



**Food Security and Nutrition  
Analysis Unit Somalia**

*Information for Better  
Livelihoods*



*Post Deyr'11/12*

# Presentation

January 24<sup>th</sup>, 2012



## Integrated Nutrition Situation Analysis

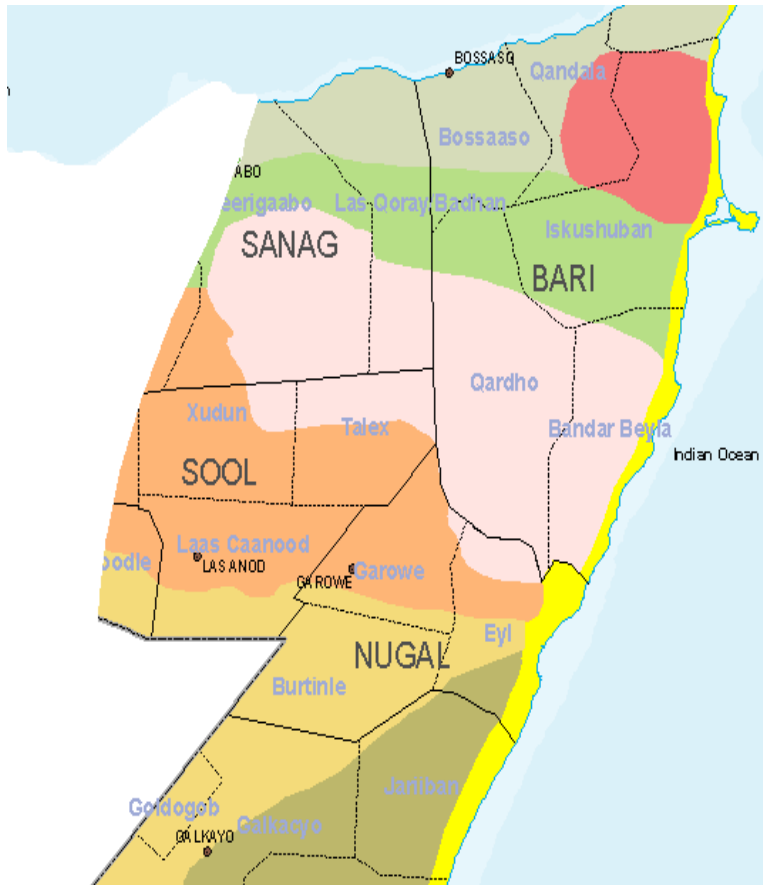
**Northeast Regions**



EUROPEAN COMMISSION



## Main Livelihood Zones

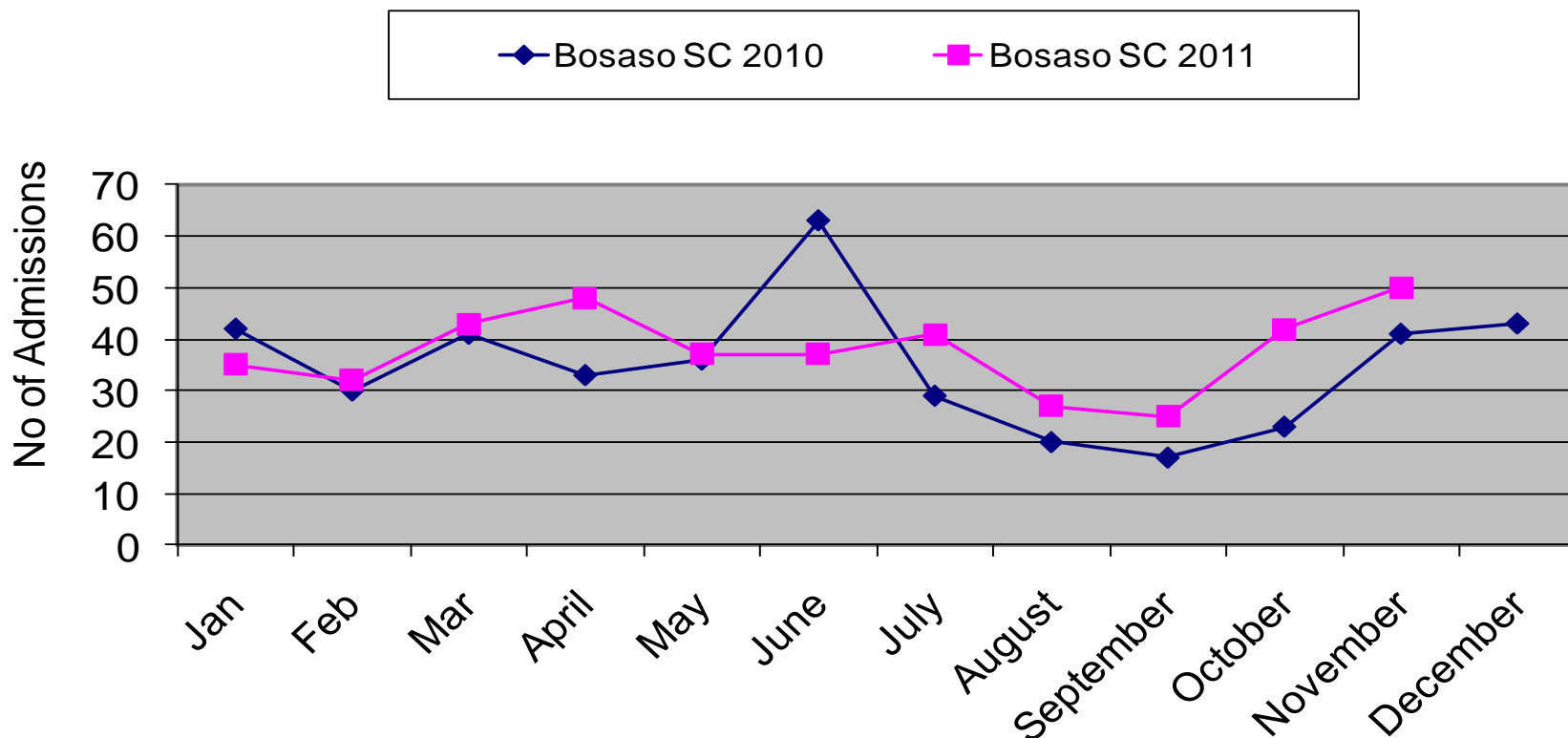


- Predominately pastoral with eight livelihood zones;
- East Golis, Gagaab, Kakaar,
  - Nugal Valley and Sool Plateau.
  - The Coastal Deeh, Hawd and Addun, cutting across the Northeast and Central.

Outcome indicators	Bossaso IDPs, Summary of Findings		
	Deyr'10/11 (N=749) November 2010	Gu'011 (N= 611) June 2011	Deyr' 11/12 (N= 899) November 2011
<b>Child Nutrition status</b>			
o GAM (WHZ<-2 or oedema)	15.6 (12.7-19.1)	24.4 (20.9-28.3)	24.1 (21.3 – 27.2)
o Mean WHZ	-0.90 ±1.04	-1.17 ±1.10	-1.22 ±1.13
o SAM (WHZ<-3 or oedema)	2.8 (1.6-4.8)	4.7 (3.2-7.1)	7.2 (6.0 – 8.7)
o Oedema	0.4	0.8	0.1
o MUAC (<12.5 cm or oedema)	15.1 (11.9-18.3)	11.0 (8.1-14.6)	14.9 (11.9 –18.5)
o MUAC (<11.5 cm or oedema)	4.3 (2.6-6.0)	2.0 (1.0- 3.9)	3.5 (2.6 – 4.6)
o HIS Nutrition Trends	High (>15%) & Stable	High (>20%) and stable	High (>20%) and stable
o TFPs/SFPs Admission trends	High levels -OTP admissions	Stable SC admissions trends	Stable SC admissions trends
<b>Crude death Rate/10,000/day (90days)</b>	0.15 (0.05-0.42)	0.89 (0.58-1.37)	0.68 (0.44-1.07)
<b>Under 5 death Rate/10,000/day (90days)</b>	1.24 (0.51-2.99)	2.23 (1.20-4.11)	1.51 (0.84-2.72)
Non-pregnant women with MUAC <18.5 cm	0.0	1.1 (0.0-2.8)	1.3 (0.0-2.9)
Pregnant & Lactating women with MUAC<21.0 cm	-	4.6 (1.3-7.9)	4.6 (1.1-8.2)
Pregnant & Lactating women with MUAC<23.0 cm	22.6	20.2 (13.5-27.0)	18.2 (11.7-24.7)
<b>OVERALL NUTRITION SITUATION</b>	<b>Critical</b>	<b>Very critical</b>	<b>Very critical</b>
<b>Child Morbidity, Immunization, IYCF</b>			
o Disease Outbreaks:	No outbreak	Measles Outbreak	No outbreak
o Morbidity based on 2wk recall	Overall Morbidity-62.5	Overall Morbidity – 53.8	Overall Morbidity: 63.2
o Immunization status/Vit. A	Measles Vac:91.2; Vit A: 94.5	Measles Vac:- 88.9 Vitamin A: 93.0;	Measles Vac: 82.6 Vitamin A 72;
o Children eating from <4 fdgps	9.0	4.4	11.5
o Children meeting min. feeding freq.	30.9	44.9	35.5
<b>Public Health Indicators; Gender</b>	<b>N=455</b>	<b>N=376</b>	<b>N= 554</b>
o Households (HH) accessing safe water	28.5	69.4	64.3
o Households (HH) accessing sanitation facility	60.7	76.3	70.2
o Relation between GAM & child sex	Insignificant	Insignificant	Insignificant
o Relation between GAM & sex of hh head	Insignificant	Insignificant	Insignificant
<b>Food Security Phase</b>	<b>HE/Emergency</b>	<b>HE/Emergency</b>	<b>HE/Emergency</b>
Proportion of hh consuming <4 fd gps	8.5	18.9	14.4
<b>Overall Risk to Deterioration</b>	<b>Uncertain</b>	<b>Uncertain</b>	<b>Uncertain</b>

## Admissions Trends of Acutely malnourished children

**Bossaso SC (2010 - 2011)**  
(Data source: UNICEF/MOH)



Stable admission trends in the Stabilization center

Outcome indicators	Galkayo IDP, Summary of Findings		
	Deyr'10/11 (N=869) November 2010	Gu' 11 (N= 602) June 2011	Deyr' 11/12 (N= 972) November 2011
<b>Child Nutrition status</b>			
○ GAM (WHZ<-2 or oedema)	16.3 (13.2-20.0)	20.3 (16.1-25.2)	21.8 (18.6 – 25.4)
○ Mean WHZ	0.81 ±1.21	-1.13 ± 1.02	-1.06 ± 1.22
○ SAM (WHZ<-3 or oedema)	2.9 (1.8-4.5)	4.4 (2.9 -6.6)	5.9 (4.2 –8.2)
○ Oedema	0.0	0.5	0.2
○ MUAC (<12.5 cm or oedema)	5.1 (3.5-7.3)	16.2 (12.5-20.6)	9.3 (6.8 –12.4)
○ MUAC (<11.5 cm or oedema)	0.0	1.6 ( 0.9- 3.0)	2.8 (1.7 – 4.5)
○ HIS Nutrition Trends	N/A	N/A	N/A
○ TFPs/SFPs Admission trends	N/A	High and fluctuating	N/A
○ Crude Death rate/10,000/day	1.00 (0.52-1.93)	0.89 (0.59-1.36)	0.80 (0.45-1.42)
○ U5 Death rate/10,000/day	1.50 (0.65-3.50)	1.01 (0.47-2.17)	1.39 (0.62-2.08)
Non-pregnant women with MUAC <18.5 cm	0.0	0.0	0.0
Pregnant & Lactating women with MUAC<21 .0 cm	-	6.3 (2.9-9.6)	7.4 (4.1-10.6)
Pregnant & Lactating women with MUAC<23.0 cm	22.2	26.1 (17.4-34.9)	27.0 (19.2-34.7)
<b>OVERALL NUTRITION SITUATION</b>	<b>Critical</b>	<b>Very Critical</b>	<b>Very Critical</b>
<b>Child Morbidity, Immunization, IYCF</b>			
○ Disease Outbreaks:	No Outbreak	No Outbreak	No Outbreak
○ Morbidity based on 2wk recall	Overall Morbidity: 3.4	Overall Morbidity-49.3	Overall Morbidity - 42.1
○ Immunization status/Vit. A	Measles Vac:83.5; Vit A:81.6	Measles Vac:86.6 Vit A: 87.4	Measles Vac: 85.5 VitA: 68.1
○ Children eating from <4 fdgps	15.0	7.7	13.9
○ Children meeting Rec. feeding freq.	8.7	31.1	31.9
<b>Public Health Indicators; Gender</b>	<b>N=445</b>	<b>N=386</b>	<b>N=523</b>
○ Households (HH) accessing safe water	65.4	99.5	91.6
○ HH accessing sanitation facilities	38.1	98.3	98.3
○ Relation between GAM & child sex	Insignificant	Insignificant	Insignificant
○ Relation between GAM & sex of hh head	Insignificant	Insignificant	Insignificant
<b>Food Security Phase</b>	<b>Emergency/HE</b>	<b>Emergency/HE</b>	<b>Emergency/HE</b>
Proportion of hh consuming <4 fd gps	12.1	2.8	4.8
<b>Overall Risk to Deterioration</b>	<b>Deteriorating</b>	<b>Uncertain</b>	<b>Uncertain</b>

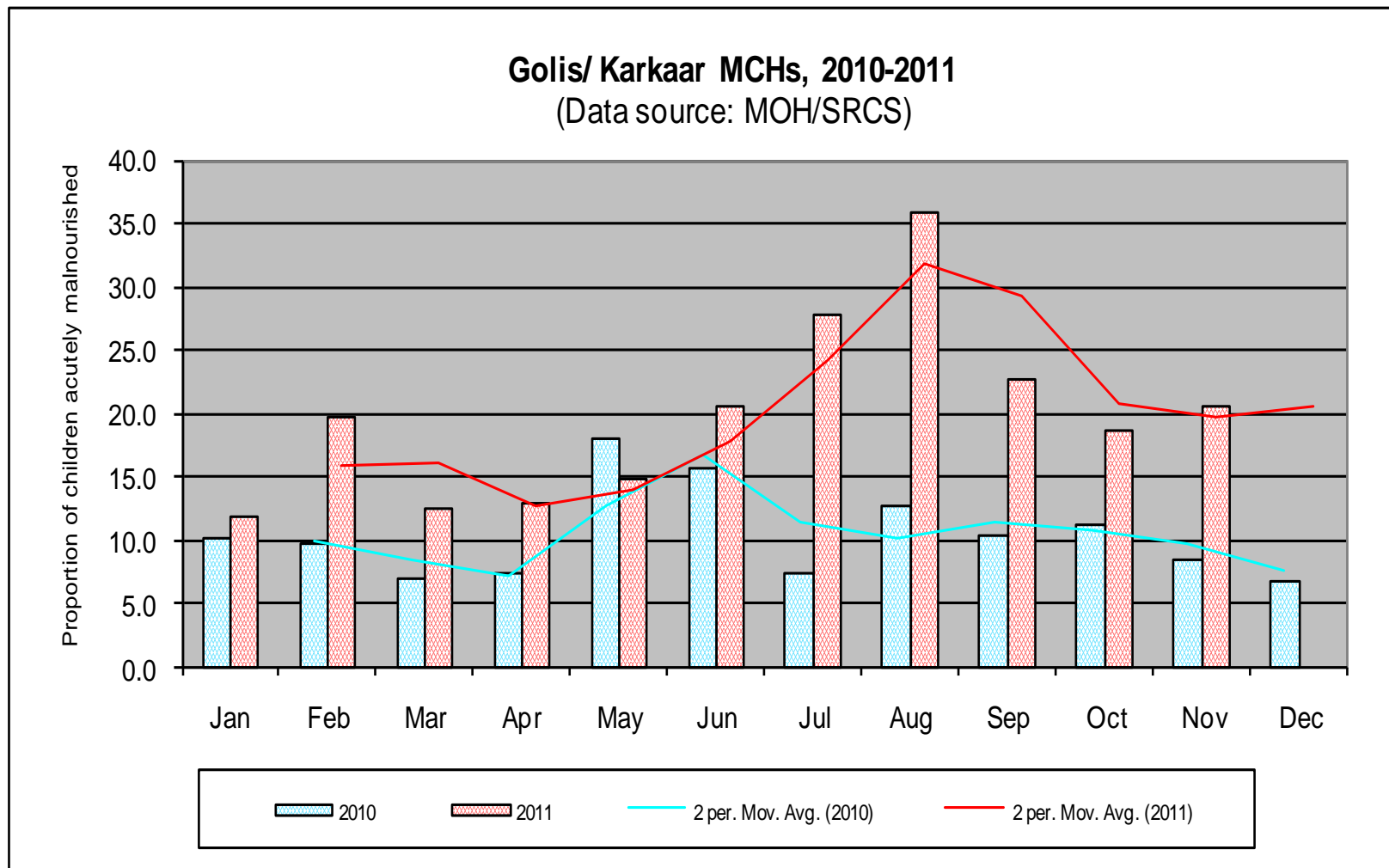
Outcome indicators	Garowe IDP, Summary of Findings		
	Deyr'10/11 (N=761) Nov ember 2010	Gu'11 (N= 604) June 2011	Deyr' 11/12 (N= 777 ) Nov ember 2011
<b>Child Nutrition status</b>			
o GAM (WHZ<-2 or oedema)	13.3 (11.0-15.9)	20.5 (17.5-24.0)	17.8 (4.7 –21.3)
o Mean WHZ	-0.96 ±1.05	-1.18 ±0.98	-0.98 ±1.18
o SAM (WHZ<-3 or oedema)	2.5 (1.6-3.9)	1.8 (0.9-3.7)	4.5 (3.2 –6.3)
o Oedema	0.1	0.3	0.1
o MUAC (<12.5 cm or oedema)	9.6 (7.0-12.9)	14.9 (12.4-17.7)	11.8 (10.2 –13.7)
o MUAC (<11.5 cm or oedema)	0.4 (0.1-1.2)	4.6 (3.1-6.9)	3.0 (2.1 – 4.2)
o HIS Nutrition Trends	N/A	N/A	N/A
o TFPs/SFPs Admission trends	High levels -OTP admissions-in Garowe	Steady increase (though operational for <a year)	-
o Crude Death rate/10,000/day	0.24 (0.10-0.60)	0.61 (0.31-1.19)	0.30 (0.15-0.59)
o U5 Death rate/10,000/day	0.41 (0.13-1.33)	1.39 (0.47-4.02)	0.77 (0.31-1.88)
Non-pregnant women with MUAC <18.5 cm	0.0	3.1 90.0-6.4)	0.6 (0.0-1.6)
Pregnant & Lactating women with MUAC<21.0 cm	-	13.6 (8.7-18.9)	4.6 (1.7-7.6)
Pregnant & Lactating women with MUAC<23.0 cm	8.4	27.1 (20.8-33.4)	14.4 (7.5-21.2)
<b>OVERALL NUTRITION SITUATION</b>	<b>Serious</b>	<b>Very Critical</b>	<b>Critical</b>
<b>Child Morbidity, Immunization, IYCF</b>			
o Disease Oubreaks:	No outbreak Disease	AWD and measles Outbreak	No outbreak
o Morbidity based on 2wk recall	Overall Morbidity-40.5	Overall Morbidity-45.0	Overall Morbidity: 37.8
o Immunization status/Vit. A	Measles Vac:79.2 Vit A: 84.2	Measles Vac80.8%: Vit A:82.5%	Measles Vac: 60.5 VitA: 68.1
o Children eating from >=4 fdgps	6.9	2.6	3.2
o Children meeting min. feeding freq.	9.2	29.5	18.7
<b>Public Health Indicators; Gender</b>	<b>N=455</b>	<b>N=377</b>	<b>N=512</b>
o Households (HH) accessing safe water	41.7	53.6	55.3
o HH accessing sanitation facilities	35.8	60.7	92.0
o Relation between GAM & child sex	Insignificant	Insignificant	Insignificant
o Relation between GAM & sex of hh head	Insignificant	Insignificant	Insignificant
<b>Food Security Phase</b>	<b>HE /Emergency</b>	<b>HE/Emergency</b>	<b>HE/Emergency</b>
Proportion of hh consuming <4 fd gps	8.0	12.2	14.5
<b>Overall Risk to Deterioration</b>	<b>Uncertain</b>	<b>Uncertain</b>	<b>Uncertain</b>

Outcome indicators	Qardho IDP, Summary of Findings		
	Deyr'10/11 (N=214) November 2010	Gu'11 (N= 211) June 2011	Gu'11 (N= 196) Nov ember 2011
<b>Child Nutrition status</b>			
o GAM (WHZ<-2 or oedema)	>10.6 (Pr=0.90)	>23.8 (Pr.=0.90)	>16.4
o Mean WHZ	-0.65 ±1.19	-1.38 ± 1.19	-0.94 ±1.14
o SAM (WHZ<-3 or oedema)	>2.7 (Pr=0.90)	>8.2 (Pr.=0.90)	>4.3
o Oedema	0.5	0.9	0.0
o MUAC (<12.5 cm or oedema)	13.2(16.3-29.7)	>19.8 (Pr.=0.90)	>13.1
o MUAC (<11.5 cm or oedema)	8.1 (4.1-12.2)	>4.4 (Pr.=0.90)	>0.8
o HIS Nutrition Trends	N/A	N/A	N/A
o TFPs/SFPs Admission trends		Stable Admissions in Karkar OTP	-
Non-pregnant women with MUAC <18.5 cm	N/A	0.0	7.7
Pregnant & Lactating women with MUAC<21.0 cm	N/A	5.3 (0.4-10.3)	10.6 (0.5-20.8)
Pregnant & Lactating women with MUAC<23.0 cm	N/A	24.0 (14.1-33.9)	44.7
<b>OVERALL NUTRITION SITUATION</b>	<b>Serious</b>	<b>Very Critical</b>	<b>Critical</b>
<b>Child Morbidity, Immunization, IYCF</b>			
o Disease Outbreaks:	No Outbreak	Measles Outbreak	No Outbreak
o Morbidity based on 2wk recall	Overall Morbidity-9.8	Overall Morbidity– 38.4	Overall Morbidity: 49.5
o Immunization status/Vit. A	Measles Vac:63.5 Vit A: 91.1	Vit A : 80.1 Measles Vac : 70.0	Measles Vac: 55.5 VitA: 64.8
o Children eating from >=4 fdgps	N/A	3.8	4.1
o Children meeting Rec. feeding freq.	N/A	66.3	35.1
<b>Public Health Indicators; Gender</b>	<b>N/A</b>	<b>N=103</b>	<b>N= 88</b>
o Households (HH) accessing safe water	N/A	61.2	97.7
o HH accessing sanitation facilities	N/A	98.1	97.7
o Relation between GAM & child sex	N/A	Insignificant	Insignificant
o Relation between GAM & sex of hh head	N/A	Insignificant	Insignificant
<b>Food Security Phase</b>	<b>AFLC/Crisis</b>	<b>HE/Emergency</b>	<b>HE/Emergency</b>
Proportion of hh consuming <4 fd gps	N/A	20.4	26.1
<b>Overall Risk to Deterioration</b>	<b>Uncertain</b>	<b>Uncertain</b>	<b>Uncertain</b>

Outcome indicators	East Golis Livelihood Zone, Summary of Findings		
	Deyr'10/11 (N= 659) December 2010	Gu'11 ( N=727) July 2011	Deyr'11/12 (N= 575) December 2011
<b>Child Nutrition status</b>			
○ GAM (WHZ<-2 or oedema)	11.1 (8.0-15.1)	12.2 (8.5-16.9)	15.2 (12.1 –18.9)
○ Mean WHZ	-0.53 ±1.18	-0.81 ±1.03	-0.92 ±1.17
○ SAM (WHZ<-3 or oedema)	2.1 (1.2-3.9)	1.1 (0.0-2.7)	3.8 (2.3-6.4)
○ Oedema	0.3	0.4	0.0
○ MUAC (<12.5 cm or oedema)	5.8 (3.8-8.6)	5.5 (3.9-7.0)	7.0 (4.8 –10.0)
○ MUAC (<11.5 cm or oedema)	0.3 (0.0-2.4)	1.2 (0.5-1.9)	1.6 (0.8-3.2)
○ HIS Nutrition Trends	Low proportion but increasing trends (Jan-Dec '10)	High (15%) and increasing	High (15%) but decreasing
○ TFPs/SFPs Admission Trends	Low proportion and decreasing	Low proportion and stable	Low proportion and decreasing
Non-pregnant women with MUAC <18.5 cm	0.5	0.4 (0.0-1.2)	0.5 (0.0-1.4)
Pregnant & Lactating women with MUAC<21.0 cm	-	2.4 (0.0-5.3)	9.0 (0.0-20.6)
Pregnant & Lactating women with MUAC<23.0 cm	21.7	23.5 (13.8-33.2)	21.0 (3.5-38.5)
<b>Crude death Rate/10,000/day (90days)</b>	0.13 (0.05-0.33)	0.98 (0.54-1.77)	0.26 (0.10-0.65)
<b>Under 5 death Rate/10,000/day (90days)</b>	0.30 (0.07-1.20)	1.44 (0.79-2.61)	0.36 (0.04-2.82)
<b>OVERALL NUTRITION SITUATION</b>	<b>Serious</b>	<b>Serious</b>	<b>Critical</b>
<b>Child Morbidity, Immunization, IYCF</b>			
○ Disease Oubreaks:	No outbreak	Measles Outbreak	No outbreak
○ Morbidity based on 2wk recall	Overall Morbidity -43.1	Overall Morbidity: 41.2	Overall Morbidity: 42
○ Immunization status/Vit. A	Measles Vac: 77.1 Vit A: 80.9	Measles Vac: 81.8 Vit A: 77.7	Measles Vac: 66.4 Vit A: 69.3
○ Children eating from ≥4 fdgps	98.0	95.8	78.5
○ Children meeting min. feeding freq.	35.0	23.3	40.6
<b>Public Health Indicators; Gender</b>	<b>N=420</b>	<b>N=536</b>	<b>N=384</b>
○ Households (HH) accessing safe water	49.8	15.2	52.8
○ HH accessing sanitation facilities	61.7	68.2	71.9
○ Relation between GAM & child sex	Significant	Insignificant	Insignificant
○ Relation between GAM & sex of hh head	Insignificant	Insignificant	Insignificant
<b>Food Security Phase</b>	<b>BFI/Stressed</b>	<b>AFLC/Crisis</b>	<b>AFLC/Crisis</b>
Proportion of hh consuming <4 fd gps	6.7	36.4	1.0
<b>Overall Risk to Deterioration</b>	<b>Potential to deteriorate</b>	<b>Potential to deteriorate</b>	<b>Potential to improve</b>



## Malnutrition Trends at Health Facilities

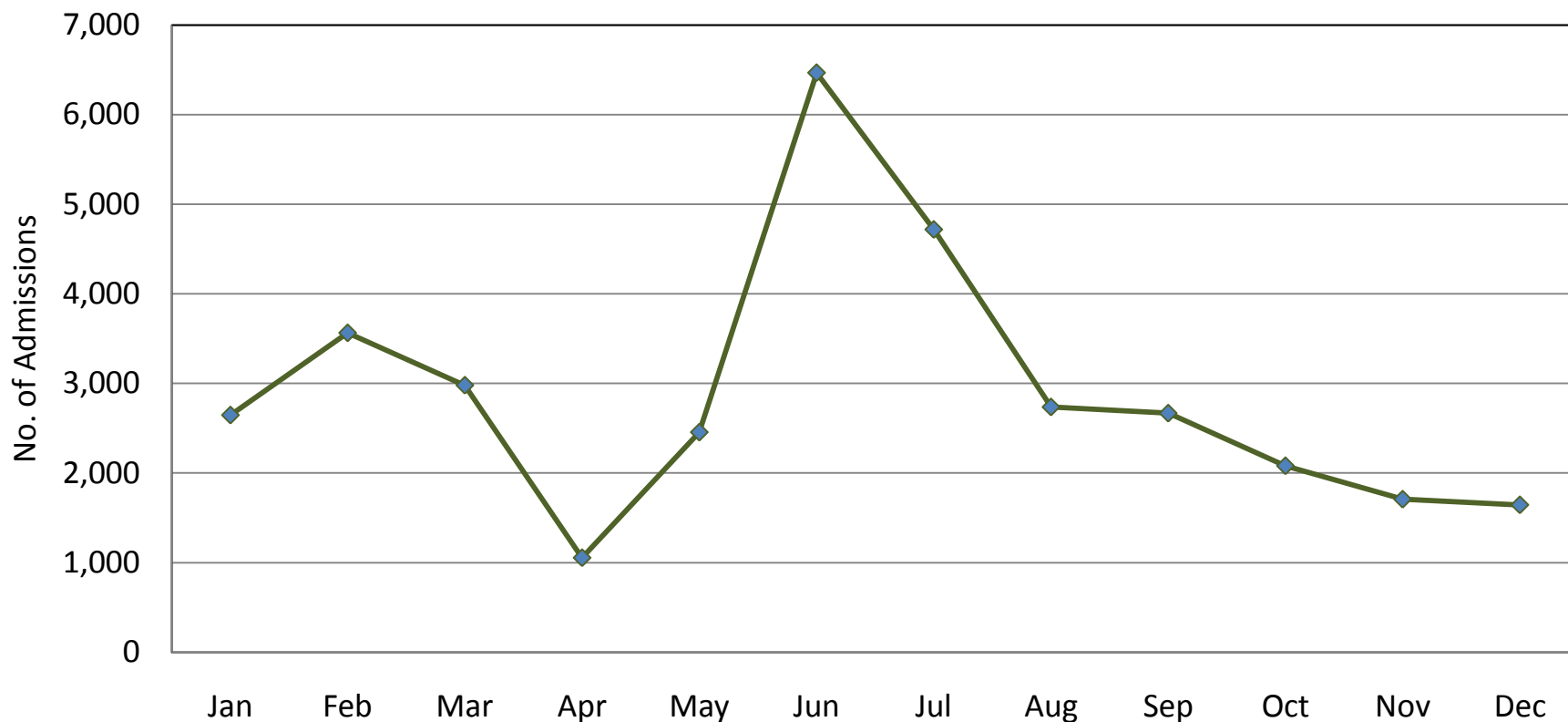


High (20%) but decreasing trends

# Admission Trends of Acutely Malnourished into Nutrition Programs

**Total Monthly Admissions into the Feeding Programs  
Bari, Nugal, Sool & Sanaag Regions, Jan-Dec 2011**

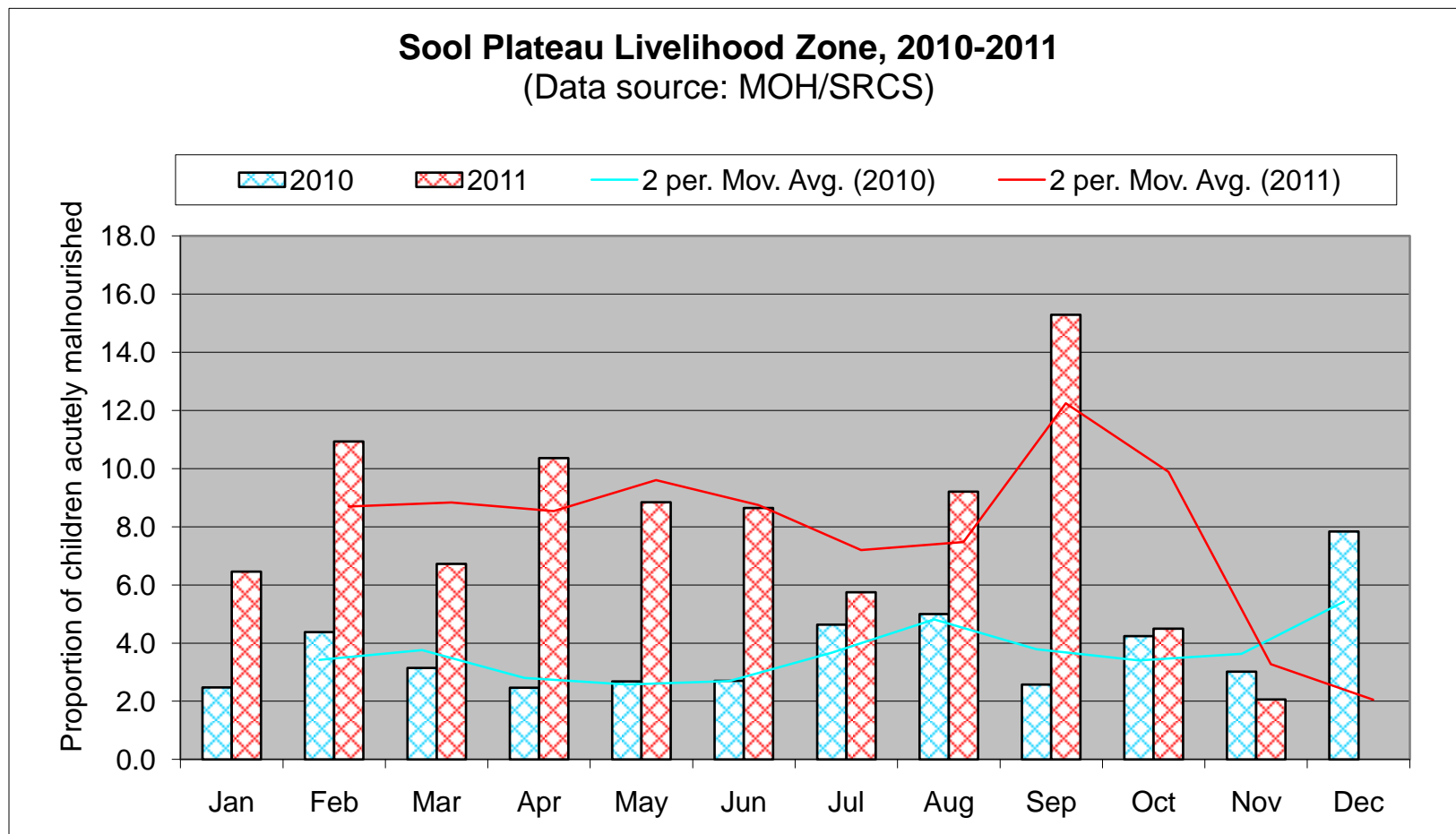
(Data source, Nutrition Cluster Coordination)



High number (>1500) of admissions but declining since Jun '11

Outcome indicators	SOOL PLATEAU Livelihood Zone, Summary of Findings		
	Deyr 2011 (N= 637) December 2010	Post GU'11 (N=629) June 2011	Post Deyr-11/12 (N=654) December 2011
<b>Child Nutrition status</b>			
o GAM (WHZ<-2 or oedema)	8.3 (6.0-11.4)	15.9(13.6-18.4)	11.6 (8.7-15.3)
o SAM (WHZ<-3 or oedema)	1.6 (0.8-3.1)	4.0 ( 2.9- 5.4)	3.4 (2.0-5.7)
o Mean weight-for-height	-0.46	-0.73 ±1.26	-0.55 ±1.19
o Oedema	0.6	1.0	1.2
o MUAC (<12.5 cm or oedema)	2.9 (1.7-5.0)	10.0 (7.1-14.0)	5.2 (3.2-8.5)
o Severe MUAC (<11.5cm)	1.3 (0.5-3.1)	3.3 ( 1.9- 5.7)	1.5 (0.9-2.7)
o HIS Nutrition Trends	10-15% and stable trend	High >15%) and increasing	Low (<10%) and decreasing
o TFPs/SFPs Admission trends	Increasing trend in Dhahar	High and increasing	Low and stable numbers
Non-pregnant women with MUAC <18.5 cm	2.2	0.6	0.4(0.1-1.3)
Pregnant & Lactating women with MUAC<21.0 cm	-	6.5 (2.3-10.6)	5.3(0.1-11.5)
Pregnant & Lactating women with MUAC<23.0 cm	19.0	22.8 (11.0-34.7)	21.1(13.2-28.9)
<b>Crude death Rate/10,000/day (90days)</b>	0.45 (0.25-0.80)	0.39 (0.21-0.74)	0.48 (0.22-1.06)
<b>Under 5 death Rate/10,000/day (90days)</b>	1.11 (0.49-2.47)	0.41 (0.13-1.30)	1.22(0.19-7.31)
<b>OVERALL NUTRITION SITUATION</b>	Alert	Critical	Serious
<b>Child Morbidity, Immunization, IYCF</b>			
o Disease Outbreaks:	No outbreaks	No Outbreak	No Outbreak
o Morbidity based on 2wk recall	48.9 ; Diarrhoea- 19.4; Pneumonia – 18.0	Morbidity, 27.8; Diarrhea:13.2 ; Pneumonia,8.1; Measles,4.7	Morbidity, 32.3, Diarrhea:9.2 Pneumonia,10.1; Measles,7.4
o Immunization status/Vit. A	Vit A – 60.6, Measles Vac- 68.9	Vit.A, 78.1 Polio: 86.5; Measles Vac:79.2	Vit-A,64.2 Measles Vac: 63.1; polio, 76.3
o Children eating from <4 fdgps	75.7	80.8	78.2
o Children meeting min. feeding freq.	47.6	78.1	44.1
<b>Public Health Indicators; Gender</b>	<b>N=373</b>	<b>N=399</b>	<b>N=396</b>
o Households (HH) accessing safe water	22.4	14.0	33.6
o HH accessing sanitation facilities	66.1	14.0	68.7
o Relation between GAM & child sex	Insignificant	Insignificant	Insignificant
o Relation between GAM & sex of hh head	Insignificant	Insignificant	Insignificant
Proportion of hh consuming <4 fd gps	10.1	2.0	15.2
<b>Food Security Phase</b>	Emergency/HE	Emergency/HE	Crisis
<b>Overall Risk to Deterioration</b>	Stable	Potential to deteriorate	Stable

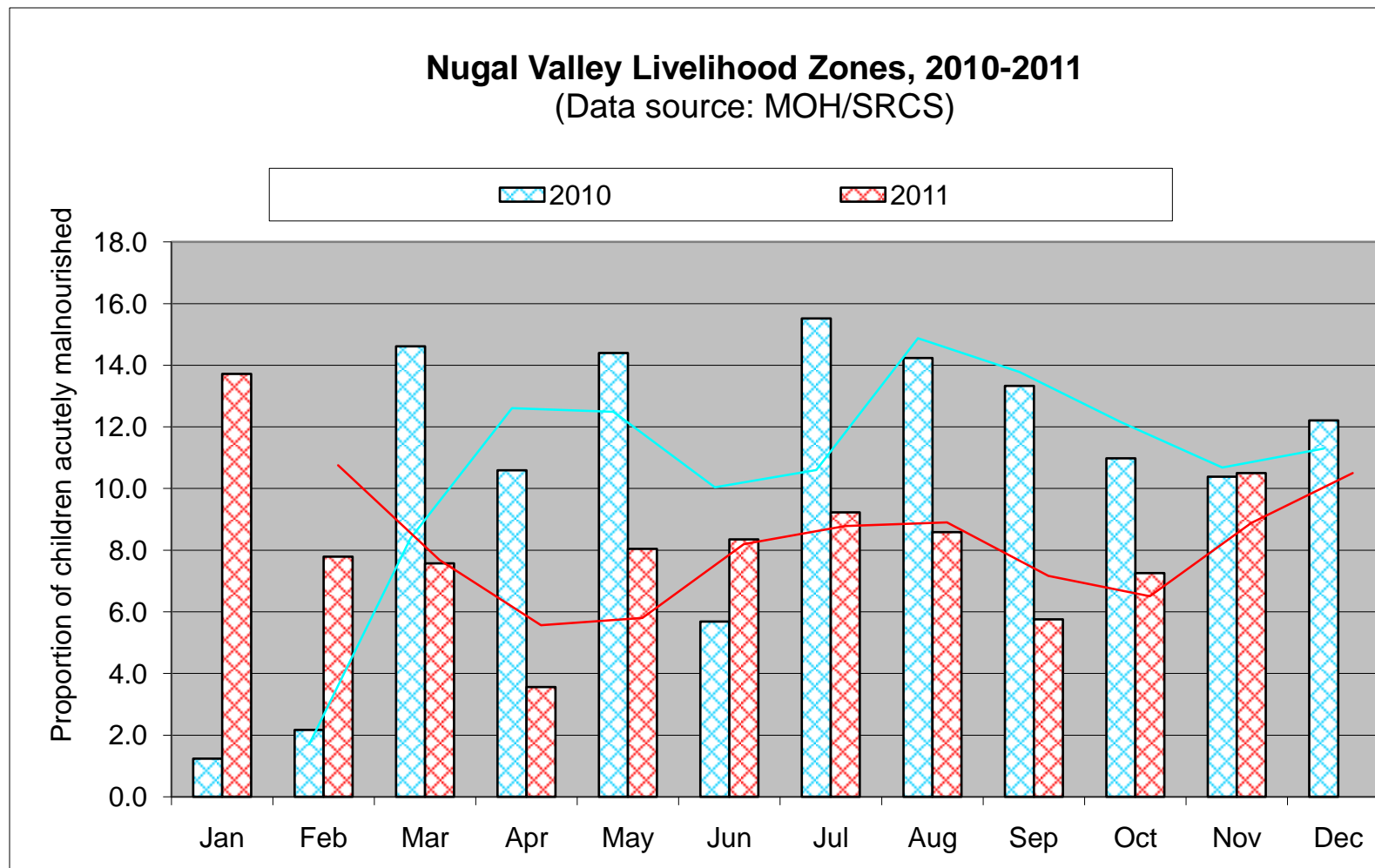
## Malnutrition Trends at Health Facilities



Low (<10%) and decreasing trends

Outcome indicators	NUGAL VALLEY Livelihood Zone, Summary of Findings		
	Deyr '10/11 (N= 516) Decembre 2010	Gu'11 (N=582) June 2011	Post Deyr '11/12 (N=637) December 2011
<b>Child Nutrition status</b>			
o GAM (WHZ<-2 or oedema)	10.3 (7.0-14.8)	23.2( 18.5-28.1)	16.3 (13.5-19.6)
o SAM (WHZ<-3 or oedema)	1.0 (0.4-2.3)	6.7 (4.4-10.0)	2.7 (1.7-4.2)
o Mean weight-for-height	-0.63	-1.11	-0.90
o Oedema	0	0.1	0.6
o MUAC (<12.5 cm or oedema)	4.2 (2.5-6.0)	11.5 (9.1-14.5)	3.0 ( 1.9-4.7)
o Severe MUAC (<11.5cm)	1.2 (0.3-2.0)	2.9(1.6-5.3)	1.5 (0.9-2.7)
o HIS Nutrition Trends	Low (<5%) but increasing	Low (<5%) and stable	Low (<10%) but increasing
o TFPs/SFPs Admission trends	High OTP admission	Low and stable numbers	Low and stable numbers
Non-pregnant women with MUAC <18.5 cm	2.0	0.0	0.5 (0.0-1.5)
Pregnant & Lactating women with MUAC<21.0 cm	-	2.4 (0.0-5.3)	1.3 (0.0-3.2)
Pregnant & Lactating women with MUAC<23.0 cm	22.9	23.5 (13.8-33.2)	9.8 (4.5-15.3)
<b>Crude death Rate/10,000/day (90days)</b>	0.53 (0.32-0.92)	0.34 (0-14.0.82)	0.19 (0.09-0.40)
<b>Under 5 death Rate/10,000/day (90days)</b>	0.61 (0.20-1.87)	0.63 (0.17-2.29)	0.48 (0.15-1.45)
<b>OVERALL NUTRITION SITUATION</b>	<b>Serious</b>	<b>Very critical</b>	<b>Critical</b>
<b>Child Morbidity, Immunization, IYCF</b>			
o Disease Outbreaks: o Morbidity based on 2wk recall	No outbreaks 40.4 ; Diarrhoea- 13.2; Pneumonia- 15.1	No outbreak Morbidity, 45.3; Diarrhea:29; Pneumonia:10.8 Fever: 23.4; Measles: 5.5	No outbreak Morbidity,33.9; Diarrhoea: 8.4; Pneumonia: 6.3; Measles: 4.7; Fever: 27
o Immunization status/Vit. A	Vit A- 52.5; Measles Vac- 55.3	Vit. A,63.7; Polio:77.6; Measles Vac: 63.6	Polio 82.3; Vit- A, 65.3; Measles Vac: 64.7
o Children eating from <4 fdgps	21.1	81.8	97.4
o Children meeting min. feeding freq.	22.3	27.6	51.0
<b>Public Health Indicators; Gender</b>	<b>N= 312</b>	<b>N=421</b>	<b>N=403</b>
o Households (HH) accessing safe water	19.9	1.6	19.3
o HH accessing sanitation facilities	30.3	27.0	58.8
o Relation between GAM & child sex	Insignificant	Insignificant	Insignificant
o Relation between GAM & sex of hh head	Insignificant	Insignificant	Insignificant
Proportion of hh consuming <4 fd gps	17.3	2.0	15.4
<b>Food Security Phase</b>	<b>BFI/Stressed</b>	<b>AFLC/Crisis</b>	<b>AFLC/Crisis</b>
<b>Overall Risk to Deterioration</b>	<b>POTENTIAL TO DETERIORATE</b>	<b>UNCERTAIN</b>	<b>UNSTABLE</b>

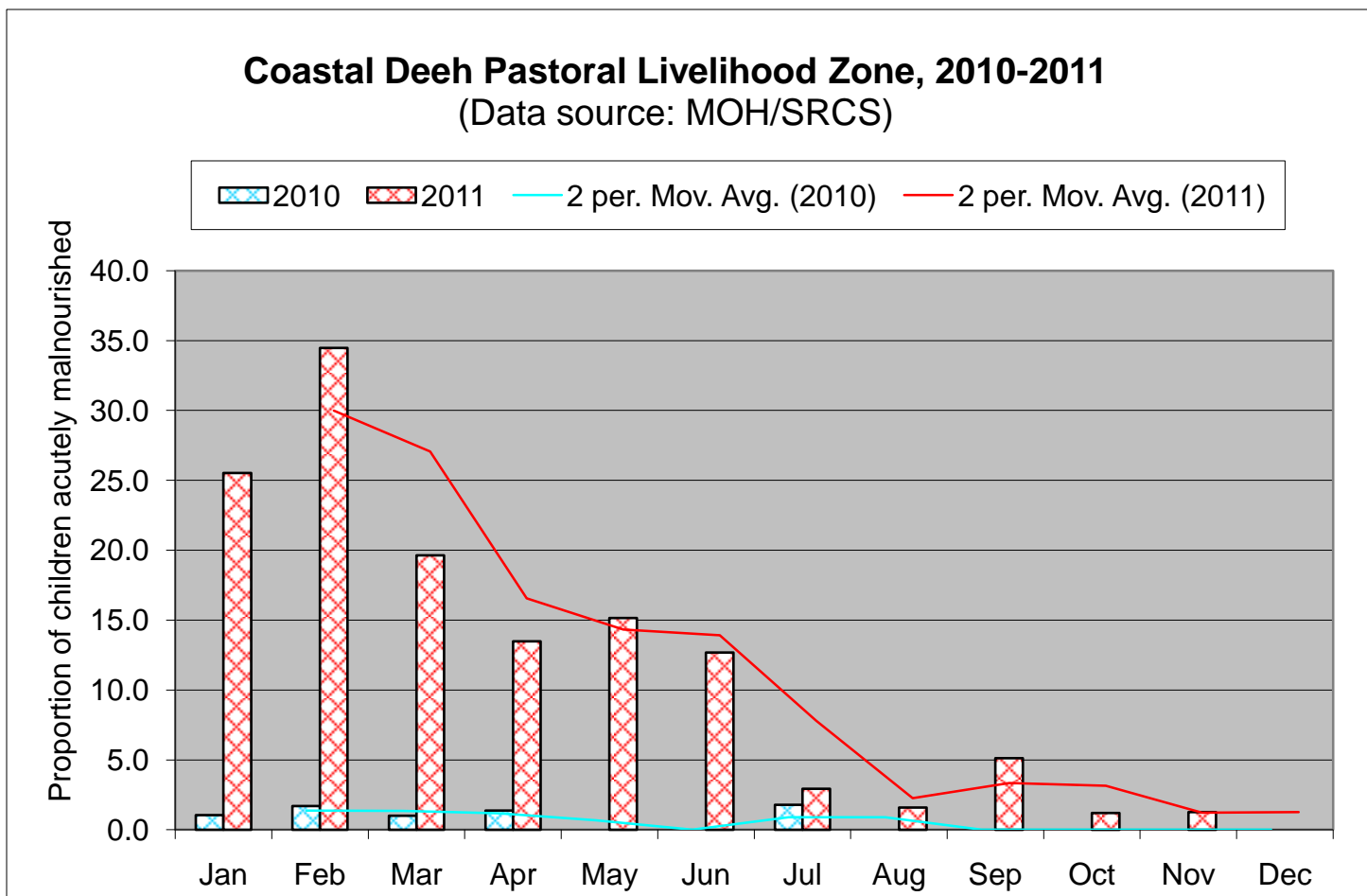
## Malnutrition Trends at Health Facilities



Low (<10%) and stable trends

Coastal Deeh LZ , Summary of Findings			
Outcome indicators	Deyr'10/11 (N=670) December 2010	Gu'2011 (N= 599) Jul y 2010	Deyr '11/12 (N= 641) December 2010
<b>Child Nutrition status</b>			
o GAM (WHZ<-2 or oedema)	12.5 (10.5-14.9)	17.4 (13.8 –21.6)	12.2 (8.9 – 16.3)
o Mean WHZ	-0.66 ± 1.25	-0.91 ±1.17	-0.61 ±1.27
o SAM (WHZ<-3 or oedema)	2.8 (1.7-4.6)	4.2 (2.7 –6.4)	3.1 (1.9-5.0)
o Oedema	0.6	0.3	0.0
o MUAC (<12.5 cm or oedema)	6.5 (2.9-10.1)	10.4 (7.3 –14.5)	3.1( 1.7-5.6)
o MUAC (<11.5 cm or oedema)	2.5 (0.4-4.6)	2.3 (1.3 –4.2)	0.2 (0.0-1.2)
o HIS Nutrition Trends	N/A	High but decreasing	Low and decreasing
o TFPs/SFPs Admission trends	N/A	N/A	N/A
Non-pregnant women with MUAC <18.5 cm	0.4	0.8 (0.0-2.0)	2.1 (0.0-4.6)
Pregnant & Lactating women with MUAC<21.0 cm	-	5.2 (1.2-9.2)	12.2 (7.2-18.2)
Pregnant & Lactating women with MUAC<23.0 cm	10.3	22.4 (15.0-29.7)	17.7 (11.5-24.0)
o Crude Death rate/10,000/day	0.38 (0.20-0.70)	0.78 (0.57-1.35)	0.19 (0.08-0.43)
o U5 Death rate/10,000/day	1.01 (0.51-2.00)	1.15 (0.58-2.25)	0.77 (0.28-2.08)
<b>OVERALL NUTRITION SITUATION</b>	<b>Serious</b>	<b>Critical</b>	<b>Serious</b>
<b>Child Morbidity, Immunization, IYCF</b>			
o Disease Outbreaks:	No outbreak	No Outbreak	No outbreak
o Morbidity based on 2wk recall	Overall Morbidity- 46.2	Overall Morbidity 48.6	Overall Morbidity: 37.4
o Immunization status/Vit. A	Measles Vac: 79.3;Vit A:	Measles Vac 57.8, VitA 52.3	Measles Vac: 64.4; VitA: 57.0
o Children eating from <4 fdgps	24.8	27.6	20.1
o Children meeting Rec. feeding freq.	32.0	51.3	98.7
<b>Public Health Indicators; Gender</b>	<b>N=448</b>	<b>N=387</b>	<b>N=440</b>
o Households (HH) accessing safe water	67.4	72.6	70.1
o HH accessing sanitation facilities	61.5	55.3	66.9
o Relation between GAM & child sex	Insignificant	Insignificant	Insignificant
o Relation between GAM & sex of hh head	Insignificant	Insignificant	Insignificant
<b>Food Security Phase</b>	<b>AFLC/Crisis</b>	<b>AFLC/Crisis</b>	<b>AFLC/Crisis</b>
Proportion of hh consuming <4 fd gps	2.4	20.2	2.3
<b>Overall Risk to Deterioration</b>	<b>Potential to Deteriorate</b>	<b>Uncertain</b>	<b>Potential to improve</b>

## Malnutrition Trends at Health Facilities



Low (<10%) and decreasing trend



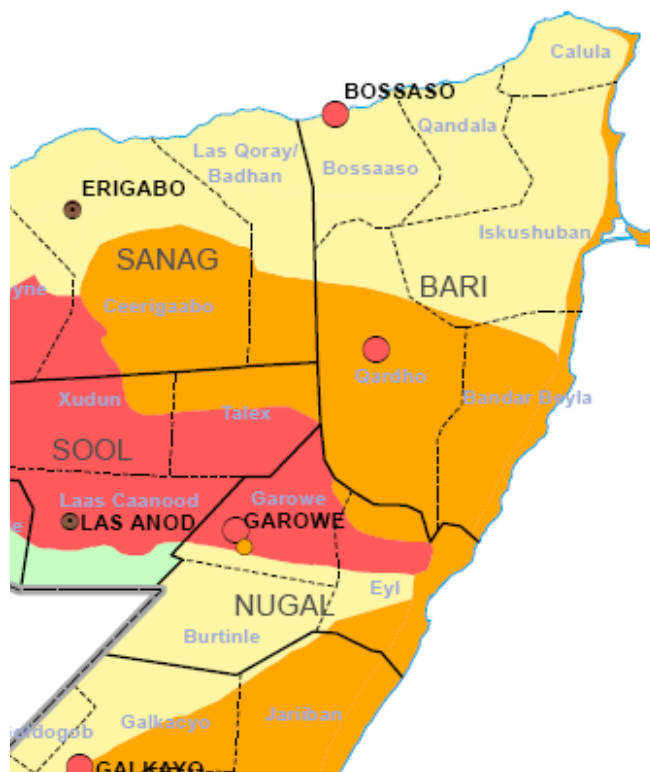
Outcome indicators	Bari Region Urban Population, Summary of Findings	
	Gu '11 (N=609) July 2011	Deyr '11/12 (N=587) December 2011
<b>Child Nutrition status</b>		
○ <i>GAM (WHZ&lt;-2 or Oedema)</i>	17.7 (14.5-21.5)	11.8 (9.1-15.1)
○ <i>SAM (WHZ&lt;-3 or Oedema)</i>	5.3 (3.7-7.8)	2.1 (1.3-3.4)
○ <i>Oedema</i>	0.7	0.0
○ <i>MUAC (&lt;12.5 cm or Oedema)</i>	6.7 (4.6-9.7)	6.1 (4.7-8.0)
○ <i>MUAC (&lt;11.5 cm or Oedema)</i>	1.6 (0.6-4.2)	0.9 (0.4-2.0)
○ <i>Mean weight-for-height</i>	-	-0.83 ±1.09
<b>OVERALL NUTRITION SITUATION</b>	<b>Critical</b>	<b>Serious</b>
<b>Child Morbidity, Immunization, IYCF</b>		
○ <i>Disease Outbreaks:</i> ○ <i>Morbidity based on 2wk recall</i>	No outbreak Overall morbidity: 16.9 Diarrhoea: 13.8 Pneumonia: 3.8; Measles: 3.3	No outbreak Overall morbidity: 35.1; Diarrhoea 17.2; Pneumonia 14.1; Measles: 0.5
<b>Overall Risk to Deterioration</b>	<b>UNSTABLE</b>	<b>STABLE</b>

Outcome indicators	Region Urban Population, Summary of Findings	
	Gu '11 (N=657) July 2011	Deyr '11/12 (N=567) December 2011
<b>Child Nutrition status</b>		
○ <i>GAM (WHZ&lt;-2 or Oedema)</i>	15.4 (12.4-19.2)	11.3 (9.1-13.9)
○ <i>SAM (WHZ&lt;-3 or Oedema)</i>	2.0 (1.1-3.4)	1.2 (0.6-2.7)
○ <i>Oedema</i>	0.0	0.0
○ <i>MUAC (&lt;12.5 cm or Oedema)</i>	8.8 (6.0-12.8)	3.8 (2.5-5.9)
○ <i>MUAC (&lt;11.5 cm or Oedema)</i>	3.3 (1.9-5.8)	0.5 (0.2-1.6)
○ <i>Mean weight-for-height</i>	-0.70 ±1.29	-0.68 ±1.14)
<b>OVERALL NUTRITION SITUATION</b>	<b>Critical</b>	<b>Serious</b>
<b>Child Morbidity, Immunization, IYCF</b>		
○ <i>Disease Outbreaks:</i> ○ <i>Morbidity based on 2wk recall</i>	No outbreak Overall morbidity: 13.2 Diarrhoea: 7.2 Pneumonia: 6.5; Measles: 4.1	AWD Outbreak in Galkayo Overall morbidity: 29.8 Diarrhoea: 8.2 Pneumonia: 7.8; Measles: 1.2
<b>Overall Risk to Deterioration</b>	<b>UNSTABLE</b>	<b>STABLE</b>

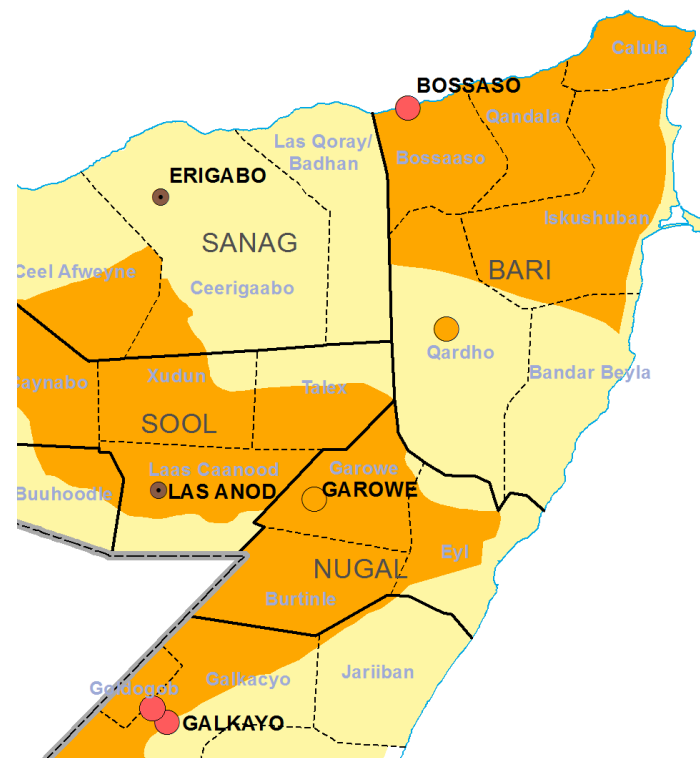
Outcome indicators	North Mudug Region Urban Population, Summary of Findings	
	Gu '11 (N=562) July '11	Deyr '11/12 (N=540) December '11
<b>Child Nutrition status</b>		
○ <i>GAM (WHZ&lt;-2 or Oedema)</i>	15.5 (12.2-19.4)	14.9 (11.7-18.7)
○ <i>SAM (WHZ&lt;-3 or Oedema)</i>	3.7 (1.2-6.2)	4.1 (2.4-6.9)
○ <i>Oedema</i>	0.2	0.0
○ <i>MUAC (&lt;12.5 cm or Oedema)</i>	7.5 (5.0-10.9)	8.1 (4.3-14.4)
○ <i>MUAC (&lt;11.5 cm or Oedema)</i>	2.5 (1.2-5.0)	1.6 (0.6-4.3)
○ <i>Mean weight-for-height</i>	-0.89 ±1.16	-0.74±1.18
<b>OVERALL NUTRITION SITUATION</b>	<b>Critical</b>	<b>Serious</b>
<b>Child Morbidity, Immunization, IYCF</b>		
○ <i>Disease Outbreaks:</i> ○ <i>Morbidity based on 2wk recall</i>	No outbreak Overall morbidity: 20.8 Diarrhoea: 13.9 Pneumonia: 3.7; Measles: 1.2	AWD Outbreak in Galkayo Overall morbidity: 12.9; Diarrhoea: 3.2 Pneumonia: 5.4; Measles: 1.4
<b>Overall Risk to Deterioration</b>	<b>UNSTABLE</b>	<b>STABLE</b>

# Nutrition situation - Northeast

**Nutrition Situation, July 2011**



**Nutrition Situation, January 2012**



# Key Driving Factors

---

- ***Aggravating factors***

- Limited milk access in Golis/Karkar and Coastal areas
- High morbidity in all livelihoods – AWD and malaria outbreak in Galkayo district
- Inappropriate child feeding and care practices
- Poor access to sanitation facilities and safe water in rural LHZs
- Poor shelter and access to milk among the IDPs
- Limited immunization coverage: Only one round of CHD conducted in July

- ***Mitigating factors***

- Limited humanitarian programmes in the region (health & feeding facilities, WASH)
- Improved milk access in Nugal, Hawd and Addun pastoral livelihoods
- Improved dietary diversity in most livelihoods
- Social support