



Post Gu 2012

Presentation

22nd August 2012



Shabelle Regions

Technical
Partner

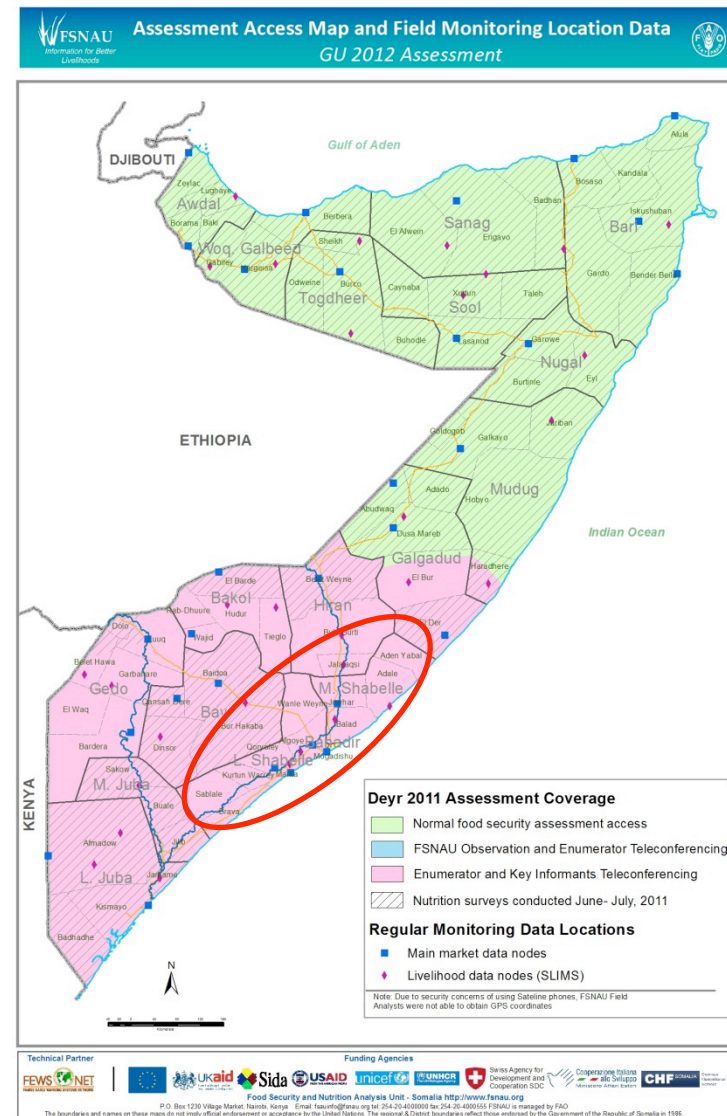


Donors

Gu 2012 Seasonal Assessment Coverage

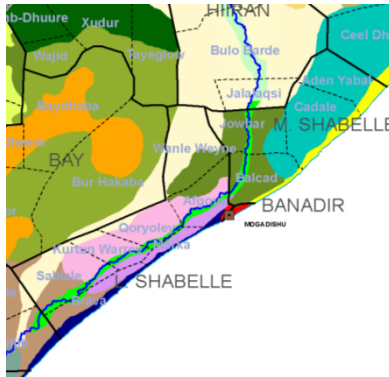
Field Access and Field Data Locations

FSNAU food security field analysts of Lower and Middle Shabelle collected data through enumerators and key informants via teleconferencing.



Main Livelihood Groups

Sources of Food and Income



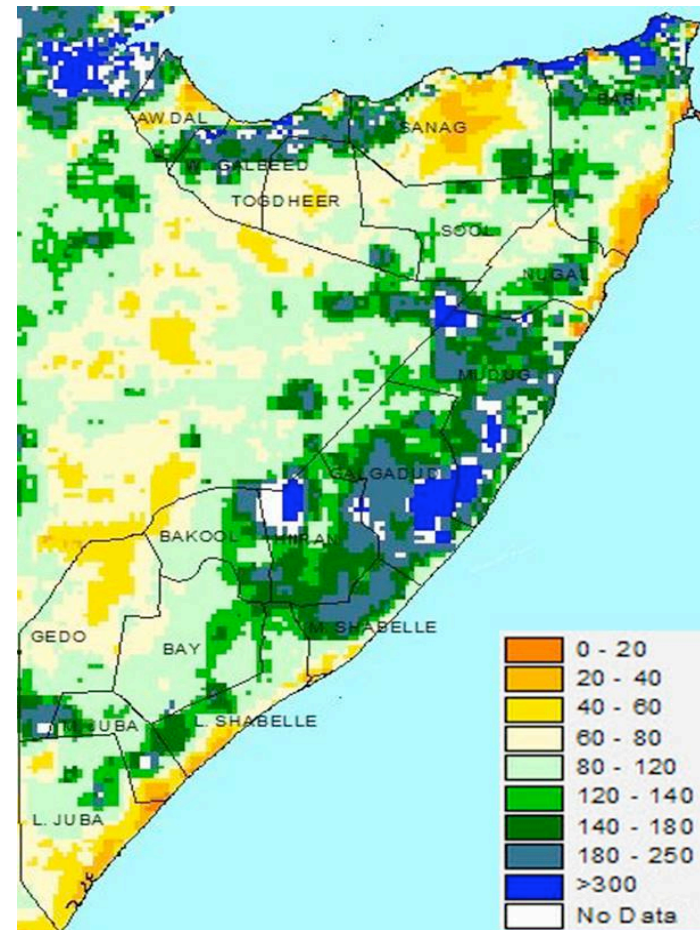
Livelihood Groups & Main Sources of Food and Income:

- **Riverine livelihood:**
 - ❑ Primary sources of **income** of poor: sale of crops, agricultural labour, and self employment.
 - ❑ Primary **food** sources of poor: Own crop and purchase.
 - ❑ Primary **livelihood asset** of poor: Agricultured land
- **Agropastoral Livelihoods** (Agropastoral Maize/cattle and Agropastoral Sorghum/cattle)
 - ❑ Agropastoral Maize/Cattle: Primary sources of **income** of poor: crop sale, agricultural labor, livestock and livestock product sales, self-employment (fodder sales, firewood, construction materials, etc); main sources of **food** of poor: Own production (maize) and purchase.
 - ❑ Agropastoral Sorghum/Cattle: Primary sources of **income** of poor: crop sale, agricultural labor, livestock and livestock product sales, self-employment (fodder sales, firewood, construction materials, etc); main sources of **food** : own production(Sorghum) and purchase.
- **Pastoral Livelihoods (Southern Inland Pastoral and South east Pastoralists)**
 - ❑ Primary sources of **income** of poor: sale of livestock & livestock products
 - ❑ Primary sources of **food** of poor: purchase
 - ❑ Primary livelihood **asset** of poor: Camel, Sh/goat (SIP), cattle (SEP),

Overall Statement:

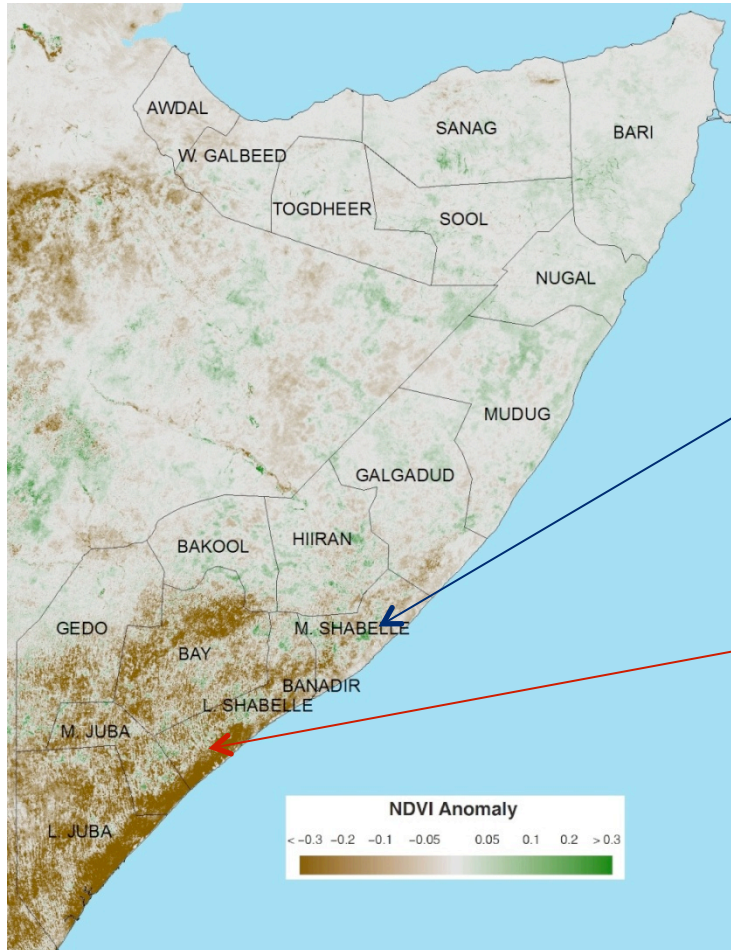
- Performance of *Gu* rains was average in all livelihoods of Middle Shabelle except Adale, Adenyabal and coastal parts of Balad. In most parts of Lower Shabelle, however rainfall performance was generally below normal.
- In coastal areas of Lower Shabelle rainfall intensity and distribution was poor; the area received (40-60%) of long term rainfall.

Rainfall Estimates: *Gu* 2012 RFE Percent from Normal (Long-Term Mean)



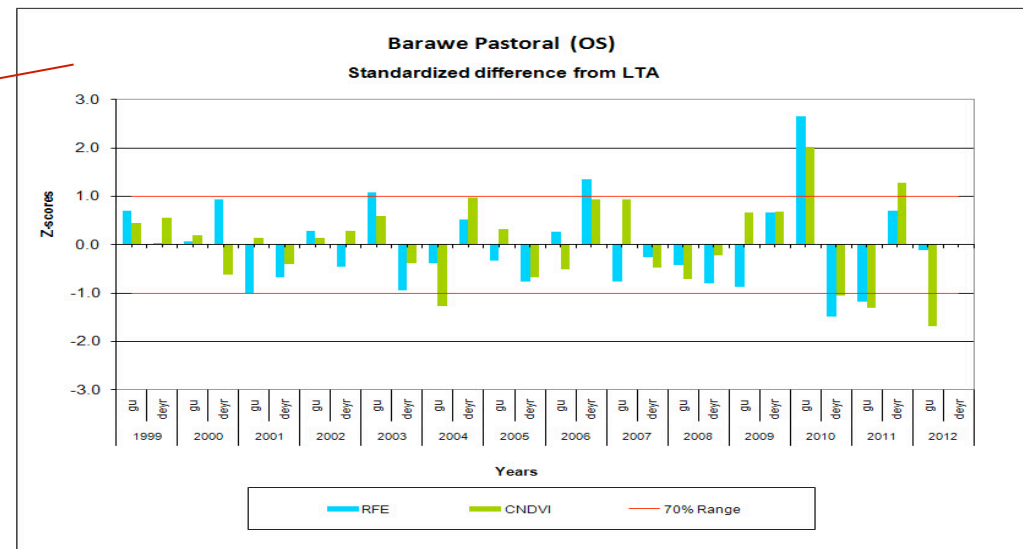
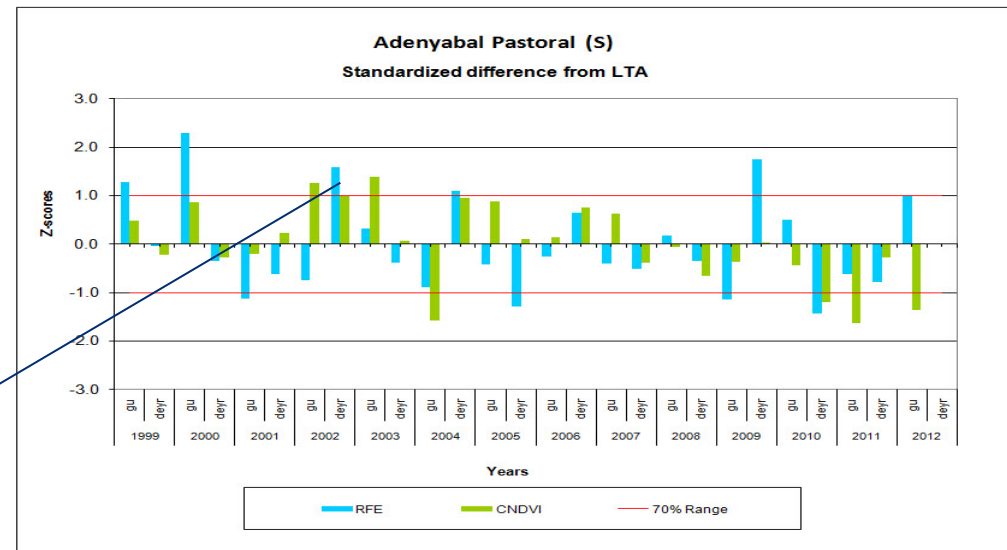
Source: NOAA/CPC/FEWS NET

NDVI eMODIS Anomaly - Period 36, June 21-30, 2012



Source: NOAA/CPC/FEWS NET

Trends in NDVI & RFE by District and Land Cover

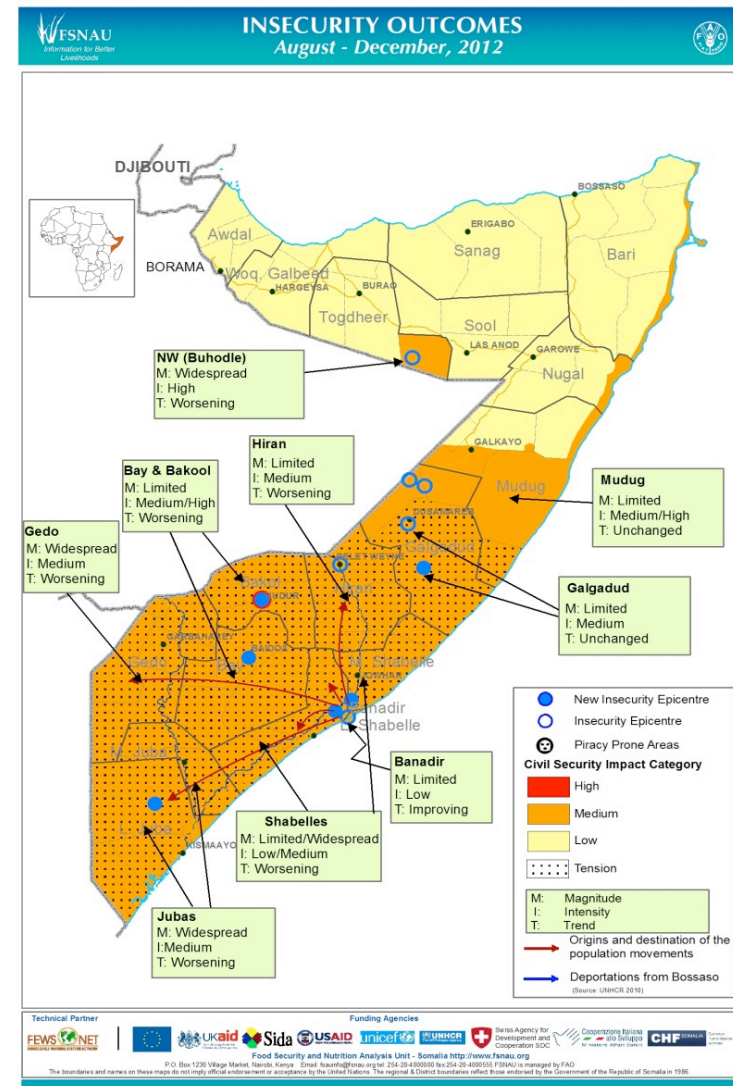


Key events:

- High political tension among TFG and religious groups in Shabelle.
- Increasing threats and limited humanitarian space

Direct and Indirect Impacts on Food Security & Nutrition:

- Market disruption mainly in the districts surrounding Mogadishu.
- Restriction of humanitarian intervention - negative impact on access to food and basic services



AGRICULTURE

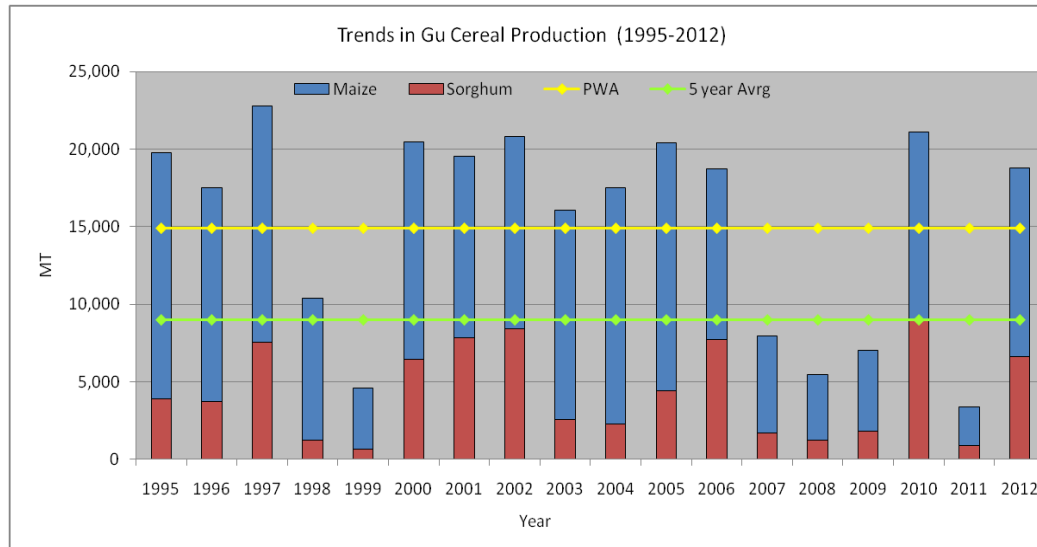
Gu 2012 Crop Production Estimates

Shabelle Dhexe (Middle) Cereal Production Estimates						
Districts	Gu 2012 Production in MT		Total Cereal	Gu 2012 as % of Gu 2011	Gu 2012 as % of Gu PWA (1995-2011)	Gu 2012 as % of 5 year average (2007-2011)
	Maize	Sorghum				
Adan Yabaal	0	70	70	0%	183%	259%
Balcad	4,140	2,500	6,640	377%	144%	199%
Cadale	0	48	48	0%	231%	235%
Jowhar/Mahaday	8,000	4,000	12,000	745%	117%	214%
Shabelle Dhexe (Middle) Gu 2012 Total	12,140	6,618	18,758	557%	126%	209%

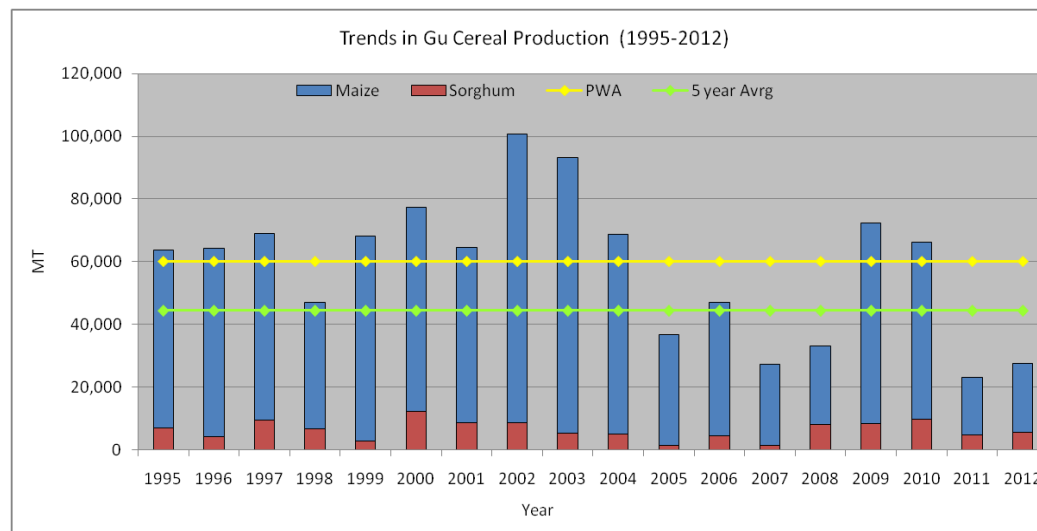
Shabelle Hoose (Lower) Cereal Production Estimates						
Districts	Gu 2012 Production in MT		Total Cereal	Gu 2012 as % of Gu 2011	Gu 2012 as % of Gu PWA (1995-2011)	Gu 2012 as % of 5 year average (2007-2011)
	Maize	Sorghum				
Afgooye	5,100	330	5,430	405%	50%	73%
Baraawe	600	0	600	120%	46%	60%
Kurtunwaarey	3,000	0	3,000	107%	39%	43%
Marka	4,725	0	4,725	91%	23%	40%
Qoryoley	5,600	0	5,600	76%	47%	61%
Sablale	2,200	0	2,200	244%	116%	115%
Wanla Weyne	800	5,200	6,000	119%	95%	95%
Shabelle Hoose (Lower) GU 2012 Total	22,025	5,530	27,555	119%	46%	62%

AGRICULTURE

Cereal Production Trends in M. Shabelle and L. Shabelle

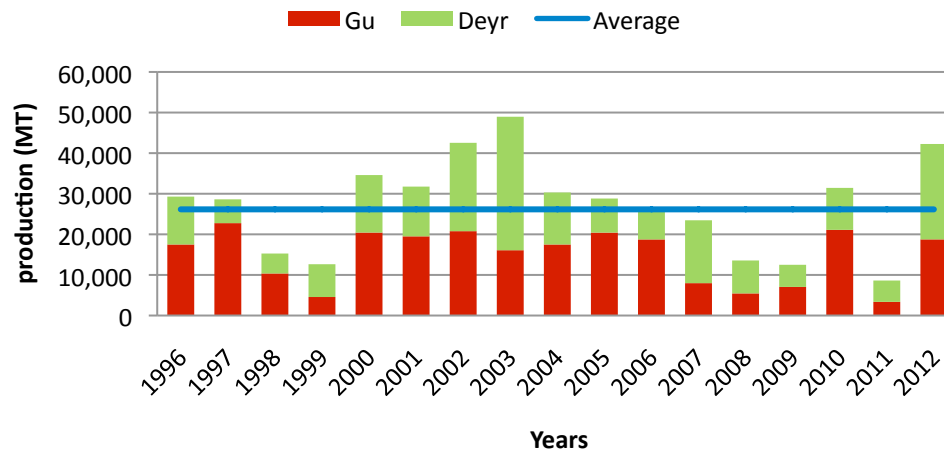


**Gu 2012 Cereal
Production Trends
Middle Shabelle
(1995 – 2012)**

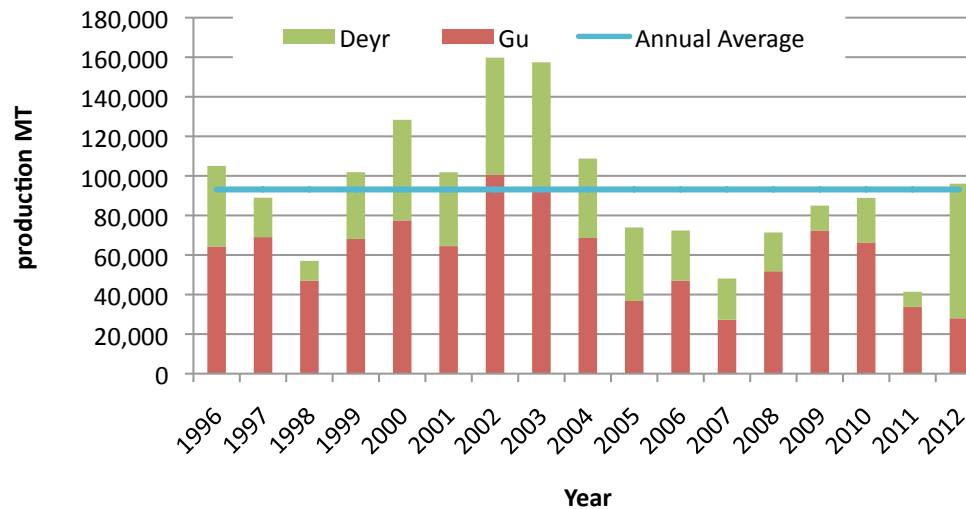


**Gu 2012 Cereal
Production Trends
Lower Shabelle
(1995 – 2012)**

Annual Cereal Production Trends in M. Shabelle and L. Shabelle



**Annual Cereal
Production Trends in
Middle Shabelle
(1996 – 2012)**



**Annual Cereal
Production
Trends in Lower
Shabelle
(1996 – 2012)**

AGRICULTURE

Gu 2012 Other Crop's Production Estimates(MT) – Middle Shabelle

District	Sesame	C/pea	Rice	Total
Jowhar	342	360	1,400	2,102
Balad	228	162	-	390
Cadale	-	45	-	45
A/Yabal	-	54	-	54
Total	570	621	1,400	2,591

AGRICULTURE

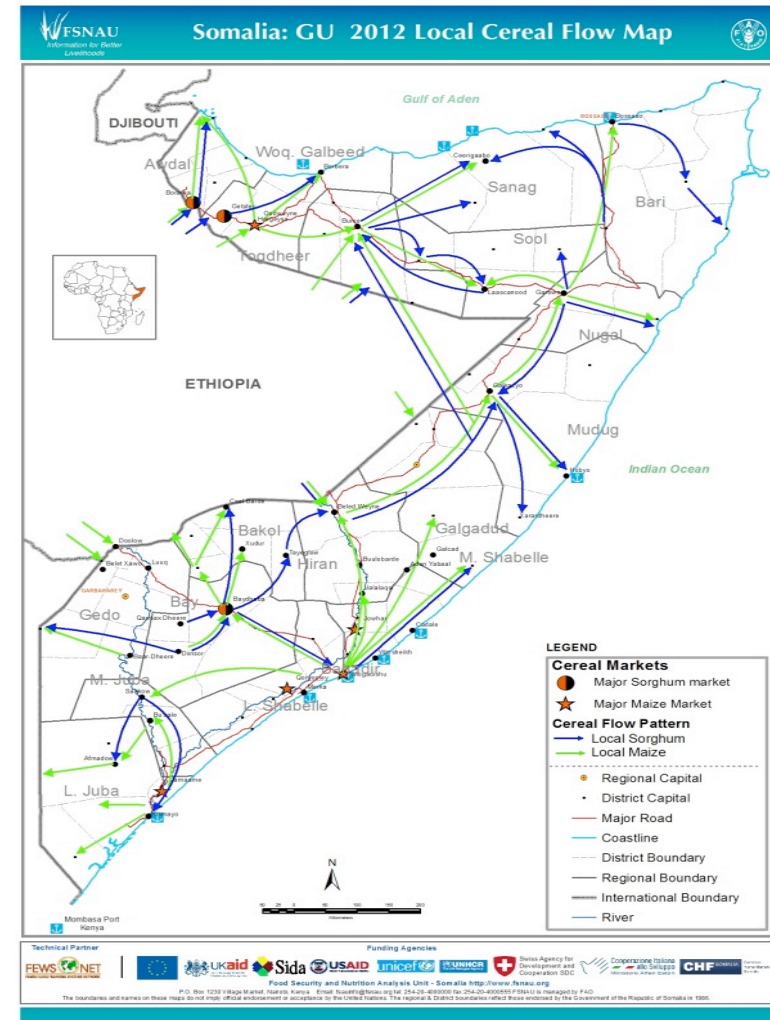
Gu 2012 Other Crop's Production Estimates – Lower Shabelle

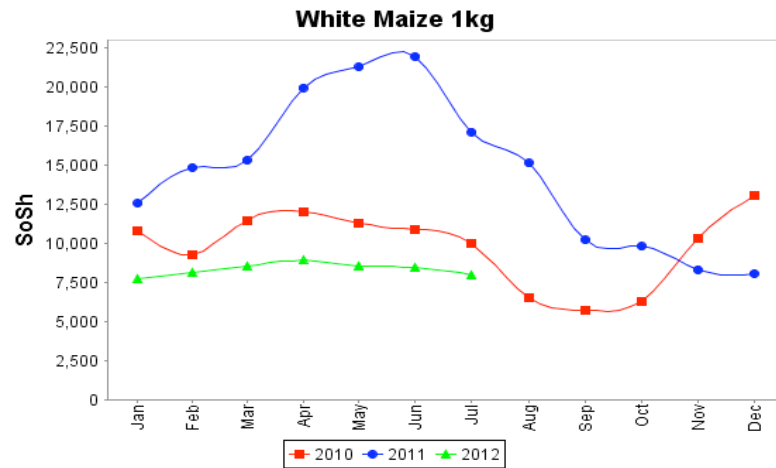
District	Sesame	Cowpea	Total
Afgoye	204	33	237
Barawa	0	24	24
K/warey	540	35	575
Marka	189	102	290
Qorioley	236	84	320
Sablale	324	33	357
W/weyne	0	342	342
Total	1,493	653	2,146

Gu 2012 Local Cereal Flow

Shabelle regions supply maize to Banadir (Mogadishu), Bay, Hiran and south Mudug. Sorghum inflow comes from Bay

Major supply of imported commodities is Mogadishu port



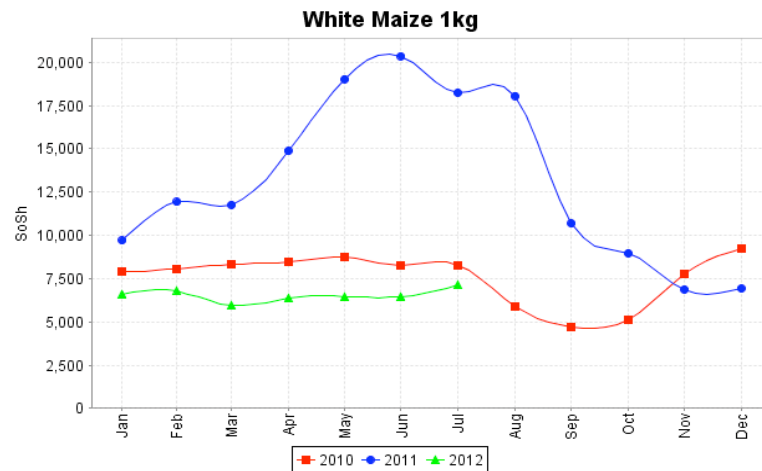


Middle Shabelle Trends in Maize Prices

Jun'11-Jun'12: Decrease (62%)

Jan-Jun'12: Increase (10%)

Jun-Jul '12: Decrease (6%)



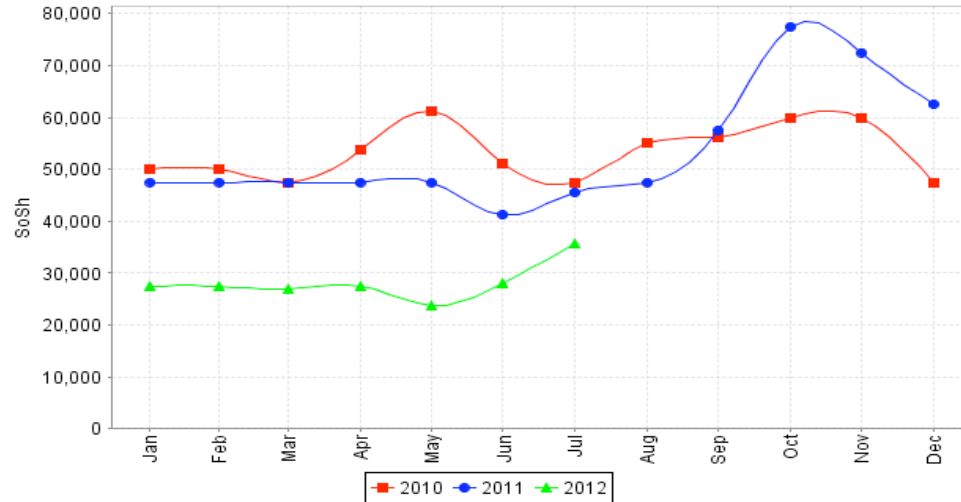
Lower Shabelle Trends in Maize Prices

Jun'11-Jun'12: Decrease (68%)

Jan-Jun'12: Decrease (2%)

Jun-Jul '12: Increase (13%)

Labor Rate Agricultural



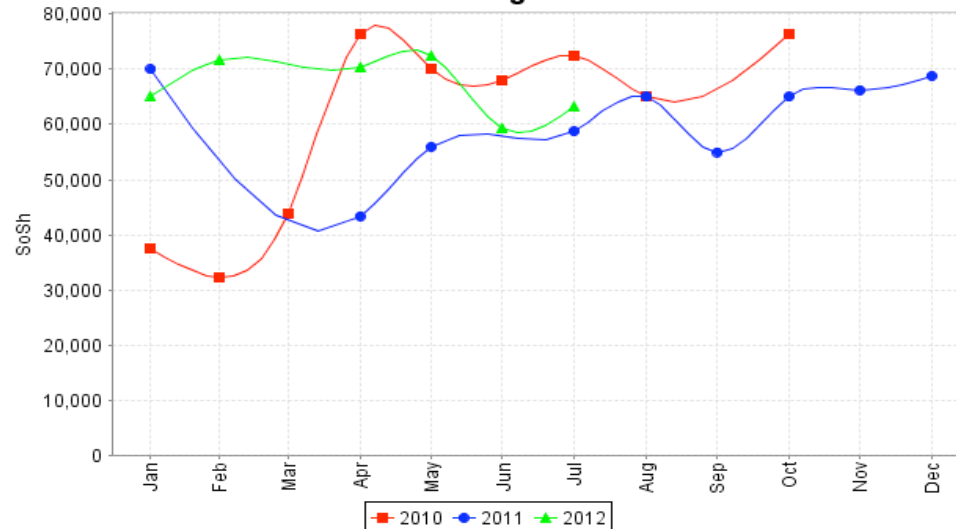
Middle Shabelle Trends in Labour Rates

Jun'11-Jun'12: Decrease (32%)

Jan-Jun'12: Increase (2%)

Jun-Jul '12: Increase (27%)

Labor Rate Agricultural



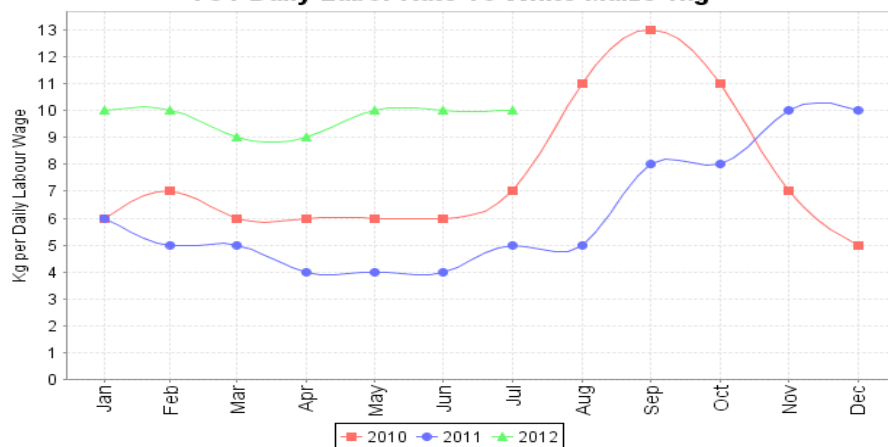
Lower Shabelle Trends in Labour Rates

Jun'11-Jun'12: Increase (3%)

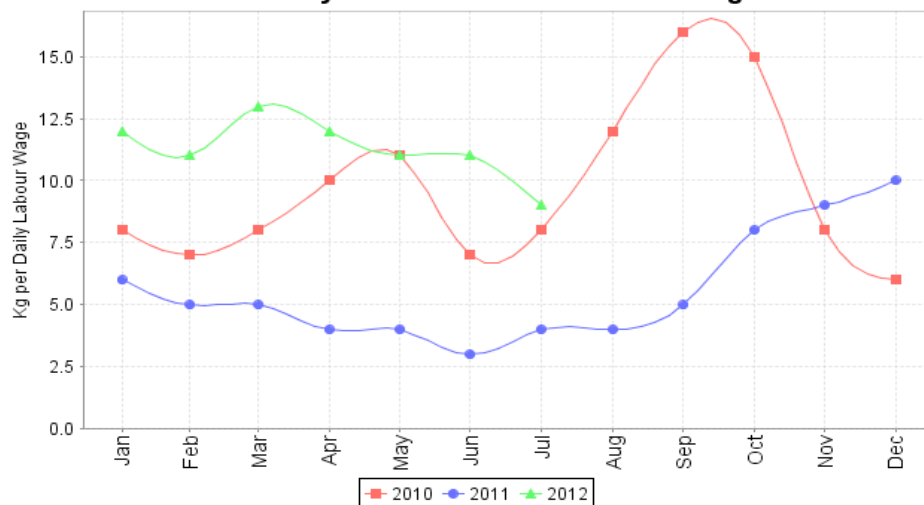
Jan-Jun'12: Decrease (9%)

Jun-Jul '12: Increase (7%)

TOT Daily Labor Rate To White Maize 1kg



TOT Daily Labor Rate To White Maize 1kg



Middle Shabelle

Regional ToT Maize/Labour

Jun'11-Jun'12: Increase (150%)

Jan-Jun'12: Stable

Jun-Jul '12: No change

Lower Shabelle

Regional Trend in ToT Labour/Maize

Jun'11-Jun '12: (3kg/day to 11kg/day);
increase (267%)

Jan-Jun'12: Decrease (8%)

Jun-Jul '12: Decrease (18%)

AGRICULTURE

Gu 2012 Assessment Photos



Good Maize Crop. Barey, Jowhar, M. Shabelle,
FSNAU, July, 2012



Maize crop, Madax Maroodi, Qoryoley., Lower
Shabelle, FSNAU, July 2012



Good Rice Crop. Bananey, Jowhar, M. Shabelle,
FSNAU, July, 2012

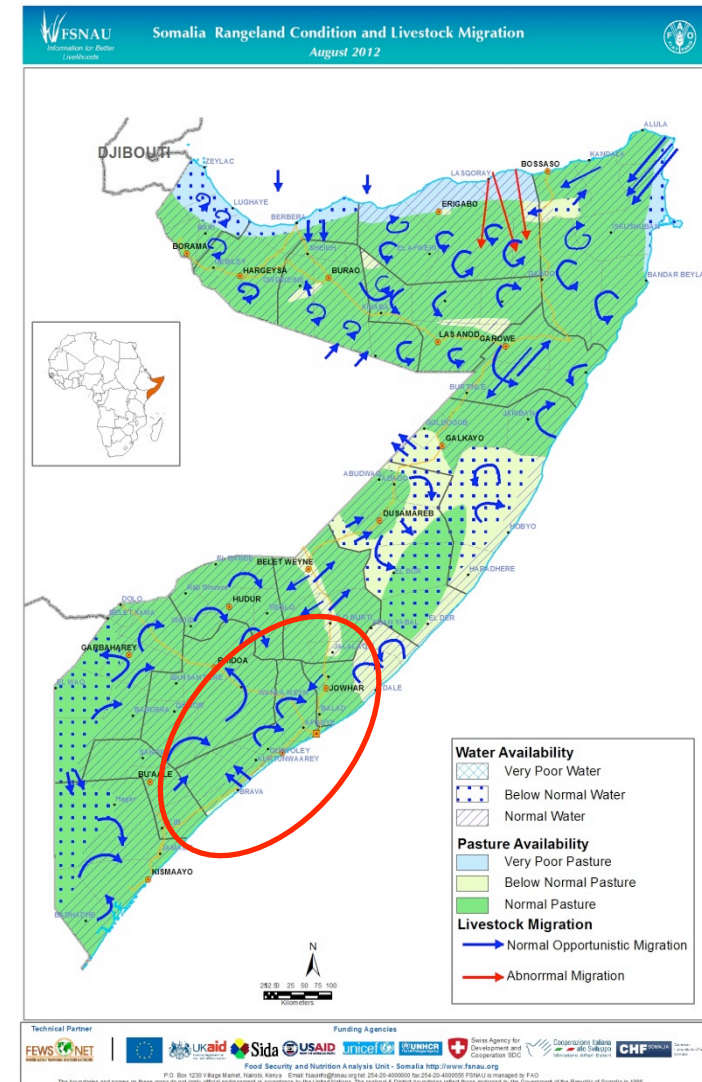


Canal rehabilitation. Farxane Village, Qoryoley,
Lower Shabelle, FSNAU, July 2012

LIVESTOCK

Rangeland Conditions and Livestock Migration

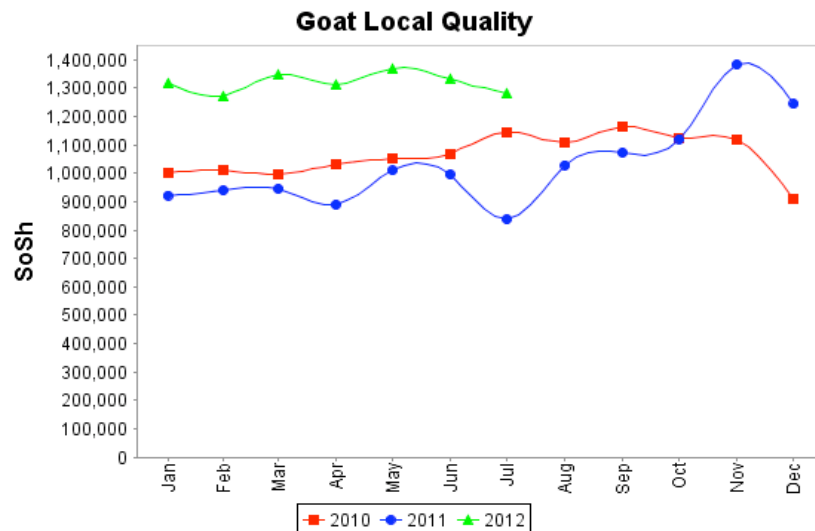
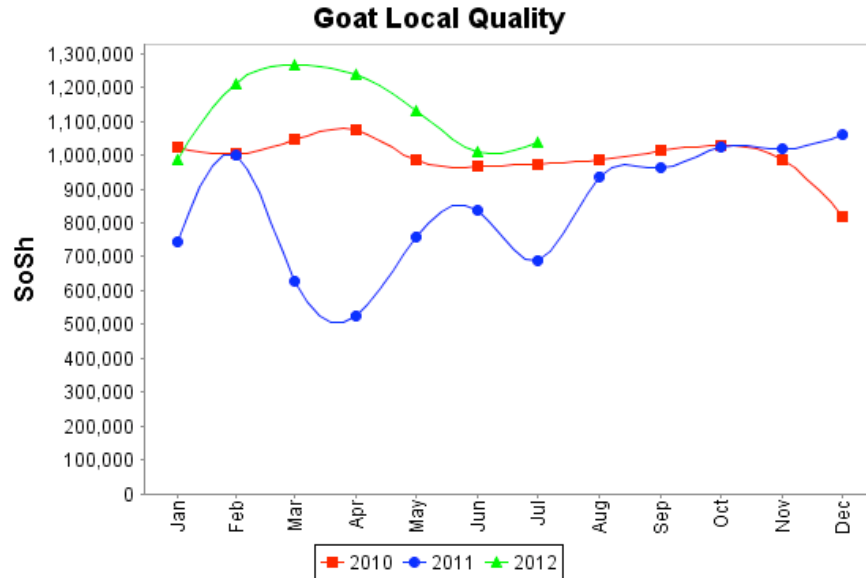
- **Pasture:** Average to good pasture and browse in key pastoral and agro pastoral areas of Shabelle regions dry pasture available in most livelihoods; exceptions are agropastoral in Adale and Aden Yabal districts and Coastal *Deeh* of Shabelle regions (poor pasture)
- **Water:** Water availability is average in agropastoral and pastoral livelihoods of Shabelle regions
- **Livestock condition:** Average to good livestock body condition (PET score 3-4) for all species
- **Migration:** Normal livestock migration from pasture deficit to surplus areas within the regions (from coastal to hinterland) is reported.



Trends in Livestock Holdings and Milk Production

Region	Livelihoods	Conception (Gu '12)	Calving/kidding (Gu '12)	Milk production (Gu '12)	Expected calving/kidding Jul – Dec '12	Trends in Herd Size (Dec '12)
Shabelle regions	Southern inland pastoral	Camel : low Sh/Goat: Medium	Camel : Low Sh/Goat: low to medium	Average	Camel: Medium to high Sh/Goat: Medium	Camel: Increasing trend (Below baseline) Cattle: Increasing trend (Below baseline) Sh/goats: increasing trend (Below baseline)
	Southeast pastoral	Cattle : low Sh/Goat: medium	Cattle : Low Sh/Goat: Low to Medium	Average	Cattle: Medium to high Sh/Goat: Medium	Cattle: Increasing trend (Below baseline) Sheep/goats: Increasing trend (Below baseline)
	Coastal Deeh	Camel : low Cattle: Low Sh/Goat: low to medium	Camel : low Cattle : Low Sh/Goat: Low to Medium	Average	Camel : High Sh/Goat: Low to medium	Increasing trend for all species (No baseline data)
	Agro pastoral	Cattle: Low Sh/Goat: low to medium	Cattle : Low Sh/Goat: Low to Medium	Average	Cattle : High Sh/Goat: Low to medium	Increasing trend for all species (No baseline data)

Trends in Goat Prices L.Shabelle and M-Shabelle



Middle Shabelle

Regional Trends in Local Goat Prices:

Jun'11-Jun'12: Increase (21%)

Jan-Jun'12: Increase (2%)

July'12: Increase (3%)

Lower Shabelle

Regional Trends in Local Goat Prices

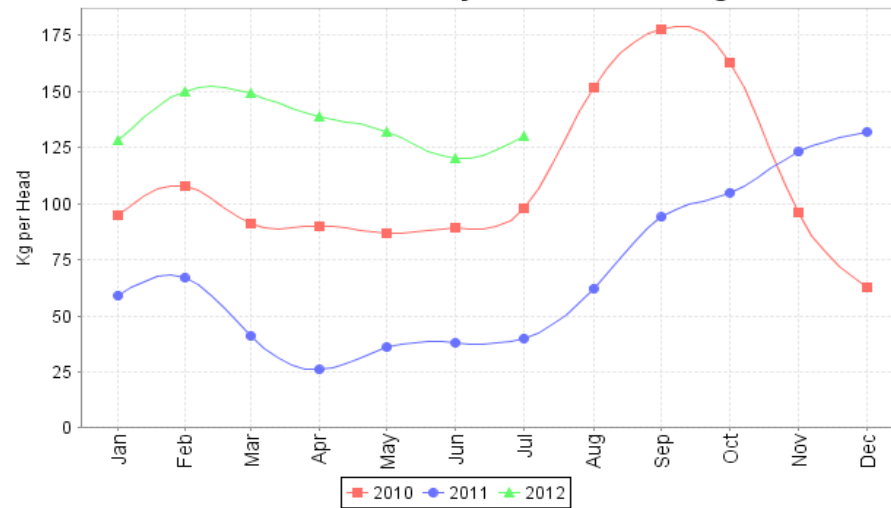
Jun'11-Jun'12: Increase (34%)

Jan-Jun'12: Increase (1%)

July'12: Decrease (2%)

Trends in Terms of Trade – Shabelle Regions

TOT Goat Local Quality To White Maize 1kg

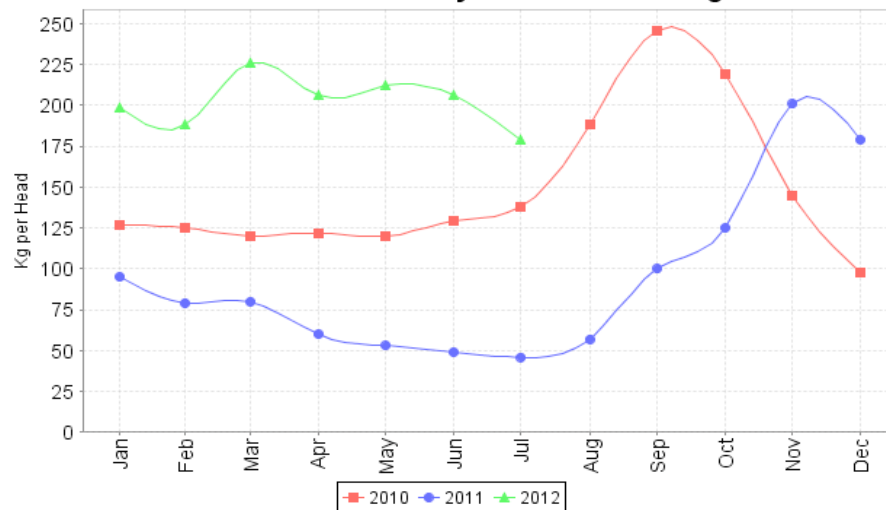


Middle Shabelle

Regional Trends Terms of Trade

Jun'11-Jun'12: Increase (216%)
 Jan-Jun'12: Decrease (6%)
 Jun-Jul '12: Increase (8%)

TOT Goat Local Quality To White Maize 1kg



Lower Shabelle

Regional Trends Terms of Trade

Jun'11-Jun'12: Increase (320%)
 Jan-Jun'12: Increase (4%)
 Jun-Jul '12 : Decrease(13%)

Livestock Body Conditions for all species, water & Pasture



Average to Good Water Availability. Yaaq Bariweyne, Wanlaweyn, Lower Shabelle, FSNAU, July 2012



Good Cattle Body condition. Jowhar, Middle Shabelle, FSNAU, July 2012

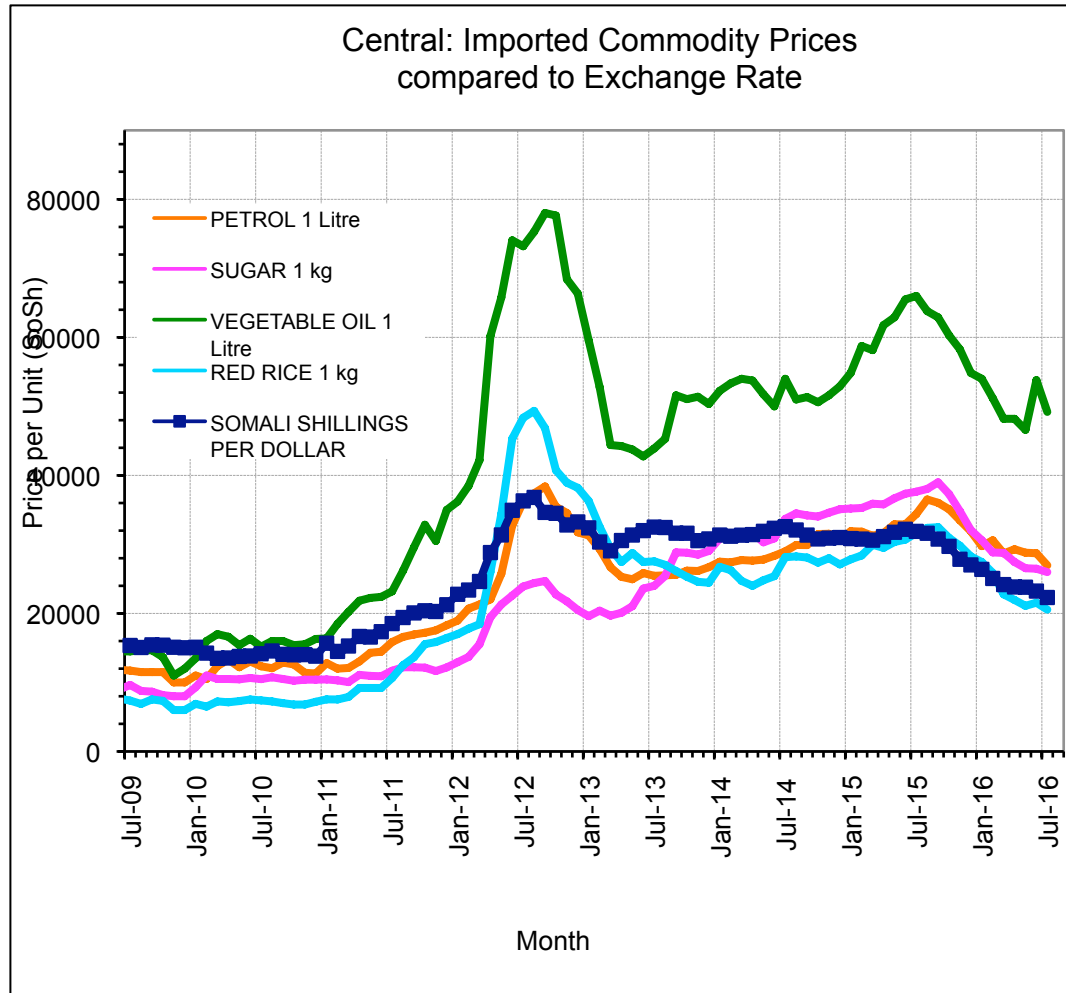


Good Cattle Body Condition, Ceel gaduud, Wanlaweyn, Lower Shabelle, FSNAU, July 2012



Average to Good Water Availability. Jarirow, Jowhar, Middle Shabelle, FSNAU, July 2012

Trends in Imported Commodity Prices



Significant Decline in Import Commodity Prices.

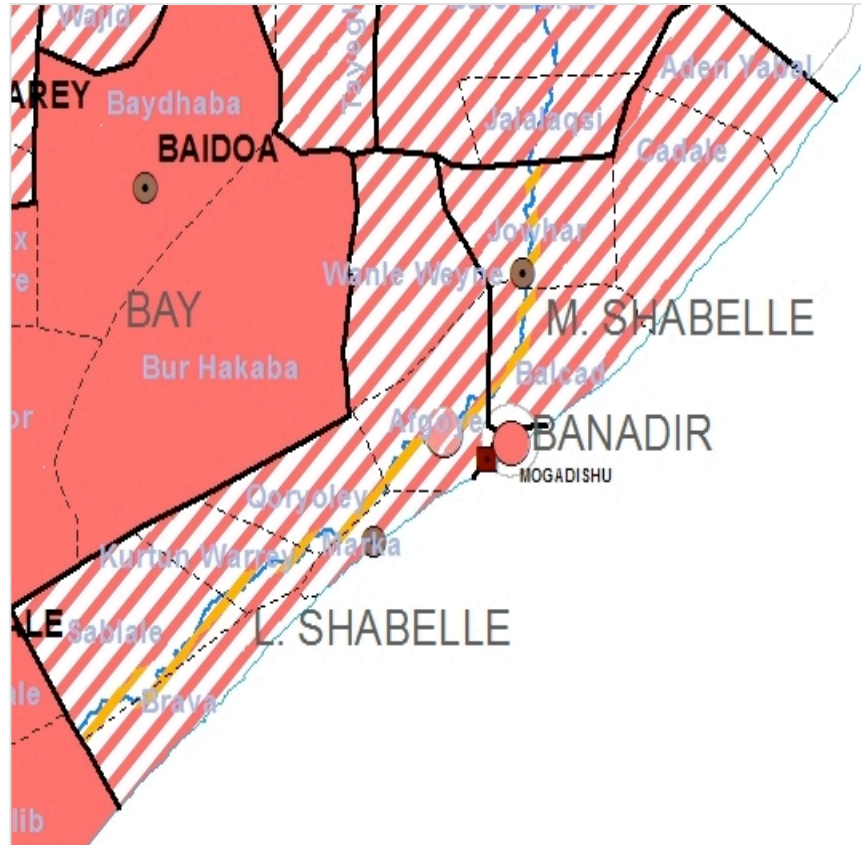
Factors Influenced Commercial Import Prices Decline:

- Relief food distribution in Mogadishu and parts in the southern regions
- Improved supply of imported cereals through Mogadishu port.
- Appreciated SoSh against US dollars.

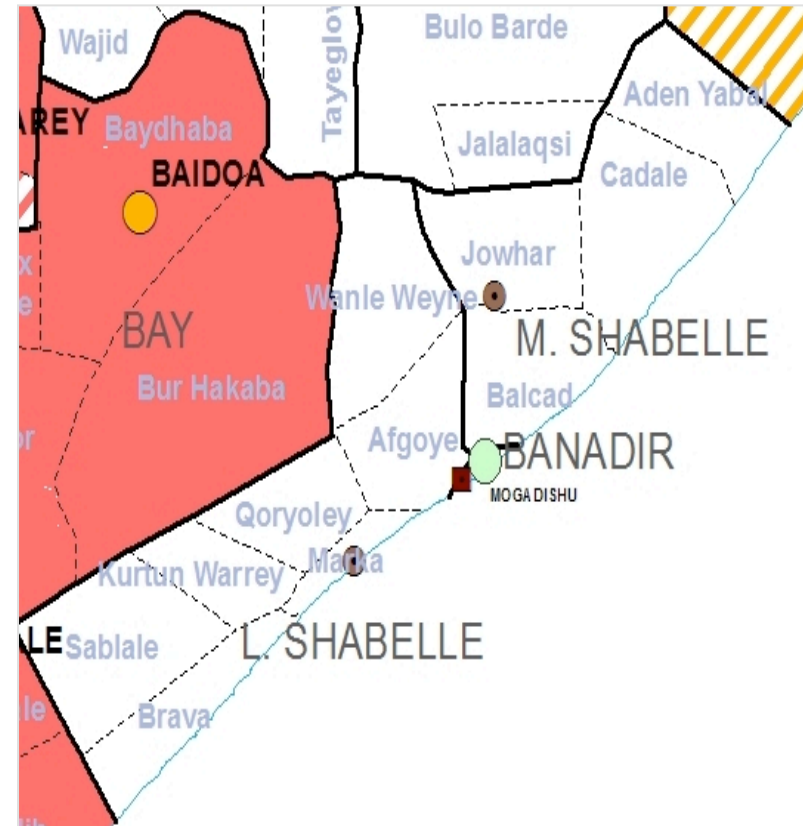
Region	Nutrition Surveys (Aug – Dec '09)	Rapid MUAC Screening (% <12.5cm)	Health Information System Info	TFC/OTP/SFC	Other relevant information – Key driving factors	Summary of analysis and change from Gu '09
L. Shabelle Agropastoral	No livelihood-based Surveys conducted due to lack of access	N/A	Agropastoral HIS Trends: High (>20%) and decreasing trend (HIS Jan- July 2012)	N/A	<p>Aggravating Factors Reduced humanitarian interventions in the area</p> <p>High burden of disease reported in the region (measles and diarrhea)</p> <p>Poor access to sanitation facilities / safe water & poor child feeding and care practices</p>	<u>L/Shabelle Agropastoral</u> – Insufficient data to make classification
M. Shabelle Agropastoral			Agropastoral HIS Trends: High (>20%) and decreasing trend (HIS Jan- July 2012)		<p>Mitigating Factors Average milk availability</p> <p>Good livestock prices, and labor opportunities from agricultural activities are increasing HH income and DD</p> <p>Reduced diseases outbreaks</p> <p>Ongoing limited Humanitarian Interventions</p>	<u>M/Shabelle Agro-pastoral</u> Insufficient data to make classification

Region	Nutrition Surveys (Aug – Dec '09)	Rapid MUAC Screening (% <12.5cm)	Health Information System Info	TFC/OTP/ SFC	Other relevant information – Key driving factors	Summary of analysis and change from Gu '09
L. Shabelle Riverine	No livelihood-based Surveys conducted due to lack of access	N/A	Riverine: HIS Trends: Low (<10%) and declining trend (HIS Jan-Jul 12)	N/A	<p>Aggravating Factors Reduced humanitarian interventions in the area</p> <p>Elevated morbidity especially diarrhea</p> <p>Poor access to sanitation facilities and safe water in rural LHZs</p>	<u>L/Shabelle Riverine</u> – Insufficient data to make classification
M. Shabelle Riverine		N/A	HIS Trends: Low (<10%) and declining trend (HIS Jan-Jul 12)		<p>Mitigating Factors Average crop production increasing DD and HH income</p> <p>Reduction of diseases outbreaks</p> <p>Ongoing Health/ Nutrition/WASH Interventions</p>	<u>M/Shabelle Riverine</u> – Insufficient data to make classification

Nutrition Situation, January 2012



Nutrition Situation, August 2012



Livelihood	Current (July'12)	Assumption for Projection (Aug-Dec.'12)
<p>Central Agro-pastoral (Cadale and Aden Yabal districts)</p> <p>Middle Shabelle</p>	<p>Crisis</p> <p>Food Access: marginally able to meet food needs</p> <p>Malnutrition: <i>Insufficient data</i></p> <ul style="list-style-type: none"> • Average milk production • Poor crop production and no stocks among poor (sorghum or cowpea) • Increase (10%) in maize prices (Jan-Jun'12) • Increase (2%) in labour rates (Jan-Jun'12) • Stable ToT maize to labour (Jan-Jun'12) • Increase (2%) in goat prices (Jan-Jun'12) • Increase (6%) goat to maize (Jan-Jun'12) • Limited saleable animals • Stable camel milk prices from last year (June) • Poor pasture and water conditions 	<p>Crisis</p> <p>Food Access: marginally able to meet food needs</p> <p>Positive Factors</p> <ul style="list-style-type: none"> • Labour wage expected to increase from Sept'12 with <i>Deyr</i> planting • Goat price expected to increase due to average pasture conditions and <i>Hajj</i> • ToT • Medium calving and high kidding rates to increase milk production starting from Aug'12 <p>Negative Factors</p> <ul style="list-style-type: none"> • Sorghum prices expected to remain stable (up to Sept '12), but expected to increase (from Oct '12) • Restricted humanitarian access due to insecurity

SHABELLE

Area Classification Justification Summary

Livelihood	Current (July'12)	Assumption for Projection (Aug-Dec. 12)
<p>Coastal <i>Deeh</i></p> <p>Middle Shabelle</p>	<p>Crisis</p> <p>Food Access: marginally able to meet food needs</p> <p>Malnutrition: Insufficient data</p> <ul style="list-style-type: none"> • Increase (10%) in maize prices (Jan-Jun'12) • Increase (2%) in labour rates (Jan-Jun'12) • Stable ToT maize to labour (Jan-Jun'12) • Increase (2%) in goat prices (Jan-Jun'12) • Increase (6%) goat to maize (Jan-Jun'12) • Water available from shallow wells • Below baseline levels livestock assets • Average pasture condition; improved sheep body condition (PET 3-4) • Declined debt levels • Increased fishing activities • Access to Mogadishu for labour opportunities 	<p>Crisis</p> <p>Food Access: marginally able to meet food needs</p> <p>Positive Factors</p> <ul style="list-style-type: none"> • Expected good <i>Deyr</i> rains • Expected conception in <i>Hagaa</i> • Livestock prices to increase during <i>Hajj</i> <p>Negative Factors</p> <ul style="list-style-type: none"> • Forecasted heavy <i>Deyr</i> rains likely to impede transportation • Cereal prices likely to increase • Limited saleable animals (livestock composed mainly of young flock)

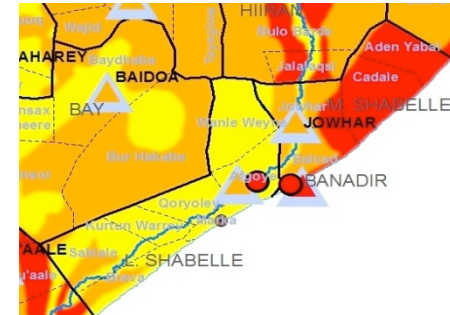
Current Acute Food Insecurity: Household Group Classification

MIDDLE SHABELLE	Phase 1: None	Phase 2: Stressed	Phase 3: Crisis	Phase 4: Emergency	Phase 5: Catastrophe
Central AP		100% M	100% P		
Southern AP		100% P			
Riverine		100% P			
Coastal <i>Deeh</i>			100%P; 25%M		
LOWER SHABELLE					
South East AP		100% P			
Agropastoral (Afgoye, Wanlaweyne)		100% P			
Southern AP		50% P	50% P		
Riverine		100% P			
SIP		100% P			

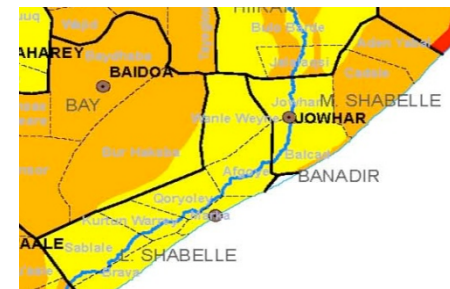
Projected Acute Food Insecurity: Household Group Classification

MIDDLE SHABELLE	Phase 1: None	Phase 2: Stressed	Phase 3: Crisis	Phase 4: Emergency	Phase 5: Catastrophe
Central AP		100% M	100% P		
Southern AP		100% P			
Riverine		100%P			
Coastal <i>Deeh</i>			100%P; 25%M		
LOWER SHABELLE					
South East AP		100% P			
Agropastoral (Afgoye, Wanlaweyne)		100% P			
Southern AP		100% P			
Riverine		100% P			
SIP		100% P			

MAP 1: IPC, April 2012



MAP 2: IPC Current July 2012



MAP 3: IPC Projection (Aug-Dec'12)



Affected Rural Population by Districts - Current

Middle Shabelle

Affected Regions and District		UNDP 2005 Rural Population	Assessed and High Risk Population in Crisis and Emergency				
			Deyr 2012		Post Gu 2012		
			Crisis	Emergency	Stressed	Crisis	Emergency
M/Shabelle	Adan Yabaal	55,717	11,000	28,000	13,000	12,000	16,000
	Balcad/Warsheikh	105,266	23,000	26,000	24,000	7,000	19,000
	Cadale	35,920	7,000	19,000	7,000	7,000	11,000
	Jowhar/Mahaday	222,167	39,000	0	72,000	0	0
	SUB-TOTAL	419,070	80,000	73,000	116,000	26,000	46,000
Total Affected Population in CRISIS & EMERGENCY			153,000		116,000	72,000	

Lower Shabelle

Affected Regions and District		UNDP 2005 Rural Population	Assessed and High Risk Population in Crisis and Emergency				
			Deyr 2012		Post Gu 2012		
			Crisis	Emergency	Stressed	Crisis	Emergency
L/Shabelle	Afgooye/Aw Dheegle	178,605	34,000	2,000	44,000	0	0
	Baraawe	42,239	8,000	0	5,000	4,000	0
	Kurtunwaarey	48,019	7,000	0	9,000	4,000	0
	Marka	129,039	18,000	1,000	29,000	9,000	0
	Qoryooley	111,364	16,000	0	23,000	8,000	0
	Sablaale	35,044	6,000	0	7,000	3,000	0
	Wanla Weyn	133,627	0	0	44,000	0	0
	SUB-TOTAL	677,937	89,000	3,000	161,000	28,000	0
Total Affected Population in CRISIS & EMERGENCY			92,000		161,000	28,000	

Affected Rural Population by Livelihoods - Current

Middle Shabelle

Affected Regions and Livelihood Zone		Estimated Population in Livelihood Zones	Assessed and High Risk Population in Crisis and Emergency				
			Deyr 2012		Stressed	Post Gu 2012	
			Crisis	Emergency		Crisis	Emergency
M/Shabelle	Central Agro-Past	36,695	10,000	9,000	20,000	9,000	0
	Coastal Deeh: sheep	46,861	13,000	17,000	0	17,000	0
	Shabelle Riverine	53,657	0	0	21,000	0	0
	Southern Agro-Past	160,948	57,000	0	56,000	0	0
	Southern Inland Past	74,048	0	0	19,000	0	0
	Destitute pastoralists	46,861	0	47,000	0	0	46,000
	SUB-TOTAL	419,070	80,000	73,000	116,000	26,000	46,000
Total Affected Population in CRISIS & EMERGENCY			153,000		116,000	72,000	

Lower Shabelle

Affected Regions and Livelihood Zone		Estimated Population in Livelihood Zones	Assessed and High Risk Population in Crisis and Emergency				
			Deyr 2012		Stressed	Post Gu 2012	
			Crisis	Emergency		Crisis	Emergency
L/Shabelle	Coastal pastoral: goats & cattle	2,534	0	0	0	0	0
	L.Shab. r/fed & f/irr	372,273	84,000	0	57,000	28,000	0
	Shabelle Riverine	115,552	0	0	46,000	0	0
	South-East Pastoral	35,475	5,000	3,000	8,000	0	0
	Southern Agro-Past	106,902	0	0	38,000	0	0
	Southern Inland Past	45,201	0	0	12,000	0	0
	SUB-TOTAL	677,937	89,000	3,000	161,000	28,000	0
Total Affected Population in CRISIS & EMERGENCY			92,000		161,000	28,000	

Affected Urban Population by Districts - Current

District		UNDP 2005 Urban Population	Assessed and High Risk Population in Crisis and Emergency							
			Deyr 2011/12				Post Gu 2012			
			Stressed	Crisis	Emergency	Total Urban in Crisis and Emergency as % of Urban population	Stressed	Crisis	Emergency	Total Urban in Crisis and Emergency as % of Urban population
Shabelle Dhexe(Middle)	Adan Yabaal	7,200	0	1,000	1,000	28	0	3,000	0	42
	Balcad	28,106	0	4,000	4,000	28	0	8,000	0	28
	Cadale	10,800	0	2,000	2,000	37	0	4,000	0	37
	Jowhar	36,844	0	6,000	6,000	33	0	11,000	0	30
	Mahaday	10,246	0	2,000	2,000	39	0	3,000	0	29
	Warsheikh	2,635	0	0	0	0	0	1,000	0	38
	SUB-TOTAL	95,831	0	15,000	15,000	31	0	30,000	0	31
Shabelle Hoose(Lower)	Afgooye	21,602	0	10,000	0	46	0	10,000	0	46
	Aw Dheegle	11,505	0	5,000	0	43	0	5,000	0	43
	Baraawe	15,413	0	5,000	0	32	0	5,000	0	32
	Kurtunwaarey	7,426	0	3,000	0	40	0	3,000	0	40
	Marka	63,900	0	29,000	0	45	0	29,000	0	45
	Qoryooley	22,841	0	8,000	0	35	0	8,000	0	35
	Sablaale	8,011	0	3,000	0	37	0	3,000	0	37
	Wanla Weyn	22,016	0	8,000	0	36	0	8,000	0	36
	SUB-TOTAL	172,714	0	71,000	0	41	0	71,000	0	41
	GRAND TOTAL	268,545	0	86,000	15,000	32	0	101,000	0	38

Affected Rural Population by Districts - Projection

Middle Shabelle

Affected Regions and District		UNDP 2005 Rural Population	Assessed and High Risk Population in Crisis and Emergency				
			Post Deyr Projection		Post Gu Projection		
			Crisis	Emergency	Stressed	Crisis	Emergency
M/Shabelle	Adan Yabaal	55,717	11,000	28,000	13,000	12,000	16,000
	Balcad/Warsheikh	105,266	23,000	26,000	24,000	7,000	19,000
	Cadale	35,920	7,000	19,000	7,000	7,000	11,000
	Jowhar/Mahaday	222,167	39,000	0	72,000	0	0
	SUB-TOTAL	419,070	80,000	73,000	116,000	26,000	46,000
Total Affected Population in CRISIS & EMERGENCY			153,000		116,000	72,000	

Lower Shabelle

Affected Regions and District		UNDP 2005 Rural Population	Assessed and High Risk Population in Crisis and Emergency				
			Post Deyr Projection		Post Gu Projection		
			Crisis	Emergency	Stressed	Crisis	Emergency
L/Shabelle	Afgooye/Aw Dheegle	178,605	34,000	2,000	44,000	0	0
	Baraawe	42,239	8,000	0	8,000	0	0
	Kurtunwaarey	48,019	7,000	0	13,000	0	0
	Marka	129,039	18,000	1,000	37,000	0	0
	Qoryooley	111,364	16,000	0	30,000	0	0
	Sablaale	35,044	6,000	0	9,000	0	0
	Wanla Weyn	133,627	0	0	44,000	0	0
	SUB-TOTAL	677,937	89,000	3,000	185,000	0	0
Total Affected Population in CRISIS & EMERGENCY			92,000		185,000	0	

Affected Rural Population by Livelihoods - Projection

Middle Shabelle

Affected Regions and Livelihood Zone		Estimated Population in Livelihood Zones	Assessed and High Risk Population in Crisis and Emergency				
			Post Deyr Projection		Post Gu Projection		
			Crisis	Emergency	Stressed	Crisis	Emergency
M/Shabelle	Central Agro-Past	36,695	10,000	9,000	20,000	9,000	0
	Coastal Deeh: sheep	46,861	13,000	17,000	0	17,000	0
	Shabelle Riverine	53,657	0	0	21,000	0	0
	Southern Agro-Past	160,948	57,000	0	56,000	0	0
	Southern Inland Past	74,048	0	0	19,000	0	0
	Destitute pastoralists	46,861	0	47,000	0	0	46,000
SUB-TOTAL		419,070	80,000	73,000	116,000	26,000	46,000
Total Affected Population in CRISIS & EMERGENCY			153,000		116,000	72,000	

Lower Shabelle

Affected Regions and Livelihood Zone		Estimated Population in Livelihood Zones	Assessed and High Risk Population in Crisis and Emergency				
			Post Deyr Projection		Post Gu Projection		
			Crisis	Emergency	Stressed	Crisis	Emergency
L/Shabelle	Coastal pastoral: goats & cattle	2,534	0	0	0	0	0
	L.Shab. r/fed & f/irr	372,273	84,000	0	83,000	0	0
	Shabelle Riverine	115,552	0	0	46,000	0	0
	South-East Pastoral	35,475	5,000	3,000	8,000	0	0
	Southern Agro-Past	106,902	0	0	37,000	0	0
	Southern Inland Past	45,201	0	0	11,000	0	0
SUB-TOTAL		677,937	89,000	3,000	185,000	0	0
Total Affected Population in CRISIS & EMERGENCY			92,000		185,000	0	

Affected Urban Population by Districts - Projection

District		UNDP 2005 Urban Population	Assessed and High Risk Population in Crisis and Emergency							
			Deyr 2011/12				Post Gu Projection			
			Stressed	Crisis	Emergency	Total Urban in Crisis and Emergency as % of Urban population	Stressed	Crisis	Emergency	Total Urban in Crisis and Emergency as % of Urban population
Shabelle Dhexe(Middle)	Adan Yabaal	7,200	0	1,000	1,000	28	0	3,000	0	42
	Balcad	28,106	0	4,000	4,000	28	0	8,000	0	28
	Cadale	10,800	0	2,000	2,000	37	0	4,000	0	37
	Jowhar	36,844	0	6,000	6,000	33	0	11,000	0	30
	Mahaday	10,246	0	2,000	2,000	39	0	3,000	0	29
	Warsheikh	2,635	0	0	0	0	0	1,000	0	38
	SUB-TOTAL	95,831	0	15,000	15,000	31	0	30,000	0	31
Shabelle Hoose(Lower)	Afgooye	21,602	0	10,000	0	46	0	10,000	0	46
	Aw Dheegle	11,505	0	5,000	0	43	0	5,000	0	43
	Baraawe	15,413	0	5,000	0	32	0	5,000	0	32
	Kurtunwaarey	7,426	0	3,000	0	40	0	3,000	0	40
	Marka	63,900	0	29,000	0	45	0	29,000	0	45
	Qoryooley	22,841	0	8,000	0	35	0	8,000	0	35
	Sablaale	8,011	0	3,000	0	37	0	3,000	0	37
	Wanla Weyn	22,016	0	8,000	0	36	0	8,000	0	36
	SUB-TOTAL	172,714	0	71,000	0	41	0	71,000	0	41
	GRAND TOTAL	268,545	0	86,000	15,000	32	0	101,000	0	38

The End