

Market Update



Food and Agriculture
Organization of the
United Nations



Food Security and Nutrition
Analysis Unit - Somalia

Issued October 19, 2021

Highlights

Inflation: Somali Shilling (SOS)-using areas: Consumer Price Index (CPI) slightly increased (2%) in September 2021 compared to August in northeast and southern regions but increased mildly (4%) in central regions. Compared to the five-year average for September (2016-2020), CPI increased (16-33%) across all regions of Somalia due to higher prices of sorghum (the main local cereal used in the consumption basket) and increases in imported food prices this year.

Somaliland Shilling (SLS)-using areas: CPI remained stable in northwest regions in September 2021 compared to August 2021. However, CPI increased (7%) in northwest regions compared to the five-year average for September (2016-2020).

Exchange rate: SOS-using areas: Exchange rates between SOS and the United States Dollar (USD) remained relatively stable in most regions of Somalia in September 2021 compared to August. Compared to the five-year average, SOS depreciated at moderate rates (6-12%) in central and southern regions of the country in September 2021. However, SOS depreciated significantly against the USD in northeast region (38%) due to continued circulation of large amount of locally printed SOS currency notes in these markets in recent years.

SLS-using areas: the exchange rate between SLS and USD was stable in September 2021 but appreciated slightly (-4%) compared to five-year average (2016-2020) for September.

Local cereal (white maize, red sorghum and white sorghum prices): Local cereal prices mostly exhibited mild changes ($\leq \pm 7\%$) in most regions of the country in September 2021 compared to the previous month. Specifically, white maize prices remained stable in Banadir and Juba Valley and (0-1%) but decreased mildly in Shabelle (12%). Red sorghum prices increased in September in northeast (4%) and Sorghum Belt (4%) while white sorghum prices increased in Hiran (2%) and northwest (7%). These increases can be attributed to reduced market supply because of low carryover stock from recent consecutive poor harvests. Similarly, compared to the five-year averages for September (2016-2020), local cereal prices in September 2021 were higher (10-54%) in most regions due to reduced supply this year. Specifically, white maize prices increased in Banadir (17%), Juba (41%) and Shabelle (40%); red sorghum prices increased in central (15%), northeast (47%) and Sorghum Belt (54%); while white sorghum prices increased in northwest (14%) and Hiran (41%).

Prices of imported food items (rice, sugar, vegetable oil, wheat flour) exhibited mild ($\leq \pm 10\%$) changes (mostly increases) in September 2021 compared to a month ago across most regions of Somalia. Compared to the five-year average, prices of most food imports were higher in most regions of Somalia mainly: southern regions (6-26% for rice, 3-25% for sugar, 48-67% for vegetable oil and 17-29% for wheat flour); central regions (23% for rice, 19% for sugar, 38% for vegetable oil and 28% for wheat flour); and northwest (20% for rice, 0% for sugar, 15% for vegetable oil and 7% for wheat flour). These price increases are mainly due to rising food prices on the international market this year. However, price of imported items were significantly higher compared to the five-year averages in northeast markets (52% for rice, 34% for sugar, 90% for vegetable oil and 53% for wheat flour). This is mainly due to depreciation of the local SOS currency as well as rising food prices on the international market this year.

Livestock (local quality goat and camel) prices mostly increased at mild rate ($\leq \pm 10\%$) in September 2021 compared to August 2021. However, compared to the five-year average, livestock prices are still higher in most regions of Somalia: south (8-23%), central (6-21%) and northwest (6-9%). Price increases were even higher in northeast regions (47-49%) due to the loss of purchasing value of the local currency this year.

Milk prices (camel and cattle) mostly increased at mild rates ($\leq \pm 10\%$) in September 2021 compared to a month ago in most regions of the country due to reduced milk availability due to drought conditions that prevailed in most regions. Compared to the five-year average for September (2016-2020), cattle milk prices mostly exhibited mild to moderate increases in south (4-21%) and central (9%) regions but mildly lower in northwest (3%) and northeast (11%) regions. On the other hand, camel milk prices exhibited mild increases across most regions ($\leq \pm 5\%$) in September. Compared the five-year average for September (2016-2020), camel milk prices mostly exhibited increases in south (5-21%) and northeast (8%) but decreased in northwest (3%) and central (17%).

Labour (unskilled) wages remained relatively stable or changed at mild rates ($\leq \pm 9\%$; mostly increases) in most regions across the country in September 2021 compared to a month ago. Compared to the five-year average, labor wages are higher (3-55%) in most regions in September 2021. However, labour wage rates were stable in Juba and slightly lower (2%) in the northwest in September 2021 compared to the five-year averages.

Terms of Trade (ToT) between daily labour wage and cereals either remained stable or changed by $\pm 1\text{kg}$ across all regions in September 2021 compared to a month ago. Compared to the five-year average for September (2016-2020), ToT between daily labor and cereals mostly declined (1-4kgs) in most regions attributable to higher cereal prices this year. However, ToT was slightly higher in central and northeast (+1kg) compared to the five-year averages.

ToT between local quality goat and cereal prices exhibited a mixed trend in September 2021 across the country. ToT was stable in Sorghum Belt, decreased in Juba (1%), Banadir (3%) and northeast (5%) but increased in central (5%) and northwest (7%). On the other hand, compared to the five-year average for September (2016-2020), the ToT between local quality goat and cereals was lower (1-28%) in most regions of the country attributable to higher cereal prices this year.



National Trends: CPI, Exchange Rates, Cereal Prices and Relative Purchasing Power

Table 1: ToT between Daily Labour Wage Rate and Cereals (kg) by Region September 2021

Regions	September 2021 (kg)	kg change from		
		August 2021	September 2020	September 5 yr Average (2016 - 2020)
Banadir/Mogadishu (White maize)	9	1	2	0
Bay (Red sorghum)	9	-1	-6	-4
Bakool (Red sorghum)	3	0	-2	-1
Gedo (Red sorghum)	9	0	-3	-3
Hiran (White sorghum)	7	-1	-2	-2
Juba (White maize)	7	0	-1	-3
Shabelle (White maize)	8	1	-2	-2
Central (Imported Rice)	6	1	0	1
Northeast (Imported Rice)	8	0	1	1
Northwest (Imported Rice)	11	0	-1	-2

Figure 1: Wheat Prices: Mogadishu and Bossaso Markets

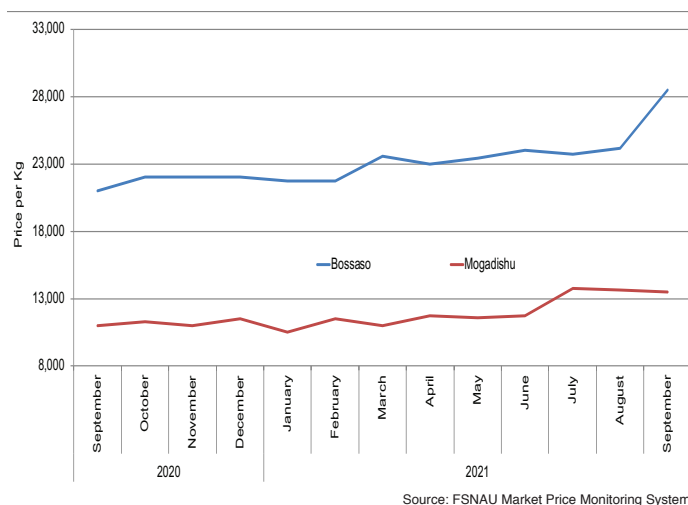


Figure 2: Terms of Trade Between Wage Rates and Selected Cereals

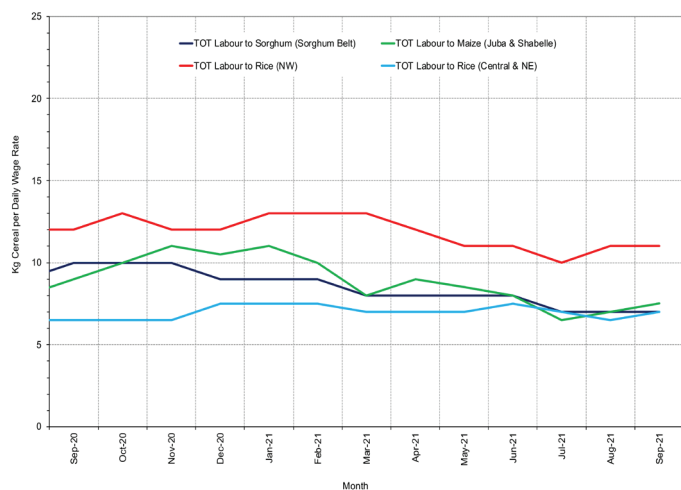


Figure 3: Monthly Exchange Rate for Selected Regions (SoSh and SISH to USD)

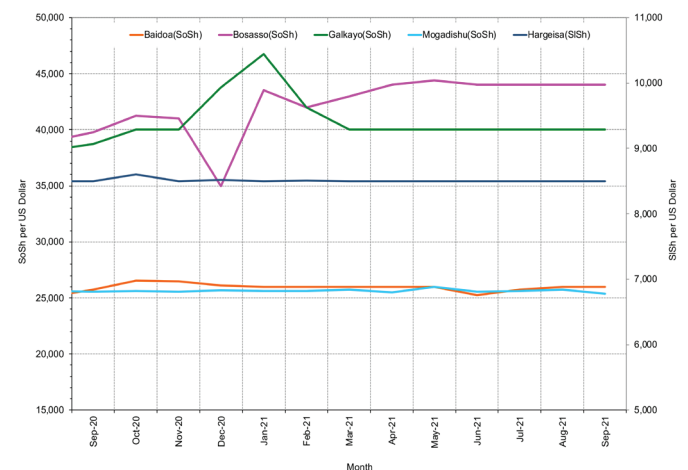


Figure 4: Monthly Trends in Consumer Price Index (CPI, March 2007=100)

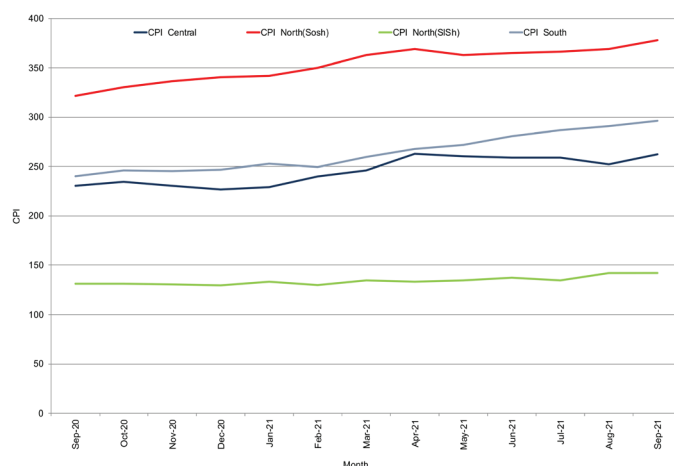
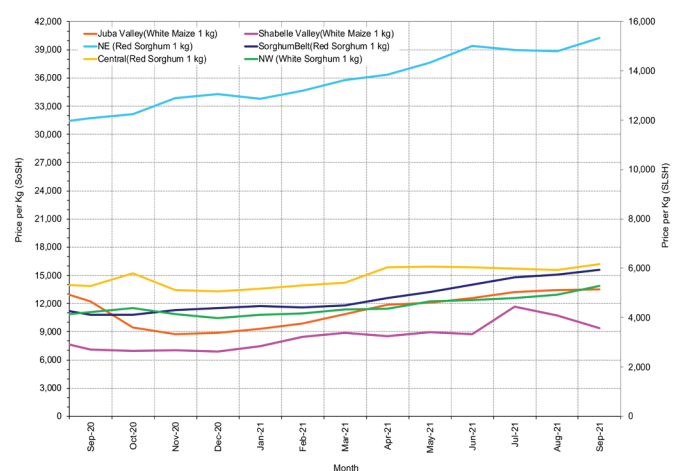


Figure 5: Monthly Trends in Local Cereal Prices



Regional analysis: Juba Regions

Indicator	5-Year Average (2016-2020)	Sep-20	Aug-21	Sep-21 Nominal Price	Sep-21 Real (Deflated) Price	% Change Previous Month	% Change Same Month Previous Year	% Change 5-year avg (2016-2020)
Imported Commodities Prices								
Diesel 1 litre	22,106	23,156	23,550	23,375	7,787	-1%	1%	6%
Imported Red Rice 1kg	16,059	16,141	19,163	18,625	6,184	-3%	15%	16%
Petrol 1 litre	24,612	25,250	26,425	26,875	8,968	2%	6%	9%
Sugar	16,384	16,422	21,450	20,500	6,817	-4%	25%	25%
Vegetable Oil 1 litre	29,707	31,375	45,225	47,750	16,011	6%	52%	61%
Wheat Flour 1kg	15,865	17,438	18,650	18,656	6,195	0%	7%	18%
Wheat Grain 1kg	-	-	20,000	-	-	-	-	-
Cereal Prices								
Red Sorghum 1kg	7,751	8,750	12,367	12,417	4,090	0%	42%	60%
White Maize 1kg	9,598	12,194	13,413	13,528	4,464	1%	11%	41%
Livestock & Livestock Product Prices								
Camel Local Quality (Head)	11,196,991	13,062,500	13,291,429	13,825,000	4,664,499	4%	6%	23%
Cattle Local Quality (Head)	3,969,583	5,775,000	3,596,000	3,212,500	1,083,808	-11%	-44%	-19%
Fresh Camel Milk 1 litre	17,229	18,406	18,425	19,000	6,311	3%	3%	10%
Goat Export Quality (Head)	1,478,521	1,791,458	1,729,500	1,719,688	580,128	-1%	-4%	16%
Goat Local Quality (Head)	837,208	892,813	953,750	942,813	318,008	-1%	6%	13%
Other Essential Items								
Charcoal 50kg	91,373	92,625	99,200	98,438	33,113	-1%	6%	8%
Cowpeas 1 kg	23,722	24,031	23,879	25,563	8,525	7%	6%	8%
Unskilled Labor Wage Rate	99,387	93,375	91,325	99,500	33,472	9%	7%	0%
Firewood Bundle	7,303	6,909	6,463	7,469	2,420	16%	8%	2%
Local Sesame Oil 1 litre	60,906	68,656	78,550	79,094	26,587	1%	15%	30%
Exchange Rate (Somali Shilling per USD)	24,127	25,938	26,438	26,391	8,804	0%	2%	9%
Terms of Trade								
Labour Wage (Daily)/ Cereal (Maize(Kg))	10	8	7	7	-	0%	-13%	-30%
Local Goat (Head)/ Cereal (Maize(Kg))	90	73	71	70	-	-1%	-4%	-22%
Cost of the Minimum Basket (CMB)	2,276,159	2,278,969	2,843,715	2,897,322	-	2%	27%	27%
Price Indices								
Consumer Price Index	236	241	291	296	-	2%	23%	26%

Figure 6: Trends in Cereal Prices

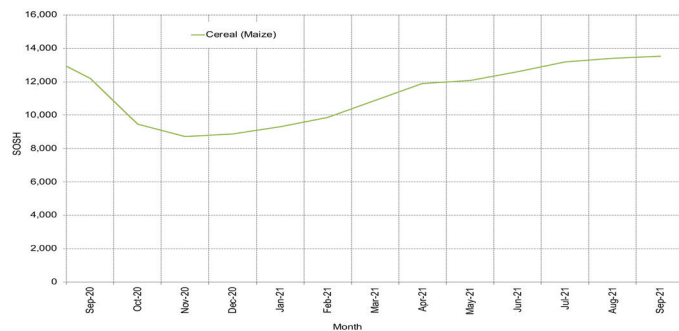


Figure 8: Imported Commodity Prices Compared to Exchange Rate

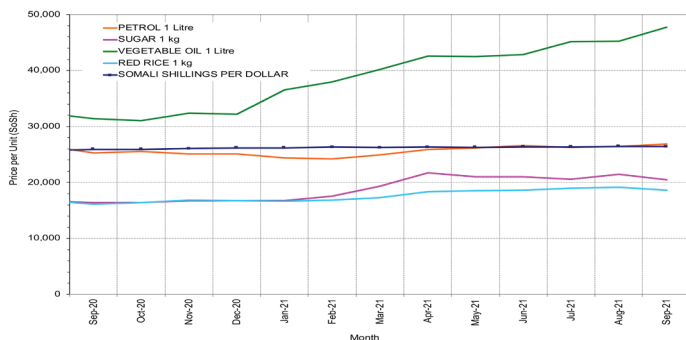


Figure 10: Exchange Rate

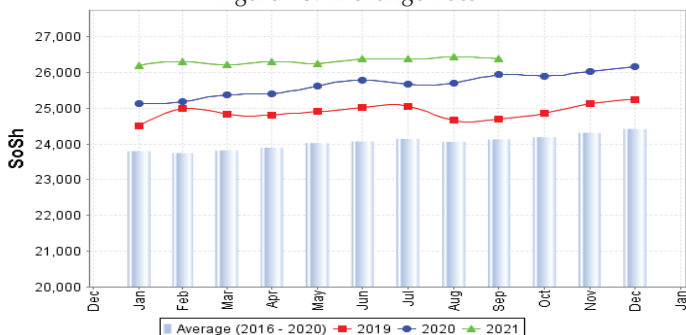


Figure 7: Trends in Wage Rates and Relative Purchasing Power

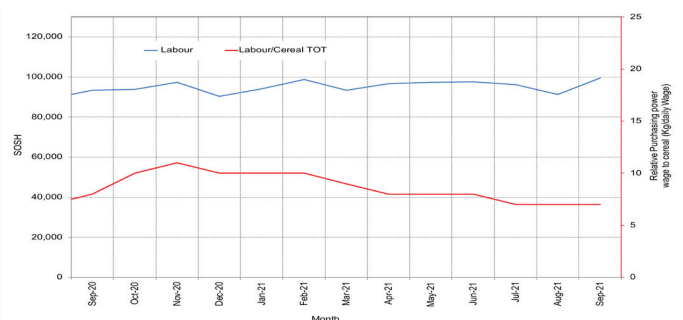


Figure 9: Goat Local Quality

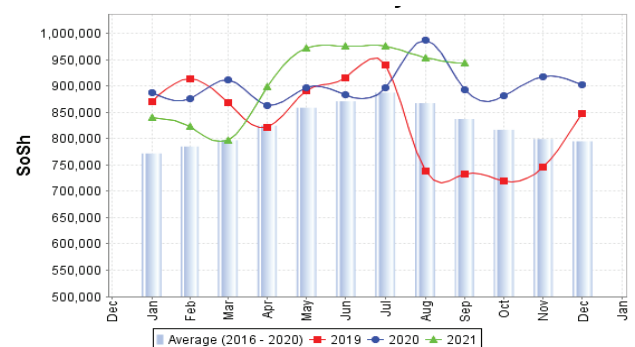
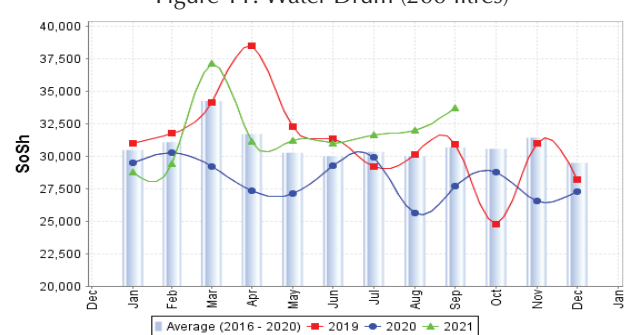


Figure 11: Water Drum (200 litres)



Regional analysis: Sorghum Belt Regions (Bay, Bakool, Gedo and Hiran)

Indicator	5-Year Average (2016-2020)	Sep-20	Aug-21	Sep-21 Nominal Price	Sep-21 Real (Deflated) Price	% Change Previous Month	% Change Same Month Previous Year	% Change 5-year avrg (2016-2020)
Imported Commodities Prices								
Diesel 1 litre	25,510	25,292	33,617	33,708	11,273	0%	33%	32%
Imported Red Rice 1kg	19,680	21,081	24,600	24,771	8,258	1%	18%	26%
Petrol 1 litre	27,902	27,792	35,233	35,146	11,758	0%	26%	26%
Sugar	20,667	20,990	25,067	25,563	8,525	2%	22%	24%
Vegetable Oil 1 litre	38,611	45,271	55,717	57,146	19,181	3%	26%	48%
Wheat Flour 1kg	18,848	20,542	23,933	24,271	8,089	1%	18%	29%
Wheat Grain 1kg	20,411	21,700	27,000	27,250	9,094	1%	26%	34%
Cereal Prices								
Red Sorghum 1kg	10,103	10,828	15,050	15,591	5,160	4%	44%	54%
White Maize 1kg	10,678	11,786	16,492	16,319	5,406	-1%	38%	53%
Livestock & Livestock Product Prices								
Camel Local Quality (Head)	11,913,411	13,343,056	12,704,167	12,642,708	4,265,590	0%	-5%	6%
Cattle Local Quality (Head)	3,173,612	3,930,750	4,335,556	4,143,056	1,397,780	-4%	5%	31%
Fresh Camel Milk 1 litre	25,931	28,681	24,400	27,521	9,186	13%	-4%	6%
Goat Export Quality (Head)	1,573,321	1,712,515	1,634,500	1,627,500	549,024	0%	-5%	3%
Goat Local Quality (Head)	888,882	1,018,514	979,667	1,017,292	343,138	4%	0%	14%
Other Essential Items								
Charcoal 50kg	178,407	197,629	213,000	216,136	72,825	1%	9%	21%
Cowpeas 1 kg	29,484	29,528	34,867	35,625	11,920	2%	21%	21%
Unskilled Labor Wage Rate	99,426	102,924	101,750	102,813	34,589	1%	0%	3%
Firewood Bundle	6,121	6,688	8,250	8,208	2,669	-1%	23%	34%
Local Sesame Oil 1 litre	85,423	98,550	102,911	103,028	34,662	0%	5%	21%
Exchange Rate (Somali Shilling per USD)	24,331	26,043	26,662	27,150	9,060	2%	4%	12%
Terms of Trade								
Labour Wage (Daily)/ Cereal (Sorghum (Kg)	10	10	7	7	-	0%	-30%	-30%
Local Goat (Head)/ Cereal (Sorghum (Kg)	90	94	65	65	-	0%	-31%	-28%
Cost of the Minimum Basket (CMB)	2,559,513	2,680,810	3,242,878	3,308,926	-	2%	23%	29%
Price Indices								
Consumer Price Index	236	241	291	296	-	2%	23%	26%

Figure 12: Trends in Cereal Prices

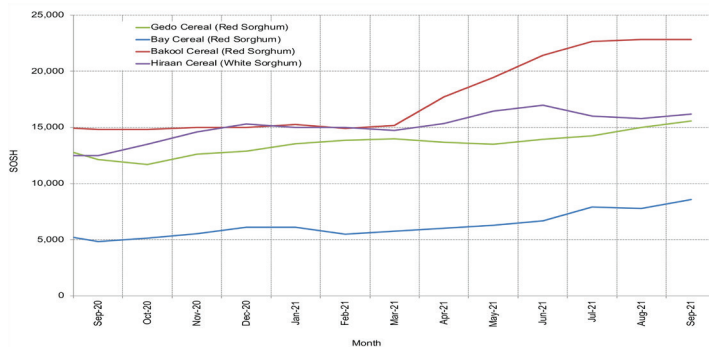


Figure 13: Trends in Wage Rates and Relative Purchasing Power

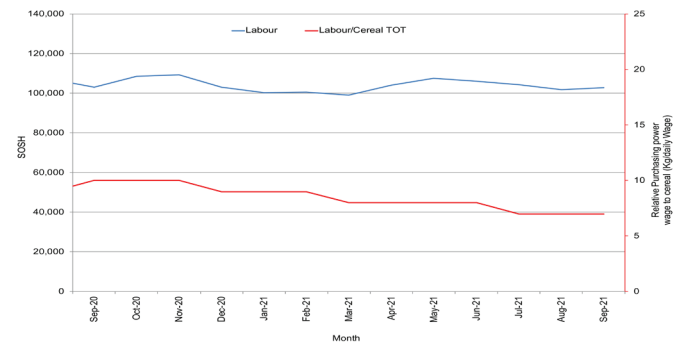


Figure 14: Imported Commodity Prices Compared to Exchange Rate

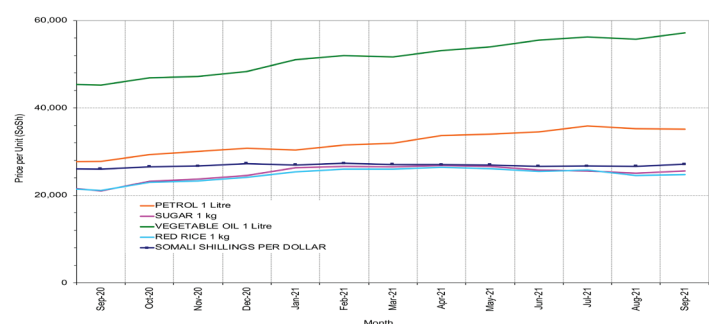


Figure 15: Goat Local Quality

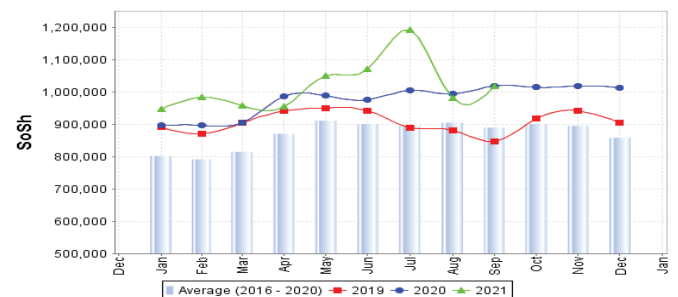


Figure 16: Exchange Rate

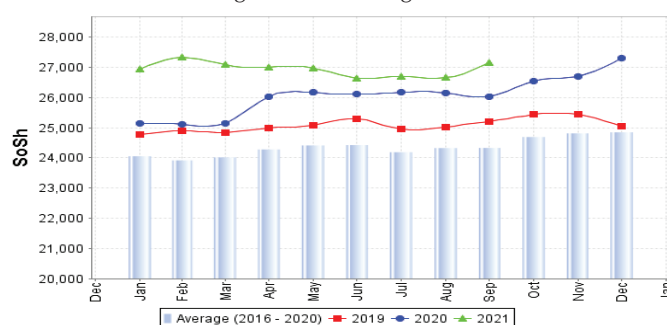
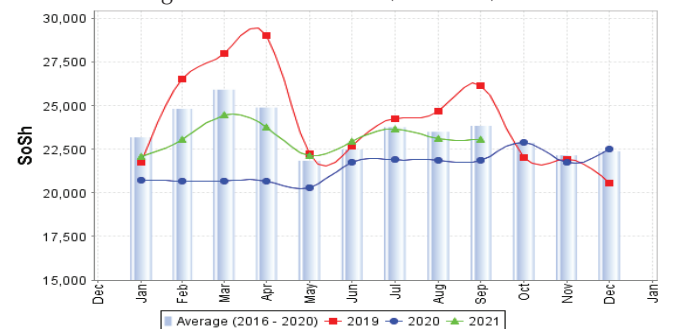


Figure 17: Water Drum (200 litres)



Regional analysis: Shabelle Regions

Indicator	5-Year Average (2016-2020)	Sep-20	Aug-21	Sep-21 Nominal Price	Sep-21 Real (Deflated) Price	% Change Previous Month	% Change Same Month Previous Year	% Change 5-year avrg (2016-2020)
Imported Commodities Prices								
Diesel 1 litre	18,616	17,125	18,767	19,875	6,606	6%	16%	7%
Imported Red Rice 1kg	16,241	16,000	18,600	19,000	6,311	2%	19%	17%
Petrol 1 litre	20,999	18,500	21,500	22,292	7,421	4%	20%	6%
Sugar	17,450	16,167	20,033	20,583	6,845	3%	27%	18%
Vegetable Oil 1 litre	27,591	25,958	45,233	46,042	15,435	2%	77%	67%
Wheat Flour 1kg	15,516	15,375	19,700	19,792	6,578	0%	29%	28%
Wheat Grain 1kg	15,300	17,000	19,000	19,250	6,395	1%	13%	26%
Cereal Prices								
Red Sorghum 1kg	9,290	8,715	12,600	12,208	4,019	-3%	40%	31%
White Maize 1kg	6,731	7,130	10,709	9,405	3,073	-12%	32%	40%
Livestock & Livestock Product Prices								
Camel Local Quality (Head)	17,908,124	19,845,625	18,407,500	19,850,000	6,697,354	8%	0%	11%
Cattle Local Quality (Head)	4,656,866	4,533,333	4,320,000	4,525,000	1,526,649	5%	0%	-3%
Fresh Camel Milk 1 litre	21,333	23,833	25,367	25,750	8,588	2%	8%	21%
Goat Export Quality (Head)	1,848,150	1,927,000	1,706,000	1,755,500	592,211	3%	-9%	-5%
Goat Local Quality (Head)	1,380,375	1,496,042	1,458,333	1,613,500	544,300	11%	8%	17%
Other Essential Items								
Charcoal 50kg	150,722	180,903	220,367	230,583	77,699	5%	27%	53%
Cowpeas 1 kg	26,174	21,569	26,133	26,417	8,813	1%	22%	1%
Unskilled Labor Wage Rate	67,225	68,750	72,167	71,667	24,081	-1%	4%	7%
Firewood Bundle	6,741	8,167	7,733	8,000	2,599	3%	-2%	19%
Local Sesame Oil 1 litre	56,816	60,083	62,767	65,833	22,112	5%	10%	16%
Exchange Rate (Somali Shilling per USD)	24,282	25,692	26,167	26,167	8,729	0%	2%	8%
Labour Wage (Daily)/ Cereal (Maize(Kg))								
Labour Wage (Daily)/ Cereal (Maize(Kg))	10	10	7	8	-	14%	-20%	-20%
Local Goat (Head)/ Cereal (Maize(Kg))	211	210	136	172	-	26%	-18%	-18%
Cost of the Minimum Basket (CMB)	2,428,008	2,369,040	2,821,456	2,861,930	-	1%	21%	18%
Price Indices								
Consumer Price Index	236	241	291	296	-	2%	23%	26%

Figure 18: Trends in Cereal Prices

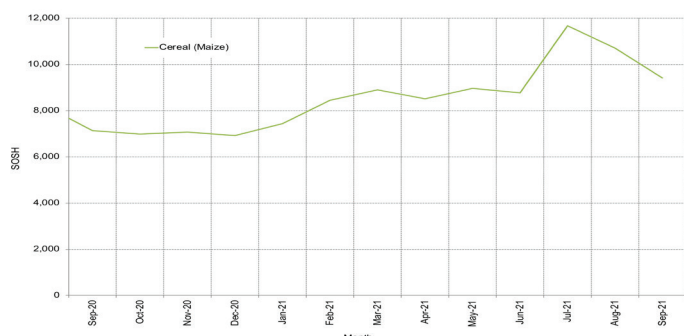


Figure 19: Trends in Wage Rates and Relative Purchasing Power

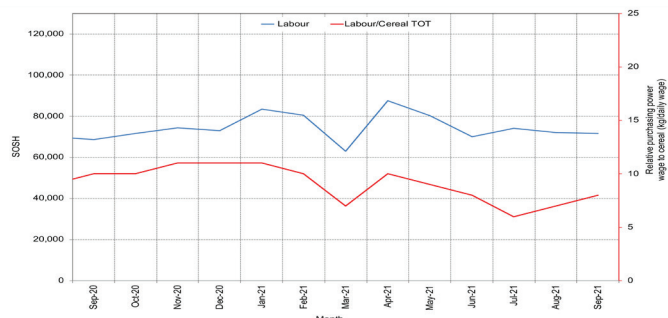


Figure 20: Imported Commodity Prices Compared to Exchange Rate

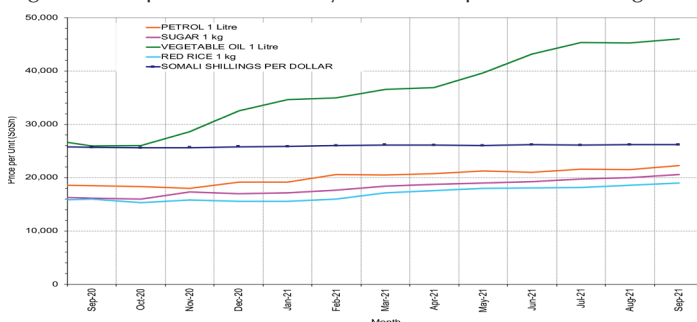


Figure 21: Goat Local Quality

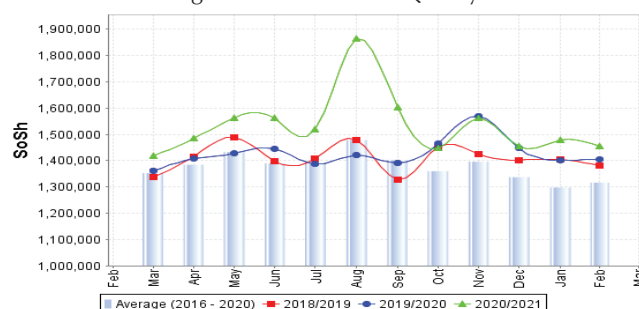


Figure 22: Exchange Rate

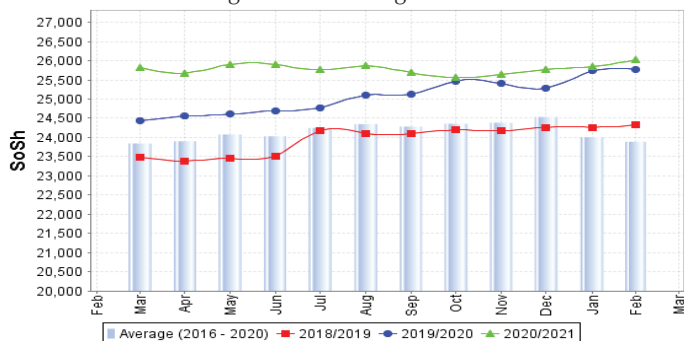
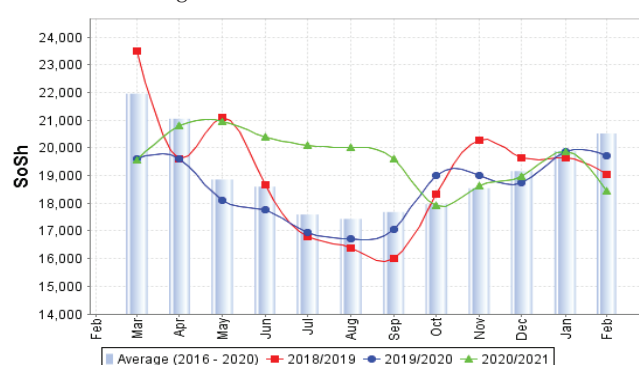


Figure 23: Water Drum (200 litres)



Regional analysis: Banadir Region

Indicator	5-Year Average (2016-2020)	Sep-20	Aug-21	Sep-21 Nominal Price	Sep-21 Real (Deflated) Price	% Change Previous Month	% Change Same Month Previous Year	% Change 5-year avrg (2016-2020)
Imported Commodities Prices								
Diesel 1 litre	14,246	12,600	16,000	16,000	5,298	0%	27%	12%
Imported Red Rice 1kg	12,063	12,233	12,800	12,750	4,202	0%	4%	6%
Petrol 1 litre	15,920	11,100	18,200	18,000	5,973	-1%	62%	13%
Sugar	13,878	12,517	14,600	14,250	4,708	-2%	14%	3%
Vegetable Oil 1 litre	22,357	22,558	33,200	37,375	12,510	13%	66%	67%
Wheat Flour 1kg	11,719	12,117	13,600	13,750	4,539	1%	13%	17%
Wheat Grain 1kg	14,975	16,000	17,000	17,250	5,720	1%	8%	15%
Cereal Prices								
Red Sorghum 1kg	9,039	10,575	9,820	9,625	3,148	-2%	-9%	6%
White Maize 1kg	10,272	12,758	12,000	12,000	3,949	0%	-6%	17%
Livestock & Livestock Product Prices								
Camel Local Quality (Head)	-	-	-	-	-	-	-	-
Cattle Local Quality (Head)	-	-	-	-	-	-	-	-
Fresh Camel Milk 1 litre	27,150	26,417	-	28,500	9,516	-	8%	5%
Goat Export Quality (Head)	2,405,000	2,650,000	2,520,000	2,300,000	775,927	-9%	-13%	-4%
Goat Local Quality (Head)	1,945,000	1,975,000	2,160,000	2,100,000	708,447	-3%	6%	8%
Other Essential Items								
Charcoal 50kg	241,350	263,000	375,000	391,375	131,951	4%	49%	62%
Cowpeas 1 kg	28,726	26,150	32,400	32,250	10,781	0%	23%	12%
Unskilled Labor Wage Rate	91,125	93,750	100,000	106,250	35,749	6%	13%	17%
Firewood Bundle	9,365	11,000	-	12,000	3,949	-	9%	28%
Local Sesame Oil 1 litre	55,833	63,917	75,000	73,625	24,741	-2%	15%	32%
Exchange Rate (Somali Shilling per USD)	23,936	25,067	25,740	25,275	8,428	-2%	1%	6%
Terms of Trade								
Labour Wage (Daily)/ Cereal (White Maize(Kg)	9	7	8	9	-	13%	29%	0%
Local Goat (Head)/ Cereal (White Maize(Kg)	194	155	180	175	-	-3%	13%	-10%
Cost of the Minimum Basket (CMB)	2,373,779	2,575,860	2,641,897	2,626,161	-	-1%	2%	11%
Price Indices								
Consumer Price Index	236	241	291	296	-	2%	23%	26%

Figure 24: Trends in Cereal Prices

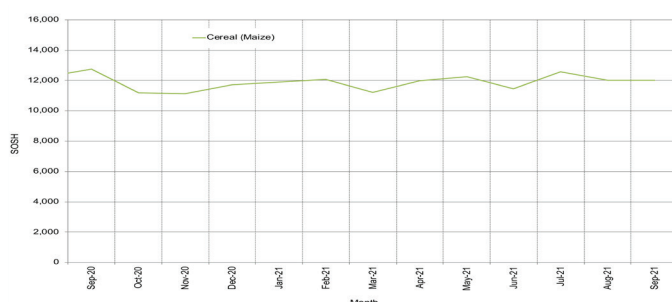


Figure 25: Bakara: Trends in Wage Rates and Relative Purchasing Power

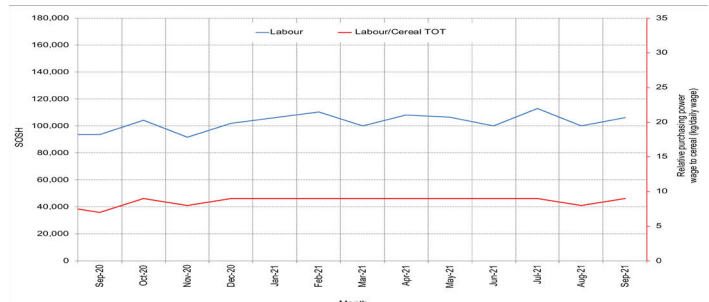


Figure 26: Imported Commodity Prices Compared to Exchange Rate

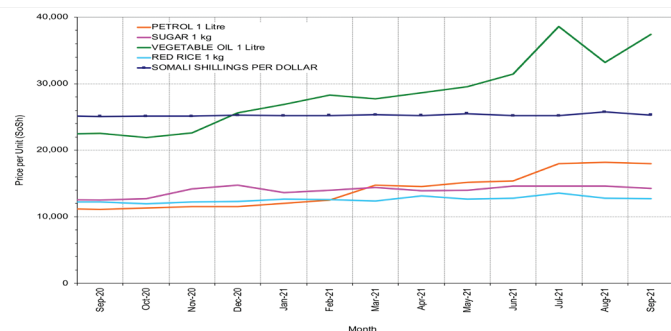


Figure 27: Goat Local Quality

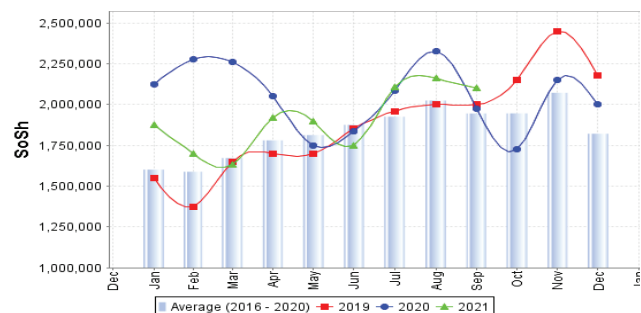


Figure 28: Exchange Rate

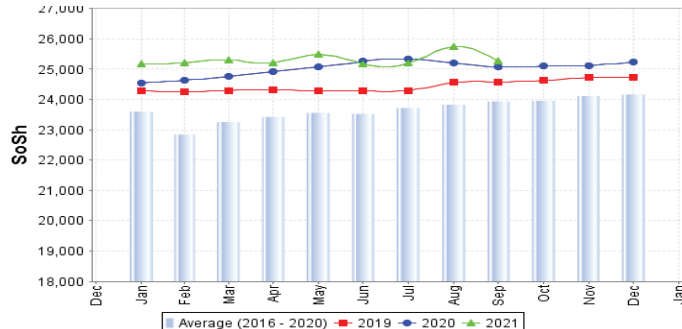
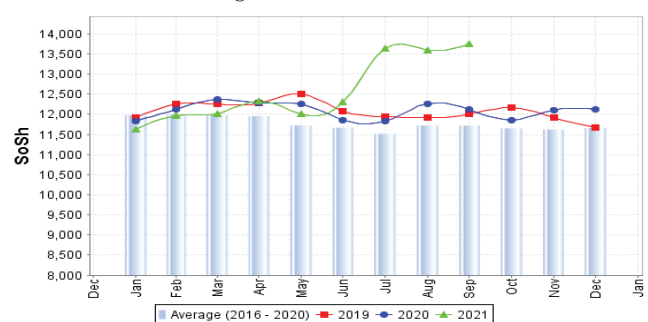


Figure 29: Wheat Flour



Regional analysis: Central Regions

Indicator	5-Year Average (2016-2020)	Sep-20	Aug-21	Sep-21 Nominal Price	Sep-21 Real (Deflated) Price	% Change Previous Month	% Change Same Month Previous Year	% Change 5-year avrg (2016-2020)
Imported Commodities Prices								
Diesel 1 litre	20,550	18,150	20,500	20,880	7,852	2%	15%	2%
Imported Red Rice 1kg	19,142	19,580	23,640	23,500	8,850	-1%	20%	23%
Petrol 1 litre	22,927	18,925	22,280	22,510	8,473	1%	19%	-2%
Sugar	22,020	21,800	25,944	26,140	9,855	1%	20%	19%
Vegetable Oil 1 litre	38,790	41,900	53,907	53,617	20,320	-1%	28%	38%
Wheat Flour 1kg	17,448	19,050	21,472	22,250	8,374	4%	17%	28%
Wheat Grain 1kg	18,954	20,188	23,450	23,625	8,898	1%	17%	25%
Cereal Prices								
Red Sorghum 1kg	14,116	13,880	15,567	16,195	6,068	4%	17%	15%
White Maize 1kg	16,195	15,250	17,200	17,625	6,612	2%	16%	9%
Livestock & Livestock Product Prices								
Camel Local Quality (Head)	12,597,500	13,362,500	13,131,400	13,348,125	5,083,521	2%	0%	6%
Cattle Local Quality (Head)	3,800,000	3,800,000	-	-	-	-	-	-
Fresh Camel Milk 1 litre	41,430	36,150	32,673	34,375	12,992	5%	-5%	-17%
Goat Export Quality (Head)	1,671,666	1,957,000	2,150,667	2,206,667	840,307	3%	13%	32%
Goat Local Quality (Head)	1,162,380	1,380,100	1,340,640	1,409,500	536,707	5%	2%	21%
Other Essential Items								
Charcoal 50kg	219,347	263,417	281,080	280,550	106,747	0%	7%	28%
Cowpeas 1 kg	36,452	31,450	42,560	43,400	16,429	2%	38%	19%
Unskilled Labor Wage Rate	111,300	119,500	128,400	136,750	51,981	7%	14%	23%
Firewood Bundle	37,200	49,000	57,200	57,700	21,875	1%	18%	55%
Local Sesame Oil 1 litre	85,460	93,700	87,760	88,800	33,719	1%	-5%	4%
Exchange Rate (Somali Shilling per USD)	25,835	27,313	28,800	28,800	10,868	0%	5%	11%
Terms of Trade								
Labour Wage (Daily)/ Cereal (Rice Kg)	5	6	5	6	-	20%	0%	20%
Local Goat (Head)/ Cereal (Rice Kg)	60	70	57	60	-	5%	-14%	0%
Camel (Head)/Cereal (Rice Kg)	657	682	555	568	-	2%	-17%	-14%
Cost of the Minimum Basket (CMB)	3,129,670	3,174,318	3,527,118	3,636,441	-	3%	15%	16%
Price Indices								
Consumer Price Index	227	230	252	263	-	4%	14%	16%

Figure 30: Trends in Cereal Prices

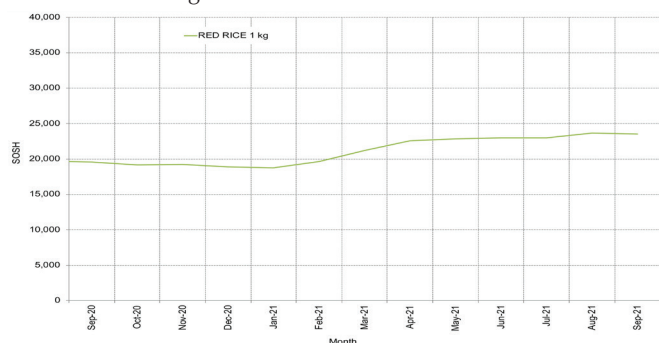


Figure 31: Trends in wage rates and relative purchasing power

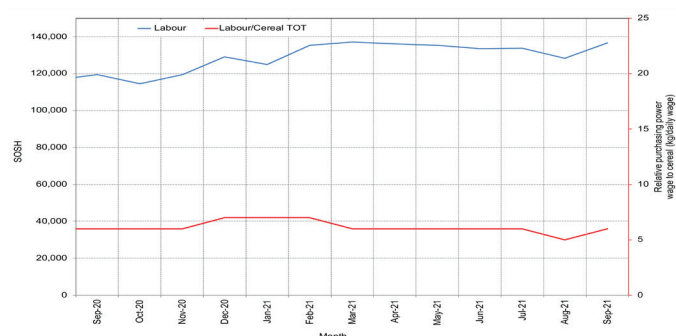


Figure 32: Imported Commodity Prices Compared to Exchange Rate

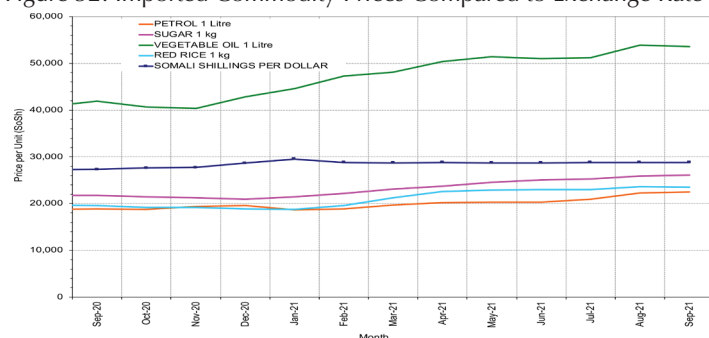


Figure 33: Goat Local Quality

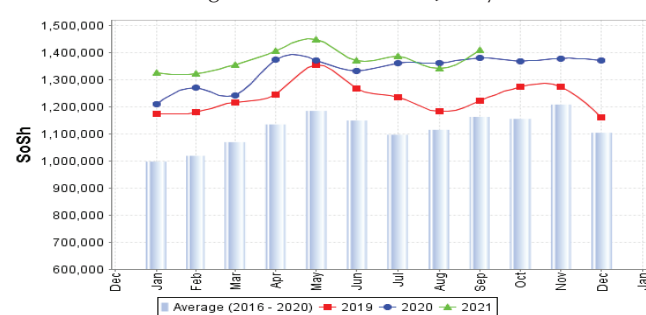


Figure 34: Exchange Rate

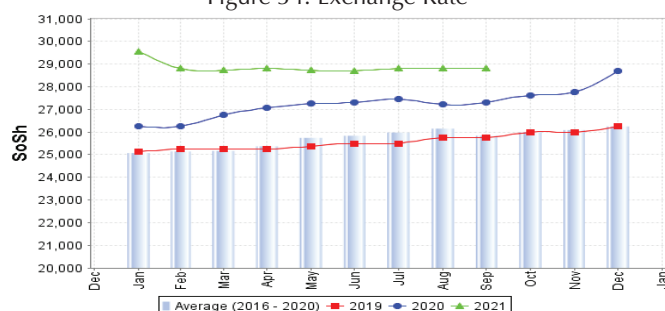
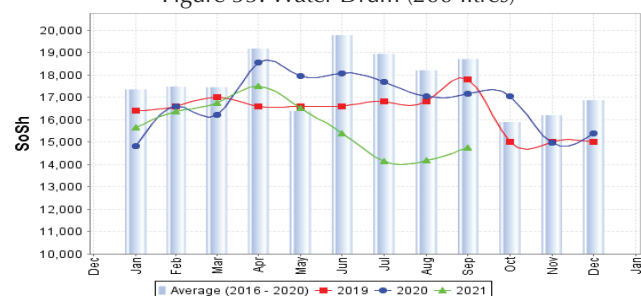


Figure 35: Water Drum (200 litres)



Regional analysis: Northeast Regions

Indicator	5-Year Average (2016-2020)	Sep-20	Aug-21	Sep-21 Nominal Price	Sep-21 Real (Deflated) Price	% Change Previous Month	% Change Same Month Previous Year	% Change 5-year avg (2016-2020)
Imported Commodities Prices								
Diesel 1 litre	21,744	19,821	27,886	28,279	7,379	1%	43%	30%
Imported Red Rice 1kg	19,535	24,357	28,500	29,643	7,740	4%	22%	52%
Petrol 1 litre	24,979	21,964	30,871	30,843	8,057	0%	40%	23%
Sugar	22,405	24,714	29,057	30,036	7,844	3%	22%	34%
Vegetable Oil 1 litre	36,764	45,464	65,829	69,886	18,383	6%	54%	90%
Wheat Flour 1kg	18,785	23,679	26,914	28,775	7,510	7%	22%	53%
Wheat Grain 1kg	31,905	32,275	37,800	37,617	9,849	0%	17%	18%
Cereal Prices								
Red Sorghum 1kg	27,425	31,750	38,800	40,250	10,545	4%	27%	47%
White Maize 1kg	24,875	25,875	38,800	40,000	10,479	3%	55%	61%
Livestock & Livestock Product Prices								
Camel Local Quality (Head)	17,222,200	22,973,500	24,868,000	25,367,500	6,708,924	2%	10%	47%
Cattle Local Quality (Head)	10,885,000	8,175,000	16,200,000	18,000,000	4,760,417	11%	120%	65%
Fresh Camel Milk 1 litre	50,501	51,472	51,650	54,450	14,301	5%	6%	8%
Goat Export Quality (Head)	1,606,516	1,964,583	2,395,000	2,365,333	625,467	-1%	20%	47%
Goat Local Quality (Head)	1,557,643	1,876,964	2,323,429	2,308,571	610,455	-1%	23%	48%
Other Essential Items								
Charcoal 50kg	429,421	532,000	572,314	584,893	154,589	2%	10%	36%
Cowpeas 1 kg	58,607	66,958	69,829	70,107	18,441	0%	5%	20%
Unskilled Labor Wage Rate	153,500	179,643	233,286	238,643	63,015	2%	33%	55%
Firewood Bundle	56,592	74,107	96,586	97,821	25,771	1%	32%	73%
Local Sesame Oil 1 litre	121,928	146,550	180,200	178,500	47,108	-1%	22%	46%
Exchange Rate (Somali Shilling per USD)	30,078	37,429	40,800	41,500	10,876	2%	11%	38%
Terms of Trade								
Labour Wage (Daily)/ Cereal (Rice(Kg))	7	7	8	8	-	0%	14%	14%
Local Goat (Head)/ Cereal (Rice(Kg))	80	77	82	78	-	-5%	1%	-3%
Cost of the Minimum Basket (CMB)	5,551,573	6,278,545	7,319,283	7,477,267	-	2%	19%	35%
Price Indices								
Consumer Price Index	284	322	369	378	-	2%	18%	33%

Figure 36: Trends in Cereal Prices

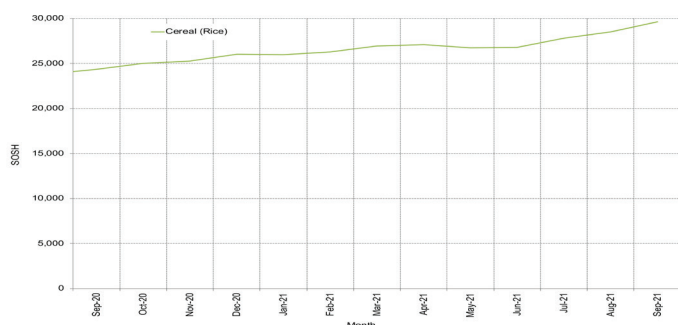


Figure 37: Trends in Wage Rates and Relative Purchasing Power

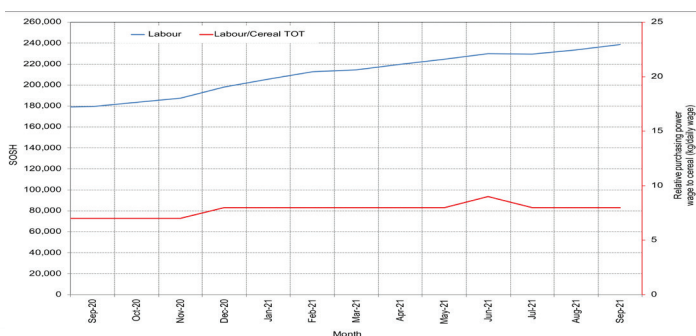


Figure 38: Imported Commodity Prices Compared to Exchange Rate

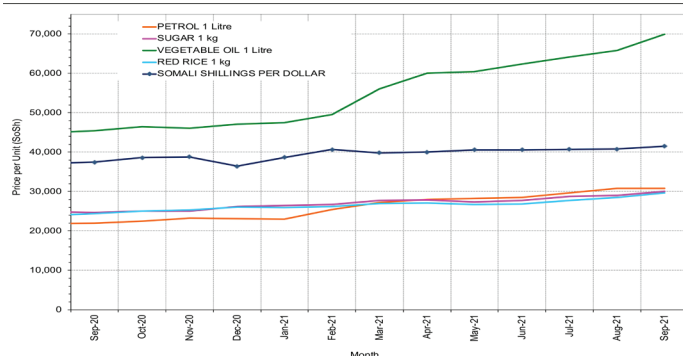


Figure 39: Goat Local Quality

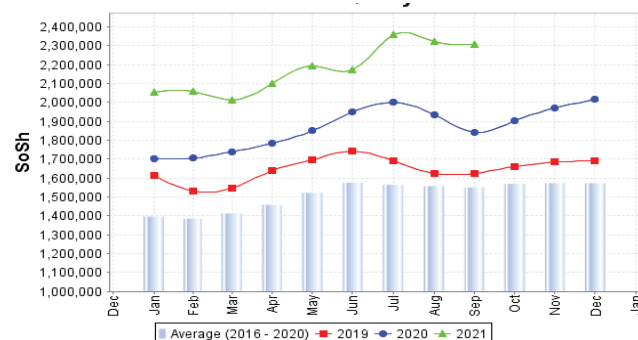


Figure 40: Exchange Rate

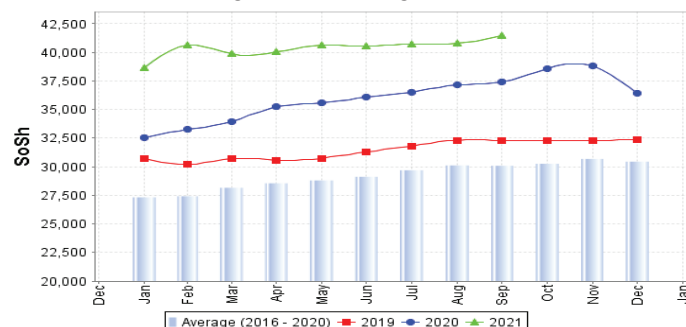
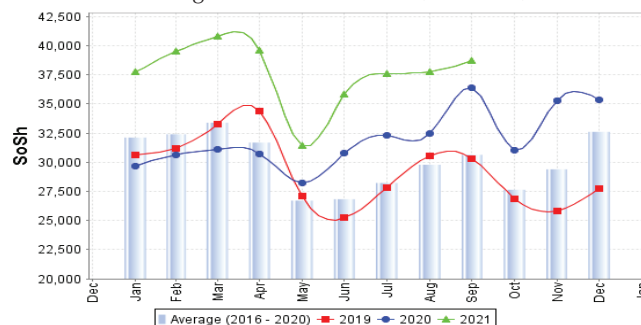


Figure 41: Water Drum (200 litres)



Regional analysis: Northwest Regions

Indicator	5-Year Average (2016-2020)	Sep-20	Aug-21	Sep-21 Nominal Price	Sep-21 Real (Deflated) Price	% Change Previous Month	% Change Same Month Previous Year	% Change 5-year avg (2016-2020)
Imported Commodities Prices								
Diesel 1 litre	6,249	5,145	6,152	6,225	4,277	1%	21%	0%
Imported Red Rice 1kg	5,912	6,750	7,408	7,075	4,875	-4%	5%	20%
Petrol 1 litre	7,226	6,005	6,784	6,770	4,661	0%	13%	-6%
Sugar	6,370	6,085	7,304	6,365	4,376	-13%	5%	0%
Vegetable Oil 1 litre	12,890	12,525	14,100	14,775	10,290	5%	18%	15%
Wheat Flour 1kg	5,143	5,405	6,080	5,525	3,785	-9%	2%	7%
Wheat Grain 1kg	4,824	5,894	6,005	5,975	4,102	0%	1%	24%
Cereal Prices								
White Sorghum 1kg	4,650	4,215	4,940	5,285	3,616	7%	25%	14%
Yellow Maize 1kg	5,491	5,510	5,764	6,187	4,251	7%	12%	13%
Livestock & Livestock Product Prices								
Camel Local Quality (Head)	4,564,773	4,225,000	4,728,667	4,833,333	3,398,693	2%	14%	6%
Cattle Local Quality (Head)	2,807,643	3,086,250	3,216,667	2,983,333	2,097,776	-7%	-3%	6%
Fresh Camel Milk 1 litre	10,235	10,275	9,624	9,950	6,897	3%	-3%	-3%
Goat Export Quality (Head)	499,080	482,813	533,000	519,813	365,432	-2%	8%	4%
Goat Local Quality (Head)	407,024	408,150	434,400	442,250	310,890	2%	8%	9%
Other Essential Items								
Charcoal 50kg	81,860	89,350	94,000	92,475	64,928	-2%	3%	13%
Cowpeas 1 kg	16,796	15,938	15,950	16,563	11,547	4%	4%	-1%
Unskilled Labor Wage Rate	75,591	79,675	79,500	74,400	52,218	-6%	-7%	-2%
Firewood Bundle	6,370	7,250	9,667	9,792	6,786	1%	35%	54%
Local Sesame Oil 1 litre	36,062	39,125	41,900	41,813	29,303	0%	7%	16%
Exchange Rate (Somaliland Shilling per USD)	8,854	8,535	8,540	8,535	5,902	0%	0%	-4%
Terms of Trade								
Labour Wage (Daily)/ Cereal (Rice(Kg))	13	12	11	11	-	0%	-8%	-15%
Local Goat (Head)/ Cereal (Rice(Kg))	69	60	59	63	-	7%	5%	-9%
Cost of the Minimum Basket (CMB)	1,222,829	1,220,053	1,299,372	1,302,312	-	0%	7%	6%
Price Indices								
Consumer Price Index	133	131	142	142	-	0%	8%	7%

Figure 42: Trends in Cereal Prices

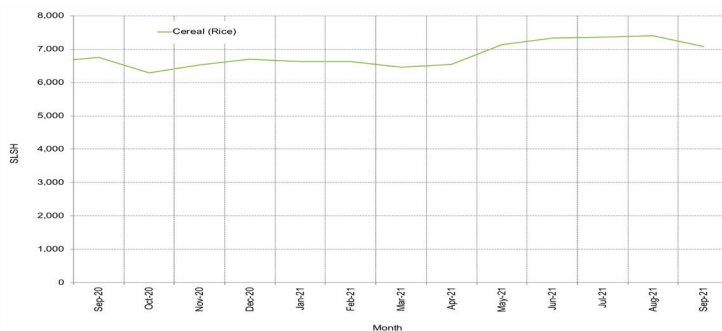


Figure 43: Trends in Wage Rates and Relative Purchasing Power

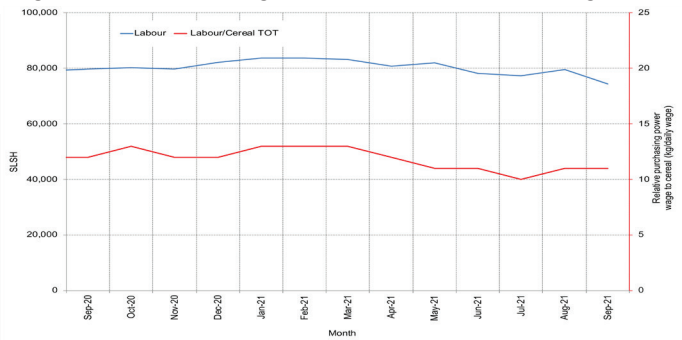


Figure 44: Imported Commodity Prices Compared to Exchange Rate

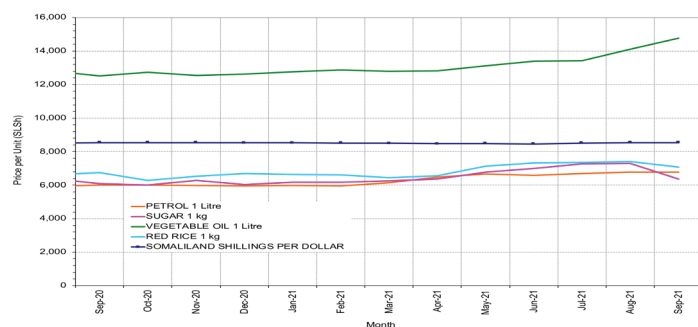


Figure 45: Goat Local Quality

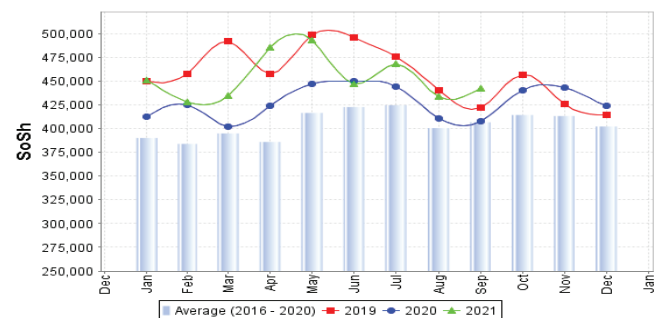


Figure 46: Exchange Rate

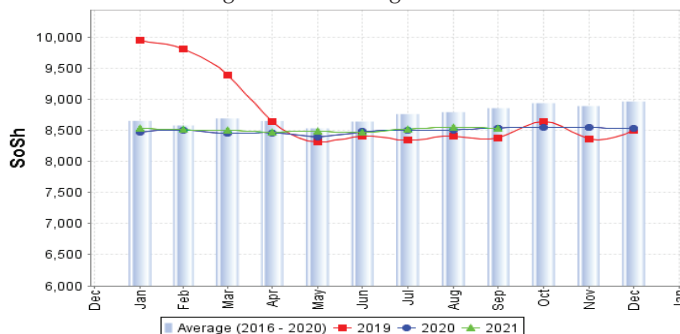
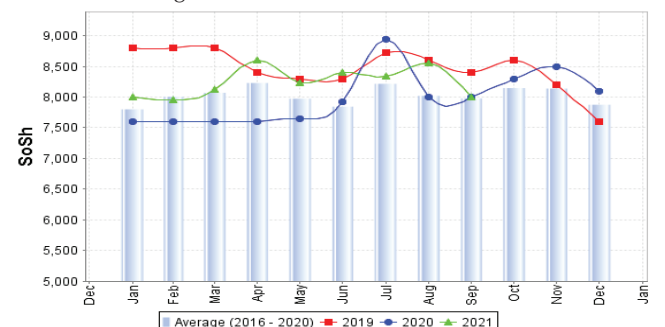


Figure 47: Water Drum (200 litres)



Trends in Livestock Exports

Table 1: Berbera Livestock Exports (Number of Heads)

	2003	2004	2005	2006	2007	2008	2009	2010	2011	2012	2013	2014	2015	2016	2017	2018	2019	2020	Jan-Jul 2021
Shoats	563 107	859 404	1 023 795	1 017 242	1 350 054	1 219 519	1 556 003	2 584 810	3 104 684	3 219 584	2 888 955	3 089 592	3 270 386	2 880 057	1 268 642	1 272 638	1 512 422	1 066 228	1 222 225
Cattle	84 312	131 852	148 151	85 631	88 143	80 051	88 005	133 021	150 934	190 354	201 876	252 397	160 395	150 133	84 812	114 589	142 152	106 772	70 980
Camel	21 874	5 147	5 069	22 810	14 245	26 515	20 206	92 651	107 281	102 664	75 728	64 578	61 475	57 841	2 371	914	914	51 497	22 118

Figure 48: Berbera Livestock Exports (Number of Heads)

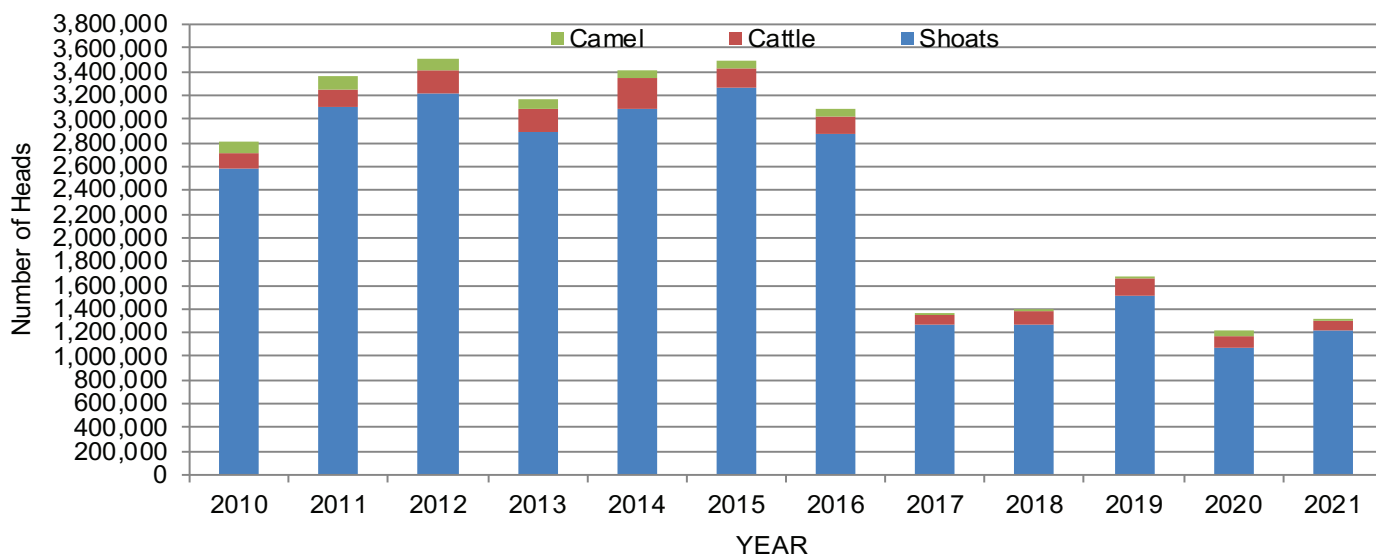
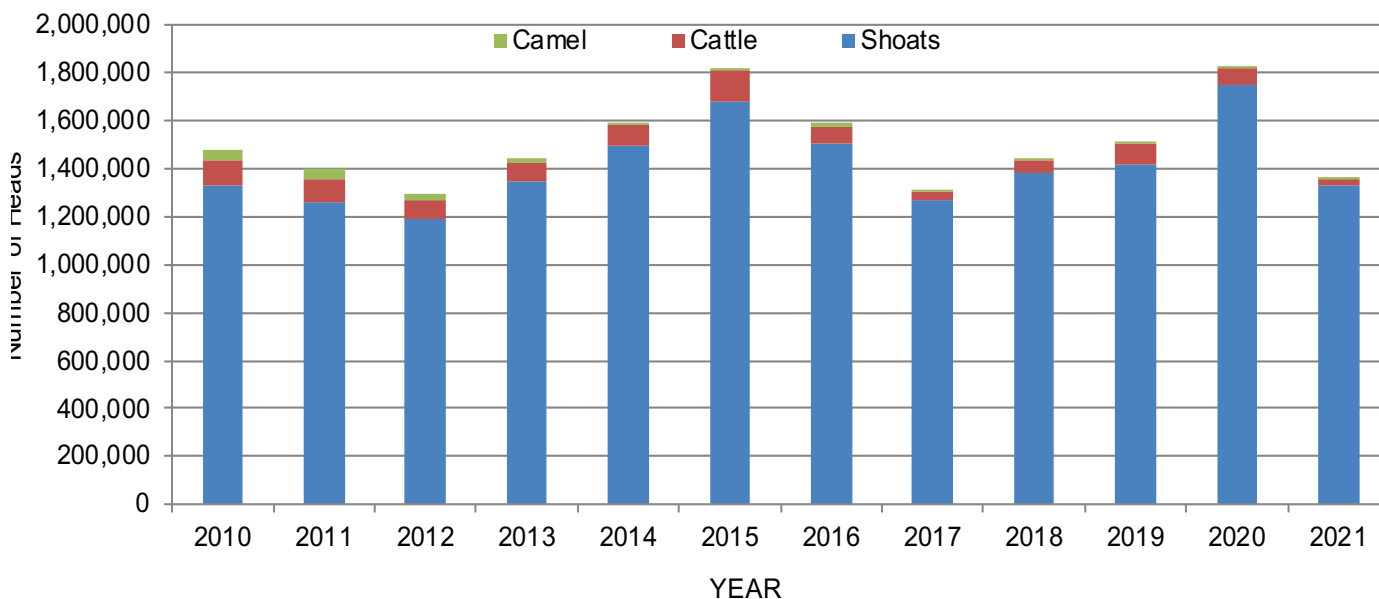


Table 2: Bossaso Livestock Exports (Number of Heads)

	2003	2004	2005	2006	2007	2008	2009	2010	2011	2012	2013	2014	2015	2016	2017	2018	2019	2020	Jan-Sept 2021
Shoats	1 483 409	1 166 480	1 594 859	1 777 283	1 522 855	1 236 775	1 159 454	1 333 478	1 256 535	1 192 197	1 349 123	1 493 111	1 676 216	1 507 910	1 266 215	1 385 187	1 419 749	1 752 081	1 333 792
Cattle	71 328	79 994	91 910	104 595	89 190	78 046	67 385	103 808	99 058	76 043	77 353	87 759	134 597	70 705	39 347	52 795	81 379	64 452	26 116
Camel	4 259	2 488	26 109	33 724	27 580	27 639	15 331	36 865	45 878	22 288	19 032	12 251	10 945	10 144	5 781	2 933	3 741	9 720	8 876

Figure 49: Bossaso Livestock Exports (Number of Heads)



Trends in Cereal Imports

Table 3: Total Cereal Imports through Berbera, Bossaso and Mogadishu Ports (Tonnes) *

	2003	2004	2005	2006	2007	2008	2009	2010	2011	2012	2013	2014	2015	2016	2017	2018	2019	2020	Jan-Sept 2021
Rice	180 614	146 567	150 017	198 101	166 626	136 007	171 472	161 415	272 877	227 955	170 868	170 888	195 240	207 267	77 299	266 087	90 868	99 023	78 466
Wheat flour	171 442	151 555	169 583	178 345	176 821	169 208	240 247	249 080	258 679	268 491	183 058	284 230	318 868	207 463	105 215	236 784	94 358	86 635	74 189
Pasta	29 273	38 749	39 153	52 815	41 331	38 441	86 372	102 373	184 849	337 878	134 311	176 951	155 360	78 113	38 935	116 879	37 670	32 746	37 259

*Elman (Mogadishu) is up to November 2015. Mogadishu data (Elmaan Port) for 2013 includes only January - March imports. Berbera Data is up to December 2016

Figure 50: Total Cereal Imports (Berbera, Bossaso and Mogadishu)

