

Market Update



Food and Agriculture
Organization of the
United Nations



Food Security and Nutrition
Analysis Unit - Somalia

September 2019 Update (Issued October 23, 2019)

Highlights

Inflation:

SoSh (Somali Shilling)-using areas: Compared to one month ago, Consumer Price Index (CPI) changed mildly (1-3%) in September 2019. Compared to the five-year average (2014-2018), CPI increased moderately in southern Somalia (9%) and northeast (12%), attributable to higher prices of commodities, especially cereals, in the Minimum Expenditure Basket (MEB) this year.

SISh (Somaliland Shilling)-using areas: CPI remained relatively stable in September 2019 but increased by 12 percent compared to the five-year average.

Exchange rate:

SoSh-using areas: The exchange rates between SoSh and the United States Dollar (USD) remained relatively stable in most regions of the country in September 2019. Compared to the five-year average, SoSh exhibited a moderate to significant depreciation (8-32%) in all regions of the country with the highest depreciation reported in the northeast mainly due to increased injection of newly printed local currency into over the past two years.

SISh-using areas: local currency in Somaliland Shilling using areas exhibited relative stability against USD in September 2019 but as well as in comparison to the five-year average.

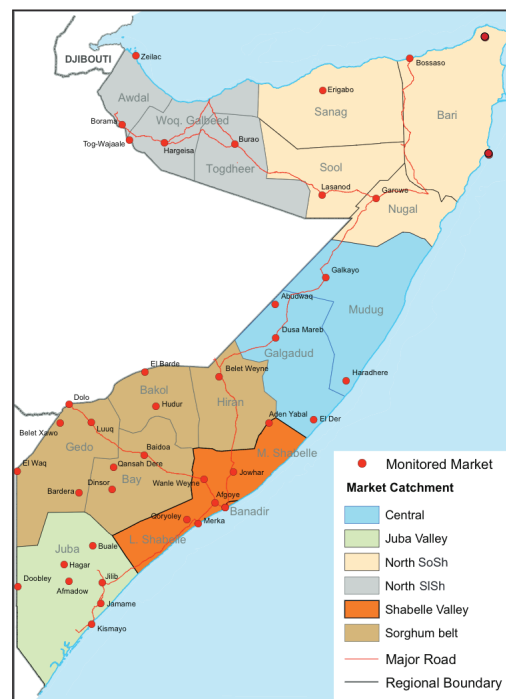
Local cereal (white maize, red sorghum and white sorghum) prices either remained relatively stable or exhibited mild ($\leq 8\%$) monthly increases in September 2019 in most parts of the country. The mild increases are due to dwindling supply as a result of the poor 2019 Gu season cereal harvest and limited carryover stocks from previous seasons. Compared to the five-year average, September 2019 local cereal prices are higher (5-24%) in all the regions across the country.

Prices of imported food (rice, sugar, vegetable oil, wheat flour) mostly exhibited relative stability or mild monthly changes ($\leq \pm 10\%$) in local currency terms in September 2019 in most Southern regions of Somalia compared to both last month and the five-year averages. In the northern parts of the country, the prices of most food imports remained relatively stable from last month but exhibited mild to moderate increases (3-17%) compared to the five-year average.

Livestock prices for local quality goat and camel mostly exhibited mild to moderate ($< 8\%$) monthly declines in the southern regions due to reduced demand following the end of the Hajj festive period and seasonal deterioration of livestock body condition during Hagaa. Relative price stability to mild monthly changes ($\pm 4\%$) in livestock prices were recorded in northern regions in September 2019. Compared to the five-year average, livestock prices exhibited mild to moderate increases (5-19%) across the country. Milk prices (camel and cattle) exhibited mild increases (\pm less than 10%) in most regions of the country both in September 2019 and compared to the five-year average.

Labor (unskilled) wages remained relatively stable ($\pm 2\%$) in the southern regions of Somalia but slightly increased (5-10%) in central and northwest regions in September 2019. Compared to the five-year average, labor wages decreased (3-6%) in the Sorghum Belt and Shabelle regions but increased slightly (4%) in the Juba Valley and moderately to significantly (11-37%) in central and northern regions due to depreciation of the local currency in recent years.

Terms of Trade (ToT) between daily labor wage and cereals either remained relatively stable or changed mildly (by ± 1 -2kgs/daily wage) in most regions of the country in September 2019. Similarly, the labor wage to cereals ToT remained relatively stable or decreased mildly in most regions of the country compared to the five-year average (2014-2018), with the exception of central and northwest regions where ToT increased (by 2-4kgs/daily) owing to the increase in labor wage rates. The ToT between local quality goat and cereals exhibited mild monthly changes ($\leq \pm 10\%$) in most regions of the country. Five-year average comparisons mostly indicate lower ToT between goat and cereals in most regions of Somalia due to higher cereal prices in September 2019.



Siege-affected towns (Bulo-Burto, Wajid, Dinsor and Hudur)

Labor (unskilled) wages in September 2019 exhibited mild to moderate increases (5-12%) in Buloburti and Dinsor but declined (6-14%) in Hudur and Wajid markets. Compared to the five-year average, labour wages were higher in all the markets except Dinsor which exhibited a decline of 18 percent.

Terms of Trade (ToTs) between daily labor wages/local quality goat and local cereals exhibited mild to moderate decreases (5-19%) both in September 2019 in all markets except Dinsor where the TOT slightly increased (by 2%) . Compared to the five year average, TOT decreased in all four markets. The decreases were due to increase in cereal prices and/or decrease in daily labor wage rates and goat prices.

Local cereal (red and white sorghum) prices mostly increased at mild to moderate rates ($\leq \pm 16\%$) in September 2019 owing to the poor Gu 2019 season cereal production and reduced cereal supply from adjacent regions. Cereal prices also exhibited moderate to significant increases (13-52%) compared to the five-year average.

Prices of imported food items (rice, sugar, vegetable oil, wheat flour) decreased at mild to moderate rates (2-9%) in September 2019 as well as in comparison to the five-year averages in Buloburti, Hudur and Dinsor markets. In Wajid, price decreases were significantly higher (21-35%) for most of the food imports.

National Trends: CPI, Exchange Rates, Cereal Prices and Relative Purchasing Power

Table 1: ToT between Daily Labour Wage Rate and Cereals by Region August and September 2019

Regions	Sep 2019 (kg)	Kg change from		
		Aug 2019	Sep 2018	Sep 5 yr Average (2014 - 2018)
Banadir/Mogadishu (White maize)	11	1	-5	-5
Bay (Red sorghum)	10	1	-9	-4
Bakool (Red sorghum)	4	-1	-2	0
Gedo (Red sorghum)	11	-1	-6	-3
Juba (White maize)	10	0	-4	-1
Shabelle (White maize)	9	0	-6	-1
Northwest (Imported Rice)	15	1	1	4
Northeast (Imported Rice)	8	0	0	0
Central (Imported Rice)	7	1	1	2

Figure 1: Wheat Prices: Mogadishu and Bossaso Markets

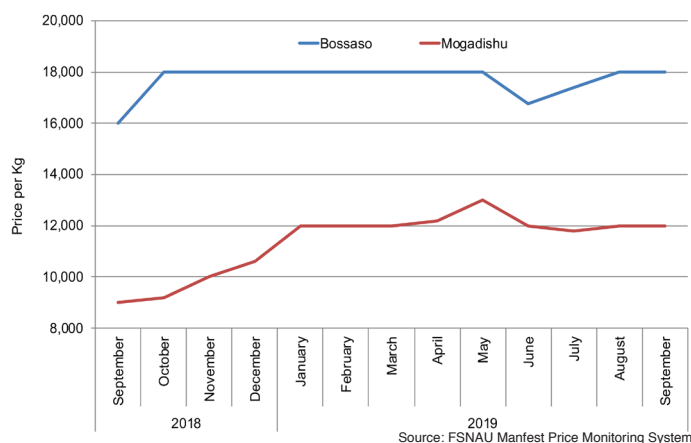


Figure 2: Terms of Trade Between Wage Rates and Selected Cereals

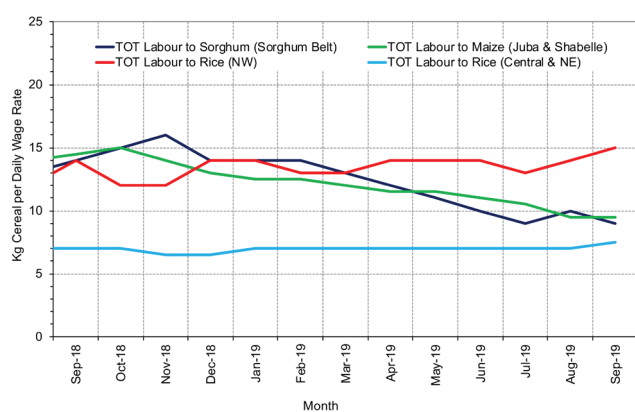


Figure 3: Monthly Exchange Rate for Selected Regions (SoSh and SiSh to USD)

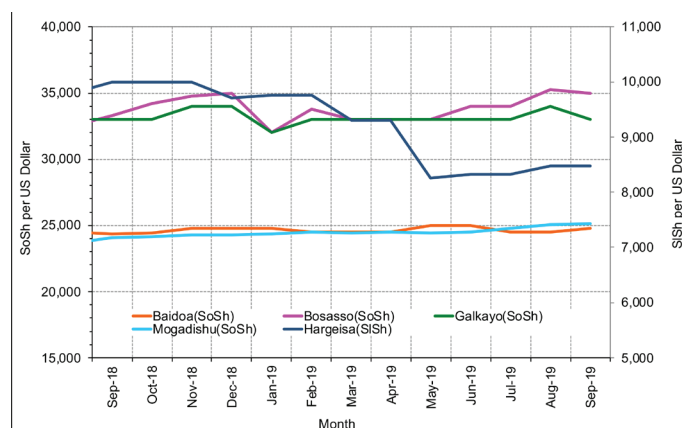


Figure 4: Monthly Trends in Consumer Price Index (CPI, April 2007=100)

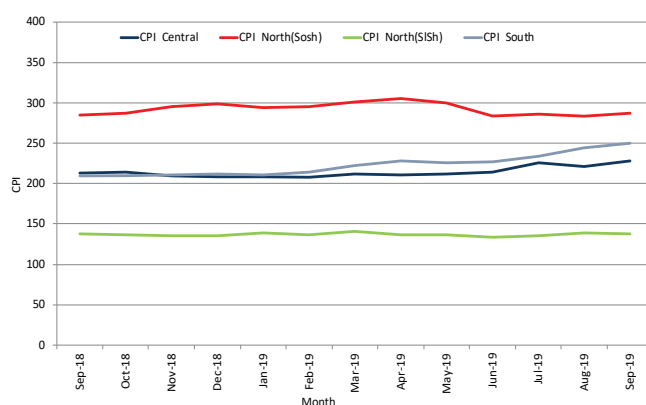
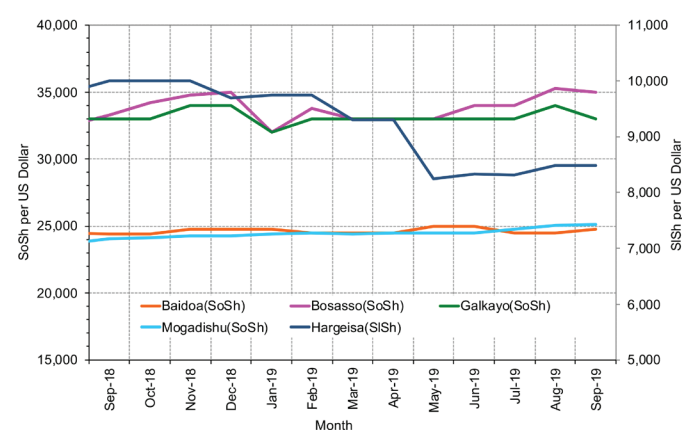


Figure 5: Monthly Trends in Local Cereal Prices



Regional analysis: Juba Regions

Indicator	5-Year Average (2014-2018)	Sep-18	Aug-19	Sep-19 Nominal Price	Sep-19 Real (Deflated) Price	% Change Previous Month	% Change Same Month Previous Year	% Change 5-year avrg (2014-2018)
Imported Commodities Prices								
Diesel 1 litre	22,881	23,969	23,125	23,125	9,150	0%	-4%	1%
Imported Red Rice 1kg	15,712	16,000	16,000	16,375	6,450	2%	2%	4%
Petrol 1 litre	25,350	25,563	24,750	24,750	9,800	0%	-3%	-2%
Sugar	16,012	16,125	16,469	16,531	6,512	0%	3%	3%
Vegetable Oil 1 litre	29,775	29,188	28,975	29,194	11,577	1%	0%	-2%
Wheat Flour 1kg	15,071	15,656	15,656	16,031	6,312	2%	2%	6%
Wheat Grain 1kg	-	-	-	-	-	-	-	-
Cereal Prices								
Red Sorghum 1kg	7,401	6,800	8,725	9,000	3,500	3%	32%	22%
White Maize 1kg	8,693	7,509	9,503	9,838	3,835	4%	31%	13%
Livestock & Livestock Product Prices								
Camel Local Quality (Head)	10,059,702	12,923,571	11,106,250	10,853,571	4,341,282	-2%	-16%	8%
Cattle Local Quality (Head)	3,756,590	3,680,357	2,966,071	3,210,714	1,284,172	8%	-13%	-15%
Fresh Camel Milk 1 litre	16,618	16,344	16,813	17,006	6,702	1%	4%	2%
Goat Export Quality (Head)	1,391,085	1,635,625	1,254,688	1,232,813	493,020	-2%	-25%	-11%
Goat Local Quality (Head)	844,744	920,313	739,063	733,438	293,272	-1%	-20%	-13%
Other Essential Items								
Charcoal 50kg	86,460	98,563	94,219	94,844	37,837	1%	-4%	10%
Cowpeas 1 kg	22,564	22,063	21,813	22,375	8,850	3%	1%	-1%
Unskilled Labor Wage Rate	97,012	103,844	99,375	100,500	40,100	1%	-3%	4%
Firewood Bundle	8,056	7,375	7,000	6,953	2,681	-1%	-6%	-14%
Local Sesame Oil 1 litre	63,669	63,313	63,375	65,250	26,000	3%	3%	2%
Exchange Rate (Somali Shilling per USD)	22,679	24,000	24,663	24,688	9,775	0%	3%	9%
Terms of Trade								
Labour Wage (Daily)/ Cereal (Maize(Kg))	11	14	10	10	-	0%	-29%	-9%
Local Goat (Head)/ Cereal (Maize(Kg))	99	123	78	75	-	-4%	-39%	-24%
Cost of the Minimum Basket (CMB)	2,297,997	2,212,656	2,379,935	2,426,430	-	2%	10%	6%
Price Indices								
Consumer Price Index	-	210	245	250	-	2%	19%	-

Figure 6: Trends in Cereal Prices

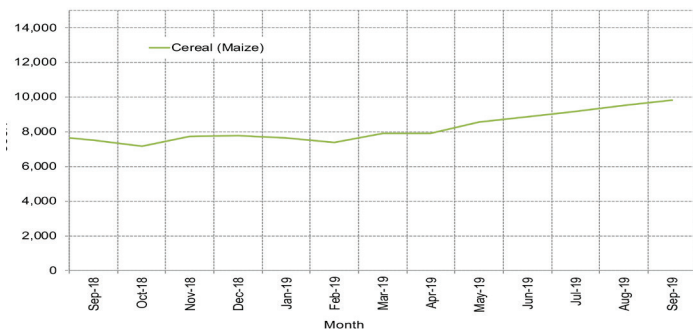


Figure 7: Trends in Wage Rates and Relative Purchasing Power

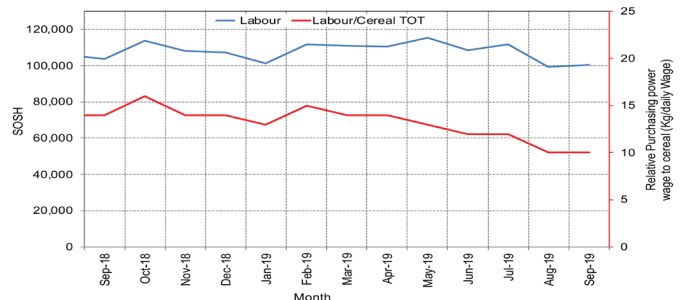


Figure 8: Imported Commodity Prices Compared to Exchange Rate

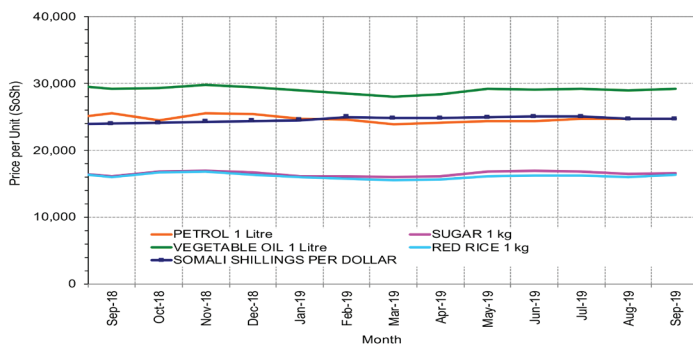


Figure 9: Goat Local Quality

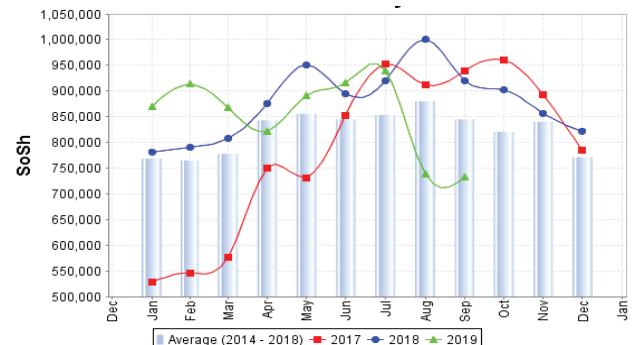


Figure 10: Exchange Rate

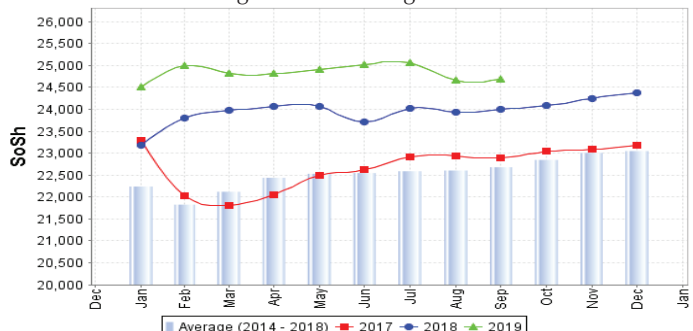
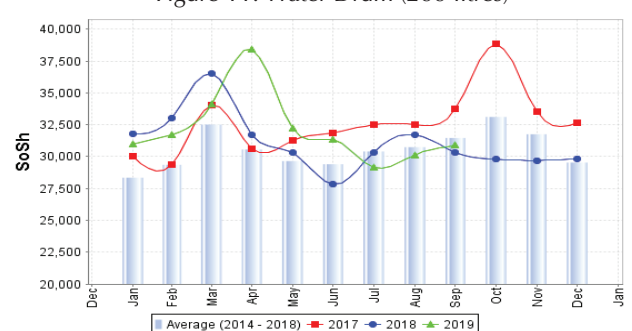


Figure 11: Water Drum (200 litres)



Regional analysis: Sorghum Belt Regions (Bay, Bakool, Gedo and Hiran)

Indicator	5-Year Average (2014-2018)	Sep-18	Aug-19	Sep-19 Nominal Price	Sep-19 Real (Deflated) Price	% Change Previous Month	% Change Same Month Previous Year	% Change 5-year avg (2014-2018)
Imported Commodities Prices								
Diesel 1 litre	27,307	26,333	26,521	26,550	10,520	0%	1%	-3%
Imported Red Rice 1kg	18,917	19,542	20,042	19,217	7,587	-4%	-2%	2%
Petrol 1 litre	28,850	27,729	29,417	29,658	11,763	1%	7%	3%
Sugar	19,905	19,854	20,458	19,950	7,880	-2%	0%	0%
Vegetable Oil 1 litre	37,350	38,000	37,917	37,492	14,897	-1%	-1%	0%
Wheat Flour 1kg	18,085	18,667	18,750	18,617	7,347	-1%	0%	3%
Wheat Grain 1kg	19,051	18,938	18,875	20,000	7,900	6%	6%	5%
Cereal Prices								
Red Sorghum 1kg	9,336	7,695	10,610	11,095	4,338	5%	44%	19%
White Maize 1kg	10,053	8,224	11,152	11,341	4,436	2%	38%	13%
Livestock & Livestock Product Prices								
Camel Local Quality (Head)	11,929,627	11,672,500	12,449,250	11,991,500	4,796,449	-4%	3%	1%
Cattle Local Quality (Head)	3,292,970	2,981,875	2,987,778	2,943,889	1,177,443	-1%	-1%	-11%
Fresh Camel Milk 1 litre	23,511	28,125	23,915	25,415	10,066	6%	-10%	8%
Goat Export Quality (Head)	1,549,000	1,526,136	1,627,727	1,565,818	626,221	-4%	3%	1%
Goat Local Quality (Head)	916,091	944,792	881,604	845,900	338,256	-4%	-10%	-8%
Other Essential Items								
Charcoal 50kg	160,004	183,295	187,045	187,932	75,072	0%	3%	17%
Cowpeas 1 kg	28,127	24,313	29,292	30,829	12,231	5%	27%	10%
Unskilled Labor Wage Rate	100,865	104,271	99,271	98,146	39,158	-1%	-6%	-3%
Firewood Bundle	6,062	5,521	6,042	6,146	2,358	2%	11%	1%
Local Sesame Oil 1 litre	78,014	78,500	95,000	100,150	39,960	5%	28%	28%
Exchange Rate (Somali Shilling per USD)	22,757	24,383	25,030	25,206	9,982	1%	3%	11%
Terms of Trade								
Labour Wage (Daily)/ Cereal (Sorghum (Kg)	11	14	9	9	-	0%	-36%	-18%
Local Goat (Head)/ Cereal (Sorghum (Kg)	101	123	83	76	-	-8%	-38%	-25%
Cost of the Minimum Basket (CMB)	2,422,425	2,181,225	2,661,933	2,771,412	-	4%	27%	14%
Price Indices								
Consumer Price Index	-	210	245	250	-	2%	19%	-

Figure 12: Trends in Cereal Prices

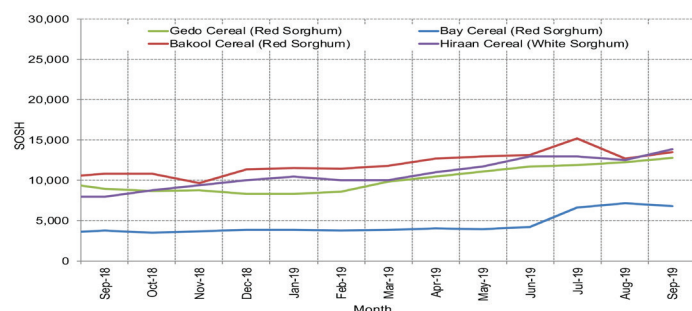


Figure 14: Imported Commodity Prices Compared to Exchange Rate

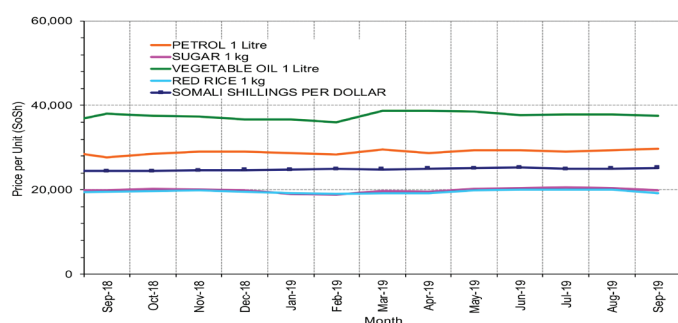


Figure 16: Exchange Rate

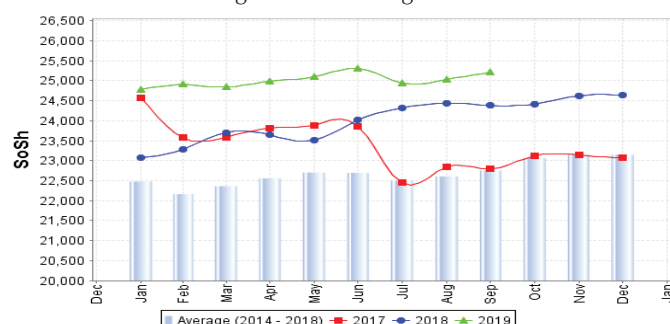


Figure 13: Trends in Wage Rates and Relative Purchasing Power

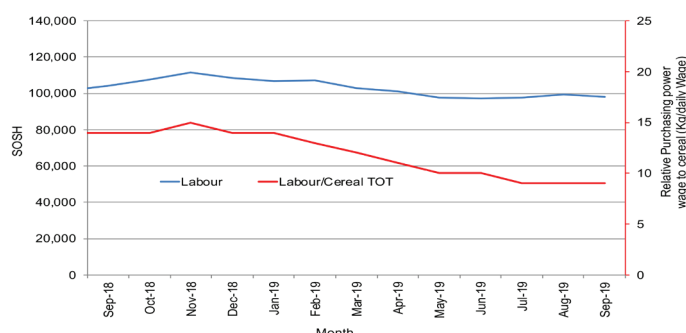


Figure 15: Goat Local Quality

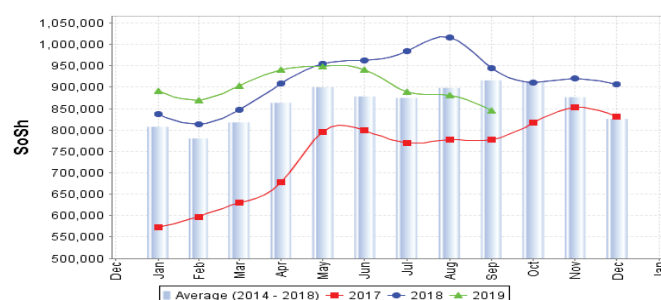
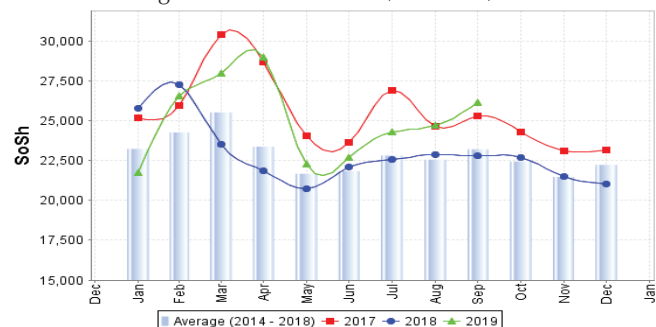


Figure 17: Water Drum (200 litres)



Regional analysis: Shabelle Regions

Indicator	5-Year Average (2014-2018)	Sep-18	Aug-19	Sep-19 Nominal Price	Sep-19 Real (Deflated) Price	% Change Previous Month	% Change Same Month Previous Year	% Change 5-year avrg (2014-2018)
Imported Commodities Prices								
Diesel 1 litre	21,500	20,417	19,583	19,125	7,550	-2%	-6%	-11%
Imported Red Rice 1kg	16,000	16,250	16,042	16,083	6,333	0%	-1%	1%
Petrol 1 litre	24,808	22,083	20,125	20,333	8,033	1%	-8%	-18%
Sugar	17,116	15,792	16,042	16,458	6,483	3%	4%	-4%
Vegetable Oil 1 litre	27,741	26,792	27,125	27,083	10,733	0%	1%	-2%
Wheat Flour 1kg	15,758	14,625	15,583	15,542	6,117	0%	6%	-1%
Wheat Grain 1kg	18,000	15,000	16,500	16,500	6,500	0%	10%	-8%
Cereal Prices								
Red Sorghum 1kg	9,813	6,899	10,384	9,968	3,887	-4%	44%	2%
White Maize 1kg	6,713	4,690	7,458	7,000	2,700	-6%	49%	4%
Livestock & Livestock Product Prices								
Camel Local Quality (Head)	17,573,500	16,927,500	17,912,500	16,537,500	6,614,830	-8%	-2%	-6%
Cattle Local Quality (Head)	5,189,725	4,166,875	5,050,000	5,196,875	2,078,628	3%	25%	0%
Fresh Camel Milk 1 litre	19,491	22,583	21,375	21,542	8,517	1%	-5%	11%
Goat Export Quality (Head)	1,880,625	1,768,125	2,031,875	1,846,875	738,642	-9%	4%	-2%
Goat Local Quality (Head)	1,391,750	1,327,917	1,420,625	1,390,833	556,227	-2%	5%	0%
Other Essential Items								
Charcoal 50kg	129,035	148,472	163,792	160,597	64,138	-2%	8%	24%
Cowpeas 1 kg	25,109	15,996	25,000	25,333	10,033	1%	58%	1%
Unskilled Labor Wage Rate	69,333	68,750	64,792	65,917	26,267	2%	-4%	-5%
Firewood Bundle	7,325	6,833	6,750	7,250	2,800	7%	6%	-1%
Local Sesame Oil 1 litre	56,338	57,083	63,958	67,333	26,833	5%	18%	20%
Exchange Rate (Somali Shilling per USD)	22,795	24,100	25,104	25,121	9,948	0%	4%	10%
Terms of Trade								
Labour Wage (Daily)/ Cereal (Maize(Kg))	10	15	9	9	-	0%	-40%	-10%
Local Goat (Head)/ Cereal (Maize(Kg))	214	283	190	199	-	5%	-30%	-7%
Cost of the Minimum Basket (CMB)	2,419,522	2,110,087	2,449,896	2,444,607	-	0%	16%	1%
Price Indices								
Consumer Price Index	-	210	245	250	-	2%	19%	-

Figure 18: Trends in Cereal Prices



Figure 19: Trends in Wage Rates and Relative Purchasing Power

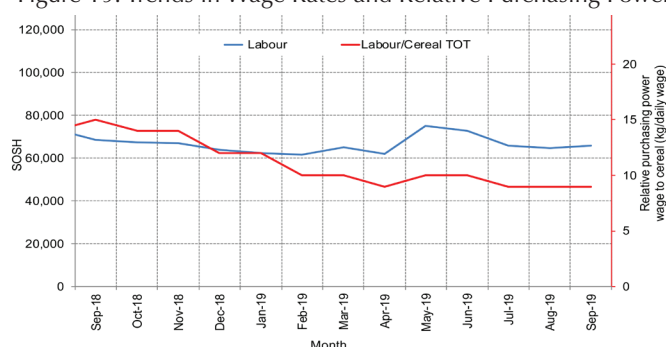


Figure 20: Imported Commodity Prices Compared to Exchange Rate

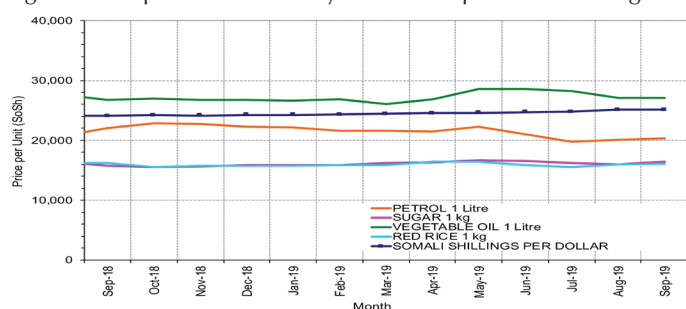


Figure 21: Goat Local Quality

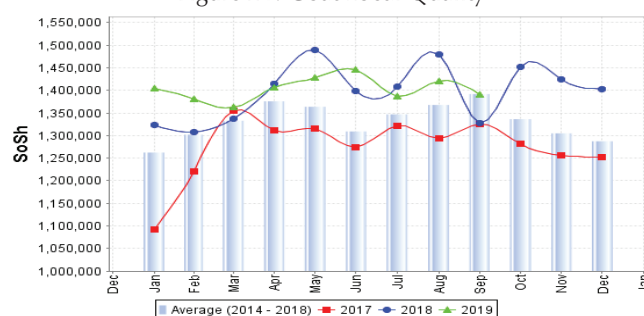


Figure 22: Exchange Rate

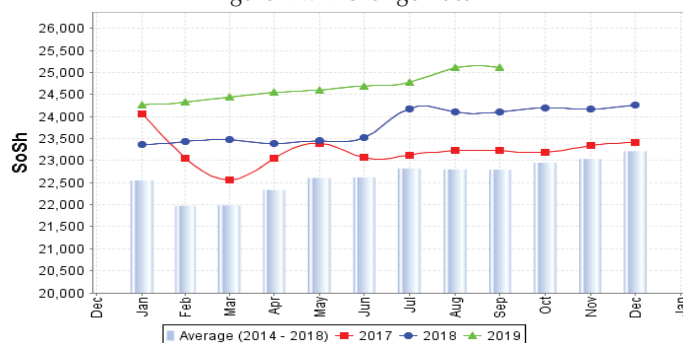
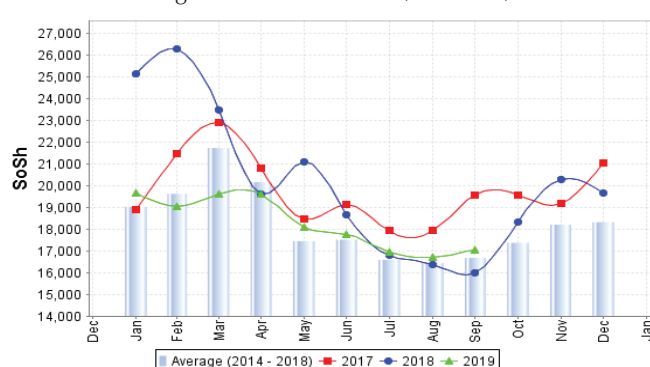


Figure 23: Water Drum (200 litres)



Regional analysis: Banadir Region

Indicator	5-Year Average (2014-2018)	Sep-18	Aug-19	Sep-19 Nominal Price	Sep-19 Real (Deflated) Price	% Change Previous Month	% Change Same Month Previous Year	% Change 5-year avrg (2014-2018)
Imported Commodities Prices								
Diesel 1 litre	16,411	14,058	15,100	15,767	6,207	4%	12%	-4%
Imported Red Rice 1kg	12,206	11,667	12,000	12,167	4,767	1%	4%	0%
Petrol 1 litre	18,670	17,250	17,333	18,000	7,100	4%	4%	-4%
Sugar	14,008	13,083	13,417	13,667	5,367	2%	4%	-2%
Vegetable Oil 1 litre	22,540	21,583	21,667	23,083	9,133	7%	7%	2%
Wheat Flour 1kg	11,886	10,500	11,917	12,000	4,700	1%	14%	1%
Wheat Grain 1kg	13,261	15,500	16,000	16,000	6,300	0%	3%	21%
Cereal Prices								
Red Sorghum 1kg	8,410	7,775	9,333	9,258	3,603	-1%	19%	10%
White Maize 1kg	9,474	8,600	10,867	10,396	4,058	-4%	21%	10%
Livestock & Livestock Product Prices								
Camel Local Quality (Head)	-	-	-	-	-	-	-	-
Cattle Local Quality (Head)	-	-	-	-	-	-	-	-
Fresh Camel Milk 1 litre	24,770	27,333	31,000	31,000	12,300	0%	13%	25%
Goat Export Quality (Head)	2,343,750	2,075,000	2,475,000	2,425,000	969,890	-2%	17%	3%
Goat Local Quality (Head)	1,971,200	1,650,000	2,000,000	2,000,000	799,891	0%	21%	1%
Other Essential Items								
Charcoal 50kg	200,940	217,500	321,083	326,417	130,465	2%	50%	62%
Cowpeas 1 kg	26,303	20,192	27,083	29,167	11,567	8%	44%	11%
Unskilled Labor Wage Rate	95,124	85,833	87,083	101,667	40,566	17%	18%	7%
Firewood Bundle	8,204	8,000	11,125	11,125	4,350	0%	39%	36%
Local Sesame Oil 1 litre	56,348	59,667	60,833	61,167	24,367	1%	3%	9%
Exchange Rate (Somali Shilling per USD)	22,588	24,079	24,558	24,583	9,733	0%	2%	9%
Terms of Trade								
Labour Wage (Daily)/ Cereal (Rice(Kg))	7	7	7	8	-	14%	14%	14%
Local Goat (Head)/ Cereal (Rice(Kg))	161	141	167	164	-	-2%	16%	2%
Cost of the Minimum Basket (CMB)	2,222,657	2,168,838	2,462,601	2,479,244	-	1%	14%	12%
Price Indices								
Consumer Price Index	-	210	245	250	-	2%	19%	-

Figure 24: Trends in Cereal Prices

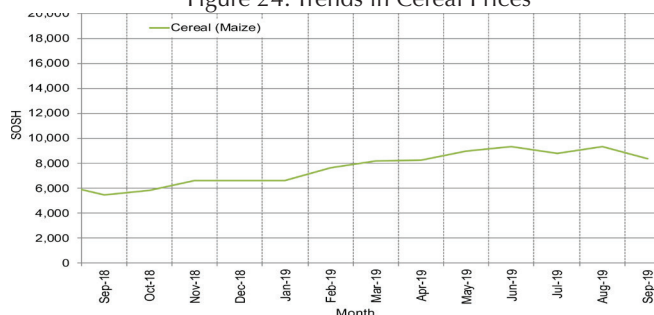


Figure 25: Bakara: Trends in Wage Rates and Relative Purchasing Power

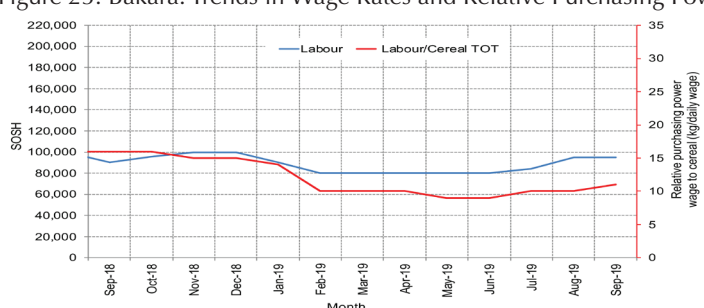


Figure 26: Imported Commodity Prices Compared to Exchange Rate

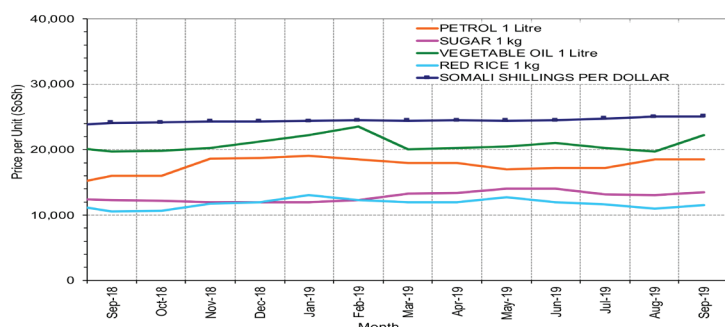


Figure 27: Goat Local Quality

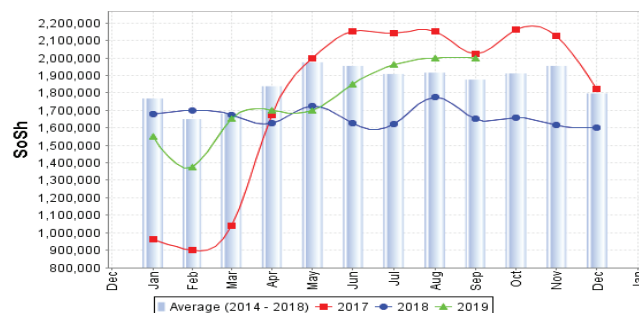


Figure 28: Exchange Rate

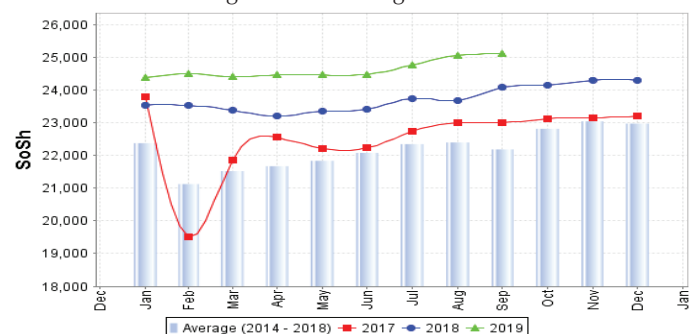
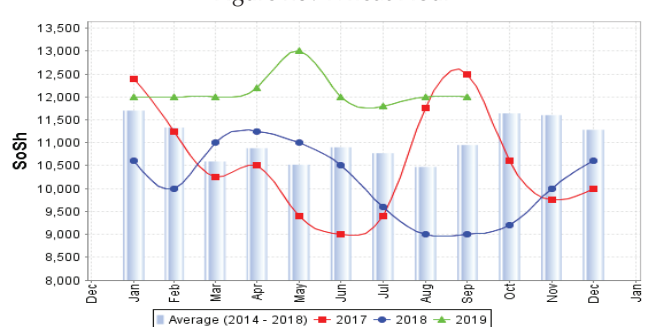


Figure 29: Wheat Flour



Regional analysis: Central Regions

Indicator	5-Year Average (2014-2018)	Sep-18	Aug-19	Sep-19 Nominal Price	Sep-19 Real (Deflated) Price	% Change Previous Month	% Change Same Month Previous Year	% Change 5-year avg (2014-2018)
Imported Commodities Prices								
Diesel 1 litre	22,910	20,800	21,600	21,600	9,369	0%	4%	-6%
Imported Red Rice 1kg	18,370	19,350	19,400	19,480	8,440	0%	1%	6%
Petrol 1 litre	24,406	25,000	23,800	23,800	10,334	0%	-5%	-2%
Sugar	21,400	22,200	20,200	20,400	8,843	1%	-8%	-5%
Vegetable Oil 1 litre	39,026	36,400	36,200	36,200	15,770	0%	-1%	-7%
Wheat Flour 1kg	16,430	17,600	17,800	18,040	7,809	1%	2%	10%
Wheat Grain 1kg	17,975	19,000	16,333	16,333	7,060	0%	-14%	-9%
Cereal Prices								
Red Sorghum 1kg	13,490	13,000	13,600	14,750	6,366	8%	13%	9%
White Maize 1kg	15,615	16,350	15,500	14,750	6,366	-5%	-10%	-6%
Livestock & Livestock Product Prices								
Camel Local Quality (Head)	11,772,000	13,550,000	11,410,000	13,050,000	5,721,022	14%	-4%	11%
Cattle Local Quality (Head)	3,000,000	-	-	-	-	-	-	-
Fresh Camel Milk 1 litre	40,892	62,200	27,600	28,800	12,526	4%	-54%	-30%
Goat Export Quality (Head)	1,465,100	1,821,333	1,833,333	1,913,333	838,705	4%	5%	31%
Goat Local Quality (Head)	1,046,960	1,314,800	1,182,000	1,222,000	535,625	3%	-7%	17%
Other Essential Items								
Charcoal 50kg	182,580	220,400	246,000	245,920	107,711	0%	12%	35%
Cowpeas 1 kg	32,972	29,250	28,800	30,560	13,298	6%	4%	-7%
Unskilled Labor Wage Rate	96,000	117,000	118,000	130,000	56,892	10%	11%	35%
Firewood Bundle	33,560	35,500	34,000	36,000	15,682	6%	1%	7%
Local Sesame Oil 1 litre	85,260	85,400	85,000	86,000	37,602	1%	1%	1%
Exchange Rate (Somali Shilling per USD)	23,823	25,969	25,750	25,750	11,189	0%	-1%	8%
Terms of Trade								
Labour Wage (Daily)/ Cereal (Rice Kg)	5	6	6	7	-	17%	17%	40%
Local Goat (Head)/ Cereal (Rice Kg)	56	68	61	63	-	3%	-7%	13%
Camel (Head)/Cereal (Rice Kg)	642	700	588	670	-	14%	-4%	4%
Cost of the Minimum Basket (CMB)	3,029,464	2,942,813	3,040,625	3,122,158	-	3%	6%	3%
Price Indices								
Consumer Price Index	-	213	221	228	-	3%	7%	-

Figure 30: Trends in Cereal Prices



Figure 31: Trends in wage rates and relative purchasing power

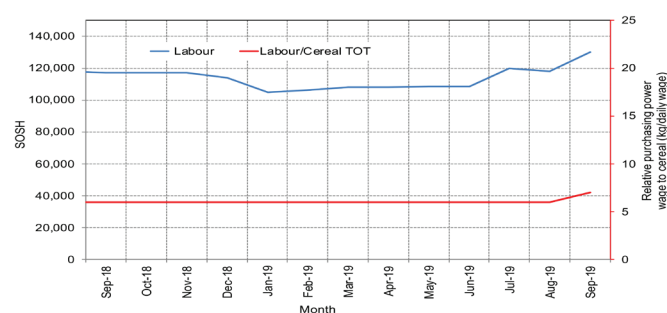


Figure 32: Imported Commodity Prices Compared to Exchange Rate

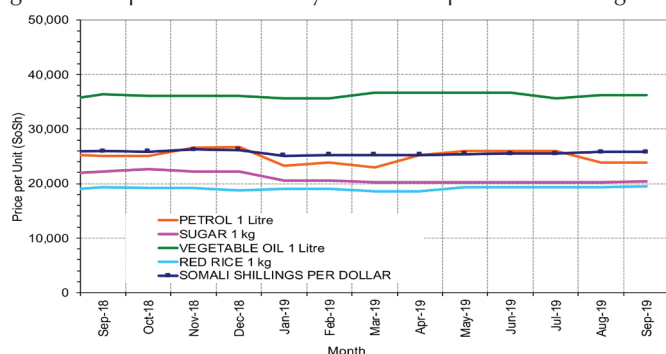


Figure 33: Goat Local Quality

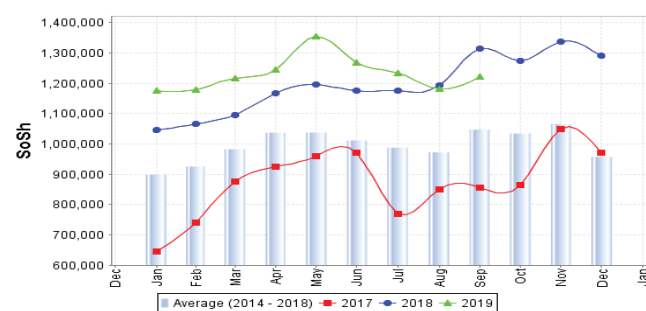


Figure 34: Exchange Rate

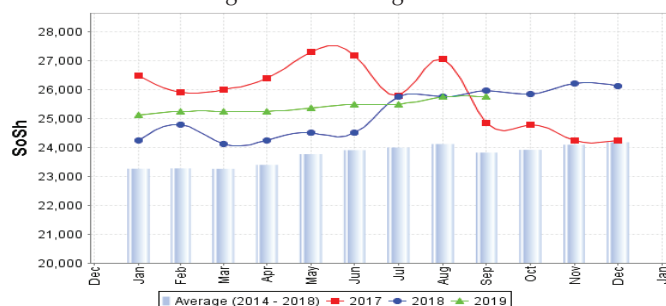
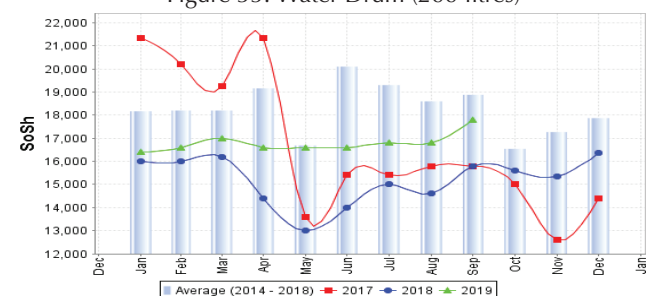


Figure 35: Water Drum (200 litres)



Regional analysis: Northeast Regions

Indicator	5-Year Average (2014-2018)	Sep-18	Aug-19	Sep-19 Nominal Price	Sep-19 Real (Deflated) Price	% Change Previous Month	% Change Same Month Previous Year	% Change 5-year avg (2014-2018)
Imported Commodities Prices								
Diesel 1 litre	21,743	26,429	25,436	25,507	8,794	0%	-3%	17%
Imported Red Rice 1kg	17,170	18,821	19,982	20,071	6,899	0%	7%	17%
Petrol 1 litre	23,970	29,793	29,593	29,518	10,193	0%	-1%	23%
Sugar	20,584	21,429	21,607	21,421	7,370	-1%	0%	4%
Vegetable Oil 1 litre	34,077	35,393	36,143	36,107	12,491	0%	2%	6%
Wheat Flour 1kg	16,548	17,714	19,143	19,286	6,625	1%	9%	17%
Wheat Grain 1kg	30,320	31,400	30,900	31,600	10,919	2%	1%	4%
Cereal Prices								
Red Sorghum 1kg	23,915	25,750	28,750	29,625	10,230	3%	15%	24%
White Maize 1kg	22,140	23,500	28,000	29,000	10,012	4%	23%	31%
Livestock & Livestock Product Prices								
Camel Local Quality (Head)	15,271,400	16,970,500	18,282,500	18,222,500	6,354,177	0%	7%	19%
Cattle Local Quality (Head)	10,275,000	13,750,000	13,500,000	12,500,000	4,358,712	-7%	-9%	22%
Fresh Camel Milk 1 litre	46,416	55,153	43,097	44,514	15,422	3%	-19%	-4%
Goat Export Quality (Head)	1,505,200	1,662,500	1,600,000	1,541,500	537,429	-4%	-7%	2%
Goat Local Quality (Head)	1,417,700	1,631,429	1,623,214	1,625,536	566,732	0%	0%	15%
Other Essential Items								
Charcoal 50kg	369,914	400,714	456,857	469,393	163,580	3%	17%	27%
Cowpeas 1 kg	47,421	60,771	57,000	61,308	21,278	8%	1%	29%
Unskilled Labor Wage Rate	141,157	150,000	157,500	157,321	54,759	0%	5%	11%
Firewood Bundle	42,735	63,571	62,143	62,679	21,756	1%	-1%	47%
Local Sesame Oil 1 litre	107,330	121,650	132,250	132,440	46,082	0%	9%	23%
Exchange Rate (Somali Shilling per USD)	24,401	30,500	32,321	32,286	11,158	0%	6%	32%
Terms of Trade								
Labour Wage (Daily)/ Cereal (Rice(Kg))	8	8	8	8	-	0%	0%	0%
Local Goat (Head)/ Cereal (Rice(Kg))	82	87	81	81	-	0%	-7%	-1%
Cost of the Minimum Basket (CMB)	4,923,995	5,601,101	5,611,741	5,670,283	-	1%	1%	15%
Price Indices								
Consumer Price Index	-	285	284	287	-	1%	1%	-

Figure 36: Trends in Cereal Prices

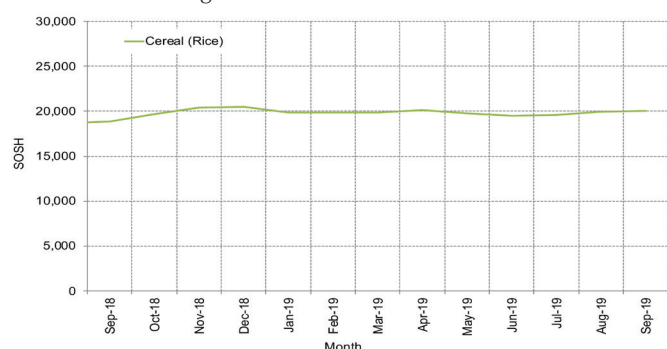


Figure 37: Trends in Wage Rates and Relative Purchasing Power

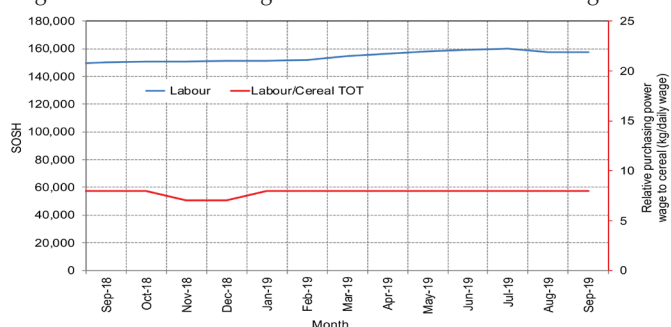


Figure 38: Imported Commodity Prices Compared to Exchange Rate

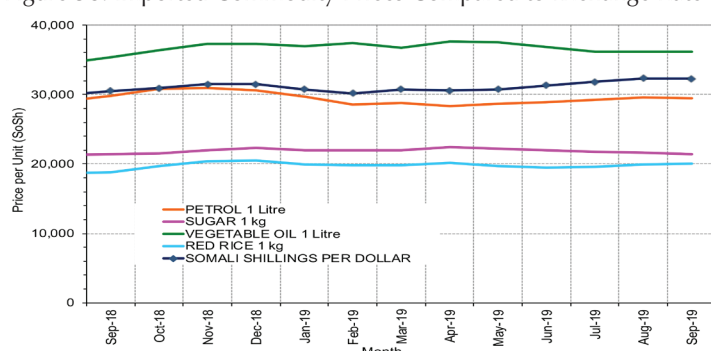


Figure 39: Goat Local Quality

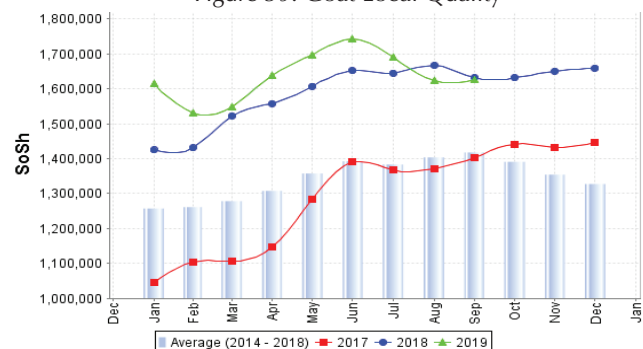


Figure 40: Exchange Rate

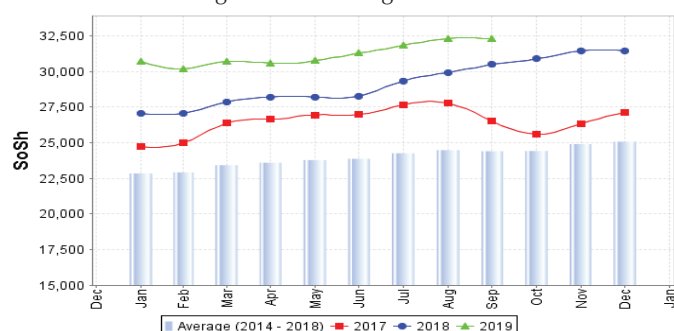
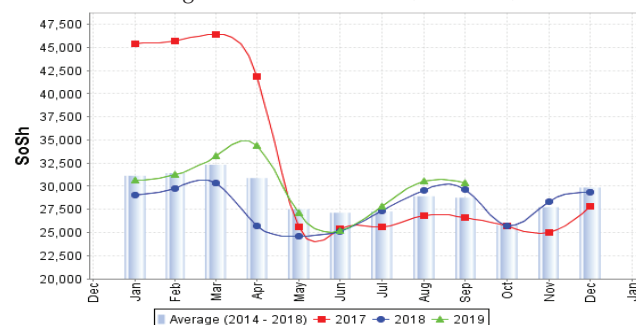


Figure 41: Water Drum (200 litres)



Regional analysis: Northwest Regions

Indicator	5-Year Average (2014-2018)	Sep-18	Aug-19	Sep-19 Nominal Price	Sep-19 Real (Deflated) Price	% Change Previous Month	% Change Same Month Previous Year	% Change 5-year avg (2014-2018)
Imported Commodities Prices								
Diesel 1 litre	6,455	7,550	7,115	7,300	5,218	3%	-3%	13%
Imported Red Rice 1kg	5,446	6,500	5,600	5,760	4,097	3%	-11%	6%
Petrol 1 litre	7,644	8,600	8,120	7,800	5,583	-4%	-9%	2%
Sugar	6,174	6,880	6,320	6,348	4,525	0%	-8%	3%
Vegetable Oil 1 litre	12,533	12,100	14,700	14,470	10,442	-2%	20%	15%
Wheat Flour 1kg	4,730	5,600	5,500	5,500	3,907	0%	-2%	16%
Wheat Grain 1kg	4,075	4,750	5,438	5,105	3,619	-6%	7%	25%
Cereal Prices								
White Sorghum 1kg	4,384	4,700	4,780	4,796	3,394	0%	2%	9%
Yellow Maize 1kg	4,743	6,125	5,650	5,820	4,140	3%	-5%	23%
Livestock & Livestock Product Prices								
Camel Local Quality (Head)	4,496,633	4,716,667	4,745,833	4,731,533	3,447,107	0%	0%	5%
Cattle Local Quality (Head)	2,685,833	2,925,000	2,831,667	2,804,467	2,043,123	-1%	-4%	4%
Fresh Camel Milk 1 litre	8,820	10,900	10,300	9,300	6,676	-10%	-15%	5%
Goat Export Quality (Head)	511,864	586,250	496,688	481,890	350,986	-3%	-18%	-6%
Goat Local Quality (Head)	383,089	467,500	441,200	422,174	307,479	-4%	-10%	10%
Other Essential Items								
Charcoal 50kg	67,990	86,500	85,000	88,500	64,378	4%	2%	30%
Cowpeas 1 kg	14,668	17,875	15,575	16,125	11,648	4%	-10%	10%
Unskilled Labor Wage Rate	62,396	88,000	80,200	84,500	61,463	5%	-4%	35%
Firewood Bundle	5,186	6,000	6,833	7,000	5,000	2%	17%	35%
Local Sesame Oil 1 litre	34,587	34,500	36,938	36,938	26,812	0%	7%	7%
Exchange Rate (Somaliland Shilling per USD)	8,337	9,945	8,406	8,380	6,005	0%	-16%	1%
Terms of Trade								
Labour Wage (Daily)/ Cereal (Rice(Kg))	11	14	14	15	-	7%	7%	36%
Local Goat (Head)/ Cereal (Rice(Kg))	70	72	79	73	-	-8%	1%	4%
Cost of the Minimum Basket (CMB)	1,125,838	1,266,854	1,263,678	1,255,429	-	-1%	-1%	12%

Price Indices

Consumer Price Index	-	138	138	137	-	-1%	0%	-
----------------------	---	-----	-----	-----	---	-----	----	---

Figure 42: Trends in Cereal Prices

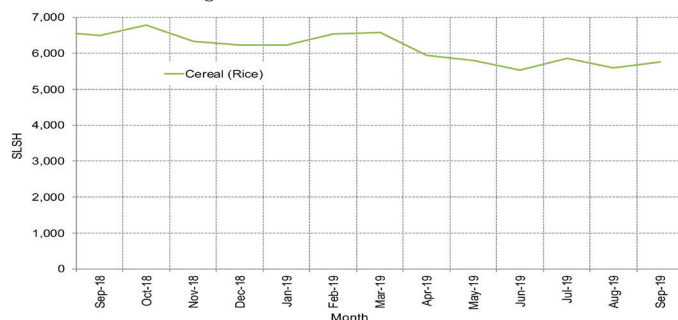


Figure 43: Trends in Wage Rates and Relative Purchasing Power

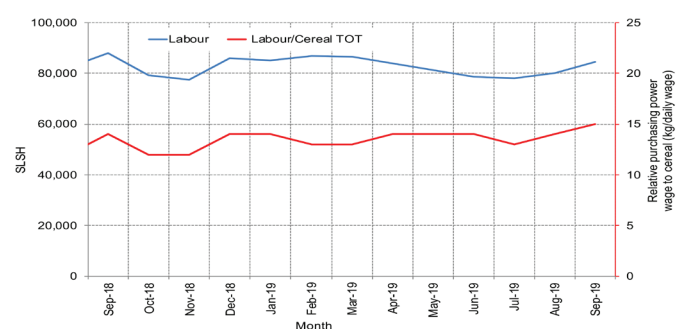


Figure 44: Imported Commodity Prices Compared to Exchange Rate

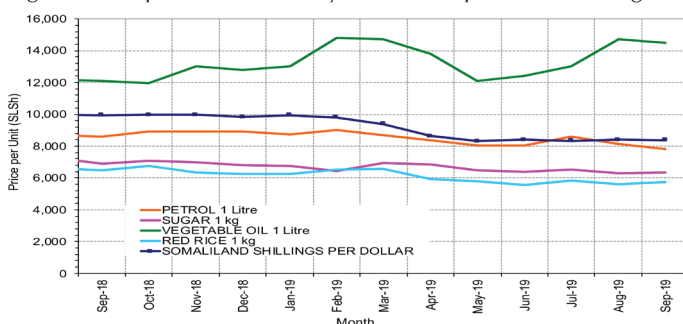


Figure 45: Goat Local Quality

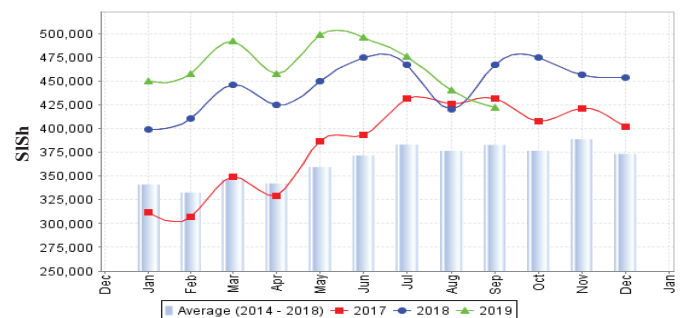


Figure 46: Exchange Rate

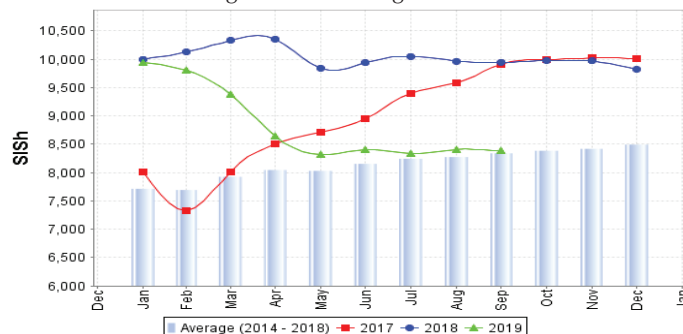
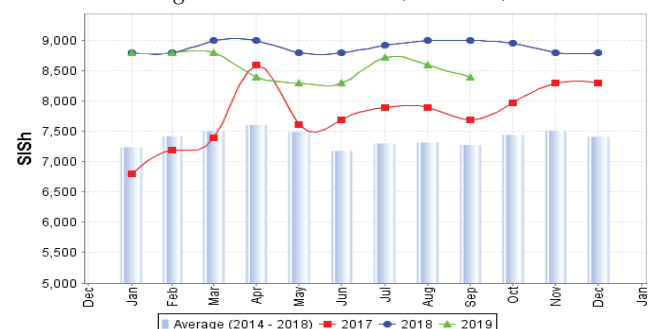


Figure 47: Water Drum (200 litres)



Trends in Livestock Exports

Table 1: Berbera Livestock Exports (Number of Heads)

	2001	2002	2003	2004	2005	2006	2007	2008	2009	2010	2011	2012	2013	2014	2015	2016	2017	2018	2019
Shoats	51 546	341 711	563 107	859 404	1 023 795	1 017 242	1 350 054	1 219 519	1 556 003	2 584 810	3 104 684	3 219 584	2 888 955	3 089 592	3 270 386	2 880 057	1 268 642	1 272 638	62 638
Cattle	20 973	37 547	84 312	131 852	148 151	85 631	88 143	80 051	88 005	133 021	150 934	190 354	201 876	252 397	160 395	150 133	84 812	114 589	47 833
Camel	3 473	18 864	21 874	5 147	5 069	22 810	14 245	26 515	20 206	92 651	107 281	102 664	75 728	64 578	61 475	57 841	2 371	914	600

Figure 48: Berbera Livestock Exports (Number of Heads)

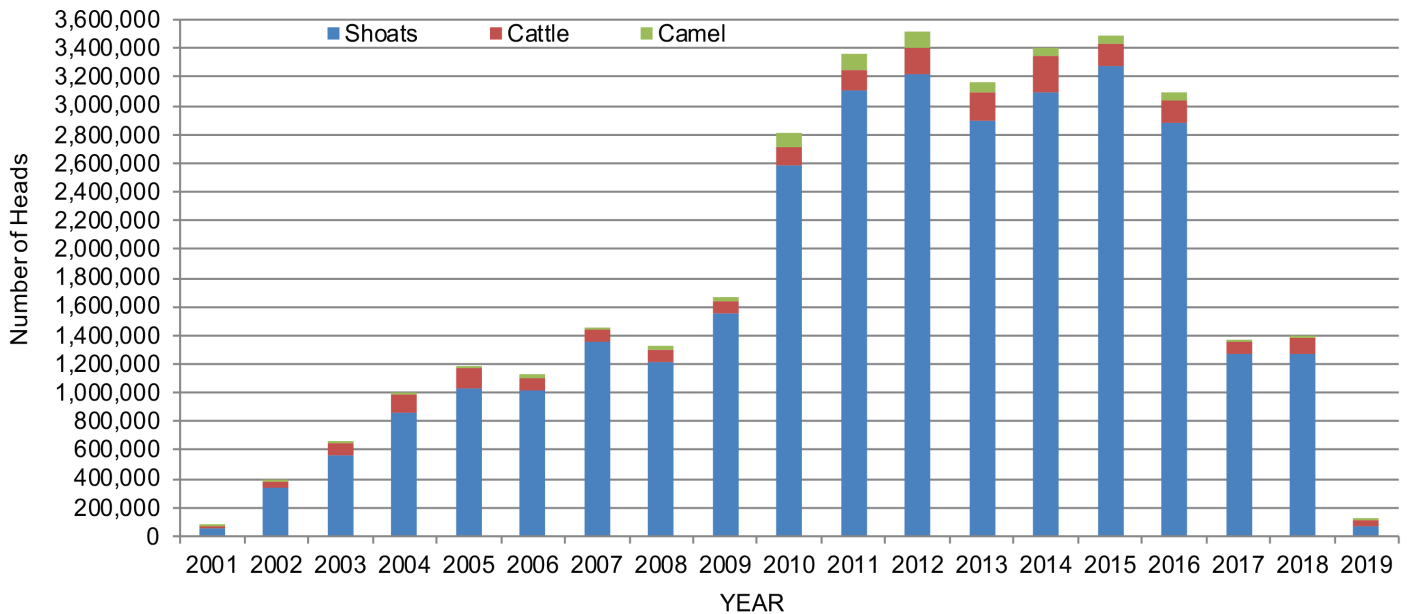
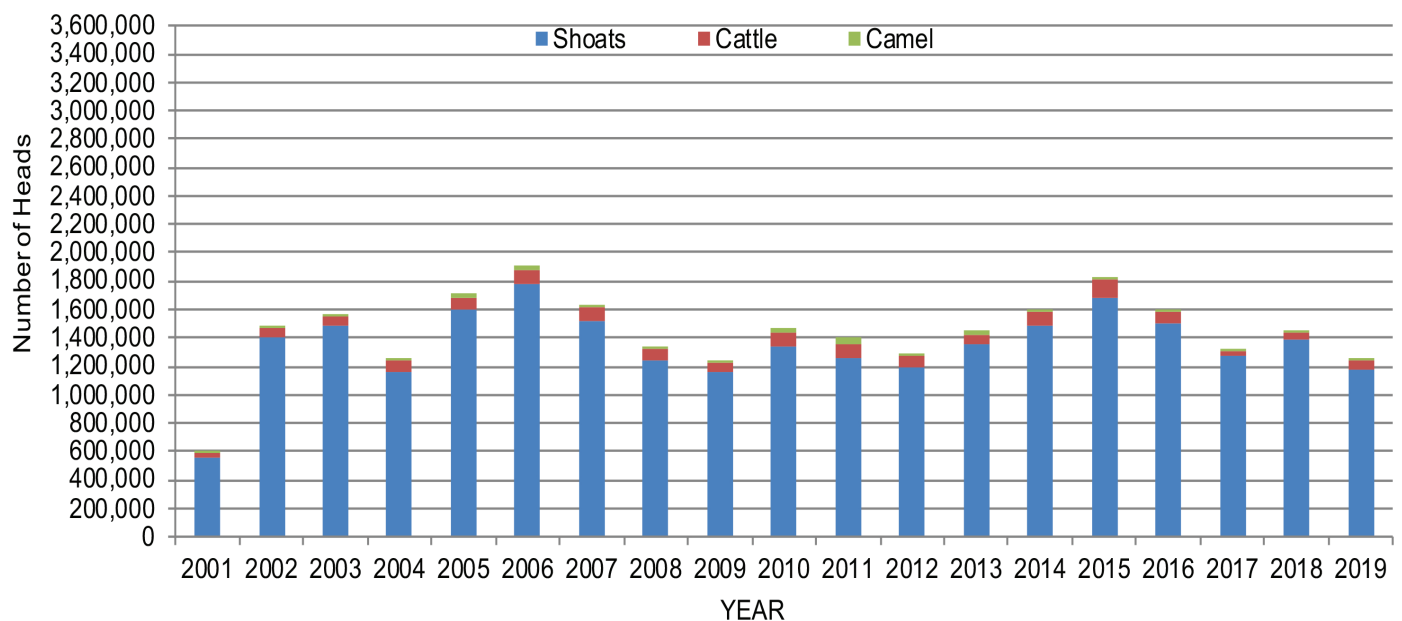


Table 2: Bossaso Livestock Exports (Number of Heads)

	2001	2002	2003	2004	2005	2006	2007	2008	2009	2010	2011	2012	2013	2014	2015	2016	2017	2018	2019
Shoats	548 853	1 412 450	1 483 409	1 166 480	1 594 859	1 777 283	1 522 855	1 236 775	1 159 454	1 333 478	1 256 535	1 192 197	1 349 123	1 493 111	1 676 216	1 507 910	1 266 215	1 385 187	1 169 348
Cattle	42 248	53 313	71 328	79 994	91 910	104 595	89 190	78 046	67 385	103 808	99 058	76 043	77 353	87 759	134 597	70 705	39 347	52 795	70 844
Camel	1 950	9 720	4 259	2 488	26 109	33 724	27 580	27 639	15 331	36 865	45 878	22 288	19 032	12 251	10 945	10 144	5 781	2 933	3 618

Figure 49: Bossaso Livestock Exports (Number of Heads)



Trends in Cereal Imports

Table 3: Total Cereal Imports through Berbera, Bossaso and Mogadishu Ports (Tonnes) *

	2001	2002	2003	2004	2005	2006	2007	2008	2009	2010	2011	2012	2013	2014	2015	2016	2017	2018	2019
Rice	74 729	144 600	180 614	146 567	150 017	198 101	166 626	136 007	171 472	161 415	272 877	227 955	170 868	170 888	195 240	207 267	77 299	256 314	60 574
Wheat flour	134 425	128 263	171 442	151 555	169 583	178 345	176 821	169 208	240 247	249 080	258 679	268 491	183 058	284 230	318 868	207 463	105 215	209 894	73 050
Pasta	26 702	35 425	29 273	38 749	39 153	52 815	41 331	38 441	86 372	102 373	184 849	337 878	134 311	176 951	155 360	78 113	38 935	109 960	28 844

* Only Bossaso data used for 2019

* Berbera data is up to Dec 2016

Elman data gap : April - December 2013

: December 2015-December 2017

Figure 50: Total Cereal Imports (Berbera, Bossaso and Mogadishu)

