

October 2016 Data (Issued November 22 2016)

Prices of imported food items (rice, sugar, vegetable oil, wheat flour) have increased (5-15%) in all the markets except in Dinsor where the prices declined. Annual comparison indicates higher prices for most of the food imports in all the markets.

National Trends: CPI, Exchange Rates, Cereal Prices and Relative Purchasing Power

Table 1: ToT between Daily Labour Wage Rate and Cereals (kg) by Region October 2016

Regions	kg change from			
	October 2016 (kg)	September 2016	October 2015	October 5 yr Average (2011-2015)
Banadir/Mogadishu	19	0	-2	1
Bay	18	0	-10	-2
Bakool	5	0	1	0
Gedo	12	-1	-3	-2
Juba	10	0	-2	0
Shabelle	11	1	-1	1
Northwest	11	-1	0	3
Northeast	8	0	-1	2
Central	5	0	0	1

Figure 1: Wheat Prices: Mogadishu and Bossaso Markets

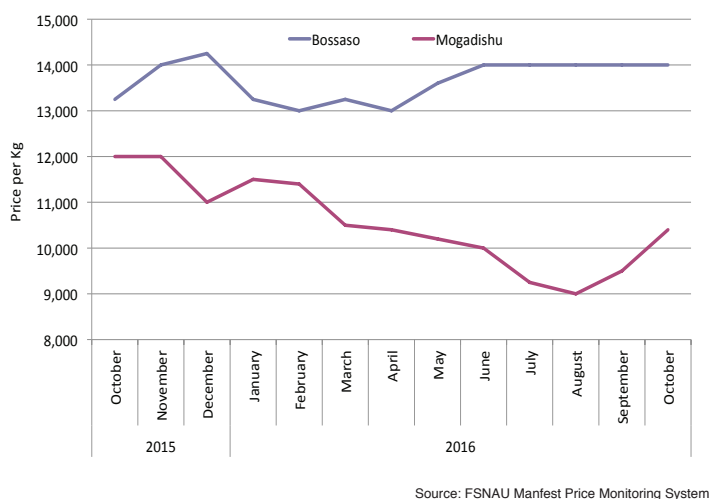


Figure 2: Terms of Trade Between Wage Rates and Selected Cereals

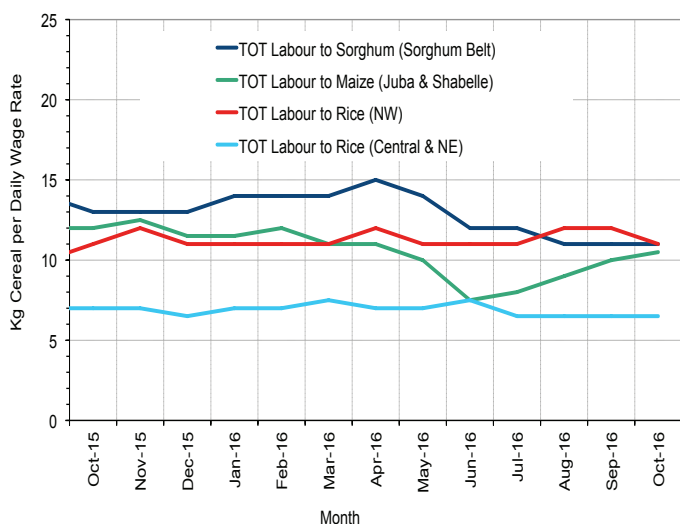


Figure 3: Monthly Exchange Rate for Selected Regions (SoSh and SiSh to USD)

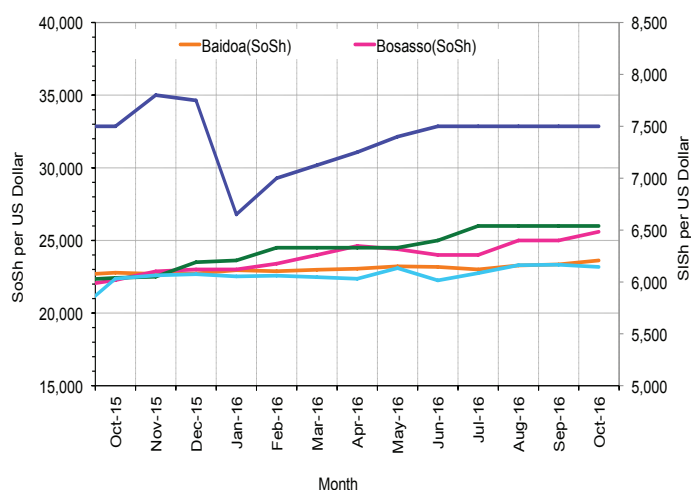


Figure 4: Monthly Trends in Consumer Price Index (CPI, March 2007=100)

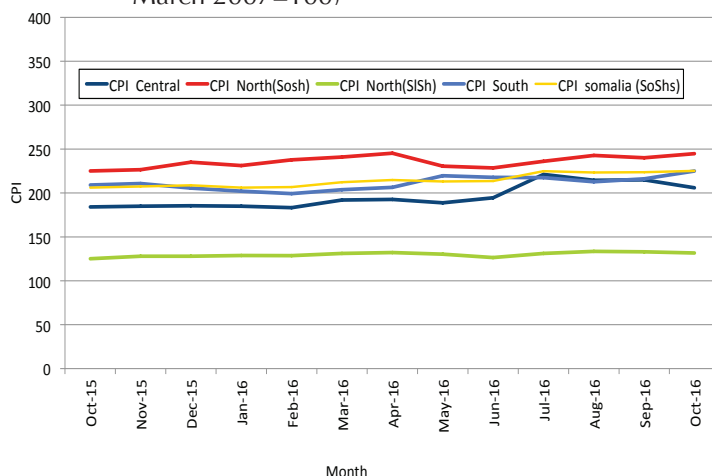
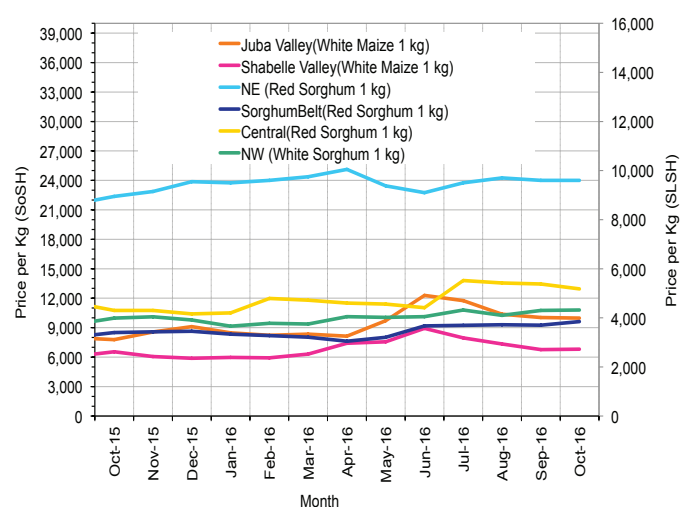


Figure 5: Monthly Trends in Local Cereal Prices



Regional analysis: Juba Regions

Indicator	5-Year Average (2011-2015)	Oct-15	Sep-16	Oct-16 Nominal Price	Oct-16 Real (Deflated) Price	% Change Previous Month	% Change Same Month Previous Year
Imported Commodities Prices							
Diesel 1 litre	31,485	25,000	20,156	21,750	9,566	8%	-13%
Imported Red Rice 1kg	18,425	15,875	15,906	16,266	7,129	2%	2%
Petrol 1 litre	31,401	25,625	24,875	25,000	11,010	1%	-2%
Sugar	24,408	17,625	16,281	18,406	8,080	13%	4%
Vegetable Oil 1 litre	38,495	30,188	29,656	28,406	12,524	-4%	-6%
Wheat Flour 1kg	17,811	15,719	15,547	15,875	6,955	2%	1%
Wheat Grain 1kg	20,000	-	-	-	-	-	-
Cereal Prices							
Red Sorghum 1kg	7,400	8,000	8,000	9,000	3,900	13%	13%
White Maize 1kg	9,402	7,788	10,031	9,975	4,333	-1%	28%
Livestock & Livestock Product Prices							
Camel Local Quality (Head)	9,292,465	8,871,875	8,246,875	7,660,714	3,404,289	-7%	-14%
Cattle Local Quality (Head)	3,791,164	3,851,071	2,996,429	2,282,143	1,014,075	-24%	-41%
Fresh Camel Milk 1 litre	19,378	19,250	16,609	18,688	8,205	13%	-3%
Goat Export Quality (Head)	1,436,981	1,171,875	1,093,438	962,813	427,770	-12%	-18%
Goat Local Quality (Head)	926,589	803,438	700,313	620,313	275,565	-11%	-23%
Other Essential Items							
Charcoal 50kg	75,911	82,500	87,188	90,625	40,173	4%	10%
Cowpeas 1 kg	22,511	19,500	25,643	24,350	10,721	-5%	25%
Unskilled Labor Wage Rate	85,341	97,292	96,250	98,500	43,673	2%	1%
Firewood Bundle	8,789	7,625	7,266	6,891	2,962	-5%	-10%
Local Sesame Oil 1 litre	76,272	64,500	56,250	54,375	24,064	-3%	-16%
Exchange Rate (Somali Shilling per USD)	23,383	22,750	23,125	23,063	10,149	0%	1%
Terms of Trade							
Labour Wage (Daily)/ Cereal (Maize(Kg))	10	12	10	10	-	0%	-17%
Local Goat (Head)/ Cereal (Maize(Kg))	111	103	70	62	-	-11%	-40%
Price Indices							
Consumer Price Index	-	209	216	225	-	4%	8%

Figure 6: Trends in Cereal Prices

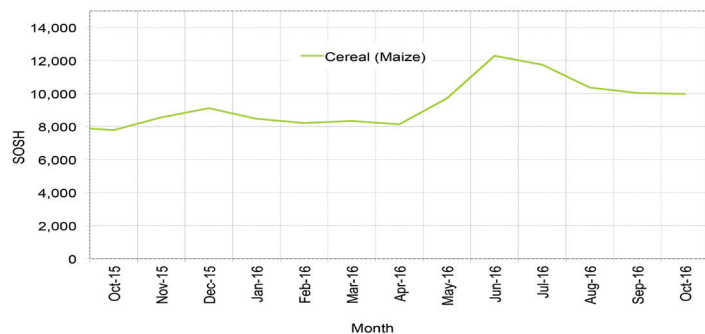


Figure 7: Trends in Wage Rates and Relative Purchasing Power

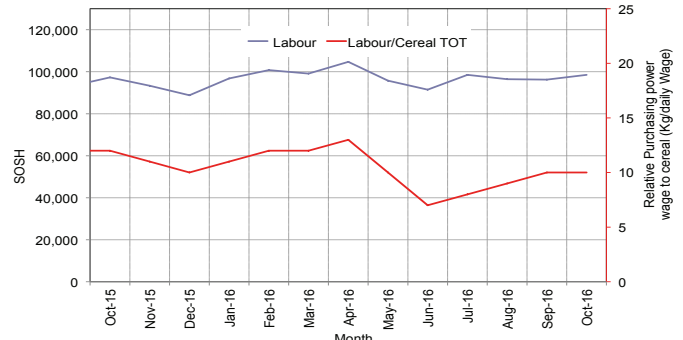


Figure 8: Imported Commodity Prices Compared to Exchange Rate

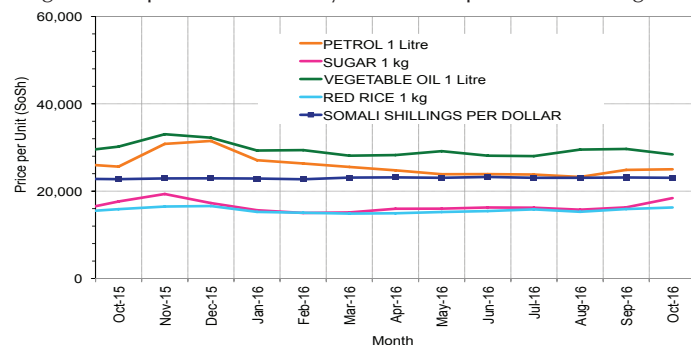


Figure 9: Goat Local Quality

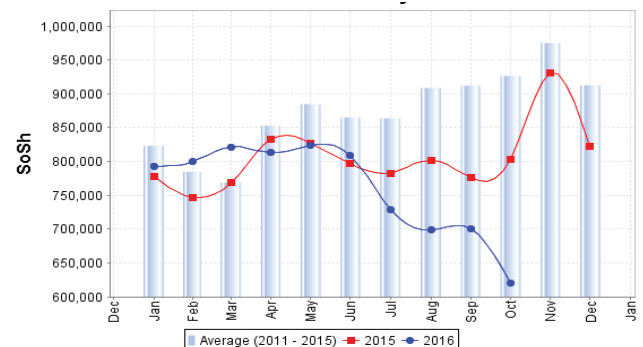


Figure 10: Exchange Rate

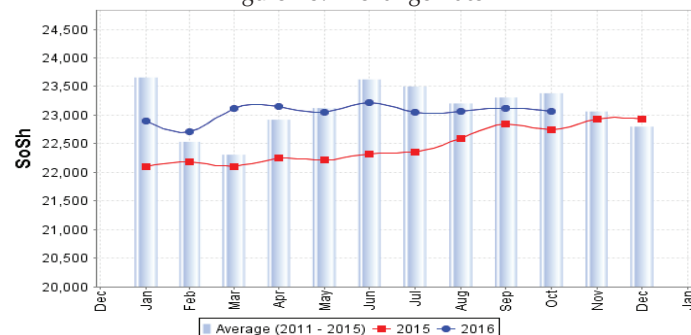
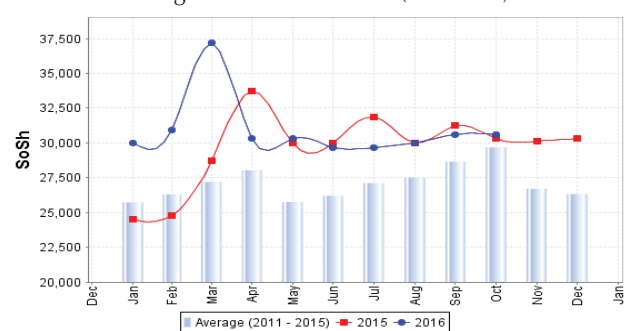


Figure 11: Water Drum (200 litres)



Regional analysis: Sorghum Belt Regions (Bay, Bakool, Gedo and Hiran)

Indicator	5-Year Average (2011-2015)	Oct-15	Sep-16	Oct-16 Nominal Price	Oct-16 Real (Deflated) Price	% Change Previous Month	% Change Same Month Previous Year
Imported Commodities Prices							
Diesel 1 litre	33,027	27,788	24,896	24,950	10,988	0%	-10%
Imported Red Rice 1kg	20,310	19,000	19,479	20,313	8,927	4%	7%
Petrol 1 litre	33,056	29,923	27,125	28,833	12,713	6%	-4%
Sugar	23,564	19,269	22,021	23,783	10,469	8%	23%
Vegetable Oil 1 litre	43,341	36,192	37,375	38,117	16,839	2%	5%
Wheat Flour 1kg	19,230	18,904	18,958	19,175	8,421	1%	1%
Wheat Grain 1kg	14,223	20,667	22,000	24,000	10,566	9%	16%
Cereal Prices							
Red Sorghum 1kg	9,189	8,292	9,050	9,585	4,160	6%	16%
White Maize 1kg	10,181	9,325	10,330	10,305	4,479	0%	11%
Livestock & Livestock Product Prices							
Camel Local Quality (Head)	12,164,703	12,404,545	11,537,500	11,639,000	5,172,223	1%	-6%
Cattle Local Quality (Head)	3,599,075	3,618,750	3,545,833	3,503,929	1,557,031	-1%	-3%
Fresh Camel Milk 1 litre	23,009	18,300	19,438	21,475	9,443	10%	17%
Goat Export Quality (Head)	1,629,012	1,508,333	1,574,182	1,558,800	692,624	-1%	3%
Goat Local Quality (Head)	1,061,717	955,519	857,708	843,292	374,655	-2%	-12%
Other Essential Items							
Charcoal 50kg	150,739	171,604	147,273	150,409	66,741	2%	-12%
Cowpeas 1 kg	31,017	25,442	24,771	25,192	11,095	2%	-1%
Unskilled Labor Wage Rate	103,305	100,615	95,833	97,208	43,099	1%	-3%
Firewood Bundle	6,383	6,231	6,083	7,167	3,085	18%	15%
Local Sesame Oil 1 litre	80,057	71,031	73,444	73,556	32,588	0%	4%
Exchange Rate (Somali Shilling per USD)	23,361	22,537	23,229	23,932	10,535	3%	6%
Terms of Trade							
Labour Wage (Daily)/ Cereal (Sorghum(Kg))	12	12	11	10	-	-9%	-17%
Local Goat (Head)/ Cereal (Sorghum(Kg))	124	115	95	88	-	-7%	-23%
Price Indices							
Consumer Price Index	-	209	216	225	-	4%	8%

Figure 12: Trends in Cereal Prices

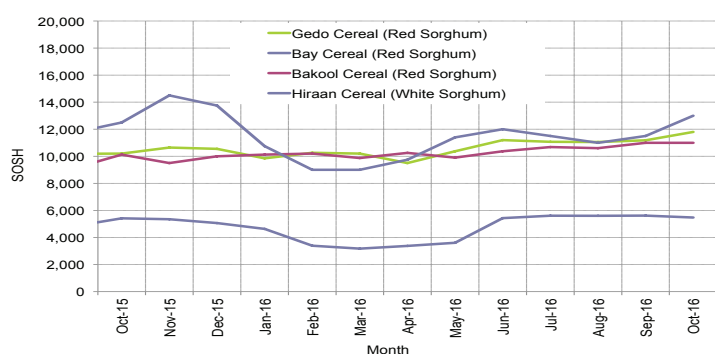


Figure 14: Imported Commodity Prices Compared to Exchange Rate

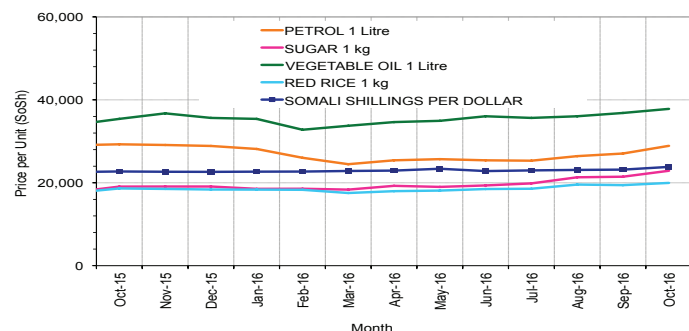


Figure 16: Exchange Rate

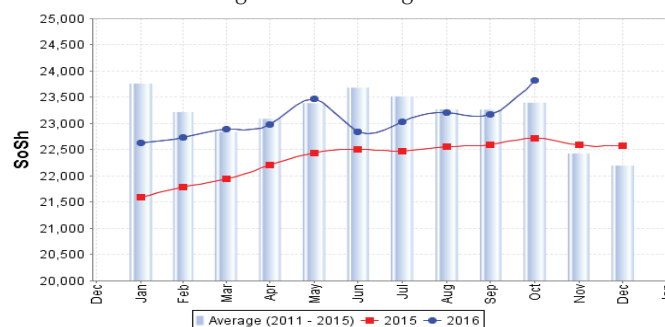


Figure 13: Trends in Wage Rates and Relative Purchasing Power

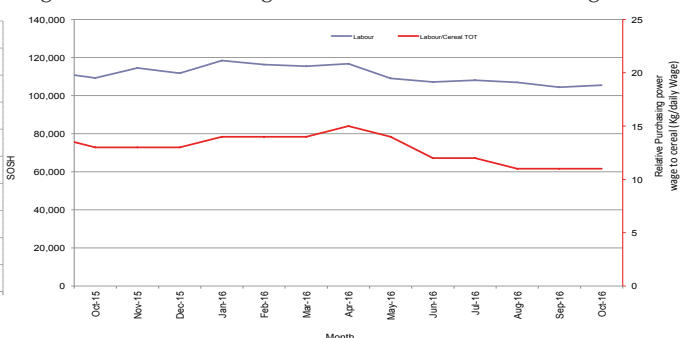


Figure 15: Goat Local Quality

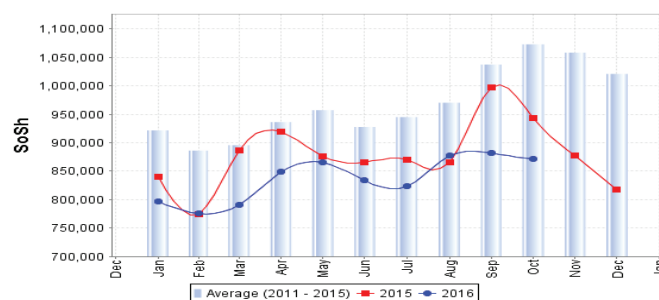
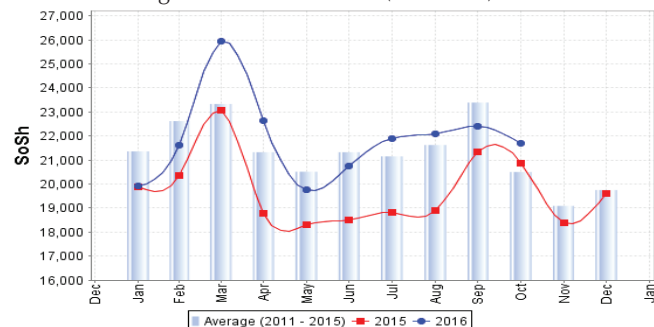


Figure 17: Water Drum (200 litres)



Regional analysis: Shabelle Regions

Indicator	5-Year Average (2011-2015)	Oct-15	Sep-16	Oct-16 Nominal Price	Oct-16 Real (Deflated) Price	% Change Previous Month	% Change Same Month Previous Year
Imported Commodities Prices							
Diesel 1 litre	29,181	23,125	20,500	16,000	7,010	-22%	-31%
Imported Red Rice 1kg	17,621	15,333	17,600	17,600	7,721	0%	15%
Petrol 1 litre	30,659	27,583	25,100	20,000	8,788	-20%	-27%
Sugar	20,858	15,542	21,900	21,900	9,632	0%	41%
Vegetable Oil 1 litre	32,665	24,667	30,500	29,500	13,010	-3%	20%
Wheat Flour 1kg	17,665	16,167	17,800	18,200	7,988	2%	13%
Wheat Grain 1kg	16,363	17,000	19,000	16,500	7,233	-13%	-3%
Cereal Prices							
Red Sorghum 1kg	11,511	10,014	9,717	7,611	3,282	-22%	-24%
White Maize 1kg	6,938	6,542	6,773	6,806	2,925	0%	4%
Livestock & Livestock Product Prices							
Camel Local Quality (Head)	16,872,966	18,070,000	17,340,000	16,262,500	7,226,887	-6%	-10%
Cattle Local Quality (Head)	5,354,300	5,640,000	5,411,000	4,769,167	2,119,298	-12%	-15%
Fresh Camel Milk 1 litre	21,510	23,625	17,200	17,600	7,721	2%	-26%
Goat Export Quality (Head)	1,949,575	1,990,625	1,803,333	1,726,944	767,347	-4%	-13%
Goat Local Quality (Head)	1,321,466	1,341,667	1,204,500	1,152,667	512,140	-4%	-14%
Other Essential Items							
Charcoal 50kg	130,099	149,611	124,583	119,083	52,820	-4%	-20%
Cowpeas 1 kg	27,241	19,147	21,683	19,583	8,603	-10%	2%
Unskilled Labor Wage Rate	70,508	77,667	70,250	74,500	33,007	6%	-4%
Firewood Bundle	6,458	6,708	6,400	6,400	2,744	0%	-5%
Local Sesame Oil 1 litre	61,939	48,833	48,000	49,600	21,942	3%	2%
Exchange Rate (Somali Shilling per USD)	23,482	22,492	23,330	23,360	10,281	0%	4%
Terms of Trade							
Labour Wage (Daily)/ Cereal (Maize(Kg))	10	12	10	11	-	10%	-8%
Local Goat (Head)/ Cereal (Maize(Kg))	199	205	178	169	-	-5%	-18%
Price Indices							
Consumer Price Index	-	209	216	225	-	4%	8%

Figure 18: Trends in Cereal Prices

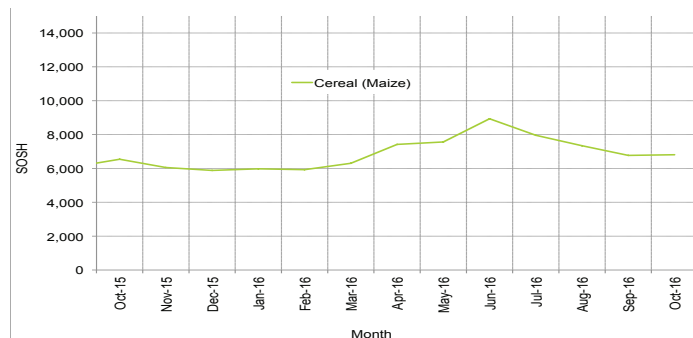


Figure 19: Trends in Wage Rates and Relative Purchasing Power

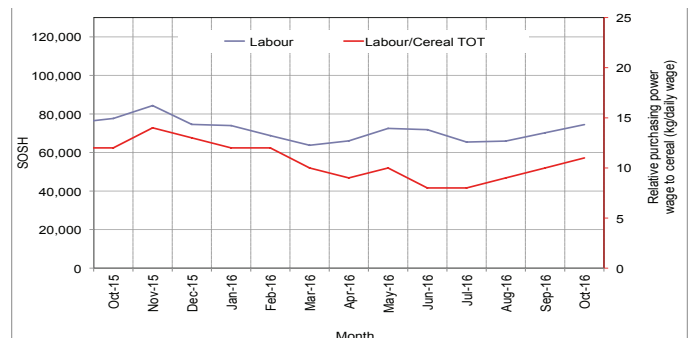


Figure 20: Imported Commodity Prices Compared to Exchange Rate

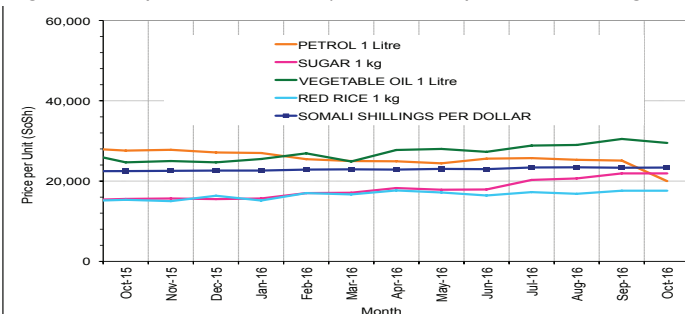


Figure 22: Exchange Rate

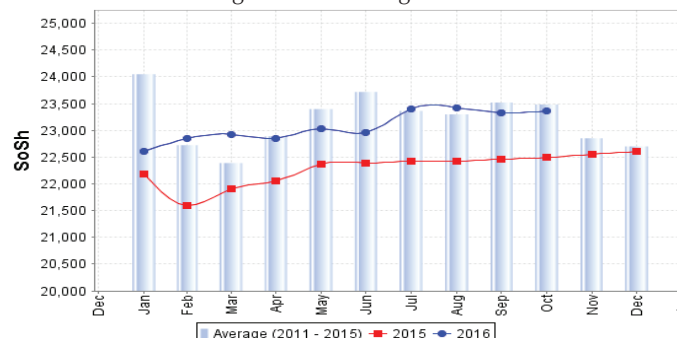


Figure 21: Goat Local Quality

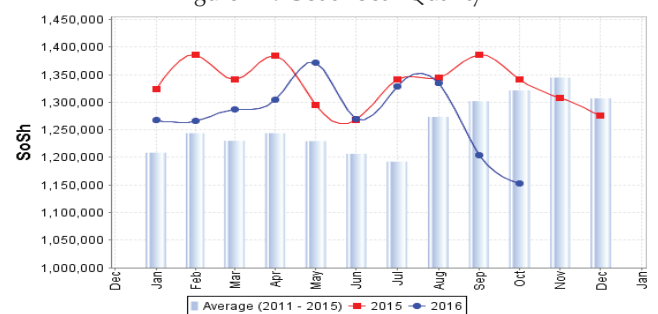
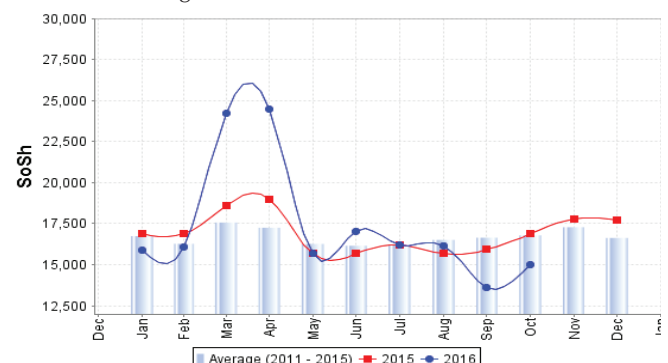


Figure 23: Water Drum (200 litres)



Regional analysis: Banadir Region

Indicator	5-Year Average (2011-2015)	Oct-15	Sep-16	Oct-16 Nominal Price	Oct-16 Real (Deflated) Price	% Change Previous Month	% Change Same Month Previous Year
Imported Commodities Prices							
Diesel 1 litre	24,484	17,292	15,250	14,200	6,210	-7%	-18%
Imported Red Rice 1kg	15,919	12,521	12,417	12,150	5,299	-2%	-3%
Petrol 1 litre	24,769	21,417	17,167	17,220	7,552	0%	-20%
Sugar	17,862	12,917	15,875	15,600	6,833	-2%	21%
Vegetable Oil 1 litre	29,243	22,125	22,229	21,825	9,599	-2%	-1%
Wheat Flour 1kg	14,835	12,833	11,688	11,930	5,202	2%	-7%
Wheat Grain 1kg	10,961	11,750	11,500	11,000	4,788	-4%	-6%
Cereal Prices							
Red Sorghum 1kg	8,722	7,475	7,133	6,930	2,980	-3%	-7%
White Maize 1kg	9,103	8,283	8,100	7,393	3,185	-9%	-11%
Livestock & Livestock Product Prices							
Camel Local Quality (Head)	11,000,000	-	-	-	-	-	-
Cattle Local Quality (Head)	3,000,000	-	-	-	-	-	-
Fresh Camel Milk 1 litre	21,686	22,917	23,667	23,700	10,432	0%	3%
Goat Export Quality (Head)	2,333,750	2,075,000	2,250,000	2,220,000	986,459	-1%	-
Goat Local Quality (Head)	2,008,875	1,812,500	2,075,000	2,032,500	903,135	-2%	12%
Other Essential Items							
Charcoal 50kg	183,383	199,625	186,500	179,100	79,491	-4%	-10%
Cowpeas 1 kg	27,233	20,667	21,342	22,775	10,021	7%	10%
Unskilled Labor Wage Rate	104,108	107,083	99,375	92,000	40,784	-7%	-14%
Firewood Bundle	7,943	8,250	8,700	6,250	2,677	-28%	-24%
Local Sesame Oil 1 litre	62,920	55,792	41,583	40,650	17,965	-2%	-27%
Exchange Rate (Somali Shilling per USD)	23,096	22,492	23,163	23,066	10,150	0%	3%
Terms of Trade							
Labour Wage (Daily)/ Cereal (Maize(Kg))	12	13	12	12	-	0%	-8%
Local Goat (Head)/ Cereal (Maize(Kg))	233	219	256	275	-	7%	26%
Price Indices							
Consumer Price Index	-	209	216	225	-	4%	8%

Figure 24: Trends in Cereal Prices

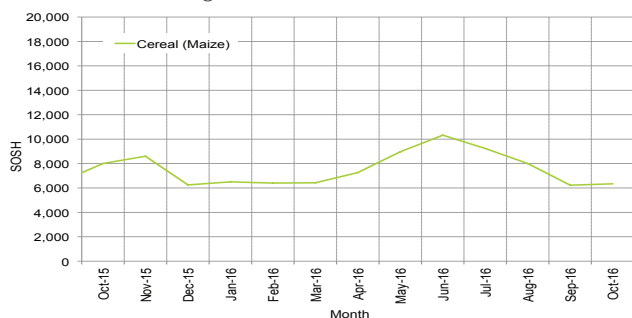


Figure 25: Bakara: Trends in Wage Rates & Relative Purchasing Power

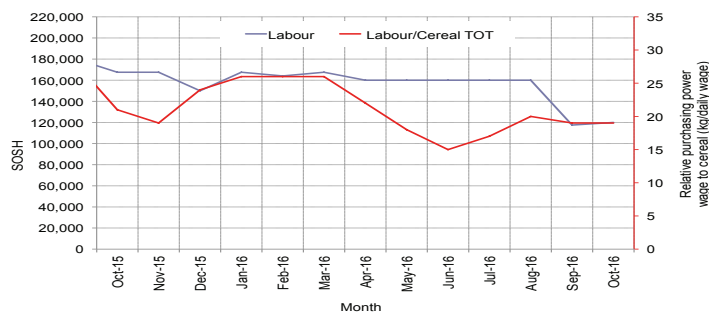


Figure 26: Imported Commodity Prices Compared to Exchange Rate

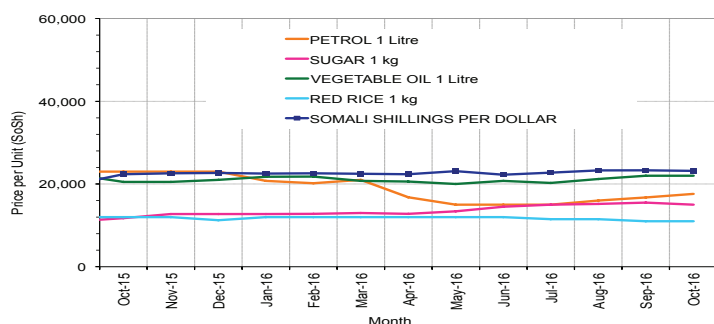


Figure 27: Goat Local Quality

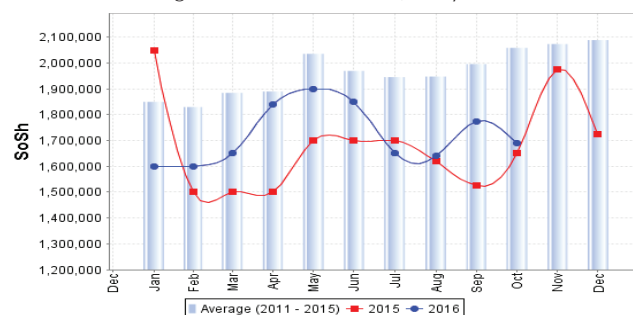


Figure 28: Exchange Rate

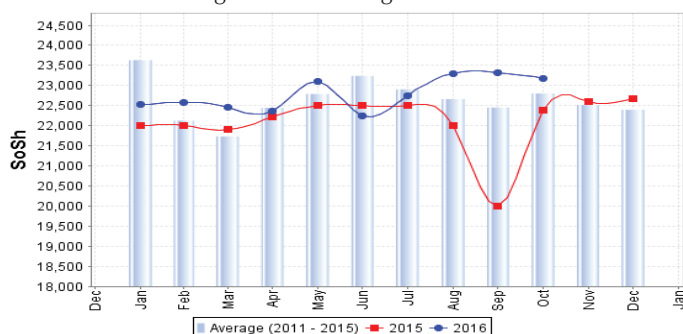
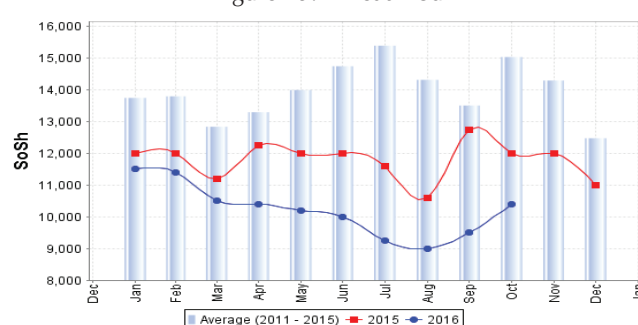


Figure 29: Wheat Flour



Regional analysis: Central Regions

Indicator	5-Year Average (2011-2015)	Oct-15	Sep-16	Oct-16 Nominal Price	Oct-16 Real (Deflated) Price	% Change Previous Month	% Change Same Month Previous Year
Imported Commodities Prices							
Diesel 1 litre	30,216	23,300	18,400	18,800	9,033	2%	-19%
Imported Red Rice 1kg	21,286	16,800	18,500	18,640	8,955	1%	11%
Petrol 1 litre	27,270	24,600	21,313	22,040	10,607	3%	-10%
Sugar	23,876	18,050	22,600	22,600	10,879	0%	25%
Vegetable Oil 1 litre	44,140	34,500	36,600	37,280	18,011	2%	8%
Wheat Flour 1kg	17,773	15,400	16,100	16,080	7,712	0%	4%
Wheat Grain 1kg	17,592	17,000	17,250	17,333	8,321	0%	2%
Cereal Prices							
Red Sorghum 1kg	12,726	10,750	13,450	12,950	6,191	-4%	20%
White Maize 1kg	13,928	13,200	16,875	16,950	8,134	0%	28%
Livestock & Livestock Product Prices							
Camel Local Quality (Head)	10,727,000	12,650,000	13,075,000	13,025,000	6,327,552	0%	3%
Cattle Local Quality (Head)	2,225,000			-	-	-	-
Fresh Camel Milk 1 litre	31,786	29,900	30,500	31,360	15,135	3%	5%
Goat Export Quality (Head)	1,503,608	1,337,500	1,516,667	1,510,000	733,470	0%	13%
Goat Local Quality (Head)	1,156,460	1,006,000	1,040,000	992,800	482,210	-5%	-1%
Other Essential Items							
Charcoal 50kg	179,503	156,500	164,000	166,000	80,544	1%	6%
Cowpeas 1 kg	27,332	22,300	29,600	29,480	14,222	0%	32%
Unskilled Labor Wage Rate	86,220	92,000	96,000	94,000	45,566	-2%	2%
Firewood Bundle	35,850	33,800	32,000	32,000	15,446	0%	-5%
Local Sesame Oil 1 litre	88,680	87,500	78,200	79,200	38,376	1%	-9%
Exchange Rate (Somali Shilling per USD)	23,127	22,360	25,300	25,700	12,385	2%	15%
Terms of Trade							
Labour Wage (Daily)/ Cereal (Rice(Kg)	4	5	5	5	-	0%	0%
Local Goat (Head)/ Cereal (Rice(Kg)	56	60	56	53	-	-5%	-12%
Camel (Head)/Cereal (Kg)	541	753	707	699	-	-1%	-7%
Price Indices							
Consumer Price Index	-	184	215	206	-	-4%	12%

Figure 30: Trends in Cereal Prices

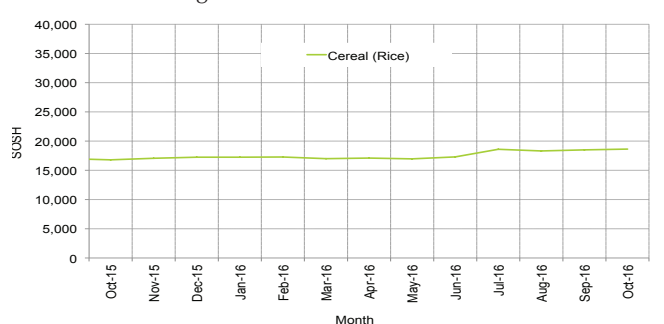


Figure 31: Trends in wage rates and relative purchasing power

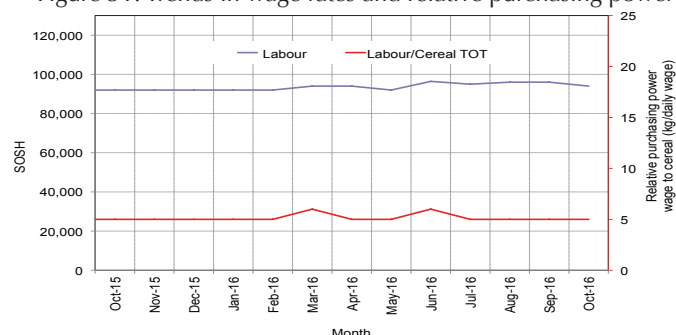


Figure 32: Imported Commodity Prices Compared to Exchange Rate

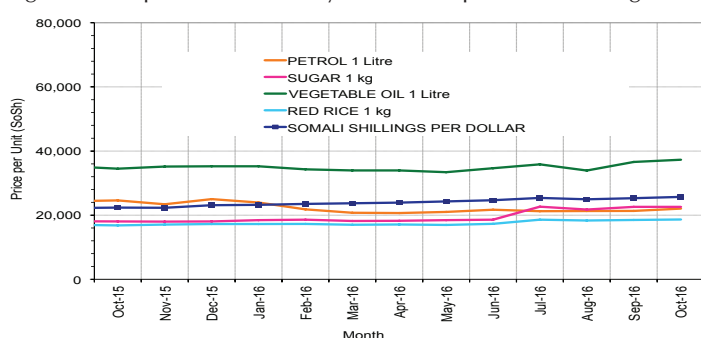


Figure 33: Goat Local Quality

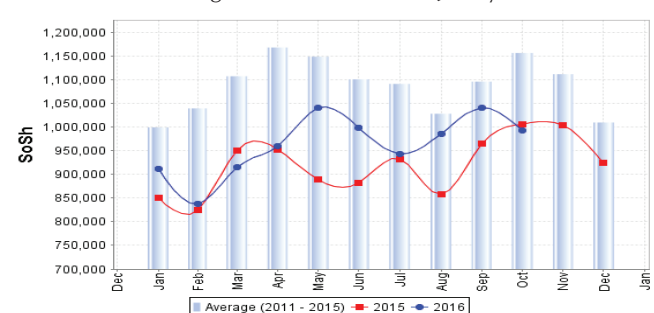


Figure 34: Exchange Rate

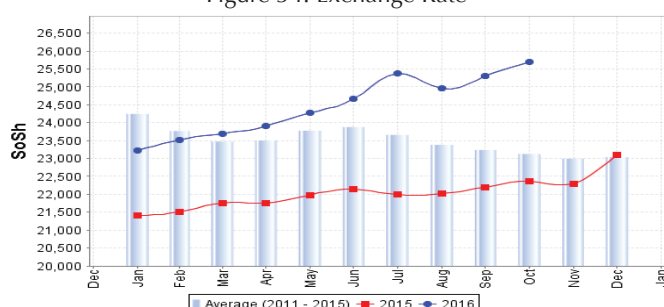
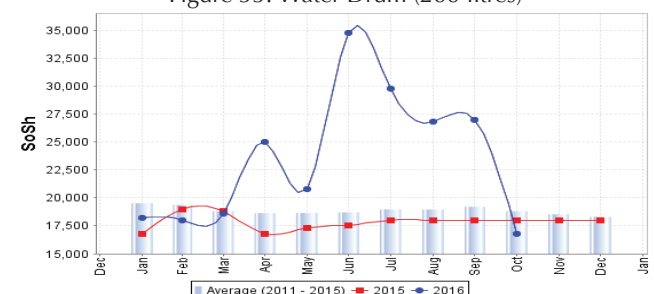


Figure 35: Water Drum (200 litres)



Regional analysis: Northeast Regions

Indicator	5-Year Average (2011-2015)	Oct-15	Sep-16	Oct-16 Nominal Price	Oct-16 Real (Deflated) Price	% Change Previous Month	% Change Same Month Previous Year	% Change 5-year avrg (2011-2015)
Imported Commodities Prices								
Diesel 1 litre	25,828	19,429	16,375	15,868	6,385	-3%	-18%	-39%
Imported Red Rice 1kg	18,850	15,536	16,786	16,943	6,824	1%	9%	-10%
Petrol 1 litre	25,169	23,071	20,036	19,629	7,922	-2%	-15%	-22%
Sugar	22,605	17,336	21,357	21,486	8,681	1%	24%	-5%
Vegetable Oil 1 litre	41,965	33,000	32,821	33,343	13,527	2%	1%	-21%
Wheat Flour 1kg	17,870	15,250	16,214	16,286	6,556	0%	7%	-9%
Wheat Grain 1kg	29,495	29,200	31,000	30,700	12,446	-1%	5%	4%
Cereal Prices								
Red Sorghum 1kg	23,241	22,375	24,000	24,000	9,708	0%	7%	3%
White Maize 1kg	20,740	21,000	26,000	26,000	10,526	0%	24%	25%
Livestock & Livestock Product Prices								
Camel Local Quality (Head)	15,202,400	14,830,000	13,758,000	13,450,000	5,496,609	-2%	-9%	-12%
Cattle Local Quality (Head)	7,975,000	8,400,000	8,250,000	8,000,000	3,269,318	-3%	-5%	0%
Fresh Camel Milk 1 litre	37,343	39,655	43,403	45,417	18,461	5%	15%	22%
Goat Export Quality (Head)	1,524,130	1,395,000	1,317,500	1,236,000	505,025	-6%	-11%	-19%
Goat Local Quality (Head)	1,401,992	1,285,357	1,251,429	1,208,929	493,962	-3%	-6%	-14%
Other Essential Items								
Charcoal 50kg	353,218	348,643	358,929	358,286	146,323	0%	3%	1%
Cowpeas 1 kg	44,213	35,458	37,083	37,283	15,137	1%	5%	-16%
Unskilled Labor Wage Rate	130,678	138,571	138,393	138,857	56,648	0%	0%	6%
Firewood Bundle	33,664	33,071	33,750	33,371	13,538	-1%	1%	-1%
Local Sesame Oil 1 litre	98,747	99,400	96,000	95,800	39,051	0%	-4%	-3%
Exchange Rate (Somali Shilling per USD)	22,588	21,175	23,679	23,943	9,685	1%	13%	6%
Terms of Trade								
Labour Wage (Daily)/ Cereal (Rice(Kg))	7	9	8	8	-	0%	-11%	14%
Local Goat (Head)/ Cereal (Rice(Kg))	76	83	75	71	-	-5%	-14%	-7%
Price Indices								
Consumer Price Index	-	225	240	245	-	2%	9%	-

Figure 36: Trends in Cereal Prices

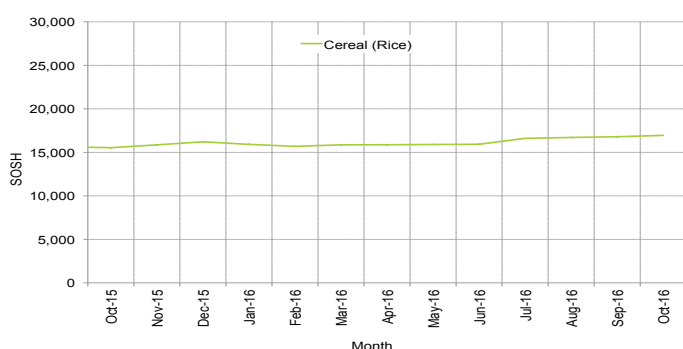


Figure 37: Trends in Wage Rates and Relative Purchasing Power

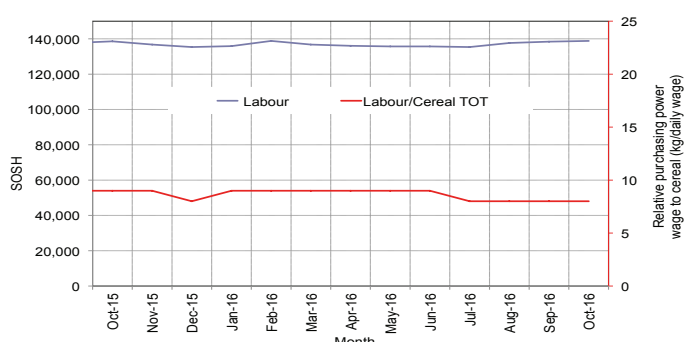


Figure 38: Imported Commodity Prices Compared to Exchange Rate

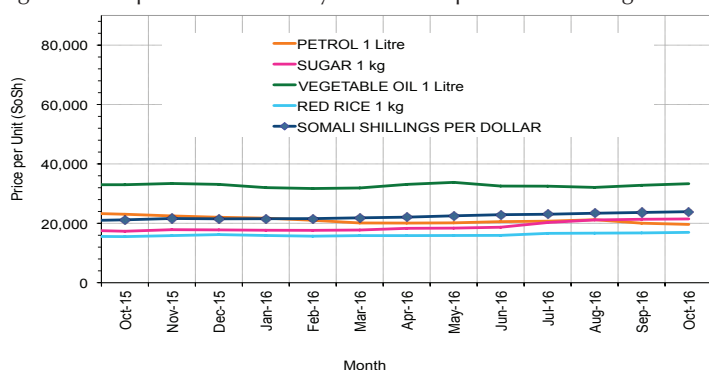


Figure 39: Goat Local Quality

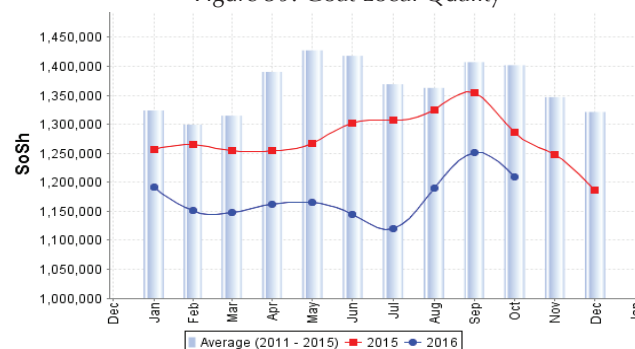


Figure 40: Exchange Rate

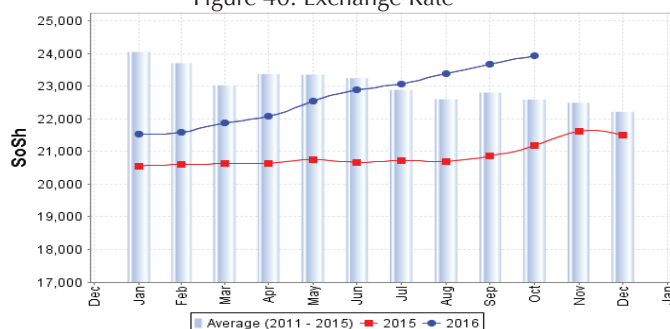
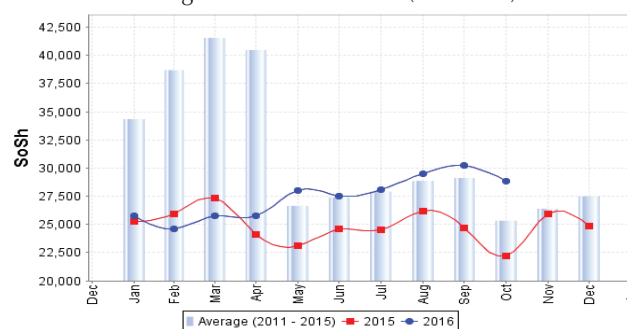


Figure 41: Water Drum (200 litres)



Regional analysis: Northwest Regions

Indicator	5-Year Average (2011-2015)	Oct-15	Sep-16	Oct-16 Nominal Price	Oct-16 Real (Deflated) Price	% Change Previous Month	% Change Same Month Previous Year
Imported Commodities Prices							
Diesel 1 litre	6,570	5,950	4,940	4,940	3,653	0%	-17%
Imported Red Rice 1kg	5,039	5,110	5,272	5,400	4,002	2%	6%
Petrol 1 litre	7,248	7,720	6,020	6,370	4,739	6%	-17%
Sugar	5,939	5,630	5,700	5,940	4,412	4%	6%
Vegetable Oil 1 litre	12,420	12,800	11,556	13,056	9,818	13%	2%
Wheat Flour 1kg	4,289	3,980	4,710	4,800	3,546	2%	21%
Wheat Grain 1kg	3,515	3,625	3,875	4,194	3,086	8%	16%
Cereal Prices							
White Sorghum 1kg	3,840	3,990	4,300	4,320	3,182	0%	8%
Yellow Maize 1kg	3,847	3,875	4,600	4,500	3,318	-2%	16%
Livestock & Livestock Product Prices							
Camel Local Quality (Head)	3,421,846	4,277,500	3,985,000	4,230,000	3,213,223	6%	-1%
Cattle Local Quality (Head)	2,111,726	2,242,292	2,300,833	2,002,667	1,521,228	-13%	-11%
Fresh Camel Milk 1 litre	6,134	8,650	9,300	9,000	6,737	-3%	4%
Goat Export Quality (Head)	462,261	487,333	427,500	364,531	276,816	-15%	-25%
Goat Local Quality (Head)	333,788	370,500	304,800	291,950	221,680	-4%	-21%
Other Essential Items							
Charcoal 50kg	48,079	57,250	70,550	72,800	55,203	3%	27%
Cowpeas 1 kg	9,647	9,750	13,667	13,375	10,060	-2%	37%
Unskilled Labor Wage Rate	44,665	56,520	60,780	58,800	44,567	-3%	4%
Firewood Bundle	3,586	4,567	5,600	5,933	4,407	6%	30%
Local Sesame Oil 1 litre	30,220	34,688	32,125	32,063	24,257	0%	-8%
Exchange Rate (Somaliland Shilling per USD)	6,549	7,520	7,500	7,530	5,620	0%	0%
Terms of Trade							
Labour Wage (Daily)/ Cereal (Rice(Kg))	8	11	12	11	-	-8%	0%
Local Goat (Head)/ Cereal (Rice(Kg))	66	73	58	54	-	-7%	-26%
Price Indices							
Consumer Price Index	-	125	133	132	-	-1%	5%

Figure 42: Trends in Cereal Prices

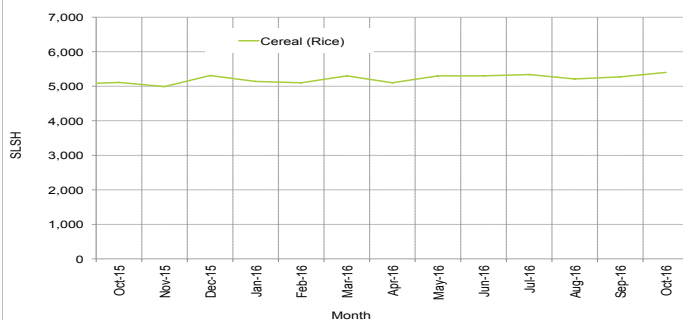


Figure 43: Trends in Wage Rates and Relative Purchasing Power

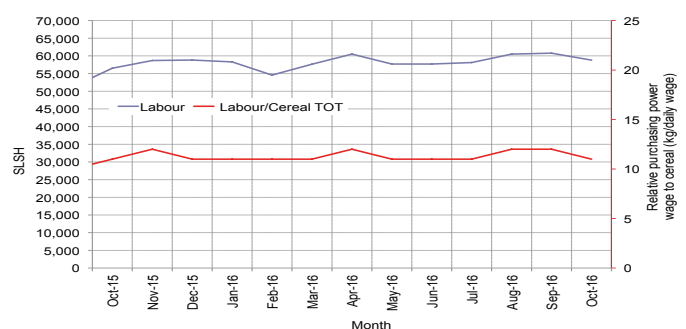


Figure 44: Imported Commodity Prices Compared to Exchange Rate

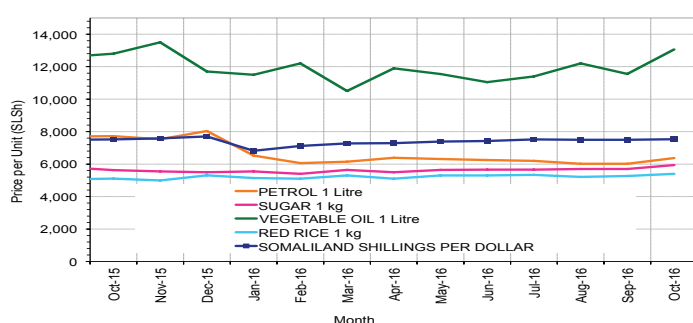


Figure 45: Goat Local Quality

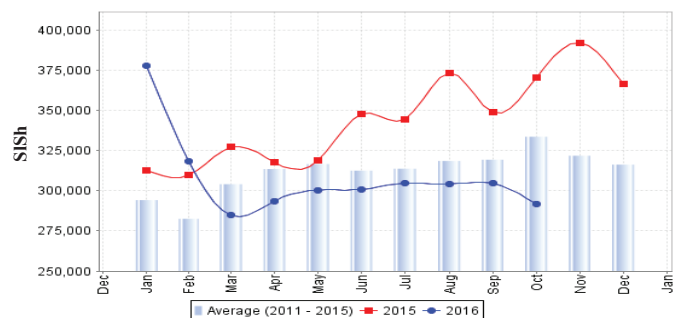


Figure 46: Exchange Rate

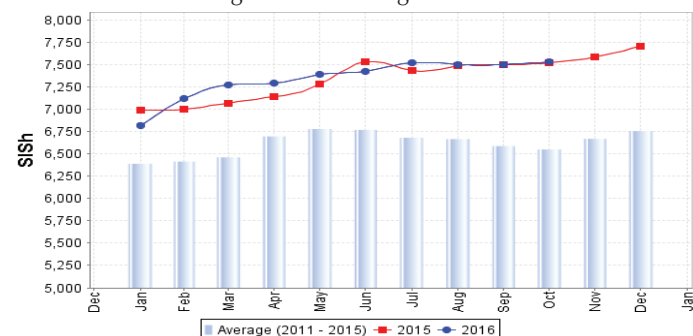
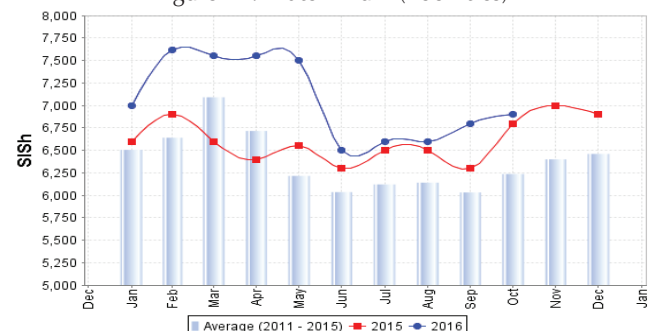


Figure 47: Water Drum (200 litres)



Trends in Livestock Exports

Table 1: Berbera Livestock Exports (Number of Heads)

	1999	2000	2001	2002	2003	2004	2005	2006	2007	2008	2009	2010	2011	2012	2013	2014	2015	Jan-Oct 2016
Shoats	2 048 136	1 601 083	51 546	341 711	563 107	859 404	1 023 795	1 017 242	1 350 054	1 219 519	1 556 003	2 584 810	3 104 684	3 219 584	2 888 955	3 089 592	3 270 386	2 792 279
Cattle	89 967	63 263	20 973	37 547	84 312	131 852	148 151	85 631	88 143	80 051	88 005	133 021	150 934	190 354	20 875	252 597	160,395	128 188
Camel	37 430	16 984	3 473	18,864	21 874	5 147	5 069	22 810	14 245	26 515	20 206	92 651	107 281	102 664	75 728	64 578	61 475	56 902

Figure 48: Berbera Livestock Exports (Number of Heads)

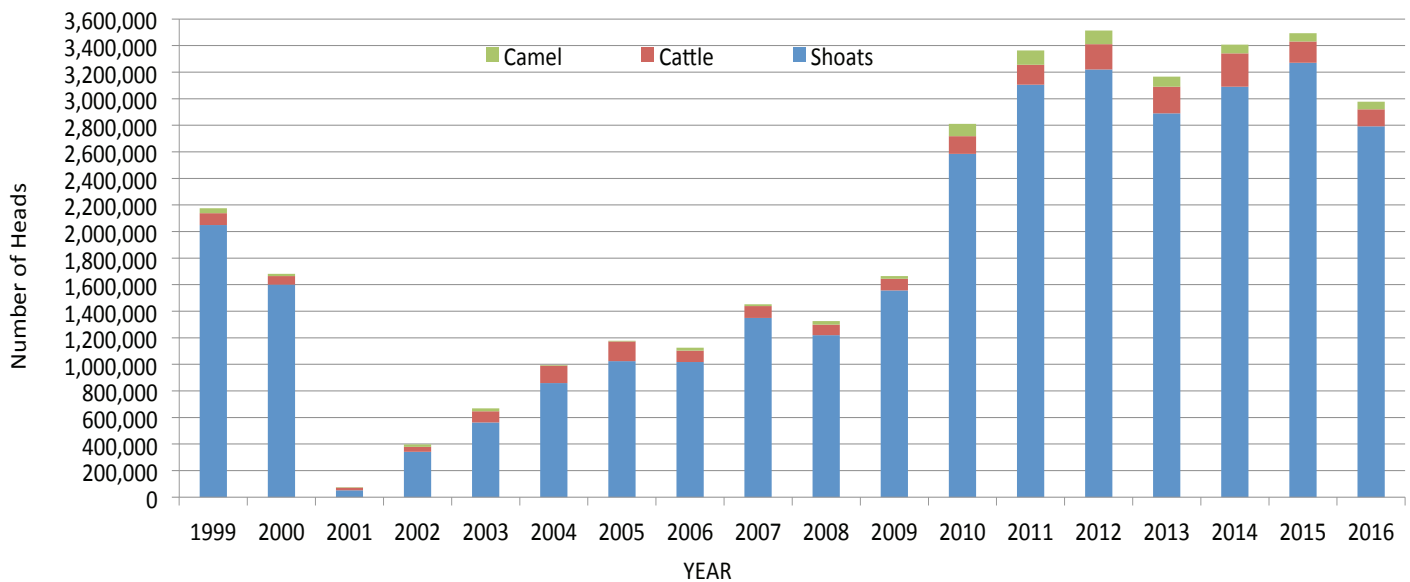
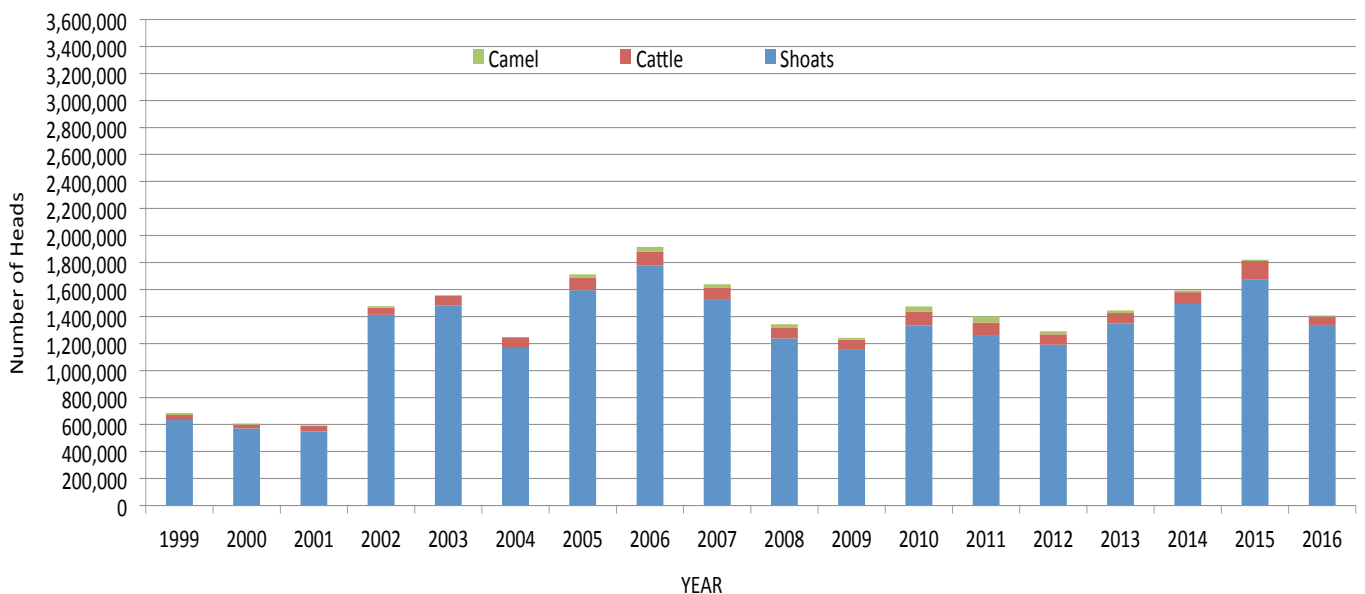


Table 2: Bossaso Livestock Exports (Number of Heads)

	1999	2000	2001	2002	2003	2004	2005	2006	2007	2008	2009	2010	2011	2012	2013	2014	2015	Jan-Oct 2016
Shoats	633,669	571,455	548,853	1,412,450	1,483,409	1,166,480	1,594,859	1,777,283	1,522,855	1,236,775	1,159,454	1,333,478	1,256,535	1,192,197	1,349,123	1,493,111	1,676,216	1,337,536
Cattle	36,586	27,604	42,248	53,313	71,328	79,994	91,910	104,595	89,190	78,046	67,385	103,808	99,058	76,043	77,353	87,759	134,597	62,374
Camel	15,544	8,177	1,950	9,720	4,259	2,488	26,109	33,724	27,580	27,639	15,331	36,865	45,878	22,288	19,032	12,251	10,945	8,720

Figure 49: Bossaso Livestock Exports (Number of Heads)

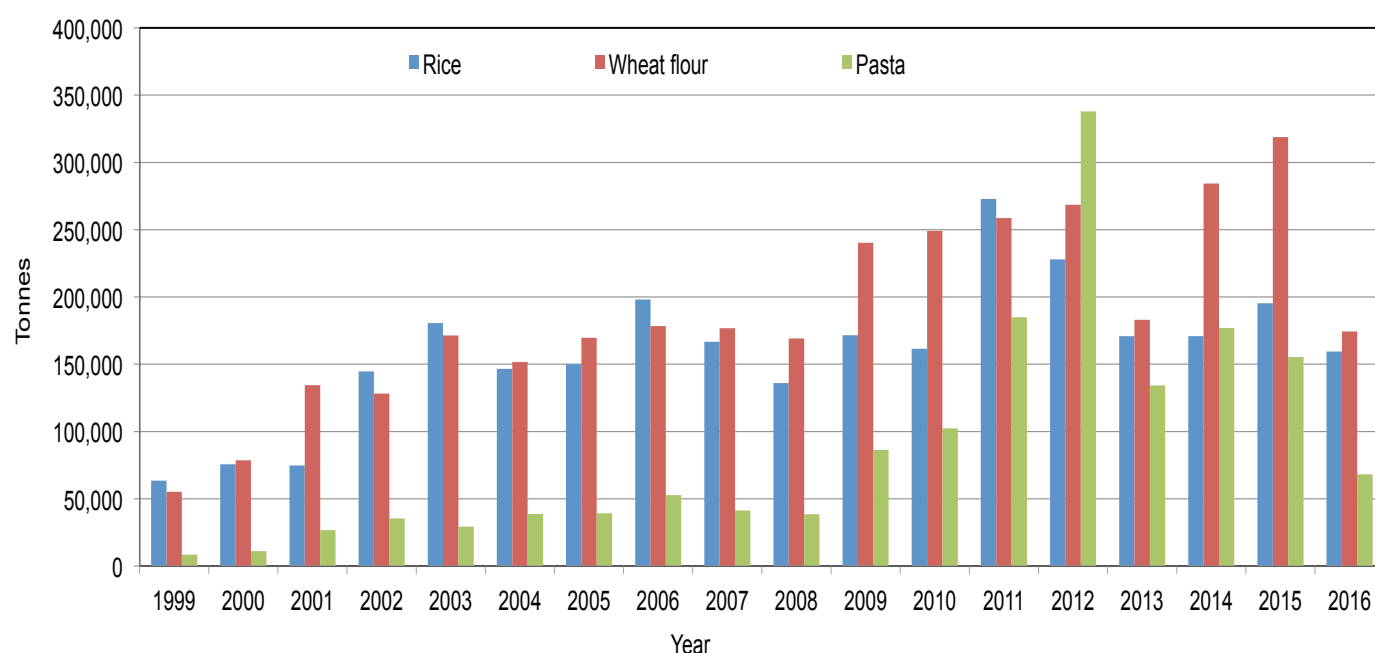


Trends in Cereal Imports

Table 3: Total Cereal Imports through Berbera, Bossaso and Mogadishu Ports (Tonnes) *

	1999	2000	2001	2002	2003	2004	2005	2006	2007	2008	2009	2010	2011	2012	2013	2014	2015	Jan-Oct 2016
Rice	63,464	75,687	74,729	144,600	180,614	146,567	150,017	198,101	166,626	136,007	171,472	161,415	272,877	227,955	170,868	170,888	195,240	159,368
Wheat flour	55,176	78,555	134,425	128,263	171,442	151,555	169,583	178,345	176,821	169,208	240,247	249,080	258,679	268,491	183,058	284,230	318,868	174,301
Pasta	8,544	11,071	26,702	35,425	29,273	38,749	39,153	52,815	41,331	38,441	86,372	102,373	184,849	337,878	134,311	176,951	155,360	68,184

Figure 50: Total Cereal Imports (Berbera, Bossaso and Mogadishu)



* Bossaso data is up to October and Berbera data is up to June 2016. Elman (Mogadishu) is up to November 2015. Mogadishu data (Elmaan Port) for 2013 includes only January - March imports.