

Market Update



Food and Agriculture
Organization of the
United Nations



Food Security and Nutrition
Analysis Unit - Somalia

November 2019 Update (Issued December 27, 2019)

Highlights

Inflation:

SoSh (Somali Shilling)-using areas: Monthly changes of the Consumer Price Index (CPI) remained relatively stable or changed mildly (1-2%) in November 2019. Compared to the five-year average (2014-2018), CPI increased moderately (10%) in southern Somalia and (15%) in the northeast attributable to higher prices of commodities this year, especially cereals, in the Minimum Expenditure Basket (MEB).

SiSh (Somaliland Shilling)-using areas: CPI declined (4%) in November 2019 but increased by 5 percent compared to the five-year average for 2014-2018.

Exchange rate:

SoSh-using areas: The exchange rates between SoSh and the United States Dollar (USD) remained relatively stable in most regions of the country in November 2019. Compared to The five-year average, SoSh exhibited a moderate to significant depreciation (9-30%) in all Regions of the country with the highest depreciation reported in the northeast mainly due to the extended impact of injection of newly printed local currency over the past two years.

SiSh-using areas: local currency in Somaliland Shilling using areas exhibited mild appreciation (1-3%) against USD in November 2019 compared to the previous month and the five-year average attributable to continued measures instituted by the Somaliland government to control and stabilize the exchange rate Somaliland Shilling against the United States Dollar.

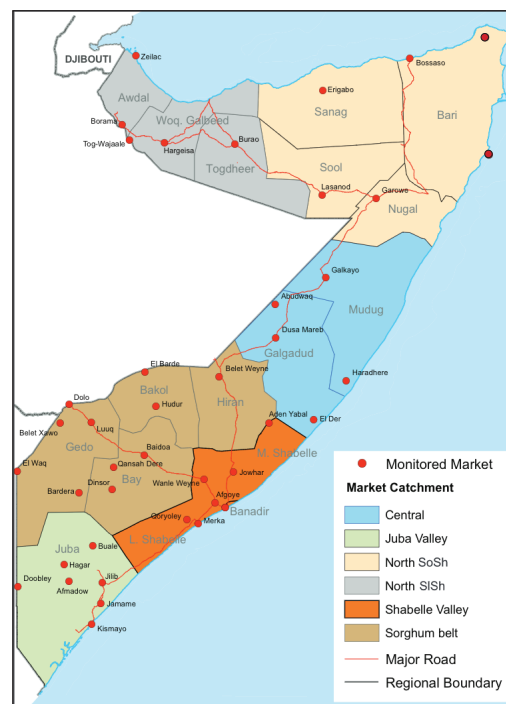
Local cereal (white maize, red sorghum and white sorghum) prices either remained relatively stable or exhibited mild ($\leq 5\%$) monthly increases in November 2019 in most parts of the country. The mild increases reflect dwindling supply from the poor 2019 *Gu* season cereal harvest and limited carryover stock from previous seasons. Compared to the five-year average, November 2019 local cereal prices are higher (5-19%) in all regions across the country.

Prices of imported food (rice, sugar, vegetable oil, wheat flour) mostly exhibited relative Stability or mild monthly changes ($\leq \pm 11\%$) in local currency terms in November 2019 in most Southern regions of Somalia compared to last month and the five-year averages. In the northern parts of the country, the prices of most food imports remained relatively stable or changed mildly (1-3%) in November 2019 but exhibited mild to moderate increases (4-14%) compared to the five-year average.

Livestock prices for local quality goat and camel mostly exhibited mild to moderate monthly increases ($< 12\%$) in most regions across Somalia in November 2019, mainly due to improved livestock body conditions that followed increased availability of pasture and water. Compared to the five-year average, livestock prices exhibited mild to moderate increases in northern and central regions (6-12%) but moderate declines (12-24%) across most of the southern regions. Milk prices (camel and cattle) exhibited moderate to significant decreases (less than 30%) in most regions of the country both in November 2019 and compared to the five-year average. This is due to increased milk availability as improved pasture and water positively impacted on milk yield per animal in addition to the increased number of animals that are currently lactating.

Labor (unskilled) wages increased mildly (1%) in the Sorghum Belt (Gedo, Bay, Bakool and Hiran regions) and moderately (21%) in Middle and Lower Shabelle and (23%) in Juba regions due to improved agriculture labor opportunities. However, wage rates exhibited mild changes ($\leq 9\%$) in Central and Northern regions in November 2019. Compared to the five year average, labor wages mildly declined (-2%) in the Sorghum Belt regions but were moderately higher (6-34%) across all the other regions.

Terms of Trade (ToT) between daily labor wage and cereals either remained relatively stable or changed mildly (by $\pm 1-2\text{kgs/daily wage}$) in most regions of the country in November 2019. Similarly, the labor wage to cereals ToT remained relatively stable or decreased mildly in most regions compared to the five-year average (2014-2018), with the exception of central and northwest regions where ToT increased (by 1-3kgs/daily) owing to labor wage rates that are currently higher. The ToT between local quality goat and cereals exhibited stability or mild monthly changes ($\leq \pm 9\%$) in most regions of the country. Five-year average comparisons indicate lower ToT between goat and cereals in the southern regions of Somalia due to higher cereal prices in November 2019; and higher TOTs in central and northern regions due to currently higher livestock prices attributed to limited sellable animals, improved body condition.



Siege-affected towns (Bulo-Burto, Wajid, Dinsor and Hudur)

Labor (unskilled) wages exhibited mild to moderate increases (3-21%) in all the four markets (Buloburto, Wajid, Dinsor and Hudur) in November 2019. Compared to the five-year average, labor wages were higher (27-34%) in Hudur and Wajid markets but were relatively stable in Buloburte and exhibited a mild decline of 4 percent in Dinsor.

Terms of Trade (ToTs) between daily labor wages and local cereals exhibited relative stability (0-2kg) in November 2019 across the four markets. TOT between goat and cereal exhibited mild increases in Buloburte (63 to 65kg) but moderate increases in Hudur (66 to 75kg) and Wajid (63 to 80 kg) while slightly declining in Dinsor. Compared to the five year average, TOT decreased in all four markets attributable to increase in cereal prices and/or decrease in daily labor wage rates and goat prices.

Local cereal (red and white sorghum) prices mostly remained high but stable in November 2019 owing to the poor 2019 *Gu* season local cereal production and reduced supply from adjacent regions. Cereal prices exhibited moderate increases (11-28%) in comparison to the five-year average.

Prices of imported food items (rice, sugar, vegetable oil, wheat flour) mostly exhibited mild to moderate increases (3-29%) in November 2019 as well as in comparison to the five-year averages in Hudur, Wajid and Dinsor markets. This is mainly due to limited supply as roads became impassable due to damages to road infrastructure caused by heavy rainfall and restricted trade movements especially in Wajid and Dinsor. In Buloburto market, price changes of less than 10 percent were recorded for most of the food imports due to relatively better access and increased humanitarian assistance in response to floods.

National Trends: CPI, Exchange Rates, Cereal Prices and Relative Purchasing Power

Table 1: ToT between Daily Labour Wage Rate and Cereals by Region August and November 2019

Regions	Nov 2019 (kg)	kg change from		
		Oct 2019	Nov 2018	Nov 5 yr Average (2014 - 2018)
Banadir/Mogadishu (White maize)	11	0	-4	-5
Bay (Red sorghum)	12	1	-10	-3
Bakool (Red sorghum)	6	1	-1	1
Gedo (Red sorghum)	11	0	-8	-2
Juba (White maize)	10	2	-4	-1
Shabelle (White maize)	12	2	-2	1
Northwest (Imported Rice)	14	-1	2	3
Northeast (Imported Rice)	8	0	1	0
Central (Imported Rice)	6	-1	0	1

Figure 1: Wheat Prices: Mogadishu and Bossaso Markets

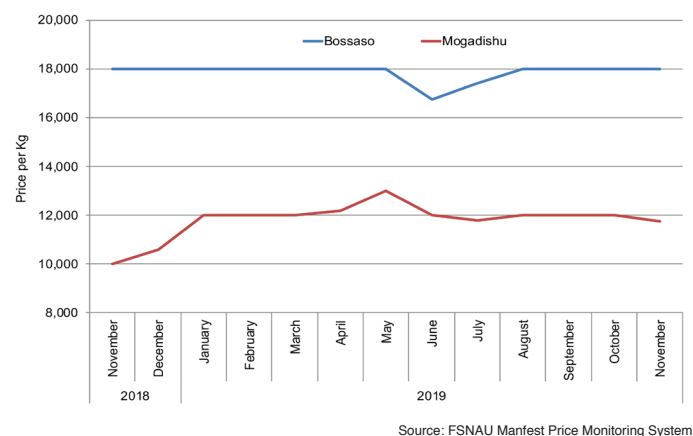


Figure 2: Terms of Trade Between Wage Rates and Selected Cereals

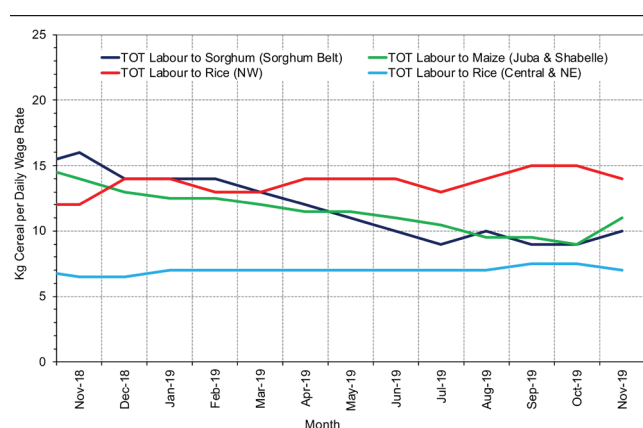


Figure 3: Monthly Exchange Rate for Selected Regions (SoSh and SiSh to USD)

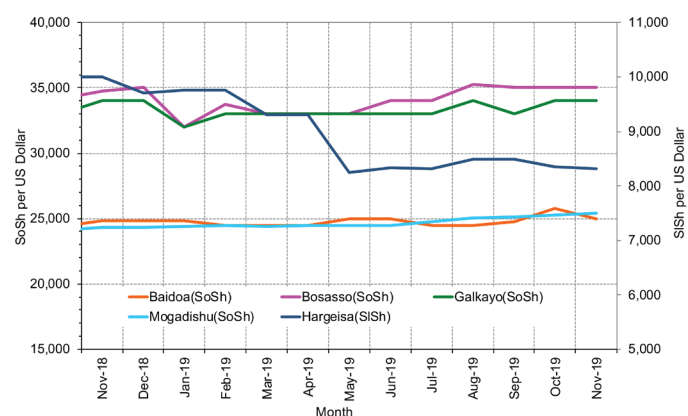


Figure 4: Monthly Trends in Consumer Price Index (CPI, April 2007=100)

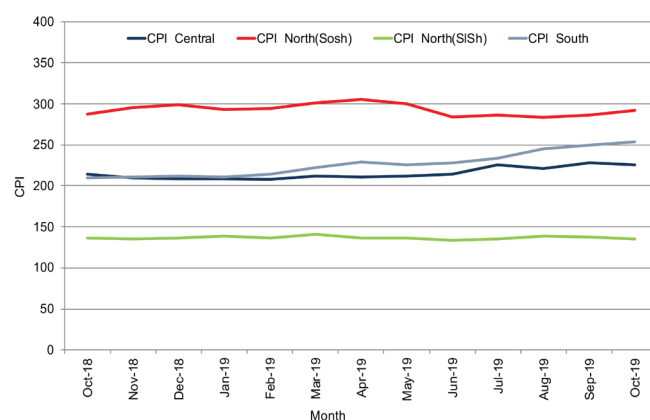
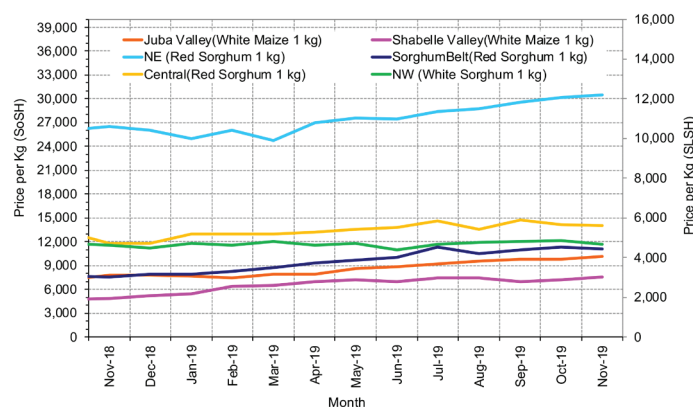


Figure 5: Monthly Trends in Local Cereal Prices



Regional analysis: Juba Regions

Indicator	5-Year Average (2014-2018)	Nov-18	Oct-19	Nov-19 Nominal Price	Nov-19 Real (Deflated) Price	% Change Previous Month	% Change Same Month Previous Year	% Change 5-year avrg (2014-2018)
Imported Commodities Prices								
Diesel 1 litre	23,668	23,750	24,000	24,656	9,540	3%	4%	4%
Imported Red Rice 1kg	16,715	16,844	17,393	17,094	6,583	-2%	1%	2%
Petrol 1 litre	26,447	25,547	26,143	27,719	10,738	6%	9%	5%
Sugar	18,188	17,000	17,714	18,219	7,023	3%	7%	0%
Vegetable Oil 1 litre	30,881	29,750	31,314	29,438	11,410	-6%	-1%	-5%
Wheat Flour 1kg	16,477	16,500	16,571	16,500	6,351	0%	0%	0%
Wheat Grain 1kg	-	-	-	-	-	-	-	-
Cereal Prices								
Red Sorghum 1kg	7,718	6,617	10,333	10,708	4,087	4%	62%	39%
White Maize 1kg	8,643	7,741	9,796	10,106	3,851	3%	31%	17%
Livestock & Livestock Product Prices								
Camel Local Quality (Head)	10,114,812	11,803,125	10,083,333	11,312,500	4,422,879	12%	-4%	12%
Cattle Local Quality (Head)	3,520,321	3,495,000	3,639,583	4,153,571	1,623,870	14%	19%	18%
Fresh Camel Milk 1 litre	18,740	16,469	15,893	18,375	7,084	16%	12%	-2%
Goat Export Quality (Head)	1,320,749	1,473,438	1,450,357	1,377,500	538,477	-5%	-7%	4%
Goat Local Quality (Head)	840,225	856,875	719,286	745,625	291,426	4%	-13%	-11%
Other Essential Items								
Charcoal 50kg	93,468	107,188	77,857	114,375	44,619	47%	7%	22%
Cowpeas 1 kg	23,901	19,813	25,036	23,719	9,174	-5%	20%	-1%
Unskilled Labor Wage Rate	95,213	107,969	81,786	100,469	39,182	23%	-7%	6%
Firewood Bundle	8,297	7,250	4,496	4,803	1,778	7%	-34%	-42%
Local Sesame Oil 1 litre	65,075	58,691	79,429	80,750	31,472	2%	38%	24%
Exchange Rate (Somali Shilling per USD)	23,007	24,250	24,857	25,125	9,723	1%	4%	9%
Terms of Trade								
Labour Wage (Daily)/ Cereal (Maize(Kg))	11	14	8	10	-	25%	-29%	-9%
Local Goat (Head)/ Cereal (Maize(Kg))	98	111	73	74	-	1%	-33%	-24%
Cost of the Minimum Basket (CMB)	2,358,032	2,154,836	2,533,290	2,557,047	-	1%	19%	8%
Price Indices								
Consumer Price Index	-	210	254	256	-	1%	22%	-

Figure 6: Trends in Cereal Prices

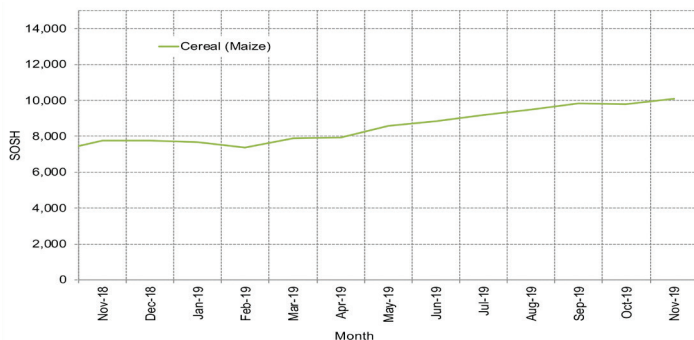


Figure 7: Trends in Wage Rates and Relative Purchasing Power

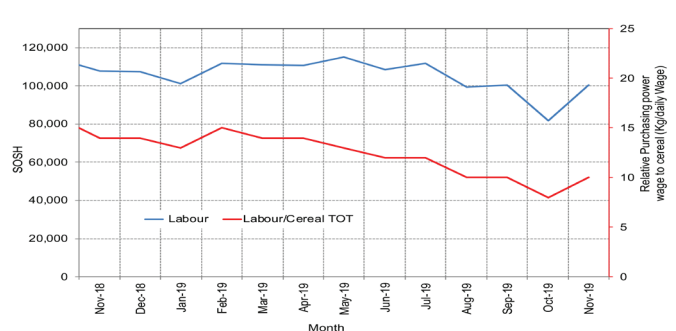


Figure 8: Imported Commodity Prices Compared to Exchange Rate

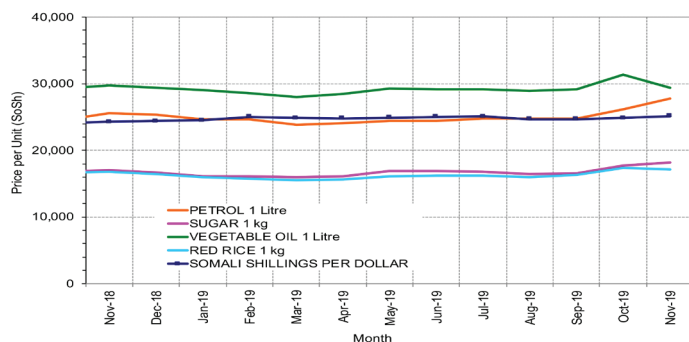


Figure 9: Goat Local Quality

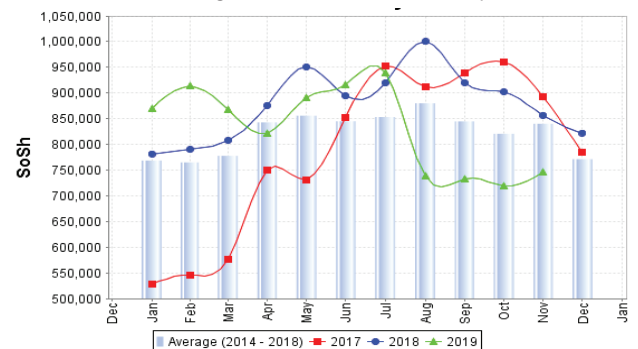


Figure 10: Exchange Rate

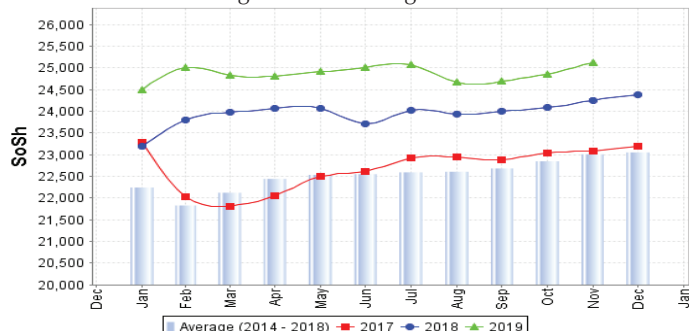
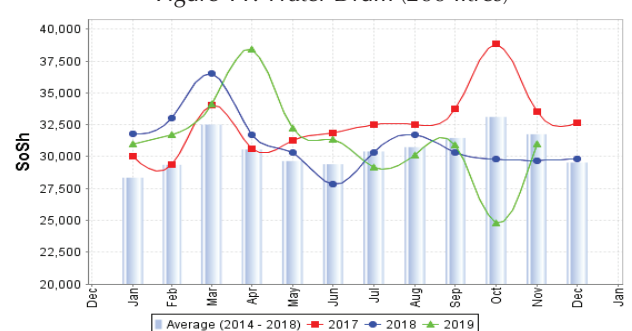


Figure 11: Water Drum (200 litres)



Regional analysis: Sorghum Belt Regions (Bay, Bakool, Gedo and Hiran)

Indicator	5-Year Average (2014-2018)	Nov-18	Oct-19	Nov-19 Nominal Price	Nov-19 Real (Deflated) Price	% Change Previous Month	% Change Same Month Previous Year	% Change 5-year avg (2014-2018)
Imported Commodities Prices								
Diesel 1 litre	27,098	26,771	27,458	31,271	12,126	14%	17%	15%
Imported Red Rice 1kg	19,063	19,813	20,188	22,042	8,518	9%	11%	16%
Petrol 1 litre	29,199	29,083	30,500	34,688	13,462	14%	19%	19%
Sugar	20,623	20,042	21,208	22,375	8,648	6%	12%	8%
Vegetable Oil 1 litre	37,407	37,333	38,208	39,375	15,295	3%	5%	5%
Wheat Flour 1kg	18,359	18,625	20,083	21,417	8,274	7%	15%	17%
Wheat Grain 1kg	19,720	18,813	21,875	23,600	9,127	8%	25%	20%
Cereal Prices								
Red Sorghum 1kg	9,223	7,384	11,338	10,950	4,181	-3%	48%	19%
White Maize 1kg	10,111	8,586	11,514	11,414	4,363	-1%	33%	13%
Livestock & Livestock Product Prices								
Camel Local Quality (Head)	11,829,653	11,351,750	12,591,500	12,883,500	5,037,111	2%	13%	9%
Cattle Local Quality (Head)	3,294,160	2,982,813	3,099,444	3,216,389	1,257,449	4%	8%	-2%
Fresh Camel Milk 1 litre	21,690	26,417	22,604	19,104	7,369	-15%	-28%	-12%
Goat Export Quality (Head)	1,502,636	1,526,364	1,623,636	1,655,250	647,072	2%	8%	10%
Goat Local Quality (Head)	876,921	920,000	916,667	941,042	367,830	3%	2%	7%
Other Essential Items								
Charcoal 50kg	168,136	189,318	198,182	210,000	82,006	6%	11%	25%
Cowpeas 1 kg	28,358	23,646	33,406	34,385	13,344	3%	45%	21%
Unskilled Labor Wage Rate	103,837	111,354	100,417	101,604	39,625	1%	-9%	-2%
Firewood Bundle	6,202	5,646	6,042	6,333	2,376	5%	12%	2%
Local Sesame Oil 1 litre	80,639	82,639	100,825	100,900	39,350	0%	22%	25%
Exchange Rate (Somali Shilling per USD)	23,163	24,628	25,438	25,440	9,847	0%	3%	10%
Terms of Trade								
Labour Wage (Daily)/ Cereal (Sorghum (Kg)	11	15	9	9	-	0%	-40%	-18%
Local Goat (Head)/ Cereal (Sorghum (Kg)	98	125	81	86	-	6%	-31%	-12%
Cost of the Minimum Basket (CMB)	2,434,125	2,140,930	2,760,278	2,775,031	-	1%	30%	14%
Price Indices								
Consumer Price Index	-	210	254	256	-	1%	22%	-

Figure 12: Trends in Cereal Prices

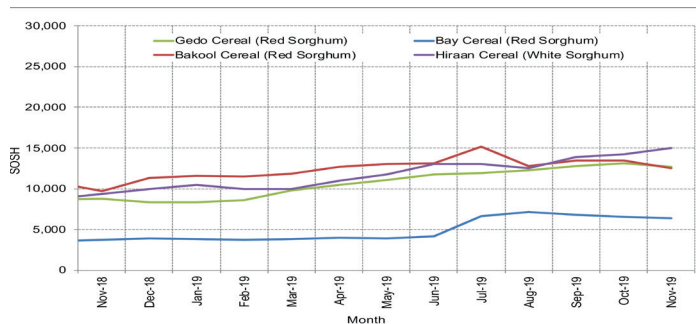


Figure 14: Imported Commodity Prices Compared to Exchange Rate

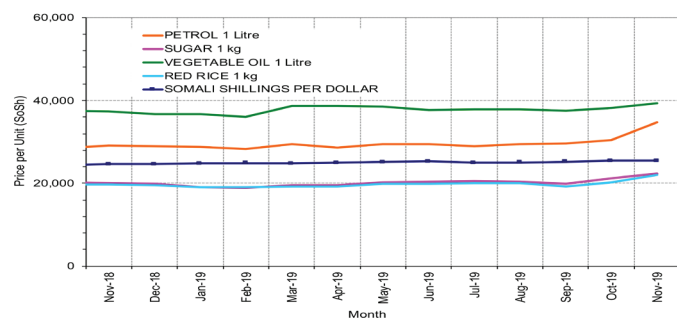


Figure 16: Exchange Rate

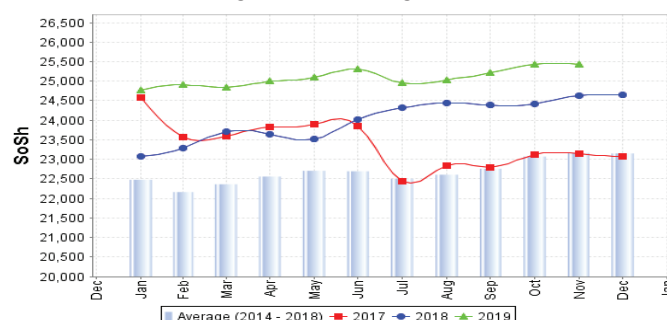


Figure 13: Trends in Wage Rates and Relative Purchasing Power

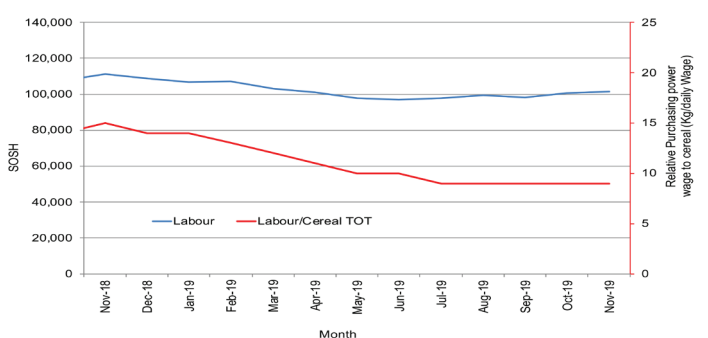


Figure 15: Goat Local Quality

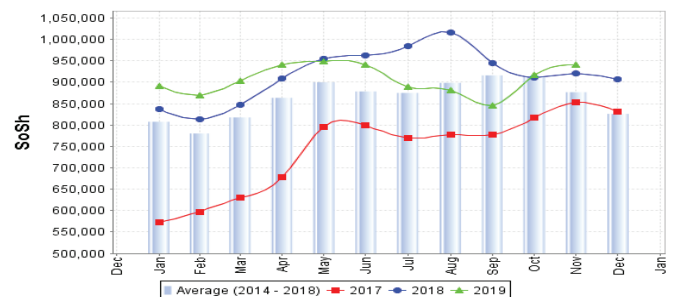
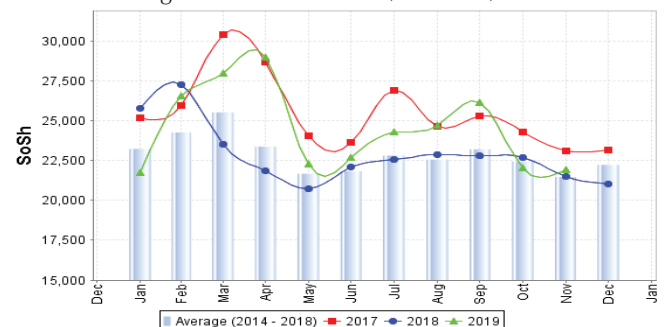


Figure 17: Water Drum (200 litres)



Regional analysis: Shabelle Regions

Indicator	5-Year Average (2014-2018)	Nov-18	Oct-19	Nov-19 Nominal Price	Nov-19 Real (Deflated) Price	% Change Previous Month	% Change Same Month Previous Year	% Change 5-year avg (2014-2018)
Imported Commodities Prices								
Diesel 1 litre	21,099	20,958	20,500	21,208	8,192	3%	1%	1%
Imported Red Rice 1kg	16,174	15,708	16,292	16,083	6,188	-1%	2%	-1%
Petrol 1 litre	24,204	22,750	21,042	21,708	8,387	3%	-5%	-10%
Sugar	17,846	15,667	15,458	15,958	6,139	3%	2%	-11%
Vegetable Oil 1 litre	28,258	26,792	25,750	26,208	10,147	2%	-2%	-7%
Wheat Flour 1kg	16,290	15,292	15,167	15,792	6,074	4%	3%	-3%
Wheat Grain 1kg	17,200	14,500	16,500	16,000	6,156	-3%	10%	-7%
Cereal Prices								
Red Sorghum 1kg	9,833	8,129	10,093	10,142	3,865	0%	25%	3%
White Maize 1kg	6,675	4,862	7,160	7,527	2,843	5%	55%	13%
Livestock & Livestock Product Prices								
Camel Local Quality (Head)	16,947,748	16,096,875	17,918,750	19,612,500	7,668,026	9%	22%	16%
Cattle Local Quality (Head)	4,864,875	3,989,375	5,550,000	5,545,000	2,167,893	0%	39%	14%
Fresh Camel Milk 1 litre	20,804	23,167	22,667	19,958	7,703	-12%	-14%	-4%
Goat Export Quality (Head)	1,709,041	1,873,125	2,315,000	2,148,125	839,777	-7%	15%	26%
Goat Local Quality (Head)	1,304,791	1,424,583	1,465,417	1,570,417	613,904	7%	10%	20%
Other Essential Items								
Charcoal 50kg	143,305	157,403	196,250	205,972	80,431	5%	31%	44%
Cowpeas 1 kg	25,707	15,528	27,889	29,917	11,597	7%	93%	16%
Unskilled Labor Wage Rate	76,570	67,083	75,000	90,833	35,414	21%	35%	19%
Firewood Bundle	6,891	6,792	7,250	9,000	3,419	24%	33%	31%
Local Sesame Oil 1 litre	57,761	62,708	65,292	66,792	26,014	2%	7%	16%
Exchange Rate (Somali Shilling per USD)	23,036	24,167	25,475	25,402	9,832	0%	5%	10%
Terms of Trade								
Labour Wage (Daily)/ Cereal (Maize(Kg))	11	14	10	12	-	20%	-14%	9%
Local Goat (Head)/ Cereal (Maize(Kg))	203	293	205	209	-	2%	-29%	3%
Cost of the Minimum Basket (CMB)	2,443,705	2,259,083	2,466,185	2,540,841	-	3%	12%	4%
Price Indices								
Consumer Price Index	-	210	254	256	-	1%	22%	-

Figure 18: Trends in Cereal Prices

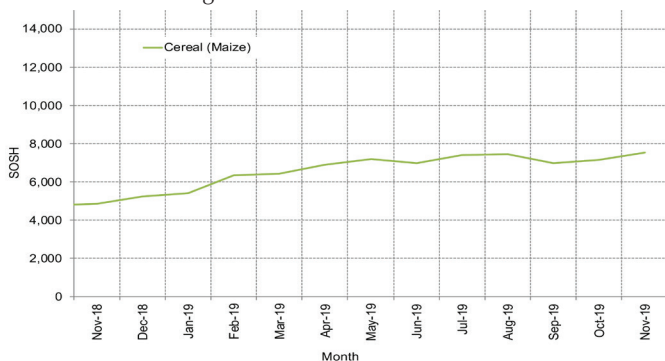


Figure 19: Trends in Wage Rates and Relative Purchasing Power

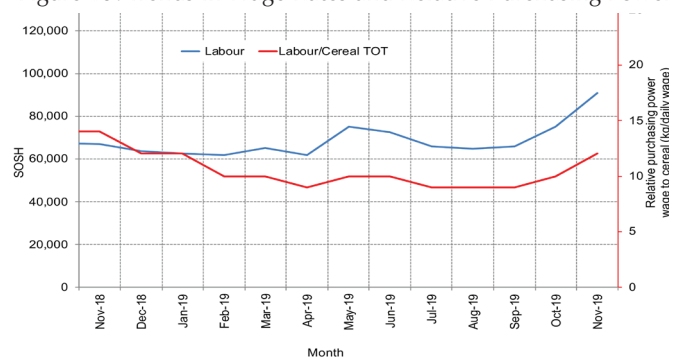


Figure 20: Imported Commodity Prices Compared to Exchange Rate

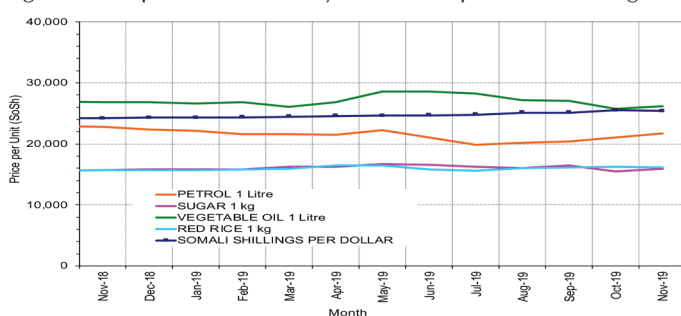


Figure 21: Goat Local Quality

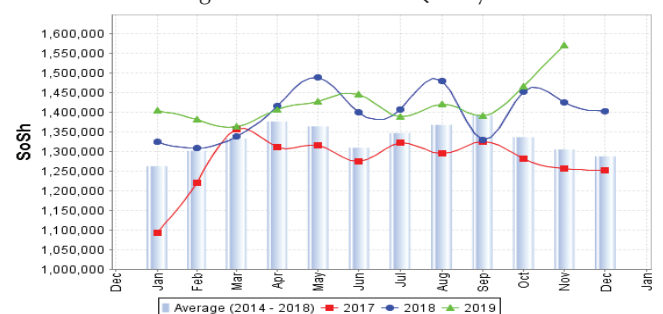


Figure 22: Exchange Rate

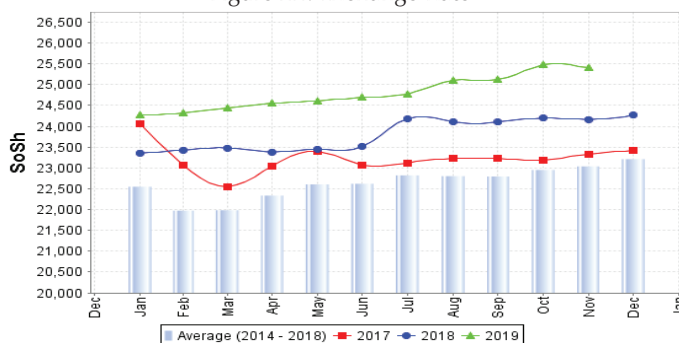
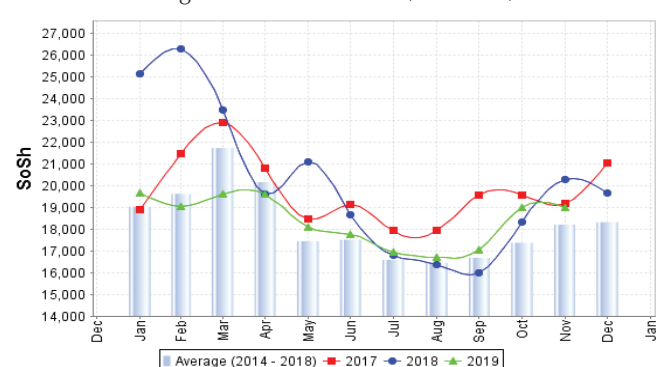


Figure 23: Water Drum (200 litres)



Regional analysis: Banadir Region

Indicator	5-Year Average (2014-2018)	Nov-18	Oct-19	Nov-19 Nominal Price	Nov-19 Real (Deflated) Price	% Change Previous Month	% Change Same Month Previous Year	% Change 5-year avrg (2014-2018)
Imported Commodities Prices								
Diesel 1 litre	16,351	15,642	16,142	16,517	6,358	2%	6%	1%
Imported Red Rice 1kg	12,368	11,917	12,500	12,417	4,755	-1%	4%	0%
Petrol 1 litre	18,568	18,117	18,000	18,000	6,938	0%	-1%	-3%
Sugar	13,990	13,000	13,583	13,125	5,032	-3%	1%	-6%
Vegetable Oil 1 litre	22,202	21,333	22,750	23,167	8,958	2%	9%	4%
Wheat Flour 1kg	12,339	10,917	12,167	11,917	4,559	-2%	9%	-3%
Wheat Grain 1kg	12,708	16,000	16,750	18,125	6,987	8%	13%	43%
Cereal Prices								
Red Sorghum 1kg	8,409	8,442	9,600	9,858	3,754	3%	17%	17%
White Maize 1kg	9,276	9,142	10,846	11,308	4,321	4%	24%	22%
Livestock & Livestock Product Prices								
Camel Local Quality (Head)	-	-	-	-	-	-	-	-
Cattle Local Quality (Head)	-	-	-	-	-	-	-	-
Fresh Camel Milk 1 litre	24,853	27,833	31,000	31,250	12,118	1%	12%	26%
Goat Export Quality (Head)	2,312,500	2,090,000	2,550,000	2,900,000	1,133,747	14%	39%	25%
Goat Local Quality (Head)	2,014,250	1,615,000	2,150,000	2,450,000	957,805	14%	52%	22%
Other Essential Items								
Charcoal 50kg	204,210	221,917	338,833	343,750	134,300	1%	55%	68%
Cowpeas 1 kg	25,155	19,867	32,583	32,917	12,770	1%	66%	31%
Unskilled Labor Wage Rate	98,683	90,417	96,667	96,667	37,695	0%	7%	-2%
Firewood Bundle	7,670	8,000	11,125	12,125	4,641	9%	52%	58%
Local Sesame Oil 1 litre	56,163	57,083	63,750	65,917	25,672	3%	15%	17%
Exchange Rate (Somali Shilling per USD)	22,914	24,333	24,633	24,717	9,564	0%	2%	8%
Terms of Trade								
Labour Wage (Daily)/ Cereal (Rice)(Kg)	8	8	8	8	-	0%	0%	0%
Local Goat (Head)/ Cereal (Rice)(Kg)	162	136	172	197	-	15%	45%	22%
Cost of the Minimum Basket (CMB)	2,218,754	2,214,908	2,562,327	2,622,473	-	2%	18%	18%
Price Indices								
Consumer Price Index	-	210	254	256	-	1%	22%	-

Figure 24: Trends in Cereal Prices

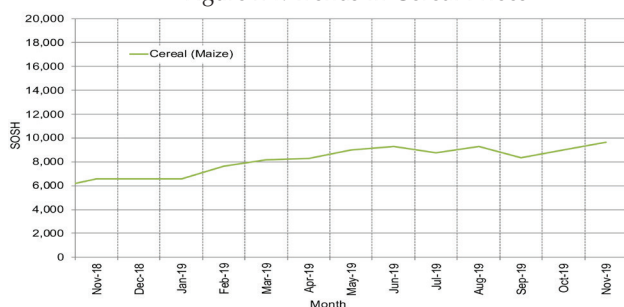


Figure 25: Bakara: Trends in Wage Rates and Relative Purchasing Power

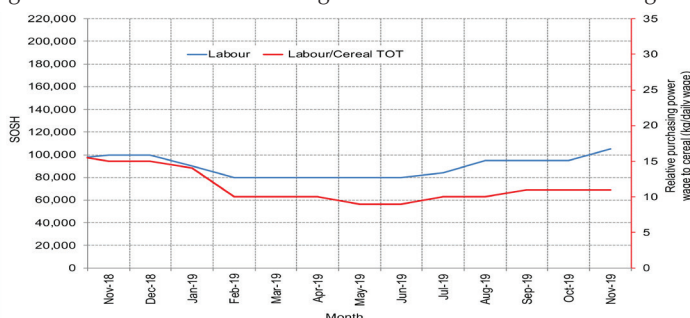


Figure 26: Imported Commodity Prices Compared to Exchange Rate

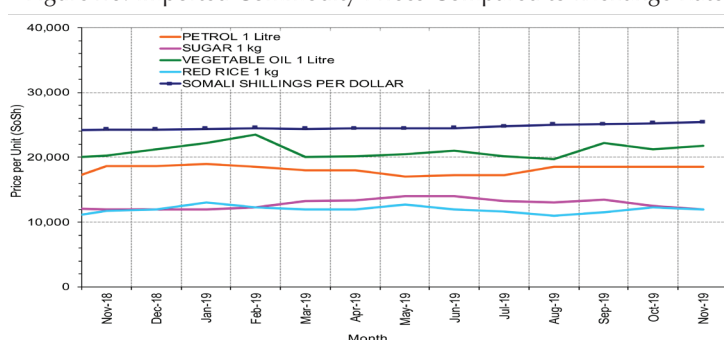


Figure 27: Goat Local Quality

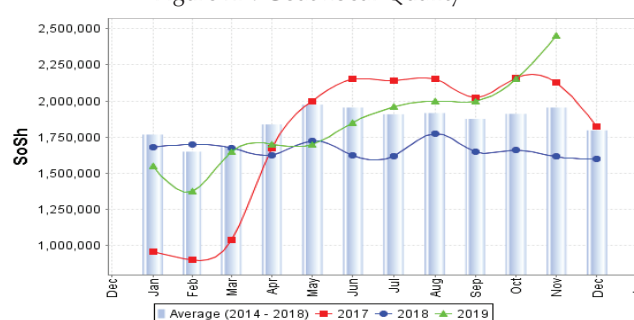


Figure 28: Exchange Rate

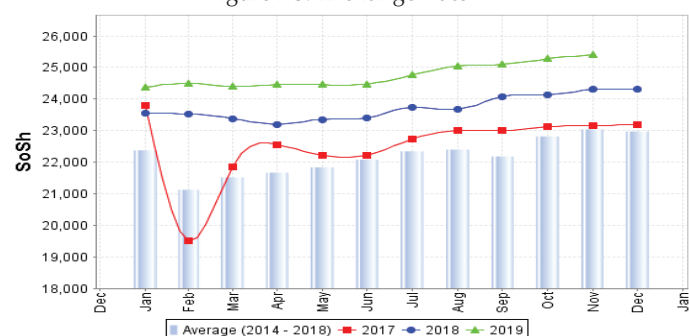
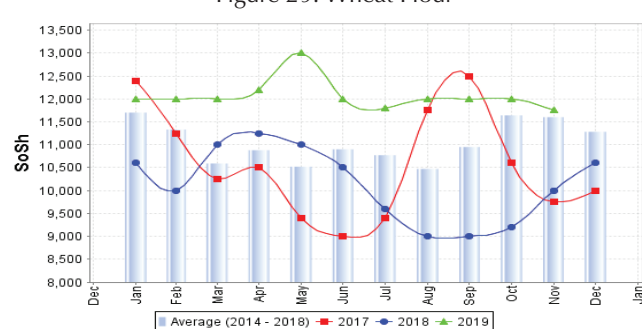


Figure 29: Wheat Flour



Regional analysis: Central Regions

Indicator	5-Year Average (2014-2018)	Nov-18	Oct-19	Nov-19 Nominal Price	Nov-19 Real (Deflated) Price	% Change Previous Month	% Change Same Month Previous Year	% Change 5-year avg (2014-2018)
Imported Commodities Prices								
Diesel 1 litre	22,190	21,400	21,200	21,000	9,380	-1%	-2%	-5%
Imported Red Rice 1kg	18,482	19,200	19,800	19,800	8,838	0%	3%	7%
Petrol 1 litre	24,490	26,550	24,600	23,200	10,373	-6%	-13%	-5%
Sugar	21,000	22,200	20,400	20,400	9,109	0%	-8%	-3%
Vegetable Oil 1 litre	37,030	36,000	35,600	35,000	15,700	-2%	-3%	-5%
Wheat Flour 1kg	16,548	17,800	17,400	17,600	7,845	1%	-1%	6%
Wheat Grain 1kg	17,334	16,333	15,750	16,500	7,348	5%	1%	-5%
Cereal Prices								
Red Sorghum 1kg	13,360	11,800	14,200	14,000	6,220	-1%	19%	5%
White Maize 1kg	15,195	16,275	16,000	16,000	7,123	0%	-2%	5%
Livestock & Livestock Product Prices								
Camel Local Quality (Head)	12,676,250	14,112,500	13,225,000	13,225,000	5,969,943	0%	-6%	4%
Cattle Local Quality (Head)	-	-	-	-	-	-	-	-
Fresh Camel Milk 1 litre	38,528	50,750	27,400	24,640	11,023	-10%	-51%	-36%
Goat Export Quality (Head)	1,483,433	1,854,667	1,930,000	1,836,667	829,010	-5%	-1%	24%
Goat Local Quality (Head)	1,065,460	1,336,800	1,274,000	1,274,000	575,010	0%	-5%	20%
Other Essential Items								
Charcoal 50kg	180,040	220,400	245,600	239,600	108,060	-2%	9%	33%
Cowpeas 1 kg	32,038	28,600	32,400	31,400	14,075	-3%	10%	-2%
Unskilled Labor Wage Rate	97,300	117,000	130,000	118,000	53,168	-9%	1%	21%
Firewood Bundle	33,860	36,600	36,000	37,000	16,603	3%	1%	9%
Local Sesame Oil 1 litre	84,280	84,000	85,000	87,000	39,174	2%	4%	3%
Exchange Rate (Somali Shilling per USD)	24,095	26,219	26,000	26,000	11,637	0%	-1%	8%
Terms of Trade								
Labour Wage (Daily)/ Cereal (Rice Kg)	5	6	7	7	-	0%	17%	40%
Local Goat (Head)/ Cereal (Rice Kg)	57	70	64	64	-	0%	-9%	12%
Camel (Head)/Cereal (Rice Kg)	686	735	668	668	-	0%	-9%	-3%
Cost of the Minimum Basket (CMB)	2,993,008	2,888,500	3,081,875	3,036,517	-	-1%	5%	1%
Price Indices								
Consumer Price Index	-	209	225	222	-	-2%	6%	-

Figure 30: Trends in Cereal Prices

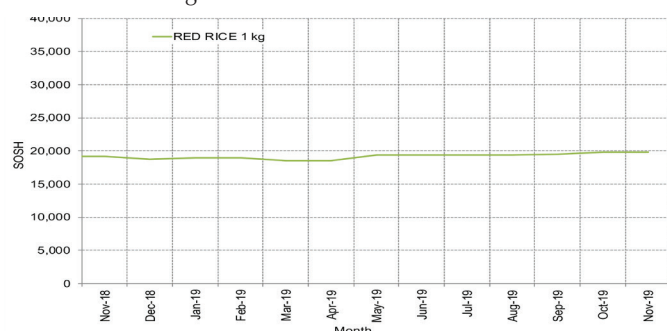


Figure 31: Trends in wage rates and relative purchasing power

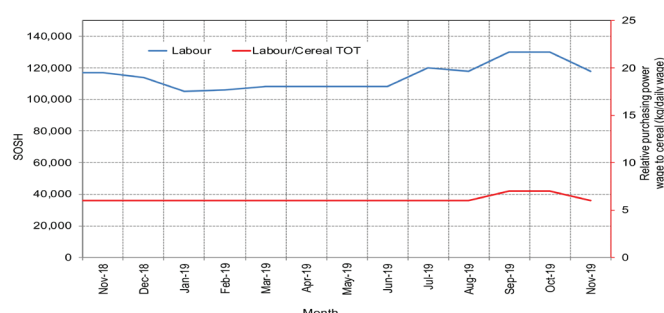


Figure 32: Imported Commodity Prices Compared to Exchange Rate

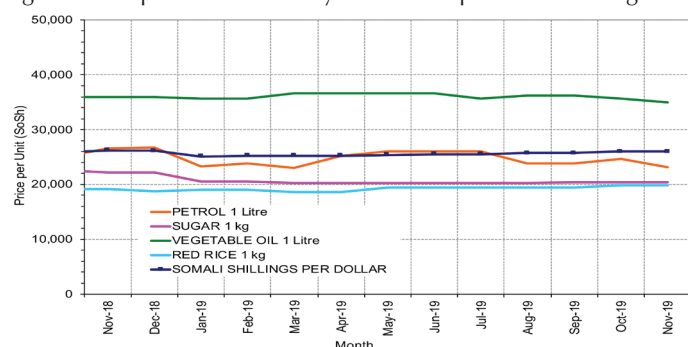


Figure 33: Goat Local Quality

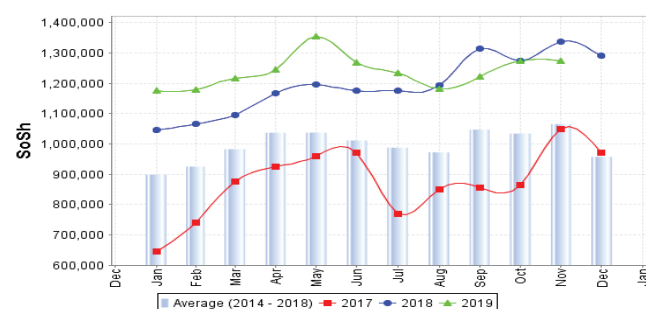


Figure 34: Exchange Rate

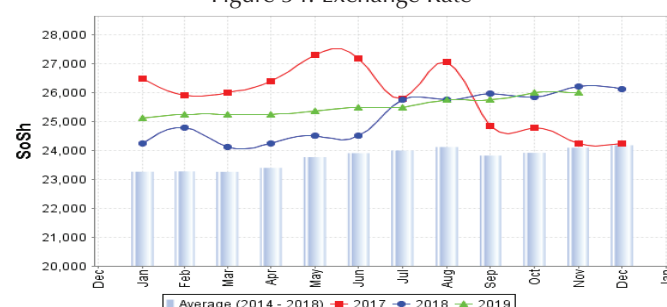
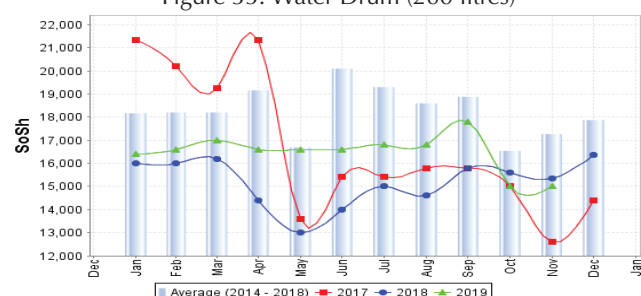


Figure 35: Water Drum (200 litres)



Regional analysis: Northeast Regions

Indicator	5-Year Average (2014-2018)	Nov-18	Oct-19	Nov-19 Nominal Price	Nov-19 Real (Deflated) Price	% Change Previous Month	% Change Same Month Previous Year	% Change 5-year avg (2014-2018)
Imported Commodities Prices								
Diesel 1 litre	21,415	27,179	26,036	26,414	8,829	1%	-3%	23%
Imported Red Rice 1kg	17,497	20,357	19,464	19,786	6,589	2%	-3%	13%
Petrol 1 litre	23,951	30,900	29,711	29,857	9,993	0%	-3%	25%
Sugar	20,459	21,929	21,446	21,250	7,084	-1%	-3%	4%
Vegetable Oil 1 litre	34,728	37,286	35,857	35,964	12,058	0%	-4%	4%
Wheat Flour 1kg	16,711	18,821	18,750	18,982	6,317	1%	1%	14%
Wheat Grain 1kg	31,412	34,800	31,200	31,100	10,413	0%	-11%	-1%
Cereal Prices								
Red Sorghum 1kg	25,075	26,500	30,125	30,500	10,211	1%	15%	22%
White Maize 1kg	23,450	22,250	27,500	25,500	8,520	-7%	15%	9%
Livestock & Livestock Product Prices								
Camel Local Quality (Head)	15,072,834	16,490,000	18,328,000	19,082,250	6,450,699	4%	16%	27%
Cattle Local Quality (Head)	10,350,000	15,000,000	12,500,000	12,750,000	4,310,067	2%	-15%	23%
Fresh Camel Milk 1 litre	46,617	56,514	43,806	43,556	14,624	-1%	-23%	-7%
Goat Export Quality (Head)	1,444,000	1,677,500	1,550,000	1,562,500	528,107	1%	-7%	8%
Goat Local Quality (Head)	1,353,999	1,650,714	1,660,357	1,684,107	569,216	1%	2%	24%
Other Essential Items								
Charcoal 50kg	375,000	396,429	475,821	483,571	163,372	2%	22%	29%
Cowpeas 1 kg	49,140	61,229	63,458	64,542	21,719	2%	5%	31%
Unskilled Labor Wage Rate	141,178	150,714	161,964	166,607	56,222	3%	11%	18%
Firewood Bundle	43,683	62,321	62,321	61,607	20,726	-1%	-1%	41%
Local Sesame Oil 1 litre	106,570	123,600	131,750	134,850	45,486	2%	9%	27%
Exchange Rate (Somali Shilling per USD)	24,901	31,464	32,286	32,286	10,814	0%	3%	30%
Terms of Trade								
Labour Wage (Daily)/ Cereal (Rice(Kg)	8	7	8	8	-	0%	14%	0%
Local Goat (Head)/ Cereal (Rice(Kg)	77	81	85	85	-	0%	5%	10%
Cost of the Minimum Basket (CMB)	5,006,482	5,762,522	5,707,281	5,741,828	-	1%	0%	15%

Price Indices								
Consumer Price Index	-	296	292	296	-	1%	0%	-

Figure 36: Trends in Cereal Prices

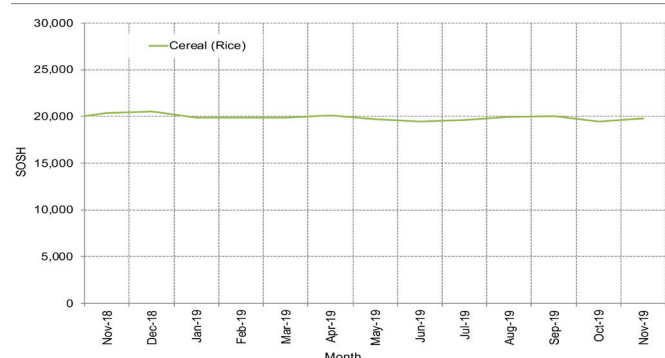


Figure 37: Trends in Wage Rates and Relative Purchasing Power

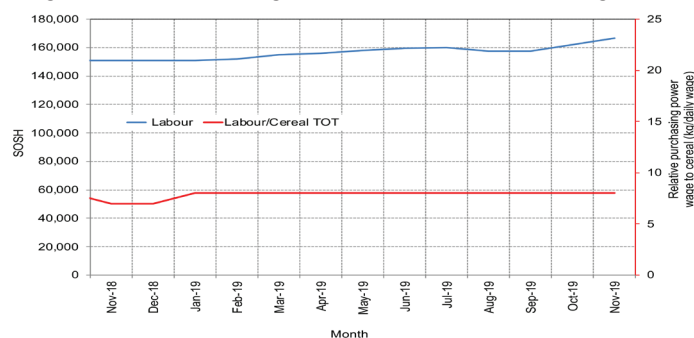


Figure 38: Imported Commodity Prices Compared to Exchange Rate

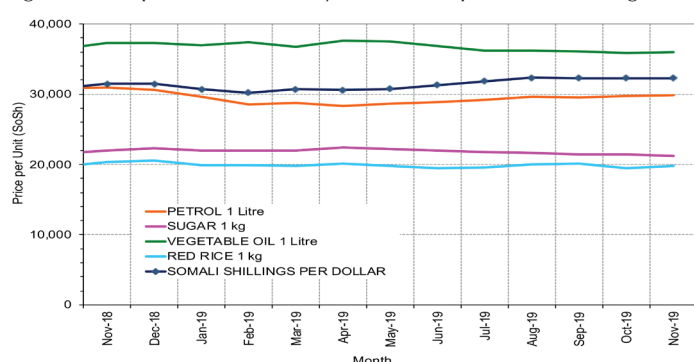


Figure 39: Goat Local Quality

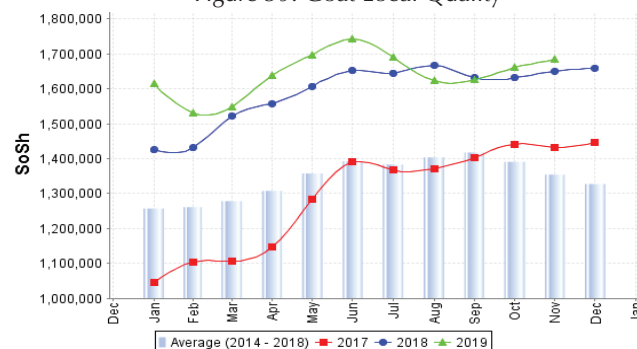


Figure 40: Exchange Rate

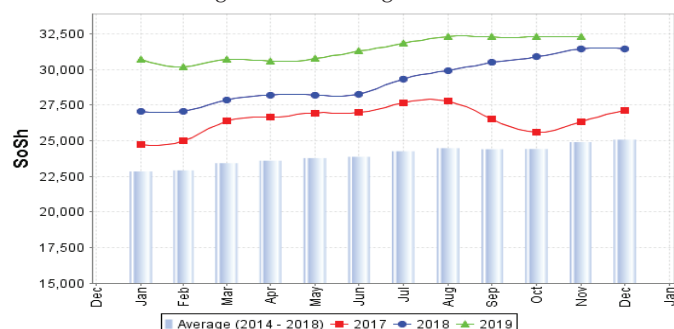
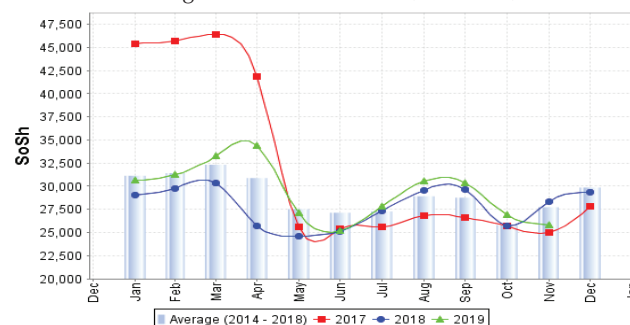


Figure 41: Water Drum (200 litres)



Regional analysis: Northwest Regions

Indicator	5-Year Average (2014-2018)	Nov-18	Oct-19	Nov-19 Nominal Price	Nov-19 Real (Deflated) Price	% Change Previous Month	% Change Same Month Previous Year	% Change 5-year avg (2014-2018)
Imported Commodities Prices								
Diesel 1 litre	6,521	7,340	6,820	6,625	4,976	-3%	-10%	2%
Imported Red Rice 1kg	5,582	6,340	5,690	5,850	4,382	3%	-8%	5%
Petrol 1 litre	7,834	8,900	7,760	7,415	5,581	-4%	-17%	-5%
Sugar	6,308	7,000	6,520	6,585	4,945	1%	-6%	4%
Vegetable Oil 1 litre	13,242	13,000	15,000	14,600	11,086	-3%	12%	10%
Wheat Flour 1kg	4,854	5,000	5,425	5,375	4,018	-1%	8%	11%
Wheat Grain 1kg	4,265	4,875	5,250	5,500	4,114	5%	13%	29%
Cereal Prices								
White Sorghum 1kg	4,472	4,600	4,845	4,655	3,466	-4%	1%	4%
Yellow Maize 1kg	5,139	6,375	5,750	5,356	4,003	-7%	-16%	4%
Livestock & Livestock Product Prices								
Camel Local Quality (Head)	4,282,683	4,608,333	4,125,333	4,606,944	3,529,450	12%	0%	8%
Cattle Local Quality (Head)	2,559,200	3,010,833	2,816,000	2,875,000	2,202,543	2%	-5%	12%
Fresh Camel Milk 1 litre	8,900	9,800	9,100	9,025	6,814	-1%	-8%	1%
Goat Export Quality (Head)	475,263	530,938	488,075	486,656	372,745	0%	-8%	2%
Goat Local Quality (Head)	389,080	457,500	457,600	426,150	326,389	-7%	-7%	10%
Other Essential Items								
Charcoal 50kg	71,770	87,000	88,600	89,550	68,508	1%	3%	25%
Cowpeas 1 kg	14,312	16,250	15,938	16,000	12,158	0%	-2%	12%
Unskilled Labor Wage Rate	61,697	77,500	85,720	82,700	63,260	-4%	7%	34%
Firewood Bundle	5,286	5,500	6,167	6,333	4,752	3%	15%	20%
Local Sesame Oil 1 litre	34,237	35,563	36,250	37,000	28,247	2%	4%	8%
Exchange Rate (Somaliland Shilling per USD)	8,418	9,967	8,640	8,366	6,310	-3%	-16%	-1%
Terms of Trade								
Labour Wage (Daily)/ Cereal (Rice(Kg))	11	12	15	14	-	-7%	17%	27%
Local Goat (Head)/ Cereal (Rice(Kg))	69	72	80	73	-	-9%	1%	6%
Cost of the Minimum Basket (CMB)	1,142,007	1,239,888	1,239,075	1,203,491	-	-3%	-3%	5%
Price Indices								
Consumer Price Index	-	135	135	131	-	-4%	-3%	-

Figure 42: Trends in Cereal Prices

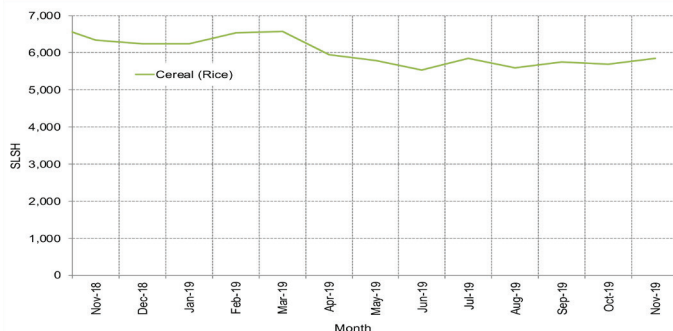


Figure 43: Trends in Wage Rates and Relative Purchasing Power

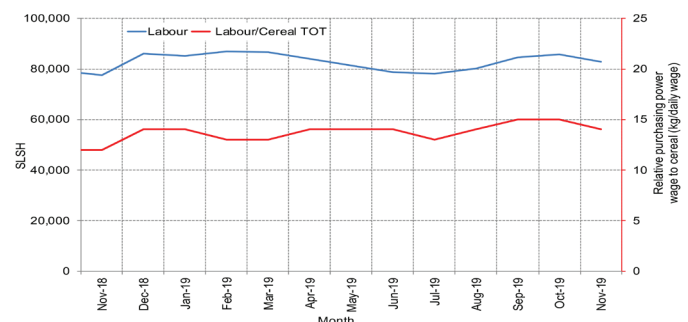


Figure 44: Imported Commodity Prices Compared to Exchange Rate

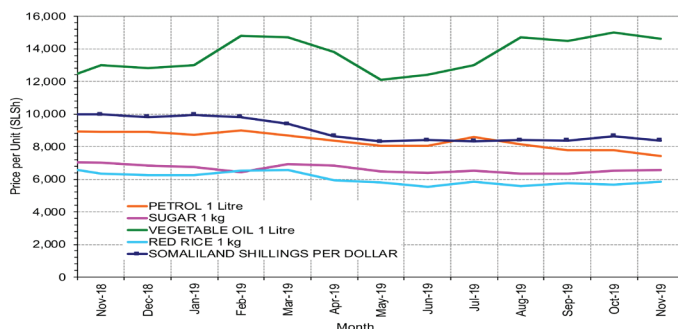


Figure 45: Goat Local Quality

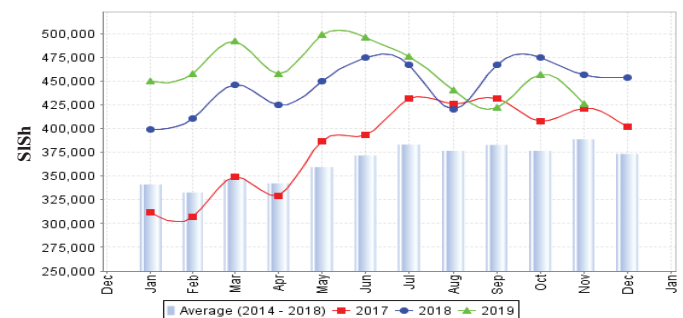


Figure 46: Exchange Rate

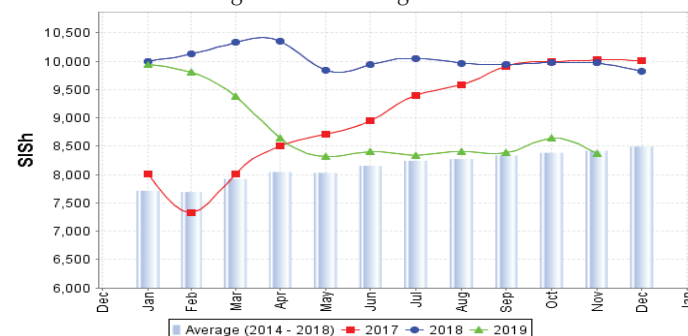
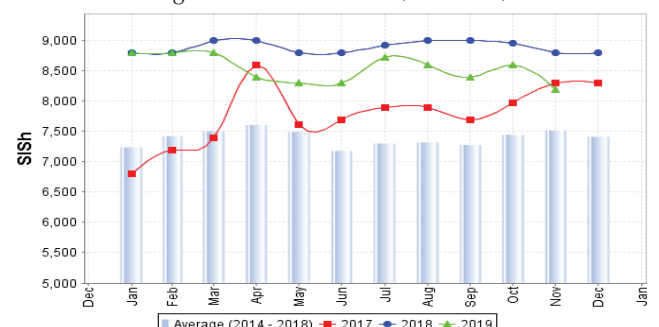


Figure 47: Water Drum (200 litres)



Trends in Livestock Exports

Table 1: Berbera Livestock Exports (Number of Heads)

	2001	2002	2003	2004	2005	2006	2007	2008	2009	2010	2011	2012	2013	2014	2015	2016	2017	2018	2019
Shoats	51 546	341 711	563 107	859 404	1 023 795	1 017 242	1 350 054	1 219 519	1 556 003	2 584 810	3 104 684	3 219 584	2 888 955	3 089 592	3 270 386	2 880 057	1 268 642	1 272 638	62 638
Cattle	20 973	37 547	84 312	131 852	148 151	85 631	88 143	80 051	88 005	133 021	150 934	190 354	201 876	252 397	160 395	150 133	84 812	114 589	47 833
Camel	3 473	18 864	21 874	5 147	5 069	22 810	14 245	26 515	20 206	92 651	107 281	102 664	75 728	64 578	61 475	57 841	2 371	914	600

Figure 48: Berbera Livestock Exports (Number of Heads)

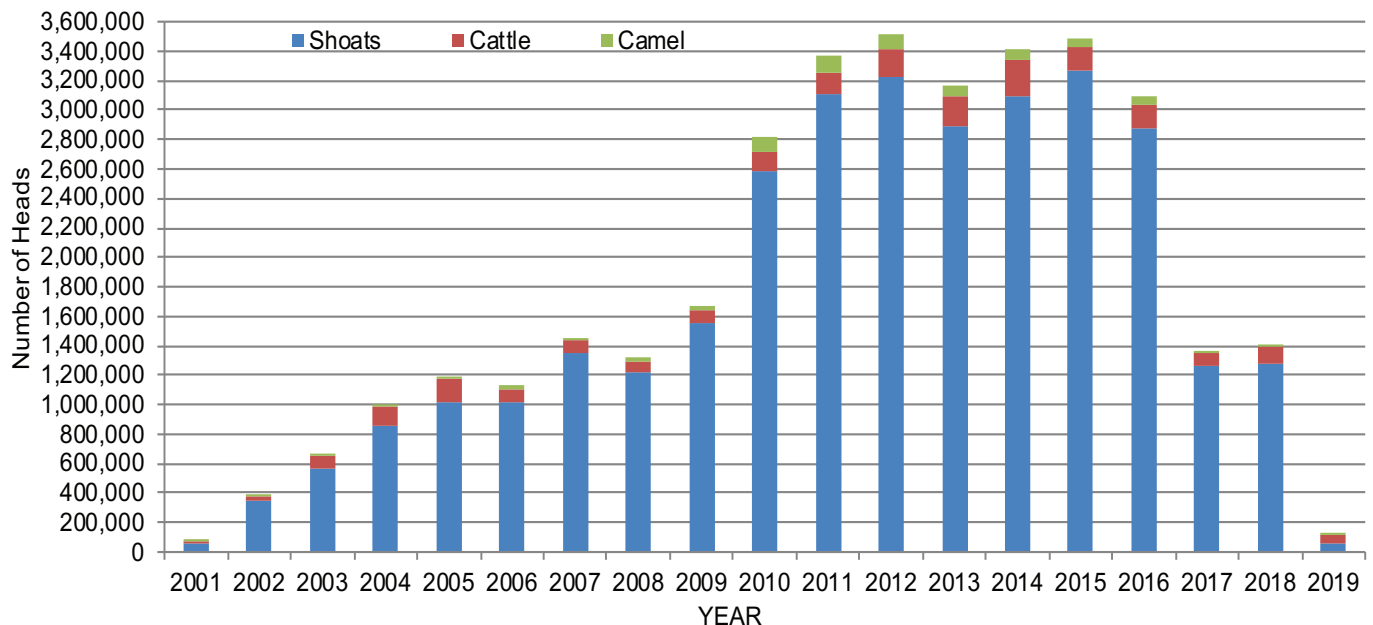
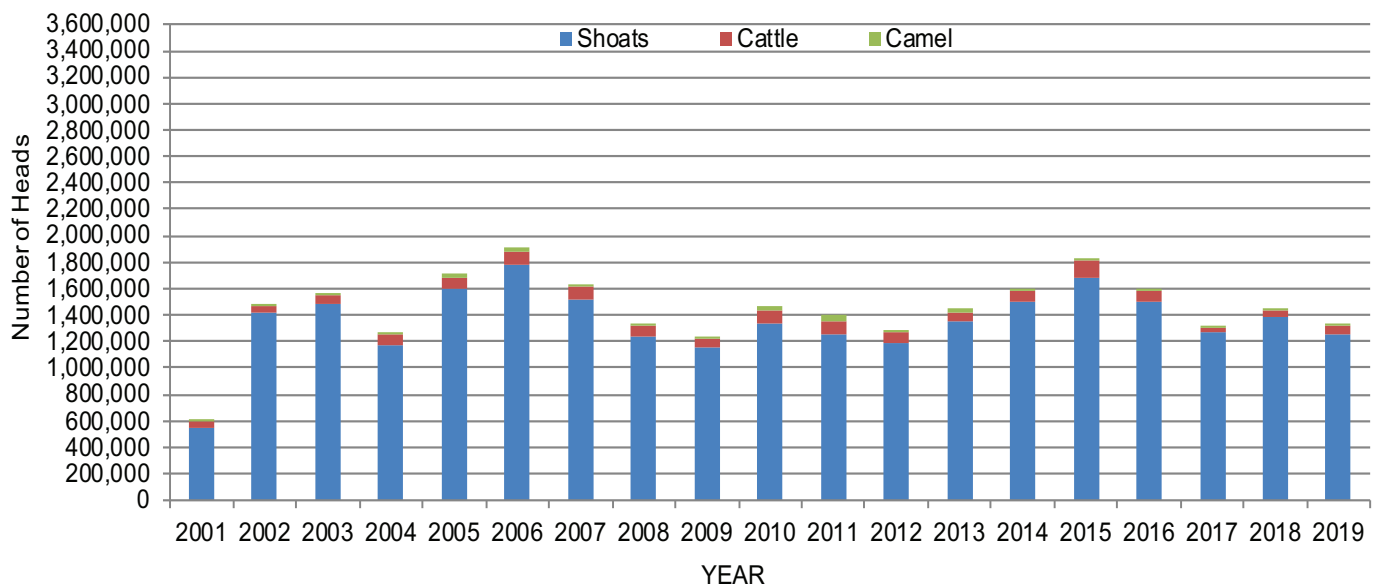


Table 2: Bossaso Livestock Exports (Number of Heads)

	2001	2002	2003	2004	2005	2006	2007	2008	2009	2010	2011	2012	2013	2014	2015	2016	2017	2018	2019
Shoats	548 853	1 412 450	1 483 409	1 166 480	1 594 859	1 777 283	1 522 855	1 236 775	1 159 454	1 333 478	1 256 535	1 192 197	1 349 123	1 493 111	1 676 216	1 507 910	1 266 215	1 385 187	1 250 295
Cattle	42 248	53 313	71 328	79 994	91 910	104 595	89 190	78 046	67 385	103 808	99 058	76 043	77 353	87 759	134 597	70 705	39 347	52 795	74 531
Camel	1 950	9 720	4 259	2 488	26 109	33 724	27 580	27 639	15 331	36 865	45 878	22 288	19 032	12 251	10 945	10 144	5 781	2 933	3 728

Figure 49: Bossaso Livestock Exports (Number of Heads)



Trends in Cereal Imports

Table 3: Total Cereal Imports through Berbera, Bossaso and Mogadishu Ports (Tonnes) *

	2001	2002	2003	2004	2005	2006	2007	2008	2009	2010	2011	2012	2013	2014	2015	2016	2017	2018	2019
Rice	74 729	144 600	180 614	146 567	150 017	198 101	166 626	136 007	171 472	161 415	272 877	227 955	170 868	170 888	195 240	207 267	77 299	256 314	73 415
Wheat flour	134 425	128 263	171 442	151 555	169 583	178 345	176 821	169 208	240 247	249 080	258 679	268 491	183 058	284 230	318 868	207 463	105 215	209 894	79 805
Pasta	26 702	35 425	29 273	38 749	39 153	52 815	41 331	38 441	86 372	102 373	184 849	337 878	134 311	176 951	155 360	78 113	38 935	109 960	32 736

* Only Bossaso data used for 2019

* Berbera data is up to Dec 2016

Elman data gap : April - December 2013

: December 2015-December 2017

Figure 50: Total Cereal Imports (Berbera, Bossaso and Mogadishu)

