

# Market Update

## Highlights

### Inflation:

*SoSh (Somali shilling)-using areas:* Consumer Price Index (CPI) increased (2-11%) in SoSh using areas month-on-month with the highest increase recorded in Central (11%); the increases are due to increase in red sorghum prices. CPI rose annually from (9-24%) due to increase in red sorghum prices.

*SISh (Somaliland shilling)-using areas:* The CPI remained relatively stable month-on-month but increased year-on-year (3%) due to increase in cereal (red sorghum) and imported items prices in the past 12 months.

### Exchange rate:

*SoSh-using areas:* The exchange rates between SoSh and the United States Dollar (USD) indicated relative stability or marginal monthly changes (1-2%) in most regions. The SoSh shows annual depreciation across SoSh-using areas.

*SISh-using areas:* The SISh indicated stability against the USD in November 2016 compared to previous month and 12 months ago.

**Local grain** prices either remained relatively stable or increased month-on-month across the regions of the country. Annual comparison indicates higher prices for local grains in most regions of the country in November 2016 with the highest increase being recorded in Bakool (53%) attributable to reduced supply due to insecurity and poor Gu 2016 production.

**Prices of imported food** (rice, sugar, vegetable oil, wheat flour) mostly exhibited relative stability or mild (less than 10%) monthly changes (increases/decreases) in local currency terms. Year-on-year comparison indicates mild to moderate price increases in most regions of the country for most of the food imports.

**Livestock prices** either changed at mild rates (less than +/- 10%) or declined in most regions of the country month-on-month due to below average pasture and water availability which has deteriorated livestock body conditions. Milk prices (camel and cattle) generally exhibited monthly increases in most regions of the country. Compared to a year ago, livestock prices were lower across the regions of the country in November attributable to deteriorated livestock body conditions and seasonal reduction in demand. On the other hand, milk prices (camel and cattle) increased annually in most regions of the country in November; exceptions are Middle Juba and Shabelle where camel milk prices declined (14-22%) annually attributable to relatively better milk supply and availability in the markets.

**Labor (unskilled) wages** either remained relatively stable or changed mildly (by less than +/- 10%) month-on-month across the regions of country. Annual comparison exhibited mixed trend patterns; specifically, rates either remained relatively stable or changed mildly (by less than +/- 10%) in Northern and Central regions; the rates declined moderately (11-22%) in the Southern regions month-on-month as a result of reduced agricultural activities due to poor performing Deyr 2016 rains.

**Terms of Trade (ToT)** between daily labor wage and local cereals either remained stable month-on-month or declined (by 1-4kg of cereals/daily labor wage) in most parts of the country with highest decline (4kg of cereal/daily labor wage) being recorded in Bay. The monthly declines in ToT between daily labor wage and local cereals can be attributed to increase in cereal prices and/or decrease in labor wage rates. Similarly, ToT between local quality goat and cereals declined in most regions of the country month-on-month. Annual comparison indicates that ToTs are lower across most regions of the country due to declines in labor wages rates and goat prices and/or increase in local grain prices.

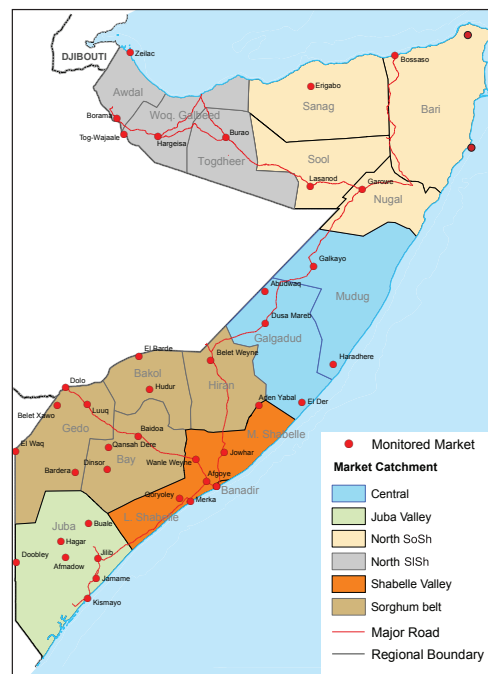
### Towns Affected by Trade Disruption (Bulo Burto, Wajid, Hudur and Diinsor)

**Labor (unskilled) wages** remained stable in Bulo-Burto but declined (4-21%) in the remaining markets month-on-month. Annual comparison indicates declines in all the markets except in Dinsor where daily labor wage rate remained stable.

**Terms of Trade (ToTs)** between daily labor wage and local cereals and between local quality goat and cereals declined both month-on-month and year-on-year in November in all the markets due to increase in cereal prices and decrease in labor wage rates and goat prices.

**Local grain (red and white sorghum)** prices increased in all the markets month-on-month. Similarly, compared to a year ago, local grain prices in all the markets increased from moderate to high levels.

**Prices of imported food items** (rice, sugar, vegetable oil, wheat flour) have changed at mild rates in these markets except in Dinsor where prices declined (16-24%). Annual comparison indicates higher prices for most of the food imports in all the markets.



This Market Update is a monthly report that presents analysis of market information and is produced regularly as part of the monthly monitoring process.

The weekly price data is collected from 48 main markets and 51 rural markets throughout Somalia since 1995.

Market analysis is an integral part of all of FSNAU's annual food security projections and seasonal technical reports (Technical Reports on FSNAU Post Gu and Post Deyr Analysis).

Detailed market data are available online on [www.fsnau.org/ids](http://www.fsnau.org/ids).

# National Trends: CPI, Exchange Rates, Cereal Prices and Relative Purchasing Power

Table 1: ToT between Daily Labour Wage Rate and Cereals (kg) by Region November 2016

Regions	November 2016 (kg)	kg change from		
		October 2016	November 2015	November 5 yr Average (2011 - 2015)
Banadir/Mogadishu	17	-2	-2	-2
Bay	11	-3	-5	-4
Bakool	4	-1	-3	-2
Gedo	10	-2	-4	-4
Juba	9	-1	-2	-1
Shabelle	11	-1	-4	0
Northwest	11	0	-1	3
Northeast	8	0	-1	1
Central	5	0	0	1

Figure 1: Wheat Prices: Mogadishu and Bossaso Markets

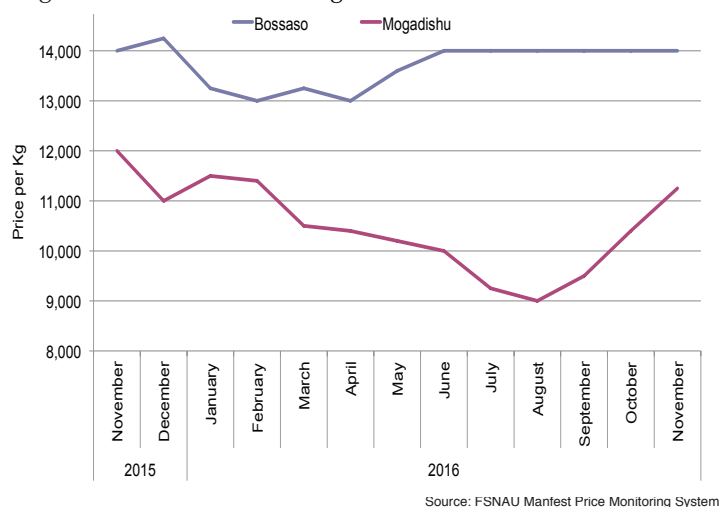


Figure 2: Terms of Trade Between Wage Rates and Selected Cereals

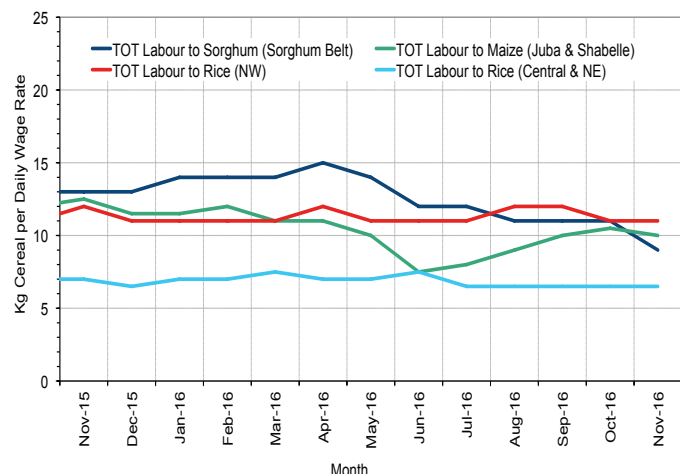


Figure 3: Monthly Exchange Rate for Selected Regions (SoSh and SiSh to USD)

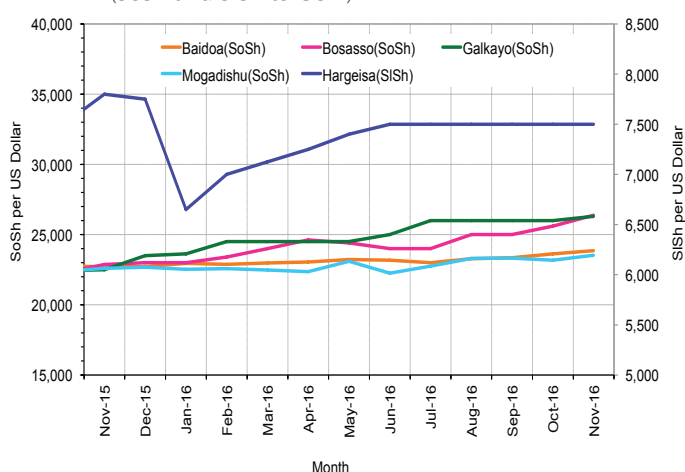


Figure 4: Monthly Trends in Consumer Price Index (CPI, March 2007=100)

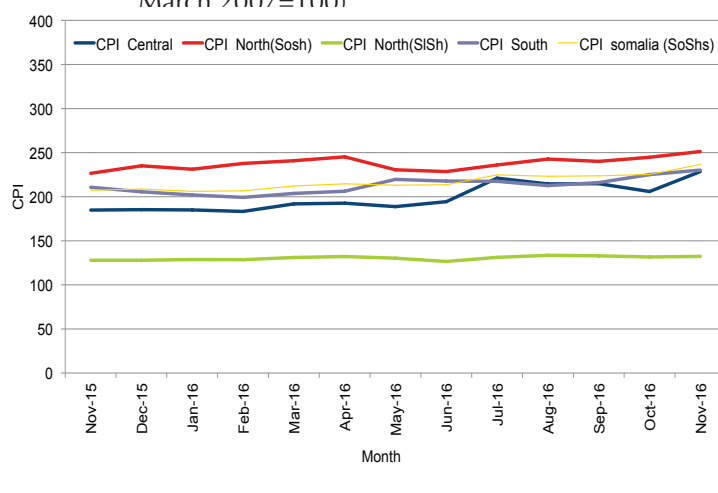
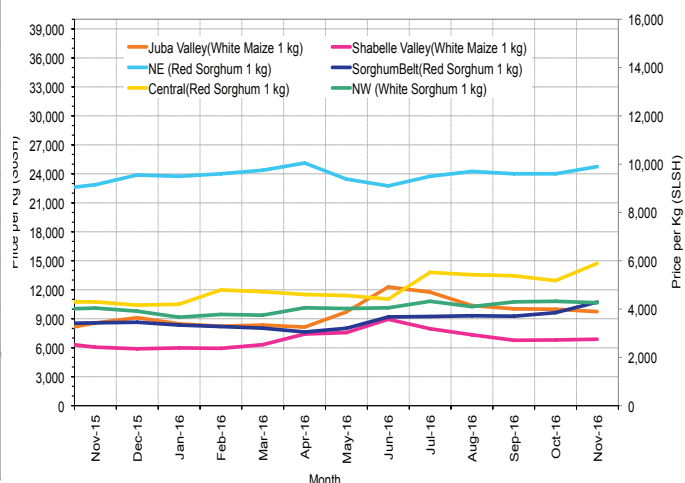


Figure 5: Monthly Trends in Local Cereal Prices



# Regional analysis: Juba Regions

Indicator	5-Year Average (2011-2015)	Nov-15	Oct-16	Nov-16 Nominal Price	Nov-16 Real (Deflated) Price	% Change Previous Month	% Change Same Month Previous Year	% Change 5-year avrg (2011-2015)
<b>Imported Commodities Prices</b>								
Diesel 1 litre	32,417	24,938	21,750	20,625	8,855	-5%	-17%	-36%
Imported Red Rice 1kg	18,830	16,469	16,266	16,484	7,057	1%	0%	-12%
Petrol 1 litre	32,492	30,813	25,000	24,625	10,592	-2%	-20%	-24%
Sugar	23,907	19,350	18,406	18,375	7,878	0%	-5%	-23%
Vegetable Oil 1 litre	40,381	33,031	28,406	29,031	12,505	2%	-12%	-28%
Wheat Flour 1kg	18,060	16,106	15,875	16,156	6,915	2%	0%	-11%
Wheat Grain 1kg	28,000	-	-	-	-	-	-	-
<b>Cereal Prices</b>								
Red Sorghum 1kg	7,562	7,000	9,000	9,000	3,808	0%	29%	19%
White Maize 1kg	9,209	8,556	9,975	9,731	4,125	-2%	14%	6%
<b>Livestock &amp; Livestock Product Prices</b>								
Camel Local Quality (Head)	9,592,035	9,529,143	7,660,714	7,443,750	3,231,811	-3%	-22%	-22%
Cattle Local Quality (Head)	4,049,358	4,133,929	2,282,143	2,362,500	1,025,645	4%	-43%	-42%
Fresh Camel Milk 1 litre	19,198	19,136	18,688	18,281	7,837	-2%	-4%	-5%
Goat Export Quality (Head)	1,478,950	1,327,150	962,813	844,688	366,645	-12%	-36%	-43%
Goat Local Quality (Head)	975,111	930,625	620,313	581,250	252,266	-6%	-38%	-40%
<b>Other Essential Items</b>								
Charcoal 50kg	84,826	92,500	90,625	86,719	37,551	-4%	-6%	2%
Cowpeas 1 kg	24,260	21,343	24,350	23,375	10,049	-4%	10%	-4%
Unskilled Labor Wage Rate	82,600	93,319	98,500	91,250	39,519	-7%	-2%	10%
Firewood Bundle	9,044	7,625	6,891	7,516	3,163	9%	-1%	-17%
Local Sesame Oil 1 litre	77,137	67,781	54,375	60,938	26,358	12%	-10%	-21%
Exchange Rate (Somali Shilling per USD)	23,063	22,925	23,063	23,063	9,913	0%	1%	0%
<b>Terms of Trade</b>								
Labour Wage (Daily)/ Cereal (Maize(Kg))	10	11	10	9	-	-10%	-18%	-10%
Local Goat (Head)/ Cereal (Maize(Kg))	117	109	62	60	-	-3%	-45%	-49%
<b>Price Indices</b>								
Consumer Price Index	-	211	225	230	-	2%	9%	-

Figure 6: Trends in Cereal Prices

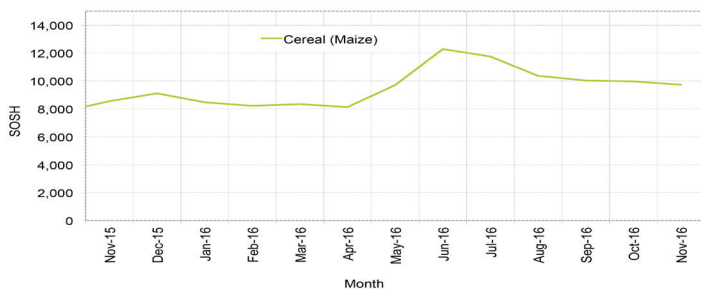


Figure 7: Trends in Wage Rates and Relative Purchasing Power

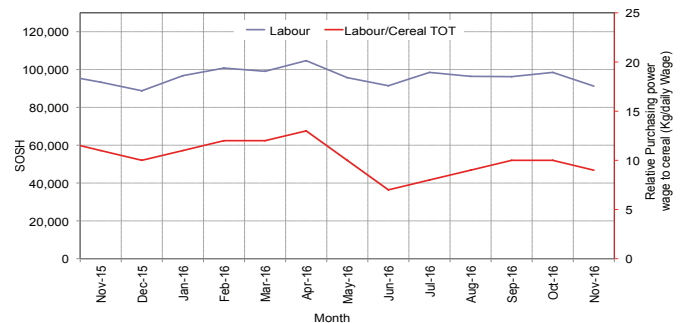


Figure 8: Imported Commodity Prices Compared to Exchange Rate

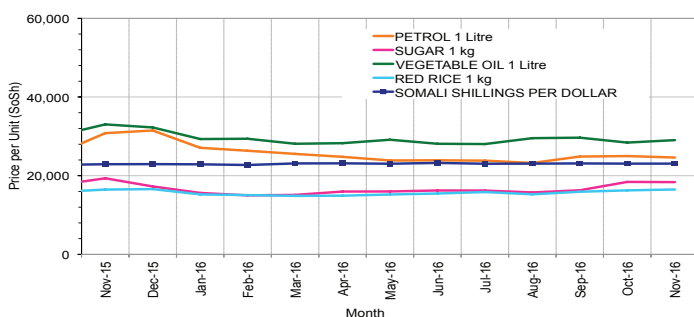


Figure 9: Goat Local Quality

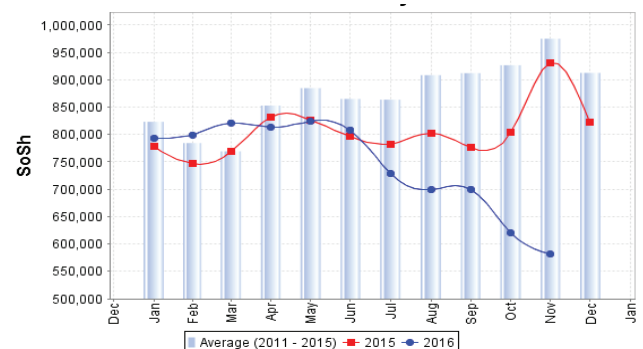


Figure 10: Exchange Rate

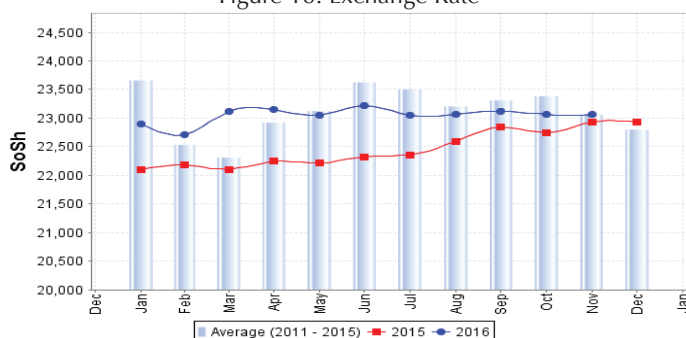
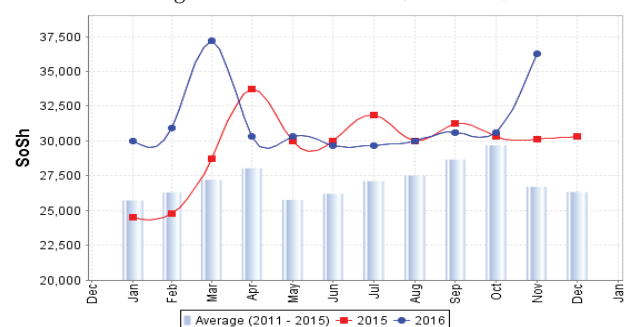


Figure 11: Water Drum (200 litres)



# Regional analysis: Sorghum Belt Regions (Bay, Bakool, Gedo and Hiran)

Indicator	5-Year Average (2011-2015)	Nov-15	Oct-16	Nov-16 Nominal Price	Nov-16 Real (Deflated) Price	% Change Previous Month	% Change Same Month Previous Year	% Change 5-year avrg (2011-2015)
<b>Imported Commodities Prices</b>								
Diesel 1 litre	32,120	27,615	24,950	24,479	10,528	-2%	-11%	-24%
Imported Red Rice 1kg	20,140	18,635	20,313	19,229	8,249	-5%	3%	-5%
Petrol 1 litre	32,290	29,635	28,833	28,375	12,220	-2%	-4%	-12%
Sugar	23,362	19,212	23,783	23,521	10,112	-1%	22%	1%
Vegetable Oil 1 litre	43,096	37,096	38,117	37,882	16,348	-1%	2%	-12%
Wheat Flour 1kg	19,032	18,365	19,175	18,396	7,887	-4%	0%	-3%
Wheat Grain 1kg	13,732	22,000	24,000	22,800	9,799	-5%	4%	66%
<b>Cereal Prices</b>								
Red Sorghum 1kg	8,772	8,255	9,585	10,600	4,502	11%	28%	21%
White Maize 1kg	10,024	9,673	10,305	10,911	4,637	6%	13%	9%
<b>Livestock &amp; Livestock Product Prices</b>								
Camel Local Quality (Head)	12,659,727	12,371,591	11,639,000	10,293,667	4,469,181	-12%	-17%	-19%
Cattle Local Quality (Head)	3,815,652	3,485,938	3,503,929	2,866,071	1,244,284	-18%	-18%	-25%
Fresh Camel Milk 1 litre	19,710	15,688	21,475	21,424	9,202	0%	37%	9%
Goat Export Quality (Head)	1,620,095	1,472,500	1,558,800	1,395,000	605,578	-11%	-5%	-14%
Goat Local Quality (Head)	1,047,953	890,769	843,292	738,403	320,498	-12%	-17%	-30%
<b>Other Essential Items</b>								
Charcoal 50kg	156,032	166,979	150,409	144,318	62,560	-4%	-14%	-8%
Cowpeas 1 kg	30,154	26,740	25,192	27,455	11,820	9%	3%	-9%
Unskilled Labor Wage Rate	106,969	107,346	97,208	89,896	38,931	-8%	-16%	-16%
Firewood Bundle	6,505	6,346	7,167	6,007	2,508	-16%	-5%	-8%
Local Sesame Oil 1 litre	80,137	71,250	73,556	76,843	33,264	4%	8%	-4%
Exchange Rate (Somali Shilling per USD)	22,480	22,627	23,932	24,169	10,394	1%	7%	8%
<b>Terms of Trade</b>								
Labour Wage (Daily)/ Cereal (Sorghum(Kg)	12	13	10	8	-	-20%	-38%	-33%
Local Goat (Head)/ Cereal (Sorghum(Kg)	124	108	88	70	-	-20%	-35%	-44%
<b>Price Indices</b>								
Consumer Price Index	-	211	225	230	-	2%	9%	-

Figure 12: Trends in Cereal Prices

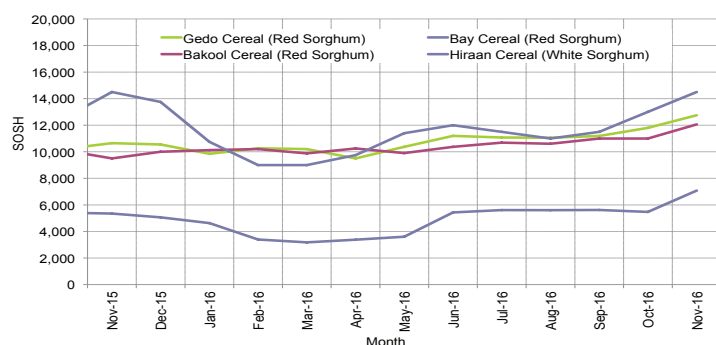


Figure 13: Trends in Wage Rates and Relative Purchasing Power

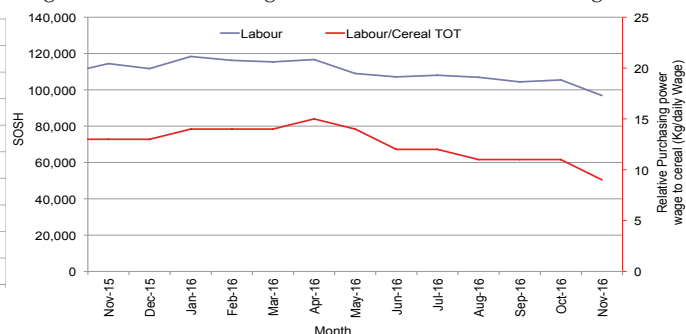


Figure 14: Imported Commodity Prices Compared to Exchange Rate

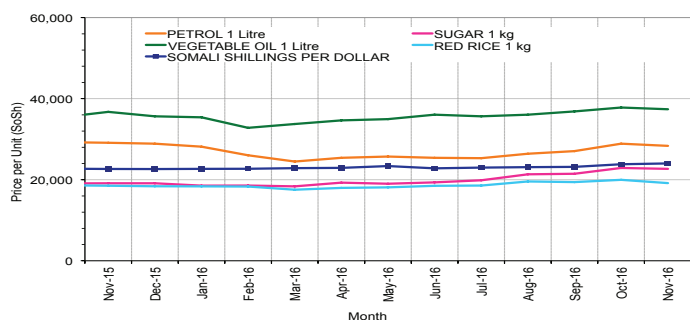


Figure 15: Goat Local Quality

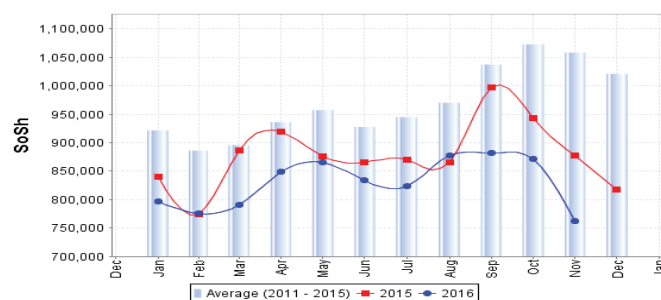


Figure 16: Exchange Rate

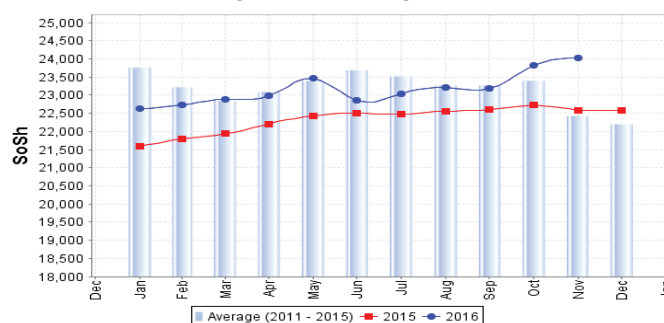
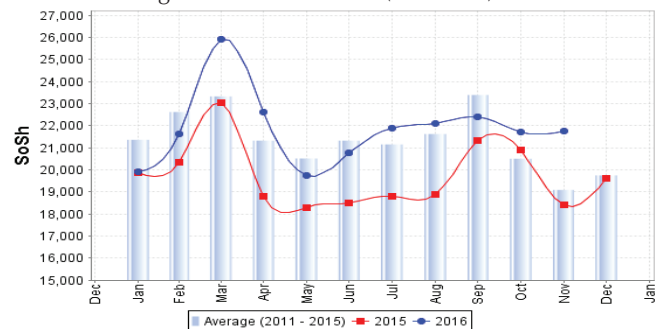


Figure 17: Water Drum (200 litres)



# Regional analysis: Shabelle Regions

Indicator	5-Year Average (2011-2015)	Nov-15	Oct-16	Nov-16 Nominal Price	Nov-16 Real (Deflated) Price	% Change Previous Month	% Change Same Month Previous Year	% Change 5-year avrg (2011-2015)
<b>Imported Commodities Prices</b>								
Diesel 1 litre	28,341	22,833	16,000	18,125	7,769	13%	-21%	-36%
Imported Red Rice 1kg	17,733	15,000	17,600	18,500	7,932	5%	23%	4%
Petrol 1 litre	30,541	27,792	20,000	21,563	9,262	8%	-22%	-29%
Sugar	19,658	15,667	21,900	23,938	10,293	9%	53%	22%
Vegetable Oil 1 litre	31,550	25,000	29,500	31,375	13,522	6%	26%	-1%
Wheat Flour 1kg	17,006	14,917	18,200	19,000	8,149	4%	27%	12%
Wheat Grain 1kg	15,733	17,000	16,500	11,000	4,676	-33%	-35%	-30%
<b>Cereal Prices</b>								
Red Sorghum 1kg	11,252	10,167	7,611	8,833	3,735	16%	-13%	-21%
White Maize 1kg	6,720	6,057	6,806	6,872	2,884	1%	13%	2%
<b>Livestock &amp; Livestock Product Prices</b>								
Camel Local Quality (Head)	17,054,500	18,005,000	16,262,500	15,165,625	6,584,477	-7%	-16%	-11%
Cattle Local Quality (Head)	5,583,000	5,430,000	4,769,167	4,481,250	1,945,559	-6%	-17%	-20%
Fresh Camel Milk 1 litre	20,766	22,167	17,600	18,437	7,905	5%	-17%	-11%
Goat Export Quality (Head)	1,883,425	1,827,500	1,726,944	1,458,333	633,076	-16%	-20%	-23%
Goat Local Quality (Head)	1,344,666	1,307,917	1,152,667	1,166,875	506,531	1%	-11%	-13%
<b>Other Essential Items</b>								
Charcoal 50kg	137,561	168,944	119,083	122,500	53,087	3%	-27%	-11%
Cowpeas 1 kg	25,482	20,350	19,583	23,906	10,279	22%	17%	-6%
Unskilled Labor Wage Rate	73,333	84,333	74,500	76,563	33,142	3%	-9%	4%
Firewood Bundle	6,999	7,375	6,400	6,750	2,831	5%	-8%	-4%
Local Sesame Oil 1 litre	61,711	42,958	49,600	51,250	22,152	3%	19%	-17%
Exchange Rate (Somali Shilling per USD)	22,852	22,550	23,360	23,375	10,049	0%	4%	2%
<b>Terms of Trade</b>								
Labour Wage (Daily)/ Cereal (Maize(Kg))	11	14	11	11	-	0%	-21%	0%
Local Goat (Head)/ Cereal (Maize(Kg))	207	216	169	170	-	1%	-21%	-18%
<b>Price Indices</b>								
Consumer Price Index	-	211	225	230	-	2%	9%	-

Figure 18: Trends in Cereal Prices

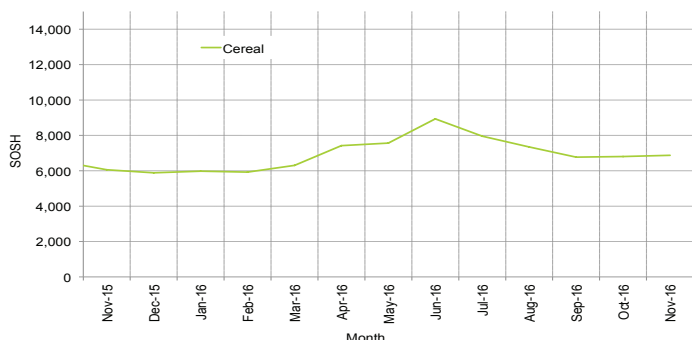


Figure 19: Trends in Wage Rates and Relative Purchasing Power

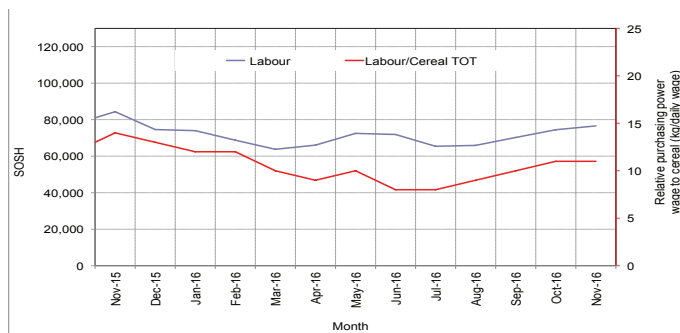


Figure 20: Imported Commodity Prices Compared to Exchange Rate

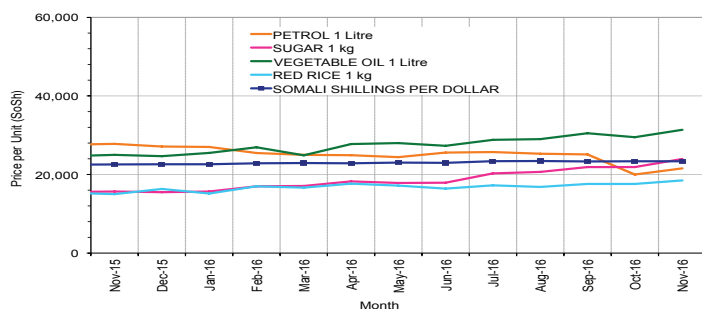


Figure 21: Goat Local Quality

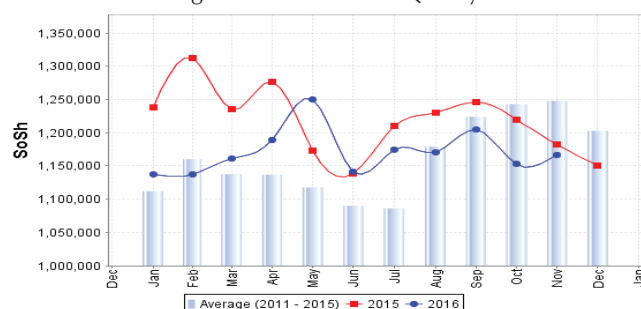


Figure 22: Exchange Rate

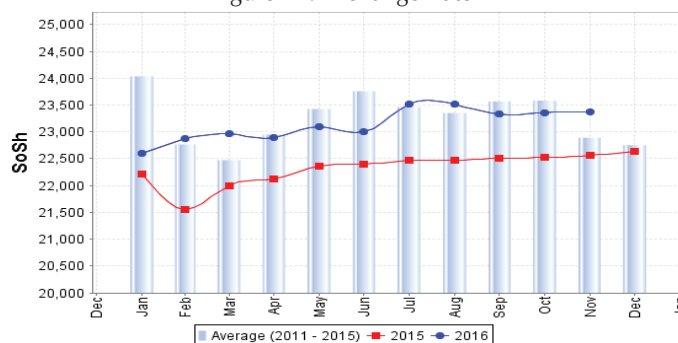
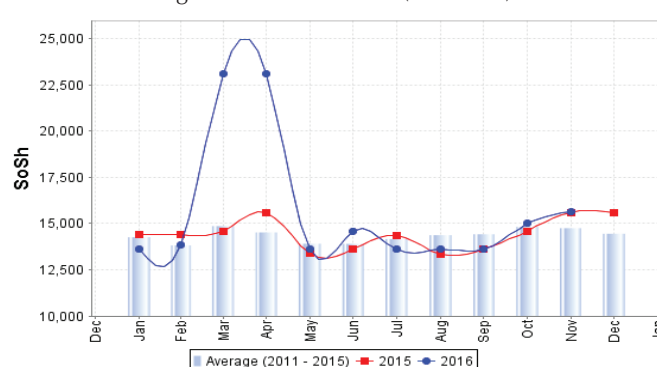


Figure 23: Water Drum (200 litres)





# Regional analysis: Banadir Region

Indicator	5-Year Average (2011-2015)	Nov-15	Oct-16	Nov-16 Nominal Price	Nov-16 Real (Deflated) Price	% Change Previous Month	% Change Same Month Previous Year	% Change 5-year avrg (2011-2015)
<b>Imported Commodities Prices</b>								
Diesel 1 litre	22,929	17,292	14,200	13,850	5,913	-2%	-20%	-40%
Imported Red Rice 1kg	14,591	12,500	12,150	12,175	5,186	0%	-3%	-17%
Petrol 1 litre	23,338	19,775	17,220	16,950	7,259	-2%	-14%	-27%
Sugar	16,430	13,208	15,600	15,450	6,608	-1%	17%	-6%
Vegetable Oil 1 litre	28,616	22,125	21,825	22,075	9,484	1%	0%	-23%
Wheat Flour 1kg	13,857	12,833	11,930	12,050	5,132	1%	-6%	-13%
Wheat Grain 1kg	12,379	11,667	11,000	11,000	4,676	0%	-6%	-11%
<b>Cereal Prices</b>								
Red Sorghum 1kg	7,485	6,721	6,930	8,835	3,736	27%	31%	18%
White Maize 1kg	8,634	8,254	7,393	8,650	3,656	17%	5%	0%
<b>Livestock &amp; Livestock Product Prices</b>								
Camel Local Quality (Head)	13,000,000	-	-	-	-	-	-	-
Cattle Local Quality (Head)	3,000,000	-	-	-	-	-	-	-
Fresh Camel Milk 1 litre	21,591	23,000	23,700	24,100	10,364	2%	5%	12%
Goat Export Quality (Head)	2,403,125	2,425,000	2,220,000	2,235,000	970,287	1%	-	-7%
Goat Local Quality (Head)	2,005,125	1,917,500	2,032,500	2,018,750	876,396	-1%	5%	1%
<b>Other Essential Items</b>								
Charcoal 50kg	195,875	229,208	179,100	177,800	77,097	-1%	-22%	-9%
Cowpeas 1 kg	24,430	22,000	22,775	23,340	10,034	2%	6%	-4%
Unskilled Labor Wage Rate	112,666	107,083	92,000	98,000	42,449	7%	-8%	-13%
Firewood Bundle	8,240	8,100	6,250	6,250	2,614	0%	-23%	-24%
Local Sesame Oil 1 litre	63,325	55,917	40,650	39,900	17,224	-2%	-29%	-37%
Exchange Rate (Somali Shilling per USD)	22,359	22,500	23,066	23,488	10,098	2%	4%	5%
<b>Terms of Trade</b>								
Labour Wage (Daily)/ Cereal (Maize(Kg)	13	13	12	11	-	-8%	-15%	-15%
Local Goat (Head)/ Cereal (Maize(Kg)	237	232	275	233	-	-15%	0%	-2%
<b>Price Indices</b>								
Consumer Price Index	-	211	225	230	-	2%	9%	-

Figure 24: Trends in Cereal Prices

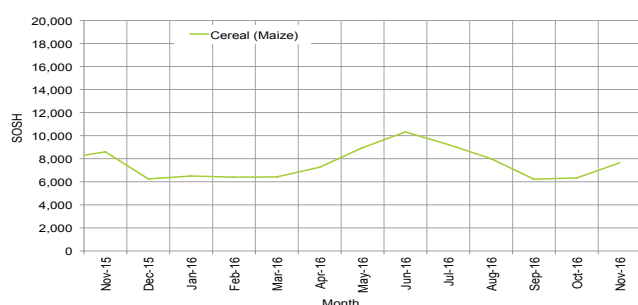


Figure 25: Bakara: Trends in Wage Rates and Relative Purchasing Power

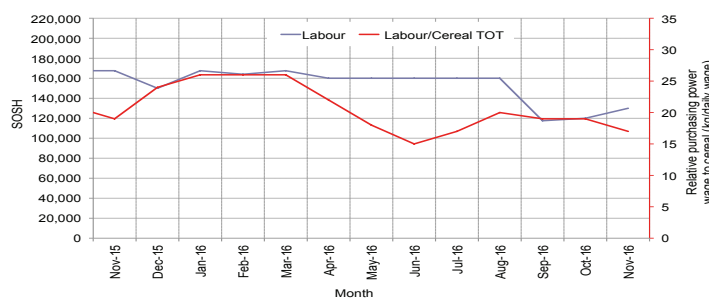


Figure 26: Imported Commodity Prices Compared to Exchange Rate

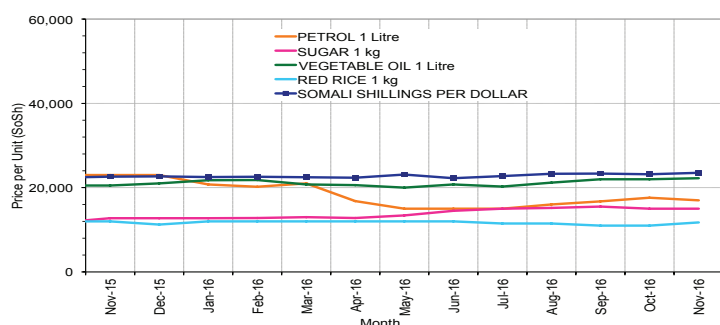


Figure 27: Goat Local Quality

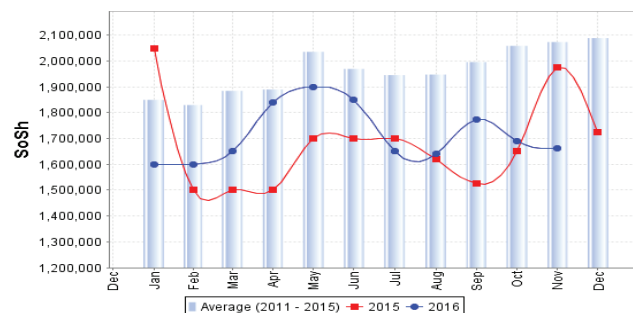


Figure 28: Exchange Rate

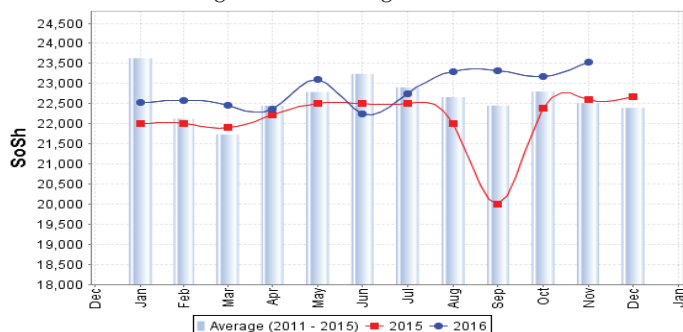
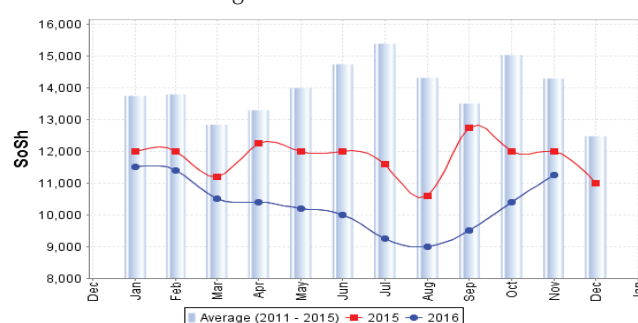


Figure 29: Wheat Flour



# Regional analysis: Central Regions

Indicator	5-Year Average (2011-2015)	Nov-15	Oct-16	Nov-16 Nominal Price	Nov-16 Real (Deflated) Price	% Change Previous Month	% Change Same Month Previous Year	% Change 5-year avrg (2011-2015)
<b>Imported Commodities Prices</b>								
Diesel 1 litre	28,842	20,950	18,800	20,300	8,785	8%	-3%	-30%
Imported Red Rice 1kg	20,764	17,060	18,640	19,350	8,369	4%	13%	-7%
Petrol 1 litre	26,236	23,400	22,040	23,300	10,098	6%	0%	-11%
Sugar	23,060	18,000	22,600	23,000	9,967	2%	28%	0%
Vegetable Oil 1 litre	44,160	35,150	37,280	37,400	16,269	0%	6%	-15%
Wheat Flour 1kg	17,662	15,440	16,080	16,100	6,947	0%	4%	-9%
Wheat Grain 1kg	15,681	16,925	17,333	17,313	7,478	0%	2%	10%
<b>Cereal Prices</b>								
Red Sorghum 1kg	12,538	10,750	12,950	14,750	6,356	14%	37%	18%
White Maize 1kg	12,848	13,200	16,950	16,500	7,122	-3%	25%	28%
<b>Livestock &amp; Livestock Product Prices</b>								
Camel Local Quality (Head)	10,910,000	13,150,000	13,025,000	12,837,500	5,618,611	-1%	-2%	18%
Cattle Local Quality (Head)	2,025,000	-	-	-	-	-	-	-
Fresh Camel Milk 1 litre	28,552	29,040	31,360	36,050	15,678	15%	24%	26%
Goat Export Quality (Head)	1,414,666	1,325,000	1,510,000	1,500,000	656,419	-1%	13%	6%
Goat Local Quality (Head)	1,111,500	1,004,000	992,800	1,001,000	438,017	1%	0%	-10%
<b>Other Essential Items</b>								
Charcoal 50kg	182,640	159,300	166,000	170,500	74,524	3%	7%	-7%
Cowpeas 1 kg	27,784	22,940	29,480	30,450	13,227	3%	33%	10%
Unskilled Labor Wage Rate	87,400	92,000	94,000	95,500	41,698	2%	4%	9%
Firewood Bundle	36,300	33,800	32,000	32,900	14,300	3%	-3%	-9%
Local Sesame Oil 1 litre	88,970	88,500	79,200	78,450	34,236	-1%	-11%	-12%
Exchange Rate (Somali Shilling per USD)	22,996	22,300	25,700	26,210	11,372	2%	18%	14%
<b>Terms of Trade</b>								
Labour Wage (Daily)/ Cereal (Rice(Kg))	4	5	5	5	-	0%	0%	25%
Local Goat (Head)/ Cereal (Rice(Kg))	55	59	53	52	-	-2%	-12%	-5%
Camel (Head)/Cereal (Kg)	560	771	699	663	-	-5%	-14%	18%
<b>Price Indices</b>								
Consumer Price Index	-	185	206	228	-	11%	24%	-

Figure 30: Trends in Cereal Prices

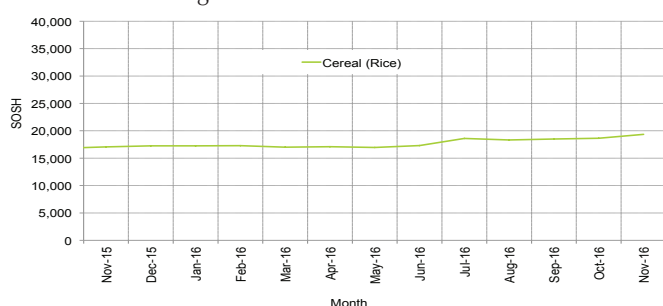


Figure 31: Trends in wage rates and relative purchasing power

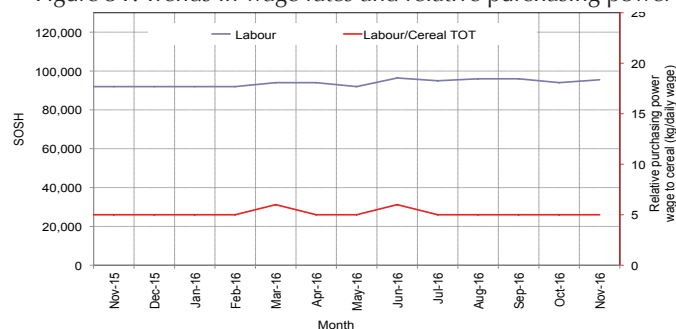


Figure 32: Imported Commodity Prices Compared to Exchange Rate

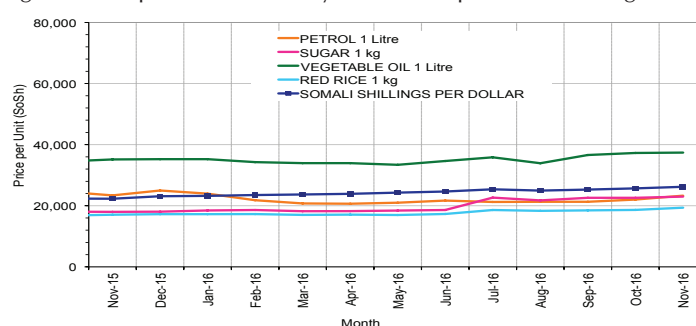


Figure 33: Goat Local Quality

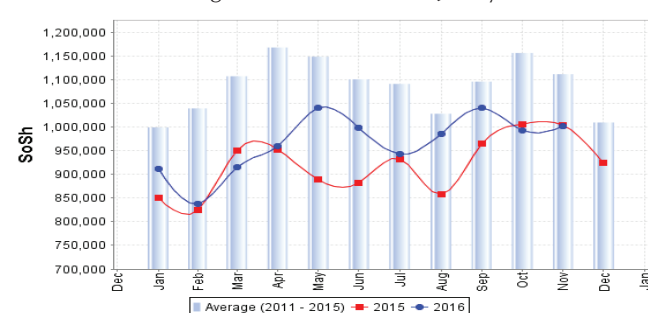


Figure 34: Exchange Rate

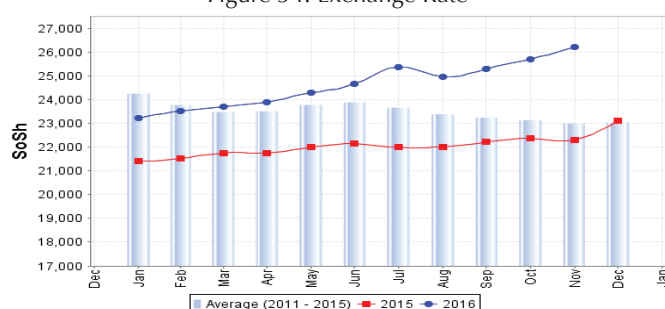
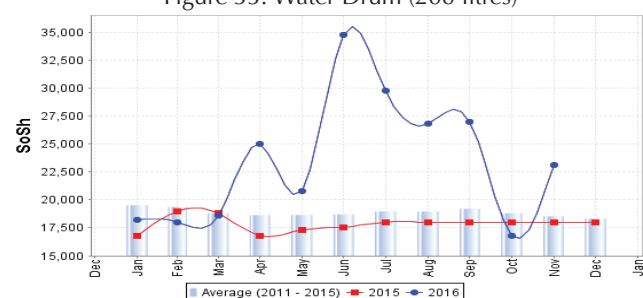


Figure 35: Water Drum (200 litres)



# Regional analysis: Northeast Regions

Indicator	5-Year Average (2011-2015)	Nov-15	Oct-16	Nov-16 Nominal Price	Nov-16 Real (Deflated) Price	% Change Previous Month	% Change Same Month Previous Year	% Change 5-year avrg (2011-2015)
<b>Imported Commodities Prices</b>								
Diesel 1 litre	25,175	18,893	15,868	16,256	6,369	2%	-14%	-35%
Imported Red Rice 1kg	18,628	15,857	16,943	16,845	6,603	-1%	6%	-10%
Petrol 1 litre	24,741	22,500	19,629	19,786	7,774	1%	-12%	-20%
Sugar	22,134	17,857	21,486	21,762	8,560	1%	22%	-2%
Vegetable Oil 1 litre	41,160	33,429	33,343	33,250	13,131	0%	-1%	-19%
Wheat Flour 1kg	17,512	15,464	16,286	16,238	6,362	0%	5%	-7%
Wheat Grain 1kg	29,317	29,650	30,700	30,700	12,117	0%	4%	5%
<b>Cereal Prices</b>								
Red Sorghum 1kg	23,158	22,875	24,000	24,750	9,749	3%	8%	7%
White Maize 1kg	20,000	22,000	26,000	26,500	10,445	2%	20%	33%
<b>Livestock &amp; Livestock Product Prices</b>								
Camel Local Quality (Head)	15,353,626	14,970,000	13,450,000	12,785,167	5,087,566	-5%	-15%	-17%
Cattle Local Quality (Head)	8,350,000	8,875,000	8,000,000	8,000,000	3,183,381	0%	-10%	-4%
Fresh Camel Milk 1 litre	35,170	38,681	45,417	47,069	18,630	4%	22%	34%
Goat Export Quality (Head)	1,429,550	1,350,000	1,236,000	1,215,000	483,391	-2%	-10%	-15%
Goat Local Quality (Head)	1,346,732	1,247,500	1,208,929	1,129,643	449,425	-7%	-9%	-16%
<b>Other Essential Items</b>								
Charcoal 50kg	370,857	347,143	358,286	365,000	145,146	2%	5%	-2%
Cowpeas 1 kg	44,841	37,583	37,283	38,306	15,143	3%	2%	-15%
Unskilled Labor Wage Rate	130,669	136,786	138,857	138,929	55,185	0%	2%	6%
Firewood Bundle	36,550	34,429	33,371	34,060	13,454	2%	-1%	-7%
Local Sesame Oil 1 litre	98,400	101,750	95,800	95,000	37,704	-1%	-7%	-3%
Exchange Rate (Somali Shilling per USD)	22,495	21,629	23,943	24,506	9,652	2%	13%	9%
<b>Terms of Trade</b>								
Labour Wage (Daily)/ Cereal (Rice(Kg))	7	9	8	8	-	0%	-11%	14%
Local Goat (Head)/ Cereal (Rice(Kg))	73	79	71	67	-	-6%	-15%	-8%
<b>Price Indices</b>								
Consumer Price Index	-	227	245	251	-	3%	11%	-

Figure 36: Trends in Cereal Prices

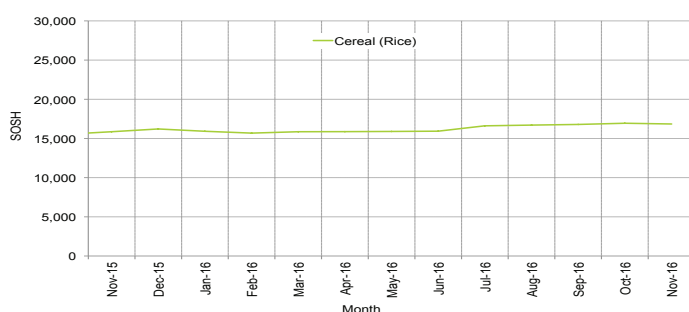


Figure 37: Trends in Wage Rates and Relative Purchasing Power

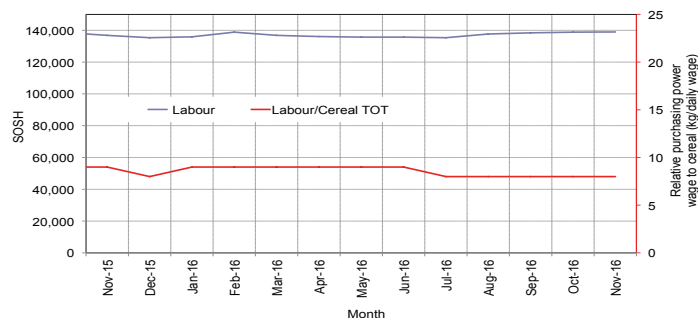


Figure 38: Imported Commodity Prices Compared to Exchange Rate

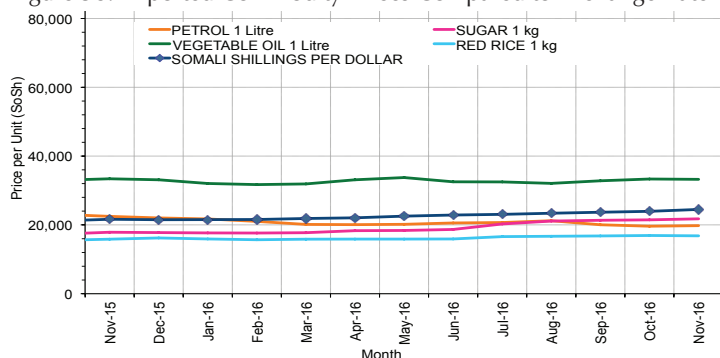


Figure 39: Goat Local Quality

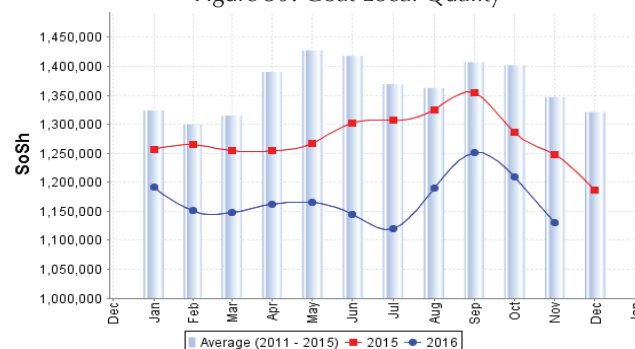


Figure 40: Exchange Rate

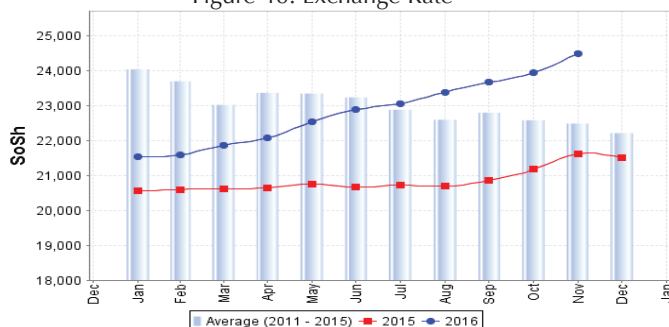
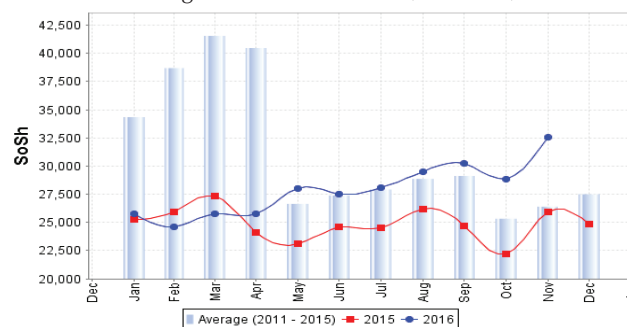


Figure 41: Water Drum (200 litres)





# Regional analysis: Northwest Regions

Indicator	5-Year Average (2011-2015)	Nov-15	Oct-16	Nov-16 Nominal Price	Nov-16 Real (Deflated) Price	% Change Previous Month	% Change Same Month Previous Year	% Change 5-year avrg (2011-2015)
<b>Imported Commodities Prices</b>								
Diesel 1 litre	6,639	6,360	4,940	4,775	3,510	-3%	-25%	-28%
Imported Red Rice 1kg	5,029	4,990	5,400	5,500	4,058	2%	10%	9%
Petrol 1 litre	7,270	7,530	6,370	6,340	4,693	0%	-16%	-13%
Sugar	5,927	5,550	5,940	6,050	4,474	2%	9%	2%
Vegetable Oil 1 litre	12,460	13,500	13,056	14,500	10,861	11%	7%	16%
Wheat Flour 1kg	4,448	4,530	4,800	5,040	3,710	5%	11%	13%
Wheat Grain 1kg	3,377	3,500	4,194	4,375	3,207	4%	25%	30%
<b>Cereal Prices</b>								
White Sorghum 1kg	3,801	4,040	4,320	4,260	3,120	-1%	5%	12%
Yellow Maize 1kg	3,792	4,250	4,500	4,720	3,468	5%	11%	24%
<b>Livestock &amp; Livestock Product Prices</b>								
Camel Local Quality (Head)	3,278,383	3,968,750	4,230,000	3,993,333	3,018,673	-6%	1%	22%
Cattle Local Quality (Head)	2,030,066	2,256,667	2,002,667	2,274,333	1,719,190	14%	1%	12%
Fresh Camel Milk 1 litre	6,222	8,400	9,000	9,200	6,855	2%	10%	48%
Goat Export Quality (Head)	425,836	456,083	364,531	416,719	314,920	14%	-9%	-2%
Goat Local Quality (Head)	321,919	392,250	291,950	319,450	241,389	9%	-19%	-1%
<b>Other Essential Items</b>								
Charcoal 50kg	52,317	64,750	72,800	70,400	53,119	-3%	9%	35%
Cowpeas 1 kg	10,351	10,750	13,375	13,625	10,200	2%	27%	32%
Unskilled Labor Wage Rate	43,443	58,700	58,800	58,575	44,180	0%	0%	35%
Firewood Bundle	3,639	4,833	5,933	5,433	4,007	-8%	12%	49%
Local Sesame Oil 1 litre	29,541	32,438	32,063	32,188	24,233	0%	-1%	9%
Exchange Rate (Somaliland Shilling per US\$)	6,668	7,585	7,530	7,550	5,607	0%	0%	13%
<b>Terms of Trade</b>								
Labour Wage (Daily)/ Cereal (Rice(Kg))	8	12	11	11	-	0%	-8%	38%
Local Goat (Head)/ Cereal (Rice(Kg))	63	79	54	58	-	7%	-27%	-8%
<b>Price Indices</b>								
Consumer Price Index	-	128	132	132	-	0%	3%	-

Figure 42: Trends in Cereal Prices

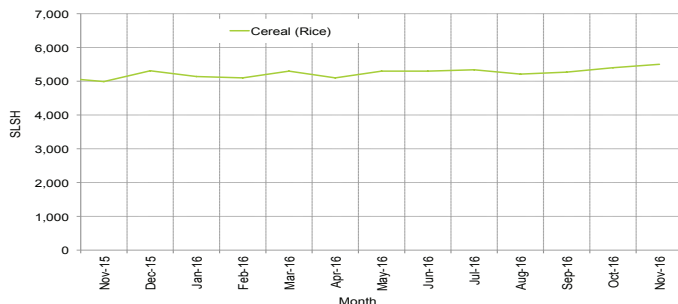


Figure 43: Trends in Wage Rates and Relative Purchasing Power

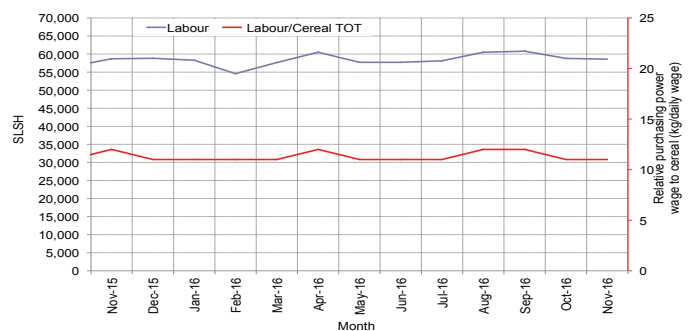


Figure 44: Imported Commodity Prices Compared to Exchange Rate

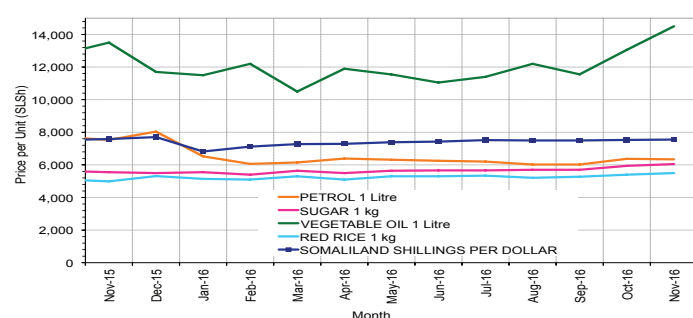


Figure 45: Goat Local Quality

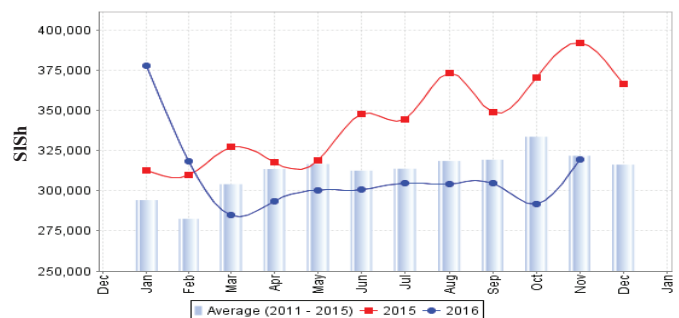


Figure 46: Exchange Rate

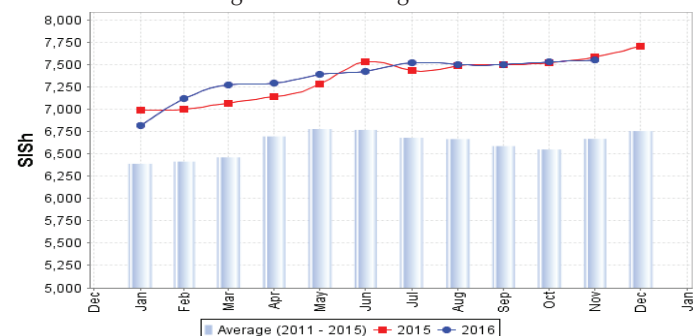
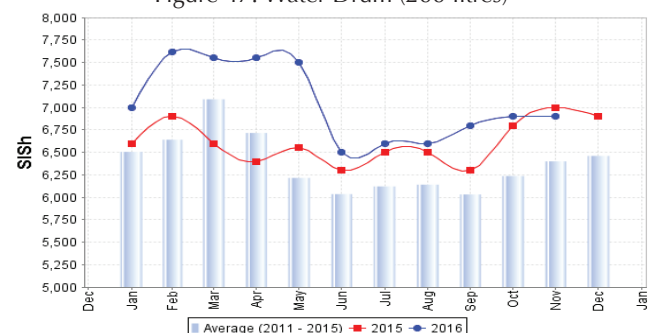


Figure 47: Water Drum (200 litres)



# Trends in Livestock Exports

Table 1: Berbera Livestock Exports (Number of Heads)

	1999	2000	2001	2002	2003	2004	2005	2006	2007	2008	2009	2010	2011	2012	2013	2014	2015	Jan-Oct 2016
Shoats	2 048 136	1 601 083	51 546	341 711	563 107	859 404	1 023 795	1 017 242	1 350 054	1 219 519	1 556 003	2 584 810	3 104 684	3 219 584	2 888 955	3 089 592	3 270 386	2 792 279
Cattle	89 967	63 263	20 973	37 547	84 312	131 852	148 151	85 631	88 143	80 051	88 005	133 021	150 934	190 354	20 875	252 597	160,395	128 188
Camel	37 430	16 984	3 473	18,864	21 874	5 147	5 069	22 810	14 245	26 515	20 206	92 651	107 281	102 664	75 728	64 578	61 475	56 902

Figure 48: Berbera Livestock Exports (Number of Heads)

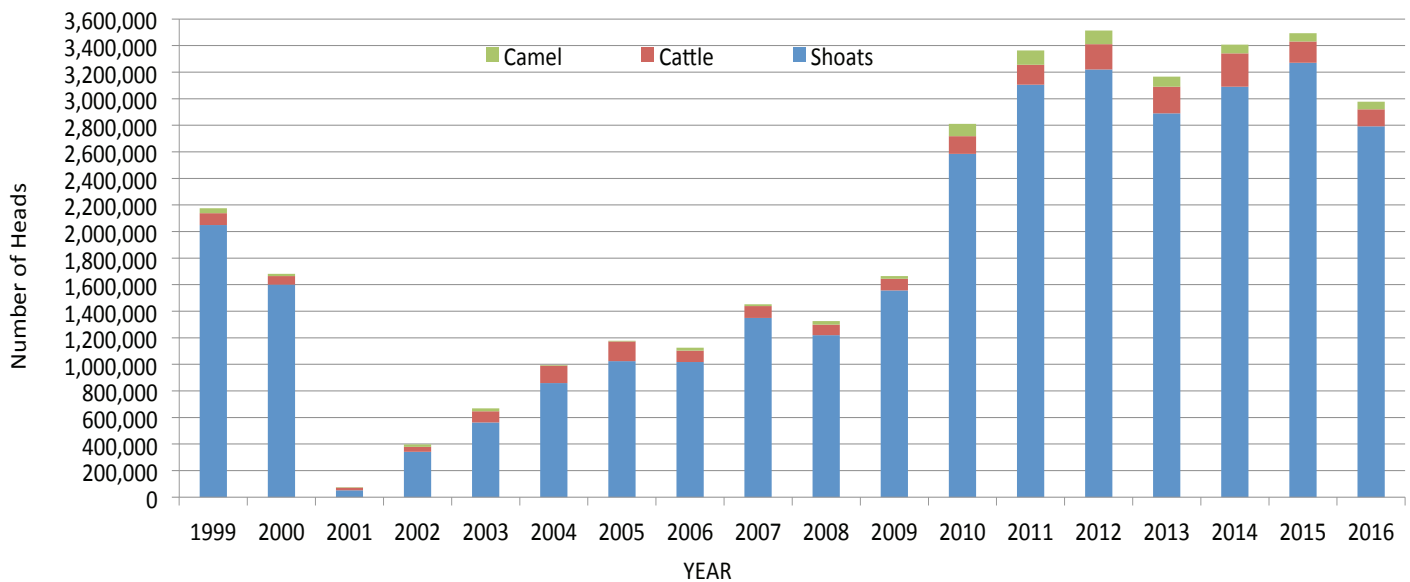
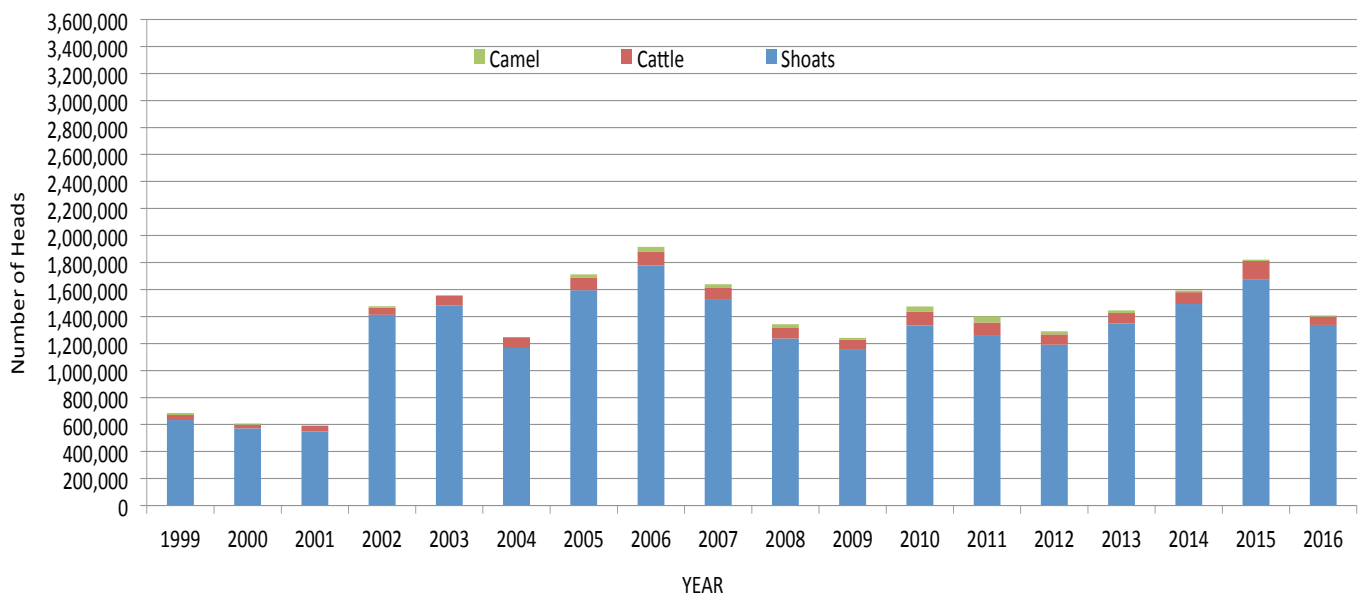


Table 2: Bossaso Livestock Exports (Number of Heads)

	1999	2000	2001	2002	2003	2004	2005	2006	2007	2008	2009	2010	2011	2012	2013	2014	2015	Jan-Oct 2016
Shoats	633,669	571,455	548,853	1,412,450	1,483,409	1,166,480	1,594,859	1,777,283	1,522,855	1,236,775	1,159,454	1,333,478	1,256,535	1,192,197	1,349,123	1,493,111	1,676,216	1,337,536
Cattle	36,586	27,604	42,248	53,313	71,328	79,994	91,910	104,595	89,190	78,046	67,385	103,808	99,058	76,043	77,353	87,759	134,597	62,374
Camel	15,544	8,177	1,950	9,720	4,259	2,488	26,109	33,724	27,580	27,639	15,331	36,865	45,878	22,288	19,032	12,251	10,945	8,720

Figure 49: Bossaso Livestock Exports (Number of Heads)

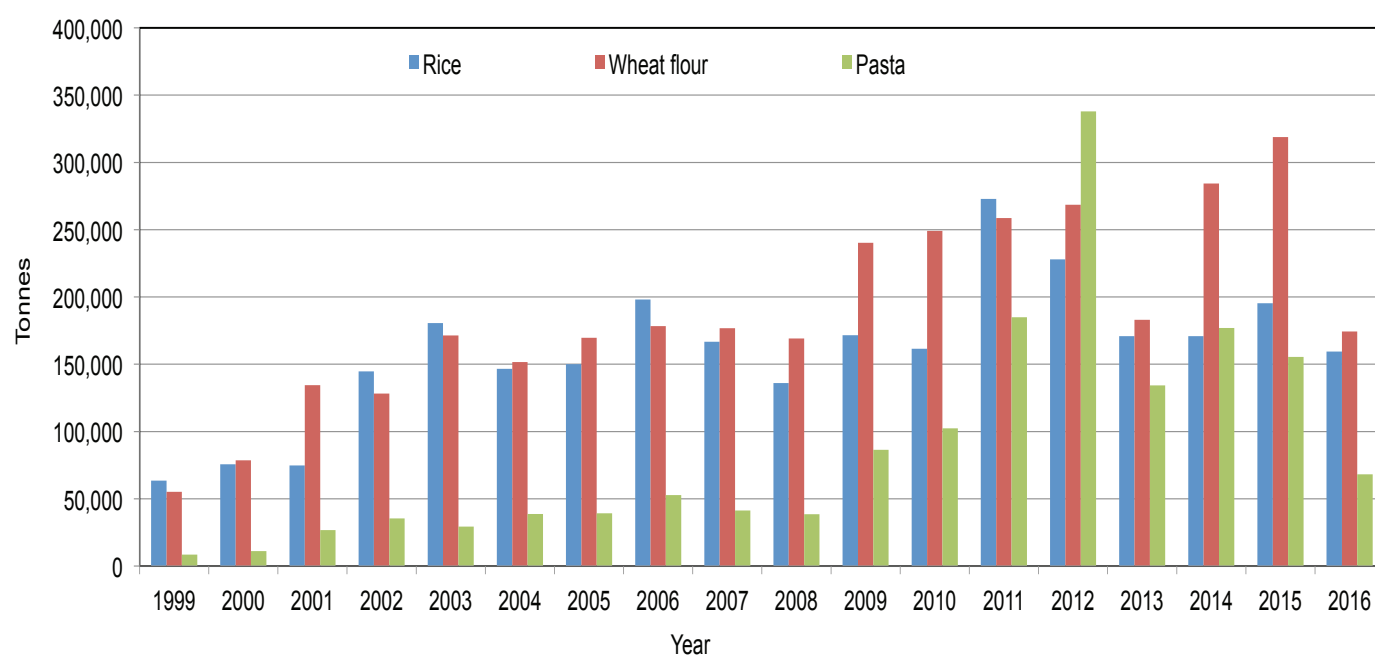


# Trends in Cereal Imports

Table 3: Total Cereal Imports through Berbera, Bossaso and Mogadishu Ports (Tonnes) \*

	1999	2000	2001	2002	2003	2004	2005	2006	2007	2008	2009	2010	2011	2012	2013	2014	2015	Jan-Oct 2016
<b>Rice</b>	63,464	75,687	74,729	144,600	180,614	146,567	150,017	198,101	166,626	136,007	171,472	161,415	272,877	227,955	170,868	170,888	195,240	159,368
<b>Wheat flour</b>	55,176	78,555	134,425	128,263	171,442	151,555	169,583	178,345	176,821	169,208	240,247	249,080	258,679	268,491	183,058	284,230	318,868	174,301
<b>Pasta</b>	8,544	11,071	26,702	35,425	29,273	38,749	39,153	52,815	41,331	38,441	86,372	102,373	184,849	337,878	134,311	176,951	155,360	68,184

Figure 50: Total Cereal Imports (Berbera, Bossaso and Mogadishu)



\* Bossaso and Berbera data is up to October 2016. Elman (Mogadishu) is up to November 2015. Mogadishu data (Elmaan Port) for 2013 includes only January - March imports.