

Market DataUpdate

Highlights

Inflation:

SoSh (Somali shilling)-using areas: Consumer Price Index (CPI) changed at mild rates (2-3%) month on month in SoSh using areas in July and August except in Central regions where the CPI increased by 14 percent in July due to increase in the prices of red sorghum. The CPI rose annually from mild (3%) to high rates (20%) due to increase in red sorghum prices.

SISh (Somaliland shilling)-using areas: The CPI increased month-on-month (2-4%) as well as year-on-year (12-13%) in July and August due to increase in cereal (red sorghum) price in the past 12 months.

Exchange rate:

SoSh-using areas: The exchange rates between SoSh and the United States Dollar (USD) indicated marginal monthly changes (1-3%) in most regions both in July and in August 2016. The SoSh shows annual depreciation across SoSh-using areas in the last two months.

SISh-using areas: The SISh indicated marginal (1%) depreciation against the USD in July 2016 but remained relatively stable in August compared to previous month and 12 months ago.

Local grain prices changed at mild rates (by less than +/-10%) in both July and August 2016 in most parts of the country. The exceptions are Banadir (Mogadishu), Middle Shabelle and Central regions. Specifically, cereal prices increased (25%) in Central in July 2016, while cereal prices declined (11-24%) in Banadir (Mogadishu) and Middle Shabelle regions, both in July and August 2016, as a result of increased supply in the markets. Annual comparison indicates higher prices for local grains in most regions of the country in both July and August 2016 with the highest increase being recorded in Middle Juba (28-39%) as a result of poor Gu 2016 production.

Prices of imported food (rice, sugar, vegetable oil, wheat flour) mostly exhibited relative stability or mild (less than +/- 10%) monthly changes in local currency terms. Year-on-year comparison indicates mixed trend patterns: there were mild price changes in most regions of the country in July and August for most of the food imports; prices have declined in Hiran due to increased humanitarian food distributions. The prices of all the food imports increased (12-35%) in Bay region in both July and August.

Livestock prices (for all species) changed at mild rates (less than +/- 10%) month-on-month in most regions of the country in July and August 2016. However, local quality camel prices declined moderately (10-15%) in Juba and Shabelle regions in July 2016. Milk prices (camel and cattle) generally exhibited mild monthly changes in most regions of the country. However, milk prices declined in Lower Shabelle (12-22%) in July and Middle Juba (14-15%) in August. Compared to a year ago, livestock prices were lower in most regions of the country in both July and August. In contrast, milk prices (camel and cattle) increased in most regions of the country in July and August apart from Lower Shabelle and Middle Juba regions where they dropped by 11-14 percent in August.

Labor (unskilled) wages either remained relatively stable or changed mildly (by less than +/- 10%) month-on-month in most parts of the country in both July and August 2016. However, labor wages in Lower Shabelle decreased by 12 percent in July 2016 due to reduced demand for farm labour in the context of a below average harvest. Annual comparison indicates mild to moderate increases in labor wages in most parts of the country in both July and August with the exception of Shabelle and Middle Juba regions where they decreased (9-17%) due to reduced agricultural labor demand as a result of poor Gu 2016 rainfall performance as well as increased conflict/insecurity causing trade disruption in these regions.

Terms of Trade (ToT) between daily labor wage and local cereals either remained stable month-on-month or changed by 1-3kg of cereals/daily labor wage in most parts of the country. ToT between goat and cereals changed at mild rates in most regions of the country. However, ToT increased (25-45 kg/goat) in Middle Shabelle in July and August 2016 as a result of reduced white maize prices. ToTs are lower compared to a year ago in most regions of the country in July and August.

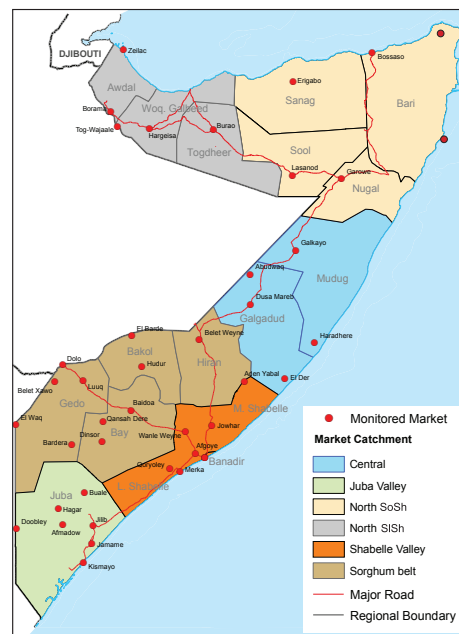
Siege-affected towns (Bulo-Burto, Wajid, Dinsor and Hudur)

Labor (unskilled) wages declined in July month-on-month in Bulo-Burto (9%) and Wajid (40%), but increased in Dinsor (8%) and Hudur (39%). In August, monthly declines were recorded for all the markets, except Wajid where labor wages increased (47%). Annual comparison indicates increase in all the markets with the particularly high spike in July in Hudur (56%) and in August in Wajid (47%) as a result of increased labor opportunities due to improved security situation.

Terms of Trade (ToTs) between daily labor wage and local cereals and between local quality goat and cereals remained relatively stable or changed mildly month-on-month in July and August across the siege-affected towns except in Dinsor where ToT declined in August (by 4kg/daily wage and 30kg/goat). Similarly, compared to one year ago, ToT between daily labor and cereals exhibited relative stability or mild changes in all of the affected markets. Conversely, the ToT between goat local quality and cereals has reduced year-on-year apart from Bulo-Burto where it increased by 25kg/goat in July due to increase in goat prices.

Local grain (red and white sorghum) prices declined month-on-month across the markets except Wajid (10% increase in July) and Dinsor (14-16% increase in July and August). Compared to a year ago, local grain prices are lower in Bulo-burto and Wajid, but higher in Hudur and Dinsor in both July and August.

Prices of imported food items (rice, sugar, vegetable oil, wheat flour) have climbed (11-22%) month-on-month in Wajid (July) and Dinsor (July and August), while they changed at mild rates (less than 10%) in other markets in July and August for most food imports. Annual comparison indicates declined prices in Wajid (July) and Bulo-Burto (July and August), but increased levels in Wajid (August), Hudur and Dinsor in both July and August.



This Market Data Update is a monthly report that presents analysis of market information and is produced regularly as part of the monthly monitoring process.

The weekly price data is collected from 48 main markets and 51 rural markets throughout Somalia since 1995.

Market analysis is an integral part of all of FSNAU's annual food security projections and seasonal technical reports (Technical Reports on FSNAU Post Gu and Post Deyr Analysis).

Detailed market data are available online on www.fsnau.org/ids.

National Trends: CPI, Exchange Rates, Cereal Prices and Relative Purchasing Power

Table 1 and 2: ToT between Daily Labour Wage Rate and Cereals (kg), by Region (July and August 2016)

Regions	For July 2016			
	July 2016 (kg)	kg change from		
		June 2016	July 2015	July 5 yr Average (2011 - 2015)
Banadir/Mogadishu	17	2	5	4
Bay	14	0	0	1
Bakool	5	0	1	1
Gedo	13	0	-2	1
Juba	8	0	-3	-1
Shabelle	8	0	0	1
Northwest	11	0	1	3
Northeast	8	-1	-1	2
Central	5	-1	0	1

Regions	For August 2016			
	August 2016 (kg)	kg change from		
		July 2016	August 2015	August 5 yr Average (2011 - 2015)
Banadir/Mogadishu	20	3	0	4
Bay	14	0	0	1
Bakool	5	0	0	1
Gedo	13	0	-2	0
Juba	9	1	-1	0
Shabelle	9	1	3	0
Northwest	12	1	2	4
Northeast	8	0	-1	2
Central	5	0	0	1

Figure 1: Wheat Prices: Mogadishu and Bossaso Markets

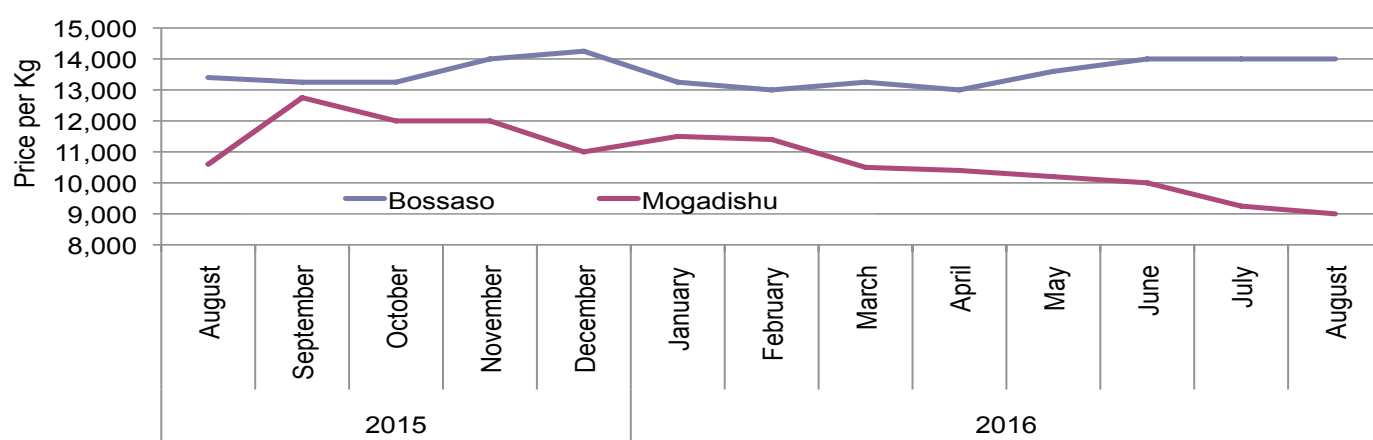


Figure 2: Terms of Trade Between Wage Rates and Selected Cereals

Figure 3: Monthly Exchange Rate for Selected Regions (SoSh and SISH to USD)

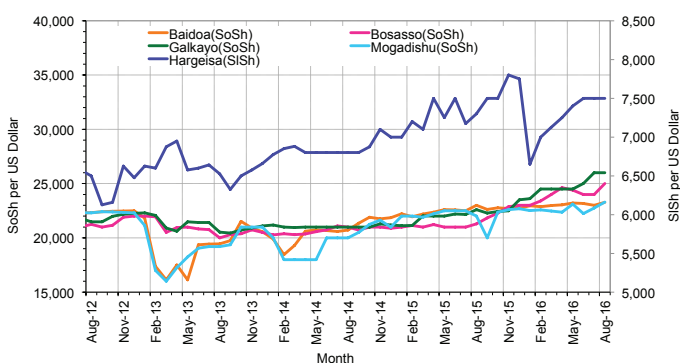
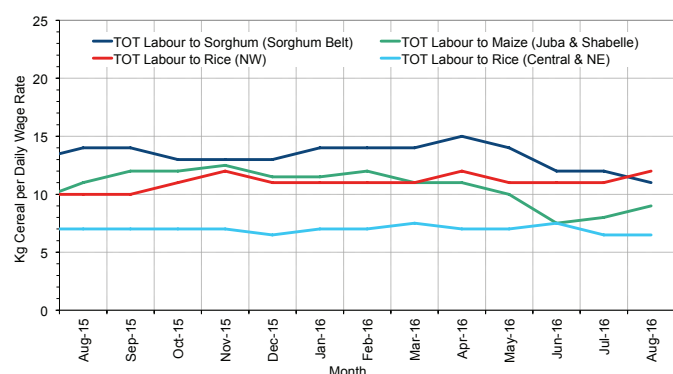
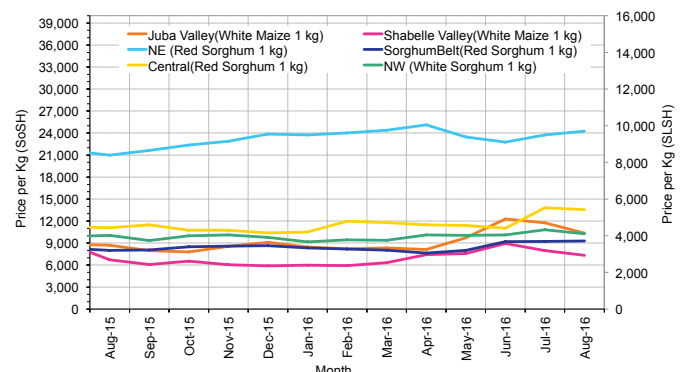
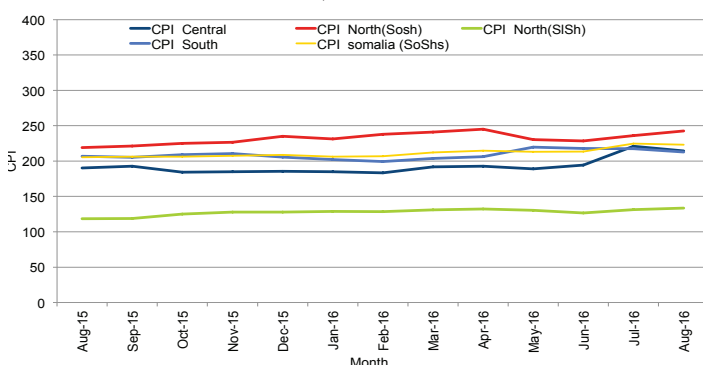


Figure 4: Monthly Trends in Consumer Price Index (CPI, March 2007=100)

Figure 5: Monthly Trends in Local Cereal Prices



Regional analysis: Juba Regions

Indicator	5-Year Average (2011-2015)	Aug-15	Jul-16	Aug-16 Nominal Price	Aug-16 Real (Deflated) Price	% Change Previous Month	% Change Same Month Previous Year	% Change 5-year avrg (2011-2015)
Imported Commodities Prices								
Diesel 1 litre	30,058	23,875	21,281	20,281	9,436	-5%	-15%	-33%
Imported Red Rice 1kg	17,809	14,875	15,828	15,266	7,078	-4%	3%	-14%
Petrol 1 litre	31,105	27,000	23,813	23,250	10,832	-2%	-14%	-25%
Sugar	21,371	15,188	16,219	15,750	7,305	-3%	4%	-26%
Vegetable Oil 1 litre	37,422	29,250	28,031	29,531	13,785	5%	1%	-21%
Wheat Flour 1kg	17,590	14,875	14,938	14,656	6,791	-2%	-1%	-17%
Wheat Grain 1kg	20,000	-	-	16,000	-	-	-	-20%
Cereal Prices								
Red Sorghum 1kg	7,525	8,600	10,000	8,000	3,661	-20%	-7%	6%
White Maize 1kg	10,731	8,713	11,750	10,366	4,774	-12%	19%	-3%
Livestock & Livestock Product Prices								
Camel Local Quality (Head)	9,283,475	8,953,571	8,478,125	8,100,000	3,808,403	-4%	-10%	-13%
Cattle Local Quality (Head)	3,645,303	3,823,625	2,917,857	3,025,000	1,422,211	4%	-21%	-17%
Fresh Camel Milk 1 litre	15,890	15,906	18,969	17,047	7,915	-10%	7%	7%
Goat Export Quality (Head)	1,375,302	1,240,688	1,196,875	1,197,500	562,947	0%	-3%	-13%
Goat Local Quality (Head)	908,555	802,031	728,438	698,750	328,442	-4%	-13%	-23%
Other Essential Items								
Charcoal 50kg	76,927	78,750	93,125	82,500	38,690	-11%	5%	7%
Cowpeas 1 kg	22,416	20,090	24,469	26,000	12,125	6%	29%	16%
Unskilled Labor Wage Rate	84,616	89,781	98,500	96,438	45,244	-2%	7%	14%
Firewood Bundle	8,396	6,625	8,984	8,203	3,757	-9%	24%	-2%
Local Sesame Oil 1 litre	73,625	66,000	48,438	52,313	24,497	8%	-21%	-29%
Exchange Rate (Somali Shilling per USD)	23,204	22,597	23,050	23,063	10,744	0%	2%	-1%
Terms of Trade								
Labour Wage (Daily)/ Cereal (Maize(Kg))	9	10	8	9	-	13%	-10%	0%
Local Goat (Head)/ Cereal (Maize(Kg))	98	92	62	67	-	8%	-27%	-32%
Price Indices								
Consumer Price Index	-	207	217	213	-	-2%	3%	-

Figure 6: Trends in Cereal Prices

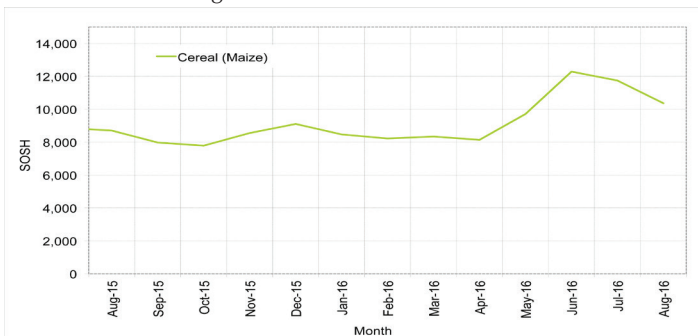


Figure 7: Trends in Wage Rates and Relative Purchasing Power

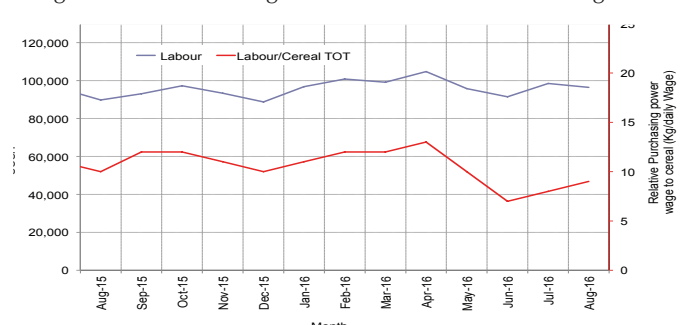


Figure 8: Imported Commodity Prices Compared to Exchange Rate

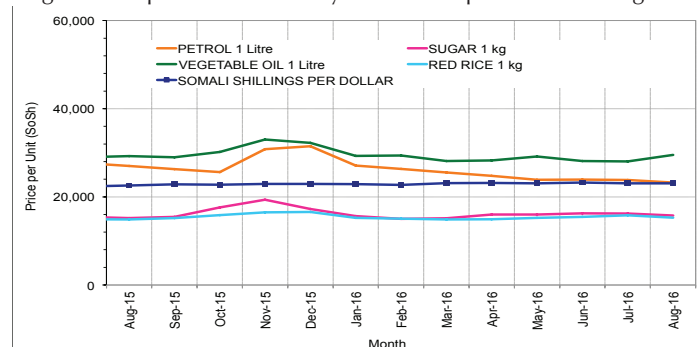


Figure 9: Goat Local Quality

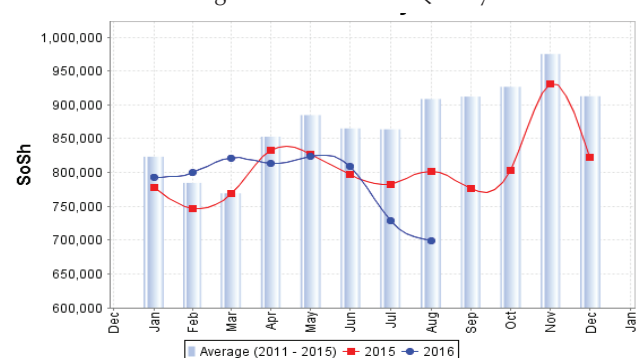


Figure 10: Exchange Rate

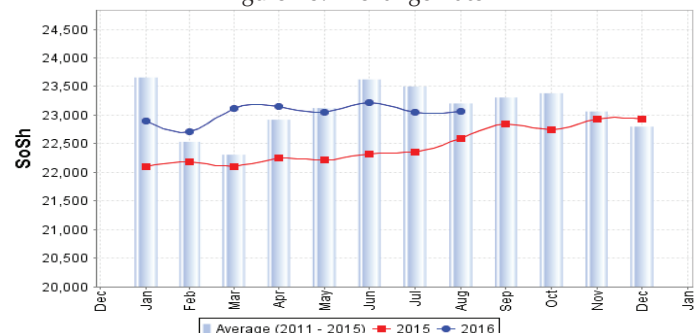
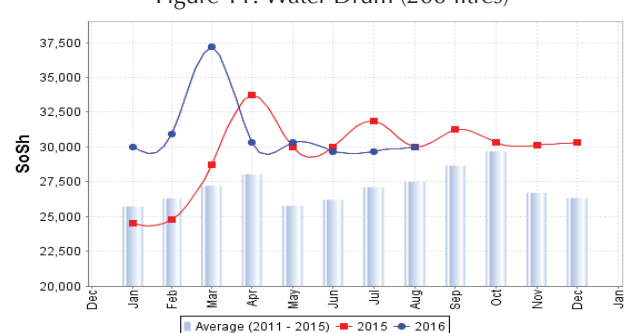


Figure 11: Water Drum (200 litres)



Regional analysis: Sorghum Belt Regions

Indicator	5-Year Average (2011-2015)	Aug-15	Jul-16	Aug-16 Nominal Price	Aug-16 Real (Deflated) Price	% Change Previous Month	% Change Same Month Previous Year	% Change 5-year avg (2011-2015)
Imported Commodities Prices								
Diesel 1 litre	33,097	30,146	23,308	23,908	11,141	3%	-21%	-28%
Imported Red Rice 1kg	20,316	18,331	19,115	19,800	9,210	4%	8%	-3%
Petrol 1 litre	32,509	30,117	25,808	26,738	12,472	4%	-11%	-18%
Sugar	22,760	18,362	20,683	21,785	10,143	5%	19%	-4%
Vegetable Oil 1 litre	44,195	35,238	36,096	37,046	17,318	3%	5%	-16%
Wheat Flour 1kg	18,977	17,938	18,702	18,723	8,703	0%	4%	-1%
Wheat Grain 1kg	14,520	19,500	17,688	19,225	8,939	9%	-1%	32%
Cereal Prices								
Red Sorghum 1kg	9,815	7,990	9,131	9,100	4,179	0%	14%	-7%
White Maize 1kg	11,054	8,993	10,950	10,545	4,858	-4%	17%	-5%
Livestock & Livestock Product Prices								
Camel Local Quality (Head)	11,551,458	12,364,545	12,018,182	11,845,455	5,569,462	-1%	-4%	3%
Cattle Local Quality (Head)	3,313,223	3,644,167	3,461,111	3,630,000	1,706,674	5%	0%	10%
Fresh Camel Milk 1 litre	21,948	16,308	19,865	19,646	9,137	-1%	20%	-10%
Goat Export Quality (Head)	1,566,255	1,868,727	1,481,250	1,528,000	718,344	3%	-18%	-2%
Goat Local Quality (Head)	958,139	890,308	824,712	853,692	401,294	4%	-4%	-11%
Other Essential Items								
Charcoal 50kg	140,094	160,375	151,042	154,250	72,426	2%	-4%	10%
Cowpeas 1 kg	26,034	25,412	24,212	25,023	11,665	3%	-2%	-4%
Unskilled Labor Wage Rate	95,529	98,646	98,942	98,385	46,159	-1%	0%	3%
Firewood Bundle	6,227	6,262	5,923	5,923	2,685	0%	-5%	-5%
Local Sesame Oil 1 litre	77,257	73,469	75,889	74,200	34,788	-2%	1%	-4%
Exchange Rate (Somali Shilling per USD)	23,175	22,274	23,062	23,157	10,788	0%	4%	0%
Terms of Trade								
Labour Wage (Daily)/ Cereal (Sorghum(Kg)	10	12	11	11	-	0%	-8%	10%
Local Goat (Head)/ Cereal (Sorghum(Kg)	113	111	90	94	-	4%	-15%	-17%
Price Indices								
Consumer Price Index	-	207	217	213	-	-2%	3%	-

Figure 12: Trends in Cereal Prices

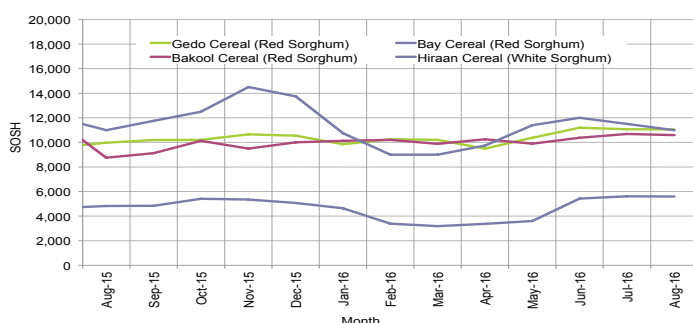


Figure 14: Imported Commodity Prices Compared to Exchange Rate

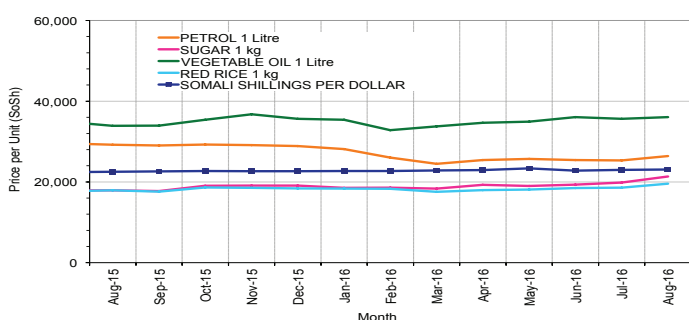


Figure 16: Exchange Rate

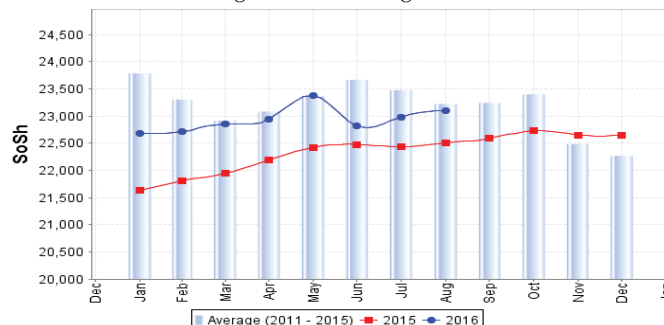


Figure 13: Trends in Wage Rates and Relative Purchasing Power

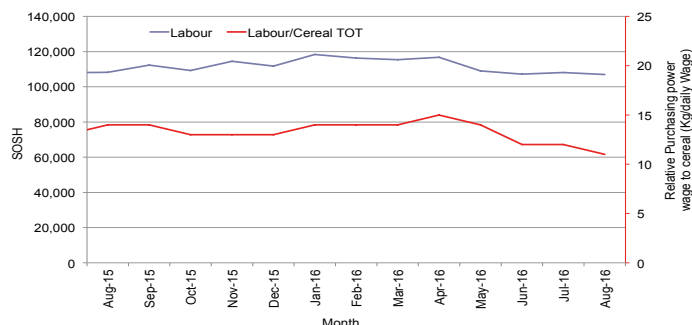


Figure 15: Goat Local Quality

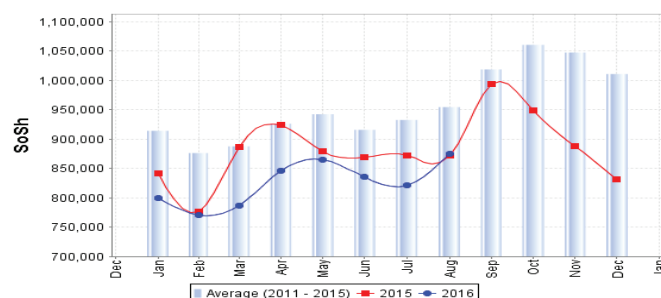
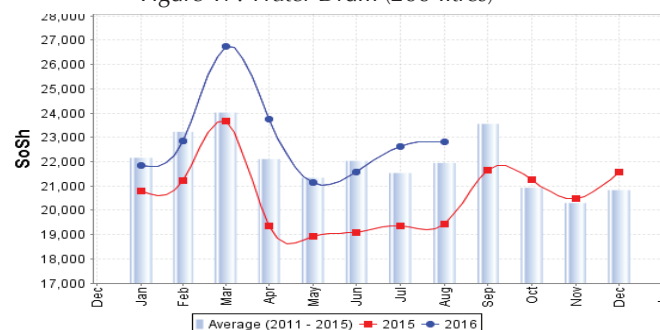


Figure 17: Water Drum (200 litres)



Regional analysis: Shabelle Regions

Indicator	5-Year Average (2011-2015)	Aug-15	Jul-16	Aug-16 Nominal Price	Aug-16 Real (Deflated) Price	% Change Previous Month	% Change Same Month Previous Year	% Change 5-year avg (2011-2015)
Imported Commodities Prices								
Diesel 1 litre	29,341	23,833	20,083	20,500	9,539	2%	-14%	-30%
Imported Red Rice 1kg	17,516	15,167	17,250	16,833	7,815	-2%	11%	-4%
Petrol 1 litre	30,775	28,042	25,708	25,292	11,792	-2%	-10%	-18%
Sugar	21,166	15,833	20,292	20,667	9,617	2%	31%	-2%
Vegetable Oil 1 litre	34,441	27,500	28,833	29,000	13,535	1%	5%	-16%
Wheat Flour 1kg	17,700	15,958	16,333	16,000	7,423	-2%	0%	-10%
Wheat Grain 1kg	14,667	18,667	20,000	20,000	9,304	0%	7%	36%
Cereal Prices								
Red Sorghum 1kg	11,659	8,906	9,044	8,906	4,087	-2%	0%	-24%
White Maize 1kg	9,136	6,713	7,957	7,343	3,353	-8%	9%	-20%
Livestock & Livestock Product Prices								
Camel Local Quality (Head)	16,184,000	18,605,000	17,239,000	16,745,000	7,873,157	-3%	-10%	3%
Cattle Local Quality (Head)	5,285,000	6,115,000	5,242,500	5,322,500	2,502,463	2%	-13%	1%
Fresh Camel Milk 1 litre	18,629	18,417	18,972	18,583	8,637	-2%	1%	0%
Goat Export Quality (Head)	1,847,450	2,103,500	1,786,250	1,958,125	920,582	10%	-7%	6%
Goat Local Quality (Head)	1,273,416	1,344,167	1,329,167	1,334,167	627,206	0%	-1%	5%
Other Essential Items								
Charcoal 50kg	118,729	133,472	131,153	132,111	62,017	1%	-1%	11%
Cowpeas 1 kg	24,744	18,406	21,938	19,694	9,160	-10%	7%	-20%
Unskilled Labor Wage Rate	70,258	78,125	65,417	65,917	30,893	1%	-16%	-6%
Firewood Bundle	6,191	8,333	6,250	5,833	2,643	-7%	-30%	-6%
Local Sesame Oil 1 litre	61,710	54,833	46,333	45,167	21,137	-3%	-18%	-27%
Exchange Rate (Somali Shilling per USD)	23,298	22,425	23,396	23,425	10,914	0%	4%	1%
Terms of Trade								
Labour Wage (Daily)/ Cereal (Maize(Kg))	9	12	8	9	-	13%	-25%	0%
Local Goat (Head)/ Cereal (Maize(Kg))	168	200	167	182	-	9%	-9%	8%
Price Indices								
Consumer Price Index	-	207	217	213	-	-2%	3%	-

Figure 18: Trends in Cereal Prices

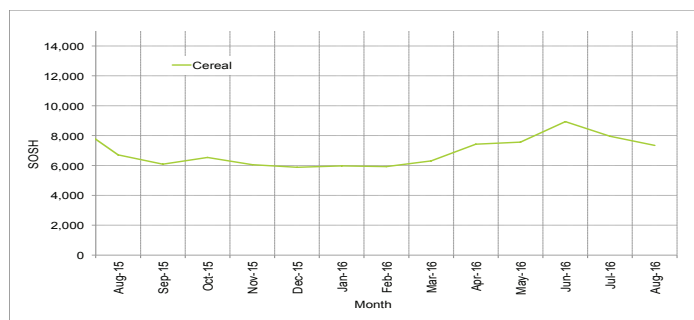


Figure 19: Trends in Wage Rates and Relative Purchasing Power

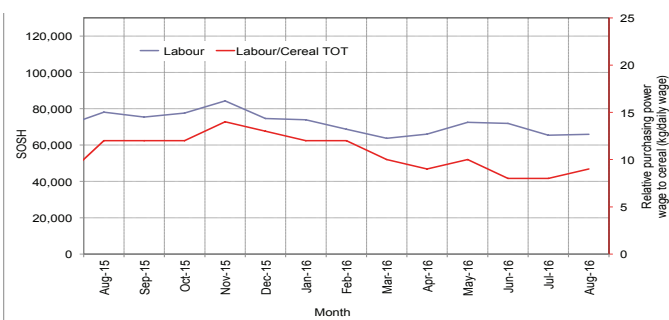


Figure 20: Imported Commodity Prices Compared to Exchange Rate

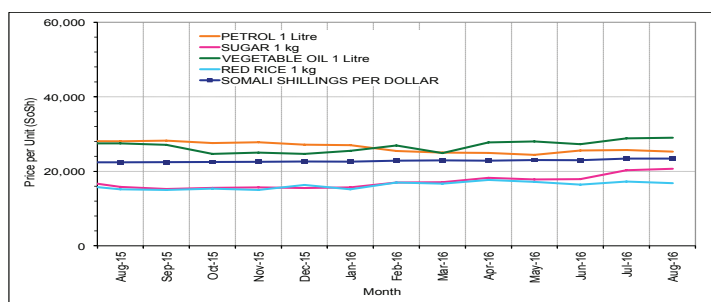


Figure 22: Exchange Rate

Figure 21: Goat Local Quality

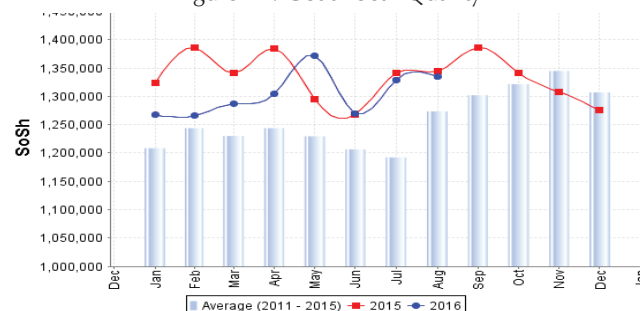
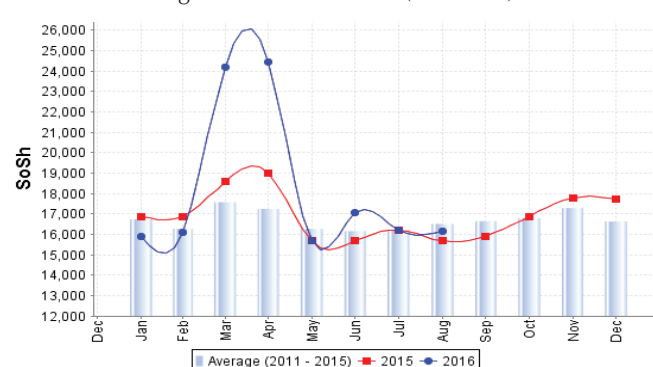
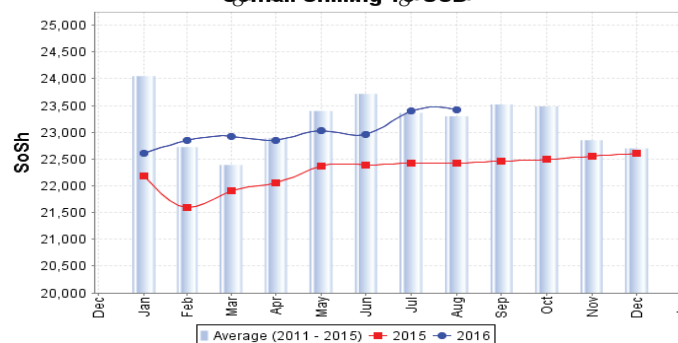


Figure 23: Water Drum (200 litres)



Regional analysis: Banadir Region

Indicator	5-Year Average (2011-2015)	Aug-15	Jul-16	Aug-16 Nominal Price	Aug-16 Real (Deflated) Price	% Change Previous Month	% Change Same Month Previous Year	% Change 5-year avg (2011-2015)
Imported Commodities Prices								
Diesel 1 litre	24,683	16,933	16,208	15,400	7,141	-5%	-9%	-38%
Imported Red Rice 1kg	15,190	12,483	12,625	12,375	5,719	-2%	-1%	-19%
Petrol 1 litre	25,023	20,900	17,000	16,942	7,866	0%	-19%	-32%
Sugar	18,721	13,300	14,750	15,521	7,198	5%	17%	-17%
Vegetable Oil 1 litre	31,254	22,633	22,021	21,929	10,211	0%	-3%	-30%
Wheat Flour 1kg	14,683	11,983	12,104	11,592	5,350	-4%	-3%	-21%
Wheat Grain 1kg	12,203	13,400	11,333	11,267	5,198	-1%	-16%	-8%
Cereal Prices								
Red Sorghum 1kg	9,793	7,867	8,075	7,097	3,237	-12%	-10%	-28%
White Maize 1kg	11,615	8,963	9,656	8,708	3,994	-10%	-3%	-25%
Livestock & Livestock Product Prices								
Camel Local Quality (Head)	10,800,000	-	-	-	-	-	-	-
Cattle Local Quality (Head)	3,040,000	-	-	-	-	-	-	-
Fresh Camel Milk 1 litre	21,515	22,833	24,250	24,067	11,216	-1%	5%	12%
Goat Export Quality (Head)	2,235,000	2,060,000	2,300,000	2,300,000	1,081,327	0%	-	3%
Goat Local Quality (Head)	1,966,250	1,620,000	1,818,750	1,870,000	879,147	3%	15%	-5%
Other Essential Items								
Charcoal 50kg	181,119	196,633	188,583	187,667	88,138	0%	-5%	4%
Cowpeas 1 kg	26,282	20,700	20,629	20,717	9,641	0%	0%	-21%
Unskilled Labor Wage Rate	101,489	102,667	110,625	109,458	51,366	-1%	7%	8%
Firewood Bundle	7,689	8,000	8,700	8,700	3,991	0%	9%	13%
Local Sesame Oil 1 litre	62,475	55,167	50,042	42,833	20,039	-14%	-22%	-31%
Exchange Rate (Somali Shilling per USD)	23,184	22,320	22,852	22,981	10,705	1%	3%	-1%
Terms of Trade								
Labour Wage (Daily)/ Cereal (Maize(Kg))	10	11	11	13	-	18%	18%	30%
Local Goat (Head)/ Cereal (Maize(Kg))	199	181	188	215	-	14%	19%	8%
Price Indices								
Consumer Price Index	-	207	217	213	-	-2%	3%	-

Figure 24: Trends in Cereal Prices

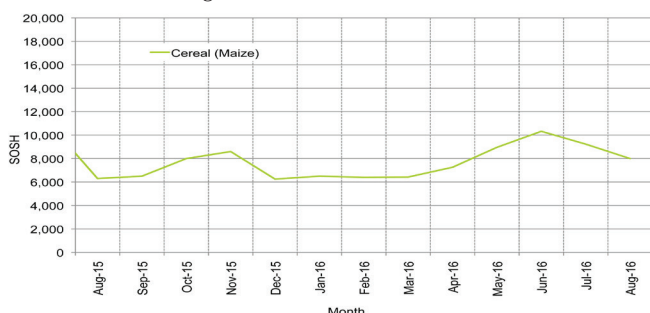


Figure 25: Bakara: Trends in Wage Rates and Relative Purchasing Power

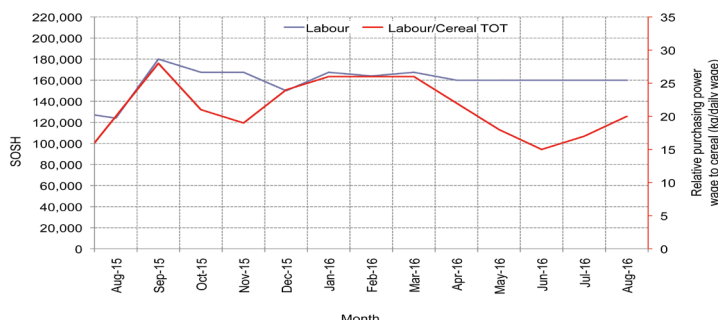


Figure 26: Imported Commodity Prices Compared to Exchange Rate

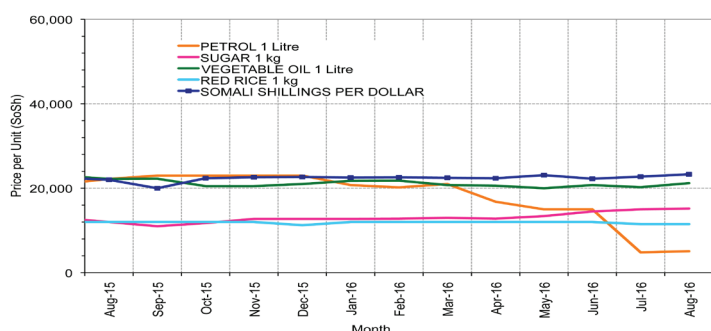


Figure 27: Goat Local Quality

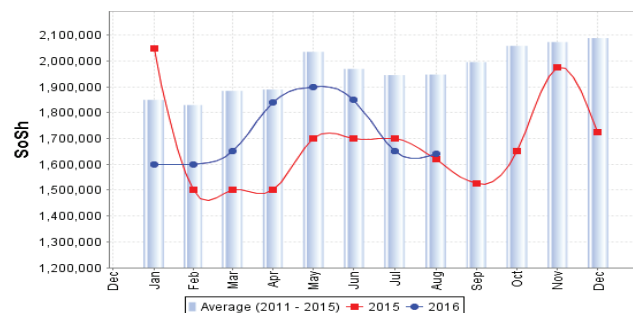


Figure 28: Exchange Rate

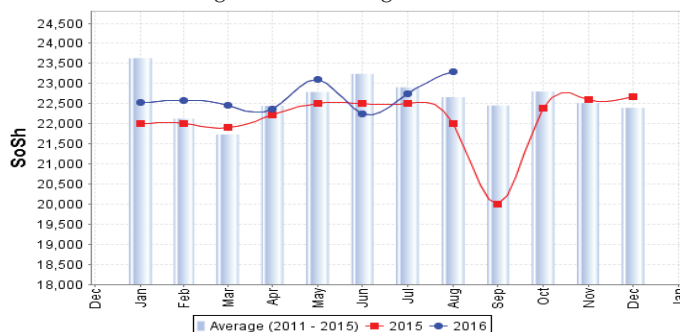
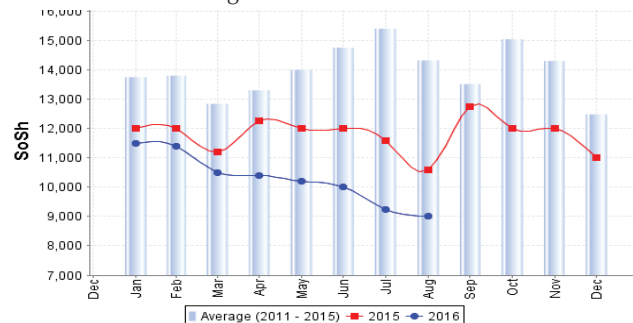


Figure 29: Wheat Flour



Regional analysis: Central Regions

Indicator	5-Year Average (2011-2015)	Aug-15	Jul-16	Aug-16 Nominal Price	Aug-16 Real (Deflated) Price	% Change Previous Month	% Change Same Month Previous Year	% Change 5-year avg (2011-2015)
Imported Commodities Prices								
Diesel 1 litre	30,554	25,400	18,600	18,400	8,479	-1%	-28%	-40%
Imported Red Rice 1kg	21,610	17,000	18,600	18,320	8,441	-2%	8%	-15%
Petrol 1 litre	27,522	24,000	21,250	21,300	9,831	0%	-11%	-23%
Sugar	24,738	18,560	22,650	21,760	10,045	-4%	17%	-12%
Vegetable Oil 1 litre	46,944	36,320	35,850	33,920	15,714	-5%	-7%	-28%
Wheat Flour 1kg	18,422	15,360	16,800	15,480	7,117	-8%	1%	-16%
Wheat Grain 1kg	16,991	17,350	17,500	16,800	7,733	-4%	-3%	-1%
Cereal Prices								
Red Sorghum 1kg	14,022	11,100	13,800	13,550	6,217	-2%	22%	-3%
White Maize 1kg	14,568	13,120	14,000	15,500	7,127	11%	18%	6%
Livestock & Livestock Product Prices								
Camel Local Quality (Head)	10,628,750	12,725,000	13,262,500	13,075,000	6,095,834	-1%	3%	23%
Cattle Local Quality (Head)	3,000,000	-	-	-	-	-	-	-
Fresh Camel Milk 1 litre	33,864	31,800	33,550	32,680	15,136	-3%	3%	-3%
Goat Export Quality (Head)	1,373,933	1,150,500	1,246,875	1,473,333	686,809	18%	28%	7%
Goat Local Quality (Head)	1,028,040	858,000	943,000	986,000	459,601	5%	15%	-4%
Other Essential Items								
Charcoal 50kg	169,060	150,800	174,500	162,400	75,615	-7%	8%	-4%
Cowpeas 1 kg	29,290	22,000	32,300	29,560	13,682	-8%	34%	1%
Unskilled Labor Wage Rate	85,720	89,000	95,000	96,000	44,658	1%	8%	12%
Firewood Bundle	33,340	34,000	31,000	32,000	14,819	3%	-6%	-4%
Local Sesame Oil 1 litre	91,340	90,000	88,000	81,000	37,664	-8%	-10%	-11%
Exchange Rate (Somali Shilling per USD)	23,381	22,020	25,375	24,955	11,535	-2%	13%	7%
Terms of Trade								
Labour Wage (Daily)/ Cereal (Rice(Kg))	4	5	5	5	-	0%	0%	25%
Local Goat (Head)/ Cereal (Rice(Kg))	50	50	51	54	-	6%	8%	8%
Camel (Head)/Cereal (Kg)	532	749	713	714	-	0%	-5%	34%
Price Indices								
Consumer Price Index	-	190	221	214	-	-3%	13%	-

Figure 30: Trends in Cereal Prices

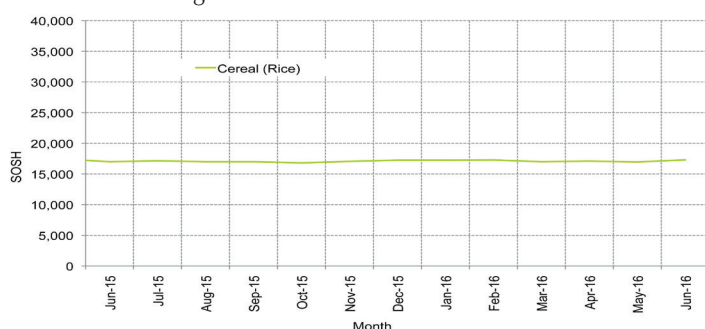


Figure 31: Trends in wage rates and relative purchasing power

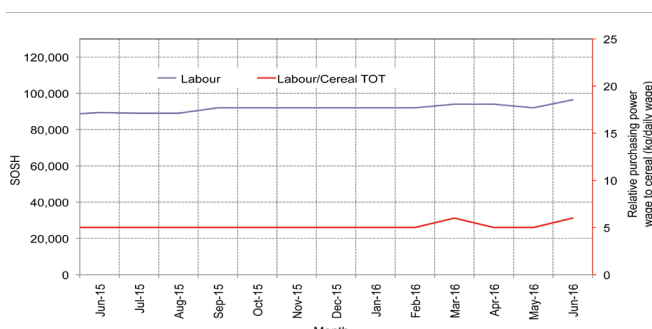


Figure 32: Imported Commodity Prices Compared to Exchange Rate

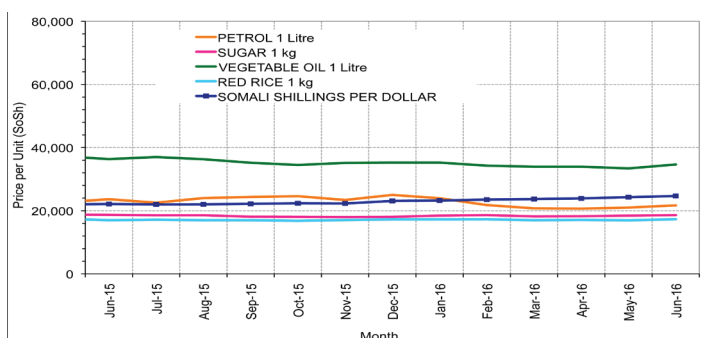


Figure 34: Exchange Rate

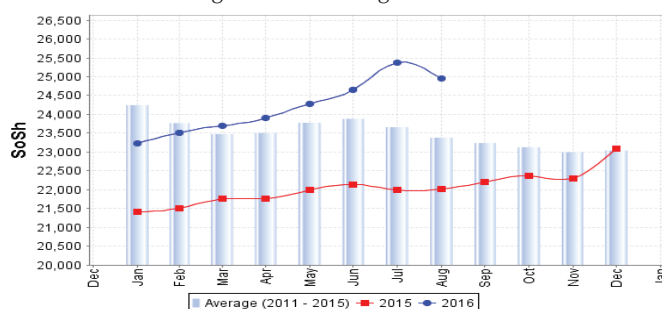


Figure 33: Goat Local Quality

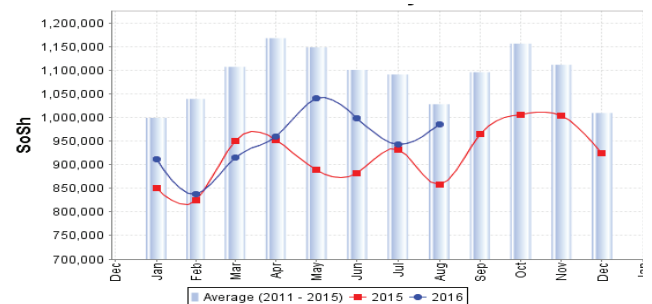
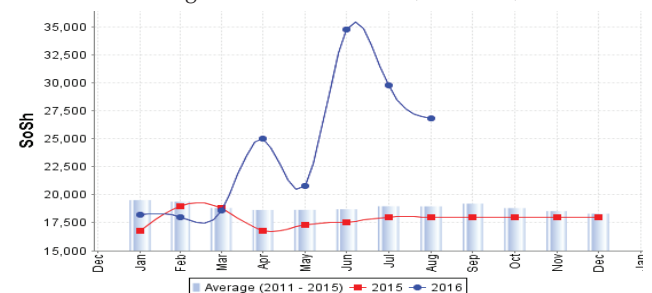


Figure 35: Water Drum (200 litres)



Regional analysis: Northeast Regions

Indicator	5-Year Average (2011-2015)	Aug-15	Jul-16	Aug-16 Nominal Price	Aug-16 Real (Deflated) Price	% Change Previous Month	% Change Same Month Previous Year	% Change 5-year avrg (2011-2015)
Imported Commodities Prices								
Diesel 1 litre	27,840	21,786	16,571	16,643	6,758	0%	-24%	-40%
Imported Red Rice 1kg	20,047	15,886	16,607	16,707	6,784	1%	5%	-17%
Petrol 1 litre	26,597	23,439	20,714	21,214	8,641	2%	-9%	-20%
Sugar	23,874	17,971	20,286	21,136	8,609	4%	18%	-11%
Vegetable Oil 1 litre	44,202	34,314	32,500	32,086	13,121	-1%	-6%	-27%
Wheat Flour 1kg	18,973	15,514	16,107	16,143	6,552	0%	4%	-15%
Wheat Grain 1kg	31,382	27,875	30,800	30,600	12,508	-1%	10%	-2%
Cereal Prices								
Red Sorghum 1kg	23,120	21,000	23,750	24,250	9,892	2%	15%	5%
White Maize 1kg	21,000	19,500	24,500	24,000	9,789	-2%	23%	14%
Livestock & Livestock Product Prices								
Camel Local Quality (Head)	15,009,400	15,359,000	13,515,000	13,673,500	5,633,880	1%	-11%	-9%
Cattle Local Quality (Head)	8,010,000	8,800,000	9,250,000	9,625,000	3,965,750	4%	9%	20%
Fresh Camel Milk 1 litre	38,335	39,124	41,875	41,690	17,078	0%	7%	9%
Goat Export Quality (Head)	1,453,500	1,430,000	1,220,000	1,276,500	525,864	5%	-11%	-12%
Goat Local Quality (Head)	1,362,889	1,325,536	1,120,000	1,189,286	489,929	6%	-10%	-13%
Other Essential Items								
Charcoal 50kg	345,571	345,929	354,643	363,929	149,852	3%	5%	5%
Cowpeas 1 kg	43,831	34,833	36,375	36,683	15,015	1%	5%	-16%
Unskilled Labor Wage Rate	131,185	136,857	135,357	137,643	56,614	2%	1%	5%
Firewood Bundle	33,364	31,429	32,643	35,821	14,660	10%	14%	7%
Local Sesame Oil 1 litre	96,880	101,000	97,750	96,300	39,579	-1%	-5%	-1%
Exchange Rate (Somali Shilling per USD)	22,602	20,693	23,071	23,393	9,539	1%	13%	3%
Terms of Trade								
Labour Wage (Daily)/ Cereal (Rice(Kg))	6	9	8	8	-	0%	-11%	33%
Local Goat (Head)/ Cereal (Rice(Kg))	70	83	67	71	-	6%	-14%	1%
Price Indices								
Consumer Price Index	-	219	236	243	-	3%	11%	-

Figure 36: Trends in Cereal Prices

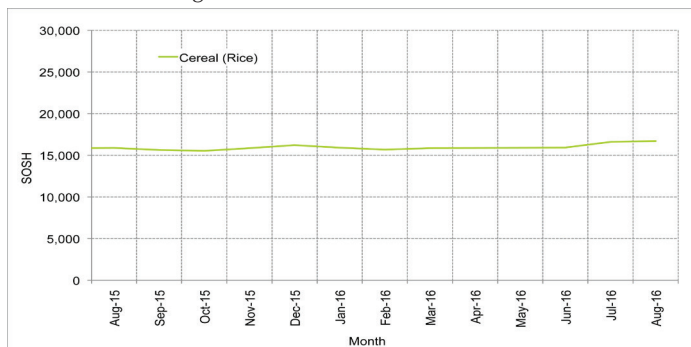


Figure 37: Trends in Wage Rates and Relative Purchasing Power

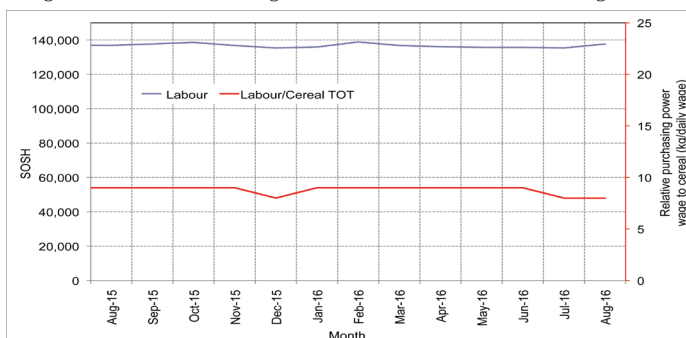


Figure 38: Imported Commodity Prices Compared to Exchange Rate

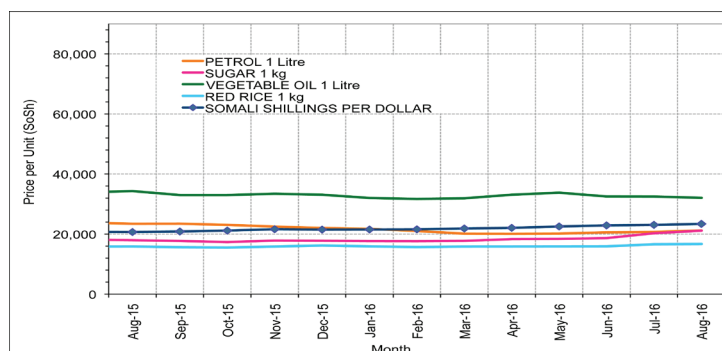


Figure 39: Goat Local Quality

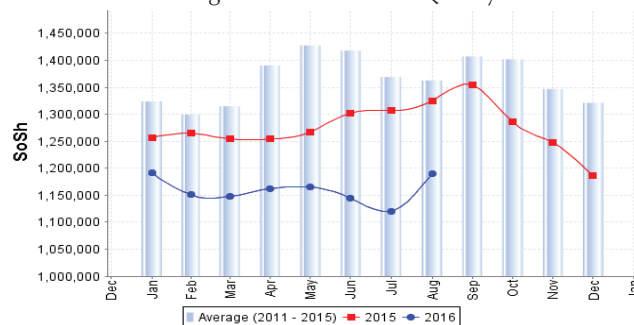


Figure 40: Exchange Rate

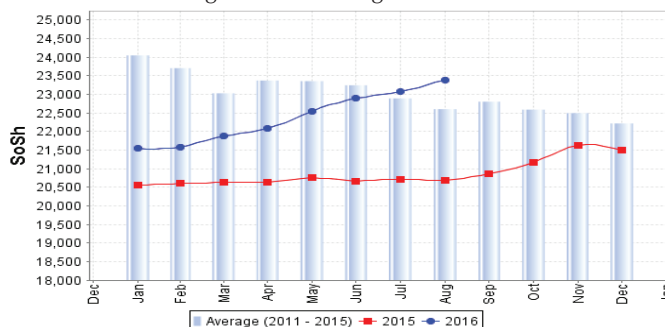
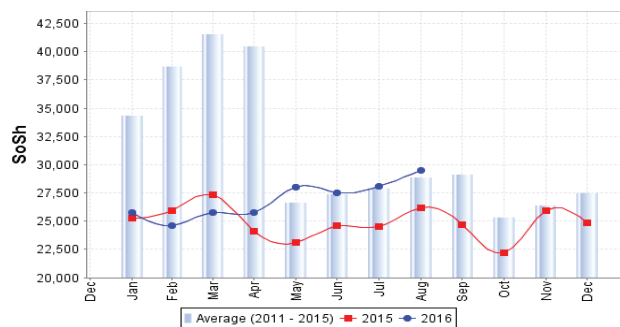


Figure 41: Water Drum (200 litres)



Regional analysis: Northwest Regions

Indicator	5-Year Average (2011-2015)	Aug-15	Jul-16	Aug-16 Nominal Price	Aug-16 Real (Deflated) Price	% Change Previous Month	% Change Same Month Previous Year	% Change 5-year avg (2011-2015)
Imported Commodities Prices								
Diesel 1 litre	6,812	6,560	4,813	5,080	3,705	6%	-23%	-25%
Imported Red Rice 1kg	4,984	5,020	5,340	5,210	3,802	-2%	4%	5%
Petrol 1 litre	7,273	7,580	6,202	6,020	4,409	-3%	-21%	-17%
Sugar	6,043	6,000	5,660	5,700	4,169	1%	-5%	-6%
Vegetable Oil 1 litre	12,280	12,500	11,400	12,200	9,038	7%	-2%	-1%
Wheat Flour 1kg	4,513	4,680	4,600	4,840	3,525	5%	3%	7%
Wheat Grain 1kg	3,643	3,790	3,950	3,875	2,802	-2%	2%	6%
Cereal Prices								
White Sorghum 1kg	3,647	4,020	4,320	4,100	2,971	-5%	2%	12%
Yellow Maize 1kg	3,711	3,750	4,625	4,600	3,345	-1%	23%	24%
Livestock & Livestock Product Prices								
Camel Local Quality (Head)	3,482,933	4,453,333	4,453,300	4,364,583	3,269,013	-2%	-2%	25%
Cattle Local Quality (Head)	2,134,203	2,304,600	2,600,000	2,365,833	1,771,931	-9%	3%	11%
Fresh Camel Milk 1 litre	5,705	6,500	8,700	8,800	6,491	1%	35%	54%
Goat Export Quality (Head)	427,807	442,325	429,188	426,906	319,657	-1%	-3%	0%
Goat Local Quality (Head)	318,676	373,555	304,800	304,250	227,786	0%	-19%	-5%
Other Essential Items								
Charcoal 50kg	45,172	53,310	61,200	68,500	51,207	12%	28%	52%
Cowpeas 1 kg	9,805	10,750	13,063	13,500	10,012	3%	26%	38%
Unskilled Labor Wage Rate	42,656	51,950	58,120	60,500	45,215	4%	16%	42%
Firewood Bundle	3,499	4,500	5,600	5,600	4,094	0%	24%	60%
Local Sesame Oil 1 litre	29,262	34,000	32,875	32,188	24,009	-2%	-5%	10%
Exchange Rate (Somaliland Shilling per USD)	6,666	7,484	7,520	7,500	5,518	0%	0%	13%
Terms of Trade								
Labour Wage (Daily)/ Cereal (Rice(Kg))	8	10	11	12	-	9%	20%	50%
Local Goat (Head)/ Cereal (Rice(Kg))	63	74	57	58	-	2%	-22%	-8%
Price Indices								
Consumer Price Index	-	118	131	134	-	2%	13%	-

Figure 42: Trends in Cereal Prices

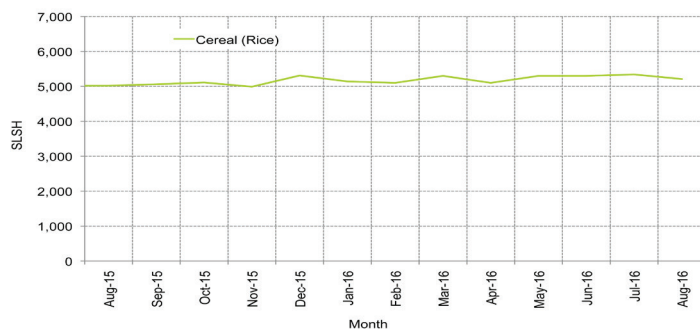


Figure 43: Trends in Wage Rates and Relative Purchasing Power

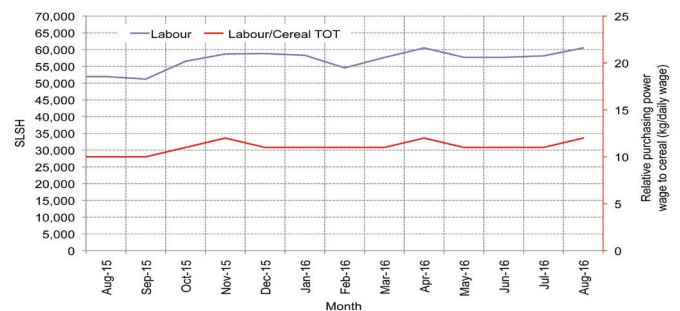


Figure 44: Imported Commodity Prices Compared to Exchange Rate

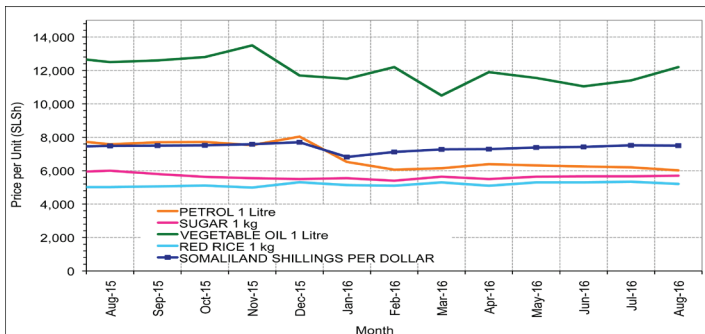


Figure 45: Goat Local Quality

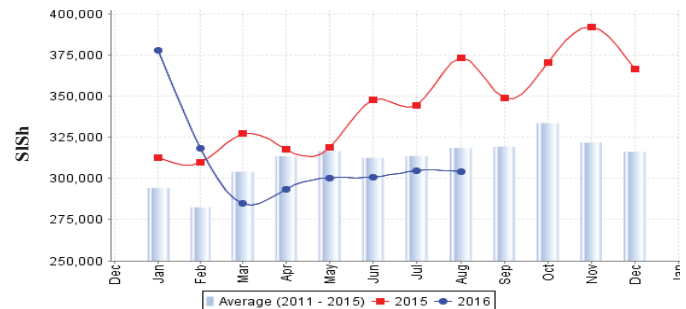


Figure 46: Exchange Rate

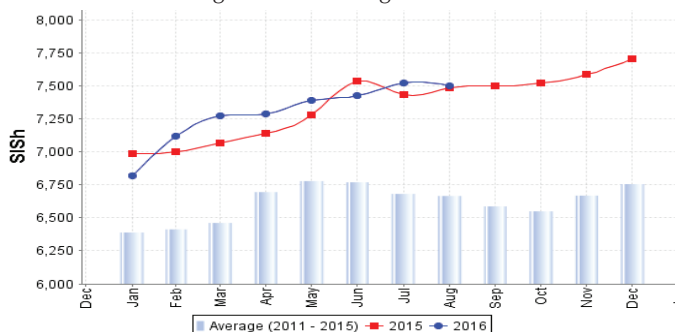
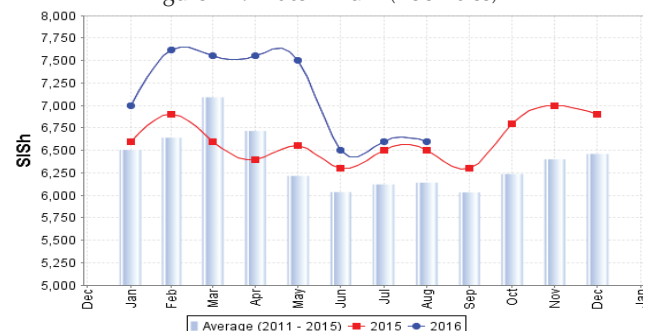


Figure 47: Water Drum (200 litres)



Trends in Livestock Exports

Table 1: Berbera Livestock Exports (Number of Heads)

	1999	2000	2001	2002	2003	2004	2005	2006	2007	2008	2009	2010	2011	2012	2013	2014	2015	Jan-Jun 2016
Shoats	2 048 136	1 601 083	51 546	341 711	563 107	859 404	1 023 795	1 017 242	1 350 054	1 219 519	1 556 003	2 584 810	3 104 684	3 219 584	2 888 955	3 089 592	3 270 386	898 061
Cattle	89 967	63 263	20 973	37 547	84 312	131 852	148 151	85 631	88 143	80 051	88 005	133 021	150 934	190 354	20 875	252 597	160,395	66 276
Camel	37 430	16 984	3 473	18,864	21 874	5 147	5 069	22 810	14 245	26 515	20 206	92 651	107 281	102 664	75 728	64 578	61 475	52 698

Figure 48: Berbera Livestock Exports (Number of Heads)

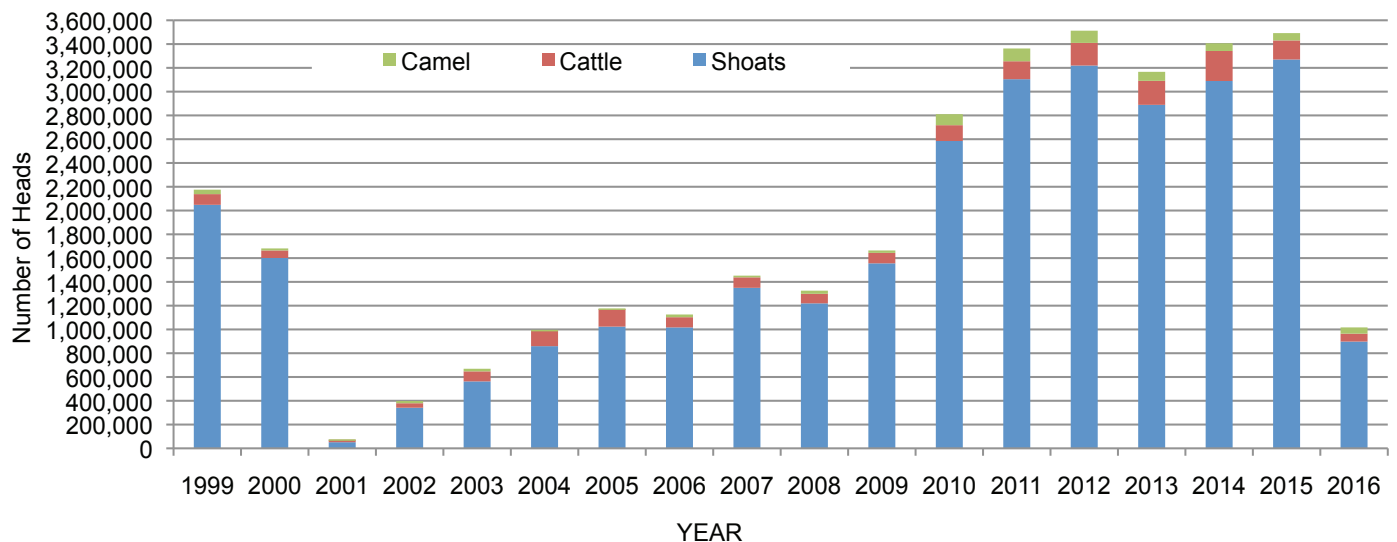
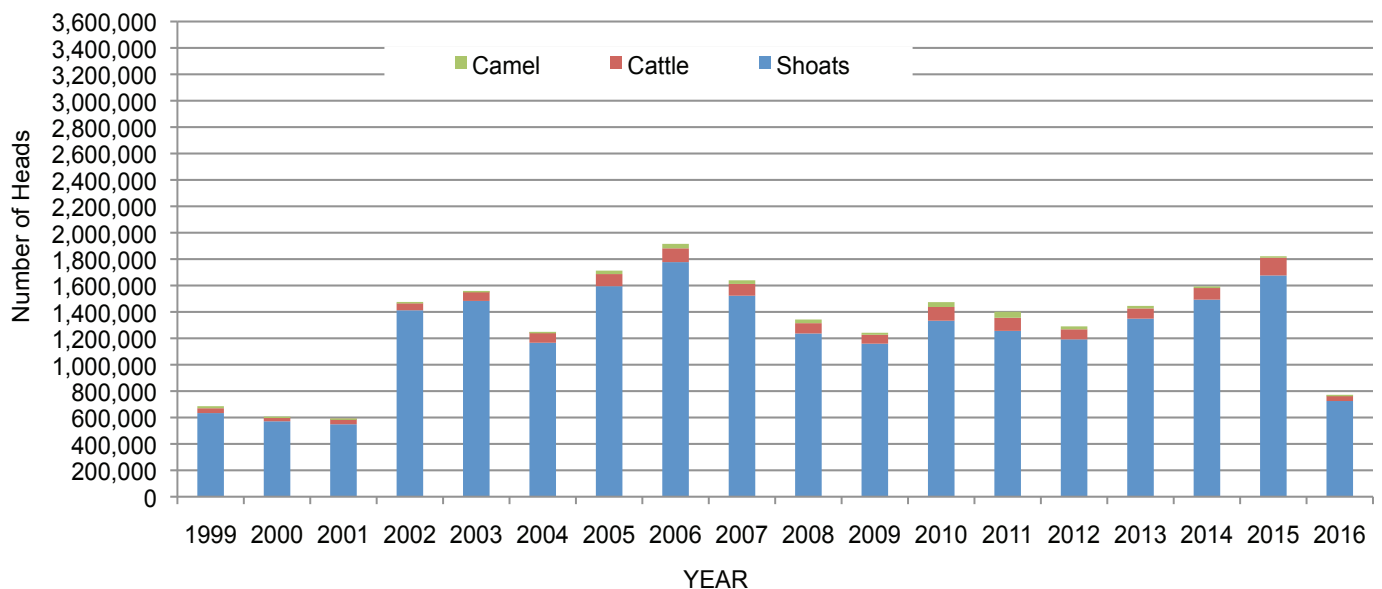


Table 2: Bossaso Livestock Exports (Number of Heads)

	1999	2000	2001	2002	2003	2004	2005	2006	2007	2008	2009	2010	2011	2012	2013	2014	2015	Jan-Jun 2016
Shoats	633 669	571 455	548 853	1 412 450	1 483 409	1 166 480	1 594 859	1 777 283	1 522 855	1 236 775	1 159 454	1 333 478	1 256 535	1 192 197	1 349 123	1 493 111	1 676 216	725 006
Cattle	36 586	27 604	42 248	53 313	71 328	79 994	91 910	104 595	89 190	78 046	67 385	103 808	99 058	76 043	77 353	87 759	134 597	41 679
Camel	15 544	8 177	1 950	9 720	4 259	2 488	26 109	33 724	27 580	27 639	15 331	36 865	45 878	22 288	19 032	12 251	10 945	5 438

Figure 49: Bossaso Livestock Exports (Number of Heads)

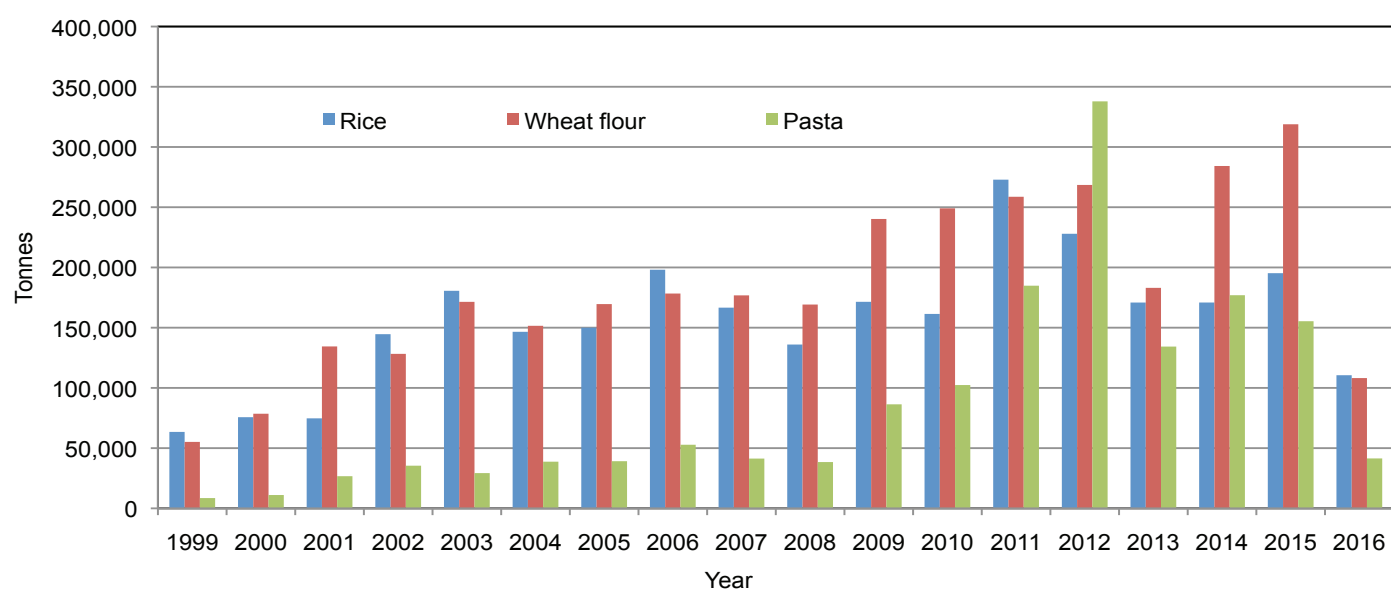


Trends in Cereal Imports

Table 3: Total Cereal Imports through Berbera, Bossaso and Mogadishu Ports (Tonnes) *

	1999	2000	2001	2002	2003	2004	2005	2006	2007	2008	2009	2010	2011	2012	2013	2014	2015	Jan-Jun 2016
Rice	63 464	75 687	74 729	144 600	180 614	146 567	150 017	198 101	166 626	136 007	171 472	161 415	272 877	227 955	170 868	170,888	195,240	110 527
Wheat flour	55 176	78 555	134 425	128 263	171 442	151 555	169 583	178 345	176 821	169 208	240 247	249 080	258 679	268,491	183 058	284 230	318,868	108 160
Pasta	8 544	11 071	26 702	35 425	29 273	38,749	39 153	52 815	41 331	38 441	86 372	102 373	184,849	337 878	134 311	176,951	155 360	41 450

Figure 50: Total Cereal Imports (Berbera, Bossaso and Mogadishu)



* Bossaso and Berbera data is up to June 2016. Elman (Mogadishu) is up to November 2015. Mogadishu data (Elmaan Port) for 2013 includes only January - March imports.