

Market Update

Highlights

Inflation:

Consumer Price Index (CPI) remained stable (4%) in Northeast and declined mildly (3%) in the Southern regions but increased mildly in Central and Northwest (30%) in September 2017 month-on-month. The CPI rose (8-20%) annually due to increases in cereal prices.

Exchange rate:

SoSh-using areas: The exchange rates between SoSh and the United States Dollar (USD) remained relatively stable or changed mild rates against USD in most regions of the country during September 2017. Annual comparison mostly exhibited mixed patterns, with SoSh mildly gaining value (less than 10%) in Central, Sorghum Belt and Juba regions; while moderate depreciations (12%) were recorded in Northeast regions due to recent printing of local currency notes in the regions.

SISh-using areas: The SISh depreciated mildly (3%) against the USD in September 2017 month-on-month while year-on-year comparison indicates high depreciation (of 32%) due to increased supply of newly printed local currency notes and a decline in the availability of USD due to reduced livestock exports and export revenue.

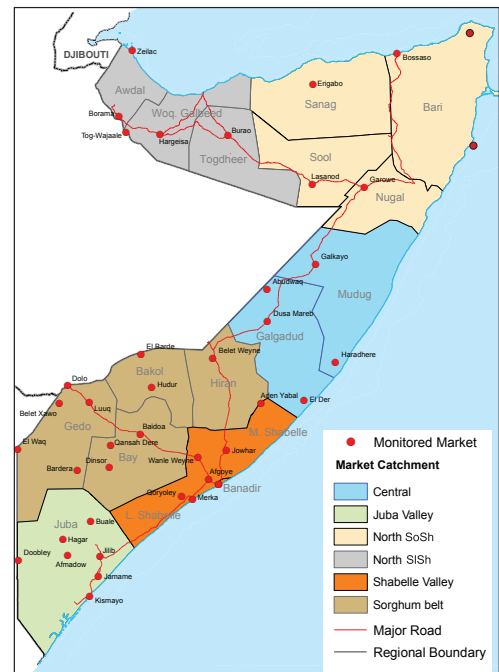
Local cereal prices changed at mild rates (less than +/-10%) in most of the Northern and Central regions while Southern regions mostly recorded declines month-on-month in September 2017 as a result of increased market supply from the new (Gu 2017) harvest in the surrounding rural areas. Annual comparison indicates higher prices for local grains in most regions of the country attributable to reduced supply due to poor successive harvests except in Juba valley where cereal prices exhibited decline (16%) due to improved harvest compared to a year ago.

Prices of imported food (rice, sugar, vegetable oil, wheat flour) mostly exhibited relative stability or mild monthly changes (less than +/-10%) in local currency terms in September 2017 across the country. Similarly, year-on-year comparison indicates mild increases or decreases in most regions of the country for most of the food imports in September 2017. However, most of the food imports in Middle Shabelle and Bay declined moderately (17-27%) compared to a year ago (September 2016) due to relatively better security situation that enabled increased supply/distribution of food imports.

Livestock prices for local quality goat and local quality camel exhibited mild changes (less than +/-10%) in most regions of the country month-on-month in September 2017. Compared to a year ago (September 2016), most regions exhibited increases in goat and camel prices except Central and sorghum Belt which showed price declines (14-20%) due to deterioration of body conditions (Bakool, Hiran and Gedo regions). Milk prices (camel and cattle) exhibited mild changes in most of the regions of the country month-on-month in September 2017. On the other hand, milk prices increased from moderate to high levels when compared to last year in most regions of the country due to less milk supply as a result of the current drought.

Labor (unskilled) wages changed mildly (by less than +/-10%) month-on-month in most of the regions of the country in September 2017. Similarly, compared to a year ago (September 2016), mild changes (by less than +/-10%) were recorded in most regions of the country with the exception of Middle Shabelle, Middle Juba and Banadir. Labor rates increased (18-29%) in Middle Shabelle and Middle Juba as a result of increased agricultural activities in Middle Juba and increased political activities in Middle Shabelle; while in Banaadir the labor rates declined (25%) due to increased labor competition.

Terms of Trade (ToTs) between daily labor wage and cereals remained relatively stable or changed mildly (by 1-2kg of cereals/daily labor wage) in most regions of the country month-on-month in September 2017. Annual comparison indicates lower ToT between daily labor and cereals in most regions due to declines in labor wages and/or increase in cereal prices; exception is Middle Juba where the ToT increased by 6kg per daily wage due to decrease in cereal prices and increase in labor wage. The ToT between local quality goat and cereals mostly increased from mild to moderate levels in most regions of the country month-on-month due to declines in cereal prices and/or mild increases in goat prices. Compared to a year ago (September 2016), the ToT between goat and cereals were lower in most regions of the country; exception is in Middle Juba where the ToT increased by 68kgs of cereal per goat compared to a year ago due to lower cereal prices and higher goat prices this year.



This Market Update is a monthly report that presents analysis of market information and is produced regularly as part of the monthly monitoring process.

The weekly price data is collected from 48 main markets and 51 rural markets throughout Somalia since 1995.

Market analysis is an integral part of all of FSNAU's annual food security projections and seasonal technical reports (Technical Reports on FSNAU Post Gu and Post Deyr Analysis).

Detailed market data are available online on www.fsnau.org/ids.

Towns Affected by Trade Disruption (Bulo Burto, Wajid, Hudur and Dinsor)

Labor (unskilled) wages increased mildly in September 2017 in siege-affected markets month-on-month. Compared to a year ago, wage rates increased in Bulo-Burto (7%) and Wajid (54%) due to increased opportunities from loading and off-loading activities because of increased humanitarian distribution of food aid; while the wage rates declined in Hudur (11%) and Dinsor (12%).

Terms of Trade (ToTs) between daily labor wage and cereals and between local quality goat and cereals either remained relatively stable or changed at mild rates in September 2017 in all the markets except Dinsor where ToT between goat and red sorghum declined significantly (by 42Kgs per goat) due to decline (9%) in goat prices and increase in red sorghum prices. Annual comparison indicates lower ToTs in all siege-affected markets.

Local grain (red and white sorghum) prices declined mildly in siege affected markets (Bulo-Burto, Wajid and Hudur) due to increased cereal supply from the new (Gu '2017) harvest and humanitarian food aid distribution month on month; exception is Dinsor where red sorghum prices increased by 27 percent due to increased demand from the neighboring regions. Compared to a year ago, local grain prices in these markets have increased significantly (20-93%) due to increased demand from the neighboring regions except in Dinsor where the prices remained stable.

Prices of imported food items (rice, sugar, vegetable oil, wheat flour) changed (+/-) at mild rates for most of the food imports in all siege affected markets month-on-month in September 2017. Similarly, compared to a year ago, prices of most food imports changed at mild rates in Bulo-Burto and Wajid but declined in Hudur (12-17%) and Dinsor (32-43%) due to increased supply which commenced when Somalia National Force started escorting trucks in and out of the towns.

National Trends: CPI, Exchange Rates, Cereal Prices and Relative Purchasing Power

Table 1: ToT between Daily Labour Wage Rate and Cereals by Region September 2017

Regions	Sept 2017 (kg)	kg change from		
		Aug 2017	Sept 2016	Sept 5 yr Average (2012 - 2016)
Banadir/Mogadishu (White maize)	7	0	-12	-14
Bay (Red sorghum)	10	-1	-3	-5
Bakool (Red sorghum)	3	0	-2	-2
Gedo (Red sorghum)	11	1	-2	-4
Juba (White maize)	12	1	2	1
Shabelle (White maize)	8	1	-2	-3
Northwest (Imported Rice)	12	0	0	3
Northeast (Imported Rice)	8	0	0	1
Central (Imported Rice)	5	0	0	1

Figure 1: Wheat Prices: Mogadishu and Bossaso Markets

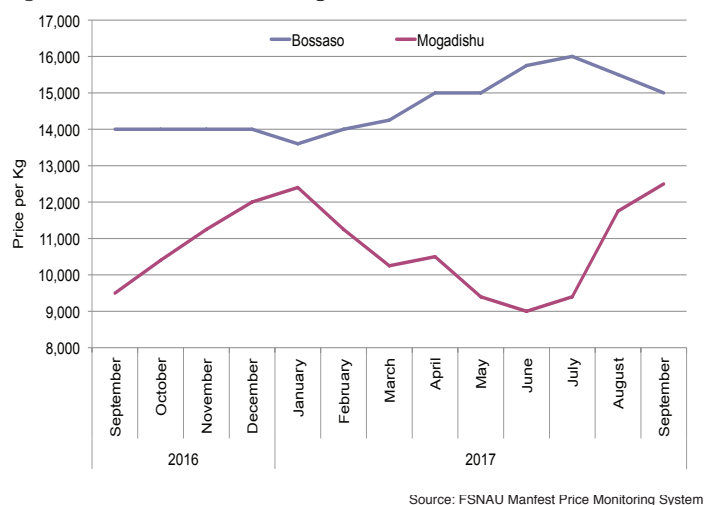


Figure 2: Terms of Trade Between Wage Rates and Selected Cereals

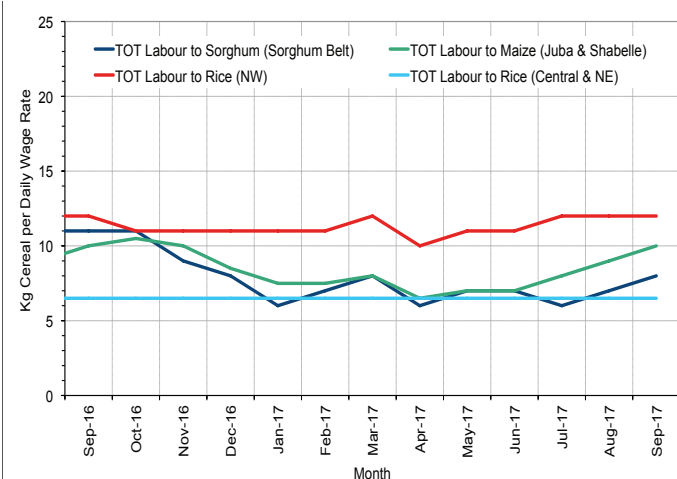


Figure 3: Monthly Exchange Rate for Selected Regions (SoSh and SiSh to USD)

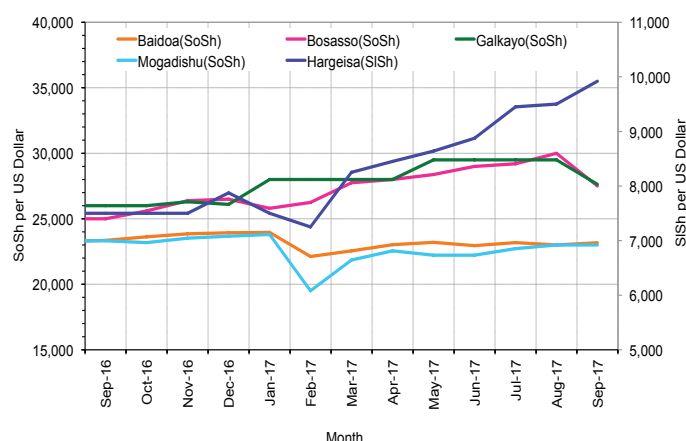


Figure 4: Monthly Trends in Consumer Price Index (CPI, March 2007=100)

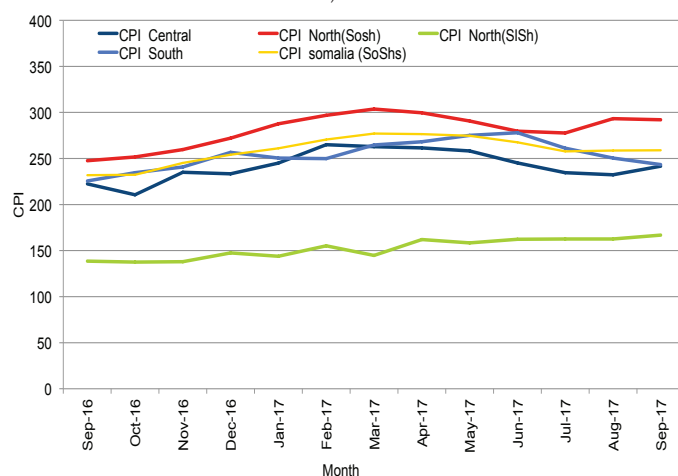
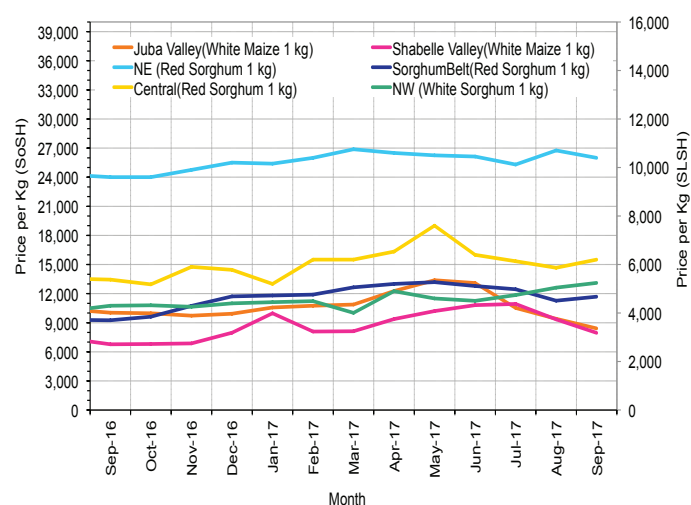


Figure 5: Monthly Trends in Local Cereal Prices



Regional analysis: Juba Regions

Indicator	5-Year Average (2012-2016)	Sep-16	Aug-17	Sep-17 Nominal Price	Sep-17 Real (Deflated) Price	% Change Previous Month	% Change Same Month Previous Year	% Change 5-year avrg (2012-2016)
Imported Commodities Prices								
Diesel 1 litre	25,878	20,156	20,375	20,125	8,171	-1%	0%	-22%
Imported Red Rice 1kg	15,931	15,906	15,750	15,875	6,424	1%	0%	0%
Petrol 1 litre	28,470	24,875	22,500	22,625	9,198	1%	-9%	-21%
Sugar	17,162	16,281	16,844	16,563	6,707	-2%	2%	-3%
Vegetable Oil 1 litre	32,087	29,656	28,563	29,125	11,870	2%	-2%	-9%
Wheat Flour 1kg	15,472	15,547	15,594	14,656	5,923	-6%	-6%	-5%
Wheat Grain 1kg	-	-	-	-	-	-	-	-
Cereal Prices								
Red Sorghum 1kg	7,400	8,000	8,083	6,208	2,451	-23%	-22%	-16%
White Maize 1kg	8,455	10,031	9,403	8,419	3,360	-10%	-16%	0%
Livestock & Livestock Product Prices								
Camel Local Quality (Head)	9,450,483	8,246,875	11,552,083	10,898,438	4,478,901	-6%	32%	15%
Cattle Local Quality (Head)	3,803,547	2,996,429	3,884,722	4,185,417	1,720,007	8%	40%	10%
Fresh Camel Milk 1 litre	16,503	16,609	16,281	17,781	7,208	9%	7%	8%
Goat Export Quality (Head)	1,413,389	1,093,438	1,600,000	1,639,271	673,602	2%	50%	16%
Goat Local Quality (Head)	926,402	700,313	911,458	939,167	385,875	3%	34%	1%
Other Essential Items								
Charcoal 50kg	81,791	87,188	93,802	83,646	34,277	-11%	-4%	2%
Cowpeas 1 kg	20,611	25,643	23,714	24,500	9,969	3%	-4%	19%
Unskilled Labor Wage Rate	92,376	96,250	105,156	102,969	42,218	-2%	7%	11%
Firewood Bundle	8,882	7,266	7,036	6,766	2,681	-4%	-7%	-24%
Local Sesame Oil 1 litre	69,130	56,250	49,656	51,063	20,886	3%	-9%	-26%
Exchange Rate (Somali Shilling per USD)	21,893	23,125	22,938	22,888	9,306	0%	-1%	5%
Terms of Trade								
Labour Wage (Daily)/ Cereal (Maize(Kg))	11	10	11	12	-	9%	20%	9%
Local Goat (Head)/ Cereal (Maize(Kg))	113	70	97	112	-	15%	60%	-1%
Price Indices								
Consumer Price Index	-	226	250	243	-	-3%	8%	-

Figure 6: Trends in Cereal Prices

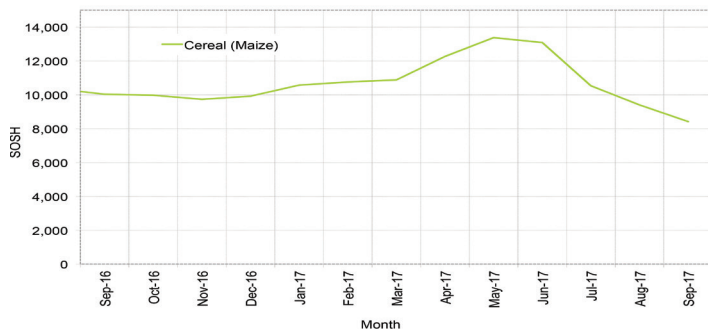


Figure 7: Trends in Wage Rates and Relative Purchasing Power

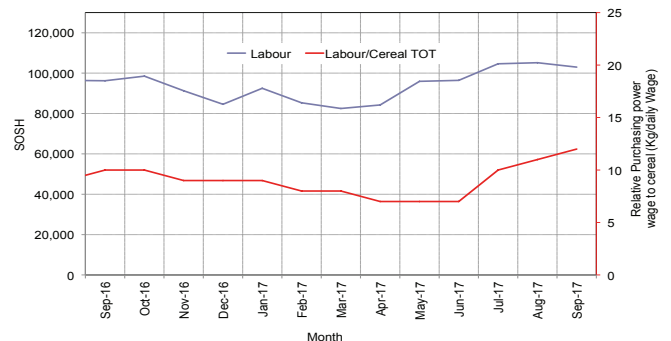


Figure 8: Imported Commodity Prices Compared to Exchange Rate

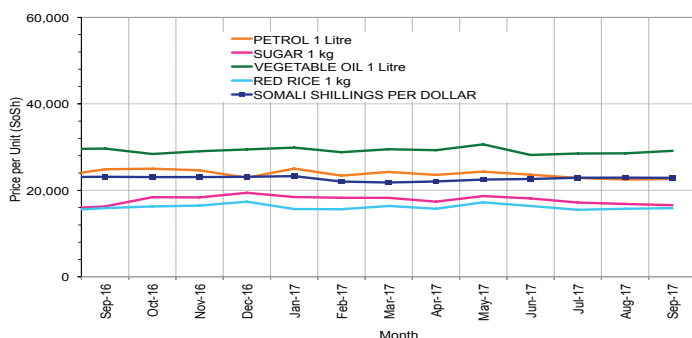


Figure 9: Goat Local Quality

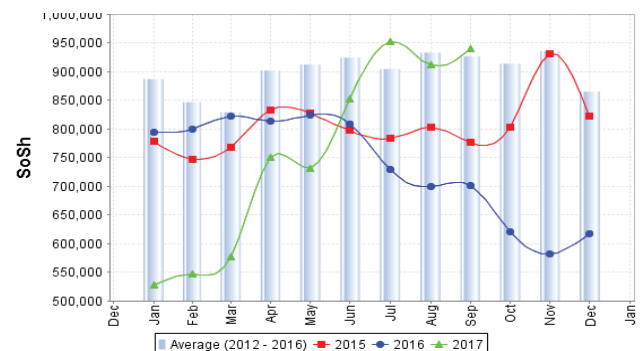


Figure 10: Exchange Rate

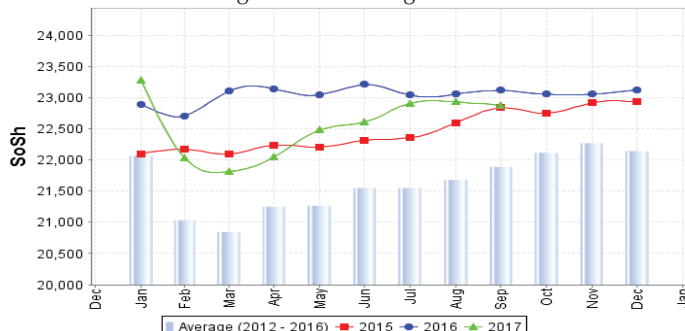
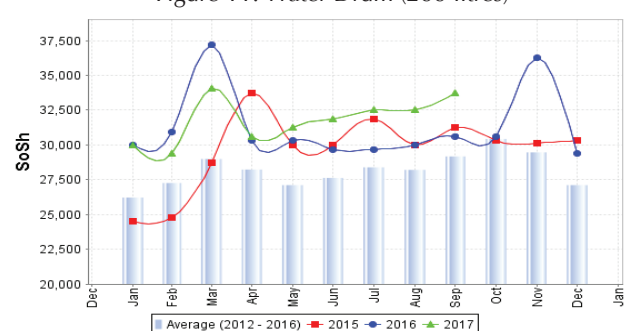


Figure 11: Water Drum (200 litres)



Regional analysis: Sorghum Belt Regions (Bay, Bakool, Gedo and Hiran)

Indicator	5-Year Average (2012-2016)	Sep-16	Aug-17	Sep-17 Nominal Price	Sep-17 Real (Deflated) Price	% Change Previous Month	% Change Same Month Previous Year	% Change 5-year avg (2012-2016)
Imported Commodities Prices								
Diesel 1 litre	29,088	24,896	23,708	24,479	9,960	3%	-2%	-16%
Imported Red Rice 1kg	18,282	19,479	19,458	19,083	7,743	-2%	-2%	4%
Petrol 1 litre	30,125	27,125	27,708	27,208	11,082	-2%	0%	-10%
Sugar	19,848	22,021	20,667	20,521	8,334	-1%	-7%	3%
Vegetable Oil 1 litre	37,942	37,375	35,042	34,917	14,250	0%	-7%	-8%
Wheat Flour 1kg	17,447	18,958	17,875	17,458	7,075	-2%	-8%	0%
Wheat Grain 1kg	14,460	22,000	18,750	19,417	7,880	4%	-12%	34%
Cereal Prices								
Red Sorghum 1kg	8,264	9,050	11,550	11,848	4,769	3%	31%	43%
White Maize 1kg	9,285	10,330	12,075	11,709	4,712	-3%	13%	26%
Livestock & Livestock Product Prices								
Camel Local Quality (Head)	12,575,689	11,537,500	11,267,500	11,022,500	4,529,887	-2%	-4%	-12%
Cattle Local Quality (Head)	3,847,880	3,545,833	2,625,357	2,465,714	1,013,250	-6%	-30%	-36%
Fresh Camel Milk 1 litre	21,480	19,438	25,182	28,000	11,407	11%	44%	30%
Goat Export Quality (Head)	1,672,026	1,574,182	1,627,750	1,487,955	611,414	-9%	-5%	-11%
Goat Local Quality (Head)	1,074,088	857,708	776,667	777,500	319,434	0%	-9%	-28%
Other Essential Items								
Charcoal 50kg	138,317	147,273	175,455	175,909	72,194	0%	19%	27%
Cowpeas 1 kg	23,148	24,771	37,979	37,979	15,508	0%	53%	64%
Unskilled Labor Wage Rate	96,724	95,833	94,479	95,958	39,336	2%	0%	-1%
Firewood Bundle	6,378	6,083	6,167	6,167	2,434	0%	1%	-3%
Local Sesame Oil 1 litre	74,586	73,444	81,889	76,472	31,328	-7%	4%	3%
Exchange Rate (Somali Shilling per USD)	21,789	23,229	22,835	22,798	9,269	0%	-2%	5%
Terms of Trade								
Labour Wage (Daily)/ Cereal (Rice (Kg)	5	5	5	5	-	0%	0%	0%
Local Goat (Head)/ Cereal (Rice (Kg)	59	54	40	41	-	2%	-24%	-31%
Price Indices								
Consumer Price Index	-	226	250	243	-	-3%	8%	-

Figure 12: Trends in Cereal Prices

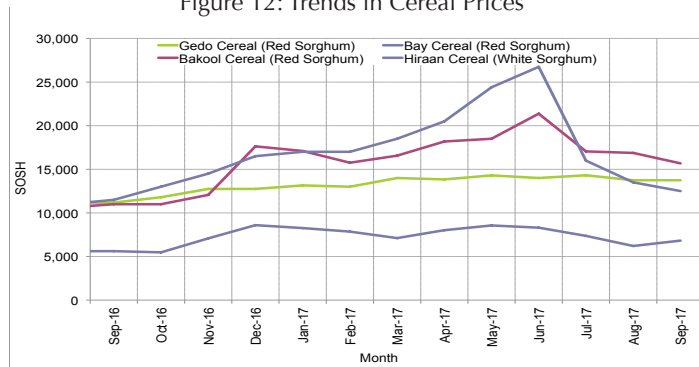


Figure 13: Trends in Wage Rates and Relative Purchasing Power

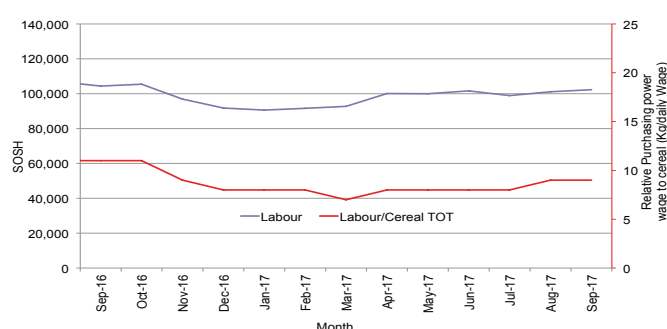


Figure 14: Imported Commodity Prices Compared to Exchange Rate

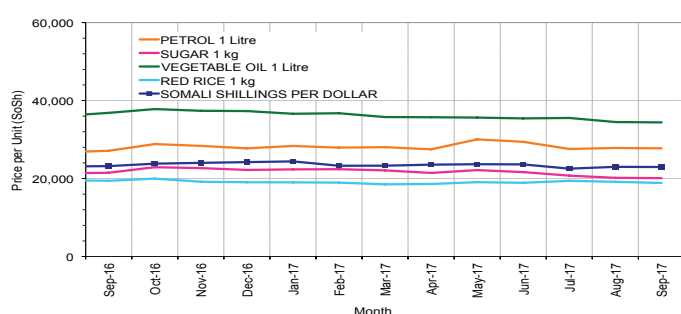


Figure 15: Goat Local Quality

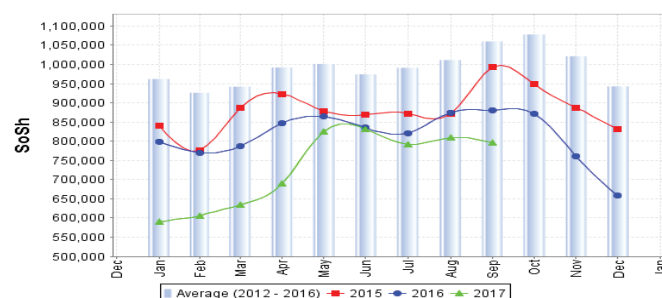


Figure 16: Exchange Rate

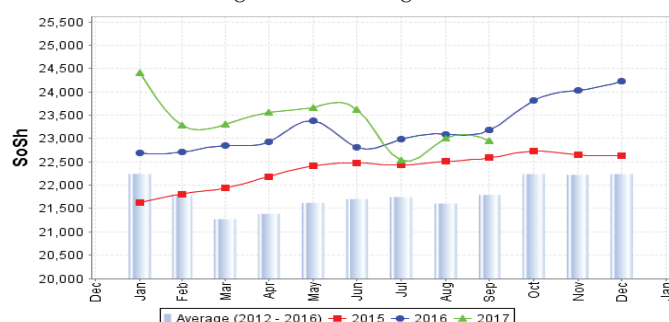
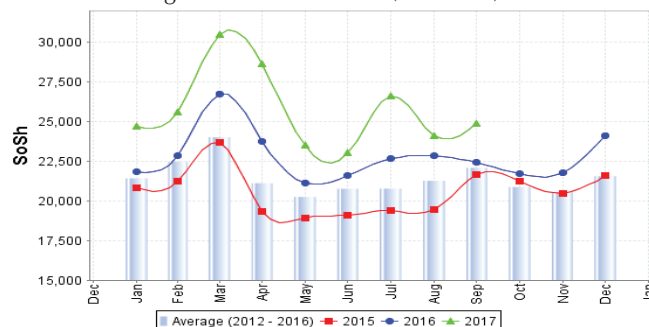


Figure 17: Water Drum (200 litres)



Regional analysis: Shabelle Regions

Indicator	5-Year Average (2012-2016)	Sep-16	Aug-17	Sep-17 Nominal Price	Sep-17 Real (Deflated) Price	% Change Previous Month	% Change Same Month Previous Year	% Change 5-year avrg (2012-2016)
Imported Commodities Prices								
Diesel 1 litre	25,658	19,833	16,833	16,583	6,715	-1%	-16%	-35%
Imported Red Rice 1kg	15,858	17,000	16,500	15,875	6,424	-4%	-7%	0%
Petrol 1 litre	28,458	24,708	19,875	19,375	7,863	-3%	-22%	-32%
Sugar	18,158	21,083	17,833	17,750	7,195	0%	-16%	-2%
Vegetable Oil 1 litre	28,808	29,417	28,708	28,708	11,698	0%	-2%	0%
Wheat Flour 1kg	16,025	17,167	15,375	14,875	6,013	-3%	-13%	-7%
Wheat Grain 1kg	15,933	19,000	-	9,000	-	-	-53%	-44%
Cereal Prices								
Red Sorghum 1kg	9,380	9,197	13,104	11,674	4,698	-11%	27%	24%
White Maize 1kg	6,261	6,878	9,348	7,958	3,171	-15%	16%	27%
Livestock & Livestock Product Prices								
Camel Local Quality (Head)	16,932,000	17,340,000	17,641,458	18,890,000	7,763,244	7%	9%	12%
Cattle Local Quality (Head)	5,778,100	5,411,000	4,225,000	3,976,250	1,634,045	-6%	-27%	-31%
Fresh Camel Milk 1 litre	18,466	17,417	20,917	21,292	8,651	2%	22%	15%
Goat Export Quality (Head)	1,876,000	1,926,875	1,808,750	1,771,875	728,099	-2%	-8%	-6%
Goat Local Quality (Head)	1,367,249	1,362,083	1,294,167	1,325,000	544,444	2%	-3%	-3%
Other Essential Items								
Charcoal 50kg	118,369	130,444	137,528	133,194	54,640	-3%	2%	13%
Cowpeas 1 kg	19,385	21,111	45,694	46,861	19,159	3%	122%	142%
Unskilled Labor Wage Rate	68,983	65,833	67,083	66,875	27,384	0%	2%	-3%
Firewood Bundle	7,491	5,833	5,625	5,625	2,212	0%	-4%	-25%
Local Sesame Oil 1 litre	56,700	47,417	52,250	52,167	21,339	0%	10%	-8%
Exchange Rate (Somali Shilling per USD)	22,016	23,275	23,225	23,225	9,445	0%	0%	5%
Terms of Trade								
Labour Wage (Daily)/ Cereal (Maize(Kg))	11	10	7	8	-	14%	-20%	-27%
Local Goat (Head)/ Cereal (Maize(Kg))	222	198	138	166	-	20%	-16%	-25%
Price Indices								
Consumer Price Index	-	226	250	243	-	-3%	8%	-

Figure 18: Trends in Cereal Prices

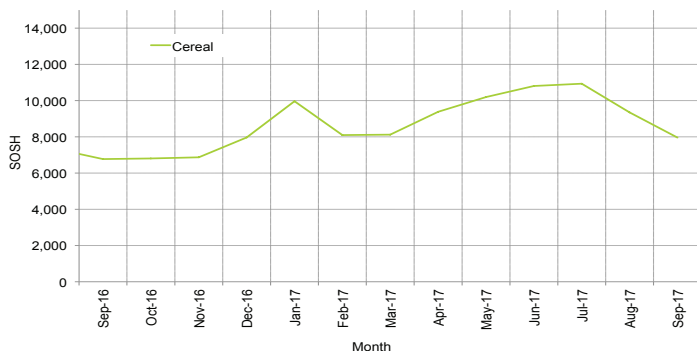


Figure 19: Trends in Wage Rates and Relative Purchasing Power

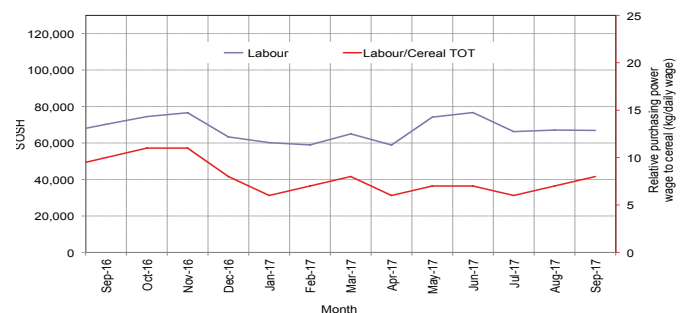


Figure 20: Imported Commodity Prices Compared to Exchange Rate

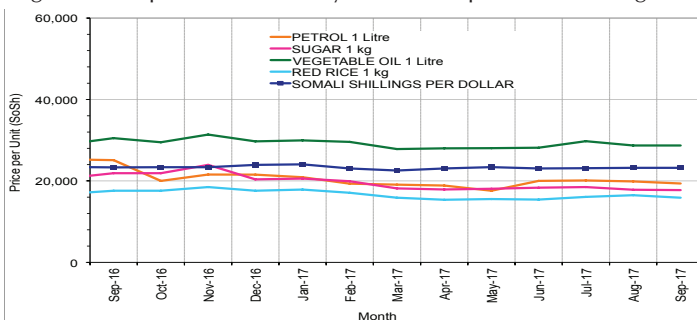


Figure 22: Exchange Rate

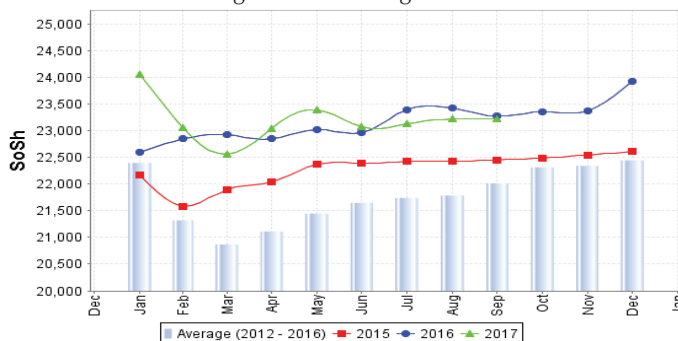


Figure 21: Goat Local Quality

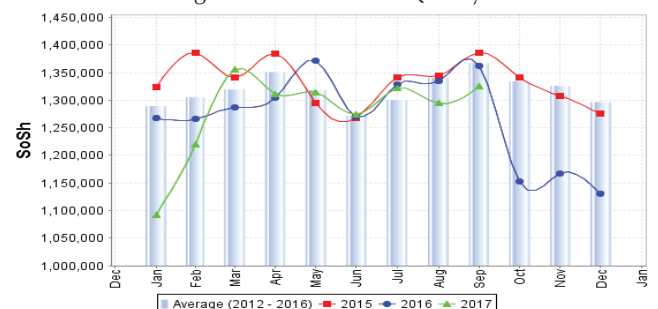
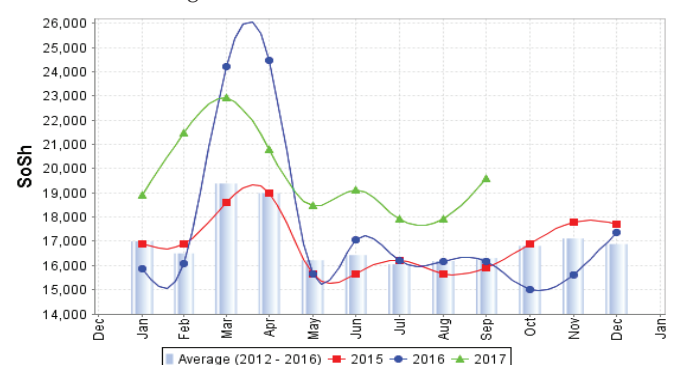


Figure 23: Water Drum (200 litres)



Regional analysis: Banadir Region

Indicator	5-Year Average (2012-2016)	Sep-16	Aug-17	Sep-17 Nominal Price	Sep-17 Real (Deflated) Price	% Change Previous Month	% Change Same Month Previous Year	% Change 5-year avg (2012-2016)
Imported Commodities Prices								
Diesel 1 litre	20,496	14,167	13,392	13,558	5,472	1%	-4%	-34%
Imported Red Rice 1kg	12,471	12,000	11,917	11,833	4,763	-1%	-1%	-5%
Petrol 1 litre	21,580	16,917	15,833	16,083	6,510	2%	-5%	-25%
Sugar	14,843	15,917	14,750	14,250	5,756	-3%	-10%	-4%
Vegetable Oil 1 litre	24,731	21,625	22,417	22,333	9,078	0%	3%	-10%
Wheat Flour 1kg	11,983	10,583	12,125	12,292	4,952	1%	16%	3%
Wheat Grain 1kg	10,255	11,250	16,125	15,875	6,424	-2%	41%	55%
Cereal Prices								
Red Sorghum 1kg	6,580	6,867	10,542	10,458	4,198	-1%	52%	59%
White Maize 1kg	8,165	6,867	12,342	11,508	4,630	-7%	68%	41%
Livestock & Livestock Product Prices								
Camel Local Quality (Head)	-	-	-	-	-	-	-	-
Cattle Local Quality (Head)	-	-	-	-	-	-	-	-
Fresh Camel Milk 1 litre	22,703	24,667	27,333	27,333	11,133	0%	11%	20%
Goat Export Quality (Head)	2,568,750	2,250,000	2,700,000	2,625,000	1,078,713	-3%	-	2%
Goat Local Quality (Head)	2,111,200	1,775,000	2,150,000	2,025,000	832,127	-6%	14%	-4%
Other Essential Items								
Charcoal 50kg	188,040	175,000	218,000	213,333	87,575	-2%	22%	13%
Cowpeas 1 kg	18,326	20,683	47,067	46,783	19,127	-1%	126%	155%
Unskilled Labor Wage Rate	114,900	97,500	80,833	75,000	30,723	-7%	-23%	-35%
Firewood Bundle	7,465	7,500	8,000	8,000	3,188	0%	7%	7%
Local Sesame Oil 1 litre	57,139	41,583	53,667	52,833	21,613	-2%	27%	-8%
Exchange Rate (Somali Shilling per USD)	21,521	23,167	22,692	22,792	9,267	0%	-2%	6%
Terms of Trade								
Labour Wage (Daily)/ Cereal (Rice(Kg))	9	8	7	6	-	-14%	-25%	-33%
Local Goat (Head)/ Cereal (Rice(Kg))	169	148	180	171	-	-5%	16%	1%
Price Indices								
Consumer Price Index	-	226	250	243	-	-3%	8%	-

Figure 24: Trends in Cereal Prices

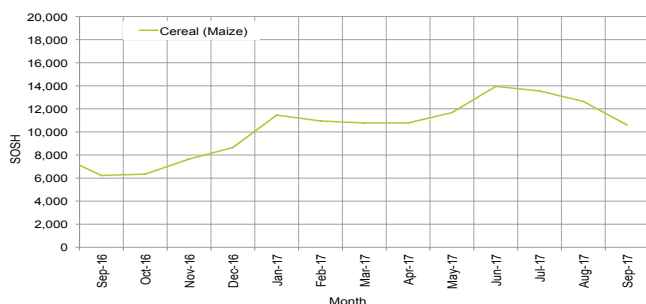


Figure 25: Bakara: Trends in Wage Rates and Relative Purchasing Power

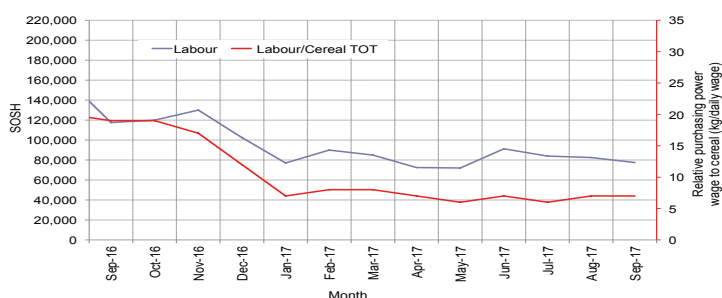


Figure 26: Imported Commodity Prices Compared to Exchange Rate

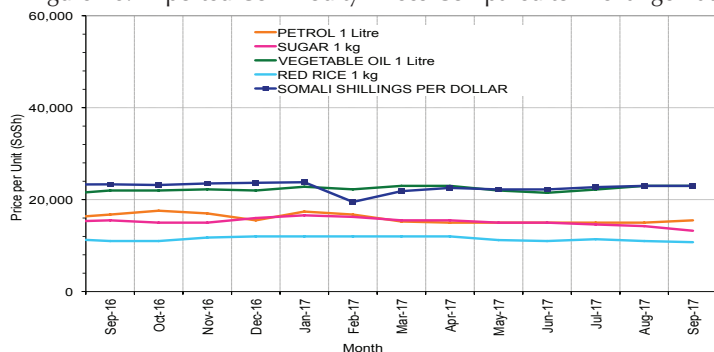


Figure 27: Goat Local Quality

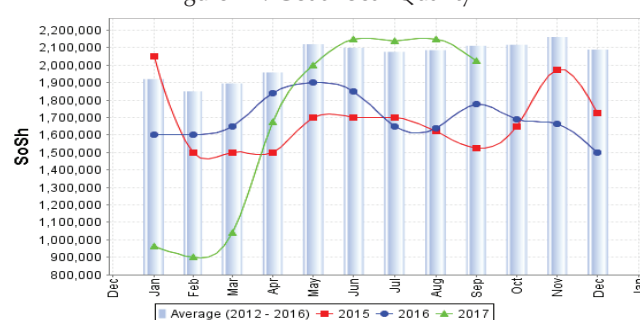


Figure 28: Exchange Rate

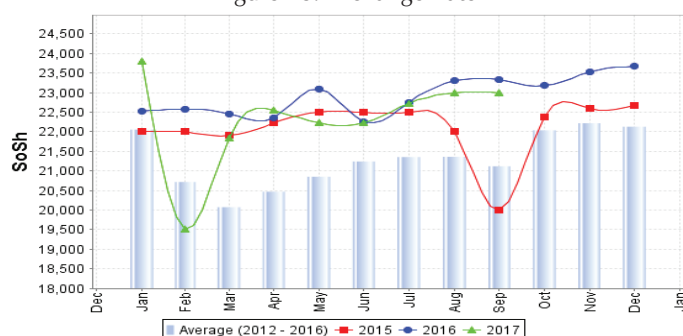
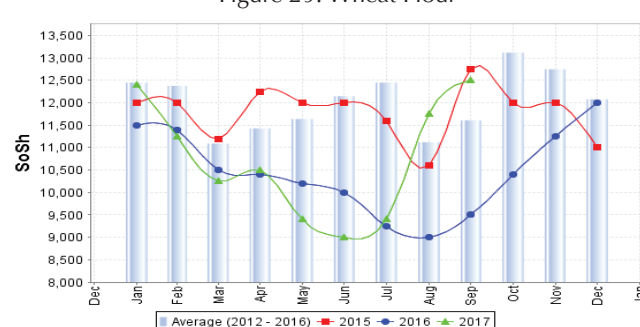


Figure 29: Wheat Flour



Regional analysis: Central Regions

Indicator	5-Year Average (2012-2016)	Sep-16	Aug-17	Sep-17 Nominal Price	Sep-17 Real (Deflated) Price	% Change Previous Month	% Change Same Month Previous Year	% Change 5-year avrg (2012-2016)
Imported Commodities Prices								
Diesel 1 litre	26,020	18,400	23,680	23,800	9,749	1%	29%	-9%
Imported Red Rice 1kg	18,740	18,500	19,200	18,800	7,680	-2%	2%	0%
Petrol 1 litre	25,066	21,313	25,600	25,600	10,494	0%	20%	2%
Sugar	21,548	22,600	23,200	23,100	9,459	0%	2%	7%
Vegetable Oil 1 litre	41,416	36,600	42,600	42,850	17,633	1%	17%	3%
Wheat Flour 1kg	16,498	16,100	16,200	16,450	6,707	2%	2%	0%
Wheat Grain 1kg	15,272	17,250	22,000	22,000	9,004	0%	28%	44%
Cereal Prices								
Red Sorghum 1kg	12,330	13,450	14,667	15,500	6,314	6%	15%	26%
White Maize 1kg	13,775	16,875	14,750	17,750	7,245	20%	5%	29%
Livestock & Livestock Product Prices								
Camel Local Quality (Head)	11,477,000	13,075,000	10,200,000	9,950,000	4,117,489	-2%	-24%	-13%
Cattle Local Quality (Head)	3,000,000	-	-	-	-	-	-	-
Fresh Camel Milk 1 litre	30,452	30,500	52,000	49,500	20,384	-5%	62%	63%
Goat Export Quality (Head)	1,469,666	1,516,667	1,250,000	1,150,000	475,802	-8%	-24%	-22%
Goat Local Quality (Head)	1,114,900	1,040,000	850,000	855,000	353,723	1%	-18%	-23%
Other Essential Items								
Charcoal 50kg	168,720	164,000	218,000	203,000	83,907	-7%	24%	20%
Cowpeas 1 kg	23,188	29,600	59,800	58,250	24,005	-3%	97%	151%
Unskilled Labor Wage Rate	87,400	96,000	94,000	94,000	38,800	0%	-2%	8%
Firewood Bundle	33,560	32,000	35,000	33,500	13,763	-4%	5%	0%
Local Sesame Oil 1 litre	86,430	78,200	80,500	84,000	34,662	4%	7%	-3%
Exchange Rate (Somali Shilling per USD)	22,143	25,300	27,075	24,844	10,181	-8%	-2%	12%
Terms of Trade								
Labour Wage (Daily)/ Cereal (Rice Kg)	4	5	5	5	-	0%	0%	25%
Local Goat (Head)/ Cereal (Rice Kg)	59	56	44	45	-	2%	-20%	-24%
Camel (Head)/Cereal (Rice Kg)	617	707	531	529	-	0%	-25%	-14%
Price Indices								
Consumer Price Index	-	223	232	242	-	4%	9%	-

Figure 30: Trends in Cereal Prices

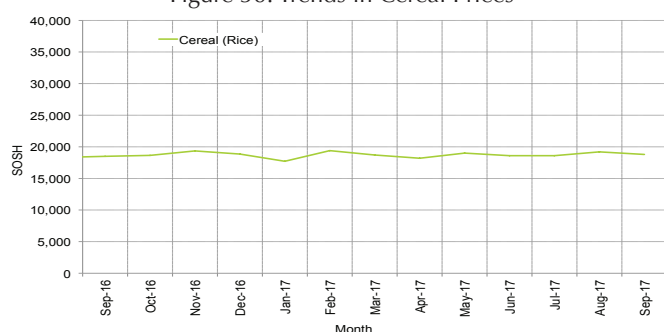


Figure 31: Trends in wage rates and relative purchasing power

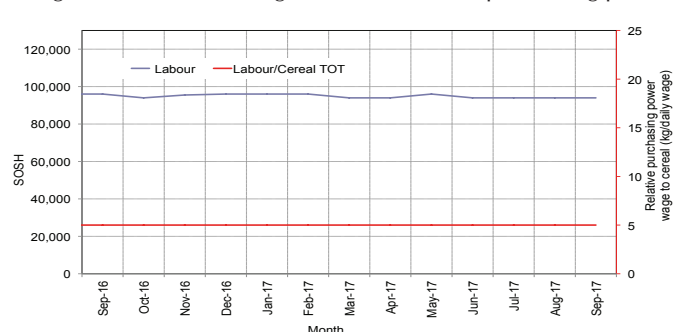


Figure 32: Imported Commodity Prices Compared to Exchange Rate

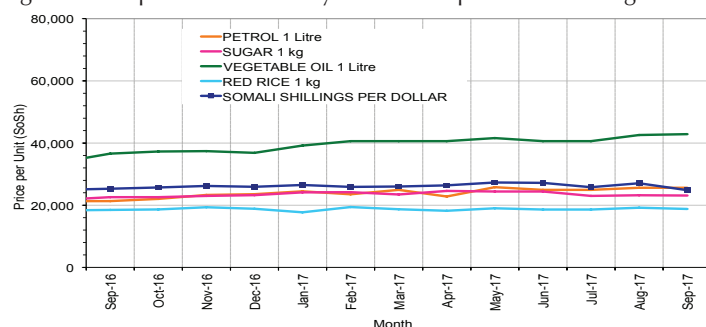


Figure 33: Goat Local Quality

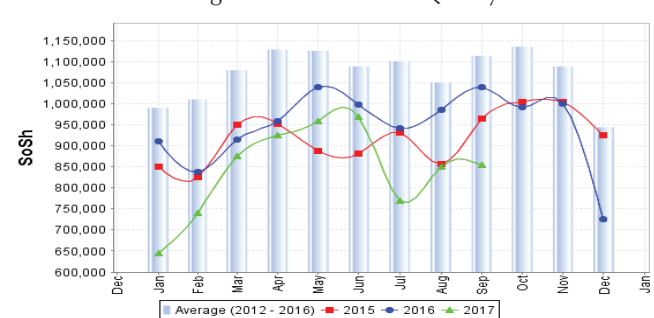


Figure 34: Exchange Rate

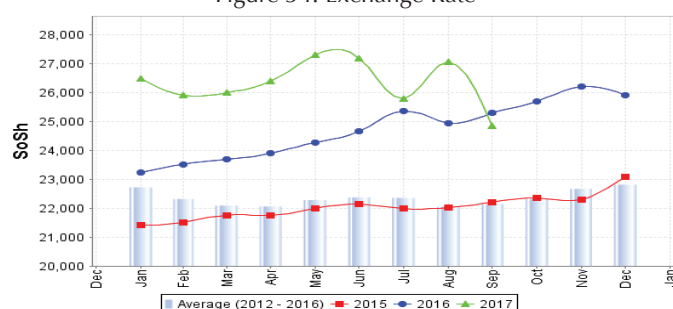
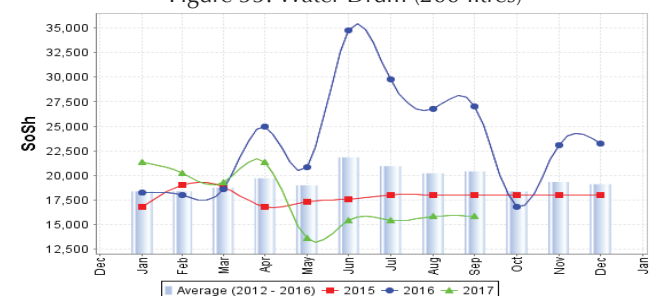


Figure 35: Water Drum (200 litres)



Regional analysis: Northeast Regions

Indicator	5-Year Average (2012-2016)	Sep-16	Aug-17	Sep-17 Nominal Price	Sep-17 Real (Deflated) Price	% Change Previous Month	% Change Same Month Previous Year	% Change 5-year avrg (2012-2016)
Imported Commodities Prices								
Diesel 1 litre	22,859	16,375	20,964	20,589	6,950	-2%	26%	-10%
Imported Red Rice 1kg	17,690	16,786	18,071	17,643	5,942	-2%	5%	0%
Petrol 1 litre	23,359	20,036	24,121	23,586	7,977	-2%	18%	1%
Sugar	20,839	21,357	22,786	23,107	7,813	1%	8%	11%
Vegetable Oil 1 litre	37,230	32,821	34,250	34,036	11,555	-1%	4%	-9%
Wheat Flour 1kg	17,019	16,214	17,286	17,036	5,734	-1%	5%	0%
Wheat Grain 1kg	29,570	31,000	34,100	33,250	11,286	-2%	7%	12%
Cereal Prices								
Red Sorghum 1kg	22,215	24,000	26,750	26,000	8,803	-3%	8%	17%
White Maize 1kg	21,940	26,000	21,500	20,000	6,749	-7%	-23%	-9%
Livestock & Livestock Product Prices								
Camel Local Quality (Head)	16,207,000	13,758,000	14,976,500	14,186,500	4,857,811	-5%	3%	-12%
Cattle Local Quality (Head)	8,618,750	8,250,000	11,000,000	11,750,000	4,023,475	7%	42%	36%
Fresh Camel Milk 1 litre	39,434	43,403	57,267	57,967	19,750	1%	34%	47%
Goat Export Quality (Head)	1,482,200	1,317,500	1,555,000	1,546,500	529,471	-1%	17%	4%
Goat Local Quality (Head)	1,406,057	1,251,429	1,370,714	1,402,857	480,283	2%	12%	0%
Other Essential Items								
Charcoal 50kg	350,100	358,929	378,214	386,071	132,103	2%	8%	10%
Cowpeas 1 kg	38,648	37,083	62,361	66,917	22,815	7%	80%	73%
Unskilled Labor Wage Rate	135,871	138,393	140,000	142,143	48,574	2%	3%	5%
Firewood Bundle	34,250	33,750	47,250	48,857	16,630	3%	45%	43%
Local Sesame Oil 1 litre	99,090	96,000	111,500	113,000	38,595	1%	18%	14%
Exchange Rate (Somali Shilling per USD)	21,223	23,679	27,786	26,500	8,974	-5%	12%	25%
Terms of Trade								
Labour Wage (Daily)/ Cereal (Rice(Kg))	7	8	8	8	-	0%	0%	14%
Local Goat (Head)/ Cereal (Rice(Kg))	80	75	76	80	-	5%	7%	0%
Price Indices								
Consumer Price Index	-	248	293	292	-	0%	18%	-

Figure 36: Trends in Cereal Prices

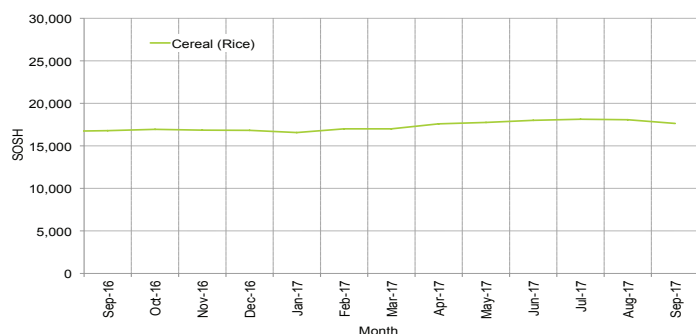


Figure 37: Trends in Wage Rates and Relative Purchasing Power

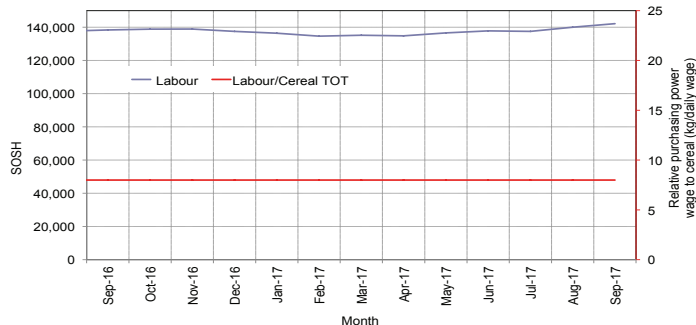


Figure 38: Imported Commodity Prices Compared to Exchange Rate

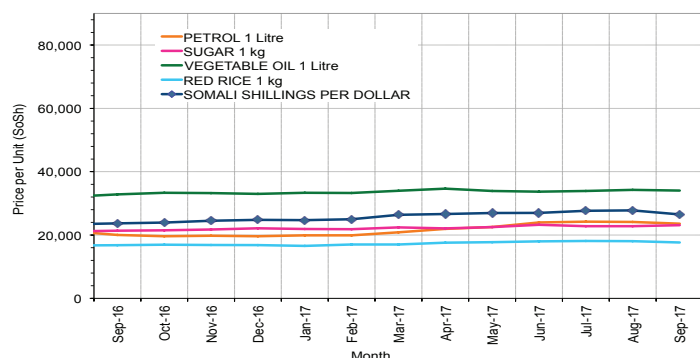


Figure 39: Goat Local Quality

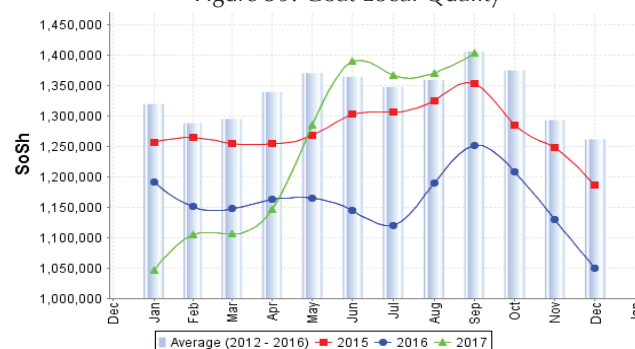


Figure 40: Exchange Rate

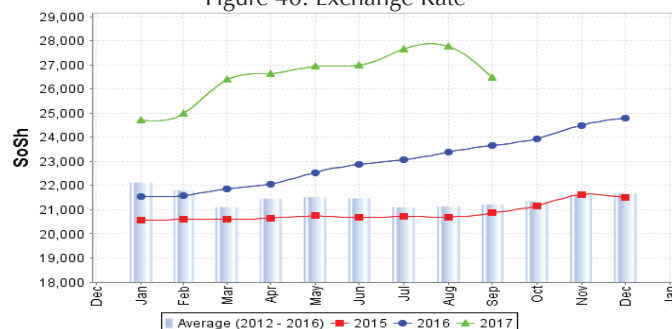
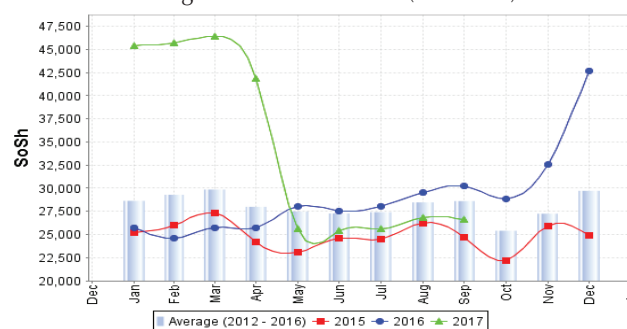


Figure 41: Water Drum (200 litres)



Regional analysis: Northwest Regions

Indicator	5-Year Average (2012-2016)	Sep-16	Aug-17	Sep-17 Nominal Price	Sep-17 Real (Deflated) Price	% Change Previous Month	% Change Same Month Previous Year	% Change 5-year avg (2012-2016)
Imported Commodities Prices								
Diesel 1 litre	6,426	4,940	5,931	6,311	3,682	6%	28%	-2%
Imported Red Rice 1kg	5,065	5,272	5,240	5,280	3,064	1%	0%	4%
Petrol 1 litre	7,267	6,020	7,560	7,708	4,519	2%	28%	6%
Sugar	5,776	5,700	6,300	6,840	3,999	9%	20%	18%
Vegetable Oil 1 litre	12,336	11,556	12,800	13,800	8,170	8%	19%	12%
Wheat Flour 1kg	4,416	4,710	4,500	4,500	2,597	0%	-4%	2%
Wheat Grain 1kg	3,508	3,875	4,625	4,500	2,597	-3%	16%	28%
Cereal Prices								
White Sorghum 1kg	3,798	4,300	5,050	5,240	3,040	4%	22%	38%
Yellow Maize 1kg	3,925	4,600	5,750	5,400	3,136	-6%	17%	38%
Livestock & Livestock Product Prices								
Camel Local Quality (Head)	3,910,800	3,985,000	5,023,333	5,165,667	3,095,383	3%	30%	32%
Cattle Local Quality (Head)	2,416,166	2,300,833	2,835,417	2,921,667	1,750,684	3%	27%	21%
Fresh Camel Milk 1 litre	6,590	9,300	11,400	11,400	6,731	0%	23%	73%
Goat Export Quality (Head)	480,408	427,500	533,125	516,950	309,678	-3%	21%	8%
Goat Local Quality (Head)	335,422	304,800	426,810	432,496	259,070	1%	42%	29%
Other Essential Items								
Charcoal 50kg	53,184	70,550	74,000	74,400	44,484	1%	5%	40%
Cowpeas 1 kg	10,796	13,667	19,500	20,375	12,110	4%	49%	89%
Unskilled Labor Wage Rate	48,856	60,780	63,400	61,940	37,017	-2%	2%	27%
Firewood Bundle	4,153	5,600	5,333	6,000	3,495	13%	7%	44%
Local Sesame Oil 1 litre	31,410	32,125	37,000	37,625	22,446	2%	17%	20%
Exchange Rate (Somaliland Shilling per USD)	6,935	7,500	9,580	9,912	5,840	3%	32%	43%
Terms of Trade								
Labour Wage (Daily)/ Cereal (Rice(Kg))	9	12	12	12	-	0%	0%	33%
Local Goat (Head)/ Cereal (Rice(Kg))	66	58	81	82	-	1%	41%	24%
Price Indices								
Consumer Price Index	-	139	163	167	-	3%	20%	-

Figure 42: Trends in Cereal Prices

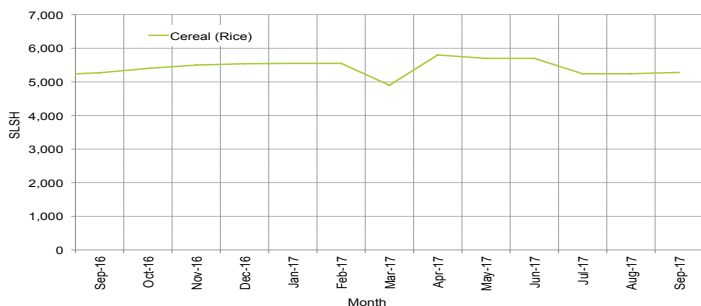


Figure 43: Trends in Wage Rates and Relative Purchasing Power

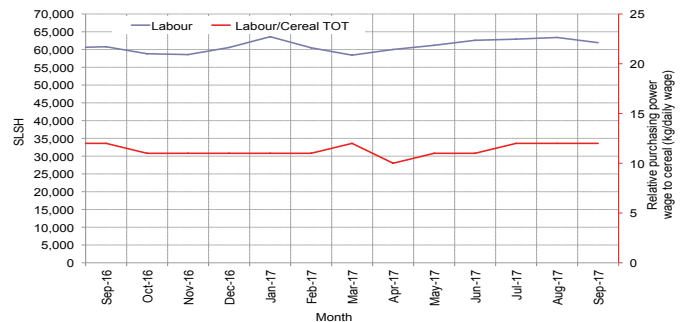


Figure 44: Imported Commodity Prices Compared to Exchange Rate

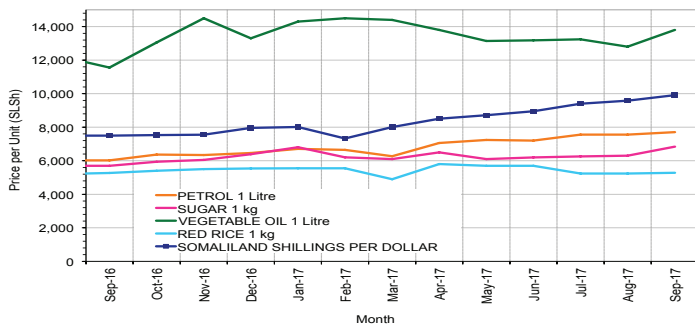


Figure 45: Goat Local Quality

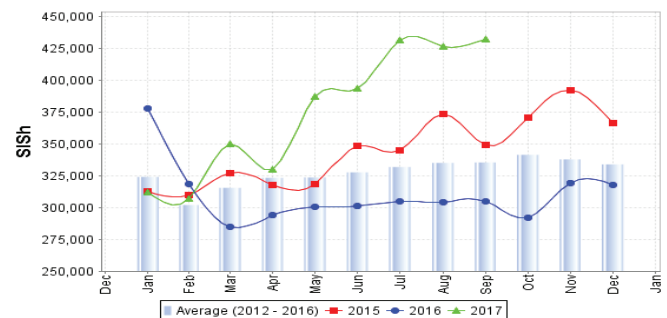


Figure 46: Exchange Rate

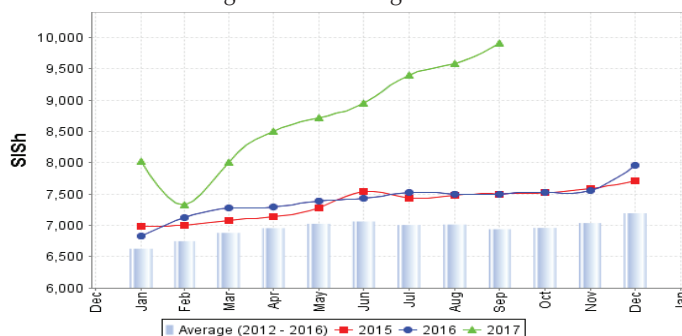
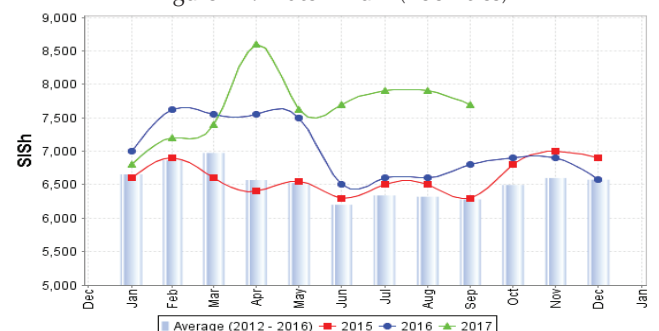


Figure 47: Water Drum (200 litres)



Trends in Livestock Exports

Table 1: Berbera Livestock Exports (Number of Heads)

	2000	2001	2002	2003	2004	2005	2006	2007	2008	2009	2010	2011	2012	2013	2014	2015	2016
Shoats	1 601 083	51 546	341 711	563 107	859 404	1 023 795	1 017 242	1 350 054	1 219 519	1 556 003	2 584 810	3 104 684	3 219 584	2 888 955	3 089 592	3 270 386	2 880 057
Cattle	63 263	20 973	37 547	84 312	131 852	148 151	85 631	88 143	80 051	88 005	133 021	150 934	190 354	20 875	252 597	160,395	150 133
Camel	16 984	3 473	18,864	21 874	5 147	5 069	22 810	14 245	26 515	20 206	92 651	107 281	102 664	75 728	64 578	61 475	57 841

Figure 48: Berbera Livestock Exports (Number of Heads)

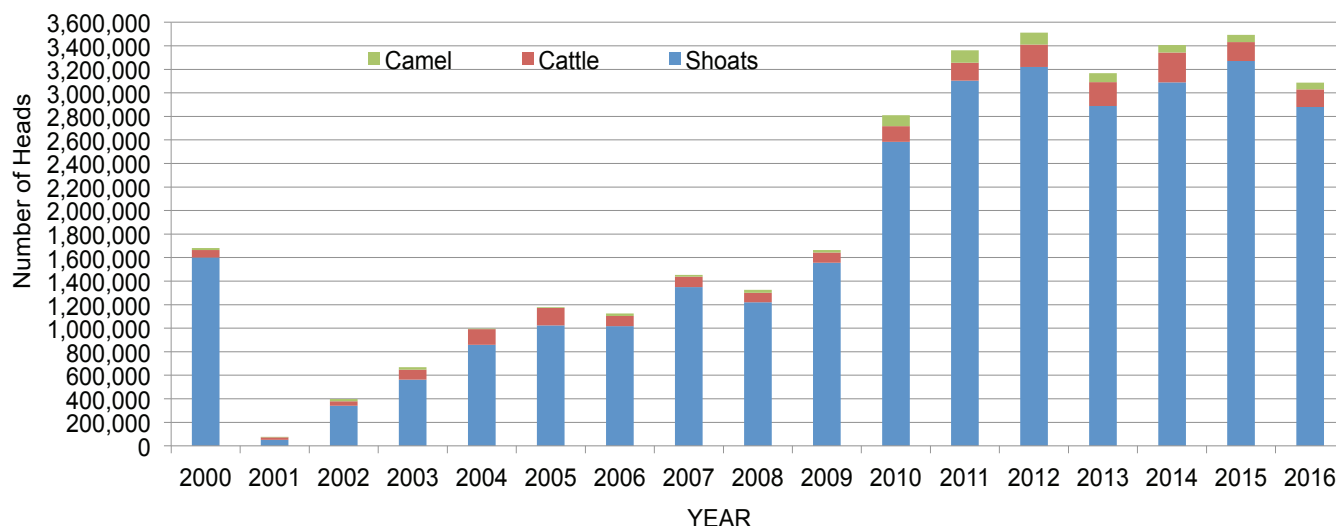
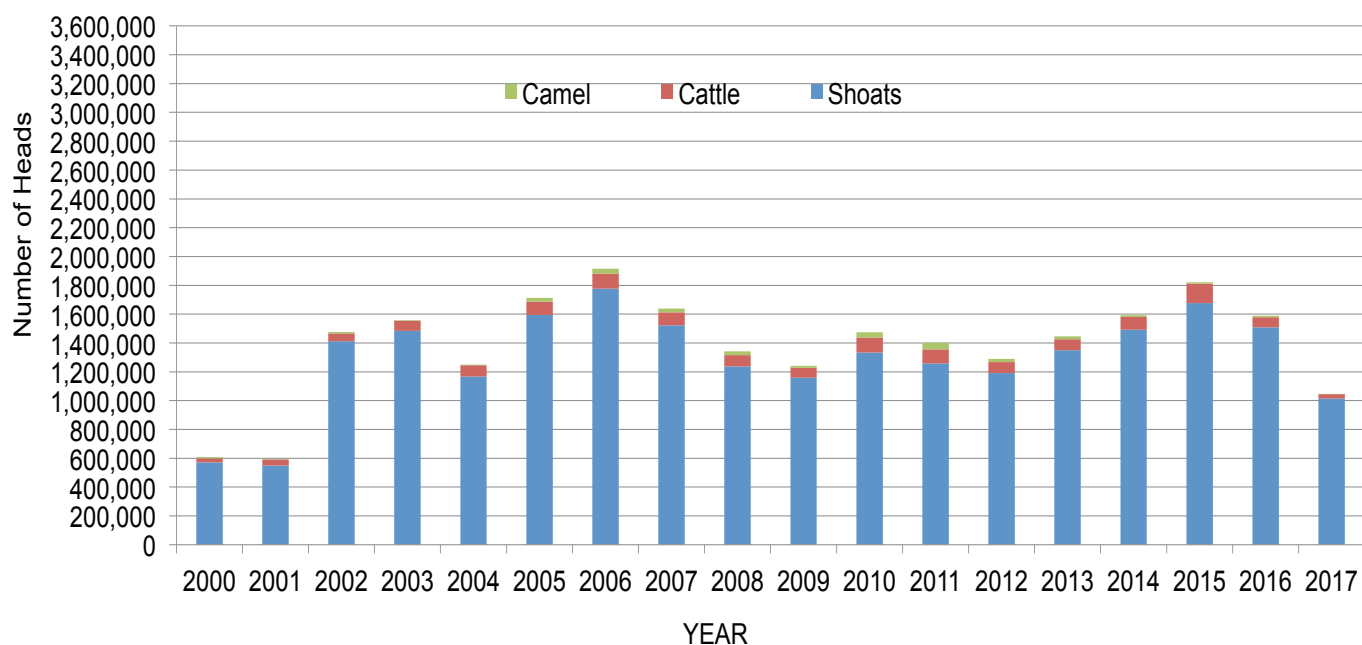


Table 2: Bossaso Livestock Exports (Number of Heads)

	2000	2001	2002	2003	2004	2005	2006	2007	2008	2009	2010	2011	2012	2013	2014	2015	2016	2017
Shoats	571,455	548,853	1,412,450	1,483,409	1,166,480	1,594,859	1,777,283	1,522,855	1,236,775	1,159,454	1,333,478	1,256,535	1,192,197	1,349,123	1,493,111	1,676,216	1 507 910	1 014 732
Cattle	27,604	42,248	53,313	71,328	79,994	91,910	104,595	89,190	78,046	67,385	103,808	99,058	76,043	77,353	87,759	134,597	70 705	30 443
Camel	8,177	1,950	9,720	4,259	2,488	26,109	33,724	27,580	27,639	15,331	36,865	45,878	22,288	19,032	12,251	10,945	10 144	1 752

Figure 49: Bossaso Livestock Exports (Number of Heads)



Trends in Cereal Imports

Table 3: Total Cereal Imports through Berbera, Bossaso and Mogadishu Ports (Tonnes) *

	2000	2001	2002	2003	2004	2005	2006	2007	2008	2009	2010	2011	2012	2013*	2014*	2015*	2016*	2017*
Rice	75,687	74,729	144,600	180,614	146,567	150,017	198,101	166,626	136,007	171,472	161,415	272,877	227,955	170,868	170,888	195,240	207 267	52 890
Wheat flour	78,555	134,425	128,263	171,442	151,555	169,583	178,345	176,821	169,208	240,247	249,080	258,679	268,491	183,058	284,230	318,868	207 463	72 470
Pasta	11,071	26,702	35,425	29,273	38,749	39,153	52,815	41,331	38,441	86,372	102,373	184,849	337,878	134,311	176,951	155,360	78 113	24 106

* Elman (Mogadishu) is up to November 2015. Mogadishu Data (Elmaan Por) for 2013 includes only January-March imports. Berbera Data is up to December 2016.

Figure 50: Total Cereal Imports (Berbera, Bossaso and Mogadishu)

