

## Highlights

**Inflation:**

*SoSh (Somali shilling)-using areas:* Consumer Price Index (CPI) remained stable in Central; while it changed at mild rates (1-2%) in northeast and south month-on-month. The CPI rose compared to one year ago annually from (5-12%), primarily due to increase in red sorghum prices.

*SiSh (Somaliland shilling)-using areas:* The CPI remained stable month-on-month but increased year-on-year (12%) due to increase in cereal (mainly red sorghum) price in the past 12 months.

**Exchange rate:**

*SoSh-using areas:* The exchange rates between SoSh and the United States Dollar (USD) indicated relative stability or marginal monthly changes (1-3%) in most regions. The SoSh showed annual depreciation across SoSh-using areas.

*SIsH-using areas:* The SIsH indicated stability against the USD in September 2016 compared to previous month and 12 months ago.

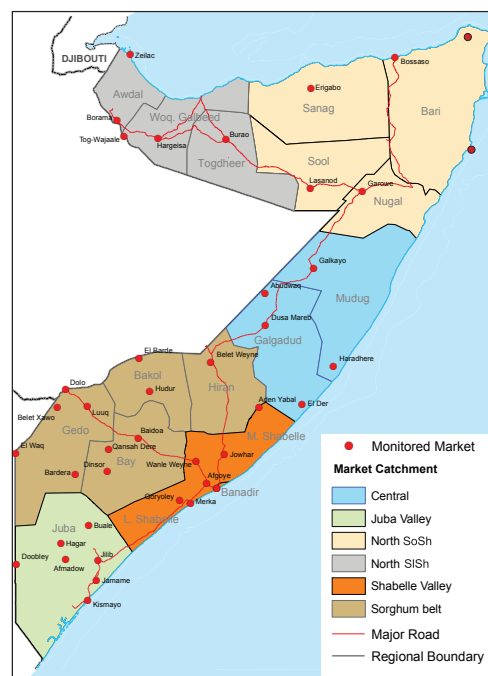
**Local grain** prices changed month-on-month at mild rates (by less than +/- 10%) in most parts of the country except in Middle Shabelle and Banadir (Mogadishu-Bakara) regions where prices declined (17-22) due to increased supply of maize from the recent off season harvest and carry over stock. Annual comparison indicates higher prices for local grains in most regions of the country in September 2016 with the highest increase being recorded in Middle Juba (57%) as a result of poor Gu 2016 production.

**Prices of imported food** (rice, sugar, vegetable oil, wheat flour) mostly exhibited relative stability or mild (less than +/- 10%) monthly changes (increases/decreases) in local currency terms. Year-on-year comparison indicates mild to moderate price increases in most regions of the country for most of the imported food items.

**Livestock prices** changed at mild rates (less than +/- 10%) month-on-month in most regions of the country. Milk prices (camel and cattle) generally exhibited mild monthly changes in most regions of the country. However, milk prices declined in Lower Shabelle (11-14%) while it increased (16-20%) in Bay as a result of reduced supply due to livestock migration away from the urban centers and increased demand. Compared to a year ago, livestock prices were lower in most regions of the country in September as a result of deteriorated livestock body conditions and seasonal reduction in demand. In contrast, milk prices (camel and cattle) increased annually in most regions of the country in September. However, Lower Shabelle and Middle Juba milk prices declined (11-30%) annually attributable to normal milk supply and availability in the markets.

**Labor (unskilled) wages** either remained relatively stable or changed mildly (by less than +/- 10%) month-on-month in most parts of the country. However, labor wages in Banadir decreased by 27 percent due to reduced labor opportunities. Annual comparison indicates mild (less than 10%) changes in labor wages in most parts of the country; with the exception of Middle Juba and Banadir (Mogadishu-Bakara) where wage rates decline (26-35%) due to reduced farm labor and increased insecurity conditions in Middle Juba and increased labor competition in Banadir compared to last year.

**Terms of Trade (ToT)** between daily labor wage and local cereals either remained stable month-on-month or changed by 1kg of cereals/daily labor wage in most parts of the country except in Middle Shabelle where ToT increased by 4Kg/daily labor wage due to decrease in white maize prices. ToT between goat and cereals changed at mild rates in most regions of the country. However, ToT increased (34-80 Kg/goat) in Shabelle and Banadir in September as a result of reduced white maize prices. Local goat to cereal ToTs are lower compared to a year ago in most regions of the country.



This Market Data Update is a monthly report that presents analysis of market information and is produced regularly as part of the monthly monitoring process.

The weekly price data is collected from 48 main markets and 51 rural markets throughout Somalia since 1995.

Market analysis is an integral part of all of FSNAU's annual food security projections and seasonal technical reports (Technical Reports on FSNAU Post *Gu* and Post *Deyr* Analysis).

Detailed market data are available online on [www.fsnau.org/ids](http://www.fsnau.org/ids).

### Towns Affected by Trade Disruption (Bulo Burto, Wajid, Hudur and Diinsor)

**Labor (unskilled) wages** changed mildly (2-5%) month-on-month in all the markets apart from Dinsor where prices increased (12%). Annual comparison indicates increase in all the markets as a result of increased labor opportunities due to relative improvement in security situation.

**Terms of Trade (ToTs)** between daily labor wage and local cereals and between local quality goat and cereals remained relatively stable or changed mildly month-on-month in September across the siege-affected towns. Compared to one year ago, ToT between daily labor and cereals exhibited relative stability or mild changes in all of the affected markets. Conversely, the ToT between goat local quality and cereals has reduced year-on-year in all the markets with the highest decrease (171Kg/goat) being recorded in Dinsor as a result of decrease in local quality goat prices.

**Local grain (red and white sorghum)** prices remained relatively stable or mildly declined month-on-month across the markets. Compared to a year ago, local grain prices are higher in all the markets except in Buloburto where white sorghum prices declined by 7 percent.

**Prices of imported food items** (rice, sugar, vegetable oil, wheat flour) have mildly month-on-month (less than +/- 10%) changed for most of the food imports. Annual comparison indicates higher prices for most of the food imports in all the markets.

# National Trends: CPI, Exchange Rates, Cereal Prices and Relative Purchasing Power

Table 1: ToT between Daily Labour Wage Rate and Cereals (kg) by Region September 2016

Regions	September 2016 (kg)	kg change from		
		August 2016	September 2015	September 5 yr Average (2011 - 2015)
Banadir/Mogadishu	19	-1	-9	1
Bay	13	-1	-3	0
Bakool	5	0	0	0
Gedo	13	1	-2	0
Juba	10	1	-2	0
Shabelle	12	2	-1	2
Northwest	12	0	2	4
Northeast	8	0	-1	-1
Central	5	0	0	1

Figure 2: Terms of Trade Between Wage Rates and Selected Cereals

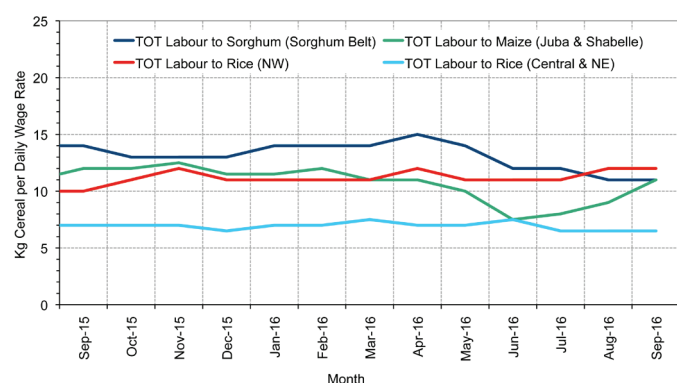


Figure 4: Monthly Trends in Consumer Price Index (CPI, March 2007=100)

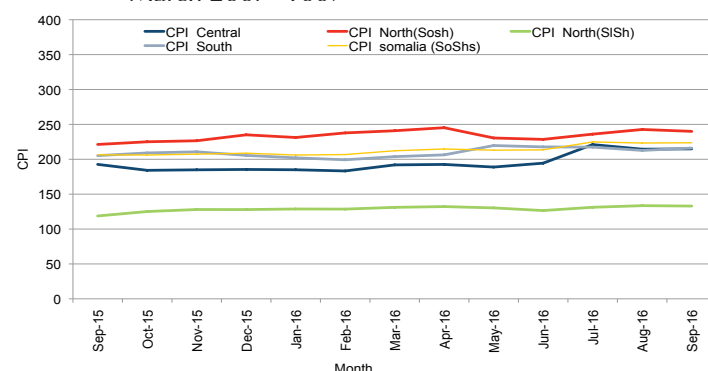
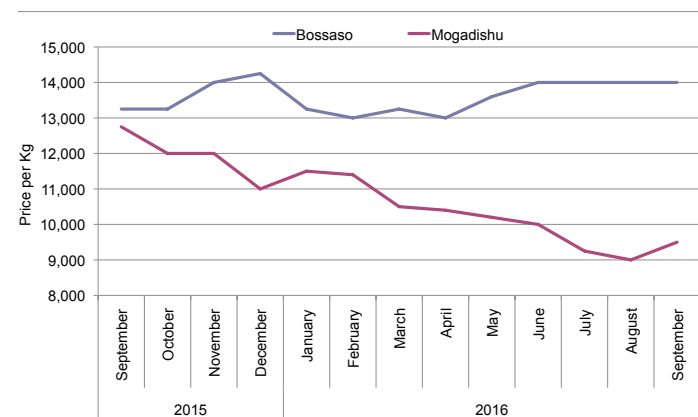


Figure 1: Wheat Prices: Mogadishu and Bossaso Markets



Source: FSNAU Manifest Price Monitoring System

Figure 3: Monthly Exchange Rate for Selected Regions (SoSh and SISH to USD)

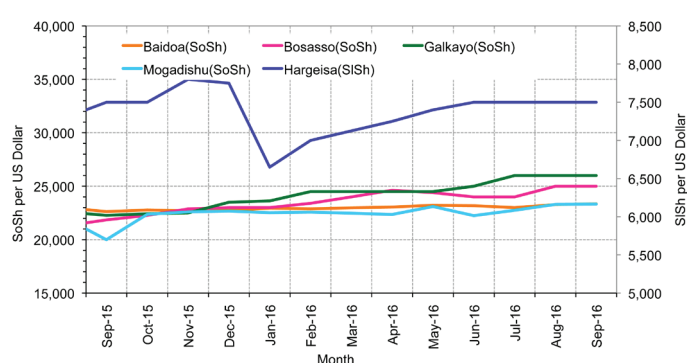
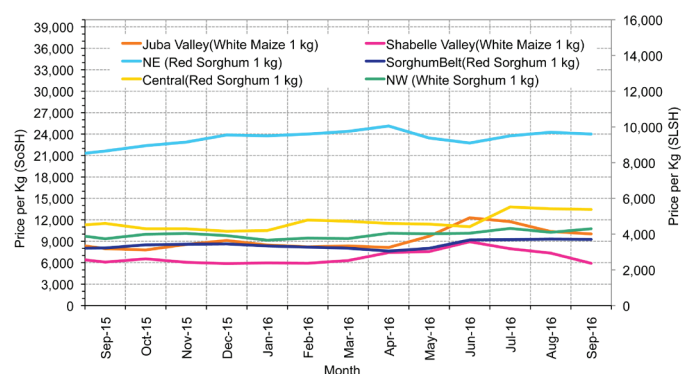


Figure 5: Monthly Trends in Local Cereal Prices



# Regional analysis: Juba Regions

Indicator	5-Year Average (2011-2015)	Sep-15	Aug-16	Sep-16 Nominal Price	Sep-16 Real (Deflated) Price	% Change Previous Month	% Change Same Month Previous Year	% Change 5-year avrg (2011-2015)
<b>Imported Commodities Prices</b>								
Diesel 1 litre	30,011	24,250	20,281	20,156	9,227	-1%	-17%	-33%
Imported Red Rice 1kg	17,921	15,188	15,266	15,906	7,261	4%	5%	-11%
Petrol 1 litre	30,866	26,313	23,250	24,875	11,411	7%	-5%	-19%
Sugar	21,463	15,469	15,750	16,281	7,434	3%	5%	-24%
Vegetable Oil 1 litre	37,606	28,969	29,531	29,656	13,623	0%	2%	-21%
Wheat Flour 1kg	17,091	14,750	14,656	15,547	7,094	6%	5%	-9%
Wheat Grain 1kg	20,000		16,000	-	-	-	-	-
<b>Cereal Prices</b>								
Red Sorghum 1kg	7,250	8,000	8,000	8,000	3,602	0%	0%	10%
White Maize 1kg	9,849	7,975	10,366	10,031	4,542	-3%	26%	2%
<b>Livestock &amp; Livestock Product Prices</b>								
Camel Local Quality (Head)	9,299,691	9,082,813	8,100,000	8,246,875	3,816,158	2%	-9%	-11%
Cattle Local Quality (Head)	3,661,261	3,702,188	3,025,000	2,996,429	1,386,503	-1%	-19%	-18%
Fresh Camel Milk 1 litre	16,909	18,203	17,047	16,609	7,586	-3%	-9%	-2%
Goat Export Quality (Head)	1,390,387	1,186,094	1,197,500	1,093,438	505,891	-9%	-8%	-21%
Goat Local Quality (Head)	912,125	775,781	698,750	700,313	323,971	0%	-10%	-23%
<b>Other Essential Items</b>								
Charcoal 50kg	77,104	74,469	80,813	87,188	40,246	8%	17%	13%
Cowpeas 1 kg	22,157	19,469	26,000	25,643	11,766	-1%	32%	16%
Unskilled Labor Wage Rate	85,540	93,000	96,438	96,250	44,440	0%	3%	13%
Firewood Bundle	8,743	6,688	8,203	7,266	3,262	-11%	9%	-17%
Local Sesame Oil 1 litre	75,694	63,969	52,313	56,250	25,930	8%	-12%	-26%
Exchange Rate (Somali Shilling per USD)	23,309	22,844	23,063	23,125	10,601	0%	1%	-1%
<b>Terms of Trade</b>								
Labour Wage (Daily)/ Cereal (Maize)(Kg)	10	12	9	10	-	11%	-17%	0%

Figure 6: Trends in Cereal Prices

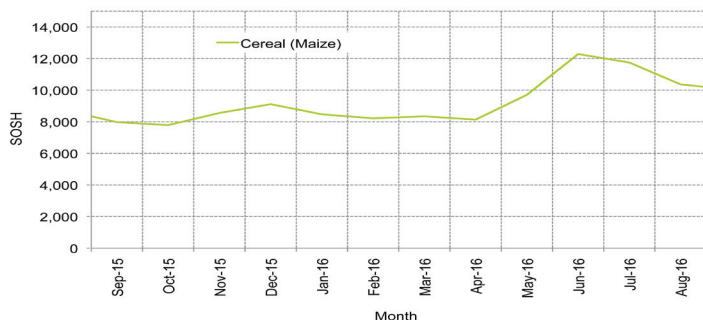


Figure 7: Trends in Wage Rates and Relative Purchasing Power

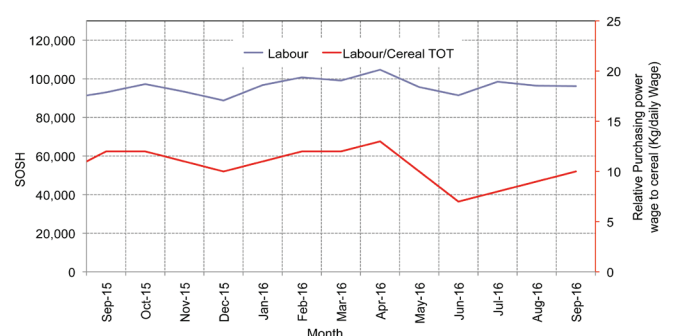


Figure 8: Imported Commodity Prices Compared to Exchange Rate

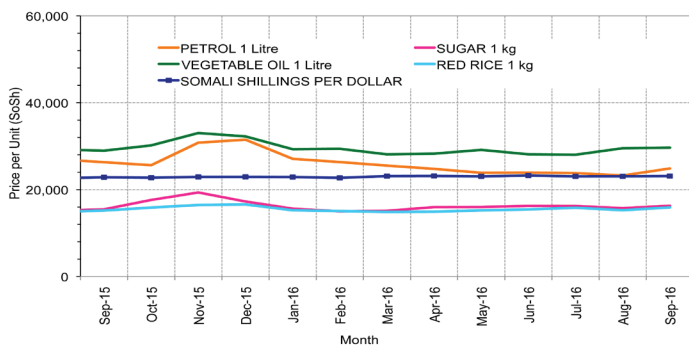


Figure 9: Goat Local Quality

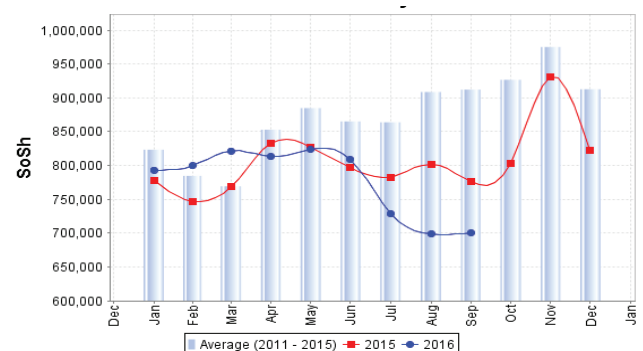


Figure 10: Exchange Rate

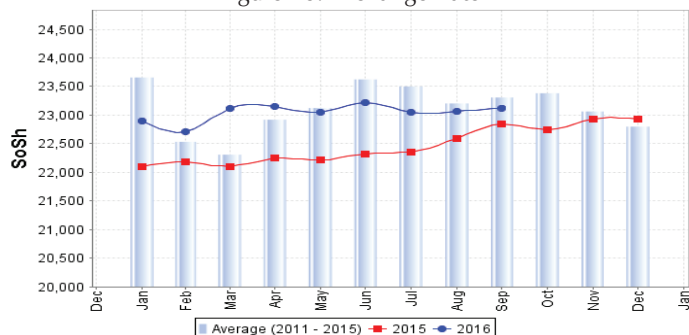
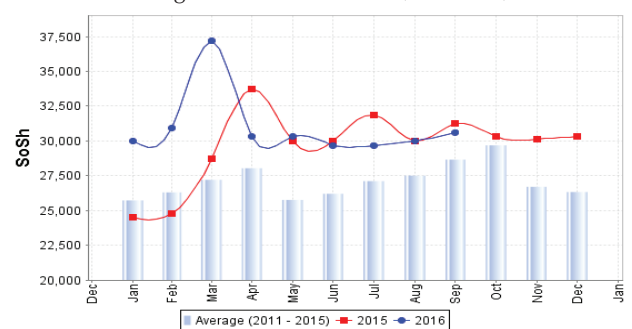


Figure 11: Water Drum (200 litres)



# Regional analysis: Sorghum Belt Regions (Bay, Bakool, Gedo and Hiran)

Indicator	5-Year Average (2011-2015)	Sep-15	Aug-16	Sep-16 Nominal Price	Sep-16 Real (Deflated) Price	% Change Previous Month	% Change Same Month Previous Year	% Change 5-year avg (2011-2015)
<b>Imported Commodities Prices</b>								
Diesel 1 litre	32,528	28,000	23,908	24,896	11,421	4%	-11%	-23%
Imported Red Rice 1kg	19,953	17,808	19,800	19,479	8,914	-2%	9%	-2%
Petrol 1 litre	32,581	30,192	26,738	27,125	12,452	1%	-10%	-17%
Sugar	23,249	17,942	21,785	22,021	10,090	1%	23%	-5%
Vegetable Oil 1 litre	42,923	35,115	37,046	37,375	17,195	1%	6%	-13%
Wheat Flour 1kg	18,615	17,615	18,723	18,958	8,673	1%	8%	2%
Wheat Grain 1kg	12,714	18,500	19,225	22,000	10,081	14%	19%	73%
<b>Cereal Prices</b>								
Red Sorghum 1kg	9,097	7,892	9,100	9,050	4,088	-1%	15%	-1%
White Maize 1kg	10,171	8,841	10,545	10,330	4,680	-2%	17%	2%
<b>Livestock &amp; Livestock Product Prices</b>								
Camel Local Quality (Head)	11,654,398	12,463,636	11,845,455	11,537,500	5,338,901	-3%	-7%	-1%
Cattle Local Quality (Head)	3,415,036	3,800,000	3,630,000	3,545,833	1,640,741	-2%	-7%	4%
Fresh Camel Milk 1 litre	23,289	17,896	19,646	19,438	8,895	-1%	9%	-17%
Goat Export Quality (Head)	1,570,618	1,591,458	1,528,000	1,574,182	728,356	3%	-1%	0%
Goat Local Quality (Head)	1,020,291	1,001,731	853,692	857,708	396,806	0%	-14%	-16%
<b>Other Essential Items</b>								
Charcoal 50kg	137,400	153,646	154,250	147,273	68,051	-5%	-4%	7%
Cowpeas 1 kg	27,417	25,231	25,023	24,771	11,363	-1%	-2%	-10%
Unskilled Labor Wage Rate	98,679	102,481	98,385	95,833	44,247	-3%	-6%	-3%
Firewood Bundle	6,153	6,231	5,923	6,083	2,715	3%	-2%	-1%
Local Sesame Oil 1 litre	76,790	71,781	74,200	73,444	33,886	-1%	2%	-4%
Exchange Rate (Somali Shilling per USD)	23,193	22,358	23,157	23,229	10,649	0%	4%	0%
<b>Terms of Trade</b>								
Labour Wage (Daily)/ Cereal (Sorghum(Kg))	11	13	11	11	-	0%	-15%	0%
Local Goat (Head)/ Cereal (Sorghum(Kg))	121	127	94	95	-	1%	-25%	-21%
<b>Price Indices</b>								
Consumer Price Index	-	205	213	216	-	2%	5%	-

Figure 12: Trends in Cereal Prices

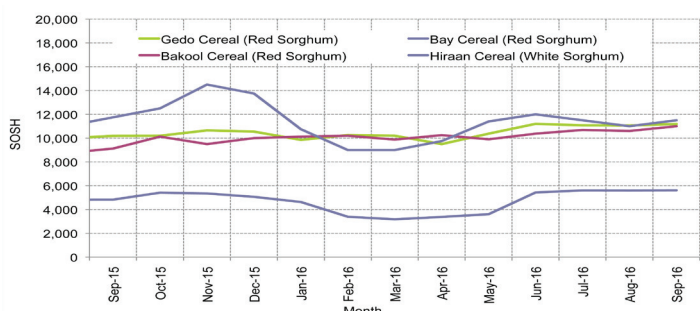


Figure 14: Imported Commodity Prices Compared to Exchange Rate

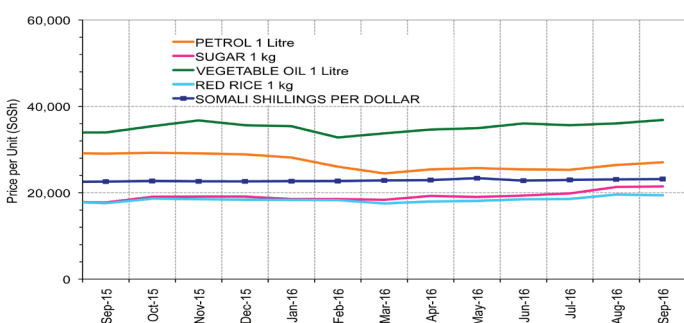


Figure 16: Exchange Rate

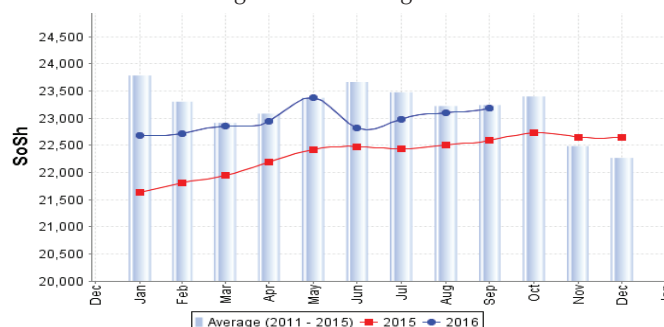


Figure 13: Trends in Wage Rates and Relative Purchasing Power

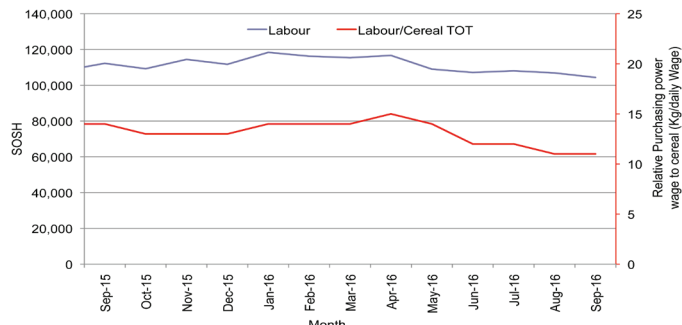


Figure 15: Goat Local Quality

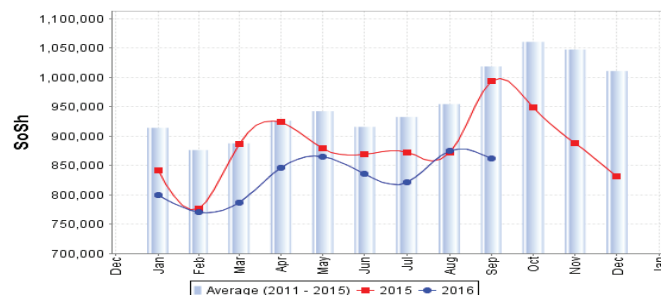
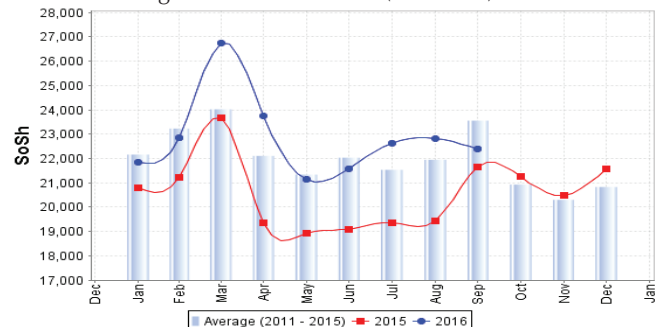


Figure 17: Water Drum (200 litres)





# Regional analysis: Shabelle Regions

Indicator	5-Year Average (2011-2015)	Sep-15	Aug-16	Sep-16 Nominal Price	Sep-16 Real (Deflated) Price	% Change Previous Month	% Change Same Month Previous Year	% Change 5-year avg (2011-2015)
<b>Imported Commodities Prices</b>								
Diesel 1 litre	29,691	23,667	20,500	22,375	10,254	9%	-5%	-25%
Imported Red Rice 1kg	17,766	15,000	16,833	18,750	8,577	11%	25%	6%
Petrol 1 litre	31,225	28,208	25,292	26,875	12,336	6%	-5%	-14%
Sugar	21,316	15,250	20,667	22,875	10,485	11%	50%	7%
Vegetable Oil 1 litre	33,258	27,083	29,000	32,125	14,766	11%	19%	-3%
Wheat Flour 1kg	17,658	16,250	16,000	19,000	8,692	19%	17%	8%
Wheat Grain 1kg	16,733	17,000	20,000	19,000	8,692	-5%	12%	14%
<b>Cereal Prices</b>								
Red Sorghum 1kg	11,089	9,767	8,906	10,896	4,942	22%	12%	-2%
White Maize 1kg	7,003	6,087	7,343	5,920	2,639	-19%	-3%	-15%
<b>Livestock &amp; Livestock Product Prices</b>								
Camel Local Quality (Head)	16,070,499	18,515,000	16,745,000	16,756,250	7,753,888	0%	-9%	4%
Cattle Local Quality (Head)	5,337,700	5,866,500	5,322,500	5,707,500	2,641,057	7%	-3%	7%
Fresh Camel Milk 1 litre	18,900	19,167	18,583	16,875	7,709	-9%	-12%	-11%
Goat Export Quality (Head)	1,777,000	1,983,125	1,958,125	1,781,250	824,177	-9%	-10%	0%
Goat Local Quality (Head)	1,301,999	1,385,833	1,334,167	1,243,125	575,159	-7%	-10%	-5%
<b>Other Essential Items</b>								
Charcoal 50kg	115,274	119,917	132,111	129,688	59,913	-2%	8%	13%
Cowpeas 1 kg	25,041	19,160	19,694	23,438	10,746	19%	22%	-6%
Unskilled Labor Wage Rate	66,991	75,417	65,917	69,375	32,003	5%	-8%	4%
Firewood Bundle	7,291	11,667	5,833	6,750	3,024	16%	-42%	-7%
Local Sesame Oil 1 litre	61,358	52,125	45,167	52,500	24,194	16%	1%	-14%
Exchange Rate (Somali Shilling per USD)	23,519	22,458	23,425	23,338	10,700	0%	4%	-1%
<b>Terms of Trade</b>								
Labour Wage (Daily)/ Cereal (Maize(Kg))	10	12	9	12	-	33%	0%	20%
Local Goat (Head)/ Cereal (Maize(Kg))	202	228	182	210	-	15%	-8%	4%
<b>Price Indices</b>								
Consumer Price Index	-	205	213	216	-	2%	5%	-

Figure 18: Trends in Cereal Prices

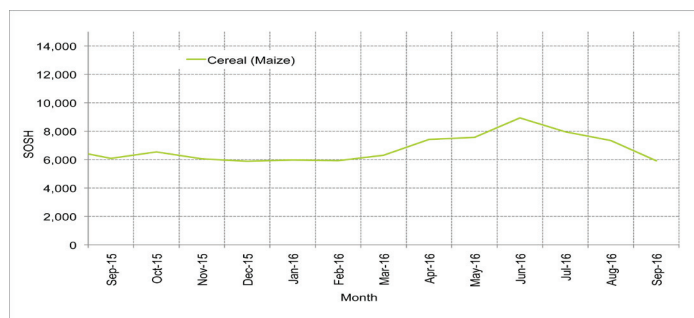


Figure 19: Trends in Wage Rates and Relative Purchasing Power

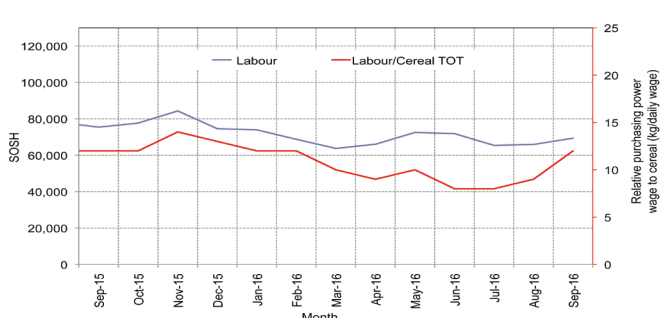


Figure 20: Imported Commodity Prices Compared to Exchange Rate

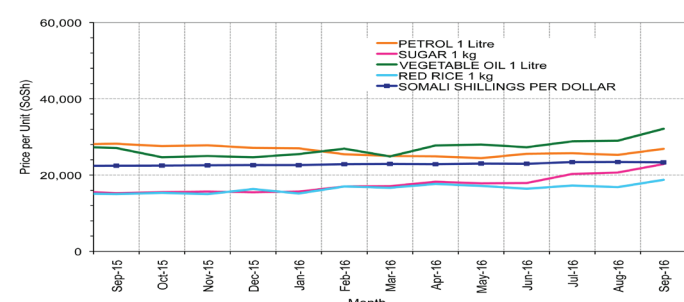


Figure 22: Exchange Rate

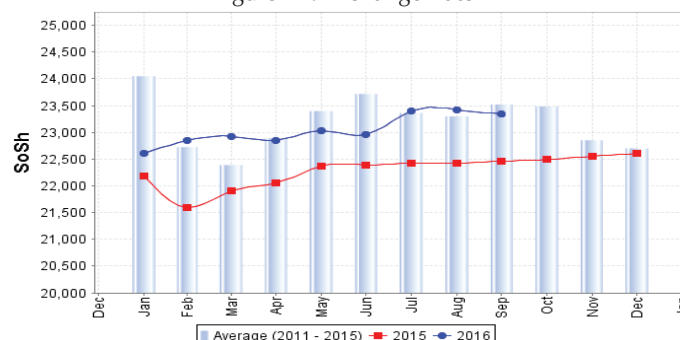


Figure 21: Goat Local Quality

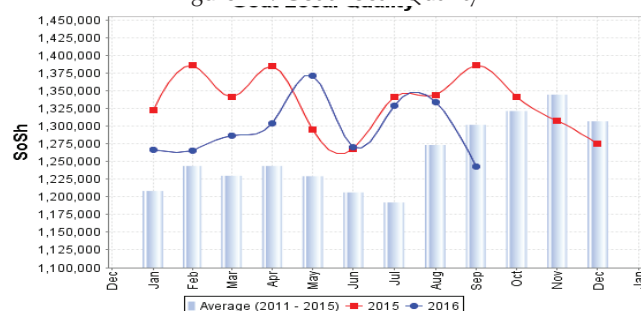
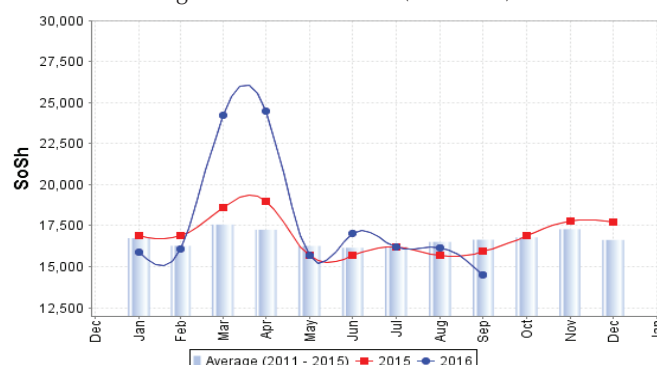


Figure 23: Water Drum (200 litres)



# Regional analysis: Banadir Region

Indicator	5-Year Average (2011-2015)	Sep-15	Aug-16	Sep-16 Nominal Price	Sep-16 Real (Deflated) Price	% Change Previous Month	% Change Same Month Previous Year	% Change 5-year avrg (2011-2015)
<b>Imported Commodities Prices</b>								
Diesel 1 litre	24,974	17,958	15,400	15,250	6,957	-1%	-15%	-39%
Imported Red Rice 1kg	15,026	12,417	12,375	12,417	5,646	0%	0%	-17%
Petrol 1 litre	25,389	21,417	16,942	17,167	7,844	1%	-20%	-32%
Sugar	18,845	12,833	15,521	15,875	7,246	2%	24%	-16%
Vegetable Oil 1 litre	30,459	22,375	21,929	22,229	10,187	1%	-1%	-27%
Wheat Flour 1kg	14,358	12,750	11,592	11,688	5,309	1%	-8%	-19%
Wheat Grain 1kg	12,196	12,833	11,267	11,500	5,222	2%	-10%	-6%
<b>Cereal Prices</b>								
Red Sorghum 1kg	9,053	7,475	7,097	7,133	3,201	1%	-5%	-21%
White Maize 1kg	9,728	8,138	8,708	8,100	3,648	-7%	0%	-17%
<b>Livestock &amp; Livestock Product Prices</b>								
Camel Local Quality (Head)	10,500,000	-	-	-	-	-	-	-
Cattle Local Quality (Head)	3,425,000	-	-	-	-	-	-	-
Fresh Camel Milk 1 litre	21,665	22,917	24,067	23,667	10,852	-2%	3%	9%
Goat Export Quality (Head)	2,381,250	2,425,000	2,300,000	2,250,000	1,041,092	-2%	-	-6%
Goat Local Quality (Head)	2,035,750	1,700,000	1,870,000	2,075,000	960,110	11%	22%	2%
<b>Other Essential Items</b>								
Charcoal 50kg	178,135	195,667	187,667	186,500	86,203	-1%	-5%	5%
Cowpeas 1 kg	26,794	20,750	20,717	21,342	9,776	3%	3%	-20%
Unskilled Labor Wage Rate	102,608	112,083	109,458	99,375	45,886	-9%	-11%	-3%
Firewood Bundle	7,607	8,000	8,700	8,700	3,926	0%	9%	14%
Local Sesame Oil 1 litre	62,341	54,958	42,833	41,583	19,143	-3%	-24%	-33%
Exchange Rate (Somali Shilling per USD)	23,108	22,063	22,981	23,163	10,619	1%	5%	0%
<b>Terms of Trade</b>								
Labour Wage (Daily)/ Cereal (Maize(Kg))	11	14	13	12	-	-8%	-14%	9%
Local Goat (Head)/ Cereal (Maize(Kg))	221	209	215	256	-	19%	22%	16%
<b>Price Indices</b>								
Consumer Price Index	-	205	213	216	-	2%	5%	-

Figure 24: Trends in Cereal Prices

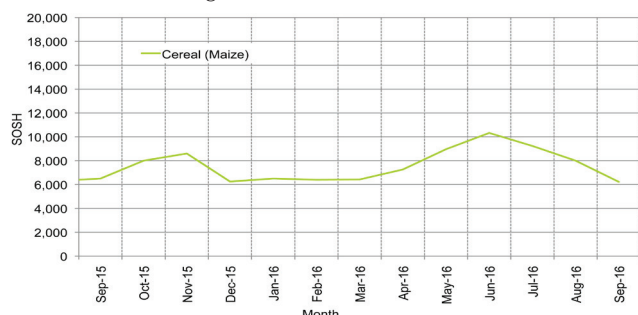


Figure 25: Bakara: Trends in Wage Rates and Relative Purchasing Power

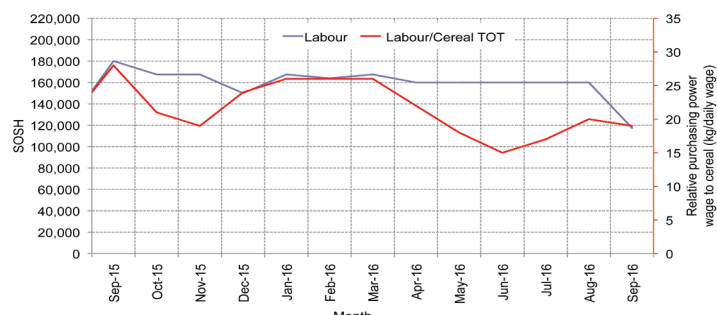


Figure 26: Imported Commodity Prices Compared to Exchange Rate

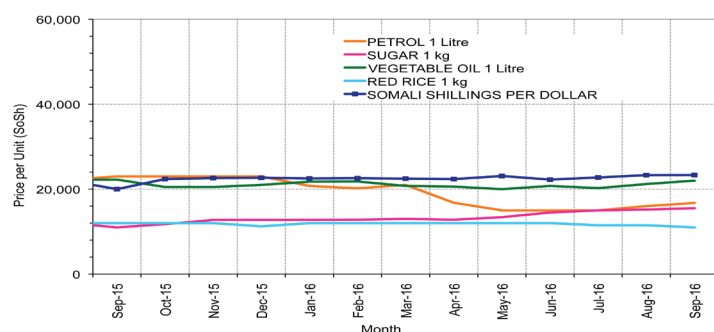


Figure 27: Goat Local Quality

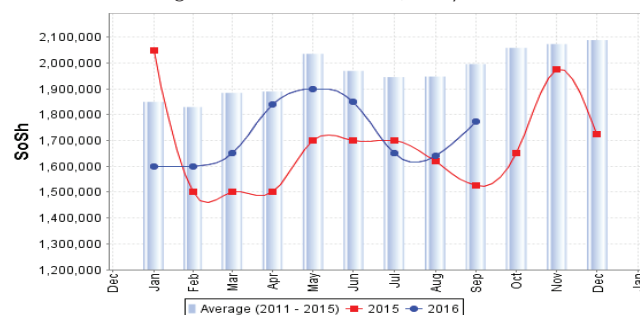


Figure 28: Exchange Rate

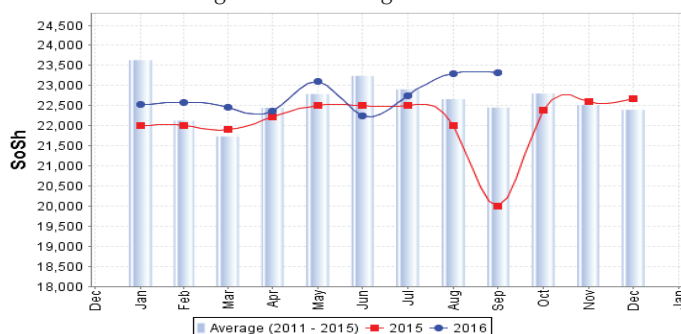
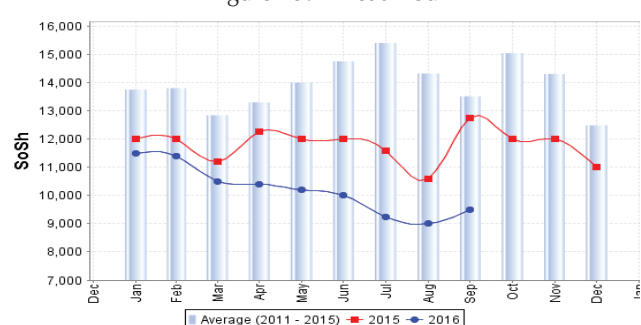


Figure 29: Wheat Flour



# Regional analysis: Central Regions

Indicator	5-Year Average (2011-2015)	Sep-15	Aug-16	Sep-16 Nominal Price	Sep-16 Real (Deflated) Price	% Change Previous Month	% Change Same Month Previous Year	% Change 5-year avg (2011-2015)
<b>Imported Commodities Prices</b>								
Diesel 1 litre	30,464	23,350	18,400	18,400	8,463	0%	-21%	-40%
Imported Red Rice 1kg	21,540	17,000	18,320	18,500	8,509	1%	9%	-14%
Petrol 1 litre	28,010	24,350	21,300	21,313	9,818	0%	-12%	-24%
Sugar	24,828	18,100	21,760	22,600	10,417	4%	25%	-9%
Vegetable Oil 1 litre	46,676	35,200	33,920	36,600	16,932	8%	4%	-22%
Wheat Flour 1kg	18,298	15,400	15,480	16,100	7,392	4%	5%	-12%
Wheat Grain 1kg	15,932	17,125	16,800	17,250	7,928	3%	1%	8%
<b>Cereal Prices</b>								
Red Sorghum 1kg	13,510	11,500	13,550	13,450	6,159	-1%	17%	0%
White Maize 1kg	14,544	13,100	15,500	16,875	7,753	9%	29%	16%
<b>Livestock &amp; Livestock Product Prices</b>								
Camel Local Quality (Head)	10,427,000	12,537,500	13,075,000	13,075,000	6,084,557	0%	4%	25%
Cattle Local Quality (Head)	2,700,000	-	-	-	-	-	-	-
Fresh Camel Milk 1 litre	33,572	32,400	32,680	30,500	14,094	-7%	-6%	-9%
Goat Export Quality (Head)	1,453,833	1,342,500	1,473,333	1,516,667	705,705	3%	13%	4%
Goat Local Quality (Head)	1,095,780	965,000	986,000	1,040,000	483,880	5%	8%	-5%
<b>Other Essential Items</b>								
Charcoal 50kg	171,070	153,500	162,400	164,000	76,220	1%	7%	-4%
Cowpeas 1 kg	28,374	21,900	29,560	29,600	13,675	0%	35%	4%
Unskilled Labor Wage Rate	86,000	92,000	96,000	96,000	44,575	0%	4%	12%
Firewood Bundle	33,960	34,800	32,000	32,000	14,792	0%	-8%	-6%
Local Sesame Oil 1 litre	89,990	87,500	81,000	78,200	36,292	-3%	-11%	-13%
Exchange Rate (Somali Shilling per USD)	23,237	22,205	24,955	25,300	11,674	1%	14%	9%
<b>Terms of Trade</b>								
Labour Wage (Daily)/ Cereal (Rice(Kg))	4	5	5	5	-	0%	0%	25%
Local Goat (Head)/ Cereal (Rice(Kg))	53	57	54	56	-	4%	-2%	6%
Camel (Head)/Cereal (Kg)	523	738	714	707	-	-1%	-4%	35%
<b>Price Indices</b>								
Consumer Price Index	-	193	214	215	-	0%	12%	-

Figure 30: Trends in Cereal Prices

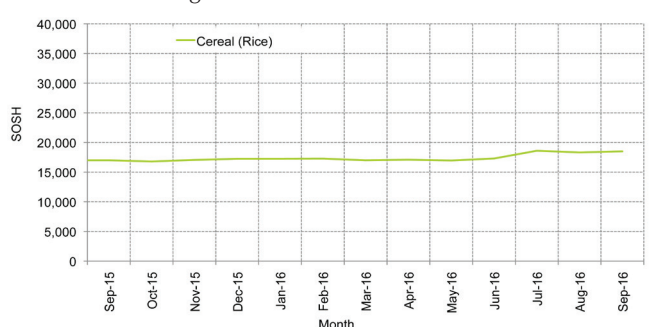


Figure 31: Trends in wage rates and relative purchasing power

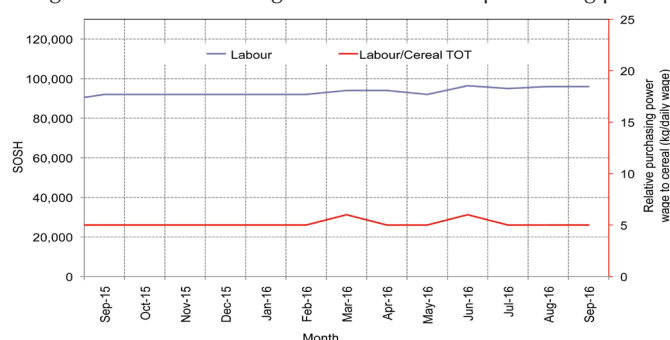


Figure 32: Imported Commodity Prices Compared to Exchange Rate

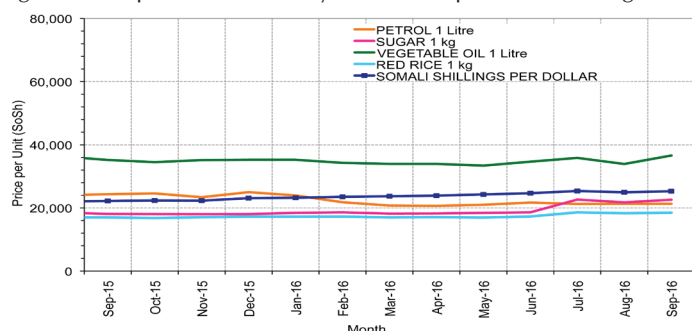


Figure 33: Goat Local Quality

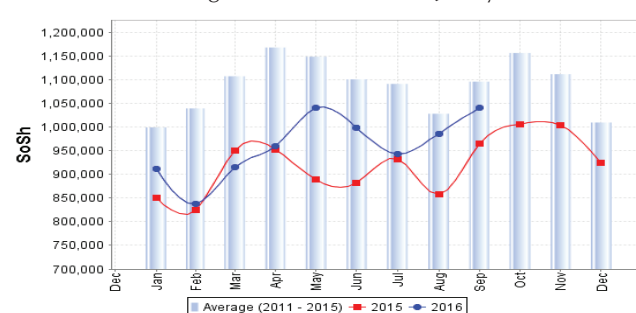


Figure 34: Exchange Rate

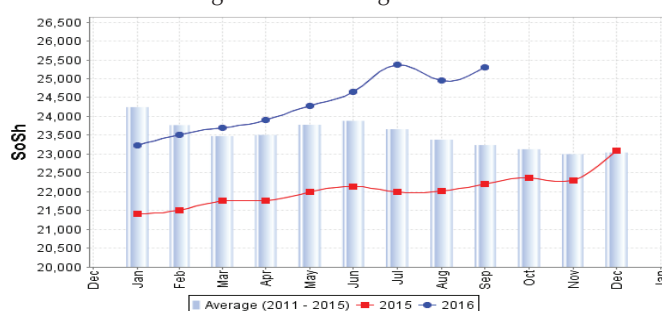
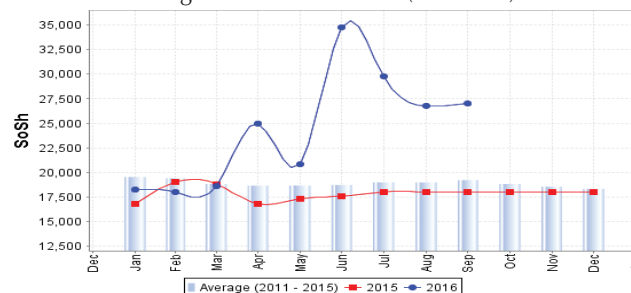


Figure 35: Water Drum (200 litres)



# Regional analysis: Northeast Regions

Indicator	5-Year Average (2011-2015)	Sep-15	Aug-16	Sep-16 Nominal Price	Sep-16 Real (Deflated) Price	% Change Previous Month	% Change Same Month Previous Year	% Change 5-year avrg (2011-2015)
<b>Imported Commodities Prices</b>								
Diesel 1 litre	26,559	20,893	16,643	16,375	6,723	-2%	-22%	-38%
Imported Red Rice 1kg	18,941	15,643	16,707	16,786	6,894	0%	7%	-11%
Petrol 1 litre	24,987	23,464	21,214	20,036	8,248	-6%	-15%	-20%
Sugar	23,113	17,714	21,136	21,357	8,798	1%	21%	-8%
Vegetable Oil 1 litre	42,703	33,000	32,086	32,821	13,575	2%	-1%	-23%
Wheat Flour 1kg	18,009	15,357	16,143	16,214	6,656	0%	6%	-10%
Wheat Grain 1kg	29,060	26,500	30,600	31,000	12,816	1%	17%	7%
<b>Cereal Prices</b>								
Red Sorghum 1kg	23,415	21,625	24,250	24,000	9,900	-1%	11%	2%
White Maize 1kg	21,190	20,000	24,000	26,000	10,733	8%	30%	23%
<b>Livestock &amp; Livestock Product Prices</b>								
Camel Local Quality (Head)	15,445,150	15,530,000	13,673,500	13,758,000	5,732,118	1%	-11%	-11%
Cattle Local Quality (Head)	8,618,750	9,125,000	9,625,000	8,250,000	3,437,231	-14%	-10%	-4%
Fresh Camel Milk 1 litre	39,410	39,381	41,690	43,403	17,984	4%	10%	10%
Goat Export Quality (Head)	1,507,350	1,457,500	1,276,500	1,317,500	548,831	3%	-10%	-13%
Goat Local Quality (Head)	1,407,289	1,353,929	1,189,286	1,251,429	521,303	5%	-8%	-11%
<b>Other Essential Items</b>								
Charcoal 50kg	353,857	345,357	363,929	358,929	149,446	-1%	4%	1%
Cowpeas 1 kg	42,711	34,667	36,683	37,083	15,350	1%	7%	-13%
Unskilled Labor Wage Rate	129,178	137,679	137,643	138,393	57,561	1%	1%	7%
Firewood Bundle	36,973	32,429	35,821	33,750	13,962	-6%	4%	-9%
Local Sesame Oil 1 litre	98,102	101,000	96,300	96,000	39,898	0%	-5%	-2%
Exchange Rate (Somali Shilling per USD)	22,804	20,864	23,393	23,679	9,766	1%	13%	4%
<b>Terms of Trade</b>								
Labour Wage (Daily)/ Cereal (Rice(Kg))	7	9	8	8	-	0%	-11%	14%
Local Goat (Head)/ Cereal (Rice(Kg))	76	87	71	75	-	6%	-14%	-1%
<b>Price Indices</b>								
Consumer Price Index	-	221	243	240	-	-1%	8%	-

Figure 36: Trends in Cereal Prices

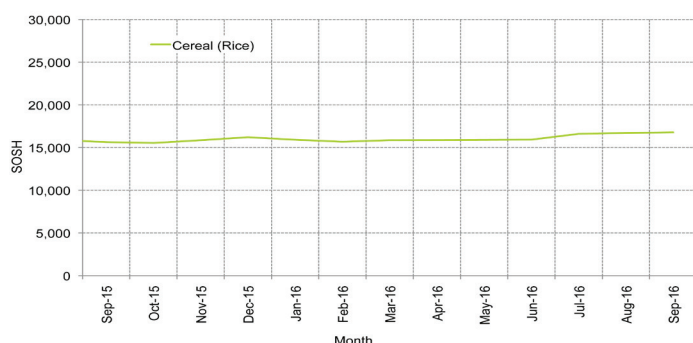


Figure 37: Trends in Wage Rates and Relative Purchasing Power

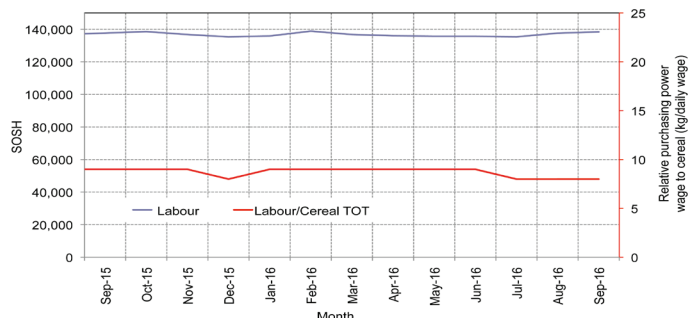


Figure 38: Imported Commodity Prices Compared to Exchange Rate

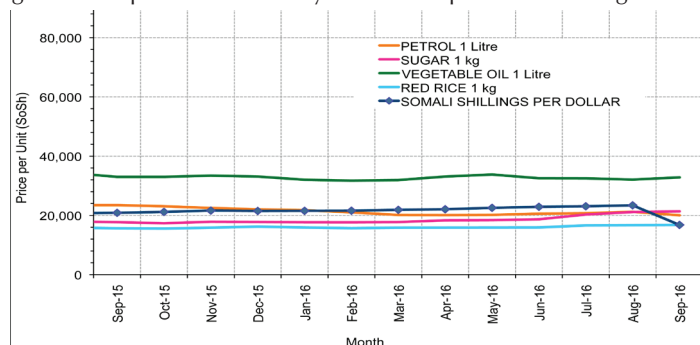


Figure 39: Goat Local Quality

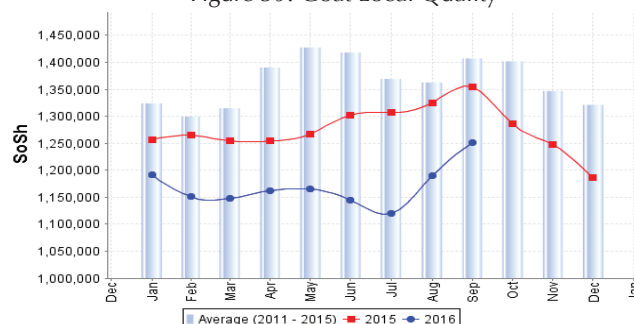


Figure 40: Exchange Rate

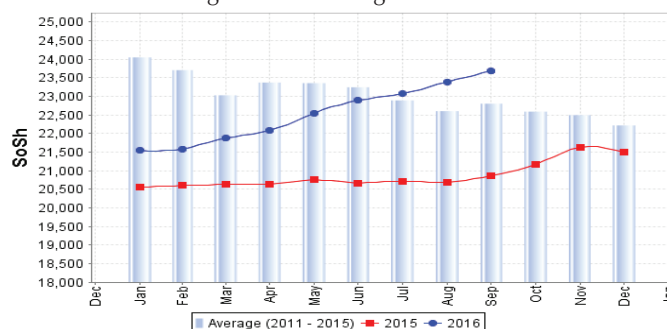
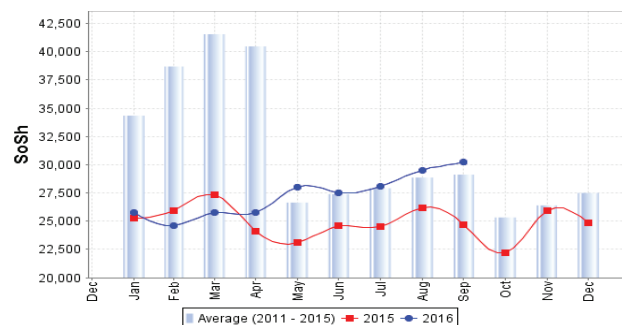


Figure 41: Water Drum (200 litres)





# Regional analysis: Northwest Regions

Indicator	5-Year Average (2011-2015)	Sep-15	Aug-16	Sep-16 Nominal Price	Sep-16 Real (Deflated) Price	% Change Previous Month	% Change Same Month Previous Year	% Change 5-year avg (2011-2015)
<b>Imported Commodities Prices</b>								
Diesel 1 litre	6,773	6,360	5,080	4,940	3,615	-3%	-22%	-27%
Imported Red Rice 1kg	5,056	5,060	5,210	5,272	3,865	1%	4%	4%
Petrol 1 litre	7,481	7,700	6,020	6,020	4,428	0%	-22%	-20%
Sugar	6,040	5,800	5,700	5,700	4,187	0%	-2%	-6%
Vegetable Oil 1 litre	12,405	12,600	12,200	11,556	8,592	-5%	-8%	-7%
Wheat Flour 1kg	4,383	4,400	4,840	4,710	3,443	-3%	7%	7%
Wheat Grain 1kg	3,528	3,625	3,875	3,875	2,814	0%	7%	10%
<b>Cereal Prices</b>								
White Sorghum 1kg	3,667	3,740	4,100	4,300	3,134	5%	15%	17%
Yellow Maize 1kg	3,695	3,812	4,600	4,600	3,360	0%	21%	24%
<b>Livestock &amp; Livestock Product Prices</b>								
Camel Local Quality (Head)	3,463,733	4,395,000	4,364,583	3,985,000	2,997,114	-9%	-9%	15%
Cattle Local Quality (Head)	2,194,333	2,803,333	2,365,833	2,300,833	1,730,412	-3%	-18%	5%
Fresh Camel Milk 1 litre	5,712	6,700	8,800	9,300	6,895	6%	39%	63%
Goat Export Quality (Head)	460,218	492,500	426,906	427,500	321,433	0%	-13%	-7%
Goat Local Quality (Head)	319,422	349,250	304,250	304,800	229,147	0%	-13%	-5%
<b>Other Essential Items</b>								
Charcoal 50kg	45,934	58,300	68,500	70,550	52,962	3%	21%	54%
Cowpeas 1 kg	9,996	10,875	13,500	13,667	10,179	1%	26%	37%
Unskilled Labor Wage Rate	42,910	51,200	60,500	60,780	45,614	0%	19%	42%
Firewood Bundle	3,599	4,500	5,600	5,600	4,112	0%	24%	56%
Local Sesame Oil 1 litre	29,722	34,063	32,188	32,125	24,062	0%	-6%	8%
Exchange Rate (Somaliland Shilling per USD)	6,587	7,500	7,500	7,500	5,541	0%	0%	14%
<b>Terms of Trade</b>								
Labour Wage (Daily)/ Cereal (Rice(Kg))	8	10	12	12	-	0%	20%	50%
Local Goat (Head)/ Cereal (Rice(Kg))	63	69	58	58	-	0%	-16%	-8%
<b>Price Indices</b>								
Consumer Price Index	-	119	134	133	-	0%	12%	-

Figure 42: Trends in Cereal Prices

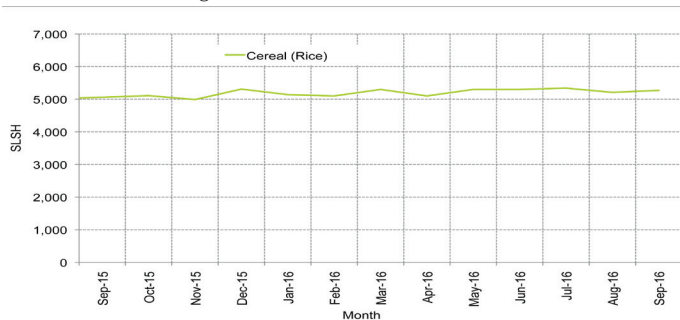


Figure 43: Trends in Wage Rates and Relative Purchasing Power

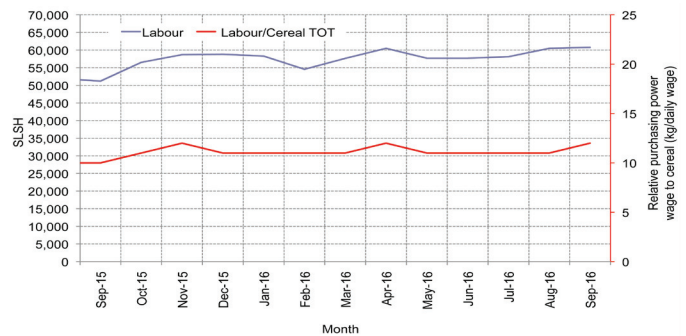


Figure 44: Imported Commodity Prices Compared to Exchange Rate

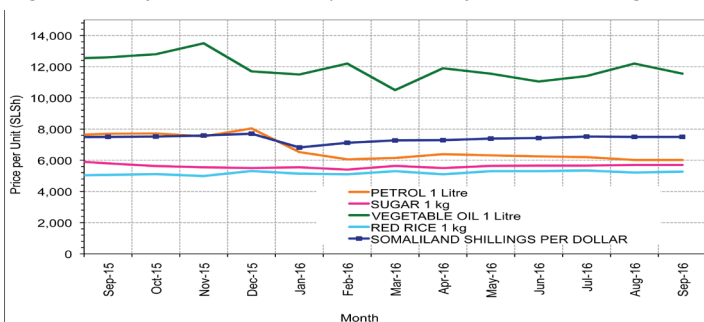


Figure 45: Goat Local Quality

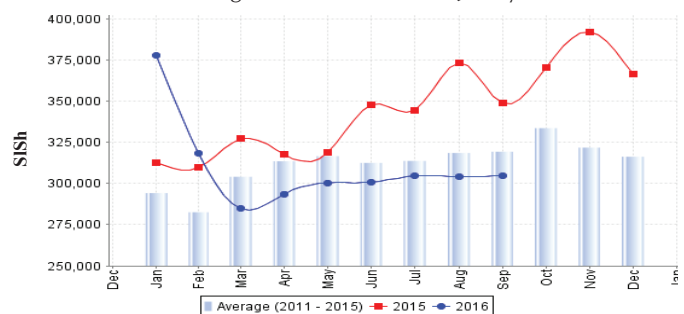


Figure 46: Exchange Rate

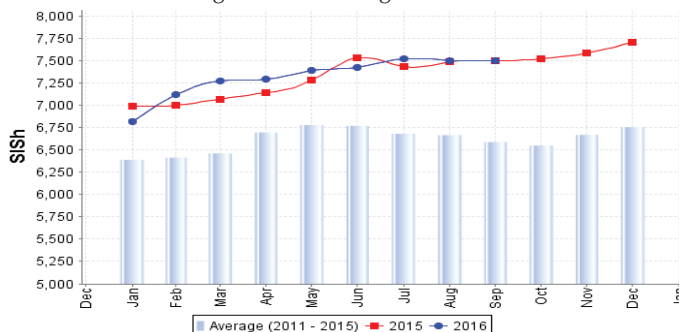
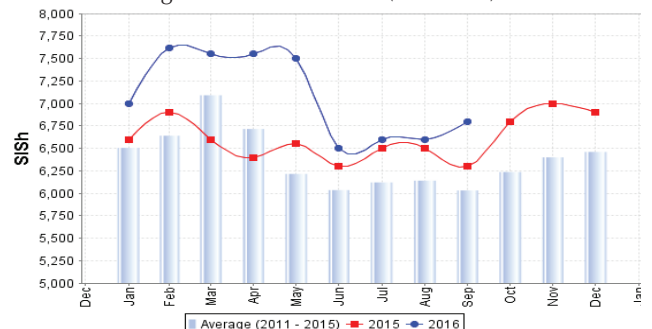


Figure 47: Water Drum (200 litres)



# Trends in Livestock Exports

Table 1: Berbera Livestock Exports (Number of Heads)

	1999	2000	2001	2002	2003	2004	2005	2006	2007	2008	2009	2010	2011	2012	2013	2014	2015	Jan-Jun 2016
Shoats	2 048 136	1 601 083	51 546	341 711	563 107	859 404	1 023 795	1 017 242	1 350 054	1 219 519	1 556 003	2 584 810	3 104 684	3 219 584	2 888 955	3 089 592	3 270 386	898 061
Cattle	89 967	63 263	20 973	37 547	84 312	131 852	148 151	85 631	88 143	80 051	88 005	133 021	150 934	190 354	20 875	252 597	160,395	66 276
Camel	37 430	16 984	3 473	18,864	21 874	5 147	5 069	22 810	14 245	26 515	20 206	92 651	107 281	102 664	75 728	64 578	61 475	52 698

Figure 48: Berbera Livestock Exports (Number of Heads)

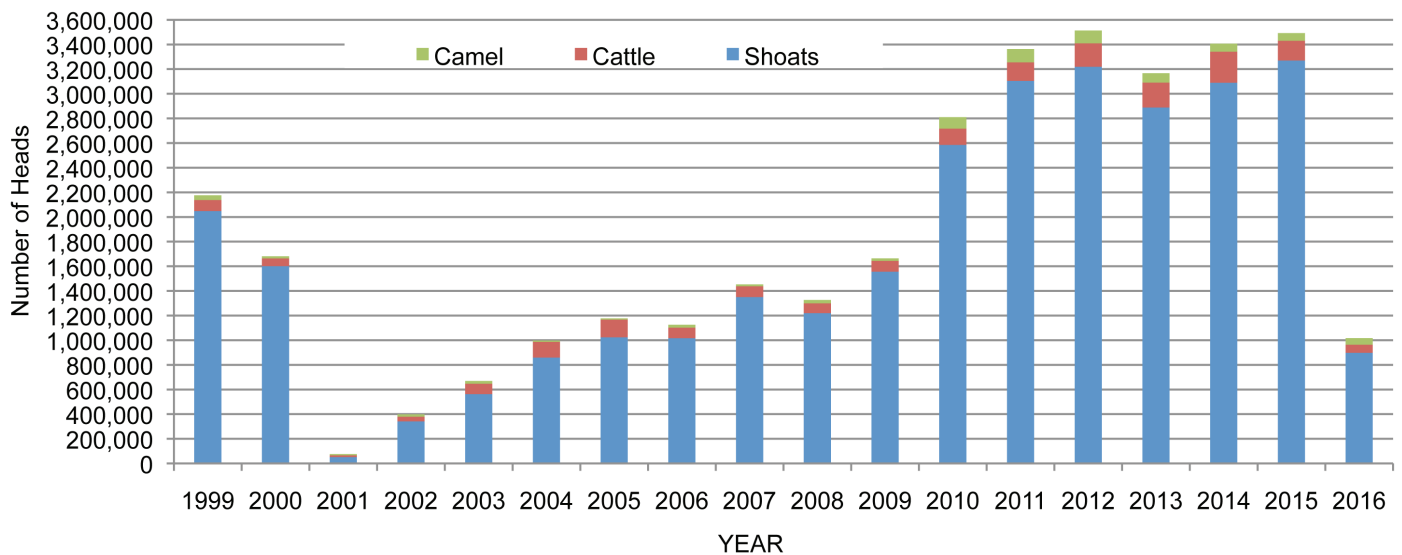
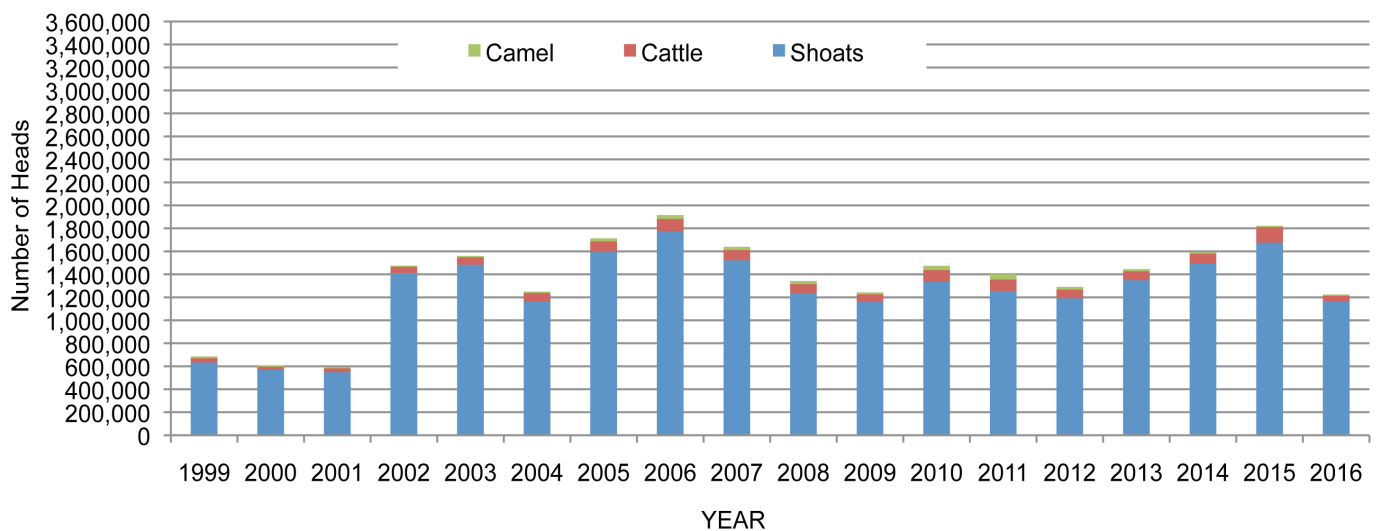


Table 2: Bossaso Livestock Exports (Number of Heads)

	1999	2000	2001	2002	2003	2004	2005	2006	2007	2008	2009	2010	2011	2012	2013	2014	2015	Jan-Aug 2016
Shoats	633 669	571 455	548 853	1 412 450	1 483 409	1 166 480	1 594 859	1 777 283	1 522 855	1 236 775	1 159 454	1 333 478	1 256 535	1 192 197	1 349 123	1 493 111	1 676 216	1 162 473
Cattle	36 586	27 604	42 248	53 313	71 328	79 994	91 910	104 595	89 190	78 046	67 385	103 808	99 058	76 043	77 353	87 759	134 597	54 738
Camel	15 544	8 177	1 950	9 720	4 259	2 488	26 109	33 724	27 580	27 639	15 331	36 865	45 878	22 288	19 032	12 251	10 945	7 066

Figure 49: Bossaso Livestock Exports (Number of Heads)

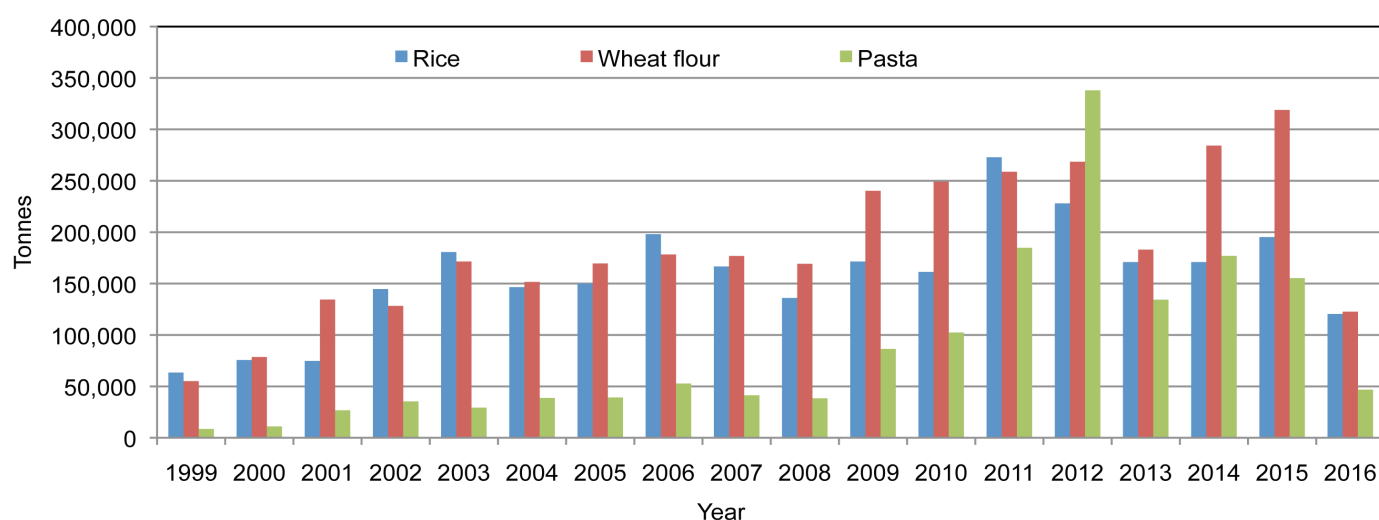


# Trends in Cereal Imports

Table 3: Total Cereal Imports through Berbera, Bossaso and Mogadishu Ports (Tonnes) \*

	1999	2000	2001	2002	2003	2004	2005	2006	2007	2008	2009	2010	2011	2012	2013	2014	2015	Jan-Aug 2016
Rice	63 464	75 687	74 729	144 600	180 614	146 567	150 017	198 101	166 626	136 007	171 472	161 415	272 877	227 955	170 868	170,888	195,240	120 451
Wheat flour	55 176	78 555	134 425	128 263	171 442	151 555	169 583	178 345	176 821	169 208	240 247	249 080	258 679	268,491	183 058	284 230	318,868	122 693
Pasta	8 544	11 071	26 702	35 425	29 273	38,749	39 153	52 815	41 331	38 441	86 372	102 373	184,849	337 878	134 311	176,951	155 360	46 780

Figure 50: Total Cereal Imports (Berbera, Bossaso and Mogadishu)



\* Bossaso data is up to August and Berbera data is up to June 2016. Elman (Mogadishu) is up to November 2015. Mogadishu data (Elmaan Port) for 2013 includes only January - March imports.