

Market DataUpdate

Highlights

Inflation:

SoSh (Somali shilling)-using areas: In the month of September, the Consumer Price Index (CPI) changed marginally (1%) in the SoSh-using areas. Compared to a year ago (September 2014), the CPI decreased (5-13%) in SoSh-using areas in September due to cereal price declines.

SISh (Somaliland shilling)-using areas: The CPI remained stable month-on-month in September. The CPI decreased compared to a year ago (September 2014) by 8 percent due to decline in cereal prices.

Exchange rate:

SoSh-using areas: The exchange rates between SoSh and the United States Dollar (USD) indicated stability or marginal monthly changes (1%) in September. The SoSh depreciated compared to a year ago across all areas, most significantly (12%) in Lower Juba.

SISh-using areas: The SISh remained stable against the USD in September month-on-month. Annual comparison indicates depreciation in *SISh* by 10 percent.

Local grain prices remained relatively stable or changed (increased/decreased) by less than 10 percent in September in Most regions of the country. Cereal prices are lower compared to a year ago in most regions of the country due to *Gu* 2015 and offseason harvests.

Prices of imported food (rice, sugar, vegetable oil, wheat flour) mostly exhibited relative stability or mild monthly changes in local currency terms in September across the country. Annual price comparison indicated generally stability trend or mild decreases in prices for most of the food imports in September with exception of Bakool region where prices of all food imports declined moderately (13-40%) due to increased humanitarian distribution as a result of improved security situation in the region.

Livestock prices (for all species) remained relatively stable or changed at mild rates (less than 10%) month-on-month in September in most regions of the country. The exception is Bay region where both cattle and local goat prices increased moderately (18-41%) due to improved body conditions as a result of Hagaa rains received and increased demand during the month's Islamic festival. Milk prices (camel and cattle) increased from mild to moderate levels month-on-month in most regions of the country due to increased demand for eid-ul-adha (Islamic festival). Annual comparison exhibited mixed trend patterns; specifically, in the Northern parts of country, yearly prices changed at mild rates (less than 10%); Camel prices of Central and most Southern regions increased while Cattle and goat prices recorded mild changes with exception of Lower Juba and Middle Shabelle where prices declined moderately (18-32%) due to increased supply. Compared to a year ago milk prices (camel and cattle) were higher in most regions of the country.

Labor (unskilled) wages remained relatively stable or increased from mild to moderate in the month of September in most parts of the country. This increase is attributable to increase in labour opportunities in offseason (Hagaa) harvest and land preparation for the coming Deyr season. Annual comparison indicates mild to moderate increases in wage rates in most regions of the country in September with the highest increase (25%) being recorded in Middle Juba.

Terms of Trade (ToT) between daily labor wage and local cereals either remained stable or increased by 1-3kg/daily labour wage month-on-month in September in most parts of the country; the highest increase was recorded in Banadir region (3kg/daily labour wage) due to decline in cereal prices and increase in labour wages. The ToT between local quality goat and cereals were higher for most of the regions of the country apart from Middle Shabelle, Gedo and Northwest where they mildly declined (1-7%) due to increase in local cereal prices and/or decrease in goat prices. Annual comparison indicated relative stability or increase in ToT between daily labor wage and local cereals in most regions of the country, while ToT between local quality goat and cereals changed at mild to moderate rates across the country with the highest change (increase of 41Kg/local quality goat) being recorded in Bakool due to significant increase in local quality goat prices and decrease in local cereal prices.

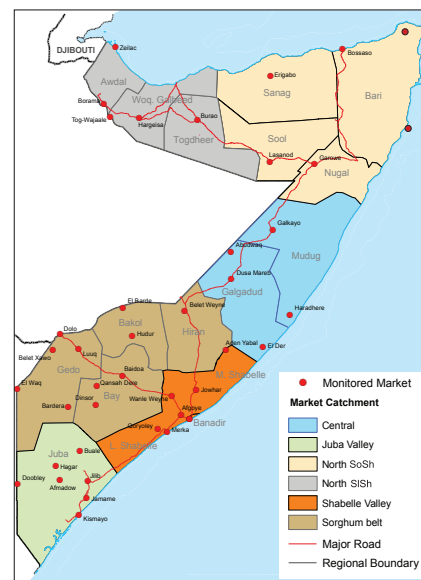
Towns Affected by Trade Disruption (Bulo Burto, Wajid and Hudur)

Labor (unskilled) wages remained stable in Hudur but increased by 4 and 10 percent in **Bulo Burto and Wajid respectively** in September month-on-month. Annual comparison indicated a moderate increase in wage rates in Hudur (16%) due to increase in economic activities as a result of relatively improved security conditions in the region.

Terms of Trade (ToTs) between daily labor wage and local cereals and between Local quality goat and local cereals remained relatively stable month-on-month in Bulo Burto and Hudur while in Wajid the ToT between local quality goat and local cereals increased significantly by 54kg/local quality goat due to increase in local quality goat prices and decline in local cereal prices. ToTs are higher compared to a year ago in Hudur due to decrease in cereal prices and increase in labor wages and goat prices

Local grains prices changed (increased) month-on-month in September in Bulo-Burto (3%) and Hudur (10%) while in Wajid, they declined moderately (25%) due to increase in cereal supply in the market. Annual comparison indicated significant (42%) decline in red sorghum prices in Hudur due to increased **humanitarian food distribution and improved access to markets.**

Prices of imported food items (rice, sugar, vegetable oil, wheat flour) declined (6-15%) month-on-month in September in all the three markets due to humanitarian food distributions. Annual comparison also indicated decline in prices in Hudur due to improved access as a result of improved security situation.



This Market Data Update is a monthly report that presents analysis of market information and is produced regularly as part of the monthly monitoring process.

The weekly price data is collected from 48 main markets and 51 rural markets throughout Somalia since 1995.

Market analysis is an integral part of all of FSNAU's annual food security projections and seasonal technical reports (Technical Reports on FSNAU Post *Gu* and Post *Deyr* Analysis).

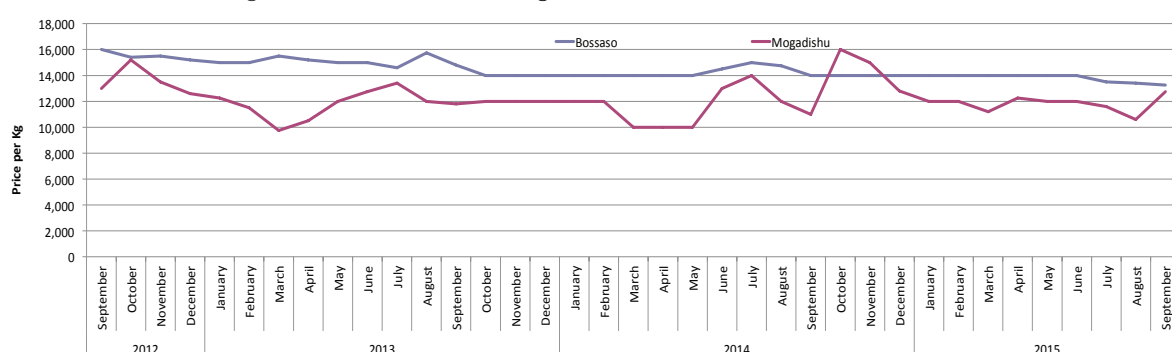
Detailed market data are available online on www.fsnau.org/ids.

National Trends: CPI, Exchange Rates, Cereal Prices and Relative Purchasing Power

Table 1: ToT between Cereals (kg) and Daily Labour Wage Rate, by Region (September)

Regions	September 2015 (kg)	Change in Kg from		
		Aug 2015	Sep 2014	September 5 yr Average (2010 - 2014)
Banadir/Mogadishu	28	8	14	14
Bay	16	2	2	4
Bakool	6	0	3	1
Gedo	15	0	1	1
Juba	12	2	3	2
Shabelle	12	0	3	2
Northwest	10	0	1	3
Northeast	9	0	1	3
Central	5	0	1	2

Figure 1: Wheat Prices: Mogadishu and Bossaso Markets



Source: FSNAU Manifest Price Monitoring System

Figure 2: Terms of Trade Between Wage Rates and Selected Cereals

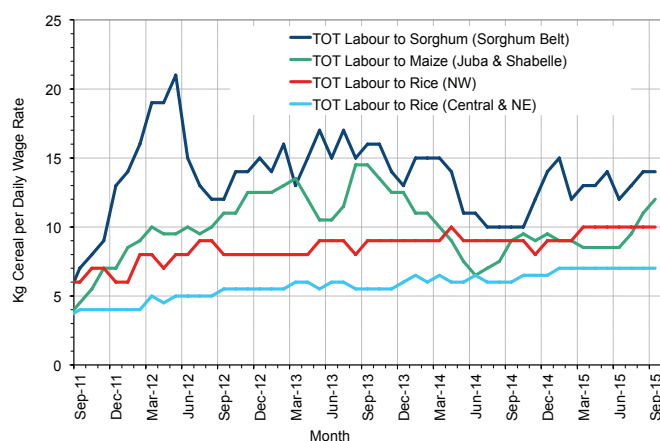


Figure 3: Monthly Exchange Rate for Selected Regions (SoSh and SiSh to USD)

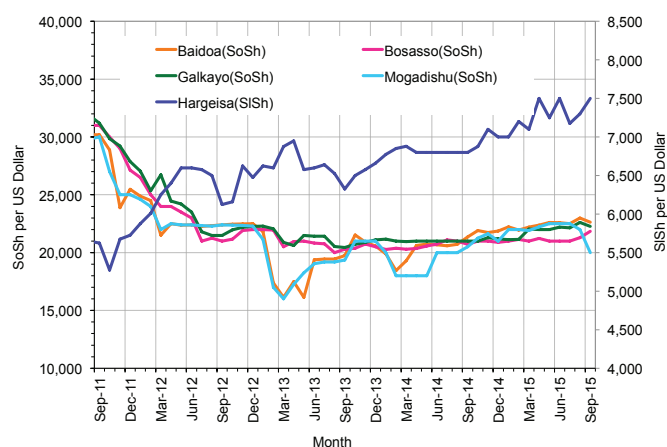


Figure 4: Monthly Trends in Consumer Price Index (CPI, March 2007=100)

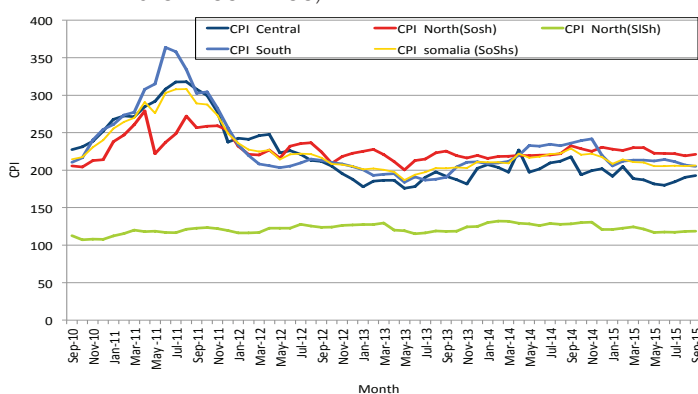
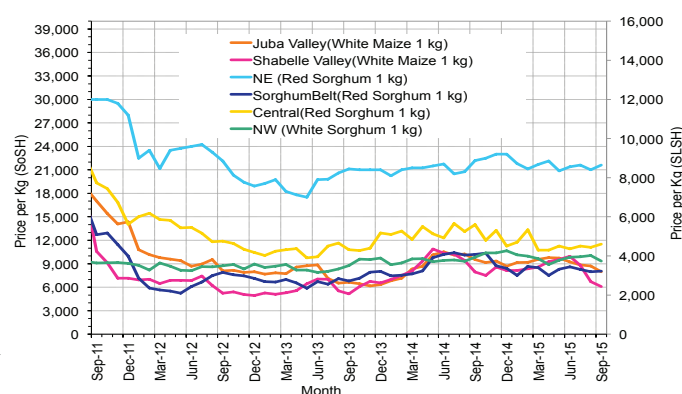


Figure 5: Monthly Trends in Local Cereal Prices



Regional analysis: Juba Regions

Indicator	5-Year Average (2010-2014)	Sep-14	Aug-15	Sep-15 Nominal Price	Sep-15 Real (Deflated) Price	% Change Previous Month	% Change Same Month Previous Year	% Change 5-year avrg (2010-2014)
Imported Commodities Prices								
Diesel 1 litre	31,690	26,000	24,000	24,143	11,664	1%	-7%	-24%
Imported Red Rice 1kg	19,207	15,536	14,929	15,214	7,313	2%	-2%	-21%
Petrol 1 litre	32,694	27,571	27,286	26,143	12,639	-4%	-5%	-20%
Sugar	23,614	15,714	15,286	15,536	7,470	2%	-1%	-34%
Vegetable Oil 1 litre	40,714	32,214	29,286	28,464	13,770	-3%	-12%	-30%
Wheat Flour 1kg	18,042	14,714	14,893	14,679	7,053	-1%	0%	-19%
Wheat Grain 1kg	18,000	-	-	-	-	-	-	-
Cereal Prices								
Red Sorghum 1kg	7,500	8,000	8,600	8,000	3,798	-7%	0%	7%
White Maize 1kg	9,658	9,682	8,939	8,239	3,915	-8%	-15%	-15%
Livestock & Livestock Product Prices								
Camel Local Quality (Head)	9,377,435	9,560,643	9,070,833	9,094,643	4,431,412	0%	-5%	-3%
Cattle Local Quality (Head)	3,821,110	4,189,071	3,859,143	3,763,214	1,833,587	-2%	-10%	-2%
Fresh Camel Milk 1 litre	17,150	13,893	15,821	17,946	8,644	13%	29%	5%
Goat Export Quality (Head)	1,440,737	1,419,000	1,257,214	1,210,893	589,927	-4%	-15%	-16%
Goat Local Quality (Head)	940,281	918,600	820,179	795,536	387,538	-3%	-13%	-15%
Other Essential Items								
Charcoal 50kg	83,025	93,929	81,429	76,536	37,193	-6%	-19%	-8%
Cowpeas 1 kg	22,264	21,313	20,817	20,107	9,697	-3%	-6%	-10%
Unskilled Labor Wage Rate	88,122	91,714	89,750	92,357	44,902	3%	1%	5%
Firewood Bundle	9,332	12,071	7,143	7,214	3,415	1%	-40%	-23%
Local Sesame Oil 1 litre	78,112	84,286	68,286	65,964	32,042	-3%	-22%	-16%
Exchange Rate (Somali Shilling per USD)	24,819	20,539	22,582	22,864	11,041	1%	11%	-8%
Terms of Trade								
Labour Wage (Daily)/ Cereal (Maize(Kg))	10	9	10	11	-	10%	22%	10%
Local Goat (Head)/ Cereal (Maize(Kg))	113	95	92	97	-	5%	2%	-14%
Price Indices								
Consumer Price Index	-	236	207	205	-	-1%	-13%	-

Figure 6: Trends in Cereal Prices

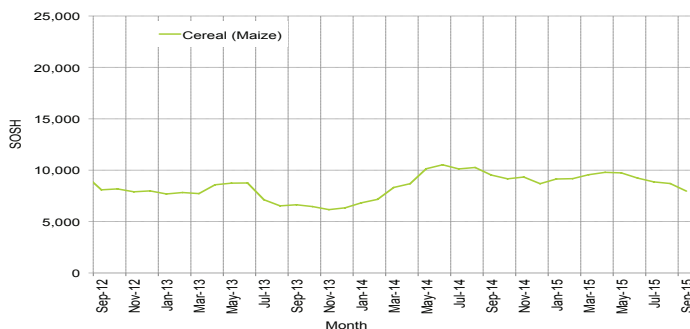


Figure 7: Trends in Wage Rates and Relative Purchasing Power

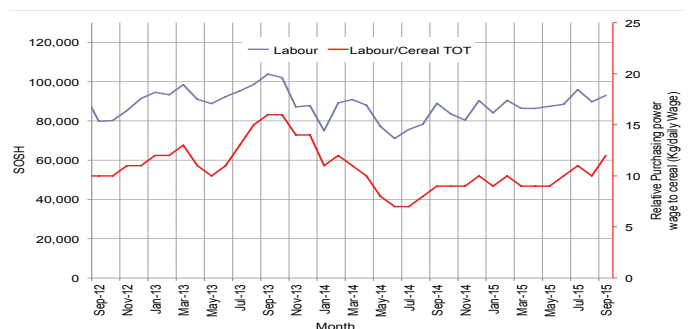


Figure 8: Imported Commodity Prices Compared to Exchange Rate

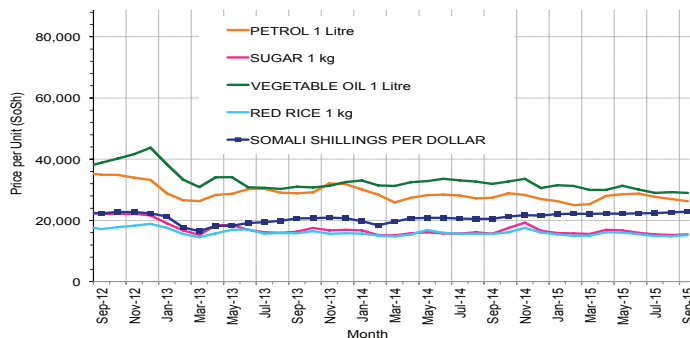


Figure 10: Exchange Rate

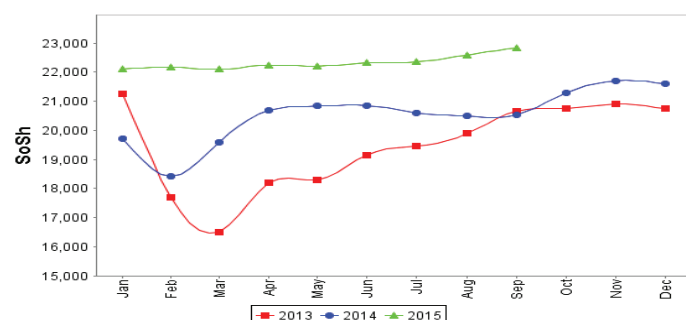


Figure 9: Goat Local Quality

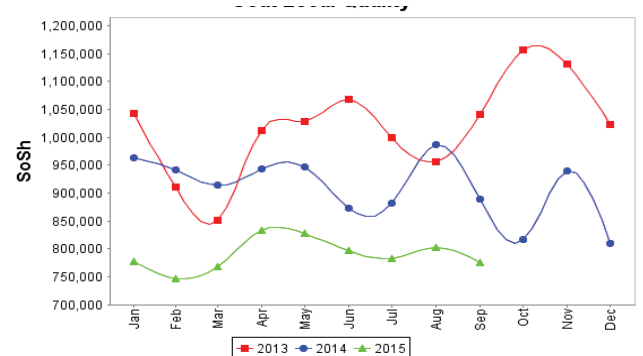
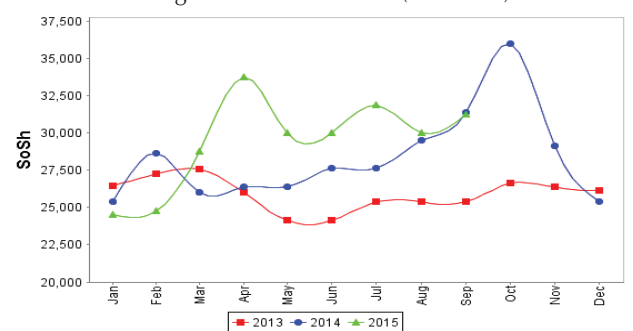


Figure 11: Water Drum (200 litres)



Regional analysis: Sorghum Belt Regions (Bay, Bakool, Gedo and Hiran)

Indicator	5-Year Average (2010-2014)	Sep-14	Aug-15	Sep-15 Nominal Price	Sep-15 Real (Deflated) Price	% Change Previous Month	% Change Same Month Previous Year	% Change 5-year avrg (2010-2014)
Imported Commodities Prices								
Diesel 1 litre	33,287	32,827	28,536	27,364	13,234	-4%	-17%	-18%
Imported Red Rice 1kg	21,246	18,673	17,918	17,591	8,472	-2%	-6%	-17%
Petrol 1 litre	32,812	32,000	29,218	29,045	14,053	-1%	-9%	-11%
Sugar	25,301	19,189	17,918	17,750	8,549	-1%	-7%	-30%
Vegetable Oil 1 litre	45,009	41,345	33,918	33,955	16,445	0%	-18%	-25%
Wheat Flour 1kg	19,461	17,727	17,455	17,364	8,361	-1%	-2%	-11%
Wheat Grain 1kg	10,514	16,400	19,875	18,625	8,975	-6%	14%	77%
Cereal Prices								
Red Sorghum 1kg	9,233	10,196	7,989	8,064	3,829	1%	-21%	-13%
White Maize 1kg	10,514	11,164	9,169	8,917	4,245	-3%	-20%	-15%
Livestock & Livestock Product Prices								
Camel Local Quality (Head)	11,274,398	12,952,000	12,601,000	12,710,000	6,193,054	1%	-2%	13%
Cattle Local Quality (Head)	3,413,163	3,671,429	3,599,688	3,775,000	1,839,330	5%	3%	11%
Fresh Camel Milk 1 litre	23,723	24,100	16,670	18,575	8,951	11%	-23%	-22%
Goat Export Quality (Head)	1,543,145	1,565,273	1,868,727	1,572,500	766,126	-16%	0%	2%
Goat Local Quality (Head)	991,218	998,727	871,273	992,955	483,733	14%	-1%	0%
Other Essential Items								
Charcoal 50kg	131,434	139,900	164,850	159,375	77,558	-3%	14%	21%
Cowpeas 1 kg	26,652	28,345	25,214	24,909	12,037	-1%	-12%	-7%
Unskilled Labor Wage Rate	99,265	105,782	108,182	112,273	54,607	4%	6%	13%
Firewood Bundle	5,934	6,309	6,582	6,545	3,089	-1%	4%	10%
Local Sesame Oil 1 litre	77,453	89,875	75,964	74,893	36,393	-1%	-17%	-3%
Exchange Rate (Somali Shilling per USD)	24,974	21,020	22,505	22,586	10,905	0%	7%	-10%
Terms of Trade								
Labour Wage (Daily)/ Cereal (Sorghum(Kg))	11	10	14	14	-	0%	40%	27%
Local Goat (Head)/ Cereal (Sorghum(Kg))	116	98	109	123	-	13%	26%	6%
Price Indices								
Consumer Price Index	-	236	207	205	-	-1%	-13%	-

Figure 12: Trends in Cereal Prices

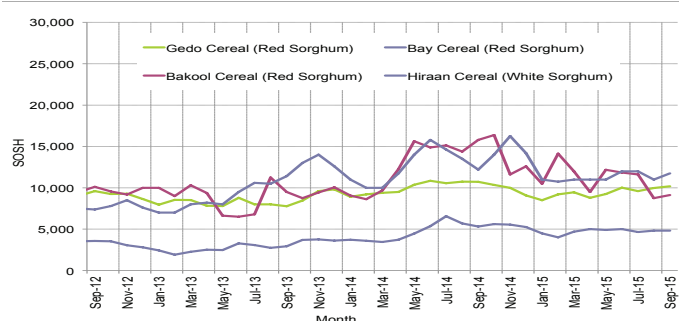


Figure 14: Imported Commodity Prices Compared to Exchange Rate

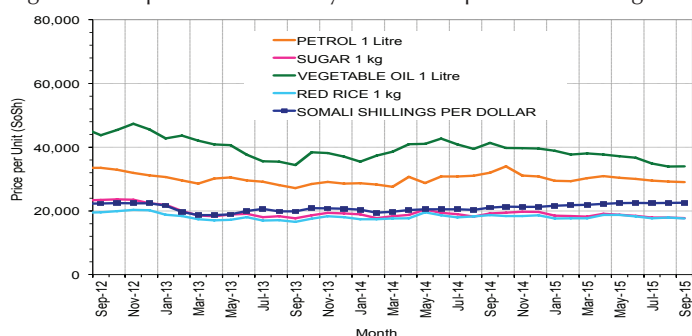


Figure 16: Exchange Rate

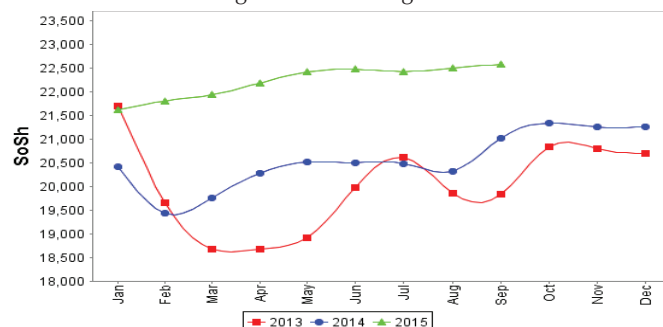


Figure 13: Trends in Wage Rates and Relative Purchasing Power

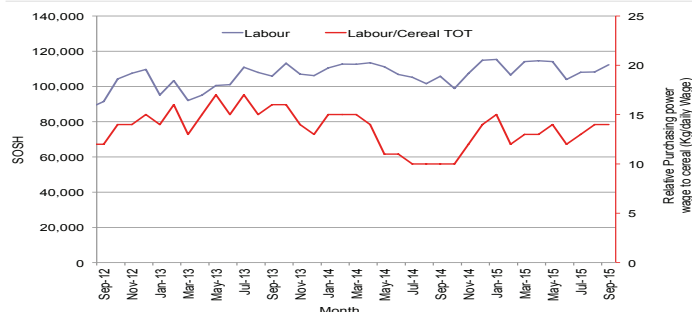


Figure 15: Goat Local Quality

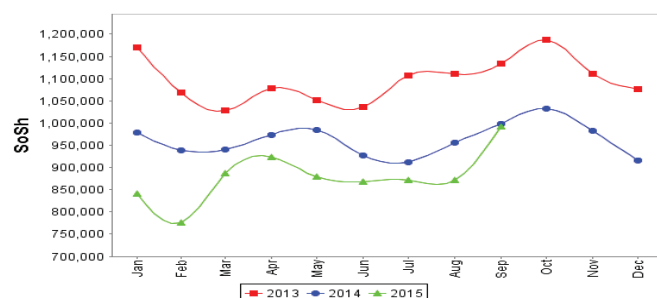
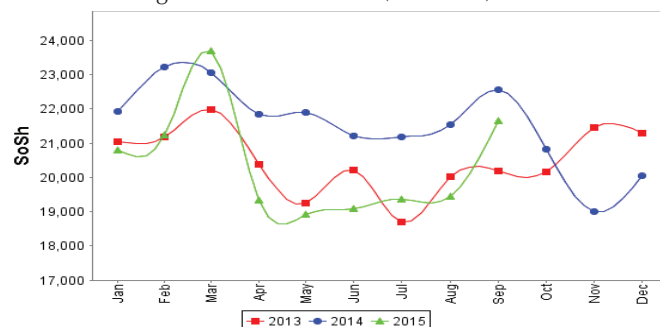


Figure 17: Water Drum (200 litres)



Regional analysis: Shabelle Regions

Indicator	5-Year Average (2010-2014)	Sep-14	Aug-15	Sep-15 Nominal Price	Sep-15 Real (Deflated) Price	% Change Previous Month	% Change Same Month Previous Year	% Change 5-year avg (2010-2014)
Imported Commodities Prices								
Diesel 1 litre	31,108	27,000	23,833	23,667	11,432	-1%	-12%	-24%
Imported Red Rice 1kg	19,216	15,875	15,167	15,000	7,209	-1%	-6%	-22%
Petrol 1 litre	31,875	29,667	28,042	28,208	13,645	1%	-5%	-12%
Sugar	23,791	15,708	15,833	15,250	7,331	-4%	-3%	-36%
Vegetable Oil 1 litre	35,450	26,708	27,500	27,083	13,097	-2%	1%	-24%
Wheat Flour 1kg	18,241	15,875	15,958	16,250	7,818	2%	2%	-11%
Wheat Grain 1kg	16,666	30,000	18,667	17,000	8,184	-9%	-43%	2%
Cereal Prices								
Red Sorghum 1kg	10,619	11,529	8,906	9,767	4,659	10%	-15%	-8%
White Maize 1kg	6,772	7,955	6,713	6,087	2,866	-9%	-23%	-10%
Livestock & Livestock Product Prices								
Camel Local Quality (Head)	15,116,499	16,195,000	18,605,000	18,515,000	9,021,634	0%	14%	22%
Cattle Local Quality (Head)	4,937,100	6,528,000	6,115,000	5,866,500	2,858,447	-4%	-10%	19%
Fresh Camel Milk 1 litre	18,108	17,000	18,417	19,167	9,239	4%	13%	6%
Goat Export Quality (Head)	1,666,143	1,953,125	2,103,500	1,983,125	966,210	-6%	2%	19%
Goat Local Quality (Head)	1,247,499	1,557,917	1,344,167	1,385,833	675,170	3%	-11%	11%
Other Essential Items								
Charcoal 50kg	113,657	113,150	133,472	119,917	58,332	-10%	6%	6%
Cowpeas 1 kg	24,197	22,417	18,406	19,160	9,236	4%	-15%	-21%
Unskilled Labor Wage Rate	65,283	69,792	78,125	75,417	36,648	-3%	8%	16%
Firewood Bundle	5,825	6,667	8,333	6,250	2,945	-25%	-6%	7%
Local Sesame Oil 1 litre	62,475	72,900	54,833	52,125	25,299	-5%	-28%	-17%
Exchange Rate (Somali Shilling per USD)	25,175	20,917	22,425	22,458	10,843	0%	7%	-11%
Terms of Trade								
Labour Wage (Daily)/ Cereal (Maize(Kg))	10	9	12	12	-	0%	33%	20%
Local Goat (Head)/ Cereal (Maize(Kg))	201	196	200	228	-	14%	16%	13%
Price Indices								
Consumer Price Index	-	236	207	205	-	-1%	-13%	-

Figure 18: Trends in Cereal Prices

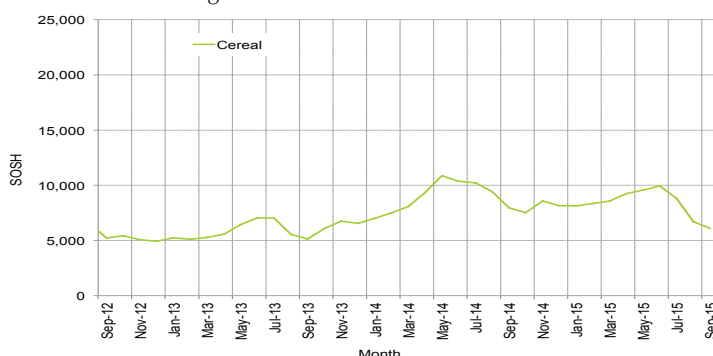


Figure 19: Trends in Wage Rates and Relative Purchasing Power

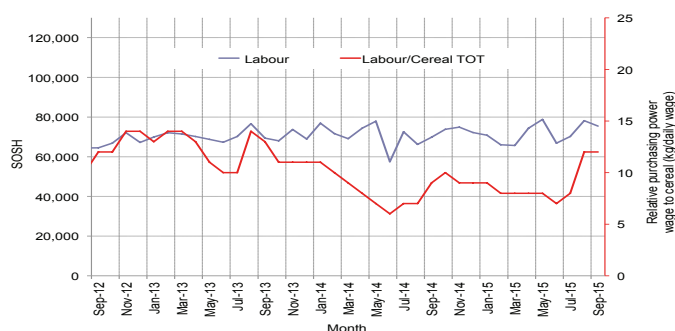


Figure 20: Imported Commodity Prices Compared to Exchange Rate

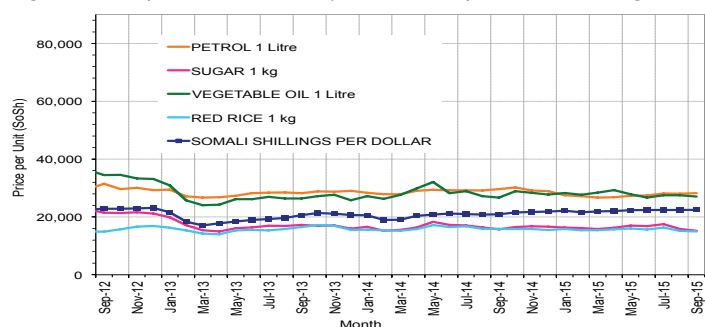


Figure 22: Exchange Rate

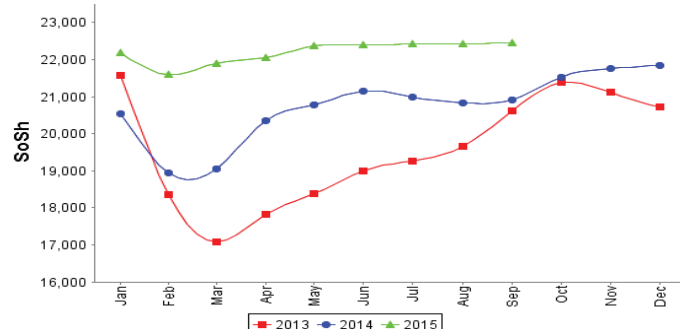


Figure 21: Goat Local Quality

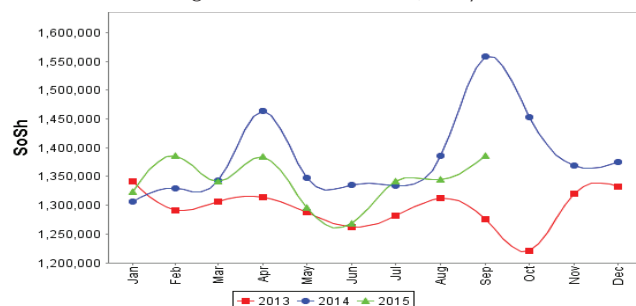
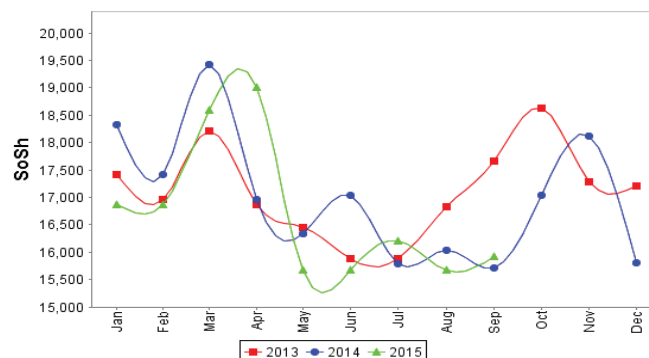


Figure 23: Water Drum (200 litres)



Regional analysis: Banadir Region

Indicator	5-Year Average (2010-2014)	Sep-14	Aug-15	Sep-15 Nominal Price	Sep-15 Real (Deflated) Price	% Change Previous Month	% Change Same Month Previous Year	% Change 5-year avg (2010-2014)
Imported Commodities Prices								
Diesel 1 litre	26,674	21,233	16,933	17,958	8,650	6%	-15%	-33%
Imported Red Rice 1kg	16,809	12,700	12,483	12,417	5,950	-1%	-2%	-26%
Petrol 1 litre	26,206	21,433	20,900	21,417	10,336	2%	0%	-18%
Sugar	21,953	14,000	13,300	12,833	6,153	-4%	-8%	-42%
Vegetable Oil 1 litre	33,934	24,183	22,633	22,375	10,803	-1%	-7%	-34%
Wheat Flour 1kg	15,208	12,200	11,983	12,750	6,113	6%	5%	-16%
Wheat Grain 1kg	11,630	10,600	13,400	12,833	6,153	-4%	21%	10%
Cereal Prices								
Red Sorghum 1kg	8,641	9,210	7,867	7,475	3,542	-5%	-19%	-13%
White Maize 1kg	9,361	11,027	8,963	8,138	3,865	-9%	-26%	-13%
Livestock & Livestock Product Prices								
Camel Local Quality (Head)	14,250,000	-	-	-	-	-	-	-
Cattle Local Quality (Head)	4,962,500	-	-	-	-	-	-	-
Fresh Camel Milk 1 litre	20,877	22,600	22,833	22,917	11,067	0%	1%	10%
Goat Export Quality (Head)	2,275,000	-	2,060,000	2,425,000	1,181,521	18%	-	7%
Goat Local Quality (Head)	2,035,750	2,406,000	1,620,000	1,700,000	828,253	5%	-29%	-16%
Other Essential Items								
Charcoal 50kg	168,068	191,700	196,633	195,667	95,242	0%	2%	16%
Cowpeas 1 kg	25,514	22,450	20,700	20,750	10,011	0%	-8%	-19%
Unskilled Labor Wage Rate	94,900	103,333	102,667	112,083	54,514	9%	8%	18%
Firewood Bundle	6,949	8,320	8,000	8,000	3,798	0%	-4%	15%
Local Sesame Oil 1 litre	63,333	72,700	55,167	54,958	26,679	0%	-24%	-13%
Exchange Rate (Somali Shilling per USD)	24,877	20,847	22,320	22,063	10,651	-1%	6%	-11%
Terms of Trade								
Labour Wage (Daily)/ Cereal (Maize(Kg))	10	9	11	14	-	27%	56%	40%
Local Goat (Head)/ Cereal (Maize(Kg))	234	218	181	209	-	15%	-4%	-11%
Price Indices								
Consumer Price Index	-	236	207	205	-	-1%	-13%	-

Figure 24: Trends in Cereal Prices



Figure 25: Bakara: Trends in Wage Rates and Relative Purchasing Power

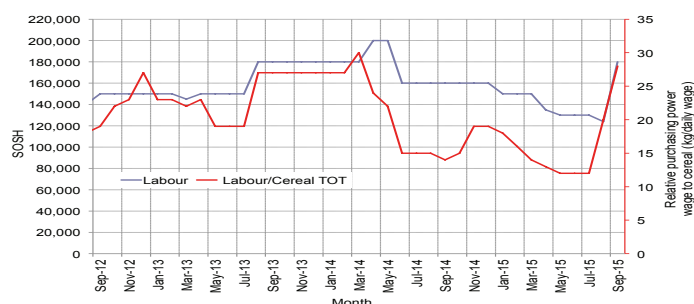


Figure 26: Imported Commodity Prices Compared to Exchange Rate

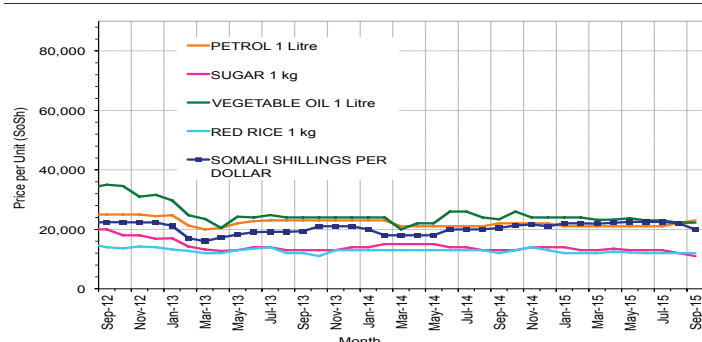


Figure 27: Goat Local Quality

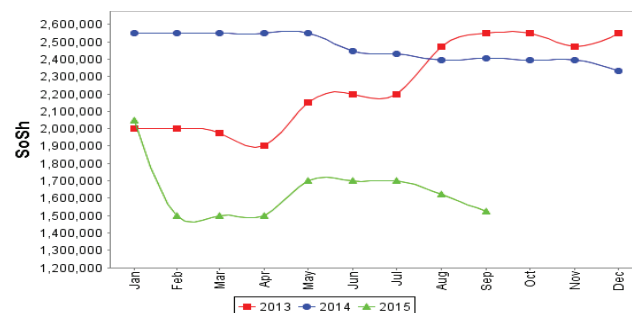


Figure 28: Exchange Rate

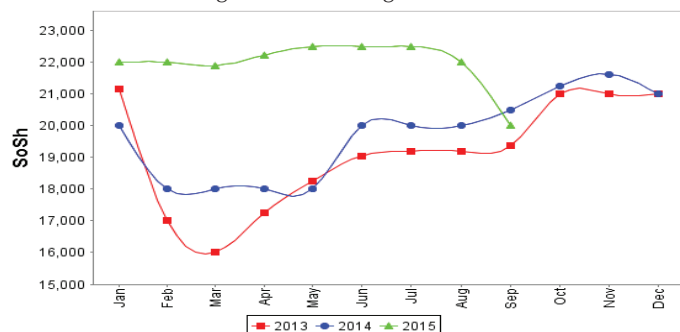
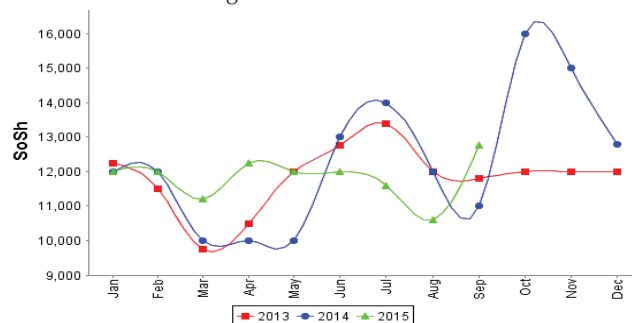


Figure 29: Wheat Flour



Regional analysis: Central Regions

Indicator	5-Year Average (2010-2014)	Sep-14	Aug-15	Sep-15 Nominal Price	Sep-15 Real (Deflated) Price	% Change Previous Month	% Change Same Month Previous Year	% Change 5-year avg (2010-2014)
Imported Commodities Prices								
Diesel 1 litre	32,114	28,200	25,400	23,350	12,019	-8%	-17%	-27%
Imported Red Rice 1kg	23,760	18,200	17,000	17,000	8,723	0%	-7%	-28%
Petrol 1 litre	29,120	25,770	24,000	24,350	12,538	1%	-6%	-16%
Sugar	28,048	21,000	18,560	18,100	9,294	-2%	-14%	-35%
Vegetable Oil 1 litre	49,906	44,080	36,320	35,200	18,169	-3%	-20%	-29%
Wheat Flour 1kg	19,738	16,600	15,360	15,400	7,893	0%	-7%	-22%
Wheat Grain 1kg	14,907	14,500	17,350	17,125	8,788	-1%	18%	15%
Cereal Prices								
Red Sorghum 1kg	13,610	14,000	11,100	11,500	5,869	4%	-18%	-16%
White Maize 1kg	14,604	14,000	13,120	13,100	6,699	0%	-6%	-10%
Livestock & Livestock Product Prices								
Camel Local Quality (Head)	9,512,000	9,747,500	12,725,000	12,537,500	6,506,870	-1%	29%	32%
Cattle Local Quality (Head)	2,533,333	3,000,000	-	-	-	-	-	-
Fresh Camel Milk 1 litre	34,892	29,860	31,800	32,400	16,716	2%	9%	-7%
Goat Export Quality (Head)	1,450,333	1,495,000	1,150,500	1,342,500	696,658	17%	-10%	-7%
Goat Local Quality (Head)	1,092,180	1,060,000	858,000	965,000	500,736	12%	-9%	-12%
Other Essential Items								
Charcoal 50kg	178,770	172,000	150,800	153,500	79,567	2%	-11%	-14%
Cowpeas 1 kg	29,414	22,710	22,000	21,900	11,266	0%	-4%	-26%
Unskilled Labor Wage Rate	85,700	81,000	89,000	92,000	47,648	3%	14%	7%
Firewood Bundle	32,850	32,000	34,000	34,800	17,961	2%	9%	6%
Local Sesame Oil 1 litre	91,490	91,200	90,000	87,500	45,313	-3%	-4%	-4%
Exchange Rate (Somali Shilling per USD)	25,067	20,800	22,020	22,205	11,424	1%	7%	-11%
Terms of Trade								
Labour Wage (Daily)/ Cereal (Rice(Kg))	3	4	5	5	-	0%	25%	67%
Local Goat (Head)/ Cereal (Rice(Kg))	49	58	50	57	-	14%	-2%	16%
Camel (Head)/Cereal (Kg)	432	536	749	738	-	-1%	38%	71%
Price Indices								
Consumer Price Index	-	218	190	193	-	1%	-12%	-

Figure 30: Trends in Cereal Prices

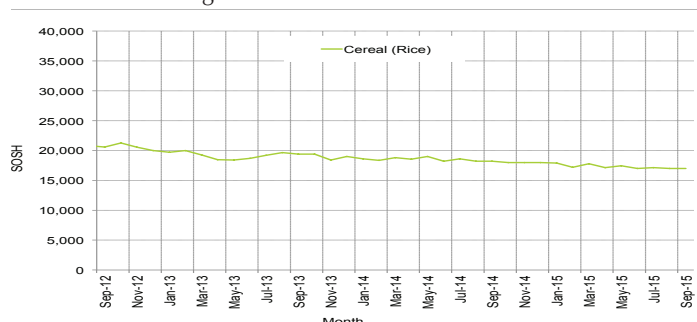


Figure 31: Trends in wage rates and relative purchasing power

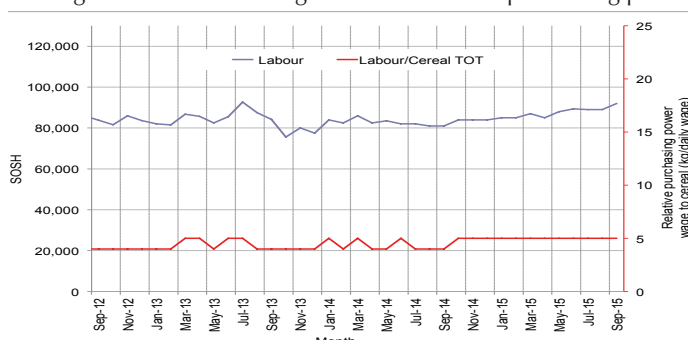


Figure 32: Imported Commodity Prices Compared to Exchange Rate

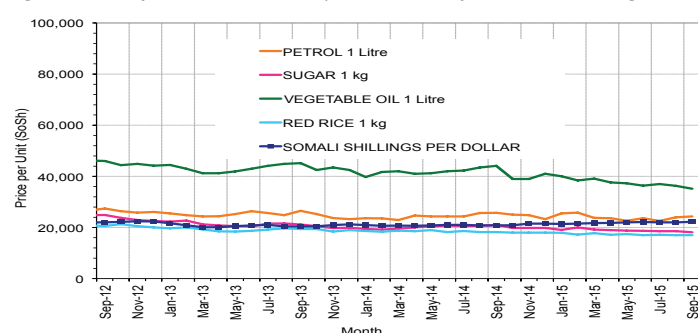


Figure 33: Goat Local Quality

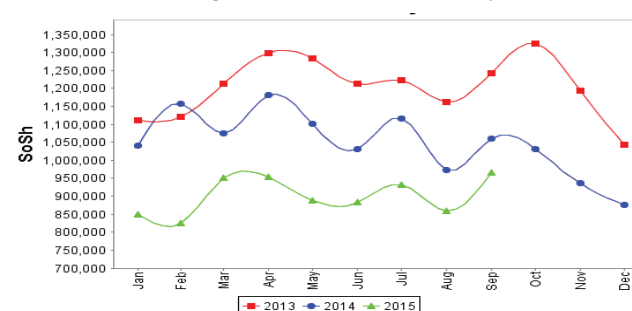


Figure 34: Exchange Rate

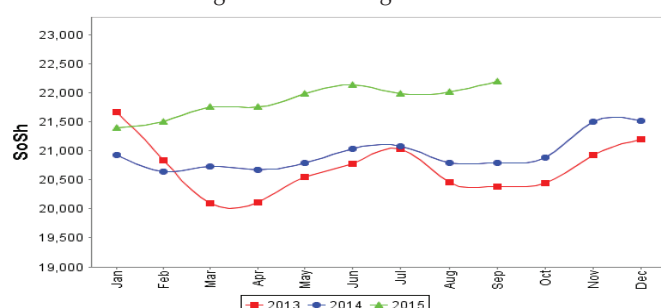
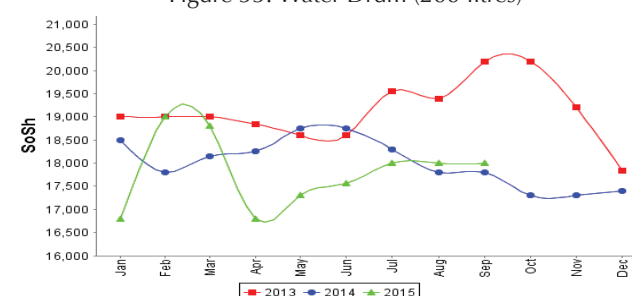


Figure 35: Water Drum (200 litres)



Regional analysis: Northeast Regions

Indicator	5-Year Average (2010-2014)	Sep-14	Aug-15	Sep-15 Nominal Price	Sep-15 Real (Deflated) Price	% Change Previous Month	% Change Same Month Previous Year	% Change 5-year avrg (2010-2014)
Imported Commodities Prices								
Diesel 1 litre	27,420	23,100	18,125	17,688	7,895	-2%	-23%	-35%
Imported Red Rice 1kg	19,730	15,675	14,800	14,375	6,397	-3%	-8%	-27%
Petrol 1 litre	24,588	20,350	20,269	19,938	8,912	-2%	-2%	-19%
Sugar	25,022	17,750	16,200	15,750	7,019	-3%	-11%	-37%
Vegetable Oil 1 litre	43,247	33,388	33,250	31,000	13,911	-7%	-7%	-28%
Wheat Flour 1kg	18,090	14,988	14,150	13,875	6,171	-2%	-7%	-23%
Wheat Grain 1kg	26,965	22,000	21,750	20,500	9,166	-6%	-7%	-24%
Cereal Prices								
Red Sorghum 1kg	22,090	22,200	21,000	21,625	9,674	3%	-3%	-2%
White Maize 1kg	20,706	21,200	19,500	20,000	8,940	3%	-6%	-3%
Livestock & Livestock Product Prices								
Camel Local Quality (Head)	14,724,250	15,640,000	15,198,750	15,350,000	6,937,749	1%	-2%	4%
Cattle Local Quality (Head)	7,743,750	8,500,000	8,800,000	9,125,000	4,124,191	4%	7%	18%
Fresh Camel Milk 1 litre	41,652	37,060	37,717	39,542	17,772	5%	7%	-5%
Goat Export Quality (Head)	1,504,750	1,590,000	1,440,000	1,468,750	663,741	2%	-8%	-2%
Goat Local Quality (Head)	1,345,187	1,408,000	1,299,688	1,310,000	591,990	1%	-7%	-3%
Other Essential Items								
Charcoal 50kg	352,962	386,375	372,875	366,875	165,719	-2%	-5%	4%
Cowpeas 1 kg	38,673	31,000	28,200	28,500	12,781	1%	-8%	-26%
Unskilled Labor Wage Rate	120,600	129,500	128,250	129,688	58,516	1%	0%	8%
Firewood Bundle	43,400	49,625	43,250	45,000	20,239	4%	-9%	4%
Local Sesame Oil 1 litre	90,996	100,250	96,250	96,250	43,403	0%	-4%	6%
Exchange Rate (Somali Shilling per USD)	25,086	20,815	21,113	21,263	9,510	1%	2%	-15%
Terms of Trade								
Labour Wage (Daily)/ Cereal (Rice(Kg))	6	8	9	9	-	0%	13%	50%
Local Goat (Head)/ Cereal (Rice(Kg))	72	90	88	91	-	3%	1%	26%
Price Indices								
Consumer Price Index	-	233	219	221	-	1%	-5%	-

Figure 36: Trends in Cereal Prices

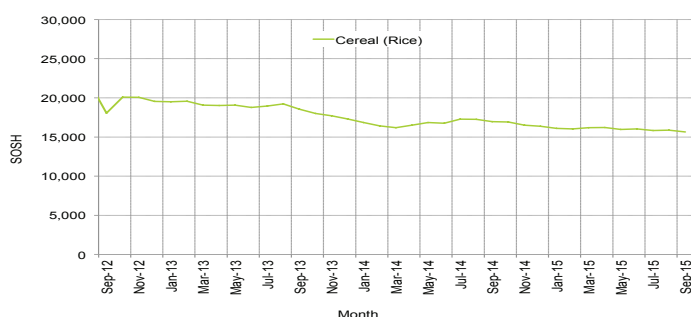


Figure 37: Trends in Wage Rates and Relative Purchasing Power

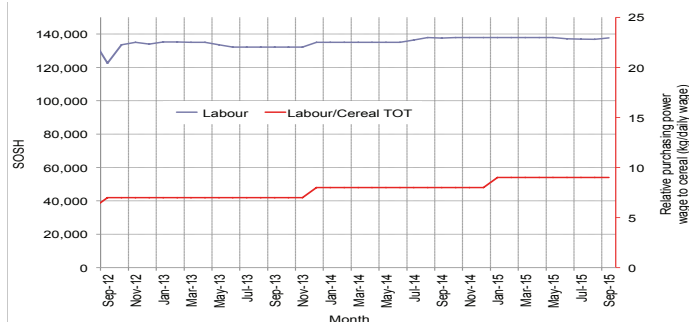


Figure 38: Imported Commodity Prices Compared to Exchange Rate

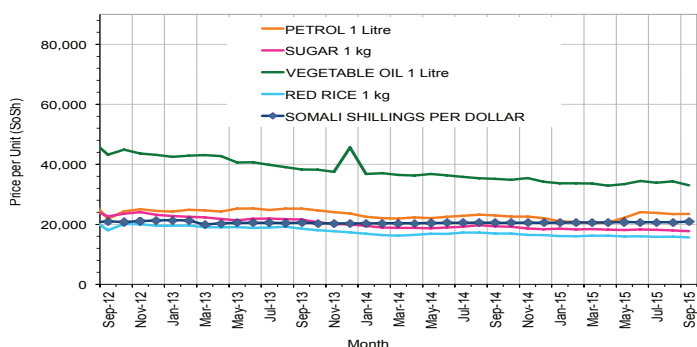


Figure 39: Goat Local Quality

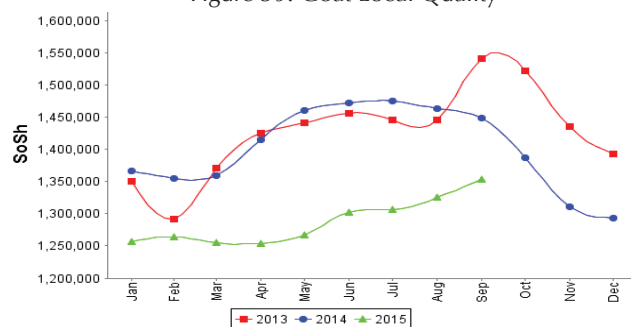


Figure 40: Exchange Rate

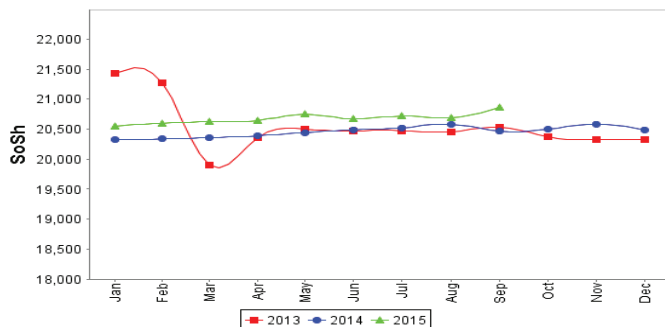
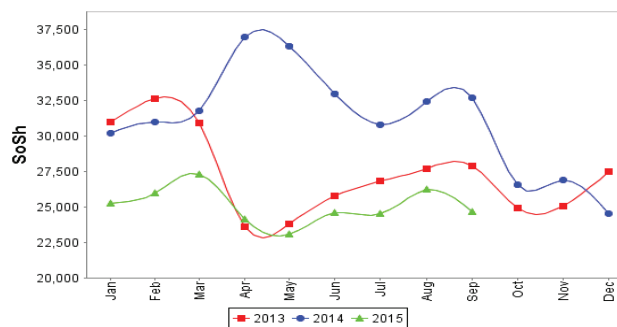


Figure 41: Water Drum (200 litres)



Regional analysis: Northwest Regions

Indicator	5-Year Average (2010-2014)	Sep-14	Aug-15	Sep-15 Nominal Price	Sep-15 Real (Deflated) Price	% Change Previous Month	% Change Same Month Previous Year	% Change 5-year avrg (2010-2014)
Imported Commodities Prices								
Diesel 1 litre	6,622	7,116	6,560	6,360	5,255	-3%	-11%	-4%
Imported Red Rice 1kg	5,112	5,120	5,020	5,060	4,160	1%	-1%	-1%
Petrol 1 litre	7,122	8,195	7,580	7,700	6,383	2%	-6%	8%
Sugar	6,131	5,652	6,000	5,800	4,784	-3%	3%	-5%
Vegetable Oil 1 litre	11,850	12,613	12,500	12,600	10,509	1%	0%	6%
Wheat Flour 1kg	4,291	4,440	4,680	4,400	3,605	-6%	-1%	3%
Wheat Grain 1kg	3,378	3,625	3,790	3,625	2,952	-4%	0%	7%
Cereal Prices								
White Sorghum 1kg	3,431	3,940	4,020	3,740	3,049	-7%	-5%	9%
Yellow Maize 1kg	3,477	3,780	3,750	3,812	3,110	2%	1%	10%
Livestock & Livestock Product Prices								
Camel Local Quality (Head)	2,924,183	4,220,833	4,453,333	4,395,000	3,700,455	-1%	4%	50%
c	1,881,833	2,478,333	2,304,600	2,803,333	2,360,284	22%	13%	49%
Fresh Camel Milk 1 litre	5,377	5,800	6,500	6,700	5,541	3%	16%	25%
Goat Export Quality (Head)	420,768	536,120	442,325	492,500	414,581	11%	-8%	17%
Goat Local Quality (Head)	297,652	361,400	373,555	349,250	293,966	-7%	-3%	17%
Other Essential Items								
Charcoal 50kg	41,259	50,200	53,310	58,300	48,988	9%	16%	41%
Cowpeas 1 kg	9,746	10,550	10,750	10,875	9,057	1%	3%	12%
Unskilled Labor Wage Rate	39,270	47,000	51,950	51,200	43,010	-1%	9%	30%
Firewood Bundle	3,219	3,833	4,500	4,500	3,689	0%	17%	40%
Local Sesame Oil 1 litre	27,760	34,625	34,000	34,063	28,581	0%	-2%	23%
Exchange Rate (Somaliland Shilling per USD)	6,306	6,830	7,484	7,500	6,215	0%	10%	19%
Terms of Trade								
Labour Wage (Daily)/ Cereal (Rice(Kg))	7	9	10	10	-	0%	11%	43%
Local Goat (Head)/ Cereal (Rice(Kg))	58	71	74	69	-	-7%	-3%	19%
Price Indices								
Consumer Price Index	-	128	118	119	-	0%	-8%	-

Figure 42: Trends in Cereal Prices

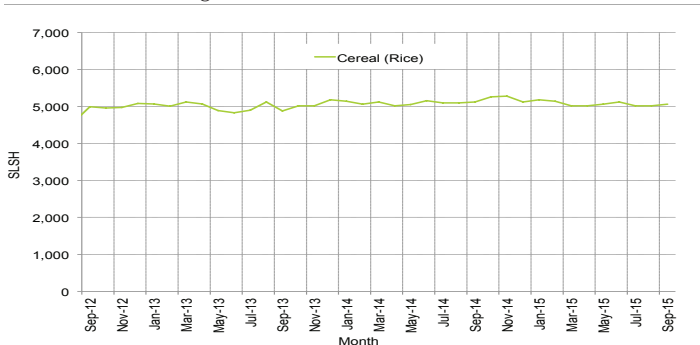


Figure 43: Trends in Wage Rates and Relative Purchasing Power

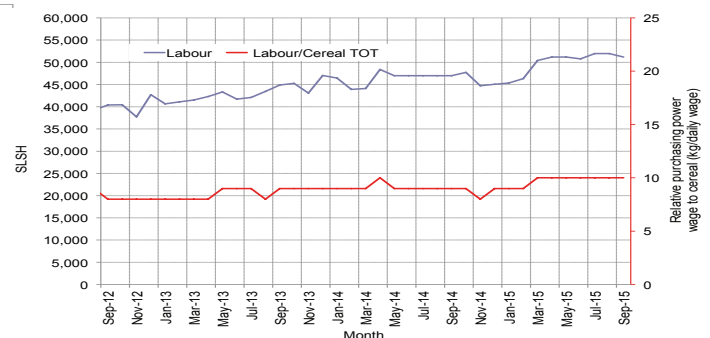


Figure 44: Imported Commodity Prices Compared to Exchange Rate

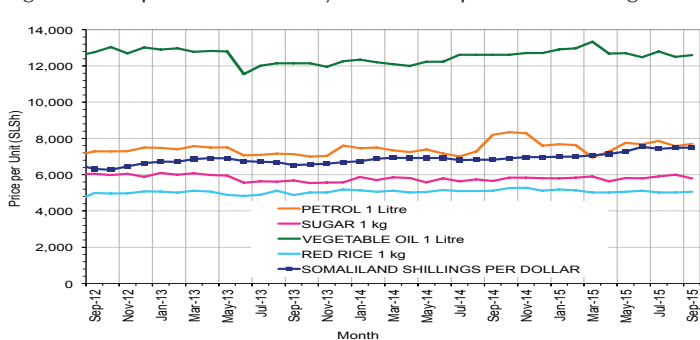


Figure 45: Goat Local Quality

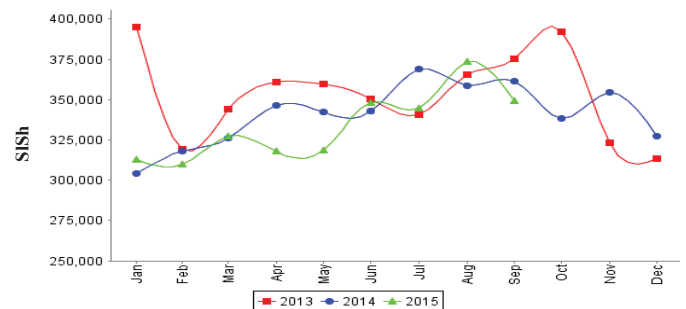


Figure 46: Exchange Rate

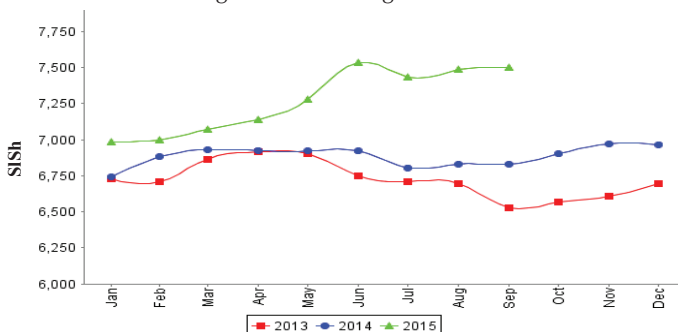
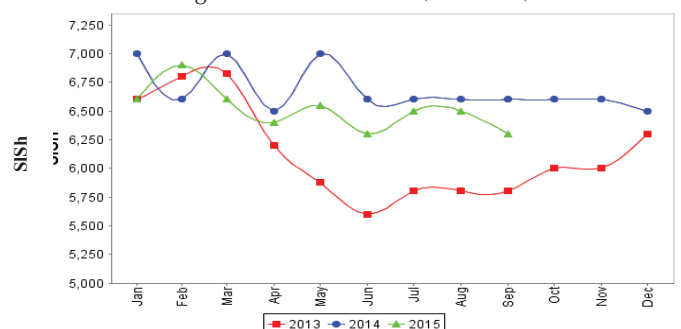


Figure 47: Water Drum (200 litres)



Trends in Livestock Exports

Table 1: Berbera Livestock Exports (Number of Heads)

	1999	2000	2001	2002	2003	2004	2005	2006	2007	2008	2009	2010	2011	2012	2013	2014	Jan-Sep 2015
Shoats	2,048,136	1,601,083	51,546	341,711	563,107	859,404	1,023,795	1,017,242	1,350,054	1,219,519	1,556,003	2,584,810	3,104,684	3,219,584	2,888,955	3,089,592	3,131,915
Cattle	89,967	63,263	20,973	37,547	84,312	131,852	148,151	85,631	88,143	80,051	88,005	133,021	150,934	190,354	20,875	252,597	132,254
Camel	37,430	16,984	3,473	18,864	21,874	5,147	5,069	22,810	14,245	26,515	20,206	92,651	107,281	102,664	75,728	64,578	55,342

Figure 48: Berbera Livestock Exports (Number of Heads)

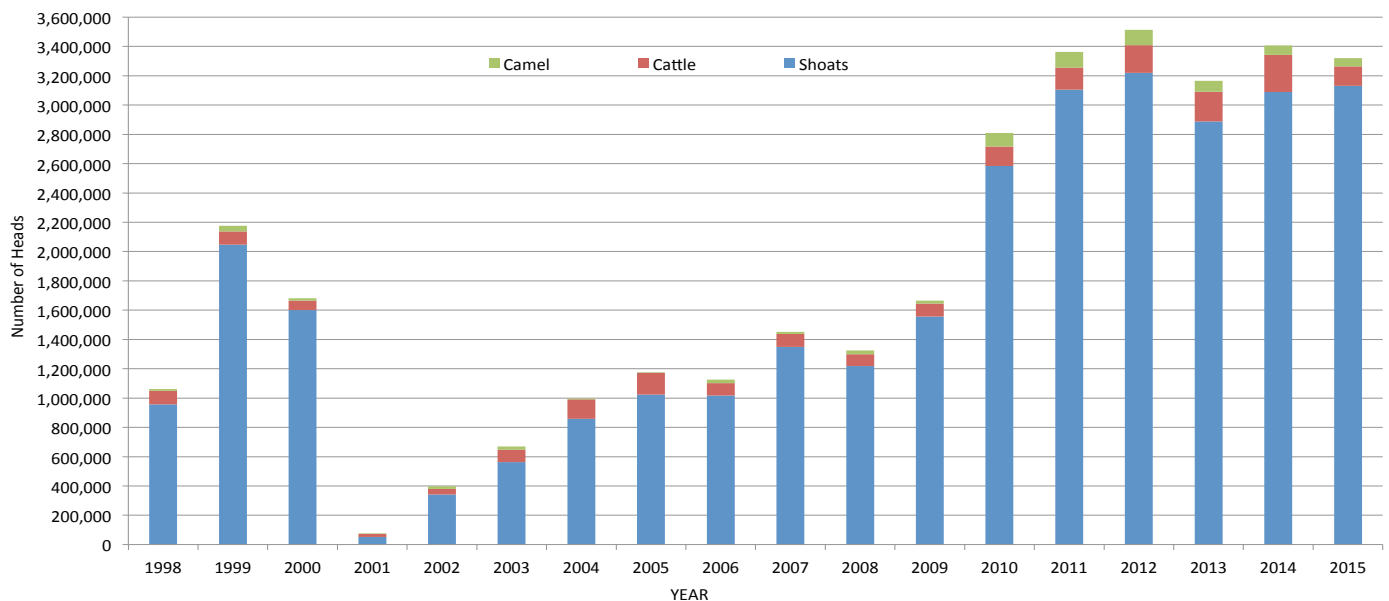
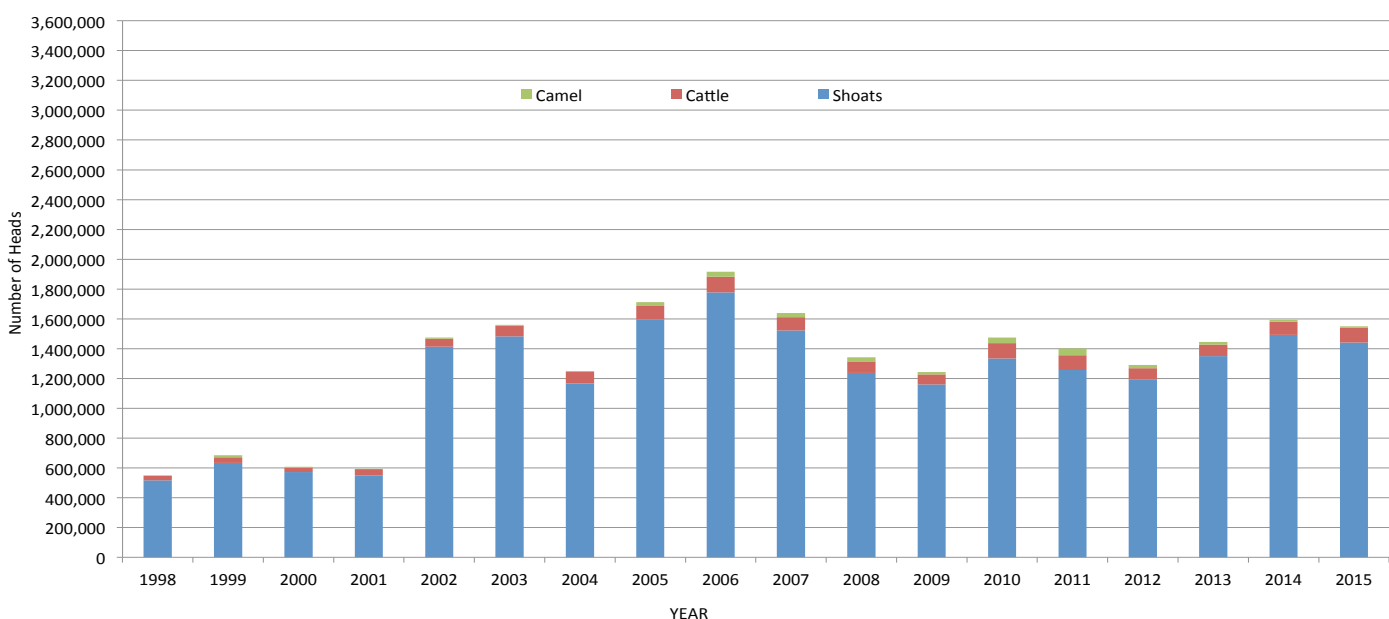


Table 2: Bossaso Livestock Exports (Number of Heads)

	1999	2000	2001	2002	2003	2004	2005	2006	2007	2008	2009	2010	2011	2012	2013	2014	Jan-Sep 2015
Shoats	633,669	571,455	548,853	1,412,450	1,483,409	1,166,480	1,594,859	1,777,283	1,522,855	1,236,775	1,159,454	1,333,478	1,256,535	1,192,197	1,349,123	1,493,111	1,441,025
Cattle	36,586	27,604	42,248	53,313	71,328	79,994	91,910	104,595	89,190	78,046	67,385	103,808	99,058	76,043	77,353	87,759	100,939
Camel	15,544	8,177	1,950	9,720	4,259	2,488	26,109	33,724	27,580	27,639	15,331	36,865	45,878	22,288	19,032	12,251	8,862

Figure 49: Bossaso Livestock Exports (Number of Heads)



Trends in Cereal Imports

Table 3: Total Cereal Imports through Berbera, Bossaso and Mogadishu Ports (Tonnes) *

	1999	2000	2001	2002	2003	2004	2005	2006	2007	2008	2009	2010	2011	2012	2013	2014	Jan-Sep 2015
Rice	63,464	75,687	74,729	144,600	180,614	146,567	150,017	198,101	166,626	136,007	171,472	161,415	272,877	227,955	170,868	170,888	140,108
Wheat flour	55,176	78,555	134,425	128,263	171,442	151,555	169,583	178,345	176,821	169,208	240,247	249,080	258,679	268,491	183,058	284,230	216,535
Pasta	8,544	11,071	26,702	35,425	29,273	38,749	39,153	52,815	41,331	38,441	86,372	102,373	184,849	337,878	134,311	176,951	127,718

Figure 50: Total Cereal Imports (Berbera, Bossaso and Mogadishu)



* Bosasso and Berbera import data is up to September 2015 and Elman (Mogadishu) is up to July 2015. Mogadishu data (Elman Port) for 2013 includes only January -March imports.