

# Market DataUpdate



Food Security and Nutrition  
Analysis Unit - Somalia



September 2014 (Issued October 15, 2014)

## Highlights

**Inflation:** The Consumer Price Index (CPI) increased (1-5%) in September in most regions that use Somali shilling (SoSh) but remains stable in Somaliland shilling (SiSh) areas. Annual comparison indicates increased inflation rates both in SiSh as well as SoSh areas, most significantly in the South (24%) followed by Central (14%). The CPI rose significantly compared to the base period (March 2007) in both currency zones (28% in SiSh zone and 118% - 136% in the SoSh zone).

**Exchange rate:** The exchange rates between local currencies (SoSh and SiSh) and the United States Dollar (USD) remained relatively stable in September in the Central zone and the Northwest SiSh areas, but changed marginally (1-2%) month-on-month in the Northeast and the South. Compared to a year ago (September 2013), the rates remained stable in the Northeast but depreciated marginally (2-5%) in central, southern and northwestern regions. Compared to the five-year average levels (September 2009-2013), the SoSh shows a strong gain in value (23-25%) against the USD, while the SiSh depreciated marginally.

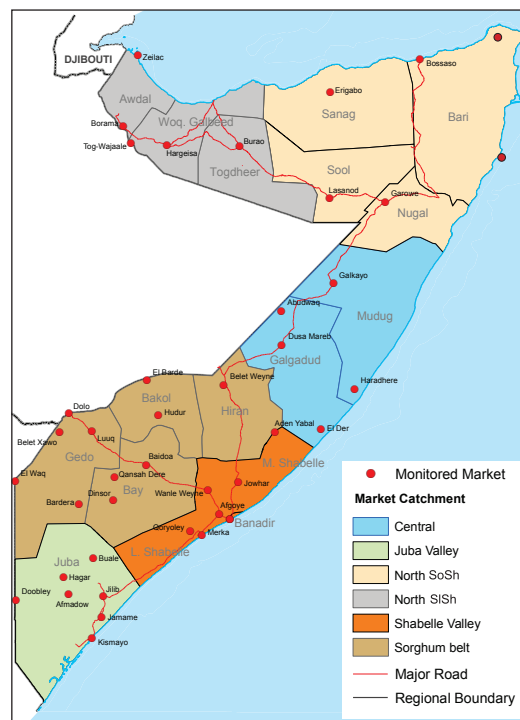
**Local grain (sorghum and maize)** prices exhibited mixed trend in the month of September. Prices increased (6-10%) in central, northern, Banadir (Bakara market) and Bakool regions, due to reduced supplies on the markets as a result of deteriorated security situation and overall below average cereal production in the South. Conversely, local grain prices remained stable (Lower Juba and Gedo) or decreased moderately in the rest of southern Somalia. Annual comparison shows increase in cereal prices across the country, with particularly significant increases (above 30%) noted in southern regions. Compared to their five-year average levels, local grain prices were relatively higher in September in most parts of the country, except in Middle Juba and Bay regions where prices declined moderately (6-11%).

**Imported food** (rice, sugar, vegetable oil & wheat flour) prices as quoted in local currency remained relatively stable or exhibited mild monthly changes (increase/decrease) in the month of September across the country. Prices of most food imports remained relatively stable in northern regions; declined mildly (1-3%) in Jubas, Banadir and Shabelle regions and increased (less than 9%) in the Sorghum Belt and Central regions. Annual price comparison generally indicates relative stability or mild changes in most parts of the country except in the Sorghum Belt regions of Bakool, Gedo and Bay where they rose moderately (9-18%) and Hiran where prices declined (3-11%). Compared to the five-year average levels, prices are lower for most food imports across the country.

**Livestock** (all species) prices showed mild monthly changes (less than 10%) in most regions in the month of September. Milk prices (cattle and camel) exhibited mixed trend patterns across the country. Milk prices remained relatively stable or changed at mild rates in most regions, except in Bay and Hiran regions where prices increased moderately (11-28%). Compared to a year ago (September 2013), values of most of livestock species have declined in most markets, while milk prices rose at moderate to high rates in most markets, with the highest increase of 104 percent recorded in Bakool region (for cattle milk). Livestock prices are higher compared to five-year average levels, particularly for big ruminants (cattle and camel), while milk prices exhibit mixed trend patterns across the country.

**Labor wages (unskilled)** remained relatively stable or changed at mild rates (less than 9%) in most regions of the country apart from Lower Juba where they surged significantly (18%) due to ongoing off-season farming activities. In Bakool labour wage rates have dropped (12%) due to trade disruptions caused by insurgents (mainly in El Barde). Labor wages showed mild annual changes in the month of September in most regions. Exceptions are increased rates (13-38%) in Bay and Middle Shabelle and declines (23-31%) in Bakool and Middle Juba associated with security conditions. The labor wage rates were higher compared to their corresponding five-year average levels in most regions. Exceptions are Central, Bakool and Middle Juba regions where the rates dropped at mild to moderate (4-12%) levels and Lower Juba and Hiran where they exhibited relatively stable rates.

**Terms of Trade (ToT)** between daily labor wage and local cereals as well as between local quality goat and cereals have exhibited mixed monthly trend in September. Both ToTs have dropped (25% and 11% respectively) in Bakool region due to decrease in goat price and increase in sorghum price, mainly in El Barde market. ToTs remained relatively stable or changed at mild rates (1-5%) in Central and Northern regions and they increased (9-25%) in most other southern regions. Annual comparisons indicate lower ToTs in most regions, except in Northern, Central and Middle Shabelle regions where ToTs remained relative stable or changed at mild rates (less than 10%). Compared to the five-year average levels, both ToTs declined in most southern regions, but increased significantly (above 30%) in northern and central regions, which is attributed to reduced rice prices, increased daily labor wages and livestock prices compared to their respective five-year averages.



This Market Data Update is a monthly report that presents analysis of market information and is produced regularly as part of the monthly monitoring process.

The weekly price data is collected from 48 main markets and 51 rural markets throughout Somalia since 1995.

Market analysis is an integral part of all of FSNAU's annual food security projections and seasonal technical reports (Technical Reports on FSNAU Post Gu and Post Deyr Analysis).

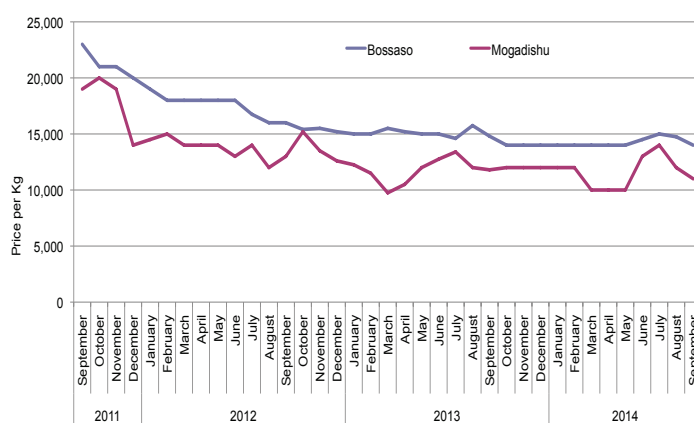
Detailed market data are available online on [www.fsnau.org/ids](http://www.fsnau.org/ids).

# National Trends: CPI, Exchange Rates, Cereal Prices and Relative Purchasing Power

Table 1: ToT between Cereals (kg) per Daily Labour Wage Rate, by Region

Regions	Sep - 2014 (kg)	Percent change from		
		Aug2014	Sep 2013	September Average (2009-2013)
Banadir/Mogadishu	10	11%	-38%	-9%
Bay	14	0%	-36%	8%
Bakool	3	-25%	-57%	-50%
Gedo	14	17%	-26%	8%
Juba	9	13%	-40%	-18%
Shabelle	9	29%	-31%	-10%
Northwest	9	0%	0%	50%
Northeast	8	0%	0%	33%
Central	4	0%	0%	33%

Figure 1: Wheat Prices: Mogadishu and Bossaso Markets



Source: FSNAU Manifest Price Monitoring System

Figure 3: Terms of Trade Between Wage Rates and Selected Cereals

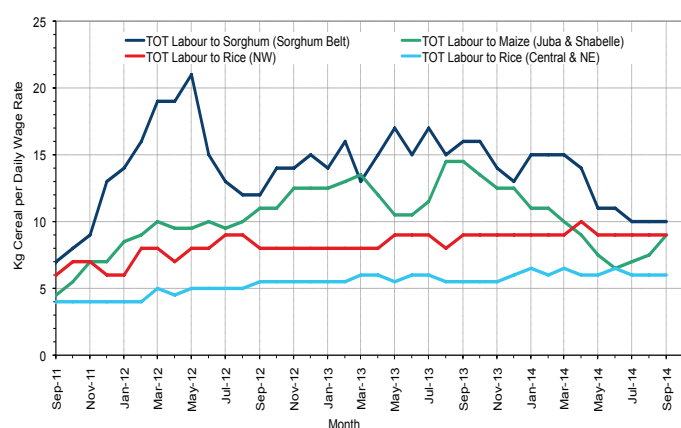


Figure 4: Monthly Exchange Rate for Selected Regions (SoSh and SiSh to USD)

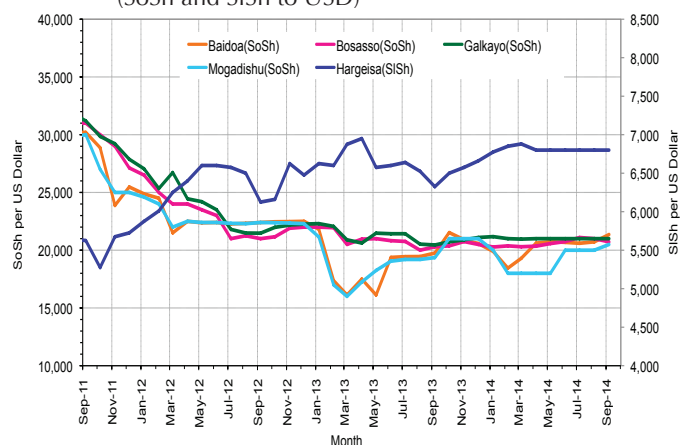


Figure 5: Monthly Trends in Consumer Price Index (CPI, March 2007=100)

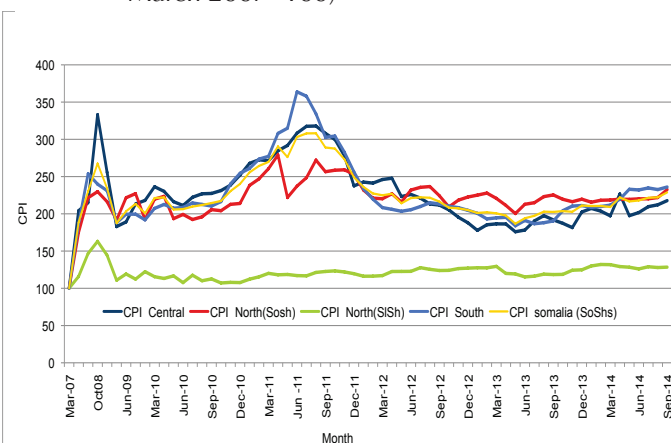
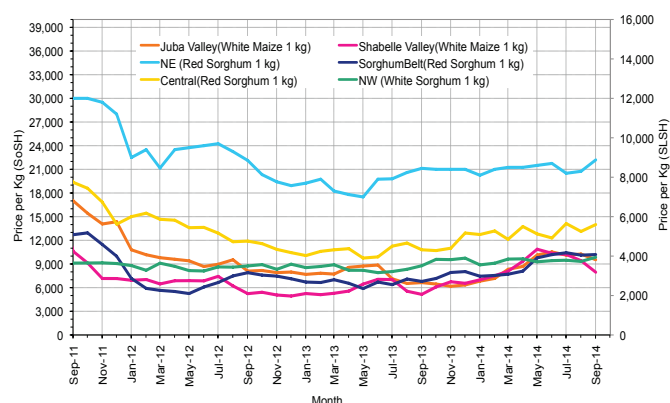


Figure 6: Monthly Trends in Local Cereal Prices



# Regional analysis: Juba Regions

Indicator	5-Year Average (2009-2013)	Sep-13	Aug-14	Sep-14 Nominal Price	Sep-14 Real (Deflated) Price	% Change Previous Month	% Change Same Month Previous Year	% Change 5-year avg (2009-2013)
<b>Imported Commodities Prices</b>								
Diesel 1 litre	32,536	26,057	27,143	26,000	10,916	-4%	0%	-20%
Imported Red Rice 1kg	21,400	15,786	15,607	15,536	6,483	0%	-2%	-27%
Petrol 1 litre	34,165	29,257	27,429	27,571	11,582	1%	-6%	-19%
Sugar	26,750	16,357	16,143	15,714	6,558	-3%	-4%	-41%
Vegetable Oil 1 litre	43,135	31,143	33,036	32,214	13,549	-2%	3%	-25%
Wheat Flour 1kg	19,228	16,071	15,036	14,714	6,134	-2%	-8%	-23%
Wheat Grain 1kg	18,000	-	-	-	-	-	-	-
<b>Cereal Prices</b>								
Red Sorghum 1kg	6,788	6,000	8,000	8,000	3,290	0%	33%	18%
White Maize 1kg	9,262	6,975	10,229	9,682	4,002	-5%	39%	5%
<b>Livestock &amp; Livestock Product Prices</b>								
Camel Local Quality (Head)	8,922,306	10,287,781	10,428,929	9,560,643	4,050,718	-8%	-7%	7%
Cattle Local Quality (Head)	3,615,582	4,322,233	4,455,833	4,189,071	1,774,798	-6%	-3%	16%
Fresh Camel Milk 1 litre	17,835	14,750	15,786	13,893	5,786	-12%	-6%	-22%
Goat Export Quality (Head)	1,352,694	1,578,614	1,432,786	1,419,000	601,126	-1%	-10%	5%
Goat Local Quality (Head)	877,683	1,060,629	996,286	918,600	389,108	-8%	-13%	5%
<b>Other Essential Items</b>								
Charcoal 50kg	80,954	86,343	89,821	93,929	39,697	5%	9%	16%
Cowpeas 1 kg	23,358	17,379	20,286	21,313	8,930	5%	23%	-9%
Unskilled Labor Wage Rate	93,101	102,936	80,179	91,714	38,759	14%	-11%	-1%
Firewood Bundle	8,197	12,343	11,643	12,071	5,014	4%	-2%	47%
Local Sesame Oil 1 litre	76,214	71,314	78,357	84,286	35,612	8%	18%	11%
Exchange Rate (Somali Shilling per USD)	26,949	20,624	20,486	20,539	8,602	0%	0%	-24%
<b>Terms of Trade</b>								
Labour Wage (Daily)/ Cereal (Maize(Kg))	11	15	8	9	-	13%	-40%	-18%
Local Goat (Head)/ Cereal (Maize(Kg))	110	152	97	95	-	-2%	-38%	-14%
<b>Price Indices</b>								
Consumer Price Index	-	190	233	236	-	1%	24%	-

Figure 7: Trends in Cereal Prices

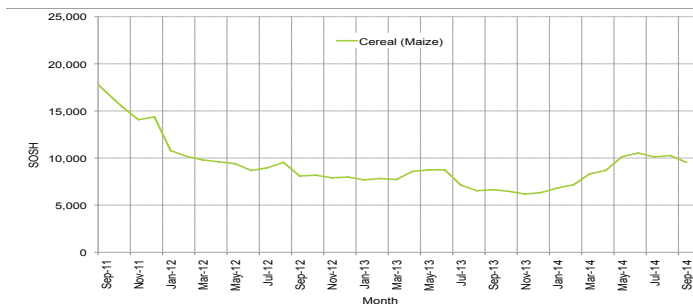


Figure 8: Trends in Wage Rates and Relative Purchasing Power

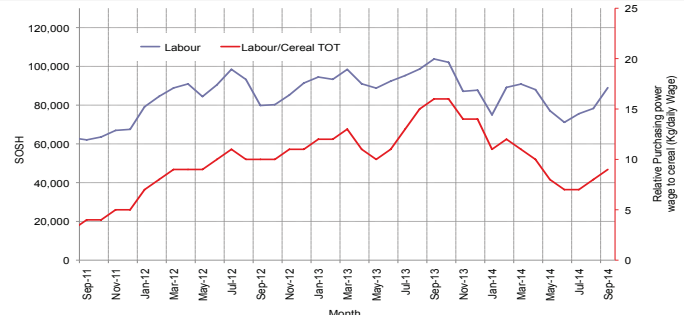


Figure 9: Imported Commodity Prices Compared to Exchange Rate

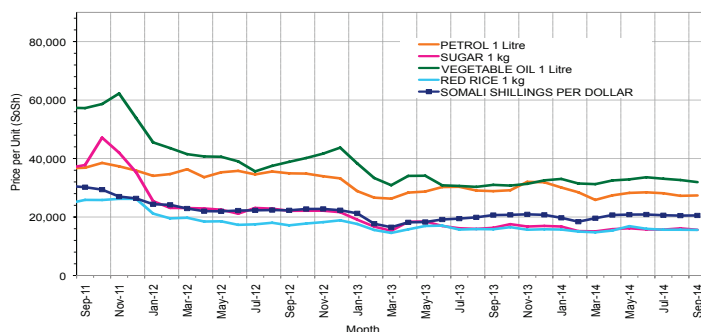


Figure 11: Exchange Rate

Figure 10: Goat Local Quality

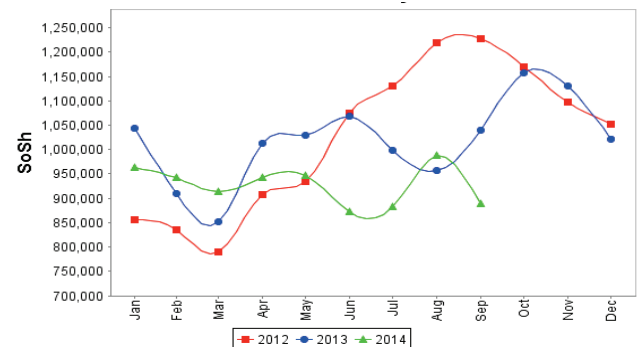
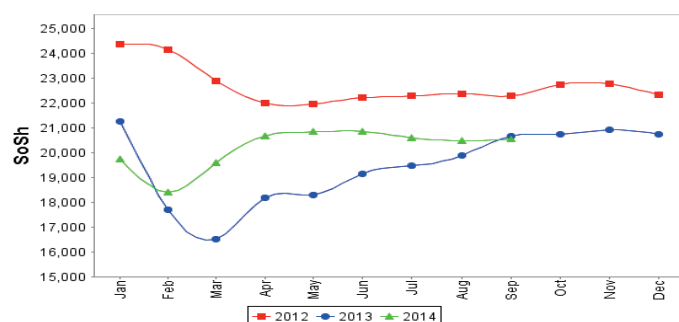
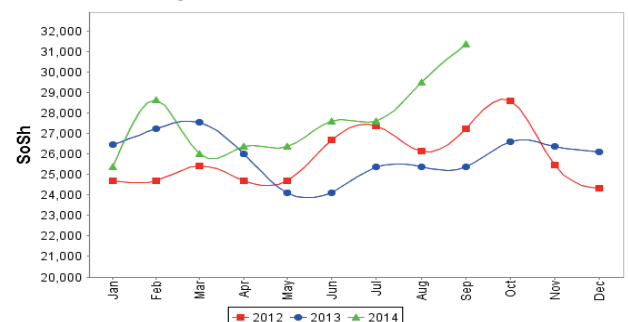


Figure 12: Water Drum (200 litres)



# Regional analysis: Sorghum Belt Regions (Bay, Bakool, Gedo and Hiran)

Indicator	5-Year Average (2009-2013)	Sep-13	Aug-14	Sep-14 Nominal Price	Sep-14 Real (Deflated) Price	% Change Previous Month	% Change Same Month Previous Year	% Change 5-year avrg (2009-2013)
<b>Imported Commodities Prices</b>								
Diesel 1 litre	32,803	27,155	30,966	32,827	13,809	6%	21%	0%
Imported Red Rice 1kg	22,634	16,550	18,273	18,673	7,812	2%	13%	-18%
Petrol 1 litre	32,852	27,168	31,045	32,000	13,458	3%	18%	-3%
Sugar	27,495	17,659	18,236	19,189	8,030	5%	9%	-30%
Vegetable Oil 1 litre	45,618	34,409	39,432	41,345	17,418	5%	20%	-9%
Wheat Flour 1kg	20,283	15,714	17,318	17,727	7,411	2%	13%	-13%
Wheat Grain 1kg	10,050	8,200	17,750	16,400	6,849	-8%	100%	63%
<b>Cereal Prices</b>								
Red Sorghum 1kg	8,771	6,789	10,120	10,196	4,220	1%	50%	16%
White Maize 1kg	10,444	7,945	12,222	11,164	4,630	-9%	41%	7%
<b>Livestock &amp; Livestock Product Prices</b>								
Camel Local Quality (Head)	10,212,887	13,177,727	12,915,000	12,952,000	5,487,627	0%	-2%	27%
Cattle Local Quality (Head)	3,129,877	3,809,375	3,488,889	3,671,429	1,555,474	5%	-4%	17%
Fresh Camel Milk 1 litre	24,235	14,245	22,275	24,100	10,111	8%	69%	-1%
Goat Export Quality (Head)	1,448,863	1,670,682	1,513,295	1,565,273	663,102	3%	-6%	8%
Goat Local Quality (Head)	914,291	1,133,409	956,364	998,727	423,058	4%	-12%	9%
<b>Other Essential Items</b>								
Charcoal 50kg	125,777	135,818	143,825	139,900	59,175	-3%	3%	11%
Cowpeas 1 kg	26,263	17,228	26,027	28,345	11,910	9%	65%	8%
Unskilled Labor Wage Rate	95,995	105,818	101,545	105,782	44,720	4%	0%	10%
Firewood Bundle	5,691	6,455	6,602	6,309	2,573	-4%	-2%	11%
Local Sesame Oil 1 litre	75,722	72,000	90,813	89,875	37,980	-1%	25%	19%
Exchange Rate (Somali Shilling per USD)	27,051	19,829	20,325	21,020	8,806	3%	6%	-22%
<b>Terms of Trade</b>								
Labour Wage (Daily)/ Cereal (Sorghum(Kg))	11	16	10	10	-	0%	-38%	-9%
Local Goat (Head)/ Cereal (Sorghum(Kg))	112	167	95	98	-	3%	-41%	-13%
<b>Price Indices</b>								
Consumer Price Index	-	190	233	236	-	1%	24%	-

Figure 13: Trends in Cereal Prices

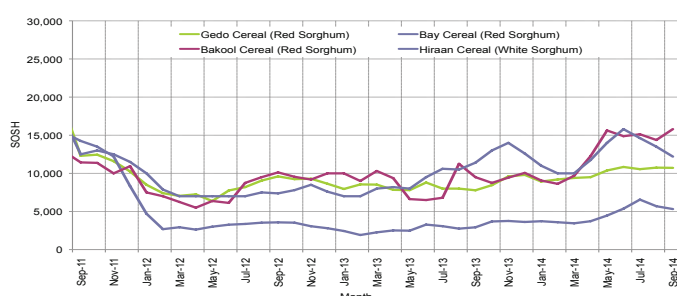


Figure 15: Imported Commodity Prices Compared to Exchange Rate

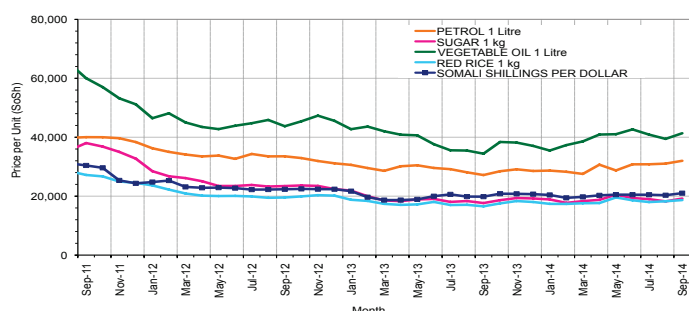


Figure 17: Exchange Rate

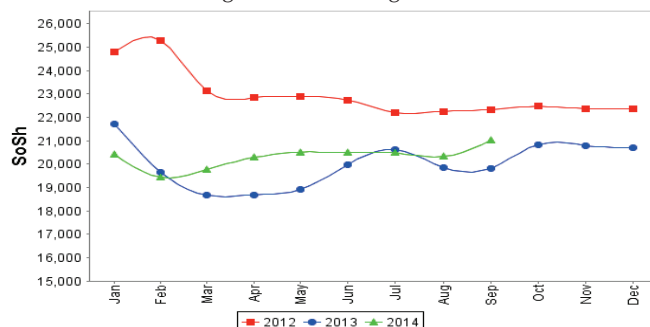


Figure 14: Trends in Wage Rates and Relative Purchasing Power

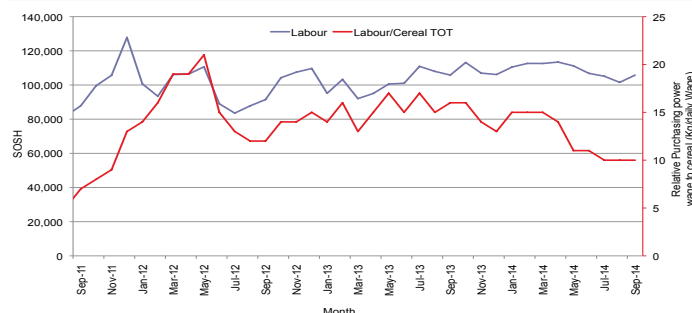


Figure 16: Goat Local Quality

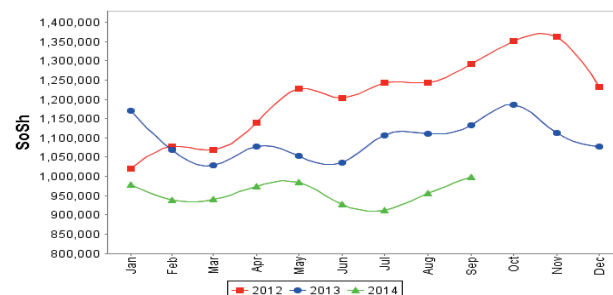
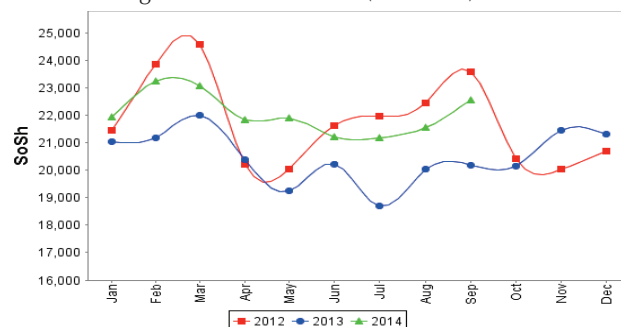


Figure 18: Water Drum (200 litres)



# Regional analysis: Shabelle Regions

Indicator	5-Year Average (2009-2013)	Sep-13	Aug-14	Sep-14 Nominal Price	Sep-14 Real (Deflated) Price	% Change Previous Month	% Change Same Month Previous Year	% Change 5-year avrg (2009-2013)
<b>Imported Commodities Prices</b>								
Diesel 1 litre	31,341	27,333	26,833	27,000	11,340	1%	-1%	-14%
Imported Red Rice 1kg	20,541	16,500	15,917	15,875	6,626	0%	-4%	-23%
Petrol 1 litre	31,808	28,208	29,125	29,667	12,470	2%	5%	-7%
Sugar	26,366	17,250	16,417	15,708	6,555	-4%	-9%	-40%
Vegetable Oil 1 litre	37,066	26,375	27,167	26,708	11,216	-2%	1%	-28%
Wheat Flour 1kg	18,991	16,042	16,000	15,875	6,626	-1%	-1%	-16%
Wheat Grain 1kg	12,222	5,333	28,000	30,000	12,611	7%	463%	145%
<b>Cereal Prices</b>								
Red Sorghum 1kg	9,413	8,097	11,258	11,529	4,785	2%	42%	22%
White Maize 1kg	6,180	5,148	9,422	7,955	3,271	-16%	55%	29%
<b>Livestock &amp; Livestock Product Prices</b>								
Camel Local Quality (Head)	14,039,000	17,010,000	16,605,000	16,195,000	6,861,677	-2%	-5%	15%
Cattle Local Quality (Head)	4,317,500	6,250,000	6,450,000	6,528,000	2,765,796	1%	4%	51%
Fresh Camel Milk 1 litre	18,058	17,458	17,833	17,000	7,103	-5%	-3%	-6%
Goat Export Quality (Head)	1,515,643	1,760,625	1,954,375	1,953,125	827,434	0%	11%	29%
Goat Local Quality (Head)	1,122,374	1,275,833	1,386,250	1,557,917	659,985	12%	22%	39%
<b>Other Essential Items</b>								
Charcoal 50kg	112,816	120,931	121,717	113,150	47,841	-7%	-6%	0%
Cowpeas 1 kg	23,157	14,919	20,450	22,417	9,398	10%	50%	-3%
Unskilled Labor Wage Rate	61,700	69,375	66,167	69,792	29,471	5%	1%	13%
Firewood Bundle	5,191	6,875	5,000	6,667	2,725	33%	-3%	28%
Local Sesame Oil 1 litre	59,970	57,417	72,050	72,900	30,788	1%	27%	22%
Exchange Rate (Somali Shilling per USD)	27,414	20,625	20,833	20,917	8,762	0%	1%	-24%
<b>Terms of Trade</b>								
Labour Wage (Daily)/ Cereal (Maize(Kg))	10	13	7	9	-	29%	-31%	-10%
Local Goat (Head)/ Cereal (Maize(Kg))	199	248	147	196	-	33%	-21%	-2%
<b>Price Indices</b>								
Consumer Price Index	-	190	233	236	-	1%	24%	-

Figure 19: Trends in Cereal Prices



Figure 20: Trends in Wage Rates and Relative Purchasing Power

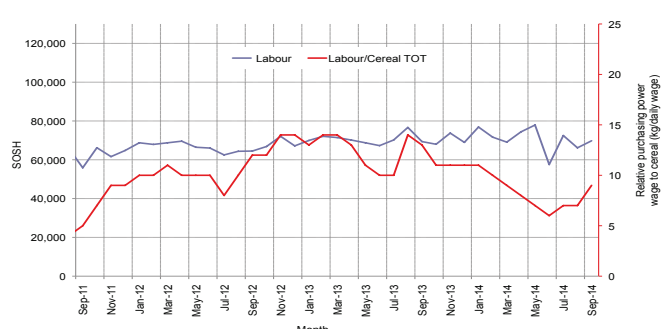


Figure 21: Imported Commodity Prices Compared to Exchange Rate

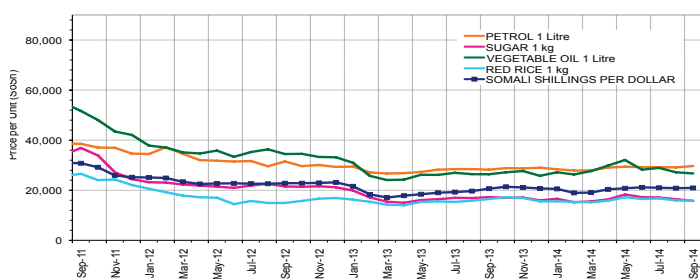


Figure 23: Exchange Rate

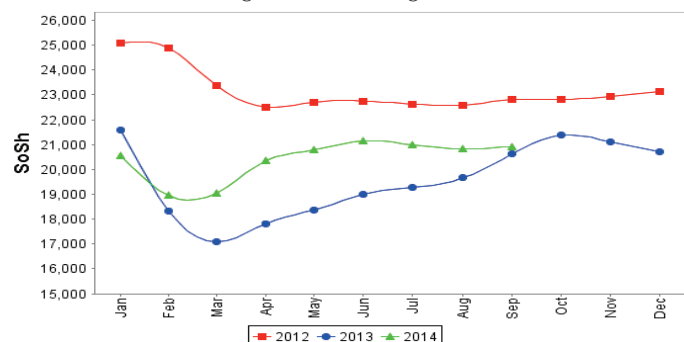


Figure 22: Goat Local Quality

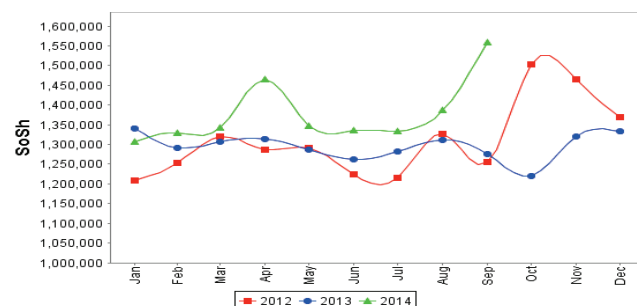
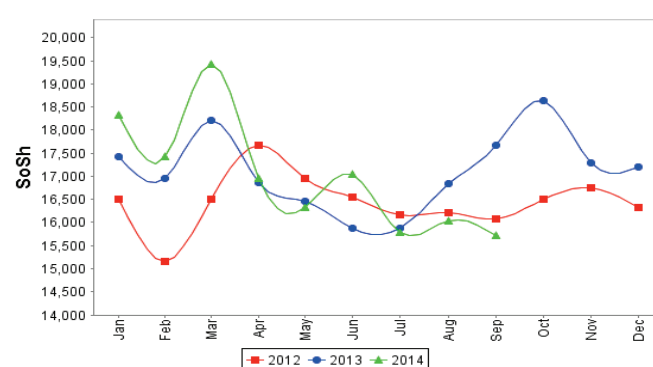


Figure 24: Water Drum (200 litres)





# Regional analysis: Banadir Region

Indicator	5-Year Average (2009-2013)	Sep-13	Aug-14	Sep-14 Nominal Price	Sep-14 Real (Deflated) Price	% Change Previous Month	% Change Same Month Previous Year	% Change 5-year avrg (2009-2013)
<b>Imported Commodities Prices</b>								
Diesel 1 litre	27,428	20,933	21,833	21,233	8,896	-3%	1%	-23%
Imported Red Rice 1kg	19,969	12,367	12,813	12,700	5,281	-1%	3%	-36%
Petrol 1 litre	27,119	21,680	20,958	21,433	8,981	2%	-1%	-21%
Sugar	24,603	13,433	14,000	14,000	5,832	0%	4%	-43%
Vegetable Oil 1 litre	35,798	22,533	24,313	24,183	10,146	-1%	7%	-32%
Wheat Flour 1kg	16,018	12,133	12,313	12,200	5,069	-1%	1%	-24%
Wheat Grain 1kg	11,460	7,267	10,333	10,600	4,391	3%	46%	-8%
<b>Cereal Prices</b>								
Red Sorghum 1kg	7,799	5,397	8,483	9,210	3,802	9%	71%	18%
White Maize 1kg	8,075	7,110	12,121	11,027	4,572	-9%	55%	37%
<b>Livestock &amp; Livestock Product Prices</b>								
Camel Local Quality (Head)	16,833,334	-	-	-	-	-	-	-
Cattle Local Quality (Head)	4,641,666	-	-	-	-	-	-	-
Fresh Camel Milk 1 litre	19,557	21,267	21,458	22,600	9,476	5%	6%	16%
Goat Export Quality (Head)	2,107,500	3,000,000	-	-	-	-	-	-
Goat Local Quality (Head)	1,712,050	2,354,000	2,395,000	2,406,000	1,019,316	0%	2%	41%
<b>Other Essential Items</b>								
Charcoal 50kg	152,978	185,433	193,167	191,700	81,123	-1%	3%	25%
Cowpeas 1 kg	23,924	12,133	21,138	22,450	9,412	6%	85%	-6%
Unskilled Labor Wage Rate	84,733	112,000	100,833	103,333	43,682	2%	-8%	22%
Firewood Bundle	5,885	7,840	8,200	8,320	3,425	1%	6%	41%
Local Sesame Oil 1 litre	62,293	58,467	71,500	72,700	30,703	2%	24%	17%
Exchange Rate (Somali Shilling per USD)	27,158	19,853	20,588	20,847	8,733	1%	5%	-23%
<b>Terms of Trade</b>								
Labour Wage (Daily)/ Cereal (Maize(Kg))	11	16	9	10	-	11%	-38%	-9%
Local Goat (Head)/ Cereal (Maize(Kg))	216	291	159	174	-	9%	-40%	-19%
<b>Price Indices</b>								
Consumer Price Index	-	190	233	236	-	1%	24%	-

Figure 25: Trends in Cereal Prices

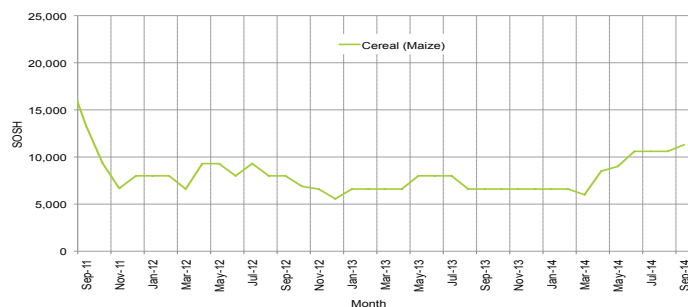


Figure 26: Bakara: Trends in Wage Rates and Relative Purchasing Power

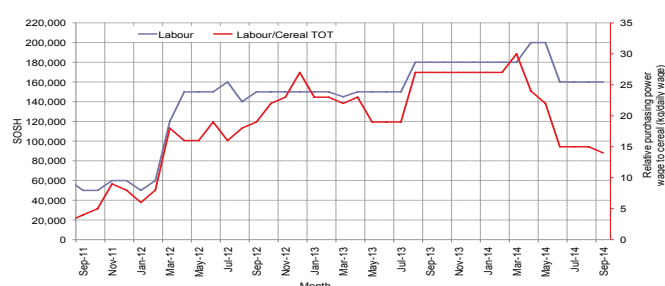


Figure 27: Imported Commodity Prices Compared to Exchange Rate

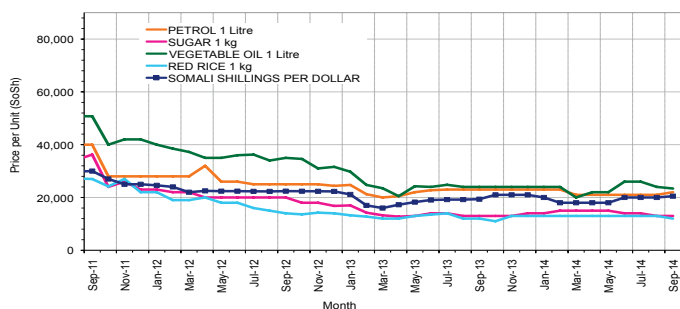


Figure 28: Goat Local Quality

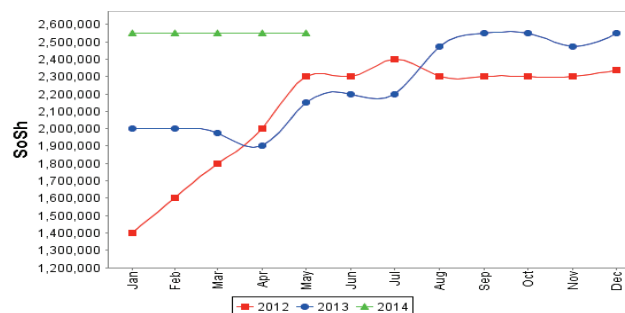


Figure 29: Exchange Rate

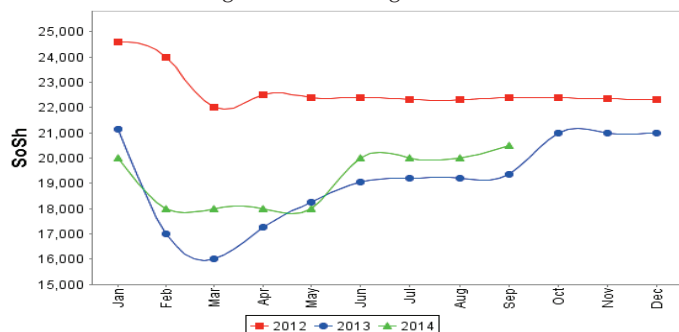
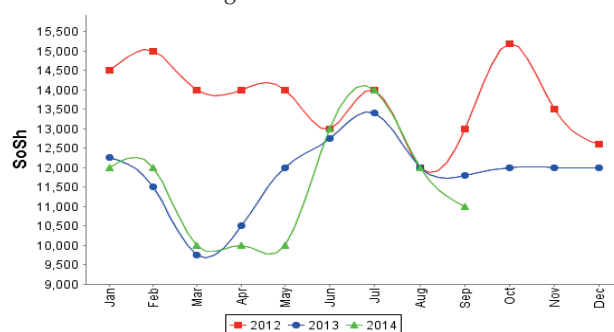


Figure 30: Wheat Flour



# Regional analysis: Central Regions

Indicator	5-Year Average (2009-2013)	Sep-13	Aug-14	Sep-14 Nominal Price	Sep-14 Real (Deflated) Price	% Change Previous Month	% Change Same Month Previous Year	% Change 5-year avg (2009-2013)
<b>Imported Commodities Prices</b>								
Diesel 1 litre	31,794	28,000	28,250	28,200	12,850	0%	1%	-11%
Imported Red Rice 1kg	25,350	19,400	18,200	18,200	8,258	0%	-6%	-28%
Petrol 1 litre	29,086	26,500	25,700	25,770	11,734	0%	-3%	-11%
Sugar	29,618	21,140	20,650	21,000	9,544	2%	-1%	-29%
Vegetable Oil 1 litre	51,410	45,200	43,500	44,080	20,143	1%	-2%	-14%
Wheat Flour 1kg	20,698	17,290	16,900	16,600	7,523	-2%	-4%	-20%
Wheat Grain 1kg	15,007	12,488	14,625	14,500	6,559	-1%	16%	-3%
<b>Cereal Prices</b>								
Red Sorghum 1kg	12,605	10,800	13,125	14,000	6,329	7%	30%	11%
White Maize 1kg	14,394	10,800	13,333	14,000	6,329	5%	30%	-3%
<b>Livestock &amp; Livestock Product Prices</b>								
Camel Local Quality (Head)	9,150,000	11,700,000	10,918,750	9,747,500	4,476,170	-11%	-17%	7%
Cattle Local Quality (Head)	2,200,000	-	3,000,000	3,000,000	-	0%	-	36%
Fresh Camel Milk 1 litre	38,400	26,950	32,400	29,860	13,612	-8%	11%	-22%
Goat Export Quality (Head)	1,401,833	1,473,333	1,317,500	1,495,000	686,437	13%	1%	7%
Goat Local Quality (Head)	1,066,780	1,243,000	972,500	1,060,000	486,676	9%	-15%	-1%
<b>Other Essential Items</b>								
Charcoal 50kg	180,970	176,600	169,000	172,000	78,886	2%	-3%	-5%
Cowpeas 1 kg	29,892	17,030	23,350	22,710	10,329	-3%	33%	-24%
Unskilled Labor Wage Rate	84,400	84,250	81,000	81,000	37,097	0%	-4%	-4%
Firewood Bundle	30,410	35,000	32,000	32,000	14,595	0%	-9%	5%
Local Sesame Oil 1 litre	93,350	86,250	91,200	91,200	41,781	0%	6%	-2%
Exchange Rate (Somali Shilling per USD)	27,232	20,390	20,800	20,800	9,452	0%	2%	-24%
<b>Terms of Trade</b>								
Labour Wage (Daily)/ Cereal (Rice(Kg))	3	4	4	4	-	0%	0%	33%
Local Goat (Head)/ Cereal (Rice(Kg))	44	64	53	58	-	9%	-9%	32%
Camel (Head)/Cereal (Kg)	386	603	600	536	-	-11%	-11%	39%
<b>Price Indices</b>								
Consumer Price Index	-	192	212	218	-	3%	14%	-

Figure 31: Trends in Cereal Prices

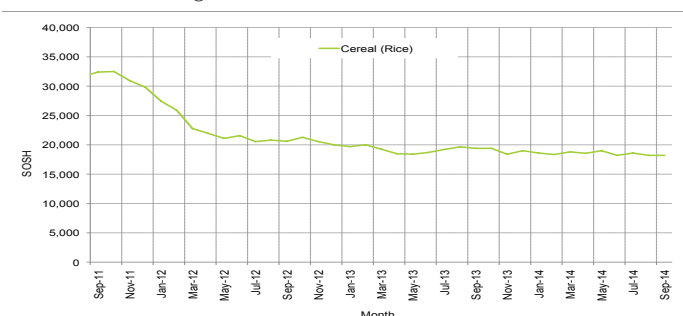


Figure 32: Trends in wage rates and relative purchasing power

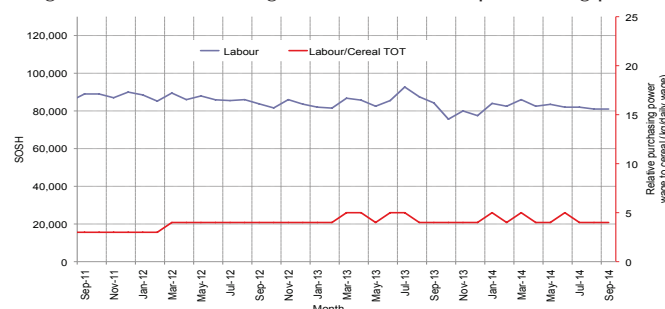


Figure 33: Imported Commodity Prices Compared to Exchange Rate

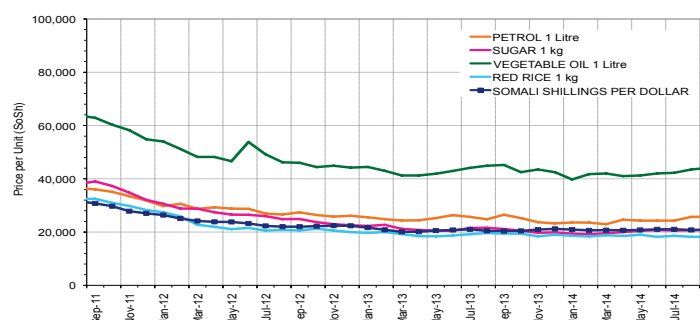


Figure 34: Goat Local Quality

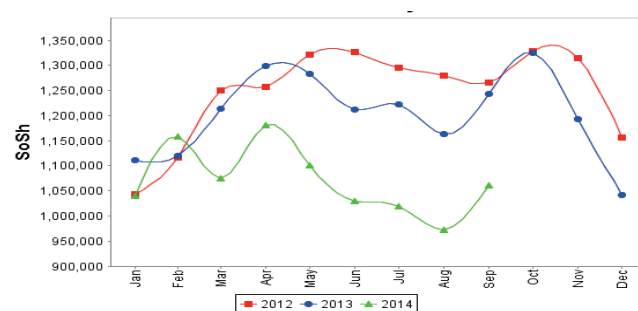


Figure 35: Exchange Rate

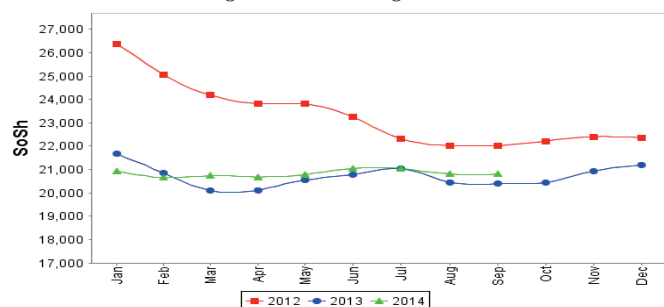
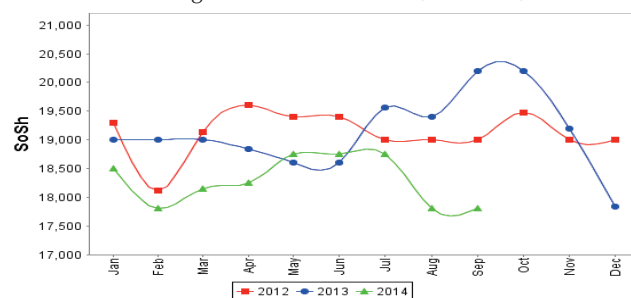


Figure 36: Water Drum (200 litres)



# Regional analysis: Northeast Regions

Indicator	5-Year Average (2009-2013)	Sep-13	Aug-14	Sep-14 Nominal Price	Sep-14 Real (Deflated) Price	% Change Previous Month	% Change Same Month Previous Year	% Change 5-year avrg (2009-2013)
<b>Imported Commodities Prices</b>								
Diesel 1 litre	27,687	23,750	23,375	23,100	9,830	-1%	-3%	-17%
Imported Red Rice 1kg	20,895	16,100	15,938	15,675	6,638	-2%	-3%	-25%
Petrol 1 litre	25,031	21,844	20,438	20,350	8,648	0%	-7%	-19%
Sugar	26,310	19,300	17,688	17,750	7,530	0%	-8%	-33%
Vegetable Oil 1 litre	43,907	36,100	33,375	33,388	14,252	0%	-8%	-24%
Wheat Flour 1kg	18,630	15,713	15,188	14,988	6,343	-1%	-5%	-20%
Wheat Grain 1kg	29,615	26,200	22,500	22,000	9,357	-2%	-16%	-26%
<b>Cereal Prices</b>								
Red Sorghum 1kg	20,575	21,125	20,750	22,200	9,443	7%	5%	8%
White Maize 1kg	19,866	23,000	19,000	21,200	9,013	12%	-8%	7%
<b>Livestock &amp; Livestock Product Prices</b>								
Camel Local Quality (Head)	13,483,750	16,112,500	15,675,000	15,640,000	6,722,821	0%	-3%	16%
Cattle Local Quality (Head)	7,118,750	8,600,000	8,375,000	8,500,000	3,653,661	1%	-1%	19%
Fresh Camel Milk 1 litre	45,636	40,225	35,063	37,060	15,830	6%	-8%	-19%
Goat Export Quality (Head)	1,436,250	1,690,000	1,537,500	1,590,000	683,368	3%	-6%	11%
Goat Local Quality (Head)	1,295,337	1,553,125	1,442,500	1,408,000	605,135	-2%	-9%	9%
<b>Other Essential Items</b>								
Charcoal 50kg	328,875	370,000	384,375	386,375	165,985	1%	4%	17%
Cowpeas 1 kg	38,640	28,450	29,000	31,000	13,225	7%	9%	-20%
Unskilled Labor Wage Rate	115,450	125,000	130,000	129,500	55,566	0%	4%	12%
Firewood Bundle	38,562	51,250	46,875	49,625	21,232	6%	-3%	29%
Local Sesame Oil 1 litre	89,612	94,000	96,563	100,250	42,993	4%	7%	12%
Exchange Rate (Somali Shilling per USD)	27,348	21,088	21,019	20,815	8,847	-1%	-1%	-24%
<b>Terms of Trade</b>								
Labour Wage (Daily)/ Cereal (Rice(Kg))	6	8	8	8	-	0%	0%	33%
Local Goat (Head)/ Cereal (Rice(Kg))	65	96	91	90	-	-1%	-6%	38%
<b>Price Indices</b>								
Consumer Price Index	-	225	222	233	-	5%	3%	-

Figure 37: Trends in Cereal Prices

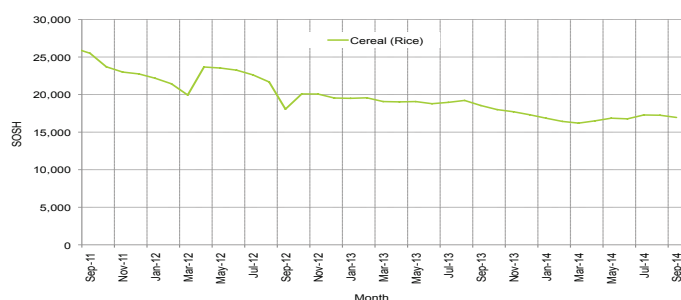


Figure 38: Trends in Wage Rates and Relative Purchasing Power

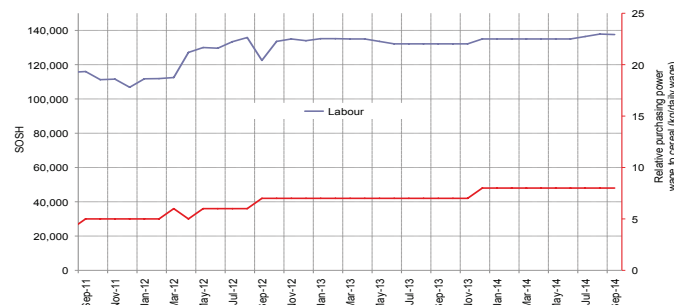


Figure 39: Imported Commodity Prices Compared to Exchange Rate

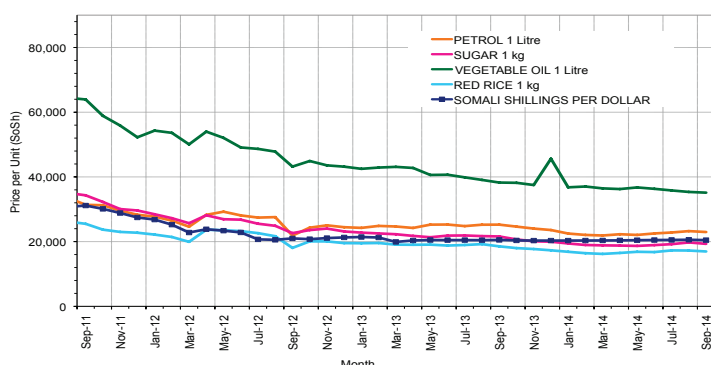


Figure 41: Exchange Rate

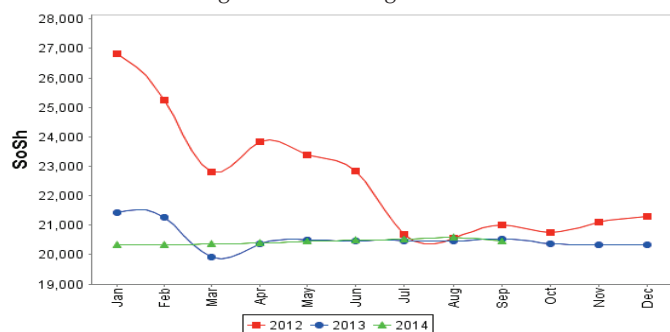


Figure 40: Goat Local Quality

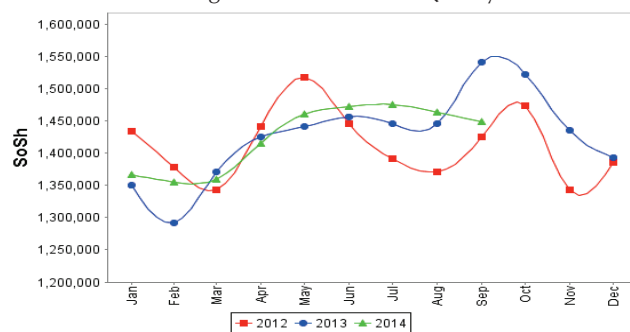
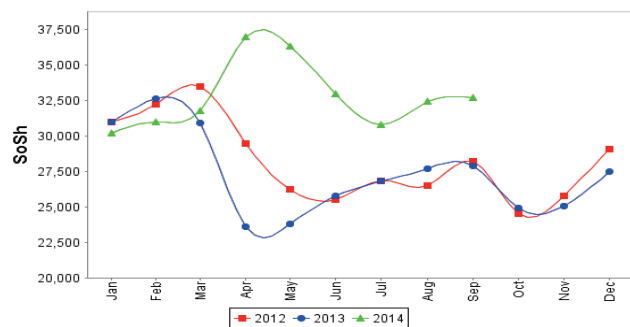


Figure 42: Water Drum (200 litres)





# Regional analysis: Northwest Regions

Indicator	5-Year Average (2009-2013)	Sep-13	Aug-14	Sep-14 Nominal Price	Sep-14 Real (Deflated) Price	% Change Previous Month	% Change Same Month Previous Year	% Change 5-year avrg (2009-2013)
<b>Imported Commodities Prices</b>								
Diesel 1 litre	6,219	6,675	6,880	7,116	5,441	3%	7%	14%
Imported Red Rice 1kg	5,235	4,880	5,095	5,120	3,887	0%	5%	-2%
Petrol 1 litre	6,581	7,130	7,280	8,195	6,281	13%	15%	25%
Sugar	6,050	5,680	5,740	5,652	4,301	-2%	0%	-7%
Vegetable Oil 1 litre	11,228	12,150	12,613	12,613	9,722	0%	4%	12%
Wheat Flour 1kg	4,344	4,356	4,380	4,440	3,357	1%	2%	2%
Wheat Grain 1kg	3,393	3,575	3,575	3,625	2,723	1%	1%	7%
<b>Cereal Prices</b>								
White Sorghum 1kg	3,280	3,511	3,730	3,940	2,968	6%	12%	20%
Yellow Maize 1kg	3,454	3,700	3,606	3,780	2,843	5%	2%	9%
<b>Livestock &amp; Livestock Product Prices</b>								
Camel Local Quality (Head)	2,495,016	4,304,167	4,325,000	4,220,833	3,286,629	-2%	-2%	69%
Cattle Local Quality (Head)	1,625,000	2,608,000	2,647,500	2,478,333	1,929,758	-6%	-5%	53%
Fresh Camel Milk 1 litre	5,229	5,750	5,700	5,800	4,416	2%	1%	11%
Goat Export Quality (Head)	367,131	523,720	472,860	536,120	417,372	13%	2%	46%
Goat Local Quality (Head)	265,872	375,385	358,850	361,400	281,319	1%	-4%	36%
<b>Other Essential Items</b>								
Charcoal 50kg	37,049	46,570	51,100	50,200	38,990	-2%	8%	35%
Cowpeas 1 kg	9,542	9,500	10,113	10,550	8,115	4%	11%	11%
Unskilled Labor Wage Rate	35,350	44,900	47,000	47,000	36,499	0%	5%	33%
Firewood Bundle	3,219	3,500	3,833	3,833	2,885	0%	10%	19%
Local Sesame Oil 1 litre	25,635	31,175	35,250	34,625	26,862	-2%	11%	35%
Exchange Rate (Somaliland Shilling per USD)	6,301	6,530	6,830	6,830	5,218	0%	5%	8%
<b>Terms of Trade</b>								
Labour Wage (Daily)/ Cereal (Rice(Kg))	6	9	9	9	-	0%	0%	50%
Local Goat (Head)/ Cereal (Rice(Kg))	51	77	70	71	-	1%	-8%	39%
<b>Price Indices</b>								
Consumer Price Index	-	118	128	128	-	0%	8%	-

Figure 43: Trends in Cereal Prices

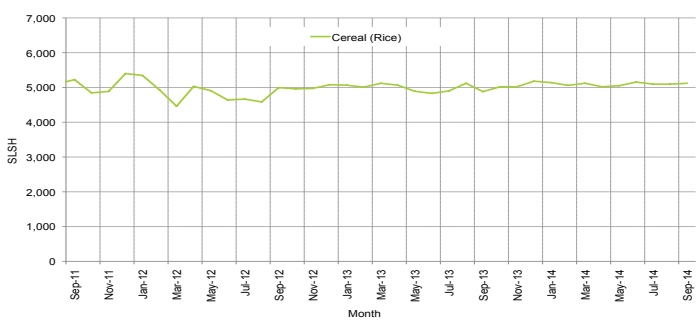


Figure 44: Trends in Wage Rates and Relative Purchasing Power

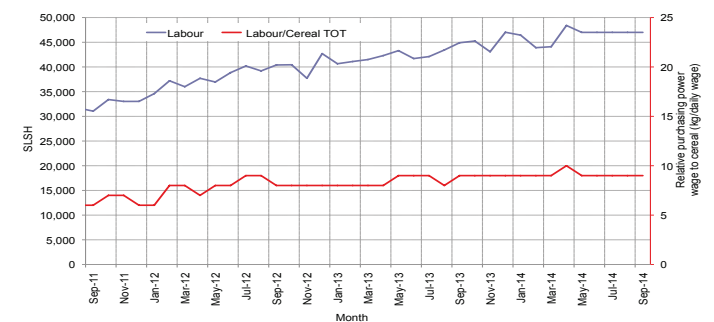


Figure 45: Imported Commodity Prices Compared to Exchange Rate

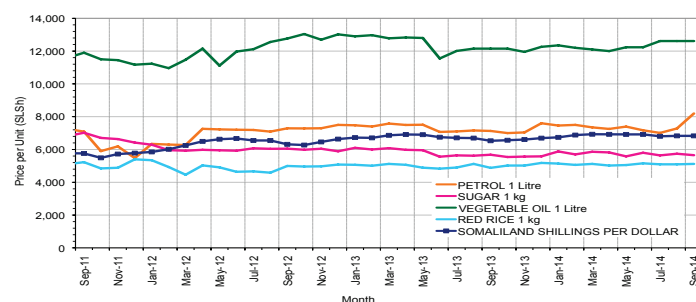


Figure 46: Goat Local Quality

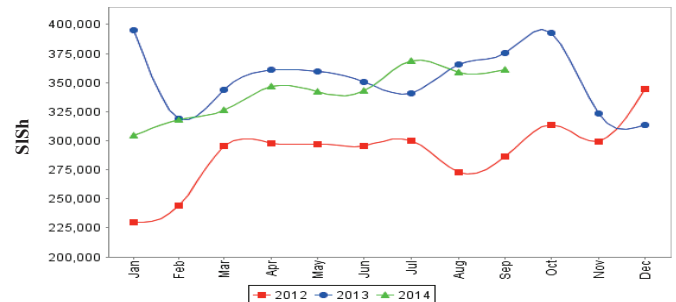


Figure 47: Exchange Rate

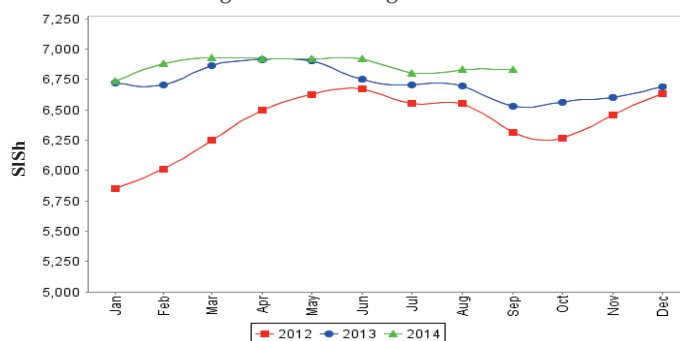
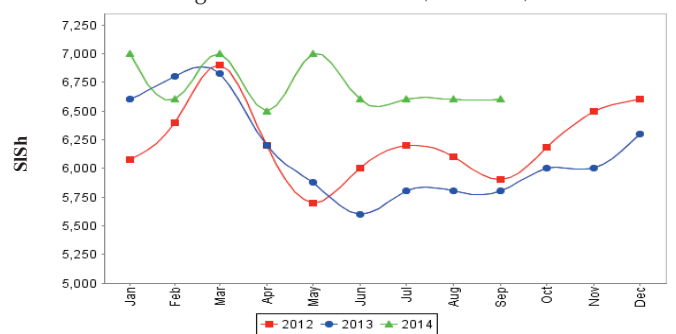


Figure 48: Water Drum (200 litres)



# Trends in Livestock Exports

Table 1: Berbera Livestock Exports (Number of Heads)

	1998	1999	2000	2001	2002	2003	2004	2005	2006	2007	2008	2009	2010	2011	2012	2014 (Jan-July)
Shoats	957,224	2,048,136	1,601,083	51,546	341,711	563,107	859,404	1,023,795	1,017,242	1,350,054	1,219,519	1,556,003	2,584,810	3,104,684	3,219,584	1,137,623
Cattle	92,213	89,967	63,263	20,973	37,547	84,312	131,852	148,151	85,631	88,143	80,051	88,005	133,021	150,934	190,354	132,494
Camel	11,663	37,430	16,984	3,473	18,864	21,874	5,147	5,069	22,810	14,245	26,515	20,206	92,651	107,281	102,664	58,647

Figure 49: Berbera Livestock Exports (Number of Heads)

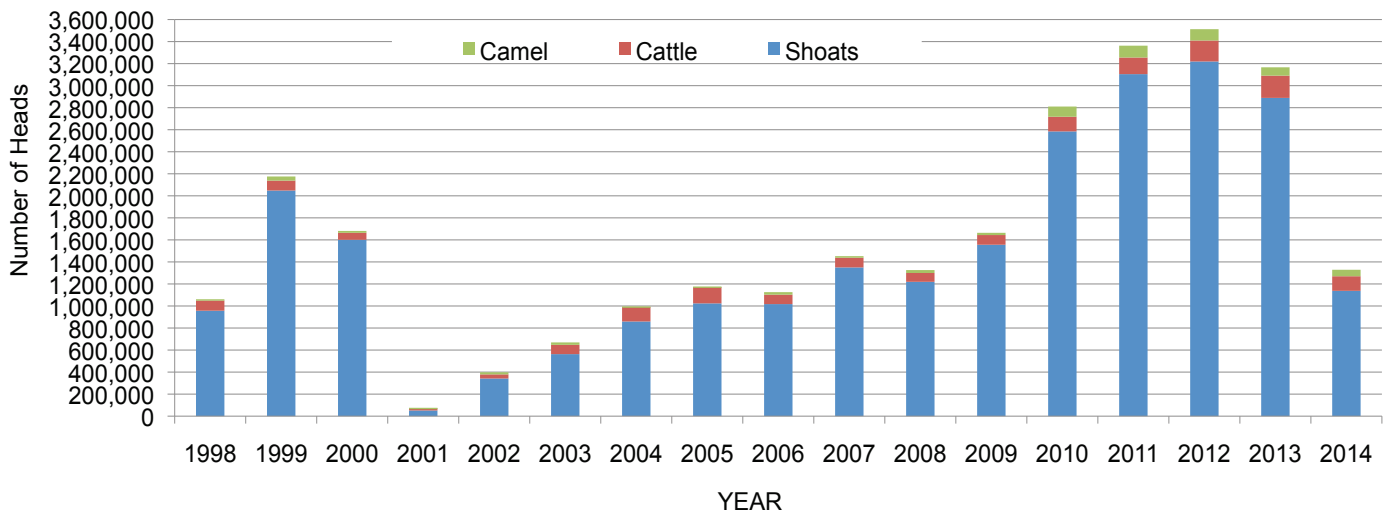
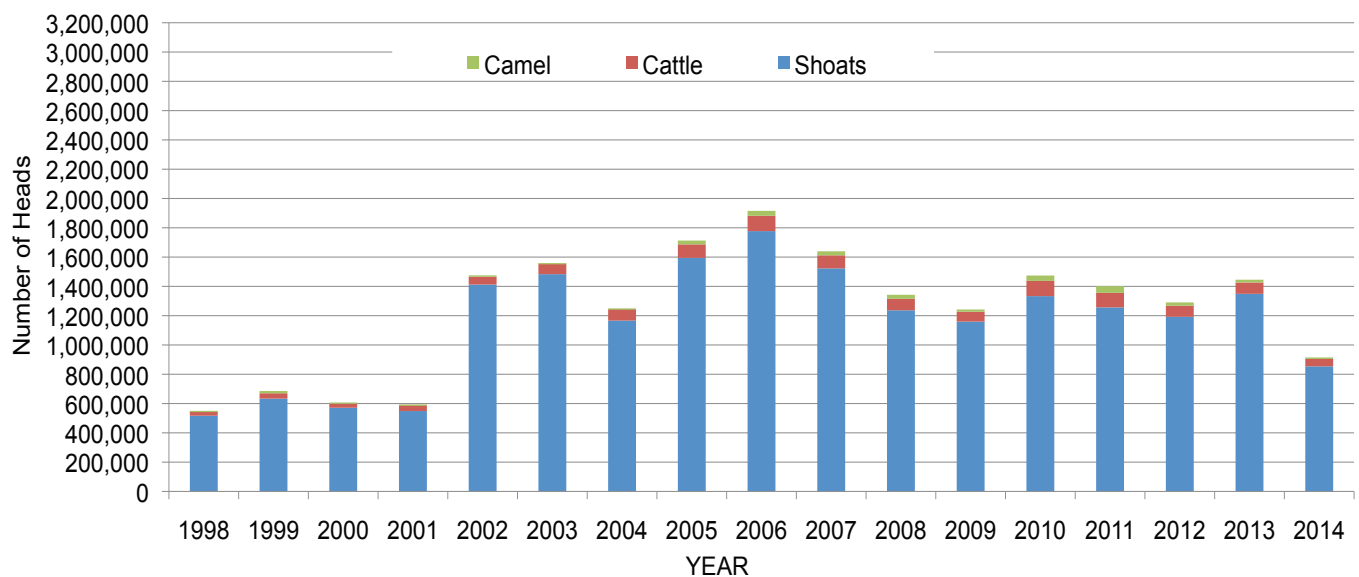


Table 2: Bossaso Livestock Exports (Number of Heads)

	1998	1999	2000	2001	2002	2003	2004	2005	2006	2007	2008	2009	2010	2011	2012	2013	2014 (Jan-Aug)
Shoats	517,020	633,669	571,455	548,853	1,412,450	1,483,409	1,166,480	1,594,859	1,777,283	1,522,855	1,236,775	1,159,454	1,333,478	1,256,535	1,192,197	1,349,123	853,872
Cattle	29,492	36,586	27,604	42,248	53,313	71,328	79,994	91,910	104,595	89,190	78,046	67,385	103,808	99,058	76,043	77,353	50,359
Camel	3,938	15,544	8,177	1,950	9,720	4,259	2,488	26,109	33,724	27,580	27,639	15,331	36,865	45,878	22,288	19,032	10,486

Figure 50: Bossaso Livestock Exports (Number of Heads)

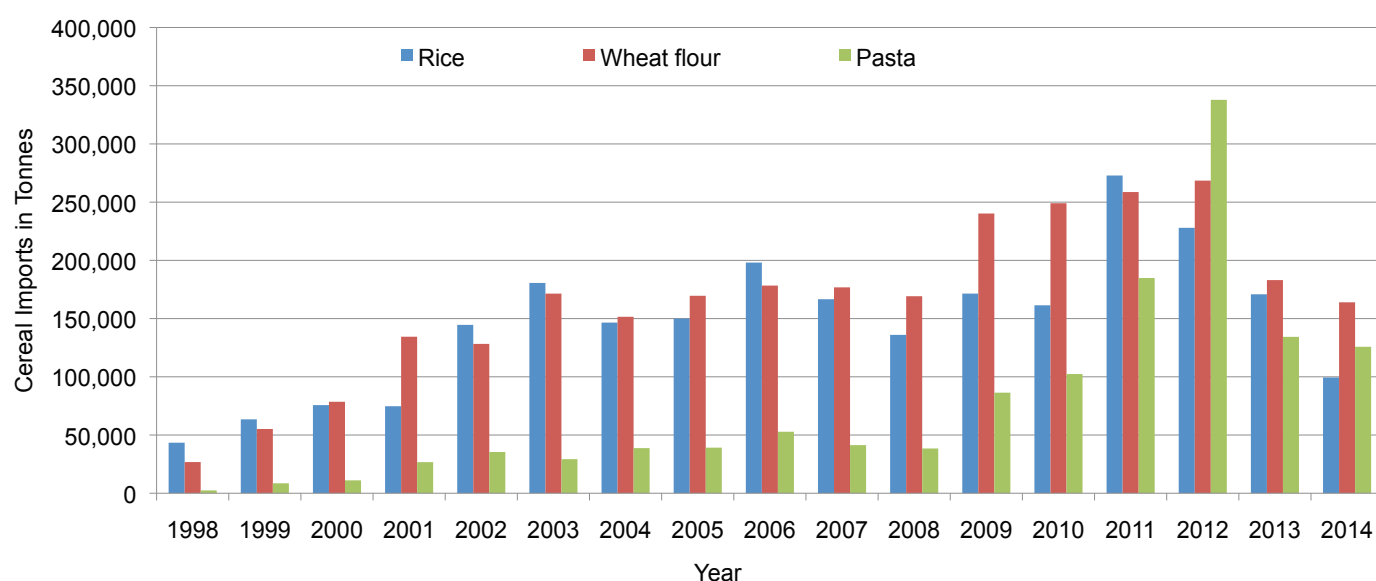


# Trends in Cereal Imports

Table 3: Total Cereal Imports through Berbera, Bossaso and Mogadishu Ports (Tonnes) \*

	1998	1999	2000	2001	2002	2003	2004	2005	2006	2007	2008	2009	2010	2011	2012	2013	2014 (Jan-Aug)
<b>Rice</b>	43,410	63,464	75,687	74,729	144,600	180,614	146,567	150,017	198,101	166,626	136,007	171,472	161,415	272,877	227,955	170,868	99,404
<b>Wheat flour</b>	26,774	55,176	78,555	134,425	128,263	171,442	151,555	169,583	178,345	176,821	169,208	240,247	249,080	258,679	268,491	183,058	163,974
<b>Pasta</b>	2,455	8,544	11,071	26,702	35,425	29,273	38,749	39,153	52,815	41,331	38,441	86,372	102,373	184,849	337,878	134,311	125,770

Figure 51: Total Cereal Imports (Berbera, Bossaso and Mogadishu)



\* 2014 import data is up to July for Berbera, up to August Bossaso and up to April for Mogadishu (Elmaan Port). 2013 Mogadishu data (Elmaan Port) includes only January -March imports.