

Market DataUpdate

September 2013



Food Security and Nutrition
Analysis Unit - Somalia



Issued October 22, 2013

Highlights

Inflation: The September Consumer Price Index (CPI) remained unchanged in all zones. However, the current CPI is lower than in the same month last year in all regions except in North Somali Shilling (SoSh) areas. Compared to the base period (March 2007), CPI increased moderately in Somaliland Shilling (SiSh) regions and significantly in SoSh regions.

Exchange rate: The Somali currencies (SoSh & SiSh) continued to hold steady against the United States Dollar (USD) during September 2013. Compared to September 2012, the exchange rate between SoSh and USD appreciated in South-Central regions but remained unchanged in Northern zones. Appreciation of the SoSh is attributable to significant dollar inflows through humanitarian assistance and foreign direct investments into the country, particularly to Mogadishu.

Local grain prices declined in most areas of South and Central Somalia. Slight increases are recorded in Bay and Juba markets as well as across most of the northern regions. The reduction in the cost of local cereals is due to continuous flows of the *Gu* and *Gu off-season* harvests. The price increase in Juba is mainly due to limited commodity flows occasioned by insecurity. In Bay, increased demand from Central and Northern regions as well as reduced humanitarian assistance were major determinants of the observed increase in cereal prices. Compared to September 2012, the retail prices of locally produced cereals are lower in most markets, with the exception of stable prices in the Northwest and increases in Hiran.

Prices of imported commodities quoted in local currency either decreased or remained stable in most markets in September 2013. However, slight increases were observed in Middle Shabelle due to increased transportation costs as trucks have had to detour to longer routes after recent floods destroyed the normal transportation corridor between Mogadishu and Jowhar. The gain in value of the local currency against the USD and increased supplies of imported commodities contributed to significant reduction in the prices of imports over the last one year (Sep 2012 – Sep 2013).

Livestock prices increased in most areas on a month-on-month basis in response to increased consumption and export demand during the *Hajj* period. Milk prices reduced in the Northwest and Southern areas due to increased milk supply following improved seasonal performance. On the other hand, milk prices increased in Central and Northeast areas due to livestock out-migration in response to below average *Gu* season and a subsequent dry *Hagaa* season. Livestock prices are higher than a year ago (2012) across most markets.

Labour wages increased on a month-on-month basis, particularly in key cereal producing regions, but remained stable in all other areas. The gain in labour wages can be attributed to seasonal increases in labour opportunities in preparation for the *Deyr* season. Casual wages are also significantly higher compared to their levels in 2012 in most markets. The annual increases in labour wages are due to increased construction and infrastructure rebuilding activities, particularly in Mogadishu.

Terms of Trade (ToT) between labour wages and local cereals (*monthly trend*) show stability in most regions, but a decrease in Shabelle and an increase in Hiran and Juba regions were observed. The decline in ToT in Shabelle is due to a faster rate of decrease in labour wages relative to maize prices. Compared to the same period last year (Sep 2012), ToT improved or remained stable in most regions, except in Hiran where it declined.

This Market Data Update is a monthly report that presents analysis of market information and is produced regularly as part of the monthly monitoring process.

The weekly price data is collected from 48 main markets and 51 rural markets throughout Somalia since 1995.

Market analysis is an integral part of all of FSNAU's Annual Food Security Projections and seasonal technical reports (Technical Reports on FSNAU Post *Gu* and *Deyr* Analysis).

Detailed market data are available online on www.fsnau.org/ids.

Juba Valley: Prices of maize, imported food (rice, wheat, vegetable oil, sugar) and cattle decreased in most markets on a

FSNAU Funding Agencies



Common
Humanitarian Fund
Somalia

Regional Market Highlights

month-on-month basis. ToT (16Kg/daily wage rate) increased by one unit from the previous month's level (Aug 2013). Compared to a year ago (2012), prices are significantly lower for all items except for cattle, which increased considerably. Annual comparisons of ToT between labour and cereals also indicate significant increase in purchasing power in favour of casual labourers.

Sorghum Belt: Goat prices were stable but cattle prices exhibited mixed trends during September 2013: stable in Bay-Bakool, an increase in Hiran and a decrease in Gedo. At the same time, prices of imported food were either stable or decreased in most regions except for a slight increase in the cost of sugar and wheat flour in Hiran in September. Local cereal prices show mixed monthly trends: sorghum price decreased in Bakool and Gedo, but increased slightly (6%) in Bay while maize price decreased in Hiran. In line with trends in cereal prices and labour wage costs, the ToT between labor and cereals went up in Hiraan but remained unchanged in all other regions. Year-on-year price comparisons indicate a decline in the prices of most items with the exception of Hiran where cereal prices increased. ToT declined in Hiran but increased in all other regions of the Sorghum Belt when compared to the same month last year (Sept 2012).

Shabelle Valley: Monthly prices of imported food increased slightly, livestock values remained generally unchanged while the price of maize fell. ToT (labour wage to cereals) declined by one unit from the previous month's level (Aug 2013) to a regional average of 13kg of maize for one day's wage. Compared to the same month last year, prices of imported commodities are significantly lower; cattle prices are considerably higher, while goat and maize prices are stable. The ToT between labour wage and cereals is one unit higher than the same month last year (Sep 2012).

Central: Slight monthly price decrease was recorded for red sorghum and imported food, while local goat prices went up. Annual comparisons indicate decreases in the prices of all items. ToT between local goat and rice (64kg/goat) was five units higher than the previous month and three units lower than in the same month last year (Sep 2012).

Northeast: Slight price decreases were observed for most imported commodities, while local grain and livestock prices increased. Prices are significantly lower compared to a year ago (Sep 2012) for most items except for goats, which are elevated. ToT between local goat and rice closed the month at 96kg/local goat, 12 units higher than the previous month. ToT is also significantly higher (by 4kgs) compared to the same period a year ago (Sept 2012).

Northwest: Prices of most commodities remained stable in September 2013 except a slight increase in the prices of white sorghum and livestock. Compared to a year ago, prices went down for most imported commodities; cereal prices remained stable while those of livestock increased. The ToT between cereals (white sorghum) and labor wage remained unchanged (13 kg/ daily labour rate) from August 2013, but are higher by 1kg compared to the same month last year.

Banadir/ Mogadishu: Prices of most commodities remained stable on a month-on-month basis. Annual price comparisons indicate a significant decline for maize and imported commodities but an increase for goat prices. The ToT between and white maize to labor wage is unchanged from the previous month's (Aug 2013) level (27 kgs/daily labor rate) but is higher than the same period a year ago.

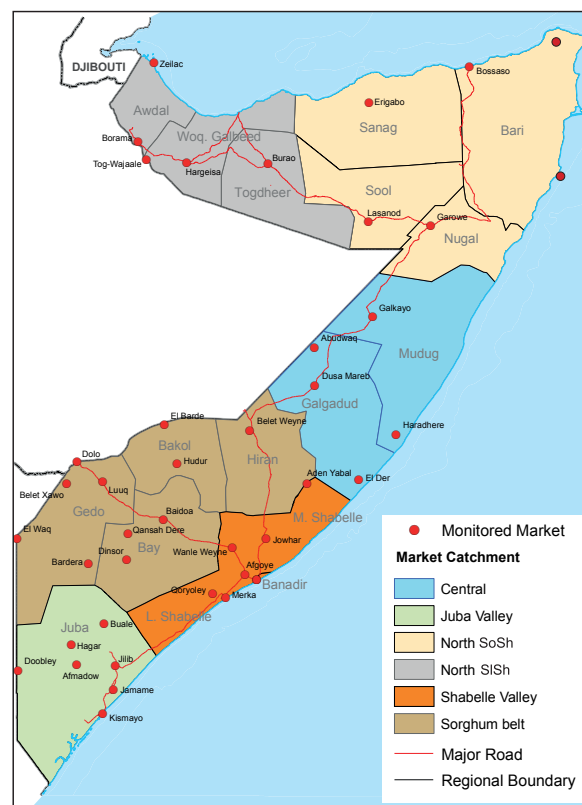


Table 1: ToT between Cereals and Daily Labour Wage Rate, by Region

Regions	September 2013* (Kgs)	% change from:	
		Aug 2013	Sep 2012
Banadir	27	0%	42%
Bay	22	0%	57%
Bakool	7	0%	40%
Gedo	19	0%	36%
Hiran	13	30%	-19%
Juba	16	7%	60%
Shabelle	13	-7%	8%
Northeast	6	0%	0%
Northwest	13	0%	8%
Central	8	0%	14%

* Cereal types used for ToT calculation: White Maize (Banadir, Hiran, Juba, Shabelle), Red Sorghum (Bay, Bakool, Gedo, Central, Northeast) and White Sorghum (Northwest)

International Market Highlights

Diesel: Crude oil¹ price on international markets remained stable at \$108/barrel during September 2013. The price stability was mainly due to positive market optimism following easing of geo-political tensions in the Middle East². Crude oil price quotations are at the same level as they were a year ago.

Diesel prices in local currency terms decreased (by 5%) in Bossaso but remained stable in Mogadishu on a month-on-month basis. Annual comparisons indicated a slight price reduction (5-8%) in both port cities due to strengthened SoSh and steady sea port supplies (Figure 1).

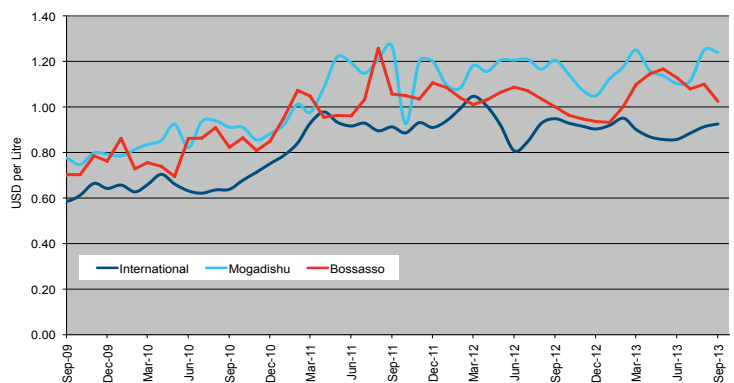
Rice: The September 2013 export price of the benchmark Thai rice (Grade A1 Super 1/B) was equivalent to USD 406 /tonne, 14 and 25 percent lower than the previous month and the same month last year, respectively³. The declines were on account of the devalued Thai currency (Thai Baht) and increased supply following the release of government stocks⁴. Prices are expected to remain stable or continue to decline.

Prices of imported rice remained generally stable over the past month in Mogadishu and Bossaso. The respective prices in these cities are five and fourteen percent lower than the same month last year. Price easing was occasioned by strengthened SoSh increased commercial import supplies and continued humanitarian interventions (Figure 2).

Wheat: The International Grain Council (IGC) wheat sub-index rose by one percent on a month-on-month basis, underpinned by a strong export demand⁵, less favourable production prospects in Argentina and likely higher import demand in China⁶. Overall, the IGC wheat sub-index stays close to its lowest level since early June 2012⁷. In the coming months the effect of near record global output forecast will most likely be offset by solid export demand (Figure 3).

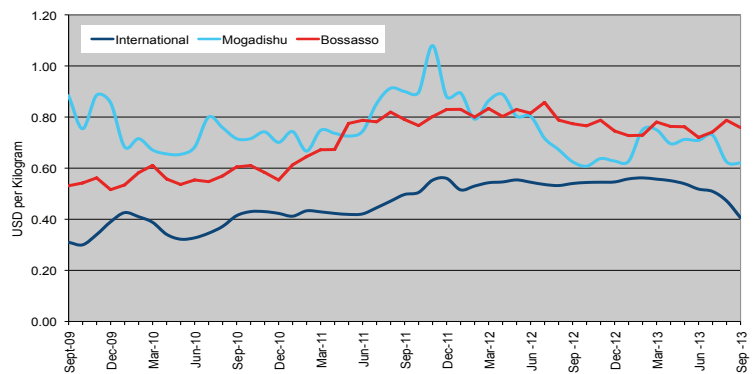
September 2013 wheat flour prices did not change significantly from last month's levels, but decreased by 5-9 percent on a year-on-year basis in Mogadishu and Bossaso.

Figure 1: Diesel Prices in Dubai, Mogadishu and Bossaso



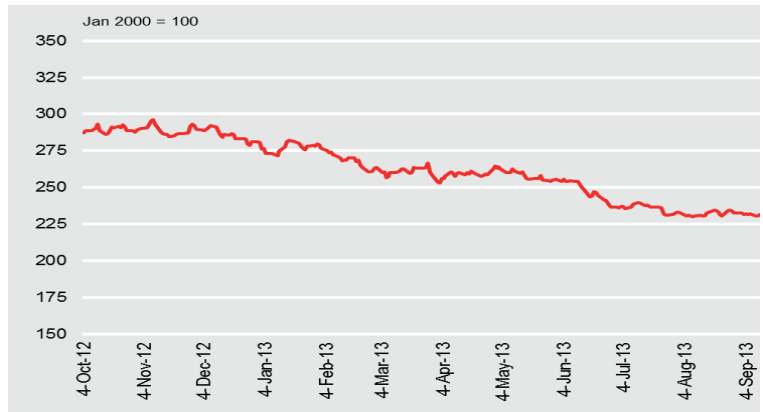
Source: FSNAU Market Price Monitoring System, FAO Statistics, 2013

Figure 2: Rice Prices in Bangkok (FOB), Mogadishu and Bossaso Markets



Source: FSNAU Market Price Monitoring System, FAO Statistics, 2013

Figure 3: International Wheat Prices



Source: International Grain Council, 2013

¹ Free on Board (FoB) in Dubai is the main source of Somalia's oil imports.

² Oil Market Report (OMR), Monthly Publication by International Energy Agency (IEA) in collaboration with Organization of Petroleum Exporting Countries (OPEC), released 12 September 2013; [Online] Available from <http://omrpublic.iea.org/>

³ Crop Prospects and Food Situation No.3 October 2013 (FAO)

⁴ Grain Market Report (GMR) 437, 30 September 2013, International Grain Council; <http://www.igc.int/en/downloads/gmrsummary/gmrsumme.pdf>

⁵ Ibid

⁶ The World Food Situation: The FAO Food Price Index October 3, 2013; <http://www.fao.org/worldfoosituations/foodpricesindex/en/>; AMIS Market Monitor No. 12, October 2013

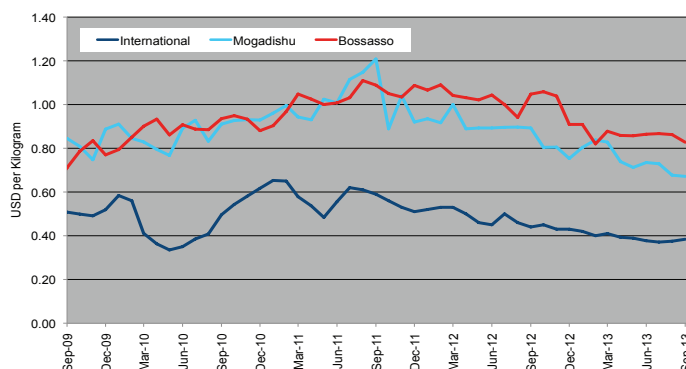
⁷ AMIS Market Monitor No. 12, October 2013; http://www.amis-outlook.org/fileadmin/user_upload/amis/docs/Market_monitor/AMIS_Market_Monitor_current.pdf

International Market Highlights

Sugar: The **FAO Sugar Price Index**⁸ averaged 246 points in September 2013, up 4.3 points (1.8%) from August 2013, marking the second consecutive monthly increase. This trend is mainly attributable to unfavorable weather conditions hampering harvesting operations in the center-south region of Brazil, the world's largest sugar producer and exporter. The index is 13 percent lower than the same period last year (Figure 4).

Sugar prices remained unchanged on a month-on-month basis but decreased significantly (by 24-35%) on a year-on-year basis in Mogadishu and Bossaso. These price trends are attributable to the strengthened SoSh, enhanced port supplies and continued humanitarian interventions.

Figure 4: Sugar Prices: International, Mogadishu and Bossaso Markets



Source: FSNAU Market Price Monitoring System, International Sugar Organizations, 2013

Cooking Oil: The **FAO Oils/Fats Price Index**⁹ averaged 186.3 points in September 2013, virtually unchanged from August 2013 but 17 percent lower than September 2012. Prices are expected to continue strengthening during the coming months on account of reduced soy oil production in the US (because of the dry weather) as well as increased export demand for palm oil¹⁰.

Monthly vegetable oil price changes were minimal in the two port cities of Mogadishu and Bossaso, but were significantly lower (29-31%) when compared to last year (Sept 2012), reflecting accelerated movement of supplies through ports and appreciated domestic currency.

⁸ The World Food Situation: The FAO Food Price Index October 3, 2013; <http://www.fao.org/worldfoodsituation/foodpricesindex/en/>

⁹ Ibid

¹⁰ Ibid

National Trends: CPI, Exchange Rates, Cereal Prices and Relative Purchasing Power

Figure 5: Terms of Trade Between Wage Rates and Selected Cereals

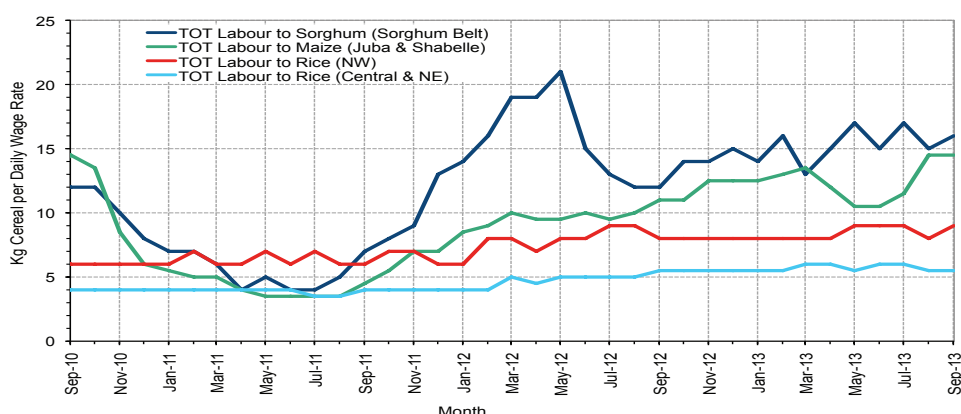


Figure 6: Monthly Exchange Rate for Selected Regions (SoSh and SISH to USD)

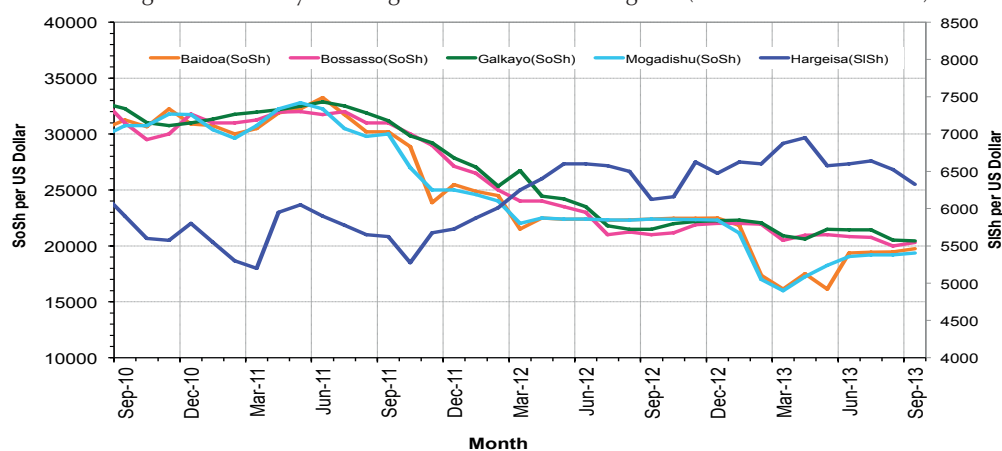


Figure 7: Monthly Trends in Consumer Price Index (CPI, March 2007=100)

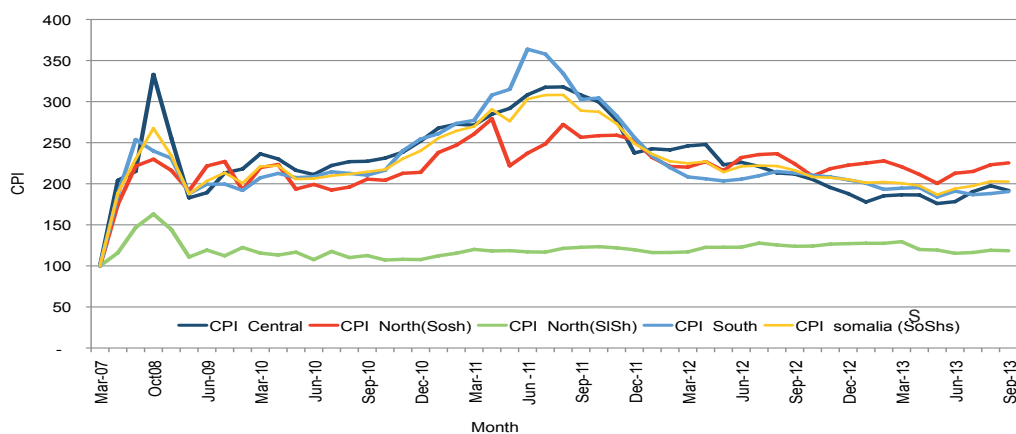
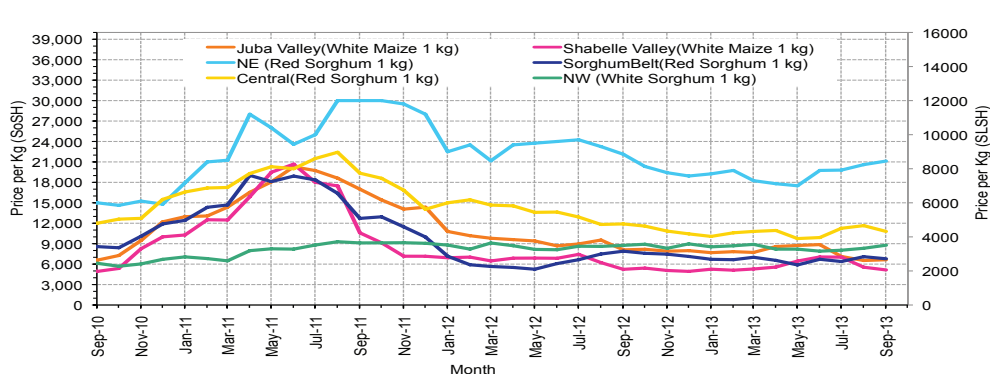


Figure 8: Monthly Trends in Local Cereal Prices



Regional analysis: Juba Regions

Indicator	5-Year Average (2008-2012)	Sep-12	Aug-13	Sep-13 Nominal Price	Sep-13 Real (Deflated) Price	% Change Same Month Previous Year	% Change Previous Month	% Change 5-year avg (2008-2012)
Imported Commodities Prices								
Diesel 1 litre	37,789	33,036	26,500	26,057	13,581	-21%	-2%	-31%
Imported Red Rice 1kg	27,985	16,750	16,000	15,786	8,188	-6%	-1%	-44%
Petrol 1 litre	37,528	34,214	29,500	29,257	15,261	-14%	-1%	-22%
Sugar	28,664	22,143	16,214	16,357	8,488	-26%	1%	-43%
Vegetable Oil 1 litre	53,248	38,714	30,357	31,143	16,251	-20%	3%	-42%
Wheat Flour 1kg	23,290	16,286	15,786	16,071	8,338	-1%	2%	-31%
Wheat Grain 1kg	23,333	-	-	-	-	-	-	-
Cereal Prices								
Red Sorghum 1kg	7,916	7,000	7,000	6,000	3,050	-14%	-14%	-24%
White Maize 1kg	11,107	8,054	6,707	6,975	3,562	-13%	4%	-37%
Livestock & Livestock Product Prices								
Camel Local Quality (Head)	9,340,250	10,127,083	10,628,429	10,287,781	5,401,413	2%	-3%	10%
Cattle Local Quality (Head)	3,842,302	3,724,250	4,374,417	4,322,233	2,269,252	16%	-1%	12%
Fresh Camel Milk 1 litre	17,422	18,607	13,371	14,750	7,644	-21%	10%	-15%
Goat Export Quality (Head)	1,291,971	1,825,500	1,508,000	1,578,614	828,738	-14%	5%	22%
Goat Local Quality (Head)	840,750	1,182,893	981,250	1,060,629	556,774	-10%	8%	26%
Other Essential Items								
Charcoal 50kg	82,978	82,893	82,214	86,343	45,234	4%	5%	4%
Cowpeas 1 kg	25,254	20,464	17,357	17,379	9,025	-15%	0%	-31%
Unskilled Labor Wage Rate	94,485	82,107	97,714	102,936	53,946	25%	5%	9%
Firewood Bundle	7,021	9,107	10,929	12,343	6,381	36%	13%	76%
Local Sesame Oil 1 litre	80,961	72,036	66,929	71,314	37,343	-1%	7%	-12%
Exchange Rate (Somali Shilling per USD)	29,642	22,332	19,946	20,624	10,728	-8%	3%	-30%
Terms of Trade								
Labour Wage (Daily)/ Cereal (Maize(Kg))	9	10	15	15	-	45%	1%	73%
Local Goat (Head)/ Cereal (Maize(Kg))	76	147	146	152	-	4%	4%	101%
Price Indices								

Figure 9: Trends in Cereal Prices



Figure 10: Trends in Wage Rates and Relative Purchasing Power

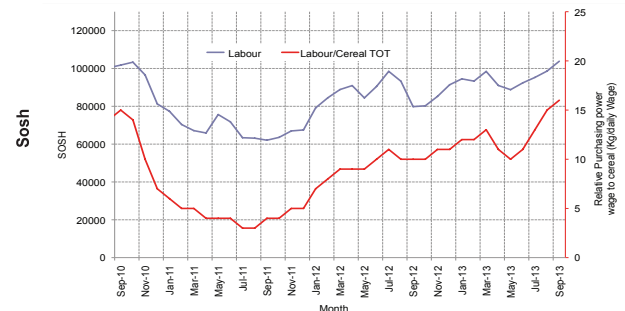


Figure 11: Imported Commodity Prices Compared to Exchange Rate

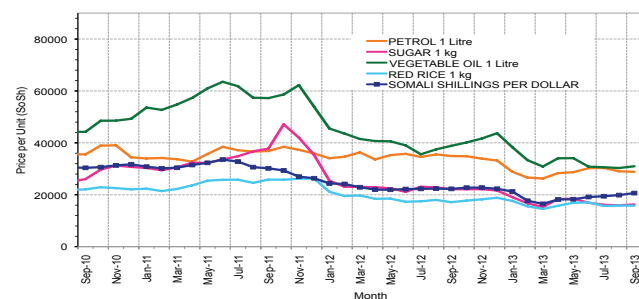


Figure 12: Goat Local Quality

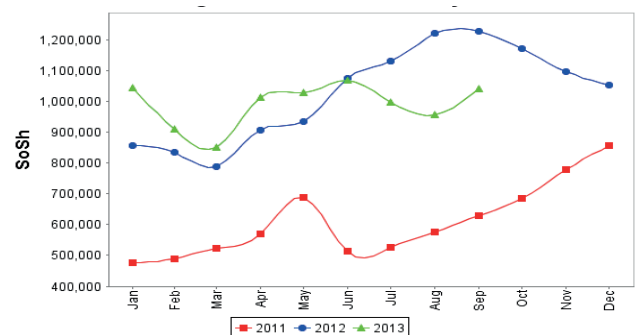


Figure 13: Exchange Rate

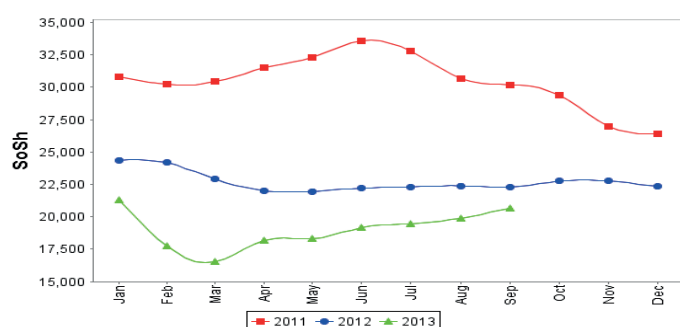
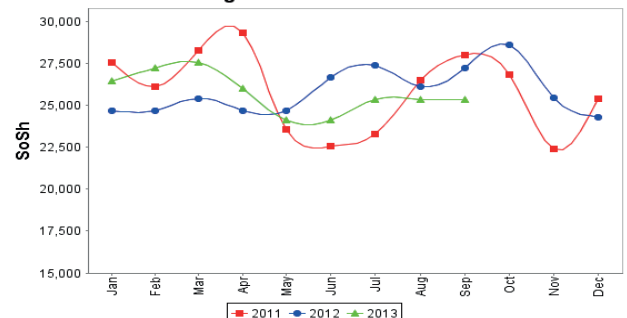


Figure 14: Water Drum (200 litres)



Regional analysis: Sorghum Belt Regions (Bay, Bakool, Gedo and Hiran)

Indicator	5-Year Average (2008-2012)	Sep-12	Aug-13	Sep-13 Nominal Price	Sep-13 Real (Deflated) Price	% Change Same Month Previous Year	% Change Previous Month	% Change 5-year avrg (2008-2012)
Imported Commodities Prices								
Diesel 1 litre	36,432	31,818	29,068	27,155	14,158	-15%	-7%	-25%
Imported Red Rice 1kg	28,842	19,545	17,068	16,550	8,589	-15%	-3%	-43%
Petrol 1 litre	36,035	33,523	28,091	27,168	14,164	-19%	-3%	-25%
Sugar	29,317	23,432	18,341	17,659	9,172	-25%	-4%	-40%
Vegetable Oil 1 litre	53,070	43,727	35,477	34,409	17,966	-21%	-3%	-35%
Wheat Flour 1kg	24,924	18,068	16,295	15,714	8,151	-13%	-4%	-37%
Wheat Grain 1kg	14,385	7,200	8,950	8,200	4,205	14%	-8%	-43%
Cereal Prices								
Red Sorghum 1kg	10,135	7,898	7,091	6,789	3,465	-14%	-4%	-33%
White Maize 1kg	12,466	8,864	8,295	7,945	4,071	-10%	-4%	-36%
Livestock & Livestock Product Prices								
Camel Local Quality (Head)	9,377,705	12,955,900	13,302,273	13,177,727	6,918,755	2%	-1%	41%
Cattle Local Quality (Head)	3,024,668	3,953,750	3,728,125	3,809,375	1,999,980	-4%	2%	26%
Fresh Camel Milk 1 litre	26,604	32,091	13,227	14,245	7,379	-56%	8%	-46%
Goat Export Quality (Head)	1,343,995	1,788,636	1,602,121	1,670,682	877,078	-7%	4%	24%
Goat Local Quality (Head)	831,936	1,292,364	1,110,227	1,133,409	594,987	-12%	2%	36%
Other Essential Items								
Charcoal 50kg	124,493	143,636	143,182	135,818	71,210	-5%	-5%	9%
Cowpeas 1 kg	29,606	22,063	16,313	17,228	8,945	-22%	6%	-42%
Unskilled Labor Wage Rate	94,059	91,477	107,955	105,818	55,459	16%	-2%	13%
Firewood Bundle	5,508	6,318	6,364	6,455	3,289	2%	1%	17%
Local Sesame Oil 1 litre	81,893	65,833	72,250	72,000	37,703	9%	0%	-12%
Exchange Rate (Somali Shilling per USD)	29,719	22,340	19,855	19,829	10,311	-11%	0%	-33%
Terms of Trade								
Labour Wage (Daily)/ Cereal (Sorghum(Kg))	9	12	15	16	-	35%	2%	68%
Local Goat (Head)/ Cereal (Sorghum(Kg))	82	164	157	167	-	2%	7%	103%
Price Indices								
Consumer Price Index	-	213	188	190	-	-11%	1%	-

Figure 15: Trends in Cereal Prices

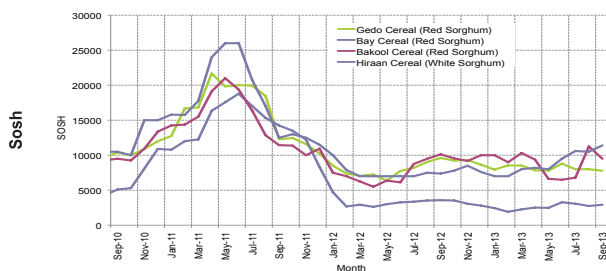


Figure 16: Trends in Wage Rates and Relative Purchasing Power

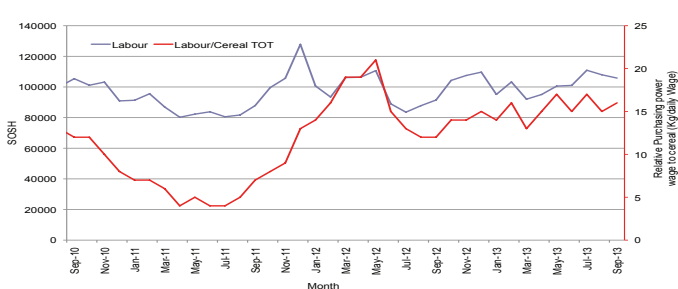


Figure 17: Imported Commodity Prices Compared to Exchange Rate

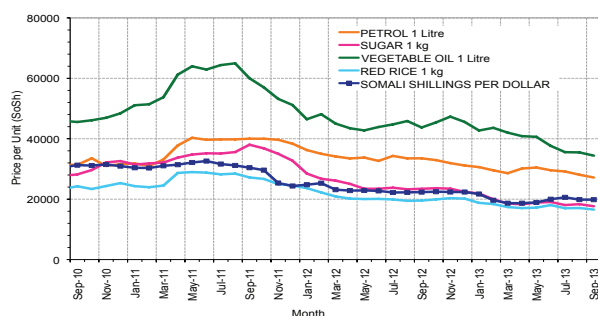


Figure 18: Goat Local Quality

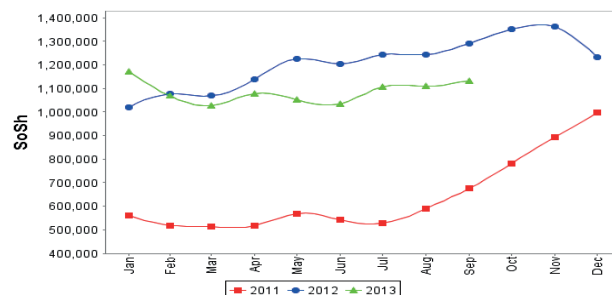


Figure 19: Exchange Rate

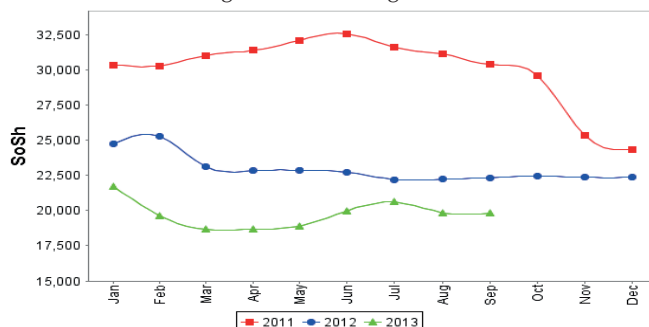
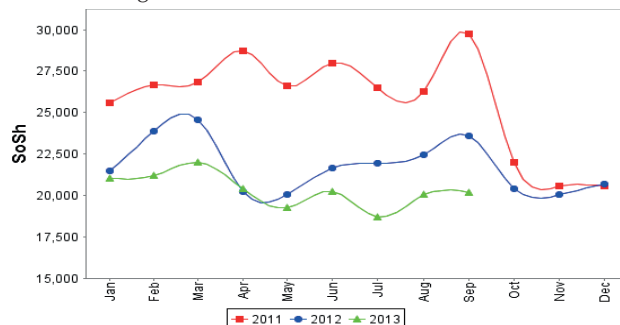


Figure 20: Water Drum (200 litres)



Regional analysis: Shabelle Regions

Indicator	5-Year Average (2008-2012)	Sep-12	Aug-13	Sep-13 Nominal Price	Sep-13 Real (Deflated) Price	% Change Same Month Previous Year	% Change Previous Month	% Change 5-year avrg (2008-2012)
Imported Commodities Prices								
Diesel 1 litre	35,133	30,458	27,250	27,333	14,251	-10%	0%	-22%
Imported Red Rice 1kg	25,483	14,917	15,833	16,500	8,563	11%	4%	-35%
Petrol 1 litre	34,441	31,500	28,458	28,208	14,710	-10%	-1%	-18%
Sugar	27,875	21,500	16,875	17,250	8,957	-20%	2%	-38%
Vegetable Oil 1 litre	44,883	34,458	26,417	26,375	13,748	-23%	0%	-41%
Wheat Flour 1kg	23,433	14,792	15,667	16,042	8,323	8%	2%	-32%
Wheat Grain 1kg	15,666	8,333	4,667	5,333	2,700	-36%	14%	-66%
Cereal Prices								
Red Sorghum 1kg	10,270	8,311	7,996	8,097	4,151	-3%	1%	-21%
White Maize 1kg	7,659	5,238	5,548	5,148	2,603	-2%	-7%	-33%
Livestock & Livestock Product Prices								
Camel Local Quality (Head)	12,918,000	15,600,000	17,185,000	17,010,000	8,930,858	9%	-1%	32%
Cattle Local Quality (Head)	3,848,590	4,835,000	6,167,500	6,250,000	3,281,410	29%	1%	62%
Fresh Camel Milk 1 litre	17,691	21,292	14,792	17,458	9,066	-18%	18%	-1%
Goat Export Quality (Head)	1,402,351	1,756,250	1,838,750	1,760,625	924,301	0%	-4%	26%
Goat Local Quality (Head)	1,040,374	1,254,583	1,311,667	1,275,833	669,765	2%	-3%	23%
Other Essential Items								
Charcoal 50kg	114,530	107,403	108,472	120,931	63,394	13%	11%	6%
Cowpeas 1 kg	25,049	19,322	14,593	14,919	7,733	-23%	2%	-40%
Unskilled Labor Wage Rate	56,533	64,500	76,667	69,375	36,325	8%	-10%	23%
Firewood Bundle	4,541	6,417	7,083	6,875	3,510	7%	-3%	51%
Local Sesame Oil 1 litre	65,736	53,642	59,167	57,417	30,046	7%	-3%	-13%
Exchange Rate (Somali Shilling per USD)	30,241	22,808	19,658	20,625	10,729	-10%	5%	-32%
Terms of Trade								
Labour Wage (Daily)/ Cereal (Maize(Kg))	7	12	14	13	-	9%	-2%	83%
Local Goat (Head)/ Cereal (Maize(Kg))	136	240	236	248	-	3%	5%	82%
Price Indices								
Consumer Price Index	-	213	188	190	-	-11%	1%	-

Figure 21: Trends in Cereal Prices

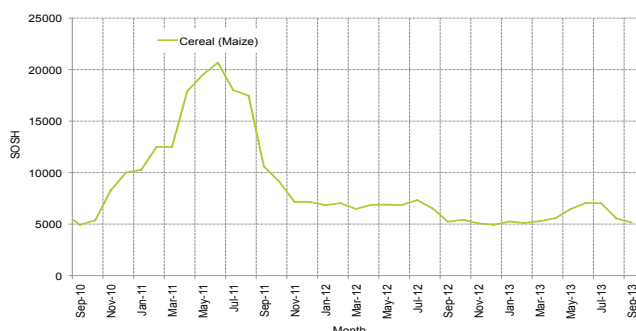


Figure 22: Trends in Wage Rates and Relative Purchasing Power

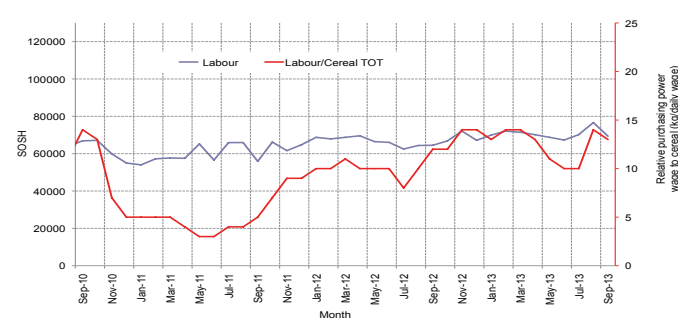


Figure 23: Imported Commodity Prices Compared to Exchange Rate

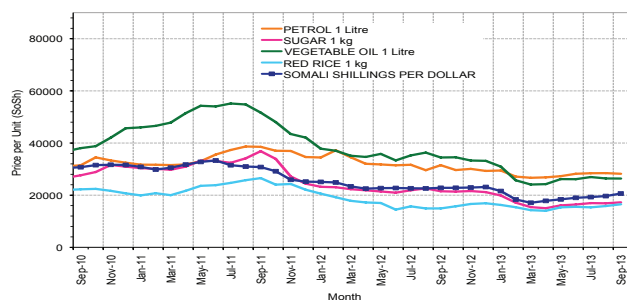


Figure 24: Goat Local Quality

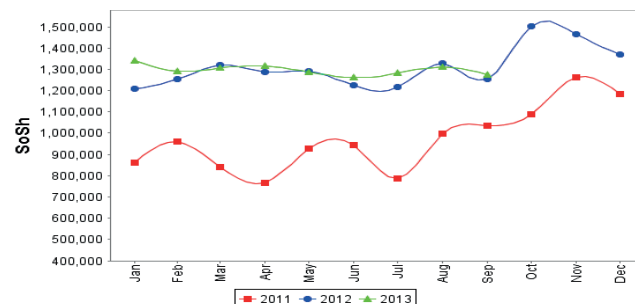


Figure 25: Exchange Rate

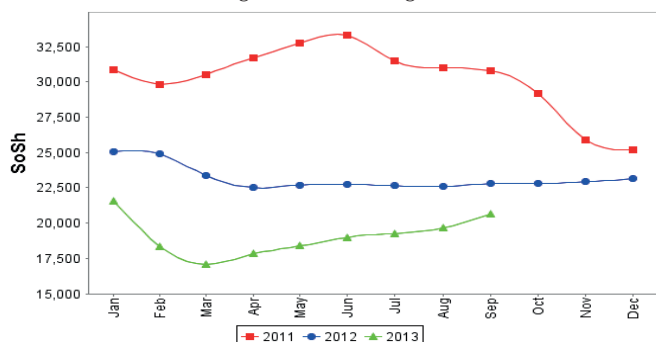
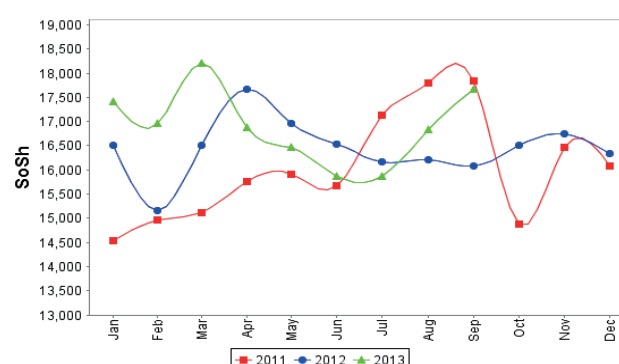


Figure 26: Water Drum (200 litres)



Regional analysis: Banadir Region

Indicator	5-Year Average (2008-2012)	Sep-12	Aug-13	Sep-13 Nominal Price	Sep-13 Real (Deflated) Price	% Change Same Month Previous Year	% Change Previous Month	% Change 5-year avrg (2008-2012)
Imported Commodities Prices								
Diesel 1 litre	31,191	26,667	20,250	20,933	10,891	-22%	3%	-33%
Imported Red Rice 1kg	25,045	14,313	12,333	12,367	6,393	-14%	0%	-51%
Petrol 1 litre	29,883	26,875	20,417	21,680	11,283	-19%	6%	-27%
Sugar	26,116	19,667	13,625	13,433	6,953	-32%	-1%	-49%
Vegetable Oil 1 litre	43,691	34,083	22,708	22,533	11,731	-34%	-1%	-48%
Wheat Flour 1kg	18,691	13,458	12,208	12,133	6,270	-10%	-1%	-35%
Wheat Grain 1kg	12,508	11,283	7,611	7,267	3,715	-36%	-5%	-42%
Cereal Prices								
Red Sorghum 1kg	8,603	5,914	5,642	5,397	2,734	-9%	-4%	-37%
White Maize 1kg	8,620	9,096	7,373	7,110	3,633	-22%	-4%	-18%
Livestock & Livestock Product Prices								
Camel Local Quality (Head)	18,500,000	-	-	-	-	-	-	-
Cattle Local Quality (Head)	4,700,000	-	-	-	-	-	-	-
Fresh Camel Milk 1 litre	18,654	22,250	20,992	21,267	11,066	-4%	1%	14%
Goat Export Quality (Head)	1,782,250	2,600,000	3,000,000	3,000,000	1,575,025	15%	0%	68%
Goat Local Quality (Head)	1,437,950	2,068,750	2,301,250	2,354,000	1,235,848	14%	2%	64%
Other Essential Items								
Charcoal 50kg	151,225	175,583	183,125	185,433	97,260	6%	1%	23%
Cowpeas 1 kg	25,797	19,892	11,950	12,133	6,270	-39%	2%	-53%
Unskilled Labor Wage Rate	68,583	102,500	115,417	112,000	58,705	9%	-3%	63%
Firewood Bundle	5,396	7,629	7,900	7,840	4,016	3%	-1%	45%
Local Sesame Oil 1 litre	66,900	58,125	59,250	58,467	30,598	1%	-1%	-13%
Exchange Rate (Somali Shilling per USD)	30,232	22,527	19,479	19,853	10,324	-12%	2%	-34%
Terms of Trade								
Labour Wage (Daily)/ Cereal (Maize(Kg))	8	11	16	16	-	40%	1%	98%
Local Goat (Head)/ Cereal (Maize(Kg))	167	227	312	331	-	46%	6%	98%
Price Indices								
Consumer Price Index	-	213	188	190	-	-11%	1%	-

Figure 27: Trends in Cereal Prices



Figure 29: Imported Commodity Prices Compared to Exchange Rate

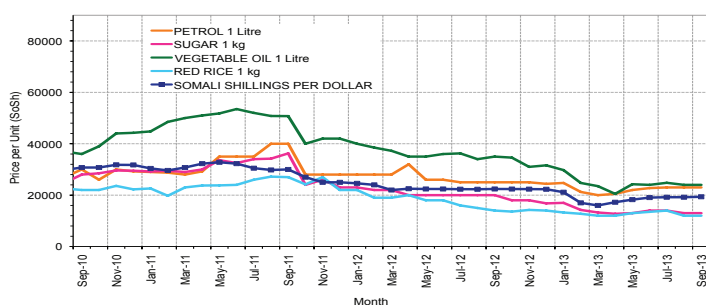


Figure 31: Exchange Rate

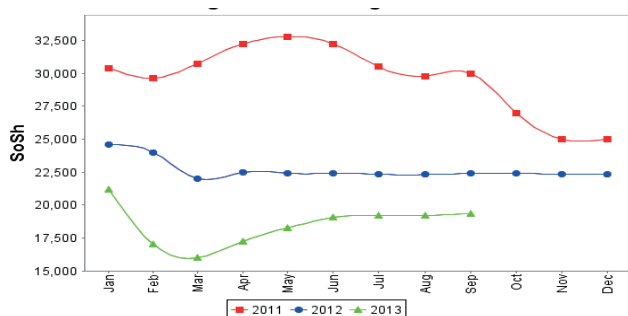


Figure 28: Bakara: Trends in Wage Rates and Relative Purchasing Power

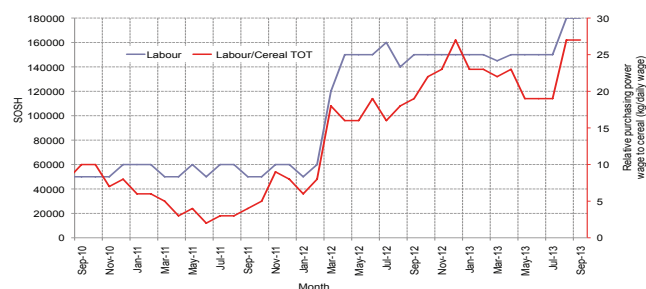


Figure 30: Goat Local Quality

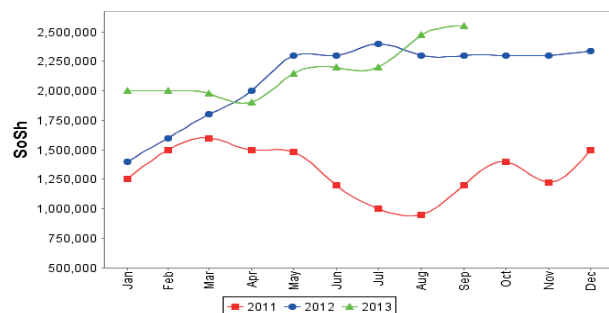
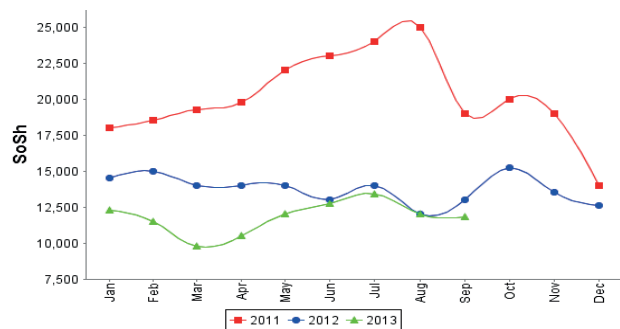


Figure 32: Wheat Flour



Regional analysis: Central Regions

Indicator	5-Year Average (2008-2012)	Sep-12	Aug-13	Sep-13 Nominal Price	Sep-13 Real (Deflated) Price	% Change Same Month Previous Year	% Change Previous Month	% Change 5-year avrg (2008-2012)
Imported Commodities Prices								
Diesel 1 litre	36,454	32,150	27,300	28,000	14,495	-13%	3%	-23%
Imported Red Rice 1kg	30,840	20,600	19,650	19,400	10,012	-6%	-1%	-37%
Petrol 1 litre	31,466	27,400	24,800	26,500	13,713	-3%	7%	-16%
Sugar	30,330	24,900	21,600	21,140	10,919	-15%	-2%	-30%
Vegetable Oil 1 litre	57,975	46,000	44,900	45,200	23,460	-2%	1%	-22%
Wheat Flour 1kg	25,550	17,100	17,450	17,290	8,912	1%	-1%	-32%
Wheat Grain 1kg	18,510	15,000	13,188	12,488	6,409	-17%	-5%	-33%
Cereal Prices								
Red Sorghum 1kg	14,665	11,900	11,650	10,800	5,529	-9%	-7%	-26%
White Maize 1kg	17,759	14,100	10,750	10,800	5,529	-23%	0%	-39%
Livestock & Livestock Product Prices								
Camel Local Quality (Head)	7,985,000	10,325,000	11,625,000	11,700,000	6,098,420	13%	1%	47%
Cattle Local Quality (Head)	2,275,000	-	-	-	-	-	-	-
Fresh Camel Milk 1 litre	43,670	32,550	27,550	26,950	13,947	-17%	-2%	-38%
Goat Export Quality (Head)	1,307,166	1,520,833	1,472,500	1,473,333	767,862	-3%	0%	13%
Goat Local Quality (Head)	940,930	1,266,500	1,162,500	1,243,000	647,803	-2%	7%	32%
Other Essential Items								
Charcoal 50kg	179,750	177,500	174,000	176,600	91,951	-1%	1%	-2%
Cowpeas 1 kg	34,856	24,700	16,700	17,030	8,777	-31%	2%	-51%
Unskilled Labor Wage Rate	80,100	83,750	87,500	84,250	43,815	1%	-4%	5%
Firewood Bundle	27,290	34,000	32,700	35,000	18,143	3%	7%	28%
Local Sesame Oil 1 litre	98,250	89,000	86,000	86,250	44,857	-3%	0%	-12%
Exchange Rate (Somali Shilling per USD)	30,082	22,020	20,455	20,390	10,528	-7%	0%	-32%
Terms of Trade								
Labour Wage (Daily)/ Cereal (Rice(Kg))	3	4	4	4	-	7%	-2%	67%
Local Goat (Head)/ Cereal (Rice(Kg))	31	61	59	64	-	4%	8%	110%
Camel (Head)/Cereal (Kg)	259	501	592	603	-	20%	2%	133%
Price Indices								
Consumer Price Index	-	212	198	192	-	-9%	-3%	-

Figure 33: Trends in Cereal Prices

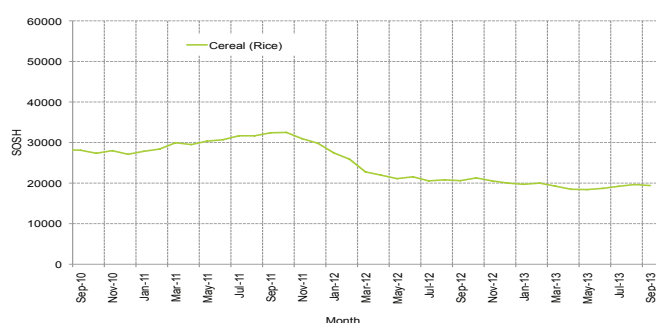


Figure 34: Trends in wage rates and relative purchasing power

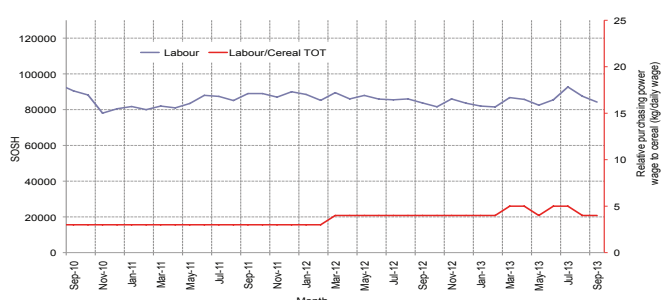


Figure 35: Imported Commodity Prices Compared to Exchange Rate

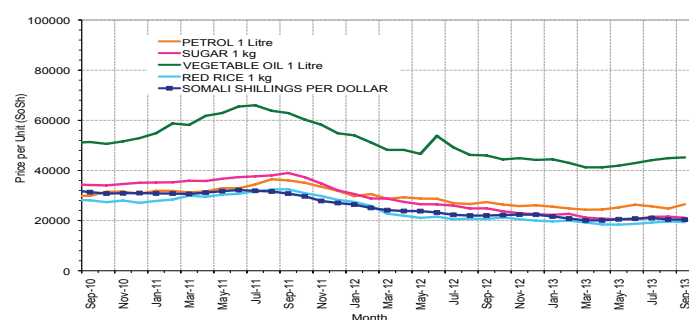


Figure 36: Goat Local Quality

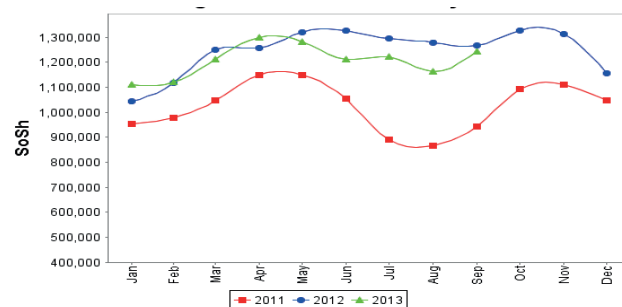


Figure 37: Exchange Rate

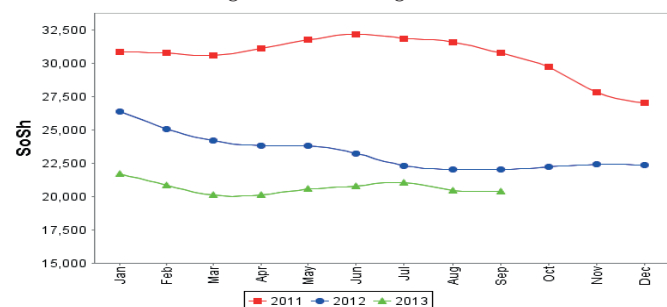
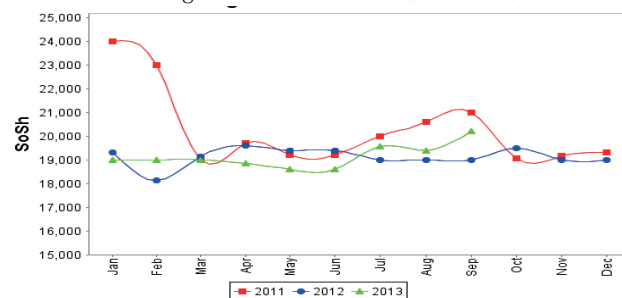


Figure 38: Water Drum (200 litres)



Regional analysis: Northeast Regions

Indicator	5-Year Average (2008-2012)	Sep-12	Aug-13	Sep-13 Nominal Price	Sep-13 Real (Deflated) Price	% Change Same Month Previous Year	% Change Previous Month	% Change 5-year avg (2008-2012)
Imported Commodities Prices								
Diesel 1 litre	31,375	24,750	23,975	23,750	10,439	-4%	-1%	-24%
Imported Red Rice 1kg	25,650	18,063	16,763	16,100	7,044	-11%	-4%	-37%
Petrol 1 litre	27,375	21,875	21,650	21,844	9,593	0%	1%	-20%
Sugar	27,125	22,625	18,988	19,300	8,464	-15%	2%	-29%
Vegetable Oil 1 litre	51,325	43,188	34,875	36,100	15,919	-16%	4%	-30%
Wheat Flour 1kg	23,725	16,875	16,025	15,713	6,872	-7%	-2%	-34%
Wheat Grain 1kg	32,979	22,500	26,500	26,200	11,526	16%	-1%	-21%
Cereal Prices								
Red Sorghum 1kg	21,600	22,125	20,600	21,125	9,274	-5%	3%	-2%
White Maize 1kg	21,016	19,500	21,600	23,000	10,106	18%	6%	9%
Livestock & Livestock Product Prices								
Camel Local Quality (Head)	12,299,374	16,131,250	15,791,250	16,112,500	7,149,520	0%	2%	31%
Cattle Local Quality (Head)	6,275,000	-	7,500,000	8,600,000	3,815,989	-	15%	37%
Fresh Camel Milk 1 litre	46,808	39,292	38,313	40,225	17,749	2%	5%	-14%
Goat Export Quality (Head)	1,333,000	1,525,000	1,550,000	1,690,000	749,806	11%	9%	27%
Goat Local Quality (Head)	1,208,525	1,425,000	1,416,250	1,553,125	689,070	9%	10%	29%
Other Essential Items								
Charcoal 50kg	306,500	362,500	373,875	370,000	164,081	2%	-1%	21%
Cowpeas 1 kg	43,612	38,667	29,150	28,450	12,524	-26%	-2%	-35%
Unskilled Labor Wage Rate	112,575	122,500	125,000	125,000	55,366	2%	0%	11%
Firewood Bundle	32,762	45,000	49,375	51,250	22,641	14%	4%	56%
Local Sesame Oil 1 litre	97,062	87,813	92,688	94,000	41,611	7%	1%	-3%
Exchange Rate (Somali Shilling per USD)	30,087	21,000	20,800	21,088	9,257	0%	1%	-30%
Terms of Trade								
Labour Wage (Daily)/ Cereal (Rice(Kg))	4	7	7	8	-	14%	4%	77%
Local Goat (Head)/ Cereal (Rice(Kg))	47	79	84	96	-	22%	14%	105%
Price Indices								
Consumer Price Index	-	224	223	225	-	0%	1%	-

Figure 39: Trends in Cereal Prices

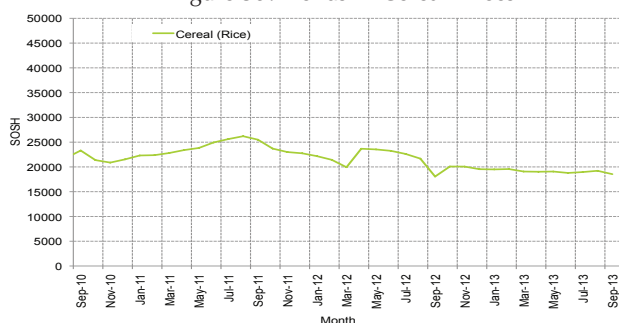


Figure 40: Trends in Wage Rates and Relative Purchasing Power

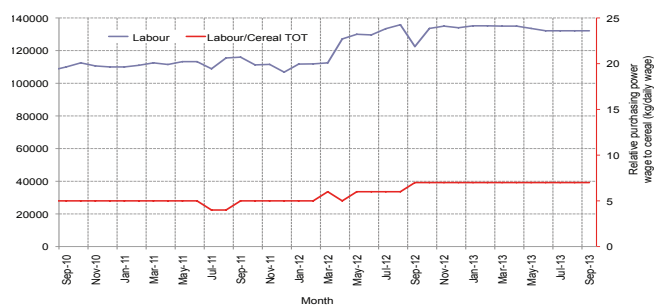


Figure 41: Imported Commodity Prices Compared to Exchange Rate

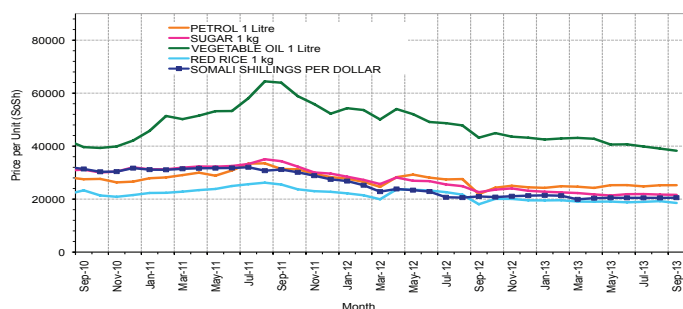


Figure 42: Goat Local Quality

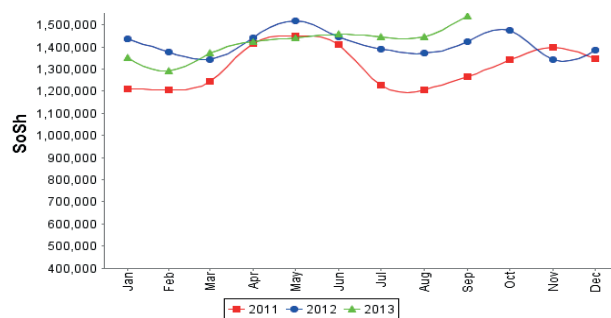


Figure 43: Exchange Rate

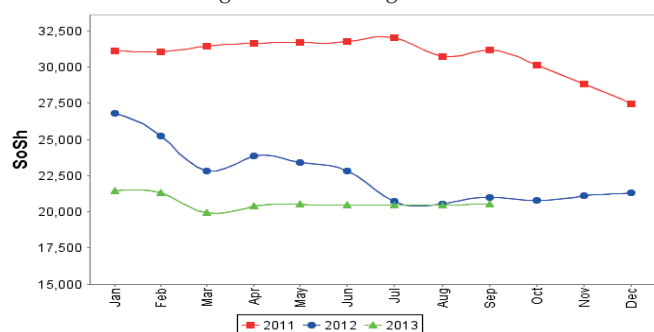
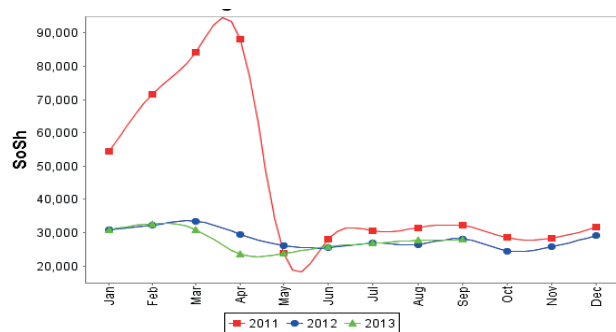


Figure 44: Water Drum (200 litres)



Regional analysis: Northwest Regions

Indicator	5-Year Average (2008-2012)	Sep-12	Aug-13	Sep-13 Nominal Price	Sep-13 Real (Deflated) Price	% Change Same Month Previous Year	% Change Previous Month	% Change 5-year avrg (2008-2012)
Imported Commodities Prices								
Diesel 1 litre	6,212	7,040	6,860	6,675	5,535	-5%	-3%	7%
Imported Red Rice 1kg	5,883	4,995	5,120	4,880	4,020	-2%	-5%	-17%
Petrol 1 litre	6,407	7,290	7,160	7,130	5,919	-2%	0%	11%
Sugar	5,742	6,050	5,620	5,680	4,695	-6%	1%	-1%
Vegetable Oil 1 litre	11,058	12,765	12,150	12,150	10,157	-5%	0%	10%
Wheat Flour 1kg	4,785	4,175	4,320	4,356	3,577	4%	1%	-9%
Wheat Grain 1kg	3,908	2,844	3,625	3,575	2,918	26%	-1%	-9%
Cereal Prices								
White Sorghum 1kg	3,702	3,500	3,339	3,511	2,864	0%	5%	-5%
Yellow Maize 1kg	3,881	3,735	3,700	3,700	3,024	-1%	0%	-5%
Livestock & Livestock Product Prices								
Camel Local Quality (Head)	1,945,433	2,649,000	4,000,000	4,304,167	3,633,601	62%	8%	121%
Cattle Local Quality (Head)	1,319,400	1,890,333	2,517,500	2,608,000	2,201,648	38%	4%	98%
Fresh Camel Milk 1 litre	5,140	5,400	5,510	5,750	4,754	6%	4%	12%
Goat Export Quality (Head)	305,837	422,200	500,875	523,720	442,039	24%	5%	71%
Goat Local Quality (Head)	223,495	286,275	365,550	375,385	316,811	31%	3%	68%
Other Essential Items								
Charcoal 50kg	33,515	40,300	46,600	46,570	39,216	16%	0%	39%
Cowpeas 1 kg	9,667	9,388	9,250	9,500	7,920	1%	3%	-2%
Unskilled Labor Wage Rate	31,490	40,400	43,430	44,900	37,806	11%	3%	43%
Firewood Bundle	4,453	3,333	3,333	3,500	2,855	5%	5%	-21%
Local Sesame Oil 1 litre	24,550	25,063	29,500	31,175	26,219	24%	6%	27%
Exchange Rate (Somaliland Shilling per USD)	6,227	6,315	6,695	6,530	5,413	3%	-2%	5%
Terms of Trade								
Labour Wage (Daily)/ Cereal (Rice(Kg))	5	8	8	9	-	14%	8%	72%
Local Goat (Head)/ Cereal (Rice(Kg))	38	57	71	77	-	34%	8%	102%
Price Indices								
Consumer Price Index	-	124	119	118	-	-4%	0%	-

Figure 45: Trends in Cereal Prices

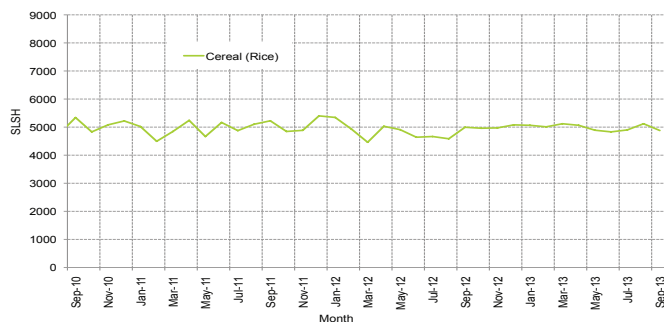


Figure 46: Trends in Wage Rates and Relative Purchasing Power

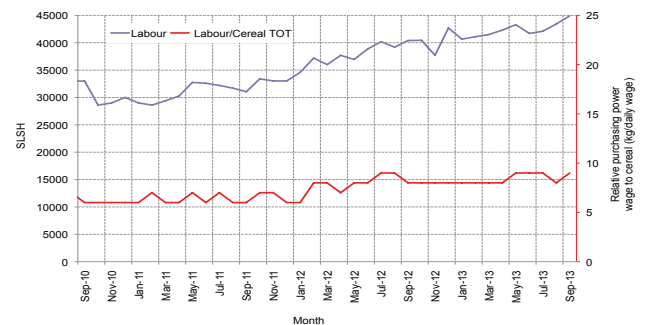


Figure 47: Imported Commodity Prices Compared to Exchange Rate

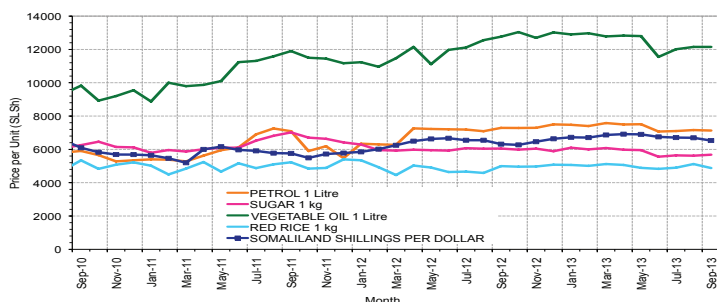


Figure 48: Goat Local Quality

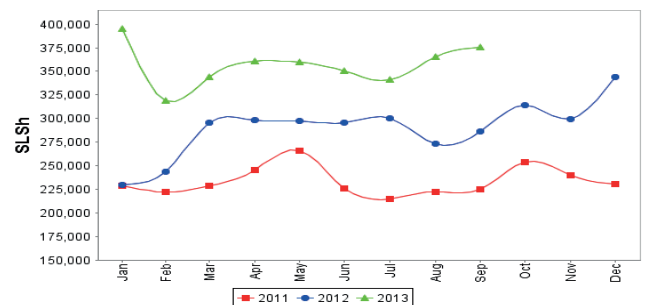


Figure 49: Exchange Rate

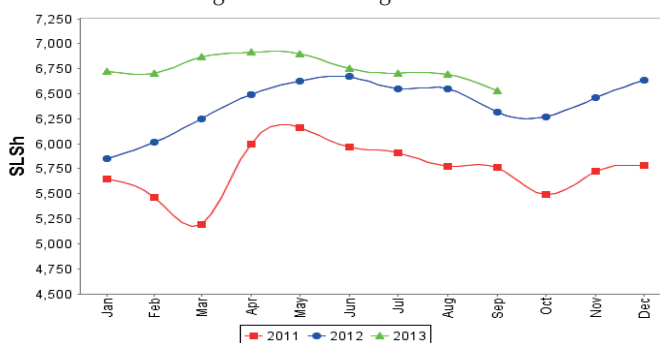
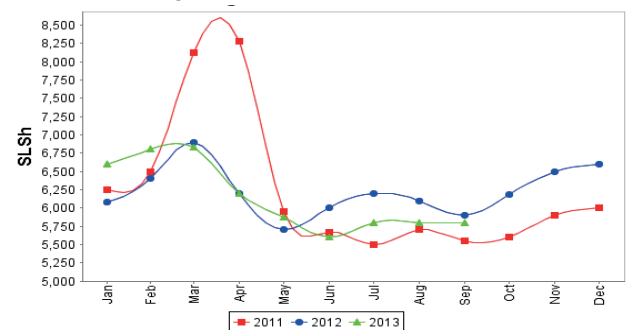


Figure 50: Water Drum (200 litres)



Trends in Livestock Exports

Table 2: Berbera Livestock Exports (Number of Heads)

	1994	1995	1996	1997	1998	1999	2000	2001	2002	2003	2004	2005	2006	2007	2008	2009	2010	2011	2012	2013 (Jan - Jul)
Shoats	1,572,656	2,683,597	2,376,646	2,814,495	957,224	2,048,136	1,601,083	51,546	341,711	563,107	859,404	1,023,795	1,017,242	1,350,054	1,219,519	1,556,003	2,584,810	3,104,684	3,219,584	1,062,159
Cattle	173,400	167,128	65,127	66,939	92,213	89,967	63,263	20,973	37,547	84,312	131,852	148,151	85,631	88,143	80,051	88,005	133,021	150,934	190,354	95,875
Camels	38,553	21,993	42,801	50,587	11,663	37,430	16,984	3,473	18,864	21,874	5,147	5,069	22,810	14,245	26,515	20,206	92,651	107,281	102,664	57,661

Figure 51: Berbera Livestock Exports (Number of Heads)

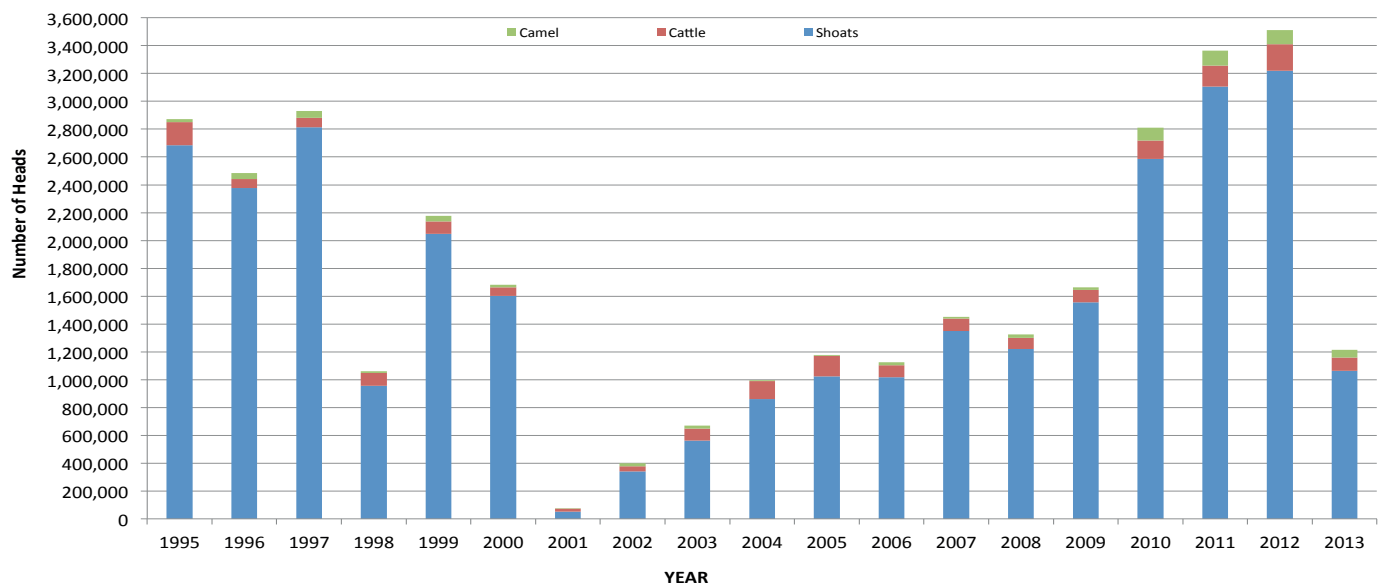
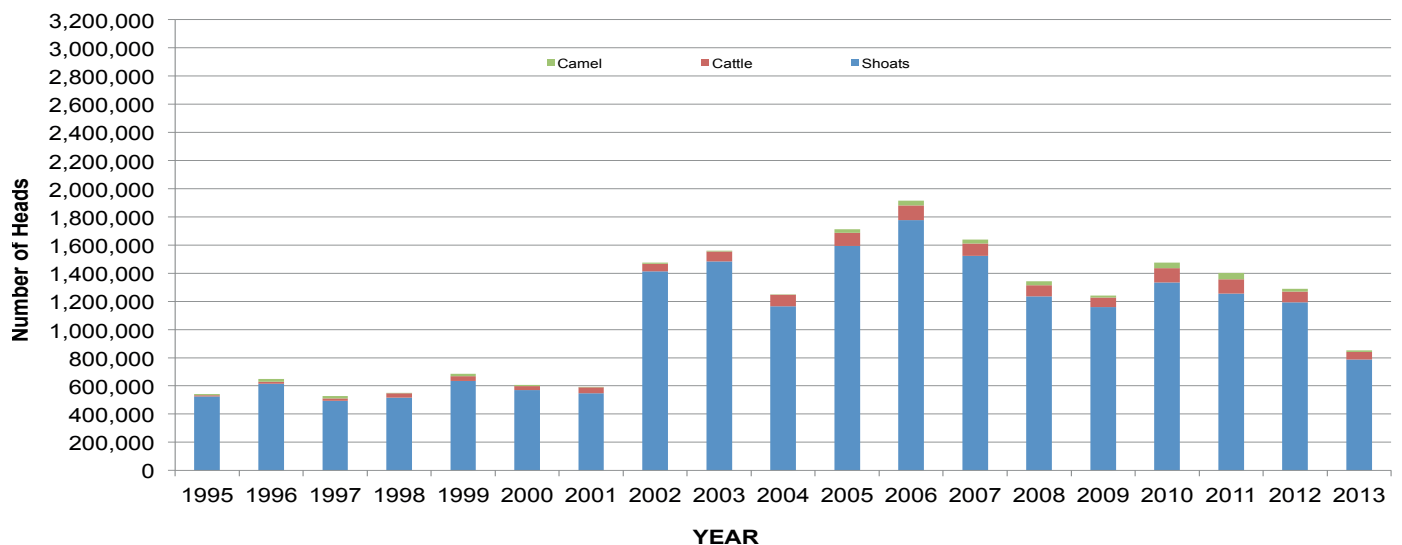


Table 3: Bossaso Livestock Exports (Number of Heads)

	1994	1995	1996	1997	1998	1999	2000	2001	2002	2003	2004	2005	2006	2007	2008	2009	2010	2011	2012	2013 (Jan - Aug)
Shoats	344,000	524,346	614,407	494,320	517,020	633,669	571,455	548,853	1,412,450	1,483,409	1,166,480	1,594,859	1,777,283	1,522,855	1,236,775	1,159,454	1,333,478	1,256,535	1,192,197	786,340
Cattle	1,450	8,795	15,335	17,831	29,492	36,586	27,604	42,248	53,313	71,328	79,994	91,910	104,595	89,190	78,046	67,385	103,808	99,058	76,043	53,306
Camels	5,397	8,392	20,462	14,599	3,938	15,544	8,177	1,950	9,720	4,259	2,488	26,109	33,724	27,580	27,639	15,331	36,865	45,878	22,288	13,666

Figure 52: Bossaso Livestock Exports (Number of Heads)

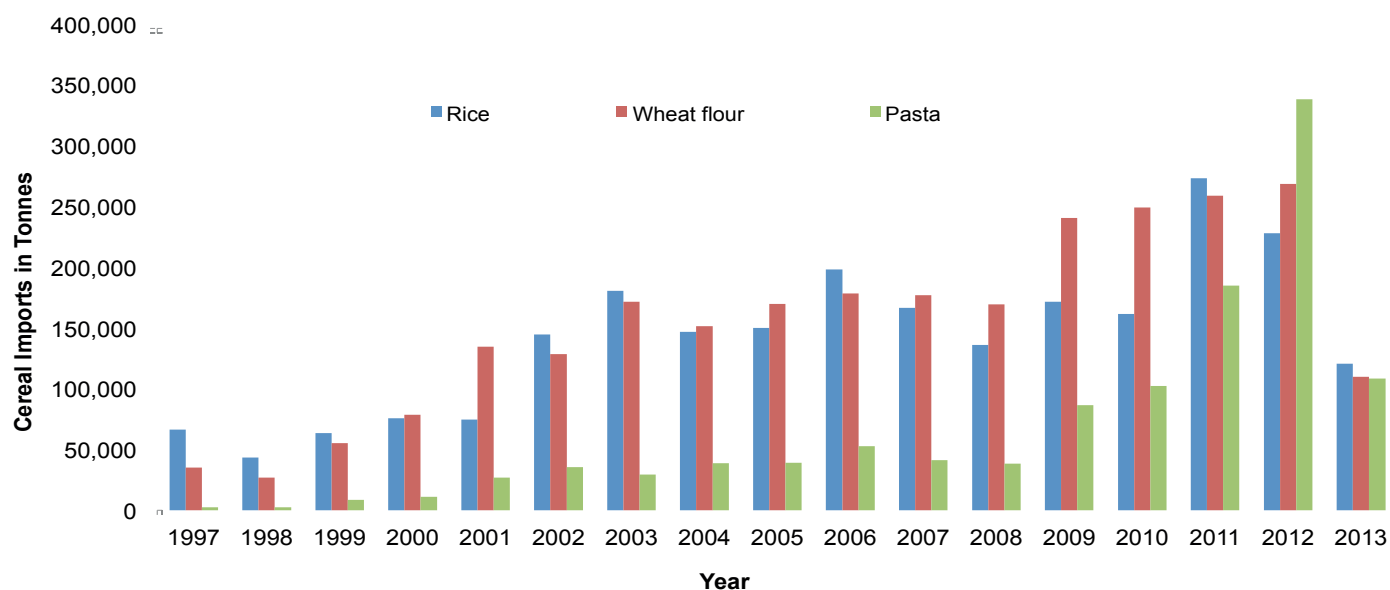


Trends in Cereal Imports

Table 4: Total Cereal Imports through Berbera, Bossaso and Mogadishu Ports (Tonnes)

	1997	1998	1999	2000	2001	2002	2003	2004	2005	2006	2007	2008	2009	2010	2011	2012	2013*
Rice	66,419	43,410	63,464	75,687	74,729	144,600	180,614	146,567	150,017	198,101	166,626	136,007	171,472	161,415	272,877	227,955	120,559
Wheat flour	35,143	26,774	55,176	78,555	134,425	128,263	171,442	151,555	169,583	178,345	176,821	169,208	240,247	249,080	258,679	268,491	109,643
Pasta	2,510	2,455	8,544	11,071	26,702	35,425	29,273	38,749	39,153	52,815	41,331	38,441	86,372	102,373	184,849	337,878	108,270

Figure 53: Total Cereal Imports (Berbera, Bossaso and Mogadishu)



*Mogadishu data is up to March 2013; the data is from Elmaan Port.

*Berbera data is up to July 2013.

*Bossaso data is up to August 2013.