

Market DataUpdate

September 2012



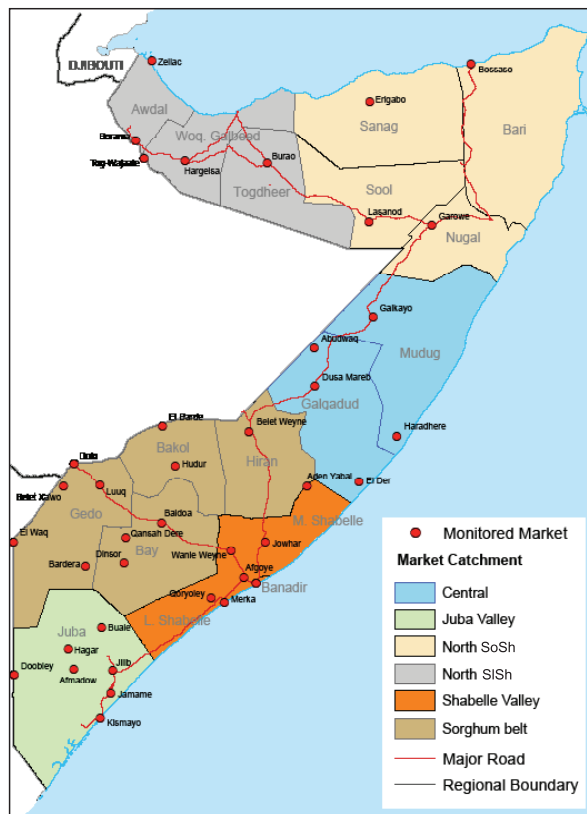
Food Security and Nutrition Analysis Unit - Somalia



Issued October 18th, 2012

Highlights

- Inflation:** the September Consumer Price Index (CPI) declined slightly in North SoSh areas but remained steady in the rest of the country. Annual inflation rates are significantly lower than their levels a year ago in South-Central but relatively stable in the both northern zones. The cost of living is significantly higher compared to the base period (March 2007) in SoSh areas; it is moderately elevated in SISH areas.
- Exchange rates** between local currencies to the USD remained relatively stable. Compared to the same period a year ago, SISH lost ground to the USD, whereas SoSh appreciated considerably. The appreciation of the SoSh is attributed to increased supply of dollars through humanitarian interventions, improved economic activities and inward investments, particularly in Mogadishu. On the other hand, the weakened SISH is mainly due to increased supply and circulation of new currency notes.
- Local grain** prices were mixed; increased in the Sorghum Belt, decreased significantly in the maize basket regions of Juba and Shabelle; remained steady in all other regions. Below average *Gu* 2012 crop production and downscaling of food distribution were the main factors that contributed to the cereal price inflation over the past month. Increased market supply of maize from *Gu* harvest in riverine areas mitigated cost of cereals in the Shabelle and Juba regions. Compared to a year ago, cereal prices are considerably lower in the South and Central zones and more stable in the North.
- Prices of most imported commodities** were generally stable in September 2012. Compared to the same period last year, imported commodity prices are significantly reduced. The decline in prices of imported commodities is mainly attributed to the strengthened SoSh, improved Mogadishu Port operations and humanitarian assistance.
- Livestock prices** were mixed, exhibiting slight monthly increases in most markets but decreasing marginally in Shabelle. Compared to the same month last year, livestock prices are significantly higher across all regions. The annual price appreciation was mainly due to improved body conditions, low supply of saleable stock and high export demand.
- Labour wages** were mixed - holding steady in most regions but reducing in Juba on the backdrop of normal seasonal decline in agricultural labour opportunities. Labour wages are significantly higher compared to their levels a year ago in most markets.
- Terms of Trade (ToT)** between labour wage and cereals were generally stable in September. The purchasing power has improved when compared to a year ago due to lower cereal prices, improved goat prices and higher labour wages (Table1).



This Market Data Update is a monthly report that presents a compilation of tabulated graphical market information produced regularly as part of the monthly monitoring process.

The weekly price data is collected from 47 main markets throughout Somalia since 1995.

Market analysis is an integral part of all of FSNAU's Annual Food Security Projections and seasonal technical reports (Technical Reports on FSNAU Post *Gu* and *Deyr* Analysis).

This data is available online on www.fsnauid.org.

Technical and Managerial Support



Funding Agencies



Regional Market Highlights

Regional Highlights

- **Juba Valley:** Local cereal and imported food prices decreased slightly since August 2012, while the value of livestock went up. Prices are significantly lower than a year ago for imported food and local cereals, but significantly higher for livestock. Annual comparisons of ToT between labor and cereals indicate significant improvement in purchasing power. The ToT (10Kg/daily wage rate) sustained its previous month's level.
- **Sorghum Belt:** Sorghum prices increased while imported food prices and livestock remained stable. Prices of imports and local cereals are significantly lower compared to their levels a year ago while those of livestock are significantly higher. The ToT between labour and cereals remained stable since August 2012. However, when compared to a year ago, the ToT is almost 4-times higher (14kg/daily wage) in Bay region and 1-2 times higher in the rest of the Sorghum Belt regions.
- **Shabelle Valley:** Prices of livestock exhibited slight decreases in September while imported food price trends were mixed. Reduced cereal prices enhanced the monthly ToT by 25 percent (currently standing at 12kg for a day's labour). Prices of most imported commodities and cereals are significantly lower when compared to the same month a year ago. Livestock prices, on the other hand, are significantly higher over the same period.
- **Central:** Prices remained generally stable over September. Annual comparisons indicate significant decreases in the prices of all items except livestock, which are significantly higher. ToT (rice/ local goat) decreased marginally but is significantly elevated when compared to the same month last year, currently standing at 61kg/local goat.
- **Northeast:** Slight monthly reduction recorded for the prices of imported food and sorghum while livestock prices appreciated. Annual price comparisons show significant decline for imported commodities and local cereals while those of livestock are higher. ToT (rice/ local goat) reduced marginally over the month of September but is significantly higher when compared to the same month last year, currently standing at 79kg/local goat.
- **Northwest:** Prices of yellow maize and imports increased marginally in September while those of livestock remained stable. Annual price comparison indicates slightly lower prices for imports and cereals and considerably inflated prices for livestock. The monthly ToT between local white sorghum and wages decreased by 1kg from the previous month but is significantly higher than the same month in 2011, currently equivalent to about 8kg/daily wage rate.
- **Banadir:** In the last month, the prices remained generally stable. With the exception of highly valued livestock, prices of imported and locally produced food are significantly below their levels a year ago. ToT cereal (maize/ labour wage) reduced by 1 kg from 12 kgs a month ago, but is twice as high as the same month in 2011.

Table 1: Monthly and Annual Changes in Terms of Trade

ToT: Mt of Cereals (kg) per Daily Labour Wage Rate Region	Cereal used	11-Sep (kg/daily wage)	12-Aug (kg/daily wage)	12-Sep (kg/daily wage)	Monthly change (%)	Annual change (%)
Banadir	White Maize	6	12	11	-8%	83%
Bay	Red Sorghum	3	13	14	8%	367%
Bakool	Red Sorghum	5	4	5	25%	0%
Gedo	Red Sorghum	9	14	14	0%	56%
Hiraan	White Maize	11	14	16	14%	45%
Juba	White Maize	4	10	10	0%	150%
Shabelle	White Maize	5	10	12	20%	140%
Northeast	Red Sorghum	4	6	6	0%	50%
Northwest	White Sorghum	9	11	12	9%	33%
Central	Red Sorghum	5	7	7	0%	40%

International Market Highlights

Diesel: Crude oil prices in Abu Dhabi (Dubai), the main source of Somalia's oil imports, continued to surge through September, rising by 2 percent, to settle at 111/barel¹. According to the International Energy Agency's Oil Market Report (October 2012), investor expectations of new economic stimulus measures in the Euro Zone and the perception of increased possibility of war² in the Middle East were the main factors driving the crude oil price³.

In Somalia Port Cities (Bossaso and Mogadishu), diesel prices remained stable when compared to August 2012 but declined significantly (29-36%) over the last year as a result of stronger domestic currency (SoSh) and increased supplies following opening up of Mogadishu Port. The annual price decline is also supported by price differential analysis showing that the gap between domestic diesel and global crude oil prices, have shrunk over the past year (September 2011 - Mogadishu (33%), Bossaso (16%); September 2012 - Mogadishu (27%), Bossaso (5%)). The latter indicates significant influence of local factors on the imported commodity prices on domestic markets (Figure 1).

Rice: The benchmark Thai rice export price (Thai A1 Super 1/B)⁴ rose marginally in September, averaging USD 540 per tonne; but this price is somewhat elevated (9%) compared to the the same month last year. According to the IGC Grain Market Report (September 2012), state intervention programme still remains the key element in Thai rice export price determination.

Prices of imported rice in Bossaso and Mogadishu ports in August declined by 3-7 percent from the previous month. The decline was remarkably significant (34-48%) when compared to the same month a year ago, supported by stronger domestic currency and improved port operations (Mogadishu). The gap between international and domestic rice markets narrowed down in both towns; from 59-81 percent in September 2011 to 16-43 percent in September this year (Figure 2).

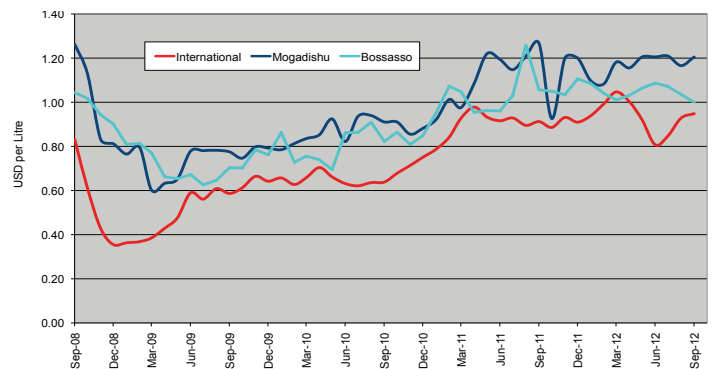
Sugar: The FAO Sugar Price Index⁵ averaged 284 points in September, down 13 points (4.2 percent) from August, and 95 points (25 percent) from September last year. The decline in sugar quotations reflects improved sugarcane harvest in Brazil, the world's largest sugar exporter, and improved crop prospects in some key producing regions including India, China, and Thailand.

Monthly *sugar prices increased somewhat (10%) in Bossaso but remained steady in Mogadishu. Compared to the same month last year, these prices have dipped significantly (35-45%) mainly due to higher supply through commercial imports and humanitarian assistance (Figure 3).*

Cooking Oil: the FAO Oils/Fats Price Index⁶ averaged 225 points in September, down 1 point (or 0.4 percent) from August. While prices for soy, rapeseed and sunflower oil remained firm during most of September, palm oil quotations dropped for the second consecutive month reflecting seasonally high production, which, combined with weak demand, has led to a marked rise in stocks.

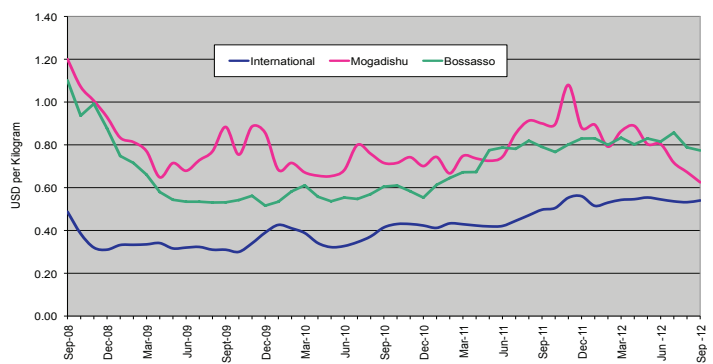
International price transmission in cooking oil is not explicitly evident in port cities of Somalia. Specifically, vegetable oil prices remained relatively stable over the previous month in Bosasso and Mogadishu but showed a significant annual decline (12-31%) on the backdrop of on-going humanitarian interventions and improved port operations.

Figure 1: Diesel Prices: Dubai, Mogadishu and Bossaso



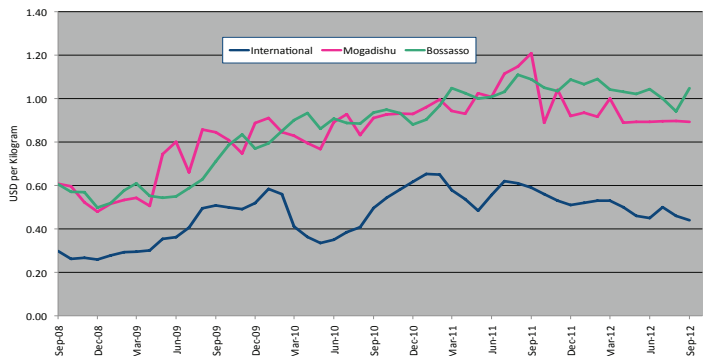
Source: FAO Statistics, FEWSNET and FSNAU Market Price Monitoring System, 2012

Figure 2: Rice Prices: Bangkok FOB, Mogadishu and Bossaso Markets



Source: FAO Statistics, FEWSNET and FSNAU Market Price Monitoring System, 2012

Figure 3: Sugar Prices: International, Mogadishu and Bossaso Markets



Source: International Sugar Organization, FEWSNET and FSNAU Market Price Monitoring System, 2012

1 Weekly Abu Dhabi Murban Spot Price FOB (Dollars per Barrel), US Energy Information Administration, http://www.eia.doe.gov/dnav/pet/pet_pri_wco_k_w.htm

2 Rising geopolitical tensions over the Iranian nuclear program has seen the revival of the oil price risk premium

3 International Energy Agency (IEA) Monthly Oil Market Report, September, 2012; <http://omrpublic.iea.org/currentissues/full.pdf>; www.oilmarketreport.org

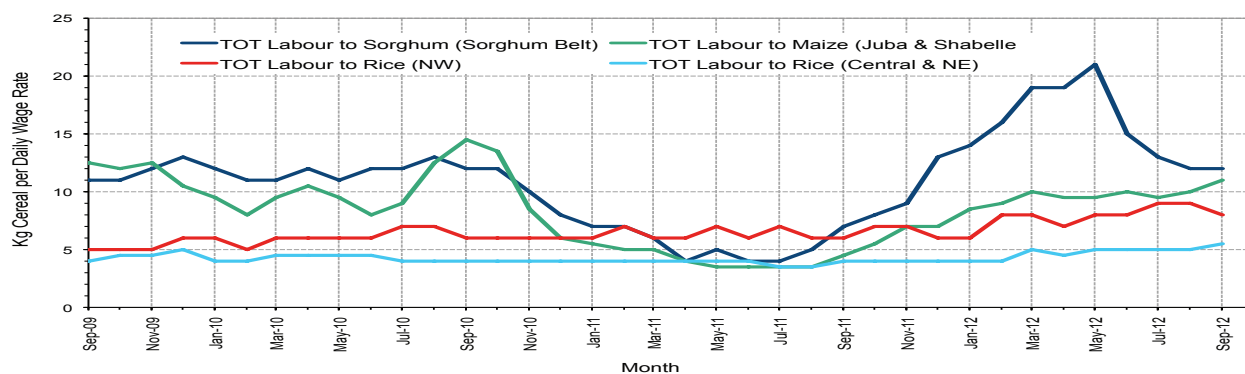
4 Main cereal import in Somalia

5 The World Food Situation: The FAO Food Price Index October 2012

6 Ibid

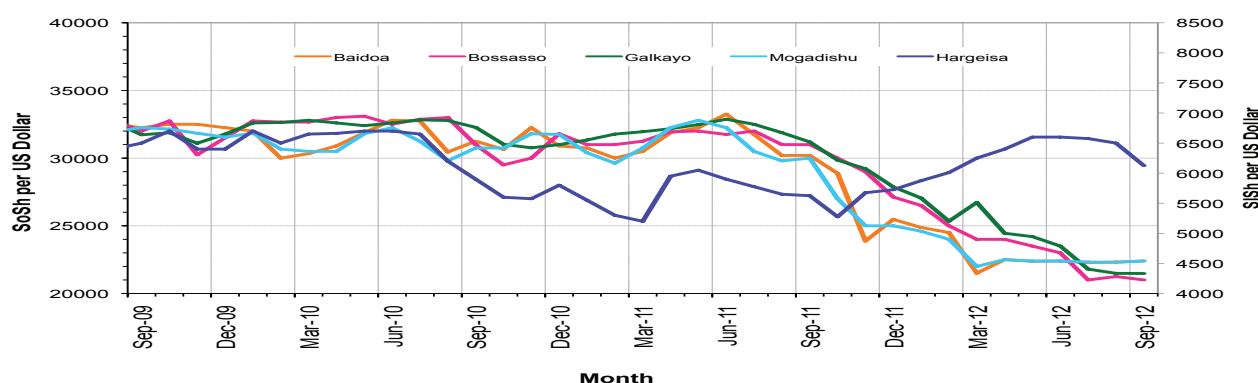
National Trends: CPI, Exchange Rates, Cereal Prices and Relative Purchasing Power

Figure 4: Terms of Trade between wage rates and selected cereals



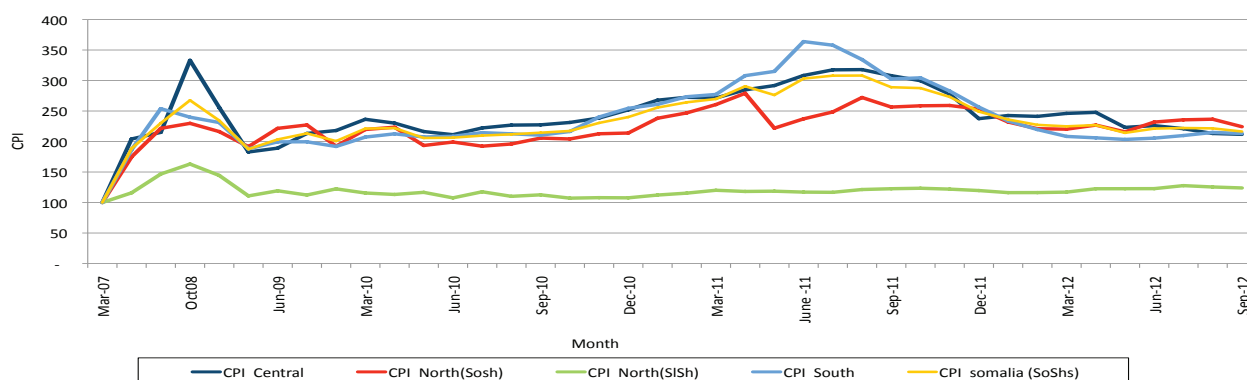
* Purchasing power was generally stable

Figure 5: Monthly Exchange Rate for Selected Regions (SoSh and SiSh to USD)



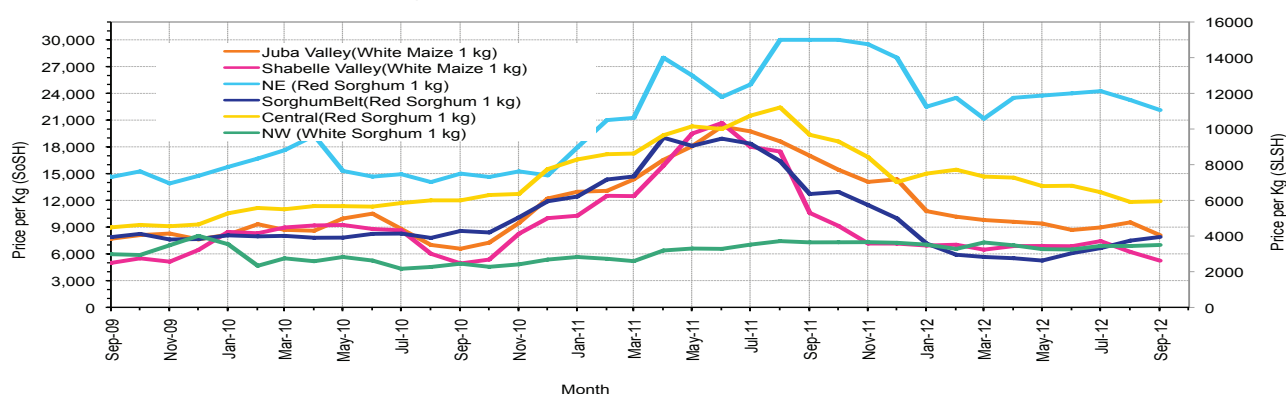
*Local currencies largely stable against the greenback (USD) in September 2012.

Figure 6: Monthly Trends in Consumer Price Index (CPI, March 2007=100)



*Inflation declined marginally in North SoSh but remained steady in all other zones

Figure 7: Monthly Trends in Local Cereal Prices



*Trends in local cereal prices were mixed in September 2012

Regional analysis: Juba Regions

Indicator	5-Year Average (2003-07)	Sep-11	Aug-12	Sep-12 Nominal Price	Sep-12 Real (Deflated) Price	% Change Same Month Previous Year	% Change Previous Month	% Change 5-year avg (2003-07)
Imported Commodities Prices								
Diesel 1 litre	13,960	40,821	33,893	33,036	15,395	-19%	-3%	137%
Imported Red Rice 1kg	9,149	25,857	18,036	16,750	7,756	-35%	-7%	83%
Petrol 1 litre	16,351	36,857	35,571	34,214	15,947	-7%	-4%	109%
Sugar	9,080	37,786	22,857	22,143	10,286	-41%	-3%	144%
Vegetable Oil 1 litre	19,571	57,250	37,500	38,714	18,058	-32%	3%	98%
Wheat Flour 1kg	8,609	23,643	17,143	16,286	7,539	-31%	-5%	89%
Wheat Grain 1kg	5,896	20,000	-	-	-	-	-	-
Cereal Prices								
Red Sorghum 1kg	2,199	-	6,500	7,000	-	-	8%	218%
White Maize 1kg	2,330	17,000	9,536	8,054	3,678	-53%	-16%	246%
Livestock & Livestock Product Prices								
Camel Local Quality (Head)	3,345,966	7,492,917	9,396,250	10,127,083	4,749,821	35%	8%	203%
Cattle Local Quality (Head)	1,663,664	2,285,000	3,636,250	3,724,250	1,746,691	63%	2%	124%
Fresh Camel Milk 1 litre	6,419	18,643	19,893	18,607	8,627	0%	-6%	190%
Goat Export Quality (Head)	431,059	978,429	1,833,571	1,825,500	856,117	87%	0%	323%
Goat Local Quality (Head)	305,465	628,929	1,220,357	1,182,893	554,714	88%	3%	287%
Other Essential Items								
Charcoal 50kg	28,528	63,750	76,786	82,893	38,779	30%	8%	191%
Cowpeas 1 kg	5,852	33,375	22,571	20,464	9,498	-39%	-9%	250%
Unskilled Labor Wage Rate	37,846	62,071	93,250	82,107	38,411	32%	-12%	117%
Firewood Bundle	2,405	6,571	9,000	9,107	4,171	39%	1%	279%
Local Sesame Oil 1 litre	21,042	89,071	67,500	72,036	33,687	-19%	7%	242%
Exchange Rate (Somali Shilling per USD)	16,243	30,204	22,389	22,332	10,374	-26%	0%	37%
Construction Materials*								
Cement 50kg	-	343,333	322,143	290,708	136,251	-15%	-10%	-
Cooking Pot Aluminium 7 Litre	-	358,333	286,607	284,643	133,407	-21%	-1%	-
Galvanised Iron Sheet Ga 26	-	174,271	130,357	122,143	57,189	-30%	-6%	-
Hollow Concrete Block 10cm x 20cm x 40cm	-	20,000	15,000	15,000	6,935	-25%	0%	-
Non Collapsible Jerrycan 10 Litre	-	31,875	34,000	34,750	16,199	9%	2%	-
Plastic Tarpaulin 14m x 5 m	-	575,000	308,750	315,417	147,841	-45%	2%	-
Roofing Nails 15Kg	-	804,286	807,857	793,393	372,026	-1%	2%	-
Timber 2in x 4in x 20ft	-	327,500	265,500	276,750	129,704	-15%	4%	-
Woven Dry Raised Blanket 150cm x 200cm	-	-	78,083	66,667	31,169	-	-15%	-
Terms of Trade								
Labour Wage (Daily)/ Cereal (Maize(Kg))	16	4	10	10	-	179%	4%	-37%
Local Goat (Head)/ Cereal (Maize(Kg))	131	37	128	147	-	297%	15%	12%
Price Indices								
Consumer Price Index	-	303	215	213	-	-30%	-1%	-
Purchasing Power Index	-	0.33	0.47	0.47	-	42%	1%	-

* Data has been collected since May 2010

* Data has been collected since May 2010

Figure 8: Imported commodity prices compared to exchange rates

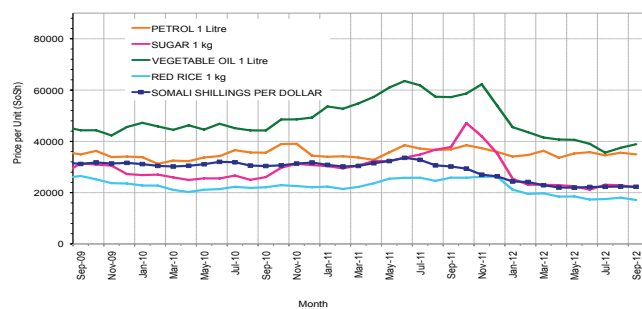


Figure 10: Goat Local Quality

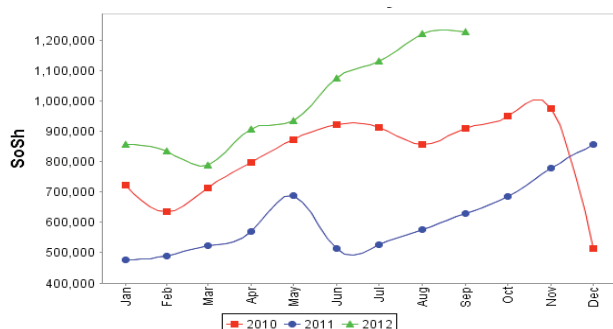


Figure 12: Water Drum

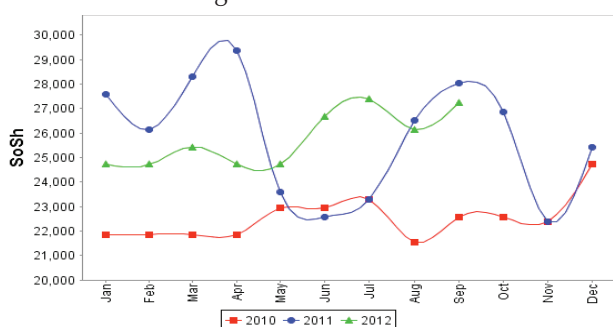


Figure 9: Trends in wage rates, staple cereal prices and relative purchasing power

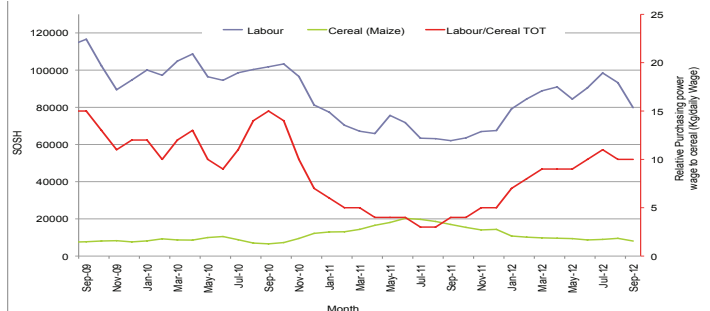


Figure 11: Exchange Rate

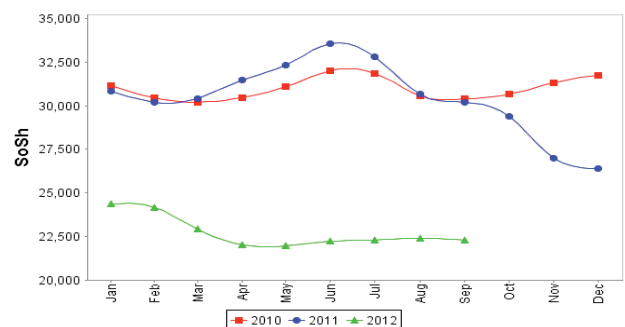
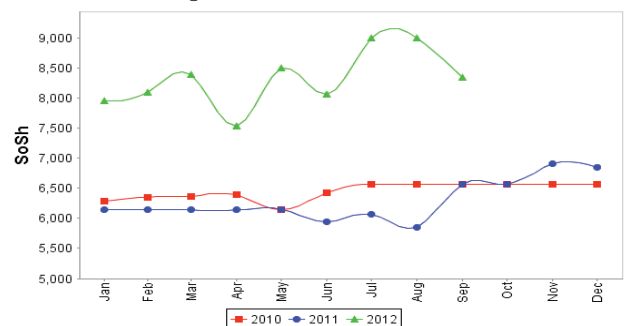


Figure 13: Firewood Bundle



Regional analysis: Sorghum Belt Regions (Bay, Bakool, Gedo and Hiran)

Indicator	5-Year Average (2003-07)	Sep-11	Aug-12	Sep-12 Nominal Price	Sep-12 Real (Deflated) Price	% Change Same Month Previous Year	% Change Previous Month	% Change 5-year avrg (2003-07)
Imported Commodities Prices								
Diesel 1 litre	12,782	42,841	31,773	31,818	14,824	-26%	0%	149%
Imported Red Rice 1kg	9,222	27,191	19,445	19,545	9,067	-28%	1%	112%
Petrol 1 litre	14,591	40,023	33,500	33,523	15,623	-16%	0%	130%
Sugar	9,465	38,023	23,273	23,432	10,890	-38%	1%	148%
Vegetable Oil 1 litre	19,024	60,023	45,864	43,727	20,409	-27%	-5%	130%
Wheat Flour 1kg	8,817	23,955	17,909	18,068	8,374	-25%	1%	105%
Wheat Grain 1kg	4,575	13,271	11,579	7,200	3,277	-46%	-38%	57%
Cereal Prices								
Red Sorghum 1kg	2,001	12,713	7,485	7,898	3,604	-38%	6%	295%
White Maize 1kg	2,623	14,045	9,155	8,864	4,057	-37%	-3%	238%
Livestock & Livestock Product Prices								
Camel Local Quality (Head)	3,426,524	6,722,727	12,796,750	12,955,900	6,076,626	93%	1%	278%
Cattle Local Quality (Head)	1,359,101	1,840,625	3,823,438	3,953,750	1,854,333	115%	3%	191%
Fresh Camel Milk 1 litre	7,545	28,114	31,568	32,091	14,952	14%	2%	325%
Goat Export Quality (Head)	411,645	1,237,045	1,716,818	1,788,636	838,827	45%	4%	335%
Goat Local Quality (Head)	265,053	675,227	1,243,523	1,292,364	606,059	91%	4%	388%
Other Essential Items								
Charcoal 50kg	37,102	114,000	140,227	143,636	67,270	26%	2%	287%
Cowpeas 1 kg	6,095	44,219	21,844	22,063	10,248	-50%	1%	262%
Unskilled Labor Wage Rate	19,839	87,841	87,795	91,477	42,806	4%	4%	361%
Firewood Bundle	1,626	5,455	6,455	6,318	2,863	16%	-2%	289%
Local Sesame Oil 1 litre	23,253	84,464	66,042	65,833	30,778	-22%	0%	183%
Exchange Rate (Somali Shilling per USD)	15,992	30,418	22,255	22,340	10,378	-27%	0%	40%
Construction Materials*								
Cement 50kg	-	337,083	331,700	314,833	147,567	-7%	-5%	-
Cooking Pot Aluminium 7 Litre	-	284,722	280,833	254,167	119,112	-11%	-3%	-
Galvanised Iron Sheet Ga 26	-	223,364	174,000	174,575	81,781	-22%	0%	-
Hollow Concrete Block 10cm x 20cm x 40cm	-	10,750	11,750	11,750	5,411	9%	0%	-
Non Collapsible Jerrycan 10 Litre	-	52,045	54,523	54,075	25,263	4%	-1%	-
Plastic Tarpaulin 14m x 5 m	-	294,200	304,500	297,000	139,202	1%	-2%	-
Roofing Nails 15Kg	-	814,250	766,667	759,222	355,999	-7%	-1%	-
Timber 2in x 4in x 20ft	-	223,214	291,406	293,286	137,460	31%	1%	-
Woven Dry Raised Blanket 150cm x 200cm	-	101,750	110,525	123,750	57,943	22%	12%	-
Terms of Trade								
Labour Wage (Daily)/ Cereal (Sorghum(Kg))	10	7	12	12	-	68%	-1%	17%
Local Goat (Head)/ Cereal (Sorghum(Kg))	132	53	166	164	-	208%	-2%	24%
Price Indices								
Consumer Price Index	-	303	215	213	-	-30%	-1%	-
Purchasing Power Index	-	0.33	0.47	0.47	-	42%	1%	-

* Data has been collected since May 2010

* Data has been collected since May 2010

Figure 14: Imported commodity prices compared to exchange rates

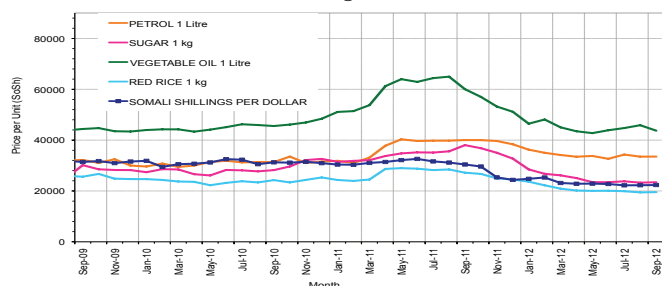


Figure 16: Goat Local Quality

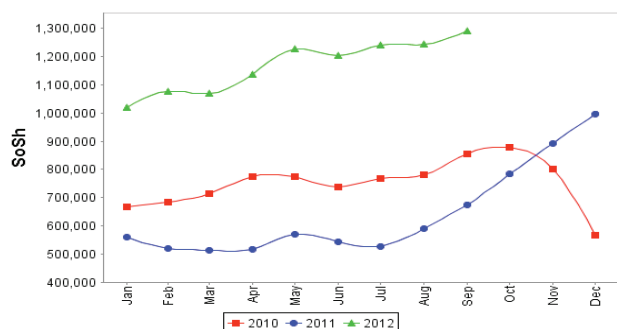


Figure 18: Water Drum

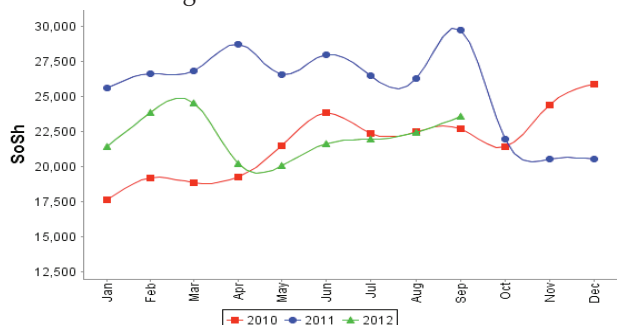


Figure 15: Trends in wage rates, staple cereal prices and relative purchasing power

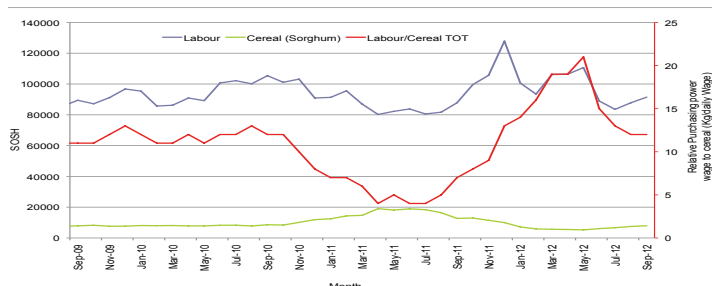


Figure 17: Exchange Rate

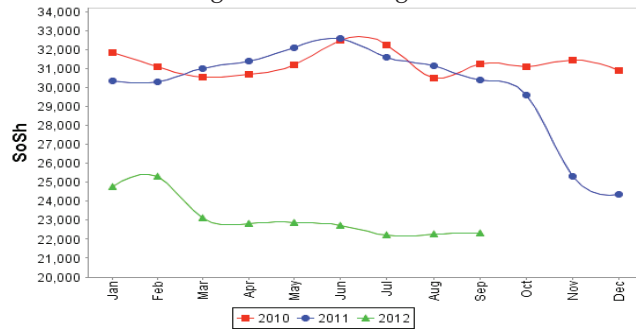
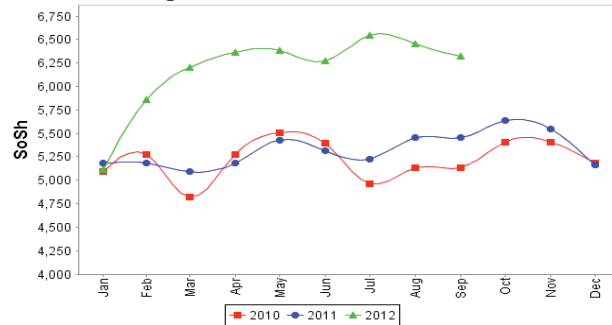


Figure 19: Firewood Bundle



Regional analysis: Shabelle Regions

Indicator	5-Year Average (2003-07)	Sep-11	Aug-12	Sep-12 Nominal Price	Sep-12 Real (Deflated) Price	% Change Same Month Previous Year	% Change Previous Month	% Change 5-year avg (2003-07)
Imported Commodities Prices								
Diesel 1 litre	10,730	40,000	29,458	30,458	14,186	-24%	3%	184%
Imported Red Rice 1kg	7,761	26,542	14,917	14,917	6,897	-44%	0%	92%
Petrol 1 litre	12,493	38,542	29,583	31,500	14,674	-18%	6%	152%
Sugar	7,890	36,875	22,583	21,500	9,984	-42%	-5%	172%
Vegetable Oil 1 litre	14,666	51,667	36,333	34,458	16,062	-33%	-5%	135%
Wheat Flour 1kg	7,588	25,333	15,600	14,792	6,838	-42%	-5%	95%
Wheat Grain 1kg	2,873	23,000	7,334	8,333	3,808	-64%	14%	190%
Cereal Prices								
Red Sorghum 1kg	2,427	17,742	9,530	8,311	3,798	-53%	-13%	242%
White Maize 1kg	2,362	10,591	6,523	5,238	2,357	-51%	-20%	122%
Livestock & Livestock Product Prices								
Camel Local Quality (Head)	4,061,116	13,032,500	16,930,000	15,600,000	7,316,792	20%	-8%	284%
Cattle Local Quality (Head)	1,243,496	3,209,000	4,700,000	4,835,000	2,267,667	51%	3%	289%
Fresh Camel Milk 1 litre	5,082	19,583	22,688	21,292	9,887	9%	-6%	319%
Goat Export Quality (Head)	505,666	1,431,875	1,966,250	1,756,250	823,637	23%	-11%	247%
Goat Local Quality (Head)	342,849	1,035,833	1,326,667	1,254,583	588,339	21%	-5%	266%
Other Essential Items								
Charcoal 50kg	37,163	114,972	116,381	107,403	50,275	-7%	-8%	189%
Cowpeas 1 kg	5,832	49,388	19,055	19,322	8,963	-61%	1%	231%
Unskilled Labor Wage Rate	21,681	55,875	64,375	64,500	30,153	15%	0%	197%
Firewood Bundle	2,021	4,833	6,042	6,417	2,910	33%	6%	218%
Local Sesame Oil 1 litre	20,026	70,708	53,625	53,642	25,060	-24%	0%	168%
Exchange Rate (Somali Shilling per USD)	16,255	30,788	22,592	22,808	10,598	-26%	1%	40%
Construction Materials*								
Cement 50kg	-	304,000	214,250	220,000	103,087	-28%	3%	-
Cooking Pot Aluminium 7 Litre	-	750,000	700,000	692,500	324,704	-8%	-1%	-
Galvanised Iron Sheet Ga 26	-	137,650	86,950	86,950	40,682	-37%	0%	-
Hollow Concrete Block 10cm x 20cm x 40cm	-	12,000	12,750	12,750	5,880	6%	0%	-
Non Collapsible Jerrycan 10 Litre	-	45,938	51,563	50,625	23,645	10%	-2%	-
Plastic Tarpaulin 14m x 5 m	-	330,000	235,833	252,083	118,135	-24%	7%	-
Roofing Nails 15Kg	-	586,500	595,500	580,500	272,173	-1%	-3%	-
Timber 2in x 4in x 20ft	-	60,100	47,750	46,750	21,827	-22%	-2%	-
Woven Dry Raised Blanket 150cm x 200cm	-	65,000	62,667	76,667	35,859	18%	22%	-
Terms of Trade								
Labour Wage (Daily)/ Cereal (Maize(Kg))	9	5	10	12	-	133%	25%	34%
Local Goat (Head)/ Cereal (Maize(Kg))	145	98	203	240	-	145%	18%	65%
Price Indices								
Consumer Price Index	-	303	215	213	-	-30%	-1%	-
Purchasing Power Index	-	0.33	0.47	0.47	-	42%	1%	-

* Data has been collected since May 2010

* Data has been collected since May 2010

Figure 20: Imported commodity prices compared to exchange rates

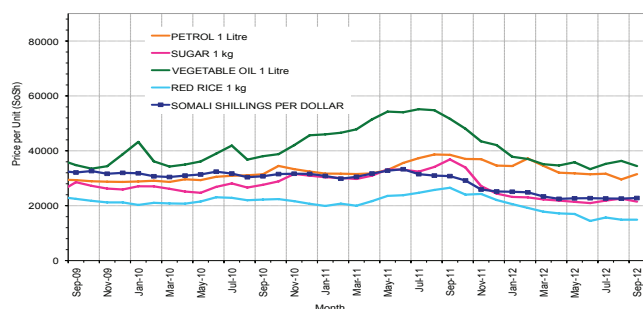


Figure 22: Goat Local Quality

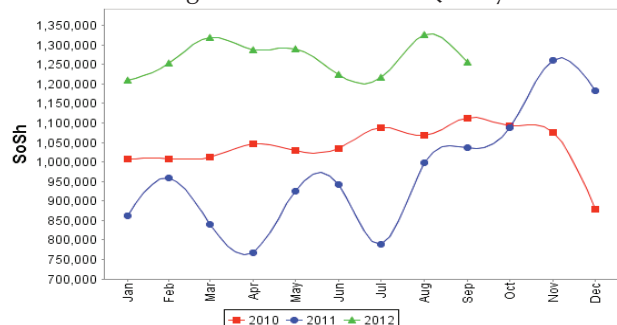


Figure 24: Water Drum

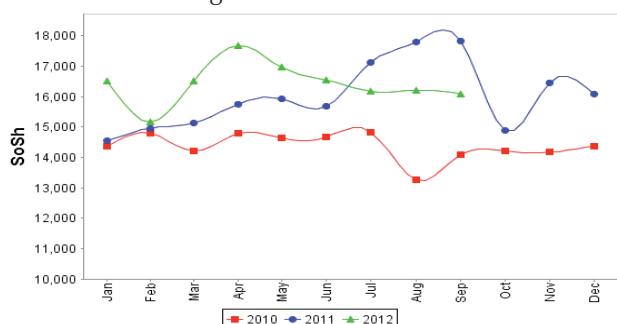


Figure 21: Trends in wage rates, staple cereal prices and relative purchasing power

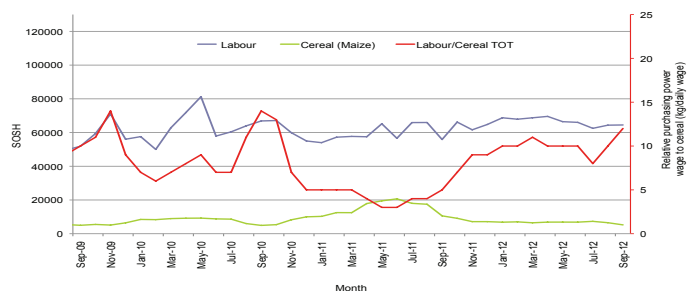


Figure 23: Exchange Rate

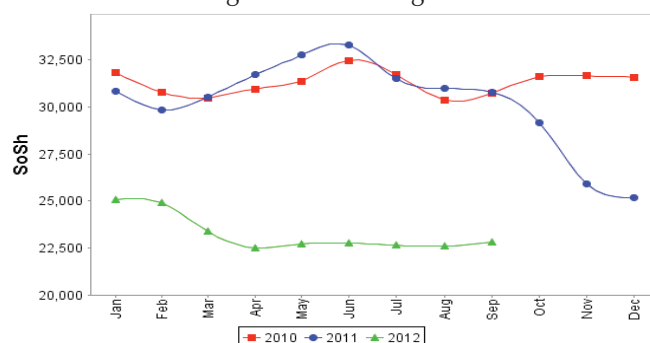
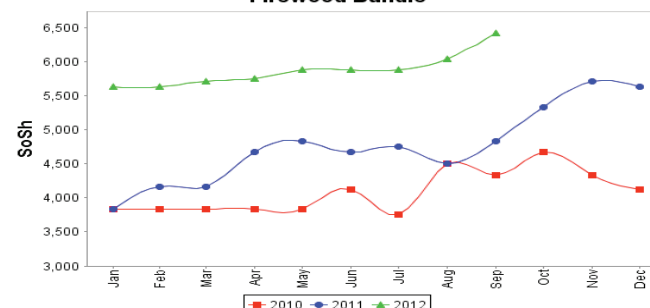


Figure 25: Firewood Bundle



Regional analysis:Banadir Region

Indicator	5-Year Average (2003-07)	Sep-11	Aug-12	Sep-12 Nominal Price	Sep-12 Real (Deflated) Price	% Change Same Month Previous Year	% Change Previous Month	% Change 5-year avrg (2003-07)
Imported Commodities Prices								
Diesel 1 litre	10,275	38,083	26,600	26,667	12,408	-30%	0%	160%
Imported Red Rice 1kg	8,366	23,333	14,167	14,313	6,613	-39%	1%	71%
Petrol 1 litre	11,250	35,542	26,133	26,875	12,505	-24%	3%	139%
Sugar	6,875	34,292	19,767	19,667	9,124	-43%	-1%	186%
Vegetable Oil 1 litre	14,350	49,125	33,917	34,083	15,886	-31%	0%	138%
Wheat Flour 1kg	7,250	21,250	13,100	13,458	6,212	-37%	0%	86%
Wheat Grain 1kg	3,966	19,000	11,673	11,283	5,192	-41%	-3%	184%
Cereal Prices								
Red Sorghum 1kg	2,315	17,272	5,437	5,914	2,674	-66%	9%	155%
White Maize 1kg	2,484	13,273	8,820	9,096	4,166	-31%	3%	266%
Livestock & Livestock Product Prices								
Camel Local Quality (Head)	5,526,666	10,500,000	-	-	-	-	-	-
Cattle Local Quality (Head)	2,740,000	3,425,000	-	-	-	-	-	-
Fresh Camel Milk 1 litre	4,716	19,292	21,607	22,250	10,336	15%	3%	372%
Goat Export Quality (Head)	-	1,500,000	2,600,000	2,600,000	1,219,382	73%	0%	-
Goat Local Quality (Head)	610,000	1,650,000	2,080,000	2,068,750	970,209	25%	-1%	239%
Other Essential Items								
Charcoal 50kg	100,000	142,292	183,533	175,583	82,254	23%	-4%	76%
Cowpeas 1 kg	4,911	58,749	19,160	19,892	9,230	-66%	4%	305%
Unskilled Labor Wage Rate	59,500	83,125	104,667	102,500	47,976	23%	-2%	72%
Firewood Bundle	42,150	6,250	7,737	7,629	3,478	22%	-1%	-82%
Local Sesame Oil 1 litre	19,533	67,458	56,200	58,125	27,162	-14%	3%	198%
Exchange Rate (Somali Shilling per USD)	16,365	30,254	22,444	22,527	10,466	-26%	0%	38%
Construction Materials*								
Cement 50kg	-	248,032	182,197	178,225	83,493	-28%	-2%	-
Cooking Pot Aluminium 7 Litre	-	298,667	284,000	286,333	134,199	-4%	1%	-
Galvanised Iron Sheet Ga 26	-	146,125	88,380	88,800	41,550	-39%	0%	-
Hollow Concrete Block 10cm x 20cm x 40cm	-	9,938	10,767	10,750	4,942	8%	0%	-
Non Collapsible Jerrycan 10 Litre	-	47,000	35,333	35,667	16,629	-24%	1%	-
Plastic Tarpaulin 14m x 5 m	-	312,500	187,500	187,500	87,843	-40%	0%	-
Roofing Nails 15Kg	-	595,542	480,583	478,542	224,351	-20%	0%	-
Timber 2in x 4in x 20ft	-	152,875	123,513	123,467	57,810	-19%	0%	-
Woven Dry Raised Blanket 150cm x 200cm	-	91,667	95,000	95,000	44,458	4%	0%	-
Terms of Trade								
Labour Wage (Daily)/ Cereal (Maize(Kg))	24	6	12	11	-	80%	-5%	-53%
Local Goat (Head)/ Cereal (Maize(Kg))	246	124	236	227	-	83%	-4%	-7%
Price Indices								
Consumer Price Index	-	303	215	213	-	-30%	-1%	-
Purchasing Power Index	-	0.33	0.47	0.47	-	42%	1%	-

* Data has been collected since May 2010

* Data has been collected since May 2010

Figure 26: Bakara: Imported Commodity Prices compared to Exchange Rate

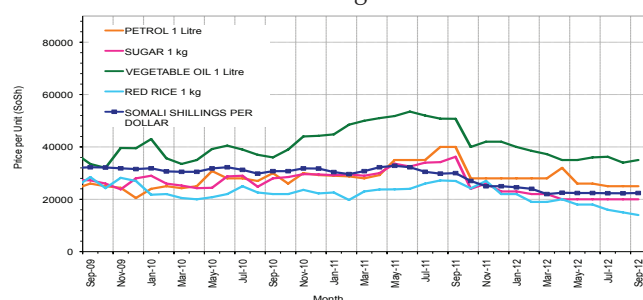


Figure 28: Goat Local Quality

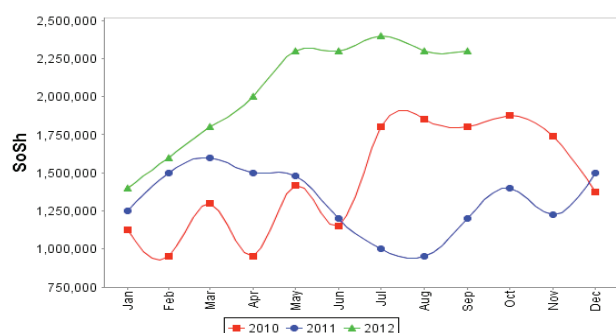


Figure 30: Wheat Flour

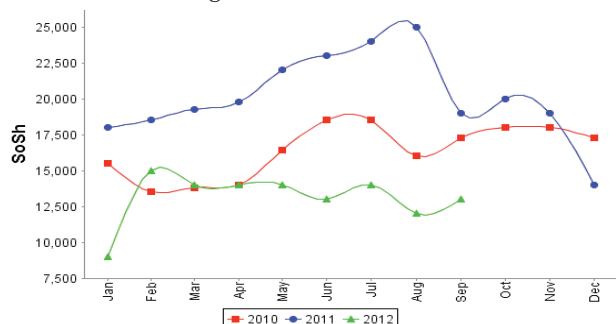


Figure 27: Bakara: Trends in Wage Rates, Staple Cereal Prices and Relative Purchasing Power

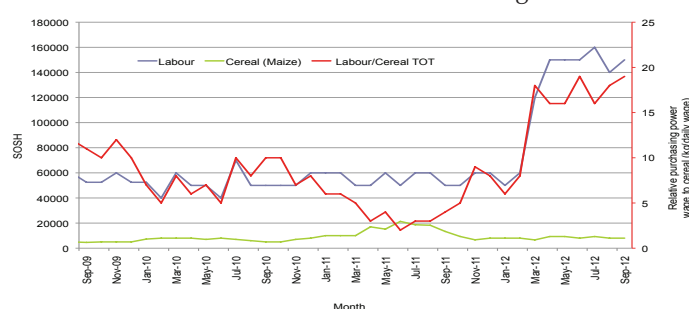


Figure 29: Exchange Rate

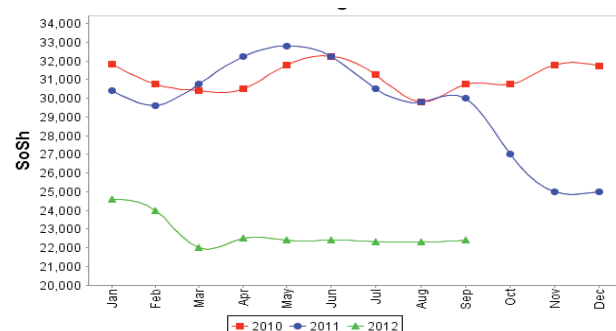
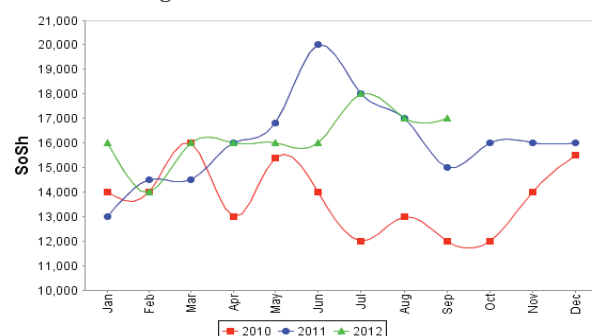


Figure 31: Fresh Camel Milk



Regional analysis: Central Regions

Indicator	5-Year Average (2003-07)	Sep-11	Aug-12	Sep-12 Nominal Price	Sep-12 Real (Deflated) Price	% Change Same Month Previous Year	% Change Previous Month	% Change 5-year avrg (2003-07)
Imported Commodities Prices								
Diesel 1 litre	12,138	40,620	30,620	32,150	15,082	-21%	5%	165%
Imported Red Rice 1kg	8,609	32,500	20,800	20,600	9,628	-37%	-1%	139%
Petrol 1 litre	13,118	36,030	26,600	27,400	12,839	-24%	3%	109%
Sugar	9,561	39,000	24,840	24,900	11,658	-36%	0%	160%
Vegetable Oil 1 litre	18,777	62,900	46,200	46,000	21,622	-27%	0%	145%
Wheat Flour 1kg	8,437	25,100	17,000	17,100	7,975	-32%	1%	103%
Wheat Grain 1kg	5,125	20,550	15,667	15,000	6,983	-27%	-4%	193%
Cereal Prices								
Red Sorghum 1kg	4,918	19,350	11,820	11,900	5,519	-39%	1%	142%
White Maize 1kg	4,944	20,720	13,920	14,100	6,558	-32%	1%	185%
Livestock & Livestock Product Prices								
Camel Local Quality (Head)	2,305,577	7,825,000	9,875,000	10,325,000	4,875,569	32%	5%	348%
Cattle Local Quality (Head)	1,571,125	2,400,000	-	-	-	-	-	-
Fresh Camel Milk 1 litre	13,218	46,100	34,320	32,550	15,271	-29%	-5%	146%
Goat Export Quality (Head)	363,534	1,437,500	1,516,667	1,520,833	718,067	6%	0%	318%
Goat Local Quality (Head)	271,961	944,400	1,280,000	1,266,500	597,966	34%	-1%	366%
Other Essential Items								
Charcoal 50kg	54,827	175,750	173,000	177,500	83,719	1%	3%	224%
Cowpeas 1 kg	7,238	55,530	24,560	24,700	11,564	-56%	1%	241%
Unskilled Labor Wage Rate	29,372	89,000	86,000	83,750	39,448	-6%	-3%	185%
Firewood Bundle	3,745	34,000	34,000	34,000	15,955	0%	0%	808%
Local Sesame Oil 1 litre	27,895	96,000	89,500	89,000	41,928	-7%	-1%	219%
Exchange Rate (Somali Shilling per USD)	16,340	30,774	22,018	22,020	10,298	-28%	0%	35%
Construction Materials*								
Cement 50kg	-	363,700	284,250	282,788	133,438	-22%	-1%	-
Cooking Pot/Aluminium 7 Litre	-	421,200	384,800	372,000	175,566	-12%	-3%	-
Galvanised Iron Sheet Ga 26	-	166,000	125,200	122,275	57,641	-26%	-2%	-
Hollow Concrete Block 10cm x 20cm x 40cm	-	16,700	15,250	15,750	7,337	-6%	3%	-
Non Collapsible Jerrycan 10 Litre	-	51,600	45,200	47,900	22,519	-7%	6%	-
Plastic Tarpaulin 14m x 5 m	-	330,400	273,200	292,500	138,024	-11%	7%	-
Roofing Nails 15Kg	-	830,200	653,250	685,688	323,695	-17%	5%	-
Timber 2in x 4in x 20ft	-	153,600	107,750	113,750	53,615	-26%	6%	-
Woven Dry Raised Blanket 150cm x 200cm	-	134,000	134,000	134,000	63,177	0%	0%	-
Terms of Trade								
Labour Wage (Daily)/ Cereal (Rice)(Kg))	3	3	4	4	-	48%	-2%	19%
Local Goat (Head)/ Cereal (Rice)(Kg))	32	29	62	61	-	112%	0%	95%
Camel (Head)/Cereal (Kg)	268	241	475	501	-	108%	6%	87%
Price Indices								
Consumer Price Index	-	308	213	212	-	-31%	-1%	-
Purchasing Power Index	-	0.32	0.47	0.47	-	45%	1%	-

* Data has been collected since May 2010

* Data has been collected since May 2010

Figure 32: Imported commodity prices compared to exchange rates

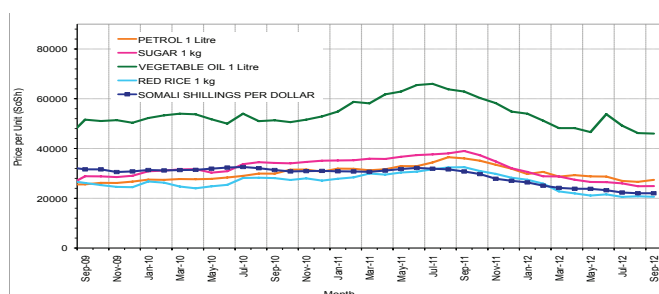


Figure 34: Goat Local Quality

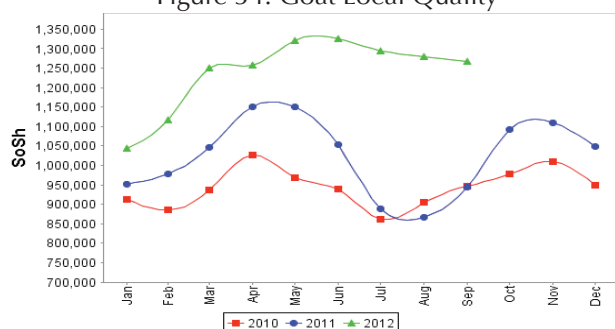


Figure 36: Water Drum

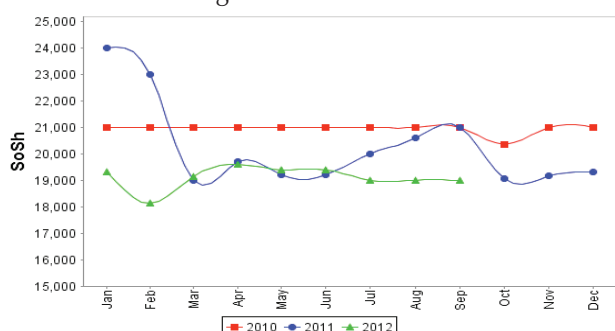


Figure 33: Trends in wage rates, staple cereal prices and relative purchasing power

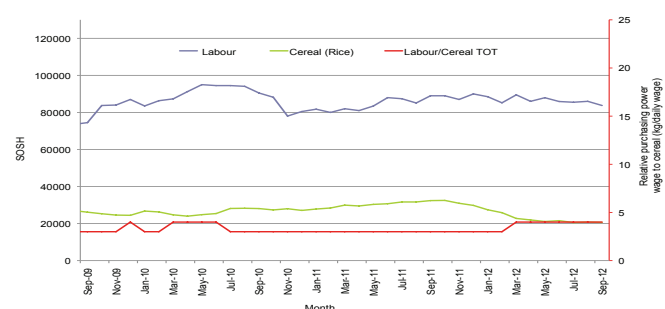


Figure 35: Exchange Rate

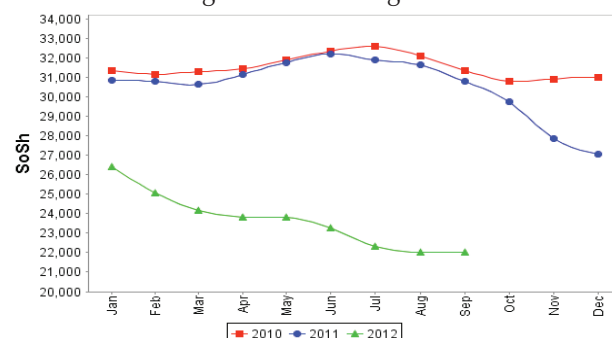
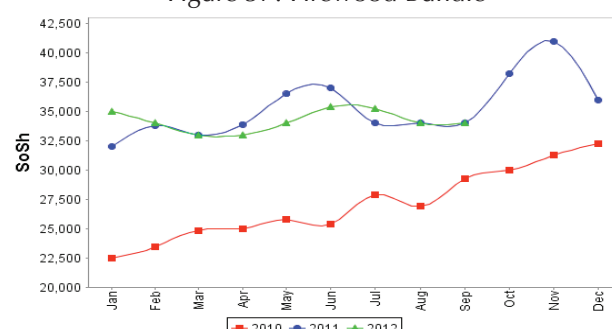


Figure 37: Firewood Bundle



Regional analysis: Northeast Regions

Indicator	5-Year Average (2003-07)	Sep-11	Aug-12	Sep-12 Nominal Price	Sep-12 Real (Deflated) Price	% Change Same Month Previous Year	% Change Previous Month	% Change 5-year avrg (2003-07)
Imported Commodities Prices								
Diesel 1 litre	10,166	36,125	25,500	24,750	10,934	-31%	-3%	143%
Imported Red Rice 1kg	7,431	25,500	18,875	18,063	7,953	-29%	-4%	143%
Petrol 1 litre	10,955	31,375	23,250	21,875	9,653	-30%	-6%	100%
Sugar	8,637	34,313	22,750	22,625	9,987	-34%	-1%	162%
Vegetable Oil 1 litre	17,828	63,938	43,313	43,188	19,155	-32%	0%	142%
Wheat Flour 1kg	7,800	23,500	17,438	16,875	7,423	-28%	-3%	116%
Wheat Grain 1kg	7,250	36,750	23,875	22,500	9,931	-39%	-6%	210%
Cereal Prices								
Red Sorghum 1kg	7,150	30,000	23,250	22,125	9,764	-26%	-5%	209%
White Maize 1kg	6,152	22,250	21,500	19,500	8,594	-12%	-9%	217%
Livestock & Livestock Product Prices								
Camel Local Quality (Head)	3,547,500	13,562,500	15,993,750	16,131,250	7,191,803	19%	1%	355%
Cattle Local Quality (Head)	1,747,916	8,250,000	7,875,000	-	-	-	-	-
Fresh Camel Milk 1 litre	15,454	41,500	41,625	39,292	17,418	-5%	-6%	154%
Goat Export Quality (Head)	430,208	1,406,250	1,425,000	1,525,000	679,801	8%	7%	254%
Goat Local Quality (Head)	389,749	1,266,875	1,393,750	1,425,000	635,217	12%	2%	266%
Other Essential Items								
Charcoal 50kg	98,958	357,500	367,500	362,500	161,516	1%	-1%	266%
Cowpeas 1 kg	10,195	64,000	39,167	38,667	17,139	-40%	-1%	279%
Unskilled Labor Wage Rate	43,916	116,000	122,500	122,500	54,515	6%	0%	179%
Firewood Bundle	6,800	35,938	46,250	45,000	19,963	25%	-3%	562%
Local Sesame Oil 1 litre	31,830	97,500	86,875	87,813	39,050	-10%	1%	176%
Exchange Rate (Somali Shilling per USD)	16,718	31,156	20,969	21,000	9,263	-33%	0%	26%
Construction Materials*								
Cement 50kg	-	258,438	194,813	190,688	84,916	-26%	-2%	-
Cooking Pot Aluminium 7 Litre	-	506,875	410,188	440,625	196,347	-13%	7%	-
Galvanised Iron Sheet Ga 26	-	249,750	175,875	176,750	78,702	-29%	0%	-
Hollow Concrete Block 10cm x 20cm x 40cm	-	12,500	12,500	12,500	5,473	0%	0%	-
Non Collapsible Jerrycan 10 Litre	-	42,500	39,500	39,688	17,594	-7%	0%	-
Plastic Tarpaulin 14m x 5 m	-	197,375	157,500	159,438	70,983	-19%	1%	-
Roofing Nails 15Kg	-	469,563	586,875	583,438	260,018	24%	-1%	-
Timber 2in x 4in x 20ft	-	240,563	168,750	168,125	74,856	-30%	0%	-
Woven Dry Raised Blanket 150cm x 200cm	-	280,188	247,438	223,146	99,387	-20%	-10%	-
Terms of Trade								
Labour Wage (Daily)/ Cereal (Rice(Kg))	6	5	6	7	-	49%	4%	15%
Local Goat (Head)/ Cereal (Rice(Kg))	52	50	74	79	-	59%	7%	50%
Price Indices								
Consumer Price Index	-	257	237	224	-	-13%	-5%	-
Purchasing Power Index	-	0.39	0.42	0.45	-	14%	5%	-

* Data has been collected since May 2010
* Data has been collected since May 2010

Figure 38: Imported commodity prices compared to exchange rates

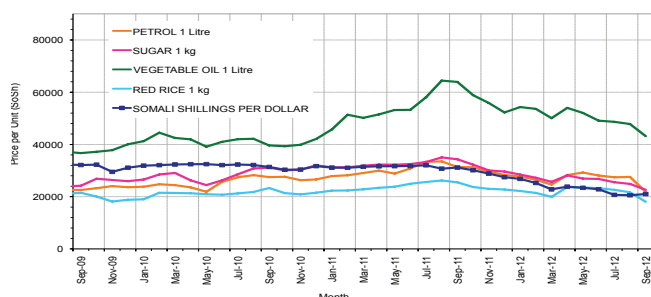


Figure 40: Goat Local Quality

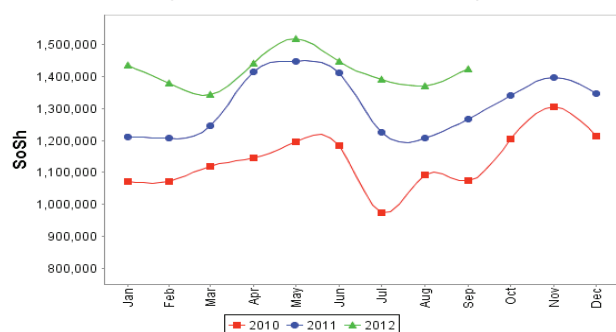


Figure 42: Water Drum

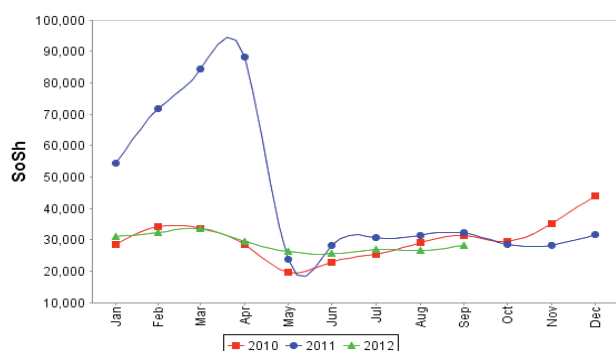


Figure 39: Trends in wage rates, staple cereal prices and relative purchasing power

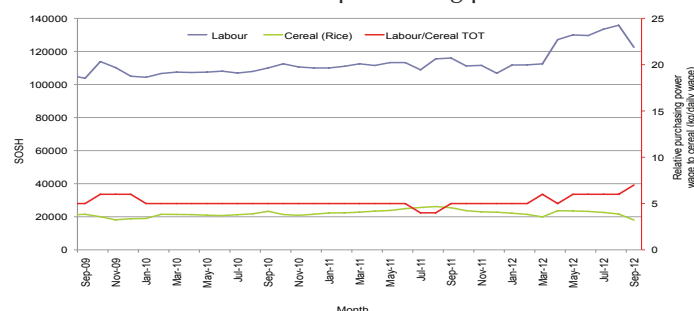


Figure 41: Exchange Rate

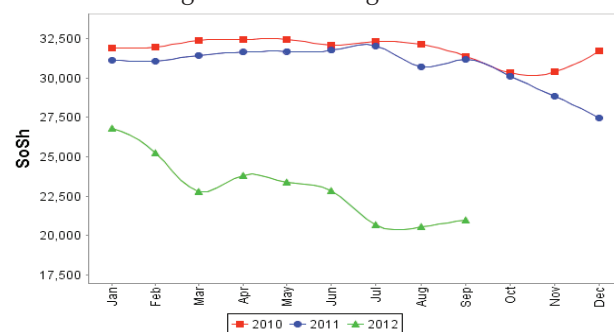
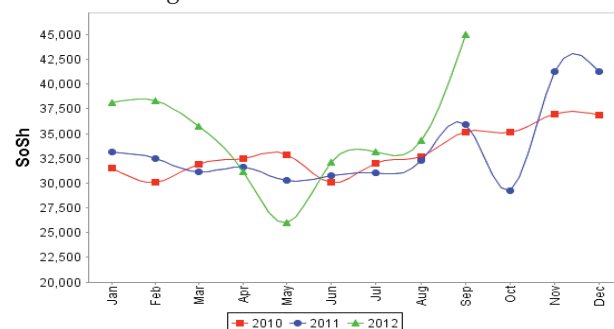


Figure 43: Firewood Bundle



Regional analysis: Northwest Regions

Indicator	5-Year Average (2003-07)	Sep-11	Aug-12	Sep-12 Nominal Price	Sep-12 Real (Deflated) Price	% Change Same Month Previous Year	% Change Previous Month	% Change 5-year avrg (2003-07)
Imported Commodities Prices								
Diesel 1 litre	3,873	6,675	6,880	7,040	5,583	5%	2%	82%
Imported Red Rice 1kg	3,253	5,225	4,585	4,995	3,932	-4%	9%	54%
Petrol 1 litre	4,560	7,090	7,090	7,290	5,785	3%	3%	60%
Sugar	3,392	7,020	6,040	6,050	4,784	-14%	0%	78%
Vegetable Oil 1 litre	7,543	11,900	12,555	12,765	10,204	7%	2%	69%
Wheat Flour 1kg	3,087	4,545	4,420	4,175	3,270	-8%	-6%	35%
Wheat Grain 1kg	2,094	3,975	3,488	2,844	2,196	-28%	-18%	36%
Cereal Prices								
White Sorghum 1kg	2,105	3,645	3,440	3,500	2,725	-4%	2%	66%
Yellow Maize 1kg	2,117	3,450	3,745	3,735	2,915	8%	0%	76%
Livestock & Livestock Product Prices								
Camel Local Quality (Head)	1,654,562	1,749,667	2,666,333	2,649,000	2,138,263	51%	-1%	60%
Cattle Local Quality (Head)	810,091	1,191,667	1,853,500	1,880,333	1,525,841	59%	2%	133%
Fresh Camel Milk 1 litre	4,503	4,910	5,525	5,400	4,259	10%	-2%	20%
Goat Export Quality (Head)	171,713	326,550	409,300	422,200	340,714	29%	3%	146%
Goat Local Quality (Head)	145,050	224,800	273,100	286,275	230,991	27%	5%	97%
Other Essential Items								
Charcoal 50kg	20,381	34,300	40,300	40,300	32,432	17%	0%	98%
Cowpeas 1 kg	4,921	9,667	9,563	9,388	7,478	-3%	-2%	91%
Unskilled Labor Wage Rate	28,517	31,050	39,200	40,400	32,512	30%	3%	42%
Firewood Bundle	4,925	2,833	3,333	3,333	2,591	18%	0%	-32%
Local Sesame Oil 1 litre	16,905	23,688	25,000	25,063	20,132	6%	0%	48%
Exchange Rate (Somaliland Shilling per USD)	6,646	5,760	6,550	6,315	4,998	10%	-4%	-5%
Construction Materials*								
Cement 50kg	-	47,168	54,575	53,105	42,768	13%	-3%	-
Cooking Pot Aluminium 7 Litre	-	87,650	83,800	87,150	70,250	-1%	4%	-
Galvanised Iron Sheet Ga 26	-	43,750	48,625	50,063	40,313	14%	3%	-
Hollow Concrete Block 10cm x 20cm x 40cm	-	2,894	3,025	3,025	2,342	5%	0%	-
Non Collapsible Jerrycan 10 Litre	-	6,850	7,000	6,775	5,369	-1%	-3%	-
Plastic Tarpaulin 14m x 5 m	-	78,050	88,200	91,700	73,923	17%	4%	-
Roofing Nails 15Kg	-	171,150	194,100	193,150	155,817	13%	0%	-
Timber 2in x 4in x 20ft	-	104,275	128,083	127,683	102,970	22%	0%	-
Woven Dry Raised Blanket 150cm x 200cm	-	87,450	75,063	74,750	60,241	-15%	0%	-
Terms of Trade								
Labour Wage (Daily)/ Cereal (Rice(Kg))	9	6	9	8	-	36%	-5%	-8%
Local Goat (Head)/ Cereal (Rice(Kg))	45	43	60	57	-	33%	-4%	29%
Price Indices								
Consumer Price Index	-	123	125	124	-	1%	-1%	-
Purchasing Power Index	-	0.82	0.80	0.81	-	-1%	1%	-

* Data has been collected since May 2010

* Data has been collected since May 2010

Figure 44: Imported commodity prices compared to exchange rates

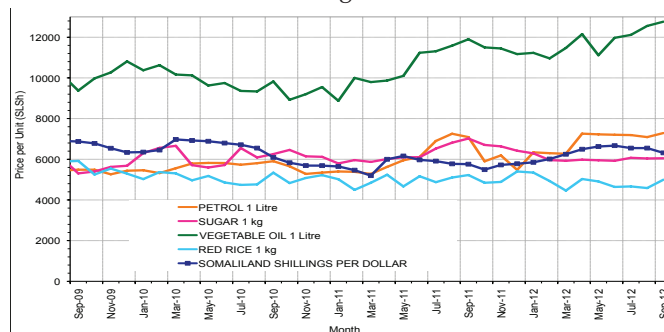


Figure 46: Goat Local Quality

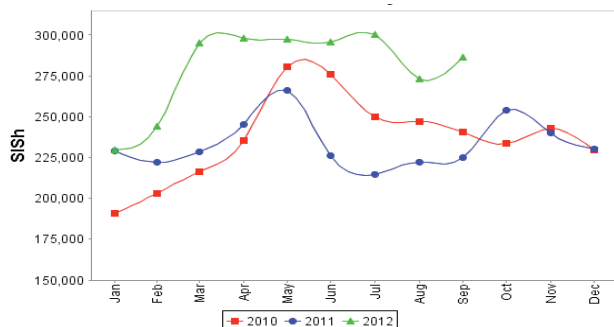


Figure 48: Water Drum

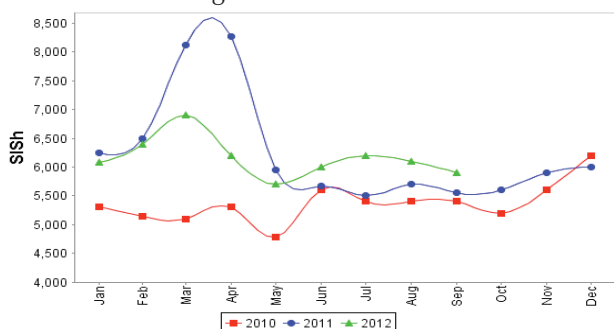


Figure 45: Trends in wage rates, staple cereal prices and relative purchasing power

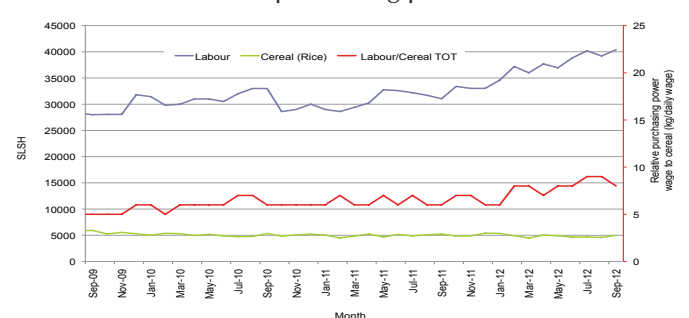


Figure 47: Exchange Rate

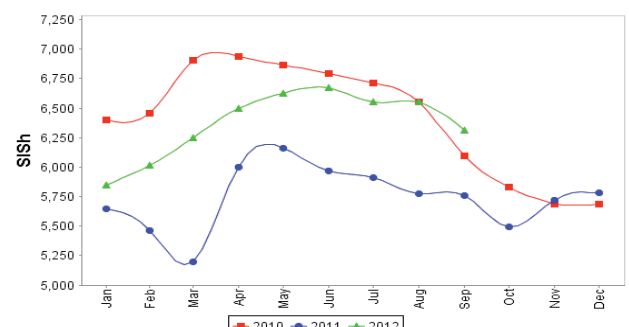
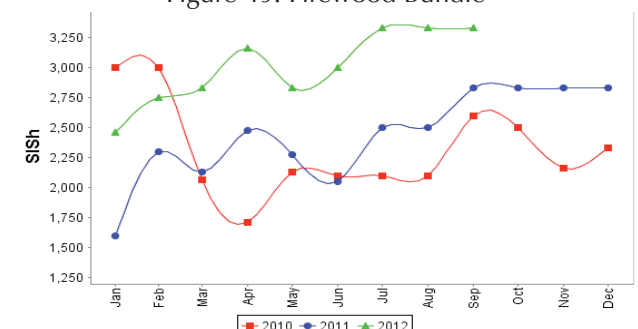


Figure 49: Firewood Bundle



Trends in Livestock Exports

Table 2: Berbera Livestock Exports (Number of Heads)

	1994	1995	1996	1997	1998	1999	2000	2001	2002	2003	2004	2005	2006	2007	2008	2009	2010	2011	2012 (Jan-Jul)*
Shoats	1,572,656	2,683,597	2,376,646	2,814,495	957,224	2,048,136	1,601,083	51,546	341,711	563,107	859,404	1,023,795	1,017,242	1,350,054	1,219,519	1,556,003	2,584,810	3,104,684	1,014,129
Cattle	173,400	167,128	65,127	66,939	92,213	89,967	63,263	20,973	37,547	84,312	131,852	148,151	85,631	88,143	80,051	88,005	133,021	150,934	98,893
Camel	38,553	21,993	42,801	50,587	11,663	37,430	16,984	3,473	18,864	21,874	5,147	5,069	22,810	14,245	26,515	20,206	92,651	107,281	77,586

* Jan-Jul 2012 cumulative livestock exports

Figure 50: Berbera Livestock Exports (Number of Heads)

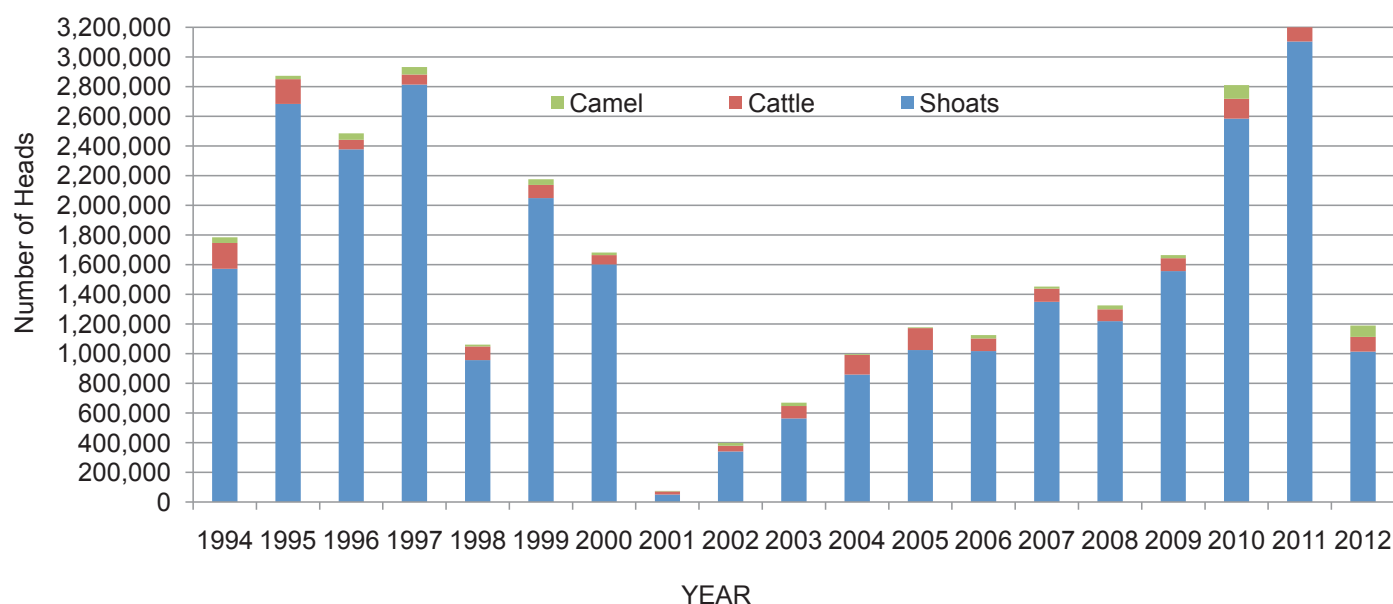
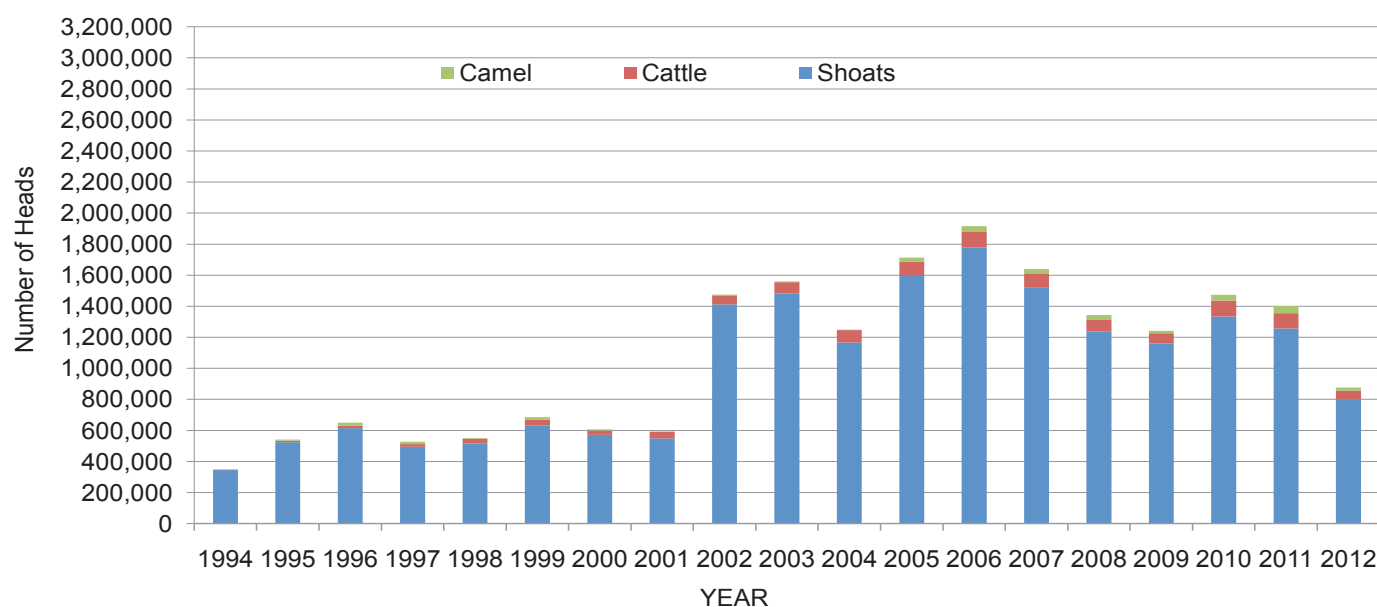


Table 3: Bossaso Livestock Exports (Number of Heads)

	1994	1995	1996	1997	1998	1999	2000	2001	2002	2003	2004	2005	2006	2007	2008	2009	2010	2011	2012 (Jan-Sep)
Shoats	344,000	524,346	614,407	494,320	517,020	633,669	571,455	548,853	1,412,450	1,483,409	1,166,480	1,594,859	1,777,283	1,522,855	1,236,775	1,159,454	1,333,478	1,256,535	796,921
Cattle	1,450	8,795	15,335	17,831	29,492	36,586	27,604	42,248	53,313	71,328	79,994	91,910	104,595	89,190	78,046	67,385	103,808	99,058	59,815
Camel	5,397	8,392	20,462	14,599	3,938	15,544	8,177	1,950	9,720	4,259	2,488	26,109	33,724	27,580	27,639	15,331	36,865	45,878	18,765

Figure 51: Bossaso Livestock Exports (Number of Heads)

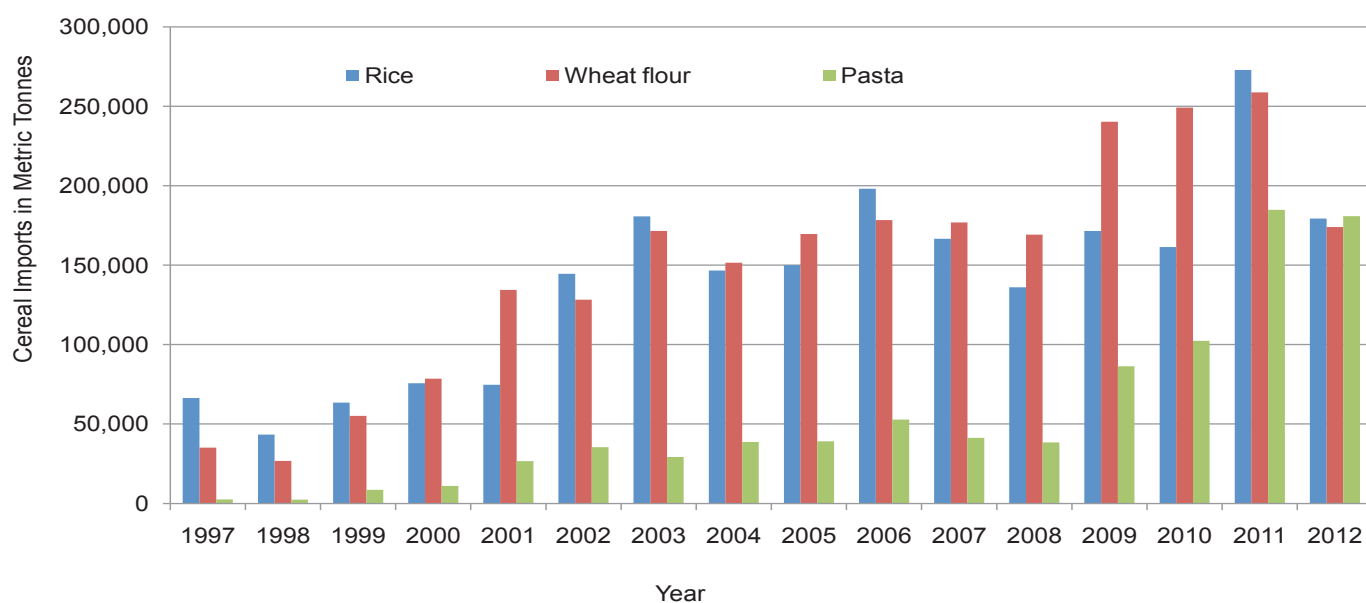


Trends in Cereal Imports

Table 4: Total Cereal Imports (Berbera,Bossaso,Elmaan)

	1997	1998	1999	2000	2001	2002	2003	2004	2005	2006	2007	2008	2009	2010	2011	2012*
Rice	66,419	43,410	63,464	75,687	74,729	144,600	180,614	146,567	150,017	198,101	166,626	136,007	171,472	161,415	272,877	179,285
Wheat flour	35,143	26,774	55,176	78,555	134,425	128,263	171,442	151,555	169,583	178,345	176,821	169,208	240,247	249,080	258,679	174,004
Pasta	2,510	2,455	8,544	11,071	26,702	35,425	29,273	38,749	39,153	52,815	41,331	38,441	86,372	102,373	184,849	180,837

Figure 52: Total Cereal Imports (Berbera,Bossaso and Elmaan)



* January-September 2012 Cumulative Cereal Imports

* Berbera data up to July 2012

* Bossaso data up to September 2012

* Elmaan data is up to July 2012