

Market Update



Food and Agriculture
Organization of the
United Nations



Food Security and Nutrition
Analysis Unit - Somalia

October 2018 Update (Issued November 20, 2018)

Highlights

Inflation:

SoSh (Somali shilling)-using areas: Compared to one month ago, consumer Price Index (CPI) remained relatively stable in October 2018. CPI declined by 16 percent compared to one year ago (October 2017) annually in South-Central SoSh using regions due to decreases in cereal prices.

SISh (Somaliland shilling)-using areas: CPI remained relatively stable in October 2018 compared to a month ago but declined by 8 percent compared to a year ago due to decline in cereal prices.

Exchange rate:

SoSh-using areas: The exchange rates between SoSh and the United States Dollar (USD) remained relatively stable in most regions of the country in October 2018 compared to last month. Annual comparison indicates that SoSh lost value in most of SoSh using areas with the highest depreciation being recorded in Northeast (21%).

SISh-using areas: The SISh the exchange rate remained relatively stable against the USD compared to both last month and a year ago.

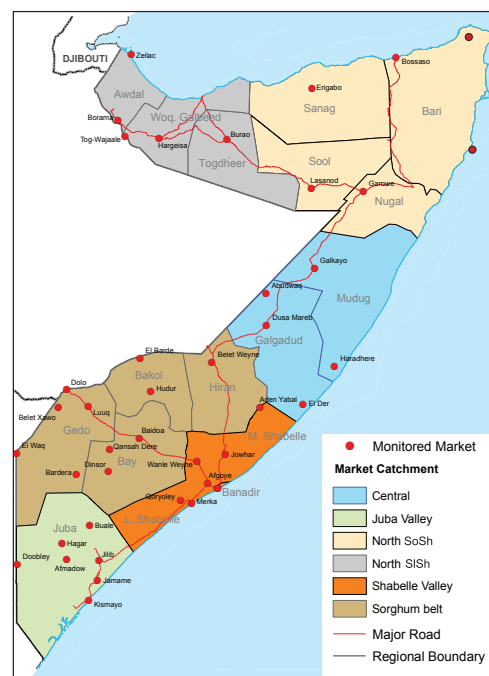
Local cereal (white maize, red sorghum and white sorghum) prices either remained relatively stable or changed at mild rates (by +/- less than 10%) in October 2018 across Somalia. Compared to a year ago, local cereal prices were lower in most regions due to improved harvests this year.

Prices of imported food (rice, sugar, vegetable oil, wheat flour) mostly exhibited relative stability or mild monthly changes in local currency terms in October 2018 compared to last month in most regions. Similarly, compared to one year ago, prices exhibited mild changes (mostly increases) in most central and Southern regions for most food imports. Exceptions are Bakool (El-Barde) and Awdal regions where prices of most food imports increased (20-52%) because of reduced supply due to deterioration of security conditions in Elbarde and damages to road infrastructure caused by cyclone sagar.

Livestock prices for local quality goat and camel mostly exhibited mild monthly changes (less than +/- 10%) in most regions of the country. Compared to a year ago (October 2017), livestock prices were higher due to improved body conditions as a result of better rainfall performance in Gu, 2018 boosted by light to moderate Deyr 2018 rains which increased water availability and pasture. Milk prices either remained relatively stable or changed at mild rates in October 2018 compared to last month. Similarly, compared to last month and a year ago, milk prices (camel and cattle) mostly exhibited mild changes (+/- less than 10%) in most regions of the country.

Labor (unskilled) wages changed mildly (by less than or equal to +/-10%) in October 2018 compared to last month in most of the regions. Compared to a year ago, labor wages mostly exhibited increases in most regions of the country due to improved agricultural labor opportunities (off-season) as a result of improved rainfall performance this year.

Terms of Trade (ToT) between daily labor wage and cereals either remained relatively stable or changed at mild rates (by +/- 1-2kgs/daily wage) in most regions of the country compared to last month. Annual comparison indicates higher ToT between daily labor and cereals in most regions due to increased labor wages and/or decrease in cereal prices. The ToT between local quality goat and cereals showed mostly mild changes (+/-) in most regions of the country in October 2018. Annual comparison indicates higher ToT between goat and cereal due to increased goat prices and decrease in cereal prices.



This Market Update is a monthly report that presents analysis of market information and is produced regularly as part of the monthly monitoring process.

The weekly price data is collected from 46 main markets and 25 rural markets throughout Somalia since 1995.

Market analysis is an integral part of all of FSNAU's annual food security projections and seasonal technical reports (Technical Reports on FSNAU Post Gu and Post Deyr Analysis).

Detailed market data are available online on www.fsnau.org/ids.

Siege-affected towns (Bulo-Burto, Wajid, Dinsor and Hudur)

Labor (unskilled) wages in October 2018 exhibited mild (less than +/- 10%) monthly changes compared to a month ago. Annual comparison indicates higher labor wages in October 2018 compared to last year (October 2017) due to improved cropping activities.

Terms of Trade (ToTs) between daily labor wages and local cereals and between local quality goat and cereals remained relatively stable compared to last month but increased compared to a year ago due to decrease in cereal prices and/or increase in daily labor wage rates.

Local grain (red and white sorghum) prices remained relatively stable compared to last month. Compared to a year ago, prices of local grain declined from moderate to high levels with the highest decline (62%) being recorded in Wajid due to increased supply from the improved Gu 2018 harvest.

Prices of imported food items (rice, sugar, vegetable oil, wheat flour) changed (by less than +/-10%) at mild rates for most of the food imports in all siege-affected markets compared to last month. On the other hand, compared to a year ago, prices of most food imports mostly declined.

National Trends: CPI, Exchange Rates, Cereal Prices and Relative Purchasing Power

Table 1: ToT between Daily Labour Wage Rate and Cereals by Region October 2018

Regions	October 2018 (kg)	kg change from		
		September 2018	October 2017	October 5 yr Average (2013 - 2017)
Banadir/Mogadishu (White maize)	16	0	7	-2
Bay (Red sorghum)	22	3	12	8
Bakool (Red sorghum)	6	0	2	2
Gedo (Red sorghum)	18	1	8	5
Juba (White maize)	16	2	3	4
Shabelle (White maize)	14	-1	5	4
Northwest (Imported Rice)	12	-2	-1	2
Northeast (Imported Rice)	8	0	0	0
Central (Imported Rice)	6	0	1	2

Figure 1: Wheat Prices: Mogadishu and Bossaso Markets

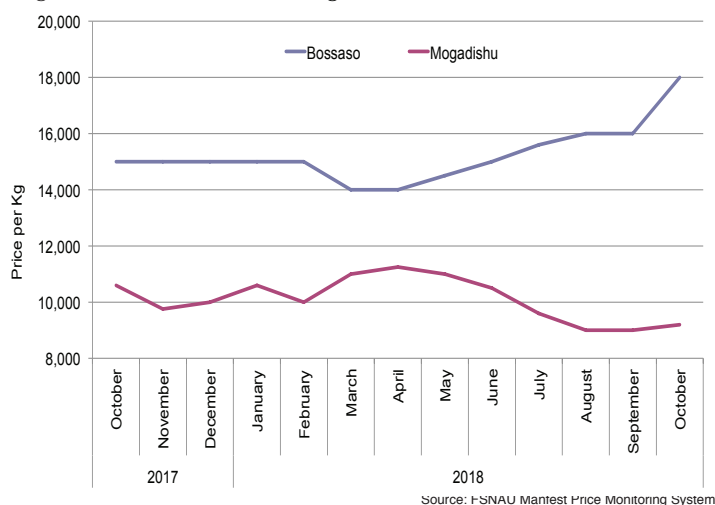


Figure 2: Terms of Trade Between Wage Rates and Selected Cereals

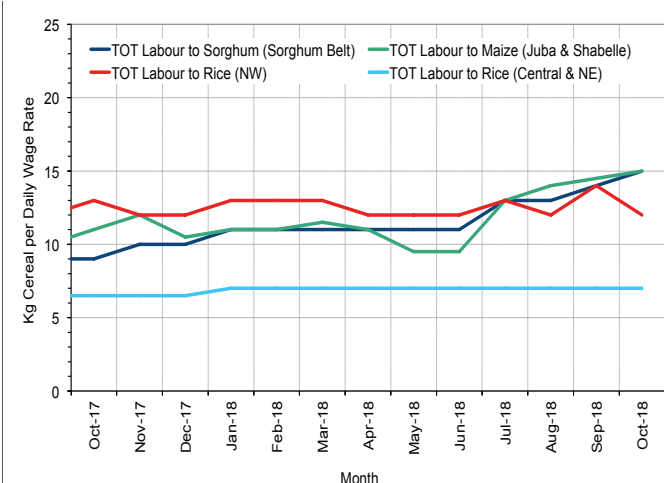


Figure 3: Monthly Exchange Rate for Selected Regions (SoSh and SiSh to USD)

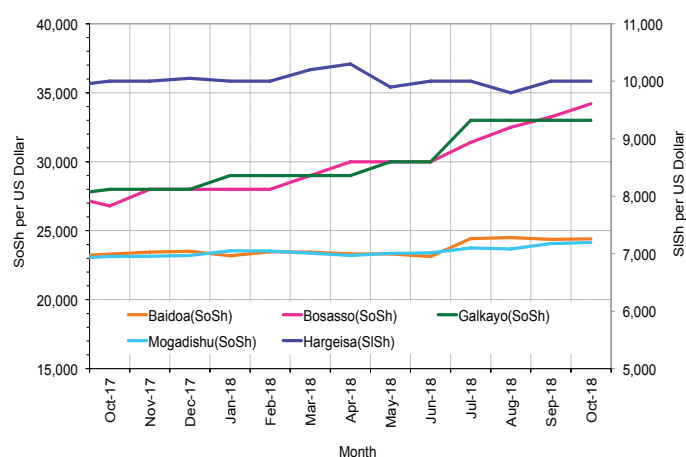


Figure 4: Monthly Trends in Consumer Price Index (CPI, March 2007=100)

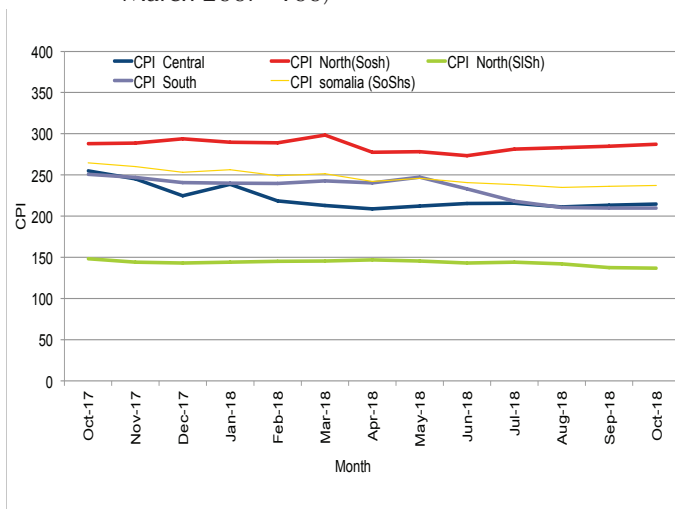
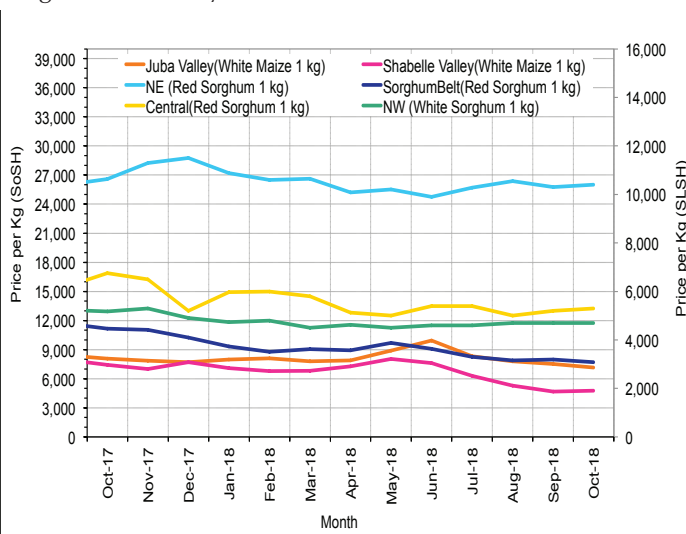


Figure 5: Monthly Trends in Local Cereal Prices



Regional analysis: Juba Regions

Indicator	5-Year Average (2013-2017)	Oct-17	Sep-18	Oct-18 Nominal Price	Oct-18 Real (Deflated) Price	% Change Previous Month	% Change Same Month Previous Year	% Change 5-year avg (2013-2017)
Imported Commodities Prices								
Diesel 1 litre	24,356	20,438	23,969	22,875	10,803	-5%	12%	-6%
Imported Red Rice 1kg	16,147	15,938	16,000	16,688	7,854	4%	5%	3%
Petrol 1 litre	26,312	22,906	25,563	24,500	11,578	-4%	7%	-7%
Sugar	17,619	16,938	16,125	16,844	7,929	4%	-1%	-4%
Vegetable Oil 1 litre	30,156	28,719	29,188	29,281	13,857	0%	2%	-3%
Wheat Flour 1kg	15,956	15,625	15,656	16,281	7,660	4%	4%	2%
Wheat Grain 1kg	-	-	-	-	-	-	-	-
Cereal Prices								
Red Sorghum 1kg	7,858	6,292	6,800	6,700	3,094	-1%	6%	-15%
White Maize 1kg	8,288	8,059	7,509	7,163	3,314	-5%	-11%	-14%
Livestock & Livestock Product Prices								
Camel Local Quality (Head)	9,602,754	11,150,000	12,923,571	12,603,571	6,007,455	-2%	13%	31%
Cattle Local Quality (Head)	3,619,634	3,741,667	3,680,357	3,446,429	1,642,658	-6%	-8%	-5%
Fresh Camel Milk 1 litre	18,743	18,906	16,344	17,938	8,450	10%	-5%	-4%
Goat Export Quality (Head)	1,365,156	1,658,750	1,635,625	1,506,250	717,862	-8%	-9%	10%
Goat Local Quality (Head)	871,612	960,938	920,313	902,188	429,932	-2%	-6%	4%
Other Essential Items								
Charcoal 50kg	83,562	87,813	98,563	106,094	50,470	8%	21%	27%
Cowpeas 1 kg	22,178	26,781	22,063	19,344	9,120	-12%	-28%	-13%
Unskilled Labor Wage Rate	97,402	105,625	103,844	113,906	54,194	10%	8%	17%
Firewood Bundle	8,756	7,516	7,375	7,344	3,401	0%	-2%	-16%
Local Sesame Oil 1 litre	65,562	51,719	63,313	56,500	26,831	-11%	9%	-14%
Exchange Rate (Somali Shilling per USD)	22,179	23,038	24,000	24,078	11,377	0%	5%	9%
Terms of Trade								
Labour Wage (Daily)/ Cereal (Maize(Kg))	12	13	14	16	-	14%	23%	33%
Local Goat (Head)/ Cereal (Maize(Kg))	110	119	123	126	-	2%	6%	15%
Price Indices								
Consumer Price Index	-	251	210	210	-	0%	-16%	-

Figure 6: Trends in Cereal Prices

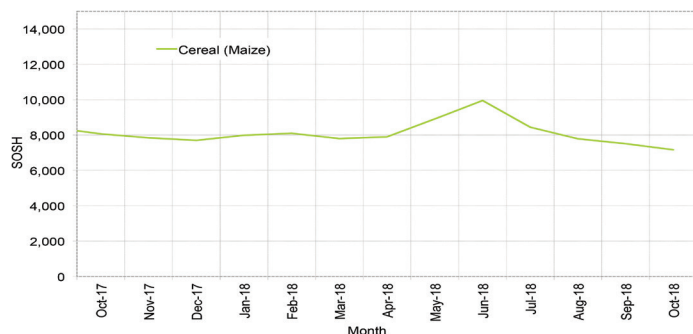


Figure 7: Trends in Wage Rates and Relative Purchasing Power

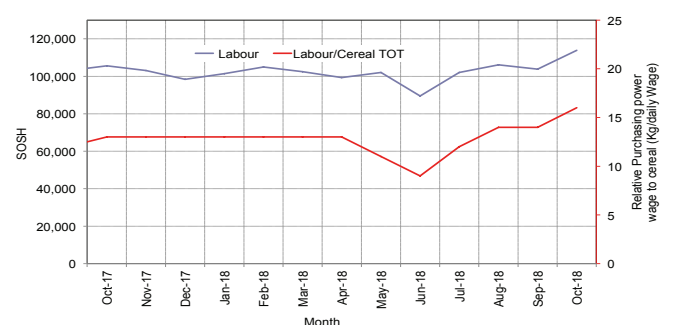


Figure 8: Imported Commodity Prices Compared to Exchange Rate

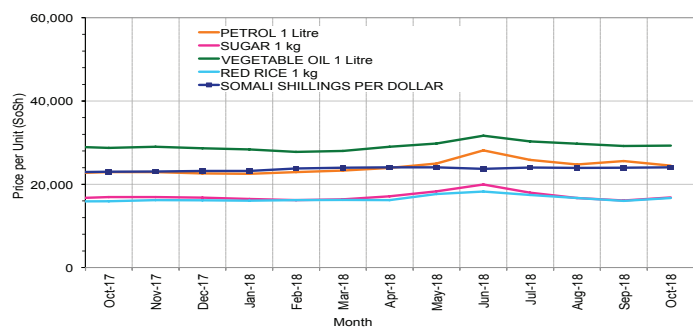


Figure 9: Goat Local Quality

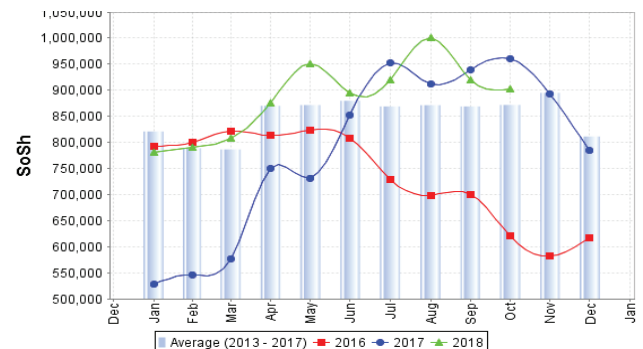


Figure 10: Exchange Rate

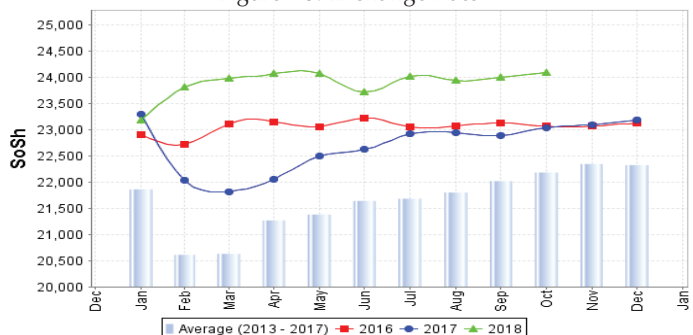
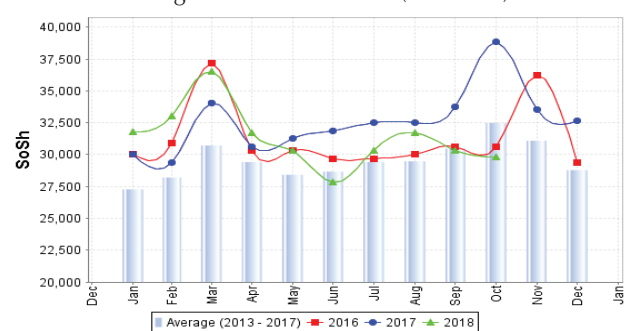


Figure 11: Water Drum (200 litres)



Regional analysis: Sorghum Belt Regions (Bay, Bakool, Gedo and Hiran)

Indicator	5-Year Average (2013-2017)	Oct-17	Sep-18	Oct-18 Nominal Price	Oct-18 Real (Deflated) Price	% Change Previous Month	% Change Same Month Previous Year	% Change 5-year avrg (2013-2017)
Imported Commodities Prices								
Diesel 1 litre	27,966	23,958	26,333	26,633	12,595	1%	11%	-5%
Imported Red Rice 1kg	18,896	19,450	19,542	19,725	9,302	1%	1%	4%
Petrol 1 litre	29,691	27,000	27,729	28,500	13,485	3%	6%	-4%
Sugar	20,366	21,029	19,854	20,300	9,576	2%	-3%	0%
Vegetable Oil 1 litre	37,833	36,333	38,000	37,579	17,812	-1%	3%	-1%
Wheat Flour 1kg	18,175	18,000	18,667	18,533	8,734	-1%	3%	2%
Wheat Grain 1kg	18,353	19,250	18,938	18,950	8,933	0%	-2%	3%
Cereal Prices								
Red Sorghum 1kg	9,264	11,333	7,695	7,449	3,451	-3%	-34%	-20%
White Maize 1kg	9,945	11,814	8,224	8,223	3,820	0%	-30%	-17%
Livestock & Livestock Product Prices								
Camel Local Quality (Head)	12,370,255	11,224,500	11,672,500	11,765,000	5,607,746	1%	5%	-5%
Cattle Local Quality (Head)	3,552,071	2,567,143	2,981,875	2,972,500	1,416,757	0%	16%	-16%
Fresh Camel Milk 1 litre	21,354	26,723	28,125	28,250	13,366	0%	6%	32%
Goat Export Quality (Head)	1,615,455	1,504,182	1,526,136	1,517,091	723,029	-1%	1%	-6%
Goat Local Quality (Head)	973,021	816,375	944,792	911,167	434,212	-4%	12%	-6%
Other Essential Items								
Charcoal 50kg	156,189	184,955	183,295	195,727	93,194	7%	6%	25%
Cowpeas 1 kg	26,992	36,902	24,313	24,407	11,534	0%	-34%	-10%
Unskilled Labor Wage Rate	97,874	95,583	104,271	107,483	51,132	3%	12%	10%
Firewood Bundle	6,743	6,133	5,521	5,638	2,587	2%	-8%	-16%
Local Sesame Oil 1 litre	79,610	78,950	78,500	79,111	37,609	1%	0%	-1%
Exchange Rate (Somali Shilling per USD)	22,374	23,124	24,383	24,422	11,541	0%	6%	9%
Terms of Trade								
Labour Wage (Daily)/ Cereal (Rice (Kg)	5	5	5	5	-	0%	0%	0%
Local Goat (Head)/ Cereal (Rice (Kg)	52	42	48	46	-	-4%	10%	-12%
Price Indices								
Consumer Price Index	-	251	210	210	-	0%	-16%	-

Figure 12: Trends in Cereal Prices

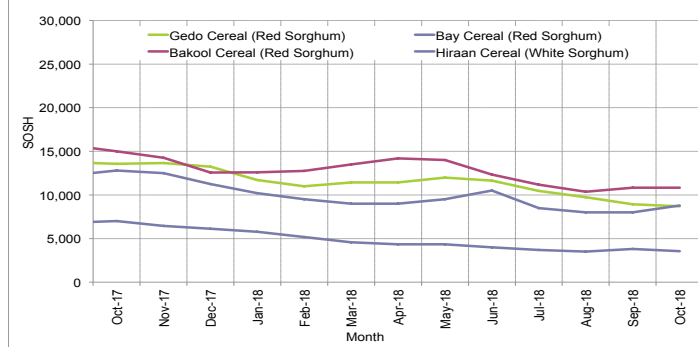


Figure 13: Trends in Wage Rates and Relative Purchasing Power

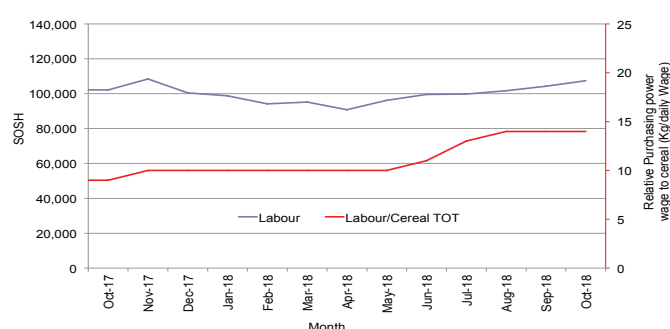


Figure 14: Imported Commodity Prices Compared to Exchange Rate

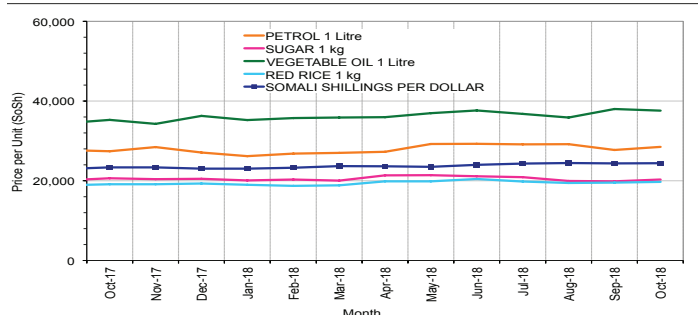


Figure 15: Goat Local Quality

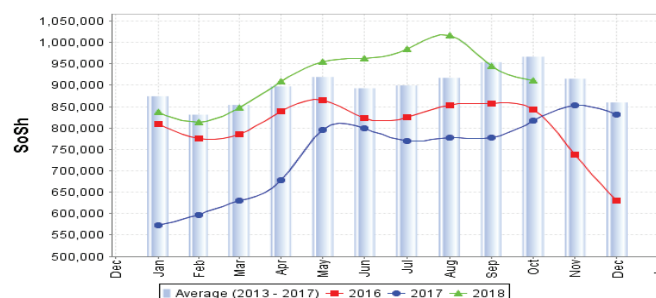


Figure 16: Exchange Rate

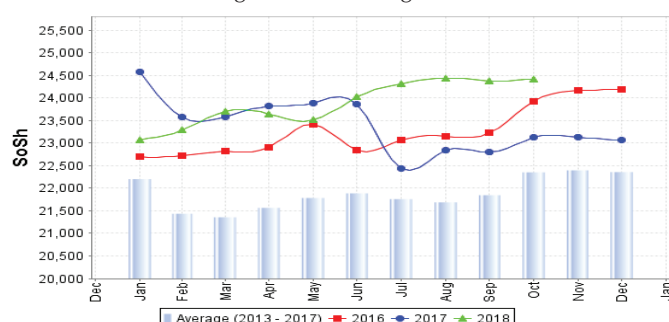
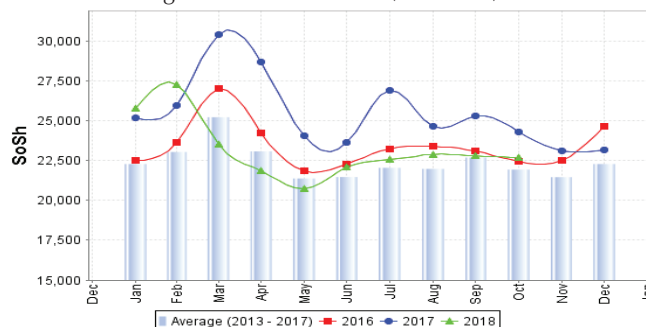


Figure 17: Water Drum (200 litres)



Regional analysis: Shabelle Regions

Indicator	5-Year Average (2013-2017)	Oct-17	Sep-18	Oct-18 Nominal Price	Oct-18 Real (Deflated) Price	% Change Previous Month	% Change Same Month Previous Year	% Change 5-year avrg (2013-2017)
Imported Commodities Prices								
Diesel 1 litre	22,070	16,625	20,417	20,875	9,850	2%	26%	-5%
Imported Red Rice 1kg	16,303	15,583	16,250	15,542	7,308	-4%	0%	-5%
Petrol 1 litre	25,141	19,083	22,083	22,875	10,803	4%	20%	-9%
Sugar	17,581	17,000	15,792	15,583	7,328	-1%	-8%	-11%
Vegetable Oil 1 litre	27,775	28,625	26,792	26,958	12,750	1%	-6%	-3%
Wheat Flour 1kg	16,271	14,167	14,625	14,625	6,871	0%	3%	-10%
Wheat Grain 1kg	17,046	17,000	15,000	16,000	7,526	7%	-6%	-6%
Cereal Prices								
Red Sorghum 1kg	9,882	10,986	6,899	7,418	3,436	8%	-32%	-25%
White Maize 1kg	6,878	7,442	4,690	4,757	2,167	1%	-36%	-31%
Livestock & Livestock Product Prices								
Camel Local Quality (Head)	17,189,616	17,181,250	16,927,500	17,150,000	8,174,533	1%	0%	0%
Cattle Local Quality (Head)	5,313,583	4,043,750	4,166,875	4,281,250	2,040,579	3%	6%	-19%
Fresh Camel Milk 1 litre	21,196	23,375	22,583	24,250	11,459	7%	4%	14%
Goat Export Quality (Head)	1,866,038	1,776,875	1,768,125	1,890,625	901,076	7%	6%	1%
Goat Local Quality (Head)	1,289,766	1,281,250	1,327,917	1,452,083	692,043	9%	13%	13%
Other Essential Items								
Charcoal 50kg	127,959	133,194	148,472	152,403	72,544	3%	14%	19%
Cowpeas 1 kg	24,246	43,028	15,996	15,444	7,261	-3%	-64%	-36%
Unskilled Labor Wage Rate	72,591	68,958	68,750	67,292	31,975	-2%	-2%	-7%
Firewood Bundle	6,788	6,417	6,833	7,000	3,237	2%	9%	3%
Local Sesame Oil 1 litre	57,405	51,542	57,083	58,083	27,586	2%	13%	1%
Exchange Rate (Somali Shilling per USD)	22,389	23,188	24,100	24,196	11,433	0%	4%	8%
Labour Wage (Daily)/ Cereal (Maize(Kg))	10	9	15	14	-	-7%	56%	40%
Local Goat (Head)/ Cereal (Maize(Kg))	187	172	283	305	-	8%	77%	63%
Price Indices								
Consumer Price Index	-	251	210	210	-	0%	-16%	-

Figure 18: Trends in Cereal Prices

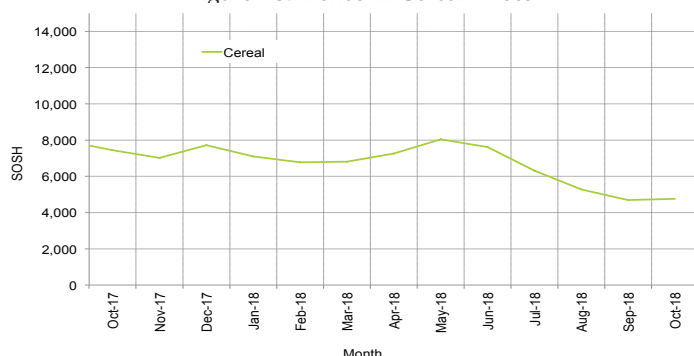


Figure 19: Trends in Wage Rates and Relative Purchasing Power

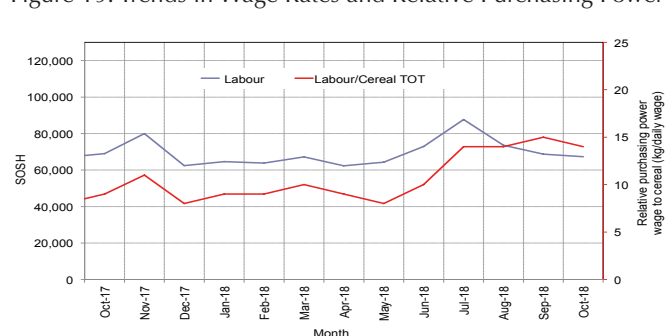


Figure 20: Imported Commodity Prices Compared to Exchange Rate

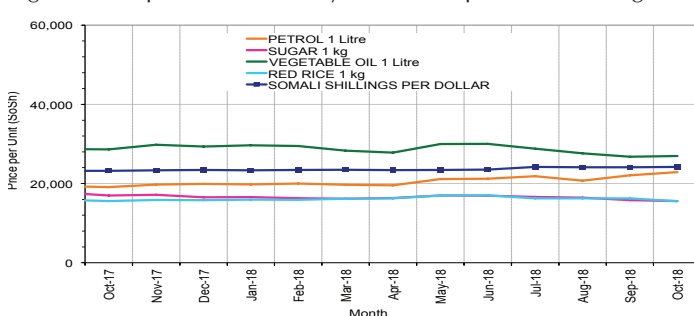


Figure 21: Goat Local Quality

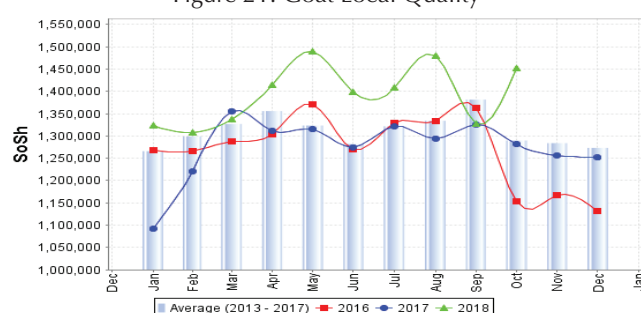


Figure 22: Exchange Rate

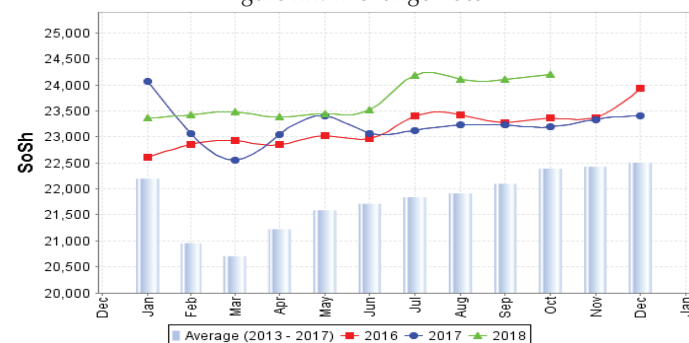
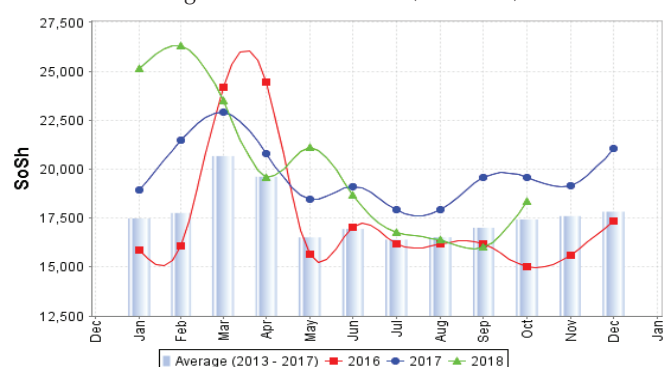


Figure 23: Water Drum (200 litres)



Regional analysis: Banadir Region

Indicator	5-Year Average (2013-2017)	Oct-17	Sep-18	Oct-18 Nominal Price	Oct-18 Real (Deflated) Price	% Change Previous Month	% Change Same Month Previous Year	% Change 5-year avg (2013-2017)
Imported Commodities Prices								
Diesel 1 litre	17,738	13,525	14,058	13,925	6,537	-1%	3%	-21%
Imported Red Rice 1kg	12,118	11,717	11,667	11,450	5,358	-2%	-2%	-6%
Petrol 1 litre	19,808	16,633	17,250	17,250	8,122	0%	4%	-13%
Sugar	13,968	14,175	13,083	13,067	6,128	0%	-8%	-6%
Vegetable Oil 1 litre	22,525	22,500	21,583	21,517	10,156	0%	-4%	-4%
Wheat Flour 1kg	12,500	11,700	10,500	10,608	4,956	1%	-9%	-15%
Wheat Grain 1kg	10,425	13,375	15,500	15,800	7,431	2%	18%	52%
Cereal Prices								
Red Sorghum 1kg	7,676	10,242	7,775	7,892	3,662	2%	-23%	3%
White Maize 1kg	8,805	11,248	8,600	8,762	4,076	2%	-22%	0%
Livestock & Livestock Product Prices								
Camel Local Quality (Head)	-	-	-	-	-	-	-	-
Cattle Local Quality (Head)	-	-	-	-	-	-	-	-
Fresh Camel Milk 1 litre	23,483	26,333	27,333	27,333	12,928	0%	4%	16%
Goat Export Quality (Head)	2,463,750	2,560,000	2,075,000	2,080,000	991,342	0%	-19%	-16%
Goat Local Quality (Head)	2,089,000	2,160,000	1,650,000	1,660,000	791,147	1%	-23%	-21%
Other Essential Items								
Charcoal 50kg	195,683	212,083	217,500	221,000	105,241	2%	4%	13%
Cowpeas 1 kg	24,266	43,083	20,192	20,163	9,511	0%	-53%	-17%
Unskilled Labor Wage Rate	108,833	87,917	85,833	93,000	44,229	8%	6%	-15%
Firewood Bundle	7,600	8,000	8,000	8,000	3,713	0%	0%	5%
Local Sesame Oil 1 litre	57,300	52,167	59,667	60,000	28,499	1%	15%	5%
Exchange Rate (Somali Shilling per USD)	22,138	22,873	24,079	24,117	11,395	0%	5%	9%
Terms of Trade								
Labour Wage (Daily)/ Cereal (Rice(Kg))	9	8	7	8	-	14%	0%	-11%
Local Goat (Head)/ Cereal (Rice(Kg))	172	184	141	145	-	3%	-21%	-16%
Price Indices								
Consumer Price Index	-	251	210	210	-	0%	-16%	-

Figure 24: Trends in Cereal Prices

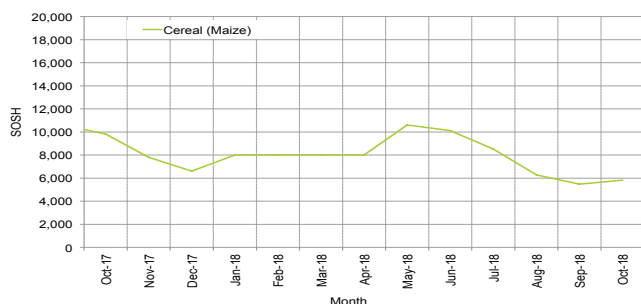


Figure 25: Bakara: Trends in Wage Rates and Relative Purchasing Power

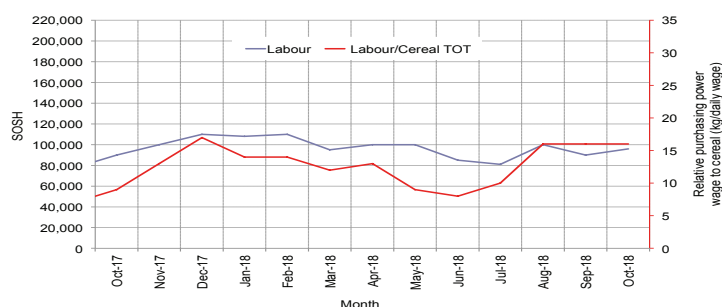


Figure 26: Imported Commodity Prices Compared to Exchange Rate

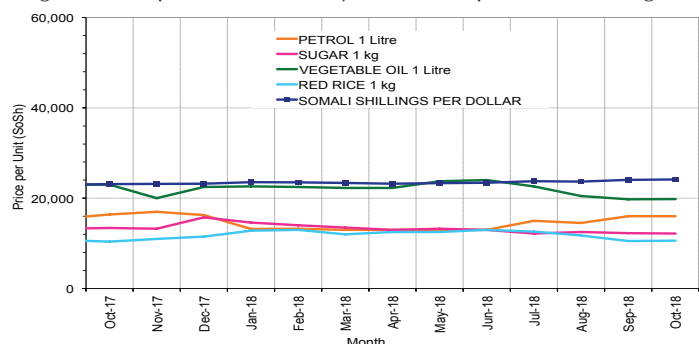


Figure 27: Goat Local Quality

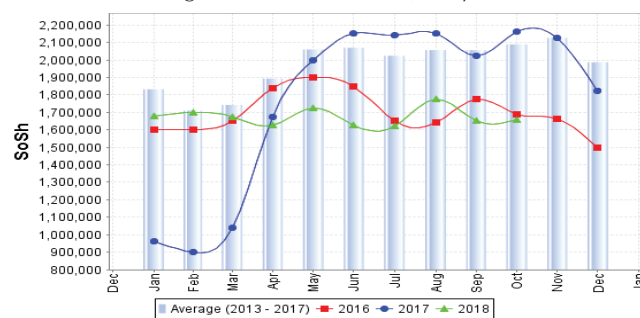


Figure 28: Exchange Rate

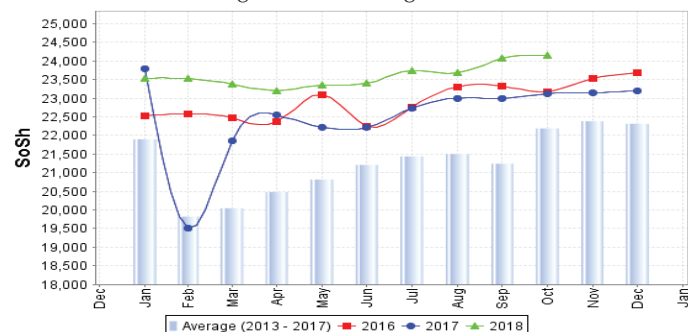
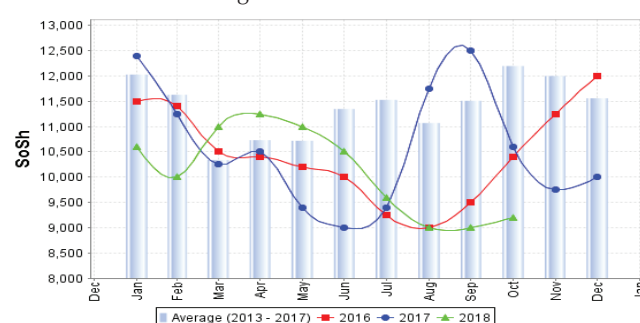


Figure 29: Wheat Flour



Regional analysis: Central Regions

Indicator	5-Year Average (2013-2017)	Oct-17	Sep-18	Oct-18 Nominal Price	Oct-18 Real (Deflated) Price	% Change Previous Month	% Change Same Month Previous Year	% Change 5-year avg (2013-2017)
Imported Commodities Prices								
Diesel 1 litre	23,610	20,400	20,800	20,800	9,589	0%	2%	-12%
Imported Red Rice 1kg	18,368	19,000	19,350	19,200	8,844	-1%	1%	5%
Petrol 1 litre	24,178	24,000	25,000	25,000	11,546	0%	4%	3%
Sugar	20,630	22,200	22,200	22,600	10,428	2%	2%	10%
Vegetable Oil 1 litre	38,176	37,600	36,400	36,000	16,670	-1%	-4%	-6%
Wheat Flour 1kg	16,236	17,800	17,600	17,400	8,005	-1%	-2%	7%
Wheat Grain 1kg	18,766	21,250	19,000	19,000	8,751	0%	-11%	1%
Cereal Prices								
Red Sorghum 1kg	12,655	16,875	13,000	13,250	6,072	2%	-21%	5%
White Maize 1kg	14,680	18,250	16,350	16,250	7,470	-1%	-11%	11%
Livestock & Livestock Product Prices								
Camel Local Quality (Head)	11,548,750	9,400,000	13,550,000	13,550,000	6,311,803	0%	44%	17%
Cattle Local Quality (Head)	-	-	-	-	-	-	-	-
Fresh Camel Milk 1 litre	32,722	47,800	62,200	61,150	28,385	-2%	28%	87%
Goat Export Quality (Head)	1,404,375	1,200,000	1,821,333	1,754,667	817,264	-4%	46%	25%
Goat Local Quality (Head)	1,043,860	865,000	1,314,800	1,274,800	593,731	-3%	47%	22%
Other Essential Items								
Charcoal 50kg	171,200	162,000	220,400	220,400	102,567	0%	36%	29%
Cowpeas 1 kg	29,276	55,800	29,250	29,400	13,595	1%	-47%	0%
Unskilled Labor Wage Rate	89,700	94,000	117,000	117,000	54,401	0%	24%	30%
Firewood Bundle	33,360	33,000	35,500	36,200	16,763	2%	10%	9%
Local Sesame Oil 1 litre	83,880	81,600	85,400	85,000	39,495	0%	4%	1%
Exchange Rate (Somali Shilling per USD)	22,839	24,800	25,969	25,844	11,939	0%	4%	13%
Terms of Trade								
Labour Wage (Daily)/ Cereal (Rice Kg)	4	5	6	6	-	0%	20%	50%
Local Goat (Head)/ Cereal (Rice Kg)	56	46	68	66	-	-3%	43%	18%
Camel (Head)/Cereal (Rice Kg)	632	495	700	706	-	1%	43%	12%
Price Indices								
Consumer Price Index	-	255	213	215	-	1%	-16%	-

Figure 30: Trends in Cereal Prices

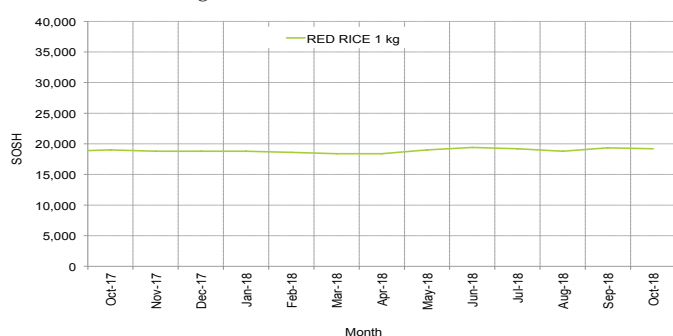


Figure 31: Trends in wage rates and relative purchasing power

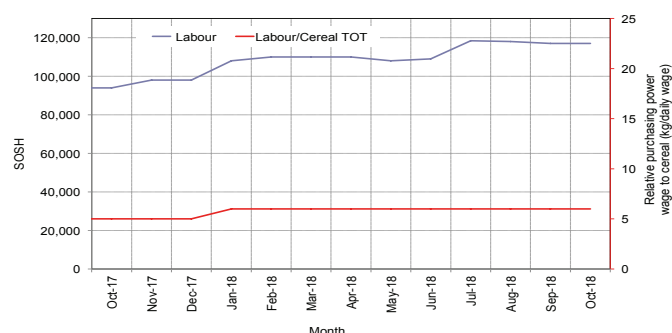


Figure 32: Imported Commodity Prices Compared to Exchange Rate

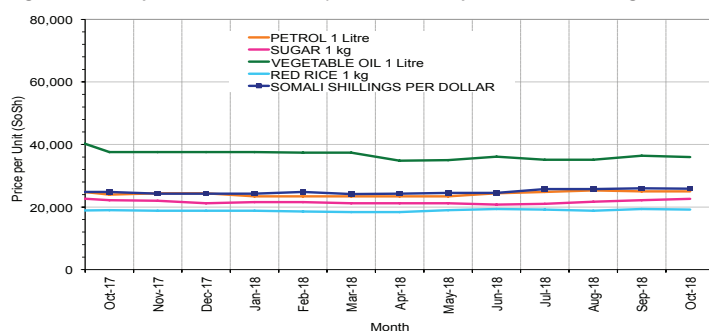


Figure 33: Goat Local Quality

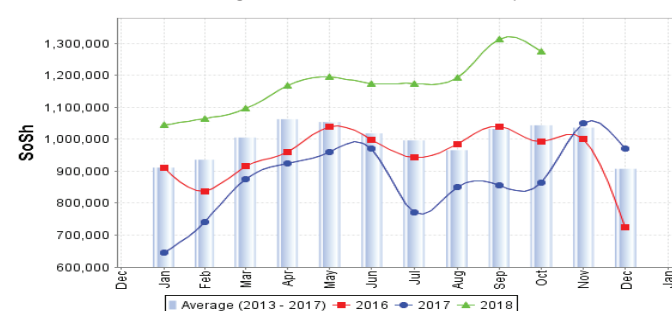


Figure 34: Exchange Rate

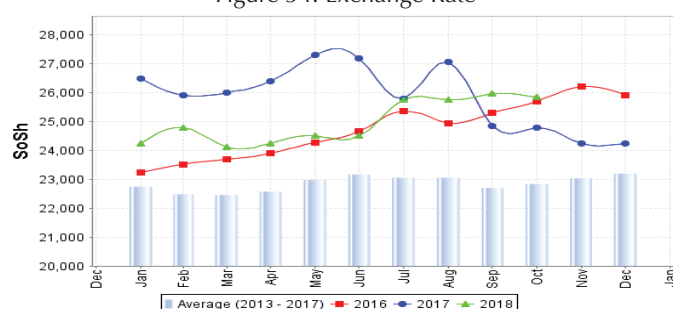
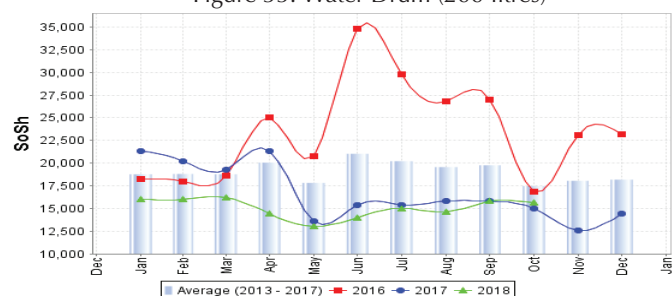


Figure 35: Water Drum (200 litres)



Regional analysis: Northeast Regions

Indicator	5-Year Average (2013-2017)	Oct-17	Sep-18	Oct-18 Nominal Price	Oct-18 Real (Deflated) Price	% Change Previous Month	% Change Same Month Previous Year	% Change 5-year avrg (2013-2017)
Imported Commodities Prices								
Diesel 1 litre	20,942	20,114	26,429	27,571	9,502	4%	37%	32%
Imported Red Rice 1kg	16,981	17,500	18,821	19,707	6,763	5%	13%	16%
Petrol 1 litre	22,588	23,026	29,793	30,846	10,643	4%	34%	37%
Sugar	20,290	22,771	21,429	21,571	7,412	1%	-5%	6%
Vegetable Oil 1 litre	34,567	33,457	35,393	36,393	12,574	3%	9%	5%
Wheat Flour 1kg	16,460	17,157	17,714	18,500	6,343	4%	8%	12%
Wheat Grain 1kg	30,317	33,000	31,400	34,720	11,992	11%	5%	15%
Cereal Prices								
Red Sorghum 1kg	23,295	26,600	25,750	26,000	8,955	1%	-2%	12%
White Maize 1kg	22,640	23,200	23,500	23,200	7,980	-1%	0%	2%
Livestock & Livestock Product Prices								
Camel Local Quality (Head)	14,997,400	15,222,000	16,970,500	16,786,400	5,845,987	-1%	10%	12%
Cattle Local Quality (Head)	8,881,000	11,630,000	13,750,000	14,750,000	5,136,783	7%	27%	66%
Fresh Camel Milk 1 litre	43,040	57,767	55,153	54,944	19,035	0%	-5%	28%
Goat Export Quality (Head)	1,440,300	1,518,000	1,662,500	1,678,000	584,286	1%	11%	17%
Goat Local Quality (Head)	1,369,157	1,441,857	1,631,429	1,631,000	567,917	0%	13%	19%
Other Essential Items								
Charcoal 50kg	361,857	383,429	400,714	399,857	139,156	0%	4%	11%
Cowpeas 1 kg	41,889	61,333	60,771	60,017	20,802	-1%	-2%	43%
Unskilled Labor Wage Rate	138,028	142,714	150,000	150,929	52,463	1%	6%	9%
Firewood Bundle	37,802	50,143	63,571	65,071	22,562	2%	30%	72%
Local Sesame Oil 1 litre	102,485	114,250	121,650	118,450	41,152	-3%	4%	16%
Exchange Rate (Somali Shilling per USD)	22,315	25,586	30,500	30,886	10,656	1%	21%	38%
Terms of Trade								
Labour Wage (Daily)/ Cereal (Rice(Kg))	8	8	8	8	-	0%	0%	0%
Local Goat (Head)/ Cereal (Rice(Kg))	80	82	87	83	-	-5%	1%	4%
Price Indices								
Consumer Price Index	-	288	285	287	-	1%	0%	-

Figure 36: Trends in Cereal Prices

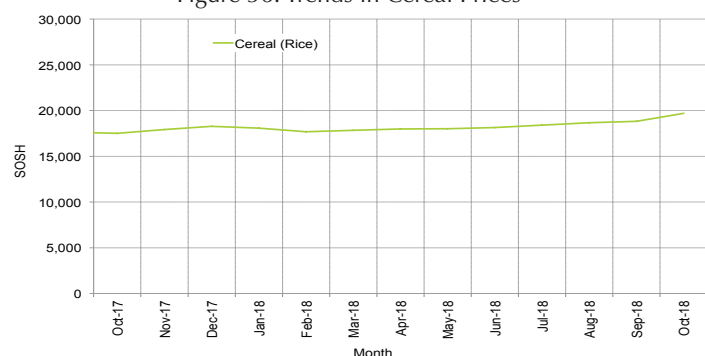


Figure 37: Trends in Wage Rates and Relative Purchasing Power

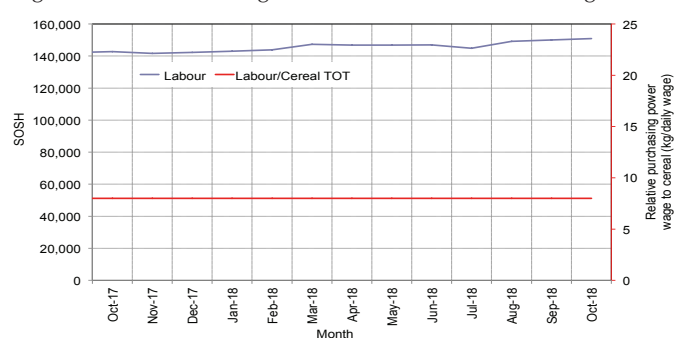


Figure 38: Imported Commodity Prices Compared to Exchange Rate

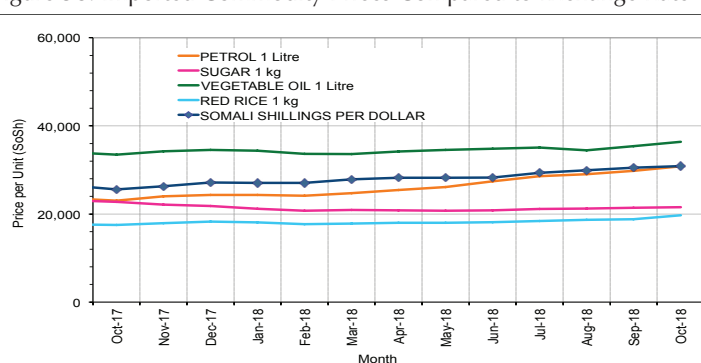


Figure 39: Goat Local Quality

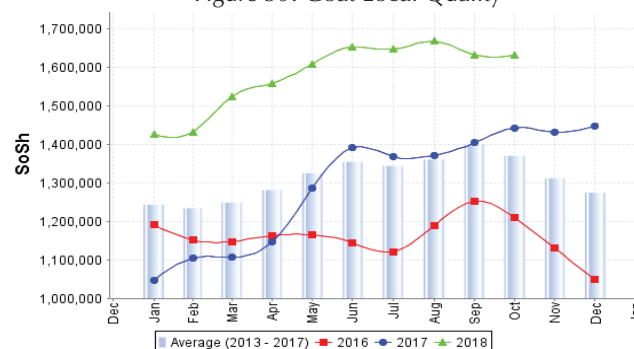


Figure 40: Exchange Rate

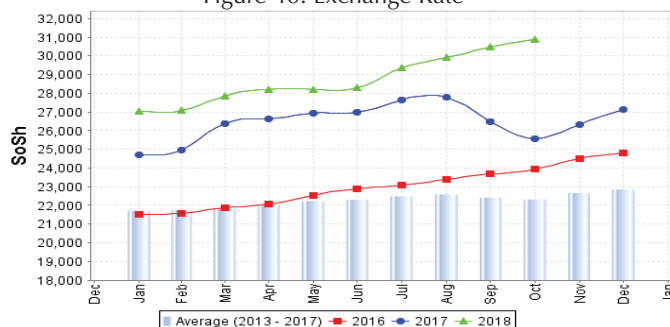
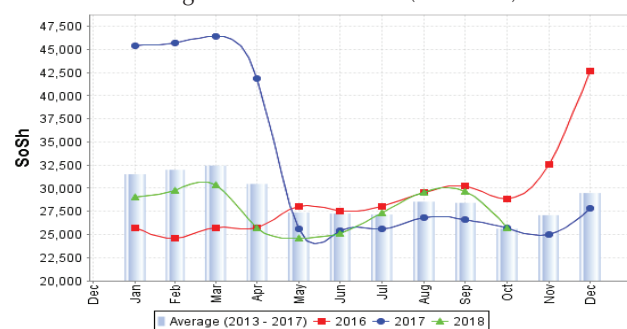


Figure 41: Water Drum (200 litres)



Regional analysis: Northwest Regions

Indicator	5-Year Average (2013-2017)	Oct-17	Sep-18	Oct-18 Nominal Price	Oct-18 Real (Deflated) Price	% Change Previous Month	% Change Same Month Previous Year	% Change 5-year avg (2013-2017)
Imported Commodities Prices								
Diesel 1 litre	6,329	6,780	7,550	7,880	5,660	4%	16%	25%
Imported Red Rice 1kg	5,206	5,240	6,500	6,780	4,856	4%	29%	30%
Petrol 1 litre	7,466	7,900	8,600	8,940	6,435	4%	13%	20%
Sugar	5,950	6,800	6,880	7,060	5,061	3%	4%	19%
Vegetable Oil 1 litre	12,723	13,000	12,100	11,940	8,628	-1%	-8%	-6%
Wheat Flour 1kg	4,454	4,800	5,600	5,320	3,789	-5%	11%	19%
Wheat Grain 1kg	3,968	4,875	4,750	4,775	3,391	1%	-2%	20%
Cereal Prices								
White Sorghum 1kg	4,297	5,180	4,700	4,700	3,336	0%	-9%	9%
Yellow Maize 1kg	4,508	6,400	6,125	6,125	4,378	0%	-4%	36%
Livestock & Livestock Product Prices								
Camel Local Quality (Head)	4,374,866	5,023,000	4,716,667	4,706,667	3,440,603	0%	-6%	8%
Cattle Local Quality (Head)	2,486,450	3,081,667	2,925,000	2,940,000	2,149,121	1%	-5%	18%
Fresh Camel Milk 1 litre	8,160	11,800	10,900	11,000	7,941	1%	-7%	35%
Goat Export Quality (Head)	467,545	464,500	586,250	545,750	398,858	-7%	17%	17%
Goat Local Quality (Head)	360,289	408,216	467,500	475,400	347,430	2%	16%	32%
Other Essential Items								
Charcoal 50kg	62,488	73,840	86,500	85,240	62,213	-1%	15%	36%
Cowpeas 1 kg	12,475	18,500	17,875	16,850	12,218	-6%	-9%	35%
Unskilled Labor Wage Rate	54,856	66,000	88,000	79,200	57,797	-10%	20%	44%
Firewood Bundle	4,766	6,167	6,000	5,833	4,164	-3%	-5%	22%
Local Sesame Oil 1 litre	34,162	36,750	34,500	34,550	25,157	0%	-6%	1%
Exchange Rate (Somaliland Shilling per USD)	7,701	9,992	9,945	9,974	7,191	0%	0%	30%
Terms of Trade								
Labour Wage (Daily)/ Cereal (Rice(Kg))	10	13	14	12	-	-14%	-8%	20%
Local Goat (Head)/ Cereal (Rice(Kg))	69	78	72	70	-	-3%	-10%	1%
Price Indices								
Consumer Price Index	-	148	138	137	-	-1%	-8%	-

Figure 42: Trends in Cereal Prices

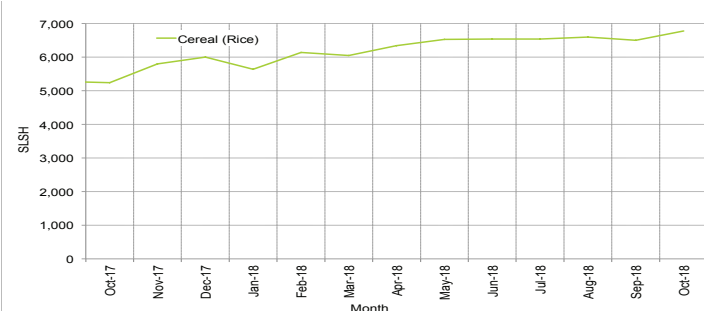


Figure 43: Trends in Wage Rates and Relative Purchasing Power

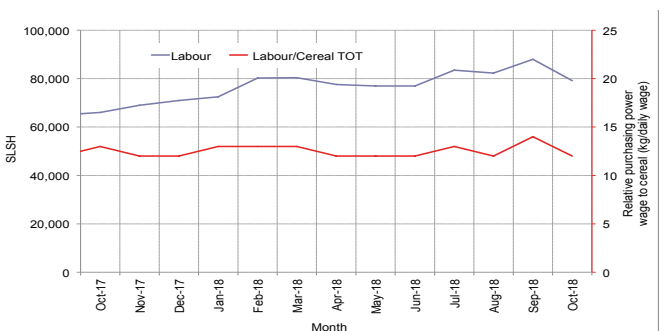


Figure 44: Imported Commodity Prices Compared to Exchange Rate

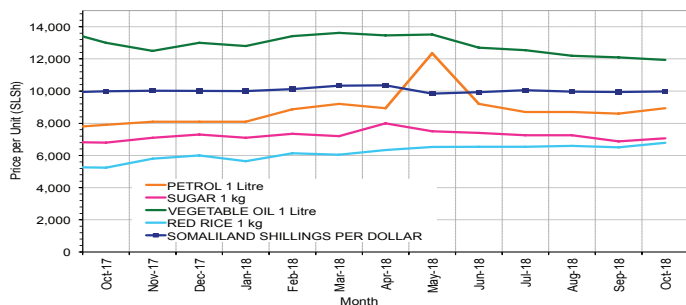


Figure 45: Goat Local Quality

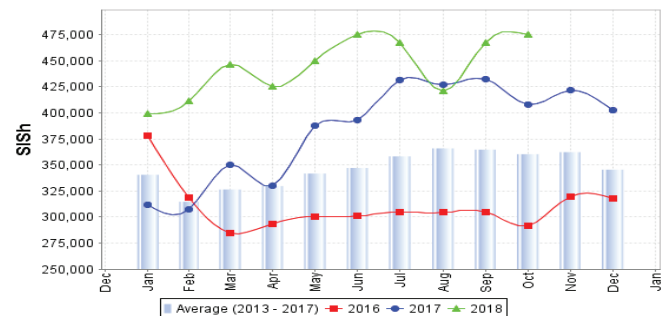


Figure 46: Exchange Rate

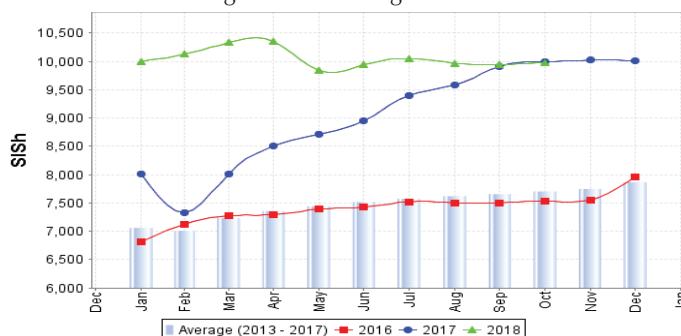
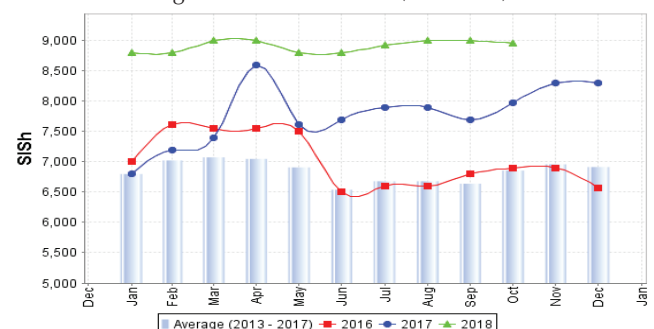


Figure 47: Water Drum (200 litres)



Trends in Livestock Exports

Table 1: Berbera Livestock Exports (Number of Heads)

	1999	2000	2001	2002	2003	2004	2005	2006	2007	2008	2009	2010	2011	2012	2013	2014	2015	2016
Shoats	2 048 136	1 601 083	51 546	341 711	563 107	859 404	1 023 795	1 017 242	1 350 054	1 219 519	1 556 003	2 584 810	3 104 684	3 219 584	2 888 955	3 089 592	3 270 386	2 880 057
Cattle	89 967	63 263	20 973	37 547	84 312	131 852	148 151	85 631	88 143	80 051	88 005	133 021	150 934	190 354	20 875	252 597	160,395	150 133
Camel	37 430	16 984	3 473	18,864	21 874	5 147	5 069	22 810	14 245	26 515	20 206	92 651	107 281	102 664	75 728	64 578	61 475	57 841

Figure 48: Berbera Livestock Exports (Number of Heads)

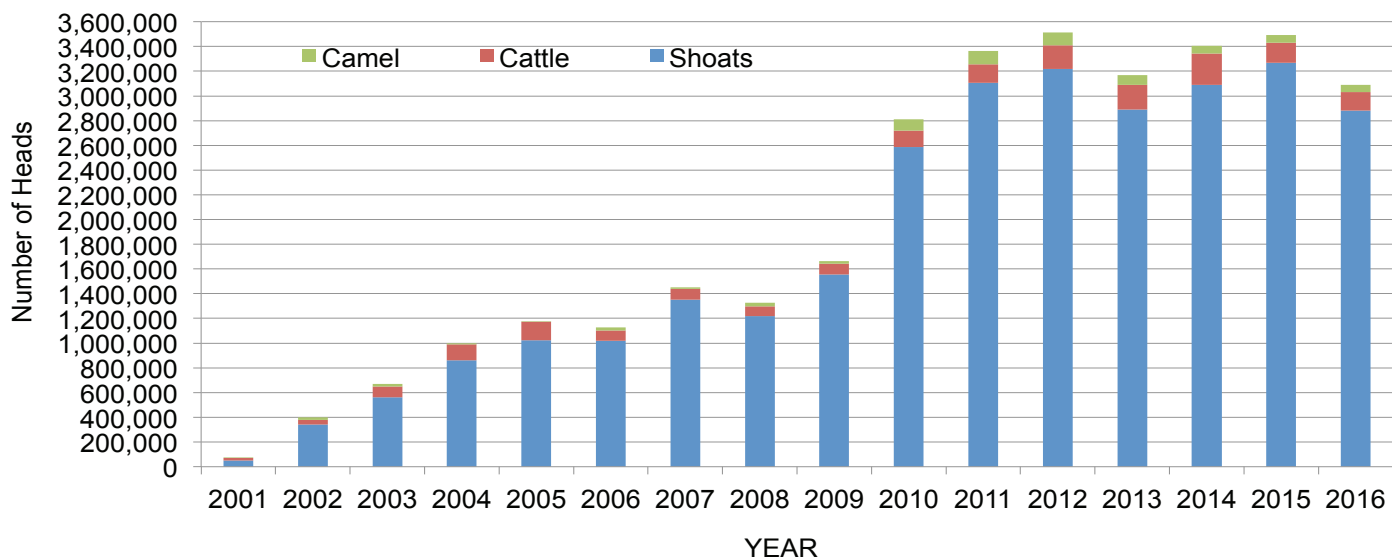
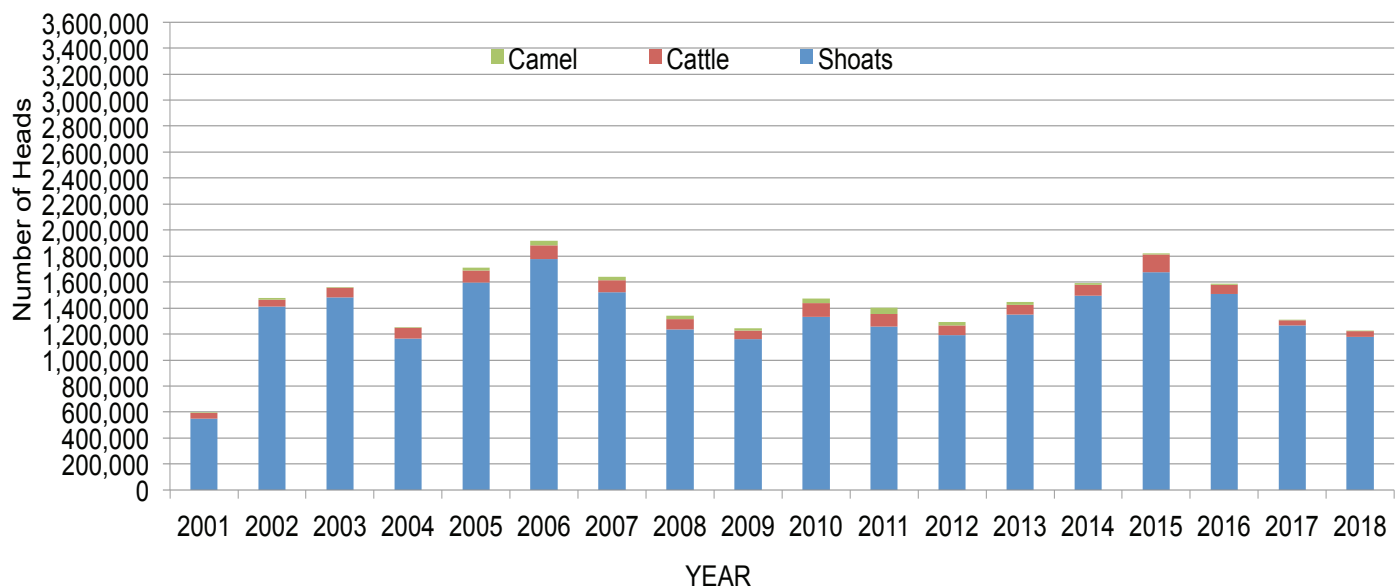


Table 2: Bossaso Livestock Exports (Number of Heads)

	1999	2000	2001	2002	2003	2004	2005	2006	2007	2008	2009	2010	2011	2012	2013	2014	2015	2016	2017	2018 (Jan-Oct)
Shoats	633 669	571 455	548 853	1 412 450	1 483 409	1 166 480	1 594 859	1 777 283	1 522 855	1 236 775	1 159 454	1 333 478	1 256 535	1 192 197	1 349 123	1 493 111	1 676 216	1 507 910	1 266 215	1 180 351
Cattle	36 586	27 604	42 248	53 313	71 328	79 994	91 910	104 595	89 190	78 046	67,385	103 808	99 058	76 043	77 353	87 759	134 597	70 705	39 347	43 262
Camel	15 544	8 177	1 950	9 720	4 259	2 488	26 109	33 724	27 580	27 639	15 331	36 865	45 878	22 288	19 032	12 251	10 945	10 144	5 781	2 650

Figure 49: Bossaso Livestock Exports (Number of Heads)



Trends in Cereal Imports

Table 3: Total Cereal Imports through Berbera, Bossaso and Mogadishu Ports (Tonnes) *

	1999	2000	2001	2002	2003	2004	2005	2006	2007	2008	2009	2010	2011	2012	2013*	2014	2015*	2016*	2017	2018 (Jan-Oct)
Rice	63,464	75 687	74 729	144 600	180 614	146 567	150 017	198 101	166 626	136 007	171 472	161 415	272 877	227 955	170 868	170 888	195 240	207 267	77 299	163 373
Wheat flour	55 176	78 555	134 425	128 263	171 442	151 555	169 583	178 345	176 821	169 208	240 247	249 080	258 679	268 491	183 058	284 230	318 868	207 463	105 215	142 854
Pasta	8 544	11 071	26 702	35 425	29 273	38 749	39 153	52 815	41 331	38 441	86 372	102 373	184 849	337 878	134 311	176 951	155 360	78 113	38 935	81 184

*Elman (Mogadishu) is up to November 2015. Mogadishu data (Elmaan Port) for 2013 includes only January - March imports. Berbera Data is up to December 2016

Figure 50: Total Cereal Imports (Berbera, Bossaso and Mogadishu)

