

Market Update

Highlights

Inflation:

SoSh (Somali shilling)-using areas: Consumer Price Index (CPI) remained stable in Northeast and Southern regions but increased mildly (6%) in Central in October 2017. The CPI rose (12-21%) annually due to increases in cereal prices.

SISh (Somaliland shilling)-using areas: The CPI increased mildly (3%) month-on-month in October 2017 but increased moderately (20%) year-on-year due to higher cereal prices this year.

Exchange rate:

SoSh-using areas: The exchange rates between SoSh and the United States Dollar (USD) remained relatively stable or changed at mild rates against USD in most regions of the country in October 2017. Annual comparison mostly exhibited mixed patterns, with SoSh mildly gaining value (less than 10%) in Central and Southern regions; while mild depreciations (7%) were recorded in Northeast regions due to recent printing of local currency notes in the regions.

SISh-using areas: The SISh remained relatively stable against the USD in October 2017 month-on-month while year-on-year comparison indicates high depreciation (33%) due to increased supply of newly printed local currency notes and a decline in the availability of USD due to reduced livestock exports and export revenue.

Local cereal prices changed at mild rates (less than +/-10%) in most regions of the country in October 2017. Annual comparison indicates higher prices for local grains in most regions of the country attributable to reduced supply due to poor successive harvests except in Juba Valley where cereal prices exhibited decline (19%) due to increased supply precipitated by improved harvest compared to a year ago.

Prices of imported food (rice, sugar, vegetable oil, wheat flour) mostly exhibited relative stability or mild monthly changes (less than +/-10%) in local currency terms in October 2017 across the country. Similarly, year-on-year comparison indicates mild increases or decreases in most regions of the country for most of the food imports in October 2017. However, most of the food imports in Middle Shabelle and Bay declined moderately (14-29%) compared to a year ago (October 2016) due to increased supply from humanitarian food distribution.

Livestock prices for local quality goat and local quality camel exhibited mild changes (less than +/-10%) in most regions of the country in October 2017. Compared to a year ago (October 2016), most regions exhibited increases in goat and camel prices except Central and Sorghum Belt (Bay, Hiran and Gedo regions) which showed price declines (3-13%) due to deterioration of body conditions and increased supply in the market. Milk prices (camel and cattle) exhibited mild changes in most of the regions of the country in October 2017. On the other hand, milk prices (camel and cattle) increased from moderate to high levels when compared to last year in most regions of the country due to less milk supply as a result of the impact of the drought (less conception in the past seasons).

Labor (unskilled) wages changed mildly (by less than +/-10%) month-on-month in most of the regions of the country in October 2017. Similarly, compared to a year ago (October 2016), mild changes (by less than +/-10%) were recorded in most regions of the country with the exception of Lower Shabelle, Middle Shabelle, Middle Juba and Banadir (Bakara). Labor rates increased (27-31%) in Middle Shabelle and Middle Juba as a result of increased agricultural activities (land preparation and crop planting) in Middle Juba and Middle Shabelle; while in Lower Shabelle and Banaadir the labor rates declined (23-25%) due to increased labor competition in Banadir (Bakara) and deteriorating security situation in Lower Shabelle.

Terms of Trade (ToT) between daily labor wage and cereals remained relatively stable or changed mildly (by 1-2kg of cereals/daily labor wage) in most regions of the country month-on-month in October 2017. Annual comparison indicates lower ToT between daily labor and cereals in most regions due to declines in labor wages and/or increase in cereal prices; exception is Middle Juba where ToT increased by 6kg per daily wage due to decrease in cereal prices and increase in labor wage. The ToT between local quality goat and cereals mostly increased in most regions of the country month-on-month due to declines in cereal prices and/or increases in goat prices. Compared to a year ago (October 2016), the ToT between goat and cereals were higher in most regions of the country. Exceptions are Sorghum Belt regions, Central and Middle Shabelle regions where ToT declined compared to a year ago due to higher cereal prices and lower goat prices this year.

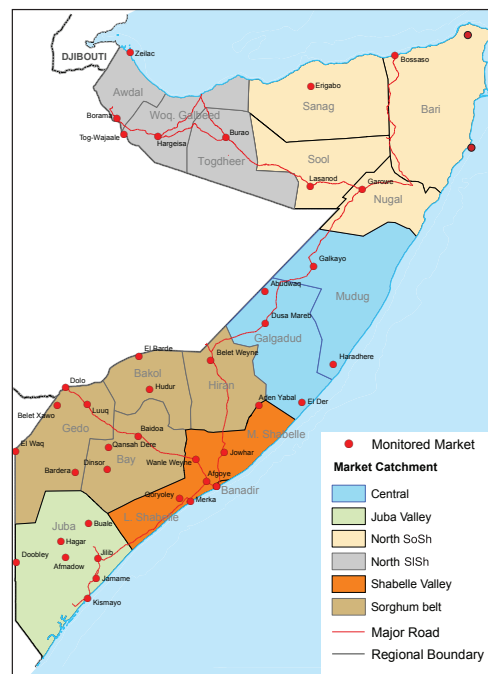
Towns Affected by Trade Disruption (Bulo Burto, Wajid, Hudur and Diinsor)

Labor (unskilled) wages changed mildly (by less than +/-10%) in October 2017 in siege-affected markets. Compared to a year ago, wage rates remained stable in Bulo-Burto, increased in Wajid (41%) due to increased opportunities attributable from loading and off-loading activities related to increased humanitarian distribution; while wage rates declined in Hudur (12%) and Dinsor (12%) mainly due to increased labor supply and reduced demand as a result of trade disruption.

Terms of Trade (ToTs) between daily labor wage and cereals and between local quality goat and cereals either remained relatively stable or changed at mild rates month-on-month in all the markets. Annual comparison indicates lower ToTs in Hudur, Wajid, and Dinsor markets but increased mildly (9kgs/goat) in Bulo-Burto.

Local grain (red and white sorghum) prices changed mildly (by less than +/-10%) in siege affected markets in October. Compared to a year ago, local grain prices in these markets have increased significantly (24-86%) due to reduced supply because of successive seasons of poor crop production.

Prices of imported food items (rice, sugar, vegetable oil, wheat flour) changed (+/-) at mild rates for most of the food imports in all siege affected markets month-on-month in October 2017. On the other hand, compared to a year ago, prices of most food imports declined in these markets due to increased supply from humanitarian distribution.



This Market Update is a monthly report that presents analysis of market information and is produced regularly as part of the monthly monitoring process.

The weekly price data is collected from 46 main markets and 25 rural markets throughout Somalia since 1995.

Market analysis is an integral part of all of FSNAU's annual food security projections and seasonal technical reports (Technical Reports on FSNAU Post Gu and Post Deyr Analysis).

Detailed market data are available online on www.fsnau.org/ids.

National Trends: CPI, Exchange Rates, Cereal Prices and Relative Purchasing Power

Table 1: ToT between Daily Labour Wage Rate and Cereals by Region October 2017

Regions	October 2017 (kg)	Kg change from		
		September 2017	October 2016	October 5 yr Average (2012 - 2016)
Banadir/Mogadishu (White maize)	9	2	-10	-11
Bay (Red sorghum)	10	0	-4	-6
Bakool (Red sorghum)	4	1	-1	-1
Gedo (Red sorghum)	10	-1	-2	-4
Juba (White maize)	13	1	3	2
Shabelle (White maize)	9	1	2	-2
Northwest (Imported Rice)	13	1	2	4
Northeast (Imported Rice)	8	0	0	1
Central (Imported Rice)	5	0	0	1

Figure 1: Wheat Prices: Mogadishu and Bossaso Markets

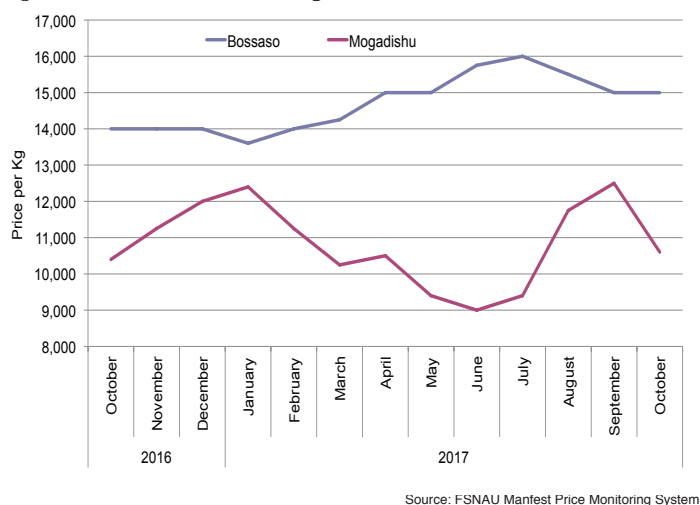


Figure 2: Terms of Trade Between Wage Rates and Selected Cereals

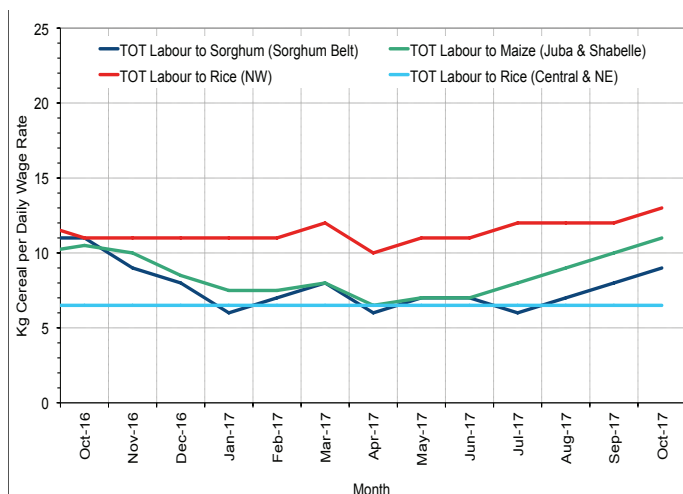


Figure 3: Monthly Exchange Rate for Selected Regions (SoSh and SISH to USD)

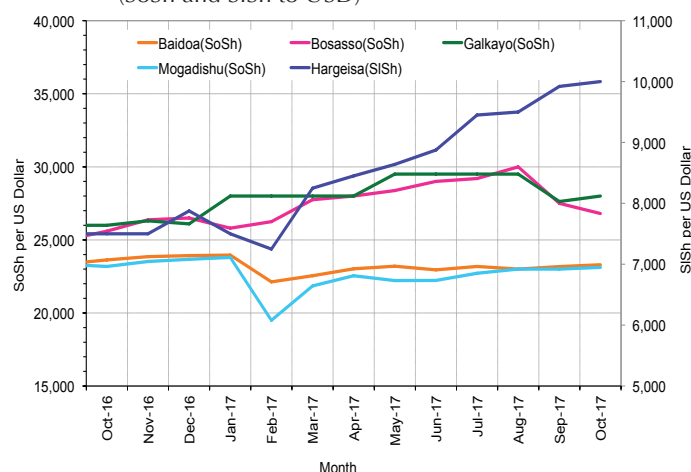


Figure 4: Monthly Trends in Consumer Price Index (CPI, March 2007=100)

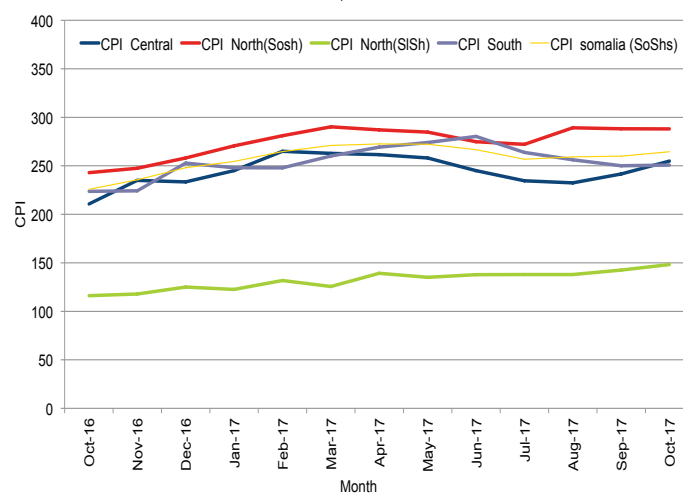
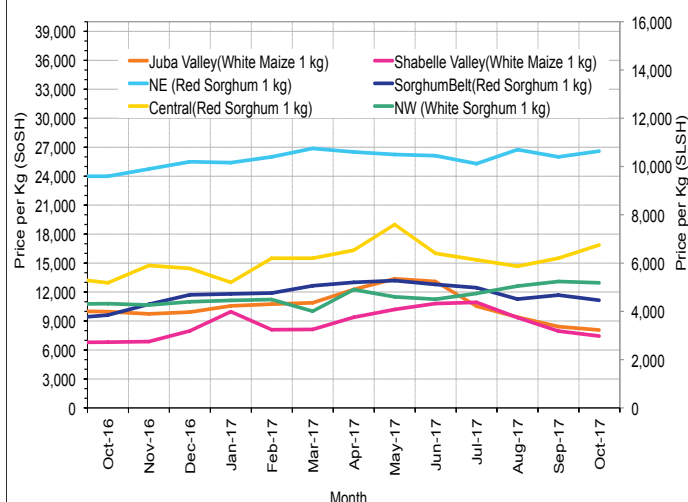


Figure 5: Monthly Trends in Local Cereal Prices



Regional analysis: Juba Regions

Indicator	5-Year Average (2012-2016)	Oct-16	Sep-17	Oct-17 Nominal Price	Oct-17 Real (Deflated) Price	% Change Previous Month	% Change Same Month Previous Year	% Change 5-year avrg (2012-2016)
Imported Commodities Prices								
Diesel 1 litre	26,913	21,750	20,125	20,438	8,049	2%	-6%	-24%
Imported Red Rice 1kg	16,514	16,266	15,875	15,938	6,255	0%	-2%	-3%
Petrol 1 litre	28,701	25,000	22,625	22,906	9,033	1%	-8%	-20%
Sugar	18,661	18,406	16,563	16,938	6,653	2%	-8%	-9%
Vegetable Oil 1 litre	32,447	28,406	29,125	28,719	11,350	-1%	1%	-11%
Wheat Flour 1kg	16,186	15,875	14,656	15,625	6,130	7%	-2%	-3%
Wheat Grain 1kg	-	-	-	-	-	-	-	-
Cereal Prices								
Red Sorghum 1kg	7,720	9,000	6,208	6,292	2,409	1%	-30%	-18%
White Maize 1kg	8,312	9,975	8,419	8,059	3,113	-4%	-19%	-3%
Livestock & Livestock Product Prices								
Camel Local Quality (Head)	9,237,274	7,660,714	10,898,438	11,150,000	4,445,436	2%	46%	21%
Cattle Local Quality (Head)	3,664,592	2,282,143	4,185,417	3,741,667	1,491,713	-11%	64%	2%
Fresh Camel Milk 1 litre	19,387	18,688	17,781	18,906	7,438	6%	1%	-2%
Goat Export Quality (Head)	1,417,901	962,813	1,639,271	1,658,750	661,248	1%	72%	17%
Goat Local Quality (Head)	913,580	620,313	939,167	960,938	383,029	2%	55%	5%
Other Essential Items								
Charcoal 50kg	81,215	90,625	83,646	87,813	34,911	5%	-3%	8%
Cowpeas 1 kg	20,731	24,350	24,500	26,781	10,578	9%	10%	29%
Unskilled Labor Wage Rate	92,327	98,500	102,969	105,625	42,013	3%	7%	14%
Firewood Bundle	8,853	6,891	8,016	7,516	2,897	-6%	9%	-15%
Local Sesame Oil 1 litre	68,868	54,375	51,063	51,719	20,521	1%	-5%	-25%
Exchange Rate (Somali Shilling per USD)	22,121	23,063	22,888	23,038	9,085	1%	0%	4%
Terms of Trade								
Labour Wage (Daily)/ Cereal (Maize(Kg))	11	10	12	13	-	8%	30%	18%
Local Goat (Head)/ Cereal (Maize(Kg))	115	62	112	119	-	6%	92%	3%
Price Indices								
Consumer Price Index	-	224	250	251	-	0%	12%	-

Figure 6: Trends in Cereal Prices

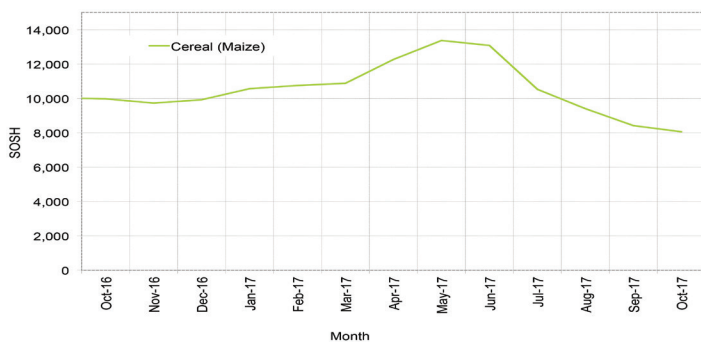


Figure 7: Trends in Wage Rates and Relative Purchasing Power

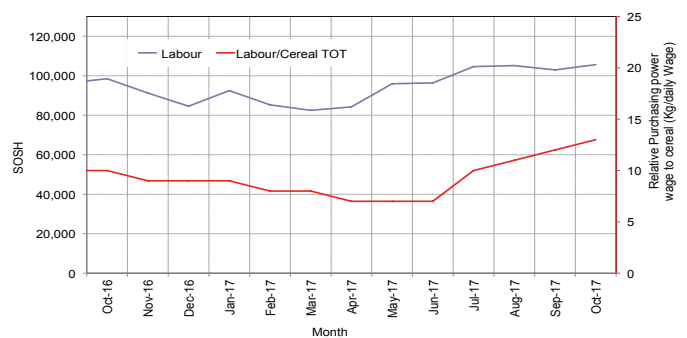


Figure 8: Imported Commodity Prices Compared to Exchange Rate

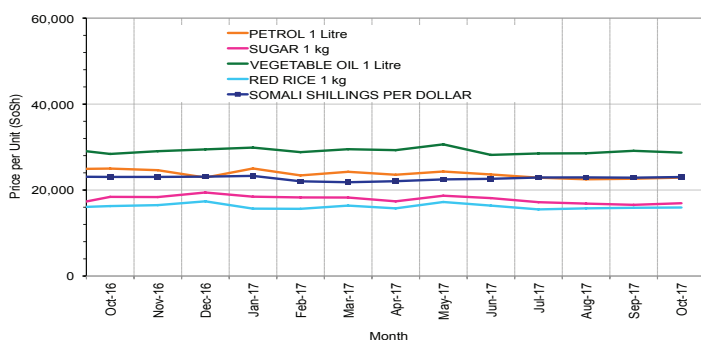


Figure 9: Goat Local Quality

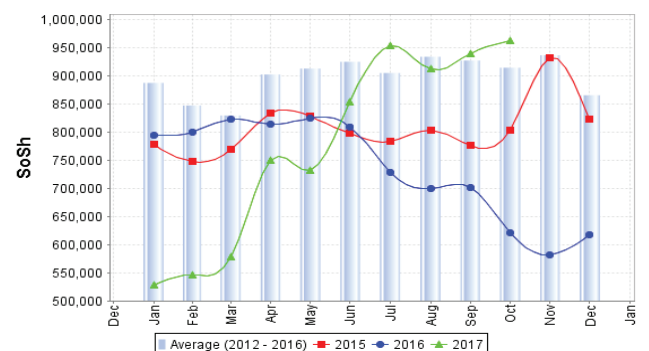


Figure 10: Exchange Rate

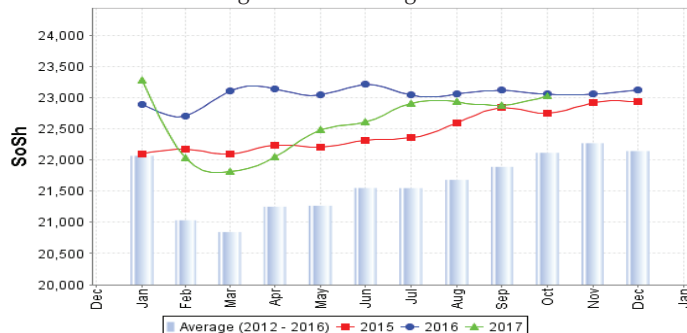
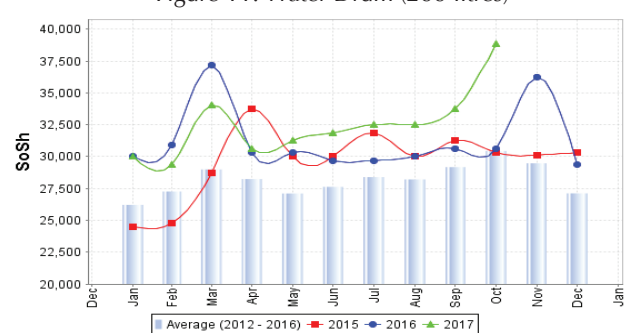


Figure 11: Water Drum (200 litres)



Regional analysis: Sorghum Belt Regions (Bay, Bakool, Gedo and Hiran)

Indicator	5-Year Average (2012-2016)	Oct-16	Sep-17	Oct-17 Nominal Price	Oct-17 Real (Deflated) Price	% Change Previous Month	% Change Same Month Previous Year	% Change 5-year avrg (2012-2016)
Imported Commodities Prices								
Diesel 1 litre	29,799	24,950	24,479	23,958	9,452	-2%	-4%	-20%
Imported Red Rice 1kg	18,988	20,313	19,083	19,450	7,655	2%	-4%	2%
Petrol 1 litre	30,919	28,833	27,208	27,000	10,665	-1%	-6%	-13%
Sugar	20,904	23,783	20,521	21,029	8,284	2%	-12%	1%
Vegetable Oil 1 litre	39,554	38,117	34,917	36,333	14,386	4%	-5%	-8%
Wheat Flour 1kg	18,303	19,175	17,458	18,000	7,077	3%	-6%	-2%
Wheat Grain 1kg	16,223	24,000	19,417	19,250	7,575	-1%	-20%	19%
Cereal Prices								
Red Sorghum 1kg	8,520	9,585	11,848	11,333	4,418	-4%	18%	33%
White Maize 1kg	9,377	10,305	11,709	11,814	4,610	1%	15%	26%
Livestock & Livestock Product Prices								
Camel Local Quality (Head)	12,921,844	11,639,000	11,022,500	11,224,500	4,475,139	2%	-4%	-13%
Cattle Local Quality (Head)	3,892,592	3,503,929	2,465,714	2,567,143	1,023,427	4%	-27%	-34%
Fresh Camel Milk 1 litre	21,720	21,475	28,000	26,177	10,337	-7%	22%	21%
Goat Export Quality (Head)	1,692,399	1,558,800	1,487,955	1,504,182	599,622	1%	-4%	-11%
Goat Local Quality (Head)	1,084,946	843,292	777,500	816,375	325,391	5%	-3%	-25%
Other Essential Items								
Charcoal 50kg	148,318	150,409	175,909	184,955	73,642	5%	23%	25%
Cowpeas 1 kg	23,952	25,192	37,979	36,902	14,613	-3%	46%	54%
Unskilled Labor Wage Rate	99,617	97,208	95,958	95,583	38,009	0%	-2%	-4%
Firewood Bundle	6,804	7,167	6,167	6,133	2,345	-1%	-14%	-10%
Local Sesame Oil 1 litre	78,240	73,556	76,472	78,950	31,378	3%	7%	1%
Exchange Rate (Somali Shilling per USD)	22,246	23,932	22,798	23,124	9,120	1%	-3%	4%
Terms of Trade								
Labour Wage (Daily)/ Cereal (Rice (Kg)	5	5	5	5	-	0%	0%	0%
Local Goat (Head)/ Cereal (Rice (Kg)	57	42	41	42	-	2%	0%	-26%
Price Indices								
Consumer Price Index	-	224	250	251	-	0%	12%	-

Figure 12: Trends in Cereal Prices

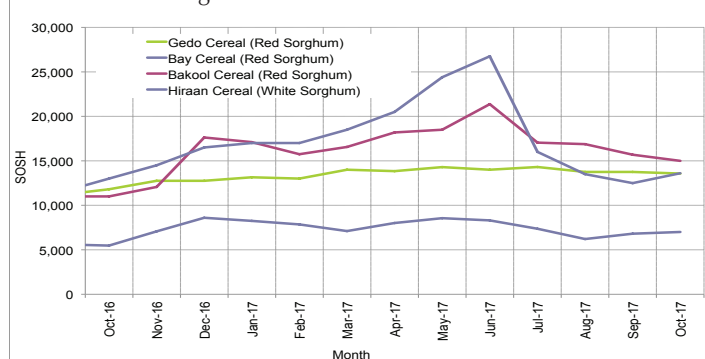


Figure 13: Trends in Wage Rates and Relative Purchasing Power

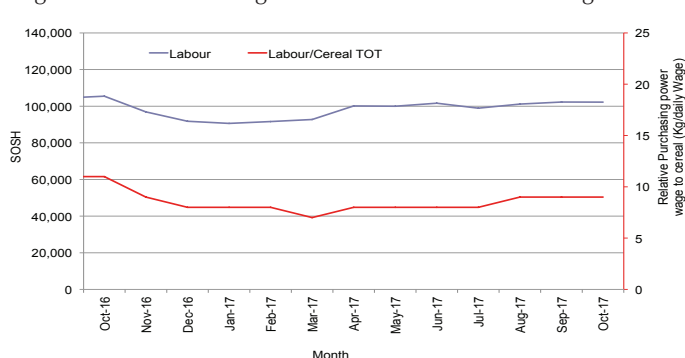


Figure 14: Imported Commodity Prices Compared to Exchange Rate

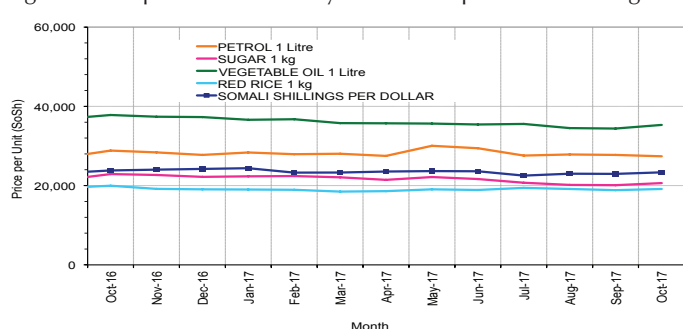


Figure 15: Goat Local Quality

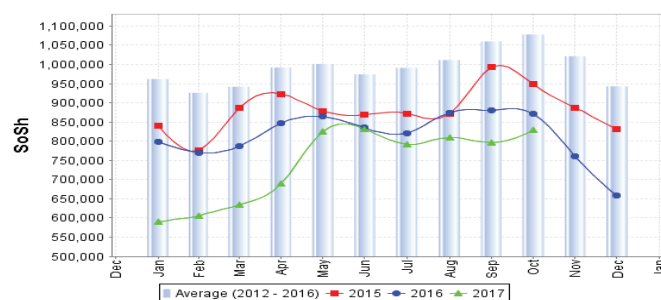


Figure 16: Exchange Rate

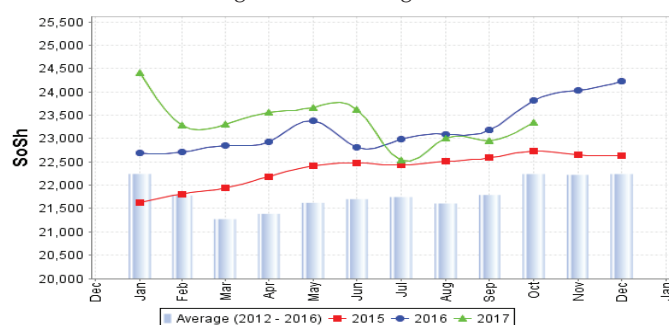
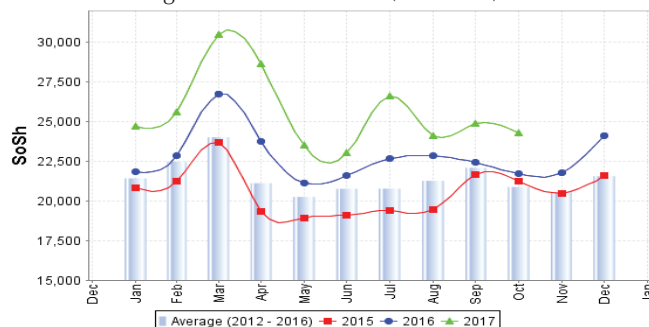


Figure 17: Water Drum (200 litres)



Regional analysis: Shabelle Regions

Indicator	5-Year Average (2012-2016)	Oct-16	Sep-17	Oct-17 Nominal Price	Oct-17 Real (Deflated) Price	% Change Previous Month	% Change Same Month Previous Year	% Change 5-year avrg (2012-2016)
Imported Commodities Prices								
Diesel 1 litre	24,698	16,000	16,583	16,625	6,528	0%	4%	-33%
Imported Red Rice 1kg	16,333	17,600	15,875	15,583	6,113	-2%	-11%	-5%
Petrol 1 litre	27,251	20,000	19,375	19,083	7,508	-2%	-5%	-30%
Sugar	18,455	21,900	17,750	17,000	6,678	-4%	-22%	-8%
Vegetable Oil 1 litre	28,956	29,500	28,708	28,625	11,313	0%	-3%	-1%
Wheat Flour 1kg	17,071	18,200	14,875	14,167	5,548	-5%	-22%	-17%
Wheat Grain 1kg	14,980	16,500	9,000	17,000	6,678	89%	3%	13%
Cereal Prices								
Red Sorghum 1kg	9,431	7,611	11,674	10,986	4,280	-6%	44%	16%
White Maize 1kg	6,472	6,806	7,958	7,442	2,867	-6%	9%	15%
Livestock & Livestock Product Prices								
Camel Local Quality (Head)	17,334,966	16,262,500	18,890,000	17,181,250	6,850,112	-9%	6%	-1%
Cattle Local Quality (Head)	5,565,633	4,769,167	3,976,250	4,043,750	1,612,154	2%	-15%	-27%
Fresh Camel Milk 1 litre	21,126	17,600	21,292	23,375	9,220	10%	33%	11%
Goat Export Quality (Head)	1,984,463	1,726,944	1,771,875	1,776,875	708,345	0%	3%	-10%
Goat Local Quality (Head)	1,334,250	1,152,667	1,325,000	1,281,250	510,738	-3%	11%	-4%
Other Essential Items								
Charcoal 50kg	128,227	119,083	133,194	133,194	53,005	0%	12%	4%
Cowpeas 1 kg	20,103	19,583	46,861	43,028	17,055	-8%	120%	114%
Unskilled Labor Wage Rate	72,166	74,500	66,875	68,958	27,394	3%	-7%	-4%
Firewood Bundle	6,671	6,400	5,625	6,417	2,458	14%	0%	-4%
Local Sesame Oil 1 litre	58,343	49,600	52,167	51,542	20,450	-1%	4%	-12%
Exchange Rate (Somali Shilling per USD)	22,316	23,360	23,225	23,188	9,145	0%	-1%	4%
Terms of Trade								
Labour Wage (Daily)/ Cereal (Maize(Kg))	11	11	8	9	-	13%	-18%	-18%
Local Goat (Head)/ Cereal (Maize(Kg))	209	169	166	172	-	4%	2%	-18%
Price Indices								
Consumer Price Index	-	224	250	251	-	0%	12%	-

Figure 18: Trends in Cereal Prices

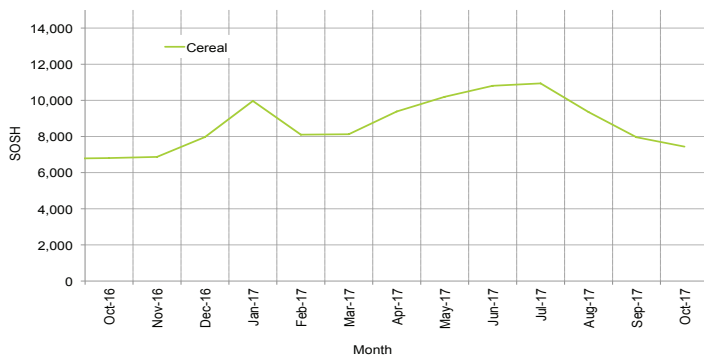


Figure 19: Trends in Wage Rates and Relative Purchasing Power

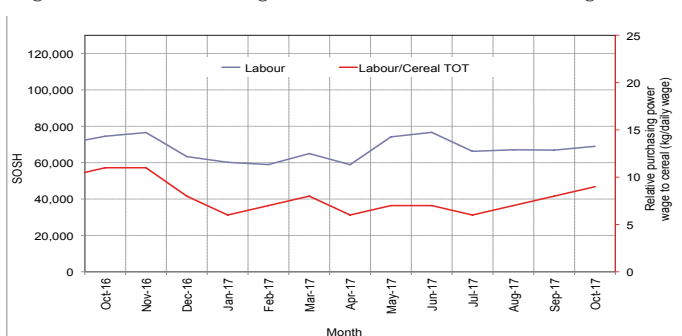


Figure 20: Imported Commodity Prices Compared to Exchange Rate

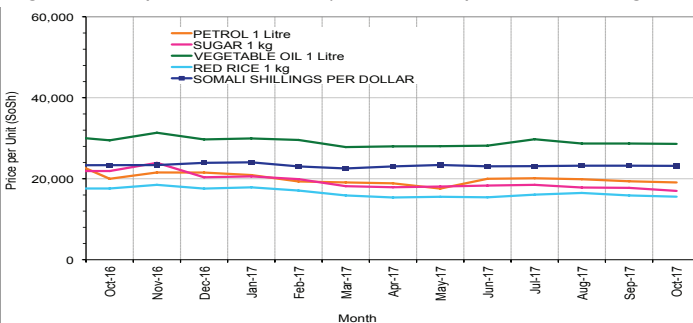


Figure 21: Goat Local Quality

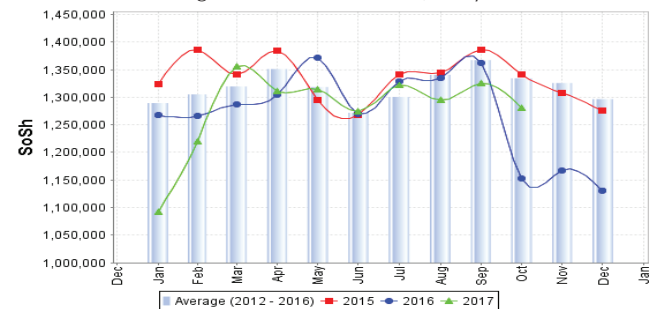


Figure 22: Exchange Rate

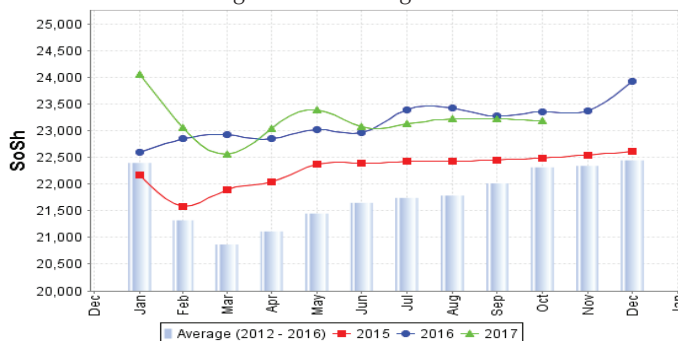
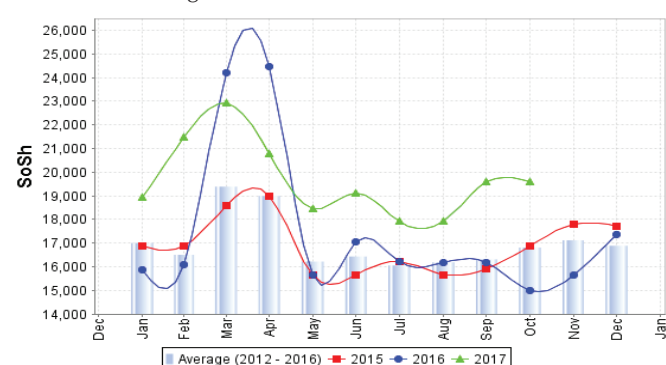


Figure 23: Water Drum (200 litres)



Regional analysis: Banadir Region

Indicator	5-Year Average (2012-2016)	Oct-16	Sep-17	Oct-17 Nominal Price	Oct-17 Real (Deflated) Price	% Change Previous Month	% Change Same Month Previous Year	% Change 5-year avrg (2012-2016)
Imported Commodities Prices								
Diesel 1 litre	20,286	15,000	13,558	13,525	5,292	0%	-10%	-33%
Imported Red Rice 1kg	12,868	11,917	11,833	11,717	4,572	-1%	-2%	-9%
Petrol 1 litre	21,521	17,283	16,083	16,633	6,532	3%	-4%	-23%
Sugar	14,753	15,917	14,250	14,175	5,552	-1%	-11%	-4%
Vegetable Oil 1 litre	24,531	21,625	22,333	22,500	8,871	1%	4%	-8%
Wheat Flour 1kg	13,426	11,550	12,292	11,700	4,565	-5%	1%	-13%
Wheat Grain 1kg	10,076	11,000	15,875	13,375	5,233	-16%	22%	33%
Cereal Prices								
Red Sorghum 1kg	6,656	6,883	10,458	10,242	3,984	-2%	49%	54%
White Maize 1kg	8,013	6,988	11,508	11,248	4,385	-2%	61%	40%
Livestock & Livestock Product Prices								
Camel Local Quality (Head)	-	-	-	-	-	-	-	-
Cattle Local Quality (Head)	-	-	-	-	-	-	-	-
Fresh Camel Milk 1 litre	22,523	24,667	27,333	26,333	10,399	-4%	7%	17%
Goat Export Quality (Head)	2,488,750	2,220,000	2,625,000	2,560,000	1,020,579	-2%	-	3%
Goat Local Quality (Head)	2,117,000	1,690,000	2,025,000	2,160,000	861,098	7%	28%	2%
Other Essential Items								
Charcoal 50kg	188,986	173,833	213,333	212,083	84,458	-1%	22%	12%
Cowpeas 1 kg	19,103	22,917	46,783	43,083	17,077	-8%	88%	126%
Unskilled Labor Wage Rate	115,916	96,667	75,000	87,917	34,953	17%	-9%	-24%
Firewood Bundle	7,533	7,500	8,000	8,000	3,090	0%	7%	6%
Local Sesame Oil 1 litre	58,120	41,250	52,833	52,167	20,699	-1%	26%	-10%
Exchange Rate (Somali Shilling per USD)	22,050	23,077	22,792	22,873	9,020	0%	-1%	4%
Terms of Trade								
Labour Wage (Daily)/ Cereal (Rice(Kg))	9	8	6	8	-	33%	0%	-11%
Local Goat (Head)/ Cereal (Rice(Kg))	165	142	171	184	-	8%	30%	12%
Price Indices								
Consumer Price Index	-	224	250	251	-	0%	12%	-

Figure 24: Trends in Cereal Prices

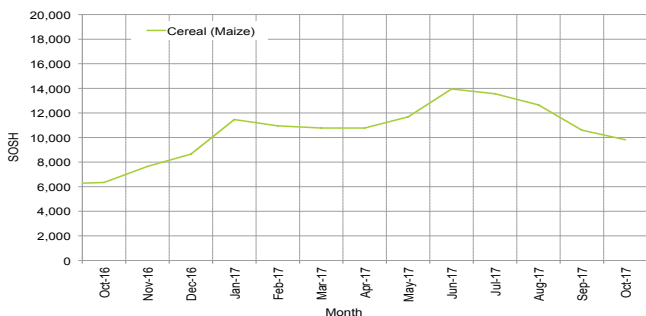


Figure 25: Bakara: Trends in Wage Rates and Relative Purchasing Power

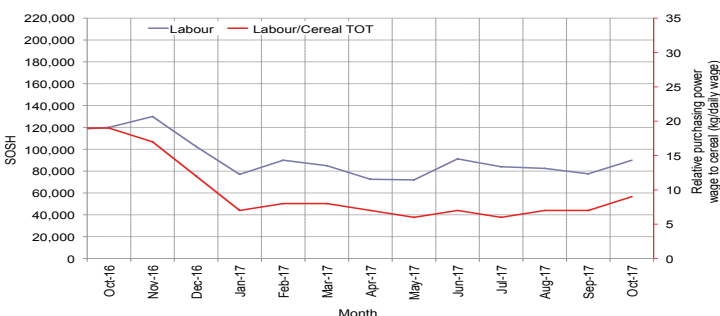


Figure 26: Imported Commodity Prices Compared to Exchange Rate

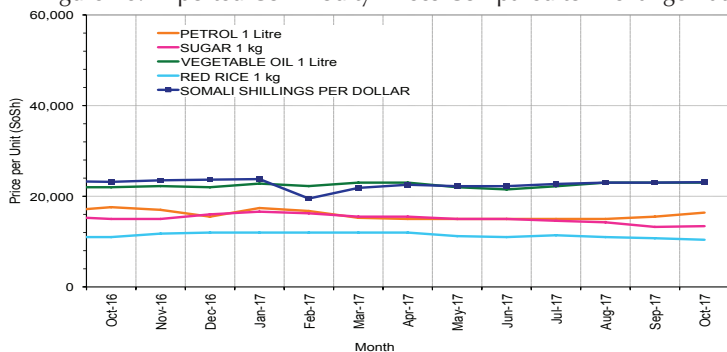


Figure 27: Goat Local Quality

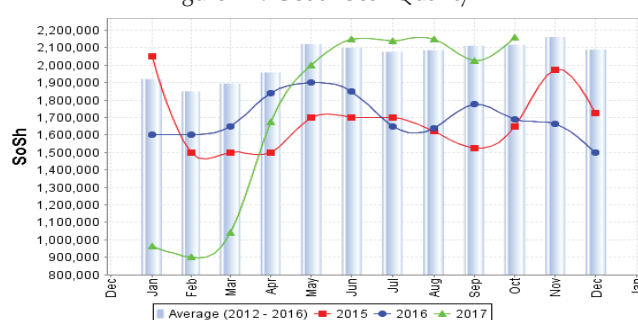


Figure 28: Exchange Rate

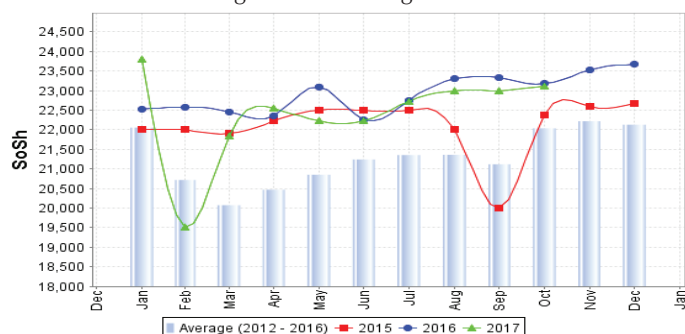
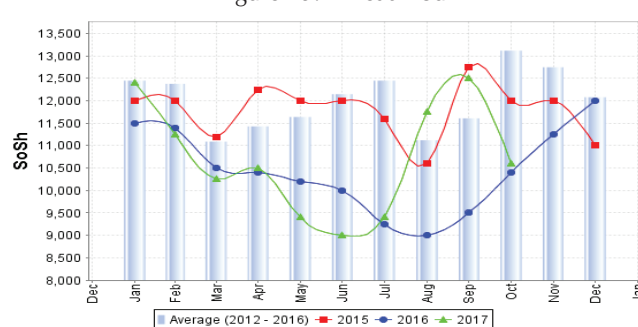


Figure 29: Wheat Flour



Regional analysis: Central Regions

Indicator	5-Year Average (2012-2016)	Oct-16	Sep-17	Oct-17 Nominal Price	Oct-17 Real (Deflated) Price	% Change Previous Month	% Change Same Month Previous Year	% Change 5-year avrg (2012-2016)
Imported Commodities Prices								
Diesel 1 litre	25,826	18,800	23,800	20,400	7,902	-14%	9%	-21%
Imported Red Rice 1kg	18,824	18,640	18,800	19,000	7,353	1%	2%	1%
Petrol 1 litre	24,658	22,040	25,600	24,000	9,314	-6%	9%	-3%
Sugar	20,936	22,600	23,100	22,200	8,608	-4%	-2%	6%
Vegetable Oil 1 litre	39,536	37,280	42,850	37,600	14,648	-12%	1%	-5%
Wheat Flour 1kg	16,169	16,080	16,450	17,800	6,882	8%	11%	10%
Wheat Grain 1kg	17,521	17,333	22,000	21,250	8,235	-3%	23%	21%
Cereal Prices								
Red Sorghum 1kg	11,596	12,950	15,500	16,875	6,519	9%	30%	46%
White Maize 1kg	13,558	16,950	17,750	18,250	7,058	3%	8%	35%
Livestock & Livestock Product Prices								
Camel Local Quality (Head)	11,725,750	13,025,000	9,950,000	9,400,000	3,686,995	-6%	-28%	-20%
Cattle Local Quality (Head)				-	-	-	-	-
Fresh Camel Milk 1 litre	29,138	31,360	49,500	47,800	18,649	-3%	52%	64%
Goat Export Quality (Head)	1,491,208	1,510,000	1,150,000	1,200,000	470,593	4%	-21%	-20%
Goat Local Quality (Head)	1,136,620	992,800	855,000	865,000	339,191	1%	-13%	-24%
Other Essential Items								
Charcoal 50kg	176,653	166,000	203,000	162,000	63,444	-20%	-2%	-8%
Cowpeas 1 kg	22,748	29,480	61,400	55,800	21,787	-9%	89%	145%
Unskilled Labor Wage Rate	87,220	94,000	94,000	94,000	36,771	0%	0%	8%
Firewood Bundle	34,600	32,000	33,500	33,000	12,844	-1%	3%	-5%
Local Sesame Oil 1 litre	85,320	79,200	84,000	81,600	31,907	-3%	3%	-4%
Exchange Rate (Somali Shilling per USD)	22,323	25,700	24,844	24,800	9,628	0%	-4%	11%
Terms of Trade								
Labour Wage (Daily)/ Cereal (Rice Kg)	4	5	5	5	-	0%	0%	25%
Local Goat (Head)/ Cereal (Rice Kg)	60	53	45	46	-	2%	-13%	-23%
Camel (Head)/Cereal (Rice Kg)	629	699	529	495	-	-6%	-29%	-21%
Price Indices								
Consumer Price Index	-	211	242	255	-	6%	21%	-

Figure 30: Trends in Cereal Prices

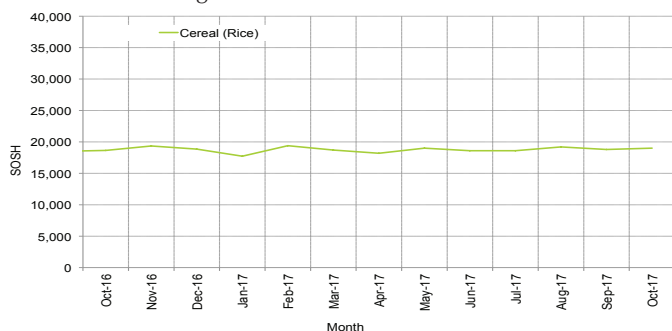


Figure 31: Trends in wage rates and relative purchasing power

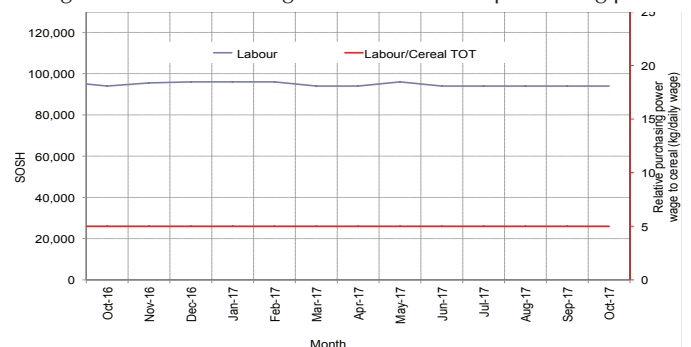


Figure 32: Imported Commodity Prices Compared to Exchange Rate

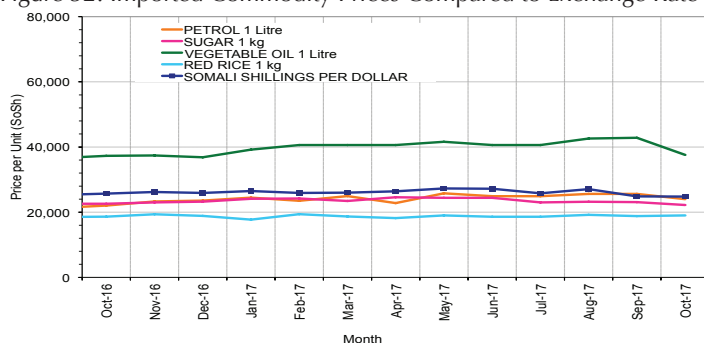


Figure 33: Goat Local Quality

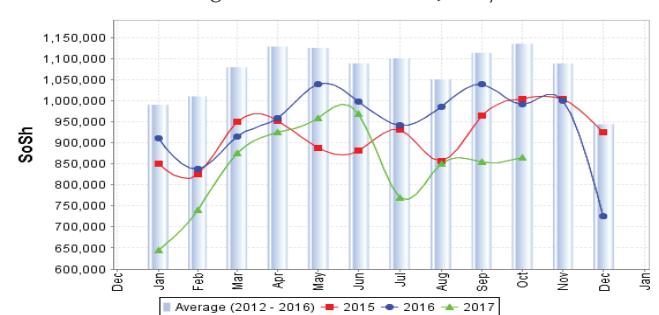


Figure 34: Exchange Rate

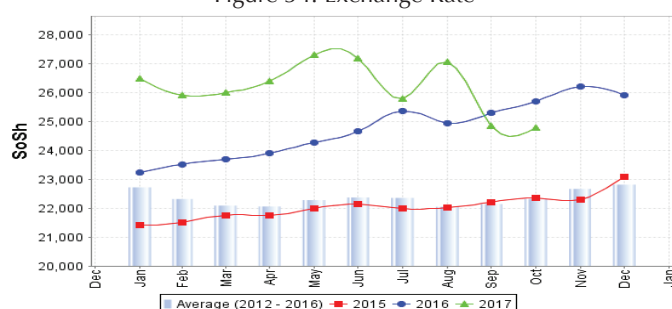
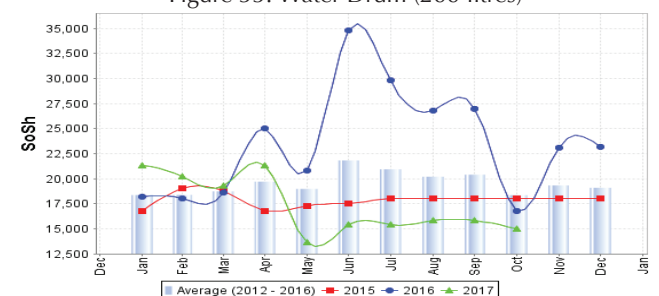


Figure 35: Water Drum (200 litres)



Regional analysis: Northeast Regions

Indicator	5-Year Average (2012-2016)	Oct-16	Sep-17	Oct-17 Nominal Price	Oct-17 Real (Deflated) Price	% Change Previous Month	% Change Same Month Previous Year	% Change 5-year avg (2012-2016)
Imported Commodities Prices								
Diesel 1 litre	21,976	15,868	20,589	20,114	6,882	-2%	27%	-8%
Imported Red Rice 1kg	17,498	16,943	17,643	17,500	5,975	-1%	3%	0%
Petrol 1 litre	22,845	19,629	23,586	23,026	7,893	-2%	17%	1%
Sugar	20,450	21,486	23,107	22,771	7,805	-1%	6%	11%
Vegetable Oil 1 litre	36,858	33,343	34,036	33,457	11,514	-2%	0%	-9%
Wheat Flour 1kg	16,777	16,286	17,036	17,157	5,856	1%	5%	2%
Wheat Grain 1kg	30,440	30,700	33,250	33,000	11,356	-1%	7%	8%
Cereal Prices								
Red Sorghum 1kg	22,041	24,000	26,000	26,600	9,134	2%	11%	21%
White Maize 1kg	21,840	26,000	20,000	23,200	7,954	16%	-11%	6%
Livestock & Livestock Product Prices								
Camel Local Quality (Head)	15,007,400	13,450,000	14,186,500	15,222,000	5,284,142	7%	13%	1%
Cattle Local Quality (Head)	8,055,000	8,000,000	11,750,000	11,630,000	4,037,197	-1%	45%	44%
Fresh Camel Milk 1 litre	38,607	45,417	57,967	57,767	19,954	0%	27%	50%
Goat Export Quality (Head)	1,441,580	1,236,000	1,546,500	1,518,000	526,866	-2%	23%	5%
Goat Local Quality (Head)	1,375,528	1,208,929	1,402,857	1,441,857	500,434	3%	19%	5%
Other Essential Items								
Charcoal 50kg	353,400	358,286	386,071	383,429	133,005	-1%	7%	8%
Cowpeas 1 kg	38,303	37,283	66,917	61,333	21,191	-8%	65%	60%
Unskilled Labor Wage Rate	136,199	138,857	142,143	142,714	49,442	0%	3%	5%
Firewood Bundle	34,488	33,371	48,857	50,143	17,307	3%	50%	45%
Local Sesame Oil 1 litre	98,595	95,800	113,000	114,250	39,561	1%	19%	16%
Exchange Rate (Somali Shilling per USD)	21,351	23,943	26,500	25,586	8,782	-3%	7%	20%
Terms of Trade								
Labour Wage (Daily)/ Cereal (Rice(Kg))	7	8	8	8	-	0%	0%	14%
Local Goat (Head)/ Cereal (Rice(Kg))	78	71	80	82	-	2%	15%	5%
Price Indices								
Consumer Price Index	-	243	288	288	-	0%	19%	-

Figure 36: Trends in Cereal Prices

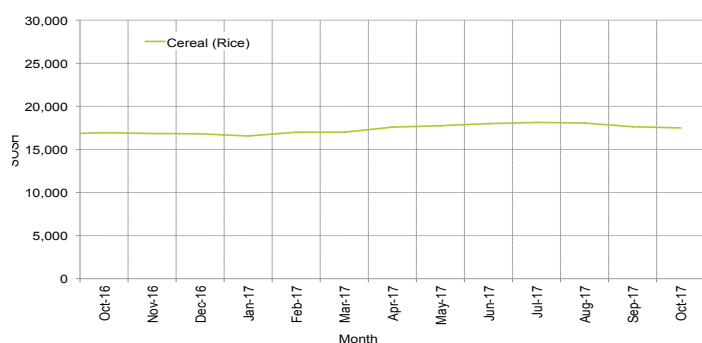


Figure 37: Trends in Wage Rates and Relative Purchasing Power

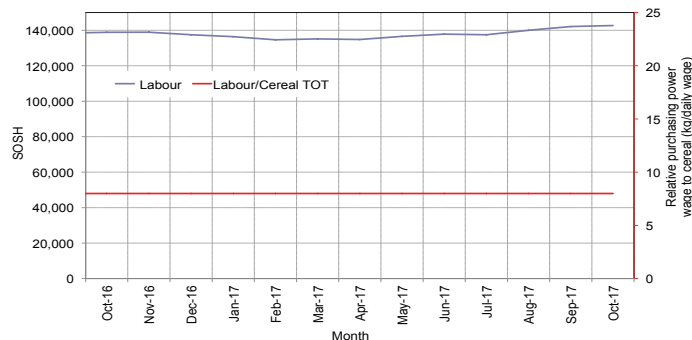


Figure 38: Imported Commodity Prices Compared to Exchange Rate

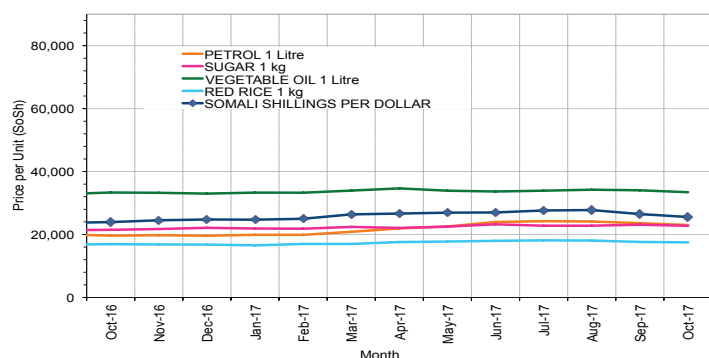


Figure 39: Goat Local Quality

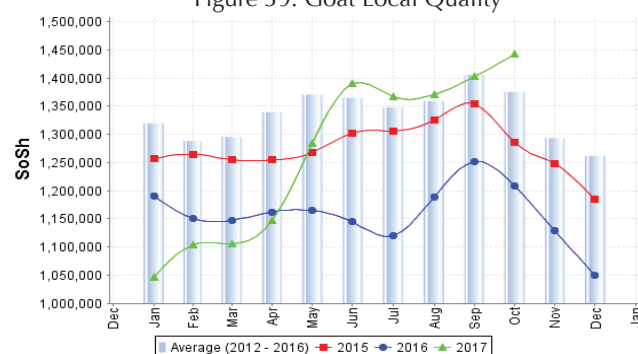


Figure 40: Exchange Rate

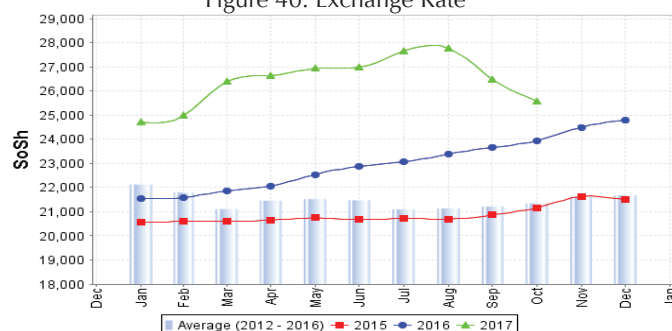
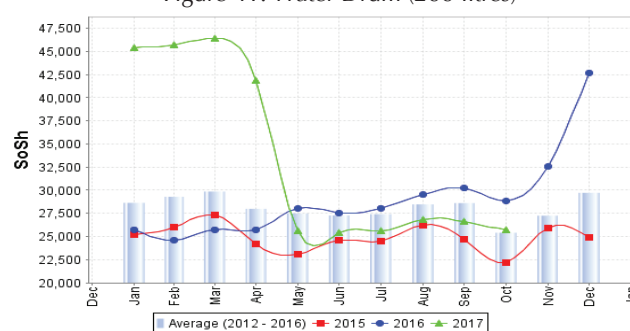


Figure 41: Water Drum (200 litres)



Regional analysis: Northwest Regions

Indicator	5-Year Average (2012-2016)	Oct-16	Sep-17	Oct-17 Nominal Price	Oct-17 Real (Deflated) Price	% Change Previous Month	% Change Same Month Previous Year	% Change 5-year avg (2012-2016)
Imported Commodities Prices								
Diesel 1 litre	6,367	4,940	6,311	6,780	4,473	7%	37%	6%
Imported Red Rice 1kg	5,150	5,400	5,280	5,240	3,434	-1%	-3%	2%
Petrol 1 litre	7,342	6,370	7,708	7,900	5,228	2%	24%	8%
Sugar	5,786	5,940	6,840	6,800	4,487	-1%	14%	18%
Vegetable Oil 1 litre	12,731	13,056	13,800	13,000	8,668	-6%	0%	2%
Wheat Flour 1kg	4,361	4,800	4,500	4,800	3,138	7%	0%	10%
Wheat Grain 1kg	3,596	4,194	4,500	4,875	3,188	8%	16%	36%
Cereal Prices								
White Sorghum 1kg	3,974	4,320	5,240	5,180	3,394	-1%	20%	30%
Yellow Maize 1kg	3,995	4,500	5,400	6,400	4,217	19%	42%	60%
Livestock & Livestock Product Prices								
Camel Local Quality (Head)	3,928,680	4,230,000	5,165,667	5,023,000	3,387,844	-3%	19%	28%
Cattle Local Quality (Head)	2,249,510	2,002,667	2,921,667	3,081,667	2,078,442	5%	54%	37%
Fresh Camel Milk 1 litre	6,902	9,000	11,400	11,800	7,859	4%	31%	71%
Goat Export Quality (Head)	468,017	364,531	516,950	464,500	313,199	-10%	27%	-1%
Goat Local Quality (Head)	341,398	291,950	432,496	408,216	275,236	-6%	40%	20%
Other Essential Items								
Charcoal 50kg	55,824	72,800	74,400	73,840	49,704	-1%	1%	32%
Cowpeas 1 kg	10,715	13,375	20,375	18,500	12,378	-9%	38%	73%
Unskilled Labor Wage Rate	49,745	58,800	65,000	66,000	44,416	2%	12%	33%
Firewood Bundle	4,206	5,933	6,000	6,167	4,060	3%	4%	47%
Local Sesame Oil 1 litre	31,757	32,063	37,625	36,750	24,687	-2%	15%	16%
Exchange Rate (Somaliland Shilling per USD)	6,957	7,530	9,912	9,992	6,639	1%	33%	44%
Terms of Trade								
Labour Wage (Daily)/ Cereal (Rice(Kg))	9	11	12	13	-	8%	18%	44%
Local Goat (Head)/ Cereal (Rice(Kg))	66	54	82	78	-	-5%	44%	18%
Price Indices								
Consumer Price Index	-	116	143	148	-	4%	28%	-

Figure 42: Trends in Cereal Prices

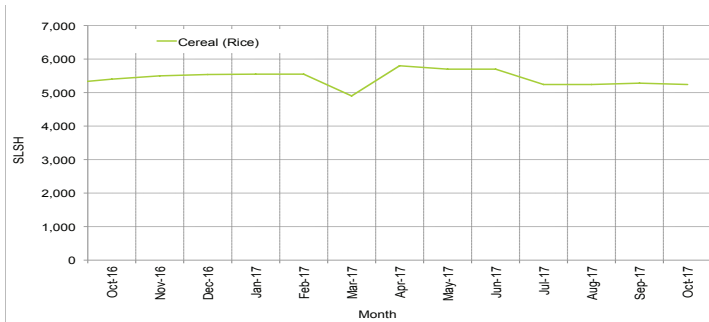


Figure 43: Trends in Wage Rates and Relative Purchasing Power

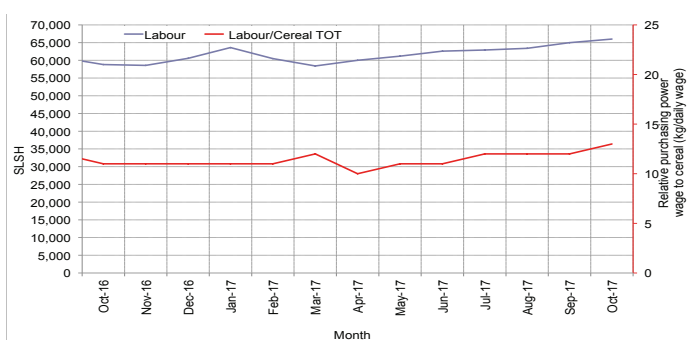


Figure 44: Imported Commodity Prices Compared to Exchange Rate

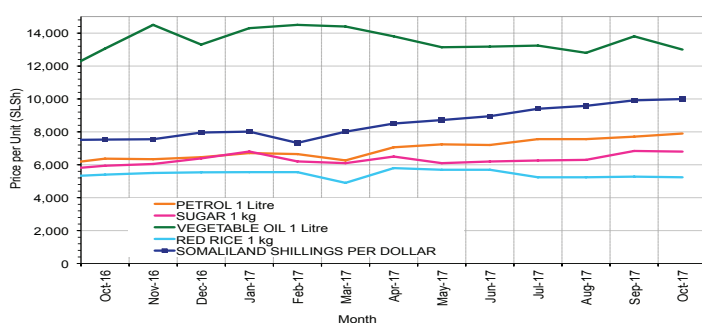


Figure 46: Exchange Rate

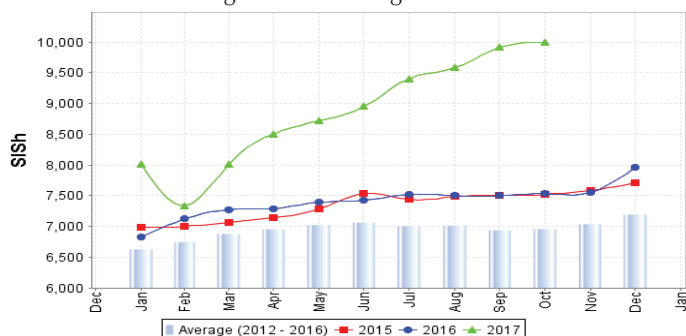


Figure 45: Goat Local Quality

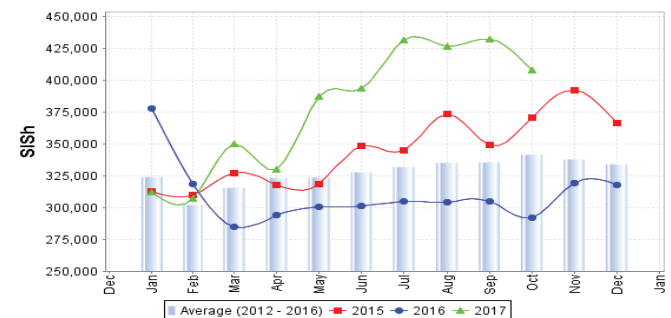
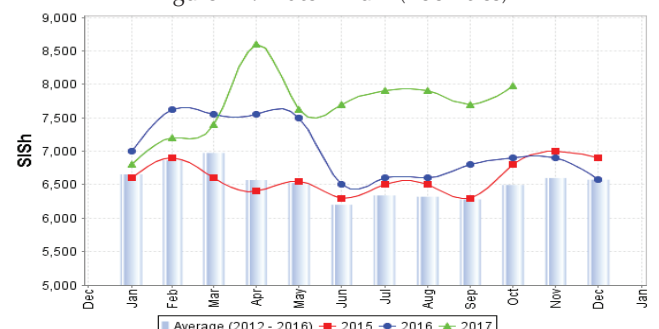


Figure 47: Water Drum (200 litres)



Trends in Livestock Exports

Table 1: Berbera Livestock Exports (Number of Heads)

	2000	2001	2002	2003	2004	2005	2006	2007	2008	2009	2010	2011	2012	2013	2014	2015	2016
Shoats	1 601 083	51 546	341 711	563 107	859 404	1 023 795	1 017 242	1 350 054	1 219 519	1 556 003	2 584 810	3 104 684	3 219 584	2 888 955	3 089 592	3 270 386	2 880 057
Cattle	63 263	20 973	37 547	84 312	131 852	148 151	85 631	88 143	80 051	88 005	133 021	150 934	190 354	20 875	252 597	160,395	150 133
Camel	16 984	3 473	18,864	21 874	5 147	5 069	22 810	14 245	26 515	20 206	92 651	107 281	102 664	75 728	64 578	61 475	57 841

Figure 48: Berbera Livestock Exports (Number of Heads)

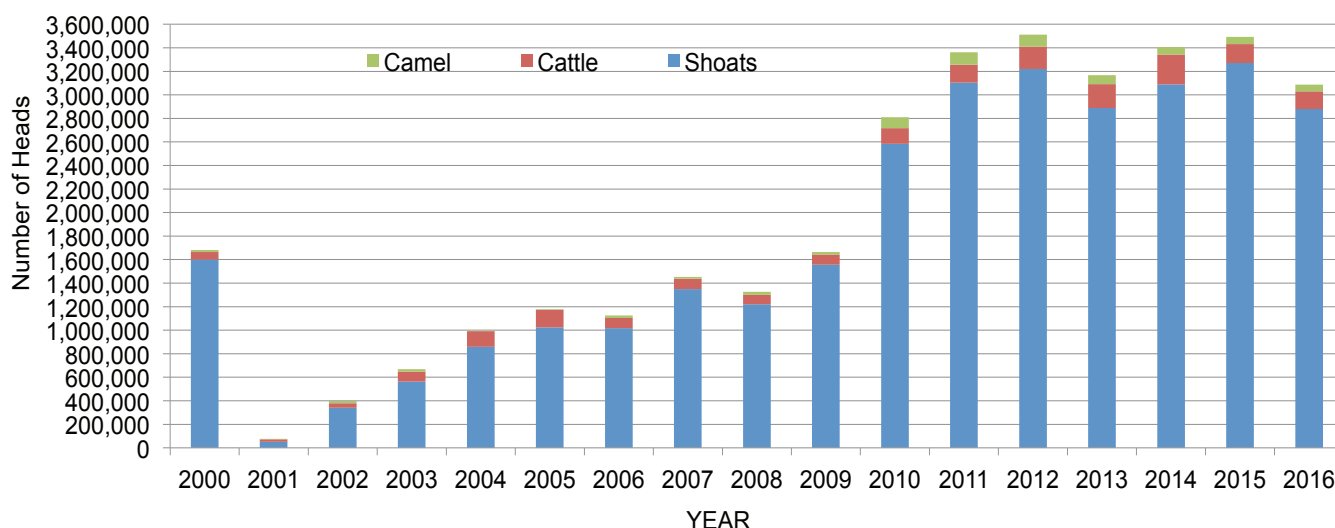
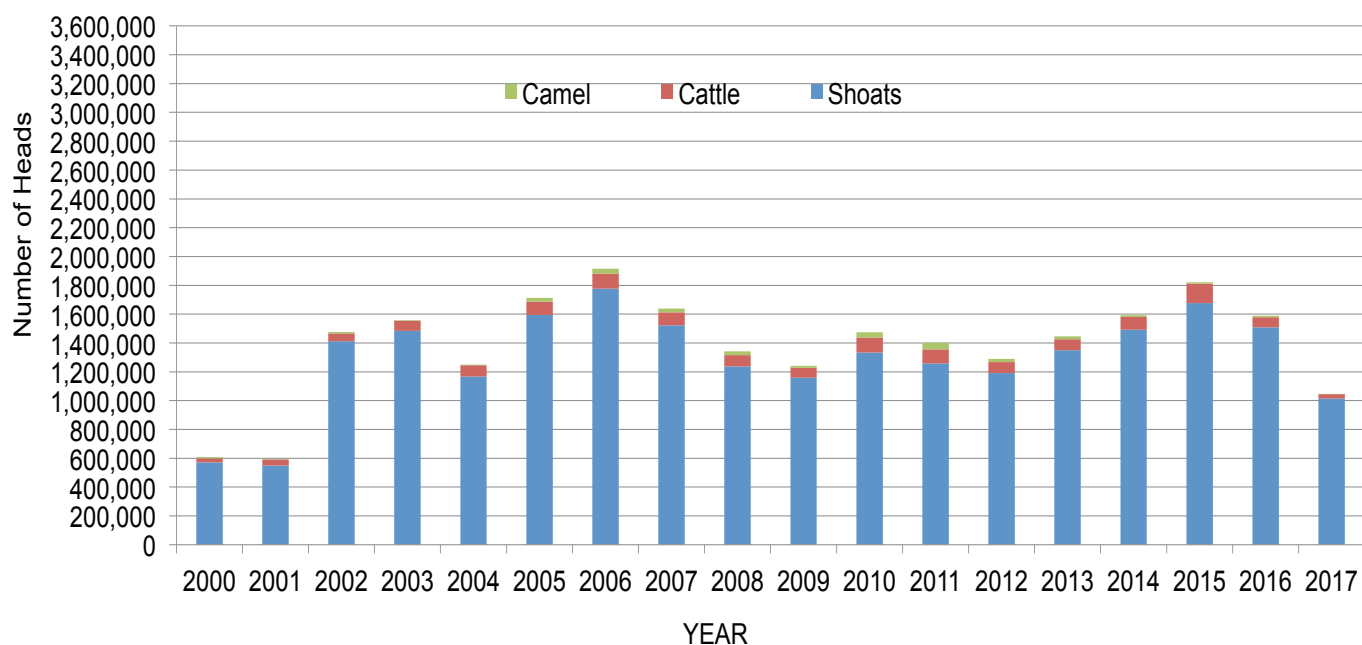


Table 2: Bossaso Livestock Exports (Number of Heads)

	2000	2001	2002	2003	2004	2005	2006	2007	2008	2009	2010	2011	2012	2013	2014	2015	2016	2017
Shoats	571,455	548,853	1,412,450	1,483,409	1,166,480	1,594,859	1,777,283	1,522,855	1,236,775	1,159,454	1,333,478	1,256,535	1,192,197	1,349,123	1,493,111	1,676,216	1 507 910	1 014 732
Cattle	27,604	42,248	53,313	71,328	79,994	91,910	104,595	89,190	78,046	67,385	103,808	99,058	76,043	77,353	87,759	134,597	70 705	30 443
Camel	8,177	1,950	9,720	4,259	2,488	26,109	33,724	27,580	27,639	15,331	36,865	45,878	22,288	19,032	12,251	10,945	10 144	1 752

Figure 49: Bossaso Livestock Exports (Number of Heads)



Trends in Cereal Imports

Table 3: Total Cereal Imports through Berbera, Bossaso and Mogadishu Ports (Tonnes) *

	2000	2001	2002	2003	2004	2005	2006	2007	2008	2009	2010	2011	2012	2013*	2014*	2015*	2016*	2017*
Rice	75,687	74,729	144,600	180,614	146,567	150,017	198,101	166,626	136,007	171,472	161,415	272,877	227,955	170,868	170,888	195,240	207 267	52 890
Wheat flour	78,555	134,425	128,263	171,442	151,555	169,583	178,345	176,821	169,208	240,247	249,080	258,679	268,491	183,058	284,230	318,868	207 463	72 470
Pasta	11,071	26,702	35,425	29,273	38,749	39,153	52,815	41,331	38,441	86,372	102,373	184,849	337,878	134,311	176,951	155,360	78 113	24 106

* Elman (Mogadishu) is up to November 2015. Mogadishu Data (Elmaan Por) for 2013 includes only January-March imports. Berbera Data is up to December 2016.

Figure 50: Total Cereal Imports (Berbera, Bossaso and Mogadishu)

