

Market DataUpdate

Highlights

Inflation: SoSh (Somali shilling)-using areas: In the month of October, the Consumer Price Index (CPI) changed marginally (2-4%) in the SoSh-using areas. Compared to a year ago (October 2014), the CPI decreased (5-13%) in SoSh-using areas in October due to cereal price declines. SiSh (Somaliland shilling)-using areas: The CPI increased marginally (5%) month-on-month in October. The CPI decreased by 4 percent compared to a year ago (October 2014).

Exchange rate: SoSh-using areas: The exchange rates between SoSh and the United States Dollar (USD) indicated stability or marginal monthly changes (1-3%) in October. The SoSh depreciated compared to a year ago across all areas, most significantly (9%) in Gedo. SiSh-using areas: The SiSh remained stable against the USD in October month-on-month. Annual comparison indicates depreciation in SiSh by 9 percent.

Local grain prices remained relatively stable or changed (increased/decreased) by less than 10 percent in October in Most regions of the country with an exception of Lower Shabelle, Bay and Banadir (Mogadishu Bakara) where prices increased moderately (11-23%) due to reduced cereal stock at household level and increased cost of transportation attributable to inaccessibility of roads as a result of Deyr'15 rainfall. Cereal prices are lower compared to a year ago in most regions of the country.

Prices of imported food (rice, sugar, vegetable oil, wheat flour) mostly exhibited relative stability or mild monthly changes in local currency terms in October in most parts of the country apart from Bay region where prices of all food imports increased moderately (10-12%) month-on-month due to increased transportation cost attributable to worsened road condition as a result of Deyr'15 rainfall. Annual price comparison indicated a generally stable trend or mild changes in prices for most of the imported food commodities in October compared to October 2014.

Livestock prices (for all species) remained relatively stable or changed at mild rates (less than 10%) month-on-month in October in most regions of the country. Milk prices (camel and cattle) changed from mild to moderate rates month-on-month in most regions of the country; a high increase (37%) in monthly fresh camel milk prices was noted in Lower Shabelle due to reduced supply as a result of camel migration away from the market catchment area. Annual comparison exhibited mixed trends; specifically, in the Northern and Central parts of country, yearly prices changed at mild rates (less than 10%); Livestock prices for most southern regions were lower compared to one year ago except in Middle Juba where livestock prices for all species increased from moderate to high levels. Compared to a year ago milk prices (camel and cattle) increased in most parts of the country except in middle Juba and sorghum belt regions where declines in prices were recorded.

Labor (unskilled) wages remained relatively stable or changed at mild rates (increase/decrease) in the month of October in most parts of the country. Notably, daily labour wage in Lower Juba increased moderately (16%) due to increased activities including rehabilitation of roads in Kismayo town. Annual comparison indicates mild to moderate increases in wage rates in most regions of the country in October with the highest increase (20%) being recorded in Bakool (Hudur and El-berde).

Terms of Trade (ToT) between daily labor wage and local cereals either remained stable or changed at mild rates (1-2kg/daily labour wage) month-on-month in October in most parts of the country except in Banadir (Mogadishu-Bakara) where it declined by 7kg/daily labour wage due to decline in labour wage rate and increase in cereal prices. The ToT between local quality goat and cereals changed at mild rates in most regions of the country apart from Banadir (Mogadishu Bakara), Lower Shabelle, Hiran and Bay where the ToT declined moderately (12-24%). Annual comparison indicated relative stability or increase in ToT between daily labor wage and local cereals in most regions of the country, while ToT between local quality goat and cereals changed at mild to moderate rates across the country with the highest change (increase of 57Kg/local quality goat) being recorded in Middle Juba due to significant increase in local quality goat prices and decrease in local cereal prices.

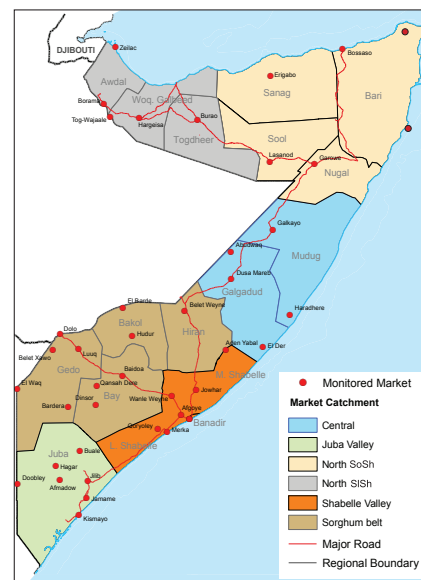
Towns Affected by Trade Disruption (Bulo Burto, Wajid and Hudur)

Labor (unskilled) wages increased at mild rates (2-10%) in all the three markets in October month-on-month. Annual comparison indicated increase in wage rates in Hudur (50%).

Terms of Trade (ToTs) between daily labor wage and local cereals and between Local quality goat and local cereals remained relatively stable month-on-month in Wajid and Hudur while in Bulo-Burto the ToT between local quality goat and local cereals declined by 8kg/local quality goat due to decline in local quality goat prices. ToTs are higher compared to a year ago in Hudur due to decrease in cereal prices and increase in labor wages and goat prices

Local grains prices remained stable in Hudur and Wajid but increased in Bulo-Burto (12%) month-on-month in October. Annual comparison indicated significant (35%) decline in red sorghum prices in Hudur.

Prices of imported food items (rice, sugar, vegetable oil, wheat flour) increased (4-21%) month-on-month in October in all the three markets. Annual comparison indicated decline in prices in Hudur due to improved access as a result of improved security situation.



This Market Data Update is a monthly report that presents analysis of market information and is produced regularly as part of the monthly monitoring process.

The weekly price data is collected from 48 main markets and 51 rural markets throughout Somalia since 1995.

Market analysis is an integral part of all of FSNAU's annual food security projections and seasonal technical reports (Technical Reports on FSNAU Post Gu and Post Deyr Analysis).

Detailed market data are available online on www.fsnau.org/ids.

National Trends: CPI, Exchange Rates, Cereal Prices and Relative Purchasing Power

Table 1: ToT between Cereals (kg) and Daily Labour Wage Rate, by Region (September)

Regions	October 2015 (kg)	kg change from		
		Sep - 2015	Oct - 2015	October 5 yr Average (2010- 2014)
Banadir/Mogadishu	21	-7	6	6
Bay	15	-1	1	2
Bakool	4	-2	2	1
Gedo	15	0	2	1
Juba	12	0	3	2
Shabelle	12	0	2	2
Northwest	11	1	2	4
Northeast	9	0	1	3
Central	5	0	0	2

Figure 1: Wheat Prices: Mogadishu and Bossaso Markets

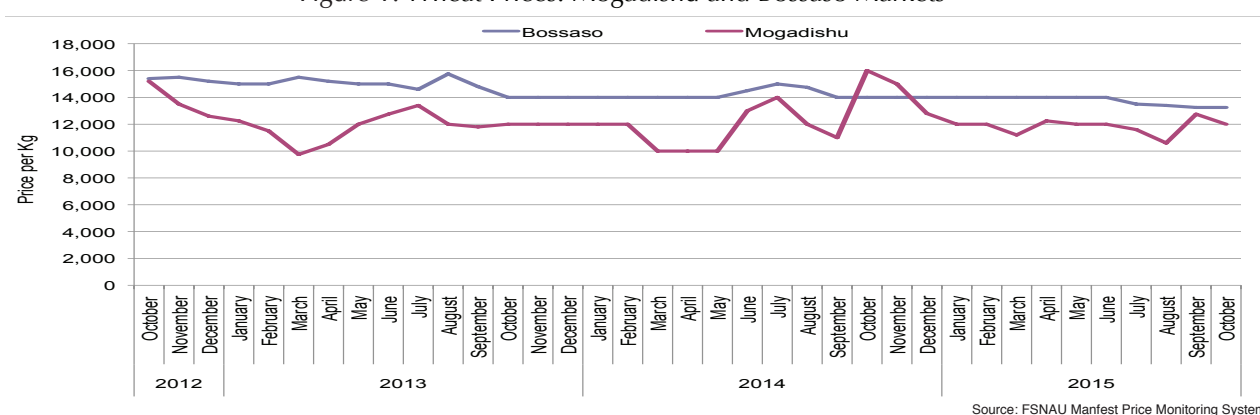


Figure 2: Terms of Trade Between Wage Rates and Selected Cereals

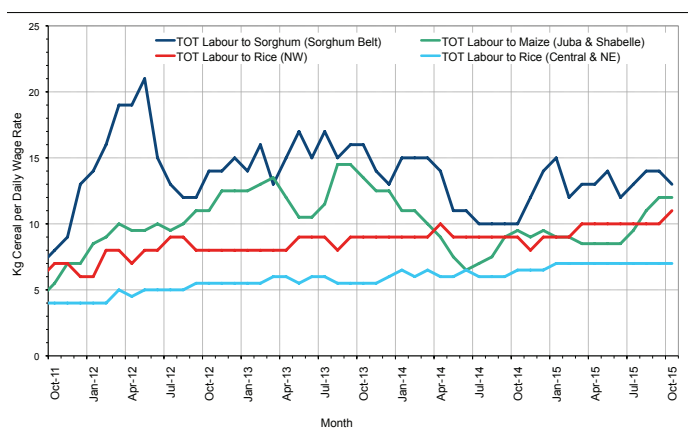


Figure 3: Monthly Exchange Rate for Selected Regions (SoSh and SiSh to USD)

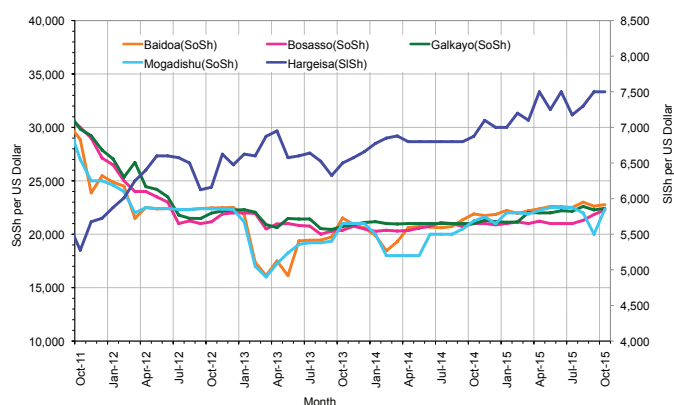


Figure 4: Monthly Trends in Consumer Price Index (CPI, March 2007=100)

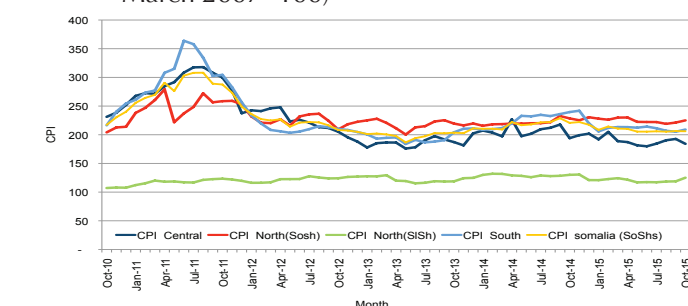
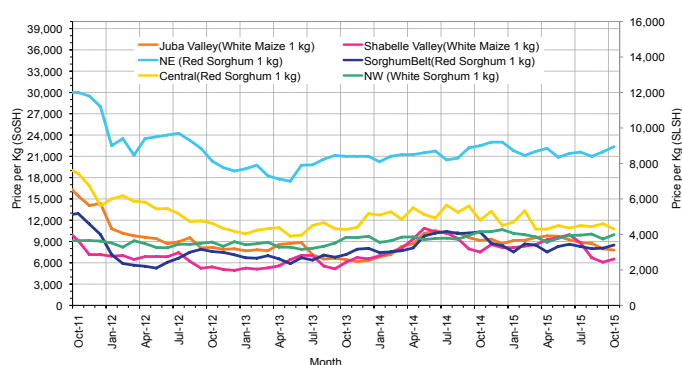


Figure 5: Monthly Trends in Local Cereal Prices



Regional analysis: Juba Regions

Indicator	5-Year Average (2010-2014)	Oct-14	Sep-15	Oct-15 Nominal Price	Oct-15 Real (Deflated) Price	% Change Previous Month	% Change Same Month Previous Year	% Change 5-year avg (2010-2014)
Imported Commodities Prices								
Diesel 1 litre	33,151	27,607	24,143	25,000	11,856	4%	-9%	-25%
Imported Red Rice 1kg	19,685	16,000	15,214	15,929	7,518	5%	0%	-19%
Petrol 1 litre	33,935	28,571	26,143	25,357	12,027	-3%	-11%	-25%
Sugar	26,785	17,643	15,536	17,857	8,440	15%	1%	-33%
Vegetable Oil 1 litre	42,062	32,964	28,464	29,857	14,179	5%	-9%	-29%
Wheat Flour 1kg	18,485	15,500	14,679	15,750	7,432	7%	2%	-15%
Wheat Grain 1kg	18,000	-	-	-	-	-	-	-
Cereal Prices								
Red Sorghum 1kg	7,775	8,000	8,000	8,000	3,726	0%	0%	3%
White Maize 1kg	9,433	9,257	8,239	7,929	3,692	-4%	-14%	-16%
Livestock & Livestock Product Prices								
Camel Local Quality (Head)	9,548,114	10,216,429	9,094,643	8,807,143	4,211,907	-3%	-14%	-8%
Cattle Local Quality (Head)	3,905,702	4,109,429	3,763,214	3,362,514	1,608,019	-11%	-18%	-14%
Fresh Camel Milk 1 litre	19,685	17,393	17,946	19,714	9,328	10%	13%	0%
Goat Export Quality (Head)	1,491,458	1,434,107	1,210,893	1,189,286	568,675	-2%	-17%	-20%
Goat Local Quality (Head)	964,091	860,893	795,536	821,786	392,918	3%	-5%	-15%
Other Essential Items								
Charcoal 50kg	79,881	91,429	76,536	85,714	40,893	12%	-6%	7%
Cowpeas 1 kg	22,329	22,725	20,107	20,143	9,533	0%	-11%	-10%
Unskilled Labor Wage Rate	87,135	85,036	92,357	100,119	47,782	8%	18%	15%
Firewood Bundle	9,171	11,857	7,214	8,286	3,863	15%	-30%	-10%
Local Sesame Oil 1 litre	78,393	86,464	65,964	67,286	32,079	2%	-22%	-14%
Exchange Rate (Somali Shilling per USD)	24,911	21,236	22,864	22,714	10,763	-1%	7%	-9%
Terms of Trade								
Labour Wage (Daily)/ Cereal (Maize(Kg))	10	9	11	13	-	18%	44%	30%
Local Goat (Head)/ Cereal (Maize(Kg))	115	93	97	104	-	7%	12%	-10%
Price Indices								
Consumer Price Index	-	240	205	209	-	2%	-13%	-

Figure 6: Trends in Cereal Prices

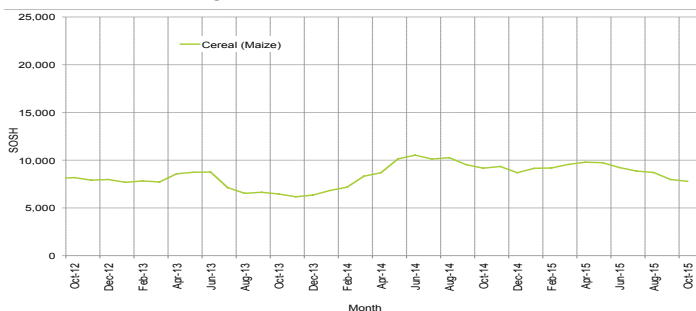


Figure 7: Trends in Wage Rates and Relative Purchasing Power

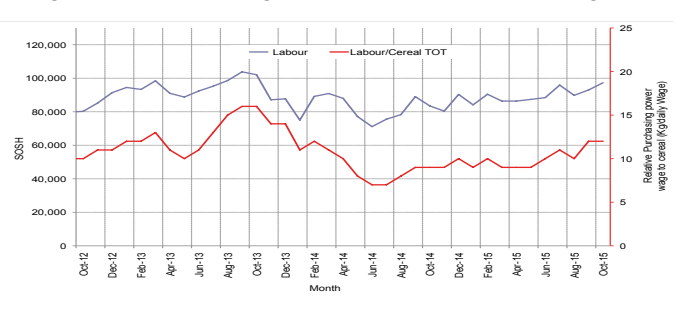


Figure 8: Imported Commodity Prices Compared to Exchange Rate

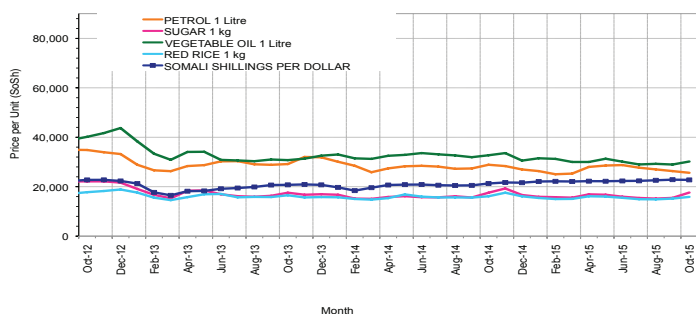


Figure 10: Exchange Rate

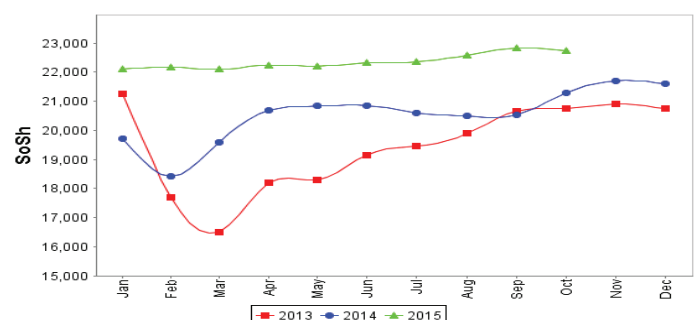


Figure 9: Goat Local Quality

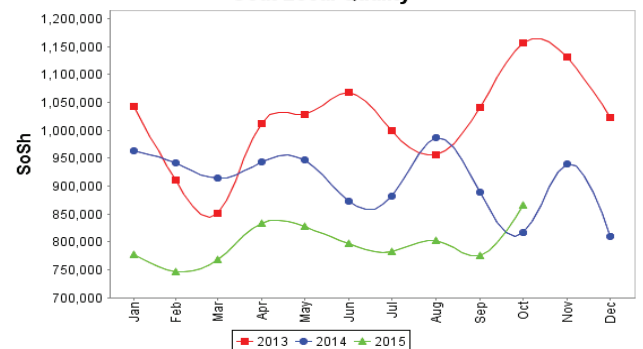
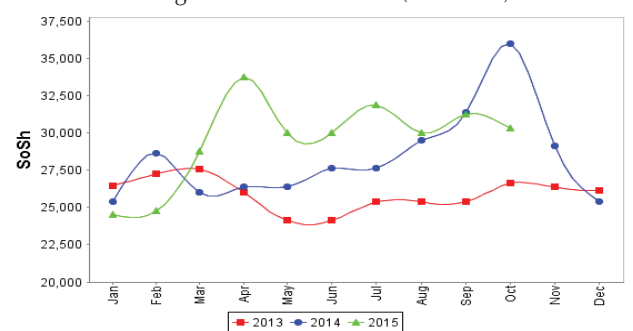


Figure 11: Water Drum (200 litres)



Regional analysis: Sorghum Belt Regions (Bay, Bakool, Gedo and Hiran)

Indicator	5-Year Average (2010-2014)	Oct-14	Sep-15	Oct-15 Nominal Price	Oct-15 Real (Deflated) Price	% Change Previous Month	% Change Same Month Previous Year	% Change 5-year avrg (2010-2014)
Imported Commodities Prices								
Diesel 1 litre	33,815	33,989	27,364	27,477	13,041	0%	-19%	-19%
Imported Red Rice 1kg	21,183	18,386	17,591	18,636	8,813	6%	1%	-12%
Petrol 1 litre	33,776	33,977	29,045	29,273	13,900	1%	-14%	-13%
Sugar	25,638	19,464	17,750	19,068	9,019	7%	-2%	-26%
Vegetable Oil 1 litre	45,325	39,727	33,955	35,409	16,834	4%	-11%	-22%
Wheat Flour 1kg	19,613	18,136	17,364	18,523	8,759	7%	2%	-6%
Wheat Grain 1kg	11,955	17,250	18,625	21,000	9,943	13%	22%	76%
Cereal Prices								
Red Sorghum 1kg	9,211	10,350	8,064	8,500	3,965	5%	-18%	-8%
White Maize 1kg	10,088	10,764	8,917	9,264	4,330	4%	-14%	-8%
Livestock & Livestock Product Prices								
Camel Local Quality (Head)	11,870,522	13,040,000	12,710,000	12,585,000	6,018,663	-1%	-3%	6%
Cattle Local Quality (Head)	3,544,143	3,953,125	3,775,000	3,535,714	1,690,852	-6%	-11%	0%
Fresh Camel Milk 1 litre	23,992	24,900	18,575	19,100	9,035	3%	-23%	-20%
Goat Export Quality (Head)	1,610,436	1,669,773	1,572,500	1,500,000	717,273	-5%	-10%	-7%
Goat Local Quality (Head)	1,046,204	1,032,614	992,955	948,341	453,443	-4%	-8%	-9%
Other Essential Items								
Charcoal 50kg	143,854	155,250	159,375	176,125	84,132	11%	13%	22%
Cowpeas 1 kg	30,091	29,864	24,909	24,886	11,802	0%	-17%	-17%
Unskilled Labor Wage Rate	103,409	98,841	112,273	109,250	52,149	-3%	11%	6%
Firewood Bundle	6,219	6,614	6,545	6,545	3,030	0%	-1%	5%
Local Sesame Oil 1 litre	81,101	94,906	74,893	74,750	35,649	0%	-21%	-8%
Exchange Rate (Somali Shilling per USD)	25,082	21,341	22,586	22,725	10,768	1%	6%	-9%
Terms of Trade								
Labour Wage (Daily)/ Cereal (Sorghum(Kg))	12	10	14	13	-	-7%	30%	8%
Local Goat (Head)/ Cereal (Sorghum(Kg))	122	100	123	112	-	-9%	12%	-8%
Price Indices								
Consumer Price Index	-	240	205	209	-	2%	-13%	-

Figure 12: Trends in Cereal Prices

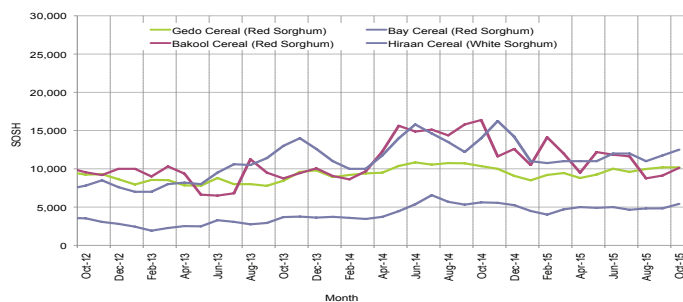


Figure 13: Trends in Wage Rates and Relative Purchasing Power

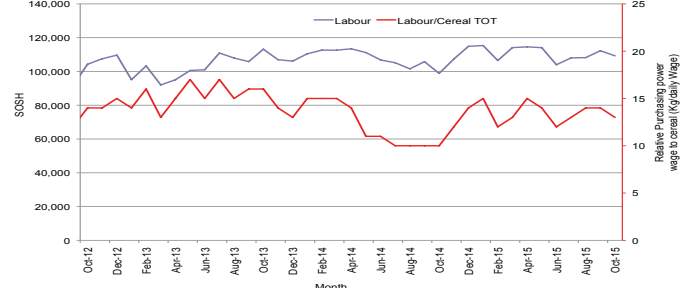


Figure 14: Imported Commodity Prices Compared to Exchange Rate

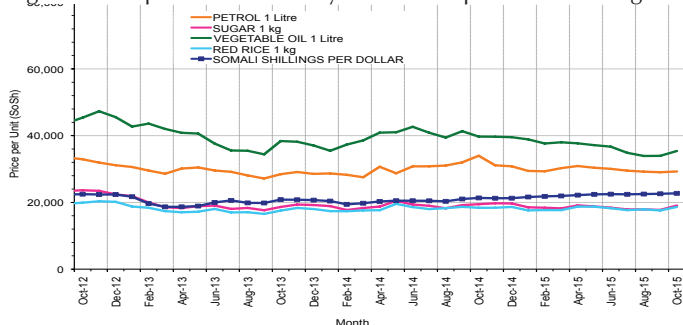


Figure 15: Goat Local Quality

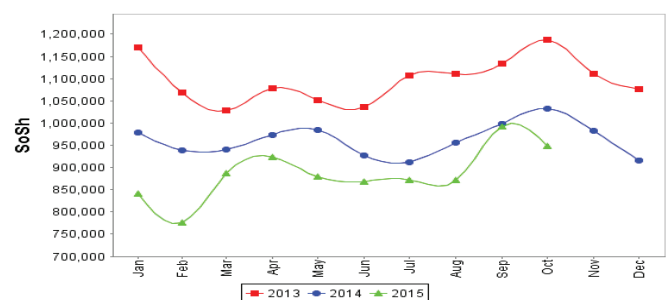


Figure 16: Exchange Rate

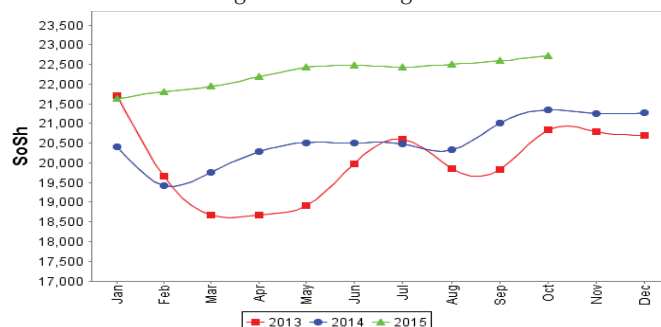
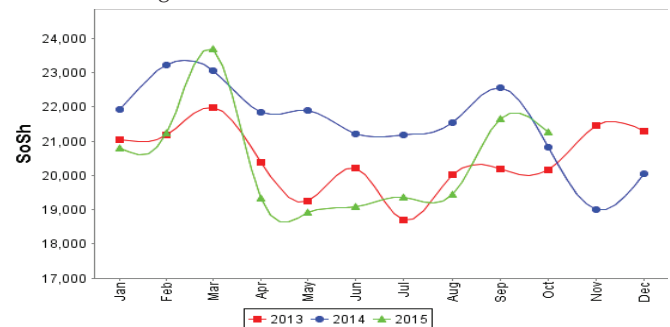


Figure 17: Water Drum (200 litres)



Regional analysis: Shabelle Regions

Indicator	5-Year Average (2010-2014)	Oct-14	Sep-15	Oct-15 Nominal Price	Oct-15 Real (Deflated) Price	% Change Previous Month	% Change Same Month Previous Year	% Change 5-year avg (2010-2014)
Imported Commodities Prices								
Diesel 1 litre	30,648	26,833	23,667	23,125	10,960	-2%	-14%	-25%
Imported Red Rice 1kg	19,038	15,833	15,000	15,333	7,233	2%	-3%	-19%
Petrol 1 litre	32,043	30,208	28,208	27,583	13,092	-2%	-9%	-14%
Sugar	23,525	16,500	15,250	15,542	7,333	2%	-6%	-34%
Vegetable Oil 1 litre	35,490	28,917	27,083	24,667	11,697	-9%	-15%	-30%
Wheat Flour 1kg	18,265	16,792	16,250	16,167	7,632	-1%	-4%	-11%
Wheat Grain 1kg	16,204	27,000	17,000	17,000	8,030	0%	-37%	5%
Cereal Prices								
Red Sorghum 1kg	11,182	11,517	9,767	10,014	4,689	3%	-13%	-10%
White Maize 1kg	6,702	7,513	6,087	6,542	3,029	7%	-13%	-2%
Livestock & Livestock Product Prices								
Camel Local Quality (Head)	16,141,166	16,405,000	18,515,000	18,070,000	8,641,859	-2%	10%	12%
Cattle Local Quality (Head)	5,021,800	5,690,000	5,866,500	5,640,000	2,697,224	-4%	-1%	12%
Fresh Camel Milk 1 litre	20,260	20,250	19,167	23,625	11,199	23%	17%	17%
Goat Export Quality (Head)	1,845,700	1,996,250	1,983,125	1,990,625	951,914	0%	0%	8%
Goat Local Quality (Head)	1,271,716	1,452,917	1,385,833	1,341,667	641,551	-3%	-8%	6%
Other Essential Items								
Charcoal 50kg	121,415	111,708	119,917	149,611	71,451	25%	34%	23%
Cowpeas 1 kg	26,411	23,025	19,160	19,147	9,057	0%	-17%	-28%
Unskilled Labor Wage Rate	68,399	73,833	75,417	77,667	37,044	3%	5%	14%
Firewood Bundle	6,049	7,083	6,250	6,708	3,108	7%	-5%	11%
Local Sesame Oil 1 litre	64,023	74,950	52,125	48,833	23,254	-6%	-35%	-24%
Exchange Rate (Somali Shilling per USD)	25,305	21,529	22,458	22,492	10,657	0%	4%	-11%
Terms of Trade								
Labour Wage (Daily)/ Cereal (Maize(Kg))	10	10	12	12	-	0%	20%	20%
Local Goat (Head)/ Cereal (Maize(Kg))	198	193	228	205	-	-10%	6%	4%
Price Indices								
Consumer Price Index	-	240	205	209	-	2%	-13%	-

Figure 18: Trends in Cereal Prices

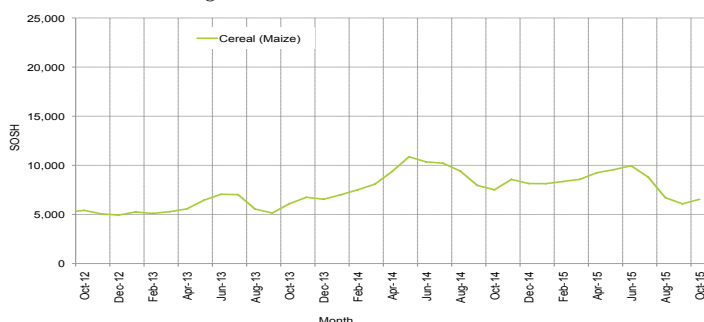


Figure 19: Trends in Wage Rates and Relative Purchasing Power

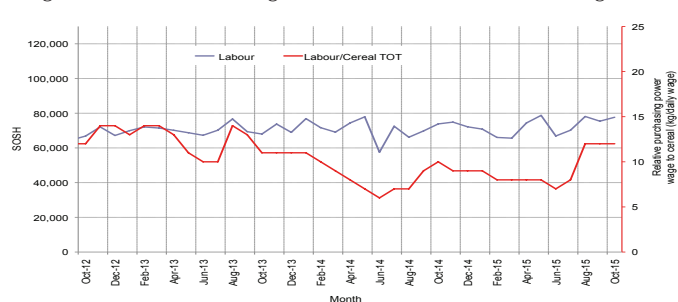


Figure 20: Imported Commodity Prices Compared to Exchange Rate

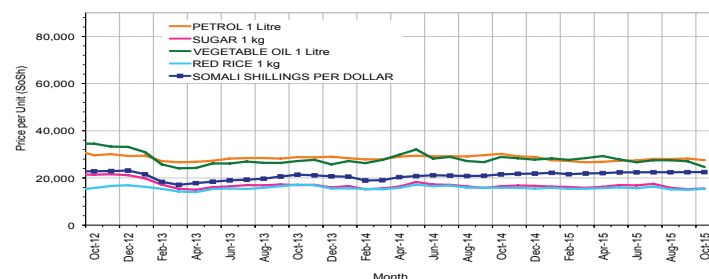


Figure 21: Goat Local Quality

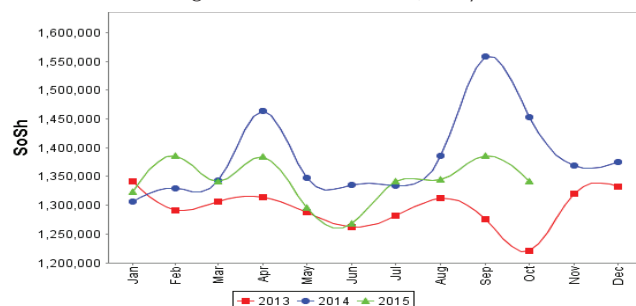


Figure 22: Exchange Rate

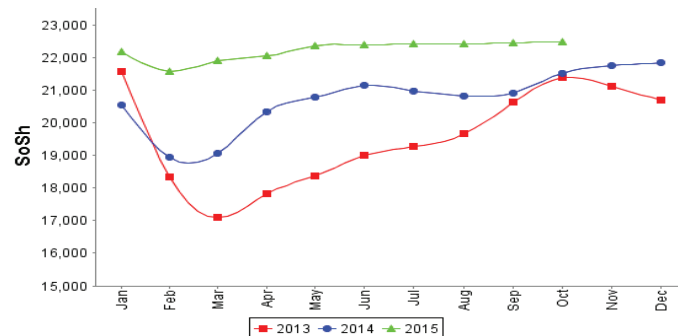
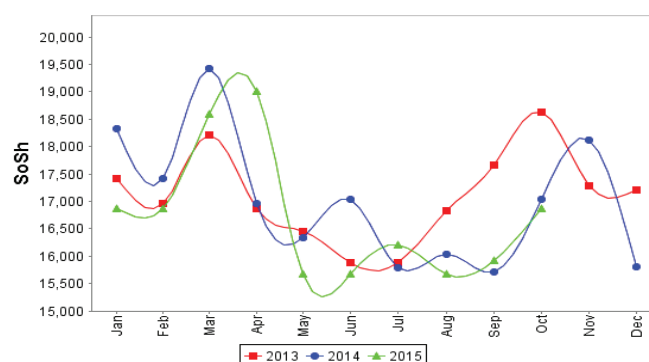


Figure 23: Water Drum (200 litres)



Regional analysis: Banadir Region

Indicator	5-Year Average (2010-2014)	Oct-14	Sep-15	Oct-15 Nominal Price	Oct-15 Real (Deflated) Price	% Change Previous Month	% Change Same Month Previous Year	% Change 5-year avrg (2010-2014)
Imported Commodities Prices								
Diesel 1 litre	26,402	21,225	17,958	17,292	8,170	-4%	-19%	-35%
Imported Red Rice 1kg	17,741	13,125	12,417	12,521	5,888	1%	-5%	-29%
Petrol 1 litre	25,560	21,208	21,417	21,417	10,143	0%	1%	-16%
Sugar	21,372	14,000	12,833	12,917	6,078	1%	-8%	-40%
Vegetable Oil 1 litre	32,928	24,167	22,375	22,125	10,481	-1%	-8%	-33%
Wheat Flour 1kg	15,699	13,896	12,750	12,833	6,037	1%	-8%	-18%
Wheat Grain 1kg	10,611	10,433	12,833	11,750	5,519	-8%	13%	11%
Cereal Prices								
Red Sorghum 1kg	8,402	8,621	7,475	7,475	3,475	0%	-13%	-11%
White Maize 1kg	8,646	10,633	8,138	8,283	3,861	2%	-22%	-4%
Livestock & Livestock Product Prices								
Camel Local Quality (Head)	14,000,000	-	-	-	-	-	-	-
Cattle Local Quality (Head)	4,500,000	-	-	-	-	-	-	-
Fresh Camel Milk 1 litre	21,015	22,458	22,917	22,917	10,860	0%	2%	9%
Goat Export Quality (Head)	2,327,500	-	2,425,000	2,075,000	992,267	-14%	-	-11%
Goat Local Quality (Head)	1,989,875	2,395,000	1,700,000	1,812,500	866,726	7%	-24%	-9%
Other Essential Items								
Charcoal 50kg	173,641	191,375	195,667	199,625	95,370	2%	4%	15%
Cowpeas 1 kg	26,335	24,192	20,750	20,667	9,784	0%	-15%	-22%
Unskilled Labor Wage Rate	97,108	104,667	112,083	107,083	51,112	-4%	2%	10%
Firewood Bundle	7,315	8,000	8,000	8,250	3,846	3%	3%	13%
Local Sesame Oil 1 litre	64,065	73,958	54,958	55,792	26,582	2%	-25%	-13%
Exchange Rate (Somali Shilling per USD)	24,632	21,338	22,063	22,492	10,657	2%	5%	-9%
Terms of Trade								
Labour Wage (Daily)/ Cereal (Maize(Kg))	11	10	14	13	-	-7%	30%	18%
Local Goat (Head)/ Cereal (Maize(Kg))	246	225	209	219	-	5%	-3%	-11%
Price Indices								
Consumer Price Index	-	240	205	209	-	2%	-13%	-

Figure 24: Trends in Cereal Prices

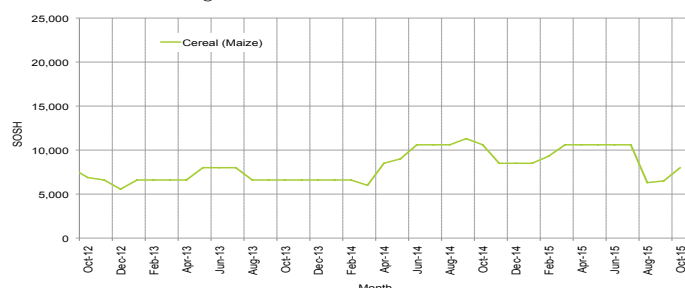


Figure 25: Bakara: Trends in Wage Rates and Relative Purchasing Power

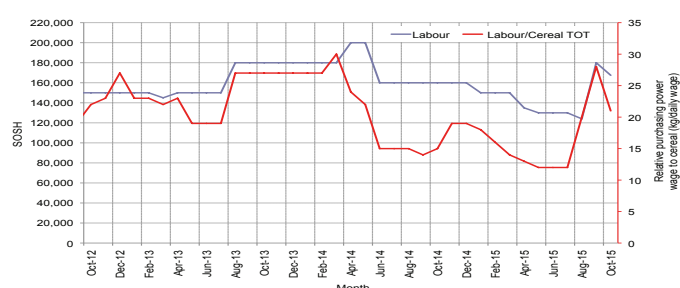


Figure 26: Imported Commodity Prices Compared to Exchange Rate

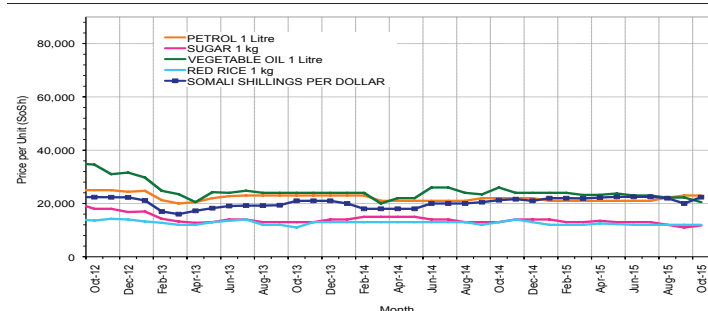


Figure 27: Goat Local Quality

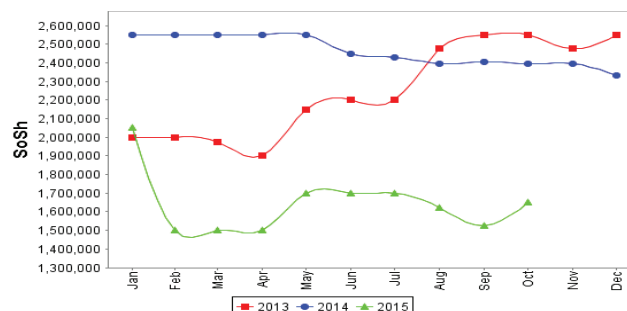


Figure 28: Exchange Rate

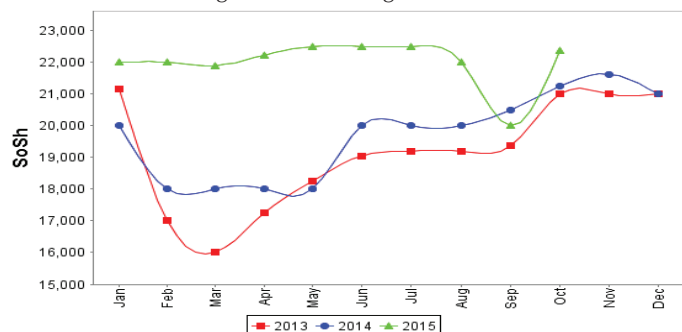
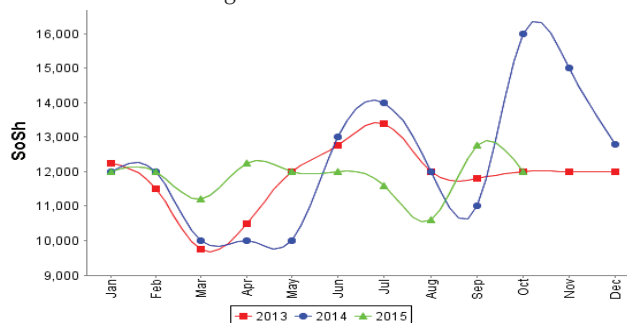


Figure 29: Wheat Flour



Regional analysis: Central Regions

Indicator	5-Year Average (2010-2014)	Oct-14	Sep-15	Oct-15 Nominal Price	Oct-15 Real (Deflated) Price	% Change Previous Month	% Change Same Month Previous Year	% Change 5-year avrg (2010-2014)
Imported Commodities Prices								
Diesel 1 litre	31,836	27,700	23,350	23,300	12,552	0%	-16%	-27%
Imported Red Rice 1kg	23,398	18,000	17,000	16,800	9,022	-1%	-7%	-28%
Petrol 1 litre	28,650	25,000	24,350	24,600	13,258	1%	-2%	-14%
Sugar	27,074	19,800	18,100	18,050	9,701	0%	-9%	-33%
Vegetable Oil 1 litre	47,360	39,000	35,200	34,500	18,633	-2%	-12%	-27%
Wheat Flour 1kg	19,021	14,950	15,400	15,400	8,262	0%	3%	-19%
Wheat Grain 1kg	16,592	26,000	17,125	17,000	9,131	-1%	-35%	2%
Cereal Prices								
Red Sorghum 1kg	13,096	12,000	11,500	10,750	5,737	-7%	-10%	-18%
White Maize 1kg	13,696	14,000	13,100	13,200	7,068	1%	-6%	-4%
Livestock & Livestock Product Prices								
Camel Local Quality (Head)	9,797,000	11,025,000	12,537,500	12,650,000	6,868,771	1%	15%	29%
Cattle Local Quality (Head)	2,085,000	-	-	-	-	-	-	-
Fresh Camel Milk 1 litre	33,686	29,000	32,400	29,900	16,136	-8%	3%	-11%
Goat Export Quality (Head)	1,510,108	1,434,375	1,342,500	1,337,500	726,154	0%	-7%	-11%
Goat Local Quality (Head)	1,150,740	1,030,500	965,000	1,006,000	546,152	4%	-2%	-13%
Other Essential Items								
Charcoal 50kg	185,063	183,500	153,500	156,500	84,879	2%	-15%	-15%
Cowpeas 1 kg	28,280	22,400	21,900	22,300	12,009	2%	0%	-21%
Unskilled Labor Wage Rate	85,460	84,000	92,000	92,000	49,855	0%	10%	8%
Firewood Bundle	35,090	33,000	34,800	33,800	18,253	-3%	2%	-4%
Local Sesame Oil 1 litre	89,780	84,350	87,500	87,500	47,412	0%	4%	-3%
Exchange Rate (Somali Shilling per USD)	24,814	20,890	22,205	22,360	12,041	1%	7%	-10%
Terms of Trade								
Labour Wage (Daily)/ Cereal (Rice(Kg))	3	5	5	5	-	0%	0%	67%
Local Goat (Head)/ Cereal (Rice(Kg))	51	57	57	60	-	5%	5%	18%
Camel (Head)/Cereal (Kg)	449	613	738	753	-	2%	23%	68%
Price Indices								
Consumer Price Index	-	194	193	184	-	-4%	-5%	-

Figure 30: Trends in Cereal Prices

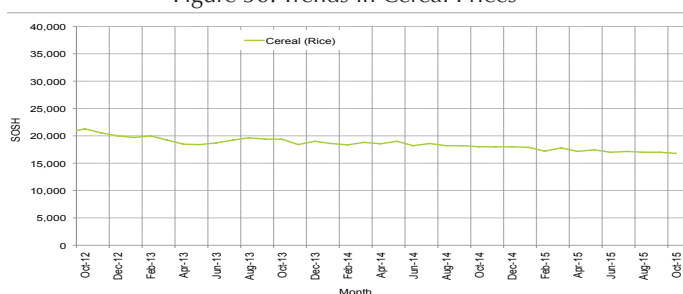


Figure 31: Trends in wage rates and relative purchasing power

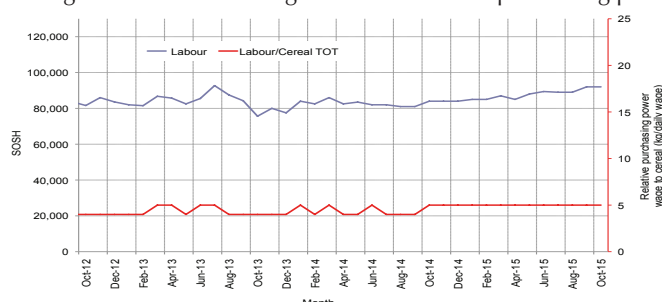


Figure 32: Imported Commodity Prices Compared to Exchange Rate

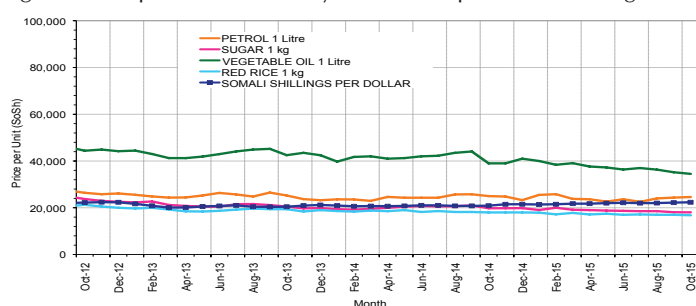


Figure 33: Goat Local Quality

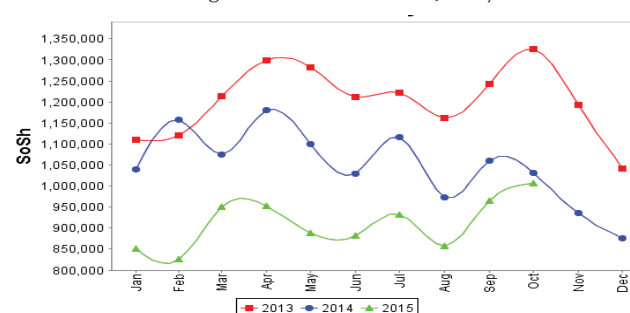


Figure 34: Exchange Rate

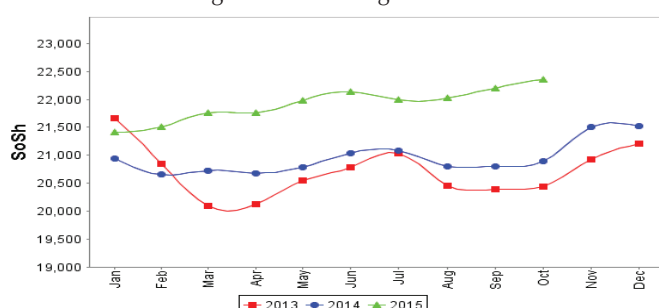
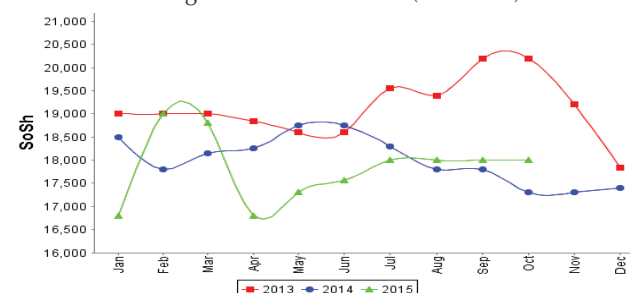


Figure 35: Water Drum (200 litres)



Regional analysis: Northeast Regions

Indicator	5-Year Average (2010-2014)	Oct-14	Sep-15	Oct-15 Nominal Price	Oct-15 Real (Deflated) Price	% Change Previous Month	% Change Same Month Previous Year	% Change 5-year avg (2010-2014)
Imported Commodities Prices								
Diesel 1 litre	26,880	23,213	17,688	16,438	7,204	-7%	-29%	-39%
Imported Red Rice 1kg	18,750	15,625	14,375	14,188	6,204	-1%	-9%	-24%
Petrol 1 litre	24,222	20,563	19,938	19,375	8,509	-3%	-6%	-20%
Sugar	24,027	17,688	15,750	15,463	6,771	-2%	-13%	-36%
Vegetable Oil 1 litre	40,955	32,750	31,000	30,750	13,563	-1%	-6%	-25%
Wheat Flour 1kg	17,260	14,813	13,875	13,688	5,982	-1%	-8%	-21%
Wheat Grain 1kg	25,420	22,000	20,500	20,500	9,009	0%	-7%	-19%
Cereal Prices								
Red Sorghum 1kg	21,691	22,500	21,625	22,375	9,842	3%	-1%	3%
White Maize 1kg	20,040	20,500	20,000	21,000	9,231	5%	2%	5%
Livestock & Livestock Product Prices								
Camel Local Quality (Head)	14,945,499	15,718,750	15,350,000	14,412,500	6,403,711	-6%	-8%	-4%
Cattle Local Quality (Head)	7,820,000	8,625,000	9,125,000	8,400,000	3,732,217	-8%	-3%	7%
Fresh Camel Milk 1 litre	38,950	35,450	39,542	40,021	17,682	1%	13%	3%
Goat Export Quality (Head)	1,552,950	1,500,000	1,468,750	1,375,000	610,845	-6%	-8%	-11%
Goat Local Quality (Head)	1,381,925	1,330,000	1,310,000	1,218,125	541,141	-7%	-8%	-12%
Other Essential Items								
Charcoal 50kg	356,887	394,375	366,875	372,625	165,466	2%	-6%	4%
Cowpeas 1 kg	38,470	31,000	28,500	29,667	13,082	4%	-4%	-23%
Unskilled Labor Wage Rate	120,250	130,000	129,688	131,250	58,217	1%	1%	9%
Firewood Bundle	42,375	53,125	45,000	46,125	20,394	2%	-13%	9%
Local Sesame Oil 1 litre	89,652	98,469	96,250	96,750	42,888	1%	-2%	8%
Exchange Rate (Somali Shilling per USD)	24,711	20,875	21,263	21,556	9,478	1%	3%	-13%
Terms of Trade								
Labour Wage (Daily)/ Cereal (Rice(Kg))	6	8	9	9	-	0%	13%	50%
Local Goat (Head)/ Cereal (Rice(Kg))	76	85	91	86	-	-5%	1%	13%
Price Indices								
Consumer Price Index	-	228	221	225	-	2%	-1%	-

Figure 36: Trends in Cereal Prices

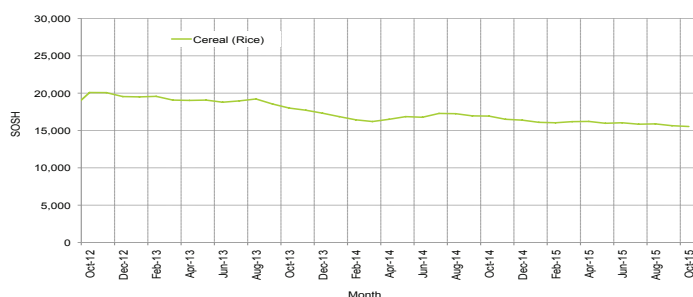


Figure 37: Trends in Wage Rates and Relative Purchasing Power

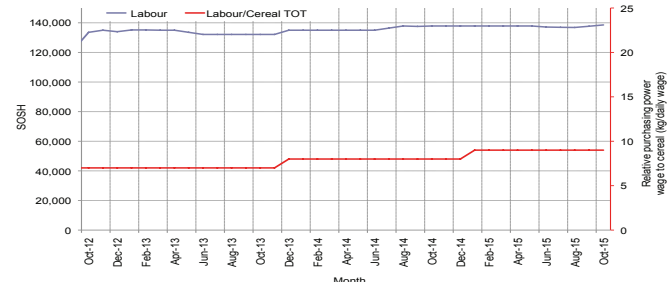


Figure 38: Imported Commodity Prices Compared to Exchange Rate

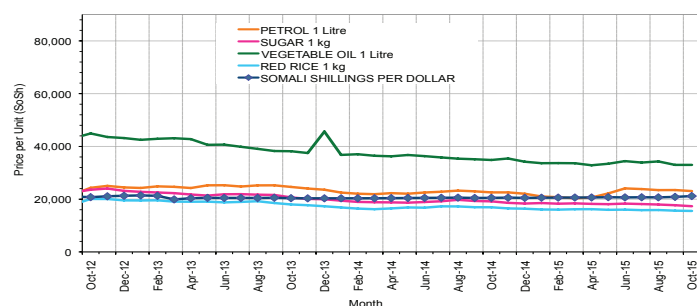


Figure 40: Exchange Rate

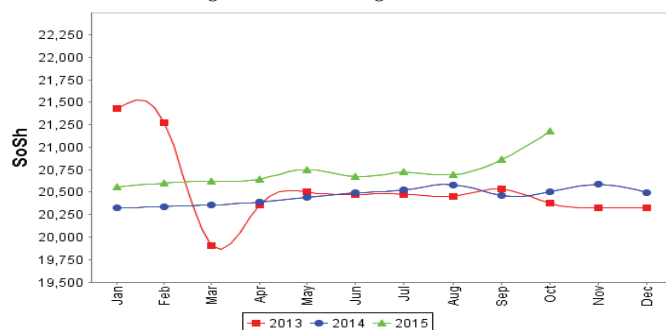


Figure 39: Goat Local Quality

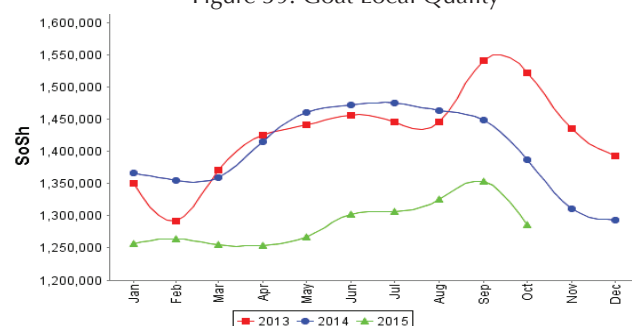
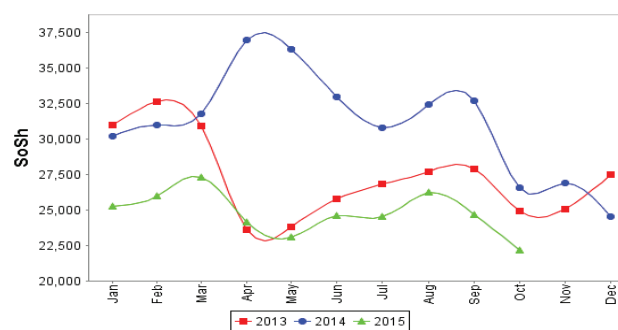


Figure 41: Water Drum (200 litres)



Regional analysis: Northwest Regions

Indicator	5-Year Average (2010-2014)	Oct-14	Sep-15	Oct-15 Nominal Price	Oct-15 Real (Deflated) Price	% Change Previous Month	% Change Same Month Previous Year	% Change 5-year avrg (2010-2014)
Imported Commodities Prices								
Diesel 1 litre	6,487	7,120	6,360	5,950	4,656	-6%	-16%	-8%
Imported Red Rice 1kg	4,983	5,260	5,060	5,110	3,984	1%	-3%	3%
Petrol 1 litre	6,835	8,340	7,700	7,720	6,070	0%	-7%	13%
Sugar	6,105	5,840	5,800	5,630	4,400	-3%	-4%	-8%
Vegetable Oil 1 litre	11,645	12,613	12,600	12,800	10,131	2%	1%	10%
Wheat Flour 1kg	4,353	4,460	4,400	3,980	3,081	-10%	-11%	-9%
Wheat Grain 1kg	3,263	3,650	3,625	3,625	2,797	0%	-1%	11%
Cereal Prices								
White Sorghum 1kg	3,526	4,160	3,740	3,990	3,089	7%	-4%	13%
Yellow Maize 1kg	3,576	3,800	3,812	3,875	2,997	2%	2%	8%
Livestock & Livestock Product Prices								
Camel Local Quality (Head)	2,861,346	4,256,333	4,395,000	4,277,500	3,418,829	-3%	0%	49%
Cattle Local Quality (Head)	1,884,935	2,431,875	2,803,333	2,242,292	1,792,124	-20%	-8%	19%
Fresh Camel Milk 1 litre	5,404	5,800	6,700	8,650	6,814	29%	49%	60%
Goat Export Quality (Head)	422,145	493,775	492,500	487,333	389,416	-1%	-1%	15%
Goat Local Quality (Head)	306,388	338,355	349,250	370,500	296,034	6%	10%	21%
Other Essential Items								
Charcoal 50kg	42,934	58,300	58,300	57,250	45,659	-2%	-2%	33%
Cowpeas 1 kg	9,522	11,125	10,875	9,750	7,693	-10%	-12%	2%
Unskilled Labor Wage Rate	39,081	47,713	51,200	56,520	45,075	10%	18%	45%
Firewood Bundle	3,173	3,833	4,500	4,567	3,550	1%	19%	44%
Local Sesame Oil 1 litre	28,220	35,438	34,063	34,688	27,625	2%	-2%	23%
Exchange Rate (Somaliland Shilling per USD)	6,211	6,900	7,500	7,520	5,911	0%	9%	21%
Terms of Trade								
Labour Wage (Daily)/ Cereal (Rice(Kg))	7	9	10	11	-	10%	22%	57%
Local Goat (Head)/ Cereal (Rice(Kg))	61	64	69	73	-	6%	14%	20%
Price Indices								
Consumer Price Index	-	130	119	125	-	5%	-4%	-

Figure 42: Trends in Cereal Prices

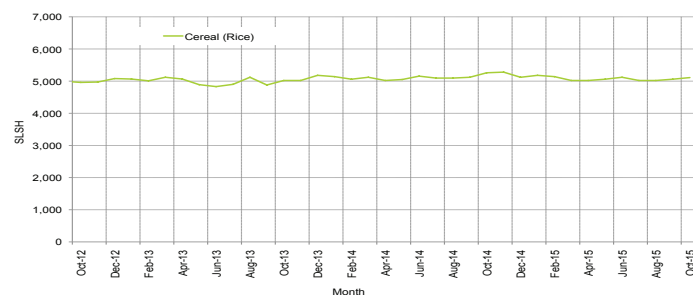


Figure 43: Trends in Wage Rates and Relative Purchasing Power

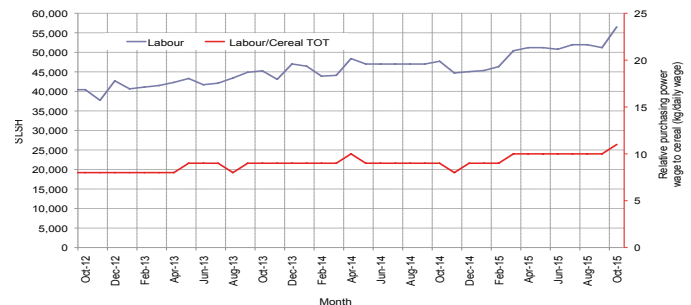


Figure 44: Imported Commodity Prices Compared to Exchange Rate

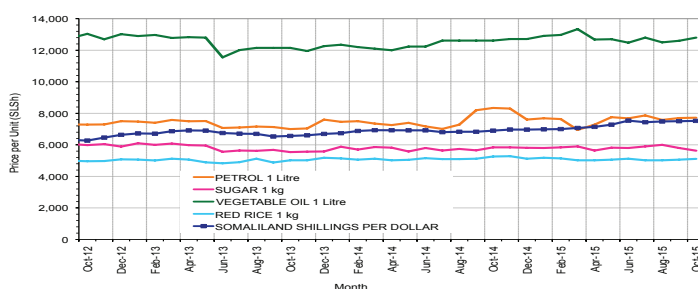


Figure 45: Goat Local Quality

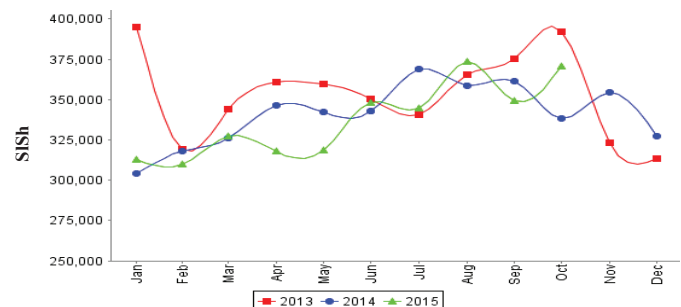


Figure 46: Exchange Rate

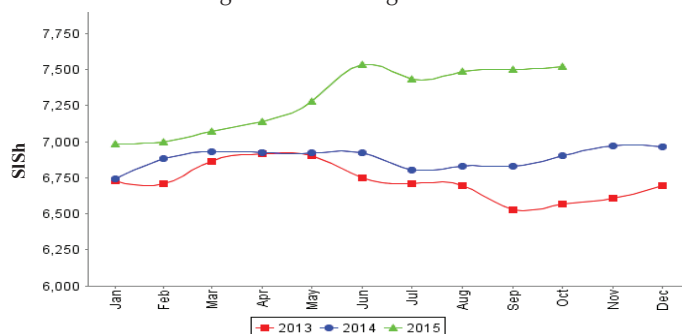
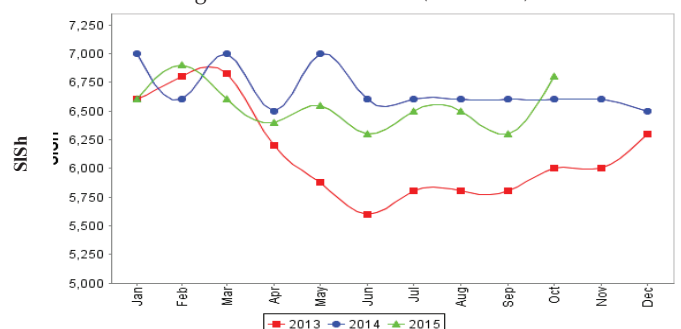


Figure 47: Water Drum (200 litres)



Trends in Livestock Exports

Table 1: Berbera Livestock Exports (Number of Heads)

	1999	2000	2001	2002	2003	2004	2005	2006	2007	2008	2009	2010	2011	2012	2013	2014	Jan-Sep 2015
Shoats	2,048,136	1,601,083	51,546	341,711	563,107	859,404	1,023,795	1,017,242	1,350,054	1,219,519	1,556,003	2,584,810	3,104,684	3,219,584	2,888,955	3,089,592	3,131,915
Cattle	89,967	63,263	20,973	37,547	84,312	131,852	148,151	85,631	88,143	80,051	88,005	133,021	150,934	190,354	20,875	252,597	132,254
Camel	37,430	16,984	3,473	18,864	21,874	5,147	5,069	22,810	14,245	26,515	20,206	92,651	107,281	102,664	75,728	64,578	55,342

Figure 48: Berbera Livestock Exports (Number of Heads)

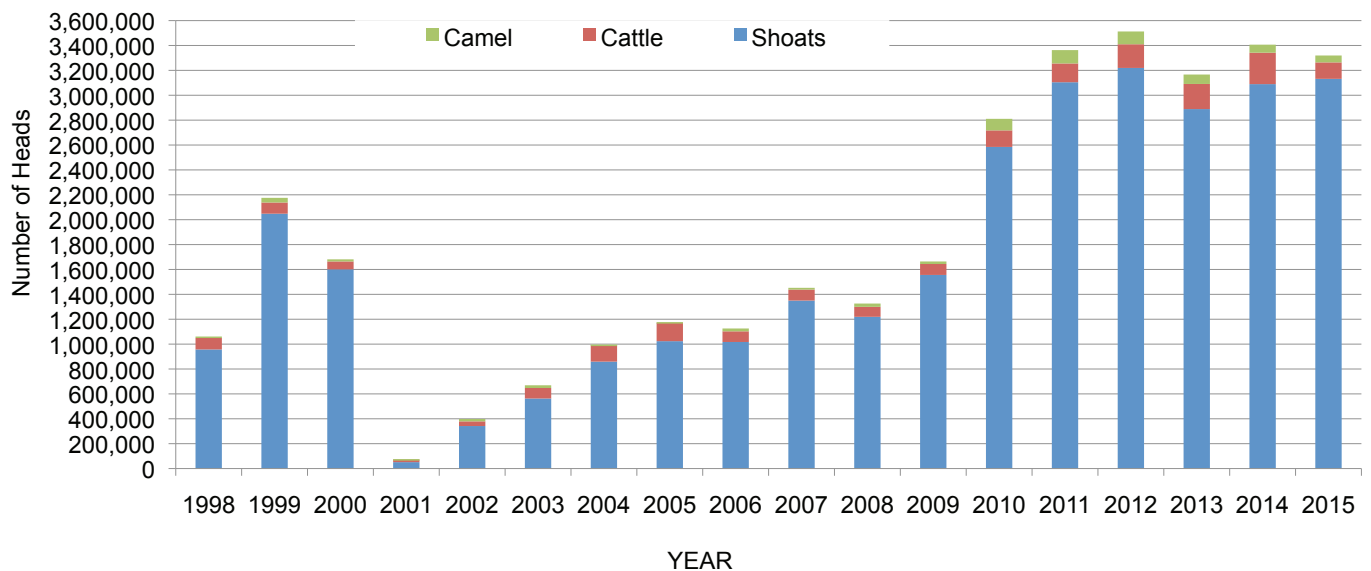
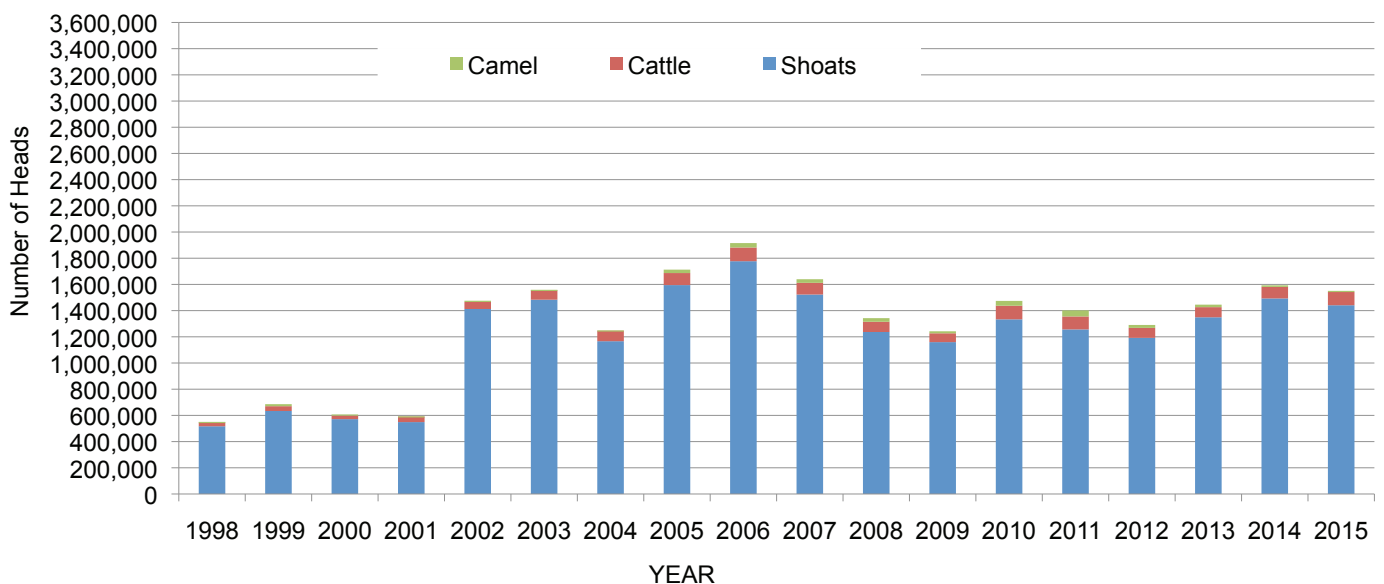


Table 2: Bossaso Livestock Exports (Number of Heads)

	1999	2000	2001	2002	2003	2004	2005	2006	2007	2008	2009	2010	2011	2012	2013	2014	Jan-Sep 2015
Shoats	633,669	571,455	548,853	1,412,450	1,483,409	1,166,480	1,594,859	1,777,283	1,522,855	1,236,775	1,159,454	1,333,478	1,256,535	1,192,197	1,349,123	1,493,111	1,441,025
Cattle	36,586	27,604	42,248	53,313	71,328	79,994	91,910	104,595	89,190	78,046	67,385	103,808	99,058	76,043	77,353	87,759	100,939
Camel	15,544	8,177	1,950	9,720	4,259	2,488	26,109	33,724	27,580	27,639	15,331	36,865	45,878	22,288	19,032	12,251	8,862

Figure 49: Bossaso Livestock Exports (Number of Heads)

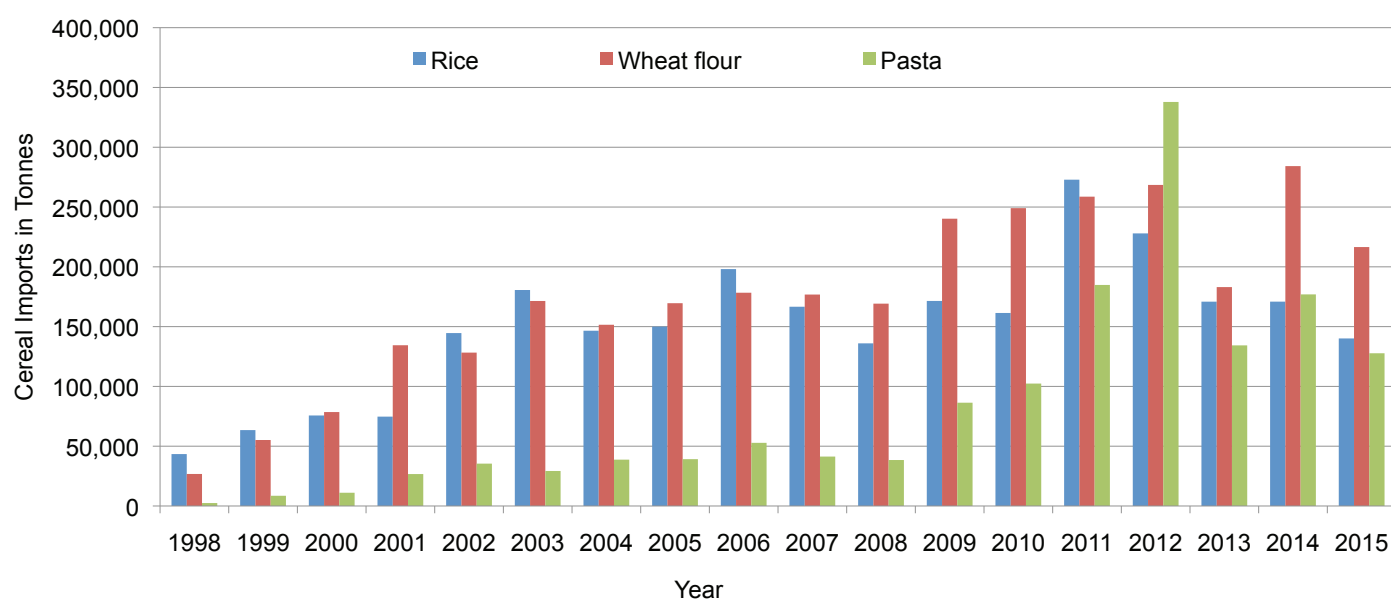


Trends in Cereal Imports

Table 3: Total Cereal Imports through Berbera, Bossaso and Mogadishu Ports (Tonnes) *

	1999	2000	2001	2002	2003	2004	2005	2006	2007	2008	2009	2010	2011	2012	2013	2014	Jan-Sep 2015
Rice	63,464	75,687	74,729	144,600	180,614	146,567	150,017	198,101	166,626	136,007	171,472	161,415	272,877	227,955	170,868	170,888	140,108
Wheat flour	55,176	78,555	134,425	128,263	171,442	151,555	169,583	178,345	176,821	169,208	240,247	249,080	258,679	268,491	183,058	284,230	216,535
Pasta	8,544	11,071	26,702	35,425	29,273	38,749	39,153	52,815	41,331	38,441	86,372	102,373	184,849	337,878	134,311	176,951	127,718

Figure 50: Total Cereal Imports (Berbera, Bossaso and Mogadishu)



* Bosasso and Berbera import data is up to September 2015 and Elman (Mogadishu) is up to July 2015. Mogadishu data (Elmaan Port) for 2013 includes only January -March imports.