

## Highlights

**Inflation:** The Consumer Price Index (CPI) remained relatively stable month-on-month in October in most parts of the *Somali shilling* (SoSh)-using regions apart from Central where inflation dropped by 11 percent due to declines in cereal prices. Annual comparison indicated increases in most of these areas, with the highest increase (17%) recorded in the South, mainly due to a surge in sorghum prices. In *Somaliland shilling* (SISH)-using regions, the CPI remained relatively stable month-on-month but increased from a year ago (October 2013) [Figure 4].

**Exchange rate:** In *SoSh*-using areas, both monthly and annual comparisons of the exchange rates between local currency (SoSh) and the United States Dollar (USD) indicate relative stability or mild changes (less than 6%). In *SiSh*-using areas, the exchange rate between local currency (SiSh) and the USD remained relatively stable in October, while it increased 5 percent on an annual basis (Figure 3).

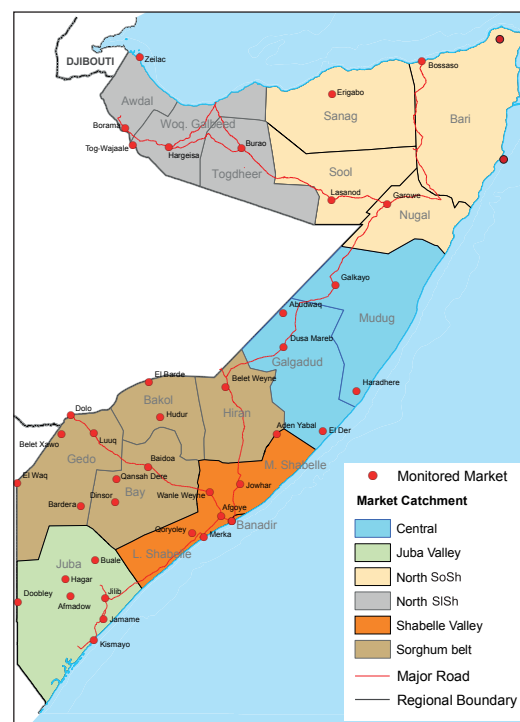
**Local grain** prices remained relatively stable or increased (by less than 10%) month-on-month in northern and central regions, but declined in most southern regions. The exception is the southern region of Bakool where grain prices increased by 10 percent due to constrained market supplies occasioned by insecurity and increased transportation costs resulting from worsened road conditions during the current Deyr rainy season. Annual comparison shows an increase in cereal prices in most parts of the country, with a particularly significant surge (above 30%) noted in southern regions (Figure 5).

**Prices of imported food** (rice, sugar, vegetable oil, wheat flour) in local currency terms exhibited mixed monthly trend across the country. For most of these commodities, prices remained relatively stable in northern regions; increased (by less than 10%) in southern regions but declined (6-12%) in Central. Annual price comparison generally indicates mild (less than 10%) changes (increase/ decrease) in most parts of the country, except from a significant increase (up to 40%) in Bakool and moderate declines (13-20%) in Hiran. The increase in Bakool region was driven by deteriorated security conditions since the beginning of the year, which caused market disruptions (Figure 1).

**Livestock prices** (for all species) showed mild (less than 10%) monthly changes in most regions in the month of October. Prices of milk (cattle and camel) increased in most southern regions month-on-month but remained relatively stable or changed at mild rates (by less than 10%) in Northwest, Hiran, Middle Shabelle and Banadir. Compared to a year ago (October 2013), values of most livestock species have declined in most markets, while milk prices rose at moderate to high rates.

**Labor wages (unskilled)** remained relatively stable or changed at mild rates (less than 10%) in most regions of the country apart from Bakool where they decreased significantly (by 26%) due to trade disruptions caused by insecurity. Labor wages showed mild annual changes in the month of October in most regions except from moderate to high (up to 46%) declines in Gedo, Bakool and Middle Juba and a significant (35%) increase in Middle Shabelle.

**Terms of Trade (ToT)** between daily labor wage and local cereals as well as between local quality goat and cereals have dropped month-on-month in Hiran and Middle Juba regions, while they increased in Lower Shabelle and Banadir; other regions of the country experienced mild (less than 10%) monthly changes. Annual comparisons indicate lower ToTs in most regions due to increase in cereal prices and decrease in labour wages and goat prices (Table 1).



This Market Data Update is a monthly report that presents analysis of market information and is produced regularly as part of the monthly monitoring process.

The weekly price data is collected from 48 main markets and 51 rural markets throughout Somalia since 1995.

Market analysis is an integral part of all of FSNAU's annual food security projections and seasonal technical reports (Technical Reports on FSNAU Post *Gu* and Post *Deyr* Analysis).

Detailed market data are available online on [www.fsnau.org/ids](http://www.fsnau.org/ids).

# National Trends: CPI, Exchange Rates, Cereal Prices and Relative Purchasing Power

Table 1: ToT between Cereals (kg) and Daily Labour Wage Rate, by Region

Regions	% Change from			
	Oct 2014	Sep 2014	Oct 2013	October Average (2009-2013)
Banadir/Mogadishu	15	7%	-44%	0%
Bay	14	0%	-26%	8%
Bakool	2	-33%	-75%	-67%
Gedo	13	-7%	-28%	0%
Juba	9	0%	-44%	-18%
Shabelle	10	11%	-9%	0%
Northwest	9	0%	0%	29%
Northeast	8	0%	0%	33%
Central	5	25%	25%	67%

Figure 1: Wheat Prices: Mogadishu and Bossaso Markets

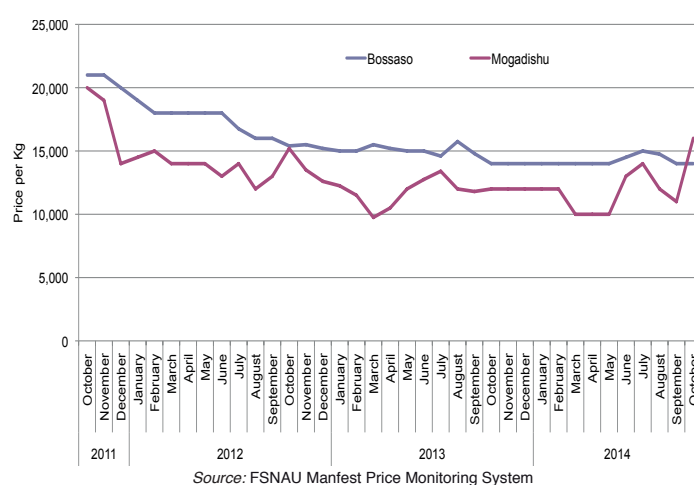


Figure 2: Terms of Trade Between Wage Rates and Selected Cereals

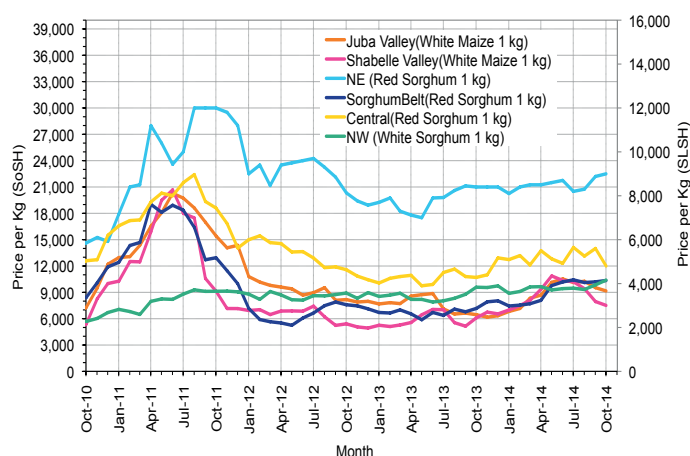


Figure 3: Monthly Exchange Rate for Selected Regions (SoSh and SLSh to USD)

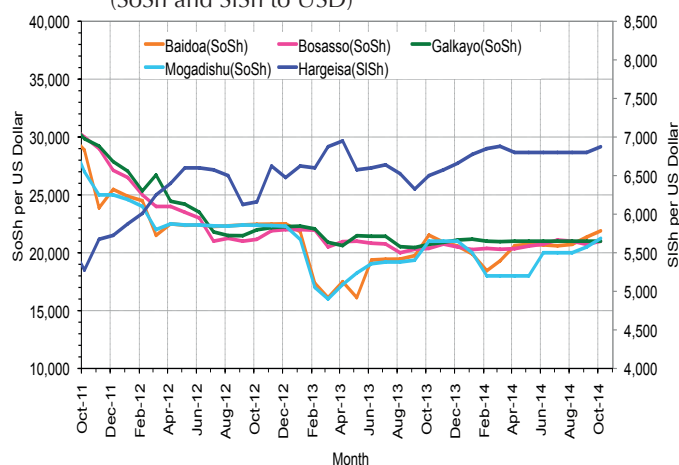


Figure 4: Monthly Trends in Consumer Price Index (CPI, March 2007=100)

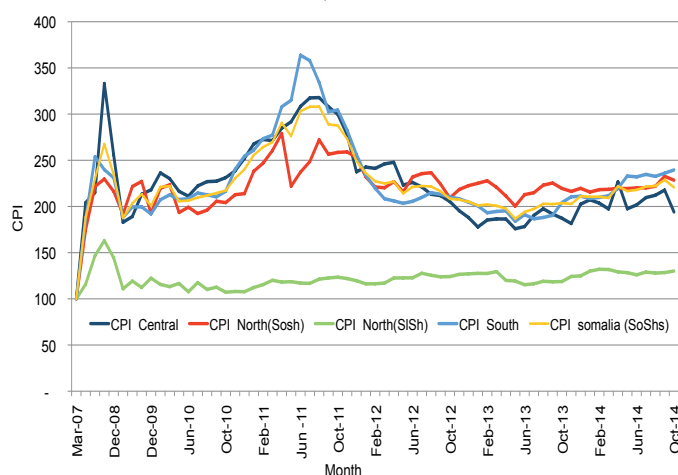
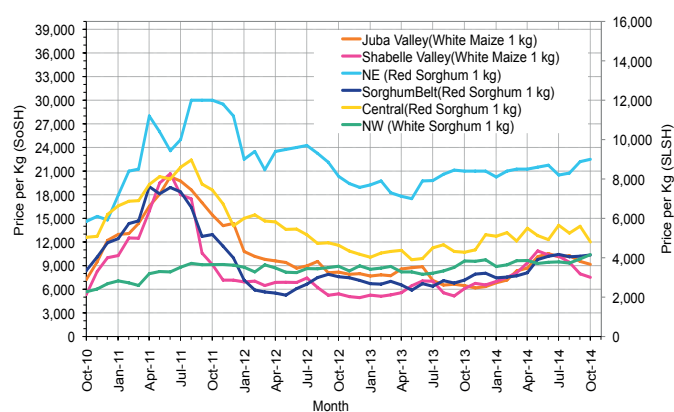


Figure 5: Monthly Trends in Local Cereal Prices



# Regional analysis: Juba Regions

Indicator	5-Year Average (2009-2013)	Oct-13	Sep-14	Oct-14 Nominal Price	Oct-14 Real (Deflated) Price	% Change Previous Month	% Change Same Month Previous Year	% Change 5-year avg (2009-2013)
<b>Imported Commodities Prices</b>								
Diesel 1 litre	33,708	26,643	26,000	27,607	11,424	6%	4%	-18%
Imported Red Rice 1kg	21,528	16,393	15,536	16,000	6,579	3%	-2%	-26%
Petrol 1 litre	35,478	29,357	27,571	28,571	11,827	4%	-3%	-19%
Sugar	29,450	17,429	15,714	17,643	7,265	12%	1%	-40%
Vegetable Oil 1 litre	44,334	30,571	32,214	32,964	13,660	2%	8%	-26%
Wheat Flour 1kg	19,585	16,714	14,714	15,500	6,370	5%	-7%	-21%
Wheat Grain 1kg	18,000	-	-	-	-	-	-	-
<b>Cereal Prices</b>								
Red Sorghum 1kg	7,232	8,000	8,000	8,000	3,239	0%	0%	11%
White Maize 1kg	9,203	6,764	9,682	9,257	3,764	-4%	37%	1%
<b>Livestock &amp; Livestock Product Prices</b>								
Camel Local Quality (Head)	9,022,628	10,496,167	9,560,643	10,216,429	4,264,592	7%	-3%	13%
Cattle Local Quality (Head)	3,773,102	4,315,550	4,189,071	4,109,429	1,715,318	-2%	-5%	9%
Fresh Camel Milk 1 litre	20,303	18,607	13,893	17,393	7,160	25%	-7%	-14%
Goat Export Quality (Head)	1,414,587	1,664,286	1,419,000	1,434,107	598,546	1%	-14%	1%
Goat Local Quality (Head)	935,013	1,146,179	918,600	860,893	359,267	-6%	-25%	-8%
<b>Other Essential Items</b>								
Charcoal 50kg	78,867	73,036	93,929	91,429	38,066	-3%	25%	16%
Cowpeas 1 kg	21,948	18,143	21,313	22,725	9,386	7%	25%	4%
Unskilled Labor Wage Rate	90,592	102,036	91,714	85,036	35,397	-7%	-17%	-6%
Firewood Bundle	8,085	12,143	12,071	9,000	3,657	-25%	-26%	11%
Local Sesame Oil 1 litre	76,386	72,143	84,286	86,464	35,993	3%	20%	13%
Exchange Rate (Somali Shilling per USD)	27,020	20,714	20,539	21,236	8,765	3%	3%	-21%
<b>Terms of Trade</b>								
Labour Wage (Daily)/ Cereal (Maize(Kg))	11	15	9	9	-	0%	-40%	-18%
Local Goat (Head)/ Cereal (Maize(Kg))	114	169	95	93	-	-2%	-45%	-18%
<b>Price Indices</b>								
Consumer Price Index	-	204	236	240	-	2%	17%	-

Figure 6: Trends in Cereal Prices

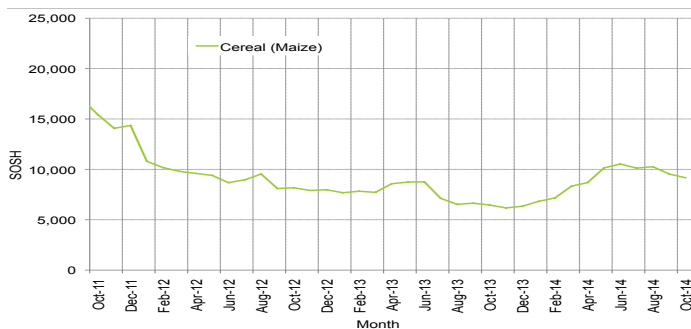


Figure 8: Imported Commodity Prices Compared to Exchange Rate

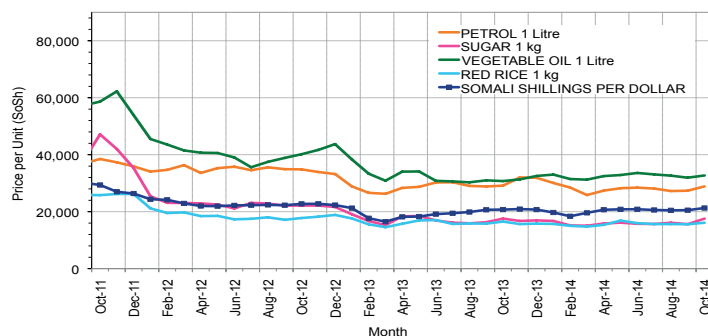


Figure 10: Exchange Rate

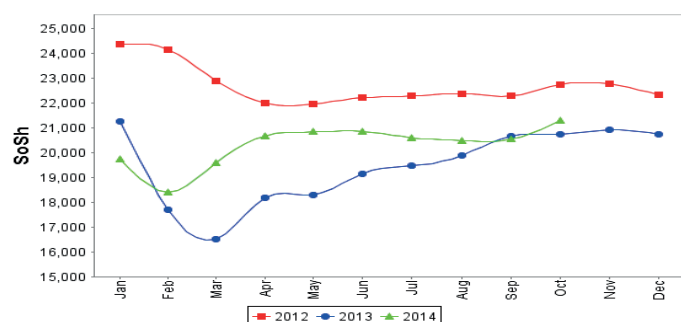


Figure 7: Trends in Wage Rates and Relative Purchasing Power

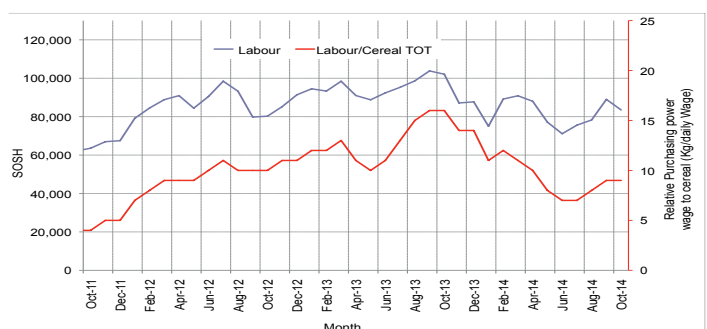


Figure 9: Goat Local Quality

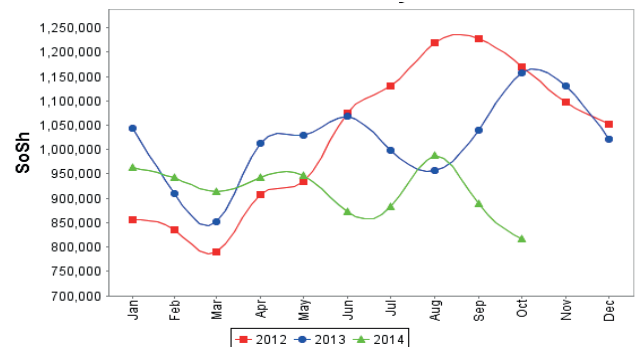
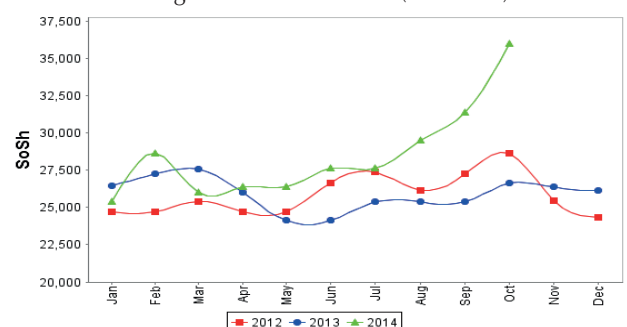


Figure 11: Water Drum (200 litres)



# Regional analysis: Sorghum Belt Regions (Bay, Bakool, Gedo and Hiran)

Indicator	5-Year Average (2009-2013)	Oct-13	Sep-14	Oct-14 Nominal Price	Oct-14 Real (Deflated) Price	% Change Previous Month	% Change Same Month Previous Year	% Change 5-year avrg (2009-2013)
<b>Imported Commodities Prices</b>								
Diesel 1 litre	33,067	28,364	32,827	33,989	14,088	4%	20%	3%
Imported Red Rice 1kg	22,847	17,545	18,673	18,386	7,575	-2%	5%	-20%
Petrol 1 litre	33,186	28,455	32,000	33,977	14,083	6%	19%	2%
Sugar	27,449	18,636	19,189	19,464	8,025	1%	4%	-29%
Vegetable Oil 1 litre	46,325	38,386	41,345	39,727	16,483	-4%	3%	-14%
Wheat Flour 1kg	20,559	17,091	17,727	18,136	7,471	2%	6%	-12%
Wheat Grain 1kg	10,205	10,600	16,400	17,250	7,101	5%	63%	69%
<b>Cereal Prices</b>								
Red Sorghum 1kg	8,789	7,166	10,196	10,350	4,220	2%	44%	18%
White Maize 1kg	10,202	8,325	11,164	10,764	4,393	-4%	29%	6%
<b>Livestock &amp; Livestock Product Prices</b>								
Camel Local Quality (Head)	10,941,966	13,934,091	12,952,000	13,040,000	5,443,248	1%	-6%	19%
Cattle Local Quality (Head)	3,224,830	3,959,375	3,671,429	3,953,125	1,650,071	8%	0%	23%
Fresh Camel Milk 1 litre	24,247	16,705	24,100	24,900	10,294	3%	49%	3%
Goat Export Quality (Head)	1,511,073	1,750,455	1,565,273	1,669,773	696,921	7%	-5%	11%
Goat Local Quality (Head)	979,773	1,186,591	998,727	1,032,614	430,949	3%	-13%	5%
<b>Other Essential Items</b>								
Charcoal 50kg	135,300	142,727	139,900	155,250	64,707	11%	9%	15%
Cowpeas 1 kg	29,681	18,830	28,345	29,864	12,366	5%	59%	1%
Unskilled Labor Wage Rate	101,072	113,182	105,782	98,841	41,160	-7%	-13%	-2%
Firewood Bundle	5,914	6,909	6,309	6,614	2,661	5%	-4%	12%
Local Sesame Oil 1 litre	78,127	79,607	89,875	94,906	39,517	6%	19%	21%
Exchange Rate (Somali Shilling per USD)	27,167	20,840	21,020	21,341	8,808	2%	2%	-21%
<b>Terms of Trade</b>								
Labour Wage (Daily)/ Cereal (Sorghum(Kg))	12	16	10	10	-	0%	-38%	-17%
Local Goat (Head)/ Cereal (Sorghum(Kg))	119	166	98	100	-	2%	-40%	-16%
<b>Price Indices</b>								
Consumer Price Index	-	204	236	240	-	2%	17%	-

Figure 12: Trends in Cereal Prices

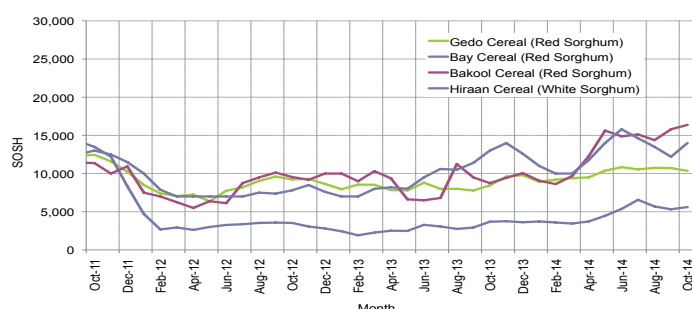


Figure 14: Imported Commodity Prices Compared to Exchange Rate

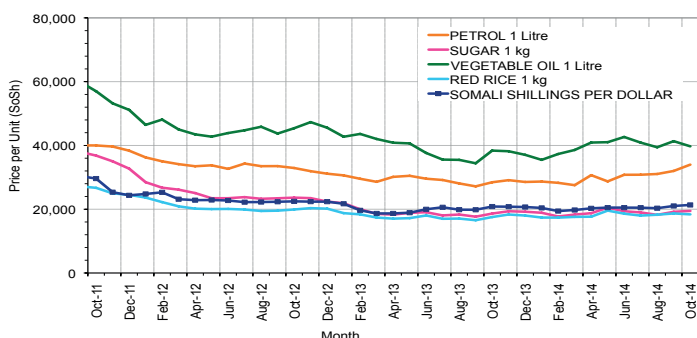


Figure 16: Exchange Rate

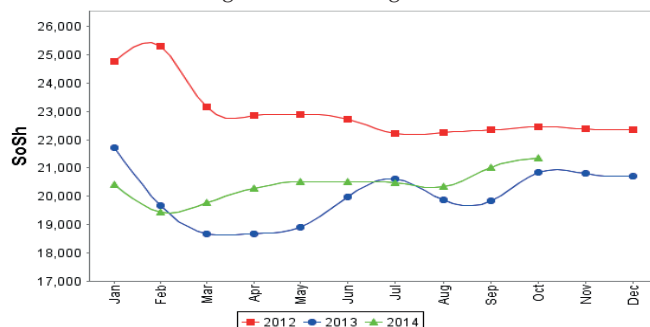


Figure 13: Trends in Wage Rates and Relative Purchasing Power

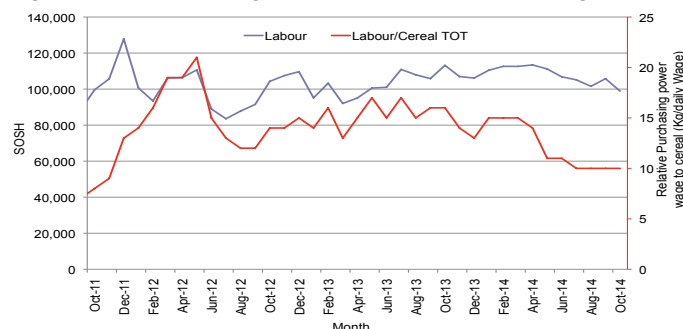


Figure 15: Goat Local Quality

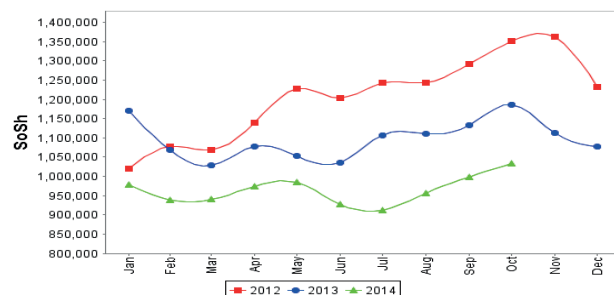
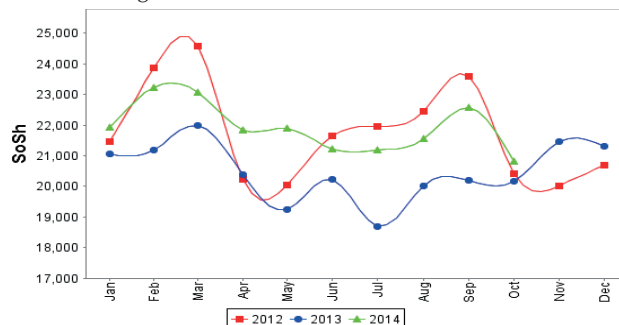


Figure 17: Water Drum (200 litres)



# Regional analysis: Shabelle Regions

Indicator	5-Year Average (2009-2013)	Oct-13	Sep-14	Oct-14 Nominal Price	Oct-14 Real (Deflated) Price	% Change Previous Month	% Change Same Month Previous Year	% Change 5-year avg (2009-2013)
<b>Imported Commodities Prices</b>								
Diesel 1 litre	30,815	27,767	27,000	26,833	11,101	-1%	-3%	-13%
Imported Red Rice 1kg	20,230	17,167	15,875	15,833	6,509	0%	-8%	-22%
Petrol 1 litre	31,785	28,833	29,667	30,208	12,510	2%	5%	-5%
Sugar	25,675	16,967	15,708	16,500	6,788	5%	-3%	-36%
Vegetable Oil 1 litre	36,406	27,167	26,708	28,917	11,971	8%	6%	-21%
Wheat Flour 1kg	18,640	16,033	15,875	16,792	6,910	6%	5%	-10%
Wheat Grain 1kg	12,605	7,733	30,000	27,000	11,171	-10%	249%	114%
<b>Cereal Prices</b>								
Red Sorghum 1kg	10,267	9,283	11,529	11,517	4,708	0%	24%	12%
White Maize 1kg	6,300	6,087	7,955	7,513	3,036	-6%	23%	19%
<b>Livestock &amp; Livestock Product Prices</b>								
Camel Local Quality (Head)	15,022,166	18,029,333	16,195,000	16,405,000	6,847,916	1%	-9%	9%
Cattle Local Quality (Head)	4,573,800	6,425,000	6,528,000	5,690,000	2,375,103	-13%	-11%	24%
Fresh Camel Milk 1 litre	19,681	21,133	17,000	20,250	8,353	19%	-4%	3%
Goat Export Quality (Head)	1,690,029	1,839,500	1,953,125	1,996,250	833,204	2%	9%	18%
Goat Local Quality (Head)	1,173,716	1,220,333	1,557,917	1,452,917	606,398	-7%	19%	24%
<b>Other Essential Items</b>								
Charcoal 50kg	119,369	126,200	113,150	111,708	46,531	-1%	-11%	-6%
Cowpeas 1 kg	25,773	16,447	22,417	23,025	9,511	3%	40%	-11%
Unskilled Labor Wage Rate	65,508	68,000	69,792	73,833	30,720	6%	9%	13%
Firewood Bundle	5,358	7,333	6,667	7,083	2,857	6%	-3%	32%
Local Sesame Oil 1 litre	61,116	62,100	72,900	74,950	31,187	3%	21%	23%
Exchange Rate (Somali Shilling per USD)	27,527	21,380	20,917	21,529	8,887	3%	1%	-22%
<b>Terms of Trade</b>								
Labour Wage (Daily)/ Cereal (Maize(Kg))	10	11	9	10	-	11%	-9%	0%
Local Goat (Head)/ Cereal (Maize(Kg))	195	200	196	193	-	-2%	-4%	-1%
<b>Price Indices</b>								
Consumer Price Index	-	204	236	240	-	2%	17%	-

Figure 18: Trends in Cereal Prices

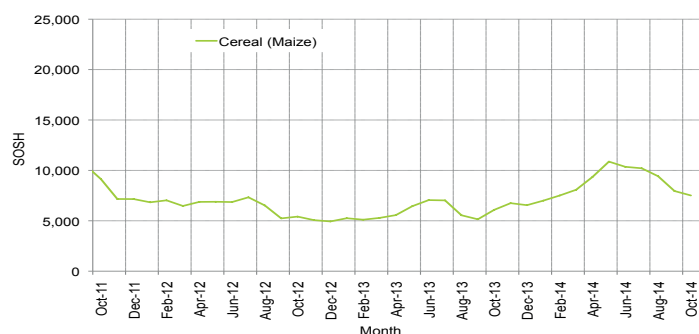


Figure 19: Trends in Wage Rates and Relative Purchasing Power

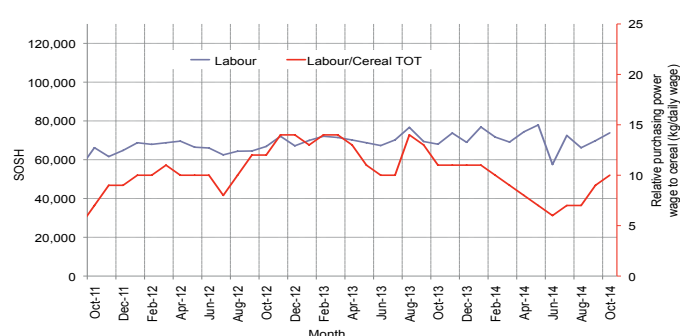


Figure 20: Imported Commodity Prices Compared to Exchange Rate

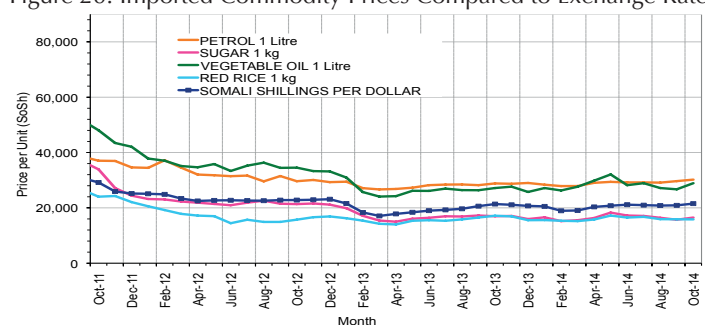


Figure 21: Goat Local Quality

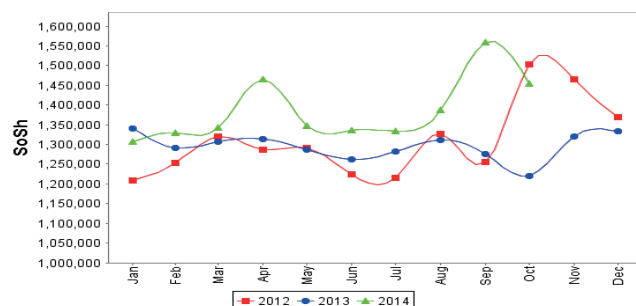


Figure 22: Exchange Rate

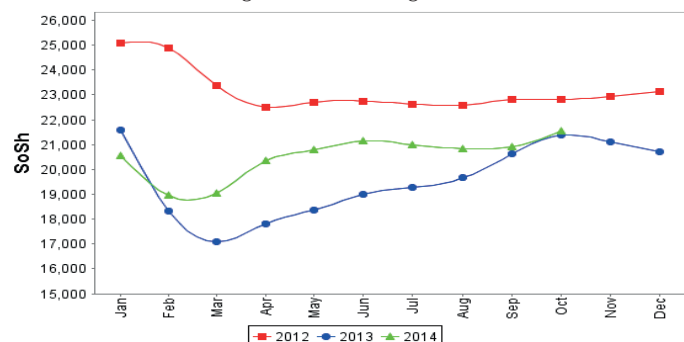
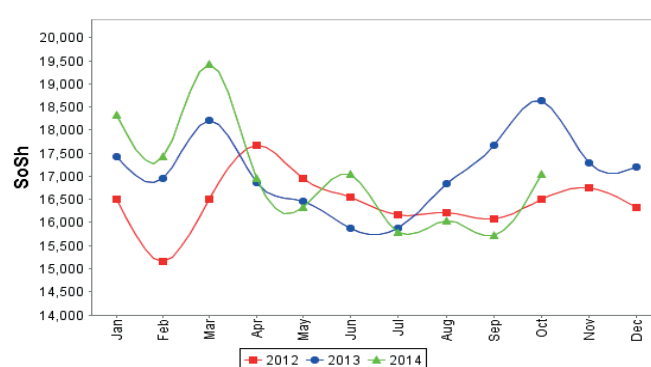


Figure 23: Water Drum (200 litres)





# Regional analysis: Banadir Region

Indicator	5-Year Average (2009-2013)	Oct-13	Sep-14	Oct-14 Nominal Price	Oct-14 Real (Deflated) Price	% Change Previous Month	% Change Same Month Previous Year	% Change 5-year avrg (2009-2013)
<b>Imported Commodities Prices</b>								
Diesel 1 litre	26,957	21,271	21,233	21,225	8,760	0%	0%	-21%
Imported Red Rice 1kg	19,966	12,333	12,700	13,125	5,379	3%	6%	-34%
Petrol 1 litre	26,318	21,104	21,433	21,208	8,753	-1%	0%	-19%
Sugar	23,772	13,646	14,000	14,000	5,744	0%	3%	-41%
Vegetable Oil 1 litre	34,495	22,958	24,183	24,167	9,988	0%	5%	-30%
Wheat Flour 1kg	15,719	12,333	12,200	13,896	5,701	14%	13%	-12%
Wheat Grain 1kg	10,324	7,333	10,600	10,433	4,255	-2%	42%	1%
<b>Cereal Prices</b>								
Red Sorghum 1kg	7,577	6,408	9,210	8,621	3,499	-6%	35%	14%
White Maize 1kg	7,519	7,363	11,027	10,633	4,339	-4%	44%	41%
<b>Livestock &amp; Livestock Product Prices</b>								
Camel Local Quality (Head)	16,666,667	-	-	-	-	-	-	-
Cattle Local Quality (Head)	4,666,666	-	-	-	-	-	-	-
Fresh Camel Milk 1 litre	19,724	21,042	22,600	22,458	9,275	-1%	7%	14%
Goat Export Quality (Head)	2,227,000	3,000,000	-	-	-	-	-	-
Goat Local Quality (Head)	1,845,875	2,356,875	2,406,000	2,395,000	999,656	0%	2%	30%
<b>Other Essential Items</b>								
Charcoal 50kg	161,366	191,250	191,700	191,375	79,787	0%	0%	19%
Cowpeas 1 kg	24,046	13,604	22,450	24,192	9,999	8%	78%	1%
Unskilled Labor Wage Rate	86,675	111,875	103,333	104,667	43,592	1%	-6%	21%
Firewood Bundle	6,315	7,900	8,320	8,000	3,239	-4%	1%	27%
Local Sesame Oil 1 litre	62,773	60,667	72,700	73,958	30,773	2%	22%	18%
Exchange Rate (Somali Shilling per USD)	26,795	21,000	20,847	21,338	8,807	2%	2%	-20%
<b>Terms of Trade</b>								
Labour Wage (Daily)/ Cereal (Maize(Kg))	12	15	9	10	-	11%	-33%	-17%
Local Goat (Head)/ Cereal (Maize(Kg))	268	320	218	225	-	3%	-30%	-16%
<b>Price Indices</b>								
Consumer Price Index	-	204	236	240	-	2%	17%	-

Figure 24: Trends in Cereal Prices

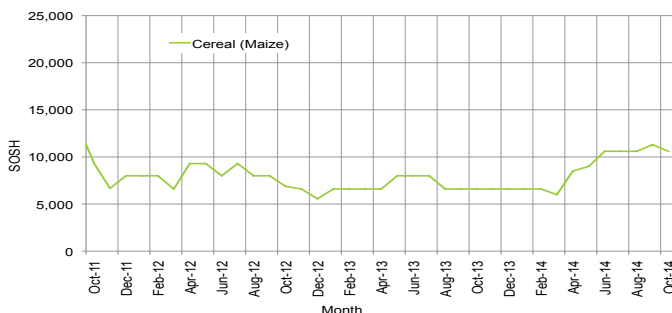


Figure 25: Bakara: Trends in Wage Rates and Relative Purchasing Power

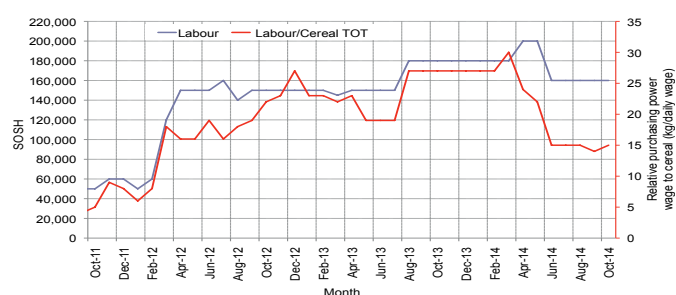


Figure 26: Imported Commodity Prices Compared to Exchange Rate

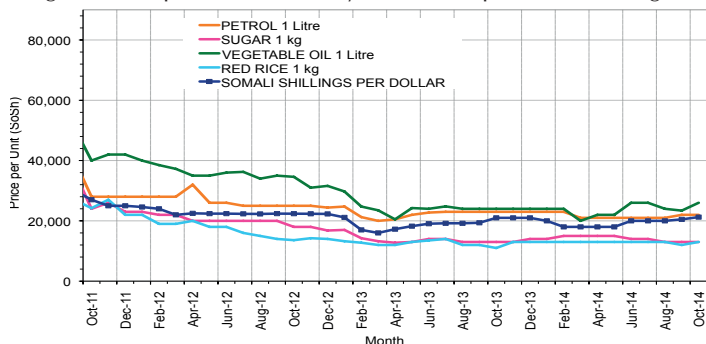


Figure 27: Goat Local Quality

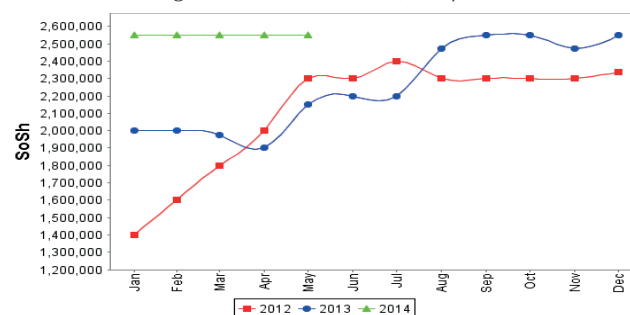


Figure 28: Exchange Rate

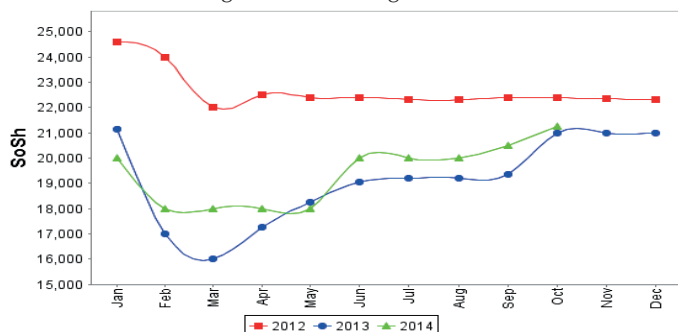
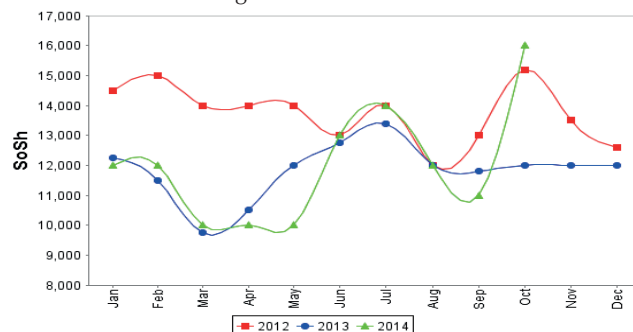


Figure 29: Wheat Flour



# Regional analysis: Central Regions

Indicator	5-Year Average (2009-2013)	Oct-13	Sep-14	Oct-14 Nominal Price	Oct-14 Real (Deflated) Price	% Change Previous Month	% Change Same Month Previous Year	% Change 5-year avg (2009-2013)
<b>Imported Commodities Prices</b>								
Diesel 1 litre	31,906	27,850	28,200	27,700	14,174	-2%	-1%	-13%
Imported Red Rice 1kg	24,858	19,400	18,200	18,000	9,176	-1%	-7%	-28%
Petrol 1 litre	28,890	25,250	25,770	25,000	12,783	-3%	-1%	-13%
Sugar	28,874	20,500	21,000	19,800	10,103	-6%	-3%	-31%
Vegetable Oil 1 litre	49,770	42,500	44,080	39,000	19,997	-12%	-8%	-22%
Wheat Flour 1kg	20,201	16,950	16,600	14,950	7,604	-10%	-12%	-26%
Wheat Grain 1kg	14,258	12,250	14,500	26,000	13,298	79%	112%	82%
<b>Cereal Prices</b>								
Red Sorghum 1kg	12,546	10,700	14,000	12,000	6,084	-14%	12%	-4%
White Maize 1kg	13,496	11,000	14,000	14,000	7,114	0%	27%	4%
<b>Livestock &amp; Livestock Product Prices</b>								
Camel Local Quality (Head)	9,242,000	11,643,750	9,747,500	11,025,000	5,681,223	13%	-5%	19%
Cattle Local Quality (Head)	2,056,666	-	3,000,000	-	-	-	-	-
Fresh Camel Milk 1 litre	37,816	25,550	29,860	29,000	14,844	-3%	14%	-23%
Goat Export Quality (Head)	1,509,233	1,540,000	1,495,000	1,434,375	739,052	-4%	-7%	-5%
Goat Local Quality (Head)	1,145,540	1,325,000	1,060,000	1,030,500	530,930	-3%	-22%	-10%
<b>Other Essential Items</b>								
Charcoal 50kg	185,263	188,000	172,000	183,500	94,460	7%	-2%	-1%
Cowpeas 1 kg	28,960	16,400	22,710	22,400	11,443	-1%	37%	-23%
Unskilled Labor Wage Rate	85,410	84,500	81,000	84,000	43,186	4%	-1%	-2%
Firewood Bundle	32,610	35,000	32,000	33,000	16,905	3%	-6%	1%
Local Sesame Oil 1 litre	93,010	86,750	91,200	84,350	43,367	-8%	-3%	-9%
Exchange Rate (Somali Shilling per USD)	26,960	20,445	20,800	20,890	10,665	0%	2%	-23%
<b>Terms of Trade</b>								
Labour Wage (Daily)/ Cereal (Rice(Kg))	3	4	4	5	-	25%	25%	67%
Local Goat (Head)/ Cereal (Rice(Kg))	48	68	58	57	-	-2%	-16%	19%
Camel (Head)/Cereal (Kg)	392	600	536	613	-	14%	2%	56%
<b>Price Indices</b>								
Consumer Price Index	-	187	218	194	-	-11%	4%	-

Figure 30: Trends in Cereal Prices

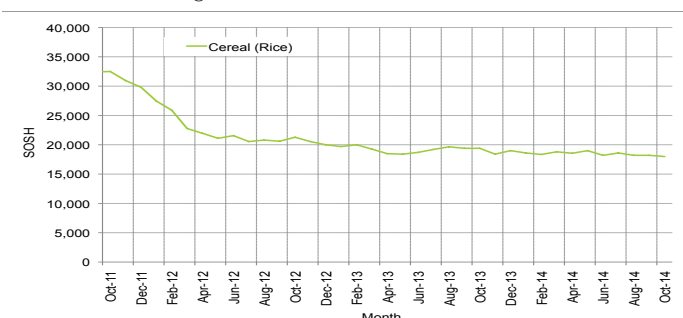


Figure 31: Trends in wage rates and relative purchasing power

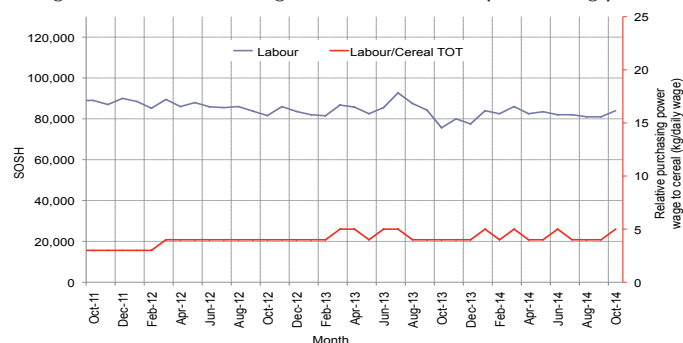


Figure 32: Imported Commodity Prices Compared to Exchange Rate

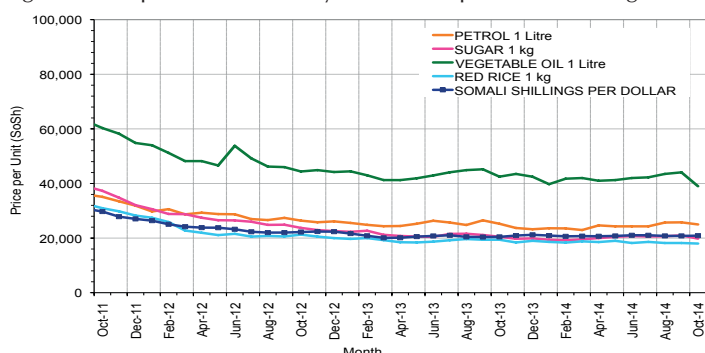


Figure 33: Goat Local Quality

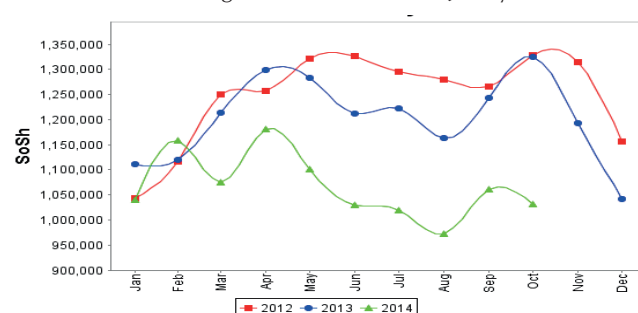


Figure 34: Exchange Rate

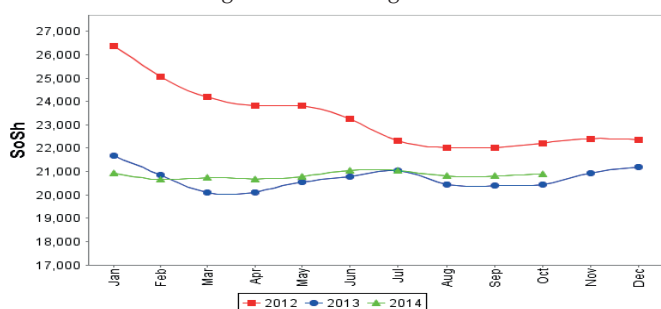
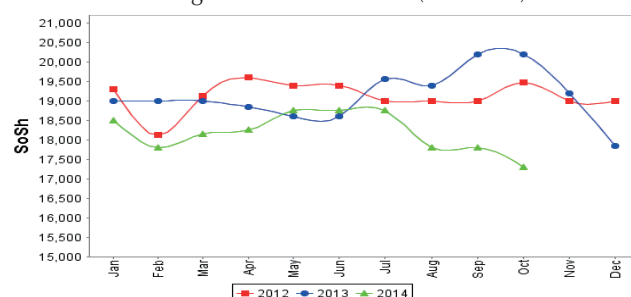


Figure 35: Water Drum (200 litres)



# Regional analysis: Northeast Regions

Indicator	5-Year Average (2009-2013)	Oct-13	Sep-14	Oct-14 Nominal Price	Oct-14 Real (Deflated) Price	% Change Previous Month	% Change Same Month Previous Year	% Change 5-year avrg (2009-2013)
<b>Imported Commodities Prices</b>								
Diesel 1 litre	27,212	23,563	23,100	23,213	10,060	0%	-1%	-15%
Imported Red Rice 1kg	19,637	15,750	15,675	15,625	6,739	0%	-1%	-20%
Petrol 1 litre	24,760	21,125	20,350	20,563	8,900	1%	-3%	-17%
Sugar	25,865	18,625	17,750	17,688	7,642	0%	-5%	-32%
Vegetable Oil 1 litre	41,842	34,188	33,388	32,750	14,234	-2%	-4%	-22%
Wheat Flour 1kg	17,947	14,875	14,988	14,813	6,383	-1%	0%	-17%
Wheat Grain 1kg	26,170	25,000	22,000	22,000	9,529	0%	-12%	-16%
<b>Cereal Prices</b>								
Red Sorghum 1kg	20,241	21,000	22,200	22,500	9,748	1%	7%	11%
White Maize 1kg	19,090	22,500	21,200	20,500	8,873	-3%	-9%	7%
<b>Livestock &amp; Livestock Product Prices</b>								
Camel Local Quality (Head)	14,079,251	15,387,500	15,640,000	15,718,750	6,879,762	1%	2%	12%
Cattle Local Quality (Head)	7,445,000	7,750,000	8,500,000	8,625,000	3,774,934	1%	11%	16%
Fresh Camel Milk 1 litre	41,776	35,750	37,060	35,450	15,416	-4%	-1%	-15%
Goat Export Quality (Head)	1,532,575	1,612,500	1,590,000	1,500,000	656,428	-6%	-7%	-2%
Goat Local Quality (Head)	1,365,550	1,540,000	1,408,000	1,330,000	582,021	-6%	-14%	-3%
<b>Other Essential Items</b>								
Charcoal 50kg	328,887	375,000	386,375	394,375	172,512	2%	5%	20%
Cowpeas 1 kg	38,486	28,917	31,000	31,000	13,468	0%	7%	-19%
Unskilled Labor Wage Rate	117,025	125,000	129,500	130,000	56,799	0%	4%	11%
Firewood Bundle	38,162	49,375	49,625	53,125	23,152	7%	8%	39%
Local Sesame Oil 1 litre	90,375	94,313	100,250	98,469	42,998	-2%	4%	9%
Exchange Rate (Somali Shilling per USD)	26,986	20,906	20,815	20,875	9,037	0%	0%	-23%
<b>Terms of Trade</b>								
Labour Wage (Daily)/ Cereal (Rice(Kg))	6	8	8	8	-	0%	0%	33%
Local Goat (Head)/ Cereal (Rice(Kg))	71	98	90	85	-	-6%	-13%	20%
<b>Price Indices</b>								
Consumer Price Index	-	220	233	228	-	-2%	4%	-

Figure 36: Trends in Cereal Prices

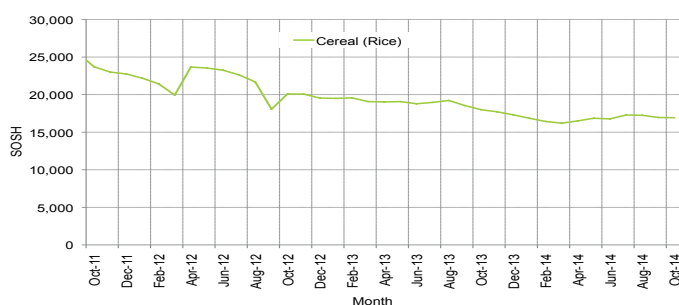


Figure 37: Trends in Wage Rates and Relative Purchasing Power

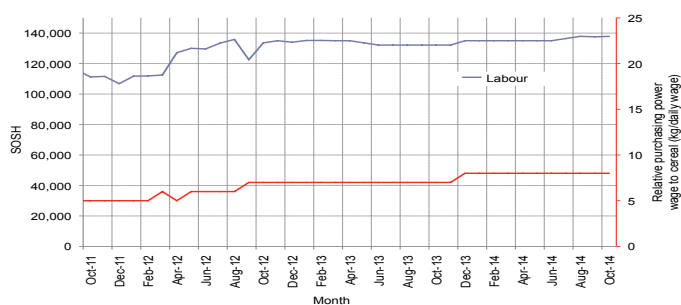


Figure 38: Imported Commodity Prices Compared to Exchange Rate

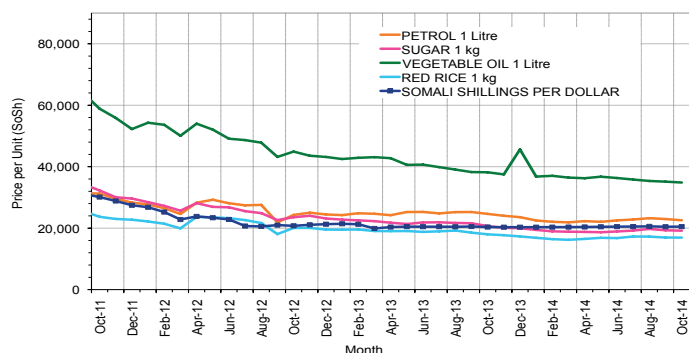


Figure 39: Goat Local Quality

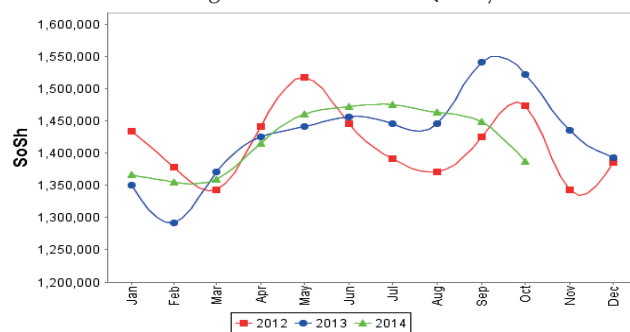


Figure 40: Exchange Rate

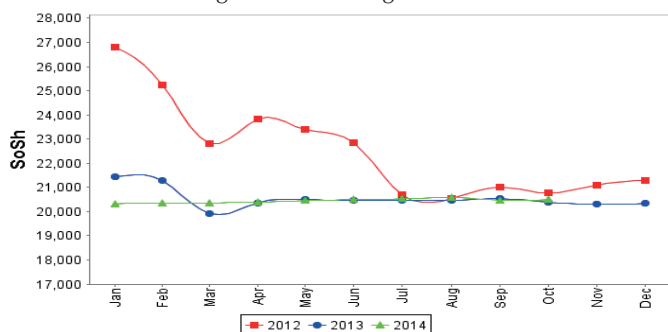
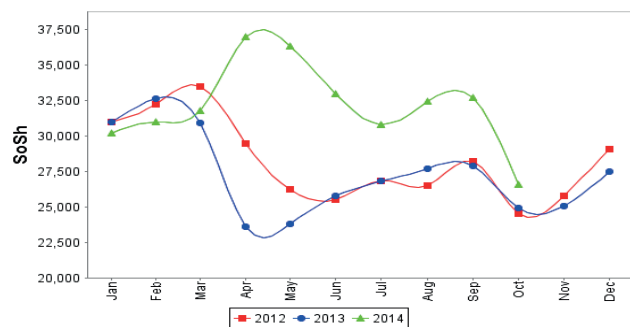


Figure 41: Water Drum (200 litres)





# Regional analysis: Northwest Regions

Indicator	5-Year Average (2009-2013)	Oct-13	Sep-14	Oct-14 Nominal Price	Oct-14 Real (Deflated) Price	% Change Previous Month	% Change Same Month Previous Year	% Change 5-year avrg (2009-2013)
<b>Imported Commodities Prices</b>								
Diesel 1 litre	6,038	6,855	7,116	7,120	5,372	0%	4%	18%
Imported Red Rice 1kg	4,971	5,020	5,120	5,260	3,943	3%	5%	6%
Petrol 1 litre	6,265	7,000	8,195	8,340	6,310	2%	19%	33%
Sugar	6,001	5,540	5,652	5,840	4,388	3%	5%	-3%
Vegetable Oil 1 litre	11,119	12,150	12,613	12,613	9,594	0%	4%	13%
Wheat Flour 1kg	4,279	4,230	4,440	4,460	3,328	0%	5%	4%
Wheat Grain 1kg	3,333	3,500	3,625	3,650	2,705	1%	4%	10%
<b>Cereal Prices</b>								
White Sorghum 1kg	3,335	3,835	3,940	4,160	3,097	6%	8%	25%
Yellow Maize 1kg	3,681	3,968	3,780	3,800	2,821	1%	-4%	3%
<b>Livestock &amp; Livestock Product Prices</b>								
Camel Local Quality (Head)	2,410,080	4,087,500	4,220,833	4,256,333	3,271,218	1%	4%	77%
Cattle Local Quality (Head)	1,686,393	2,673,750	2,478,333	2,431,875	1,868,982	-2%	-9%	44%
Fresh Camel Milk 1 litre	5,250	5,550	5,800	5,800	4,358	0%	5%	10%
Goat Export Quality (Head)	382,240	527,590	536,120	493,775	379,404	-8%	-6%	29%
Goat Local Quality (Head)	279,997	392,425	361,400	338,355	259,952	-6%	-14%	21%
<b>Other Essential Items</b>								
Charcoal 50kg	37,269	50,250	50,200	58,300	44,708	16%	16%	56%
Cowpeas 1 kg	9,122	9,625	10,550	11,125	8,450	5%	16%	22%
Unskilled Labor Wage Rate	35,028	45,250	47,000	47,713	36,571	2%	5%	36%
Firewood Bundle	3,178	3,333	3,833	3,833	2,846	0%	15%	21%
Local Sesame Oil 1 litre	26,220	31,875	34,625	35,438	27,137	2%	11%	35%
Exchange Rate (Somaliland Shilling per USD)	6,178	6,565	6,830	6,900	5,203	1%	5%	12%
<b>Terms of Trade</b>								
Labour Wage (Daily)/ Cereal (Rice(Kg))	7	9	9	9	-	0%	0%	29%
Local Goat (Head)/ Cereal (Rice(Kg))	56	78	71	64	-	-10%	-18%	14%
<b>Price Indices</b>								
Consumer Price Index	-	119	128	130	-	1%	10%	-

Figure 42: Trends in Cereal Prices

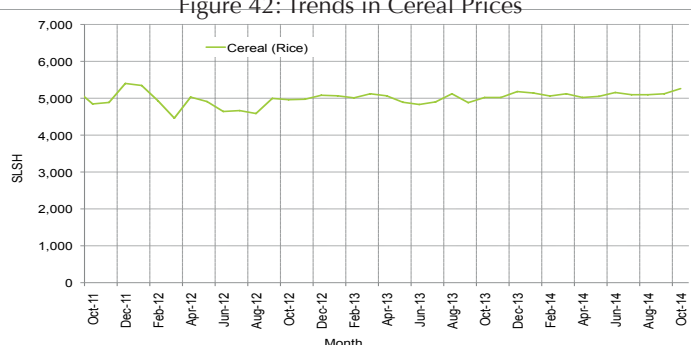


Figure 43: Trends in Wage Rates and Relative Purchasing Power

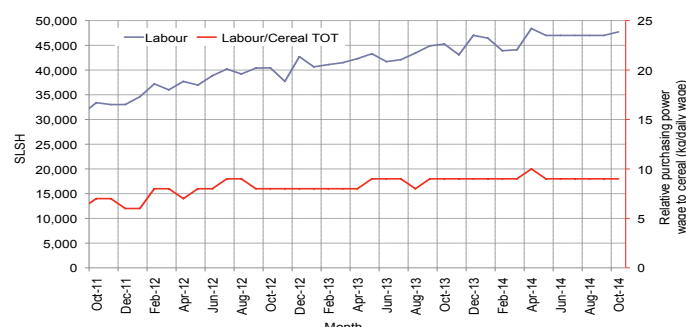


Figure 44: Imported Commodity Prices Compared to Exchange Rate

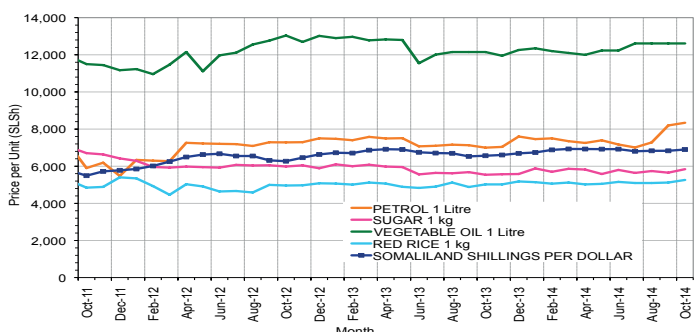


Figure 45: Goat Local Quality

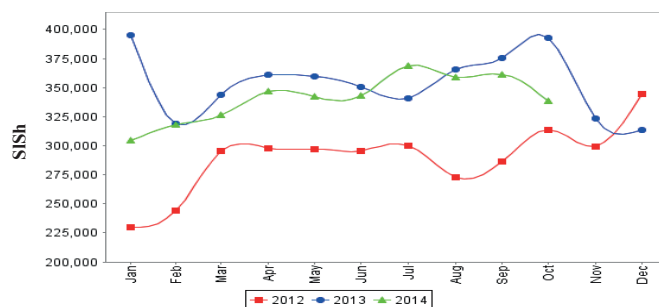


Figure 46: Exchange Rate

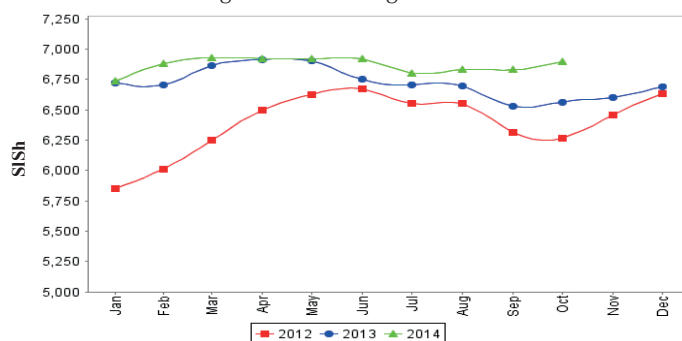
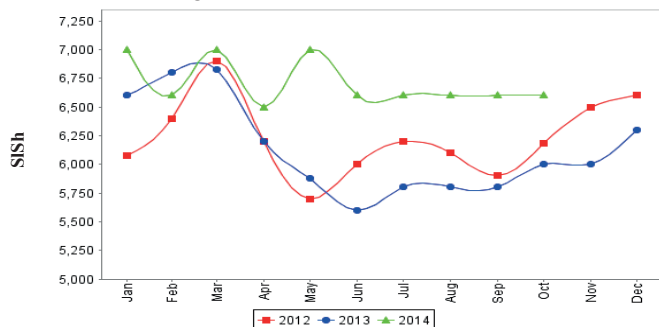


Figure 47: Water Drum (200 litres)



# Trends in Livestock Exports

Table 1: Berbera Livestock Exports (Number of Heads)

	1998	1999	2000	2001	2002	2003	2004	2005	2006	2007	2008	2009	2010	2011	2012	2014 (Jan-Sept)
Shoats	957,224	2,048,136	1,601,083	51,546	341,711	563,107	859,404	1,023,795	1,017,242	1,350,054	1,219,519	1,556,003	2,584,810	3,104,684	3,219,584	2,679,169
Cattle	92,213	89,967	63,263	20,973	37,547	84,312	131,852	148,151	85,631	88,143	80,051	88,005	133,021	150,934	190,354	200,159
Camel	11,663	37,430	16,984	3,473	18,864	21,874	5,147	5,069	22,810	14,245	26,515	20,206	92,651	107,281	102,664	59,567

Figure 48: Berbera Livestock Exports (Number of Heads)

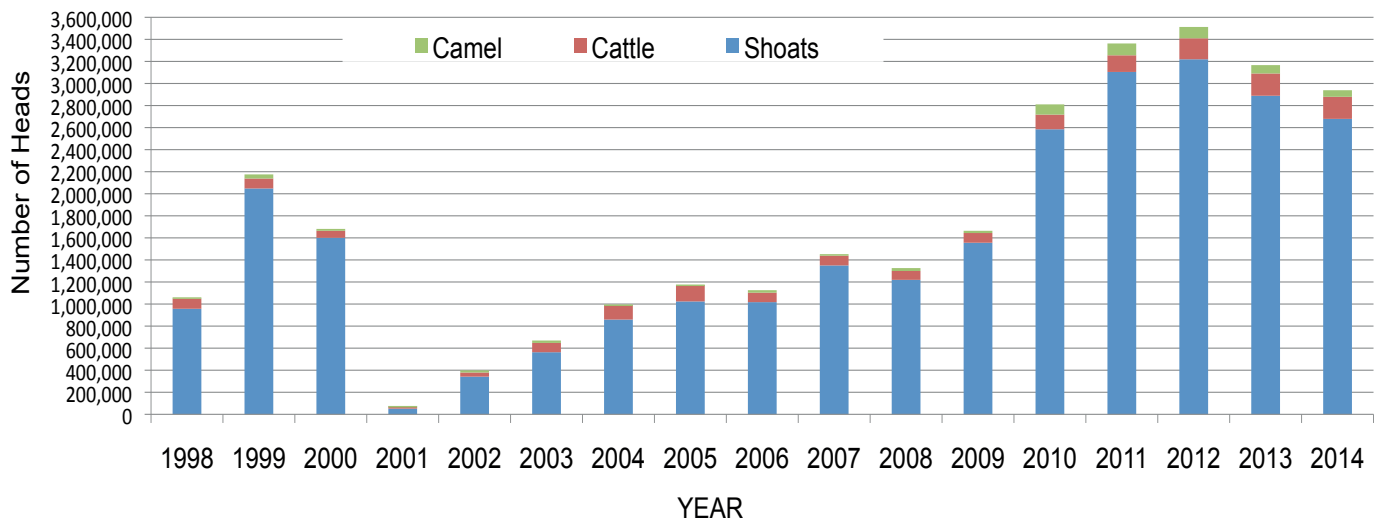
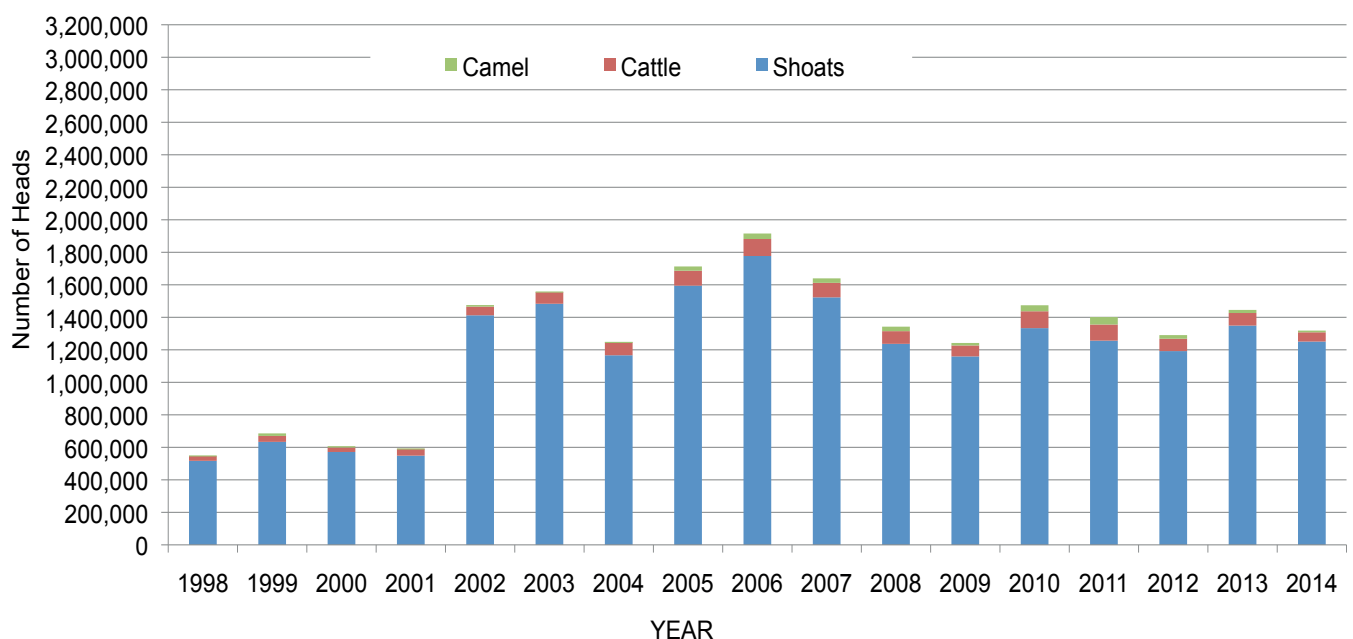


Table 2: Bossaso Livestock Exports (Number of Heads)

	1998	1999	2000	2001	2002	2003	2004	2005	2006	2007	2008	2009	2010	2011	2012	2013	2014 (Jan-Sept)
Shoats	517,020	633,669	571,455	548,853	1,412,450	1,483,409	1,166,480	1,594,859	1,777,283	1,522,855	1,236,775	1,159,454	1,333,478	1,256,535	1,192,197	1,349,123	1,250,843
Cattle	29,492	36,586	27,604	42,248	53,313	71,328	79,994	91,910	104,595	89,190	78,046	67,385	103,808	99,058	76,043	77,353	56,959
Camel	3,938	15,544	8,177	1,950	9,720	4,259	2,488	26,109	33,724	27,580	27,639	15,331	36,865	45,878	22,288	19,032	10,506

Figure 49: Bossaso Livestock Exports (Number of Heads)

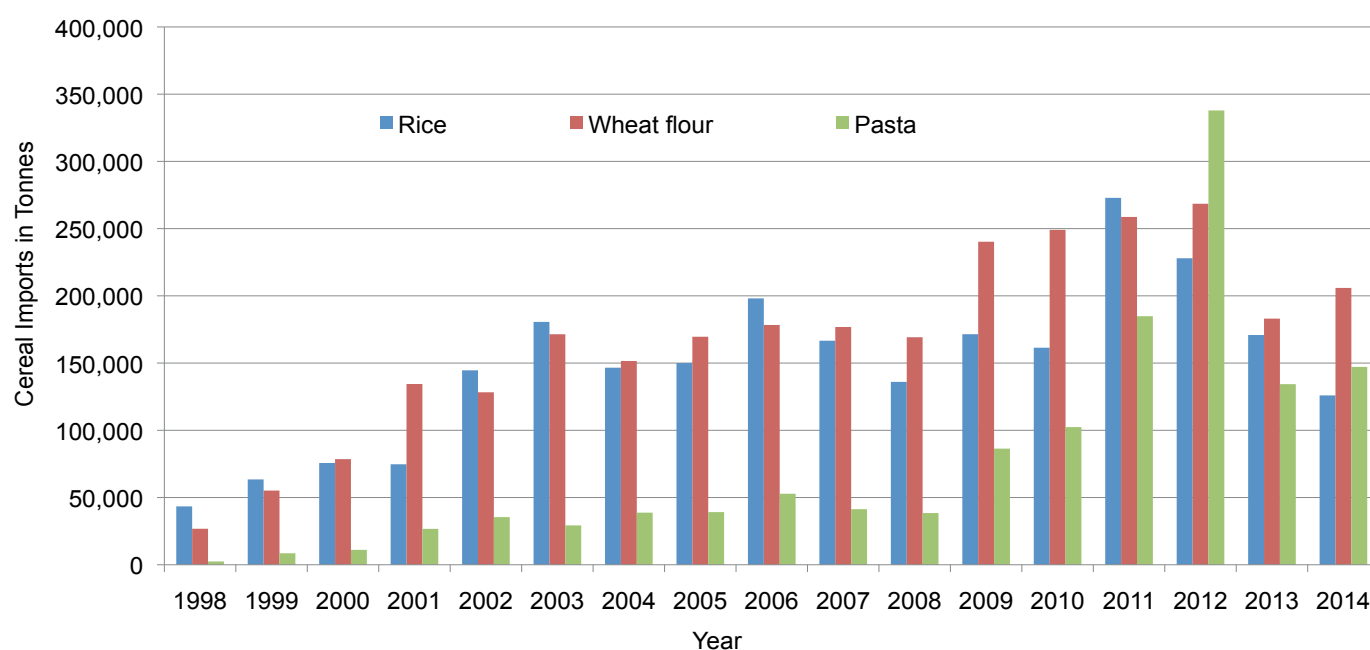


# Trends in Cereal Imports

Table 3: Total Cereal Imports through Berbera, Bossaso and Mogadishu Ports (Tonnes) \*

	1998	1999	2000	2001	2002	2003	2004	2005	2006	2007	2008	2009	2010	2011	2012	2013	2014 (Jan-Sept)
<b>Rice</b>	43,410	63,464	75,687	74,729	144,600	180,614	146,567	150,017	198,101	166,626	136,007	171,472	161,415	272,877	227,955	170,868	125,949
<b>Wheat flour</b>	26,774	55,176	78,555	134,425	128,263	171,442	151,555	169,583	178,345	176,821	169,208	240,247	249,080	258,679	268,491	183,058	205,888
<b>Pasta</b>	2,455	8,544	11,071	26,702	35,425	29,273	38,749	39,153	52,815	41,331	38,441	86,372	102,373	184,849	337,878	134,311	147,133

Figure 50: Total Cereal Imports (Berbera, Bossaso and Mogadishu)



\* 2014 import data is up to September for Berbera and Bossaso and up to August for Mogadishu (Elmaan Port). 2013 Mogadishu data (Elmaan Port) includes only January -March imports.