

Market DataUpdate

October 2013



Food Security and Nutrition
Analysis Unit - Somalia



Issued November 20, 2013

Highlights

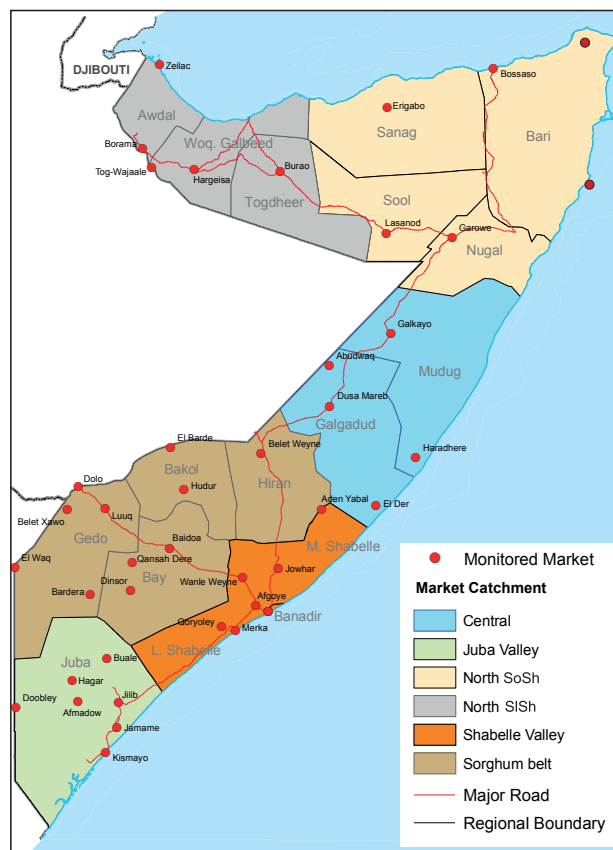
Inflation: The Consumer Price Index (CPI) for the month of October 2013 remained unchanged in all zones apart from a slight increase in the South. The CPI fell in other regions except in North Somali Shilling (SoSh) on a year-on-year basis. Compared to the base period (March 2007), the CPI increased moderately in Somaliland Shilling (SISH) regions and significantly in SoSh regions.

Exchange rate: The exchange rate for the Somali currencies (SoSh & SISH) against the United States Dollar (USD) remained stable in October 2013. Annual comparisons indicate slight appreciation of the SoSh against the USD while the SISH lost its value marginally. The appreciation of the SoSh is likely attributable to high dollar inflows through humanitarian assistance foreign direct investments and remittance.

Local grain prices increased slightly from the previous month in most areas, in line with seasonal trends. Cereal prices increased in Hiraan region, which usually receives supplies from Ethiopia, driven by new levies and taxes introduced by the Ethiopian Government. Compared to October 2012, retail cereal prices either remained constant or reduced in most parts of Somalia, but increased in Hiraan, Lower and Middle Shabelle and Northeast regions.

Prices of imported commodities quoted in local currency reduced slightly in the North-Central markets while prices increased with a similar margin in most of the southern markets in October 2013. The reduction coincides with increased supplies following resumption of operation of small vessels in Bossaso and Berbera after the end of the monsoon winds. The increase, on the other hand, is linked to heightened militia extortions, barricades and road blocks, which have limited inland trade flows from Mogadishu. Floods in Jowhar also cut off the tarmac road from Mogadishu, consequently limiting supplies to the hinterland. The reduction in the retail cost of food imports over the last one year (Oct 2012 – Oct 2013) is mainly attributable to the appreciation of the local currency against the USD, increased supplies of imported commodities and general decline of prices on the international market.

Livestock prices especially for small ruminants increased in most areas month-on-month, in response to increased consumption demand during the *Hajj* and *Id-Al-Adha* periods¹. Further, herders prefer fattening their animals during this time of the year in order to benefit from good prevailing seasonal conditions. Livestock prices are lower compared to 12 months ago in most markets except in the North and Mogadishu where prices increased slightly.



This Market Data Update is a monthly report that presents analysis of market information and is produced regularly as part of the monthly monitoring process.

The weekly price data is collected from 48 main markets and 51 rural markets throughout Somalia since 1995.

Market analysis is an integral part of all of FSNAU's annual food security projections and seasonal technical reports (Technical Reports on FSNAU Post *Gu* and *Deyr* Analysis).

Detailed market data are available online on www.fsnau.org/ids.

¹ For instance a large number of local cattle quality were slaughtered in the capital Mogadishu by Turkish NGO and distributed to the IDPS and poor Urban live in the capital, resulting increase in the prices of local quality cattle from the surround Shabelle and Banadir markets

FSNAU Funding Agencies



Common
Humanitarian Fund
Somalia

Regional Market Highlights

Labour wages increased on a month-on-month basis, particularly in key cereal producing regions, but remained stable in all other areas. The gain in labour wages is supported by ongoing *Deyr* seasonal agricultural activities in the South-Central and *Gu-Karan* harvest in northern agro-pastoral livelihoods. Labour wages are significantly higher compared to their levels a year ago in most markets- due to renewed infrastructure reconstruction and rebuilding activities, particularly in Mogadishu.

Terms of Trade (ToT) between labour wages and local cereals (monthly trend) declined or remained stable in most regions except in Bakool where they increased slightly. The decline in ToT is due to a faster rate of increase in cereal prices relative to labour wages. Compared to the same period last year (Oct 2012), ToT improved or remained stable in most regions, but declined in Hiran, Shabelle and Northeast.

Juba Valley: Prices of maize, imported food (rice, wheat, vegetable oil) and cattle remained somewhat stable in most markets while the cost of sugar went up on a month-on-month basis. Compared to a year ago (2012), prices are significantly lower for all items except for cattle price, which exhibited increase. ToT (16kg/daily wage rate) between labour wage rate and cereals was sustained at the previous month's level (Sept 2013). Annual comparisons of ToT between labour and cereals also indicate significant increase in purchasing power in favour of casual labourers.

Sorghum Belt: Monthly prices of goat, cereal and imported food rose in most markets of the Sorghum Belt regions. Year-on-year price comparisons indicate a decline in the prices of most items with the exception of Hiran and Bay where cereal prices increased. In line with trends in cereal prices and labour wage costs, the ToT between labor wage and cereals went up in Bakool, remained stable in Hiraan but declined in Bay and Gedo regions. ToT declined in Hiran, remained stable in Bay and increased in all other regions of the Sorghum Belt when compared to the same month last year (Oct 2012).

Shabelle Valley: Monthly prices of maize (Lower Shabelle), rice (both Shabelle regions) and sugar (Lower Shabelle) increased but prices of other commodities remained relatively stable. The increase in the retail price of these commodities is most likely due to the recent floods that have curtailed road transport, trade and commodity flows from Mogadishu. Compared to the same month last year, prices of most commodities, (except cereals), declined across most parts of Lower Shabelle regions. ToT (labour wage to cereals) declined by two units from September 2013 to a regional average of 11kg of maize for one day's wage. ToT between labour wage and cereals also declined when compared to the same month last year (Oct 2012).

Central: Slight monthly price decrease was recorded for red sorghum and imported foods, while local goat prices went up. Annual comparisons indicate decreases in the prices of all items. ToT between local goat and rice (68kg/goat) was four units higher than in the September 2013 but six units lower than in the same month last year (Oct 2012).

Northeast: Slight price decreases were observed for most imported commodities while local grain and goat prices remained stable. Prices of food imports are lower compared to a year ago (Oct 2012) while goat and sorghum prices increased slightly. ToT between local goat and rice closed the month at 98kg/local goat, two units higher than in September 2013. ToT is also significantly higher (by 12kgs) compared to the same period a year ago (Oct 2012).

Northwest: Prices of most commodities remained stable in October 2013 but exhibited a slight increase for white sorghum and livestock. Compared to a year ago, prices declined for imported commodities but cereal and goat prices increased. The level of increase varies from moderate to significant in most markets. ToT between cereals (white sorghum) and labor wage decreased by one unit to close the month at 12 kg/ daily labour rate, but is one kg higher than it was 12 months ago (Oct 2012).

Banadir/ Mogadishu: Prices of most commodities remained relatively stable, both on monthly and yearly basis, in the main Bakaara market. ToT between labour wage and white maize is also unchanged from the previous month's level (27 kgs/daily labor rate) but is higher than in the same period a year ago because of significantly increased labour wage rates.

Table 1: ToT between Cereals (kg) per Daily Labour Wage Rate, by Region

Regions	Oct 2013*	% change from:	
	(Kgs)	Sep 2013	Oct 2013
Banadir/ Mogadishu	27	0%	23%
Bay	19	-14%	0%
Bakool	8	14%	33%
Gedo	18	-5%	20%
Hiran	13	0%	-24%
Juba	16	0%	60%
Shabelle	11	-15%	-8%
Northeast	6	0%	-14%
Northwest	12	-8%	9%
Central	7	-13%	0%

* Cereal types used for ToT calculation: white maize (Banadir, Hiran, Juba, Shabelle), red sorghum (Bay, Bakool, Gedo, Central, Northeast) and white Sorghum (Northwest)

International Market Highlights

Diesel: International crude oil¹ price decreased to \$106.7/barrel in October following easing geo-political tensions in the Middle East². Crude oil price quotations are slightly lower than their levels a year ago.

Monthly diesel prices did not change much in local currency terms but declined (6%) in Mogadishu and rose marginally (3%) in Bossaso when compared to the same month last year (Figure 1).

Rice: The export price of the benchmark Thai rice (Grade A1 Super 1/B) was down by one unit, in USD terms extending further price declines on account of limited buying interest and pressure from heavy intervention reserves³. Rice prices remained significantly depressed (26%) compared to the same month last year.

In line with international market signals, the cost of imported rice in Bossaso and Mogadishu fell slightly over the last month (1-8%) as well over the last year (6-19%). Increased commercial import supplies and continued humanitarian interventions were the main driving factors behind declining prices (Figure 2).

Wheat: The International Grain Council's wheat sub-Index increased by three percent month-on-month, supported by firm import demand and deteriorating prospects for production in Argentina and the Black Sea region⁴. The Index is 9 percent lower than it was a year ago.

Wheat flour prices remained stable in October 2013 but were 9-21 percent lower than a year ago in Mogadishu and Bossaso.

Sugar: The FAO Sugar Price Index⁵ averaged 265 points in October 2013, up 18.4 points (7.4%) from September, marking the third consecutive monthly gain. The increase was occasioned by harvest delays following unfavourable weather conditions in the central and southern regions of Brazil. Overall, sugar prices were slightly lower (9%) when compared to the same period a year ago.

Figure 1: Diesel Prices in Dubai, Mogadishu and Bossaso

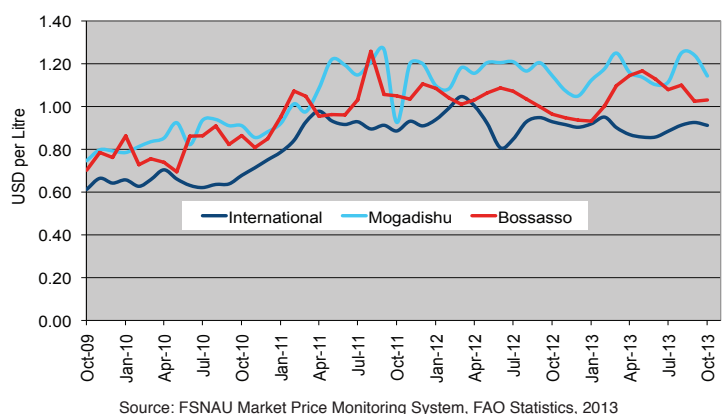


Figure 2: Rice Prices in Bangkok (FOB), Mogadishu and Bossaso Markets

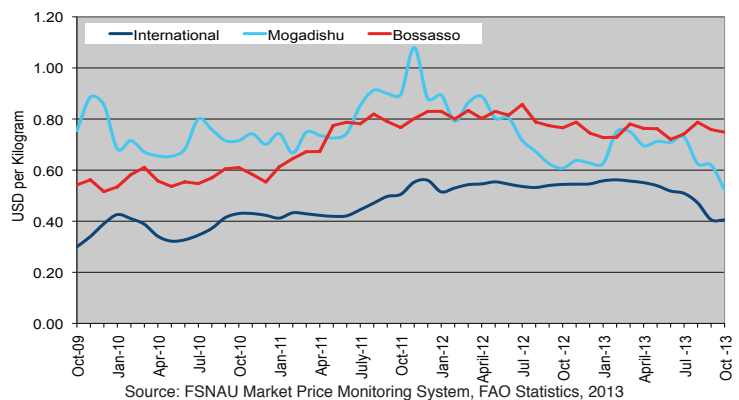
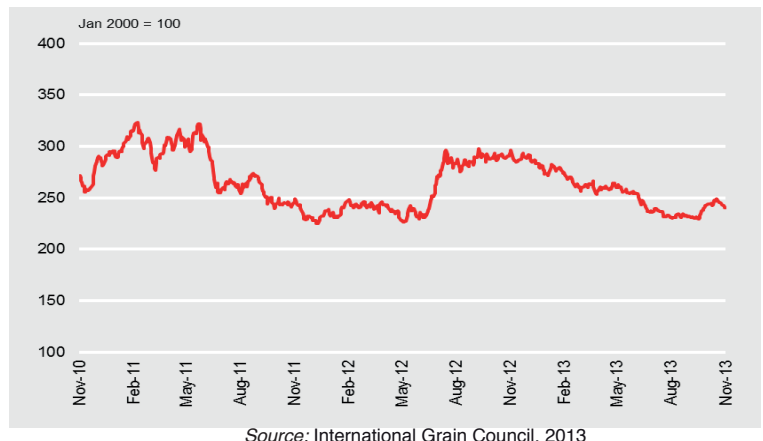


Figure 3: International Wheat Prices



¹ Free on Board (FoB) price in Dubai, the main source of Somalia's oil imports.

² Oil Market Report (OMR), Monthly Publication by International Energy Agency (IEA) in collaboration with Organization of Petroleum Exporting Countries (OPEC), released 13 November 2013; [Online] Available from <http://omrpublic.iea.org/>

³ AMIS Market Monitor, No. 12, November 2013; http://www.fao.org/fileadmin/user_upload/amis/docs/Market_monitor/AMIS_Market_Monitor_current.pdf

⁴ Grain Market Report (GMR) Issue 438 – 31 October 2013, International Grain Council; <http://www.igc.int/en/downloads/gmrsummary/gmrsumme.pdf>

⁵ The World Food Situation: The FAO Food Price Index November 7, 2013

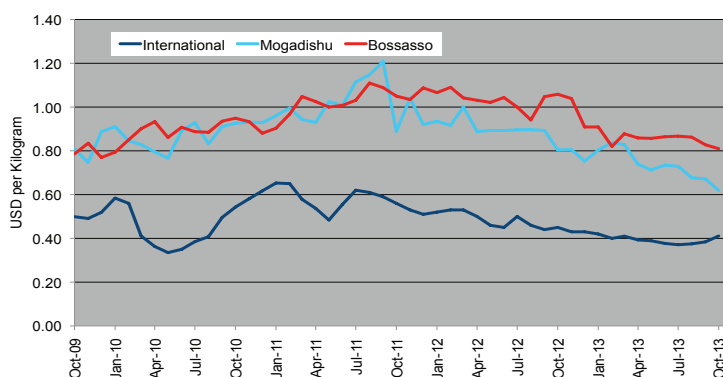
International Market Highlights

Sugar prices remained unchanged on a month-on-month basis but decreased significantly (by 26-28%) on a year-on-year basis in Mogadishu and Bossaso. These price trends are attributable to the strengthened SoSh, enhanced port supplies and continued humanitarian interventions.

Cooking Oil: The FAO Oils/Fats Price Index⁶ averaged 188 points in October 2013, 3.7 points (2%) up from September. Strengthened palm oil prices, mainly on lower than anticipated production in Southeast Asia and firm world import demand was the main reason behind the rising index. The index is 7 percentage points lower than a year ago.

Monthly vegetable oil price remained stable in October 2013 in the two port cities of Mogadishu and Bossaso, but was significantly lower when compared to Oct 2012 by 31 and 9 percent, respectively. The observed year on year decline is because of accelerated movement of supplies through the Somali ports.

Figure 4: Sugar Prices: International, Mogadishu and Bossaso Markets



Source: FSNAU Market Price Monitoring System, International Sugar Organizations, 2013

⁶ Ibid

National Trends: CPI, Exchange Rates, Cereal Prices and Relative Purchasing Power

Figure 5: Terms of Trade Between Wage Rates and Selected Cereals

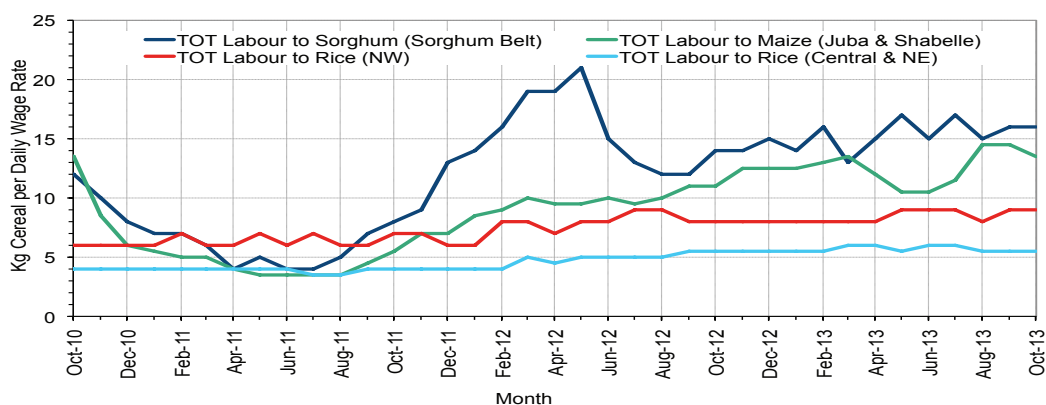


Figure 6: Monthly Exchange Rate for Selected Regions (SoSh and SiSh to USD)

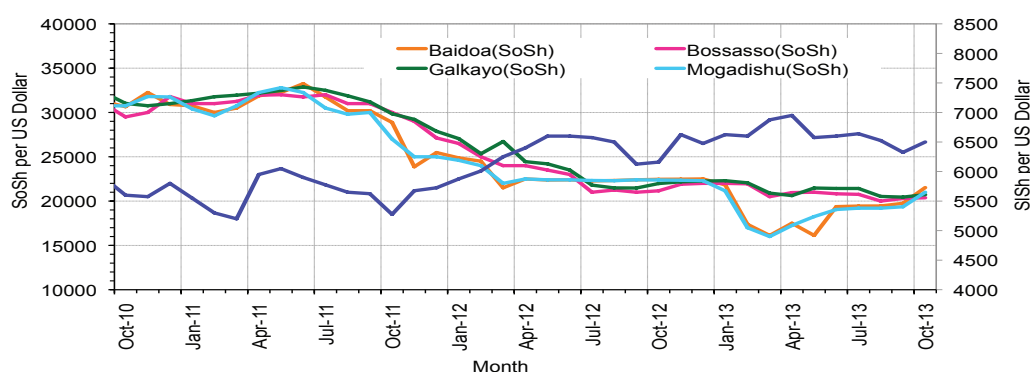


Figure 7: Monthly Trends in Consumer Price Index (CPI, March 2007=100)

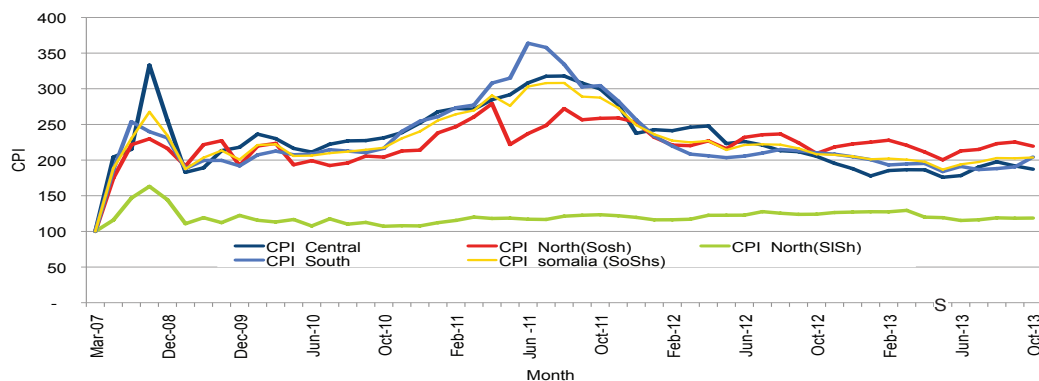
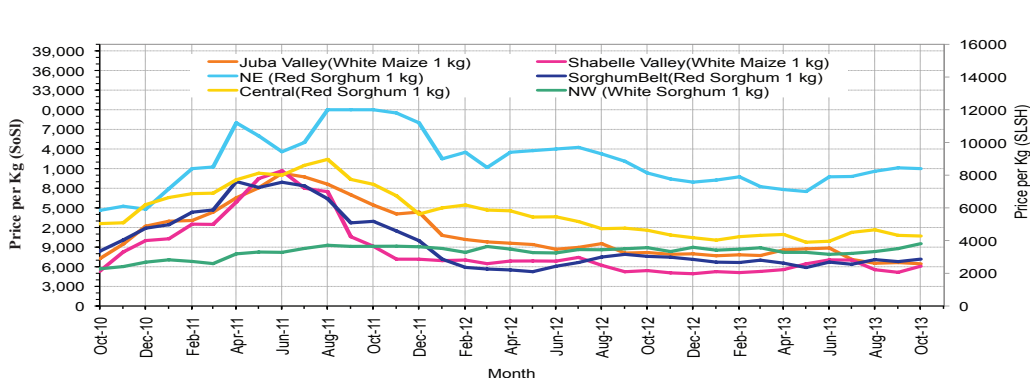


Figure 8: Monthly Trends in Local Cereal Prices



Regional analysis: Juba Regions

Indicator	5-Year Average (2008-2012)	Oct-12	Sep-13	Oct-13 Nominal Price	Oct-13 Real (Deflated) Price	% Change Same Month Previous Year	% Change Previous Month	% Change 5-year avg (2008-2012)
Imported Commodities Prices								
Diesel 1 litre	38,387	32,971	26,057	26,643	12,945	-19%	2%	-31%
Imported Red Rice 1kg	27,628	17,286	15,786	16,393	7,927	-5%	4%	-41%
Petrol 1 litre	39,250	34,286	29,257	29,357	14,274	-14%	0%	-25%
Sugar	31,028	22,000	16,357	17,429	8,434	-21%	7%	-44%
Vegetable Oil 1 litre	53,591	39,600	31,143	30,571	14,869	-23%	-2%	-43%
Wheat Flour 1kg	23,128	16,714	16,071	16,714	8,084	0%	4%	-28%
Wheat Grain 1kg	18,000	-	-	-	-	-	-	-
Cereal Prices								
Red Sorghum 1kg	7,436	5,600	6,000	8,000	3,817	43%	33%	8%
White Maize 1kg	10,124	8,451	6,975	6,764	3,212	-20%	-3%	-33%
Livestock & Livestock Product Prices								
Camel Local Quality (Head)	9,394,228	9,445,471	10,287,781	10,496,167	5,139,202	11%	2%	12%
Cattle Local Quality (Head)	4,024,676	3,847,533	4,322,233	4,315,550	2,112,949	12%	0%	7%
Fresh Camel Milk 1 litre	19,753	22,000	14,750	18,607	9,011	-15%	26%	-6%
Goat Export Quality (Head)	1,359,729	1,907,114	1,578,614	1,664,286	814,795	-13%	5%	22%
Goat Local Quality (Head)	888,920	1,178,029	1,060,629	1,146,179	561,111	-3%	8%	29%
Other Essential Items								
Charcoal 50kg	82,438	81,371	86,343	73,036	35,661	-10%	-15%	-11%
Cowpeas 1 kg	22,864	20,029	17,379	18,143	8,783	-9%	4%	-21%
Unskilled Labor Wage Rate	92,964	81,714	102,936	102,036	49,861	25%	-1%	10%
Firewood Bundle	6,942	8,714	12,343	12,143	5,846	39%	-2%	75%
Local Sesame Oil 1 litre	80,349	69,429	71,314	72,143	35,224	4%	1%	-10%
Exchange Rate (Somali Shilling per USD)	29,908	22,583	20,624	20,714	10,042	-8%	0%	-31%
Terms of Trade								
Labour Wage (Daily)/ Cereal (Maize(Kg))	9	10	15	15	-	56%	2%	64%
Local Goat (Head)/ Cereal (Maize(Kg))	88	139	152	169	-	22%	11%	93%
Price Indices								
Consumer Price Index	-	210	190	204	-	-3%	7%	-

Figure 9: Trends in Cereal Prices

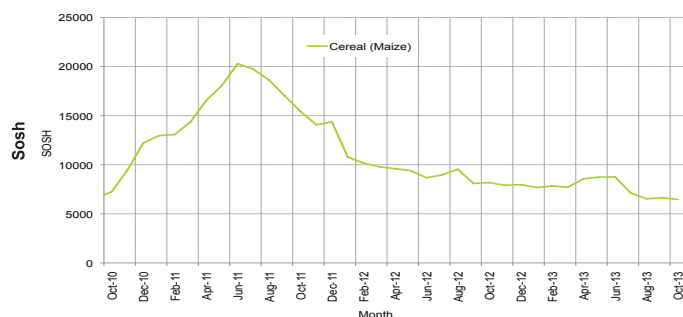


Figure 10: Trends in Wage Rates and Relative Purchasing Power

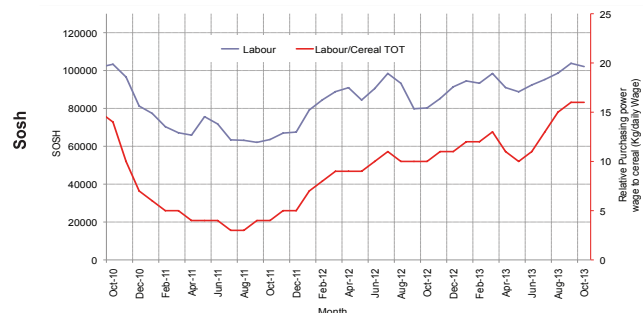


Figure 11: Imported Commodity Prices Compared to Exchange Rate

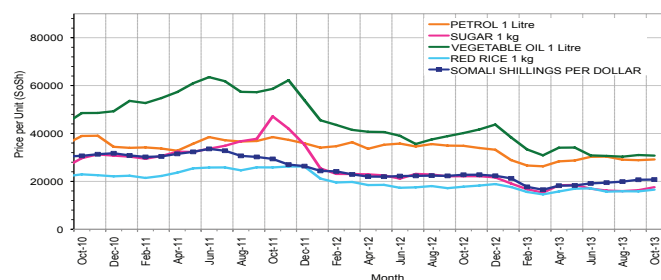


Figure 12: Goat Local Quality

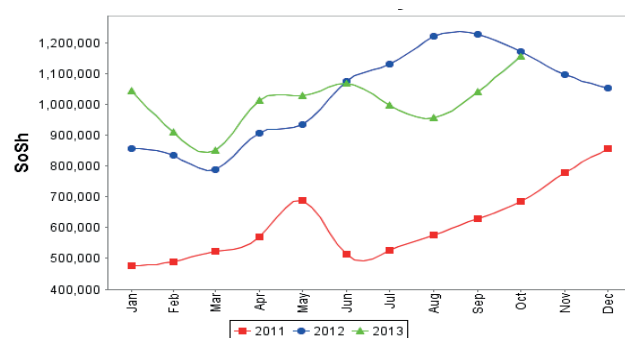


Figure 13: Exchange Rate

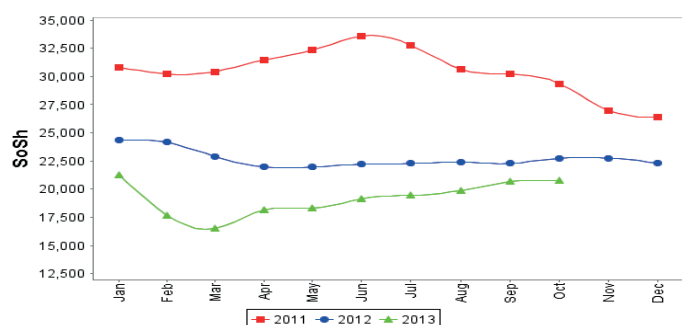
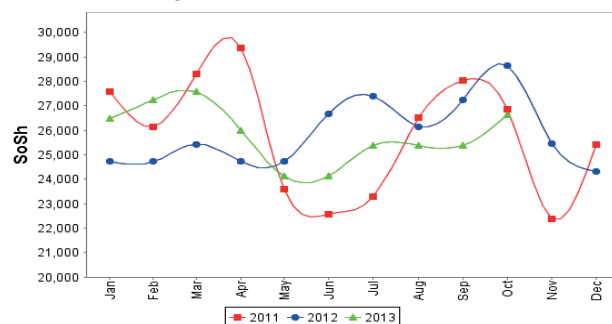


Figure 14: Water Drum (200 litres)



Regional analysis: Sorghum Belt Regions (Bay, Bakool, Gedo and Hiran)

Indicator	5-Year Average (2008-2012)	Oct-12	Sep-13	Oct-13 Nominal Price	Oct-13 Real (Deflated) Price	% Change Same Month Previous Year	% Change Previous Month	% Change 5-year avrg (2008-2012)
Imported Commodities Prices								
Diesel 1 litre	36,603	32,836	27,155	28,364	13,788	-14%	4%	-23%
Imported Red Rice 1kg	28,163	19,918	16,550	17,545	8,491	-12%	6%	-38%
Petrol 1 litre	36,291	32,927	27,168	28,455	13,833	-14%	5%	-22%
Sugar	28,961	23,636	17,659	18,636	9,025	-21%	6%	-36%
Vegetable Oil 1 litre	52,489	45,400	34,409	38,386	18,695	-15%	12%	-27%
Wheat Flour 1kg	24,220	18,727	15,714	17,091	8,268	-9%	9%	-29%
Wheat Grain 1kg	14,410	8,600	8,200	10,600	5,090	23%	29%	-26%
Cereal Prices								
Red Sorghum 1kg	9,653	7,590	6,789	7,166	3,409	-6%	6%	-26%
White Maize 1kg	11,612	8,880	7,945	8,325	3,976	-6%	5%	-28%
Livestock & Livestock Product Prices								
Camel Local Quality (Head)	10,245,148	13,864,200	13,177,727	13,934,091	6,822,534	1%	6%	36%
Cattle Local Quality (Head)	3,267,241	4,269,750	3,809,375	3,959,375	1,938,553	-7%	4%	21%
Fresh Camel Milk 1 litre	25,606	28,573	14,245	16,705	8,079	-42%	17%	-35%
Goat Export Quality (Head)	1,409,982	1,829,000	1,670,682	1,750,455	856,986	-4%	5%	24%
Goat Local Quality (Head)	888,536	1,350,909	1,133,409	1,186,591	580,898	-12%	5%	34%
Other Essential Items								
Charcoal 50kg	132,129	153,091	135,818	142,727	69,784	-7%	5%	8%
Cowpeas 1 kg	32,535	21,700	17,228	18,830	9,120	-13%	9%	-42%
Unskilled Labor Wage Rate	94,501	104,273	105,818	113,182	55,318	9%	7%	20%
Firewood Bundle	5,673	6,527	6,455	6,909	3,283	6%	7%	22%
Local Sesame Oil 1 litre	81,720	72,100	72,000	79,607	38,878	10%	11%	-3%
Exchange Rate (Somali Shilling per USD)	29,717	22,471	19,829	20,840	10,104	-7%	5%	-30%
Terms of Trade								
Labour Wage (Daily)/ Cereal (Sorghum(Kg))	10	14	16	16	-	15%	1%	61%
Local Goat (Head)/ Cereal (Sorghum(Kg))	92	178	167	166	-	-7%	-1%	80%
Price Indices								
Consumer Price Index	-	210	190	204	-	-3%	7%	-

Figure 15: Trends in Cereal Prices

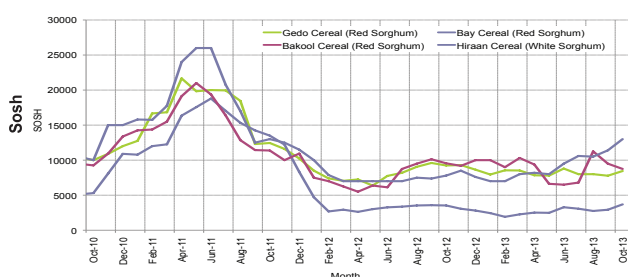


Figure 16: Trends in Wage Rates and Relative Purchasing Power

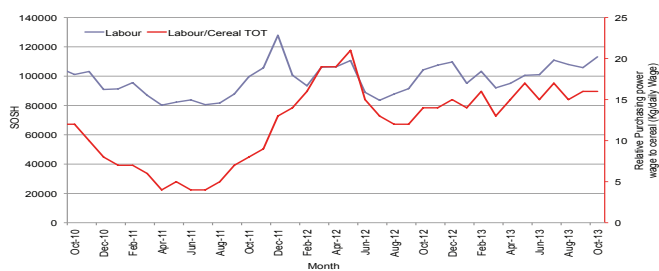


Figure 17: Imported Commodity Prices Compared to Exchange Rate

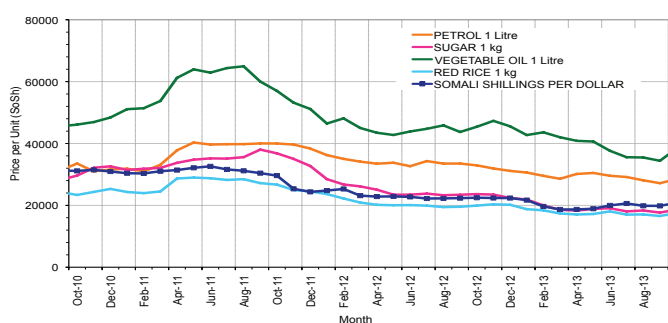


Figure 18: Goat Local Quality

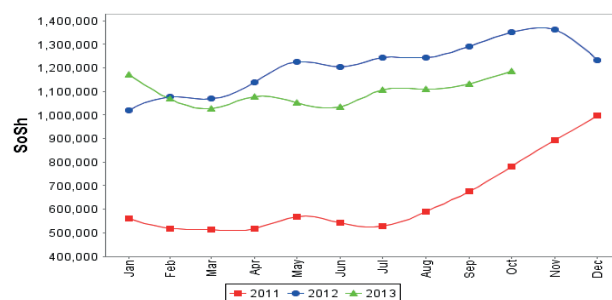


Figure 19: Exchange Rate

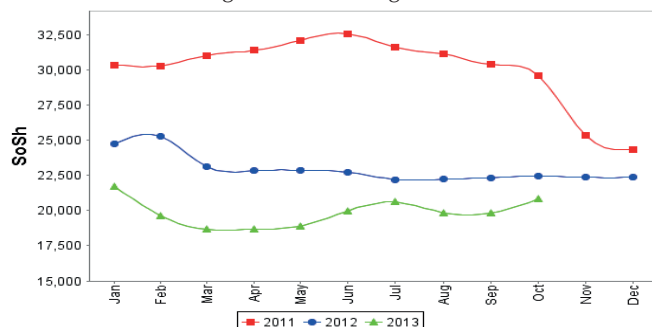
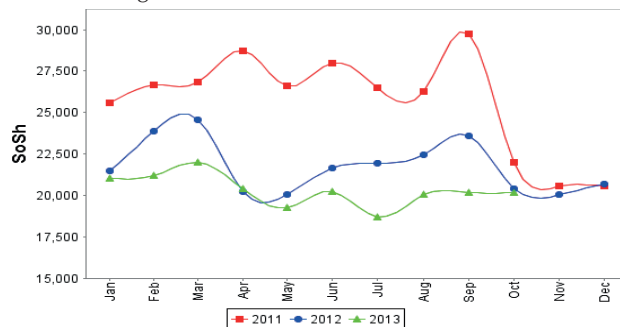


Figure 20: Water Drum (200 litres)



Regional analysis: Shabelle Regions

Indicator	5-Year Average (2008-2012)	Oct-12	Sep-13	Oct-13 Nominal Price	Oct-13 Real (Deflated) Price	% Change Same Month Previous Year	% Change Previous Month	% Change 5-year avrg (2008-2012)
Imported Commodities Prices								
Diesel 1 litre	33,853	29,767	27,333	27,767	13,496	-7%	2%	-18%
Imported Red Rice 1kg	24,721	15,733	16,500	17,167	8,306	9%	4%	-31%
Petrol 1 litre	33,885	29,633	28,208	28,833	14,018	-3%	2%	-15%
Sugar	26,865	21,367	17,250	16,967	8,208	-21%	-2%	-37%
Vegetable Oil 1 litre	42,615	34,533	26,375	27,167	13,202	-21%	3%	-36%
Wheat Flour 1kg	22,158	18,167	16,042	16,033	7,750	-12%	0%	-28%
Wheat Grain 1kg	15,042	6,667	5,333	7,733	3,686	16%	45%	-49%
Cereal Prices								
Red Sorghum 1kg	10,579	8,733	8,097	9,283	4,445	6%	15%	-12%
White Maize 1kg	6,835	5,416	5,148	6,087	2,880	12%	18%	-11%
Livestock & Livestock Product Prices								
Camel Local Quality (Head)	13,855,299	17,908,000	17,010,000	18,029,333	8,827,712	1%	6%	30%
Cattle Local Quality (Head)	4,283,800	5,304,000	6,250,000	6,425,000	3,145,812	21%	3%	50%
Fresh Camel Milk 1 litre	18,546	23,022	17,458	21,133	10,247	-8%	21%	14%
Goat Export Quality (Head)	1,608,587	2,369,000	1,760,625	1,839,500	900,586	-22%	4%	14%
Goat Local Quality (Head)	1,124,233	1,503,667	1,275,833	1,220,333	597,419	-19%	-4%	9%
Other Essential Items								
Charcoal 50kg	122,862	134,533	120,931	126,200	61,692	-6%	4%	3%
Cowpeas 1 kg	26,990	22,313	14,919	16,447	7,953	-26%	10%	-39%
Unskilled Labor Wage Rate	63,658	66,833	69,375	68,000	33,195	2%	-2%	7%
Firewood Bundle	4,641	5,833	6,875	7,333	3,491	26%	7%	58%
Local Sesame Oil 1 litre	64,755	56,233	57,417	62,100	30,306	10%	8%	-4%
Exchange Rate (Somali Shilling per USD)	30,310	22,822	20,625	21,380	10,368	-6%	4%	-29%
Terms of Trade								
Labour Wage (Daily)/ Cereal (Maize(Kg))	9	12	13	11	-	-9%	-17%	20%
Local Goat (Head)/ Cereal (Maize(Kg))	164	278	248	200	-	-28%	-19%	22%
Price Indices								
Consumer Price Index	-	210	190	204	-	-3%	7%	-

Figure 21: Trends in Cereal Prices

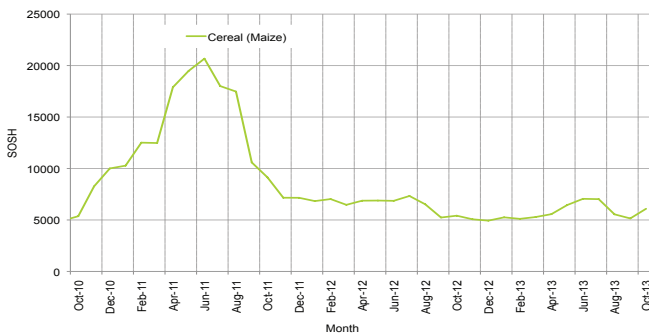


Figure 22: Trends in Wage Rates and Relative Purchasing Power

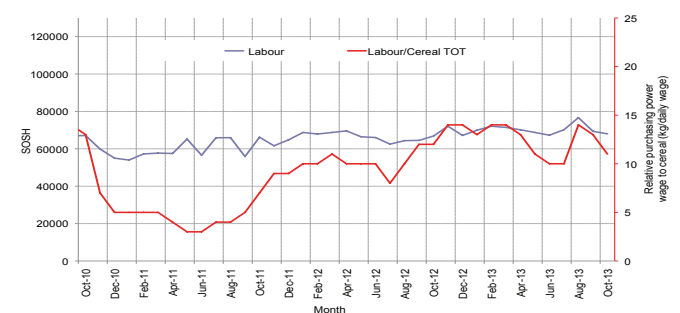


Figure 23: Imported Commodity Prices Compared to Exchange Rate

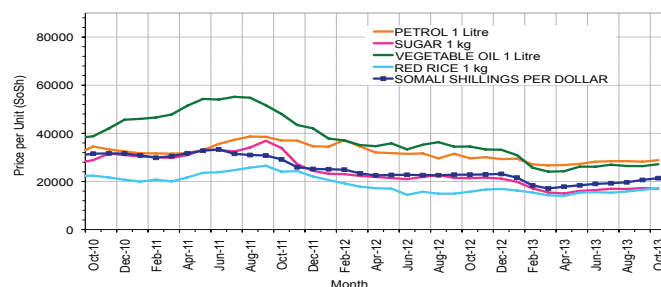


Figure 25: Exchange Rate

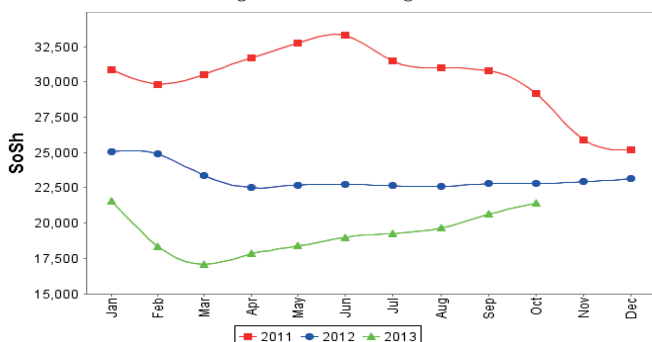


Figure 24: Goat Local Quality

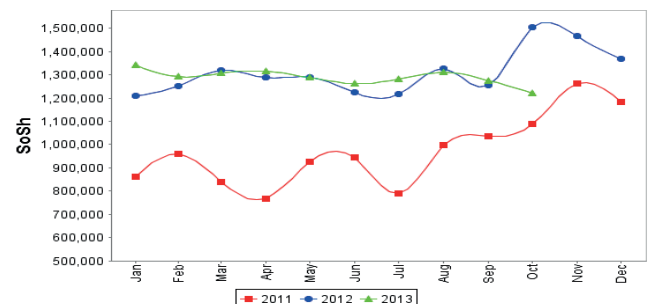
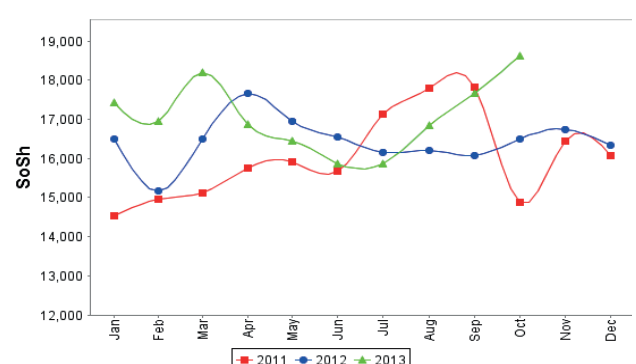


Figure 26: Water Drum (200 litres)



Regional analysis: Banadir Region

Indicator	5-Year Average (2008-2012)	Oct-12	Sep-13	Oct-13 Nominal Price	Oct-13 Real (Deflated) Price	% Change Same Month Previous Year	% Change Previous Month	% Change 5-year avg (2008-2012)
Imported Commodities Prices								
Diesel 1 litre	30,653	26,033	20,933	21,271	10,315	-18%	2%	-31%
Imported Red Rice 1kg	25,050	16,217	12,367	12,333	5,939	-24%	0%	-51%
Petrol 1 litre	29,197	25,867	21,680	21,104	10,233	-18%	-3%	-28%
Sugar	25,243	18,700	13,433	13,646	6,582	-27%	2%	-46%
Vegetable Oil 1 litre	42,303	33,350	22,533	22,958	11,141	-31%	2%	-46%
Wheat Flour 1kg	18,353	16,933	12,133	12,333	5,939	-27%	2%	-33%
Wheat Grain 1kg	11,072	11,289	7,267	7,333	3,491	-35%	1%	-34%
Cereal Prices								
Red Sorghum 1kg	8,179	5,740	5,397	6,408	3,038	12%	19%	-22%
White Maize 1kg	8,013	7,363	7,110	7,363	3,505	0%	4%	-8%
Livestock & Livestock Product Prices								
Camel Local Quality (Head)	18,000,000	-	-	-	-	-	-	-
Cattle Local Quality (Head)	4,718,750	-	-	-	-	-	-	-
Fresh Camel Milk 1 litre	18,865	22,033	21,267	21,042	10,203	-4%	-1%	12%
Goat Export Quality (Head)	1,901,750	2,660,000	3,000,000	3,000,000	1,468,808	13%	0%	58%
Goat Local Quality (Head)	1,571,200	2,120,000	2,354,000	2,356,875	1,153,911	11%	0%	50%
Other Essential Items								
Charcoal 50kg	158,450	175,033	185,433	191,250	93,543	9%	3%	21%
Cowpeas 1 kg	25,625	17,950	12,133	13,604	6,561	-24%	12%	-47%
Unskilled Labor Wage Rate	70,550	109,000	112,000	111,875	54,678	3%	0%	59%
Firewood Bundle	5,918	8,000	7,840	7,900	3,768	-1%	1%	33%
Local Sesame Oil 1 litre	66,940	57,700	58,467	60,667	29,605	5%	4%	-9%
Exchange Rate (Somali Shilling per USD)	29,640	22,458	19,853	21,000	10,182	-6%	6%	-29%
Terms of Trade								
Labour Wage (Daily)/ Cereal (Maize(Kg))	9	15	16	15	-	3%	-4%	73%
Local Goat (Head)/ Cereal (Maize(Kg))	196	288	331	320	-	11%	-3%	63%
Price Indices								
Consumer Price Index	-	210	190	204	-	-3%	7%	-

Figure 27: Trends in Cereal Prices

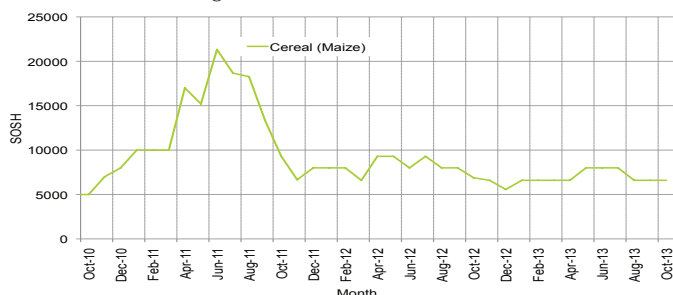


Figure 28: Bakara: Trends in Wage Rates and Relative Purchasing Power

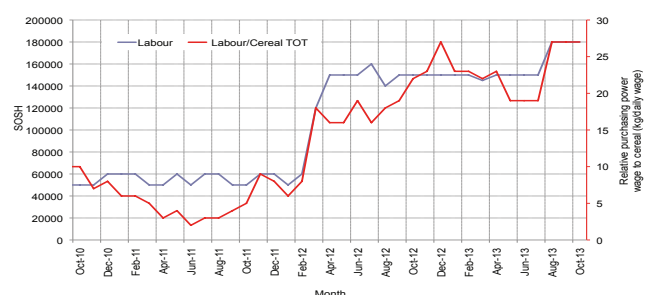


Figure 29: Imported Commodity Prices Compared to Exchange Rate

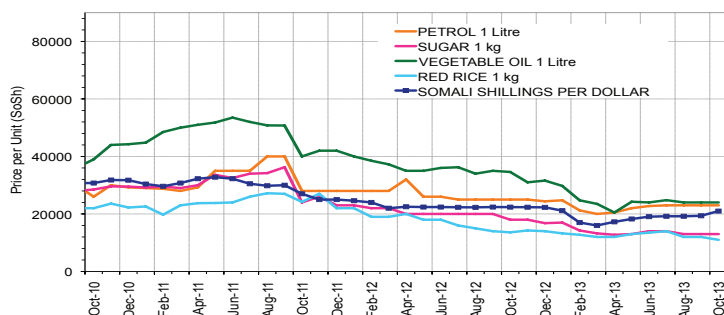


Figure 30: Goat Local Quality

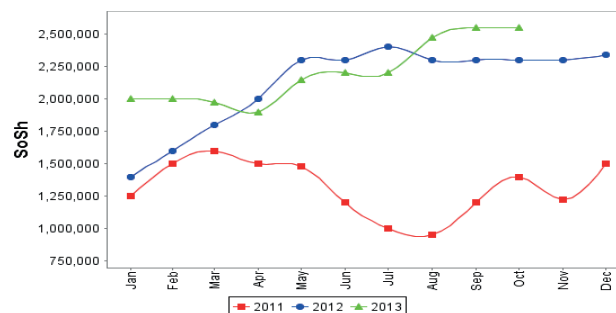


Figure 31: Exchange Rate

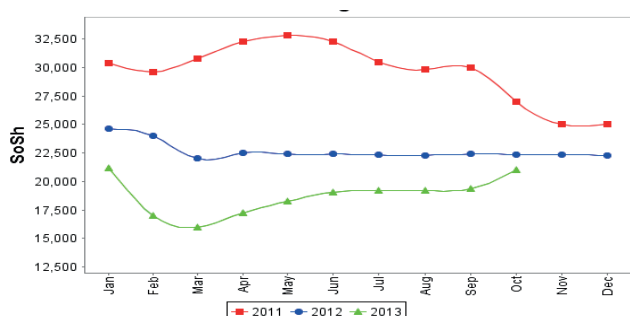
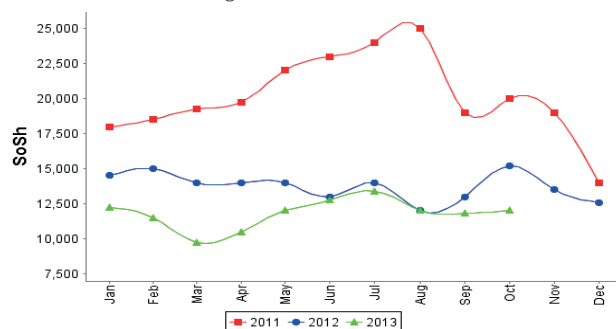


Figure 32: Wheat Flour



Regional analysis: Central Regions

Indicator	5-Year Average (2008-2012)	Oct-12	Sep-13	Oct-13 Nominal Price	Oct-13 Real (Deflated) Price	% Change Same Month Previous Year	% Change Previous Month	% Change 5-year avrg (2008-2012)
Imported Commodities Prices								
Diesel 1 litre	35,726	31,480	28,000	27,850	14,775	-12%	-1%	-22%
Imported Red Rice 1kg	29,128	21,280	19,400	19,400	10,262	-9%	0%	-33%
Petrol 1 litre	30,930	26,400	26,500	25,250	13,386	-4%	-5%	-18%
Sugar	29,324	23,733	21,140	20,500	10,849	-14%	-3%	-30%
Vegetable Oil 1 litre	56,800	44,400	45,200	42,500	22,600	-4%	-6%	-25%
Wheat Flour 1kg	24,201	17,467	17,290	16,950	8,953	-3%	-2%	-30%
Wheat Grain 1kg	17,808	15,022	12,488	12,250	6,443	-18%	-2%	-31%
Cereal Prices								
Red Sorghum 1kg	14,016	11,580	10,800	10,700	5,615	-8%	-1%	-24%
White Maize 1kg	15,246	12,642	10,800	11,000	5,775	-13%	2%	-28%
Livestock & Livestock Product Prices								
Camel Local Quality (Head)	8,248,249	10,285,000	11,700,000	11,643,750	6,218,937	13%	0%	41%
Cattle Local Quality (Head)	2,292,500				-	-	-	-
Fresh Camel Milk 1 litre	41,966	29,880	26,950	25,550	13,546	-14%	-5%	-39%
Goat Export Quality (Head)	1,457,483	1,634,167	1,473,333	1,540,000	822,429	-6%	5%	6%
Goat Local Quality (Head)	1,063,540	1,328,800	1,243,000	1,325,000	707,595	0%	7%	25%
Other Essential Items								
Charcoal 50kg	181,163	189,267	176,600	188,000	100,313	-1%	6%	4%
Cowpeas 1 kg	33,640	23,160	17,030	16,400	8,659	-29%	-4%	-51%
Unskilled Labor Wage Rate	81,510	81,600	84,250	75,625	40,292	-7%	-10%	-7%
Firewood Bundle	29,450	39,200	35,000	35,000	18,594	-11%	0%	19%
Local Sesame Oil 1 litre	99,972	88,800	86,250	86,750	46,234	-2%	1%	-13%
Exchange Rate (Somali Shilling per USD)	29,772	22,220	20,390	20,445	10,820	-8%	0%	-31%
Terms of Trade								
Labour Wage (Daily)/ Cereal (Rice(Kg))	3	4	4	4	-	2%	-10%	39%
Local Goat (Head)/ Cereal (Rice(Kg))	37	62	64	68	-	9%	7%	87%
Camel (Head)/Cereal (Kg)	283	483	603	600	-	24%	0%	112%
Price Indices								
Consumer Price Index	-	205	192	187	-	-9%	-2%	-

Figure 33: Trends in Cereal Prices

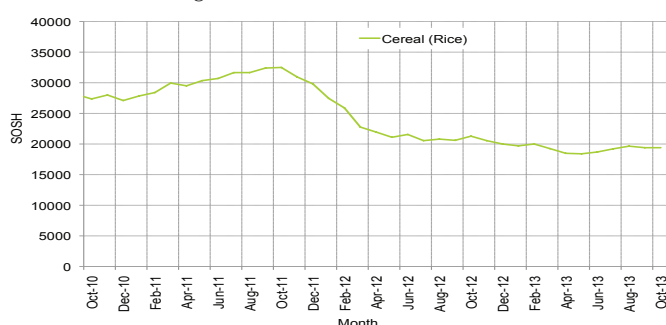


Figure 34: Trends in wage rates and relative purchasing power

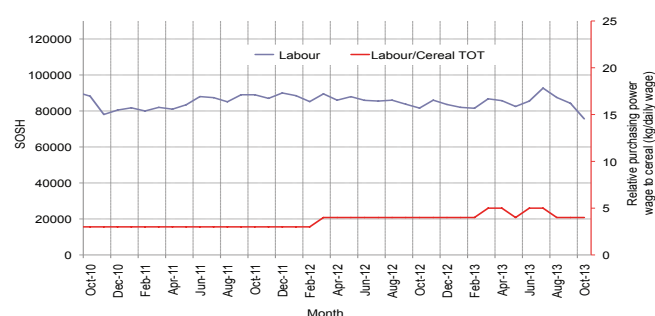


Figure 35: Imported Commodity Prices Compared to Exchange Rate

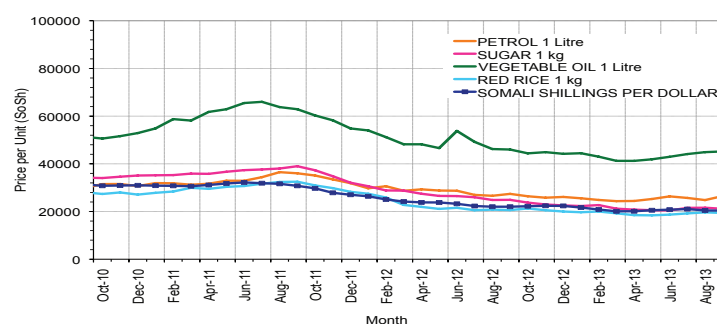


Figure 36: Goat Local Quality

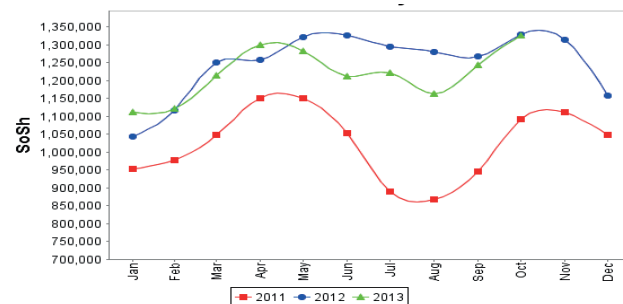


Figure 37: Exchange Rate

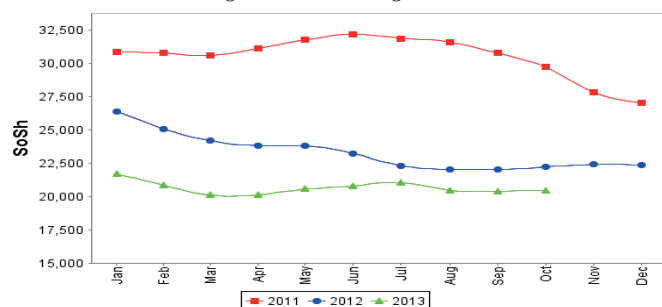
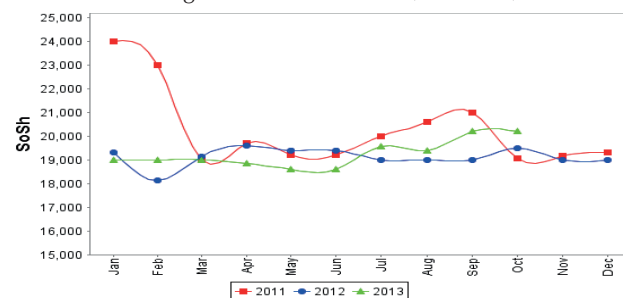


Figure 38: Water Drum (200 litres)



Regional analysis: Northeast Regions

Indicator	5-Year Average (2008-2012)	Oct-12	Sep-13	Oct-13 Nominal Price	Oct-13 Real (Deflated) Price	% Change Same Month Previous Year	% Change Previous Month	% Change 5-year avrg (2008-2012)
Imported Commodities Prices								
Diesel 1 litre	30,637	23,500	23,750	23,563	10,635	0%	-1%	-23%
Imported Red Rice 1kg	23,187	17,300	16,100	15,750	7,075	-9%	-2%	-32%
Petrol 1 litre	27,135	20,550	21,844	21,125	9,524	3%	-3%	-22%
Sugar	26,477	21,500	19,300	18,625	8,385	-13%	-3%	-30%
Vegetable Oil 1 litre	48,580	39,650	36,100	34,188	15,475	-14%	-5%	-30%
Wheat Flour 1kg	20,860	16,050	15,713	14,875	6,677	-7%	-5%	-29%
Wheat Grain 1kg	28,632	28,125	26,200	25,000	11,289	-11%	-5%	-13%
Cereal Prices								
Red Sorghum 1kg	20,941	20,333	21,125	21,000	9,467	3%	-1%	0%
White Maize 1kg	20,290	19,200	23,000	22,500	10,151	17%	-2%	11%
Livestock & Livestock Product Prices								
Camel Local Quality (Head)	13,104,125	15,940,000	16,112,500	15,387,500	7,010,130	-3%	-4%	17%
Cattle Local Quality (Head)	7,170,000	7,500,000	8,600,000	7,750,000	3,530,642	-	-10%	8%
Fresh Camel Milk 1 litre	42,221	35,950	40,225	35,938	16,273	0%	-11%	-15%
Goat Export Quality (Head)	1,449,075	1,616,000	1,690,000	1,612,500	734,522	0%	-5%	11%
Goat Local Quality (Head)	1,280,300	1,494,000	1,553,125	1,547,292	704,815	4%	0%	21%
Other Essential Items								
Charcoal 50kg	305,137	360,500	370,000	375,000	170,742	4%	1%	23%
Cowpeas 1 kg	42,890	34,933	28,450	29,056	13,137	-17%	2%	-32%
Unskilled Labor Wage Rate	113,525	122,500	125,000	125,000	56,847	2%	0%	10%
Firewood Bundle	32,362	45,000	51,250	49,375	22,394	10%	-4%	53%
Local Sesame Oil 1 litre	96,012	88,500	94,000	94,313	42,867	7%	0%	-2%
Exchange Rate (Somali Shilling per USD)	29,645	21,340	21,088	20,906	9,424	-2%	-1%	-29%
Terms of Trade								
Labour Wage (Daily)/ Cereal (Rice(Kg))	5	7	8	8	-	12%	2%	62%
Local Goat (Head)/ Cereal (Rice(Kg))	55	86	96	98	-	14%	2%	78%
Price Indices								
Consumer Price Index	-	209	225	220	-	5%	-3%	-

Figure 39: Trends in Cereal Prices

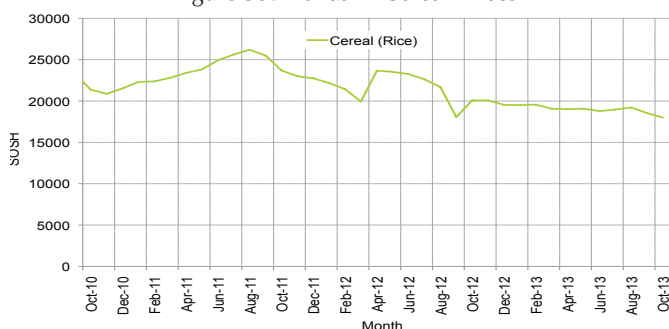


Figure 40: Trends in Wage Rates and Relative Purchasing Power

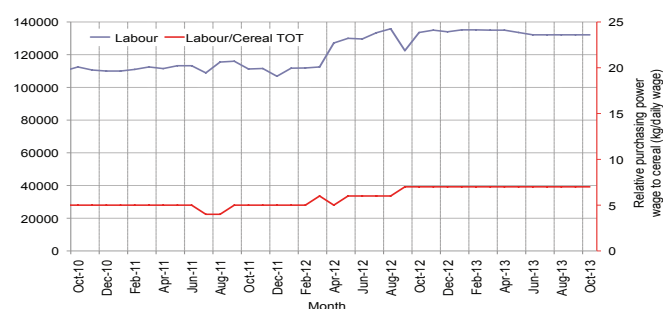


Figure 41: Imported Commodity Prices Compared to Exchange Rate

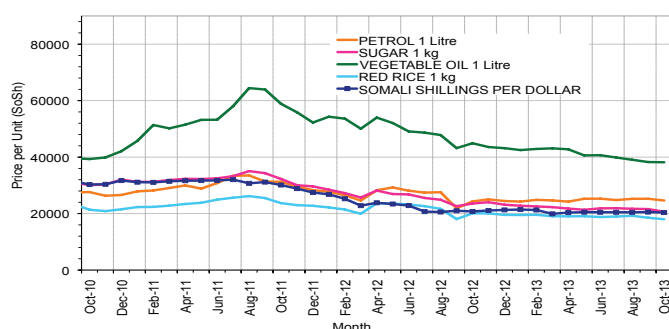


Figure 42: Goat Local Quality

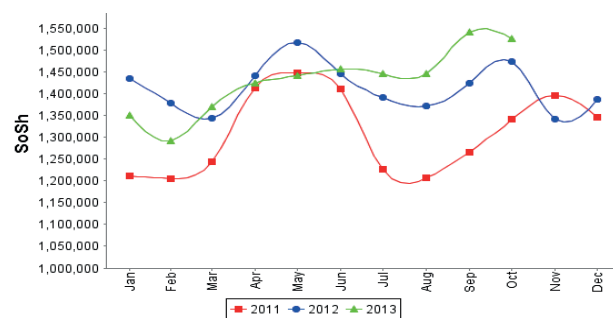


Figure 43: Exchange Rate

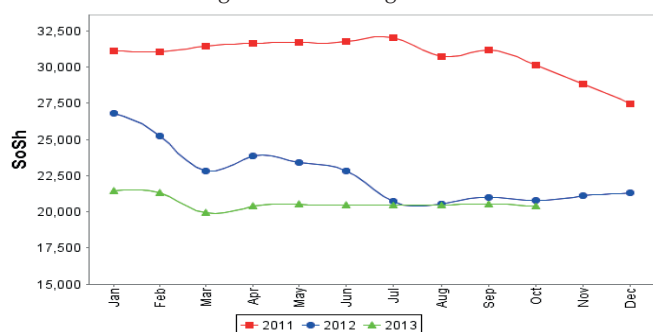
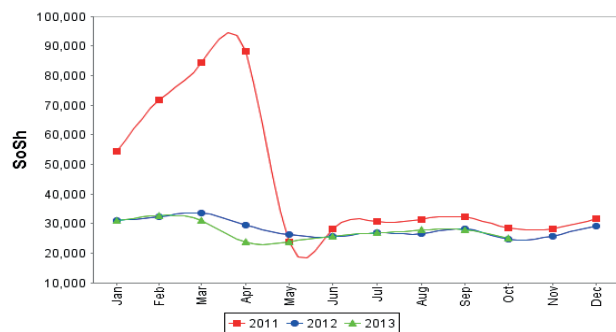


Figure 44: Water Drum (200 litres)



Regional analysis: Northwest Regions

Indicator	5-Year Average (2008-2012)	Oct-12	Sep-13	Oct-13 Nominal Price	Oct-13 Real (Deflated) Price	% Change Same Month Previous Year	% Change Previous Month	% Change 5-year avrg (2008-2012)
Imported Commodities Prices								
Diesel 1 litre	5,972	6,972	6,675	6,855	5,675	-2%	3%	15%
Imported Red Rice 1kg	5,343	4,960	4,880	5,020	4,129	1%	3%	-6%
Petrol 1 litre	6,087	7,284	7,130	7,000	5,797	-4%	-2%	15%
Sugar	5,694	5,984	5,680	5,540	4,567	-7%	-2%	-3%
Vegetable Oil 1 litre	10,985	13,040	12,150	12,150	10,136	-7%	0%	11%
Wheat Flour 1kg	4,556	4,336	4,356	4,230	3,464	-2%	-3%	-7%
Wheat Grain 1kg	3,913	3,015	3,575	3,500	2,849	16%	-2%	-11%
Cereal Prices								
White Sorghum 1kg	3,744	3,568	3,511	3,835	3,131	7%	9%	2%
Yellow Maize 1kg	4,081	3,832	3,700	3,968	3,243	4%	7%	-3%
Livestock & Livestock Product Prices								
Camel Local Quality (Head)	1,914,517	2,792,067	4,304,167	4,087,500	3,443,562	46%	-5%	114%
Cattle Local Quality (Head)	1,373,181	1,896,967	2,608,000	2,673,750	2,252,498	41%	3%	95%
Fresh Camel Milk 1 litre	5,200	5,510	5,750	5,550	4,576	1%	-3%	7%
Goat Export Quality (Head)	318,592	466,860	523,720	527,590	444,387	13%	1%	66%
Goat Local Quality (Head)	233,822	313,760	375,385	392,425	330,513	25%	5%	68%
Other Essential Items								
Charcoal 50kg	32,549	40,520	46,570	50,250	42,235	24%	8%	54%
Cowpeas 1 kg	9,147	9,700	9,500	9,625	8,009	-1%	1%	5%
Unskilled Labor Wage Rate	31,098	40,444	44,900	45,250	38,023	12%	1%	46%
Firewood Bundle	3,845	3,367	3,500	3,333	2,708	-1%	-5%	-13%
Local Sesame Oil 1 litre	24,895	24,725	31,175	31,875	26,754	29%	2%	28%
Exchange Rate (Somaliland Shilling per USD)	6,126	6,270	6,530	6,565	5,431	5%	1%	7%
Terms of Trade								
Labour Wage (Daily)/ Cereal (Rice(Kg))	6	8	9	9	-	11%	-2%	55%
Local Goat (Head)/ Cereal (Rice(Kg))	44	63	77	78	-	24%	2%	79%
Price Indices								
Consumer Price Index	-	124	118	119	-	-4%	0%	-

Figure 45: Trends in Cereal Prices

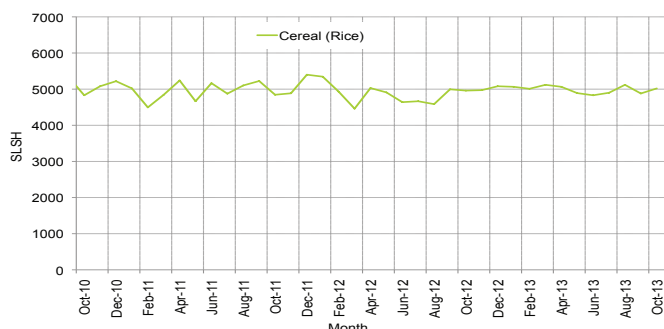


Figure 46: Trends in Wage Rates and Relative Purchasing Power

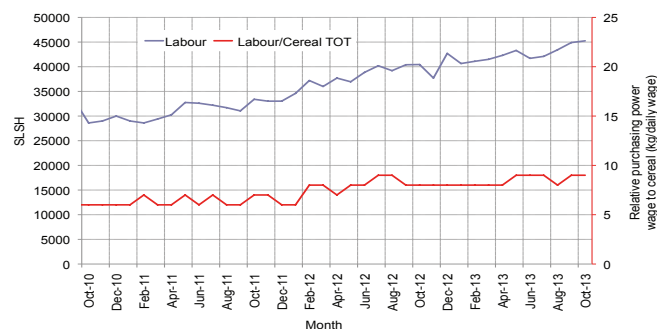


Figure 47: Imported Commodity Prices Compared to Exchange Rate

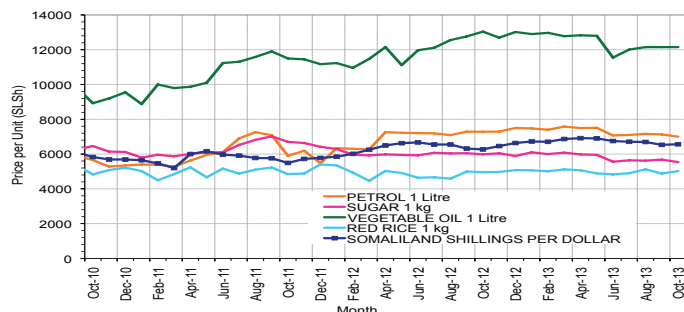


Figure 48: Goat Local Quality

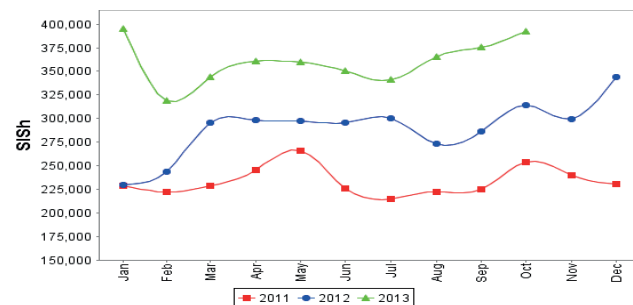


Figure 49: Exchange Rate

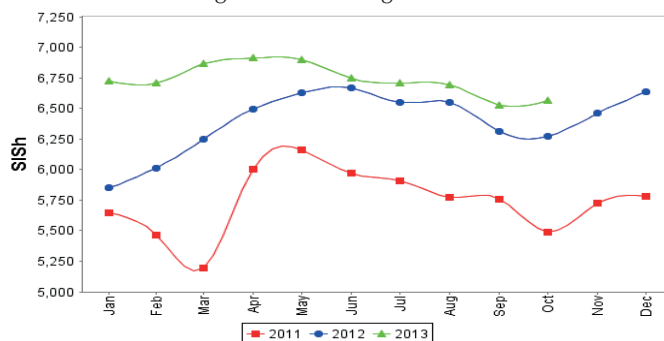
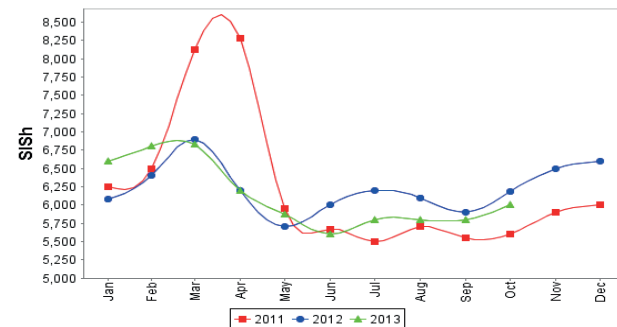


Figure 50: Water Drum (200 litres)



Trends in Livestock Exports

Table 2: Berbera Livestock Exports (Number of Heads)

	1994	1995	1996	1997	1998	1999	2000	2001	2002	2003	2004	2005	2006	2007	2008	2009	2010	2011	2012	2013 (Jan - Jul)
Shoats	1,572,656	2,683,597	2,376,646	2,814,495	957,224	2,048,136	1,601,083	51,546	341,711	563,107	859,404	1,023,795	1,017,242	1,350,054	1,219,519	1,556,003	2,584,810	3,104,684	3,219,584	1,062,159
Cattle	173,400	167,128	65,127	66,939	92,213	89,967	63,263	20,973	37,547	84,312	131,852	148,151	85,631	88,143	80,051	88,005	133,021	150,934	190,354	95,875
Camels	38,553	21,993	42,801	50,587	11,663	37,430	16,984	3,473	18,864	21,874	5,147	5,069	22,810	14,245	26,515	20,206	92,651	107,281	102,664	57,661

Figure 51: Berbera Livestock Exports (Number of Heads)

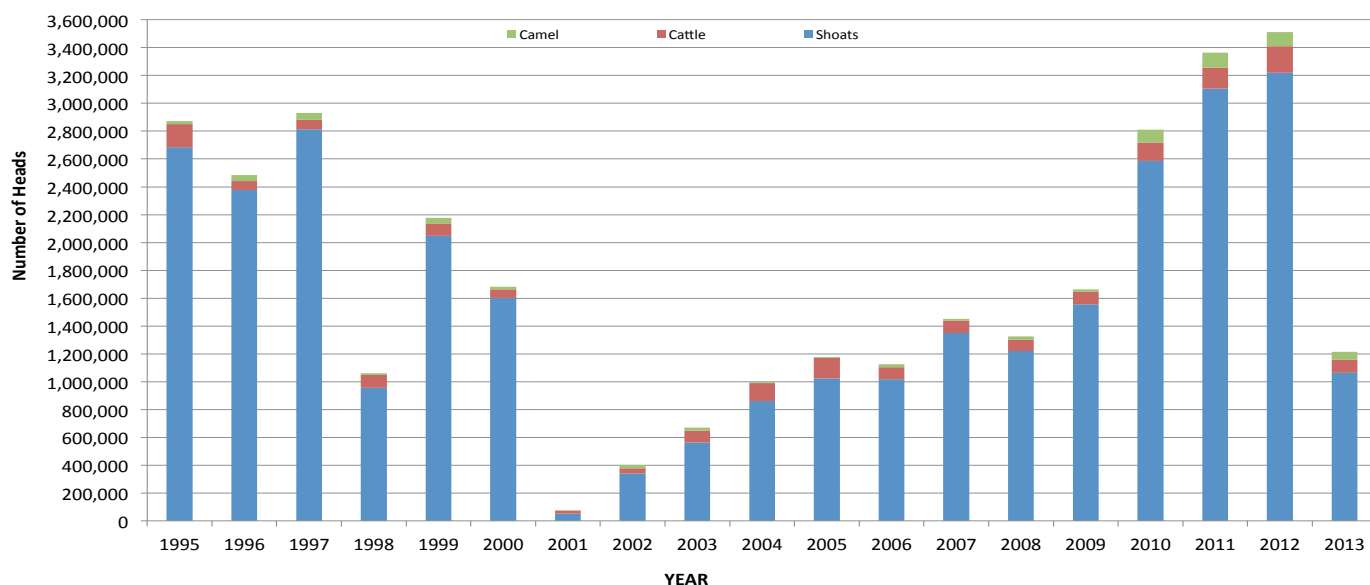
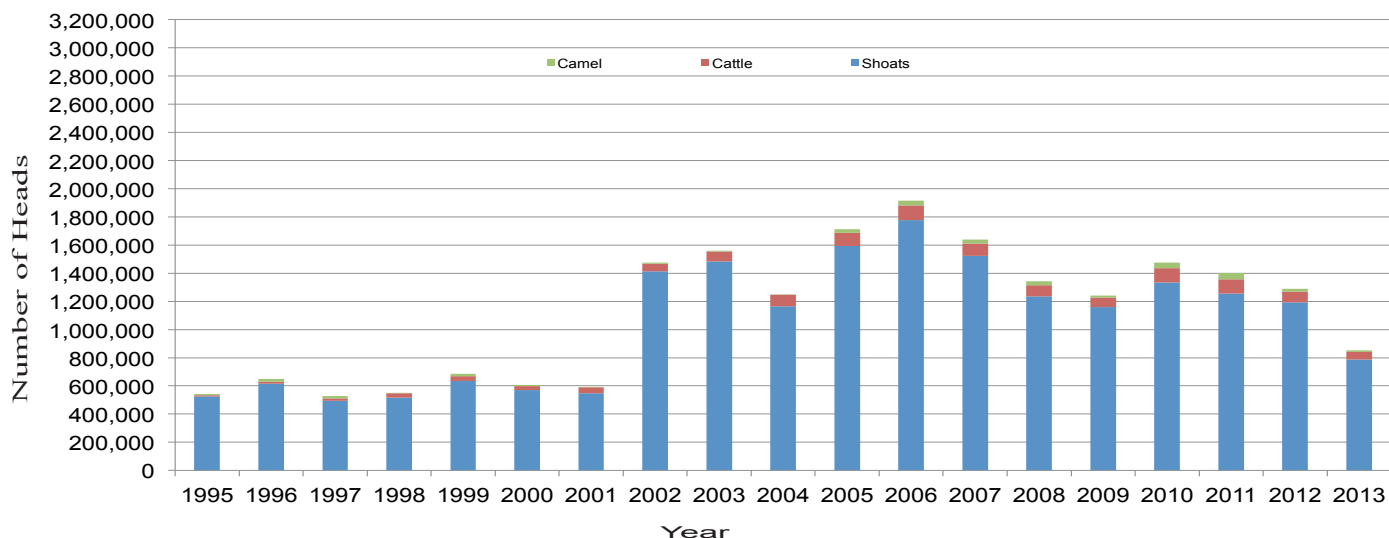


Table 3: Bossaso Livestock Exports (Number of Heads)

	1994	1995	1996	1997	1998	1999	2000	2001	2002	2003	2004	2005	2006	2007	2008	2009	2010	2011	2012	2013 (Jan - Aug)
Shoats	344,000	524,346	614,407	494,320	517,020	633,669	571,455	548,853	1,412,450	1,483,409	1,166,480	1,594,859	1,777,283	1,522,855	1,236,775	1,159,454	1,333,478	1,256,535	1,192,197	786,340
Cattle	1,450	8,795	15,335	17,831	29,492	36,586	27,604	42,248	53,313	71,328	79,994	91,910	104,595	89,190	78,046	67,385	103,808	99,058	76,043	53,306
Camels	5,397	8,392	20,462	14,599	3,938	15,544	8,177	1,950	9,720	4,259	2,488	26,109	33,724	27,580	27,639	15,331	36,865	45,878	22,288	13,666

Figure 52: Bossaso Livestock Exports (Number of Heads)

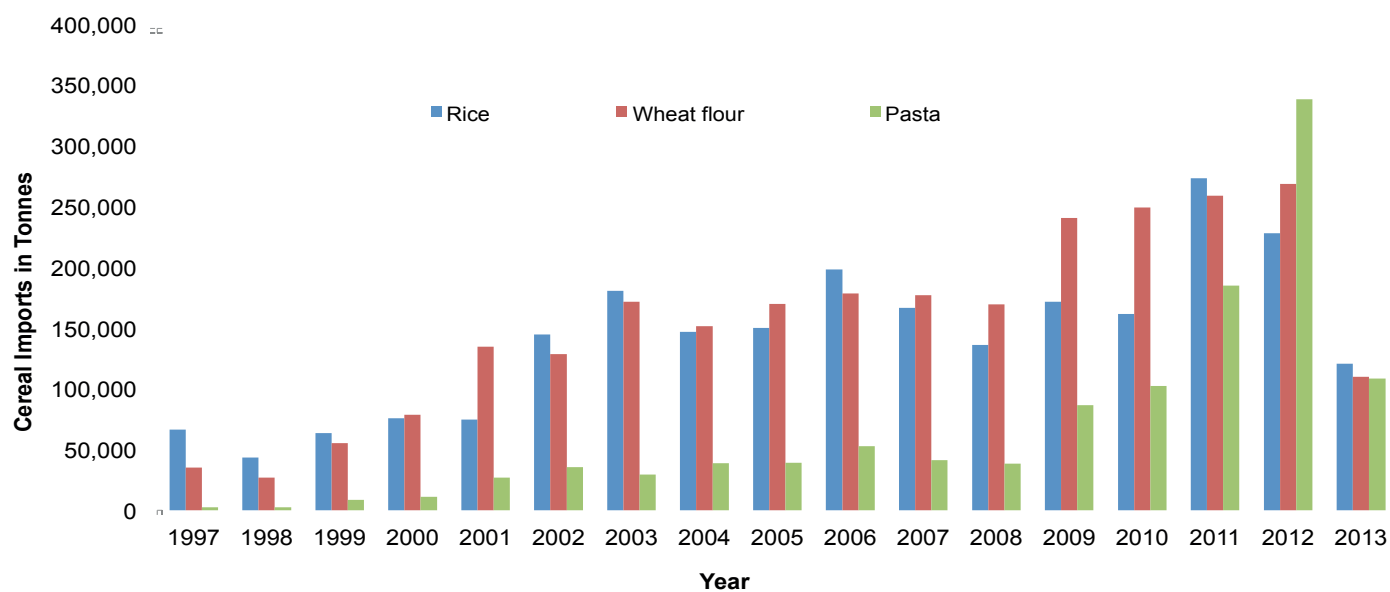


Trends in Cereal Imports

Table 4: Total Cereal Imports through Berbera, Bossaso and Mogadishu Ports (Tonnes)

	1997	1998	1999	2000	2001	2002	2003	2004	2005	2006	2007	2008	2009	2010	2011	2012	2013*
Rice	66,419	43,410	63,464	75,687	74,729	144,600	180,614	146,567	150,017	198,101	166,626	136,007	171,472	161,415	272,877	227,955	120,559
Wheat flour	35,143	26,774	55,176	78,555	134,425	128,263	171,442	151,555	169,583	178,345	176,821	169,208	240,247	249,080	258,679	268,491	109,643
Pasta	2,510	2,455	8,544	11,071	26,702	35,425	29,273	38,749	39,153	52,815	41,331	38,441	86,372	102,373	184,849	337,878	108,270

Figure 53: Total Cereal Imports (Berbera, Bossaso and Mogadishu)



*Mogadishu data is up to March 2013; the data is from Elmaan Port.

*Berbera data is up to July 2013.

*Bossaso data is up to August 2013.