

Market DataUpdate

October 2012



Food Security and Nutrition Analysis Unit - Somalia



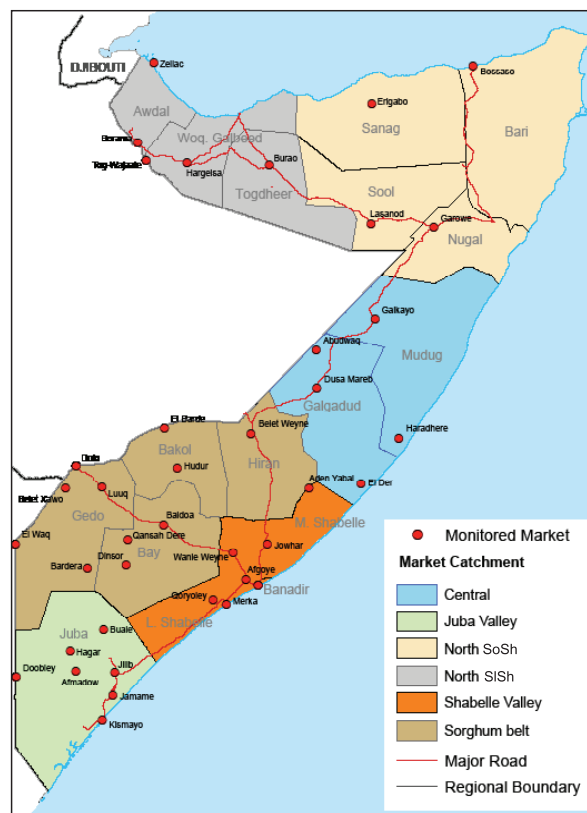
Issued November 19th, 2012

Highlights

- **Inflation:** The October Consumer Price Index (CPI) declined in all Somali Shilling (SoSh) areas but remained steady in Somaliland Shilling (SISh) regions. The CPI is significantly higher compared to the base period (March 2007) in SoSh areas; it is moderately elevated in SISh areas.

- **Exchange rates** between local currencies to the USD remained relatively stable with the SoSh losing slight ground while the SISh extended signs of recovery in the last two months. Compared to the same period a year ago, SISh depreciated against the USD, whereas SoSh gained considerable value. The appreciation of the SoSh is attributed to increased supply of dollars through humanitarian interventions, high livestock trade, increased investments and port activities (Mogadishu). The weakening of SISh is due to increased supply and circulation of new currency notes.

- **Local grain** prices were mixed; remained stable in most markets, increased slightly in Juba regions, but declined significantly in the North SoSh areas and in Banadir. Compared to a year ago, cereal prices are significantly lower in the SoSh zones due to higher supplies from a combination of sources, including domestic production, commercial imports and humanitarian food; the prices were relatively stable in the North SISh areas in the same period of comparison.



- **Prices of most imported commodities** were generally stable in most markets over the month of October 2012, but declined in the port cities and in the surrounding markets. On the contrary, wheat flour prices went up in most markets as a result of high wheat price on the international markets due to tight global supplies. Compared to the same period last year, imported commodity prices are significantly lower due to the strengthened SoSh, higher supplies through Mogadishu port.

- **Livestock prices** increased in nearly all markets during October. Compared to the same month last year, livestock prices are significantly higher across all regions. The price appreciation was mainly due to improved body conditions, low supply of saleable stock and high export demand during *Hajj* (Muslim pilgrimage).

- **Labour wages either remained constant or increased** in all regions supported by ongoing *Deyr* seasonal preparations in the South-Central and *Gu-Karan* harvests in the Northern agro-pastoral livelihoods. Labour wages are significantly higher compared to their levels a year ago in most markets.

- **Terms of Trade (ToT)** between labour wage and cereals were mixed in October mostly remaining stable but significantly rising in Banadir and parts of Sorghum Belt. The purchasing power has significantly improved when compared to a year ago due to lower cereal prices, improved goat prices and higher labour wages (Table 1).

This Market Data Update is a monthly report that presents a compilation of tabulated graphical market information produced regularly as part of the monthly monitoring process.

The weekly price data is collected from 47 main markets throughout Somalia since 1995.

Market analysis is an integral part of all of FSNAU's Annual Food Security Projections and seasonal technical reports (Technical Reports on FSNAU Post *Cu* and *Deyr* Analysis).

This data is available online on www.fsnau.org/ids.

Technical and Managerial Support



Funding Agencies



Regional Market Highlights

- **Juba Valley:** Imported food prices remained stable; the price of maize increased slightly; monthly livestock prices also increased. Prices are significantly lower than a year ago for imported food and local cereals, but significantly higher for livestock. Annual comparisons of ToT between labor and cereals indicate significant improvement in the purchasing power. The ToT (10Kg/daily wage rate) for October nearly sustained its previous month's level.
- **Sorghum Belt:** Sorghum and imported food prices remained stable while livestock prices increased. Prices of imports and local cereals are significantly lower compared to their levels a year ago while those of livestock are significantly higher. The ToT between labour and cereals rose from the previous month. The annual comparison indicates an almost five-fold increase (19kg/daily wage) in Bay region; the ToT is 1-2 times higher than last year in the rest of the Sorghum Belt regions.
- **Shabelle Valley:** Prices of local cereals were generally stable in October; livestock exhibited significant increases while imported food prices increased moderately. Stability in cereal and labor wages settled the monthly ToT to their September levels (12kg for a day's labour). Prices of most imported commodities and cereals are significantly lower while livestock prices, on the other hand, are significantly higher when compared to the same month a year ago.
- **Central:** Imported food and local cereal prices decreased slightly while those of livestock increased. Annual comparisons indicate significant lower prices for all items except livestock, which is significantly higher. ToT (rice/ local goat), currently standing at 62kg/local goat, is stable since September; it is higher when compared to the same month last year (October 2011).
- **Northeast:** Reduction was recorded for the prices of imported food and sorghum while livestock prices appreciated. Annual price comparisons show significant decline for imported commodities and local cereals while those of livestock increased. ToT (rice/ local goat) is equivalent to 86kg/local goat, showing a marginal decline over the month of October; however, the ToT is significantly higher when compared to the same month last year.
- **Northwest:** The prices of white sorghum remained stable; the prices of imported commodities reduced slightly while livestock prices increased. Annual price comparison shows mixed trends for imported food, stability for locally produced cereals and considerably inflated prices for livestock. The monthly ToT between local white sorghum and wages decreased slightly from September 2012 levels but is higher than the same month in 2011, currently equivalent to about 11kg/daily wage rate.
- **Banadir:** In the last month, the prices of locally produced and imported food declined while those of livestock increased marginally. With the exception of highly valued livestock, prices of imported and locally produced food are significantly below their levels a year ago. Tot cereal (maize/ labour wage) increased by 4kg from 11kgs a month ago, and is twice as high as during the same month in 2011.

Table 1: Monthly and Annual Changes in Terms of Trade

Tot: MT of Cereals (kg) per Daily Labour Wage Rate Region	Cereal used	11-Oct	12-Sep	12-October	Monthly change	Annual change
		(kg/daily wage)	(kg/daily wage)	(kg/daily wage)	(%)	(%)
Banadir	White Maize	7	11	15	36%	114%
Bay	Red Sorghum	4	14	19	36%	375%
Bakool	Red Sorghum	5	5	6	20%	20%
Gedo	Red Sorghum	11	14	15	7%	36%
Hiraan	White Maize	10	16	17	6%	70%
Juba	White Maize	4	10	10	0%	150%
Shabelle	White Maize	7	12	12	0%	71%
Northeast	Red Sorghum	4	6	7	17%	75%
Northwest	White Sorghum	9	12	11	-8%	22%
Central	Red Sorghum	5	7	7	0%	40%

International Market Highlights

Diesel: Crude oil prices in Abu Dhabi (Dubai)¹ dropped in October by \$2.3 to \$108.7/barrel. This price is however 5 percent higher than in the same month in 2011. Organization of Petroleum Exporting Countries (OPEC) Monthly Oil Market Report (November 2012) attributes a steady decline for the better part of September-October period to the following factors: higher growth in crude supply, concerns on global economic slowdown as well as significant US crude stockbuilds drove oil prices on, overriding geopolitical supply fears².

In Somalia Port Cities of Bossaso and Mogadishu, diesel prices declined marginally (3-5%) when compared to September 2012. However, the prices are significantly lower (25-35%) than the same month last year as a result of appreciated value of the SoSh against the USD as well as increased supplies through local ports. The differential between the prices of domestic diesel and global crude oil has shrunk in the port cities over the past one year (since October 2011): from 42 percent to 23 percent in Mogadishu; and from 19 percent to 4 percent in Bossaso. The price differential attenuation signifies the role of local factors in driving imported commodity prices on the domestic markets (Figure 1).

Rice: The benchmark price of Thai rice (Thai A1 Super 1/ B), the major type of rice imported in Somalia, remained mostly stable in October³, averaging USD 545 per tonne; but this price is still 8 percent higher than the same month in 2011. The relative price stability was supported by anticipated rise in stocks in major exporting countries including in Thailand⁴.

Prices of imported rice in Bossaso and Mogadishu ports in October were largely stable but declined significantly (30-44%) when compared to the same month a year ago, supported by stronger domestic currency and improved port supplies. The gap between international and domestic rice markets narrowed down in both towns; from 52-77 percent in October 2011 to 12-40 percent in the reporting month (Figure 2).

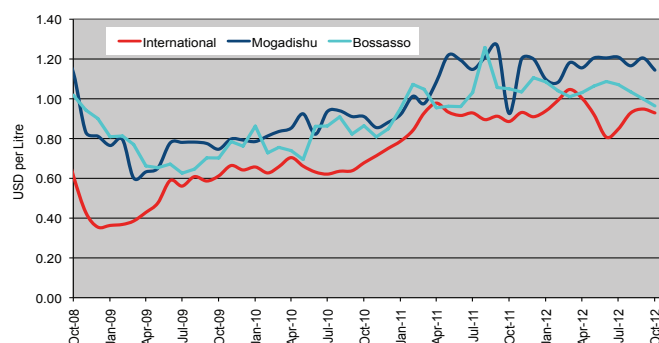
Sugar: The FAO Sugar Price Index⁵ averaged 288 points in October, up 4.5 points (1.6 percent) from September, and down 73 points (20.2 percent) from October last year. The recent trend in sugar quotations has two major drivers: short-term export tightness in Brazil, the world's largest sugar exporter; prospects of large overall availabilities in the current 2012/13 marketing season.

Monthly sugar prices remained steady in Bossaso and decreased by 10 percent in Mogadishu. Due to higher supply through commercial imports and humanitarian assistance, annual price reductions were significant in both cities, in the range of 25-29 percent.

Cooking Oil: the FAO Oils/Fats Price Index⁶ averaged 206 points in October, dropping 18 points (8 percent) from September, and reaching its lowest level in two years. The slide in prices mainly reflects continued abundance in palm oil output in Southeast Asia, combined with weak world import demand. Higher than expected export availabilities of soy, rape and sunflower seed oil, and a general slowdown in global consumption growth also contributed to cooling in the market.

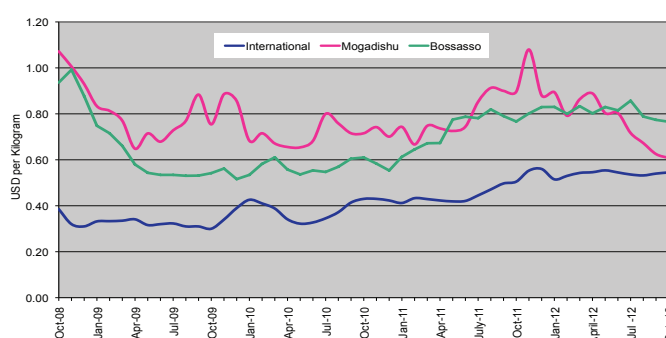
In port cities of Somalia, vegetable oil prices remained relatively stable over the previous month in Bossaso and Mogadishu but showed a significant annual decline (13-25%) on the backdrop of on-going humanitarian interventions, improved port operations and international price trends.

Figure 1: Diesel Prices: Dubai, Mogadishu and Bossaso



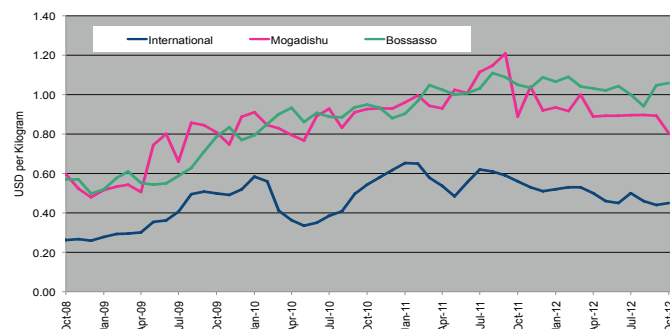
Source: FAO Statistics, FEWSNET and FSNAU Market Price Monitoring System, 2012

Figure 2: Rice Prices: Bangkok FOB, Mogadishu and Bossaso Markets



Source: FAO Statistics, FEWSNET and FSNAU Market Price Monitoring System, 2012

Figure 3: Sugar Prices: International, Mogadishu and Bossaso Markets



Source: International Sugar Organization, FEWSNET and FSNAU Market Price Monitoring System, 2012

¹ the main source of Somalia's oil imports

² Organization of Petroleum Exporting Countries (OPEC) Monthly Oil Market Report (November , 2012; http://www.opec.org/opec_web/static_files_project/media/downloads/publications/MOMR_November_2012.pdf)

³ The World Food Situation: The FAO Food Price Index November 2012

⁴ IGC GMR 427 – 25 October 2012

⁵ The World Food Situation: The FAO Food Price Index November 2012

⁶ Ibid

National Trends: CPI, Exchange Rates, Cereal Prices and Relative Purchasing Power

Figure 4: Terms of Trade between wage rates and selected cereals

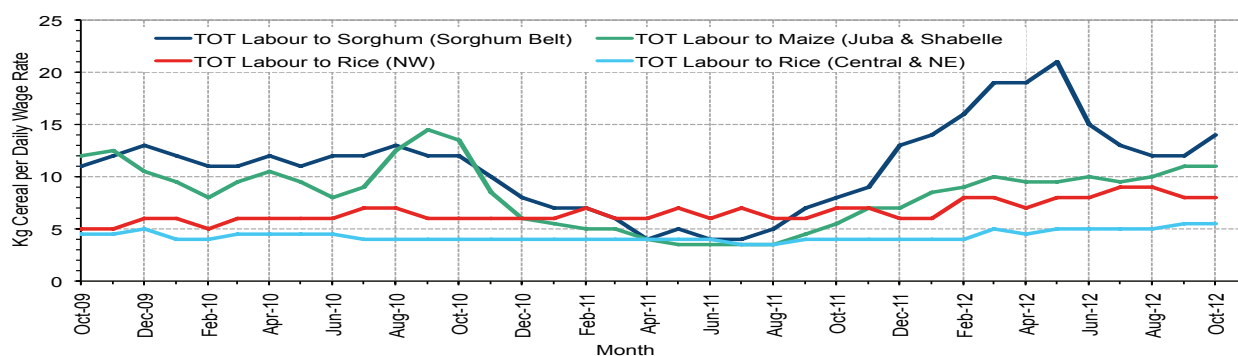


Figure 5: Monthly Exchange Rate for Selected Regions (SoSh and SiSh to USD)

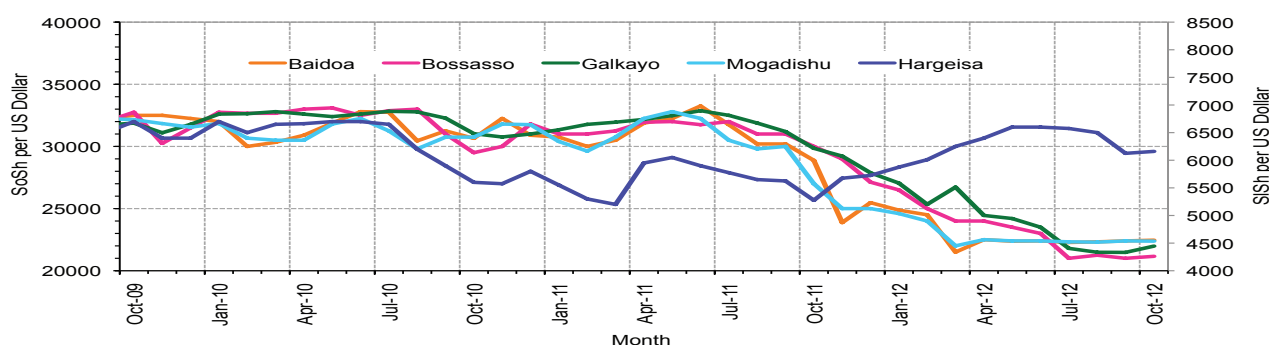


Figure 6: Monthly Trends in Consumer Price Index (CPI, March 2007=100)

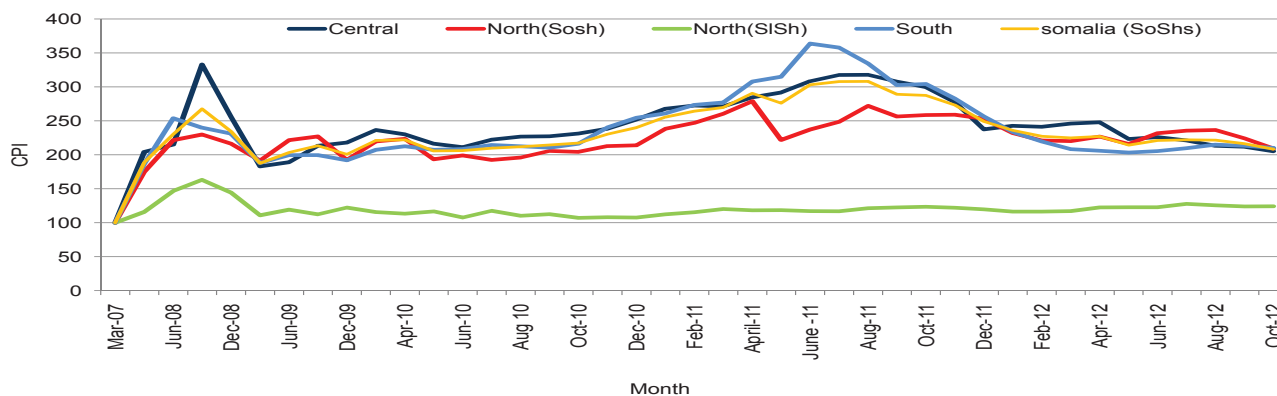
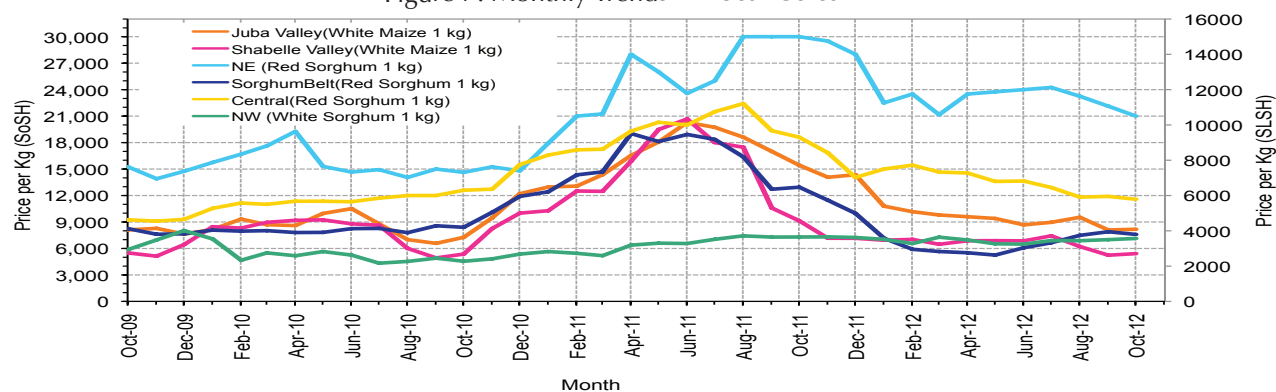


Figure 7: Monthly Trends in Local Cereal Prices



Regional analysis: Juba Regions

Indicator	5-Year Average (2003-07)	Oct-11	Sep-12	Oct-12 Nominal Price	Oct-12 Real (Deflated) Price	% Change Same Month Previous Year	% Change Previous Month	% Change 5-year avrg (2003-07)
Imported Commodities Prices								
Diesel 1 litre	14,101	44,607	33,036	32,971	15,587	-26%	0%	134%
Imported Red Rice 1kg	9,540	25,821	16,750	17,286	8,124	-33%	3%	81%
Petrol 1 litre	16,395	38,500	34,214	34,286	16,213	-11%	0%	109%
Sugar	9,014	47,143	22,143	22,000	10,367	-53%	-1%	144%
Vegetable Oil 1 litre	20,734	58,643	38,714	39,600	18,741	-32%	2%	91%
Wheat Flour 1kg	8,667	24,000	16,286	16,714	7,852	-30%	3%	93%
Wheat Grain 1kg	1,200	20,000	-	-	-	-	-	-
Red Sorghum 1kg	2,228	-	7,000	5,600	2,564	-	-20%	151%
White Maize 1kg	2,575	15,429	8,054	8,451	3,921	-45%	5%	228%
Livestock & Livestock Product Prices								
Camel Local Quality (Head)	3,222,545	7,936,667	10,127,083	9,445,471	4,493,887	19%	-7%	193%
Cattle Local Quality (Head)	1,688,044	2,915,000	3,724,250	3,847,533	1,830,488	32%	3%	128%
Fresh Camel Milk 1 litre	6,655	18,643	18,607	22,000	10,367	18%	18%	231%
Goat Export Quality (Head)	425,671	1,058,214	1,825,500	1,907,114	907,271	80%	4%	348%
Goat Local Quality (Head)	305,365	685,357	1,182,893	1,178,029	560,385	72%	0%	286%
Other Essential Items								
Charcoal 50kg	29,326	64,107	82,893	81,371	38,615	27%	-2%	177%
Cowpeas 1 kg	5,070	33,250	20,464	20,029	9,429	-40%	-2%	295%
Unskilled Labor Wage Rate	36,008	63,571	82,107	81,714	38,778	29%	0%	127%
Firewood Bundle	2,253	6,571	9,107	8,714	4,046	33%	-4%	287%
Local Sesame Oil 1 litre	21,379	91,393	72,036	69,429	32,933	-24%	-4%	225%
Exchange Rate (Somali Shilling per USD)	16,071	29,375	22,332	22,583	10,645	-23%	1%	41%
Construction Materials*								
Cement 50kg	-	338,333	290,708	297,500	141,445	-12%	2%	-
Cooking Pot Aluminium 7 Litre	-	362,500	284,643	313,286	148,956	-14%	10%	-
Galvanised Iron Sheet Ga 26	-	177,083	122,143	124,114	58,951	-30%	2%	-
Hollow Concrete Block 10cm x 20cm x 40cm	-	20,000	15,000	15,000	7,037	-25%	0%	-
Non Collapsible Jerrycan 10 Litre	-	35,250	34,750	35,417	16,751	0%	2%	-
Plastic Tarpaulin 14m x 5 m	-	503,333	315,417	323,429	153,782	-36%	3%	-
Roofing Nails 15Kg	-	790,000	793,393	819,857	389,973	4%	3%	-
Timber 2in x 4in x 20ft	-	327,500	276,500	273,250	129,907	-17%	-1%	-
Woven Dry Raised Blanket 150cm x 200cm	-	150,000	66,667	71,750	34,037	-52%	8%	-
Terms of Trade								
Labour Wage (Daily)/ Cereal (Maize(Kg))	14	4	10	10	-	135%	-5%	-31%
Local Goat (Head)/ Cereal (Maize(Kg))	119	44	147	139	-	214%	-5%	18%
Price Indices								
Consumer Price Index	-	304	213	210	-	-31%	-1%	-
Purchasing Power Index	-	0.33	0.47	0.48	-	45%	1%	-

* Data has been collected since May 2010

* Data has been collected since May 2010

Figure 8: Imported commodity prices compared to exchange rates

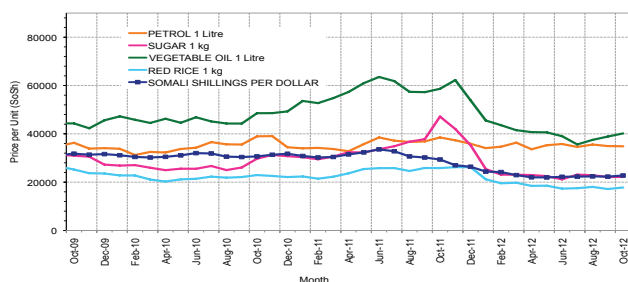


Figure 10: Goat Local Quality

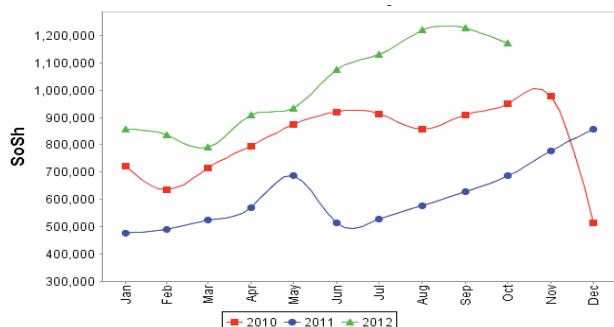


Figure 12: Water Drum

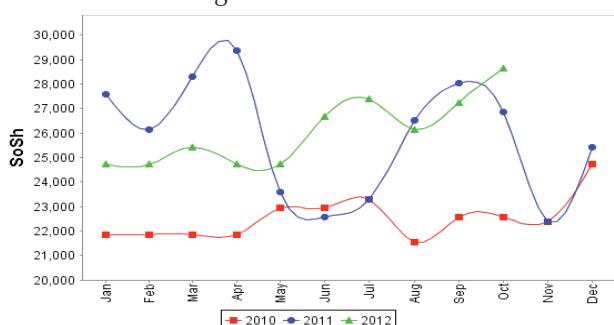


Figure 9: Trends in wage rates, staple cereal prices and relative purchasing power

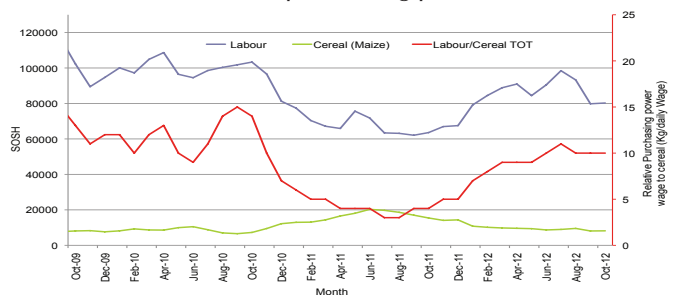


Figure 11: Exchange Rate

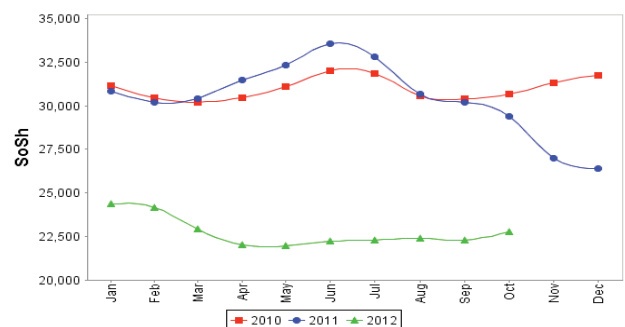
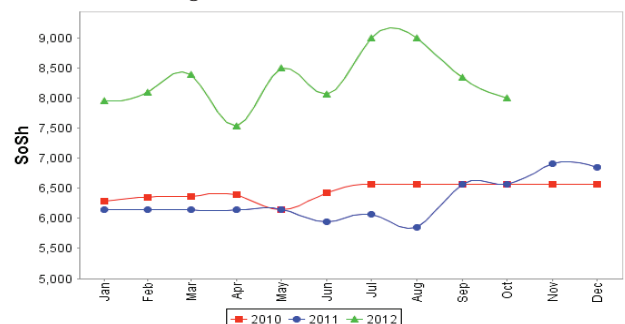


Figure 13: Firewood Bundle



Regional analysis: Sorghum Belt Regions (Bay, Bakool, Gedo and Hiran)

Indicator	5-Year Average (2003-07)	Oct-11	Sep-12	Oct-12 Nominal Price	Oct-12 Real (Deflated) Price	% Change Same Month Previous Year	% Change Previous Month	% Change 5-year avg (2003-07)
Imported Commodities Prices								
Diesel 1 litre	12,506	42,159	31,818	32,836	15,523	-22%	3%	163%
Imported Red Rice 1kg	9,259	26,705	19,545	19,918	9,377	-25%	2%	115%
Petrol 1 litre	15,053	40,000	33,523	32,927	15,566	-18%	-2%	119%
Sugar	9,618	36,818	23,432	23,636	11,146	-36%	1%	146%
Vegetable Oil 1 litre	19,522	57,000	43,727	45,400	21,501	-20%	4%	133%
Wheat Flour 1kg	8,850	23,295	18,068	18,727	8,810	-20%	4%	112%
Wheat Grain 1kg	3,702	14,000	7,200	8,600	3,992	-39%	19%	132%
Cereal Prices								
Red Sorghum 1kg	2,207	12,550	7,898	7,590	3,511	-40%	-4%	244%
White Maize 1kg	2,812	13,614	8,864	8,880	4,125	-35%	0%	216%
Livestock & Livestock Product Prices								
Camel Local Quality (Head)	3,553,346	7,580,682	12,955,900	13,864,200	6,596,240	83%	7%	290%
Cattle Local Quality (Head)	1,464,450	2,194,375	3,953,750	4,269,750	2,031,371	95%	8%	192%
Fresh Camel Milk 1 litre	8,185	26,568	32,091	28,573	13,495	8%	-11%	249%
Goat Export Quality (Head)	457,537	1,387,500	1,788,636	1,829,000	870,106	32%	2%	300%
Goat Local Quality (Head)	291,199	782,955	1,292,364	1,350,909	642,638	73%	5%	364%
Other Essential Items								
Charcoal 50kg	44,032	131,023	143,636	153,091	72,738	17%	7%	248%
Cowpeas 1 kg	6,512	59,250	22,063	21,700	10,224	-63%	-2%	233%
Unskilled Labor Wage Rate	21,947	99,614	91,477	104,273	49,511	5%	14%	375%
Firewood Bundle	1,723	5,636	6,318	6,527	3,005	16%	3%	279%
Local Sesame Oil 1 litre	23,268	82,643	65,833	69,117	32,785	-16%	5%	197%
Exchange Rate (Somali Shilling per USD)	16,297	29,618	22,340	22,471	10,591	-24%	1%	38%
Construction Materials*								
Cement 50kg	-	345,556	314,833	354,740	168,679	3%	13%	-
Cooking Pot Aluminium 7 Litre	-	278,889	254,167	307,200	146,060	10%	21%	-
Galvanised Iron Sheet Ga 26	-	223,477	174,575	177,500	84,351	-21%	2%	-
Hollow Concrete Block 10cm x 20cm x 40cm	-	11,000	11,750	11,700	5,467	6%	0%	-
Non Collapsible Jerrycan 10 Litre	-	49,409	54,075	56,060	26,572	13%	4%	-
Plastic Tarpaulin 14m x 5 m	-	303,700	297,000	289,467	137,623	-5%	-3%	-
Roofing Nails 15Kg	-	839,000	759,222	737,400	350,742	-12%	-3%	-
Timber 2in x 4in x 20ft	-	219,107	293,286	317,375	150,901	45%	8%	-
Woven Dry Raised Blanket 150cm x 200cm	-	99,143	123,750	129,952	61,729	31%	5%	-
Terms of Trade								
Labour Wage (Daily)/ Cereal (Sorghum(Kg))	10	8	12	14	-	73%	19%	38%
Local Goat (Head)/ Cereal (Sorghum(Kg))	132	62	164	178	-	185%	9%	35%
Price Indices								
Consumer Price Index	-	304	213	210	-	-31%	-1%	-
Purchasing Power Index	-	0.33	0.47	0.48	-	45%	1%	-

* Data has been collected since May 2010

* Data has been collected since May 2010

Figure 14: Imported commodity prices compared to exchange rates

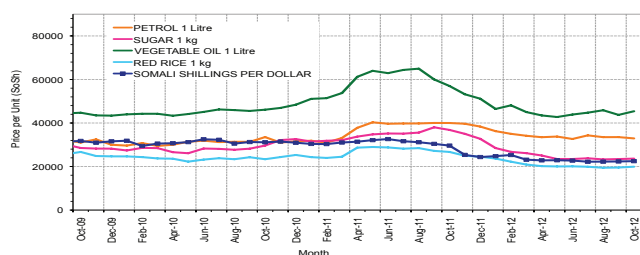


Figure 15: Trends in wage rates, staple cereal prices and relative purchasing power

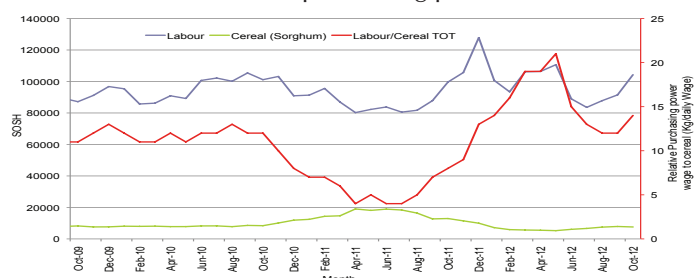


Figure 16: Goat Local Quality

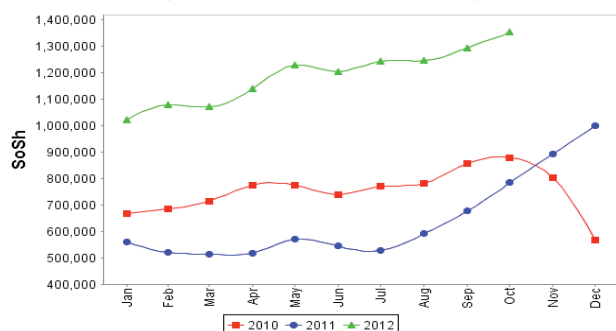


Figure 17: Exchange Rate

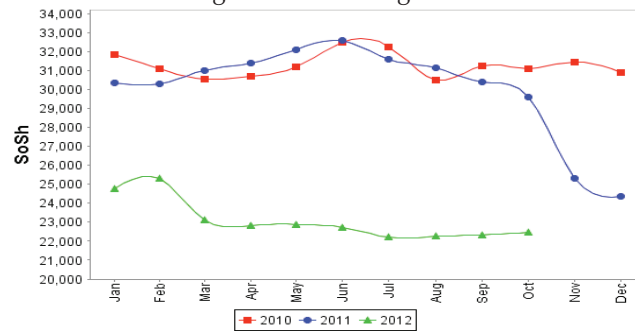


Figure 18: Water Drum

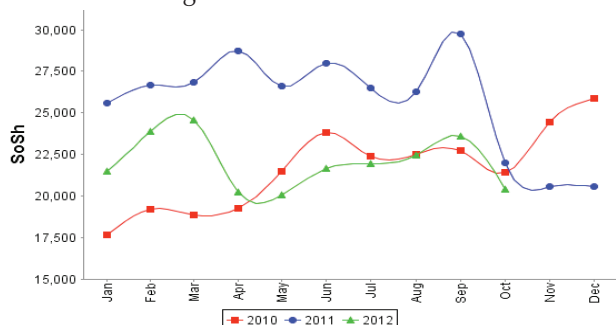
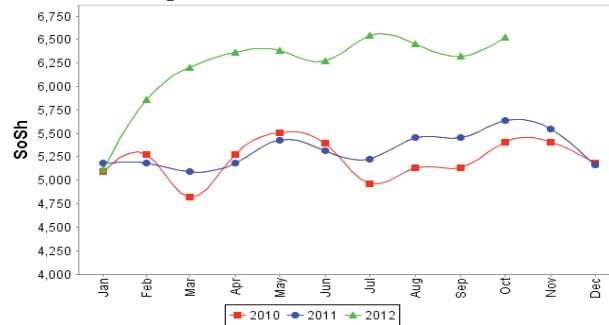


Figure 19: Firewood Bundle



Regional analysis: Shabelle Regions

Indicator	5-Year Average (2003-07)	Oct-11	Sep-12	Oct-12 Nominal Price	Oct-12 Real (Deflated) Price	% Change Same Month Previous Year	% Change Previous Month	% Change 5-year avrg (2003-07)
Imported Commodities Prices								
Diesel 1 litre	10,572	38,417	30,458	29,767	14,063	-23%	-2%	182%
Imported Red Rice 1kg	7,780	24,042	14,917	15,733	7,385	-35%	5%	102%
Petrol 1 litre	12,442	37,042	31,500	29,633	13,999	-20%	-6%	138%
Sugar	7,628	33,917	21,500	21,367	10,066	-37%	-1%	180%
Vegetable Oil 1 litre	14,586	48,042	34,458	34,533	16,330	-28%	0%	137%
Wheat Flour 1kg	7,429	21,167	14,792	18,167	8,544	-14%	23%	145%
Wheat Grain 1kg	2,499	23,417	8,333	6,667	3,072	-72%	-20%	167%
Cereal Prices								
Red Sorghum 1kg	2,519	18,010	8,311	8,733	4,055	-52%	5%	247%
White Maize 1kg	2,367	9,132	5,238	5,416	2,477	-41%	3%	129%
Livestock & Livestock Product Prices								
Camel Local Quality (Head)	4,125,958	13,952,500	15,600,000	17,908,000	8,520,208	28%	15%	334%
Cattle Local Quality (Head)	1,333,996	3,712,500	4,835,000	3,720,000	1,769,810	0%	-23%	179%
Fresh Camel Milk 1 litre	5,723	19,521	21,292	23,022	10,853	18%	8%	302%
Goat Export Quality (Head)	525,675	1,552,500	1,756,250	2,369,000	1,127,028	53%	35%	351%
Goat Local Quality (Head)	361,273	1,088,750	1,254,583	1,503,667	715,318	38%	20%	316%
Other Essential Items								
Charcoal 50kg	40,515	128,444	107,403	134,533	63,908	5%	25%	232%
Cowpeas 1 kg	5,565	55,275	19,322	22,313	10,516	-60%	15%	301%
Unskilled Labor Wage Rate	21,237	66,208	64,500	64,200	30,445	-3%	0%	202%
Firewood Bundle	2,013	5,333	6,417	5,833	2,675	9%	-9%	190%
Local Sesame Oil 1 litre	20,129	67,583	53,642	56,233	26,655	-17%	5%	179%
Exchange Rate (Somali Shilling per USD)	16,615	29,188	22,808	22,822	10,758	-22%	0%	37%
Construction Materials*								
Cement 50kg	-	301,000	220,000	212,200	100,861	-30%	-4%	-
Cooking Pot Aluminium 7 Litre	-	700,000	692,500	680,000	323,432	-3%	-2%	-
Galvanised Iron Sheet Ga 26	-	147,250	86,950	84,040	39,885	-43%	-3%	-
Hollow Concrete Block 10cm x 20cm x 40cm	-	12,667	12,750	12,600	5,895	-1%	-1%	-
Non Collapsible Jerrycan 10 Litre	-	49,125	50,625	48,250	22,856	-2%	-5%	-
Plastic Tarpaulin 14m x 5 m	-	315,833	252,083	260,667	123,921	-17%	3%	-
Roofing Nails 15Kg	-	621,750	580,500	594,600	282,800	-4%	2%	-
Timber 2in x 4in x 20ft	-	57,300	46,750	47,320	22,414	-17%	1%	-
Woven Dry Raised Blanket 150cm x 200cm	-	67,583	76,667	68,667	32,571	2%	-10%	-
Terms of Trade								
Labour Wage (Daily)/ Cereal (Maize(Kg))	9	7	12	12	-	63%	-4%	32%
Local Goat (Head)/ Cereal (Maize(Kg))	153	119	240	278	-	133%	16%	82%
Price Indices								
Consumer Price Index	-	304	213	210	-	-31%	-1%	-
Purchasing Power Index	-	0.33	0.47	0.48	-	45%	1%	-

* Data has been collected since May 2010

* Data has been collected since May 2010

Figure 20: Imported commodity prices compared to exchange rates

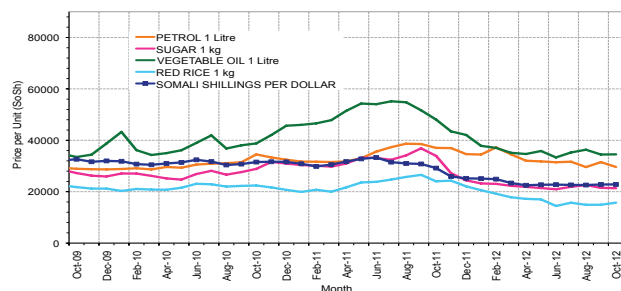


Figure 22: Goat Local Quality

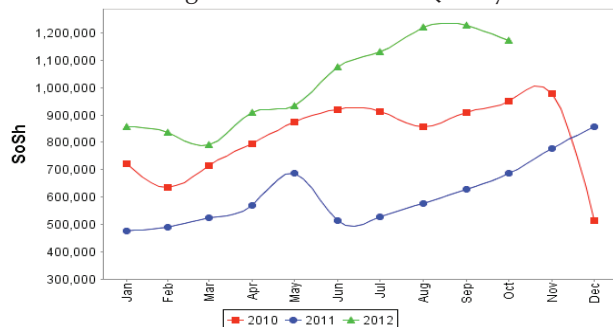


Figure 24: Water Drum

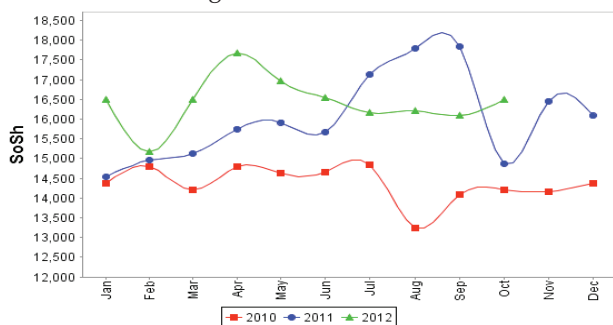


Figure 21: Trends in wage rates, staple cereal prices and relative purchasing power

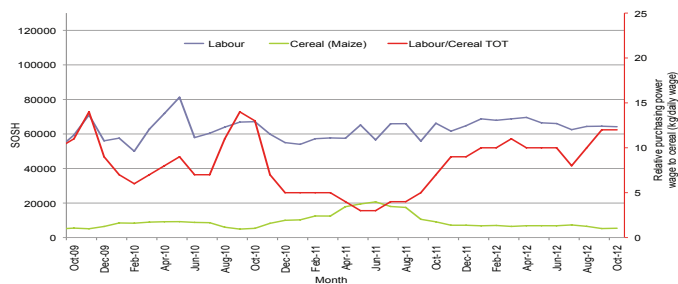


Figure 23: Exchange Rate

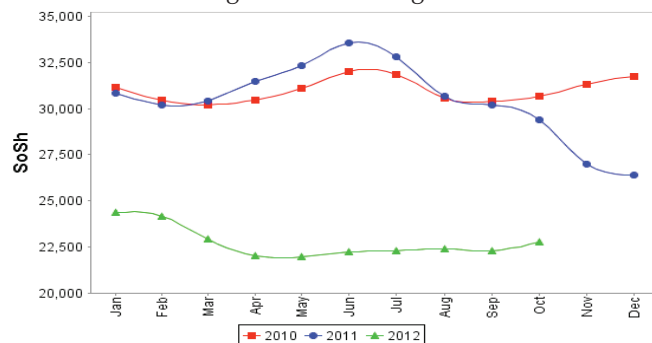
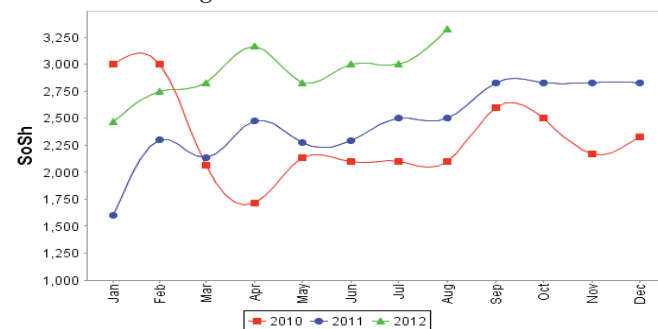


Figure 25: Firewood Bundle



Regional analysis:Banadir Region

Indicator	5-Year Average (2003-07)	Oct-11	Sep-12	Oct-12 Nominal Price	Oct-12 Real (Deflated) Price	% Change Same Month Previous Year	% Change Previous Month	% Change 5-year avg (2003-07)
Imported Commodities Prices								
Diesel 1 litre	9,580	36,600	26,667	26,033	12,286	-29%	-2%	172%
Imported Red Rice 1kg	8,325	25,400	14,313	16,217	7,616	-36%	13%	95%
Petrol 1 litre	11,500	34,250	26,875	25,867	12,207	-24%	-4%	125%
Sugar	6,975	30,050	19,667	18,700	8,797	-38%	-5%	168%
Vegetable Oil 1 litre	11,662	43,617	34,083	33,350	15,767	-24%	-2%	186%
Wheat Flour 1kg	7,491	18,183	13,458	16,933	7,956	-7%	26%	126%
Wheat Grain 1kg	3,920	14,000	11,283	11,289	5,271	-19%	0%	188%
Cereal Prices								
Red Sorghum 1kg	2,331	15,369	5,914	5,740	2,631	-63%	-3%	146%
White Maize 1kg	2,427	11,874	9,096	7,363	3,403	-38%	-19%	203%
Livestock & Livestock Product Prices								
Camel Local Quality (Head)	5,670,000	11,000,000	-	-	-	-	-	-
Cattle Local Quality (Head)	2,870,000	3,000,000	-	-	-	-	-	-
Fresh Camel Milk 1 litre	4,850	19,983	22,250	22,033	10,383	10%	-1%	354%
Goat Export Quality (Head)	-	1,600,000	2,600,000	2,660,000	1,265,481	66%	2%	-
Goat Local Quality (Head)	622,500	1,360,000	2,068,750	2,120,000	1,008,558	56%	2%	241%
Other Essential Items								
Charcoal 50kg	100,000	159,633	175,583	175,033	83,178	10%	0%	75%
Cowpeas 1 kg	4,966	59,754	19,892	17,950	8,440	-70%	-10%	261%
Unskilled Labor Wage Rate	59,500	87,917	102,500	109,000	51,760	24%	6%	83%
Firewood Bundle	42,250	7,567	7,629	8,000	3,706	6%	5%	-81%
Local Sesame Oil 1 litre	18,900	66,483	58,125	57,700	27,353	-13%	-1%	205%
Exchange Rate (Somali Shilling per USD)	16,829	28,195	22,527	22,458	10,585	-20%	0%	33%
Construction Materials*								
Cement 50kg	-	238,400	178,225	172,707	82,071	-28%	-3%	-
Cooking Pot Aluminium 7 Litre	-	325,000	286,333	221,600	105,333	-32%	-23%	-
Galvanised Iron Sheet Ga 26	-	138,033	88,800	86,067	40,849	-38%	-3%	-
Hollow Concrete Block 10cm x 20cm x 40cm	-	9,800	10,750	10,767	5,023	10%	0%	-
Non Collapsible Jerrycan 10 Litre	-	39,125	35,667	55,520	26,315	42%	56%	-
Plastic Tarpaulin 14m x 5 m	-	353,333	187,500	193,667	92,043	-45%	3%	-
Roofing Nails 15Kg	-	586,108	478,542	457,333	217,491	-22%	-4%	-
Timber 2in x 4in x 20ft	-	144,558	123,467	120,080	57,032	-17%	-3%	-
Woven Dry Raised Blanket 150cm x 200cm	-	78,333	95,000	100,500	47,716	28%	6%	-
Terms of Trade								
Labour Wage (Daily)/ Cereal (Maize(Kg))	25	7	11	15	-	100%	31%	-40%
Local Goat (Head)/ Cereal (Maize(Kg))	256	115	227	288	-	151%	27%	12%
Price Indices								
Consumer Price Index	-	304	213	210	-	-31%	-1%	-
Purchasing Power Index	-	0.33	0.47	0.48	-	45%	1%	-

* Data has been collected since May 2010

* Data has been collected since May 2010

Figure 26: Bakara: Imported Commodity Prices compared to Exchange Rate

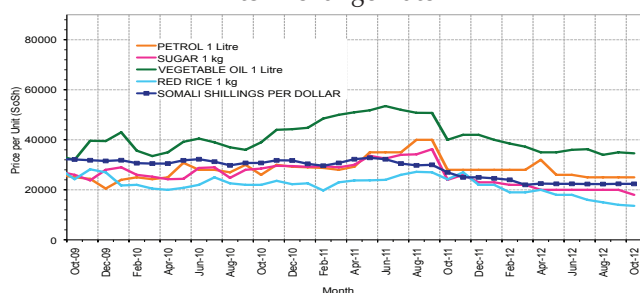


Figure 28: Goat Local Quality

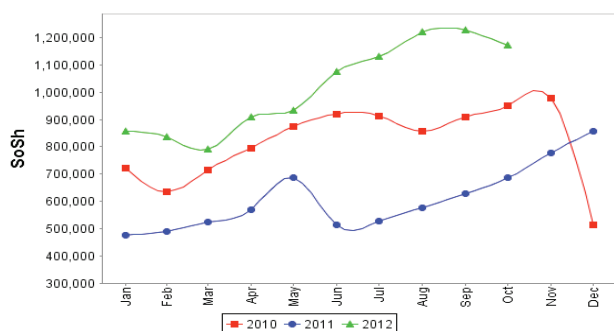


Figure 30: Wheat Flour

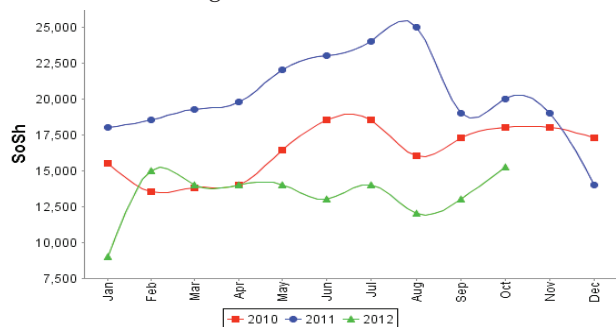


Figure 27: Bakara: Trends in Wage Rates, Staple Cereal Prices and Relative Purchasing Power

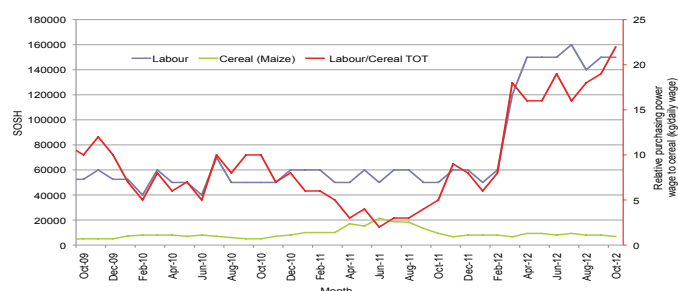


Figure 29: Exchange Rate

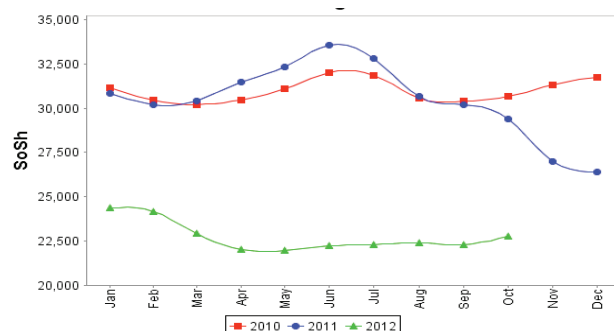
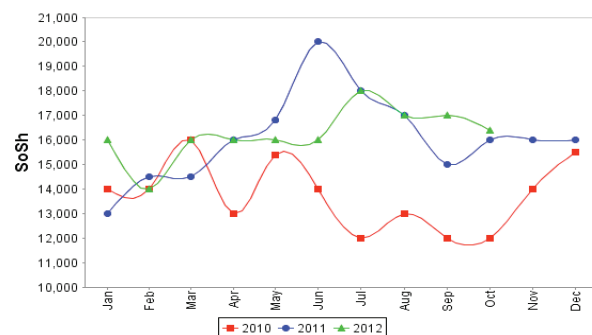


Figure 31: Fresh Camel Milk



Regional analysis: Central Regions

Indicator	5-Year Average (2003-07)	Oct-11	Sep-12	Oct-12 Nominal Price	Oct-12 Real (Deflated) Price	% Change Same Month Previous Year	% Change Previous Month	% Change 5-year avrg (2003-07)
Imported Commodities Prices								
Diesel 1 litre	11,594	40,750	32,150	31,480	15,234	-23%	-2%	172%
Imported Red Rice 1kg	9,036	30,950	20,600	21,280	10,266	-31%	3%	136%
Petrol 1 litre	12,743	35,100	27,400	26,400	12,760	-25%	-4%	107%
Sugar	9,280	37,300	24,900	23,733	11,461	-36%	-5%	156%
Vegetable Oil 1 litre	18,925	60,300	46,000	44,400	21,528	-26%	-3%	135%
Wheat Flour 1kg	8,619	24,100	17,100	17,467	8,408	-28%	-3%	103%
Wheat Grain 1kg	7,500	17,688	15,000	15,022	7,217	-15%	0%	100%
Cereal Prices								
Red Sorghum 1kg	4,807	18,600	11,900	11,580	5,541	-38%	-3%	141%
White Maize 1kg	4,980	18,800	14,100	12,642	6,058	-33%	-10%	154%
Livestock & Livestock Product Prices								
Camel Local Quality (Head)	2,411,840	8,031,250	10,325,000	10,285,000	5,009,824	28%	0%	326%
Cattle Local Quality (Head)	1,572,500	2,225,000	-	-	-	-	-	-
Fresh Camel Milk 1 litre	12,617	44,600	32,550	29,880	14,455	-33%	-8%	137%
Goat Export Quality (Head)	399,815	1,572,000	1,520,833	1,634,167	795,919	4%	7%	309%
Goat Local Quality (Head)	288,690	1,092,000	1,266,500	1,328,800	647,171	22%	5%	360%
Other Essential Items								
Charcoal 50kg	54,185	180,250	177,500	189,267	92,094	5%	7%	249%
Cowpeas 1 kg	7,737	52,400	24,700	23,160	11,181	-56%	-6%	199%
Unskilled Labor Wage Rate	27,800	89,000	83,750	81,600	39,648	-8%	-3%	194%
Firewood Bundle	3,580	38,250	34,000	39,200	18,995	2%	15%	995%
Local Sesame Oil 1 litre	27,642	96,000	89,000	88,800	43,155	-8%	0%	221%
Exchange Rate (Somali Shilling per USD)	16,042	29,720	22,020	22,220	10,724	-25%	1%	39%
Construction Materials*								
Cement 50kg	-	372,500	282,788	285,183	138,815	-23%	1%	-
Cooking Pot Aluminium 7 Litre	-	426,500	372,000	353,000	171,850	-17%	-5%	-
Galvanised Iron Sheet Ga 26	-	163,400	122,275	116,667	56,730	-29%	-5%	-
Hollow Concrete Block 10cm x 20cm x 40cm	-	17,438	15,750	15,000	7,207	-14%	-5%	-
Non Collapsible Jerrycan 10 Litre	-	52,750	47,900	47,800	23,184	-9%	0%	-
Plastic Tarpaulin 14m x 5 m	-	341,750	292,500	310,933	151,359	-9%	6%	-
Roofing Nails 15Kg	-	834,250	685,688	688,850	335,446	-17%	0%	-
Timber 2in x 4in x 20ft	-	152,400	113,750	86,050	41,816	-44%	-24%	-
Woven Dry Raised Blanket 150cm x 200cm	-	131,000	134,000	128,133	62,315	-2%	-4%	-
Terms of Trade								
Labour Wage (Daily)/ Cereal (Rice)(Kg))	3	3	4	4	-	33%	-6%	25%
Local Goat (Head)/ Cereal (Rice)(Kg))	32	35	61	62	-	77%	2%	95%
Camel (Head)/Cereal (Kg)	267	259	501	483	-	86%	-4%	81%
Price Indices								
Consumer Price Index	-	300	212	205	-	-32%	-3%	-
Purchasing Power Index	-	0.33	0.47	0.49	-	46%	3%	-

* Data has been collected since May 2010

* Data has been collected since May 2010

Figure 32: Imported commodity prices compared to exchange rates

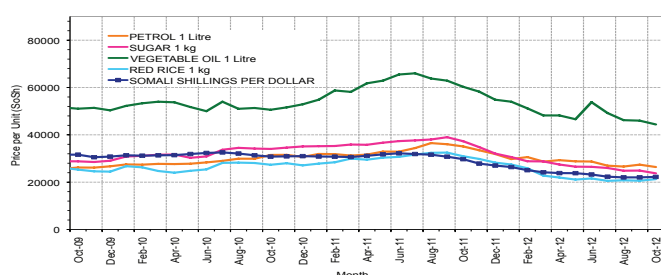


Figure 34: Goat Local Quality

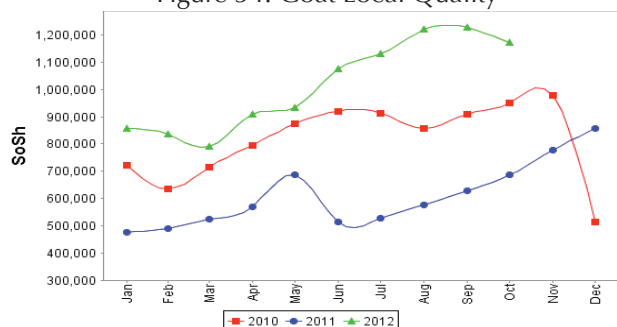


Figure 36: Water Drum

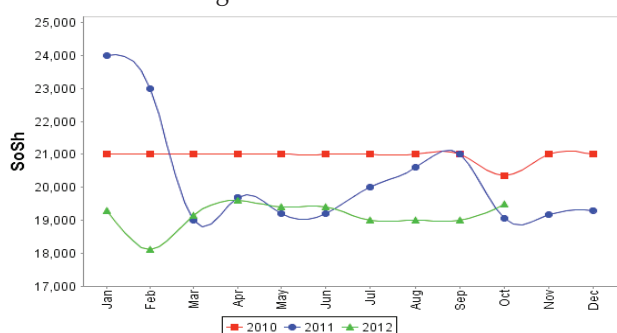


Figure 33: Trends in wage rates, staple cereal prices and relative purchasing power

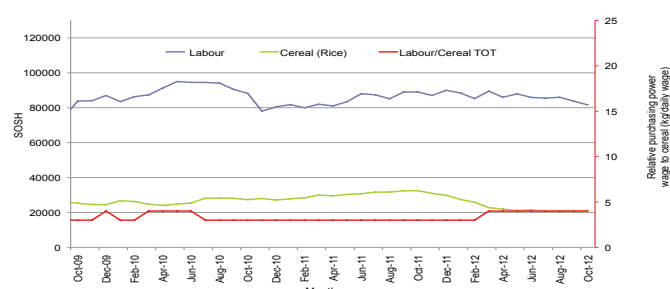


Figure 35: Exchange Rate

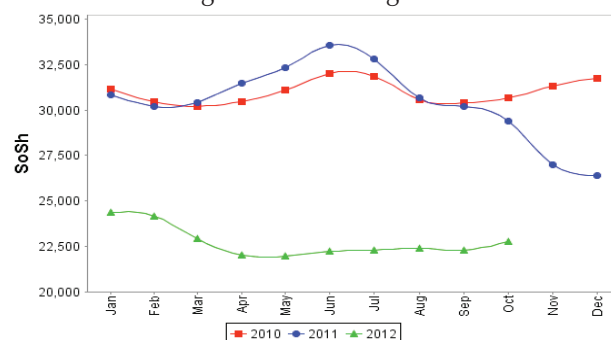
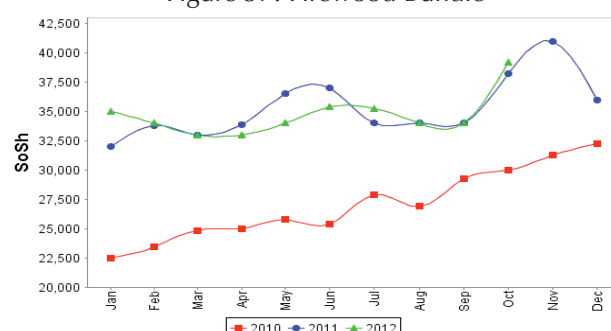


Figure 37: Firewood Bundle



Regional analysis: Northeast Regions

Indicator	5-Year Average (2003-07)	Oct-11	Sep-12	Oct-12 Nominal Price	Oct-12 Real (Deflated) Price	% Change Same Month Previous Year	% Change Previous Month	% Change 5-year avrg (2003-07)
Imported Commodities Prices								
Diesel 1 litre	10,043	35,125	24,750	23,500	11,132	-33%	-5%	134%
Imported Red Rice 1kg	7,427	23,700	18,063	17,300	8,168	-27%	-4%	133%
Petrol 1 litre	10,163	31,250	21,875	20,550	9,722	-34%	-6%	102%
Sugar	8,752	32,263	22,625	21,500	10,176	-33%	-5%	146%
Vegetable Oil 1 litre	18,281	58,875	43,188	39,650	18,850	-33%	-8%	117%
Wheat Flour 1kg	8,012	21,750	16,875	16,050	7,571	-26%	-5%	100%
Wheat Grain 1kg	8,800	25,975	22,500	28,125	13,342	8%	25%	220%
Cereal Prices								
Red Sorghum 1kg	6,975	30,000	22,125	20,333	9,618	-32%	-8%	192%
White Maize 1kg	6,442	20,500	19,500	19,200	9,076	-6%	-2%	198%
Livestock & Livestock Product Prices								
Camel Local Quality (Head)	3,193,611	14,425,000	16,131,250	15,940,000	7,618,211	11%	-1%	399%
Cattle Local Quality (Head)	2,094,200	7,600,000	-	7,500,000	3,584,425	-1%	-	258%
Fresh Camel Milk 1 litre	14,940	39,100	39,292	35,950	17,082	-8%	-9%	141%
Goat Export Quality (Head)	437,887	1,648,750	1,525,000	1,616,000	772,246	-2%	6%	269%
Goat Local Quality (Head)	399,933	1,341,250	1,425,000	1,494,000	713,937	11%	5%	274%
Other Essential Items								
Charcoal 50kg	80,058	357,375	362,500	360,500	172,196	1%	-1%	350%
Cowpeas 1 kg	10,338	66,833	38,667	34,933	16,596	-48%	-10%	238%
Unskilled Labor Wage Rate	45,500	111,250	122,500	122,500	58,447	10%	0%	169%
Firewood Bundle	7,180	29,250	45,000	45,000	21,407	54%	0%	527%
Local Sesame Oil 1 litre	30,953	96,563	87,813	88,500	42,197	-8%	1%	186%
Exchange Rate (Somali Shilling per USD)	16,874	30,125	21,000	21,340	10,099	-29%	2%	26%
Construction Materials*								
Cement 50kg	-	244,063	190,688	182,400	87,076	-25%	-4%	-
Cooking Pot Aluminium 7 Litre	-	486,250	440,625	426,000	203,501	-12%	-3%	-
Galvanised Iron Sheet Ga 26	-	239,125	176,750	177,800	84,877	-26%	1%	-
Hollow Concrete Block 10cm x 20cm x 40cm	-	12,625	12,500	12,200	5,731	-3%	-2%	-
Non Collapsible Jerrycan 10 Litre	-	44,063	39,688	39,500	18,779	-10%	0%	-
Plastic Tarpaulin 14m x 5 m	-	192,500	159,438	172,900	82,535	-10%	8%	-
Roofing Nails 15Kg	-	497,250	583,438	611,000	291,919	23%	5%	-
Timber 2in x 4in x 20ft	-	235,250	168,125	169,950	81,125	-28%	1%	-
Woven Dry Raised Blanket 150cm x 200cm	-	271,250	223,146	224,500	107,197	-17%	1%	-
Terms of Trade								
Labour Wage (Daily)/ Cereal (Rice(Kg))	6	5	7	7	-	51%	4%	16%
Local Goat (Head)/ Cereal (Rice(Kg))	54	57	79	86	-	53%	9%	60%
Price Indices								
Consumer Price Index	-	259	224	209	-	-19%	-7%	-
Purchasing Power Index	-	0.39	0.45	0.48	-	24%	7%	-

* Data has been collected since May 2010

* Data has been collected since May 2010

Figure 38: Imported commodity prices compared to exchange rates

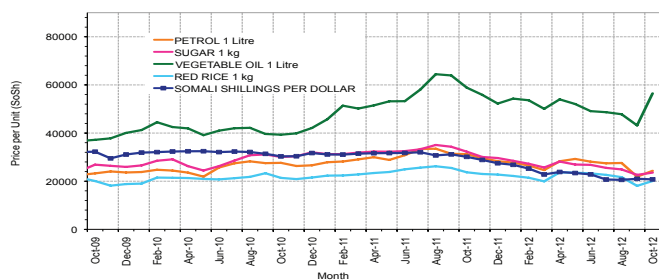


Figure 40: Goat Local Quality

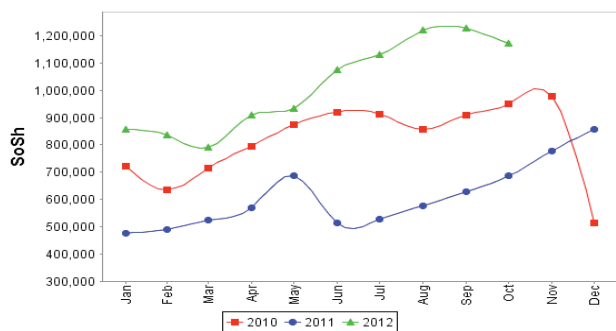


Figure 42: Water Drum

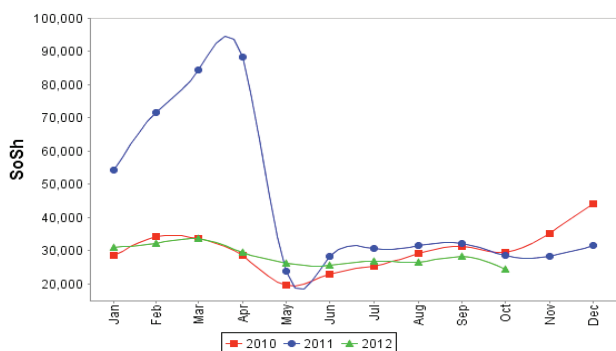


Figure 39: Trends in wage rates, staple cereal prices and relative purchasing power

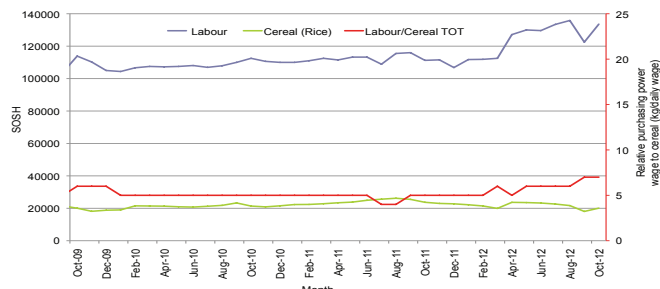


Figure 41: Exchange Rate

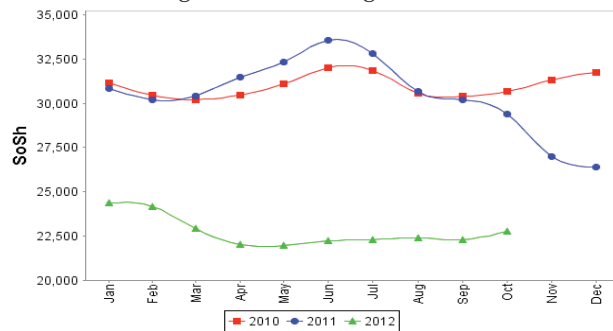
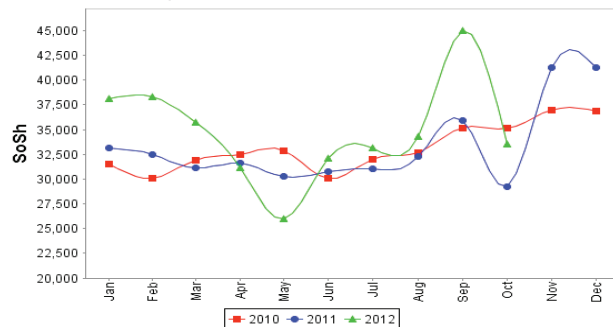


Figure 43: Firewood Bundle



Regional analysis: Northwest Regions

Indicator	5-Year Average (2003-07)	Oct-11	Sep-12	Oct-12 Nominal Price	Oct-12 Real (Deflated) Price	% Change Same Month Previous Year	% Change Previous Month	% Change 5-year avrg (2003-07)
Imported Commodities Prices								
Diesel 1 litre	3,775	5,955	7,040	6,972	5,519	17%	-1%	85%
Imported Red Rice 1kg	3,057	4,845	4,995	4,960	3,897	2%	-1%	62%
Petrol 1 litre	4,577	5,900	7,290	7,284	5,770	23%	0%	59%
Sugar	3,262	6,705	6,050	5,984	4,722	-11%	-1%	83%
Vegetable Oil 1 litre	7,489	11,500	12,765	13,040	10,409	13%	2%	74%
Wheat Flour 1kg	3,046	4,440	4,175	4,336	3,394	-2%	4%	42%
Wheat Grain 1kg	2,093	3,788	2,844	3,015	2,330	-20%	6%	44%
Cereal Prices								
White Sorghum 1kg	1,883	3,650	3,500	3,568	2,775	-2%	2%	89%
Yellow Maize 1kg	1,914	3,762	3,735	3,832	2,988	2%	3%	100%
Livestock & Livestock Product Prices								
Camel Local Quality (Head)	1,448,269	1,695,833	2,649,000	2,792,067	2,249,936	65%	5%	93%
Cattle Local Quality (Head)	906,368	1,313,750	1,890,333	1,896,967	1,528,604	44%	0%	109%
Fresh Camel Milk 1 litre	4,245	5,160	5,400	5,510	4,340	7%	2%	30%
Goat Export Quality (Head)	185,923	335,750	422,200	466,860	376,127	39%	11%	151%
Goat Local Quality (Head)	144,367	253,900	286,275	313,760	252,749	24%	10%	117%
Other Essential Items								
Charcoal 50kg	20,899	34,075	40,300	40,520	32,554	19%	1%	94%
Cowpeas 1 kg	4,904	8,038	9,388	9,700	7,717	21%	3%	98%
Unskilled Labor Wage Rate	26,784	33,400	40,400	40,444	32,492	21%	0%	51%
Firewood Bundle	3,357	2,833	3,333	3,367	2,613	19%	1%	0%
Local Sesame Oil 1 litre	17,371	24,375	25,063	24,725	19,825	1%	-1%	42%
Exchange Rate (Somaliland Shilling per USD)	6,535	5,490	6,315	6,270	4,953	14%	-1%	-4%
Construction Materials*								
Cement 50kg	-	45,269	53,105	52,850	42,490	17%	0%	-
Cooking Pot Aluminium 7 Litre	-	109,900	87,150	90,890	73,137	-17%	4%	-
Galvanised Iron Sheet Ga 26	-	44,000	50,063	48,080	38,646	9%	-4%	-
Hollow Concrete Block 10cm x 20cm x 40cm	-	2,781	3,025	4,100	3,204	47%	36%	-
Non Collapsible Jerrycan 10 Litre	-	6,745	6,775	6,912	5,470	2%	2%	-
Plastic Tarpaulin 14m x 5 m	-	75,170	91,700	94,640	76,167	26%	3%	-
Roofing Nails 15Kg	-	176,100	193,150	189,540	152,644	8%	-2%	-
Timber 2in x 4in x 20ft	-	97,363	127,683	127,160	102,374	31%	0%	-
Woven Dry Raised Blanket 150cm x 200cm	-	68,188	74,750	77,100	62,032	13%	3%	-
Terms of Trade								
Labour Wage (Daily)/ Cereal (Rice(Kg))	9	7	8	8	-	18%	1%	-7%
Local Goat (Head)/ Cereal (Rice(Kg))	47	52	57	63	-	21%	10%	34%
Price Indices								
Consumer Price Index	-	123	124	124	-	1%	0%	-
Purchasing Power Index	-	0.81	0.81	0.81	-	-1%	0%	-

* Data has been collected since May 2010

* Data has been collected since May 2010

Figure 44: Imported commodity prices compared to exchange rates

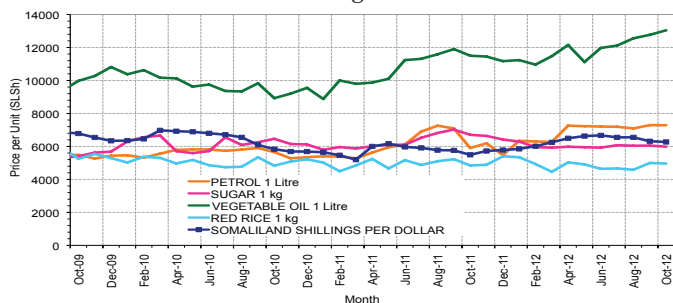


Figure 46: Goat Local Quality

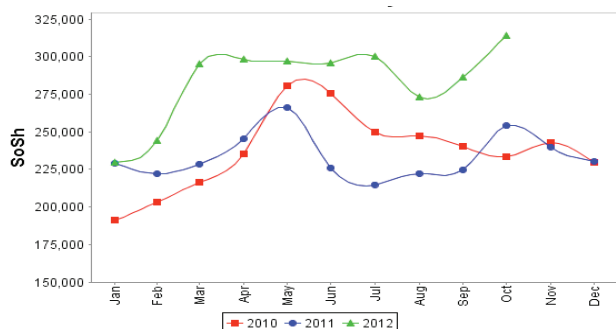


Figure 48: Water Drum

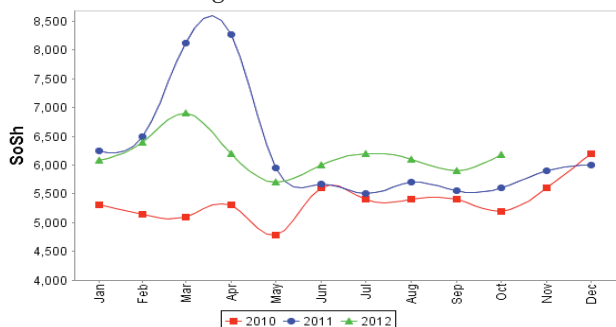


Figure 45: Trends in wage rates, staple cereal prices and relative purchasing power

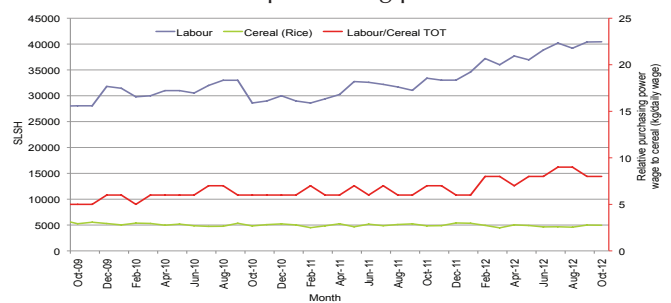


Figure 47: Exchange Rate

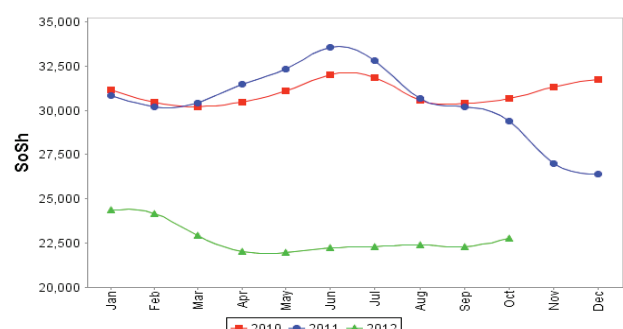
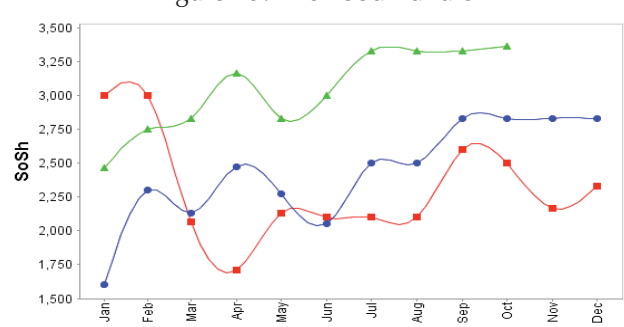


Figure 49: Firewood Bundle



Trends in Livestock Exports

Table 2: Berbera Livestock Exports (Number of Heads)

	1994	1995	1996	1997	1998	1999	2000	2001	2002	2003	2004	2005	2006	2007	2008	2009	2010	2011	2012 (Jan-Sep)*
Shoats	1,572,656	2,683,597	2,376,646	2,814,495	957,224	2,048,136	1,601,083	51,546	341,711	563,107	859,404	1,023,795	1,017,242	1,350,054	1,219,519	1,556,003	2,584,810	3,104,684	1,448,910
Cattle	173,400	167,128	65,127	66,939	92,213	89,967	63,263	20,973	37,547	84,312	131,852	148,151	85,631	88,143	80,051	88,005	133,021	150,934	128,955
Camel	38,553	21,993	42,801	50,587	11,663	37,430	16,984	3,473	18,864	21,874	5,147	5,069	22,810	14,245	26,515	20,206	92,651	107,281	88,986

* Jan-Sep 2012 cumulative livestock exports

Figure 50: Berbera Livestock Exports (Number of Heads)

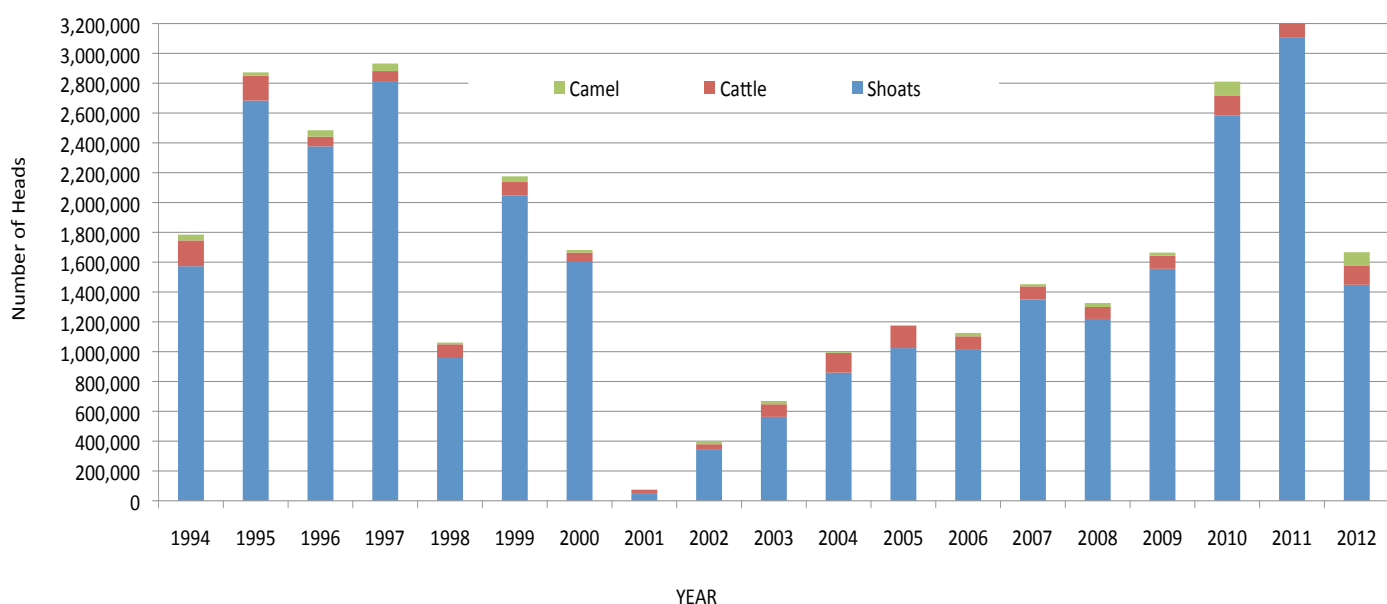
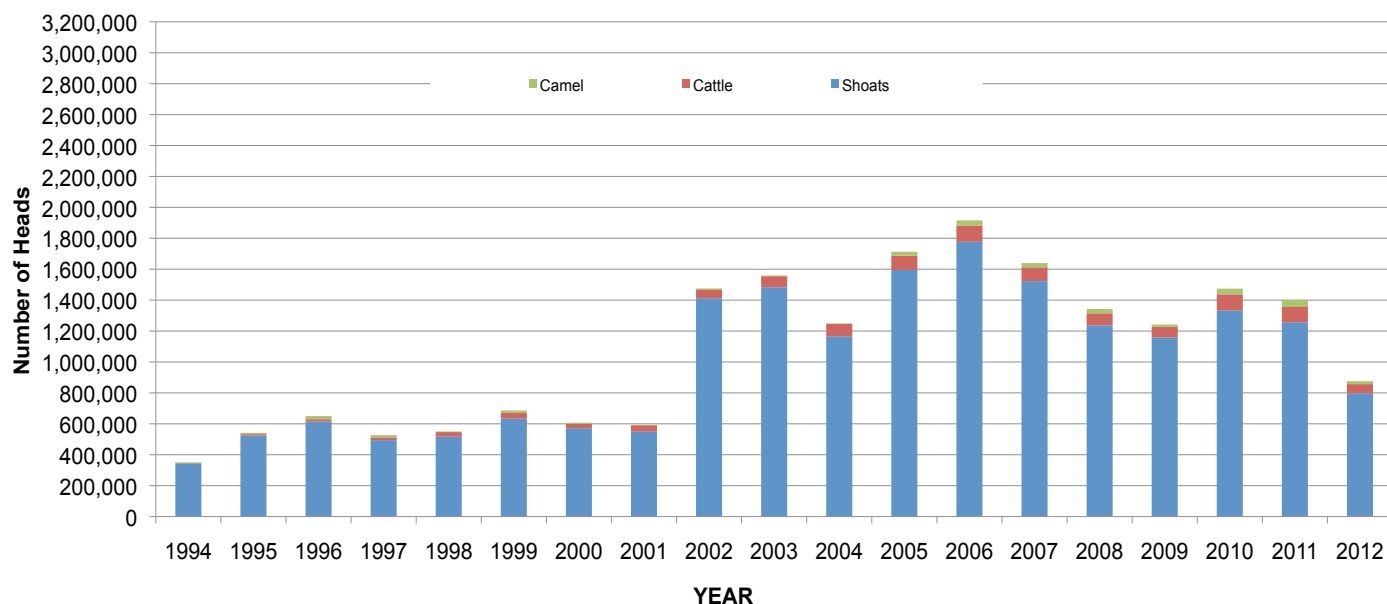


Table 3: Bossaso Livestock Exports (Number of Heads)

	1994	1995	1996	1997	1998	1999	2000	2001	2002	2003	2004	2005	2006	2007	2008	2009	2010	2011	2012 (Jan-Sep)
Shoats	344,000	524,346	614,407	494,320	517,020	633,669	571,455	548,853	1,412,450	1,483,409	1,166,480	1,594,859	1,777,283	1,522,855	1,236,775	1,159,454	1,333,478	1,256,535	796,921
Cattle	1,450	8,795	15,335	17,831	29,492	36,586	27,604	42,248	53,313	71,328	79,994	91,910	104,595	89,190	78,046	67,385	103,808	99,058	59,815
Camel	5,397	8,392	20,462	14,599	3,938	15,544	8,177	1,950	9,720	4,259	2,488	26,109	33,724	27,580	27,639	15,331	36,865	45,878	18,765

Figure 51: Bossaso Livestock Exports (Number of Heads)

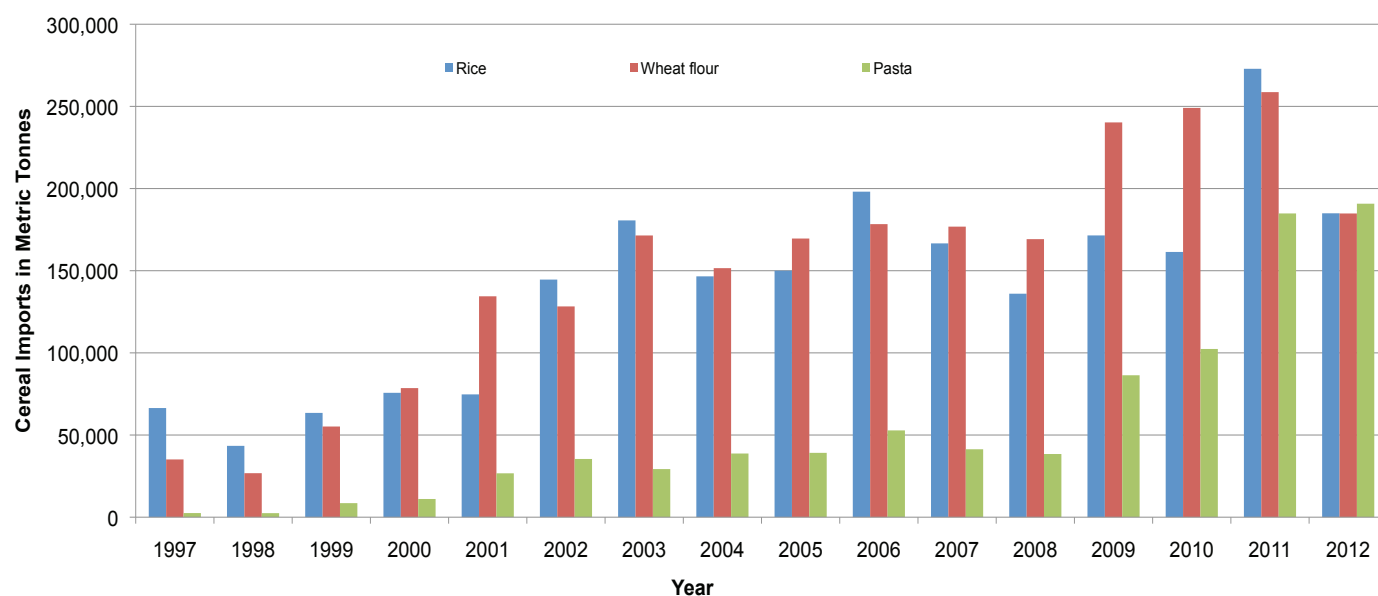


Trends in Cereal Imports

Table 4: Total Cereal Imports (Berbera,Bossaso,Elmaan)

	1997	1998	1999	2000	2001	2002	2003	2004	2005	2006	2007	2008	2009	2010	2011	2012*
Rice	66,419	43,410	63,464	75,687	74,729	144,600	180,614	146,567	150,017	198,101	166,626	136,007	171,472	161,415	272,877	184,940
Wheat flour	35,143	26,774	55,176	78,555	134,425	128,263	171,442	151,555	169,583	178,345	176,821	169,208	240,247	249,080	258,679	184,831
Pasta	2,510	2,455	8,544	11,071	26,702	35,425	29,273	38,749	39,153	52,815	41,331	38,441	86,372	102,373	184,849	190,780

Figure 52: Total Cereal Imports (Berbera,Bossaso and Elmaan)



* January-September 2012 Cumulative Cereal Imports

* Berbera data up to September 2012

* Bossaso data up to September 2012

* Elmaan data is up to July 2012