

Market Update

Highlights

Inflation:

SoSh (Somali shilling)-using areas: Consumer Price Index (CPI) remained stable in Northeast but declined mildly (2-4%) in Southern and Central regions in November 2017 due to lower cereal prices during the month. Compared to last year (November 2016), CPI increased (4-17%) due to higher cereal prices this year.

SISh (Somaliland shilling)-using areas: CPI declined mildly (3%) during November 2017 but increased (22%) compared to a year ago (November 2016) due to higher cereal prices this year.

Exchange rate:

SoSh-using areas: The exchange rates between SoSh and the United States Dollar (USD) remained relatively stable or changed at mild rates (+/-) against USD in most regions of the country during November 2017; exception is Sanaag region where SoSh depreciated by 12 percent due to recent printing of local currency. Annual comparison mostly exhibited mixed patterns, SoSh gaining value in Central and southern regions with the highest appreciation (19%) being recorded in Hiraan due to rejection of newly printed notes in favor of better valued pre-war old notes; mild depreciations (7%) were recorded in Northeast regions due to recent printing of local notes in the regions.

SISh-using areas: The SISh remained relatively stable against the USD in November 2017 month-on-month while year-on-year comparison indicates substantial depreciation (33%) due to increased supply of newly printed local currency notes and a decline in the availability of USD due to reduced livestock exports and export revenue.

Local cereal prices declined in most of the Southern and Central regions of the country month-on-month in November 2017. This is attributed to increased supply from the neighboring rural towns resulting from clearing of stocks in anticipation of a relatively favorable outlook for the new Deyr season harvest. Annual comparison indicates higher prices for local grains in most regions of the country attributable to reduced supply due to poor successive harvests except in Juba valley where cereal prices are 19 percent lower than last year due to increased supply and better harvest prospects compared to a year ago.

Prices of imported food (rice, sugar, vegetable oil, wheat flour) mostly exhibited relative stability or mild monthly changes (less than +/-10%) in local currency terms in November 2017 in most regions of the country except in Hiraan where prices of all food imports declined moderately (10-17%). Compared to one year ago, prices exhibited mixed patterns; mild to moderate price declines were recorded for most food imports in most of Southern regions with highest declines (14-30%) being recorded in Hiraan, Bay and Middle Shabelle due to increased supply from humanitarian food distribution and mild appreciation of Somali shillings against USD. Prices for most food imports in Awdal, Central and Northeast regions showed mild changes compared to a year ago while increases for most food imports was noted in Northwest (Woqooyi Galbeed and Togdheer) regions.

Livestock prices for local quality goat and local quality camel exhibited mild changes (less than +/-10%) during November 2017 in most regions of the country; except in Central (Mudug and Galgaduud) where livestock prices increased (15-38%) due to improved livestock body conditions and reduced supply as pastoralist tend to reduce the number of livestock they sell during good seasons. Compared to a year ago (November 2016), most regions exhibited increases in goat and camel prices. Milk prices (camel and cattle) mostly showed declines in most of the regions of the country in November 2017 due to improved supply as a result of increased pasture and water availability. On the other hand, milk prices (camel and cattle) increased from moderate to high levels when compared to last year in most regions of the country due to less milk supply as a result of the drought (less conception in previous seasons).

Labor (unskilled) wages changed mildly (by less than +/-10%) in most regions of the country during November 2017 except in Banadir (Bakara), Hiraan, Mudug and Shabelle regions where wage rates increased moderately (11-16%) due increased agricultural activities in the neighboring rural areas. Compared to a year ago (November 2016), increases in wage rates were recorded in most regions of the country with the exception of Lower Shabelle, and Banadir (Bakara) regions where labor rates declined (13-23%).

Terms of Trade (ToT) between daily labor wage and cereals remained relatively stable or changed mildly (by 1-2kg of cereals/daily labor wage) in most regions of the country during November 2017. Exceptions are Lower Shabelle and Banadir (Mogadishu) where ToT increased (by 3-4kgs of cereals/daily labor wage) due to increase in labor wage rates. Similarly, annual comparison indicates mild changes in ToT between daily labor and cereals in most regions; exceptions are Awdal, Banadir (Mogadishu) and Middle Juba; the ToT increased (by 4-6kg of cereals/daily labor wage) in Awdal and Middle Juba due to increase in labor wage rates. The ToT between local quality goat and cereals mostly increased in most regions of the country month-on-month due to declines in cereal prices and/or increases in goat prices. Compared to a year ago (November 2016), the ToT between goat and cereals were higher in most regions of the country; exception is in Middle Shabelle (Jowhar) region where the ToT declined compared to a year ago due to higher cereal prices and lower goat prices this year.

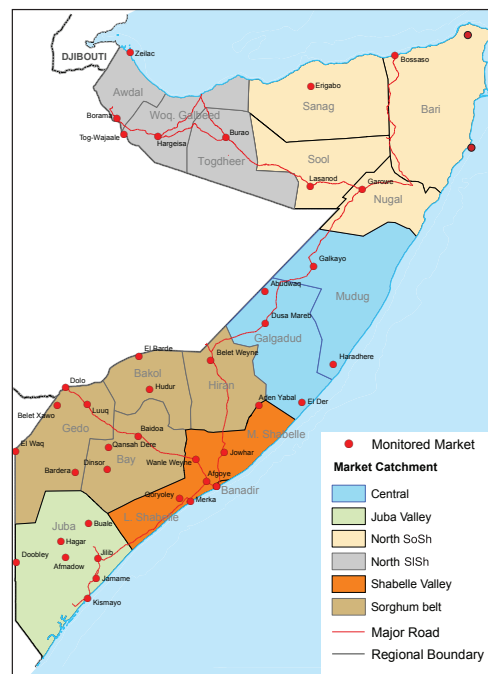
Towns Affected by Trade Disruption (Bulo Burto, Wajid, Hudur and Diinsor)

Labor (unskilled) wages increased in siege-affected markets both during November 2017 and compared to a year ago (November 2016) as a result of increased employment opportunities associated with increased humanitarian distribution of food aid and increased agricultural activities in the surrounding rural areas.

Terms of Trade (ToTs) between daily labor wage and cereals and between local quality goat and cereals either remained relatively stable or changed at mild rates during November in all the siege affected markets. Annual comparison indicates higher ToTs in these markets due to increase in goat prices, daily labor wage and/or decrease in cereal prices compared to one year ago.

Local grain (red and white sorghum) prices declined (5-17%) in siege affected markets during November 2017 due to increased supply in the market as traders started to clear old stock in preparation for the incoming new cereal harvest. Compared to a year ago, local grain prices have decreased in Diinsor (17%) and Bulo-Burto (25%) while local grain prices have increased in Hudur (9%) and Wajid (30%) because of increased trade disruption by insurgents compared to a year ago.

Prices of imported food items (rice, sugar, vegetable oil, wheat flour) changed (+/-) at mild rates for most of the food imports in all siege affected markets month-on-month in November 2017. On the other hand, compared to a year ago, prices of most food imports declined in these markets due to increased supply from humanitarian distribution.



This Market Update is a monthly report that presents analysis of market information and is produced regularly as part of the monthly monitoring process.

The weekly price data is collected from 46 main markets and 25 rural markets throughout Somalia since 1995.

Market analysis is an integral part of all of FSNAU's annual food security projections and seasonal technical reports (Technical Reports on FSNAU Post Gu and Post Deyr Analysis).

Detailed market data are available online on www.fsnau.org/ids.

National Trends: CPI, Exchange Rates, Cereal Prices and Relative Purchasing Power

Table 1: ToT between Daily Labour Wage Rate and Cereals by Region November 2017

Regions	November 2017 (kg)	kg change from		
		October 2017	November 2016	November 5 yr Average (2012 - 2016)
Banadir/Mogadishu (White maize)	13	4	-4	-8
Bay (Red sorghum)	12	2	1	-4
Bakool (Red sorghum)	4	0	0	-1
Gedo (Red sorghum)	11	1	1	-2
Juba (White maize)	13	0	4	3
Shabelle (White maize)	11	2	0	0
Northwest (Imported Rice)	12	-1	1	3
Northeast (Imported Rice)	8	0	0	1
Central (Imported Rice)	5	0	0	1

Figure 1: Wheat Prices: Mogadishu and Bossaso Markets

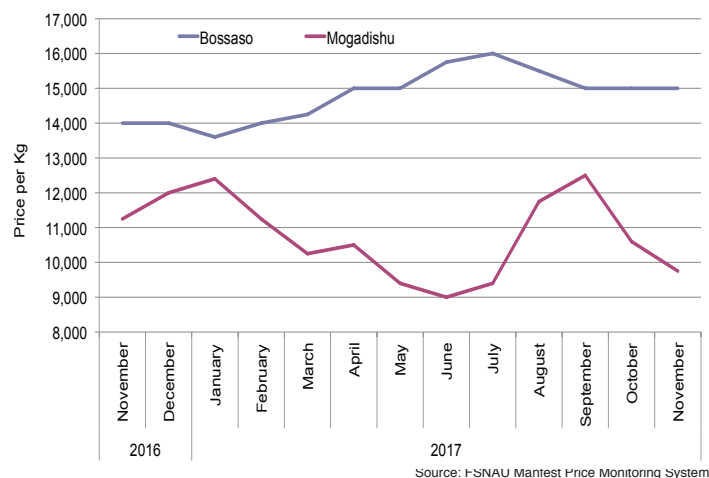


Figure 2: Terms of Trade Between Wage Rates and Selected Cereals

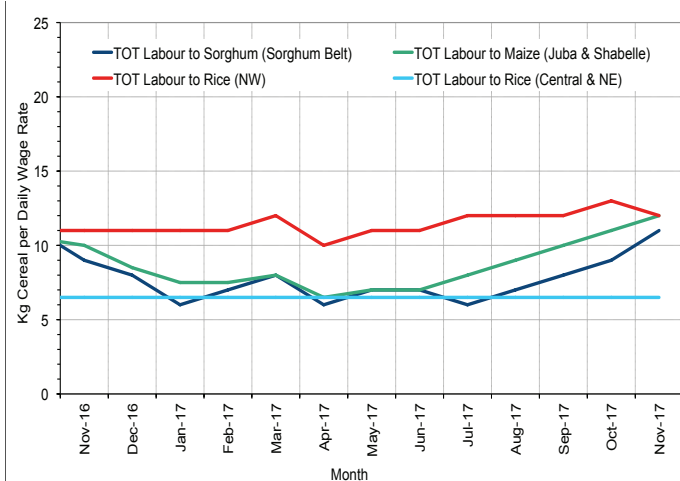


Figure 3: Monthly Exchange Rate for Selected Regions (SoSh and SISH to USD)

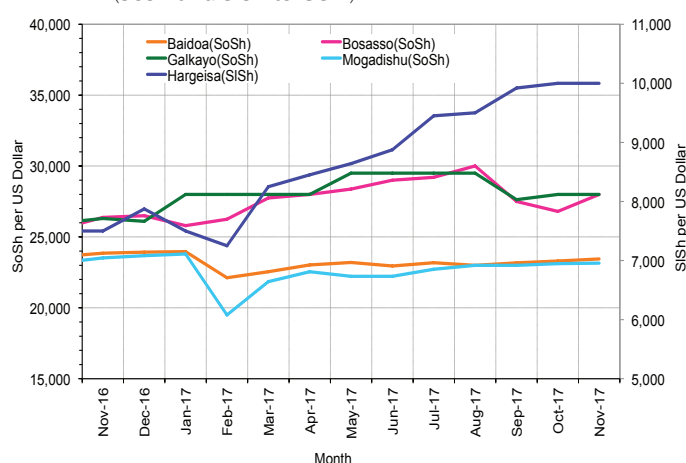


Figure 4: Monthly Trends in Consumer Price Index (CPI, March 2007=100)

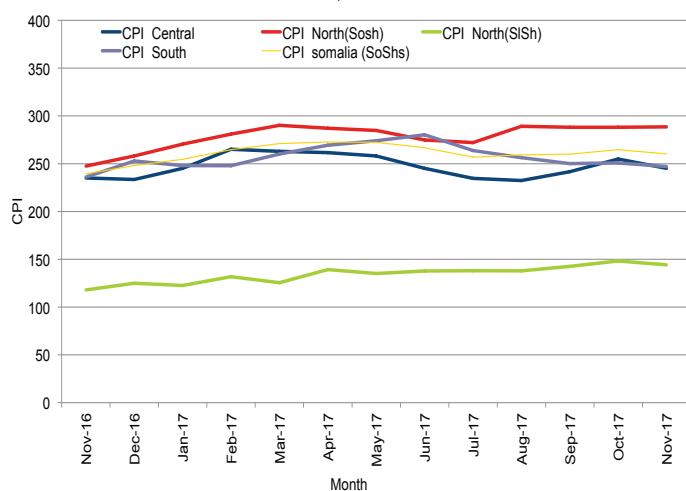
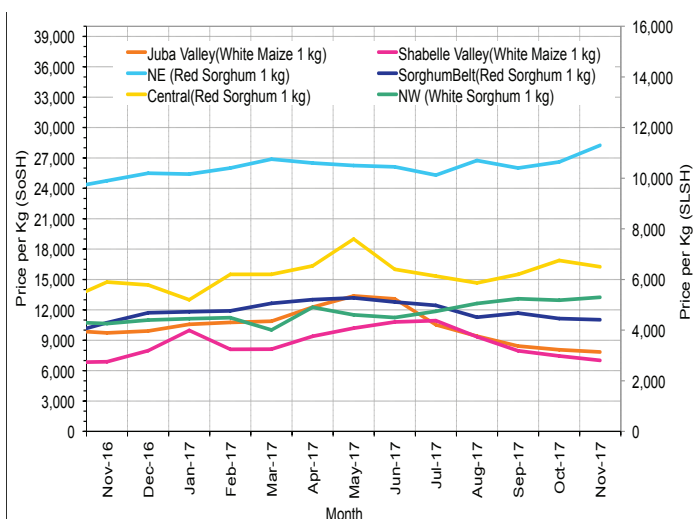


Figure 5: Monthly Trends in Local Cereal Prices



Regional analysis: Juba Regions

Indicator	5-Year Average (2012-2016)	Nov-16	Oct-17	Nov-17 Nominal Price	Nov-17 Real (Deflated) Price	% Change Previous Month	% Change Same Month Previous Year	% Change 5-year avg (2012-2016)
Imported Commodities Prices								
Diesel 1 litre	27,050	20,625	20,438	20,625	8,251	1%	0%	-24%
Imported Red Rice 1kg	16,884	16,484	15,938	16,219	6,467	2%	-2%	-4%
Petrol 1 litre	29,950	24,625	22,906	22,906	9,175	0%	-7%	-24%
Sugar	19,182	18,375	16,938	16,938	6,758	0%	-8%	-12%
Vegetable Oil 1 litre	33,737	29,031	28,719	29,000	11,642	1%	0%	-14%
Wheat Flour 1kg	16,677	16,156	15,625	15,969	6,366	2%	-1%	-4%
Wheat Grain 1kg	-	-	-	-	-	-	-	-
Cereal Prices								
Red Sorghum 1kg	7,850	9,000	6,292	6,975	2,724	11%	-23%	-11%
White Maize 1kg	8,341	9,731	8,059	7,847	3,077	-3%	-19%	-6%
Livestock & Livestock Product Prices								
Camel Local Quality (Head)	9,526,784	7,443,750	11,150,000	11,133,750	4,507,962	0%	50%	17%
Cattle Local Quality (Head)	3,874,358	2,362,500	3,741,667	3,565,000	1,443,371	-5%	51%	-8%
Fresh Camel Milk 1 litre	18,912	18,281	18,906	20,281	8,112	7%	11%	7%
Goat Export Quality (Head)	1,400,673	844,688	1,658,750	1,576,563	638,251	-5%	87%	13%
Goat Local Quality (Head)	935,719	581,250	960,938	893,438	361,654	-7%	54%	-5%
Other Essential Items								
Charcoal 50kg	87,456	86,719	87,813	93,906	37,923	7%	8%	7%
Cowpeas 1 kg	21,702	23,375	26,781	29,000	11,642	8%	24%	34%
Unskilled Labor Wage Rate	87,457	91,250	105,625	103,156	41,668	-2%	13%	18%
Firewood Bundle	9,165	7,516	7,516	8,219	3,228	9%	9%	-10%
Local Sesame Oil 1 litre	71,275	60,938	51,719	52,625	21,208	2%	-14%	-26%
Exchange Rate (Somali Shilling per USD)	22,276	23,063	23,038	23,088	9,248	0%	0%	4%
Terms of Trade								
Labour Wage (Daily)/ Cereal (Maize(Kg)	10	9	13	13	-	0%	44%	30%
Local Goat (Head)/ Cereal (Maize(Kg)	118	60	119	114	-	-4%	90%	-3%
Price Indices								
Consumer Price Index	-	236	251	247	-	-2%	5%	-

Figure 6: Trends in Cereal Prices

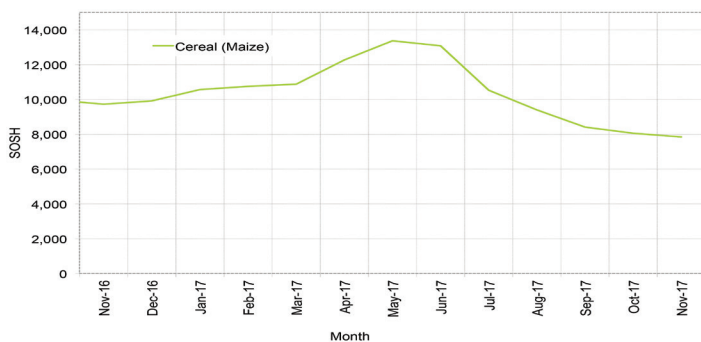


Figure 7: Trends in Wage Rates and Relative Purchasing Power

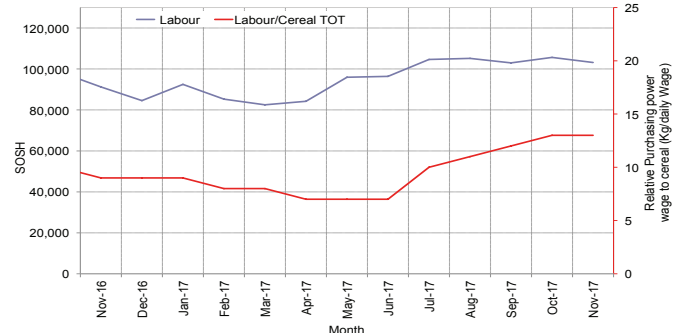


Figure 8: Imported Commodity Prices Compared to Exchange Rate

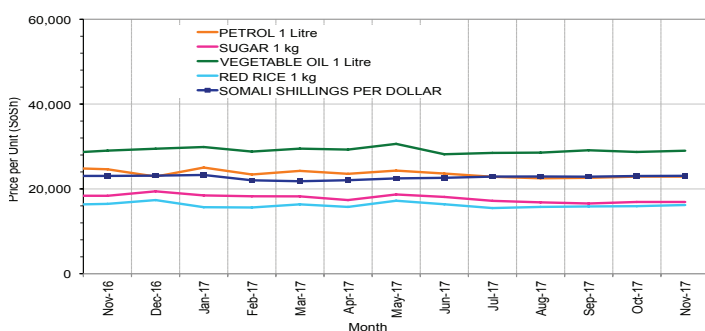


Figure 9: Goat Local Quality

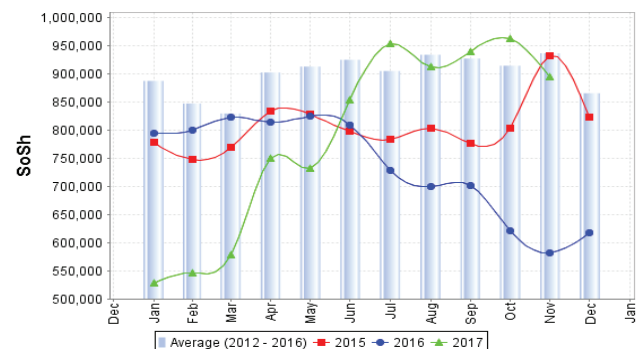


Figure 10: Exchange Rate

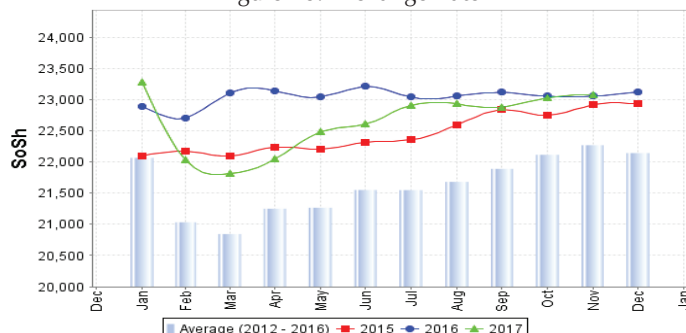
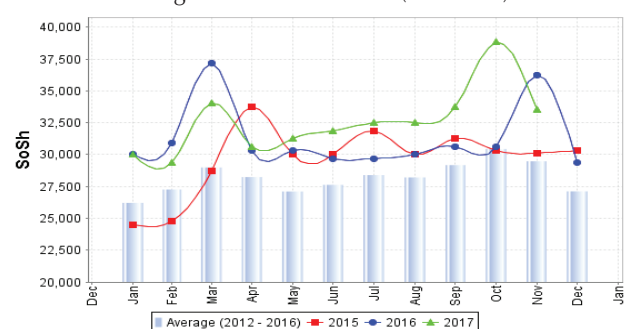


Figure 11: Water Drum (200 litres)



Regional analysis: Sorghum Belt Regions (Bay, Bakool, Gedo and Hiran)

Indicator	5-Year Average (2012-2016)	Nov-16	Oct-17	Nov-17 Nominal Price	Nov-17 Real (Deflated) Price	% Change Previous Month	% Change Same Month Previous Year	% Change 5-year avg (2012-2016)
Imported Commodities Prices								
Diesel 1 litre	29,390	24,479	23,958	24,750	9,921	3%	1%	-16%
Imported Red Rice 1kg	18,860	19,229	19,450	19,229	7,686	-1%	0%	2%
Petrol 1 litre	30,030	28,375	27,000	27,792	11,153	3%	-2%	-7%
Sugar	20,940	23,521	21,029	20,604	8,243	-2%	-12%	-2%
Vegetable Oil 1 litre	40,008	37,882	36,333	35,042	14,089	-4%	-7%	-12%
Wheat Flour 1kg	18,210	18,396	18,000	17,594	7,024	-2%	-4%	-3%
Wheat Grain 1kg	16,077	22,800	19,250	18,800	7,512	-2%	-18%	17%
Cereal Prices								
Red Sorghum 1kg	8,431	10,600	11,333	11,123	4,404	-2%	5%	32%
White Maize 1kg	9,605	10,911	11,814	10,808	4,276	-9%	-1%	13%
Livestock & Livestock Product Prices								
Camel Local Quality (Head)	12,824,983	10,293,667	11,224,500	11,661,250	4,721,547	4%	13%	-9%
Cattle Local Quality (Head)	3,838,749	2,866,071	2,567,143	2,782,857	1,126,680	8%	-3%	-28%
Fresh Camel Milk 1 litre	19,387	21,424	26,723	25,896	10,385	-3%	21%	34%
Goat Export Quality (Head)	1,622,477	1,395,000	1,504,182	1,493,864	604,766	-1%	7%	-8%
Goat Local Quality (Head)	1,024,844	738,403	816,375	852,708	345,162	4%	15%	-17%
Other Essential Items								
Charcoal 50kg	151,500	144,318	184,955	181,818	73,518	-2%	26%	20%
Cowpeas 1 kg	24,489	27,455	36,902	35,271	14,181	-4%	28%	44%
Unskilled Labor Wage Rate	100,862	89,896	95,583	103,229	41,697	8%	15%	2%
Firewood Bundle	6,754	6,007	6,133	6,125	2,380	0%	2%	-9%
Local Sesame Oil 1 litre	78,999	76,843	78,950	81,528	32,911	3%	6%	3%
Exchange Rate (Somali Shilling per USD)	22,195	24,169	23,124	23,138	9,269	0%	-4%	4%
Terms of Trade								
Labour Wage (Daily)/ Cereal (Rice (Kg)	5	5	5	5	-	0%	0%	0%
Local Goat (Head)/ Cereal (Rice (Kg)	54	38	42	44	-	5%	16%	-19%
Price Indices								
Consumer Price Index	-	236	251	247	-	-2%	5%	-

Figure 12: Trends in Cereal Prices

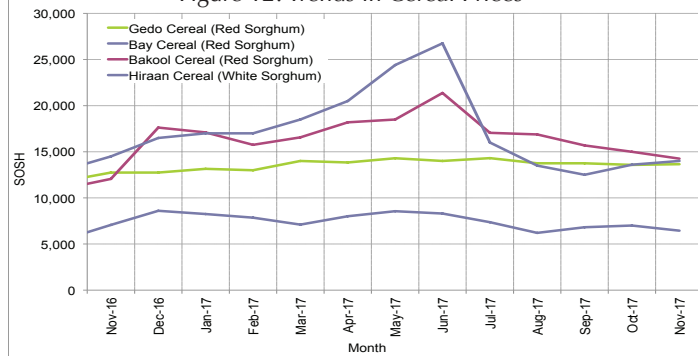


Figure 13: Trends in Wage Rates and Relative Purchasing Power

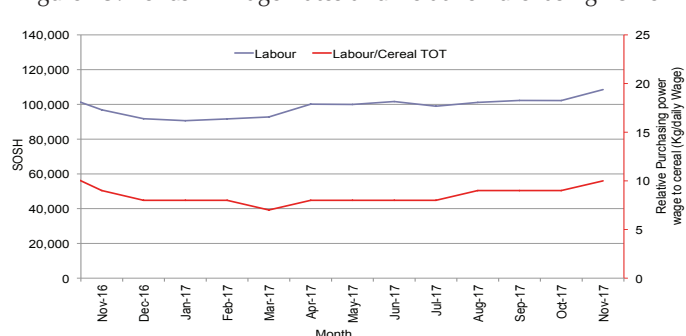


Figure 14: Imported Commodity Prices Compared to Exchange Rate

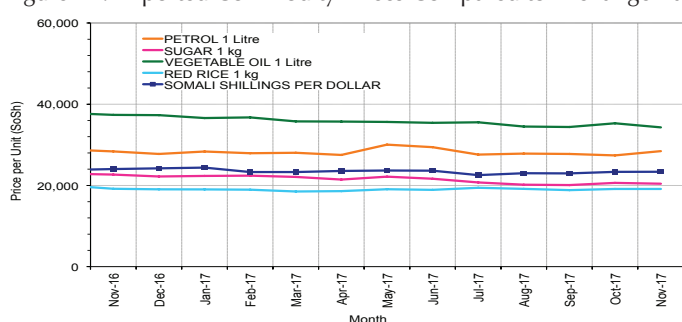


Figure 15: Goat Local Quality

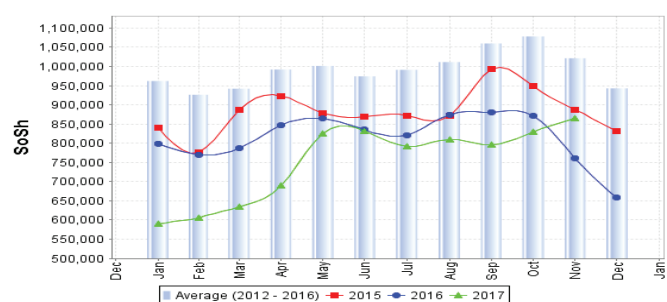


Figure 16: Exchange Rate

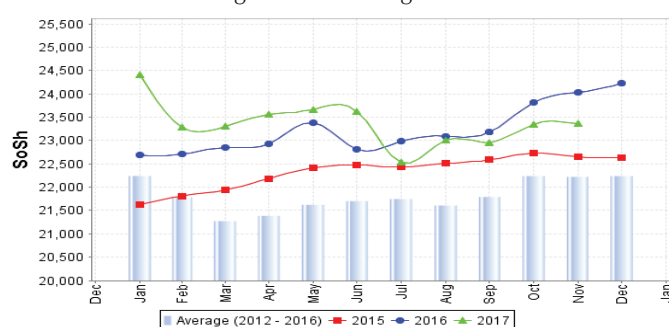
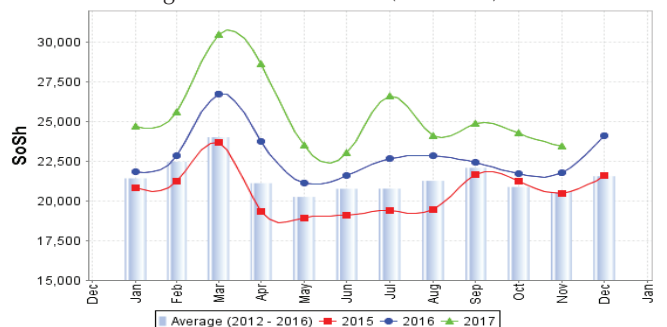


Figure 17: Water Drum (200 litres)



Regional analysis: Shabelle Regions

Indicator	5-Year Average (2012-2016)	Nov-16	Oct-17	Nov-17 Nominal Price	Nov-17 Real (Deflated) Price	% Change Previous Month	% Change Same Month Previous Year	% Change 5-year avrg (2012-2016)
Imported Commodities Prices								
Diesel 1 litre	24,983	18,125	16,625	16,750	6,682	1%	-8%	-33%
Imported Red Rice 1kg	16,575	18,500	15,583	15,833	6,311	2%	-14%	-4%
Petrol 1 litre	27,462	21,563	19,083	19,750	7,897	3%	-8%	-28%
Sugar	19,012	23,938	17,000	17,167	6,851	1%	-28%	-10%
Vegetable Oil 1 litre	29,133	31,375	28,625	29,792	11,963	4%	-5%	2%
Wheat Flour 1kg	17,123	19,000	14,167	14,542	5,788	3%	-23%	-15%
Wheat Grain 1kg	14,266	11,000	17,000	16,500	6,581	-3%	50%	16%
Cereal Prices								
Red Sorghum 1kg	9,819	8,833	10,986	10,335	4,085	-6%	17%	5%
White Maize 1kg	6,663	6,872	7,442	7,013	2,740	-6%	2%	5%
Livestock & Livestock Product Prices								
Camel Local Quality (Head)	17,099,124	15,165,625	17,181,250	18,231,250	7,381,744	6%	20%	7%
Cattle Local Quality (Head)	5,632,250	4,481,250	4,043,750	4,468,750	1,809,300	11%	0%	-21%
Fresh Camel Milk 1 litre	20,671	18,438	23,375	21,417	8,572	-8%	16%	4%
Goat Export Quality (Head)	1,812,541	1,458,333	1,776,875	1,722,500	697,341	-3%	18%	-5%
Goat Local Quality (Head)	1,325,708	1,166,875	1,281,250	1,256,250	508,556	-2%	8%	-5%
Other Essential Items								
Charcoal 50kg	135,094	122,500	133,194	147,917	59,792	11%	21%	9%
Cowpeas 1 kg	22,137	23,906	43,028	41,264	16,608	-4%	73%	86%
Unskilled Labor Wage Rate	76,320	76,563	68,958	80,000	32,292	16%	4%	5%
Firewood Bundle	7,208	6,750	6,417	6,458	2,515	1%	-4%	-10%
Local Sesame Oil 1 litre	59,111	51,250	51,542	57,542	23,199	12%	12%	-3%
Exchange Rate (Somali Shilling per USD)	22,343	23,375	23,188	23,338	9,350	1%	0%	4%
Terms of Trade								
Labour Wage (Daily)/ Cereal (Maize(Kg)	11	11	9	11	-	22%	0%	0%
Local Goat (Head)/ Cereal (Maize(Kg)	206	170	172	179	-	4%	5%	-13%
Price Indices								
Consumer Price Index	-	236	251	247	-	-2%	5%	-

Figure 18: Trends in Cereal Prices

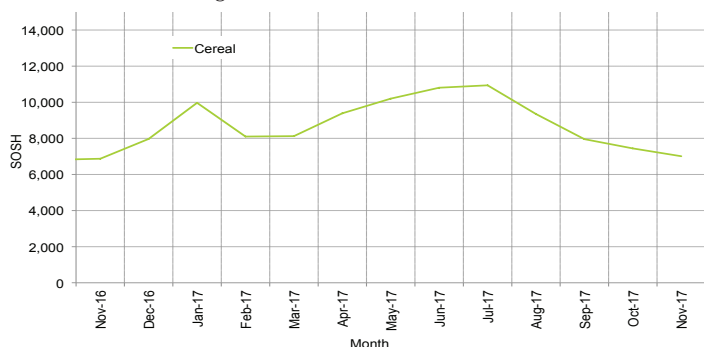


Figure 19: Trends in Wage Rates and Relative Purchasing Power

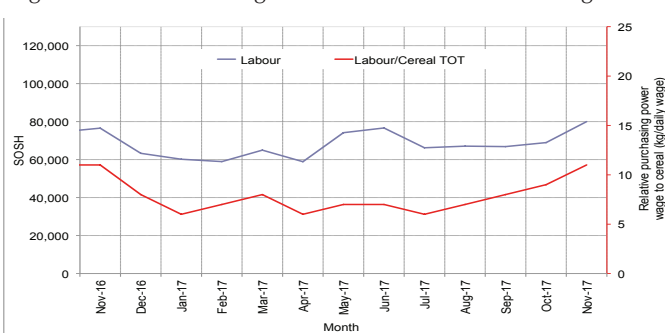


Figure 20: Imported Commodity Prices Compared to Exchange Rate

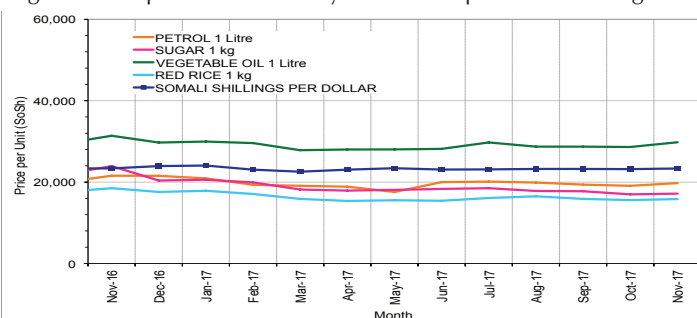


Figure 21: Goat Local Quality

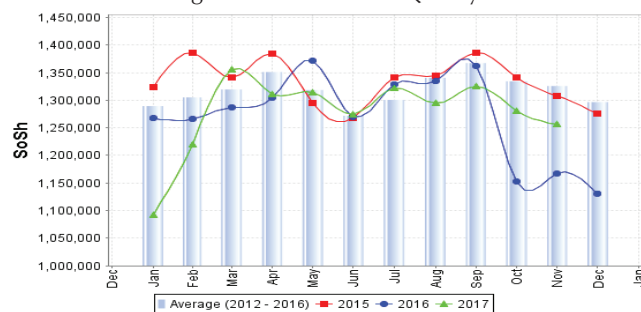


Figure 22: Exchange Rate

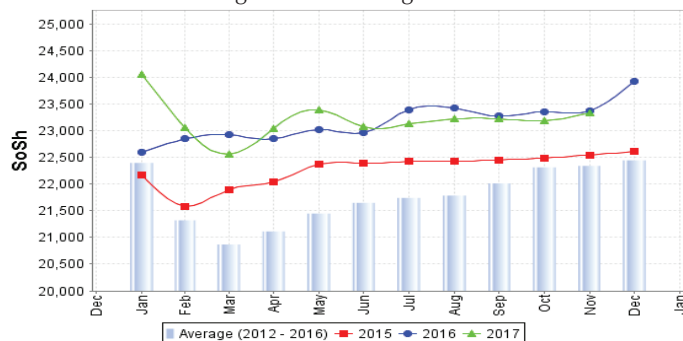
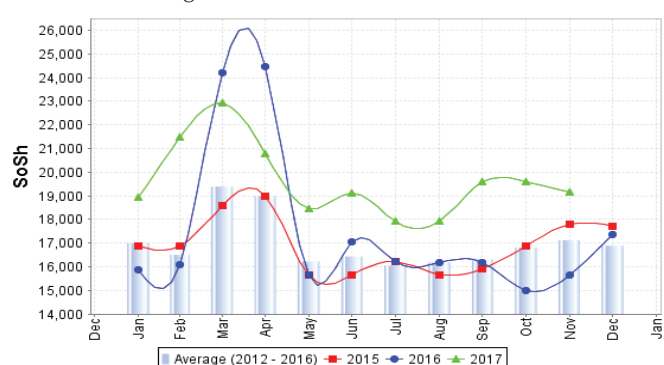


Figure 23: Water Drum (200 litres)



Regional analysis: Banadir Region

Indicator	5-Year Average (2012-2016)	Nov-16	Oct-17	Nov-17 Nominal Price	Nov-17 Real (Deflated) Price	% Change Previous Month	% Change Same Month Previous Year	% Change 5-year avrg (2012-2016)
Imported Commodities Prices								
Diesel 1 litre	19,716	14,417	13,525	13,725	5,457	1%	-5%	-30%
Imported Red Rice 1kg	12,858	12,167	11,717	11,958	4,742	2%	-2%	-7%
Petrol 1 litre	21,459	16,833	16,633	16,833	6,716	1%	0%	-22%
Sugar	14,825	15,667	14,175	14,125	5,619	0%	-10%	-5%
Vegetable Oil 1 litre	24,158	22,042	22,500	21,667	8,673	-4%	-2%	-10%
Wheat Flour 1kg	12,966	11,917	11,700	11,125	4,405	-5%	-7%	-14%
Wheat Grain 1kg	9,477	11,000	13,375	14,375	5,720	7%	31%	52%
Cereal Prices								
Red Sorghum 1kg	6,853	8,392	10,242	9,225	3,635	-10%	10%	35%
White Maize 1kg	8,314	8,217	11,248	9,825	3,878	-13%	20%	18%
Livestock & Livestock Product Prices								
Camel Local Quality (Head)	-	-	-	-	-	-	-	-
Cattle Local Quality (Head)	-	-	-	-	-	-	-	-
Fresh Camel Milk 1 litre	22,566	25,333	26,333	26,333	10,562	0%	4%	17%
Goat Export Quality (Head)	2,565,000	2,235,000	2,560,000	2,500,000	1,012,151	-2%	-	-3%
Goat Local Quality (Head)	2,161,500	1,662,500	2,160,000	2,125,000	860,314	-2%	28%	-2%
Other Essential Items								
Charcoal 50kg	198,550	171,667	212,083	202,083	81,724	-5%	18%	2%
Cowpeas 1 kg	20,045	24,150	43,083	36,667	14,746	-15%	52%	83%
Unskilled Labor Wage Rate	116,583	106,667	87,917	91,250	36,847	4%	-14%	-22%
Firewood Bundle	7,350	7,500	8,000	8,000	3,139	0%	7%	9%
Local Sesame Oil 1 litre	59,533	40,000	52,167	54,083	21,798	4%	35%	-9%
Exchange Rate (Somali Shilling per USD)	22,171	23,542	22,873	22,908	9,175	0%	-3%	3%
Terms of Trade								
Labour Wage (Daily)/ Cereal (Rice(Kg))	9	9	8	8	-	0%	-11%	-11%
Local Goat (Head)/ Cereal (Rice(Kg))	167	137	184	178	-	-3%	30%	7%
Price Indices								
Consumer Price Index	-	236	251	247	-	-2%	5%	-

Figure 24: Trends in Cereal Prices

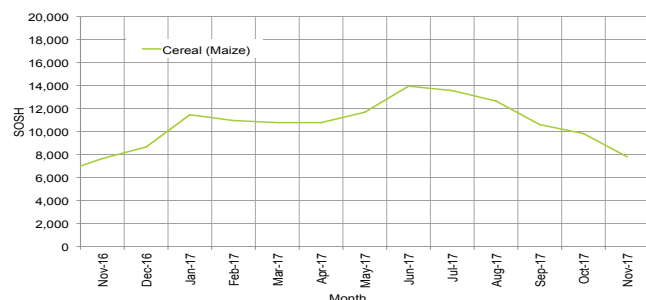


Figure 25: Bakara: Trends in Wage Rates and Relative Purchasing Power

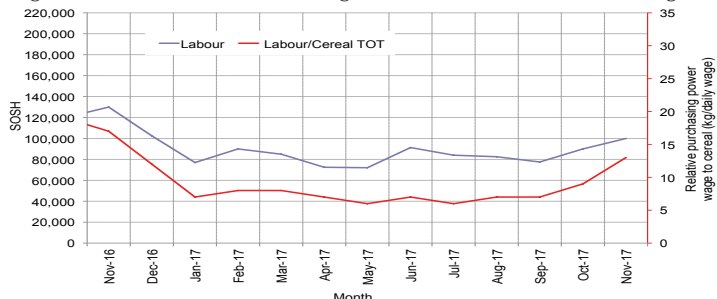


Figure 26: Imported Commodity Prices Compared to Exchange Rate

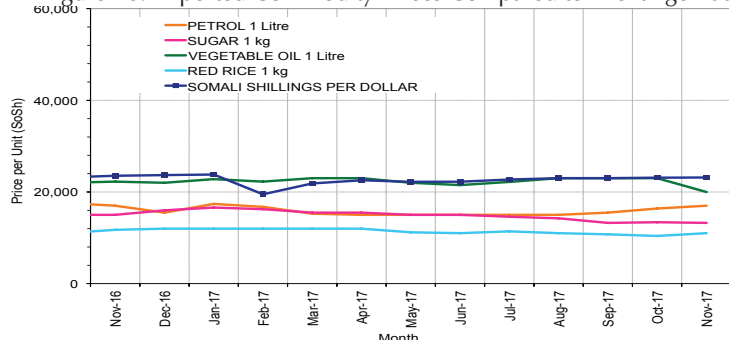


Figure 27: Goat Local Quality

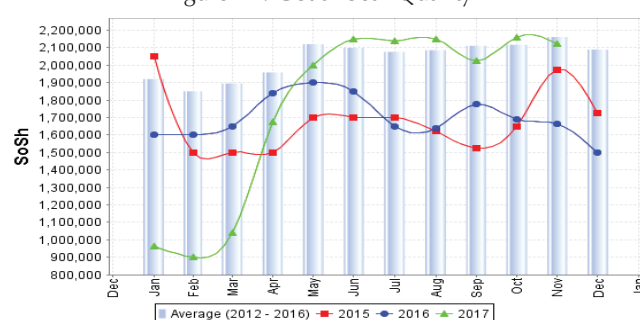


Figure 28: Exchange Rate

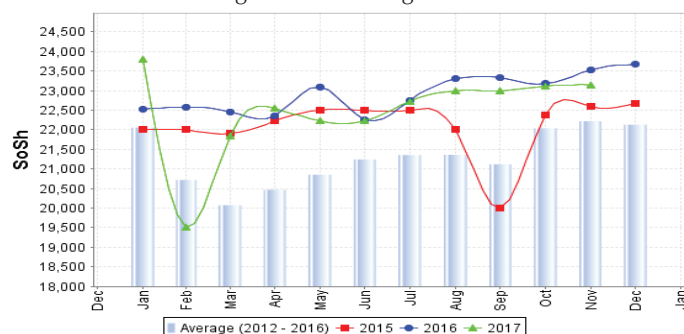
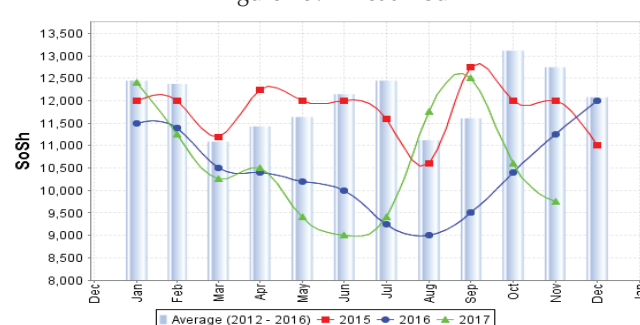


Figure 29: Wheat Flour



Regional analysis: Central Regions

Indicator	5-Year Average (2012-2016)	Nov-16	Oct-17	Nov-17 Nominal Price	Nov-17 Real (Deflated) Price	% Change Previous Month	% Change Same Month Previous Year	% Change 5-year avrg (2012-2016)
Imported Commodities Prices								
Diesel 1 litre	25,120	20,300	20,400	20,000	8,058	-2%	-1%	-20%
Imported Red Rice 1kg	18,672	19,350	19,000	18,800	7,569	-1%	-3%	1%
Petrol 1 litre	24,200	23,300	24,000	24,400	9,853	2%	5%	1%
Sugar	20,700	23,000	22,200	22,000	8,874	-1%	-4%	6%
Vegetable Oil 1 litre	39,990	37,400	37,600	37,600	15,238	0%	1%	-6%
Wheat Flour 1kg	16,408	16,100	17,800	16,600	6,671	-7%	3%	1%
Wheat Grain 1kg	15,668	17,313	21,250	19,600	7,895	-8%	13%	25%
Cereal Prices								
Red Sorghum 1kg	12,120	14,750	16,875	16,250	6,529	-4%	10%	34%
White Maize 1kg	12,665	16,500	18,250	17,500	7,039	-4%	6%	38%
Livestock & Livestock Product Prices								
Camel Local Quality (Head)	11,808,750	12,837,500	9,400,000	12,200,000	4,976,467	30%	-5%	3%
Cattle Local Quality (Head)	-	-	-	-	-	-	-	-
Fresh Camel Milk 1 litre	28,698	36,050	47,800	49,600	20,133	4%	38%	73%
Goat Export Quality (Head)	1,404,000	1,500,000	1,200,000	1,500,000	611,773	25%	0%	7%
Goat Local Quality (Head)	1,089,600	1,001,000	865,000	1,050,000	428,211	21%	5%	-4%
Other Essential Items								
Charcoal 50kg	178,660	170,500	162,000	166,000	67,614	2%	-3%	-7%
Cowpeas 1 kg	23,618	30,450	55,800	55,400	22,499	-1%	82%	135%
Unskilled Labor Wage Rate	89,100	95,500	94,000	98,000	39,876	4%	3%	10%
Firewood Bundle	34,680	32,900	33,000	33,000	13,361	0%	0%	-5%
Local Sesame Oil 1 litre	85,460	78,450	81,600	82,600	33,594	1%	5%	-3%
Exchange Rate (Somali Shilling per USD)	22,669	26,210	24,800	24,250	9,792	-2%	-7%	7%
Terms of Trade								
Labour Wage (Daily)/ Cereal (Rice Kg)	4	5	5	5	-	0%	0%	25%
Local Goat (Head)/ Cereal (Rice Kg)	58	52	46	56	-	22%	8%	-3%
Camel (Head)/Cereal (Rice Kg)	636	663	495	649	-	31%	-2%	2%
Price Indices								
Consumer Price Index	-	235	255	245	-	-4%	4%	-

Figure 30: Trends in Cereal Prices

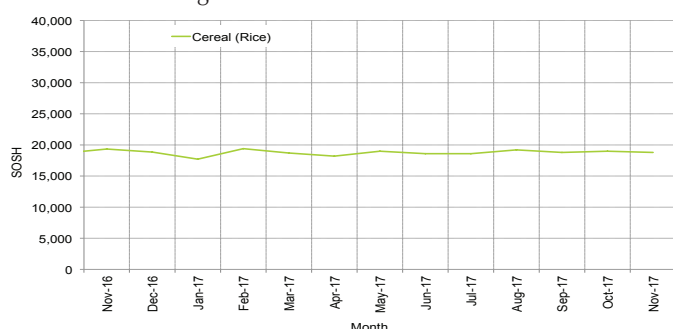


Figure 31: Trends in wage rates and relative purchasing power

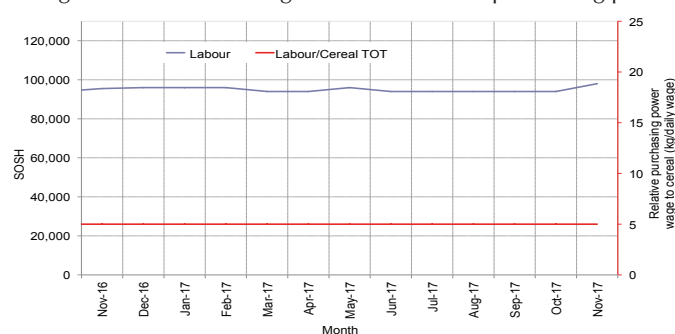


Figure 32: Imported Commodity Prices Compared to Exchange Rate

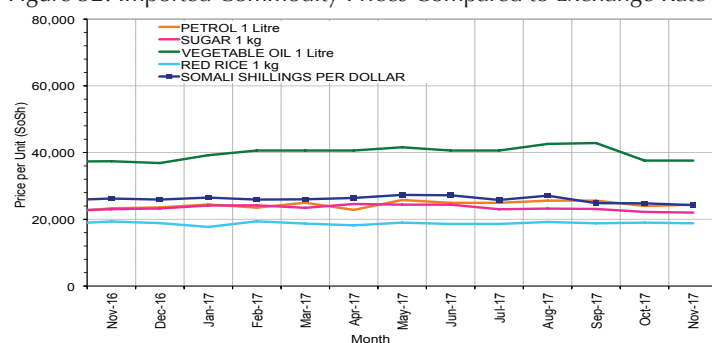


Figure 33: Goat Local Quality

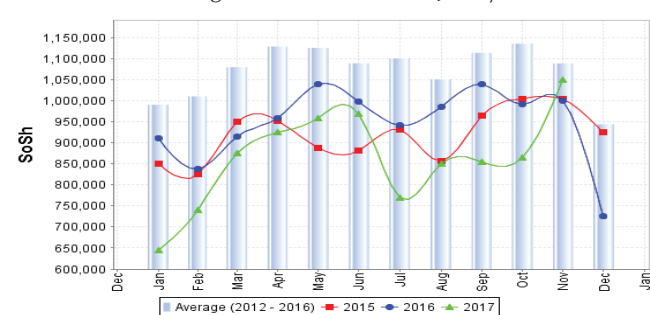


Figure 34: Exchange Rate

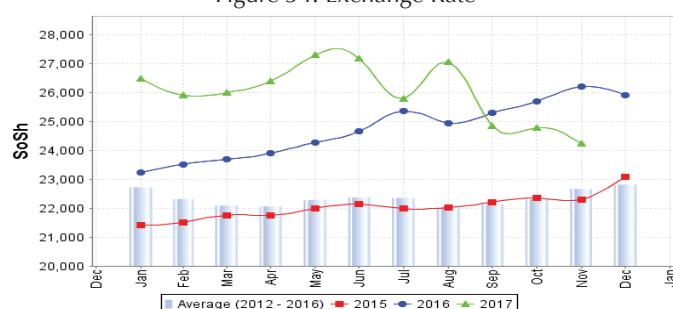
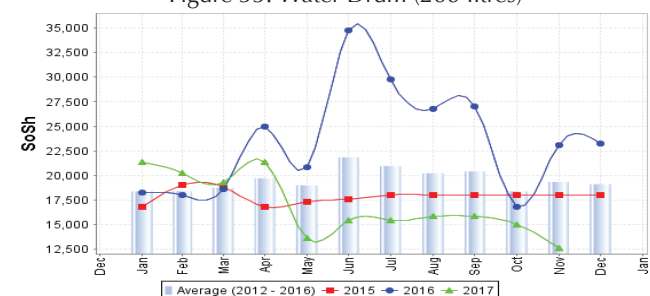


Figure 35: Water Drum (200 litres)



Regional analysis: Northeast Regions

Indicator	5-Year Average (2012-2016)	Nov-16	Oct-17	Nov-17 Nominal Price	Nov-17 Real (Deflated) Price	% Change Previous Month	% Change Same Month Previous Year	% Change 5-year avg (2012-2016)
Imported Commodities Prices								
Diesel 1 litre	21,876	16,256	20,114	20,875	7,135	4%	28%	-5%
Imported Red Rice 1kg	17,397	16,845	17,500	17,929	6,114	2%	6%	3%
Petrol 1 litre	22,785	19,786	23,026	24,000	8,218	4%	21%	5%
Sugar	20,473	21,762	22,771	22,143	7,574	-3%	2%	8%
Vegetable Oil 1 litre	36,635	33,250	33,457	34,250	11,770	2%	3%	-7%
Wheat Flour 1kg	16,697	16,238	17,157	17,250	5,878	1%	6%	3%
Wheat Grain 1kg	30,057	30,700	33,000	32,600	11,198	-1%	6%	8%
Cereal Prices								
Red Sorghum 1kg	22,208	24,750	26,600	28,250	9,690	6%	14%	27%
White Maize 1kg	21,700	26,500	23,200	26,000	8,911	12%	-2%	20%
Livestock & Livestock Product Prices								
Camel Local Quality (Head)	14,855,034	12,785,167	15,222,000	15,344,000	5,317,597	1%	20%	3%
Cattle Local Quality (Head)	8,350,000	8,000,000	11,630,000	11,250,000	3,898,759	-3%	41%	35%
Fresh Camel Milk 1 litre	37,171	47,069	57,767	60,000	20,694	4%	27%	61%
Goat Export Quality (Head)	1,391,300	1,215,000	1,518,000	1,500,000	519,748	-1%	23%	8%
Goat Local Quality (Head)	1,293,285	1,129,643	1,441,857	1,431,071	495,859	-1%	27%	11%
Other Essential Items								
Charcoal 50kg	357,857	365,000	383,429	392,500	135,927	2%	8%	10%
Cowpeas 1 kg	38,752	38,306	61,333	72,000	24,853	17%	88%	86%
Unskilled Labor Wage Rate	136,143	138,929	142,714	141,607	48,976	-1%	2%	4%
Firewood Bundle	35,112	34,060	50,143	50,893	17,538	1%	49%	45%
Local Sesame Oil 1 litre	98,150	95,000	114,250	109,750	37,936	-4%	16%	12%
Exchange Rate (Somali Shilling per USD)	21,627	24,506	25,586	26,321	9,022	3%	7%	22%
Terms of Trade								
Labour Wage (Daily)/ Cereal (Rice(Kg))	7	8	8	8	-	0%	0%	14%
Local Goat (Head)/ Cereal (Rice(Kg))	74	67	82	80	-	-2%	19%	8%
Price Indices								
Consumer Price Index	-	247	288	289	-	0%	17%	-

Figure 36: Trends in Cereal Prices

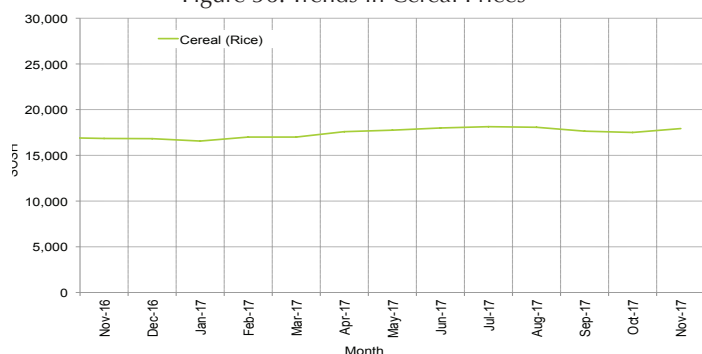


Figure 37: Trends in Wage Rates and Relative Purchasing Power

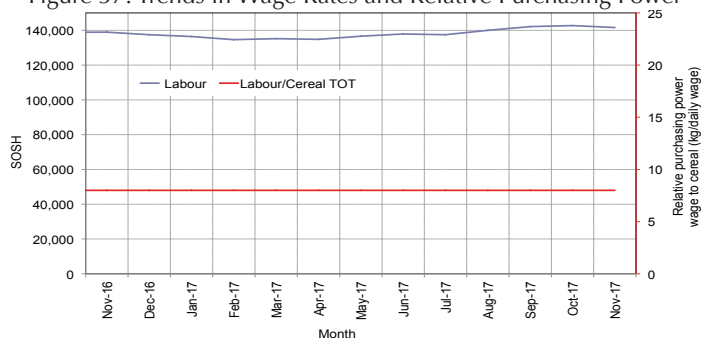


Figure 38: Imported Commodity Prices Compared to Exchange Rate

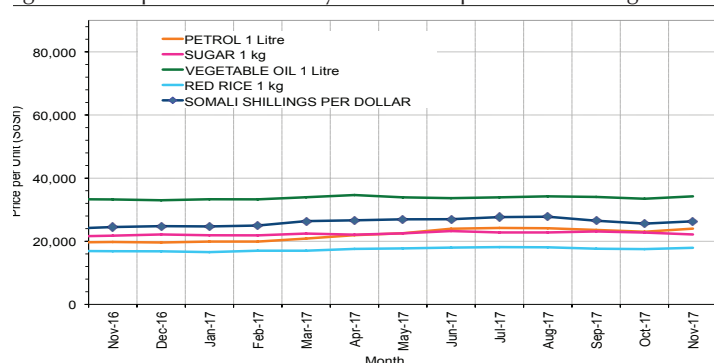


Figure 39: Goat Local Quality

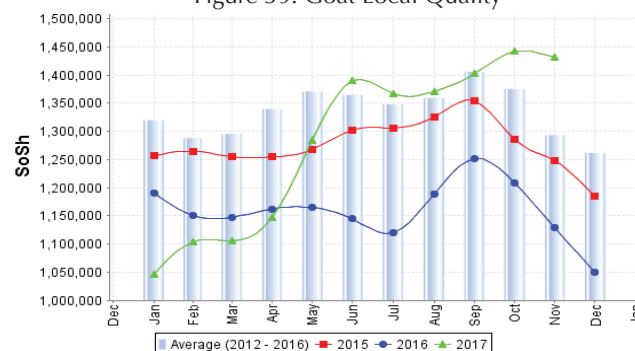


Figure 40: Exchange Rate

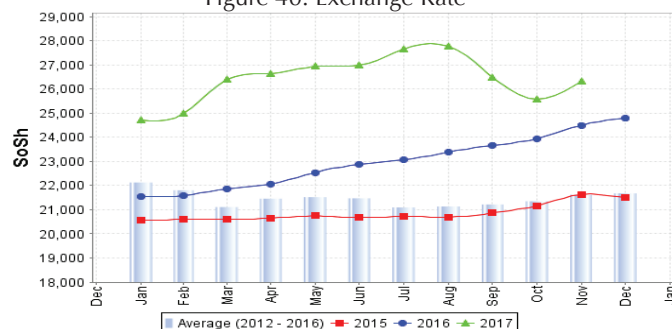
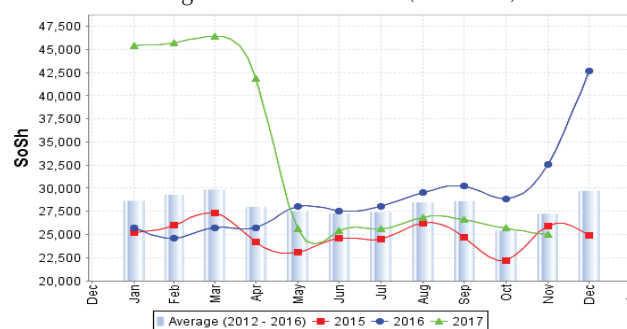


Figure 41: Water Drum (200 litres)



Regional analysis: Northwest Regions

Indicator	5-Year Average (2012-2016)	Nov-16	Oct-17	Nov-17 Nominal Price	Nov-17 Real (Deflated) Price	% Change Previous Month	% Change Same Month Previous Year	% Change 5-year avrg (2012-2016)
Imported Commodities Prices								
Diesel 1 litre	6,416	4,775	6,780	7,000	4,757	3%	47%	9%
Imported Red Rice 1kg	5,152	5,500	5,240	5,800	3,924	11%	5%	13%
Petrol 1 litre	7,300	6,340	7,900	8,100	5,520	3%	28%	11%
Sugar	5,810	6,050	6,800	7,100	4,826	4%	17%	22%
Vegetable Oil 1 litre	13,071	14,500	13,000	12,500	8,573	-4%	-14%	-4%
Wheat Flour 1kg	4,558	5,040	4,800	5,100	3,439	6%	1%	12%
Wheat Grain 1kg	3,537	4,375	4,875	5,075	3,421	4%	16%	43%
Cereal Prices								
White Sorghum 1kg	3,922	4,260	5,180	5,300	3,578	2%	24%	35%
Yellow Maize 1kg	3,985	4,720	6,400	6,650	4,514	4%	41%	67%
Livestock & Livestock Product Prices								
Camel Local Quality (Head)	3,730,050	3,993,333	5,023,000	4,670,000	3,240,279	-7%	17%	25%
Cattle Local Quality (Head)	2,169,933	2,274,333	3,081,667	2,965,000	2,057,229	-4%	30%	37%
Fresh Camel Milk 1 litre	7,040	9,200	11,800	10,500	7,186	-11%	14%	49%
Goat Export Quality (Head)	448,860	416,719	464,500	480,625	333,392	3%	15%	7%
Goat Local Quality (Head)	337,805	319,450	408,216	421,650	292,471	3%	32%	25%
Other Essential Items								
Charcoal 50kg	59,187	70,400	73,840	74,900	51,871	1%	6%	27%
Cowpeas 1 kg	11,218	13,625	18,500	19,000	13,084	3%	39%	69%
Unskilled Labor Wage Rate	48,554	58,575	66,000	69,000	47,777	5%	18%	42%
Firewood Bundle	4,159	5,433	6,167	6,500	4,410	5%	20%	56%
Local Sesame Oil 1 litre	31,154	32,188	36,750	36,750	25,400	0%	14%	18%
Exchange Rate (Somaliland Shilling per USD)	7,034	7,550	9,992	10,020	6,853	0%	33%	42%
Terms of Trade								
Labour Wage (Daily)/ Cereal (Rice(Kg)	9	11	13	12	-	-8%	9%	33%
Local Goat (Head)/ Cereal (Rice(Kg)	65	58	78	73	-	-6%	26%	12%
Price Indices								
Consumer Price Index	-	118	148	144	-	-3%	22%	-

Figure 42: Trends in Cereal Prices

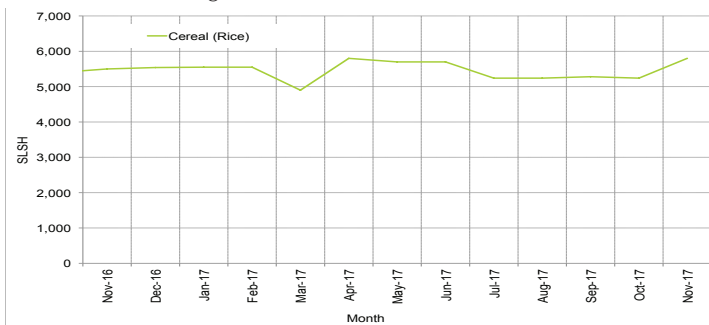


Figure 43: Trends in Wage Rates and Relative Purchasing Power

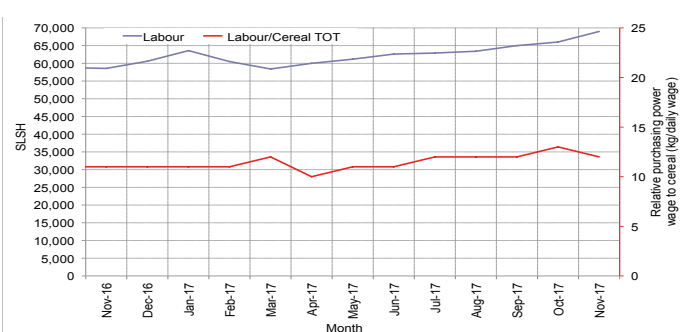


Figure 44: Imported Commodity Prices Compared to Exchange Rate

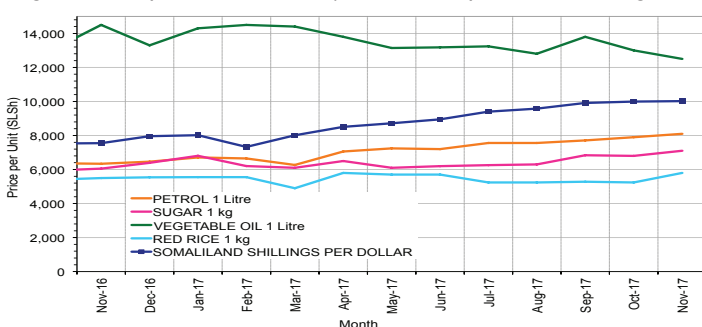


Figure 45: Goat Local Quality

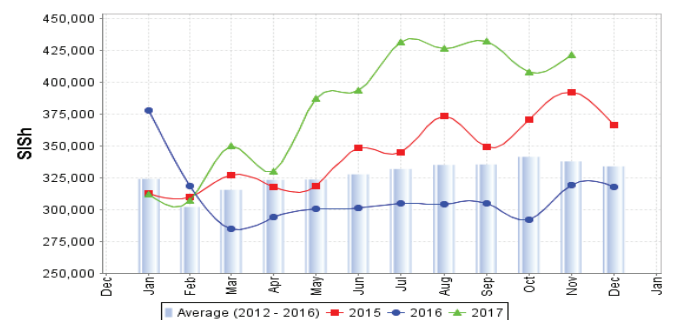


Figure 46: Exchange Rate

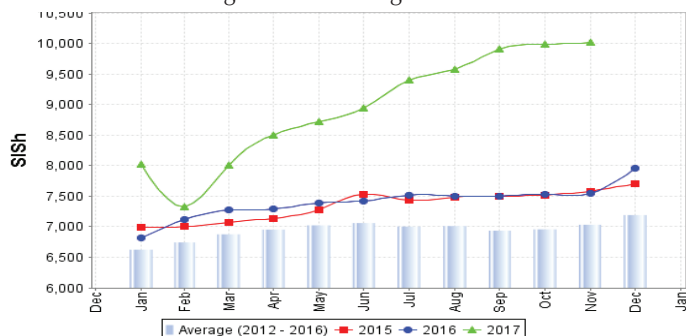
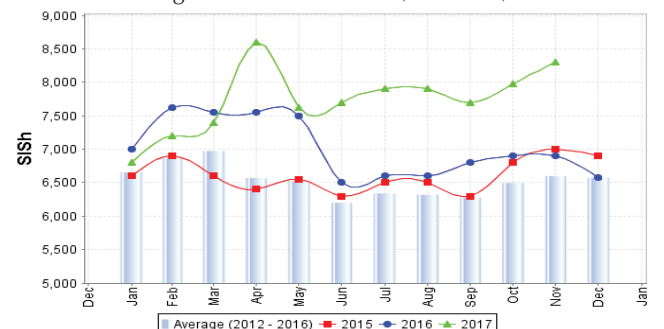


Figure 47: Water Drum (200 litres)



Trends in Livestock Exports

Table 1: Berbera Livestock Exports (Number of Heads)

	2000	2001	2002	2003	2004	2005	2006	2007	2008	2009	2010	2011	2012	2013	2014	2015	2016
Shoats	1 601 083	51 546	341 711	563 107	859 404	1 023 795	1 017 242	1 350 054	1 219 519	1 556 003	2 584 810	3 104 684	3 219 584	2 888 955	3 089 592	3 270 386	2 880 057
Cattle	63 263	20 973	37 547	84 312	131 852	148 151	85 631	88 143	80 051	88 005	133 021	150 934	190 354	20 875	252 597	160,395	150 133
Camel	16 984	3 473	18,864	21 874	5 147	5 069	22 810	14 245	26 515	20 206	92 651	107 281	102 664	75 728	64 578	61 475	57 841

Figure 48: Berbera Livestock Exports (Number of Heads)

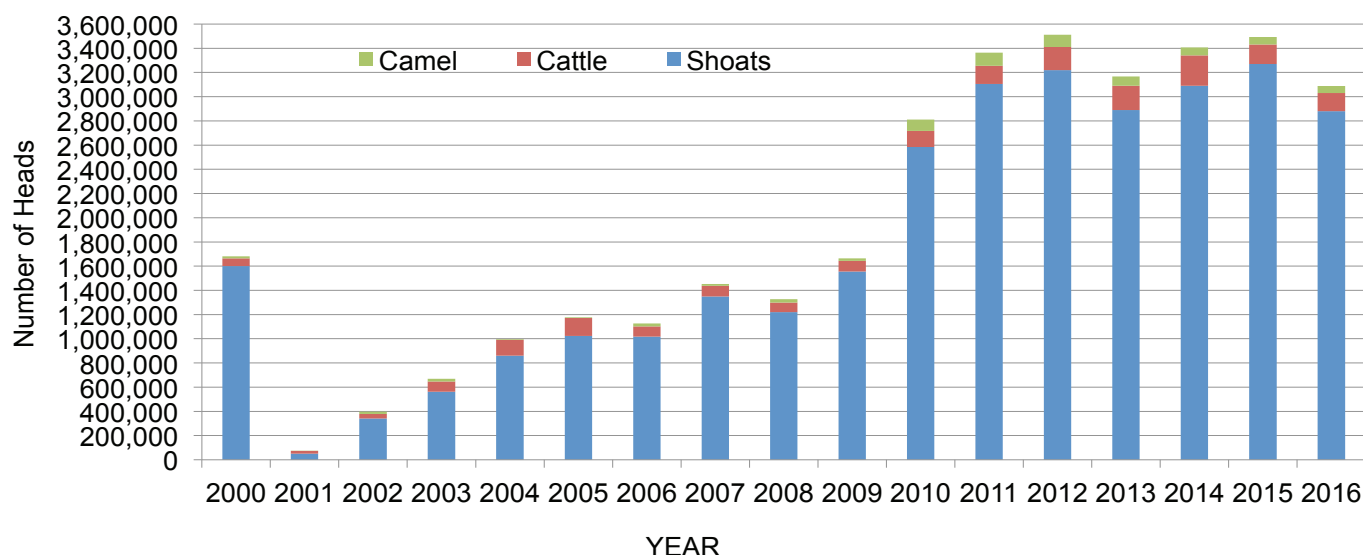
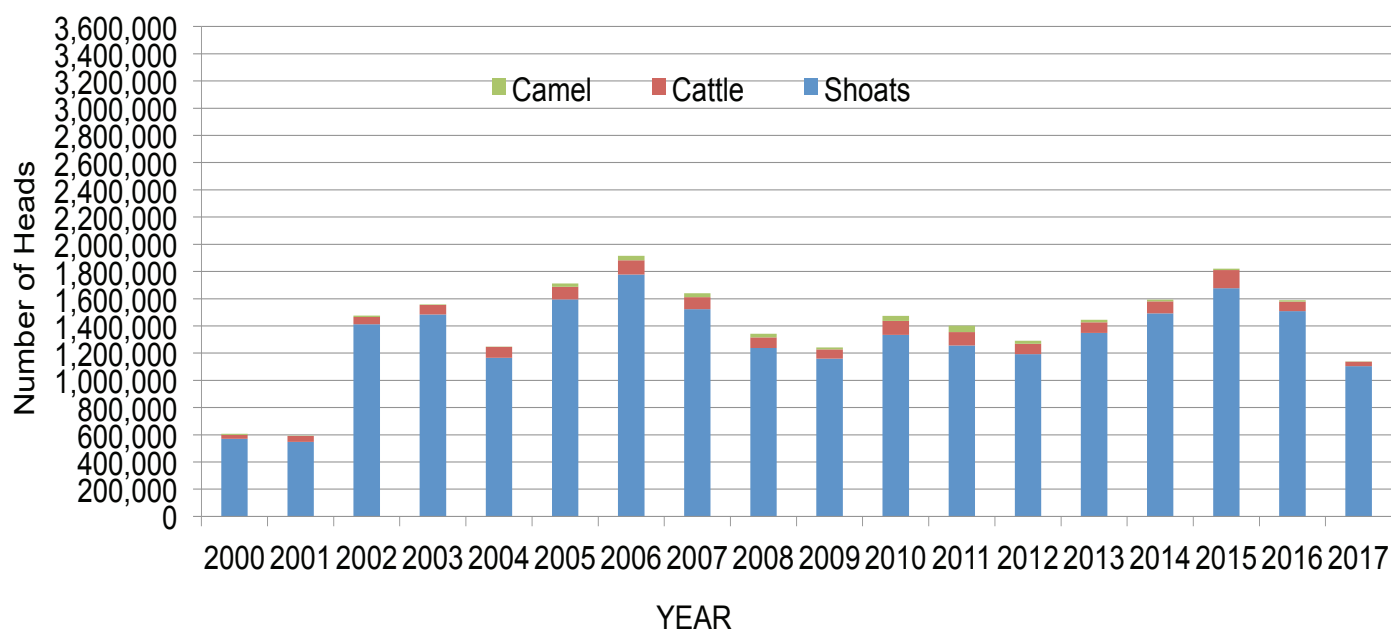


Table 2: Bossaso Livestock Exports (Number of Heads)

	2000	2001	2002	2003	2004	2005	2006	2007	2008	2009	2010	2011	2012	2013	2014	2015	2016	2017
Shoats	571,455	548,853	1,412,450	1,483,409	1,166,480	1,594,859	1,777,283	1,522,855	1,236,775	1,159,454	1,333,478	1,256,535	1,192,197	1,349,123	1,493,111	1,676,216	1 507 910	1 103 863
Cattle	27,604	42,248	53,313	71,328	79,994	91,910	104,595	89,190	78,046	67,385	103,808	99,058	76,043	77,353	87,759	134,597	70 705	33 913
Camel	8,177	1,950	9,720	4,259	2,488	26,109	33,724	27,580	27,639	15,331	36,865	45,878	22,288	19,032	12,251	10,945	10 144	1 974

Figure 49: Bossaso Livestock Exports (Number of Heads)



Trends in Cereal Imports

Table 3: Total Cereal Imports through Berbera, Bossaso and Mogadishu Ports (Tonnes) *

	2000	2001	2002	2003	2004	2005	2006	2007	2008	2009	2010	2011	2012	2013*	2014*	2015*	2016*	2017*
Rice	75,687	74,729	144,600	180,614	146,567	150,017	198,101	166,626	136,007	171,472	161,415	272,877	227,955	170,868	170,888	195,240	207 267	58 058
Wheat flour	78,555	134,425	128,263	171,442	151,555	169,583	178,345	176,821	169,208	240,247	249,080	258,679	268,491	183,058	284,230	318,868	207 463	81 025
Pasta	11,071	26,702	35,425	29,273	38,749	39,153	52,815	41,331	38,441	86,372	102,373	184,849	337,878	134,311	176,951	155,360	78 113	26 884

* Elman (Mogadishu) is up to November 2015. Mogadishu Data (Elmaan Por) for 2013 includes only January-March imports. Berbera Data is up to December 2016.

Figure 50: Total Cereal Imports (Berbera, Bossaso and Mogadishu)

