

# Market DataUpdate

## Highlights

### Inflation:

**SoSh (Somali shilling)-using areas:** In the month of November 2015, Consumer Price Index (CPI) remained stable. Compared to a year ago (November 2014), CPI remained stable in North east while in Central and southern SoSh-using areas CPI decline (7-13%) was recorded.

**SISh (Somaliland shilling)-using areas:** CPI increased marginally (2%) month-on-month in November. CPI decreased by 2 percent compared to a year ago (November 2014).

### Exchange rate:

**SoSh-using areas:** The exchange rates between SoSh and the United States Dollar (USD) remained stable or changed slightly (1-3%) in November 2015. The SoSh depreciated compared to a year ago across all areas, most significantly (9%) in Gedo.

**SISh-using areas:** The SISh remained relatively stable against the USD in November 2015. Annual comparison indicates depreciation in *SISh* by 9 percent compared to November 2014.

**Local grain** prices remained relatively stable or changed (increased/decreased) by less than 10 percent in November in Most regions of the country with the exception of Middle Shabbele and Middle Juba. Prices declined moderately (11%) in Middle Shabbele while in Middle Juba cereal prices increased moderately (17%) due to increased cost of transport as most roads in the region are inaccessible. Annual comparison indicated local grain price declines in most parts of the country.

**Prices of imported food** (rice, sugar, vegetable oil, wheat flour) mostly exhibited relative stability or mild monthly changes in local currency terms in November 2015 across the country. Annual price comparison indicated price decreases (2-15%) for most of the imported food commodities with the highest decrease recorded in Bakool (11-15%) compared to November 2014.

**Livestock prices** (for all species) remained relatively stable or changed at mild rates (less than 10%) month-on-month in November 2015 in most regions of the country. Milk prices (camel and cattle) changed at mild rates month-on-month in most regions of the country; moderate (12-23%) decreases of milk prices were recorded in both Bay and Bakool due to increased supply of milk into the markets following Deyr rains which improved pasture and animal body condition as well as medium calving. Annual comparison exhibited mixed trends; specifically, in the Northern parts of country, yearly prices changed at mild rates (less than 10%) Livestock prices for most southern regions were lower compared to one year ago except in Middle Juba where livestock prices for all species increased from mild to moderate levels. Compared to a year ago milk prices (camel and cattle) increased in Middle Shabbele, Northern and Central regions of the country, while declines in milk prices were recorded in most parts of the remaining southern regions.

**Labor (unskilled) wages** remained relatively stable or changed at mild rates (increase/decrease) in the month of November 2015 in most parts of the country. Notably, daily labor wage in Bakool increased by 30 percent due to increased activities in the region including on-going constructions in Hudur. Annual comparison indicates mild to moderate increases in wage rates in most regions of the country in November with the highest increase (30%) being recorded in Bakool (Hudur and El-Barde).

**Terms of Trade (ToT)** between daily labor wage and local cereals either remained stable or changed at mild rates (1-3kg/daily labor wage) month-on-month in November 2015 in most parts of the country with the highest change recorded in Bakool (3kg/daily wage-increase) and Middle Juba (3kg/daily wage-decrease). The ToT between local quality goat and cereals changed at mild rates in most regions of the country. Annual comparison indicated increases in ToT between daily labor wage and local cereals in most regions of the country with the highest increase (5kg/daily wage) recorded in Shabbele region, while ToT between local quality goat and cereals changed at mild to moderate rates across the country with the highest change (increase of 64Kg/local quality goat) recorded in Lower Shabbele due to significant decrease in local cereal prices compared to November 2014.

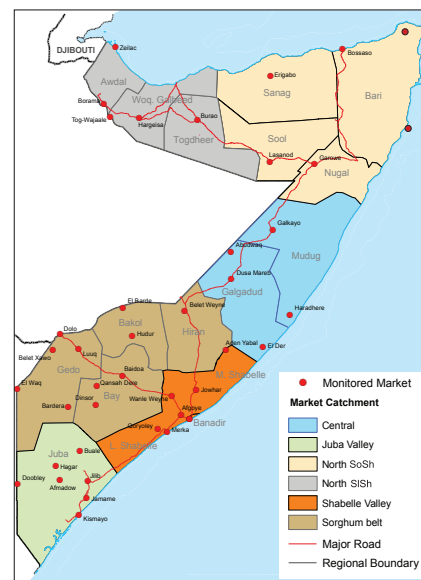
### Towns Affected by Trade Disruption (Bulo Burto, Wajid and Hudur)

**Labor (unskilled) wages** increased significantly (25-38%) in all the three markets in November 2015 due to increased labor opportunities in the respective regions. Annual comparison indicated increase in wage rates in Hudur (84%).

**Terms of Trade (ToTs)** between daily labor wage and local cereals and between Local quality goat and local cereals remained relatively stable month-on-month in these markets apart from Hudur where ToT between Local quality goat and local cereals declined (17Kg/local quality goat). ToTs are higher compared to a year ago in Hudur due to decrease in cereal prices and increase in labor wages and goat prices.

**Local grains prices** remained stable in Bulo-Burto, increased in Hudur (15%) but declined in Wajid (17%) in November 2015. Annual comparison indicated moderate (12%) decline in red sorghum prices in Hudur.

**Prices of imported food** items (rice, sugar, vegetable oil, wheat flour) change at mild rates in Hudur and Bulo-Burto, while in Wajid the prices of most food imports declined (10-16%) month-on-month in November. Annual comparison indicated decline in prices in Hudur.



This Market Data Update is a monthly report that presents analysis of market information and is produced regularly as part of the monthly monitoring process.

The weekly price data is collected from 48 main markets and 51 rural markets throughout Somalia since 1995.

Market analysis is an integral part of all of FSNAU's annual food security projections and seasonal technical reports (Technical Reports on FSNAU Post *Gu* and Post *Deyr* Analysis).

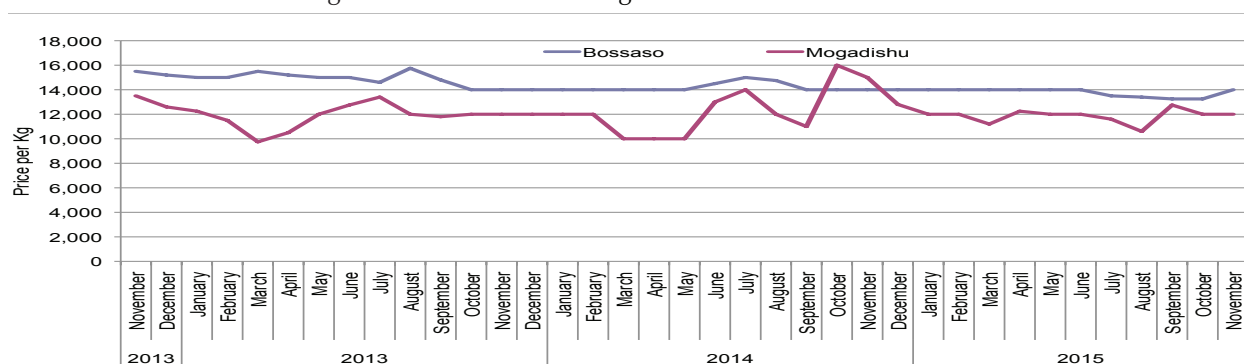
Detailed market data are available online on [www.fsnau.org/ids](http://www.fsnau.org/ids).

# National Trends: CPI, Exchange Rates, Cereal Prices and Relative Purchasing Power

Table 1: ToT between Cereals (kg) and Daily Labour Wage Rate, by Region (September)

Regions	November 2015 (kg)	kg change from		
		Oct - 2015	Nov - 2014	November 5 yr Average (2010 - 2014)
Banadir/Mogadishu	19	-2	0	2
Bay	16	1	2	3
Bakool	6	2	3	1
Gedo	14	-1	-1	0
Juba	11	-1	2	2
Shabelle	14	2	5	4
Northwest	12	1	4	5
Northeast	9	0	1	3
Central	5	0	0	1

Figure 1: Wheat Prices: Mogadishu and Bossaso Markets



Source: FSNAU Manfest Price Monitoring System

Figure 2: Terms of Trade Between Wage Rates and Selected Cereals

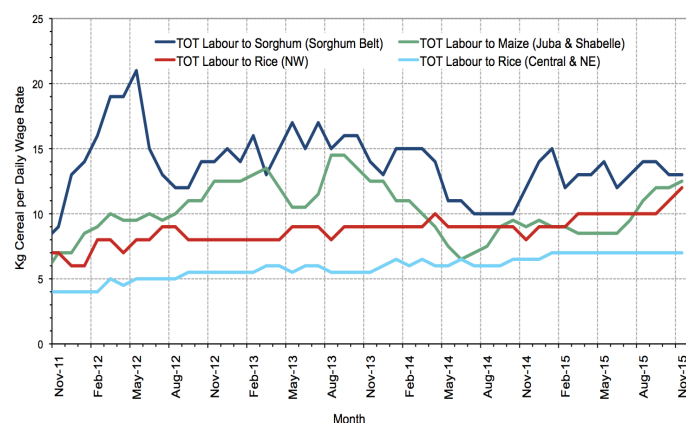


Figure 3: Monthly Exchange Rate for Selected Regions (SoSh and SiSh to USD)

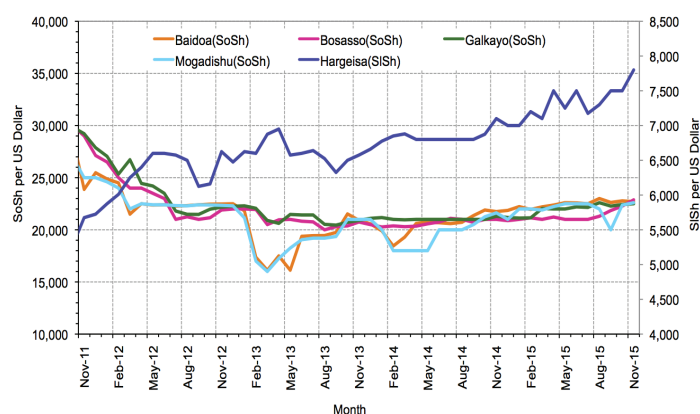


Figure 4: Monthly Trends in Consumer Price Index (CPI, March 2007=100)

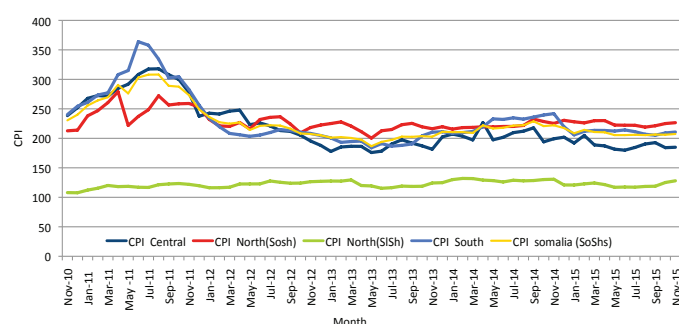
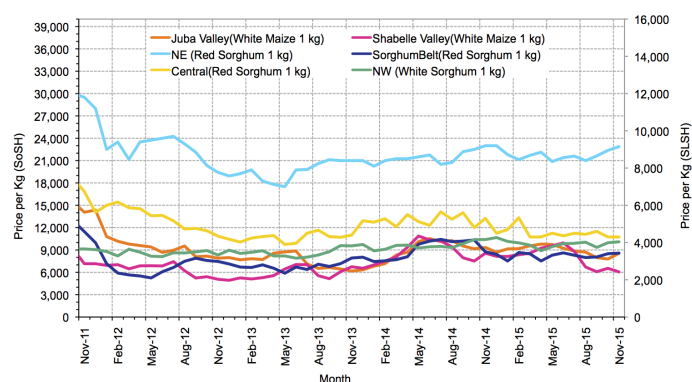


Figure 5: Monthly Trends in Local Cereal Prices



# Regional analysis: Juba Regions

Indicator	5-Year Average (2010-2014)	Nov-14	Oct-15	Nov-15 Nominal Price	Nov-15 Real (Deflated) Price	% Change Previous Month	% Change Same Month Previous Year	% Change 5-year avg (2010-2014)
<b>Imported Commodities Prices</b>								
Diesel 1 litre	33,907	28,179	25,000	24,214	11,393	-3%	-14%	-29%
Imported Red Rice 1kg	19,907	17,500	15,929	16,429	7,698	3%	-6%	-17%
Petrol 1 litre	34,249	29,071	25,357	29,857	14,072	18%	3%	-13%
Sugar	26,265	19,321	17,857	19,543	9,176	9%	1%	-26%
Vegetable Oil 1 litre	43,335	33,821	29,857	32,036	15,106	7%	-5%	-26%
Wheat Flour 1kg	18,745	17,607	15,750	15,907	7,450	1%	-10%	-15%
Wheat Grain 1kg	22,600	-	-	-	-	-	-	-
<b>Cereal Prices</b>								
Red Sorghum 1kg	8,387	9,000	8,000	7,000	3,223	-13%	-22%	-17%
White Maize 1kg	9,522	9,464	7,929	8,761	4,058	10%	-7%	-8%
<b>Livestock &amp; Livestock Product Prices</b>								
Camel Local Quality (Head)	9,546,268	11,098,476	8,807,143	9,429,833	4,475,810	7%	-15%	-1%
Cattle Local Quality (Head)	4,054,571	4,331,875	3,922,917	4,256,250	2,020,147	8%	-2%	5%
Fresh Camel Milk 1 litre	19,949	18,625	19,714	19,367	9,093	-2%	4%	-3%
Goat Export Quality (Head)	1,493,593	1,415,036	1,189,286	1,319,600	626,254	11%	-7%	-12%
Goat Local Quality (Head)	997,978	980,214	821,786	958,214	454,720	17%	-2%	-4%
<b>Other Essential Items</b>								
Charcoal 50kg	85,864	91,786	85,714	97,143	46,009	13%	6%	13%
Cowpeas 1 kg	24,236	26,543	20,143	21,891	10,291	9%	-18%	-10%
Unskilled Labor Wage Rate	84,506	81,321	100,119	97,007	45,945	-3%	19%	15%
Firewood Bundle	9,453	12,000	8,286	8,286	3,833	0%	-31%	-12%
Local Sesame Oil 1 litre	78,871	86,464	67,286	69,429	32,855	3%	-20%	-12%
Exchange Rate (Somali Shilling per USD)	24,748	21,696	22,714	22,914	10,776	1%	6%	-7%
<b>Terms of Trade</b>								
Labour Wage (Daily)/ Cereal (Maize(Kg))	9	9	13	11	-	-15%	22%	22%
Local Goat (Head)/ Cereal (Maize(Kg))	115	104	104	109	-	5%	5%	-5%
<b>Price Indices</b>								
Consumer Price Index	-	242	209	211	-	1%	-13%	-

Figure 6: Trends in Cereal Prices

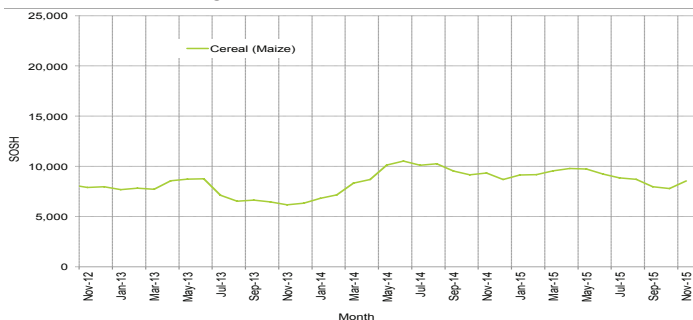


Figure 7: Trends in Wage Rates and Relative Purchasing Power

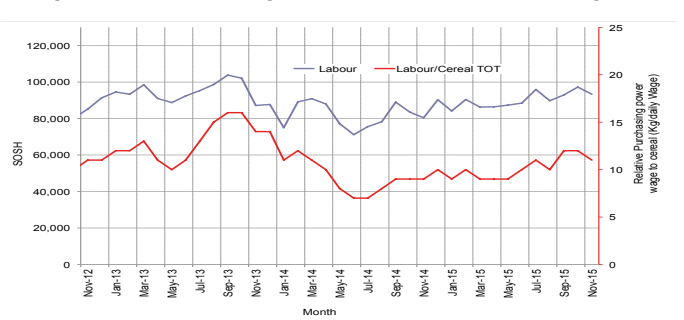


Figure 8: Imported Commodity Prices Compared to Exchange Rate

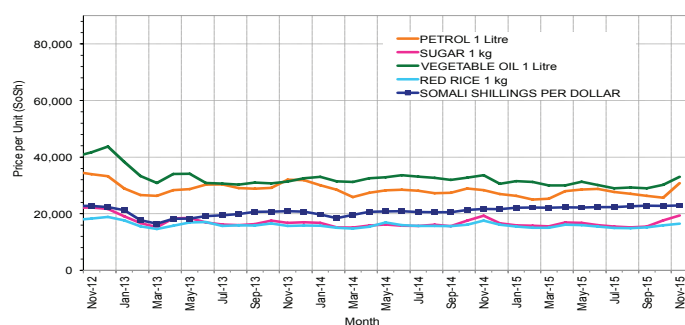


Figure 10: Exchange Rate

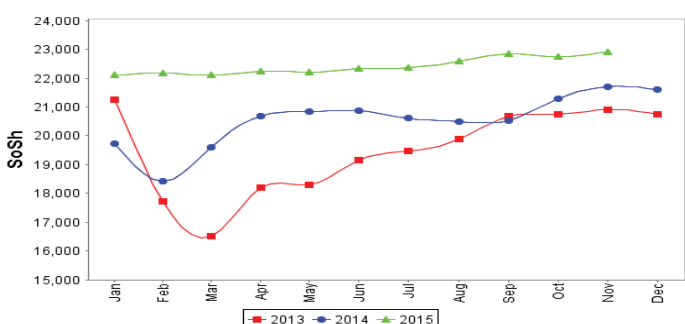


Figure 9: Goat Local Quality

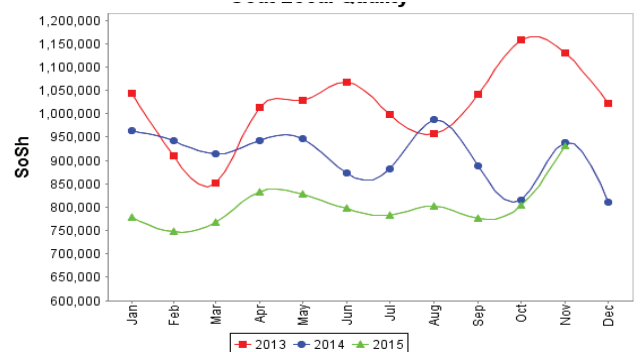
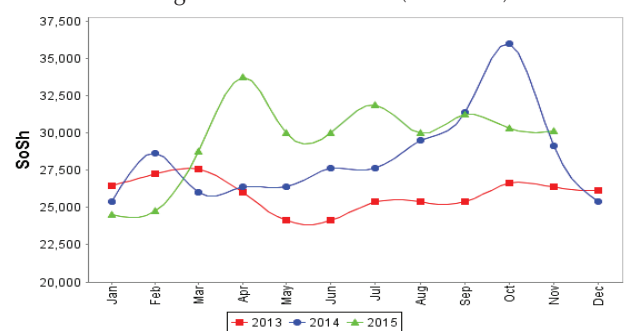


Figure 11: Water Drum (200 litres)



# Regional analysis: Sorghum Belt Regions (Bay, Bakool, Gedo and Hiran)

Indicator	5-Year Average (2010-2014)	Nov-14	Oct-15	Nov-15 Nominal Price	Nov-15 Real (Deflated) Price	% Change Previous Month	% Change Same Month Previous Year	% Change 5-year avrg (2010-2014)
<b>Imported Commodities Prices</b>								
Diesel 1 litre	32,854	31,875	27,477	27,273	12,845	-1%	-14%	-17%
Imported Red Rice 1kg	21,282	18,409	18,636	18,523	8,692	-1%	1%	-13%
Petrol 1 litre	32,565	31,114	29,273	29,114	13,719	-1%	-6%	-11%
Sugar	25,951	19,736	19,068	19,114	8,973	0%	-3%	-26%
Vegetable Oil 1 litre	45,062	39,682	35,409	36,750	17,344	4%	-7%	-18%
Wheat Flour 1kg	19,595	18,818	18,523	18,159	8,519	-2%	-4%	-7%
Wheat Grain 1kg	11,088	16,188	21,000	23,000	10,817	10%	42%	107%
<b>Cereal Prices</b>								
Red Sorghum 1kg	9,140	8,755	8,500	8,580	3,973	1%	-2%	-6%
White Maize 1kg	10,211	10,581	9,264	9,711	4,509	5%	-8%	-5%
<b>Livestock &amp; Livestock Product Prices</b>								
Camel Local Quality (Head)	12,051,318	13,470,000	12,585,000	12,508,750	5,937,231	-1%	-7%	4%
Cattle Local Quality (Head)	3,692,715	4,353,125	3,535,714	3,412,500	1,619,658	-3%	-22%	-8%
Fresh Camel Milk 1 litre	21,205	19,025	19,100	16,225	7,601	-15%	-15%	-23%
Goat Export Quality (Head)	1,604,095	1,625,455	1,500,000	1,465,455	695,484	-2%	-10%	-9%
Goat Local Quality (Head)	1,030,163	982,727	948,341	887,955	421,372	-6%	-10%	-14%
<b>Other Essential Items</b>								
Charcoal 50kg	149,581	158,250	176,125	170,375	80,769	-3%	8%	14%
Cowpeas 1 kg	29,316	28,682	24,886	26,830	12,635	8%	-6%	-8%
Unskilled Labor Wage Rate	106,136	107,364	109,250	114,477	54,237	5%	7%	8%
Firewood Bundle	6,318	6,886	6,545	6,682	3,072	2%	-3%	6%
Local Sesame Oil 1 litre	80,779	90,938	74,750	75,000	35,499	0%	-18%	-7%
Exchange Rate (Somali Shilling per USD)	24,250	21,255	22,725	22,650	10,651	0%	7%	-7%
<b>Terms of Trade</b>								
Labour Wage (Daily)/ Cereal (Sorghum(Kg))	11	12	13	13	-	0%	8%	18%
Local Goat (Head)/ Cereal (Sorghum(Kg))	118	112	112	103	-	-8%	-8%	-13%
<b>Price Indices</b>								
Consumer Price Index	-	242	209	211	-	1%	-13%	-

Figure 12: Trends in Cereal Prices

Figure 13: Trends in Wage Rates and Relative Purchasing Power

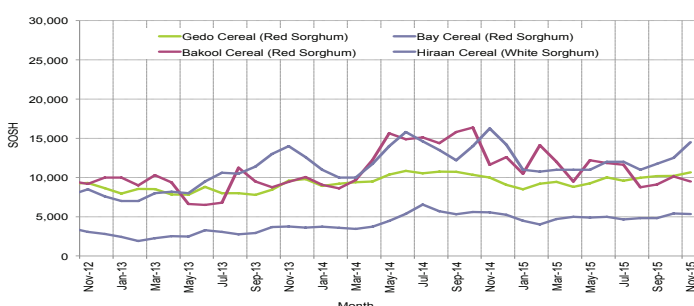


Figure 14: Imported Commodity Prices Compared to Exchange Rate

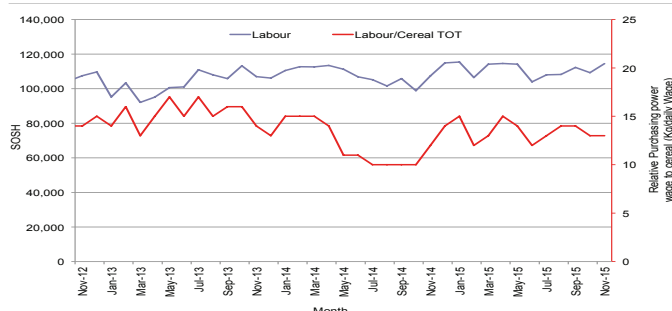


Figure 15: Goat Local Quality

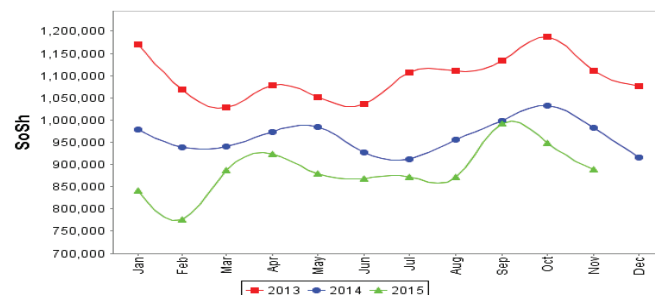


Figure 17: Water Drum (200 litres)

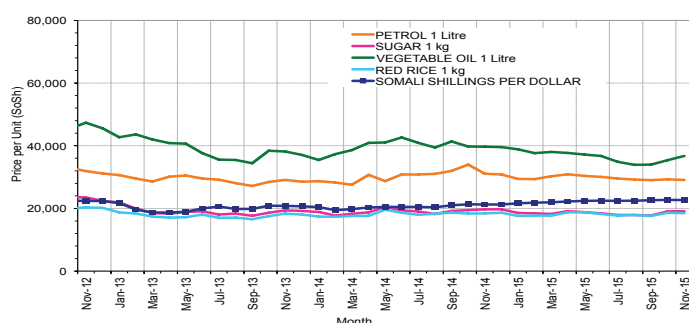
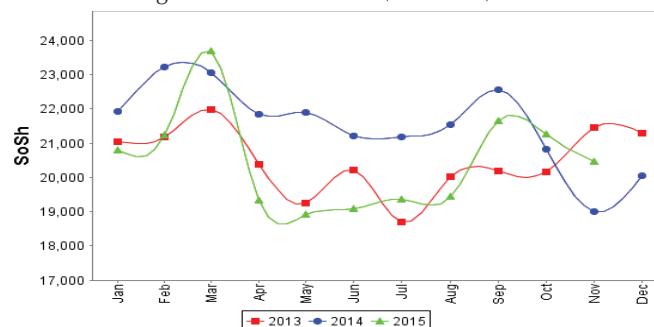
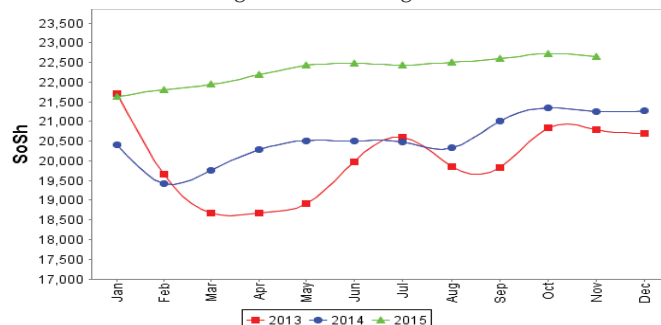


Figure 16: Exchange Rate



# Regional analysis: Shabelle Regions

Indicator	5-Year Average (2010-2014)	Nov-14	Oct-15	Nov-15 Nominal Price	Nov-15 Real (Deflated) Price	% Change Previous Month	% Change Same Month Previous Year	% Change 5-year avg (2010-2014)
<b>Imported Commodities Prices</b>								
Diesel 1 litre	29,808	26,833	23,125	22,833	10,738	-1%	-15%	-23%
Imported Red Rice 1kg	19,066	15,833	15,333	15,000	7,020	-2%	-5%	-21%
Petrol 1 litre	31,649	29,167	27,583	27,792	13,092	1%	-5%	-12%
Sugar	22,841	16,792	15,542	15,667	7,336	1%	-7%	-31%
Vegetable Oil 1 litre	34,958	28,333	24,667	25,000	11,766	1%	-12%	-28%
Wheat Flour 1kg	17,856	17,700	16,167	14,917	6,980	-8%	-16%	-16%
Wheat Grain 1kg	15,417	27,000	17,000	17,000	7,969	0%	-37%	10%
<b>Cereal Prices</b>								
Red Sorghum 1kg	11,278	11,704	10,014	10,167	4,726	2%	-13%	-10%
White Maize 1kg	7,161	8,572	6,542	6,057	2,775	-7%	-29%	-15%
<b>Livestock &amp; Livestock Product Prices</b>								
Camel Local Quality (Head)	15,699,501	17,240,000	18,070,000	18,005,000	8,546,050	0%	4%	15%
Cattle Local Quality (Head)	5,107,100	5,955,000	5,640,000	5,430,000	2,577,273	-4%	-9%	6%
Fresh Camel Milk 1 litre	20,416	18,833	23,625	22,167	10,422	-6%	18%	9%
Goat Export Quality (Head)	1,812,175	1,663,750	1,990,625	1,827,500	867,331	-8%	10%	1%
Goat Local Quality (Head)	1,298,250	1,368,333	1,341,667	1,307,917	620,708	-3%	-4%	1%
<b>Other Essential Items</b>								
Charcoal 50kg	127,100	119,764	149,611	168,944	80,090	13%	41%	33%
Cowpeas 1 kg	25,352	27,489	19,147	20,350	9,559	6%	-26%	-20%
Unskilled Labor Wage Rate	68,445	74,875	77,667	84,333	39,929	9%	13%	23%
Firewood Bundle	6,391	7,083	6,708	7,375	3,401	10%	4%	15%
Local Sesame Oil 1 litre	66,045	74,350	48,833	42,958	20,290	-12%	-42%	-35%
Exchange Rate (Somali Shilling per USD)	24,673	21,754	22,492	22,550	10,603	0%	4%	-9%
<b>Terms of Trade</b>								
Labour Wage (Daily)/ Cereal (Maize(Kg))	10	9	12	14	-	17%	56%	40%
Local Goat (Head)/ Cereal (Maize(Kg))	190	160	205	216	-	5%	35%	14%
<b>Price Indices</b>								
Consumer Price Index	-	242	209	211	-	1%	-13%	-

Figure 18: Trends in Cereal Prices

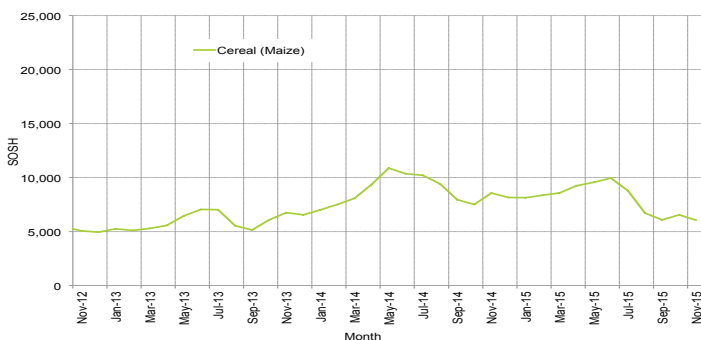


Figure 19: Trends in Wage Rates and Relative Purchasing Power

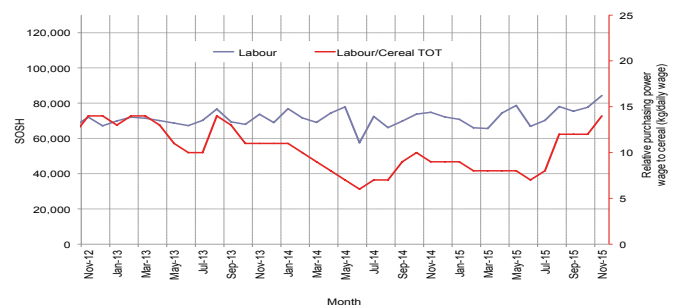


Figure 20: Imported Commodity Prices Compared to Exchange Rate

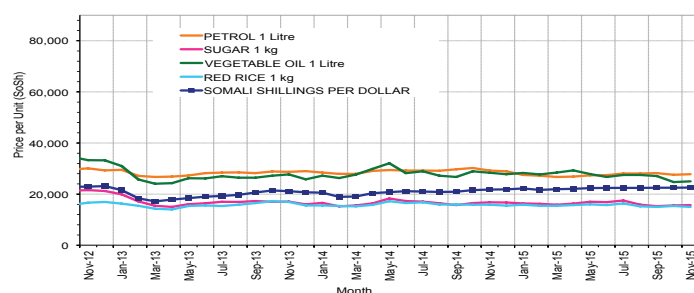


Figure 22: Exchange Rate

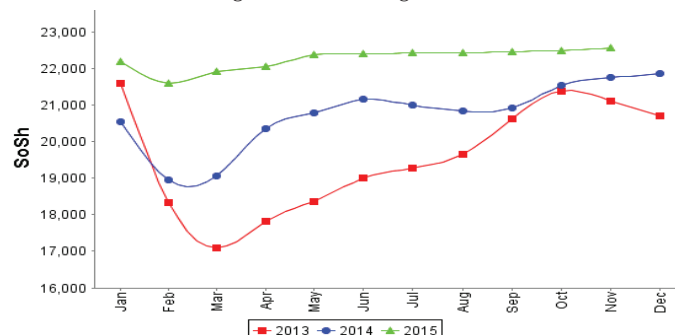


Figure 21: Goat Local Quality

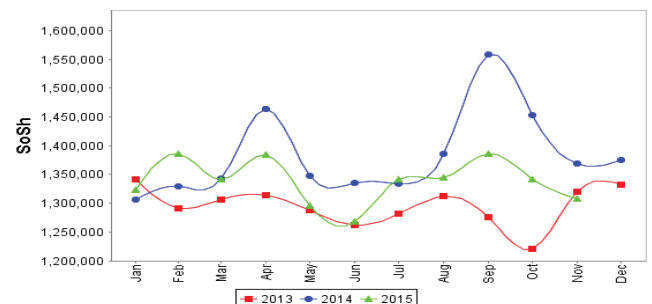
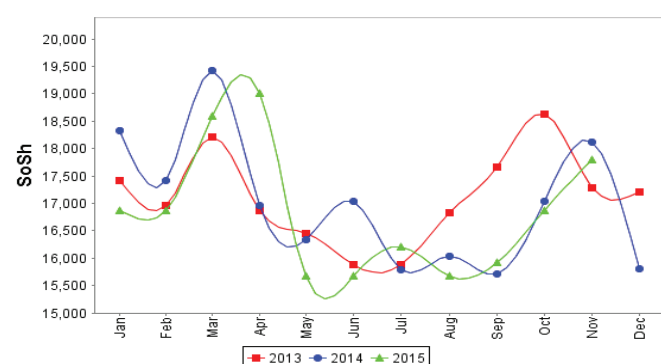


Figure 23: Water Drum (200 litres)





# Regional analysis: Banadir Region

Indicator	5-Year Average (2010-2014)	Nov-14	Oct-15	Nov-15 Nominal Price	Nov-15 Real (Deflated) Price	% Change Previous Month	% Change Same Month Previous Year	% Change 5-year avrg (2010-2014)
<b>Imported Commodities Prices</b>								
Diesel 1 litre	24,970	21,250	17,292	17,292	8,108	0%	-19%	-31%
Imported Red Rice 1kg	16,505	13,292	12,521	12,500	5,833	0%	-6%	-24%
Petrol 1 litre	25,076	21,167	21,417	19,775	9,286	-8%	-7%	-21%
Sugar	19,695	14,167	12,917	13,208	6,169	2%	-7%	-33%
Vegetable Oil 1 litre	32,671	23,813	22,125	22,125	10,402	0%	-7%	-32%
Wheat Flour 1kg	14,570	14,771	12,833	12,833	5,991	0%	-13%	-12%
Wheat Grain 1kg	12,645	10,500	11,750	11,667	5,438	-1%	11%	-8%
<b>Cereal Prices</b>								
Red Sorghum 1kg	8,261	8,825	7,475	6,721	3,090	-10%	-24%	-19%
White Maize 1kg	9,034	10,513	8,283	8,254	3,818	0%	-21%	-9%
<b>Livestock &amp; Livestock Product Prices</b>								
Camel Local Quality (Head)	14,500,000	-	-	-	-	-	-	-
Cattle Local Quality (Head)	4,000,000	-	-	-	-	-	-	-
Fresh Camel Milk 1 litre	21,811	23,000	22,917	23,000	10,817	0%	0%	5%
Goat Export Quality (Head)	2,296,875	-	2,075,000	2,425,000	1,150,937	17%	-	6%
Goat Local Quality (Head)	1,989,625	2,395,000	1,812,500	1,917,500	910,050	6%	-20%	-4%
<b>Other Essential Items</b>								
Charcoal 50kg	181,693	190,042	199,625	229,208	108,695	15%	21%	26%
Cowpeas 1 kg	24,561	23,904	20,667	22,000	10,342	6%	-8%	-10%
Unskilled Labor Wage Rate	106,383	106,667	107,083	107,083	50,727	0%	0%	1%
Firewood Bundle	7,746	8,000	8,250	8,100	3,745	-2%	1%	5%
Local Sesame Oil 1 litre	64,688	73,833	55,792	55,917	26,441	0%	-24%	-14%
Exchange Rate (Somali Shilling per USD)	24,227	21,343	22,492	22,500	10,580	0%	5%	-7%
<b>Terms of Trade</b>								
Labour Wage (Daily)/ Cereal (Maize(Kg))	12	10	13	13	-	0%	30%	8%
Local Goat (Head)/ Cereal (Maize(Kg))	227	228	219	232	-	6%	2%	2%
<b>Price Indices</b>								
Consumer Price Index	-	242	209	211	-	1%	-13%	-

Figure 24: Trends in Cereal Prices

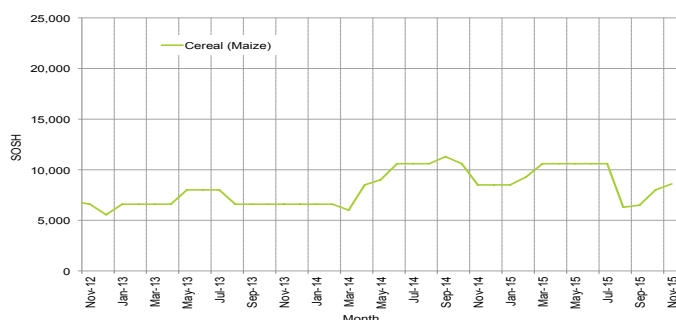


Figure 26: Imported Commodity Prices Compared to Exchange Rate

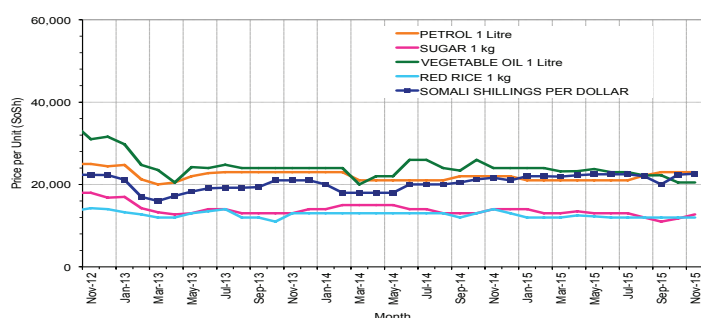


Figure 28: Exchange Rate

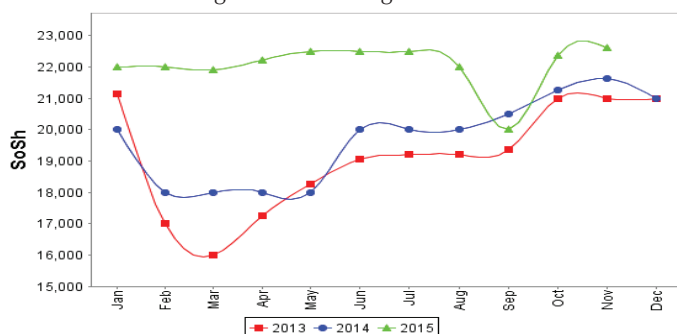


Figure 25: Bakara: Trends in Wage Rates and Relative Purchasing Power

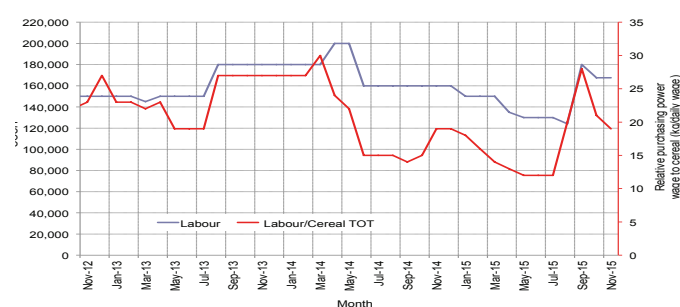


Figure 27: Goat Local Quality

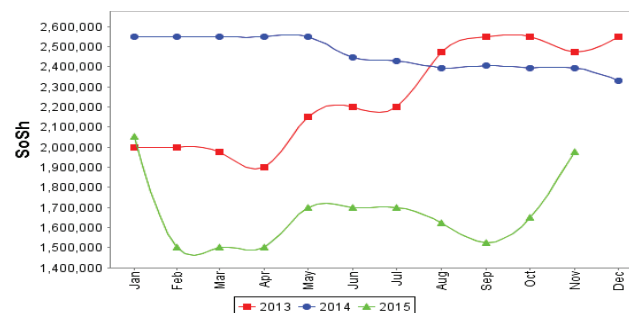
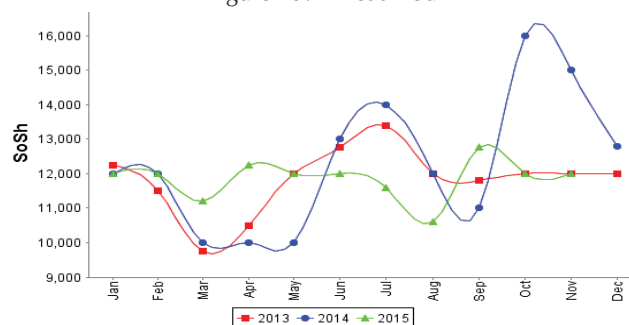


Figure 29: Wheat Flour



# Regional analysis: Central Regions

Indicator	5-Year Average (2010-2014)	Nov-14	Oct-15	Nov-15 Nominal Price	Nov-15 Real (Deflated) Price	% Change Previous Month	% Change Same Month Previous Year	% Change 5-year avrg (2010-2014)
<b>Imported Commodities Prices</b>								
Diesel 1 litre	31,152	28,300	23,300	20,950	11,231	-10%	-26%	-33%
Imported Red Rice 1kg	22,952	18,000	16,800	17,060	9,127	2%	-5%	-26%
Petrol 1 litre	27,866	24,800	24,600	23,400	12,556	-5%	-6%	-16%
Sugar	26,380	19,800	18,050	18,000	9,636	0%	-9%	-32%
Vegetable Oil 1 litre	47,450	39,000	34,500	35,150	18,912	2%	-10%	-26%
Wheat Flour 1kg	18,974	16,800	15,400	15,440	8,251	0%	-8%	-19%
Wheat Grain 1kg	14,696	16,500	17,000	16,925	9,054	0%	3%	15%
<b>Cereal Prices</b>								
Red Sorghum 1kg	12,932	13,250	10,750	10,750	5,714	0%	-19%	-17%
White Maize 1kg	13,052	12,500	13,200	13,200	7,040	0%	6%	1%
<b>Livestock &amp; Livestock Product Prices</b>								
Camel Local Quality (Head)	9,895,000	11,081,250	12,650,000	13,150,000	7,112,371	4%	19%	33%
Cattle Local Quality (Head)	1,962,500	-	-	-	-	-	-	-
Fresh Camel Milk 1 litre	31,224	27,200	29,900	29,040	15,607	-3%	7%	-7%
Goat Export Quality (Head)	1,422,866	1,237,500	1,337,500	1,325,000	716,556	-1%	7%	-7%
Goat Local Quality (Head)	1,112,700	935,500	1,006,000	1,004,000	542,936	0%	7%	-10%
<b>Other Essential Items</b>								
Charcoal 50kg	188,900	184,000	156,500	159,300	86,061	2%	-13%	-16%
Cowpeas 1 kg	29,304	22,800	22,300	22,940	12,308	3%	1%	-22%
Unskilled Labor Wage Rate	84,610	84,000	92,000	92,000	49,660	0%	10%	9%
Firewood Bundle	35,790	33,000	33,800	33,800	18,181	0%	2%	-6%
Local Sesame Oil 1 litre	90,220	87,850	87,500	88,500	47,767	1%	1%	-2%
Exchange Rate (Somali Shilling per USD)	24,719	21,500	22,360	22,300	11,961	0%	4%	-10%
<b>Terms of Trade</b>								
Labour Wage (Daily)/ Cereal (Rice(Kg))	4	5	5	5	-	0%	0%	25%
Local Goat (Head)/ Cereal (Rice(Kg))	50	52	60	59	-	-2%	13%	18%
Camel (Head)/Cereal (Kg)	463	616	753	771	-	2%	25%	67%
<b>Price Indices</b>								
Consumer Price Index	-	199	184	185	-	0%	-7%	-

Figure 30: Trends in Cereal Prices

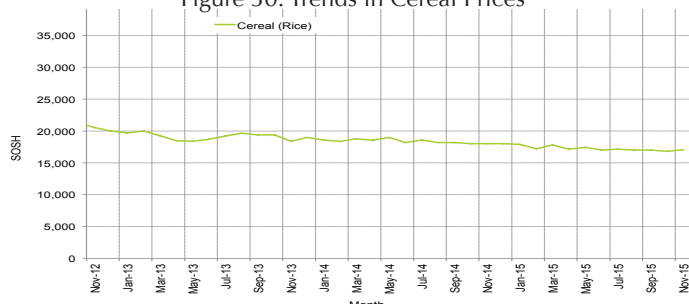


Figure 31: Trends in wage rates and relative purchasing power

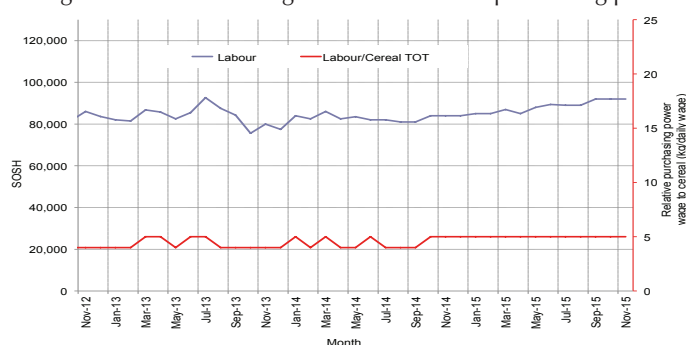


Figure 32: Imported Commodity Prices Compared to Exchange Rate

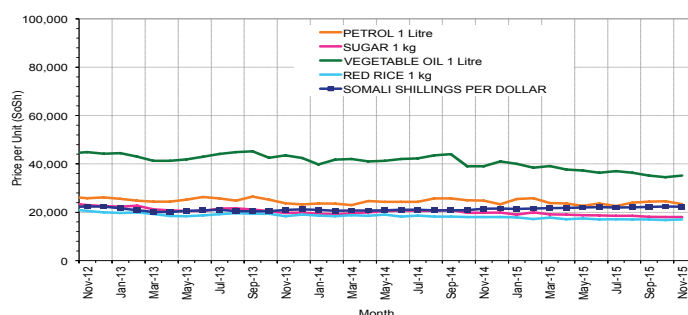


Figure 33: Goat Local Quality

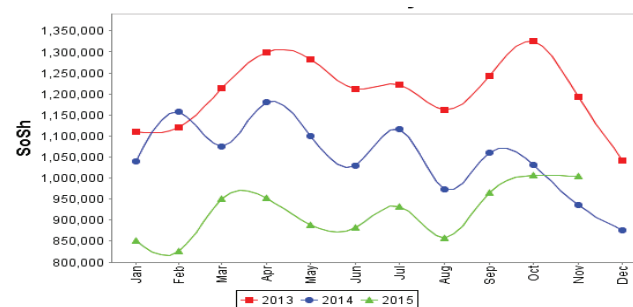


Figure 34: Exchange Rate

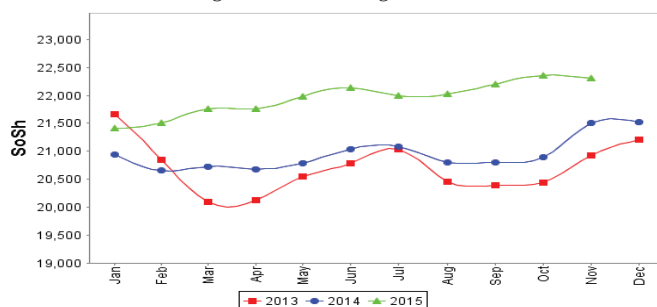
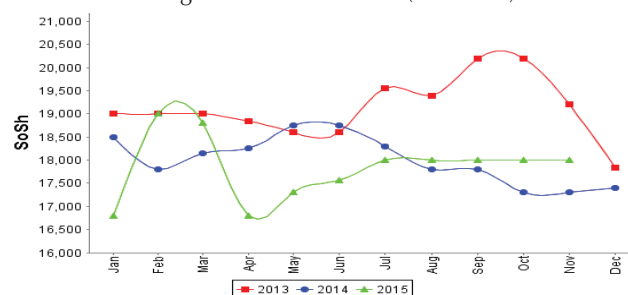


Figure 35: Water Drum (200 litres)



# Regional analysis: Northeast Regions

Indicator	5-Year Average (2010-2014)	Nov-14	Oct-15	Nov-15 Nominal Price	Nov-15 Real (Deflated) Price	% Change Previous Month	% Change Same Month Previous Year	% Change 5-year avrg (2010-2014)
<b>Imported Commodities Prices</b>								
Diesel 1 litre	26,293	22,594	16,438	15,563	6,770	-5%	-31%	-41%
Imported Red Rice 1kg	18,450	14,875	14,188	14,375	6,246	1%	-3%	-22%
Petrol 1 litre	23,837	20,375	19,375	19,500	8,508	1%	-4%	-18%
Sugar	23,375	16,813	15,463	15,625	6,797	1%	-7%	-33%
Vegetable Oil 1 litre	39,850	32,625	30,750	31,188	13,668	1%	-4%	-22%
Wheat Flour 1kg	17,025	14,375	13,688	13,813	5,998	1%	-4%	-19%
Wheat Grain 1kg	26,325	24,500	20,500	21,625	9,446	5%	-12%	-18%
<b>Cereal Prices</b>								
Red Sorghum 1kg	21,633	23,000	22,375	22,875	9,998	2%	-1%	6%
White Maize 1kg	19,200	20,500	21,000	22,000	9,612	5%	7%	15%
<b>Livestock &amp; Livestock Product Prices</b>								
Camel Local Quality (Head)	14,990,626	15,593,750	14,412,500	14,712,500	6,494,562	2%	-6%	-2%
Cattle Local Quality (Head)	8,000,000	8,625,000	8,400,000	8,875,000	3,917,666	6%	3%	11%
Fresh Camel Milk 1 litre	37,108	30,188	40,021	38,021	16,684	-5%	26%	2%
Goat Export Quality (Head)	1,461,166	1,518,750	1,375,000	1,362,500	601,360	-1%	-10%	-7%
Goat Local Quality (Head)	1,329,000	1,216,250	1,218,125	1,186,250	523,556	-3%	-2%	-11%
<b>Other Essential Items</b>								
Charcoal 50kg	397,125	397,500	372,625	376,250	165,991	1%	-5%	-5%
Cowpeas 1 kg	39,100	31,500	29,667	33,167	14,541	12%	5%	-15%
Unskilled Labor Wage Rate	120,437	130,000	131,250	128,125	56,459	-2%	-1%	6%
Firewood Bundle	45,525	52,500	46,125	48,500	21,310	5%	-8%	7%
Local Sesame Oil 1 litre	90,133	95,938	96,750	98,438	43,354	2%	3%	9%
Exchange Rate (Somali Shilling per USD)	24,545	21,031	21,556	21,975	9,601	2%	4%	-10%
<b>Terms of Trade</b>								
Labour Wage (Daily)/ Cereal (Rice(Kg))	6	8	9	9	-	0%	13%	50%
Local Goat (Head)/ Cereal (Rice(Kg))	73	82	86	83	-	-3%	1%	14%
<b>Price Indices</b>								
Consumer Price Index	-	225	225	227	-	1%	1%	-

Figure 36: Trends in Cereal Prices

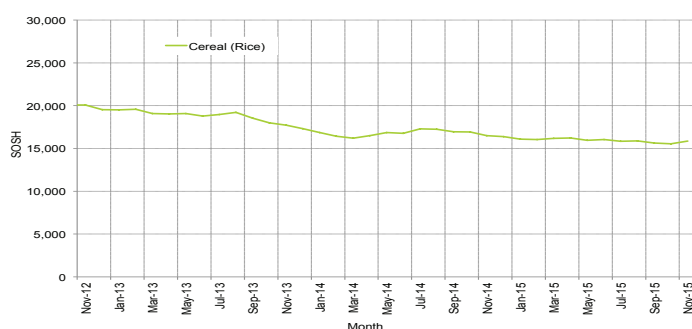


Figure 38: Imported Commodity Prices Compared to Exchange Rate

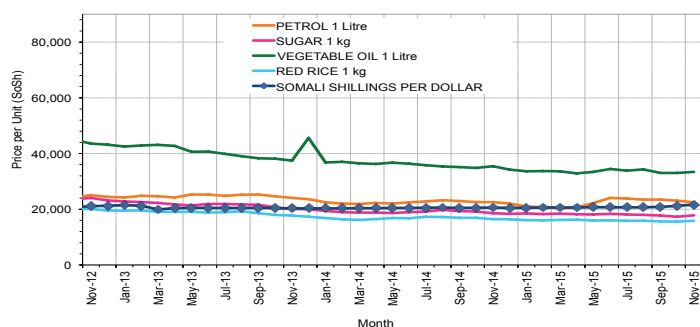


Figure 40: Exchange Rate

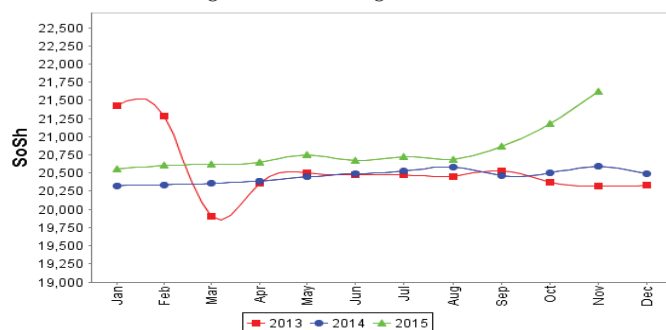


Figure 37: Trends in Wage Rates and Relative Purchasing Power

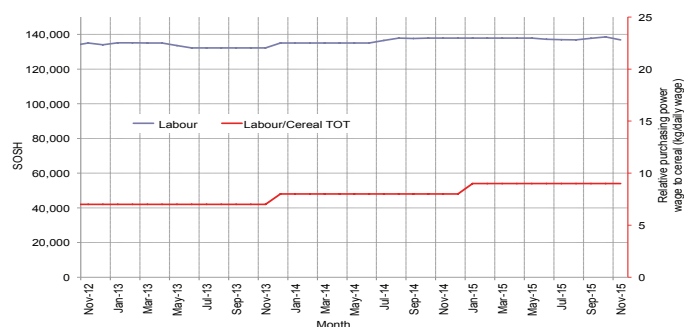


Figure 39: Goat Local Quality

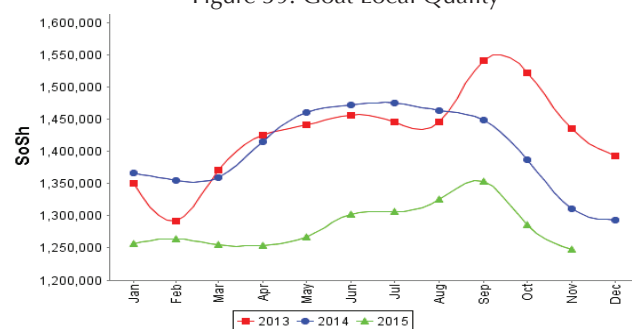
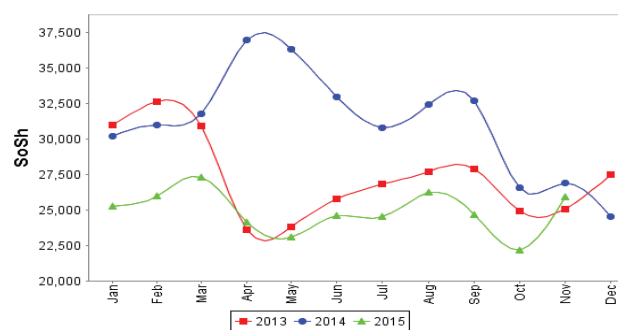


Figure 41: Water Drum (200 litres)





# Regional analysis: Northwest Regions

Indicator	5-Year Average (2010-2014)	Nov-14	Oct-15	Nov-15 Nominal Price	Nov-15 Real (Deflated) Price	% Change Previous Month	% Change Same Month Previous Year	% Change 5-year avrg (2010-2014)
<b>Imported Commodities Prices</b>								
Diesel 1 litre	6,405	7,130	5,950	6,360	4,869	7%	-11%	-1%
Imported Red Rice 1kg	5,047	5,280	5,110	4,990	3,798	-2%	-5%	-1%
Petrol 1 litre	6,820	8,300	7,720	7,530	5,783	-2%	-9%	10%
Sugar	6,046	5,840	5,630	5,550	4,236	-1%	-5%	-8%
Vegetable Oil 1 litre	11,600	12,711	12,800	13,500	10,447	5%	6%	16%
Wheat Flour 1kg	4,317	4,600	3,980	4,530	3,439	14%	-2%	5%
Wheat Grain 1kg	3,127	3,500	3,625	3,500	2,634	-3%	0%	12%
<b>Cereal Prices</b>								
White Sorghum 1kg	3,499	4,160	3,990	4,040	3,056	1%	-3%	15%
Yellow Maize 1kg	3,372	3,700	3,875	4,250	3,220	10%	15%	26%
<b>Livestock &amp; Livestock Product Prices</b>								
Camel Local Quality (Head)	2,801,966	4,173,000	4,277,500	3,968,750	3,100,464	-7%	-5%	42%
Cattle Local Quality (Head)	1,802,066	2,289,167	2,242,292	2,256,667	1,762,909	1%	-1%	25%
Fresh Camel Milk 1 litre	5,497	6,600	8,650	8,400	6,462	-3%	27%	53%
Goat Export Quality (Head)	399,300	491,950	487,333	456,083	356,212	-6%	-7%	14%
Goat Local Quality (Head)	292,019	354,550	370,500	392,250	306,343	6%	11%	34%
<b>Other Essential Items</b>								
Charcoal 50kg	45,867	61,800	57,250	64,750	50,486	13%	5%	41%
Cowpeas 1 kg	9,964	11,938	9,750	10,750	8,298	10%	-10%	8%
Unskilled Labor Wage Rate	37,503	44,713	56,520	58,700	45,759	4%	31%	57%
Firewood Bundle	3,106	4,167	4,567	4,833	3,676	6%	16%	56%
Local Sesame Oil 1 litre	27,903	34,250	34,688	32,438	25,242	-6%	-5%	16%
Exchange Rate (Somaliland Shilling per USD)	6,189	6,970	7,520	7,585	5,826	1%	9%	23%
<b>Terms of Trade</b>								
Labour Wage (Daily)/ Cereal (Rice(Kg))	7	8	11	12	-	9%	50%	71%
Local Goat (Head)/ Cereal (Rice(Kg))	57	67	73	79	-	8%	18%	39%
<b>Price Indices</b>								
Consumer Price Index	-	131	125	128	-	2%	-2%	-

Figure 42: Trends in Cereal Prices

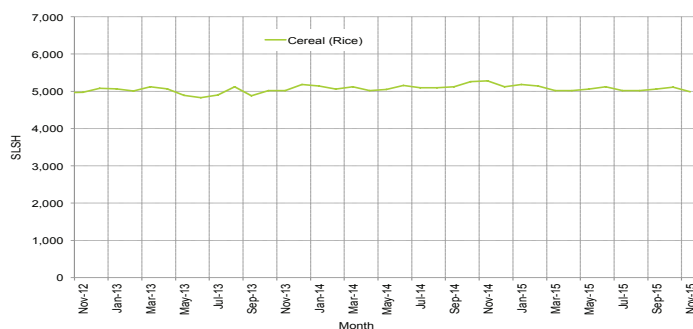


Figure 44: Imported Commodity Prices Compared to Exchange Rate

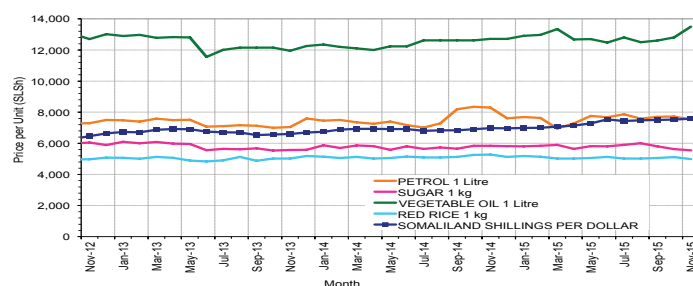


Figure 46: Exchange Rate

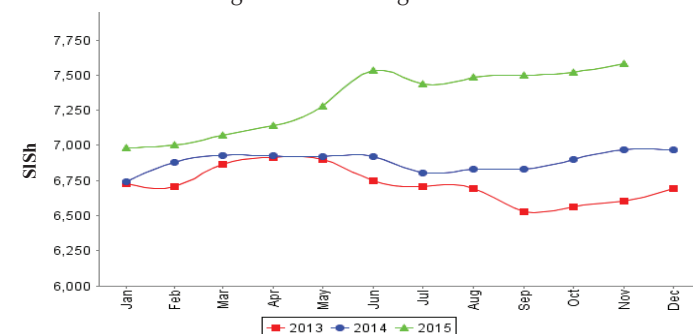


Figure 43: Trends in Wage Rates and Relative Purchasing Power

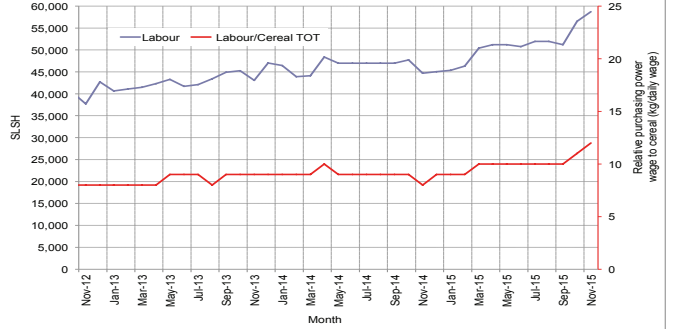


Figure 45: Goat Local Quality

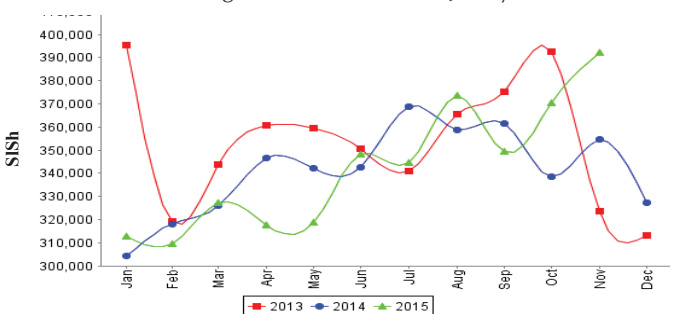
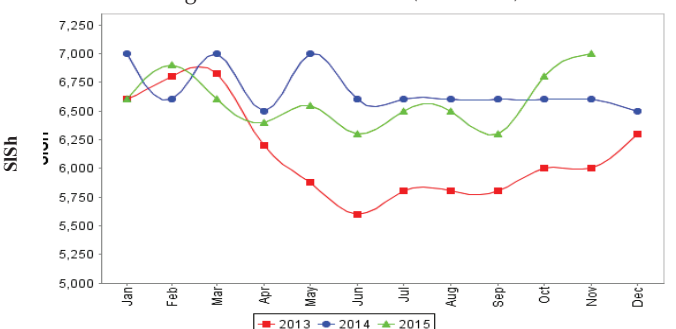


Figure 47: Water Drum (200 litres)



# Trends in Livestock Exports

Table 1: Berbera Livestock Exports (Number of Heads)

	1999	2000	2001	2002	2003	2004	2005	2006	2007	2008	2009	2010	2011	2012	2013	2014	Jan-Sep 2015
Shoats	2,048,136	1,601,083	51,546	341,711	563,107	859,404	1,023,795	1,017,242	1,350,054	1,219,519	1,556,003	2,584,810	3,104,684	3,219,584	2,888,955	3,089,592	3,131,915
Cattle	89,967	63,263	20,973	37,547	84,312	131,852	148,151	85,631	88,143	80,051	88,005	133,021	150,934	190,354	20,875	252,597	132,254
Camel	37,430	16,984	3,473	18,864	21,874	5,147	5,069	22,810	14,245	26,515	20,206	92,651	107,281	102,664	75,728	64,578	55,342

Figure 48: Berbera Livestock Exports (Number of Heads)

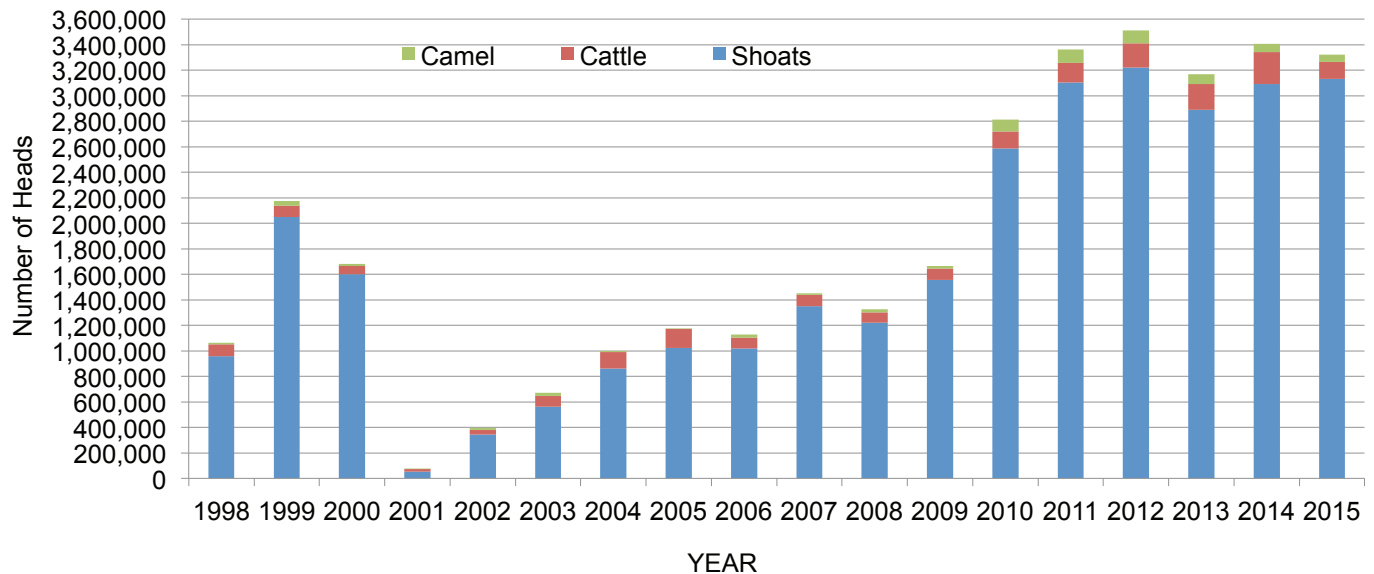
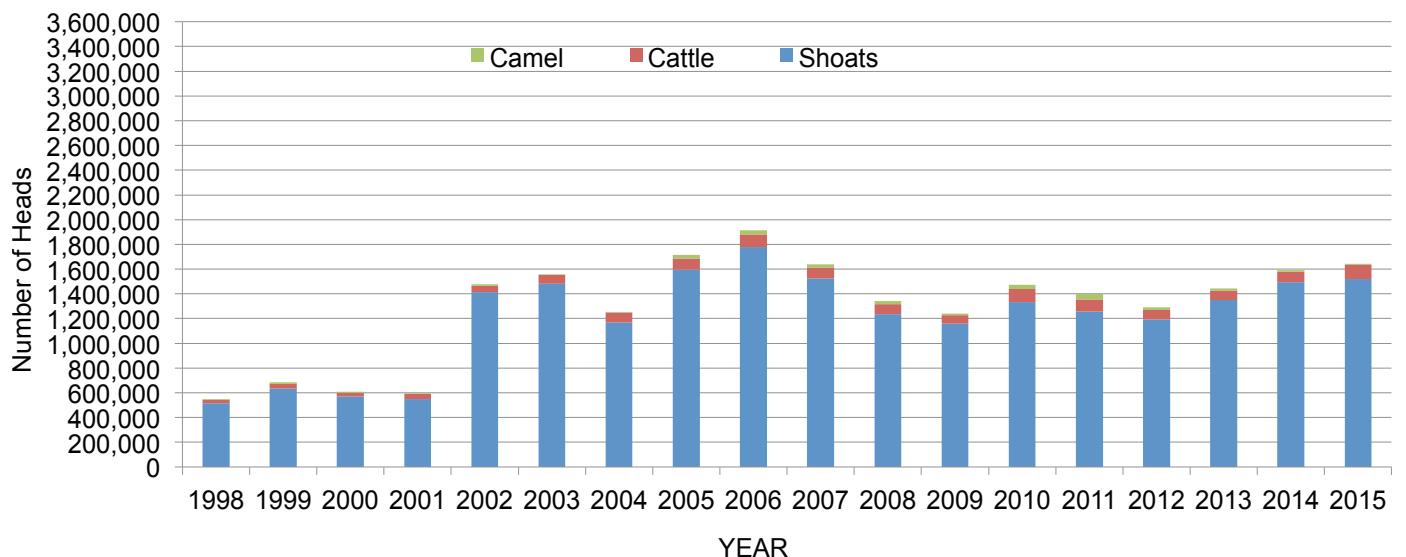


Table 2: Bossaso Livestock Exports (Number of Heads)

	1999	2000	2001	2002	2003	2004	2005	2006	2007	2008	2009	2010	2011	2012	2013	2014	Jan-Oct 2015
Shoats	633,669	571,455	548,853	1,412,450	1,483,409	1,166,480	1,594,859	1,777,283	1,522,855	1,236,775	1,159,454	1,333,478	1,256,535	1,192,197	1,349,123	1,493,111	1,520,143
Cattle	36,586	27,604	42,248	53,313	71,328	79,994	91,910	104,595	89,190	78,046	67,385	103,808	99,058	76,043	77,353	87,759	114,169
Camel	15,544	8,177	1,950	9,720	4,259	2,488	26,109	33,724	27,580	27,639	15,331	36,865	45,878	22,288	19,032	12,251	8,989

Figure 49: Bossaso Livestock Exports (Number of Heads)

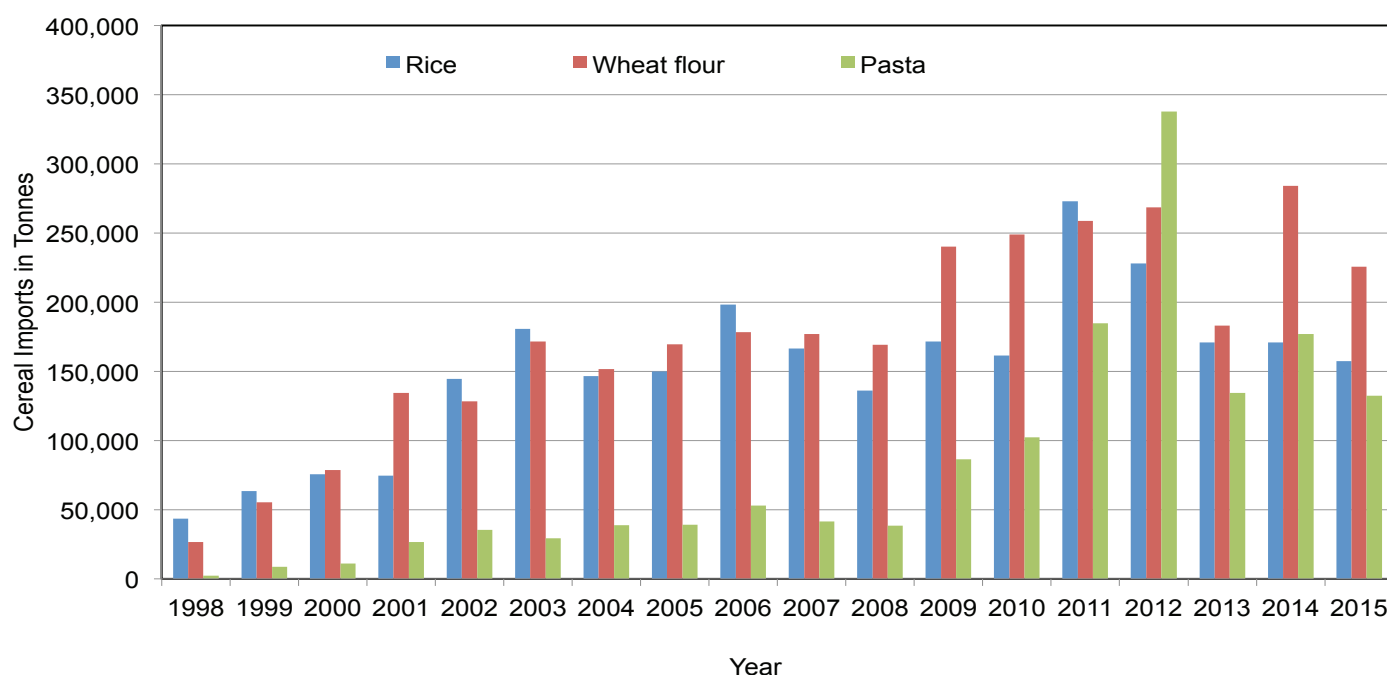


# Trends in Cereal Imports

Table 3: Total Cereal Imports through Berbera, Bossaso and Mogadishu Ports (Tonnes) \*

	1999	2000	2001	2002	2003	2004	2005	2006	2007	2008	2009	2010	2011	2012	2013	2014	Jan-Oct 2015
<b>Rice</b>	63,464	75,687	74,729	144,600	180,614	146,567	150,017	198,101	166,626	136,007	171,472	161,415	272,877	227,955	170,868	170,888	157,510
<b>Wheat flour</b>	55,176	78,555	134,425	128,263	171,442	151,555	169,583	178,345	176,821	169,208	240,247	249,080	258,679	268,491	183,058	284,230	225,571
<b>Pasta</b>	8,544	11,071	26,702	35,425	29,273	38,749	39,153	52,815	41,331	38,441	86,372	102,373	184,849	337,878	134,311	176,951	132,214

Figure 50: Total Cereal Imports (Berbera, Bossaso and Mogadishu)



\* Bosassodata is up to October and Berbera import data is up to September 2015. Elman (Mogadishu) is up to July 2015. Mogadishu data (Elmaan Port) for 2013 includes only January -March imports.