

# Market DataUpdate



Food Security and Nutrition  
Analysis Unit - Somalia



November 2014 (Issued December 16, 2014)

## Highlights

**Inflation:** In *SoSh* (Somali shilling) - using regions, the Consumer Price Index (CPI) remained relatively stable or changed mildly (1-3%) month-on-month in November Compared to a year ago (November 2013), CPI shows increase in most areas, with the highest increase (15%) recorded in the South. The annual increase was mainly driven by a surge in sorghum prices this year.

In *SISh* (Somaliland shilling) - using regions, the CPI remained relatively stable month-on-month in November. Annual comparison indicates a mild increase in inflation (by 5%) in these regions.

**Exchange rate:** In *SoSh* - using areas, both monthly and annual comparisons of the exchange rates between local currency (SoSh) and the United States Dollar (USD) indicate relative stability or mild changes (by less than 6%) in November.

In *SISh* -using areas, the exchange rates between local currency (SISh) and the USD remained relatively stable in November month on month, while they have increased (6%) on an annual basis.

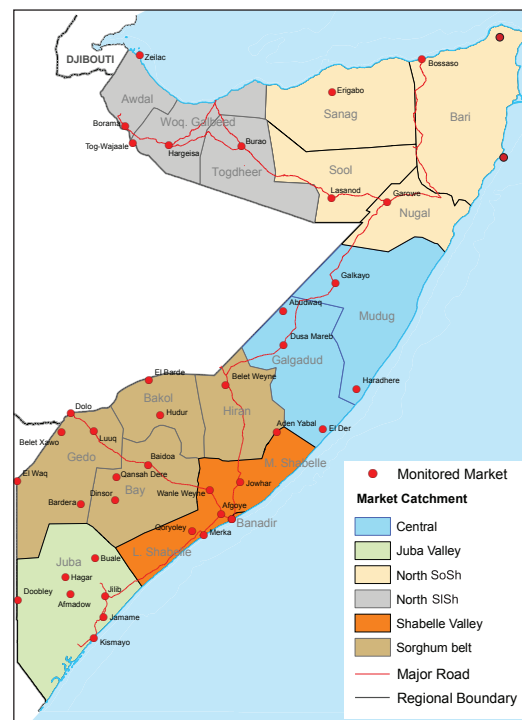
**Local grain** prices remained relatively stable or changed at mild rates (by less than 10%) in November in most regions of the country. Notably, prices declined moderately (10%) in Bakool (Hudur market) after a sustained increase over the previous three months. The decline is attributable to distribution of sorghum by humanitarian agencies in November. Annual comparison shows an increase in cereal prices in most parts of the country, with particularly significant surge (above 25%) noted in southern regions.

**Prices of imported food** (rice, sugar, vegetable oil, wheat flour) in local currency terms remained relatively stable or changed at mild rates in November in most parts of the country except in Lower Juba where they increased (11-17%) as heavy rains impeded transportation. Annual price comparison generally indicates mild (less than 10%) changes (increase/ decrease) in most parts of the country, with the exception of Bakool where the prices of all food imports have increased significantly (up to 42%) due to deteriorated security conditions since the beginning of the current year, which affected trade flow and market supplies of these commodities.

**Livestock prices** (for all species) showed mild monthly changes in most regions in the month of November. Notably, a local quality goat price that plunged in October in Middle Juba due to poor start of the Deyr season, recovered in November back to normal levels, surging by 33 percent. Prices of milk (cattle and camel) decreased in most regions of the country month-on-month but remained relatively stable or changed at mild rates (by less than 10%) in Northwest, Hiran, Middle Shabelle and Banadir. Compared to a year ago (November 2013), values of most livestock species have declined in most markets, while milk prices increased in most regions, predominantly at moderate (8 -18%) to high rates (26 - 45%).

**Labor wages (unskilled)** remained relatively stable or changed at mild rates month on month in most regions of the country. Annual comparison indicates mild changes in labor wage rates in most regions. However, significant annual decline in labour wage rates was recorded in Bakool region due to reduced economic/trade activities in the context of worsened security conditions. Conversely, the rates have increased significantly (38%) in Middle Shabelle due to improved labour opportunities compared to last year when these were constrained by inter-clan conflicts and floods.

**Terms of Trade (ToT)** between daily labor wage and local cereals as well as between local quality goat and cereals changed at mild to moderate rates month on month in most regions. The exceptions are Mogadishu, Gedo and Bakool where ToT between daily labour wage and cereals increased significantly from the levels in October. The annual comparisons indicated lower ToTs in most regions, due to increased cereal prices and/or decreased labour wages and goat prices compared to a year ago.



This Market Data Update is a monthly report that presents analysis of market information and is produced regularly as part of the monthly monitoring process.

The weekly price data is collected from 48 main markets and 51 rural markets throughout Somalia since 1995.

Market analysis is an integral part of all of FSNAU's annual food security projections and seasonal technical reports (Technical Reports on FSNAU Post *Gu* and Post *Deyr* Analysis).

Detailed market data are available online on [www.fsnau.org/ids](http://www.fsnau.org/ids).

# National Trends: CPI, Exchange Rates, Cereal Prices and Relative Purchasing Power

Table 1: ToT between Cereals (kg) and Daily Labour Wage Rate, by Region

Regions	% change from			
	Nov 2014 (Kg)	Oct 2014	Nov 2013	November Average (2009-2013)
Banadir (Mogadishu)	19	27%	-30%	28%
Bay	14	0%	-26%	9%
Bakool	3	50%	-57%	-44%
Gedo	15	15%	0%	10%
Juba	9	0%	-36%	-10%
Shabelle	9	-10%	-18%	-16%
Northwest	8	0%	0%	10%
Northeast	8	0%	14%	29%
Central	5	0%	0%	32%

Figure 1: Wheat Prices: Mogadishu and Bossaso Markets

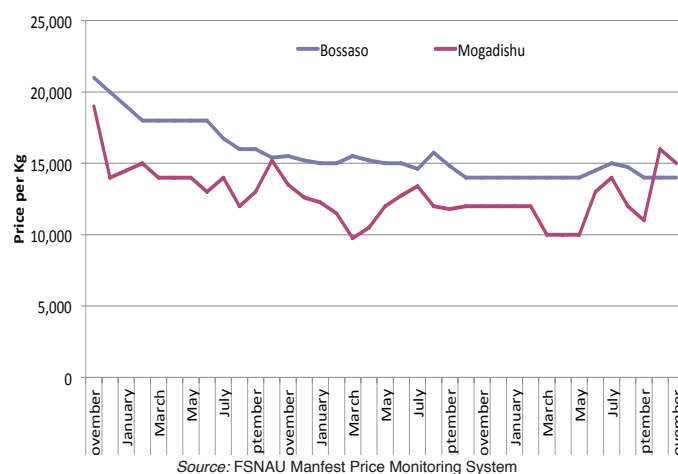


Figure 2: Terms of Trade Between Wage Rates and Selected Cereals

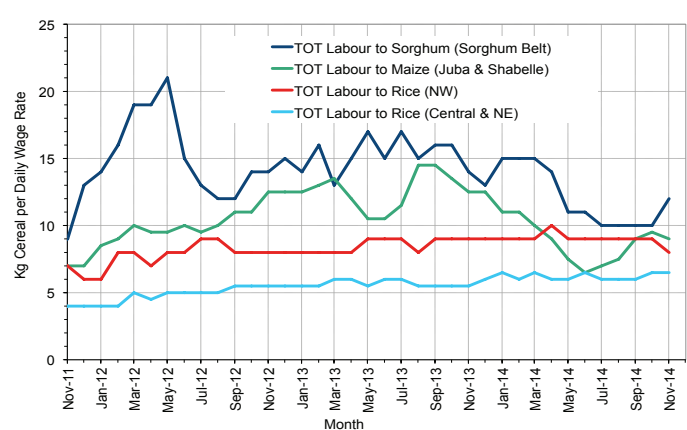


Figure 3: Monthly Exchange Rate for Selected Regions (SoSh and SiSh to USD)

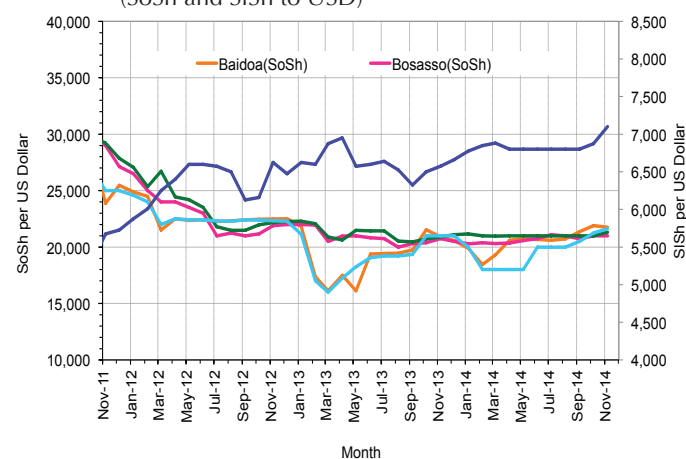


Figure 4: Monthly Trends in Consumer Price Index (CPI, March 2007=100)

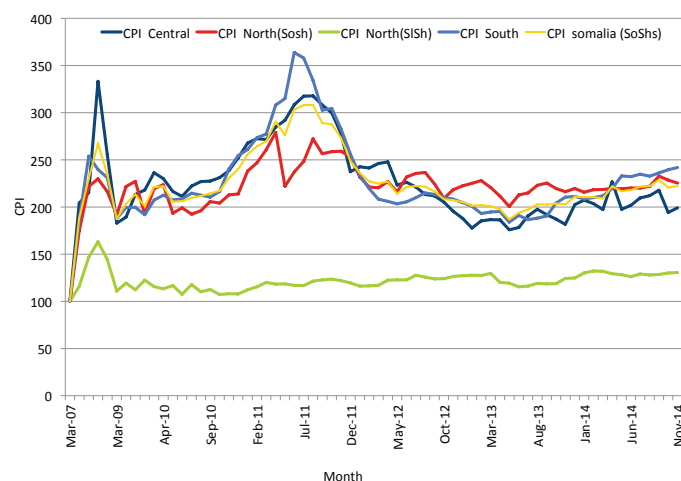
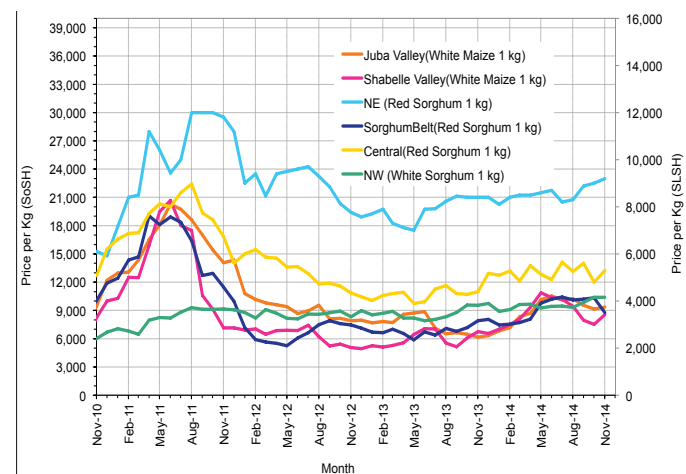


Figure 5: Monthly Trends in Local Cereal Prices



# Regional analysis: Juba Regions

Indicator	5-Year Average (2009-2013)	Nov-13	Oct-14	Nov-14 Nominal Price	Nov-14 Real (Deflated) Price	% Change Previous Month	% Change Same Month Previous Year	% Change 5-year avrg (2009-2013)
<b>Imported Commodities Prices</b>								
Diesel 1 litre	34,531	28,321	27,607	28,179	11,552	2%	-1%	-18%
Imported Red Rice 1kg	21,149	15,536	16,000	17,500	7,136	9%	13%	-17%
Petrol 1 litre	35,212	32,321	28,571	29,071	11,921	2%	-10%	-17%
Sugar	28,510	16,857	17,643	19,321	7,889	10%	15%	-32%
Vegetable Oil 1 litre	45,031	30,821	32,964	33,821	13,885	3%	10%	-25%
Wheat Flour 1kg	18,995	15,750	15,500	17,607	7,180	14%	12%	-7%
Wheat Grain 1kg	22,600	-	-	-	-	-	-	-
<b>Cereal Prices</b>								
Red Sorghum 1kg	7,590	8,000	8,000	9,000	3,621	13%	13%	19%
White Maize 1kg	9,285	6,339	9,257	9,464	3,813	2%	49%	2%
<b>Livestock &amp; Livestock Product Prices</b>								
Camel Local Quality (Head)	9,074,573	10,099,111	10,216,429	11,098,476	4,589,030	9%	10%	22%
Cattle Local Quality (Head)	4,021,510	4,317,850	4,109,429	4,331,875	1,791,095	5%	0%	8%
Fresh Camel Milk 1 litre	19,839	17,667	17,393	18,625	7,601	7%	5%	-6%
Goat Export Quality (Head)	1,431,545	1,608,679	1,434,107	1,415,036	585,006	-1%	-12%	-1%
Goat Local Quality (Head)	944,021	1,120,536	860,893	980,214	405,211	14%	-13%	4%
<b>Other Essential Items</b>								
Charcoal 50kg	85,038	82,250	91,429	91,786	37,853	0%	12%	8%
Cowpeas 1 kg	23,525	19,364	22,725	26,543	10,875	17%	37%	13%
Unskilled Labor Wage Rate	86,134	89,571	85,036	81,321	33,526	-4%	-9%	-6%
Firewood Bundle	8,345	12,679	11,857	12,000	4,862	1%	-5%	44%
Local Sesame Oil 1 litre	76,161	72,375	86,464	86,464	35,652	0%	19%	14%
Exchange Rate (Somali Shilling per USD)	26,682	20,975	21,236	21,696	8,871	2%	3%	-19%
<b>Terms of Trade</b>								
Labour Wage (Daily)/ Cereal (Maize(Kg))	10	14	9	9	-	0%	-36%	-10%
Local Goat (Head)/ Cereal (Maize(Kg))	111	177	93	104	-	12%	-41%	-6%
<b>Price Indices</b>								
Consumer Price Index	-	210	240	242	-	1%	15%	-

Figure 6: Trends in Cereal Prices

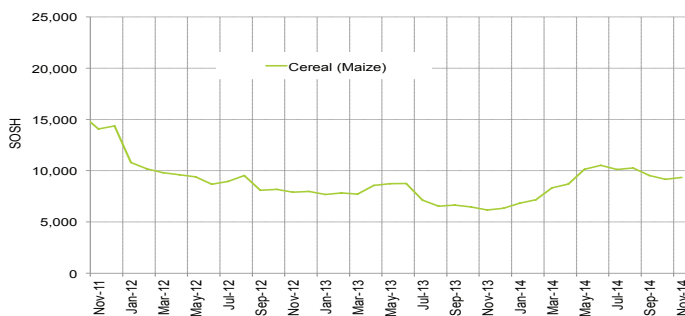


Figure 7: Trends in Wage Rates and Relative Purchasing Power

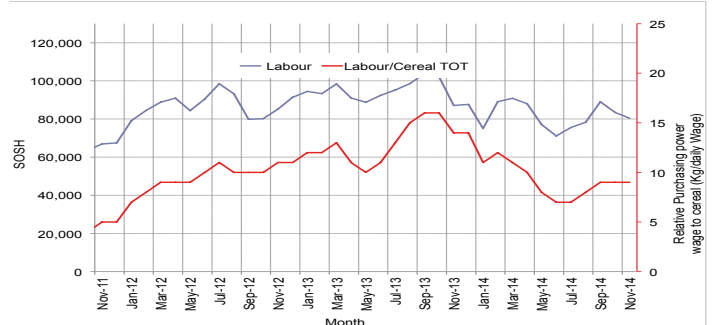


Figure 8: Imported Commodity Prices Compared to Exchange Rate

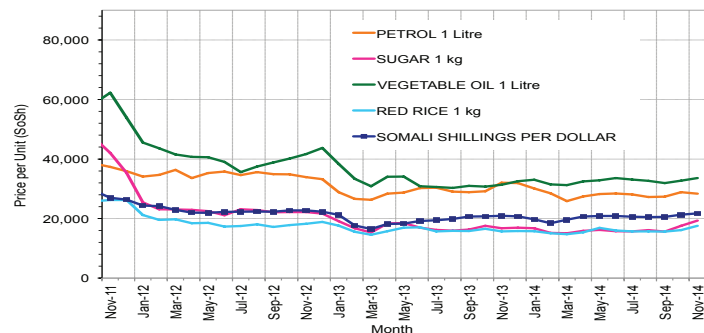


Figure 9: Goat Local Quality

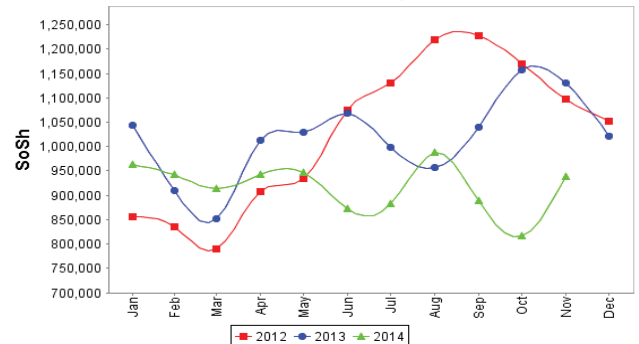


Figure 10: Exchange Rate

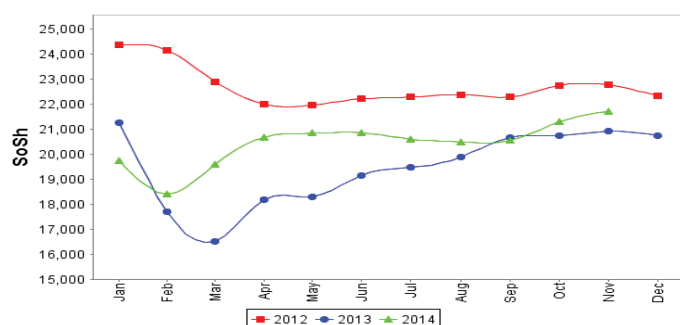
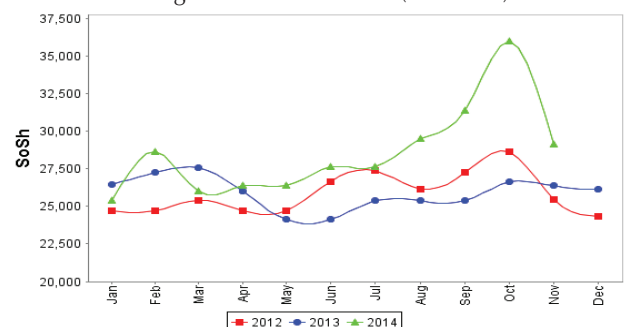


Figure 11: Water Drum (200 litres)



# Regional analysis: Sorghum Belt Regions (Bay, Bakool, Gedo and Hiran)

Indicator	5-Year Average (2009-2013)	Nov-13	Oct-14	Nov-14 Nominal Price	Nov-14 Real (Deflated) Price	% Change Previous Month	% Change Same Month Previous Year	% Change 5-year avrg (2009-2013)
<b>Imported Commodities Prices</b>								
Diesel 1 litre	32,524	29,205	33,989	31,875	13,080	-6%	9%	-2%
Imported Red Rice 1kg	22,569	18,341	18,386	18,409	7,512	0%	0%	-18%
Petrol 1 litre	32,837	29,114	33,977	31,114	12,765	-8%	7%	-5%
Sugar	27,653	19,364	19,464	19,736	8,061	1%	2%	-29%
Vegetable Oil 1 litre	45,826	38,182	39,727	39,682	16,308	0%	4%	-13%
Wheat Flour 1kg	20,532	16,932	18,136	18,818	7,681	4%	11%	-8%
Wheat Grain 1kg	11,117	10,750	17,250	16,188	6,594	-6%	51%	46%
<b>Cereal Prices</b>								
Red Sorghum 1kg	8,911	7,923	10,350	8,755	3,520	-15%	11%	-2%
White Maize 1kg	10,200	9,273	10,764	10,581	4,275	-2%	14%	4%
<b>Livestock &amp; Livestock Product Prices</b>								
Camel Local Quality (Head)	11,134,318	13,754,545	13,040,000	13,470,000	5,569,636	3%	-2%	21%
Cattle Local Quality (Head)	3,427,183	3,967,813	3,953,125	4,353,125	1,799,882	10%	10%	27%
Fresh Camel Milk 1 litre	21,281	16,205	24,900	19,025	7,767	-24%	17%	-11%
Goat Export Quality (Head)	1,528,413	1,661,591	1,669,773	1,625,455	672,013	-3%	-2%	6%
Goat Local Quality (Head)	975,095	1,111,818	1,032,614	982,727	406,250	-5%	-12%	1%
<b>Other Essential Items</b>								
Charcoal 50kg	140,300	152,614	155,250	158,250	65,335	2%	4%	13%
Cowpeas 1 kg	28,805	19,603	29,864	28,682	11,760	-4%	46%	0%
Unskilled Labor Wage Rate	102,891	106,955	98,841	107,364	44,294	9%	0%	4%
Firewood Bundle	5,963	6,818	6,614	6,886	2,747	4%	1%	15%
Local Sesame Oil 1 litre	78,684	82,714	94,906	90,938	37,502	-4%	10%	16%
Exchange Rate (Somali Shilling per USD)	26,191	20,794	21,341	21,255	8,689	0%	2%	-19%
<b>Terms of Trade</b>								
Labour Wage (Daily)/ Cereal (Sorghum(Kg))	11	14	10	12	-	20%	-14%	9%
Local Goat (Head)/ Cereal (Sorghum(Kg))	114	140	100	112	-	12%	-20%	-2%
<b>Price Indices</b>								
Consumer Price Index	-	210	240	242	-	1%	15%	-

Figure 12: Trends in Cereal Prices

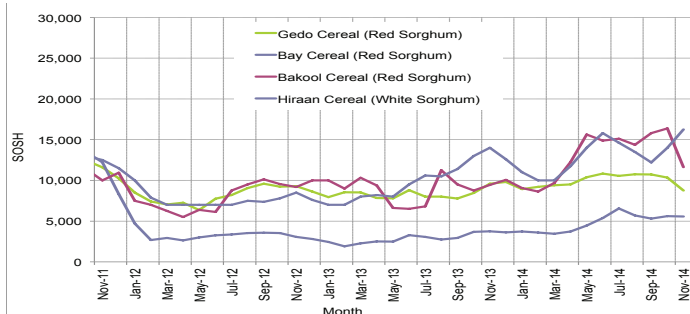


Figure 13: Trends in Wage Rates and Relative Purchasing Power

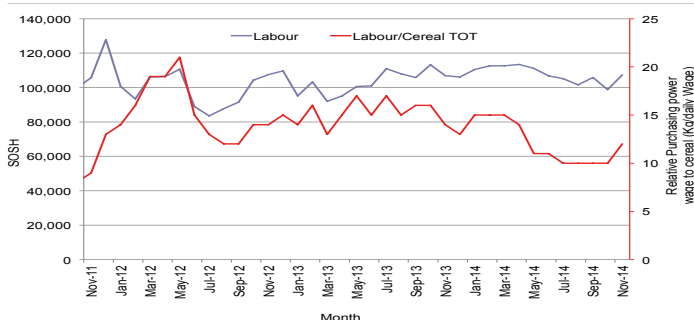


Figure 14: Imported Commodity Prices Compared to Exchange Rate

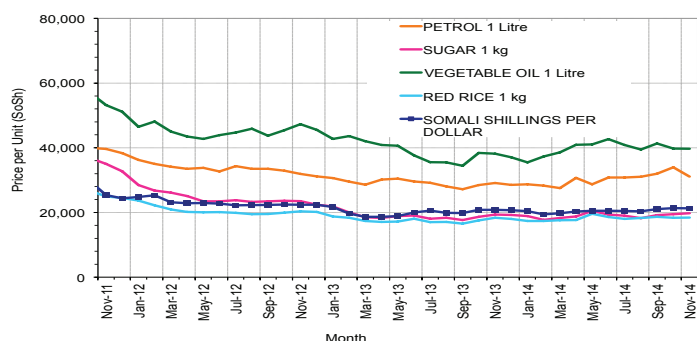


Figure 15: Goat Local Quality

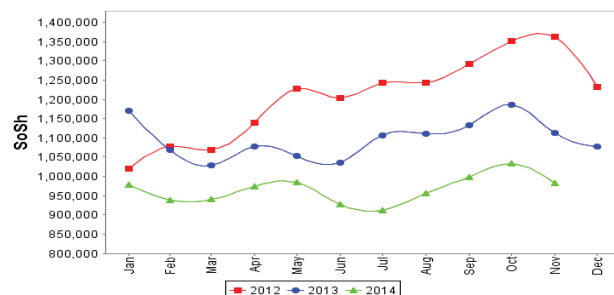


Figure 16: Exchange Rate

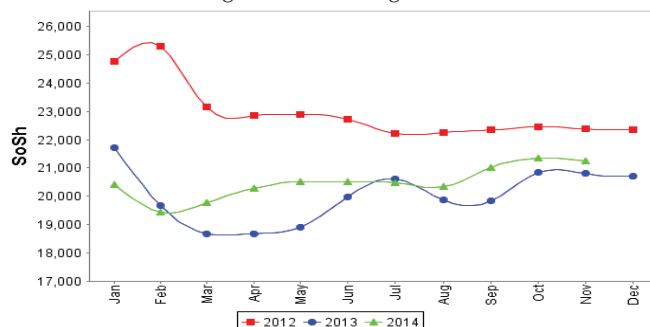
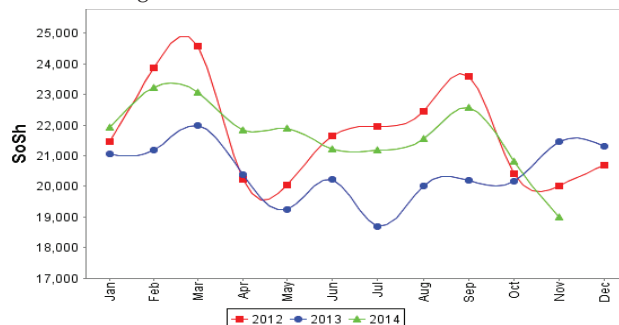


Figure 17: Water Drum (200 litres)



# Regional analysis: Shabelle Regions

Indicator	5-Year Average (2009-2013)	Nov-13	Oct-14	Nov-14 Nominal Price	Nov-14 Real (Deflated) Price	% Change Previous Month	% Change Same Month Previous Year	% Change 5-year avg (2009-2013)
<b>Imported Commodities Prices</b>								
Diesel 1 litre	30,008	27,875	26,833	26,833	10,995	0%	-4%	-11%
Imported Red Rice 1kg	20,141	16,917	15,833	15,833	6,447	0%	-6%	-21%
Petrol 1 litre	31,566	28,708	30,208	29,167	11,960	-3%	2%	-8%
Sugar	24,733	17,083	16,500	16,792	6,843	2%	-2%	-32%
Vegetable Oil 1 litre	36,171	27,667	28,917	28,333	11,615	-2%	2%	-22%
Wheat Flour 1kg	18,025	15,958	16,792	17,700	7,219	5%	11%	-2%
Wheat Grain 1kg	11,556	9,667	27,000	27,000	11,064	0%	179%	134%
<b>Cereal Prices</b>								
Red Sorghum 1kg	10,331	9,521	11,517	11,704	4,740	2%	23%	13%
White Maize 1kg	6,472	6,748	7,513	8,572	3,444	14%	27%	32%
<b>Livestock &amp; Livestock Product Prices</b>								
Camel Local Quality (Head)	14,552,166	17,850,000	16,405,000	17,240,000	7,128,501	5%	-3%	18%
Cattle Local Quality (Head)	4,691,800	6,345,000	5,690,000	5,955,000	2,462,244	5%	-6%	27%
Fresh Camel Milk 1 litre	19,529	22,042	20,250	18,833	7,687	-7%	-15%	-4%
Goat Export Quality (Head)	1,755,675	1,924,375	1,996,250	1,663,750	687,847	-17%	-14%	-5%
Goat Local Quality (Head)	1,240,666	1,320,000	1,452,917	1,368,333	565,695	-6%	4%	10%
<b>Other Essential Items</b>								
Charcoal 50kg	124,475	135,444	111,708	119,764	49,421	7%	-12%	-4%
Cowpeas 1 kg	23,747	16,317	23,025	27,489	11,266	19%	68%	16%
Unskilled Labor Wage Rate	67,679	73,750	73,833	74,875	30,860	1%	2%	11%
Firewood Bundle	5,708	7,875	7,083	7,083	2,829	0%	-10%	24%
Local Sesame Oil 1 litre	63,665	68,000	74,950	74,350	30,643	-1%	9%	17%
Exchange Rate (Somali Shilling per USD)	26,652	21,110	21,529	21,754	8,895	1%	3%	-18%
<b>Terms of Trade</b>								
Labour Wage (Daily)/ Cereal (Maize(Kg))	11	11	10	9	-	-10%	-18%	-18%
Local Goat (Head)/ Cereal (Maize(Kg))	200	196	193	160	-	-17%	-18%	-20%
<b>Price Indices</b>								
Consumer Price Index	-	210	240	242	-	1%	15%	-

Figure 18: Trends in Cereal Prices

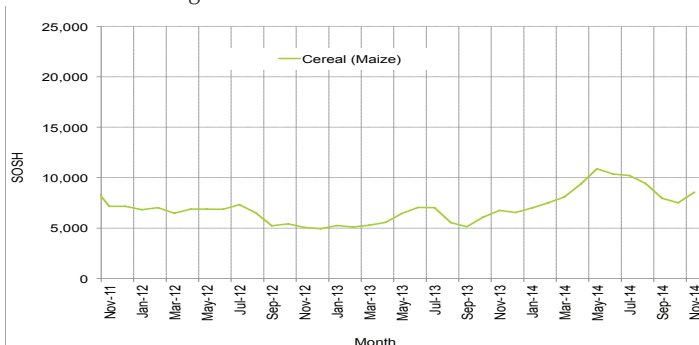


Figure 19: Trends in Wage Rates and Relative Purchasing Power

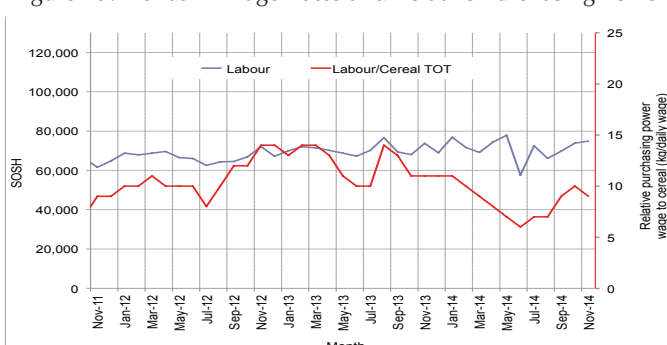


Figure 20: Imported Commodity Prices Compared to Exchange Rate

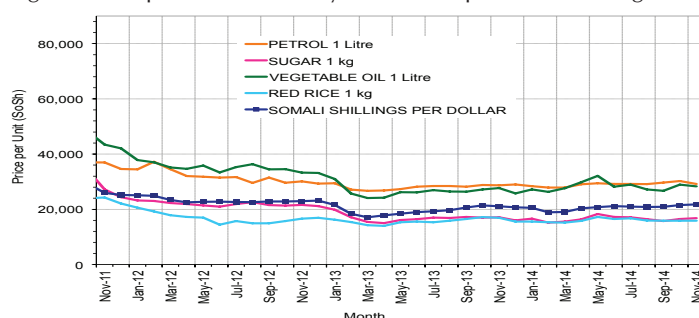


Figure 22: Exchange Rate

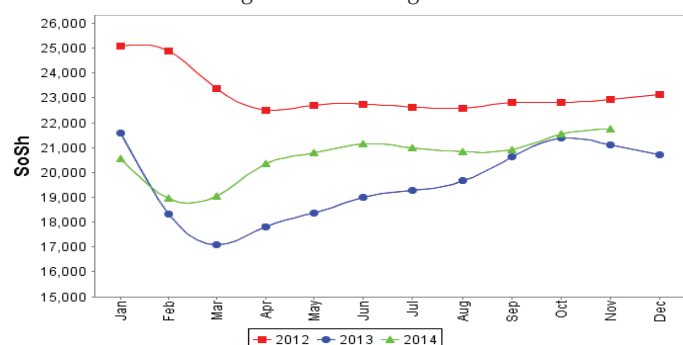
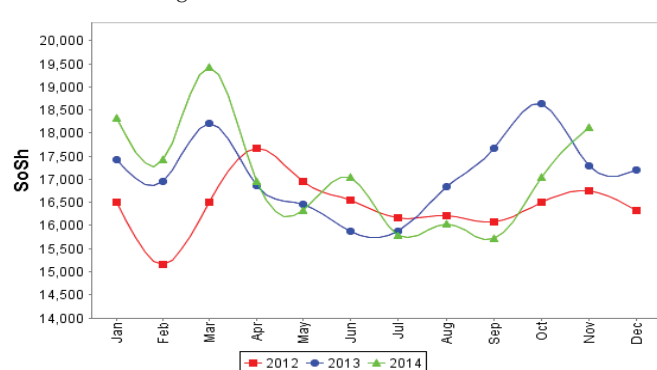


Figure 21: Goat Local Quality



Figure 23: Water Drum (200 litres)





# Regional analysis: Banadir Region

Indicator	5-Year Average (2009-2013)	Nov-13	Oct-14	Nov-14 Nominal Price	Nov-14 Real (Deflated) Price	% Change Previous Month	% Change Same Month Previous Year	% Change 5-year avg (2009-2013)
<b>Imported Commodities Prices</b>								
Diesel 1 litre	25,800	21,146	21,225	21,250	8,687	0%	0%	-18%
Imported Red Rice 1kg	19,486	12,688	13,125	13,292	5,396	1%	5%	-32%
Petrol 1 litre	25,723	21,625	21,208	21,167	8,652	0%	-2%	-18%
Sugar	21,621	13,688	14,000	14,167	5,758	1%	3%	-34%
Vegetable Oil 1 litre	35,829	23,042	24,167	23,813	9,746	-1%	3%	-34%
Wheat Flour 1kg	15,136	12,354	13,896	14,771	6,008	6%	20%	-2%
Wheat Grain 1kg	13,025	7,458	10,433	10,500	4,242	1%	41%	-19%
<b>Cereal Prices</b>								
Red Sorghum 1kg	7,396	6,108	8,621	8,825	3,549	2%	44%	19%
White Maize 1kg	7,932	7,729	10,633	10,513	4,247	-1%	36%	33%
<b>Livestock &amp; Livestock Product Prices</b>								
Camel Local Quality (Head)	15,466,667	-	-	-	-	-	-	-
Cattle Local Quality (Head)	4,060,000	-	-	-	-	-	-	-
Fresh Camel Milk 1 litre	20,411	21,042	22,458	23,000	9,410	2%	9%	13%
Goat Export Quality (Head)	2,321,500	3,000,000	-	-	-	-	-	-
Goat Local Quality (Head)	1,946,625	2,319,375	2,395,000	2,395,000	990,213	0%	3%	23%
<b>Other Essential Items</b>								
Charcoal 50kg	171,085	187,083	191,375	190,042	78,481	-1%	2%	11%
Cowpeas 1 kg	22,860	13,104	24,192	23,904	9,784	-1%	82%	5%
Unskilled Labor Wage Rate	97,050	111,458	104,667	106,667	44,006	2%	-4%	10%
Firewood Bundle	6,946	7,800	8,000	8,000	3,208	0%	3%	15%
Local Sesame Oil 1 litre	61,921	64,292	73,958	73,833	30,429	0%	15%	19%
Exchange Rate (Somali Shilling per USD)	26,326	21,035	21,338	21,343	8,725	0%	1%	-19%
<b>Terms of Trade</b>								
Labour Wage (Daily)/ Cereal (Maize(Kg))	12	14	10	10	-	0%	-29%	-17%
Local Goat (Head)/ Cereal (Maize(Kg))	268	300	225	228	-	1%	-24%	-15%
<b>Price Indices</b>								
Consumer Price Index	-	210	240	242	-	1%	15%	-

Figure 24: Trends in Cereal Prices



Figure 25: Bakara: Trends in Wage Rates and Relative Purchasing Power

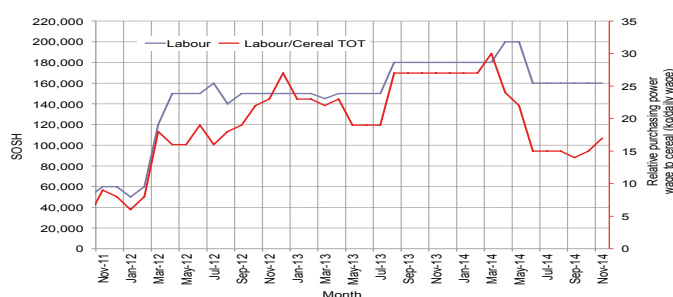


Figure 26: Imported Commodity Prices Compared to Exchange Rate

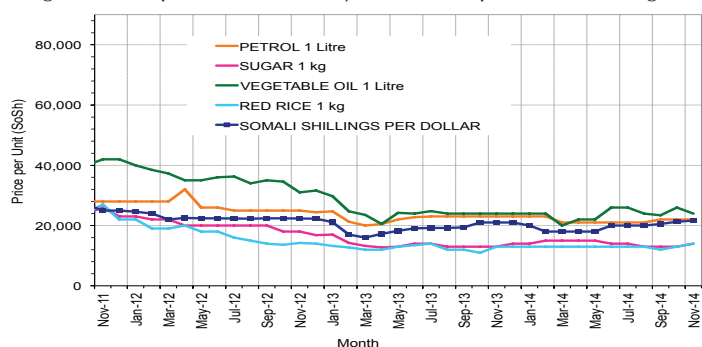


Figure 27: Goat Local Quality

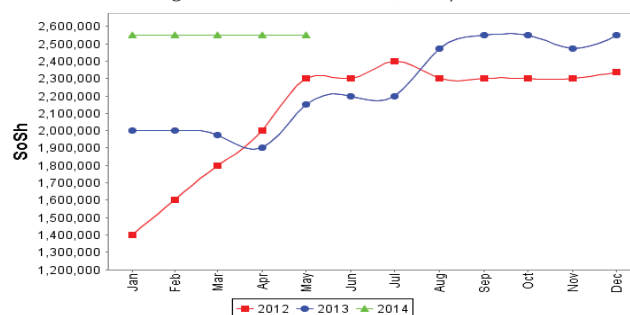


Figure 28: Exchange Rate

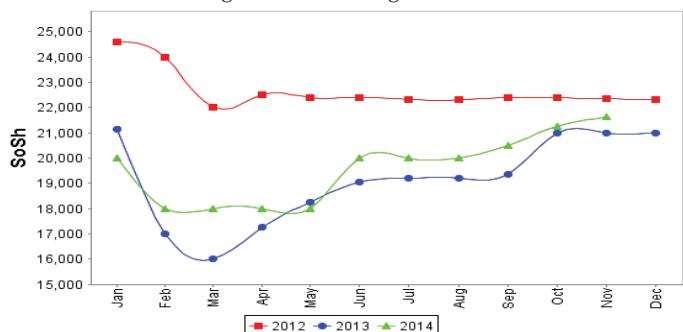
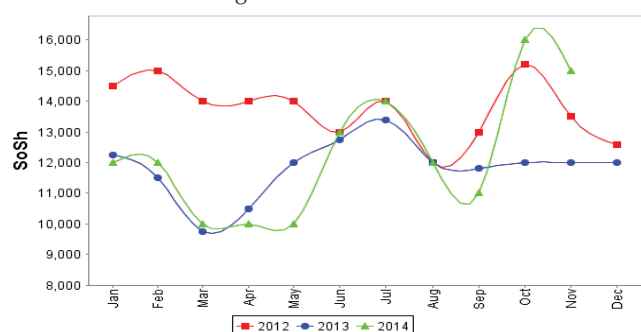


Figure 29: Wheat Flour



# Regional analysis: Central Regions

Indicator	5-Year Average (2009-2013)	Nov-13	Oct-14	Nov-14 Nominal Price	Nov-14 Real (Deflated) Price	% Change Previous Month	% Change Same Month Previous Year	% Change 5-year avrg (2009-2013)
<b>Imported Commodities Prices</b>								
Diesel 1 litre	31,194	26,650	27,700	28,300	14,103	2%	6%	-9%
Imported Red Rice 1kg	24,268	18,400	18,000	18,000	8,934	0%	-2%	-26%
Petrol 1 litre	28,136	23,700	25,000	24,800	12,346	-1%	5%	-12%
Sugar	28,124	19,750	19,800	19,800	9,837	0%	0%	-30%
Vegetable Oil 1 litre	49,930	43,500	39,000	39,000	19,473	0%	-10%	-22%
Wheat Flour 1kg	19,886	16,600	14,950	16,800	8,331	12%	1%	-16%
Wheat Grain 1kg	14,862	12,938	26,000	16,500	8,181	-37%	28%	11%
<b>Cereal Prices</b>								
Red Sorghum 1kg	12,102	11,000	12,000	13,250	6,550	10%	20%	9%
White Maize 1kg	13,268	9,750	14,000	12,500	6,173	-11%	28%	-6%
<b>Livestock &amp; Livestock Product Prices</b>								
Camel Local Quality (Head)	8,937,083	11,350,000	11,025,000	11,081,250	5,561,153	1%	-2%	24%
Cattle Local Quality (Head)	1,988,333	-	-	-	-	-	-	-
Fresh Camel Milk 1 litre	35,970	25,300	29,000	27,200	13,551	-6%	8%	-24%
Goat Export Quality (Head)	1,445,266	1,462,500	1,434,375	1,237,500	620,954	-14%	-15%	-14%
Goat Local Quality (Head)	1,110,600	1,193,500	1,030,500	935,500	469,391	-9%	-22%	-16%
<b>Other Essential Items</b>								
Charcoal 50kg	187,640	186,000	183,500	184,000	92,243	0%	-1%	-2%
Cowpeas 1 kg	30,160	16,000	22,400	22,800	11,342	2%	43%	-24%
Unskilled Labor Wage Rate	84,610	88,000	84,000	84,000	42,056	0%	-5%	-1%
Firewood Bundle	33,580	34,700	33,000	33,000	16,461	0%	-5%	-2%
Local Sesame Oil 1 litre	92,460	85,250	84,350	87,850	43,989	4%	3%	-5%
Exchange Rate (Somali Shilling per USD)	26,528	20,930	20,890	21,500	10,690	3%	3%	-19%
<b>Terms of Trade</b>								
Labour Wage (Daily)/ Cereal (Rice(Kg))	3	5	5	5	-	0%	0%	67%
Local Goat (Head)/ Cereal (Rice(Kg))	48	65	57	52	-	-9%	-20%	8%
Camel (Head)/Cereal (Kg)	391	617	613	616	-	0%	0%	58%
<b>Price Indices</b>								
Consumer Price Index	-	181	194	199	-	3%	10%	-

Figure 30: Trends in Cereal Prices

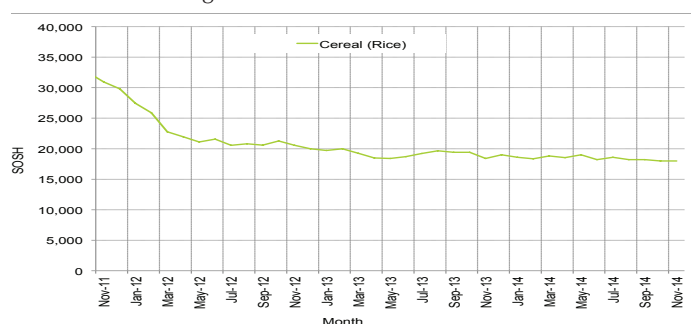


Figure 31: Trends in wage rates and relative purchasing power

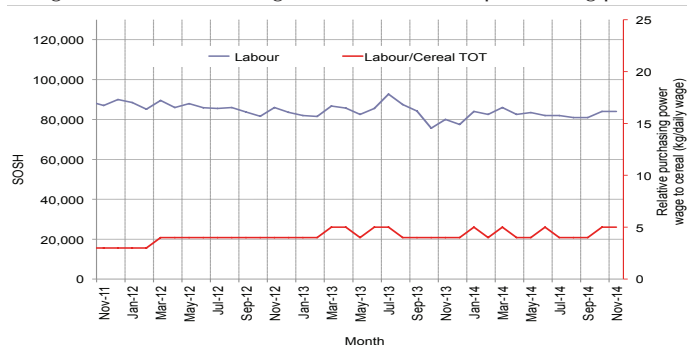


Figure 32: Imported Commodity Prices Compared to Exchange Rate

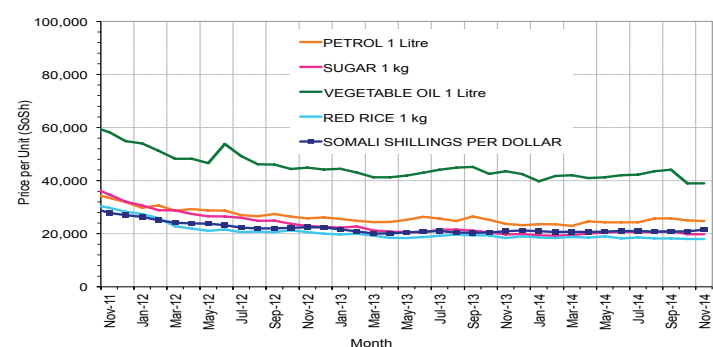


Figure 33: Goat Local Quality

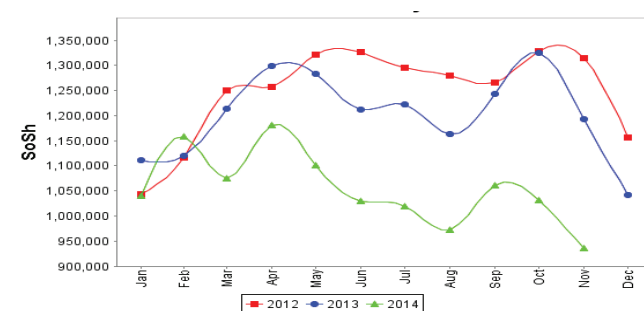


Figure 34: Exchange Rate

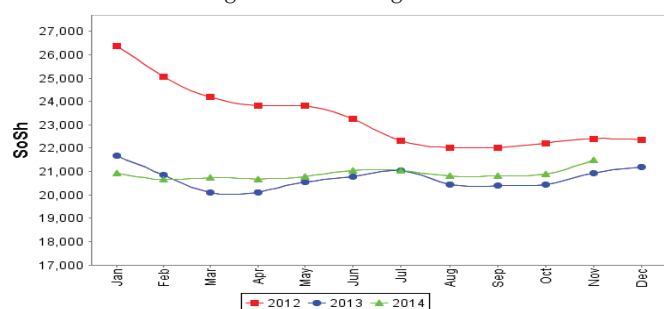
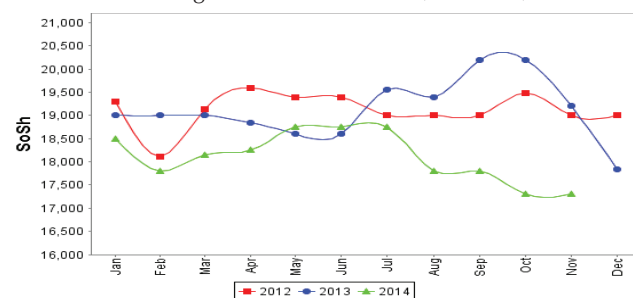


Figure 35: Water Drum (200 litres)



# Regional analysis: Northeast Regions

Indicator	5-Year Average (2009-2013)	Nov-13	Oct-14	Nov-14 Nominal Price	Nov-14 Real (Deflated) Price	% Change Previous Month	% Change Same Month Previous Year	% Change 5-year avrg (2009-2013)
<b>Imported Commodities Prices</b>								
Diesel 1 litre	26,675	23,375	23,213	22,594	9,931	-3%	-3%	-15%
Imported Red Rice 1kg	19,105	15,875	15,625	14,875	6,504	-5%	-6%	-22%
Petrol 1 litre	24,572	21,000	20,563	20,375	8,946	-1%	-3%	-17%
Sugar	25,290	18,188	17,688	16,813	7,365	-5%	-8%	-34%
Vegetable Oil 1 litre	40,885	33,125	32,750	32,625	14,385	0%	-2%	-20%
Wheat Flour 1kg	17,576	14,875	14,813	14,375	6,282	-3%	-3%	-18%
Wheat Grain 1kg	26,985	25,750	22,000	24,500	10,778	11%	-5%	-9%
<b>Cereal Prices</b>								
Red Sorghum 1kg	19,813	21,000	22,500	23,000	10,112	2%	10%	16%
White Maize 1kg	18,426	22,000	20,500	20,500	9,002	0%	-7%	11%
<b>Livestock &amp; Livestock Product Prices</b>								
Camel Local Quality (Head)	14,204,374	14,993,750	15,718,750	15,593,750	6,923,241	-1%	4%	10%
Cattle Local Quality (Head)	7,525,000	8,125,000	8,625,000	8,625,000	3,829,243	0%	6%	15%
Fresh Camel Milk 1 litre	39,215	32,125	35,450	30,188	13,303	-15%	-6%	-23%
Goat Export Quality (Head)	1,452,016	1,475,000	1,500,000	1,518,750	674,197	1%	3%	5%
Goat Local Quality (Head)	1,337,925	1,440,000	1,330,000	1,216,250	539,893	-9%	-16%	-9%
<b>Other Essential Items</b>								
Charcoal 50kg	370,425	407,500	394,375	397,500	176,383	1%	-2%	7%
Cowpeas 1 kg	38,813	29,417	31,000	31,500	13,885	2%	7%	-19%
Unskilled Labor Wage Rate	116,487	125,000	130,000	130,000	57,618	0%	4%	12%
Firewood Bundle	41,367	51,250	53,125	52,500	23,209	-1%	2%	27%
Local Sesame Oil 1 litre	91,546	92,500	98,469	95,938	42,495	-3%	4%	5%
Exchange Rate (Somali Shilling per USD)	26,239	20,813	20,875	21,031	9,237	1%	1%	-20%
<b>Terms of Trade</b>								
Labour Wage (Daily)/ Cereal (Rice(Kg))	6	8	8	9	-	13%	13%	50%
Local Goat (Head)/ Cereal (Rice(Kg))	71	91	85	82	-	-4%	-10%	15%
<b>Price Indices</b>								
Consumer Price Index	-	216	228	225	-	-1%	4%	-

Figure 36: Trends in Cereal Prices

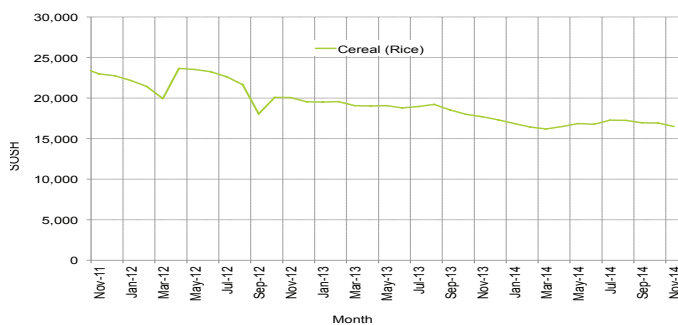


Figure 37: Trends in Wage Rates and Relative Purchasing Power

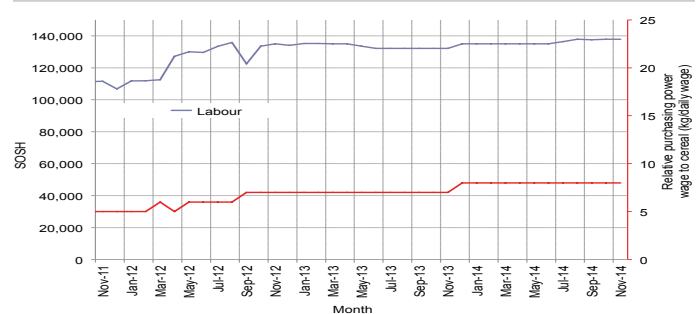


Figure 38: Imported Commodity Prices Compared to Exchange Rate

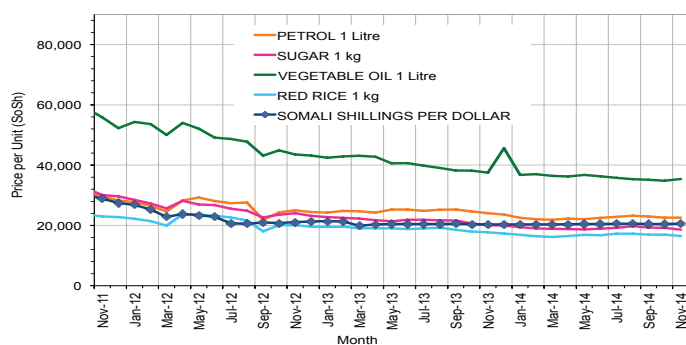


Figure 39: Goat Local Quality

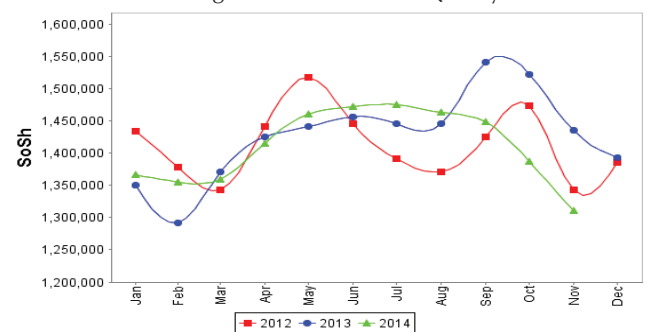


Figure 40: Exchange Rate

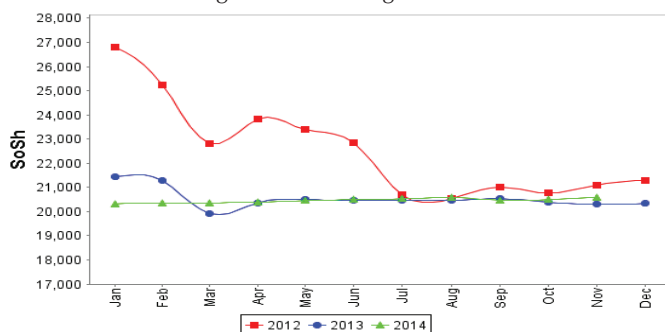
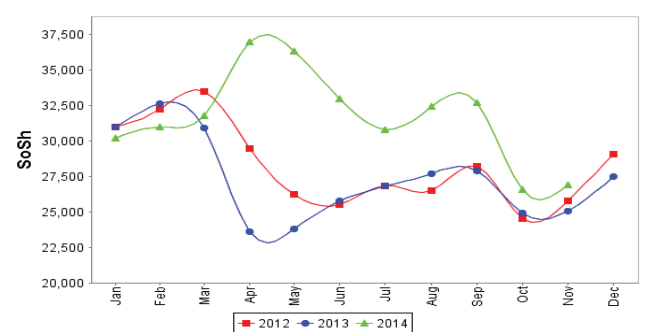


Figure 41: Water Drum (200 litres)





# Regional analysis: Northwest Regions

Indicator	5-Year Average (2009-2013)	Nov-13	Oct-14	Nov-14 Nominal Price	Nov-14 Real (Deflated) Price	% Change Previous Month	% Change Same Month Previous Year	% Change 5-year avrg (2009-2013)
<b>Imported Commodities Prices</b>								
Diesel 1 litre	5,935	6,880	7,120	7,130	5,358	0%	4%	20%
Imported Red Rice 1kg	5,078	5,020	5,260	5,280	3,942	0%	5%	4%
Petrol 1 litre	6,222	7,040	8,340	8,300	6,253	0%	18%	33%
Sugar	5,983	5,568	5,840	5,840	4,370	0%	5%	-2%
Vegetable Oil 1 litre	11,101	11,950	12,613	12,711	9,630	1%	6%	15%
Wheat Flour 1kg	4,315	4,180	4,460	4,600	3,421	3%	10%	7%
Wheat Grain 1kg	2,970	3,406	3,650	3,500	2,579	-4%	3%	18%
<b>Cereal Prices</b>								
White Sorghum 1kg	3,384	3,820	4,160	4,160	3,084	0%	9%	23%
Yellow Maize 1kg	3,379	3,875	3,800	3,700	2,732	-3%	-5%	9%
<b>Livestock &amp; Livestock Product Prices</b>								
Camel Local Quality (Head)	2,391,116	3,804,167	4,256,333	4,173,000	3,194,193	-2%	10%	75%
Cattle Local Quality (Head)	1,618,344	2,275,000	2,431,875	2,289,167	1,752,181	-6%	1%	41%
Fresh Camel Milk 1 litre	5,167	5,600	5,800	6,600	4,952	14%	18%	28%
Goat Export Quality (Head)	363,847	436,400	493,775	491,950	376,471	0%	13%	35%
Goat Local Quality (Head)	265,609	323,450	338,355	354,550	271,296	5%	10%	33%
<b>Other Essential Items</b>								
Charcoal 50kg	39,877	53,600	58,300	61,800	47,206	6%	15%	55%
Cowpeas 1 kg	9,432	9,750	11,125	11,938	9,038	7%	22%	27%
Unskilled Labor Wage Rate	34,051	43,080	47,713	44,713	34,126	-6%	4%	31%
Firewood Bundle	3,044	3,333	3,833	4,167	3,090	9%	25%	37%
Local Sesame Oil 1 litre	25,841	31,000	35,438	34,250	26,117	-3%	10%	33%
Exchange Rate (Somaliland Shilling per USD)	6,198	6,605	6,900	6,970	5,235	1%	6%	12%
<b>Terms of Trade</b>								
Labour Wage (Daily)/ Cereal (Rice(Kg))	7	9	9	8	-	-11%	-11%	14%
Local Goat (Head)/ Cereal (Rice(Kg))	52	64	64	67	-	5%	5%	29%
<b>Price Indices</b>								
Consumer Price Index	-	124	130	131	-	0%	5%	-

Figure 42: Trends in Cereal Prices

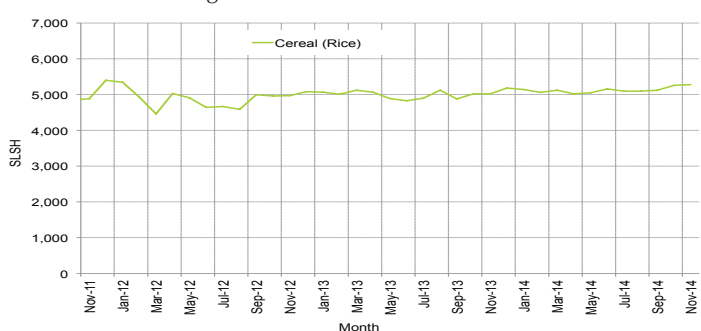


Figure 43: Trends in Wage Rates and Relative Purchasing Power

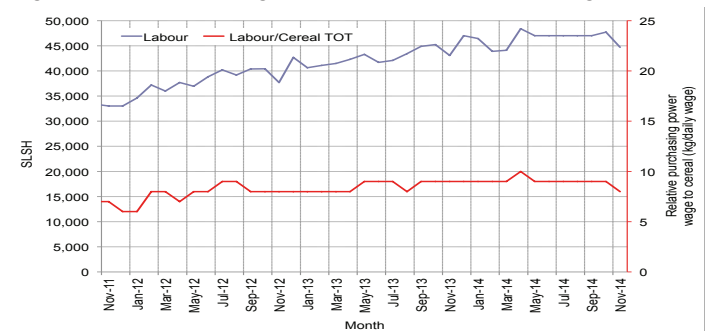


Figure 44: Imported Commodity Prices Compared to Exchange Rate

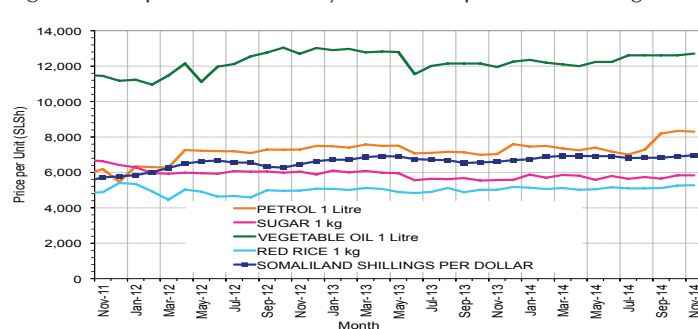


Figure 45: Goat Local Quality

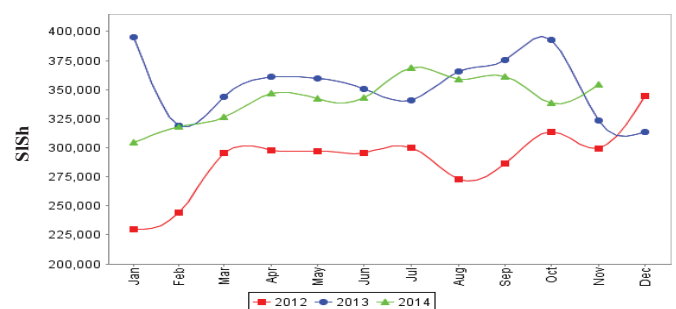


Figure 46: Exchange Rate

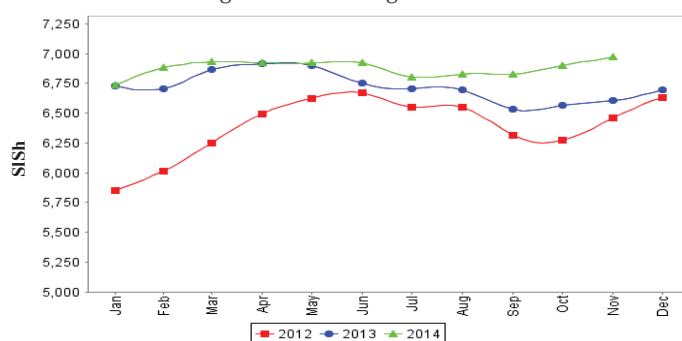
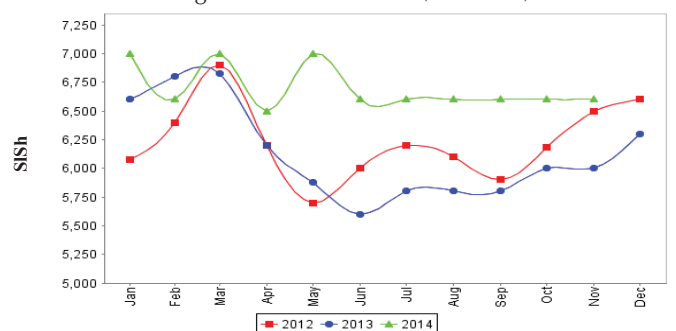


Figure 47: Water Drum (200 litres)



# Trends in Livestock Exports

Table 1: Berbera Livestock Exports (Number of Heads)

	1998	1999	2000	2001	2002	2003	2004	2005	2006	2007	2008	2009	2010	2011	2012	2014 (Jan-Sept)
Shoats	957,224	2,048,136	1,601,083	51,546	341,711	563,107	859,404	1,023,795	1,017,242	1,350,054	1,219,519	1,556,003	2,584,810	3,104,684	3,219,584	2,679,169
Cattle	92,213	89,967	63,263	20,973	37,547	84,312	131,852	148,151	85,631	88,143	80,051	88,005	133,021	150,934	190,354	200,159
Camel	11,663	37,430	16,984	3,473	18,864	21,874	5,147	5,069	22,810	14,245	26,515	20,206	92,651	107,281	102,664	59,567

Figure 48: Berbera Livestock Exports (Number of Heads)

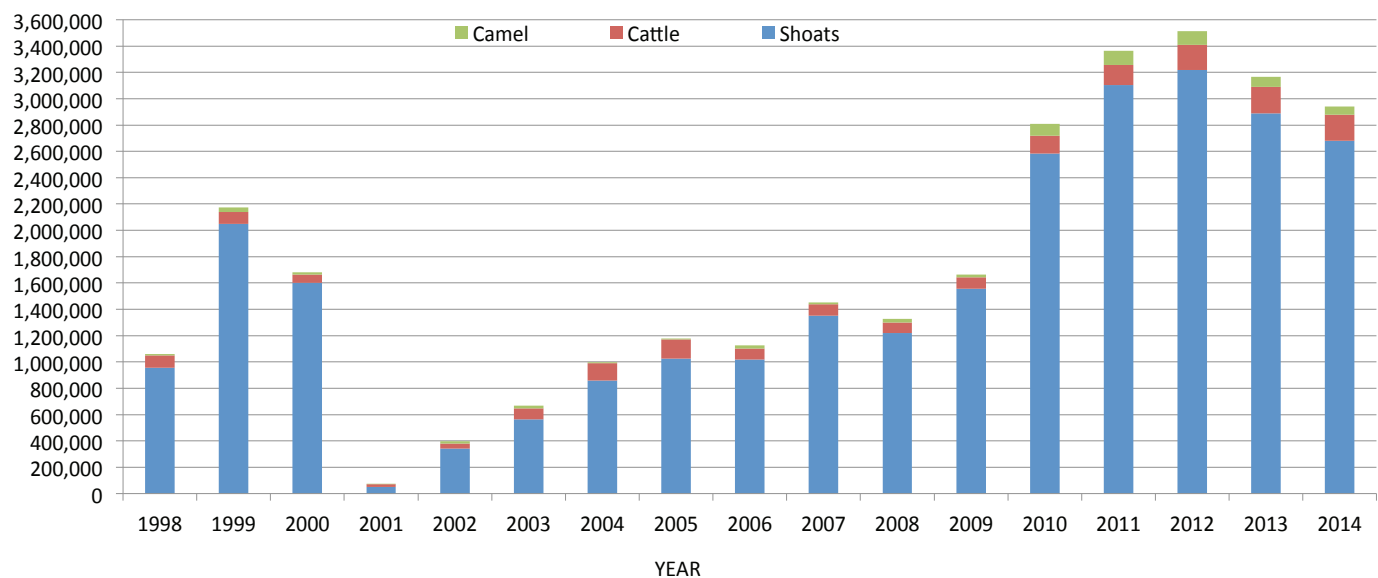
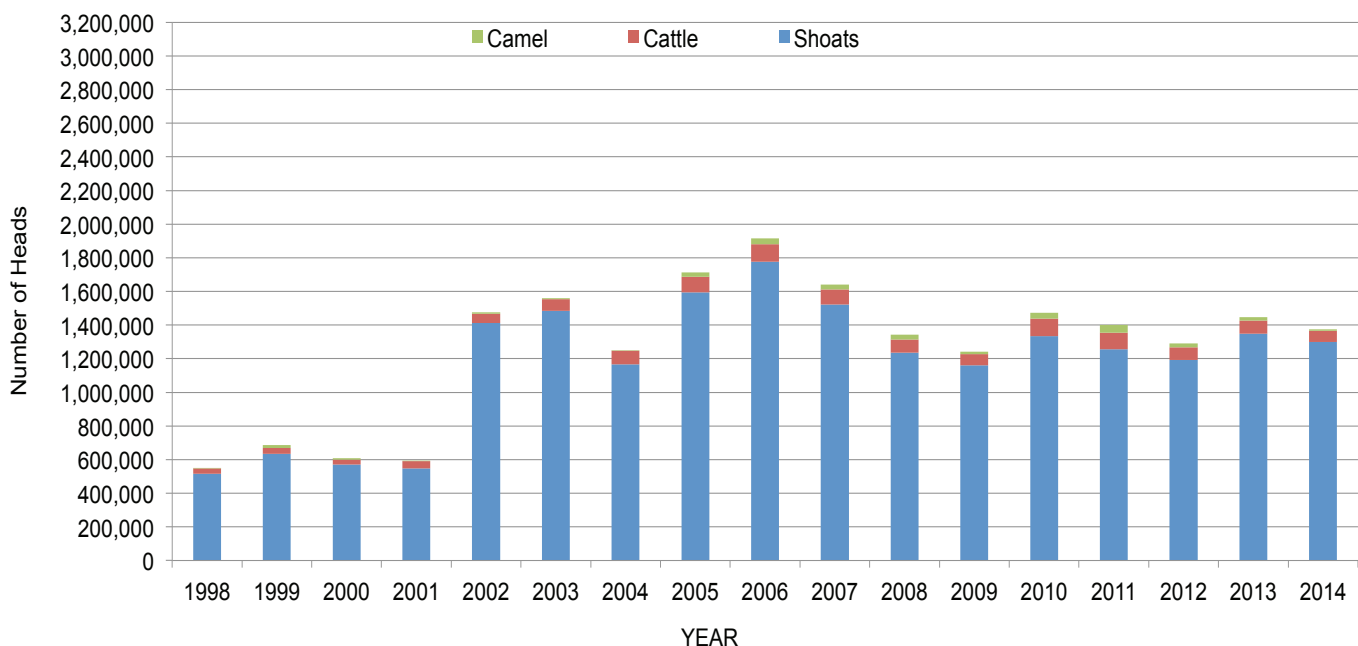


Table 2: Bossaso Livestock Exports (Number of Heads)

	1998	1999	2000	2001	2002	2003	2004	2005	2006	2007	2008	2009	2010	2011	2012	2013	2014 (Jan-Oct)
Shoats	517,020	633,669	571,455	548,853	1,412,450	1,483,409	1,166,480	1,594,859	1,777,283	1,522,855	1,236,775	1,159,454	1,333,478	1,256,535	1,192,197	1,349,123	1,298,190
Cattle	29,492	36,586	27,604	42,248	53,313	71,328	79,994	91,910	104,595	89,190	78,046	67,385	103,808	99,058	76,043	77,353	66,737
Camel	3,938	15,544	8,177	1,950	9,720	4,259	2,488	26,109	33,724	27,580	27,639	15,331	36,865	45,878	22,288	19,032	10,506

Figure 49: Bossaso Livestock Exports (Number of Heads)



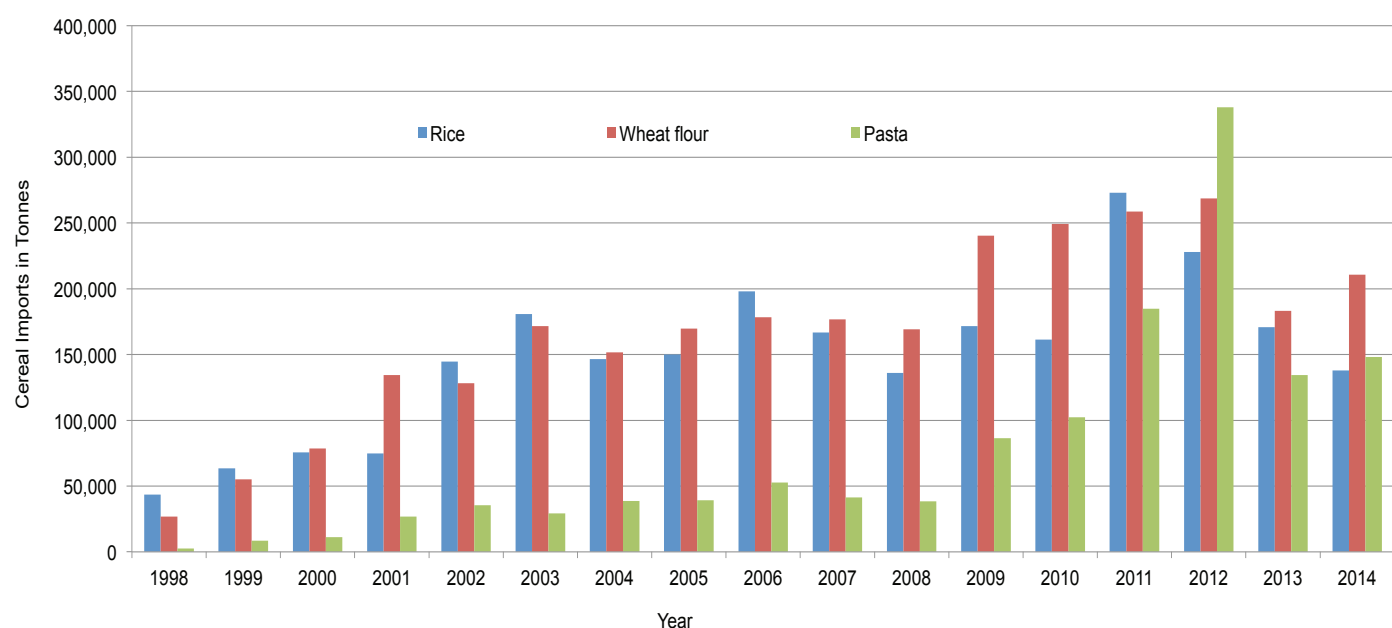
Livestock Exports: Berbera port data is up to September 2014 and Bossaso port data is up to October 2014

# Trends in Cereal Imports

Table 3: Total Cereal Imports through Berbera, Bossaso and Mogadishu Ports (Tonnes) \*

	1998	1999	2000	2001	2002	2003	2004	2005	2006	2007	2008	2009	2010	2011	2012	2013	2014 (Jan- Oct)
<b>Rice</b>	43,410	63,464	75,687	74,729	144,600	180,614	146,567	150,017	198,101	166,626	136,007	171,472	161,415	272,877	227,955	170,868	137,865
<b>Wheat flour</b>	26,774	55,176	78,555	134,425	128,263	171,442	151,555	169,583	178,345	176,821	169,208	240,247	249,080	258,679	268,491	183,058	210,599
<b>Pasta</b>	2,455	8,544	11,071	26,702	35,425	29,273	38,749	39,153	52,815	41,331	38,441	86,372	102,373	184,849	337,878	134,311	148,039

Figure 50: Total Cereal Imports (Berbera, Bossaso and Mogadishu)



\* Cereal Imports: Elmaan port data is up to August 2014, Berbera port data is up to September 2014 and Bossaso port data is up to October 2014.