

# Market DataUpdate



Food Security and Nutrition  
Analysis Unit - Somalia



November 2013 (Issued December 20, 2013)

## Highlights

**Inflation:** The November Consumer Price Index (CPI) was unchanged in all zones save for a slight increase in the Somaliland Shilling (SISH) areas. The CPI trends exhibited minimal variation on annual basis except for a slight decline in Central. Compared to the base period (March 2007), the CPI increased moderately in SISH regions and significantly in SoSh regions.

**Exchange rate:** The Somali currencies (SoSh & SISH) held steady against the United States Dollar (USD) over the month of November. However, the SoSh gained some ground when compared to November last year due to high dollar inflows through humanitarian assistance and foreign direct investments and remittances.

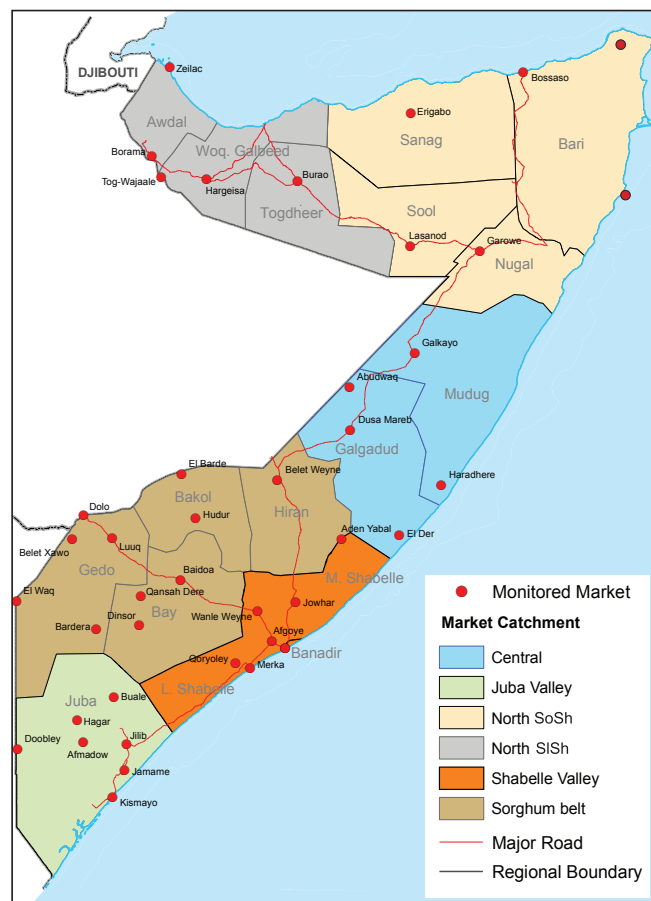
**Local grain prices** increased slightly in November in most areas except for a slight decline in Lower Juba. The price patterns are in tandem with normal seasonal trends. Compared to November 2012, retail cereal prices were mixed: higher in most markets, lower in most of Juba, Central and Bakool but stable in Bay.

**Prices of imported food** quoted in local currency were mostly unchanged in November except slight decline in Central and parts of Juba. The retail cost of imported food over the last one year (Nov 2012 – Nov 2013) declined nearly across all markets because of appreciated local currency against the USD, increased port supplies and general decline of prices in the international markets.

**Livestock prices** declined in November in line with reduced demand after the end of *Haji* festive period. Compared to November 2012, livestock prices were lower in most areas but significantly higher in Mogadishu and Northwest. The price decline in most areas was due to increased market supply as a result of improved livestock holdings among pastoralists after successive favourable rainy seasons.

**Labour wages** sustained their levels or increased in most regions in November supported by labour demand for *Deyr* season agricultural activities. Labour wages are significantly higher compared to their levels a year ago in most markets- due to renewed infrastructure reconstruction and rebuilding activities in Mogadishu in addition to revitalised trade activities in other regions as a result of gains in macro-economic stability.

**Terms of Trade (ToT)** between labour wages and local cereals (monthly trend) declined or remained stable in most regions. The decline in ToT was due to a faster rate of increase in cereal prices relative to labour wages. Compared to the same period last year (Nov 2012), ToT declined or remained stable in most regions, but increased in Juba and Mogadishu (Table 1).



This Market Data Update is a monthly report that presents analysis of market information and is produced regularly as part of the monthly monitoring process.

The weekly price data is collected from 48 main markets and 51 rural markets throughout Somalia since 1995.

Market analysis is an integral part of all of FSNAU's annual food security projections and seasonal technical reports (Technical Reports on FSNAU Post *Gu* and *Deyr* Analysis).

Detailed market data are available online on [www.fsnau.org/ids](http://www.fsnau.org/ids).

# Regional Market Highlights

**Juba Valley:** Prices of maize, imported food (rice, sugar and vegetable oil) and cattle declined in November in most markets while the cost of vegetable oil remained somewhat stable. ToT (14Kg/daily wage rate) declined by two units from the previous month (Oct 2013). Compared to a year ago (November 2012), prices are lower for most monitored items. Annual comparisons of ToT between labour and cereals indicate significant increase this November in purchasing power of casual labourers.

**Sorghum Belt:** Monthly prices of goats decreased while those of cereals and food imports went up in most markets of the Sorghum Belt regions. The ToT between labor wage and cereals decreased in Bakool and Gedo but remained stable in Bay and Hiraan. Year-on- year price comparisons indicated a decline or stable trend in the prices of most items with the exception of higher local cereal prices in Hiran and Bay. ToT declined in Hiran and Bay but remained unchanged in all other regions of the Sorghum Belt when compared to the same month last year (Nov 2012).

**Shabelle Valley:** Monthly prices of imports and cattle were stable while maize and goat prices increased. ToT (labour wage to cereals) remained stable in November 2013. Compared to the same month last year, prices of most commodities declined except for maize and cattle which increased. The ToT between labour wage and cereals declined when compared to November 2012.

**Central:** Slight monthly price decrease was recorded for imported food and goats while red sorghum price remained unchanged in November. Annual comparisons indicate decreases in the prices of all items. ToT between local goat and rice (65kg/goat) was three units down from the previous month but a unit higher than in November 2012.

**Northeast:** General price stability for imported food and red sorghum was observed in most markets in November while livestock prices decreased during the month. Prices of food imports are lower compared to a year ago (Nov 2012) while goat and sorghum prices increased. ToT between local goat and rice dropped significantly from the previous month (by 7 units) to 91kg/local goat. However, ToT is higher (by 18kgs) than it was a year ago (Nov 2012).

**Northwest:** Prices of most commodities remained stable in November 2013 except for a significant decline in livestock prices. Compared to a year ago, imported commodity prices declined while cereal and goat prices increased. The ToT between cereals (white sorghum) and labor wage decreased by one unit to close the month at 11 kg/ daily labour rate, but is at the same level as of the 12 months ago.

**Banadir/ Mogadishu:** Prices of most commodities remained relatively stable during November in the main Bakaara market. Compared to a year ago (Nov 2012), prices of most commodities are lower apart from goat and maize, which are higher. ToT between labour wage and white maize is unchanged from the previous month's level (27 kgs/daily labor rate) but is higher than the same period last year because of significantly increased labour wage rates this November.

**Table 1: ToT between Cereals (kg) per Daily Labour Wage Rate, by Region**

Regions	Nov 2013*	% change from:	
		13-Oct	12-Nov
Banadir/ Mogadishu	27	0%	17%
Bay	19	0%	-17%
Bakool	7	-13%	0%
Gedo	15	-17%	0%
Hiran	13	0%	-28%
Juba	14	-13%	27%
Shabelle	11	0%	-21%
Northeast	6	0%	-14%
Northwest	11	-8%	0%
Central	7	0%	-13%

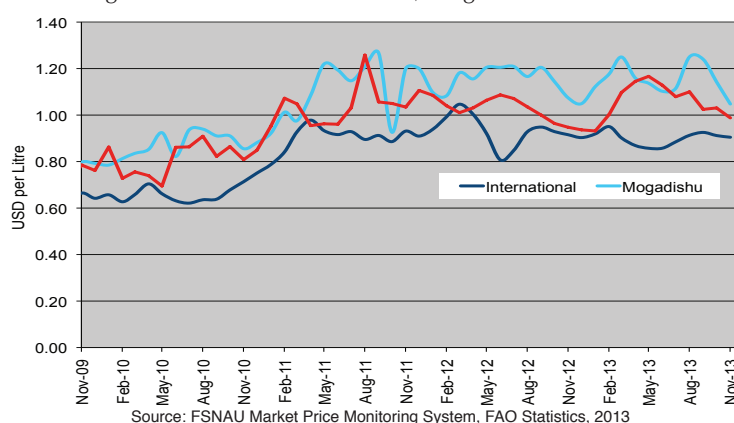
\* Cereal types used for ToT calculation: White Maize (Banadir, Hiran, Juba, Shabelle), Red Sorghum (Bay, Bakool, Gedo, Central, Northeast) and White Sorghum (Northwest)

## International Market Highlights

**Diesel:** the November International crude oil<sup>1</sup> exchanged at \$105.85/barrel, about a dollar lower than the previous month. The trend is supported by higher output particularly in the Middle East<sup>2</sup>. Crude oil price quotations are nearly at the same level as a year ago (Nov. '12).

**Monthly diesel prices in local currency terms decreased slightly (8%) in Mogadishu but remained unchanged in Bossaso. Similar trends were discernible on a year-on-year basis (Figure 1).**

**Figure 1: Diesel Prices in Dubai, Mogadishu and Bossaso**



1 Free on Board (FoB) price in Dubai, the main source of Somalia's oil imports.

2 Oil Market Report (OMR, No. 440), Monthly Publication by International Energy Agency (IEA) in collaboration with Organization of Petroleum Exporting Countries (OPEC), released 28 November 2013; [Online] Available from <http://omrpublic.iea.org/>

**Rice:** The export price of the benchmark Thai rice (Grade A1 Super 1/B) eased (6%) from 405 USD/tonne in October to 379 USD/tonne in November, pressured by limited export interest and the approaching main crop harvest<sup>3</sup>. Rice prices remained significantly depressed (30%) compared to the same month last year.

*The cost of imported rice increased by nearly a dollar (18%) in Mogadishu but was slightly depressed (5%) in Bossaso in November. Increased rice prices in Mogadishu could be attributable to increased consumption needs following recent arrivals of displaced people (about 4 000 people) from parts of Banadir and Shabelle regions (mostly due to floods)<sup>4</sup>. When compared to the same month last year, rice prices were down (9-16%) in both port cities, reflecting increased commercial import supplies and decreased internal rice prices (Figure 2).*

**Wheat:** The International Grain Council's wheat sub-Index fell by three percent month-on-month, reflecting slowing export demand and good winter wheat conditions in the US<sup>5</sup> (Figure 3). The Index is 17 percent lower than it was a year ago (Nov '12).

*On the domestic front, wheat flour prices did not change significantly in November 2013 but were 10-11 percent lower than a year ago in Mogadishu and Bossaso.*

**Sugar:** The FAO Sugar Price Index<sup>6</sup> averaged 250.6 points in November, down 14.2 points (5.3%) from October. The decline was mainly attributable to improved harvesting operations in Brazil and a possible surge of exports from India. Overall, sugar prices were lower (9%) when compared to the same period a year ago.

*Sugar prices remained unchanged on a month-on-month basis but decreased significantly (by 28- 30%) on a year-on-year basis in Mogadishu and Bossaso. These price trends are attributable to the strengthened SoSh, enhanced port supplies and continued humanitarian interventions (Figure 4).*

**Cooking Oil:** The FAO Vegetable Oil Price Index<sup>7</sup> averaged 198.5 points in November, up 11 points (5.6%) from October. Gains in palm oil prices following below-expectation output in Southeast Asia (Malaysia & Indonesia as from Dec. 13) coupled with strong global import demand led to the rise in the index. The index remained unchanged compared to 12 months ago.

*Monthly vegetable oil price did not change much in November in the two port cities of Mogadishu and Bossaso, but was significantly lower when compared to November 2012, by 23 and 16 percent, respectively. The latter trend is because of accelerated movement of supplies through ports.*

Figure 2: Rice Prices in Bangkok (FOB), Mogadishu and Bossaso Markets

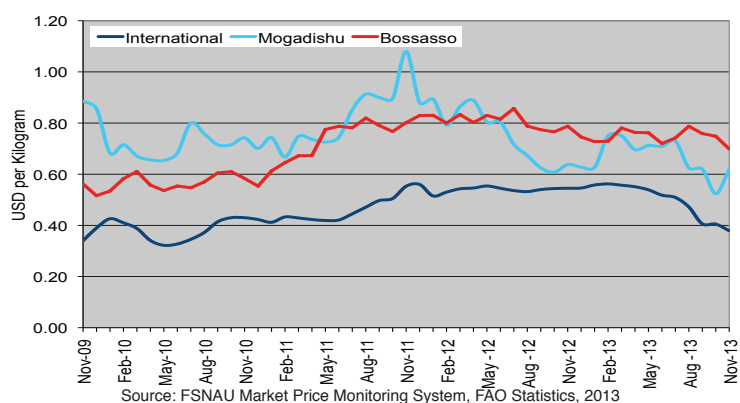
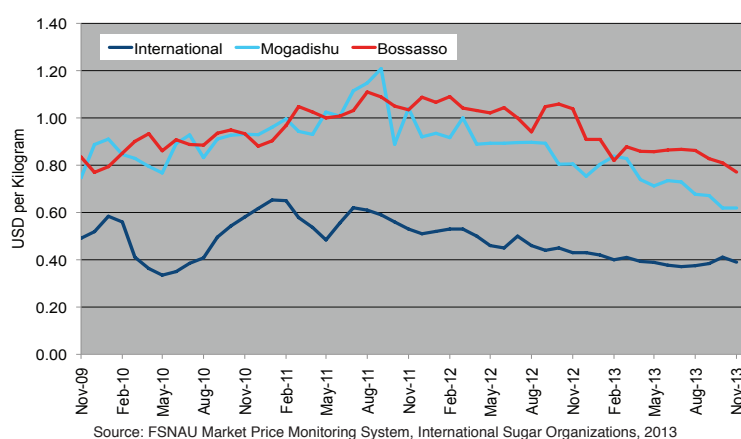


Figure 3: International Wheat Prices



Figure 4: Sugar Prices: International, Mogadishu and Bossaso Markets



3 AMIS Market Monitor, No. 14, December 2013

4 <http://data.unhcr.org/horn-of-africa/country.php?id=197>.

5 Grain Market Report (GMR) Issue 439 – 28 November 2013, International Grain Council

6 The World Food Situation: The FAO Food Price Index December 5, 2013

7 Ibid

# National Trends: CPI, Exchange Rates, Cereal Prices and Relative Purchasing Power

Figure 5: Terms of Trade Between Wage Rates and Selected Cereals

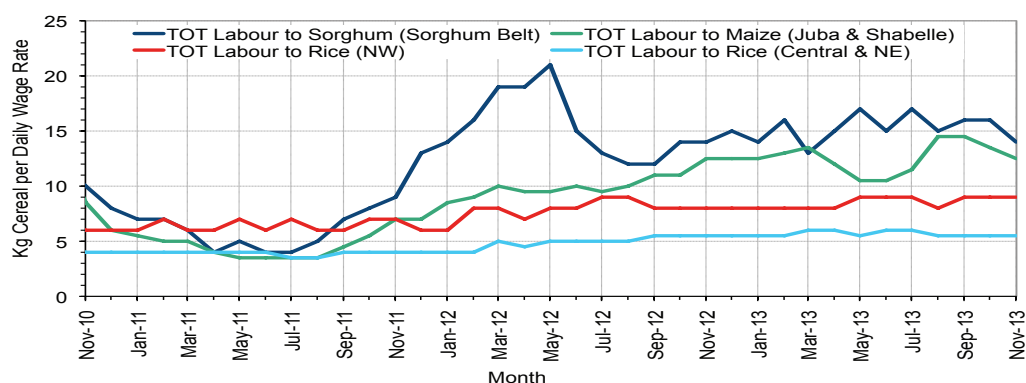


Figure 6: Monthly Exchange Rate for Selected Regions (SoSh and SiSh to USD)

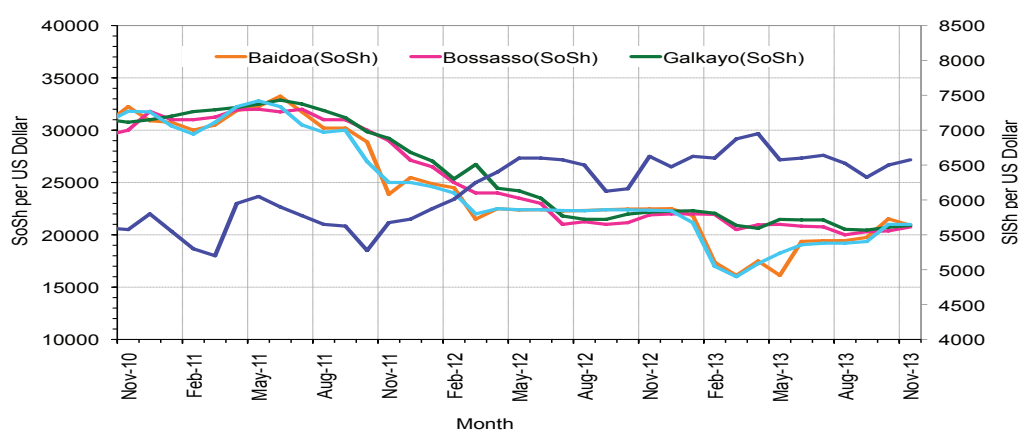


Figure 7: Monthly Trends in Consumer Price Index (CPI, March 2007=100)

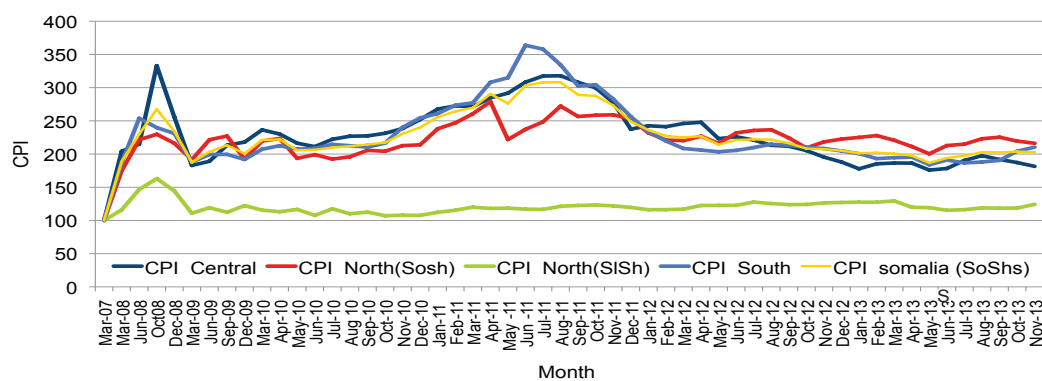
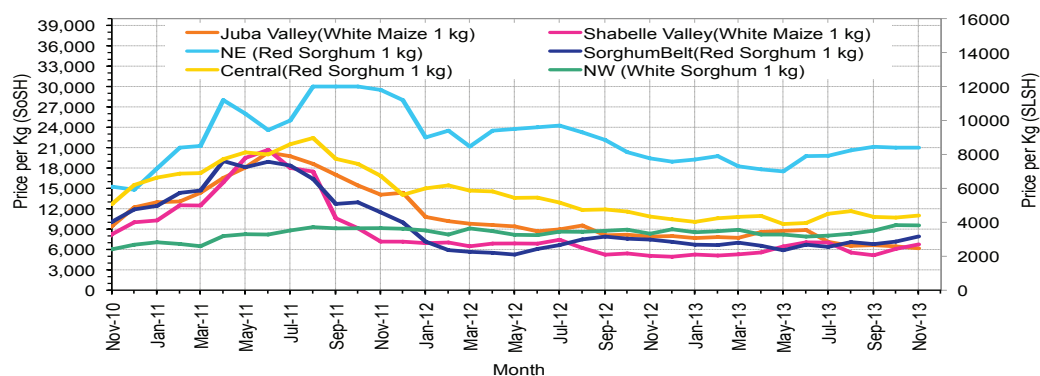


Figure 8: Monthly Trends in Local Cereal Prices



# Regional analysis: Juba Regions

Indicator	5-Year Average (2008-2012)	Nov-12	Oct-13	Nov-13 Nominal Price	Nov-13 Real (Deflated) Price	% Change Same Month Previous Year	% Change Previous Month	% Change 5-year avrg (2008-2012)
<b>Imported Commodities Prices</b>								
Diesel 1 litre	38,552	32,571	26,643	28,321	13,359	-13%	6%	-27%
Imported Red Rice 1kg	26,306	17,714	16,393	15,536	7,283	-12%	-5%	-41%
Petrol 1 litre	38,048	33,464	29,357	32,321	15,260	-3%	10%	-15%
Sugar	29,695	21,893	17,429	16,857	7,911	-23%	-3%	-43%
Vegetable Oil 1 litre	51,405	41,214	30,571	30,821	14,547	-25%	1%	-40%
Wheat Flour 1kg	22,081	17,500	16,714	15,750	7,385	-10%	-6%	-29%
Wheat Grain 1kg	22,600	-	-	-	-	-	-	-
<b>Cereal Prices</b>								
Red Sorghum 1kg	7,685	6,250	8,000	8,000	3,702	28%	0%	4%
White Maize 1kg	10,319	8,264	6,764	6,339	2,912	-23%	-6%	-39%
<b>Livestock &amp; Livestock Product Prices</b>								
Camel Local Quality (Head)	9,532,945	9,459,583	10,496,167	10,099,111	4,799,286	7%	-4%	6%
Cattle Local Quality (Head)	4,255,757	4,408,833	4,315,550	4,317,850	2,051,866	-2%	0%	1%
Fresh Camel Milk 1 litre	19,206	20,500	18,607	17,667	8,296	-14%	-5%	-8%
Goat Export Quality (Head)	1,381,881	1,863,036	1,664,286	1,608,679	764,390	-14%	-3%	16%
Goat Local Quality (Head)	893,471	1,134,429	1,146,179	1,120,536	532,411	-1%	-2%	25%
<b>Other Essential Items</b>								
Charcoal 50kg	88,588	95,357	73,036	82,250	38,988	-14%	13%	-7%
Cowpeas 1 kg	24,495	19,464	18,143	19,364	9,102	-1%	7%	-21%
Unskilled Labor Wage Rate	90,305	88,107	102,036	89,571	42,467	2%	-12%	-1%
Firewood Bundle	7,066	9,107	12,143	12,679	5,925	39%	4%	79%
Local Sesame Oil 1 litre	78,340	70,839	72,143	72,375	34,295	2%	0%	-8%
Exchange Rate (Somali Shilling per USD)	29,493	22,736	20,714	20,975	9,868	-8%	1%	-29%
<b>Terms of Trade</b>								
Labour Wage (Daily)/ Cereal (Maize(Kg))	9	11	15	14	-	33%	-6%	61%
Local Goat (Head)/ Cereal (Maize(Kg))	87	137	169	177	-	29%	4%	104%
<b>Price Indices</b>								
Consumer Price Index	-	208	204	210	-	1%	3%	-

Figure 9: Trends in Cereal Prices

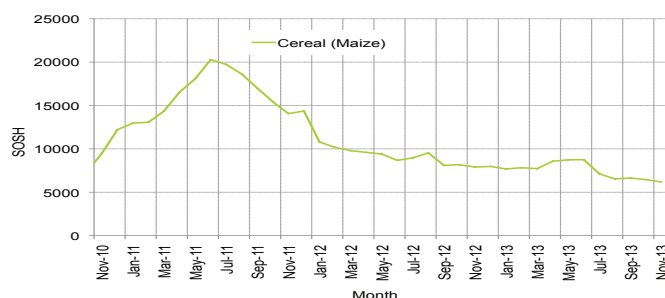


Figure 10: Trends in Wage Rates and Relative Purchasing Power

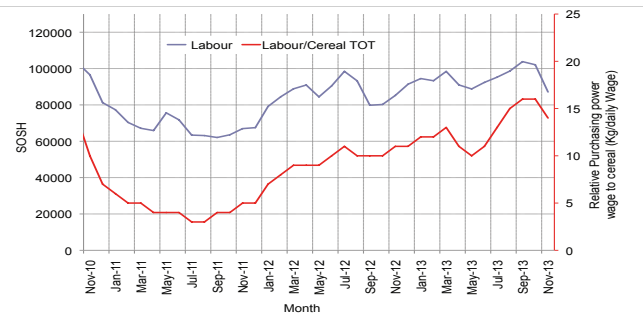


Figure 11: Imported Commodity Prices Compared to Exchange Rate

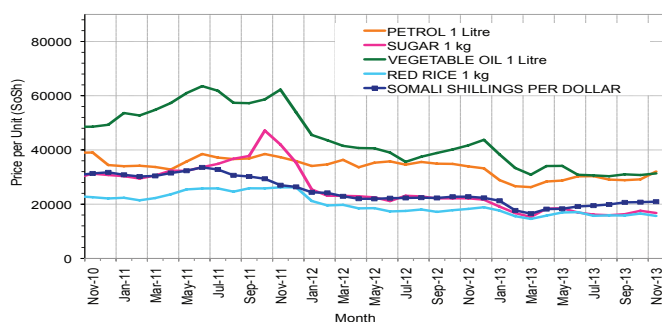


Figure 12: Goat Local Quality

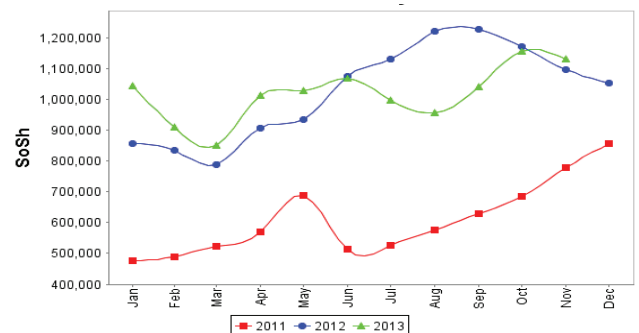


Figure 13: Exchange Rate

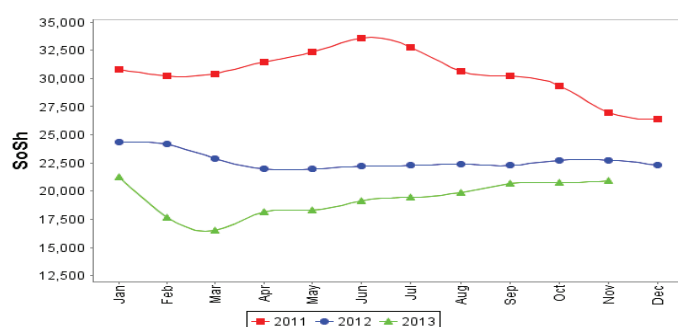
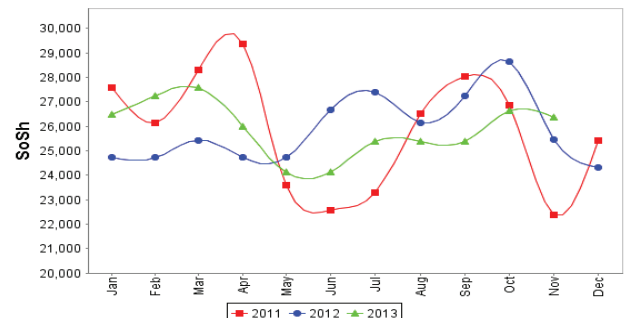


Figure 14: Water Drum (200 litres)





# Regional analysis: Sorghum Belt Regions (Bay, Bakool, Gedo and Hiran)

Indicator	5-Year Average (2008-2012)	Nov-12	Oct-13	Nov-13 Nominal Price	Nov-13 Real (Deflated) Price	% Change Same Month Previous Year	% Change Previous Month	% Change 5-year avrg (2008-2012)
<b>Imported Commodities Prices</b>								
Diesel 1 litre	34,929	32,500	28,364	29,205	13,779	-10%	3%	-16%
Imported Red Rice 1kg	27,070	20,341	17,545	18,341	8,616	-10%	5%	-32%
Petrol 1 litre	35,092	31,932	28,455	29,114	13,736	-9%	2%	-17%
Sugar	28,794	23,477	18,636	19,364	9,102	-18%	4%	-33%
Vegetable Oil 1 litre	50,681	47,318	38,386	38,182	18,045	-19%	-1%	-25%
Wheat Flour 1kg	23,460	19,273	17,091	16,932	7,947	-12%	-1%	-28%
Wheat Grain 1kg	14,017	8,650	10,600	10,750	5,009	24%	1%	-23%
<b>Cereal Prices</b>								
Red Sorghum 1kg	9,429	7,461	7,166	7,923	3,665	6%	11%	-16%
White Maize 1kg	10,954	8,488	8,325	9,273	4,307	9%	11%	-15%
<b>Livestock &amp; Livestock Product Prices</b>								
Camel Local Quality (Head)	10,332,909	14,219,500	13,934,091	13,754,545	6,536,452	-3%	-1%	33%
Cattle Local Quality (Head)	3,392,906	4,436,667	3,959,375	3,967,813	1,885,518	-11%	0%	17%
Fresh Camel Milk 1 litre	21,809	25,886	16,705	16,205	7,601	-37%	-3%	-26%
Goat Export Quality (Head)	1,442,459	1,900,705	1,750,455	1,661,591	789,535	-13%	-5%	15%
Goat Local Quality (Head)	897,322	1,361,955	1,186,591	1,111,818	528,268	-18%	-6%	24%
<b>Other Essential Items</b>								
Charcoal 50kg	135,077	163,227	142,727	152,614	72,427	-7%	7%	13%
Cowpeas 1 kg	30,520	21,359	18,830	19,603	9,216	-8%	4%	-36%
Unskilled Labor Wage Rate	96,810	107,500	113,182	106,955	50,728	-1%	-6%	10%
Firewood Bundle	5,654	6,932	6,909	6,818	3,140	-2%	-1%	21%
Local Sesame Oil 1 litre	80,762	73,250	79,607	82,714	39,208	13%	4%	2%
Exchange Rate (Somali Shilling per USD)	28,672	22,379	20,840	20,794	9,782	-7%	0%	-27%
<b>Terms of Trade</b>								
Labour Wage (Daily)/ Cereal (Sorghum(Kg))	10	14	16	13	-	-6%	-15%	31%
Local Goat (Head)/ Cereal (Sorghum(Kg))	95	183	166	140	-	-23%	-15%	47%
<b>Price Indices</b>								
Consumer Price Index	-	208	204	210	-	1%	3%	-

Figure 15: Trends in Cereal Prices

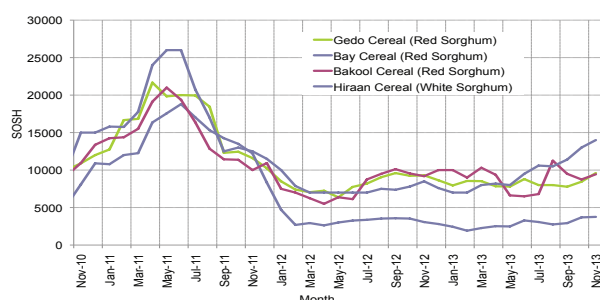


Figure 16: Trends in Wage Rates and Relative Purchasing Power

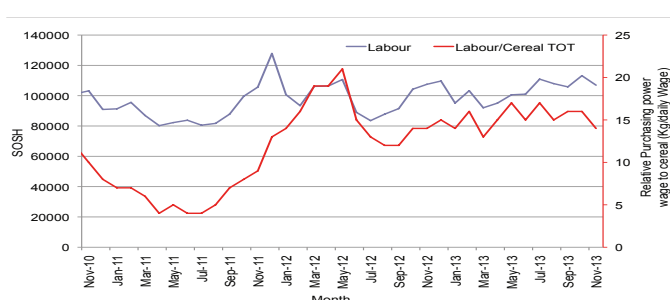


Figure 17: Imported Commodity Prices Compared to Exchange Rate

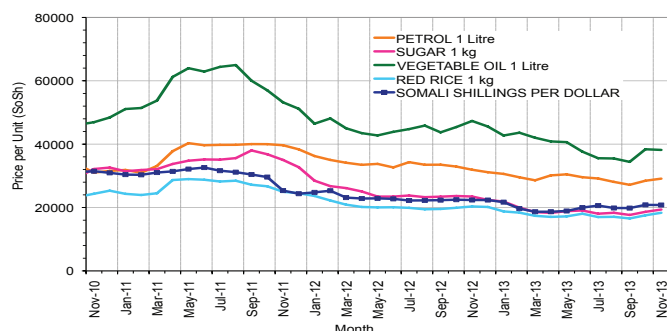


Figure 18: Goat Local Quality

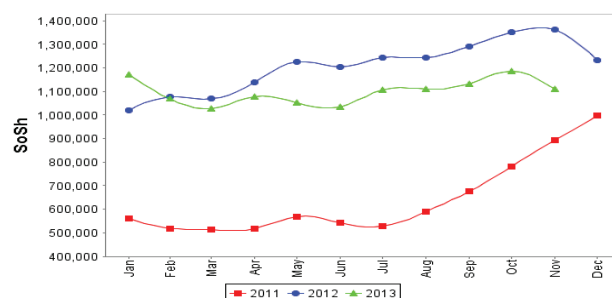


Figure 19: Exchange Rate

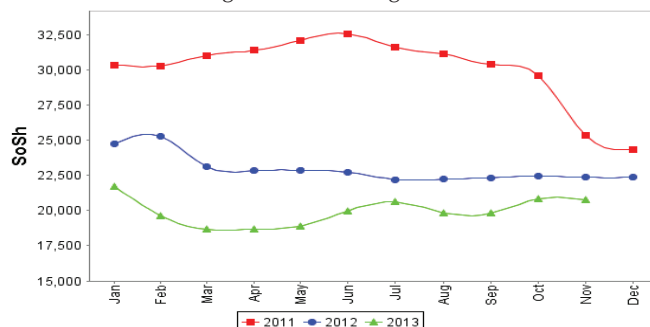
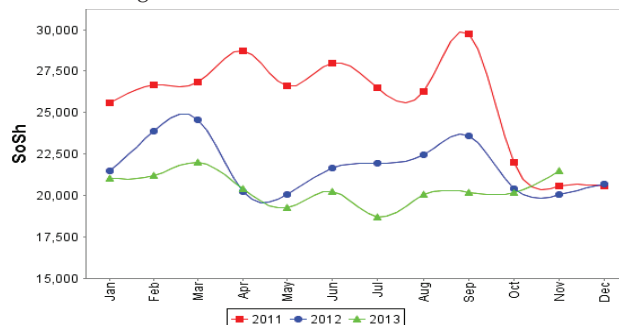


Figure 20: Water Drum (200 litres)



# Regional analysis: Shabelle Regions

Indicator	5-Year Average (2008-2012)	Nov-12	Oct-13	Nov-13 Nominal Price	Nov-13 Real (Deflated) Price	% Change Same Month Previous Year	% Change Previous Month	% Change 5-year avrg (2008-2012)
<b>Imported Commodities Prices</b>								
Diesel 1 litre	31,612	29,250	27,767	27,875	13,147	-5%	0%	-12%
Imported Red Rice 1kg	24,283	16,625	17,167	16,917	7,939	2%	-1%	-30%
Petrol 1 litre	33,633	30,083	28,833	28,708	13,543	-5%	0%	-15%
Sugar	25,352	21,583	16,967	17,083	8,018	-21%	1%	-33%
Vegetable Oil 1 litre	40,037	33,292	27,167	27,667	13,048	-17%	2%	-31%
Wheat Flour 1kg	19,883	18,042	16,033	15,958	7,484	-12%	0%	-20%
Wheat Grain 1kg	12,500	6,667	7,733	9,667	4,494	45%	25%	-23%
<b>Cereal Prices</b>								
Red Sorghum 1kg	10,546	8,872	9,283	9,521	4,425	7%	3%	-10%
White Maize 1kg	6,608	5,067	6,087	6,748	3,107	33%	11%	2%
<b>Livestock &amp; Livestock Product Prices</b>								
Camel Local Quality (Head)	13,296,166	17,235,000	18,029,333	17,850,000	8,482,729	4%	-1%	34%
Cattle Local Quality (Head)	4,352,800	5,950,000	6,425,000	6,345,000	3,015,225	7%	-1%	46%
Fresh Camel Milk 1 litre	18,391	21,875	21,133	22,042	10,375	1%	4%	20%
Goat Export Quality (Head)	1,653,175	2,188,750	1,839,500	1,924,375	914,418	-12%	5%	16%
Goat Local Quality (Head)	1,182,416	1,465,417	1,220,333	1,320,000	627,202	-10%	8%	12%
<b>Other Essential Items</b>								
Charcoal 50kg	123,952	128,820	126,200	135,444	64,267	5%	7%	9%
Cowpeas 1 kg	24,222	22,627	16,447	16,317	7,654	-28%	-1%	-33%
Unskilled Labor Wage Rate	62,637	72,083	68,000	73,750	34,948	2%	8%	18%
Firewood Bundle	4,958	6,958	7,333	7,875	3,642	13%	7%	59%
Local Sesame Oil 1 litre	65,515	59,000	62,100	68,000	32,216	15%	10%	4%
Exchange Rate (Somali Shilling per USD)	29,280	22,929	21,380	21,110	9,932	-8%	-1%	-28%
<b>Terms of Trade</b>								
Labour Wage (Daily)/ Cereal (Maize(Kg))	9	14	11	11	-	-23%	-2%	15%
Local Goat (Head)/ Cereal (Maize(Kg))	179	289	200	196	-	-32%	-2%	9%
<b>Price Indices</b>								
Consumer Price Index	-	208	204	210	-	1%	3%	-

Figure 21: Trends in Cereal Prices

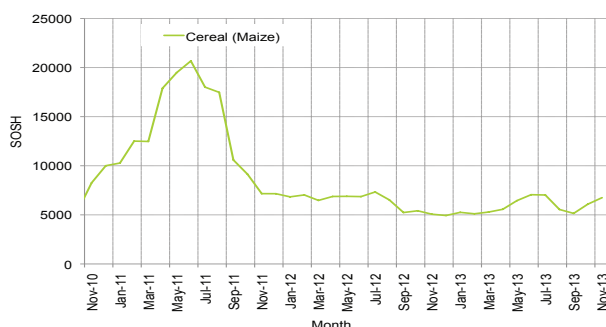


Figure 22: Trends in Wage Rates and Relative Purchasing Power

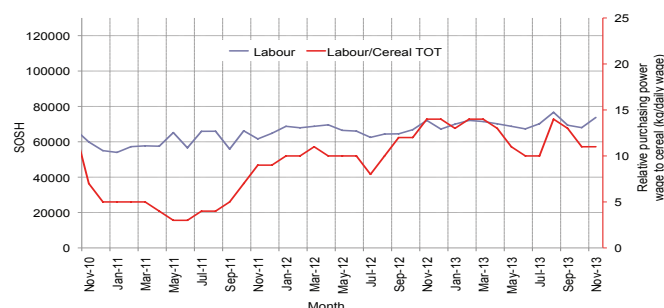


Figure 23: Imported Commodity Prices Compared to Exchange Rate

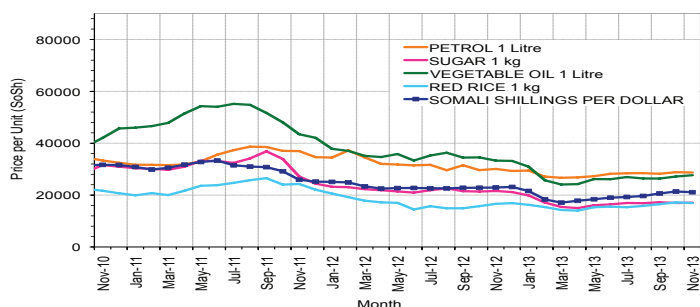


Figure 25: Exchange Rate

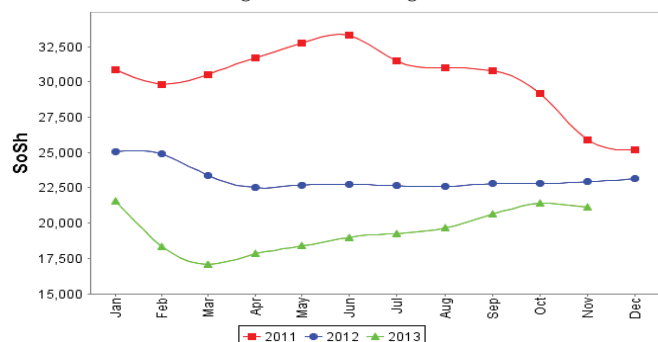


Figure 24: Goat Local Quality

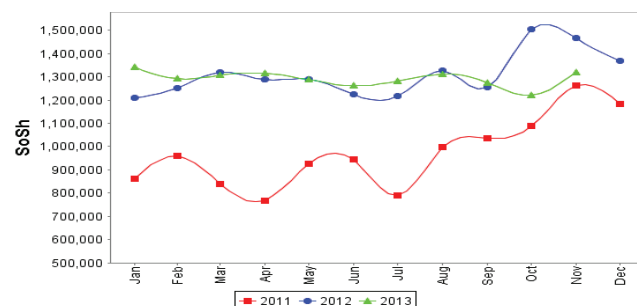
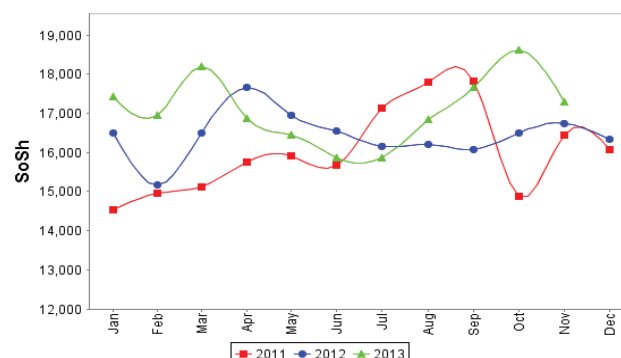


Figure 26: Water Drum (200 litres)



# Regional analysis: Banadir Region

Indicator	5-Year Average (2008-2012)	Nov-12	Oct-13	Nov-13 Nominal Price	Nov-13 Real (Deflated) Price	% Change Same Month Previous Year	% Change Previous Month	% Change 5-year avrg (2008-2012)
<b>Imported Commodities Prices</b>								
Diesel 1 litre	27,305	23,833	21,271	21,146	9,949	-11%	-1%	-23%
Imported Red Rice 1kg	23,882	14,083	12,333	12,688	5,930	-10%	3%	-47%
Petrol 1 litre	28,198	24,542	21,104	21,625	10,177	-12%	2%	-23%
Sugar	22,484	17,854	13,646	13,688	6,405	-23%	0%	-39%
Vegetable Oil 1 litre	39,954	32,250	22,958	23,042	10,850	-29%	0%	-42%
Wheat Flour 1kg	16,865	14,167	12,333	12,354	5,771	-13%	0%	-27%
Wheat Grain 1kg	14,417	8,733	7,333	7,458	3,444	-15%	2%	-48%
<b>Cereal Prices</b>								
Red Sorghum 1kg	8,041	5,275	6,408	6,108	2,803	16%	-5%	-24%
White Maize 1kg	8,208	7,239	7,363	7,729	3,573	7%	5%	-6%
<b>Livestock &amp; Livestock Product Prices</b>								
Camel Local Quality (Head)	16,187,500	-	-	-	-	-	-	-
Cattle Local Quality (Head)	4,286,667	-	-	-	-	-	-	-
Fresh Camel Milk 1 litre	19,803	20,208	21,042	21,042	9,900	4%	0%	6%
Goat Export Quality (Head)	2,020,166	2,600,000	3,000,000	3,000,000	1,425,586	15%	0%	49%
Goat Local Quality (Head)	1,684,083	2,131,250	2,356,875	2,319,375	1,102,133	9%	-2%	38%
<b>Other Essential Items</b>								
Charcoal 50kg	176,446	190,542	191,250	187,083	88,807	-2%	-2%	6%
Cowpeas 1 kg	23,662	19,688	13,604	13,104	6,127	-33%	-4%	-45%
Unskilled Labor Wage Rate	81,758	110,000	111,875	111,458	52,868	1%	0%	36%
Firewood Bundle	6,733	7,800	7,900	7,800	3,607	0%	-1%	16%
Local Sesame Oil 1 litre	63,596	60,625	60,667	64,292	30,453	6%	6%	1%
Exchange Rate (Somali Shilling per USD)	29,012	22,471	21,000	21,035	9,896	-6%	0%	-27%
<b>Terms of Trade</b>								
Labour Wage (Daily)/ Cereal (Maize(Kg))	10	15	15	14	-	-5%	-5%	45%
Local Goat (Head)/ Cereal (Maize(Kg))	205	294	320	300	-	2%	-6%	46%
<b>Price Indices</b>								
Consumer Price Index	-	208	204	210	-	1%	3%	-

Figure 27: Trends in Cereal Prices

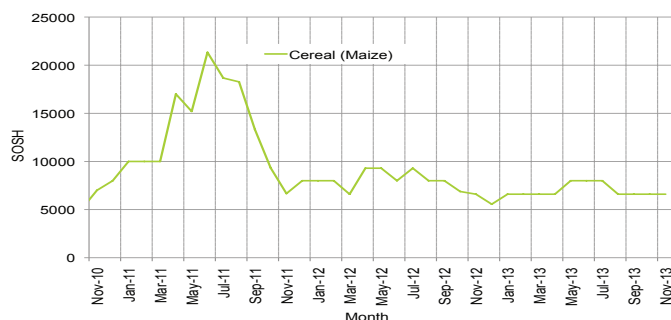


Figure 28: Bakara: Trends in Wage Rates and Relative Purchasing Power

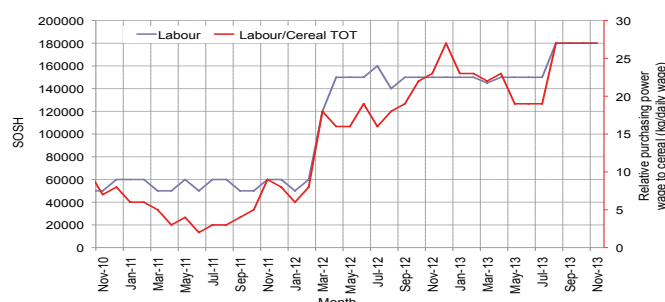


Figure 29: Imported Commodity Prices Compared to Exchange Rate

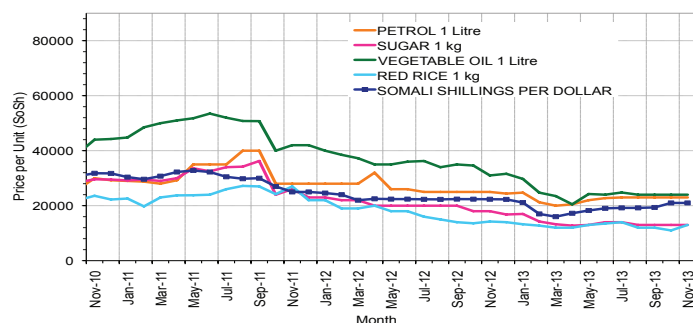


Figure 30: Goat Local Quality

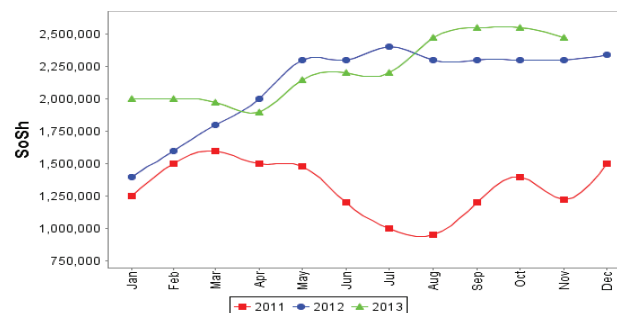


Figure 31: Exchange Rate

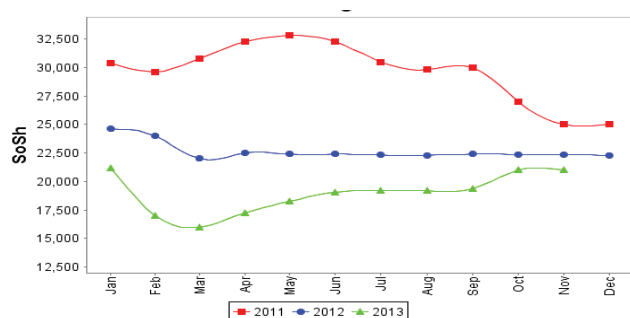
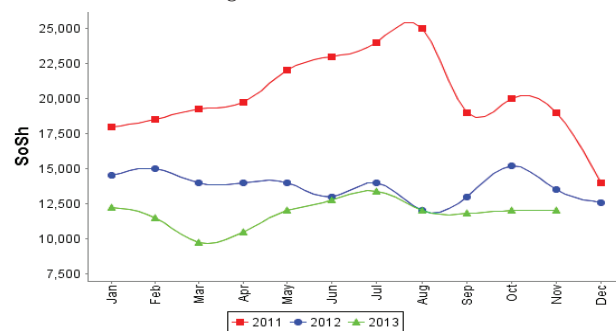


Figure 32: Wheat Flour





# Regional analysis: Central Regions

Indicator	5-Year Average (2008-2012)	Nov-12	Oct-13	Nov-13 Nominal Price	Nov-13 Real (Deflated) Price	% Change Same Month Previous Year	% Change Previous Month	% Change 5-year avrg (2008-2012)
<b>Imported Commodities Prices</b>								
Diesel 1 litre	34,526	29,400	27,850	26,650	14,584	-9%	-4%	-23%
Imported Red Rice 1kg	28,375	20,550	19,400	18,400	10,038	-10%	-5%	-35%
Petrol 1 litre	30,308	25,800	25,250	23,700	12,958	-8%	-6%	-22%
Sugar	28,634	22,950	20,500	19,750	10,782	-14%	-4%	-31%
Vegetable Oil 1 litre	54,917	44,900	42,500	43,500	23,868	-3%	2%	-21%
Wheat Flour 1kg	22,941	17,100	16,950	16,600	9,046	-3%	-2%	-28%
Wheat Grain 1kg	18,075	14,667	12,250	12,938	7,029	-12%	6%	-28%
<b>Cereal Prices</b>								
Red Sorghum 1kg	13,189	10,850	10,700	11,000	5,961	1%	3%	-17%
White Maize 1kg	14,709	11,375	11,000	9,750	5,272	-14%	-11%	-34%
<b>Livestock &amp; Livestock Product Prices</b>								
Camel Local Quality (Head)	8,048,750	10,625,000	11,643,750	11,350,000	6,253,600	7%	-3%	41%
Cattle Local Quality (Head)	2,141,250	-	-	-	-	-	-	-
Fresh Camel Milk 1 litre	38,372	25,900	25,550	25,300	13,840	-2%	-1%	-34%
Goat Export Quality (Head)	1,409,016	1,495,000	1,540,000	1,462,500	805,718	-2%	-5%	4%
Goat Local Quality (Head)	1,042,275	1,314,000	1,325,000	1,193,500	657,503	-9%	-10%	15%
<b>Other Essential Items</b>								
Charcoal 50kg	185,440	193,500	188,000	186,000	102,384	-4%	-1%	0%
Cowpeas 1 kg	34,110	25,900	16,400	16,000	8,716	-38%	-2%	-53%
Unskilled Labor Wage Rate	79,760	86,000	75,625	80,000	43,979	-7%	6%	0%
Firewood Bundle	30,690	39,000	35,000	34,700	19,019	-11%	-1%	13%
Local Sesame Oil 1 litre	99,535	87,250	86,750	85,250	46,872	-2%	-2%	-14%
Exchange Rate (Somali Shilling per USD)	28,906	22,405	20,445	20,930	11,432	-7%	2%	-28%
<b>Terms of Trade</b>								
Labour Wage (Daily)/ Cereal (Rice(Kg))	3	4	4	4	-	4%	12%	55%
Local Goat (Head)/ Cereal (Rice(Kg))	37	64	68	65	-	1%	-5%	77%
Camel (Head)/Cereal (Kg)	284	517	600	617	-	19%	3%	117%
<b>Price Indices</b>								
Consumer Price Index	-	195	187	181	-	-7%	-3%	-

Figure 33: Trends in Cereal Prices

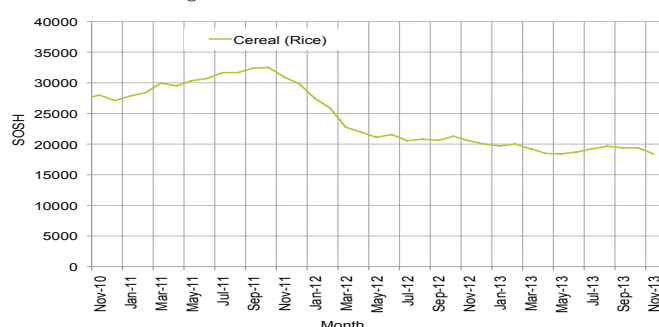


Figure 34: Trends in wage rates and relative purchasing power

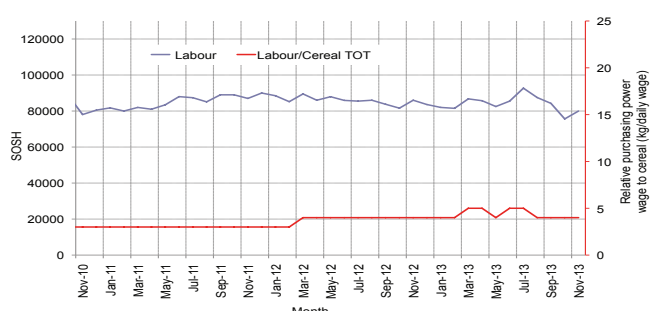


Figure 35: Imported Commodity Prices Compared to Exchange Rate

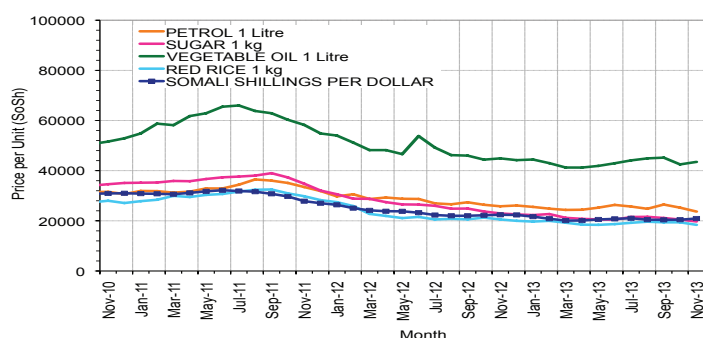


Figure 36: Goat Local Quality

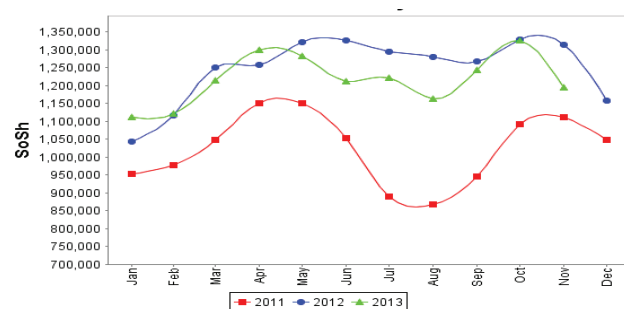


Figure 37: Exchange Rate

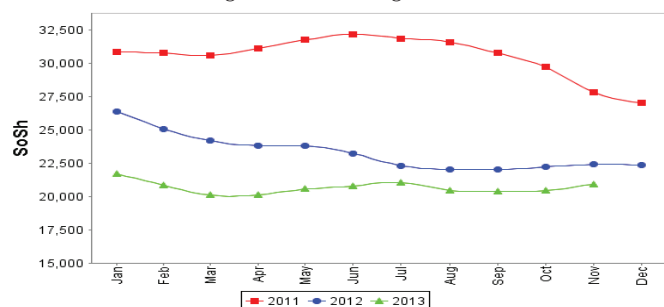
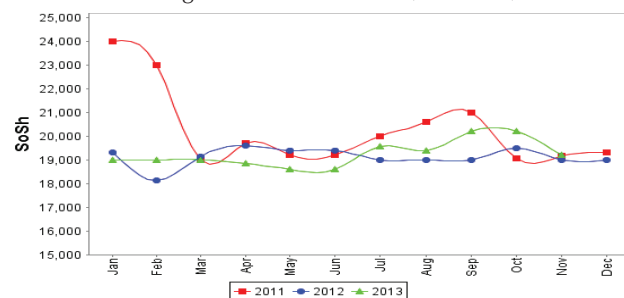


Figure 38: Water Drum (200 litres)



# Regional analysis: Northeast Regions

Indicator	5-Year Average (2008-2012)	Nov-12	Oct-13	Nov-13 Nominal Price	Nov-13 Real (Deflated) Price	% Change Same Month Previous Year	% Change Previous Month	% Change 5-year avrg (2008-2012)
<b>Imported Commodities Prices</b>								
Diesel 1 litre	29,362	23,875	23,563	23,375	10,709	-2%	-1%	-20%
Imported Red Rice 1kg	22,467	17,625	15,750	15,875	7,241	-10%	1%	-29%
Petrol 1 litre	26,510	21,938	21,125	21,000	9,610	-4%	-1%	-21%
Sugar	25,627	21,438	18,625	18,188	8,310	-15%	-2%	-29%
Vegetable Oil 1 litre	46,172	37,750	34,188	33,125	15,217	-12%	-3%	-28%
Wheat Flour 1kg	20,039	16,625	14,875	14,875	6,778	-11%	0%	-26%
Wheat Grain 1kg	28,768	27,375	25,000	25,750	11,807	-6%	3%	-10%
<b>Cereal Prices</b>								
Red Sorghum 1kg	20,113	19,417	21,000	21,000	9,610	8%	0%	4%
White Maize 1kg	20,051	17,500	22,500	22,000	10,073	26%	-2%	10%
<b>Livestock &amp; Livestock Product Prices</b>								
Camel Local Quality (Head)	13,310,000	15,750,000	15,387,500	14,993,750	6,933,010	-5%	-3%	13%
Cattle Local Quality (Head)	7,210,000	8,125,000	7,750,000	8,125,000	3,756,900	-	5%	13%
Fresh Camel Milk 1 litre	38,552	35,125	35,750	32,125	14,755	-9%	-10%	-17%
Goat Export Quality (Head)	1,424,016	1,485,000	1,612,500	1,475,000	681,940	-1%	-9%	4%
Goat Local Quality (Head)	1,286,550	1,287,500	1,540,000	1,440,000	665,756	12%	-6%	12%
<b>Other Essential Items</b>								
Charcoal 50kg	345,175	373,125	375,000	407,500	188,328	9%	9%	18%
Cowpeas 1 kg	42,442	35,667	28,917	29,417	13,502	-18%	2%	-31%
Unskilled Labor Wage Rate	111,737	125,000	125,000	125,000	57,700	0%	0%	12%
Firewood Bundle	35,267	45,625	49,375	51,250	23,598	12%	4%	45%
Local Sesame Oil 1 litre	96,646	86,563	94,313	92,500	42,672	7%	-2%	-4%
Exchange Rate (Somali Shilling per USD)	28,307	21,663	20,906	20,813	9,524	-4%	0%	-26%
<b>Terms of Trade</b>								
Labour Wage (Daily)/ Cereal (Rice(Kg))	5	7	8	8	-	11%	-1%	58%
Local Goat (Head)/ Cereal (Rice(Kg))	57	73	98	91	-	24%	-7%	58%
<b>Price Indices</b>								
Consumer Price Index	-	218	220	216	-	-1%	-1%	-

Figure 39: Trends in Cereal Prices

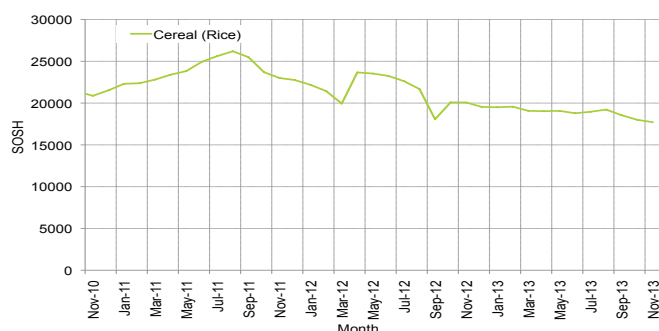


Figure 40: Trends in Wage Rates and Relative Purchasing Power

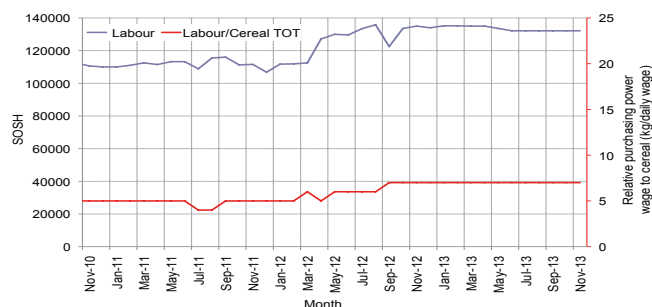


Figure 41: Imported Commodity Prices Compared to Exchange Rate

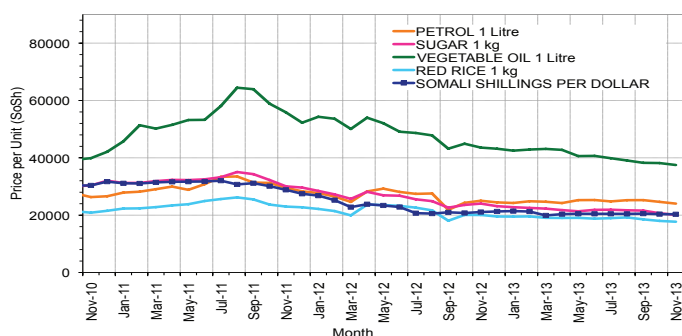


Figure 42: Goat Local Quality

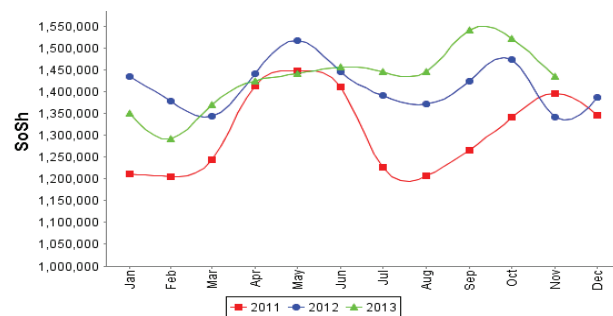


Figure 43: Exchange Rate

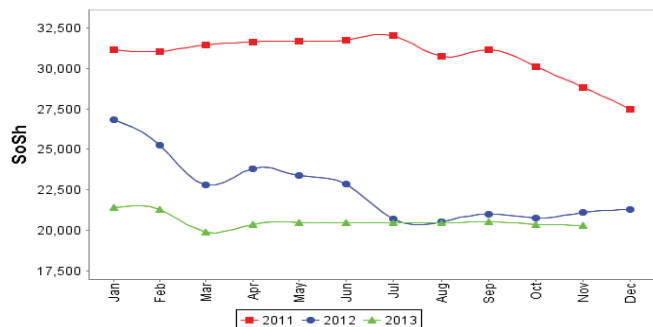
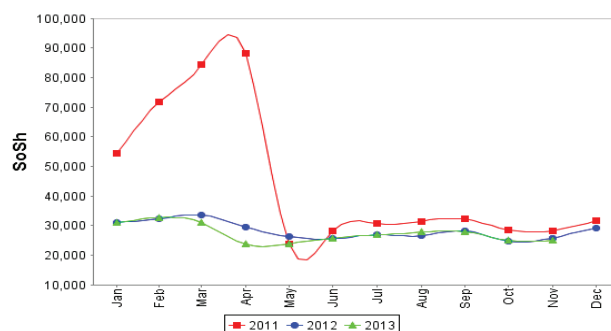


Figure 44: Water Drum (200 litres)



# Regional analysis: Northwest Regions

Indicator	5-Year Average (2008-2012)	Nov-12	Oct-13	Nov-13 Nominal Price	Nov-13 Real (Deflated) Price	% Change Same Month Previous Year	% Change Previous Month	% Change 5-year avrg (2008-2012)
<b>Imported Commodities Prices</b>								
Diesel 1 litre	5,845	6,937	6,855	6,880	5,437	-1%	0%	18%
Imported Red Rice 1kg	5,397	4,972	5,020	5,020	3,940	1%	0%	-7%
Petrol 1 litre	6,082	7,294	7,000	7,040	5,565	-3%	1%	16%
Sugar	5,635	6,045	5,540	5,568	4,381	-8%	1%	-1%
Vegetable Oil 1 litre	11,002	12,695	12,150	11,950	9,517	-6%	-2%	9%
Wheat Flour 1kg	4,561	4,442	4,230	4,180	3,264	-6%	-1%	-8%
Wheat Grain 1kg	3,423	2,906	3,500	3,406	2,641	17%	-3%	0%
<b>Cereal Prices</b>								
White Sorghum 1kg	3,661	3,330	3,835	3,820	2,974	15%	0%	4%
Yellow Maize 1kg	3,707	3,381	3,968	3,875	3,018	15%	-2%	5%
<b>Livestock &amp; Livestock Product Prices</b>								
Camel Local Quality (Head)	1,947,033	2,711,000	4,087,500	3,804,167	3,061,221	40%	-7%	95%
Cattle Local Quality (Head)	1,395,844	1,754,500	2,673,750	2,275,000	1,830,657	30%	-15%	63%
Fresh Camel Milk 1 litre	5,077	5,400	5,550	5,600	4,406	4%	1%	10%
Goat Export Quality (Head)	325,467	443,150	527,590	436,400	351,083	-2%	-17%	34%
Goat Local Quality (Head)	237,929	299,325	392,425	323,450	260,189	8%	-18%	36%
<b>Other Essential Items</b>								
Charcoal 50kg	35,414	45,385	50,250	53,600	43,033	18%	7%	51%
Cowpeas 1 kg	9,363	10,031	9,625	9,750	7,746	-3%	1%	4%
Unskilled Labor Wage Rate	30,795	37,705	45,250	43,080	34,568	14%	-5%	40%
Firewood Bundle	3,644	3,033	3,333	3,333	2,582	10%	0%	-9%
Local Sesame Oil 1 litre	24,708	25,894	31,875	31,000	24,847	20%	-3%	25%
Exchange Rate (Somaliland Shilling per USD)	6,133	6,460	6,565	6,605	5,215	2%	1%	8%
<b>Terms of Trade</b>								
Labour Wage (Daily)/ Cereal (Rice(Kg))	6	8	9	9	-	13%	-5%	50%
Local Goat (Head)/ Cereal (Rice(Kg))	44	60	78	64	-	7%	-18%	46%
<b>Price Indices</b>								
Consumer Price Index	-	126	119	124	-	-2%	5%	-

Figure 45: Trends in Cereal Prices

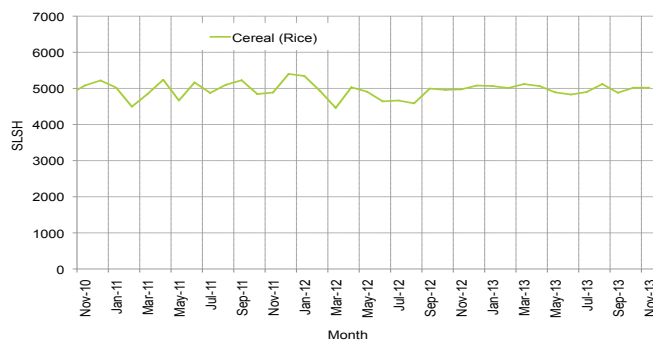


Figure 46: Trends in Wage Rates and Relative Purchasing Power

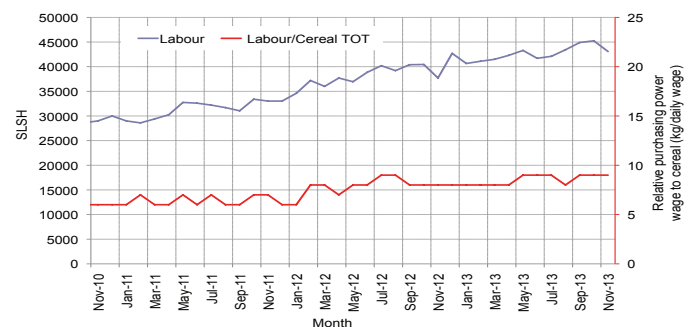


Figure 47: Imported Commodity Prices Compared to Exchange Rate

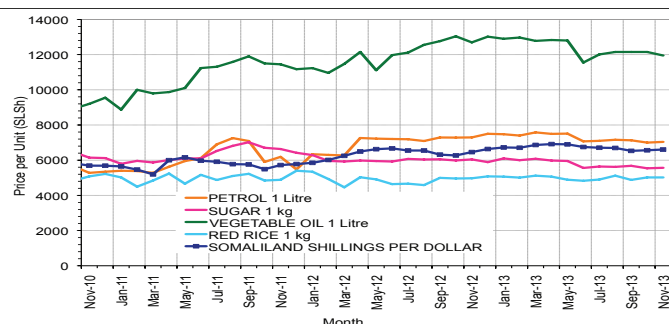


Figure 48: Goat Local Quality

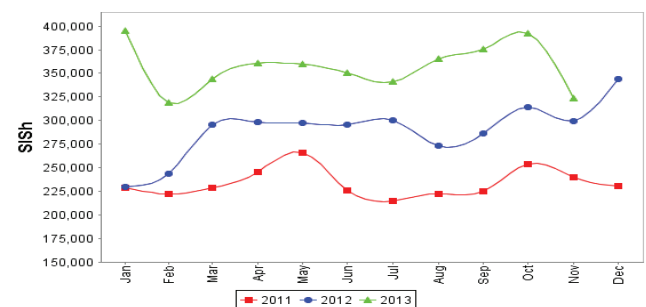


Figure 49: Exchange Rate

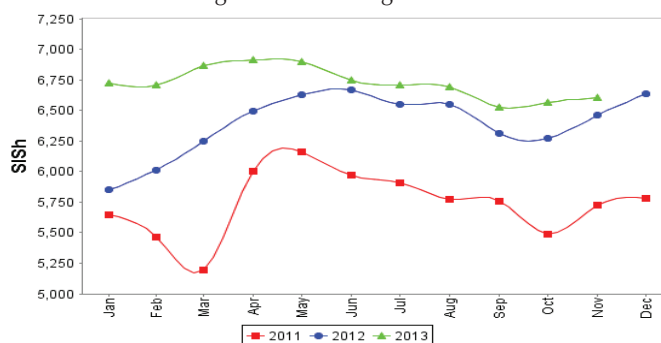
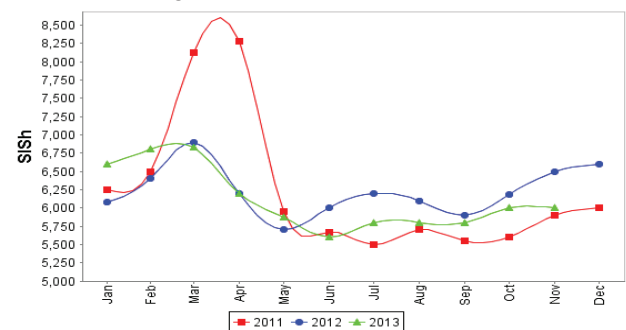


Figure 50: Water Drum (200 litres)



# Trends in Livestock Exports

Table 2: Berbera Livestock Exports (Number of Heads)

	1994	1995	1996	1997	1998	1999	2000	2001	2002	2003	2004	2005	2006	2007	2008	2009	2010	2011	2012	2013 (Jan - Sep)
Shoats	1,572,656	2,683,597	2,376,646	2,814,495	957,224	2,048,136	1,601,083	51,546	341,711	563,107	859,404	1,023,795	1,017,242	1,350,054	1,219,519	1,556,003	2,584,810	3,104,684	3,219,584	2,185,990
Cattle	173,400	167,128	65,127	66,939	92,213	89,967	63,263	20,973	37,547	84,312	131,852	148,151	85,631	88,143	80,051	88,005	133,021	150,934	190,354	138,612
Camels	38,553	21,993	42,801	50,587	11,663	37,430	16,984	3,473	18,864	21,874	5,147	5,069	22,810	14,245	26,515	20,206	92,651	107,281	102,664	65,570

Figure 51: Berbera Livestock Exports (Number of Heads)

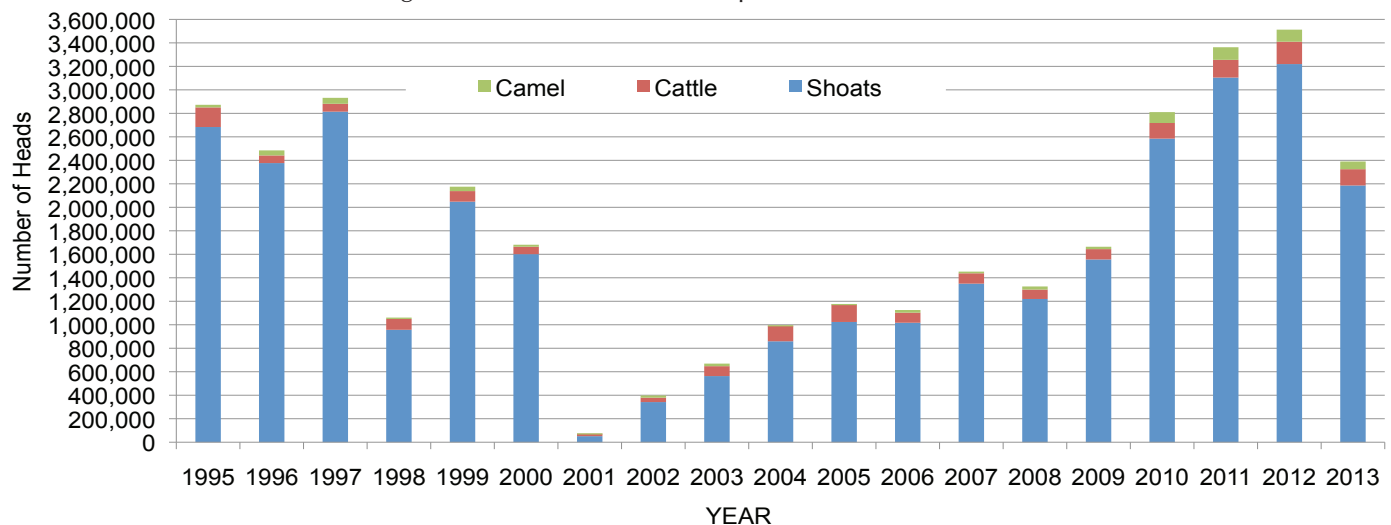
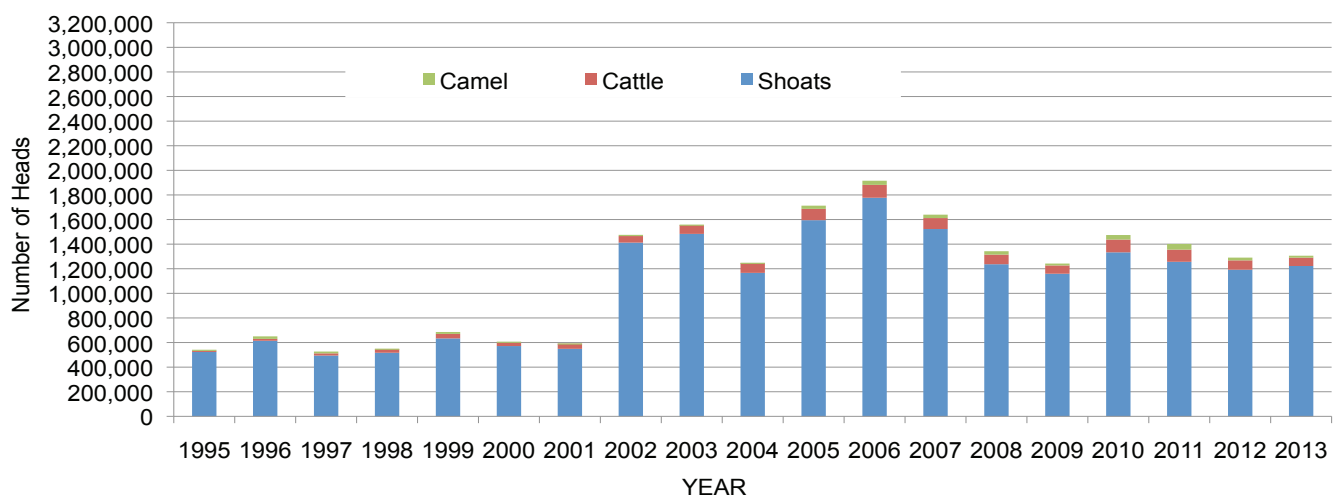


Table 3: Bossaso Livestock Exports (Number of Heads)

	1994	1995	1996	1997	1998	1999	2000	2001	2002	2003	2004	2005	2006	2007	2008	2009	2010	2011	2012	2013 (Jan - Oct)
Shoats	344,000	524,346	614,407	494,320	517,020	633,669	571,455	548,853	1,412,450	1,483,409	1,166,480	1,594,859	1,777,283	1,522,855	1,236,775	1,159,454	1,333,478	1,256,535	1,192,197	1,222,330
Cattle	1,450	8,795	15,335	17,831	29,492	36,586	27,604	42,248	53,313	71,328	79,994	91,910	104,595	89,190	78,046	67,385	103,808	99,058	76,043	67,789
Camels	5,397	8,392	20,462	14,599	3,938	15,544	8,177	1,950	9,720	4,259	2,488	26,109	33,724	27,580	27,639	15,331	36,865	45,878	22,288	15,732

Figure 52: Bossaso Livestock Exports (Number of Heads)

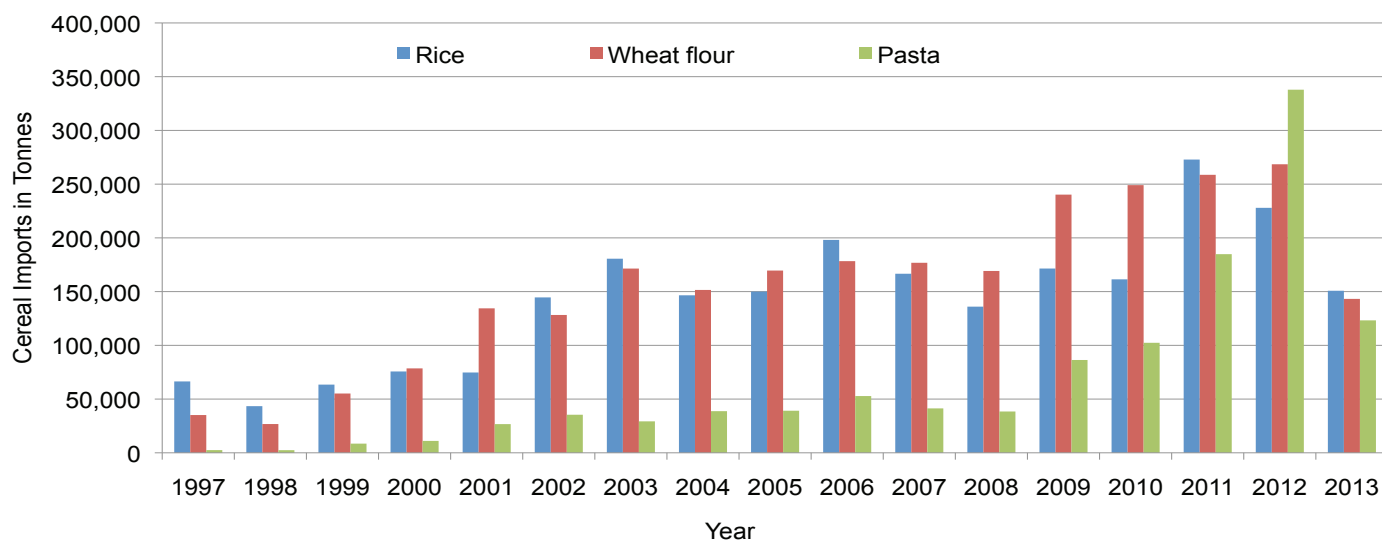


# Trends in Cereal Imports

Table 4: Total Cereal Imports through Berbera, Bossaso and Mogadishu Ports (Tonnes)

	1997	1998	1999	2000	2001	2002	2003	2004	2005	2006	2007	2008	2009	2010	2011	2012	2013*
<b>Rice</b>	66,419	43,410	63,464	75,687	74,729	144,600	180,614	146,567	150,017	198,101	166,626	136,007	171,472	161,415	272,877	227,955	150,789
<b>Wheat flour</b>	35,143	26,774	55,176	78,555	134,425	128,263	171,442	151,555	169,583	178,345	176,821	169,208	240,247	249,080	258,679	268,491	143,229
<b>Pasta</b>	2,510	2,455	8,544	11,071	26,702	35,425	29,273	38,749	39,153	52,815	41,331	38,441	86,372	102,373	184,849	337,878	123,243

Figure 53: Total Cereal Imports (Berbera, Bossaso and Mogadishu)



\*Mogadishu data is up to March 2013; the data is from Elmaan Port.

\*Berbera data is up to Sept 2013.

\*Bossaso data is up to Oct 2013.



---

FSNAU Funding Agencies



Common  
Humanitarian Fund  
Somalia

