

Market DataUpdate

November 2012



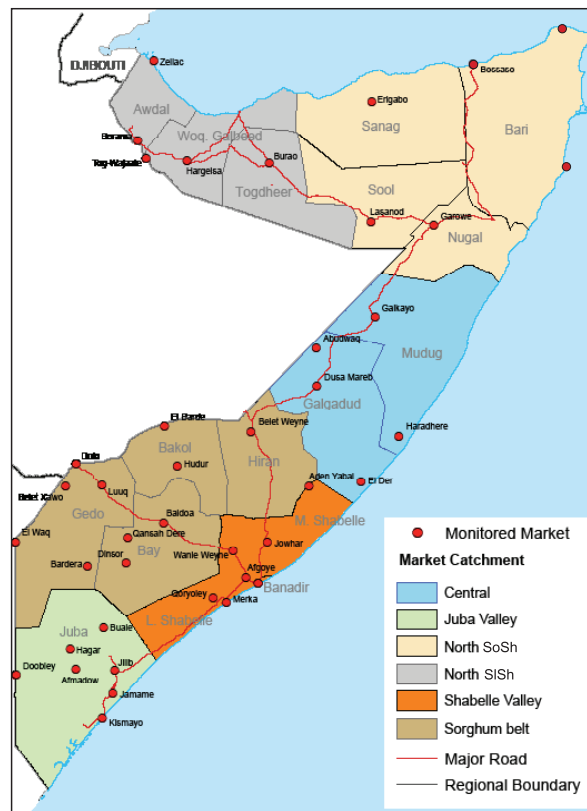
Food Security and Nutrition
Analysis Unit - Somalia



Issued December 21st, 2012

Highlights

- Inflation:** The November Consumer Price Index (CPI) was mixed increasing slightly in the North Somali Shilling (SoSh) zone, slowing down in Central while remaining relatively stable in the South as well as in Somaliland shilling (SiSh) regions. Annual inflation rates are significantly lower than their levels a year ago in all areas except in SiSh zone where it is relatively stable. The cost of living is significantly elevated when compared to the base period (March 2007) in SoSh areas; it is moderately high in SiSh areas.
- Exchange rates** between local currencies and the USD remained relatively stable over the reporting month. Compared to the same period a year ago, SiSh depreciated against the USD, whereas SoSh gained considerable value. The annual appreciation of the SoSh is attributed to supply of dollars through humanitarian interventions; dollar proceeds from *Hajj* livestock exports; renewed investments in infrastructure rebuilding and reconstruction in Mogadishu; increased port functioning and emerging new economic and business opportunities particularly in Mogadishu. The weakened SiSh is due to increased supply and circulation of new currency notes.
- Local grain prices** were mixed- they remained stable in most markets in Juba and Hiran; increased slightly in most Sorghum Belt markets but declined somewhat in Shabelle, Banadir, Central and Northern Regions. Diminished cereal stocks as a consequence of below average *Cu* 2012 crop production and restricted trade flows due to insecurity and impassable roads (following recent *Deyr* rains) were the main factors that drove local cereal prices on the upside over the past month. On the other hand, the combined effects of reduced prices of imported food and off-season maize production and humanitarian food have mitigated the cost of cereals. Compared to a year ago, cereal prices are significantly lower in the South, Central and North SoSh zones but stable in the North SiSh areas.
- Prices of most imported commodities** were generally stable in most markets over the month of November but declined in Banadir. Compared to the same period last year, imported commodity prices are significantly lower. The decline in prices of imported food is mainly attributed to the strengthened SoSh and improved port operations.
- Livestock prices** were mixed; declining slightly in most markets but at the same time remaining stable and increasing in pockets of other regions. The reductions in monthly prices were due to reduced demand with the end of *Hajj*. Compared to the same month last year, livestock prices are significantly higher across all regions. The price appreciation was mainly due to improved body conditions, high export and local demand and low supply of saleable stock.
- Labour wages** sustained their levels or increased in all regions; supported by *Deyr* seasonal agricultural activities. Labour wages are significantly higher compared to their levels a year ago in most markets.
- Terms of Trade (ToT)** between labour wage and cereals were mixed in November, mostly improving on the backdrop of increased labour wages. The purchasing power has improved when compared to a year ago due to lower cereal prices, improved local quality goat prices and higher labour wages.



This Market Data Update is a monthly report that presents a compilation of tabulated graphical market information produced regularly as part of the monthly monitoring process.

The weekly price data is collected from 47 main markets throughout Somalia since 1995.

Market analysis is an integral part of all of FSNAU's Annual Food Security Projections and seasonal technical reports (Technical Reports on FSNAU Post *Cu* and *Deyr* Analysis).

This data is available online on www.fsnau.org/ids.

Funding Agencies



Regional Market Highlights

- **Juba Valley:** imported food and maize prices remained stable since October; the price of livestock went down except for cattle which appreciated. Prices are significantly lower than a year ago for imported food and local cereals, but significantly higher for livestock. Annual comparisons of ToT between labor and cereals indicate significant improvement in purchasing power. The ToT (11kg/daily wage rate) went up by one unit from the previous month's level.
- **Sorghum Belt:** monthly price changes indicate stability for imported food and slight increases for sorghum and livestock. Prices of imports and local cereals are significantly lower compared to their levels a year ago while those of livestock are significantly higher. The ToT between labour and cereals increased from October. When compared to a year ago, the ToT has almost tripled (23kg/daily wage) in Bay region and is slightly higher in the rest of the Sorghum Belt regions.
- **Shabelle Valley:** monthly prices of maize and livestock declined while they remained generally stable for most imported food. Cheaper cereals and increased casual labor wages enhanced the monthly ToT by 17 percent to settle at 14kg for a day's worth of labour. Prices of most imported commodities and cereals are significantly lower while livestock are significantly higher when compared to the levels in November last year.
- **Central:** imported food, livestock and local cereal prices decreased slightly in November. Annual comparisons indicate significant decreases in the prices of all items except livestock, which are significantly higher. ToT (rice/ local goat) improved somewhat but is significantly elevated when compared to the same month last year, currently standing at 64kg/local goat.
- **Northeast:** reduction was recorded for the prices of sorghum and livestock while those of imported food nearly sustained the previous month's levels. Annual price comparisons show significant decline for imported commodities and local cereals while those of livestock are near November 2011 levels. ToT (rice/ local goat) declined by 15 percent over the month of November, but it is significantly higher when compared to the same month last year, currently standing at 73kg/ local goat.
- **Northwest:** prices of yellow maize and livestock declined while those of imported food remained generally stable. Compared to November 2011, the current prices are moderately lower for locally produced cereals and imports but considerably inflated for livestock. The monthly ToT between local white sorghum and wages remained stable but is significantly higher than the same month last year, currently equivalent to about 11kg/daily wage rate. The monthly ToT between local white sorghum and local quality goat declined (11%) but it is still significantly higher than the same month last year, currently equivalent to about 71kg/daily wage rate.
- **Banadir:** monthly prices of locally produced cereals, imported food and livestock declined moderately. With the exception of highly valued goats, prices of imported and locally produced food are significantly below their levels a year ago. ToT cereal (maize/ labour wage) sustained their October levels to stand at 11 kgs/ daily labour rate; and is just 1 kg above the November 2011 level.

Table 1: Monthly and Annual Changes in Terms of Trade

| ToT: MT of Cereals (kg) per Daily Labour Wage Rate Region | Cereal used | Nov. 2011 | Oct.2012 | Nov. 2012 | Monthly change | Annual change |
|---|---------------|-----------------|-----------------|-----------------|----------------|---------------|
| | | (kg/daily wage) | (kg/daily wage) | (kg/daily wage) | (%) | (%) |
| Banadir | White Maize | 14 | 15 | 15 | 0% | 7% |
| Bay | Red Sorghum | 6 | 19 | 23 | 21% | 283% |
| Bakool | Red Sorghum | 6 | 6 | 7 | 17% | 17% |
| Gedo | Red Sorghum | 12 | 15 | 15 | 0% | 25% |
| Hiraan | White Maize | 13 | 17 | 18 | 6% | 38% |
| Juba | White Maize | 5 | 10 | 11 | 10% | 120% |
| Shabelle | White Maize | 9 | 12 | 14 | 17% | 56% |
| Northeast | Red Sorghum | 4 | 7 | 7 | 0% | 75% |
| Northwest | White Sorghum | 9 | 11 | 11 | 0% | 22% |
| Central | Red Sorghum | 5 | 7 | 8 | 14% | 60% |

International Market Highlights

Diesel: Crude oil prices¹ dropped for the second month in a row in November, having slipped by \$1.6 to close at \$107.1/b, slightly just below its level the same month a year ago. According to Organization of Petroleum Exporting Countries (OPEC) Monthly Oil Market Report (December 2012), lingering concern about the struggling world economy and its impact on oil consumption weighed on prices, offsetting concerns about supply distributions².

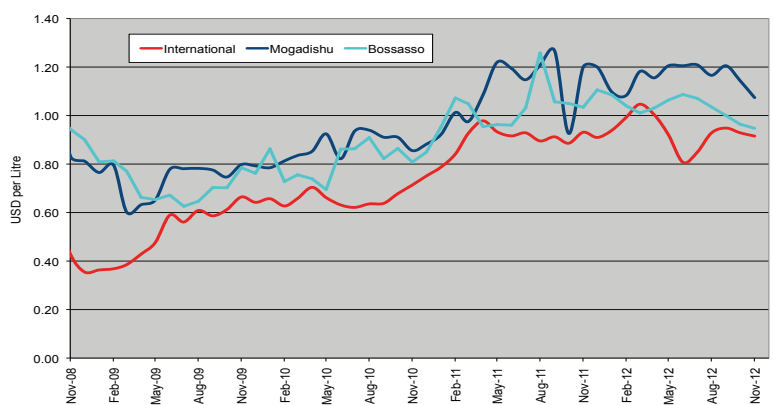
In Somalia Port Cities the November diesel prices remained stable in Bossaso, but declined somewhat in Mogadishu (6%) when compared to the previous month. The current prices are significantly lower (20-31%) than the same month last year on the backdrop of stronger SoSh as well increased supplies through local ports. The price differential, i.e. the gap between domestic diesel and global crude oil prices, has shrunk over the past year (since Nov. '11) - from 29 to 17 percent in Mogadishu and from 11 to 4 percent in Bossaso. The price differential attenuation signifies the role of local factors in driving imported commodity prices on the domestic markets (Figure 1).

Rice: The benchmark Thai rice export price (Thai A1 Super 1/ B) remained mostly stable in November³, averaging USD 545 per tonne and closing nearly at the same level the same month a year ago. The relative price stability was supported by new and abundant exportable crop supplies and limited trade activity in Asian markets⁴.

November prices of imported rice in Bossaso and Mogadishu port markets rose somewhat (5-6%) but were significantly lower (26-47%) than their levels the same month a year ago, the latter trend supported by the appreciated Somali Shilling against the US Dollar and improved port functioning. The gap between international and domestic rice markets narrowed down from 95 percent in November last year to 45 percent currently in Mogadishu while remaining at nearly the same level in Bossaso (Figure 2).

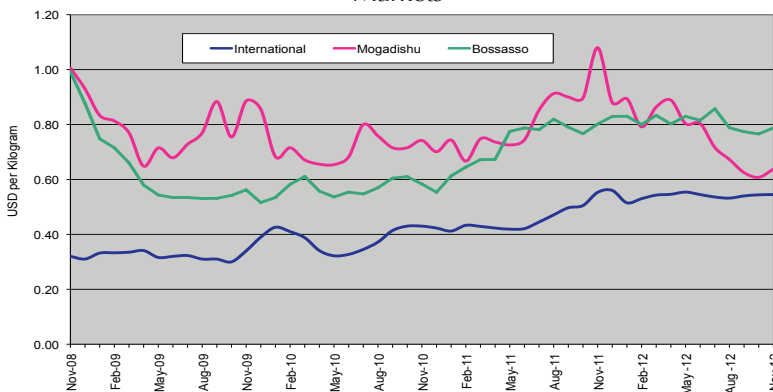
Wheat: The November wheat prices have stayed firm, with the International Grain Council index closing at 290 just a point below its level the previous month. Annual comparisons however indicate significant increase; the IGC wheat index accelerated from 244 points in November 2011 to 290 currently, which is about 19 percent. Weather-related worries for 2012/13 crops currently being harvested in the southern hemisphere, conditions for the recently planted winter wheat in the north and fears of eminent export restrictions dominated the markets in November with possibility of price upsurge. However, export flows from the Black Sea region have defied expectations and fears of an imminent export restriction by Ukraine have since receded resulting in monthly price stability⁵.

Figure 1: Diesel Prices: Dubai, Mogadishu and Bossaso



Source: FAO Statistics, FEWSNET and FSNAU Market Price Monitoring System, 2012

Figure 2: Rice Prices: Bangkok FOB, Mogadishu and Bossaso Markets



Source: FAO Statistics, FEWSNET and FSNAU Market Price Monitoring System, 2012

Figure 3: International Wheat Prices



Source: International Grain Council

¹ in Abu Dhabi (Dubai) the main source of Somalia's oil imports

² Organization of Petroleum Exporting Countries (OPEC) Monthly Oil Market Report (December, 2012; http://www.opec.org/opec_web/static_files_project/media/downloads/publications/MOMR_November_2012.pdf)

³ The World Food Situation: The FAO Food Price Index December 2012

⁴ International Grain Council, Grain Market Report 428 - 29 November 2012

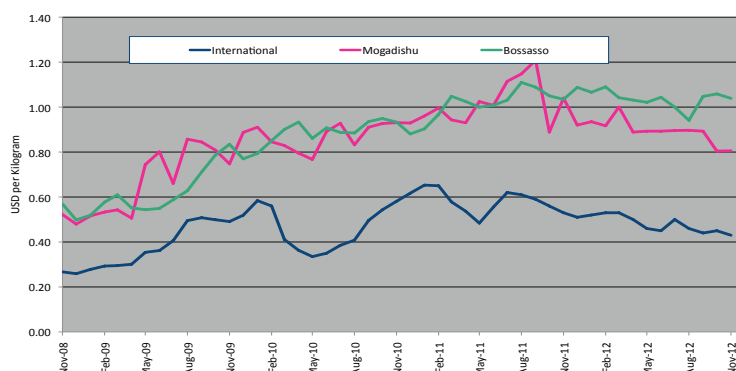
⁵ Ibid; The World Food Situation: The FAO Food Price Index December 2012

International Market Highlights

Sugar: The FAO Sugar Price Index⁶ averaged 274 points in November, down 14 points (4.8 percent) from October, and 65 points (19.2 percent) lower than in November 2011. “The decline in sugar quotations reflects prospects for large export availabilities in the 2012/13 marketing season, notably in Brazil, the world’s largest sugar exporter”. However, the lower quotations provided an incentive to replenish inventories, which limited the extent of the decline in international prices.

November sugar prices remained relatively unchanged from the previous month levels in both Bossaso and Mogadishu. However, the prices are (24 and 31% respectively) lower than in November 2011 buttressed by increased supplies through commercial imports and humanitarian assistance.

Figure 4: Sugar Prices: International, Mogadishu and Bossaso Markets



Source: International Sugar Organization, FEWSNET and FSNAU Market Price Monitoring System, 2012

Cooking Oil: the FAO Oils/Fats Price Index⁷ averaged 200 points in November, down 6 points (2.9 percent) from October, and from the third consecutive month of decline. Compared to the same month last year, the index declined from 235 points which represents 15 percent. The main driving factor remains abundant palm oil production, which, combined with weak world import demand, has led to further build-ups in inventories. Better than expected soy yields in the United States and large global availabilities of rape and sunflower-seed oils also weighed on the index, as did lingering concerns over poor economic growth world-wide.

International price transmission in cooking oil is not explicitly evident in port cities of Somalia. Specifically, vegetable oil prices remained relatively stable over the previous month in Bosasso; dropped slightly in Mogadishu but are significantly lower when compared to the same month in 2011. The latter is attributable to stronger SoSh, on-going humanitarian interventions and improved port operations.

⁶ The World Food Situation: The FAO Food Price Index December 6th 2012

⁷ Ibid

National Trends: CPI, Exchange Rates, Cereal Prices and Relative Purchasing Power

Figure 4: Terms of Trade between wage rates and selected cereals

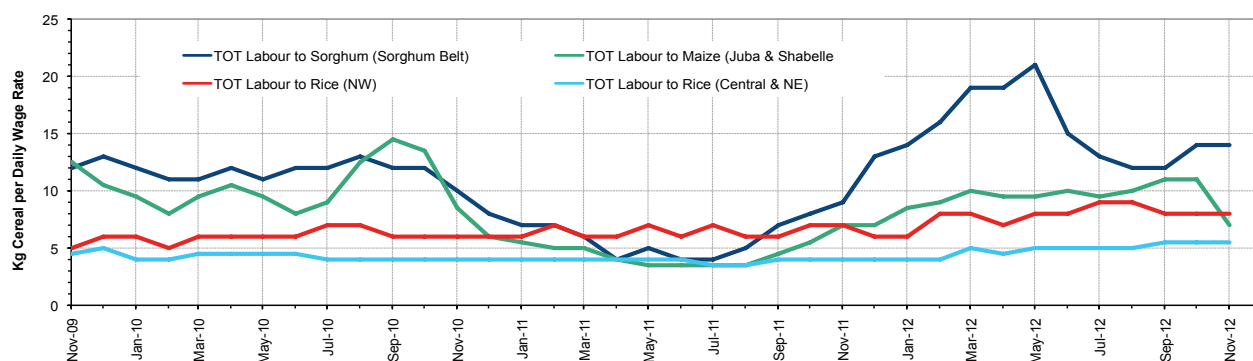


Figure 5: Monthly Exchange Rate for Selected Regions (SoSh and SiSh to USD)

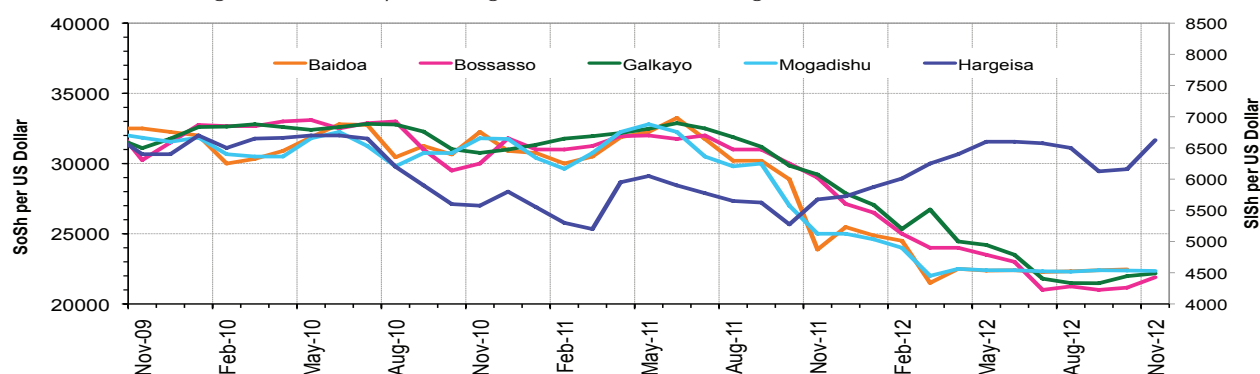


Figure 6: Monthly Trends in Consumer Price Index (CPI, March 2007=100)

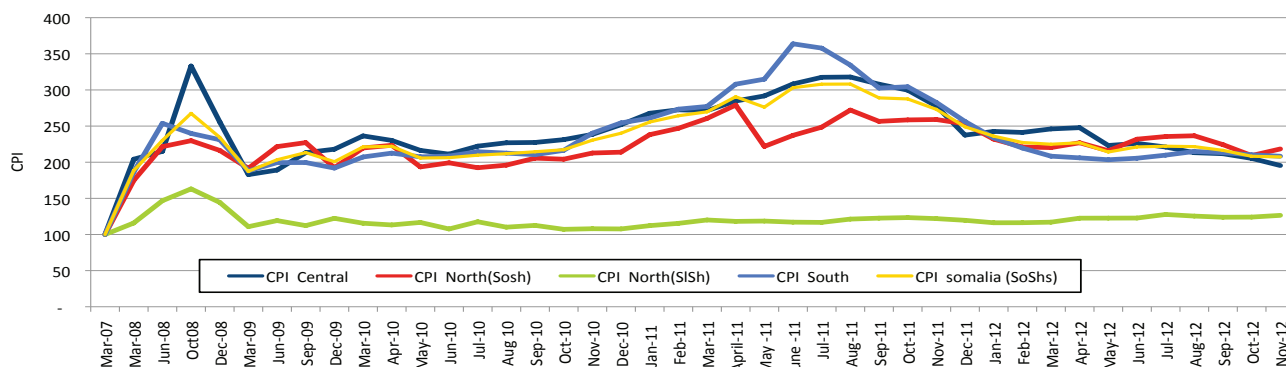
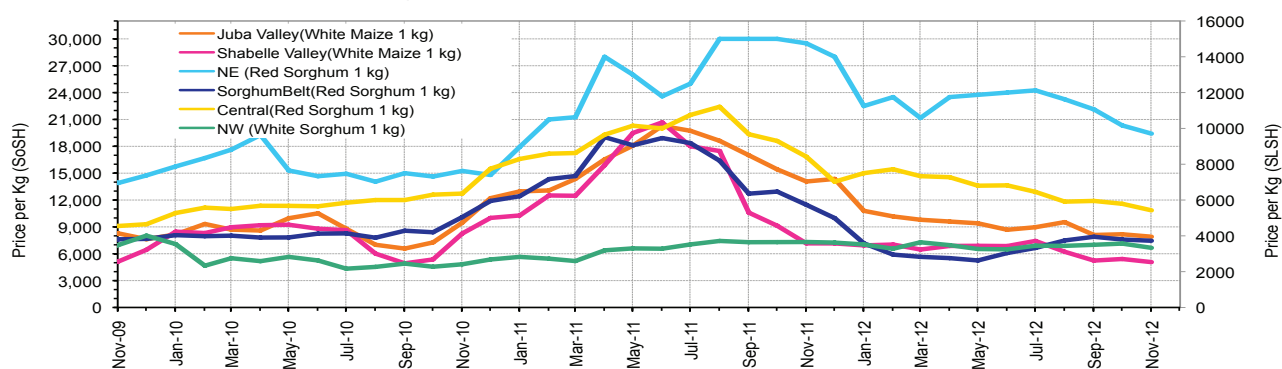


Figure 7: Monthly Trends in Local Cereal Prices



Regional analysis: Juba Regions

| Indicator | 5-Year Average (2003-07) | Nov-11 | Oct-12 | Nov-12 Nominal Price | Nov-12 Real (Deflated) Price | % Change Same Month Previous Year | % Change Previous Month | % Change 5-year avg (2003-07) |
|---|-----------------------------|-----------|-----------|-------------------------|---------------------------------|--|-------------------------------|-------------------------------------|
| Imported Commodities Prices | | | | | | | | |
| Diesel 1 litre | 14,215 | 47,464 | 32,971 | 32,571 | 15,537 | -31% | -1% | 129% |
| Imported Red Rice 1kg | 9,658 | 26,214 | 17,286 | 17,714 | 8,404 | -32% | 2% | 83% |
| Petrol 1 litre | 16,748 | 37,333 | 34,286 | 33,464 | 15,965 | -10% | -2% | 100% |
| Sugar | 8,843 | 42,000 | 22,000 | 21,893 | 10,410 | -48% | 0% | 148% |
| Vegetable Oil 1 litre | 20,182 | 62,250 | 39,600 | 41,214 | 19,686 | -34% | 4% | 104% |
| Wheat Flour 1kg | 8,421 | 23,071 | 16,714 | 17,500 | 8,301 | -24% | 5% | 108% |
| Wheat Grain 1kg | 9,500 | 28,000 | - | - | - | - | - | - |
| Red Sorghum 1kg | 2,266 | - | 5,600 | 6,250 | 2,901 | - | 12% | 176% |
| White Maize 1kg | 2,587 | 14,071 | 8,451 | 8,264 | 3,867 | -41% | -2% | 219% |
| Livestock & Livestock Product Prices | | | | | | | | |
| Camel Local Quality (Head) | 3,670,320 | 7,770,000 | 9,445,471 | 9,459,583 | 4,541,276 | 22% | 0% | 158% |
| Cattle Local Quality (Head) | 1,894,962 | 3,237,500 | 3,847,533 | 4,408,833 | 2,116,502 | 36% | 15% | 133% |
| Fresh Camel Milk 1 litre | 6,737 | 19,714 | 22,000 | 20,500 | 9,742 | 4% | -7% | 204% |
| Goat Export Quality (Head) | 441,274 | 1,236,071 | 1,907,114 | 1,863,036 | 894,310 | 51% | -2% | 322% |
| Goat Local Quality (Head) | 305,340 | 778,214 | 1,178,029 | 1,134,429 | 544,519 | 46% | -4% | 272% |
| Other Essential Items | | | | | | | | |
| Charcoal 50kg | 31,522 | 73,571 | 81,371 | 95,357 | 45,679 | 30% | 17% | 203% |
| Cowpeas 1 kg | 5,636 | 36,167 | 20,029 | 19,464 | 9,244 | -46% | -3% | 245% |
| Unskilled Labor Wage Rate | 30,693 | 66,964 | 81,714 | 88,107 | 42,199 | 32% | 8% | 187% |
| Firewood Bundle | 2,476 | 6,911 | 8,714 | 9,107 | 4,272 | 32% | 5% | 268% |
| Local Sesame Oil 1 litre | 22,991 | 90,250 | 69,429 | 70,839 | 33,909 | -22% | 2% | 208% |
| Exchange Rate (Somali Shilling per USD) | 16,071 | 27,000 | 22,583 | 22,736 | 10,815 | -16% | 1% | 41% |
| Construction Materials* | | | | | | | | |
| Cement 50kg | - | 343,333 | 297,500 | 392,321 | 188,246 | 14% | 32% | - |
| Cooking Pot Aluminium 7 Litre | - | 370,500 | 313,286 | 314,583 | 150,926 | -15% | 0% | - |
| Galvanised Iron Sheet Ga 26 | - | 185,000 | 124,114 | 113,458 | 54,369 | -39% | -9% | - |
| Hollow Concrete Block 10cm x 20cm x 40cm | - | 20,000 | 15,000 | 15,000 | 7,101 | -25% | 0% | - |
| Non Collapsible Jerrycan 10 Litre | - | 42,750 | 35,417 | 36,458 | 17,403 | -15% | 3% | - |
| Plastic Tarpaulin 14m x 5 m | - | 553,125 | 323,429 | 320,214 | 153,629 | -42% | -1% | - |
| Roofing Nails 15Kg | - | 775,000 | 819,857 | 686,071 | 329,270 | -11% | -16% | - |
| Timber 2in x 4in x 20ft | - | 323,750 | 273,250 | 253,625 | 121,661 | -22% | -7% | - |
| Woven Dry Raised Blanket 150cm x 200cm | - | - | 71,750 | 69,063 | 33,056 | - | -4% | - |
| Terms of Trade | | | | | | | | |
| Labour Wage (Daily)/ Cereal (Maize(Kg)) | 12 | 5 | 10 | 11 | - | 124% | 10% | -10% |
| Local Goat (Head)/ Cereal (Maize(Kg)) | 118 | 55 | 139 | 137 | - | 148% | -2% | 16% |
| Price Indices | | | | | | | | |
| Consumer Price Index | - | 283 | 210 | 208 | - | -26% | -1% | - |
| Purchasing Power Index | - | 0.35 | 0.48 | 0.48 | - | 36% | 1% | - |

* Data has been collected since May 2010

* Data has been collected since May 2010

Figure 8: Imported commodity prices compared to exchange rates

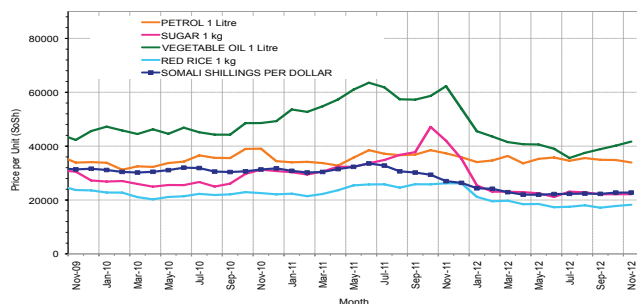


Figure 10: Goat Local Quality

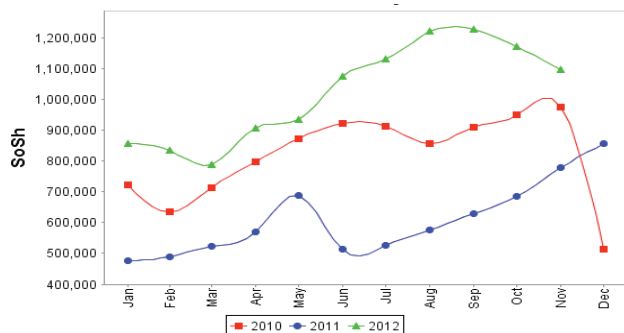


Figure 12: Water Drum

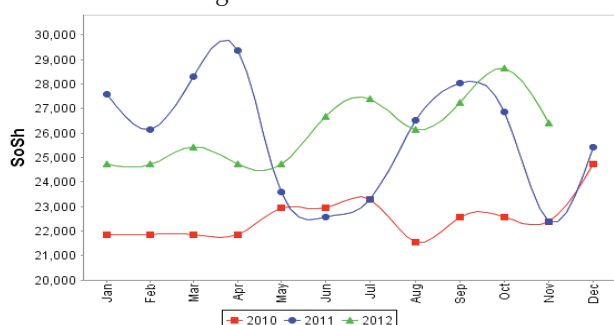


Figure 9: Trends in wage rates, staple cereal prices and relative purchasing power

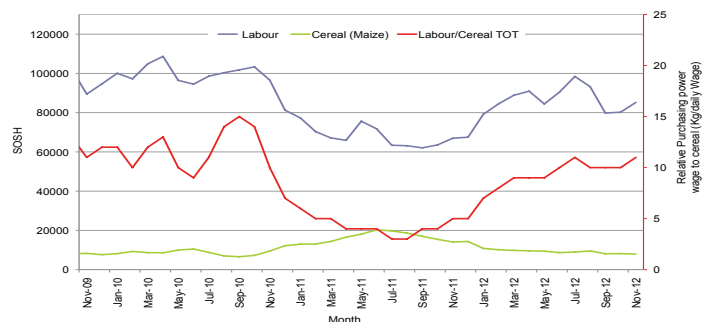


Figure 11: Exchange Rate

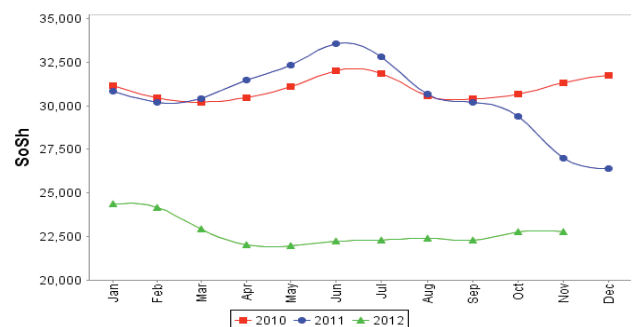
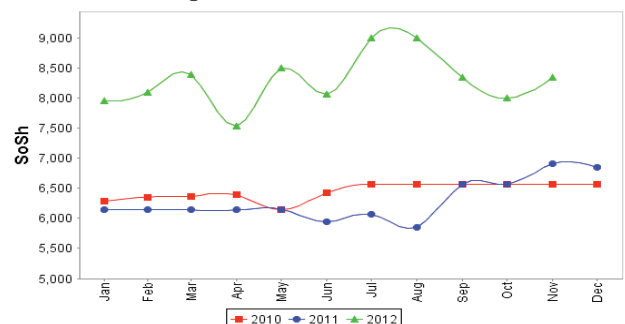


Figure 13: Firewood Bundle



Regional analysis: Sorghum Belt Regions (Bay, Bakool, Gedo and Hiran)

| Indicator | 5-Year Average (2003-07) | Nov-11 | Oct-12 | Nov-12 Nominal Price | Nov-12 Real (Deflated) Price | % Change Same Month Previous Year | % Change Previous Month | % Change 5-year avrg (2003-07) |
|---|--------------------------|-----------|------------|----------------------|------------------------------|-----------------------------------|-------------------------|--------------------------------|
| Imported Commodities Prices | | | | | | | | |
| Diesel 1 litre | 13,119 | 39,409 | 32,836 | 32,500 | 15,503 | -18% | -1% | 148% |
| Imported Red Rice 1kg | 9,694 | 24,977 | 19,918 | 20,341 | 9,665 | -19% | 2% | 110% |
| Petrol 1 litre | 15,817 | 39,659 | 32,927 | 31,932 | 15,230 | -19% | -3% | 102% |
| Sugar | 9,932 | 35,023 | 23,636 | 23,477 | 11,171 | -33% | -1% | 136% |
| Vegetable Oil 1 litre | 19,915 | 53,205 | 45,400 | 47,318 | 22,617 | -11% | 4% | 138% |
| Wheat Flour 1kg | 9,289 | 21,773 | 18,727 | 19,273 | 9,153 | -11% | 3% | 107% |
| Wheat Grain 1kg | 5,047 | 11,075 | 8,600 | 8,650 | 4,053 | -22% | 1% | 71% |
| Cereal Prices | | | | | | | | |
| Red Sorghum 1kg | 2,021 | 11,468 | 7,590 | 7,461 | 3,482 | -35% | -2% | 269% |
| White Maize 1kg | 2,939 | 12,107 | 8,880 | 8,488 | 3,975 | -30% | -4% | 189% |
| Livestock & Livestock Product Prices | | | | | | | | |
| Camel Local Quality (Head) | 3,660,194 | 9,483,000 | 13,864,200 | 14,219,500 | 6,826,427 | 50% | 3% | 288% |
| Cattle Local Quality (Head) | 1,532,951 | 2,834,722 | 4,269,750 | 4,436,667 | 2,129,864 | 57% | 4% | 189% |
| Fresh Camel Milk 1 litre | 6,257 | 21,750 | 28,573 | 25,886 | 12,327 | 19% | -9% | 314% |
| Goat Export Quality (Head) | 458,530 | 1,440,227 | 1,829,000 | 1,900,705 | 912,394 | 32% | 4% | 315% |
| Goat Local Quality (Head) | 287,221 | 892,500 | 1,350,909 | 1,361,955 | 653,750 | 53% | 1% | 374% |
| Other Essential Items | | | | | | | | |
| Charcoal 50kg | 42,413 | 139,091 | 153,091 | 163,227 | 78,262 | 17% | 7% | 285% |
| Cowpeas 1 kg | 7,175 | 54,389 | 21,700 | 21,359 | 10,154 | -61% | -2% | 198% |
| Unskilled Labor Wage Rate | 23,223 | 105,682 | 104,273 | 107,500 | 51,509 | 2% | 3% | 363% |
| Firewood Bundle | 1,898 | 5,545 | 6,527 | 6,932 | 3,228 | 25% | 6% | 265% |
| Local Sesame Oil 1 litre | 24,734 | 82,536 | 72,100 | 73,250 | 35,066 | -11% | 2% | 196% |
| Exchange Rate (Somali Shilling per USD) | 16,511 | 25,348 | 22,471 | 22,379 | 10,644 | -12% | 0% | 36% |
| Construction Materials* | | | | | | | | |
| Cement 50kg | - | 376,389 | 354,740 | 324,600 | 155,735 | -14% | -8% | - |
| Cooking Pot Aluminium 7 Litre | - | 274,722 | 307,200 | 310,682 | 149,053 | 13% | 1% | - |
| Galvanised Iron Sheet Ga 26 | - | 210,864 | 177,500 | 177,000 | 84,875 | -16% | 0% | - |
| Hollow Concrete Block 10cm x 20cm x 40cm | - | 11,375 | 11,700 | 11,750 | 5,541 | 3% | 0% | - |
| Non Collapsible Jerrycan 10 Litre | - | 51,955 | 56,060 | 56,833 | 27,185 | 9% | 1% | - |
| Plastic Tarpaulin 14m x 5 m | - | 297,150 | 308,667 | 338,611 | 162,461 | 14% | 10% | - |
| Roofing Nails 15Kg | - | 781,667 | 737,400 | 717,750 | 344,479 | -8% | -3% | - |
| Timber 2in x 4in x 20ft | - | 286,806 | 317,375 | 301,594 | 144,690 | 5% | -5% | - |
| Woven Dry Raised Blanket 150cm x 200cm | - | 85,571 | 112,333 | 91,071 | 43,622 | 6% | -19% | - |
| Terms of Trade | | | | | | | | |
| Labour Wage (Daily)/ Cereal (Sorghum(Kg)) | 11 | 9 | 14 | 14 | - | 56% | 5% | 25% |
| Local Goat (Head)/ Cereal (Sorghum(Kg)) | 142 | 78 | 178 | 183 | - | 135% | 3% | 28% |
| Price Indices | | | | | | | | |
| Consumer Price Index | - | 283 | 210 | 208 | - | -26% | -1% | - |
| Purchasing Power Index | - | 0.35 | 0.48 | 0.48 | - | 36% | 1% | - |

* Data has been collected since May 2010

* Data has been collected since May 2010

Figure 14: Imported commodity prices compared to exchange rates

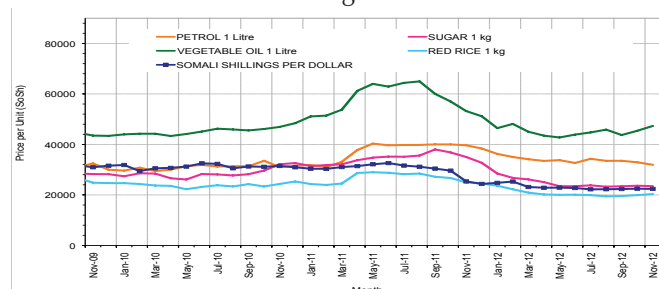


Figure 15: Trends in wage rates, staple cereal prices and relative purchasing power

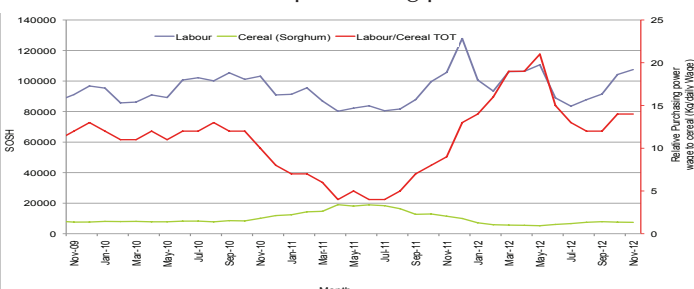


Figure 16: Goat Local Quality

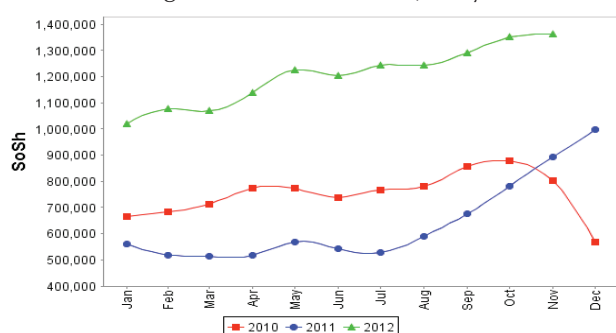


Figure 17: Exchange Rate

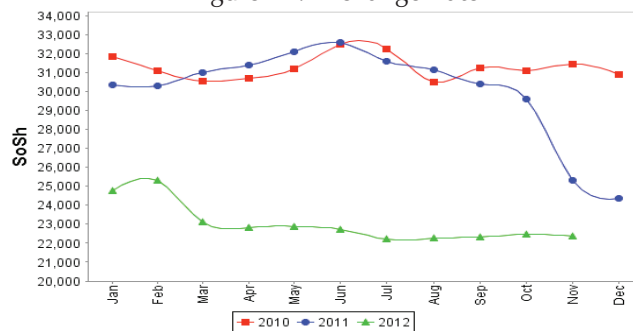


Figure 18: Water Drum

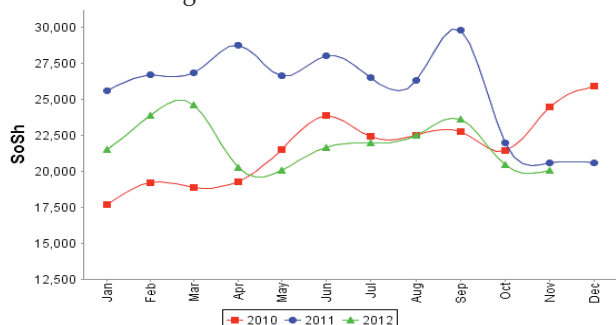
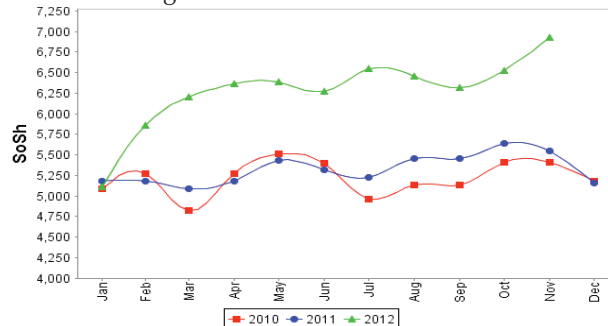


Figure 19: Firewood Bundle



Regional analysis: Shabelle Regions

| Indicator | 5-Year Average (2003-07) | Nov-11 | Oct-12 | Nov-12 Nominal Price | Nov-12 Real (Deflated) Price | % Change Same Month Previous Year | % Change Previous Month | % Change 5-year avrg (2003-07) |
|---|-----------------------------|------------|------------|-------------------------|------------------------------------|--|-------------------------------|--------------------------------------|
| Imported Commodities Prices | | | | | | | | |
| Diesel 1 litre | 12,355 | 34,917 | 29,767 | 29,250 | 13,942 | -16% | -2% | 137% |
| Imported Red Rice 1kg | 7,847 | 24,292 | 15,733 | 16,625 | 7,881 | -32% | 6% | 112% |
| Petrol 1 litre | 13,995 | 36,958 | 29,633 | 30,083 | 14,342 | -19% | 2% | 115% |
| Sugar | 7,968 | 27,167 | 21,367 | 21,583 | 10,262 | -21% | 1% | 171% |
| Vegetable Oil 1 litre | 15,062 | 43,458 | 34,533 | 33,292 | 15,883 | -23% | -4% | 121% |
| Wheat Flour 1kg | 8,534 | 18,417 | 18,167 | 18,042 | 8,562 | -2% | -1% | 111% |
| Wheat Grain 1kg | 2,499 | 18,334 | 6,667 | 6,667 | 3,101 | -64% | 0% | 167% |
| Cereal Prices | | | | | | | | |
| Red Sorghum 1kg | 2,596 | 15,997 | 8,733 | 8,872 | 4,159 | -45% | 2% | 242% |
| White Maize 1kg | 2,549 | 7,160 | 5,416 | 5,067 | 2,333 | -29% | -6% | 99% |
| Livestock & Livestock Product Prices | | | | | | | | |
| Camel Local Quality (Head) | 4,598,187 | 14,942,500 | 17,908,000 | 17,235,000 | 8,274,114 | 15% | -4% | 275% |
| Cattle Local Quality (Head) | 1,414,239 | 4,235,000 | 5,304,000 | 5,950,000 | 2,856,388 | 40% | 12% | 321% |
| Fresh Camel Milk 1 litre | 5,501 | 18,917 | 23,022 | 21,875 | 10,402 | 16% | -5% | 298% |
| Goat Export Quality (Head) | 553,619 | 1,812,750 | 2,369,000 | 2,188,750 | 1,050,680 | 21% | -8% | 295% |
| Goat Local Quality (Head) | 390,713 | 1,261,667 | 1,503,667 | 1,465,417 | 703,420 | 16% | -3% | 275% |
| Other Essential Items | | | | | | | | |
| Charcoal 50kg | 48,495 | 134,833 | 134,533 | 128,820 | 61,744 | -4% | -4% | 166% |
| Cowpeas 1 kg | 6,696 | 40,629 | 22,313 | 22,627 | 10,763 | -44% | 1% | 238% |
| Unskilled Labor Wage Rate | 23,143 | 61,625 | 66,833 | 72,083 | 34,506 | 17% | 8% | 211% |
| Firewood Bundle | 2,402 | 5,708 | 5,833 | 6,958 | 3,240 | 22% | 19% | 190% |
| Local Sesame Oil 1 litre | 23,554 | 64,250 | 56,233 | 59,000 | 28,225 | -8% | 5% | 150% |
| Exchange Rate (Somali Shilling per USD) | 16,478 | 25,917 | 22,822 | 22,929 | 10,908 | -12% | 0% | 39% |
| Construction Materials* | | | | | | | | |
| Cement 50kg | - | 270,850 | 212,200 | 214,250 | 102,758 | -21% | 1% | - |
| Cooking Pot Aluminium 7 Litre | - | 700,000 | 680,000 | 800,000 | 383,966 | 14% | 18% | - |
| Galvanised Iron Sheet Ga 26 | - | 118,700 | 84,040 | 79,850 | 38,235 | -33% | -5% | - |
| Hollow Concrete Block 10cm x 20cm x 40cm | - | 12,000 | 12,600 | 12,500 | 5,901 | 4% | -1% | - |
| Non Collapsible Jerrycan 10 Litre | - | 52,688 | 48,250 | 44,063 | 21,054 | -16% | -9% | - |
| Plastic Tarpaulin 14m x 5 m | - | 291,667 | 260,667 | 221,333 | 106,158 | -24% | -15% | - |
| Roofing Nails 15Kg | - | 613,750 | 594,600 | 582,750 | 279,668 | -5% | -2% | - |
| Timber 2in x 4in x 20ft | - | 52,450 | 47,320 | 47,500 | 22,704 | -9% | 0% | - |
| Woven Dry Raised Blanket 150cm x 200cm | - | 70,417 | 68,667 | 71,750 | 34,346 | 2% | 4% | - |
| Terms of Trade | | | | | | | | |
| Labour Wage (Daily)/ Cereal (Maize(Kg)) | 9 | 9 | 12 | 14 | - | 65% | 15% | 57% |
| Local Goat (Head)/ Cereal (Maize(Kg)) | 153 | 176 | 278 | 289 | - | 64% | 4% | 89% |
| Price Indices | | | | | | | | |
| Consumer Price Index | - | 283 | 210 | 208 | - | -26% | -1% | - |
| Purchasing Power Index | - | 0.35 | 0.48 | 0.48 | - | 36% | 1% | - |

* Data has been collected since May 2010

* Data has been collected since May 2010

Figure 20: Imported commodity prices compared to exchange rates

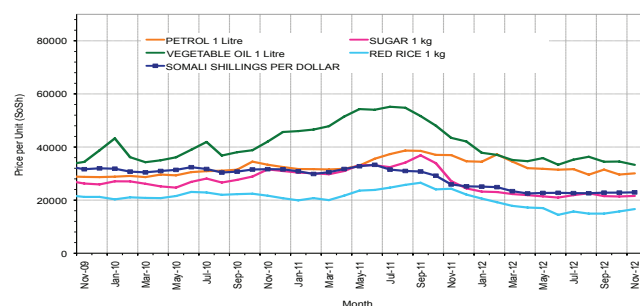


Figure 22: Goat Local Quality

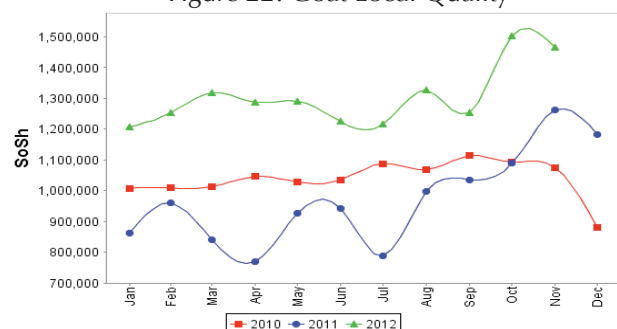


Figure 24: Water Drum

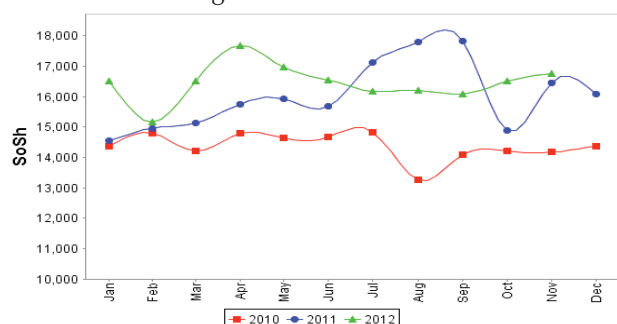


Figure 21: Trends in wage rates, staple cereal prices and relative purchasing power

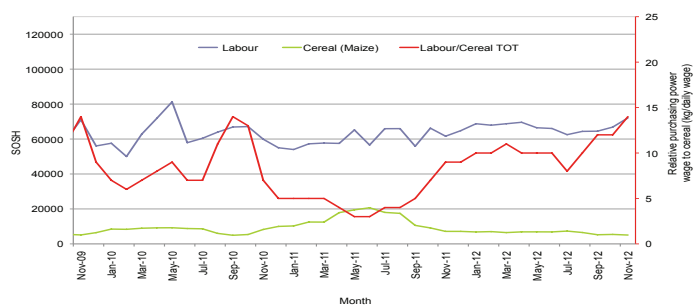


Figure 23: Exchange Rate

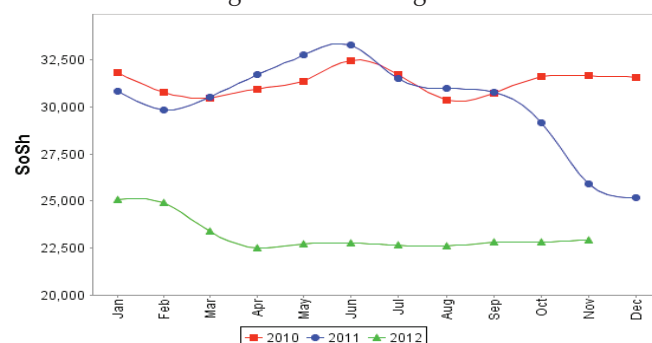
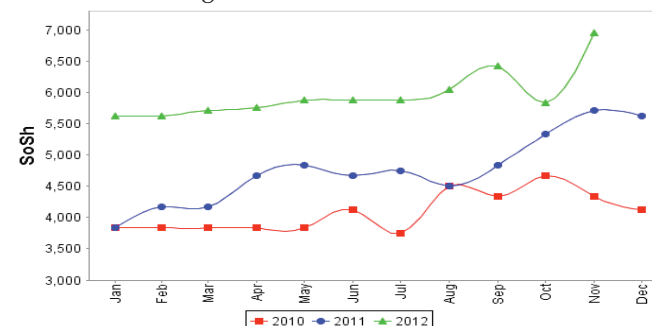


Figure 25: Firewood Bundle



Regional analysis:Banadir Region

| Indicator | 5-Year Average (2003-07) | Nov-11 | Oct-12 | Nov-12 Nominal Price | Nov-12 Real (Deflated) Price | % Change Same Month Previous Year | % Change Previous Month | % Change 5-year avg (2003-07) |
|---|-----------------------------|------------|-----------|-------------------------|------------------------------------|--|-------------------------------|-------------------------------------|
| Imported Commodities Prices | | | | | | | | |
| Diesel 1 litre | 10,425 | 31,125 | 26,033 | 23,833 | 11,342 | -23% | -8% | 129% |
| Imported Red Rice 1kg | 7,200 | 20,396 | 16,217 | 14,083 | 6,661 | -31% | -13% | 96% |
| Petrol 1 litre | 12,600 | 29,583 | 25,867 | 24,542 | 11,682 | -17% | -5% | 95% |
| Sugar | 7,150 | 23,233 | 18,700 | 17,854 | 8,471 | -23% | -5% | 150% |
| Vegetable Oil 1 litre | 12,062 | 41,854 | 33,350 | 32,250 | 15,383 | -23% | -3% | 167% |
| Wheat Flour 1kg | 7,775 | 15,161 | 16,933 | 14,167 | 6,701 | -7% | -16% | 82% |
| Wheat Grain 1kg | 4,000 | 23,538 | 11,289 | 8,733 | 4,093 | -63% | -23% | 118% |
| Cereal Prices | | | | | | | | |
| Red Sorghum 1kg | 2,293 | 10,500 | 5,740 | 5,275 | 2,432 | -50% | -8% | 130% |
| White Maize 1kg | 2,886 | 9,438 | 7,363 | 7,239 | 3,375 | -23% | -2% | 151% |
| Livestock & Livestock Product Prices | | | | | | | | |
| Camel Local Quality (Head) | 5,986,666 | 13,000,000 | - | - | - | - | - | - |
| Cattle Local Quality (Head) | 3,185,000 | 3,000,000 | - | - | - | - | - | - |
| Fresh Camel Milk 1 litre | 4,700 | 20,708 | 22,033 | 20,208 | 9,601 | -2% | -8% | 330% |
| Goat Export Quality (Head) | - | 1,587,500 | 2,660,000 | 2,600,000 | 1,248,113 | 64% | -2% | - |
| Goat Local Quality (Head) | 660,000 | 1,262,500 | 2,120,000 | 2,131,250 | 1,023,075 | 69% | 1% | 223% |
| Other Essential Items | | | | | | | | |
| Charcoal 50kg | 104,000 | 182,500 | 175,033 | 190,542 | 91,376 | 4% | 9% | 83% |
| Cowpeas 1 kg | 5,206 | 43,454 | 17,950 | 19,688 | 9,352 | -55% | 10% | 278% |
| Unskilled Labor Wage Rate | 60,000 | 128,125 | 109,000 | 110,000 | 52,709 | -14% | 1% | 83% |
| Firewood Bundle | 42,750 | 9,500 | 8,000 | 7,800 | 3,645 | -18% | -3% | -82% |
| Local Sesame Oil 1 litre | 20,350 | 61,958 | 57,700 | 60,625 | 29,005 | -2% | 5% | 198% |
| Exchange Rate (Somali Shilling per USD) | 17,055 | 24,446 | 22,458 | 22,471 | 10,688 | -8% | 0% | 32% |
| Construction Materials* | | | | | | | | |
| Cement 50kg | - | 201,250 | 172,707 | 164,225 | 78,741 | -18% | -5% | - |
| Cooking Pot Aluminium 7 Litre | - | 314,563 | 221,600 | 272,222 | 130,589 | -13% | 23% | - |
| Galvanised Iron Sheet Ga 26 | - | 100,300 | 86,067 | 82,675 | 39,591 | -18% | -4% | - |
| Hollow Concrete Block 10cm x 20cm x 40cm | - | 10,125 | 10,767 | 10,708 | 5,041 | 6% | -1% | - |
| Non Collapsible Jerrycan 10 Litre | - | 48,625 | 55,520 | 39,056 | 18,650 | -20% | -30% | - |
| Plastic Tarpaulin 14m x 5 m | - | 293,750 | 193,667 | 245,833 | 117,920 | -16% | 27% | - |
| Roofing Nails 15kg | - | 566,058 | 457,333 | 464,958 | 223,118 | -18% | 2% | - |
| Timber 2in x 4in x 20ft | - | 133,958 | 120,080 | 121,542 | 58,250 | -9% | 1% | - |
| Woven Dry Raised Blanket 150cm x 200cm | - | 80,417 | 100,500 | 109,583 | 52,509 | 36% | 9% | - |
| Terms of Trade | | | | | | | | |
| Labour Wage (Daily)/ Cereal (Maize(Kg)) | 21 | 14 | 15 | 15 | - | 12% | 3% | -27% |
| Local Goat (Head)/ Cereal (Maize(Kg)) | 229 | 134 | 288 | 294 | - | 120% | 2% | 29% |
| Price Indices | | | | | | | | |
| Consumer Price Index | - | 283 | 210 | 208 | - | -26% | -1% | - |
| Purchasing Power Index | - | 0.35 | 0.48 | 0.48 | - | 36% | 1% | - |

* Data has been collected since May 2010

Figure 26: Bakara: Imported Commodity Prices compared to Exchange Rate

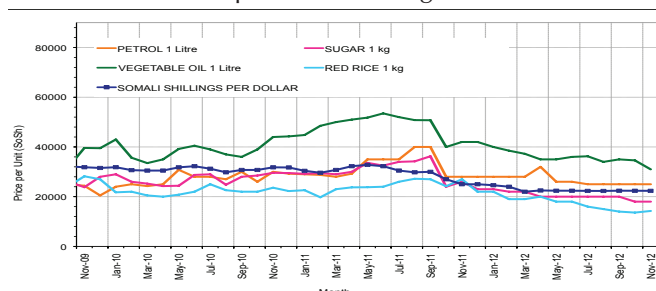


Figure 28: Goat Local Quality

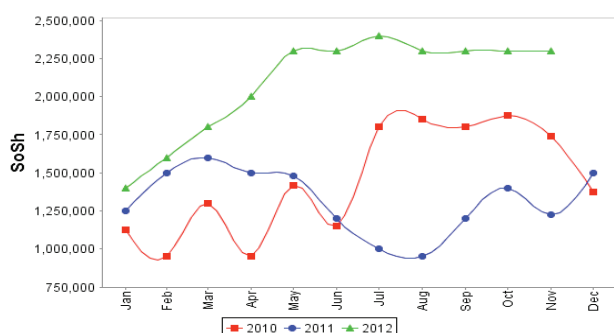


Figure 30: Wheat Flour

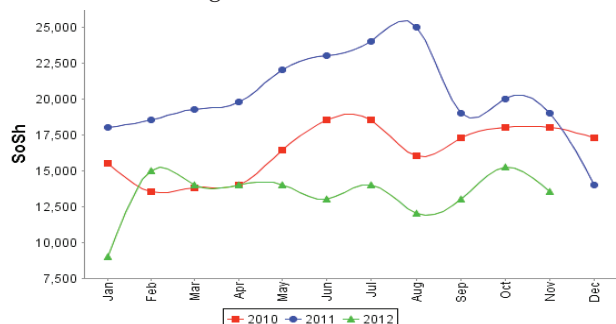


Figure 27: Bakara: Trends in Wage Rates, Staple Cereal Prices and Relative Purchasing Power

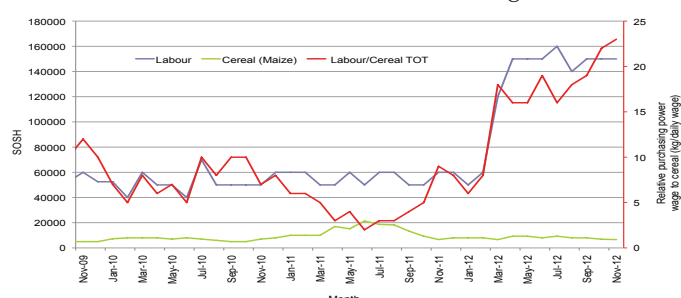


Figure 29: Exchange Rate

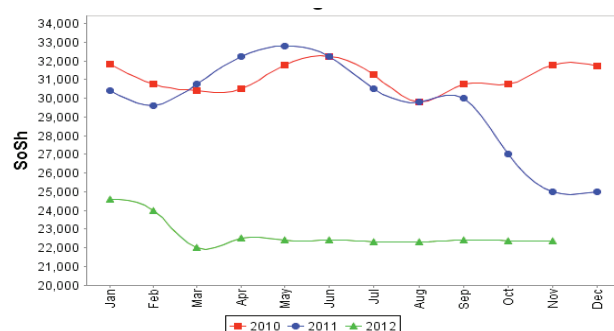
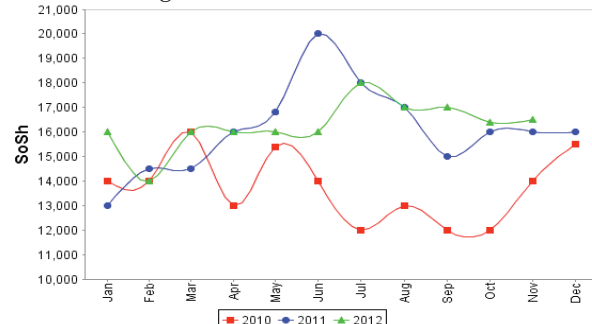


Figure 31: Fresh Camel Milk



Regional analysis: Central Regions

| Indicator | 5-Year Average (2003-07) | Nov-11 | Oct-12 | Nov-12 Nominal Price | Nov-12 Real (Deflated) Price | % Change Same Month Previous Year | % Change Previous Month | % Change 5-year avrg (2003-07) |
|---|-----------------------------|-----------|------------|-------------------------|------------------------------------|--|-------------------------------|--------------------------------------|
| Imported Commodities Prices | | | | | | | | |
| Diesel 1 litre | 11,514 | 38,910 | 31,480 | 29,400 | 14,945 | -24% | -7% | 155% |
| Imported Red Rice 1kg | 8,396 | 29,810 | 21,280 | 20,550 | 10,416 | -31% | -3% | 145% |
| Petrol 1 litre | 12,190 | 33,480 | 26,400 | 25,800 | 13,103 | -23% | -2% | 112% |
| Sugar | 8,943 | 34,800 | 23,733 | 22,850 | 11,645 | -34% | -3% | 157% |
| Vegetable Oil 1 litre | 17,673 | 58,250 | 44,400 | 44,900 | 22,877 | -23% | 1% | 154% |
| Wheat Flour 1kg | 8,596 | 22,370 | 17,467 | 17,100 | 8,651 | -24% | -2% | 99% |
| Wheat Grain 1kg | 7,667 | 17,375 | 15,022 | 14,667 | 7,406 | -16% | -2% | 91% |
| Cereal Prices | | | | | | | | |
| Red Sorghum 1kg | 4,848 | 16,840 | 11,580 | 10,850 | 5,452 | -36% | -6% | 124% |
| White Maize 1kg | 4,683 | 17,415 | 12,642 | 11,375 | 5,721 | -35% | -10% | 143% |
| Livestock & Livestock Product Prices | | | | | | | | |
| Camel Local Quality (Head) | 2,724,766 | 8,343,750 | 10,285,000 | 10,625,000 | 5,437,201 | 27% | 3% | 290% |
| Cattle Local Quality (Head) | 1,561,111 | 2,025,000 | - | - | - | - | - | - |
| Fresh Camel Milk 1 litre | 15,347 | 35,320 | 29,880 | 25,900 | 13,154 | -27% | -13% | 69% |
| Goat Export Quality (Head) | 446,986 | 1,553,333 | 1,634,167 | 1,495,000 | 764,960 | -4% | -9% | 234% |
| Goat Local Quality (Head) | 374,177 | 1,110,500 | 1,328,800 | 1,314,000 | 672,334 | 18% | -1% | 251% |
| Other Essential Items | | | | | | | | |
| Charcoal 50kg | 62,433 | 190,400 | 189,267 | 193,500 | 98,923 | 2% | 2% | 210% |
| Cowpeas 1 kg | 7,720 | 51,280 | 23,160 | 25,900 | 13,154 | -49% | 12% | 235% |
| Unskilled Labor Wage Rate | 30,600 | 87,000 | 81,600 | 86,000 | 43,910 | -1% | 5% | 181% |
| Firewood Bundle | 4,340 | 41,000 | 39,200 | 39,000 | 19,858 | -5% | -1% | 799% |
| Local Sesame Oil 1 litre | 27,137 | 96,000 | 88,800 | 87,250 | 44,550 | -9% | -2% | 222% |
| Exchange Rate (Somali Shilling per USD) | 16,602 | 27,849 | 22,220 | 22,405 | 11,366 | -20% | 1% | 35% |
| Construction Materials* | | | | | | | | |
| Cement 50kg | - | 358,320 | 285,183 | 289,300 | 147,948 | -19% | 1% | - |
| Cooking Pot Aluminium 7 Litre | - | 400,500 | 353,000 | 369,500 | 188,990 | -8% | 5% | - |
| Galvanised Iron Sheet Ga 26 | - | 154,880 | 116,667 | 115,350 | 58,930 | -26% | -1% | - |
| Hollow Concrete Block 10cm x 20cm x 40cm | - | 16,250 | 15,000 | 14,563 | 7,353 | -20% | -3% | - |
| Non Collapsible Jerrycan 10 Litre | - | 52,450 | 47,800 | 48,000 | 24,464 | -8% | 0% | - |
| Plastic Tarpaulin 14m x 5 m | - | 342,000 | 310,933 | 301,000 | 153,936 | -12% | -3% | - |
| Roofing Nails 15kg | - | 814,000 | 688,850 | 672,750 | 344,177 | -17% | -2% | - |
| Timber 2in x 4in x 20ft | - | 150,320 | 111,050 | 109,375 | 55,872 | -27% | -2% | - |
| Woven Dry Raised Blanket 150cm x 200cm | - | 130,800 | 128,133 | 132,000 | 67,450 | 1% | 3% | - |
| Terms of Trade | | | | | | | | |
| Labour Wage (Daily)/ Cereal (Rice(Kg)) | 4 | 3 | 4 | 4 | - | 43% | 9% | 15% |
| Local Goat (Head)/ Cereal (Rice(Kg)) | 45 | 37 | 62 | 64 | - | 72% | 2% | 43% |
| Camel (Head)/Cereal (Kg) | 325 | 280 | 483 | 517 | - | 85% | 7% | 59% |
| Price Indices | | | | | | | | |
| Consumer Price Index | - | 278 | 205 | 195 | - | -30% | -5% | - |
| Purchasing Power Index | - | 0.36 | 0.49 | 0.51 | - | 42% | 5% | - |

* Data has been collected since May 2010

* Data has been collected since May 2010

Figure 32: Imported commodity prices compared to exchange rates

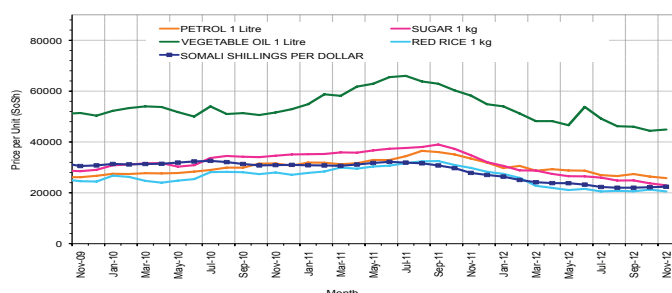


Figure 34: Goat Local Quality

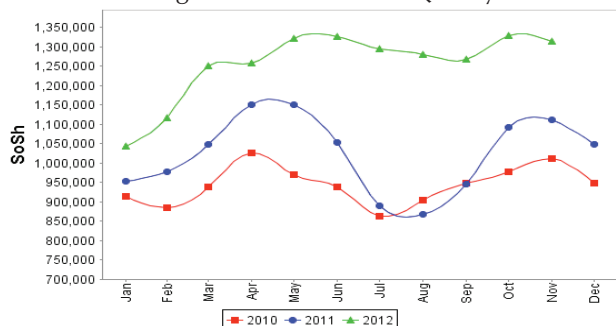


Figure 36: Water Drum

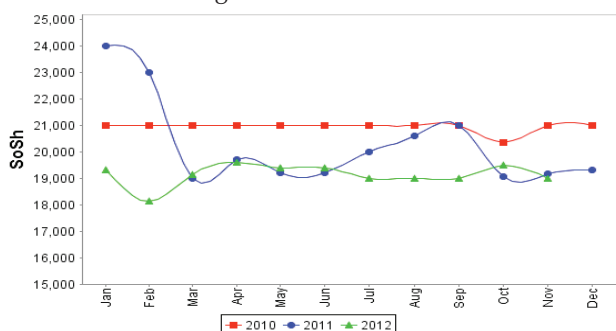


Figure 33: Trends in wage rates, staple cereal prices and relative purchasing power

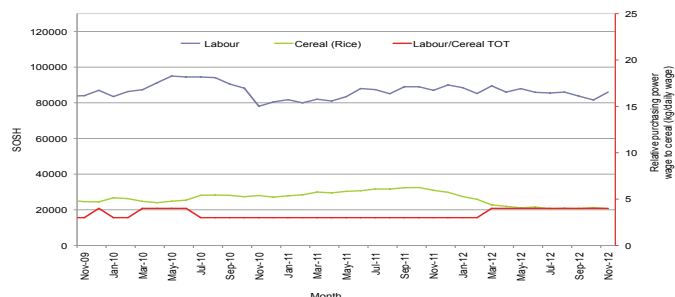


Figure 35: Exchange Rate

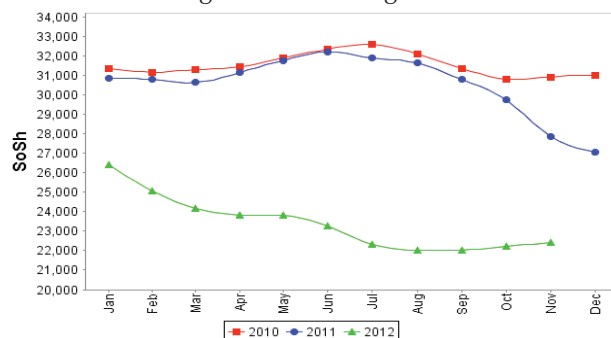
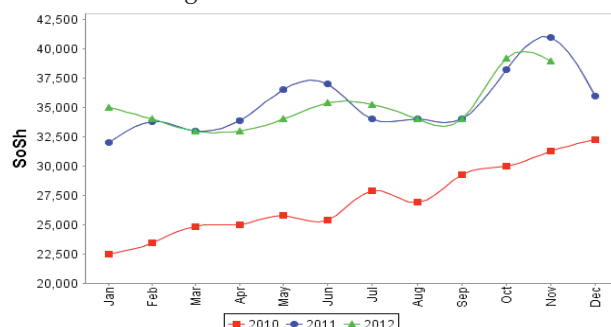


Figure 37: Firewood Bundle



Regional analysis: Northeast Regions

| Indicator | 5-Year Average (2003-07) | Nov-11 | Oct-12 | Nov-12 Nominal Price | Nov-12 Real (Deflated) Price | % Change Same Month Previous Year | % Change Previous Month | % Change 5-year avrg (2003-07) |
|---|-----------------------------|------------|------------|-------------------------|---------------------------------|--|-------------------------------|--------------------------------------|
| Imported Commodities Prices | | | | | | | | |
| Diesel 1 litre | 9,708 | 32,750 | 23,500 | 23,875 | 10,834 | -27% | 2% | 146% |
| Imported Red Rice 1kg | 7,750 | 23,000 | 17,300 | 17,625 | 7,972 | -23% | 2% | 127% |
| Petrol 1 litre | 10,294 | 29,563 | 20,550 | 21,938 | 9,947 | -26% | 7% | 113% |
| Sugar | 8,812 | 30,063 | 21,500 | 21,438 | 9,718 | -29% | 0% | 143% |
| Vegetable Oil 1 litre | 17,793 | 55,875 | 39,050 | 37,750 | 17,189 | -32% | -5% | 112% |
| Wheat Flour 1kg | 8,050 | 20,313 | 16,050 | 16,625 | 7,514 | -18% | 4% | 107% |
| Wheat Grain 1kg | 7,906 | 27,000 | 28,125 | 27,375 | 12,437 | 1% | -3% | 246% |
| Cereal Prices | | | | | | | | |
| Red Sorghum 1kg | 7,156 | 29,500 | 20,333 | 19,417 | 8,793 | -34% | -5% | 171% |
| White Maize 1kg | 6,843 | 18,000 | 19,200 | 17,500 | 7,915 | -3% | -9% | 156% |
| Livestock & Livestock Product Prices | | | | | | | | |
| Camel Local Quality (Head) | 3,964,583 | 15,278,125 | 15,940,000 | 15,750,000 | 7,213,207 | 3% | -1% | 297% |
| Cattle Local Quality (Head) | 1,812,500 | 8,000,000 | 7,500,000 | 8,125,000 | 3,721,050 | 2% | - | 348% |
| Fresh Camel Milk 1 litre | 15,397 | 37,063 | 35,950 | 35,125 | 15,987 | -5% | -2% | 128% |
| Goat Export Quality (Head) | 487,034 | 1,406,250 | 1,616,000 | 1,485,000 | 680,012 | 6% | -8% | 205% |
| Goat Local Quality (Head) | 462,993 | 1,396,875 | 1,494,000 | 1,287,500 | 589,559 | -8% | -14% | 178% |
| Other Essential Items | | | | | | | | |
| Charcoal 50kg | 99,316 | 430,000 | 360,500 | 373,125 | 170,787 | -13% | 4% | 276% |
| Cowpeas 1 kg | 10,654 | 68,750 | 34,933 | 35,667 | 16,235 | -48% | 2% | 235% |
| Unskilled Labor Wage Rate | 45,666 | 111,563 | 122,500 | 125,000 | 57,148 | 12% | 2% | 174% |
| Firewood Bundle | 6,166 | 41,250 | 45,000 | 45,625 | 20,796 | 11% | 1% | 640% |
| Local Sesame Oil 1 litre | 32,750 | 96,250 | 88,500 | 86,563 | 39,545 | -10% | -2% | 164% |
| Exchange Rate (Somali Shilling per USD) | 16,675 | 28,844 | 21,340 | 21,663 | 9,821 | -25% | 2% | 30% |
| Construction Materials* | | | | | | | | |
| Cement 50kg | - | 237,550 | 182,400 | 188,344 | 86,159 | -21% | 3% | - |
| Cooking Pot Aluminium 7 Litre | - | 480,625 | 426,000 | 418,125 | 191,396 | -13% | -2% | - |
| Galvanised Iron Sheet Ga 26 | - | 234,300 | 177,800 | 180,500 | 82,567 | -23% | 2% | - |
| Hollow Concrete Block 10cm x 20cm x 40cm | - | 12,300 | 12,200 | 11,750 | 5,281 | -4% | -4% | - |
| Non Collapsible Jerrycan 10 Litre | - | 43,750 | 39,500 | 39,563 | 18,019 | -10% | 0% | - |
| Plastic Tarpaulin 14m x 5 m | - | 190,313 | 172,900 | 173,688 | 79,447 | -9% | 0% | - |
| Roofing Nails 15Kg | - | 470,875 | 611,000 | 606,188 | 277,527 | 29% | -1% | - |
| Timber 2in x 4in x 20ft | - | 236,550 | 169,950 | 171,938 | 78,645 | -27% | 1% | - |
| Woven Dry Raised Blanket 150cm x 200cm | - | 261,250 | 224,500 | 233,750 | 106,955 | -11% | 4% | - |
| Terms of Trade | | | | | | | | |
| Labour Wage (Daily)/ Cereal (Rice(Kg)) | 6 | 5 | 7 | 7 | - | 46% | 0% | 20% |
| Local Goat (Head)/ Cereal (Rice(Kg)) | 60 | 61 | 86 | 73 | - | 20% | -15% | 22% |
| Price Indices | | | | | | | | |
| Consumer Price Index | - | 259 | 209 | 218 | - | -16% | 4% | - |
| Purchasing Power Index | - | 0.39 | 0.48 | 0.46 | - | 19% | -4% | - |

* Data has been collected since May 2010

Figure 38: Imported commodity prices compared to exchange rates

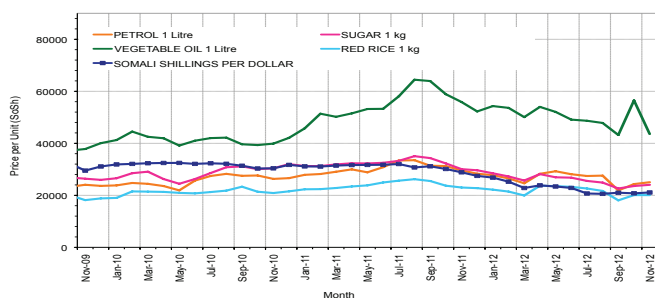


Figure 39: Trends in wage rates, staple cereal prices and relative purchasing power

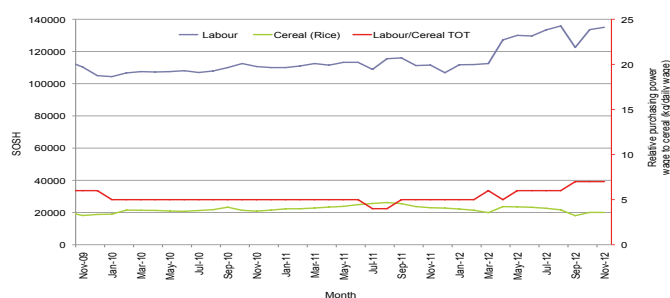


Figure 40: Goat Local Quality

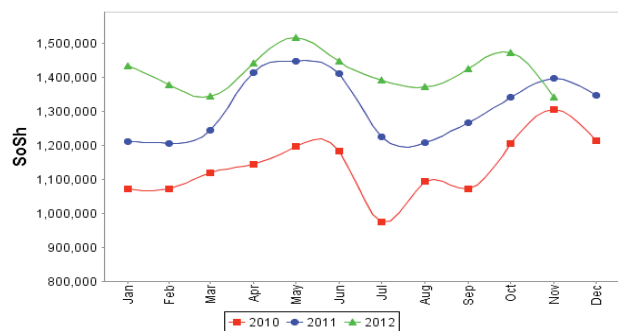


Figure 41: Exchange Rate

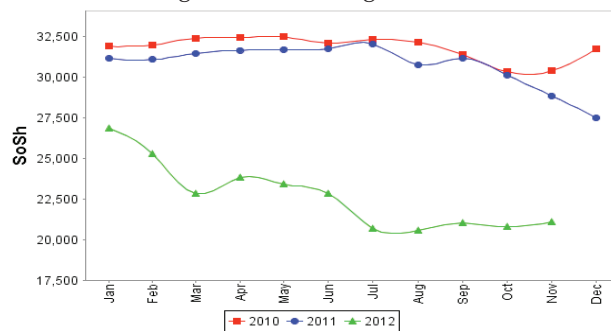


Figure 42: Water Drum

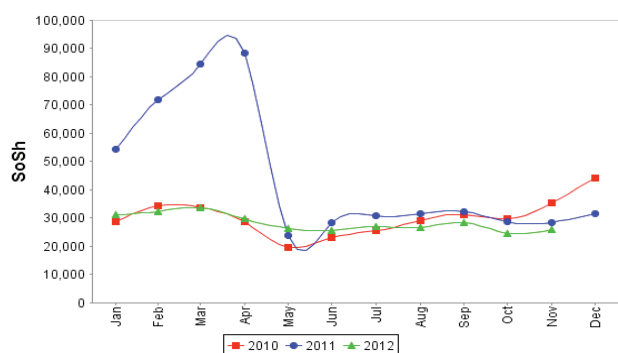
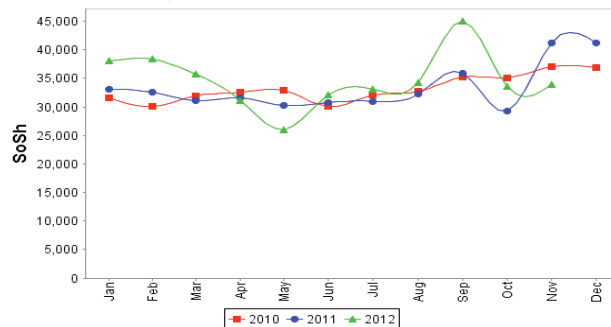


Figure 43: Firewood Bundle



Regional analysis: Northwest Regions

| Indicator | 5-Year Average (2003-07) | Nov-11 | Oct-12 | Nov-12 Nominal Price | Nov-12 Real (Deflated) Price | % Change Same Month Previous Year | % Change Previous Month | % Change 5-year avrg (2003-07) |
|---|--------------------------|-----------|-----------|----------------------|------------------------------|-----------------------------------|-------------------------|--------------------------------|
| Imported Commodities Prices | | | | | | | | |
| Diesel 1 litre | 3,754 | 5,890 | 6,972 | 6,937 | 5,385 | 18% | -1% | 85% |
| Imported Red Rice 1kg | 3,036 | 4,885 | 4,960 | 4,972 | 3,831 | 2% | 0% | 64% |
| Petrol 1 litre | 4,371 | 6,189 | 7,284 | 7,294 | 5,667 | 18% | 0% | 67% |
| Sugar | 3,332 | 5,984 | 5,984 | 6,045 | 4,680 | -9% | 1% | 81% |
| Vegetable Oil 1 litre | 7,346 | 11,448 | 13,040 | 12,695 | 9,938 | 11% | -3% | 73% |
| Wheat Flour 1kg | 3,024 | 4,490 | 4,336 | 4,442 | 3,412 | -1% | 2% | 47% |
| Wheat Grain 1kg | 2,241 | 3,575 | 3,015 | 2,906 | 2,198 | -19% | -4% | 30% |
| Cereal Prices | | | | | | | | |
| White Sorghum 1kg | 1,830 | 3,657 | 3,568 | 3,330 | 2,533 | -9% | -7% | 82% |
| Yellow Maize 1kg | 1,929 | 3,756 | 3,832 | 3,381 | 2,573 | -10% | -12% | 75% |
| Livestock & Livestock Product Prices | | | | | | | | |
| Camel Local Quality (Head) | 1,793,284 | 1,735,000 | 2,792,067 | 2,711,000 | 2,143,511 | 56% | -3% | 51% |
| Cattle Local Quality (Head) | 927,319 | 1,575,000 | 1,896,967 | 1,754,500 | 1,387,198 | 11% | -8% | 89% |
| Fresh Camel Milk 1 litre | 4,008 | 5,110 | 5,510 | 5,400 | 4,170 | 6% | -2% | 35% |
| Goat Export Quality (Head) | 191,705 | 301,600 | 466,860 | 443,150 | 350,303 | 47% | -5% | 131% |
| Goat Local Quality (Head) | 155,814 | 240,020 | 313,760 | 299,325 | 236,579 | 25% | -5% | 92% |
| Other Essential Items | | | | | | | | |
| Charcoal 50kg | 20,133 | 36,050 | 40,520 | 45,385 | 35,786 | 26% | 12% | 125% |
| Cowpeas 1 kg | 4,701 | 9,288 | 9,700 | 10,031 | 7,832 | 8% | 3% | 113% |
| Unskilled Labor Wage Rate | 25,311 | 33,020 | 40,444 | 37,705 | 29,714 | 14% | -7% | 49% |
| Firewood Bundle | 2,616 | 2,833 | 3,367 | 3,033 | 2,298 | 7% | -10% | 16% |
| Local Sesame Oil 1 litre | 16,462 | 24,125 | 24,725 | 25,894 | 20,375 | 7% | 5% | 57% |
| Exchange Rate (Somaliland Shilling per USD) | 6,598 | 5,722 | 6,270 | 6,460 | 5,008 | 13% | 3% | -2% |
| Construction Materials* | | | | | | | | |
| Cement 50kg | - | 44,499 | 52,850 | 53,276 | 42,026 | 20% | 1% | - |
| Cooking Pot Aluminium 7 Litre | - | 103,690 | 90,880 | 85,525 | 67,525 | -18% | -6% | - |
| Galvanised Iron Sheet Ga 26 | - | 42,000 | 48,080 | 51,413 | 40,553 | 22% | 7% | - |
| Hollow Concrete Block 10cm x 20cm x 40cm | - | 2,738 | 4,100 | 3,254 | 2,473 | 19% | -21% | - |
| Non Collapsible Jerrycan 10 Litre | - | 6,340 | 6,912 | 7,120 | 5,530 | 12% | 3% | - |
| Plastic Tarpaulin 14m x 5 m | - | 71,290 | 94,640 | 94,025 | 74,246 | 32% | -1% | - |
| Roofing Nails 15Kg | - | 164,800 | 189,540 | 161,194 | 127,358 | -2% | -15% | - |
| Timber 2in x 4in x 20ft | - | 100,075 | 127,160 | 129,590 | 102,368 | 29% | 2% | - |
| Woven Dry Raised Blanket 150cm x 200cm | - | 76,115 | 77,100 | 78,375 | 61,872 | 3% | 2% | - |
| Terms of Trade | | | | | | | | |
| Labour Wage (Daily)/ Cereal (Rice(Kg)) | 8 | 7 | 8 | 8 | - | 12% | -7% | -9% |
| Local Goat (Head)/ Cereal (Rice(Kg)) | 51 | 49 | 63 | 60 | - | 23% | -5% | 17% |
| Price Indices | | | | | | | | |
| Consumer Price Index | - | 122 | 124 | 126 | - | 4% | 2% | - |
| Purchasing Power Index | - | 0.82 | 0.81 | 0.79 | - | -4% | -2% | - |

* Data has been collected since May 2010

* Data has been collected since May 2010

Figure 44: Imported commodity prices compared to exchange rates

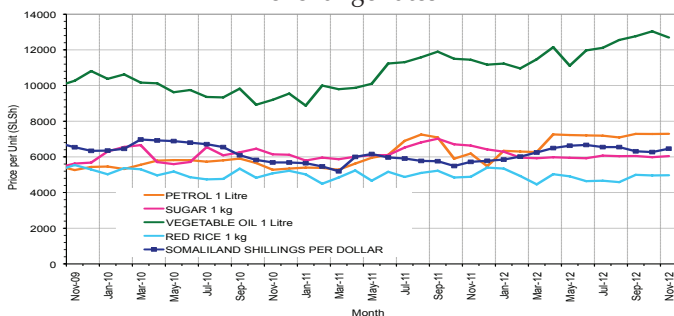


Figure 46: Goat Local Quality

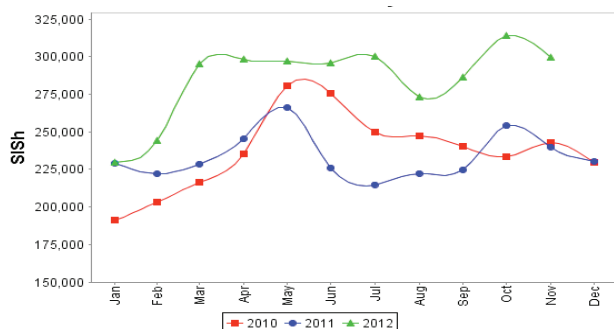


Figure 48: Water Drum

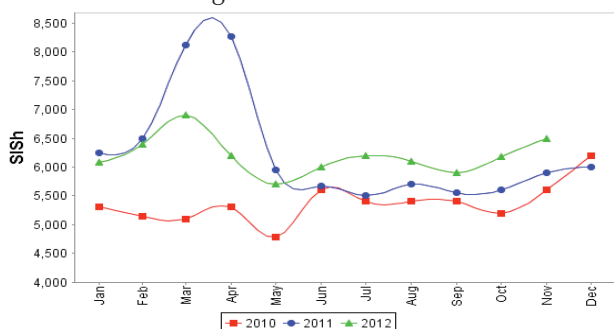


Figure 45: Trends in wage rates, staple cereal prices and relative purchasing power

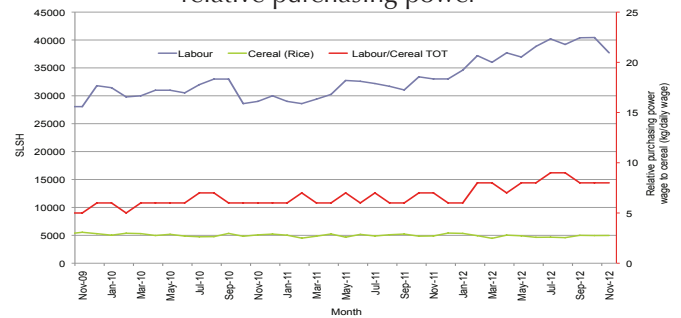


Figure 47: Exchange Rate

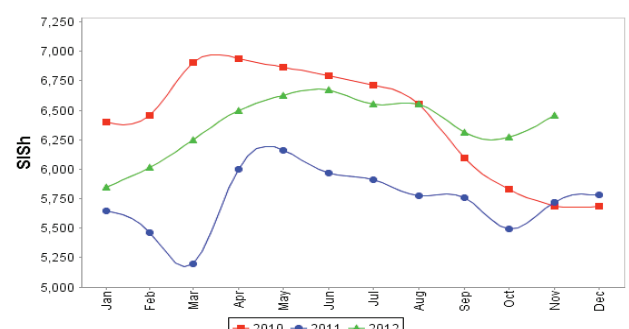
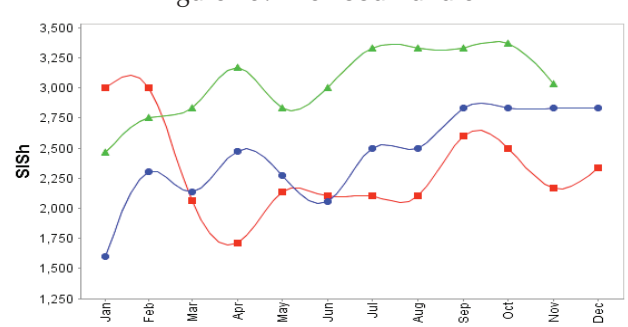


Figure 49: Firewood Bundle



Trends in Livestock Exports

Table 2: Berbera Livestock Exports (Number of Heads)

| | 1994 | 1995 | 1996 | 1997 | 1998 | 1999 | 2000 | 2001 | 2002 | 2003 | 2004 | 2005 | 2006 | 2007 | 2008 | 2009 | 2010 | 2011 | 2012 (Jan-Oct)* |
|--------|-----------|-----------|-----------|-----------|---------|-----------|-----------|--------|---------|---------|---------|-----------|-----------|-----------|-----------|-----------|-----------|-----------|-----------------|
| Shoats | 1,572,656 | 2,683,597 | 2,376,646 | 2,814,495 | 957,224 | 2,048,136 | 1,601,083 | 51,546 | 341,711 | 563,107 | 859,404 | 1,023,795 | 1,017,242 | 1,350,054 | 1,219,519 | 1,556,003 | 2,584,810 | 3,104,684 | 3,013,394 |
| Cattle | 173,400 | 167,128 | 65,127 | 66,939 | 92,213 | 89,967 | 63,263 | 20,973 | 37,547 | 84,312 | 131,852 | 148,151 | 85,631 | 88,143 | 80,051 | 88,005 | 133,021 | 150,934 | 156,441 |
| Camel | 38,553 | 21,993 | 42,801 | 50,587 | 11,663 | 37,430 | 16,984 | 3,473 | 18,864 | 21,874 | 5,147 | 5,069 | 22,810 | 14,245 | 26,515 | 20,206 | 92,651 | 107,281 | 91,152 |

* Jan-Oct 2012 cumulative livestock exports

Figure 50: Berbera Livestock Exports (Number of Heads)

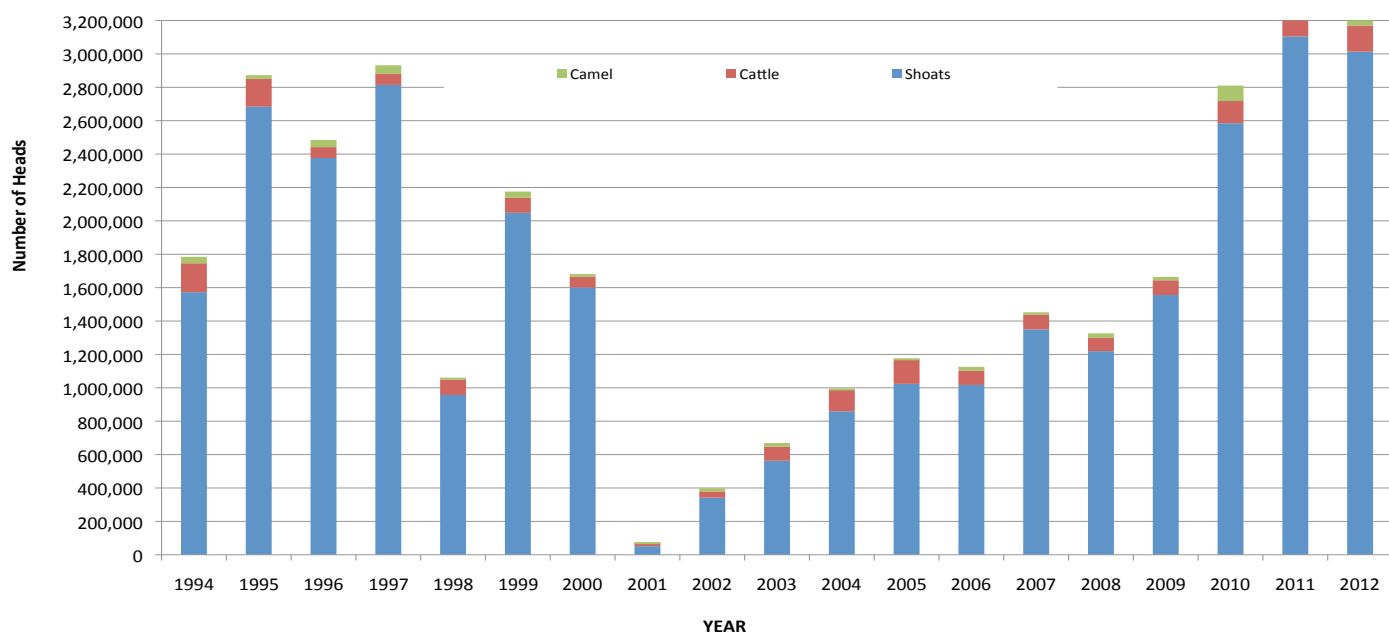
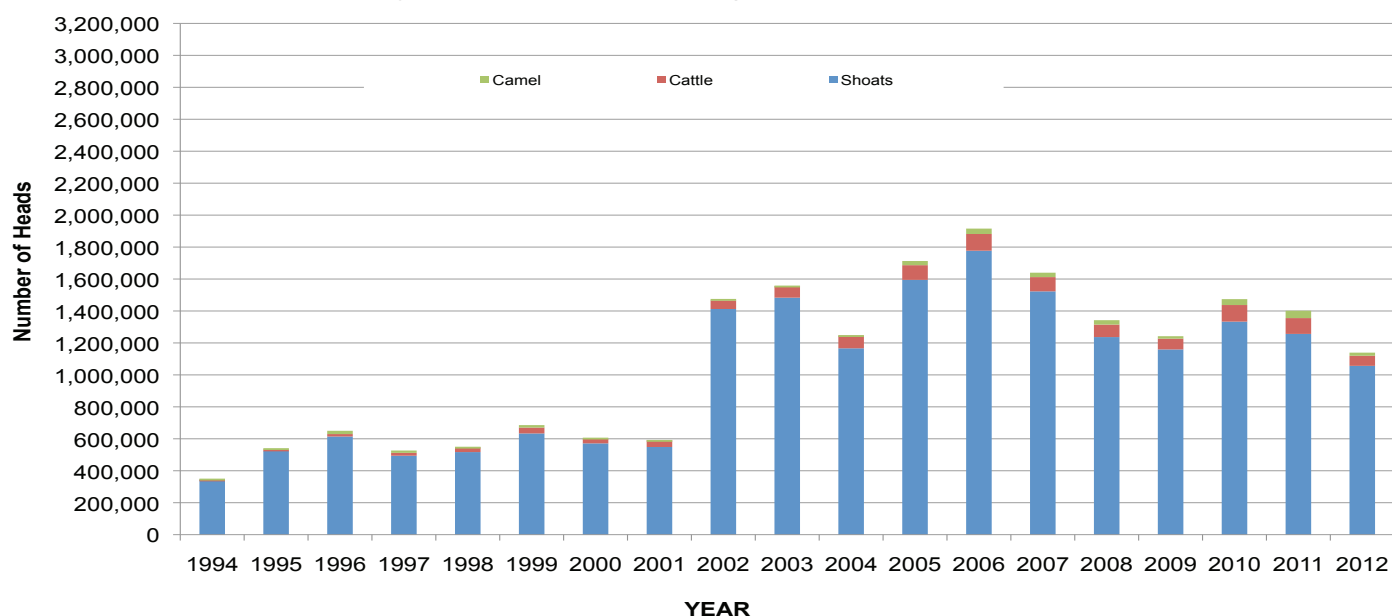


Table 3: Bossaso Livestock Exports (Number of Heads)

| | 1994 | 1995 | 1996 | 1997 | 1998 | 1999 | 2000 | 2001 | 2002 | 2003 | 2004 | 2005 | 2006 | 2007 | 2008 | 2009 | 2010 | 2011 | 2012 (Jan-Oct) |
|--------|---------|---------|---------|---------|---------|---------|---------|---------|-----------|-----------|-----------|-----------|-----------|-----------|-----------|-----------|-----------|-----------|----------------|
| Shoats | 344,000 | 524,346 | 614,407 | 494,320 | 517,020 | 633,669 | 571,455 | 548,853 | 1,412,450 | 1,483,409 | 1,166,480 | 1,594,859 | 1,777,283 | 1,522,855 | 1,236,775 | 1,159,454 | 1,333,478 | 1,256,535 | 1,056,921 |
| Cattle | 1,450 | 8,795 | 15,335 | 17,831 | 29,492 | 36,586 | 27,604 | 42,248 | 53,313 | 71,328 | 79,994 | 91,910 | 104,595 | 89,190 | 78,046 | 67,385 | 103,808 | 99,058 | 63,121 |
| Camel | 5,397 | 8,392 | 20,462 | 14,599 | 3,938 | 15,544 | 8,177 | 1,950 | 9,720 | 4,259 | 2,488 | 26,109 | 33,724 | 27,580 | 27,639 | 15,331 | 36,865 | 45,878 | 19,523 |

* Jan-Oct 2012 cumulative livestock exports

Figure 51: Bossaso Livestock Exports (Number of Heads)

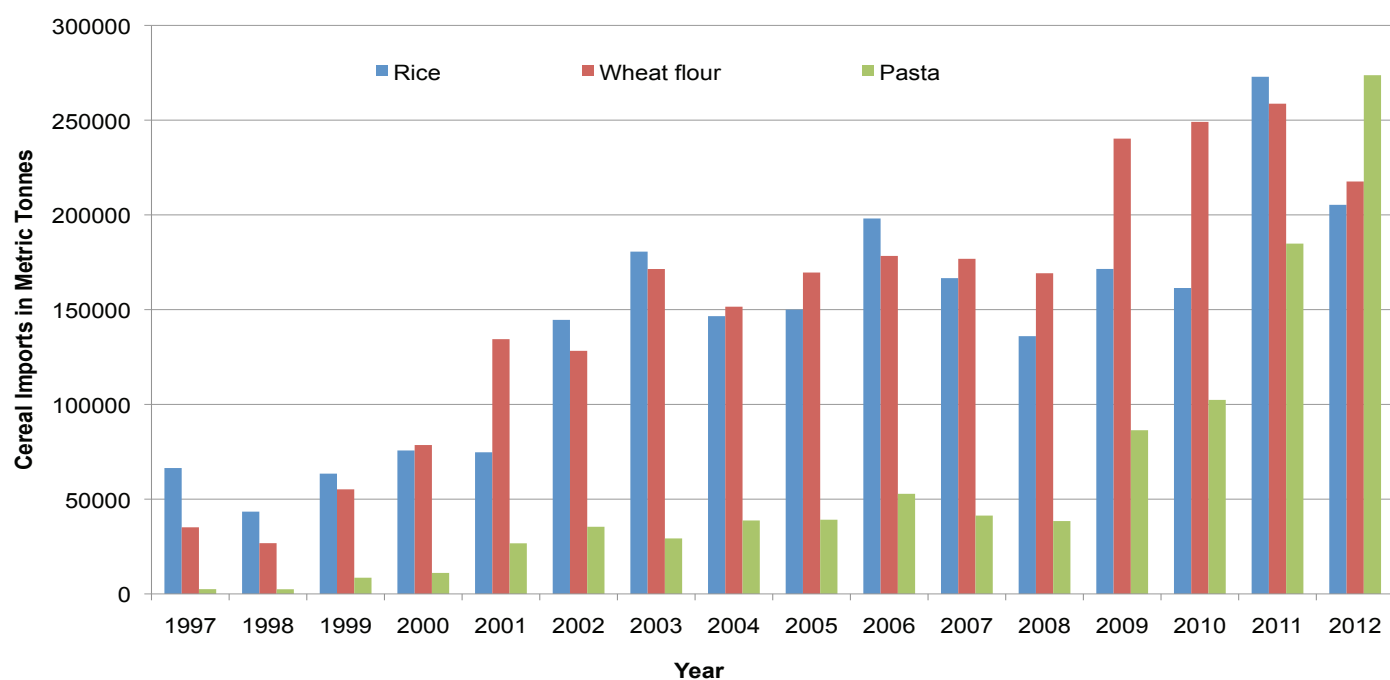


Trends in Cereal Imports

Table 4: Total Cereal Imports (Berbera, Bossaso, Elmaan)

| | 1997 | 1998 | 1999 | 2000 | 2001 | 2002 | 2003 | 2004 | 2005 | 2006 | 2007 | 2008 | 2009 | 2010 | 2011 | 2012* |
|--------------------|--------|--------|--------|--------|---------|---------|---------|---------|---------|---------|---------|---------|---------|---------|---------|---------|
| Rice | 66,419 | 43,410 | 63,464 | 75,687 | 74,729 | 144,600 | 180,614 | 146,567 | 150,017 | 198,101 | 166,626 | 136,007 | 171,472 | 161,415 | 272,877 | 205,308 |
| Wheat flour | 35,143 | 26,774 | 55,176 | 78,555 | 134,425 | 128,263 | 171,442 | 151,555 | 169,583 | 178,345 | 176,821 | 169,208 | 240,247 | 249,080 | 258,679 | 217,617 |
| Pasta | 2,510 | 2,455 | 8,544 | 11,071 | 26,702 | 35,425 | 29,273 | 38,749 | 39,153 | 52,815 | 41,331 | 38,441 | 86,372 | 102,373 | 184,849 | 273,713 |

Figure 52: Total Cereal Imports (Berbera, Bossaso and Elmaan)



* January-October 2012 Cumulative Cereal Imports