

Market DataUpdate



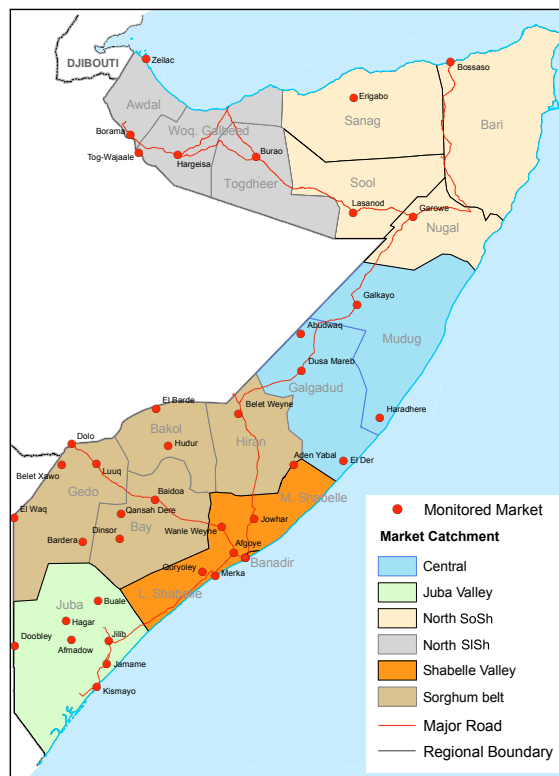
Food Security and Nutrition Analysis Unit - Somalia



Issued December 15th, 2011

Highlights

- Inflation:** The monthly Consumer Price Index (CPI) declined slightly (7%) in south-central regions and remained stable in the north. Annual inflation rate for the country as a whole ranged between 13 and 18 percent. When compared to the base period (March 2007), the cost of living has risen significantly (159-183%) in Somali Shilling (SoSh) areas, while having risen moderately (22%) in Somaliland Shilling (SiSh) areas.
- Exchange Rates:** Local currencies appreciated moderately against the USD in most markets when compared to the previous month and the same month last year; this is attributed to increased dollar inflows following the humanitarian response to the drought and famine, and livestock export earnings during the peak *Hajj* period.
- Local grain prices:** Maize and red sorghum declined moderately in most markets in southern and central parts of the country, following increased supply from food aid interventions and stock sales by better off households. Monthly prices of local grains remained stable in the North. However prices are still considerably higher than they were a year ago in all regions.
- Prices of most imported commodities** declined slightly over the past month in most markets. However, yearly comparisons indicate significant increases across the country, mostly driven by high international commodity prices, increased fuel costs as well as higher transportation costs attributable to the recent rains that have hindered movement of commodities into the hinterlands.
- Livestock prices** are up in most markets, also when compared to a year ago, mainly due to increased quality of the animals sold. Prices declined in most markets in the Northwest, due to reduced demand, in line with end of *Hajj* seasonal trends. The *Hajj* period buoyed livestock exports from northern ports. However, the month of November saw a significant drop (73-94%) in the number of animals exported through Bosasso Port, in line with normal trends, as exports drop immediately after the end of the *Hajj*.
- Labour wages** improved in parts of the South, in response to increased agricultural activities, but remained stable in Central and Northern regions. Wages are either slightly higher or comparable to their levels a year ago in most markets.
- Terms of Trade (ToT)** between labour wages and cereals improved in most markets of the South from their levels a month ago, signalling increased purchasing power of poor households. Significant increases (50-100%) were observed in Banadir and Bay. However, purchasing power remains low when compared to a year ago in most regions, with considerably lower ToT recorded in the regions of Juba and the Northeast (see Table 1).



This Market Data Update is a monthly report that presents a compilation of tabulated graphical market information produced regularly as part of the monthly monitoring process.

The weekly price data is collected from 44 main markets throughout Somalia since 1995.

The 5-year period of 2003-07 was characterised by fairly stable prices and relatively low inflation. In this bulletin, these years are used as a reference period for seasonal trends comparison.

Market analysis is an integral part of all of FSNAU's Annual Food Security Projections and seasonal technical reports (Technical Reports on FSNAU Post Gu and Deyr Analysis).

This data is available online on www.fsnau.org/ids.

Technical and Managerial Support



Funding Agencies



Regional Market Highlights

- **Juba Valley:** maize prices declined in most markets, while livestock prices increased marginally. Imported food prices (rice, vegetable oil and wheat flour) remained relatively stable, mitigated by humanitarian interventions. However, prices of imported commodities in hinterland markets are slightly up due to interruptions in Kismayo Port operations and heavy rains that have slowed road transportation. When compared to a year ago, prices of imports (rice, sugar, vegetable oil and wheat flour) and of maize are higher, especially when compared to livestock prices, which remained below their levels twelve months earlier. While monthly ToT between labour and cereals improved, purchasing power is still much lower when compared to the same period last year, and is one of the lowest in the country (only 5kgs of maize can be purchased for a daily wage).
- **Sorghum Belt:** The effects of humanitarian interventions in the south resulted in declining prices of local cereals in the Sorghum belt – with moderate (12-16%) reductions in Bay, Bakool and Gedo and a decline of 9% in Hiran. Prices of imported commodities also declined, while they increased for livestock. Annual comparisons show significantly higher prices of imported commodities and sorghum, in contrast to those of livestock. A slight improvement in labour wages and a decline in cereal prices enhanced the terms of trade between labour and cereals. However, purchasing power is down when compared to the same period last year and currently stands at about 9 kg of cereals for a daily wage, 1 kg less than a year ago.
- **Shabelle Valley:** Similar to most other regions in the South, prices of maize, labour and imports declined, while livestock prices increased. The ToT improved by an additional 2 kg from October 2011 and currently is equivalent to 9kg/daily wage rate. Prices of cereals, imported commodities and livestock are higher than their levels same month last year.
- **Central:** prices of imported commodities and sorghum declined marginally, while remaining stable for livestock in most main markets in November 2011. Most commodities are more expensive than they were a year ago in most markets. ToT did not change over the previous month, but remains one of the lowest (5kg/daily wage rate) in the country, due to a very high price of local cereals.
- **Northeast:** prices of cereals and imported commodities decreased while livestock were mixed in November 2011. These prices are however higher than their levels last year. ToT (cereals/wages) did not improve significantly as labour wages remained stable. Given a high cost of cereals relative to wages, the ToT (4kgs/daily wage rate) stood at a half its levels for the same period last year.
- **Northwest:** prices of most monitored commodities were stable in November. The ToT (cereals/wages) declined by 1 kg from a month ago to settle at 9kgs/daily wage rate.
- **Banadir:** prices decreased significantly for local cereals and imported commodities while for livestock remained stable. Notably, these prices are lower than they were a year ago. As in other regions, humanitarian interventions in the region have seen cereal prices decline, labour wages improve, effectively doubling the ToT to 14kg per daily wage rate.

Table 1: Monthly and Annual Changes in Terms of Trade

Region (cereal)	Terms of Trade: Amount of Cereals (kg) per Daily Labour Wage Rate			Percent changes in Terms of Trade	
	Nov 2010	Oct 2011	Nov 2011	Monthly change (%)	Annual change (%)
Bay (red sorghum)	7	4	6	50%	-14%
Bakool (red sorghum)	5	5	6	20%	20%
Gedo (red sorghum)	14	10	12	20%	-14%
Hiraan (white maize)	9	10	12	20%	33%
Juba (white maize)	10	4	5	25%	-50%
Shabelle (white maize)	7	7	9	29%	29%
NE (red sorghum)	7	4	4	0%	-43%
NW (white sorghum)	11	9	9	0%	-18%
Central (red sorghum)	6	5	5	0%	-17%
Banadir (white maize)	7	7	14	100%	100%

International Market Highlights

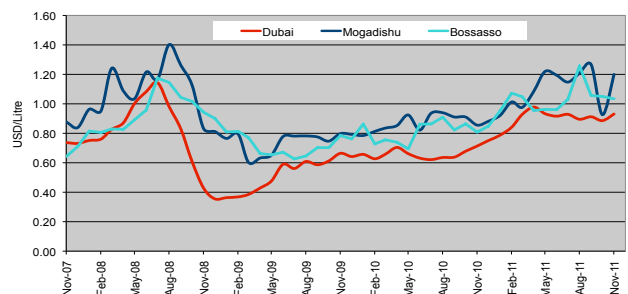
Diesel: Crude oil prices in Abu Dhabi/Dubai,¹ the main source of Somalia's oil imports, increased (5%) in November to settle at \$ 109 perbarrel. The current quotation is 30 percent higher than the same month last year. The upward movement in crude oil prices was supported by strong Asian demand, heavy buying of benchmark Dubai crude partials by Shell, renewed efforts to address the Euro-zone crisis, renewed geopolitical concerns, and slight improvement in the US economy. Uncertain outlook for the global economy in the coming year, coupled with macro-economic sentiments and speculative market activities underscores risks facing the world oil markets going forward and should keep prices volatile at least in the near-term². The pass through of global oil price to Somalia markets is clearly evidenced in annual increases of diesel prices in the main port cities of Bossaso (24%) and Mogadishu (13%), respectively. On a monthly basis however, diesel prices remained stable in both cities.

Rice: Export price of rice³ in November sustained its upward trends for the fifth consecutive month to close at USD 553 per ton, 10 percent higher than in October and 29 percent above its level same month a year ago. However, the rice price is still (28%) below its record peak in May 2008. The new Thailand's high procurement price policy in addition to the effects of the Southeast Asia floods were the principal factors propelling international rice quotations in November this year⁴. Though flooding in parts of Asia has negatively affected crop prospects in some key exporters, bigger outturns in China and India are expected to lift global production. In line with international price trends, retail prices of imported rice increased moderately (14-33%) in Somali port towns of Mogadishu and Bossaso when compared to a year ago. The prices were 12 percent up in Mogadishu but stable in Bossaso in November 2011. Developments of rice prices on local markets in the short-run will be determined by the dynamics of global rice and oil markets, as well as local factors such as level of local cereal production in the current season, availability of relief food in the South and ease of inland food transportation.

Sugar: The **FAO Sugar Price Index**⁵ averaged 340 points in November, down 6 percent (21 points) from October and 15 percent (60 points) from its July 2011 peak. The decline largely reflects expectations of a large global production surplus over the next twelve months, on the back of good harvests in India, the EU, Thailand and the Russian Federation. The effect of the international price developments of the last month are reflected on the local markets of Somalia where sugar prices declined by 5 percent in Bossaso. However, in Mogadishu town, sugar prices exhibited significant monthly (21%) and annual (23%) declines, which could be attributed to increased clogging of supplies as road conditions into the hinterland markets are poor following heavy rains.

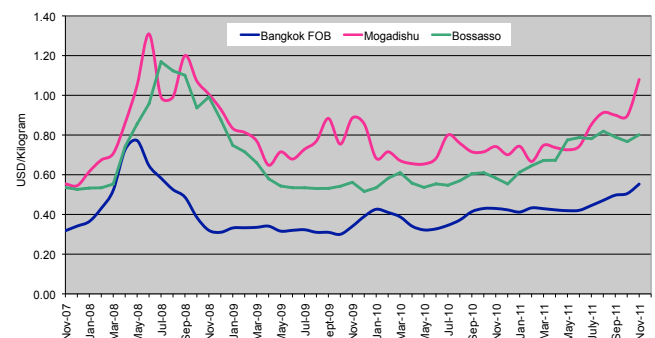
Cooking Oil: The **FAO Oils/Fats Price Index**⁶ increased to 235 points in November, up 5 percent (11 point) from October, reversing the downward trend that had persisted since March. Markets responded to a prospective tightening of global supply and demand for vegetable oils. In particular, the recent rise in prices reflects concerns about the anticipated slowdown in palm oil and soyoil output, increased absorption of vegetable oils by the biodiesel industry and rising import demand by China and other players. International price trends in cooking oil is discernible in Bossaso port, where vegetable oil price remains relatively stable. However, in Mogadishu the cooking oil price declined by 4 percent in November 2011 when compared to the previous month mainly as a result of on-going relief food distributions.

Figure 1: Diesel Prices: Dubai, Mogadishu and Bossaso



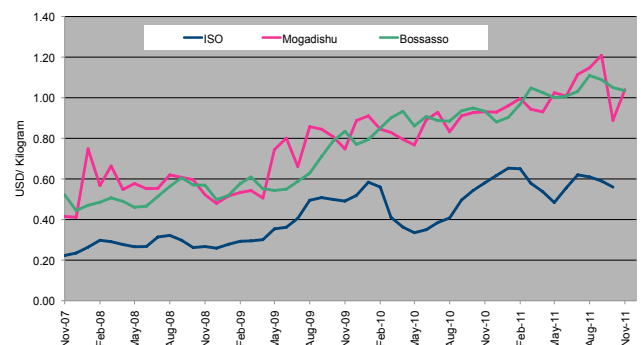
Source: FAO Statistics, FEWSNET and FSNAU Market Price Monitoring System, 2011

Figure 2: Rice Prices: Bangkok FOB, Mogadishu and Bossaso Markets



Source: FAO Statistics, FEWSNET and FSNAU Market Price Monitoring System, 2011

Figure 3: Sugar Prices: ISO, Mogadishu and Bossaso Markets



Source: FAO Statistics, FEWSNET, ISO and FSNAU Market Price Monitoring System, 2011

¹ Weekly Abu Dhabi Murban Spot Price FOB (Dollars per Barrel), US Energy Information Administration, http://www.eia.doe.gov/dnav/pet/pri_wco_k_w.htm

² OPEC, Monthly Oil Market Report, December 2011

³ Bangkok, Rice (Thai A1 Super 1/ B) , Export, US Dollar, Tonne, FAO GIEWS Global Food Price Monitor, September 2011,

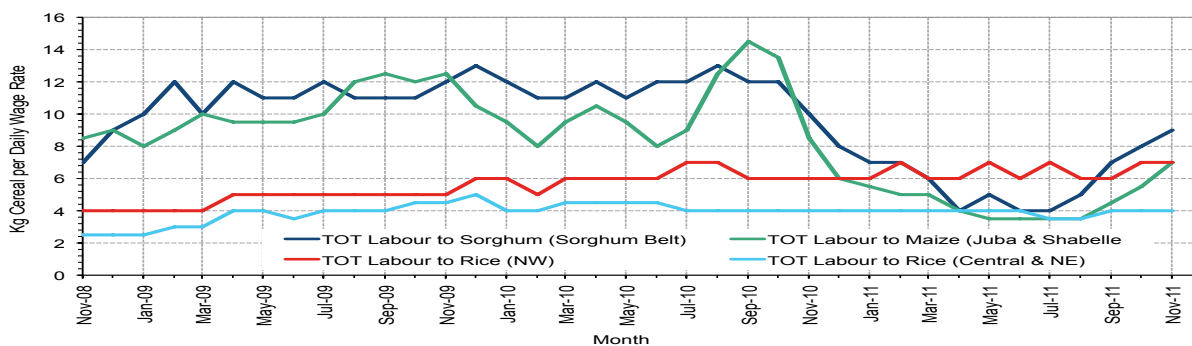
⁴ International Grain Council, Grain Market Report, 24th November 2011

⁵ FAO Food Price Index, December 2011

⁶ FAO Food Price Index, December 2011

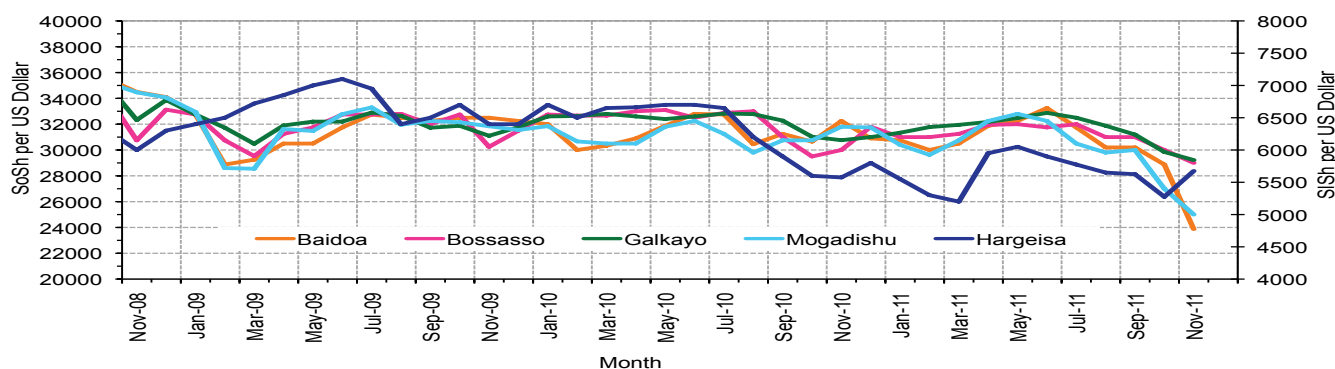
National Trends: CPI, Exchange Rates, Cereal Prices and Relative Purchasing Power

Figure 4: Terms of Trade between wage rates and selected cereals



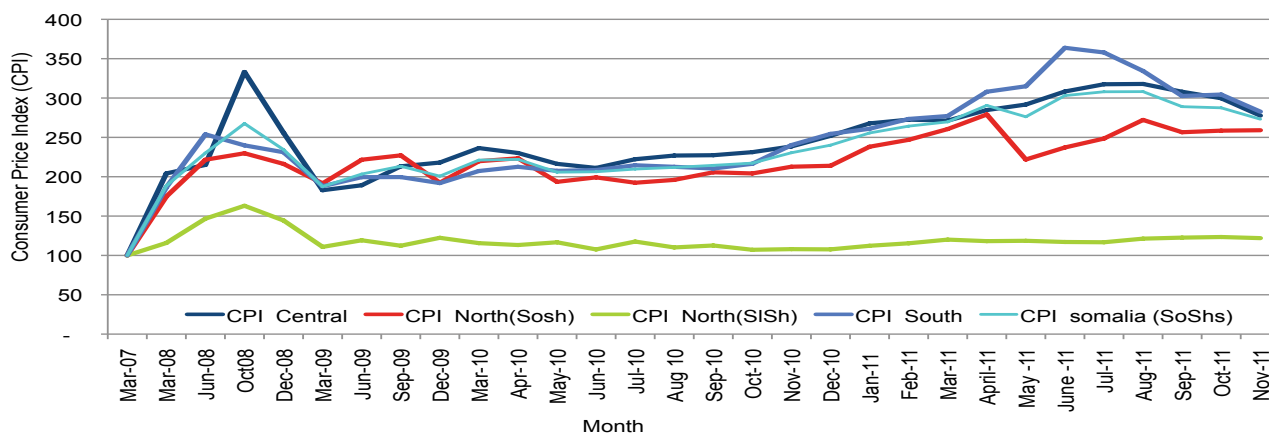
* Purchasing power low but improving

Figure 5: Monthly Exchange Rate for Selected Regions (SoSh and SiSh to USD)



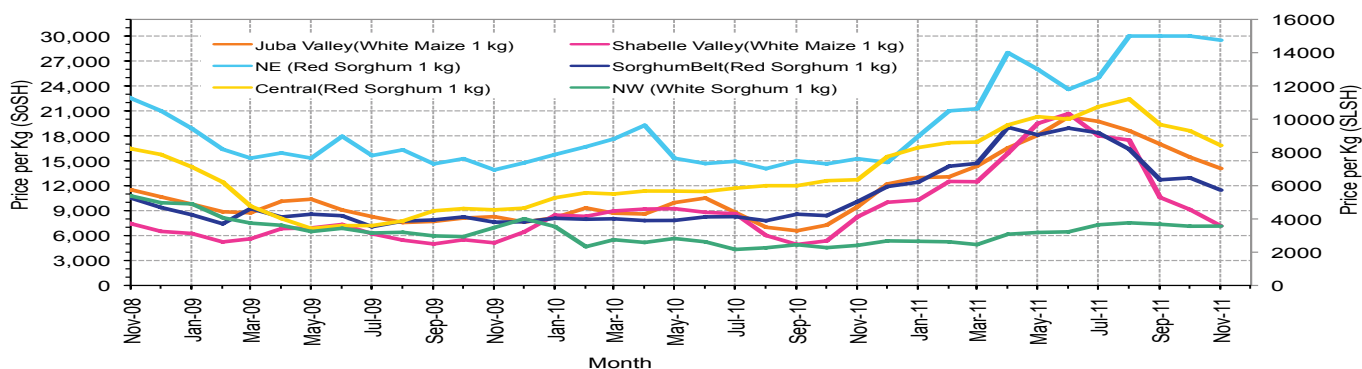
*Local currencies slowly strengthening against the USD

Figure 6: Monthly Trends in Consumer Price Index (CPI, March 2007=100)



*Inflation is slowly easing in SoShs regions but stable in Somaliland

Figure 7: Monthly Trends in Local Cereal Prices



*Local cereal prices are high but on a downward trend

Regional analysis: Juba Regions

Indicator	5-Year Average (2003-07)	Nov-10	Oct-11	Nov-11 Nominal Price	Nov-11 Real Price (Deflated)	% Change Same Month Previous Year	% Change Previous Month	% Change 5-year avrg (2003-07)
Imported Commodities Prices								
Diesel 1 litre	14,215	33,000	44,607	47,464	16,689	44%	6%	234%
Imported Red Rice 1kg	9,658	22,571	25,821	26,214	9,173	16%	2%	171%
Petrol 1 litre	16,748	39,057	38,500	37,333	13,106	-4%	-3%	123%
Sugar	8,843	31,257	47,143	42,000	14,756	34%	-11%	375%
Vegetable Oil 1 litre	20,182	48,571	58,643	62,250	21,919	28%	6%	208%
Wheat Flour 1kg	8,421	19,800	24,000	23,071	8,061	17%	-4%	174%
Wheat Grain 1kg	9,500	17,200	20,000	28,000	9,804	63%	40%	195%
Cereal Prices								
Red Sorghum 1kg	2,266	10,300	-	-	-	-	-	-
White Maize 1kg	2,587	9,473	15,429	14,071	4,877	49%	-9%	444%
Livestock & Livestock Product Prices								
Camel Local Quality (Head)	3,670,320	9,304,168	7,936,667	7,770,000	2,748,335	-16%	-2%	112%
Cattle Local Quality (Head)	1,894,962	3,976,800	2,915,000	3,237,500	1,145,081	-19%	11%	71%
Fresh Camel Milk 1 litre	6,737	23,243	18,643	19,714	6,873	-15%	6%	193%
Goat Export Quality (Head)	441,274	1,345,143	1,058,214	1,236,071	437,128	-8%	17%	180%
Goat Local Quality (Head)	305,340	976,500	685,357	778,214	275,173	-20%	14%	155%
Other Essential Items								
Charcoal 50kg	31,522	86,357	64,107	73,571	25,924	-15%	15%	133%
Cowpeas 1 kg	5,636	19,643	33,250	36,167	12,693	84%	9%	542%
Unskilled Labor Wage Rate	30,693	96,571	63,571	66,964	23,587	-31%	5%	118%
Firewood Bundle	2,476	6,571	6,571	6,911	2,345	5%	5%	179%
Local Sesame Oil 1 litre	22,991	74,429	91,393	90,250	31,824	21%	-1%	293%
Exchange Rate (Somali Shilling per USD)	16,071	31,337	29,375	25,232	8,825	-19%	-14%	57%
Construction Materials*								
Cement 50kg	-	352,889	338,333	343,333	121,345	-3%	1%	-
Cooking Pot Aluminium 7 Litre	-	324,667	362,500	370,500	130,955	14%	2%	-
Galvanised Iron Sheet Ga 26	-	162,107	177,083	170,600	60,245	5%	-4%	-
Hollow Concrete Block 10cm x 20cm x 40cm	-	19,250	20,000	20,000	6,974	4%	0%	-
Non Collapsible Jerrycan 10 Litre	-	30,000	35,250	42,750	15,022	43%	21%	-
Plastic Tarpaulin 14m x 5 m	-	700,000	503,333	553,125	195,554	-21%	10%	-
Roofing Nails 15Kg	-	830,000	790,000	775,000	274,036	-7%	-2%	-
Timber 2in x 4in x 20ft	-	338,400	327,500	323,750	114,418	-4%	-1%	-
Woven Dry Raised Blanket 150cm x 200cm	-	-	150,000	-	-	-	-	-
Terms of Trade								
Labour Wage (Daily)/ Cereal (Maize(Kg))	12	10	4	5	-	-53%	16%	-60%
Local Goat (Head)/ Cereal (Maize(Kg))	118	103	44	55	-	-46%	25%	-53%
Price Indices								
Consumer Price Index	-	240	304	283	-	18%	-7%	-
Purchasing Power Index	-	0.42	0.33	0.35	-	-15%	8%	-

* Data has been collected since May 2010

Figure 8: Imported commodity prices compared to exchange rates

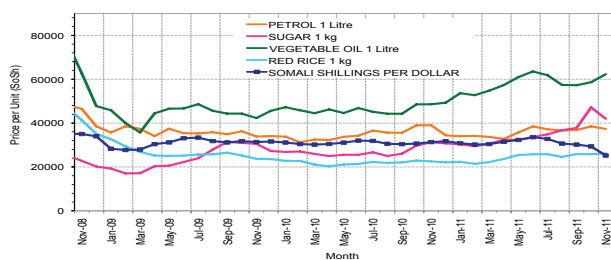


Figure 10: Goat Local Quality

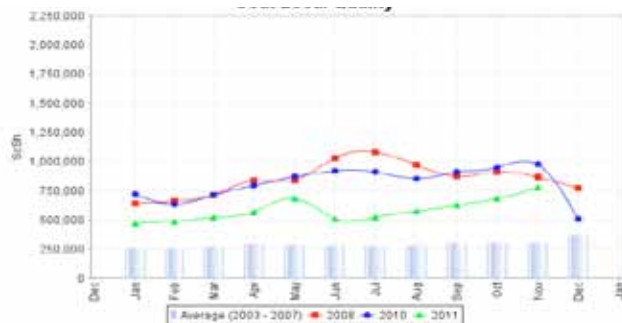


Figure 12: Water Drum

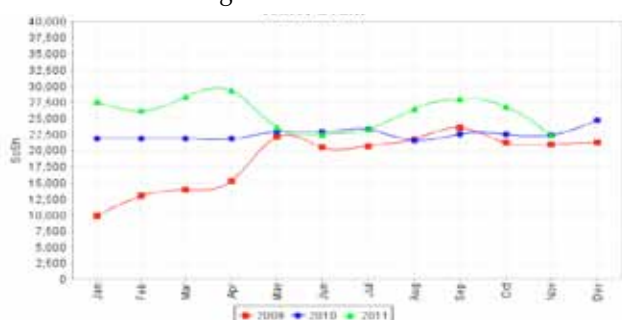


Figure 9: Trends in wage rates, staple cereal prices and relative purchasing power

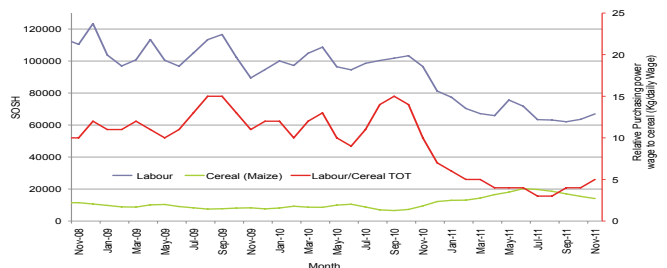


Figure 11: Sugar

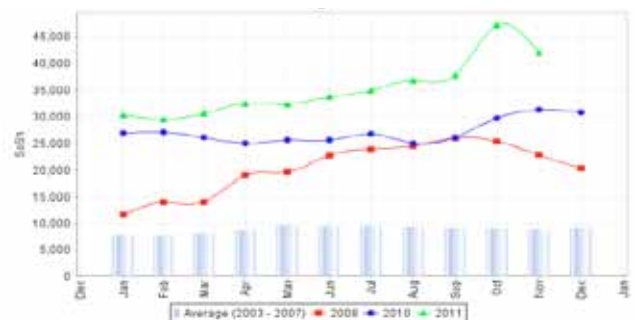
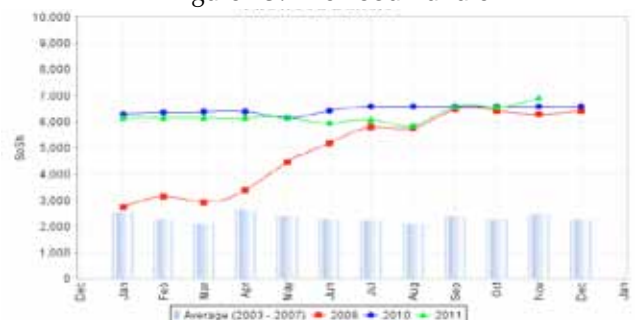


Figure 13: Firewood Bundle



Regional analysis: Sorghum Belt Regions (Bay, Bakool, Gedo and Hiran)

Indicator	5-Year Average (2003-07)	Nov-10	Oct-11	Nov-11 Nominal Price	Nov-11 Real Price (Deflated)	% Change Same Month Previous Year	% Change Previous Month	% Change 5-year avrg (2003-07)
Imported Commodities Prices								
Diesel 1 litre	13,119	31,282	42,159	39,409	13,840	26%	-7%	200%
Imported Red Rice 1kg	9,694	24,345	26,705	24,977	8,735	3%	-6%	158%
Petrol 1 litre	15,817	31,009	40,000	39,659	13,928	28%	-1%	151%
Sugar	9,932	32,155	36,818	35,023	12,288	9%	-5%	253%
Vegetable Oil 1 litre	19,915	46,927	57,000	53,205	18,720	13%	-7%	167%
Wheat Flour 1kg	9,289	21,182	23,295	21,773	7,602	3%	-7%	134%
Wheat Grain 1kg	5,047	8,781	14,000	11,075	3,817	26%	-21%	119%
Cereal Prices								
Red Sorghum 1kg	2,021	10,095	12,944	11,468	3,957	14%	-11%	467%
White Maize 1kg	2,939	10,608	13,614	12,107	4,183	14%	-11%	312%
Livestock & Livestock Product Prices								
Camel Local Quality (Head)	3,660,194	9,329,546	7,580,682	9,483,000	3,354,264	2%	25%	159%
Cattle Local Quality (Head)	1,532,951	2,871,250	2,194,375	2,834,722	1,002,609	-1%	29%	85%
Fresh Camel Milk 1 head	6,257	23,159	26,568	25,227	8,823	9%	-5%	303%
Goat Export Quality (Head)	458,530	1,392,500	1,387,500	1,440,227	509,343	3%	4%	214%
Goat Local Quality (Head)	287,221	801,818	782,955	892,500	315,599	11%	14%	211%
Other Essential Items								
Charcoal 50kg	42,413	134,727	131,023	131,727	46,495	-2%	1%	211%
Cowpeas 1 kg	7,175	22,550	59,250	54,389	19,139	141%	-8%	658%
Unskilled Labor Wage Rate	23,223	103,182	99,614	105,682	37,282	2%	6%	355%
Firewood Bundle	1,898	5,409	5,636	6,000	2,022	11%	6%	216%
Local Sesame Oil 1 litre	24,734	74,457	82,643	82,536	29,095	11%	0%	234%
Exchange Rate (Somali Shilling per USD)	16,511	31,475	29,618	25,348	8,866	-19%	-14%	54%
Construction Materials*								
Cement 50kg	-	347,600	345,556	376,389	133,038	8%	9%	-
Cooking Pot Aluminium 7 Litre	-	350,250	278,889	274,722	97,076	-22%	-1%	-
Galvanised Iron Sheet Ga 26	-	205,000	223,477	210,864	74,488	3%	-6%	-
Hollow Concrete Block 10cm x 20cm x 40cm	-	9,750	11,000	11,375	3,924	17%	3%	-
Non Collapsible Jerrycan 10 Litre	-	50,500	49,409	51,955	18,278	3%	5%	-
Plastic Tarpaulin 14m x 5 m	-	370,600	303,700	297,150	105,009	-20%	-2%	-
Roofing Nails 15Kg	-	809,688	839,000	744,167	263,130	-8%	-11%	-
Timber 2in x 4in x 20ft	-	273,571	219,107	286,806	101,350	5%	31%	-
Woven Dry Raised Blanket 150cm x 200cm	-	121,667	99,143	85,571	30,169	-30%	-14%	-
Terms of Trade								
Labour Wage (Daily)/ Cereal (Sorghum(Kg))	11	10	8	9	-	-10%	20%	-20%
Local Goat (Head)/ Cereal (Sorghum(Kg))	142	79	60	78	-	-2%	29%	-45%
Price Indices								
Consumer Price Index	-	240	304	283	-	18%	-7%	-
Purchasing Power Index	-	0.42	0.33	0.35	-	-15%	8%	-

* Data has been collected since May 2010

Figure 14: Imported commodity prices compared to exchange rates

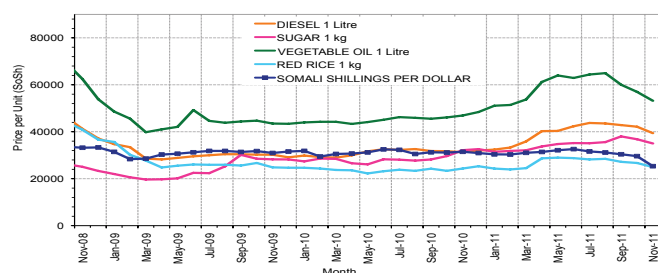


Figure 15: Trends in wage rates, staple cereal prices and relative purchasing power

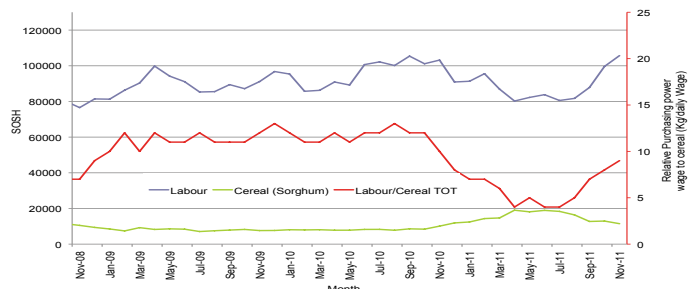


Figure 16: Goat Local Quality

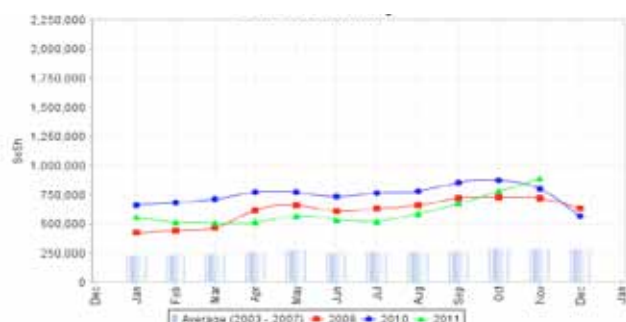


Figure 17: Sugar

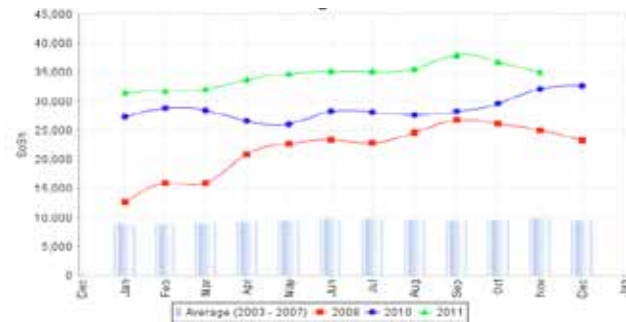


Figure 18: Water Drum

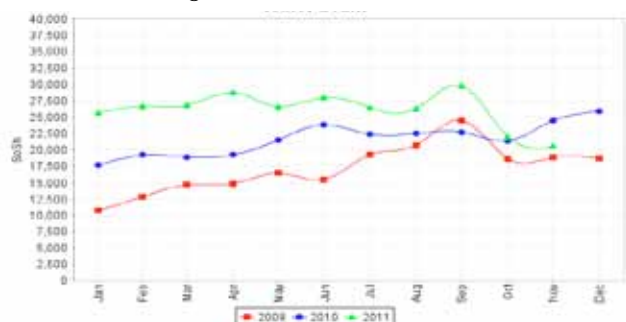
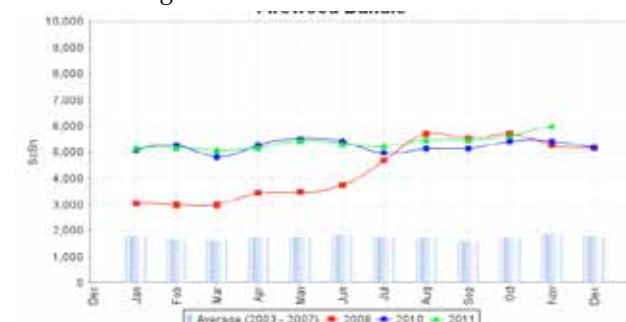


Figure 19: Firewood Bundle



Regional analysis: Shabelle Regions

Indicator	5-Year Average (2003-07)	Nov-10	Oct-11	Nov-11 Nominal Price	Nov-11 Real (Deflated) Price	% Change Same Month Previous Year	% Change Previous Month	% Change 5-year avg (2003-07)
Imported Commodities Prices								
Diesel 1 litre	12,355	30,167	38,417	34,917	12,251	16%	-9%	183%
Imported Red Rice 1kg	7,847	21,667	24,042	24,292	8,493	12%	1%	210%
Petrol 1 litre	13,995	33,333	37,042	36,958	12,973	11%	0%	164%
Sugar	7,968	31,583	33,917	27,167	9,510	-14%	-20%	241%
Vegetable Oil 1 litre	15,062	42,042	48,042	43,458	15,272	3%	-10%	189%
Wheat Flour 1kg	8,534	19,167	21,167	18,417	6,415	-4%	-13%	116%
Wheat Grain 1kg	2,499	-	23,417	18,334	-	-	-22%	-
Cereal Prices								
Red Sorghum 1kg	2,596	10,300	18,010	15,997	5,559	55%	-11%	516%
White Maize 1kg	2,549	8,261	9,132	7,160	2,433	-13%	-22%	181%
Livestock & Livestock Product Prices								
Camel Local Quality (Head)	4,598,188	11,230,000	13,952,500	14,942,500	5,285,419	33%	7%	225%
Cattle Local Quality (Head)	1,414,239	3,050,500	3,712,500	4,235,000	1,497,921	39%	14%	199%
Fresh Camel Milk 1 litre	5,501	20,417	19,521	18,917	6,591	-7%	-3%	244%
Goat Export Quality (Head)	553,619	1,471,250	1,552,500	1,812,750	641,113	23%	17%	227%
Goat Local Quality (Head)	390,713	1,075,833	1,088,750	1,261,667	446,182	17%	16%	223%
Other Essential Items								
Charcoal 50kg	48,495	116,639	128,444	134,833	47,594	16%	5%	178%
Cowpeas 1 kg	6,696	19,701	55,275	40,629	14,271	106%	-26%	507%
Unskilled Labor Wage Rate	23,143	59,896	66,208	61,625	21,698	3%	-7%	166%
Firewood Bundle	2,402	4,333	5,333	5,708	1,919	32%	7%	138%
Local Sesame Oil 1 litre	23,554	64,625	67,583	64,250	22,627	-1%	-5%	173%
Exchange Rate (Somali Shilling per USD)	16,478	31,658	29,188	25,917	9,067	-18%	-11%	57%
Construction Materials*								
Cement 50kg	-	283,000	301,000	270,850	95,706	-4%	-10%	-
Cooking Pot Aluminium 7 Litre	-	972,500	700,000	700,000	247,507	-28%	0%	-
Galvanised Iron Sheet Ga 26	-	117,100	147,250	118,700	41,887	1%	-19%	-
Hollow Concrete Block 10cm x 20cm x 40cm	-	13,750	12,667	12,000	4,145	-13%	-5%	-
Non Collapsible Jerrycan 10 Litre	-	51,063	49,125	52,688	18,537	3%	7%	-
Plastic Tarpaulin 14m x 5 m	-	280,000	315,833	291,667	103,070	4%	-8%	-
Roofing Nails 15Kg	-	646,250	621,750	613,750	216,998	-5%	-1%	-
Timber 2in x 4in x 20ft	-	59,525	57,300	52,450	18,453	-12%	-8%	-
Woven Dry Raised Blanket 150cm x 200cm	-	69,583	67,583	70,417	24,808	1%	4%	-
Terms of Trade								
Labour Wage (Daily)/ Cereal (Maize(Kg))	9	7	7	9	-	19%	19%	-5%
Local Goat (Head)/ Cereal (Maize(Kg))	153	130	119	176	-	35%	48%	15%
Price Indices								
Consumer Price Index	-	240	304	283	-	18%	-7%	-
Purchasing Power Index	-	0.42	0.33	0.35	-	-15%	8%	-

* Data has been collected since May 2010

Figure 20: Imported commodity prices compared to exchange rates

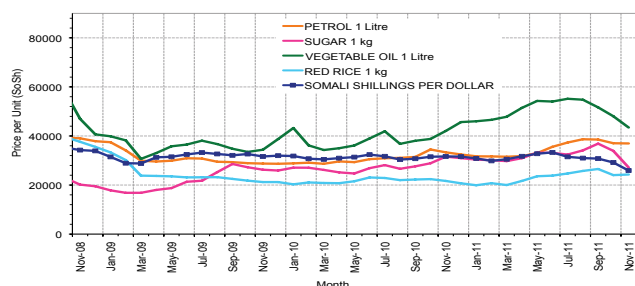


Figure 22: Goat Local Quality

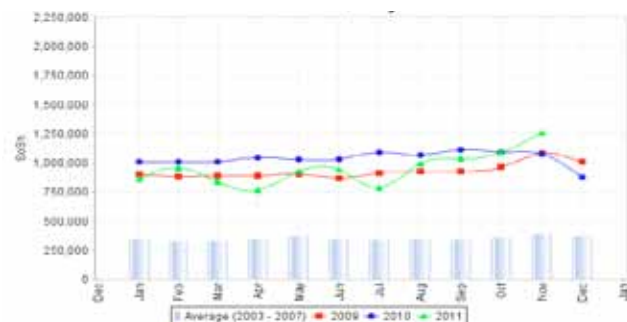


Figure 24: Water Drum

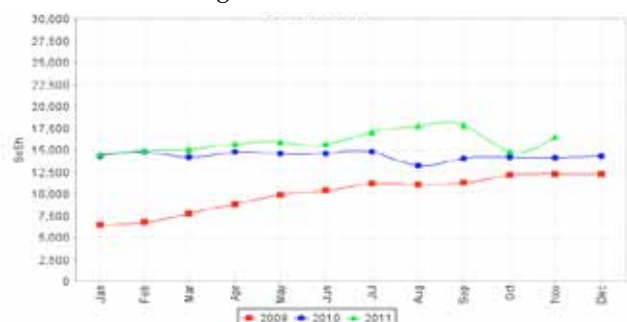


Figure 21: Trends in wage rates, staple cereal prices and relative purchasing power

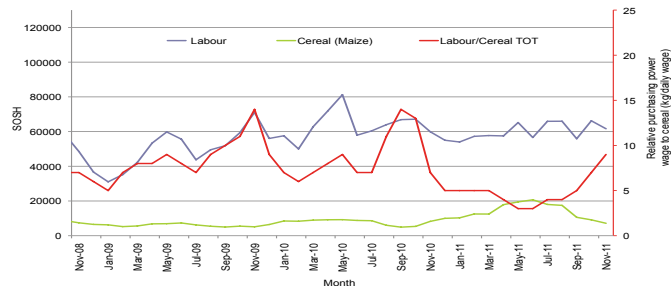


Figure 23: Sugar

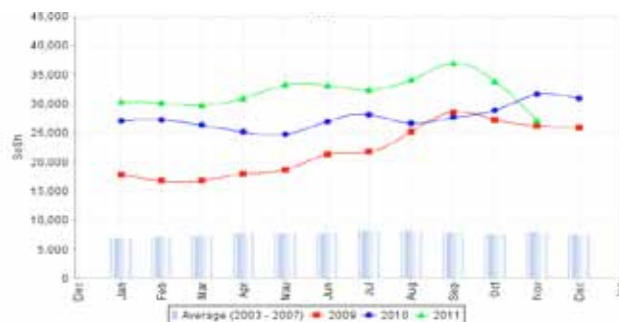
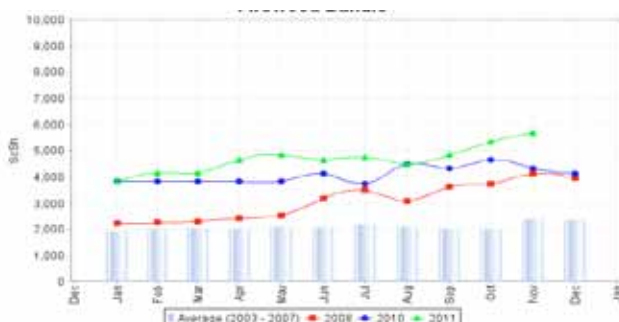


Figure 25: Firewood Bundle



Regional analysis:Banadir Region

Indicator	5-Year Average (2003-07)	Nov-10	Oct-11	Nov-11 Nominal Price	Nov-11 Real (Deflated) Price	% Change Same Month Previous Year	% Change Previous Month	% Change 5-year avg (2003-07)
Imported Commodities Prices								
Diesel 1 litre	8,281	27,500	36,600	31,125	10,910	13%	-15%	276%
Imported Red Rice 1kg	6,000	22,067	25,400	20,396	7,115	-8%	-20%	240%
Petrol 1 litre	9,187	28,467	34,250	29,583	10,364	4%	-14%	222%
Sugar	6,687	29,533	30,050	23,233	8,118	-21%	-23%	247%
Vegetable Oil 1 litre	12,062	42,400	43,617	41,854	14,705	-1%	-4%	247%
Wheat Flour 1kg	5,718	16,400	18,183	15,161	5,263	-8%	-17%	165%
Wheat Grain 1kg	4,000	13,000	14,000	23,538	8,226	81%	68%	488%
Cereal Prices								
Red Sorghum 1kg	2,200	10,597	15,369	10,500	3,614	-1%	-32%	377%
White Maize 1kg	2,441	10,254	11,874	9,438	3,238	-8%	-21%	287%
Livestock & Livestock Product Prices								
Camel Local Quality (Head)	5,733,333	16,000,000	11,000,000	13,000,000	4,598,311	-19%	18%	127%
Cattle Local Quality (Head)	3,231,250	5,000,000	3,000,000	3,000,000	1,061,072	-40%	0%	-7%
Fresh Camel Milk 1 litre	4,625	24,100	19,983	20,708	7,225	-14%	4%	348%
Goat Export Quality (Head)	-	2,000,000	1,600,000	1,587,500	561,437	-21%	-1%	-
Goat Local Quality (Head)	625,000	1,840,000	1,360,000	1,262,500	446,476	-31%	-7%	102%
Other Essential Items								
Charcoal 50kg	100,000	158,300	159,633	182,500	64,455	15%	14%	83%
Cowpeas 1 kg	4,758	22,658	59,754	43,454	15,271	92%	-27%	813%
Unskilled Labor Wage Rate	62,500	75,667	87,917	128,125	45,221	69%	46%	105%
Firewood Bundle	40,937	5,633	7,567	9,500	3,260	69%	26%	-77%
Local Sesame Oil 1 litre	17,437	62,733	66,483	61,958	21,816	-1%	-7%	255%
Exchange Rate (Somali Shilling per USD)	17,055	31,840	28,195	24,446	8,547	-23%	-13%	43%
Construction Materials*								
Cement 50kg	-	245,667	238,400	201,250	71,087	-18%	-16%	-
Cooking Pot Aluminium 7 Litre	-	180,000	325,000	314,563	111,168	75%	-3%	-
Galvanised Iron Sheet Ga 26	-	117,933	138,033	100,300	35,379	-15%	-27%	-
Hollow Concrete Block 10cm x 20cm x 40cm	-	10,033	9,800	10,125	3,481	1%	3%	-
Non Collapsible Jerrycan 10 Litre	-	60,333	39,125	48,625	17,100	-19%	24%	-
Plastic Tarpaulin 14m x 5 m	-	249,250	353,333	293,750	103,806	-18%	-17%	-
Roofing Nails 15Kg	-	508,167	586,108	566,058	200,128	11%	-3%	-
Timber 2in x 4in x 20ft	-	172,233	144,558	133,958	47,284	-22%	-7%	-
Woven Dry Raised Blanket 150cm x 200cm	-	156,133	78,333	80,417	-	-48%	3%	-
Terms of Trade								
Labour Wage (Daily)/ Cereal (Maize(Kg))	26	7	7	14	-	84%	83%	-47%
Local Goat (Head)/ Cereal (Maize(Kg))	256	179	115	134	-	-25%	17%	-48%
Price Indices								
Consumer Price Index	-	240	304	283	-	18%	-7%	-
Purchasing Power Index	-	0.42	0.33	0.35	-	-	-	-

* Data has been collected since May 2010

Figure 26: Bakara: Imported Commodity Prices compared to Exchange Rate

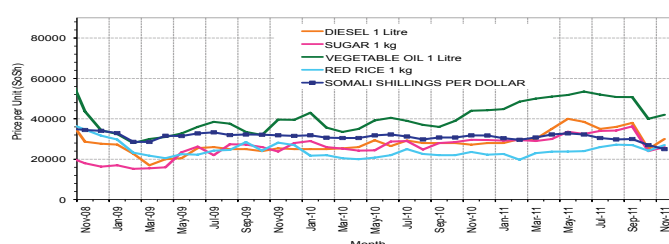


Figure 28: Goat Local Quality

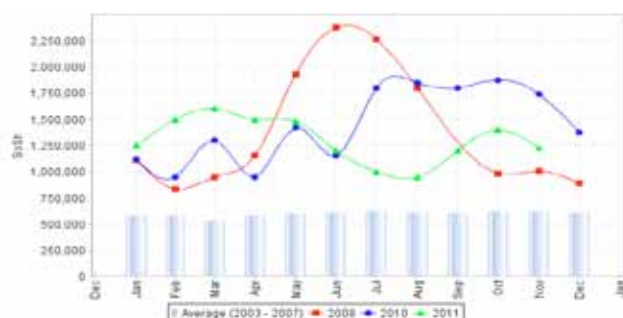


Figure 30: Wheat Flour

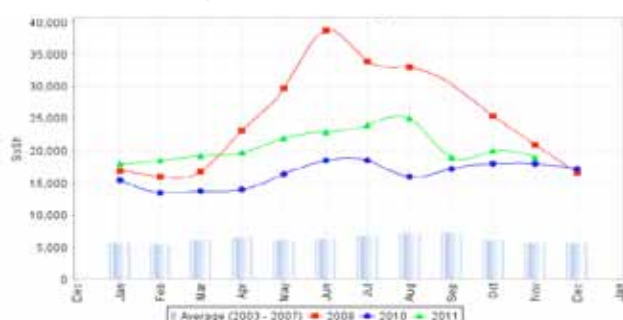


Figure 27: Bakara: Trends in Wage Rates, Staple Cereal Prices and Relative Purchasing Power

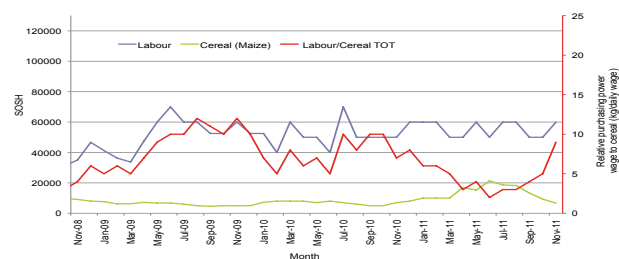


Figure 29: Sugar

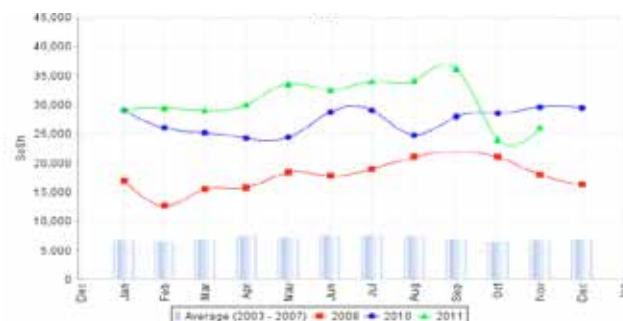
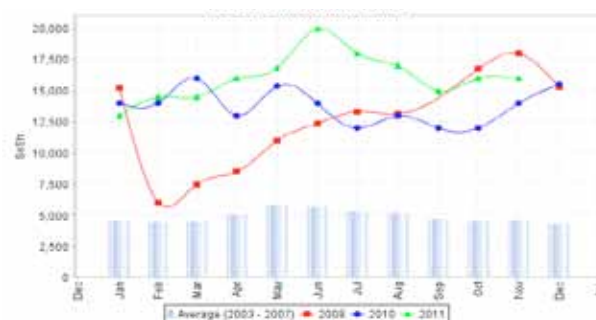


Figure 31: Fresh Camel Milk



Regional analysis: Central Regions

Indicator	5-Year Average (2003-07)	Nov-10	Oct-11	Nov-11 Nominal Price	Nov-11 Real (Deflated) Price	% Change Same Month Previous Year	% Change Previous Month	% Change 5-year avg (2003-07)
Imported Commodities Prices								
Diesel 1 litre	11,514	32,500	40,750	38,910	13,912	20%	-5%	238%
Imported Red Rice 1kg	8,396	28,000	30,950	29,810	10,635	6%	-4%	255%
Petrol 1 litre	12,190	31,550	35,100	33,480	11,957	6%	-5%	175%
Sugar	8,943	34,600	37,300	34,800	12,432	1%	-7%	289%
Vegetable Oil 1 litre	17,673	51,600	60,300	58,250	20,876	13%	-3%	230%
Wheat Flour 1kg	8,596	22,000	24,100	22,370	7,956	2%	-7%	160%
Wheat Grain 1kg	7,667	12,000	17,688	17,375	6,157	45%	-2%	127%
Cereal Prices								
Red Sorghum 1kg	4,848	12,720	18,600	16,840	5,964	32%	-9%	247%
White Maize 1kg	4,683	14,220	18,800	17,415	6,171	22%	-7%	272%
Livestock & Livestock Product Prices								
Camel Local Quality (Head)	2,724,766	8,075,000	8,031,250	8,343,750	3,004,578	3%	4%	206%
Cattle Local Quality (Head)	1,561,111	1,900,000	2,225,000	2,025,000	-	-	-	-
Fresh Camel Milk 1 litre	15,347	42,400	44,600	35,320	12,619	-17%	-21%	130%
Goat Export Quality (Head)	446,986	1,366,000	1,572,000	1,553,333	559,273	14%	-1%	248%
Goat Local Quality (Head)	374,177	1,010,000	1,092,000	1,110,500	399,803	10%	2%	197%
Other Essential Items								
Charcoal 50kg	62,433	190,600	180,250	190,400	68,465	0%	6%	205%
Cowpeas 1 kg	7,720	30,540	52,400	51,280	18,367	68%	-2%	564%
Unskilled Labor Wage Rate	30,600	78,050	89,000	87,000	31,230	11%	-2%	184%
Firewood Bundle	4,340	31,250	38,250	41,000	14,665	31%	7%	845%
Local Sesame Oil 1 litre	27,137	94,750	96,000	96,000	34,471	1%	0%	254%
Exchange Rate (Somali Shilling per USD)	16,602	30,912	29,720	27,849	9,929	-10%	-6%	68%
Construction Materials*								
Cement 50kg	-	335,200	372,500	358,320	128,935	7%	-4%	-
Cooking Pot Aluminium 7 Litre	-	463,000	426,500	400,500	144,125	-13%	-6%	-
Galvanised Iron Sheet Ga 26	-	159,500	163,400	154,880	55,674	-3%	-5%	-
Hollow Concrete Block 10cm x 20cm x 40cm	-	17,250	17,438	18,250	6,472	6%	5%	-
Non Collapsible Jerrycan 10 Litre	-	38,000	52,750	52,450	18,788	38%	-1%	-
Plastic Tarpaulin 14m x 5 m	-	348,000	341,750	342,000	123,058	-2%	0%	-
Roofing Nails 15Kg	-	959,680	834,250	814,000	293,030	-15%	-2%	-
Timber 2in x 4in x 20ft	-	155,400	152,400	150,320	54,032	-3%	-1%	-
Woven Dry Raised Blanket 150cm x 200cm	-	172,000	131,000	130,800	47,003	-24%	0%	-
Terms of Trade								
Labour Wage (Daily)/ Cereal (Rice(Kg))	4	3	3	3	-	5%	1%	-20%
Local Goat (Head)/ Cereal (Rice(Kg))	45	36	35	37	-	3%	6%	-16%
Camel (Head)/Cereal (Kg)	325	288	259	280	-	-3%	8%	-14%
Price Indices								
Consumer Price Index	-	238	300	278	-	16%	-7%	-
Purchasing Power Index	-	0.42	0.33	0.36	-	-14%	8%	-

* Data has been collected since May 2010

Figure 32: Imported commodity prices compared to exchange rates

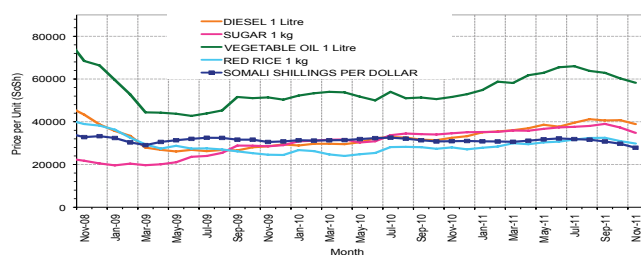


Figure 33: Trends in wage rates, staple cereal prices and relative purchasing power

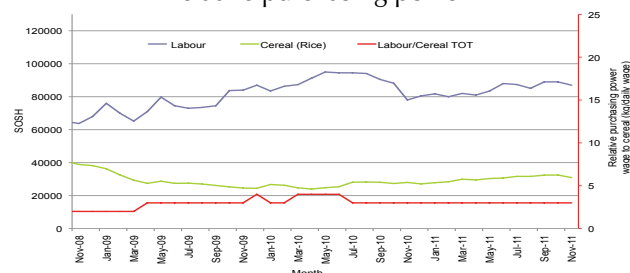


Figure 34: Goat Local Quality

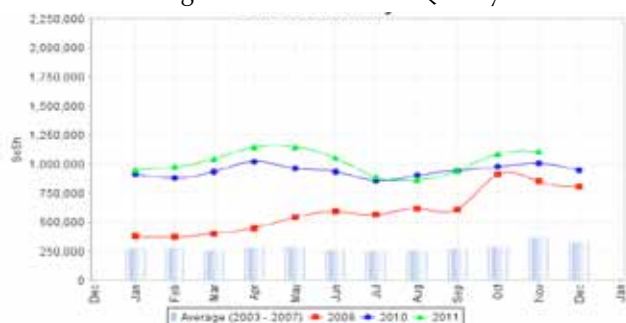


Figure 35: Sugar

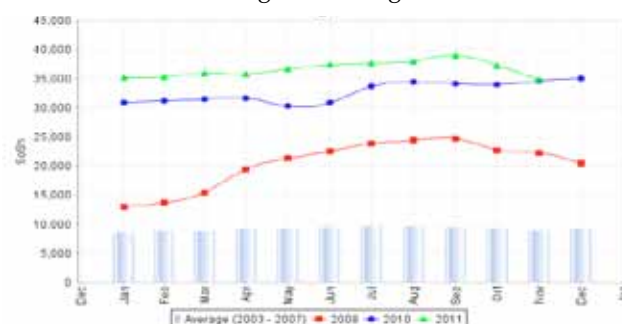


Figure 36: Water Drum

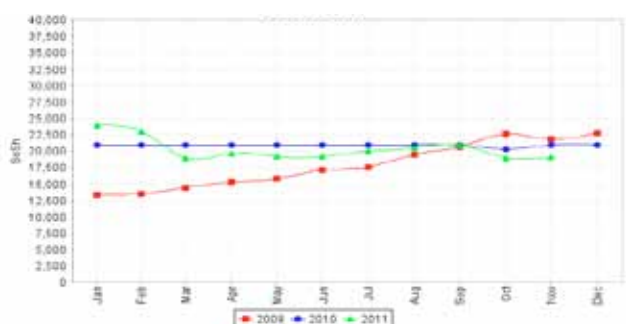
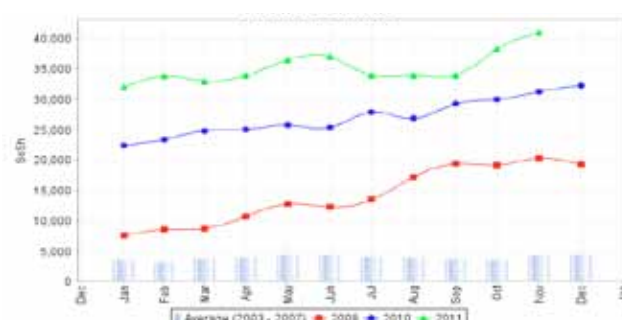


Figure 37: Firewood Bundle



Regional analysis: Northeast Regions

Indicator	5-Year Average (2003-07)	Nov-10	Oct-11	Nov-11 Nominal Price	Nov-11 Real Price (Deflated)	% Change Same Month Previous Year	% Change Previous Month	% Change 5-year avrg (2003-07)
Imported Commodities Prices								
Diesel 1 litre	9,708	28,875	35,125	32,750	12,541	13%	-7%	237%
Imported Red Rice 1kg	7,750	20,875	23,700	23,000	8,778	10%	-3%	197%
Petrol 1 litre	10,294	26,313	31,250	29,563	11,311	12%	-5%	187%
Sugar	8,812	30,375	32,263	30,063	11,504	-1%	-7%	241%
Vegetable Oil 1 litre	17,793	39,875	58,875	55,875	21,467	40%	-5%	214%
Wheat Flour 1kg	8,050	18,938	21,750	20,313	7,740	7%	-7%	152%
Wheat Grain 1kg	7,906	27,000	25,975	27,000	10,322	0%	4%	242%
Cereal Prices								
Red Sorghum 1kg	7,156	15,250	30,000	29,500	11,286	93%	-2%	312%
White Maize 1kg	6,843	18,000	20,500	18,000	6,848	0%	-12%	163%
Livestock & Livestock Product Prices								
Camel Local Quality (Head)	3,964,583	13,337,500	14,425,000	14,462,500	5,582,167	8%	0%	265%
Cattle Local Quality (Head)	1,812,500	7,125,000	7,600,000	8,000,000	3,087,757	12%	5%	341%
Fresh Camel Milk 1 litre	15,397	51,042	39,100	37,063	14,206	-27%	-5%	141%
Goat Export Quality (Head)	487,034	1,420,833	1,648,750	1,406,250	542,687	-1%	-15%	189%
Goat Local Quality (Head)	462,993	1,304,375	1,341,250	1,396,875	539,069	7%	4%	202%
Other Essential Items								
Charcoal 50kg	99,316	377,500	357,375	430,000	165,872	14%	20%	333%
Cowpeas 1 kg	10,654	30,167	66,833	68,750	26,436	128%	3%	545%
Unskilled Labor Wage Rate	45,666	110,625	111,250	111,563	42,961	1%	0%	144%
Firewood Bundle	6,166	37,000	29,250	41,250	15,822	11%	41%	569%
Local Sesame Oil 1 litre	32,750	79,417	96,563	96,250	37,051	21%	0%	194%
Exchange Rate (Somali Shilling per USD)	16,675	30,375	30,125	28,844	11,033	-5%	-4%	73%
Construction Materials*								
Cement 50kg	-	224,375	244,063	237,550	91,590	6%	-3%	-
Cooking Pot Aluminium 7 Litre	-	313,125	486,250	480,625	185,413	53%	-1%	-
Galvanised Iron Sheet Ga 26	-	224,125	239,125	234,300	90,336	5%	-2%	-
Hollow Concrete Block 10cm x 20cm x 40cm	-	11,333	12,625	12,300	4,648	9%	-3%	-
Non Collapsible Jerrycan 10 Litre	-	37,500	44,063	43,750	16,787	17%	-1%	-
Plastic Tarpaulin 14m x 5 m	-	190,000	192,500	190,313	73,357	0%	-1%	-
Roofing Nails 15Kg	-	403,000	497,250	470,875	181,649	17%	-5%	-
Timber 2in x 4in x 20ft	-	237,063	235,250	236,550	91,204	0%	1%	-
Woven Dry Raised Blanket 150cm x 200cm	-	248,125	271,250	261,250	100,738	5%	-4%	-
Terms of Trade								
Labour Wage (Daily)/ Cereal (Rice(Kg))	6	5	5	5	-	-8%	3%	-18%
Local Goat (Head)/ Cereal (Rice(Kg))	60	62	57	61	-	-3%	7%	2%
Price Indices								
Consumer Price Index	-	213	259	259	-	22%	0%	-
Purchasing Power Index	-	0.47	0.39	0.39	-	-18%	0%	-

* Data has been collected since May 2010

Figure 38: Imported commodity prices compared to exchange rates

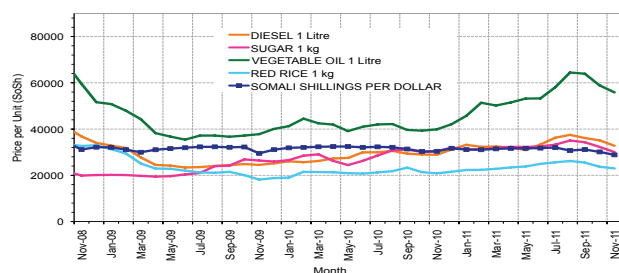


Figure 39: Trends in wage rates, staple cereal prices and relative purchasing power

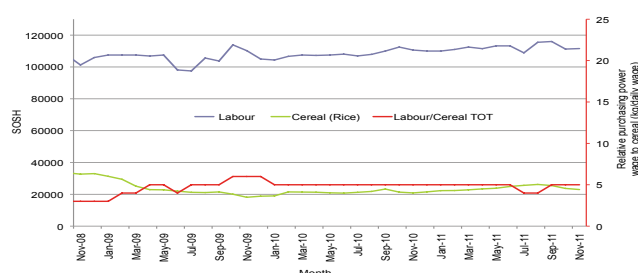


Figure 40: Goat Local Quality

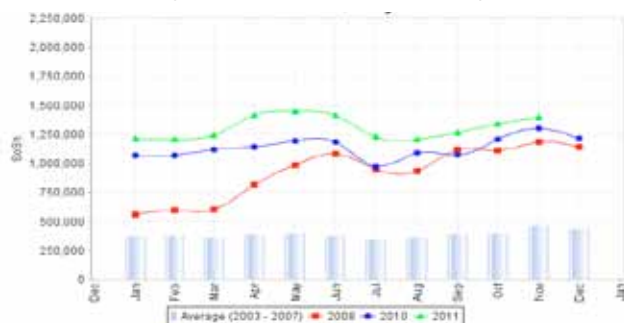


Figure 41: Sugar

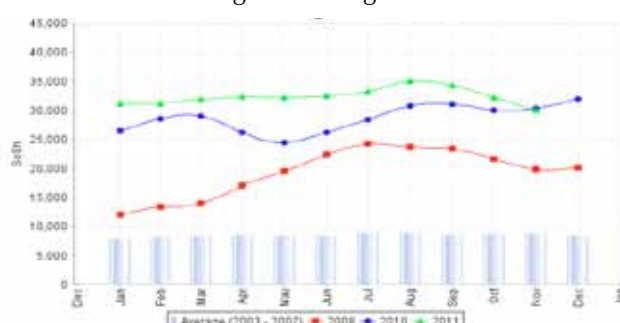


Figure 42: Water Drum

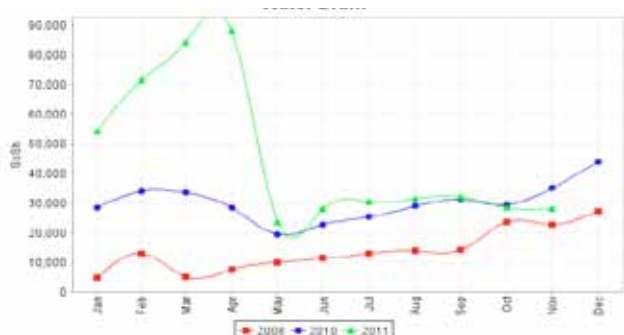
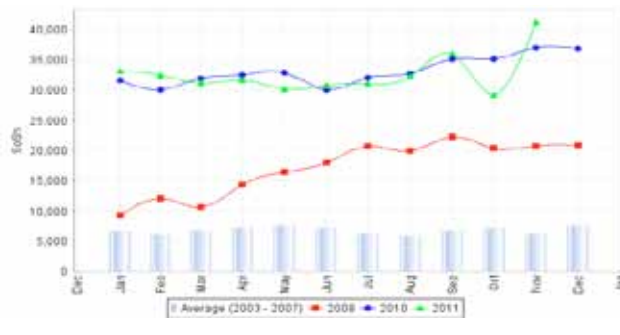


Figure 43: Firewood Bundle



Regional analysis: Northwest Regions

Indicator	5-Year Average (2003-07)	Nov-10	Oct-11	Nov-11 Nominal Price	Nov-11 Real (Deflated) Price	% Change Same Month Previous Year	% Change Previous Month	% Change 5-year avrg (2003-07)
Imported Commodities Prices								
Diesel 1 litre	3,530	5,175	6,025	6,019	4,835	16%	0%	71%
Imported Red Rice 1kg	2,917	5,225	4,869	4,856	3,882	-7%	0%	66%
Petrol 1 litre	4,149	5,225	5,950	6,268	5,039	20%	0%	51%
Sugar	3,168	6,088	6,819	6,763	5,445	11%	-1%	113%
Vegetable Oil 1 litre	7,028	9,000	11,375	11,310	9,173	26%	-1%	61%
Wheat Flour 1kg	2,896	3,781	4,363	4,363	3,477	15%	0%	51%
Wheat Grain 1kg	2,168	2,333	4,050	3,767	2,989	61%	-7%	74%
Cereal Prices								
White Sorghum 1kg	1,736	2,412	3,562	3,571	2,828	48%	0%	106%
Yellow Maize 1kg	1,896	2,187	3,762	3,756	2,980	72%	0%	98%
Livestock & Livestock Product Prices								
Camel Local Quality (Head)	1,848,666	1,267,500	1,318,750	1,296,250	1,062,735	2%	-2%	-30%
Cattle Local Quality (Head)	927,319	1,116,667	1,313,750	1,575,000	1,291,290	41%	20%	70%
Fresh Camel Milk 1 litre	3,882	4,531	4,950	4,888	3,908	8%	-1%	26%
Goat Export Quality (Head)	183,826	319,875	330,000	295,750	242,394	-8%	-10%	61%
Goat Local Quality (Head)	151,154	248,750	257,375	233,775	191,579	-6%	-9%	55%
Other Essential Items								
Charcoal 50kg	19,652	33,438	35,094	36,313	29,674	9%	3%	85%
Cowpeas 1 kg	4,551	9,333	8,633	8,050	6,500	-14%	-7%	77%
Unskilled Labor Wage Rate	26,012	28,750	34,250	33,775	27,593	17%	-1%	30%
Firewood Bundle	2,616	2,167	2,833	2,833	2,223	31%	0%	8%
Local Sesame Oil 1 litre	17,049	25,667	24,833	24,167	19,715	-6%	-3%	42%
Exchange Rate (Somaliland Shilling per USD)	6,671	5,687	5,500	5,709	4,581	0%	4%	-14%
Construction Materials*								
Cement 50kg	-	46,225	46,711	46,061	37,667	0%	-1%	-
Cooking Pot Aluminium 7 Litre	-	63,850	81,750	77,113	63,127	21%	-6%	-
Galvanised Iron Sheet Ga 26	-	50,400	-	-	-	-	-	-
Hollow Concrete Block 10cm x 20cm x 40cm	-	2,725	3,042	2,983	2,346	9%	-2%	-
Non Collapsible Jerrycan 10 Litre	-	6,250	6,650	6,175	4,963	-1%	-7%	-
Plastic Tarpaulin 14m x 5 m	-	63,250	84,588	115,988	95,002	83%	37%	-
Roofing Nails 15Kg	-	162,750	188,250	175,688	143,952	8%	-7%	-
Timber 2in x 4in x 20ft	-	106,200	94,725	105,150	86,116	-1%	11%	-
Woven Dry Raised Blanket 150cm x 200cm	-	62,850	68,188	67,644	55,363	8%	-1%	-
Terms of Trade								
Labour Wage (Daily)/ Cereal (Rice(Kg))	9	6	7	7	-	26%	-1%	-22%
Local Goat (Head)/ Cereal (Rice(Kg))	52	48	53	48	-	1%	-9%	-7%
Price Indices								
Consumer Price Index	-	108	123	122	-	13%	-1%	-
Purchasing Power Index	-	0.93	0.81	0.82	-	-11%	1%	-

* Data has been collected since May 2010

Figure 44: Imported commodity prices compared to exchange rates

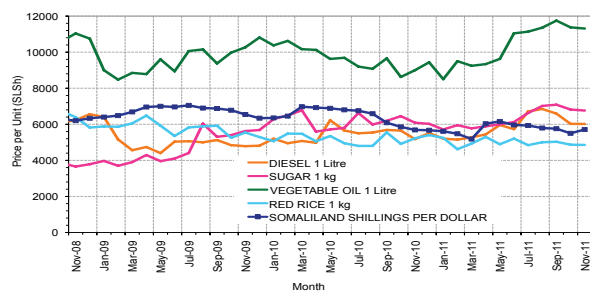


Figure 46: Goat Local Quality

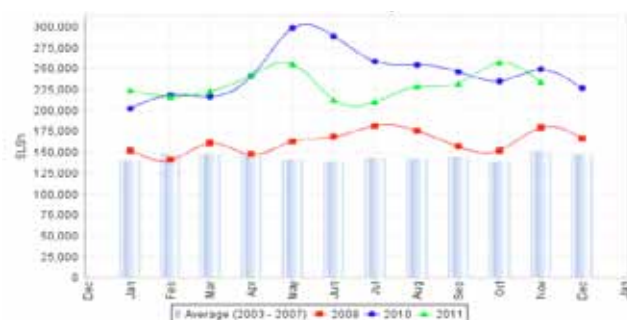


Figure 48: Water Drum

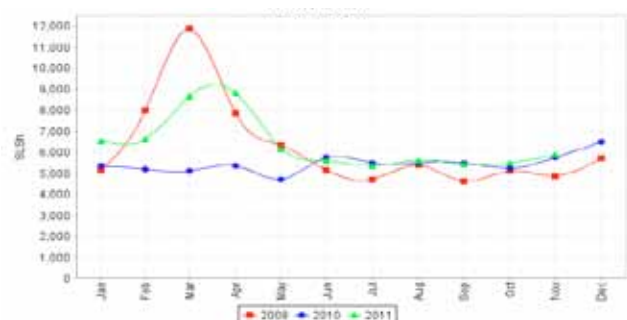


Figure 45: Trends in wage rates, staple cereal prices and relative purchasing power

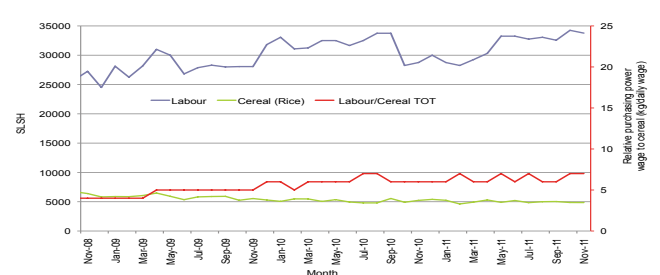


Figure 47: Sugar

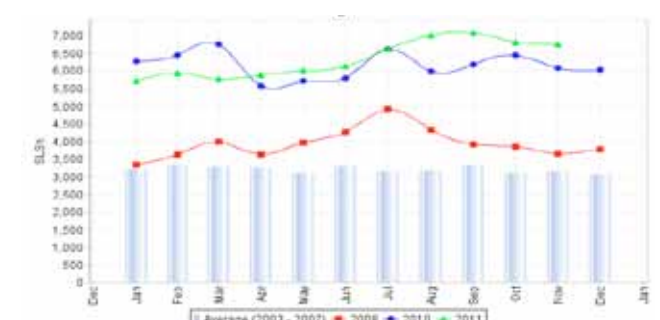
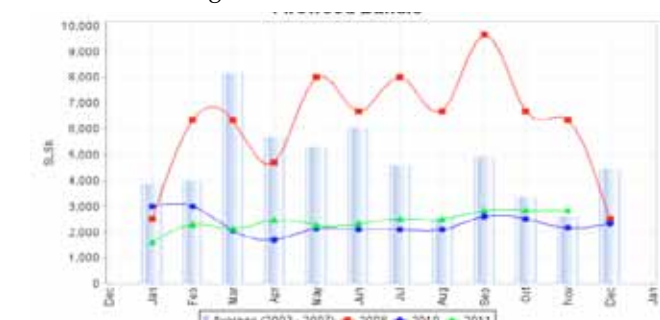


Figure 49: Firewood Bundle

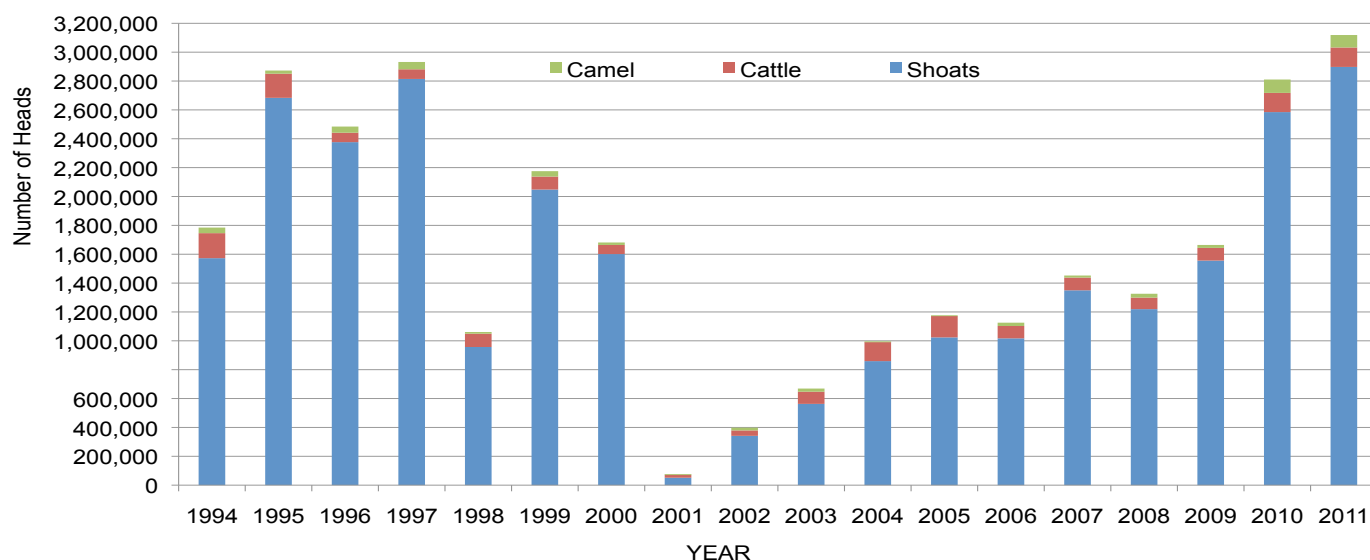


Trends in Livestock Exports

Table 2: Berbera Livestock Exports (Number of Heads)

	1994	1995	1996	1997	1998	1999	2000	2001	2002	2003	2004	2005	2006	2007	2008	2009	2010	2011 (Jan-Nov)
Shoats	1,572,656	2,683,597	2,376,646	2,814,495	957,224	2,048,136	1,601,083	51,546	341,711	563,107	859,404	1,023,795	1,017,242	1,350,054	1,219,519	1,556,003	2,584,810	2,897,752
Cattle	173,400	167,128	65,127	66,939	92,213	89,967	63,263	20,973	37,547	84,312	131,852	148,151	85,631	88,143	80,051	88,005	133,021	134,778
Camel	38,553	21,993	42,801	50,587	11,663	37,430	16,984	3,473	18,864	21,874	5,147	5,069	22,810	14,245	26,515	20,206	92,651	86,270

Figure 50: Berbera Livestock Exports (Number of Heads)

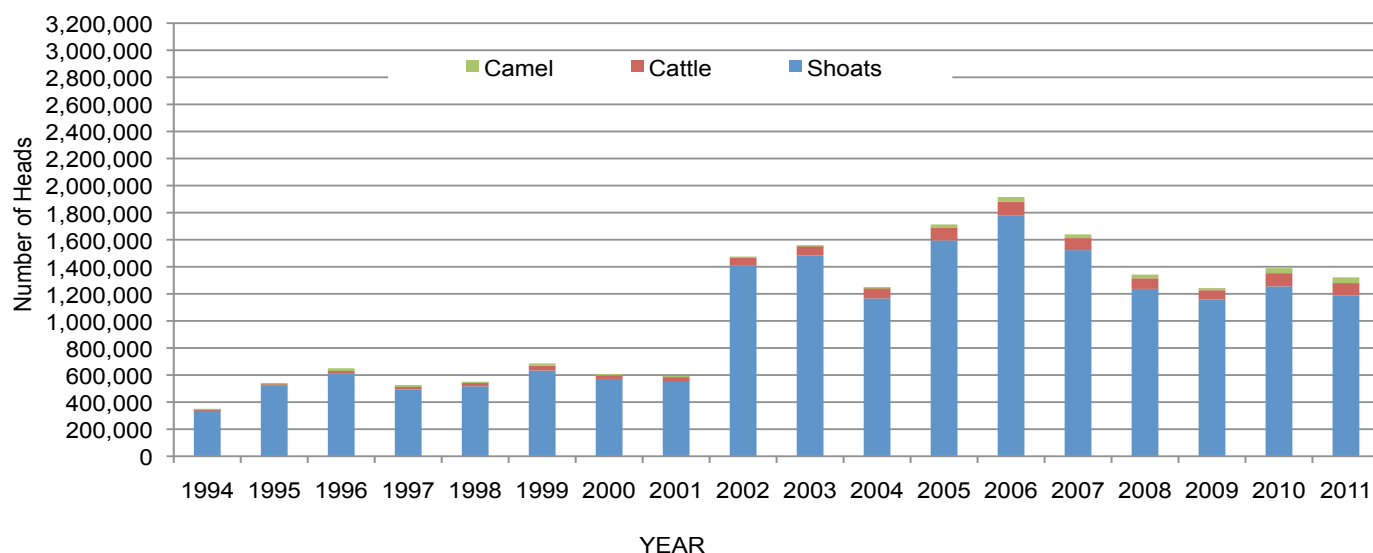


*2011 data is for January to November

Table 3: Bossaso Livestock Exports (Number of Heads)

	1994	1995	1996	1997	1998	1999	2000	2001	2002	2003	2004	2005	2006	2007	2008	2009	2010	2011 (Jan-Nov)
Shoats	344,000	524,346	614,407	494,320	517,020	633,669	571,455	548,853	1,412,450	1,483,409	1,166,480	1,594,859	1,777,283	1,522,855	1,236,775	1,159,454	1,333,478	1,189,082
Cattle	1,450	8,795	15,335	17,831	29,492	36,586	27,604	42,248	53,313	71,328	79,994	91,910	104,595	89,190	78,046	67,385	103,808	90,503
Camel	5,397	8,392	20,462	14,599	3,938	15,544	8,177	1,950	9,720	4,259	2,488	26,109	33,724	27,580	27,639	15,331	36,865	42,364

Figure 51: Bossaso Livestock Exports (Number of Heads)

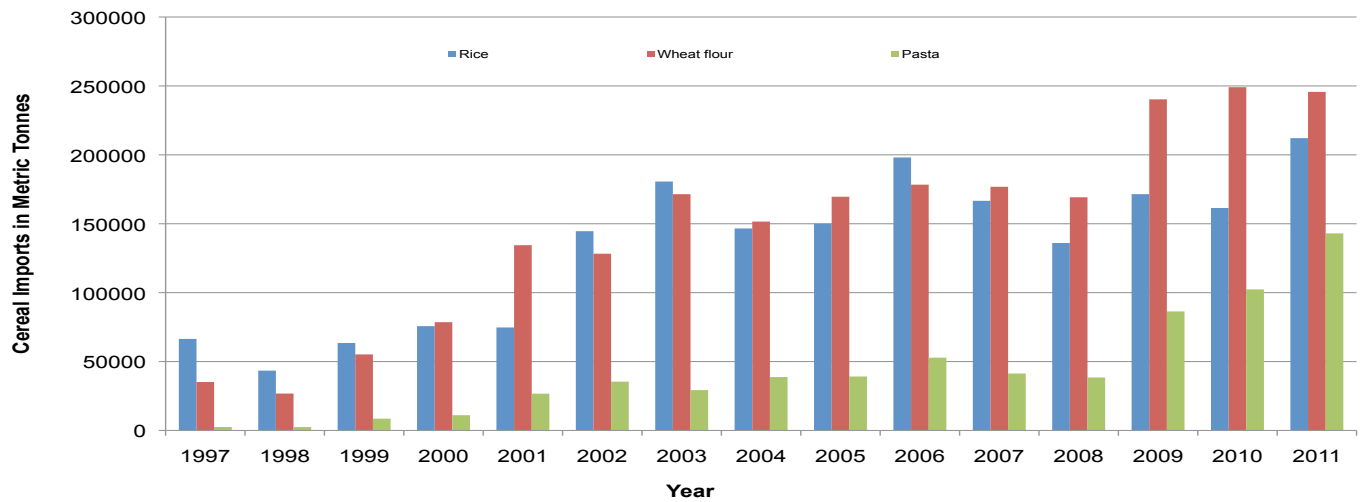


*2011 data is for January to November

Table 4: Total Cereal Imports (Berbera,Bossaso,Elmaan)

	1997	1998	1999	2000	2001	2002	2003	2004	2005	2006	2007	2008	2009	2010	2011 (Jan-Nov)
Rice	66,419	43,410	63,464	75,687	74,729	144,600	180,614	146,567	150,017	198,101	166,626	136,007	171,472	161,415	212,104
Wheat Flour	35,143	26,774	55,176	78,555	134,425	128,263	171,442	151,555	169,583	178,345	176,821	169,208	240,247	249,080	245,665
Pasta	2,510	2,455	8,544	11,071	26,702	35,425	29,273	38,749	39,153	52,815	41,331	38,441	86,372	102,373	143,003

Figure 52: Total Cereal Imports (Berbera,Bossaso and Elmaan)



* November 2011 cereal import data is for only Berbera and Bossaso. Elmaan (Mogadishu) data is not yet available.