

Market Update

Highlights

Inflation:

SoSh (Somali shilling)-using areas: Consumer Price Index (CPI) changed at mild rates (+/-1-3%) in SoSh using areas in May 2017 month-on-month. The CPI rose substantially (19-33%) annually due to increases in cereal prices.

SISH (Somaliland shilling)-using areas: The CPI remained relatively stable month-on-month in May 2017 but increased (16%) year-on-year due to increased prices.

Exchange rate:

SoSh-using areas: The exchange rates between SoSh and the United States Dollar (USD) remained relatively stable or changed at mild rates (less than +/-5%) against USD in most regions of the country month-on-month in May 2017. Annual comparison mostly exhibited a mixed trend; specifically, mild (less than 10%) changes were recorded in most of the southern regions; moderate to high (10-40%) depreciations were recorded in central and northeast regions due to printing of more local currency notes in the regions.

SISH-using areas: The SISH depreciated mildly (2%) against the USD in May 2017 month-on-month while year-on-year comparison indicates moderate depreciation of 18 percent as a result of printing of more local currency notes.

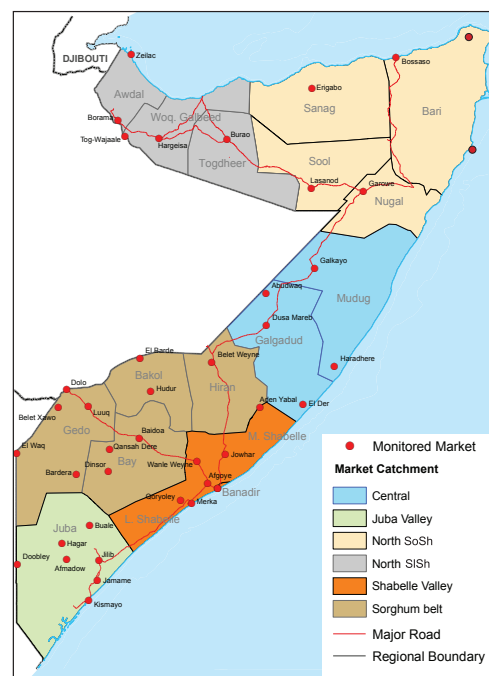
Local cereal prices increased from mild to high levels in most regions of the country month-on-month in May 2017 with the highest increase (40%) being recorded in Mudug region. The cereal price increases are attributable to reduced supply as a result of the two previous consecutive poor production seasons. Similarly, annual comparison indicates higher prices for local grains in all regions of the country with the highest increase being recorded in Bay (137%) due to two consecutive seasons of poor production.

Prices of imported food (rice, sugar, vegetable oil, wheat flour) mostly exhibited relative stability or mild (less than +/-10%) monthly changes in local currency terms in May 2017 in most regions of the country. Year-on-year comparison indicates mild to moderate price increases in most regions of the country for most of the food imports in May 2017 due to depreciation of local currency against USD and increased global sugar prices.

Livestock prices exhibited a mixed trend; with mild to moderate increases in livestock prices recorded in most parts of the country due to reduced supply of saleable livestock; exceptions are in Lower Shabelle, Lower Juba and Awdal regions where camel prices declined (19-26%) month-on-month in May 2017 due to poor body condition of the in-migrated livestock body conditions. Compared to a year ago, livestock prices for all species were significantly lower across the regions of the country in May 2017 attributable to deteriorated livestock body conditions. Milk prices (camel and cattle) exhibited a mixed trend; with high declines (35-36%) recorded in Bay and Bakool regions due to increased availability as a result of increased pasture and water which attracted more livestock into the regions leading to increment. Increases in milk prices were noted in Galgaduud, Middle Shabelle, Middle Juba and Hiran due to below normal milk supply. On the other hand, milk prices (camel and cattle) increased from moderate to high levels when compared to last year in most regions of the country in May 2017 due to the impact of the current drought.

Labor (unskilled) wages changed mildly (by less than +/-10%) month-on-month in most of the regions of the country in May 2017; increases were noted in Bay (10%), Lower Juba (19%) and Lower Shabelle (45%) due to improved agricultural activities in the surrounding rural areas. Annual comparison indicates mild changes in most parts of the country with the exception of Banadir (Bakara-Mogadishu) where rates declined significantly (55%) due to increased competition for available labour in urban areas as a result of increased population displacement from drought affected rural areas.

Terms of Trade (ToT) between daily labor wage and cereals either remained stable month-on-month or changed by 1kg of cereals/daily labor wage across the country in May 2017. Annual comparison indicates lower ToT between daily labor and cereals across the regions due to declines in labor wages and/or increase in cereal prices. ToT between local quality goat and cereals increased from mild to moderate levels (5-39kgs of cereals/goat) month-on-month with the highest increase noted in Banadir (Mogadishu) due to increase in goat prices. Exceptions are Lower Juba and Shabelle where ToT declined (8-11kgs of cereals/daily wage) due to increase in cereal prices. Annual comparison indicates the ToT between goat and cereals are lower across most regions of the country due to declines in goat prices and/or increase in grain prices compared to a year ago (May 2016).



This Market Update is a monthly report that presents analysis of market information and is produced regularly as part of the monthly monitoring process.

The weekly price data is collected from 48 main markets and 51 rural markets throughout Somalia since 1995.

Market analysis is an integral part of all of FSNAU's annual food security projections and seasonal technical reports (Technical Reports on FSNAU Post Gu and Post Deyr Analysis).

Detailed market data are available online on www.fsnau.org/ids.

Towns Affected by Trade Disruption (Bulo Burto, Wajid, Hudur and Diinsor)

Labor (unskilled) wages remained relatively stable in May 2017 in siege affected markets. Wage rates in May 2017 are also stable compared to same period last year (May 2016).

Terms of Trade (ToTs) between daily labor wage and cereals and between local quality goat and cereals either remained relatively stable or changed at mild rates month-on-month in all markets affected by trade disruption. Annual comparison indicates lower ToTs in all the markets due to increase in cereal prices and/or decrease in labor wage rates and goat prices.

Local grain (red and white sorghum) prices increased (9-31%) in Wajid, Bulo-Burto and Dinsor but remained relatively stable in Hudur in May 2017 month-on-month due ongoing food distributions. Compared to a year ago, local grain prices increased substantially in all the markets.

Prices of imported food items (rice, sugar, vegetable oil, wheat flour) changed at mild rates for most of the food imports in Bulo-Burto, Hudur and Wajid but increased in Dinsor (12-25%) in May 2017. Annual comparison indicates higher prices for most of the food imports in all the siege affected markets.

National Trends: CPI, Exchange Rates, Cereal Prices and Relative Purchasing Power

Table 1: ToT between Daily Labour Wage Rate and Cereals by Region May 2017

Regions	May 2017 (kg)	kg change from		
		April 2017	May 2016	May 5 yr Average (2012 - 2016)
Banadir/Mogadishu (Rice)	6	0	-7	-5
Bay (Rice)	4	0	-1	0
Bakool (Rice)	2	0	0	0
Gedo (Rice)	7	0	-1	0
Juba (White maize)	7	0	-3	-2
Shabelle (White maize)	7	1	-3	-2
Northwest (Rice)	11	1	0	2
Northeast (Rice)	8	0	-1	1
Central (Rice)	5	0	0	1

Figure 1: Wheat Prices: Mogadishu and Bossaso Markets

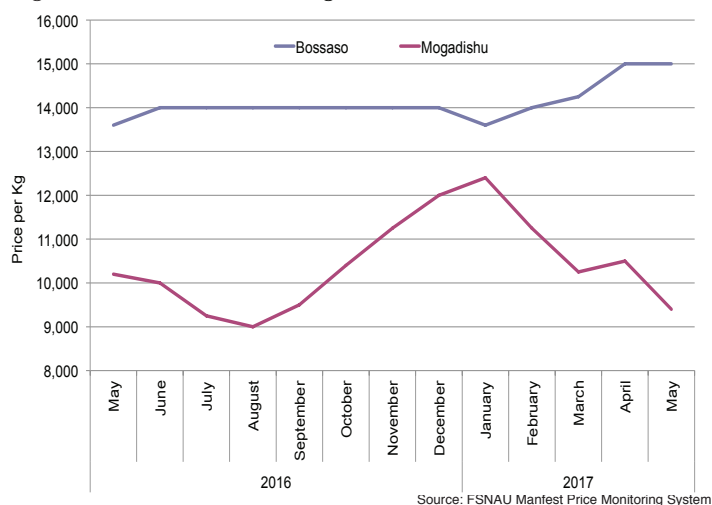


Figure 2: Terms of Trade Between Wage Rates and Selected Cereals

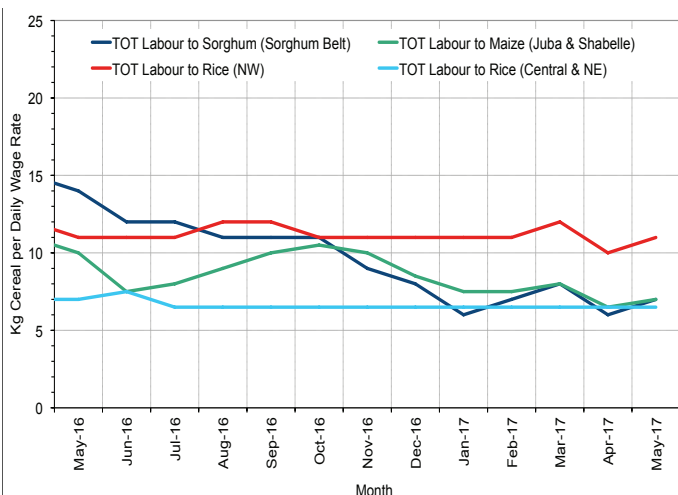


Figure 3: Monthly Exchange Rate for Selected Regions (SoSh and SiSh to USD)

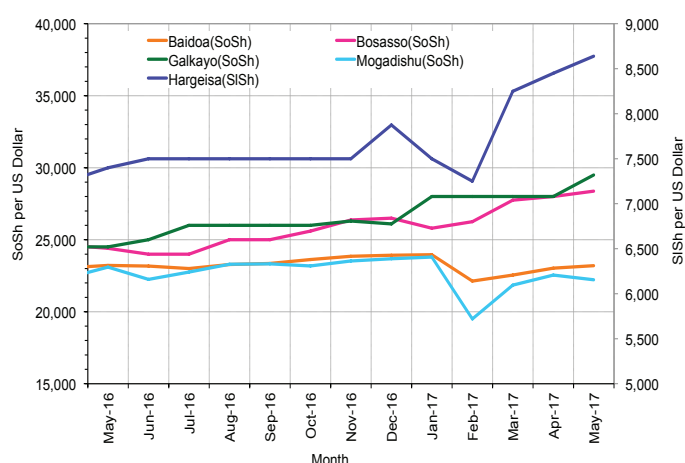


Figure 4: Monthly Trends in Consumer Price Index (CPI, March 2007=100)

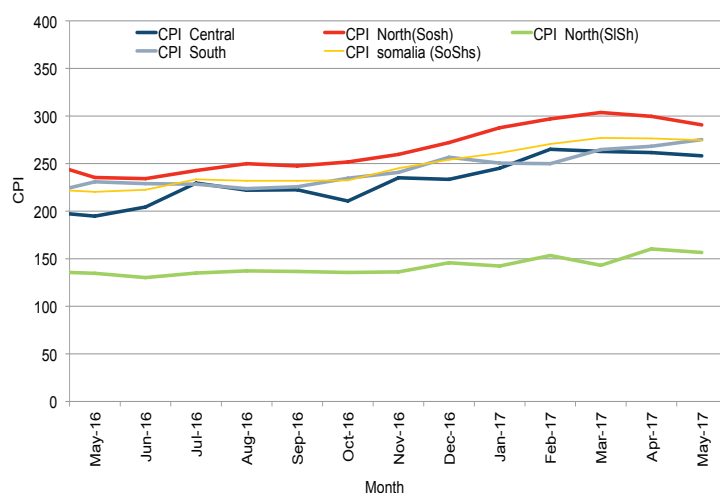
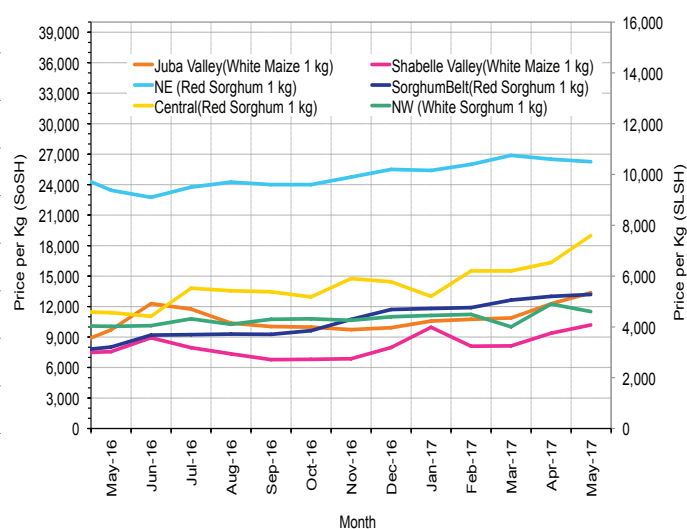


Figure 5: Monthly Trends in Local Cereal Prices



Regional analysis: Juba Regions

Indicator	5-Year Average (2012-2016)	May-16	Apr-17	May-17 Nominal Price	May-17 Real (Deflated) Price	% Change Previous Month	% Change Same Month Previous Year	% Change 5-year avrg (2012-2016)
Imported Commodities Prices								
Diesel 1 litre	26,357	20,344	20,750	20,969	7,521	1%	3%	-20%
Imported Red Rice 1kg	16,713	15,219	15,750	17,219	6,158	9%	13%	3%
Petrol 1 litre	28,938	23,875	23,563	24,313	8,736	3%	2%	-16%
Sugar	17,981	16,000	17,375	18,688	6,692	8%	17%	4%
Vegetable Oil 1 litre	33,614	29,150	29,281	30,625	11,030	5%	5%	-9%
Wheat Flour 1kg	16,435	15,594	15,813	16,594	5,931	5%	6%	1%
Wheat Grain 1kg	-	-	-	-	-	-	-	-
Cereal Prices								
Red Sorghum 1kg	9,250	12,000	11,083	11,917	4,231	8%	-1%	29%
White Maize 1kg	9,544	9,704	12,272	13,375	4,761	9%	38%	40%
Livestock & Livestock Product Prices								
Camel Local Quality (Head)	9,871,683	10,418,750	10,410,938	9,053,125	3,290,163	-13%	-13%	-8%
Cattle Local Quality (Head)	4,041,173	3,628,571	2,253,571	2,865,278	1,041,255	27%	-21%	-29%
Fresh Camel Milk 1 litre	20,135	18,143	18,750	19,938	7,146	6%	10%	-1%
Goat Export Quality (Head)	1,455,391	1,391,250	1,097,500	1,242,500	451,473	13%	-11%	-15%
Goat Local Quality (Head)	912,139	823,750	749,438	731,563	265,779	-2%	-11%	-20%
Other Essential Items								
Charcoal 50kg	91,579	98,125	82,656	79,469	28,782	-4%	-19%	-13%
Cowpeas 1 kg	23,512	25,094	25,875	28,313	10,190	9%	13%	20%
Unskilled Labor Wage Rate	86,685	95,719	84,219	95,938	34,768	14%	0%	11%
Firewood Bundle	8,384	8,109	5,656	8,156	2,864	44%	1%	-3%
Local Sesame Oil 1 litre	71,870	53,813	57,406	53,938	19,503	-6%	0%	-25%
Exchange Rate (Somali Shilling per USD)	21,270	23,050	22,050	22,488	8,073	2%	-2%	6%
Terms of Trade								
Labour Wage (Daily)/ Cereal (Maize(Kg))	9	10	7	7	-	0%	-30%	-22%
Local Goat (Head)/ Cereal (Maize(Kg))	96	85	61	55	-	-10%	-35%	-43%
Price Indices								
Consumer Price Index	-	231	268	275	-	3%	19%	-

Figure 6: Trends in Cereal Prices

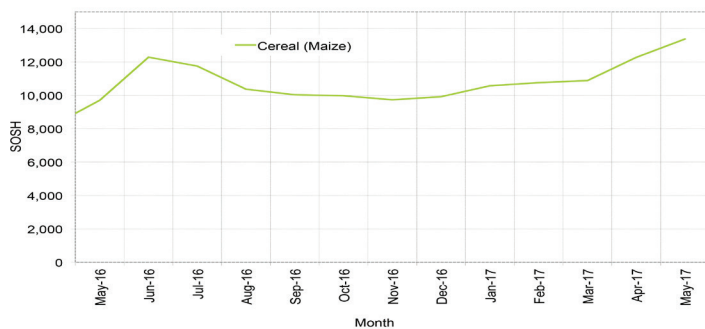


Figure 7: Trends in Wage Rates and Relative Purchasing Power

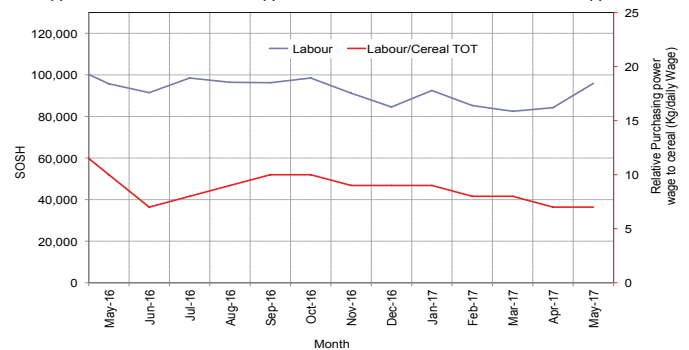


Figure 8: Imported Commodity Prices Compared to Exchange Rate

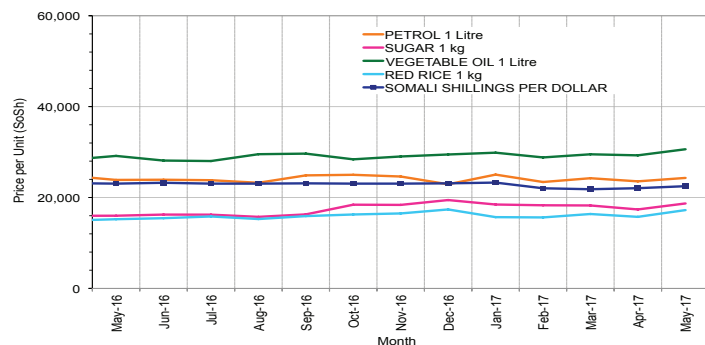


Figure 9: Goat Local Quality

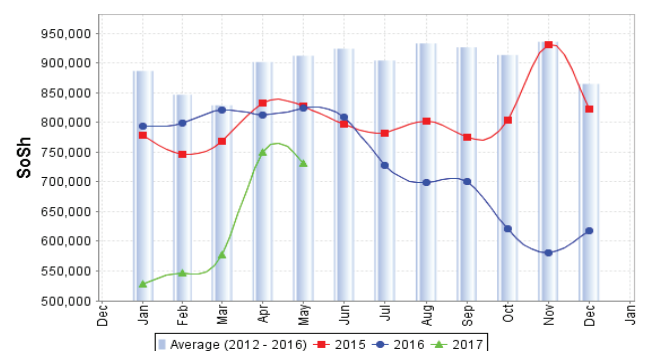


Figure 10: Exchange Rate

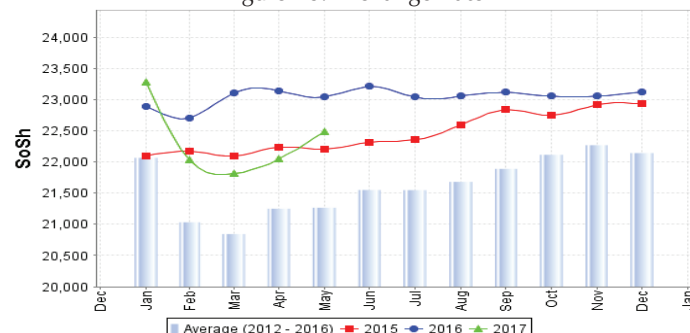
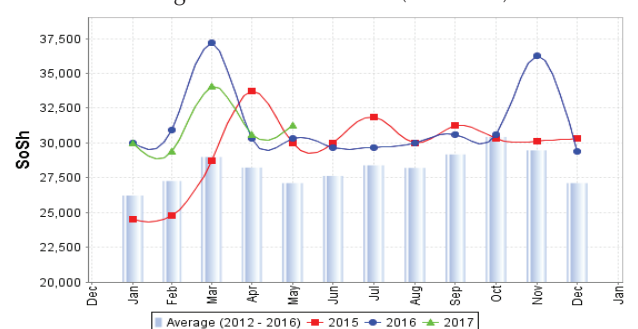


Figure 11: Water Drum (200 litres)



Regional analysis: Sorghum Belt Regions (Bay, Bakool, Gedo and Hiran)

Indicator	5-Year Average (2012-2016)	May-16	Apr-17	May-17 Nominal Price	May-17 Real (Deflated) Price	% Change Previous Month	% Change Same Month Previous Year	% Change 5-year avrg (2012-2016)
Imported Commodities Prices								
Diesel 1 litre	30,330	22,700	24,583	25,850	9,295	5%	14%	-15%
Imported Red Rice 1kg	19,031	18,325	19,208	19,583	7,017	2%	7%	3%
Petrol 1 litre	30,049	26,217	27,083	29,367	10,573	8%	12%	-2%
Sugar	20,356	19,350	22,188	22,733	8,162	2%	17%	12%
Vegetable Oil 1 litre	39,665	34,850	37,042	36,717	13,244	-1%	5%	-7%
Wheat Flour 1kg	18,150	17,992	18,104	18,383	6,581	2%	2%	1%
Wheat Grain 1kg	14,021	20,000	19,231	20,420	7,321	6%	2%	46%
Cereal Prices								
Red Sorghum 1kg	7,157	7,280	12,823	13,080	4,654	2%	80%	83%
White Maize 1kg	9,619	9,886	12,766	12,812	4,556	0%	30%	33%
Livestock & Livestock Product Prices								
Camel Local Quality (Head)	12,629,463	12,161,000	10,163,000	11,046,000	4,014,452	9%	-9%	-13%
Cattle Local Quality (Head)	3,864,238	3,742,083	2,550,357	2,798,571	1,017,011	10%	-25%	-28%
Fresh Camel Milk 1 litre	18,710	18,550	27,932	24,400	8,768	-13%	32%	30%
Goat Export Quality (Head)	1,618,305	1,554,788	1,355,682	1,477,273	536,799	9%	-5%	-9%
Goat Local Quality (Head)	1,018,270	865,250	677,292	795,500	289,016	17%	-8%	-22%
Other Essential Items								
Charcoal 50kg	153,353	156,182	153,295	168,182	61,024	10%	8%	10%
Cowpeas 1 kg	24,426	22,875	35,327	36,787	13,270	4%	61%	51%
Unskilled Labor Wage Rate	102,110	95,611	93,438	93,733	33,966	0%	-2%	-8%
Firewood Bundle	6,610	6,100	6,083	6,250	2,171	3%	2%	-5%
Local Sesame Oil 1 litre	75,487	65,250	79,167	80,556	29,177	2%	23%	7%
Exchange Rate (Somali Shilling per USD)	21,607	23,491	23,819	23,889	8,582	0%	2%	11%
Terms of Trade								
Labour Wage (Daily)/ Cereal (Rice (Kg)	5	5	5	5	-	0%	0%	0%
Local Goat (Head)/ Cereal (Rice (Kg)	53	47	35	41	-	17%	-13%	-23%
Price Indices								
Consumer Price Index	-	231	268	275	-	3%	19%	-

Figure 12: Trends in Cereal Prices

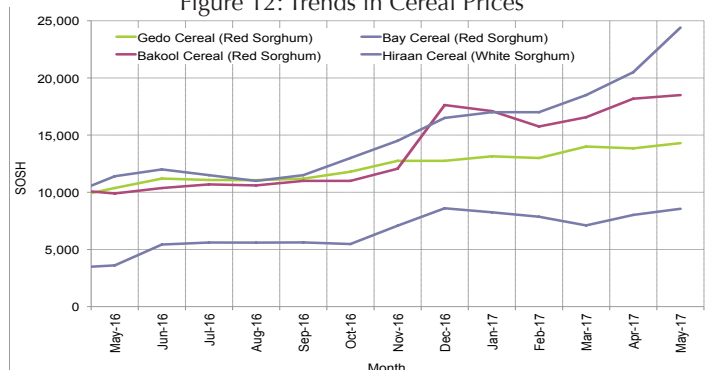


Figure 13: Trends in Wage Rates and Relative Purchasing Power

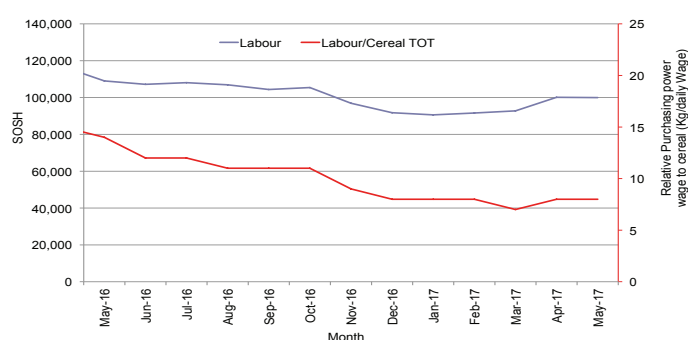


Figure 14: Imported Commodity Prices Compared to Exchange Rate

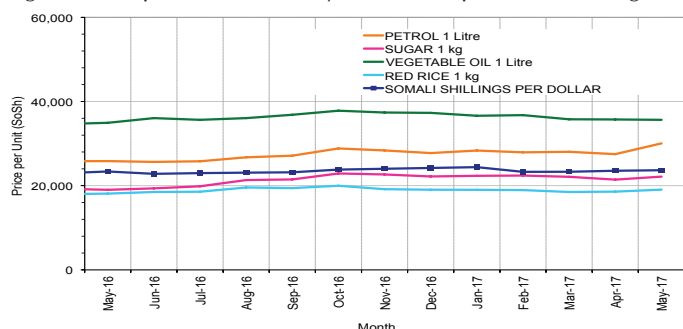


Figure 15: Goat Local Quality

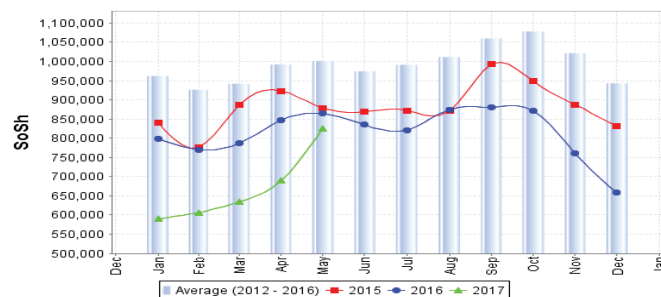


Figure 16: Exchange Rate

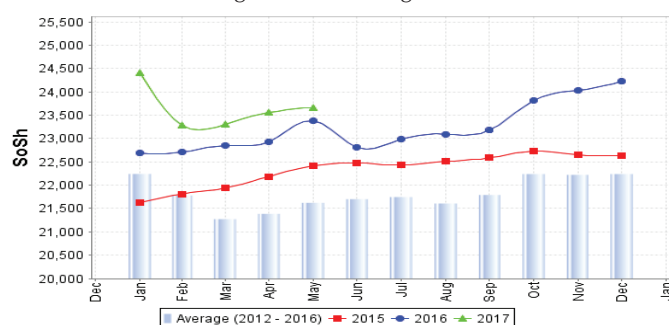
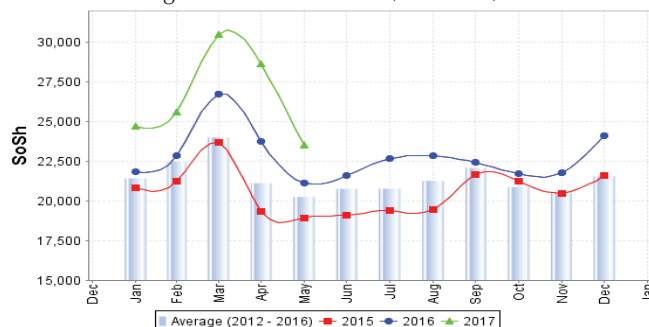


Figure 17: Water Drum (200 litres)



Regional analysis: Shabelle Regions

Indicator	5-Year Average (2012-2016)	May-16	Apr-17	May-17 Nominal Price	May-17 Real (Deflated) Price	% Change Previous Month	% Change Same Month Previous Year	% Change 5-year avg (2012-2016)
Imported Commodities Prices								
Diesel 1 litre	25,170	18,917	16,250	17,667	6,321	9%	-7%	-30%
Imported Red Rice 1kg	16,541	17,167	15,367	15,542	5,549	1%	-9%	-6%
Petrol 1 litre	28,046	24,417	18,867	17,583	6,290	-7%	-28%	-37%
Sugar	18,125	17,833	17,900	18,083	6,472	1%	1%	0%
Vegetable Oil 1 litre	29,983	28,000	28,000	28,042	10,092	0%	0%	-6%
Wheat Flour 1kg	15,833	17,000	13,400	13,750	4,897	3%	-19%	-13%
Wheat Grain 1kg	17,083	17,000	-	-	-	-	-	-
Cereal Prices								
Red Sorghum 1kg	9,425	9,657	12,380	12,882	4,582	4%	33%	37%
White Maize 1kg	8,267	7,563	9,385	10,198	3,606	9%	35%	23%
Livestock & Livestock Product Prices								
Camel Local Quality (Head)	17,273,166	17,900,000	19,201,667	16,637,500	6,046,623	-13%	-7%	-4%
Cattle Local Quality (Head)	5,879,750	5,540,000	3,138,750	3,912,500	1,421,857	25%	-29%	-33%
Fresh Camel Milk 1 litre	19,695	22,500	26,100	25,000	8,986	-4%	11%	27%
Goat Export Quality (Head)	1,874,875	1,945,000	2,212,000	1,860,000	675,897	-16%	-4%	-1%
Goat Local Quality (Head)	1,318,500	1,371,667	1,310,833	1,314,583	477,671	0%	-4%	0%
Other Essential Items								
Charcoal 50kg	132,183	138,944	123,083	126,597	45,910	3%	-9%	-4%
Cowpeas 1 kg	20,928	20,375	35,028	44,472	16,063	27%	118%	113%
Unskilled Labor Wage Rate	72,875	72,500	58,917	74,167	26,855	26%	2%	2%
Firewood Bundle	6,550	6,250	5,833	6,292	2,187	8%	1%	-4%
Local Sesame Oil 1 litre	55,666	48,792	51,350	52,750	19,071	3%	8%	-5%
Exchange Rate (Somali Shilling per USD)	21,449	23,025	23,050	23,400	8,404	2%	2%	9%
Terms of Trade								
Labour Wage (Daily)/ Cereal (Maize(Kg))	9	10	6	7	-	17%	-30%	-22%
Local Goat (Head)/ Cereal (Maize(Kg))	165	181	140	129	-	-8%	-29%	-22%
Price Indices								
Consumer Price Index	-	231	268	275	-	3%	19%	-

Figure 18: Trends in Cereal Prices

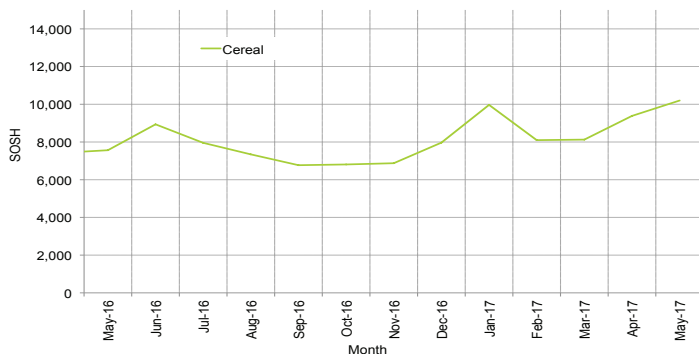


Figure 19: Trends in Wage Rates and Relative Purchasing Power

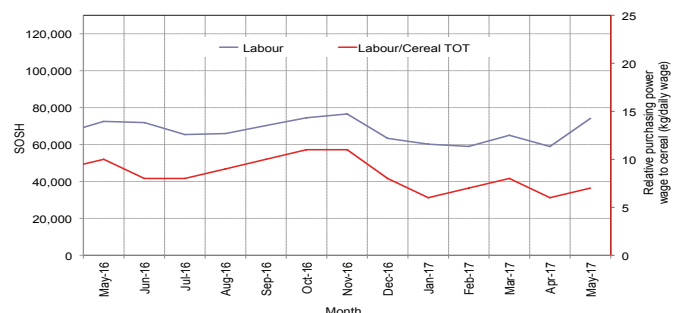


Figure 20: Imported Commodity Prices Compared to Exchange Rate

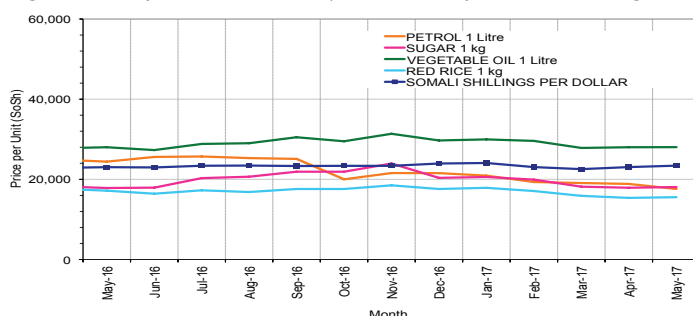


Figure 22: Exchange Rate

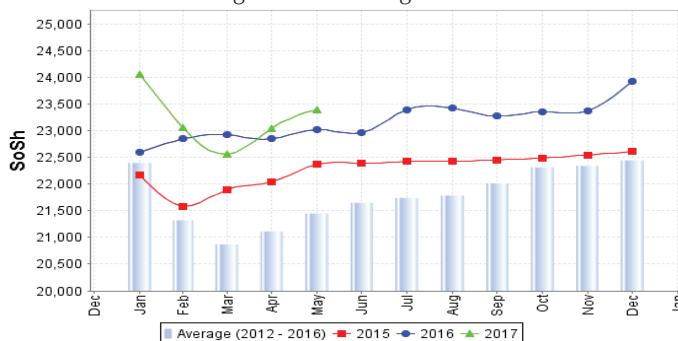


Figure 21: Goat Local Quality

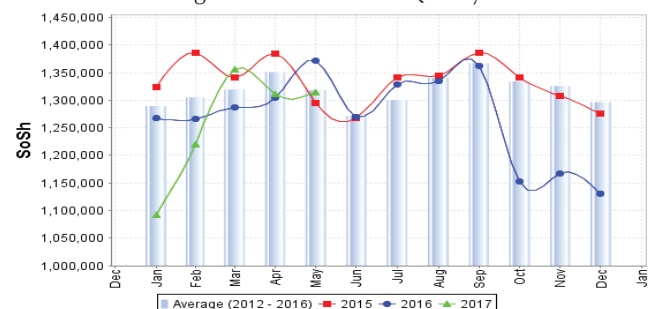
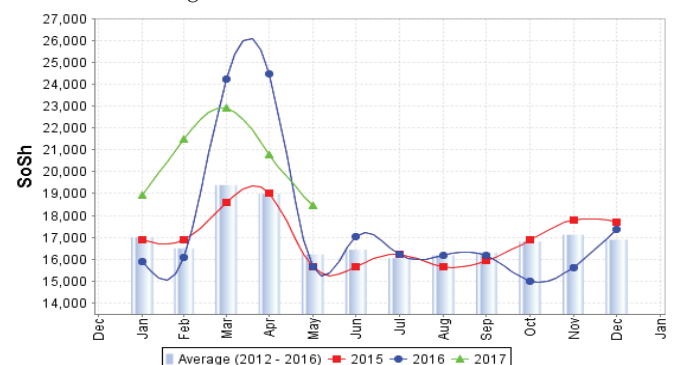


Figure 23: Water Drum (200 litres)



Regional analysis: Banadir Region

Indicator	5-Year Average (2012-2016)	May-16	Apr-17	May-17 Nominal Price	May-17 Real (Deflated) Price	% Change Previous Month	% Change Same Month Previous Year	% Change 5-year avrg (2012-2016)
Imported Commodities Prices								
Diesel 1 litre	18,946	15,333	12,333	12,380	4,399	0%	-19%	-35%
Imported Red Rice 1kg	13,278	12,292	12,250	12,000	4,261	-2%	-2%	-10%
Petrol 1 litre	21,150	16,333	16,167	15,967	5,703	-1%	-2%	-25%
Sugar	14,901	13,467	15,833	15,567	5,558	-2%	16%	4%
Vegetable Oil 1 litre	25,378	20,758	22,500	22,200	7,968	-1%	7%	-13%
Wheat Flour 1kg	11,893	11,150	11,042	10,733	3,801	-3%	-4%	-10%
Wheat Grain 1kg	8,708	10,500	16,375	17,000	6,078	4%	62%	95%
Cereal Prices								
Red Sorghum 1kg	6,525	6,853	10,850	11,080	3,927	2%	62%	70%
White Maize 1kg	8,807	9,053	11,550	12,093	4,295	5%	34%	37%
Livestock & Livestock Product Prices								
Camel Local Quality (Head)	-	-	-	-	-	-	-	-
Cattle Local Quality (Head)	-	-	-	-	-	-	-	-
Fresh Camel Milk 1 litre	22,146	26,333	26,333	27,267	9,810	4%	4%	23%
Goat Export Quality (Head)	2,511,000	2,380,000	2,150,000	2,475,000	899,413	15%	-	-1%
Goat Local Quality (Head)	2,120,000	1,900,000	1,675,000	2,000,000	726,779	19%	5%	-6%
Other Essential Items								
Charcoal 50kg	203,933	187,500	202,500	204,333	74,163	1%	9%	0%
Cowpeas 1 kg	17,438	19,032	35,875	38,300	13,820	7%	101%	120%
Unskilled Labor Wage Rate	116,783	122,333	77,917	79,000	28,612	1%	-35%	-32%
Firewood Bundle	7,118	7,300	8,000	8,000	2,808	0%	10%	12%
Local Sesame Oil 1 litre	56,946	46,100	52,458	50,167	18,133	-4%	9%	-12%
Exchange Rate (Somali Shilling per USD)	21,135	22,990	22,350	22,407	8,044	0%	-3%	6%
Terms of Trade								
Labour Wage (Daily)/ Cereal (Rice(Kg))	9	10	6	7	-	17%	-30%	-22%
Local Goat (Head)/ Cereal (Rice(Kg))	161	155	137	167	-	22%	8%	4%
Price Indices								
Consumer Price Index	-	231	268	275	-	3%	19%	-

Figure 24: Trends in Cereal Prices

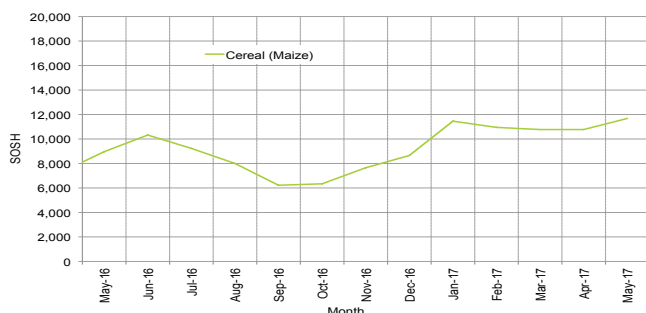


Figure 25: Bakara: Trends in Wage Rates and Relative Purchasing Power

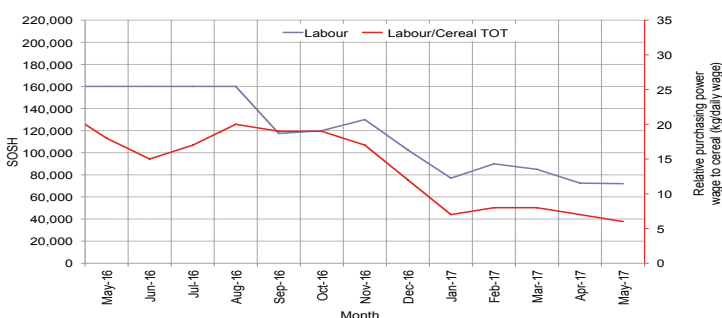


Figure 26: Imported Commodity Prices Compared to Exchange Rate

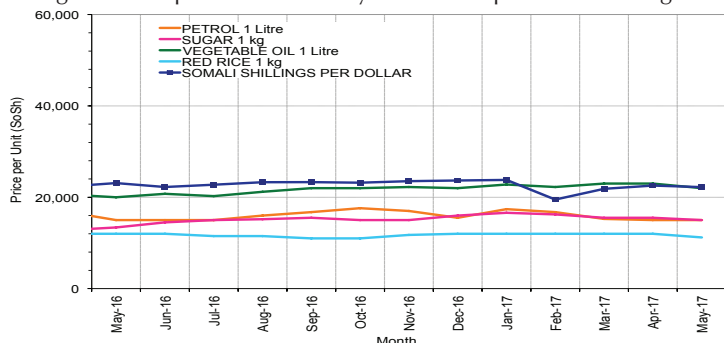


Figure 27: Goat Local Quality

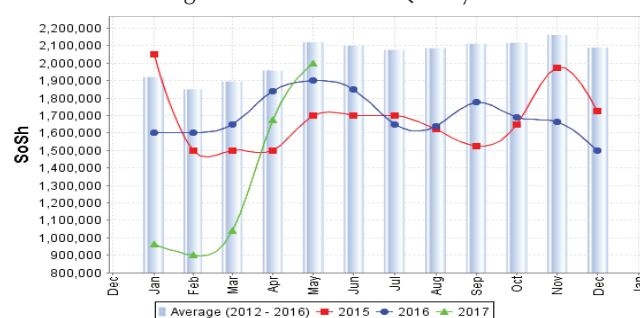


Figure 28: Exchange Rate

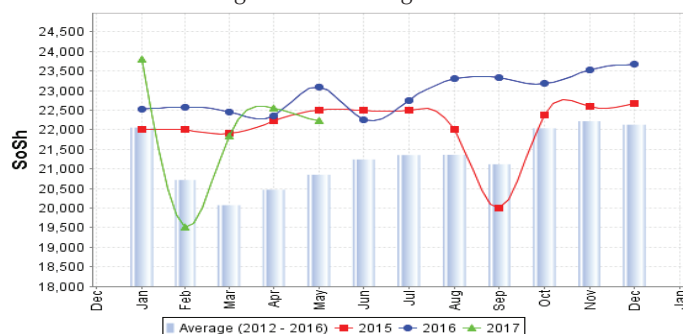
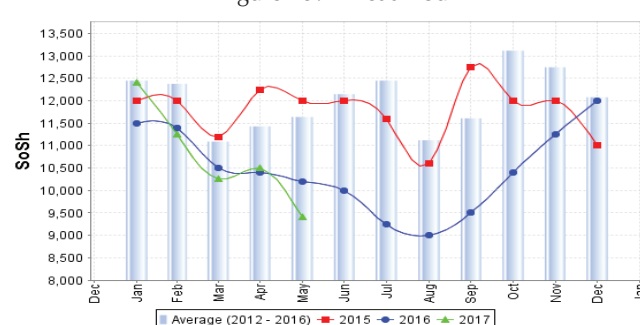


Figure 29: Wheat Flour



Regional analysis: Central Regions

Indicator	5-Year Average (2012-2016)	May-16	Apr-17	May-17 Nominal Price	May-17 Real (Deflated) Price	% Change Previous Month	% Change Same Month Previous Year	% Change 5-year avg (2012-2016)
Imported Commodities Prices								
Diesel 1 litre	25,428	18,360	20,750	23,400	8,964	13%	27%	-8%
Imported Red Rice 1kg	18,582	16,960	18,200	19,000	7,260	4%	12%	2%
Petrol 1 litre	24,400	21,000	22,800	25,800	9,894	13%	23%	6%
Sugar	20,958	18,440	24,600	24,400	9,352	-1%	32%	16%
Vegetable Oil 1 litre	40,080	33,400	40,600	41,600	16,014	2%	25%	4%
Wheat Flour 1kg	16,326	15,720	16,650	17,000	6,485	2%	8%	4%
Wheat Grain 1kg	15,382	14,350	17,250	19,000	7,260	10%	32%	24%
Cereal Prices								
Red Sorghum 1kg	11,762	11,400	16,333	19,000	7,260	16%	67%	62%
White Maize 1kg	13,096	11,750	17,000	18,750	7,163	10%	60%	43%
Livestock & Livestock Product Prices								
Camel Local Quality (Head)	11,795,000	13,050,000	9,500,000	9,900,000	3,834,748	4%	-24%	-16%
Cattle Local Quality (Head)	2,600,000	-	-	-	-	-	-	-
Fresh Camel Milk 1 litre	28,194	29,000	41,600	44,000	16,944	6%	52%	56%
Goat Export Quality (Head)	1,425,991	1,285,000	1,200,000	1,200,000	464,730	0%	-7%	-16%
Goat Local Quality (Head)	1,126,700	1,040,000	925,000	960,000	371,764	4%	-8%	-15%
Other Essential Items								
Charcoal 50kg	178,580	170,400	162,000	172,000	66,526	6%	1%	-4%
Cowpeas 1 kg	21,310	21,200	39,000	42,800	16,479	10%	102%	101%
Unskilled Labor Wage Rate	86,790	92,000	94,000	96,000	37,086	2%	4%	11%
Firewood Bundle	34,050	33,000	36,000	35,000	13,458	-3%	6%	3%
Local Sesame Oil 1 litre	87,490	83,000	82,000	81,400	31,431	-1%	-2%	-7%
Exchange Rate (Somali Shilling per USD)	22,280	24,280	26,400	27,300	10,475	3%	12%	23%
Terms of Trade								
Labour Wage (Daily)/ Cereal (Rice(Kg))	4	5	5	5	-	0%	0%	25%
Local Goat (Head)/ Cereal (Rice(Kg))	60	61	51	51	-	0%	-16%	-15%
Camel (Head)/Cereal (Kg)	643	769	522	521	-	0%	-32%	-19%
Price Indices								
Consumer Price Index	-	195	262	258	-	-1%	33%	-

Figure 30: Trends in Cereal Prices

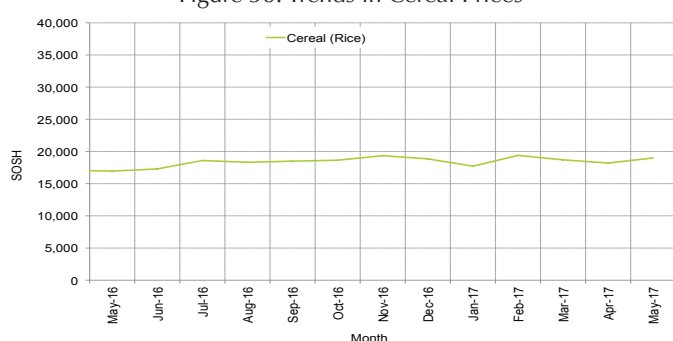


Figure 31: Trends in wage rates and relative purchasing power

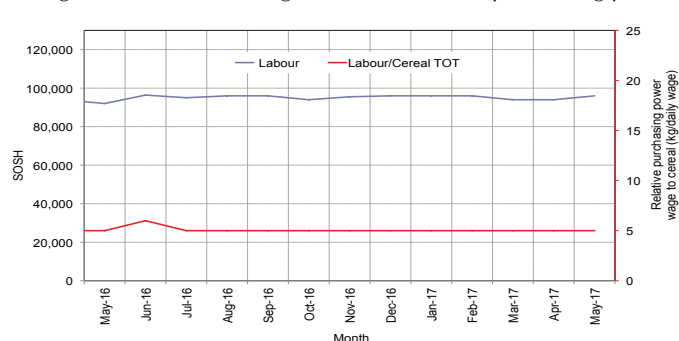


Figure 32: Imported Commodity Prices Compared to Exchange Rate

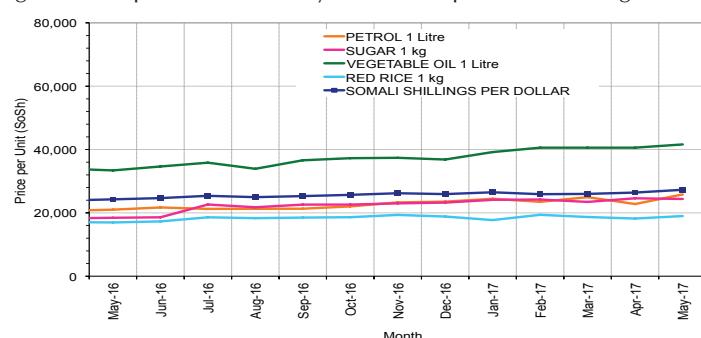


Figure 33: Goat Local Quality

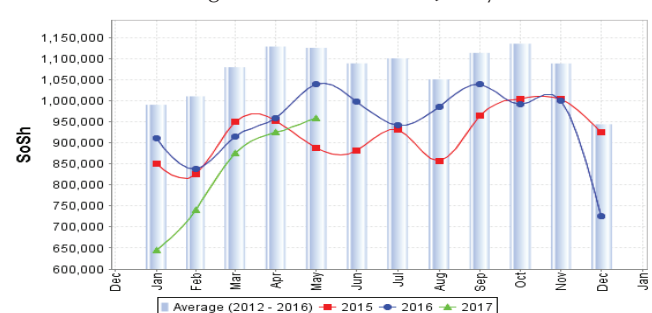


Figure 34: Exchange Rate

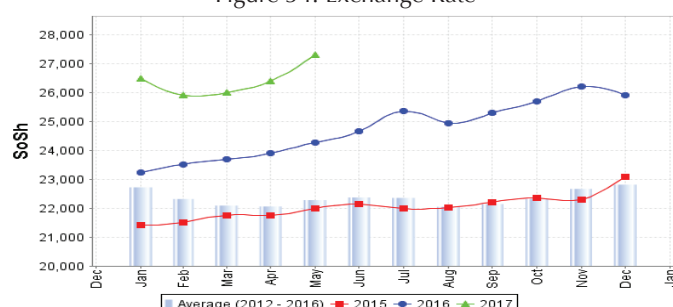
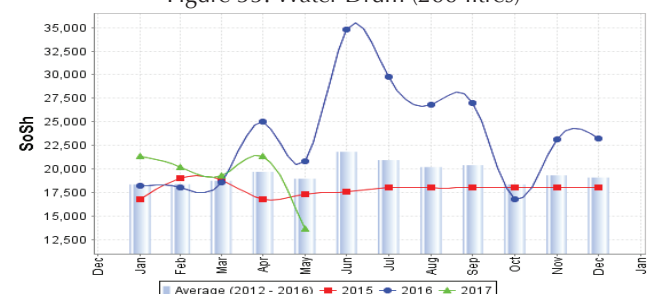


Figure 35: Water Drum (200 litres)



Regional analysis: Northeast Regions

Indicator	5-Year Average (2012-2016)	May-16	Apr-17	May-17 Nominal Price	May-17 Real (Deflated) Price	% Change Previous Month	% Change Same Month Previous Year	% Change 5-year avrg (2012-2016)
Imported Commodities Prices								
Diesel 1 litre	23,695	15,693	18,214	18,911	6,406	4%	21%	-20%
Imported Red Rice 1kg	18,265	15,900	17,589	17,750	6,007	1%	12%	-3%
Petrol 1 litre	23,785	20,175	21,929	22,536	7,653	3%	12%	-5%
Sugar	20,694	18,400	22,089	22,500	7,641	2%	22%	9%
Vegetable Oil 1 litre	39,328	33,786	34,643	33,929	11,573	-2%	0%	-14%
Wheat Flour 1kg	17,257	15,500	17,214	17,250	5,835	0%	11%	0%
Wheat Grain 1kg	29,454	29,960	31,600	33,150	11,305	5%	11%	13%
Cereal Prices								
Red Sorghum 1kg	21,415	23,450	26,500	26,250	8,931	-1%	12%	23%
White Maize 1kg	19,600	21,500	23,500	22,000	7,469	-6%	2%	12%
Livestock & Livestock Product Prices								
Camel Local Quality (Head)	15,018,600	14,223,000	11,062,500	12,057,500	4,148,131	9%	-15%	-20%
Cattle Local Quality (Head)	8,510,000	9,250,000	5,250,000	6,750,000	2,322,152	29%	-27%	-21%
Fresh Camel Milk 1 litre	37,359	40,689	59,217	57,250	19,596	-3%	41%	53%
Goat Export Quality (Head)	1,419,600	1,253,000	1,197,500	1,380,000	474,672	15%	10%	-3%
Goat Local Quality (Head)	1,370,714	1,164,643	1,146,429	1,284,286	441,742	12%	10%	-6%
Other Essential Items								
Charcoal 50kg	349,378	348,929	355,357	363,929	125,105	2%	4%	4%
Cowpeas 1 kg	38,332	36,900	42,708	46,750	15,984	9%	27%	22%
Unskilled Labor Wage Rate	134,428	135,714	134,821	136,607	46,898	1%	1%	2%
Firewood Bundle	32,671	33,429	40,500	42,643	14,571	5%	28%	31%
Local Sesame Oil 1 litre	96,580	94,900	101,250	105,000	36,024	4%	11%	9%
Exchange Rate (Somali Shilling per USD)	21,526	22,543	26,643	26,946	9,170	1%	20%	25%
Terms of Trade								
Labour Wage (Daily)/ Cereal (Rice(Kg))	7	9	8	8	-	0%	-11%	14%
Local Goat (Head)/ Cereal (Rice(Kg))	76	73	65	72	-	11%	-1%	-5%
Price Indices								
Consumer Price Index	-	235	300	291	-	-3%	24%	-

Figure 36: Trends in Cereal Prices



Figure 37: Trends in Wage Rates and Relative Purchasing Power

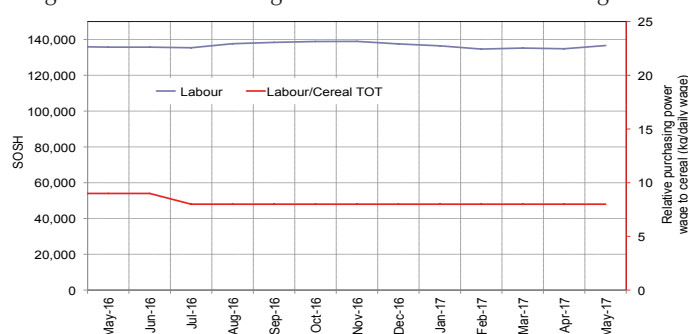


Figure 38: Imported Commodity Prices Compared to Exchange Rate

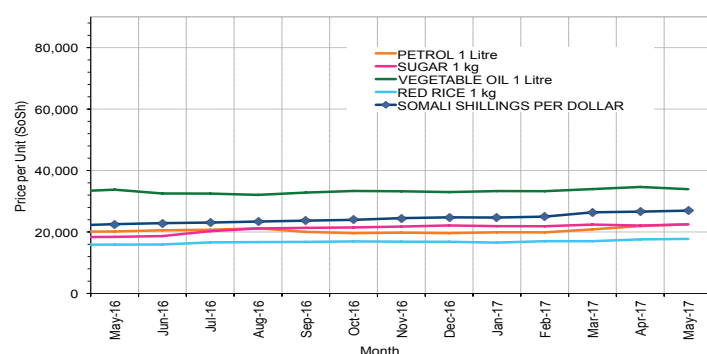


Figure 39: Goat Local Quality

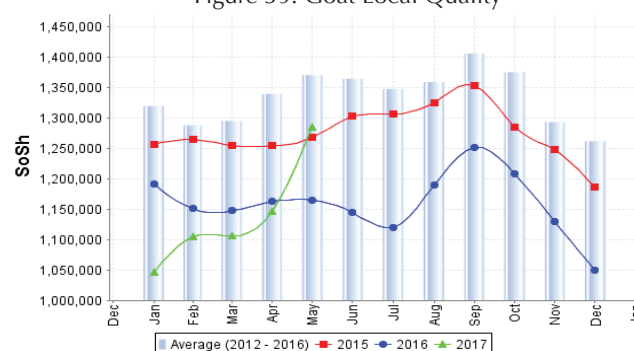


Figure 40: Exchange Rate

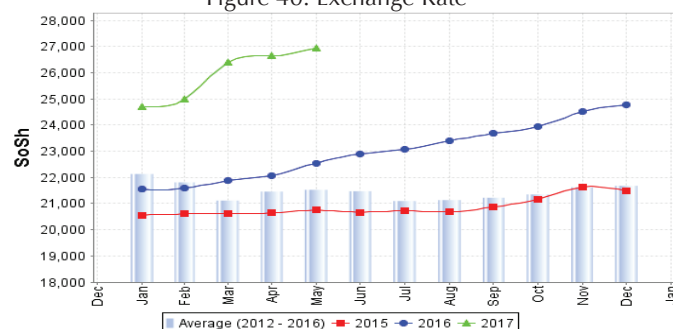
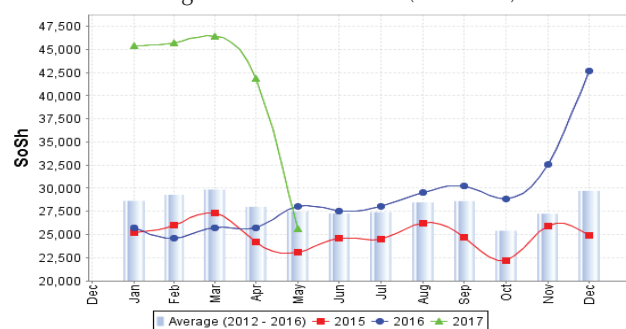


Figure 41: Water Drum (200 litres)



Regional analysis: Northwest Regions

Indicator	5-Year Average (2012-2016)	May-16	Apr-17	May-17 Nominal Price	May-17 Real (Deflated) Price	% Change Previous Month	% Change Same Month Previous Year	% Change 5-year avg (2012-2016)
Imported Commodities Prices								
Diesel 1 litre	6,473	4,690	5,800	5,800	3,603	0%	24%	-10%
Imported Red Rice 1kg	5,042	5,300	5,800	5,700	3,540	-2%	8%	13%
Petrol 1 litre	7,240	6,315	7,060	7,240	4,523	3%	15%	0%
Sugar	5,789	5,640	6,500	6,100	3,795	-6%	8%	5%
Vegetable Oil 1 litre	12,079	11,550	13,800	13,140	8,290	-5%	14%	9%
Wheat Flour 1kg	4,458	5,120	5,400	4,600	2,837	-15%	-10%	3%
Wheat Grain 1kg	3,487	4,375	4,625	4,125	2,534	-11%	-6%	18%
Cereal Prices								
White Sorghum 1kg	3,611	4,020	4,900	4,600	2,837	-6%	14%	27%
Yellow Maize 1kg	3,633	4,000	5,000	5,000	3,093	0%	25%	38%
Livestock & Livestock Product Prices								
Camel Local Quality (Head)	3,636,092	4,310,417	4,325,000	4,433,333	2,830,716	3%	3%	22%
Cattle Local Quality (Head)	2,226,183	2,239,583	2,290,000	2,720,000	1,736,702	19%	21%	22%
Fresh Camel Milk 1 litre	6,477	8,300	11,500	11,400	7,179	-1%	37%	76%
Goat Export Quality (Head)	444,207	397,488	445,625	455,600	290,814	2%	15%	3%
Goat Local Quality (Head)	323,622	300,500	329,750	387,400	247,267	17%	29%	20%
Other Essential Items								
Charcoal 50kg	48,910	63,400	70,050	69,000	43,959	-1%	9%	41%
Cowpeas 1 kg	10,855	13,063	15,500	16,733	10,585	8%	28%	54%
Unskilled Labor Wage Rate	47,230	57,700	60,000	61,180	38,965	2%	6%	30%
Firewood Bundle	4,016	5,500	5,333	5,333	3,305	0%	-3%	33%
Local Sesame Oil 1 litre	29,950	31,813	36,625	34,500	21,929	-6%	8%	15%
Exchange Rate (Somaliland Shilling per USD)	7,023	7,390	8,505	8,716	5,465	2%	18%	24%
Terms of Trade								
Labour Wage (Daily)/ Cereal (Rice(Kg))	9	11	10	11	-	10%	0%	22%
Local Goat (Head)/ Cereal (Rice(Kg))	64	57	57	68	-	19%	19%	6%
Price Indices								
Consumer Price Index	-	135	160	157	-	-2%	16%	-

Figure 42: Trends in Cereal Prices

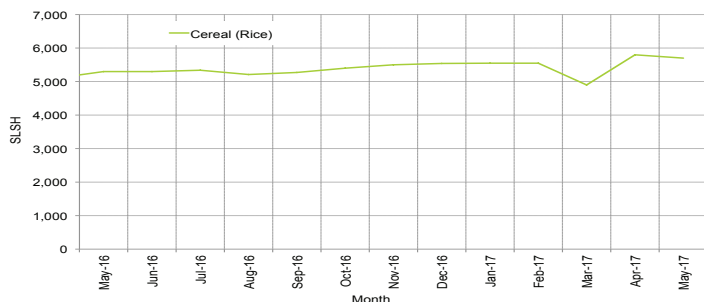


Figure 43: Trends in Wage Rates and Relative Purchasing Power

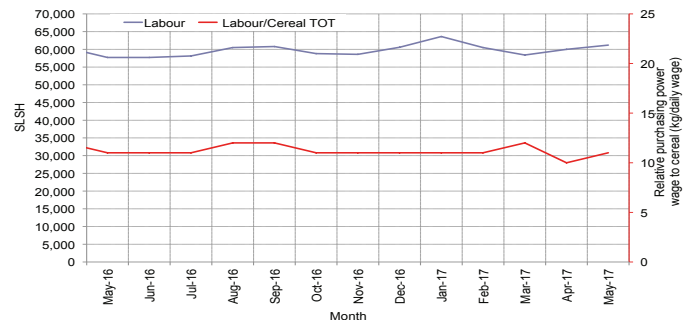


Figure 44: Imported Commodity Prices Compared to Exchange Rate

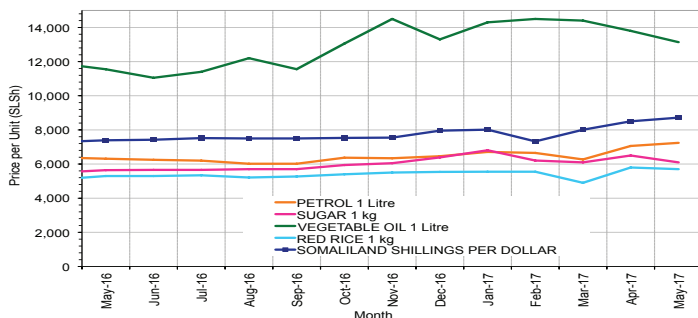


Figure 45: Goat Local Quality

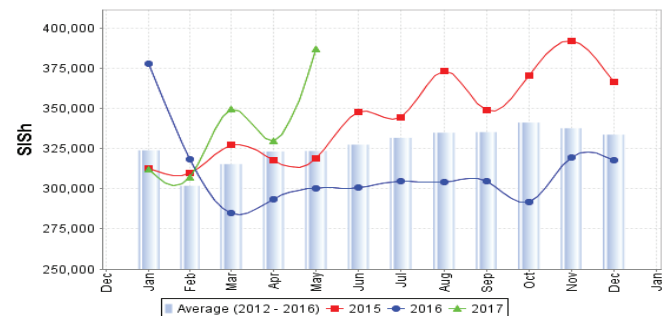


Figure 46: Exchange Rate

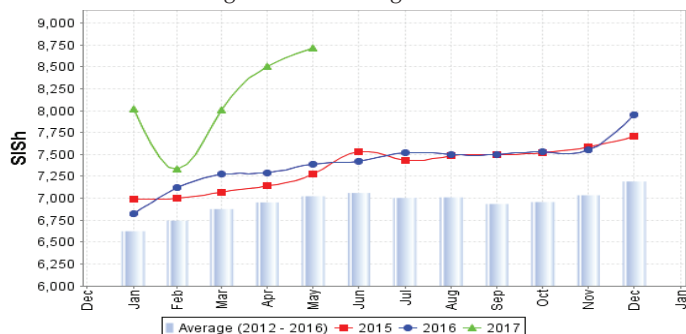


Figure 47: Water Drum (200 litres)

