

Market DataUpdate

Highlights

Inflation:

SoSh (Somali shilling)-using areas: Consumer Price Index (CPI) increased month-on-month (6%) in May 2016 in the South due to increase in prices of red sorghum and/or imported goods. Conversely, it declined (9%) in Northeast regions following the decline in red sorghum prices. The CPI rose annually in Central (4%) and South (3%), but remained stable in Northeast.

SISh (Somaliland shilling)-using areas: The CPI declined month-on-month (1%) and increased year-on-year (11%) due to increase in cereal (red sorghum) price in the past 12 months.

Exchange rate:

SoSh-using areas: The exchange rates between SoSh and the United States Dollar (USD) indicated marginal monthly changes (1-3%) in May 2016 apart from Hiran where SoSh depreciated by eight percent as a result of newly printed currency in the region. The SoSh shows annual depreciation across all areas in May.

SISh-using areas: The SISh indicated marginal (1-2%) depreciation against the USD in May 2016 compared to previous month and 12 months ago.

Local grain prices changed month-on-month at mild rates (by less than +/-10%) in most parts of the country. The exceptions are Hiran, Juba and Banadir regions where prices increased by 15-20 percent due to reduced humanitarian distributions and cross-border cereal trade as well as reduced supply from other producing regions attributable to worsened road conditions and increased costs of transportation during *Gu* rainy season. Annual comparison indicates lower prices for local grains in most regions of the country, most significantly in Bakool (El-Barde and Wajid), attributable to humanitarian assistance and increased cereal supply from neighboring countries (Ethiopia).

Prices of imported food (rice, sugar, vegetable oil, wheat flour) mostly exhibited relative stability or mild monthly changes (+/- to %) mainly local currency terms. However, prices of all food imports increased (13-15%) in Hiran due to increased trade restrictions by insurgents that led to decreased availability of food and non-food commodities in the market as well as damage to infrastructure caused by flooding. Year-on-year comparison indicates lower prices for most of the imported commodities in most parts of the country.

Livestock prices (for all species) changed at mild rates month-on-month in most regions of the country. Milk prices (camel and cattle) generally show declines in the country with the highest drop (23%) being recorded in Bay due to increased supplies as a result of increased calving/kidding during the *Gu* rainy season. Compared to a year ago, livestock prices mostly show mild changes. Milk prices (camel and cattle) increased annually in most regions of the country apart from Bakool where prices declined due to improved supplies on the market as a result of increased animal lactation and better security conditions compared to one year ago.

Labor (unskilled) wages either remained relatively stable or changed mildly (up to 7%) month-on-month in most parts of the country with the exception of Bakool and Lower Juba regions where wages decreased (11-12%). The declines are attributable to reduced demand for farm labour due to poor rains. Annual comparison indicates mixed trend patterns. Specifically, wages decreased (16%) in Lower Shabelle, but increased in Northwest, Lower Juba, Middle Shabelle, Mogadishu and Bakool. However, the highest increase of 38 percent was recorded in Bakool due to increased job opportunities in the context of improved security situation compared to a year ago.

Terms of Trade (ToT) between daily labor wage and local cereals either remained stable or changed by 1-3kg of cereals/daily labor wage month-on-month in most parts of the country. The exception is Banadir (Mogadishu) Region where ToT declined (4kg/daily wage) due to increased cereal prices (see above). The ToT between local quality goat and cereals has also dropped (by 41kg/goat) in Banadir (Mogadishu) following white maize price increase. ToT remained relatively stable or changed at mild rates in other regions. ToTs are higher compared to a year ago in most regions of the country. However, ToT between local quality goat and cereals (imported red rice) declined (6kg/goat) in the past 12 months in the northern regions due to declines in goat prices and/or increase in imported red rice prices.

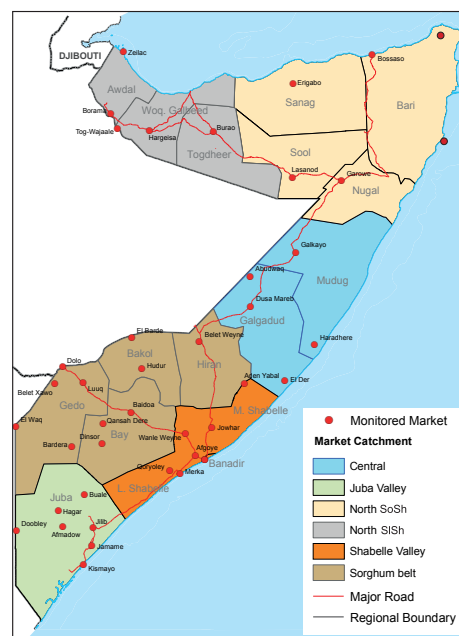
Towns Affected by Trade Disruption (Bulo Burto, Wajid, Hudur and Diinsor)

Labor (unskilled) wages remained relatively stable or declined (Hudur-16%) in the markets month-on-month. Annual comparison indicates increase in labor wages in all the markets with the particularly high increase of 122 percent being recorded in Wajid as a result of increased job opportunities following relative improvements in security conditions.

Local grain (red and white sorghum) prices remained relatively stable month-on-month in Wajid and Dinsor, but rose (7-13%) in Hudur and Bulo-Burto. In contrast, Local grain prices declined substantially (31-50%) year-on-year in Bulo-Burto, Dinsor and Wajid due to good harvests in the last two seasons (Deyr 2015/16 and *Gu* 2015) as well as humanitarian food interventions. In contrast, the prices rose annually in Hudur (19%) due to reduced humanitarian distributions of red sorghum.

Terms of Trade (ToTs) between daily labor wage and local cereals remained relatively stable month-on-month across the siege-affected towns. ToT between local quality goat and local cereals changed mildly (1-5kg/head) except in Dinsor where it increased by 25kg/head due to increase (11%) in local quality goat prices. ToTs are higher compared to a year ago in all markets apart from Hudur where the ToT between local quality goat and local cereals has dropped by 12kg/head due to increased red sorghum prices.

Prices of imported food items (rice, sugar, vegetable oil, wheat flour) have increased (11-22%) month-on-month in Hudur and Bulo-Burto while prices declined in Wajid and Dinsor. Annual comparison indicates lower prices in Hudur, Wajid and Bulo-Burto and higher prices in Dinsor.



This Market Data Update is a monthly report that presents analysis of market information and is produced regularly as part of the monthly monitoring process.

The weekly price data is collected from 48 main markets and 51 rural markets throughout Somalia since 1995.

Market analysis is an integral part of all of FSNAU's annual food security projections and seasonal technical reports (Technical Reports on FSNAU Post *Gu* and Post *Deyr* Analysis).

Detailed market data are available online on www.fsnau.org/ids.

National Trends: CPI, Exchange Rates, Cereal Prices and Relative Purchasing Power

Table 1: ToT between Cereals (kg) and Daily Labour
Wage Rate, by Region (May 2016)

Regions	May 2016 (kg)	Kg change from		
		April 2016 (Last Month)	May 2015 (Last Year)	May 5 yr Average (2011 - 2015)
Banadir/Mogadishu	18	-4	6	4
Bay	22	-2	5	5
Bakool	6	-1	3	0
Gedo	14	-3	-3	-1
Juba	10	-3	1	2
Shabelle	10	1	2	3
Northwest	11	-1	1	3
Northeast	9	0	0	2
Central	5	0	0	

Figure 1: Wheat Prices: Mogadishu and Bossaso Markets

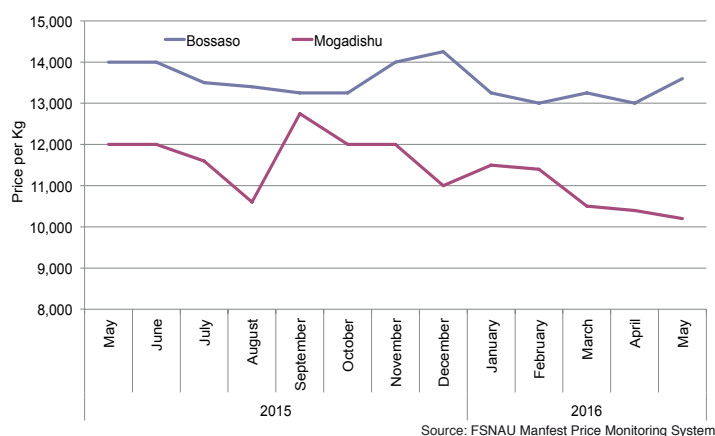


Figure 2: Terms of Trade Between Wage Rates and Selected Cereals

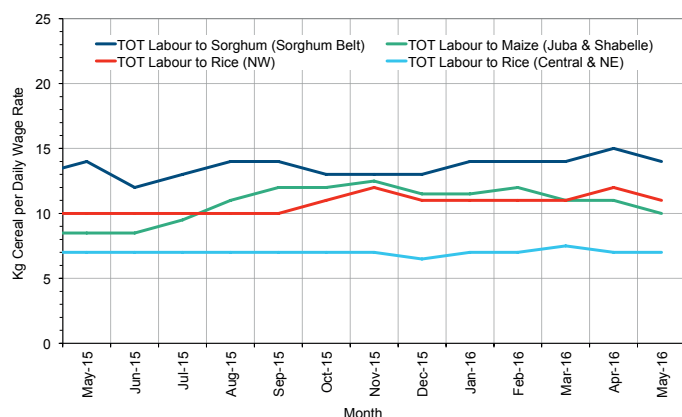


Figure 3: Monthly Exchange Rate for Selected Regions (SoSh and SiSh to USD)

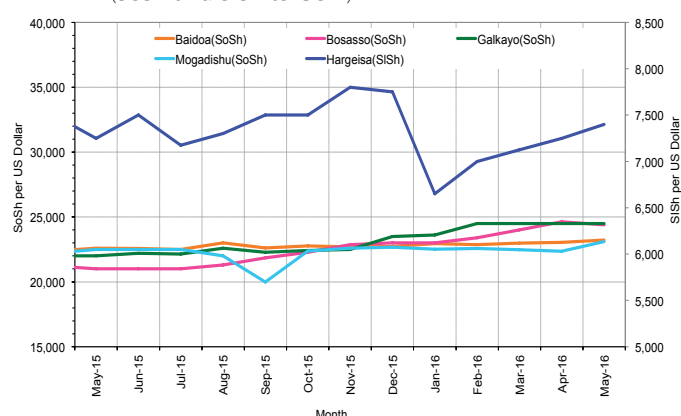


Figure 4: Monthly Trends in Consumer Price Index (CPI, March 2007=100)

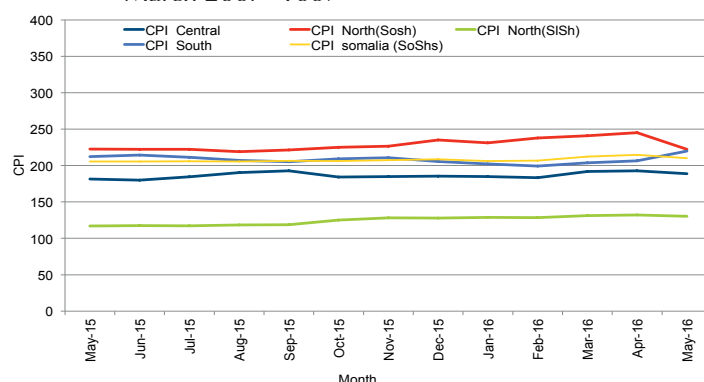
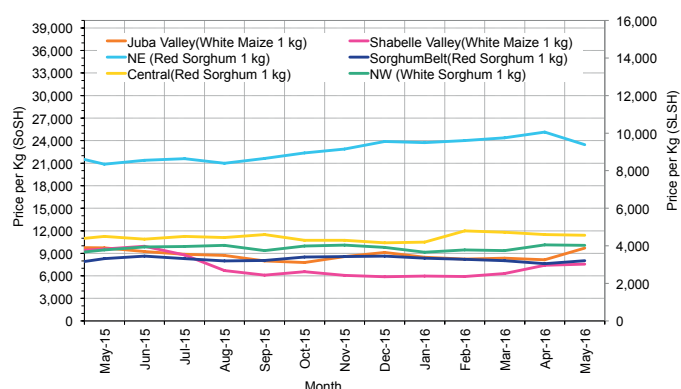


Figure 5: Monthly Trends in Local Cereal Prices



Regional analysis: Juba Regions

Indicator	5-Year Average (2011-2015)	May-15	Apr-16	May-16 Nominal Price	May-16 Real (Deflated) Price	% Change Previous Month	% Change Same Month Previous Year	% Change 5-year avg (2011-2015)
Imported Commodities Prices								
Diesel 1 litre	29,358	25,375	20,219	20,344	9,161	1%	-20%	-31%
Imported Red Rice 1kg	18,757	16,000	14,925	15,219	6,828	2%	-5%	-19%
Petrol 1 litre	31,306	28,563	24,781	23,875	10,768	-4%	-16%	-24%
Sugar	21,238	16,750	15,975	16,000	7,183	0%	-4%	-25%
Vegetable Oil 1 litre	39,978	31,313	28,275	29,150	13,169	3%	-7%	-27%
Wheat Flour 1kg	18,050	15,750	15,313	15,594	6,998	2%	-1%	-14%
Wheat Grain 1kg	16,400	-	-	-	-	-	-	-
Cereal Prices								
Red Sorghum 1kg	8,333	8,000	8,000	12,000	5,362	50%	50%	44%
White Maize 1kg	11,217	9,741	8,136	9,704	4,317	19%	0%	-13%
Livestock & Livestock Product Prices								
Camel Local Quality (Head)	9,416,099	8,993,750	10,518,750	10,418,750	4,742,489	-1%	16%	11%
Cattle Local Quality (Head)	3,943,326	3,976,875	3,571,429	3,628,571	1,651,616	2%	-9%	-8%
Fresh Camel Milk 1 litre	21,468	18,464	19,906	18,143	8,159	-9%	-2%	-15%
Goat Export Quality (Head)	1,407,784	1,215,469	1,231,250	1,391,250	633,193	13%	14%	-1%
Goat Local Quality (Head)	884,760	827,031	813,063	823,750	374,869	1%	0%	-7%
Other Essential Items								
Charcoal 50kg	84,526	78,750	100,625	98,125	44,566	-2%	25%	16%
Cowpeas 1 kg	24,486	25,003	22,625	25,094	11,323	11%	0%	2%
Unskilled Labor Wage Rate	82,670	87,375	104,719	95,719	43,471	-9%	10%	16%
Firewood Bundle	7,993	6,625	7,484	8,109	3,591	8%	22%	1%
Local Sesame Oil 1 litre	78,147	71,000	53,675	53,813	24,396	0%	-24%	-31%
Exchange Rate (Somali Shilling per USD)	23,124	22,213	23,150	23,050	10,392	0%	4%	0%
Terms of Trade								
Labour Wage (Daily)/ Cereal (Maize(Kg))	8	9	13	10	-	-23%	11%	25%
Local Goat (Head)/ Cereal (Maize(Kg))	86	85	100	85	-	-15%	0%	-1%
Price Indices								
Consumer Price Index	-	212	206	220	-	6%	3%	-

Figure 6: Trends in Cereal Prices

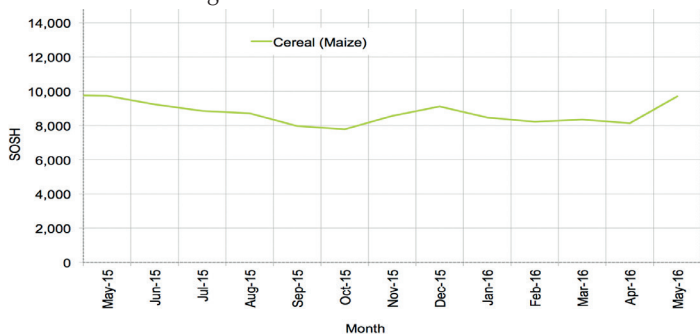


Figure 7: Trends in Wage Rates and Relative Purchasing Power

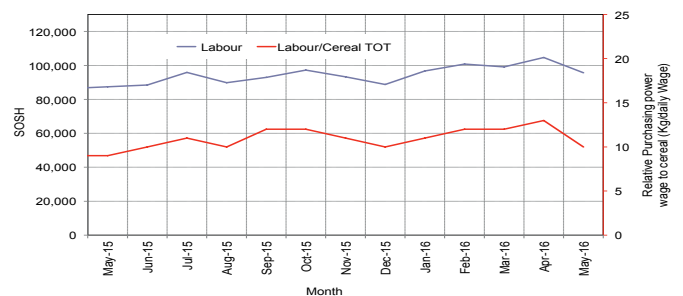


Figure 8: Imported Commodity Prices Compared to Exchange Rate

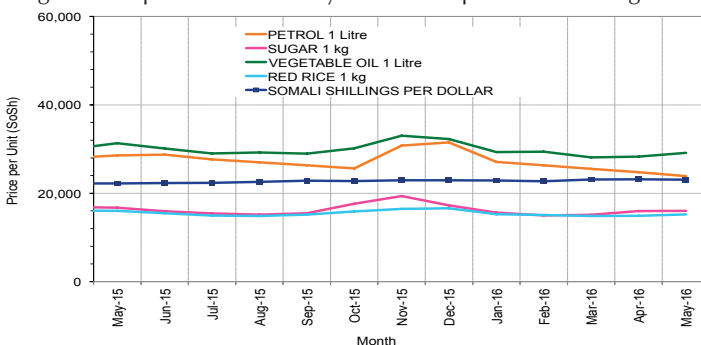


Figure 9: Goat Local Quality

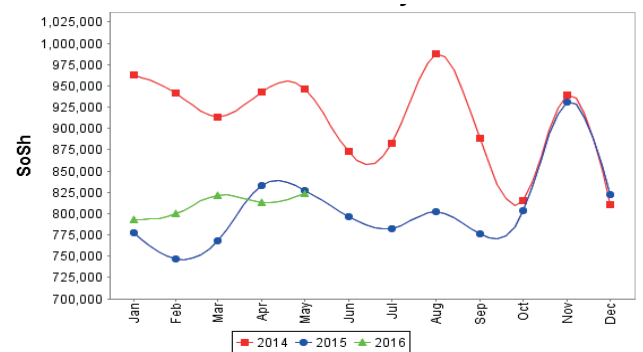


Figure 10: Exchange Rate

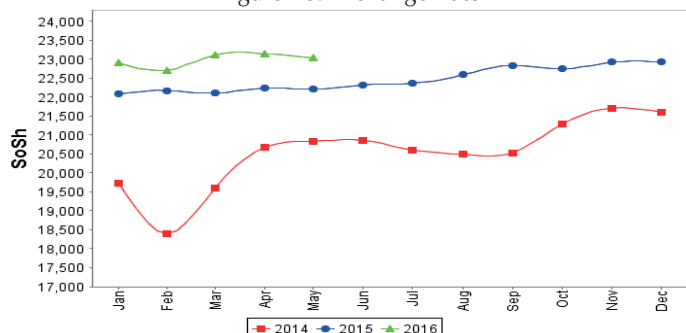
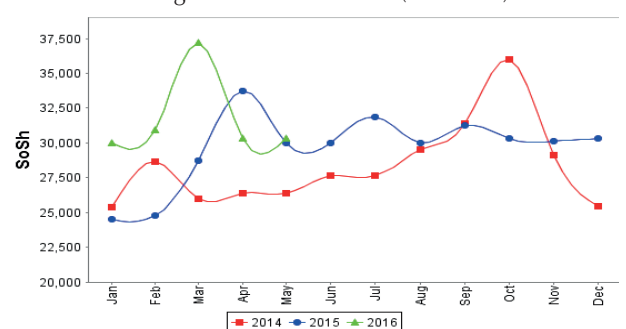


Figure 11: Water Drum (200 litres)



Regional analysis: Sorghum Belt Regions (Bay, Bakool, Gedo and Hiran)

Indicator	5-Year Average (2011-2015)	May-15	Apr-16	May-16 Nominal Price	May-16 Real (Deflated) Price	% Change Previous Month	% Change Same Month Previous Year	% Change 5-year avrg (2011-2015)
Imported Commodities Prices								
Diesel 1 litre	33,681	31,500	22,692	22,492	10,138	-1%	-29%	-33%
Imported Red Rice 1kg	21,243	20,423	18,196	18,454	8,300	1%	-10%	-13%
Petrol 1 litre	32,946	31,438	25,808	25,831	11,658	0%	-18%	-22%
Sugar	23,607	20,481	19,462	19,400	8,731	0%	-5%	-18%
Vegetable Oil 1 litre	45,516	39,196	34,692	35,246	15,944	2%	-10%	-23%
Wheat Flour 1kg	19,751	19,577	17,975	18,146	8,160	1%	-7%	-8%
Wheat Grain 1kg	14,471	20,125	18,000	20,000	9,004	11%	-1%	38%
Cereal Prices								
Red Sorghum 1kg	9,676	8,444	7,364	7,712	3,410	5%	-9%	-20%
White Maize 1kg	11,328	10,158	9,323	10,215	4,550	10%	1%	-10%
Livestock & Livestock Product Prices								
Camel Local Quality (Head)	11,759,886	12,116,250	11,990,909	12,419,091	5,653,039	4%	2%	6%
Cattle Local Quality (Head)	3,424,413	3,978,125	3,625,000	3,726,296	1,696,100	3%	-6%	9%
Fresh Camel Milk 1 litre	19,723	17,004	21,019	19,815	8,920	-6%	17%	0%
Goat Export Quality (Head)	1,501,256	1,508,125	1,516,042	1,535,222	698,729	1%	2%	2%
Goat Local Quality (Head)	946,428	900,231	839,038	864,846	393,576	3%	-4%	-9%
Other Essential Items								
Charcoal 50kg	148,858	169,771	157,521	161,833	73,566	3%	-5%	9%
Cowpeas 1 kg	27,252	28,131	22,562	24,254	10,940	7%	-14%	-11%
Unskilled Labor Wage Rate	101,631	103,500	109,038	102,256	46,447	-6%	-1%	1%
Firewood Bundle	6,339	6,538	5,846	5,938	2,603	2%	-9%	-6%
Local Sesame Oil 1 litre	78,509	77,438	61,438	65,250	29,602	6%	-16%	-17%
Exchange Rate (Somali Shilling per USD)	23,331	22,200	22,906	23,415	10,558	2%	5%	0%
Terms of Trade								
Labour Wage (Daily)/ Cereal (Sorghum(Kg))	13	12	15	13	-	-13%	8%	0%
Local Goat (Head)/ Cereal (Sorghum(Kg))	130	107	114	112	-	-2%	5%	-14%
Price Indices								
Consumer Price Index	-	212	206	220	-	6%	3%	-

Figure 12: Trends in Cereal Prices

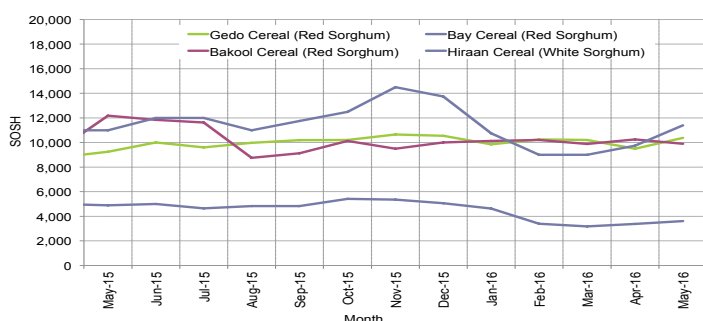


Figure 13: Trends in Wage Rates and Relative Purchasing Power

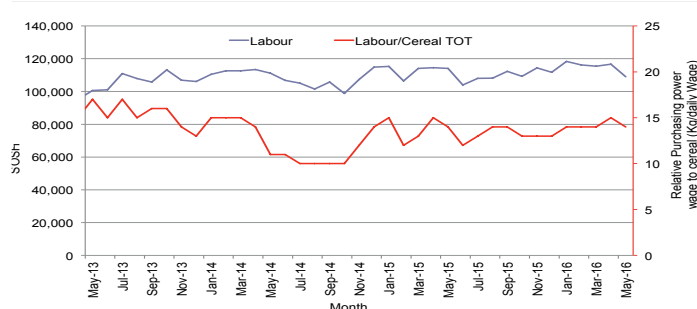


Figure 14: Imported Commodity Prices Compared to Exchange Rate

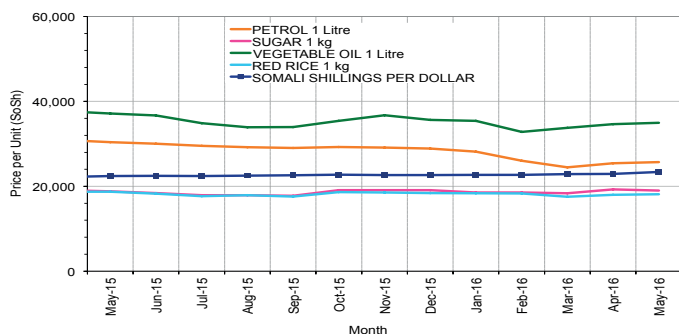


Figure 15: Goat Local Quality

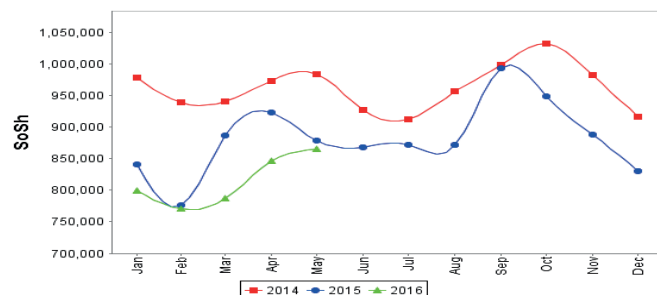


Figure 16: Exchange Rate

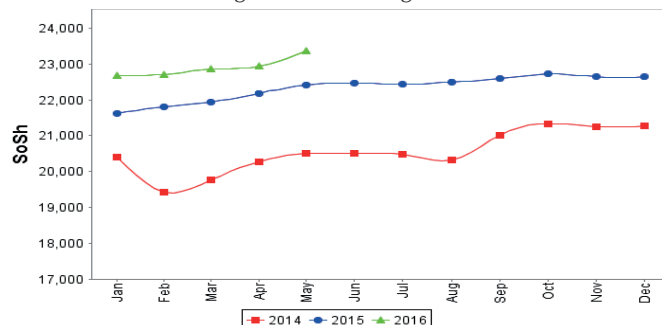
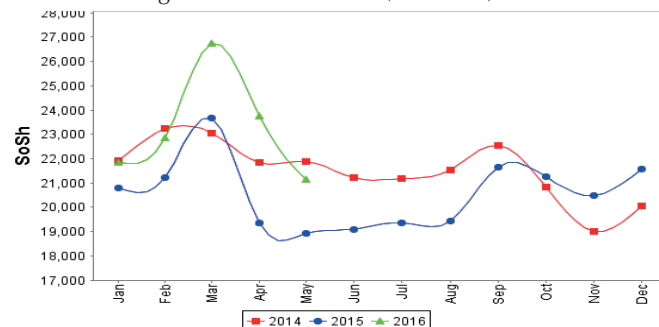


Figure 17: Water Drum (200 litres)



Regional analysis: Shabelle Regions

Indicator	5-Year Average (2011-2015)	May-15	Apr-16	May-16 Nominal Price	May-16 Real (Deflated) Price	% Change Previous Month	% Change Same Month Previous Year	% Change 5-year avg (2011-2015)
Imported Commodities Prices								
Diesel 1 litre	28,820	24,125	18,500	18,917	8,511	2%	-22%	-34%
Imported Red Rice 1kg	17,824	16,000	17,667	17,167	7,714	-3%	7%	-4%
Petrol 1 litre	29,763	27,333	24,917	24,417	11,015	-2%	-11%	-18%
Sugar	21,200	17,000	18,250	17,833	8,018	-2%	5%	-16%
Vegetable Oil 1 litre	35,241	27,833	27,750	28,000	12,646	1%	1%	-21%
Wheat Flour 1kg	17,099	15,917	17,500	17,000	7,638	-3%	7%	-1%
Wheat Grain 1kg	17,111	21,000	17,000	17,000	7,638	0%	-19%	-1%
Cereal Prices								
Red Sorghum 1kg	11,364	11,264	9,517	9,657	4,296	1%	-14%	-15%
White Maize 1kg	10,652	9,567	7,420	7,563	3,343	2%	-21%	-29%
Livestock & Livestock Product Prices								
Camel Local Quality (Head)	16,018,166	16,588,333	18,655,000	17,900,000	8,147,935	-4%	8%	12%
Cattle Local Quality (Head)	5,296,417	5,595,000	5,167,500	5,540,000	2,521,694	7%	-1%	5%
Fresh Camel Milk 1 litre	19,700	19,083	21,750	22,500	10,142	3%	18%	14%
Goat Export Quality (Head)	1,775,437	1,803,125	1,911,875	1,945,000	885,259	2%	8%	10%
Goat Local Quality (Head)	1,229,333	1,295,417	1,304,167	1,371,667	624,279	5%	6%	12%
Other Essential Items								
Charcoal 50kg	127,627	130,542	135,583	138,944	63,147	2%	6%	9%
Cowpeas 1 kg	23,467	22,683	20,025	20,375	9,175	2%	-10%	-13%
Unskilled Labor Wage Rate	71,416	78,750	66,042	72,500	32,902	10%	-8%	2%
Firewood Bundle	6,266	7,333	6,417	6,250	2,745	-3%	-15%	0%
Local Sesame Oil 1 litre	58,791	56,583	48,583	48,792	22,110	0%	-14%	-17%
Exchange Rate (Somali Shilling per USD)	23,398	22,369	22,850	23,025	10,381	1%	3%	-2%
Terms of Trade								
Labour Wage (Daily)/ Cereal (Maize(Kg))	7	8	9	10	-	11%	25%	43%
Local Goat (Head)/ Cereal (Maize(Kg))	138	135	176	181	-	3%	34%	31%
Price Indices								
Consumer Price Index	-	212	206	220	-	6%	3%	-

Figure 18: Trends in Cereal Prices

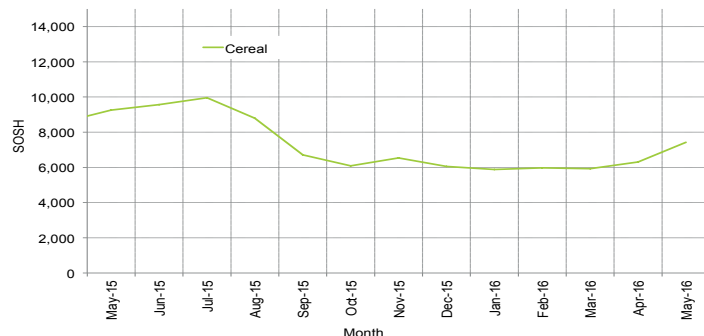


Figure 19: Trends in Wage Rates and Relative Purchasing Power

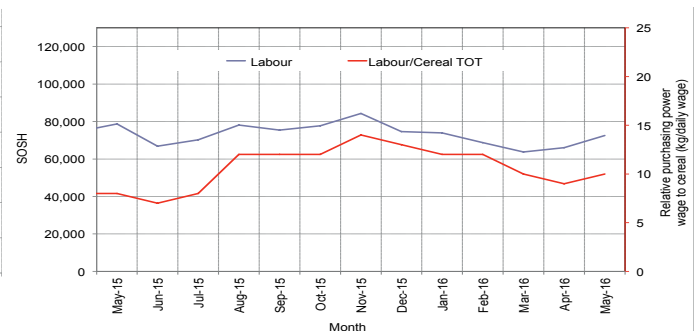


Figure 20: Imported Commodity Prices Compared to Exchange Rate

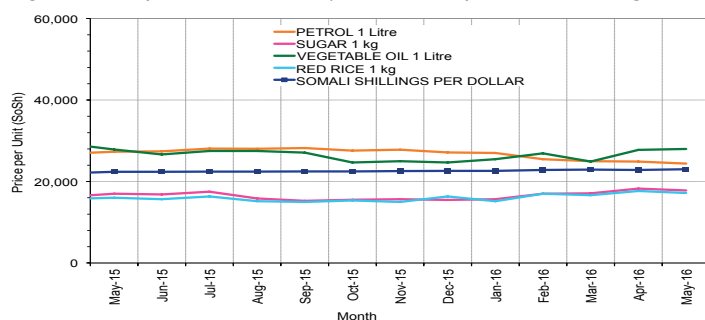


Figure 21: Goat Local Quality

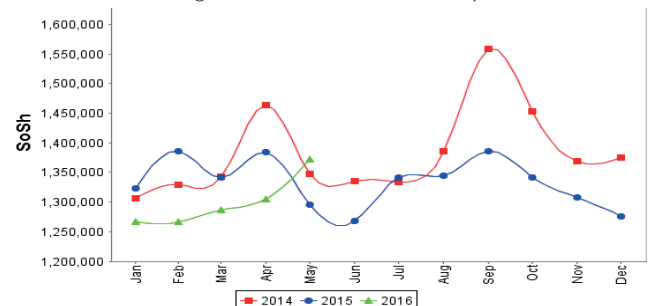


Figure 22: Exchange Rate

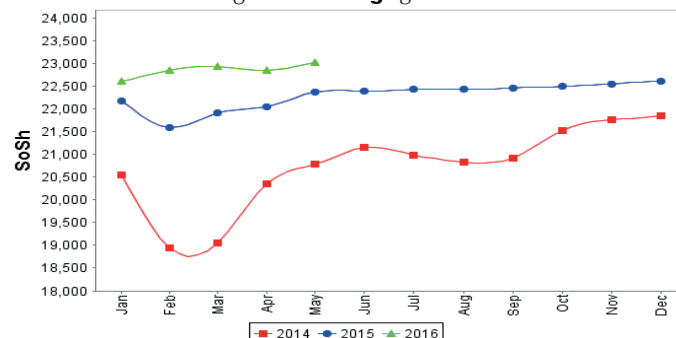
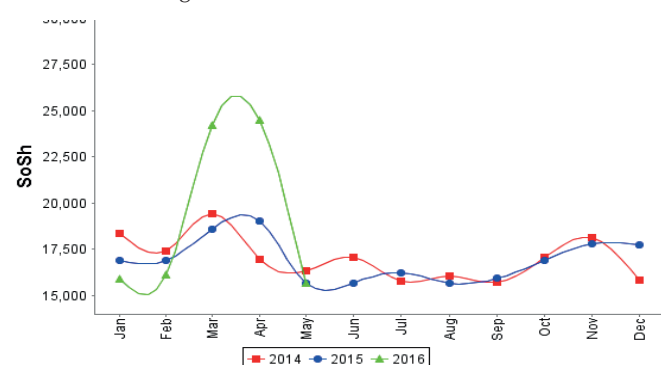


Figure 23: Water Drum (200 litres)



Regional analysis: Banadir Region

Indicator	5-Year Average (2011-2015)	May-15	Apr-16	May-16 Nominal Price	May-16 Real Price (Deflated)	% Change Previous Month	% Change Same Month Previous Year	% Change 5-year avrg (2011-2015)
Imported Commodities Prices								
Diesel 1 litre	22,740	16,250	16,467	16,200	7,274	-2%	0%	-29%
Imported Red Rice 1kg	15,470	12,667	12,592	12,471	5,577	-1%	-2%	-19%
Petrol 1 litre	23,835	20,250	17,950	17,167	7,714	-4%	-15%	-28%
Sugar	18,701	13,833	13,533	13,800	6,182	2%	0%	-26%
Vegetable Oil 1 litre	31,355	23,208	22,096	21,871	9,856	-1%	-6%	-30%
Wheat Flour 1kg	14,124	12,625	12,421	11,992	5,359	-3%	-5%	-15%
Wheat Grain 1kg	11,135	12,750	10,683	11,000	4,907	3%	-14%	-1%
Cereal Prices								
Red Sorghum 1kg	9,336	8,825	7,191	7,377	3,258	3%	-16%	-21%
White Maize 1kg	10,621	10,896	8,310	8,977	3,986	8%	-18%	-15%
Livestock & Livestock Product Prices								
Camel Local Quality (Head)	15,000,000	-	-	-	-	-	-	-
Cattle Local Quality (Head)	3,000,000	-	-	-	-	-	-	-
Fresh Camel Milk 1 litre	21,283	21,667	24,183	24,517	11,060	1%	13%	15%
Goat Local Quality (Head)	2,391,000	2,250,000	2,240,000	2,380,000	1,083,270	6%	-	0%
Goat Export Quality (Head)	1,996,500	1,787,500	1,851,250	1,887,500	859,085	2%	6%	-5%
Other Essential Items								
Charcoal 50kg	189,244	203,583	191,208	192,750	87,639	1%	-5%	2%
Cowpeas 1 kg	22,867	20,517	18,150	19,953	8,983	10%	-3%	-13%
Unskilled Labor Wage Rate	101,108	102,917	111,667	106,167	48,227	-5%	3%	5%
Firewood Bundle	7,825	8,000	8,720	8,520	3,778	-2%	6%	9%
Local Sesame Oil 1 litre	58,558	60,083	50,017	50,442	22,861	1%	-16%	-14%
Exchange Rate (Somali Shilling per USD)	23,209	22,517	22,687	22,987	10,364	1%	2%	-1%
Terms of Trade								
Labour Wage (Daily)/ Cereal (Maize(Kg))	10	9	13	12	-	-8%	33%	20%
Local Goat (Head)/ Cereal (Maize(Kg))	217	164	223	210	-	-6%	28%	-3%
Price Indices								
Consumer Price Index	-	212	206	220	-	6%	3%	-

Figure 24: Trends in Cereal Prices

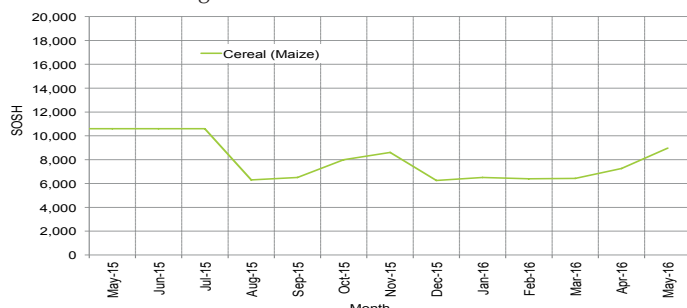


Figure 25: Bakara: Trends in Wage Rates and Relative Purchasing Power

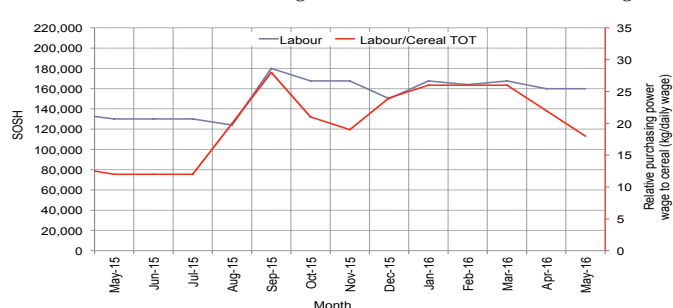


Figure 26: Imported Commodity Prices Compared to Exchange Rate

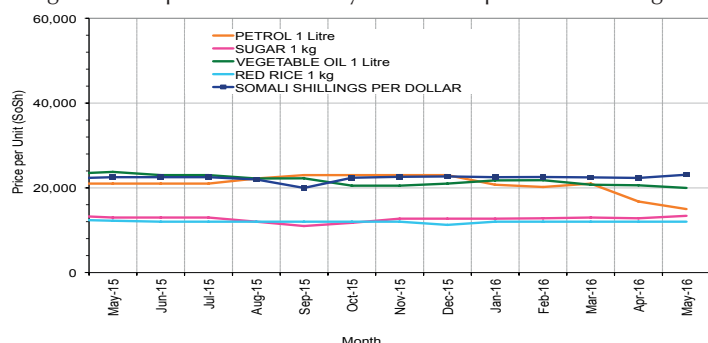


Figure 27: Goat Local Quality

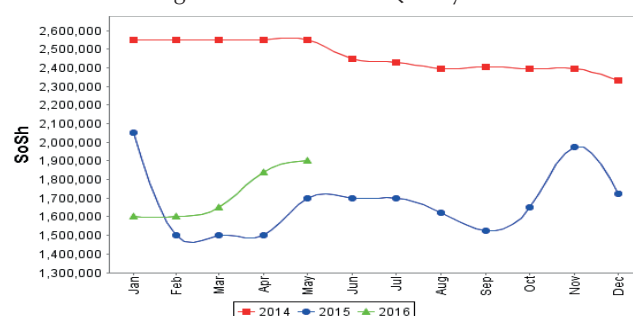


Figure 28: Exchange Rate

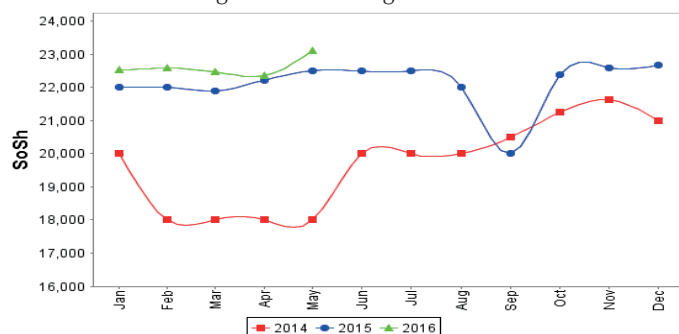
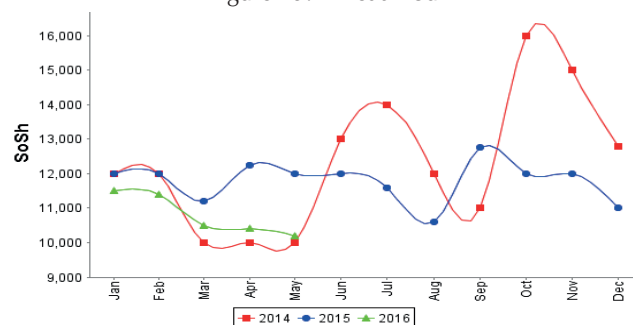


Figure 29: Wheat Flour



Regional analysis: Central Regions

Indicator	5-Year Average (2011-2015)	May-15	Apr-16	May-16 Nominal Price	May-16 Real (Deflated) Price	% Change Previous Month	% Change Same Month Previous Year	% Change 5-year avg (2011-2015)
Imported Commodities Prices								
Diesel 1 litre	29,476	21,100	19,000	18,360	9,622	-3%	-13%	-38%
Imported Red Rice 1kg	21,260	17,450	17,100	16,960	8,881	-1%	-3%	-20%
Petrol 1 litre	26,784	22,650	20,652	21,000	11,020	2%	-7%	-22%
Sugar	24,606	18,800	18,250	18,440	9,665	1%	-2%	-25%
Vegetable Oil 1 litre	45,980	37,250	33,950	33,400	17,587	-2%	-10%	-27%
Wheat Flour 1kg	18,102	16,050	15,800	15,720	8,224	-1%	-2%	-13%
Wheat Grain 1kg	17,379	17,500	15,188	14,350	7,499	-6%	-18%	-17%
Cereal Prices								
Red Sorghum 1kg	13,542	11,250	11,500	11,400	5,937	-1%	1%	-16%
White Maize 1kg	14,706	12,800	13,000	11,750	6,122	-10%	-8%	-20%
Livestock & Livestock Product Prices								
Camel Local Quality (Head)	10,810,000	13,187,500	13,200,000	13,050,000	6,910,367	-1%	-1%	21%
Cattle Local Quality (Head)	2,600,000	-	-	-	-	-	-	-
Fresh Camel Milk 1 litre	31,778	24,750	31,600	29,000	15,257	-8%	17%	-9%
Goat Export Quality (Head)	1,471,658	1,357,500	1,250,000	1,285,000	680,356	3%	-5%	-13%
Goat Local Quality (Head)	1,148,600	889,000	960,000	1,040,000	550,619	8%	17%	-9%
Other Essential Items								
Charcoal 50kg	188,350	156,500	159,500	170,400	90,133	7%	9%	-10%
Cowpeas 1 kg	26,102	21,150	18,650	21,200	11,126	14%	0%	-19%
Unskilled Labor Wage Rate	85,080	88,000	94,000	92,000	48,617	-2%	5%	8%
Firewood Bundle	34,750	34,000	33,000	33,000	17,375	0%	-3%	-5%
Local Sesame Oil 1 litre	90,040	90,250	82,200	83,000	43,852	1%	-8%	-8%
Exchange Rate (Somali Shilling per USD)	23,776	21,985	23,900	24,280	12,757	2%	10%	2%
Terms of Trade								
Labour Wage (Daily)/ Cereal (Rice(Kg))	4	5	5	5	-	0%	0%	25%
Local Goat (Head)/ Cereal (Rice(Kg))	56	51	56	61	-	9%	20%	9%
Camel (Head)/Cereal (Kg)	543	756	772	769	-	0%	2%	42%
Price Indices								
Consumer Price Index	-	182	193	189	-	-2%	4%	-

Figure 30: Trends in Cereal Prices

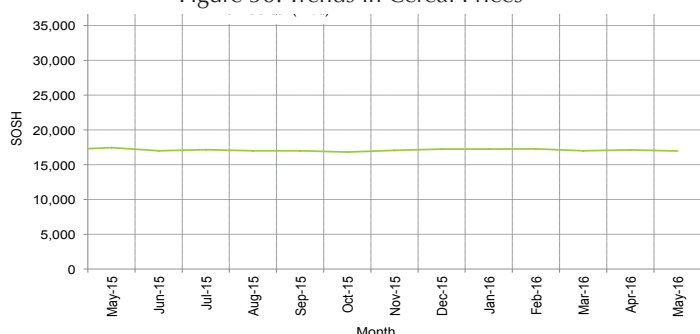


Figure 31: Trends in wage rates and relative purchasing power

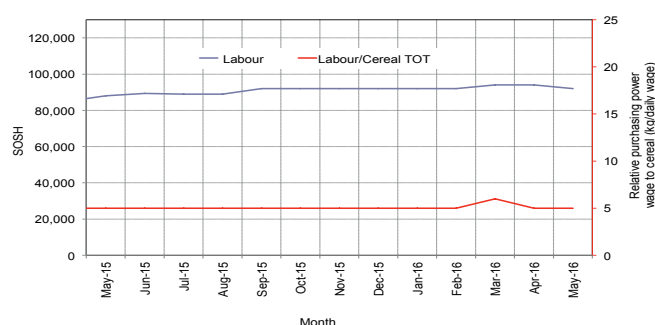


Figure 32: Imported Commodity Prices Compared to Exchange Rate

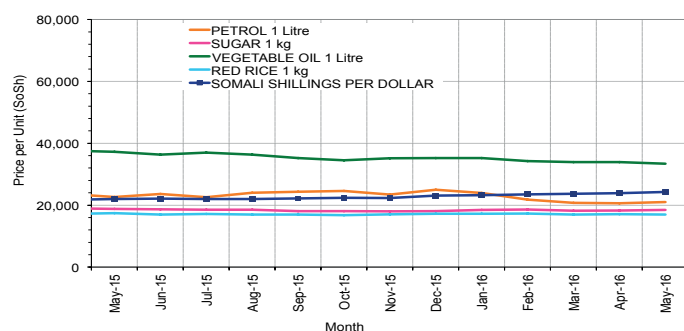


Figure 33: Goat Local Quality

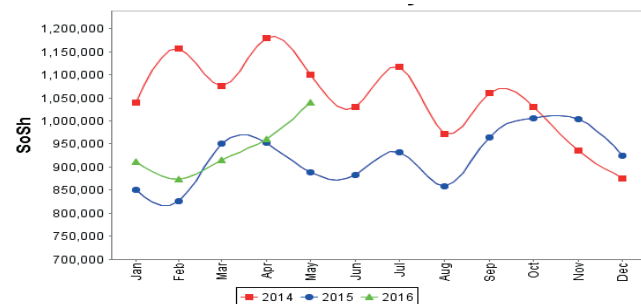


Figure 34: Exchange Rate

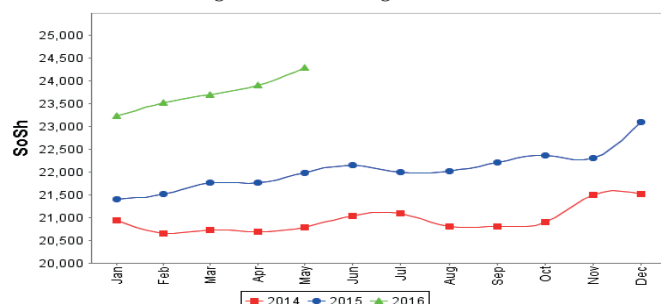
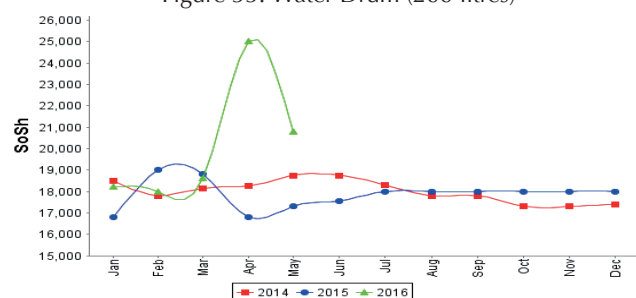


Figure 35: Water Drum (200 litres)



Regional analysis: Northeast Regions

Indicator	5-Year Average (2011-2015)	May-15	Apr-16	May-16 Nominal Price	May-16 Real (Deflated) Price	% Change Previous Month	% Change Same Month Previous Year	% Change 5-year avrg (2011-2015)
Imported Commodities Prices								
Diesel 1 litre	26,738	21,857	16,107	15,693	6,708	-3%	-28%	-41%
Imported Red Rice 1kg	19,850	15,964	15,875	15,900	6,797	0%	0%	-20%
Petrol 1 litre	25,517	22,179	20,089	20,175	8,652	0%	-9%	-21%
Sugar	23,464	18,107	18,321	18,400	7,882	0%	2%	-22%
Vegetable Oil 1 litre	43,209	33,429	33,107	33,786	14,556	2%	1%	-22%
Wheat Flour 1kg	18,692	15,464	15,375	15,500	6,624	1%	0%	-17%
Wheat Grain 1kg	29,992	27,688	29,850	29,960	12,897	0%	8%	0%
Cereal Prices								
Red Sorghum 1kg	21,925	20,875	25,125	23,450	10,073	-7%	12%	7%
White Maize 1kg	19,550	18,000	24,250	21,500	9,227	-11%	19%	10%
Livestock & Livestock Product Prices								
Camel Local Quality (Head)	15,022,750	15,160,000	14,430,000	14,223,000	6,169,846	-1%	-6%	-5%
Cattle Local Quality (Head)	7,960,000	8,250,000	8,750,000	9,250,000	4,012,555	6%	12%	16%
Fresh Camel Milk 1 litre	38,159	32,929	43,694	40,689	17,551	-7%	24%	7%
Goat Export Quality (Head)	1,450,300	1,335,000	1,210,000	1,253,000	543,452	4%	-6%	-14%
Goat Local Quality (Head)	1,427,535	1,267,500	1,162,143	1,164,643	505,123	0%	-8%	-18%
Other Essential Items								
Charcoal 50kg	345,717	351,071	350,357	348,929	151,266	0%	-1%	1%
Cowpeas 1 kg	40,312	33,708	37,167	36,900	15,907	-1%	9%	-8%
Unskilled Labor Wage Rate	129,935	137,857	136,071	135,714	58,773	0%	-2%	4%
Firewood Bundle	32,035	36,000	33,857	33,429	14,402	-1%	-7%	4%
Local Sesame Oil 1 litre	95,412	99,500	104,000	94,900	41,068	-9%	-5%	-1%
Exchange Rate (Somali Shilling per USD)	23,355	20,750	22,075	22,543	9,679	2%	9%	-3%
Terms of Trade								
Labour Wage (Daily)/ Cereal (Rice(Kg))	7	9	9	9	-	0%	0%	29%
Local Goat (Head)/ Cereal (Rice(Kg))	73	79	73	73	-	0%	-8%	0%
Price Indices								
Consumer Price Index	-	222	245	231	-	-6%	4%	-

Figure 36: Trends in Cereal Prices

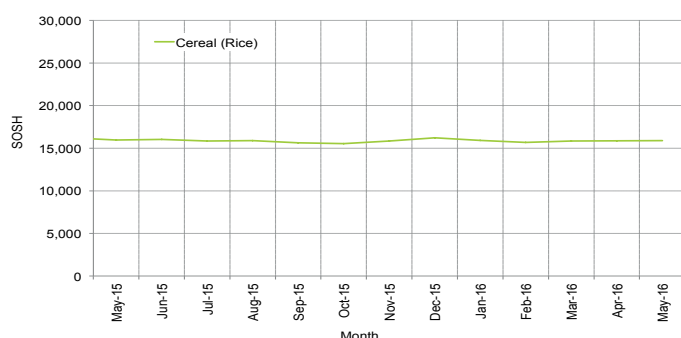


Figure 37: Trends in Wage Rates and Relative Purchasing Power

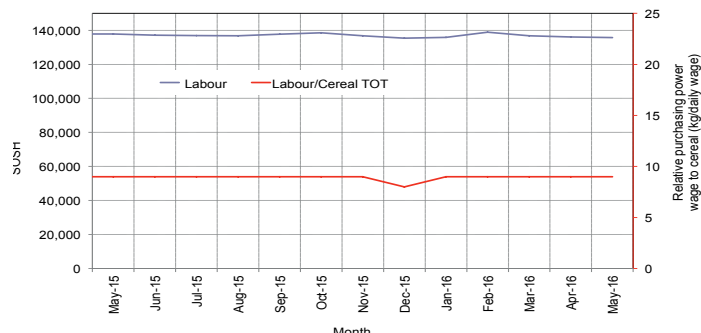


Figure 38: Imported Commodity Prices Compared to Exchange Rate

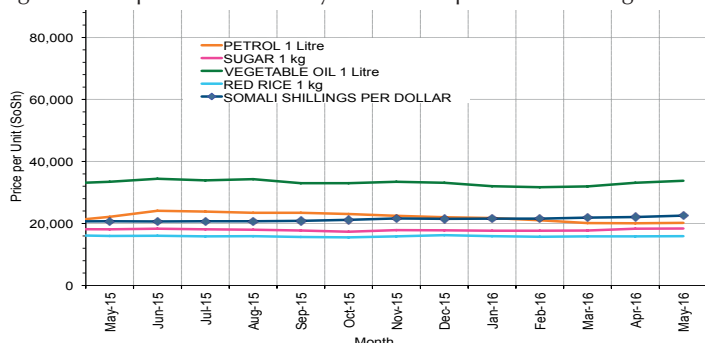


Figure 39: Goat Local Quality

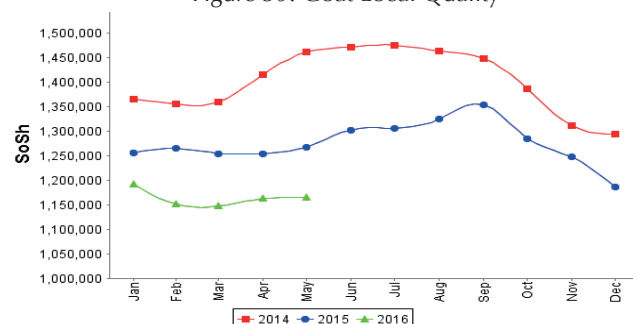


Figure 40: Exchange Rate

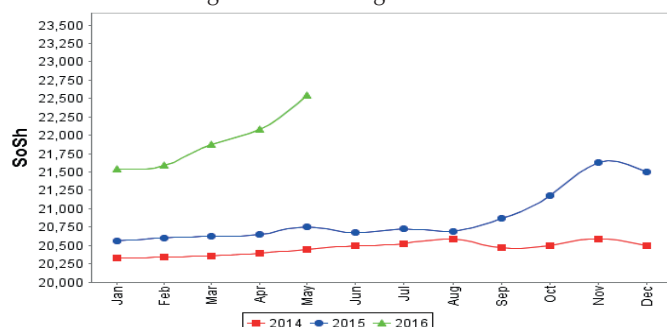
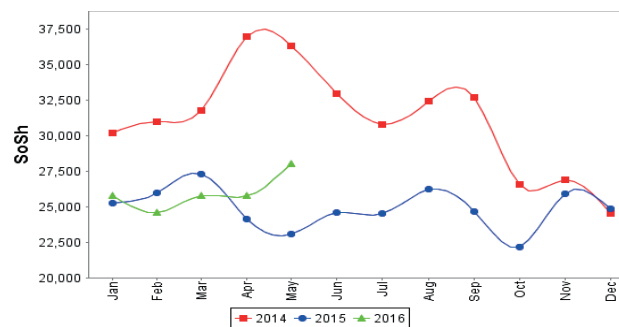


Figure 41: Water Drum (200 litres)



Regional analysis: Northwest Regions

Indicator	5-Year Average (2011-2015)	May-15	Apr-16	May-16 Nominal Price	May-16 Real (Deflated) Price	% Change Previous Month	% Change Same Month Previous Year	% Change 5-year avrg (2011-2015)
Imported Commodities Prices								
Diesel 1 litre	6,744	6,600	4,850	4,690	3,499	-3%	-29%	-30%
Imported Red Rice 1kg	4,915	5,060	5,100	5,300	3,967	4%	5%	8%
Petrol 1 litre	7,167	7,755	6,390	6,315	4,746	-1%	-19%	-12%
Sugar	5,881	5,820	5,500	5,640	4,228	3%	-3%	-4%
Vegetable Oil 1 litre	11,789	12,700	11,900	11,550	8,763	-3%	-9%	-2%
Wheat Flour 1kg	4,285	4,360	4,780	5,120	3,829	7%	17%	19%
Wheat Grain 1kg	3,187	3,575	4,250	4,375	3,257	3%	22%	37%
Cereal Prices								
White Sorghum 1kg	3,467	3,780	4,050	4,020	2,985	-1%	6%	16%
Yellow Maize 1kg	3,465	3,783	4,300	4,000	2,969	-7%	6%	15%
Livestock & Livestock Product Prices								
Camel Local Quality (Head)	3,121,008	4,380,000	4,444,583	4,310,417	3,307,524	-3%	-2%	38%
Cattle Local Quality (Head)	2,023,233	2,293,333	2,405,833	2,239,583	1,718,457	-7%	-2%	11%
Fresh Camel Milk 1 litre	5,787	7,250	8,810	8,300	6,269	-6%	14%	43%
Goat Export Quality (Head)	429,940	442,450	386,438	397,488	304,915	3%	-10%	-8%
Goat Local Quality (Head)	316,732	318,750	293,700	300,500	230,490	2%	-6%	-5%
Other Essential Items								
Charcoal 50kg	42,550	52,025	63,750	63,400	48,550	-1%	22%	49%
Cowpeas 1 kg	10,026	11,594	13,375	13,063	9,924	-2%	13%	30%
Unskilled Labor Wage Rate	42,240	51,200	60,500	57,700	44,176	-5%	13%	37%
Firewood Bundle	3,371	4,250	5,000	5,500	4,120	10%	29%	63%
Local Sesame Oil 1 litre	27,844	32,938	32,125	31,813	24,312	-1%	-3%	14%
Exchange Rate (Somaliland Shilling per US\$)	6,778	7,280	7,290	7,390	5,571	1%	2%	9%
Terms of Trade								
Labour Wage (Daily)/ Cereal (Rice(Kg))	8	10	12	11	-	-8%	10%	38%
Local Goat (Head)/ Cereal (Rice(Kg))	64	63	58	57	-	-2%	-10%	-11%
Price Indices								
Consumer Price Index	-	117	132	130	-	-1%	11%	-

Figure 42: Trends in Cereal Prices

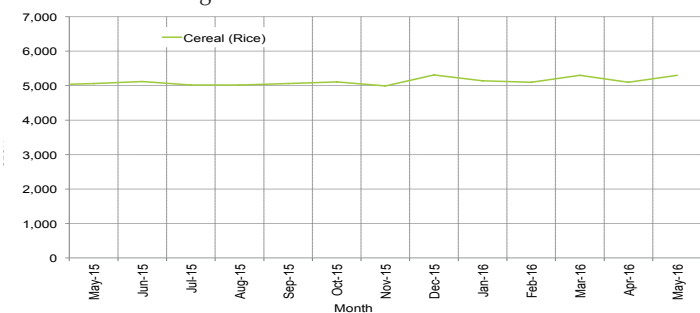


Figure 43: Trends in Wage Rates and Relative Purchasing Power

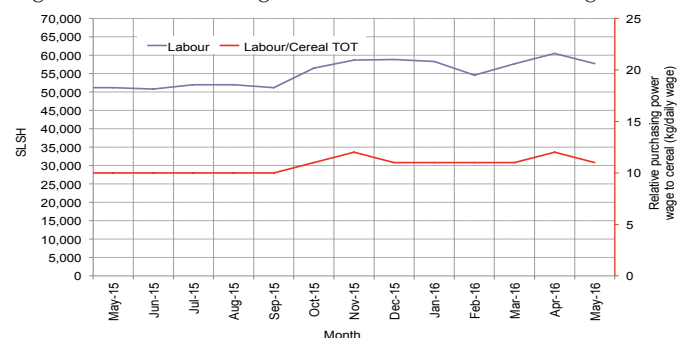


Figure 44: Imported Commodity Prices Compared to Exchange Rate

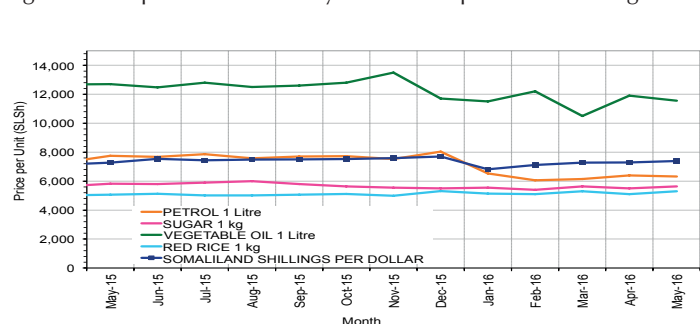


Figure 45: Goat Local Quality

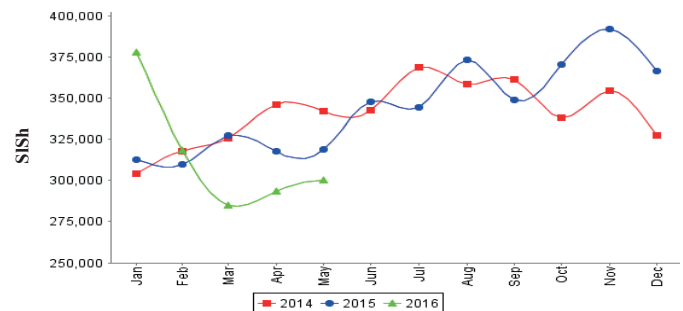


Figure 46: Exchange Rate

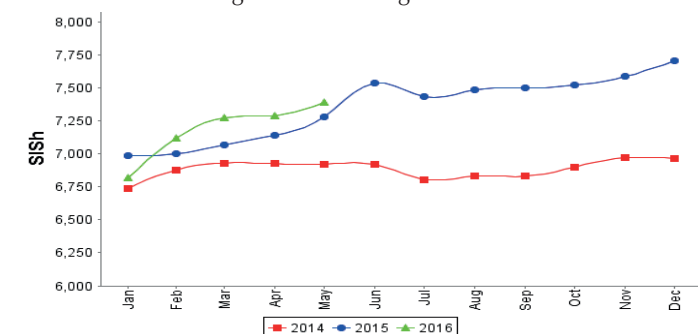
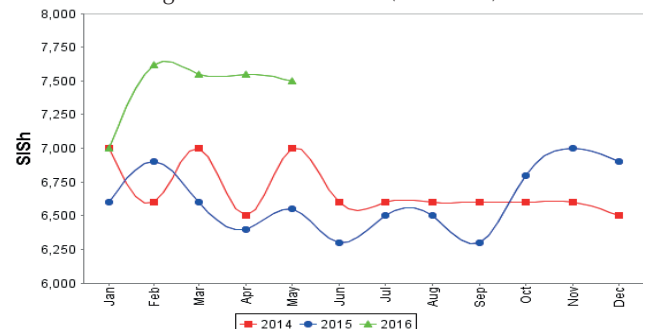


Figure 47: Water Drum (200 litres)



Trends in Livestock Exports

Table 1: Berbera Livestock Exports (Number of Heads)

	1999	2000	2001	2002	2003	2004	2005	2006	2007	2008	2009	2010	2011	2012	2013	2014	2015	Jan-Mar 2016
Shoats	2 048 136	1 601 083	51 546	341 711	563 107	859 404	1 023 795	1 017 242	1 350 054	1 219 519	1 556 003	2 584 810	3 104 684	3 219 584	2 888 955	3 089 592	3 270 386	448 389
Cattle	89 967	63 263	20 973	37 547	84 312	131 852	148 151	85 631	88 143	80 051	88 005	133 021	150 934	190 354	20 875	252 597	160,395	36 542
Camel	37 430	16 984	3 473	18,864	21 874	5 147	5 069	22 810	14 245	26 515	20 206	92 651	107 281	102 664	75 728	64 578	61 475	37 836

Figure 48: Berbera Livestock Exports (Number of Heads)

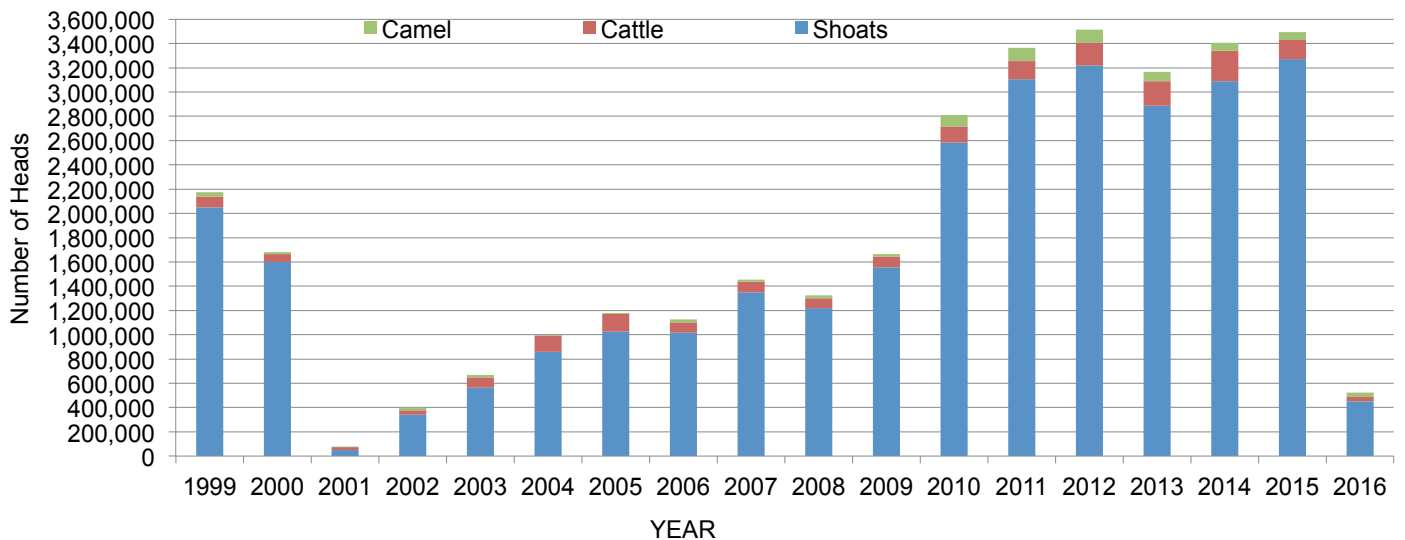
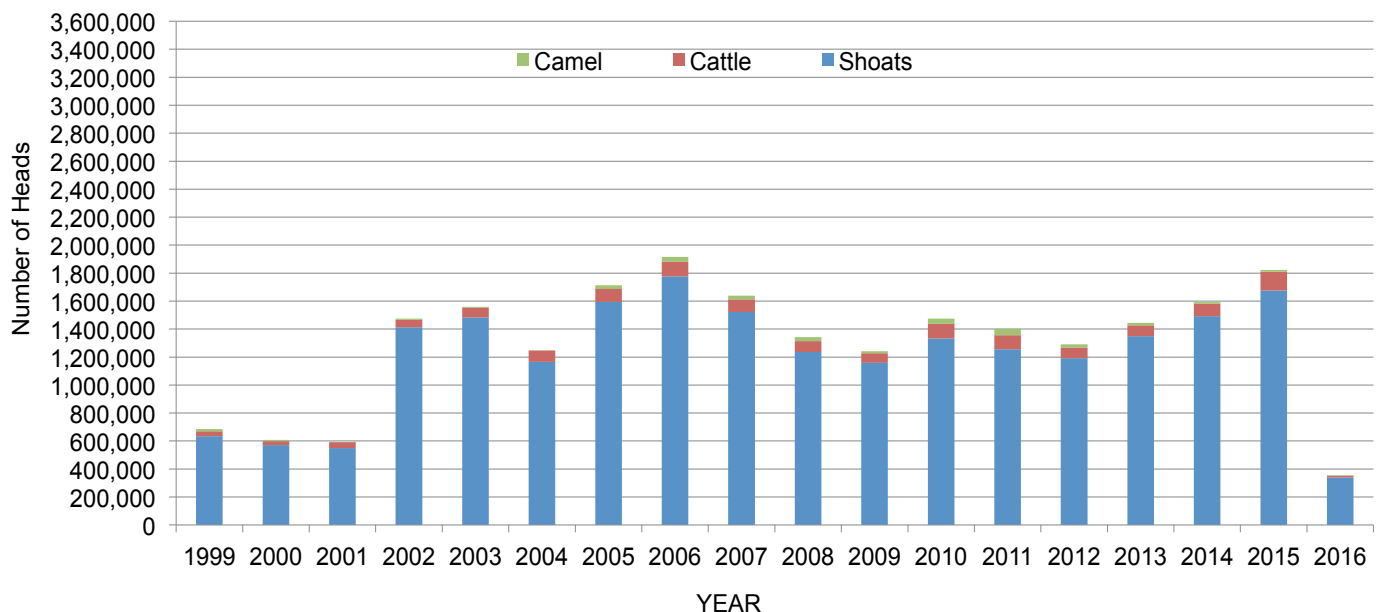


Table 2: Bossaso Livestock Exports (Number of Heads)

	1999	2000	2001	2002	2003	2004	2005	2006	2007	2008	2009	2010	2011	2012	2013	2014	2015	Jan-Apr 2016
Shoats	633 669	571 455	548 853	1 412 450	1 483 409	1 166 480	1 594 859	1 777 283	1 522 855	1 236 775	1 159 454	1 333 478	1 256 535	1 192 197	1 349 123	1 493 111	1 676 216	471 170
Cattle	36 586	27 604	42 248	53 313	71 328	79 994	91 910	104 595	89 190	78 046	67 385	103 808	99 058	76 043	77 353	87 759	134 597	20 606
Camel	15 544	8 177	1 950	9 720	4 259	2 488	26 109	33 724	27 580	27 639	15 331	36 865	45 878	22 288	19 032	12 251	10 945	5 279

Figure 49: Bossaso Livestock Exports (Number of Heads)

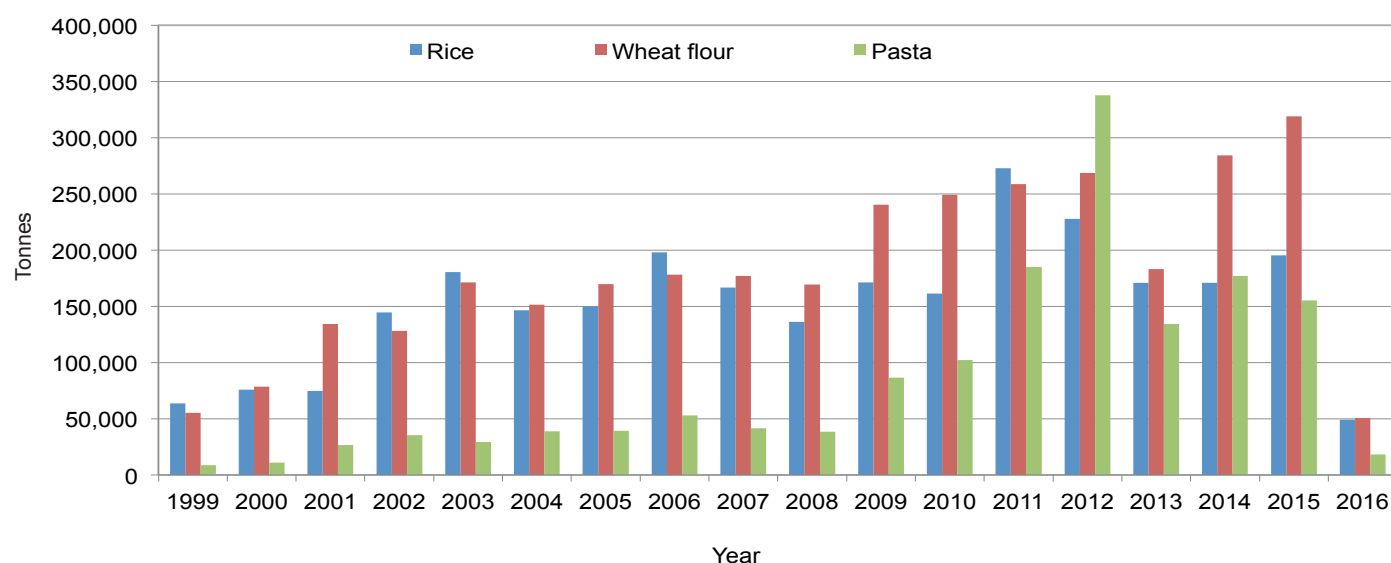


Trends in Cereal Imports

Table 3: Total Cereal Imports through Berbera, Bossaso and Mogadishu Ports (Tonnes) *

	1999	2000	2001	2002	2003	2004	2005	2006	2007	2008	2009	2010	2011	2012	2013	2014	2015	Jan-Apr 2016
Rice	63 464	75 687	74 729	144 600	180 614	146 567	150 017	198 101	166 626	136 007	171 472	161 415	272 877	227 955	170 868	170,888	195,240	57 682
Wheat flour	55 176	78 555	134 425	128 263	171 442	151 555	169 583	178 345	176 821	169 208	240 247	249 080	258 679	268,491	183 058	284 230	318,868	57 438
Pasta	8 544	11 071	26 702	35 425	29 273	38,749	39 153	52 815	41 331	38 441	86 372	102 373	184,849	337 878	134 311	176,951	155 360	20 223

Figure 50: Total Cereal Imports (Berbera, Bossaso and Mogadishu)



* Bossaso data is up to April and Berbera data is up to March 2016. Elman (Mogadishu) is up to November 2015. Mogadishu data (Elmaan Port) for 2013 includes only January - March imports.