

Market DataUpdate



Food Security and Nutrition
Analysis Unit - Somalia



May Data 2015 (Issued June 18, 2015)

Highlights

Inflation:

SoSh (Somali shilling)-using areas: In the month of May, the Consumer Price Index (CPI) remained stable in the South, but declined (3%) in Central and Northeast on account of cereal prices declines. Compared to a year ago (May 2014), the CPI remained relatively stable in Northeast but it has dropped by 8 - 9 percent in Central and South as a result of cereal price decrease. **SISh (Somaliland shilling)-using areas:** The CPI decreased by four percent month-on-month and by nine percent year-on-year due to declines in cereal prices.

Exchange rate:

SoSh-using areas: The exchange rates between SoSh and the United States Dollar (USD) indicated relative stability or marginal monthly changes (1-2%) in May. The SoSh depreciated compared to a year ago across all areas, most significantly (12%) in Banadir due to injection of fake Somali shilling notes into the market as well as reduced/ intermittent supply of dollars through remittances. **SISh-using areas:** The SISh depreciated against the USD by two percent month-on-month and by five percent year-on-year.

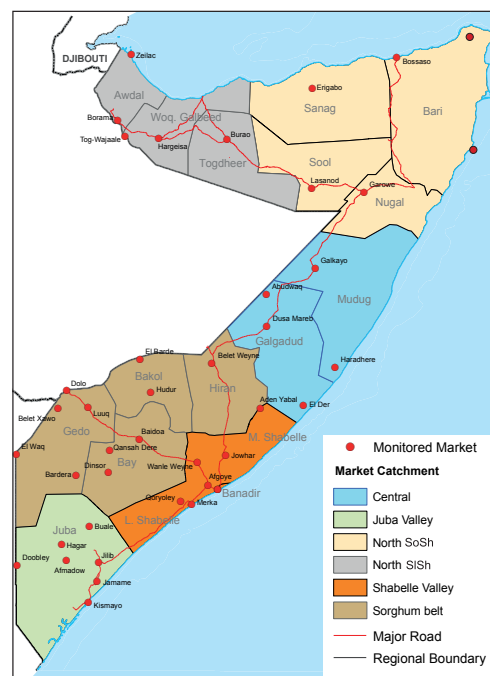
Local grain prices remained relatively stable or changed (increased/decreased) by less than 10 percent in May in most regions of the country month-on-month. Compared to a year ago, cereal prices were lower (10-22%) in most regions. Significant (22%) yearly price increase was recorded in Banadir likely attributable to increased demand for cereals in view of recent inflow of repatriated refugees from Yemen into the Mogadishu-city.

Prices of imported food (rice, sugar, vegetable oil, wheat flour) mostly exhibited relative stability or mild changes in local currency terms month-on-month in most regions of the country. Annual price comparison also indicates similar trends for most food imports in most parts of the country except in Bay and Bakool where prices declined moderately (11 - 14%).

Livestock prices (for all species) showed mild monthly changes (increase/decrease) in May in most regions of the country, while prices of milk (camel and cattle) declined, most significantly in Middle Shabelle (21-30%), due to improved milk supply. Annual comparison indicates reduced values for most livestock species as well as for milk in most markets.

Labor (unskilled) wages remained relatively stable or increased at mild rates (less than 10%) month-on-month in most regions of the country. Annual comparison mostly indicates mild changes in labor wage rates apart from a significant decline (33%) in Bakool, particularly in El-Berde district. This is a result of reduced economic/trade activities in the district on account of continued siege in the region (Huduur,Wajid), which has indirectly affected El berde by cutting off primary supply routes (Bay and Banadir) of commercial goods.

Terms of Trade (ToT) between daily labor wage and local cereals remained stable or changed by 1kg/daily labour wage month-on-month in most parts of the country. The ToT between local quality goat and cereals declined in most regions of the country due to reduced prices of local quality goat. Annual comparison indicates relative stability in ToTs between daily labor wage and local cereals in most regions, while ToT between local quality goat and cereals have dropped in most regions of the country as a result of lower local quality goat prices compared to a year ago.



This Market Data Update is a monthly report that presents analysis of market information and is produced regularly as part of the monthly monitoring process.

The weekly price data is collected from 48 main markets and 51 rural markets throughout Somalia since 1995.

Market analysis is an integral part of all of FSNAU's annual food security projections and seasonal technical reports (Technical Reports on FSNAU Post Gu and Post Deyr Analysis).

Detailed market data are available online on www.fsnau.org/ids.

Siege-affected towns (Bulo Burto, Hudur and Wajid)

Labor (unskilled) wages decreased mildly month-on-month in Bulo Burto and Hudur (3-7%) while it increased significantly (by 29%) in Wajid due to increased offloading activities of humanitarian aid for Wajid. Annual comparison indicated a moderate increase in wage rates in Hudur (26%) as a result of relatively improved security conditions in the region.

Terms of Trade (ToT) between daily labor wage and local cereals as well as between local quality goat and cereals remained relatively stable month-on-month in most markets apart from Wajid where the ToT local quality goat and cereals increased due to increase in local quality goat prices. Compared to a year ago, the ToTs have increased in Hudur due to decrease in cereal prices and/or increased labor wages and goat prices.

Local grains prices increased mildly (1-7%) month-on-month in all the three markets.

Prices of imported food items (rice, sugar, vegetable oil, wheat flour) mostly changed at mild rates, apart from Wajid, where prices for most food imports increased by 14-17 percent month-on-month.

National Trends: CPI, Exchange Rates, Cereal Prices and Relative Purchasing Power

Table 1: ToT between Cereals (kg) and Daily Labour Wage Rate, by Region

Regions	May 2015 (Kg)	% change from		
		Apr 2015	May 2014	May Average (2010-2014)
Banadir/Mogadishu	12	-8%	-45%	-8%
Bay	17	6%	0%	13%
Bakool	3	-25%	-25%	-50%
Gedo	17	-6%	21%	21%
Juba	9	0%	-13%	-13%
Shabelle	8	0%	14%	0%
Northwest	10	0%	11%	43%
Northeast	9	0%	13%	50%
Central	5	0%	25%	67%

Figure 1: Wheat Prices: Mogadishu and Bossaso Markets

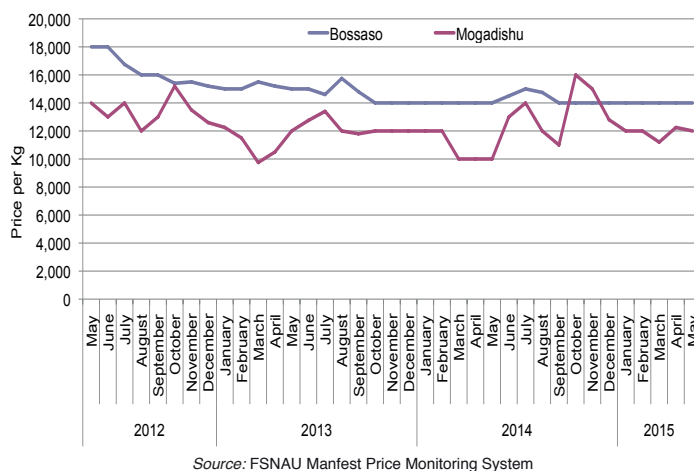


Figure 2: Terms of Trade Between Wage Rates and Selected Cereals

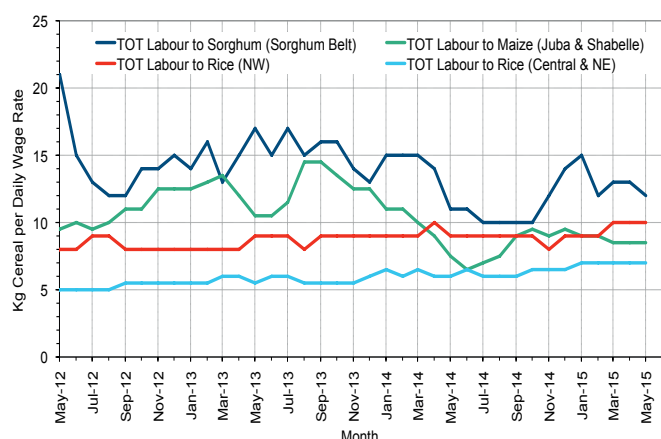


Figure 3: Monthly Exchange Rate for Selected Regions (SoSh and SiSh to USD)

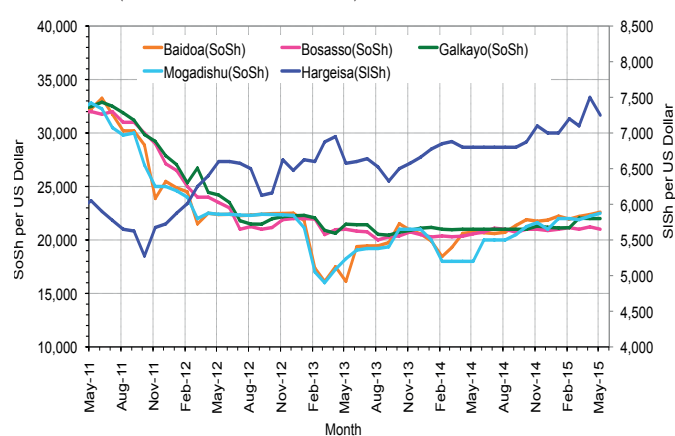


Figure 4: Monthly Trends in Consumer Price Index (CPI, March 2007=100)

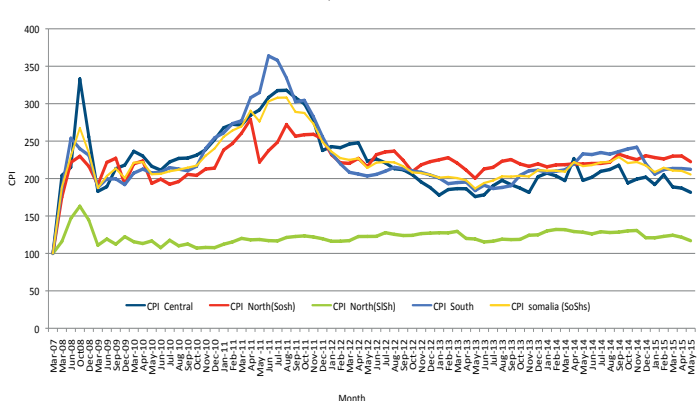
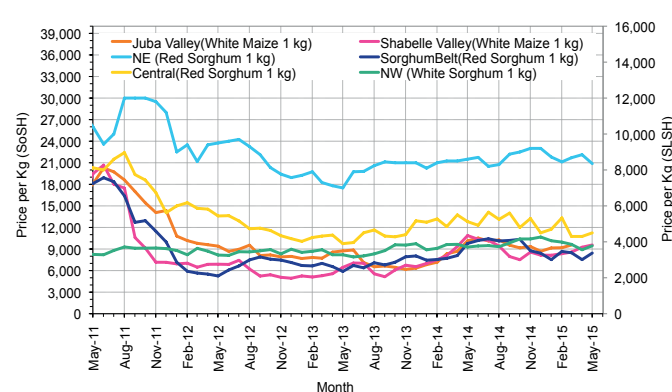


Figure 5: Monthly Trends in Local Cereal Prices



Regional analysis: Juba Regions

Indicator	5-Year Average (2010-2014)	May-14	Apr-15	May-15 Nominal Price	May-15 Real (Deflated) Price	% Change Previous Month	% Change Same Month Previous Year	% Change 5-year avrg (2010-2014)
Imported Commodities Prices								
Diesel 1 litre	30,868	26,714	24,857	25,857	12,078	4%	-3%	-16%
Imported Red Rice 1kg	19,780	17,000	16,000	16,000	7,436	0%	-6%	-19%
Petrol 1 litre	32,195	28,000	28,000	28,357	13,256	1%	1%	-12%
Sugar	23,021	16,179	16,893	16,857	7,839	0%	4%	-27%
Vegetable Oil 1 litre	42,575	32,571	30,000	31,500	14,736	5%	-3%	-26%
Wheat Flour 1kg	18,591	15,714	15,857	15,714	7,301	-1%	0%	-15%
Wheat Grain 1kg	16,400	-	-	-	-	-	-	-
Cereal Prices								
Red Sorghum 1kg	8,333	10,000	7,500	8,000	3,668	7%	-20%	-4%
White Maize 1kg	11,287	10,343	9,761	9,675	4,457	-1%	-6%	-14%
Livestock & Livestock Product Prices								
Camel Local Quality (Head)	9,441,258	10,823,393	8,587,214	8,617,857	4,058,826	0%	-20%	-9%
Cattle Local Quality (Head)	3,994,058	4,438,833	3,843,214	3,955,714	1,863,003	3%	-11%	-1%
Fresh Camel Milk 1 litre	22,144	23,500	18,917	19,167	8,927	1%	-18%	-13%
Goat Export Quality (Head)	1,411,663	1,492,179	1,302,857	1,225,179	576,947	-6%	-18%	-13%
Goat Local Quality (Head)	896,985	970,857	858,679	854,107	402,176	-1%	-12%	-5%
Other Essential Items								
Charcoal 50kg	87,990	91,429	80,536	81,429	38,252	1%	-11%	-7%
Cowpeas 1 kg	24,774	20,821	26,714	25,432	11,878	-5%	22%	3%
Unskilled Labor Wage Rate	84,903	78,500	86,750	87,536	41,129	1%	12%	3%
Firewood Bundle	8,259	11,500	6,857	7,143	3,264	4%	-38%	-14%
Local Sesame Oil 1 litre	79,114	83,786	74,500	71,143	33,408	-5%	-15%	-10%
Exchange Rate (Somali Shilling per USD)	24,904	20,813	22,207	22,171	10,342	0%	7%	-11%
Terms of Trade								
Labour Wage (Daily)/ Cereal (Maize(Kg))	8	8	9	9	-	0%	13%	13%
Local Goat (Head)/ Cereal (Maize(Kg))	87	94	88	88	-	0%	-6%	1%
Price Indices								
Consumer Price Index	-	233	213	212	-	0%	-9%	-

Figure 6: Trends in Cereal Prices

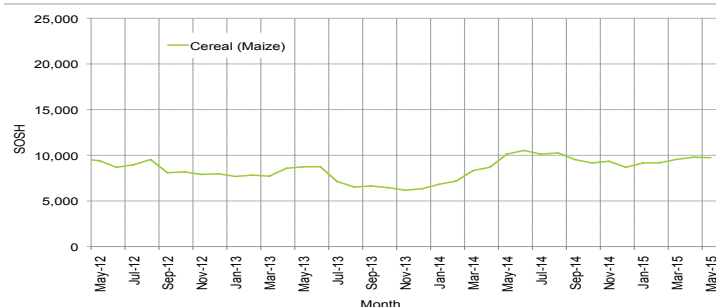


Figure 7: Trends in Wage Rates and Relative Purchasing Power

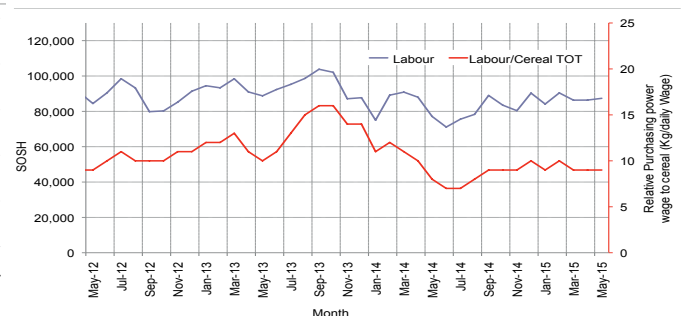


Figure 8: Imported Commodity Prices Compared to Exchange Rate

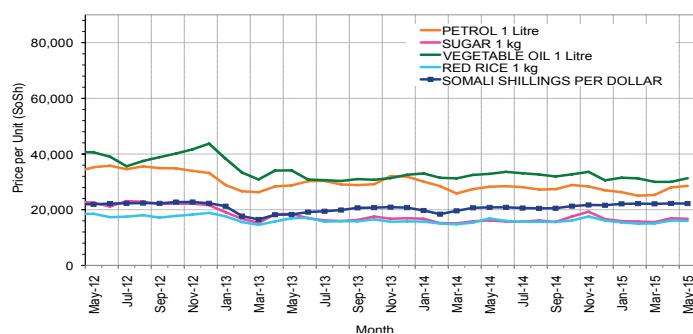


Figure 10: Exchange Rate

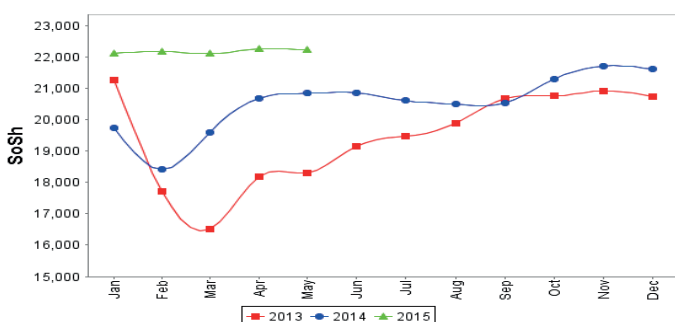


Figure 9: Goat Local Quality

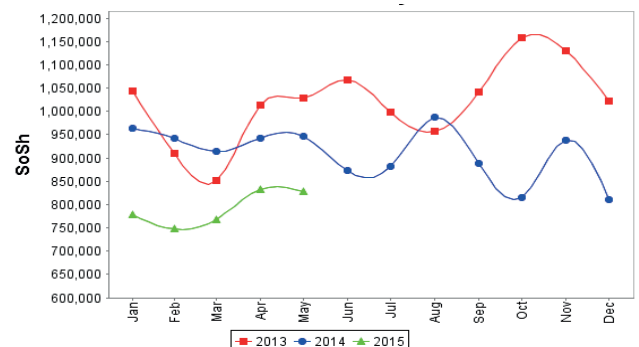
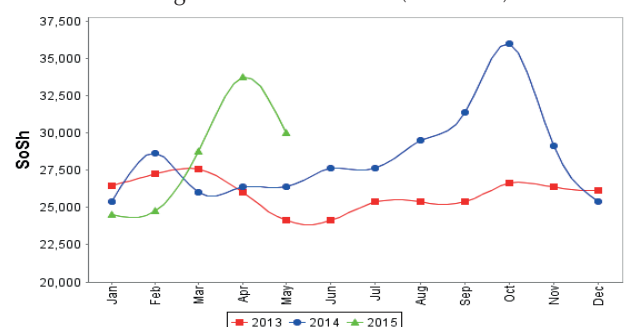


Figure 11: Water Drum (200 litres)



Regional analysis: Sorghum Belt Regions (Bay, Bakool, Gedo and Hiran)

Indicator	5-Year Average (2010-2014)	May-14	Apr-15	May-15 Nominal Price	May-15 Real (Deflated) Price	% Change Previous Month	% Change Same Month Previous Year	% Change 5-year avrg (2010-2014)
Imported Commodities Prices								
Diesel 1 litre	33,713	32,159	29,818	29,045	13,580	-3%	-10%	-14%
Imported Red Rice 1kg	21,610	19,568	18,727	18,727	8,720	0%	-4%	-13%
Petrol 1 litre	32,935	28,725	30,909	30,386	14,212	-2%	6%	-8%
Sugar	24,733	20,466	19,114	18,795	8,752	-2%	-8%	-24%
Vegetable Oil 1 litre	46,502	41,023	37,705	37,159	17,402	-1%	-9%	-20%
Wheat Flour 1kg	19,523	19,136	18,318	17,955	8,357	-2%	-6%	-8%
Wheat Grain 1kg	12,696	14,188	22,000	20,125	9,379	-9%	42%	59%
Cereal Prices								
Red Sorghum 1kg	9,551	9,775	7,525	8,302	3,810	10%	-15%	-13%
White Maize 1kg	11,446	12,181	9,136	9,859	4,543	8%	-19%	-14%
Livestock & Livestock Product Prices								
Camel Local Quality (Head)	11,245,259	14,413,889	12,430,833	12,116,250	5,706,535	-3%	-16%	8%
Cattle Local Quality (Head)	3,261,151	4,125,000	3,582,143	3,832,143	1,804,802	7%	-7%	18%
Fresh Camel Milk 1 litre	19,243	20,950	17,975	16,375	7,612	-9%	-22%	-15%
Goat Export Quality (Head)	1,463,872	1,671,250	1,559,773	1,490,682	701,997	-4%	-11%	2%
Goat Local Quality (Head)	920,959	983,955	923,409	878,682	413,751	-5%	-11%	-5%
Other Essential Items								
Charcoal 50kg	143,568	151,091	173,000	170,225	80,074	-2%	13%	19%
Cowpeas 1 kg	26,462	26,225	28,114	28,136	13,152	0%	7%	6%
Unskilled Labor Wage Rate	98,772	111,182	114,568	114,091	53,636	0%	3%	16%
Firewood Bundle	6,133	7,159	6,909	6,909	3,154	0%	-3%	13%
Local Sesame Oil 1 litre	78,746	93,750	80,179	79,643	37,411	-1%	-15%	1%
Exchange Rate (Somali Shilling per USD)	25,135	20,514	22,189	22,418	10,459	1%	9%	-11%
Terms of Trade								
Labour Wage (Daily)/ Cereal (Sorghum(Kg))	12	11	15	14	-	-7%	27%	17%
Local Goat (Head)/ Cereal (Sorghum(Kg))	128	101	123	106	-	-14%	5%	-17%
Price Indices								
Consumer Price Index	-	233	213	212	-	0%	-9%	-

Figure 12: Trends in Cereal Prices

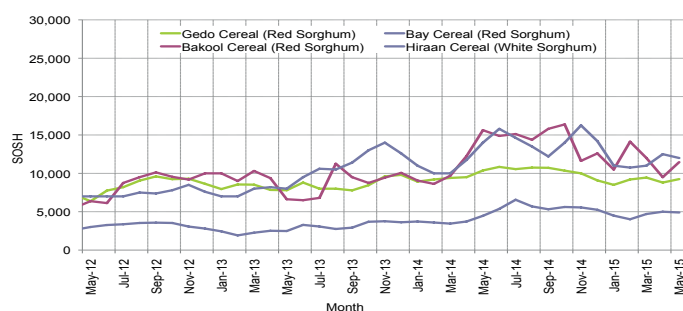


Figure 14: Imported Commodity Prices Compared to Exchange Rate

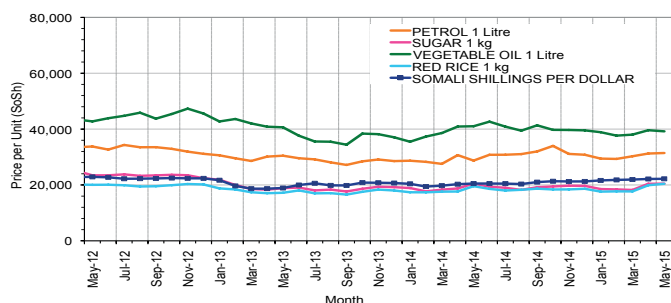


Figure 16: Exchange Rate

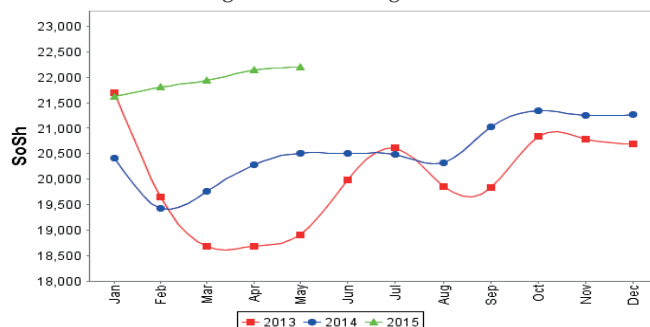


Figure 13: Trends in Wage Rates and Relative Purchasing Power

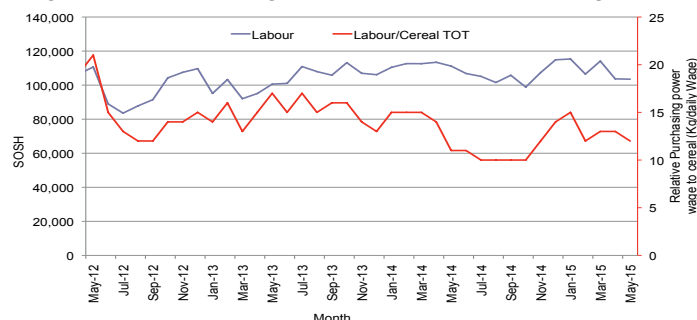


Figure 15: Goat Local Quality

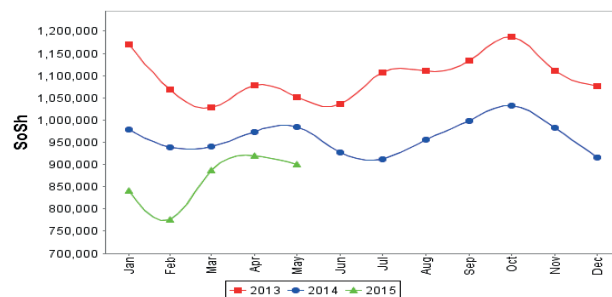
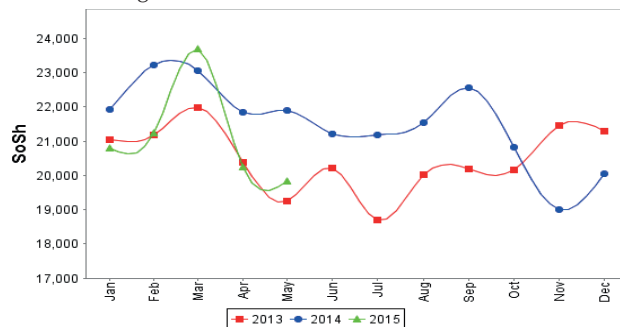


Figure 17: Water Drum (200 litres)



Regional analysis: Shabelle Regions

Indicator	5-Year Average (2010-2014)	May-14	Apr-15	May-15 Nominal Price	May-15 Real (Deflated) Price	% Change Previous Month	% Change Same Month Previous	% Change 5-year avg (2010-2014)
Imported Commodities Prices								
Diesel 1 litre	30,320	28,100	22,958	24,125	11,263	5%	-14%	-20%
Imported Red Rice 1kg	18,933	17,208	15,708	16,000	7,436	2%	-7%	-15%
Petrol 1 litre	30,163	29,400	26,833	27,333	12,774	2%	-7%	-9%
Sugar	22,741	18,292	16,250	17,000	7,907	5%	-7%	-25%
Vegetable Oil 1 litre	36,900	32,083	29,292	27,833	13,009	-5%	-13%	-25%
Wheat Flour 1kg	17,066	15,833	15,500	15,917	7,397	3%	1%	-7%
Wheat Grain 1kg	15,166	21,000	27,000	21,000	9,791	-22%	0%	38%
Cereal Prices								
Red Sorghum 1kg	10,862	10,473	10,833	11,264	5,205	4%	8%	4%
White Maize 1kg	10,587	10,872	9,252	9,567	4,406	3%	-12%	-10%
Livestock & Livestock Product Prices								
Camel Local Quality (Head)	14,911,334	20,075,000	16,740,000	16,588,333	7,812,843	-1%	-17%	11%
Cattle Local Quality (Head)	5,015,416	7,456,250	5,700,000	5,595,000	2,635,090	-2%	-25%	12%
Fresh Camel Milk 1 litre	18,904	21,500	25,833	19,083	8,888	-26%	-11%	1%
Goat Export Quality (Head)	1,686,854	1,918,750	1,806,875	1,803,125	849,154	0%	-6%	7%
Goat Local Quality (Head)	1,175,916	1,347,500	1,384,583	1,295,417	610,029	-6%	-4%	10%
Other Essential Items								
Charcoal 50kg	120,544	121,250	128,250	130,542	61,384	2%	8%	8%
Cowpeas 1 kg	23,285	21,653	22,190	22,683	10,583	2%	5%	-3%
Unskilled Labor Wage Rate	71,916	77,917	74,375	78,750	36,990	6%	1%	10%
Firewood Bundle	5,566	5,000	6,875	7,333	3,354	7%	47%	32%
Local Sesame Oil 1 litre	58,141	68,750	56,667	56,583	26,550	0%	-18%	-3%
Exchange Rate (Somali Shilling per USD)	25,202	20,783	22,047	22,369	10,436	1%	8%	-11%
Terms of Trade								
Labour Wage (Daily)/ Cereal (Maize(Kg))	8	7	8	8	-	0%	14%	0%
Local Goat (Head)/ Cereal (Maize(Kg))	134	124	150	135	-	-10%	9%	1%
Price Indices								
Consumer Price Index	-	233	213	212	-	0%	-9%	-

Figure 18: Trends in Cereal Prices

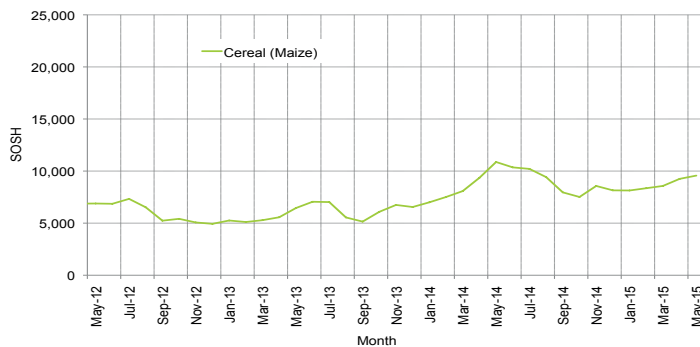


Figure 19: Trends in Wage Rates and Relative Purchasing Power

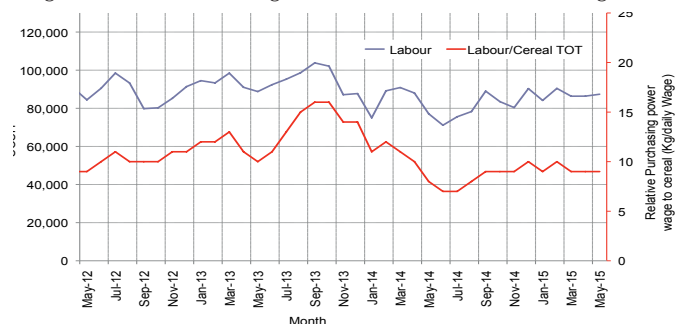


Figure 20: Imported Commodity Prices Compared to Exchange Rate

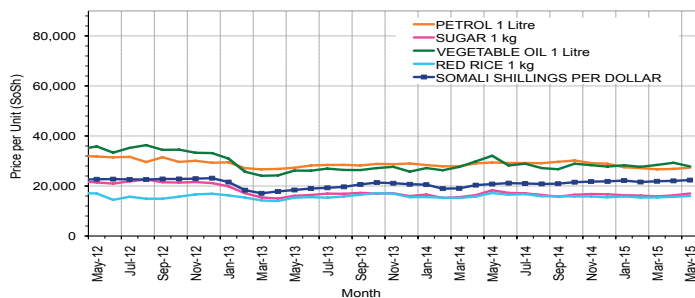


Figure 22: Exchange Rate

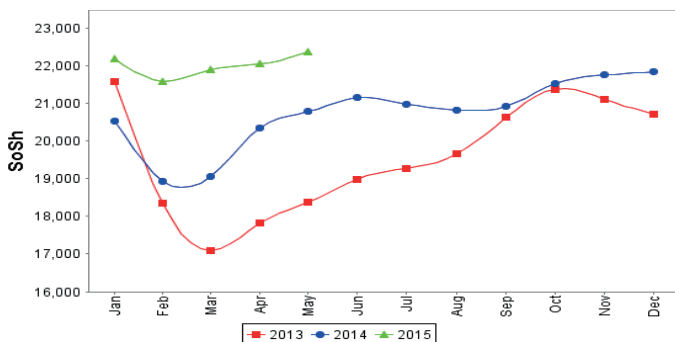


Figure 21: Goat Local Quality

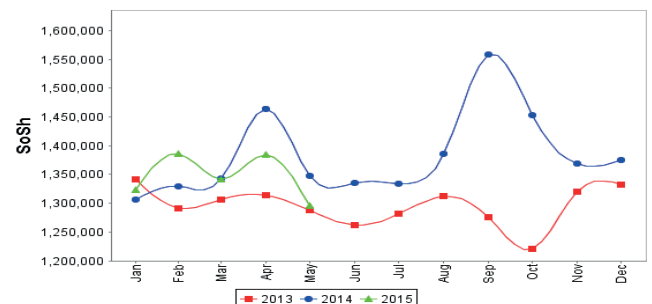
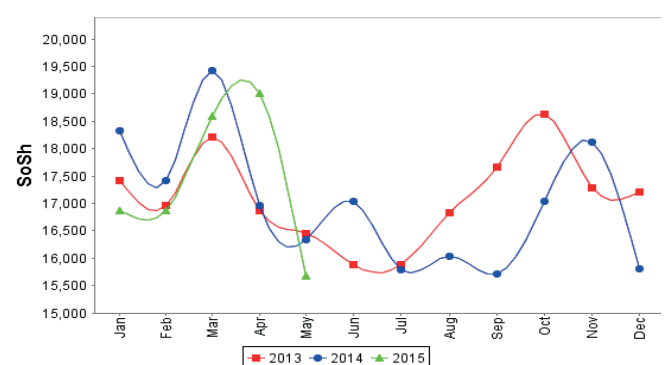


Figure 23: Water Drum (200 litres)



Regional analysis: Banadir Region

Indicator	5-Year Average (2010-2014)	May-14	Apr-15	May-15 Nominal Price	May-15 Real (Deflated) Price	% Change Previous Month	% Change Same Month Previous Year	% Change 5-year avrg (2010-2014)
Imported Commodities Prices								
Diesel 1 litre	25,250	20,458	19,125	16,250	7,554	-15%	-21%	-36%
Imported Red Rice 1kg	16,810	12,896	12,667	12,667	5,866	0%	-2%	-25%
Petrol 1 litre	25,545	21,125	20,583	20,250	9,438	-2%	-4%	-21%
Sugar	20,755	14,438	13,917	13,833	6,415	-1%	-4%	-33%
Vegetable Oil 1 litre	34,260	24,729	23,125	23,208	10,831	0%	-6%	-32%
Wheat Flour 1kg	14,685	12,325	12,333	12,625	5,846	2%	2%	-14%
Wheat Grain 1kg	10,585	7,542	12,333	12,750	5,905	3%	69%	20%
Cereal Prices								
Red Sorghum 1kg	9,029	7,388	8,596	8,825	4,056	3%	19%	-2%
White Maize 1kg	10,461	8,925	10,104	10,896	5,032	8%	22%	4%
Livestock & Livestock Product Prices								
Camel Local Quality (Head)	17,000,000	-	-	-	-	-	-	-
Cattle Local Quality (Head)	3,610,000	-	-	-	-	-	-	-
Fresh Camel Milk 1 litre	20,076	22,167	22,125	21,667	10,105	-2%	-2%	8%
Goat Export Quality (Head)	2,249,000	3,000,000	2,000,000	2,250,000	1,059,628	13%	-25%	0%
Goat Local Quality (Head)	1,925,000	2,468,750	1,731,250	1,787,500	841,795	3%	-28%	-7%
Other Essential Items								
Charcoal 50kg	177,128	192,458	193,792	203,583	95,786	5%	6%	15%
Cowpeas 1 kg	22,818	15,708	21,750	20,517	9,563	-6%	31%	-10%
Unskilled Labor Wage Rate	94,458	108,125	100,833	102,917	48,373	2%	-5%	9%
Firewood Bundle	7,031	8,100	8,000	8,000	3,668	0%	-1%	14%
Local Sesame Oil 1 litre	59,295	69,500	63,042	60,083	28,199	-5%	-14%	1%
Exchange Rate (Somali Shilling per USD)	25,091	20,192	22,317	22,517	10,505	1%	12%	-10%
Terms of Trade								
Labour Wage (Daily)/ Cereal (Maize(Kg))	10	12	10	9	-	-10%	-25%	-10%
Local Goat (Head)/ Cereal (Maize(Kg))	212	277	171	164	-	-4%	-41%	-23%
Price Indices								
Consumer Price Index	-	233	213	212	-	0%	-9%	-

Figure 24: Trends in Cereal Prices

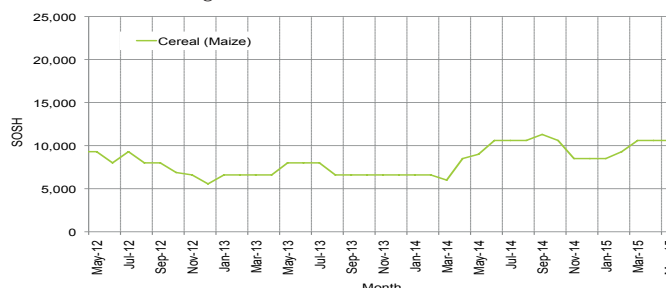


Figure 25: Bakara: Trends in Wage Rates and Relative Purchasing Power

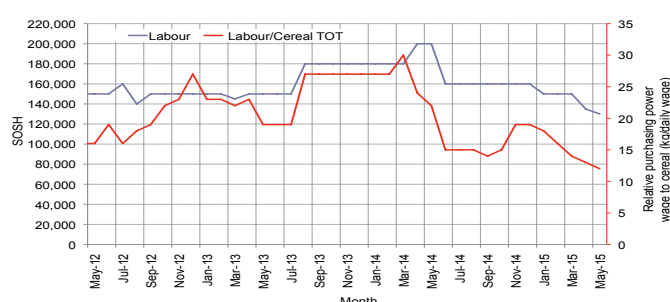


Figure 26: Imported Commodity Prices Compared to Exchange Rate

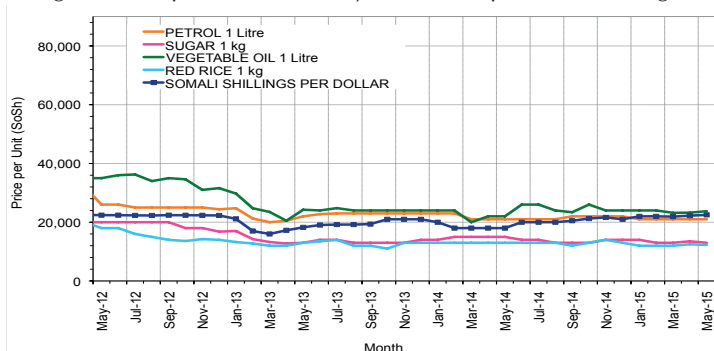


Figure 27: Goat Local Quality

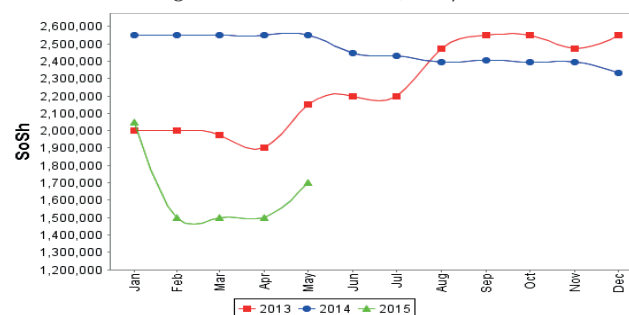


Figure 28: Exchange Rate

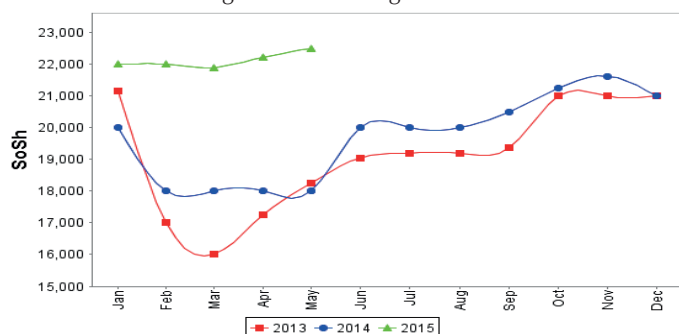
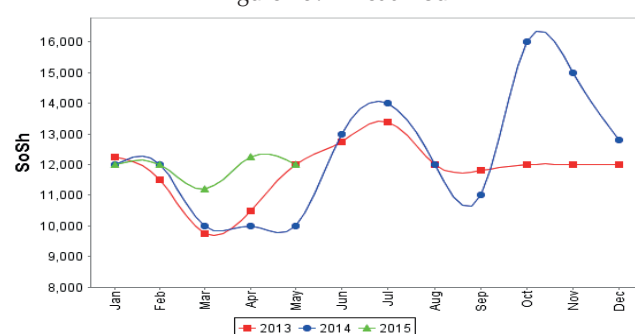


Figure 29: Wheat Flour



Regional analysis: Central Regions

Indicator	5-Year Average (2010-2014)	May-14	Apr-15	May-15 Nominal Price	May-15 Real (Deflated) Price	% Change Previous Month	% Change Same Month Previous Year	% Change 5-year avrg (2010-2014)
Imported Commodities Prices								
Diesel 1 litre	31,336	27,200	23,600	21,100	11,521	-11%	-22%	-33%
Imported Red Rice 1kg	22,730	19,000	17,150	17,450	9,510	2%	-8%	-23%
Petrol 1 litre	27,814	24,300	23,650	22,650	12,374	-4%	-7%	-19%
Sugar	26,906	20,450	19,000	18,800	10,254	-1%	-8%	-30%
Vegetable Oil 1 litre	48,880	41,250	37,650	37,250	20,415	-1%	-10%	-24%
Wheat Flour 1kg	18,962	15,900	15,900	16,050	8,739	1%	1%	-15%
Wheat Grain 1kg	16,212	15,333	18,167	17,500	9,538	-4%	14%	8%
Cereal Prices								
Red Sorghum 1kg	13,562	12,813	10,750	11,250	6,096	5%	-12%	-17%
White Maize 1kg	14,646	17,917	12,600	12,800	6,949	2%	-29%	-13%
Livestock & Livestock Product Prices								
Camel Local Quality (Head)	9,539,166	11,381,250	12,275,000	13,187,500	7,262,796	7%	16%	38%
Cattle Local Quality (Head)	2,525,000	-	-	-	-	-	-	-
Fresh Camel Milk 1 litre	34,178	27,400	29,600	24,750	13,531	-16%	-10%	-28%
Goat Export Quality (Head)	1,453,158	1,401,000	1,418,750	1,357,500	747,531	-4%	-3%	-7%
Goat Local Quality (Head)	1,164,500	1,100,500	952,500	889,000	489,509	-7%	-19%	-24%
Other Essential Items								
Charcoal 50kg	199,750	187,000	163,500	156,500	86,091	-4%	-16%	-22%
Cowpeas 1 kg	26,732	17,450	21,950	21,150	11,548	-4%	21%	-21%
Unskilled Labor Wage Rate	86,480	83,500	85,000	88,000	48,365	4%	5%	2%
Firewood Bundle	33,100	32,250	35,000	34,000	18,625	-3%	5%	3%
Local Sesame Oil 1 litre	91,390	89,450	91,000	90,250	49,604	-1%	1%	-1%
Exchange Rate (Somali Shilling per USD)	25,759	20,790	21,760	21,985	12,008	1%	6%	-15%
Terms of Trade								
Labour Wage (Daily)/ Cereal (Rice(Kg))	3	4	5	5	-	0%	25%	67%
Local Goat (Head)/ Cereal (Rice(Kg))	53	58	56	51	-	-9%	-12%	-4%
Camel (Head)/Cereal (Kg)	447	599	716	756	-	6%	26%	69%
Price Indices								
Consumer Price Index	-	197	187	182	-	-3%	-8%	-

Figure 30: Trends in Cereal Prices

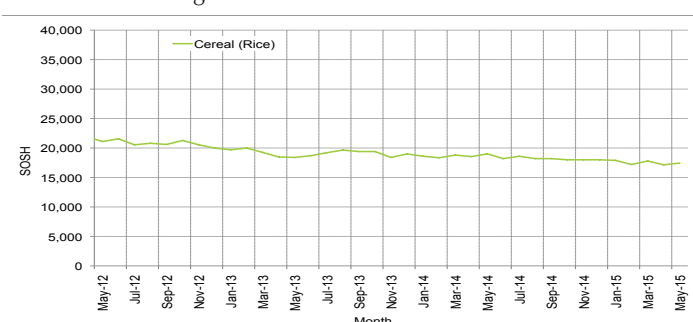


Figure 31: Trends in wage rates and relative purchasing power

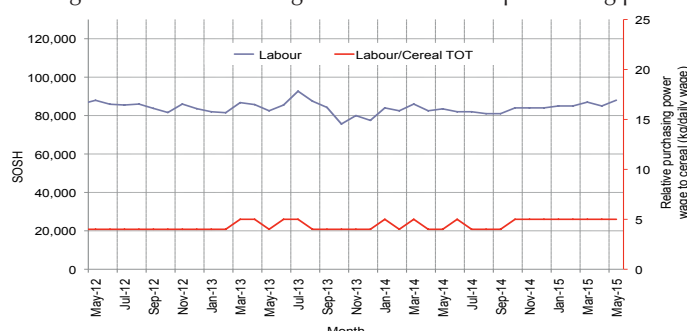


Figure 32: Imported Commodity Prices Compared to Exchange Rate

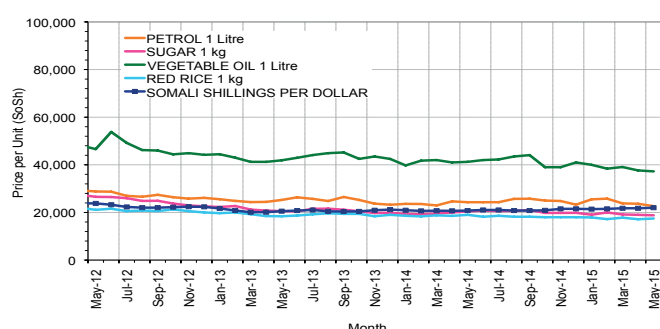


Figure 33: Goat Local Quality

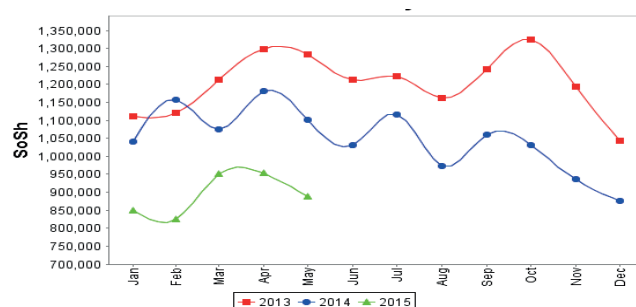


Figure 34: Exchange Rate

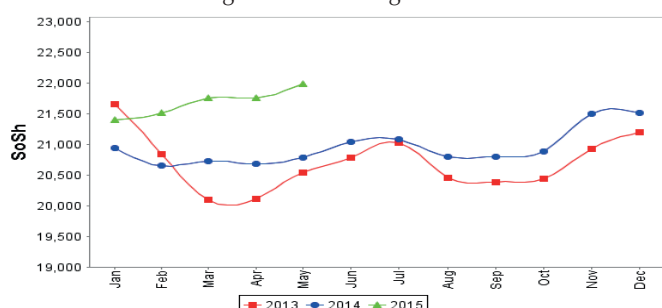
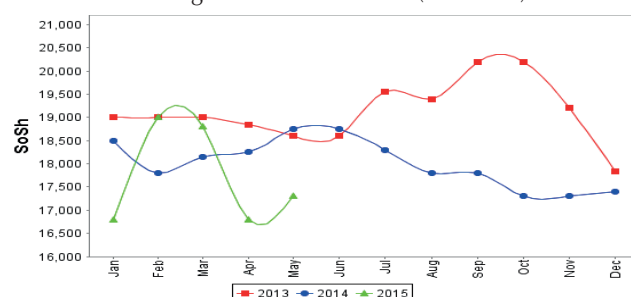


Figure 35: Water Drum (200 litres)



Regional analysis: Northeast Regions

Indicator	5-Year Average (2010-2014)	May-14	Apr-15	May-15 Nominal Price	May-15 Real Price (Deflated)	% Change Previous Month	% Change Same Month Previous Year	% Change 5-year avg (2010-2014)
Imported Commodities Prices								
Diesel 1 litre	26,881	22,563	16,125	17,375	7,710	8%	-23%	-35%
Imported Red Rice 1kg	19,402	15,000	14,875	14,750	6,530	-1%	-2%	-24%
Petrol 1 litre	23,772	20,250	17,375	18,313	8,132	5%	-10%	-23%
Sugar	23,325	16,938	16,375	16,438	7,289	0%	-3%	-30%
Vegetable Oil 1 litre	41,737	34,188	30,875	31,750	14,171	3%	-7%	-24%
Wheat Flour 1kg	17,495	14,500	14,250	14,063	6,221	-1%	-3%	-20%
Wheat Grain 1kg	25,855	21,375	21,000	21,375	9,508	2%	0%	-17%
Cereal Prices								
Red Sorghum 1kg	20,810	21,500	22,125	20,875	9,283	-6%	-3%	0%
White Maize 1kg	19,383	22,000	19,000	18,000	7,991	-5%	-18%	-7%
Livestock & Livestock Product Prices								
Camel Local Quality (Head)	14,579,582	15,806,250	14,700,000	14,950,000	6,719,797	2%	-5%	3%
Cattle Local Quality (Head)	7,502,000	8,375,000	8,500,000	8,250,000	3,708,204	-3%	-1%	10%
Fresh Camel Milk 1 litre	39,106	40,000	33,625	32,625	14,565	-3%	-18%	-17%
Goat Export Quality (Head)	1,476,050	1,537,500	1,362,500	1,387,500	623,569	2%	-10%	-6%
Goat Local Quality (Head)	1,424,000	1,470,000	1,282,500	1,280,625	575,530	0%	-13%	-10%
Other Essential Items								
Charcoal 50kg	344,537	383,750	378,750	374,375	168,178	-1%	-2%	9%
Cowpeas 1 kg	34,581	25,833	27,500	27,167	12,111	-1%	5%	-21%
Unskilled Labor Wage Rate	118,650	130,000	130,000	130,000	58,334	0%	0%	10%
Firewood Bundle	37,750	46,250	52,188	51,250	22,936	-2%	11%	36%
Local Sesame Oil 1 litre	91,271	96,250	93,750	94,375	42,321	1%	-2%	3%
Exchange Rate (Somali Shilling per USD)	25,961	20,781	21,131	21,313	9,480	1%	3%	-18%
Terms of Trade								
Labour Wage (Daily)/ Cereal (Rice(Kg))	6	9	9	9	-	0%	0%	50%
Local Goat (Head)/ Cereal (Rice(Kg))	75	98	86	87	-	1%	-11%	16%
Price Indices								
Consumer Price Index	-	219	230	222	-	-3%	1%	-

Figure 36: Trends in Cereal Prices

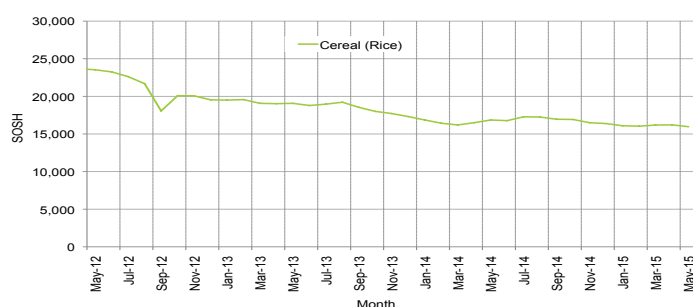


Figure 37: Trends in Wage Rates and Relative Purchasing Power

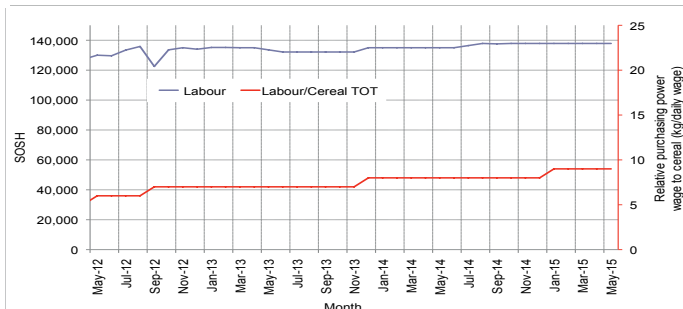


Figure 38: Imported Commodity Prices Compared to Exchange Rate

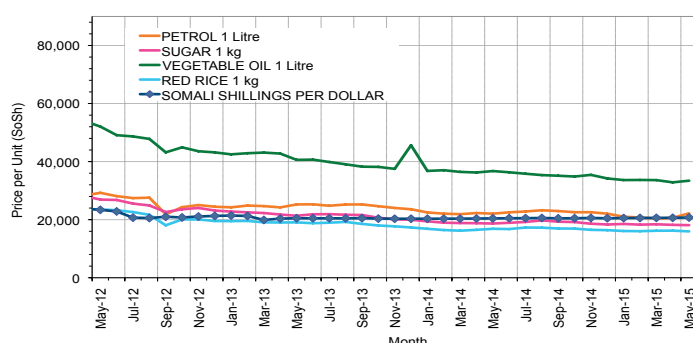


Figure 39: Goat Local Quality

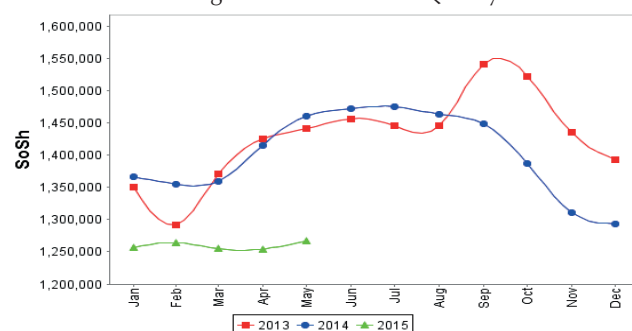


Figure 40: Exchange Rate

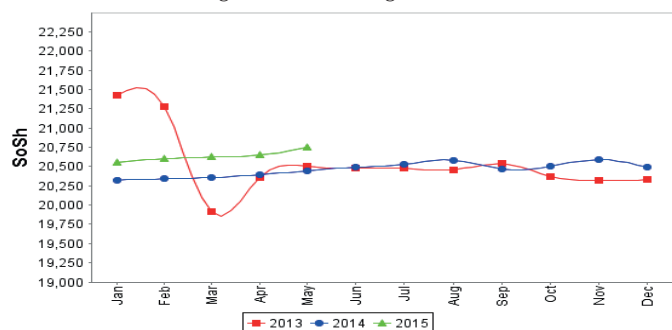
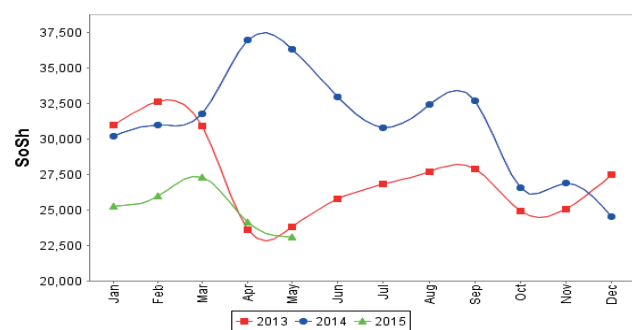


Figure 41: Water Drum (200 litres)



Regional analysis: Northwest Regions

Indicator	5-Year Average (2010-2014)	May-14	Apr-15	May-15 Nominal Price	May-15 Real Price (Deflated)	% Change Previous Month	% Change Same Month Previous Year	% Change 5-year avrg (2010-2014)
Imported Commodities Prices								
Diesel 1 litre	6,660	6,950	6,770	6,600	5,543	-3%	-5%	-1%
Imported Red Rice 1kg	4,939	5,050	5,020	5,060	4,226	1%	0%	2%
Petrol 1 litre	6,780	7,395	7,280	7,755	6,530	7%	5%	14%
Sugar	5,836	5,580	5,640	5,820	4,876	3%	4%	0%
Vegetable Oil 1 litre	11,189	12,233	12,680	12,700	10,758	0%	4%	14%
Wheat Flour 1kg	4,195	4,420	4,280	4,360	3,628	2%	-1%	4%
Wheat Grain 1kg	2,997	3,313	3,500	3,575	2,957	2%	8%	19%
Cereal Prices								
White Sorghum 1kg	3,303	3,710	3,560	3,780	3,132	6%	2%	14%
Yellow Maize 1kg	3,235	3,362	3,687	3,783	3,134	3%	13%	17%
Livestock & Livestock Product Prices								
Camel Local Quality (Head)	2,572,508	3,491,667	4,233,333	4,380,000	3,744,700	3%	25%	70%
Cattle Local Quality (Head)	1,793,733	2,510,000	2,233,333	2,293,333	1,960,647	3%	-9%	28%
Fresh Camel Milk 1 litre	5,437	5,700	6,275	7,250	6,099	16%	27%	33%
Goat Export Quality (Head)	406,650	467,850	434,225	442,450	378,185	2%	-5%	9%
Goat Local Quality (Head)	309,062	342,150	317,750	318,750	272,424	0%	-7%	3%
Other Essential Items								
Charcoal 50kg	38,380	47,150	52,800	52,025	44,380	-1%	10%	36%
Cowpeas 1 kg	9,451	9,431	11,750	11,594	9,813	-1%	23%	23%
Unskilled Labor Wage Rate	38,200	47,000	51,200	51,200	43,675	0%	9%	34%
Firewood Bundle	2,948	3,833	3,833	4,250	3,534	11%	11%	44%
Local Sesame Oil 1 litre	26,656	33,250	32,000	32,938	28,061	3%	-1%	24%
Exchange Rate (Somaliland Shilling per USD)	6,695	6,920	7,140	7,280	6,124	2%	5%	9%
Terms of Trade								
Labour Wage (Daily)/ Cereal (Rice(Kg))	7	9	10	10	-	0%	11%	43%
Local Goat (Head)/ Cereal (Rice(Kg))	62	68	63	63	-	0%	-7%	2%
Price Indices								
Consumer Price Index	-	128	122	117	-	-4%	-9%	-

Figure 42: Trends in Cereal Prices

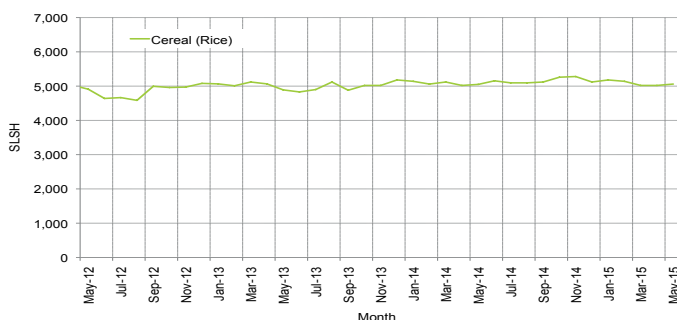


Figure 43: Trends in Wage Rates and Relative Purchasing Power

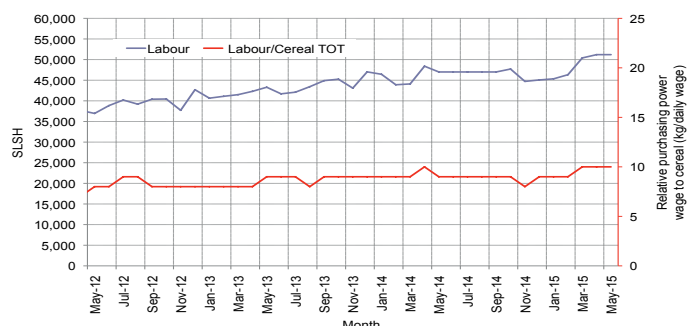


Figure 44: Imported Commodity Prices Compared to Exchange Rate

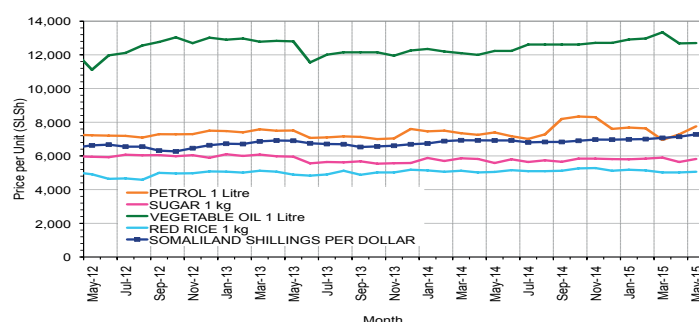


Figure 45: Goat Local Quality

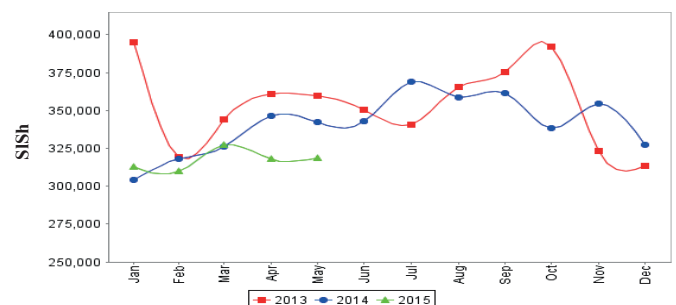


Figure 46: Exchange Rate

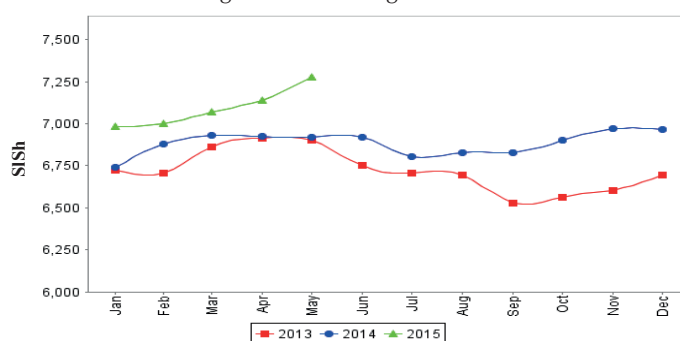
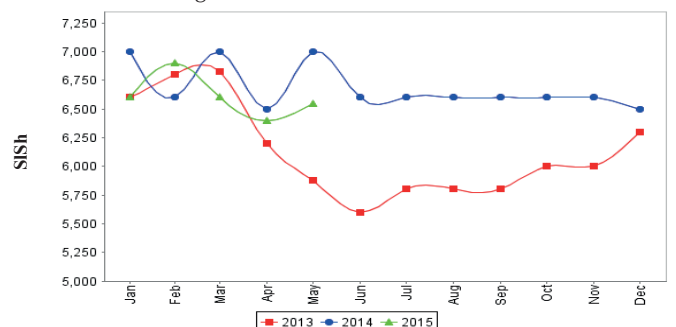


Figure 47: Water Drum (200 litres)



Trends in Livestock Exports

Table 1: Berbera Livestock Exports (Number of Heads)

	1999	2000	2001	2002	2003	2004	2005	2006	2007	2008	2009	2010	2011	2012	2013	2014
Shoats	2,048,136	1,601,083	51,546	341,711	563,107	859,404	1,023,795	1,017,242	1,350,054	1,219,519	1,556,003	2,584,810	3,104,684	3,219,584	2,888,955	3,089,592
Cattle	89,967	63,263	20,973	37,547	84,312	131,852	148,151	85,631	88,143	80,051	88,005	133,021	150,934	190,354	20,875	252,597
Camel	37,430	16,984	3,473	18,864	21,874	5,147	5,069	22,810	14,245	26,515	20,206	92,651	107,281	102,664	75,728	64,578

Figure 48: Berbera Livestock Exports (Number of Heads)

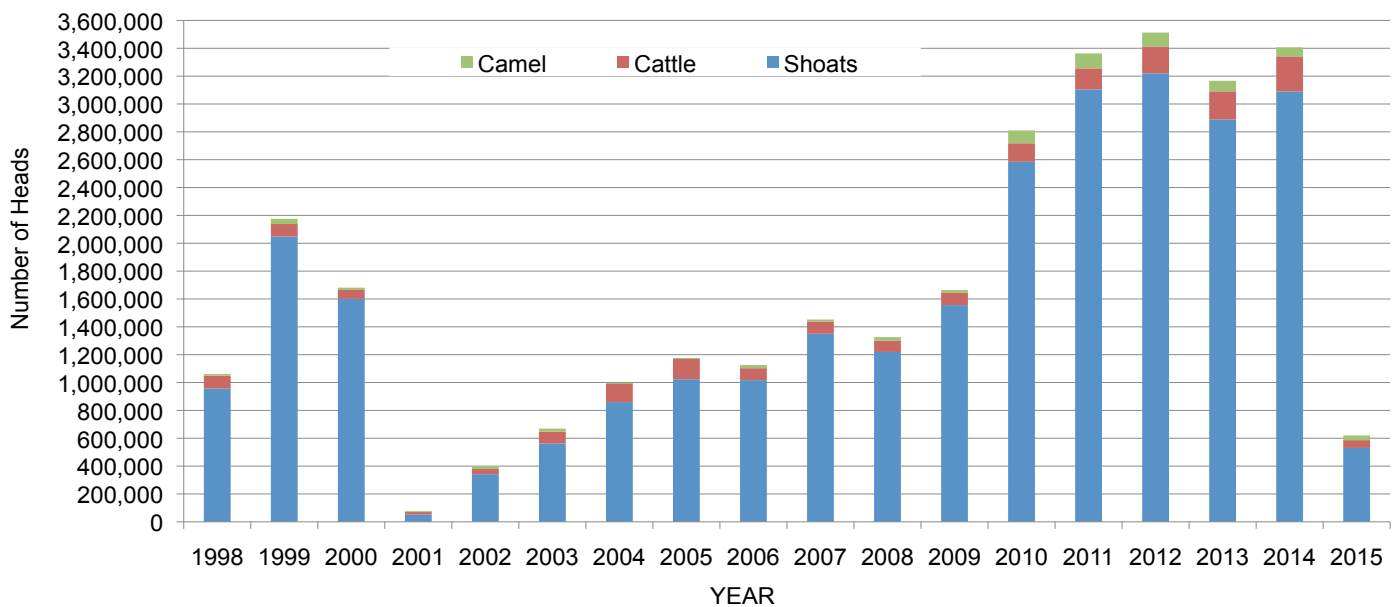
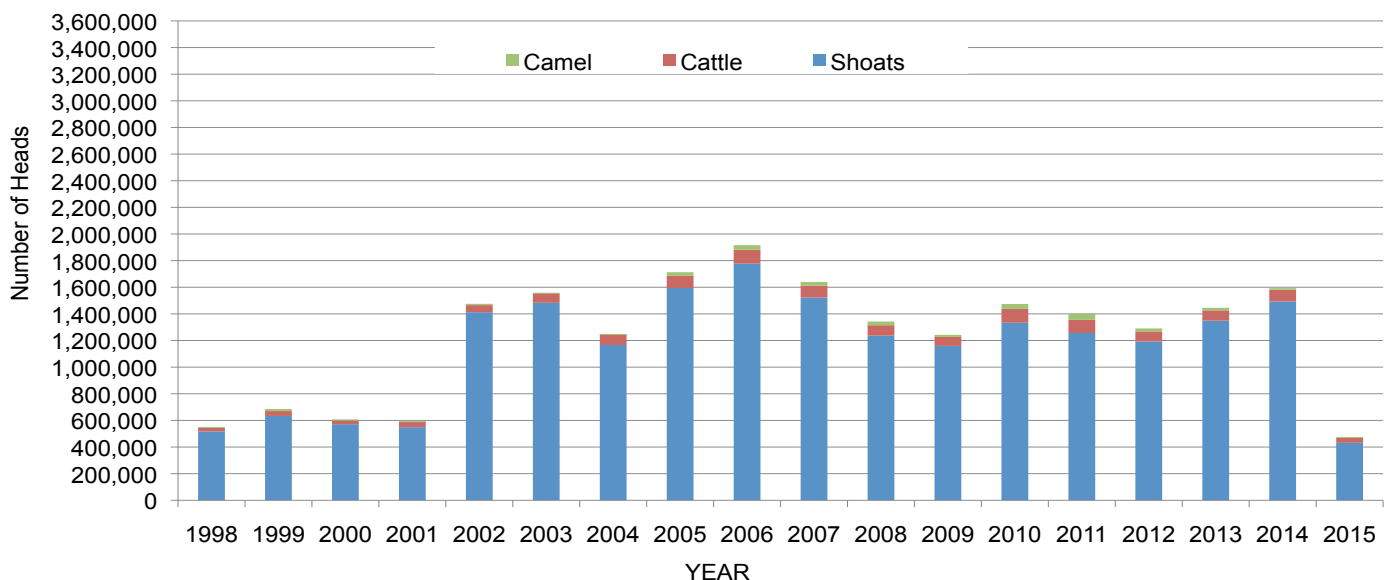


Table 2: Bossaso Livestock Exports (Number of Heads)

	1999	2000	2001	2002	2003	2004	2005	2006	2007	2008	2009	2010	2011	2012	2013	2014	Jan-Apr 2015
Shoats	633,669	571,455	548,853	1,412,450	1,483,409	1,166,480	1,594,859	1,777,283	1,522,855	1,236,775	1,159,454	1,333,478	1,256,535	1,192,197	1,349,123	1,493,111	431,641
Cattle	36,586	27,604	42,248	53,313	71,328	79,994	91,910	104,595	89,190	78,046	67,385	103,808	99,058	76,043	77,353	87,759	39,280
Camel	15,544	8,177	1,950	9,720	4,259	2,488	26,109	33,724	27,580	27,639	15,331	36,865	45,878	22,288	19,032	12,251	3,306

Figure 49: Bossaso Livestock Exports (Number of Heads)

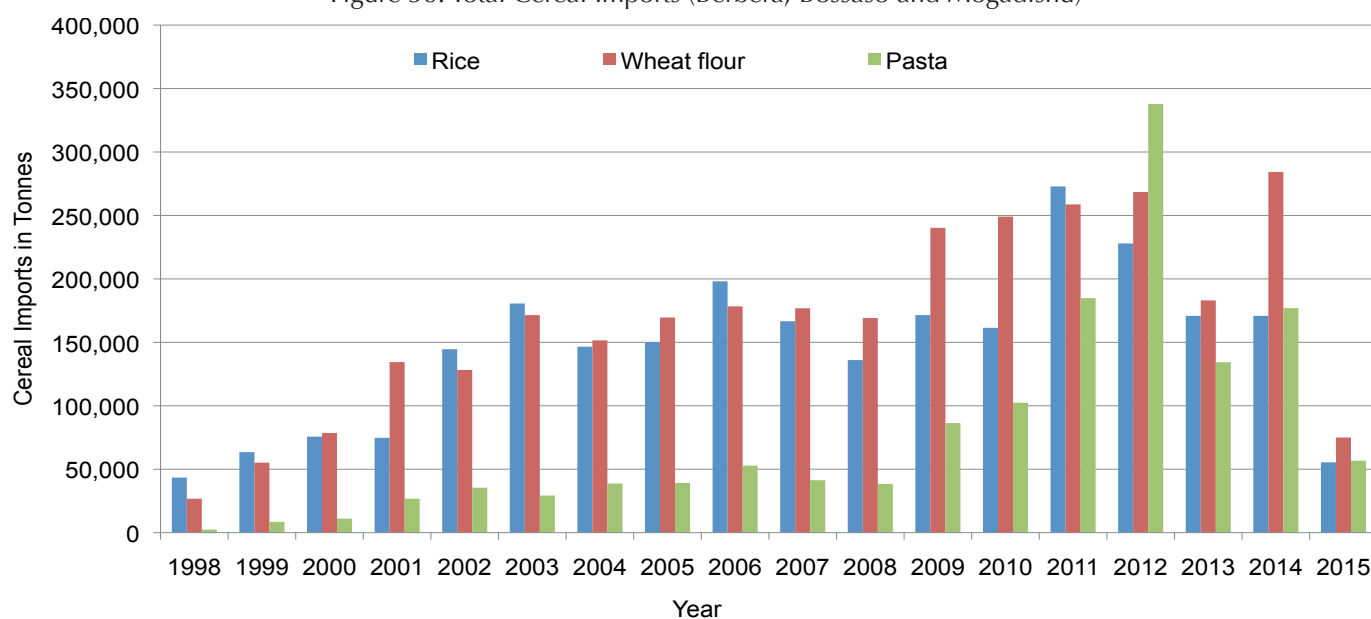


Trends in Cereal Imports

Table 3: Total Cereal Imports through Berbera, Bossaso and Mogadishu Ports (Tonnes) *

	1999	2000	2001	2002	2003	2004	2005	2006	2007	2008	2009	2010	2011	2012	2013	2014	Jan-Apr 2015
Rice	63,464	75,687	74,729	144,600	180,614	146,567	150,017	198,101	166,626	136,007	171,472	161,415	272,877	227,955	170,868	170,495	55,443
Wheat flour	55,176	78,555	134,425	128,263	171,442	151,555	169,583	178,345	176,821	169,208	240,247	249,080	258,679	268,491	183,058	273,211	74,986
Pasta	8,544	11,071	26,702	35,425	29,273	38,749	39,153	52,815	41,331	38,441	86,372	102,373	184,849	337,878	134,311	164,989	56,708

Figure 50: Total Cereal Imports (Berbera, Bossaso and Mogadishu)



* Bosasso import data is up to April 2015, Berbera data is up to March 2015 and Elman (Mogadishu) is up to January 2015. Mogadishu data (Elmaan Port) for 2013 includes only January -March imports.