

# Market DataUpdate



Food Security and Nutrition  
Analysis Unit - Somalia



May 2014 (Issued June 17, 2014)

## Highlights

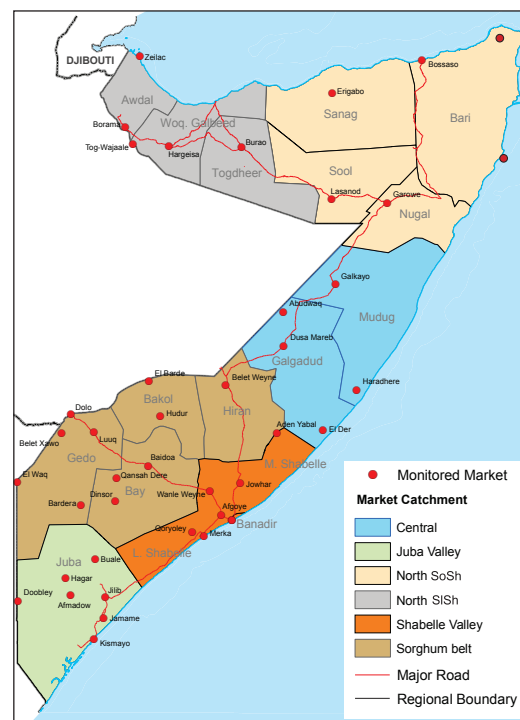
**Inflation:** The Consumer Price Index (CPI) in Somali shilling areas exhibited mixed monthly trends in May 2014: it declined in Central zone markets (by 13%), remained stable in the North and increased in the South (by 6%); the CPI decreased marginally (by 1%) in Somaliland shilling (SISh) areas. Inflation rose year-on-year across the country, most significantly (by 27%) in the South followed by Central zone (by 12%). Compared to the base period (March 2007), CPI increased moderately in SISh regions and significantly in SoSh areas.

**Exchange rate:** The exchange rate between local currencies (SoSh and SISh) and the United States Dollar (USD) remained stable in May 2014 in the North, but depreciated marginally (1-2%) month-on-month in South-Central. Compared to a year ago (May 2013), the SoSh depreciated moderately in the South and marginally in Central, but remained stable in the North; the SISh remained unchanged year-on-year. The SoSh shows a strong gain in value compared to the five-year average (May 2009-2013), particularly in southern regions, resulting from sustained high dollar inflows through humanitarian assistance and foreign direct investments over the past five years. Conversely, the SISh depreciated marginally in the same period of comparison.

**Local grain** prices increased from April to May in all markets of the South predominantly at moderate to high rates; the highest monthly gain (28%) was recorded in Bakool region. Notably, the local cereal prices have also shown significant increases since the beginning of the year in most southern regions, including Bakool, Hiran, Juba and Shabelle. This trend is driven by reduced supplies on the markets as a result of prevailing insecurity affecting trade movement (particularly Bakool region), low carry-over stocks from the prior below average seasonal (*Deyr*) harvest and less than optimistic outlook for the next *Gu* seasonal cereal production. Mild monthly price declines were recorded in Central and Northwest, while prices remained relatively stable in the Northeast. Annual (May 2013) comparison indicates a significant swelling of local cereal prices in most regions with the highest annual increase (136%) recorded in Bakool region. This region stands out also when we compare current prices with five-year average (May 2009-2013) levels, with an increase of over 50 percent. Higher than five-year average prices are also recorded in Shabelle, Hiran, Central and Northern regions, while they are lower in the rest of the southern regions.

**Prices of imported food** (rice, sugar, vegetable oil & wheat flour) quoted in local currency show mixed pattern in the South, mostly exhibiting mild monthly increases, apart from Bay, Bakool and Shabelle regions where they increased at moderate to high rates for most commodities. In Bakool region, the prices also surged significantly for most commodities since the beginning of the year. In central and northern regions, the monthly price changes shows relative stability or mild increases. Year-on-year price comparison generally indicates increases for most southern regions apart from Juba regions where the prices mostly declined and Middle Shabelle where they remained relatively stable (apart from the increase in vegetable oil). In Central and North, costs of most imported commodities changed at mild to moderate rates. Compared to five-year averages, the prices generally show declines in SoSh areas (apart from Bakool where they increased) and mild to moderate gains in SISh areas.

**Livestock prices** (for all species) show mild monthly changes in most regions. Milk prices (cattle and camel) changed at mild to moderate rates month-on-month in all regions with the exception of Bakool region where cattle milk price rose significantly (by 55%). Annual comparison indicates declined value of a local quality goat and gain in the costs of big ruminants (cattle and/or camel) in most regions. Milk prices predominantly exhibited moderate to high annual increase. Both livestock and milk prices are higher compared to the five-year average levels in most regions.



This Market Data Update is a monthly report that presents analysis of market information and is produced regularly as part of the monthly monitoring process.

The weekly price data is collected from 48 main markets and 51 rural markets throughout Somalia since 1995.

Market analysis is an integral part of all of FSNAU's annual food security projections and seasonal technical reports (Technical Reports on FSNAU Post *Gu* and Post *Deyr* Analysis).

Detailed market data are available online on [www.fsnau.org/ids](http://www.fsnau.org/ids).

**Labour wages (unskilled)** showed monthly increase in most southern regions, except Juba and Lower Shabelle where the declined; the rates remained relatively stable in central and northern regions. Labour wages rose annually in most regions except falling in Banadir and Juba regions. Compared to five-year average levels, the wage rates increased in most regions.

**Terms of Trade (ToT)** between daily labor wage and local cereals as well as between local quality goat and cereals show monthly declines in May 2014 in most regions. This trend is mostly driven by monthly cereal price increases. Notably, the ToT fell significantly since January 2014 in Bakool, Juba and Shabelle regions. The annual comparison (with May 2013) also indicates lower rates in most regions. Compared to five-year average levels, the ToT daily labor wage / cereals mostly show increase or relative stability, apart from Bakool, Hiran, Lower Juba and Lower Shabelle regions where they have declined; ToT local quality goat/ cereals exhibited a mixed pattern, with large (40-50%) drops recorded in Hiran and Bakool regions.

## Regional Market Highlights

**Juba Regions:** Prices of imported commodities (rice, sugar, wheat flour, diesel and vegetable oil) mostly show mild monthly increases apart from rice price, which rose moderately (by 13%) in Lower Juba region. Moderate monthly price changes are also recorded for locally produced white maize (increased in both regions), fresh cattle milk (fell in Middle Juba) and daily labour wage (declined in Lower Juba); the rest of the commodities exhibited mild monthly changes. The ToTs between daily labor wage and white maize as well as between local quality goat and white maize fell by 2-3 units and by 11-17 units respectively, in two regions. Annual price comparisons show declines in the costs of imported commodities, daily labour rate and local quality goat. Prices increased annually for white maize, milk and water in both regions and for cattle in Lower Juba region. Both ToTs show annual declines: by 2-3 units for ToT between daily labour rate and white maize and by 21-31 for the ToT between local quality goat and white maize.

**Sorghum Belt Regions (Bay, Bakool, Gedo and Hiran):** Prices of imported commodities exhibited mild monthly changes or relative stability in Gedo and Hiran, while they mostly increased in Bay and Bakool regions. Local cereal prices show significant monthly gains in the regions of Bay (red sorghum), Bakool (red sorghum) and Hiran (white sorghum) and a moderate increase in Gedo (red sorghum). Milk, water and livestock prices generally show mild changes in most regions; the most significant month-on-month change is a 55 percent gain in cattle milk price in Bakool region. Daily unskilled labour wage rates increased across the regions. The ToT between daily labor wage and cereals fell in most regions, apart from Gedo where it rose by one unit; the ToT between local quality goat and cereals also declined across the regions. Year-on-year price comparisons indicate increases for most of the imported food commodities, of which highest increases are seen in Bay and Bakool regions. Local cereal prices gained significantly across the regions of the Sorghum Belt, with a particularly high increase (136%) recorded in Bakool region. Milk and water prices mostly show annual gains across the regions; local quality goat prices fell in Bakool and Hiran but remained relatively stable in Bay and Gedo; prices of big ruminants (cattle, camel) have predominantly increased. The annual change in ToT between daily labor wage and cereals shows declines in most regions, except Gedo where it remained unchanged; the ToT between local quality goat and cereals fell across the regions.

**Shabelle Regions:** Price of imported commodities exhibited mixed patterns month-on-month by regions and by commodities (gained, declined or remained constant). White maize showed a significant 20 percent monthly gain in Lower Shabelle, while it rose at mild rates in Middle Shabelle. Moderate monthly price drops are recorded for fresh milk (both regions) and local quality goat (in Lower Shabelle); cattle prices gained at mild rates in both regions. The ToT between daily labor wage and cereals fell from the levels in April 2014 in Lower Shabelle but remained stable in Middle Shabelle; ToT between local quality goat and cereals reduced substantially (by 55kgs) in Lower Shabelle, while remaining relatively stable in Middle Shabelle. Annual comparison indicates increase for most of the imported commodities in both regions, apart from sugar, wheat flour and rice prices that remained relatively stable in Middle Shabelle. Maize prices gained significantly year-on-year in both regions along with milk and cattle prices in Lower Shabelle and daily labour rates in Middle Shabelle; the costs of the remaining commodities show mild to moderate changes. The ToT between daily labor wage and cereals fell annually by two units in Lower Shabelle, but remained constant in Middle Shabelle; the ToT between local quality goat and cereals declined by 11-13 units in both regions in the same period.

**Table 1: ToT between Cereals (kg) per Daily Labour Wage Rate, by Region**

Regions	May 2014*(kg)	% change from:		
		Apr 2014	May 2013	May Average (2009-2013)
Banadir/ Mogadishu	22	-8%	16%	100%
Bay	17	-15%	-37%	21%
Bakool	4	-20%	-60%	-43%
Gedo	17	6%	0%	21%
Hiran	9	-10%	-25%	-25%
Juba	8	-20%	-20%	0%
Shabelle	7	-12%	-36%	-12%
Northeast	6	0%	-25%	0%
Northwest	13	0%	0%	30%
Central	7	17%	-12%	0%

\* Cereal types used for ToT calculation: White Maize (Banadir, Hiran, Juba, Shabelle), Red Sorghum (Bay, Bakool, Gedo, Central, Northeast) and White Sorghum (Northwest)

**Central Regions:** Prices of most imported commodities exhibited mild monthly changes in May 2014. Local cereal prices fell at mild

rates for red sorghum but gained moderately for white maize from the levels in April 2014. The prices of livestock (camel and local goat) show mild changes, while they fell significantly for milk and remained relatively stable for water. The ToT between daily labor wage and rice remained stable, but ToT between local quality goat and rice (58 kg/ head) reduced by six units month-on-month. Annual comparisons indicate mild price changes for most of the imported commodities apart from wheat grain, which increased significantly. Local cereal (red sorghum and white maize) prices have exhibited significant yearly gains. Prices fell for livestock and increased for milk moderately year-on-year. The ToT between daily labor wage and rice remained constant, while ToT between local quality goat and rice declined by 12 kgs from a year ago (May 2013).

**Northeast Regions:** Prices exhibited relative stability for most imported commodities, livestock (camel and goat) and water in May 2014. Mild monthly changes were recorded for local cereals, livestock, milk and water. The ToT between daily labor wage and rice remained stable, while the ToT between local quality goat and rice increased by four units on a monthly basis. Annual price comparison shows declines for imported commodities; relative stability for livestock (camel and goat); moderate gains for milk and local cereals (red sorghum and white maize) and significant increase for water. The ToT between daily labor wage and rice increased by one unit, while ToT between local quality goat and rice gained 11 units on an annual basis.

**Northwest Regions:** Prices mostly exhibited relative stability or mild changes for the imported commodities, local cereals, livestock and milk, while water prices gained moderately in May 2014. The ToT between labor wage and rice as well as ToT between local quality goat and rice fell by one unit month-on-month. Compared to the previous year, prices of most imported commodities and locally produced white sorghum changed at mild to moderate rates; goat values fell marginally, while camel, milk and water prices increased moderately. The ToT between daily labor wage and rice remained constant, while ToT between local quality goat and rice declined by six units on an annual basis.

**Banadir Region:** Month-on-month comparison indicates relative stability or mild increases in the prices of imported commodities, local cereals, livestock and milk. The ToT between daily labor wage and cereals fell by one unit month-on-month. Annual comparison indicates moderate increase in the prices of most imported commodities; significant gains for white maize; and decline in daily labour wage rates. The ToT between daily labour wage and white maize declined in May 2014 compared to the levels the same month last year (May 2013).

## International Market Highlights

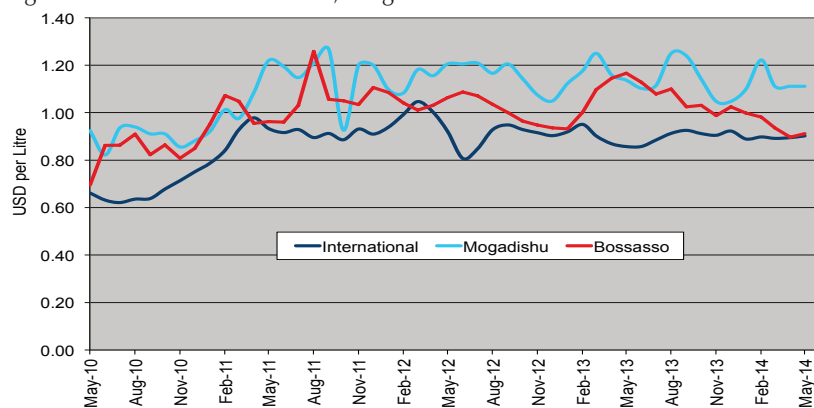
**Diesel:** The crude oil price in Dubai (the main source of Somalia's oil imports) increased by one percent month-on-month to \$105.55/barrel in May 2014<sup>1</sup>. Crude oil prices are five percent higher when compared to the quotations the same month last year (May 2013).

**Diesel prices (in local currency terms) in May 2014, show stable rates or marginal increase in the port cities of Mogadishu and Bossaso respectively. Year-on-year comparison (to May 2013) indicates a significant drop (by 23%) in prices in Bossaso and a marginal (4%) decline in Mogadishu (Figure 1).**

**Rice:** Export price of the benchmark Thai (white) rice (100%/B) remained unchanged month-on-month at USD 408 per tonne in May 2014<sup>2</sup> as the Thai Government released large volumes of rice stocks onto the markets. The Thai rice price is 24 percent lower compared to the levels a year ago (May 2013).

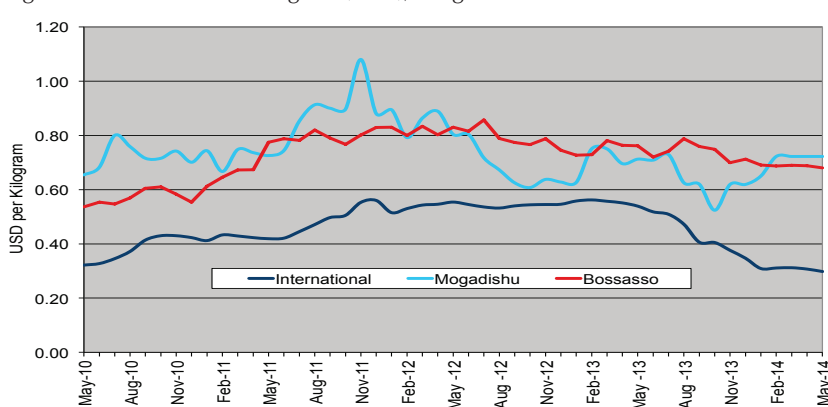
**The cost of imported rice (in local currency terms) remained stable since January 2014 both in Mogadishu and Bossaso markets. Compared to levels a year ago (May 2013), rice prices are unchanged for Mogadishu but they fell by 12 percent in Bossaso (Figure 2).**

Figure 1: Diesel Prices in Dubai, Mogadishu and Bossaso



Source: FSNAU Market Price Monitoring System, FAO Statistics, 2014

Figure 2: Rice Prices in Bangkok (FOB), Mogadishu and Bossaso Markets



Source: FSNAU Market Price Monitoring System, FAO Statistics, 2014

<sup>1</sup> Organization of the Petroleum Exporting Countries (12 June 2014), Monthly Oil Market Report [Online]. Available from [http://www.opec.org/opec\\_web/en/publications/338.htm](http://www.opec.org/opec_web/en/publications/338.htm)  
<sup>2</sup> Food and Agriculture Organisation (10 June 2014) Global Food Price Monitor [Online]. Available from [http://www.fao.org/GIEWS/english/gfpm/GFPM\\_06\\_2014.pdf](http://www.fao.org/GIEWS/english/gfpm/GFPM_06_2014.pdf)

**Wheat:** The International Grain Council's wheat sub-Index averaged 253 points in May, down from the average of 252 in April. The downward trend is attributed to "prospects for ample global supplies in 2014/15"<sup>33</sup>. The sub-index dropped by 1.9 percentage points from the average of the same period last year (May 2013) [Figure 3].

**Wheat flour prices (in local currency terms) remained stable since January in Mogadishu and Bossaso. Compared to a year ago (May 2013), wheat prices fell both in Mogadishu (by 11%) as well as Bossaso (by 7%).**

**Sugar:** The FAO Sugar Price Index averaged 259.2 points in May, up by 3.7 percent from April. The increase was driven by anticipated 2014/15 season production deficit exacerbated by anticipated El Nino weather impact on output<sup>4</sup>. The index rose by four percentage points from a year ago (May 2014).

**Sugar prices (in local currency terms) remained stable in May in Mogadishu and fell marginally (2%) in Bossaso. The annual price comparison shows the opposite trends in the two port cities: sugar prices declined in Bossaso (by 15%) but increased in Mogadishu (by 15%).**

**Cooking Oil:** The FAO Vegetable Oil Price Index averaged 195.3 points in May, 1.8 percent lower compared to April<sup>5</sup>. The drop in the index reflects lower quotations of palm, soy and rapeseed oils. The index rose by one percentage point year-on-year (May 2013).

**Vegetable oil price (in local currency terms) remained unchanged month-on-month in both port cities. Annual price comparison (compared to May 2013) indicates declines both in Mogadishu (by 9%) and in Bossaso (by 11%).**

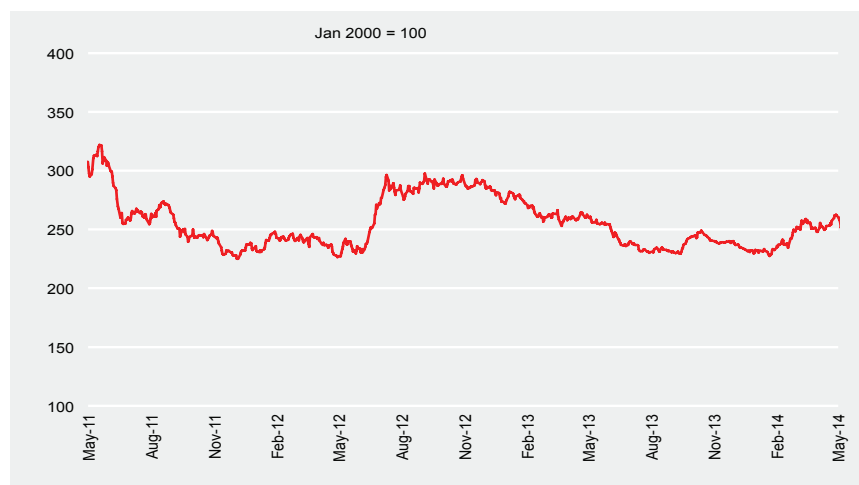
(Endnotes)

3 International Grain Council (29 May 2014), Grain Market Report (GMR), Issue 444 [Online]. Available from <http://www.fao.org/worldfoodsituation/foodpricesindex/en/>

4 Food and Agriculture Organisation of the United Nations (05 June 2014), World Food Situation: The FAO Food Price Index [Online] Available from <http://www.fao.org/worldfoodsituation/foodpricesindex/en/>

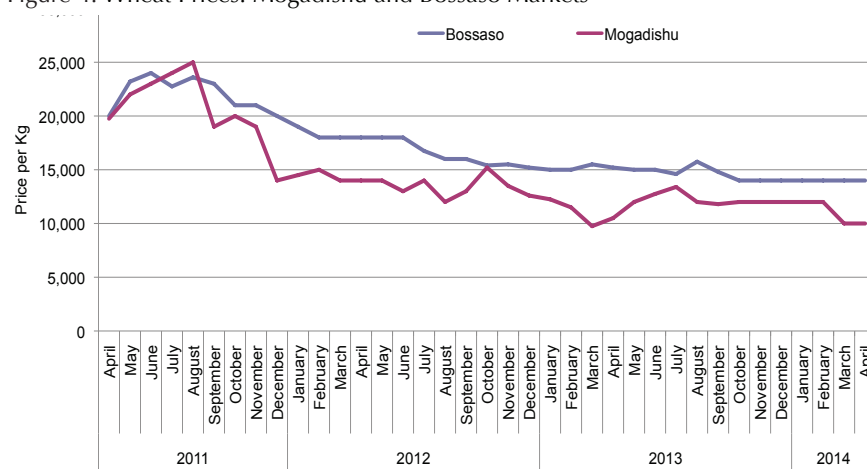
5 Ibid

Figure 3: International Wheat Prices (Index)



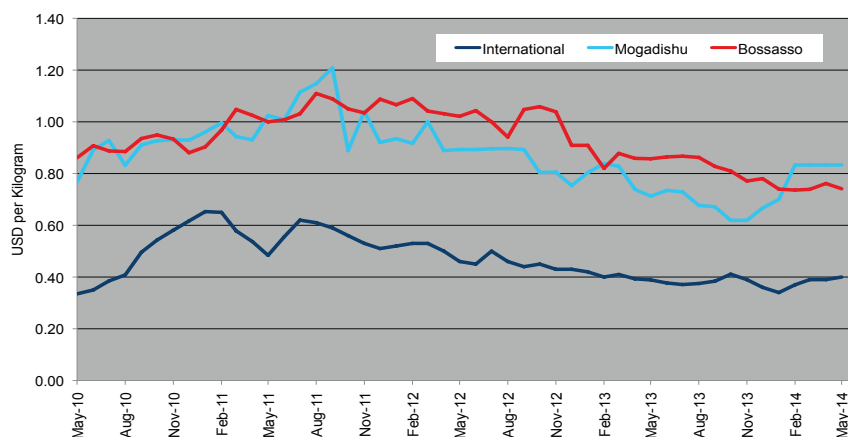
Source: International Grain Council, 2014

Figure 4: Wheat Prices: Mogadishu and Bossaso Markets



Source: FSNAU Manifest Price Monitoring System

Figure 5: Sugar Prices: International, Mogadishu and Bossaso Markets



Source: FSNAU Market Price Monitoring System, International Sugar Organization, 2014

# National Trends: CPI, Exchange Rates, Cereal Prices and Relative Purchasing Power

Figure 6: Terms of Trade Between Wage Rates and Selected Cereals

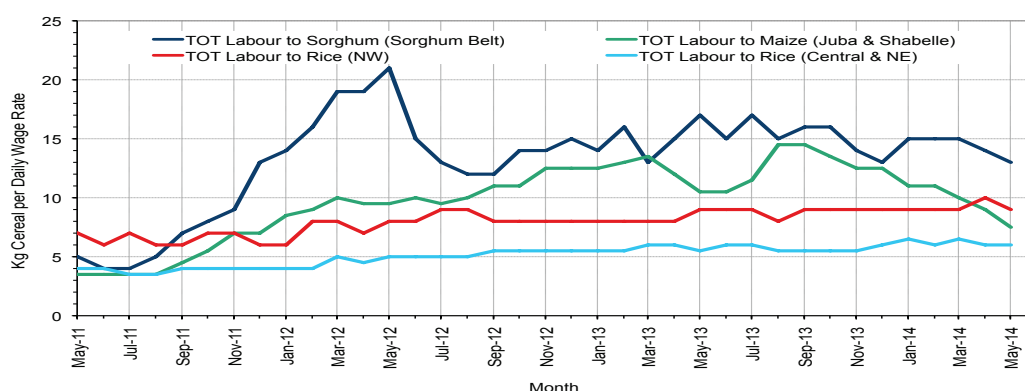


Figure 7: Monthly Exchange Rate for Selected Regions (SoSh and SSh to USD)

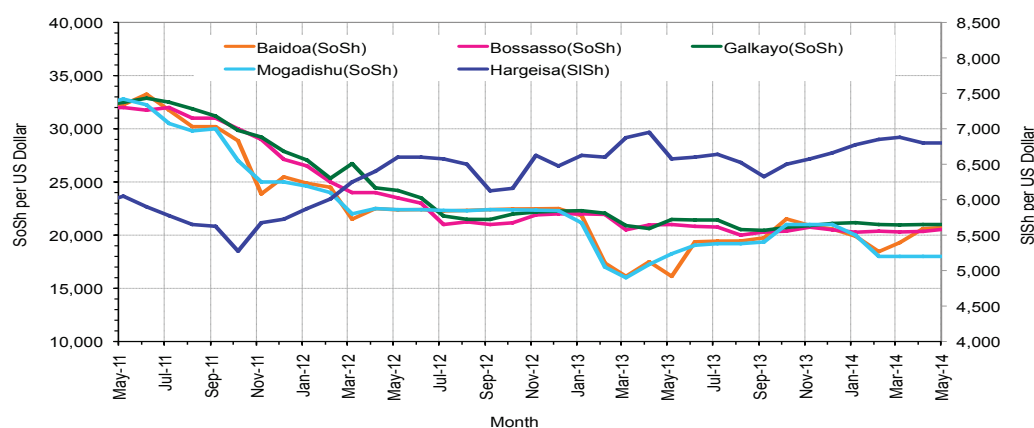


Figure 8: Monthly Trends in Consumer Price Index (CPI, March 2007=100)

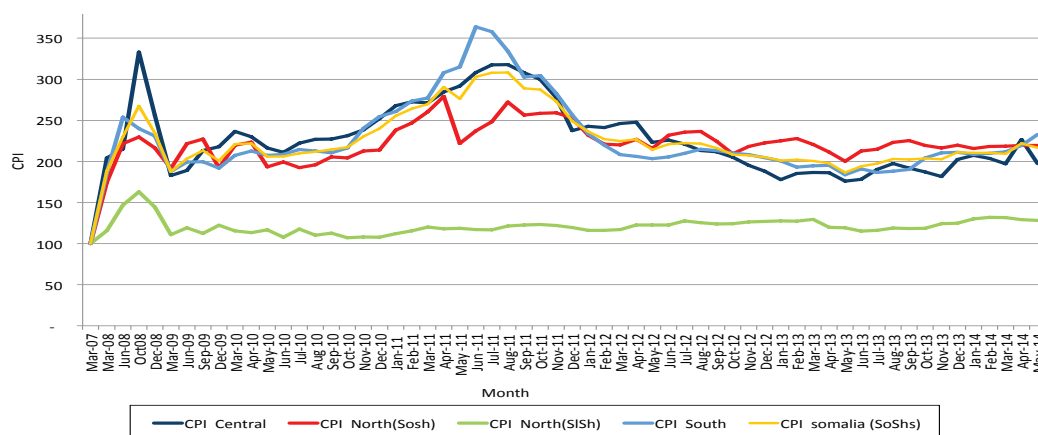
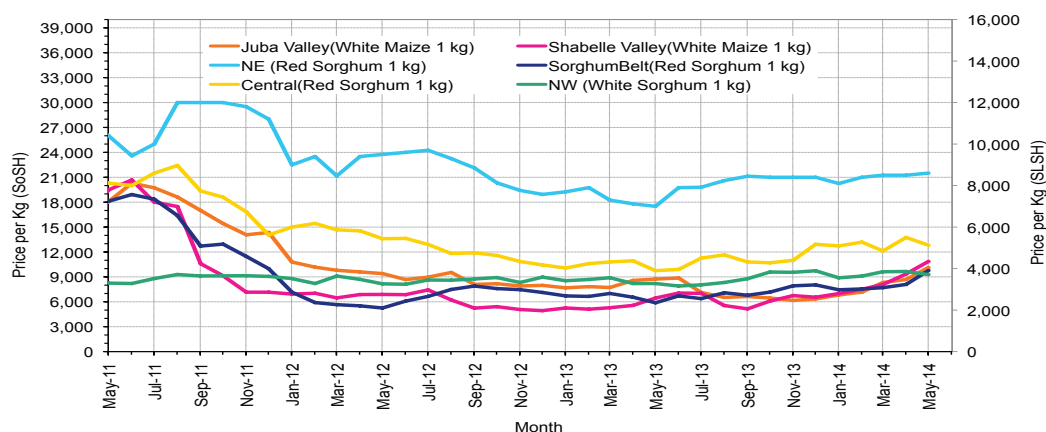


Figure 9: Monthly Trends in Local Cereal Prices





# Regional analysis: Juba Regions

Indicator	5-Year Average (2009-2013)	May-13	Apr-14	May-14 Nominal Price	May-14 Real (Deflated) Price	% Change Same Month Previous Year	% Change Previous Month	% Change 5-year avrg (2009-2013)
<b>Imported Commodities Prices</b>								
Diesel 1 litre	32,018	28,321	26,429	26,714	11,366	-6%	1%	-17%
Imported Red Rice 1kg	21,394	16,786	15,286	17,000	7,197	1%	11%	-21%
Petrol 1 litre	34,081	28,250	27,607	28,000	11,918	-1%	1%	-18%
Sugar	23,899	18,571	15,821	16,179	6,844	-13%	2%	-32%
Vegetable Oil 1 litre	45,375	34,143	32,143	32,571	13,880	-5%	1%	-28%
Wheat Flour 1kg	20,005	17,071	15,000	15,714	6,645	-8%	5%	-21%
Wheat Grain 1kg	16,400	-	-	-	-	-	-	-
<b>Cereal Prices</b>								
Red Sorghum 1kg	8,187	7,000	10,000	10,000	4,192	43%	0%	22%
White Maize 1kg	11,294	8,657	8,896	10,343	4,340	19%	16%	-8%
<b>Livestock &amp; Livestock Product Prices</b>								
Camel Local Quality (Head)	9,129,079	9,641,964	10,262,583	10,823,393	4,645,603	12%	5%	19%
Cattle Local Quality (Head)	3,638,651	4,456,458	4,393,700	4,438,833	1,905,171	0%	1%	22%
Fresh Camel Milk 1 litre	21,653	18,583	24,458	23,500	9,987	26%	-4%	9%
Goat Export Quality (Head)	1,352,584	1,641,786	1,581,857	1,492,179	640,385	-9%	-6%	10%
Goat Local Quality (Head)	846,206	1,018,821	964,536	970,857	416,619	-5%	1%	15%
<b>Other Essential Items</b>								
Charcoal 50kg	87,240	92,321	89,643	91,429	39,144	-1%	2%	5%
Cowpeas 1 kg	25,196	23,536	19,929	20,821	8,837	-12%	4%	-17%
Unskilled Labor Wage Rate	89,303	89,500	90,571	78,500	33,594	-12%	-13%	-12%
Firewood Bundle	6,909	9,000	11,000	11,500	4,836	28%	5%	66%
Local Sesame Oil 1 litre	76,923	75,357	82,929	83,786	35,863	11%	1%	9%
Exchange Rate (Somali Shilling per USD)	26,982	18,339	20,639	20,813	8,834	13%	1%	-23%
<b>Terms of Trade</b>								
Labour Wage (Daily)/ Cereal (Maize(Kg))	8	10	10	8	-	-27%	-25%	-4%
Local Goat (Head)/ Cereal (Maize(Kg))	75	118	108	94	-	-20%	-13%	25%
<b>Price Indices</b>								
Consumer Price Index	-	184	220	233	-	27%	6%	-

Figure 10: Trends in Cereal Prices

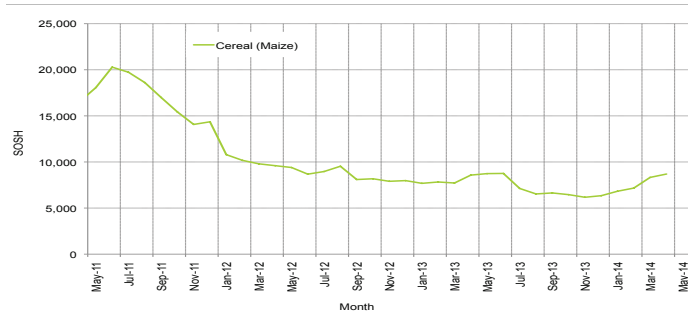


Figure 11: Trends in Wage Rates and Relative Purchasing Power

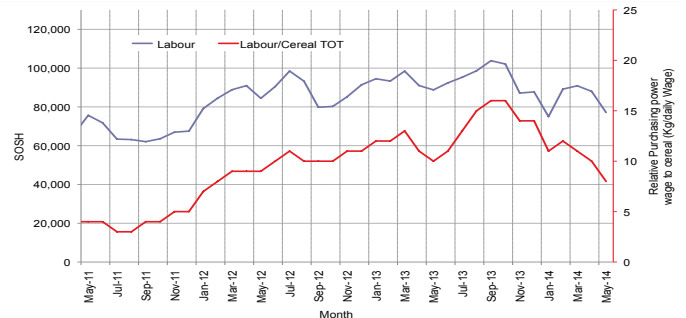


Figure 12: Imported Commodity Prices Compared to Exchange Rate

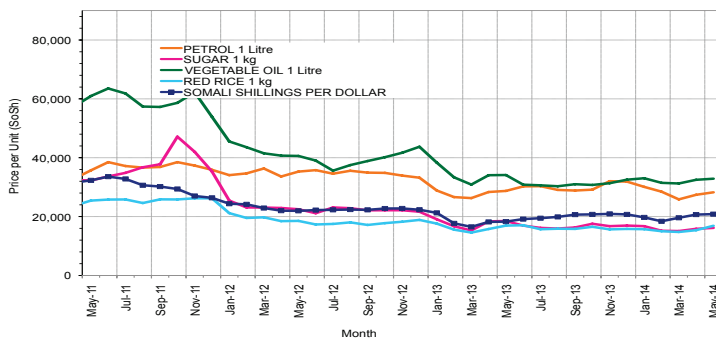


Figure 13: Goat Local Quality

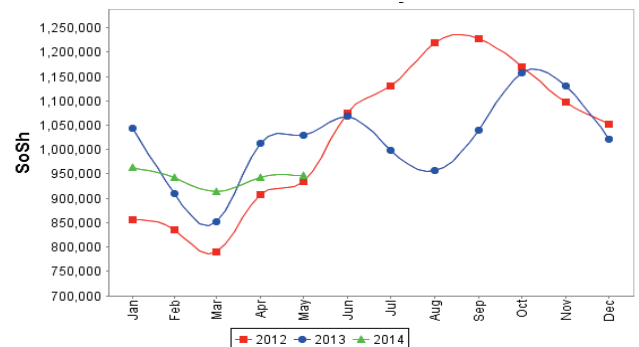


Figure 14: Exchange Rate

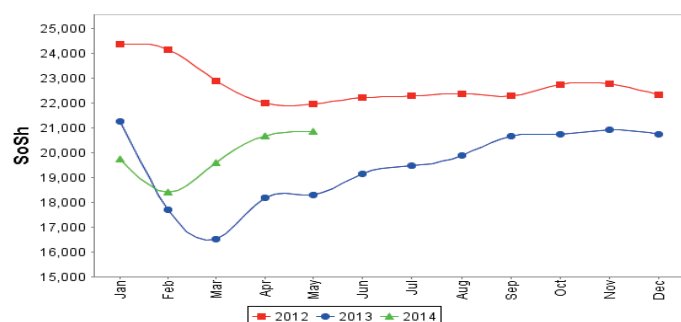
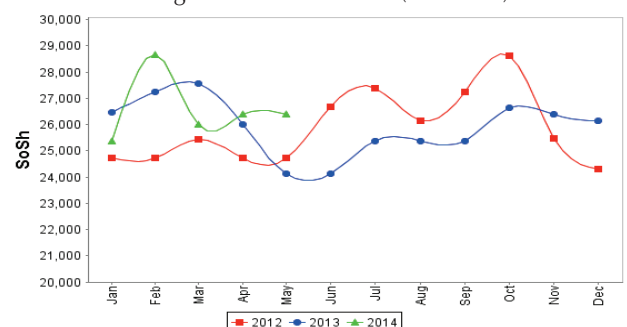


Figure 15: Water Drum (200 litres)



# Regional analysis: Sorghum Belt Regions (Bay, Bakool, Gedo and Hiran)

Indicator	5-Year Average (2009-2013)	May-13	Apr-14	May-14 Nominal Price	May-14 Real (Deflated) Price	% Change Same Month Previous Year	% Change Previous Month	% Change 5-year avrg (2009-2013)
<b>Imported Commodities Prices</b>								
Diesel 1 litre	33,054	30,841	30,068	32,159	13,704	4%	7%	-3%
Imported Red Rice 1kg	22,805	17,205	17,659	19,568	8,299	14%	11%	-14%
Petrol 1 litre	33,195	30,477	30,682	28,725	12,230	-6%	-6%	-13%
Sugar	24,672	18,864	18,750	20,466	8,685	8%	9%	-17%
Vegetable Oil 1 litre	46,716	40,636	40,909	41,023	17,508	1%	0%	-12%
Wheat Flour 1kg	19,841	15,545	17,364	19,136	8,114	23%	10%	-4%
Wheat Grain 1kg	11,458	8,042	12,663	14,188	5,990	76%	12%	24%
<b>Cereal Prices</b>								
Red Sorghum 1kg	9,310	5,882	8,093	9,775	4,096	66%	21%	5%
White Maize 1kg	11,182	8,550	10,525	12,181	5,128	42%	16%	9%
<b>Livestock &amp; Livestock Product Prices</b>								
Camel Local Quality (Head)	9,751,482	12,785,227	13,461,111	14,413,889	6,186,745	13%	7%	48%
Cattle Local Quality (Head)	2,994,401	3,631,719	4,435,313	4,125,000	1,770,465	14%	-7%	38%
Fresh Camel Milk 1 litre	19,403	10,545	22,932	20,950	8,892	99%	-9%	8%
Goat Export Quality (Head)	1,327,554	1,547,727	1,647,500	1,671,250	717,247	8%	1%	26%
Goat Local Quality (Head)	851,531	1,052,273	973,591	983,955	422,241	-6%	1%	16%
<b>Other Essential Items</b>								
Charcoal 50kg	137,163	140,682	147,136	151,091	64,752	7%	3%	10%
Cowpeas 1 kg	25,992	19,194	23,740	26,225	11,157	37%	10%	1%
Unskilled Labor Wage Rate	95,377	100,568	113,409	126,523	54,207	26%	12%	33%
Firewood Bundle	5,801	6,182	6,727	7,159	2,973	16%	6%	23%
Local Sesame Oil 1 litre	75,790	69,286	80,833	93,750	40,140	35%	16%	24%
Exchange Rate (Somali Shilling per USD)	27,161	18,909	20,283	20,514	8,705	8%	1%	-24%
<b>Terms of Trade</b>								
Labour Wage (Daily)/ Cereal (Sorghum(Kg))	10	17	14	13	-	-24%	-8%	26%
Local Goat (Head)/ Cereal (Sorghum(Kg))	91	179	120	101	-	-44%	-16%	10%
<b>Price Indices</b>								
Consumer Price Index	-	184	220	233	-	27%	6%	-

Figure 16: Trends in Cereal Prices

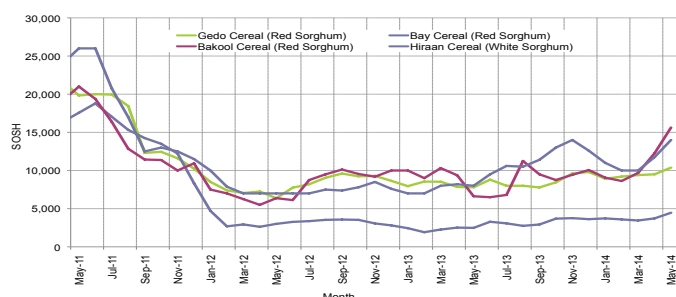


Figure 17: Trends in Wage Rates and Relative Purchasing Power

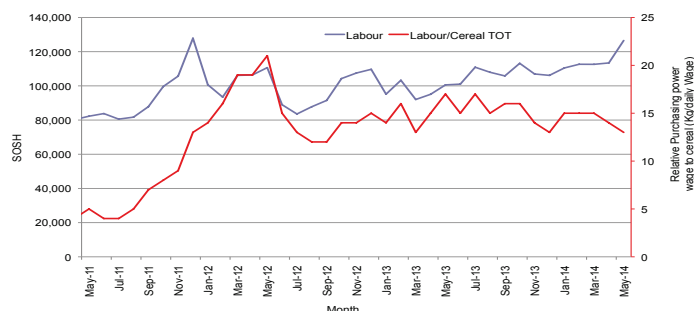


Figure 18: Imported Commodity Prices Compared to Exchange Rate

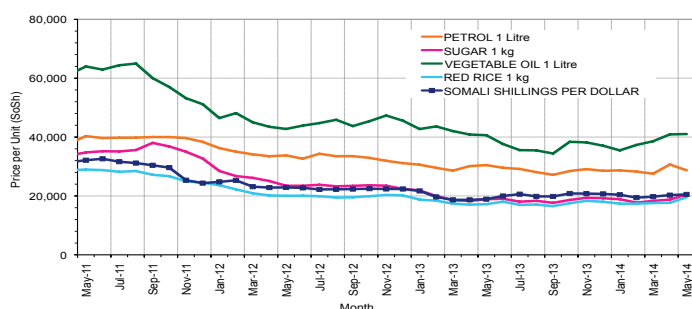


Figure 19: Goat Local Quality

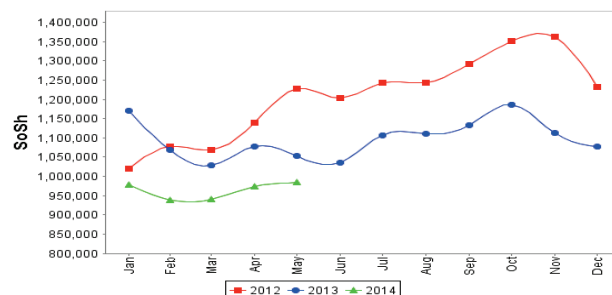


Figure 20: Exchange Rate

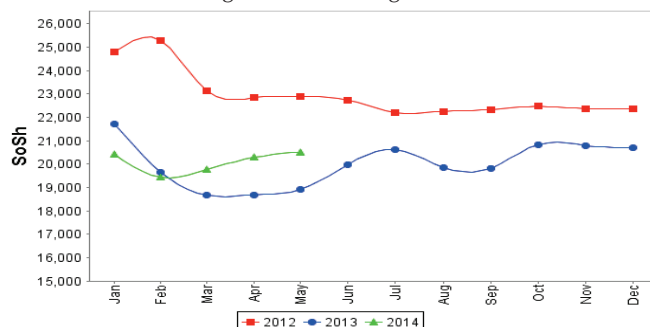
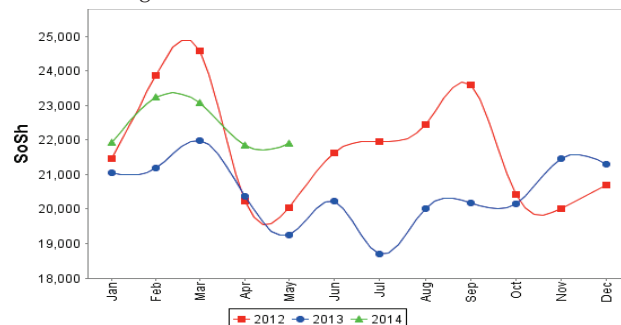


Figure 21: Water Drum (200 litres)



# Regional analysis: Shabelle Regions

Indicator	5-Year Average (2009-2013)	May-13	Apr-14	May-14 Nominal Price	May-14 Real (Deflated) Price	% Change Same Month Previous Year	% Change Previous Month	% Change 5-year avrg (2009-2013)
<b>Imported Commodities Prices</b>								
Diesel 1 litre	29,508	24,833	28,000	28,100	11,961	13%	0%	-5%
Imported Red Rice 1kg	20,200	15,333	15,792	17,208	7,286	12%	9%	-15%
Petrol 1 litre	30,266	27,292	29,050	29,400	12,519	8%	1%	-3%
Sugar	22,833	16,083	16,333	18,292	7,751	14%	12%	-20%
Vegetable Oil 1 litre	37,641	26,167	29,833	32,083	13,671	23%	8%	-15%
Wheat Flour 1kg	17,679	14,833	16,000	15,833	6,696	7%	-1%	-10%
Wheat Grain 1kg	9,333		26,000	21,000	8,914	-	-19%	125%
<b>Cereal Prices</b>								
Red Sorghum 1kg	9,934	7,019	9,851	10,473	4,395	49%	6%	5%
White Maize 1kg	9,797	6,450	9,353	10,872	4,567	69%	16%	11%
<b>Livestock &amp; Livestock Product Prices</b>								
Camel Local Quality (Head)	13,025,000	17,117,500	20,287,500	20,075,000	8,616,652	17%	-1%	54%
Cattle Local Quality (Head)	4,233,666	6,272,500	7,200,000	7,456,250	3,200,331	19%	4%	76%
Fresh Camel Milk 1 litre	18,287	15,813	24,333	21,500	9,128	36%	-12%	18%
Goat Export Quality (Head)	1,551,854	1,821,875	1,975,000	1,918,750	823,481	5%	-3%	24%
Goat Local Quality (Head)	1,087,166	1,287,500	1,464,500	1,347,500	578,285	5%	-8%	24%
<b>Other Essential Items</b>								
Charcoal 50kg	115,933	145,070	125,750	121,250	51,944	-16%	-4%	5%
Cowpeas 1 kg	23,588	15,593	16,554	21,653	9,194	39%	31%	-8%
Unskilled Labor Wage Rate	68,291	68,750	74,375	77,917	33,344	13%	5%	14%
Firewood Bundle	5,266	8,292	6,000	5,000	2,046	-40%	-17%	-5%
Local Sesame Oil 1 litre	56,341	60,208	69,850	68,750	29,409	14%	-2%	22%
Exchange Rate (Somali Shilling per USD)	27,347	18,371	20,350	20,783	8,821	13%	2%	-24%
<b>Terms of Trade</b>								
Labour Wage (Daily)/ Cereal (Maize(Kg))	7	11	8	7	-	-33%	-10%	3%
Local Goat (Head)/ Cereal (Maize(Kg))	111	200	157	124	-	-38%	-21%	12%
<b>Price Indices</b>								
Consumer Price Index	-	184	220	233	-	27%	6%	-

Figure 22: Trends in Cereal Prices



Figure 23: Trends in Wage Rates and Relative Purchasing Power

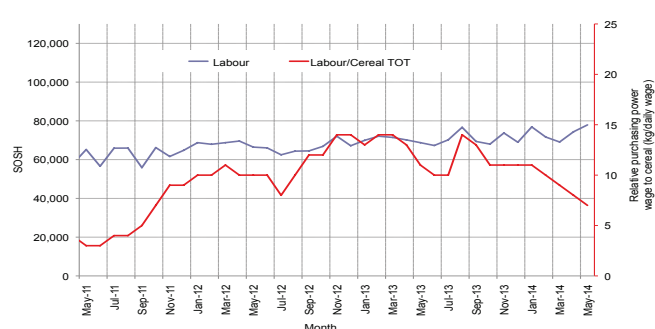


Figure 24: Imported Commodity Prices Compared to Exchange Rate

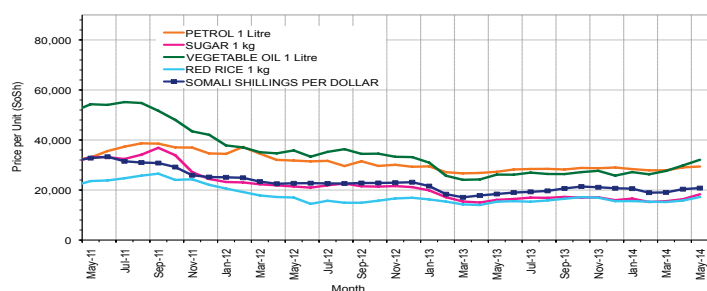


Figure 25: Goat Local Quality

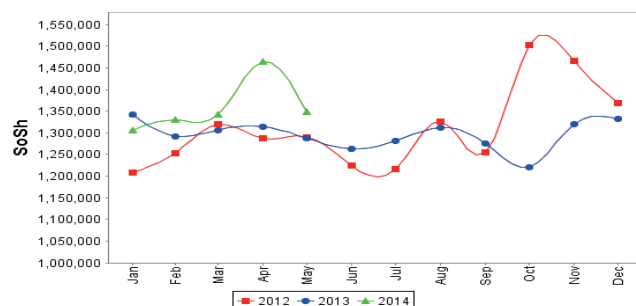


Figure 26: Exchange Rate

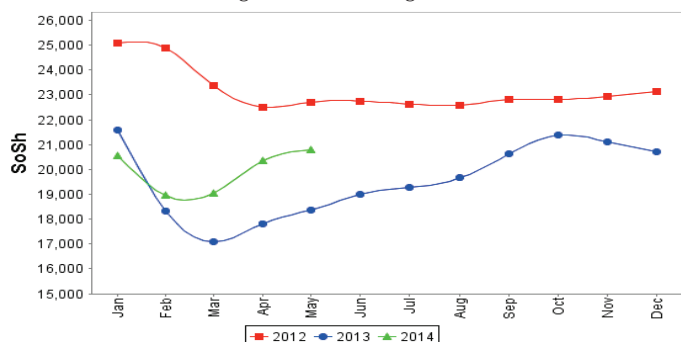
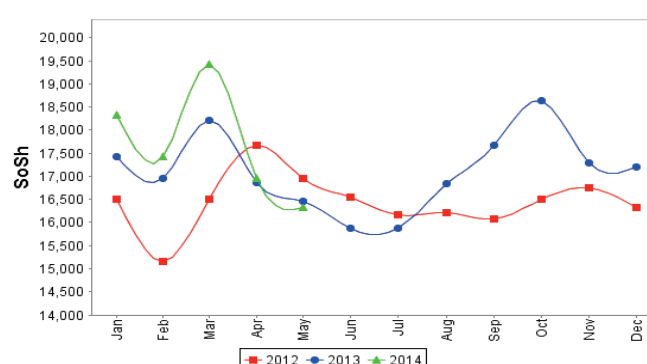


Figure 27: Water Drum (200 litres)





# Regional analysis: Banadir Region

Indicator	5-Year Average (2009-2013)	May-13	Apr-14	May-14 Nominal Price	May-14 Real (Deflated) Price	% Change Same Month Previous Year	% Change Previous Month	% Change 5-year avg (2009-2013)
<b>Imported Commodities Prices</b>								
Diesel 1 litre	25,258	18,917	20,458	20,458	8,681	8%	0%	-19%
Imported Red Rice 1kg	18,731	12,604	12,896	12,896	5,435	2%	0%	-31%
Petrol 1 litre	26,420	19,417	21,125	21,125	8,967	9%	0%	-20%
Sugar	22,552	13,938	14,271	14,438	6,097	4%	1%	-36%
Vegetable Oil 1 litre	35,865	22,792	23,896	24,729	10,514	8%	3%	-31%
Wheat Flour 1kg	15,495	11,646	12,033	12,325	5,190	6%	2%	-20%
Wheat Grain 1kg	12,627	7,532	7,542	7,542	3,137	0%	0%	-40%
<b>Cereal Prices</b>								
Red Sorghum 1kg	8,701	5,246	7,388	7,388	3,071	41%	0%	-15%
White Maize 1kg	10,026	6,789	8,508	8,925	3,731	31%	5%	-11%
<b>Livestock &amp; Livestock Product Prices</b>								
Camel Local Quality (Head)	17,833,334	-	-	-	-	-	-	-
Cattle Local Quality (Head)	3,723,333	-	-	-	-	-	-	-
Fresh Camel Milk 1 litre	19,543	21,208	21,167	22,167	9,415	5%	5%	13%
Goat Export Quality (Head)	2,015,500	2,325,000	3,000,000	3,000,000	1,287,584	29%	0%	49%
Goat Local Quality (Head)	1,741,250	2,146,250	2,468,750	2,468,750	1,059,557	15%	0%	42%
<b>Other Essential Items</b>								
Charcoal 50kg	169,136	203,875	191,625	192,458	82,508	-6%	0%	14%
Cowpeas 1 kg	23,376	13,283	14,908	15,708	6,642	18%	5%	-33%
Unskilled Labor Wage Rate	84,833	116,667	108,125	108,125	46,310	-7%	0%	27%
Firewood Bundle	5,986	7,900	8,100	8,100	3,377	3%	0%	35%
Local Sesame Oil 1 litre	58,545	55,375	69,000	69,500	29,731	26%	1%	19%
Exchange Rate (Somali Shilling per USD)	27,348	18,242	19,875	20,192	8,567	11%	2%	-26%
<b>Terms of Trade</b>								
Labour Wage (Daily)/ Cereal (Maize(Kg))	8	17	13	12	-	-30%	-5%	43%
Local Goat (Head)/ Cereal (Maize(Kg))	174	316	290	277	-	-13%	-5%	59%
<b>Price Indices</b>								
Consumer Price Index	-	184	220	233	-	27%	6%	-

Figure 28: Trends in Cereal Prices

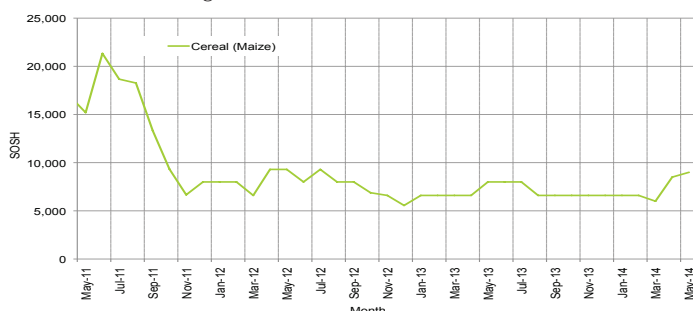


Figure 29: Bakara: Trends in Wage Rates and Relative Purchasing Power

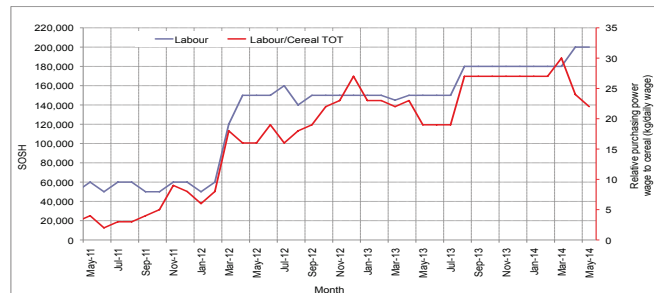


Figure 30: Imported Commodity Prices Compared to Exchange Rate

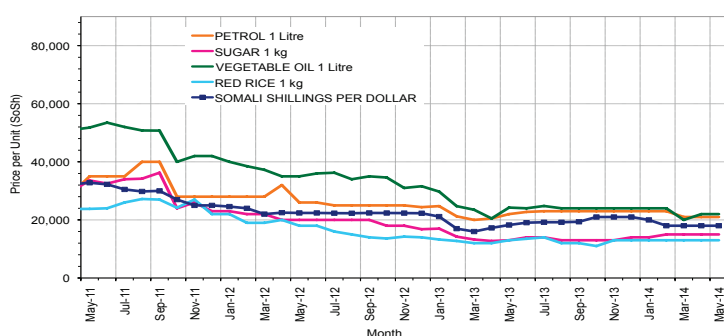


Figure 31: Goat Local Quality

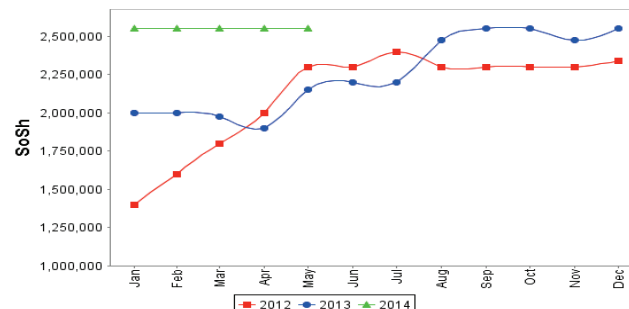


Figure 32: Exchange Rate

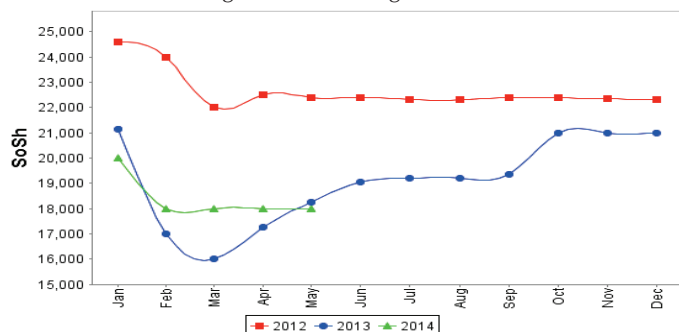
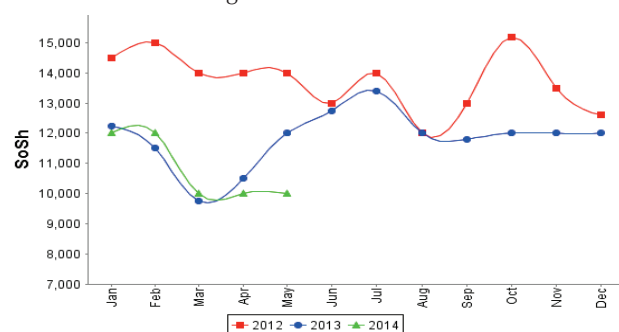


Figure 33: Wheat Flour



# Regional analysis: Central Regions

Indicator	5-Year Average (2009-2013)	May-13	Apr-14	May-14 Nominal Price	May-14 Real (Deflated) Price	% Change Same Month Previous Year	% Change Previous Month	% Change 5-year avg (2009-2013)
<b>Imported Commodities Prices</b>								
Diesel 1 litre	31,116	27,600	27,300	27,200	13,673	-1%	0%	-13%
Imported Red Rice 1kg	24,680	18,400	18,550	19,000	9,521	3%	2%	-23%
Petrol 1 litre	27,944	25,250	24,650	24,300	12,204	-4%	-1%	-13%
Sugar	27,026	20,550	20,000	20,450	10,255	0%	2%	-24%
Vegetable Oil 1 litre	49,380	41,900	41,000	41,250	20,787	-2%	1%	-16%
Wheat Flour 1kg	19,962	16,200	15,300	15,900	7,951	-2%	4%	-20%
Wheat Grain 1kg	16,296	13,063	15,688	15,333	7,664	17%	-2%	-6%
<b>Cereal Prices</b>								
Red Sorghum 1kg	12,370	9,750	13,750	12,813	6,388	31%	-7%	4%
White Maize 1kg	13,132	10,313	16,000	17,917	8,972	74%	12%	36%
<b>Livestock &amp; Livestock Product Prices</b>								
Camel Local Quality (Head)	8,671,250	11,843,750	10,821,875	11,381,250	5,762,852	-4%	5%	31%
Cattle Local Quality (Head)	2,350,000	-	-	-	-	-	-	-
Fresh Camel Milk 1 litre	37,068	23,550	33,750	27,400	13,774	16%	-19%	-26%
Goat Export Quality (Head)	1,450,458	1,503,125	1,433,333	1,401,000	709,303	-7%	-2%	-3%
Goat Local Quality (Head)	1,141,300	1,282,500	1,180,500	1,100,500	557,144	-14%	-7%	-4%
<b>Other Essential Items</b>								
Charcoal 50kg	198,250	191,000	176,500	187,000	94,588	-2%	6%	-6%
Cowpeas 1 kg	28,462	16,150	17,200	17,450	8,736	8%	1%	-39%
Unskilled Labor Wage Rate	85,730	82,500	82,500	83,500	42,181	1%	1%	-3%
Firewood Bundle	30,570	37,000	32,000	32,250	16,230	-13%	1%	5%
Local Sesame Oil 1 litre	93,650	84,750	88,700	89,450	45,193	6%	1%	-4%
Exchange Rate (Somali Shilling per USD)	27,873	20,545	20,680	20,790	10,427	1%	1%	-25%
<b>Terms of Trade</b>								
Labour Wage (Daily)/ Cereal (Rice(Kg))	3	4	4	4	-	-2%	-1%	27%
Local Goat (Head)/ Cereal (Rice(Kg))	46	70	64	58	-	-17%	-9%	25%
Camel (Head)/Cereal (Kg)	351	644	583	599	-	-7%	3%	70%
<b>Price Indices</b>								
Consumer Price Index	-	176	227	197	-	12%	-13%	-

Figure 34: Trends in Cereal Prices



Figure 35: Trends in wage rates and relative purchasing power

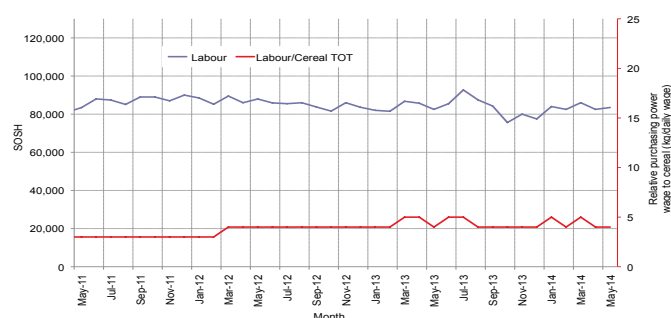


Figure 36: Imported Commodity Prices Compared to Exchange Rate

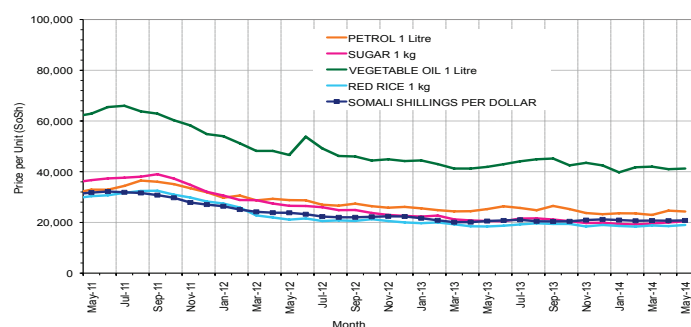


Figure 37: Goat Local Quality

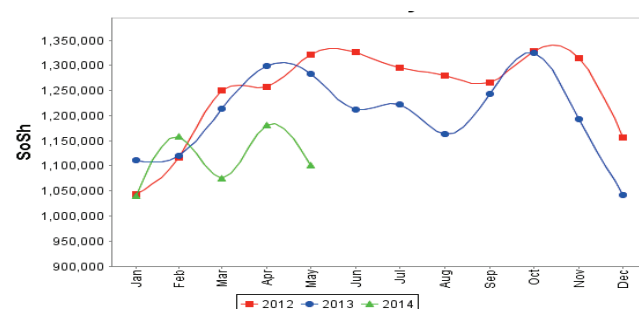


Figure 38: Exchange Rate

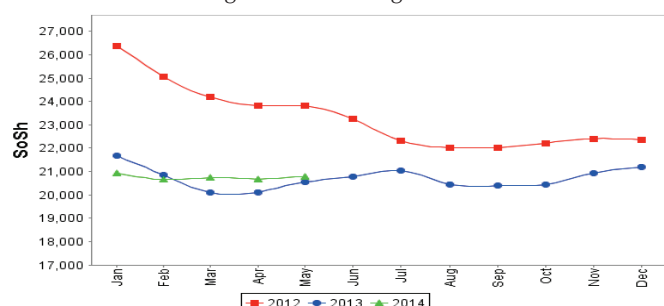
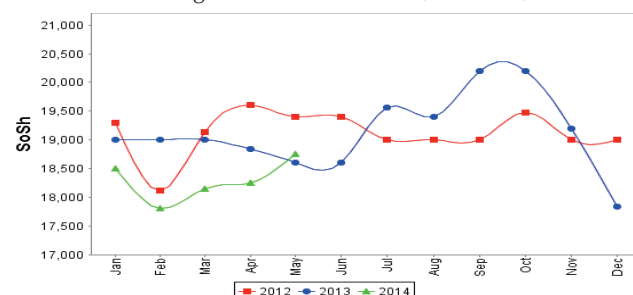


Figure 39: Water Drum (200 litres)



# Regional analysis: Northeast Regions

Indicator	5-Year Average (2009-2013)	May-13	Apr-14	May-14 Nominal Price	May-14 Real (Deflated) Price	% Change Same Month Previous Year	% Change Previous Month	% Change 5-year avg (2009-2013)
<b>Imported Commodities Prices</b>								
Diesel 1 litre	27,206	24,563	22,438	22,563	10,185	-8%	1%	-17%
Imported Red Rice 1kg	20,965	16,438	15,000	15,000	6,737	-9%	0%	-28%
Petrol 1 litre	24,272	21,813	20,125	20,250	9,130	-7%	1%	-17%
Sugar	23,862	18,375	17,000	16,938	7,621	-8%	0%	-29%
Vegetable Oil 1 litre	42,250	36,063	33,000	34,188	15,483	-5%	4%	-19%
Wheat Flour 1kg	18,095	15,250	14,750	14,500	6,509	-5%	-2%	-20%
Wheat Grain 1kg	26,730	24,750	21,500	21,375	9,643	-14%	-1%	-20%
<b>Cereal Prices</b>								
Red Sorghum 1kg	19,572	17,500	21,250	21,500	9,700	23%	1%	10%
White Maize 1kg	18,364	17,500	20,500	22,000	9,928	26%	7%	20%
<b>Livestock &amp; Livestock Product Prices</b>								
Camel Local Quality (Head)	13,787,083	15,800,000	15,150,000	15,806,250	7,204,621	0%	4%	15%
Cattle Local Quality (Head)	7,227,000	8,175,000	8,125,000	8,375,000	3,817,348	-	3%	16%
Fresh Camel Milk 1 litre	38,710	35,000	39,250	40,000	18,133	14%	2%	3%
Goat Export Quality (Head)	1,444,383	1,537,500	1,512,500	1,537,500	700,715	0%	2%	6%
Goat Local Quality (Head)	1,383,500	1,423,125	1,408,750	1,470,000	669,948	3%	4%	6%
<b>Other Essential Items</b>								
Charcoal 50kg	322,162	368,750	383,750	383,750	174,819	4%	0%	19%
Cowpeas 1 kg	36,031	27,667	25,500	25,833	11,675	-7%	1%	-28%
Unskilled Labor Wage Rate	114,150	125,000	130,000	130,000	59,156	4%	0%	14%
Firewood Bundle	33,675	48,125	45,313	46,250	20,981	-4%	2%	37%
Local Sesame Oil 1 litre	90,854	91,875	96,250	96,250	43,772	5%	0%	6%
Exchange Rate (Somali Shilling per USD)	28,117	20,875	20,688	20,781	9,372	0%	0%	-26%
<b>Terms of Trade</b>								
Labour Wage (Daily)/ Cereal (Rice(Kg))	5	8	9	9	-	14%	0%	59%
Local Goat (Head)/ Cereal (Rice(Kg))	66	87	94	98	-	13%	4%	49%
<b>Price Indices</b>								
Consumer Price Index	-	200	220	219	-	9%	0%	-

Figure 40: Trends in Cereal Prices

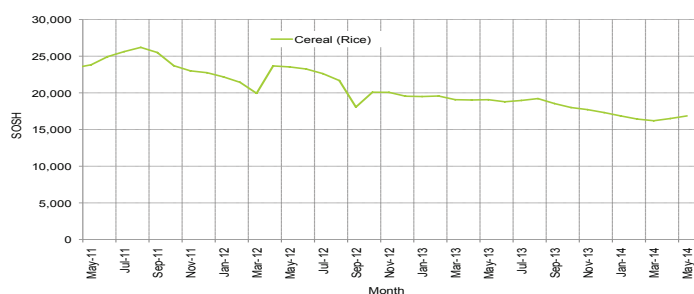


Figure 41: Trends in Wage Rates and Relative Purchasing Power

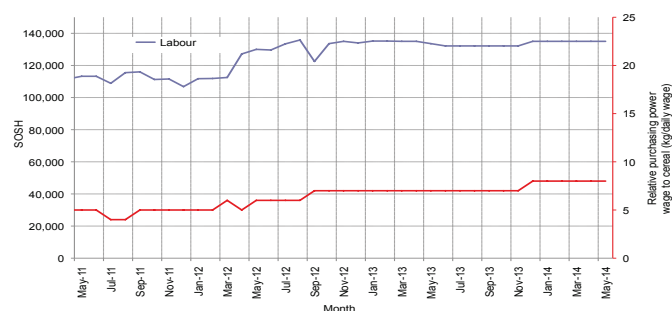


Figure 42: Imported Commodity Prices Compared to Exchange Rate

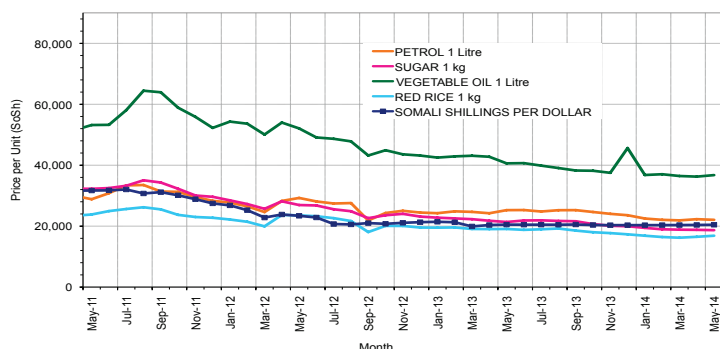


Figure 43: Goat Local Quality

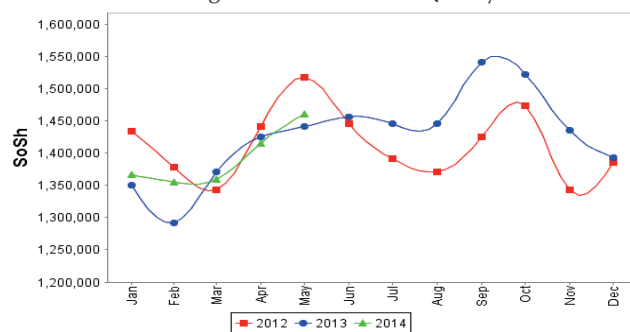


Figure 44: Exchange Rate

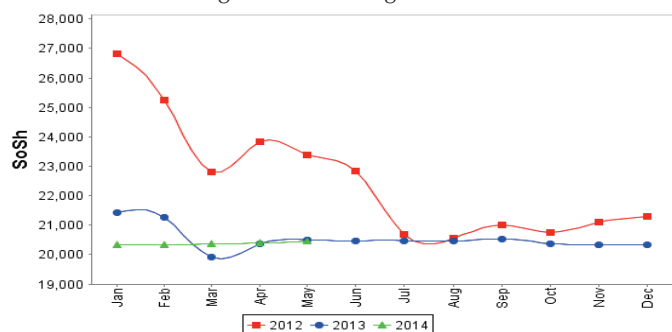
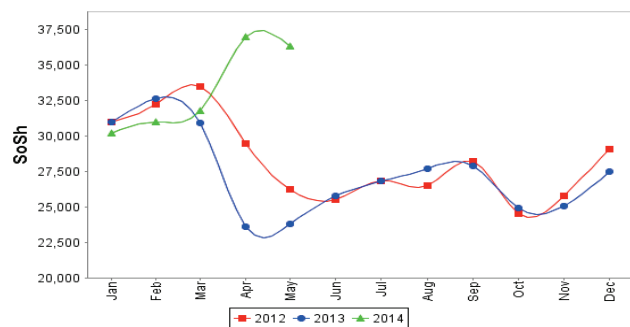


Figure 45: Water Drum (200 litres)



# Regional analysis: Northwest Regions

Indicator	5-Year Average (2009-2013)	May-13	Apr-14	May-14 Nominal Price	May-14 Real (Deflated) Price	% Change Same Month Previous Year	% Change Previous Month	% Change 5-year avrg (2009-2013)
<b>Imported Commodities Prices</b>								
Diesel 1 litre	6,164	7,115	6,905	6,950	5,316	-2%	1%	13%
Imported Red Rice 1kg	5,117	4,890	5,020	5,050	3,836	3%	1%	-1%
Petrol 1 litre	6,309	7,510	7,253	7,395	5,663	-2%	2%	17%
Sugar	5,513	5,955	5,820	5,580	4,249	-6%	-4%	1%
Vegetable Oil 1 litre	10,739	12,800	12,000	12,233	9,434	-4%	2%	14%
Wheat Flour 1kg	4,259	4,170	4,380	4,420	3,345	6%	1%	4%
Wheat Grain 1kg	3,668	3,000	3,575	3,313	2,482	10%	-7%	-10%
<b>Cereal Prices</b>								
White Sorghum 1kg	3,240	3,280	3,860	3,710	2,791	13%	-4%	15%
Yellow Maize 1kg	3,296	3,375	3,395	3,362	2,520	0%	-1%	2%
<b>Livestock &amp; Livestock Product Prices</b>								
Camel Local Quality (Head)	2,174,175	3,179,875	3,850,000	3,491,667	2,721,099	10%	-9%	61%
Cattle Local Quality (Head)	1,503,399	2,283,750	2,437,500	2,510,000	1,956,046	10%	3%	67%
Fresh Camel Milk 1 litre	5,232	5,285	5,800	5,700	4,342	8%	-2%	9%
Goat Export Quality (Head)	367,980	491,850	465,300	467,850	364,515	-5%	1%	27%
Goat Local Quality (Head)	287,582	359,510	346,500	342,150	266,551	-5%	-1%	19%
<b>Other Essential Items</b>								
Charcoal 50kg	35,430	43,750	46,950	47,150	36,646	8%	0%	33%
Cowpeas 1 kg	9,114	9,313	9,138	9,431	7,250	1%	3%	3%
Unskilled Labor Wage Rate	34,600	43,300	48,400	47,000	36,529	9%	-3%	36%
Firewood Bundle	3,226	3,667	3,667	3,833	2,887	5%	5%	19%
Local Sesame Oil 1 litre	25,906	27,438	33,688	33,250	25,813	21%	-1%	28%
Exchange Rate (Somaliland Shilling per USD)	6,702	6,902	6,925	6,920	5,293	0%	0%	3%
<b>Terms of Trade</b>								
Labour Wage (Daily)/ Cereal (Rice(Kg))	7	9	10	9	-	5%	-3%	38%
Local Goat (Head)/ Cereal (Rice(Kg))	56	74	69	68	-	-8%	-2%	21%
<b>Price Indices</b>								
Consumer Price Index	-	119	129	128	-	8%	-1%	-

Figure 46: Trends in Cereal Prices



Figure 47: Trends in Wage Rates and Relative Purchasing Power

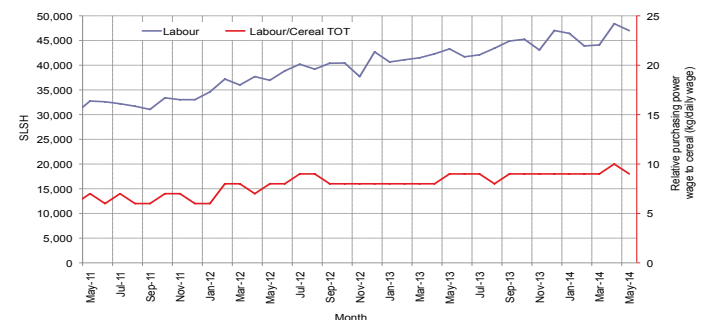


Figure 48: Imported Commodity Prices Compared to Exchange Rate

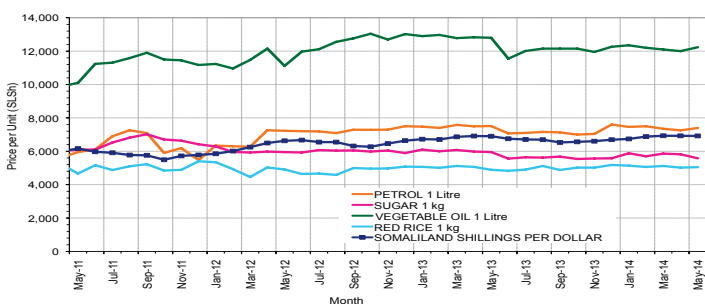


Figure 49: Goat Local Quality

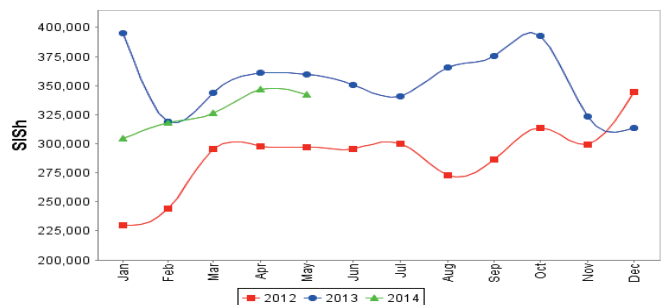


Figure 50: Exchange Rate

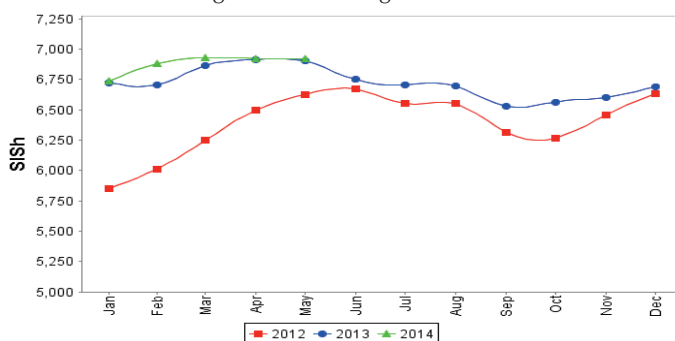
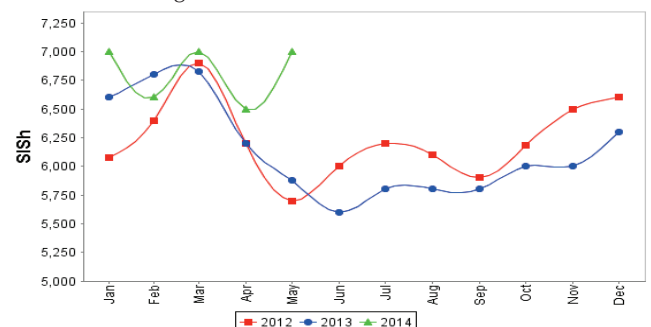


Figure 51: Water Drum (200 litres)



# Trends in Livestock Exports

Table 2: Berbera Livestock Exports (Number of Heads)

	1998	1999	2000	2001	2002	2003	2004	2005	2006	2007	2008	2009	2010	2011	2012	2014 (Jan-March)
Shoats	957,224	2,048,136	1,601,083	51,546	341,711	563,107	859,404	1,023,795	1,017,242	1,350,054	1,219,519	1,556,003	2,584,810	3,104,684	3,219,584	452,428
Cattle	92,213	89,967	63,263	20,973	37,547	84,312	131,852	148,151	85,631	88,143	80,051	88,005	133,021	150,934	190,354	59,025
Camel	11,663	37,430	16,984	3,473	18,864	21,874	5,147	5,069	22,810	14,245	26,515	20,206	92,651	107,281	102,664	42,315

Figure 52: Berbera Livestock Exports (Number of Heads)

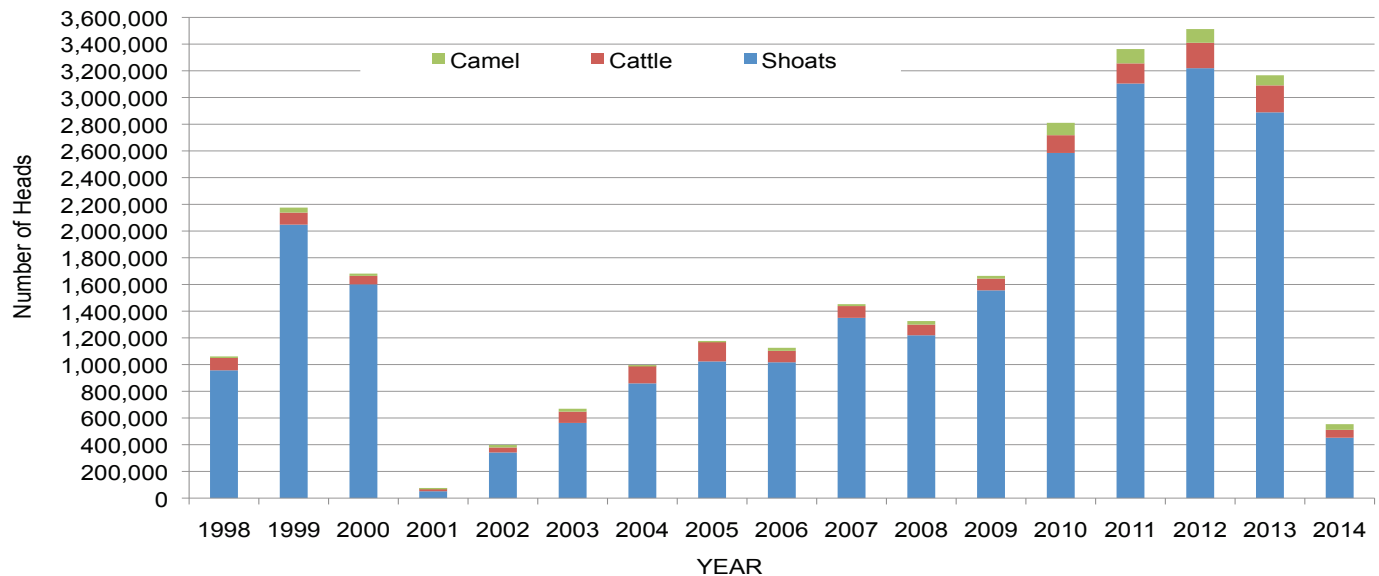
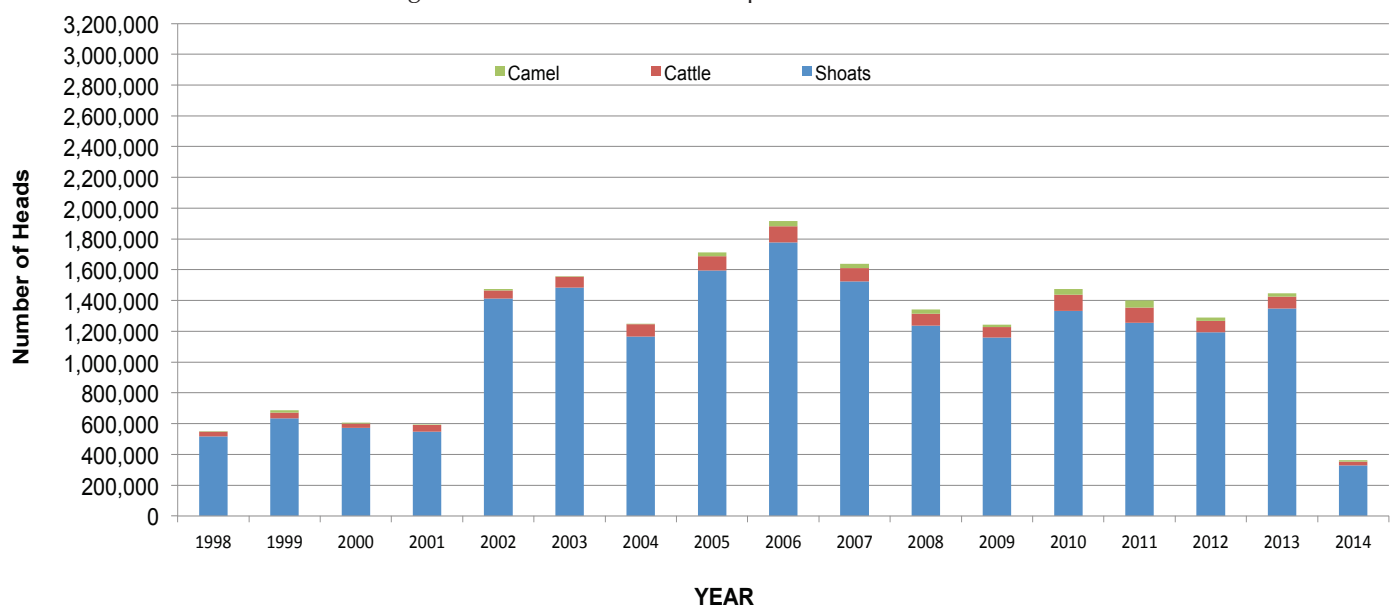


Table 3: Bossaso Livestock Exports (Number of Heads)

	1998	1999	2000	2001	2002	2003	2004	2005	2006	2007	2008	2009	2010	2011	2012	2013	2014 (Jan-Apr)
Shoats	517,020	633,669	571,455	548,853	1,412,450	1,483,409	1,166,480	1,594,859	1,777,283	1,522,855	1,236,775	1,159,454	1,333,478	1,256,535	1,192,197	1,349,123	330,036
Cattle	29,492	36,586	27,604	42,248	53,313	71,328	79,994	91,910	104,595	89,190	78,046	67,385	103,808	99,058	76,043	77,353	22,207
Camel	3,938	15,544	8,177	1,950	9,720	4,259	2,488	26,109	33,724	27,580	27,639	15,331	36,865	45,878	22,288	19,032	9,529

Figure 53: Bossaso Livestock Exports (Number of Heads)



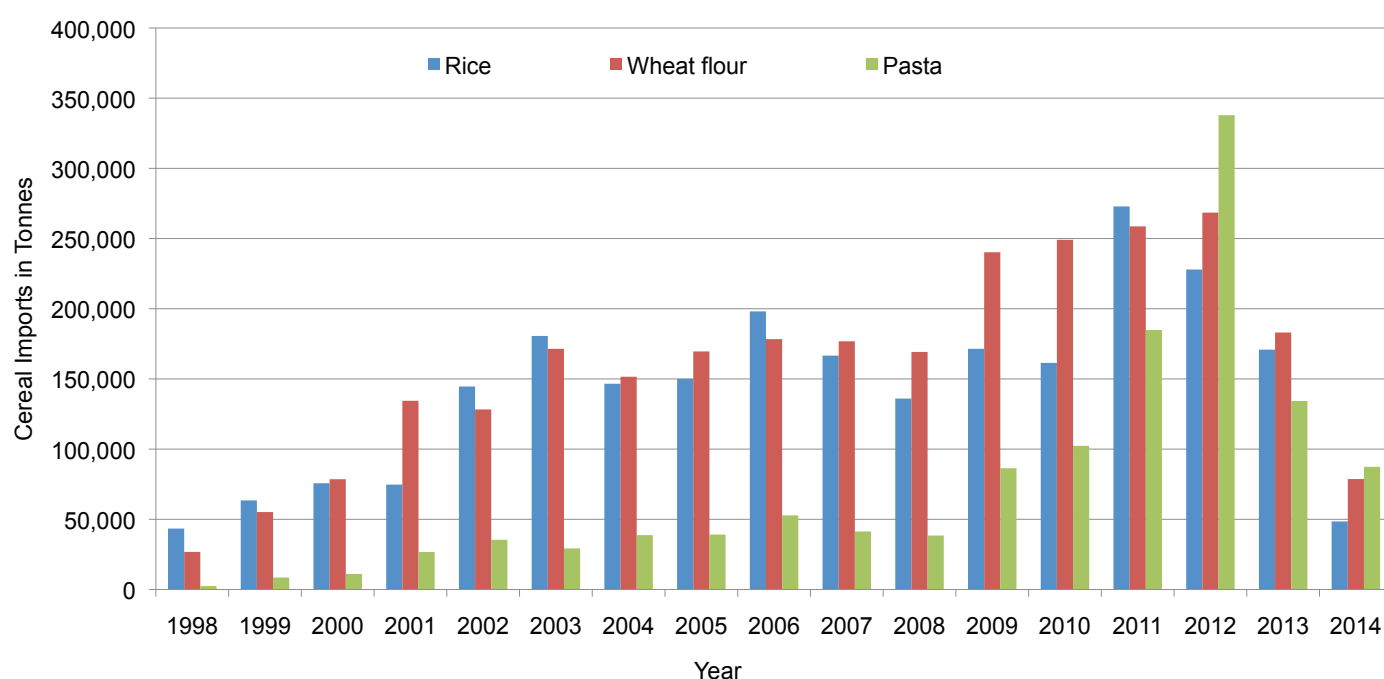


# Trends in Cereal Imports

Table 4: Total Cereal Imports through Berbera, Bossaso and Mogadishu Ports (Tonnes) \*

	1998	1999	2000	2001	2002	2003	2004	2005	2006	2007	2008	2009	2010	2011	2012	2013	2014 (Jan-Apr)
<b>Rice</b>	43,410	63,464	75,687	74,729	144,600	180,614	146,567	150,017	198,101	166,626	136,007	171,472	161,415	272,877	227,955	170,868	48,484
<b>Wheat flour</b>	26,774	55,176	78,555	134,425	128,263	171,442	151,555	169,583	178,345	176,821	169,208	240,247	249,080	258,679	268,491	183,058	78,686
<b>Pasta</b>	2,455	8,544	11,071	26,702	35,425	29,273	38,749	39,153	52,815	41,331	38,441	86,372	102,373	184,849	337,878	134,311	87,378

Figure 54: Total Cereal Imports (Berbera, Bossaso and Mogadishu)



\* 2014 import data for Mogadishu (Elmaan Port) and Bossaso are up to April and for Berbera it is up to March. Mogadishu data (Elmaan Port) for 2013 only includes January -March imports.