

Market DataUpdate

May 2013



Food Security and Nutrition
Analysis Unit - Somalia



Issued June 21, 2013

Highlights

Inflation: The Consumer Price Index (CPI) went down in nearly all zones in the month of May. The inflation rate was also significantly reduced year-on-year. However, when compared to the base period (March 2007), the minimum cost of living is significantly elevated in Somali Shilling areas (SoSh) but increased only moderately in the Somaliland Shilling (SISh) areas.

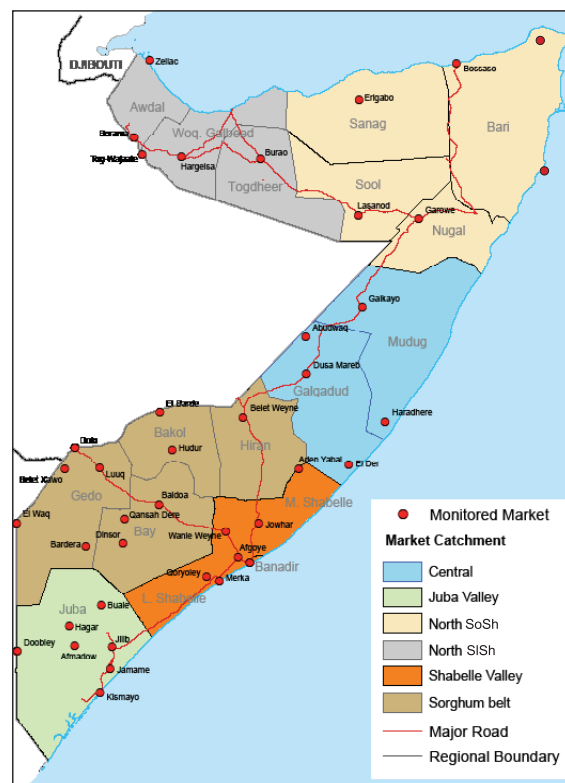
The exchange rate between the SoSh and the United States dollar (USD) remained generally stable in most towns. The SISh, however, extended marginal gains in May. Compared to one year ago, the SoSh appreciated in all regions, while the SISh depreciated slightly as a result of increased money supply. The appreciation of the SoSh is attributable to increased dollar flows into the country, particularly in Mogadishu.

Local grain price monthly trends were mixed; they remained stable in the Northwest, Juba, Bay and Gedo; increased in Shabelle, Banadir, and Hiran; but decreased elsewhere. The appreciation of cereal prices is mainly due to limited household maize stocks in most areas. In other areas, the decline is attributed to accelerated trade flows through passable feeder roads after seasonal rains subsided in most regions, in addition to cereal stock sales by farmers in preparation for the upcoming harvest. Overall, cereal prices remained at lower levels in most markets when compared to the corresponding time last year.

Prices of imported commodities quoted in local currency remained either stable or declined marginally in most markets. An exception was a slight increase in Juba and Shabelle due to insecurity and cut-off feeder roads. Compared to the same period a year ago, imported commodity prices are significantly reduced in nearly all trading centres on account of stronger local currency and accelerated port supplies, but remained stable in SISh regions. The decline in prices of imported food was mostly driven by local factors such as appreciated local currency and improved trade flows.

Livestock prices in May were mixed; they increased in Juba and Banadir, while remaining stable in all other areas. Price increases were caused by increased consumption needs in Mogadishu, insecurity in Juba and livestock out-migration from market towns back to grazing fields. Milk prices experienced downward trends countrywide following increased milk production. Livestock prices are significantly higher than a year ago in most markets.

Labour wage cost did not vary significantly from the previous month's levels in most markets apart from Mogadishu where they increased. Casual wages are significantly higher compared to their levels a year ago in most markets.



This Market Data Update is a monthly report that presents analysis of market information and is produced regularly as part of the monthly monitoring process.

The weekly price data is collected from 47 main markets throughout Somalia since 1995.

Market analysis is an integral part of all of FSNAU's Annual Food Security Projections and seasonal technical reports (Technical Reports on FSNAU Post *Gu* and *Deyr* Analysis).

Detailed data is available online on www.fsnau.org/ids.

FSNAU Funding Agencies



Regional Market Highlights

Terms of Trade (ToT) between labour wage and cereals showed mixed trends in May; ToT reduced mainly in maize consuming areas,¹ remained stable in Central, Northeast and Banadir, and increased in all other areas with a more pronounced gain in Bay and Bakool. Compared to the same month last year, the purchasing power improved in most regions except for declining in Gedo and Hiran and remaining stable in Bakool.

Juba Valley: Prices of imports and cattle increased month-on-month but maize prices were stable. The ToT (10Kg/daily wage rate) was down by 1 kg from the previous month's level. Compared to a year ago, prices are significantly lower for imported food and local cereals, whereas they are considerably elevated for livestock. Annual comparisons of ToT between labour and cereals also indicate a significant improvement in purchasing power for casual labourers.

Sorghum Belt: Stability was observed in the prices of imported food and livestock. The ToT between labor and cereals were mixed – increased in Bay, Bakool and Gedo but reduced in Hiran. Year-on-year price comparisons showed mixed trends; import commodities and goat cost less while cereals are more expensive. Year-on-year comparison of ToT showed an increase in Bay, no change in Bakool, and a decrease in the other regions.

Shabelle Valley: Monthly prices of imported food and maize increased while livestock quotations remained unchanged. The ToT reduced by 2kg to close the month at 11kg of maize for a day's worth of labor. Compared to the same month last year, prices of imported commodities and cereals are significantly lower while cattle and camel prices are considerably higher.

Central: Relative stability was observed in the monthly price movements for imports and goats while that of red sorghum was down. Annual comparisons indicate significant decreases in the prices of all items except for camel, which accelerated significantly. ToT is sustained at the previous month's level but is significantly higher than in the same month last year, currently standing at 70kg of rice/local quality goat.

Northeast: Month-on-month prices remained generally stable for most commodities. Prices are significantly lower compared to a year ago for most items except for stability in livestock prices. ToT (rice/local goat) did not change (87kg/local goat) from April 2013 levels but is higher than in the same month a year ago.

Northwest: Prices of most monitored commodities were generally stable, except for a slight reduction in wheat flour and milk during the reporting month. Compared to 12 months ago, prices of imports and cereals were virtually unchanged, while camel prices increased slightly. ToT between cereal (white sorghum) and labor wage increased by 1kg to 13kg/daily labour rate month-on-month and is up by 3kg compared to May 2012.

Banadir: Monthly prices of nearly all monitored commodities increased slightly. Year-on-year price comparisons indicate decreased trends for imports and local cereals while export quality goat declined. ToT of white maize to labor wage increased by 2 units from the previous month's level, exchanging at 17kgs/ daily labor rate.

Table 1: ToT of Cereals (kg) per Daily Labour Wage Rate by Regions

Regions	May 2013*	% change from:	
		April 2013	May 2012
	(kg of cereals/daily wage rate)		
Banadir	15	0%	36%
Bay	22	23%	17%
Bakool	7	43%	0%
Gedo	16	6%	-29%
Hiran	14	-14%	-14%
Juba	11	-9%	11%
Shabelle	13	-15%	10%
Northeast	8	0%	60%
Northwest	13	10%	22%
Central	8	0%	33%

* Cereal types used for ToT calculation: White Maize (Banadir, Hiran, Juba, Shabelle), Red Sorghum (Bay, Bakool, Gedo, Central, Northeast) and White Sorghum (Northwest)

¹ Hiran, Juba and Shabelle.

International Market Highlights

International Price Highlights

Diesel: In May 2013, Free on Board (FoB) crude oil¹ prices closed the month at US \$100.3 per barrel, one percent below the previous month's level but seven percent lower than the same period last year. According to the Oil Market Report (OMR),² the price decline was due to anticipated downward price movement against a backdrop of a weaker economic outlook.

Diesel prices in local currency terms increased slightly (2-4%) month-on-month in Mogadishu and Bossaso. Compared to the same month last year, diesel prices are significantly lower in Mogadishu (23%) but remain at the same level in Bossaso. Annual reduction was supported by appreciated SoSh and steady sea port supplies. The dollar equivalent price gap between domestic traded diesel and global crude oil over the last twelve months narrowed in Mogadishu but increased (20%) in Bossaso, the latter trend occasioned by import restrictions from Yemen (Figure 1).

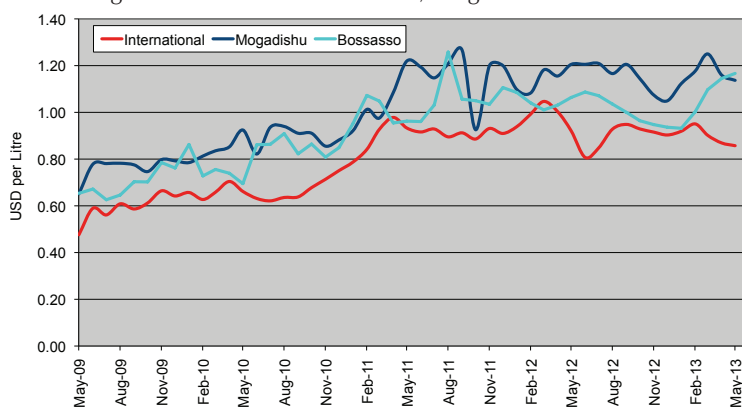
Rice: The benchmark Thai rice (Thai A1 Super 1/ B) export price was largely unchanged month-on-month and year-on-year, quoted at \$539 per tonne in May.³ A slight weakening in rice markets was due to limited export demand, which has weighed on Thai export quotations, despite continued government intervention buying.⁴

Domestic prices of imported rice increased (7%) in Mogadishu but remained stable in Bossaso over the last month. The prices are significantly lower (18% and 28% respectively) than they were in the same period last year; the decline was caused by several factors, including appreciation of the Somali shilling against the USD, increased supplies through ports, and ongoing humanitarian interventions. The gap between international and domestic rice prices (in USD terms) has decreased from 45 percent in May last year to 32 percent currently in Mogadishu, and from 50 percent to 41 percent in Bossaso (Figure 2).

Wheat: While concerns remain over harvest prospects for some major producers, wheat prices have softened over the last month, as supplies are still expected to be ample in the year ahead; the IGC wheat sub-Index is down (4%) month-on-month but is up (8%) when compared to the same month last year.⁵

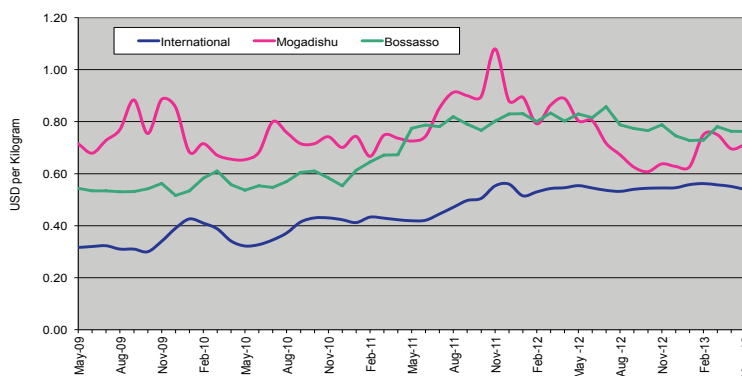
Wheat flour prices for the reporting month increased in local currency terms in Mogadishu (14%)⁶ and remained stable in Bossaso. Year-on-year comparisons indicate significant price reductions (14-17%) in both cities.

Figure 1: Diesel Prices in Dubai, Mogadishu and Bossaso



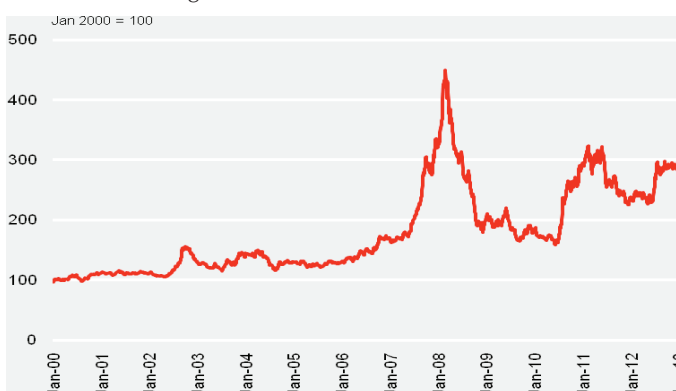
Source: FSNAU & FEWSNET Market Price Monitoring System, FAO Statistics, 2013

Figure 2: Rice Prices in Bangkok (FOB), Mogadishu and Bossaso Markets



Source: FSNAU & FEWSNET Market Price Monitoring System, FAO Statistics, 2013

Figure 3: International Wheat Prices



Source: International Grain Council

¹ In Abu Dhabi (Dubai), the main source of Somalia's oil imports.

² Monthly Publication by International Energy Agency (IEA) in collaboration with Organization of Petroleum Exporting Countries (OPEC), released on 12 June 2013; <http://omrpublic.iea.org/>

³ The World Food Situation: The FAO Food Price Index May 2013; <http://www.fao.org/worldfoodsituation/wfs-home/foodpricesindex/en/>

⁴ IGC Grain Market Report (GMR 433) – 31 May, 2013; <http://www.igc.int/en/downloads/gmrsummary/gmrsumme.pdf>.

⁵ Ibid.

⁶ Due to increased consumptions needs.

International Market Highlights

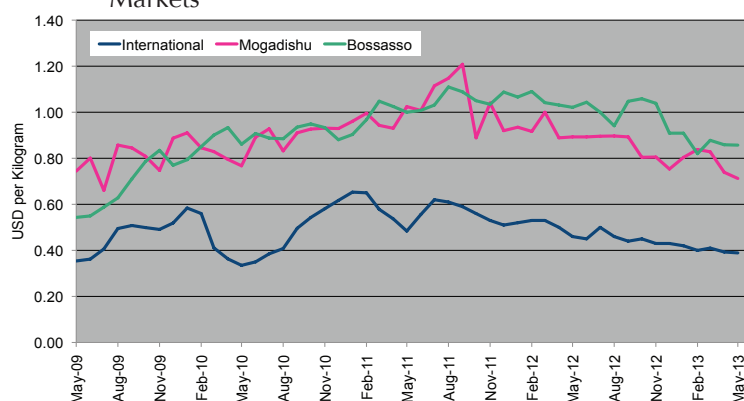
Sugar: The **FAO Sugar Price Index**⁷ averaged 250.1 points in May, down 2.6 points (1%) from April 2013 and 15% from May 2012. Sugar prices continued to soften in May, driven by favourable harvesting conditions in Brazil, the world's largest producer and exporter, which boosted cane harvest. More generally, the price slide reflects the prospect of more abundant global supplies, combined with weaker import demand.

Month-on-month sugar prices did not vary in Somalia's port cities. However, significant price reductions were recorded when compared to twelve months ago, reflecting increased port supplies and appreciated domestic currency.

Cooking Oil: The **FAO Oils/Fats Price Index**⁸ averaged 199.0 points in May, which is unchanged from April but 15 percent lower than in May of last year. While palm oil prices gained strength following a drop in global inventories from their recent record-high levels, soy oil values eased further, reflecting higher than anticipated export availabilities in Argentina and an encouraging outlook for the United States 2013/14 soybean crop.

Vegetable oil prices remained stable in both Bossaso and Mogadishu month-on-month. Annual price comparisons indicate a significant reduction due to appreciated SoSh, continued humanitarian interventions and enhanced port supplies.

Figure 4: Sugar Prices: International, Mogadishu and Bossaso Markets



Source: FSNAU & FEWSNET Market Price Monitoring System, International Sugar Organizations, 2013

⁷ The World Food Situation: The FAO Food Price Index June 2013.

⁸ Ibid

National Trends: CPI, Exchange Rates, Cereal Prices and Relative Purchasing Power

Figure 5: Terms of Trade Between Wage Rates and Selected Cereals

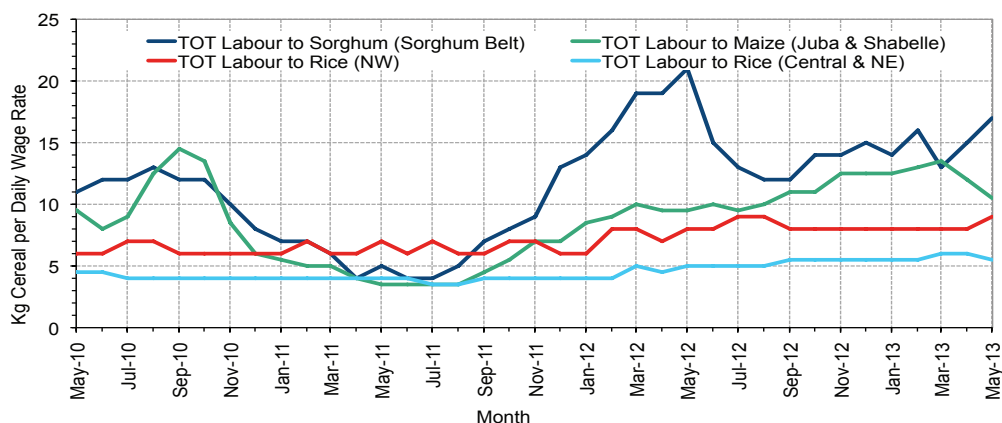


Figure 6: Monthly Exchange Rate for Selected Regions (SoSh and SiSh to USD)

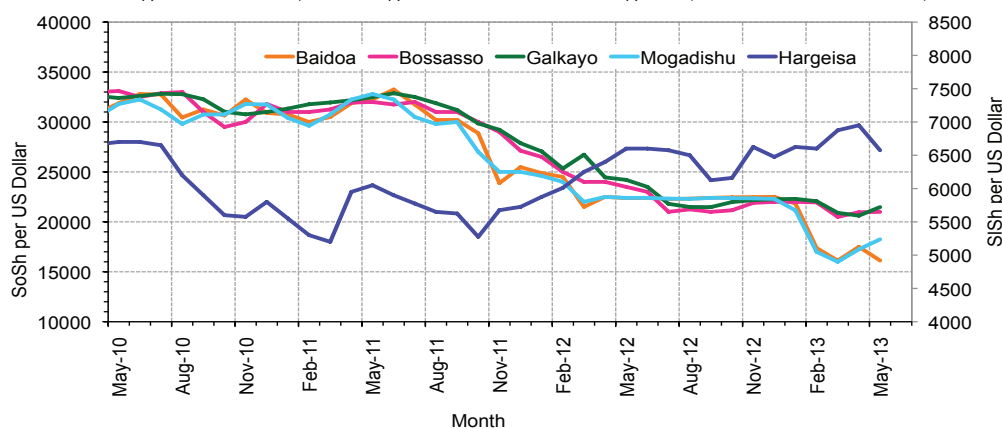


Figure 7: Monthly Trends in Consumer Price Index (CPI, March 2007=100)

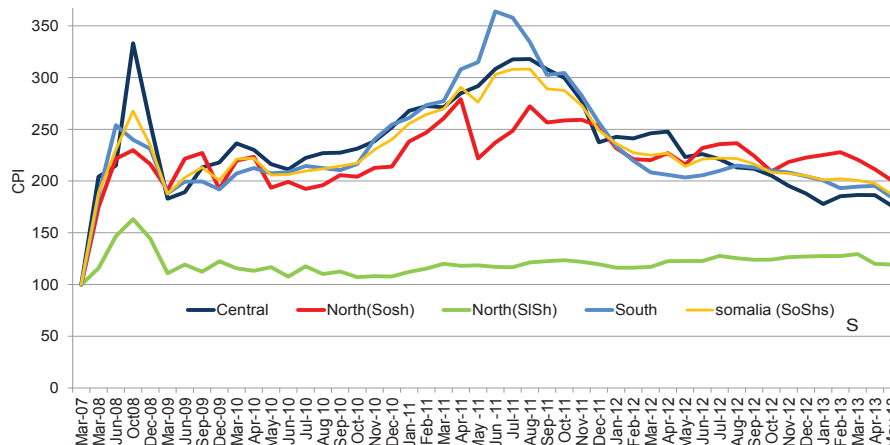
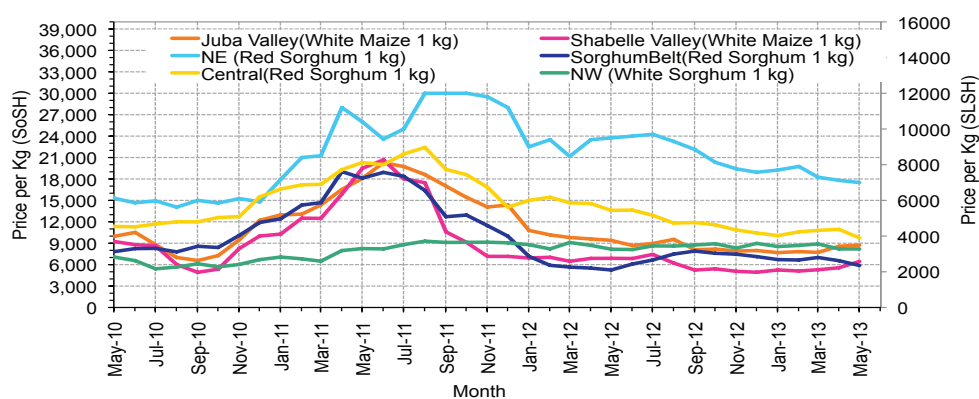


Figure 8: Monthly Trends in Local Cereal Prices



Regional analysis: Juba Regions

Indicator	5-Year Average (2008-2012)	May-12	Apr-13	May-13 Nominal Price	May-13 Real (Deflated) Price	% Change Same Month Previous Year	% Change Previous Month	% Change 5-year avg (2008-2012)
Imported Commodities Prices								
Diesel 1 litre	33,854	30,786	28,029	28,321	15,300	-8%	1%	-16%
Imported Red Rice 1kg	24,373	18,536	15,457	16,786	9,028	-9%	9%	-31%
Petrol 1 litre	34,931	35,286	28,114	28,250	15,261	-20%	0%	-19%
Sugar	24,099	22,500	18,714	18,571	9,998	-17%	-1%	-23%
Vegetable Oil 1 litre	50,997	40,607	34,071	34,143	18,466	-16%	0%	-33%
Wheat Flour 1kg	22,855	17,643	15,857	17,071	9,183	-3%	8%	-25%
Wheat Grain 1kg	16,400	-	-	-	-	-	-	-
Cereal Prices								
Red Sorghum 1kg	8,913	-	-	7,000	3,706	-	-	-21%
White Maize 1kg	12,410	9,400	8,586	8,657	4,607	-8%	1%	-30%
Livestock & Livestock Product Prices								
Camel Local Quality (Head)	8,729,686	9,423,100	10,461,048	9,641,964	5,242,814	2%	-8%	10%
Cattle Local Quality (Head)	3,598,760	3,649,100	4,036,400	4,456,458	2,423,143	22%	10%	24%
Fresh Camel Milk 1 litre	20,953	23,000	17,700	18,583	10,005	-19%	5%	-11%
Goat Export Quality (Head)	1,262,941	1,487,393	1,635,543	1,641,786	892,637	10%	0%	30%
Goat Local Quality (Head)	810,764	934,571	1,035,029	1,018,821	553,894	9%	-2%	26%
Other Essential Items								
Charcoal 50kg	84,704	101,179	91,714	92,321	50,100	-9%	1%	9%
Cowpeas 1 kg	23,571	24,400	23,286	23,536	12,698	-4%	1%	0%
Unskilled Labor Wage Rate	86,603	84,429	92,929	89,500	48,567	6%	-4%	3%
Firewood Bundle	6,002	8,500	8,800	9,000	4,794	6%	2%	50%
Local Sesame Oil 1 litre	75,562	77,786	69,286	75,357	40,876	-3%	9%	0%
Exchange Rate (Somali Shilling per USD)	29,398	21,954	18,214	18,339	9,872	-16%	1%	-38%
Terms of Trade								
Labour Wage (Daily)/ Cereal (Maize(Kg))	7	9	11	10	-	15%	-4%	48%
Local Goat (Head)/ Cereal (Maize(Kg))	65	99	121	118	-	18%	-2%	80%
Price Indices								
Consumer Price Index	-	203	195	184	-	-10%	-6%	-

Figure 9: Trends in Cereal Prices

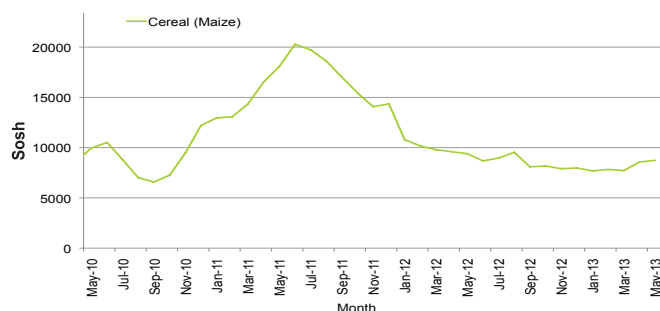


Figure 10: Trends in Wage Rates and Relative Purchasing Power

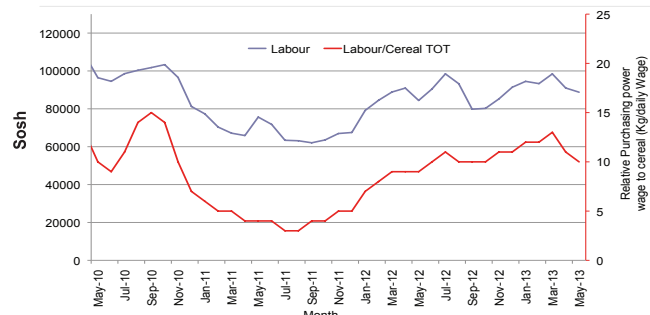


Figure 11: Imported Commodity Prices Compared to Exchange Rate

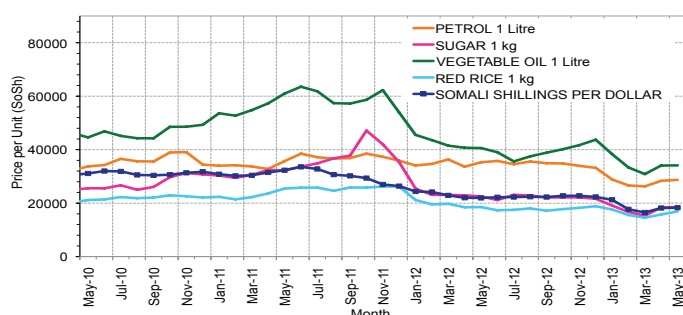


Figure 12: Goat Local Quality

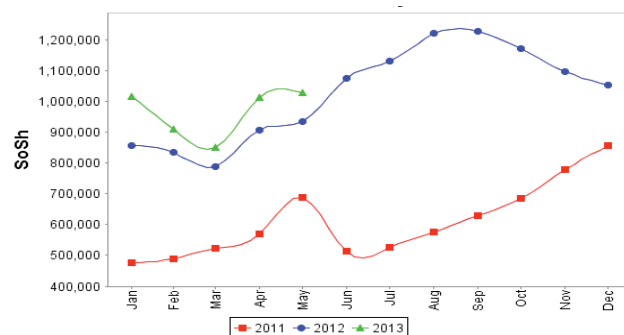


Figure 13: Exchange Rate

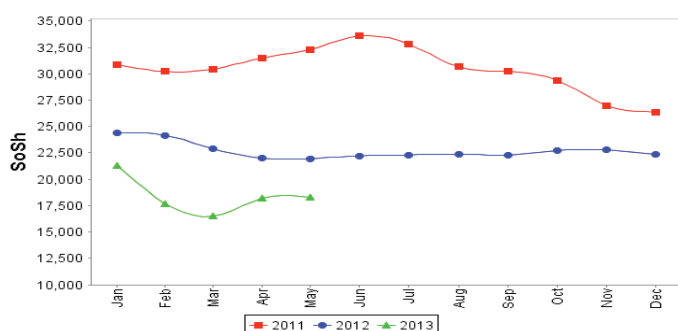
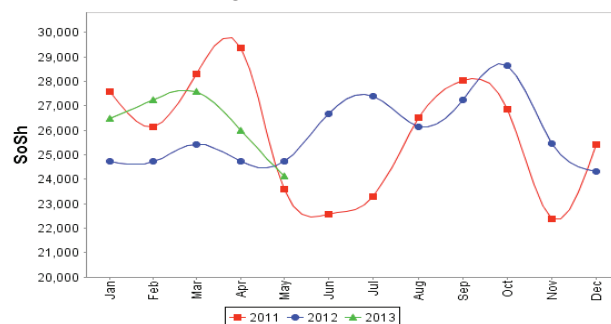


Figure 14: Water Drum



Regional analysis: Sorghum Belt Regions (Bay, Bakool, Gedo and Hiran)

Indicator	5-Year Average (2008-2012)	May-12	Apr-13	May-13 Nominal Price	May-13 Real (Deflated) Price	% Change Same Month Previous Year	% Change Previous Month	% Change 5-year avg (2008-2012)
Imported Commodities Prices								
Diesel 1 litre	34,370	33,545	28,559	30,841	16,670	-8%	8%	-10%
Imported Red Rice 1kg	26,332	20,045	17,045	17,205	9,255	-14%	1%	-35%
Petrol 1 litre	33,841	33,773	30,145	30,477	16,472	-10%	1%	-10%
Sugar	25,440	23,455	18,309	18,864	10,157	-20%	3%	-26%
Vegetable Oil 1 litre	50,439	42,750	40,859	40,636	21,996	-5%	-1%	-19%
Wheat Flour 1kg	23,282	18,568	15,055	15,545	8,353	-16%	3%	-33%
Wheat Grain 1kg	15,050	7,750	8,550	8,042	4,273	4%	-6%	-47%
Cereal Prices								
Red Sorghum 1kg	9,777	5,250	6,550	5,882	3,098	12%	-10%	-40%
White Maize 1kg	12,215	7,800	8,505	8,550	4,549	10%	1%	-30%
Livestock & Livestock Product Prices								
Camel Local Quality (Head)	8,802,846	11,861,111	12,701,364	12,785,227	6,951,994	8%	1%	45%
Cattle Local Quality (Head)	3,104,308	3,625,000	3,562,500	3,631,719	1,974,683	0%	2%	17%
Fresh Camel Milk 1 litre	20,503	25,682	12,336	10,545	5,634	-59%	-15%	-49%
Goat Export Quality (Head)	1,242,327	1,698,864	1,583,245	1,547,727	841,492	-9%	-2%	25%
Goat Local Quality (Head)	773,827	1,226,818	1,077,545	1,052,273	572,084	-14%	-2%	36%
Other Essential Items								
Charcoal 50kg	131,887	178,864	150,659	140,682	76,397	-21%	-7%	7%
Cowpeas 1 kg	27,534	26,281	17,950	19,194	10,337	-27%	7%	-30%
Unskilled Labor Wage Rate	89,032	110,659	95,068	100,568	54,585	-9%	6%	13%
Firewood Bundle	5,260	6,386	6,455	6,182	3,262	-3%	-4%	18%
Local Sesame Oil 1 litre	77,933	71,714	69,607	69,286	37,575	-3%	0%	-11%
Exchange Rate (Somali Shilling per USD)	29,549	22,893	18,679	18,909	10,182	-17%	1%	-36%
Terms of Trade								
Labour Wage (Daily)/ Cereal (Sorghum(Kg))	9	21	15	17	-	-19%	18%	88%
Local Goat (Head)/ Cereal (Sorghum(Kg))	79	234	165	179	-	-23%	9%	126%
Price Indices								
Consumer Price Index	-	203	195	184	-	-10%	-6%	-

Figure 15: Trends in Cereal Prices

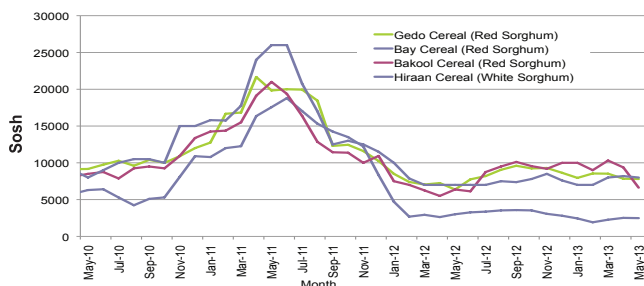


Figure 16: Trends in Wage Rates and Relative Purchasing Power

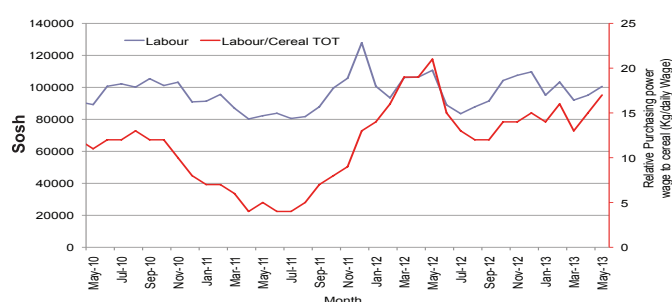


Figure 17: Imported Commodity Prices Compared to Exchange Rate

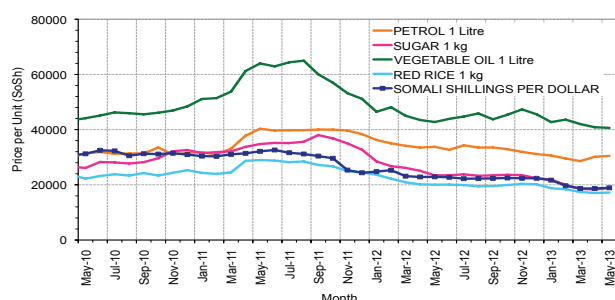


Figure 18: Goat Local Quality

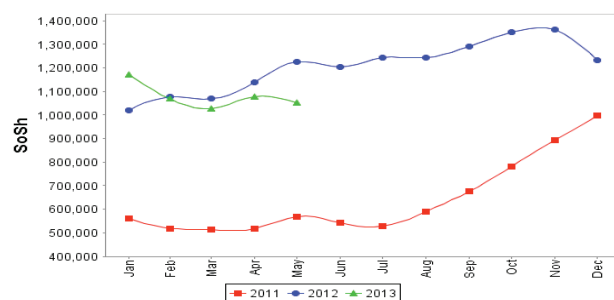


Figure 19: Exchange Rate

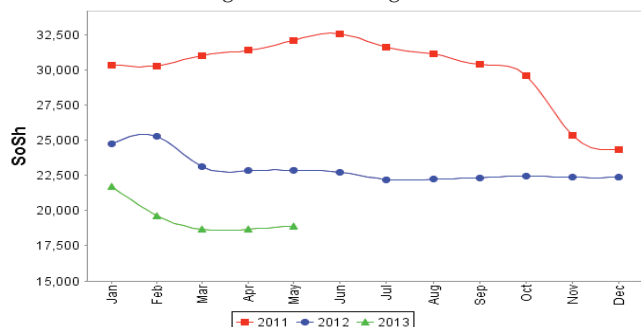
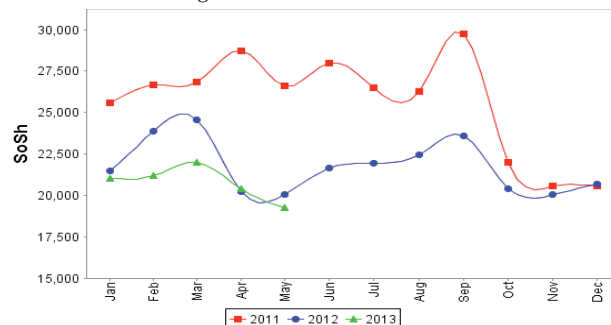


Figure 20: Water Drum



Regional analysis: Shabelle Regions

Indicator	5-Year Average (2008-2012)	May-12	Apr-13	May-13 Nominal Price	May-13 Real (Deflated) Price	% Change Same Month Previous Year	% Change Previous Month	% Change 5-year avrg (2008-2012)
Imported Commodities Prices								
Diesel 1 litre	32,491	29,875	24,667	24,833	13,403	-17%	1%	-24%
Imported Red Rice 1kg	23,775	17,000	14,000	15,333	8,237	-10%	10%	-36%
Petrol 1 litre	30,950	31,792	26,833	61,792	33,500	94%	130%	100%
Sugar	23,675	21,417	15,000	16,083	8,645	-25%	7%	-32%
Vegetable Oil 1 litre	42,283	35,833	24,233	26,167	14,129	-27%	8%	-38%
Wheat Flour 1kg	21,304	15,583	13,833	14,833	7,966	-5%	7%	-30%
Wheat Grain 1kg	9,333	9,333	4,133	-	-	-	-	-
Cereal Prices								
Red Sorghum 1kg	10,229	8,715	9,912	7,019	3,717	-19%	-29%	-31%
White Maize 1kg	11,447	6,887	5,565	6,450	3,407	-6%	16%	-44%
Livestock & Livestock Product Prices								
Camel Local Quality (Head)	11,198,500	14,685,000	18,265,000	17,117,500	9,307,711	17%	-6%	53%
Cattle Local Quality (Head)	3,622,166	4,535,000	6,200,000	6,272,500	3,410,634	38%	1%	73%
Fresh Camel Milk 1 litre	18,350	19,583	18,117	15,813	8,498	-19%	-13%	-14%
Goat Export Quality (Head)	1,395,729	1,885,625	1,770,500	1,821,875	990,563	-3%	3%	31%
Goat Local Quality (Head)	987,375	1,290,417	1,314,333	1,287,500	699,991	0%	-2%	30%
Other Essential Items								
Charcoal 50kg	102,556	125,111	133,856	145,070	78,783	16%	8%	41%
Cowpeas 1 kg	25,632	24,336	16,890	15,593	8,379	-36%	-8%	-39%
Unskilled Labor Wage Rate	61,500	66,458	70,167	68,750	37,283	3%	-2%	12%
Firewood Bundle	4,116	5,875	6,833	8,292	4,409	41%	21%	101%
Local Sesame Oil 1 litre	58,350	44,000	58,667	60,208	32,639	37%	3%	3%
Exchange Rate (Somali Shilling per USD)	30,116	22,700	17,818	18,370	9,889	-19%	3%	-39%
Terms of Trade								
Labour Wage (Daily)/ Cereal (Maize(Kg))	5	10	13	11	-	10%	-15%	98%
Local Goat (Head)/ Cereal (Maize(Kg))	86	187	236	200	-	7%	-15%	131%
Price Indices								
Consumer Price Index	-	203	195	184	-	-10%	-6%	-

Figure 21: Trends in Cereal Prices

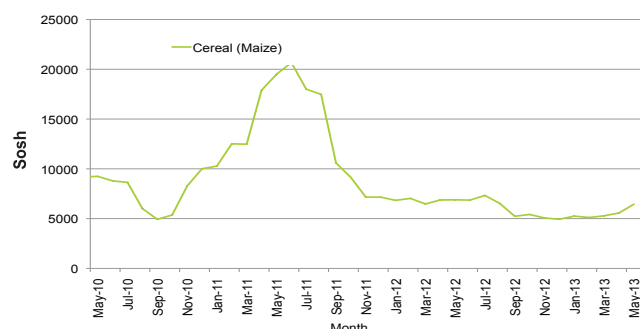


Figure 22: Trends in Wage Rates and Relative Purchasing Power

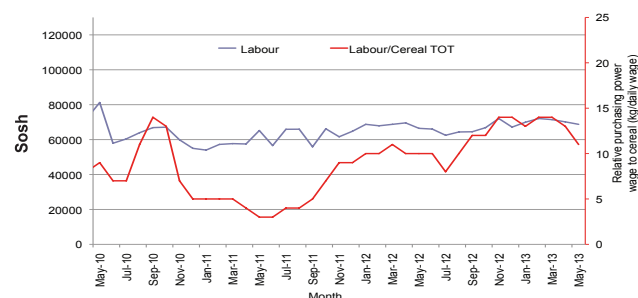


Figure 23: Imported Commodity Prices Compared to Exchange Rate

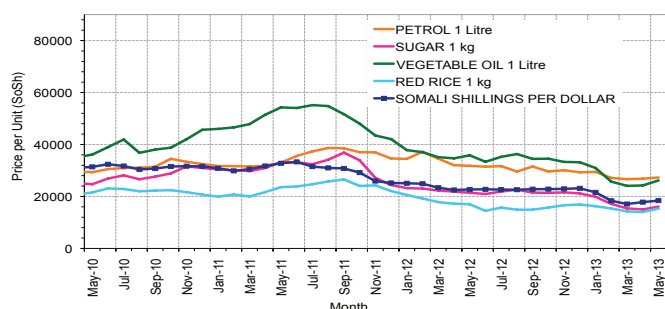


Figure 25: Exchange Rate

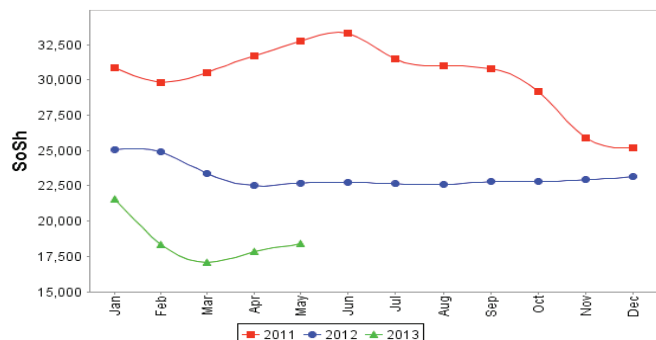


Figure 24: Goat Local Quality

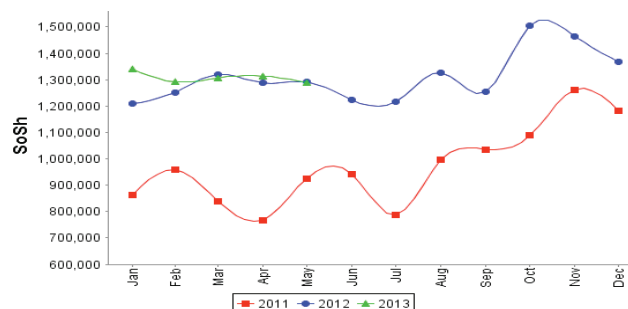
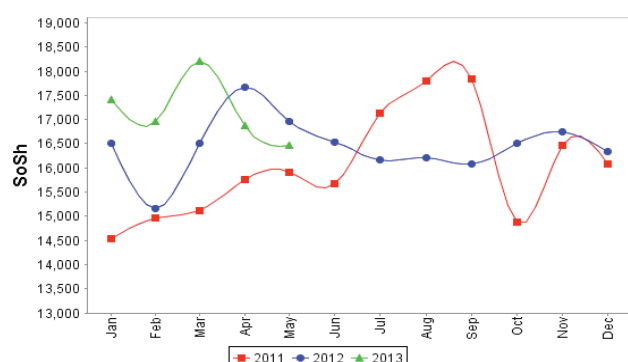


Figure 26: Water Drum



Regional analysis: Banadir Region

Indicator	5-Year Average (2008-2012)	May-12	Apr-13	May-13 Nominal Price	May-13 Real (Deflated) Price	% Change Same Month Previous Year	% Change Previous Month	% Change 5-year avrg (2008-2012)
Imported Commodities Prices								
Diesel 1 litre	28,075	24,700	18,458	18,917	10,186	-23%	2%	-33%
Imported Red Rice 1kg	22,910	16,717	11,813	12,604	6,754	-25%	7%	-45%
Petrol 1 litre	27,586	27,800	18,354	19,417	10,458	-30%	6%	-30%
Sugar	23,445	19,533	13,000	13,938	7,479	-29%	7%	-41%
Vegetable Oil 1 litre	40,306	35,083	22,458	22,792	12,293	-35%	1%	-43%
Wheat Flour 1kg	19,116	12,767	11,167	11,646	6,233	-9%	4%	-39%
Wheat Grain 1kg	13,900	8,653	8,248	7,532	3,996	-13%	-9%	-46%
Cereal Prices								
Red Sorghum 1kg	9,302	5,833	5,171	5,246	2,753	-10%	1%	-44%
White Maize 1kg	11,880	8,520	6,460	6,789	3,592	-20%	5%	-43%
Livestock & Livestock Product Prices								
Camel Local Quality (Head)	17,187,500	-	-	-	-	-	-	-
Cattle Local Quality (Head)	5,292,500	-	-	-	-	-	-	-
Fresh Camel Milk 1 litre	17,501	19,733	20,167	21,208	11,432	7%	5%	21%
Goat Export Quality (Head)	1,938,125	2,600,000	2,175,000	2,325,000	1,264,142	-11%	7%	-
Goat Local Quality (Head)	1,697,000	2,090,000	1,971,875	2,146,250	1,166,945	3%	9%	26%
Other Essential Items								
Charcoal 50kg	159,361	200,600	187,000	203,875	110,759	2%	9%	28%
Cowpeas 1 kg	24,320	22,367	13,167	13,283	7,123	-41%	1%	-45%
Unskilled Labor Wage Rate	70,500	102,000	100,000	116,667	63,339	14%	17%	65%
Firewood Bundle	23,406	8,000	7,000	7,900	4,196	-1%	13%	-66%
Local Sesame Oil 1 litre	63,620	49,567	53,292	55,375	30,011	12%	4%	-13%
Exchange Rate (Somali Shilling per USD)	30,074	22,193	17,163	18,242	9,819	-18%	6%	-39%
Terms of Trade								
Labour Wage (Daily)/ Cereal (Maize(Kg))	6	12	15	17	-	44%	11%	190%
Local Goat (Head)/ Cereal (Maize(Kg))	143	245	305	316	-	29%	4%	121%
Price Indices								
Consumer Price Index	-	203	195	184	-	-10%	-6%	-

Figure 27: Trends in Cereal Prices

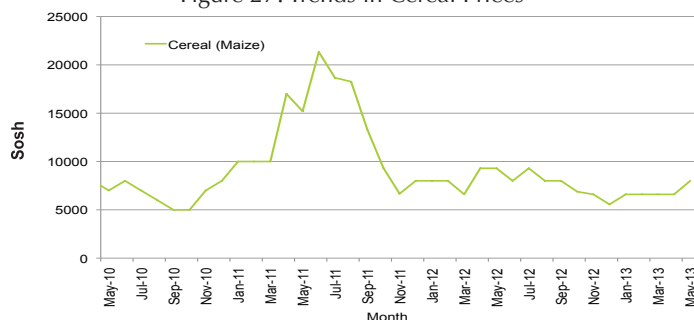


Figure 28: Bakara: Trends in Wage Rates and Relative Purchasing Power

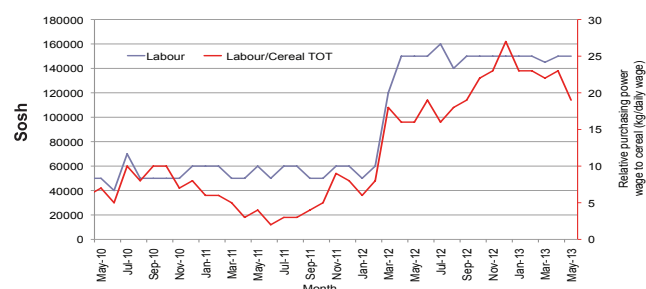


Figure 29: Imported Commodity Prices Compared to Exchange Rate

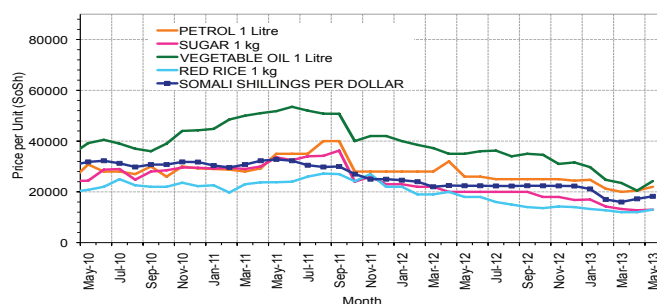


Figure 30: Goat Local Quality

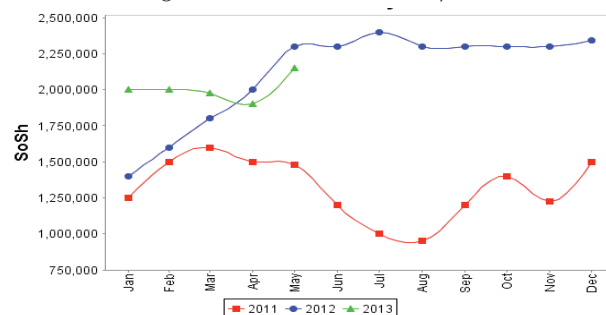


Figure 31: Exchange Rate

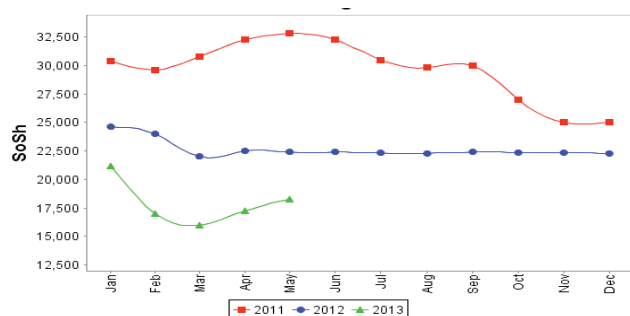
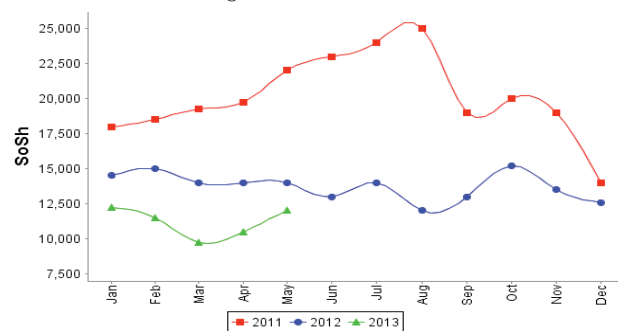


Figure 32: Wheat Flour



Regional analysis: Central Regions

Indicator	5-Year Average (2008-2012)	May-12	Apr-13	May-13 Nominal Price	May-13 Real (Deflated) Price	% Change Same Month Previous Year	% Change Previous Month	% Change 5-year avrg (2008-2012)
Imported Commodities Prices								
Diesel 1 litre	32,151	32,880	26,680	27,600	15,591	-16%	3%	-14%
Imported Red Rice 1kg	27,890	21,100	18,480	18,400	10,361	-13%	0%	-34%
Petrol 1 litre	28,044	28,800	24,427	25,250	14,255	-12%	3%	-10%
Sugar	27,176	26,550	20,787	20,550	11,583	-23%	-1%	-24%
Vegetable Oil 1 litre	54,160	46,600	41,240	41,900	23,721	-10%	2%	-23%
Wheat Flour 1kg	23,222	17,760	16,280	16,200	9,110	-9%	0%	-30%
Wheat Grain 1kg	17,133	16,667	13,183	13,063	7,326	-22%	-1%	-24%
Cereal Prices								
Red Sorghum 1kg	12,760	13,600	10,940	9,750	5,443	-28%	-11%	-24%
White Maize 1kg	14,670	12,700	10,100	10,313	5,763	-19%	2%	-30%
Livestock & Livestock Product Prices								
Camel Local Quality (Head)	7,027,500	9,512,500	11,100,000	11,843,750	6,733,175	25%	7%	69%
Cattle Local Quality (Head)	2,256,250	2,600,000	-	-	-	-	-	-
Fresh Camel Milk 1 litre	39,523	36,270	25,640	23,550	13,288	-35%	-8%	-40%
Goat Export Quality (Head)	1,317,958	1,583,333	1,550,667	1,503,125	854,440	-5%	-3%	14%
Goat Local Quality (Head)	994,000	1,321,500	1,298,667	1,282,500	729,012	-3%	-1%	29%
Other Essential Items								
Charcoal 50kg	181,750	188,000	196,000	191,000	108,485	2%	-3%	5%
Cowpeas 1 kg	30,942	30,600	16,987	16,150	9,081	-47%	-5%	-48%
Unskilled Labor Wage Rate	78,380	87,950	85,733	82,500	46,802	-6%	-4%	5%
Firewood Bundle	25,737	34,000	37,600	37,000	20,935	9%	-2%	44%
Local Sesame Oil 1 litre	93,850	90,000	88,200	84,750	48,081	-6%	-4%	-10%
Exchange Rate (Somali Shilling per USD)	30,038	23,800	20,117	20,545	11,580	-14%	2%	-32%
Terms of Trade								
Labour Wage (Daily)/ Cereal (Rice(Kg))	3	4	5	4	-	8%	-3%	60%
Local Goat (Head)/ Cereal (Rice(Kg))	36	63	70	70	-	11%	-1%	96%
Camel (Head)/Cereal (Kg)	252	451	601	644	-	43%	7%	155%
Price Indices								
Consumer Price Index	-	223	186	176	-	-21%	-6%	-

Figure 33: Trends in Cereal Prices

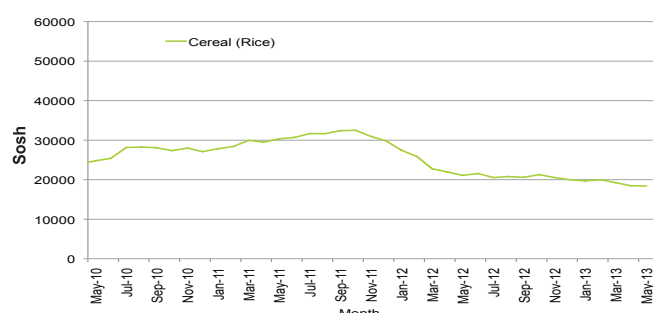


Figure 34: Trends in wage rates and relative purchasing power

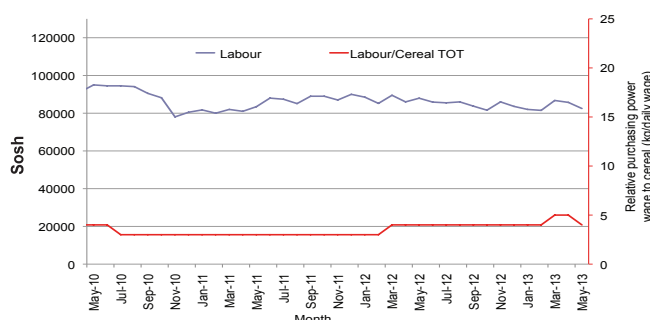


Figure 35: Imported Commodity Prices Compared to Exchange Rate

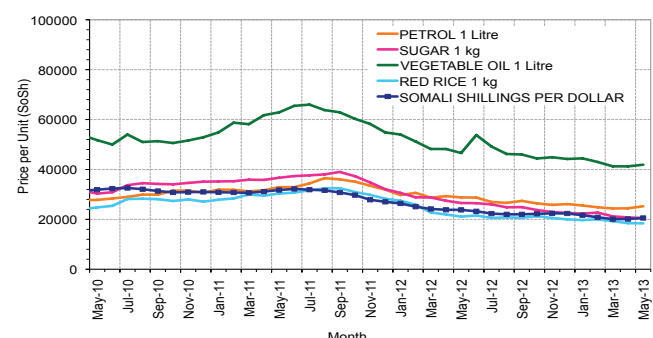


Figure 36: Goat Local Quality

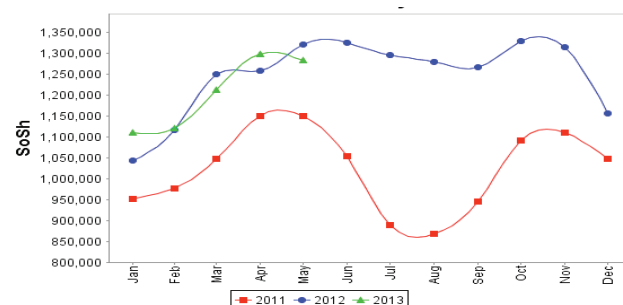


Figure 37: Exchange Rate

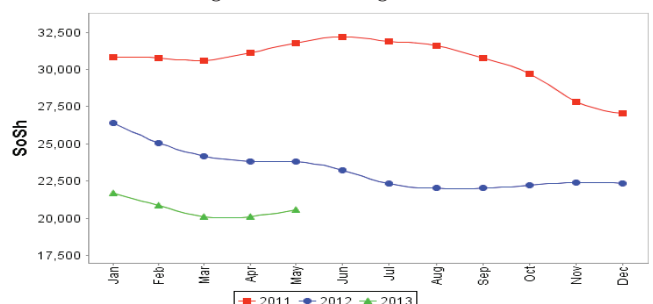
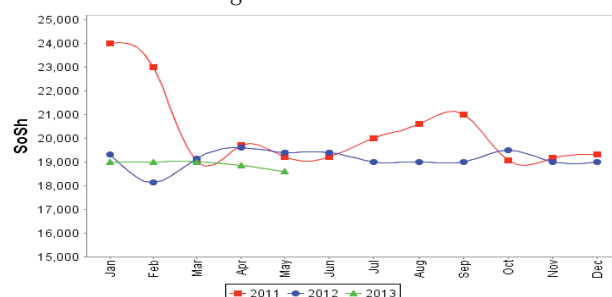


Figure 38: Water Drum



Regional analysis: Northeast Regions

Indicator	5-Year Average (2008-2012)	May-12	Apr-13	May-13 Nominal Price	May-13 Real (Deflated) Price	% Change Same Month Previous Year	% Change Previous Month	% Change 5-year avg (2008-2012)
Imported Commodities Prices								
Diesel 1 litre	28,443	28,875	24,250	24,563	12,159	-15%	1%	-14%
Imported Red Rice 1kg	23,765	20,813	16,600	16,438	8,104	-21%	-1%	-31%
Petrol 1 litre	25,110	26,063	21,150	21,813	10,787	-16%	3%	-13%
Sugar	24,093	24,625	19,500	18,375	9,071	-25%	-6%	-24%
Vegetable Oil 1 litre	44,812	46,125	37,350	36,063	17,899	-22%	-3%	-20%
Wheat Flour 1kg	20,807	18,438	15,600	15,250	7,511	-17%	-2%	-27%
Wheat Grain 1kg	26,280	25,000	25,400	24,750	12,253	-1%	-3%	-6%
Cereal Prices								
Red Sorghum 1kg	19,239	23,750	17,800	17,500	8,634	-26%	-2%	-9%
White Maize 1kg	17,489	19,000	18,400	17,500	8,634	-8%	-5%	0%
Livestock & Livestock Product Prices								
Camel Local Quality (Head)	12,398,333	15,656,250	16,960,000	15,800,000	7,885,624	1%	-7%	27%
Cattle Local Quality (Head)	6,557,000	8,500,000	8,100,000	8,175,000	4,080,013	-4%	1%	25%
Fresh Camel Milk 1 litre	37,406	38,375	38,575	35,000	17,368	-9%	-9%	-6%
Goat Export Quality (Head)	1,344,046	1,568,750	1,575,000	1,537,500	767,261	-2%	-2%	14%
Goat Local Quality (Head)	1,296,687	1,581,875	1,449,500	1,423,125	710,177	-10%	-2%	10%
Other Essential Items								
Charcoal 50kg	283,100	362,063	381,000	329,375	164,290	-9%	-14%	16%
Cowpeas 1 kg	36,447	42,688	30,700	27,667	13,709	-35%	-10%	-24%
Unskilled Labor Wage Rate	103,150	117,500	125,000	125,000	62,287	6%	0%	21%
Firewood Bundle	27,337	31,250	50,000	48,125	23,919	54%	-4%	76%
Local Sesame Oil 1 litre	93,229	92,500	88,500	91,875	45,754	-1%	4%	-1%
Exchange Rate (Somali Shilling per USD)	30,457	24,000	20,835	20,875	10,319	-13%	0%	-31%
Terms of Trade								
Labour Wage (Daily)/ Cereal (Rice(Kg))	4	6	8	8	-	35%	1%	75%
Local Goat (Head)/ Cereal (Rice(Kg))	55	76	87	87	-	14%	-1%	59%
Price Indices								
Consumer Price Index	-	216	211	200	-	-7%	-5%	-

Figure 39: Trends in Cereal Prices

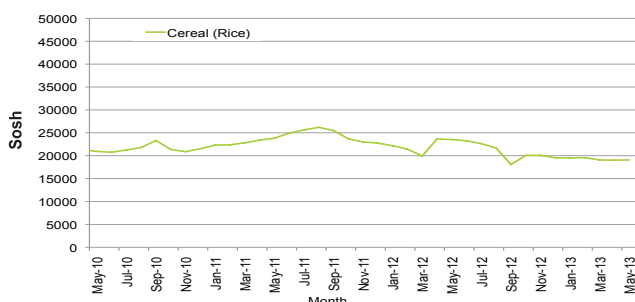


Figure 40: Trends in Wage Rates and Relative Purchasing Power

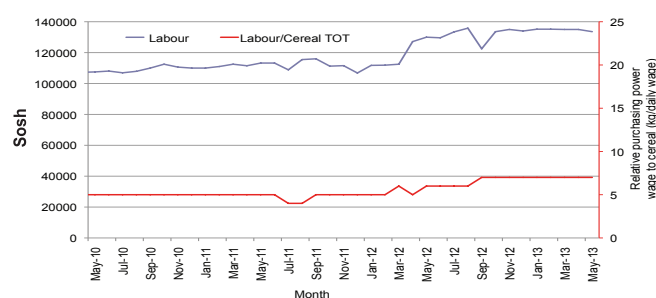


Figure 41: Imported Commodity Prices Compared to Exchange Rate

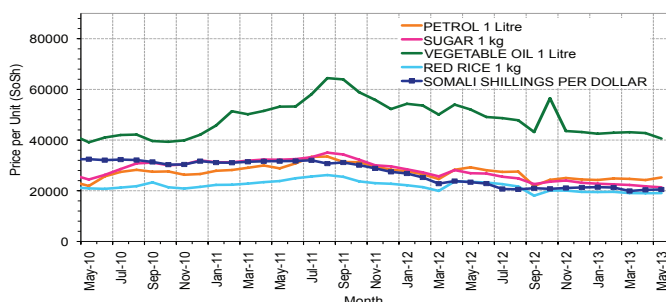


Figure 42: Goat Local Quality

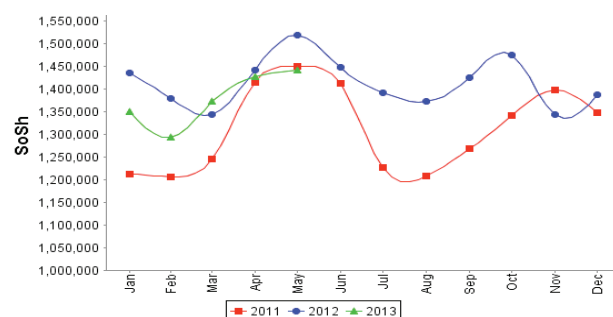


Figure 43: Exchange Rate

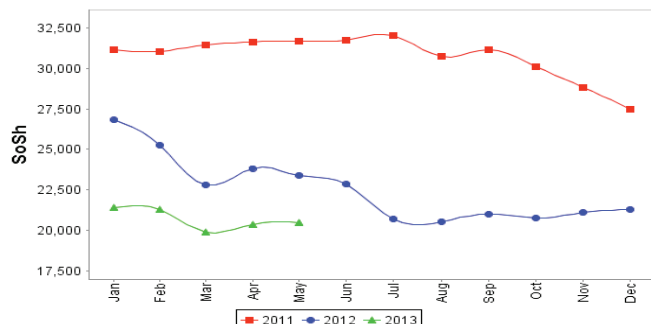
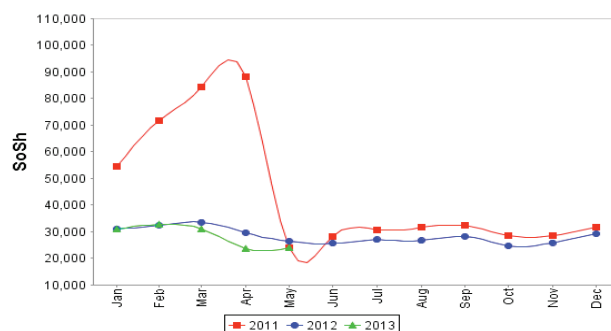


Figure 44: Water Drum



Regional analysis: Northwest Regions

Indicator	5-Year Average (2008-2012)	May-12	Apr-13	May-13 Nominal Price	May-13 Real (Deflated) Price	% Change Same Month Previous Year	% Change Previous Month	% Change 5-year avg (2008-2012)
Imported Commodities Prices								
Diesel 1 litre	5,837	7,010	6,990	7,115	5,865	1%	2%	22%
Imported Red Rice 1kg	5,393	4,910	5,065	4,890	4,000	0%	-3%	-9%
Petrol 1 litre	6,027	7,225	7,495	7,510	6,196	4%	0%	25%
Sugar	5,138	5,950	5,980	5,955	4,892	0%	0%	16%
Vegetable Oil 1 litre	10,339	11,115	12,830	12,800	10,631	15%	0%	24%
Wheat Flour 1kg	4,554	4,220	4,620	4,170	3,396	-1%	-10%	-8%
Wheat Grain 1kg	3,928	3,175	3,000	3,000	2,415	-6%	0%	-24%
Cereal Prices								
White Sorghum 1kg	3,266	3,265	3,280	3,280	2,650	0%	0%	0%
Yellow Maize 1kg	3,334	3,645	3,375	3,375	2,729	-7%	0%	1%
Livestock & Livestock Product Prices								
Camel Local Quality (Head)	1,866,200	2,818,500	2,861,250	3,179,875	2,665,760	13%	11%	70%
Cattle Local Quality (Head)	1,289,649	1,804,250	2,218,458	2,283,750	1,914,490	27%	3%	77%
Fresh Camel Milk 1 litre	5,205	5,850	5,900	5,285	4,331	-10%	-10%	2%
Goat Export Quality (Head)	313,910	421,400	497,450	491,850	412,244	17%	-1%	57%
Goat Local Quality (Head)	249,950	297,200	360,700	359,510	301,297	21%	0%	44%
Other Essential Items								
Charcoal 50kg	32,602	38,225	42,450	43,750	36,578	14%	3%	34%
Cowpeas 1 kg	8,747	10,875	10,000	9,313	7,708	-14%	-7%	6%
Unskilled Labor Wage Rate	30,940	36,950	42,300	43,300	36,201	17%	2%	40%
Firewood Bundle	4,092	2,833	3,667	3,667	2,974	29%	0%	-10%
Local Sesame Oil 1 litre	25,168	24,313	29,438	27,438	22,903	13%	-7%	9%
Exchange Rate (Somaliland Shilling per USD)	6,487	6,627	6,915	6,902	5,686	4%	0%	6%
Terms of Trade								
Labour Wage (Daily)/ Cereal (Rice(Kg))	6	8	8	9	-	18%	6%	54%
Local Goat (Head)/ Cereal (Rice(Kg))	46	61	71	74	-	21%	3%	59%
Price Indices								
Consumer Price Index	-	123	120	119	-	-3%	-1%	-

Figure 45: Trends in Cereal Prices

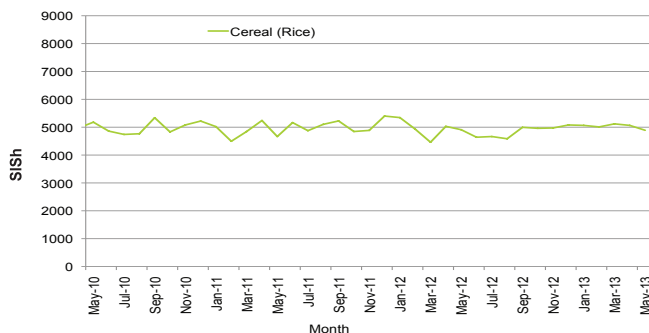


Figure 46: Trends in Wage Rates and Relative Purchasing Power

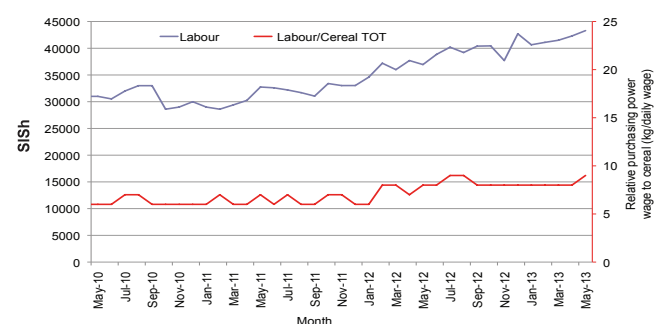


Figure 47: Imported Commodity Prices Compared to Exchange Rate

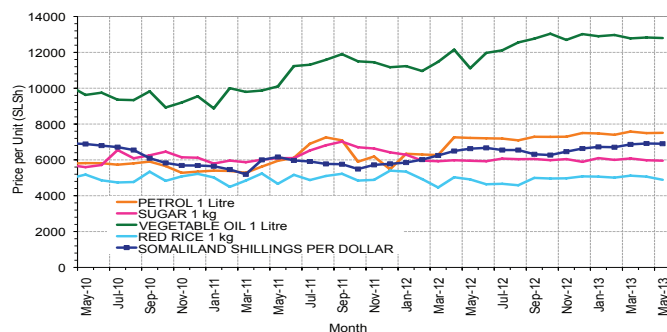


Figure 48: Goat Local Quality

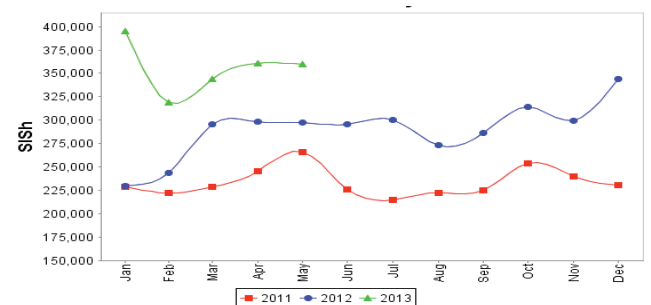


Figure 49: Exchange Rate

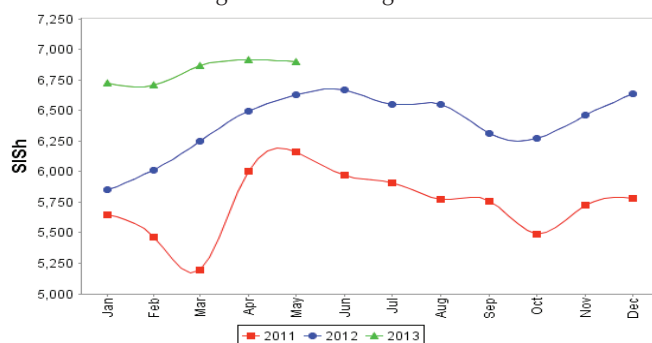
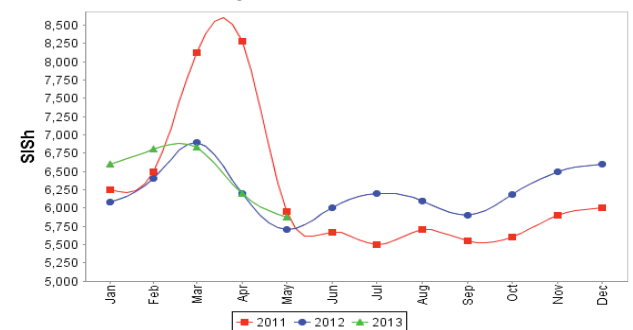


Figure 50: Water Drum



Trends in Livestock Exports

Table 2: Berbera Livestock Exports (Number of Heads)

	1994	1995	1996	1997	1998	1999	2000	2001	2002	2003	2004	2005	2006	2007	2008	2009	2010	2011	2012	2013 (Jan - Mar)
Shoats	1,572,656	2,683,597	2,376,646	2,814,495	957,224	2,048,136	1,601,083	51,546	341,711	563,107	859,404	1,023,795	1,017,242	1,350,054	1,219,519	1,556,003	2,584,810	3,104,684	3,219,584	431,696
Cattle	173,400	167,128	65,127	66,939	92,213	89,967	63,263	20,973	37,547	84,312	131,852	148,151	85,631	88,143	80,051	88,005	133,021	150,934	190,354	46,319
Camels	38,553	21,993	42,801	50,587	11,663	37,430	16,984	3,473	18,864	21,874	5,147	5,069	22,810	14,245	26,515	20,206	92,651	107,281	102,664	24,900

Figure 51: Berbera Livestock Exports (Number of Heads)

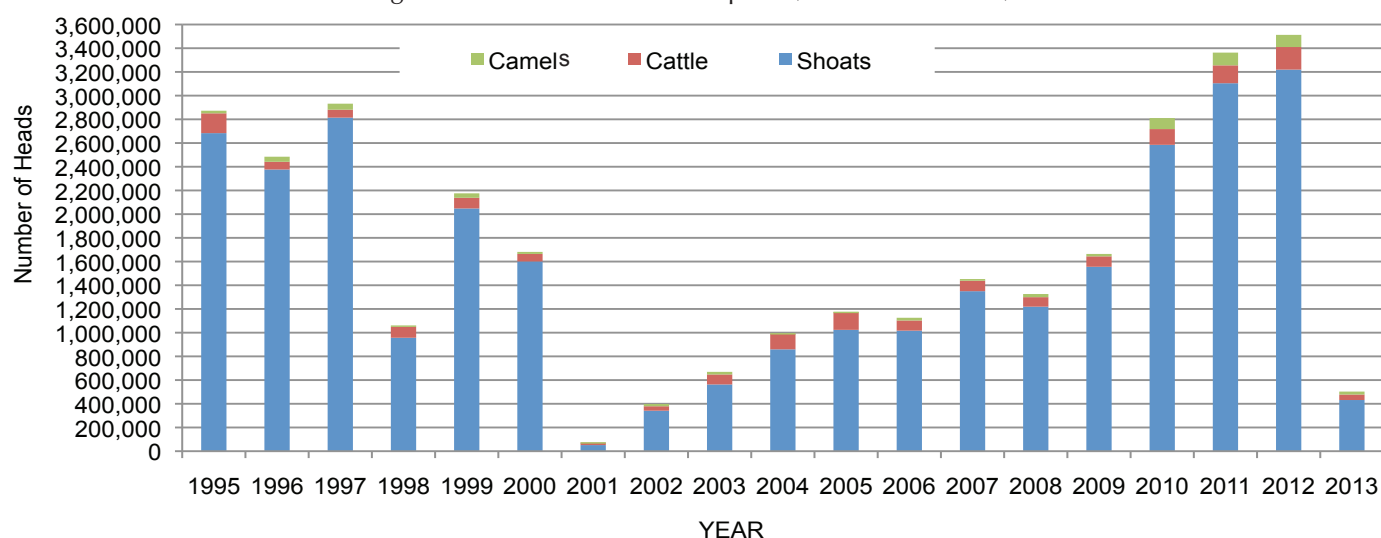
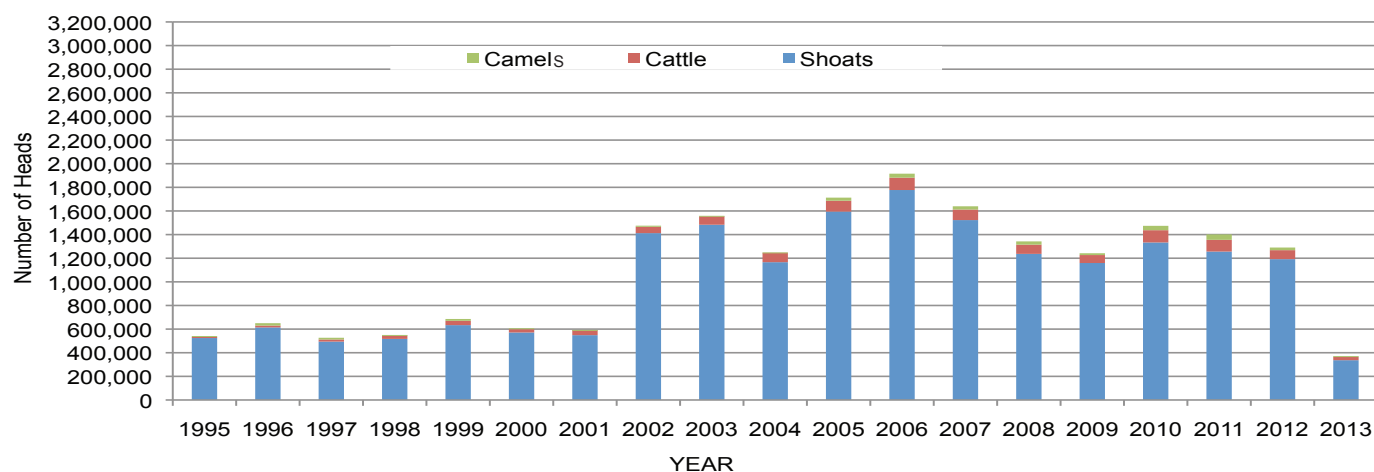


Table 3: Bossaso Livestock Exports (Number of Heads)

	1994	1995	1996	1997	1998	1999	2000	2001	2002	2003	2004	2005	2006	2007	2008	2009	2010	2011	2012	2013 (Jan - Apr)
Shoats	344,000	524,346	614,407	494,320	517,020	633,669	571,455	548,853	1,412,450	1,483,409	1,166,480	1,594,859	1,777,283	1,522,855	1,236,775	1,159,454	1,333,478	1,256,535	1,192,197	336,839
Cattle	1,450	8,795	15,335	17,831	29,492	36,586	27,604	42,248	53,313	71,328	79,994	91,910	104,595	89,190	78,046	67,385	103,808	99,058	76,043	29,168
Camels	5,397	8,392	20,462	14,599	3,938	15,544	8,177	1,950	9,720	4,259	2,488	26,109	33,724	27,580	27,639	15,331	36,865	45,878	22,288	5,311

Figure 52: Bossaso Livestock Exports (Number of Heads)

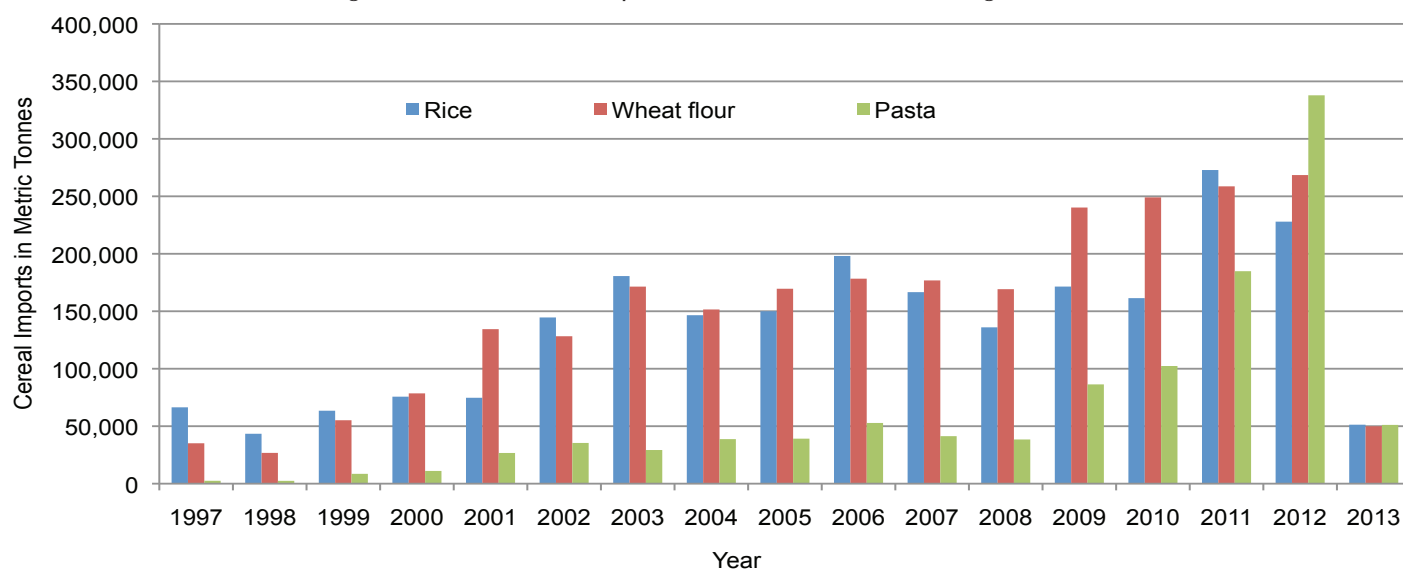


Trends in Cereal Imports

Table 4: Total Cereal Imports (Berbera, Bossaso, Mogadishu)

	1997	1998	1999	2000	2001	2002	2003	2004	2005	2006	2007	2008	2009	2010	2011	2012	2013*
Rice	66,419	43,410	63,464	75,687	74,729	144,600	180,614	146,567	150,017	198,101	166,626	136,007	171,472	161,415	272,877	227,955	59,914
Wheat flour	35,143	26,774	55,176	78,555	134,425	128,263	171,442	151,555	169,583	178,345	176,821	169,208	240,247	249,080	258,679	268,491	54,916
Pasta	2,510	2,455	8,544	11,071	26,702	35,425	29,273	38,749	39,153	52,815	41,331	38,441	86,372	102,373	184,849	337,878	54,081

Figure 53: Total Cereal Imports (Berbera, Bossaso and Mogadishu)



*Mogadishu data is up to Jan 2013; the data is from Elmaan Port.

*Berbera data is up to March 2013.

*Bossaso data is up to April 2013.