

Market Data Update



Food Security and Nutrition Analysis Unit - Somalia



Monthly Market Analysis, May 2011

Highlights

In May 2011, the Consumer Price Index (CPI), which is based on a fixed minimum basket of goods and services, exhibited mixed trends across Somalia. The CPI increased by 2-3 percent in South and Central, declined by 9 percent in Northeast and retained relative stability in the Northwest regions. Compared to the same month a year ago, the inflation rose by 26-53 percent in Somali Shilling (SoSh) zones, while remaining stable in Somaliland Shilling (SiSh) zones. However, the inflation rate is significantly above the reference value (March 2007) in SoSh areas, 144-194 percent; yet only 14 percent higher in SiSh zone.

The cereal price inflation in the current hunger period is considerably higher than the same time last year, due to depleted grain stocks in the domestic markets, high demand, and accelerating fuel prices as well as imminent below normal *Gu* 2011 cereal harvest. In the last month, prices of white maize increased by 9-18 percent across main markets of the Shabelle and Juba regions. Sorghum price, on the other hand, increased marginally in Northwest and Central (3-5%) while it declined in the Sorghum Belt and Northeast (5-7%) regions. However, when compared to May last year, the cereal prices surged considerably in all the regions. In particular, red sorghum price increased in most markets of the Sorghum Belt (150-240%), Central (79%), Northeast (70%), while maize price accelerated in Shabelle (111%) and Juba (96%) regions. The increase in white sorghum price was moderate in the Northwest (13%) as a result of good harvest in the last *Gu-Karan* season.

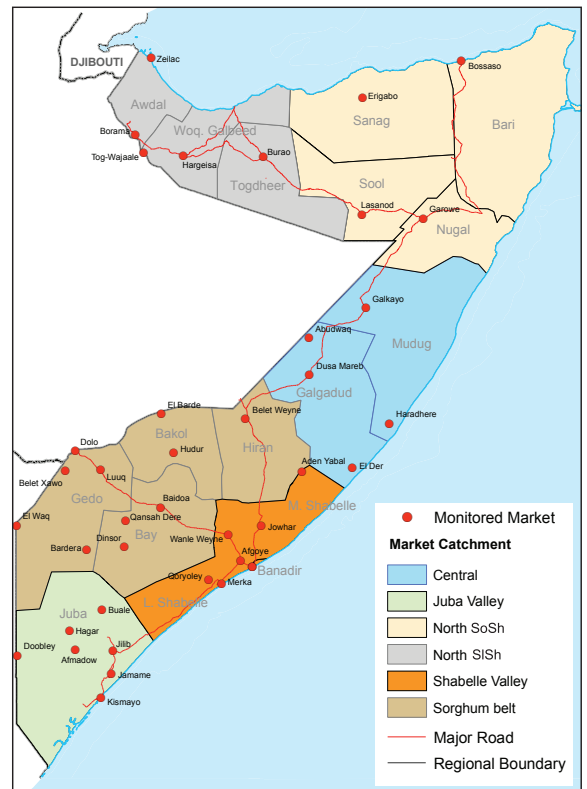
Prices of imported commodities (rice, sugar, wheat flour, vegetable oil and petrol) did not change significantly across the country in May, apart from the southern regions. This trend is mostly attributable to the volatile security situation affecting trade movement in the South as well as the currently dysfunctional Bakara market, which until recently was the main supply market for southern and central Somalia. Compared to a year ago, the prices of all imported commodities are generally higher in most monitored markets. In addition to increased international prices, the rising price trends are due to several factors, including increased taxation by multiple authorities and extortion by freelance militias, continuous trade disruptions caused by the volatile security situation in South-Central and the ripple effect of increased fuel prices (inflating transportation costs). The imported commodity prices are projected to augment further with the start of monsoon season (early June) as the winds are going to limit international freight deliveries to the ports.

Livestock prices showed a mixed trend in May 2011 across Somalia. Compared to the same month last year, the livestock prices are lower in most southern regions, stable in Central but slightly higher in the North. These trends are attributable to low demand as well as undersupply, occasioned by lack of saleable animals as livestock has not yet fully recovered from the prolonged dry weather conditions. However, the milk prices started to decline as the rainy season progressed. Similarly, with the discontinuation of water trucking in the current rainy season, water prices reversed (e.g. NE -63%, Juba -20% and NW -17%) their upward trends across most regions of Somalia. The total number of livestock exports¹ through Bossaso Port declined by 19 percent over the past month and is 13 percent lower than the same month last year. Trend analysis also indicates that the cumulative total livestock exports during January-May 2011 period in the same port is 19 percent lower than in the corresponding period in 2010. The low export figures are attributed to reduced supply resulting from the drought situation in the country.

Labour wages remained relatively stable throughout May 2011 in most regions. However, faced with rising prices of grains, the peoples' purchasing power is greatly eroded. The monthly terms of trade (ToT) between daily labour wage and the main staple cereals (maize and sorghum) sustained their levels in May in all regions due to offsetting labour and cereal price trends. However, annual comparison of the ToT indicates particularly large declines in southern regions, about 60-62 percent in the Sorghum Belt, Shabelle and Juba regions; 43-50 percent decrease in Northeast and Central and 17 percent decrease in Northwest (white sorghum). Only 3-5 kgs of these cereals could be purchased with one day of labour across the country, with the exception of Northwest where the ToT in May was equivalent to 10kgs.

Exchange rates between USD to Somali Shilling (SoSh) and Somaliland Shilling (SiSh) remained relatively stable in May 2011. However, the SiSh seemed to have gained significant value (11%) when compared to May 2010, mainly due to Government control of the local currency and increased livestock exports. The SoSh remained stable in the same period of comparison.

¹ Livestock export data for May 2011 from Berbera port is not yet publicly available and is, therefore, not included in this analysis.



Regional Highlights

Juba Regions: prices of most monitored commodities remained generally stable in the past one month except for maize, wheat flour, cattle local quality and labour wages, which accelerated from their April 2011 levels. The rapid rise in maize prices led to decline in the ToT by 3 and 60 percent from the previous month (April '11) and last year (May '10), respectively.

Sorghum Regions: prices of most imported commodities and livestock rose rapidly in May. Conversely, red sorghum, milk and charcoal prices declined from April 2011. Declining cereal prices and firming wage rates led to a slight improvement in purchasing power (8% increase).

Shabelle Regions: prices of most monitored commodities rose marginally over the month of May 2011. The ToT retained the same level as of last month due to corresponding increases in both labour wage rates and cereal prices over the month of May. However, the ToT is about one-third of its levels a year ago.

Central Regions: labour wage rates remained generally stable in the zone, while changes in the prices of rice and a local quality goat and other items over the past one month were marginal, resulting in stable terms of trade between goat and imported red rice. However, the amount of rice that a local quality goat can fetch is still lower compared to the amount of red sorghum.

Northeast Regions: with the exception of milk, goat and sorghum prices, which declined by 7-18 percent over the last month, all other key monitored commodities remained generally stable in May 2011. Stability in goat and imported rice prices settled the ToT to its April levels.

Northwest Regions: prices of most monitored commodities remained stable except those of diesel, camel local quality and labour wage rate, which rose marginally. The ToT of daily labor wage to red rice has remained almost unchanged in May, but is still significantly lower compared to the ToT of daily labor wage to local cereals.

Banadir Regions: local cereal prices remained stable when compared to the previous month, but are significantly higher than a year ago. Prices of most imported commodities are on the rise.

This Market Data Update is a monthly report that presents a compilation of tabulated graphical market information produced regularly as part of the monthly monitoring process.

The weekly price data is collected from 44 main markets throughout Somalia since 1995.

The 5-year period of 2003-07 was characterised by fairly stable prices and relatively low inflation. In this bulletin these years are used as a reference period for seasonal trends comparison.

Market analysis is an integral part of all of FSNAU's Annual Food Security Projections and seasonal technical reports (Technical Reports on FSNAU Post *Gu* and *Deyr* Analysis).

This data is available online on www.fsnau.org/ids.

Technical and Managerial Support



Funding Agencies



International Market Highlights

Diesel: Crude oil prices in Abu Dhabi/Dubai,¹ the main source of Somalia's oil imports, slowed down marginally (5%) from its April 2011 peak to settle at \$109 per barrel in May 2011. The current price, however, is 41 percent higher than the same month last year. International crude oil prices are projected to remain high in the short-run, as long as supply interruptions² occasioned by the political unrest, tensions and conflict in the oil-rich countries of Middle East and North Africa persist. Oil price transmission from international to Somali markets is clearly manifested in annual increases of diesel prices in the main port cities of Bossaso (34%) and Mogadishu (36%), respectively. On a monthly basis, diesel prices remained stable in May 2011 in Bossaso, while increasing by 14 percent in Mogadishu. The different trends in the prices in these two cities are mainly due to high levels of insecurity and multiple taxation regimes in Mogadishu as opposed to Bossaso. Domestic prices of diesel are projected to remain high in the short-run in the face of high international oil prices as well as reduced supply into the country during the high season (June-September).

Rice: International export prices of rice³ sustained its April 2011 levels at USD 423 per metric ton, exhibiting only a marginal decline of 1 percent in May. This trend mainly reflects ample export supplies following recent harvests in the main exporting countries in Asia⁴. At the current levels, rice export prices are nearly 30 percent higher than a year ago but 46 percent below their peak in May 2008. In line with international price trends, retail prices of imported rice in Mogadishu and Bossaso cities remained relatively stable in May 2011 but are higher compared to a year ago, by 14% and 40%, respectively. International rice prices are projected to continue remaining steady in the short-run as exportable surplus is adequate against a backdrop of the highest level of world rice stocks since 2002 and the continued expansion of world output⁵. In Somalia, rice price developments in the coming months will depend heavily on trends in import freight and insurance charges, formal and informal taxation levels, prices of local cereals and international crude oil prices.

Sugar: The FAO sugar price index averaged nearly 311 points in May 2011, down by 10 percent from the previous month and 26 percent below of its record levels in January 2011. The Index is however significantly (44%) higher than a year ago. The international price developments of the last month has not yet passed through to markets of Somalia where sugar prices (Mogadishu and Bossaso) remained generally stable during May. In the short-run, international sugar prices are likely to remain high in the face of reduced exportable availabilities in several major exporting countries. Sugar price development in the next year will depend on weather patterns of the new 2011/2012 season in major producing regions⁶.

Cooking oil: The FAO Oils/Fats Price Index, which was stable in April remained unchanged, at 259 points, in May 2011. In contrast, the Index is 20 percent above the corresponding value in May last year. Cooking oil price transmission from international to local markets of Somalia is evident through annual price increases (from May 2010) of 32 and 38 percent in Bossaso and Mogadishu port cities, respectively.

Figure 1: Comparison of Diesel Prices: International (Asia Dubai), Mogadishu and Bossaso

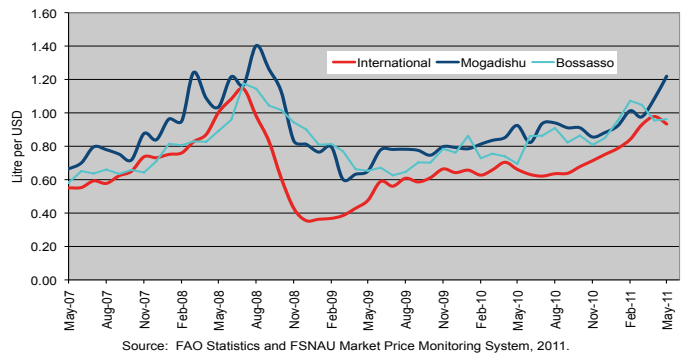


Figure 2: Comparison of Rice Prices: International (Bangkok FOB), Mogadishu and Bossaso

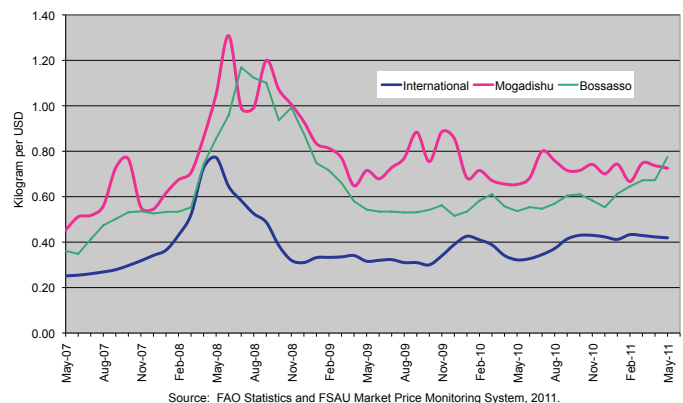
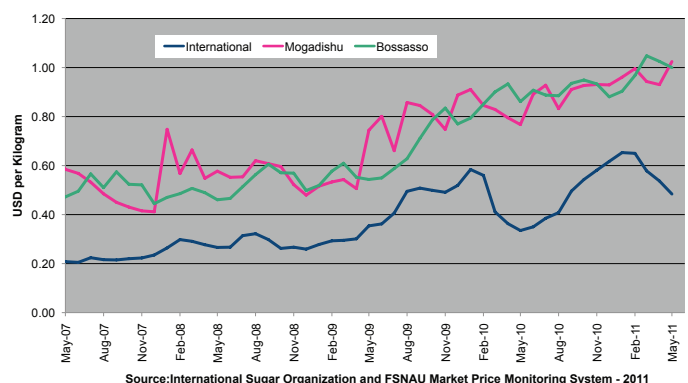


Figure 3: Comparison of Sugar Prices: International (ISO), Mogadishu and Bossaso



¹ Weekly Abu Dhabi Murban Spot Price FOB (Dollars per Barrel), US Energy Information Administration, http://www.eia.doe.gov/dnav/pet/pet_pri_wco_k_w.htm

² The halt in exports from Libya have also raised concerns that supply may also be interrupted elsewhere

³ Bangkok, Rice (Thai A1 Super 1/ B) , Export, US Dollar, Tonne, FAO GIEWS 2011

⁴ FAO Global Food Price Monitor, June 9th 2011

⁵ FAO Global Food Outlook (June 2011)

⁶ FAO Global Food Outlook (June 2011)

National Trends in Market Prices

Figure 4: Relative Purchasing Power for Selected Regions
(Terms of Trade between wage rates and selected cereals)

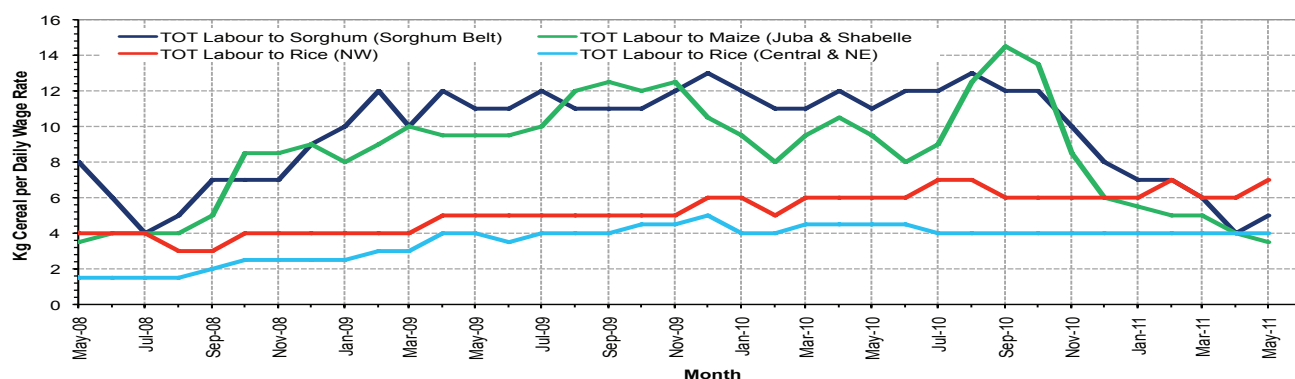


Figure 5: Monthly Exchange Rate for Selected Regions (SoSh and SiSh to USD)

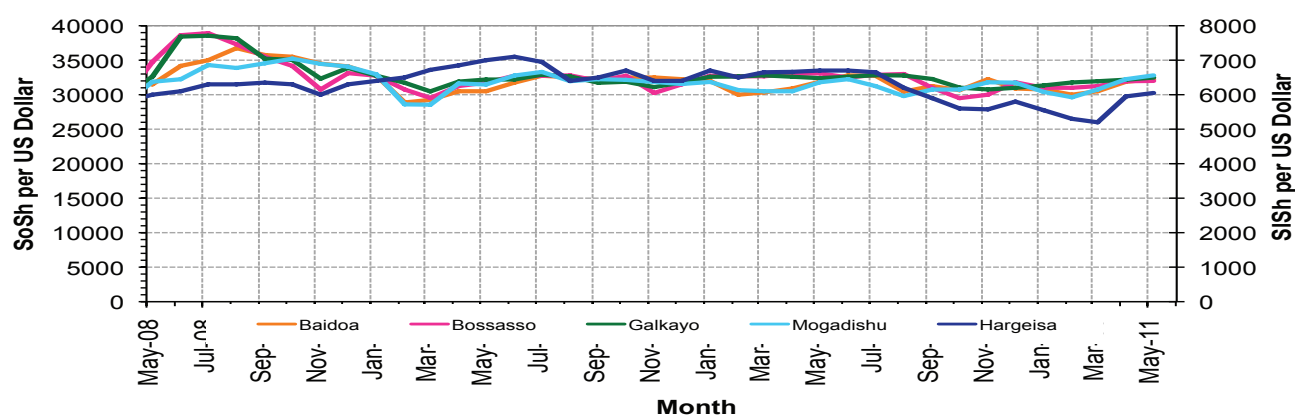


Figure 6: Monthly Trends in Consumer Price Index (CPI)

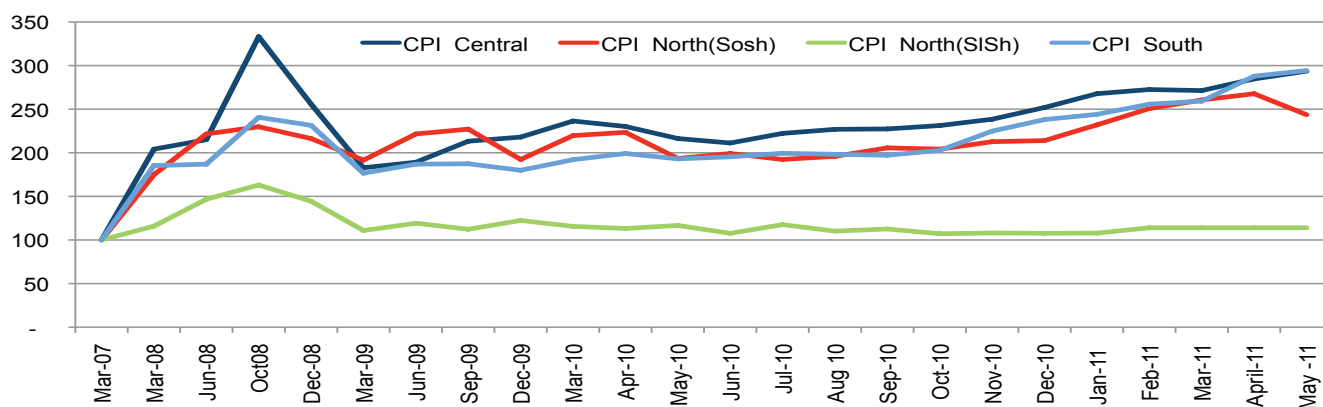
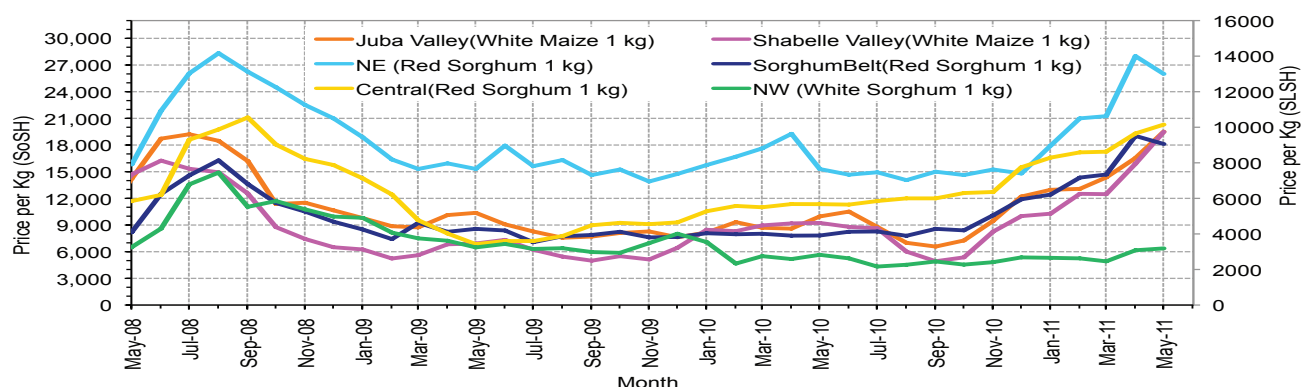


Figure 7: Monthly Trends in Cereal Prices



Regional analysis: Juba Regions

Indicator	5-Year Average	May-10	Apr-11	May-11 Nominal Price	May-11 Real (Deflated) Price	% Change Same Month Previous Year	% Change Previous Month	% Change 5-year avg (2003-07)
Imported Commodities Prices								
Diesel 1 litre	12,762	33,171	34,143	35,350	11,910	7%	4%	177%
Imported Red Rice 1kg	8,545	21,143	23,643	25,436	8,542	20%	8%	198%
Petrol 1 litre	16,535	33,729	32,786	35,714	12,034	6%	9%	116%
Sugar	9,681	25,571	32,393	32,286	10,869	26%	0%	233%
Vegetable Oil 1 litre	18,799	44,586	57,321	60,971	20,615	37%	6%	224%
Wheat Flour 1kg	8,672	18,857	21,571	23,671	7,942	26%	10%	173%
Wheat Grain 1kg	-	-	16,000	16,400	5,472	-	2%	-
Cereal Prices								
Red Sorghum 1kg	2,531	8,000	-	-	-	-	-	-
White Maize 1kg	3,348	9,968	16,536	19,500	6,525	96%	18%	482%
Livestock & Livestock Product Prices								
Camel Local Quality (Head)	2,957,280	9,177,000	7,537,500	8,140,834	2,765,733	-11%	8%	175%
Cattle Local Quality (Head)	1,470,129	4,286,567	2,050,000	3,139,333	1,066,483	-27%	53%	114%
Fresh Camel Milk 1 litre	6,959	20,833	26,786	24,807	8,328	19%	-7%	256%
Goat Export Quality (Head)	423,400	1,283,743	916,429	1,153,214	391,702	-10%	26%	172%
Goat Local Quality (Head)	288,037	873,821	568,929	686,857	233,258	-21%	21%	138%
Other Essential Items								
Charcoal 50kg	30,861	92,164	69,286	62,857	21,256	-32%	-9%	104%
Cowpeas 1 kg	8,495	25,150	28,500	29,964	10,080	19%	5%	253%
Unskilled Labor Wage Rate	33,464	96,443	65,893	75,643	25,600	-22%	15%	126%
Firewood Bundle	2,394	6,143	6,714	6,154	1,991	0%	-8%	157%
Local Sesame Oil 1 litre	21,465	73,443	75,893	85,200	28,847	16%	12%	297%
Exchange Rate (Somali Shilling per USD)	16,180	31,094	31,484	32,323	10,882	4%	3%	100%
Construction Materials*								
Cement 50kg	-	373,857	330,500	347,500	117,962	-7%	5%	-
Cooking Pot Aluminium 7 Litre	-	362,750	324,167	360,667	122,436	-1%	11%	-
Galvanised Iron Sheet Ga 26	-	165,500	159,375	161,250	54,684	-3%	1%	-
Hollow Concrete Block 10cm x 20cm x 40cm	-	22,834	18,750	19,250	6,440	-16%	3%	-
Non Collapsible Jerrycan 10 Litre	-	29,000	27,500	28,333	9,526	-2%	3%	-
Plastic Tarpaulin 14m x 5 m	-	666,667	600,000	600,000	203,749	-10%	0%	-
Roofing Nails 15Kg	-	829,286	804,286	801,871	272,334	-3%	0%	-
Timber 2in x 4in x 20ft	-	335,000	340,000	331,000	112,357	-1%	-3%	-
Woven Dry Raised Blanket 150cm x 200cm	-	247,501	100,000	100,000	33,875	-60%	0%	-
Terms of Trade								
Labour Wage (Daily)/ Cereal (Maize(Kg))	10	10	4	4	4	-60%	-3%	-61%
Local Goat (Head)/ Cereal (Maize(Kg))	86	88	34	35	36	-60%	2%	-59%
Price Indices								
Consumer Price Index	-	193	288	294	-	53%	2%	-
Purchasing Power Index	-	0.52	0.35	0.34	-	-34%	-2%	-

* Data has been collected for the past 12 months only

Figure 8: Imported commodity prices compared to exchange rates

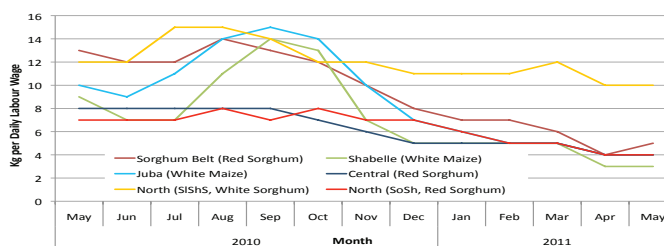


Figure 9: Trends in wage rates, staple cereal prices and relative purchasing power

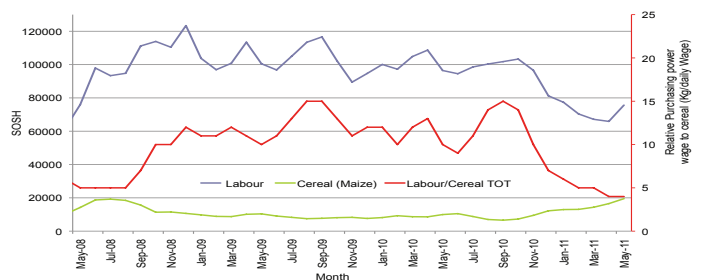


Figure 10: Goat Local Quality

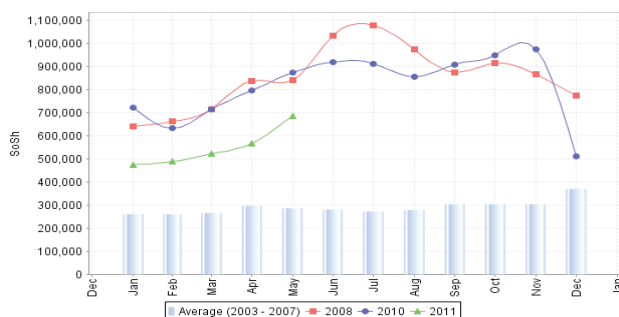


Figure 11: Sugar

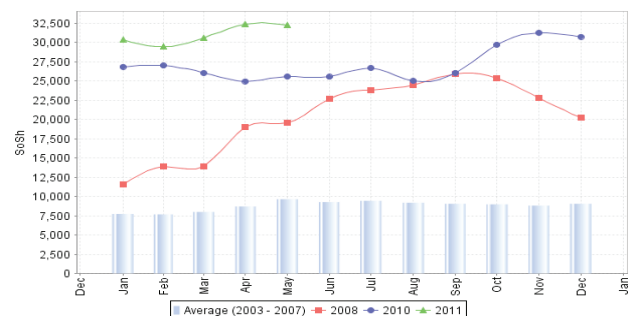


Figure 12: Water Drum

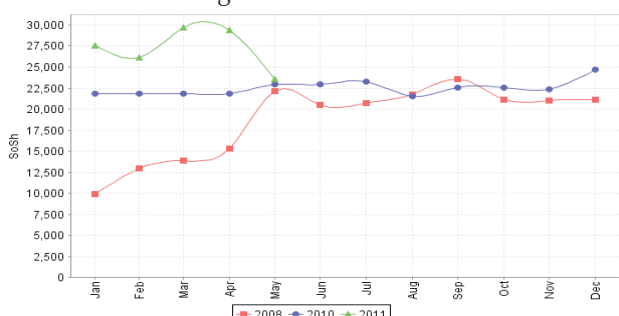
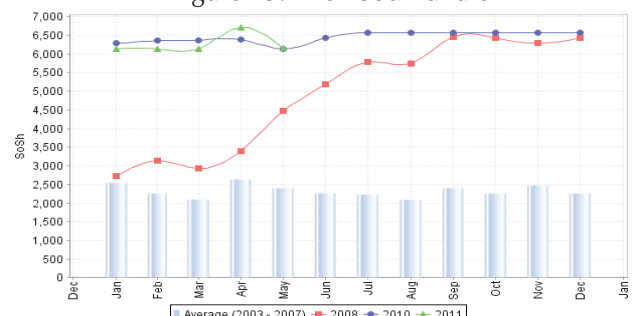


Figure 13: Firewood Bundle



Regional analysis: Sorghum Belt Regions

Indicator	5-Year Average	May-10	Apr-11	May-11 Nominal Price	May-11 Real (Deflated) Price	% Change Same Month Previous	% Change Previous Month	% Change 5-year avg (2003-07)
Imported Commodities Prices								
Diesel 1 litre	11,510	31,659	40,273	40,364	13,614	27%	0%	251%
Imported Red Rice 1kg	8,429	22,255	28,682	28,977	9,745	30%	1%	244%
Petrol 1 litre	15,992	31,386	37,795	40,318	13,598	28%	7%	152%
Sugar	9,495	26,109	33,750	34,773	11,714	33%	3%	266%
Vegetable Oil 1 litre	17,940	44,127	61,227	63,977	21,636	45%	4%	257%
Wheat Flour 1kg	8,303	18,436	23,773	25,932	8,710	41%	9%	212%
Wheat Grain 1kg	3,856	11,250	18,563	22,250	7,459	98%	20%	477%
Cereal Prices								
Red Sorghum 1kg	1,656	7,822	19,025	18,117	6,055	132%	-5%	994%
White Maize 1kg	2,639	10,750	16,875	17,952	5,999	67%	6%	580%
Livestock & Livestock Product Prices								
Camel Local Quality (Head)	3,279,251	9,543,114	6,363,637	7,622,955	2,589,785	-20%	20%	132%
Cattle Local Quality (Head)	1,433,123	3,161,818	1,420,625	1,762,222	598,612	-44%	24%	23%
Fresh Camel Milk 1 litre	6,241	14,602	30,500	24,436	8,202	67%	-20%	292%
Goat Export Quality (Head)	412,861	1,321,205	976,250	1,080,318	366,936	-18%	11%	162%
Goat Local Quality (Head)	276,993	772,886	517,045	568,864	193,170	-26%	10%	105%
Other Essential Items								
Charcoal 50kg	38,898	143,318	110,455	103,886	35,195	-28%	-6%	167%
Cowpeas 1 kg	5,968	24,181	36,375	36,431	12,277	51%	0%	510%
Unskilled Labor Wage Rate	18,241	89,205	80,227	82,250	27,844	-8%	3%	351%
Firewood Bundle	1,757	5,509	5,182	5,432	1,746	-1%	5%	209%
Local Sesame Oil 1 litre	22,380	78,625	79,500	80,357	27,201	2%	1%	259%
Exchange Rate (Somali Shilling per USD)	15,963	31,220	31,414	32,140	10,820	3%	2%	101%
Construction Materials*								
Cement 50kg	-	341,556	346,250	330,000	112,017	-3%	-5%	-
Cooking Pot Aluminium 7 Litre	-	341,875	335,000	328,250	111,422	-4%	-2%	-
Galvanised Iron Sheet Ga 26	-	220,833	208,500	216,682	73,517	-2%	4%	-
Hollow Concrete Block 10cm x 20cm x 40cm	-	8,792	9,500	9,875	3,255	12%	4%	-
Non Collapsible Jerrycan 10 Litre	-	52,700	52,455	53,591	18,107	2%	2%	-
Plastic Tarpaulin 14m x 5 m	-	339,857	306,944	319,000	108,280	-6%	4%	-
Roofing Nails 15Kg	-	844,333	836,000	835,000	283,590	-1%	0%	-
Timber 2in x 4in x 20ft	-	251,500	261,071	213,286	72,364	-15%	-18%	-
Woven Dry Raised Blanket 150cm x 200cm	-	125,625	90,000	102,083	34,583	-19%	13%	-
Terms of Trade								
Labour Wage (Daily)/ Cereal (Sorghum(Kg))	11	11	4	5	5	-60%	8%	-59%
Local Goat (Head)/ Cereal (Sorghum(Kg))	167	99	27	31	32	-68%	16%	-81%
Price Indices								
Consumer Price Index	-	193	288	294	-	53%	2%	-
Purchasing Power Index	-	0.52	0.35	0.34	-	-34%	-2%	-

* Data has been collected for the past 12 months only

Figure 14: Imported commodity prices compared to exchange rates

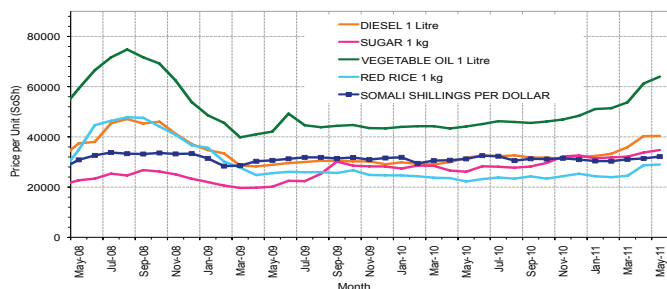


Figure 15: Trends in wage rates, staple cereal prices and relative purchasing power

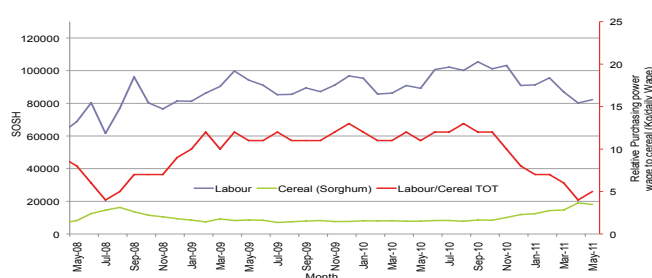


Figure 16: Goat Local Quality

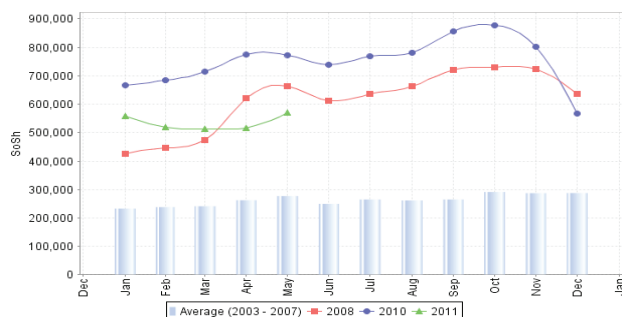


Figure 17: Sugar

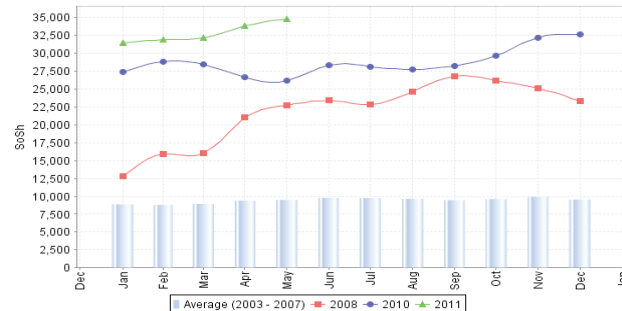


Figure 18: Water Drum

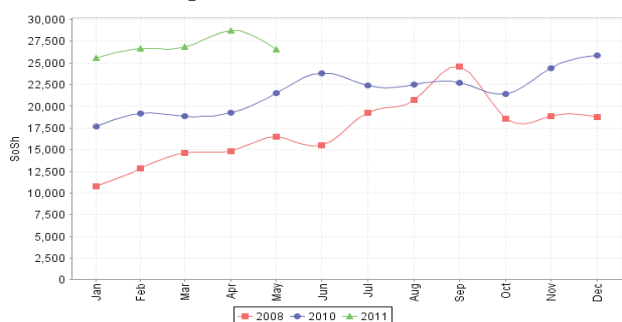
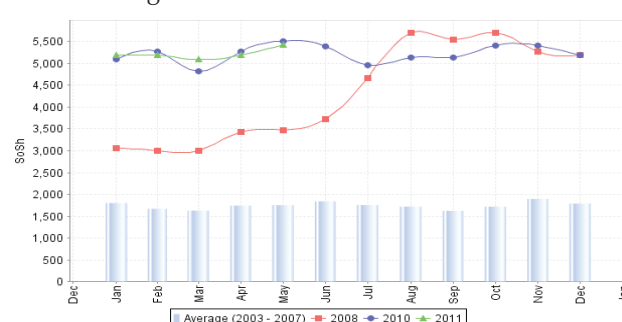


Figure 19: Firewood Bundle



Regional analysis: Shabelle Regions

Indicator	5-Year Average	May-10	Apr-11	May-11 Nominal Price	May-11 Real (Deflated) Price	% Change Same Month Previous Year	% Change Previous Month	% Change 5-year avg (2003-07)
Imported Commodities Prices								
Diesel 1 litre	9,458	31,625	36,000	37,167	12,527	18%	3%	293%
Imported Red Rice 1kg	6,898	21,542	21,675	23,583	7,912	9%	9%	242%
Petrol 1 litre	14,071	29,333	31,792	33,000	11,112	13%	4%	135%
Sugar	7,758	24,708	30,958	33,208	11,182	34%	7%	328%
Vegetable Oil 1 litre	13,425	36,125	51,458	54,292	18,346	50%	6%	304%
Wheat Flour 1kg	6,540	15,750	21,542	23,333	7,827	48%	8%	257%
Wheat Grain 1kg	6,406	-	-	-	-	-	-	-
Cereal Prices								
Red Sorghum 1kg	2,332	8,756	17,319	19,350	6,474	121%	12%	730%
White Maize 1kg	3,233	9,243	17,893	19,485	6,520	111%	9%	503%
Livestock & Livestock Product Prices								
Camel Local Quality (Head)	4,114,914	11,054,168	10,555,000	11,625,000	3,949,472	5%	10%	183%
Cattle Local Quality (Head)	1,225,265	4,190,000	2,142,500	2,623,333	891,172	-37%	22%	114%
Fresh Camel Milk 1 litre	5,737	15,104	25,542	25,854	8,684	71%	1%	351%
Goat Export Quality (Head)	522,532	1,360,208	1,400,250	1,447,813	491,792	6%	3%	177%
Goat Local Quality (Head)	369,929	1,028,333	767,917	925,833	314,450	-10%	21%	150%
Other Essential Items								
Charcoal 50kg	43,960	95,125	106,469	116,166	39,367	22%	9%	164%
Cowpeas 1 kg	5,879	21,773	30,716	33,071	11,136	52%	8%	463%
Unskilled Labor Wage Rate	21,225	81,250	57,500	65,208	22,054	-20%	13%	207%
Firewood Bundle	2,084	3,833	4,667	4,833	-	26%	4%	132%
Local Sesame Oil 1 litre	19,029	53,333	60,792	64,417	21,786	21%	6%	239%
Exchange Rate (Somali Shilling per USD)	16,591	31,391	31,723	32,805	11,045	5%	3%	98%
Construction Materials*								
Cement 50kg	-	257,600	261,400	284,250	96,473	10%	9%	-
Cooking Pot Aluminium 7 Litre	-	750,000	750,000	780,000	264,904	4%	4%	-
Galvanised Iron Sheet Ga 26	-	126,800	131,700	136,800	46,378	8%	4%	-
Hollow Concrete Block 10cm x 20cm x 40cm	-	13,000	14,000	13,500	4,487	4%	-4%	-
Non Collapsible Jerrycan 10 Litre	-	52,250	46,438	50,938	17,206	-3%	10%	-
Plastic Tarpaulin 14m x 5 m	-	246,500	301,667	301,667	102,391	22%	0%	-
Roofing Nails 15Kg	-	653,750	631,667	678,333	230,362	4%	7%	-
Timber 2in x 4in x 20ft	-	61,250	58,400	59,700	20,183	-3%	2%	-
Woven Dry Raised Blanket 150cm x 200cm	-	86,667	79,250	95,000	32,176	10%	20%	-
Terms of Trade								
Labour Wage (Daily)/ Cereal (Maize(Kg))	7	9	3	3	3	-62%	4%	-49%
Local Goat (Head)/ Cereal (Maize(Kg))	114	111	43	48	48	-57%	11%	-58%
Price Indices								
Consumer Price Index	-	193	288	294	-	53%	2%	-
Purchasing Power Index	-	0.52	0.35	0.34	-	-34%	-2%	-

* Data has been collected for the past 12 months only

Figure 20: Imported commodity prices compared to exchange rates

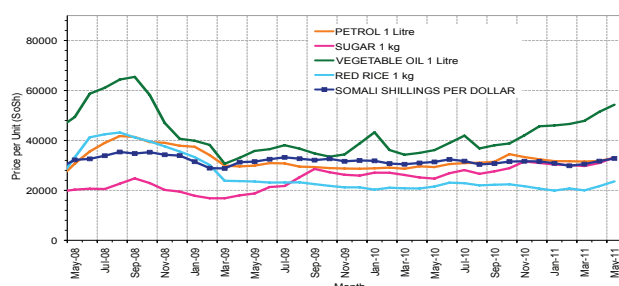


Figure 22: Goat Local Quality

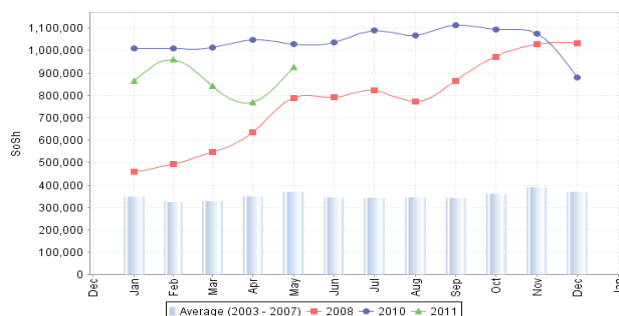


Figure 24: Water Drum

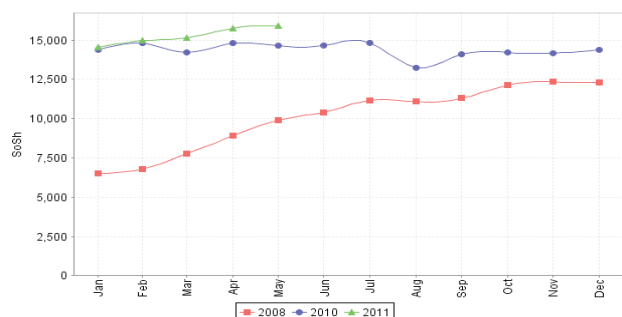


Figure 21: Trends in wage rates, staple cereal prices and relative purchasing power

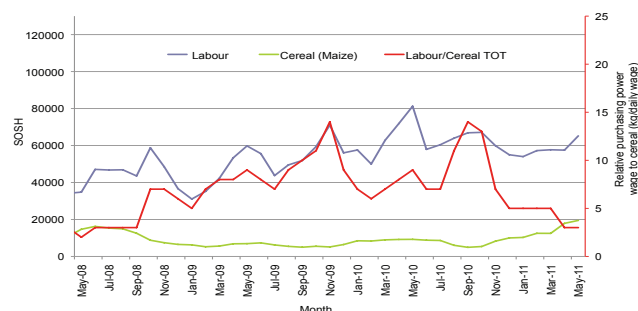


Figure 23: Sugar

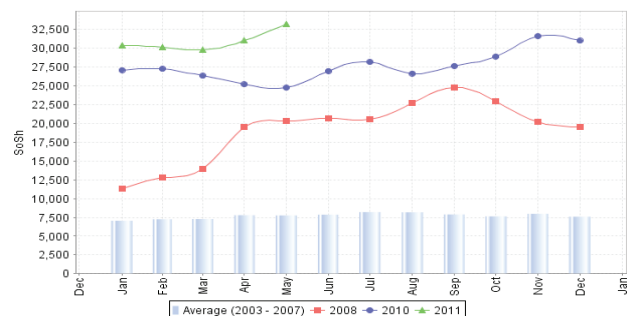
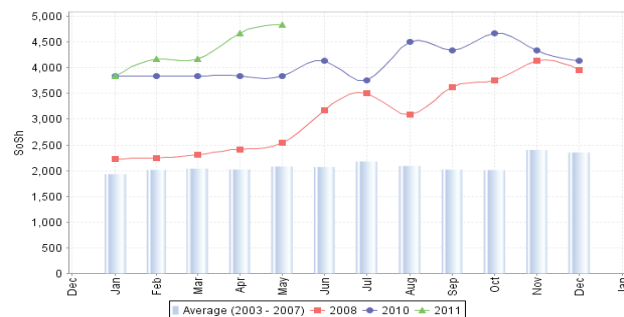


Figure 25: Firewood Bundle



Regional analysis:Banadir Region

Indicator	5-Year Average	May-10	Apr-11	May-11 Nominal Price	May-11 Real (Deflated) Price	% Change Same Month Previous Year	% Change Previous Month	% Change 5-year avg (2003-07)
Imported Commodities Prices								
Diesel 1 litre	8,425	28,800	31,258	33,375	11,239	16%	7%	296%
Imported Red Rice 1kg	6,708	19,367	24,075	22,467	7,533	16%	-7%	235%
Petrol 1 litre	12,750	28,800	30,592	30,583	10,291	6%	0%	140%
Sugar	7,263	24,100	28,917	31,767	10,693	32%	10%	337%
Vegetable Oil 1 litre	13,400	37,733	49,383	50,967	17,216	35%	3%	280%
Wheat Flour 1kg	6,116	15,433	19,500	21,258	7,122	38%	9%	248%
Wheat Grain 1kg	3,648	10,000	18,000	19,200	6,423	92%	7%	426%
Cereal Prices								
Red Sorghum 1kg	2,086	7,289	19,387	19,389	6,487	166%	0%	829%
White Maize 1kg	3,475	10,098	18,428	17,977	6,008	78%	-2%	417%
Livestock & Livestock Product Prices								
Camel Local Quality (Head)	6,055,000	19,000,000	16,500,000	15,000,000	5,096,122	-21%	-9%	148%
Cattle Local Quality (Head)	3,170,000	4,220,000	3,400,000	3,000,000	1,019,144	-29%	-12%	-5%
Fresh Camel Milk 1 litre	6,050	15,633	20,800	21,642	7,253	38%	4%	258%
Goat Export Quality (Head)	612,500	1,540,000	1,725,000	1,780,000	604,652	16%	3%	191%
Goat Local Quality (Head)	570,000	1,430,000	1,520,000	1,490,000	506,125	4%	-2%	161%
Other Essential Items								
Charcoal 50kg	100,000	143,000	148,500	145,708	49,404	2%	-2%	46%
Cowpeas 1 kg	5,013	20,274	36,229	42,460	14,326	109%	17%	747%
Unskilled Labor Wage Rate	55,666	69,667	77,542	75,833	25,664	9%	-2%	36%
Firewood Bundle	41,350	4,033	7,275	7,125	2,321	77%	-2%	-83%
Local Sesame Oil 1 litre	18,200	63,767	67,592	58,267	19,696	-9%	-14%	220%
Exchange Rate (Somali Shilling per USD)	16,464	31,930	31,748	32,901	11,078	3%	4%	100%
Construction Materials*								
Cement 50kg	-	228,636	234,488	237,354	80,541	4%	1%	-
Cooking Pot Aluminium 7 Litre	-	-	265,000	270,000	91,632	-	2%	-
Galvanised Iron Sheet Ga 25	-	121,738	124,179	151,482	51,366	24%	22%	-
Hollow Concrete Block 10cm x 20cm x 40cm	-	8,900	10,796	10,675	3,527	20%	-1%	-
Non Collapsible Jerrycan 10 Litre	-	47,000	47,000	42,000	14,169	-	-11%	-
Plastic Tarpaulin 14m x 5 m	-	316,000	241,667	307,500	104,373	-3%	27%	-
Roofing Nails 15Kg	-	601,600	601,833	551,967	187,430	-8%	-8%	-
Timber 2in x 4in x 20ft	-	149,000	164,429	138,854	47,075	-7%	-16%	-
Woven Dry Raised Blanket 150cm x 200cm	-	134,000	97,917	100,500	34,045	-25%	3%	-
Terms of Trade								
Labour Wage (Daily)/ Cereal (Maize(Kg))	16	7	4	4	4	-39%	0%	-74%
Local Goat (Head)/ Cereal (Maize(Kg))	164	142	82	83	84	-41%	0%	-49%
Price Indices								
Consumer Price Index	-	193	288	294	-	53%	2%	-
Purchasing Power Index	-	0.52	0.35	0.34	-	-34%	-2%	-

* Data has been collected for the past 12 months only

Figure 26: Bakara: Imported Commodity Prices compared to Exchange Rate

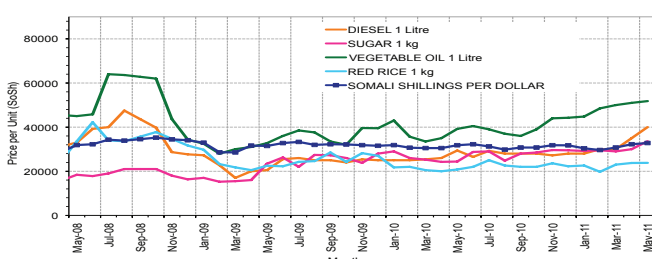


Figure 28: Goat Local Quality

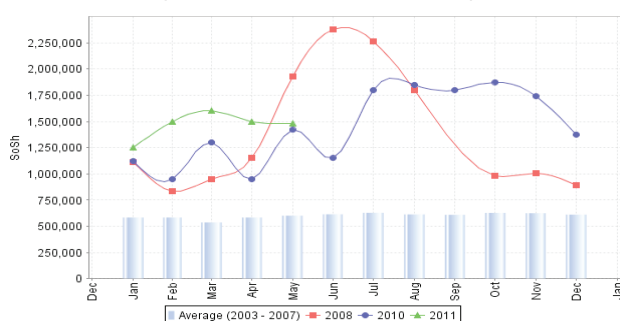


Figure 30: Wheat Flour

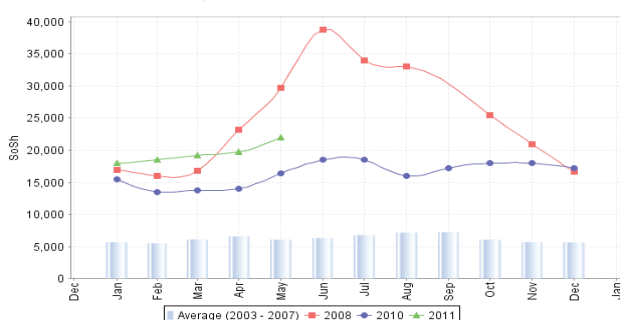


Figure 27: Bakara: Trends in Wage Rates, Staple Cereal Prices and Relative Purchasing Power

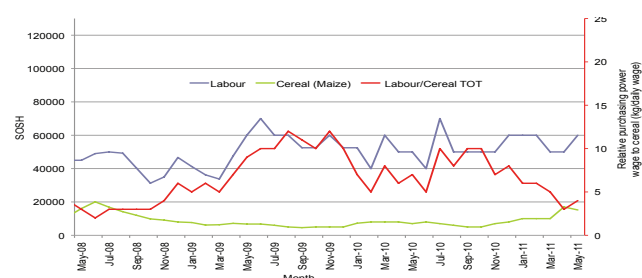


Figure 29: Sugar

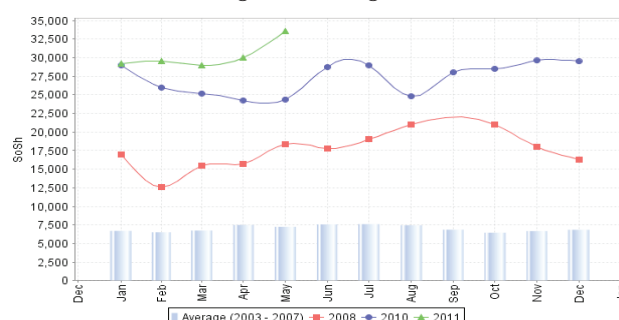
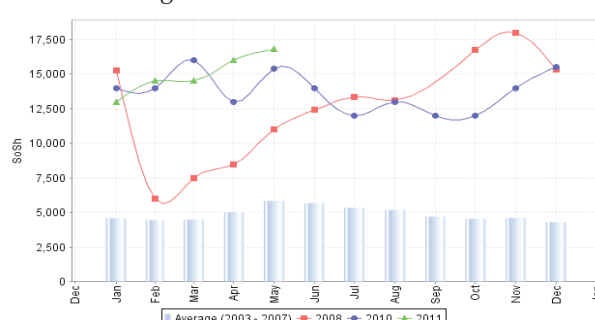


Figure 31: Fresh Camel Milk



Regional analysis: Central Regions

Indicator	5-Year Average	May-10	Apr-11	Current Nominal Price	Current Real (Deflated) Price	% Change Same Month Previous Year	% Change Previous Month	% Change 5-year avg (2003-07)
Imported Commodities Prices								
Diesel 1 litre	11,024	30,400	36,960	38,600	13,048	27%	4%	250%
Imported Red Rice 1kg	7,870	24,800	29,500	30,350	10,238	22%	3%	286%
Petrol 1 litre	13,442	27,800	31,650	32,920	11,114	18%	4%	145%
Sugar	9,169	30,300	35,800	36,680	12,394	21%	2%	300%
Vegetable Oil 1 litre	18,029	51,750	61,770	62,900	21,326	22%	2%	249%
Wheat Flour 1kg	7,795	20,350	24,100	24,600	8,280	21%	2%	216%
Wheat Grain 1kg	4,972	11,667	22,333	24,333	8,189	109%	9%	389%
Cereal Prices								
Red Sorghum 1kg	4,189	11,350	19,300	20,300	6,815	79%	5%	385%
White Maize 1kg	4,487	12,500	19,500	19,800	6,645	58%	2%	341%
Livestock & Livestock Product Prices								
Camel Local Quality (Head)	2,192,293	6,833,334	7,960,000	8,125,000	2,767,551	19%	2%	271%
Cattle Local Quality (Head)	1,577,479	2,450,000	-	-	-	-	-	-
Fresh Camel Milk 1 litre	9,366	36,750	48,240	46,920	15,883	28%	-3%	401%
Goat Export Quality (Head)	369,593	1,265,000	1,575,000	1,513,333	515,393	20%	-4%	309%
Goat Local Quality (Head)	289,506	968,500	1,150,300	1,149,500	391,459	19%	0%	297%
Other Essential Items								
Charcoal 50kg	55,473	213,500	214,000	219,250	74,584	3%	2%	295%
Cowpeas 1 kg	6,746	24,300	39,200	45,160	15,283	86%	15%	569%
Unskilled Labor Wage Rate	32,090	95,000	81,000	83,450	28,326	-12%	3%	160%
Firewood Bundle	4,422	25,750	33,900	36,500	12,333	42%	8%	725%
Local Sesame Oil 1 litre	30,205	97,000	94,600	95,750	32,516	-1%	1%	217%
Exchange Rate (Somali Shilling per USD)	16,607	31,900	31,135	31,760	10,719	0%	2%	91%
Construction Materials*								
Cement 50kg	-	336,400	327,600	332,000	112,990	-1%	1%	-
Cooking Pot Aluminium 7 Litre	-	308,000	404,800	408,000	138,879	32%	1%	-
Galvanised Iron Sheet Ga 26	-	173,750	155,775	158,940	54,040	-9%	2%	-
Hollow Concrete Block 10cm x 20cm x 40cm	-	18,500	16,250	16,250	5,435	-12%	0%	-
Non Collapsible Jerrycan 10 Litre	-	65,000	51,600	52,200	17,681	-20%	1%	-
Plastic Tarpaulin 14m x 5 m	-	358,000	310,000	316,000	107,540	-12%	2%	-
Roofing Nails 15Kg	-	850,200	811,940	810,688	276,048	-5%	0%	-
Timber 2in x 4in x 20ft	-	160,000	151,600	152,350	51,796	-5%	0%	-
Woven Dry Raised Blanket 150cm x 200cm	-	142,000	134,000	136,000	46,226	-4%	1%	-
Terms of Trade								
Labour Wage (Daily)/ Cereal (Rice(Kg))	4	4	3	3	3	-28%	0%	-33%
Local Goat (Head)/ Cereal (Rice(Kg))	37	39	39	38	38	-3%	-3%	3%
Camel (Head)/Cereal (Kg)	279	276	270	268	270	-3%	-1%	-4%
Price Indices								
Consumer Price Index	-	216	285	294	-	36%	3%	-
Purchasing Power Index	-	0.46	0.35	0.34	-	-26%	-3%	-

* Data has been collected for the past 12 months only

Figure 32: Imported commodity prices compared to exchange rates

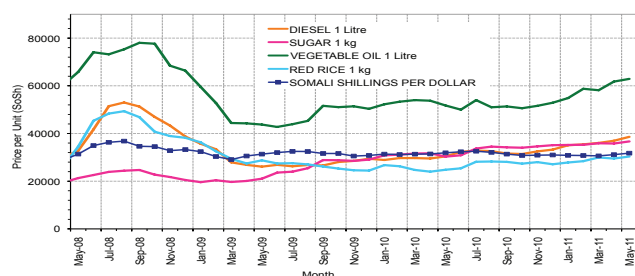


Figure 34: Goat Local Quality

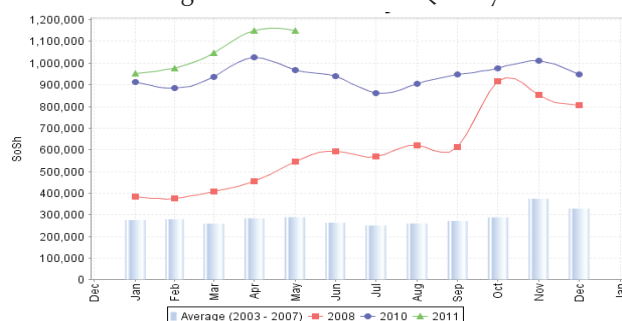


Figure 36: Water Drum

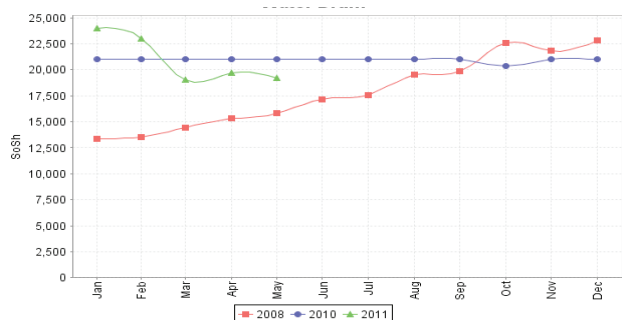


Figure 33: Trends in wage rates, staple cereal prices and relative purchasing power

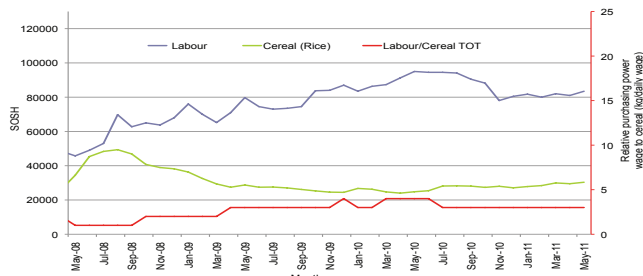


Figure 35: Sugar

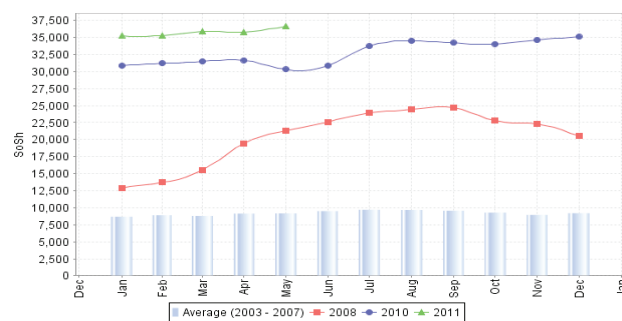
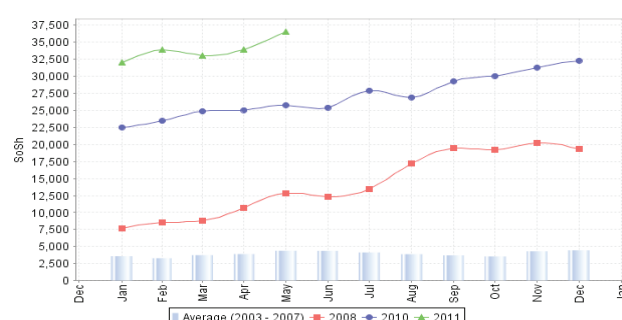


Figure 37: Firewood Bundle



Regional analysis: Northeast Regions

Indicator	5-Year Average	May-10	Apr-11	May-11 Nominal Price	May-11 Real (Deflated) Price	% Change Same Month Previous	% Change Previous Month	% Change 5-year avg (2003-07)
Imported Commodities Prices								
Diesel 1 litre	9,416	27,500	32,070	30,906	12,585	12%	-4%	228%
Imported Red Rice 1kg	6,555	20,938	23,400	23,825	9,679	14%	2%	263%
Petrol 1 litre	10,654	21,900	29,975	28,838	11,737	32%	-4%	171%
Sugar	8,455	24,438	32,313	32,250	13,137	32%	0%	281%
Vegetable Oil 1 litre	16,716	39,125	51,500	53,188	21,731	36%	3%	218%
Wheat Flour 1kg	6,997	16,613	22,225	22,675	9,207	36%	2%	224%
Wheat Grain 1kg	7,210	25,500	30,250	32,650	13,301	28%	8%	353%
Cereal Prices								
Red Sorghum 1kg	6,220	15,300	28,000	26,000	10,572	70%	-7%	318%
White Maize 1kg	5,553	17,167	21,600	21,250	8,622	24%	-2%	283%
Livestock & Livestock Product Prices								
Camel Local Quality (Head)	3,126,000	11,391,668	13,433,750	14,243,750	5,846,232	25%	6%	356%
Cattle Local Quality (Head)	1,818,750	5,960,000	6,075,000	6,500,000	2,667,818	9%	7%	257%
Fresh Camel Milk 1 litre	12,519	37,467	54,788	44,688	18,242	19%	-18%	257%
Goat Export Quality (Head)	443,683	1,330,000	1,600,000	1,406,500	577,196	6%	-12%	217%
Goat Local Quality (Head)	401,616	1,196,250	1,414,625	1,448,750	594,538	21%	2%	261%
Other Essential Items								
Charcoal 50kg	76,066	277,500	320,688	330,625	135,605	19%	3%	335%
Cowpeas 1 kg	9,609	29,917	45,650	46,800	19,109	56%	3%	387%
Unskilled Labor Wage Rate	44,666	107,500	111,500	113,250	46,383	5%	2%	154%
Firewood Bundle	7,651	32,875	31,613	30,250	12,316	-8%	-4%	295%
Local Sesame Oil 1 litre	28,111	86,667	89,438	89,063	36,456	3%	0%	217%
Exchange Rate (Somali Shilling per USD)	16,825	32,463	31,638	31,688	12,906	-2%	0%	88%
Construction Materials*								
Cement 50kg	-	256,400	235,250	234,875	96,304	-8%	0%	-
Cooking Pot Aluminium 7 Litre	-	336,000	489,375	491,250	201,533	46%	0%	-
Galvanised Iron Sheet Ga 26	-	243,425	235,125	250,788	102,836	3%	7%	-
Hollow Concrete Block 10cm x 20cm x 40cm	-	20,000	12,250	12,500	5,031	-38%	2%	-
Non Collapsible Jerrycan 10 Litre	-	29,500	35,200	36,813	15,010	25%	5%	-
Plastic Tarpaulin 14m x 5 m	-	181,625	204,688	198,738	81,472	9%	-3%	-
Roofing Nails 15Kg	-	401,500	467,000	457,563	187,706	14%	-2%	-
Timber 2in x 4in x 20ft	-	250,125	231,225	237,125	97,228	-5%	3%	-
Woven Dry Raised Blanket 150cm x 200cm	-	242,250	262,875	265,325	108,802	10%	1%	-
Terms of Trade								
Labour Wage (Daily)/ Cereal (Rice(Kg))	7	5	5	5	5	-7%	0%	-30%
Local Goat (Head)/ Cereal (Rice(Kg))	61	57	60	61	61	6%	1%	-1%
Price Indices								
Consumer Price Index	-	193	268	244	-	26%	-9%	-
Purchasing Power Index	-	0.52	0.37	0.41	-	-21%	10%	-

* Data has been collected for the past 12 months only

Figure 38: Imported commodity prices compared to exchange rates

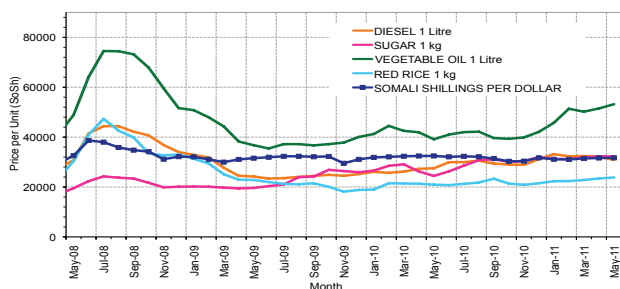


Figure 39: Trends in wage rates, staple cereal prices and relative purchasing power

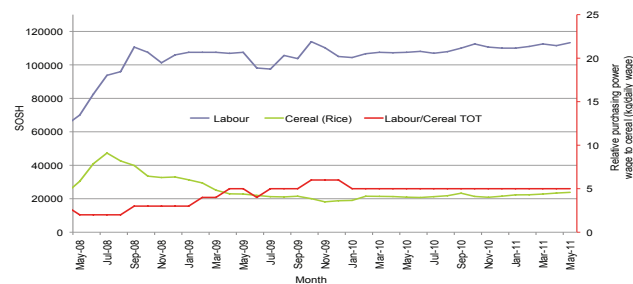


Figure 40: Goat Local Quality

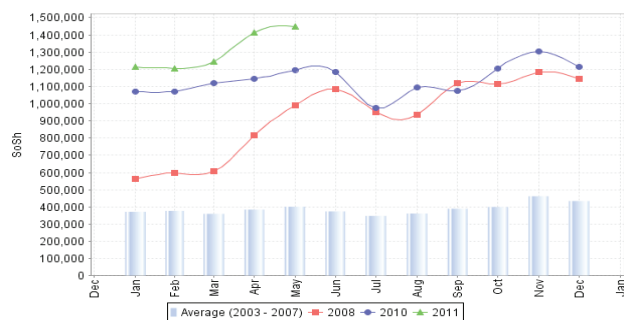


Figure 41: Sugar

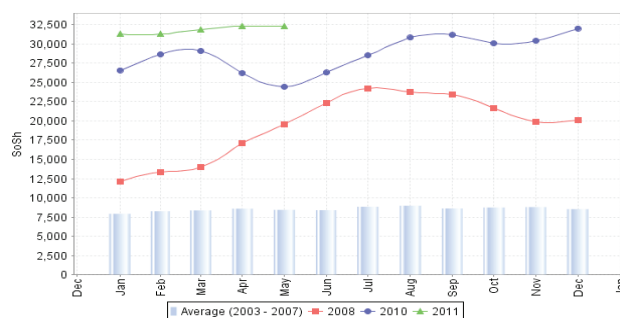


Figure 42: Water Drum

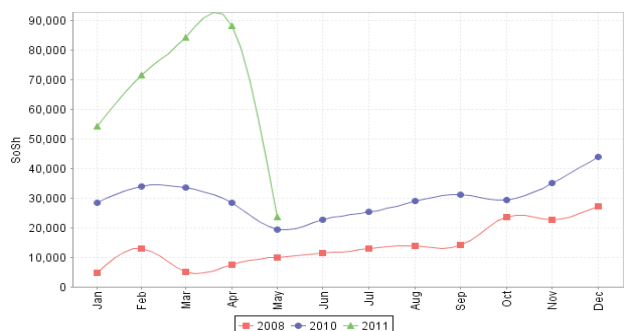
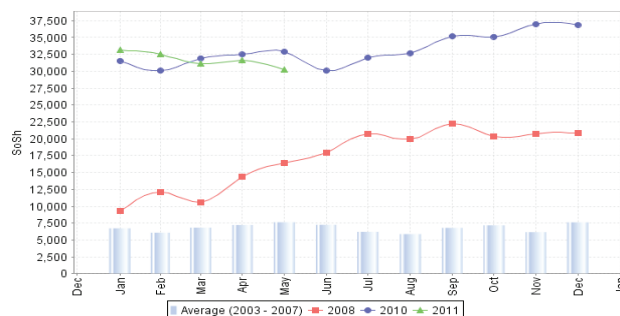


Figure 43: Firewood Bundle



Regional analysis: Northwest Regions

Indicator	5-Year Average	May-10	Apr-11	May-11 Nominal Price	May-11 Real (Deflated) Price	% Change Same Month Previous	% Change Previous Month	% Change 5-year avrg (2003-07)
Imported Commodities Prices								
Diesel 1 litre	3,492	6,225	5,438	5,963	5,132	-4%	10%	71%
Imported Red Rice 1kg	2,785	5,350	5,300	4,894	4,194	-9%	-8%	76%
Petrol 1 litre	4,284	5,900	5,563	5,844	5,027	-1%	5%	36%
Sugar	3,121	5,713	5,888	6,000	5,164	5%	2%	92%
Vegetable Oil 1 litre	6,907	9,625	9,338	9,625	8,345	0%	3%	39%
Wheat Flour 1kg	2,603	3,763	3,963	4,194	3,580	11%	6%	61%
Wheat Grain 1kg	1,842	2,500	3,300	2,750	2,313	10%	-17%	49%
Cereal Prices								
White Sorghum 1kg	1,651	2,825	3,081	3,187	2,696	13%	3%	93%
Yellow Maize 1kg	1,765	2,543	2,716	2,716	2,283	7%	0%	54%
Livestock & Livestock Product Prices								
Camel Local Quality (Head)	1,555,766	1,100,000	1,272,500	1,552,500	1,361,992	41%	22%	0%
Cattle Local Quality (Head)	879,175	1,145,833	1,257,917	1,224,833	1,074,512	7%	-3%	39%
Fresh Camel Milk 1 litre	4,526	5,375	4,950	4,438	3,794	-17%	-10%	-2%
Goat Export Quality (Head)	167,608	323,438	335,500	307,688	269,851	-5%	-8%	84%
Goat Local Quality (Head)	141,385	298,625	242,156	255,688	224,229	-14%	6%	81%
Other Essential Items								
Charcoal 50kg	19,668	32,719	30,906	31,375	27,427	-4%	2%	60%
Cowpeas 1 kg	4,870	9,292	7,750	8,375	7,248	-10%	8%	72%
Unskilled Labor Wage Rate	27,940	32,500	30,313	33,250	29,072	2%	10%	19%
Firewood Bundle	5,299	2,133	2,475	2,275	1,896	7%	-8%	-57%
Local Sesame Oil 1 litre	17,257	27,667	21,125	20,875	18,215	-25%	-1%	21%
Exchange Rate (Somaliland Shilling per USD)	6,753	6,887	6,031	6,159	-	-11%	2%	-9%
Construction Materials*								
Cement 50kg	-	52,350	44,625	46,913	41,059	-10%	5%	-
Cooking Pot Aluminium 7 Litre	-	69,000	87,625	95,875	84,016	39%	9%	-
Galvanised Iron Sheet Ga 26	-	60,300	48,000	61,000	53,419	1%	27%	-
Hollow Concrete Block 10cm x 20cm x 40cm	-	2,750	3,725	3,433	2,912	25%	-8%	-
Non Collapsible Jerrycan 10 Litre	-	5,750	6,775	6,313	5,439	10%	-7%	-
Plastic Tarpsaulin 14m x 5 m	-	55,750	68,750	73,750	64,605	32%	7%	-
Roofing Nails 15Kg	-	172,500	165,063	136,500	119,659	-21%	-17%	-
Timber 2in x 4in x 20ft	-	138,267	122,667	123,233	108,019	-11%	0%	-
Woven Dry Raised Blanket 150cm x 200cm	-	47,500	59,938	62,688	54,900	32%	5%	-
Terms of Trade								
Labour Wage (Daily)/ Cereal (Rice(Kg))	10	6	6	7	7	12%	19%	-32%
Local Goat (Head)/ Cereal (Rice(Kg))	51	56	46	52	53	-6%	14%	3%
Price Indices								
Consumer Price Index	-	117	114	114	-	-2%	0%	-
Purchasing Power Index	-	0.86	0.88	0.88	-	2%	0%	-

* Data has been collected for the past 12 months only

Figure 44: Imported commodity prices compared to exchange rates

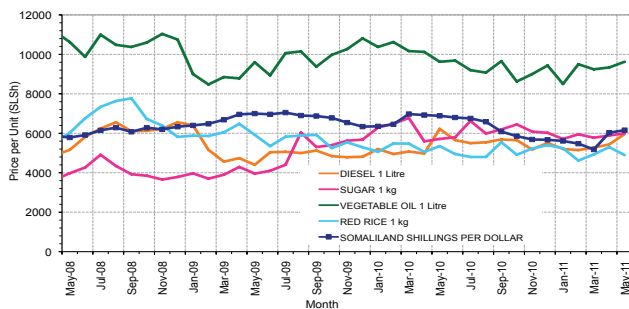


Figure 46: Goat Local Quality

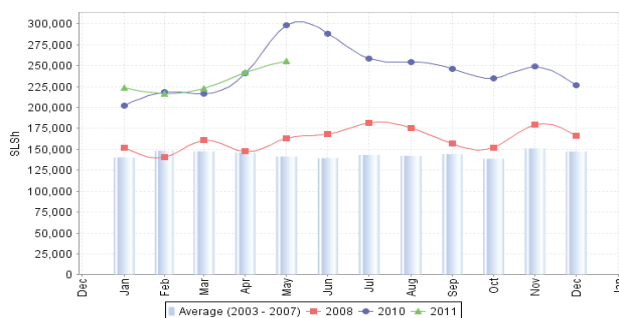


Figure 48: Water Drum

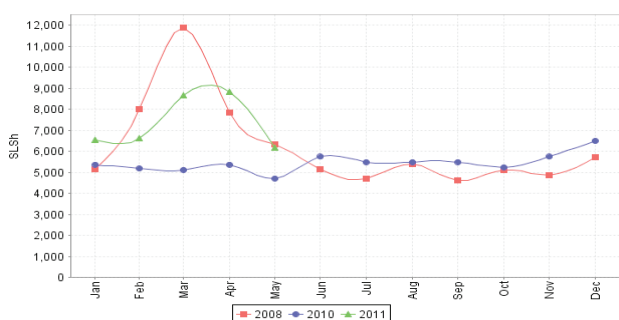


Figure 45: Trends in wage rates, staple cereal prices and relative purchasing power

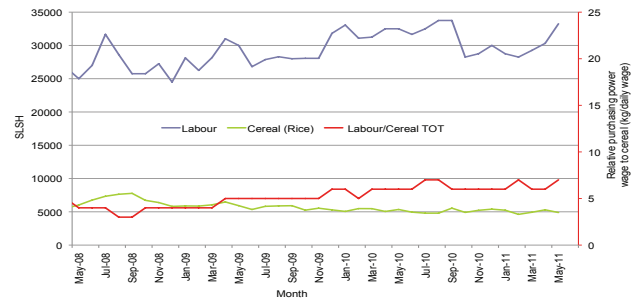


Figure 47: Sugar

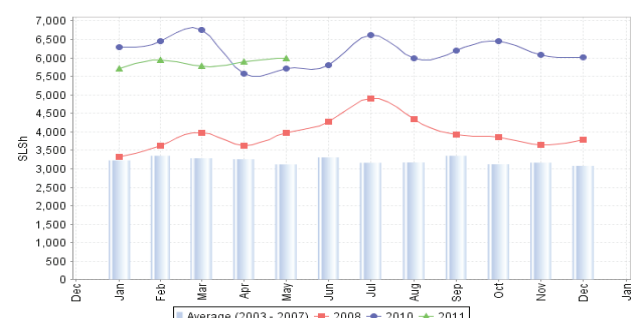
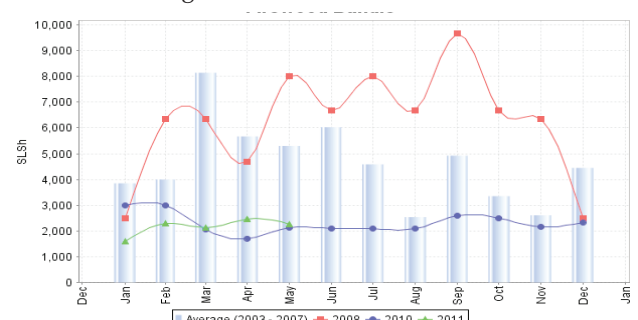


Figure 49: Firewood Bundle



Trends in Livestock Exports

Table 1: Berbera Livestock Exports (Number of Heads)

	1994	1995	1996	1997	1998	1999	2000	2001	2002	2003	2004	2005	2006	2007	2008	2009	2010	2011 (Jan-May)
Shoats	1,572,656	2,683,597	2,376,646	2,814,495	957,224	2,048,136	1,601,083	51,546	341,711	563,107	859,404	1,023,795	1,017,242	1,350,054	1,219,519	1,556,003	2,584,810	449,631
Cattle	173,400	167,128	65,127	66,939	92,213	89,967	63,263	20,973	37,547	84,312	131,852	148,151	85,631	88,143	80,051	88,005	133,021	47,539
Camel	38,553	21,993	42,801	50,587	11,663	37,430	16,984	3,473	18,864	21,874	5,147	5,069	22,810	14,245	26,515	20,206	92,651	43,577

Figure 50: Berbera Livestock Exports (Number of Heads)

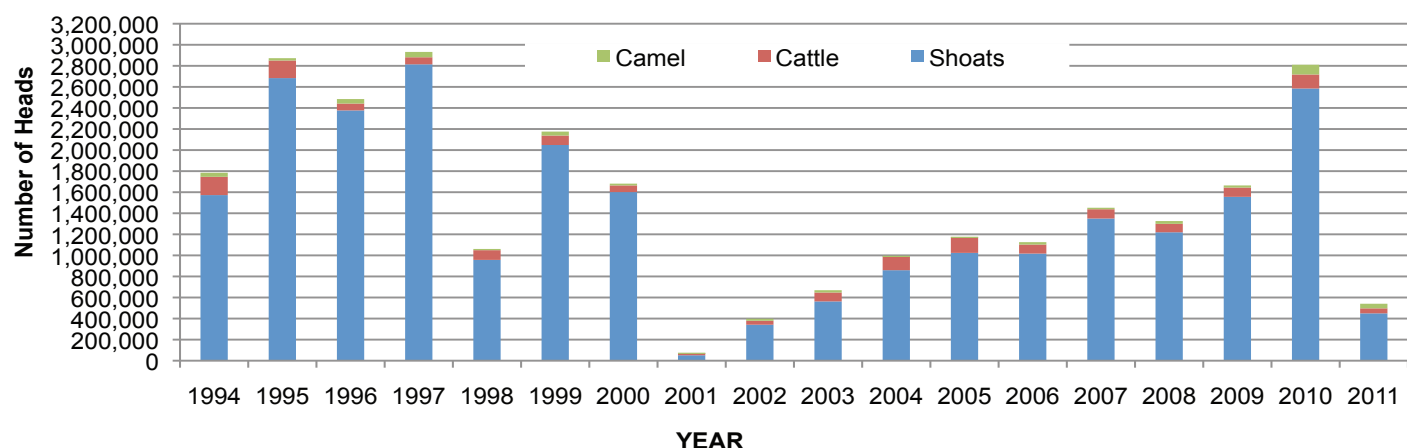


Table 2: Bossaso Livestock Exports (Number of Heads)

	1994	1995	1996	1997	1998	1999	2000	2001	2002	2003	2004	2005	2006	2007	2008	2009	2010	2011 (Jan-May)
Shoats	344,000	524,346	614,407	494,320	517,020	633,669	571,455	548,853	1,412,450	1,483,409	1,166,480	1,594,859	1,777,283	1,522,855	1,236,775	1,159,454	1,333,478	283,444
Cattle	1,450	8,795	15,335	17,831	29,492	36,586	27,604	42,248	53,313	71,328	79,994	91,910	104,595	89,190	78,046	67,385	103,808	37,539
Camel	5,397	8,392	20,462	14,599	3,938	15,544	8,177	1,950	9,720	4,259	2,488	26,109	33,724	27,580	27,639	15,331	36,865	25,089

Figure 51: Bossaso Livestock Exports (Number of Heads)

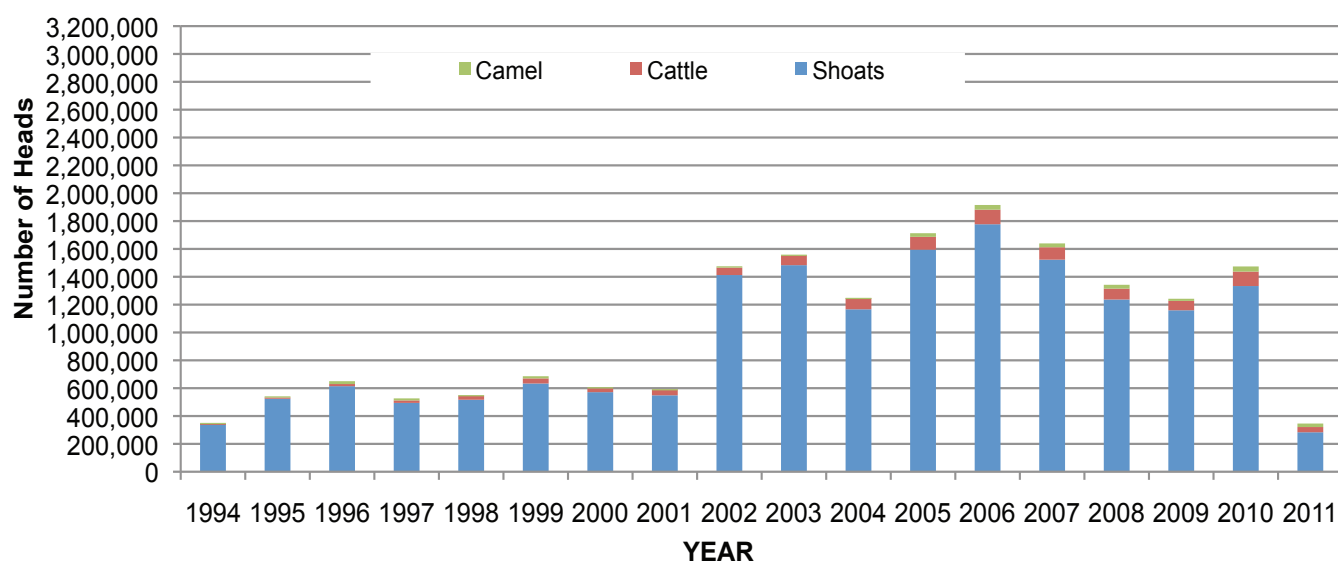


Table 3: Total Cereal Imports (Berbera,Bossaso,Elmaan)

	1997	1998	1999	2000	2001	2002	2003	2004	2005	2006	2007	2008	2009	2010	2011 (Jan-May)
Rice	66,419	43,410	63,464	75,687	74,729	144,600	180,614	146,567	150,017	198,101	166,626	136,007	171,472	161,415	103,806
Wheat flour	35,143	26,774	55,176	78,555	134,425	128,263	171,442	151,555	169,583	178,345	176,821	169,208	240,247	249,080	102,244
Pasta	2,510	6,858	8,544	11,071	26,702	35,425	29,273	38,749	39,153	52,815	41,331	38,441	86,372	102,373	74,379

Figure 52: Total Cereal Imports (Berbera,Bossaso and Elmaan)

