

Highlights

Inflation:

SoSh (Somali shilling)-using areas: Consumer Price Index (CPI) rose 1-2 percent month-on-month in the South and Northeast regions and 5 percent in Central regions in March 2016. Compared to a year ago, the CPI increased in Central (2%) and Northeast (5%), but declined (6%) in the South. The annual changes in CPI were mostly driven by cereal (red sorghum) price trends.

SISH (Somaliland shilling)-using areas: The CPI increased month-on-month (2%) and year-on-year (5%) due to increase in cereal (red sorghum) price over these periods.

Exchange rate:

SoSh-using areas: The exchange rates between SoSh and the United States Dollar (USD) indicated stability or marginal changes (1-3%) during March 2016. The SoSh depreciated over the last 12 months across all areas (3 and 9%).

SISH-using areas: The SISH depreciated against the USD in March 2016 both month-on-month (2%) as well as year-on-year (3%).

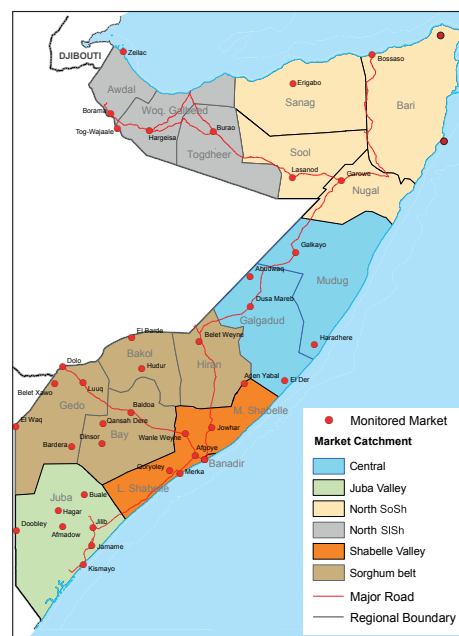
Local grain prices have changed at mild rates (by less than +/- 10%) during March 2016 across the country. Local grain prices declined (9-39%) compared to a year ago in most regions apart from Gedo, Central and Northeast where local cereal prices increased (8-12%) due to reduced supply from the producing regions into the market as a result of trade disruption by insurgents (Gedo) as well as reduced humanitarian intervention..

Prices of imported food (rice, sugar, vegetable oil, wheat flour) in the country mostly exhibited relative stability or mild (less than +/- 10%) monthly changes in local currency terms in March 2016. The annual comparison indicates mild to moderate changes in the prices of most imported commodities across the country.

Livestock prices (for all species) changed at mild rates (less than +/- 10%) during in March 2016 in most regions of the country. The exception is Northwest where prices declined by 11-17 percent due to poor livestock body conditions and increased sales by pastoralists in order to pay-off debts and meet increased costs for water. Milk prices (camel and cattle) also exhibited mild monthly changes in most regions of the country. Over the last 12 months, livestock prices changed by less than 10 percent in most regions apart from Northwest, where prices declined by 13-20 percent. The trend in Northwest is attributable to low demand from Gulf States as well as locally due to poor body condition as a result of the drought in the region. Milk prices (camel and cattle) are lower compared to a year ago in most parts of the country apart from Northwest where prices are higher (cattle milk: 10% & camel milk: 67%).

Labor (unskilled) wages either remained stable or changed mildly (up to 6%) during March 2016 in most regions of the country. The exception is Lower Shabelle where wage rates declined by 11 percent due to reduced agricultural activities in riverine areas triggered by low river levels. Labor wages rose annually in most regions of the country, and most significantly (30%) in Middle Shabelle (Jowhar) because of improved job opportunities for off-season crop harvesting as well as seasonal land preparation activities. I in labor wage compared to last year.

Terms of Trade (ToT) between daily labor wage and local cereals either remained stable or changed by 1-2kg of cereals per daily labor wage during March 2016 in most parts of the country. The ToT between local quality goat and cereals declined in the North as well as Shabelle regions, while it remained relatively stable or increased in other regions; the highest increase was recorded in Bay (33kg/local quality goat) as a result of lower cereal prices and higher goat prices. Annual comparison indicates increase in both ToTs in most regions of the country. However, ToT between local quality goat and cereals (imported red rice) declined compared to a year ago in the northern regions due to declined goat prices and /or increased imported red rice prices.



This Market Data Update is a monthly report that presents analysis of market information and is produced regularly as part of the monthly monitoring process.

The weekly price data is collected from 48 main markets and 51 rural markets throughout Somalia since 1995.

Market analysis is an integral part of all of FSNAU's annual food security projections and seasonal technical reports (Technical Reports on FSNAU Post *Gu* and Post *Deyr* Analysis).

Detailed market data are available online on www.fsnau.org/jds.

Lower Shabelle there has been a 14 percent decrease

Towns Affected by Trade Disruption (Bulo Burto, Wajid, Hudur and Diinsor)

Labor (unskilled) wages decreased in Bulo-Burto and Hudur (8-11%) while they rose in Dinsor (2%) and Wajid (11%) in March 2016. Annual comparison indicated increase in labor wages in both Dinsor (6%) and Hudur (37%) due to better job opportunities in the area this year.

Local grain (red and white sorghum) prices remained stable month-on-month in Bulo-Burto and Wajid; but increased in Hudur (6%) and declined (8%) in Dinsor. The red sorghum price declined annually in Dinsor (32%) as a result of above average *Deyr* 2015/16 and previous *Gu* 2015 seasonal productions as well as humanitarian assistance. In Hudur, cereal prices increased at mild rates (8%) over the last 12 months.

Terms of Trade (ToTs) between daily labor wage and local cereals mostly exhibited mild monthly changes (1-2kg/daily labor) in March 2016; the exception is Dinsor where the ToT increased by 3kg/daily labor wage as a result of improved labor wages and /or reduced red sorghum prices. ToT between local quality goat and local cereals declined in Bulo-Burto (2kg/goat), Wajid (4kg/goat) and Hudur (6kg/goat), while it increased in Dinsor (12kg/goat) in March 2016. ToTs are higher compared to a year ago in both Hudur and Dinsor driven by cereal prices declines and/or labor wages and goat price increase.

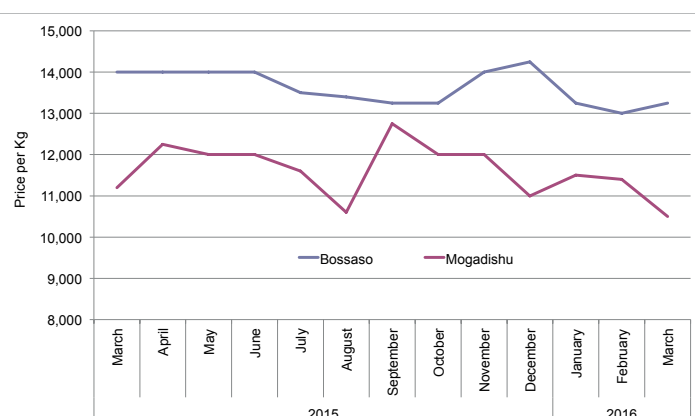
Prices of imported food items (rice, sugar, vegetable oil, wheat flour) remained stable or declined month-on-month in March 2016. Annual comparison indicated lower prices in Hudur but higher prices in Dinsor (33-48%).

National Trends: CPI, Exchange Rates, Cereal Prices and Relative Purchasing Power

Table 1: ToT between Cereals (kg) and Daily Labour Wage Rate, by Region (March 2016)

Regions	March 2016 (kg)	Kg change from		
		February 2016	March 2015	March 5 yr Average (2011 - 2015)
Banadir/Mogadishu	26	0	12	9
Bay	26	2	9	9
Bakool	6	0	2	0
Gedo	15	0	-2	0
Juba	12	0	3	3
Shabelle	10	-2	2	1
Northwest	11	0	1	2
Northeast	9	0	0	2
Central	6	1	1	2

Figure 1: Wheat Prices: Mogadishu and Bossaso Markets



Source: FSNAU Manifest Price Monitoring System

Figure 2: Terms of Trade Between Wage Rates and Selected Cereals

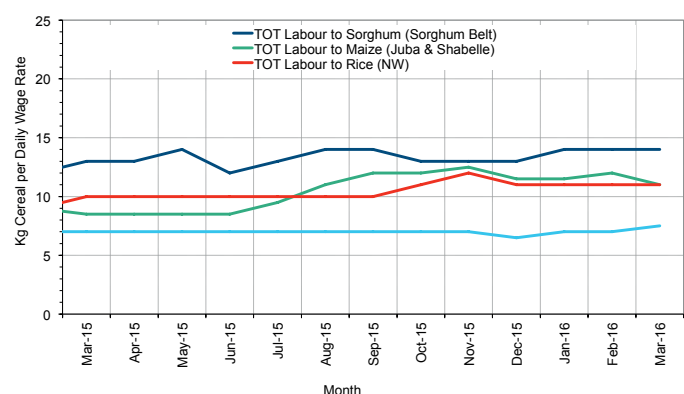


Figure 3: Monthly Exchange Rate for Selected Regions (SoSh and SISH to USD)

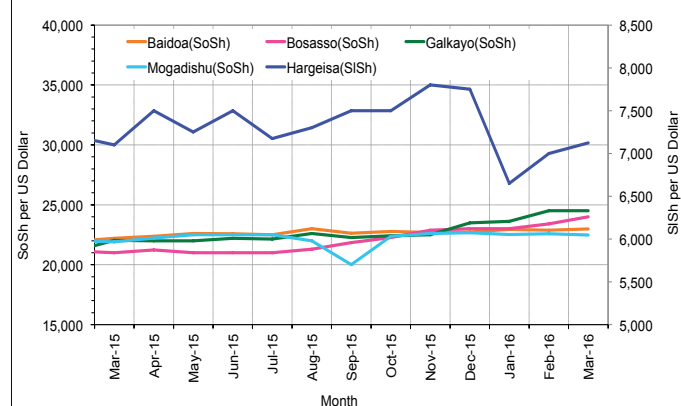


Figure 4: Monthly Trends in Consumer Price Index (CPI, March 2007=100)

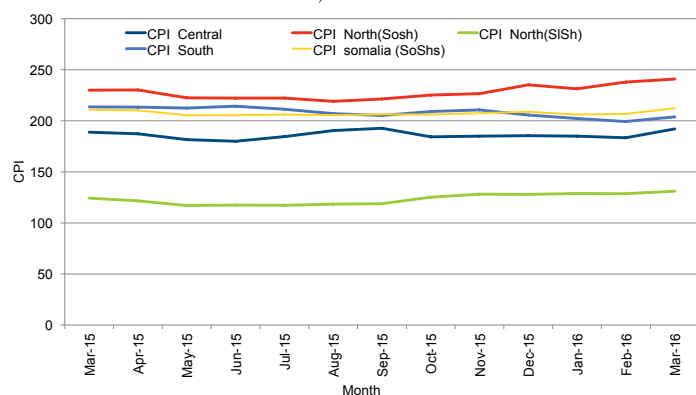
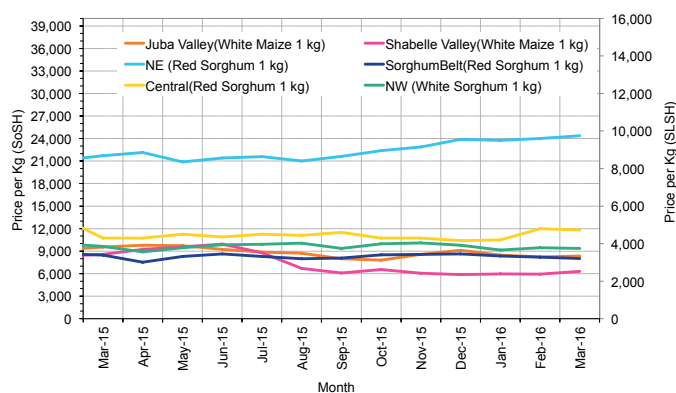


Figure 5: Monthly Trends in Local Cereal Prices



Regional analysis: Juba Regions

Indicator	5-Year Average (2011-2015)	Mar-15	Feb-16	Mar-16 Nominal Price	Mar-16 Real (Deflated) Price	% Change Previous Month	% Change Same Month Previous Year	% Change 5-year avg (2011-2015)
Imported Commodities Prices								
Diesel 1 litre	27,668	23,429	22,500	20,536	9,977	-9%	-12%	-26%
Imported Red Rice 1kg	17,297	15,214	15,071	14,857	7,191	-1%	-2%	-14%
Petrol 1 litre	29,445	25,200	26,500	25,750	12,536	-3%	2%	-13%
Sugar	20,005	15,786	15,000	15,143	7,331	1%	-4%	-24%
Vegetable Oil 1 litre	37,558	30,357	29,457	27,993	13,637	-5%	-8%	-25%
Wheat Flour 1kg	16,395	15,214	14,857	15,071	7,296	1%	-1%	-8%
Wheat Grain 1kg	16,000	-	-	-	-	-	-	-
Cereal Prices								
Red Sorghum 1kg	8,000	8,000	7,500	8,000	3,826	7%	0%	0%
White Maize 1kg	10,054	9,636	8,500	8,568	4,104	1%	-11%	-15%
Livestock & Livestock Product Prices								
Camel Local Quality (Head)	8,529,344	7,519,286	11,332,143	11,409,524	5,598,737	1%	52%	34%
Cattle Local Quality (Head)	3,459,434	3,577,143	3,747,083	3,634,583	1,783,448	-3%	2%	5%
Fresh Camel Milk 1 litre	21,970	19,343	18,679	19,393	9,416	4%	0%	-12%
Goat Export Quality (Head)	1,237,286	1,183,929	1,259,786	1,245,000	610,841	-1%	5%	1%
Goat Local Quality (Head)	783,007	797,857	836,786	847,500	415,782	1%	6%	8%
Other Essential Items								
Charcoal 50kg	82,025	83,393	97,143	92,643	45,361	-5%	11%	13%
Cowpeas 1 kg	24,988	27,907	23,286	23,625	11,493	1%	-15%	-5%
Unskilled Labor Wage Rate	86,458	87,071	104,464	102,250	50,076	-2%	17%	18%
Firewood Bundle	8,298	6,286	7,964	8,107	3,878	2%	29%	-2%
Local Sesame Oil 1 litre	73,684	73,286	66,071	55,036	26,907	-17%	-25%	-25%
Exchange Rate (Somali Shilling per USD)	22,313	22,150	22,629	23,129	11,250	2%	4%	4%
Terms of Trade								
Labour Wage (Daily)/ Cereal (Maize(Kg))	9	9	12	12	-	0%	33%	33%
Local Goat (Head)/ Cereal (Maize(Kg))	83	83	98	99	-	1%	19%	19%
Price Indices								
Consumer Price Index	-	213	199	204	-	2%	-5%	-

Figure 6: Trends in Cereal Prices

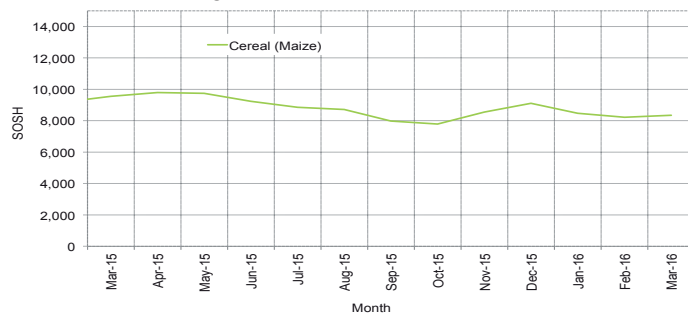


Figure 7: Trends in Wage Rates and Relative Purchasing Power

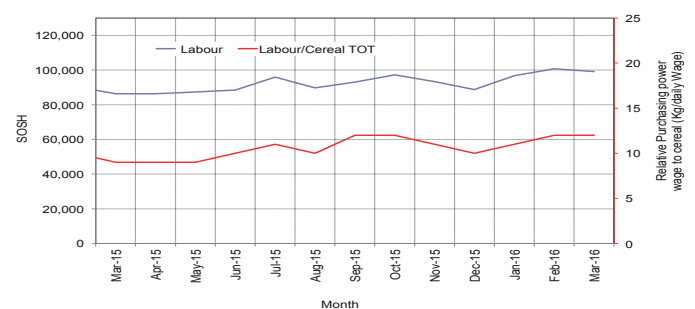


Figure 8: Imported Commodity Prices Compared to Exchange Rate

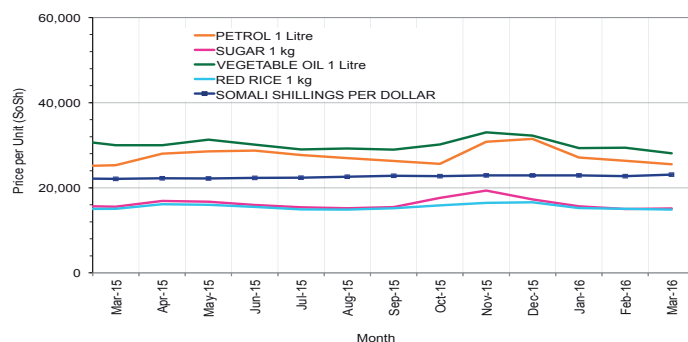


Figure 9: Goat Local Quality

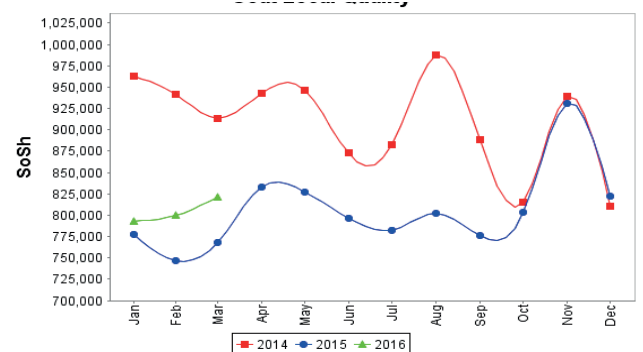


Figure 10: Exchange Rate

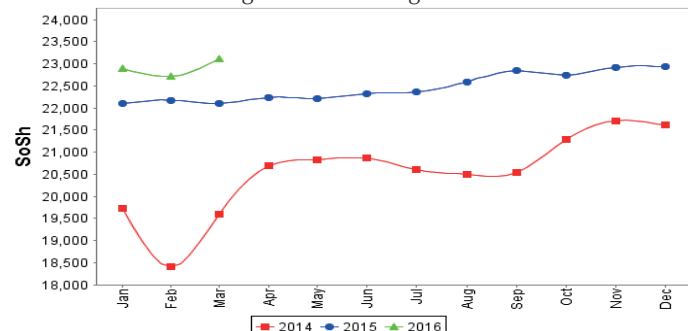
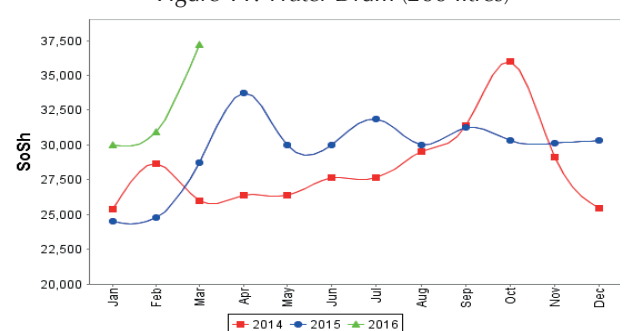


Figure 11: Water Drum (200 litres)



Regional analysis: Sorghum Belt Regions (Bay, Bakool, Gedo and Hiran)

Indicator	5-Year Average (2011-2015)	Mar-15	Feb-16	Mar-16 Nominal Price	Mar-16 Real (Deflated) Price	% Change Previous Month	% Change Same Month Previous Year	% Change 5-year avrg (2011-2015)
Imported Commodities Prices								
Diesel 1 litre	30,873	29,268	24,018	22,273	10,830	-7%	-24%	-28%
Imported Red Rice 1kg	19,616	17,691	18,309	17,527	8,501	-4%	-1%	-11%
Petrol 1 litre	30,731	30,273	26,036	24,482	11,914	-6%	-19%	-20%
Sugar	22,665	18,214	18,564	18,364	8,912	-1%	1%	-19%
Vegetable Oil 1 litre	43,479	38,018	32,800	33,755	16,464	3%	-11%	-22%
Wheat Flour 1kg	18,003	17,455	18,018	17,273	8,376	-4%	-1%	-4%
Wheat Grain 1kg	13,371	21,133	23,000	21,500	10,450	-7%	2%	61%
Cereal Prices								
Red Sorghum 1kg	8,706	8,486	8,188	8,026	3,838	-2%	-5%	-8%
White Maize 1kg	9,516	9,615	9,282	9,420	4,523	1%	-2%	-1%
Livestock & Livestock Product Prices								
Camel Local Quality (Head)	11,157,046	11,830,000	12,052,000	12,090,500	5,932,902	0%	2%	8%
Cattle Local Quality (Head)	3,063,004	3,405,714	3,605,000	3,445,625	1,690,724	-4%	1%	12%
Fresh Camel Milk 1 litre	21,990	20,460	18,927	20,282	9,853	7%	-1%	-8%
Goat Export Quality (Head)	1,455,186	1,502,750	1,453,818	1,452,909	712,866	0%	-3%	0%
Goat Local Quality (Head)	887,436	886,318	770,364	786,682	385,937	2%	-11%	-11%
Other Essential Items								
Charcoal 50kg	147,828	164,800	157,200	156,850	76,869	0%	-5%	6%
Cowpeas 1 kg	24,571	27,650	21,800	21,468	10,435	-2%	-22%	-13%
Unskilled Labor Wage Rate	102,360	114,114	116,273	115,432	56,544	-1%	1%	13%
Firewood Bundle	6,190	6,700	6,309	6,273	2,978	-1%	-6%	1%
Local Sesame Oil 1 litre	77,243	79,964	66,429	65,214	31,902	-2%	-18%	-16%
Exchange Rate (Somali Shilling per USD)	22,910	21,940	22,709	22,853	11,114	1%	4%	0%
Terms of Trade								
Labour Wage (Daily)/ Cereal (Sorghum(Kg))	13	13	14	14	-	0%	8%	8%
Local Goat (Head)/ Cereal (Sorghum(Kg))	119	104	94	98	-	4%	-6%	-18%
Price Indices								
Consumer Price Index	-	213	199	204	-	2%	-5%	-

Figure 12: Trends in Cereal Prices

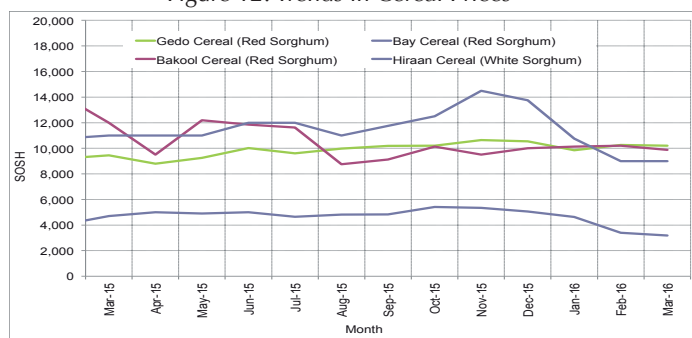


Figure 14: Imported Commodity Prices Compared to Exchange Rate

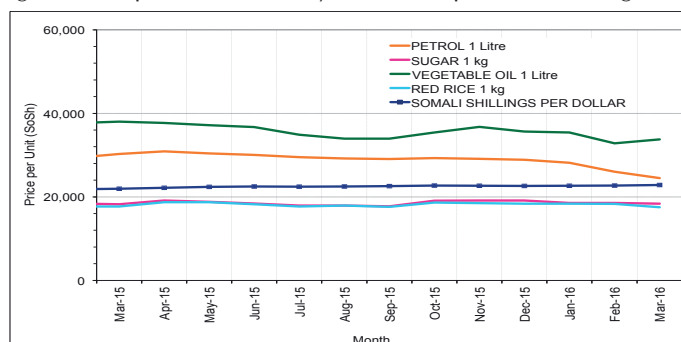


Figure 16: Exchange Rate

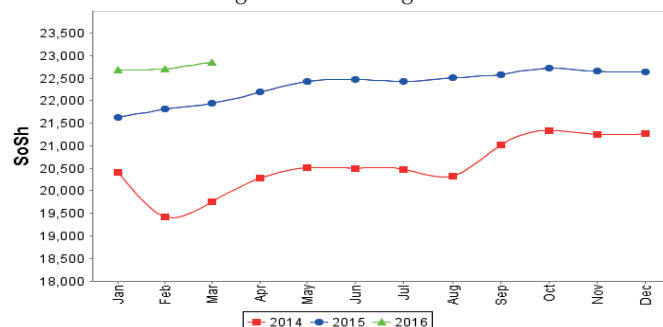


Figure 13: Trends in Wage Rates and Relative Purchasing Power

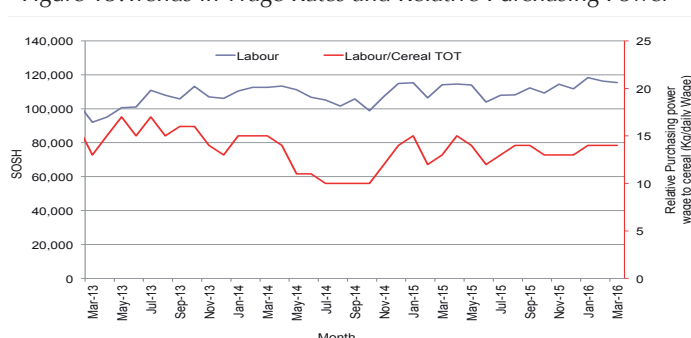


Figure 15: Goat Local Quality

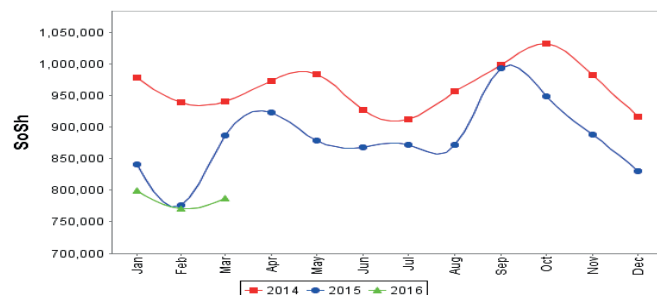
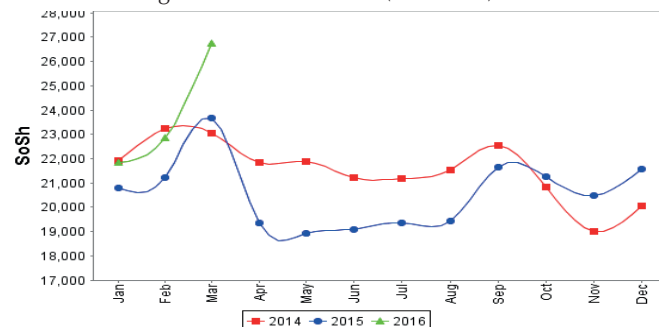


Figure 17: Water Drum (200 litres)



Regional analysis: Shabelle Regions

Indicator	5-Year Average (2011-2015)	Mar-15	Feb-16	Mar-16 Nominal Price	Mar-16 Real (Deflated) Price	% Change Previous Month	% Change Same Month Previous Year	% Change 5-year avrg (2011-2015)
Imported Commodities Prices								
Diesel 1 litre	27,550	22,667	19,250	18,625	9,040	-3%	-18%	-32%
Imported Red Rice 1kg	16,541	15,417	17,000	16,667	8,079	-2%	8%	1%
Petrol 1 litre	29,461	26,667	25,458	25,000	12,168	-2%	-6%	-15%
Sugar	19,766	15,833	17,000	17,083	8,283	0%	8%	-14%
Vegetable Oil 1 litre	32,619	28,417	26,917	24,879	12,109	-8%	-12%	-24%
Wheat Flour 1kg	15,766	14,917	15,833	16,167	7,833	2%	8%	3%
Wheat Grain 1kg	16,500	22,500	17,000	17,000	8,242	0%	-24%	3%
Cereal Prices								
Red Sorghum 1kg	10,508	10,613	8,500	8,428	4,036	-1%	-21%	-20%
White Maize 1kg	8,177	8,575	5,927	6,306	2,994	6%	-26%	-23%
Livestock & Livestock Product Prices								
Camel Local Quality (Head)	15,263,466	16,230,000	18,192,500	18,286,500	8,973,379	1%	13%	20%
Cattle Local Quality (Head)	4,900,666	5,255,000	4,972,500	5,189,500	2,546,471	4%	-1%	6%
Fresh Camel Milk 1 litre	18,705	21,492	19,167	20,250	9,837	6%	-6%	8%
Goat Export Quality (Head)	1,734,625	1,791,250	1,805,625	1,750,625	858,960	-3%	-2%	1%
Goat Local Quality (Head)	1,229,938	1,341,250	1,265,833	1,287,083	631,492	2%	-4%	5%
Other Essential Items								
Charcoal 50kg	121,899	121,375	135,056	136,250	66,760	1%	12%	12%
Cowpeas 1 kg	21,462	22,378	16,258	17,857	8,663	10%	-20%	-17%
Unskilled Labor Wage Rate	66,527	65,625	68,750	63,750	31,183	-7%	-3%	-4%
Firewood Bundle	6,002	6,375	5,875	5,667	2,681	-4%	-11%	-6%
Local Sesame Oil 1 litre	60,302	61,667	40,500	41,000	20,019	1%	-34%	-32%
Exchange Rate (Somali Shilling per USD)	22,389	21,902	22,850	22,925	11,150	0%	5%	2%
Terms of Trade								
Labour Wage (Daily)/ Cereal (Maize(Kg))	9	8	12	10	-	-17%	25%	11%
Local Goat (Head)/ Cereal (Maize(Kg))	168	156	214	204	-	-5%	31%	21%
Price Indices								
Consumer Price Index	-	213	199	204	-	2%	-5%	-

Figure 18: Trends in Cereal Prices

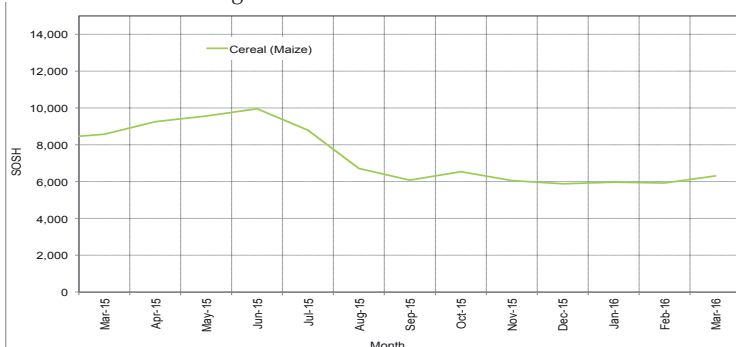


Figure 19: Trends in Wage Rates and Relative Purchasing Power

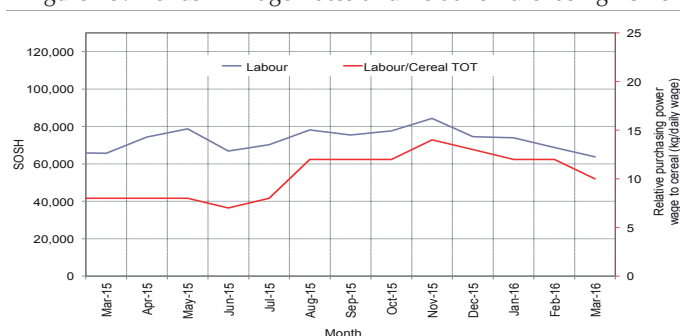


Figure 20: Imported Commodity Prices Compared to Exchange Rate

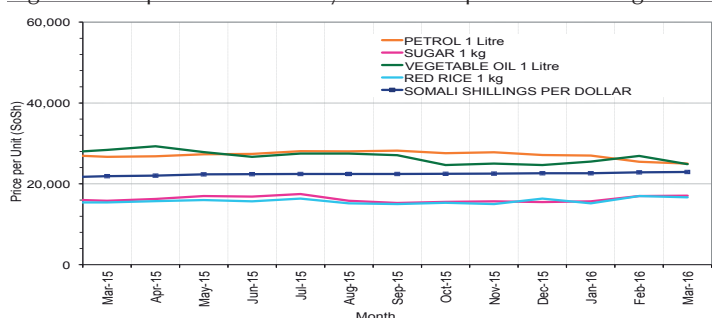


Figure 21: Goat Local Quality

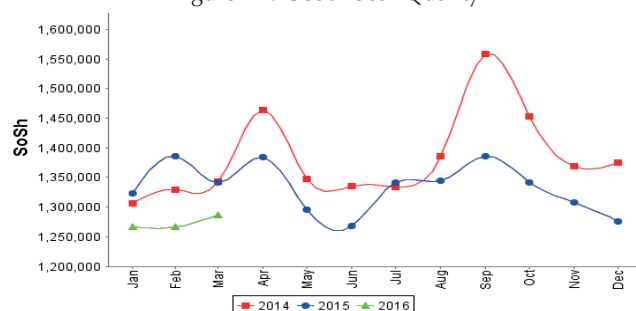


Figure 22: Exchange Rate

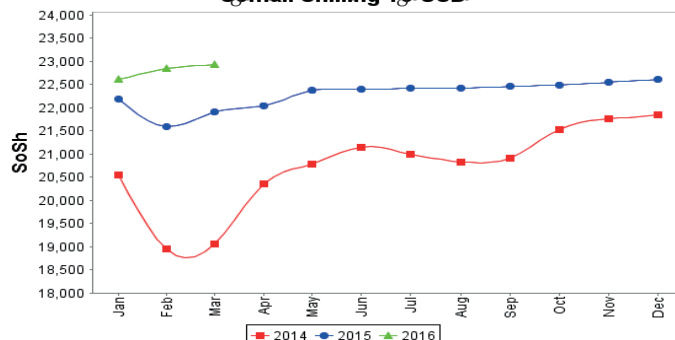
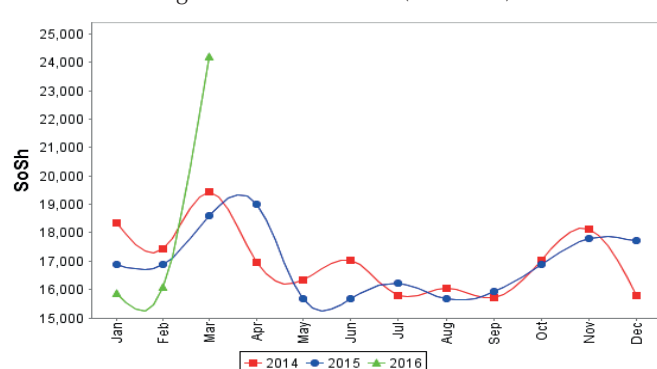


Figure 23: Water Drum (200 litres)



Regional analysis: Banadir Region

Indicator	5-Year Average (2011-2015)	Mar-15	Feb-16	Mar-16 Nominal Price	Mar-16 Real (Deflated) Price	% Change Previous Month	% Change Same Month Previous Year	% Change 5-year avrg (2011-2015)
Imported Commodities Prices								
Diesel 1 litre	22,635	18,896	16,733	16,750	8,119	0%	-11%	-26%
Imported Red Rice 1kg	16,026	12,500	12,471	12,500	6,034	0%	0%	-22%
Petrol 1 litre	23,441	20,667	19,500	19,583	9,510	0%	-5%	-16%
Sugar	18,585	13,917	13,425	13,500	6,525	1%	-3%	-27%
Vegetable Oil 1 litre	31,047	23,013	22,550	21,542	10,471	-4%	-6%	-31%
Wheat Flour 1kg	13,876	12,242	12,558	12,417	5,993	-1%	1%	-11%
Wheat Grain 1kg	10,464	10,750	11,267	11,000	5,298	-2%	2%	5%
Cereal Prices								
Red Sorghum 1kg	8,494	8,575	7,488	6,458	3,069	-14%	-25%	-24%
White Maize 1kg	9,076	10,029	6,775	7,096	3,382	5%	-29%	-22%
Livestock & Livestock Product Prices								
Camel Local Quality (Head)	13,500,000	-	-	-	-	-	-	-
Cattle Local Quality (Head)	4,462,500	-	-	-	-	-	-	-
Fresh Camel Milk 1 litre	21,561	22,575	23,000	23,000	11,186	0%	2%	7%
Goat Export Quality (Head)	2,202,000	1,960,000	1,980,000	2,050,000	1,005,868	4%	-	-7%
Goat Local Quality (Head)	1,894,325	1,775,000	1,687,500	1,737,500	852,519	3%	-2%	-8%
Other Essential Items								
Charcoal 50kg	174,141	187,208	195,917	188,167	92,237	-4%	1%	8%
Cowpeas 1 kg	20,204	21,825	18,004	17,867	8,668	-1%	-18%	-12%
Unskilled Labor Wage Rate	97,341	105,000	109,833	110,417	54,083	1%	5%	13%
Firewood Bundle	7,415	7,400	8,680	8,700	4,169	0%	18%	17%
Local Sesame Oil 1 litre	60,408	64,625	54,667	48,521	23,710	-11%	-25%	-20%
Exchange Rate (Somali Shilling per USD)	21,931	22,033	22,531	22,438	10,911	0%	2%	2%
Terms of Trade								
Labour Wage (Daily)/ Cereal (Maize(Kg))	11	10	16	16	-	0%	60%	45%
Local Goat (Head)/ Cereal (Maize(Kg))	223	177	249	245	-	-2%	38%	10%
Price Indices								
Consumer Price Index	-	213	199	204	-	2%	-5%	-

Figure 24: Trends in Cereal Prices

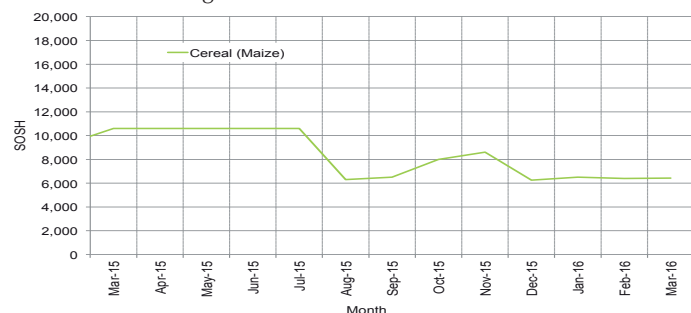


Figure 25: Bakara: Trends in Wage Rates and Relative Purchasing Power

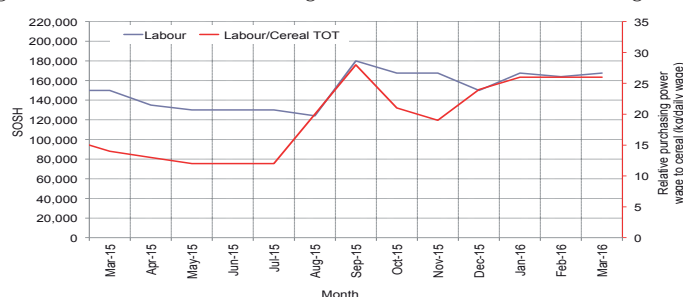


Figure 26: Imported Commodity Prices Compared to Exchange Rate

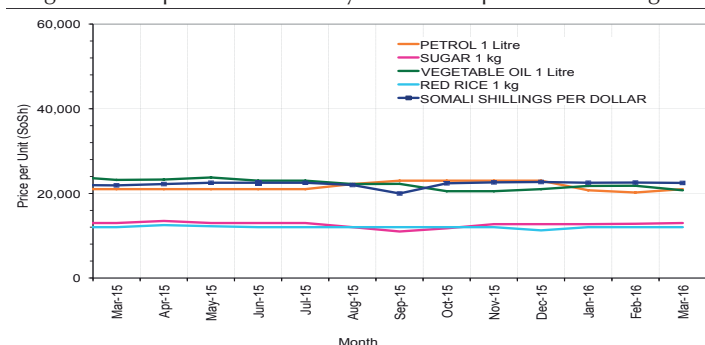


Figure 27: Goat Local Quality

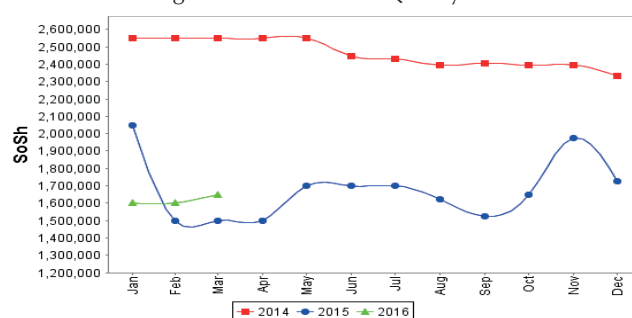


Figure 28: Exchange Rate

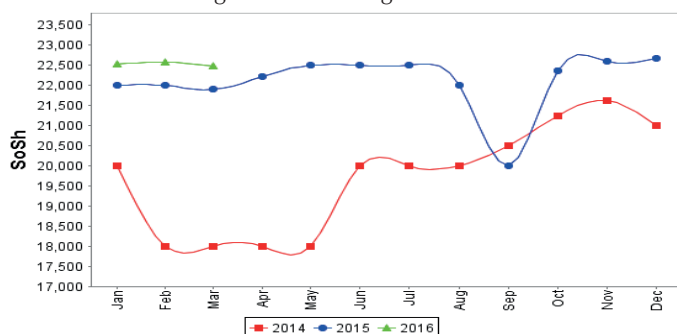
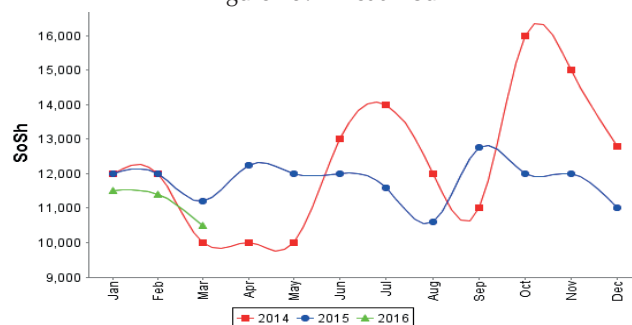


Figure 29: Wheat Flour



Regional analysis: Central Regions

Indicator	5-Year Average (2011-2015)	Mar-15	Feb-16	Mar-16 Nominal Price	Mar-16 Real (Deflated) Price	% Change Previous Month	% Change Same Month Previous Year	% Change 5-year avrg (2011-2015)
Imported Commodities Prices								
Diesel 1 litre	29,184	24,040	20,000	19,800	10,216	-1%	-18%	-32%
Imported Red Rice 1kg	21,713	17,800	17,280	17,000	8,757	-2%	-4%	-22%
Petrol 1 litre	26,210	23,800	21,800	20,752	10,711	-5%	-13%	-21%
Sugar	24,915	19,160	18,600	18,200	9,382	-2%	-5%	-27%
Vegetable Oil 1 litre	45,736	39,080	34,280	33,950	17,587	-1%	-13%	-26%
Wheat Flour 1kg	18,218	15,840	15,840	15,850	8,158	0%	0%	-13%
Wheat Grain 1kg	16,321	17,733	16,200	15,875	8,171	-2%	-10%	-3%
Cereal Prices								
Red Sorghum 1kg	13,118	10,750	11,975	11,800	6,048	-1%	10%	-10%
White Maize 1kg	13,449	13,320	13,250	13,000	6,673	-2%	-2%	-3%
Livestock & Livestock Product Prices								
Camel Local Quality (Head)	10,372,500	12,450,000	13,575,000	13,200,000	6,876,913	-3%	6%	27%
Cattle Local Quality (Head)	2,550,000	-	-	-	-	-	-	-
Fresh Camel Milk 1 litre	32,946	31,480	31,600	31,250	16,181	-1%	-1%	-5%
Goat Export Quality (Head)	1,421,775	1,377,500	1,147,500	1,156,250	602,290	1%	-16%	-19%
Goat Local Quality (Head)	1,107,200	950,000	874,000	915,000	476,602	5%	-4%	-17%
Other Essential Items								
Charcoal 50kg	182,673	160,200	160,000	159,000	82,737	-1%	-1%	-13%
Cowpeas 1 kg	24,541	21,760	20,600	20,600	10,632	0%	-5%	-16%
Unskilled Labor Wage Rate	86,250	87,000	92,000	94,000	48,873	2%	8%	9%
Firewood Bundle	33,720	35,000	30,400	32,000	16,572	5%	-9%	-5%
Local Sesame Oil 1 litre	90,600	91,000	85,200	82,500	42,881	-3%	-9%	-9%
Exchange Rate (Somali Shilling per USD)	23,475	21,756	23,520	23,700	12,247	1%	9%	1%
Terms of Trade								
Labour Wage (Daily)/ Cereal (Rice(Kg))	4	5	5	6	-	20%	20%	50%
Local Goat (Head)/ Cereal (Rice(Kg))	52	53	51	54	-	6%	2%	4%
Camel (Head)/Cereal (Kg)	508	699	786	776	-	-1%	11%	53%
Price Indices								
Consumer Price Index	-	189	183	192	-	5%	2%	-

Figure 30: Trends in Cereal Prices

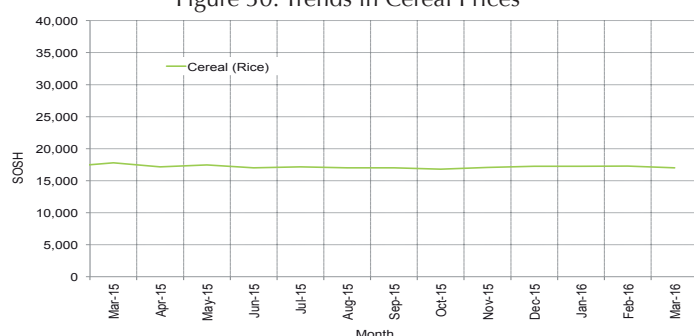


Figure 31: Trends in wage rates and relative purchasing power

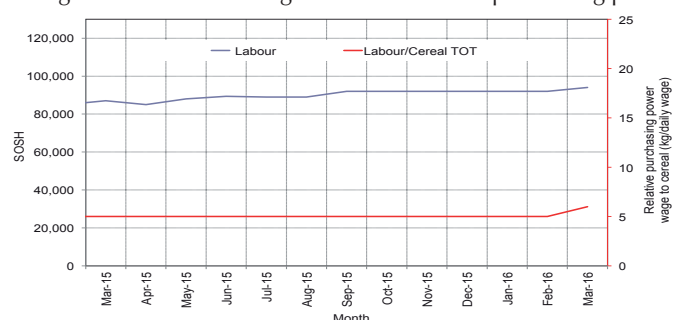


Figure 32: Imported Commodity Prices Compared to Exchange Rate

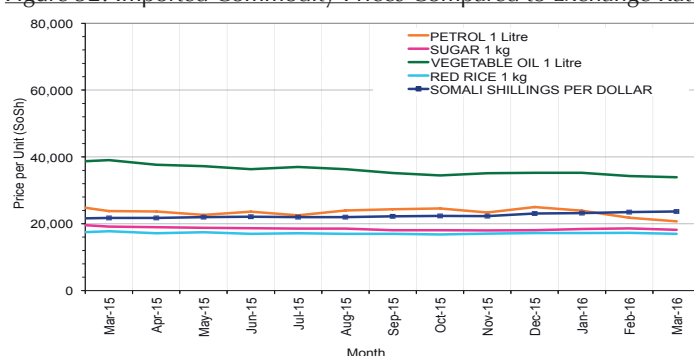


Figure 34: Exchange Rate

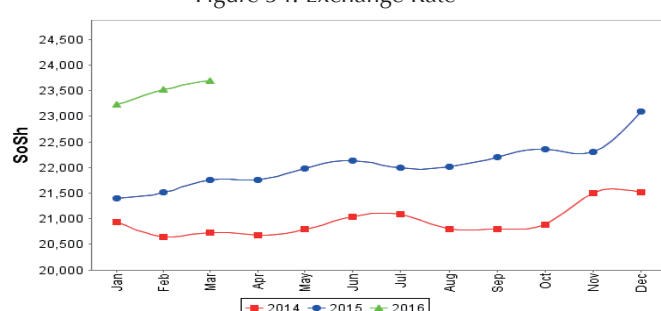


Figure 33: Goat Local Quality

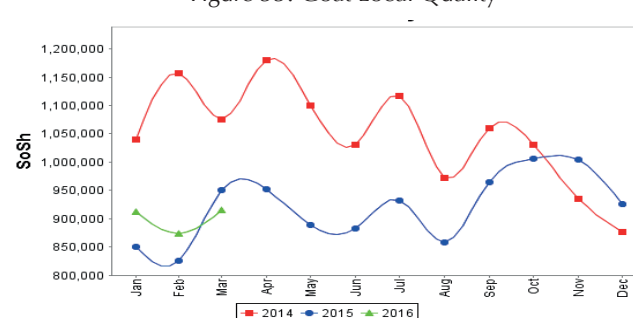
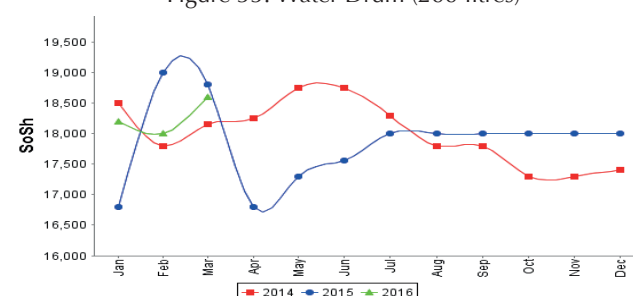


Figure 35: Water Drum (200 litres)



Regional analysis: Northeast Regions

Indicator	5-Year Average (2011-2015)	Mar-15	Feb-16	Mar-16 Nominal Price	Mar-16 Real (Deflated) Price	% Change Previous Month	% Change Same Month Previous Year	% Change 5-year avrg (2011-2015)
Imported Commodities Prices								
Diesel 1 litre	24,720	16,975	13,650	13,000	5,296	-5%	-23%	-47%
Imported Red Rice 1kg	17,772	15,075	14,450	14,750	6,023	2%	-2%	-17%
Petrol 1 litre	22,610	17,363	18,250	16,750	6,853	-8%	-4%	-26%
Sugar	22,162	16,775	15,888	15,938	6,516	0%	-5%	-28%
Vegetable Oil 1 litre	40,667	31,850	29,388	29,875	12,301	2%	-6%	-27%
Wheat Flour 1kg	16,804	14,625	13,850	14,063	5,738	2%	-4%	-16%
Wheat Grain 1kg	24,750	21,000	22,200	22,375	9,188	1%	7%	-10%
Cereal Prices								
Red Sorghum 1kg	20,723	21,700	24,000	24,375	10,018	2%	12%	18%
White Maize 1kg	20,140	20,200	21,600	22,000	9,032	2%	9%	9%
Livestock & Livestock Product Prices								
Camel Local Quality (Head)	14,807,376	14,772,500	13,765,000	13,912,500	5,775,130	1%	-6%	-6%
Cattle Local Quality (Head)	7,400,000	7,600,000	9,125,000	8,500,000	3,528,343	-7%	12%	15%
Fresh Camel Milk 1 litre	41,657	34,913	40,896	42,771	17,655	5%	23%	3%
Goat Export Quality (Head)	1,408,500	1,410,000	1,265,000	1,300,000	539,544	3%	-8%	-8%
Goat Local Quality (Head)	1,308,250	1,260,625	1,161,375	1,163,750	482,985	0%	-8%	-11%
Other Essential Items								
Charcoal 50kg	373,400	387,500	378,000	376,875	156,345	0%	-3%	1%
Cowpeas 1 kg	35,183	28,667	32,667	32,500	13,391	-1%	13%	-8%
Unskilled Labor Wage Rate	122,000	130,000	131,750	128,125	53,086	-3%	-1%	5%
Firewood Bundle	42,600	52,500	47,500	48,750	20,137	3%	-7%	14%
Local Sesame Oil 1 litre	91,529	92,750	97,750	93,750	38,817	-4%	1%	2%
Exchange Rate (Somali Shilling per USD)	23,249	21,089	22,175	22,338	9,173	1%	6%	-4%
Terms of Trade								
Labour Wage (Daily)/ Cereal (Rice(Kg))	7	9	9	9	-	0%	0%	29%
Local Goat (Head)/ Cereal (Rice(Kg))	76	84	80	79	-	-1%	-6%	4%
Price Indices								
Consumer Price Index	-	230	238	241	-	1%	5%	-

Figure 36: Trends in Cereal Prices

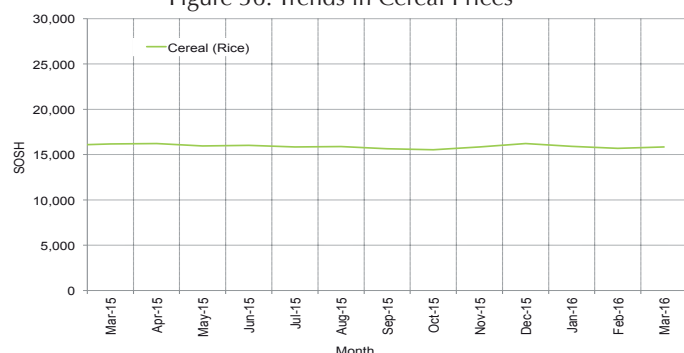


Figure 37: Trends in Wage Rates and Relative Purchasing Power

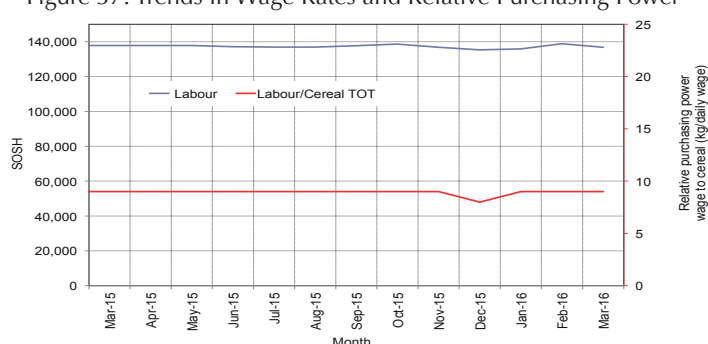


Figure 38: Imported Commodity Prices Compared to Exchange Rate

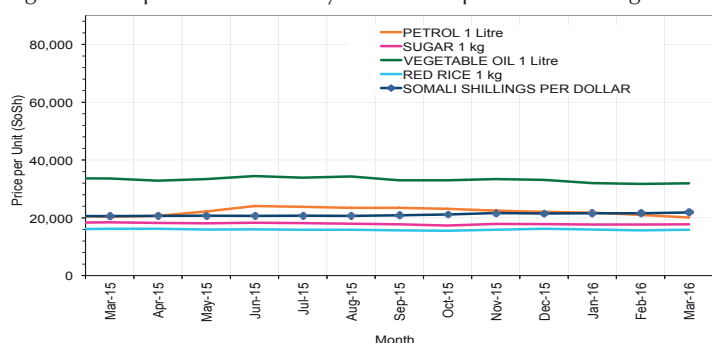


Figure 39: Goat Local Quality

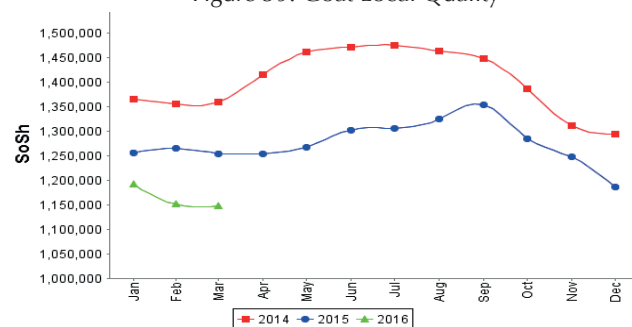


Figure 40: Exchange Rate

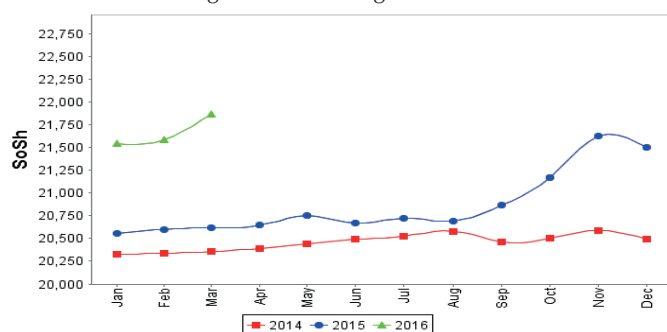
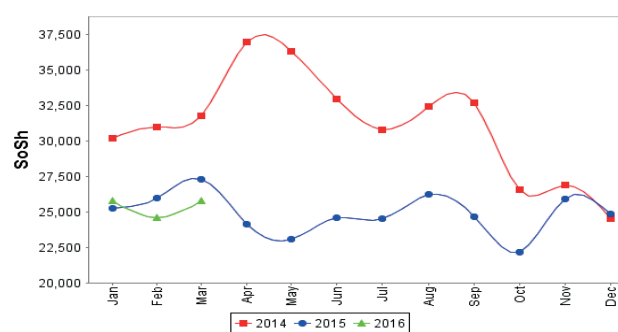


Figure 41: Water Drum (200 litres)



Regional analysis: Northwest Regions

Indicator	5-Year Average (2011-2015)	Mar-15	Feb-16	Mar-16 Nominal Price	Mar-16 Real (Deflated) Price	% Change Previous Month	% Change Same Month Previous Year	% Change 5-year avrg (2011-2015)
Imported Commodities Prices								
Diesel 1 litre	6,387	6,310	4,610	4,900	3,638	6%	-22%	-23%
Imported Red Rice 1kg	4,913	5,020	5,100	5,300	3,943	4%	6%	8%
Petrol 1 litre	6,685	6,950	6,060	6,148	4,589	1%	-12%	-8%
Sugar	5,927	5,900	5,400	5,640	4,202	4%	-4%	-5%
Vegetable Oil 1 litre	11,897	13,340	12,200	10,500	7,909	-14%	-21%	-12%
Wheat Flour 1kg	4,298	4,340	4,600	5,100	3,790	11%	18%	19%
Wheat Grain 1kg	3,271	3,625	4,325	4,225	3,123	-2%	17%	29%
Cereal Prices								
White Sorghum 1kg	3,500	3,860	3,780	3,750	2,760	-1%	-3%	7%
Yellow Maize 1kg	3,342	3,833	4,560	4,340	3,210	-5%	13%	30%
Livestock & Livestock Product Prices								
Camel Local Quality (Head)	2,727,383	4,100,333	3,917,500	4,112,500	3,136,737	5%	0%	51%
Cattle Local Quality (Head)	1,835,100	2,266,667	2,191,667	1,817,500	1,386,210	-17%	-20%	-1%
Fresh Camel Milk 1 litre	5,852	5,400	8,660	8,700	6,536	0%	61%	49%
Goat Export Quality (Head)	417,148	440,820	362,325	398,813	304,097	10%	-10%	-4%
Goat Local Quality (Head)	304,190	327,250	318,600	284,850	217,171	-11%	-13%	-6%
Other Essential Items								
Charcoal 50kg	43,220	53,400	58,350	61,550	46,848	5%	15%	42%
Cowpeas 1 kg	9,915	11,625	12,975	13,500	10,197	4%	16%	36%
Unskilled Labor Wage Rate	40,280	50,400	54,560	57,650	43,873	6%	14%	43%
Firewood Bundle	3,260	4,167	4,500	4,667	3,460	4%	12%	43%
Local Sesame Oil 1 litre	28,762	33,750	32,000	32,000	24,308	0%	-5%	11%
Exchange Rate (Somaliland Shilling per USD)	6,461	7,070	7,120	7,275	5,449	2%	3%	13%
Terms of Trade								
Labour Wage (Daily)/ Cereal (Rice(Kg))	8	10	11	11	-	0%	10%	38%
Local Goat (Head)/ Cereal (Rice(Kg))	61	65	62	54	-	-13%	-17%	-11%
Price Indices								
Consumer Price Index	-	124	129	131	-	2%	5%	-

Figure 42: Trends in Cereal Prices

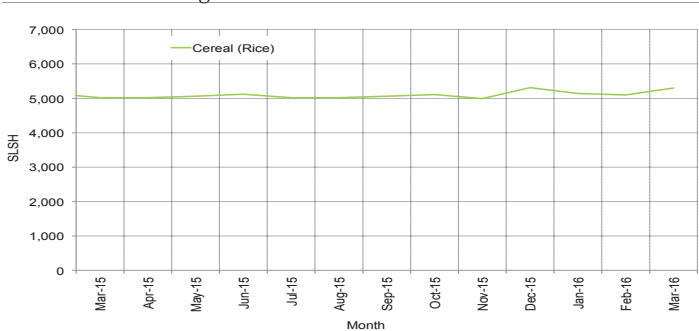


Figure 43: Trends in Wage Rates and Relative Purchasing Power

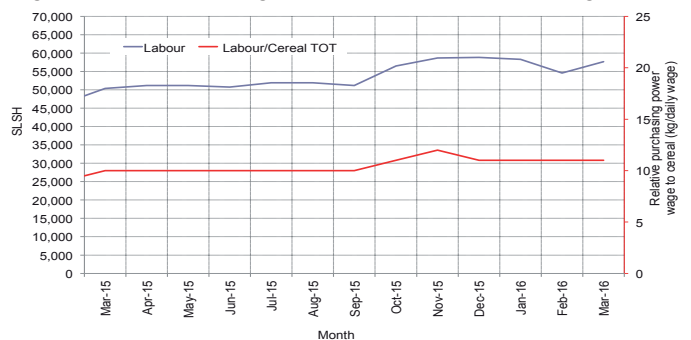


Figure 44: Imported Commodity Prices Compared to Exchange Rate

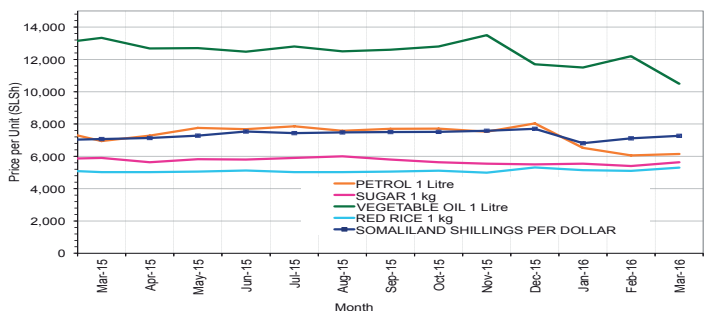


Figure 45: Goat Local Quality

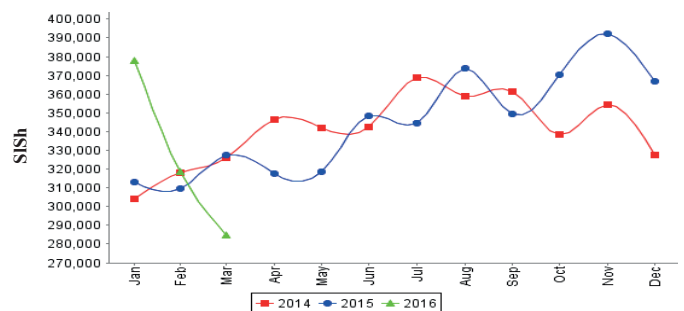


Figure 46: Exchange Rate

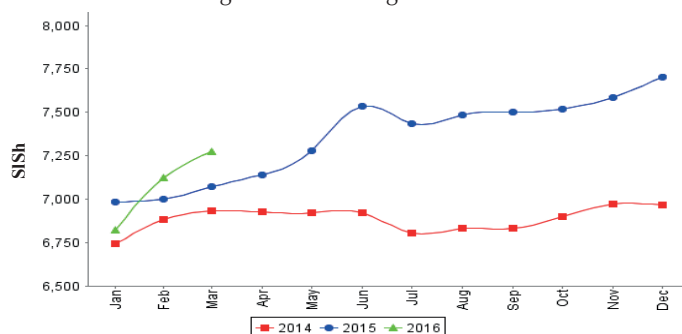
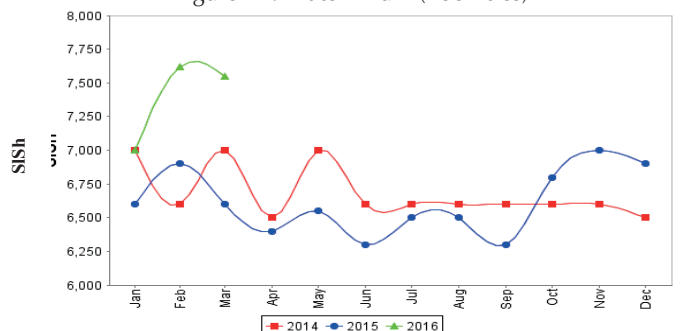


Figure 47: Water Drum (200 litres)



Trends in Livestock Exports

Table 1: Berbera Livestock Exports (Number of Heads)

	1999	2000	2001	2002	2003	2004	2005	2006	2007	2008	2009	2010	2011	2012	2013	2014	Jan-Mar 2016
Shoats	2 048 136	1 601 083	51 546	341 711	563 107	859 404	1 023 795	1 017 242	1 350 054	1 219 519	1 556,003	2 584 810	3 104 684	3 219 584	2 888 955	3 089 592	448 389
Cattle	89 967	63 263	20 973	37 547	84 312	131 852	148 151	85 631	88 143	80 051	88 005	133 021	150 934	190 354	20 875	252 597	36 542
Camel	37 430	16 984	3 473	18,864	21 874	5 147	5 069	22 810	14 245	26 515	20 206	92 651	107 281	102 664	75 728	64 578	37 836

Figure 48: Berbera Livestock Exports (Number of Heads)

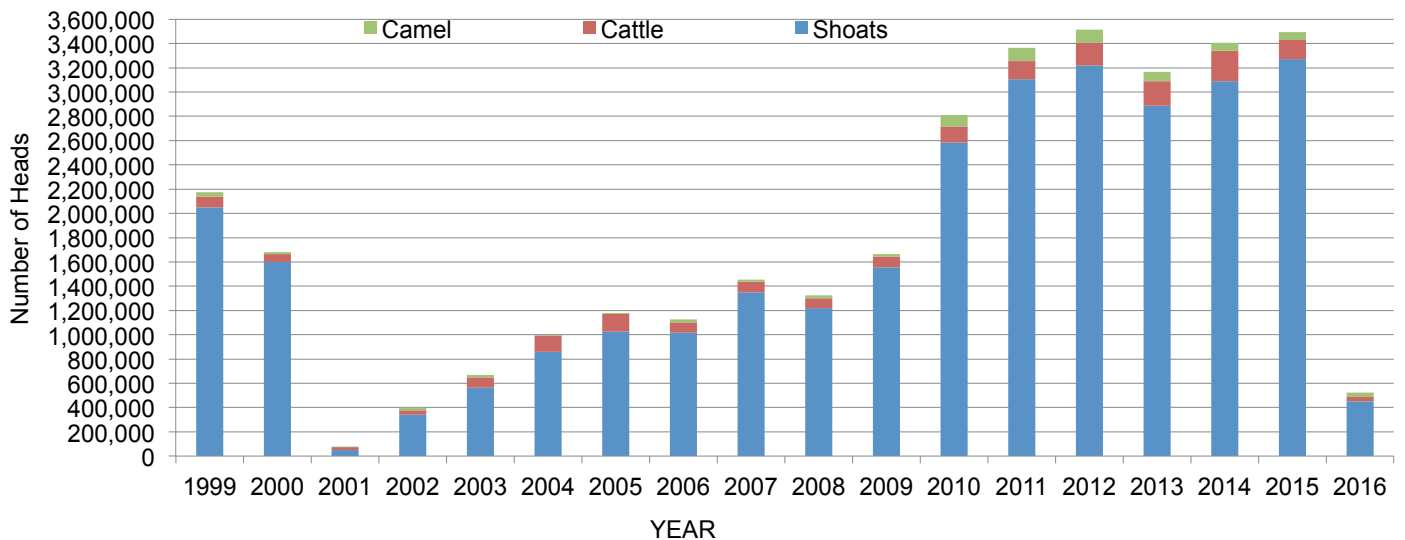
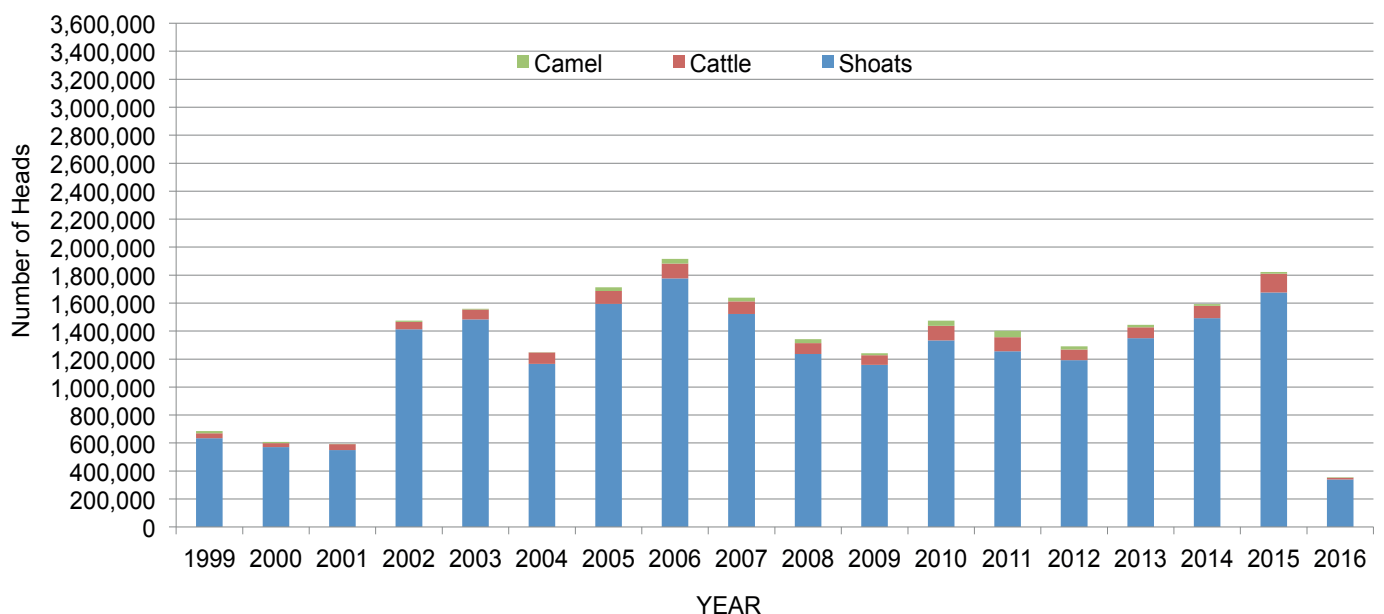


Table 2: Bossaso Livestock Exports (Number of Heads)

	1999	2000	2001	2002	2003	2004	2005	2006	2007	2008	2009	2010	2011	2012	2013	2014	2015	Jan-Mar 2016
Shoats	633 669	571 455	548 853	1 412 450	1 483 409	1 166 480	1 594 859	1 777 283	1 522 855	1 236 775	1 159 454	1 333 478	1 256 535	1 192 197	1 349 123	1 493 111	1 676 216	339 070
Cattle	36 586	27 604	42 248	53 313	71 328	79 994	91 910	104 595	89 190	78 046	67 385	103 808	99 058	76 043	77 353	87 759	134 597	13 187
Camel	15 544	8 177	1 950	9 720	4 259	2 488	26 109	33 724	27 580	27 639	15 331	36 865	45 878	22 288	19 032	12 251	10 945	3 483

Figure 49: Bossaso Livestock Exports (Number of Heads)

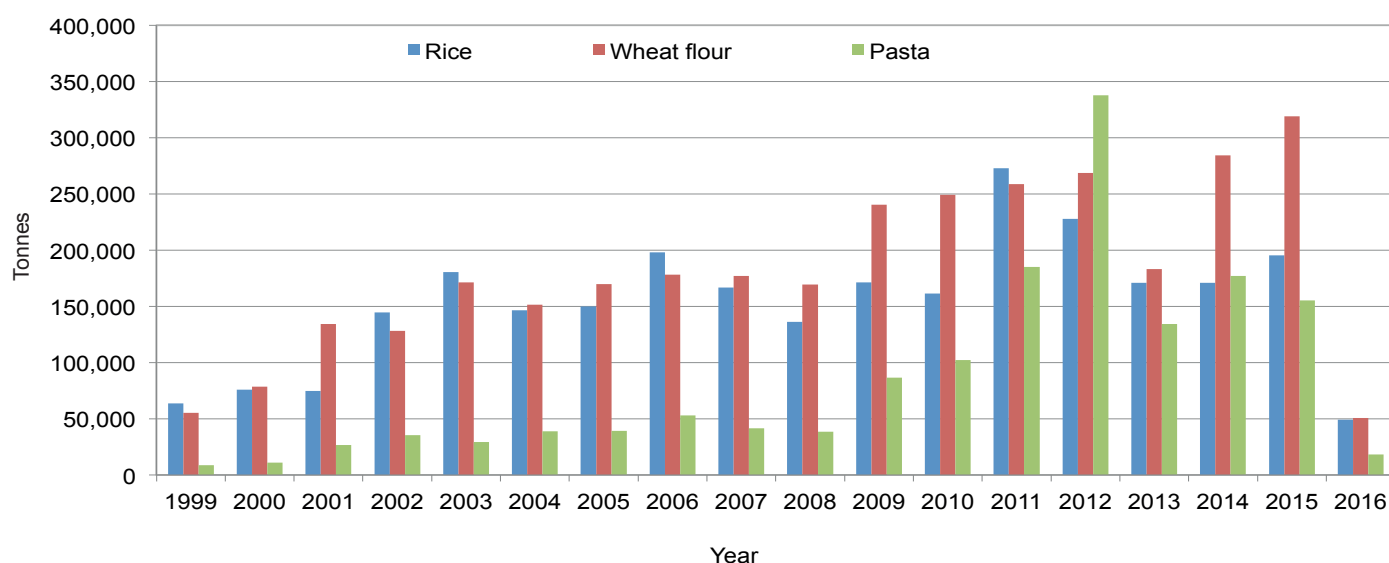


Trends in Cereal Imports

Table 3: Total Cereal Imports through Berbera, Bossaso and Mogadishu Ports (Tonnes) *

	1999	2000	2001	2002	2003	2004	2005	2006	2007	2008	2009	2010	2011	2012	2013	2014	2015	Jan-Mar 2016
Rice	63 464	75 687	74 729	144 600	180 614	146 567	150 017	198 101	166 626	136 007	171 472	161 415	272 877	227 955	170 868	170,888	195,240	49 168
Wheat flour	55 176	78 555	134 425	128 263	171 442	151 555	169 583	178 345	176 821	169 208	240 247	249 080	258 679	268,491	183 058	284 230	318,868	50 770
Pasta	8 544	11 071	26 702	35 425	29 273	38,749	39 153	52 815	41 331	38 441	86 372	102 373	184,849	337 878	134 311	176,951	155 360	18 383

Figure 50: Total Cereal Imports (Berbera, Bossaso and Mogadishu)



* Bossaso data is up to March 2016 and Berbera data is up to March 2016. Elman (Mogadishu) is up to Nov 2015. Mogadishu data (Elmaan Port) for 2013 includes only January -March imports.