

Market DataUpdate



Food Security and Nutrition
Analysis Unit - Somalia



March 2014 (Issued April 15, 2014)

Highlights

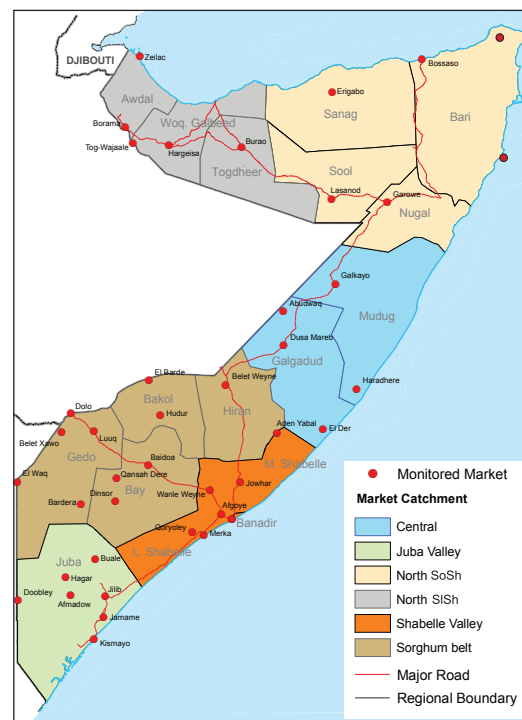
Inflation: The Consumer Price Index (CPI) declined in Central zone (3%) but increased marginally (2%) in other parts of Somalia in March 2014. Annual price inflation did not change much in the Northern zone although it increased (6-9%) in Southern and Central zones. The CPI increased moderately in Somaliland Shilling (SISh) regions and significantly in Somali Shilling (SoSh) areas when compared to the base period (March 2007).

Exchange rate: The SoSh posted a monthly drop in value against the United States Dollar (USD) in most southern regions but remained relatively stable in Central and Northern regions. The SISh also depreciated slightly in March 2014. Compared to the previous year (March 2013), the SoSh depreciated significantly in southern regions and marginally in central and northern regions; the SISh also showed a marginal annual depreciation. The annual trend in southern regions could be attributed to on-going conflict affecting economic and humanitarian activities. However, the SoSh shows a strong gain in value compared to the five-year average, particularly in southern regions, resulting from high dollar inflows through humanitarian assistance, foreign direct investments and remittances.

Local grain prices increased in March 2014 on a month-on-month basis in most markets with a significant increase observed in Bakool (Hudur market), Middle Shabelle (Jowhar market) and Juba regions. The trend in the latter regions is attributed to ongoing conflict which curtailed supply into these areas as well as reduced cereal stocks following below normal/ poor *Deyr* 2013/2014 harvest. Cereal prices were well above their levels in comparison with the previous year (March 2013) but below the five-year average (March 2009-2013) levels across many regions.

Prices of imported food (rice, sugar, vegetable oil & wheat flour) quoted in local currency showed slight monthly changes at regional levels with the exception of Bakool region where the prices of all commodities increased significantly due to prevailing insecurity. Annual price comparison indicates increases in conflict-affected regions of Lower Shabelle and Bakool regions and declines in most other markets. Compared to five-year averages, prices declined in all SoSh areas but rose mildly in SISh areas. The latter is attributable to an appreciation of the SoSh currency against the USD over the five year period increased port supplies and a general decline of prices on the international markets.

Livestock prices exhibited mixed trends in most areas on a month-on-month basis. The prices of large ruminants (camel and cattle) showed relative stability in most southern markets, moderate increase in central regions and mild to moderate declines in northern markets. Goat prices remained relatively stable in most markets apart from central regions where they decreased moderately due prevailing insecurity affecting trade activities. Annual price comparisons show mild changes (increase /decline) in most markets. However, prices are considerably higher than their five-year average levels in most markets.



This Market Data Update is a monthly report that presents analysis of market information and is produced regularly as part of the monthly monitoring process.

The weekly price data is collected from 48 main markets and 51 rural markets throughout Somalia since 1995.

Market analysis is an integral part of all of FSNAU's annual food security projections and seasonal technical reports (Technical Reports on FSNAU Post *Gu* and *Deyr* Analysis).

Detailed market data are available online on www.fsnau.org/ids.

Regional Market Highlights

Labour wages showed mild monthly increases in most regions, particularly in the South, which is attributed to off-season crop activities in the riverine areas and early *Cu* seasonal farming activities in March 2014. Labour wages rose annually in most regions except declining in Middle Juba. The labour wage rates are higher than their five-year average levels in all regions.

Terms of Trade (ToT) between labour wages and local cereals (monthly trend) were mixed in March 2014; ToT increased in Bay, Hiran and Central regions, were stable in Northeast and dropped in all other regions. The decrease in ToT was mainly driven by increased cereal prices. The annual comparison (March 2013) shows declines in ToT in many regions reflecting cereal price and labour wage rate trends.

Juba Regions: Prices of imported food (rice, sugar, wheat flour and vegetable oil) remained relatively stable or somewhat declined as well as the value of livestock (cattle and goat). The cost of maize increased in March 2014 resulting in reduced ToT between white maize and daily labour rate (11kg/daily wage rate) by one unit compared to the February 2014 level. Prices for most monitored items show mild annual changes except cattle, which increased moderately. Annual comparisons of ToT between labour and cereals indicate reduced purchasing power of casual labourers.

Sorghum Belt Regions (Bay, Bakool, Gedo and Hiran): Monthly prices of imported food, sorghum and goat show mild monthly changes in most markets of the Sorghum Belt regions in the month of March 2014. However, sorghum and imported food prices increased significantly in Bakool region (Hudur market) due to prevailing insecurity exacerbated by the recent military offensive against insurgents. The ToT between labor wage and cereals increased in Bay and Hiran regions, but reduced in Gedo and Bakool regions. Year-on-year price comparisons indicate declines in prices of some imported food commodities and goats but increases in the price of sorghum and cattle. ToT between labour wage rates and local cereals declined on an annual basis in Hiran and Bay but increased elsewhere.

Shabelle Regions: Monthly prices of imported food and maize increased at mild to moderate rate over the last one month. Labour wage rates declined while livestock prices changed marginally in both regions. Monthly ToT (labour wage to cereals) declined by one unit in both Shabelle regions when compared to February 2014 levels. Compared to March 2013, the prices of most commodities increased. The ToT between labour wage and cereals showed significant annual declines, particularly in Lower Shabelle.

Central Regions: Prices of imported food increased while the cost of sorghum and goat reduced on a month-on-month basis. Annual comparisons indicate mixed trends for different imported commodities (increase/ decrease/ stable), while sorghum and camel prices rose and local goat price declined. The ToT between local goat and rice (57 kg/ local goat) reduced by six units when compared to the levels in February 2014 as well as the same month in the previous year (March 2013).

Northeast Regions: General price stability or marginal declines prevailed in the region in March 2014. Prices of food imports and livestock (camel, goat) are lower compared to the previous year while red sorghum prices increased moderately. ToT between local goat and rice increased by one unit from February 2014 to 90 kg/local goat. The ToT is higher (by 6 kgs) than it was in March 2013.

Northwest Regions: Prices of most commodities show mild changes in March 2014. Exceptions are white sorghum price which increased and value of camel which declined – both at moderate levels. The ToT between cereals (white sorghum) and labor wage stood at 9 kg/ daily labour rate, unchanged from February 2014 levels and one unit higher than in the previous year (March 2014).

Banadir Region: Prices of most commodities remained relatively stable or showed mild decreases over the last one month in the main Bakaara market. On an annual basis, prices of most imported commodities as well as maize and goat increased. The March 2014 ToT between labour wage and white maize show declines from the levels both in the previous month (by one unit) as well as the same month last year (by two units).

Table 1: ToT between Cereals (kg) per Daily Labour Wage Rate, by Region

Regions	Mar 2014*(kg)	% change from:	
		Feb 2014	Mar 2013
Banadir/ Mogadishu	30	11%	36%
Bay	20	11%	-17%
Bakool	7	0%	17%
Gedo	17	-6%	13%
Hiran	12	0%	-14%
Juba	11	-8%	-15%
Shabelle	9	-10%	-36%
Northeast	6	0%	-14%
Northwest	11	-8%	-8%
Central	7	17%	-12%

* Cereal types used for ToT calculation: White Maize (Banadir, Hiran, Juba, Shabelle), Red Sorghum (Bay, Bakool, Gedo, Central, Northeast) and White Sorghum (Northwest)

International Market Highlights

Diesel: The Free on Board (FoB) price of crude oil in Dubai, the main source of Somalia's oil imports, showed a marginal monthly decline (0.7%) to \$104.32/barrel in March 2014¹¹. Crude oil prices are four percent lower when compared to the same month last year (March 2013) [Figure 1].

Diesel prices in local currency terms in the port cities of Mogadishu and Bossaso reduced moderately month-on-month and from January this year. The annual comparison (to March 2013) also indicates a moderate decline (16%) in the retail cost of diesel in Bossaso but stable levels in Mogadishu.

Rice: The export price of the benchmark Thai rice (Grade A1 Super 1/B) was traded at USD 430 per tonne in March, 7.7 percent lower than the previous month and lowest level since August 2010. The current prices reflect the downward pressure on export rice prices in Asia "coinciding with the suspension of the rice pledging scheme and heavy sales of rice from public stocks in Thailand"²². Rice prices remained significantly depressed (28%) compared to a year ago (March 2013) [Figure 2].

The cost of imported rice in SoSh has not changed in Mogadishu and Bossaso markets since January 2014. Rice prices show moderate annual changes from the March 2013 levels in both cities - dropping (by 12%) in Bossaso and increasing (by 8%) in Mogadishu.

Wheat: The International Grain Council's wheat sub-Index increased by nine percent month-on-month despite ample global supplies and generally favourable crop outlook. The increase was mostly driven by US weather concerns and political tensions between Russia and Ukraine, which are significant exporters of wheat³. The Index is about five percent lower than it was a year ago (March 26, 2013) [Figure 3].

Wheat flour prices have not changed since

Figure 1: Diesel Prices in Dubai, Mogadishu and Bossaso

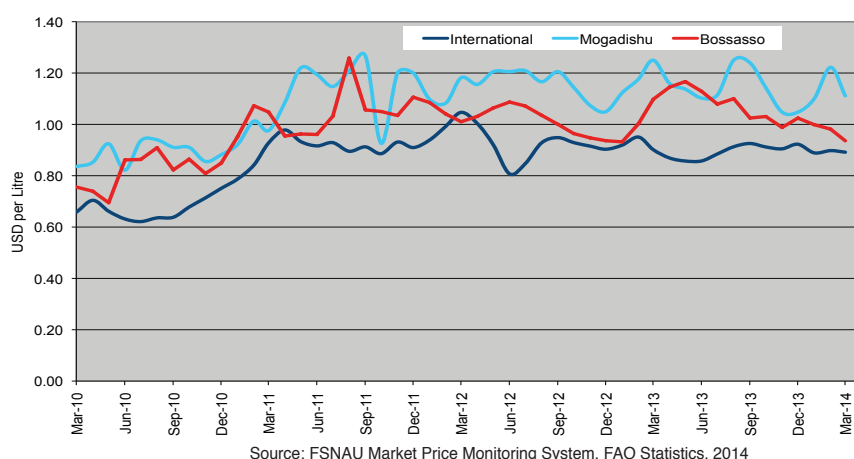


Figure 2: Rice Prices in Bangkok (FOB), Mogadishu and Bossaso Markets

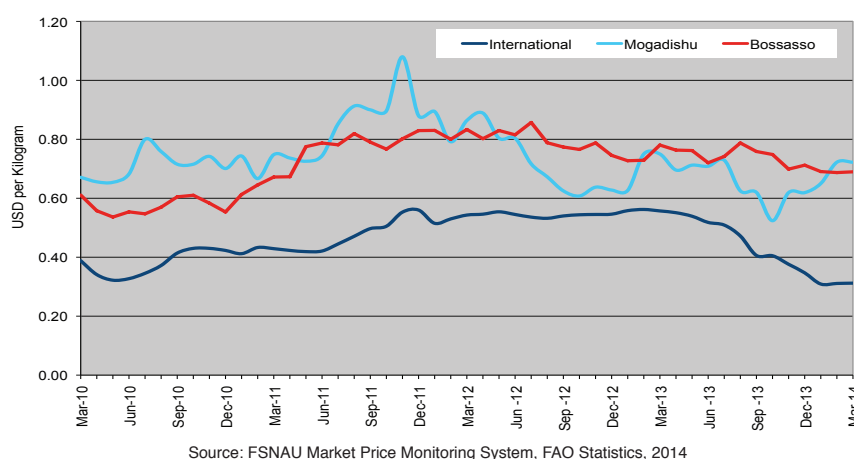


Figure 3: International Wheat Prices (Index)



1 Organization of the Petroleum Exporting Countries (10 April 2014), Monthly Oil Market Report [Online]. Available from http://www.opec.org/opec_web/en/publications/338.htm

2 Food and Agriculture Organisation (10 April 2014) Global Food Price Monitor [Online]. Available from http://www.fao.org/giews/english/gfpm/GFPM_04_2014.pdf

3 International Grain Council (27 March 2014), Grain Market Report (GMR), Issue 442 [Online] Available from <http://www.igc.int/downloads/gmrsummary/gmrsumme.pdf>

January 2014 in Bossaso but exhibited a monthly decline (by 17%) in Mogadishu due to trade disruptions precipitated by the on-going military activities in neighboring southern regions, which get main supplies of imported commodities from the markets in Mogadishu. Compared to March 2013, wheat prices reduced moderately (10%) in Bossaso and increased marginally (3%) in Mogadishu (Figure 4).

Sugar: The FAO Sugar Price Index averaged 253.9 points in March, up by 7.9 percent from February 2014. The increase is attributed to “concerns of declining export availabilities from Brazil and Thailand, due to drought and reduced sugarcane output, respectively. The likelihood of sugar crops being adversely affected by El Niño later this year also contributed to the price surge”⁴. The index dropped by about three percent from the levels a year ago (March 2013).

Sugar prices remained stable month-on-month in both port cities (Mogadishu and Bossaso), but exhibited a mild increase (7%) in Mogadishu in January-March 2014. When compared to March 2013 price levels, the commodity was traded at a lower rate (by 17%) in Bossaso and at a higher rate (by 13%) in Mogadishu. The annual price changes are driven by international market price trends and somewhat reduced humanitarian food supply in the South.

Cooking Oil: The FAO Vegetable Oil Price Index averaged 204.8 points in March 2014⁴, 4.5 percent higher compared to the previous month⁵. This was also a highest level in 18 months, reflecting mostly developments in the palm oil market. The index is four percent above the levels a year ago (March 2013).

Monthly vegetable oil price did not change in Bossaso since January 2014 but decreased moderately (by 17%) in Mogadishu. Annual comparison (compared to March 2013) indicates moderate price declines in both cities (15-16%).

Figure 4: Wheat Prices: Mogadishu and Bossaso Markets

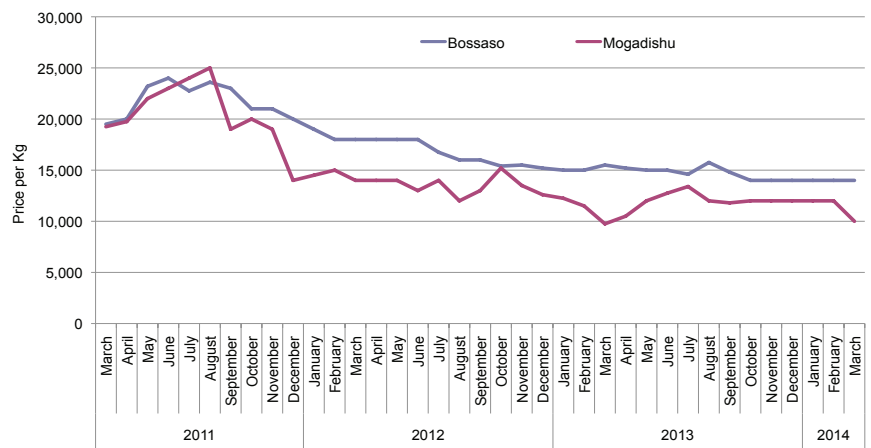
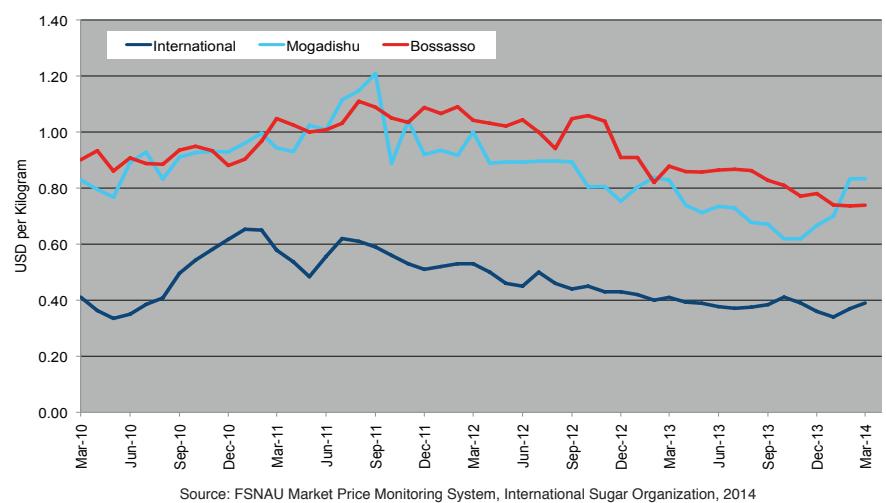


Figure 5: Sugar Prices: International, Mogadishu and Bossaso Markets



⁴ Food and Agriculture Organisation of the United Nations (March 2014), World Food Situation: The FAO Food Price Index [Online] Available from <http://www.fao.org/worldfoodsituation/foodpricesindex/en/>

⁵ Ibid

National Trends: CPI, Exchange Rates, Cereal Prices and Relative Purchasing Power

Figure 6: Terms of Trade Between Wage Rates and Selected Cereals

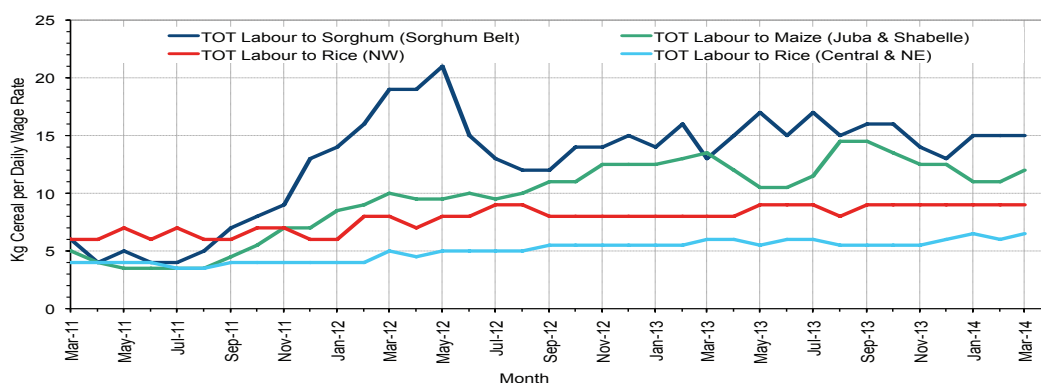


Figure 7: Monthly Exchange Rate for Selected Regions (SoSh and SSh to USD)

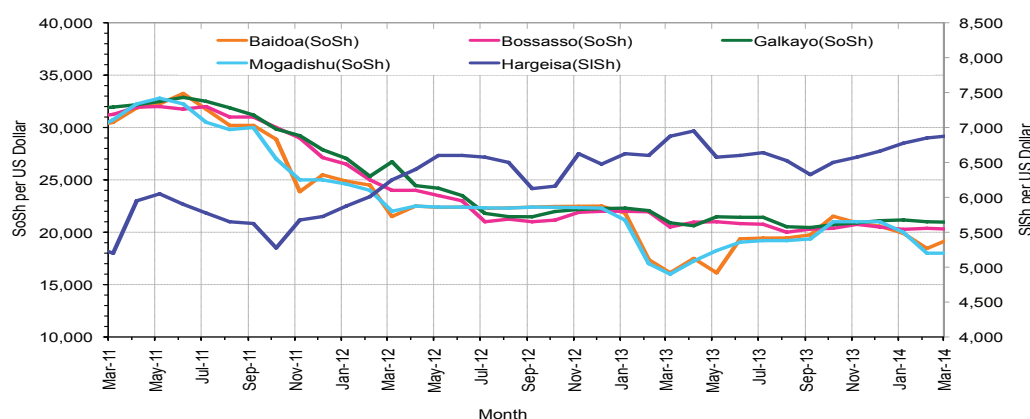


Figure 8: Monthly Trends in Consumer Price Index (CPI, March 2007=100)

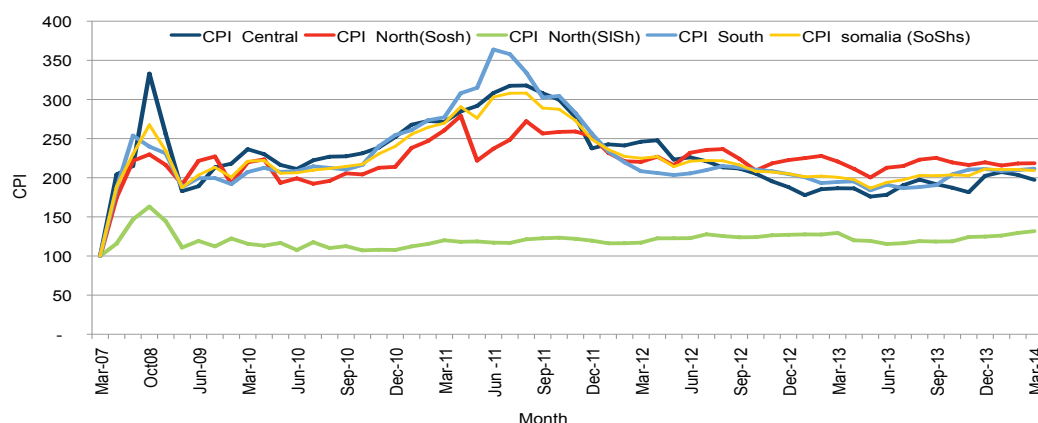
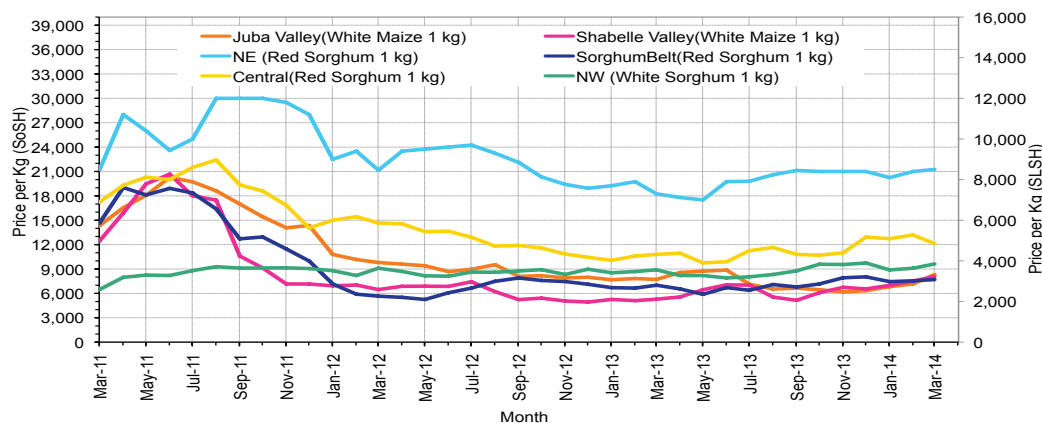


Figure 9: Monthly Trends in Local Cereal Prices



Regional analysis: Juba Regions

Indicator	5-Year Average (2009-2013)	Mar-13	Feb-14	Mar-14 Nominal Price	Mar-14 Real (Deflated) Price	% Change Same Month Previous Year	% Change Previous Month	% Change 5-year avrg (2009-2013)
Imported Commodities Prices								
Diesel 1 litre	30,240	26,107	27,821	25,200	11,806	-3%	-9%	-17%
Imported Red Rice 1kg	20,985	14,643	15,036	14,629	6,811	0%	-3%	-30%
Petrol 1 litre	33,222	26,286	28,679	25,686	12,035	-2%	-10%	-23%
Sugar	22,480	15,571	15,357	15,029	7,000	-3%	-2%	-33%
Vegetable Oil 1 litre	41,364	30,429	30,607	30,714	14,411	1%	0%	-26%
Wheat Flour 1kg	17,695	14,179	15,143	14,800	6,892	4%	-2%	-16%
Wheat Grain 1kg	14,300	-	-	-	-	-	-	-
Cereal Prices								
Red Sorghum 1kg	7,280	6,000	10,000	10,000	4,625	67%	0%	37%
White Maize 1kg	9,904	7,964	7,336	8,515	3,923	7%	16%	-14%
Livestock & Livestock Product Prices								
Camel Local Quality (Head)	8,641,213	8,757,714	9,364,222	10,004,700	4,726,624	14%	7%	16%
Cattle Local Quality (Head)	2,989,812	3,877,042	4,400,400	4,385,200	2,071,689	13%	0%	47%
Fresh Camel Milk 1 litre	21,792	17,107	18,054	22,457	10,510	31%	24%	3%
Goat Export Quality (Head)	1,102,569	1,353,679	1,326,893	1,453,629	686,667	7%	10%	32%
Goat Local Quality (Head)	709,910	873,250	949,250	931,429	439,954	7%	-2%	31%
Other Essential Items								
Charcoal 50kg	82,203	93,821	86,429	85,879	40,474	-8%	-1%	4%
Cowpeas 1 kg	23,381	19,179	20,304	20,274	9,478	6%	0%	-13%
Unskilled Labor Wage Rate	91,202	96,071	91,357	93,150	43,909	-3%	2%	2%
Firewood Bundle	7,224	9,357	11,143	11,314	5,245	21%	2%	57%
Local Sesame Oil 1 litre	72,650	62,500	82,536	81,650	38,476	31%	-1%	12%
Exchange Rate (Somali Shilling per USD)	25,592	16,475	18,464	19,609	9,164	19%	6%	-23%
Terms of Trade								
Labour Wage (Daily)/ Cereal (Maize(Kg))	9	12	12	11	-	-9%	-12%	19%
Local Goat (Head)/ Cereal (Maize(Kg))	72	110	129	109	-	0%	-15%	53%
Price Indices								
Consumer Price Index	-	195	210	212	-	9%	1%	-

Figure 10: Trends in Cereal Prices

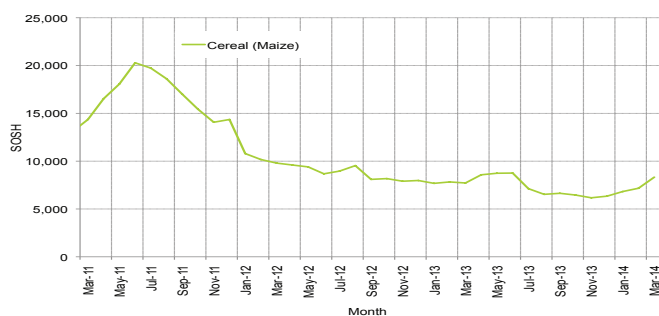


Figure 12: Imported Commodity Prices Compared to Exchange Rate

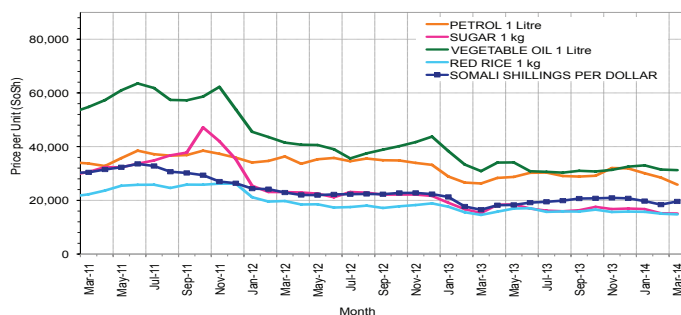


Figure 14: Exchange Rate

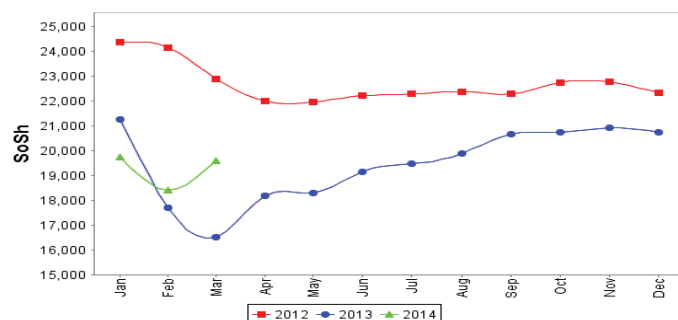


Figure 11: Trends in Wage Rates and Relative Purchasing Power

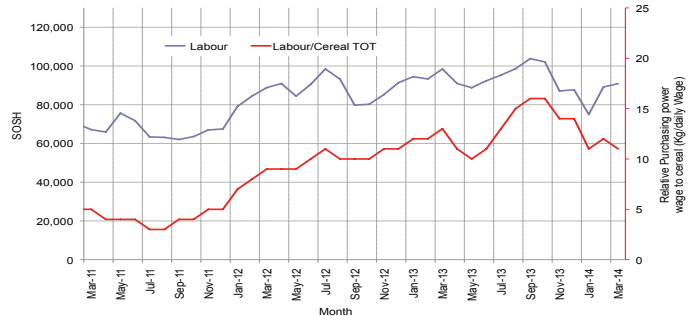


Figure 13: Goat Local Quality

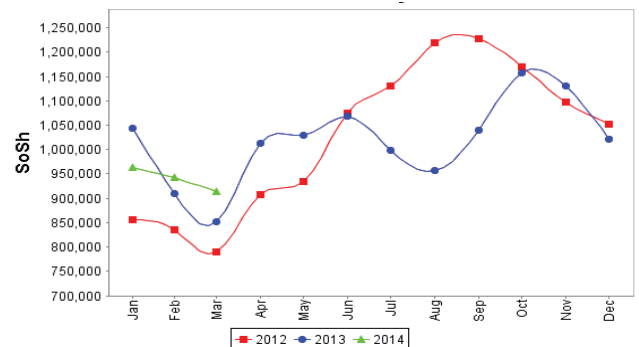
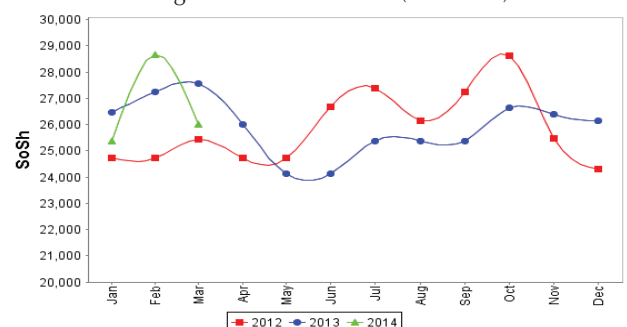


Figure 15: Water Drum (200 litres)



Regional analysis: Sorghum Belt Regions (Bay, Bakool, Gedo and Hiran)

Indicator	5-Year Average (2009-2013)	Mar-13	Feb-14	Mar-14 Nominal Price	Mar-14 Real (Deflated) Price	% Change Same Month Previous Year	% Change Previous Month	% Change 5-year avrg (2009-2013)
Imported Commodities Prices								
Diesel 1 litre	30,822	28,159	28,000	28,555	13,391	1%	2%	-7%
Imported Red Rice 1kg	22,863	17,386	17,364	17,595	8,213	1%	1%	-23%
Petrol 1 litre	31,226	28,591	28,273	27,545	12,914	-4%	-3%	-12%
Sugar	24,971	18,545	17,727	18,318	8,554	-1%	3%	-27%
Vegetable Oil 1 litre	44,999	42,023	37,318	38,582	18,128	-8%	3%	-14%
Wheat Flour 1kg	19,274	15,659	16,159	16,927	7,897	8%	5%	-12%
Wheat Grain 1kg	11,680	8,750	13,150	12,575	5,841	44%	-4%	8%
Cereal Prices								
Red Sorghum 1kg	8,921	7,005	7,548	7,702	3,539	10%	2%	-14%
White Maize 1kg	9,853	7,579	8,985	9,670	4,469	28%	8%	-2%
Livestock & Livestock Product Prices								
Camel Local Quality (Head)	9,243,300	12,126,439	12,627,500	12,822,500	6,057,894	6%	2%	39%
Cattle Local Quality (Head)	2,702,857	3,272,656	4,090,278	4,148,438	1,959,831	27%	1%	53%
Fresh Camel Milk 1 litre	22,097	17,670	18,682	20,800	9,727	18%	11%	-6%
Goat Export Quality (Head)	1,273,172	1,561,045	1,607,500	1,607,136	759,192	3%	0%	26%
Goat Local Quality (Head)	782,527	1,027,818	939,227	940,545	444,261	-8%	0%	20%
Other Essential Items								
Charcoal 50kg	132,559	157,386	147,273	146,614	69,168	-7%	0%	11%
Cowpeas 1 kg	24,156	17,417	21,925	23,495	11,000	35%	7%	-3%
Unskilled Labor Wage Rate	92,363	92,023	112,636	112,595	53,096	22%	0%	22%
Firewood Bundle	5,595	6,455	6,545	6,500	2,971	1%	-1%	16%
Local Sesame Oil 1 litre	74,543	67,500	79,857	84,179	39,670	25%	5%	13%
Exchange Rate (Somali Shilling per USD)	26,400	18,674	19,425	19,756	9,234	6%	2%	-25%
Terms of Trade								
Labour Wage (Daily)/ Cereal (Sorghum(Kg))	10	13	15	15	-	11%	-2%	41%
Local Goat (Head)/ Cereal (Sorghum(Kg))	88	147	124	122	-	-17%	-2%	39%
Price Indices								
Consumer Price Index	-	195	210	212	-	9%	1%	-

Figure 16: Trends in Cereal Prices

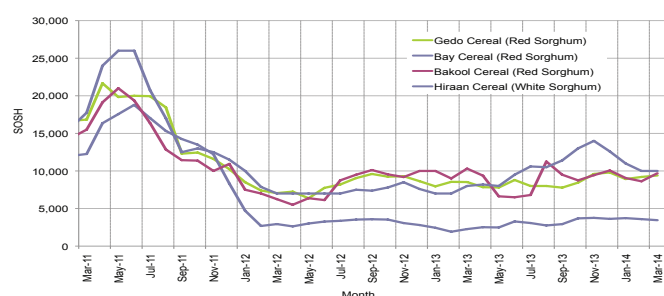


Figure 17: Trends in Wage Rates and Relative Purchasing Power

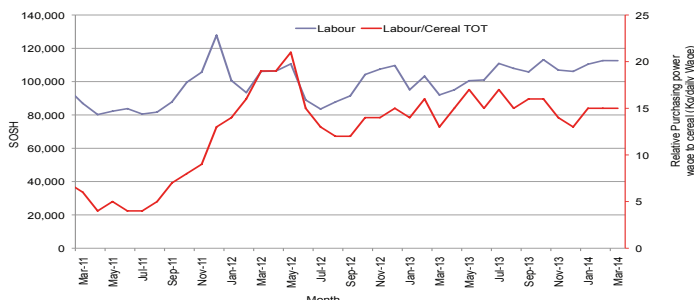


Figure 18: Imported Commodity Prices Compared to Exchange Rate

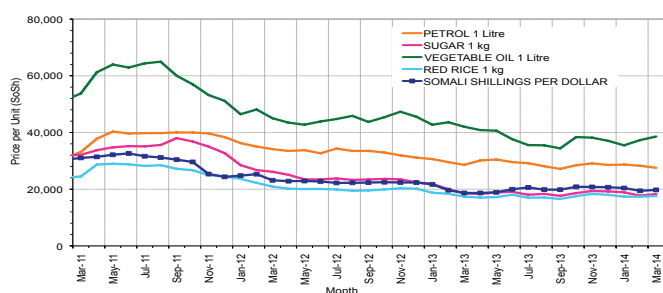


Figure 19: Goat Local Quality

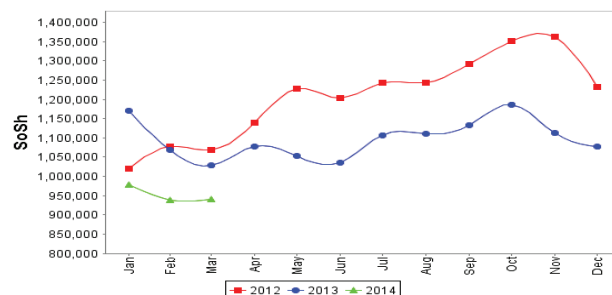


Figure 20: Exchange Rate

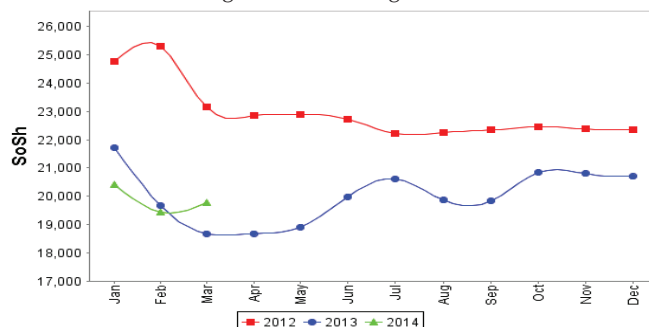
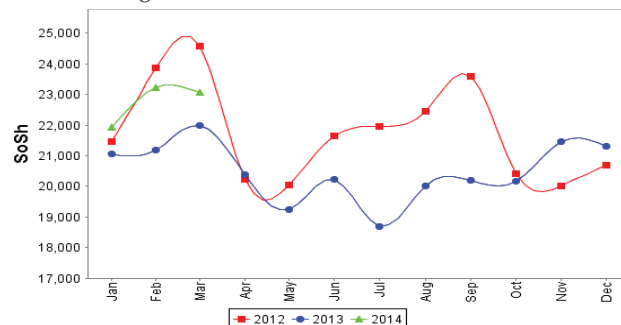


Figure 21: Water Drum (200 litres)



Regional analysis: Shabelle Regions

Indicator	5-Year Average (2009-2013)	Mar-13	Feb-14	Mar-14 Nominal Price	Mar-14 Real (Deflated) Price	% Change Same Month Previous Year	% Change Previous Month	% Change 5-year avrg (2009-2013)
Imported Commodities Prices								
Diesel 1 litre	27,766	25,250	26,958	27,250	12,774	8%	1%	-2%
Imported Red Rice 1kg	19,341	14,250	15,333	15,208	7,085	7%	-1%	-21%
Petrol 1 litre	30,267	26,667	27,875	27,889	13,076	5%	0%	-8%
Sugar	22,116	15,417	15,208	15,542	7,243	1%	2%	-30%
Vegetable Oil 1 litre	34,400	24,083	26,292	27,639	12,958	15%	5%	-20%
Wheat Flour 1kg	16,191	13,792	15,333	15,708	7,321	14%	2%	-3%
Wheat Grain 1kg	9,250	5,167	20,000	25,000	11,711	384%	25%	170%
Cereal Prices								
Red Sorghum 1kg	9,530	9,280	9,229	9,331	4,308	1%	1%	-2%
White Maize 1kg	7,761	5,286	7,510	8,079	3,717	53%	8%	4%
Livestock & Livestock Product Prices								
Camel Local Quality (Head)	12,536,000	16,390,000	17,555,000	18,242,333	8,618,496	11%	4%	46%
Cattle Local Quality (Head)	3,925,000	6,090,000	6,470,000	6,543,333	3,091,300	7%	1%	67%
Fresh Camel Milk 1 litre	17,254	14,896	18,917	18,222	8,509	22%	-4%	6%
Goat Export Quality (Head)	1,513,916	1,857,500	1,887,500	1,847,917	872,949	-1%	-2%	22%
Goat Local Quality (Head)	1,074,266	1,306,667	1,329,583	1,342,611	634,217	3%	1%	25%
Other Essential Items								
Charcoal 50kg	113,588	140,000	120,069	118,194	55,741	-16%	-2%	4%
Cowpeas 1 kg	21,546	15,547	15,831	16,369	7,634	5%	3%	-24%
Unskilled Labor Wage Rate	60,250	71,458	71,667	69,097	32,545	-3%	-4%	15%
Firewood Bundle	4,658	6,042	8,417	7,722	3,548	28%	-8%	66%
Local Sesame Oil 1 litre	57,366	54,417	74,375	73,972	34,848	36%	-1%	29%
Exchange Rate (Somali Shilling per USD)	26,057	17,088	18,942	19,056	8,903	12%	1%	-27%
Terms of Trade								
Labour Wage (Daily)/ Cereal (Maize(Kg))	8	14	10	9	-	-37%	-10%	10%
Local Goat (Head)/ Cereal (Maize(Kg))	138	247	177	166	-	-33%	-6%	20%
Price Indices								
Consumer Price Index	-	195	210	212	-	9%	1%	-

Figure 22: Trends in Cereal Prices



Figure 23: Trends in Wage Rates and Relative Purchasing Power

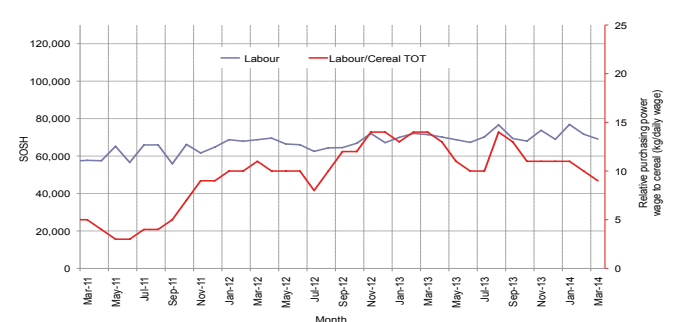


Figure 24: Imported Commodity Prices Compared to Exchange Rate

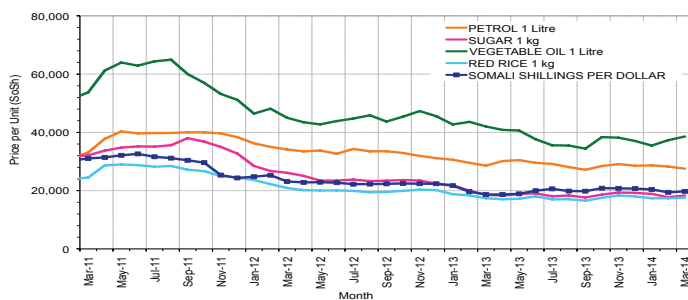


Figure 25: Goat Local Quality

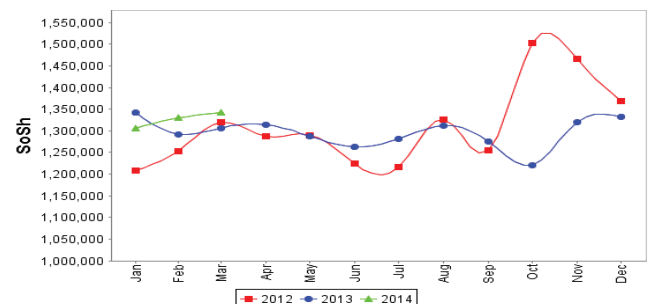


Figure 26: Exchange Rate

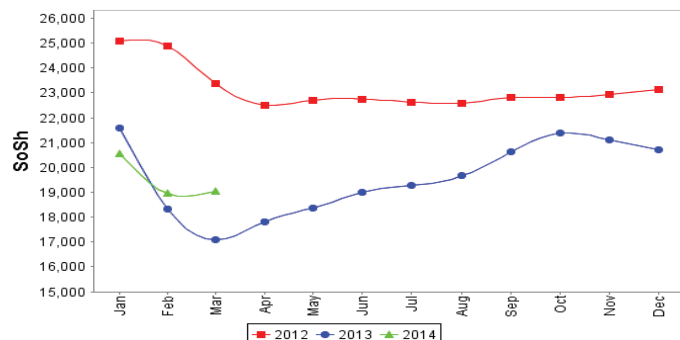
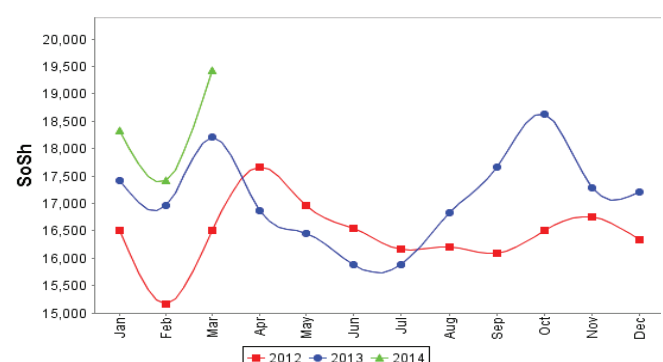


Figure 27: Water Drum (200 litres)



Regional analysis: Banadir Region

Indicator	5-Year Average (2009-2013)	Mar-13	Feb-14	Mar-14 Nominal Price	Mar-14 Real (Deflated) Price	% Change Same Month Previous Year	% Change Previous Month	% Change 5-year avrg (2009-2013)
Imported Commodities Prices								
Diesel 1 litre	23,230	17,875	20,292	20,533	9,601	15%	1%	-12%
Imported Red Rice 1kg	19,380	12,625	12,875	12,883	5,987	2%	0%	-34%
Petrol 1 litre	24,755	18,000	20,792	20,667	9,664	15%	-1%	-17%
Sugar	21,085	13,729	14,271	14,283	6,648	4%	0%	-32%
Vegetable Oil 1 litre	34,578	25,208	23,438	22,933	10,735	-9%	-2%	-34%
Wheat Flour 1kg	14,839	11,813	12,450	11,993	5,566	2%	-4%	-19%
Wheat Grain 1kg	11,209	9,138	7,542	7,533	3,459	-18%	0%	-33%
Cereal Prices								
Red Sorghum 1kg	7,946	5,288	6,821	6,833	3,128	29%	0%	-14%
White Maize 1kg	8,345	6,391	8,075	7,957	3,659	25%	-1%	-5%
Livestock & Livestock Product Prices								
Camel Local Quality (Head)	13,500,000	-	-	-	-	-	-	-
Cattle Local Quality (Head)	4,346,250	-	-	-	-	-	-	-
Fresh Camel Milk 1 litre	22,006	20,167	20,792	21,200	9,916	5%	2%	-4%
Goat Export Quality (Head)	1,862,500	2,250,000	3,000,000	3,000,000	1,417,251	33%	0%	61%
Goat Local Quality (Head)	1,630,406	1,584,125	2,468,750	2,475,000	1,169,215	56%	0%	52%
Other Essential Items								
Charcoal 50kg	150,650	179,792	186,917	183,000	86,358	2%	-2%	21%
Cowpeas 1 kg	19,177	12,900	13,929	14,843	6,913	15%	7%	-23%
Unskilled Labor Wage Rate	74,125	96,667	109,792	104,833	49,428	8%	-5%	41%
Firewood Bundle	6,379	7,100	8,100	8,160	3,755	15%	1%	28%
Local Sesame Oil 1 litre	61,200	47,042	73,125	69,667	32,814	48%	-5%	14%
Exchange Rate (Somali Shilling per USD)	25,517	15,904	18,692	18,989	8,871	19%	2%	-26%
Terms of Trade								
Labour Wage (Daily)/ Cereal (Maize(Kg))	9	15	14	13	-	-13%	-3%	48%
Local Goat (Head)/ Cereal (Maize(Kg))	195	248	306	311	-	25%	2%	59%
Price Indices								
Consumer Price Index	-	195	210	212	-	9%	1%	-

Figure 28: Trends in Cereal Prices

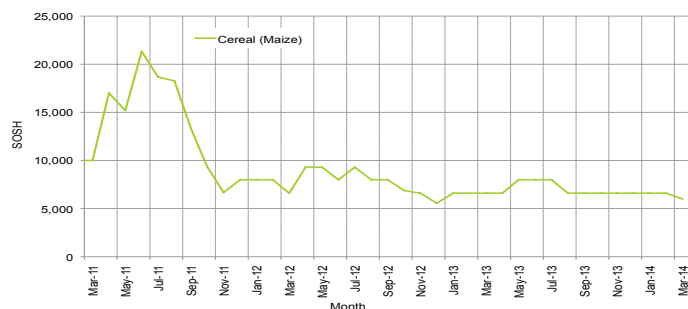


Figure 29: Bakara: Trends in Wage Rates and Relative Purchasing Power

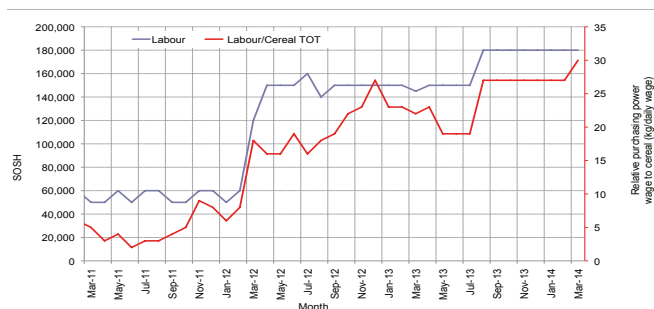


Figure 30: Imported Commodity Prices Compared to Exchange Rate

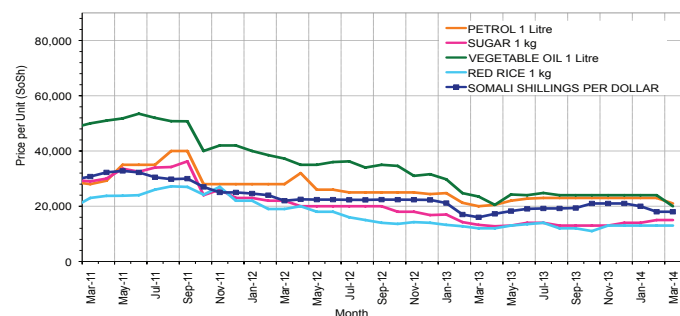


Figure 31: Goat Local Quality

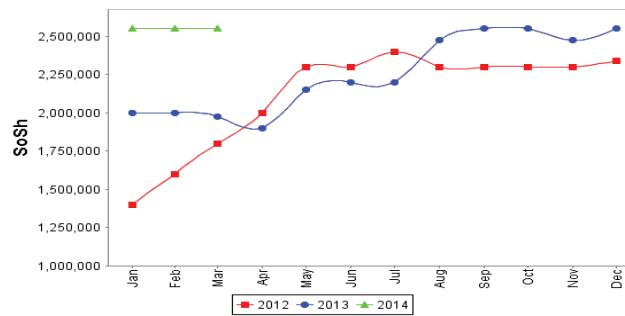


Figure 32: Exchange Rate

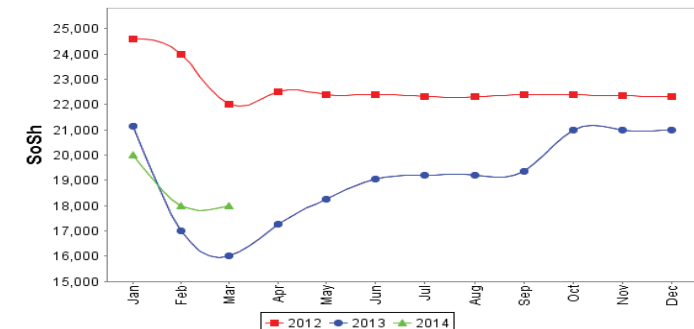
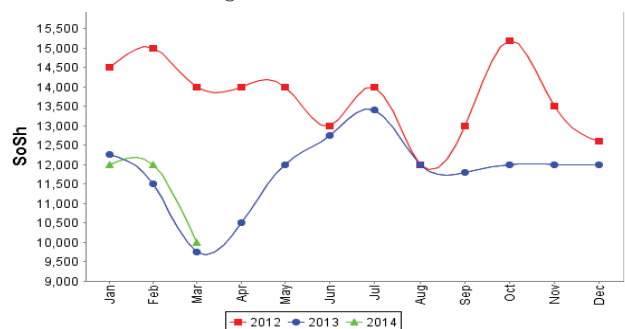


Figure 33: Wheat Flour



Regional analysis: Central Regions

Indicator	5-Year Average (2009-2013)	Mar-13	Feb-14	Mar-14 Nominal Price	Mar-14 Real (Deflated) Price	% Change Same Month Previous Year	% Change Previous Month	% Change 5-year avg (2009-2013)
Imported Commodities Prices								
Diesel 1 litre	30,710	27,300	27,250	25,930	13,044	-5%	-5%	-16%
Imported Red Rice 1kg	25,211	19,250	18,350	18,800	9,430	-2%	2%	-25%
Petrol 1 litre	27,736	24,350	23,550	22,950	11,534	-6%	-3%	-17%
Sugar	27,405	21,200	19,200	19,550	9,810	-8%	2%	-29%
Vegetable Oil 1 litre	49,200	41,250	41,750	42,000	21,190	2%	1%	-15%
Wheat Flour 1kg	19,980	16,400	15,950	16,450	8,239	0%	3%	-18%
Wheat Grain 1kg	16,541	13,375	13,563	15,500	7,757	16%	14%	-6%
Cereal Prices								
Red Sorghum 1kg	12,651	10,800	13,188	12,125	6,046	12%	-8%	-4%
White Maize 1kg	14,045	10,000	11,583	11,375	5,666	14%	-2%	-19%
Livestock & Livestock Product Prices								
Camel Local Quality (Head)	8,798,416	11,031,250	10,500,000	11,643,750	5,902,298	6%	11%	32%
Cattle Local Quality (Head)	2,487,500	2,650,000	-	-	-	-	-	-
Fresh Camel Milk 1 litre	39,742	26,900	28,900	28,150	14,170	5%	-3%	-29%
Goat Export Quality (Head)	1,382,675	1,489,500	1,446,875	1,320,000	669,029	-11%	-9%	-5%
Goat Local Quality (Head)	1,064,300	1,213,500	1,157,500	1,075,500	545,088	-11%	-7%	1%
Other Essential Items								
Charcoal 50kg	193,053	189,000	176,000	171,500	86,836	-9%	-3%	-11%
Cowpeas 1 kg	26,469	17,050	15,800	16,830	8,431	-1%	7%	-36%
Unskilled Labor Wage Rate	82,070	86,750	82,500	86,000	43,495	-1%	4%	5%
Firewood Bundle	29,163	36,600	32,000	31,000	15,614	-15%	-3%	6%
Local Sesame Oil 1 litre	95,630	86,750	88,200	88,500	44,762	2%	0%	-7%
Exchange Rate (Somali Shilling per USD)	27,049	20,095	20,650	20,728	10,407	3%	0%	-23%
Terms of Trade								
Labour Wage (Daily)/ Cereal (Rice(Kg))	3	5	4	5	-	2%	2%	41%
Local Goat (Head)/ Cereal (Rice(Kg))	42	63	63	57	-	-9%	-9%	36%
Camel (Head)/Cereal (Kg)	349	573	572	619	-	8%	8%	77%
Price Indices								
Consumer Price Index	-	187	204	197	-	6%	-3%	-

Figure 34: Trends in Cereal Prices



Figure 35: Trends in wage rates and relative purchasing power

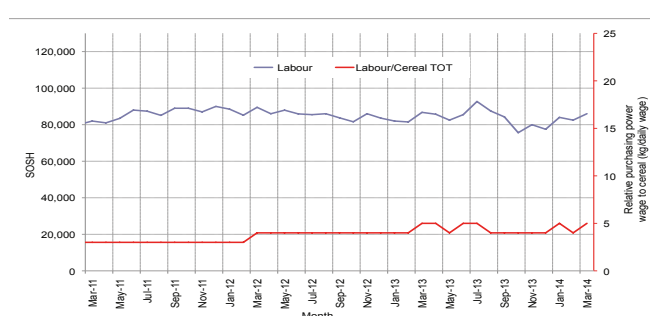


Figure 36: Imported Commodity Prices Compared to Exchange Rate

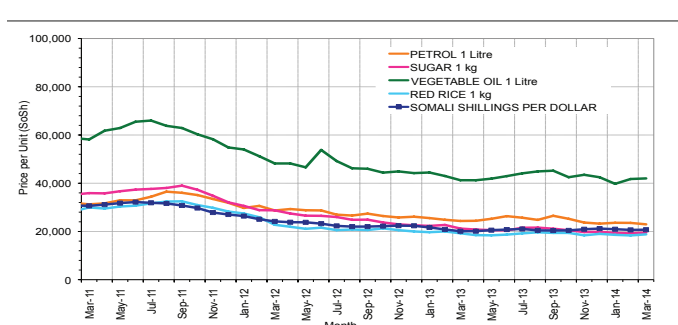


Figure 37: Goat Local Quality

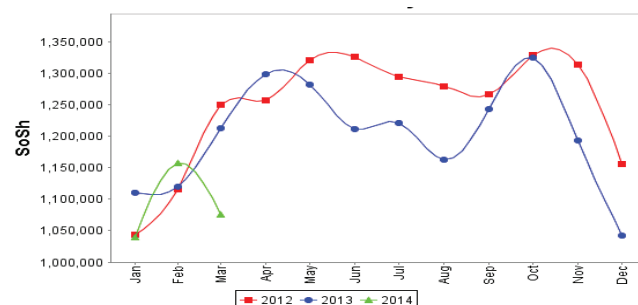


Figure 38: Exchange Rate

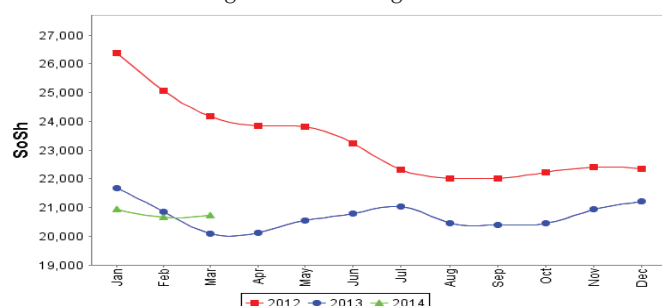
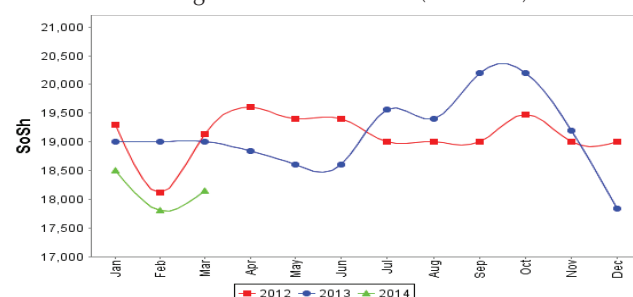


Figure 39: Water Drum (200 litres)



Regional analysis: Northeast Regions

Indicator	5-Year Average (2009-2013)	Mar-13	Feb-14	Mar-14 Nominal Price	Mar-14 Real (Deflated) Price	% Change Same Month Previous Year	% Change Previous Month	% Change 5-year avrg (2009-2013)
Imported Commodities Prices								
Diesel 1 litre	27,562	24,438	23,000	22,750	10,310	-7%	-1%	-17%
Imported Red Rice 1kg	21,062	16,188	15,000	14,850	6,695	-8%	-1%	-29%
Petrol 1 litre	24,987	21,938	20,375	20,063	9,081	-9%	-2%	-20%
Sugar	25,225	19,750	16,938	16,725	7,553	-15%	-1%	-34%
Vegetable Oil 1 litre	45,038	37,938	34,063	33,300	15,138	-12%	-2%	-26%
Wheat Flour 1kg	18,155	15,625	15,000	14,833	6,687	-5%	-1%	-18%
Wheat Grain 1kg	27,325	25,250	24,750	22,750	10,310	-10%	-8%	-17%
Cereal Prices								
Red Sorghum 1kg	18,721	18,250	21,000	21,250	9,624	16%	1%	14%
White Maize 1kg	18,283	18,000	19,000	21,000	9,509	17%	11%	15%
Livestock & Livestock Product Prices								
Camel Local Quality (Head)	13,033,125	15,987,500	14,893,750	14,673,750	6,714,490	-8%	-1%	13%
Cattle Local Quality (Head)	6,900,000	8,750,000	7,500,000	7,400,000	3,386,081	-15%	-1%	7%
Fresh Camel Milk 1 litre	43,975	40,938	34,750	37,375	17,003	-9%	8%	-15%
Goat Export Quality (Head)	1,332,375	1,481,250	1,481,250	1,476,250	675,420	0%	0%	11%
Goat Local Quality (Head)	1,219,125	1,361,875	1,340,625	1,330,000	608,497	-2%	-1%	9%
Other Essential Items								
Charcoal 50kg	327,000	376,250	390,000	384,500	175,844	2%	-1%	18%
Cowpeas 1 kg	36,366	29,833	27,667	26,167	11,874	-12%	-5%	-28%
Unskilled Labor Wage Rate	112,937	125,000	130,000	130,000	59,387	4%	0%	15%
Firewood Bundle	34,737	48,125	47,500	45,500	20,720	-5%	-4%	31%
Local Sesame Oil 1 litre	94,208	86,875	93,750	94,688	43,228	9%	1%	1%
Exchange Rate (Somali Shilling per USD)	27,376	20,281	20,594	20,625	9,338	2%	0%	-25%
Terms of Trade								
Labour Wage (Daily)/ Cereal (Rice(Kg))	5	8	9	9	-	13%	1%	63%
Local Goat (Head)/ Cereal (Rice(Kg))	58	84	89	90	-	6%	0%	55%
Price Indices								
Consumer Price Index	-	221	218	219	-	-1%	0%	-

Figure 40: Trends in Cereal Prices

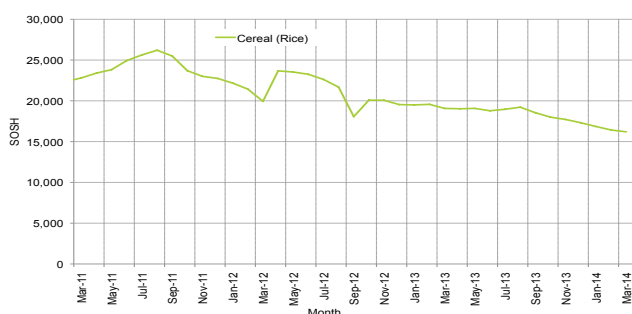


Figure 41: Trends in Wage Rates and Relative Purchasing Power

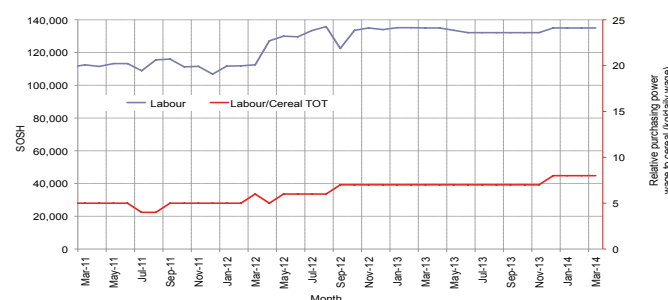


Figure 42: Imported Commodity Prices Compared to Exchange Rate

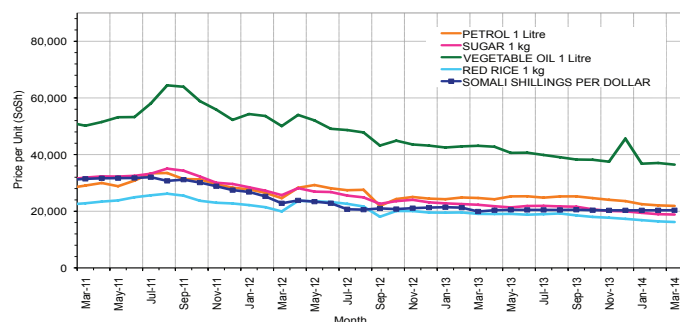


Figure 43: Goat Local Quality

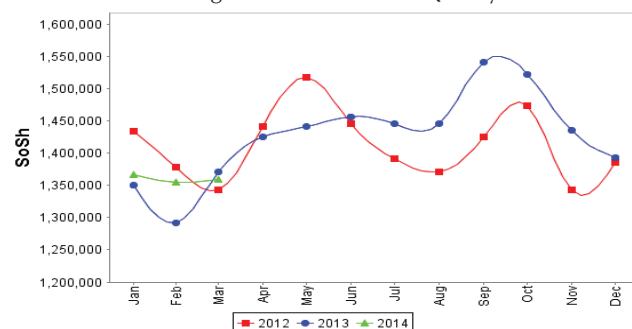


Figure 44: Exchange Rate

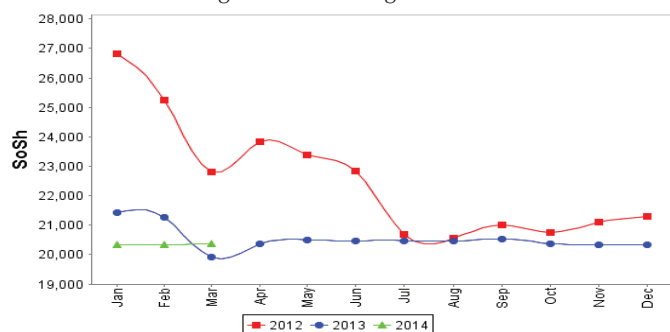
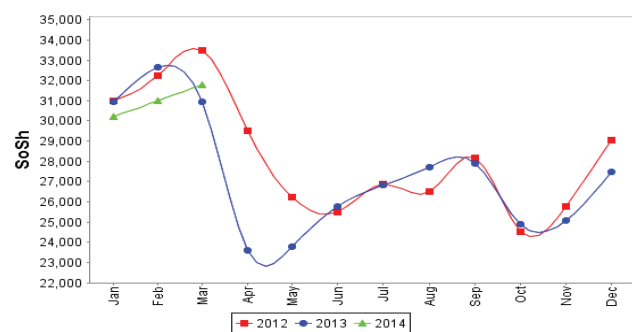


Figure 45: Water Drum (200 litres)



Regional analysis: Northwest Regions

Indicator	5-Year Average (2009-2013)	Mar-13	Feb-14	Mar-14 Nominal Price	Mar-14 Real (Deflated) Price	% Change Same Month Previous Year	% Change Previous Month	% Change 5-year avrg (2009-2013)
Imported Commodities Prices								
Diesel 1 litre	5,644	7,290	7,280	7,054	5,254	-3%	-3%	25%
Imported Red Rice 1kg	5,174	5,120	5,060	5,120	3,786	0%	1%	-1%
Petrol 1 litre	5,997	7,580	7,500	7,348	5,477	-3%	-2%	23%
Sugar	5,691	6,080	5,700	5,860	4,348	-4%	3%	3%
Vegetable Oil 1 litre	10,755	12,780	12,200	12,100	9,084	-5%	3%	13%
Wheat Flour 1kg	4,245	4,470	4,480	4,480	3,300	0%	0%	6%
Wheat Grain 1kg	3,397	3,156	3,475	3,450	2,519	9%	-1%	2%
Cereal Prices								
White Sorghum 1kg	3,303	3,560	3,640	3,848	2,821	8%	6%	17%
Yellow Maize 1kg	3,082	3,431	3,540	3,500	2,556	2%	-1%	14%
Livestock & Livestock Product Prices								
Camel Local Quality (Head)	2,002,975	2,479,167	3,566,667	3,095,333	2,349,234	25%	-13%	55%
Cattle Local Quality (Head)	1,437,750	1,974,167	2,125,833	2,048,000	1,554,316	4%	-4%	42%
Fresh Camel Milk 1 litre	5,992	6,370	5,185	5,442	4,030	-15%	5%	-9%
Goat Export Quality (Head)	336,260	471,150	477,300	488,620	370,759	4%	2%	45%
Goat Local Quality (Head)	251,910	343,900	318,100	326,000	247,332	-5%	2%	29%
Other Essential Items								
Charcoal 50kg	33,273	42,100	51,400	52,000	39,368	24%	1%	56%
Cowpeas 1 kg	9,011	9,950	10,000	9,688	7,253	-3%	-3%	8%
Unskilled Labor Wage Rate	32,888	41,500	43,900	44,100	33,372	6%	0%	34%
Firewood Bundle	4,406	3,667	3,667	3,500	2,556	-5%	-5%	-21%
Local Sesame Oil 1 litre	26,120	26,563	32,813	33,813	25,564	27%	3%	29%
Exchange Rate (Somaliland Shilling per USD)	6,348	6,865	6,880	6,930	5,160	1%	1%	9%
Terms of Trade								
Labour Wage (Daily)/ Cereal (Rice(Kg))	6	8	9	9	-	6%	-1%	36%
Local Goat (Head)/ Cereal (Rice(Kg))	49	67	63	64	-	-5%	1%	31%
Price Indices								
Consumer Price Index	-	129	129	132	-	2%	2%	-

Figure 46: Trends in Cereal Prices

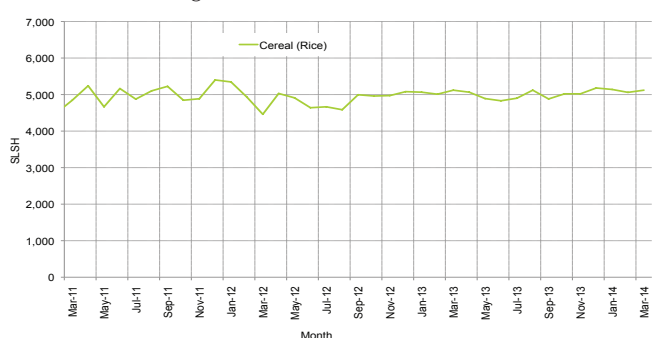


Figure 47: Trends in Wage Rates and Relative Purchasing Power

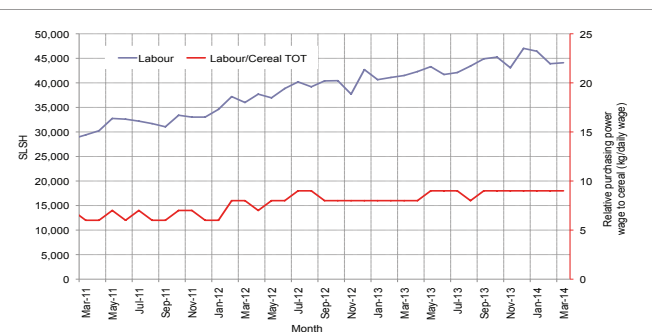


Figure 48: Imported Commodity Prices Compared to Exchange Rate

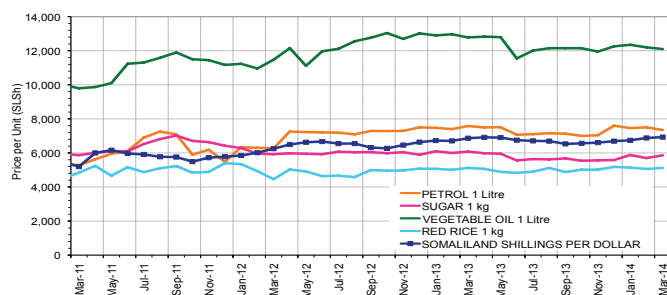


Figure 49: Goat Local Quality

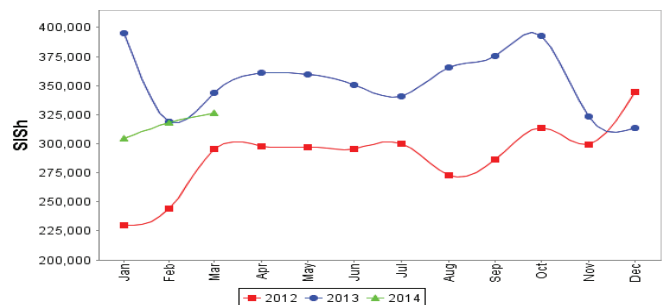


Figure 50: Exchange Rate

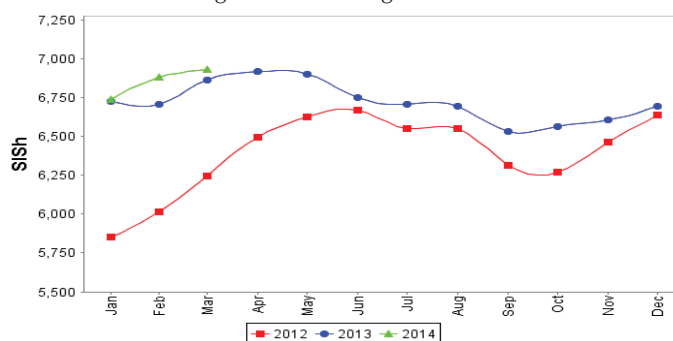
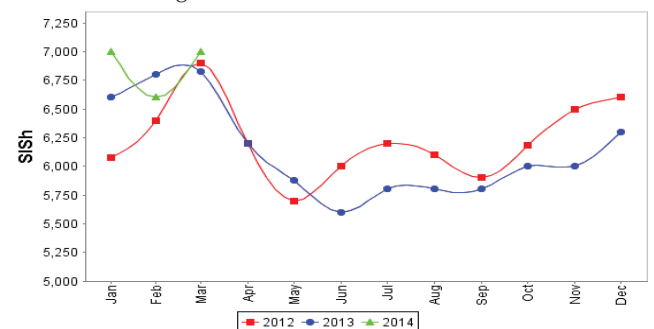


Figure 51: Water Drum (200 litres)



Trends in Livestock Exports

Table 2: Berbera Livestock Exports (Number of Heads)

	1998	1999	2000	2001	2002	2003	2004	2005	2006	2007	2008	2009	2010	2011	2012	2013
Shoats	957,224	2,048,136	1,601,083	51,546	341,711	563,107	859,404	1,023,795	1,017,242	1,350,054	1,219,519	1,556,003	2,584,810	3,104,684	3,219,584	2,888,955
Cattle	92,213	89,967	63,263	20,973	37,547	84,312	131,852	148,151	85,631	88,143	80,051	88,005	133,021	150,934	190,354	201,876
Camel	11,663	37,430	16,984	3,473	18,864	21,874	5,147	5,069	22,810	14,245	26,515	20,206	92,651	107,281	102,664	75,728

Figure 52: Berbera Livestock Exports (Number of Heads)

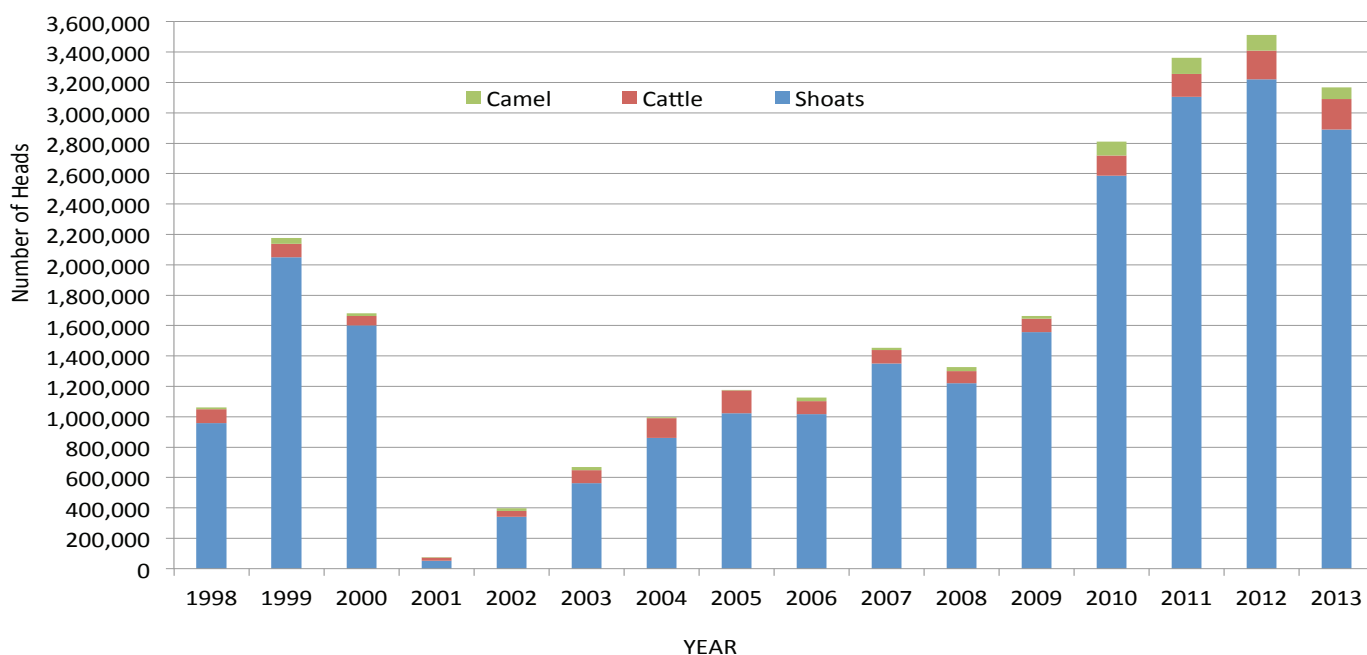
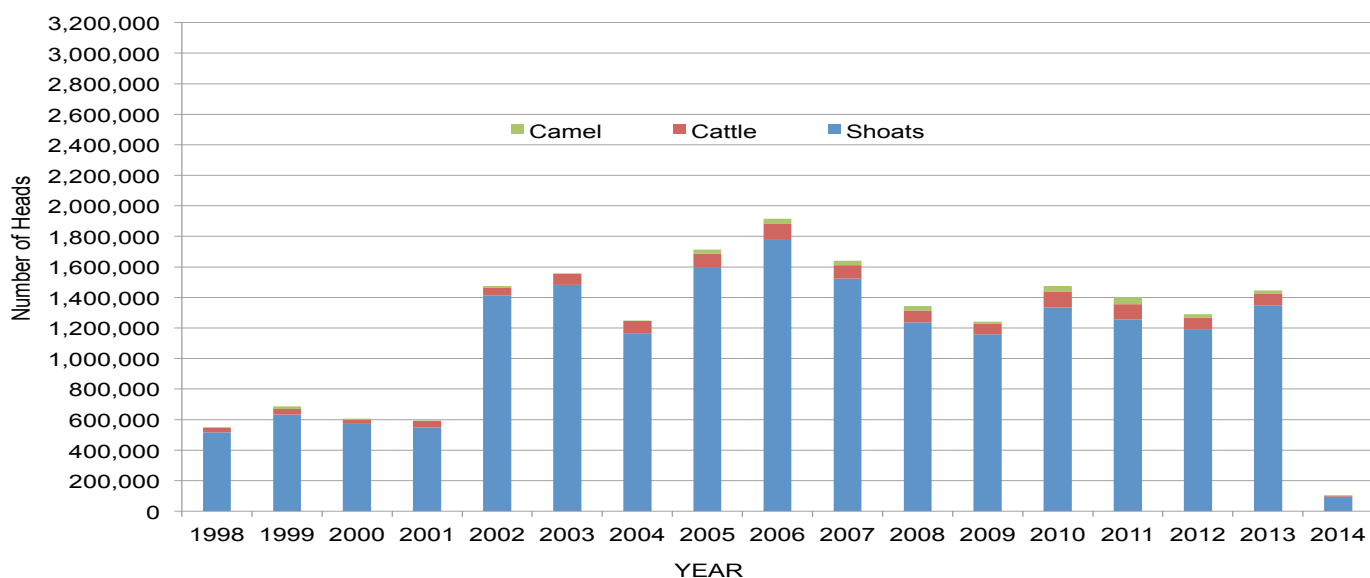


Table 3: Bossaso Livestock Exports (Number of Heads)

	1998	1999	2000	2001	2002	2003	2004	2005	2006	2007	2008	2009	2010	2011	2012	2013	2014 (Jan-Feb)
Shoats	517,020	633,669	571,455	548,853	1,412,450	1,483,409	1,166,480	1,594,859	1,777,283	1,522,855	1,236,775	1,159,454	1,333,478	1,256,535	1,192,197	1,349,123	167,245
Cattle	29,492	36,586	27,604	42,248	53,313	71,328	79,994	91,910	104,595	89,190	78,046	67,385	103,808	99,058	76,043	77,353	11,466
Camel	3,938	15,544	8,177	1,950	9,720	4,259	2,488	26,109	33,724	27,580	27,639	15,331	36,865	45,878	22,288	19,032	2,924

Figure 53: Bossaso Livestock Exports (Number of Heads)

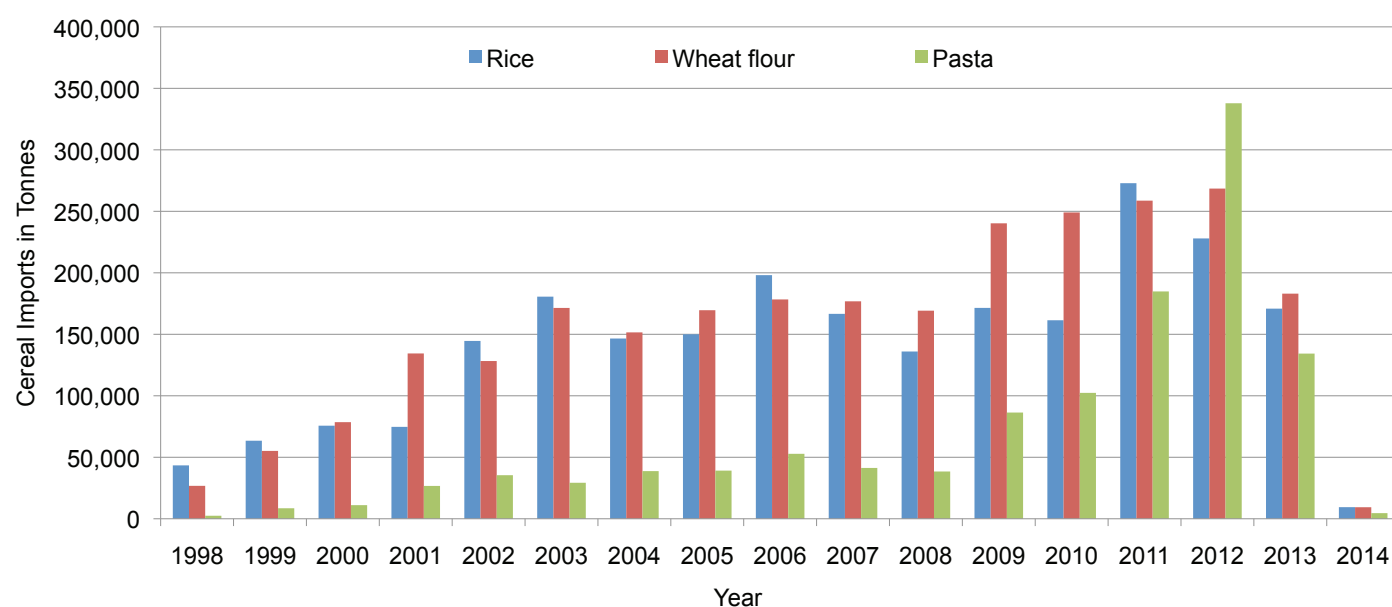


Trends in Cereal Imports

Table 4: Total Cereal Imports through Berbera, Bossaso and Mogadishu Ports (Tonnes)

	1998	1999	2000	2001	2002	2003	2004	2005	2006	2007	2008	2009	2010	2011	2012	2013	2014 (Jan-Feb)
Rice	43,410	63,464	75,687	74,729	144,600	180,614	146,567	150,017	198,101	166,626	136,007	171,472	161,415	272,877	227,955	170,868	9,432
Wheat flour	26,774	55,176	78,555	134,425	128,263	171,442	151,555	169,583	178,345	176,821	169,208	240,247	249,080	258,679	268,491	183,058	9,379
Pasta	2,455	8,544	11,071	26,702	35,425	29,273	38,749	39,153	52,815	41,331	38,441	86,372	102,373	184,849	337,878	134,311	4,571

Figure 54: Total Cereal Imports (Berbera, Bossaso and Mogadishu)



*Mogadishu data is up to March 2013; the data is from Elmaan Port.

*Berbera data is up to Dec 2013.

*Bossaso data is up to Feb 2014