

Market DataUpdate



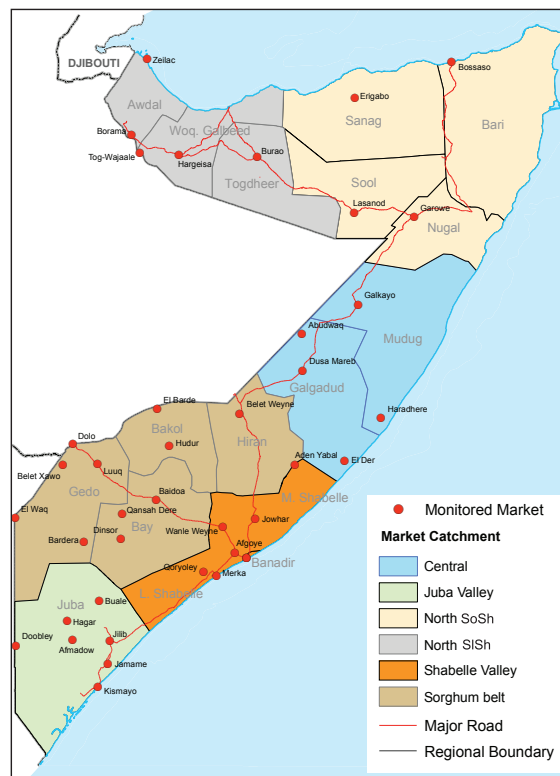
Food Security and Nutrition Analysis Unit - Somalia



Monthly Market Prices & Export-Import Statistics
March, 2012

Highlights

- **Inflation:** The monthly Consumer Price Index (CPI) decreased for the fourth consecutive month in southern regions while remaining stable in all other areas of the country. Annual inflation rates also decreased significantly in all Somali Shilling (SoSh) zones while remaining relatively stable in Somaliland Shilling (SISh) area. When compared to the base period (March 2007), the cost of living is, however, significantly inflated (109-146%) in SoSh areas, while having risen moderately (17%) in SISh areas.
- **Exchange Rates:** SoSh continued to appreciate against the US dollar (USD) while the exchange rate between SISh and the USD remained stable in most markets over the last one month. Compared to the same month a year ago, the SISh lost significant ground to the USD, whereas SoSh exhibited a large gain against the USD. The gain of the Somali Shilling is attributed to increased dollar inflows following the humanitarian response to the drought and famine, high earnings from the record high livestock exports in 2011 as well as increased foreign investments, particularly in Mogadishu.
- **Local grain prices:** Maize and red sorghum prices declined in most markets in the South while remaining stable in Central and North over the last month. Decrease in the prices of local cereals is mostly as a consequence of an increased supply of the Deyr 2011/12 crop harvest in the South and on-going humanitarian food assistance programmes. Notably, compared to a year ago, cereal prices are considerably lower in the South-Central, stable in the Northeast, but significantly higher in the Northwest due to recent introduction of mechanized threshing.



- **Prices of most imported commodities** declined in the last one month and also over the previous year throughout the country, with a more pronounced trend experienced in Banadir (Mogadishu). The slowdown in the prices of these commodities is mainly due to stronger SoSh currency. This is due to increased supplies following opening of the Mogadishu Port operations and ongoing humanitarian supplies in the South.
- **Livestock prices** showed mixed trends, increasing in most southern and northern SISh regions, but remaining stable to declining in most parts of the Central and North SoSh areas when compared to a month ago. The rise in these prices in the South was mainly due to good body conditions of livestock, improved access to Garissa Market and low supply of saleable stock. On the other hand, the decline in livestock prices in some markets of North and Central was due to deteriorated livestock body conditions, low demand from Gulf states at this time of the year as well as distressed sales in some markets in order to meet increased water and migration costs. Current prices remained significantly higher than a year ago in most markets of the country.
- **Labour wages** were stable to increasing in March in most regions in the South, supported by ongoing agricultural activities in preparation of Gu 2012 cropping season. Labour wages are slightly higher than their levels a year ago in most markets.
- **Terms of Trade (ToT)** between labour wages and cereals improved in most markets from their levels a month ago and also over the past year, implying strengthened purchasing power of poor households reliant on casual labour activities.

This Market Data Update is a monthly report that presents a compilation of tabulated graphical market information produced regularly as part of the monthly monitoring process.

The weekly price data is collected from 44 main markets throughout Somalia since 1995.

The 5-year period of 2003-07 was characterised by fairly stable prices and relatively low inflation. In this bulletin, these years are used as a reference period for seasonal trends comparison.

Market analysis is an integral part of all of FSNAU's Annual Food Security Projections and seasonal technical reports (Technical Reports on FSNAU Post Gu and Deyr Analysis).

This data is available online on www.fsnau.org/ids.

Technical and
Managerial Support



Funding Agencies



Regional Market Highlights

- **Juba Valley:** maize prices declined while prices of imported food commodities, livestock and other essential commodities (firewood, charcoal, sesame oil, etc.) remained stable over the previous month. Prices of imported food and cereals are lower than a year ago, but those of livestock are higher. Monthly and annual comparisons for ToT between labor and cereals indicate sustained improvement in purchasing power, with 9kgs of maize able to be purchased by a day's worth of labour in March 2012.
- **Sorghum Belt:** local cereal prices remained stable in Hiran, declined slightly in Bakool (11%) and Gedo (5%), but increased in Bay (9%) regions. Prices of imported commodities declined marginally while livestock prices rose slightly. Annual comparisons show significantly lower prices for food imports and local cereals, but higher for livestock. Slight increase in labour wages coupled with declining cereal prices enhanced the ToT between labour and cereals. Further, compared to a year ago the ToT in Bay region is five times greater (20kg/daily wage) and 2-2.5 times higher in the rest of the Sorghum Belt regions.
- **Shabelle Valley:** similar to most other regions in the South, prices of imported food and locally produced cereals declined as those of local quality livestock grades remained stable in March 2012. The ToT improved slightly from February 2012 levels, supported by declining cereal prices and is equivalent to 11kg/daily wage rate. Prices of most imported commodities and cereals are significantly lower, the reverse for livestock when compared to the same month year ago.
- **Central:** prices of imported commodities and locally produced cereals declined while those for livestock remained relatively stable in most main markets in March 2012. Imported commodities and cereals cost slightly less than they did a year ago in most markets, while local quality goat prices increased. ToT (rice/ local goat) improved remarkably over the month of March 2012, up to 55kg/local goat, which is also higher (44%) than a year ago.
- **Northeast:** prices of red sorghum, livestock, imported and other essential commodities declined in the month of March 2012. Annual price comparisons show reduced prices for most commodities. ToT (rice/ local goat) improved slightly over the previous month but significantly accelerated (23%) when compared to the same month a year ago, currently standing at 67kg/local goat.
- **Northwest:** prices of cereals and most imported commodities slowed down as livestock quotations surged in March 2012. Prices of most items are significantly above their levels as they were a year ago. The ToT of between white sorghum and wages (10kgs/daily wage rate) declined slightly from the previous month but is constant compared to the same month a year ago. ToT (rice /local goat) improved significantly (31%) over the last month, to settle at 47kg/local goat, almost at the same level a year ago.
- **Banadir:** prices decreased significantly for local cereals, remained stable for imported commodities-increasing for livestock in the last one month. Most of the above prices are significantly below their levels a year ago. The ToT cereal (rice)/ labour wage improved significantly in the third consecutive month of the year and has more than doubled when compared to the same month the previous year as a result of reduced cereals prices and improved labour wages.

Terms of Trade: Amount of Cereals (kg) per Daily Labour Wage RateRegion	Cereal used	Mar-11	Feb-12	Mar -12	Monthly change	Annual change
		(kg/daily wage)	(kg/daily wage)	(kg/daily wage)	(%)	(%)
Bay	Red Sorghum	4	24	20	-17%	400%
Bakool	Red Sorghum	4	9	10	11%	150%
Gedo	Red Sorghum	9	17	22	29%	144%
Hiraan	White Maize	6	9	11	22%	83%
Juba	White Maize	5	8	9	13%	80%
Shabelle	White Maize	5	10	11	10%	120%
NE	Red Sorghum	5	5	5	0%	0%
NW	White Sorghum	10	11	10	-9%	0%
Central	Red Sorghum	5	6	6	0%	20%

International Market Highlights*

Diesel: Crude oil prices in Abu Dhabi/Dubai,¹ the main source of Somalia's oil imports, sustained an upward trend for the second straight month, rising by 5 percent to settle at USD 122/barrel in March 2012. The current quotation is 13 percent higher than the same month last year and also the highest ever recorded since July 2008. According to the international Energy Agency's April 2012 Oil Market Report, the surge in prices is in tandem with escalating supply-side risks stemming from supply disruptions in Syria, South Sudan and Yemen. On average, 600 thousand barrels/day (kbd) was removed from the market in the first quarter of the year². The same source indicates that the unplanned outages in non-OPEC countries, which dented oil supply and potential additional losses relating to Iran add uncertainty for the crude outlook. In Somalia port cities (Bossaso and Mogadishu), diesel prices remained stable when compared to last month but declined significantly (13-26%) over the last one year, buoyed by strengthening domestic currencies and increased supply following opening up of Mogadishu Port (Figure 1). (<http://www.fsnaul.org/ids>).

Rice: According to FAO's Food Price Index (April 2012), monthly export price of rice³ surged slightly (2%), closing at USD 543/ton in March 2012. The price quotations are significantly (27%) higher than same time last year. The increase in rice prices was supported by logistical constraints in India⁴, unexpectedly large purchases made by China and Nigeria and ongoing support measures for strengthening export in Thailand⁵. In the last one month, prices of imported rice in Bossaso and Mogadishu ports eased (5-17%), mainly underpinned by reduced domestic demand following increased market availability of locally-produced cereals. These prices are stable when compared to the same month a year ago. The current price differential between domestic and international prices is about 50 percent, 26 percent lower than it was the same month last year, indicating decrease in domestic retail prices of this commodity (Figure 2).

Sugar: The FAO Sugar Price Index⁶ averaged 342 points in March, unchanged from February, but 30 points (8 percent) lower than in March 2011. Overall, sugar prices were volatile, as the market reacted ahead of the beginning of the new season in Brazil, the world's largest sugar producer and exporter. India, the European Union and Thailand, have all reported increased output, which contributed to keeping prices below their high levels of last season. The announcement by India to allow 1 million tonnes more exports also weighed on prices. The effect of the international price developments are clearly discernible in the local port markets of Somalia where sugar prices remained stable over the past month but declined significantly (24%) when compared to the same period in 2011 (Figure 3).

Cooking Oil: The FAO Oils/Fats Price Index⁷ rose in March to 245 points, up 6 points (or 2.5 percent) from February, as markets reacted to the prospect of growing tightness in the 2011/12 supply and demand balance for oils. Weak growth in world palm oil production, limited global soy oil export availabilities and declining rapeseed production, all contributed to the rise in oil prices. However, the index remained stable (declining only by 4%) when compared to the same month a year ago. International price transmission in cooking oil is not explicitly evident in port cities of Somalia. Specifically, vegetable oil prices remained stable over the previous month in both cities but showed a significant annual decline (26%) in Mogadishu on the backdrop of on-going humanitarian interventions and opening up of the local Ports. Slight (7%) annual price increase was observed in Bosasso.

Figure 1: Diesel Prices: Dubai, Mogadishu and Bossaso

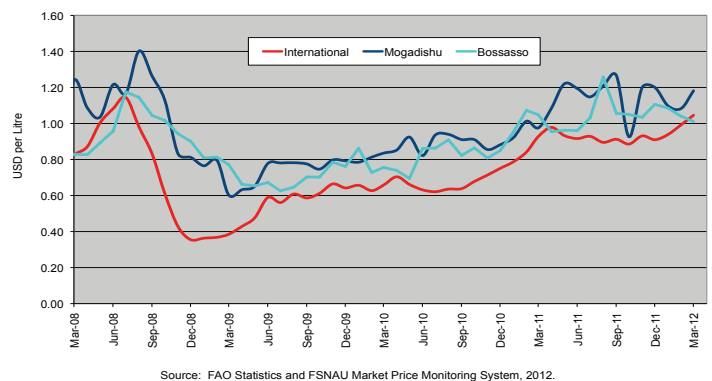


Figure 2: Rice Prices: Bangkok FOB, Mogadishu and Bossaso Markets

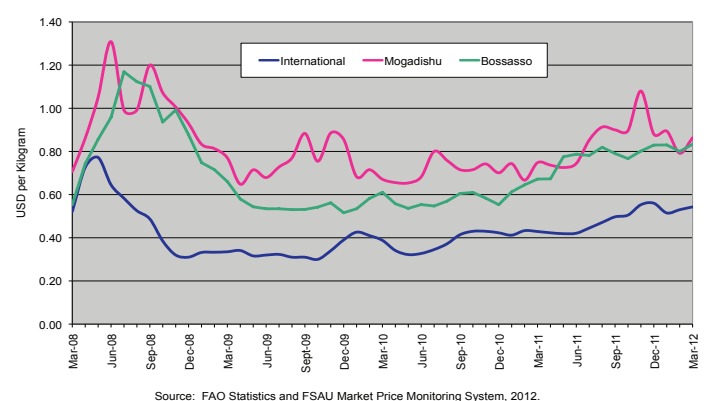
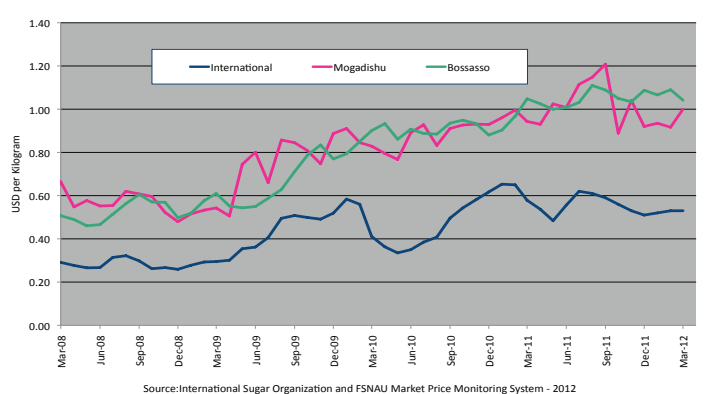


Figure 3: Sugar Prices: ISO, Mogadishu and Bossaso Markets



1 Weekly Abu Dhabi Murban Spot Price FOB (Dollars per Barrel), US Energy Information Administration, http://www.eia.doe.gov/dnav/pet/pet_pri_wco_k_w.htm

2 International Energy Agency (IEA) Monthly Oil Market Report, April 14, 2012; <http://omrpublic.iea.org/currentissues/full.pdf>; www.oilmarketreport.org

3 Bangkok, Rice (Thai A1 Super 1/B), Export, US Dollar, Tonne

4 Weak logistics at Indian ports led to congestion and consequent shipping delays, forcing many Chinese and African buyers to opt for Thai and Viet rice despite their higher prices compared to India's competitive rice prices. The sudden rise in demand for non-Indian rice led to increase in rice prices in Thailand as well as Vietnam

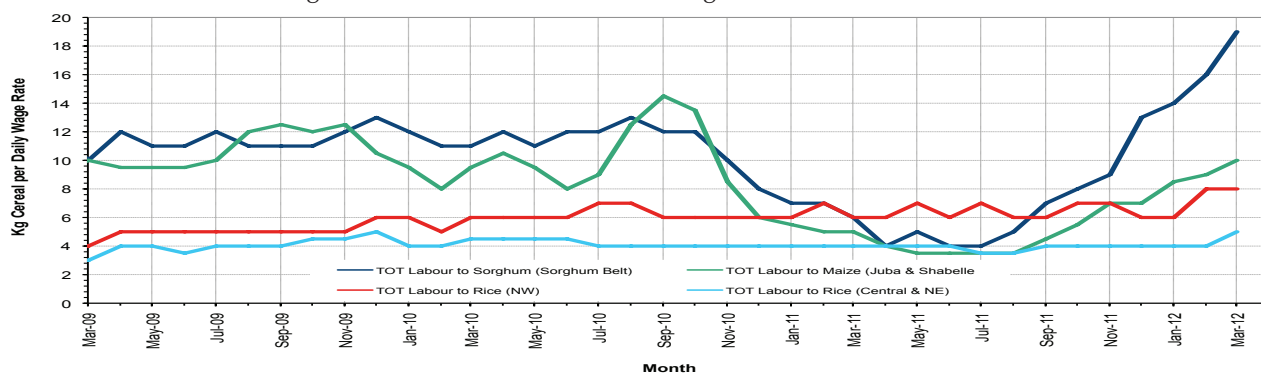
5 FAO Food Price Index, April 2012; International Grain Council Grain Market Report (GMR No. 420), 2nd April 2012; <http://www.fao.org/worldfoodsituation/wfs-home/foodpricesindex/en/>; <http://www.igc.int/en/downloads/gmrsummary/gmrsumme.pdf>

6 Ibid

7 Ibid

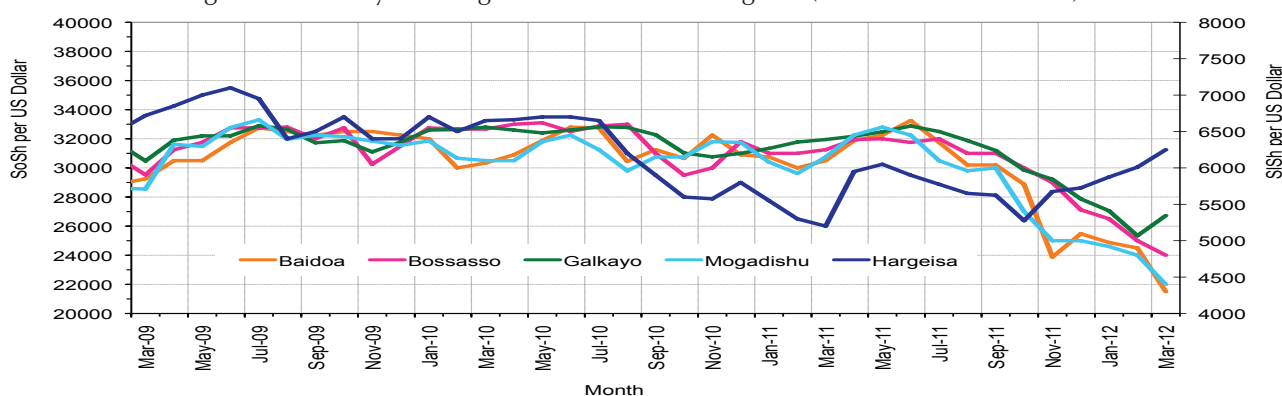
National Trends: CPI, Exchange Rates, Cereal Prices and Relative Purchasing Power

Figure 4: Terms of Trade between wage rates and selected cereals



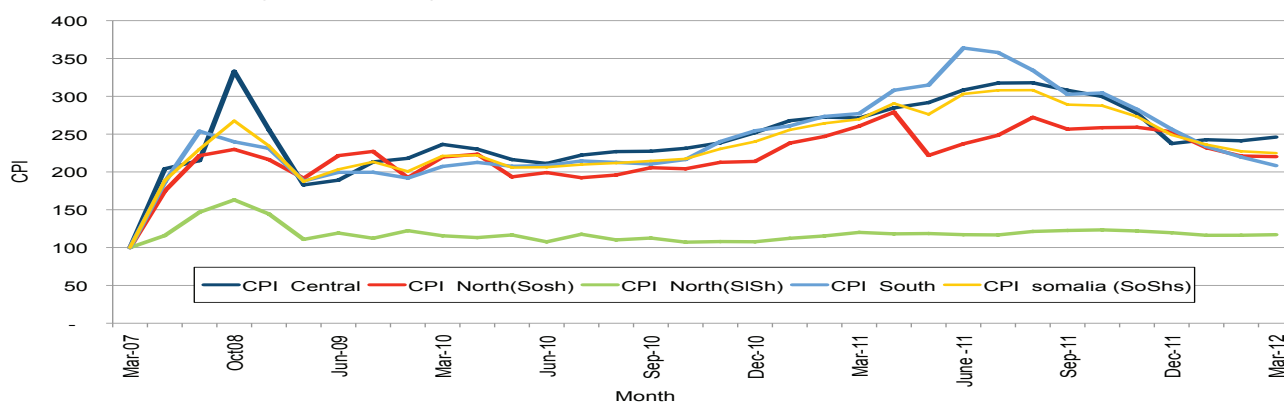
* Purchasing power is improving significantly

Figure 5: Monthly Exchange Rate for Selected Regions (SoSh and SISH to USD)



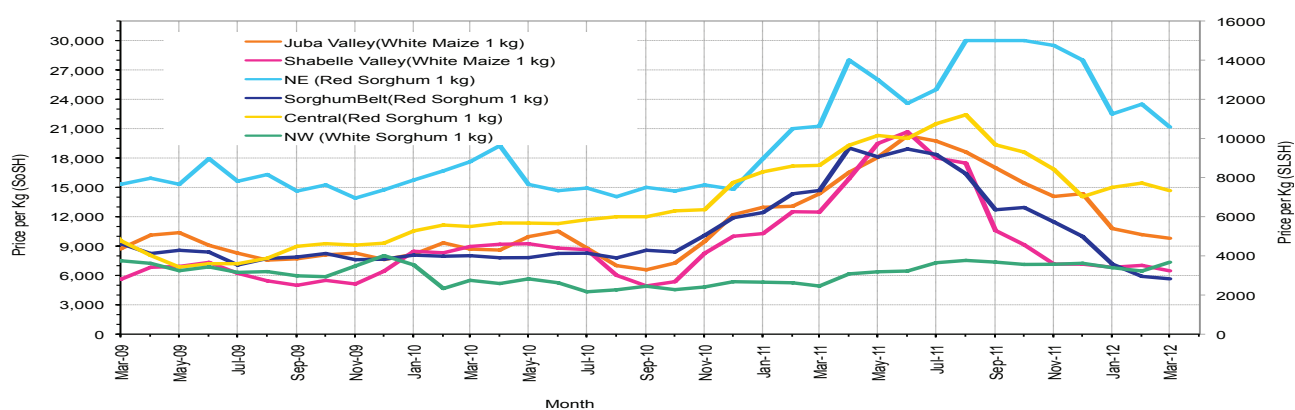
*SoSh continues strengthening against the USD although SISH is marginally depreciating

Figure 6: Monthly Trends in Consumer Price Index (CPI, March 2007=100)



*Inflation is slowly easing in SoSh regions but stable in SISH Areas

Figure 7: Monthly Trends in Local Cereal Prices



*Local cereals prices continue a downward trend in most regions

Regional analysis: Juba Regions

Indicator	Mar-11	Feb-12	Mar-12 Nominal Price	Mar-12 Real (Deflated) Price	% Change Same Month Previous Year	% Change Previous Month	% Change 5-year avrg (2003-07)
Imported Commodities Prices							
Diesel 1 litre	33,500	30,393	30,107	14,350	-10%	-1%	156%
Imported Red Rice 1kg	22,250	19,536	19,750	9,379	-11%	1%	164%
Petrol 1 litre	33,714	34,679	36,343	17,343	8%	5%	166%
Sugar	30,571	23,107	23,071	10,973	-25%	0%	187%
Vegetable Oil 1 litre	54,786	43,571	41,504	19,820	-24%	-5%	138%
Wheat Flour 1kg	19,571	17,964	18,214	8,642	-7%	1%	142%
Wheat Grain 1kg	16,000	-	-	-	-	-	-
Cereal Prices							
Red Sorghum 1kg	-	-	-	-	-	-	-
White Maize 1kg	14,357	10,170	9,798	4,602	-32%	-4%	300%
Livestock & Livestock Product Prices							
Camel Local Quality (Head)	6,922,917	9,475,500	9,442,100	4,531,566	36%	0%	184%
Cattle Local Quality (Head)	1,957,500	3,472,572	3,500,286	1,679,836	79%	1%	151%
Fresh Camel Milk 1 litre	27,907	18,250	23,036	10,956	-17%	26%	248%
Goat Export Quality (Head)	865,625	1,321,036	1,329,571	638,018	54%	1%	250%
Goat Local Quality (Head)	522,857	834,857	789,643	378,883	51%	-5%	196%
Other Essential Items							
Charcoal 50kg	62,143	82,679	84,893	40,644	37%	3%	165%
Cowpeas 1 kg	27,321	30,127	30,261	14,424	11%	0%	359%
Unskilled Labor Wage Rate	67,143	84,500	88,857	42,546	32%	5%	183%
Firewood Bundle	6,143	8,107	8,393	3,928	37%	4%	300%
Local Sesame Oil 1 litre	78,250	75,125	72,737	34,810	-7%	-3%	265%
Exchange Rate (Somali Shilling per USD)	30,423	24,171	22,911	10,896	-25%	-5%	48%
Construction Materials*							
Cement 50kg	364,643	273,417	301,847	144,769	-17%	10%	-
Cooking Pot Aluminium 7 Litre	322,500	314,143	309,107	148,254	-4%	-2%	-
Galvanised Iron Sheet Ga 26	163,393	147,142	184,357	88,381	13%	25%	-
Hollow Concrete Block 10cm x 20cm x 40cm	19,250	15,125	18,333	-	-	21%	-
Non Collapsible Jerrycan 10 Litre	27,500	34,583	33,167	15,818	21%	-4%	-
Plastic Tarpaulin 14m x 5 m	600,000	379,000	324,143	155,470	-46%	-14%	-
Roofing Nails 15Kg	804,286	640,000	614,464	294,807	-24%	-4%	-
Timber 2in x 4in x 20ft	324,000	295,438	281,063	134,794	-13%	-5%	-
Woven Dry Raised Blanket 150cm x 200cm	-	42,500	45,000	-	-	6%	-
Terms of Trade							
Labour Wage (Daily)/ Cereal (Maize(Kg))	5	8	9	-	94%	9%	-29%
Local Goat (Head)/ Cereal (Maize(Kg))	36	82	81	-	121%	-2%	-26%
Price Indices							
Consumer Price Index	277	220	208	-	-25%	-5%	-
Purchasing Power Index	0.36	0.46	0.48	-	33%	5%	-

* Data has been collected since May 2010

* Data has been collected since May 2010

Figure 8: Imported commodity prices compared to exchange rates

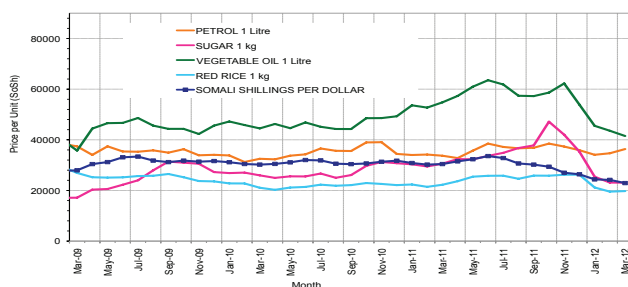


Figure 10: Goat Local Quality

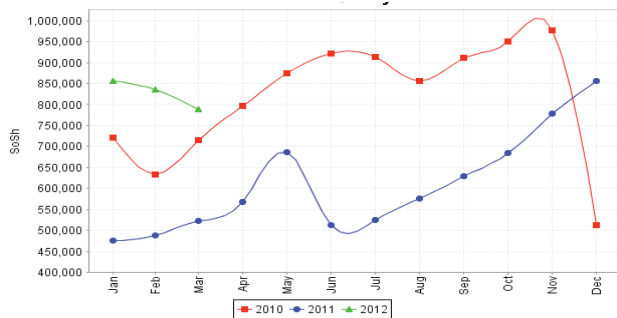


Figure 12: Water Drum

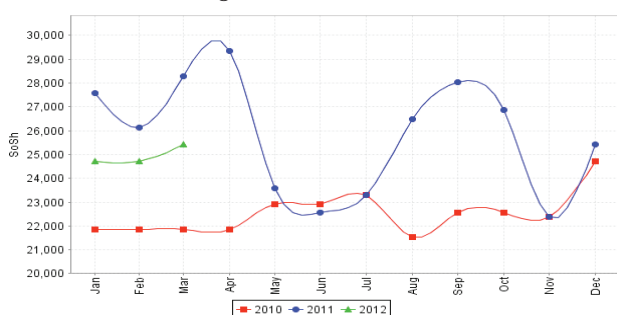


Figure 9: Trends in wage rates, staple cereal prices and relative purchasing power

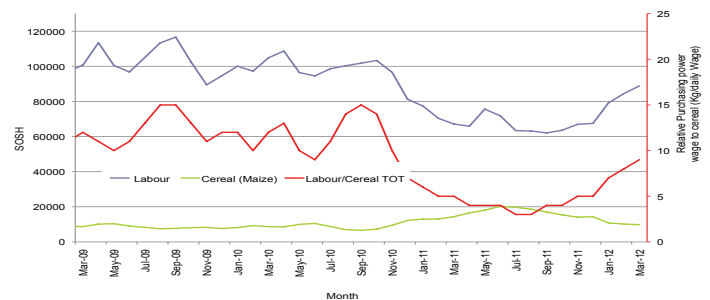


Figure 11: Exchange Rate

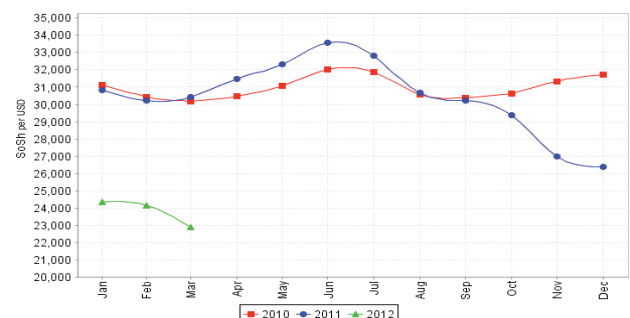
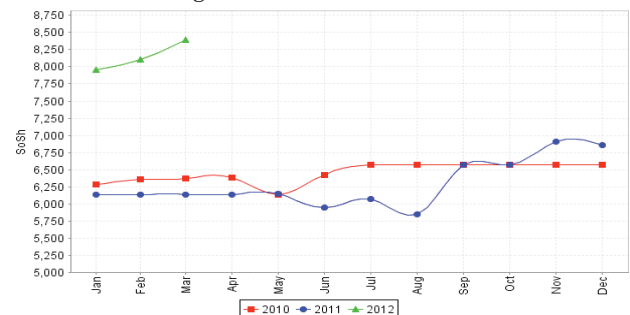


Figure 13: Firewood Bundle



Regional analysis: Sorghum Belt Regions (Bay, Bakool, Gedo and Hiran)

Indicator	Mar-11	Feb-12	Mar-12 Nominal Price	Mar-12 Real (Deflated) Price	% Change Same Month Previous Year	% Change Previous Month	% Change 5-year avrg (2003-07)
Imported Commodities Prices							
Diesel 1 litre	35,886	34,739	32,500	15,498	-9%	-6%	196%
Imported Red Rice 1kg	24,500	22,227	20,909	9,935	-15%	-6%	169%
Petrol 1 litre	33,114	35,023	34,136	16,283	3%	-3%	154%
Sugar	32,114	26,750	26,136	12,444	-19%	-2%	192%
Vegetable Oil 1 litre	53,750	48,118	45,023	21,508	-16%	-6%	158%
Wheat Flour 1kg	21,114	19,205	18,864	8,954	-11%	-2%	148%
Wheat Grain 1kg	17,000	7,208	7,400	3,452	-56%	3%	112%
Cereal Prices							
Red Sorghum 1kg	14,682	5,905	5,655	2,614	-61%	-4%	227%
White Maize 1kg	13,764	7,509	6,955	3,238	-49%	-7%	208%
Livestock & Livestock Product Prices							
Camel Local Quality (Head)	7,270,455	11,251,390	11,735,834	5,632,426	61%	4%	296%
Cattle Local Quality (Head)	1,198,929	3,109,375	3,289,286	1,578,568	174%	6%	180%
Fresh Camel Milk 1 litre	26,727	22,205	24,295	11,560	-9%	9%	243%
Goat Export Quality (Head)	1,080,000	1,525,000	1,525,000	731,812	41%	0%	313%
Goat Local Quality (Head)	513,409	1,077,273	1,069,091	513,002	108%	-1%	343%
Other Essential Items							
Charcoal 50kg	112,614	159,045	157,727	75,600	40%	-1%	322%
Cowpeas 1 kg	31,406	24,156	22,889	10,885	-27%	-5%	335%
Unskilled Labor Wage Rate	86,932	93,432	106,136	50,839	22%	14%	444%
Firewood Bundle	5,091	5,864	6,205	2,878	22%	6%	280%
Local Sesame Oil 1 litre	78,143	71,321	76,429	36,582	-2%	7%	256%
Exchange Rate (Somali Shilling per USD)	31,041	25,300	23,142	11,007	-25%	-9%	47%
Construction Materials*							
Cement 50kg	349,250	359,000	328,000	157,321	-6%	-9%	-
Cooking Pot Aluminium 7 Litre	339,500	298,250	322,000	154,442	-5%	8%	-
Galvanised Iron Sheet Ga 26	210,227	194,091	189,545	90,871	-10%	-2%	-
Hollow Concrete Block 10cm x 20cm x 40cm	9,625	12,083	10,500	4,939	9%	-13%	-
Non Collapsible Jerrycan 10 Litre	51,955	55,000	53,136	25,402	2%	-3%	-
Plastic Tarpaulin 14m x 5 m	305,278	286,000	289,525	138,855	-5%	1%	-
Roofing Nails 15Kg	829,722	789,045	741,306	355,684	-11%	-6%	-
Timber 2in x 4in x 20ft	268,929	290,250	287,778	138,017	7%	-1%	-
Woven Dry Raised Blanket 150cm x 200cm	100,833	92,143	99,000	47,414	-2%	7%	-
Terms of Trade							
Labour Wage (Daily)/ Cereal (Sorghum(Kg))	6	16	19	-	217%	19%	66%
Local Goat (Head)/ Cereal (Sorghum(Kg))	35	182	189	-	441%	4%	35%
Price Indices							
Consumer Price Index	277	220	208	-	-25%	-5%	-
Purchasing Power Index	0.36	0.46	0.48	-	33%	5%	-

* Data has been collected since May 2010

* Data has been collected since May 2010

Figure 14: Imported commodity prices compared to exchange rates

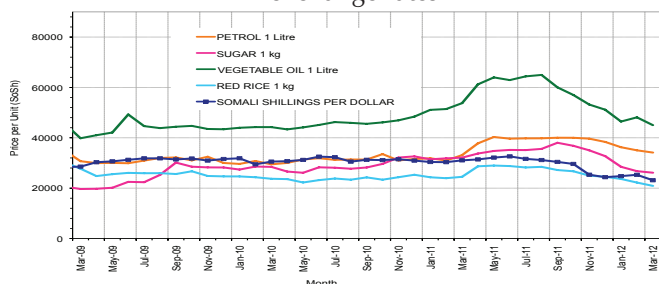


Figure 15: Trends in wage rates, staple cereal prices and relative purchasing power

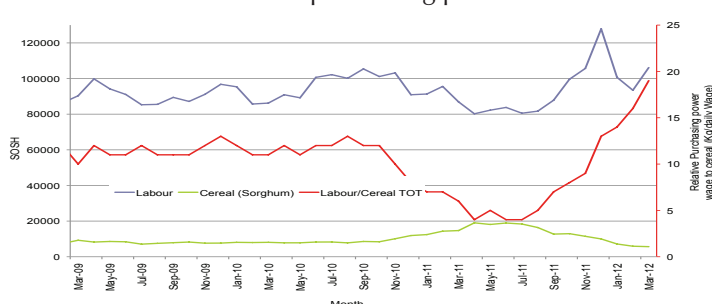


Figure 16: Goat Local Quality

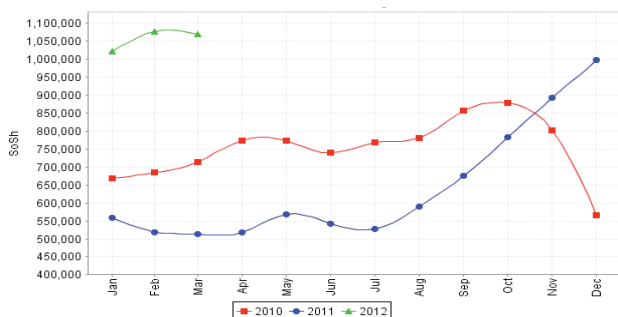


Figure 17: Exchange Rate

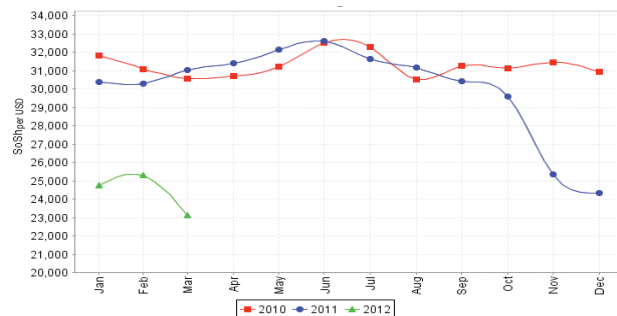


Figure 18: Water Drum

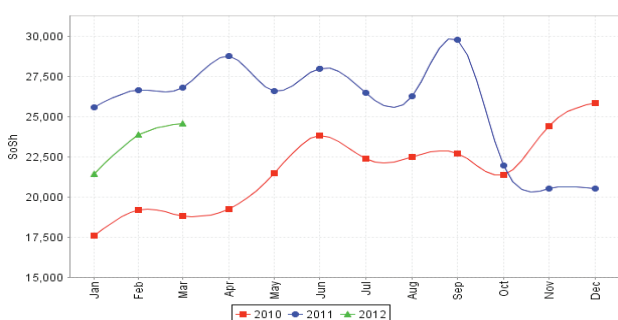
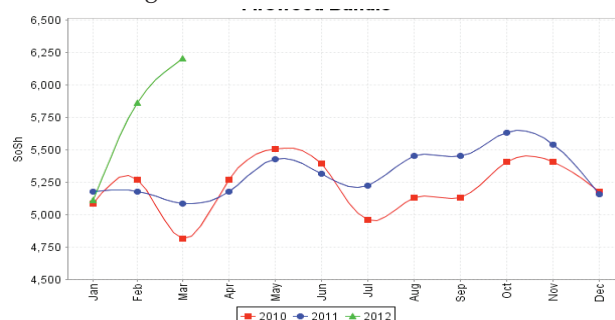


Figure 19: Firewood Bundle



Regional analysis: Shabelle Regions

Indicator	Mar-11	Feb-12	Mar-12 Nominal Price	Mar-12 Real (Deflated) Price	% Change Same Month Previous Year	% Change Previous Month	% Change 5-year avg (2003-07)
Imported Commodities Prices							
Diesel 1 litre	31,875	30,250	30,708	14,638	-4%	2%	251%
Imported Red Rice 1kg	20,000	19,208	17,833	8,459	-11%	-7%	187%
Petrol 1 litre	31,542	37,208	34,542	16,478	10%	-7%	202%
Sugar	29,750	23,042	22,292	10,599	-25%	-3%	207%
Vegetable Oil 1 litre	47,833	37,042	35,125	16,758	-27%	-5%	168%
Wheat Flour 1kg	19,000	14,667	15,417	7,299	-19%	5%	152%
Wheat Grain 1kg	-	13,333	13,333	6,299	-	0%	238%
Cereal Prices							
Red Sorghum 1kg	14,389	10,769	8,928	4,185	-38%	-17%	328%
White Maize 1kg	12,477	7,030	6,472	3,006	-48%	-8%	142%
Livestock & Livestock Product Prices							
Camel Local Quality (Head)	10,375,000	14,255,000	15,080,000	7,237,434	45%	6%	289%
Cattle Local Quality (Head)	2,460,000	4,235,000	4,155,000	1,994,061	69%	-2%	276%
Fresh Camel Milk 1 litre	21,917	17,208	17,000	8,059	-22%	-1%	232%
Goat Export Quality (Head)	1,263,958	1,700,313	1,912,500	917,790	51%	12%	290%
Goat Local Quality (Head)	839,583	1,252,500	1,319,583	633,224	57%	5%	302%
Other Essential Items							
Charcoal 50kg	103,958	133,139	125,972	60,359	21%	-5%	202%
Cowpeas 1 kg	28,416	25,233	24,602	11,708	-13%	-3%	404%
Unskilled Labor Wage Rate	57,708	67,917	68,750	32,896	19%	1%	259%
Firewood Bundle	4,167	5,625	5,708	2,640	37%	1%	180%
Local Sesame Oil 1 litre	61,000	55,083	50,458	24,117	-17%	-8%	187%
Exchange Rate (Somali Shilling per USD)	30,528	24,892	23,375	11,119	-23%	-6%	44%
Construction Materials*							
Cement 50kg	259,500	216,250	203,750	97,688	-21%	-6%	-
Cooking Pot Aluminium 7 Litre	600,000	700,000	700,000	335,860	17%	0%	-
Galvanised Iron Sheet Ga 26	118,650	95,500	92,600	44,343	-22%	-3%	-
Hollow Concrete Block 10cm x 20cm x 40cm	14,000	12,917	12,563	5,930	-10%	-3%	-
Non Collapsible Jerrycan 10 Litre	45,375	46,125	45,563	21,768	0%	-1%	-
Plastic Tarpaulin 14m x 5 m	275,000	267,500	231,667	111,087	-16%	-13%	-
Roofing Nails 15Kg	646,667	563,700	594,000	284,986	-8%	5%	-
Timber 2in x 4in x 20ft	57,300	48,450	47,400	22,649	-17%	-2%	-
Woven Dry Raised Blanket 150cm x 200cm	75,167	60,583	63,833	30,536	-15%	5%	-
Terms of Trade							
Labour Wage (Daily)/ Cereal (Maize(Kg))	5	10	11	-	130%	10%	49%
Local Goat (Head)/ Cereal (Maize(Kg))	67	178	204	-	203%	14%	66%
Price Indices							
Consumer Price Index	277	220	208	-	-25%	-5%	-
Purchasing Power Index	0.36	0.46	0.48	-	33%	5%	-

* Data has been collected since May 2010

Figure 20: Imported commodity prices compared to exchange rates

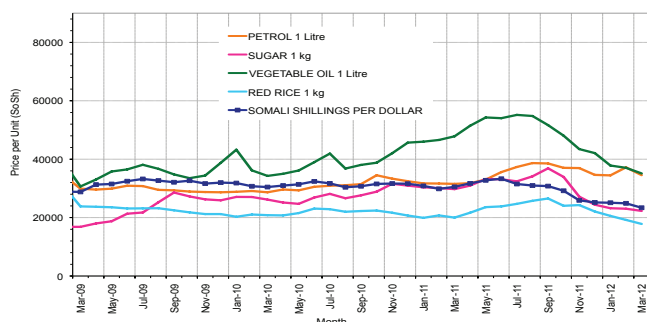


Figure 22: Goat Local Quality

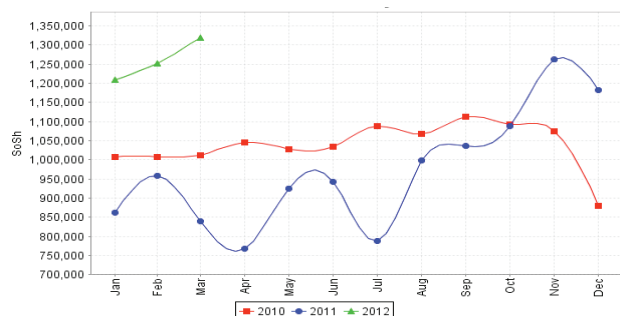


Figure 24: Water Drum

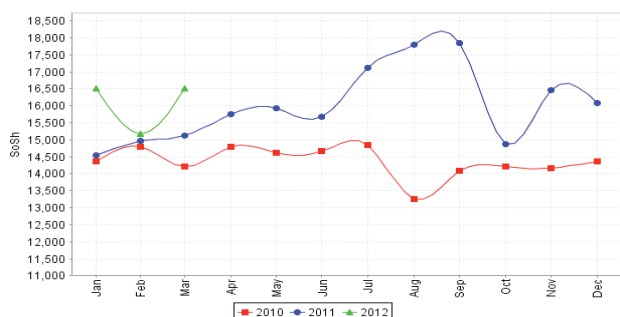


Figure 21: Trends in wage rates, staple cereal prices and relative purchasing power

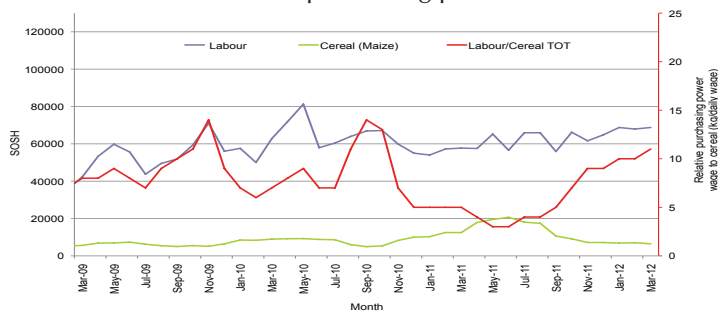


Figure 23: Exchange Rate

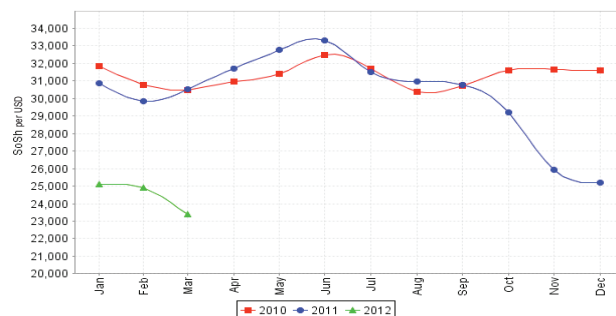
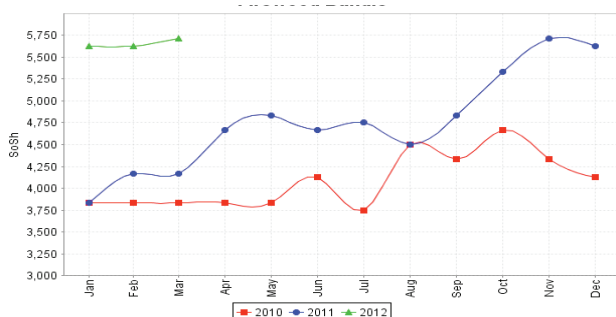


Figure 25: Firewood Bundle



Regional analysis:Banadir Region

Indicator	Mar-11	Feb-12	Mar-12 Nominal Price	Mar-12 Real (Deflated) Price	% Change Same Month Previous Year	% Change Previous Month	% Change 5-year avrg (2003-07)
Imported Commodities Prices							
Diesel 1 litre	29,417	25,250	26,458	12,598	-10%	5%	205%
Imported Red Rice 1kg	23,750	17,000	18,375	8,719	-23%	8%	209%
Petrol 1 litre	29,333	29,750	28,542	13,599	-3%	-4%	174%
Sugar	29,458	20,583	21,542	10,239	-27%	5%	219%
Vegetable Oil 1 litre	48,875	36,000	35,208	16,798	-28%	-2%	168%
Wheat Flour 1kg	19,583	13,667	13,750	6,499	-30%	1%	124%
Wheat Grain 1kg	17,000	12,683	7,900	3,692	-54%	-38%	78%
Cereal Prices							
Red Sorghum 1kg	15,327	7,081	6,450	2,996	-58%	-9%	161%
White Maize 1kg	13,658	8,575	7,346	3,426	-46%	-14%	181%
Livestock & Livestock Product Prices							
Camel Local Quality (Head)	16,000,000	12,000,000	11,000,000	5,279,268	-31%	-8%	95%
Cattle Local Quality (Head)	3,925,000	4,000,000	5,000,000	2,399,613	27%	25%	102%
Fresh Camel Milk 1 litre	23,967	19,854	19,896	9,449	-17%	0%	342%
Goat Export Quality (Head)	1,800,000	1,800,000	2,000,000	959,785	11%	11%	-
Goat Local Quality (Head)	1,781,250	1,581,250	1,856,250	890,793	4%	17%	258%
Other Essential Items							
Charcoal 50kg	139,458	153,542	181,250	86,890	30%	18%	88%
Cowpeas 1 kg	29,438	23,517	22,017	10,467	-25%	-6%	392%
Unskilled Labor Wage Rate	76,875	88,750	103,333	49,494	34%	16%	76%
Firewood Bundle	6,500	7,875	7,917	3,700	22%	1%	-82%
Local Sesame Oil 1 litre	66,042	57,708	54,667	26,137	-17%	-5%	211%
Exchange Rate (Somali Shilling per USD)	30,250	24,392	22,483	10,691	-26%	-8%	38%
Construction Materials*							
Cement 50kg	215,458	180,267	159,667	76,531	-26%	-11%	-
Cooking Pot Aluminium 7 Litre	250,000	335,000	306,667	147,083	23%	-8%	-
Galvanised Iron Sheet Ga 26	120,800	87,354	93,458	44,754	-23%	7%	-
Hollow Concrete Block 10cm x 20cm x 40cm	9,813	8,958	9,104	4,269	-7%	2%	-
Non Collapsible Jerrycan 10 Litre	44,375	38,438	33,333	15,898	-25%	-13%	-
Plastic Tarpaulin 14m x 5 m	222,083	228,267	274,750	131,764	24%	20%	-
Roofing Nails 15Kg	482,417	484,892	490,125	235,132	2%	1%	-
Timber 2in x 4in x 20ft	157,000	134,833	116,917	56,013	-26%	-13%	-
Woven Dry Raised Blanket 150cm x 200cm	85,833	103,583	132,875	63,672	55%	28%	-
Terms of Trade							
Labour Wage (Daily)/ Cereal (Maize(Kg))	6	10	14	-	150%	36%	-37%
Local Goat (Head)/ Cereal (Maize(Kg))	130	184	253	-	94%	37%	27%
Price Indices							
Consumer Price Index	277	220	208	-	-25%	-5%	-
Purchasing Power Index	0.36	0.46	0.48	-	-	-	-

* Data has been collected since May 2010

* Data has been collected since May 2010

Figure 26: Bakara: Imported Commodity Prices compared to Exchange Rate

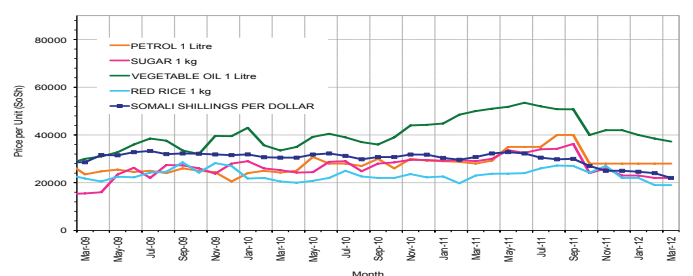


Figure 27: Bakara: Trends in Wage Rates, Staple Cereal Prices and Relative Purchasing Power

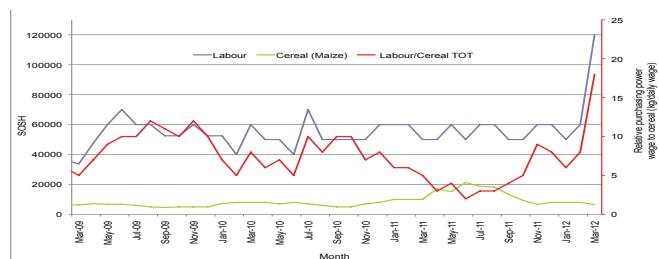


Figure 28: Goat Local Quality

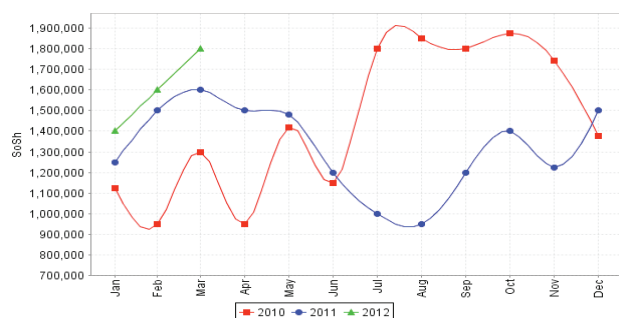


Figure 29: Exchange Rate

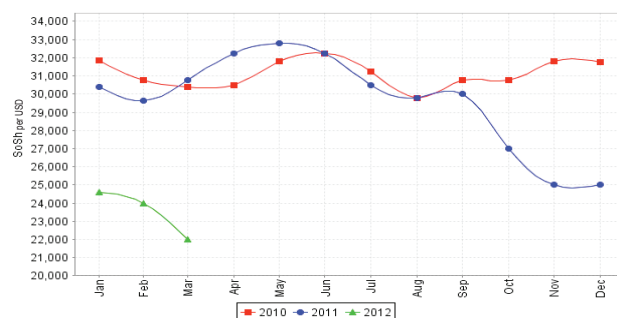


Figure 30: Wheat Flour

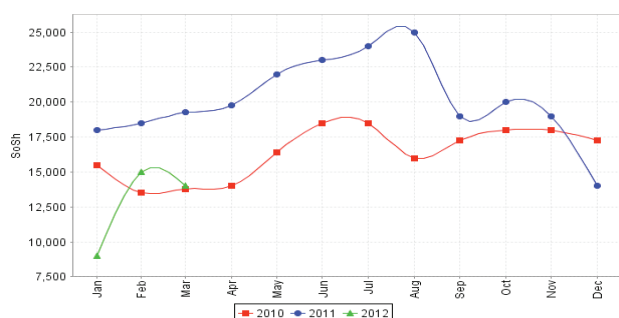
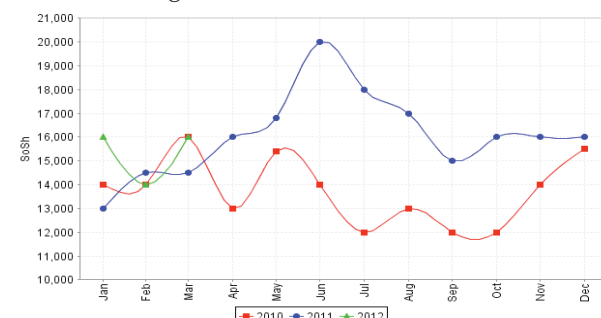


Figure 31: Fresh Camel Milk



Regional analysis: Central Regions

Indicator	Mar-11	Feb-12	Mar-12 Nominal Price	Mar-12 Real (Deflated) Price	% Change Same Month Previous Year	% Change Previous Month	% Change 5-year avrg (2003-07)
Imported Commodities Prices							
Diesel 1 litre	36,050	33,240	32,600	13,148	-10%	-2%	217%
Imported Red Rice 1kg	29,950	25,880	22,767	9,152	-24%	-12%	209%
Petrol 1 litre	31,250	30,600	28,700	11,563	-8%	-6%	147%
Sugar	35,900	28,840	28,767	11,591	-20%	0%	227%
Vegetable Oil 1 litre	58,150	51,200	48,200	19,488	-17%	-6%	166%
Wheat Flour 1kg	23,300	20,240	19,100	7,662	-18%	-6%	157%
Wheat Grain 1kg	18,333	17,867	16,667	6,673	-9%	-7%	194%
Cereal Prices							
Red Sorghum 1kg	17,250	15,440	14,667	5,861	-15%	-5%	255%
White Maize 1kg	17,250	17,120	15,300	6,118	-11%	-11%	214%
Livestock & Livestock Product Prices							
Camel Local Quality (Head)	7,825,000	8,550,000	8,912,500	3,621,883	14%	4%	318%
Cattle Local Quality (Head)	-	2,400,000	2,450,000	-	-	-	-
Fresh Camel Milk 1 litre	43,200	33,720	35,000	14,124	-19%	4%	220%
Goat Export Quality (Head)	1,487,500	1,517,500	1,434,375	582,821	-4%	-5%	325%
Goat Local Quality (Head)	1,047,000	1,116,400	1,250,000	507,892	19%	12%	382%
Other Essential Items							
Charcoal 50kg	213,000	183,600	179,667	72,916	-16%	-2%	234%
Cowpeas 1 kg	36,800	32,480	30,267	12,200	-18%	-7%	347%
Unskilled Labor Wage Rate	82,000	85,200	89,500	36,272	9%	5%	180%
Firewood Bundle	33,000	34,000	33,000	13,311	0%	-3%	774%
Local Sesame Oil 1 litre	94,750	92,400	92,000	37,288	-3%	0%	228%
Exchange Rate (Somali Shilling per USD)	30,620	25,068	24,178	9,726	-21%	-4%	47%
Construction Materials*							
Cement 50kg	324,600	299,600	289,500	117,551	-11%	-3%	-
Cooking Pot Aluminium 7 Litre	414,500	398,000	386,667	157,039	-7%	-3%	-
Galvanised Iron Sheet Ga 26	155,525	135,600	140,750	57,100	-10%	4%	-
Hollow Concrete Block 10cm x 20cm x 40cm	16,250	17,050	15,083	6,030	-7%	-12%	-
Non Collapsible Jerrycan 10 Litre	51,000	51,400	50,600	20,464	-1%	-2%	-
Plastic Tarpaulin 14m x 5 m	308,000	272,000	269,400	109,382	-12%	-1%	-
Roofing Nails 15Kg	819,440	742,600	690,000	280,312	-16%	-7%	-
Timber 2in x 4in x 20ft	151,600	135,000	122,750	49,785	-19%	-9%	-
Woven Dry Raised Blanket 150cm x 200cm	134,000	128,800	128,000	51,918	-4%	-1%	-
Terms of Trade							
Labour Wage (Daily)/ Cereal (Rice)(Kg))	3	3	4	-	44%	19%	-9%
Local Goat (Head)/ Cereal (Rice)(Kg))	35	43	55	-	57%	27%	56%
Camel (Head)/Cereal (Kg)	261	330	391	-	50%	18%	36%
Price Indices							
Consumer Price Index	271	241	246	-	-9%	2%	-
Purchasing Power Index	0.37	0.41	0.41	-	10%	-2%	-

* Data has been collected since May 2010

* Data has been collected since May 2010

Figure 32: Imported commodity prices compared to exchange rates

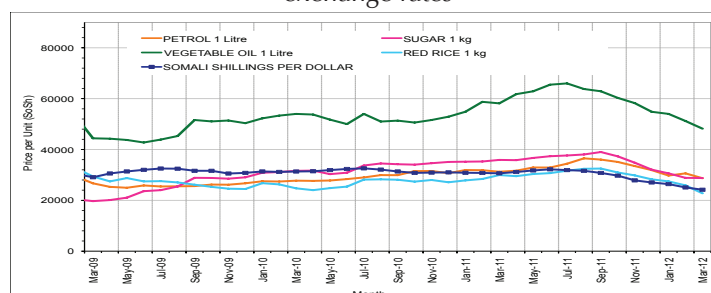


Figure 33: Trends in wage rates, staple cereal prices and relative purchasing power

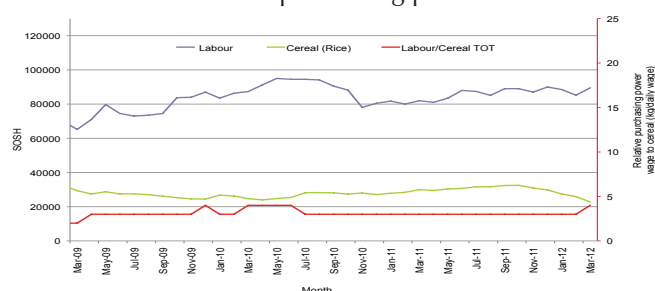


Figure 34: Goat Local Quality

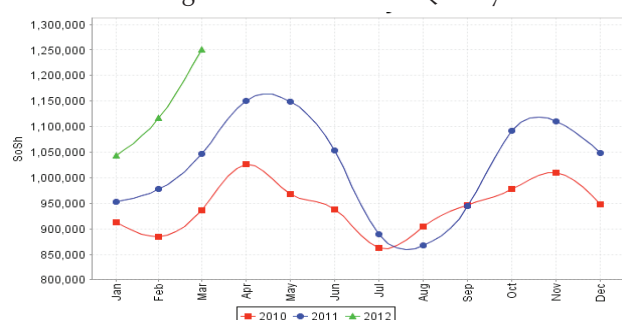


Figure 35: Exchange Rate

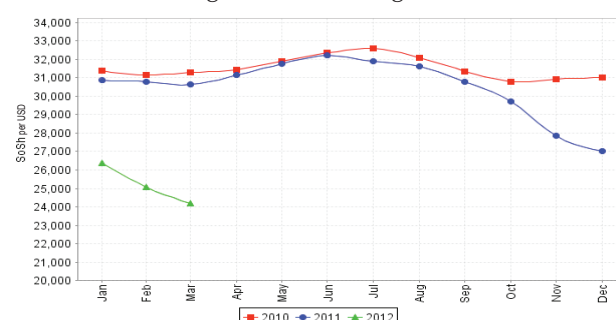


Figure 36: Water Drum

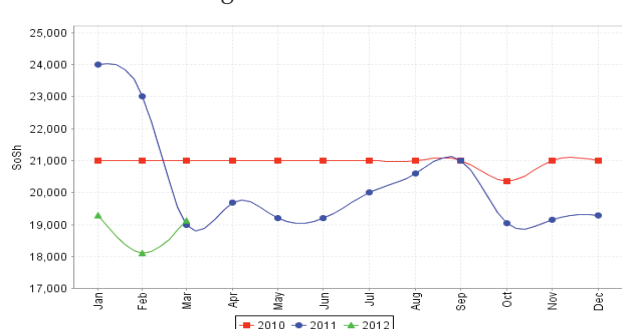
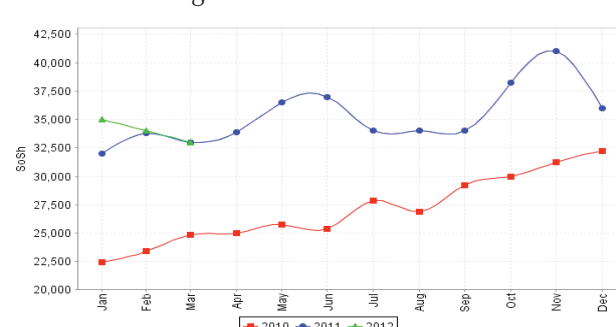


Figure 37: Firewood Bundle



Regional analysis: Northeast Regions

Indicator	Mar-11	Feb-12	Mar-12 Nominal Price	Mar-12 Real (Deflated) Price	% Change Same Month Previous Year	% Change Previous Month	% Change 5-year avrg (2003-07)
Imported Commodities Prices							
Diesel 1 litre	32,438	28,250	27,000	12,160	-17%	-4%	217%
Imported Red Rice 1kg	22,813	21,438	19,938	8,953	-13%	-7%	217%
Petrol 1 litre	29,063	26,500	24,625	11,081	-15%	-7%	156%
Sugar	31,875	27,250	25,688	11,564	-19%	-6%	207%
Vegetable Oil 1 litre	50,188	53,625	50,063	22,632	0%	-7%	186%
Wheat Flour 1kg	20,625	18,688	18,313	8,215	-11%	-2%	171%
Wheat Grain 1kg	29,625	25,500	25,125	11,308	-15%	-1%	245%
Cereal Prices							
Red Sorghum 1kg	21,250	23,500	21,167	9,511	0%	-10%	218%
White Maize 1kg	21,750	16,500	19,750	8,868	-9%	20%	274%
Livestock & Livestock Product Prices							
Camel Local Quality (Head)	13,837,500	14,621,876	14,765,626	6,704,443	7%	1%	387%
Cattle Local Quality (Head)	7,000,000		6,250,000	-	-	-	-
Fresh Camel Milk 1 litre	54,500	37,688	40,563	18,318	-26%	8%	186%
Goat Export Quality (Head)	1,375,000	1,337,500	1,300,000	590,184	-5%	-3%	227%
Goat Local Quality (Head)	1,245,000	1,378,750	1,343,750	610,049	8%	-3%	273%
Other Essential Items							
Charcoal 50kg	348,750	398,750	370,000	167,904	6%	-7%	433%
Cowpeas 1 kg	42,333	51,333	48,917	22,111	16%	-5%	419%
Unskilled Labor Wage Rate	112,500	111,875	112,500	50,982	0%	1%	156%
Firewood Bundle	31,125	38,313	35,750	16,133	15%	-7%	423%
Local Sesame Oil 1 litre	88,333	95,000	95,000	43,036	8%	0%	217%
Exchange Rate (Somali Shilling per USD)	31,438	25,250	22,813	10,259	-27%	-10%	38%
Construction Materials*							
Cement 50kg	228,813	218,500	215,500	97,751	-6%	-1%	-
Cooking Pot Aluminium 7 Litre	459,375	439,375	415,000	188,337	-10%	-6%	-
Galvanised Iron Sheet Ga 26	224,438	208,000	203,188	92,160	-9%	-2%	-
Hollow Concrete Block 10cm x 20cm x 40cm	12,313	12,500	12,500	5,576	2%	0%	-
Non Collapsible Jerrycan 10 Litre	40,000	37,813	35,313	15,934	-12%	-7%	-
Plastic Tarpaulin 14m x 5 m	208,438	178,125	170,813	77,460	-18%	-4%	-
Roofing Nails 15Kg	461,719	402,000	412,125	187,031	-11%	3%	-
Timber 2in x 4in x 20ft	221,469	208,875	206,250	93,551	-7%	-1%	-
Woven Dry Raised Blanket 150cm x 200cm	259,375	253,750	236,563	107,315	-9%	-7%	-
Terms of Trade							
Labour Wage (Daily)/ Cereal (Rice(Kg))	5	5	6	-	14%	8%	-19%
Local Goat (Head)/ Cereal (Rice(Kg))	55	64	67	-	23%	5%	18%
Price Indices							
Consumer Price Index	261	221	220	-	-15%	0%	-
Purchasing Power Index	0.38	0.45	0.45	-	18%	0%	-

* Data has been collected since May 2010

Figure 38: Imported commodity prices compared to exchange rates

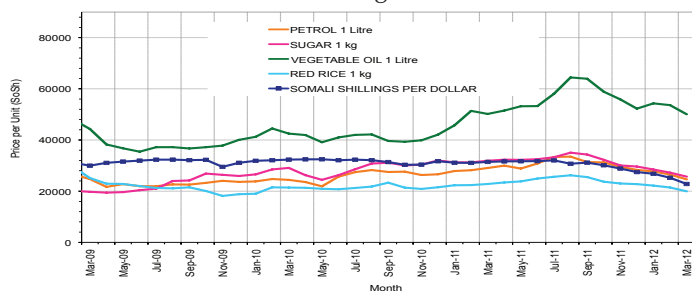


Figure 39: Trends in wage rates, staple cereal prices and relative purchasing power

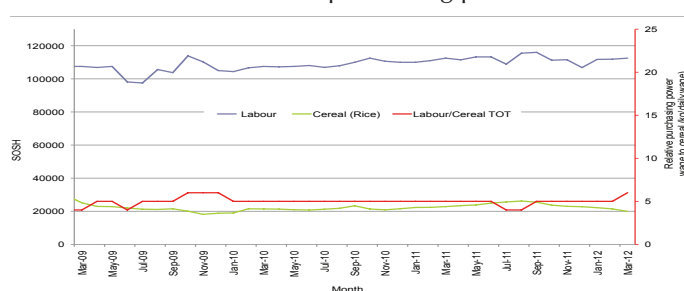


Figure 40: Goat Local Quality

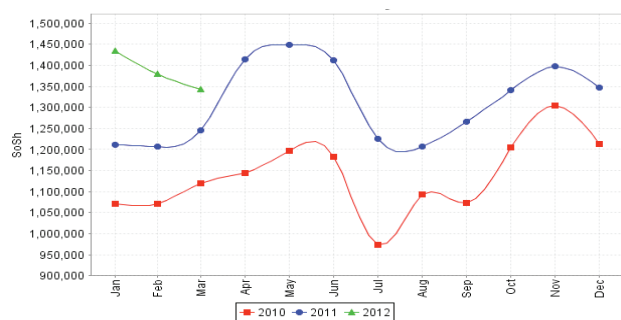


Figure 41: Exchange Rate

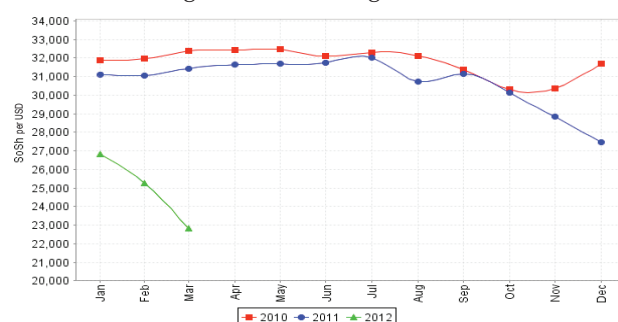


Figure 42: Water Drum

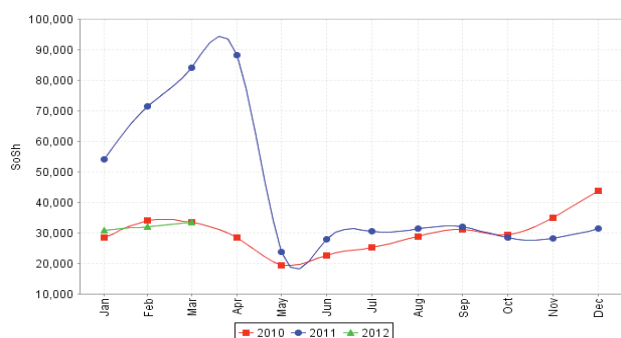
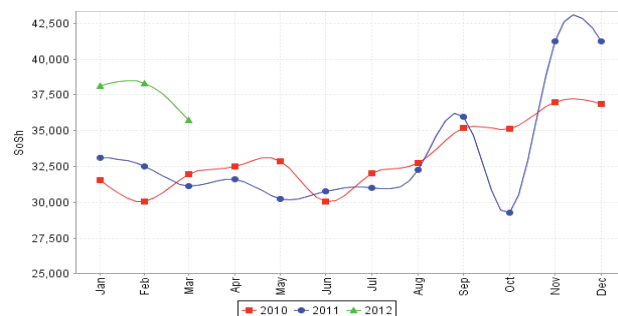


Figure 43: Firewood Bundle



Regional analysis: Northwest Regions

Indicator	Mar-11	Feb-12	Mar-12 Nominal Price	Mar-12 Real (Deflated) Price	% Change Same Month Previous Year	% Change Previous Month	% Change 5-year avg (2003-07)
Imported Commodities Prices							
Diesel 1 litre	5,275	6,150	5,913	4,951	12%	-4%	68%
Imported Red Rice 1kg	4,931	5,038	4,575	3,808	-7%	-9%	54%
Petrol 1 litre	5,256	6,375	6,250	5,239	19%	-2%	44%
Sugar	5,775	5,950	5,906	4,945	2%	-1%	80%
Vegetable Oil 1 litre	9,244	10,700	11,291	9,546	22%	6%	63%
Wheat Flour 1kg	4,100	4,175	4,088	3,392	0%	-2%	47%
Wheat Grain 1kg	2,667	3,067	3,500	2,890	31%	14%	62%
Cereal Prices							
White Sorghum 1kg	2,458	3,225	3,675	3,039	50%	14%	99%
Yellow Maize 1kg	2,425	3,650	3,408	2,811	41%	-7%	73%
Livestock & Livestock Product Prices							
Camel Local Quality (Head)	1,093,333	1,937,500	2,288,750	1,955,120	109%	18%	47%
Cattle Local Quality (Head)	1,269,167	1,421,000	1,617,500	1,381,689	27%	14%	88%
Fresh Camel Milk 1 litre	5,594	5,438	5,969	4,999	7%	10%	22%
Goat Export Quality (Head)	274,250	332,706	392,813	335,470	43%	18%	153%
Goat Local Quality (Head)	223,000	238,594	283,313	241,927	27%	19%	92%
Other Essential Items							
Charcoal 50kg	30,188	38,000	37,188	31,669	23%	-2%	88%
Cowpeas 1 kg	7,250	10,400	9,750	8,229	34%	-6%	100%
Unskilled Labor Wage Rate	29,250	37,750	36,250	30,867	24%	-4%	27%
Firewood Bundle	2,133	2,750	2,833	2,320	33%	3%	-65%
Local Sesame Oil 1 litre	25,083	25,500	25,667	21,827	2%	1%	54%
Exchange Rate (Somaliland Shilling per USD)	5,181	6,018	6,235	5,226	20%	4%	-6%
Construction Materials*							
Cement 50kg	43,950	48,500	49,102	41,847	12%	1%	-
Cooking Pot Aluminium 7 Litre	94,000	82,538	90,000	76,785	-4%	9%	-
Galvanised Iron Sheet Ga 26	48,000	-	-	-	-	-	-
Hollow Concrete Block 10cm x 20cm x 40cm	3,225	2,933	2,817	2,306	-13%	-4%	-
Non Collapsible Jerrycan 10 Litre	6,775	5,000	5,125	4,278	-24%	2%	-
Plastic Tarpaulin 14m x 5 m	68,000	93,313	89,625	76,464	32%	-4%	-
Roofing Nails 15Kg	147,750	183,750	171,563	146,462	16%	-7%	-
Timber 2in x 4in x 20ft	124,000	110,433	126,250	107,752	2%	14%	-
Woven Dry Raised Blanket 150cm x 200cm	60,375	65,269	64,500	55,001	7%	-1%	-
Terms of Trade							
Labour Wage (Daily)/ Cereal (Rice(Kg))	6	7	8	-	34%	6%	-18%
Local Goat (Head)/ Cereal (Rice(Kg))	45	47	62	-	37%	31%	24%
Price Indices							
Consumer Price Index	120	116	117	-	-3%	1%	-
Purchasing Power Index	0.83	0.86	0.85	-	3%	-1%	-

* Data has been collected since May 2010

* Data has been collected since May 2010

Figure 44: Imported commodity prices compared to exchange rates

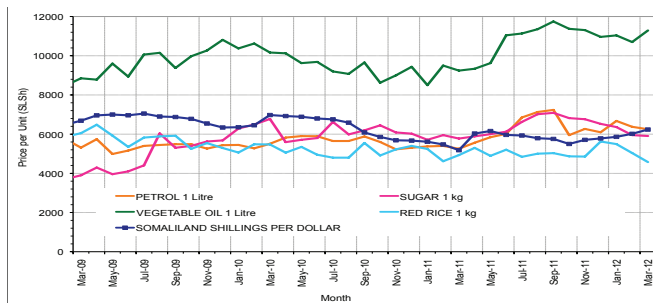


Figure 46: Goat Local Quality

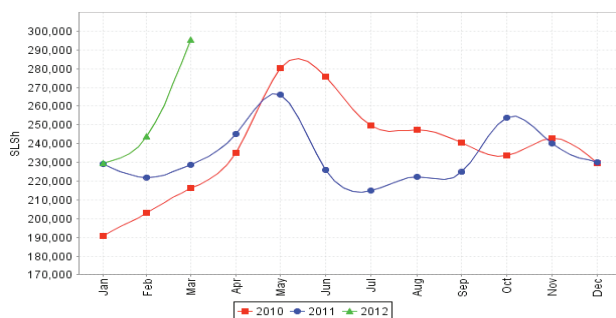


Figure 48: Water Drum

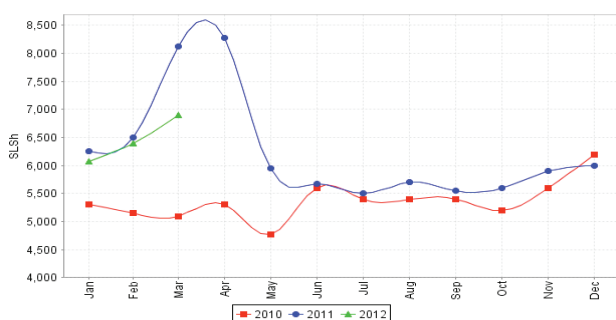


Figure 45: Trends in wage rates, staple cereal prices and relative purchasing power

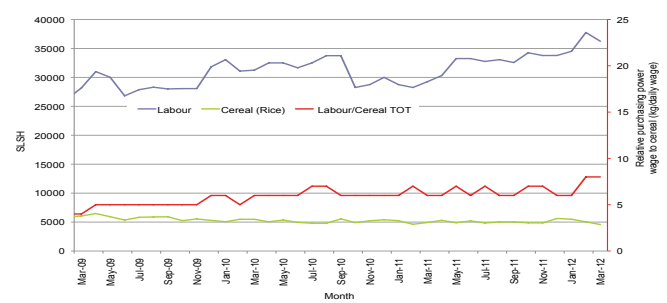


Figure 47: Exchange Rate

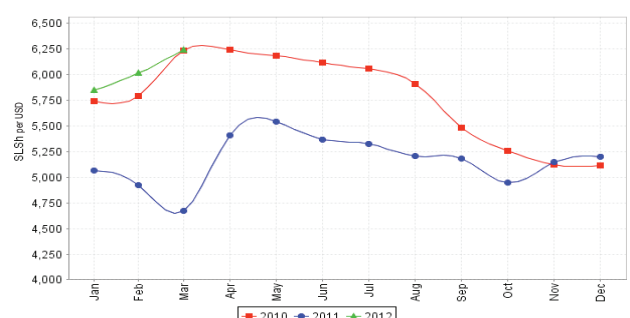
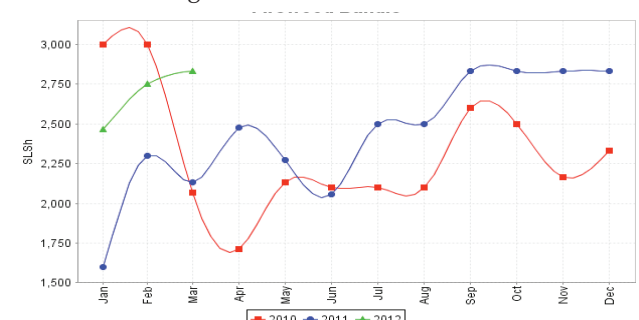


Figure 49: Firewood Bundle



Trends in Livestock Exports

Table 2: Berbera Livestock Exports (Number of Heads)

	1994	1995	1996	1997	1998	1999	2000	2001	2002	2003	2004	2005	2006	2007	2008	2009	2010	2011	2012 Jan-Feb
Shoats	1,572,656	2,683,597	2,376,646	2,814,495	957,224	2,048,136	1,601,083	51,546	341,711	563,107	859,404	1,023,795	1,017,242	1,350,054	1,219,519	1,556,003	2,584,810	3,104,684	464,648
Cattle	173,400	167,128	65,127	66,939	92,213	89,967	63,263	20,973	37,547	84,312	131,852	148,151	85,631	88,143	80,051	88,005	133,021	150,934	38,509
Camel	38,553	21,993	42,801	50,587	11,663	37,430	16,984	3,473	18,864	21,874	5,147	5,069	22,810	14,245	26,515	20,206	92,651	107,281	21,674

Figure 50: Berbera Livestock Exports (Number of Heads)

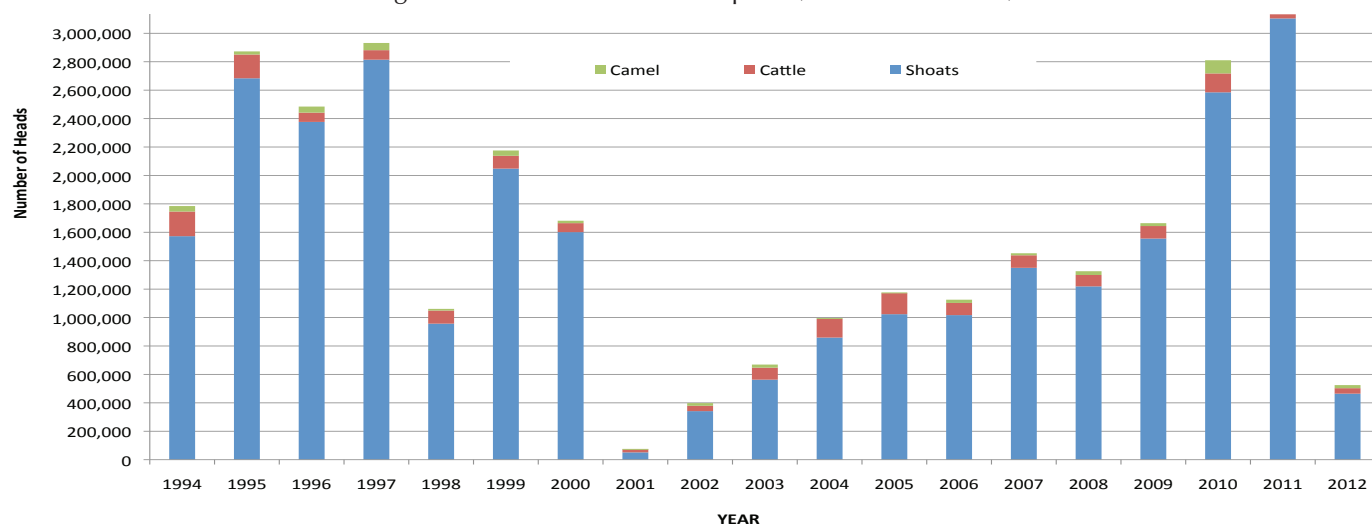
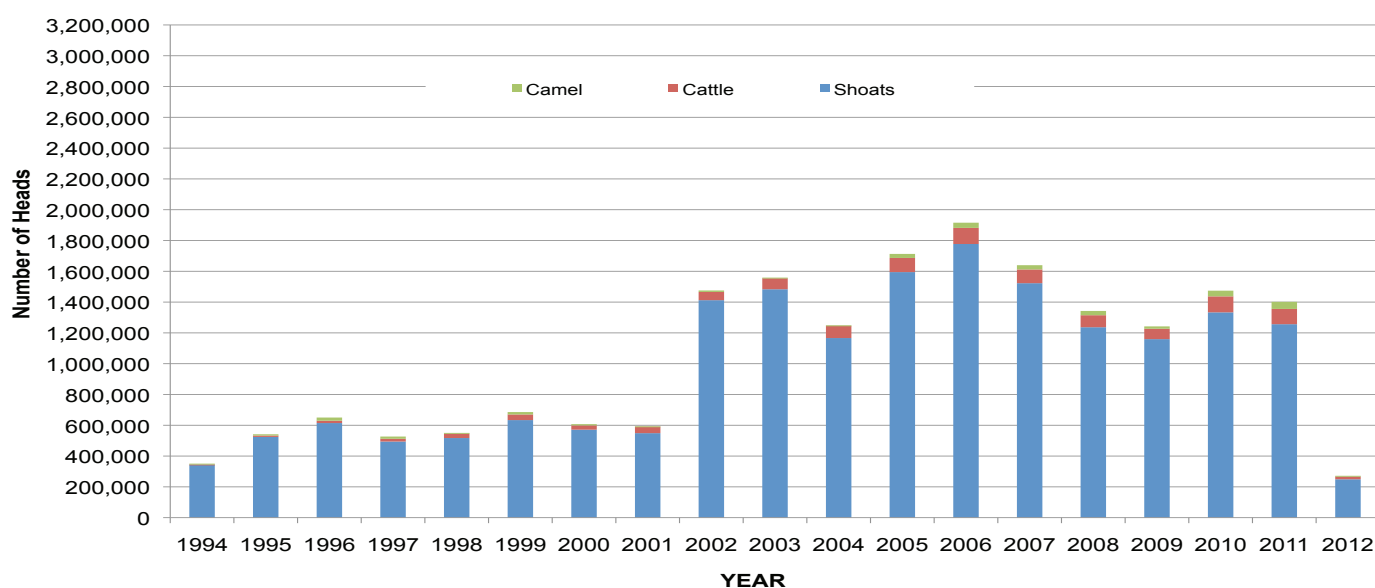


Table 3: Bossaso Livestock Exports (Number of Heads)

	1994	1995	1996	1997	1998	1999	2000	2001	2002	2003	2004	2005	2006	2007	2008	2009	2010	2011	2012 Jan-Mar
Shoats	344,000	524,346	614,407	494,320	517,020	633,669	571,455	548,853	1,412,450	1,483,409	1,166,480	1,594,859	1,777,283	1,522,855	1,236,775	1,159,454	1,333,478	1,256,535	249,200
Cattle	1,450	8,795	15,335	17,831	29,492	36,586	27,604	42,248	53,313	71,328	79,994	91,910	104,595	89,190	78,046	67,385	103,808	99,058	17,923
Camel	5,397	8,392	20,462	14,599	3,938	15,544	8,177	1,950	9,720	4,259	2,488	26,109	33,724	27,580	27,639	15,331	36,865	45,878	4,770

Figure 51: Bossaso Livestock Exports (Number of Heads)

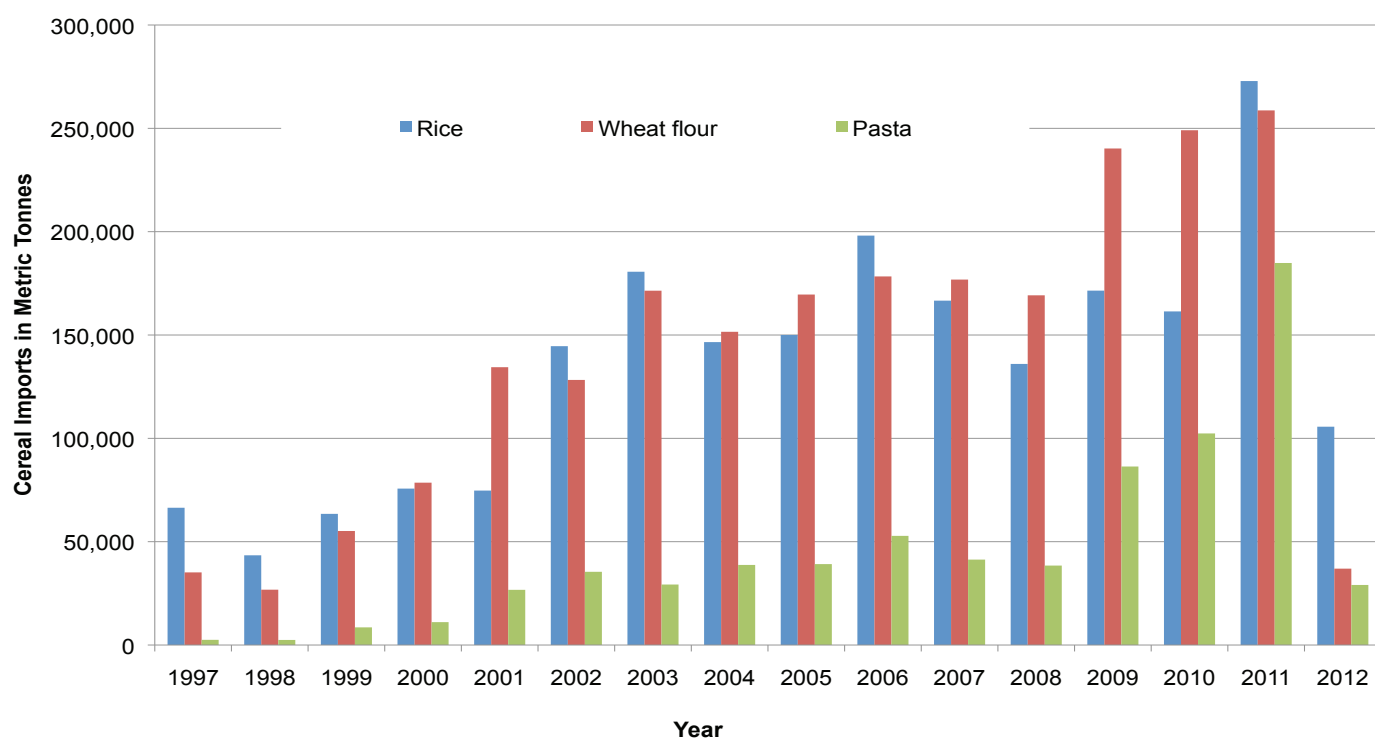


Trends in Cereal Imports

Table 4: Total Cereal Imports (Berbera,Bossaso,Elmaan)

	1997	1998	1999	2000	2001	2002	2003	2004	2005	2006	2007	2008	2009	2010	2011	2012
Rice	66,419	43,410	63,464	75,687	74,729	144,600	180,614	146,567	150,017	198,101	166,626	136,007	171,472	161,415	272,877	105,636
Wheat flour	35,143	26,774	55,176	78,555	134,425	128,263	171,442	151,555	169,583	178,345	176,821	169,208	240,247	249,080	258,679	36,954
Pasta	2,510	2,455	8,544	11,071	26,702	35,425	29,273	38,749	39,153	52,815	41,331	38,441	86,372	102,373	184,849	29,059

Figure 52: Total Cereal Imports (Berbera,Bossaso and Elmaan)



2012 Data excludes Berbera (March) and Elmaan (February and March)