

Market Data Update

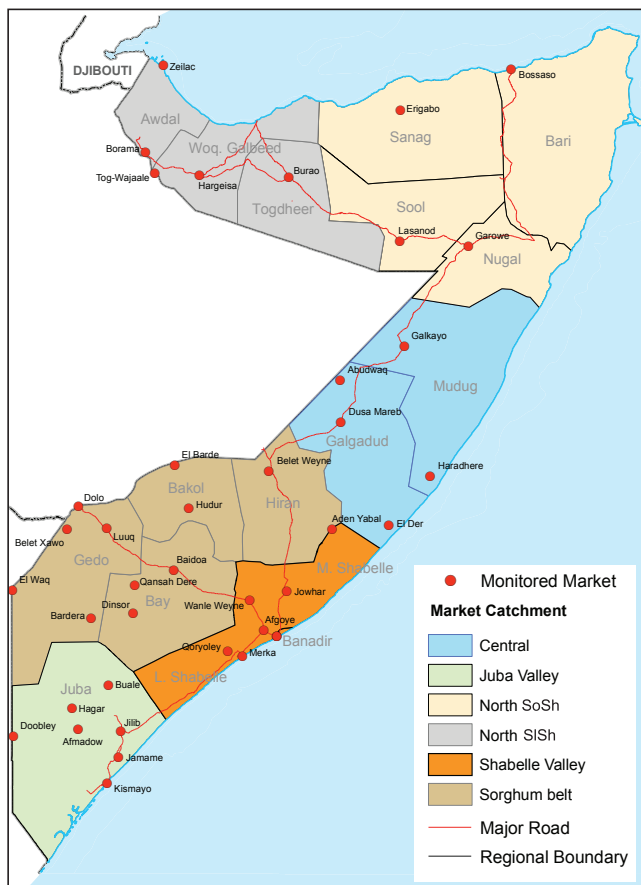


Food Security and Nutrition Analysis Unit - Somalia



Monthly Market Analysis, March 2011

Highlights



In March 2011, the Consumer Price Index (CPI), which is based on a fixed minimum basket of goods and services, remained stable in all zones, except in Northeast, where it exhibited a monthly increase of 4 percent. Compared to the same month a year ago, the inflation is 15-35 percent higher in Somali Shilling (SoSh) and stable in Somaliland Shilling (SiSh) zones. However, the inflation rate is still significantly above the reference value (March 2007) in SoSh areas, (59-171%); it is equivalent to only 14 percent in SiSh zone.

In the last month, the prices of locally produced cereals increased in markets of Juba and Banadir regions, while remaining stable in other markets. Rising cost of cereals in these regions is attributable to high demand from neighbouring areas and hoarding by retailers and producers in view of the anticipated low Gu 2011 seasonal production. Compared to a year ago, the local cereal prices are considerably higher both for maize (39-65%) and sorghum (83%) in the respective producing southern regions (Juba, Shabelle and Sorghum Belt) reflecting low cereal supply and volatility of trade activities due to insecurity. Conversely, in Northwest the locally produced cereal prices are favourable for consumers due to high supply from bumper *Gu/Karan* 2010 harvest in the zone, which brought yellow maize prices down significantly (68%), and kept white sorghum prices stable compared to last year (Mar. '10).

Imported commodity prices have not changed considerably since February 2011, with the exception of fuel in Sorghum Belt, wheat flour in Mogadishu, and rice in Central, Northwest and Banadir. However, the prices of all imported commodities are generally higher compared to a year ago in most monitored markets with the exception of those in SiSh areas (marginal declines of sugar, vegetable oil and rice). The rising prices of imported commodities are mainly due to increased taxation by multiple authorities and freelance militias, ripple effect of increased diesel prices inflating transportation costs and trade disruption attributed to fighting in the south in March 2011.

Livestock prices showed a slight monthly increase in March in most markets, although they are significantly lower when compared to the same month last year. The monthly increase in prices of livestock are mainly attributable to undersupply, occasioned by lack of sellable animals due to the ongoing drought situation. In contrast, camel local quality prices decelerated by 32 percent in Northwest while remaining stable in all other regions compared to Feb '11. Low seasonal calving and poor pasture conditions have resulted in low milk supplies and increased milk prices in North, Shabelle and Juba regions. Further, water prices rose moderately (12-23%) across the country due to depleting water resources and intensified water resource competition resulting from ongoing drought. Prices of other essential items exhibited mixed trends.

Labour wages showed either relative stability or slight declines in March. Faced with rising prices of grains, the peoples' purchasing power is greatly eroded. The terms of trade (ToT) between daily labour wage and local cereals declined in all zones of the North, Central, Juba and Shabelle, while maintaining their levels as of February 2011 in all other regions. Compared to a year ago, significant decline in the ToT is observed in southern regions of Shabelle (32%), Juba (61%) and Sorghum Belt (45%). The amount of cereals that can be exchanged for one day of labour is equivalent to 3-6kg, with the lowest ToT recorded in Central.

Exchange rate between USD to Somali Shilling (SoSh) and Somaliland Shilling (SiSh) remained relatively stable in March 2011 in most parts of Somalia with marginal appreciation observed in Somaliland. SiSh gained significant value (25%) when compared to March 2010 mainly due to Government control of the SiSh and higher foreign exchange earnings from livestock exports as well as from the remittances from diaspora. The SoSh remained stable in the same period of comparison.

Regional Highlights

Juba Valley: prices of most monitored commodities remained generally stable in the past one month except for maize, milk and cattle which mounted from the February 2011 levels. The decline in casual labour wage rate consequently worsened the ToT between labour and maize by 13 and 61 percent from the previous month (Feb. '11) and last year (Mar '10), respectively.

Sorghum Belt: prices of most monitored commodities remained generally stable over the last month. The exceptions are diesel, petrol and livestock for which prices are moderately above their respective levels in Feb 2011. However, stability in cereal prices was undermined by reduced purchasing power attributable to reduced labor rates (9% decline).

Shabelle Valley: prices of most monitored commodities remained stable over the month of March 2011. However, livestock prices declined in most markets. Stability in labour rates and cereal prices over the month of March 2011 maintained the ToT. However, the purchasing power has significantly weakened when compared to a year ago, with the ToT labor to cereal exhibiting a decrease of 32 percent.

Central: labour wage rates remained generally stable in the zone, while changes in the prices of sorghum and a local goat and other items over the past one month were marginal, with no effect on the terms of trade. Hence, as in Feb'11, 35 kilograms of cereals can be fetched by the sale of one local goat.

Northeast: with the exception of milk and cowpea prices, which appreciated by 15 and 31 percent over the last month, respectively, livestock prices, purchasing power and other monitored commodities remained generally stable in March 2011 compared to the previous month.

Northwest: all other commodities including cereal prices are stable except camel prices significantly fell (32%). labour to cereal ToT is at the same level as of last month.

Banadir: sorghum prices levels are significantly elevated (16%, 155%) when compared to the previous month and a year ago, respectively. Labour rates improved marginally thus leveling the ToT between labour rates and cereals.

This Market Data Update is a monthly report that presents a compilation of tabulated graphical market information produced regularly as part of the monthly monitoring process.

The weekly price data is collected from 44 main markets throughout Somalia since 1995.

The 5-year period of 2003-07 was characterised by fairly stable prices and relatively low inflation. In this bulletin these years are used as a reference period for seasonal trends comparison.

Market analysis is an integral part of all of FSNAU's Annual Food Security Projections and seasonal technical reports (Technical Reports on FSNAU Post *Gu* and *Deyr* Analysis).

This data is available online on www.fsnaui.org/ids.

Technical and Managerial Support



Funding Agencies

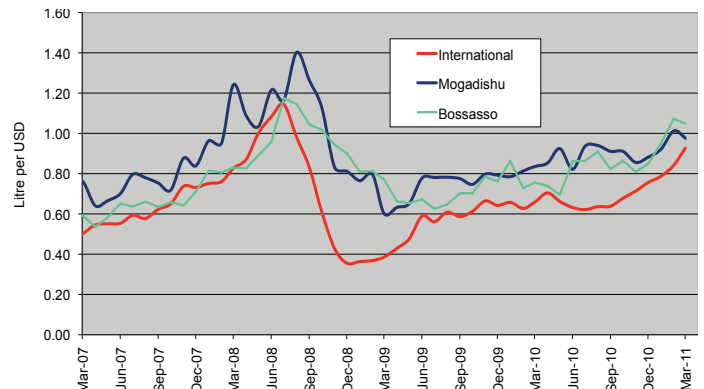
International Market Highlights

Diesel: The prices of Abu Dhabi/ Dubai crude oil, ¹ is the main source of oil import into Somalia, sustained its upward trend of the last 30 months, settling at \$109 per barrel in March 2011. The current price reflects 10 percent and 40 percent increases from last month and last year respectively. The oil prices are expected to continue rising, so long as the political unrest in the oil-rich Middle East and North Africa regions persists. International oil price transmission is clearly manifested in Somalia where current diesel prices in the country's main port cities of Mogadishu and Bossaso are 18 and 32 percent higher than the same month last year, respectively. However, the prices remained stable between February and March.

Rice: international export prices of rice² decreased marginally in March 2011, averaging USD 429 per ton, which is reflective of ample export supplies following the recent harvests in the large exporting countries in Asia. At the current levels, prices are nearly 45 percent below their peak in May 2008. In contrast, current retail prices of imported rice in Mogadishu city are higher than last month (16%) and last year (13%) mainly due to rising freight and insurance charges resulting from surging international crude oil prices and persistent piracy along the Somali coastline. The cost of rice however remains relatively stable in Bossaso over the same periods. According to GIEWS, the prospect of rice market is projected to sustain stability in the coming months.

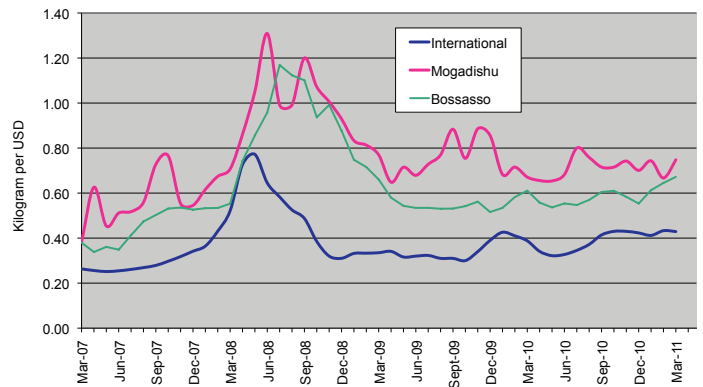
Sugar: FAO sugar price index averaged 372 points in March 2011, indicating 10 percent decrease from the highs in the beginning of this year. The international sugar price trend is mirrored in the local markets in Somalia with sugar price stability observed in Mogadishu and Bossaso. The delayed effects of international sugar price dynamics will ultimately slow down the retail prices of this commodity in the domestic markets in short-run. The prospects of improved outlook in sugar production by the two key world producers, India and Brazil, is favorable³, which is likely to reverse the two year long deficit. However, further direction of the international prices will be gauged from the developments in the next six months.

Figure 1: Comparison of Diesel Prices: International (Asia Dubai), Mogadishu and Bossasso



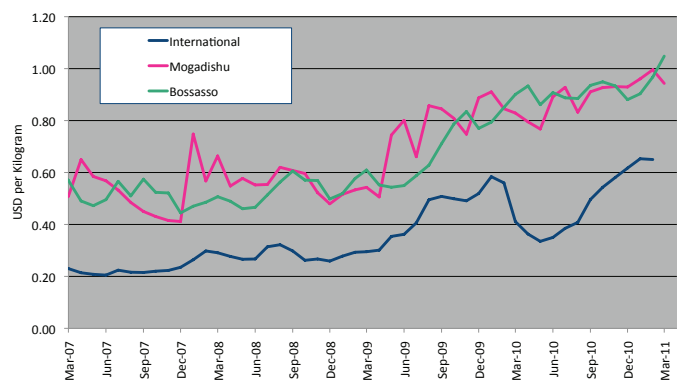
Source: FAO Statistics and FSNAU Market Price Monitoring System, 2010.

Figure 2: Comparison of Rice Prices: International (Bangkok FOB), Mogadishu and Bossasso



Source: FAO Statistics and FSNAU Market Price Monitoring System, 2010.

Figure 3: Comparison of Sugar Prices: International (ISO), Mogadishu and Bossasso



Source: International Sugar Organization and FSNAU Market Price Monitoring System - 2011

¹ Weekly Abu Dhabi Murban Spot Price FOB (Dollars per Barrel), US Energy Information Administration, http://www.eia.doe.gov/dnav/pet/pet_pri_wco_k_w.htm
² Bangkok, Rice (Thai A1 Super 1/ B), Export, US Dollar, Tonne, FAO GIEWS 2011

³ International Sugar Organization (ISO)

National Trends in Market Prices

Figure 4: Relative Purchasing Power for Selected Regions
(Terms of Trade between wage rates and selected cereals)

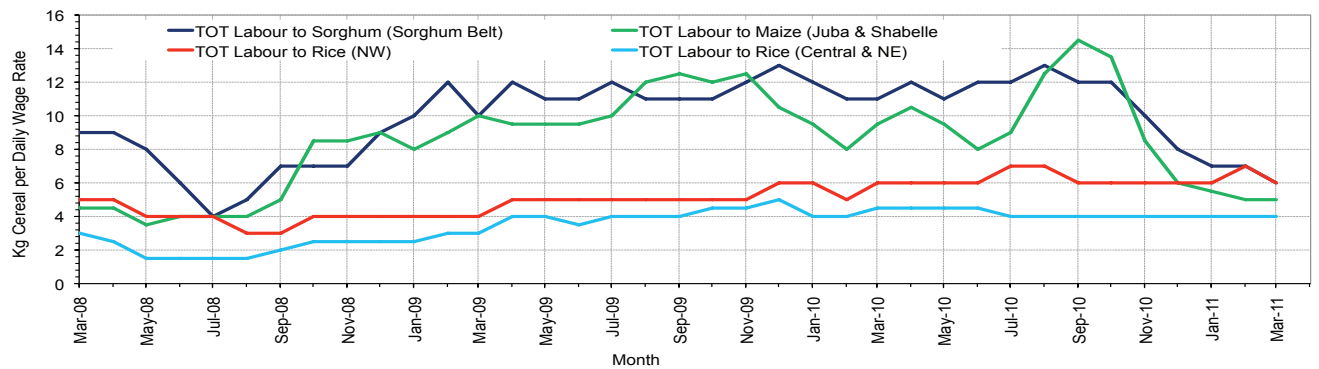


Figure 5: Monthly Exchange Rate for Selected Regions (SoSh and SiSh to USD)

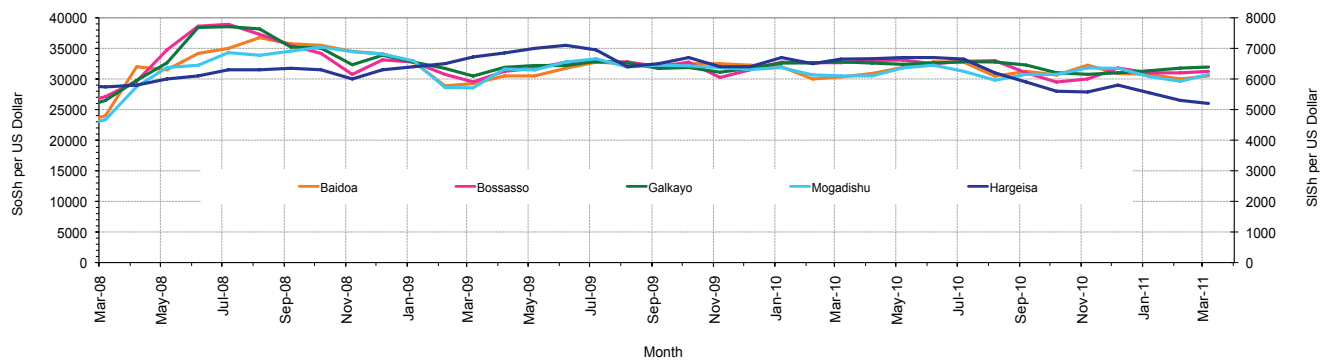


Figure 6: Monthly Trends in Consumer Price Index (CPI)

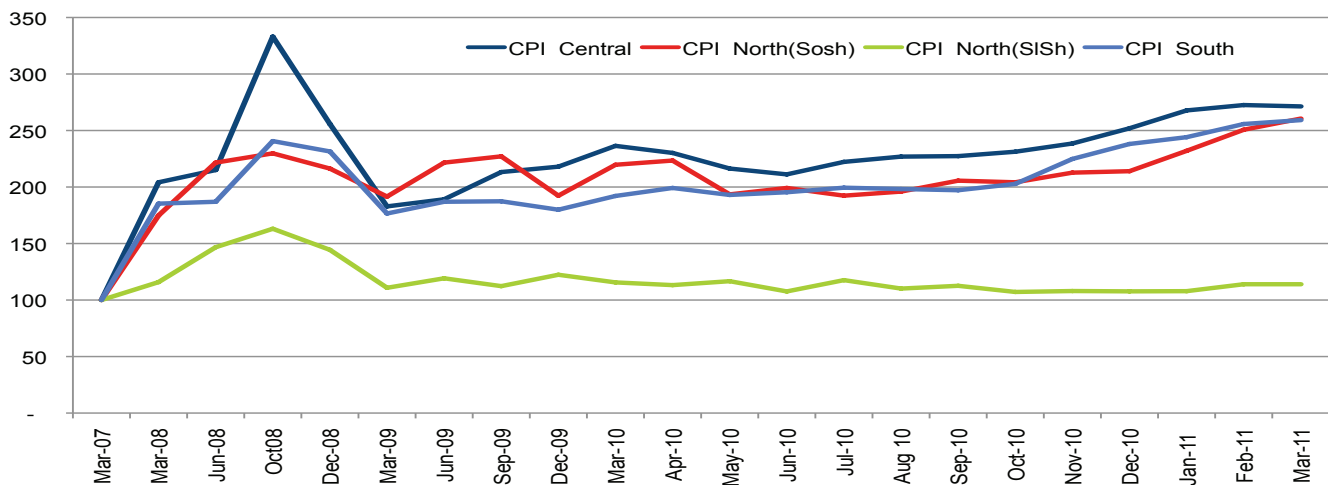
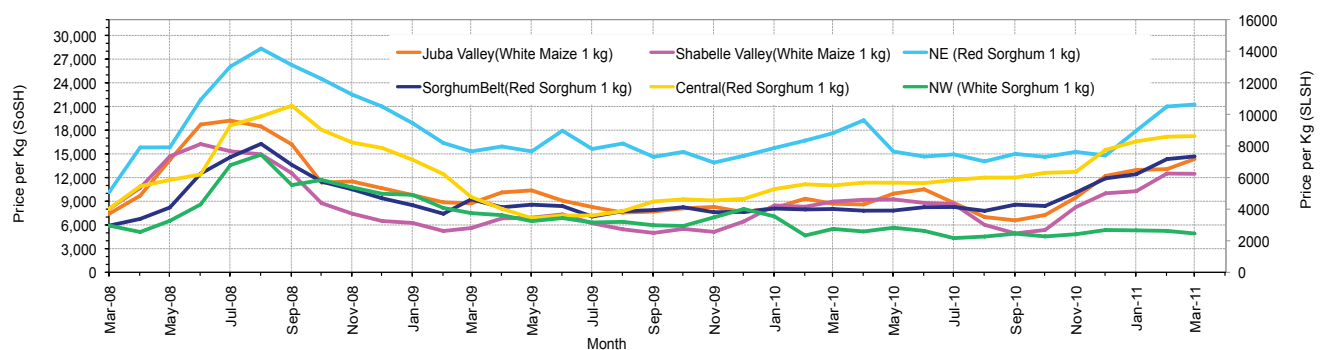


Figure 7: Monthly Trends in Cereal Prices



Regional analysis: Juba Regions

Indicator	5-Year Average	Mar-10	Feb-11	Current Nominal Price	Current Real (Deflated) Price	% Change Same Month Previous Year	% Change Previous Month	% Change 5-year avrg (2003-07)
Imported Commodities Prices								
Diesel 1 litre	11,775	29,943	32,393	33,500	12,824	12%	3%	185%
Imported Red Rice 1kg	7,490	21,371	21,429	22,250	8,484	4%	4%	197%
Petrol 1 litre	13,662	32,371	34,179	33,714	12,907	4%	-1%	147%
Sugar	8,025	26,051	29,464	30,571	11,694	17%	4%	281%
Vegetable Oil 1 litre	17,422	44,346	52,714	54,786	21,036	24%	4%	214%
Wheat Flour 1kg	7,531	16,800	18,857	19,571	7,450	16%	4%	160%
Wheat Grain 1kg	-	12,600	16,000	16,000	6,073	27%	0%	-
Cereal Prices								
Red Sorghum 1kg	2,045	8,880	-	-	-	-	-	-
White Maize 1kg	2,447	8,681	13,071	14,357	5,439	65%	10%	487%
Livestock & Livestock Product Prices								
Camel Local Quality (Head)	3,325,841	7,803,334	6,879,167	6,922,917	2,670,749	-11%	1%	108%
Cattle Local Quality (Head)	1,395,005	3,844,433	1,650,000	1,957,500	755,100	-49%	19%	40%
Fresh Camel Milk 1 litre	6,611	22,143	27,907	27,907	10,666	26%	13%	322%
Goat Export Quality (Head)	380,136	1,079,257	819,792	865,625	333,857	-20%	6%	128%
Goat Local Quality (Head)	267,102	714,686	489,107	522,857	201,617	-27%	7%	96%
Other Essential Items								
Charcoal 50kg	32,025	87,729	68,036	62,143	23,875	-29%	-9%	94%
Cowpeas 1 kg	6,595	21,477	25,550	27,321	10,440	27%	7%	314%
Unskilled Labor Wage Rate	31,375	103,171	70,357	67,143	25,804	-35%	-5%	114%
Firewood Bundle	2,099	6,371	6,143	6,143	-	-4%	0%	193%
Local Sesame Oil 1 litre	19,911	78,029	75,786	78,250	30,089	0%	3%	293%
Exchange Rate (Somali Shilling per USD)	15,458	30,203	30,208	30,423	11,637	1%	1%	97%
Construction Materials*								
Cement 50kg	-	-	391,429	364,643	140,579	-	-7%	-
Cooking Pot Aluminium 7 Litre	-	-	297,000	322,500	124,320	-	9%	-
Galvanised Iron Sheet Ga 26	-	-	160,714	163,393	62,937	-	2%	-
Hollow Concrete Block 10cm x 20cm x 40cm	-	-	20,000	19,250	7,327	-	-4%	-
Non Collapsible Jerrycan 10 Litre	-	-	30,000	27,500	10,509	-	-8%	-
Plastic Tarpaulin 14m x 5 m	-	-	600,000	600,000	231,379	-	0%	-
Roofing Nails 15kg	-	-	804,286	804,286	310,192	-	0%	-
Timber 2in x 4in x 20ft	-	-	334,000	324,000	124,899	-	-3%	-
Woven Dry Raised Blanket 150cm x 200cm	-	-	-	-	-	-	-	-
Terms of Trade								
Labour Wage (Daily)/ Cereal (Maize(Kg))	13	12	5	5	5	-61%	-13%	-64%
Local Goat (Head)/ Cereal (Maize(Kg))	109	82	37	36	37	-56%	-3%	-67%
Price Indices								
Consumer Price Index	-	194	256	259	-	34%	1%	-
Purchasing Power Index	-	0.52	0.39	0.39	-	-25%	-1%	-

* Data has been collected for the past 10 months only

Figure 8: Imported commodity prices compared to exchange rates

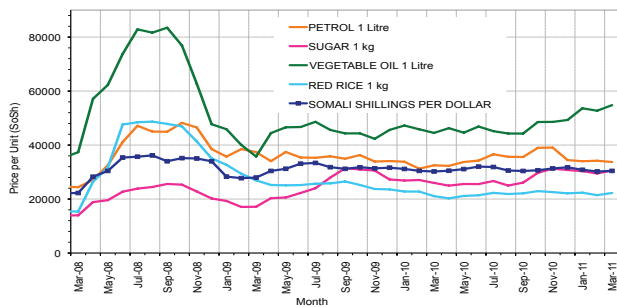
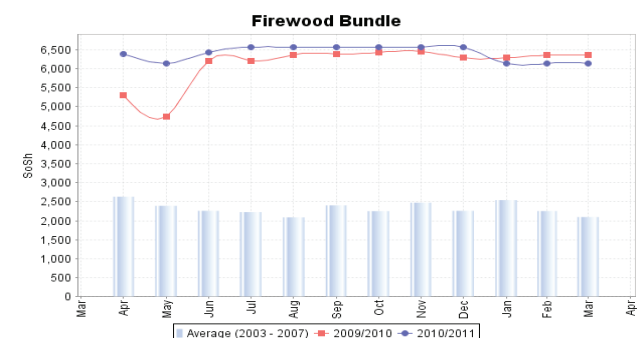
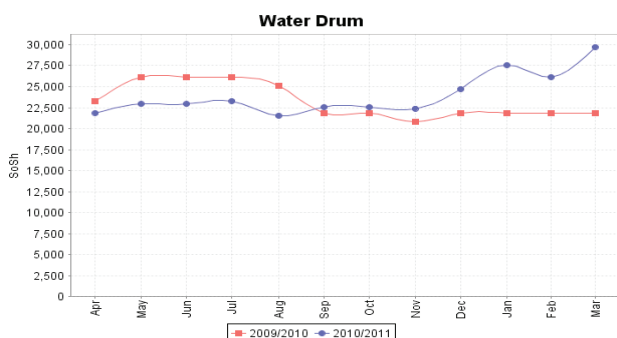
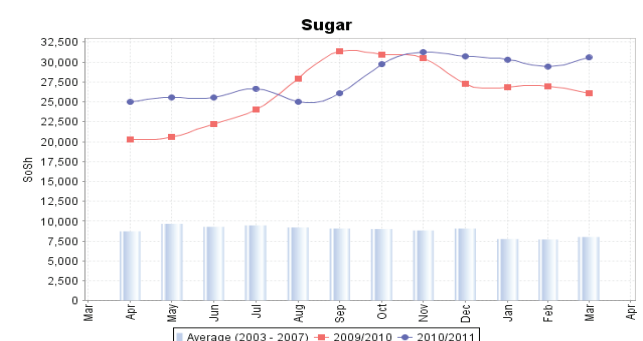
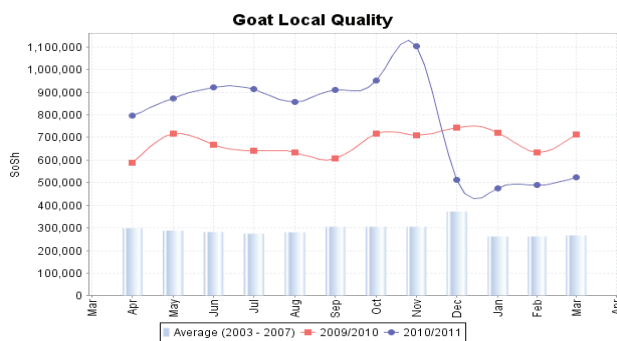
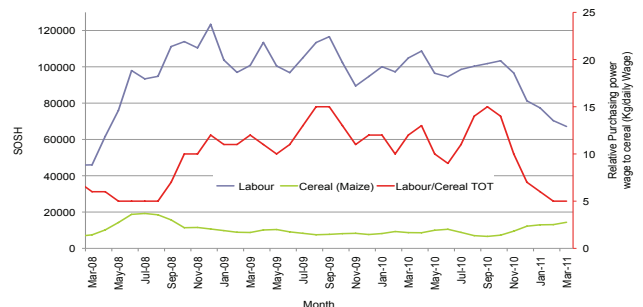


Figure 9: Trends in wage rates, staple cereal prices and relative purchasing power



Regional analysis: Sorghum Belt Regions

Indicator	5-Year Average	Mar-10	Feb-11	Current Nominal Price	Current Real (Deflated) Price	% Change Same Month Previous Year	% Change Previous Month	% Change 5-year avg (2003-07)
Imported Commodities Prices								
Diesel 1 litre	10,992	29,000	33,273	35,886	13,745	24%	8%	226%
Imported Red Rice 1kg	7,766	23,795	23,955	24,500	9,352	3%	2%	215%
Petrol 1 litre	13,414	29,591	30,975	33,114	12,675	12%	7%	147%
Sugar	8,942	28,405	31,841	32,114	12,290	13%	1%	259%
Vegetable Oil 1 litre	17,457	44,382	51,409	53,750	20,637	21%	5%	208%
Wheat Flour 1kg	7,613	19,636	20,909	21,114	8,046	8%	1%	177%
Wheat Grain 1kg	3,484	9,500	16,125	17,000	6,459	79%	5%	388%
Cereal Prices								
Red Sorghum 1kg	1,727	8,020	14,339	14,682	5,564	83%	2%	750%
White Maize 1kg	2,261	10,553	13,898	13,764	5,210	30%	-1%	509%
Livestock & Livestock Product Prices								
Camel Local Quality (Head)	2,961,304	8,756,500	6,427,273	7,270,455	2,804,829	-17%	13%	146%
Cattle Local Quality (Head)	1,176,390	2,936,750	1,090,000	1,198,929	462,445	-59%	10%	2%
Fresh Camel Milk 1 litre	7,076	17,991	26,636	26,727	10,211	49%	0%	278%
Goat Export Quality (Head)	369,544	1,201,091	1,013,409	1,080,000	416,562	-10%	7%	192%
Goat Local Quality (Head)	241,249	714,318	519,091	513,409	197,972	-28%	-1%	113%
Other Essential Items								
Charcoal 50kg	37,366	123,364	110,795	112,614	43,346	-9%	2%	201%
Cowpeas 1 kg	5,260	25,719	30,281	31,406	12,016	22%	4%	497%
Unskilled Labor Wage Rate	19,519	86,386	95,568	86,932	33,438	1%	-9%	345%
Firewood Bundle	1,632	4,818	5,182	5,091	1,864	6%	-2%	212%
Local Sesame Oil 1 litre	21,451	77,750	77,679	78,143	30,047	1%	1%	264%
Exchange Rate (Somali Shilling per USD)	15,780	30,590	30,320	31,041	11,876	1%	2%	97%
Construction Materials*								
Cement 50kg	-	-	339,250	349,250	134,640	-	3%	-
Cooking Pot Aluminium 7 Litre	-	-	334,250	339,500	130,878	-	2%	-
Galvanised Iron Sheet Ga 26	-	-	202,045	210,227	81,005	-	4%	-
Hollow Concrete Block 10cm x 20cm x 40cm	-	-	11,000	9,625	3,613	-	-13%	-
Non Collapsible Jerrycan 10 Litre	-	-	52,500	51,955	19,944	-	-1%	-
Plastic Tarpaulin 14m x 5 m	-	-	311,600	305,278	117,676	-	-2%	-
Roofing Nails 15Kg	-	-	830,972	829,722	320,005	-	0%	-
Timber 2in x 4in x 20ft	-	-	265,714	268,929	103,652	-	1%	-
Woven Dry Raised Blanket 150cm x 200cm	-	-	114,167	100,833	38,801	-	-12%	-
Terms of Trade								
Labour Wage (Daily)/ Cereal (Sorghum(Kg))	11	11	7	6	6	-45%	-11%	-48%
Local Goat (Head)/ Cereal (Sorghum(Kg))	140	89	36	35	36	-61%	-3%	-75%
Price Indices								
Consumer Price Index	-	194	256	259	-	34%	1%	-
Purchasing Power Index	-	0.52	0.39	0.39	-	-25%	-1%	-

* Data has been collected for the past 10 months only

Figure 10: Imported commodity prices compared to exchange rates

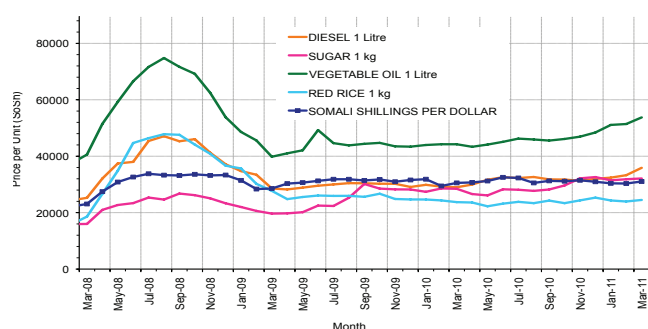
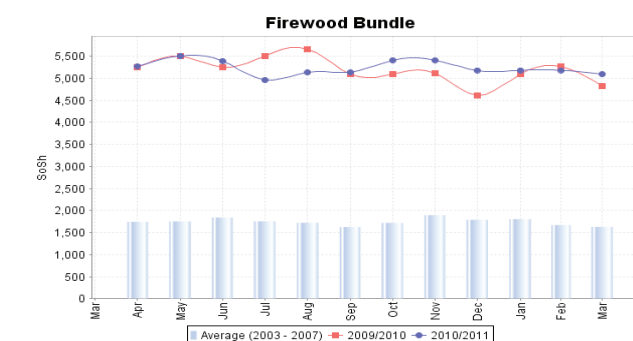
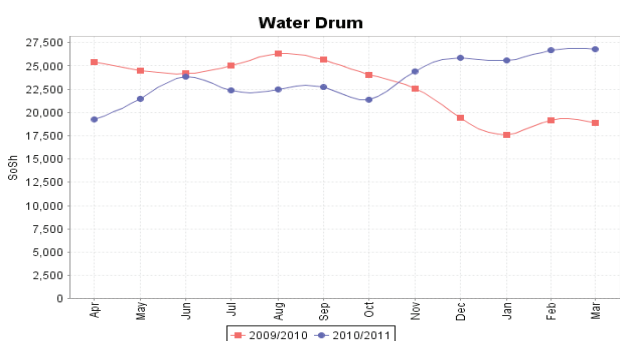
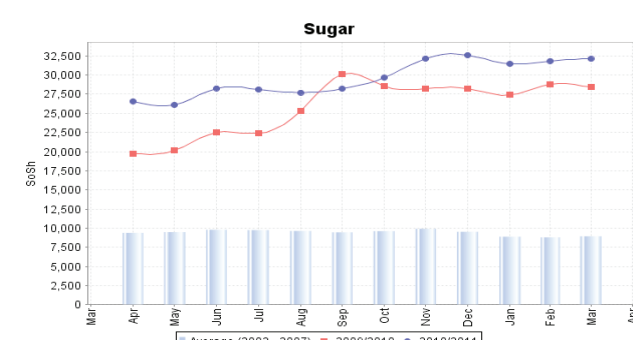
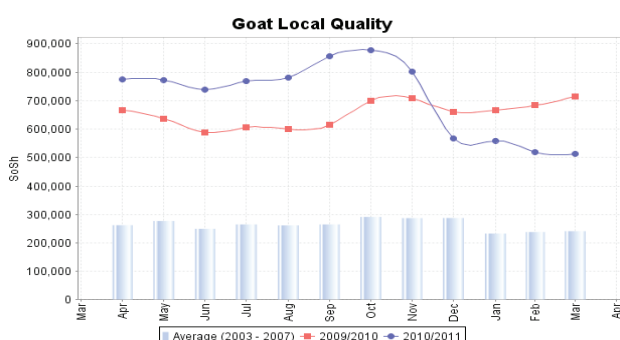
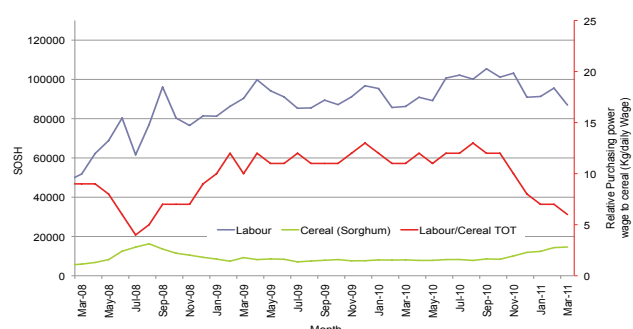


Figure 11: Trends in wage rates, staple cereal prices and relative purchasing power



Regional analysis: Shabelle Regions

Indicator	5-Year Average	Mar-10	Feb-11	Current Nominal Price	Current Real (Deflated) Price	% Change Same Month Previous Year	% Change Previous Month	% Change 5-year avrg (2003-07)
Imported Commodities Prices								
Diesel 1 litre	8,747	27,750	31,250	31,875	12,197	15%	2%	264%
Imported Red Rice 1kg	6,214	20,792	20,750	20,000	7,616	-4%	-4%	222%
Petrol 1 litre	11,452	28,667	31,667	31,542	12,069	10%	0%	175%
Sugar	7,273	26,292	30,125	29,750	11,377	13%	-1%	309%
Vegetable Oil 1 litre	13,124	34,292	46,583	47,833	18,354	39%	3%	264%
Wheat Flour 1kg	6,117	14,750	18,833	19,000	7,230	29%	1%	211%
Wheat Grain 1kg	3,944	-	-	-	-	-	-	-
Cereal Prices								
Red Sorghum 1kg	2,084	7,880	13,707	14,389	5,451	83%	5%	590%
White Maize 1kg	2,679	8,962	12,511	12,477	4,714	39%	0%	366%
Livestock & Livestock Product Prices								
Camel Local Quality (Head)	3,875,305	10,900,000	11,300,000	10,375,000	4,002,556	-5%	-8%	168%
Cattle Local Quality (Head)	1,103,608	3,680,000	2,715,000	2,460,000	948,964	-33%	-9%	123%
Fresh Camel Milk 1 litre	5,119	14,313	20,458	21,917	8,356	53%	7%	328%
Goat Export Quality (Head)	490,825	1,306,250	1,220,000	1,263,958	487,533	-3%	4%	158%
Goat Local Quality (Head)	328,391	1,012,500	959,167	839,583	323,810	-17%	-12%	156%
Other Essential Items								
Charcoal 50kg	41,691	109,170	109,278	103,958	40,007	-5%	-5%	149%
Cowpeas 1 kg	4,879	19,262	26,542	28,416	10,863	48%	7%	482%
Unskilled Labor Wage Rate	19,125	61,042	57,250	57,708	22,164	-5%	1%	202%
Firewood Bundle	2,040	3,833	4,167	4,167	-	9%	0%	104%
Local Sesame Oil 1 litre	17,592	56,167	60,667	61,000	23,434	9%	1%	247%
Exchange Rate (Somali Shilling per USD)	16,276	30,500	29,846	30,528	11,678	0%	2%	88%
Construction Materials*								
Cement 50kg	-	-	260,750	259,500	100,015	-	0%	-
Cooking Pot Aluminium 7 Litre	-	-	690,000	600,000	231,379	-	-13%	-
Galvanised Iron Sheet Ga 26	-	-	118,800	118,650	45,675	-	0%	-
Hollow Concrete Block 10cm x 20cm x 40cm	-	-	13,750	14,000	5,301	-	2%	-
Non Collapsible Jerrycan 10 Litre	-	-	53,000	45,375	17,406	-	-14%	-
Plastic Tarpaulin 14m x 5 m	-	-	275,000	275,000	105,995	-	0%	-
Roofing Nails 15kg	-	-	642,500	646,667	249,383	-	1%	-
Timber 2in x 4in x 20ft	-	-	58,550	57,300	22,006	-	-2%	-
Woven Dry Raised Blanket 150cm x 200cm	-	-	75,000	75,167	28,899	-	0%	-
Terms of Trade								
Labour Wage (Daily)/ Cereal (Maize(Kg))	7	7	5	5	5	-32%	1%	-35%
Local Goat (Head)/ Cereal (Maize(Kg))	123	113	77	67	69	-40%	-12%	-45%
Price Indices								
Consumer Price Index	-	194	256	259	-	34%	1%	-
Purchasing Power Index	-	0.52	0.39	0.39	-	-25%	-1%	-

* Data has been collected for the past 10 months only

Figure 12: Imported commodity prices compared to exchange rates

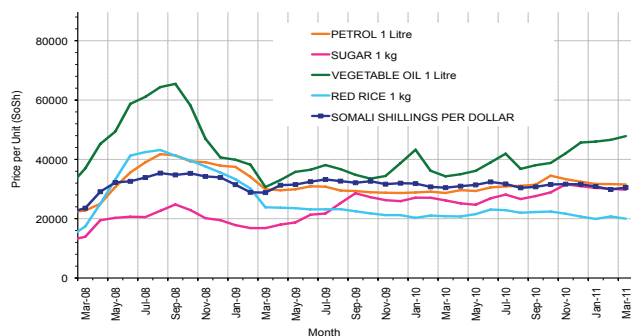
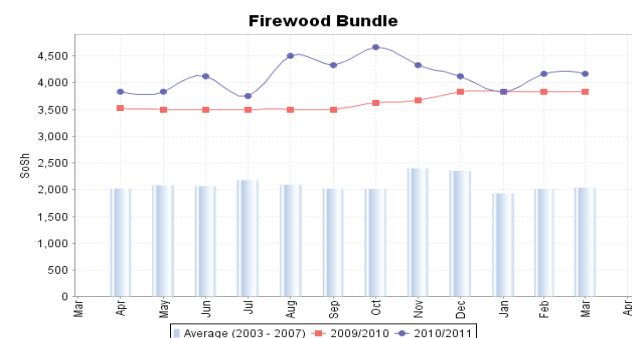
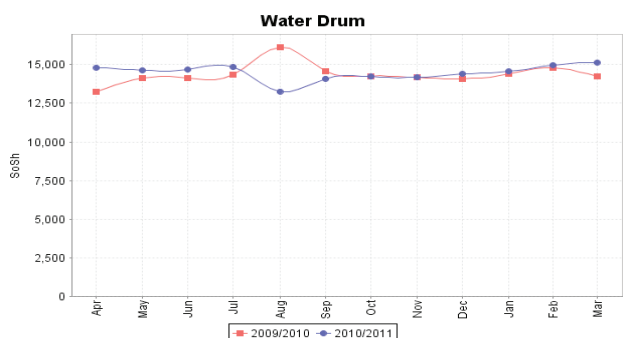
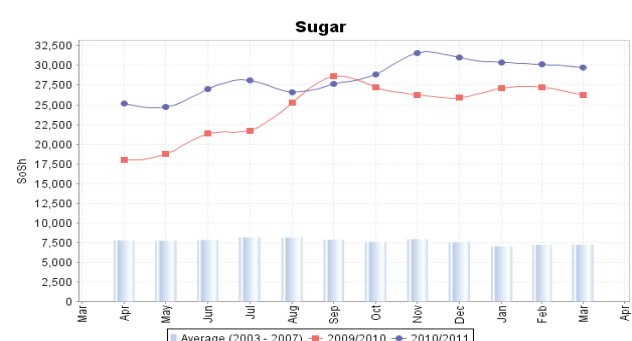
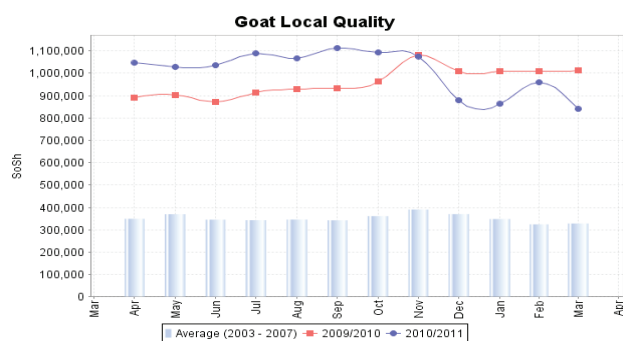
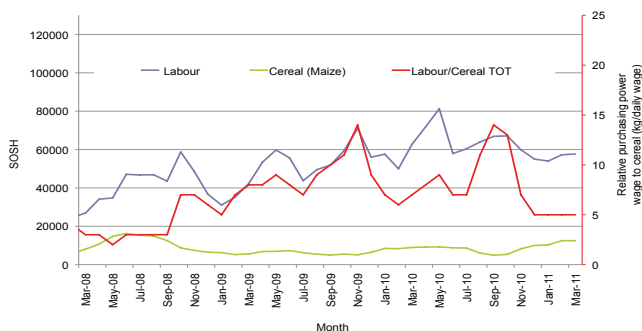


Figure 13: Trends in wage rates, staple cereal prices and relative purchasing power



Regional analysis:Banadir Region

Indicator	5-Year Average	Mar-10	Feb-11	Current Nominal Price	Current Real (Deflated) Price	% Change Same Month Previous Year	% Change Previous Month	% Change 5-year avrg (2003-07)
Imported Commodities Prices								
Diesel 1 litre	8,676	25,400	29,063	29,417	11,249	16%	1%	239%
Imported Red Rice 1kg	5,940	20,400	22,458	23,750	9,063	16%	6%	300%
Petrol 1 litre	10,406	24,400	29,021	29,333	11,217	20%	1%	182%
Sugar	6,756	25,200	29,333	29,458	11,265	17%	0%	336%
Vegetable Oil 1 litre	13,150	33,600	48,250	48,875	18,756	45%	1%	272%
Wheat Flour 1kg	6,133	13,800	18,104	19,583	7,455	42%	8%	219%
Wheat Grain 1kg	4,444	10,800	17,000	17,000	6,459	57%	0%	283%
Cereal Prices								
Red Sorghum 1kg	2,476	6,000	13,167	15,327	5,813	155%	16%	519%
White Maize 1kg	2,614	8,000	13,211	13,658	5,169	71%	3%	422%
Livestock & Livestock Product Prices								
Camel Local Quality (Head)	5,628,333	16,000,000	16,000,000	16,000,000	6,172,671	0%	0%	184%
Cattle Local Quality (Head)	2,478,333	4,060,000	3,925,000	3,925,000	1,514,158	-3%	0%	58%
Fresh Camel Milk 1 litre	4,500	16,000	24,604	23,967	9,146	50%	-3%	433%
Goat Export Quality (Head)	-	1,400,000	1,650,000	1,800,000	694,337	29%	9%	-
Goat Local Quality (Head)	518,750	1,300,000	1,673,750	1,781,250	687,103	37%	6%	243%
Other Essential Items								
Charcoal 50kg	96,500	134,000	140,604	139,458	53,703	4%	-1%	45%
Cowpeas 1 kg	4,474	14,200	28,607	29,438	11,257	107%	3%	558%
Unskilled Labor Wage Rate	58,750	60,000	71,667	76,875	29,558	28%	7%	31%
Firewood Bundle	43,100	4,000	6,854	6,500	-	63%	-5%	-85%
Local Sesame Oil 1 litre	17,596	70,000	65,500	66,042	25,379	-6%	1%	275%
Exchange Rate (Somali Shilling per USD)	16,324	30,400	29,960	30,250	11,570	0%	1%	85%
Construction Materials*								
Cement 50kg	-	-	216,339	215,458	-	-	0%	-
Cooking Pot Aluminium 7 Litre	-	-	180,000	250,000	-	-	39%	-
Galvanised Iron Sheet Ga 26	-	-	113,405	120,800	-	-	7%	-
Hollow Concrete Block 10cm x 20cm x 40cm	-	-	9,375	9,813	-	-	5%	-
Non Collapsible Jerrycan 10 Litre	-	-	47,500	44,375	-	-	-7%	-
Plastic Tarpaulin 14m x 5 m	-	-	255,000	222,083	-	-	-13%	-
Roofing Nails 15kg	-	-	464,253	482,417	-	-	4%	-
Timber 2in x 4in x 20ft	-	-	158,809	157,000	-	-	-1%	-
Woven Dry Raised Blanket 150cm x 200cm	-	-	98,917	85,833	-	-	-13%	-
Terms of Trade								
Labour Wage (Daily)/ Cereal (Maize(Kg))	22	8	5	6	6	-25%	4%	-75%
Local Goat (Head)/ Cereal (Maize(Kg))	198	163	127	130	133	-20%	3%	-34%
Price Indices								
Consumer Price Index	-	194	256	259	-	34%	1%	-
Purchasing Power Index	-	0.52	0.39	0.39	-	-25%	-1%	-

* Data has been collected for the past 10 months only

Figure 14: Bakara: Imported Commodity Prices compared to Exchange Rate

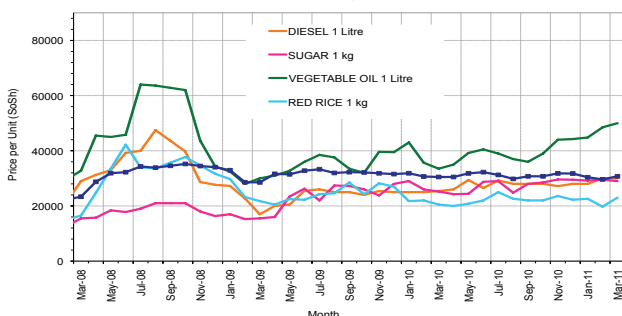
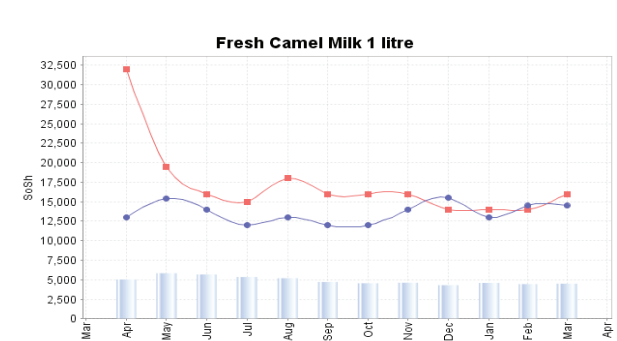
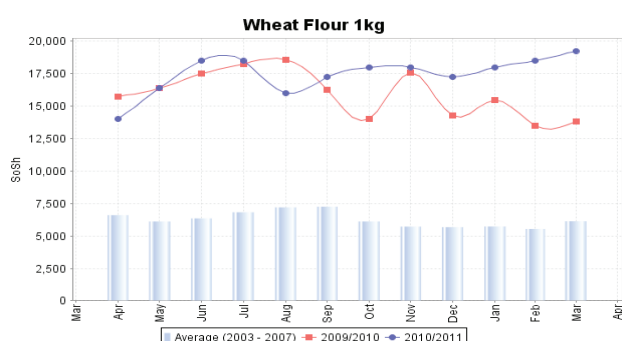
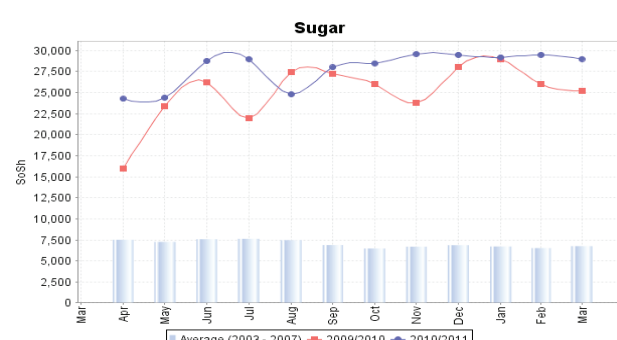
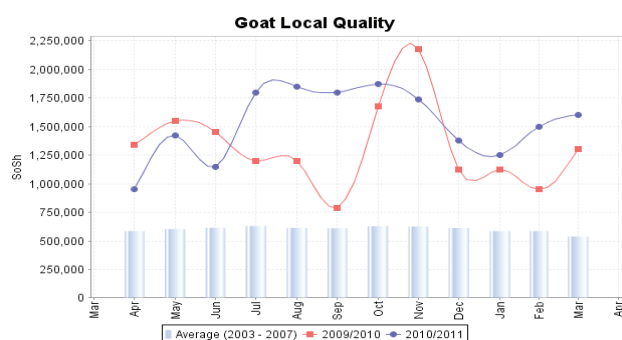
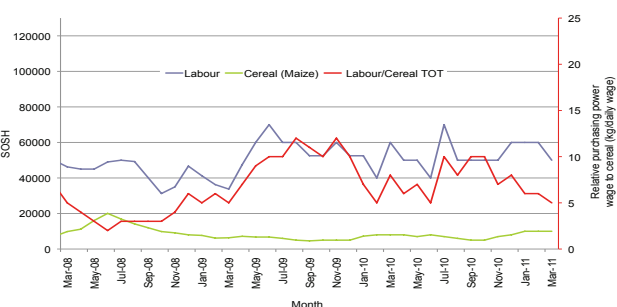


Figure 15: Bakara: Trends in Wage Rates, Staple Cereal Prices and Relative Purchasing Power



Regional analysis: Central Regions

Indicator	5-Year Average	Mar-10	Feb-11	Current Nominal Price	Current Real (Deflated) Price	% Change Same Month Previous Year	% Change Previous Month	% Change 5-year avrg (2003-07)
Imported Commodities Prices								
Diesel 1 litre	10,300	29,700	35,450	36,050	13,186	21%	2%	250%
Imported Red Rice 1kg	7,378	24,720	28,400	29,950	10,938	21%	5%	306%
Petrol 1 litre	11,625	27,700	31,850	31,250	11,417	13%	-2%	169%
Sugar	8,796	31,480	35,280	35,900	13,131	14%	2%	308%
Vegetable Oil 1 litre	18,108	54,000	58,750	58,150	21,331	8%	-1%	221%
Wheat Flour 1kg	7,443	19,680	22,820	23,300	8,487	18%	2%	213%
Wheat Grain 1kg	5,666	14,333	18,333	18,333	6,657	28%	0%	224%
Cereal Prices								
Red Sorghum 1kg	4,135	11,000	17,175	17,250	6,258	57%	0%	317%
White Maize 1kg	4,867	14,240	18,250	17,250	6,258	21%	-5%	254%
Livestock & Livestock Product Prices								
Camel Local Quality (Head)	2,131,166	8,750,000	7,787,500	7,825,000	2,883,825	-11%	0%	267%
Cattle Local Quality (Head)	1,513,111	2,350,000	-	-	-	-	-	-
Fresh Camel Milk 1 litre	10,950	51,860	42,600	43,200	15,821	-17%	1%	295%
Goat Export Quality (Head)	337,520	1,280,000	1,458,333	1,487,500	548,122	16%	2%	341%
Goat Local Quality (Head)	259,239	937,000	977,400	1,047,000	385,775	12%	7%	304%
Other Essential Items								
Charcoal 50kg	53,718	211,400	220,000	213,000	78,402	1%	-3%	297%
Cowpeas 1 kg	6,770	24,320	36,400	36,800	13,463	51%	1%	444%
Unskilled Labor Wage Rate	31,916	86,900	80,000	82,000	30,121	-6%	2%	157%
Firewood Bundle	3,775	24,850	33,800	33,000	12,062	33%	-2%	774%
Local Sesame Oil 1 litre	28,082	100,000	95,000	94,750	34,820	-5%	0%	237%
Exchange Rate (Somali Shilling per USD)	16,491	31,282	30,775	30,620	11,185	-2%	-1%	86%
Construction Materials*								
Cement 50kg	-	-	328,000	324,600	119,532	-	-1%	-
Cooking Pot Aluminium 7 Litre	-	-	408,000	414,500	152,665	-	2%	-
Galvanised Iron Sheet Ga 26	-	-	155,775	155,525	57,219	-	0%	-
Hollow Concrete Block 10cm x 20cm x 40cm	-	-	16,200	16,250	5,889	-	0%	-
Non Collapsible Jerrycan 10 Litre	-	-	50,000	51,000	18,696	-	2%	-
Plastic Tarpaulin 14m x 5 m	-	-	306,000	306,000	112,677	-	0%	-
Roofing Nails 15kg	-	-	811,940	819,440	301,907	-	1%	-
Timber 2in x 4in x 20ft	-	-	151,600	151,600	55,773	-	0%	-
Woven Dry Raised Blanket 150cm x 200cm	-	-	134,000	134,000	49,286	-	0%	-
Terms of Trade								
Labour Wage (Daily)/ Cereal (Rice)(Kg)	4	4	3	3	3	-22%	-3%	-37%
Local Goat (Head)/ Cereal (Rice)(Kg)	35	38	34	35	35	-8%	2%	-1%
Camel (Head)/Cereal (Kg)	289	354	274	261	264	-26%	-5%	-10%
Price Indices								
Consumer Price Index	-	236	273	271	-	15%	0%	-
Purchasing Power Index	-	0.42	0.37	0.37	-	-13%	0%	-

* Data has been collected for the past 10 months only

Figure 16: Imported commodity prices compared to exchange rates

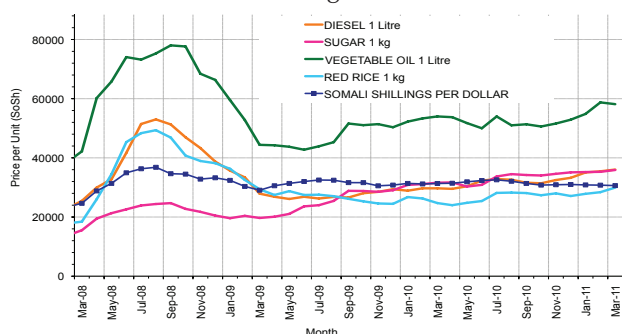
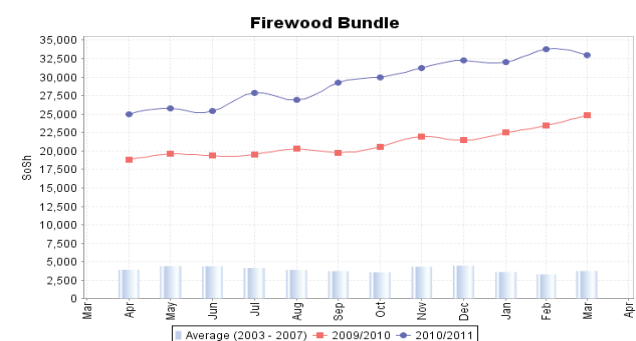
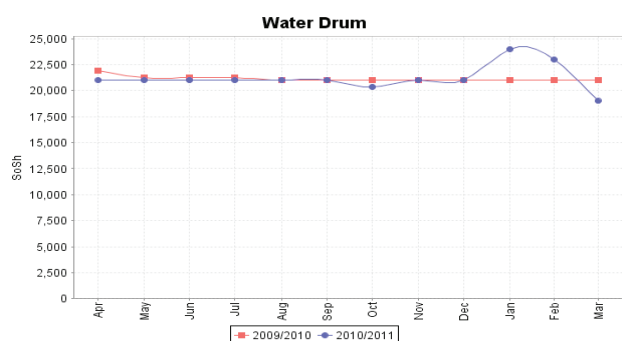
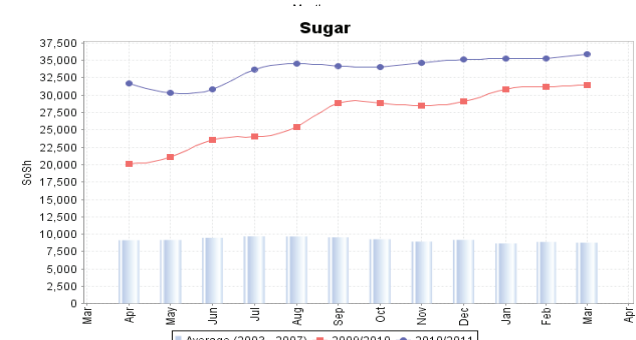
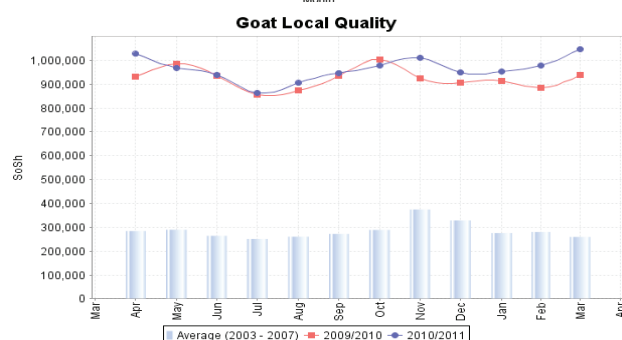
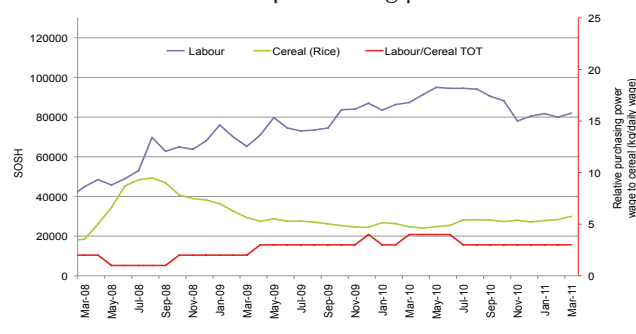


Figure 17: Trends in wage rates, staple cereal prices and relative purchasing power



Regional analysis: Northeast Regions

Indicator	5-Year Average	Mar-10	Feb-11	Current Nominal Price	Current Real Price (Deflated) Price	% Change Same Month Previous Year	% Change Previous Month	% Change 5-year avrg (2003-07)
Imported Commodities Prices								
Diesel 1 litre	8,514	26,188	32,313	32,438	12,349	24%	0%	281%
Imported Red Rice 1kg	6,296	21,250	22,375	22,813	8,655	7%	2%	262%
Petrol 1 litre	9,601	24,563	28,188	29,063	11,054	18%	3%	203%
Sugar	8,379	29,063	31,250	31,875	12,133	10%	2%	280%
Vegetable Oil 1 litre	17,485	42,688	51,375	50,188	19,162	18%	-2%	187%
Wheat Flour 1kg	6,758	17,125	19,875	20,625	7,816	20%	4%	205%
Wheat Grain 1kg	7,275	28,375	28,875	29,625	11,270	4%	3%	307%
Cereal Prices								
Red Sorghum 1kg	6,650	17,625	21,000	21,250	8,056	21%	1%	220%
White Maize 1kg	5,283	17,417	22,333	21,750	8,247	25%	-3%	312%
Livestock & Livestock Product Prices								
Camel Local Quality (Head)	3,029,208	9,950,000	13,418,750	13,837,500	5,310,594	39%	3%	357%
Cattle Local Quality (Head)	1,660,000	5,500,000	7,000,000	7,000,000	2,686,430	27%	0%	322%
Fresh Camel Milk 1 litre	14,201	47,708	47,229	54,500	20,817	14%	15%	284%
Goat Export Quality (Head)	397,751	1,298,333	1,306,250	1,375,000	527,611	6%	5%	246%
Goat Local Quality (Head)	360,012	1,119,375	1,206,250	1,245,000	477,719	11%	3%	246%
Other Essential Items								
Charcoal 50kg	69,454	268,750	373,750	348,750	133,747	30%	-7%	402%
Cowpeas 1 kg	9,420	30,250	32,333	42,333	16,147	40%	31%	349%
Unskilled Labor Wage Rate	44,000	107,188	111,000	112,500	43,076	5%	1%	156%
Firewood Bundle	6,833	31,938	32,500	31,125	11,845	-3%	-4%	356%
Local Sesame Oil 1 litre	29,951	95,417	85,833	88,333	33,801	-7%	3%	195%
Exchange Rate (Somali Shilling per USD)	16,527	32,375	31,063	31,438	11,966	-3%	1%	90%
Construction Materials*								
Cement 50kg	-	-	235,625	228,813	87,716	-	-3%	-
Cooking Pot Aluminium 7 Litre	-	-	434,375	459,375	176,204	-	6%	-
Galvanised Iron Sheet Ga 26	-	-	235,000	199,438	76,442	-	-15%	-
Hollow Concrete Block 10cm x 20cm x 40cm	-	-	12,375	12,313	4,626	-	-1%	-
Non Collapsible Jerrycan 10 Litre	-	-	40,938	40,000	15,252	-	-2%	-
Plastic Tarpaulin 14m x 5 m	-	-	201,875	208,438	79,896	-	3%	-
Roofing Nails 15Kg	-	-	463,688	688,688	264,212	-	49%	-
Timber 2in x 4in x 20ft	-	-	222,188	221,469	84,898	-	0%	-
Woven Dry Raised Blanket 150cm x 200cm	-	-	266,250	259,375	99,446	-	-3%	-
Terms of Trade								
Labour Wage (Daily)/ Cereal (Rice(Kg))	7	5	5	5	5	-2%	-1%	-29%
Local Goat (Head)/ Cereal (Rice(Kg))	57	53	54	55	55	4%	1%	-5%
Price Indices								
Consumer Price Index	-	220	251	261	-	19%	4%	-
Purchasing Power Index	-	0.46	0.40	0.38	-	-16%	-4%	-

* Data has been collected for the past 10 months only

Figure 18: Imported commodity prices compared to exchange rates

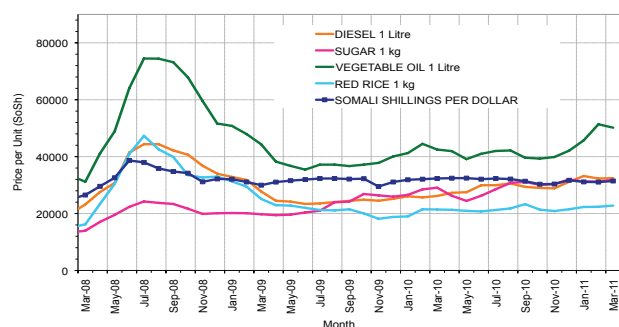
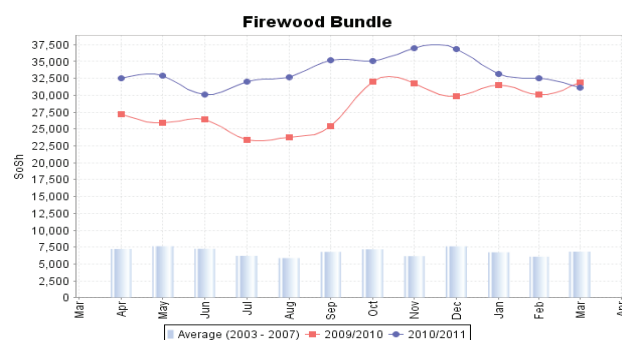
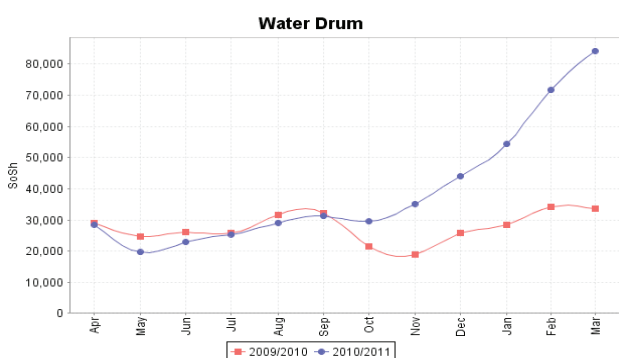
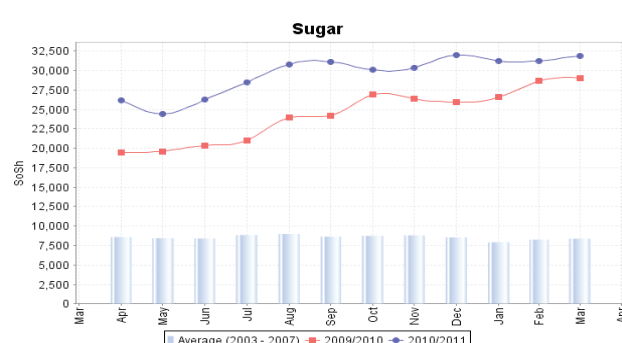
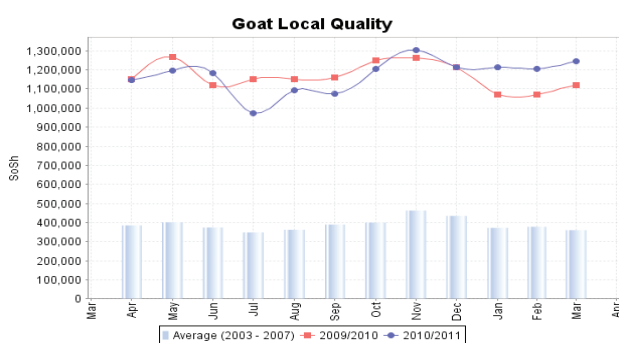
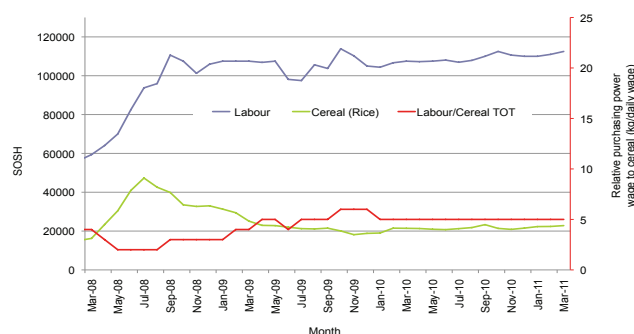


Figure 19: Trends in wage rates, staple cereal prices and relative purchasing power



Regional analysis: Northwest Regions

Indicator	5-Year Average	Mar-10	Feb-11	Current Nominal Price	Current Real Price (Deflated) Price	% Change Same Month Previous Year	% Change Previous Month	% Change 5-year avg (2003-07)
Imported Commodities Prices								
Diesel 1 litre	3,514	5,075	5,150	5,275	4,528	4%	2%	50%
Imported Red Rice 1kg	2,964	5,475	4,619	4,931	4,226	-10%	7%	66%
Petrol 1 litre	4,343	5,526	5,400	5,256	4,511	-5%	-3%	21%
Sugar	3,286	6,763	5,950	5,775	4,967	-15%	-3%	76%
Vegetable Oil 1 litre	6,934	10,188	9,500	9,244	8,010	-9%	-3%	33%
Wheat Flour 1kg	2,784	4,075	3,750	4,100	3,497	1%	9%	47%
Wheat Grain 1kg	2,162	2,833	2,333	2,667	2,240	-6%	14%	23%
Cereal Prices								
White Sorghum 1kg	1,844	2,750	2,625	2,458	2,057	-11%	-6%	33%
Yellow Maize 1kg	1,970	3,000	2,300	2,425	2,028	-19%	5%	23%
Livestock & Livestock Product Prices								
Camel Local Quality (Head)	1,559,561	1,450,000	1,600,000	1,093,333	959,140	-25%	-32%	-30%
Cattle Local Quality (Head)	859,783	1,266,667	1,167,500	1,269,167	1,113,409	0%	9%	48%
Fresh Camel Milk 1 litre	4,888	5,375	5,250	5,594	4,808	4%	7%	14%
Goat Export Quality (Head)	155,133	295,938	284,688	274,250	240,514	-7%	-4%	77%
Goat Local Quality (Head)	147,679	216,750	216,563	223,000	195,550	3%	3%	51%
Other Essential Items								
Charcoal 50kg	19,765	28,906	31,281	30,188	26,386	4%	-3%	53%
Cowpeas 1 kg	4,876	10,333	8,500	7,250	6,261	-30%	-15%	49%
Unskilled Labor Wage Rate	28,626	31,250	28,250	29,250	25,563	-6%	4%	2%
Firewood Bundle	8,132	2,067	2,300	2,133	1,771	3%	-7%	-74%
Local Sesame Oil 1 litre	16,627	25,333	22,083	25,083	21,907	-1%	14%	51%
Exchange Rate (Somaliland Shilling per USD)	6,655	6,905	5,465	5,195	-	-25%	-5%	-22%
Construction Materials*								
Cement 50kg	-	-	40,819	43,950	38,460	-	8%	-
Cooking Pot Aluminium 7 Litre	-	-	99,875	94,000	82,371	-	-6%	-
Galvanised Iron Sheet Ga 26	-	-	50,300	48,000	42,013	-	-5%	-
Hollow Concrete Block 10cm x 20cm x 40cm	-	-	3,325	3,225	2,729	-	-3%	-
Non Collapsible Jerrycan 10 Litre	-	-	6,750	6,775	5,844	-	0%	-
Plastic Tarpaulin 14m x 5 m	-	-	59,375	68,000	59,560	-	15%	-
Roofing Nails 15Kg	-	-	150,688	147,750	129,529	-	-2%	-
Timber 2in x 4in x 20ft	-	-	121,950	124,000	108,692	-	2%	-
Woven Dry Raised Blanket 150cm x 200cm	-	-	64,500	60,375	52,870	-	-6%	-
Terms of Trade								
Labour Wage (Daily)/ Cereal (Rice(Kg))	10	6	6	6	6	4%	-3%	-39%
Local Goat (Head)/ Cereal (Rice(Kg))	50	40	47	45	46	14%	-4%	-9%
Price Indices								
Consumer Price Index	-	113	114	114	-	1%	0%	-
Purchasing Power Index	-	0.88	0.88	0.88	-	-1%	0%	-

* Data has been collected for the past 10 months only

Figure 20: Imported commodity prices compared to exchange rates

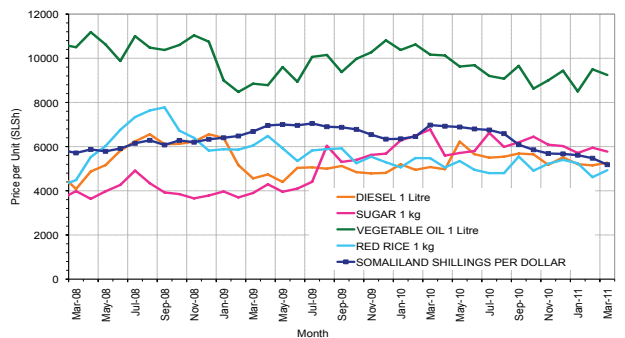
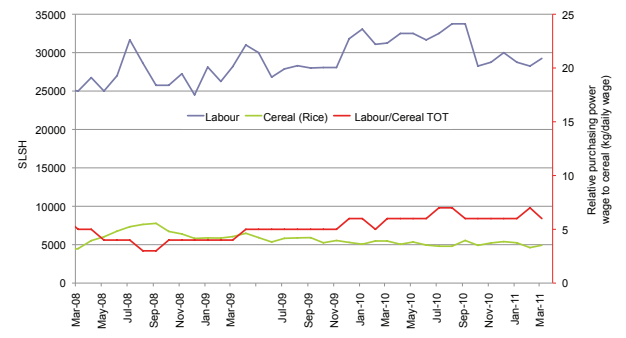
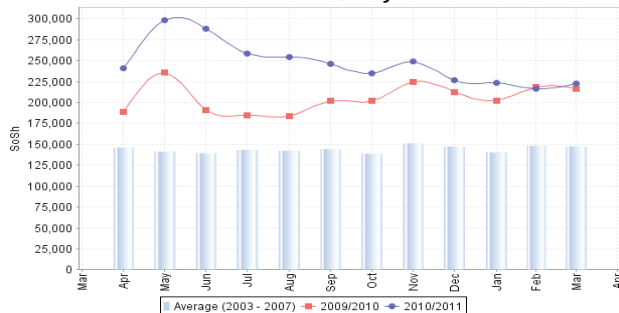


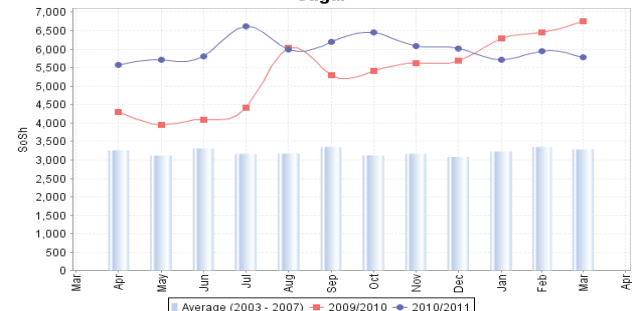
Figure 21: Trends in wage rates, staple cereal prices and relative purchasing power



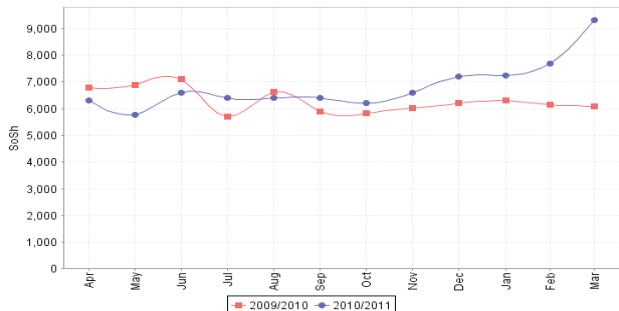
Goat Local Quality



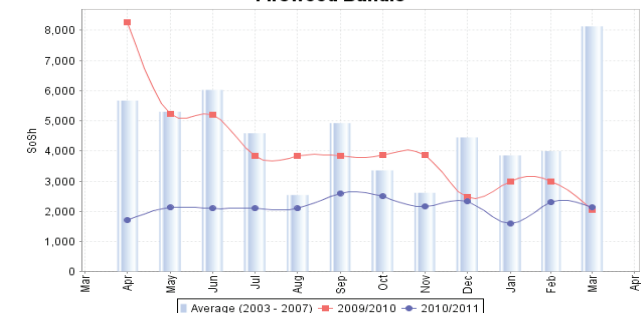
Sugar



Water Drum



Firewood Bundle



Trends in Livestock Exports

Table 1: Berbera Livestock Exports (Number of Heads)

	1994	1995	1996	1997	1998	1999	2000	2001	2002	2003	2004	2005	2006	2007	2008	2009	2010	2011
Shoats	1,572,656	2,683,597	2,376,646	2,814,495	957,224	2,048,136	1,601,083	51,546	341,711	563,107	859,404	1,023,795	1,017,242	1,350,054	1,219,519	1,556,003	2,584,810	284,955
Cattle	173,400	167,128	65,127	66,939	92,213	89,967	63,263	20,973	37,547	84,312	131,852	148,151	85,631	88,143	80,051	88,005	133,021	32,318
Camel	38,553	21,993	42,801	50,587	11,663	37,430	16,984	3,473	18,864	21,874	5,147	5,069	22,810	14,245	26,515	20,206	92,651	31,503

Figure 22: Berbera Livestock Exports (Number of Heads)

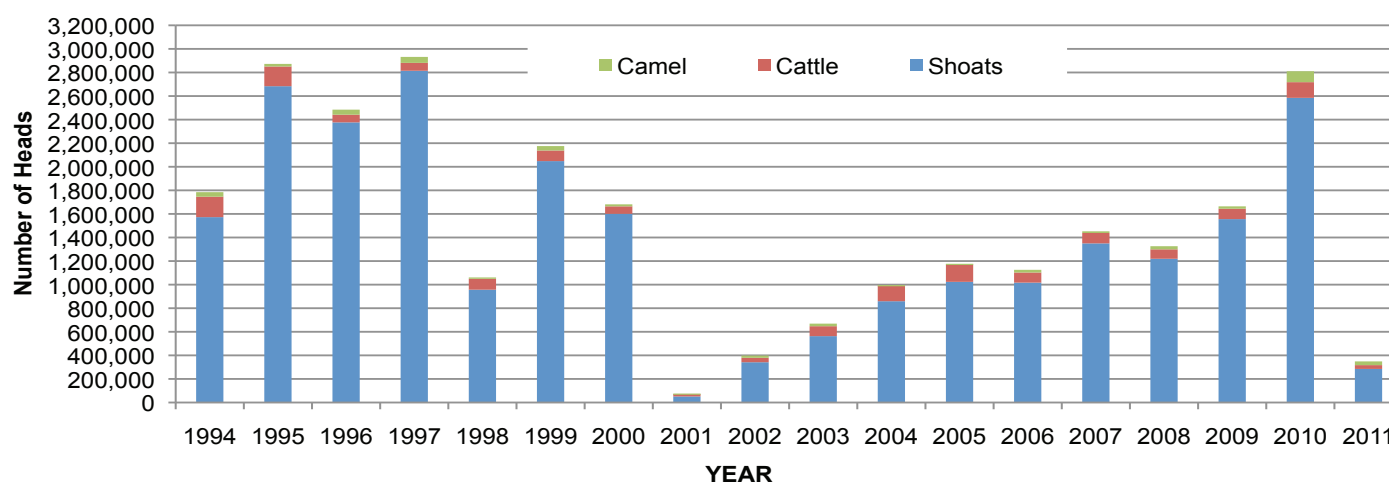


Table 2: Bossaso Livestock Exports (Number of Heads)

	1994	1995	1996	1997	1998	1999	2000	2001	2002	2003	2004	2005	2006	2007	2008	2009	2010	2011
Shoats	344,000	524,346	614,407	494,320	517,020	633,669	571,455	548,853	1,412,450	1,483,409	1,166,480	1,594,859	1,777,283	1,522,855	1,236,775	1,159,454	1,334,478	181,769
Cattle	1,450	8,795	15,335	17,831	29,492	36,586	27,604	42,248	53,313	71,328	79,994	91,910	104,595	89,190	78,046	67,385	103,808	25,029
Camel	5,397	8,392	20,462	14,599	3,938	15,544	8,177	1,950	9,720	4,259	2,488	26,109	33,724	27,580	27,639	15,331	36,865	19,952

Figure 23: Bossaso Livestock Exports (Number of Heads)

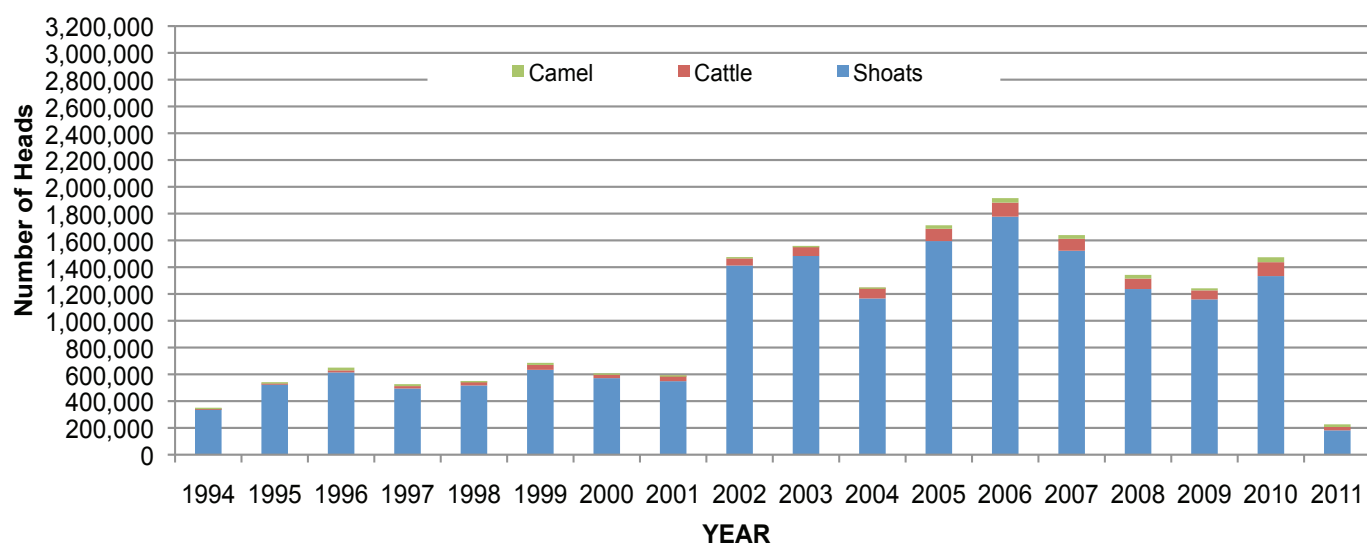


Table 3: Total Cereal Imports (Berbera,Bossasso,Elmaan)

	1997	1998	1999	2000	2001	2002	2003	2004	2005	2006	2007	2008	2009	2010	2011
Rice	66,419	43,410	63,464	75,687	74,729	144,600	180,614	146,567	150,017	198,101	166,626	136,007	171,472	161,415	56,811
Wheat flour	35,143	26,774	55,176	78,555	134,425	128,263	171,442	151,555	169,583	178,345	176,821	169,208	240,247	249,080	52,184
Pasta	2,510	6,858	8,544	11,071	26,702	35,425	29,273	38,749	39,153	52,815	41,331	38,441	86,372	102,373	33,429

Figure 24: Total Cereal Imports (Berbera,Bossaso and Elmaan)

