

Market Update

Highlights

Inflation:

SoSh (Somali shilling)-using areas: Consumer Price Index (CPI) mildly (+/- 1-5%) changed in June 2017 month-on-month. The CPI increased significantly (+/- 7-22%) due to increases in cereal (red sorghum) prices.

SISh (Somaliland shilling)-using areas: The CPI mildly increased (2%) month on month in June 2017 but significantly increased (19%) compared to last year primarily due to increase in cereal prices this year.

Exchange rate:

SoSh-using areas: The exchange rates between SoSh and the United States Dollar (USD) remained relatively stable or changed at mild rates (less than +/- 5%) against USD in most regions of the country month-on-month in June 2017. Annual comparison mostly exhibited a mixed trend with mild (less than +/- 10%) changes recorded in most of the southern regions; moderate to high (10-18%) depreciations were recorded in central and northeast regions due to printing of local notes in the regions.

SISh-using areas: The SISh depreciated mildly (3%) against the USD in June 2017 month-on-month, while year-on-year comparison indicates moderate depreciation of 21 percent due to increased supply (printing) of local currency notes.

Local cereal prices changed at mild rates (upto +/- than 10%) in most regions of the country month-on-month in June 2017. Annual comparison indicates higher prices for local grains in most regions of the country attributable to reduced supply due to two previous consecutive poor production seasons.

Prices of imported food (rice, sugar, vegetable oil, wheat flour) mostly exhibited relative stability or mild (+/-10%) monthly changes in local currency terms in June 2017 in most regions of the country. Year-on-year comparison indicates mild to moderate price increases in most regions of the country for most of the food imports in June 2017 due to depreciation of local currency against USD and increased global sugar prices.

Livestock prices (specifically of goat and camel) exhibited mild (upto +/- than 10%) changes in most regions of the country; high price increases (26-85%) for all livestock species were noted in Sanaag (Erigavo) region month-on-month attributable to improved body conditions, increased demand during Ramadhan and reduced supply in the market as many pastoralists have access to humanitarian assistance. Compared to a year ago, livestock prices exhibited a mixed trend; specifically, livestock prices mostly declined in the southern parts of the country attributable to deteriorated livestock body conditions; goat prices showed increases in most of the northern and central parts while camel prices in the same regions mostly indicated increases due to low supply in the market. Monthly changes of milk prices (camel and cattle) generally showed increases in most of the regions of the country due to increased demand during Ramadhan; exceptions are Hiran and Middle Juba where both camel and cattle milk prices declined due to increased availability because of increased pasture and water in the regions. On the other hand, milk prices (camel and cattle) increased from moderate to high levels when compared to last year in most regions of the country.

Labor (unskilled) wages changed mildly (by up to +/- less than 10%) month-on-month in most of the regions of the country in June 2017; moderate increases were noted in Middle Shabelle (17%) and Banadir (Mogadishu), (27%) due to increased agricultural activities in the surrounding rural areas. Annual comparison indicates decreases from mild to high levels in most regions of the country with the highest decline (43%) recorded in Banadir (Bakara-Mogadishu) attributable to increased competition for available labour in urban areas due to increase in-migration from drought affected rural areas; high increase (40%) was noted in Middle Shabelle due to improved activities in the region.

Terms of Trade (ToT) between daily labor wage and cereals either remained stable month-on-month or changed by 1-2kg of cereals/daily labor wage across the country in June 2017. Annual comparison indicates lower ToT between daily labor and cereals across the regions due to declines in labor wages and/or increase in cereal prices. ToT between local quality goat and cereals mostly increased from mild to moderate levels (2-29kgs of cereals/goat) month-on-month with the highest increase noted in Sanaag (Erigavo) due to increase in goat prices; a decline (19Kgs of cereal/goat) was noted in Lower Shabelle due to increase in cereal prices and a mild decrease in goat prices. Annual comparison indicates that ToT between goat and cereals are lower in most regions of the country due to declines in goat prices and/or increase in grain prices compared to a year ago (June 2016).

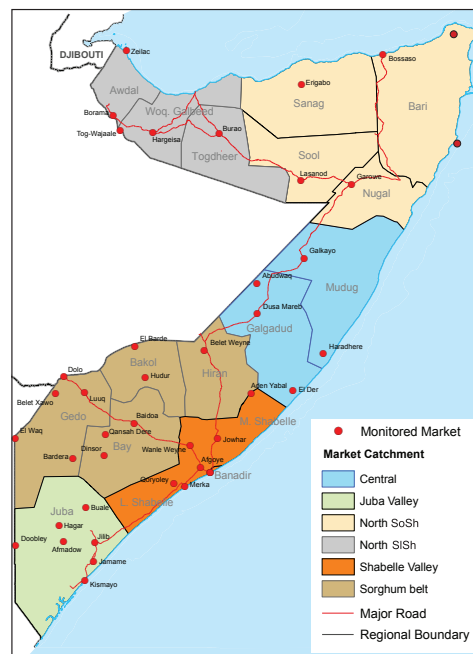
Towns Affected by Trade Disruption (Bulo Burto, Wajid, Hudur and Diinsor)

Labor (unskilled) wages either remained relatively stable or changed mildly in June 2017 in siege-affected markets month-on-month. Compared to a year ago, wage rates declined in Bulo-Burto (3%) and Dinsor (15%) while the wages increased in Hudur (15%) and Wajid (27%).

Terms of Trade (ToTs) between daily labor wage and cereals and between local quality goat and cereals either remained relatively stable or changed at mild rates month-on-month in siege affected markets. Annual comparison indicates relatively stable ToT between labor and cereals but lower for ToT between goat and cereals in Hudur, Wajid and Dinsor due to increases in cereal prices and/or decrease in goat prices.

Local grain (red and white sorghum) prices increased (2-25%) in Hudur, Bulo-Burto and Wajid but declined (16%) in Dinsor month-on-month attributable to increased humanitarian distribution. Compared to a year ago, local grain prices in all the markets increased significantly.

Prices of imported food items (rice, sugar, vegetable oil, wheat flour) either remained stable or changed (+/-) at mild rates for most of the food imports in Bulo-Burto, Hudur and Wajid but declined moderately in Dinsor (12-21%) in June 2017 month-on-month due to the same reason mentioned above. Annual comparison indicates higher prices for most of the food imports.



This Market Update is a monthly report that presents analysis of market information and is produced regularly as part of the monthly monitoring process.

The weekly price data is collected from 48 main markets and 51 rural markets throughout Somalia since 1995.

Market analysis is an integral part of all of FSNAU's annual food security projections and seasonal technical reports (Technical Reports on FSNAU Post Gu and Post Deyr Analysis).

Detailed market data are available online on www.fsnau.org/ids.

National Trends: CPI, Exchange Rates, Cereal Prices and Relative Purchasing Power

Table 1: ToT between Daily Labour Wage Rate and Cereals by Region June 2017

Regions	June 2017 (kg)	kg change from		
		May 2017	June 2016	June 5 yr Average (2012 - 2016)
Banadir/Mogadishu (Rice)	7	0	-2	-1
Bay (Rice)	4	0	-1	0
Bakool (Rice)	2	0	0	0
Gedo (Rice)	8	1	0	1
Juba (White maize)	7	0	-1	-2
Shabelle (White maize)	7	0	-1	-1
Northwest (Rice)	11	0	0	2
Northeast (Rice)	8	0	-1	1
Central (Rice)	5	0	-1	0

Figure 1: Wheat Prices: Mogadishu and Bossaso Markets

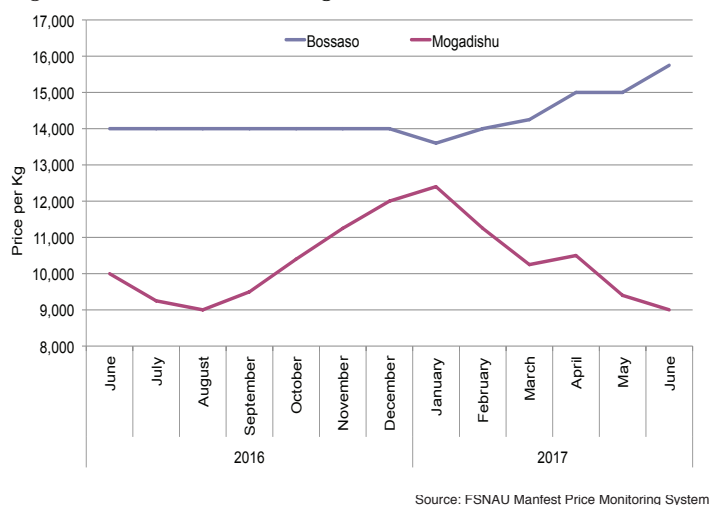


Figure 2: Terms of Trade Between Wage Rates and Selected Cereals

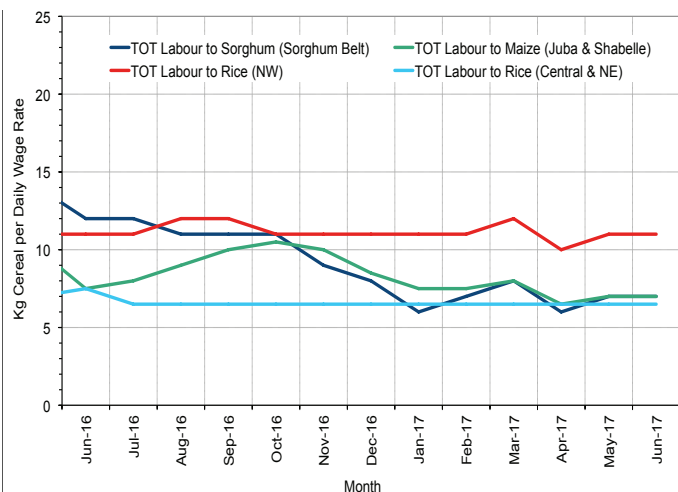


Figure 3: Monthly Exchange Rate for Selected Regions (SoSh and SiSh to USD)

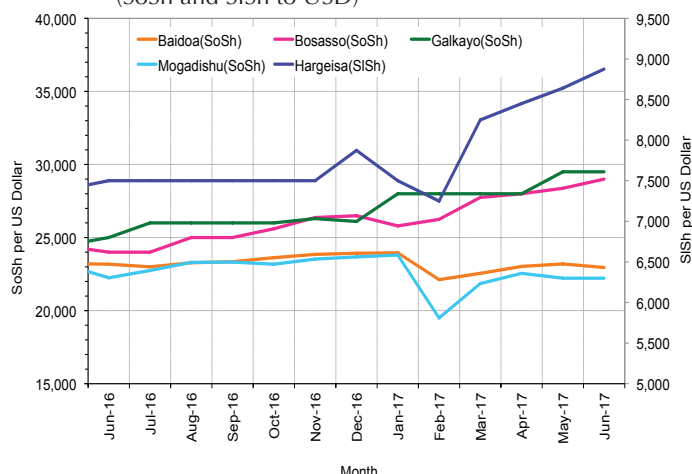


Figure 4: Monthly Trends in Consumer Price Index (CPI, March 2007=100)

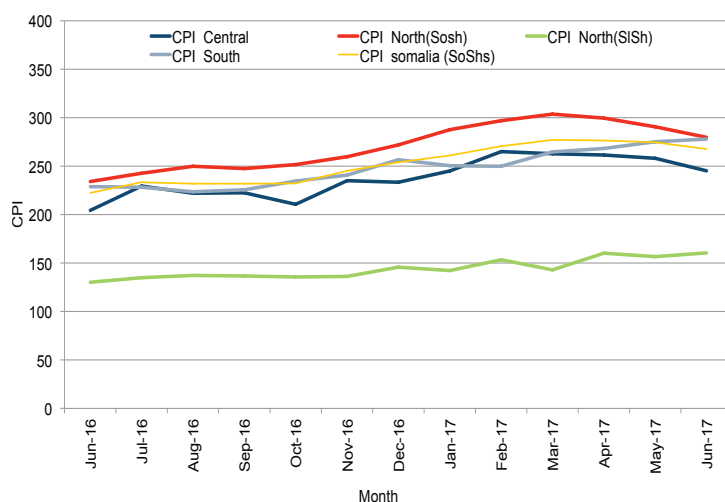
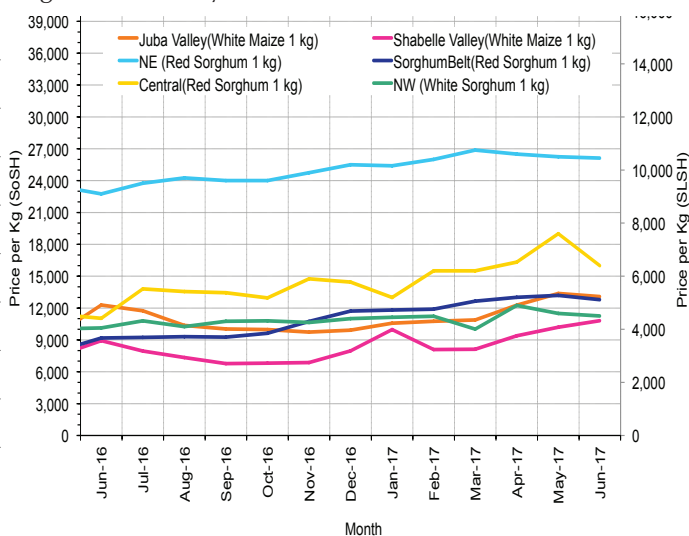


Figure 5: Monthly Trends in Local Cereal Prices



Regional analysis: Juba Regions

Indicator	5-Year Average (2012-2016)	Jun-16	May-17	June-17 Nominal Price	June-17 Real (Deflated) Price	% Change Previous Month	% Change Same Month Previous Year	% Change 5-year avg (2012-2016)
Imported Commodities Prices								
Diesel 1 litre	26,929	20,469	20,969	21,094	7,487	1%	3%	-22%
Imported Red Rice 1kg	16,262	15,453	17,219	16,391	5,796	-5%	6%	1%
Petrol 1 litre	29,428	23,906	24,313	23,625	8,398	-3%	-1%	-20%
Sugar	17,206	16,250	18,688	18,125	6,419	-3%	12%	5%
Vegetable Oil 1 litre	32,346	28,125	30,625	28,188	10,039	-8%	0%	-13%
Wheat Flour 1kg	16,240	15,359	16,594	16,000	5,655	-4%	4%	-1%
Wheat Grain 1kg	-	-	-	-	-	-	-	-
Cereal Prices								
Red Sorghum 1kg	8,750	10,000	11,917	13,375	4,711	12%	34%	53%
White Maize 1kg	9,896	12,286	13,375	13,088	4,608	-2%	7%	32%
Livestock & Livestock Product Prices								
Camel Local Quality (Head)	9,623,923	9,665,625	9,053,125	9,579,375	3,445,540	6%	-1%	0%
Cattle Local Quality (Head)	3,939,145	3,271,429	2,865,278	3,327,500	1,196,781	16%	2%	-16%
Fresh Camel Milk 1 litre	18,282	19,750	19,938	18,531	6,565	-7%	-6%	1%
Goat Export Quality (Head)	1,401,263	1,288,438	1,242,500	1,448,438	520,894	17%	12%	3%
Goat Local Quality (Head)	924,103	808,750	731,563	852,188	306,427	16%	5%	-8%
Other Essential Items								
Charcoal 50kg	86,092	95,781	88,750	89,844	32,216	1%	-6%	4%
Cowpeas 1 kg	22,887	26,313	28,313	29,750	10,601	5%	13%	30%
Unskilled Labor Wage Rate	88,706	101,094	95,938	96,406	34,577	0%	-5%	9%
Firewood Bundle	8,486	8,359	8,156	7,156	2,474	-12%	-14%	-16%
Local Sesame Oil 1 litre	68,834	51,563	53,938	49,094	17,559	-9%	-5%	-29%
Exchange Rate (Somali Shilling per USD)	21,554	23,219	22,488	22,617	8,035	1%	-3%	5%
Terms of Trade								
Labour Wage (Daily)/ Cereal (Maize(Kg))	9	8	7	7	-	0%	-13%	-22%
Local Goat (Head)/ Cereal (Maize(Kg))	96	66	55	65	-	18%	-2%	-32%
Price Indices								
Consumer Price Index	-	229	275	278	-	1%	21%	-

Figure 6: Trends in Cereal Prices

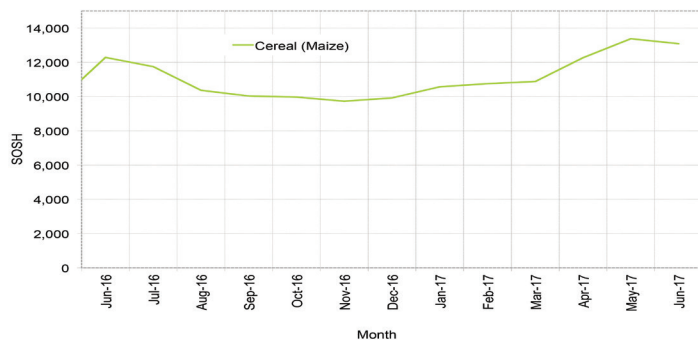


Figure 7: Trends in Wage Rates and Relative Purchasing Power

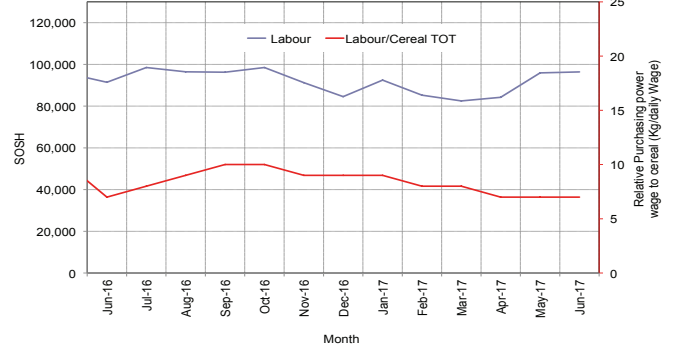


Figure 8: Imported Commodity Prices Compared to Exchange Rate

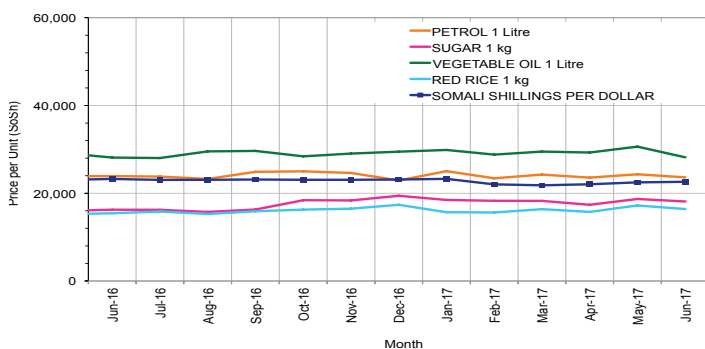


Figure 9: Goat Local Quality

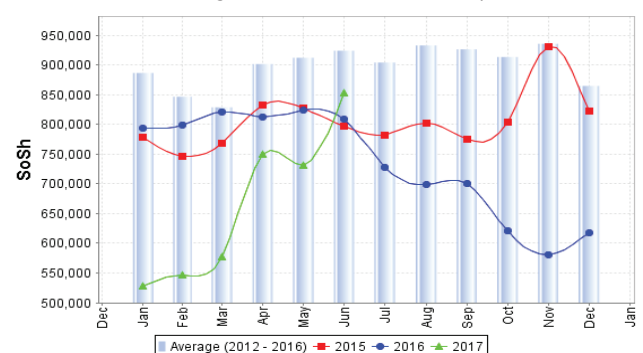


Figure 10: Exchange Rate

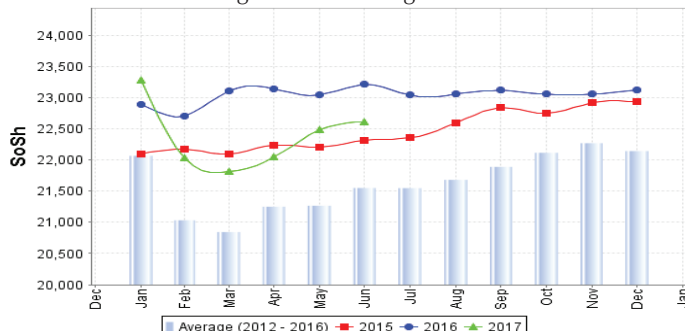
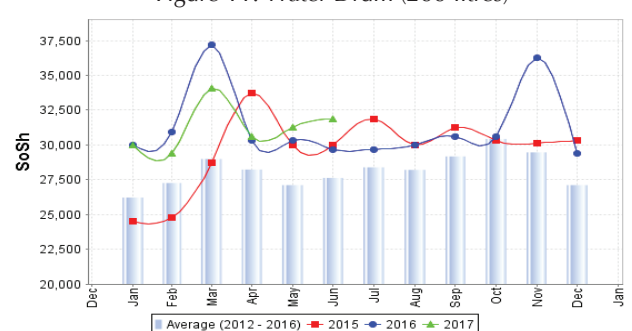


Figure 11: Water Drum (200 litres)



Regional analysis: Sorghum Belt Regions (Bay, Bakool, Gedo and Hiran)

Indicator	5-Year Average (2012-2016)	Jun-16	May-17	June-17 Nominal Price	June-17 Real (Deflated) Price	% Change Previous Month	% Change Same Month Previous Year	% Change 5-year avrg (2012-2016)
Imported Commodities Prices								
Diesel 1 litre	29,948	22,438	25,850	24,750	8,802	-4%	10%	-17%
Imported Red Rice 1kg	19,036	18,792	19,583	19,104	6,772	-2%	2%	0%
Petrol 1 litre	30,001	25,958	29,367	29,188	10,399	-1%	12%	-3%
Sugar	20,370	19,740	22,733	22,125	7,858	-3%	12%	9%
Vegetable Oil 1 litre	39,588	36,042	36,717	36,604	13,066	0%	2%	-8%
Wheat Flour 1kg	18,029	18,177	18,383	17,917	6,345	-3%	-1%	-1%
Wheat Grain 1kg	13,520	17,250	20,420	20,550	7,292	1%	19%	52%
Cereal Prices								
Red Sorghum 1kg	7,965	8,800	13,080	13,005	4,578	-1%	48%	63%
White Maize 1kg	10,193	10,863	12,812	13,550	4,774	6%	25%	33%
Livestock & Livestock Product Prices								
Camel Local Quality (Head)	12,202,222	11,745,000	11,046,000	11,212,500	4,032,965	2%	-5%	-8%
Cattle Local Quality (Head)	3,750,892	3,562,500	2,798,571	2,752,857	990,085	-2%	-23%	-27%
Fresh Camel Milk 1 litre	19,435	18,688	24,400	24,295	8,639	0%	30%	25%
Goat Export Quality (Head)	1,601,437	1,491,818	1,477,273	1,570,000	564,619	6%	5%	-2%
Goat Local Quality (Head)	984,956	820,833	795,500	799,167	287,355	0%	-3%	-19%
Other Essential Items								
Charcoal 50kg	147,193	144,318	168,182	163,636	58,759	-3%	13%	11%
Cowpeas 1 kg	24,221	24,396	36,787	37,583	13,418	2%	54%	55%
Unskilled Labor Wage Rate	94,534	93,021	93,733	95,313	34,183	2%	2%	1%
Firewood Bundle	6,521	6,083	6,250	6,333	2,178	1%	4%	-3%
Local Sesame Oil 1 litre	77,990	72,222	80,556	80,833	28,975	0%	12%	4%
Exchange Rate (Somali Shilling per USD)	21,694	22,872	23,889	23,856	8,481	0%	4%	10%
Terms of Trade								
Labour Wage (Daily)/ Cereal (Rice (Kg)	4	5	5	5	-	0%	0%	25%
Local Goat (Head)/ Cereal (Rice (Kg)	51	44	41	42	-	2%	-5%	-18%
Price Indices								
Consumer Price Index	-	229	275	278	-	1%	21%	-

Figure 12: Trends in Cereal Prices

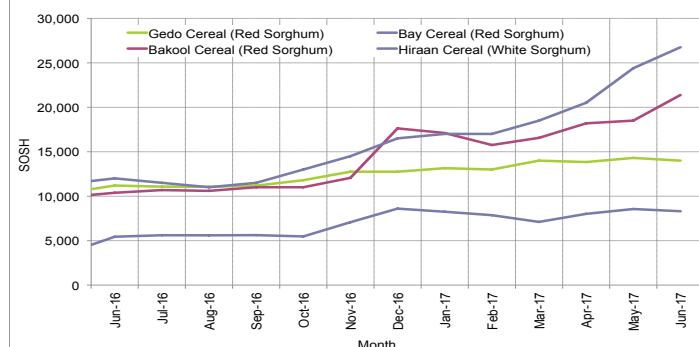


Figure 13: Trends in Wage Rates and Relative Purchasing Power

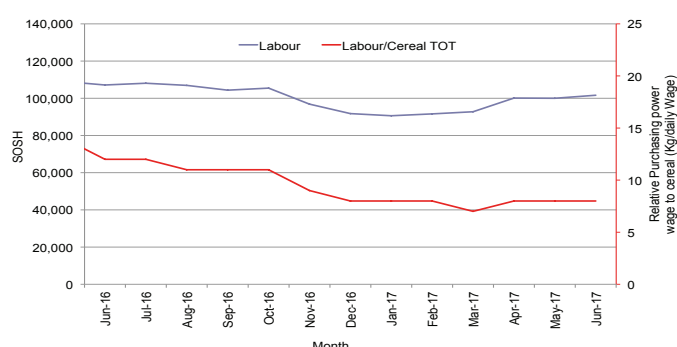


Figure 14: Imported Commodity Prices Compared to Exchange Rate

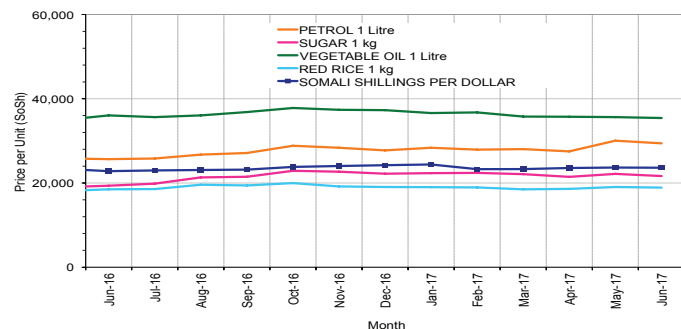


Figure 15: Goat Local Quality

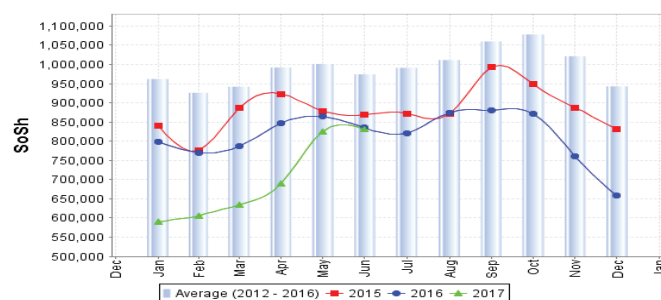


Figure 16: Exchange Rate

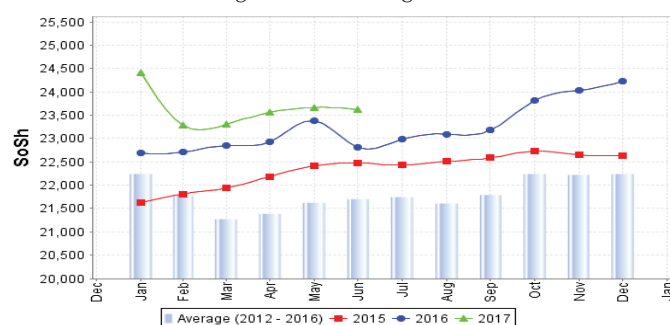
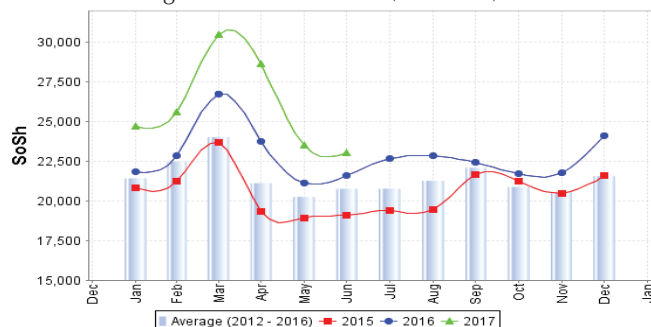


Figure 17: Water Drum (200 litres)



Regional analysis: Shabelle Regions

Indicator	5-Year Average (2012-2016)	Jun-16	May-17	June-17 Nominal Price	June-17 Real (Deflated) Price	% Change Previous Month	% Change Same Month Previous Year	% Change 5-year avrg (2012-2016)
Imported Commodities Prices								
Diesel 1 litre	25,585	19,667	17,667	16,500	5,835	-7%	-16%	-36%
Imported Red Rice 1kg	15,716	16,417	15,542	15,417	5,445	-1%	-6%	-2%
Petrol 1 litre	28,373	25,583	17,583	20,000	7,094	14%	-22%	-30%
Sugar	17,871	17,917	18,083	18,333	6,494	1%	2%	3%
Vegetable Oil 1 litre	28,323	27,292	28,042	28,167	10,031	0%	3%	-1%
Wheat Flour 1kg	15,711	15,833	13,750	14,083	4,966	2%	-11%	-10%
Wheat Grain 1kg	16,666	20,000	-	-	-	-	-	-
Cereal Prices								
Red Sorghum 1kg	9,316	8,961	12,882	13,225	4,657	3%	48%	42%
White Maize 1kg	8,632	8,935	10,198	10,808	3,788	6%	21%	25%
Livestock & Livestock Product Prices								
Camel Local Quality (Head)	17,791,250	19,165,000	16,637,500	17,406,250	6,260,817	5%	-9%	-2%
Cattle Local Quality (Head)	5,649,133	5,263,500	3,912,500	3,975,000	1,429,682	2%	-24%	-30%
Fresh Camel Milk 1 litre	18,803	24,500	25,000	26,833	9,552	7%	10%	43%
Goat Export Quality (Head)	1,803,208	1,766,250	1,860,000	1,786,875	642,628	-4%	1%	-1%
Goat Local Quality (Head)	1,271,833	1,270,000	1,314,583	1,274,583	458,359	-3%	0%	0%
Other Essential Items								
Charcoal 50kg	127,478	135,458	126,597	139,583	50,107	10%	3%	9%
Cowpeas 1 kg	19,661	19,608	44,472	43,486	15,542	-2%	122%	121%
Unskilled Labor Wage Rate	65,925	71,875	74,167	76,667	27,477	3%	7%	16%
Firewood Bundle	6,671	6,250	6,292	5,667	1,938	-10%	-9%	-15%
Local Sesame Oil 1 litre	56,280	46,458	52,750	50,500	18,065	-4%	9%	-10%
Exchange Rate (Somali Shilling per USD)	21,649	22,965	23,400	23,071	8,198	-1%	0%	7%
Terms of Trade								
Labour Wage (Daily)/ Cereal (Maize(Kg))	8	8	7	7	-	0%	-13%	-13%
Local Goat (Head)/ Cereal (Maize(Kg))	151	142	129	118	-	-9%	-17%	-22%
Price Indices								
Consumer Price Index	-	229	275	278	-	1%	21%	-

Figure 18: Trends in Cereal Prices

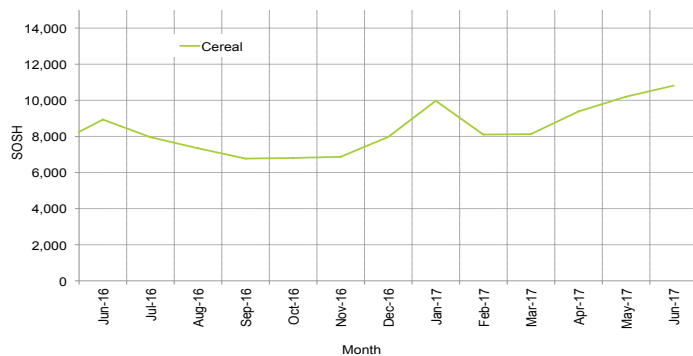


Figure 19: Trends in Wage Rates and Relative Purchasing Power

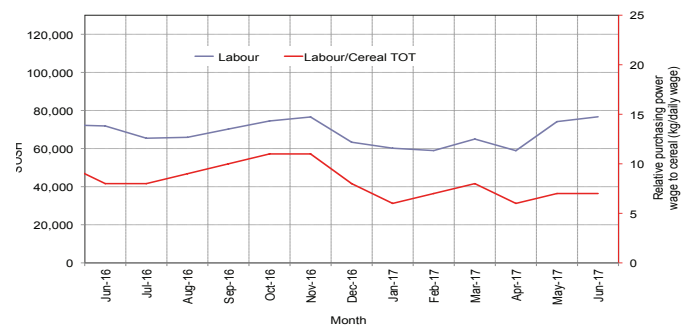


Figure 20: Imported Commodity Prices Compared to Exchange Rate

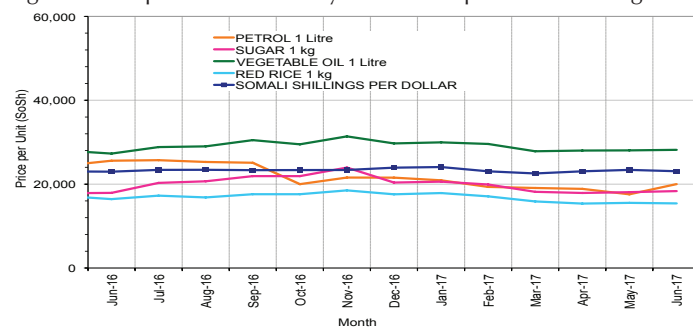


Figure 22: Exchange Rate

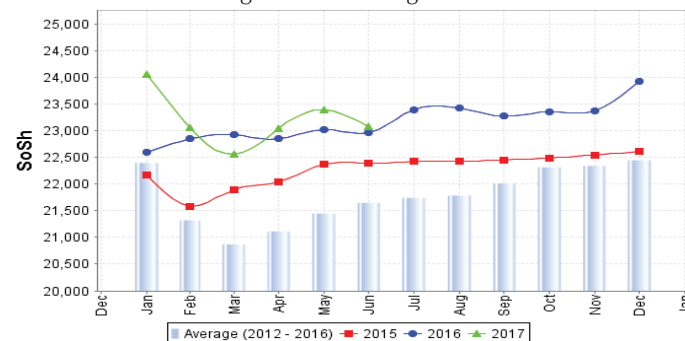


Figure 21: Goat Local Quality

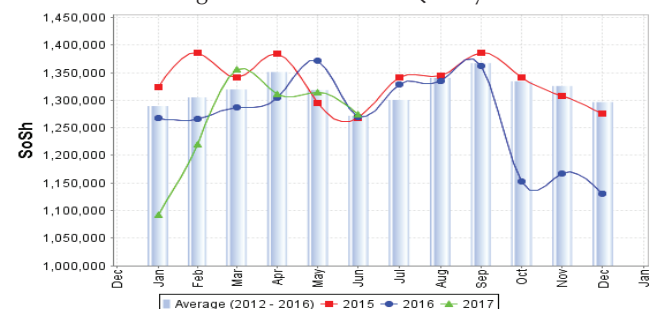
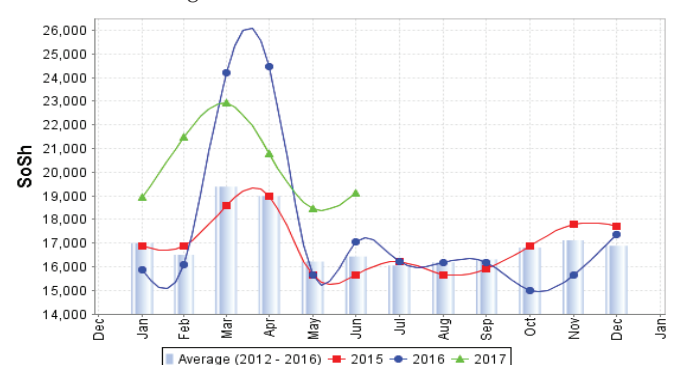


Figure 23: Water Drum (200 litres)



Regional analysis: Banadir Region

Indicator	5-Year Average (2012-2016)	Jun-16	May-17	June-17 Nominal Price	June-17 Real (Deflated) Price	% Change Previous Month	% Change Same Month Previous Year	% Change 5-year avg (2012-2016)
Imported Commodities Prices								
Diesel 1 litre	19,716	15,500	12,380	12,725	4,477	3%	-18%	-35%
Imported Red Rice 1kg	12,891	12,333	12,000	11,958	4,201	0%	-3%	-7%
Petrol 1 litre	21,153	16,333	15,967	15,833	5,595	-1%	-3%	-25%
Sugar	14,853	14,167	15,567	15,333	5,415	-2%	8%	3%
Vegetable Oil 1 litre	25,211	21,125	22,200	22,167	7,873	0%	5%	-12%
Wheat Flour 1kg	12,115	11,417	10,733	10,625	3,722	-1%	-7%	-12%
Wheat Grain 1kg	9,142	11,000	17,000	16,500	5,835	-3%	50%	80%
Cereal Prices								
Red Sorghum 1kg	6,711	7,358	11,080	11,300	3,965	2%	54%	68%
White Maize 1kg	9,273	10,325	12,093	13,558	4,777	12%	31%	46%
Livestock & Livestock Product Prices								
Camel Local Quality (Head)	-	-	-	-	-	-	-	-
Cattle Local Quality (Head)	-	-	-	-	-	-	-	-
Fresh Camel Milk 1 litre	22,123	27,333	27,267	30,167	10,751	11%	10%	36%
Goat Export Quality (Head)	2,306,250	2,325,000	2,475,000	2,550,000	917,119	3%	-	11%
Goat Local Quality (Head)	2,099,600	1,850,000	2,000,000	2,150,000	773,241	8%	16%	2%
Other Essential Items								
Charcoal 50kg	199,616	181,667	204,333	208,750	74,986	2%	15%	5%
Cowpeas 1 kg	18,605	20,550	38,300	39,833	14,228	4%	94%	114%
Unskilled Labor Wage Rate	113,366	120,000	79,000	87,083	31,223	10%	-27%	-23%
Firewood Bundle	7,363	7,500	8,000	8,000	2,778	0%	7%	9%
Local Sesame Oil 1 litre	58,096	46,000	50,167	52,708	18,859	5%	15%	-9%
Exchange Rate (Somali Shilling per USD)	21,300	22,467	22,407	22,258	7,906	-1%	-1%	4%
Terms of Trade								
Labour Wage (Daily)/ Cereal (Rice(Kg))	9	10	7	7	-	0%	-30%	-22%
Local Goat (Head)/ Cereal (Rice(Kg))	163	150	167	180	-	8%	20%	10%
Price Indices								
Consumer Price Index	-	229	275	278	-	1%	21%	-

Figure 24: Trends in Cereal Prices

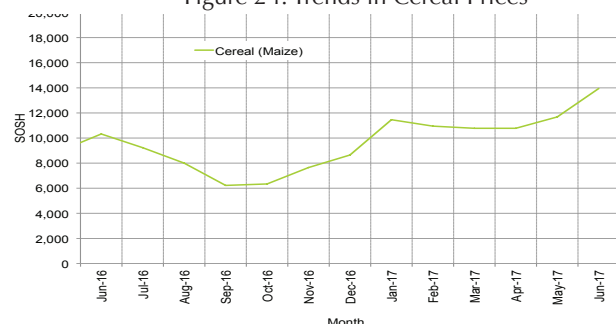


Figure 25: Bakara: Trends in Wage Rates and Relative Purchasing Power

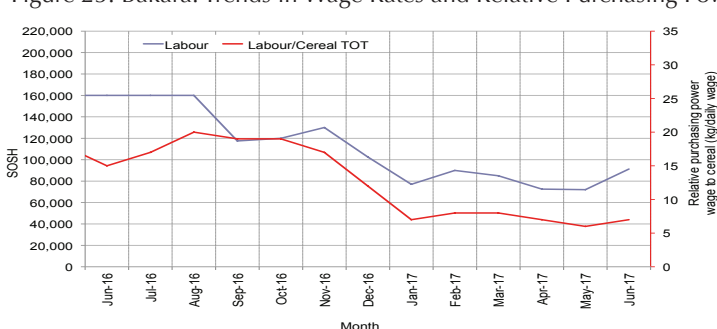


Figure 26: Imported Commodity Prices Compared to Exchange Rate

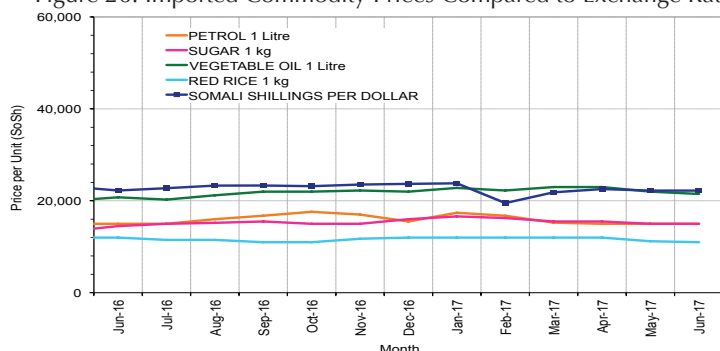


Figure 27: Goat Local Quality

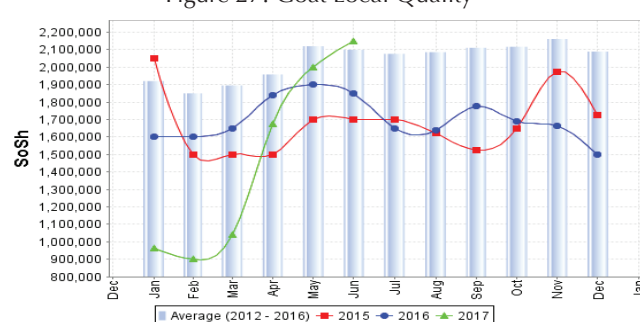


Figure 28: Exchange Rate

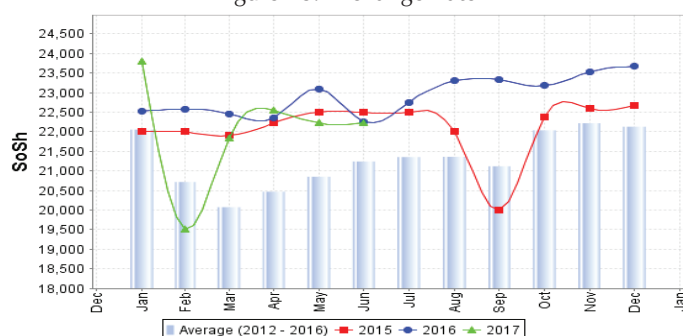
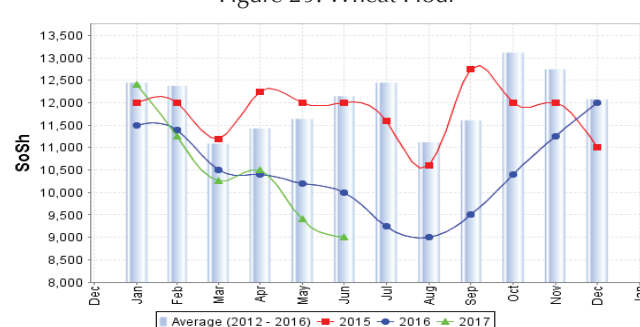


Figure 29: Wheat Flour



Regional analysis: Central Regions

Indicator	5-Year Average (2012-2016)	Jun-16	May-17	June-17 Nominal Price	June-17 Real (Deflated) Price	% Change Previous Month	% Change Same Month Previous Year	% Change 5-year avrg (2012-2016)
Imported Commodities Prices								
Diesel 1 litre	25,938	18,600	23,400	23,700	9,569	1%	27%	-9%
Imported Red Rice 1kg	18,552	17,300	19,000	18,600	7,488	-2%	8%	0%
Petrol 1 litre	24,942	21,700	25,800	24,900	10,058	-3%	15%	0%
Sugar	20,992	18,600	24,400	24,400	9,854	0%	31%	16%
Vegetable Oil 1 litre	41,952	34,650	41,600	40,600	16,464	-2%	17%	-3%
Wheat Flour 1kg	16,542	15,400	17,000	16,200	6,509	-5%	5%	-2%
Wheat Grain 1kg	14,906	13,667	19,000	20,000	8,059	5%	46%	34%
Cereal Prices								
Red Sorghum 1kg	11,556	11,040	19,000	16,000	6,427	-16%	45%	38%
White Maize 1kg	12,641	11,750	18,750	15,250	6,122	-19%	30%	21%
Livestock & Livestock Product Prices								
Camel Local Quality (Head)	11,519,250	13,487,500	9,900,000	9,787,500	3,992,891	-1%	-27%	-15%
Cattle Local Quality (Head)	2,180,000	-	-	-	-	-	-	-
Fresh Camel Milk 1 litre	28,980	33,360	44,000	50,000	20,298	14%	50%	73%
Goat Export Quality (Head)	1,372,500	1,293,750	1,200,000	1,300,000	530,259	8%	0%	-5%
Goat Local Quality (Head)	1,089,800	999,000	960,000	970,000	395,629	1%	-3%	-11%
Other Essential Items								
Charcoal 50kg	172,470	171,000	172,000	170,000	69,255	-1%	-1%	-1%
Cowpeas 1 kg	21,868	23,400	42,800	46,600	18,911	9%	99%	113%
Unskilled Labor Wage Rate	87,840	96,400	96,000	94,000	38,249	-2%	-2%	7%
Firewood Bundle	33,018	31,440	35,000	35,000	14,179	0%	11%	6%
Local Sesame Oil 1 litre	87,990	82,200	81,400	83,500	33,965	3%	2%	-5%
Exchange Rate (Somali Shilling per USD)	22,373	24,660	27,300	27,200	10,997	0%	10%	22%
Terms of Trade								
Labour Wage (Daily)/ Cereal (Rice(Kg))	5	6	5	5	-	0%	-17%	0%
Local Goat (Head)/ Cereal (Rice(Kg))	58	58	51	52	-	2%	-10%	-10%
Camel (Head)/Cereal (Kg)	628	780	521	526	-	1%	-33%	-16%
Price Indices								
Consumer Price Index	-	204	258	245	-	-5%	20%	-

Figure 30: Trends in Cereal Prices

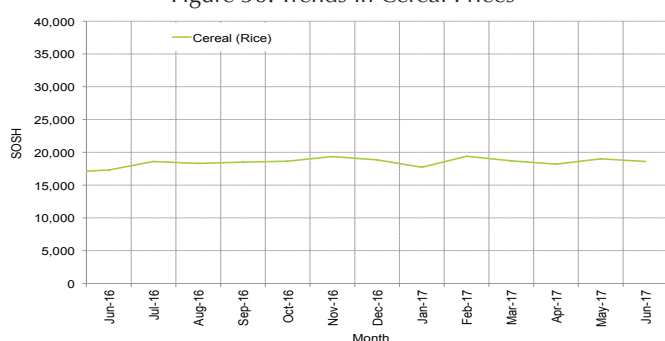


Figure 31: Trends in wage rates and relative purchasing power

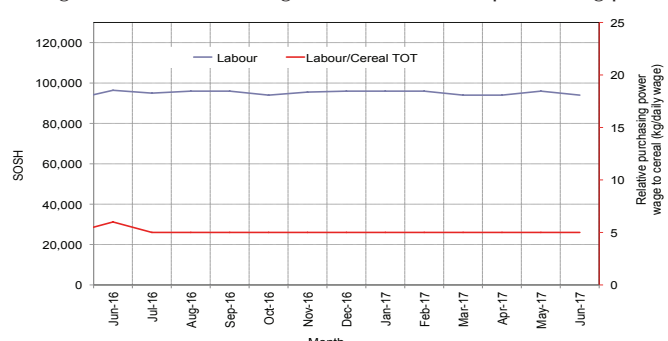


Figure 32: Imported Commodity Prices Compared to Exchange Rate

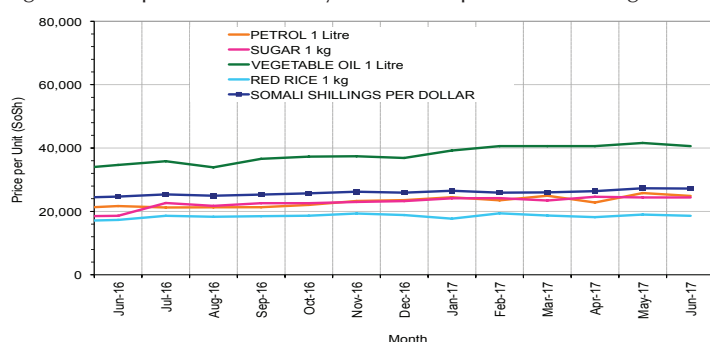


Figure 33: Goat Local Quality

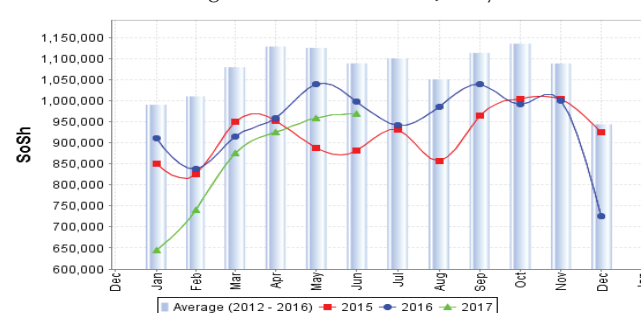


Figure 34: Exchange Rate

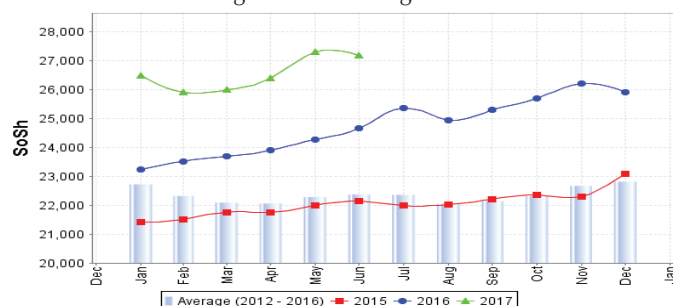
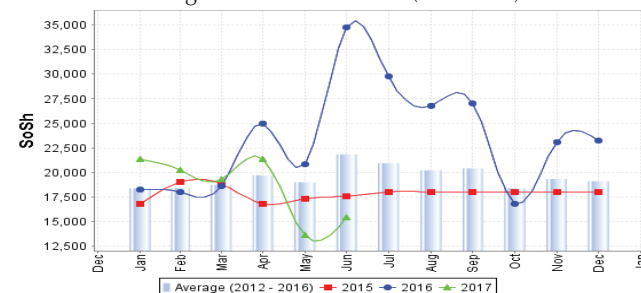


Figure 35: Water Drum (200 litres)



Regional analysis: Northeast Regions

Indicator	5-Year Average (2012-2016)	Jun-16	May-17	June-17 Nominal Price	June-17 Real (Deflated) Price	% Change Previous Month	% Change Same Month Previous Year	% Change 5-year avrg (2012-2016)
Imported Commodities Prices								
Diesel 1 litre	24,036	16,118	18,911	20,268	7,146	7%	26%	-16%
Imported Red Rice 1kg	18,154	15,929	17,750	18,000	6,335	1%	13%	-1%
Petrol 1 litre	24,115	20,571	22,536	23,964	8,468	6%	16%	-1%
Sugar	20,914	18,679	22,500	23,250	8,212	3%	24%	11%
Vegetable Oil 1 litre	38,614	32,536	33,929	33,679	11,941	-1%	4%	-13%
Wheat Flour 1kg	17,471	15,643	17,250	17,429	6,131	1%	11%	0%
Wheat Grain 1kg	29,567	30,600	33,150	35,000	12,413	6%	14%	18%
Cereal Prices								
Red Sorghum 1kg	21,930	22,750	26,250	26,125	9,240	0%	15%	19%
White Maize 1kg	21,150	21,250	22,000	22,500	7,944	2%	6%	6%
Livestock & Livestock Product Prices								
Camel Local Quality (Head)	14,807,501	13,652,500	12,057,500	13,230,500	4,730,092	10%	-3%	-11%
Cattle Local Quality (Head)	7,875,000	8,500,000	6,750,000	8,500,000	3,038,835	26%	0%	8%
Fresh Camel Milk 1 litre	36,768	41,111	57,250	55,767	19,838	-3%	36%	52%
Goat Export Quality (Head)	1,427,900	1,223,500	1,380,000	1,520,000	543,333	10%	24%	6%
Goat Local Quality (Head)	1,364,750	1,144,643	1,284,286	1,389,643	496,728	8%	21%	2%
Other Essential Items								
Charcoal 50kg	350,185	351,786	363,929	362,500	129,502	0%	3%	4%
Cowpeas 1 kg	38,746	36,167	46,750	48,042	17,076	3%	33%	24%
Unskilled Labor Wage Rate	133,921	135,714	136,607	137,857	49,187	1%	2%	3%
Firewood Bundle	33,507	31,536	42,643	39,393	13,984	-8%	25%	18%
Local Sesame Oil 1 litre	96,050	94,750	105,000	103,500	36,904	-1%	9%	8%
Exchange Rate (Somali Shilling per USD)	21,474	22,893	26,946	27,000	9,553	0%	18%	26%
Terms of Trade								
Labour Wage (Daily)/ Cereal (Rice(Kg))	7	9	8	8	-	0%	-11%	14%
Local Goat (Head)/ Cereal (Rice(Kg))	76	72	72	77	-	7%	7%	1%
Price Indices								
Consumer Price Index	-	234	291	280	-	-4%	19%	-

Figure 36: Trends in Cereal Prices

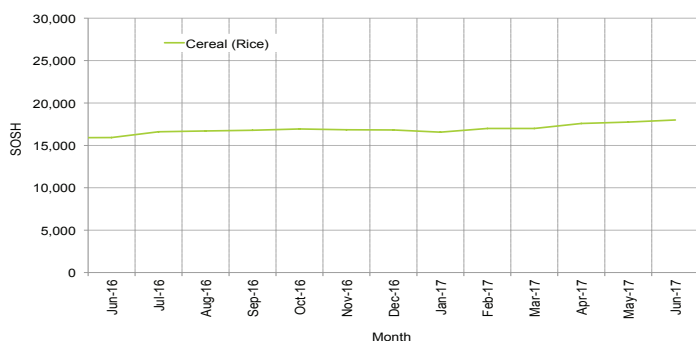


Figure 37: Trends in Wage Rates and Relative Purchasing Power

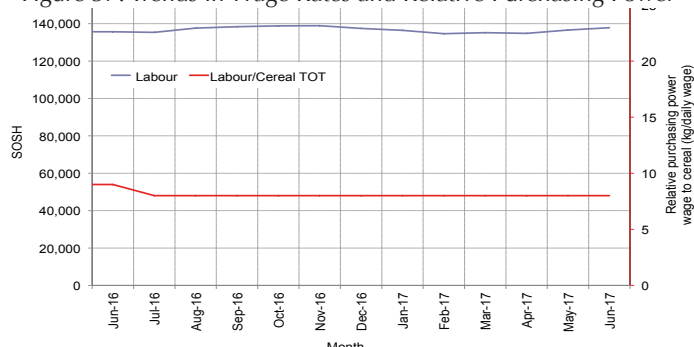


Figure 38: Imported Commodity Prices Compared to Exchange Rate

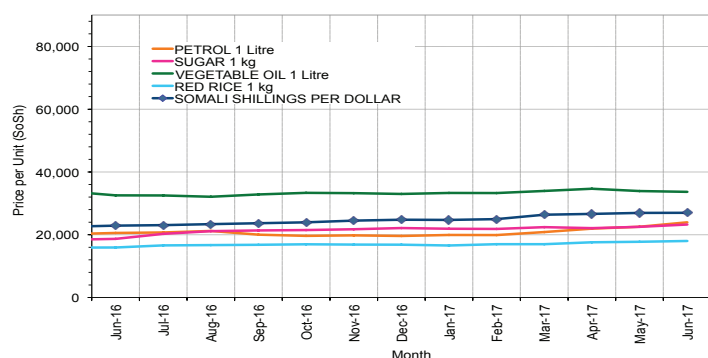


Figure 39: Goat Local Quality

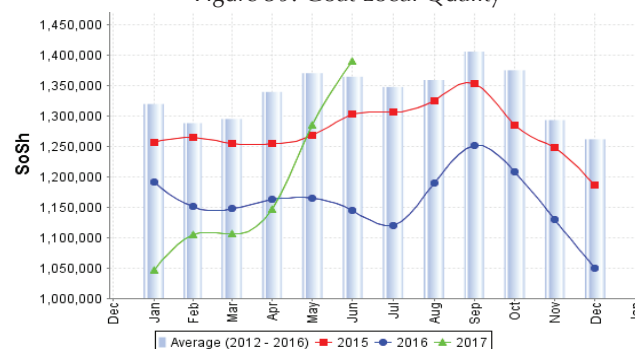


Figure 40: Exchange Rate

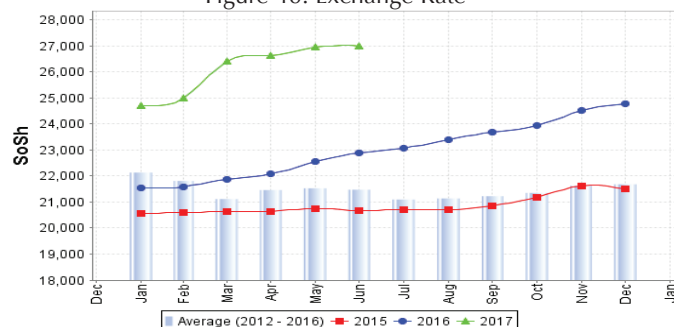
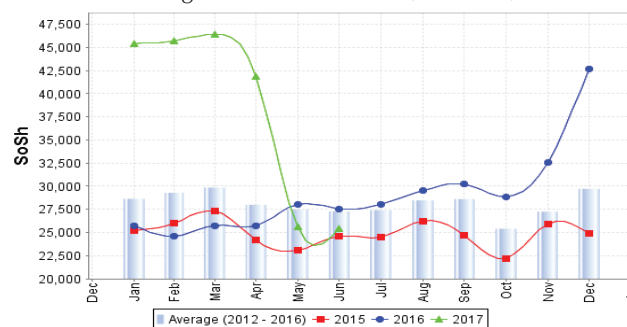


Figure 41: Water Drum (200 litres)



Regional analysis: Northwest Regions

Indicator	5-Year Average (2012-2016)	Jun-16	May-17	June-17 Nominal Price	June-17 Real (Deflated) Price	% Change Previous Month	% Change Same Month Previous Year	% Change 5-year avg (2012-2016)
Imported Commodities Prices								
Diesel 1 litre	6,326	4,740	5,800	5,991	3,633	3%	26%	-5%
Imported Red Rice 1kg	5,009	5,300	5,700	5,700	3,452	0%	8%	14%
Petrol 1 litre	7,075	6,250	7,240	7,200	4,386	-1%	15%	2%
Sugar	5,749	5,660	6,100	6,200	3,763	2%	10%	8%
Vegetable Oil 1 litre	11,856	11,050	13,140	13,180	8,113	0%	19%	11%
Wheat Flour 1kg	4,564	5,200	4,600	4,700	2,829	2%	-10%	3%
Wheat Grain 1kg	3,659	4,167	4,125	4,550	2,735	10%	9%	24%
Cereal Prices								
White Sorghum 1kg	3,633	4,050	4,600	4,500	2,704	-2%	11%	24%
Yellow Maize 1kg	3,757	4,325	5,000	5,400	3,265	8%	25%	44%
Livestock & Livestock Product Prices								
Camel Local Quality (Head)	3,680,075	3,792,083	4,433,333	4,471,667	2,786,214	1%	18%	22%
Cattle Local Quality (Head)	2,118,386	2,191,667	2,720,000	2,657,167	1,655,592	-2%	21%	25%
Fresh Camel Milk 1 litre	6,556	8,400	11,400	11,350	6,972	0%	35%	73%
Goat Export Quality (Head)	433,367	371,719	455,600	460,000	286,528	1%	24%	6%
Goat Local Quality (Head)	327,583	300,875	387,400	393,250	244,936	2%	31%	20%
Other Essential Items								
Charcoal 50kg	50,053	63,300	69,000	72,000	44,763	4%	14%	44%
Cowpeas 1 kg	10,380	12,875	16,733	18,000	11,116	8%	40%	73%
Unskilled Labor Wage Rate	47,206	57,700	61,180	62,600	38,906	2%	8%	33%
Firewood Bundle	3,930	5,488	5,333	5,333	3,223	0%	-3%	36%
Local Sesame Oil 1 litre	30,517	32,813	34,500	36,000	22,332	4%	10%	18%
Exchange Rate (Somaliland Shilling per USD)	7,060	7,425	8,716	8,950	5,477	3%	21%	27%
Terms of Trade								
Labour Wage (Daily)/ Cereal (Rice(Kg))	9	11	11	11	-	0%	0%	22%
Local Goat (Head)/ Cereal (Rice(Kg))	65	57	68	69	-	1%	21%	6%
Price Indices								
Consumer Price Index	-	130	157	160	-	2%	23%	-

Figure 42: Trends in Cereal Prices

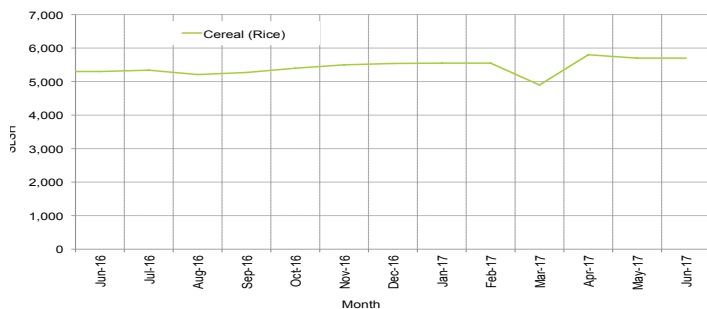


Figure 43: Trends in Wage Rates and Relative Purchasing Power

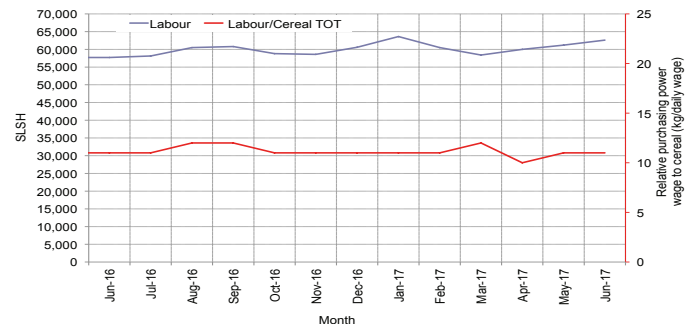


Figure 44: Imported Commodity Prices Compared to Exchange Rate

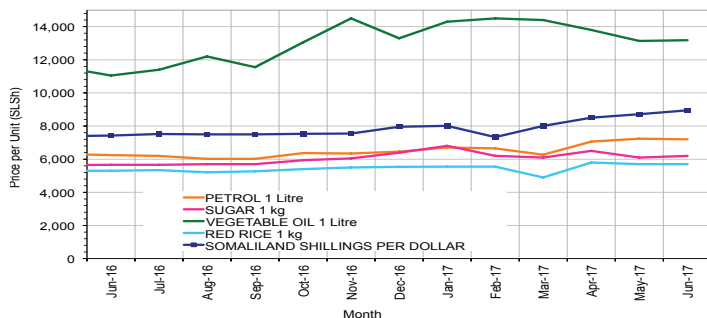


Figure 45: Goat Local Quality

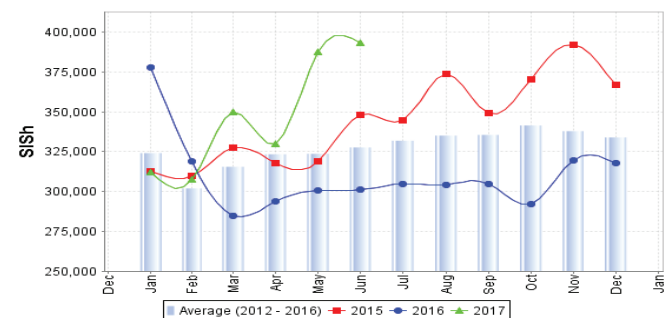


Figure 46: Exchange Rate

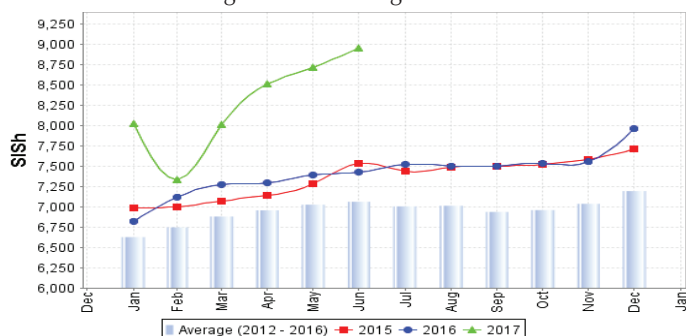
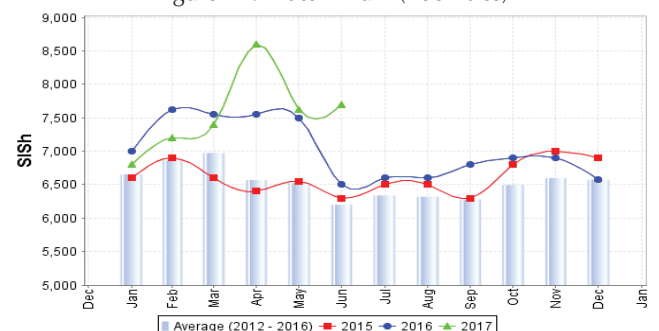


Figure 47: Water Drum (200 litres)



Trends in Livestock Exports

Table 2: Bossaso Livestock Exports (Number of Heads)

	2000	2001	2002	2003	2004	2005	2006	2007	2008	2009	2010	2011	2012	2013	2014	2015	2016	2017
Shoats	571,455	548,853	1,412,450	1,483,409	1,166,480	1,594,859	1,777,283	1,522,855	1,236,775	1,159,454	1,333,478	1,256,535	1,192,197	1,349,123	1,493,111	1,676,216	1 507 910	508 485
Cattle	27,604	42,248	53,313	71,328	79,994	91,910	104,595	89,190	78,046	67,385	103,808	99,058	76,043	77,353	87,759	134,597	70 705	19 696
Camel	8,177	1,950	9,720	4,259	2,488	26,109	33,724	27,580	27,639	15,331	36,865	45,878	22,288	19,032	12,251	10,945	10 144	960

Figure 48: Bossaso Livestock Exports (Number of Heads)

