

## Highlights

**Inflation:** The June Consumer Price Index (CPI) increased in all Somali shilling (SoSh) zones but decreased marginally in Somaliland shilling (SiSh) regions. The inflation rate was significantly reduced year-on-year, but was remarkably elevated when compared to the base period (March 2007), particularly in SoSh areas.

**Exchange rate:** The SoSh depreciated against the United States dollar (USD) in most areas, whereas the SiSh gained slight value against the USD over the month of June. Compared to one year ago, the exchange rate appreciated in all SoSh regions but remained stable in the SiSh areas. The appreciation of the SoSh is attributable to increased dollar flows into the country, particularly to Mogadishu.

**Local grain** prices appreciated in most markets in June except for a slight decline in SiSh regions and relative stability in Bakool. The increase in the cost of local grains is mainly due to depleted household stocks just before the *Gu* harvest. Overall, cereal prices remained at lower levels in most markets when compared to the corresponding time last year.

**Prices of imported commodities** quoted in local currency decreased or remained stable in most markets, except in Central and Lower Juba, where they increased slightly. The latter price trends are attributable to the heightened insecurity that has increased road-block extortions. The appreciation of local currency and improved port operations have led to a significant reduction in the prices of imports over the last one year.

**Livestock prices** increased in most markets, except for some areas of Shabelle, Central, Banadir and Northern regions, where they were more or less unchanged. The increase in livestock prices is linked to increased export demand during the Ramadan. Milk prices continue on the downward trajectory countrywide as supply and production remain at its peak. Livestock prices are significantly higher than a year ago in most markets.

**Labour wages** remained stable or reduced slightly in most areas, in line with normal scaling down of agricultural labour opportunities in this time of the year. However, labour opportunities increased in parts of riverine areas in the South due to renewed agricultural activities after floods receded in Hiraan, Shabelle and Juba. Casual wages are significantly higher compared to their levels a year ago in most markets.

**Terms of Trade (ToT)** between labour wages and local cereals fell in most areas, in line with increased cereal prices and stable labour wages. Compared to the same period last year, the purchasing power improved in most regions, except for Gedo and Hiran where it declined, and Shabelle where it remained stable.

This Market Data Update is a monthly report that presents analysis of market information and is produced regularly as part of the monthly monitoring process.

The weekly price data is collected from 47 main markets throughout Somalia since 1995.

Market analysis is an integral part of all of FSNAU's Annual Food Security Projections and seasonal technical reports (Technical Reports on FSNAU Post *Gu* and *Deyr* Analysis).

Detailed data is available online on [www.fsnau.org/ids](http://www.fsnau.org/ids).

### FSNAU Funding Agencies



Swiss Agency for Development  
and Cooperation SDC



Common  
Humanitarian Fund  
Somalia

# Regional Market Highlights

**Juba Valley:** Prices of maize, imports and cattle increased slightly month-on-month. The ToT (11Kg/daily wage rate) was sustained at previous month's level. Compared to a year ago, prices are significantly lower for milk and imported food, whereas they are considerably elevated for cattle. Annual comparisons of ToT between labour and cereals also indicated significant improvement in purchasing power for casual labourers.

**Sorghum Belt:** Prices of sorghum and livestock increased while those of imported food reduced. The ToT between labor and cereals reduced everywhere except in Bakool, where it remained relatively stable. Year-on-year price comparisons showed mixed trends; prices of import commodities, goats and milk decreased while those of cereals increased. The ToT exhibited an annual increase in Bay and Bakool but a decline in Gedo and Hiran.

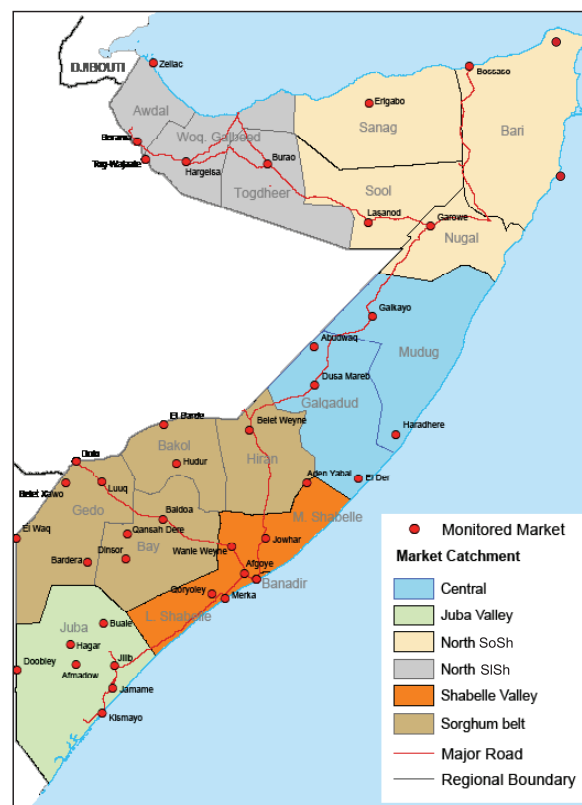
**Shabelle Valley:** Monthly prices of imported food and maize increased while the livestock price reduced. The ToT dropped 1kg to close the month at 10kg of maize for one day of labor. Compared to the same month last year, prices of imported commodities and cereals are significantly lower, cattle prices are considerably higher, and goat prices are somewhat suppressed. Labour to wage and local goat to cereal ToT remain as they were a year ago.

**Central:** A slight monthly price increase was recorded for food imports and red sorghum, but livestock prices declined slightly. Annual comparisons indicate significant decreases in the prices of all items except for camel, which accelerated significantly. A decline in local goat prices, coupled with a slight increase in rice prices, reduced the ToT by 5kg from the previous month's level (70kg/goat). The ToT is slightly higher than the same month last year, currently standing at 65kg of rice/local quality goat. Similarly, the goat to red sorghum ToT declined by 10kg month-on-month to close at 122kgs/local quality goat, but is significantly increased (25kgs more, or 26%) from 97kg/goat 12 months ago.

**Northeast:** Month-on-month price reductions were recorded for imports, local cereals and milk; goat values, however, went up. Prices are significantly lower compared to a year ago for most items except for livestock prices, which have remained relatively stable. ToT for rice/local goat increased by 6kgs to 93kg/local goat from the previous month. It is also significantly higher compared to the same period a year ago.

**Northwest:** Prices of most monitored commodities were lower than they were a month ago, except for local quality camel, which showed an increase. Compared to 12 months ago, prices of imports and cereals have decreased but those of livestock have significantly increased. The ToT between cereals (white sorghum) and labor wage remained unchanged (13 kg/ daily labour rate) from May 2013, but is higher by 1kg compared to June of last year.

**Banadir/ Mogadishu:** Monthly prices for imports and local cereals were up, while those of livestock remained stable. Annual price comparisons indicate a decline for import commodities, maize and export quality goat. The ToT for white maize to labor wage was down by one kg from the previous month's level, to 16kgs/daily labor rate in June.



**Table: ToT of Cereals (kg) per Daily Labour Wage Rate, by Region**

Regions	June 2013* (kg of cereals /daily wage rate )	% change from:	
		May-13	Jun-12
Banadir	16	-6%	23%
Bay	20	-26%	25%
Bakool	10	0%	25%
Gedo	15	-12%	-6%
Hiran	10	-17%	-23%
Juba	11	10%	10%
Shabelle	10	-9%	0%
Northeast	7	-13%	40%
Northwest	13	0%	8%
Central	9	13%	50%

\* Cereal types used for ToT calculation: White Maize (Banadir, Hiran, Juba, Shabelle), Red Sorghum (Bay, Bakool, Gedo, Central, Northeast) and White Sorghum (Northwest)

# International Market Highlights

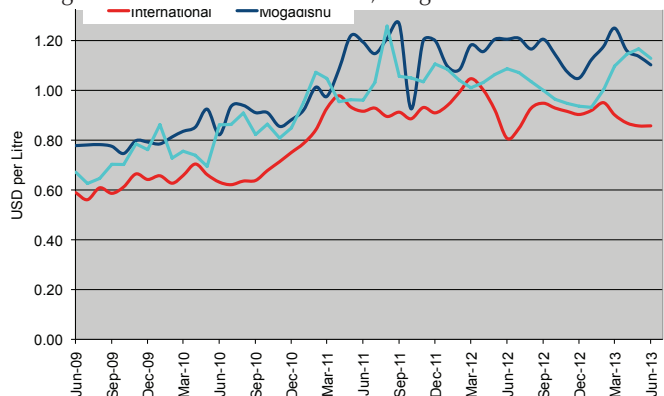
**Diesel:** The June crude oil<sup>1</sup> prices closed at US \$100.33 per barrel (bbl), nearly the same level as May, but six percentage points lower than the same period last year. According to the Oil Market Report (OMR),<sup>2</sup> sluggish macroeconomic conditions and escalating geopolitical turmoil in oil producing countries, including Iraq, Iran, Syria and Libya, are expected to keep oil demand at a steady level, while moderating downward supply momentum in the short term. As a result, the nominal oil prices are expected to average \$101/bbl during 2013 and to decline to slightly below \$100/bbl in 2014.<sup>3</sup>

**Diesel prices in local currency terms did not change much from the previous month. Compared to the same month last year, the prices were reduced significantly (22%) in Mogadishu and slightly (6%) in Bossaso. The annual reduction was supported by appreciated SoSh and steady sea port supplies, mainly coming from Mogadishu. The dollar equivalent price gap between domestic diesel prices and global crude oil costs over the last one year decreased by 20 percent in Mogadishu but was minimal in Bossaso (Figure 1).**

**Rice:** The export price of the benchmark Thai rice (Grade A1 Super 1/B) fell by 4 percent month-on-month to a 17-month low, due to sluggish exports and the Thai government's announcement of a cut in the intervention price for regular paddy, which was later reversed<sup>4</sup>. A similar price easing pattern was observed when compared to June 2013. Rice price quotations are projected to remain unchanged in the short term, on the backdrop of continued weak import demand.

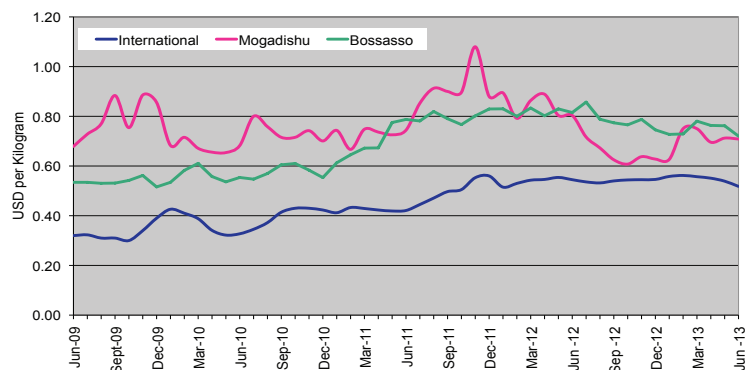
**Prices of imported rice remained relatively stable in Bossaso and Mogadishu over the last month but were significantly reduced (20% and 25%, respectively) when compared to the same period last year. The decline was caused by several factors, including appreciation of the SoSh against the USD, increased supplies through ports, and ongoing humanitarian interventions. The gap between international and domestic rice prices (in USD terms) decreased from 47 percent in June last year to 37 percent currently in Mogadishu, and from 50 percent to 39 percent in Bossaso (Figure 2).**

Figure 1: Diesel Prices in Dubai, Mogadishu and Bossaso



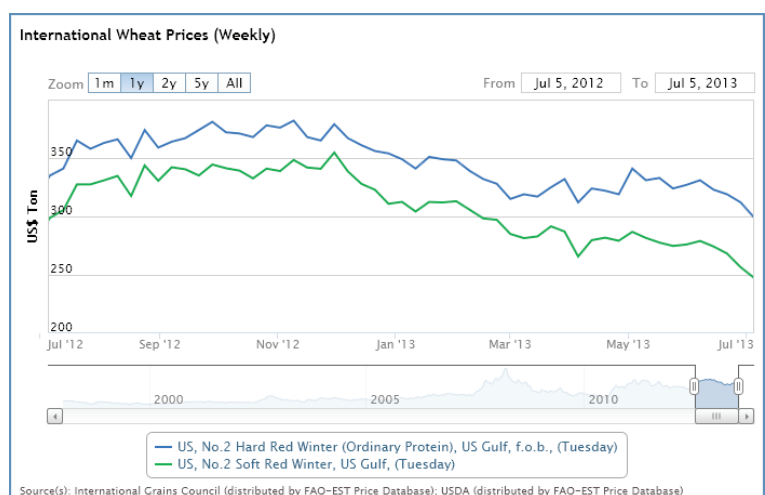
Source: FSNAU & FEWSNET Market Price Monitoring System, FAO Statistics, 2013

Figure 2: Rice Prices in Bangkok (FOB), Mogadishu and Bossaso Markets



Source: FSNAU & FEWSNET Market Price Monitoring System, FAO Statistics, 2013

Figure 3: International Wheat Prices



Source(s): International Grains Council (distributed by FAO-EST Price Database); USDA (distributed by FAO-EST Price Database)

Source: International Grain Council

1 Free on Board (FoB) in Abu Dhabi (Dubai) is the main source of Somalia's oil imports.

2 Monthly Publication by International Energy Agency (IEA) in collaboration with Organization of Petroleum Exporting Countries (OPEC), released on 11 July 2013; <http://omrpublic.iea.org/>.

3 Commodity Markets Outlook, July 2013, World Bank; [http://siteresources.worldbank.org/INTPROSPECTS/Resources/334934-1304428586133/CommodityMarketsOutlook\\_July2013.pdf](http://siteresources.worldbank.org/INTPROSPECTS/Resources/334934-1304428586133/CommodityMarketsOutlook_July2013.pdf).

4 The World Food Situation: The FAO Food Price Index July 2013; <http://www.fao.org/worldfoodsituation/wfs-home/foodpricesindex/en>; IGC Grain Market Report 434 - 1 July 2013.

# International Market Highlights

**Wheat:** The International Grain Council (IGC) wheat sub-index averaged 4 percent lower month-on-month as northern hemisphere harvests accelerated, with further downward pressure from expectations for ample 2013/14 supplies. With world trade contracting resulting in lower import demand by several countries due to their higher domestic production, global wheat markets are likely to experience more stable conditions under generally lower prices.<sup>5</sup>

**Wheat flour prices for June 2013 increased slightly in local currency terms in Mogadishu<sup>6</sup> (6%), while remaining stable in Bossaso. Year-on-year comparisons indicate significant price reduction (14%) in Bossaso and relative stability in Mogadishu.**

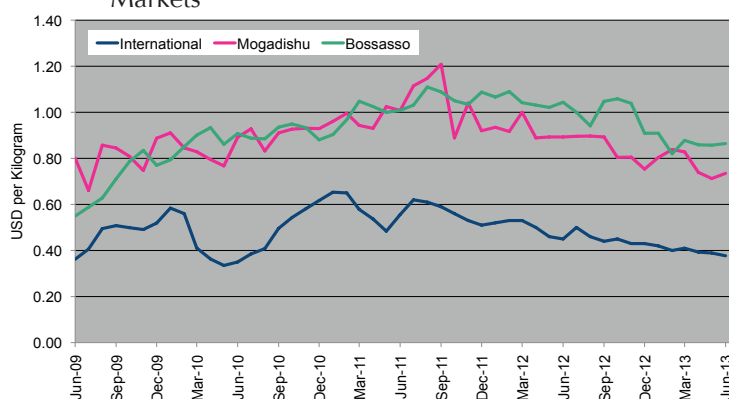
**Sugar:** The FAO Sugar Price Index<sup>7</sup> averaged 242.6 points in June, down 7.5 points (3.0 percent) from May 2013 and 16 percent from June last year. Sugar prices declined for the third consecutive month, on the back of anticipated surplus production in Brazil, the world's largest sugar producer and exporter, despite heavy rains slowing harvesting in the Centre South region, the main producing area in Brazil.

**Sugar prices increased in Mogadishu (8%) but did not change in Bossaso month-on-month. Annual price comparisons indicate significant reduction (25-30%) due to the appreciation of the SoSh, continued humanitarian interventions and enhanced port supplies.**

**Cooking Oil:** The FAO Oils/Fats Price Index<sup>8</sup> averaged 198 points in June, marginally below May and the lowest level in six months, but 10 percent lower than the same month a year ago. The decrease was driven by soy oil, mostly reflecting a rise in export availabilities in South America, where subdued consumption coincided with high soy oil production. Meanwhile, palm oil prices remained steady due to slow production growth and falling inventory levels in Southeast Asia.

**Month-on-month vegetable oil price movement was flat in the two port cities' markets, but were significantly reduced (12-33%) when compared to the same month last year, reflecting accelerated movement of supplies through ports and appreciated domestic currency.**

Figure 4: Sugar Prices: International, Mogadishu and Bossaso Markets



Source: FSNAU & FEWSNET Market Price Monitoring System, International Sugar Organizations, 2013

<sup>5</sup> Ibid.

<sup>6</sup> Due to increased consumptions needs.

<sup>7</sup> The World Food Situation: The FAO Food Price Index June 2013

<sup>8</sup> Ibid

# National Trends: CPI, Exchange Rates, Cereal Prices and Relative Purchasing Power

Figure 5: Terms of Trade Between Wage Rates and Selected Cereals

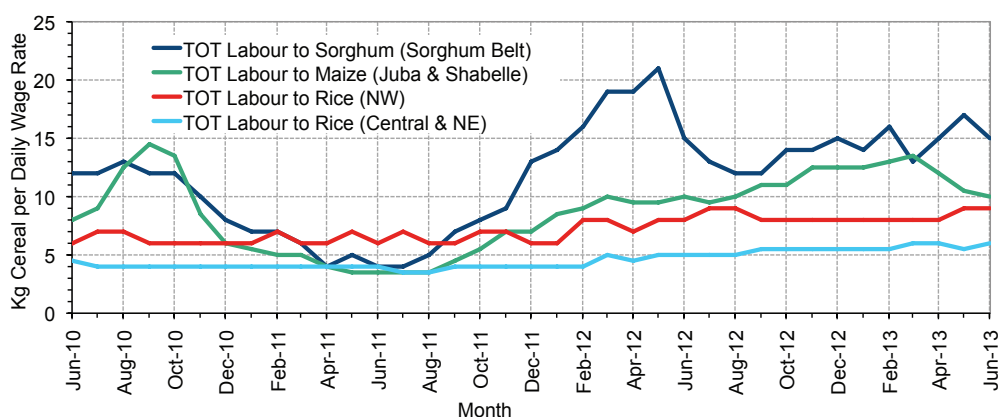


Figure 6: Monthly Exchange Rate for Selected Regions (SoSh and SiSh to USD)

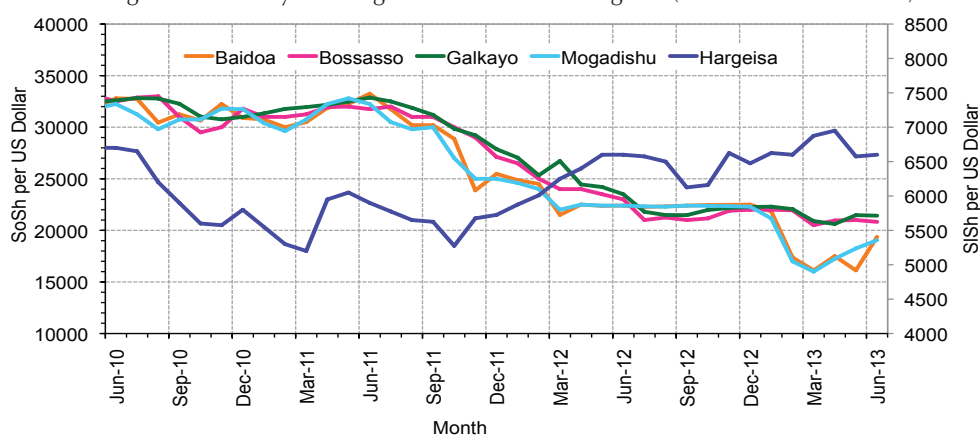


Figure 7: Monthly Trends in Consumer Price Index (CPI, March 2007=100)

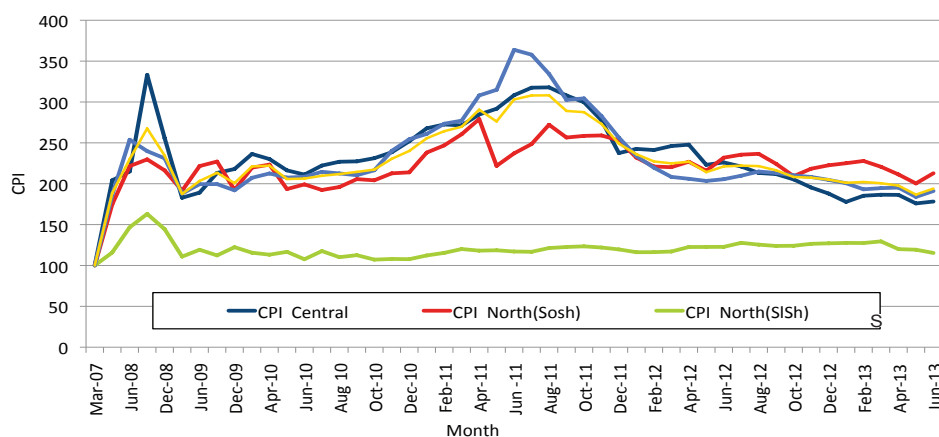
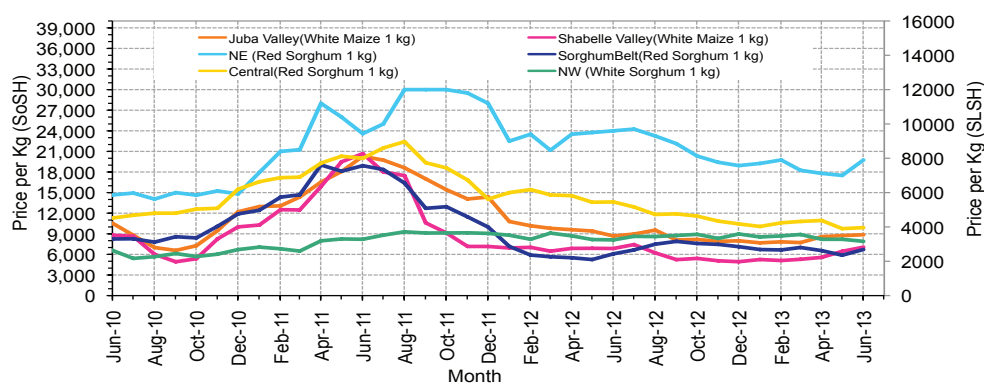


Figure 8: Monthly Trends in Local Cereal Prices





# Regional analysis: Juba Regions

Indicator	5-Year Average (2008-2012)	Jun-12	May-13	June-13 Nominal Price	June-13 Real (Deflated) Price	% Change Same Month Previous Year	% Change Previous Month	% Change 5-year avrg (2008-2012)
<b>Imported Commodities Prices</b>								
Diesel 1 litre	38,457	33,571	28,321	29,179	15,171	-13%	3%	-24%
Imported Red Rice 1kg	27,457	17,321	16,786	16,929	8,760	-2%	1%	-38%
Petrol 1 litre	37,007	35,786	28,250	30,929	16,087	-14%	9%	-16%
Sugar	25,057	21,143	18,571	17,071	8,834	-19%	-8%	-32%
Vegetable Oil 1 litre	53,971	39,036	34,143	30,964	16,105	-21%	-9%	-43%
Wheat Flour 1kg	24,642	17,179	17,071	17,571	9,096	2%	3%	-29%
Wheat Grain 1kg	20,000	-	-	-	-	-	-	-
<b>Cereal Prices</b>								
Red Sorghum 1kg	9,989	-	7,000	7,000	3,563	-	0%	-30%
White Maize 1kg	13,455	8,679	8,657	8,750	4,479	1%	1%	-35%
<b>Livestock &amp; Livestock Product Prices</b>								
Camel Local Quality (Head)	9,078,548	9,867,600	9,641,964	10,733,214	5,617,195	9%	11%	18%
Cattle Local Quality (Head)	3,781,343	4,132,050	4,456,458	4,619,833	2,417,719	12%	4%	22%
Fresh Camel Milk 1 litre	18,864	21,500	18,583	16,042	8,296	-25%	-14%	-15%
Goat Export Quality (Head)	1,266,085	1,642,714	1,641,786	1,539,571	805,644	-6%	-6%	22%
Goat Local Quality (Head)	842,400	1,074,750	1,018,821	1,063,036	556,247	-1%	4%	26%
<b>Other Essential Items</b>								
Charcoal 50kg	83,221	94,357	92,321	83,750	43,731	-11%	-9%	1%
Cowpeas 1 kg	25,313	23,386	23,536	22,000	11,414	-6%	-7%	-13%
Unskilled Labor Wage Rate	90,421	90,500	89,500	90,929	47,488	0%	2%	1%
Firewood Bundle	6,367	8,071	9,000	10,143	5,208	26%	13%	59%
Local Sesame Oil 1 litre	77,493	70,304	75,357	73,786	38,516	5%	-2%	-5%
Exchange Rate (Somali Shilling per USD)	31,249	22,214	18,339	19,175	9,935	-14%	5%	-39%
<b>Terms of Trade</b>								
Labour Wage (Daily)/ Cereal (Maize(Kg))	7	10	10	10	-	0%	1%	55%
Local Goat (Head)/ Cereal (Maize(Kg))	63	124	118	121	-	-2%	3%	94%
<b>Price Indices</b>								
Consumer Price Index	-	206	184	191	-	-7%	4%	-

Figure 9: Trends in Cereal Prices

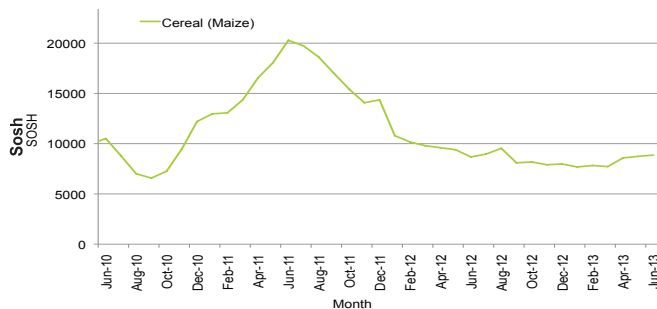


Figure 10: Trends in Wage Rates and Relative Purchasing Power

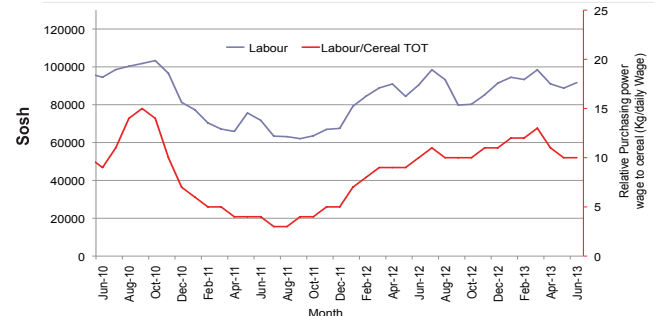


Figure 11: Imported Commodity Prices Compared to Exchange Rate

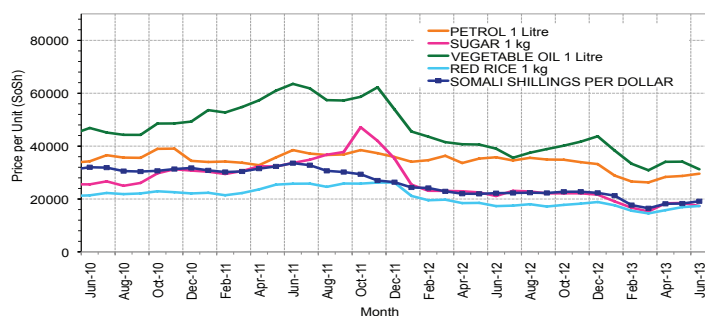


Figure 12: Goat Local Quality

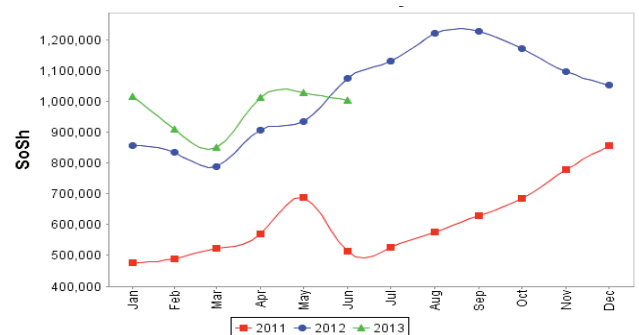


Figure 13: Exchange Rate

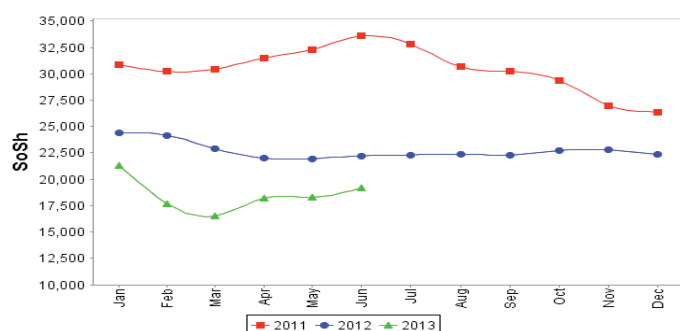
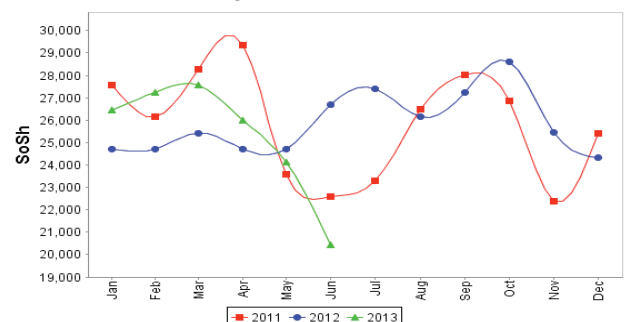


Figure 14: Water Drum



# Regional analysis: Sorghum Belt Regions (Bay, Bakool, Gedo and Hiran)

Indicator	5-Year Average (2008-2012)	Jun-12	May-13	June-13 Nominal Price	June-13 Real (Deflated) Price	% Change Same Month Previous Year	% Change Previous Month	% Change 5-year avrg (2008-2012)
<b>Imported Commodities Prices</b>								
Diesel 1 litre	35,019	32,659	30,841	30,273	15,744	-7%	-2%	-14%
Imported Red Rice 1kg	28,554	20,091	17,205	18,045	9,344	-10%	5%	-37%
Petrol 1 litre	34,135	32,659	30,477	29,568	15,375	-9%	-3%	-13%
Sugar	26,557	23,455	18,864	19,068	9,879	-19%	1%	-28%
Vegetable Oil 1 litre	52,813	43,886	40,636	37,636	19,597	-14%	-7%	-29%
Wheat Flour 1kg	25,354	18,250	15,545	16,705	8,643	-8%	7%	-34%
Wheat Grain 1kg	16,409	7,208	8,042	7,667	3,913	6%	-5%	-53%
<b>Cereal Prices</b>								
Red Sorghum 1kg	10,827	6,080	5,882	6,710	3,412	10%	14%	-38%
White Maize 1kg	13,150	7,898	8,550	9,120	4,673	15%	7%	-31%
<b>Livestock &amp; Livestock Product Prices</b>								
Camel Local Quality (Head)	8,618,872	11,699,500	12,785,227	13,050,000	6,829,699	12%	2%	51%
Cattle Local Quality (Head)	2,944,882	3,597,500	3,631,719	3,805,556	1,991,562	6%	5%	29%
Fresh Camel Milk 1 litre	21,148	29,068	10,545	11,989	6,175	-59%	14%	-43%
Goat Export Quality (Head)	1,225,554	1,652,841	1,547,727	1,611,136	843,098	-3%	4%	31%
Goat Local Quality (Head)	737,131	1,203,636	1,052,273	1,035,227	541,693	-14%	-2%	40%
<b>Other Essential Items</b>								
Charcoal 50kg	124,585	156,364	140,682	145,455	76,025	-7%	3%	17%
Cowpeas 1 kg	29,539	26,536	19,194	19,472	10,091	-27%	1%	-34%
Unskilled Labor Wage Rate	88,974	88,977	100,568	101,023	52,771	14%	0%	14%
Firewood Bundle	5,193	6,273	6,182	6,045	3,064	-4%	-2%	16%
Local Sesame Oil 1 litre	78,028	71,786	69,286	75,357	39,339	5%	9%	-3%
Exchange Rate (Somali Shilling per USD)	30,350	22,736	18,909	19,984	10,359	-12%	6%	-34%
<b>Terms of Trade</b>								
Labour Wage (Daily)/ Cereal (Sorghum(Kg))	8	15	17	15	-	3%	-12%	83%
Local Goat (Head)/ Cereal (Sorghum(Kg))	68	198	179	154	-	-22%	-14%	127%
<b>Price Indices</b>								
Consumer Price Index	-	206	184	191	-	-7%	4%	-

Figure 15: Trends in Cereal Prices

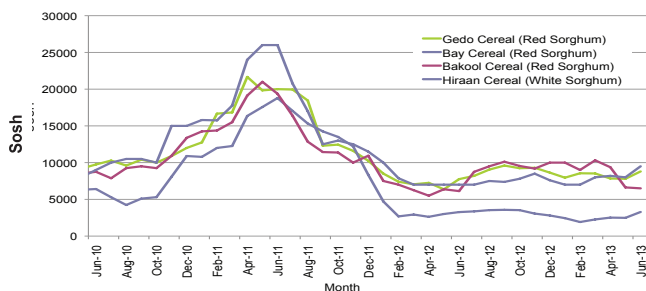


Figure 16: Trends in Wage Rates and Relative Purchasing Power

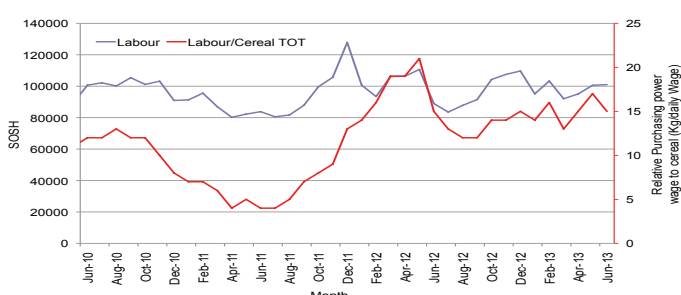


Figure 17: Imported Commodity Prices Compared to Exchange Rate

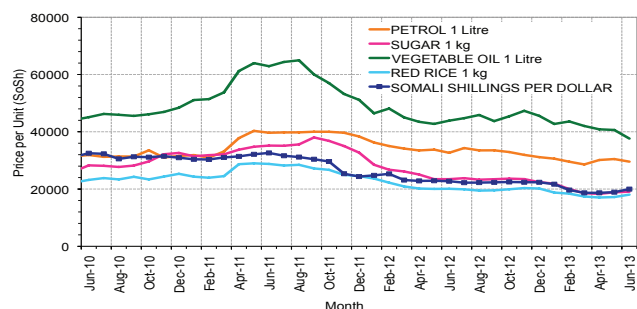


Figure 18: Goat Local Quality

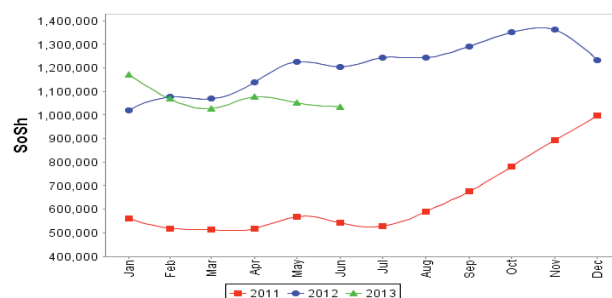


Figure 19: Exchange Rate

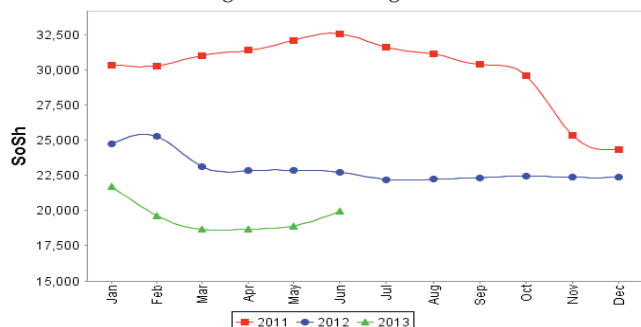
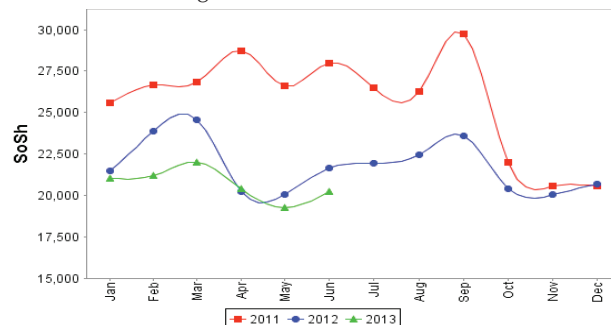


Figure 20: Water Drum



# Regional analysis: Shabelle Regions

Indicator	5-Year Average (2008-2012)	Jun-12	May-13	June-13 Nominal Price	June-13 Real (Deflated) Price	% Change Same Month Previous Year	% Change Previous Month	% Change 5-year avrg (2008-2012)
<b>Imported Commodities Prices</b>								
Diesel 1 litre	34,233	30,417	24,833	26,083	13,551	-14%	5%	-24%
Imported Red Rice 1kg	25,149	14,458	15,333	15,542	8,034	7%	1%	-38%
Petrol 1 litre	32,816	31,458	27,292	28,208	14,663	-10%	3%	-14%
Sugar	24,608	20,958	16,083	16,417	8,492	-22%	2%	-33%
Vegetable Oil 1 litre	44,350	33,333	26,167	26,125	13,573	-22%	0%	-41%
Wheat Flour 1kg	23,258	14,417	14,833	15,750	8,143	9%	6%	-32%
Wheat Grain 1kg	16,777	9,333	-	5,000	-	-46%	-	-70%
<b>Cereal Prices</b>								
Red Sorghum 1kg	11,510	8,706	7,019	7,683	3,921	-12%	9%	-33%
White Maize 1kg	11,982	6,860	6,450	7,053	3,591	3%	9%	-41%
<b>Livestock &amp; Livestock Product Prices</b>								
Camel Local Quality (Head)	11,537,083	15,480,000	17,117,500	16,985,000	8,889,106	10%	-1%	47%
Cattle Local Quality (Head)	3,590,000	4,590,000	6,272,500	6,380,000	3,338,913	39%	2%	78%
Fresh Camel Milk 1 litre	16,079	16,833	15,813	14,583	7,532	-13%	-8%	-9%
Goat Export Quality (Head)	1,417,020	1,960,625	1,821,875	1,646,042	861,366	-16%	-10%	16%
Goat Local Quality (Head)	973,333	1,224,583	1,287,500	1,262,083	660,419	3%	-2%	30%
<b>Other Essential Items</b>								
Charcoal 50kg	98,114	115,264	145,070	131,889	68,925	14%	-9%	34%
Cowpeas 1 kg	26,571	21,701	15,593	14,637	7,560	-33%	-6%	-45%
Unskilled Labor Wage Rate	56,650	66,042	68,750	67,292	35,118	2%	-2%	19%
Firewood Bundle	4,266	5,875	8,292	8,083	4,130	38%	-3%	89%
Local Sesame Oil 1 litre	59,350	44,583	60,208	59,792	31,193	34%	-1%	1%
Exchange Rate (Somali Shilling per USD)	30,724	22,750	18,371	18,992	9,840	-17%	3%	-38%
<b>Terms of Trade</b>								
Labour Wage (Daily)/ Cereal (Maize(Kg))	5	10	11	10	-	-1%	-10%	102%
Local Goat (Head)/ Cereal (Maize(Kg))	81	179	200	179	-	0%	-10%	120%
<b>Price Indices</b>								
Consumer Price Index	-	206	184	191	-	-7%	4%	-

Figure 21: Trends in Cereal Prices

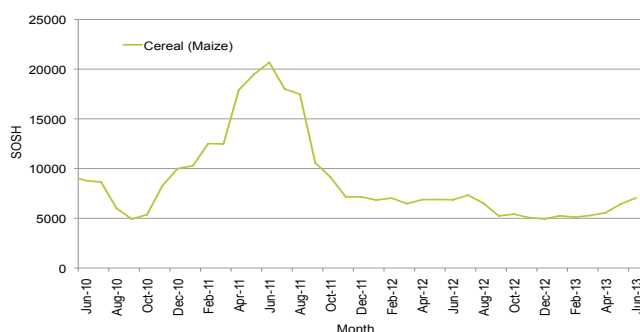


Figure 22: Trends in Wage Rates and Relative Purchasing Power

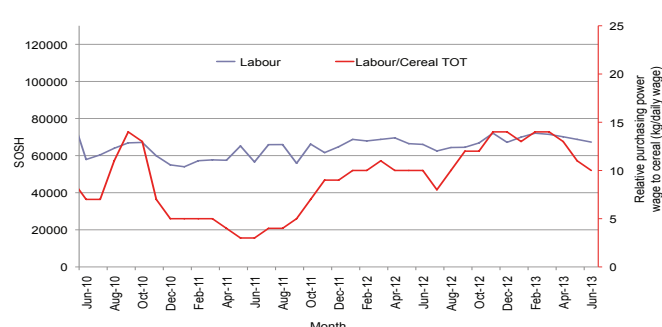


Figure 23: Imported Commodity Prices Compared to Exchange Rate

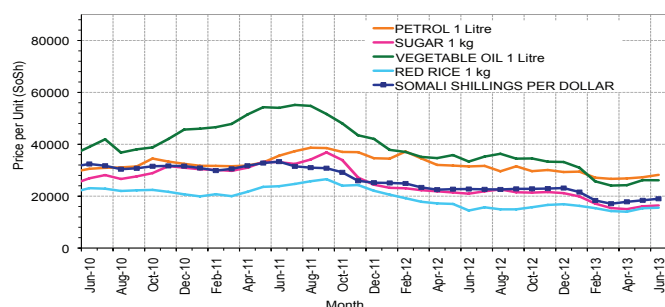


Figure 25: Exchange Rate

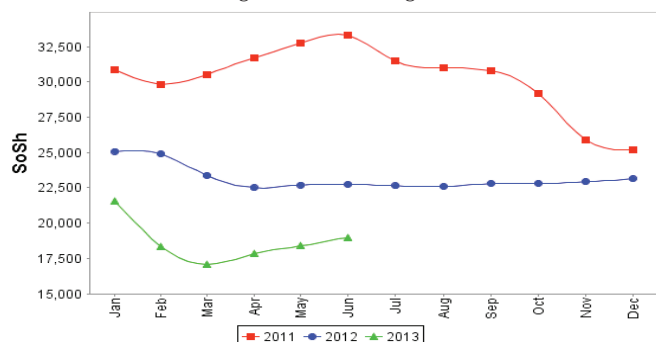


Figure 24: Goat Local Quality

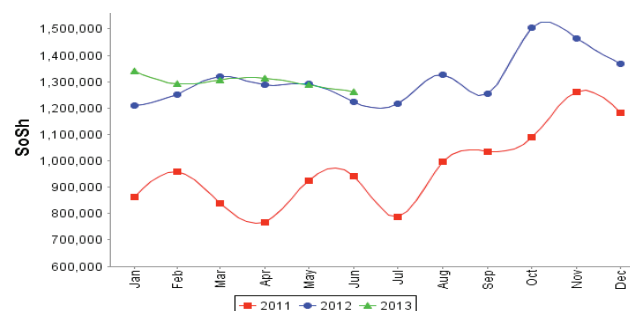
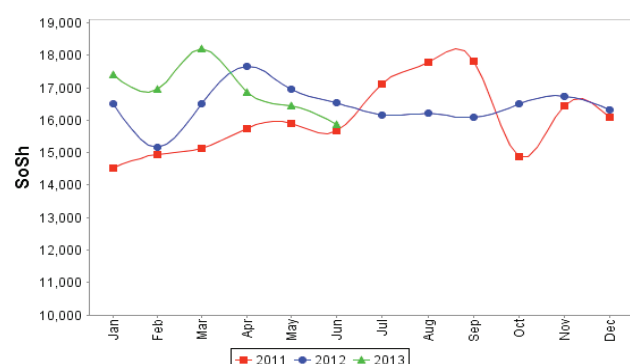


Figure 26: Water Drum





# Regional analysis: Banadir Region

Indicator	5-Year Average (2008-2012)	Jun-12	May-13	June-13 Nominal Price	June-13 Real (Deflated) Price	% Change Same Month Previous Year	% Change Previous Month	% Change 5-year avrg (2008-2012)
<b>Imported Commodities Prices</b>								
Diesel 1 litre	30,565	25,167	18,917	19,292	9,997	-23%	2%	-37%
Imported Red Rice 1kg	24,473	13,375	12,604	12,688	6,540	-5%	1%	-48%
Petrol 1 litre	28,693	27,250	19,417	19,917	10,324	-27%	3%	-31%
Sugar	24,376	18,833	13,938	13,667	7,053	-27%	-2%	-44%
Vegetable Oil 1 litre	42,301	36,042	22,792	22,875	11,872	-37%	0%	-46%
Wheat Flour 1kg	21,518	12,375	11,646	12,229	6,300	-1%	5%	-43%
Wheat Grain 1kg	12,018	8,575	7,532	8,450	4,322	-1%	12%	-30%
<b>Cereal Prices</b>								
Red Sorghum 1kg	10,386	5,383	5,246	5,813	2,942	8%	11%	-44%
White Maize 1kg	13,452	8,300	6,789	6,918	3,521	-17%	2%	-49%
<b>Livestock &amp; Livestock Product Prices</b>								
Camel Local Quality (Head)	15,812,500	-	-	-	-	-	-	-
Cattle Local Quality (Head)	5,828,125	-	-	-	-	-	-	-
Fresh Camel Milk 1 litre	17,342	18,667	21,208	20,500	10,629	10%	-3%	18%
Goat Export Quality (Head)	1,825,000	2,600,000	2,325,000	2,300,000	1,203,619	-12%	-1%	-
Goat Local Quality (Head)	1,734,300	2,137,500	2,146,250	2,157,500	1,129,041	1%	1%	24%
<b>Other Essential Items</b>								
Charcoal 50kg	155,016	174,583	203,875	203,125	106,207	16%	0%	31%
Cowpeas 1 kg	24,695	19,900	13,283	13,263	6,841	-33%	0%	-46%
Unskilled Labor Wage Rate	75,533	107,083	116,667	112,917	58,996	5%	-3%	49%
Firewood Bundle	25,970	7,750	7,900	7,700	3,930	-1%	-3%	-70%
Local Sesame Oil 1 litre	64,325	49,417	55,375	55,875	29,143	13%	1%	-13%
Exchange Rate (Somali Shilling per USD)	30,766	22,392	18,242	18,883	9,783	-16%	4%	-39%
<b>Terms of Trade</b>								
Labour Wage (Daily)/ Cereal (Maize(Kg))	6	13	17	16	-	27%	-5%	191%
Local Goat (Head)/ Cereal (Maize(Kg))	129	258	316	312	-	21%	-1%	142%
<b>Price Indices</b>								
Consumer Price Index	-	206	184	191	-	-7%	4%	-

Figure 27: Trends in Cereal Prices

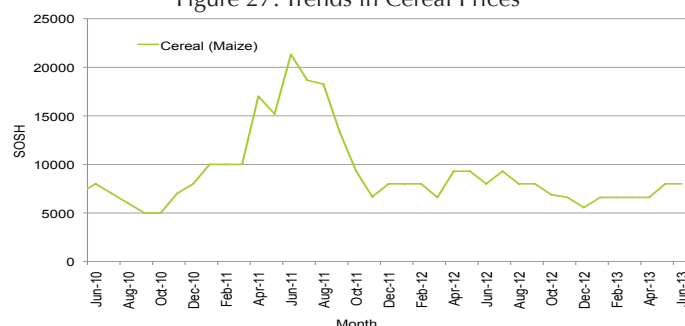


Figure 28: Bakara: Trends in Wage Rates and Relative Purchasing Power

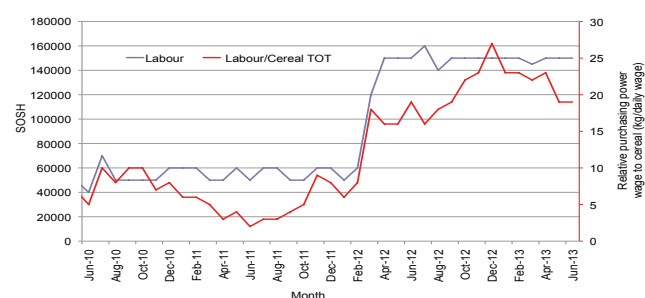


Figure 29: Imported Commodity Prices Compared to Exchange Rate

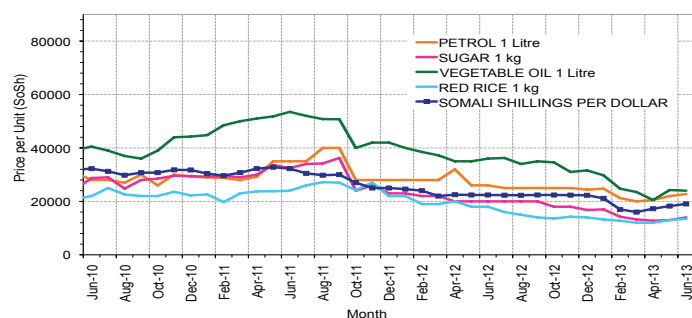


Figure 30: Goat Local Quality

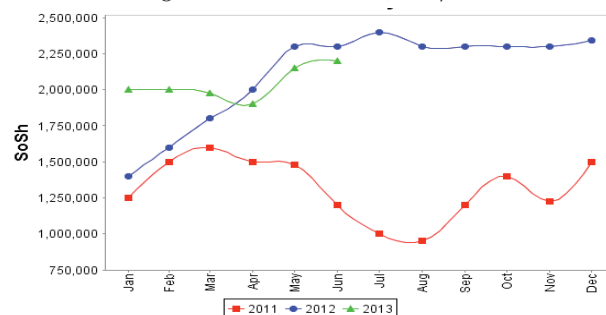


Figure 31: Exchange Rate

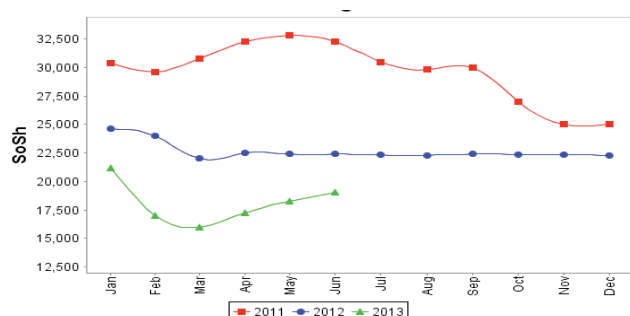
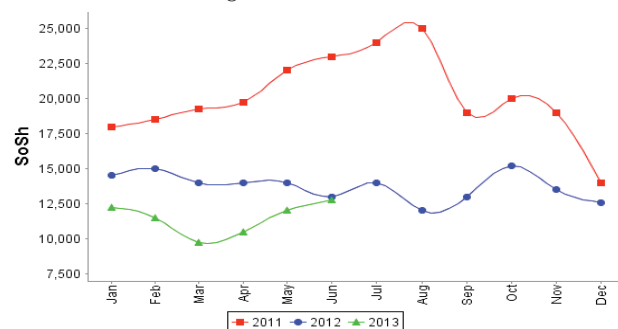


Figure 32: Wheat Flour



# Regional analysis: Central Regions

Indicator	5-Year Average (2008-2012)	Jun-12	May-13	June-13 Nominal Price	June-13 Real (Deflated) Price	% Change Same Month Previous Year	% Change Previous Month	% Change 5-year avg (2008-2012)
<b>Imported Commodities Prices</b>								
Diesel 1 litre	34,316	33,040	27,600	27,850	15,526	-16%	1%	-19%
Imported Red Rice 1kg	30,088	21,560	18,400	18,700	10,392	-13%	2%	-38%
Petrol 1 litre	29,714	28,720	25,250	26,350	14,684	-8%	4%	-11%
Sugar	28,174	26,480	20,550	20,450	11,374	-23%	0%	-27%
Vegetable Oil 1 litre	57,222	53,800	41,900	42,950	23,998	-20%	3%	-25%
Wheat Flour 1kg	25,122	17,960	16,200	16,900	9,382	-6%	4%	-33%
Wheat Grain 1kg	20,660	16,667	13,063	12,750	7,054	-24%	-2%	-38%
<b>Cereal Prices</b>								
Red Sorghum 1kg	12,906	13,640	9,750	9,900	5,455	-27%	2%	-23%
White Maize 1kg	17,290	12,900	10,313	9,833	5,417	-24%	-5%	-43%
<b>Livestock &amp; Livestock Product Prices</b>								
Camel Local Quality (Head)	7,494,249	10,115,000	11,843,750	11,768,750	6,603,007	16%	-1%	57%
Cattle Local Quality (Head)	2,399,375	2,660,000	-	-	-	-	-	-
Fresh Camel Milk 1 litre	37,560	32,540	23,550	24,800	13,815	-24%	5%	-34%
Goat Export Quality (Head)	1,334,458	1,577,500	1,503,125	1,481,250	830,987	-6%	-1%	11%
Goat Local Quality (Head)	969,800	1,326,000	1,282,500	1,212,000	679,918	-9%	-5%	25%
<b>Other Essential Items</b>								
Charcoal 50kg	180,220	180,600	191,000	182,000	102,015	1%	-5%	1%
Cowpeas 1 kg	33,006	28,340	16,150	16,400	9,102	-42%	2%	-50%
Unskilled Labor Wage Rate	78,380	85,900	82,500	85,500	47,872	0%	4%	9%
Firewood Bundle	25,882	35,400	37,000	33,250	18,556	-6%	-10%	28%
Local Sesame Oil 1 litre	97,480	91,050	84,750	86,500	48,433	-5%	2%	-11%
Exchange Rate (Somali Shilling per USD)	30,944	23,240	20,545	20,785	11,562	-11%	1%	-33%
<b>Terms of Trade</b>								
Labour Wage (Daily)/ Cereal (Rice(Kg))	3	4	4	5	-	15%	2%	76%
Local Goat (Head)/ Cereal (Rice(Kg))	32	62	70	65	-	5%	-7%	101%
Camel (Head)/Cereal (Kg)	249	469	644	629	-	34%	-2%	153%
<b>Price Indices</b>								
Consumer Price Index	-	226	176	178	-	-21%	1%	-

Figure 33: Trends in Cereal Prices

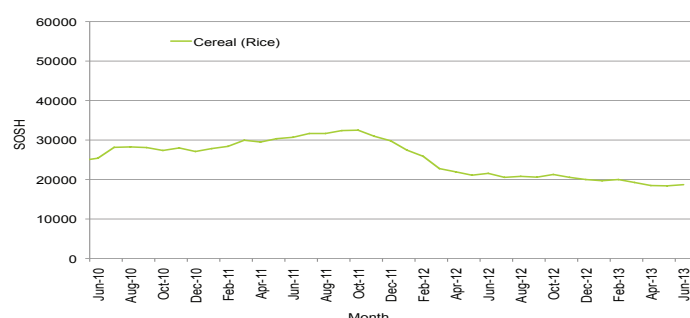


Figure 34: Trends in wage rates and relative purchasing power

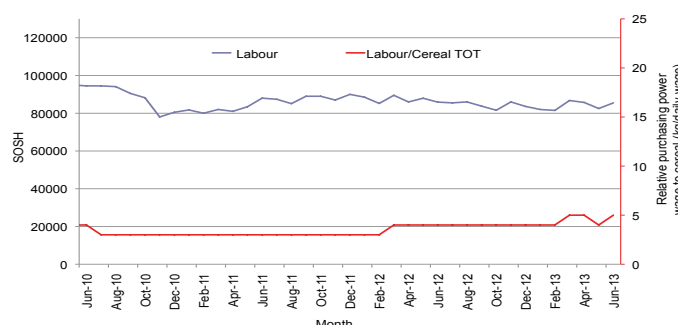


Figure 35: Imported Commodity Prices Compared to Exchange Rate

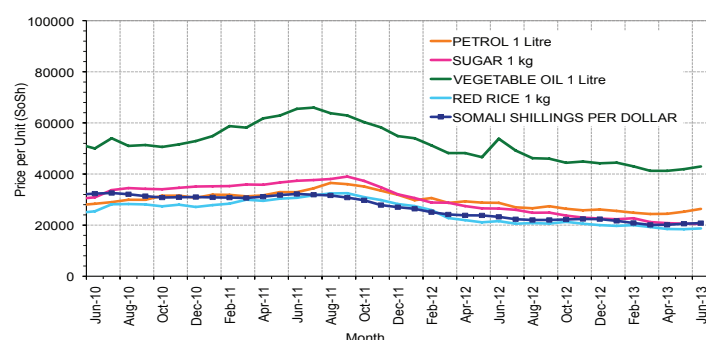


Figure 36: Goat Local Quality

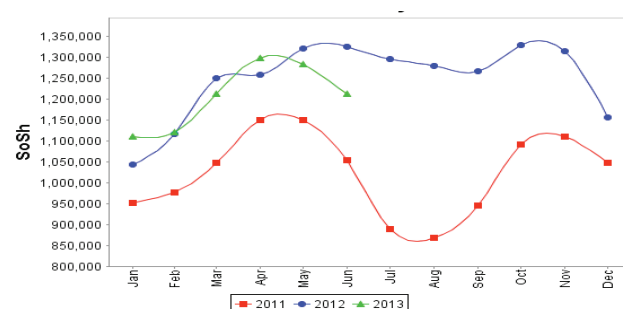


Figure 37: Exchange Rate

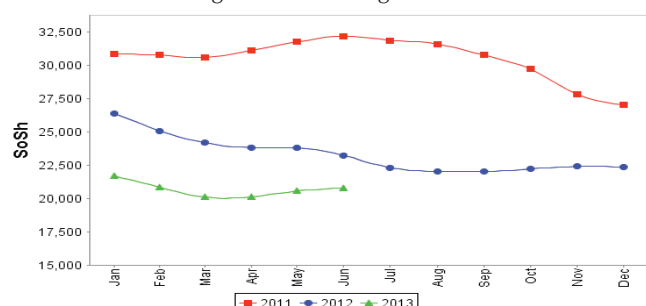
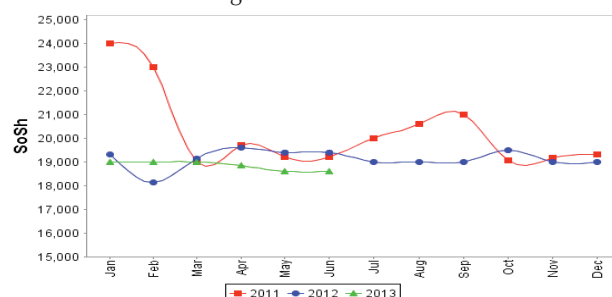


Figure 38: Water Drum



# Regional analysis: Northeast Regions

Indicator	5-Year Average (2008-2012)	Jun-12	May-13	June-13 Nominal Price	June-13 Real (Deflated) Price	% Change Same Month Previous Year	% Change Previous Month	% Change 5-year avg (2008-2012)
<b>Imported Commodities Prices</b>								
Diesel 1 litre	31,116	27,500	24,563	23,625	11,002	-14%	-4%	-24%
Imported Red Rice 1kg	25,835	20,563	16,438	15,625	7,243	-24%	-5%	-40%
Petrol 1 litre	27,410	24,688	21,813	21,438	9,974	-13%	-2%	-22%
Sugar	25,120	24,125	18,375	18,375	8,535	-24%	0%	-27%
Vegetable Oil 1 litre	47,362	43,063	36,063	35,250	16,465	-18%	-2%	-26%
Wheat Flour 1kg	22,036	18,375	15,250	15,250	7,066	-17%	0%	-31%
Wheat Grain 1kg	28,590	25,000	24,750	24,500	11,413	-2%	-1%	-14%
<b>Cereal Prices</b>								
Red Sorghum 1kg	20,406	24,000	17,500	19,750	9,181	-18%	13%	-3%
White Maize 1kg	20,303	22,500	17,500	20,000	9,299	-11%	14%	-1%
<b>Livestock &amp; Livestock Product Prices</b>								
Camel Local Quality (Head)	11,582,050	15,887,500	15,800,000	15,275,000	7,178,046	-4%	-3%	32%
Cattle Local Quality (Head)	6,310,000	7,750,000	8,175,000	7,500,000	3,524,358	-3%	-8%	19%
Fresh Camel Milk 1 litre	34,156	36,792	35,000	33,813	15,790	-8%	-3%	-1%
Goat Export Quality (Head)	1,320,008	1,475,000	1,537,500	1,568,750	737,099	6%	2%	19%
Goat Local Quality (Head)	1,246,212	1,431,875	1,423,125	1,450,000	681,295	1%	2%	16%
<b>Other Essential Items</b>								
Charcoal 50kg	286,566	366,250	329,375	364,375	171,130	-1%	11%	27%
Cowpeas 1 kg	39,303	40,083	27,667	29,000	13,528	-28%	5%	-26%
Unskilled Labor Wage Rate	104,437	120,250	125,000	125,000	58,641	4%	0%	20%
Firewood Bundle	29,412	41,875	48,125	48,125	22,515	15%	0%	64%
Local Sesame Oil 1 litre	92,054	88,438	91,875	90,938	42,634	3%	-1%	-1%
Exchange Rate (Somali Shilling per USD)	31,532	23,219	20,875	20,831	9,689	-10%	0%	-34%
<b>Terms of Trade</b>								
Labour Wage (Daily)/ Cereal (Rice(Kg))	4	6	8	8	-	37%	5%	98%
Local Goat (Head)/ Cereal (Rice(Kg))	48	70	87	93	-	33%	7%	92%
<b>Price Indices</b>								
Consumer Price Index	-	232	200	213	-	-8%	6%	-

Figure 39: Trends in Cereal Prices

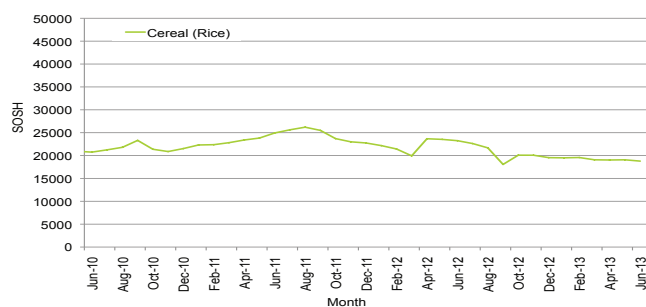


Figure 40: Trends in Wage Rates and Relative Purchasing Power

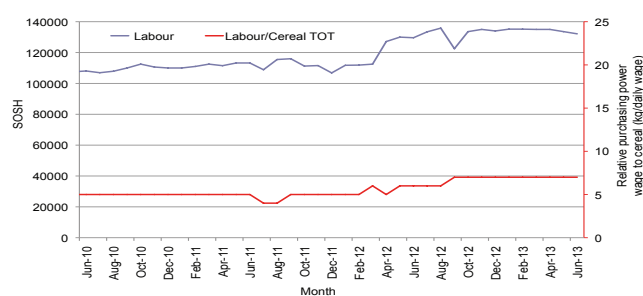


Figure 41: Imported Commodity Prices Compared to Exchange Rate

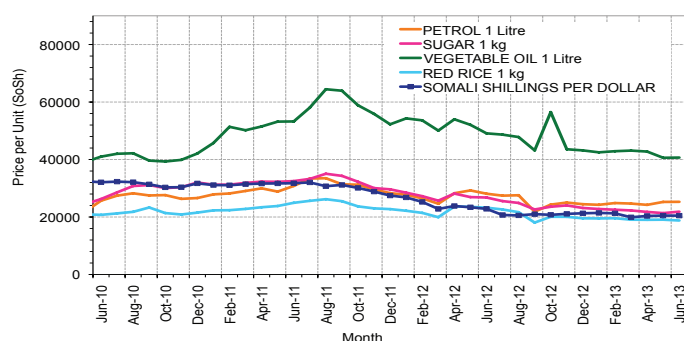


Figure 42: Goat Local Quality

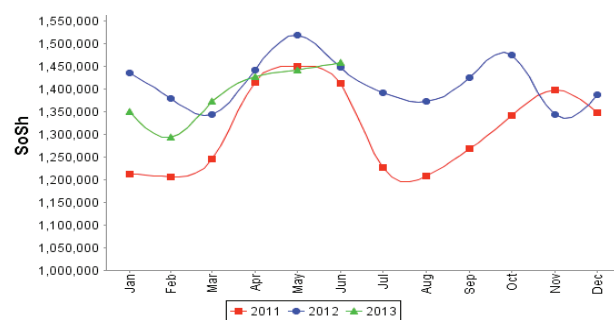


Figure 43: Exchange Rate

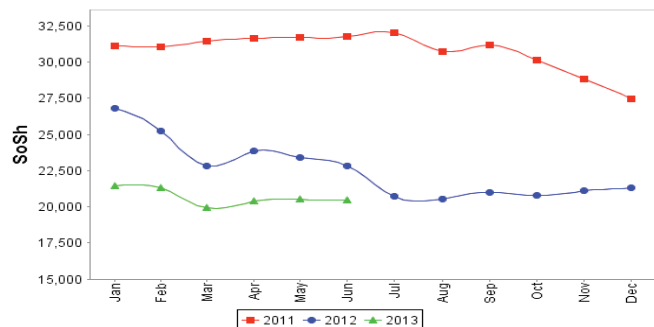
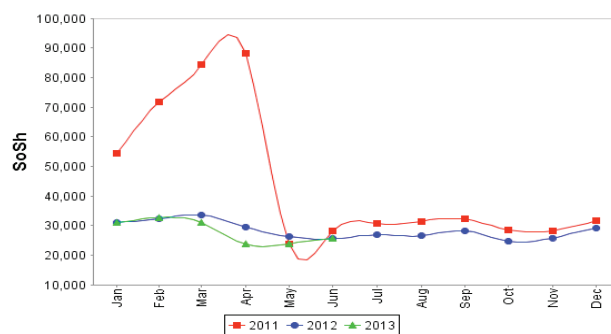


Figure 44: Water Drum



# Regional analysis: Northwest Regions

Indicator	5-Year Average (2008-2012)	Jun-12	May-13	June-13 Nominal Price	June-13 Real (Deflated) Price	% Change Same Month Previous Year	% Change Previous Month	% Change 5-year avrg (2008-2012)
<b>Imported Commodities Prices</b>								
Diesel 1 litre	5,927	6,785	7,115	6,670	5,684	-2%	-6%	13%
Imported Red Rice 1kg	5,400	4,640	4,890	4,830	4,088	4%	-1%	-11%
Petrol 1 litre	6,117	7,205	7,510	7,070	6,031	-2%	-6%	16%
Sugar	5,266	5,925	5,955	5,560	4,721	-6%	-7%	6%
Vegetable Oil 1 litre	10,601	11,970	12,800	11,550	9,916	-4%	-10%	9%
Wheat Flour 1kg	4,562	4,170	4,170	4,310	3,637	3%	3%	-6%
Wheat Grain 1kg	3,275	2,975	3,000	3,175	2,653	7%	6%	-3%
<b>Cereal Prices</b>								
White Sorghum 1kg	3,453	3,245	3,280	3,160	2,640	-3%	-4%	-8%
Yellow Maize 1kg	3,520	3,500	3,375	3,500	2,935	0%	4%	-1%
<b>Livestock &amp; Livestock Product Prices</b>								
Camel Local Quality (Head)	1,879,700	2,434,500	3,179,875	3,738,792	3,242,022	54%	18%	99%
Cattle Local Quality (Head)	1,367,708	1,594,125	2,283,750	2,255,042	1,955,377	41%	-1%	65%
Fresh Camel Milk 1 litre	5,434	6,225	5,285	5,400	4,583	-13%	2%	-1%
Goat Export Quality (Head)	296,639	398,550	491,850	483,150	418,867	21%	-2%	63%
Goat Local Quality (Head)	232,127	295,675	359,510	350,515	303,852	19%	-3%	51%
<b>Other Essential Items</b>								
Charcoal 50kg	32,501	39,800	43,750	44,150	38,185	11%	1%	36%
Cowpeas 1 kg	8,990	9,433	9,313	9,500	8,138	1%	2%	6%
Unskilled Labor Wage Rate	31,005	38,850	43,300	41,700	36,060	7%	-4%	34%
Firewood Bundle	3,806	3,000	3,667	3,500	2,935	17%	-5%	-8%
Local Sesame Oil 1 litre	23,867	24,875	27,438	28,250	24,397	14%	3%	18%
Exchange Rate (Somaliland Shilling per USD)	6,465	6,670	6,902	6,750	5,753	1%	-2%	4%
<b>Terms of Trade</b>								
Labour Wage (Daily)/ Cereal (Rice(Kg))	6	8	9	9	-	3%	-2%	50%
Local Goat (Head)/ Cereal (Rice(Kg))	43	64	74	73	-	14%	-1%	69%
<b>Price Indices</b>								
Consumer Price Index	-	123	119	115	-	-6%	-3%	-

Figure 45: Trends in Cereal Prices

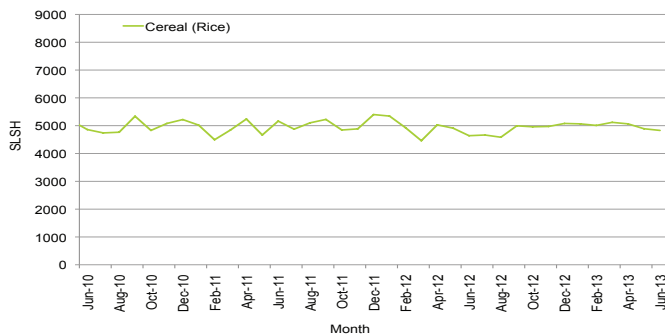


Figure 46: Trends in Wage Rates and Relative Purchasing Power

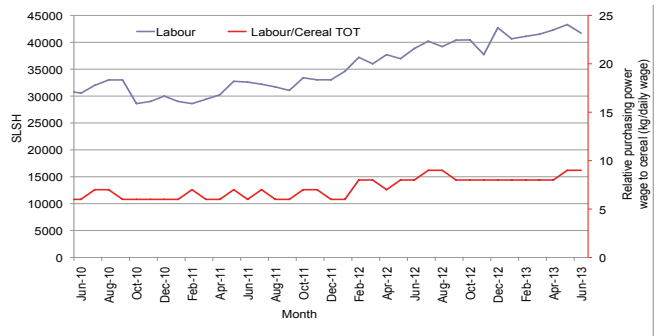


Figure 47: Imported Commodity Prices Compared to Exchange Rate

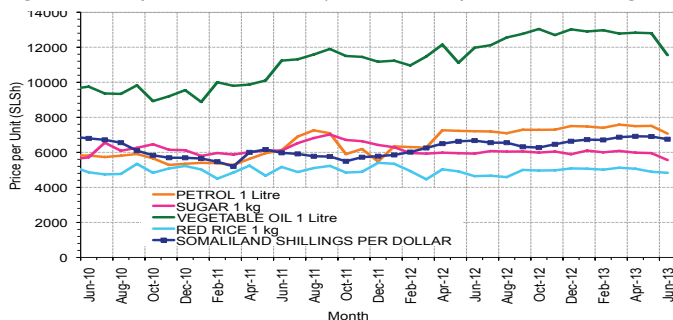


Figure 48: Goat Local Quality

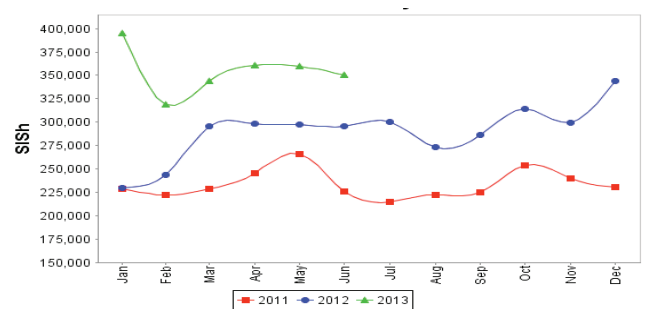


Figure 49: Exchange Rate

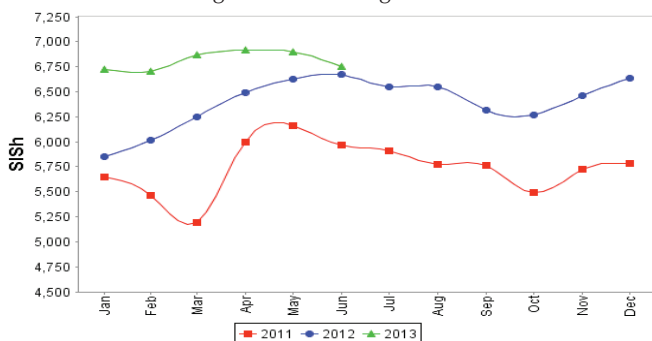
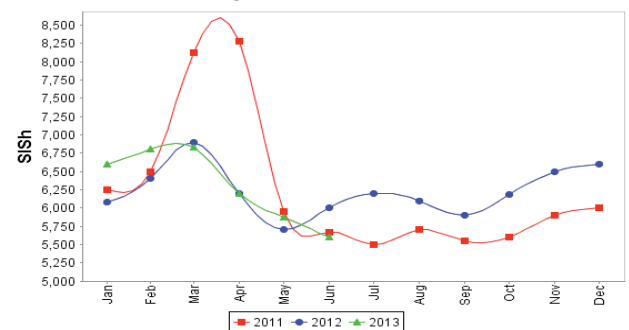


Figure 50: Water Drum



# Trends in Livestock Exports

Table 2: Berbera Livestock Exports (Number of Heads)

	1994	1995	1996	1997	1998	1999	2000	2001	2002	2003	2004	2005	2006	2007	2008	2009	2010	2011	2012	2013 (Jan - Mar)
Shoats	1,572,656	2,683,597	2,376,646	2,814,495	957,224	2,048,136	1,601,083	51,546	341,711	563,107	859,404	1,023,795	1,017,242	1,350,054	1,219,519	1,556,003	2,584,810	3,104,684	3,219,584	623,580
Cattle	173,400	167,128	65,127	66,939	92,213	89,967	63,263	20,973	37,547	84,312	131,852	148,151	85,631	88,143	80,051	88,005	133,021	150,934	190,354	66,415
Camels	38,553	21,993	42,801	50,587	11,663	37,430	16,984	3,473	18,864	21,874	5,147	5,069	22,810	14,245	26,515	20,206	92,651	107,281	102,664	40,622

Figure 51: Berbera Livestock Exports (Number of Heads)

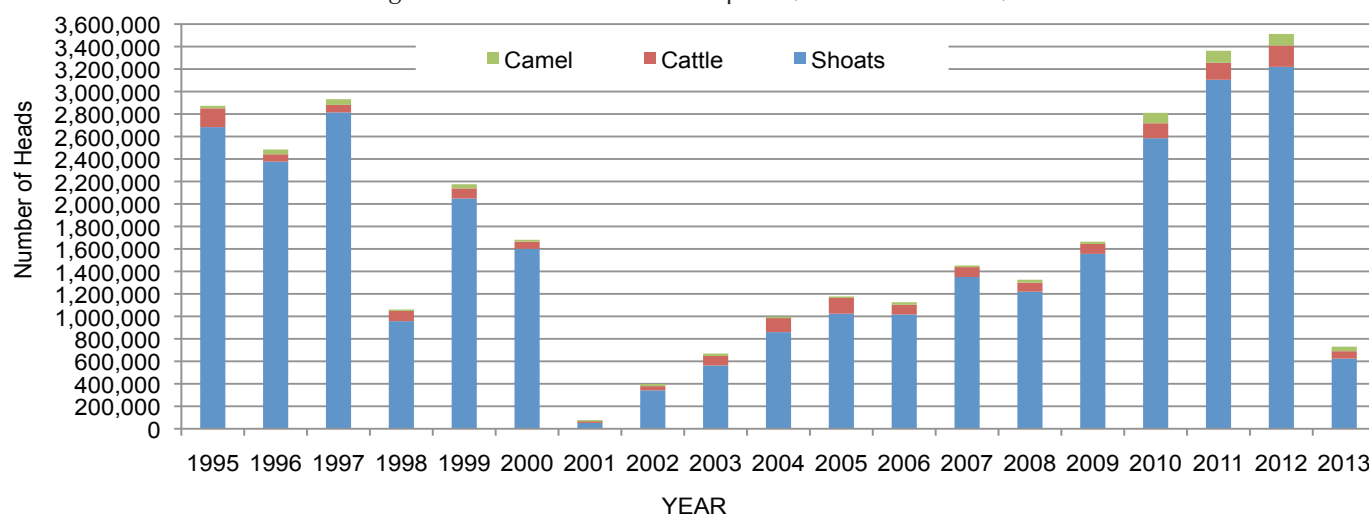
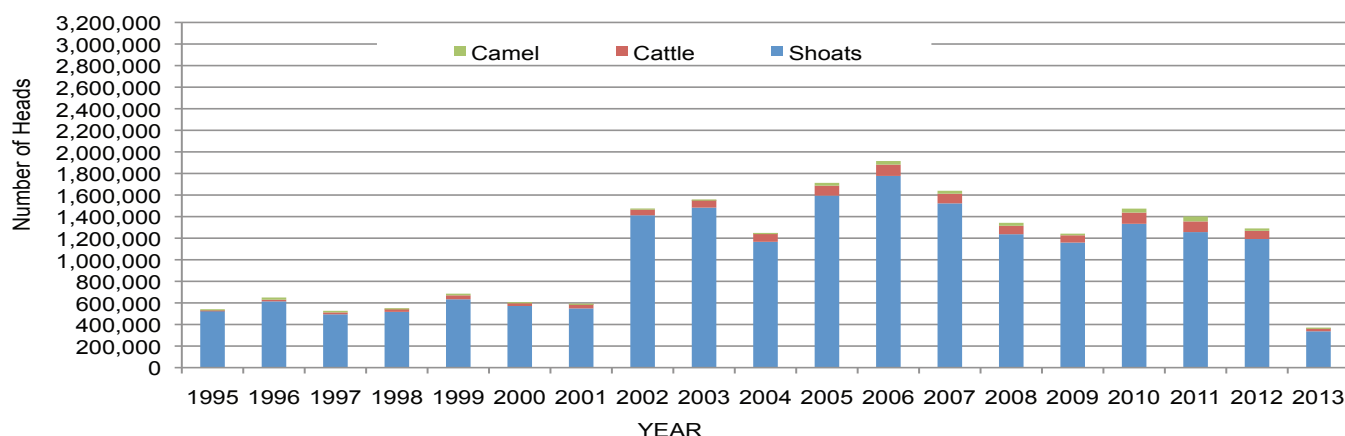


Table 3: Bossaso Livestock Exports (Number of Heads)

	1994	1995	1996	1997	1998	1999	2000	2001	2002	2003	2004	2005	2006	2007	2008	2009	2010	2011	2012	2013 (Jan - Apr)
Shoats	344,000	524,346	614,407	494,320	517,020	633,669	571,455	548,853	1,412,450	1,483,409	1,166,480	1,594,859	1,777,283	1,522,855	1,236,775	1,159,454	1,333,478	1,256,535	1,192,197	336,839
Cattle	1,450	8,795	15,335	17,831	29,492	36,586	27,604	42,248	53,313	71,328	79,994	91,910	104,595	89,190	78,046	67,385	103,808	99,058	76,043	29,168
Camels	5,397	8,392	20,462	14,599	3,938	15,544	8,177	1,950	9,720	4,259	2,488	26,109	33,724	27,580	27,639	15,331	36,865	45,878	22,288	5,311

Figure 52: Bossaso Livestock Exports (Number of Heads)



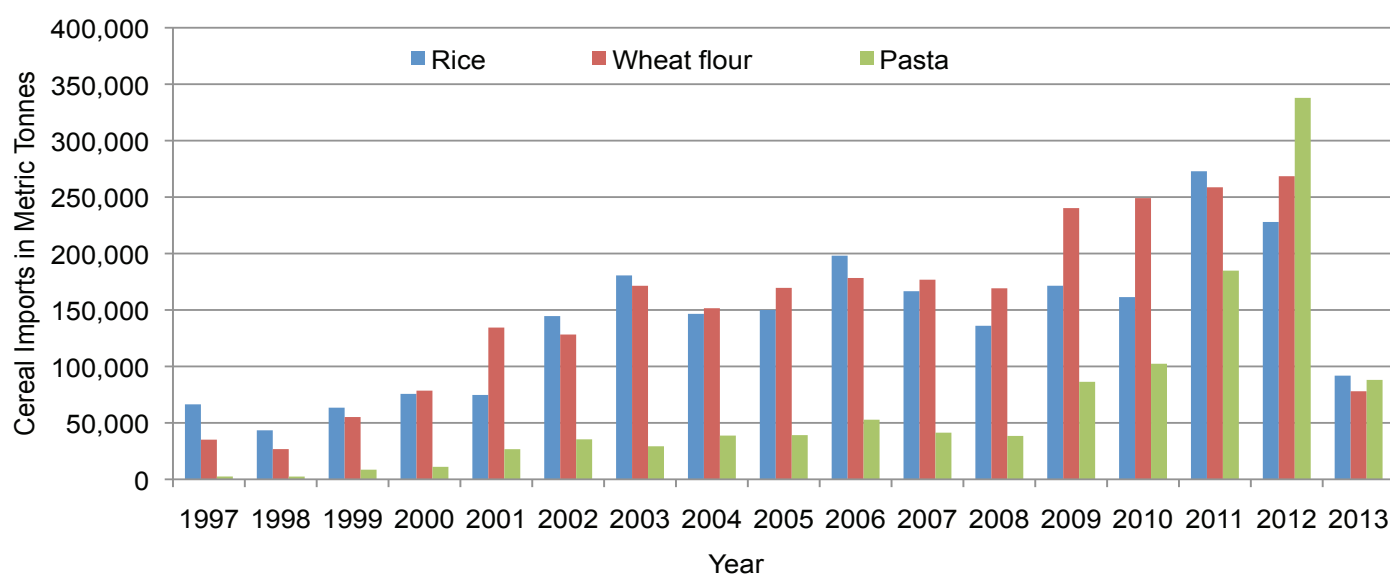


# Trends in Cereal Imports

Table 4: Total Cereal Imports (Berbera, Bossaso, Mogadishu)

	1997	1998	1999	2000	2001	2002	2003	2004	2005	2006	2007	2008	2009	2010	2011	2012	2013*
<b>Rice</b>	66,419	43,410	63,464	75,687	74,729	144,600	180,614	146,567	150,017	198,101	166,626	136,007	171,472	161,415	272,877	227,955	91,837
<b>Wheat flour</b>	35,143	26,774	55,176	78,555	134,425	128,263	171,442	151,555	169,583	178,345	176,821	169,208	240,247	249,080	258,679	268,491	78,016
<b>Pasta</b>	2,510	2,455	8,544	11,071	26,702	35,425	29,273	38,749	39,153	52,815	41,331	38,441	86,372	102,373	184,849	337,878	88,073

Figure 53: Total Cereal Imports (Berbera, Bossaso and Mogadishu)



\*Mogadishu data is up to March 2013; the data is from Elmaan Port.

\*Berbera data is up to May 2013.

\*Bossaso data is up to April 2013.