

Market DataUpdate

June 2012



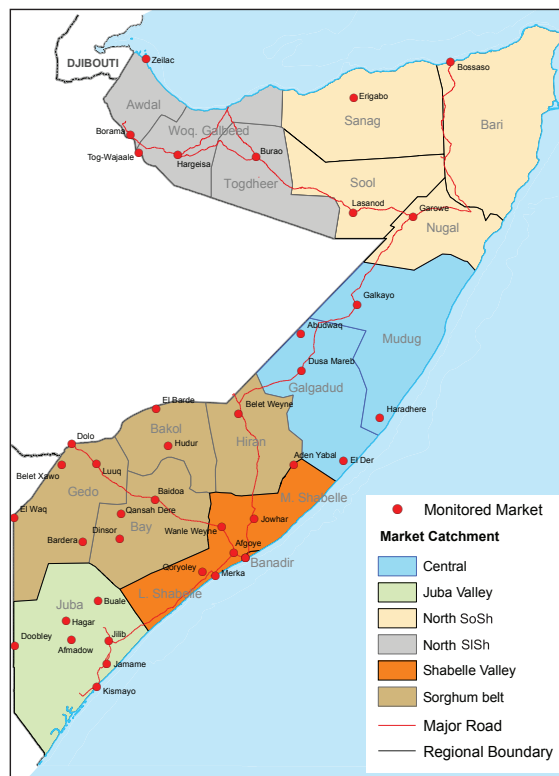
Food Security and Nutrition Analysis Unit - Somalia



Issued July 17th, 2012

Highlights

- Inflation:** The June Consumer Price Index (CPI) remained stable in most markets of the South, Central and North SiSh while rising marginally (5%) in North SoSh. Annual inflation rates decreased significantly in Central (27%) and South (44%) while remaining relatively stable in the Northern zones. When compared to the base period (March 2007), the cost of living has significantly increased (106-128%) in SoSh areas, while having risen moderately (23%) in SiSh areas.
- Exchange Rates:** local currencies (SoSh & SiSh) were largely stable against the dollar (USD) over the last month. However, when compared to the same month a year ago, SiSh lost some ground (12%) to the USD, whereas SoSh gained considerable value (27-34%). The appreciation of the Somali Shilling is attributed to increased supply of dollars through humanitarian interventions and foreign investments, particularly in Mogadishu. On the other hand, the weakened SiSh is mainly due to reduced dollar earnings from export markets as well as increased demand and circulation of the local currency.
- Local grain prices:** Maize and red sorghum prices were mixed; remaining largely stable in most markets, declining particularly in Mogadishu but increasing significantly in Gedo (22%) and moderately in Bay (9%) over the last month. The stability and the decline in the prices of local cereals is mostly attributed to the increased supply of the Deyr 2011/12 and off season crop harvests in the South and to the cumulative effect of ongoing humanitarian food assistance. Compared to a year ago, cereal prices are considerably lower in the South and Central zones and more stable in the North.
- Prices of most imported commodities** in most markets were slightly down in the last month but were significantly lower when compared to the same period last year. The declining trend in the prices of import commodities is mainly attributed to the strengthened SoSh, the increased trade flows from Mogadishu Port, and to the ongoing humanitarian assistance.
- Livestock prices** exhibited increasing trend in most markets when compared to the previous month and to the same period in 2011. The price appreciation was mainly due to good body conditions and low supply of saleable stock. Monthly livestock prices however declined slightly in most markets of northeast, Hiran and Gedo due to increased market supply, mainly to repay accumulated debts. Milk prices have generally gone down in the last one month, although pockets of increases were observed in the Sorghum Belt and in parts of North SiSh regions, occasioned by livestock out-migration from main towns in search of pasture.
- Labour wages** were stable in most regions, although slight increases (5-7%) were recorded in some markets in Juba, Banadir and Northwest while significant declines were observed in Gedo (20%), Bakool (26%), Bay (19%). The improvements in wage rates were mainly due to increased agricultural activities in the northwest and infrastructure rehabilitation and reconstruction works in Mogadishu. The decline in labour wages in Sorghum Belt regions is due to the seasonal decline in agricultural labour opportunities at this time of the year. Labour wages are significantly higher than their levels a year ago in most markets.
- Terms of Trade (ToT)** between labour wage/ local goat prices and cereals increased in most markets in Juba, Banadir, and in the Northwest; declined significantly in Gedo (18-33%), Bay (10-30%) and Bakool (20%), while remained stable in all other regions over the past month. The purchasing power has improved when compared to a year ago on the backdrop of reduced cereal prices, improved goat prices and stable labour wages.



This Market Data Update is a monthly report that presents a compilation of tabulated graphical market information produced regularly as part of the monthly monitoring process.

The weekly price data is collected from 47 main markets throughout Somalia since 1995.

The 5-year period of 2003-07 was characterised by fairly stable prices and relatively low inflation. In this bulletin, these years are used as a reference period for seasonal trends comparison.

Market analysis is an integral part of all of FSNAU's Annual Food Security Projections and seasonal technical reports (Technical Reports on FSNAU Post Gu and Deyr Analysis).

This data is available online on www.fsnau.org/ids.

Technical and Managerial Support

Funding Agencies



Regional Market Highlights

- **Juba Valley:** maize and imported food prices declined while livestock prices increased over the month of June. Prices of imported food and maize are significantly lower than a year ago, but those of livestock are higher. Monthly and annual comparisons of ToT between labor and cereals indicate improvement in purchasing power, with a day's labour worth 10kgs of maize in June 2012.
- **Sorghum Belt:** over the last month, local cereal prices remained stable in Hiran and Bakool but increased in Bay (9%) and Gedo (22%). Imported commodity prices declined slightly while those of export quality goat rose over the last month. Prices of imports and local cereals are significantly lower than their levels a year ago while those of livestock are significantly higher. The decline in wage labour rate was made worse by the increased cereal prices, significantly reducing the ToT between labour and cereals. However when compared to a year ago, the ToT is almost 7-times more (16kg/daily wage) in Bay region and 2-3 times higher in the rest of the Sorghum Belt regions.
- **Shabelle Valley:** in June 2012, the prices of imported food declined while maize and cattle prices remained stable. Relative stability in maize and in labour wages settled the monthly ToT to its levels the previous month, currently standing at 10kg for a day's labour. Prices of most imported commodities and cereals are significantly lower when compared to the same month a year ago. Livestock prices, on the other hand, are significantly higher over the same period.
- **Central:** with the exception of wheat flour prices which increased by 15 percent, those of other monitored items were largely stable in most markets in June. Annual comparisons indicate significant decreases in the prices of all other items except livestock which are significantly higher. Monthly ToT (rice/ local goat) slipped from 63 to 62 kg/local goat, but is 79% higher than a year ago.
- **Northeast:** prices of imported food decreased slightly, sorghum remained stable while those of livestock declined over the previous month. Annual price comparisons show significant decline for imported commodities, stability for local cereals while those of livestock were higher. ToT (rice/ local goat) declined over the previous month and is significantly elevated (23%) when compared to the same month last year, currently standing at 70kg/local goat.
- **Northwest:** prices of local cereals, livestock and imports declined slightly over the month of June. However, these prices are significantly inflated when compared to the same month a year ago. The monthly and annual comparison of ToT between local white sorghum and wages indicate significant improvement (20-26%), equivalent to about 12kg/daily wage rate.
- **Banadir:** in the last month, the prices of imported commodities and locally produced cereals decreased while those of local quality goat increased, albeit marginally. With the exception of the currently highly valued livestock, prices of most other items are significantly below their levels a year ago. ToT cereal (maize/ labour wage) improved by 1kg from 12kgs a month ago and is also almost 3-times as high as in the same month in 2011.

Table 1: Monthly and Annual Changes in Terms of Trade

Terms of Trade: Amount of Cereals (kg) per Daily Labour Wage Rate Region	Cereal used	11-Jun (kg/daily wage)	12-May (kg/daily wage)	12-Jun (kg/daily wage)	Monthly change (%)	Annual change (%)
Banadir	White Maize	4	12	13	8%	225%
Bay	Red Sorghum	2	23	16	-30%	700%
Bakool	Red Sorghum	3	10	8	-20%	167%
Gedo	Red Sorghum	6	24	16	-33%	167%
Hiraan	White Maize	6	14	13	-7%	117%
Juba	White Maize	4	9	10	11%	150%
Shabelle	White Maize	3	10	10	0%	233%
Northeast	Red Sorghum	5	5	5	0%	0%
Northwest	White Sorghum	10	11	12	9%	20%
Central	Red Sorghum	4	6	6	0%	50%

International Market Highlights

Diesel: Crude oil prices in Abu Dhabi (Dubai),¹ the main source of Somalia's oil imports, fell significantly in June to close at \$94.24, representing a decline of \$13.21 or 13 percent. The current quotation is also 12 percent lower than its level a year ago. The International Energy Agency's Oil Market Report (July 2012) indicates that these prices were volatile over June and early July, amid mixed pressures; worsening euro zone woes, on the backdrop of rising global inventory².

In Somalia port cities (Bossaso and Mogadishu), diesel prices remained stable when compared to last month but declined significantly (18-30%) over the last one year, supported by stronger domestic currencies and increased supply following opening up of Mogadishu Port. (<http://www.fsnao.org/ids>).

Rice: According to FAO's Food Price Index (July 2012), monthly export prices of rice³ on international markets remained largely steady (unchanged) over the month of June as intervention buying supported export prices in Thailand while prices in Vietnam weakened on new supplies⁴.

In June, prices of imported rice in Bossaso and Mogadishu ports sustained their May 2012 levels, on the backdrop of stronger domestic currency and normal market supply. These prices were however 25 percent lower when compared to the same month a year ago, supported by humanitarian rice supply as well as by increased availability of local cereals.

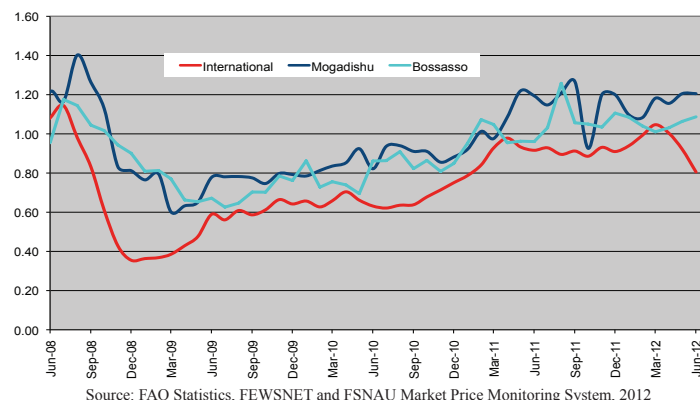
Sugar: The FAO Sugar Price Index⁵ averaged 290 points in June, down 5 points (1.6 percent) from May and as much as 68 points (19.0 percent) below their level in June 2011. Sugar prices declined for the fourth month in a row, reflecting larger availabilities in India, the EU and Thailand, new supplies from Brazil reaching the market, and declining crude oil prices. However, prices regained some strength towards the end of June on the back of unfavourable harvesting conditions in Brazil, the world's largest sugar exporter.

The effect of the international price developments are clearly discernible in the local port markets of Somalia where sugar prices reduced slightly over the past month but significantly (19-30%) when compared to the same period in 2011.

Cooking Oil: the FAO Oils/Fats Price Index⁶ averaged 221 points in June, down for the second consecutive month. After falling by 6.8 percent in May, the index fell by another 5.6 percent in June notwithstanding prospects for further supply and demand tightness for oil crops in 2012/13. The recent easing in international oil/fat prices was caused primarily by larger than expected oil crop plantings in northern hemisphere countries, as well as by a sizeable decline in crude oil prices, which has weakened demand for vegetable oils from the energy sector.

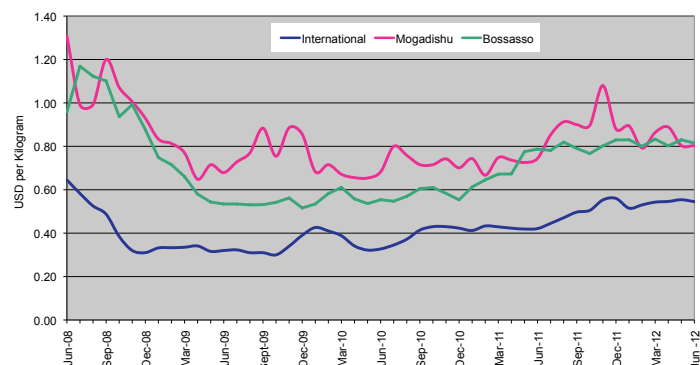
International price transmission in cooking oil is not explicitly evident in port cities of Somalia. Specifically, vegetable oil prices remained stable over the previous month in both cities but showed a significant annual decline (18-32%) in Bossaso and Mogadishu on the backdrop of on-going humanitarian interventions and improved port operations.

Figure 1: Diesel Prices: Dubai, Mogadishu and Bossaso



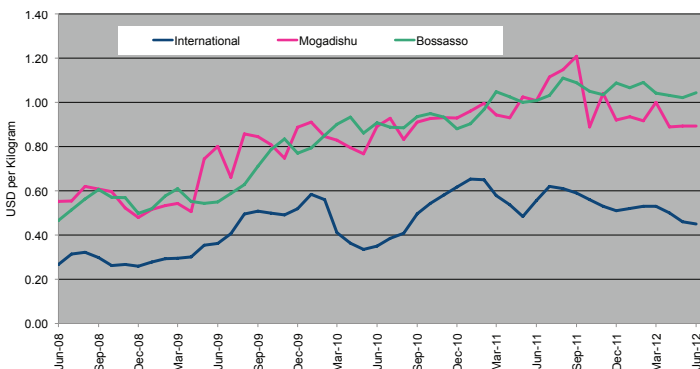
Source: FAO Statistics, FEWSNET and FSNAU Market Price Monitoring System, 2012

Figure 2: Rice Prices: Bangkok FOB, Mogadishu and Bossaso Markets



Source: FAO Statistics, FEWSNET and FSNAU Market Price Monitoring System, 2012

Figure 3: Sugar Prices: International, Mogadishu and Bossaso Markets



Source: International Sugar Organization, FEWSNET and FSNAU Market Price Monitoring System, 2012

¹ Weekly Abu Dhabi Murban Spot Price FOB (Dollars per Barrel), US Energy Information Administration, http://www.eia.doe.gov/dnav/pet/pet_pri_wco_k_w.htm

² International Energy Agency (IEA) Monthly Oil Market Report, July, 2012; <http://omrpublic.iea.org/currentissues/full.pdf>; www.oilmarketreport.org

³ Bangkok, Rice (Thai A1 Super 1/B), Export, US Dollar, Tonne

⁴ Grain Market Report, 2nd July 2012, International grain council report

⁵ The World Food Situation: The FAO Food Price Index July 2012

⁶ Ibid

National Trends: CPI, Exchange Rates, Cereal Prices and Relative Purchasing Power

Figure 4: Terms of Trade between wage rates and selected cereals

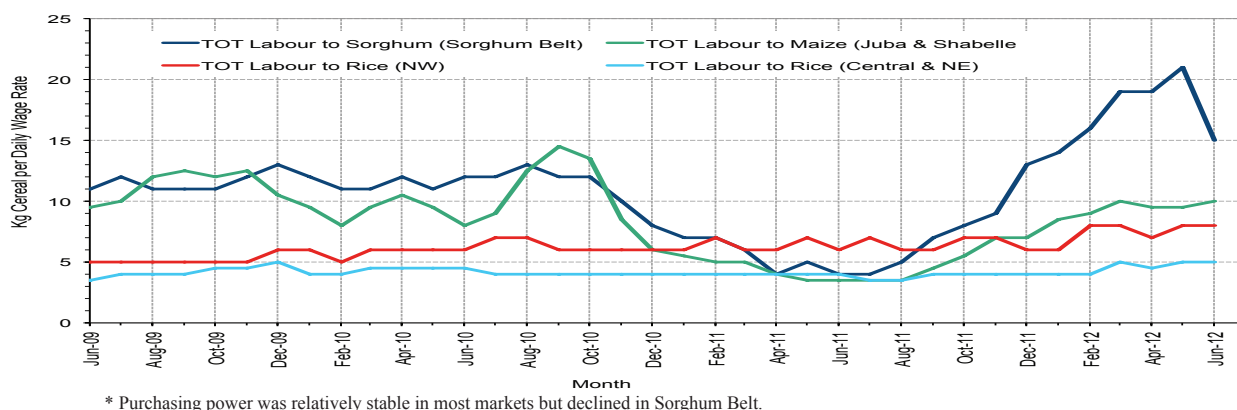


Figure 5: Monthly Exchange Rate for Selected Regions (SoSh and SiSh to USD)

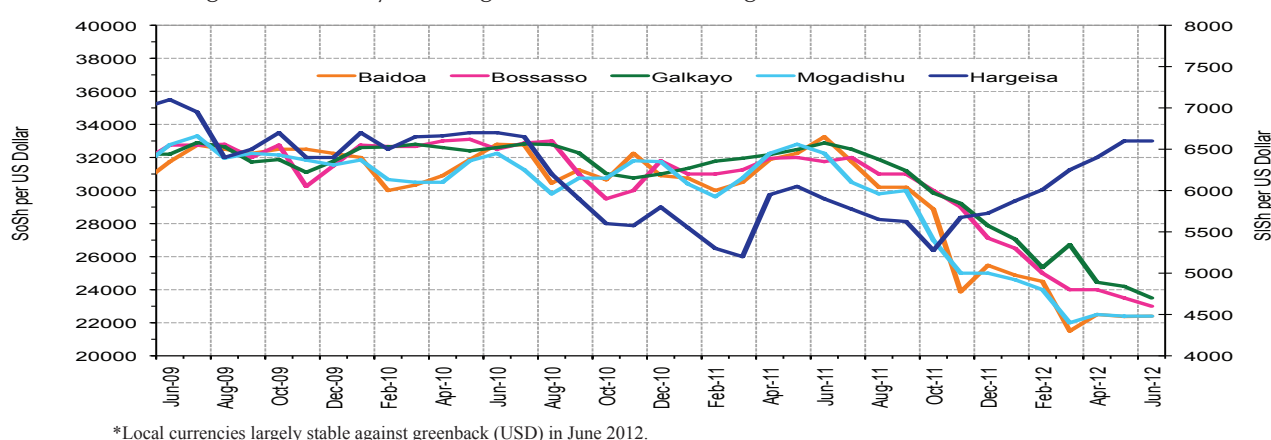


Figure 6: Monthly Trends in Consumer Price Index (CPI, March 2007=100)

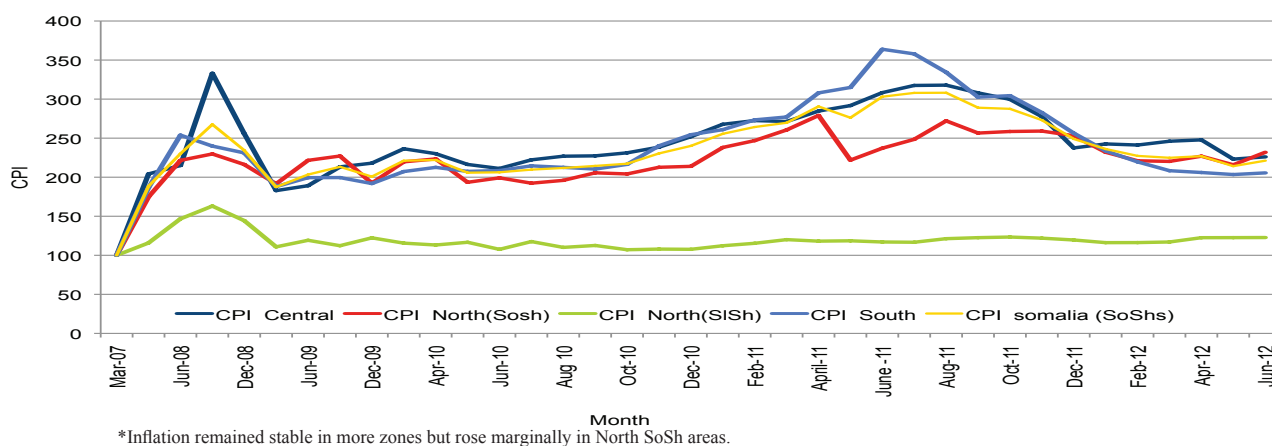
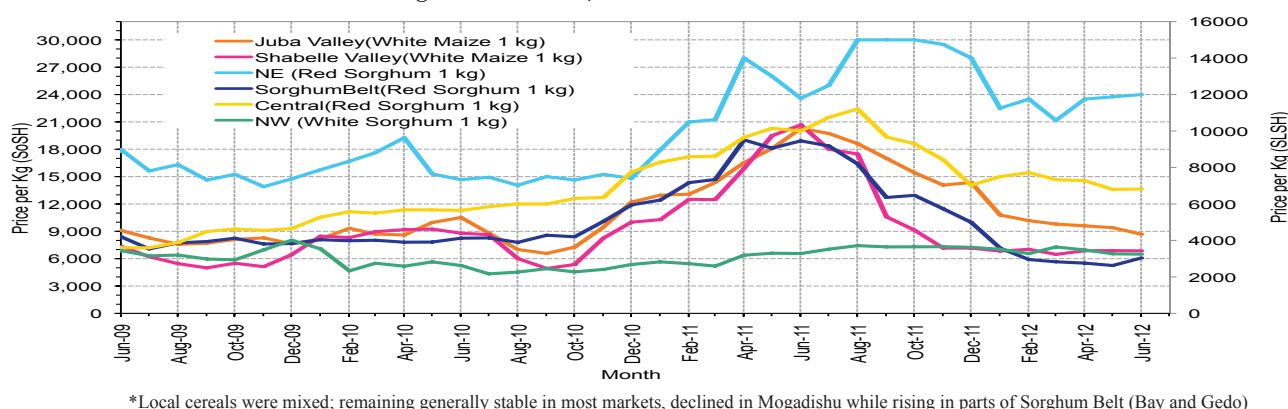


Figure 7: Monthly Trends in Local Cereal Prices



Regional analysis: Juba Regions

Indicator	Jun-11	May-12	June-12 Nominal Price	June-12 Real (Deflated) Price	% Change Same Month Previous Year	% Change Previous Month	% Change 5-year avrg (2003-07)
Imported Commodities Prices							
Diesel 1 litre	40,750	30,786	33,571	16,197	-18%	9%	162%
Imported Red Rice 1kg	25,786	18,536	17,321	8,308	-33%	-7%	97%
Petrol 1 litre	38,500	35,286	35,786	17,272	-7%	1%	122%
Sugar	33,643	22,500	21,143	10,164	-37%	-6%	127%
Vegetable Oil 1 litre	63,536	40,607	39,036	18,850	-39%	-4%	105%
Wheat Flour 1kg	25,107	17,643	17,179	8,239	-32%	-3%	106%
Wheat Grain 1kg	20,000	-	-	-	-	-	-
Cereal Prices							
Red Sorghum 1kg	-	-	-	-	-	-	-
White Maize 1kg	20,286	9,400	8,679	4,113	-57%	-8%	143%
Livestock & Livestock Product Prices							
Camel Local Quality (Head)	6,822,917	9,423,100	9,867,600	4,789,997	45%	5%	225%
Cattle Local Quality (Head)	2,172,083	3,649,100	4,132,050	2,005,750	90%	13%	179%
Fresh Camel Milk 1 litre	18,179	23,000	21,500	10,337	18%	-7%	247%
Goat Export Quality (Head)	882,679	1,487,393	1,642,714	797,334	86%	10%	292%
Goat Local Quality (Head)	513,393	934,571	1,074,750	521,623	109%	15%	281%
Other Essential Items							
Charcoal 50kg	59,643	101,179	94,357	45,704	58%	-7%	209%
Cowpeas 1 kg	34,625	24,400	23,386	11,252	-32%	-4%	164%
Unskilled Labor Wage Rate	71,786	84,429	90,500	43,832	26%	7%	179%
Firewood Bundle	5,946	8,500	8,071	3,818	36%	-5%	257%
Local Sesame Oil 1 litre	87,929	77,786	70,304	34,028	-20%	-10%	233%
Exchange Rate (Somali Shilling per USD)	33,571	21,954	22,214	10,683	-34%	1%	41%
Construction Materials*							
Cement 50kg	339,643	295,083	294,917	143,064	-13%	0%	-
Cooking Pot Aluminium 7 Litre	331,667	298,786	291,321	141,318	-12%	-2%	-
Galvanised Iron Sheet Ga 26	172,083	126,000	126,429	61,273	-27%	0%	-
Hollow Concrete Block 10cm x 20cm x 40cm	19,250	18,333	15,000	7,182	-22%	-18%	-
Non Collapsible Jerrycan 10 Litre	29,167	34,292	34,000	16,406	17%	-1%	-
Plastic Tarpaulin 14m x 5 m	460,000	323,083	294,167	142,700	-36%	-9%	-
Roofing Nails 15Kg	825,833	796,071	807,857	392,064	-2%	1%	-
Timber 2in x 4in x 20ft	332,500	263,563	265,000	128,541	-20%	1%	-
Woven Dry Raised Blanket 150cm x 200cm	-	58,750	75,000	36,308	-	28%	-
Terms of Trade							
Labour Wage (Daily)/ Cereal (Maize(Kg))	4	9	10	-	195%	16%	15%
Local Goat (Head)/ Cereal (Maize(Kg))	25	99	124	-	389%	25%	57%
Price Indices							
Consumer Price Index	353	203	206	-	-42%	1%	-
Purchasing Power Index	0.28	0.49	0.49	-	71%	-1%	-

* Data has been collected since May 2010

Figure 8: Imported commodity prices compared to exchange rates

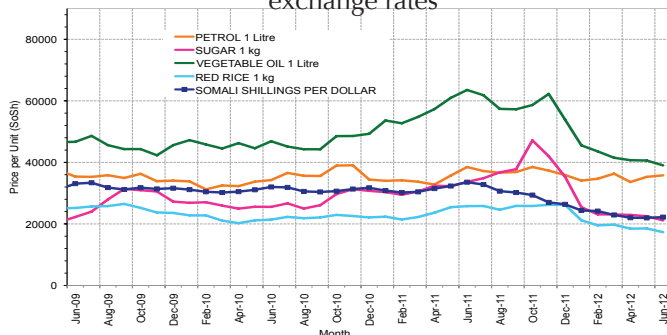


Figure 10: Goat Local Quality

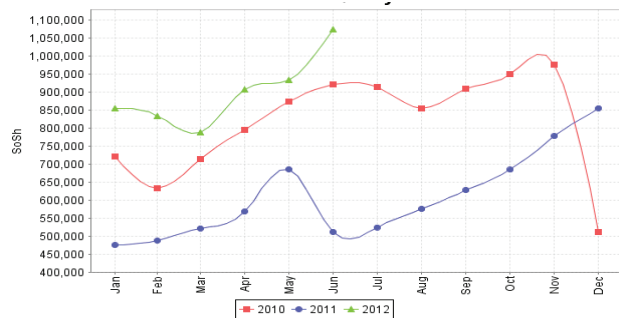


Figure 12: Water Drum

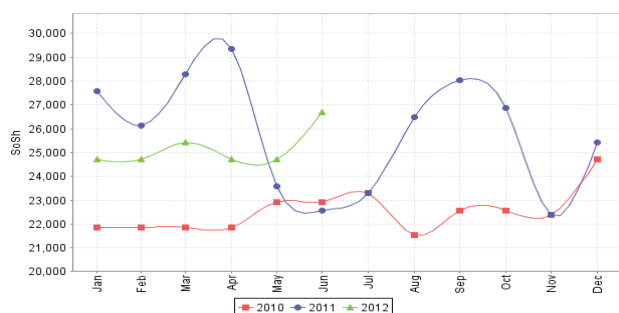


Figure 9: Trends in wage rates, staple cereal prices and relative purchasing power

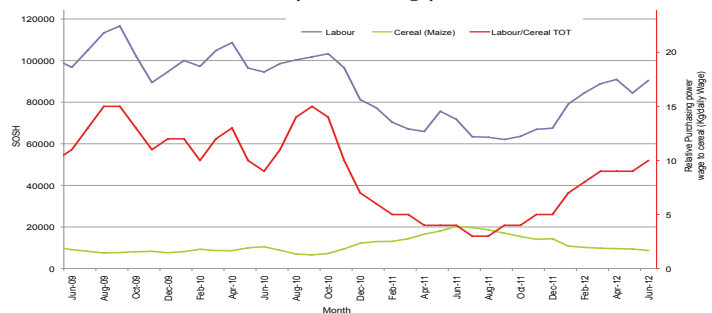


Figure 11: Exchange Rate

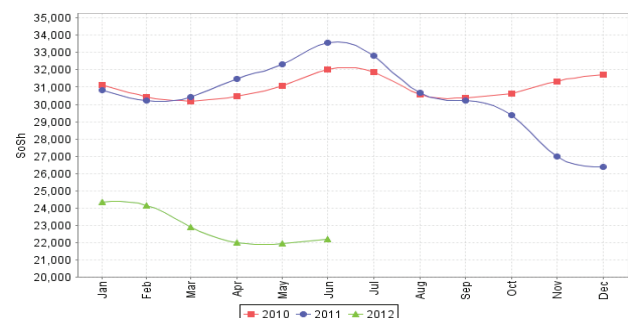
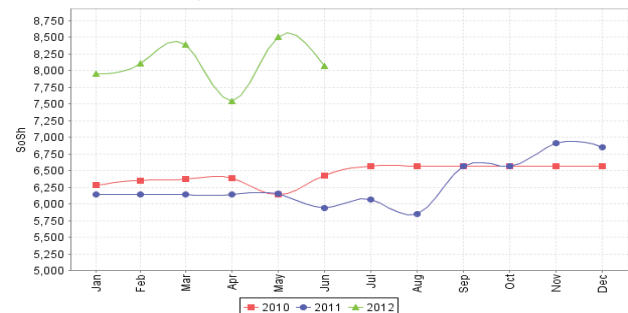


Figure 13: Firewood Bundle



Regional analysis: Sorghum Belt Regions (Bay, Bakool, Gedo and Hiran)

Indicator	Jun-11	May-12	June-12 Nominal Price	June-12 Real (Deflated) Price	% Change Same Month Previous Year	% Change Previous Month	% Change 5-year avrg (2003-07)
Imported Commodities Prices							
Diesel 1 litre	42,341	33,545	32,659	15,754	-23%	-3%	175%
Imported Red Rice 1kg	28,773	20,045	20,091	9,653	-30%	0%	128%
Petrol 1 litre	39,659	33,773	32,659	15,754	-18%	-3%	104%
Sugar	35,182	23,455	23,455	11,286	-33%	0%	139%
Vegetable Oil 1 litre	62,909	42,750	43,886	21,204	-30%	3%	145%
Wheat Flour 1kg	25,500	18,568	18,250	8,759	-28%	-2%	114%
Wheat Grain 1kg	20,188	7,750	7,208	3,399	-64%	-7%	82%
Cereal Prices							
Red Sorghum 1kg	18,920	5,250	6,080	2,851	-68%	16%	204%
White Maize 1kg	18,393	7,800	7,898	3,734	-57%	1%	184%
Livestock & Livestock Product Prices							
Camel Local Quality (Head)	7,568,182	11,861,112	11,699,500	5,679,269	55%	-1%	269%
Cattle Local Quality (Head)	1,706,945	3,625,000	3,597,500	1,746,259	111%	-1%	170%
Fresh Camel Milk 1 litre	23,000	25,682	29,068	14,011	26%	13%	356%
Goat Export Quality (Head)	1,090,682	1,698,864	1,880,114	912,577	72%	11%	382%
Goat Local Quality (Head)	542,955	1,226,818	1,203,636	584,189	122%	-2%	382%
Other Essential Items							
Charcoal 50kg	104,500	178,864	156,364	75,805	50%	-13%	315%
Cowpeas 1 kg	39,333	26,281	26,536	12,782	-33%	1%	334%
Unskilled Labor Wage Rate	83,795	110,659	88,977	43,093	6%	-20%	390%
Firewood Bundle	5,318	6,386	6,273	2,945	18%	-2%	240%
Local Sesame Oil 1 litre	80,286	71,714	68,750	33,274	-14%	-4%	201%
Exchange Rate (Somali Shilling per USD)	32,616	22,893	22,736	10,937	-30%	-1%	45%
Construction Materials*							
Cement 50kg	339,444	336,325	337,750	163,856	0%	0%	-
Cooking Pot Aluminium 7 Litre	328,500	271,111	264,444	128,271	-19%	-2%	-
Galvanised Iron Sheet Ga 26	218,091	173,194	179,250	86,915	-18%	3%	-
Hollow Concrete Block 10cm x 20cm x 40cm	10,063	9,500	10,500	4,997	4%	11%	-
Non Collapsible Jerrycan 10 Litre	53,477	54,977	56,159	27,162	5%	2%	-
Plastic Tarpaulin 14m x 5 m	293,600	324,775	301,111	146,070	3%	-7%	-
Roofing Nails 15kg	837,407	768,333	762,222	369,911	-9%	-1%	-
Timber 2in x 4in x 20ft	216,429	279,688	280,375	136,004	30%	0%	-
Woven Dry Raised Blanket 150cm x 200cm	102,500	86,292	86,000	41,648	-16%	0%	-
Terms of Trade							
Labour Wage (Daily)/ Cereal (Sorghum(Kg))	4	21	15	-	230%	-31%	61%
Local Goat (Head)/ Cereal (Sorghum(Kg))	29	234	198	-	590%	-15%	58%
Price Indices							
Consumer Price Index	353	203	206	-	-42%	1%	-
Purchasing Power Index	0.28	0.49	0.49	-	71%	-1%	-

* Data has been collected since May 2010

Figure 14: Imported commodity prices compared to exchange rates

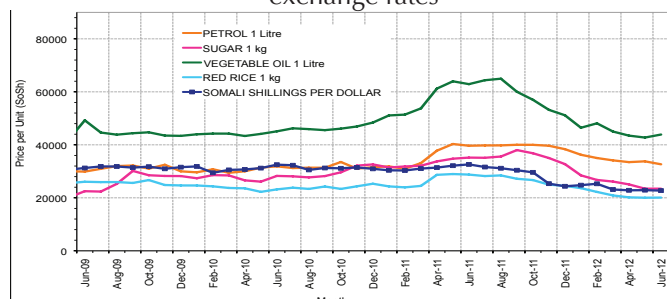


Figure 16: Goat Local Quality

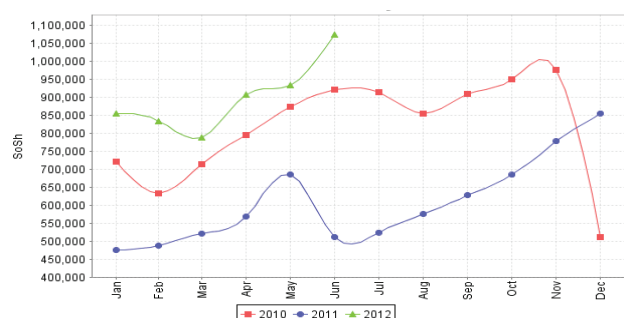


Figure 18: Water Drum

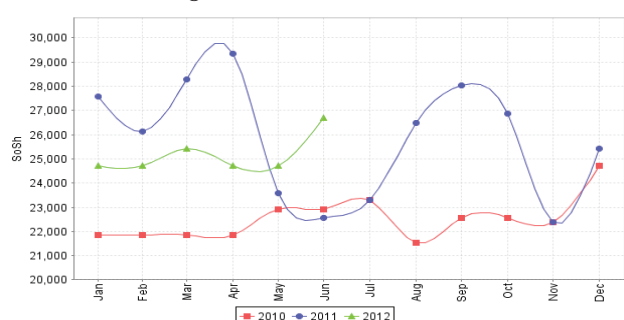


Figure 15: Trends in wage rates, staple cereal prices and relative purchasing power

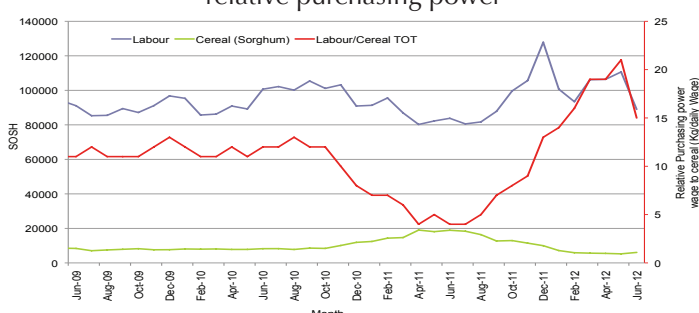


Figure 17: Exchange Rate

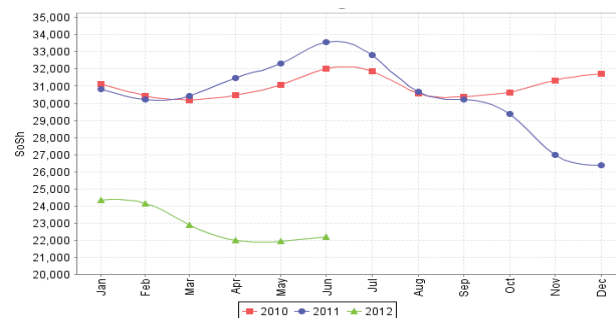
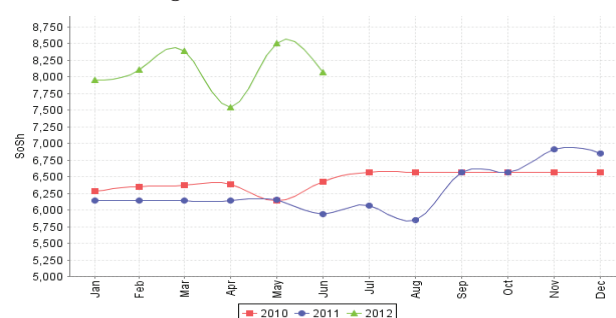


Figure 19: Firewood Bundle



Regional analysis: Shabelle Regions

Indicator	Jun-11	May-12	June-12 Nominal Price	June-12 Real (Deflated) Price	% Change Same Month Previous Year	% Change Previous Month	% Change 5-year avrg (2003-07)
Imported Commodities Prices							
Diesel 1 litre	40,167	29,875	30,417	14,666	-24%	2%	216%
Imported Red Rice 1kg	23,833	17,000	14,458	6,918	-39%	-15%	106%
Petrol 1 litre	35,583	31,792	31,458	15,171	-12%	-1%	144%
Sugar	33,125	21,417	20,958	10,074	-37%	-2%	167%
Vegetable Oil 1 litre	54,042	35,833	33,333	16,081	-38%	-7%	144%
Wheat Flour 1kg	24,708	15,583	14,417	6,899	-42%	-7%	115%
Wheat Grain 1kg	27,667	9,333	9,333	4,431	-66%	0%	107%
Cereal Prices							
Red Sorghum 1kg	21,913	8,715	8,706	4,126	-60%	0%	251%
White Maize 1kg	20,673	6,887	6,860	3,230	-67%	0%	107%
Livestock & Livestock Product Prices							
Camel Local Quality (Head)	#####	14,685,000	15,480,000	7,514,463	29%	5%	264%
Cattle Local Quality (Head)	2,815,000	4,535,000	4,590,000	2,228,055	63%	1%	268%
Fresh Camel Milk 1 litre	20,083	19,583	16,833	8,071	-16%	-14%	244%
Goat Export Quality (Head)	1,363,438	1,885,625	1,960,625	951,660	44%	4%	295%
Goat Local Quality (Head)	942,917	1,290,417	1,224,583	594,358	30%	-5%	254%
Other Essential Items							
Charcoal 50kg	105,847	125,111	115,264	55,853	9%	-8%	180%
Cowpeas 1 kg	39,737	24,336	21,701	10,434	-45%	-11%	276%
Unskilled Labor Wage Rate	56,583	66,458	66,042	31,959	17%	-1%	258%
Firewood Bundle	4,667	5,875	5,875	2,752	26%	0%	184%
Local Sesame Oil 1 litre	64,083	44,000	44,583	21,542	-30%	1%	130%
Exchange Rate (Somali Shilling per USD)	33,300	22,700	22,750	10,944	-32%	0%	38%
Construction Materials*							
Cement 50kg	307,500	210,500	218,250	105,847	-29%	4%	-
Cooking Pot Aluminium 7 Litre	760,000	700,000	700,000	339,706	-8%	0%	-
Galvanised Iron Sheet Ga 26	149,000	89,200	87,650	42,449	-41%	-2%	-
Hollow Concrete Block 10cm x 20cm x 40cm	13,125	12,750	12,750	6,089	-3%	0%	-
Non Collapsible Jerrycan 10 Litre	50,313	46,875	47,813	23,110	-5%	2%	-
Plastic Tarpsaulin 14m x 5 m	295,833	265,000	255,000	123,686	-14%	-4%	-
Roofing Nails 15Kg	701,667	551,500	579,000	280,968	-17%	5%	-
Timber 2in x 4in x 20ft	62,050	50,833	47,050	22,740	-24%	-7%	-
Woven Dry Raised Blanket 150cm x 200cm	79,833	72,750	73,917	35,782	-7%	2%	-
Terms of Trade							
Labour Wage (Daily)/ Cereal (Maize(Kg))	3	10	10	-	252%	0%	72%
Local Goat (Head)/ Cereal (Maize(Kg))	46	187	179	-	291%	-5%	71%
Price Indices							
Consumer Price Index	353	203	206	-	-42%	1%	-
Purchasing Power Index	0.28	0.49	0.49	-	71%	-1%	-

* Data has been collected since May 2010

Figure 20: Imported commodity prices compared to exchange rates

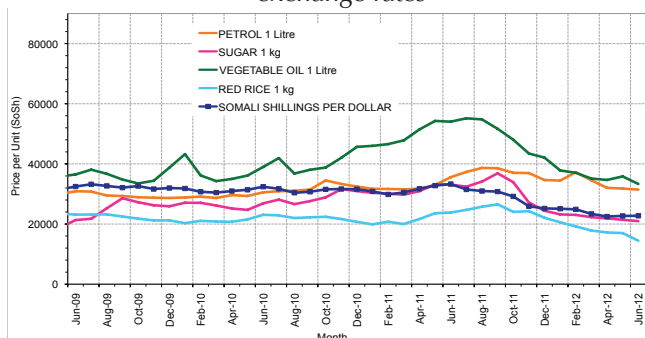


Figure 21: Trends in wage rates, staple cereal prices and relative purchasing power

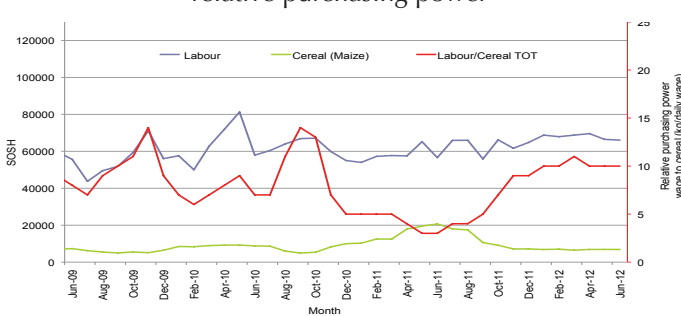


Figure 22: Goat Local Quality

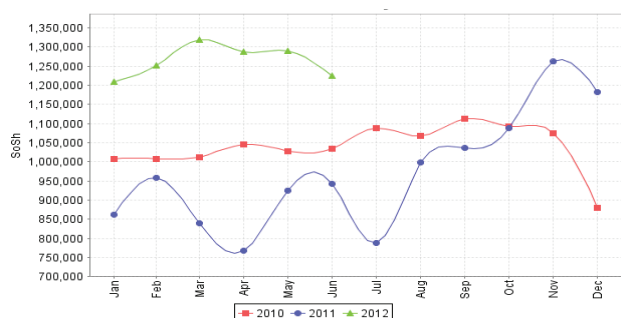


Figure 23: Exchange Rate

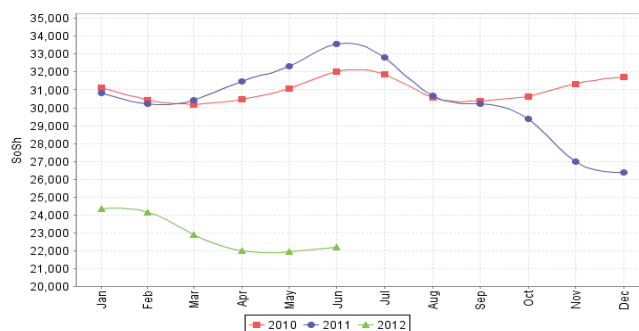


Figure 24: Water Drum

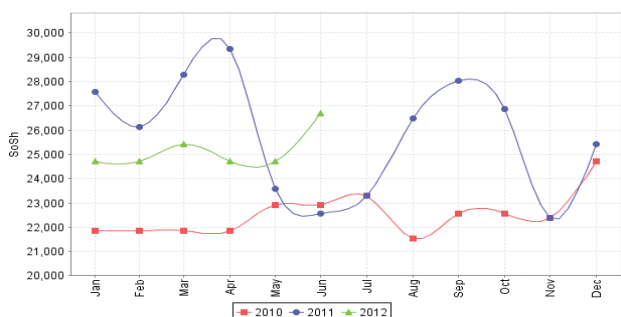
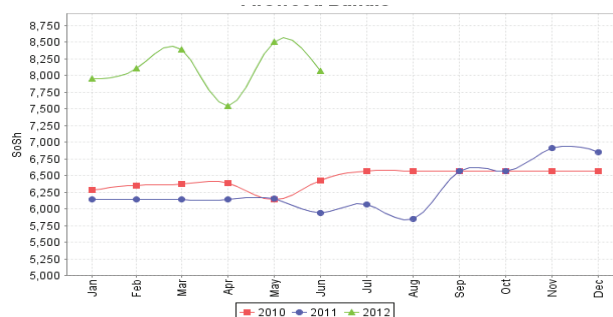


Figure 25: Firewood Bundle



Regional analysis:Banadir Region

Indicator	Jun-11	May-12	June-12 Nominal Price	June-12 Real (Deflated) Price	% Change Same Month Previous Year	% Change Previous Month	% Change 5-year avrg (2003-07)
Imported Commodities Prices							
Diesel 1 litre	34,458	24,700	25,167	12,117	-27%	2%	178%
Imported Red Rice 1kg	23,625	16,717	13,375	6,393	-43%	-20%	100%
Petrol 1 litre	30,708	27,800	27,250	13,128	-11%	-2%	118%
Sugar	31,750	19,533	18,833	9,042	-41%	-4%	149%
Vegetable Oil 1 litre	54,000	35,083	36,042	17,396	-33%	3%	159%
Wheat Flour 1kg	22,375	12,767	12,375	5,907	-45%	-3%	95%
Wheat Grain 1kg	20,000	8,653	8,575	4,063	-57%	-1%	125%
Cereal Prices							
Red Sorghum 1kg	22,052	5,833	5,383	2,513	-76%	-8%	162%
White Maize 1kg	21,666	8,520	8,300	3,929	-62%	-3%	122%
Livestock & Livestock Product Prices							
Camel Local Quality (Head)	12,000,000	-	-	-	-	-	-
Cattle Local Quality (Head)	3,000,000	-	-	-	-	-	-
Fresh Camel Milk 1 litre	23,708	19,733	18,667	8,962	-21%	-5%	228%
Goat Export Quality (Head)	1,625,000	2,600,000	2,600,000	1,262,036	60%	0%	-
Goat Local Quality (Head)	1,379,000	2,090,000	2,137,500	1,037,521	55%	2%	248%
Other Essential Items							
Charcoal 50kg	157,958	200,600	174,583	84,649	11%	-13%	75%
Cowpeas 1 kg	46,928	22,367	19,900	9,560	-58%	-11%	278%
Unskilled Labor Wage Rate	77,500	102,000	107,083	51,882	38%	5%	90%
Firewood Bundle	6,250	8,000	7,750	3,662	24%	-3%	-81%
Local Sesame Oil 1 litre	62,292	49,567	49,417	23,889	-21%	0%	161%
Exchange Rate (Somali Shilling per USD)	33,413	22,193	22,392	10,770	-33%	1%	36%
Construction Materials*							
Cement 50kg	256,200	195,633	181,917	88,209	-29%	-7%	-
Cooking Pot Aluminium 7 Litre	373,000	301,867	345,000	167,376	-8%	14%	-
Galvanised Iron Sheet Ga 26	157,083	93,633	89,208	43,205	-43%	-5%	-
Hollow Concrete Block 10cm x 20cm x 40cm	10,542	10,767	9,792	4,653	-7%	-9%	-
Non Collapsible Jerrycan 10 Litre	62,500	39,800	45,250	21,866	-28%	14%	-
Plastic Tarpaulin 14m x 5 m	317,500	258,067	261,500	126,842	-18%	1%	-
Roofing Nails 15Kg	666,917	475,800	489,438	237,491	-27%	3%	-
Timber 2in x 4in x 20ft	185,875	114,160	115,967	56,195	-38%	2%	-
Woven Dry Raised Blanket 150cm x 200cm	87,917	112,667	114,000	55,240	30%	1%	-
Terms of Trade							
Labour Wage (Daily)/ Cereal (Maize(Kg))	4	12	13	-	261%	8%	-14%
Local Goat (Head)/ Cereal (Maize(Kg))	64	245	258	-	305%	5%	57%
Price Indices							
Consumer Price Index	353	203	206	-	-42%	1%	-
Purchasing Power Index	0.28	0.49	0.49	-	-	-	-

* Data has been collected since May 2010

Figure 26: Bakara: Imported Commodity Prices compared to Exchange Rate

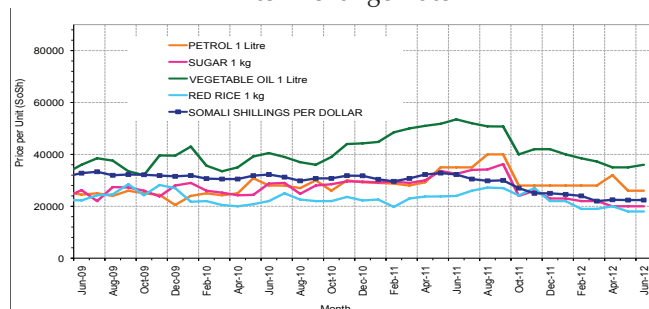


Figure 28: Goat Local Quality

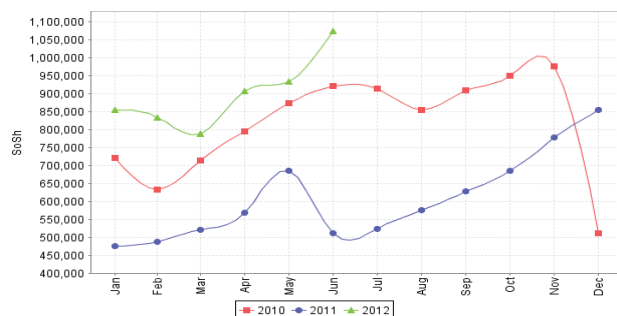


Figure 30: Wheat Flour

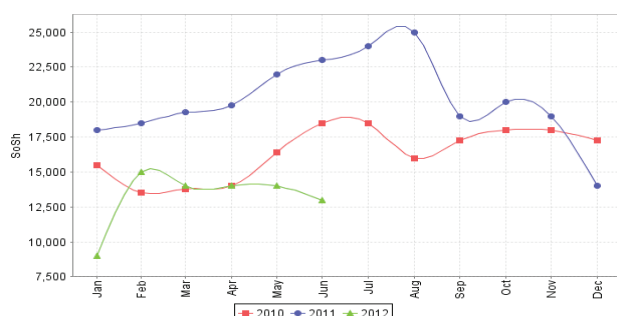


Figure 27: Bakara: Trends in Wage Rates, Staple Cereal Prices and Relative Purchasing Power

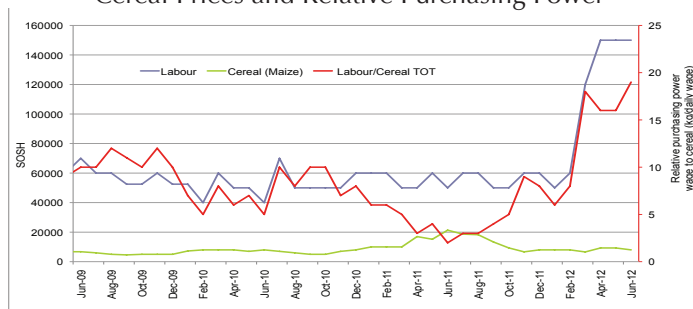


Figure 29: Exchange Rate

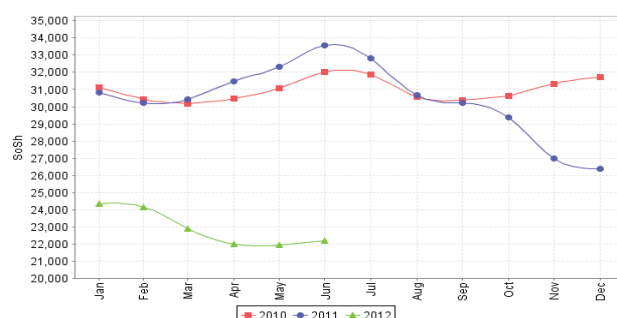
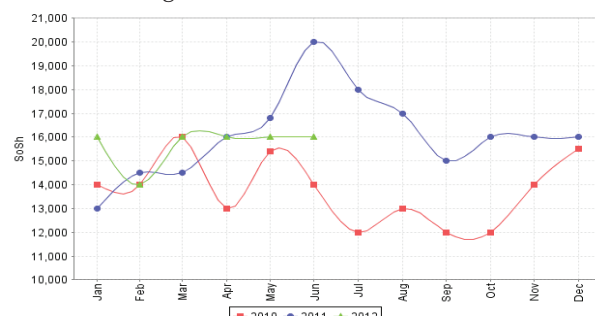


Figure 31: Fresh Camel Milk



Regional analysis: Central Regions

Indicator	Jun-11	May-12	June-12 Nominal Price	June-12 Real (Deflated) Price	% Change Same Month Previous Year	% Change Previous Month	% Change 5-year avrg (2003-07)
Imported Commodities Prices							
Diesel 1 litre	37,700	32,880	33,040	14,516	-12%	0%	196%
Imported Red Rice 1kg	30,700	21,100	21,560	9,437	-30%	2%	171%
Petrol 1 litre	32,900	28,800	28,720	12,605	-13%	0%	124%
Sugar	37,350	26,550	26,480	11,614	-29%	0%	179%
Vegetable Oil 1 litre	65,500	46,600	53,800	23,699	-18%	15%	194%
Wheat Flour 1kg	24,700	17,760	17,960	7,845	-27%	1%	126%
Wheat Grain 1kg	23,333	16,667	16,667	7,273	-29%	0%	317%
Cereal Prices							
Red Sorghum 1kg	20,000	13,600	13,640	5,934	-32%	0%	228%
White Maize 1kg	21,550	12,700	12,900	5,606	-40%	2%	193%
Livestock & Livestock Product Prices							
Camel Local Quality (Head)	8,031,250	9,512,500	10,115,000	4,474,370	26%	6%	375%
Cattle Local Quality (Head)	-	2,600,000	2,660,000	1,176,577	-	2%	79%
Fresh Camel Milk 1 litre	47,350	36,270	32,540	14,294	-31%	-10%	245%
Goat Export Quality (Head)	1,541,667	1,583,333	1,577,500	697,723	2%	0%	338%
Goat Local Quality (Head)	1,053,500	1,321,500	1,326,000	586,469	26%	0%	402%
Other Essential Items							
Charcoal 50kg	211,000	188,000	180,600	79,790	-14%	-4%	235%
Cowpeas 1 kg	49,650	30,600	28,340	12,436	-43%	-7%	324%
Unskilled Labor Wage Rate	88,000	87,950	85,900	37,899	-2%	-2%	183%
Firewood Bundle	37,000	34,000	35,400	15,560	-4%	4%	705%
Local Sesame Oil 1 litre	98,250	90,000	91,050	40,177	-7%	1%	222%
Exchange Rate (Somali Shilling per USD)	32,195	23,800	23,240	10,180	-28%	-2%	44%
Construction Materials*							
Cement 50kg	336,300	302,348	307,445	135,901	-9%	2%	-
Cooking Pot Aluminium 7 Litre	408,000	384,000	390,400	172,597	-4%	2%	-
Galvanised Iron Sheet Ga 26	159,975	135,260	136,890	60,455	-14%	1%	-
Hollow Concrete Block 10cm x 20cm x 40cm	16,250	15,250	15,900	6,934	-2%	4%	-
Non Collapsible Jerrycan 10 Litre	52,000	48,600	49,600	21,841	-5%	2%	-
Plastic Tarpaulin 14m x 5 m	316,000	280,650	290,850	128,560	-8%	4%	-
Roofing Nails 15Kg	818,200	738,000	693,000	306,455	-15%	-6%	-
Timber 2in x 4in x 20ft	152,350	124,000	119,700	52,850	-21%	-3%	-
Woven Dry Raised Blanket 150cm x 200cm	136,000	134,800	136,800	60,415	1%	1%	-
Terms of Trade							
Labour Wage (Daily)/ Cereal (Rice(Kg))	3	4	4	-	39%	-4%	5%
Local Goat (Head)/ Cereal (Rice(Kg))	34	63	62	-	79%	-2%	85%
Camel (Head)/Cereal (Kg)	262	451	469	-	79%	4%	75%
Price Indices							
Consumer Price Index	308	223	226	-	-27%	1%	-
Purchasing Power Index	0.32	0.45	0.44	-	36%	-1%	-

* Data has been collected since May 2010

Figure 32: Imported commodity prices compared to exchange rates

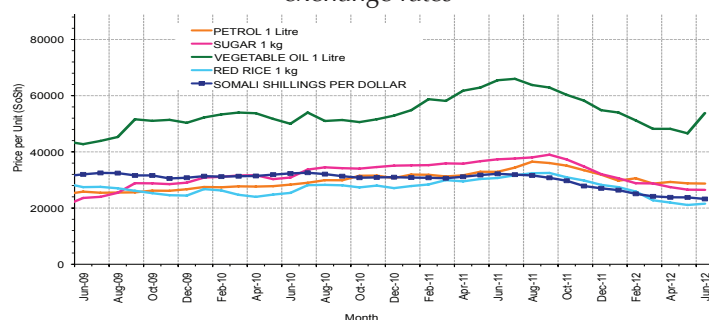


Figure 34: Goat Local Quality

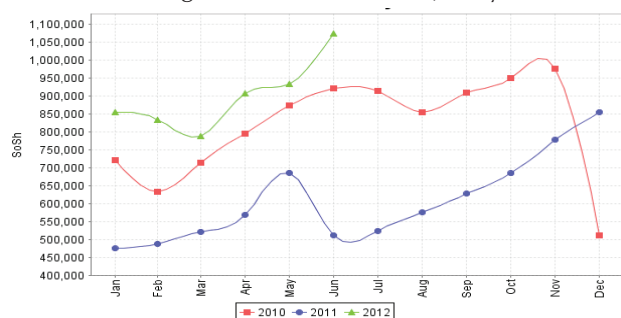


Figure 36: Water Drum

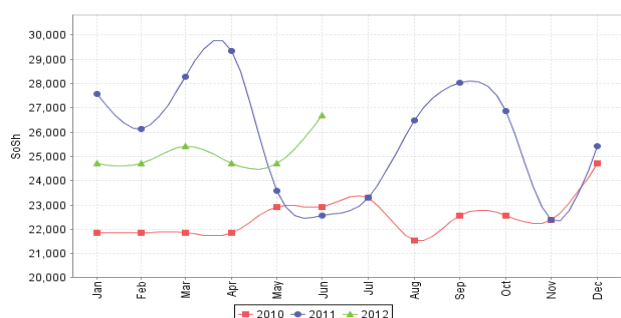


Figure 33: Trends in wage rates, staple cereal prices and relative purchasing power

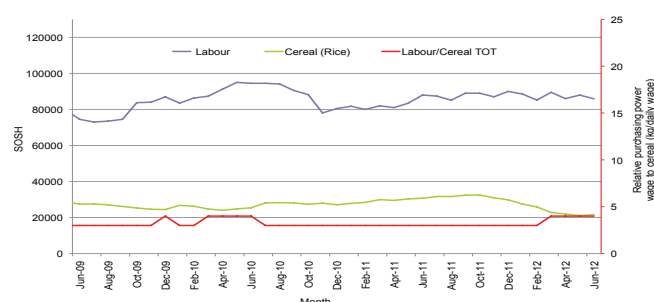


Figure 35: Exchange Rate

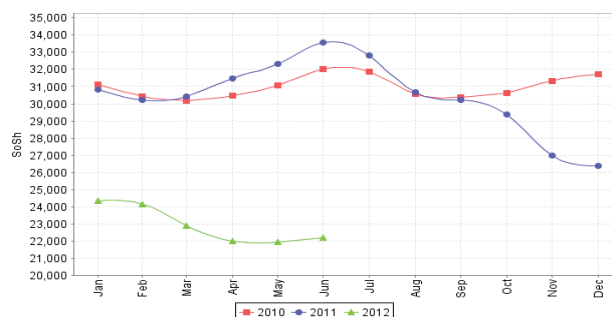
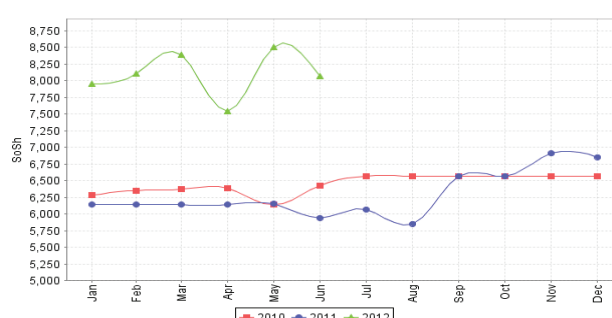


Figure 37: Firewood Bundle



Regional analysis: Northeast Regions

Indicator	Jun-11	May-12	June-12 Nominal Price	June-12 Real (Deflated) Price	% Change Same Month Previous Year	% Change Previous Month	% Change 5-year avg (2003-07)
Imported Commodities Prices							
Diesel 1 litre	33,313	28,875	27,500	11,759	-17%	-5%	183%
Imported Red Rice 1kg	24,938	20,813	20,563	8,768	-18%	-1%	207%
Petrol 1 litre	30,813	26,063	24,688	10,546	-20%	-5%	131%
Sugar	32,500	24,625	24,125	10,304	-26%	-2%	187%
Vegetable Oil 1 litre	53,250	46,125	43,063	18,471	-19%	-7%	150%
Wheat Flour 1kg	23,250	18,438	18,375	7,824	-21%	0%	160%
Wheat Grain 1kg	34,250	25,000	25,000	10,681	-27%	0%	248%
Cereal Prices							
Red Sorghum 1kg	23,583	23,750	24,000	10,250	2%	1%	266%
White Maize 1kg	21,750	19,000	22,500	9,603	3%	18%	307%
Livestock & Livestock Product Prices							
Camel Local Quality (Head)	12,525,000	15,656,250	15,887,500	6,851,236	27%	1%	390%
Cattle Local Quality (Head)	7,500,000	8,500,000	7,750,000	3,342,015	3%	-9%	381%
Fresh Camel Milk 1 litre	34,188	38,375	36,792	15,766	8%	-4%	215%
Goat Export Quality (Head)	1,425,000	1,568,750	1,475,000	635,980	4%	-6%	253%
Goat Local Quality (Head)	1,411,250	1,581,875	1,431,875	617,383	1%	-9%	283%
Other Essential Items							
Charcoal 50kg	330,625	362,063	366,250	157,842	11%	1%	393%
Cowpeas 1 kg	50,750	42,688	40,083	17,185	-21%	-6%	303%
Unskilled Labor Wage Rate	113,250	117,500	120,250	51,757	6%	2%	169%
Firewood Bundle	30,750	31,250	41,875	17,958	36%	34%	476%
Local Sesame Oil 1 litre	89,583	92,500	88,438	38,038	-1%	-4%	203%
Exchange Rate (Somali Shilling per USD)	31,750	24,000	23,219	9,913	-27%	-3%	41%
Construction Materials*							
Cement 50kg	232,938	218,500	227,813	98,142	-2%	4%	-
Cooking Pot Aluminium 7 Litre	521,250	476,563	431,750	186,088	-17%	-9%	-
Galvanised Iron Sheet Ga 26	243,250	200,375	197,813	85,205	-19%	-1%	-
Hollow Concrete Block 10cm x 20cm x 40cm	12,250	13,375	13,250	5,614	8%	-1%	-
Non Collapsible Jerrycan 10 Litre	37,813	39,188	40,208	17,239	6%	3%	-
Plastic Tarpaulin 14m x 5 m	199,625	175,000	171,813	73,993	-14%	-2%	-
Roofing Nails 15Kg	386,250	414,250	415,250	178,973	8%	0%	-
Timber 2in x 4in x 20ft	245,063	207,750	203,688	87,739	-17%	-2%	-
Woven Dry Raised Blanket 150cm x 200cm	270,375	240,500	245,000	105,554	-9%	2%	-
Terms of Trade							
Labour Wage (Daily)/ Cereal (Rice(Kg))	5	6	6	-	29%	4%	-13%
Local Goat (Head)/ Cereal (Rice(Kg))	57	76	70	-	23%	-8%	24%
Price Indices							
Consumer Price Index	236	216	232	-	-2%	7%	-
Purchasing Power Index	0.42	0.46	0.43	-	2%	-7%	-

* Data has been collected since May 2010

Figure 38: Imported commodity prices compared to exchange rates

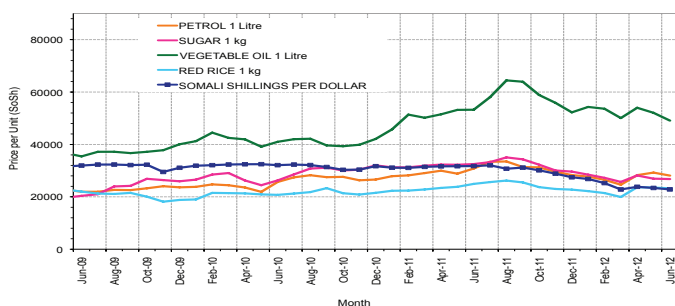


Figure 40: Goat Local Quality

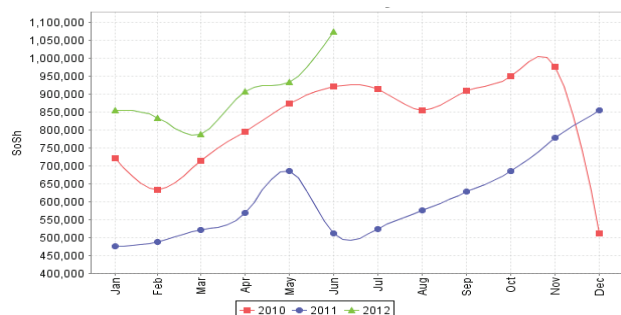


Figure 42: Water Drum

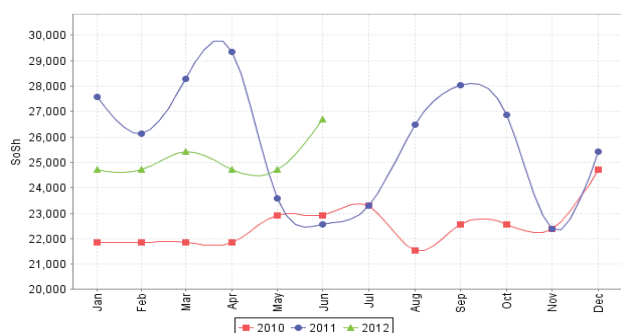


Figure 39: Trends in wage rates, staple cereal prices and relative purchasing power

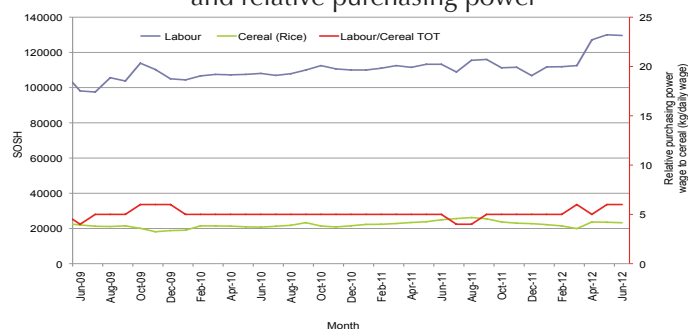


Figure 41: Exchange Rate

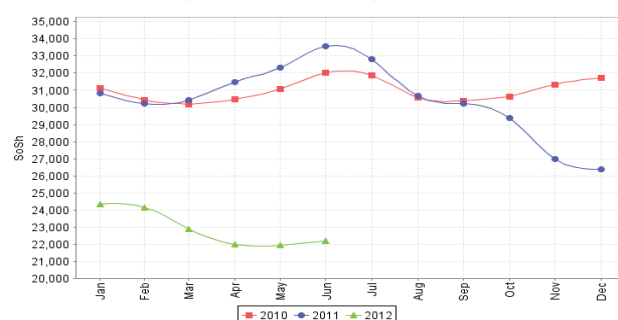
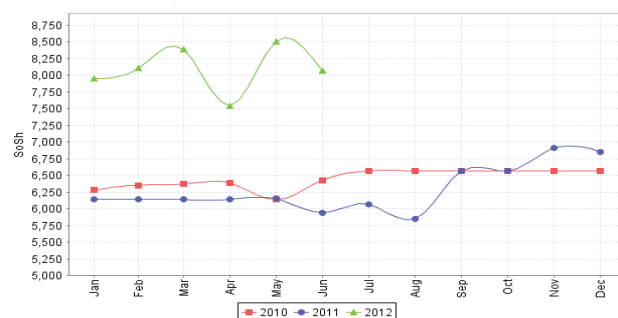


Figure 43: Firewood Bundle



Regional analysis: Northwest Regions

Indicator	Jun-11	May-12	June-12 Nominal Price	June-12 Real (Deflated) Price	% Change Same Month Previous Year	% Change Previous Month	% Change 5-year avg (2003-07)
Imported Commodities Prices							
Diesel 1 litre	5,822	7,010	6,785	5,427	17%	-3%	82%
Imported Red Rice 1kg	5,165	4,910	4,640	3,680	-10%	-5%	58%
Petrol 1 litre	6,114	7,225	7,205	5,769	18%	0%	64%
Sugar	6,100	5,950	5,925	4,726	-3%	0%	76%
Vegetable Oil 1 litre	11,235	11,115	11,970	9,651	7%	8%	71%
Wheat Flour 1kg	4,272	4,220	4,170	3,297	-2%	-1%	52%
Wheat Grain 1kg	3,125	3,175	2,975	2,323	-5%	-6%	39%
Cereal Prices							
White Sorghum 1kg	3,281	3,265	3,245	2,543	-1%	-1%	69%
Yellow Maize 1kg	3,264	3,645	3,500	2,751	7%	-4%	85%
Livestock & Livestock Product Prices							
Camel Local Quality (Head)	1,925,000	2,818,500	2,434,500	1,983,007	26%	-14%	79%
Cattle Local Quality (Head)	1,807,500	1,804,250	1,594,125	1,298,450	-12%	-12%	89%
Fresh Camel Milk 1 litre	5,100	5,850	6,225	4,971	22%	6%	51%
Goat Export Quality (Head)	299,525	421,400	398,550	324,553	33%	-5%	129%
Goat Local Quality (Head)	226,125	297,200	295,675	240,752	31%	-1%	112%
Other Essential Items							
Charcoal 50kg	32,230	38,225	39,800	32,320	23%	4%	99%
Cowpeas 1 kg	9,875	10,875	9,433	7,584	-4%	-13%	92%
Unskilled Labor Wage Rate	32,600	36,950	38,850	31,547	19%	5%	39%
Firewood Bundle	2,055	2,833	3,000	2,344	46%	6%	-50%
Local Sesame Oil 1 litre	22,313	24,313	24,875	20,163	11%	2%	44%
Exchange Rate (Somaliland Shilling per USD)	5,970	6,627	6,670	5,333	12%	1%	0%
Construction Materials*							
Cement 50kg	46,010	49,080	52,355	42,548	14%	7%	-
Cooking Pot Aluminium 7 Litre	88,150	95,500	89,650	72,928	2%	-6%	-
Galvanised Iron Sheet Ga 26	52,125	54,983	51,625	41,953	-1%	-6%	-
Hollow Concrete Block 10cm x 20cm x 40cm	2,547	2,800	2,963	2,314	16%	6%	-
Non Collapsible Jerrycan 10 Litre	6,665	6,700	6,925	5,541	4%	3%	-
Plastic Tarpaulin 14m x 5 m	75,850	75,450	85,500	69,547	13%	13%	-
Roofing Nails 15Kg	168,550	191,450	188,600	153,531	12%	-1%	-
Timber 2in x 4in x 20ft	104,000	115,950	126,683	103,094	22%	9%	-
Woven Dry Raised Blanket 150cm x 200cm	78,125	79,375	77,333	62,894	-1%	-3%	-
Terms of Trade							
Labour Wage (Daily)/ Cereal (Rice(Kg))	6	8	8	-	33%	11%	-12%
Local Goat (Head)/ Cereal (Rice(Kg))	44	61	64	-	46%	5%	34%
Price Indices							
Consumer Price Index	119	123	123	-	4%	0%	-
Purchasing Power Index	0.84	0.82	0.81	-	-3%	0%	-

* Data has been collected since May 2010

Figure 44: Imported commodity prices compared to exchange rates

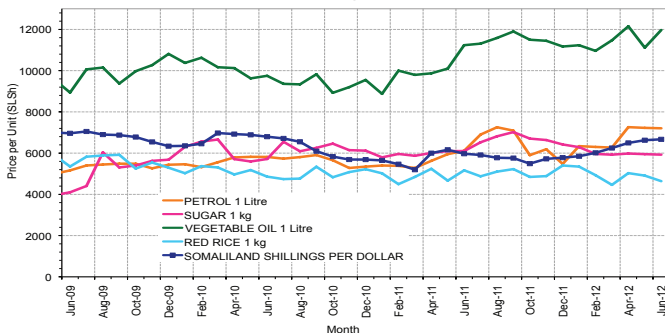


Figure 46: Goat Local Quality

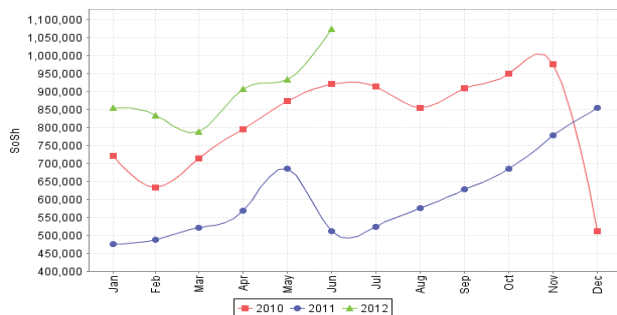


Figure 48: Water Drum

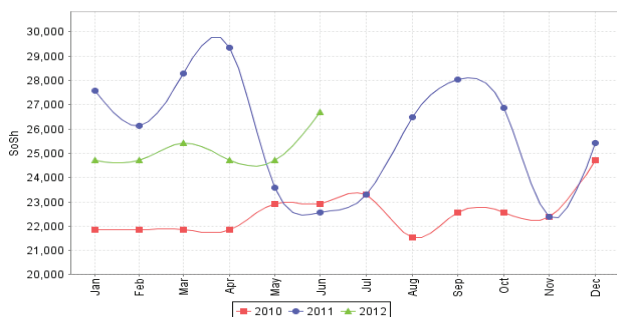


Figure 45: Trends in wage rates, staple cereal prices and relative purchasing power

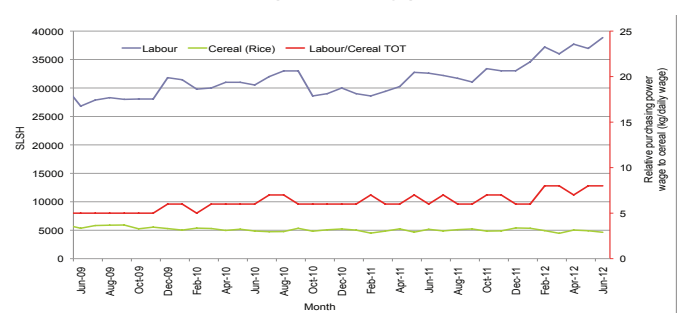


Figure 47: Exchange Rate

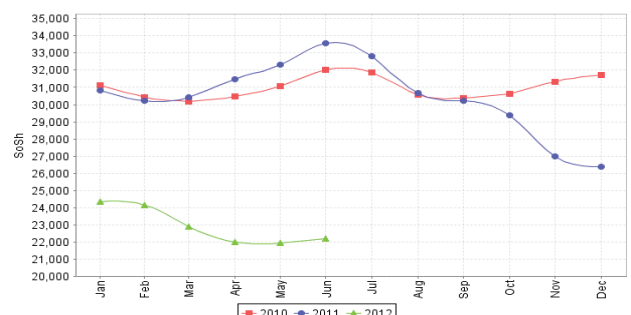
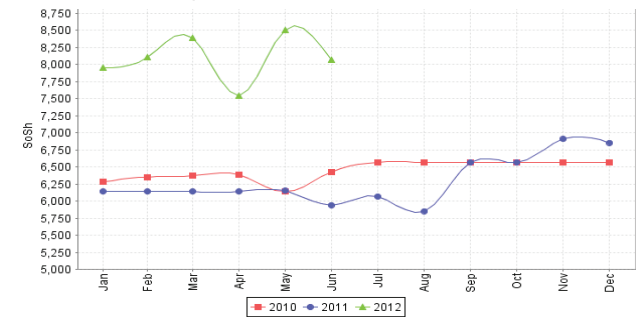


Figure 49: Firewood Bundle



Trends in Livestock Exports

Table 2: Berbera Livestock Exports (Number of Heads)

	1994	1995	1996	1997	1998	1999	2000	2001	2002	2003	2004	2005	2006	2007	2008	2009	2010	2011	2012 (Jan-May)*
Shoats	1,572,656	2,683,597	2,376,646	2,814,495	957,224	2,048,136	1,601,083	51,546	341,711	563,107	859,404	1,023,795	1,017,242	1,350,054	1,219,519	1,556,003	2,584,810	3,104,684	627,718
Cattle	173,400	167,128	65,127	66,939	92,213	89,967	63,263	20,973	37,547	84,312	131,852	148,151	85,631	88,143	80,051	88,005	133,021	150,934	73,384
Camel	38,553	21,993	42,801	50,587	11,663	37,430	16,984	3,473	18,864	21,874	5,147	5,069	22,810	14,245	26,515	20,206	92,651	107,281	46,938

* Jan-May 2012 cumulative livestock exports

Figure 50: Berbera Livestock Exports (Number of Heads)

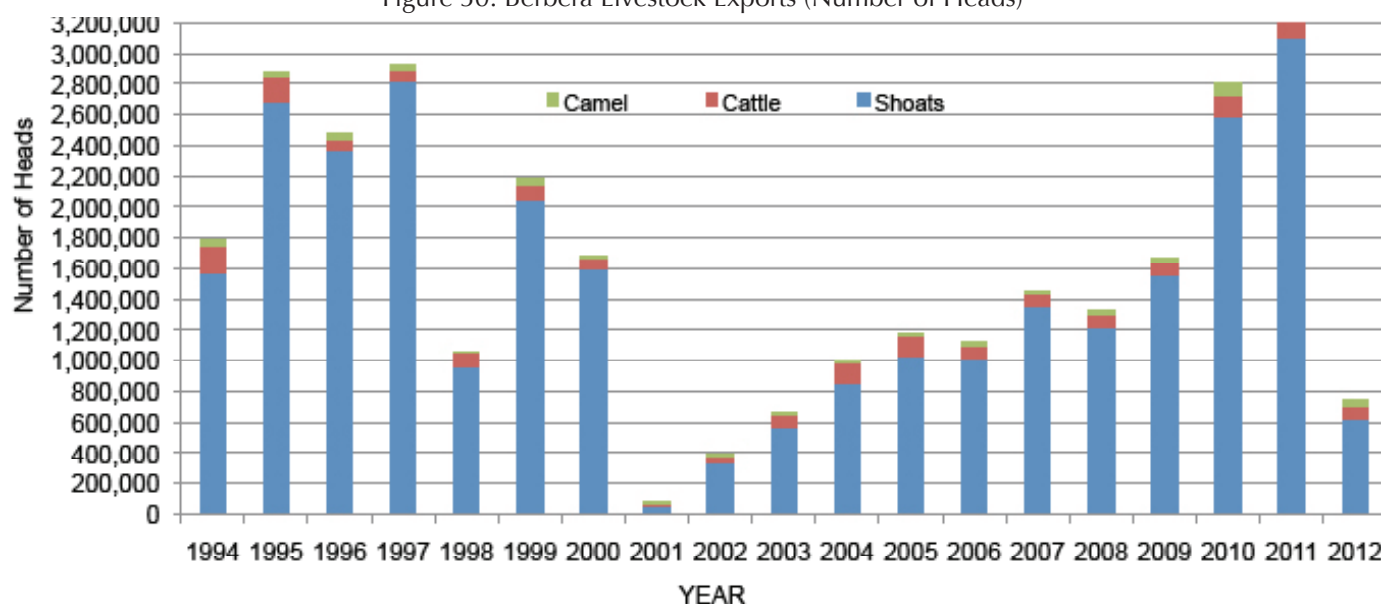


Table 3: Bossaso Livestock Exports (Number of Heads)

	1994	1995	1996	1997	1998	1999	2000	2001	2002	2003	2004	2005	2006	2007	2008	2009	2010	2011	2012 (Jan-May)
Shoats	344,000	524,346	614,407	494,320	517,020	633,669	571,455	548,853	1,412,450	1,483,409	1,166,480	1,594,859	1,777,283	1,522,855	1,236,775	1,159,454	1,333,478	1,256,535	379,611
Cattle	1,450	8,795	15,335	17,831	29,492	36,586	27,604	42,248	53,313	71,328	79,994	91,910	104,595	89,190	78,046	67,385	103,808	99,058	30,637
Camel	5,397	8,392	20,462	14,599	3,938	15,544	8,177	1,950	9,720	4,259	2,488	26,109	33,724	27,580	27,639	15,331	36,865	45,878	9,392

Figure 51: Bossaso Livestock Exports (Number of Heads)

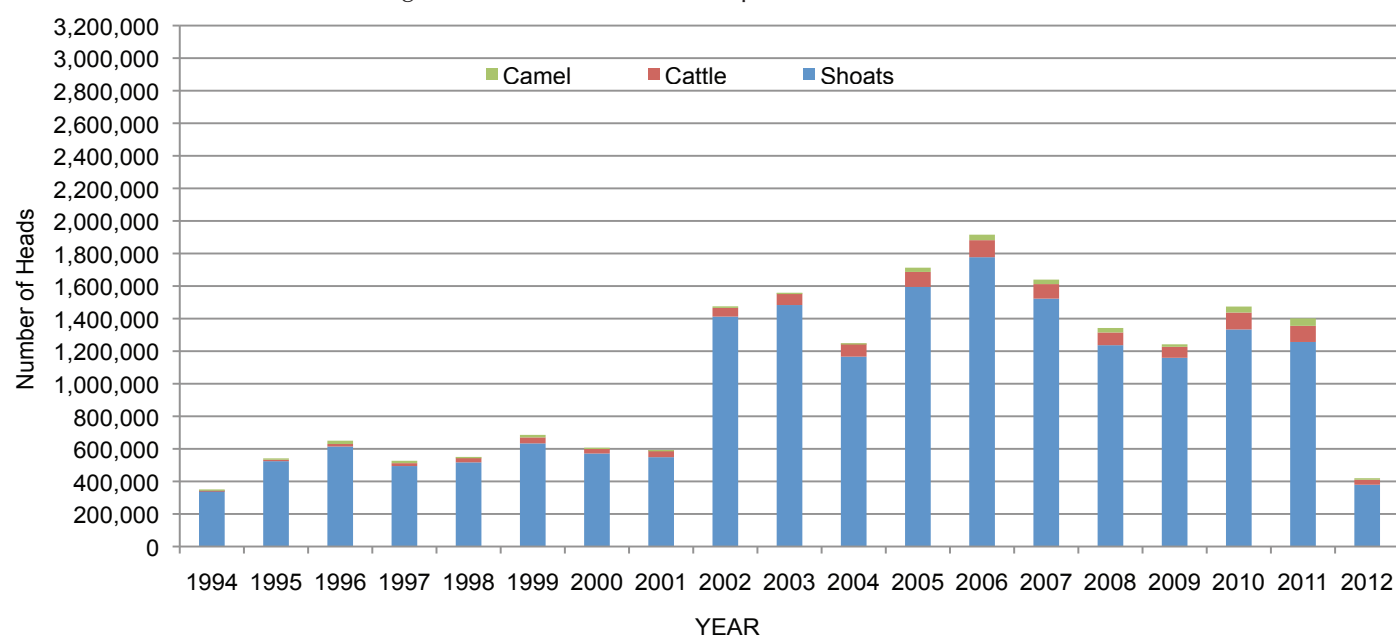
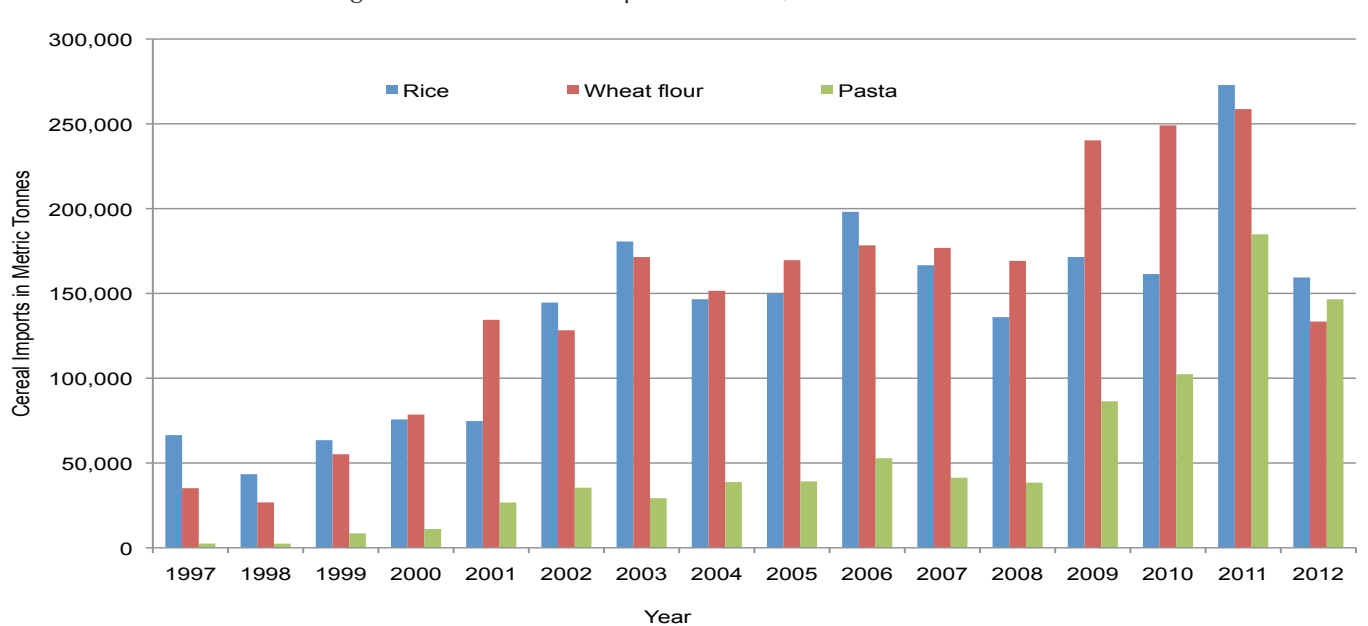


Table 4: Total Cereal Imports (Berbera,Bossaso,Elmaan)

	1997	1998	1999	2000	2001	2002	2003	2004	2005	2006	2007	2008	2009	2010	2011	2012 (Jan-May)*
Rice	66,419	43,410	63,464	75,687	74,729	144,600	180,614	146,567	150,017	198,101	166,626	136,007	171,472	161,415	272,877	159,388
Wheat Flour	35,143	26,774	55,176	78,555	134,425	128,263	171,442	151,555	169,583	178,345	176,821	169,208	240,247	249,080	258,679	133,407
Pasta	2,510	2,455	8,544	11,071	26,702	35,425	29,273	38,749	39,153	52,815	41,331	38,441	86,372	102,373	184,849	146,548

Figure 52: Total Cereal Imports (Berbera,Bossaso and Elmaan)



* January-May 2012 Cummulative Cereal Imports