

# Market Data Update



Food Security and Nutrition Analysis Unit - Somalia



Monthly Market Analysis, June 2011

## Highlights

In June 2011, the Consumer Price Index (CPI), which is based on a fixed minimum basket of goods and services, increased by 6-12 percent in Somali Shillings zones (South, Northeast and Central) and remained stable in Somaliland. The level of inflation jumped to an all time high in the south, surpassing the 2008 hyperinflation period by 39 percent. Compared to the same month a year ago, the inflation rose by 18-69 percent in Somali Shilling (SoSh) zones, while remaining stable in Somaliland Shilling (SISh) zones. Since March 2007 (reference period), the inflation rate accelerated significantly (136-253%) in SoSh areas but remained relatively steady in SISh zone.

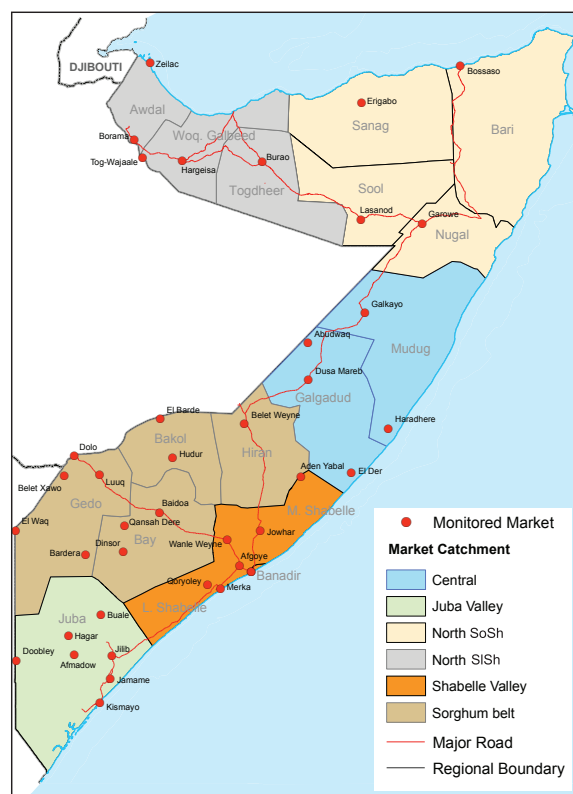
The food price inflation in the current hunger period is considerably higher than the same month last year due to exhausted local grain stocks in the domestic markets, high demand, reduced cross-border trade inflows, low humanitarian food supplies in the South and accelerating fuel prices as well as imminent below normal Gu 2011 cereal harvest. In the last month, prices of white maize increased by 6-12 percent across main markets of the Shabelle and Juba regions. Sorghum price, on the other hand, increased rapidly (9%-14%) in Sorghum Belt and Banadir regions while sustaining their previous month levels in most markets in Northwest, Northeast and Central. However, when compared to June last year the cereal prices are significantly higher in all regions. In particular, red sorghum price increased in most markets of the Sorghum Belt (170-240%), Central (77%), Northeast (61%), while maize price accelerated in Shabelle (158%) and Juba (93%) regions. Increase in white sorghum price was however comparatively moderate in Northwest (23%).

Except for diesel which increased in most regional markets throughout the country, prices of imported commodities (rice, sugar, wheat flour, vegetable oil and petrol) showed mixed trends with a more pronounced increase observed in the southern regions. This trend is mostly attributable to the volatile security situation which affects trade movement in the South as well as reduced supplies to southern and central regions from Bakkara market which is currently dysfunctional. Compared to a year ago, the prices of all imported commodities are generally higher in most monitored markets. In addition to increased international prices, the rising price trends are due to several factors, including increased taxation and import levies by multiple authorities and extortion by freelance militias, continuous trade disruptions caused by volatile security situation in South-Central and fuel-induced inflation in transport costs. The imported commodity prices are projected to augment further with the start of monsoon season (early June) as the strong winds and waves limit sea freight deliveries to the ports.

Livestock prices showed a mixed trend in June 2011 across Somalia. Compared to the same month last year, the livestock prices are lower in most southern regions, stable in Central but slightly higher in the North. These trends are attributable to low demand as well as undersupply, occasioned by lack of saleable animals as livestock has not yet fully recovered from prolonged dry weather conditions. However, the milk prices are slowly on a downward slump as the rainy season progresses and milk production improves in most regions. Similarly, with the discontinuation of water trucking in the current rainy season, water prices continue to slow down, though marginally in most reference markets.

Labour wages remained relatively stable throughout June 2011 in most regions. However, faced with rising prices of grains, purchasing power especially of the poor and destitute has greatly weakened. The monthly terms of trade (ToT) between daily labour wage and main staple cereals (maize and sorghum) deteriorated considerably in South Somalia while sustained their levels in June in the North and Central regions, due to stable labour and cereal prices over the past month. However, annual comparison of the ToT indicates particularly large declines in the southern regions, about 58-64 percent in the Sorghum Belt, Shabelle and Juba regions; 29-50 percent decrease in Northeast and Central and 17 percent decrease in Northwest (white sorghum). Only 3-5 kgs of these cereals could be purchased with one day of labour across the country, with the exception of Northwest where the ToT in June was equivalent to 7kgs.

Exchange rate between USD to Somali Shilling (SoSh) and Somaliland Shilling (SISh) remained relatively stable in June 2011. However, SISh seemed to have gained significant value (12%) when compared to June 2010 mainly due to sustained implementation of prudent monetary policies by the Government of Somaliland. The SoSh remained stable in the same period of comparison.



## Regional Highlights

**Juba Valley:** prices of most monitored commodities have remained generally stable in the past one month except for local cereals and livestock prices. While cereal prices increased due to low market supply resulting from last season crop failure, livestock prices dipped as a result of oversupply following massive in-migration from Gedo and Northern Kenya and also due to low regional demand (particularly Garissa market). The rapid rise in maize prices led to a decline in the ToT by 15 and 61 percent from the previous month and last year respectively.

**Sorghum Belt:** with the exception of diesel and cereals which increased, prices of most monitored commodities remained stable in June. However, when compared to same time last year, the prices are considerably higher for imported commodities, local cereals while lower for local quality livestock. Lower price for the latter is mainly attributable to over-supply as pastoralists flood local markets in attempt to cover the rising cost of living. Increased cereal prices coupled with stable labour wage rates led to a slight weakening of the purchasing power (7%).

**Shabelle Valley:** over the previous month, prices of imported commodities and cereals rose considerably while labour wages declined. The increase in the price of imported commodities and cereals is attributed to low supply and high demand while low labour wage rate is due to intensified labour competition. Reduced labour rates and rising cereals reduced the ToT to a low of 18 percent compared to May.

**Central:** prices of most monitored commodities remained generally stable in the past month. However, when compared to the previous year, the prices are particularly higher for imported commodities, cereals and livestock. Stability in cereal prices and labour rates sustained the ToT to its level in the previous month. The purchasing power however weakened by more than half when compared to same period last year.

**Northeast:** with the exception of imported commodities which appreciated marginally (1-8%) and livestock prices and milk which slumped (3-25%), all other monitored commodities remained firm in the month of June 2011. The price changes are due to improved milk production and over supply of saleable livestock. Slight decrease in goat price and imported rice price increase settled the ToT 4 percent lower than its May level.

**Northwest:** prices of most monitored commodities remained stable except those of livestock, milk and cereals. Low supply of milk and livestock and reduce supply of cereals from Ethiopia and Southern Somalia have pushed prices upwards. Stability in labour wage rate and slight increase in rice prices pushed the ToT 4 percent below the May level.

**Banadir:** while all other commodities showed mixed trends, local cereals and milk increased (10-21%). The prices of all commodities are however significantly higher than a year ago. The ToT labour to cereal rate is 15 percent lower than the previous month and nearly half its level the same month last year.

This Market Data Update is a monthly report that presents a compilation of tabulated graphical market information produced regularly as part of the monthly monitoring process.

The weekly price data is collected from 44 main markets throughout Somalia since 1995.

The 5-year period of 2003-07 was characterised by fairly stable prices and relatively low inflation. In this bulletin these years are used as a reference period for seasonal trends comparison.

Market analysis is an integral part of all of FSNAU's Annual Food Security Projections and seasonal technical reports (Technical Reports on FSNAU Post Gu and Deyr Analysis).

This data is available online on [www.fsnau.org/ids](http://www.fsnau.org/ids).

Technical and Managerial Support

Funding Agencies



# International Market Highlights

**Diesel:** Crude oil prices in Abu Dhabi/Dubai,<sup>1</sup> the main sources of Somalia's oil imports, remained virtually steady, slowing marginally (2%) from its May 2011 level to settle at \$107 per barrel in June 2011. The current price, however, is 47 percent higher than the same month last year. International crude oil prices are projected to remain high in the short-run, as long as supply interruptions<sup>2</sup> occasioned by the political unrest, tensions and conflict in the oil-rich countries of Middle East and North Africa persist. Oil price transmission from international to Somalia markets is clearly evidenced in annual increases of diesel prices in the main port cities of Bossaso (7%) and Mogadishu (32%), respectively. On a monthly basis, diesel prices remained stable in both cities over the previous month. The faster acceleration in the year on year diesel prices in Mogadishu as opposed to Bossaso are mainly due to high levels of insecurity, disrupted main supply market (Bakara) and multiple taxation regimes in the former as opposed to latter market. Domestic prices of diesel are projected to remain firm to high in the short-run in the face of high international oil prices as well as reduced supply into the country during high seas (June-September).

**Rice:** international export prices of rice<sup>3</sup> were slightly up in June, after declining marginally in May 2011 to close at USD 423. This is a reflection of strong import demand and uncertainty over export prices in Thailand, the world's largest rice exporter. At the current levels, rice export prices are nearly 30 percent higher than a year ago but 45 percent below their peak in May 2008. In line with international price trends, retail prices of imported rice in Mogadishu and Bossaso cities remained relatively stable in June 2011 but are higher compared to a year ago, by 9% and 39%, respectively. International rice prices are projected to firm in the short-run as current international inventories are expected to become more comfortable<sup>4</sup>. In Somalia, rice price developments in the coming months are mostly likely to be on the upward as demand will likely tighten following depletion of locally produced cereal stocks.

## Sugar:

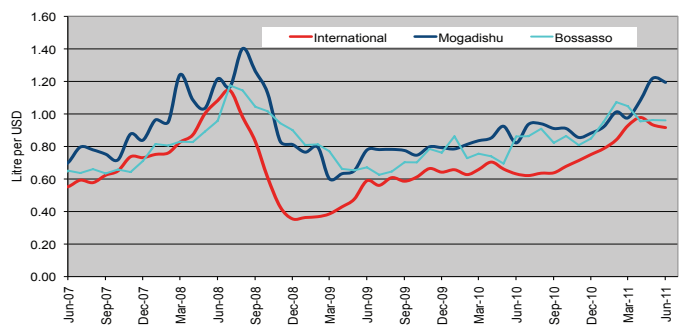
The **FAO Sugar Price Index** averaged 359 points in June, up 14 percent from May, only 15 percent below its January record and significantly higher (59%) than a year ago. The price strength reflects dynamic short-term demand against tight exportable availabilities, notably in Brazil, the world's largest sugar producer where production is forecast to fall below last year's level<sup>5</sup>.

The international price development of the last month has not yet passed through to markets of Somalia where sugar prices (Mogadishu and Bossaso) remained generally stable during June. In the short-run, international sugar prices are likely to remain high in the face of reduced exportable availabilities in several major exporting countries. Sugar price development in the next year will depend on weather patterns of the new 2011/2012 season in major producing regions<sup>6</sup>.

**Cooking oil:** The **FAO Oils/Fats Price Index** averaged 257 points in June, down marginally from May 2011 but is 53 percent above the corresponding value in June last year. Continued production uncertainties and expectation of stronger world import demand sustained soybean oil prices. By contrast, palm oil prices eased further, reflecting improved supply prospects and ample export availabilities in Southeast Asia.

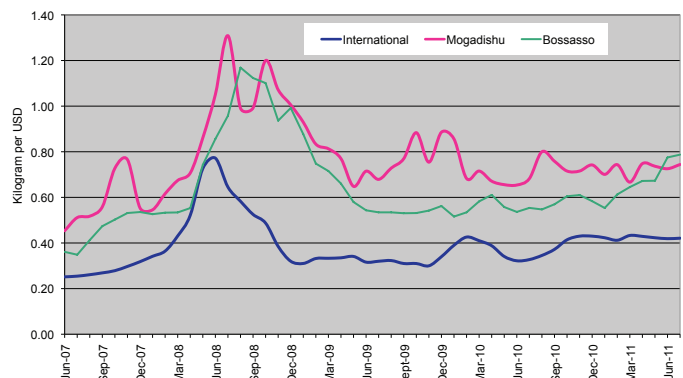
Vegetable cooking oil price transmission from international to local markets of Somalia is evident through annual price increases (from June 2010) of 36 and 40 percent in Bossaso and Mogadishu port cities, respectively.

Figure 1: Comparison of Diesel Prices: International (Asia Dubai ), Mogadishu and Bossaso



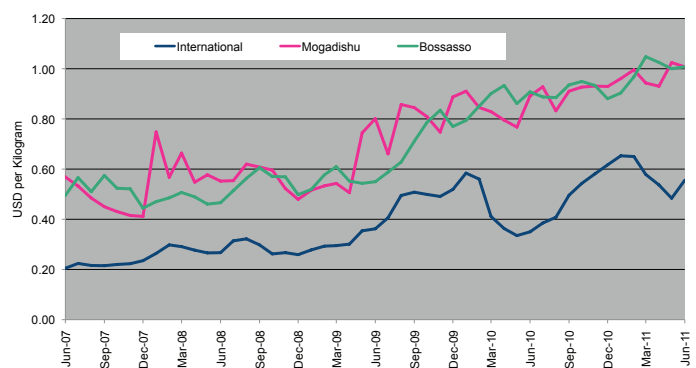
Source: FAO Statistics and FSNAU Market Price Monitoring System, 2011.

Figure 2: Comparison of Rice Prices: International (Bangkok FOB), Mogadishu and Bossaso



Source: FAO Statistics and FSNAU Market Price Monitoring System, 2011.

Figure 3: Comparison of Sugar Prices: International (ISO), Mogadishu and Bossaso



Source: International Sugar Organization and FSNAU Market Price Monitoring System - 2011

<sup>1</sup> Weekly Abu Dhabi Murban Spot Price FOB (Dollars per Barrel), US Energy Information Administration, [http://www.eia.doe.gov/dnav/pet/pet\\_pri\\_wco\\_k\\_w.htm](http://www.eia.doe.gov/dnav/pet/pet_pri_wco_k_w.htm)

<sup>2</sup> The halt in exports from Libya have also raised concerns that supply may also be interrupted elsewhere

<sup>3</sup> Bangkok, Rice (Thai A1 Super 1/ B) , Export, US Dollar, Tonne, FAO GIEWS 2011

<sup>4</sup> FAO Global Food Outlook (June 2011)

<sup>5</sup> FAO Global Food Price Index (July 2011)

<sup>6</sup> FAO Global Food Price Index (July 2011)

# National Trends in Market Prices

Figure 4: Relative Purchasing Power for Selected Regions  
(Terms of Trade between wage rates and selected cereals)

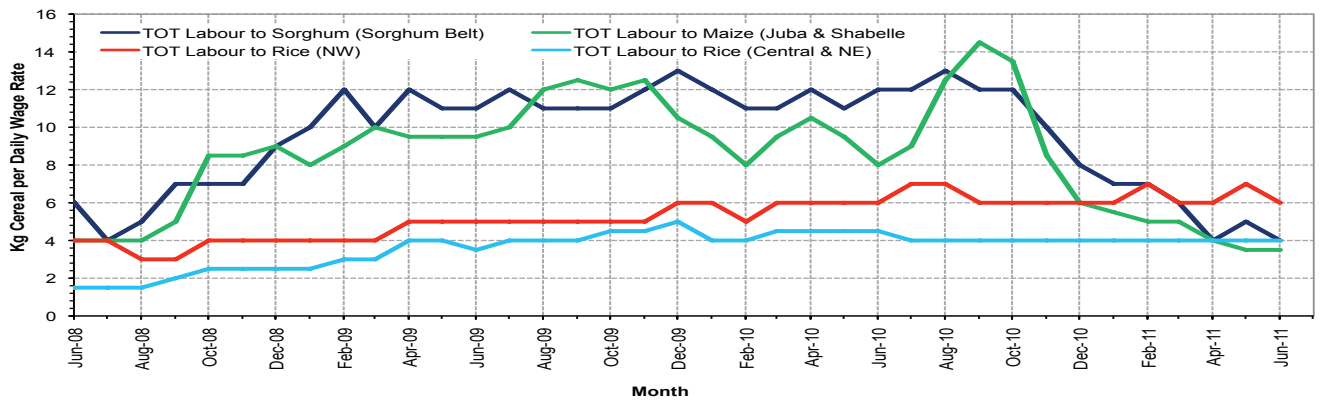


Figure 5: Monthly Exchange Rate for Selected Regions (SoSh and SISH to USD)

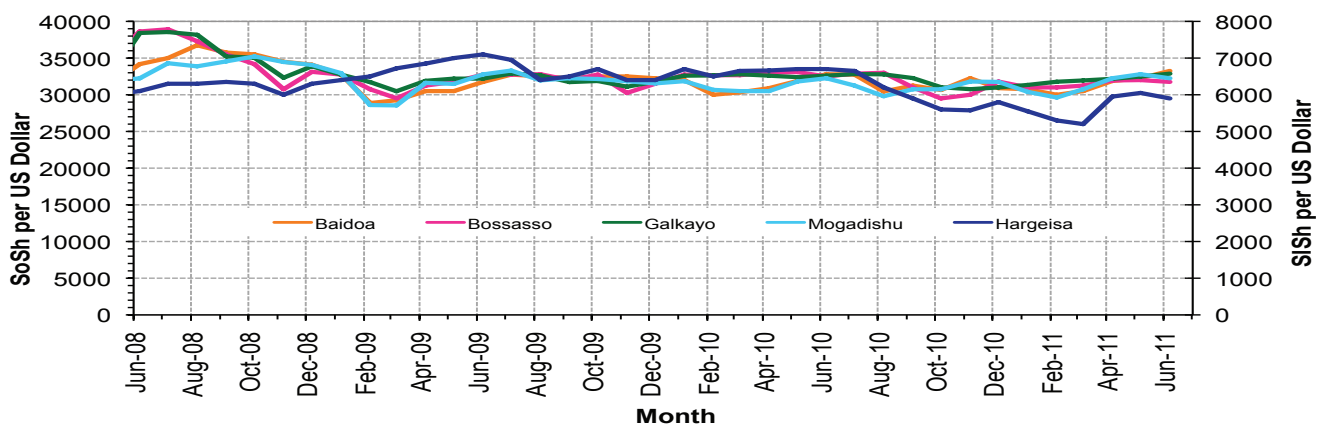


Figure 6: Monthly Trends in Consumer Price Index (CPI)

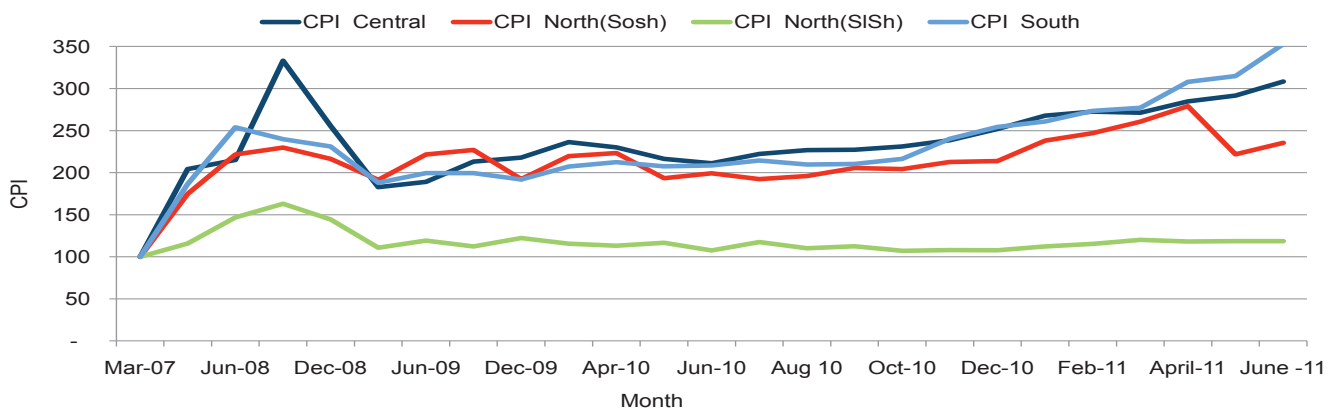
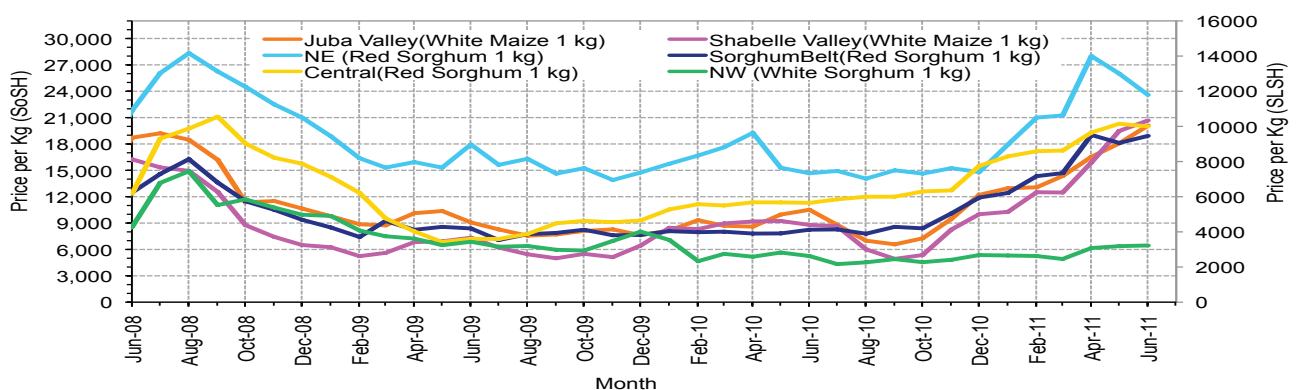


Figure 7: Monthly Trends in Cereal Prices



# Regional analysis: Juba Regions

Indicator	5-Year Average	Jun-10	May-11	June-11 Nominal Price	June-11 Real (Deflated) Price	% Change Same Month Previous	% Change Previous Month	% Change 5-year avg (2003-07)
<b>Imported Commodities Prices</b>								
Diesel 1 litre	12,790	33,929	35,350	40,750	11,452	20%	15%	219%
Imported Red Rice 1kg	8,809	21,393	25,436	25,786	7,210	21%	1%	193%
Petrol 1 litre	16,112	34,250	35,714	38,500	10,814	12%	8%	139%
Sugar	9,298	25,536	32,286	33,643	9,437	32%	4%	262%
Vegetable Oil 1 litre	19,025	46,857	60,971	63,536	17,911	36%	4%	234%
Wheat Flour 1kg	8,339	19,714	23,671	25,107	7,017	27%	6%	201%
Wheat Grain 1kg	9,000	-	16,400	20,000	5,569	-	22%	122%
<b>Cereal Prices</b>								
Red Sorghum 1kg	2,597	9,500	-	-	-	-	-	-
White Maize 1kg	3,573	10,514	18,071	20,286	5,651	93%	12%	468%
<b>Livestock &amp; Livestock Product Prices</b>								
Camel Local Quality (Head)	3,039,868	8,700,418	8,140,834	6,822,917	1,934,011	-22%	-16%	124%
Cattle Local Quality (Head)	1,482,175	4,425,500	3,139,333	2,172,083	615,626	-51%	-31%	47%
Fresh Camel Milk 1 litre	6,204	20,286	24,807	18,179	5,053	-10%	-27%	193%
Goat Export Quality (Head)	419,302	1,315,893	1,153,214	882,679	250,115	-33%	-23%	111%
Goat Local Quality (Head)	282,260	920,714	686,857	513,393	145,433	-44%	-25%	82%
<b>Other Essential Items</b>								
Charcoal 50kg	30,493	90,714	62,857	59,643	16,807	-34%	-5%	96%
Cowpeas 1 kg	8,850	25,375	29,964	34,625	9,715	36%	16%	291%
Unskilled Labor Wage Rate	32,456	95,107	75,643	71,786	20,249	-25%	-5%	121%
Firewood Bundle	2,262	6,429	6,154	5,346	1,586	-8%	-3%	163%
Local Sesame Oil 1 litre	21,102	75,125	85,200	87,929	24,825	17%	3%	317%
Exchange Rate (Somali Shilling per USD)	15,752	32,004	32,323	33,571	9,416	5%	4%	113%
<b>Construction Materials*</b>								
Cement 50kg	-	382,857	347,500	299,786	84,881	-22%	-14%	-
Cooking Pot Aluminium 7 Litre	-	356,042	360,667	381,667	108,092	7%	6%	-
Galvanised Iron Sheet Ga 26	-	176,714	161,250	172,083	48,681	-3%	7%	-
Hollow Concrete Block 10cm x 20cm x 40cm	-	21,000	19,250	19,250	5,357	-8%	0%	-
Non Collapsible Jerrycan 10 Litre	-	31,000	28,333	29,167	8,168	-6%	3%	-
Plastic Tarpaulin 14m x 5 m	-	656,667	600,000	460,000	130,297	-30%	-23%	-
Roofing Nails 15Kg	-	837,857	801,871	825,833	234,001	-1%	3%	-
Timber 2in x 4in x 20ft	-	341,500	331,000	332,500	94,155	-3%	0%	-
Woven Dry Raised Blanket 150cm x 200cm	-	240,000	100,000	-	100	-100%	-100%	-
<b>Terms of Trade</b>								
Labour Wage (Daily)/ Cereal (Maize(Kg))	9	9	4	4	4	-61%	-15%	-61%
Local Goat (Head)/ Cereal (Maize(Kg))	79	88	38	25	26	-71%	-33%	-68%
<b>Price Indices</b>								
Consumer Price Index	-	209	315	353	-	69%	12%	-
Purchasing Power Index	-	0.48	0.32	0.28	-	-41%	-11%	-

\* Data has been collected for the past 13 months only

Figure 8: Imported commodity prices compared to exchange rates

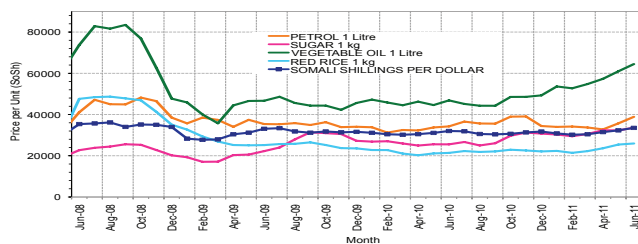


Figure 10: Goat Local Quality

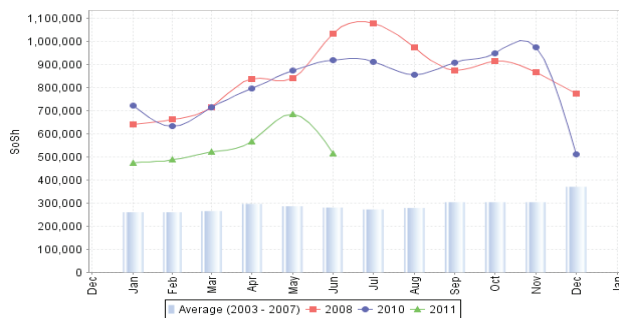


Figure 12: Water Drum

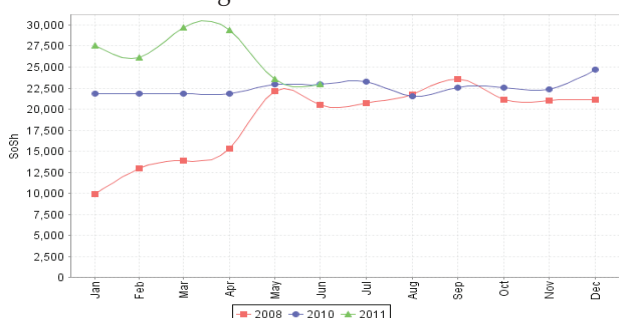


Figure 9: Trends in wage rates, staple cereal prices and relative purchasing power

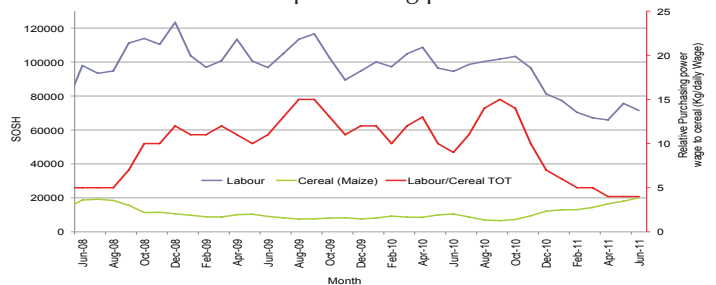


Figure 11: Sugar

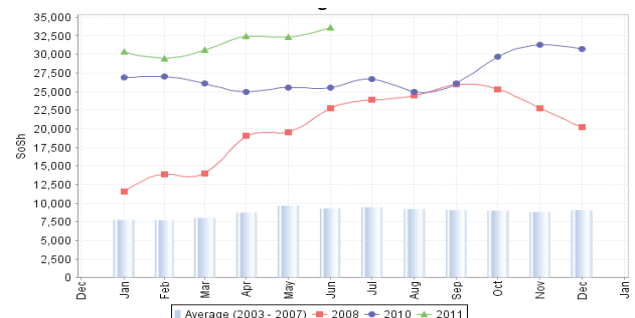
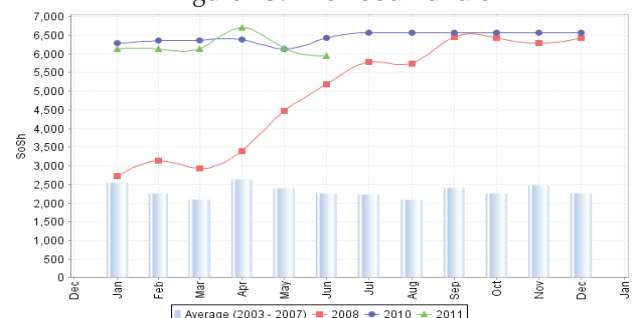


Figure 13: Firewood Bundle





# Regional analysis: Sorghum Belt Regions

Indicator	5-Year Average	Jun-10	May-11	June-11 Nominal Price	June-11 Real (Deflated) Price	% Change Same Month Previous	% Change Previous Month	% Change 5-year avg (2003-07)
<b>Imported Commodities Prices</b>								
Diesel 1 litre	11,879	32,561	40,364	42,341	11,903	30%	5%	256%
Imported Red Rice 1kg	8,811	23,159	28,977	28,773	8,056	24%	-1%	227%
Petrol 1 litre	15,982	31,891	40,318	39,659	11,142	24%	-2%	148%
Sugar	9,798	28,273	34,773	35,182	9,873	24%	1%	259%
Vegetable Oil 1 litre	17,942	45,089	63,977	62,909	17,733	40%	-2%	251%
Wheat Flour 1kg	8,528	20,432	25,932	25,500	7,129	25%	-2%	199%
Wheat Grain 1kg	3,958	10,125	22,250	20,188	5,623	99%	-9%	410%
<b>Cereal Prices</b>								
Red Sorghum 1kg	1,997	8,248	17,281	18,920	5,263	129%	9%	847%
White Maize 1kg	2,777	11,758	17,952	18,393	5,114	56%	2%	562%
<b>Livestock &amp; Livestock Product Prices</b>								
Camel Local Quality (Head)	3,169,050	9,779,546	7,622,955	7,568,182	2,145,273	-23%	-1%	139%
Cattle Local Quality (Head)	1,331,409	3,279,273	1,762,222	1,706,945	483,772	-48%	-3%	28%
Fresh Camel Milk 1 litre	6,374	14,968	24,436	23,000	6,420	54%	-6%	261%
Goat Export Quality (Head)	390,245	1,299,705	1,080,318	1,090,682	309,079	-16%	1%	179%
Goat Local Quality (Head)	249,616	738,784	568,864	542,955	153,813	-27%	-5%	118%
<b>Other Essential Items</b>								
Charcoal 50kg	37,696	135,955	103,886	104,500	29,523	-23%	1%	177%
Cowpeas 1 kg	6,111	25,935	37,178	39,333	11,050	52%	6%	544%
Unskilled Labor Wage Rate	18,166	100,670	82,250	83,795	23,654	-17%	2%	361%
Firewood Bundle	1,844	5,395	5,432	5,318	1,408	-1%	-2%	188%
Local Sesame Oil 1 litre	22,847	77,094	80,357	80,286	22,659	4%	0%	251%
Exchange Rate (Somali Shilling per USD)	15,725	32,513	32,140	32,616	9,146	0%	1%	107%
<b>Construction Materials*</b>								
Cement 50kg	-	357,444	330,000	339,444	96,123	-5%	3%	-
Cooking Pot Aluminium 7 Litre	-	404,000	328,250	328,500	93,021	-19%	0%	-
Galvanised Iron Sheet Ga 26	-	215,444	216,682	218,091	61,723	1%	1%	-
Hollow Concrete Block 10cm x 20cm x 40cm	-	8,833	9,875	10,063	2,753	14%	2%	-
Non Collapsible Jerrycan 10 Litre	-	54,425	53,591	53,477	15,059	-2%	0%	-
Plastic Tarpaulin 14m x 5 m	-	368,167	319,000	293,600	83,128	-20%	-8%	-
Roofing Nails 15Kg	-	893,889	835,000	837,407	237,282	-6%	0%	-
Timber 2in x 4in x 20ft	-	263,214	213,286	216,429	61,252	-18%	1%	-
Woven Dry Raised Blanket 150cm x 200cm	-	116,500	102,083	102,500	28,956	-12%	0%	-
<b>Terms of Trade</b>								
Labour Wage (Daily)/ Cereal (Sorghum(Kg))	9	12	5	4	4	-64%	-7%	-51%
Local Goat (Head)/ Cereal (Sorghum(Kg))	125	90	33	29	29	-68%	-13%	-77%
<b>Price Indices</b>								
Consumer Price Index	-	209	315	353	-	69%	12%	-
Purchasing Power Index	-	0.48	0.32	0.28	-	-41%	-11%	-

\* Data has been collected for the past 13 months only

Figure 14: Imported commodity prices compared to exchange rates

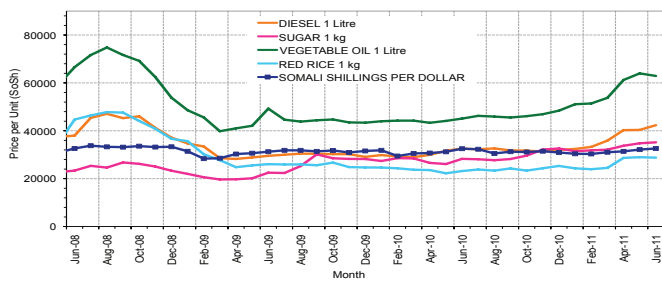


Figure 15: Trends in wage rates, staple cereal prices and relative purchasing power

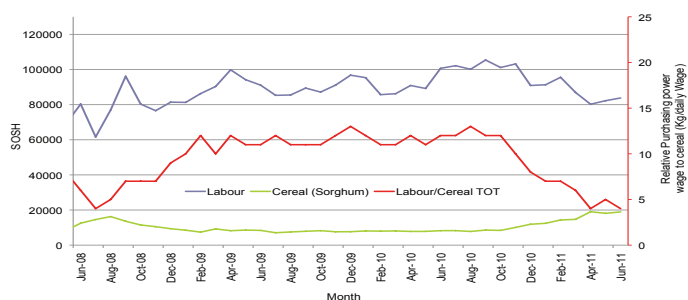


Figure 16: Goat Local Quality

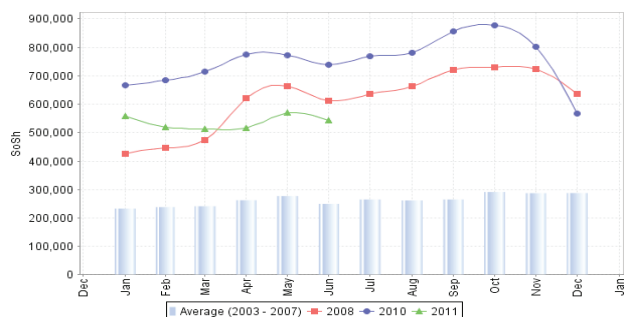


Figure 17: Sugar

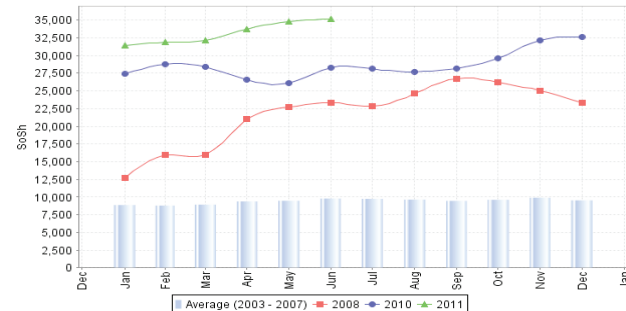


Figure 18: Water Drum

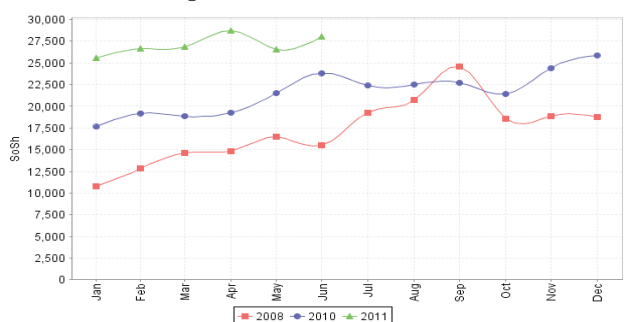
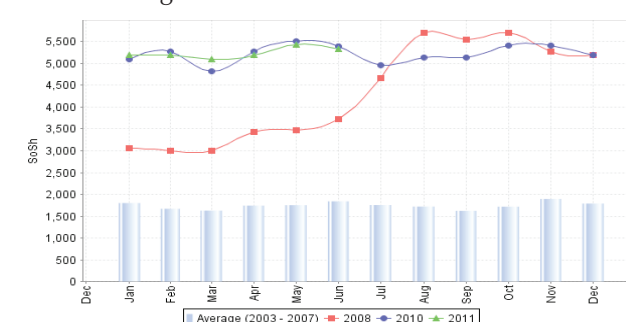


Figure 19: Firewood Bundle



# Regional analysis: Shabelle Regions

Indicator	5-Year Average	Jun-10	May-11	June-11 Nominal Price	June-11 Real (Deflated) Price	% Change Same Month Previous	% Change Previous Month	% Change 5-year avrg (2003-07)
<b>Imported Commodities Prices</b>								
Diesel 1 litre	9,616	32,458	37,167	40,167	11,286	24%	8%	318%
Imported Red Rice 1kg	7,005	23,083	23,583	23,833	6,656	3%	1%	240%
Petrol 1 litre	12,897	30,542	33,000	35,583	9,987	17%	8%	176%
Sugar	7,854	26,958	33,208	33,125	9,290	23%	0%	322%
Vegetable Oil 1 litre	13,689	39,167	54,292	54,042	15,219	38%	0%	295%
Wheat Flour 1kg	6,706	19,042	23,333	24,708	6,904	30%	6%	268%
Wheat Grain 1kg	4,499	13,333	-	27,667	-	108%	-	-
<b>Cereal Prices</b>								
Red Sorghum 1kg	2,479	8,487	19,350	21,913	6,112	158%	13%	784%
White Maize 1kg	3,308	8,793	19,485	20,673	5,760	135%	6%	525%
<b>Livestock &amp; Livestock Product Prices</b>								
Camel Local Quality (Head)	4,247,777	11,319,168	11,625,000	11,955,000	3,388,816	6%	3%	181%
Cattle Local Quality (Head)	1,246,475	3,597,500	2,623,333	2,815,000	797,876	-22%	7%	126%
Fresh Camel Milk 1 litre	4,888	14,708	25,854	20,083	5,593	37%	-22%	311%
Goat Export Quality (Head)	496,879	1,405,208	1,447,813	1,363,438	386,397	-3%	-6%	174%
Goat Local Quality (Head)	345,789	1,035,000	925,833	942,917	267,191	-9%	2%	173%
<b>Other Essential Items</b>								
Charcoal 50kg	41,112	90,694	116,166	105,847	29,905	17%	-9%	157%
Cowpeas 1 kg	5,775	19,059	33,071	39,737	11,164	108%	20%	588%
Unskilled Labor Wage Rate	18,468	57,917	65,208	56,583	15,940	-2%	-13%	206%
Firewood Bundle	2,071	4,125	4,833	4,667	-	13%	-3%	125%
Local Sesame Oil 1 litre	19,392	56,167	64,417	64,083	18,066	14%	-1%	230%
Exchange Rate (Somali Shilling per USD)	16,427	32,488	32,805	32,033	8,980	-1%	-2%	95%
<b>Construction Materials*</b>								
Cement 50kg	-	281,100	284,250	307,500	87,068	9%	8%	-
Cooking Pot Aluminium 7 Litre	-	750,000	780,000	760,000	215,339	1%	-3%	-
Galvanised Iron Sheet Ga 26	-	131,100	136,800	149,000	42,137	14%	9%	-
Hollow Concrete Block 10cm x 20cm x 40cm	-	12,600	13,500	18,750	5,215	49%	39%	-
Non Collapsible Jerrycan 10 Litre	-	52,750	50,938	50,313	14,162	-5%	-1%	-
Plastic Tarpaulin 14m x 5 m	-	287,100	301,667	295,833	83,761	3%	-2%	-
Roofing Nails 15Kg	-	678,125	678,333	701,667	198,803	3%	3%	-
Timber 2in x 4in x 20ft	-	62,938	59,700	62,050	17,489	-1%	4%	-
Woven Dry Raised Blanket 150cm x 200cm	-	84,250	95,000	79,833	22,530	-5%	-16%	-
<b>Terms of Trade</b>								
Labour Wage (Daily)/ Cereal (Maize(Kg))	6	7	3	3	3	-58%	-18%	-51%
Local Goat (Head)/ Cereal (Maize(Kg))	105	118	48	46	46	-61%	-4%	-56%
<b>Price Indices</b>								
Consumer Price Index	-	209	315	353	-	69%	12%	-
Purchasing Power Index	-	0.48	0.32	0.28	-	-41%	-11%	-

\* Data has been collected for the past 13 months only

Figure 20: Imported commodity prices compared to exchange rates

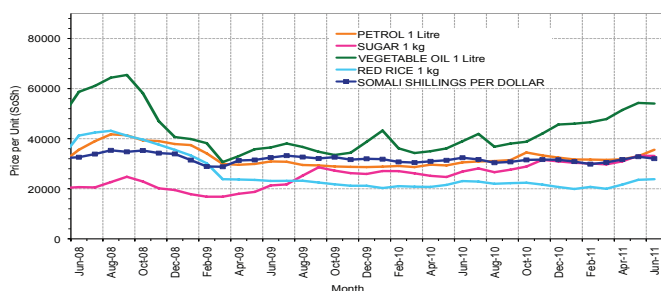


Figure 22: Goat Local Quality

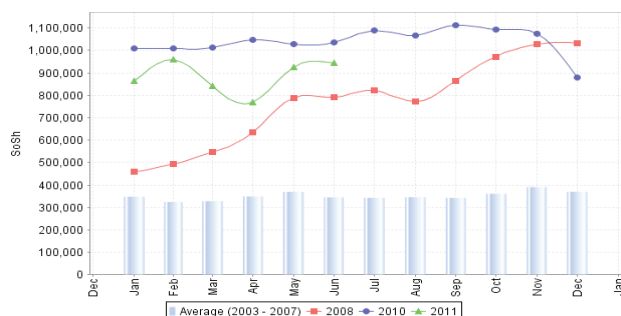


Figure 24: Water Drum

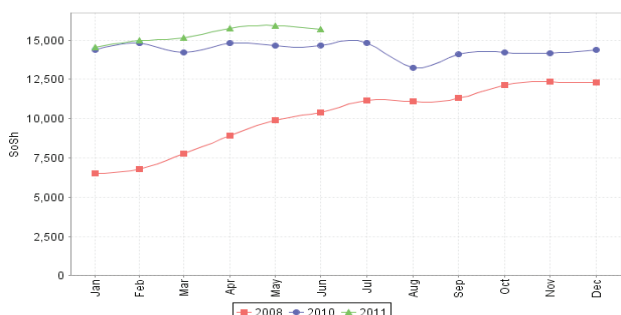


Figure 21: Trends in wage rates, staple cereal prices and relative purchasing power

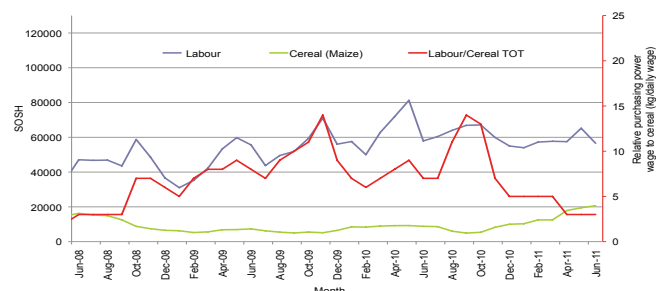


Figure 23: Sugar

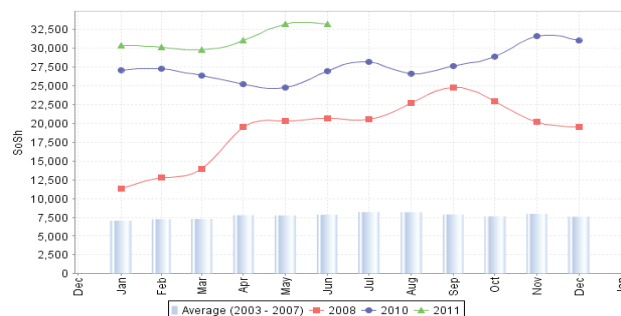
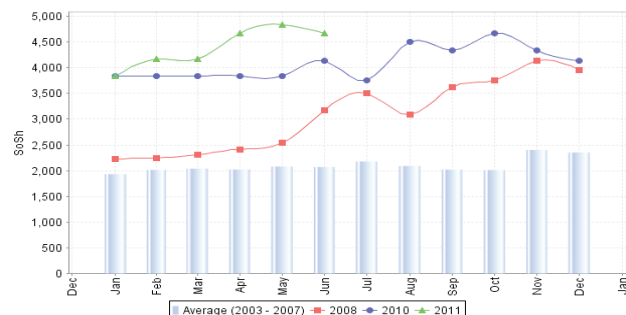


Figure 25: Firewood Bundle



# Regional analysis:Banadir Region

Indicator	5-Year Average	Jun-10	May-11	June-11 Nominal Price	June-11 Real (Deflated) Price	% Change Same Month Previous	% Change Previous Month	% Change 5-year avg (2003-07)
<b>Imported Commodities Prices</b>								
Diesel 1 litre	9,066	28,500	33,375	34,458	9,668	21%	3%	280%
Imported Red Rice 1kg	6,700	20,917	22,467	23,625	6,597	13%	5%	253%
Petrol 1 litre	12,525	28,208	30,583	30,708	8,605	9%	0%	145%
Sugar	7,575	27,250	31,767	31,750	8,900	17%	0%	319%
Vegetable Oil 1 litre	13,900	39,667	50,967	54,000	15,208	36%	6%	288%
Wheat Flour 1kg	6,358	16,542	21,258	22,375	6,243	35%	5%	252%
Wheat Grain 1kg	3,812	9,000	19,200	20,000	5,569	122%	4%	425%
<b>Cereal Prices</b>								
Red Sorghum 1kg	2,051	7,883	19,389	22,052	6,151	180%	14%	975%
White Maize 1kg	3,746	10,479	17,977	21,666	6,042	107%	21%	478%
<b>Livestock &amp; Livestock Product Prices</b>								
Camel Local Quality (Head)	5,690,000	17,250,000	15,000,000	12,000,000	3,401,573	-30%	-20%	111%
Cattle Local Quality (Head)	3,100,000	5,300,000	3,000,000	3,000,000	850,318	-43%	0%	-3%
Fresh Camel Milk 1 litre	5,687	15,938	21,642	23,708	6,621	49%	10%	317%
Goat Export Quality (Head)	-	1,450,000	1,780,000	1,625,000	460,543	12%	-9%	-
Goat Local Quality (Head)	615,000	1,325,000	1,490,000	1,379,000	390,809	4%	-7%	124%
<b>Other Essential Items</b>								
Charcoal 50kg	100,000	149,792	145,708	157,958	44,677	5%	8%	58%
Cowpeas 1 kg	5,271	19,747	42,460	46,928	13,203	138%	11%	790%
Unskilled Labor Wage Rate	56,333	74,083	75,833	77,500	21,869	5%	2%	38%
Firewood Bundle	41,800	3,854	7,125	6,250	1,672	62%	-12%	-85%
Local Sesame Oil 1 litre	18,916	58,917	58,267	62,292	17,558	6%	7%	229%
Exchange Rate (Somali Shilling per USD)	16,410	33,013	32,901	33,368	9,359	1%	1%	103%
<b>Construction Materials*</b>								
Cement 50kg	-	264,950	237,354	256,200	72,526	-3%	8%	-
Cooking Pot Aluminium 7 Litre	-	-	270,000	373,000	105,635	-	38%	-
Galvanised Iron Sheet Ga 26	-	120,400	151,482	157,083	44,429	30%	4%	-
Hollow Concrete Block 10cm x 20cm x 40cm	-	9,175	10,675	10,542	2,888	15%	-1%	-
Non Collapsible Jerrycan 10 Litre	-	-	42,000	62,500	17,617	-	49%	-
Plastic Tarpaulin 14m x 5 m	-	345,000	307,500	317,500	89,903	-8%	3%	-
Roofing Nails 15Kg	-	629,500	551,967	666,917	188,953	6%	21%	-
Timber 2in x 4in x 20ft	-	164,800	138,854	185,875	52,590	13%	34%	-
Woven Dry Raised Blanket 150cm x 200cm	-	86,250	100,500	87,917	24,822	2%	-13%	-
<b>Terms of Trade</b>								
Labour Wage (Daily)/ Cereal (Maize(Kg))	15	7	4	4	4	-49%	-15%	-76%
Local Goat (Head)/ Cereal (Maize(Kg))	164	126	83	64	65	-50%	-23%	-61%
<b>Price Indices</b>								
Consumer Price Index	-	209	315	353	-	69%	12%	-
Purchasing Power Index	-	0.48	0.32	0.28	-	-41%	-11%	-

\* Data has been collected for the past 13 months only

Figure 26: Bakara: Imported Commodity Prices compared to Exchange Rate

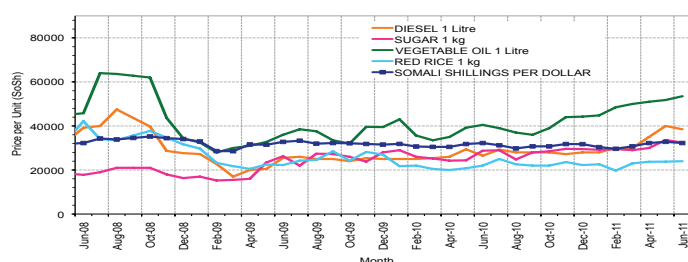


Figure 27: Bakara: Trends in Wage Rates, Staple Cereal Prices and Relative Purchasing Power

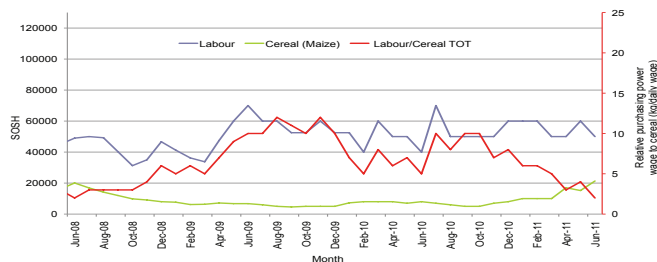


Figure 28: Goat Local Quality

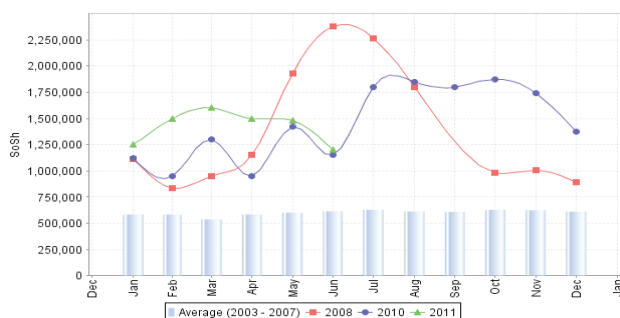


Figure 29: Sugar

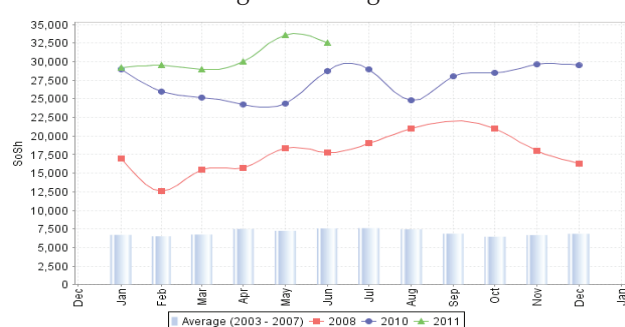


Figure 30: Wheat Flour

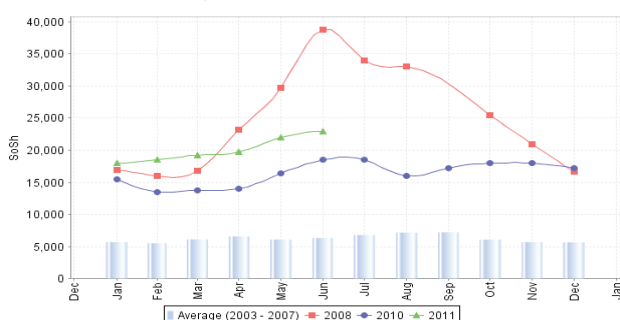
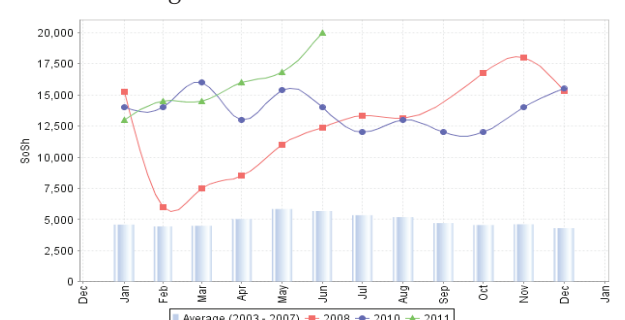


Figure 31: Fresh Camel Milk



# Regional analysis: Central Regions

Indicator	5-Year Average	Jun-10	May-11	June-11 Nominal Price	June-11 Real (Deflated) Price	% Change Same Month Previous	% Change Previous Month	% Change 5-year avrg (2003-07)
<b>Imported Commodities Prices</b>								
Diesel 1 litre	11,146	32,300	38,600	37,700	12,123	17%	-2%	238%
Imported Red Rice 1kg	7,960	25,400	30,350	30,700	9,853	21%	-1%	266%
Petrol 1 litre	12,845	28,350	32,920	32,900	10,567	16%	0%	156%
Sugar	9,496	30,850	36,680	37,350	12,009	21%	2%	293%
Vegetable Oil 1 litre	18,301	50,000	62,900	65,500	21,136	31%	4%	258%
Wheat Flour 1kg	7,962	20,300	24,600	24,700	7,908	22%	0%	210%
Wheat Grain 1kg	4,000	14,500	24,333	23,333	7,465	61%	-4%	483%
<b>Cereal Prices</b>								
Red Sorghum 1kg	4,157	11,300	20,480	20,000	6,384	77%	-2%	381%
White Maize 1kg	4,401	12,800	19,800	21,550	6,887	68%	9%	390%
<b>Livestock &amp; Livestock Product Prices</b>								
Camel Local Quality (Head)	2,131,716	7,968,750	8,125,000	8,031,250	2,603,716	1%	-1%	277%
Cattle Local Quality (Head)	1,487,750	2,450,000	-	-	-	-	-	-
Fresh Camel Milk 1 litre	9,422	33,950	46,920	47,350	15,251	39%	1%	403%
Goat Export Quality (Head)	359,991	1,255,000	1,513,333	1,541,667	499,725	23%	2%	328%
Goat Local Quality (Head)	264,075	938,500	1,149,500	1,053,500	341,456	12%	-8%	299%
<b>Other Essential Items</b>								
Charcoal 50kg	53,845	214,500	219,250	211,000	68,308	-2%	-4%	292%
Cowpeas 1 kg	6,690	24,900	45,160	49,650	15,997	99%	10%	642%
Unskilled Labor Wage Rate	30,330	94,500	83,450	88,000	28,431	-7%	5%	190%
Firewood Bundle	4,400	25,375	36,500	37,000	11,896	46%	1%	741%
Local Sesame Oil 1 litre	28,303	97,250	95,750	98,250	31,754	1%	3%	247%
Exchange Rate (Somali Shilling per USD)	16,171	32,340	31,760	32,195	10,338	0%	1%	99%
<b>Construction Materials*</b>								
Cement 50kg	-	337,200	332,000	336,300	108,932	0%	1%	-
Cooking Pot Aluminium 7 Litre	-	308,000	408,000	408,000	132,178	32%	0%	-
Galvanised Iron Sheet Ga 26	-	170,600	158,940	159,975	51,766	-6%	1%	-
Hollow Concrete Block 10cm x 20cm x 40cm	-	17,000	16,250	16,250	5,168	-4%	0%	-
Non Collapsible Jerrycan 10 Litre	-	62,500	52,200	52,000	16,759	-17%	0%	-
Plastic Tarpaulin 14m x 5 m	-	340,000	316,000	316,000	102,351	-7%	0%	-
Roofing Nails 15Kg	-	872,400	810,688	818,200	265,169	-6%	1%	-
Timber 2in x 4in x 20ft	-	158,400	152,350	152,350	49,293	-4%	0%	-
Woven Dry Raised Blanket 150cm x 200cm	-	142,000	136,000	136,000	43,993	-4%	0%	-
<b>Terms of Trade</b>								
Labour Wage (Daily)/ Cereal (Rice(Kg))	4	4	3	3	3	-23%	4%	-25%
Local Goat (Head)/ Cereal (Rice(Kg))	33	37	38	34	35	-7%	-9%	3%
Camel (Head)/Cereal (Kg)	268	314	268	262	264	-17%	-2%	-2%
<b>Price Indices</b>								
Consumer Price Index	-	211	292	308	-	46%	6%	-
Purchasing Power Index	-	0.47	0.34	0.32	-	-32%	-5%	-

\* Data has been collected for the past 13 months only

Figure 32: Imported commodity prices compared to exchange rates

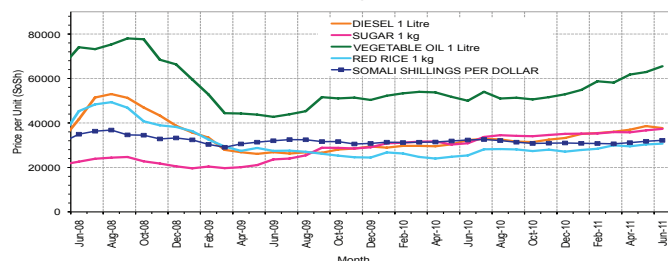


Figure 33: Trends in wage rates, staple cereal prices and relative purchasing power

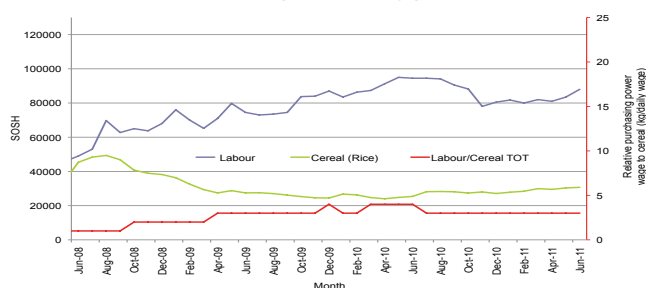


Figure 34: Goat Local Quality

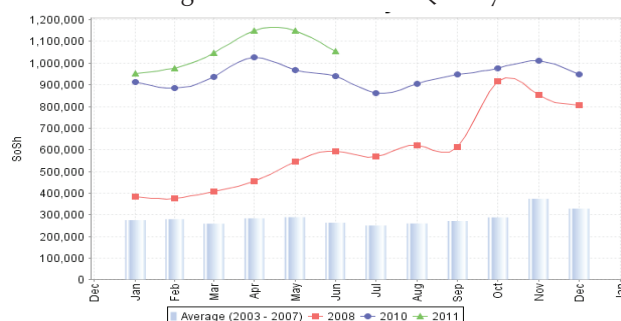


Figure 35: Sugar

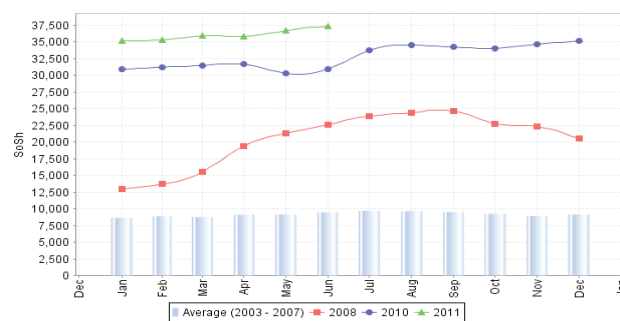


Figure 36: Water Drum

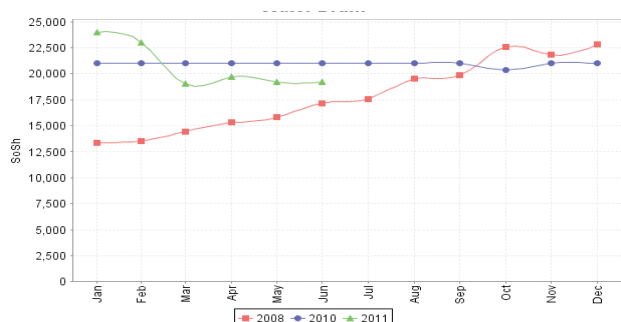
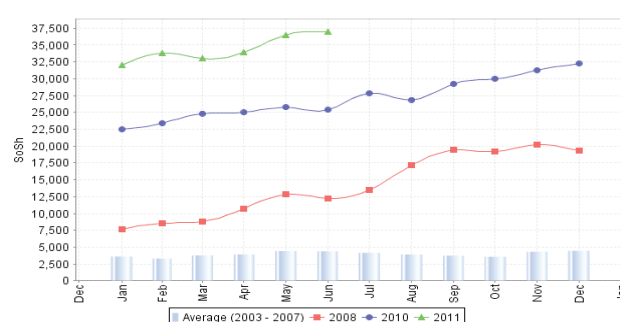


Figure 37: Firewood Bundle





# Regional analysis: Northeast Regions

Indicator	5-Year Average	Jun-10	May-11	June-11 Nominal Price	June-11 Real (Deflated) Price	% Change Same Month Previous	% Change Previous Month	% Change 5-year avrg (2003-07)
<b>Imported Commodities Prices</b>								
Diesel 1 litre	9,704	29,931	30,906	33,313	14,044	11%	8%	243%
Imported Red Rice 1kg	6,688	20,750	23,825	24,938	10,488	20%	5%	273%
Petrol 1 litre	10,706	25,675	28,838	30,813	12,983	20%	7%	188%
Sugar	8,413	26,250	32,250	32,500	13,699	24%	1%	286%
Vegetable Oil 1 litre	17,198	41,000	53,188	53,250	22,509	30%	0%	210%
Wheat Flour 1kg	7,071	16,675	22,675	23,250	9,771	39%	3%	229%
Wheat Grain 1kg	7,175	26,200	32,650	34,250	14,442	31%	5%	377%
<b>Cereal Prices</b>								
Red Sorghum 1kg	6,555	14,663	23,500	23,583	9,913	61%	0%	260%
White Maize 1kg	5,533	16,317	21,250	21,750	9,135	33%	2%	293%
<b>Livestock &amp; Livestock Product Prices</b>								
Camel Local Quality (Head)	3,244,750	11,086,250	14,243,750	12,525,000	5,317,769	13%	-12%	286%
Cattle Local Quality (Head)	1,611,333	5,000,000	6,500,000	7,500,000	3,184,253	50%	15%	365%
Fresh Camel Milk 1 litre	11,672	34,354	44,688	34,188	14,416	0%	-23%	193%
Goat Export Quality (Head)	418,165	1,317,500	1,406,500	1,425,000	604,927	8%	1%	241%
Goat Local Quality (Head)	374,300	1,183,750	1,448,750	1,411,250	599,089	19%	-3%	277%
<b>Other Essential Items</b>								
Charcoal 50kg	74,232	283,375	330,625	330,625	140,277	17%	0%	345%
Cowpeas 1 kg	9,946	30,567	47,200	50,750	21,447	66%	8%	410%
Unskilled Labor Wage Rate	44,750	108,063	113,250	113,250	47,984	5%	0%	153%
Firewood Bundle	7,271	30,063	30,250	30,750	12,956	2%	2%	323%
Local Sesame Oil 1 litre	29,143	86,417	89,063	89,583	37,935	4%	1%	207%
Exchange Rate (Somali Shilling per USD)	16,470	32,094	31,688	31,750	13,380	-1%	0%	93%
<b>Construction Materials*</b>								
Cement 50kg	-	252,950	234,875	232,938	98,801	-8%	-1%	-
Cooking Pot Aluminium 7 Litre	-	312,650	491,250	521,250	221,213	67%	6%	-
Galvanised Iron Sheet Ga 26	-	225,125	250,788	243,250	103,179	8%	-3%	-
Hollow Concrete Block 10cm x 20cm x 40cm	-	21,000	12,500	12,250	5,101	-42%	-2%	-
Non Collapsible Jerrycan 10 Litre	-	32,500	36,813	37,813	15,955	16%	3%	-
Plastic Tarpaulin 14m x 5 m	-	204,375	198,738	199,625	84,657	-2%	0%	-
Roofing Nails 15Kg	-	395,250	457,563	386,250	163,894	-2%	-16%	-
Timber 2in x 4in x 20ft	-	291,500	237,125	245,063	103,949	-16%	3%	-
Woven Dry Raised Blanket 150cm x 200cm	-	260,000	265,325	270,375	114,696	4%	2%	-
<b>Terms of Trade</b>								
Labour Wage (Daily)/ Cereal (Rice(Kg))	7	5	5	5	5	-13%	-4%	-32%
Local Goat (Head)/ Cereal (Rice(Kg))	56	57	61	57	57	-1%	-7%	1%
<b>Price Indices</b>								
Consumer Price Index	-	199	222	236	-	18%	6%	-
Purchasing Power Index	-	0.50	0.45	0.42	-	-15%	-6%	-

\* Data has been collected for the past 13 months only

Figure 38: Imported commodity prices compared to exchange rates

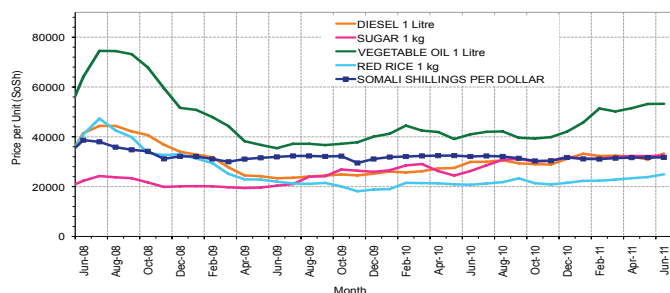


Figure 40: Goat Local Quality

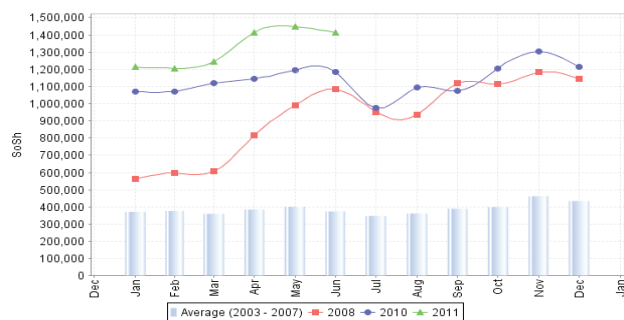


Figure 42: Water Drum

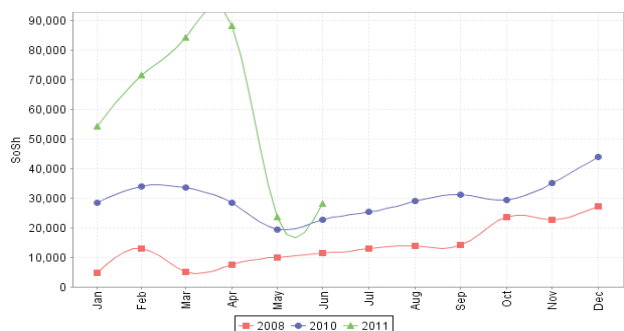


Figure 39: Trends in wage rates, staple cereal prices and relative purchasing power

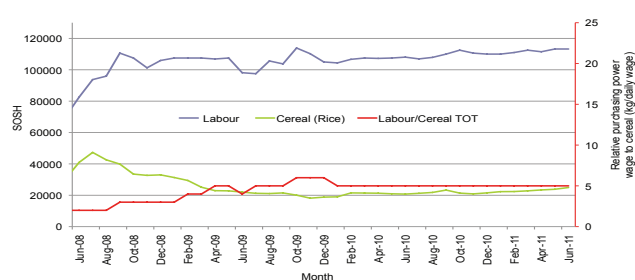


Figure 41: Sugar

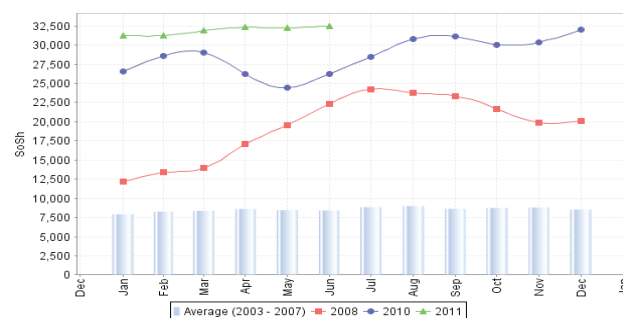
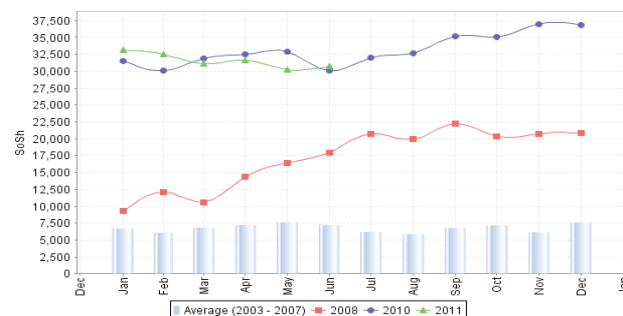


Figure 43: Firewood Bundle



# Regional analysis: Northwest Regions

Indicator	5-Year Average	Jun-10	May-11	June-11 Nominal Price	June-11 Real (Deflated) Price	% Change Same Month Previous	% Change Previous Month	% Change 5-year avg (2003-07)
<b>Imported Commodities Prices</b>								
Diesel 1 litre	3,630	5,656	5,963	5,731	4,733	1%	-4%	58%
Imported Red Rice 1kg	2,893	4,950	4,894	5,206	4,290	5%	6%	80%
Petrol 1 litre	4,260	5,894	5,844	6,017	4,974	2%	3%	41%
Sugar	3,311	5,800	6,000	6,125	5,065	6%	2%	85%
Vegetable Oil 1 litre	6,893	9,688	9,625	11,044	9,214	14%	15%	60%
Wheat Flour 1kg	2,653	3,650	4,194	4,214	3,454	15%	0%	59%
Wheat Grain 1kg	2,058	2,333	2,750	3,167	2,571	36%	15%	54%
<b>Cereal Prices</b>								
White Sorghum 1kg	1,948	2,625	3,187	3,226	2,621	23%	1%	66%
Yellow Maize 1kg	1,894	2,800	3,137	3,330	2,708	19%	6%	76%
<b>Livestock &amp; Livestock Product Prices</b>								
Camel Local Quality (Head)	1,395,300	1,350,000	1,552,500	1,850,000	1,560,059	37%	19%	33%
Cattle Local Quality (Head)	843,350	1,220,000	1,224,833	1,807,500	1,524,217	48%	48%	114%
Fresh Camel Milk 1 litre	4,149	5,469	4,438	5,000	4,117	-9%	13%	21%
Goat Export Quality (Head)	168,608	320,625	307,688	294,406	248,181	-8%	-4%	75%
Goat Local Quality (Head)	139,559	288,438	255,688	212,656	179,239	-26%	-17%	52%
<b>Other Essential Items</b>								
Charcoal 50kg	19,981	32,625	31,375	32,225	27,076	-1%	3%	61%
Cowpeas 1 kg	4,906	9,667	9,000	12,208	10,195	26%	36%	149%
Unskilled Labor Wage Rate	28,822	30,813	33,250	33,250	27,941	8%	0%	15%
Firewood Bundle	6,025	2,100	2,306	2,319	1,856	10%	5%	-62%
Local Sesame Oil 1 litre	17,643	25,167	20,875	22,417	18,805	-11%	7%	27%
Exchange Rate (Somali Shilling per USD)	6,701	6,800	6,159	5,962	4,928	-12%	-3%	-11%
<b>Construction Materials*</b>								
Cement 50kg	-	52,225	46,913	46,200	38,862	-12%	-2%	-
Cooking Pot Aluminium 7 Litre	-	75,000	95,875	78,875	66,418	5%	-18%	-
Galvanised Iron Sheet Ga 26	-	60,300	61,000	60,000	50,500	0%	-2%	-
Hollow Concrete Block 10cm x 20cm x 40cm	-	2,650	3,433	2,820	2,278	6%	-18%	-
Non Collapsible Jerrycan 10 Litre	-	6,000	6,313	6,456	5,345	8%	2%	-
Plastic Tarpaulin 14m x 5 m	-	56,000	73,750	84,813	71,425	51%	15%	-
Roofing Nails 15Kg	-	168,625	164,063	178,063	150,066	6%	9%	-
Timber 2in x 4in x 20ft	-	128,667	123,233	96,000	80,860	-25%	-22%	-
Woven Dry Raised Blanket 150cm x 200cm	-	65,075	62,688	61,667	51,906	-5%	-2%	-
<b>Terms of Trade</b>								
Labour Wage (Daily)/ Cereal (Rice(Kg))	10	6	7	6	7	3%	-6%	-36%
Local Goat (Head)/ Cereal (Rice(Kg))	48	58	52	41	42	-30%	-22%	-15%
<b>Price Indices</b>								
Consumer Price Index	-	108	119	119	-	10%	0%	-
Purchasing Power Index	-	0.93	0.84	0.84	-	-9%	0%	-

\* Data has been collected for the past 1 year only

\* Data has been collected for the past 13 months only

Figure 44: Imported commodity prices compared to exchange rates

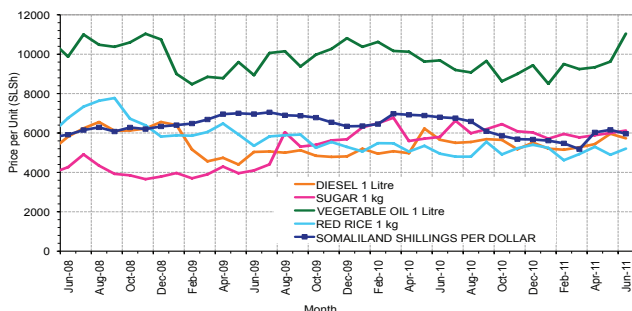


Figure 46: Goat Local Quality

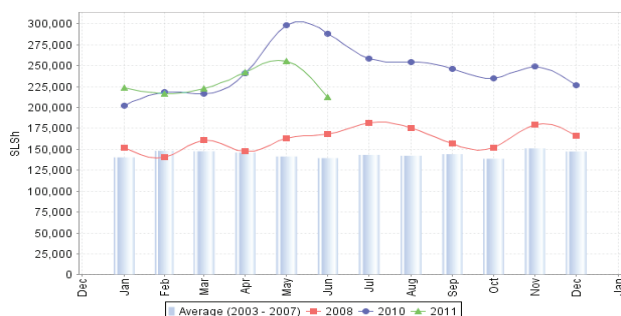


Figure 48: Water Drum

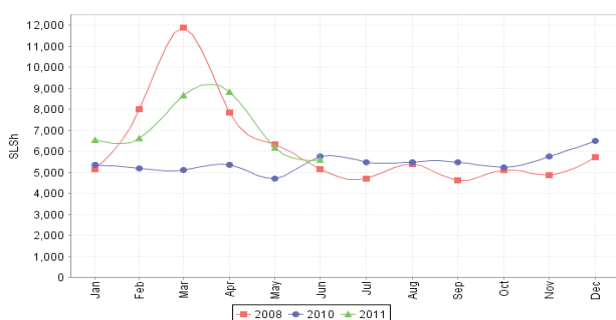


Figure 45: Trends in wage rates, staple cereal prices and relative purchasing power

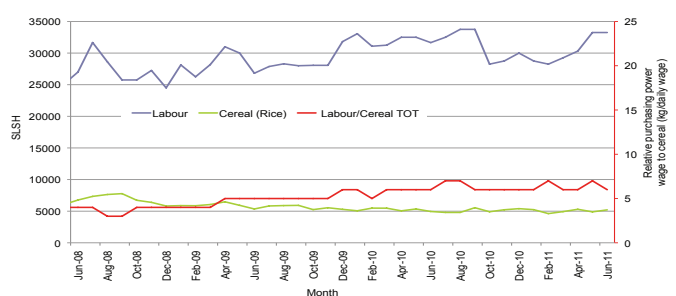


Figure 47: Sugar

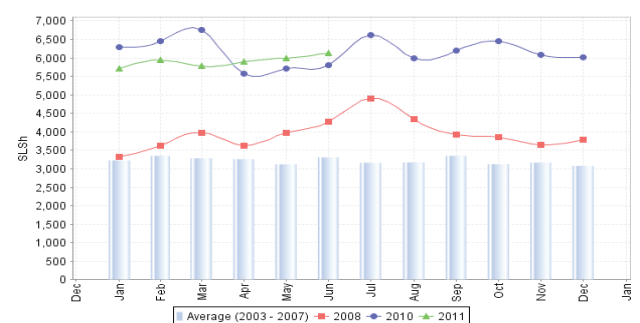
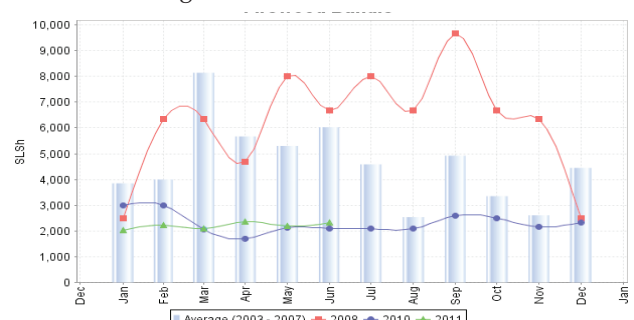


Figure 49: Firewood Bundle



# Trends in Livestock Exports

Table 1: Berbera Livestock Exports (Number of Heads)

	1994	1995	1996	1997	1998	1999	2000	2001	2002	2003	2004	2005	2006	2007	2008	2009	2010	2011 (Jan-June)
Shoats	1,572,656	2,683,597	2,376,646	2,814,495	957,224	2,048,136	1,601,083	51,546	341,711	563,107	859,404	1,023,795	1,017,242	1,350,054	1,219,519	1,556,003	2,584,810	617,408
Cattle	173,400	167,128	65,127	66,939	92,213	89,967	63,263	20,973	37,547	84,312	131,852	148,151	85,631	88,143	80,051	88,005	133,021	52,182
Camel	38,553	21,993	42,801	50,587	11,663	37,430	16,984	3,473	18,864	21,874	5,147	5,069	22,810	14,245	26,515	20,206	92,651	52,356

Figure 50: Berbera Livestock Exports (Number of Heads)

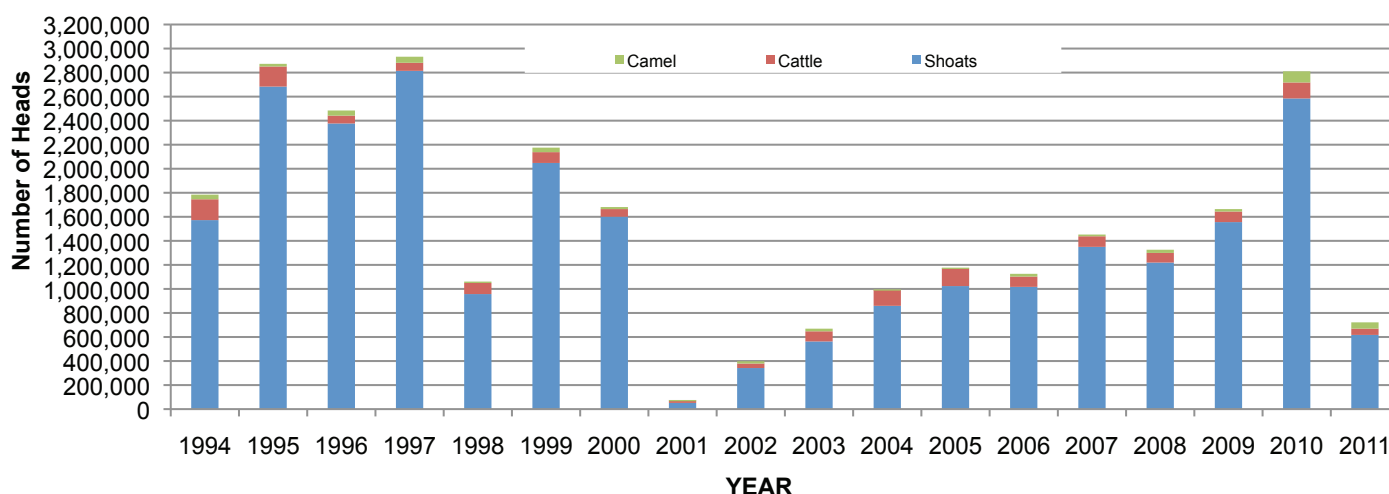


Table 2: Bossaso Livestock Exports (Number of Heads)

	1994	1995	1996	1997	1998	1999	2000	2001	2002	2003	2004	2005	2006	2007	2008	2009	2010	2011 (Jan -June)
Shoats	344,000	524,346	614,407	494,320	517,020	633,669	571,455	548,853	1,412,450	1,483,409	1,166,480	1,594,859	1,777,283	1,522,855	1,236,775	1,159,454	1,333,478	399,615
Cattle	1,450	8,795	15,335	17,831	29,492	36,586	27,604	42,248	53,313	71,328	79,994	91,910	104,595	89,190	78,046	67,385	103,808	44,828
Camel	5,397	8,392	20,462	14,599	3,938	15,544	8,177	1,950	9,720	4,259	2,488	26,109	33,724	27,580	27,639	15,331	36,865	26,551

Figure 51: Bossaso Livestock Exports (Number of Heads)

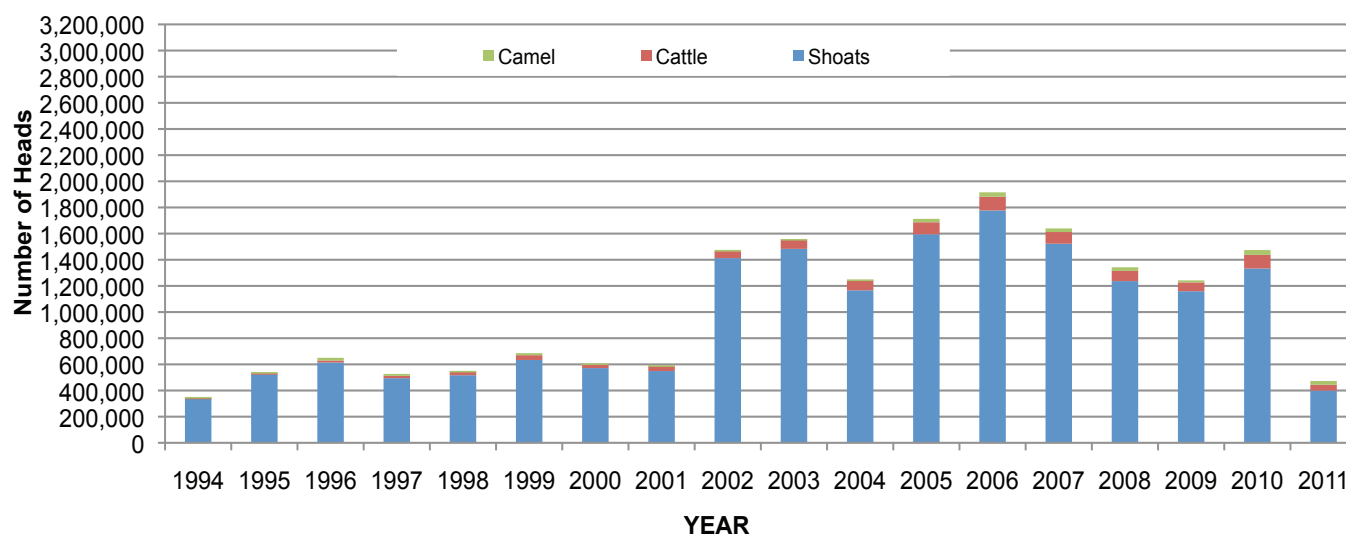


Table 3: Total Cereal Imports (Berbera,Bossaso,Elmaan)

	1997	1998	1999	2000	2001	2002	2003	2004	2005	2006	2007	2008	2009	2010	2011 (Jan-June)
Rice	66,419	43,410	63,464	75,687	74,729	144,600	180,614	146,567	150,017	198,101	166,626	136,007	171,472	161,415	127,880
Wheat flour	35,143	26,774	55,176	78,555	134,425	128,263	171,442	151,555	169,583	178,345	176,821	169,208	240,247	249,080	134,210
Pasta	2,510	6,858	8,544	11,071	26,702	35,425	29,273	38,749	39,153	52,815	41,331	38,441	86,372	102,373	85,218

Figure 52: Total Cereal Imports (Berbera,Bossaso and Elmaan)

