

Market DataUpdate



Food Security and Nutrition
Analysis Unit - Somalia



July 2014 (Issued August 28, 2014)

Highlights

Inflation: The Consumer Price Index (CPI) remained stable or changed marginally month-on-month (2-4%) in June-July 2014 across the country. The past two months inflation increased as compared to the previous year, most significantly in the South (21-26%) and Central Zones (by 10-13%). Compared to the base period (March 2007), the CPI increased moderately in Somaliland shilling (SISh) areas and significantly in Somali shilling (SoSh) areas.

Exchange rate: The exchange rates between local currencies (SoSh and SISh) and the United States Dollar (USD) remained stable or changed marginally in the past two months. The same trend is observed compared to a year ago (June and July 2013). The SoSh shows a strong gain in value compared to the five-year average (May 2009-2013), while the SISh depreciated marginally in the same period of comparison.

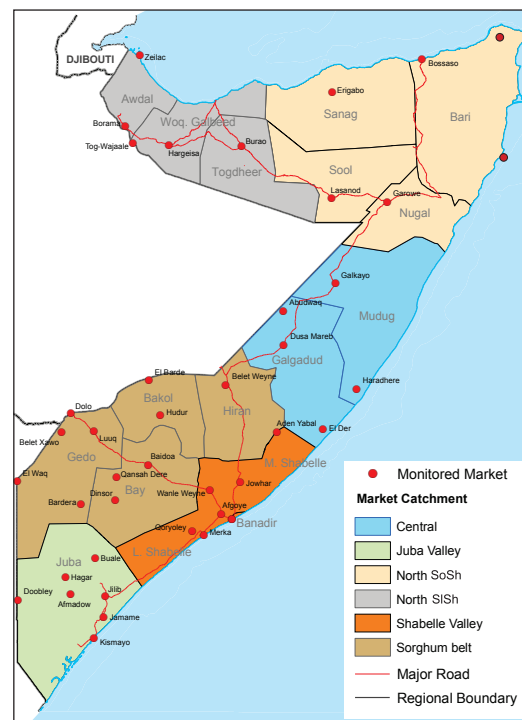
Local grain prices increased in most markets in June, but they declined or showed marginal increases in the month of July with the exception of the Bay, Banadir and Central regions, where prices escalated (by 14-20%). Cereal prices showed moderate to high annual increases in the past two months across the markets, apart from Northern SoSh areas where they have changed marginally (by 4%). The most significant annual increases (by 122-142%) were observed in the Bakool region. Compared to their five-year average levels, the local grain prices were relatively stable in the June-July months in Hiran, Bay, Gedo, Northeast and Banadir, while they rose at moderate to high levels in the rest of the country, most significantly (by 57%) in Bakool (Hudur dist.).

Prices of imported food Imported foods (rice, sugar, vegetable oil & wheat flour) as quoted in local currency exhibited mild monthly changes in the past two months in most regions. Annual comparison mostly indicates mild to moderate price changes across the country. Compared to five-year averages, the prices generally show declines for most food imports.

Livestock prices (for all species) showed mild to moderate monthly changes in most regions in June-July. Milk prices (cattle and camel) have declined in most regions month-on-month, while rising moderately (8-17%) in July in Hiran, Bakool, Gedo, Central and Northwest regions. Annual comparisons indicate generally declined value of all livestock species in most markets and increased milk prices, particularly in Bakool and Hiran regions. Compared to five-year average levels of the past two months, milk prices exhibited mixed patterns, while livestock prices showed increases.

Labour wages (unskilled) showed monthly declines or relative stability in most regions apart from Lower Juba, Shabelle and Bay where they increased moderately in July due to ongoing farming activities (harvesting). The exception is Qoryoley district of Lower Shabelle where the wages continued dropping at fast rates due to prevailing insecurity. Labour wages showed annual declines for the past two months, except where increases were observed in Bay, Lower Shabelle (apart from declines in Qoryoley district) and Northwest regions. The labour wage rates were higher than their five-year average levels across all regions, except Central regions which showed a marginal drop.

Terms of Trade (ToT) between daily labor wage and local cereals as well as between local quality goat and cereals have mostly exhibited declines in the past two months. The ToTs increased in July in some regions, including Hiran, Lower Juba, Shabelle and Gedo as a result of declined cereal prices and increased/ stable labour wages and local quality goat prices. The annual comparisons (with June and July 2013) indicated lower ToT rates in most regions. Compared to the five-year average levels, the ToT daily labour rate/ cereals showed declines in the southern regions, while the ToTs for local quality goat/ cereals mostly increased. Both ToTs rose significantly in the northern and central regions, due to declines in imported rice prices.



This Market Data Update is a monthly report that presents analysis of market information and is produced regularly as part of the monthly monitoring process.

The weekly price data is collected from 48 main markets and 51 rural markets throughout Somalia since 1995.

Market analysis is an integral part of all of FSNAU's annual food security projections and seasonal technical reports (Technical Reports on FSNAU Post Gu and Post Deyr Analysis).

Detailed market data are available online on www.fsnau.org/ids.

National Trends: CPI, Exchange Rates, Cereal Prices and Relative Purchasing Power

Table 1: ToT between Cereals (kg) per Daily Labour Wage Rate, by Region

| Regions | July 2014* (kg) | % change from: | | |
|--------------------|--------------------|----------------|-----------|--------------------------|
| | | June 2014 | July 2013 | July Average (2009-2013) |
| Banadir/ Mogadishu | 15 | 0% | -21% | 36% |
| Bay | 13 | -7% | -35% | 8% |
| Bakool | 3 | -25% | -70% | -50% |
| Gedo | 13 | 0% | -35% | 0% |
| Hiran | 8 | 14% | -20% | -27% |
| Juba | 7 | 0% | -46% | -30% |
| Shabelle | 7 | 17% | -30% | 0% |
| Northeast | 7 | 17% | 0% | 40% |
| Northwest | 12 | 0% | -8% | 9% |
| Central | 6 | -14% | -25% | -14% |

Figure 1: Wheat Prices: Mogadishu and Bossaso Markets

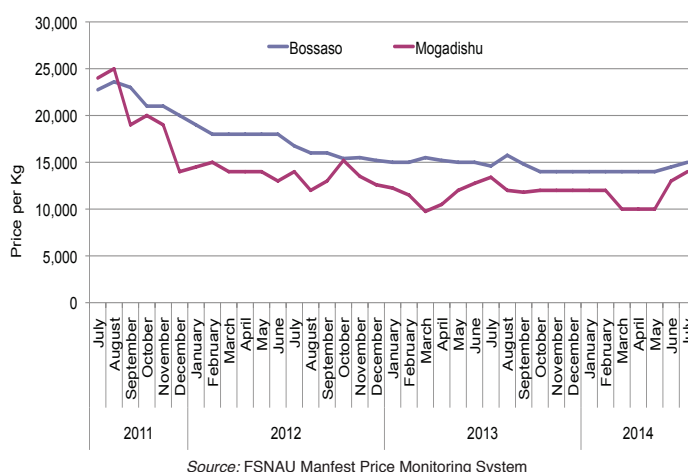


Figure 3: Terms of Trade Between Wage Rates and Selected Cereals

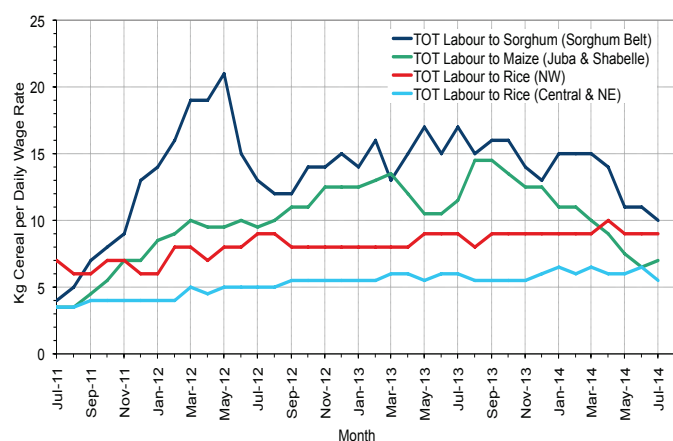


Figure 4: Monthly Exchange Rate for Selected Regions (SoSh and SiSh to USD)

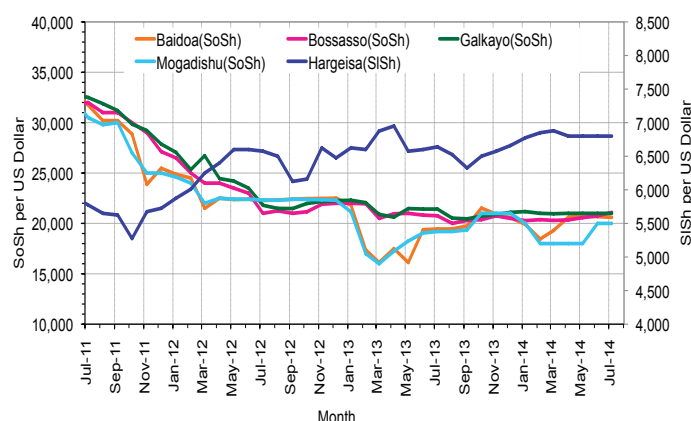


Figure 5: Monthly Trends in Consumer Price Index (CPI, March 2007=100)

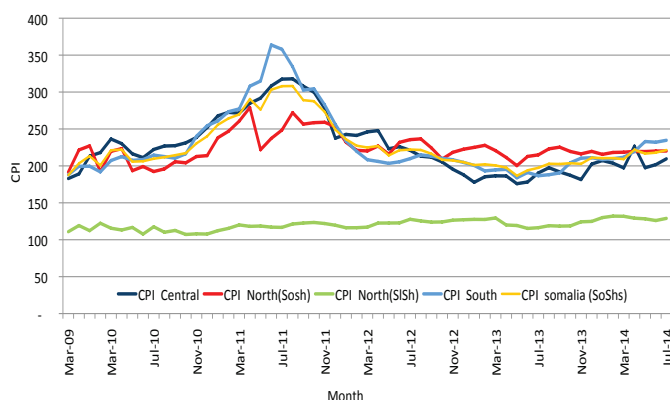
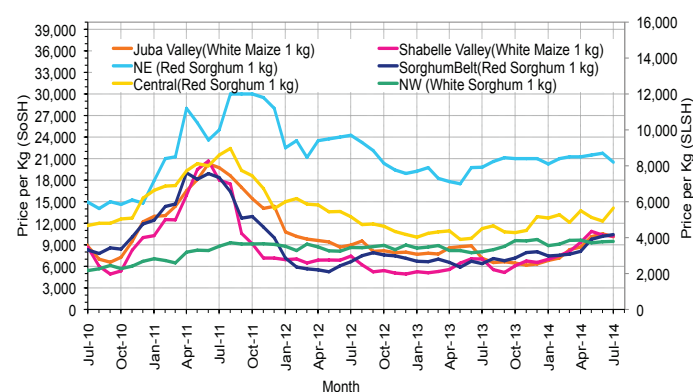


Figure 6: Monthly Trends in Local Cereal Prices



Regional analysis: Juba Regions

| Indicator | 5-Year Average (2009-2013) | Jul-13 | Jun-14 | Jul-14 Nominal Price | Jul-14 Real (Deflated) Price | % Change Previous Month | % Change Same Month Previous Year | % Change 5-year avrg (2009-2013) |
|---|----------------------------|------------|-----------|----------------------|------------------------------|-------------------------|-----------------------------------|----------------------------------|
| Imported Commodities Prices | | | | | | | | |
| Diesel 1 litre | 33,434 | 27,064 | 27,371 | 27,500 | 11,616 | 0% | 2% | -18% |
| Imported Red Rice 1kg | 21,388 | 15,657 | 15,829 | 15,464 | 6,488 | -2% | -1% | -28% |
| Petrol 1 litre | 34,898 | 30,886 | 28,514 | 28,429 | 12,012 | 0% | -8% | -19% |
| Sugar | 24,965 | 16,186 | 15,714 | 15,643 | 6,565 | 0% | -3% | -37% |
| Vegetable Oil 1 litre | 44,380 | 30,714 | 33,400 | 32,821 | 13,883 | -2% | 7% | -26% |
| Wheat Flour 1kg | 19,768 | 15,771 | 15,343 | 14,964 | 6,275 | -2% | -5% | -24% |
| Wheat Grain 1kg | 20,000 | - | - | - | - | - | - | - |
| Cereal Prices | | | | | | | | |
| Red Sorghum 1kg | 7,481 | 8,000 | 10,000 | 10,000 | 4,160 | 0% | 25% | 34% |
| White Maize 1kg | 10,630 | 7,384 | 10,606 | 9,996 | 4,159 | -6% | 35% | -6% |
| Livestock & Livestock Product Prices | | | | | | | | |
| Camel Local Quality (Head) | 8,766,234 | 11,289,086 | 9,968,786 | 9,825,214 | 4,185,927 | -1% | -13% | 12% |
| Cattle Local Quality (Head) | 3,389,115 | 4,101,033 | 4,104,333 | 4,068,125 | 1,733,123 | -1% | -1% | 20% |
| Fresh Camel Milk 1 litre | 16,310 | 12,943 | 17,314 | 16,143 | 6,778 | -7% | 25% | -1% |
| Goat Export Quality (Head) | 1,271,111 | 1,526,843 | 1,336,257 | 1,394,286 | 593,935 | 4% | -9% | 10% |
| Goat Local Quality (Head) | 846,557 | 1,024,071 | 896,914 | 929,393 | 395,867 | 4% | -9% | 10% |
| Other Essential Items | | | | | | | | |
| Charcoal 50kg | 78,820 | 86,243 | 86,429 | 90,893 | 38,625 | 5% | 5% | 15% |
| Cowpeas 1 kg | 25,091 | 19,429 | 20,457 | 20,464 | 8,619 | 0% | 5% | -18% |
| Unskilled Labor Wage Rate | 92,145 | 95,300 | 71,814 | 77,250 | 32,812 | 8% | -19% | -16% |
| Firewood Bundle | 7,617 | 10,229 | 11,143 | 11,500 | 4,800 | 3% | 12% | 51% |
| Local Sesame Oil 1 litre | 75,692 | 71,357 | 81,314 | 81,929 | 34,806 | 1% | 15% | 8% |
| Exchange Rate (Somali Shilling per USD) | 27,957 | 19,454 | 20,843 | 20,693 | 8,716 | -1% | 6% | -26% |
| Terms of Trade | | | | | | | | |
| Labour Wage (Daily)/ Cereal (Maize(Kg)) | 9 | 13 | 7 | 8 | - | 14% | -40% | -11% |
| Local Goat (Head)/ Cereal (Maize(Kg)) | 80 | 139 | 85 | 93 | - | 10% | -33% | 17% |
| Price Indices | | | | | | | | |
| Consumer Price Index | - | 187 | 232 | 235 | - | 1% | 26% | - |

Figure 7: Trends in Cereal Prices



Figure 8: Trends in Wage Rates and Relative Purchasing Power

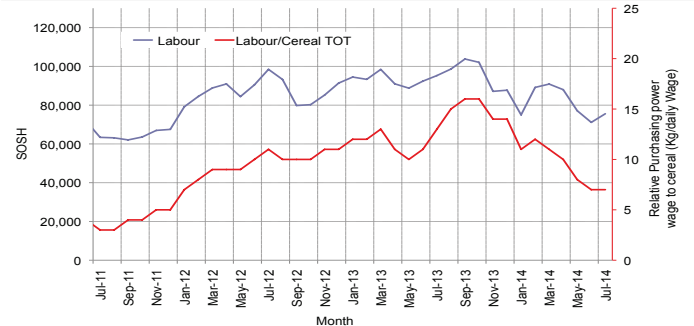


Figure 9: Imported Commodity Prices Compared to Exchange Rate

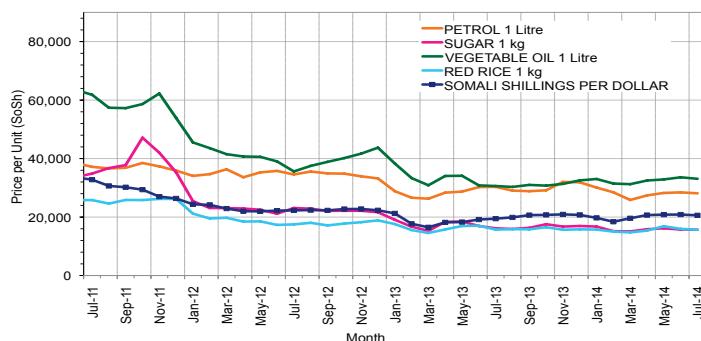


Figure 11: Exchange Rate

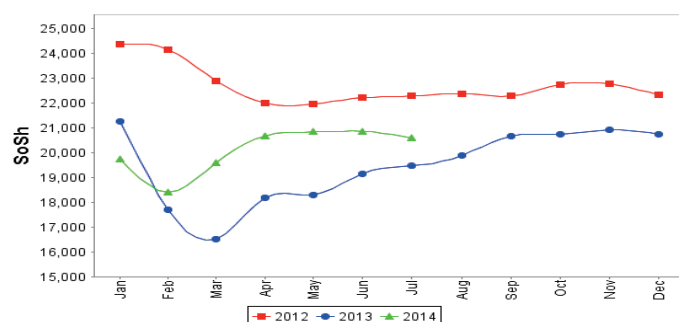


Figure 10: Goat Local Quality

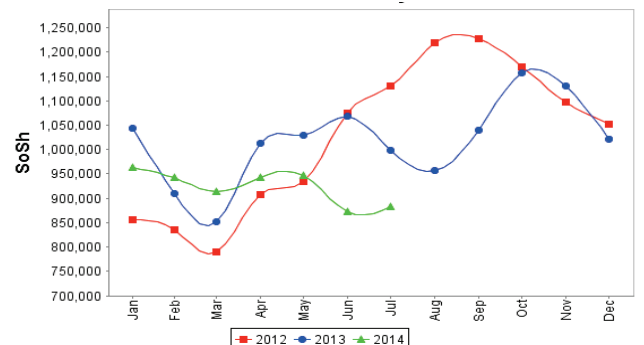
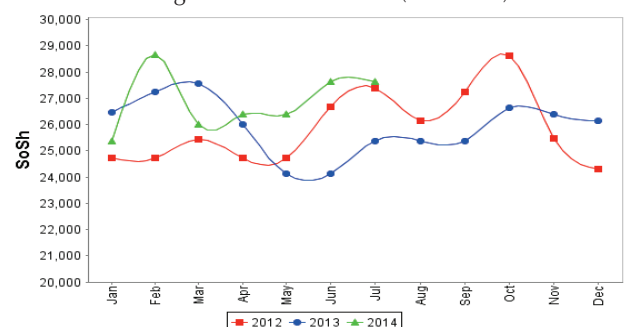


Figure 12: Water Drum (200 litres)



Regional analysis: Sorghum Belt Regions (Bay, Bakool, Gedo and Hiran)

| Indicator | 5-Year Average (2009-2013) | Jul-13 | Jun-14 | Jul-14 Nominal Price | Jul-14 Real (Deflated) Price | % Change Previous Month | % Change Same Month Previous Year | % Change 5-year avrg (2009-2013) |
|---|----------------------------|------------|------------|----------------------|------------------------------|-------------------------|-----------------------------------|----------------------------------|
| Imported Commodities Prices | | | | | | | | |
| Diesel 1 litre | 33,660 | 29,600 | 31,073 | 30,761 | 13,006 | -1% | 4% | -9% |
| Imported Red Rice 1kg | 22,974 | 16,995 | 18,909 | 18,000 | 7,569 | -5% | 6% | -22% |
| Petrol 1 litre | 33,089 | 29,164 | 30,800 | 30,818 | 13,030 | 0% | 6% | -7% |
| Sugar | 25,488 | 18,055 | 19,373 | 18,989 | 7,990 | -2% | 5% | -25% |
| Vegetable Oil 1 litre | 47,114 | 35,564 | 42,659 | 40,886 | 17,319 | -4% | 15% | -13% |
| Wheat Flour 1kg | 20,450 | 16,255 | 17,714 | 17,455 | 7,337 | -1% | 7% | -15% |
| Wheat Grain 1kg | 11,433 | 10,137 | 15,500 | 17,442 | 7,331 | 13% | 72% | 53% |
| Cereal Prices | | | | | | | | |
| Red Sorghum 1kg | 9,347 | 6,382 | 10,186 | 10,425 | 4,342 | 2% | 63% | 12% |
| White Maize 1kg | 11,458 | 9,136 | 13,520 | 13,198 | 5,523 | -2% | 44% | 15% |
| Livestock & Livestock Product Prices | | | | | | | | |
| Camel Local Quality (Head) | 9,511,238 | 12,856,364 | 12,715,152 | 12,757,500 | 5,435,226 | 0% | -1% | 34% |
| Cattle Local Quality (Head) | 2,906,678 | 3,647,778 | 3,765,000 | 3,904,250 | 1,663,304 | 4% | 7% | 34% |
| Fresh Camel Milk 1 litre | 20,877 | 12,764 | 20,210 | 21,900 | 9,230 | 8% | 72% | 5% |
| Goat Export Quality (Head) | 1,348,611 | 1,604,500 | 1,619,700 | 1,471,364 | 626,774 | -9% | -8% | 9% |
| Goat Local Quality (Head) | 850,209 | 1,107,273 | 927,755 | 912,500 | 388,670 | -2% | -18% | 7% |
| Other Essential Items | | | | | | | | |
| Charcoal 50kg | 129,153 | 144,727 | 149,145 | 148,175 | 63,030 | -1% | 2% | 15% |
| Cowpeas 1 kg | 24,789 | 16,342 | 25,737 | 25,275 | 10,668 | -2% | 55% | 2% |
| Unskilled Labor Wage Rate | 92,404 | 110,909 | 106,818 | 105,136 | 44,693 | -2% | -5% | 14% |
| Firewood Bundle | 5,757 | 6,545 | 6,882 | 7,000 | 2,882 | 2% | 7% | 22% |
| Local Sesame Oil 1 litre | 75,953 | 72,686 | 93,114 | 94,219 | 40,042 | 1% | 30% | 24% |
| Exchange Rate (Somali Shilling per USD) | 27,718 | 20,609 | 20,503 | 20,480 | 8,625 | 0% | -1% | -26% |
| Terms of Trade | | | | | | | | |
| Labour Wage (Daily)/ Cereal (Sorghum(Kg)) | 10 | 17 | 10 | 10 | - | -4% | -42% | 2% |
| Local Goat (Head)/ Cereal (Sorghum(Kg)) | 91 | 173 | 91 | 88 | - | -4% | -50% | -4% |
| Price Indices | | | | | | | | |
| Consumer Price Index | - | 187 | 232 | 235 | - | 1% | 26% | - |

Figure 13: Trends in Cereal Prices

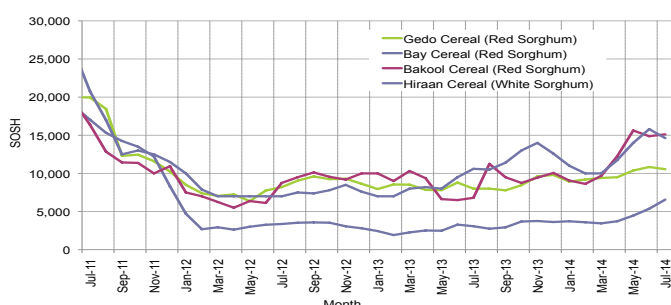


Figure 14: Trends in Wage Rates and Relative Purchasing Power

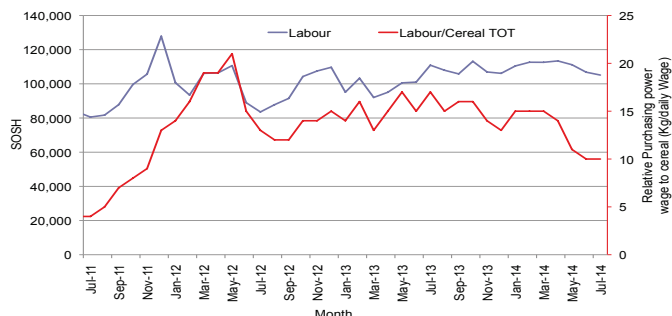


Figure 15: Imported Commodity Prices Compared to Exchange Rate

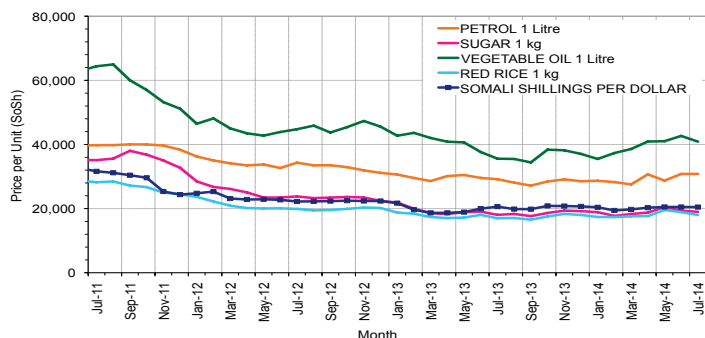


Figure 16: Goat Local Quality

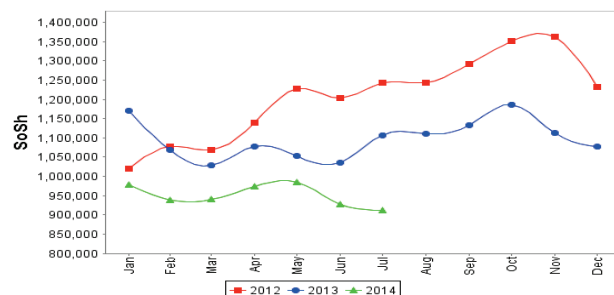


Figure 17: Exchange Rate

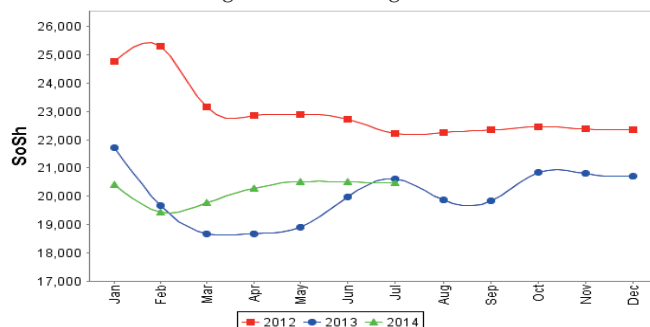
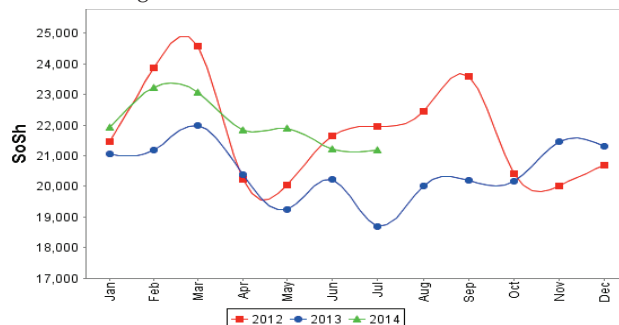


Figure 18: Water Drum (200 litres)



Regional analysis: Shabelle Regions

| Indicator | 5-Year Average (2009-2013) | Jul-13 | Jun-14 | Jul-14 Nominal Price | Jul-14 Real (Deflated) Price | % Change Previous Month | % Change Same Month Previous Year | % Change 5-year avrg (2009-2013) |
|---|----------------------------|------------|------------|----------------------|------------------------------|-------------------------|-----------------------------------|----------------------------------|
| Imported Commodities Prices | | | | | | | | |
| Diesel 1 litre | 31,533 | 26,917 | 27,800 | 28,000 | 11,829 | 1% | 4% | -11% |
| Imported Red Rice 1kg | 20,358 | 15,333 | 16,500 | 16,750 | 7,036 | 2% | 9% | -18% |
| Petrol 1 litre | 31,825 | 28,417 | 29,200 | 29,200 | 12,341 | 0% | 3% | -8% |
| Sugar | 24,225 | 16,958 | 17,233 | 17,083 | 7,178 | -1% | 1% | -29% |
| Vegetable Oil 1 litre | 39,475 | 26,958 | 28,200 | 28,917 | 12,220 | 3% | 7% | -27% |
| Wheat Flour 1kg | 19,066 | 15,250 | 16,767 | 17,042 | 7,161 | 2% | 12% | -11% |
| Wheat Grain 1kg | 15,444 | 5,333 | 25,000 | 30,000 | 12,681 | 20% | 463% | 94% |
| Cereal Prices | | | | | | | | |
| Red Sorghum 1kg | 10,377 | 7,444 | 10,789 | 11,201 | 4,672 | 4% | 50% | 8% |
| White Maize 1kg | 9,463 | 7,023 | 10,355 | 10,210 | 4,250 | -1% | 45% | 8% |
| Livestock & Livestock Product Prices | | | | | | | | |
| Camel Local Quality (Head) | 13,226,000 | 16,625,000 | 19,716,250 | 18,437,500 | 7,855,187 | -6% | 11% | 39% |
| Cattle Local Quality (Head) | 4,261,925 | 6,270,000 | 6,647,500 | 6,065,000 | 2,583,890 | -9% | -3% | 42% |
| Fresh Camel Milk 1 litre | 16,341 | 14,417 | 18,383 | 17,333 | 7,285 | -6% | 20% | 6% |
| Goat Export Quality (Head) | 1,489,254 | 1,737,500 | 1,880,000 | 1,916,875 | 816,584 | 2% | 10% | 29% |
| Goat Local Quality (Head) | 1,057,366 | 1,281,250 | 1,335,000 | 1,334,167 | 568,321 | 0% | 4% | 26% |
| Other Essential Items | | | | | | | | |
| Charcoal 50kg | 111,882 | 125,174 | 124,100 | 123,417 | 52,482 | -1% | -1% | 10% |
| Cowpeas 1 kg | 24,261 | 13,161 | 21,788 | 21,713 | 9,151 | 0% | 65% | -11% |
| Unskilled Labor Wage Rate | 60,558 | 70,208 | 57,543 | 72,500 | 30,789 | 26% | 3% | 20% |
| Firewood Bundle | 5,000 | 7,125 | 5,400 | 5,000 | 2,030 | -7% | -30% | 0% |
| Local Sesame Oil 1 litre | 58,291 | 58,667 | 73,110 | 73,000 | 31,002 | 0% | 24% | 25% |
| Exchange Rate (Somali Shilling per USD) | 27,672 | 19,271 | 21,150 | 20,985 | 8,841 | -1% | 9% | -24% |
| Terms of Trade | | | | | | | | |
| Labour Wage (Daily)/ Cereal (Maize(Kg)) | 6 | 10 | 6 | 7 | - | 28% | -29% | 11% |
| Local Goat (Head)/ Cereal (Maize(Kg)) | 112 | 182 | 129 | 131 | - | 1% | -28% | 17% |
| Price Indices | | | | | | | | |
| Consumer Price Index | - | 187 | 232 | 235 | - | 1% | 26% | - |

Figure 19: Trends in Cereal Prices

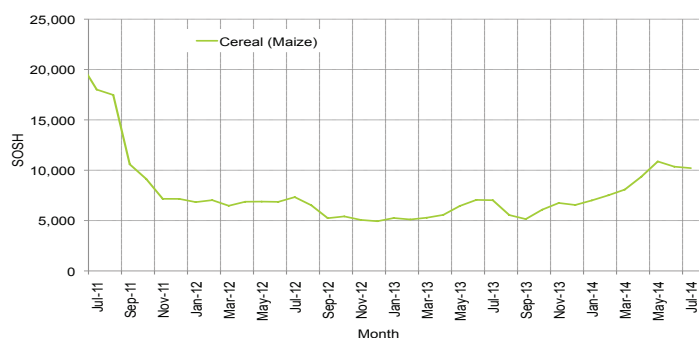


Figure 20: Trends in Wage Rates and Relative Purchasing Power

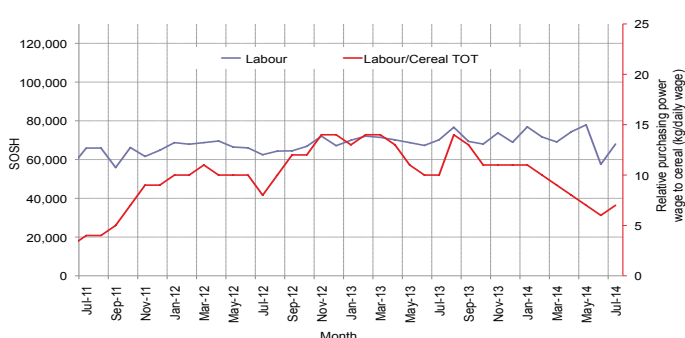


Figure 21: Imported Commodity Prices Compared to Exchange Rate

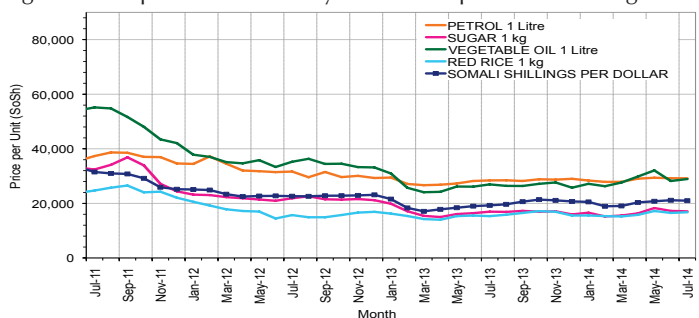


Figure 22: Goat Local Quality

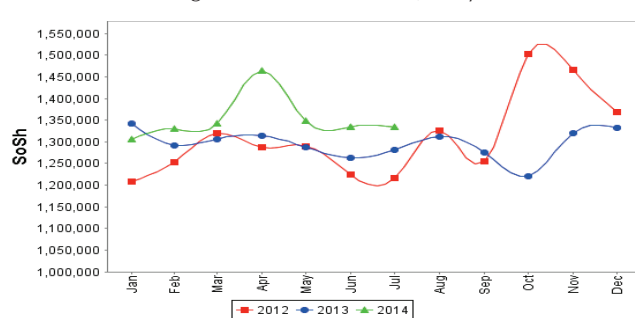


Figure 23: Exchange Rate

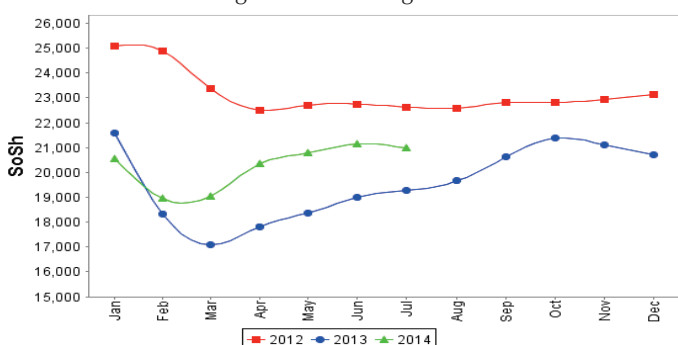
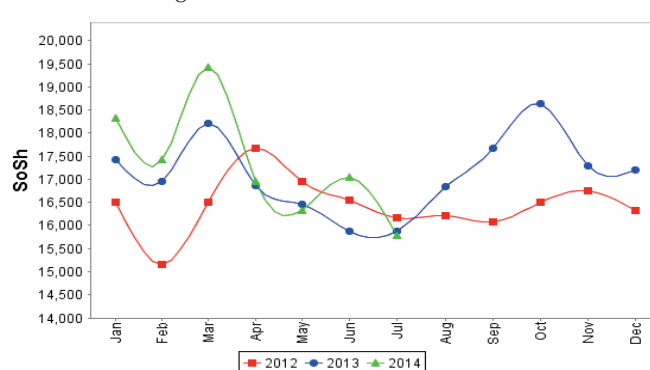


Figure 24: Water Drum (200 litres)



Regional analysis: Banadir Region

| Indicator | 5-Year Average (2009-2013) | Jul-13 | Jun-14 | Jul-14 Nominal Price | Jul-14 Real (Deflated) Price | % Change Previous Month | % Change Same Month Previous Year | % Change 5-year avrg (2009-2013) |
|---|----------------------------|-----------|-----------|----------------------|------------------------------|-------------------------|-----------------------------------|----------------------------------|
| Imported Commodities Prices | | | | | | | | |
| Diesel 1 litre | 27,786 | 19,867 | 21,283 | 21,417 | 9,025 | 1% | 8% | -23% |
| Imported Red Rice 1kg | 19,378 | 12,867 | 12,733 | 12,688 | 5,306 | 0% | -1% | -35% |
| Petrol 1 litre | 26,678 | 20,600 | 20,992 | 20,958 | 8,829 | 0% | 2% | -21% |
| Sugar | 23,180 | 13,867 | 14,150 | 14,146 | 5,927 | 0% | 2% | -39% |
| Vegetable Oil 1 litre | 38,340 | 22,900 | 24,733 | 24,146 | 10,187 | -2% | 5% | -37% |
| Wheat Flour 1kg | 16,652 | 12,683 | 12,527 | 12,679 | 5,302 | 1% | 0% | -24% |
| Wheat Grain 1kg | 11,003 | 7,333 | 9,167 | 10,167 | 4,232 | 11% | 39% | -8% |
| Cereal Prices | | | | | | | | |
| Red Sorghum 1kg | 9,050 | 6,041 | 8,157 | 7,730 | 3,193 | -5% | 28% | -15% |
| White Maize 1kg | 10,670 | 7,719 | 9,845 | 11,254 | 4,695 | 14% | 46% | 5% |
| Livestock & Livestock Product Prices | | | | | | | | |
| Camel Local Quality (Head) | 15,416,667 | - | - | - | - | - | - | - |
| Cattle Local Quality (Head) | 3,920,833 | - | - | - | - | - | - | - |
| Fresh Camel Milk 1 litre | 19,812 | 21,617 | 21,467 | 21,333 | 8,989 | -1% | -1% | 8% |
| Goat Export Quality (Head) | 1,840,000 | 2,300,000 | - | - | - | - | - | - |
| Goat Local Quality (Head) | 1,731,750 | 2,195,000 | 2,448,000 | 2,430,000 | 1,035,200 | -1% | 11% | 40% |
| Other Essential Items | | | | | | | | |
| Charcoal 50kg | 161,091 | 196,833 | 193,450 | 192,750 | 82,021 | 0% | -2% | 20% |
| Cowpeas 1 kg | 24,834 | 13,107 | 18,783 | 20,292 | 8,545 | 8% | 55% | -18% |
| Unskilled Labor Wage Rate | 88,300 | 115,000 | 101,333 | 101,667 | 43,215 | 0% | -12% | 15% |
| Firewood Bundle | 5,668 | 7,720 | 8,160 | 8,100 | 3,351 | -1% | 5% | 43% |
| Local Sesame Oil 1 litre | 59,080 | 59,000 | 70,483 | 70,375 | 29,883 | 0% | 19% | 19% |
| Exchange Rate (Somali Shilling per USD) | 27,831 | 19,240 | 20,350 | 20,488 | 8,629 | 1% | 6% | -26% |
| Terms of Trade | | | | | | | | |
| Labour Wage (Daily)/ Cereal (Maize(Kg)) | 8 | 15 | 10 | 9 | - | -12% | -39% | 9% |
| Local Goat (Head)/ Cereal (Maize(Kg)) | 162 | 284 | 249 | 216 | - | -13% | -24% | 33% |
| Price Indices | | | | | | | | |
| Consumer Price Index | - | 187 | 232 | 235 | - | 1% | 26% | - |

Figure 25: Trends in Cereal Prices

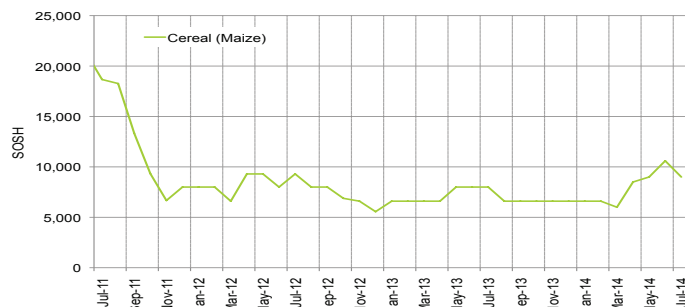


Figure 26: Bakara: Trends in Wage Rates and Relative Purchasing Power

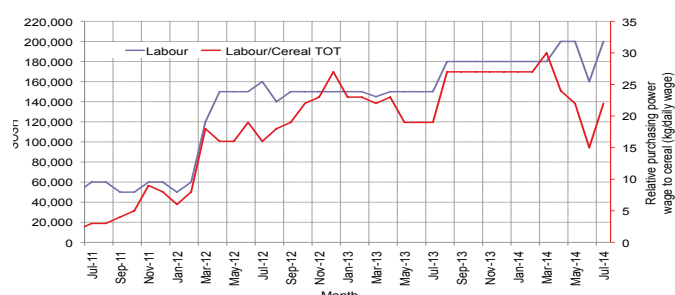


Figure 27: Imported Commodity Prices Compared to Exchange Rate

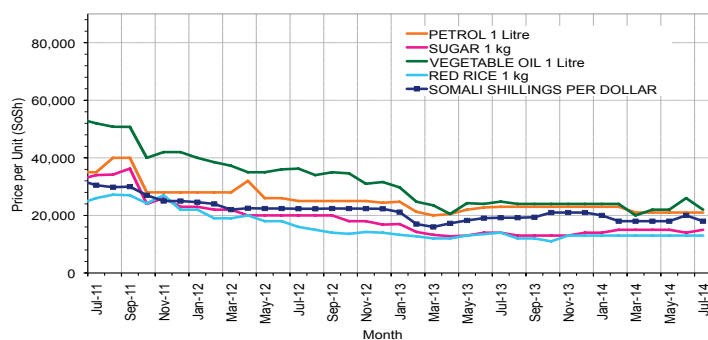


Figure 28: Goat Local Quality

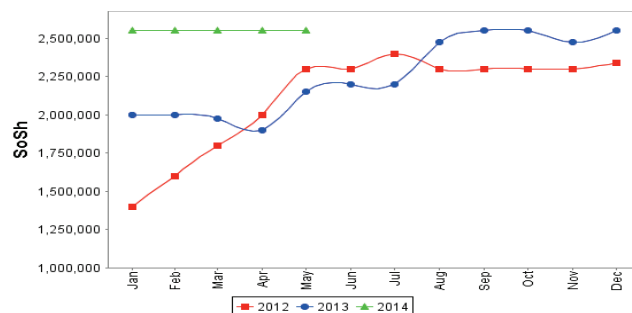


Figure 29: Exchange Rate

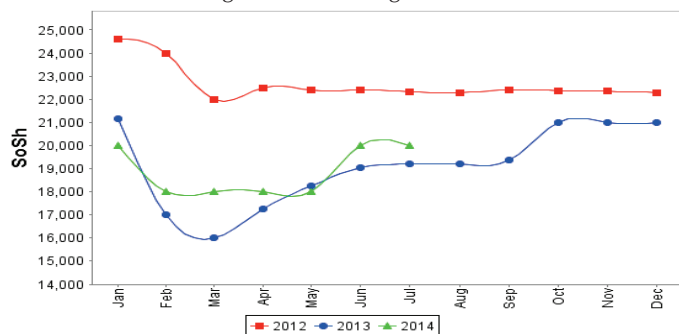
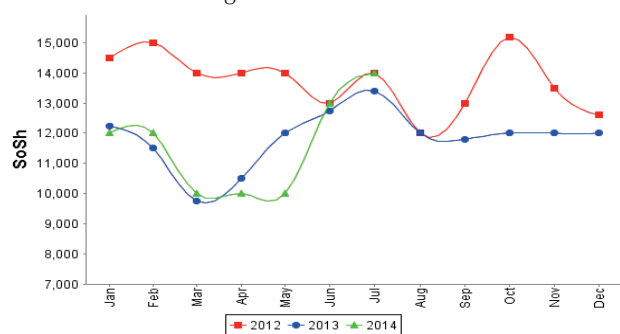


Figure 30: Wheat Flour



Regional analysis: Central Regions

| Indicator | 5-Year Average (2009-2013) | Jul-13 | Jun-14 | Jul-14 Nominal Price | Jul-14 Real (Deflated) Price | % Change Previous Month | % Change Same Month Previous Year | % Change 5-year avrg (2009-2013) |
|---|----------------------------|------------|------------|----------------------|------------------------------|-------------------------|-----------------------------------|----------------------------------|
| Imported Commodities Prices | | | | | | | | |
| Diesel 1 litre | 31,636 | 27,780 | 27,200 | 27,200 | 12,876 | 0% | -2% | -14% |
| Imported Red Rice 1kg | 25,424 | 19,210 | 18,200 | 18,600 | 8,773 | 2% | -3% | -27% |
| Petrol 1 litre | 28,304 | 25,700 | 24,300 | 24,300 | 11,492 | 0% | -5% | -14% |
| Sugar | 28,572 | 21,530 | 20,750 | 20,600 | 9,727 | -1% | -4% | -28% |
| Vegetable Oil 1 litre | 51,440 | 44,100 | 42,000 | 42,250 | 20,055 | 1% | -4% | -18% |
| Wheat Flour 1kg | 20,346 | 16,920 | 16,650 | 16,600 | 7,819 | 0% | -2% | -18% |
| Wheat Grain 1kg | 16,320 | 13,000 | 16,000 | 16,000 | 7,533 | 0% | 23% | -2% |
| Cereal Prices | | | | | | | | |
| Red Sorghum 1kg | 12,914 | 11,260 | 12,300 | 14,125 | 6,638 | 15% | 25% | 9% |
| White Maize 1kg | 14,333 | 10,167 | 15,563 | 15,000 | 7,056 | -4% | 48% | 5% |
| Livestock & Livestock Product Prices | | | | | | | | |
| Camel Local Quality (Head) | 8,995,000 | 11,731,250 | 11,125,000 | 11,190,625 | 5,338,418 | 1% | -5% | 24% |
| Cattle Local Quality (Head) | 2,284,375 | - | - | - | - | - | - | - |
| Fresh Camel Milk 1 litre | 37,226 | 26,670 | 28,200 | 32,900 | 15,595 | 17% | 23% | -12% |
| Goat Export Quality (Head) | 1,375,850 | 1,498,750 | 1,262,500 | 1,306,250 | 623,050 | 3% | -13% | -5% |
| Goat Local Quality (Head) | 1,024,860 | 1,221,500 | 1,030,000 | 1,019,500 | 486,255 | -1% | -17% | -1% |
| Other Essential Items | | | | | | | | |
| Charcoal 50kg | 189,610 | 183,600 | 171,750 | 171,750 | 81,834 | 0% | -6% | -9% |
| Cowpeas 1 kg | 30,644 | 17,080 | 19,400 | 21,950 | 10,371 | 13% | 29% | -28% |
| Unskilled Labor Wage Rate | 86,620 | 92,700 | 82,000 | 82,000 | 39,018 | 0% | -12% | -5% |
| Firewood Bundle | 30,102 | 33,850 | 32,000 | 32,250 | 15,285 | 1% | -5% | 7% |
| Local Sesame Oil 1 litre | 93,470 | 84,200 | 89,200 | 89,700 | 42,692 | 1% | 7% | -4% |
| Exchange Rate (Somali Shilling per USD) | 28,063 | 21,033 | 21,040 | 21,040 | 9,937 | 0% | 0% | -25% |
| Terms of Trade | | | | | | | | |
| Labour Wage (Daily)/ Cereal (Rice(Kg)) | 3 | 5 | 5 | 4 | - | -2% | -9% | 29% |
| Local Goat (Head)/ Cereal (Rice(Kg)) | 40 | 64 | 57 | 55 | - | -3% | -14% | 36% |
| Camel (Head)/Cereal (Kg) | 354 | 611 | 611 | 602 | - | -2% | -1% | 70% |
| Price Indices | | | | | | | | |
| Consumer Price Index | - | 190 | 202 | 210 | - | 4% | 10% | - |

Figure 31: Trends in Cereal Prices

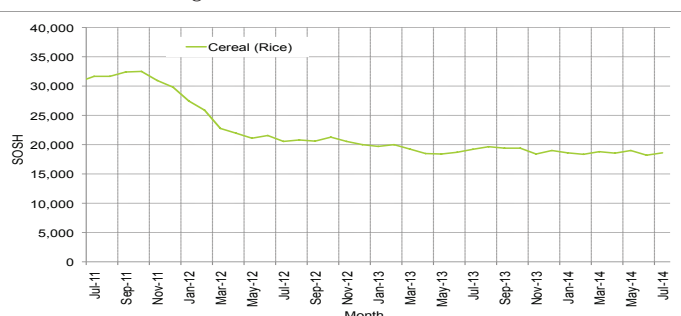


Figure 32: Trends in wage rates and relative purchasing power

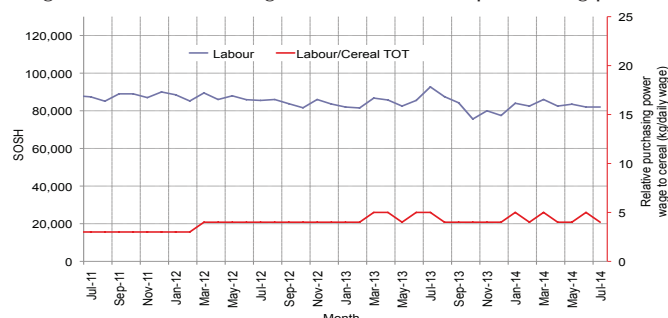


Figure 33: Imported Commodity Prices Compared to Exchange Rate

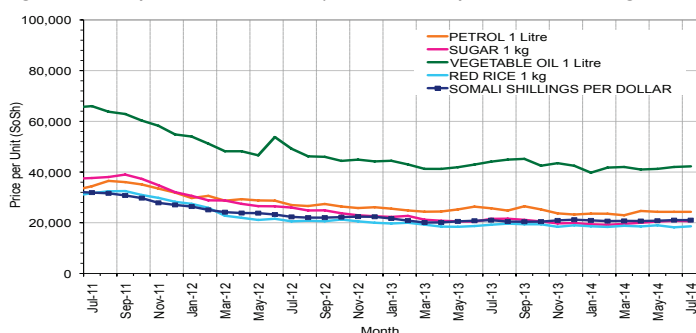


Figure 34: Goat Local Quality

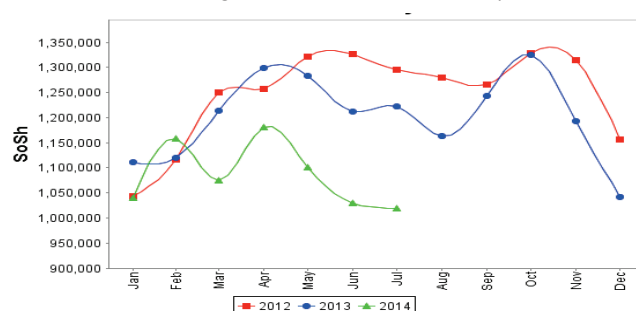


Figure 35: Exchange Rate

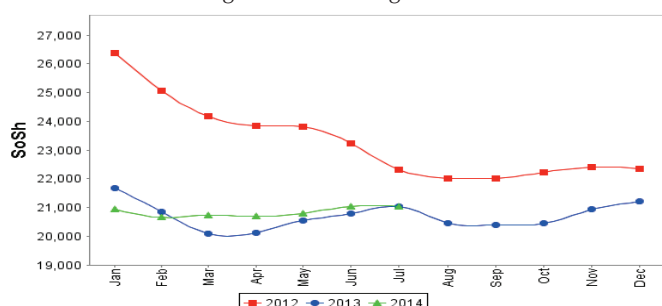
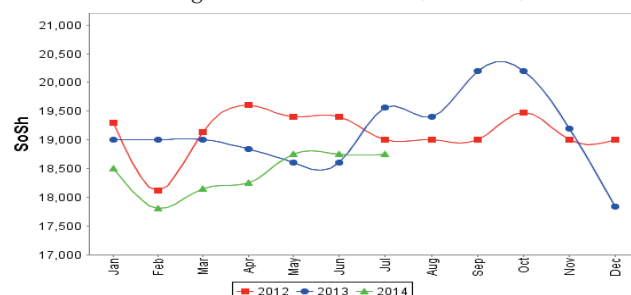


Figure 36: Water Drum (200 litres)



Regional analysis: Northeast Regions

| Indicator | 5-Year Average (2009-2013) | Jul-13 | Jun-14 | Jul-14 Nominal Price | Jul-14 Real (Deflated) Price | % Change Previous Month | % Change Same Month Previous Year | % Change 5-year avg (2009-2013) |
|---|----------------------------|------------|------------|----------------------|------------------------------|-------------------------|-----------------------------------|---------------------------------|
| Imported Commodities Prices | | | | | | | | |
| Diesel 1 litre | 27,727 | 23,350 | 22,513 | 23,438 | 10,544 | 4% | 0% | -15% |
| Imported Red Rice 1kg | 20,837 | 15,938 | 14,850 | 15,875 | 7,110 | 7% | 0% | -24% |
| Petrol 1 litre | 25,532 | 20,850 | 19,800 | 20,313 | 9,125 | 3% | -3% | -20% |
| Sugar | 24,910 | 18,688 | 17,000 | 17,125 | 7,677 | 1% | -8% | -31% |
| Vegetable Oil 1 litre | 43,090 | 35,013 | 33,875 | 33,375 | 15,057 | -1% | -5% | -23% |
| Wheat Flour 1kg | 18,358 | 15,125 | 14,875 | 15,125 | 6,769 | 2% | 0% | -18% |
| Wheat Grain 1kg | 28,326 | 25,800 | 22,625 | 23,125 | 10,402 | 2% | -10% | -18% |
| Cereal Prices | | | | | | | | |
| Red Sorghum 1kg | 19,921 | 19,800 | 21,750 | 20,500 | 9,210 | -6% | 4% | 3% |
| White Maize 1kg | 20,480 | 20,000 | 22,500 | 20,750 | 9,324 | -8% | 4% | 1% |
| Livestock & Livestock Product Prices | | | | | | | | |
| Camel Local Quality (Head) | 12,824,750 | 15,530,000 | 15,756,250 | 15,431,250 | 7,007,968 | -2% | -1% | 20% |
| Cattle Local Quality (Head) | 6,700,000 | 8,125,000 | 7,625,000 | 8,375,000 | 3,803,388 | 10% | 3% | 25% |
| Fresh Camel Milk 1 litre | 37,511 | 36,450 | 34,675 | 33,938 | 15,313 | -2% | -7% | -10% |
| Goat Export Quality (Head) | 1,343,550 | 1,537,500 | 1,512,500 | 1,543,750 | 700,991 | 2% | 0% | 15% |
| Goat Local Quality (Head) | 1,225,375 | 1,427,875 | 1,445,625 | 1,439,375 | 653,589 | 0% | 1% | 17% |
| Other Essential Items | | | | | | | | |
| Charcoal 50kg | 322,825 | 379,125 | 380,625 | 381,250 | 173,044 | 0% | 1% | 18% |
| Cowpeas 1 kg | 37,631 | 28,767 | 26,417 | 26,833 | 12,086 | 2% | -7% | -29% |
| Unskilled Labor Wage Rate | 111,587 | 125,000 | 130,000 | 130,000 | 58,939 | 0% | 4% | 17% |
| Firewood Bundle | 36,162 | 50,625 | 46,250 | 46,250 | 20,904 | 0% | -9% | 28% |
| Local Sesame Oil 1 litre | 89,029 | 91,125 | 97,500 | 96,875 | 43,896 | -1% | 6% | 9% |
| Exchange Rate (Somali Shilling per USD) | 27,718 | 20,835 | 20,863 | 20,919 | 9,400 | 0% | 0% | -25% |
| Terms of Trade | | | | | | | | |
| Labour Wage (Daily)/ Cereal (Rice(Kg)) | 5 | 8 | 9 | 8 | - | -6% | 4% | 53% |
| Local Goat (Head)/ Cereal (Rice(Kg)) | 59 | 90 | 97 | 91 | - | -7% | 1% | 54% |
| Price Indices | | | | | | | | |
| Consumer Price Index | - | 215 | 220 | 220 | - | 0% | 2% | - |

Figure 37: Trends in Cereal Prices

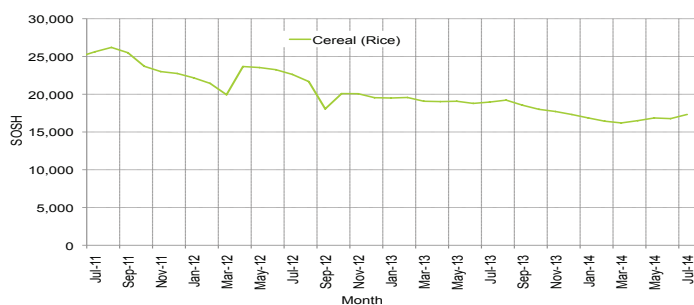


Figure 38: Trends in Wage Rates and Relative Purchasing Power

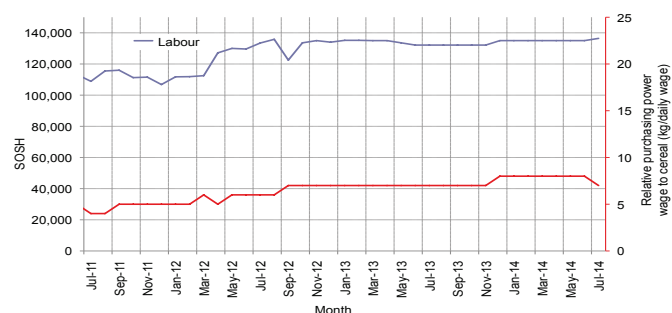


Figure 39: Imported Commodity Prices Compared to Exchange Rate

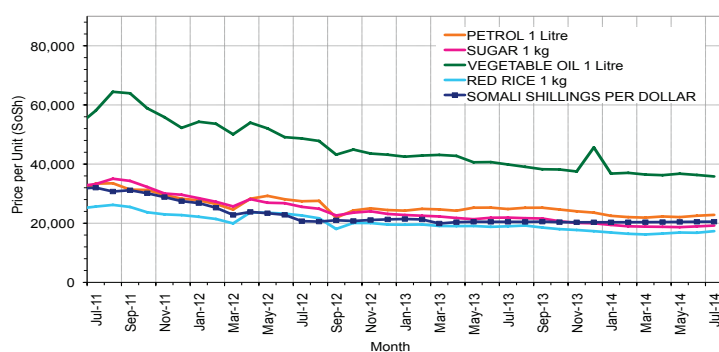


Figure 41: Exchange Rate

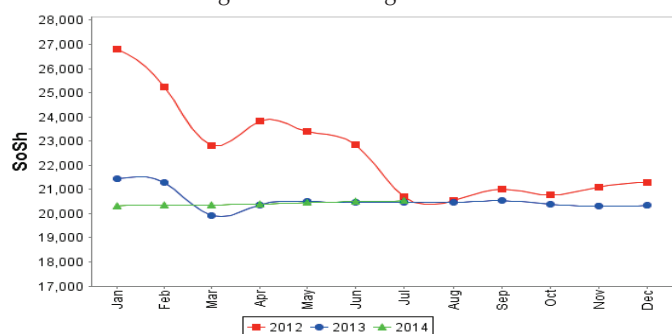


Figure 40: Goat Local Quality

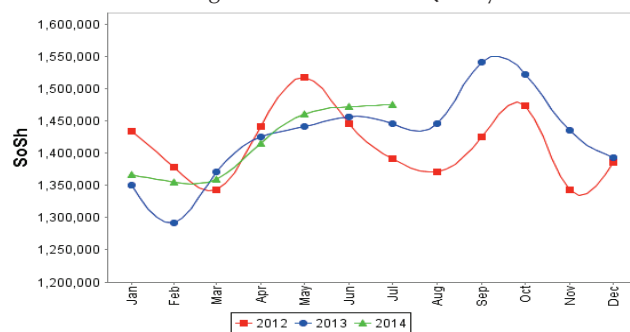
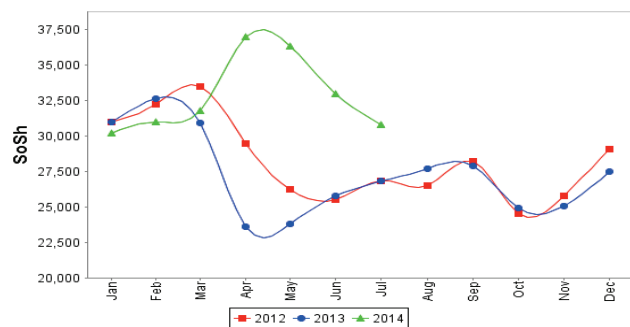


Figure 42: Water Drum (200 litres)



Regional analysis: Northwest Regions

| Indicator | 5-Year Average (2009-2013) | Jul-13 | Jun-14 | Jul-14 Nominal Price | Jul-14 Real Price (Deflated) | % Change Previous Month | % Change Same Month Previous Year | % Change 5-year avg (2009-2013) |
|---|----------------------------|-----------|-----------|----------------------|------------------------------|-------------------------|-----------------------------------|---------------------------------|
| Imported Commodities Prices | | | | | | | | |
| Diesel 1 litre | 6,176 | 6,767 | 6,830 | 6,840 | 5,204 | 0% | 1% | 11% |
| Imported Red Rice 1kg | 4,948 | 4,900 | 5,155 | 5,095 | 3,851 | -1% | 4% | 3% |
| Petrol 1 litre | 6,468 | 7,100 | 7,170 | 7,010 | 5,336 | -2% | -1% | 8% |
| Sugar | 5,842 | 5,640 | 5,800 | 5,640 | 4,274 | -3% | 0% | -3% |
| Vegetable Oil 1 litre | 10,969 | 12,010 | 12,233 | 12,613 | 9,681 | 3% | 5% | 15% |
| Wheat Flour 1kg | 4,276 | 4,300 | 4,460 | 4,440 | 3,343 | 0% | 3% | 4% |
| Wheat Grain 1kg | 2,953 | 3,875 | 3,688 | 3,750 | 2,808 | 2% | -3% | 27% |
| Cereal Prices | | | | | | | | |
| White Sorghum 1kg | 3,177 | 3,216 | 3,770 | 3,790 | 2,839 | 1% | 18% | 19% |
| Yellow Maize 1kg | 3,476 | 3,625 | 3,437 | 3,556 | 2,658 | 3% | -2% | 2% |
| Livestock & Livestock Product Prices | | | | | | | | |
| Camel Local Quality (Head) | 2,512,983 | 4,108,333 | 3,966,667 | 3,791,667 | 2,940,279 | -4% | -8% | 51% |
| Cattle Local Quality (Head) | 1,642,916 | 2,443,000 | 2,295,833 | 2,173,333 | 1,685,286 | -5% | -11% | 32% |
| Fresh Camel Milk 1 litre | 5,436 | 5,525 | 5,275 | 5,720 | 4,336 | 8% | 4% | 5% |
| Goat Export Quality (Head) | 352,283 | 473,080 | 459,700 | 459,500 | 356,235 | 0% | -3% | 30% |
| Goat Local Quality (Head) | 257,658 | 340,840 | 342,650 | 368,880 | 285,961 | 8% | 8% | 43% |
| Other Essential Items | | | | | | | | |
| Charcoal 50kg | 35,217 | 43,840 | 48,975 | 49,575 | 38,345 | 1% | 13% | 41% |
| Cowpeas 1 kg | 10,023 | 9,438 | 9,344 | 10,313 | 7,898 | 10% | 9% | 3% |
| Unskilled Labor Wage Rate | 34,760 | 42,100 | 47,000 | 47,000 | 36,348 | 0% | 12% | 35% |
| Firewood Bundle | 3,019 | 3,333 | 3,833 | 3,833 | 2,872 | 0% | 15% | 27% |
| Local Sesame Oil 1 litre | 25,151 | 29,038 | 33,750 | 35,000 | 27,042 | 4% | 21% | 39% |
| Exchange Rate (Somaliland Shilling per USD) | 6,580 | 6,708 | 6,920 | 6,805 | 5,177 | -2% | 1% | 3% |
| Terms of Trade | | | | | | | | |
| Labour Wage (Daily)/ Cereal (Rice(Kg)) | 7 | 9 | 9 | 9 | - | 1% | 7% | 31% |
| Local Goat (Head)/ Cereal (Rice(Kg)) | 52 | 70 | 66 | 72 | - | 9% | 4% | 39% |
| Price Indices | | | | | | | | |
| Consumer Price Index | - | 116 | 126 | 129 | - | 2% | 11% | - |

Figure 43: Trends in Cereal Prices

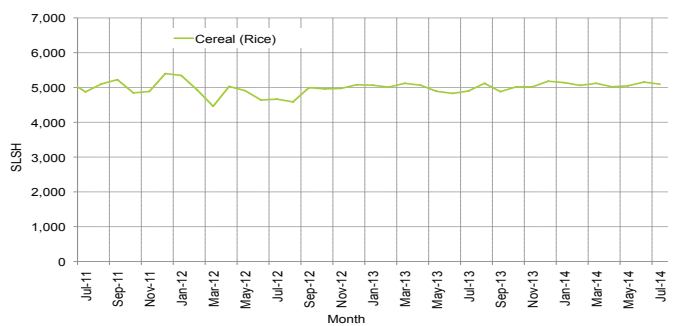


Figure 44: Trends in Wage Rates and Relative Purchasing Power

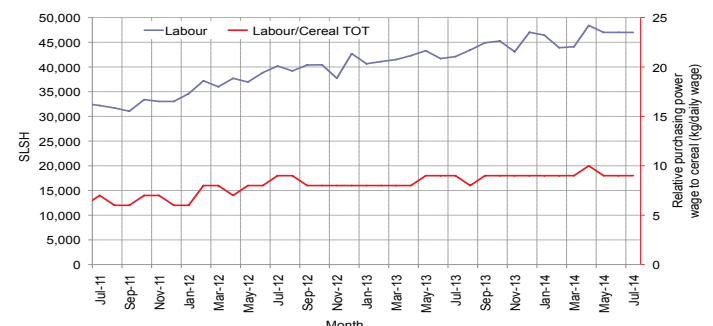


Figure 45: Imported Commodity Prices Compared to Exchange Rate

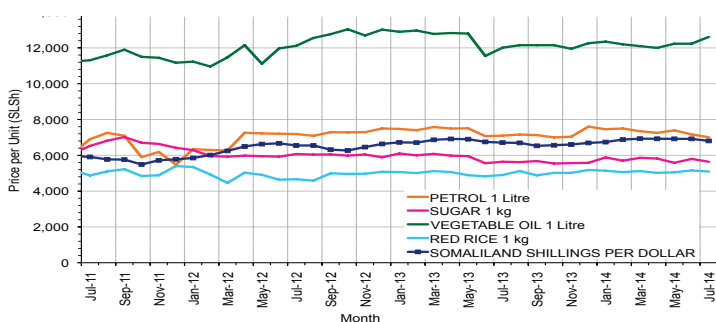


Figure 46: Goat Local Quality

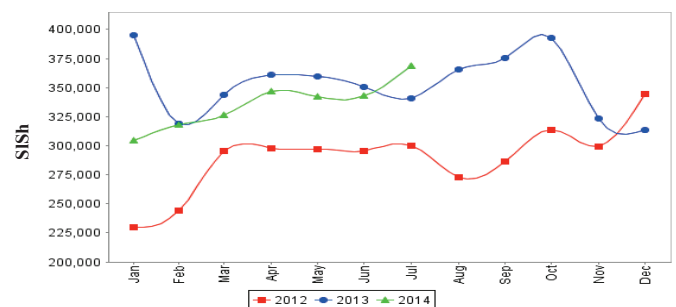


Figure 47: Exchange Rate

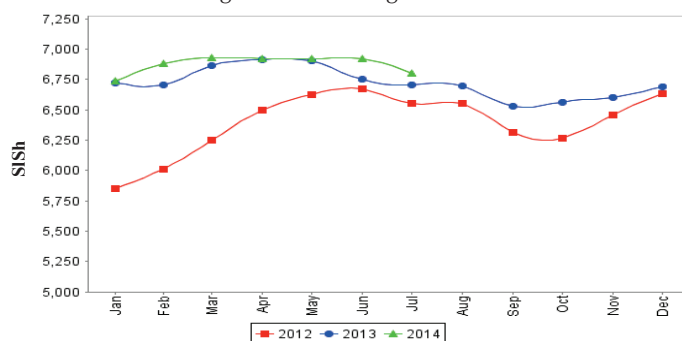
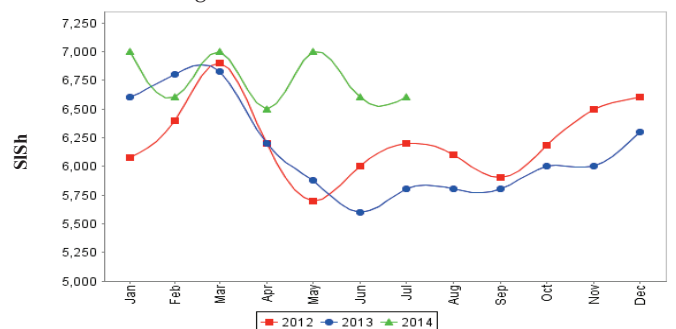


Figure 48: Water Drum (200 litres)



Trends in Livestock Exports

Table 1: Berbera Livestock Exports (Number of Heads)

| | 1998 | 1999 | 2000 | 2001 | 2002 | 2003 | 2004 | 2005 | 2006 | 2007 | 2008 | 2009 | 2010 | 2011 | 2012 | 2014 (Jan-July) |
|--------|---------|-----------|-----------|--------|---------|---------|---------|-----------|-----------|-----------|-----------|-----------|-----------|-----------|-----------|--------------------|
| Shoats | 957,224 | 2,048,136 | 1,601,083 | 51,546 | 341,711 | 563,107 | 859,404 | 1,023,795 | 1,017,242 | 1,350,054 | 1,219,519 | 1,556,003 | 2,584,810 | 3,104,684 | 3,219,584 | 1,137,623 |
| Cattle | 92,213 | 89,967 | 63,263 | 20,973 | 37,547 | 84,312 | 131,852 | 148,151 | 85,631 | 88,143 | 80,051 | 88,005 | 133,021 | 150,934 | 190,354 | 132,494 |
| Camel | 11,663 | 37,430 | 16,984 | 3,473 | 18,864 | 21,874 | 5,147 | 5,069 | 22,810 | 14,245 | 26,515 | 20,206 | 92,651 | 107,281 | 102,664 | 58,647 |

Figure 49: Berbera Livestock Exports (Number of Heads)

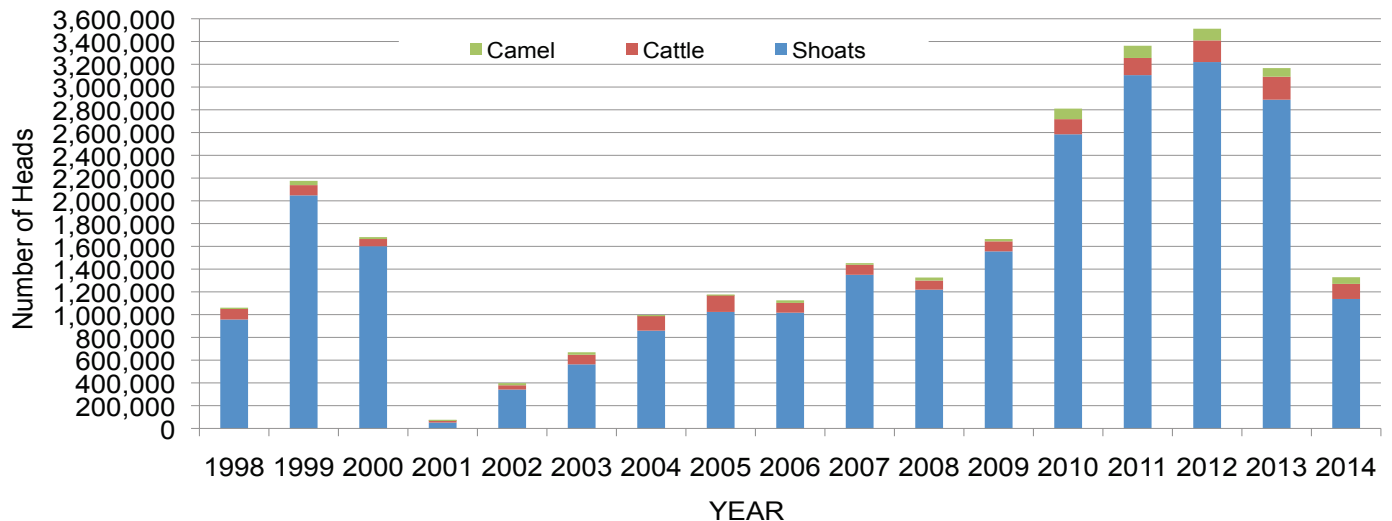
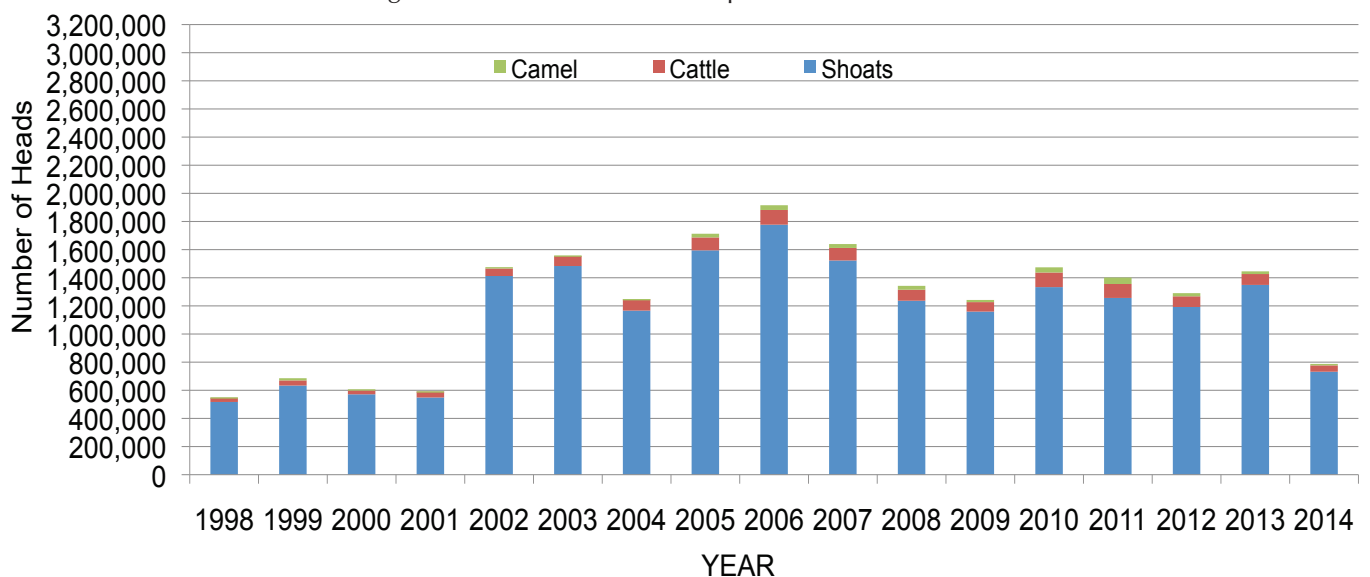


Table 2: Bossaso Livestock Exports (Number of Heads)

| | 1998 | 1999 | 2000 | 2001 | 2002 | 2003 | 2004 | 2005 | 2006 | 2007 | 2008 | 2009 | 2010 | 2011 | 2012 | 2013 | 2014 (Jan-July) |
|--------|---------|---------|---------|---------|-----------|-----------|-----------|-----------|-----------|-----------|-----------|-----------|-----------|-----------|-----------|-----------|--------------------|
| Shoats | 517,020 | 633,669 | 571,455 | 548,853 | 1,412,450 | 1,483,409 | 1,166,480 | 1,594,859 | 1,777,283 | 1,522,855 | 1,236,775 | 1,159,454 | 1,333,478 | 1,256,535 | 1,192,197 | 1,349,123 | 731,980 |
| Cattle | 29,492 | 36,586 | 27,604 | 42,248 | 53,313 | 71,328 | 79,994 | 91,910 | 104,595 | 89,190 | 78,046 | 67,385 | 103,808 | 99,058 | 76,043 | 77,353 | 45,080 |
| Camel | 3,938 | 15,544 | 8,177 | 1,950 | 9,720 | 4,259 | 2,488 | 26,109 | 33,724 | 27,580 | 27,639 | 15,331 | 36,865 | 45,878 | 22,288 | 19,032 | 10,437 |

Figure 50: Bossaso Livestock Exports (Number of Heads)

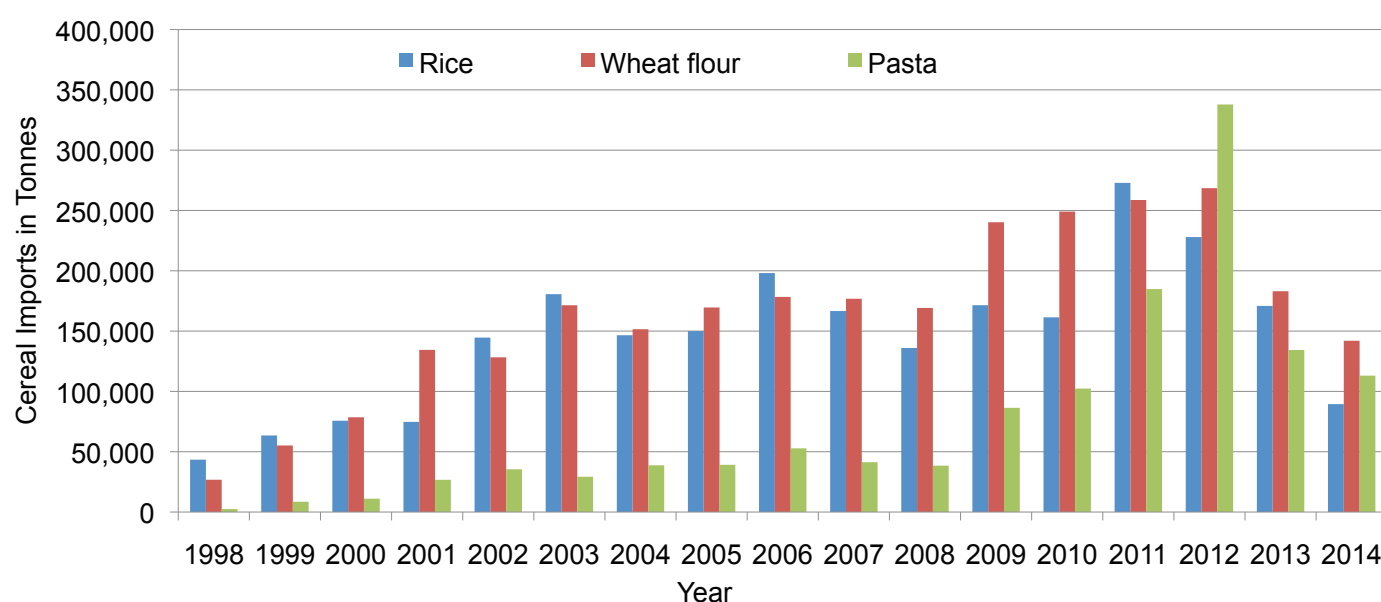


Trends in Cereal Imports

Table 3: Total Cereal Imports through Berbera, Bossaso and Mogadishu Ports (Tonnes) *

| | 1998 | 1999 | 2000 | 2001 | 2002 | 2003 | 2004 | 2005 | 2006 | 2007 | 2008 | 2009 | 2010 | 2011 | 2012 | 2013 | 2014 (Jan-July) |
|--------------------|--------|--------|--------|---------|---------|---------|---------|---------|---------|---------|---------|---------|---------|---------|---------|---------|--------------------|
| Rice | 43,410 | 63,464 | 75,687 | 74,729 | 144,600 | 180,614 | 146,567 | 150,017 | 198,101 | 166,626 | 136,007 | 171,472 | 161,415 | 272,877 | 227,955 | 170,868 | 89,459 |
| Wheat flour | 26,774 | 55,176 | 78,555 | 134,425 | 128,263 | 171,442 | 151,555 | 169,583 | 178,345 | 176,821 | 169,208 | 240,247 | 249,080 | 258,679 | 268,491 | 183,058 | 141,990 |
| Pasta | 2,455 | 8,544 | 11,071 | 26,702 | 35,425 | 29,273 | 38,749 | 39,153 | 52,815 | 41,331 | 38,441 | 86,372 | 102,373 | 184,849 | 337,878 | 134,311 | 113,076 |

Figure 51: Total Cereal Imports (Berbera, Bossaso and Mogadishu)



* 2014 import data for Berbera and Bossaso are up to July and for Mogadishu (Elmaan Port) is up to April. 2013 Mogadishu data (Elmaan Port) includes only January -March imports.