

## Highlights

**Inflation:** The July Consumer Price Index (CPI) increased in Central and North Somali shilling (SoSh) zones but remained stable in the South as well as in Somaliland shilling (SiSh) regions. The minimum cost of living dropped significantly year-on-year but is remarkably elevated compared to the base period (March 2007), particularly in SoSh areas.

**Exchange rate:** The Somali currencies (SoSh & SiSh) held steady against the United States dollar (USD) month-on-month. Compared to one year ago, the exchange rate appreciated in South-Central regions but remained unchanged in the Northern zones. The appreciation of the SoSh is attributable to increased dollar flows into the country, particularly to Mogadishu.

**Local grain** prices declined in key growing areas of the South<sup>1</sup> as available stocks were offloaded into the markets in readiness for the Gu 2013 harvests. Grain costs in other areas remained more or less unchanged except slight increase in Banadir, Central, Hiraan, Bakool and parts of Northwest. Prices of locally produced cereals remained at lower levels in most markets when compared to the corresponding time last year.

**Prices of imported commodities** quoted in local currency decreased or remained stable in most markets in line with increased sea port supplies. Significant reduction in the prices of imports over the last one year was occasioned by local currency appreciation against the USD.

**Livestock prices** were mixed month-on-month as they rose marginally in the regions of Sorghum Belt, Shabelle, Banadir and Central, fell slightly in Juba but remained relatively stable in northern areas. The increase in livestock prices is linked to increased consumption demand during Ramadan. Milk prices continue on the downward trend in most areas on account of sustained production and supply. Livestock prices are higher than a year ago in most markets.

**Labour wages** increased particularly in key cereal producing regions but remained stable in all other areas. The gain in labour wages is attributable to normal seasonal increase in labour opportunities from early crop harvests. Casual wages are significantly higher compared to their levels a year ago in most markets, on account of increased construction and infrastructure rebuilding activities, particularly in Mogadishu.

**Terms of Trade (ToT)** between labour wages and local cereals rose in Gedo and Juba but remained stable in all other areas, in line with trends of cereal prices and labour wages. Compared to the same period last year, the purchasing power improved in most regions, except in Hiran where it declined, and Gedo where it remained stable.

This Market Data Update is a monthly report that presents analysis of market information and is produced regularly as part of the monthly monitoring process.

The weekly price data is collected from 47 main markets throughout Somalia since 1995.

Market analysis is an integral part of all of FSNAU's Annual Food Security Projections and seasonal technical reports (Technical Reports on FSNAU Post Gu and Deyr Analysis).

Detailed data is available online on [www.fsnau.org/ids](http://www.fsnau.org/ids).

<sup>1</sup> Bay, Shabelle and Juba

# Regional Market Highlights

**Juba Valley:** Prices of maize, imported food (rice, wheat, vegetable oil, sugar) and cattle decreased slightly month-on-month. The ToT (13Kg/ daily wage rate) increased by two units from the previous month's level. Compared to a year ago, prices are significantly lower for milk, maize and imported food, whereas they are considerably elevated for cattle. Annual comparisons of ToT between labour and cereals also indicate improved purchasing power for casual labourers.

**Sorghum Belt:** Prices of sorghum and imported food decreased while those of livestock remained stable in most areas. However, sorghum prices went up slightly in Bakool and Hiran regions. The ToT between labor and cereals did not change month-on-month except in Gedo where it increased. Year-on-year price comparisons indicated reduction in the prices of import commodities, goats, milk, and sorghum. The ToT declined in Hiraan, remained steady in Gedo while showing increased trend when compared to the same month last year.

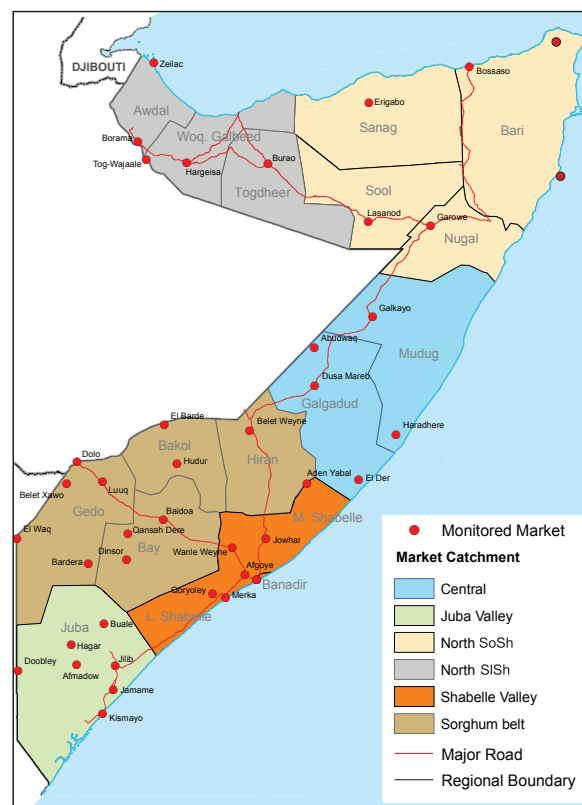
**Shabelle Valley:** Monthly prices of imported food, maize and livestock remained relatively stable. The ToT also did not change from the previous month's level (10kg of maize for one day of labor). Compared to the same month last year, prices of imported commodities and cereals are significantly lower, cattle prices are considerably higher, while goat prices are somewhat suppressed. Labour wage to cereal are two units higher than the same month in 2012.

**Central:** marginal monthly price increase was recorded for food imports and red sorghum while goat prices were more or less unchanged. Annual comparisons indicate decrease in the prices of all items except for camel, which accelerated significantly. ToT local goat to rice (64kg/goat) was sustained as of last month. The ToT is one unit higher than the same month last year.

**Northeast:** Month-on-month price stability persisted for imported commodities, local cereals and goats. Prices are significantly lower compared to a year ago for most items except for livestock, which are elevated. ToT for local goat to rice closed the month at 90kg/ local goat, which is three units lower than the previous month. The ToT is however significantly higher compared to the same period a year ago.

**Northwest:** Prices of most monitored commodities, cereals and livestock remained stable month-on-month with the exception of camel prices, which increased slightly. Compared to 12 months ago, prices of imported commodities and cereals are slightly lower while those of livestock are higher. The ToT between cereals (white sorghum) and labor wage remained unchanged (13 kg/ daily labour rate) from May 2013, but is higher by 1kg compared to July last year.

**Banadir/ Mogadishu:** Prices of imported commodities and of livestock remained stable month-on-month while maize prices went up. Annual price comparisons indicate a decline for import commodities, maize and export quality goat. The ToT for white maize to labor wage was sustained at previous month's level (16kgs/daily labor rate) but is three units higher than the same period a year ago.



**Table 1: ToT of Cereals (kg) per Daily Labour Wage Rate, by Region**

Regions	July 2013 <sup>1</sup>	% change from:	
		13-Jun	12-Jul
Banadir	19	0%	19%
Bay	20	0%	33%
Bakool	10	0%	100%
Gedo	20	33%	0%
Hiran	10	0%	-29%
Juba	13	18%	18%
Shabelle	10	0%	25%
Northeast	7	0%	40%
Northwest	13	0%	8%
Central	8	-11%	14%

<sup>1</sup> Cereal types used for ToT calculation: White Maize (Banadir, Hiran, Juba, Shabelle), Red Sorghum (Bay, Bakool, Gedo, Central, Northeast) and White Sorghum (Northwest)

# International Market Highlights

**Diesel:** The July crude oil<sup>1</sup> prices rose by \$3.06/bbl to \$103.36/bbl, a four-month high, on the backdrop of supply outages in Libya and Iraq<sup>2</sup>. The crude oil quotations are also slightly higher (3%) than the same month last year. Going forward, the political upheaval in Egypt and the prospect of oil-supply disruptions due to the country's status as a major oil-transit point are likely to affect crude oil prices.

*Diesel prices in local currency terms did not change much from the previous month. Compared to the same month last year, the prices reduced significantly (21%) in Mogadishu but remained stable in Bossaso. The annual reduction was supported by appreciated SoSh and steady sea port supplies, mainly coming from Mogadishu. The dollar equivalent price gap between domestic diesel prices and global crude oil prices over the last one year narrowed down by 13-37% in both cities (Figure 1).*

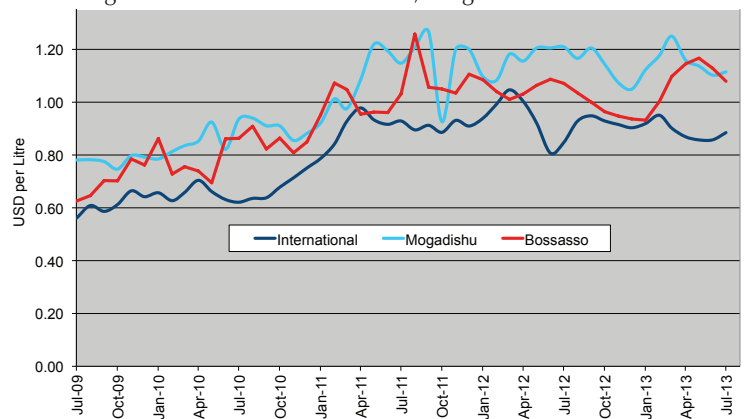
**Rice:** The export price of the benchmark Thai rice (Grade A1 Super 1/B) continued a month-on-month fall (2%), reflecting low export demand and the Government's announcement of public stocks release<sup>3</sup>. Rice prices also decreased when compared to July 2012.

*Prices of imported rice increased slightly in Bossaso and Mogadishu over the last month but reduced (13-14%) when compared to the same period last year. The decline was caused by several factors, including appreciation of the SoSh against the USD, increased supplies through ports, and ongoing humanitarian interventions. The gap between international and domestic rice prices (in USD terms) decreased from 60 percent in July last year to 39 percent currently in Bossaso, while it remained unchanged in Mogadishu (Figure 2).*

**Wheat:** The International Grain Council GOI wheat sub-index is down 1% month-on-month on seasonal pressure from favourable production prospects, but tempered by export demand, particularly from China<sup>4</sup>.

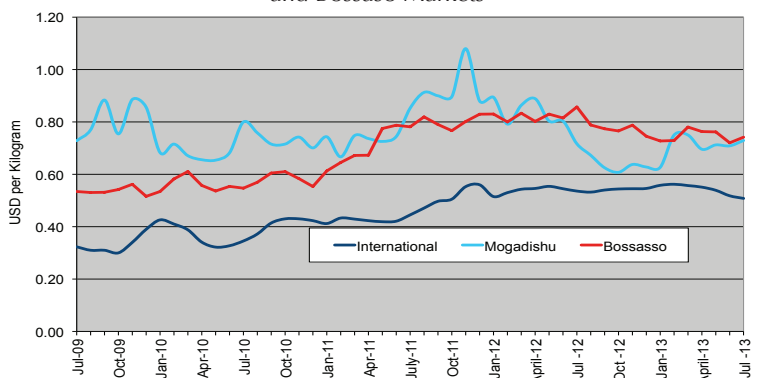
*Wheat flour prices for June 2013 increased slightly in local currency terms in Mogadishu<sup>5</sup> (5%), while remaining stable in Bossaso. Year-on-year comparisons indicate significant price reduction (13%) in Bossaso and relative stability in Mogadishu.*

Figure 1: Diesel Prices in Dubai, Mogadishu and Bossaso



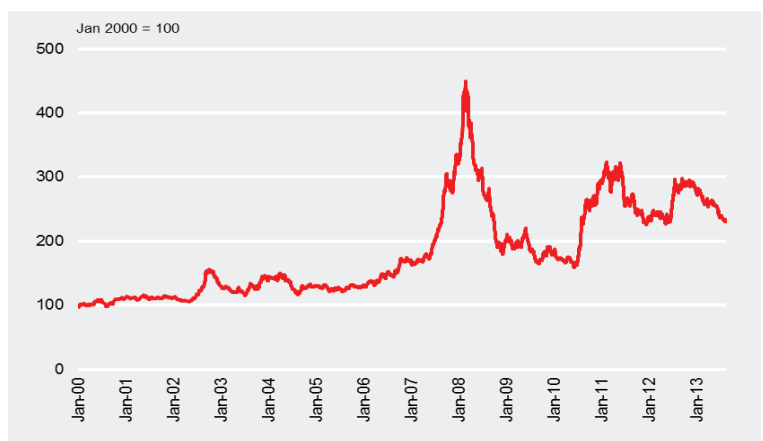
Source: FSNAU & FEWSNET Market Price Monitoring System, FAO Statistics, 2013

Figure 2: Rice Prices in Bangkok (FOB), Mogadishu and Bossaso Markets



Source: FSNAU & FEWSNET Market Price Monitoring System, FAO Statistics, 2013

Figure 3: International Wheat Prices



Source: International Grain Council, 2013

1 Free on Board (FoB) in Abu Dhabi (Dubai) is the main source of Somalia's oil imports.

2 Oil Market Report (OMR), Monthly Publication by International Energy Agency (IEA) in collaboration with Organization of Petroleum Exporting Countries (OPEC), released 9 Aug 2013; [Online] Available from <http://omrpublic.iea.org/>

3 FAO Global Food Price Monitor; 9 Aug 2013. [http://www.google.co.ke/url?sa=t&rct=j&q=&esrc=s&source=web&cd=1&cad=rja&ved=0CC0QFjAA&url=http%3A%2F%2Fwww.fao.org%2Ffigiews%2Fenglish%2Fshortnews%2Fprice-monitor09082013.htm&ei=yQAeUva6D5K2hAfcj4GADQ&usq=AFQjCNE15coxaQ2ljhda\\_tvulNiFwkmHoQ&sig2=2srVwdidQOBMW8MtWf6xwQ&bvm=bv.51495398,d.ZG4](http://www.google.co.ke/url?sa=t&rct=j&q=&esrc=s&source=web&cd=1&cad=rja&ved=0CC0QFjAA&url=http%3A%2F%2Fwww.fao.org%2Ffigiews%2Fenglish%2Fshortnews%2Fprice-monitor09082013.htm&ei=yQAeUva6D5K2hAfcj4GADQ&usq=AFQjCNE15coxaQ2ljhda_tvulNiFwkmHoQ&sig2=2srVwdidQOBMW8MtWf6xwQ&bvm=bv.51495398,d.ZG4)

4 Grain Market Report (GMR) 435, 1 August 2013, International Grain Council;

5 Due to increased consumptions needs

# International Market Highlights

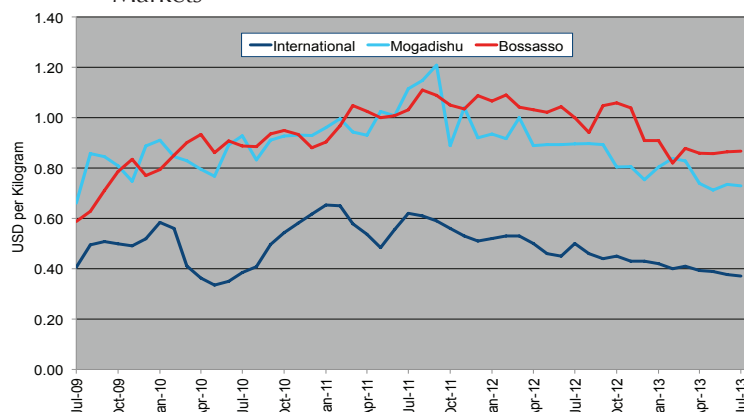
**Sugar:** The FAO Sugar Price Index<sup>6</sup> averaged 239 points in July, down 3.6 points (1.5 percent) from June. Sugar prices declined for the fourth consecutive month in July, on the back of anticipated large surplus production in major producing areas, notably in Brazil, the world's largest sugar producer and exporter. Declining ethanol prices in Brazil also provided an incentive to convert more sugarcane into sugar instead of ethanol, which put additional downward pressure on international sugar prices.

*Sugar prices increased did not change month-on-month in Mogadishu and Bossaso. Annual price comparisons indicate significant reduction (14-30%) in both port cities resulting from appreciated SoSh, continued humanitarian interventions and enhanced port supplies.*

**Cooking Oil:** The FAO Oils/Fats Price Index<sup>7</sup> averaged 191 points in July, down by 7 points (or 3.3 percent) from June and the lowest level in three years. The slide in the index mainly reflects easing quotations for both soy and palm oil. Soy oil values have fallen in response to ample export availabilities, especially in Argentina, combined with weak demand (including from the biodiesel sector), as well as good soybean crop prospects in the United States. The palm oil price weakness mainly resulted from the combination of ample production and lower than expected import demand, most notably by China. Prices for rape and sunflower seed oil also fell, reflecting improved 2013/14 crop prospects.

*In Somalia, month-on-month vegetable oil price movement was flat in the two port cities' markets, but was significantly reduced (10-32%) when compared to the same month last year, reflecting accelerated movement of supplies through ports and appreciated domestic currency.*

Figure 4: Sugar Prices: International, Mogadishu and Bossaso Markets



Source: FSNAU & FEWSNET Market Price Monitoring System, International Sugar Organizations, 2013

<sup>6</sup> The World Food Situation: The FAO Food Price Index August 2013

<sup>7</sup> Ibid

# National Trends: CPI, Exchange Rates, Cereal Prices and Relative Purchasing Power

Figure 5: Terms of Trade Between Wage Rates and Selected Cereals

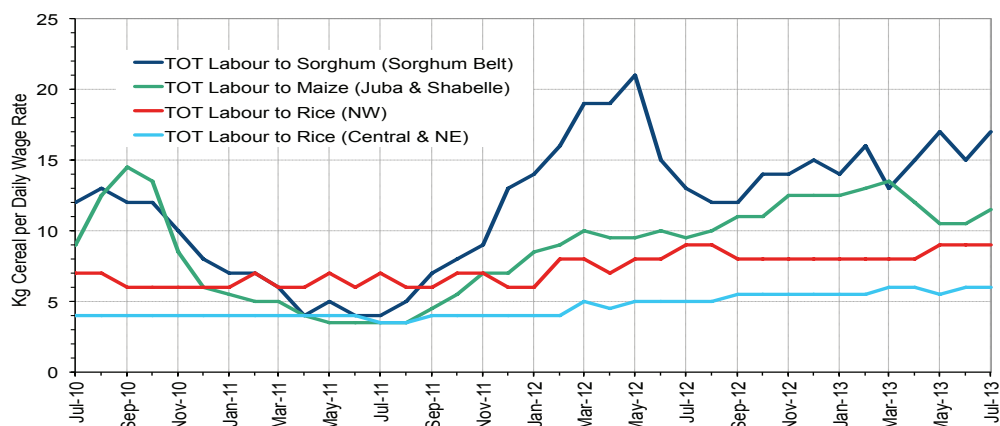


Figure 6: Monthly Exchange Rate for Selected Regions (SoSh and SiSh to USD)

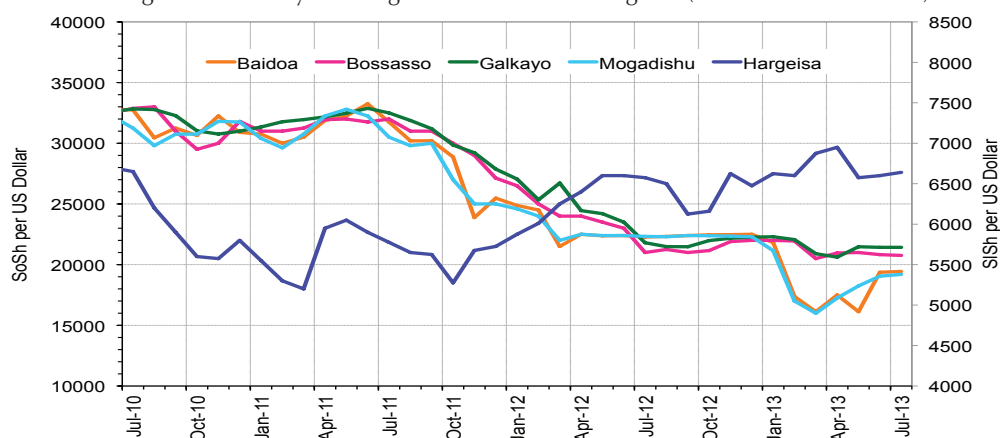


Figure 7: Monthly Trends in Consumer Price Index (CPI, March 2007=100)

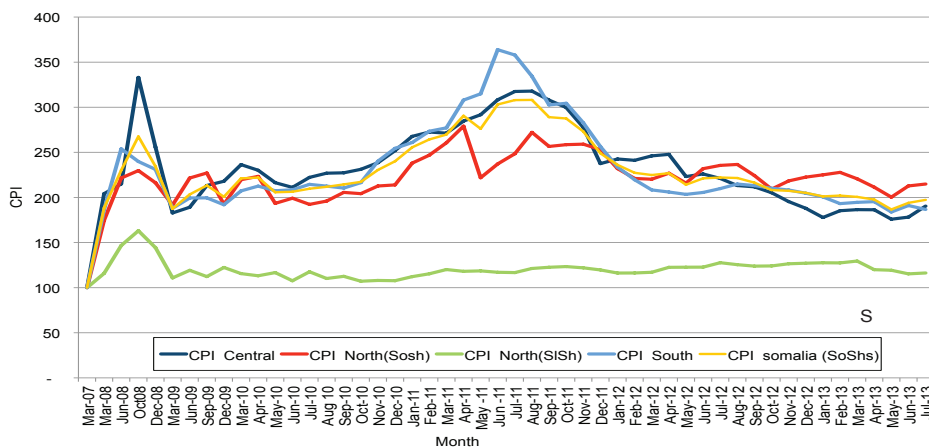
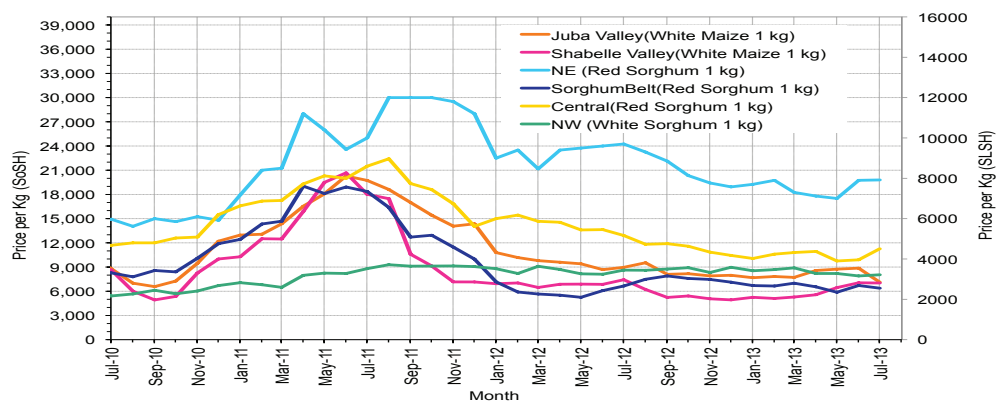


Figure 8: Monthly Trends in Local Cereal Prices





# Regional analysis: Juba Regions

Indicator	5-Year Average (2008-2012)	Jul-12	Jun-13	July-13 Nominal Price	July-13 Real (Deflated) Price	% Change Same Month Previous Year	% Change Previous Month	% Change 5-year avrg (2008-2012)
<b>Imported Commodities Prices</b>								
Diesel 1 litre	38,814	33,071	29,179	27,064	14,398	-18%	-7%	-30%
Imported Red Rice 1kg	27,943	17,500	16,929	15,657	8,287	-11%	-8%	-44%
Petrol 1 litre	38,150	34,571	30,929	30,886	16,445	-11%	0%	-19%
Sugar	26,500	23,107	17,071	16,186	8,571	-30%	-5%	-39%
Vegetable Oil 1 litre	54,809	35,607	30,964	30,714	16,353	-14%	-1%	-44%
Wheat Flour 1kg	24,007	16,500	17,571	15,771	8,348	-4%	-10%	-34%
Wheat Grain 1kg	20,000	-	-	-	-	-	-	-
<b>Cereal Prices</b>								
Red Sorghum 1kg	9,460	5,000	7,000	8,000	4,185	60%	14%	-15%
White Maize 1kg	12,996	8,964	8,750	7,384	3,855	-18%	-16%	-43%
<b>Livestock &amp; Livestock Product Prices</b>								
Camel Local Quality (Head)	8,774,834	9,122,833	10,733,214	11,289,086	6,047,280	24%	5%	29%
Cattle Local Quality (Head)	3,895,692	3,559,542	4,619,833	4,101,033	2,196,757	15%	-11%	5%
Fresh Camel Milk 1 litre	16,442	19,500	16,042	12,943	6,833	-34%	-19%	-21%
Goat Export Quality (Head)	1,261,385	1,691,250	1,539,571	1,526,843	817,805	-10%	-1%	21%
Goat Local Quality (Head)	857,728	1,129,750	1,063,036	1,024,071	548,478	-9%	-4%	19%
<b>Other Essential Items</b>								
Charcoal 50kg	79,107	82,679	83,750	86,243	46,099	4%	3%	9%
Cowpeas 1 kg	26,008	21,786	22,000	19,429	10,308	-11%	-12%	-25%
Unskilled Labor Wage Rate	91,757	98,464	90,929	95,300	50,951	-3%	5%	4%
Firewood Bundle	6,728	9,000	10,143	11,193	5,896	24%	10%	66%
Local Sesame Oil 1 litre	78,713	65,071	73,786	71,357	38,125	10%	-3%	-9%
Exchange Rate (Somali Shilling per USD)	31,203	22,293	19,175	19,454	10,321	-13%	1%	-38%
<b>Terms of Trade</b>								
Labour Wage (Daily)/ Cereal (Maize(Kg))	7	11	10	13	-	17%	24%	83%
Local Goat (Head)/ Cereal (Maize(Kg))	66	126	121	139	-	10%	14%	110%
<b>Price Indices</b>								
Consumer Price Index	-	210	191	187	-	-11%	-2%	-

\* Data has been collected since May 2010

Figure 9: Trends in Cereal Prices

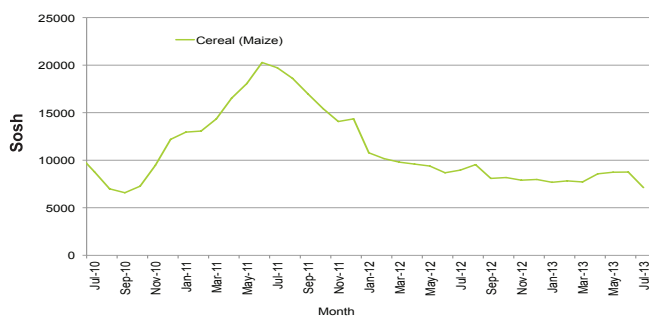


Figure 10: Trends in Wage Rates and Relative Purchasing Power

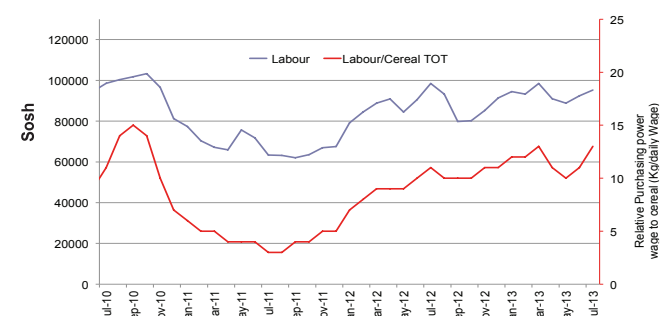


Figure 11: Imported Commodity Prices Compared to Exchange Rate

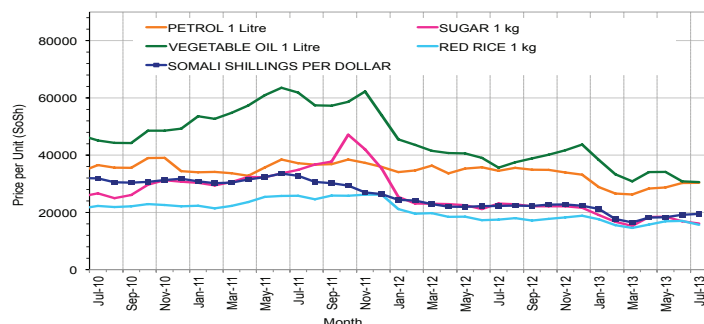


Figure 12: Goat Local Quality

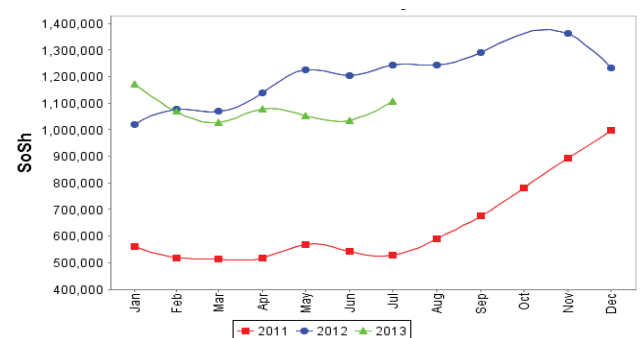


Figure 13: Exchange Rate

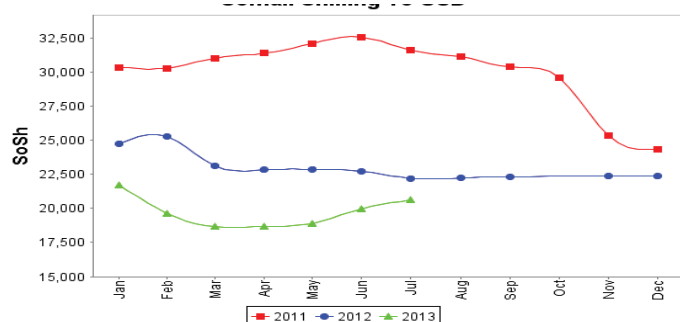
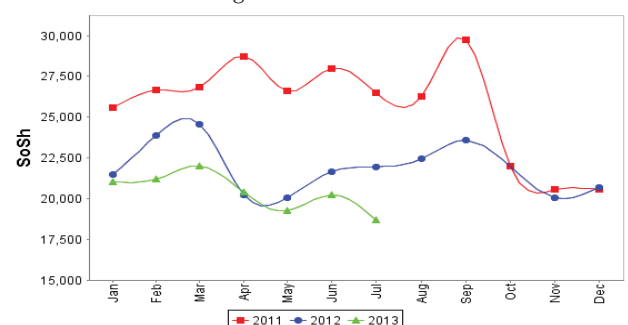


Figure 14: Water Drum



# Regional analysis: Sorghum Belt Regions (Bay, Bakool, Gedo and Hiran)

Indicator	5-Year Average (2008-2012)	Jul-12	Jun-13	July-13 Nominal Price	July-13 Real (Deflated) Price	% Change Same Month Previous Year	% Change Previous Month	% Change 5-year avrg (2008-2012)
<b>Imported Commodities Prices</b>								
Diesel 1 litre	36,819	32,682	30,273	29,600	15,756	-9%	-2%	-20%
Imported Red Rice 1kg	28,853	19,900	18,045	16,995	9,004	-15%	-6%	-41%
Petrol 1 litre	35,180	34,318	29,568	29,164	15,523	-15%	-1%	-17%
Sugar	26,447	23,795	19,068	18,055	9,572	-24%	-5%	-32%
Vegetable Oil 1 litre	54,328	44,750	37,636	35,564	18,951	-21%	-6%	-35%
Wheat Flour 1kg	25,530	18,145	16,705	16,255	8,608	-10%	-3%	-36%
Wheat Grain 1kg	17,821	10,593	7,667	8,276	4,333	-22%	8%	-54%
<b>Cereal Prices</b>								
Red Sorghum 1kg	10,987	6,650	6,710	6,382	3,319	-4%	-5%	-42%
White Maize 1kg	13,631	8,793	9,120	9,136	4,794	4%	0%	-33%
<b>Livestock &amp; Livestock Product Prices</b>								
Camel Local Quality (Head)	8,620,565	12,005,000	13,050,000	13,085,454	7,009,565	9%	0%	52%
Cattle Local Quality (Head)	2,950,506	3,631,250	3,805,556	3,647,778	1,953,955	0%	-4%	24%
Fresh Camel Milk 1 litre	22,557	31,214	11,989	12,764	6,737	-59%	6%	-43%
Goat Export Quality (Head)	1,251,901	1,706,818	1,611,136	1,604,500	859,405	-6%	0%	28%
Goat Local Quality (Head)	755,859	1,242,727	1,035,227	1,107,272	593,048	-11%	7%	46%
<b>Other Essential Items</b>								
Charcoal 50kg	122,236	144,977	145,455	144,727	77,428	0%	-1%	18%
Cowpeas 1 kg	27,869	21,919	19,472	16,342	8,654	-25%	-16%	-41%
Unskilled Labor Wage Rate	82,545	83,545	101,023	110,909	59,312	33%	10%	34%
Firewood Bundle	5,382	6,545	6,045	6,545	3,406	0%	8%	22%
Local Sesame Oil 1 litre	81,457	67,714	75,357	72,686	38,837	7%	-4%	-11%
Exchange Rate (Somali Shilling per USD)	30,352	22,220	19,984	20,609	10,940	-7%	3%	-32%
<b>Terms of Trade</b>								
Labour Wage (Daily)/ Cereal (Sorghum(Kg))	8	13	15	17	-	38%	15%	131%
Local Goat (Head)/ Cereal (Sorghum(Kg))	69	187	154	173	-	-7%	12%	152%
<b>Price Indices</b>								
Consumer Price Index	-	210	191	187	-	-11%	-2%	-

\* Data has been collected since May 2010

Figure 15: Trends in Cereal Prices

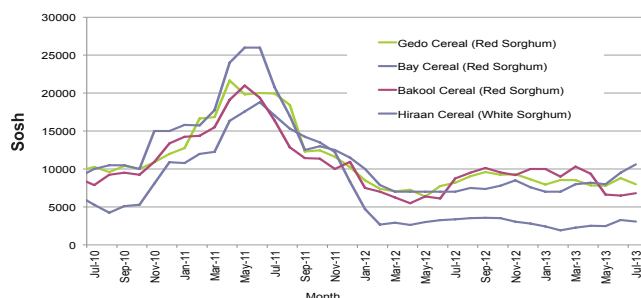


Figure 16: Trends in Wage Rates and Relative Purchasing Power

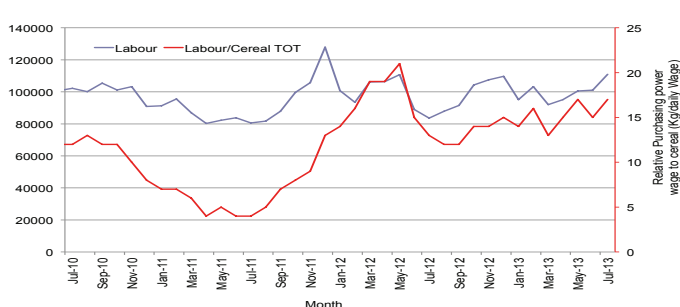


Figure 17: Imported Commodity Prices Compared to Exchange Rate

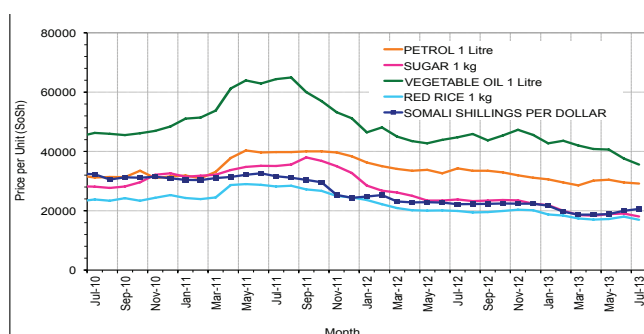


Figure 18: Goat Local Quality

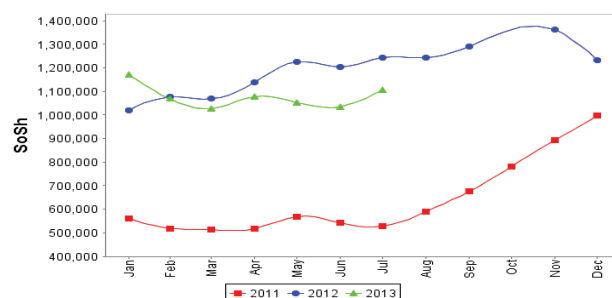


Figure 19: Exchange Rate

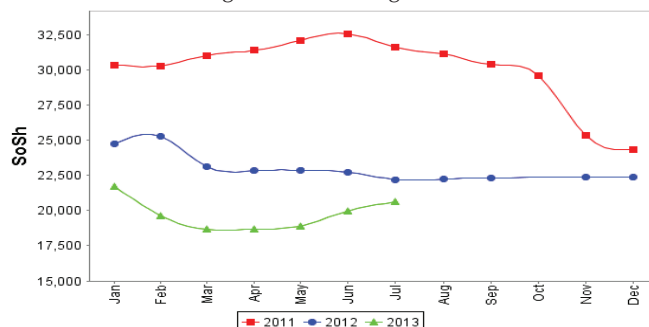
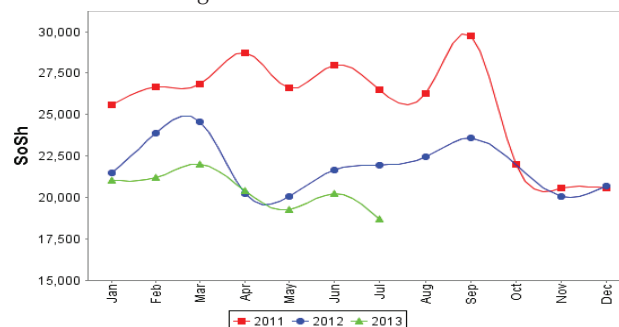


Figure 20: Water Drum



# Regional analysis: Shabelle Regions

Indicator	5-Year Average (2008-2012)	Jul-12	Jun-13	July-13 Nominal Price	July-13 Real (Deflated) Price	% Change Same Month Previous Year	% Change Previous Month	% Change 5-year avg (2008-2012)
<b>Imported Commodities Prices</b>								
Diesel 1 litre	35,791	30,958	26,083	26,917	14,319	-13%	3%	-25%
Imported Red Rice 1kg	25,783	15,708	15,542	15,333	8,114	-2%	-1%	-41%
Petrol 1 litre	33,941	31,667	28,208	28,417	15,123	-10%	1%	-16%
Sugar	24,941	21,875	16,417	16,958	8,984	-22%	3%	-32%
Vegetable Oil 1 litre	46,300	35,250	26,125	26,958	14,341	-24%	3%	-42%
Wheat Flour 1kg	23,716	15,417	15,750	15,250	8,069	-1%	-3%	-36%
Wheat Grain 1kg	20,500	13,000	5,000	5,333	2,757	-59%	7%	-74%
<b>Cereal Prices</b>								
Red Sorghum 1kg	11,647	9,167	7,683	7,444	3,888	-19%	-3%	-36%
White Maize 1kg	11,124	7,431	7,053	7,023	3,662	-5%	0%	-37%
<b>Livestock &amp; Livestock Product Prices</b>								
Camel Local Quality (Head)	11,800,400	15,435,000	16,985,000	16,625,000	8,905,642	8%	-2%	41%
Cattle Local Quality (Head)	3,624,424	4,517,500	6,380,000	6,270,000	3,358,637	39%	-2%	73%
Fresh Camel Milk 1 litre	15,879	18,333	14,583	14,417	7,623	-21%	-1%	-9%
Goat Export Quality (Head)	1,388,504	1,801,458	1,646,042	1,737,500	930,650	-4%	6%	25%
Goat Local Quality (Head)	965,366	1,216,250	1,262,083	1,281,250	686,245	5%	2%	33%
<b>Other Essential Items</b>								
Charcoal 50kg	105,413	110,583	131,889	125,174	66,954	13%	-5%	19%
Cowpeas 1 kg	27,528	19,994	14,637	13,161	6,950	-34%	-10%	-52%
Unskilled Labor Wage Rate	55,866	62,500	67,292	70,208	37,509	12%	4%	26%
Firewood Bundle	4,275	5,875	8,083	7,125	3,717	21%	-12%	67%
Local Sesame Oil 1 litre	61,650	47,000	59,792	58,667	31,327	25%	-2%	-5%
Exchange Rate (Somali Shilling per USD)	30,592	22,638	18,992	19,271	10,223	-15%	1%	-37%
<b>Terms of Trade</b>								
Labour Wage (Daily)/ Cereal (Maize(Kg))	5	8	10	10	-	19%	5%	99%
Local Goat (Head)/ Cereal (Maize(Kg))	87	164	179	182	-	11%	2%	110%
<b>Price Indices</b>								
Consumer Price Index	-	210	191	187	-	-11%	-2%	-

\* Data has been collected since May 2010

Figure 21: Trends in Cereal Prices

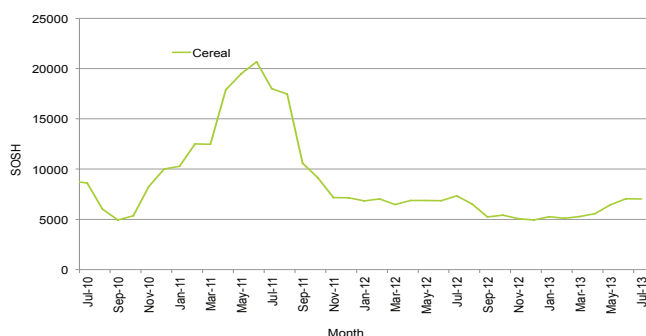


Figure 22: Trends in Wage Rates and Relative Purchasing Power

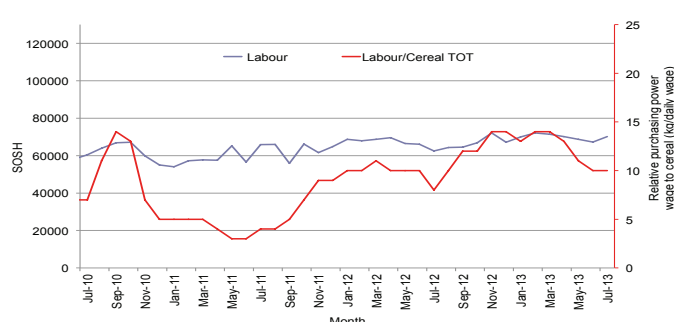


Figure 23: Imported Commodity Prices Compared to Exchange Rate

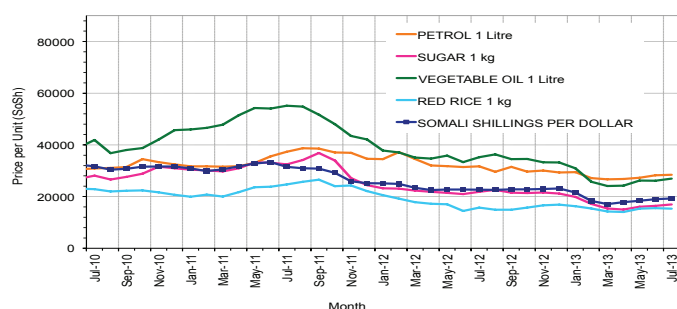


Figure 24: Goat Local Quality

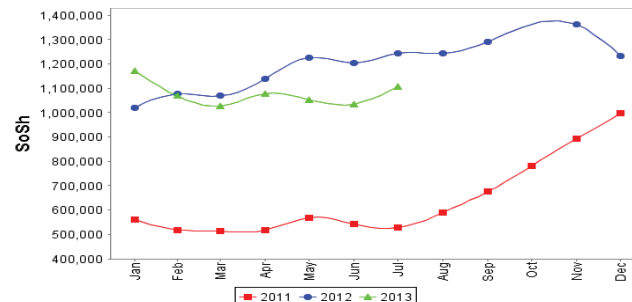


Figure 25: Exchange Rate

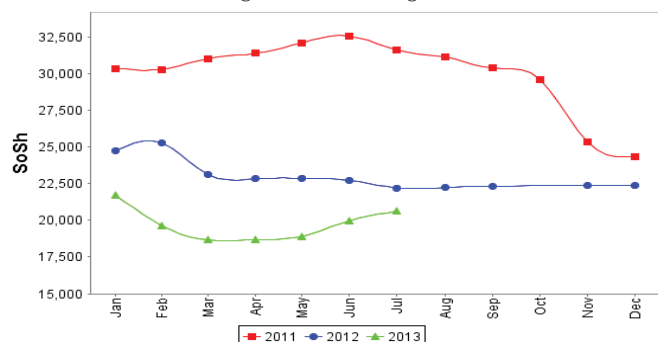
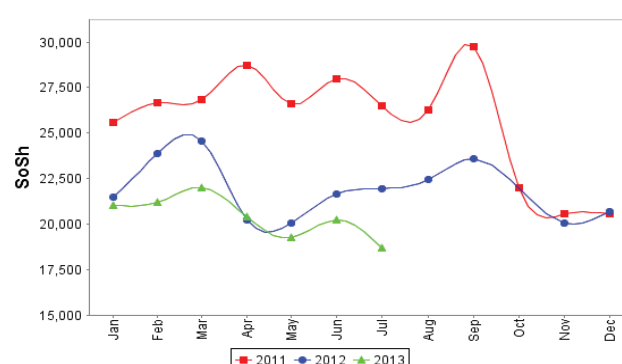


Figure 26: Water Drum





# Regional analysis: Banadir Region

Indicator	5-Year Average (2008-2012)	Jul-12	Jun-13	July-13 Nominal Price	July-13 Real (Deflated) Price	% Change Same Month Previous Year	% Change Previous Month	% Change 5-year avrg (2008-2012)
<b>Imported Commodities Prices</b>								
Diesel 1 litre	31,813	27,500	19,292	19,867	10,542	-28%	3%	-38%
Imported Red Rice 1kg	23,605	13,325	12,688	12,867	6,793	-3%	1%	-45%
Petrol 1 litre	29,558	26,042	19,917	20,600	10,935	-21%	3%	-30%
Sugar	24,206	20,167	13,667	13,867	7,328	-31%	1%	-43%
Vegetable Oil 1 litre	46,560	35,750	22,875	22,900	12,167	-36%	0%	-51%
Wheat Flour 1kg	20,916	12,771	12,229	12,683	6,694	-1%	4%	-39%
Wheat Grain 1kg	11,920	11,683	8,450	7,333	3,828	-37%	-13%	-38%
<b>Cereal Prices</b>								
Red Sorghum 1kg	10,486	5,683	5,813	6,041	3,136	6%	4%	-42%
White Maize 1kg	12,504	8,633	6,918	7,719	4,035	-11%	12%	-38%
<b>Livestock &amp; Livestock Product Prices</b>								
Camel Local Quality (Head)	15,562,500	-	-	-	-	-	-	-
Cattle Local Quality (Head)	4,440,625	-	-	-	-	-	-	-
Fresh Camel Milk 1 litre	18,156	20,413	20,500	21,617	11,480	6%	5%	19%
Goat Export Quality (Head)	1,725,000	2,700,000	2,300,000	2,300,000	1,231,973	-15%	0%	33%
Goat Local Quality (Head)	1,746,083	2,173,750	2,157,500	2,195,000	1,175,726	1%	2%	26%
<b>Other Essential Items</b>								
Charcoal 50kg	155,725	170,292	203,125	196,833	105,340	16%	-3%	26%
Cowpeas 1 kg	26,702	16,883	13,263	13,107	6,921	-22%	-1%	-51%
Unskilled Labor Wage Rate	75,300	111,667	112,917	115,000	61,504	3%	2%	53%
Firewood Bundle	24,124	7,833	7,700	7,720	4,035	-1%	0%	-68%
Local Sesame Oil 1 litre	63,146	49,542	55,875	59,000	31,505	19%	6%	-7%
Exchange Rate (Somali Shilling per USD)	30,843	22,348	18,883	19,240	10,207	-14%	2%	-38%
<b>Terms of Trade</b>								
Labour Wage (Daily)/ Cereal (Maize(Kg))	6	13	16	15	-	15%	-9%	147%
Local Goat (Head)/ Cereal (Maize(Kg))	140	252	312	284	-	13%	-9%	104%
<b>Price Indices</b>								
Consumer Price Index	-	210	191	187	-	-11%	-2%	-

\* Data has been collected since May 2010

Figure 27: Trends in Cereal Prices

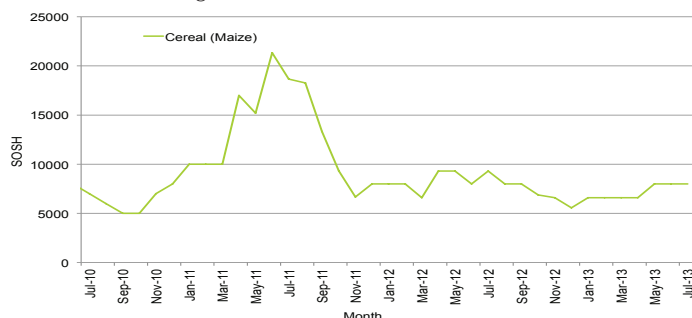


Figure 28: Bakara: Trends in Wage Rates and Relative Purchasing Power

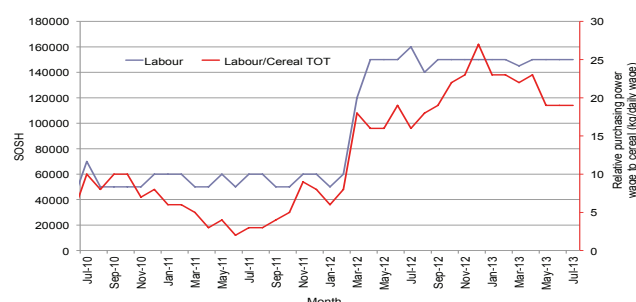


Figure 29: Imported Commodity Prices Compared to Exchange Rate

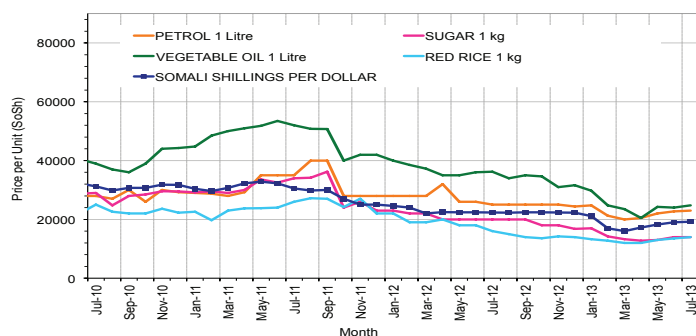


Figure 31: Exchange Rate

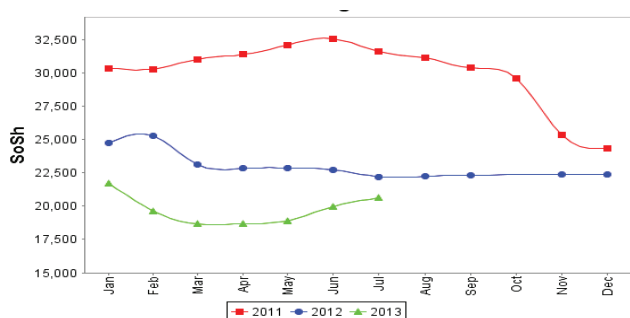


Figure 30: Goat Local Quality

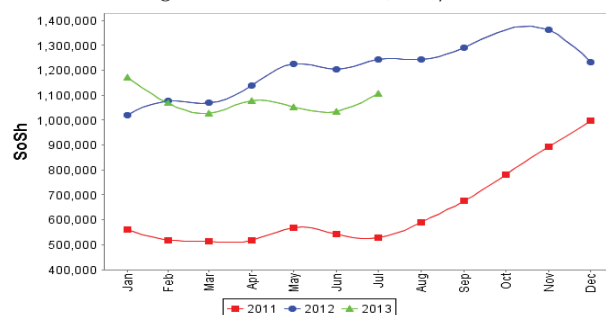
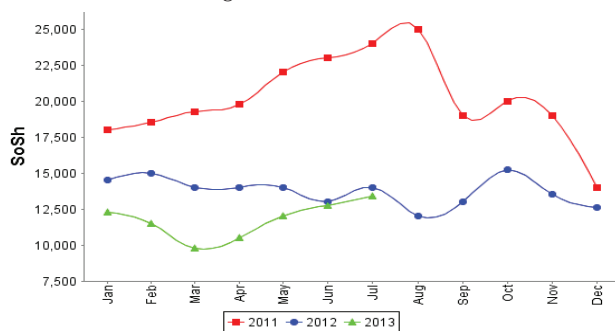


Figure 32: Wheat Flour



# Regional analysis: Central Regions

Indicator	5-Year Average (2008-2012)	Jul-12	Jun-13	July-13 Nominal Price	July-13 Real (Deflated) Price	% Change Same Month Previous Year	% Change Previous Month	% Change 5-year avrg (2008-2012)
<b>Imported Commodities Prices</b>								
Diesel 1 litre	36,370	31,750	27,850	27,780	14,490	-13%	0%	-24%
Imported Red Rice 1kg	31,252	20,550	18,700	19,210	9,989	-7%	3%	-39%
Petrol 1 litre	30,404	26,970	26,350	25,700	13,397	-5%	-2%	-15%
Sugar	29,046	25,990	20,450	21,530	11,207	-17%	5%	-26%
Vegetable Oil 1 litre	57,260	49,200	42,950	44,100	23,061	-10%	3%	-23%
Wheat Flour 1kg	26,082	17,410	16,900	16,920	8,786	-3%	0%	-35%
Wheat Grain 1kg	20,620	15,600	12,750	13,000	6,727	-17%	2%	-37%
<b>Cereal Prices</b>								
Red Sorghum 1kg	14,382	12,910	9,900	11,260	5,814	-13%	14%	-22%
White Maize 1kg	18,900	13,750	9,833	10,167	5,240	-26%	3%	-46%
<b>Livestock &amp; Livestock Product Prices</b>								
Camel Local Quality (Head)	7,517,500	9,950,000	11,768,750	11,731,250	6,160,995	18%	0%	56%
Cattle Local Quality (Head)	2,189,583	-	-	-	-	-	-	-
Fresh Camel Milk 1 litre	40,177	35,320	24,800	26,670	13,907	-24%	8%	-34%
Goat Export Quality (Head)	1,261,100	1,506,667	1,481,250	1,498,750	787,023	-1%	1%	19%
Goat Local Quality (Head)	894,160	1,295,000	1,212,000	1,221,500	641,415	-6%	1%	37%
<b>Other Essential Items</b>								
Charcoal 50kg	176,490	175,500	182,000	183,600	96,324	5%	1%	4%
Cowpeas 1 kg	35,418	25,700	16,400	17,080	8,870	-34%	4%	-52%
Unskilled Labor Wage Rate	78,680	85,500	85,500	92,700	48,585	8%	8%	18%
Firewood Bundle	26,032	35,250	33,250	33,850	17,678	-4%	2%	30%
Local Sesame Oil 1 litre	97,930	89,150	86,500	84,200	44,121	-6%	-3%	-14%
Exchange Rate (Somali Shilling per USD)	31,119	22,310	20,785	21,033	10,946	-6%	1%	-32%
<b>Terms of Trade</b>								
Labour Wage (Daily)/ Cereal (Rice(Kg))	3	4	5	5	-	16%	6%	92%
Local Goat (Head)/ Cereal (Rice(Kg))	29	63	65	64	-	1%	-2%	122%
Camel (Head)/Cereal (Kg)	241	484	629	611	-	26%	-3%	154%
<b>Price Indices</b>								
Consumer Price Index	-	221	178	190	-	-14%	7%	-

\* Data has been collected since May 2010

Figure 33: Trends in Cereal Prices

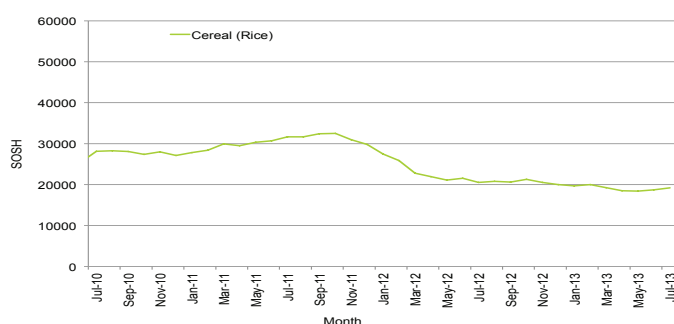


Figure 34: Trends in wage rates and relative purchasing power

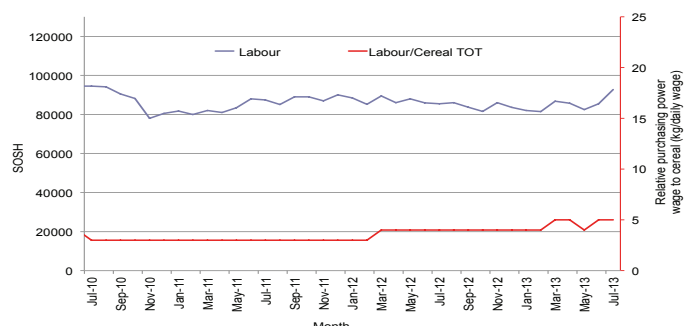


Figure 35: Imported Commodity Prices Compared to Exchange Rate

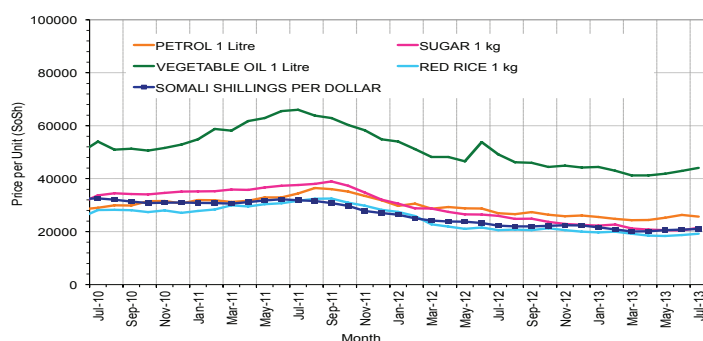


Figure 36: Goat Local Quality

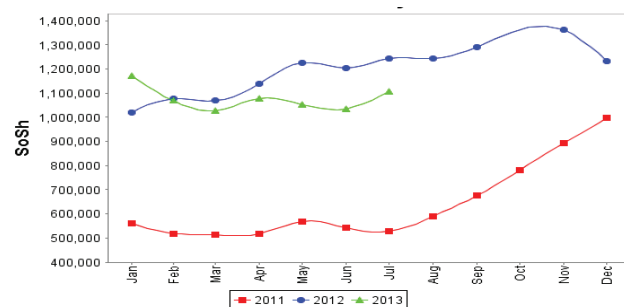


Figure 37: Exchange Rate

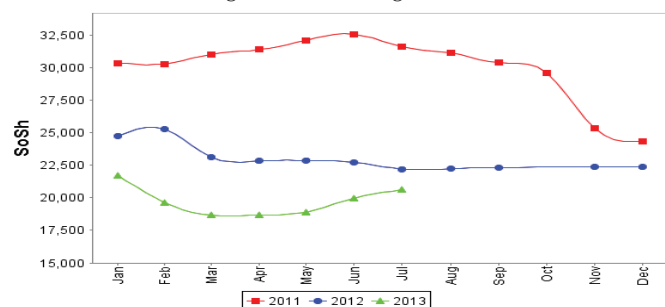
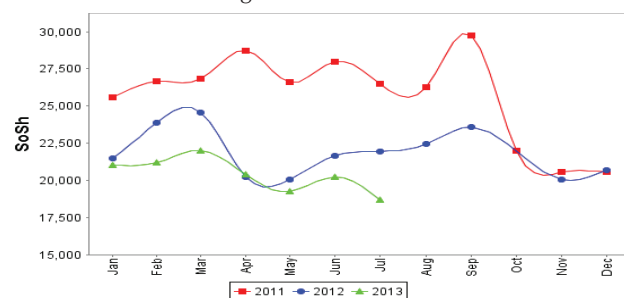


Figure 38: Water Drum



# Regional analysis: Northeast Regions

Indicator	5-Year Average (2008-2012)	Jul-12	Jun-13	July-13 Nominal Price	July-13 Real (Deflated) Price	% Change Same Month Previous Year	% Change Previous Month	% Change 5-year avg (2008-2012)
<b>Imported Commodities Prices</b>								
Diesel 1 litre	31,932	25,500	23,625	23,350	10,764	-8%	-1%	-27%
Imported Red Rice 1kg	27,112	20,125	15,625	15,938	7,316	-21%	2%	-41%
Petrol 1 litre	28,075	24,000	21,438	20,850	9,601	-13%	-3%	-26%
Sugar	26,022	23,125	18,375	18,688	8,595	-19%	2%	-28%
Vegetable Oil 1 litre	50,987	43,063	35,250	35,013	16,191	-19%	-1%	-31%
Wheat Flour 1kg	24,283	19,188	15,250	15,125	6,937	-21%	-1%	-38%
Wheat Grain 1kg	28,958	24,750	24,500	25,800	11,904	4%	5%	-11%
<b>Cereal Prices</b>								
Red Sorghum 1kg	21,174	24,250	19,750	19,800	9,113	-18%	0%	-6%
White Maize 1kg	21,230	22,250	20,000	20,000	9,206	-10%	0%	-6%
<b>Livestock &amp; Livestock Product Prices</b>								
Camel Local Quality (Head)	11,507,750	15,962,500	15,275,000	15,530,000	7,225,766	-3%	2%	35%
Cattle Local Quality (Head)	6,095,000	7,000,000	7,500,000	8,125,000	3,780,336	16%	8%	33%
Fresh Camel Milk 1 litre	35,975	38,833	33,813	36,495	16,881	-6%	8%	1%
Goat Export Quality (Head)	1,241,050	1,368,750	1,568,750	1,537,500	715,275	12%	-2%	24%
Goat Local Quality (Head)	1,130,425	1,348,125	1,450,000	1,427,875	664,268	6%	-2%	26%
<b>Other Essential Items</b>								
Charcoal 50kg	284,625	372,500	364,375	379,125	176,301	2%	4%	33%
Cowpeas 1 kg	42,453	38,083	29,000	28,767	13,285	-24%	-1%	-32%
Unskilled Labor Wage Rate	105,337	119,625	125,000	125,000	58,061	4%	0%	19%
Firewood Bundle	30,187	43,750	48,125	50,625	23,455	16%	5%	68%
Local Sesame Oil 1 litre	94,087	87,188	90,938	91,125	42,299	5%	0%	-3%
Exchange Rate (Somali Shilling per USD)	31,149	21,094	20,831	20,835	9,594	-1%	0%	-33%
<b>Terms of Trade</b>								
Labour Wage (Daily)/ Cereal (Rice(Kg))	4	6	8	8	-	32%	-2%	102%
Local Goat (Head)/ Cereal (Rice(Kg))	42	67	93	90	-	34%	-3%	115%
<b>Price Indices</b>								
Consumer Price Index	-	236	213	215	-	-9%	1%	-

\* Data has been collected since May 2010

Figure 39: Trends in Cereal Prices

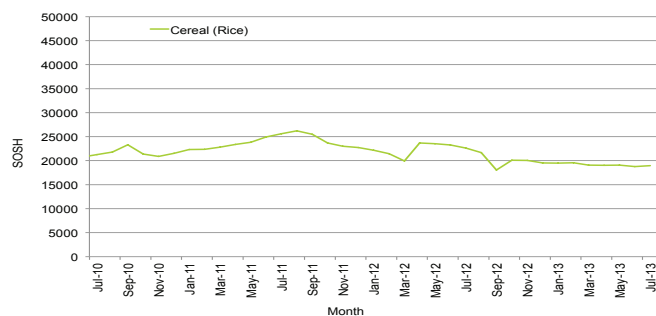


Figure 40: Trends in Wage Rates and Relative Purchasing Power

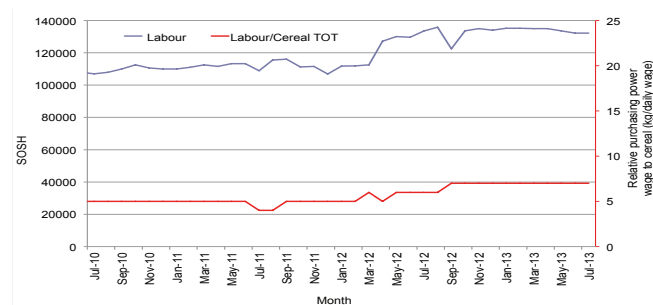


Figure 41: Imported Commodity Prices Compared to Exchange Rate

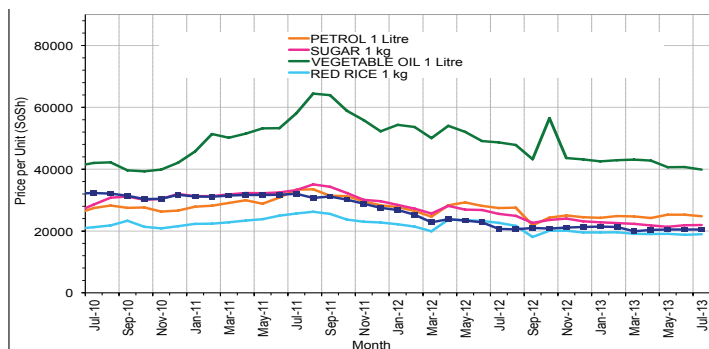


Figure 42: Goat Local Quality

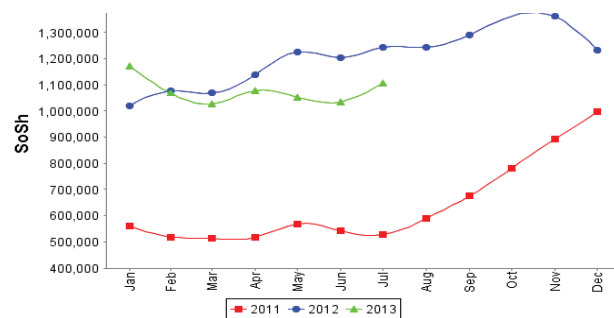


Figure 43: Exchange Rate

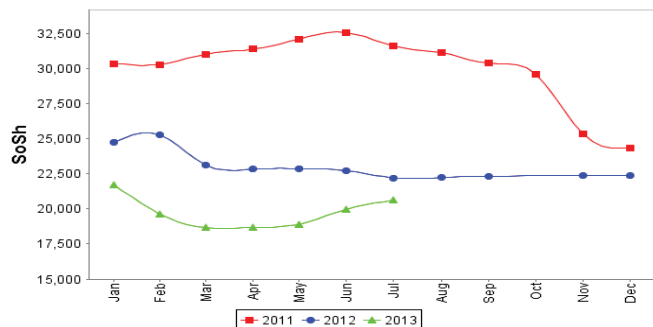
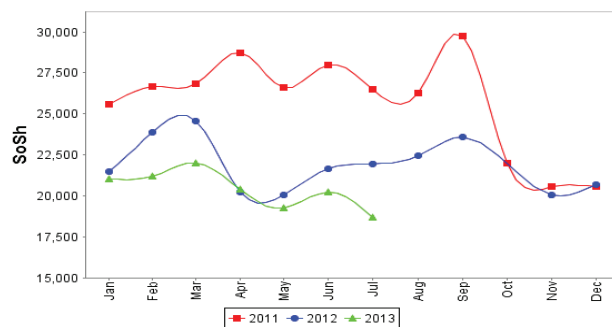


Figure 44: Water Drum



# Regional analysis: Northwest Regions

Indicator	5-Year Average (2008-2012)	Jul-12	Jun-13	July-13 Nominal Price	July-13 Real (Deflated) Price	% Change Same Month Previous Year	% Change Previous Month	% Change 5-year avrg (2008-2012)
<b>Imported Commodities Prices</b>								
Diesel 1 litre	6,171	6,923	6,670	6,767	5,719	-2%	1%	10%
Imported Red Rice 1kg	5,527	4,665	4,830	4,900	4,114	5%	1%	-11%
Petrol 1 litre	6,373	7,190	7,070	7,100	6,005	-1%	0%	11%
Sugar	5,680	6,073	5,560	5,640	4,750	-7%	1%	-1%
Vegetable Oil 1 litre	10,927	12,115	11,550	12,010	10,228	-1%	4%	10%
Wheat Flour 1kg	4,787	4,170	4,310	4,300	3,598	3%	0%	-10%
Wheat Grain 1kg	3,418	3,019	3,175	3,875	3,232	28%	22%	13%
<b>Cereal Prices</b>								
White Sorghum 1kg	3,880	3,450	3,160	3,216	2,666	-7%	2%	-17%
Yellow Maize 1kg	4,087	3,418	3,500	3,625	3,017	6%	4%	-11%
<b>Livestock &amp; Livestock Product Prices</b>								
Camel Local Quality (Head)	1,996,483	2,601,167	3,738,792	4,108,333	3,532,746	58%	10%	106%
Cattle Local Quality (Head)	1,361,250	1,833,250	2,255,042	2,443,000	2,100,690	33%	8%	79%
Fresh Camel Milk 1 litre	5,299	5,675	5,400	5,525	4,651	-3%	2%	4%
Goat Export Quality (Head)	304,147	434,400	483,150	473,100	406,729	9%	-2%	56%
Goat Local Quality (Head)	226,140	300,050	350,515	340,840	292,996	14%	-3%	51%
<b>Other Essential Items</b>								
Charcoal 50kg	32,359	40,870	44,150	43,840	37,599	7%	-1%	35%
Cowpeas 1 kg	10,185	9,333	9,500	9,438	8,016	1%	-1%	-7%
Unskilled Labor Wage Rate	32,340	40,200	41,700	42,100	36,103	5%	1%	30%
Firewood Bundle	3,953	3,333	3,500	3,333	2,766	0%	-5%	-16%
Local Sesame Oil 1 litre	24,318	25,438	28,250	29,038	24,870	14%	3%	19%
Exchange Rate (Somaliland Shilling per USD)	6,458	6,550	6,750	6,708	5,668	2%	-1%	4%
<b>Terms of Trade</b>								
Labour Wage (Daily)/ Cereal (Rice(Kg))	6	9	9	9	-	0%	0%	47%
Local Goat (Head)/ Cereal (Rice(Kg))	41	64	73	70	-	8%	-4%	70%
<b>Price Indices</b>								
Consumer Price Index	-	128	115	116	-	-9%	1%	-

\* Data has been collected since May 2010

Figure 45: Trends in Cereal Prices

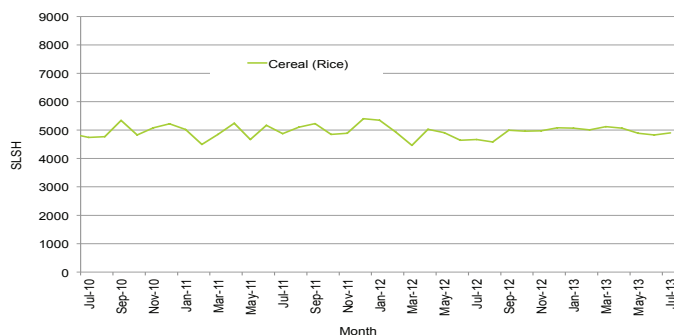


Figure 46: Trends in Wage Rates and Relative Purchasing Power

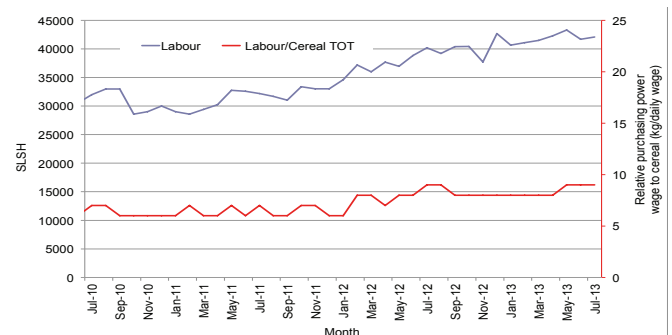


Figure 47: Imported Commodity Prices Compared to Exchange Rate

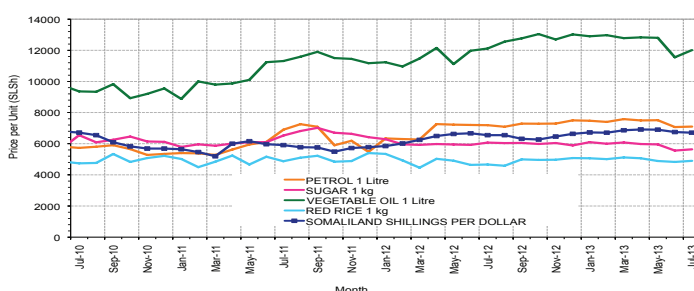


Figure 48: Goat Local Quality



Figure 49: Exchange Rate

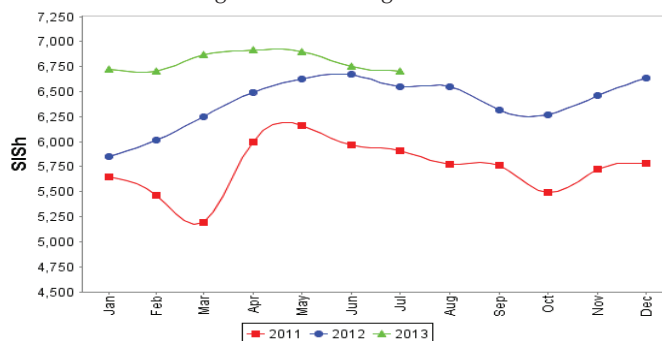
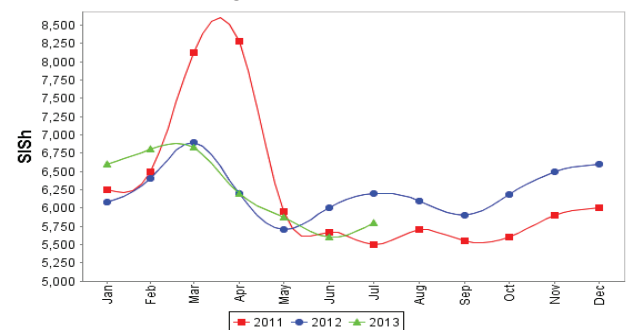


Figure 50: Water Drum



# Trends in Livestock Exports

Table 2: Berbera Livestock Exports (Number of Heads)

	1994	1995	1996	1997	1998	1999	2000	2001	2002	2003	2004	2005	2006	2007	2008	2009	2010	2011	2012	2013 (Jan - Jul)
Shoats	1,572,656	2,683,597	2,376,646	2,814,495	957,224	2,048,136	1,601,083	51,546	341,711	563,107	859,404	1,023,795	1,017,242	1,350,054	1,219,519	1,556,003	2,584,810	3,104,684	3,219,584	1,062,159
Cattle	173,400	167,128	65,127	66,939	92,213	89,967	63,263	20,973	37,547	84,312	131,852	148,151	85,631	88,143	80,051	88,005	133,021	150,934	190,354	95,875
Camels	38,553	21,993	42,801	50,587	11,663	37,430	16,984	3,473	18,864	21,874	5,147	5,069	22,810	14,245	26,515	20,206	92,651	107,281	102,664	57,661

Figure 51: Berbera Livestock Exports (Number of Heads)

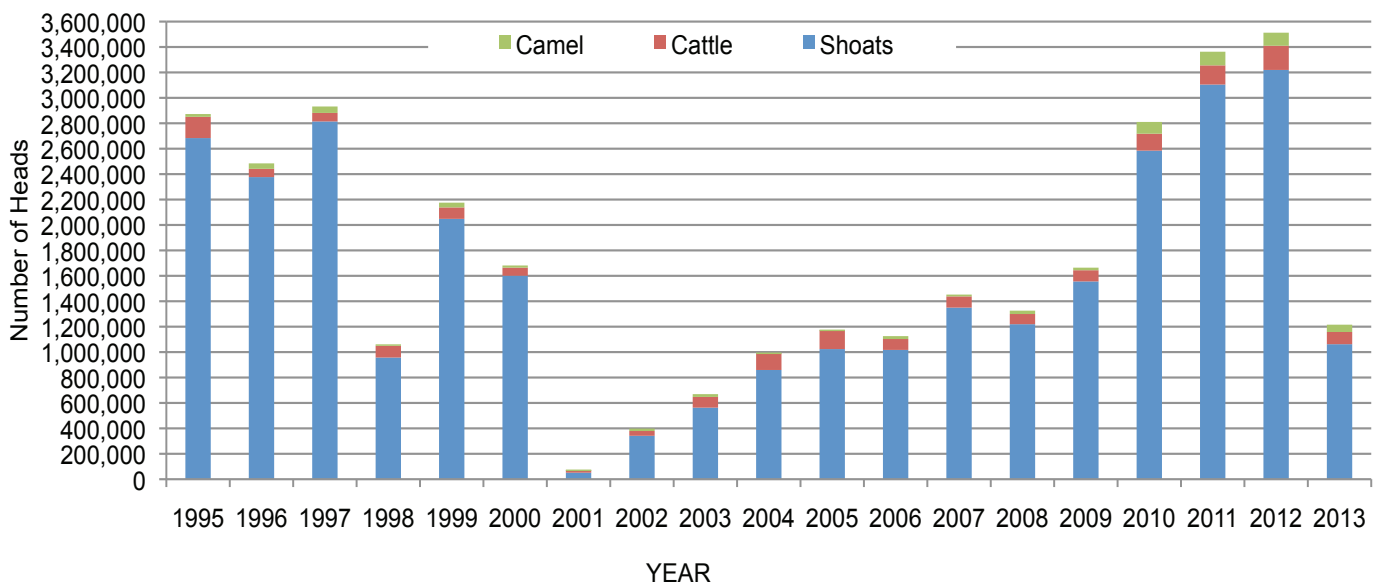
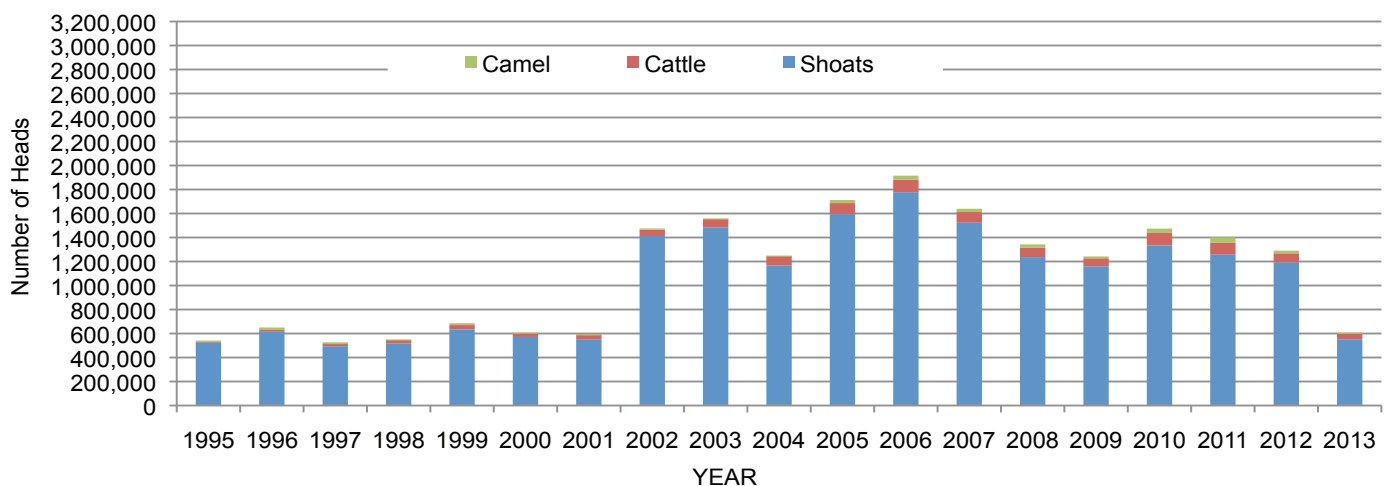


Table 3: Bossaso Livestock Exports (Number of Heads)

	1994	1995	1996	1997	1998	1999	2000	2001	2002	2003	2004	2005	2006	2007	2008	2009	2010	2011	2012	2013 (Jan - Jul)
Shoats	344,000	524,346	614,407	494,320	517,020	633,669	571,455	548,853	1,412,450	1,483,409	1,166,480	1,594,859	1,777,283	1,522,855	1,236,775	1,159,454	1,333,478	1,256,535	1,192,197	551,451
Cattle	1,450	8,795	15,335	17,831	29,492	36,586	27,604	42,248	53,313	71,328	79,994	91,910	104,595	89,190	78,046	67,385	103,808	99,058	76,043	45,276
Camels	5,397	8,392	20,462	14,599	3,938	15,544	8,177	1,950	9,720	4,259	2,488	26,109	33,724	27,580	27,639	15,331	36,865	45,878	22,288	9,827

Figure 52: Bossaso Livestock Exports (Number of Heads)



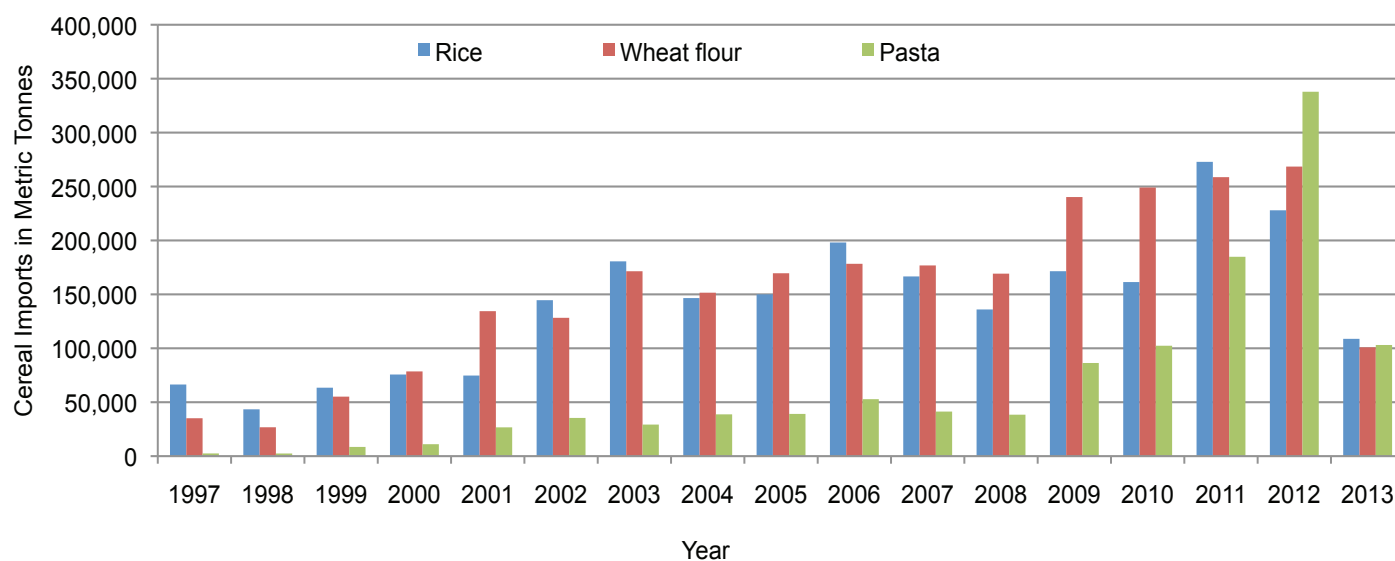


# Trends in Cereal Imports

Table 4: Total Cereal Imports (Berbera, Bossaso, Mogadishu)

	1997	1998	1999	2000	2001	2002	2003	2004	2005	2006	2007	2008	2009	2010	2011	2012	2013*
<b>Rice</b>	66,419	43,410	63,464	75,687	74,729	144,600	180,614	146,567	150,017	198,101	166,626	136,007	171,472	161,415	272,877	227,955	108,770
<b>Wheat flour</b>	35,143	26,774	55,176	78,555	134,425	128,263	171,442	151,555	169,583	178,345	176,821	169,208	240,247	249,080	258,679	268,491	100,894
<b>Pasta</b>	2,510	2,455	8,544	11,071	26,702	35,425	29,273	38,749	39,153	52,815	41,331	38,441	86,372	102,373	184,849	337,878	103,066

Figure 53: Total Cereal Imports (Berbera, Bossaso and Mogadishu)



\*Mogadishu data is up to March 2013; the data is from Elmaan Port.

\*Berbera data is up to July 2013.

\*Bossaso data is up to June 2013.