

# Market Data Update

July 2012



Food Security and Nutrition Analysis Unit - Somalia



Issued August 22<sup>nd</sup>, 2012

## Highlights

- **Inflation:** The July Consumer Price Index (CPI) rose marginally in most regional markets of southern and northern parts of Somalia while falling slightly (2%) in Central. Annual inflation rates are significantly lower in Central (30%) and South (41%) but relatively stable in the both northern zones (5-9%). The cost of living is significantly higher (110-136%) compared to the base period (March 2007) in SoSh areas, while it is moderately elevated (28%) in SiSh areas.

- **Exchange rates:** Local currencies (SoSh & SiSh) were largely stable against the dollar (USD) over the last month. However, when compared to the same month a year ago, SiSh has lost ground (23%) to the USD, whereas SoSh appreciated considerably (28-34%). The appreciation of the Somali Shilling is attributed to the increased supply of dollars through humanitarian interventions and foreign investments, particularly in Mogadishu. On the other hand, the weakened SiSh is mainly due to reduced dollar earnings from export markets as well as increased supply and circulation of new currency notes.

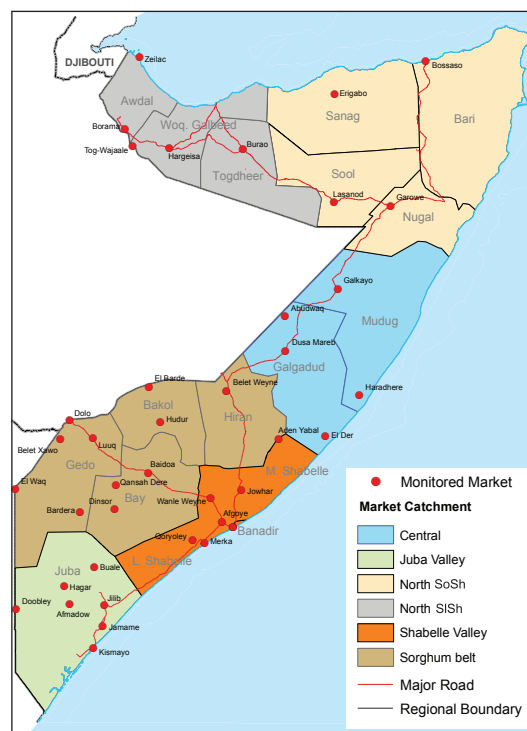
- **Local grain prices:** Maize and red sorghum prices increased slightly (3-7%) in most markets over the last month. However, in Hudur Market (Bakool region), the prices surged significantly (21%) as a result of restricted trade movement in/out of the town due to insecurity. Remarkably, sorghum prices decreased by five percent in Central zone. Anticipated poor Gu 2012 harvest in the South was one of the major driving factors of the appreciation of local cereal prices over the past month. Compared to a year ago, cereal prices are considerably lower in the South and Central zones and more stable in the North.

- **Prices of most imported commodities** extended stable or declining trends observed in the previous months into July 2012. However, these commodities were significantly lower when compared to the same period last year. The declining trend in the prices of import commodities is mainly attributed to the strengthened SoSh, increased trade flows from Mogadishu Port, and ongoing humanitarian assistance.

- **Livestock prices** were mixed, exhibiting slight monthly decreases particularly in Central, Shabelle, North East and parts of Juba, Gedo and Hiran. Monthly livestock price degeneration was however due to increased market supply, mainly to repay accumulated debts. On the other hand, these prices rose in Northwest (7-15%), Mogadishu, Bay and Bakool. Compared to the same month last year, livestock prices are significantly higher across all regions. The annual price appreciation was mainly due to improved body conditions, low supply of saleable stock and high demand from Saudi Arabia (main importer). Milk prices rose in most markets in July except in Northwest regions (9%). The appreciation in milk prices is due to low production as most livestock are still in gestation period and are headed to the dry season.

- **Labour wages** were mixed in July. The wages increased slightly (3-9%) in Lower Juba, Banadir, Northwest and Hiran; they rose significantly (28%) in Middle Juba while declining (5-9%) in Shabelle, Bay, Bakool and Gedo. The improvements in wage rates were mainly due to rehabilitation and reconstruction works in Mogadishu; increased portage activities occasioned by improved flow of goods from Mogadishu Port; and reactivation of the market functioning. The decline in labour wages is due to the seasonal decline in agricultural labour opportunities at this time of the year. Labour wages are significantly higher compared to their level a year ago in most markets.

- **Terms of Trade (ToT)** between labour wage and cereals exhibited mixed trends in July. The ToT remained stable in Mogadishu and Northeast; increased moderately (8-17%) in Hiraan, Juba, Northwest and Central; declined slightly (6-13%) in Bay and Gedo but significantly decimated (20-38%) in Shabelle and Bakool. At the same time, the ToT between local goat and cereals remained stable in most markets but declined moderately (7-9%) in Shabelle and Northeast, while rising somewhat in Northwest (12%). However, the ToT fell significantly in Bakool (31%) due to a sharp increase in cereal prices in this region. The purchasing power has improved when compared to a year ago on the backdrop of lower cereal prices, improved goat prices and higher labour wages.



This Market Data Update is a monthly report that presents a compilation of tabulated graphical market information produced regularly as part of the monthly monitoring process.

The weekly price data is collected from 47 main markets throughout Somalia since 1995.

The 5-year period of 2003-07 was characterised by fairly stable prices and relatively low inflation. In this bulletin, these years are used as a reference period for seasonal trends comparison.

Market analysis is an integral part of all of FSNAU's Annual Food Security Projections and seasonal technical reports (Technical Reports on FSNAU Post Gu and Deyr Analysis).

This data is available online on [www.fsnau.org/ids](http://www.fsnau.org/ids).

Technical and Managerial Support



Funding Agencies



# Regional Market Highlights

- **Juba Valley:** Maize and imported food prices were stable while livestock prices declined over the month of July. Prices are significantly lower than a year ago for imported food and maize, but higher for livestock. Monthly and annual comparisons of ToT between labor and cereals indicate improvement in purchasing power, with a day's labour worth 11kgs of maize in July 2012.
- **Sorghum Belt:** Over the last month, local cereal prices were stable in Hiran, increased slightly in Bay (3%) and Gedo (6%) but were up significantly in Bakool (21%). Imported commodity and livestock prices were generally stable over the last month. Prices of imports and local cereals are significantly lower compared to their levels a year ago while those of livestock are significantly higher. The ToT between labour and cereals declined (14%) as a result of declining wage rates and increased cereal prices. However, when compared to a year ago, the ToT is almost 4-times higher (15kg/daily wage) in Bay region and 1-2 times higher in the rest of the Sorghum Belt regions.
- **Shabelle Valley:** In July 2012, the prices of imported food and maize showed slight monthly increases, while cattle prices remained stable. Increased cereal prices coupled with reduced labour wages reduced the monthly ToT by 13 percent (currently standing at 8kg for a day's labour). Prices of most imported commodities and cereals are significantly lower when compared to the same month a year ago. Livestock prices, on the other hand, are significantly higher over the same period.
- **Central:** With the exception of wheat flour prices, which increased by 15 percent, the prices of monitored commodities were largely stable in most markets in July. Annual comparisons indicate significant decreases in the prices of all items except livestock, which are significantly higher. ToT (rice/ local goat) improved marginally over the month of July but are significantly elevated (124%) when compared to the same month last year, currently standing at 63kg/local goat.
- **Northeast:** Slight reduction recorded for prices of imported food, sorghum and livestock over the previous month. Annual price comparisons show significant decline for imported commodities and local cereals while those of livestock are higher. ToT (rice/ local goat) reduced marginally over the month of July but is significantly elevated (40%) when compared to the same month last year, currently standing at 67kg/local goat.
- **Northwest:** Prices of local cereals, livestock and imported commodities increased marginally over the month of July. Annual price comparison indicates slightly lower prices for imports and cereals and considerably inflated prices for livestock. The monthly and annual comparison of ToT between local white sorghum and wages indicate significant improvement by 17 percent and 56 percent respectively, currently equivalent to about 14kg/daily wage rate.
- **Banadir:** In the last month, the prices of imported commodities, locally produced cereals and livestock rose slightly. With the exception of currently highly valued livestock, prices of most items are significantly below their levels a year ago. ToT cereal (maize/ labour wage) remained almost at the June 2012 level (13 Kg/daily labour) and is nearly 3-times as high as in the same month in 2011.

**Table 1: Monthly and Annual Changes in Terms of Trade**

ToT: Mt of Cereals (kg) per Daily Labour Wage Rate Region	Cereal used	Jul 11	Jun 12	12-Jul	Monthly change	Annual change
		(kg/daily wage)	(kg/daily wage)	(kg/daily wage)	(%)	(%)
Banadir	White Maize	4	13	13	0%	225%
Bay	Red Sorghum	3	16	15	-6%	400%
Bakool	Red Sorghum	3	8	5	-38%	67%
Gedo	Red Sorghum	5	16	14	-13%	180%
Hiraan	White Maize	7	13	14	8%	100%
Juba	White Maize	3	10	11	10%	267%
Shabelle	White Maize	4	10	8	-20%	100%
Northeast	Red Sorghum	4	5	5	0%	25%
Northwest	White Sorghum	9	12	14	17%	56%
Central	Red Sorghum	4	6	7	17%	75%

# International Market Highlights

## International Price Highlights-August 2012

**Diesel:** Crude oil prices in Abu Dhabi (Dubai), the main source of Somalia's oil imports, showed a six percent monthly increase to settle at the near \$100/barell in July<sup>1</sup>. This represents a price reversal after a three-month declining streak. According to the International Energy Agency's Oil Market Report (August 2012), the reasons that contributed to the overall increase in global crude oil prices included; global economic slowdown, re-emergence of geopolitical tensions and production problems in the North Sea<sup>2</sup>.

**In Somalia Port Cities (Bossaso and Mogadishu), diesel prices remained stable when compared to June 2012 but declined significantly (23-32%) over the last year, the latter supported by stronger domestic currency (SoSH) and increased supply following opening up of Mogadishu Port.**

**Rice:** The FAO's Rice Price Index<sup>3</sup> remained mostly unchanged in July (barely one point more than in June), stabilized by supply-side pressures in Thailand<sup>4</sup>. However, the benchmark Thai rice export price (Thai A1 Super 1/ B)<sup>5</sup> exhibited two-percent monthly decline in July, averaging USD 536 per tonne; but this price is still 9 percent higher than in July 2011. The decline in July mainly reflected slow pace of exports from the country. Going forward, drought and crop failure in the U.S. could increase volatility across the grains sector and probably spike the global rice prices, with serious food security implications in net food importing countries.

**In July, prices of imported rice in Bossaso and Mogadishu ports declined by 4-11 percent from the previous month. The decline is particularly significant when compared to the same month a year ago, supported by humanitarian rice distributions, stronger domestic currency and improved port operations (Mogadishu).**

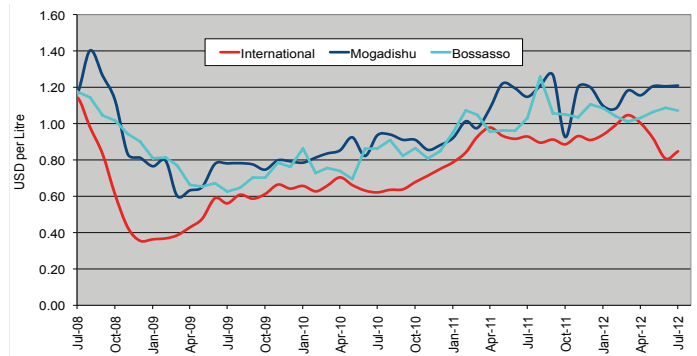
**Sugar:** The FAO Sugar Price Index<sup>6</sup> averaged 324 points in July, indicating 12 percent increase from June, following the steady fall since March. The upturn was triggered by untimely rains in Brazil, the world's largest sugar exporter, which hampered sugarcane harvesting in July. Concerns over delayed monsoon in India and poor precipitation in Australia also contributed to the price increase. The sugar prices have declined significantly (19%) when compared to July 2011.

**Sugar prices have reduced in the local port markets of Somalia, dipping slightly over the previous month but significantly (36-41%) when compared to the same period in 2011, the latter due to higher supply of through commercial imports and humanitarian assistance, as well as the effect of the time lag in international price transmission.**

**Cooking Oil:** the FAO Oils/Fats Price Index<sup>7</sup> averaged 226 points in July, up 5 points (or 2 percent) from June. The increase, which follows two months of contraction, maintains the index above the historical average but below the peaks recorded in 2008 and 2011. The rebound in the index was primarily driven by soyoil, reflecting the tight supply and demand outlook for soybeans, the prices of which have climbed to record levels. The current and prospective ample availabilities of palm, sunflower and rapeseed oil prevented the index from rising more pronouncedly. However, the cooking oil prices are expected to surge after the worst drought in the U.S.<sup>8</sup> in the last 50 years, which destroyed one-sixth of the country's expected corn crop and soybeans over the past month. The spill-over effects will be much pronounced in net food importing countries, Somalia included.

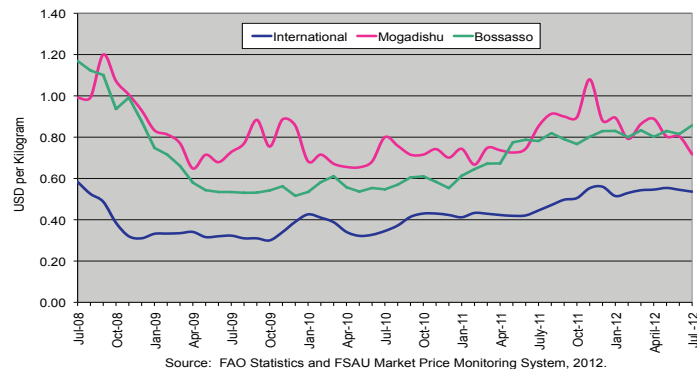
**International price transmission in cooking oil is not explicitly evident in port cities of Somalia. Specifically, vegetable oil prices remained stable over the previous month in Bosasso and Mogadishu but showed a significant annual decline (19-30%) in on the backdrop of on-going humanitarian interventions and improved port operations.**

Figure 1: Diesel Prices: Dubai, Mogadishu and Bossaso



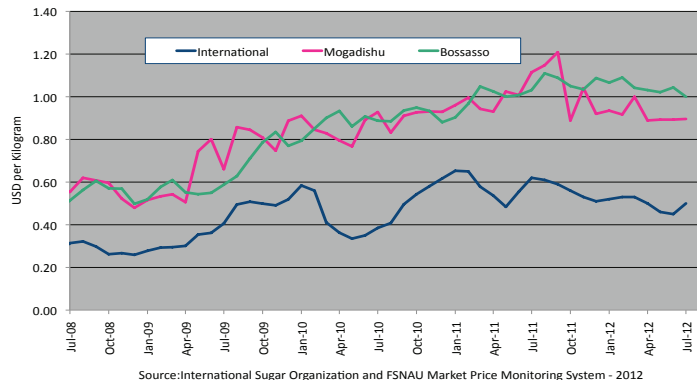
Source: FAO Statistics, FEWSNET and FSNAU Market Price Monitoring System, 2012

Figure 2: Rice Prices: Bangkok FOB, Mogadishu and Bossaso Markets



Source: FAO Statistics, FEWSNET and FSNAU Market Price Monitoring System, 2012

Figure 3: Sugar Prices: International, Mogadishu and Bossaso Markets



Source: International Sugar Organization, FEWSNET and FSNAU Market Price Monitoring System, 2012

1 Weekly Abu Dhabi Murban Spot Price FOB (Dollars per Barrel), US Energy Information Administration, [http://www.eia.doe.gov/dnav/pet/pet\\_pri\\_wco\\_k\\_w.htm](http://www.eia.doe.gov/dnav/pet/pet_pri_wco_k_w.htm)

2 International Energy Agency (IEA) Monthly Oil Market Report, August, 2012; <http://omrpublic.iea.org/currentissues/full.pdf>; [www.oilmarketreport.org](http://www.oilmarketreport.org)

3 FAO's Rice Price Index August 2012).

4 Grain Market Report, 2nd July 2012, International grain council report

5 Main cereal import in Somalia

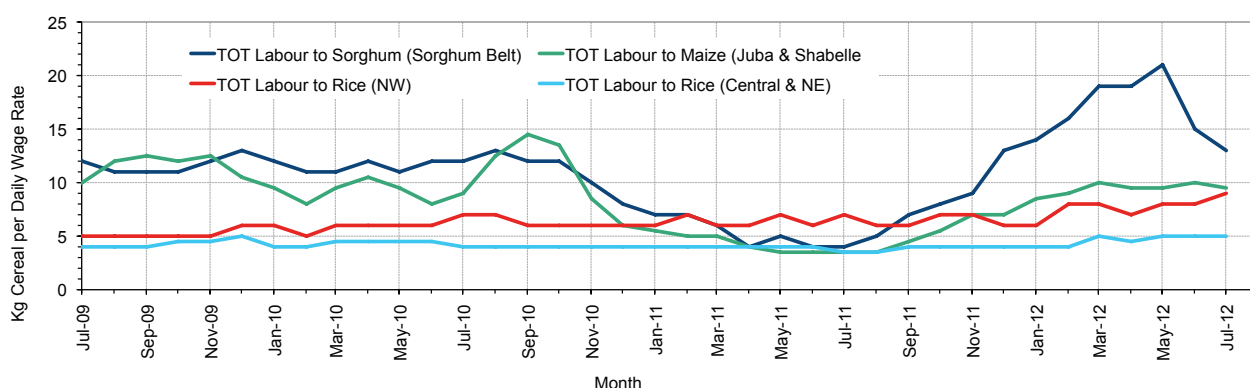
6 The World Food Situation: The FAO Food Price Index August 2012

7 Ibid

8 United States Department of Agriculture (USDA)

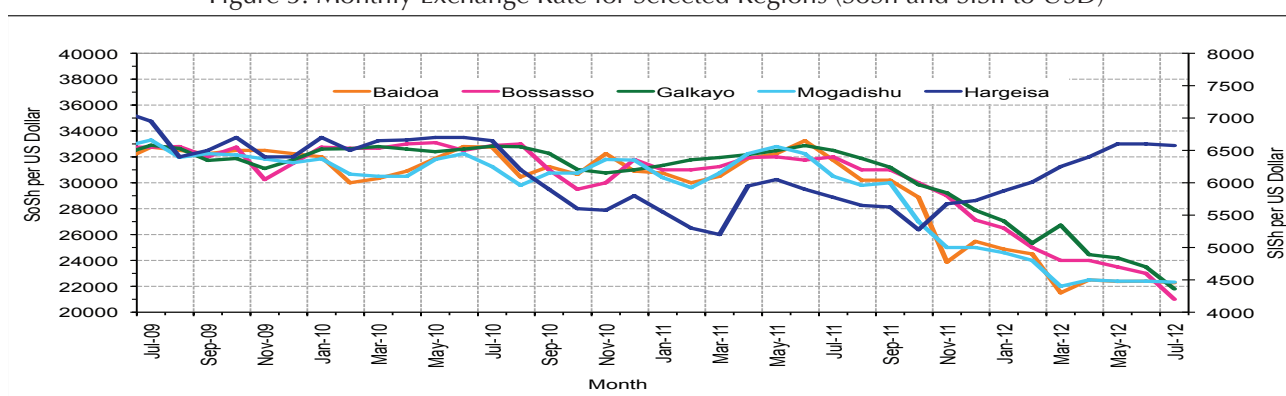
# National Trends: CPI, Exchange Rates, Cereal Prices and Relative Purchasing Power

Figure 4: Terms of Trade between wage rates and selected cereals



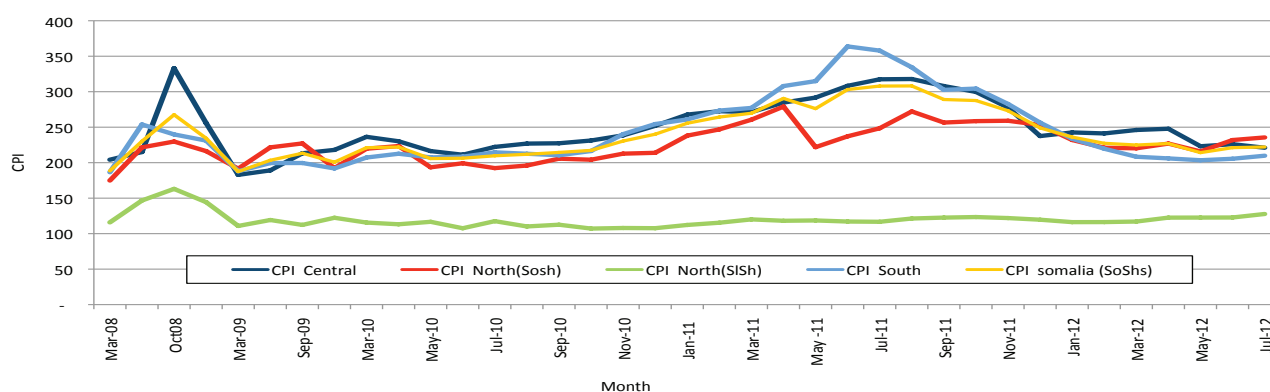
\* Purchasing power was relatively stable in most markets but declined in Bakool and Shabelle

Figure 5: Monthly Exchange Rate for Selected Regions (SoSh and SiSh to USD)



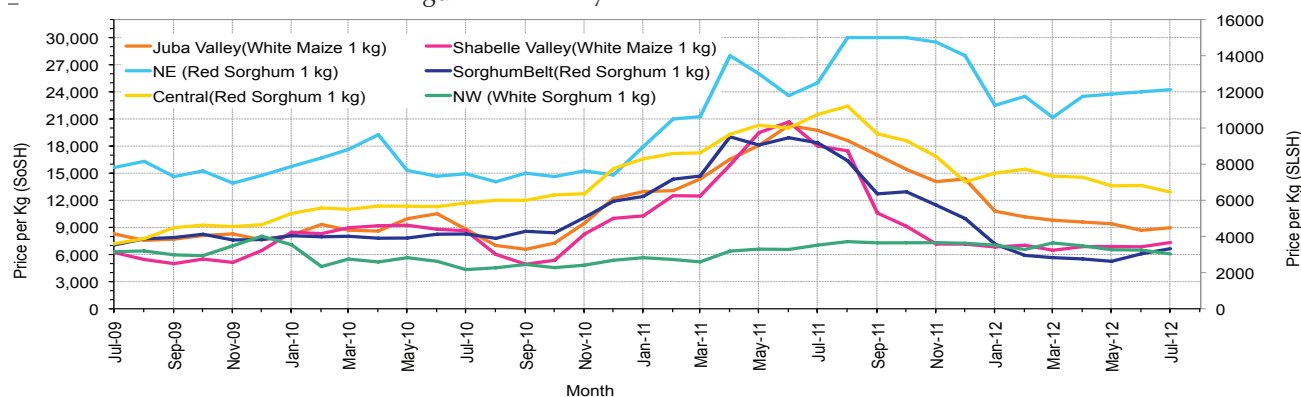
\*Local currencies largely stable against the greenback (USD) in July 2012.

Figure 6: Monthly Trends in Consumer Price Index (CPI, March 2007=100)



\*Inflation rose marginally in all the zones except for slight dip in Central

Figure 7: Monthly Trends in Local Cereal Prices



\*Local cereals were mixed; increasing slightly in most markets but significantly in Hudur (Bakool Region)



# Regional analysis: Juba Regions

Indicator	Jul-11	Jun-12	July-12 Nominal Price	July-12 Real (Deflated) Price	% Change Same Month Previous Year	% Change Previous Month	% Change 5-year avrg (2003-07)
<b>Imported Commodities Prices</b>							
Diesel 1 litre	40,000	33,571	33,071	15,663	-17%	-1%	152%
Imported Red Rice 1kg	25,821	17,321	17,500	8,241	-32%	1%	94%
Petrol 1 litre	37,179	35,786	34,571	16,378	-7%	-3%	124%
Sugar	34,857	21,143	23,107	10,914	-34%	9%	144%
Vegetable Oil 1 litre	61,833	39,036	35,607	16,872	-42%	-9%	91%
Wheat Flour 1kg	25,002	17,179	16,500	7,765	-34%	-4%	98%
Wheat Grain 1kg	20,000	-	-	-	-	-	-
<b>Cereal Prices</b>							
Red Sorghum 1kg	-	-	5,000	-	-	-	82%
White Maize 1kg	19,732	8,679	8,964	4,173	-55%	3%	209%
<b>Livestock &amp; Livestock Product Prices</b>							
Camel Local Quality (Head)	6,206,250	9,867,600	9,122,834	4,348,287	47%	-8%	222%
Cattle Local Quality (Head)	1,979,583	4,132,050	3,559,542	1,696,551	80%	-14%	130%
Fresh Camel Milk 1 litre	15,607	21,500	19,500	9,195	25%	-9%	262%
Goat Export Quality (Head)	860,179	1,642,714	1,691,250	806,032	97%	3%	336%
Goat Local Quality (Head)	525,714	1,074,750	1,129,750	538,394	115%	5%	312%
<b>Other Essential Items</b>							
Charcoal 50kg	59,821	94,357	82,679	39,309	38%	-12%	189%
Cowpeas 1 kg	36,850	23,386	21,786	10,284	-41%	-7%	178%
Unskilled Labor Wage Rate	63,393	90,500	98,464	46,833	55%	9%	211%
Firewood Bundle	6,071	8,071	9,000	4,190	48%	12%	304%
Local Sesame Oil 1 litre	90,786	70,304	65,071	30,916	-28%	-7%	204%
Exchange Rate (Somali Shilling per USD)	32,793	22,214	22,293	10,526	-32%	0%	40%
<b>Construction Materials*</b>							
Cement 50kg	349,583	294,917	312,571	148,887	-11%	6%	-
Cooking Pot Aluminium 7 Litre	332,500	291,321	292,679	139,405	-12%	0%	-
Galvanised Iron Sheet Ga 26	172,083	126,429	129,429	61,592	-25%	2%	-
Hollow Concrete Block 10cm x 20cm x 40cm	19,250	15,000	15,000	7,050	-22%	0%	-
Non Collapsible Jerrycan 10 Litre	29,167	34,000	34,000	16,106	17%	0%	-
Plastic Tarpaulin 14m x 5 m	480,000	294,167	307,083	146,271	-36%	4%	-
Roofing Nails 15Kg	829,286	807,857	807,857	384,964	-3%	0%	-
Timber 2in x 4in x 20ft	330,000	265,000	265,375	126,391	-20%	0%	-
Woven Dry Raised Blanket 150cm x 200cm	-	75,000	74,444	35,384	-	-1%	-
<b>Terms of Trade</b>							
Labour Wage (Daily)/ Cereal (Maize(Kg))	3	10	11	-	242%	5%	0%
Local Goat (Head)/ Cereal (Maize(Kg))	27	124	126	-	373%	2%	33%
<b>Price Indices</b>							
Consumer Price Index	358	206	210	-	-41%	2%	-
Purchasing Power Index	0.28	0.49	0.48	-	71%	-2%	-

\* Data has been collected since May 2010

Figure 8: Imported commodity prices compared to exchange rates

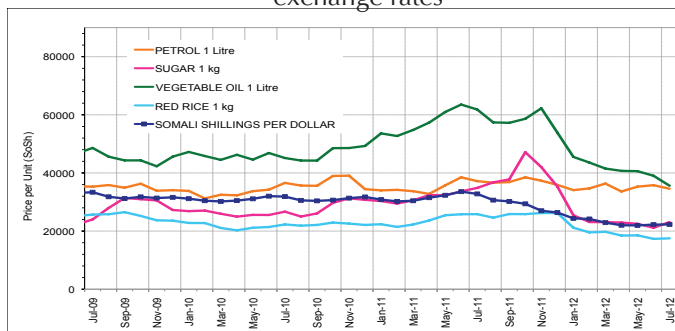


Figure 10: Goat Local Quality

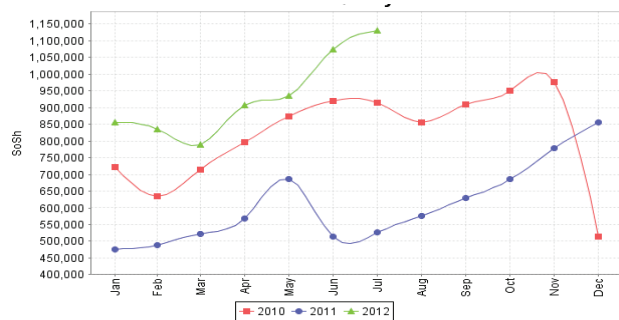


Figure 12: Water Drum

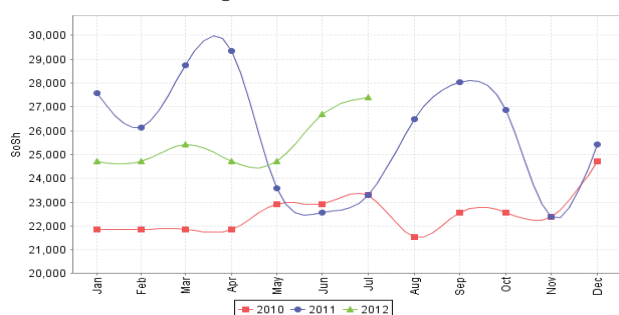


Figure 9: Trends in wage rates, staple cereal prices and relative purchasing power

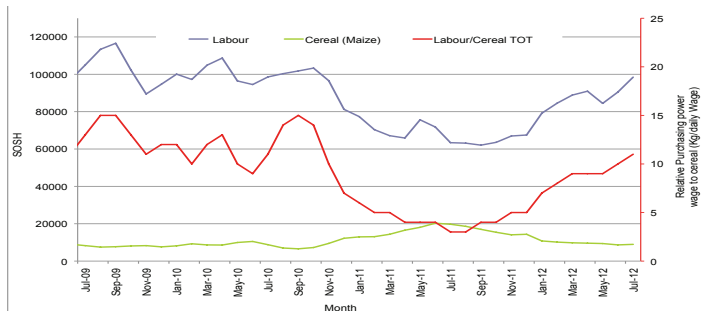


Figure 11: Exchange Rate

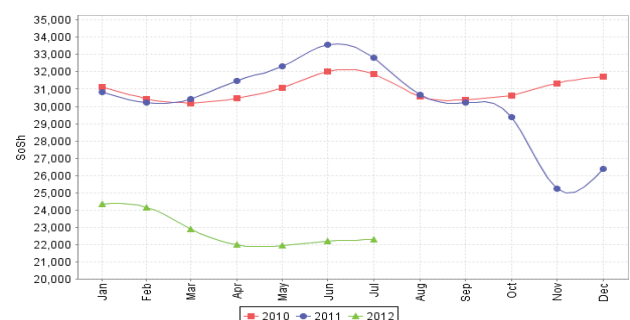
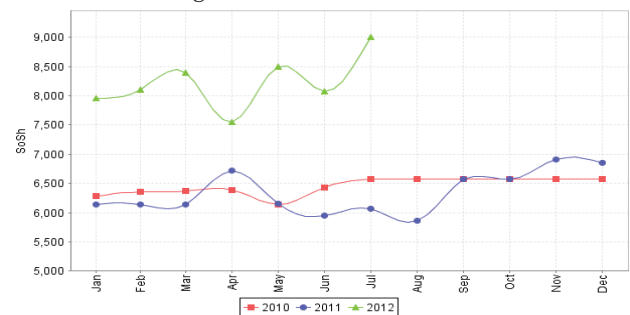


Figure 13: Firewood Bundle



# Regional analysis: Sorghum Belt Regions (Bay, Bakool, Gedo and Hiran)

Indicator	Jul-11	Jun-12	July-12 Nominal Price	July-12 Real (Deflated) Price	% Change Same Month Previous Year	% Change Previous Month	% Change 5-year avrg (2003-07)
<b>Imported Commodities Prices</b>							
Diesel 1 litre	43,750	32,659	32,445	15,365	-26%	-1%	171%
Imported Red Rice 1kg	28,216	20,091	19,900	9,385	-29%	-1%	130%
Petrol 1 litre	39,775	32,659	34,318	16,258	-14%	5%	123%
Sugar	35,114	23,455	23,795	11,242	-32%	1%	144%
Vegetable Oil 1 litre	64,386	43,886	44,750	21,230	-30%	2%	151%
Wheat Flour 1kg	25,455	18,250	18,145	8,549	-29%	-1%	115%
Wheat Grain 1kg	18,344	7,208	10,593	4,949	-42%	47%	170%
<b>Cereal Prices</b>							
Red Sorghum 1kg	18,360	6,080	6,650	3,070	-64%	9%	211%
White Maize 1kg	18,658	7,898	8,793	4,091	-53%	11%	196%
<b>Livestock &amp; Livestock Product Prices</b>							
Camel Local Quality (Head)	6,566,591	11,699,500	12,005,000	5,722,068	83%	3%	296%
Cattle Local Quality (Head)	1,545,625	3,697,500	3,631,250	1,730,731	135%	1%	180%
Fresh Camel Milk 1 litre	23,841	29,068	31,214	14,778	31%	7%	385%
Goat Export Quality (Head)	1,038,182	1,880,114	1,706,818	813,453	64%	-9%	315%
Goat Local Quality (Head)	527,227	1,203,636	1,242,727	592,244	136%	3%	369%
<b>Other Essential Items</b>							
Charcoal 50kg	110,364	156,364	144,977	69,003	31%	-7%	296%
Cowpeas 1 kg	40,563	26,536	21,919	10,348	-46%	-17%	272%
Unskilled Labor Wage Rate	80,545	88,977	83,545	39,722	4%	-6%	340%
Firewood Bundle	5,227	6,273	6,545	3,020	25%	4%	272%
Local Sesame Oil 1 litre	86,179	68,750	67,714	32,176	-21%	-2%	199%
Exchange Rate (Somali Shilling per USD)	31,627	22,736	22,220	10,491	-30%	-2%	39%
<b>Construction Materials*</b>							
Cement 50kg	343,333	337,750	337,560	160,798	-2%	0%	-
Cooking Pot Aluminium 7 Litre	340,500	264,444	264,444	125,947	-22%	0%	-
Galvanised Iron Sheet Ga 26	220,114	179,250	174,000	82,837	-21%	-3%	-
Hollow Concrete Block 10cm x 20cm x 40cm	11,500	10,500	11,250	5,262	-2%	7%	-
Non Collapsible Jerrycan 10 Litre	53,273	56,159	56,795	26,971	7%	1%	-
Plastic Tarpaulin 14m x 5 m	275,463	301,111	308,333	146,867	12%	2%	-
Roofing Nails 15Kg	851,667	762,222	892,333	425,229	5%	17%	-
Timber 2in x 4in x 20ft	220,714	280,375	285,000	135,745	29%	2%	-
Woven Dry Raised Blanket 150cm x 200cm	99,500	86,000	98,083	46,651	-1%	14%	-
<b>Terms of Trade</b>							
Labour Wage (Daily)/ Cereal (Sorghum(Kg))	4	15	13	-	186%	-14%	42%
Local Goat (Head)/ Cereal (Sorghum(Kg))	29	198	187	-	551%	-6%	51%
<b>Price Indices</b>							
Consumer Price Index	358	206	210	-	-41%	2%	-
Purchasing Power Index	0.28	0.49	0.48	-	71%	-2%	-

\* Data has been collected since May 2010

Figure 14: Imported commodity prices compared to exchange rates

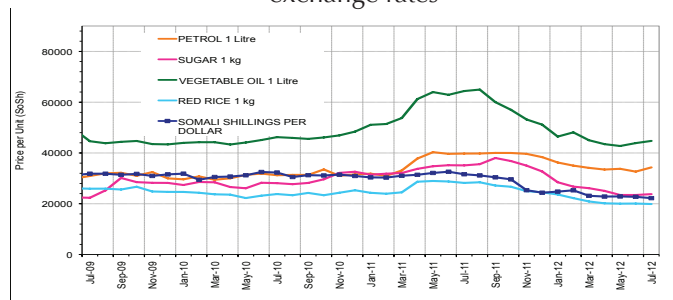


Figure 15: Trends in wage rates, staple cereal prices and relative purchasing power

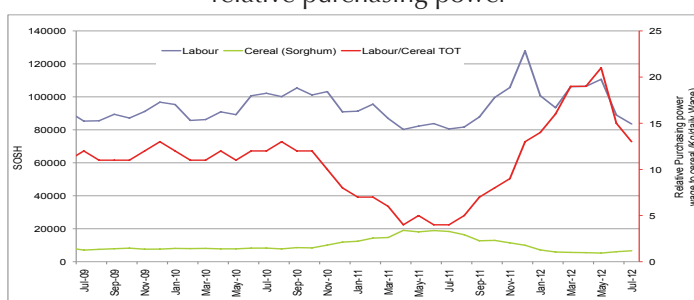


Figure 16: Goat Local Quality

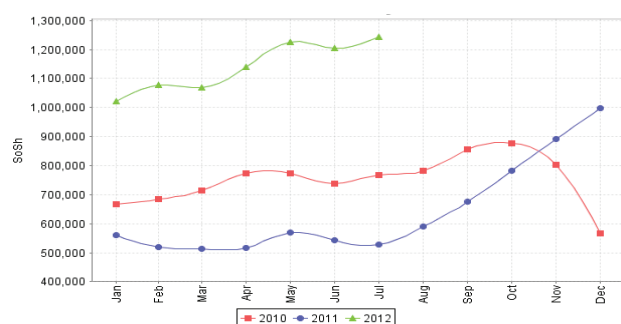


Figure 17: Exchange Rate

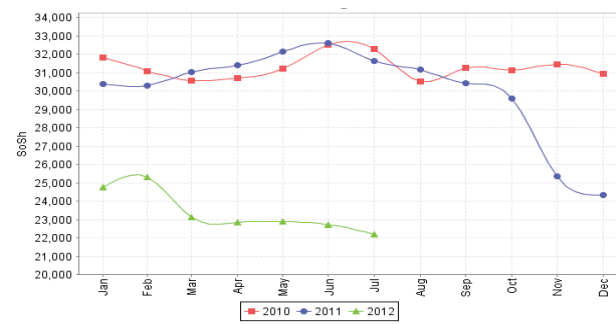


Figure 18: Water Drum

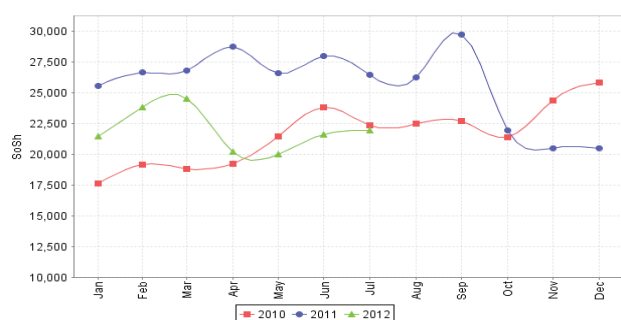
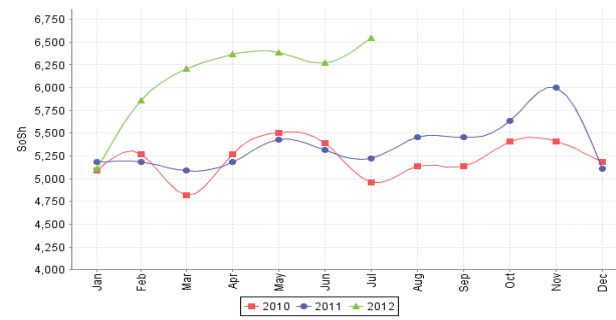


Figure 19: Firewood Bundle



# Regional analysis: Shabelle Regions

Indicator	Jul-11	Jun-12	July-12 Nominal Price	July-12 Real (Deflated) Price	% Change Same Month Previous Year	% Change Previous Month	% Change 5-year avrg (2003-07)
<b>Imported Commodities Prices</b>							
Diesel 1 litre	39,333	30,417	30,958	14,656	-21%	2%	201%
Imported Red Rice 1kg	24,708	14,458	15,708	7,387	-36%	9%	111%
Petrol 1 litre	37,333	31,458	31,667	14,994	-15%	1%	141%
Sugar	32,417	20,958	21,875	10,327	-33%	4%	167%
Vegetable Oil 1 litre	55,167	33,333	35,250	16,702	-36%	6%	144%
Wheat Flour 1kg	25,000	14,417	15,417	7,248	-38%	7%	109%
Wheat Grain 1kg	28,000	9,333	13,000	6,096	-54%	39%	232%
<b>Cereal Prices</b>							
Red Sorghum 1kg	21,240	8,706	9,167	4,269	-57%	5%	275%
White Maize 1kg	18,008	6,860	7,431	3,442	-59%	8%	125%
<b>Livestock &amp; Livestock Product Prices</b>							
Camel Local Quality (Head)	11,885,000	15,480,000	15,435,000	7,356,973	30%	0%	264%
Cattle Local Quality (Head)	2,727,500	4,590,000	4,517,500	2,153,161	66%	-2%	283%
Fresh Camel Milk 1 litre	19,250	16,833	18,333	8,638	-5%	9%	316%
Goat Export Quality (Head)	1,293,750	1,960,625	1,801,458	858,563	39%	-8%	267%
Goat Local Quality (Head)	788,083	1,224,583	1,216,250	579,624	54%	-1%	255%
<b>Other Essential Items</b>							
Charcoal 50kg	106,861	115,264	110,583	52,609	3%	-4%	183%
Cowpeas 1 kg	52,736	21,701	29,744	14,077	-44%	37%	433%
Unskilled Labor Wage Rate	65,917	66,042	62,500	29,691	-5%	-5%	224%
Firewood Bundle	4,750	5,875	5,875	2,700	24%	0%	169%
Local Sesame Oil 1 litre	65,625	44,583	47,000	22,302	-28%	5%	124%
Exchange Rate (Somali Shilling per USD)	31,500	22,750	22,638	10,690	-28%	0%	38%
<b>Construction Materials*</b>							
Cement 50kg	301,250	18,250	222,950	106,169	-26%	2%	-
Cooking Pot Aluminium 7 Litre	800,000	700,000	676,667	322,432	-15%	-3%	-
Galvanised Iron Sheet Ga 26	156,500	87,650	87,600	41,654	-44%	0%	-
Hollow Concrete Block 10cm x 20cm x 40cm	12,250	12,750	12,750	5,977	4%	0%	-
Non Collapsible Jerrycan 10 Litre	50,313	47,813	47,500	22,541	-6%	-1%	-
Plastic Tarpaulin 14m x 5 m	301,667	255,000	252,083	120,055	-16%	-1%	-
Roofing Nails 15Kg	664,167	579,000	579,000	275,880	-13%	0%	-
Timber 2in x 4in x 20ft	60,250	47,050	46,600	22,112	-23%	-1%	-
Woven Dry Raised Blanket 150cm x 200cm	76,333	73,917	75,250	35,768	-1%	2%	-
<b>Terms of Trade</b>							
Labour Wage (Daily)/ Cereal (Maize(Kg))	4	10	8	-	130%	-13%	44%
Local Goat (Head)/ Cereal (Maize(Kg))	44	179	164	-	274%	-8%	58%
<b>Price Indices</b>							
Consumer Price Index	358	206	210	-	-41%	2%	-
Purchasing Power Index	0.28	0.49	0.48	-	71%	-2%	-

\* Data has been collected since May 2010

Figure 20: Imported commodity prices compared to exchange rates

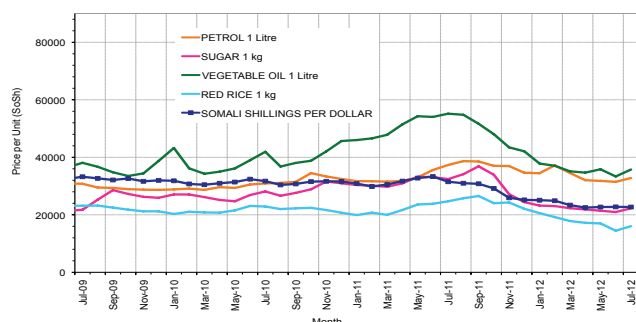


Figure 22: Goat Local Quality

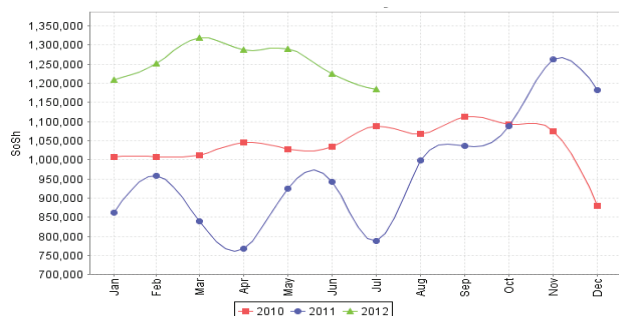


Figure 24: Water Drum

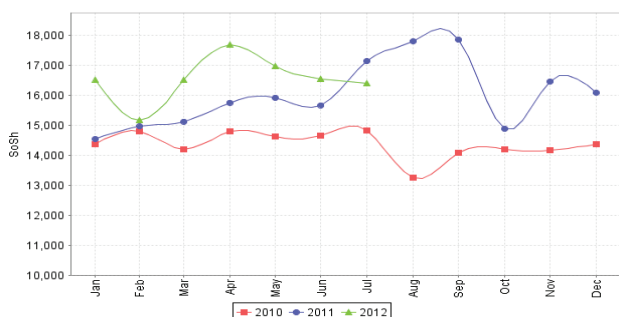


Figure 21: Trends in wage rates, staple cereal prices and relative purchasing power

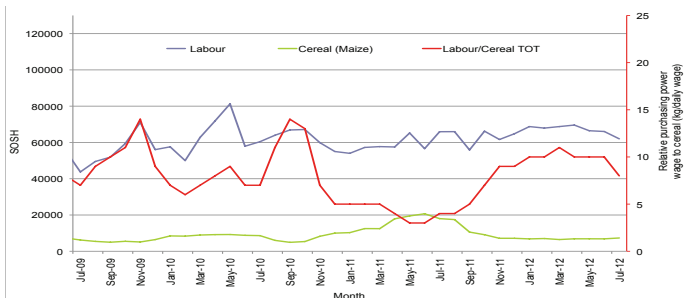


Figure 23: Exchange Rate

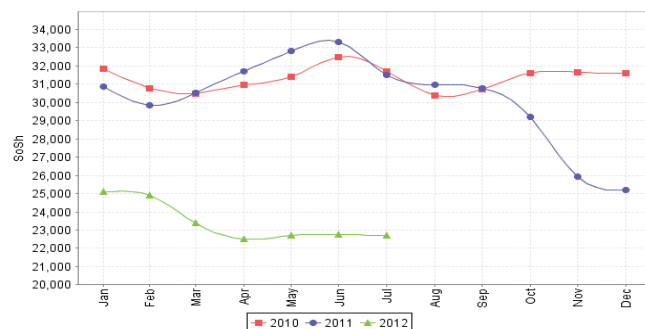
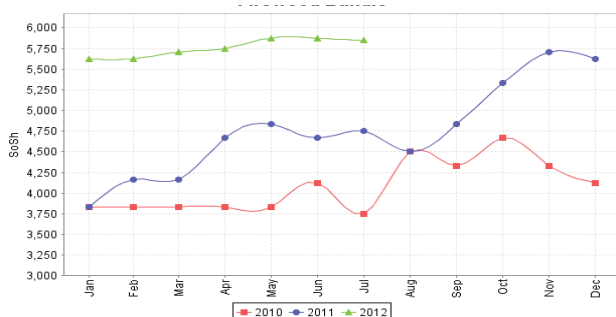


Figure 25: Firewood Bundle



# Regional analysis:Banadir Region

Indicator	Jul-11	Jun-12	July-12 Nominal Price	July-12 Real (Deflated) Price	% Change Same Month Previous Year	% Change Previous Month	% Change 5-year avrg (2003-07)
<b>Imported Commodities Prices</b>							
Diesel 1 litre	38,108	25,167	27,500	13,008	-28%	9%	181%
Imported Red Rice 1kg	24,617	13,375	13,325	6,251	-46%	0%	92%
Petrol 1 litre	35,125	27,250	26,042	12,313	-26%	-4%	108%
Sugar	32,283	18,833	20,167	9,513	-38%	7%	164%
Vegetable Oil 1 litre	54,967	36,042	35,750	16,940	-35%	-3%	153%
Wheat Flour 1kg	23,267	12,375	12,771	5,987	-45%	1%	87%
Wheat Grain 1kg	18,000	8,575	11,683	5,469	-35%	36%	194%
<b>Cereal Prices</b>							
Red Sorghum 1kg	22,052	5,383	5,683	2,609	-74%	6%	153%
White Maize 1kg	22,054	8,300	8,633	4,015	-61%	4%	161%
<b>Livestock &amp; Livestock Product Prices</b>							
Camel Local Quality (Head)	13,000,000	-	-	-	-	-	-
Cattle Local Quality (Head)	3,000,000	-	-	-	-	-	-
Fresh Camel Milk 1 litre	23,742	18,667	20,413	9,630	-14%	9%	282%
Goat Export Quality (Head)	1,400,000	2,600,000	2,700,000	1,286,852	93%	4%	-
Goat Local Quality (Head)	1,440,000	2,137,500	2,173,750	1,036,015	51%	2%	245%
<b>Other Essential Items</b>							
Charcoal 50kg	155,417	174,583	170,292	81,069	10%	-2%	70%
Cowpeas 1 kg	64,178	19,900	16,883	7,947	-74%	-15%	231%
Unskilled Labor Wage Rate	81,083	107,083	111,667	53,126	38%	4%	101%
Firewood Bundle	6,333	7,750	7,833	3,634	24%	1%	-81%
Local Sesame Oil 1 litre	67,192	49,417	49,542	23,514	-26%	0%	143%
Exchange Rate (Somali Shilling per USD)	32,546	22,392	22,348	10,552	-31%	0%	34%
<b>Construction Materials*</b>							
Cement 50kg	254,279	181,917	414,792	197,610	63%	128%	-
Cooking Pot Aluminium 7 Litre	294,000	345,000	337,500	160,769	15%	-2%	-
Galvanised Iron Sheet Ga 26	154,750	89,208	87,313	41,518	-44%	-2%	-
Hollow Concrete Block 10cm x 20cm x 40cm	10,063	9,792	10,333	4,825	3%	6%	-
Non Collapsible Jerrycan 10 Litre	49,333	45,250	40,000	18,966	-19%	-12%	-
Plastic Tarpaulin 14m x 5 m	330,833	261,500	207,500	98,805	-37%	-21%	-
Roofing Nails 15Kg	667,417	489,438	469,042	223,468	-30%	-4%	-
Timber 2in x 4in x 20ft	161,542	115,967	114,479	54,466	-29%	-1%	-
Woven Dry Raised Blanket 150cm x 200cm	81,250	114,000	117,000	55,668	44%	3%	-
<b>Terms of Trade</b>							
Labour Wage (Daily)/ Cereal (Maize(Kg))	4	13	13	-	252%	0%	-23%
Local Goat (Head)/ Cereal (Maize(Kg))	65	258	252	-	286%	-2%	32%
<b>Price Indices</b>							
Consumer Price Index	358	206	210	-	-41%	2%	-
Purchasing Power Index	0.28	0.49	0.48	-	71%	-2%	-

\* Data has been collected since May 2010

Figure 26: Bakara: Imported Commodity Prices compared to Exchange Rate

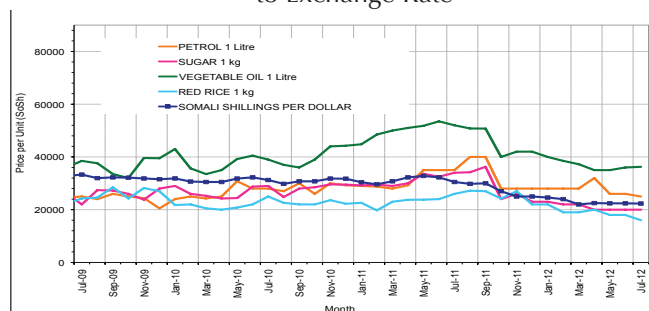


Figure 28: Goat Local Quality

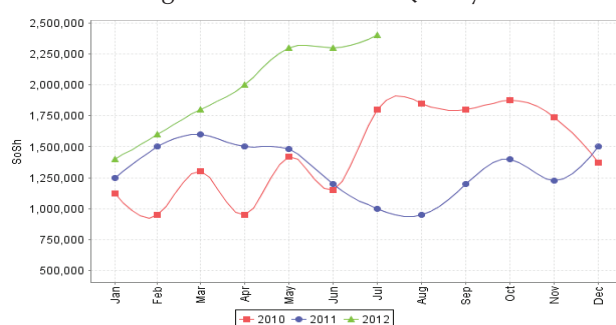


Figure 30: Wheat Flour

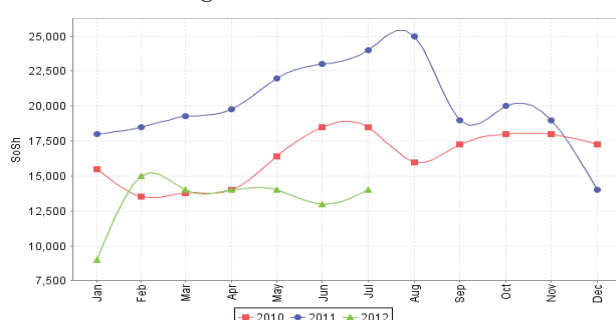


Figure 27: Bakara: Trends in Wage Rates, Staple Cereal Prices and Relative Purchasing Power

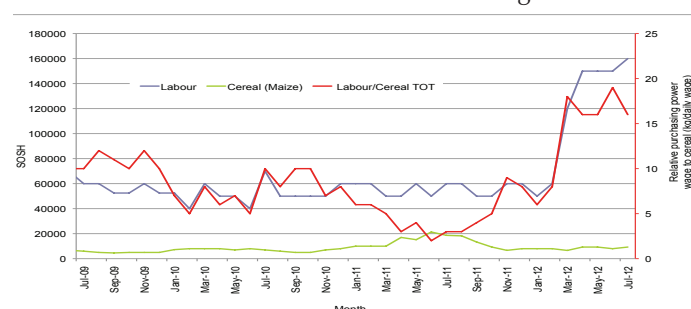


Figure 29: Exchange Rate

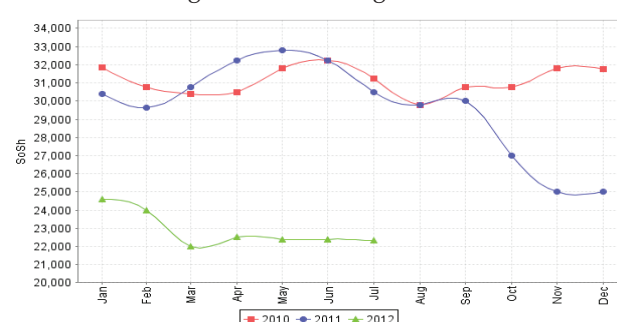
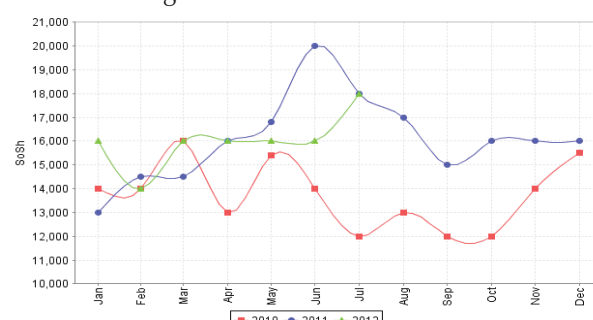


Figure 31: Fresh Camel Milk





# Regional analysis: Central Regions

Indicator	Jul-11	Jun-12	July-12 Nominal Price	July-12 Real (Deflated) Price	% Change Same Month Previous Year	% Change Previous Month	% Change 5-year avg (2003-07)
<b>Imported Commodities Prices</b>							
Diesel 1 litre	39,550	33,040	31,750	14,263	-20%	-4%	178%
Imported Red Rice 1kg	31,660	21,560	20,550	9,197	-35%	-5%	150%
Petrol 1 litre	34,400	28,720	26,970	12,101	-22%	-6%	112%
Sugar	37,640	26,480	25,990	11,657	-31%	-2%	168%
Vegetable Oil 1 litre	66,000	53,800	49,200	22,157	-25%	-9%	171%
Wheat Flour 1kg	25,100	17,960	17,410	7,776	-31%	-3%	117%
Wheat Grain 1kg	23,750	16,667	15,600	6,957	-34%	-6%	215%
<b>Cereal Prices</b>							
Red Sorghum 1kg	21,500	13,640	12,910	5,740	-40%	-5%	176%
White Maize 1kg	22,750	12,900	13,750	6,120	-40%	7%	195%
<b>Livestock &amp; Livestock Product Prices</b>							
Camel Local Quality (Head)	8,000,000	10,115,000	9,950,000	4,501,134	24%	-2%	379%
Cattle Local Quality (Head)	-	2,660,000	-	-	-	-	-
Fresh Camel Milk 1 litre	43,640	32,540	35,320	15,878	-19%	9%	242%
Goat Export Quality (Head)	1,458,333	1,577,500	1,508,667	681,494	3%	-4%	336%
Goat Local Quality (Head)	889,300	1,326,000	1,295,000	585,739	46%	-2%	416%
<b>Other Essential Items</b>							
Charcoal 50kg	193,200	180,600	175,500	79,294	-9%	-3%	228%
Cowpeas 1 kg	57,640	28,340	25,700	11,526	-55%	-9%	259%
Unskilled Labor Wage Rate	87,400	85,900	85,500	38,579	-2%	0%	170%
Firewood Bundle	34,000	35,400	35,250	15,847	4%	0%	747%
Local Sesame Oil 1 litre	99,000	91,050	89,150	40,230	-10%	-2%	210%
Exchange Rate (Somali Shilling per USD)	31,890	23,240	22,310	9,993	-30%	-4%	36%
<b>Construction Materials*</b>							
Cement 50kg	350,800	307,445	289,250	130,752	-18%	-6%	-
Cooking Pot Aluminium 7 Litre	415,200	390,400	392,000	177,235	-6%	0%	-
Galvanised Iron Sheet Ga 26	161,975	136,890	119,750	54,073	-26%	-13%	-
Hollow Concrete Block 10cm x 20cm x 40cm	16,250	15,900	33,438	15,027	106%	110%	-
Non Collapsible Jerrycan 10 Litre	52,000	49,600	46,600	20,981	-10%	-6%	-
Plastic Tarpaulin 14m x 5 m	322,400	290,850	280,000	126,568	-13%	-4%	-
Roofing Nails 15Kg	833,200	693,000	672,600	304,174	-19%	-3%	-
Timber 2in x 4in x 20ft	152,600	119,700	111,250	50,228	-27%	-7%	-
Woven Dry Raised Blanket 150cm x 200cm	136,000	136,800	136,000	61,424	0%	-1%	-
<b>Terms of Trade</b>							
Labour Wage (Daily)/ Cereal (Rice(Kg))	3	4	4	-	51%	4%	8%
Local Goat (Head)/ Cereal (Rice(Kg))	28	62	63	-	124%	2%	106%
Camel (Head)/Cereal (Kg)	253	469	484	-	92%	3%	92%
<b>Price Indices</b>							
Consumer Price Index	317	226	221	-	-30%	-2%	-
Purchasing Power Index	0.31	0.44	0.45	-	44%	2%	-

\* Data has been collected since May 2010

Figure 32: Imported commodity prices compared to exchange rates

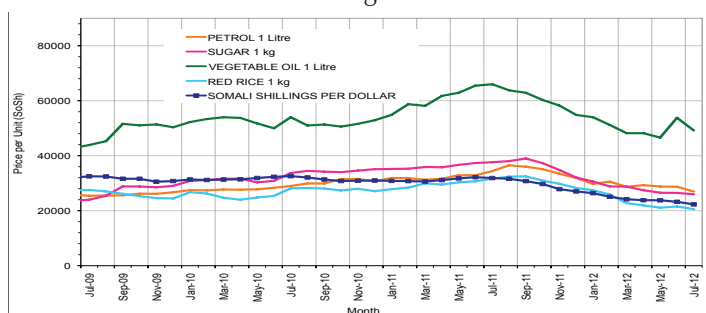


Figure 34: Goat Local Quality

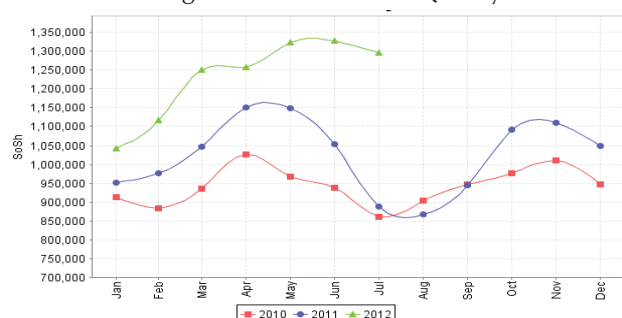


Figure 36: Water Drum

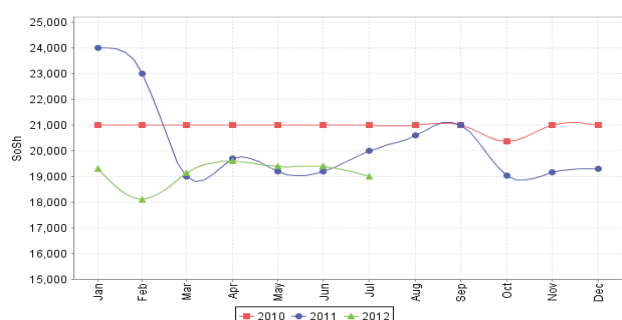


Figure 33: Trends in wage rates, staple cereal prices and relative purchasing power

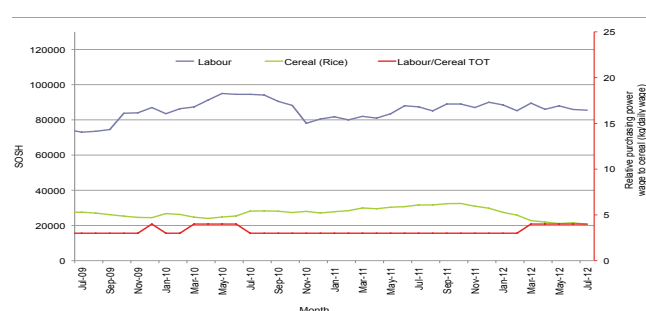


Figure 35: Exchange Rate

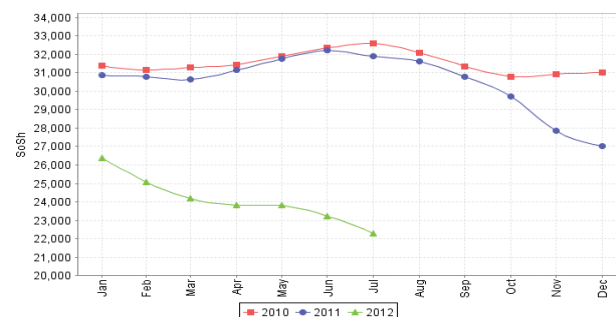
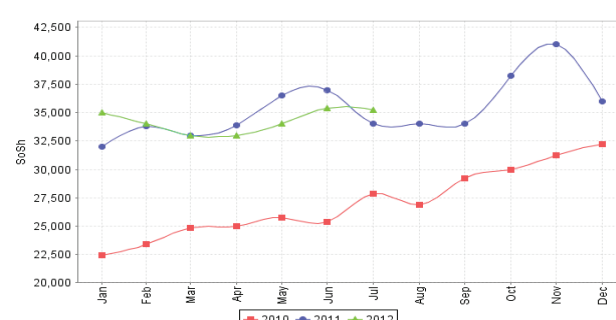


Figure 37: Firewood Bundle



# Regional analysis: Northeast Regions

Indicator	Jul-11	Jun-12	July-12 Nominal Price	July-12 Real (Deflated) Price	% Change Same Month Previous Year	% Change Previous Month	% Change 5-year avrg (2003-07)
<b>Imported Commodities Prices</b>							
Diesel 1 litre	36,250	27,500	25,500	10,725	-30%	-7%	160%
Imported Red Rice 1kg	25,625	20,563	20,125	8,444	-21%	-2%	190%
Petrol 1 litre	33,375	24,688	24,000	10,089	-28%	-3%	124%
Sugar	33,250	24,125	23,125	9,717	-30%	-4%	161%
Vegetable Oil 1 litre	58,063	43,063	43,063	18,181	-26%	0%	144%
Wheat Flour 1kg	22,917	18,375	19,188	8,046	-16%	4%	161%
Wheat Grain 1kg	32,333	25,000	24,750	10,407	-23%	-1%	233%
<b>Cereal Prices</b>							
Red Sorghum 1kg	25,000	24,000	24,250	10,195	-3%	1%	254%
White Maize 1kg	26,000	22,500	22,250	9,346	-14%	-1%	300%
<b>Livestock &amp; Livestock Product Prices</b>							
Camel Local Quality (Head)	12,500,000	15,887,500	15,962,500	6,776,358	28%	0%	379%
Cattle Local Quality (Head)	7,000,000	7,750,000	7,000,000	2,971,565	0%	-10%	345%
Fresh Camel Milk 1 litre	34,875	36,792	38,833	16,386	11%	6%	191%
Goat Export Quality (Head)	1,375,000	1,475,000	1,368,750	580,967	0%	-7%	238%
Goat Local Quality (Head)	1,226,250	1,431,875	1,348,125	572,211	10%	-6%	287%
<b>Other Essential Items</b>							
Charcoal 50kg	310,625	366,250	372,500	158,035	20%	2%	413%
Cowpeas 1 kg	55,125	40,083	38,083	16,087	-31%	-5%	278%
Unskilled Labor Wage Rate	198,675	120,250	119,625	50,684	-10%	-1%	165%
Firewood Bundle	31,000	41,875	43,750	18,473	41%	4%	604%
Local Sesame Oil 1 litre	91,250	88,438	87,188	36,913	-4%	-1%	186%
Exchange Rate (Somali Shilling per USD)	32,031	23,219	21,094	8,855	-34%	-9%	27%
<b>Construction Materials*</b>							
Cement 50kg	267,375	227,813	185,813	78,782	-31%	-18%	-
Cooking Pot Aluminium 7 Litre	499,375	431,750	383,125	162,546	-23%	-11%	-
Galvanised Iron Sheet Ga 26	256,438	197,813	180,750	76,633	-30%	-9%	-
Hollow Concrete Block 30cm x 20cm x 40cm	31,000	41,875	43,750	18,473	41%	4%	-
Non Collapsible Jerrycan 10 Litre	41,563	40,208	37,000	15,607	-11%	-8%	-
Plastic Tarpaulin 14m x 5 m	202,000	171,813	162,688	68,965	-19%	-5%	-
Roofing Nails 15Kg	470,313	415,250	598,125	253,818	27%	44%	-
Timber 2in x 4in x 20ft	242,750	203,688	175,438	74,378	-28%	-14%	-
Woven Dry Raised Blanket 150cm x 200cm	302,500	245,000	226,875	96,214	-25%	-7%	-
<b>Terms of Trade</b>							
Labour Wage (Daily)/ Cereal (Rice(Kg))	4	6	6	-	40%	2%	-9%
Local Goat (Head)/ Cereal (Rice(Kg))	48	70	67	-	40%	-4%	34%
<b>Price Indices</b>							
Consumer Price Index	248	232	236	-	-5%	2%	-
Purchasing Power Index	0.40	0.43	0.42	-	5%	-2%	-

\* Data has been collected since May 2010

Figure 38: Imported commodity prices compared to exchange rates

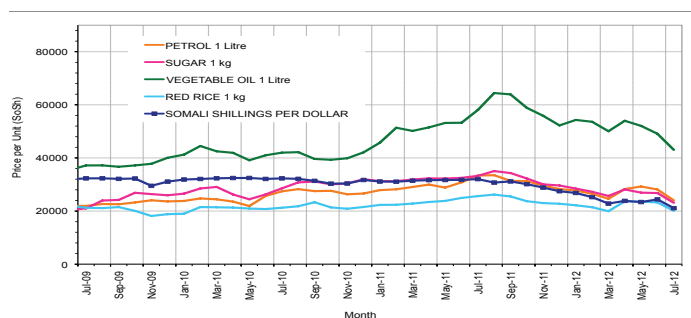


Figure 40: Goat Local Quality

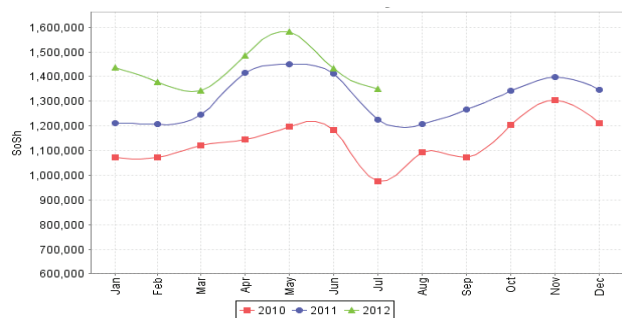


Figure 42: Water Drum

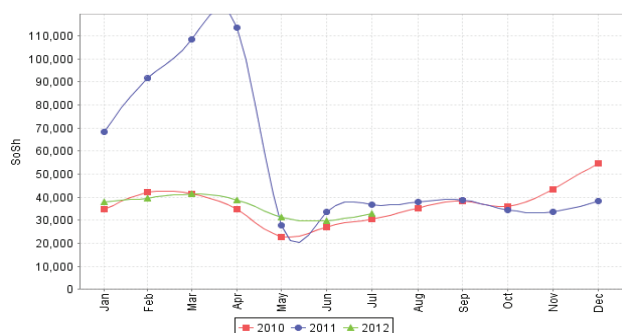


Figure 39: Trends in wage rates, staple cereal prices and relative purchasing power

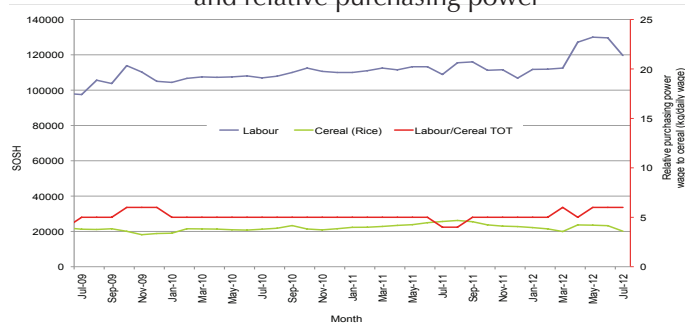


Figure 41: Exchange Rate

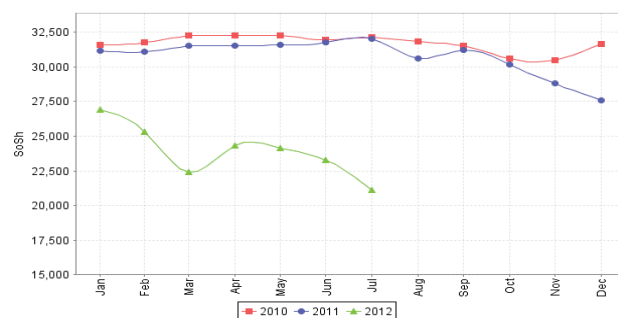
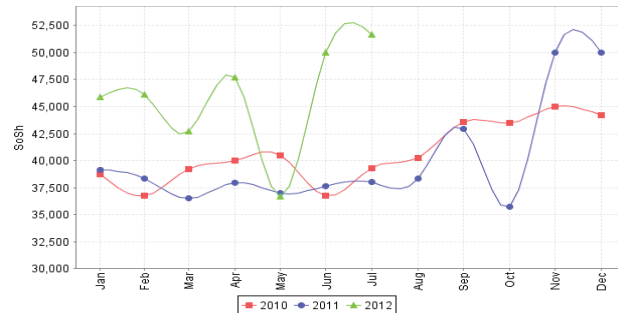


Figure 43: Firewood Bundle



# Regional analysis: Northwest Regions

Indicator	Jul-11	Jun-12	July-12 Nominal Price	July-12 Real (Deflated) Price	% Change Same Month Previous Year	% Change Previous Month	% Change 5-year avrg (2003-07)
<b>Imported Commodities Prices</b>							
Diesel 1 litre	6,555	6,785	6,923	5,321	6%	2%	90%
Imported Red Rice 1kg	4,875	4,640	4,665	3,553	-4%	1%	63%
Petrol 1 litre	6,900	7,205	7,190	5,530	4%	0%	64%
Sugar	6,525	5,925	6,073	4,656	-7%	2%	87%
Vegetable Oil 1 litre	11,310	11,970	12,115	9,387	7%	1%	71%
Wheat Flour 1kg	4,645	4,170	4,170	3,165	-10%	0%	56%
Wheat Grain 1kg	3,000	2,975	3,019	2,264	1%	1%	55%
<b>Cereal Prices</b>							
White Sorghum 1kg	3,520	3,245	3,450	2,602	-2%	6%	83%
Yellow Maize 1kg	3,533	3,500	3,418	2,577	-3%	-2%	74%
<b>Livestock &amp; Livestock Product Prices</b>							
Camel Local Quality (Head)	1,948,333	2,434,500	2,601,167	2,036,844	34%	7%	76%
Cattle Local Quality (Head)	1,481,967	1,594,125	1,833,250	1,435,497	24%	15%	125%
Fresh Camel Milk 1 litre	4,955	6,225	5,675	4,344	15%	-9%	38%
Goat Export Quality (Head)	307,375	398,550	434,400	340,074	41%	9%	163%
Goat Local Quality (Head)	214,850	295,675	300,050	234,866	40%	1%	111%
<b>Other Essential Items</b>							
Charcoal 50kg	33,550	39,800	40,870	31,905	22%	3%	109%
Cowpeas 1 kg	12,500	9,433	9,333	7,209	-24%	-1%	91%
Unskilled Labor Wage Rate	32,200	38,850	40,200	31,380	25%	3%	54%
Firewood Bundle	2,500	3,000	3,333	2,510	33%	11%	-27%
Local Sesame Oil 1 litre	22,125	24,875	25,438	19,820	15%	2%	45%
Exchange Rate (Somaliland Shilling per USD)	5,327	6,670	6,550	5,029	23%	-2%	6%
<b>Construction Materials*</b>							
Cement 50kg	47,510	52,355	53,720	41,968	13%	3%	-
Cooking Pot Aluminium 7 Litre	81,325	89,650	88,400	69,125	9%	-1%	-
Galvanised Iron Sheet Ga 26	43,813	51,625	48,750	38,076	11%	-6%	-
Hollow Concrete Block 10cm x 20cm x 40cm	2,300	2,963	2,975	2,230	5%	0%	-
Non Collapsible Jerrycan 10 Litre	5,985	6,925	6,915	5,315	16%	0%	-
Plastic Tarpaulin 14m x 5 m	79,450	85,500	88,250	69,008	11%	3%	-
Roofing Nails 15Kg	169,800	188,600	179,615	140,554	6%	-5%	-
Timber 2in x 4in x 20ft	100,333	126,683	127,283	99,574	27%	0%	-
Woven Dry Raised Blanket 150cm x 200cm	82,406	77,333	72,375	56,576	-12%	-6%	-
<b>Terms of Trade</b>							
Labour Wage (Daily)/ Cereal (Rice(Kg))	7	8	9	-	30%	3%	-5%
Local Goat (Head)/ Cereal (Rice(Kg))	44	64	64	-	46%	1%	29%
<b>Price Indices</b>							
Consumer Price Index	117	123	128	-	9%	4%	-
Purchasing Power Index	0.86	0.81	0.78	-	-9%	-4%	-

\* Data has been collected since May 2010

Figure 44: Imported commodity prices compared to exchange rates

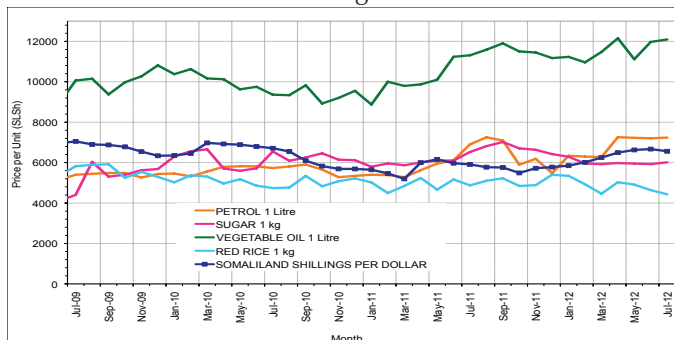


Figure 46: Goat Local Quality

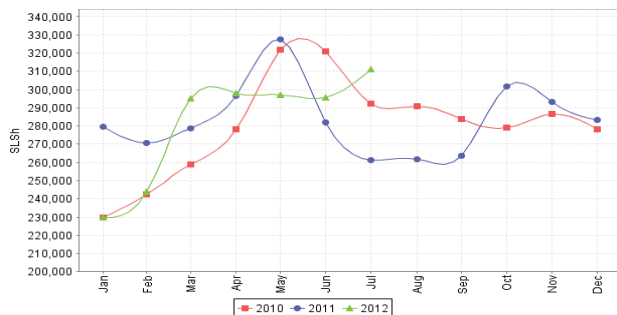


Figure 48: Water Drum

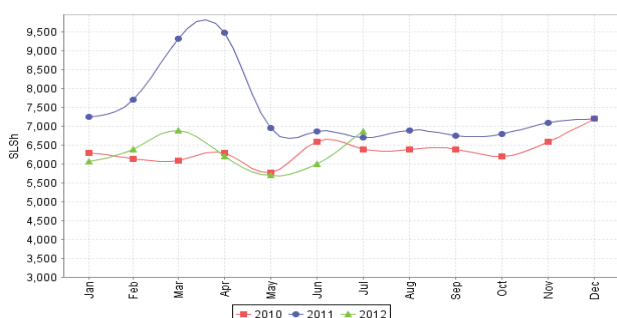


Figure 45: Trends in wage rates, staple cereal prices and relative purchasing power

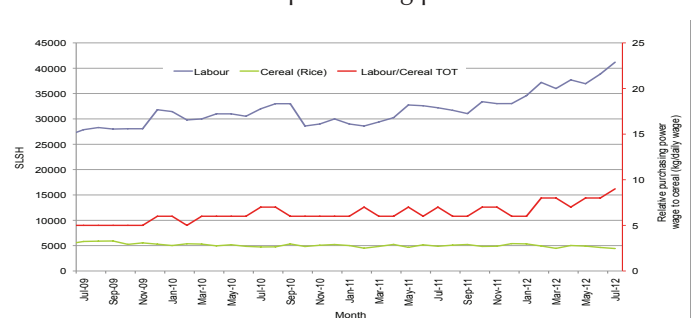


Figure 47: Exchange Rate

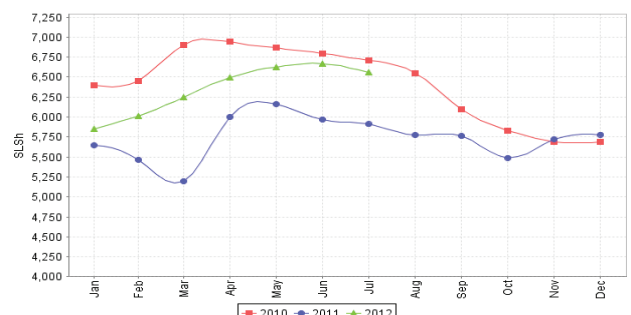
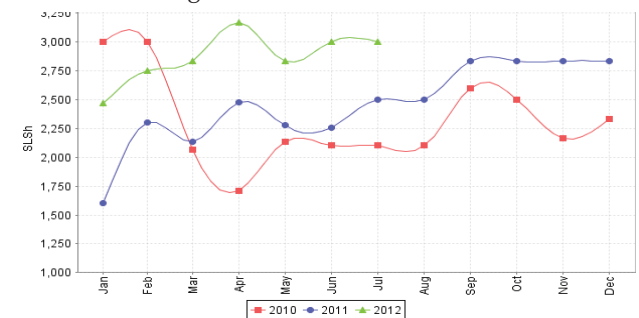


Figure 49: Firewood Bundle



# Trends in Livestock Exports

Table 2: Berbera Livestock Exports (Number of Heads)

	1994	1995	1996	1997	1998	1999	2000	2001	2002	2003	2004	2005	2006	2007	2008	2009	2010	2011	2012 (Jan-May)*
Shoats	1,572,656	2,683,597	2,376,646	2,814,495	957,224	2,048,136	1,601,083	51,546	341,711	563,107	859,404	1,023,795	1,017,242	1,350,054	1,219,519	1,556,003	2,584,810	3,104,684	627,718
Cattle	173,400	167,128	65,127	66,939	92,213	89,967	63,263	20,973	37,547	84,312	131,852	148,151	85,631	88,143	80,051	88,005	133,021	150,934	73,384
Camel	38,553	21,993	42,801	50,587	11,663	37,430	16,984	3,473	18,864	21,874	5,147	5,069	22,810	14,245	26,515	20,206	92,651	107,281	46,938

\* Jan-May 2012 cumulative livestock exports

Figure 50: Berbera Livestock Exports (Number of Heads)

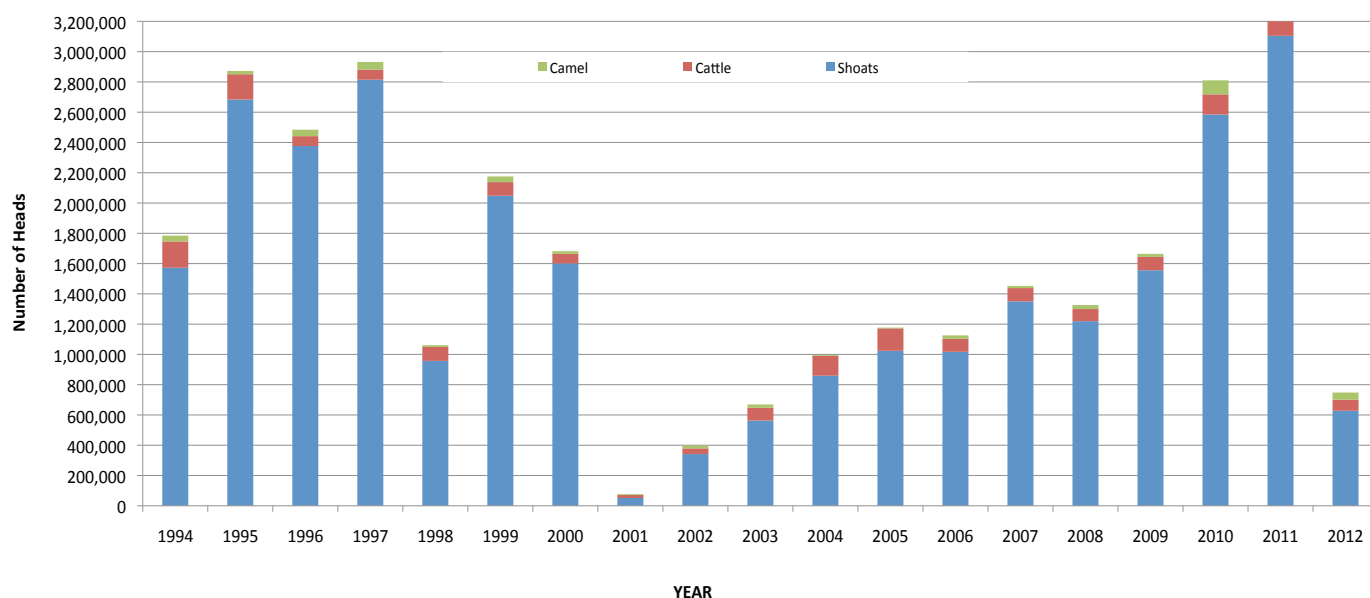


Table 3: Bossaso Livestock Exports (Number of Heads)

	1994	1995	1996	1997	1998	1999	2000	2001	2002	2003	2004	2005	2006	2007	2008	2009	2010	2011	2012 (Jan-July)
Shoats	344,000	524,346	614,407	494,320	517,020	633,669	571,455	548,853	1,412,450	1,483,409	1,166,480	1,594,859	1,777,283	1,522,855	1,236,775	1,159,454	1,333,478	1,256,535	612,988
Cattle	1,450	8,795	15,335	17,831	29,492	36,586	27,604	42,248	53,313	71,328	79,994	91,910	104,595	89,190	78,046	67,385	103,808	99,058	46,467
Camel	5,397	8,392	20,462	14,599	3,938	15,544	8,177	1,950	9,720	4,259	2,488	26,109	33,724	27,580	27,639	15,331	36,865	45,878	16,690

Figure 51: Bossaso Livestock Exports (Number of Heads)

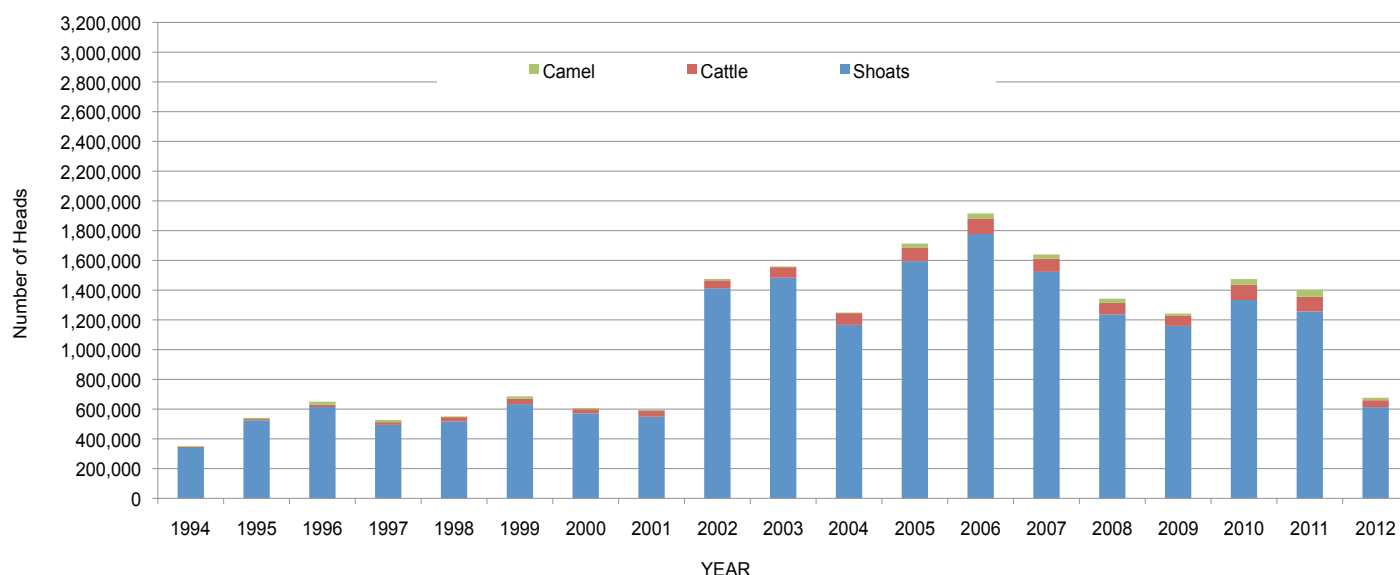
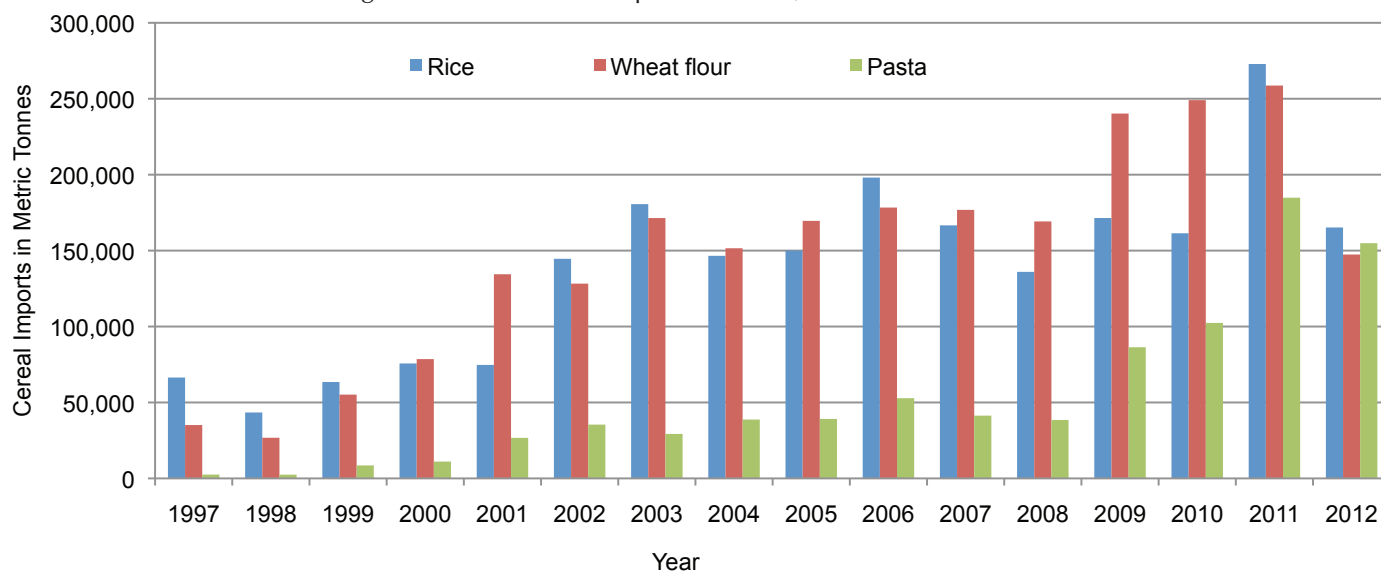


Table 4: Total Cereal Imports (Berbera,Bossaso,Elmaan)

	1997	1998	1999	2000	2001	2002	2003	2004	2005	2006	2007	2008	2009	2010	2011	2012*
<b>Rice</b>	66,419	43,410	63,464	75,687	74,729	144,600	180,614	146,567	150,017	198,101	166,626	136,007	171,472	161,415	272,877	165,232
<b>Wheat flour</b>	35,143	26,774	55,176	78,555	134,425	128,263	171,442	151,555	169,583	178,345	176,821	169,208	240,247	249,080	258,679	147,419
<b>Pasta</b>	2,510	2,455	8,544	11,071	26,702	35,425	29,273	38,749	39,153	52,815	41,331	38,441	86,372	102,373	184,849	154,880

Figure 52: Total Cereal Imports (Berbera,Bossaso and Elmaan)



\* January-July 2012 Cumulative Cereal Imports

\* Berbera data upto May 2012

\* Bossaso data upto July 2012

\* Elmaan data is up to June 2012