

# Market Update

## Highlights

### Inflation:

**SoSh (Somali shilling)-using areas:** Consumer Price Index (CPI) generally exhibits increases (2-11%) in most of the SoSh using areas in December 2016 and January 2017 month-on-month due to increase in red sorghum prices. The CPI increased sharply compared to a year ago essentially for the same reason.

**SISh (Somaliland shilling)-using areas:** The CPI increased (7%) in December 2016 but mildly (3%) declined in January 2017 month-on-month. Compared to one year ago, CPI increased in both December 2016 (11%) and January 2017 (8%) due to increase in cereal (red sorghum) and imported items prices over the past 12 months.

### Exchange rate:

**SoSh-using areas:** The exchange rates between SoSh and the United States Dollar (USD) indicated relative stability or marginal (1-3%) monthly depreciation of SoSh (Jan 2017 average – 24,817) against USD in most regions. The SoSh shows annual depreciation across SoSh-using areas.

**SISh-using areas:** The SISh depreciated (5%) against the USD in December 2016 but remained relatively stable in January 2016 month-on-month. Compared to one year ago, the SISh depreciated against USD in both December 2016 and January 2017.

**Local grain** prices either remained relatively stable or changed at mild rates in central and northern regions while southern regions recorded mild to moderate increases month-on-month in both December 2016 and January 2017. The increases in local grain prices is attributable to decline in cereal supply as a result of poor post Deyr 2016 cereal harvest. Annual comparison indicates higher prices for local grains in all regions of the country in both December 2016 and January 2017 with the highest increase being recorded in Bakool (72% for December; 65% for January) attributable to reduced supply due to poor Deyr 2016 cereal production.

**Prices of imported food** (rice, sugar, vegetable oil, wheat flour) mostly exhibited relative stability or mild monthly changes (+/-10%) in local currency terms in December 2016 and January 2017. Year-on-year comparison indicates mild to moderate price increases in most regions of the country for most of the food imports in December 2016 and January 2017.

**Livestock prices** mostly exhibited declines in most regions of the country month-on-month in both December 2016 and January 2017 due to below average pasture and water availability which has deteriorated livestock body conditions. Milk prices (camel and cattle) generally exhibited monthly increases in most regions of the country reflecting reduced availability. Compared to a year ago, livestock prices were significantly lower across the country in December 2016 and January 2017 attributable to deteriorated livestock body conditions and seasonal reduction in demand. On the other hand, milk prices (camel and cattle) increased from moderate to high levels annually in most regions of the country in December 2016 and January 2017.

**Labor (unskilled) wages** either remained relatively stable or changed mildly (+/-10%) month-on-month in most of the northern and central regions while labour wages in southern regions generally exhibited declines in December 2016 and January 2017 due to reduced agricultural labor opportunities in the surrounding rural areas as a result of poor Deyr 2016 rainfall performance. Annual comparison exhibited mixed trend patterns; specifically, rates either remained relatively stable or changed mildly (by less than 10%) in northern and central regions; the rates declined moderately (11-22%) in southern regions year-on-year as a result of reduced agricultural activities due to poor Deyr 2016 harvest.

**Terms of Trade (ToT)** between daily labor wage and local cereals either remained stable month-on-month or declined (by 1-5kg of cereals/daily labor wage) in most parts of the country with largest decline (5kg of cereal/daily labor wage) being recorded in Mogadishu (Bakara market) in December 2016 and January 2017. The monthly declines in ToT between daily labor wage and local cereals can be attributed to increase in cereal prices and/or decrease in labor wage rates. Similarly, ToT between local quality goat and cereals declined in most regions of the country month-on-month as a result of increase in cereal prices and/or decline in local quality goat prices. Annual comparison indicates the ToTs are lower across the country due to declines in labor wage rates and goat prices and/or increase in local grain prices compared to a year ago (Dec 2015/Jan 2016).

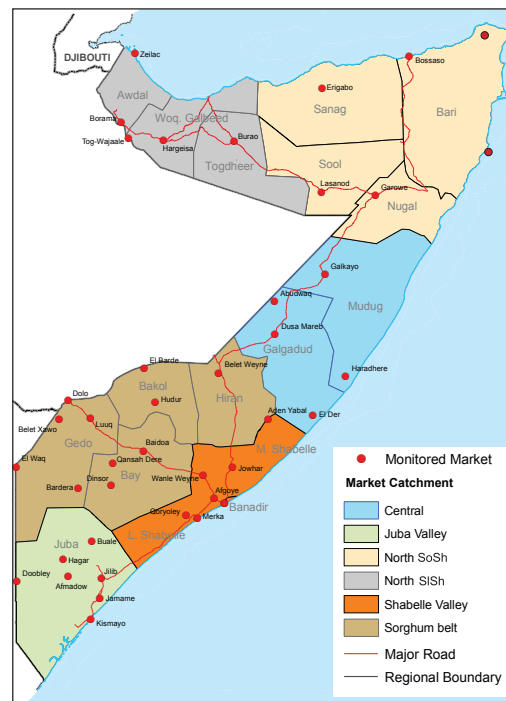
### Towns Affected by Trade Disruption (Bulo Burto, Wajid, Hudur and Diinsor)

**Labor (unskilled) wages** either remained relatively stable or declined (11-16%) in siege affected markets month-on-month in December 2016 and January 2017. Annual comparison indicates declines in all the markets.

**Terms of Trade (ToTs)** between daily labor wage and local cereals and between local quality goat and cereals declined both month-on-month and year-on-year in December 2016 and January 2017 in all the markets due to increase in cereal prices and decrease in labor wage rates and goat prices.

**Local grain (red and white sorghum)** prices increased in all the markets month-on-month. Similarly, compared to a year ago, local grain prices in all the markets increased substantially in all the markets.

**Prices of imported food items** (rice, sugar, vegetable oil, wheat flour) have changed at mild rates for most of the food imports in all the siege affected markets in December 2016 and January 2017 month-on-month. Annual comparison indicates higher prices for most of the food imports in all the markets.



# National Trends: CPI, Exchange Rates, Cereal Prices and Relative Purchasing Power

Table 1: ToT between Daily Labour Wage Rate and Cereals (kg) by Region December 2016

Regions	December 2016 (kg)	kg change from		
		November 2016	December 2015	December 5 yr Average (2011 - 2015)
Banadir/Mogadishu	12	-5	-12	-9
Bay	8	-3	-8	-8
Bakool	3	-1	-4	-2
Gedo	10	0	-4	-6
Juba	9	0	-1	-1
Shabelle	8	-3	-5	-3
Northwest	11	0	0	3
Northeast	8	0	0	1
Central	5	0	0	1

Table 2: ToT between Daily Labour Wage Rate and Cereals (kg) by Region January 2016

Regions	January 2017 (kg)	kg change from		
		December 2016	January 2016	January 5 yr Average (2012 - 2016)
Banadir/Mogadishu	7	-5	-19	-13
Bay	8	0	-9	-10
Bakool	3	0	-4	-3
Gedo	10	0	-6	-7
Juba	9	0	-2	-1
Shabelle	6	-2	-6	-5
Northwest	11	0	0	3
Northeast	8	0	-1	1
Central	5	0	0	1

Figure 1: Wheat Prices: Mogadishu and Bossaso Markets

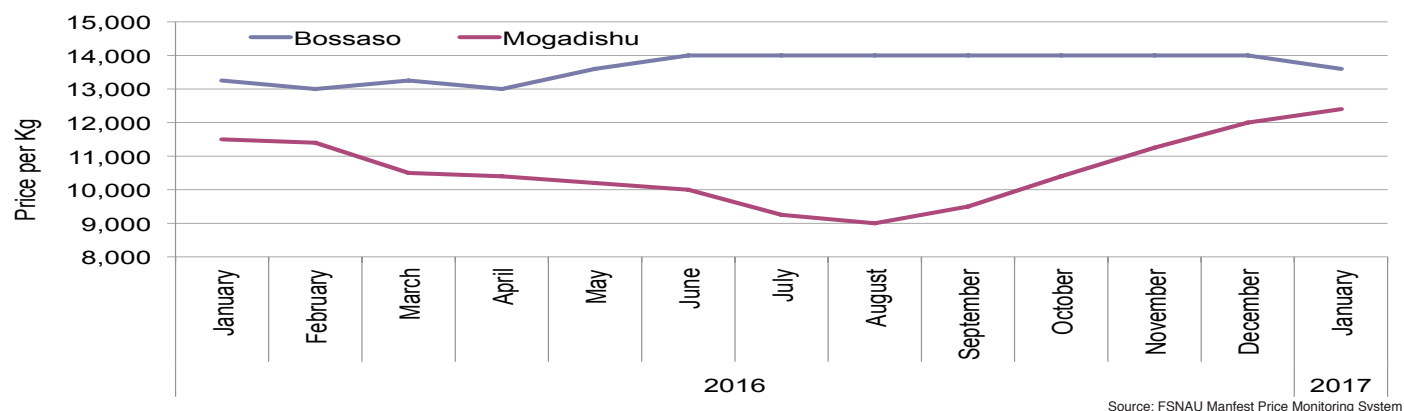


Figure 2: Terms of Trade Between Wage Rates and Selected Cereals

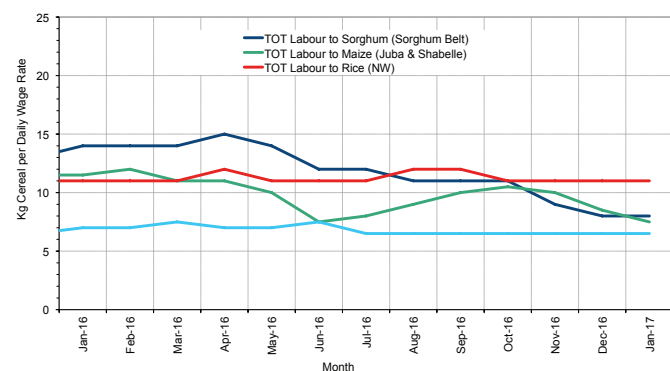


Figure 3: Monthly Exchange Rate for Selected Regions (SoSh and SISH to USD)

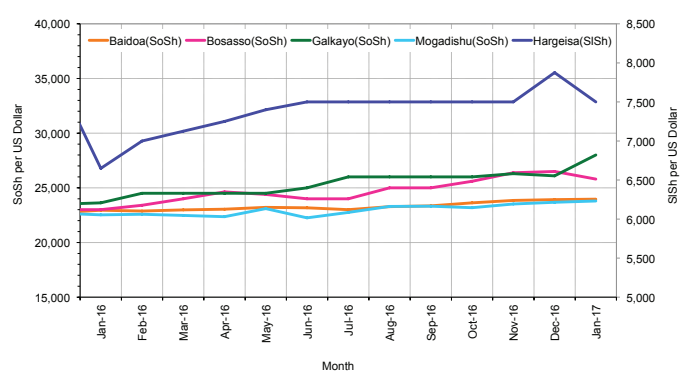


Figure 4: Monthly Trends in Consumer Price Index (CPI, March 2007=100)

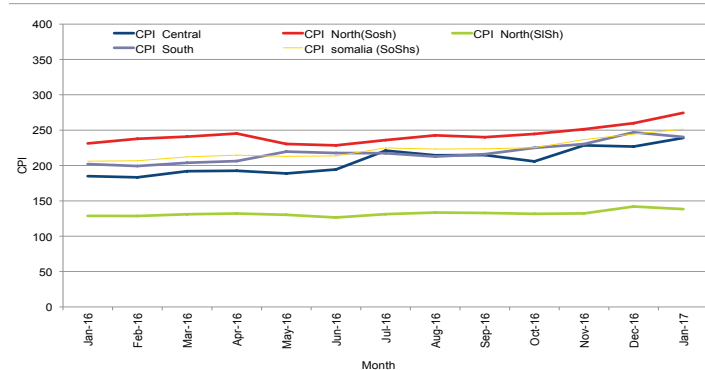
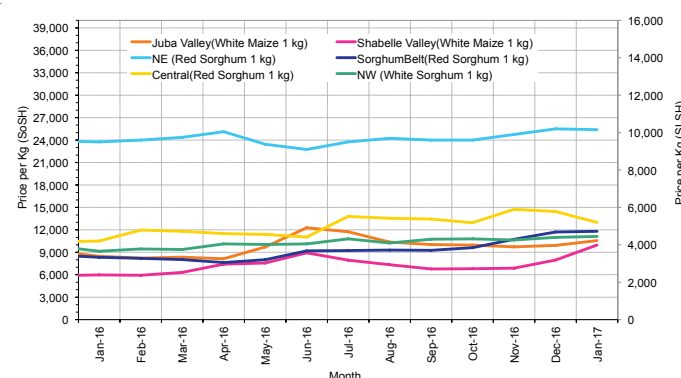


Figure 5: Monthly Trends in Local Cereal Prices



# Regional analysis: Juba Regions

Indicator	5-Year Average (2012-2016)	Jan-16	Dec-16	Jan-17 Nominal Price	Jan-17 Real (Deflated) Price	% Change Previous Month	% Change Same Month Previous Year	% Change 5-year avg (2012-2016)
<b>Imported Commodities Prices</b>								
Diesel 1 litre	27,026	23,094	20,938	21,594	8,881	3%	-6%	-20%
Imported Red Rice 1kg	17,040	15,250	17,375	15,688	6,425	-10%	3%	-8%
Petrol 1 litre	29,292	27,094	22,906	25,031	10,311	9%	-8%	-15%
Sugar	18,562	15,625	19,438	18,469	7,582	-5%	18%	-1%
Vegetable Oil 1 litre	35,541	29,306	29,469	29,875	12,326	1%	2%	-16%
Wheat Flour 1kg	16,145	14,875	18,219	16,688	6,841	-8%	12%	3%
Wheat Grain 1kg	18,000	-	-	-	-	-	-	-
<b>Cereal Prices</b>								
Red Sorghum 1kg	7,950	8,000	10,700	8,417	3,401	-21%	5%	6%
White Maize 1kg	8,584	8,471	9,922	10,571	4,297	7%	25%	23%
<b>Livestock &amp; Livestock Product Prices</b>								
Camel Local Quality (Head)	9,783,738	11,590,000	9,646,875	7,215,625	3,001,034	-25%	-38%	-26%
Cattle Local Quality (Head)	3,886,928	3,342,143	2,604,167	2,270,000	944,042	-13%	-32%	-42%
Fresh Camel Milk 1 litre	17,732	18,281	16,094	15,063	6,165	-6%	-18%	-15%
Goat Export Quality (Head)	1,365,396	1,242,813	960,938	771,875	320,939	-20%	-38%	-43%
Goat Local Quality (Head)	886,676	793,281	617,188	527,188	219,169	-15%	-34%	-41%
<b>Other Essential Items</b>								
Charcoal 50kg	86,638	89,531	81,406	79,063	32,784	-3%	-12%	-9%
Cowpeas 1 kg	23,863	21,688	23,719	23,531	9,687	-1%	8%	-1%
Unskilled Labor Wage Rate	85,914	96,781	84,563	92,500	38,373	9%	-4%	8%
Firewood Bundle	8,369	7,359	6,641	6,719	2,695	1%	-9%	-20%
Local Sesame Oil 1 litre	73,270	64,500	50,625	52,781	21,853	4%	-18%	-28%
Exchange Rate (Somali Shilling per USD)	22,072	22,900	23,125	23,288	9,586	1%	2%	6%
<b>Terms of Trade</b>								
Labour Wage (Daily) / Cereal (Maize (Kg)	10	11	9	9	-	0%	-18%	-10%
Local Goat (Head) / Cereal (Maize (Kg)	107	94	62	50	-	-19%	-47%	-53%
<b>Price Indices</b>								
Consumer Price Index	-	202	247	240	-	-3%	19%	-

Figure 6: Trends in Cereal Prices



Figure 7: Trends in Wage Rates and Relative Purchasing Power

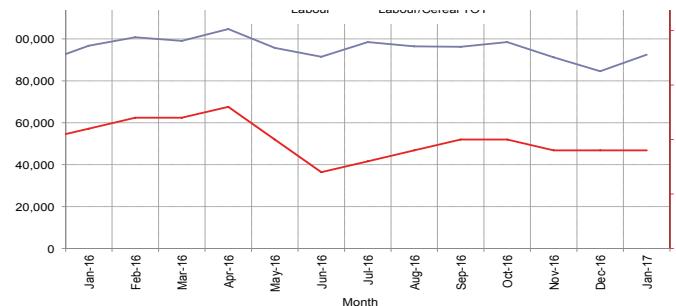


Figure 8: Imported Commodity Prices Compared to Exchange Rate

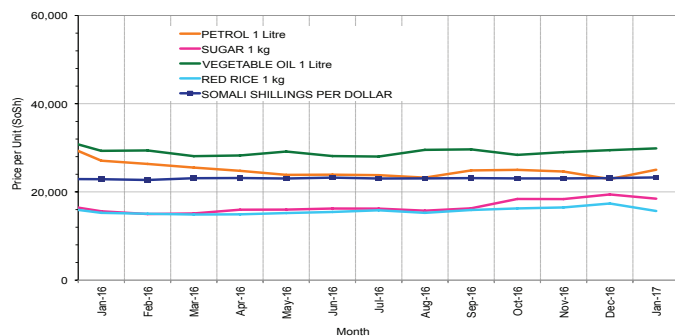


Figure 9: Goat Local Quality

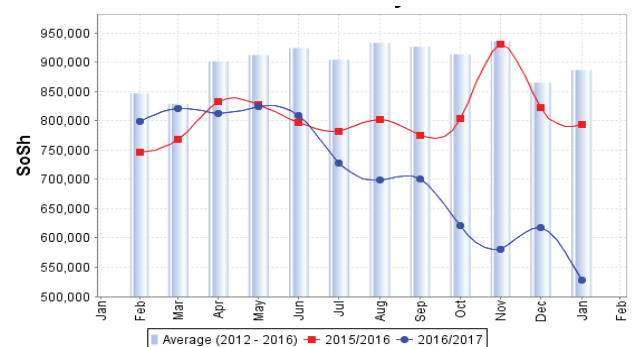


Figure 10: Exchange Rate

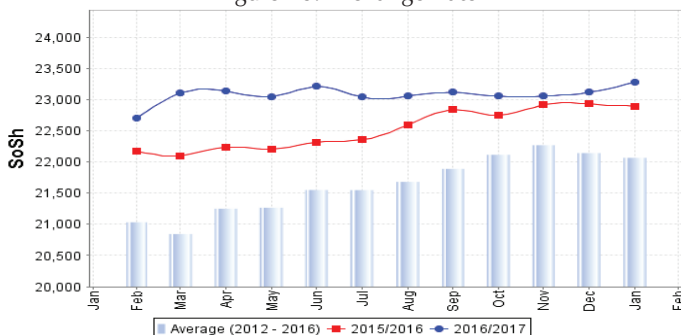
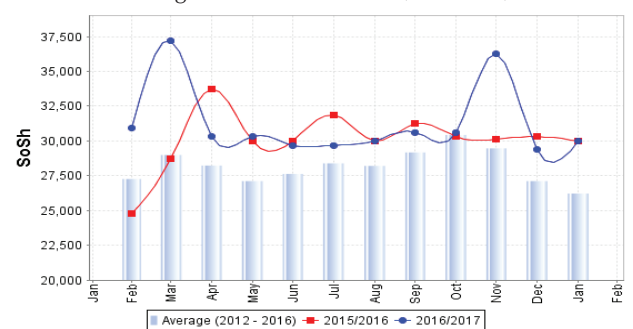


Figure 11: Water Drum (200 litres)



# Regional analysis: Sorghum Belt Regions (Bay, Bakool, Gedo and Hiran)

Indicator	5-Year Average (2012-2016)	Jan-16	Dec-16	Jan-17 Nominal Price	Jan-17 Real (Deflated) Price	% Change Previous Month	% Change Same Month Previous Year	% Change 5-year avrg (2012-2016)
<b>Imported Commodities Prices</b>								
Diesel 1 litre	30,950	27,063	23,667	23,550	9,695	0%	-13%	-24%
Imported Red Rice 1kg	19,041	18,208	19,375	19,350	7,948	0%	6%	2%
Petrol 1 litre	30,709	28,771	27,750	28,133	11,601	1%	-2%	-8%
Sugar	20,976	18,375	23,333	23,100	9,508	-1%	26%	10%
Vegetable Oil 1 litre	39,571	35,458	38,167	37,533	15,511	-2%	6%	-5%
Wheat Flour 1kg	17,592	17,813	18,313	18,333	7,525	0%	3%	4%
Wheat Grain 1kg	15,315	23,333	21,800	18,425	7,563	-15%	-21%	20%
<b>Cereal Prices</b>								
Red Sorghum 1kg	7,177	7,718	11,643	11,751	4,787	1%	52%	64%
White Maize 1kg	8,430	9,008	11,518	11,885	4,843	3%	32%	41%
<b>Livestock &amp; Livestock Product Prices</b>								
Camel Local Quality (Head)	12,385,500	12,007,500	9,302,000	8,756,000	3,641,709	-6%	-27%	-29%
Cattle Local Quality (Head)	3,711,708	3,475,000	2,521,354	2,224,286	925,028	-12%	-36%	-40%
Fresh Camel Milk 1 litre	18,861	17,458	21,604	22,200	9,133	3%	27%	18%
Goat Export Quality (Head)	1,529,238	1,434,091	1,234,318	1,178,400	490,022	-5%	-18%	-23%
Goat Local Quality (Head)	970,476	807,708	629,792	572,500	238,015	-9%	-29%	-41%
<b>Other Essential Items</b>								
Charcoal 50kg	141,793	143,750	142,045	136,909	56,843	-4%	-5%	-3%
Cowpeas 1 kg	21,534	19,406	27,563	30,283	12,495	10%	56%	41%
Unskilled Labor Wage Rate	99,400	103,854	85,010	83,333	34,560	-2%	-20%	-16%
Firewood Bundle	6,339	6,146	5,792	5,850	2,333	1%	-5%	-8%
Local Sesame Oil 1 litre	76,035	67,813	77,222	79,111	32,804	2%	17%	4%
Exchange Rate (Somali Shilling per USD)	22,225	22,648	24,183	24,583	10,125	2%	9%	11%
<b>Terms of Trade</b>								
Labour Wage (Daily)/ Cereal (Sorghum(Kg))	13	13	7	7	-	0%	-46%	-46%
Local Goat (Head)/ Cereal (Sorghum(Kg))	136	105	54	49	-	-9%	-53%	-64%
<b>Price Indices</b>								
Consumer Price Index	-	202	247	240	-	-3%	19%	-

Figure 12: Trends in Cereal Prices

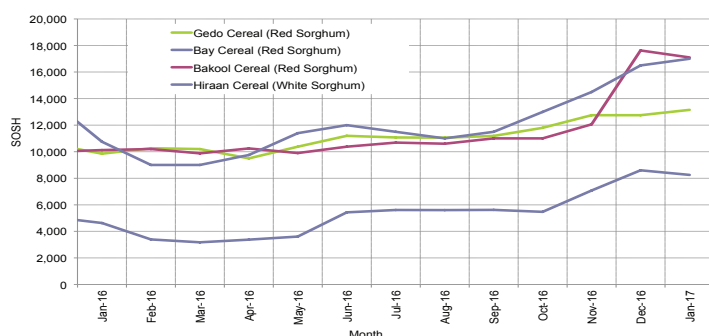


Figure 13: Trends in Wage Rates and Relative Purchasing Power

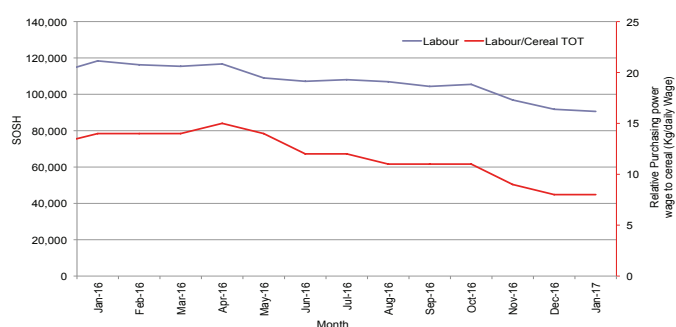


Figure 14: Imported Commodity Prices Compared to Exchange Rate

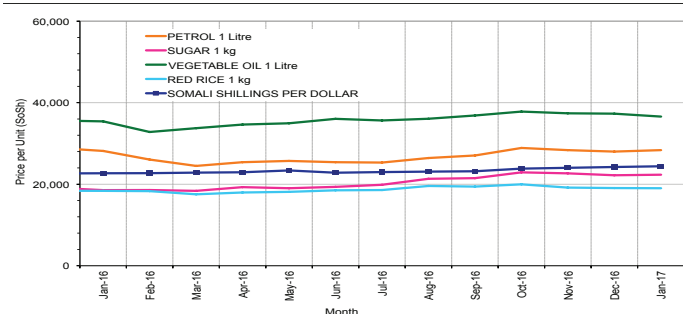


Figure 15: Goat Local Quality

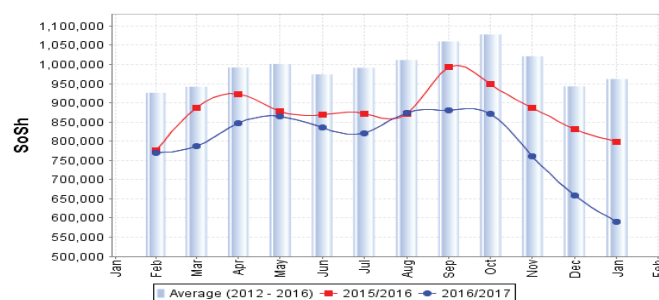


Figure 16: Exchange Rate

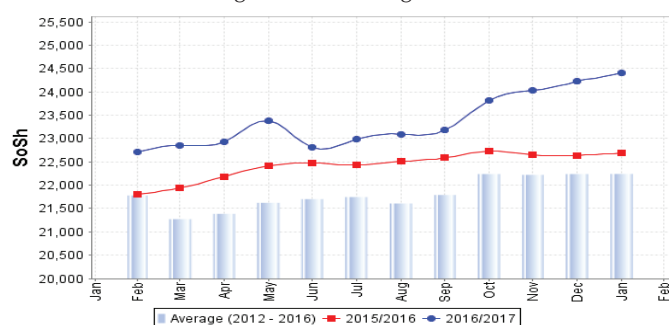
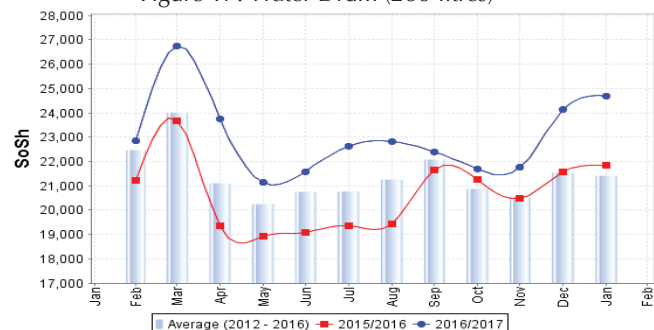


Figure 17: Water Drum (200 litres)



# Regional analysis: Shabelle Regions

Indicator	5-Year Average (2012-2016)	Jan-16	Dec-16	Jan-17 Nominal Price	Jan-17 Real (Deflated) Price	% Change Previous Month	% Change Same Month Previous Year	% Change 5-year avrg (2012-2016)
<b>Imported Commodities Prices</b>								
Diesel 1 litre	26,716	21,292	17,333	17,958	7,369	4%	-16%	-33%
Imported Red Rice 1kg	16,683	15,167	17,583	17,875	7,335	2%	18%	7%
Petrol 1 litre	29,358	27,000	21,542	20,917	8,600	-3%	-23%	-29%
Sugar	18,333	15,667	20,375	20,583	8,461	1%	31%	12%
Vegetable Oil 1 litre	29,950	25,500	29,708	29,958	12,360	1%	17%	0%
Wheat Flour 1kg	16,375	15,000	16,167	16,250	6,659	1%	8%	-1%
Wheat Grain 1kg	16,433	17,500	17,000	18,000	7,387	6%	3%	10%
<b>Cereal Prices</b>								
Red Sorghum 1kg	10,340	9,136	9,764	10,724	4,360	10%	17%	4%
White Maize 1kg	6,639	5,977	7,970	9,970	4,047	25%	67%	50%
<b>Livestock &amp; Livestock Product Prices</b>								
Camel Local Quality (Head)	17,411,600	19,290,000	14,565,000	13,935,000	5,795,766	-4%	-28%	-20%
Cattle Local Quality (Head)	5,332,300	4,917,500	3,718,500	3,177,500	1,321,491	-15%	-35%	-40%
Fresh Camel Milk 1 litre	18,641	19,333	18,917	19,000	7,803	0%	-2%	2%
Goat Export Quality (Head)	1,844,750	1,778,125	1,659,375	1,500,625	624,042	-10%	-16%	-19%
Goat Local Quality (Head)	1,289,250	1,267,083	1,130,833	1,091,250	453,774	-4%	-14%	-15%
<b>Other Essential Items</b>								
Charcoal 50kg	130,199	155,597	127,014	120,167	49,880	-5%	-23%	-8%
Cowpeas 1 kg	19,507	16,369	22,875	24,792	10,212	8%	51%	27%
Unskilled Labor Wage Rate	72,074	73,958	63,333	60,208	24,942	-5%	-19%	-16%
Firewood Bundle	6,400	6,083	5,333	5,000	1,980	-6%	-18%	-22%
Local Sesame Oil 1 litre	59,898	40,625	46,375	52,542	21,753	13%	29%	-12%
Exchange Rate (Somali Shilling per USD)	22,398	22,604	23,933	24,067	9,910	1%	6%	7%
<b>Terms of Trade</b>								
Labour Wage (Daily)/ Cereal (Maize(Kg))	11	12	8	6	-	-25%	-50%	-45%
Local Goat (Head)/ Cereal (Maize(Kg))	198	212	142	109	-	-23%	-49%	-45%
<b>Price Indices</b>								
Consumer Price Index	-	202	247	240	-	-3%	19%	-

Figure 18: Trends in Cereal Prices

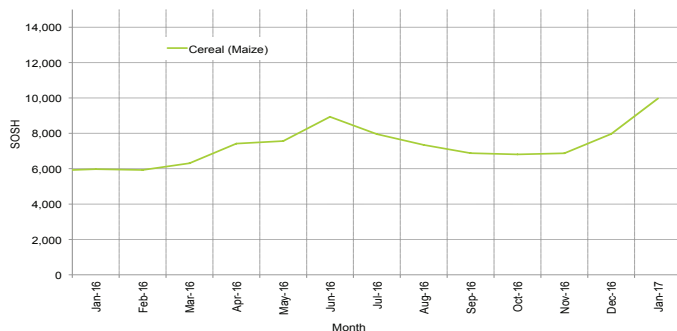


Figure 19: Trends in Wage Rates and Relative Purchasing Power

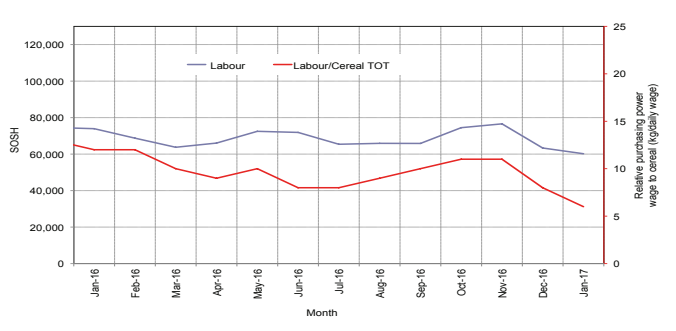


Figure 20: Imported Commodity Prices Compared to Exchange Rate

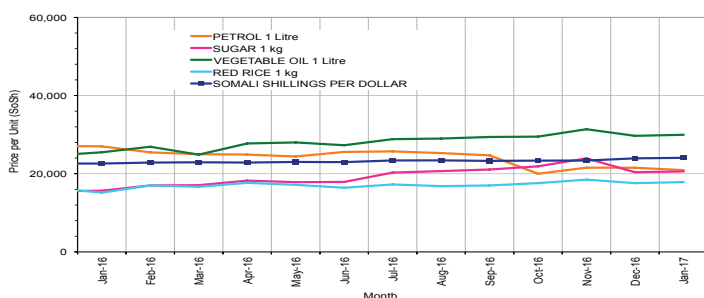


Figure 22: Exchange Rate

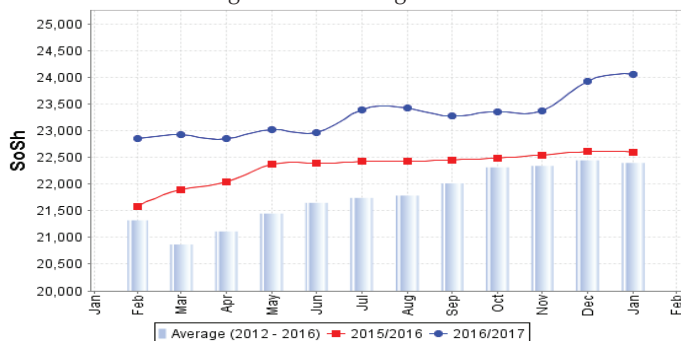


Figure 21: Goat Local Quality

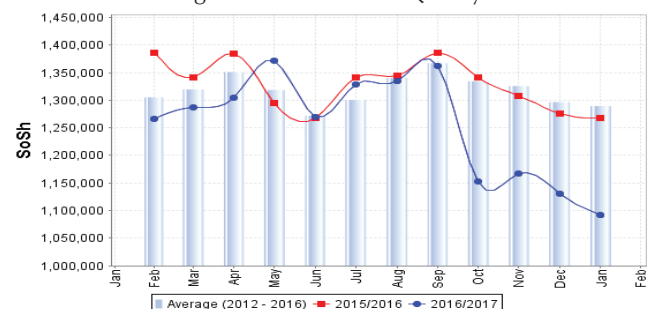
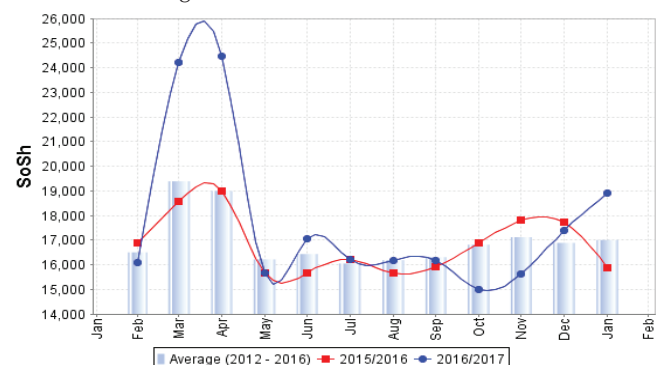


Figure 23: Water Drum (200 litres)





# Regional analysis: Banadir Region

Indicator	5-Year Average (2012-2016)	Jan-16	Dec-16	Jan-17 Nominal Price	Jan-17 Real (Deflated) Price	% Change Previous Month	% Change Same Month Previous Year	% Change 5-year avg (2012-2016)
<b>Imported Commodities Prices</b>								
Diesel 1 litre	21,367	15,667	14,000	12,233	4,988	-13%	-22%	-43%
Imported Red Rice 1kg	13,741	12,167	12,250	12,300	5,016	0%	1%	-10%
Petrol 1 litre	23,441	19,750	16,000	17,067	6,999	7%	-14%	-27%
Sugar	15,525	13,250	15,917	16,300	6,680	2%	23%	5%
Vegetable Oil 1 litre	27,224	22,083	21,958	22,500	9,258	2%	2%	-17%
Wheat Flour 1kg	12,416	12,167	12,167	12,200	4,974	0%	0%	-2%
Wheat Grain 1kg	8,908	11,250	11,875	13,400	5,473	13%	19%	50%
<b>Cereal Prices</b>								
Red Sorghum 1kg	6,573	6,625	9,617	11,040	4,492	15%	67%	68%
White Maize 1kg	7,781	6,517	8,950	10,907	4,436	22%	67%	40%
<b>Livestock &amp; Livestock Product Prices</b>								
Camel Local Quality (Head)	11,000,000	-	-	-	-	-	-	-
Cattle Local Quality (Head)	3,000,000	-	-	-	-	-	-	-
Fresh Camel Milk 1 litre	21,408	24,667	26,083	26,333	10,852	1%	7%	23%
Goat Export Quality (Head)	2,237,500	2,000,000	2,125,000	1,620,000	673,693	-24%	-	-28%
Goat Local Quality (Head)	1,920,000	1,600,000	1,500,000	960,000	399,185	-36%	-40%	-50%
<b>Other Essential Items</b>								
Charcoal 50kg	183,383	190,833	180,417	174,333	72,409	-3%	-9%	-5%
Cowpeas 1 kg	17,801	15,750	23,908	27,373	11,285	14%	74%	54%
Unskilled Labor Wage Rate	111,416	124,167	92,500	79,000	32,758	-15%	-36%	-29%
Firewood Bundle	7,383	7,500	7,500	7,500	3,019	0%	0%	2%
Local Sesame Oil 1 litre	64,133	64,250	40,250	50,800	21,029	26%	-21%	-21%
Exchange Rate (Somali Shilling per USD)	22,080	22,571	23,658	23,667	9,744	0%	5%	7%
<b>Terms of Trade</b>								
Labour Wage (Daily)/ Cereal (Maize(Kg))	14	19	10	7	-	-30%	-63%	-50%
Local Goat (Head)/ Cereal (Maize(Kg))	250	246	168	88	-	-48%	-64%	-65%
<b>Price Indices</b>								
Consumer Price Index	-	202	247	240	-	-3%	19%	-

Figure 24: Trends in Cereal Prices

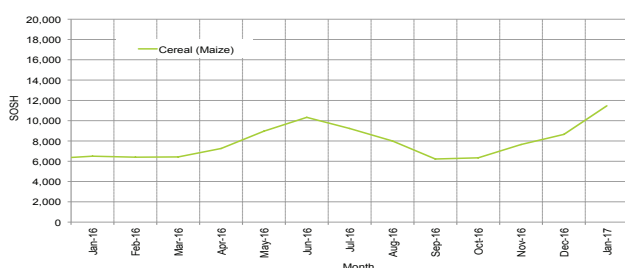


Figure 25: Bakara: Trends in Wage Rates and Relative Purchasing Power

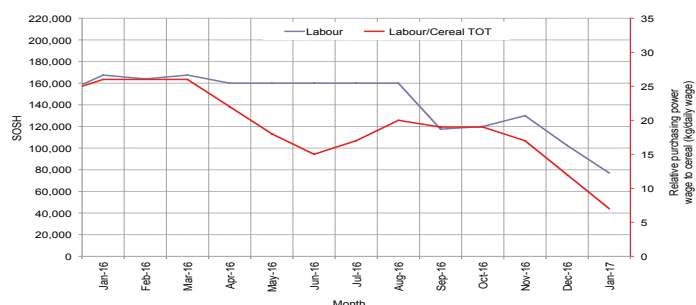


Figure 26: Imported Commodity Prices Compared to Exchange Rate

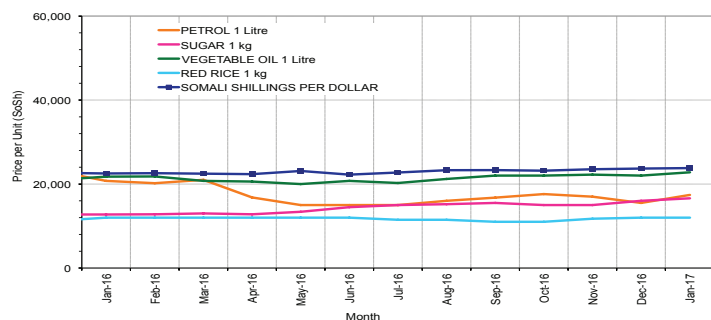


Figure 27: Goat Local Quality

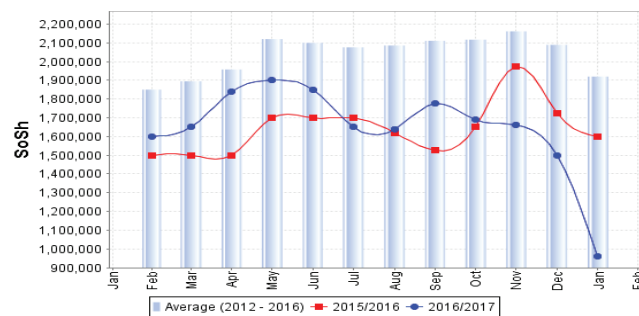


Figure 28: Exchange Rate

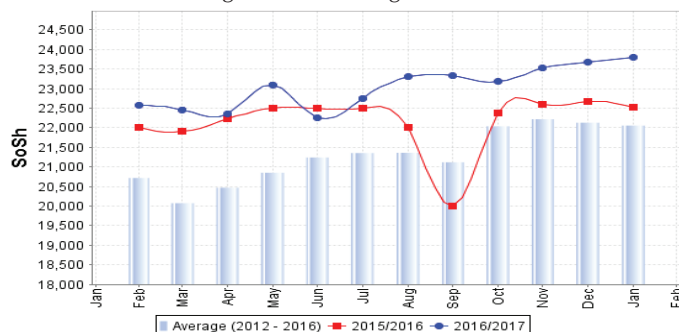
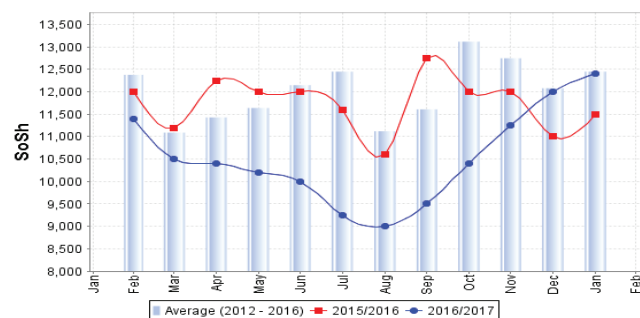


Figure 29: Wheat Flour



# Regional analysis: Central Regions

Indicator	5-Year Average (2012-2016)	Jan-16	Dec-16	Jan-17 Nominal Price	Jan-17 Real (Deflated) Price	% Change Previous Month	% Change Same Month Previous Year	% Change 5-year avg (2012-2016)
<b>Imported Commodities Prices</b>								
Diesel 1 litre	27,390	21,750	19,950	20,550	8,497	3%	-6%	-25%
Imported Red Rice 1kg	20,180	17,250	18,850	17,720	7,313	-6%	3%	-12%
Petrol 1 litre	25,670	23,950	23,550	24,460	10,133	4%	2%	-5%
Sugar	21,960	18,450	23,250	24,120	9,991	4%	31%	10%
Vegetable Oil 1 litre	42,690	35,250	36,850	39,200	16,300	6%	11%	-8%
Wheat Flour 1kg	17,080	15,700	15,900	15,850	6,531	0%	1%	-7%
Wheat Grain 1kg	15,604	16,875	18,583	20,083	8,302	8%	19%	29%
<b>Cereal Prices</b>								
Red Sorghum 1kg	12,010	10,500	14,450	13,000	5,339	-10%	24%	8%
White Maize 1kg	12,920	12,700	17,000	17,250	7,117	1%	36%	34%
<b>Livestock &amp; Livestock Product Prices</b>								
Camel Local Quality (Head)	10,703,750	13,625,000	9,200,000	8,200,000	3,430,519	-11%	-40%	-23%
Cattle Local Quality (Head)	2,400,000			-	-	-	-	-
Fresh Camel Milk 1 litre	29,606	30,500	34,450	36,300	15,087	5%	19%	23%
Goat Export Quality (Head)	1,388,000	1,270,000	1,493,750	1,500,000	627,452	0%	18%	8%
Goat Local Quality (Head)	991,166	912,000	725,000	644,000	269,329	-11%	-29%	-35%
<b>Other Essential Items</b>								
Charcoal 50kg	174,033	162,000	166,500	173,500	72,487	4%	7%	0%
Cowpeas 1 kg	22,956	21,200	28,900	38,560	16,032	33%	82%	68%
Unskilled Labor Wage Rate	86,300	92,000	96,000	96,000	40,063	0%	4%	11%
Firewood Bundle	34,080	33,000	34,750	34,750	14,438	0%	5%	2%
Local Sesame Oil 1 litre	88,310	87,000	76,850	80,850	33,725	5%	-7%	-8%
Exchange Rate (Somali Shilling per USD)	22,723	23,225	25,920	26,500	10,987	2%	14%	17%
<b>Terms of Trade</b>								
Labour Wage (Daily)/ Cereal (Rice(Kg))	4	5	5	5	-	0%	0%	25%
Local Goat (Head)/ Cereal (Rice(Kg))	50	53	38	36	-	-5%	-32%	-28%
Camel (Head)/Cereal (Kg)	559	790	488	463	-	-5%	-41%	-17%
<b>Price Indices</b>								
Consumer Price Index	-	185	227	239	-	5%	29%	-

Figure 30: Trends in Cereal Prices

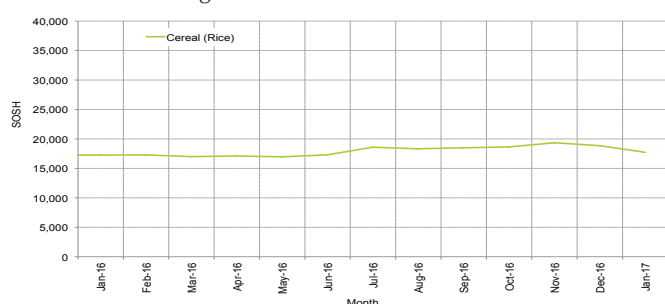


Figure 31: Trends in wage rates and relative purchasing power

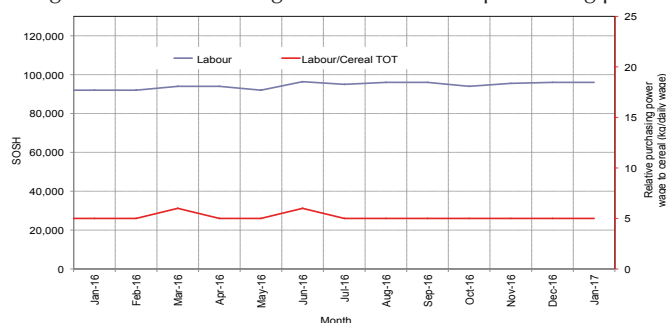


Figure 32: Imported Commodity Prices Compared to Exchange Rate

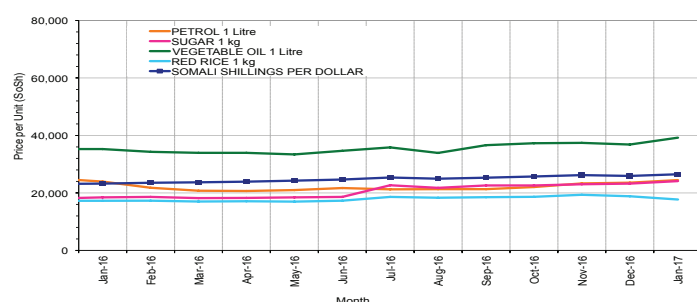


Figure 33: Goat Local Quality

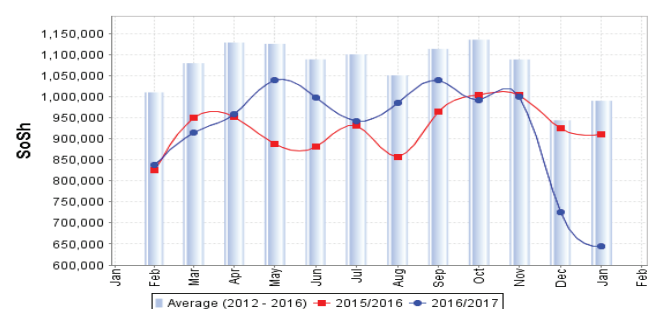


Figure 34: Exchange Rate

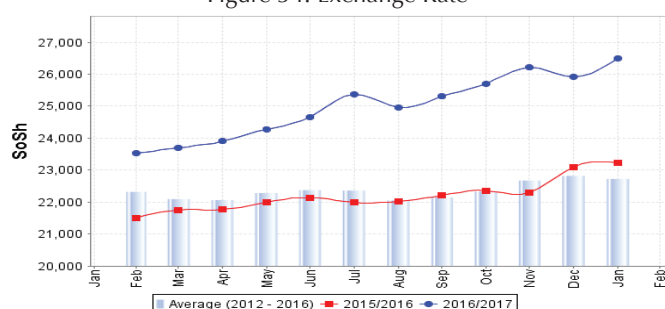
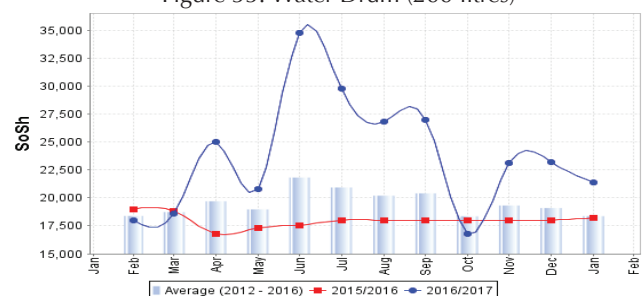


Figure 35: Water Drum (200 litres)



# Regional analysis: Northeast Regions

Indicator	5-Year Average (2012-2016)	Jan-16	Dec-16	Jan-17 Nominal Price	Jan-17 Real (Deflated) Price	% Change Previous Month	% Change Same Month Previous Year	% Change 5-year avrg (2012-2016)
<b>Imported Commodities Prices</b>								
Diesel 1 litre	23,644	17,357	16,464	16,325	5,846	-1%	-6%	-31%
Imported Red Rice 1kg	18,107	15,914	16,821	16,564	5,934	-2%	4%	-9%
Petrol 1 litre	23,449	21,750	19,607	19,914	7,154	2%	-8%	-15%
Sugar	21,377	17,679	22,143	21,914	7,882	-1%	24%	3%
Vegetable Oil 1 litre	39,855	32,036	33,000	33,329	12,040	1%	4%	-16%
Wheat Flour 1kg	17,082	15,393	16,286	15,979	5,720	-2%	4%	-6%
Wheat Grain 1kg	28,502	29,800	31,100	30,720	11,090	-1%	3%	8%
<b>Cereal Prices</b>								
Red Sorghum 1kg	21,510	23,750	25,500	25,400	9,152	0%	7%	18%
White Maize 1kg	19,455	22,000	27,000	28,500	10,281	6%	30%	46%
<b>Livestock &amp; Livestock Product Prices</b>								
Camel Local Quality (Head)	14,900,525	14,640,000	11,800,000	11,650,000	4,243,478	-1%	-20%	-22%
Cattle Local Quality (Head)	8,045,000	9,125,000	5,750,000	5,400,000	1,966,880	-6%	-41%	-33%
Fresh Camel Milk 1 litre	34,202	36,571	55,133	56,007	20,301	2%	53%	64%
Goat Export Quality (Head)	1,342,000	1,237,500	1,122,500	1,182,000	430,450	5%	-4%	-12%
Goat Local Quality (Head)	1,319,800	1,191,071	1,049,500	1,046,429	381,068	0%	-12%	-21%
<b>Other Essential Items</b>								
Charcoal 50kg	367,018	346,786	440,714	362,714	132,021	-18%	5%	-1%
Cowpeas 1 kg	41,766	37,792	38,292	38,517	13,930	1%	2%	-8%
Unskilled Labor Wage Rate	131,135	135,893	137,500	136,429	49,595	-1%	0%	4%
Firewood Bundle	35,682	33,857	34,036	35,786	12,935	5%	6%	0%
Local Sesame Oil 1 litre	98,377	100,500	94,350	96,650	35,105	2%	-4%	-2%
Exchange Rate (Somali Shilling per USD)	22,133	21,543	24,786	24,714	8,902	0%	15%	12%
<b>Terms of Trade</b>								
Labour Wage (Daily)/ Cereal (Rice(Kg))	7	9	8	8	-	0%	-11%	14%
Local Goat (Head)/ Cereal (Rice(Kg))	73	75	62	63	-	2%	-16%	-14%
<b>Price Indices</b>								
Consumer Price Index	-	231	260	275	-	6%	19%	-

Figure 36: Trends in Cereal Prices

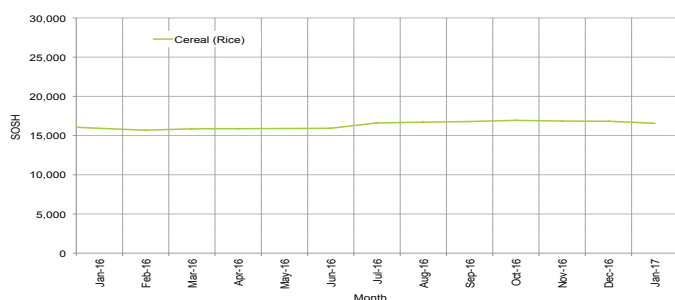


Figure 37: Trends in Wage Rates and Relative Purchasing Power

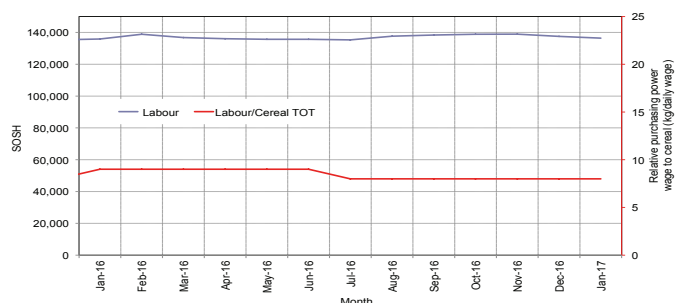


Figure 38: Imported Commodity Prices Compared to Exchange Rate

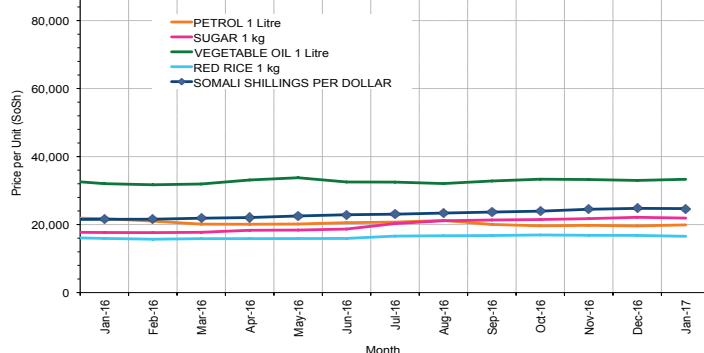


Figure 39: Goat Local Quality

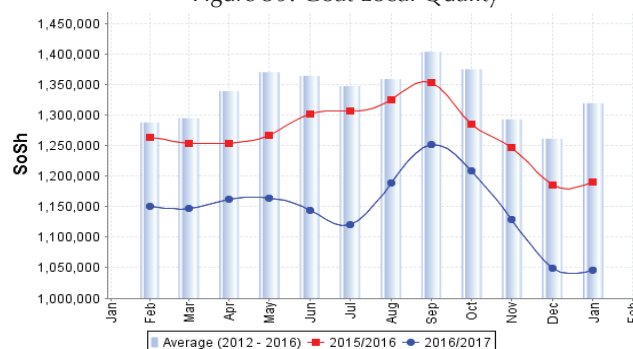


Figure 40: Exchange Rate

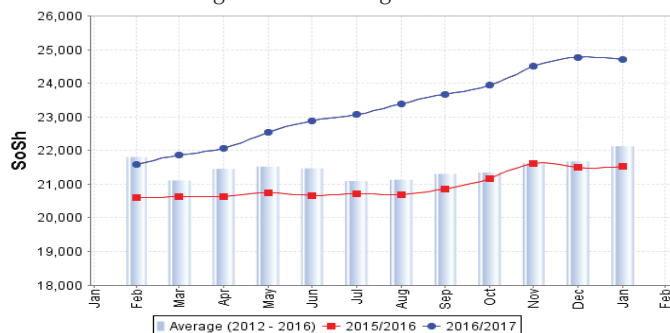
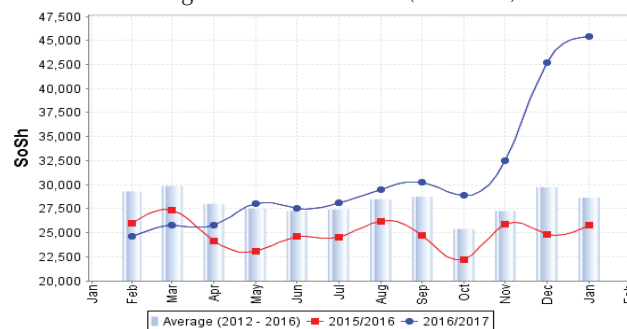


Figure 41: Water Drum (200 litres)





# Regional analysis: Northwest Regions

Indicator	5-Year Average (2012-2016)	Jan-16	Dec-16	Jan-17 Nominal Price	Jan-17 Real (Deflated) Price	% Change Previous Month	% Change Same Month Previous Year	% Change 5-year avrg (2012-2016)
<b>Imported Commodities Prices</b>								
Diesel 1 litre	6,353	4,855	4,875	5,425	3,818	11%	12%	-15%
Imported Red Rice 1kg	5,174	5,140	5,540	5,550	3,909	0%	8%	7%
Petrol 1 litre	7,097	6,525	6,460	6,710	4,746	4%	3%	-5%
Sugar	5,924	5,550	6,390	6,807	4,816	7%	23%	15%
Vegetable Oil 1 litre	12,178	11,500	13,300	14,300	10,228	8%	24%	17%
Wheat Flour 1kg	4,487	4,540	4,700	4,514	3,160	-4%	-1%	1%
Wheat Grain 1kg	3,425	4,325	4,344	4,250	2,970	-2%	-2%	24%
<b>Cereal Prices</b>								
White Sorghum 1kg	3,641	3,660	4,400	4,450	3,114	1%	22%	22%
Yellow Maize 1kg	3,856	4,520	5,300	5,000	3,511	-6%	11%	30%
<b>Livestock &amp; Livestock Product Prices</b>								
Camel Local Quality (Head)	3,476,633	4,586,250	3,624,167	4,052,500	2,926,888	12%	-12%	17%
Cattle Local Quality (Head)	1,940,816	2,256,667	2,270,167	2,340,833	1,690,607	3%	4%	21%
Fresh Camel Milk 1 litre	6,091	8,600	9,600	10,750	7,664	12%	25%	76%
Goat Export Quality (Head)	419,346	420,600	373,281	406,188	293,276	9%	-3%	-3%
Goat Local Quality (Head)	324,020	378,000	317,788	311,990	225,240	-2%	-17%	-4%
<b>Other Essential Items</b>								
Charcoal 50kg	52,600	58,900	68,100	56,450	40,672	-17%	-4%	7%
Cowpeas 1 kg	10,687	12,250	13,500	14,000	10,012	4%	14%	31%
Unskilled Labor Wage Rate	45,065	58,300	60,575	63,600	45,836	5%	9%	41%
Firewood Bundle	3,760	4,833	5,100	4,833	3,391	-5%	0%	29%
Local Sesame Oil 1 litre	29,948	33,000	33,188	33,750	24,277	2%	2%	13%
Exchange Rate (Somaliland Shilling per USD)	6,624	6,820	7,957	8,015	5,689	1%	18%	21%
<b>Terms of Trade</b>								
Labour Wage (Daily)/ Cereal (Rice(Kg))	8	11	11	11	-	0%	0%	38%
Local Goat (Head)/ Cereal (Rice(Kg))	62	74	57	56	-	-2%	-24%	-10%
<b>Price Indices</b>								
Consumer Price Index	-	129	142	138	-	-3%	8%	-

Figure 42: Trends in Cereal Prices

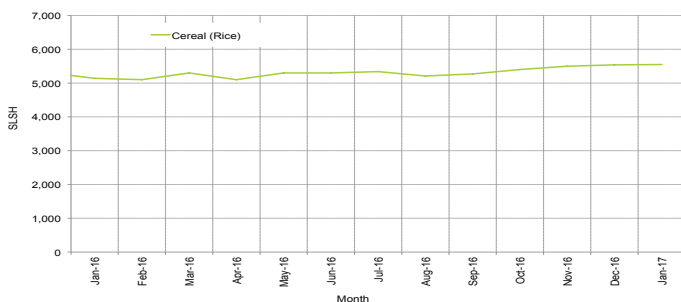


Figure 43: Trends in Wage Rates and Relative Purchasing Power

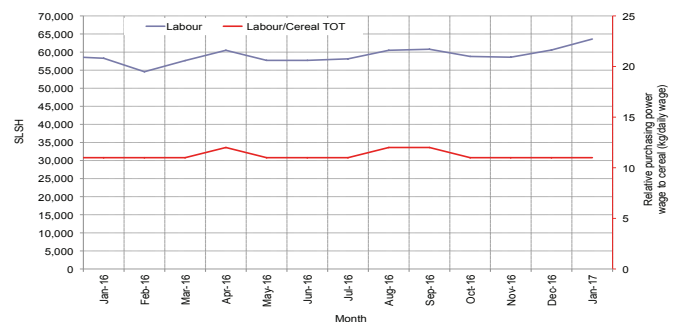


Figure 44: Imported Commodity Prices Compared to Exchange Rate

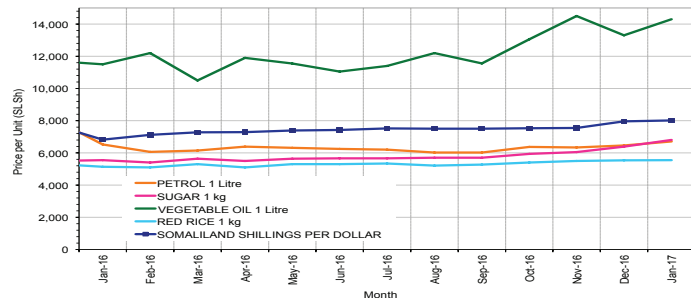


Figure 45: Goat Local Quality

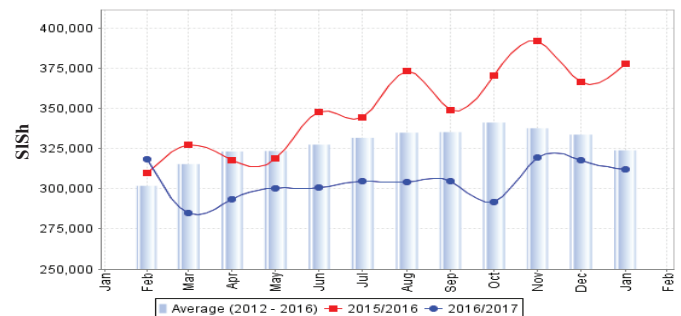


Figure 46: Exchange Rate

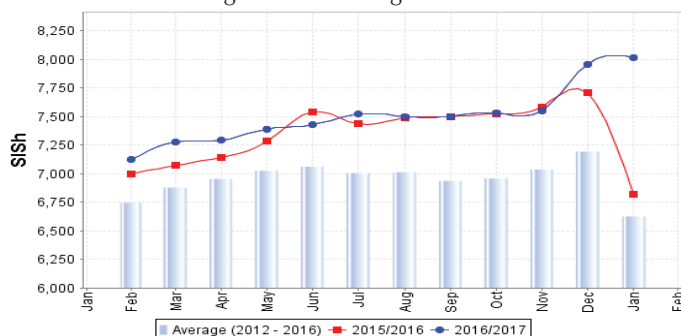
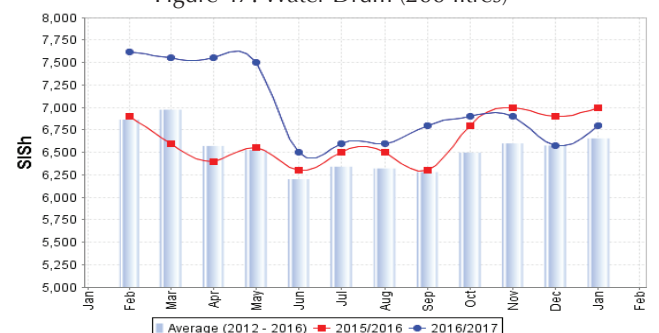


Figure 47: Water Drum (200 litres)



# Trends in Livestock Exports

Table 1: Berbera Livestock Exports (Number of Heads)

	1999	2000	2001	2002	2003	2004	2005	2006	2007	2008	2009	2010	2011	2012	2013	2014	2015	2016
Shoats	2 048 136	1 601 083	51 546	341 711	563 107	859 404	1 023 795	1 017 242	1 350 054	1 219 519	1 556 003	2 584 810	3 104 684	3 219 584	2 888 955	3 089 592	3 270 386	2 880 057
Cattle	89 967	63 263	20 973	37 547	84 312	131 852	148 151	85 631	88 143	80 051	88 005	133 021	150 934	190 354	20 875	252 597	160,395	150 133
Camel	37 430	16 984	3 473	18,864	21 874	5 147	5 069	22 810	14 245	26 515	20 206	92 651	107 281	102 664	75 728	64 578	61 475	57 841

Figure 48: Berbera Livestock Exports (Number of Heads)

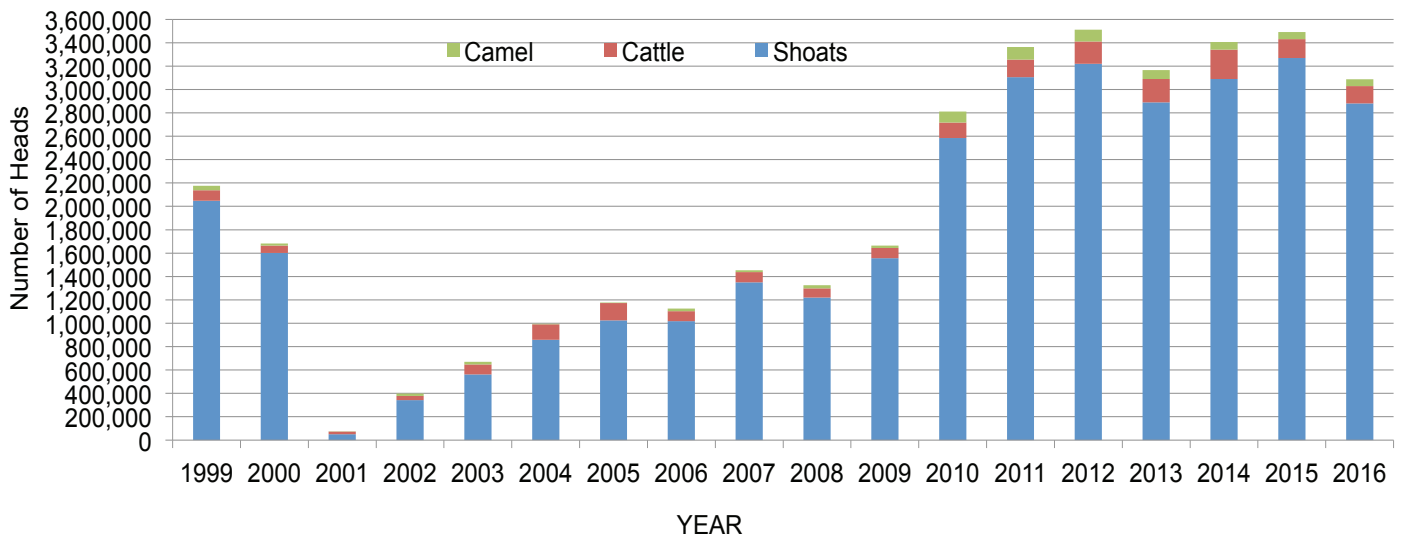
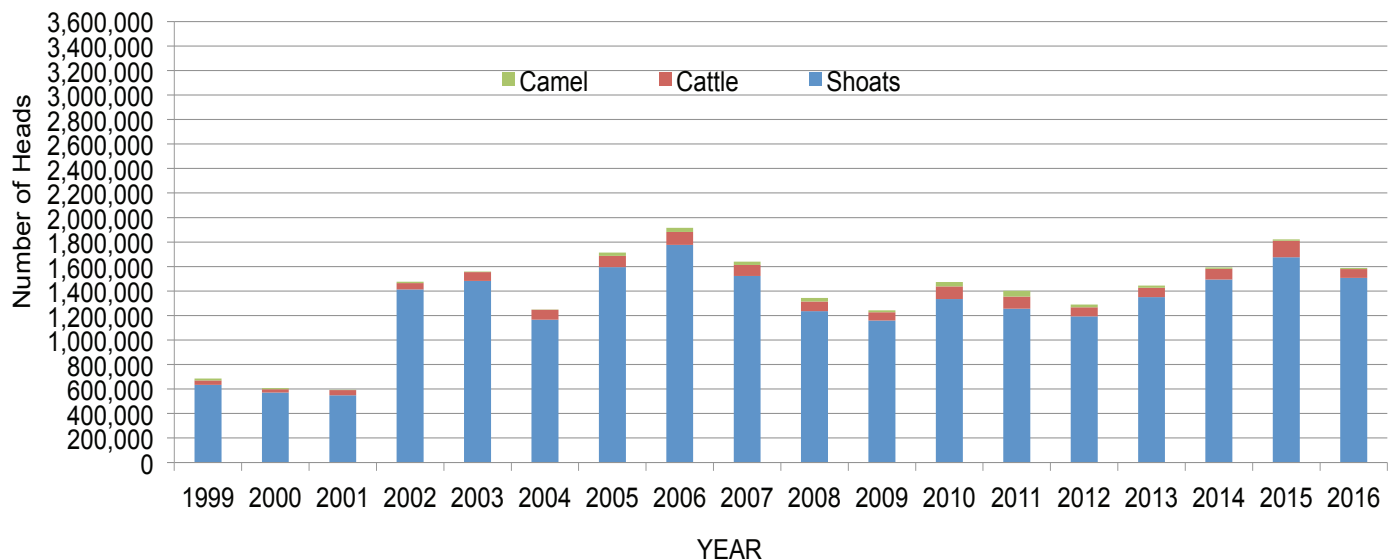


Table 2: Bossaso Livestock Exports (Number of Heads)

	1999	2000	2001	2002	2003	2004	2005	2006	2007	2008	2009	2010	2011	2012	2013	2014	2015	2016
Shoats	633 669	571 455	548 853	1 412 450	1 483 409	1 166 480	1 594 859	1 777 283	1 522 855	1 236 775	1 159 454	1 333 478	1 256 535	1 192 197	1 349 123	1 493 111	1 676 216	1 507 910
Cattle	36 586	27 604	42 248	53 313	71 328	79 994	91 910	104 595	89 190	78 046	67,385	103 808	99 058	76 043	77 353	87 759	134 597	70 705
Camel	15 544	8 177	1 950	9 720	4 259	2 488	26 109	33 724	27 580	27 639	15 331	36 865	45 878	22 288	19 032	12 251	10 945	10 144

Figure 49: Bossaso Livestock Exports (Number of Heads)



# Trends in Cereal Imports

Table 3: Total Cereal Imports through Berbera, Bossaso and Mogadishu Ports (Tonnes) \*

	1999	2000	2001	2002	2003	2004	2005	2006	2007	2008	2009	2010	2011	2012	2013*	2014	2015*	2016*
<b>Rice</b>	63,464	75,687	74,729	144,600	180,614	146,567	150,017	198,101	166,626	136,007	171,472	161,415	272,877	227,955	170,868	170,888	195,240	207 267
<b>Wheat flour</b>	55,176	78,555	134,425	128,263	171,442	151,555	169,583	178,345	176,821	169,208	240,247	249,080	258,679	268,491	183,058	284,230	318,868	207 463
<b>Pasta</b>	8,544	11,071	26,702	35,425	29,273	38,749	39,153	52,815	41,331	38,441	86,372	102,373	184,849	337,878	134,311	176,951	155,360	78 113

\*Elman (Mogadishu) is up to November 2015. Mogadishu data (Elmaan Port) for 2013 includes only January - March imports.

Figure 50: Total Cereal Imports (Berbera, Bossaso and Mogadishu)

