

Detailed market data are available online on [www.fsnau.org/ids](http://www.fsnau.org/ids).

# National Trends: CPI, Exchange Rates, Cereal Prices and Relative Purchasing Power

Table 1: ToT between Cereals (kg) and Daily Labour Wage Rate, by Region (December 2015)

Regions	December 2015 (kg)	kg change from		
		November 2015	December 2014	December 5 yr Average (2010 - 2014)
Banadir/Mogadishu	24	5	5	7
Bay	16	0	1	2
Bakool	6	0	3	1
Gedo	14	0	-4	-1
Juba	10	-1	0	1
Shabelle	13	-1	4	4
Northwest	11	-1	2	4
Northeast	8	-1	0	2
Central	5	0	0	1

Table 2: ToT between Cereals (kg) and Daily Labour Wage Rate, by Region (January 2016)

Regions	January 2015 (kg)	kg change from		
		December 2015	January 2015	January 5 yr Average (2011 - 2015)
Banadir/Mogadishu	26	2	8	10
Bay	17	1	-1	2
Bakool	7	1	3	1
Gedo	16	2	-4	0
Juba	11	1	2	2
Shabelle	12	-1	3	2
Northwest	11	0	2	4
Northeast	9	1	0	3
Central	5	0	0	1

Figure 1: Wheat Prices: Mogadishu and Bossaso Markets

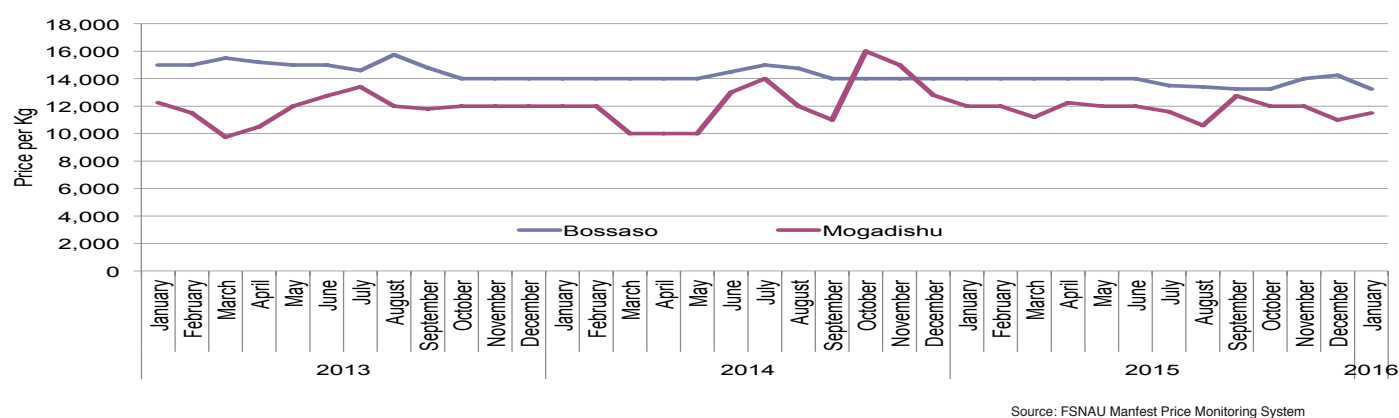


Figure 2: Terms of Trade Between Wage Rates and Selected Cereals

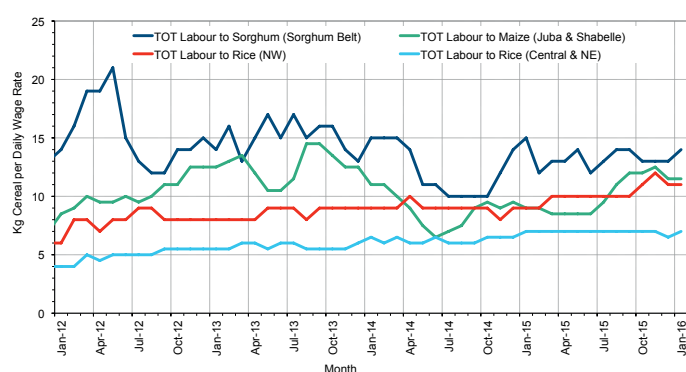


Figure 3: Monthly Exchange Rate for Selected Regions (SoSh and SiSh to USD)

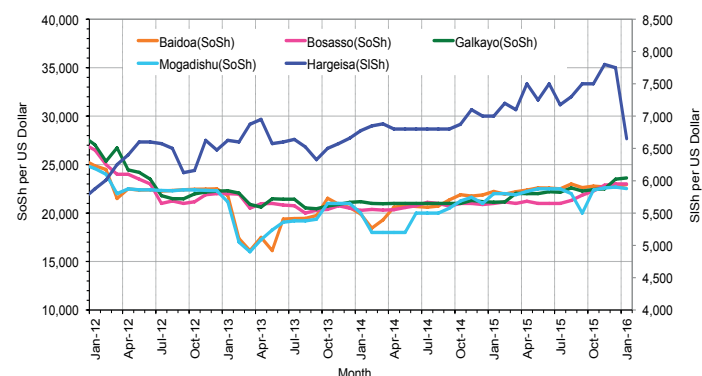


Figure 4: Monthly Trends in Consumer Price Index (CPI, March 2007=100)

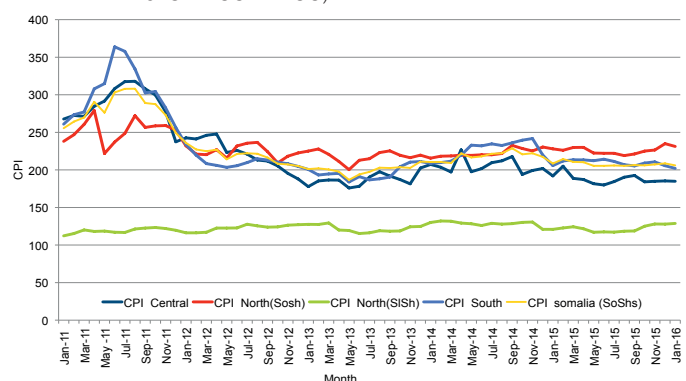
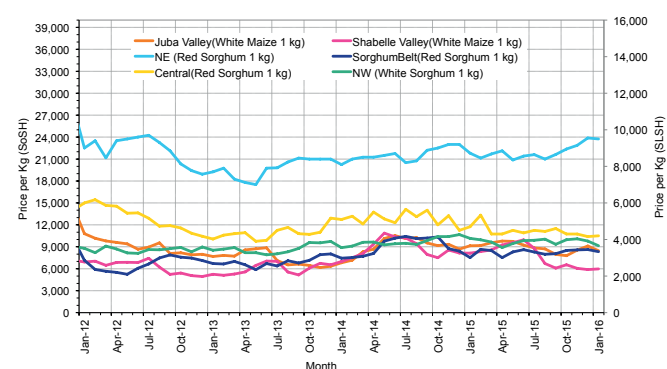


Figure 5: Monthly Trends in Local Cereal Prices



# Regional analysis: Juba Regions

Indicator	5-Year Average (2011-2015)	Jan-15	Dec-15	Jan-16 Nominal Price	Jan-16 Real (Deflated) Price	% Change Previous Month	% Change Same Month Previous Year	% Change 5-year avg (2011-
<b>Imported Commodities Prices</b>								
Diesel 1 litre	28,671	24,679	24,571	22,393	10,981	-9%	-9%	-22%
Imported Red Rice 1kg	18,477	15,607	16,643	15,286	7,464	-8%	-2%	-17%
Petrol 1 litre	30,710	26,357	31,000	27,357	13,438	-12%	4%	-11%
Sugar	21,603	16,143	17,393	15,714	7,676	-10%	-3%	-27%
Vegetable Oil 1 litre	40,227	31,714	31,857	29,207	14,353	-8%	-8%	-27%
Wheat Flour 1kg	17,070	15,321	16,500	14,857	7,252	-10%	-3%	-13%
Wheat Grain 1kg	17,000	-	-	-	-	-	-	-
<b>Cereal Prices</b>								
Red Sorghum 1kg	8,950	7,250	7,000	8,000	3,859	14%	10%	-11%
White Maize 1kg	9,597	9,221	9,271	8,729	4,220	-6%	-5%	-9%
<b>Livestock &amp; Livestock Product Prices</b>								
Camel Local Quality (Head)	8,936,000	9,042,083	9,741,667	11,925,833	5,901,366	22%	32%	33%
Cattle Local Quality (Head)	3,576,488	3,925,542	3,820,417	3,474,167	1,719,082	-9%	-11%	-3%
Fresh Camel Milk 1 litre	18,722	15,464	18,083	18,750	9,178	4%	21%	0%
Goat Export Quality (Head)	1,286,096	1,157,536	1,273,929	1,279,286	632,951	0%	11%	-1%
Goat Local Quality (Head)	835,285	792,357	822,679	819,107	405,233	0%	3%	-2%
<b>Other Essential Items</b>								
Charcoal 50kg	84,648	81,429	98,214	94,643	46,734	-4%	16%	12%
Cowpeas 1 kg	24,792	25,000	24,286	22,214	10,893	-9%	-11%	-10%
Unskilled Labor Wage Rate	82,525	84,893	90,929	100,964	49,862	11%	19%	22%
Firewood Bundle	8,627	7,714	8,107	7,893	3,806	-3%	2%	-9%
Local Sesame Oil 1 litre	76,167	76,286	69,393	68,000	33,550	-2%	-11%	-11%
Exchange Rate (Somali Shilling per USD)	23,698	22,088	22,857	22,814	11,189	0%	3%	-4%
<b>Terms of Trade</b>								
Labour Wage (Daily)/ Cereal (Maize(Kg))	9	9	10	12	-	20%	33%	33%
Local Goat (Head)/ Cereal (Maize(Kg))	95	86	89	94	-	6%	9%	-1%
<b>Price Indices</b>								
Consumer Price Index	-	206	206	202	-	-2%	-2%	-

Figure 6: Trends in Cereal Prices

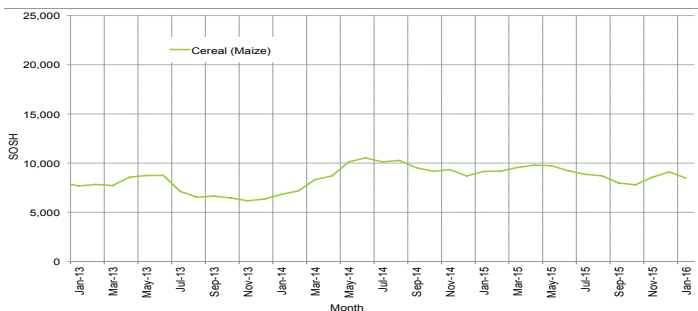


Figure 7: Trends in Wage Rates and Relative Purchasing Power

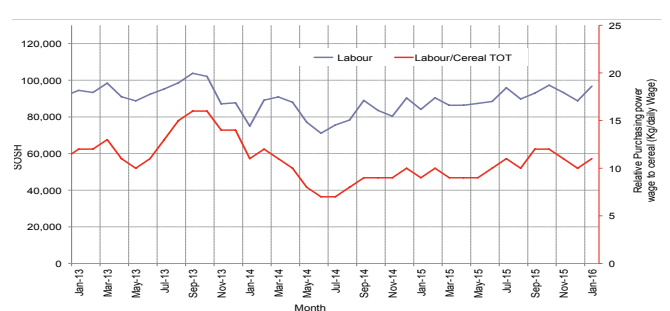


Figure 8: Imported Commodity Prices Compared to Exchange Rate

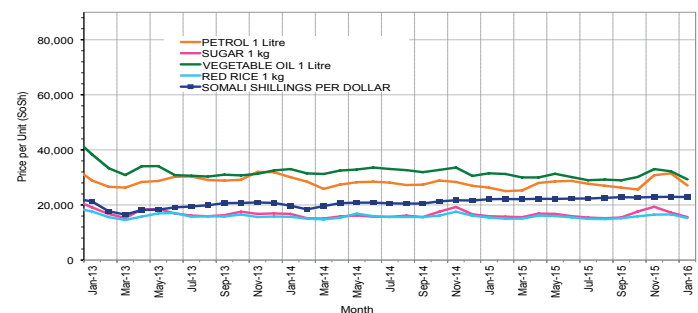


Figure 10: Exchange Rate

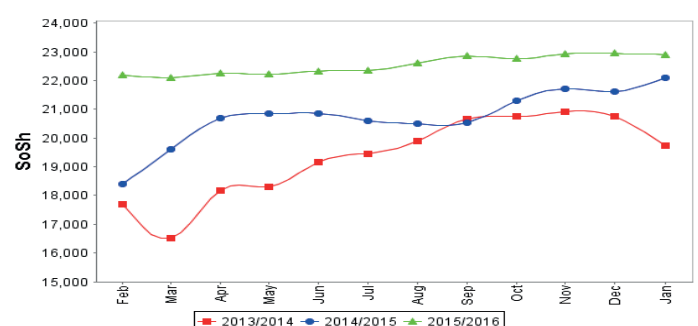


Figure 9: Goat Local Quality

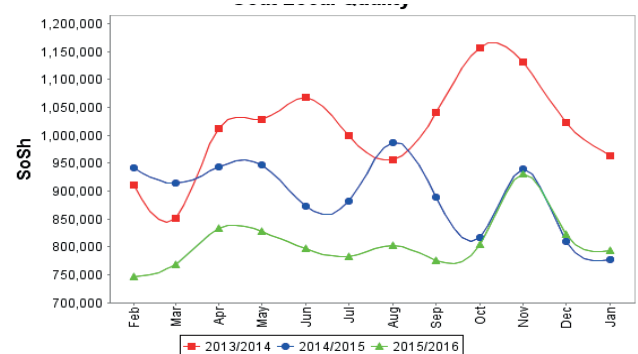
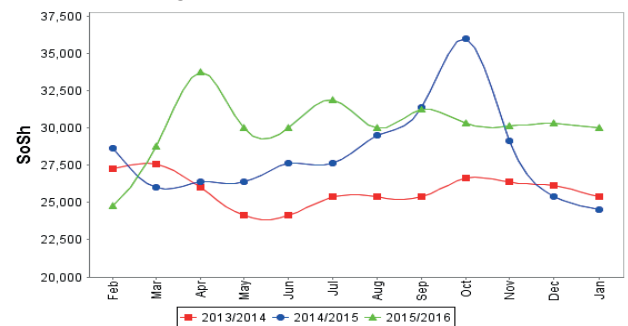


Figure 11: Water Drum (200 litres)



# Regional analysis: Sorghum Belt Regions (Bay, Bakool, Gedo and Hiran)

Indicator	5-Year Average (2011-2015)	Jan-15	Dec-15	Jan-16 Nominal Price	Jan-16 Real (Deflated) Price	% Change Previous Month	% Change Same Month Previous Year	% Change 5-year avg (2011-2015)
<b>Imported Commodities Prices</b>								
Diesel 1 litre	31,843	29,534	26,750	26,386	12,957	-1%	-11%	-17%
Imported Red Rice 1kg	20,349	17,614	18,386	18,364	8,987	0%	4%	-10%
Petrol 1 litre	31,368	29,432	28,886	28,159	13,834	-3%	-4%	-10%
Sugar	23,846	18,527	19,114	18,545	9,077	-3%	0%	-22%
Vegetable Oil 1 litre	42,927	38,886	35,636	35,409	17,422	-1%	-9%	-18%
Wheat Flour 1kg	18,490	17,636	18,068	17,841	8,729	-1%	1%	-4%
Wheat Grain 1kg	13,961	19,000	24,500	25,000	12,271	2%	32%	79%
<b>Cereal Prices</b>								
Red Sorghum 1kg	8,254	7,523	8,632	8,340	4,027	-3%	11%	1%
White Maize 1kg	9,157	9,647	9,979	9,675	4,688	-3%	0%	6%
<b>Livestock &amp; Livestock Product Prices</b>								
Camel Local Quality (Head)	11,390,405	12,064,500	12,613,500	12,357,500	6,114,975	-2%	2%	8%
Cattle Local Quality (Head)	3,278,606	3,766,667	3,493,750	3,393,750	1,679,288	-3%	-10%	4%
Fresh Camel Milk 1 litre	20,726	17,725	16,823	19,364	9,482	15%	9%	-7%
Goat Export Quality (Head)	1,452,700	1,356,364	1,450,000	1,434,091	709,556	-1%	6%	-1%
Goat Local Quality (Head)	913,941	840,682	830,591	799,091	395,328	-4%	-5%	-13%
<b>Other Essential Items</b>								
Charcoal 50kg	143,171	158,700	160,325	156,125	77,158	-3%	-2%	9%
Cowpeas 1 kg	23,116	26,591	22,486	20,489	10,039	-9%	-23%	-11%
Unskilled Labor Wage Rate	102,586	115,341	111,727	118,409	58,494	6%	3%	15%
Firewood Bundle	6,022	6,432	6,455	6,341	3,038	-2%	-1%	5%
Local Sesame Oil 1 litre	78,129	84,464	71,964	71,071	35,069	-1%	-16%	-9%
Exchange Rate (Somali Shilling per USD)	23,783	21,625	22,641	22,684	11,125	0%	5%	-5%
<b>Terms of Trade</b>								
Labour Wage (Daily)/ Cereal (Sorghum(Kg))	13	15	13	14	-	8%	-7%	8%
Local Goat (Head)/ Cereal (Sorghum(Kg))	121	112	96	96	-	0%	-14%	-21%
<b>Price Indices</b>								
Consumer Price Index	-	206	206	202	-	-2%	-2%	-

Figure 12: Trends in Cereal Prices

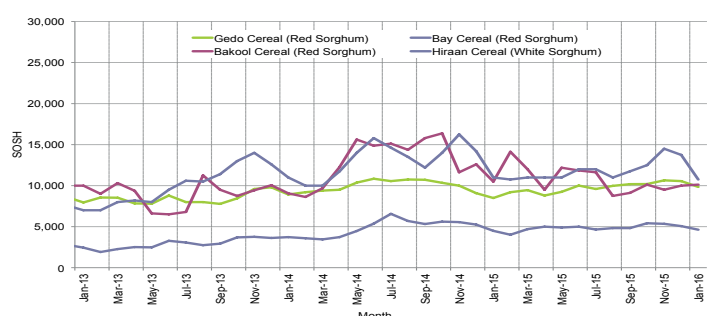


Figure 14: Imported Commodity Prices Compared to Exchange Rate

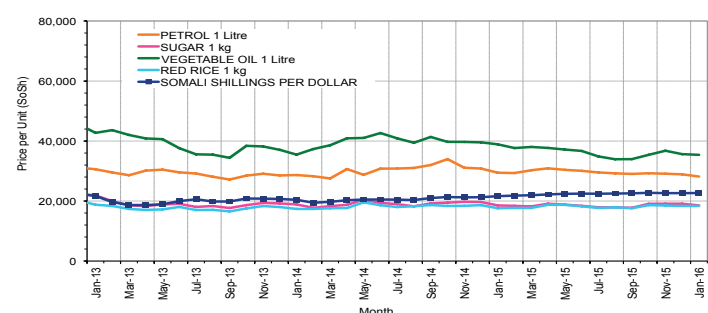


Figure 16: Exchange Rate

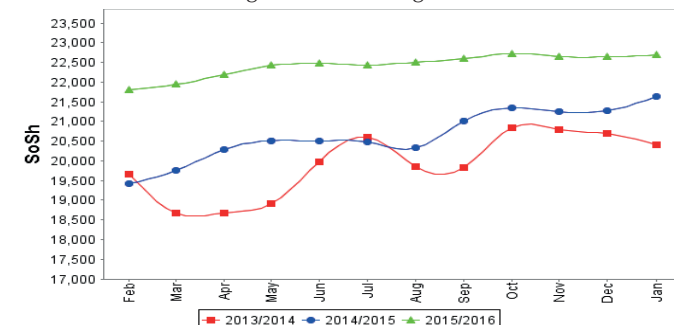


Figure 13: Trends in Wage Rates and Relative Purchasing Power

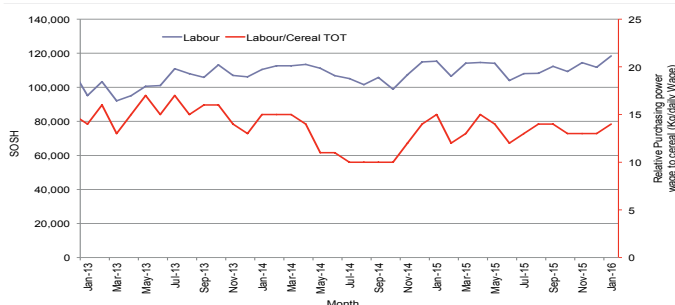


Figure 15: Goat Local Quality

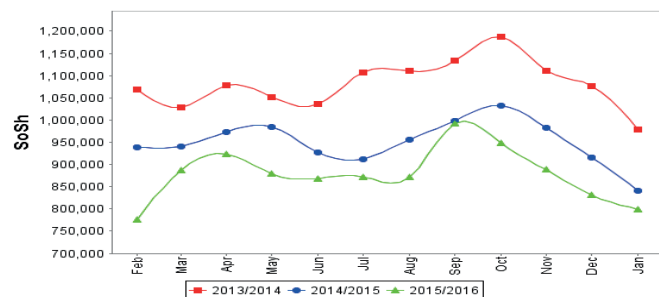
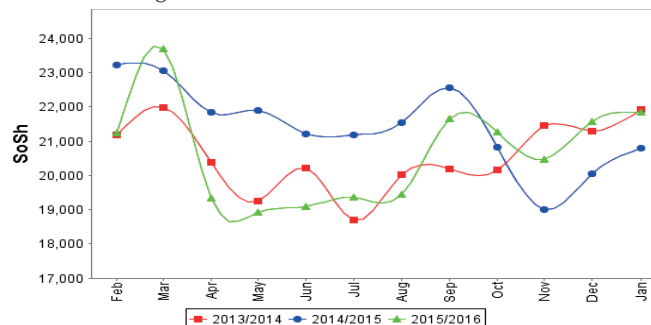


Figure 17: Water Drum (200 litres)



# Regional analysis: Shabelle Regions

Indicator	5-Year Average (2011-2015)	Jan-15	Dec-15	Jan-16 Nominal Price	Jan-16 Real (Deflated) Price	% Change Previous Month	% Change Same Month Previous Year	% Change 5-year avrg (2011-2015)
<b>Imported Commodities Prices</b>								
Diesel 1 litre	28,666	24,583	21,583	21,292	10,436	-1%	-13%	-26%
Imported Red Rice 1kg	17,633	15,833	16,333	15,167	7,405	-7%	-4%	-14%
Petrol 1 litre	30,299	27,500	27,125	27,000	13,261	0%	-2%	-11%
Sugar	21,274	16,333	15,500	15,667	7,653	1%	-4%	-26%
Vegetable Oil 1 litre	34,050	28,292	24,667	25,500	12,519	3%	-10%	-25%
Wheat Flour 1kg	17,175	16,208	15,833	15,000	7,323	-5%	-7%	-13%
Wheat Grain 1kg	16,166	27,000	17,000	17,500	8,560	3%	-35%	8%
<b>Cereal Prices</b>								
Red Sorghum 1kg	10,912	10,350	10,028	9,136	4,421	-9%	-12%	-16%
White Maize 1kg	7,499	8,137	5,883	5,977	2,858	2%	-27%	-20%
<b>Livestock &amp; Livestock Product Prices</b>								
Camel Local Quality (Head)	15,788,600	16,450,000	18,844,000	19,290,000	9,545,504	2%	17%	22%
Cattle Local Quality (Head)	4,877,800	5,150,000	5,690,000	4,917,500	2,433,312	-14%	-5%	1%
Fresh Camel Milk 1 litre	18,708	18,917	20,567	19,333	9,467	-6%	2%	3%
Goat Export Quality (Head)	1,733,333	1,864,375	1,758,750	1,778,125	879,800	1%	-5%	3%
Goat Local Quality (Head)	1,208,333	1,322,917	1,275,833	1,267,083	626,913	-1%	-4%	5%
<b>Other Essential Items</b>								
Charcoal 50kg	120,897	121,361	173,139	155,597	76,897	-10%	28%	29%
Cowpeas 1 kg	21,036	22,669	17,939	19,932	9,763	11%	-12%	-5%
Unskilled Labor Wage Rate	68,083	70,833	74,583	73,958	36,498	-1%	4%	9%
Firewood Bundle	5,950	6,375	7,208	6,083	2,910	-16%	-5%	2%
Local Sesame Oil 1 litre	63,981	67,950	43,217	40,625	20,003	-6%	-40%	-37%
Exchange Rate (Somali Shilling per USD)	24,048	22,177	22,608	22,604	11,086	0%	2%	-6%
<b>Terms of Trade</b>								
Labour Wage (Daily)/ Cereal (Maize(Kg))	9	9	13	12	-	-8%	33%	33%
Local Goat (Head)/ Cereal (Maize(Kg))	173	163	217	212	-	-2%	30%	23%
<b>Price Indices</b>								
Consumer Price Index	-	206	206	202	-	-2%	-2%	-

Figure 18: Trends in Cereal Prices



Figure 19: Trends in Wage Rates and Relative Purchasing Power

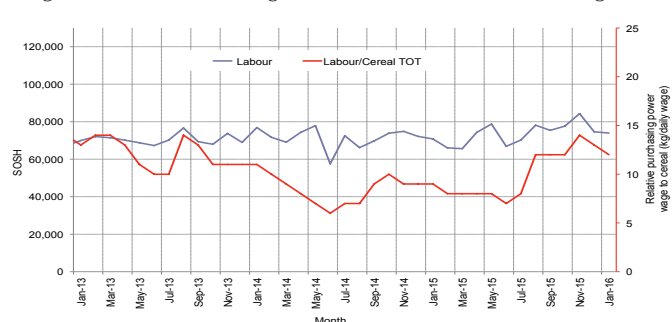


Figure 20: Imported Commodity Prices Compared to Exchange Rate

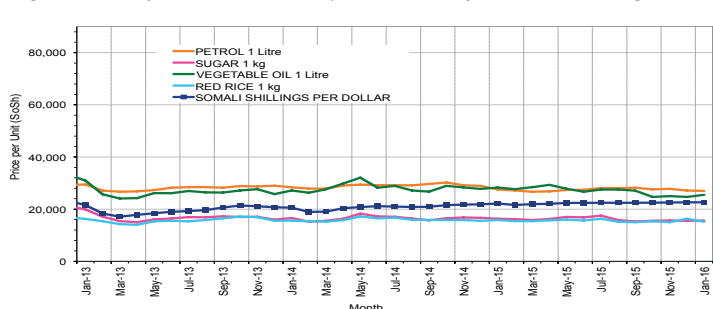


Figure 21: Goat Local Quality

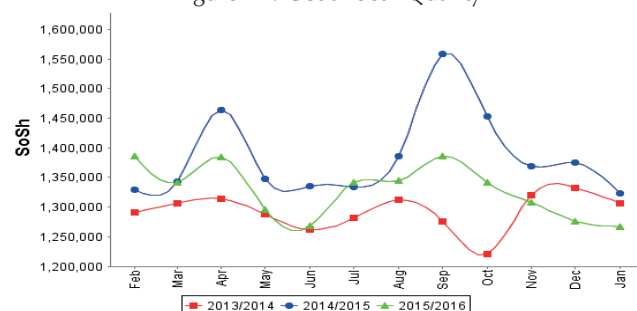


Figure 22: Exchange Rate

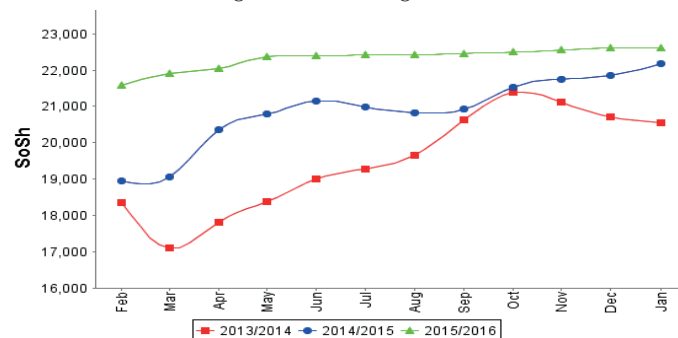
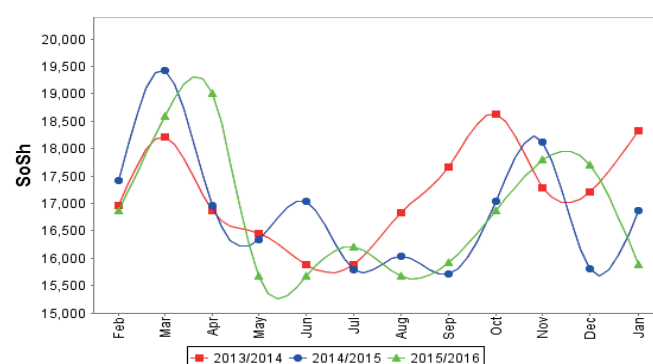


Figure 23: Water Drum (200 litres)





# Regional analysis: Banadir Region

Indicator	5-Year Average (2011-2015)	Jan-15	Dec-15	Jan-16 Nominal Price	Jan-16 Real (Deflated) Price	% Change Previous Month	% Change Same Month Previous Year	% Change 5-year avrg (2011-2015)
<b>Imported Commodities Prices</b>								
Diesel 1 litre	23,687	20,479	17,000	16,500	8,065	-3%	-19%	-30%
Imported Red Rice 1kg	16,091	12,542	12,375	12,563	6,117	2%	0%	-22%
Petrol 1 litre	24,829	21,250	19,917	19,292	9,447	-3%	-9%	-22%
Sugar	18,856	14,167	13,250	13,417	6,539	1%	-5%	-29%
Vegetable Oil 1 litre	32,227	23,813	22,375	22,500	11,034	1%	-6%	-30%
Wheat Flour 1kg	14,006	12,833	12,583	12,708	6,189	1%	-1%	-9%
Wheat Grain 1kg	10,746	10,917	11,417	11,917	5,797	4%	9%	11%
<b>Cereal Prices</b>								
Red Sorghum 1kg	8,246	8,542	7,104	7,333	3,529	3%	-14%	-11%
White Maize 1kg	8,769	10,121	7,833	6,875	3,302	-12%	-32%	-22%
<b>Livestock &amp; Livestock Product Prices</b>								
Camel Local Quality (Head)	13,700,000	-	-	-	-	-	-	-
Cattle Local Quality (Head)	3,040,000	-	-	-	-	-	-	-
Fresh Camel Milk 1 litre	20,570	22,375	23,000	23,000	11,281	0%	3%	12%
Goat Export Quality (Head)	2,127,500	-	2,175,000	2,000,000	989,595	-8%	-	-6%
Goat Local Quality (Head)	1,855,000	2,050,000	1,746,250	1,687,500	834,955	-3%	-18%	-9%
<b>Other Essential Items</b>								
Charcoal 50kg	172,500	186,917	210,875	198,167	97,962	-6%	6%	15%
Cowpeas 1 kg	21,230	22,388	20,608	17,313	8,467	-16%	-23%	-18%
Unskilled Labor Wage Rate	98,108	102,500	107,500	110,417	54,540	3%	8%	13%
Firewood Bundle	7,466	8,000	8,700	8,800	4,255	1%	10%	18%
Local Sesame Oil 1 litre	65,056	70,917	57,333	57,500	28,354	0%	-19%	-12%
Exchange Rate (Somali Shilling per USD)	23,677	21,854	22,610	22,552	11,060	0%	3%	-5%
<b>Terms of Trade</b>								
Labour Wage (Daily)/ Cereal (Maize(Kg))	11	10	14	16	-	14%	60%	45%
Local Goat (Head)/ Cereal (Maize(Kg))	227	203	223	245	-	10%	21%	8%
<b>Price Indices</b>								
Consumer Price Index	-	206	206	202	-	-2%	-2%	-

Figure 24: Trends in Cereal Prices



Figure 25: Bakara: Trends in Wage Rates and Relative Purchasing Power

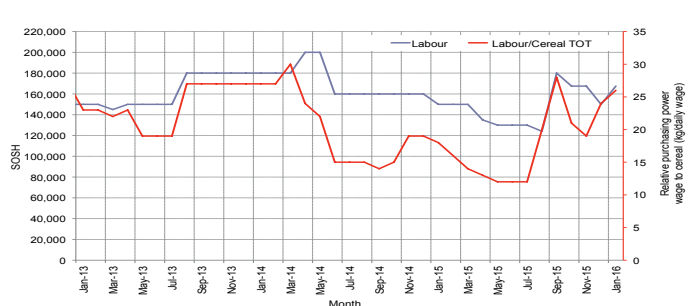


Figure 26: Imported Commodity Prices Compared to Exchange Rate

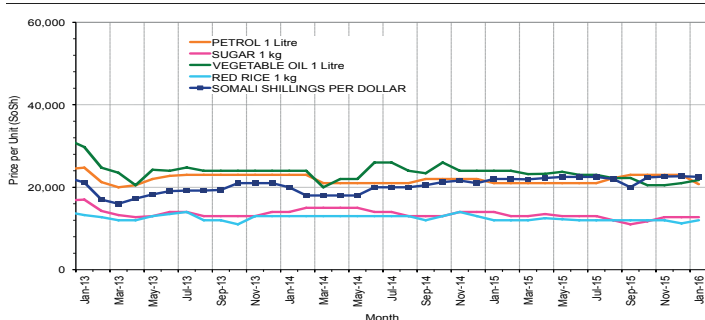


Figure 27: Goat Local Quality

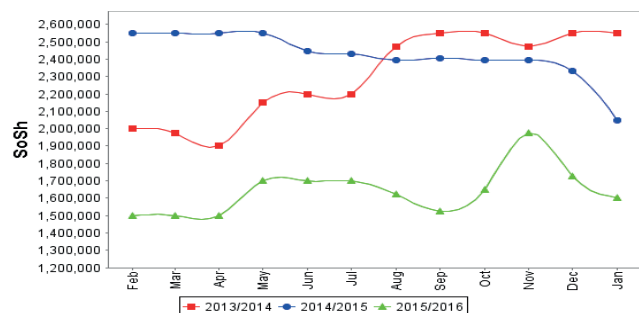


Figure 28: Exchange Rate

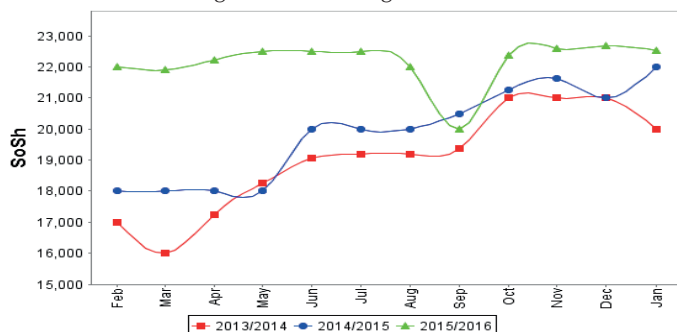
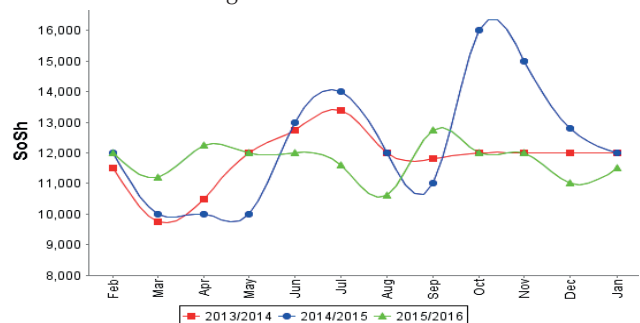


Figure 29: Wheat Flour



# Regional analysis: Central Regions

Indicator	5-Year Average (2011-2015)	Jan-15	Dec-15	Jan-16 Nominal Price	Jan-16 Real (Deflated) Price	% Change Previous Month	% Change Same Month Previous Year	% Change 5-year avrg (2011-2015)
<b>Imported Commodities Prices</b>								
Diesel 1 litre	30,052	26,550	22,450	21,750	11,660	-3%	-18%	-28%
Imported Red Rice 1kg	22,298	17,900	17,250	17,250	9,227	0%	-4%	-23%
Petrol 1 litre	27,264	25,500	25,000	23,950	12,849	-4%	-6%	-12%
Sugar	25,310	19,050	18,050	18,450	9,876	2%	-3%	-27%
Vegetable Oil 1 litre	46,610	40,000	35,250	35,250	18,959	0%	-12%	-24%
Wheat Flour 1kg	18,300	16,000	15,400	15,700	8,389	2%	-2%	-14%
Wheat Grain 1kg	15,655	16,500	16,875	16,875	9,024	0%	2%	8%
<b>Cereal Prices</b>								
Red Sorghum 1kg	13,227	11,750	10,400	10,500	5,577	1%	-11%	-21%
White Maize 1kg	14,035	13,600	12,400	12,700	6,767	2%	-7%	-10%
<b>Livestock &amp; Livestock Product Prices</b>								
Camel Local Quality (Head)	9,536,250	11,825,000	14,012,500	13,625,000	7,366,671	-3%	15%	43%
Cattle Local Quality (Head)	2,400,000	-	-	-	-	-	-	-
Fresh Camel Milk 1 litre	31,936	29,800	30,750	30,500	16,391	-1%	2%	-4%
Goat Export Quality (Head)	1,396,000	1,320,000	1,218,750	1,270,000	686,564	4%	-4%	-9%
Goat Local Quality (Head)	999,206	850,000	925,000	912,000	493,001	-1%	7%	-9%
<b>Other Essential Items</b>								
Charcoal 50kg	181,493	161,000	160,000	162,000	87,490	1%	1%	-11%
Cowpeas 1 kg	25,598	20,000	22,500	21,200	11,362	-6%	6%	-17%
Unskilled Labor Wage Rate	84,250	85,000	92,000	92,000	49,643	0%	8%	9%
Firewood Bundle	33,880	33,100	33,000	33,000	17,742	0%	0%	-3%
Local Sesame Oil 1 litre	89,970	87,950	87,000	87,000	46,939	0%	-1%	-3%
Exchange Rate (Somali Shilling per USD)	24,247	21,405	23,100	23,225	12,457	1%	9%	-4%
<b>Terms of Trade</b>								
Labour Wage (Daily)/ Cereal (Rice(Kg))	4	5	5	5	-	0%	0%	25%
Local Goat (Head)/ Cereal (Rice(Kg))	46	47	54	53	-	-2%	13%	15%
Camel (Head)/Cereal (Kg)	457	661	812	790	-	-3%	20%	73%
<b>Price Indices</b>								
Consumer Price Index	-	192	185	185	-	0%	-4%	-

Figure 30: Trends in Cereal Prices

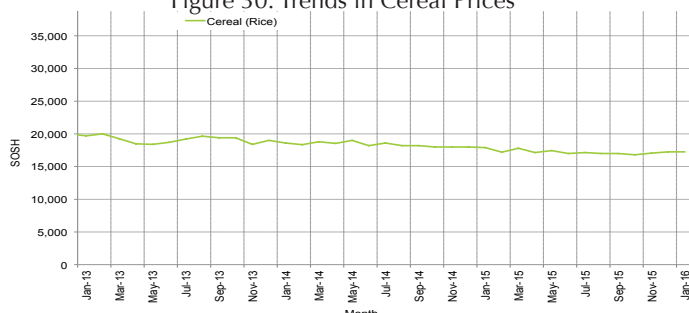


Figure 31: Trends in wage rates and relative purchasing power

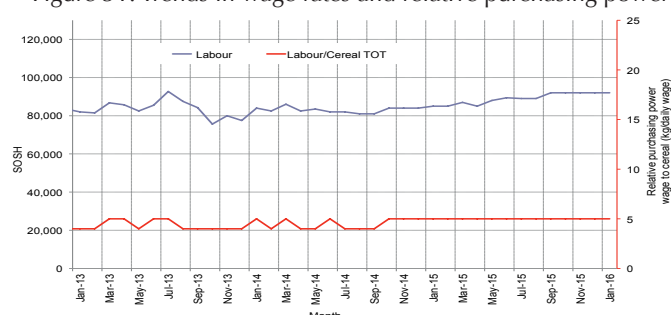


Figure 32: Imported Commodity Prices Compared to Exchange Rate

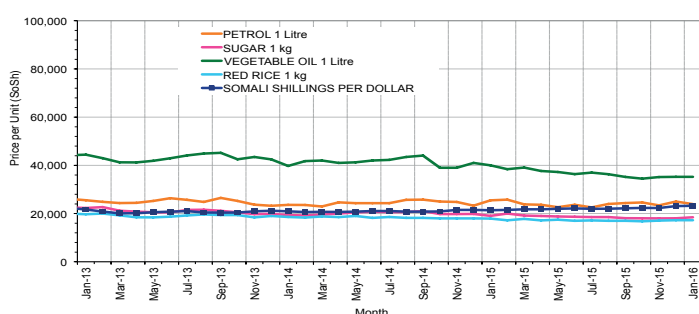


Figure 33: Goat Local Quality

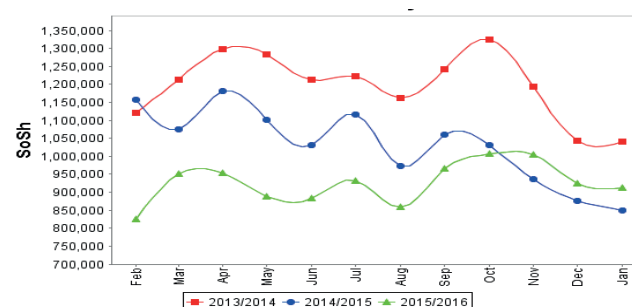


Figure 34: Exchange Rate

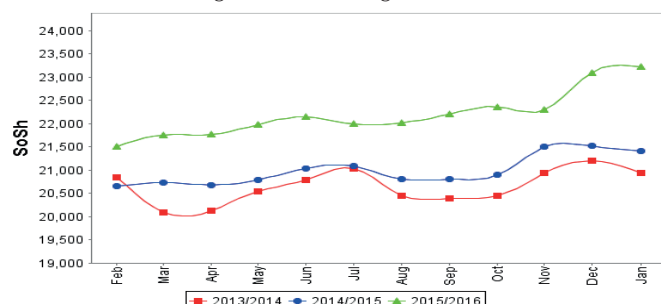
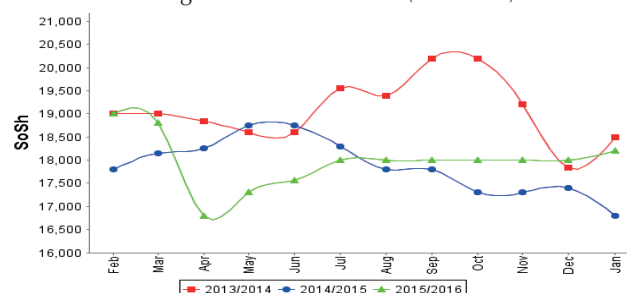


Figure 35: Water Drum (200 litres)



# Regional analysis: Northeast Regions

Indicator	5-Year Average (2011-2015)	Jan-15	Dec-15	Jan-16 Nominal Price	Jan-16 Real (Deflated) Price	% Change Previous Month	% Change Same Month Previous Year	% Change 5-year avrg (2011-2015)
<b>Imported Commodities Prices</b>								
Diesel 1 litre	25,812	19,250	15,375	14,875	6,333	-3%	-23%	-42%
Imported Red Rice 1kg	18,342	14,850	14,875	14,600	6,214	-2%	-2%	-20%
Petrol 1 litre	23,265	18,913	18,625	19,125	8,171	3%	1%	-18%
Sugar	22,802	16,675	15,625	15,813	6,739	1%	-5%	-31%
Vegetable Oil 1 litre	40,187	31,250	30,938	29,313	12,577	-5%	-6%	-27%
Wheat Flour 1kg	16,812	14,300	14,250	13,938	5,928	-2%	-3%	-17%
Wheat Grain 1kg	25,135	21,300	22,000	22,000	9,414	0%	3%	-12%
<b>Cereal Prices</b>								
Red Sorghum 1kg	20,347	21,800	23,875	23,750	10,171	-1%	9%	17%
White Maize 1kg	19,055	20,400	22,500	22,000	9,414	-2%	8%	15%
<b>Livestock &amp; Livestock Product Prices</b>								
Camel Local Quality (Head)	14,362,374	14,677,500	14,456,250	14,300,000	6,184,095	-1%	-3%	0%
Cattle Local Quality (Head)	7,520,000	8,500,000	8,375,000	9,125,000	3,946,108	9%	7%	21%
Fresh Camel Milk 1 litre	37,055	31,588	38,646	38,375	16,496	-1%	21%	4%
Goat Export Quality (Head)	1,377,500	1,431,250	1,300,000	1,250,000	540,476	-4%	-13%	-9%
Goat Local Quality (Head)	1,309,275	1,227,000	1,153,125	1,190,625	514,799	3%	-3%	-9%
<b>Other Essential Items</b>								
Charcoal 50kg	393,250	395,625	378,438	375,625	162,343	-1%	-5%	-4%
Cowpeas 1 kg	36,283	30,667	31,833	32,917	14,135	3%	7%	-9%
Unskilled Labor Wage Rate	121,412	130,000	125,625	125,938	54,363	0%	-3%	4%
Firewood Bundle	43,900	50,750	47,125	47,500	20,442	1%	-6%	8%
Local Sesame Oil 1 litre	91,591	95,750	94,375	95,625	41,254	1%	0%	4%
Exchange Rate (Somali Shilling per USD)	24,259	20,976	22,000	22,200	9,501	1%	6%	-8%
<b>Terms of Trade</b>								
Labour Wage (Daily)/ Cereal (Rice(Kg)	6	9	8	9	-	13%	0%	50%
Local Goat (Head)/ Cereal (Rice(Kg)	73	83	78	82	-	5%	-1%	12%
<b>Price Indices</b>								
Consumer Price Index	-	228	235	231	-	-2%	1%	-

Figure 36: Trends in Cereal Prices



Figure 37: Trends in Wage Rates and Relative Purchasing Power

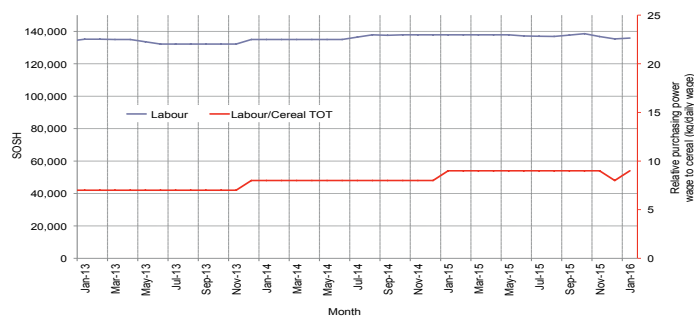


Figure 38: Imported Commodity Prices Compared to Exchange Rate

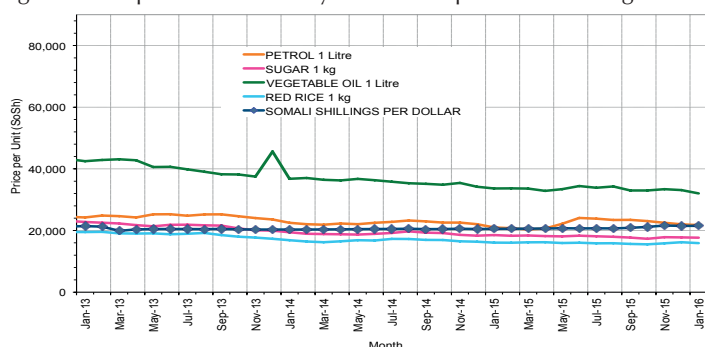


Figure 39: Goat Local Quality

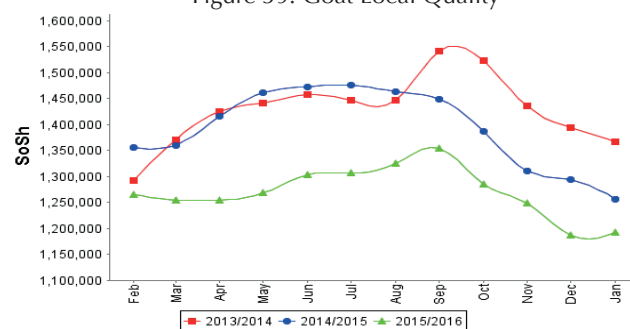


Figure 40: Exchange Rate

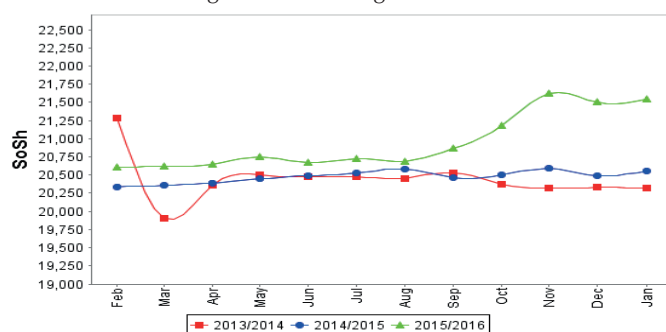
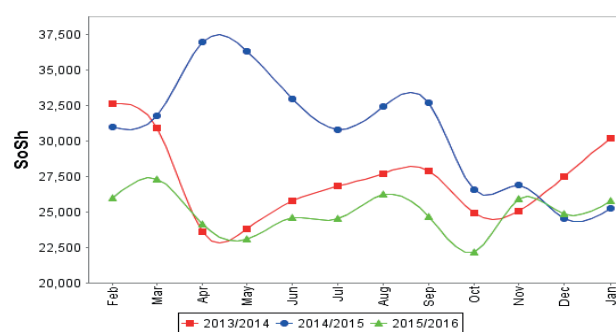


Figure 41: Water Drum (200 litres)





# Regional analysis: Northwest Regions

Indicator	5-Year Average (2011-2015)	Jan-15	Dec-15	Jan-16 Nominal Price	Jan-16 Real (Deflated) Price	% Change Previous Month	% Change Same Month Previous Year	% Change 5-year avg (2011-2015)
<b>Imported Commodities Prices</b>								
Diesel 1 litre	6,447	6,686	6,340	4,855	3,671	-23%	-27%	-25%
Imported Red Rice 1kg	5,150	5,180	5,310	5,140	3,892	-3%	-1%	0%
Petrol 1 litre	6,872	7,685	8,040	6,525	4,968	-19%	-15%	-5%
Sugar	5,973	5,800	5,500	5,550	4,210	1%	-4%	-7%
Vegetable Oil 1 litre	11,653	12,911	11,700	11,500	8,831	-2%	-11%	-1%
Wheat Flour 1kg	4,375	4,600	4,790	4,540	3,426	-5%	-1%	4%
Wheat Grain 1kg	3,040	3,500	3,700	4,325	3,259	17%	24%	42%
<b>Cereal Prices</b>								
White Sorghum 1kg	3,474	4,060	3,915	3,660	2,742	-7%	-10%	5%
Yellow Maize 1kg	3,477	3,700	4,500	4,520	3,410	0%	22%	30%
<b>Livestock &amp; Livestock Product Prices</b>								
Camel Local Quality (Head)	2,916,883	3,688,333	4,893,063	4,586,250	3,561,743	-6%	24%	57%
Cattle Local Quality (Head)	1,702,296	1,979,167	2,164,167	2,256,667	1,752,507	4%	14%	33%
Fresh Camel Milk 1 litre	5,397	5,900	8,000	8,600	6,579	8%	46%	59%
Goat Export Quality (Head)	393,681	432,000	415,663	420,600	326,553	1%	-3%	7%
Goat Local Quality (Head)	294,220	312,850	366,650	378,000	293,468	3%	21%	28%
<b>Other Essential Items</b>								
Charcoal 50kg	47,675	61,550	59,300	58,900	45,644	-1%	-4%	24%
Cowpeas 1 kg	9,721	11,500	12,000	12,250	9,414	2%	7%	26%
Unskilled Labor Wage Rate	39,205	45,336	58,820	58,300	45,178	-1%	29%	49%
Firewood Bundle	3,113	4,167	4,833	4,833	3,653	0%	16%	55%
Local Sesame Oil 1 litre	27,438	33,125	32,938	33,000	25,529	0%	0%	20%
Exchange Rate (Somaliland Shilling per USD)	6,389	6,985	7,705	6,820	5,197	-11%	-2%	7%
<b>Terms of Trade</b>								
Labour Wage (Daily)/ Cereal (Rice)(Kg)	7	9	11	11	-	0%	22%	57%
Local Goat (Head)/ Cereal (Rice)(Kg)	57	60	69	74	-	7%	23%	30%
<b>Price Indices</b>								
Consumer Price Index	-	121	128	129	-	1%	7%	-

Figure 42: Trends in Cereal Prices

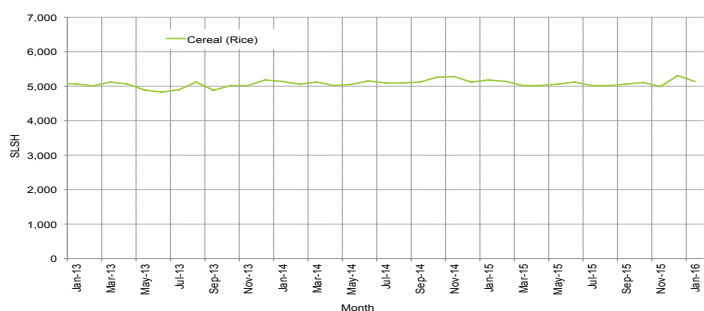


Figure 43: Trends in Wage Rates and Relative Purchasing Power

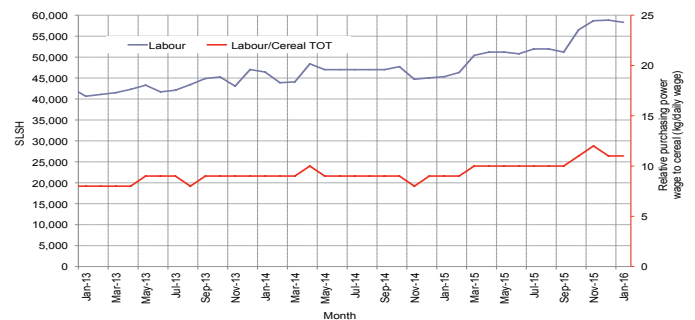


Figure 44: Imported Commodity Prices Compared to Exchange Rate

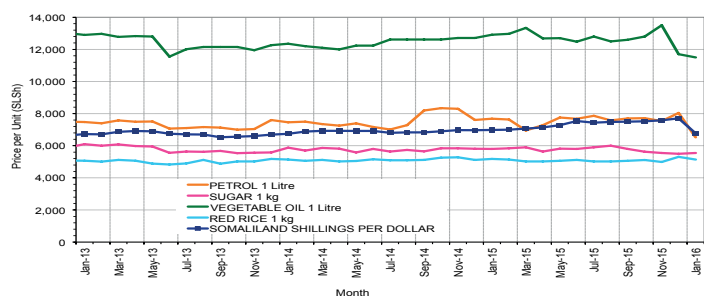


Figure 45: Goat Local Quality

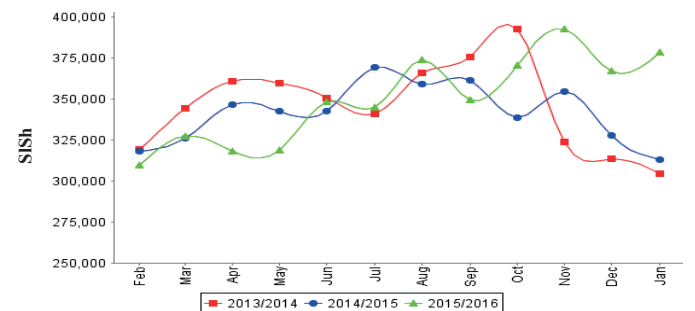


Figure 46: Exchange Rate

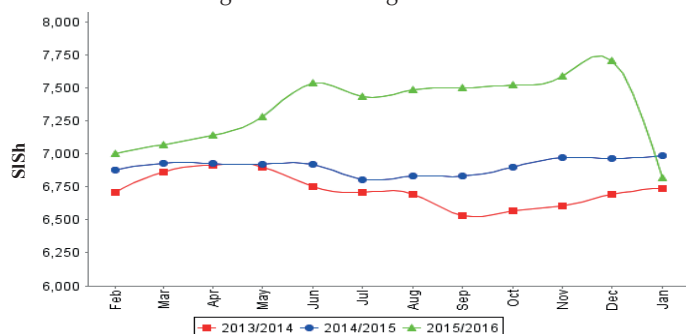
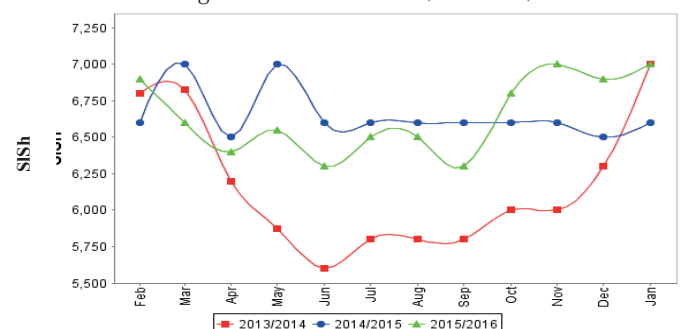


Figure 47: Water Drum (200 litres)



# Trends in Livestock Exports

Table 1: Berbera Livestock Exports (Number of Heads)

	1999	2000	2001	2002	2003	2004	2005	2006	2007	2008	2009	2010	2011	2012	2013	2014	Jan-Dec 2015
Shoats	2,048,136	1,601,083	51,546	341,711	563,107	859,404	1,023,795	1,017,242	1,350,054	1,219,519	1,556,003	2,584,810	3,104,684	3,219,584	2,888,955	3,089,592	3,270,386
Cattle	89,967	63,263	20,973	37,547	84,312	131,852	148,151	85,631	88,143	80,051	88,005	133,021	150,934	190,354	20,875	252,597	160,395
Camel	37,430	16,984	3,473	18,864	21,874	5,147	5,069	22,810	14,245	26,515	20,206	92,651	107,281	102,664	75,728	64,578	61,475

Figure 48: Berbera Livestock Exports (Number of Heads)

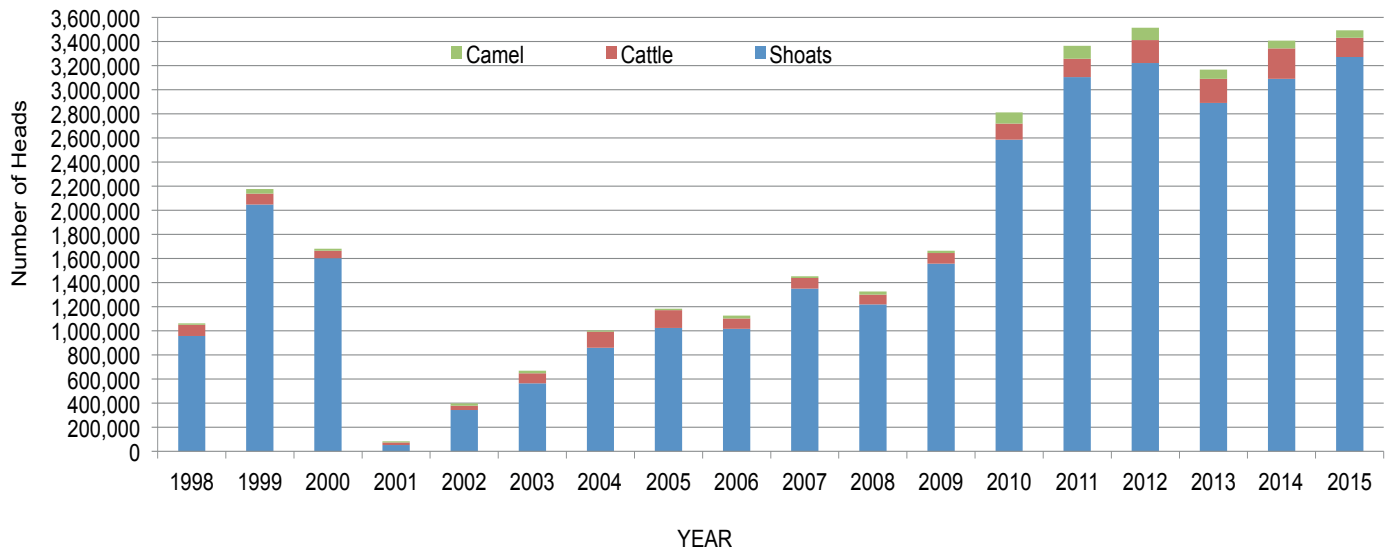
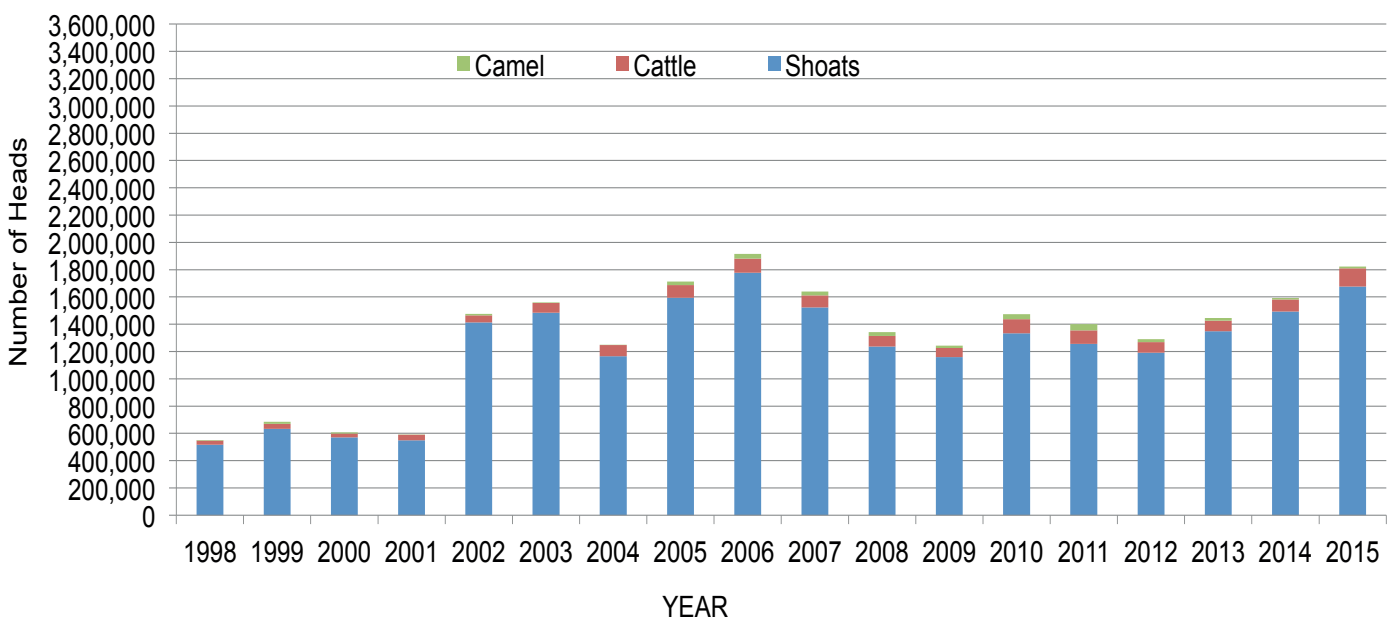


Table 2: Bossaso Livestock Exports (Number of Heads)

	1999	2000	2001	2002	2003	2004	2005	2006	2007	2008	2009	2010	2011	2012	2013	2014	Jan-Dec 2015
Shoats	633,669	571,455	548,853	1,412,450	1,483,409	1,166,480	1,594,859	1,777,283	1,522,855	1,236,775	1,159,454	1,333,478	1,256,535	1,192,197	1,349,123	1,493,111	1,676,216
Cattle	36,586	27,604	42,248	53,313	71,328	79,994	91,910	104,595	89,190	78,046	67,385	103,808	99,058	76,043	77,353	87,759	134,597
Camel	15,544	8,177	1,950	9,720	4,259	2,488	26,109	33,724	27,580	27,639	15,331	36,865	45,878	22,288	19,032	12,251	10,945

Figure 49: Bossaso Livestock Exports (Number of Heads)

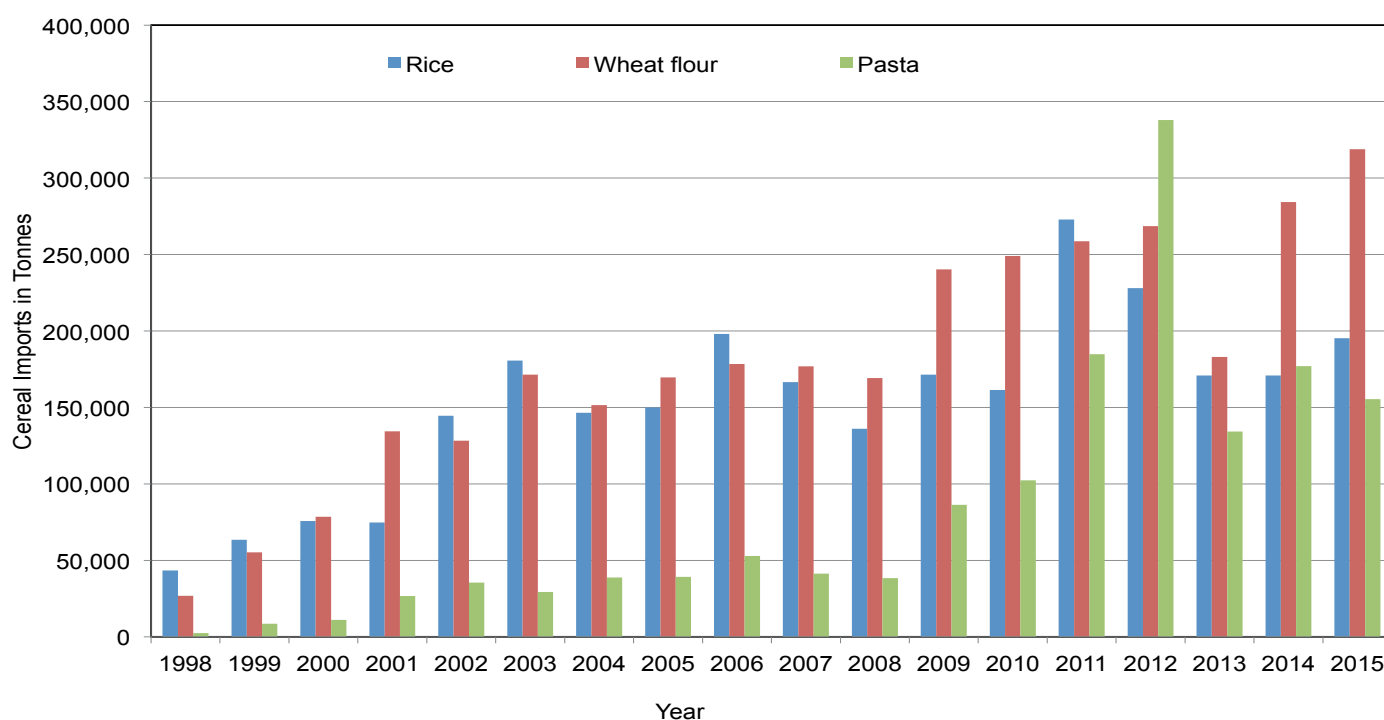


# Trends in Cereal Imports

Table 3: Total Cereal Imports through Berbera, Bossaso and Mogadishu Ports (Tonnes) \*

	1999	2000	2001	2002	2003	2004	2005	2006	2007	2008	2009	2010	2011	2012	2013	2014	Jan-Dec 2015
<b>Rice</b>	63,464	75,687	74,729	144,600	180,614	146,567	150,017	198,101	166,626	136,007	171,472	161,415	272,877	227,955	170,868	170,888	195,240
<b>Wheat flour</b>	55,176	78,555	134,425	128,263	171,442	151,555	169,583	178,345	176,821	169,208	240,247	249,080	258,679	268,491	183,058	284,230	318,868
<b>Pasta</b>	8,544	11,071	26,702	35,425	29,273	38,749	39,153	52,815	41,331	38,441	86,372	102,373	184,849	337,878	134,311	176,951	155,360

Figure 50: Total Cereal Imports (Berbera, Bossaso and Mogadishu)



\* Bossaso and Berbera data is up to Dec 2015. Elman (Mogadishu) is up to Nov 2015. Mogadishu data (Elmaan Port) for 2013 includes only January -March imports.