

Market DataUpdate



Food Security and Nutrition
Analysis Unit - Somalia



Dec 2014 - Jan 2015 (Issued February 13, 2015)

Highlights

Inflation:

SoSh (Somali shilling): The Consumer Price Index (CPI) exhibited mild-to-moderate monthly changes (1-5%) in Central and Northeast, while it declined (6-9%) in southern regions in the past two months. Annual trends for December 2014 indicated increase (4-5%) in the South and Northeast and stable levels in Central regions. The CPI for January 2015 showed annual declines in South-Central and an increase (6%) in Northeast.

SISh (Somaliland shilling): The CPI declined moderately (7%) month-on-month in SISh-using regions in December but remained relatively stable in January; the CPI declined (3-7%) annually in the past two months.

Exchange rate:

SoSh-using areas: The exchange rates between local currency (SoSh) and the United States Dollar (USD) indicated relative stability or marginal monthly changes (1-5%) in December and January. Annual comparison indicates mild increases (less than 10%) in most of the SoSh regions (December and January) except in Juba valley where the rates increased moderately (12%) in the month of January (2015).

SISh-using areas: The exchange rates between local currency (SISh) and the USD remained stable month-on-month in the past two months (December and January), while they have increased (4%) year-on-year.

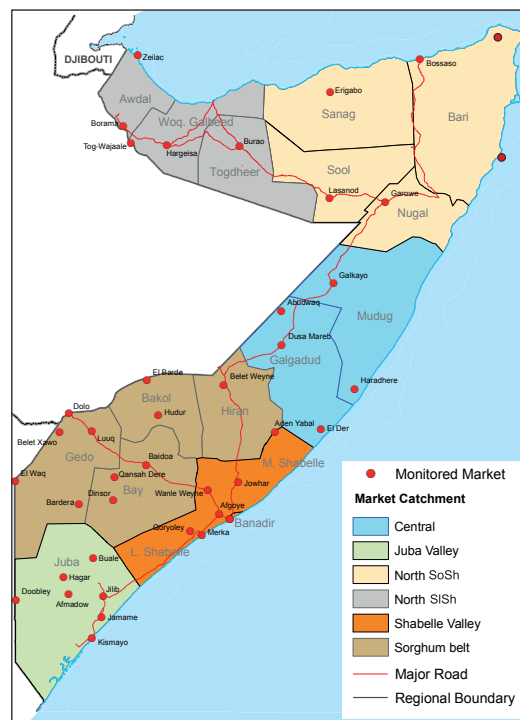
Local grain prices remained relatively stable or changed (increased/decreased) at mild rates (by less than 10%) in December and January in most regions of the country; the exceptions are moderate (13-23%) declines in Bay and Bakool regions in January and in Hiran in both months, and a moderate increase (11%) in Middle Juba region in January 2015. The moderate declines were driven by good production (Bay and Bakool) and humanitarian food distributions, while increase in Middle Juba was due to below average / poor cereal harvest caused by erratic rains and floods. Annual comparisons for the past two months (December and January) show cereal price declines in northern and central parts of the country and significant (above 20%) increases in the South.

Prices of imported food (rice, sugar, vegetable oil, wheat flour) in local currency terms remained relatively stable or changed by less than 10 percent month-on-month in December and January for most food imports across the country. Exceptionally, in Bakool region prices have declined (13-20%) in January due to humanitarian assistance. Annual price comparison generally indicates mild (less than 10%) changes (increase/decrease) in most parts of the country in the past two months, with the exception of Bakool where the prices of most food imports have increased significantly (up to 48%) due to the lingering impacts from trade disruptions caused by insecurity since the beginning of last year, which affected market supplies of these commodities.

Livestock prices (for all species) were lower in most regions of the country in the months of December and January compared to the previous months due to increased supply into the markets. Prices of milk (cattle and camel) changed mildly in most regions of the country in the same periods except in Bay, Middle Juba and Lower Shabelle where milk prices declined significantly (16-24%). Annual comparison indicates lower values for most livestock species in most markets in December and January except in Shabelle regions where they increased at moderate to significant rates (18-33%). Milk prices have risen year-on-year, predominantly at moderate to high rates in most regions of the country both in December and January.

Labor (unskilled) wages remained relatively stable or changed by less than 10 percent month-on-month in most regions of the country in December and January except in Gedo and Lower Juba where labor wages increased moderately (12-16%) in December. Annual comparison for the past two months indicates mild changes in labor wage rates in most regions of the country. However, significant annual decline in labour wage rates was recorded in Bakool region both in December and January due to reduced economic/trade activities in the context of worsened security conditions. Conversely, the rates have increased significantly (38%) in Middle Shabelle in December due to improved labour opportunities compared to last year when these were constrained by inter-clan conflicts and floods.

Terms of Trade (ToT) between daily labor wage and local cereals as well as between local quality goat and cereals changed at mild to moderate rates month-on-month in most regions in the past two months. Compared to a year ago, the ToTs were lower in most regions both in December and January as a result of increased cereal prices and/or decreased labour wages and goat prices this year.



This Market Data Update is a monthly report that presents analysis of market information and is produced regularly as part of the monthly monitoring process.

The weekly price data is collected from 48 main markets and 51 rural markets throughout Somalia since 1995.

Market analysis is an integral part of all of FSNAU's annual food security projections and seasonal technical reports (Technical Reports on FSNAU Post Gu and Post Deyr Analysis).

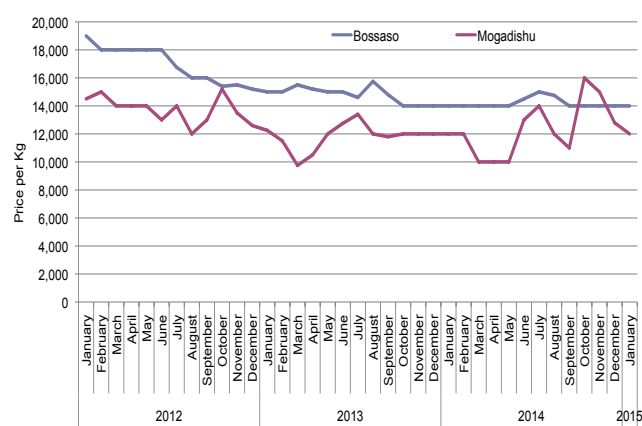
Detailed market data are available online on www.fsnau.org/ids.

National Trends: CPI, Exchange Rates, Cereal Prices and Relative Purchasing Power

Table 1: ToT between Cereals (kg) and Daily Labour Wage Rate, by Region

Regions	Dec-14	Dec-14	Jan-14	January Average (2009-2013)
Banadir/Mogadishu	19	-5%	-33%	30%
Bay	15	20%	-5%	29%
Bakool	3	33%	-43%	-35%
Gedo	18	11%	18%	37%
Juba	10	-10%	-18%	-6%
Shabelle	9	0%	-18%	-2%
Northwest	9	0%	0%	29%
Northeast	8	13%	13%	50%
Central	5	0%	0%	39%

Figure 1: Wheat Prices: Mogadishu and Bossaso Markets



Source: FSNAU Manifest Price Monitoring System

Figure 2: Terms of Trade Between Wage Rates and Selected Cereals

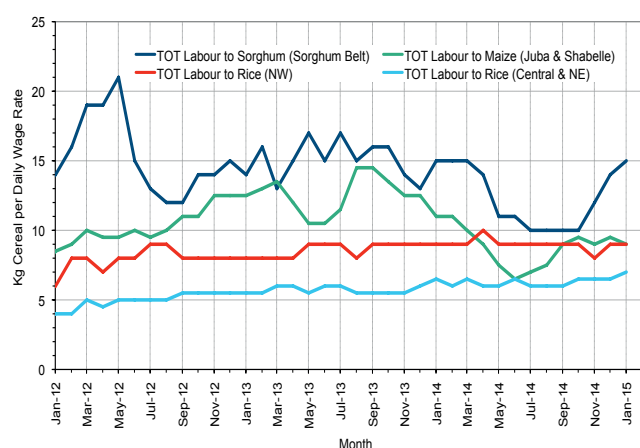


Figure 3: Monthly Exchange Rate for Selected Regions (SoSh and SiSh to USD)

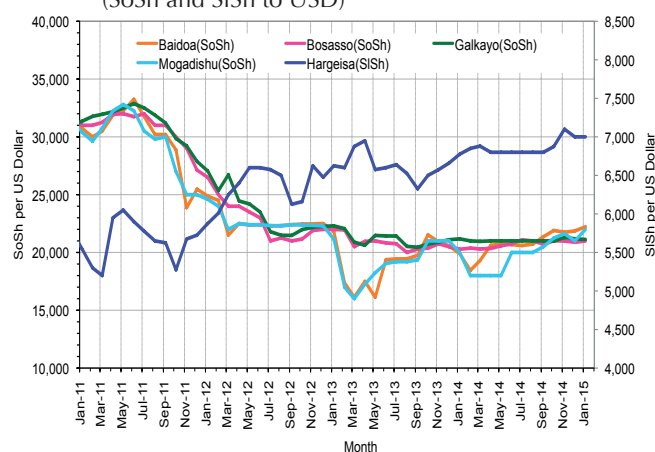


Figure 4: Monthly Trends in Consumer Price Index (CPI, March 2007=100)

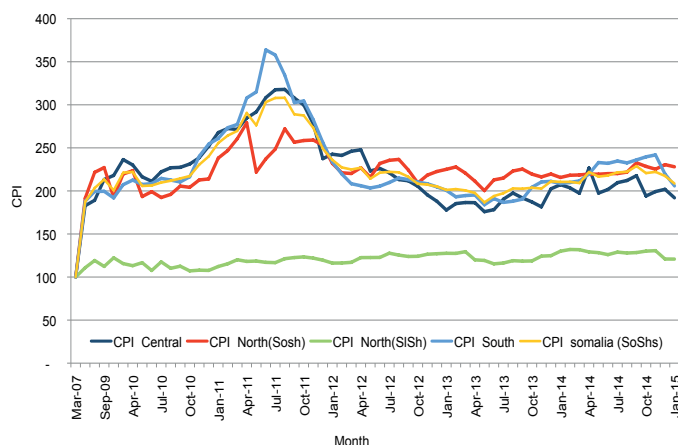
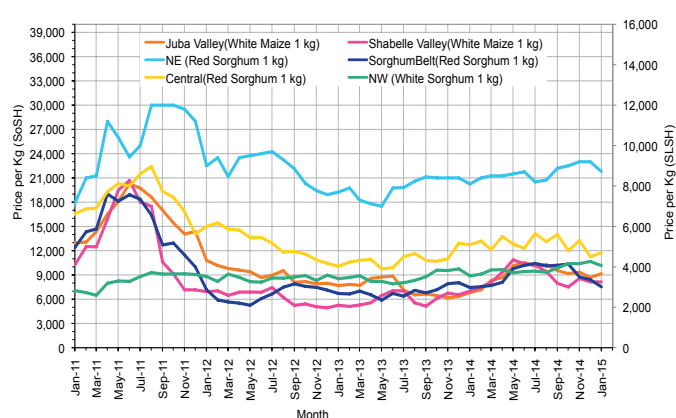


Figure 5: Monthly Trends in Local Cereal Prices



Regional analysis: Juba Regions

Indicator	5-Year Average (2010-2014)	Jan-14	Dec-14	Jan-15 Nominal Price	Jan-14 Real (Deflated) Price	% Change Previous Month	% Change Same Month Previous Year	% Change 5-year avrg (2010-2014)
Imported Commodities Prices								
Diesel 1 litre	29,857	28,179	25,429	24,679	11,891	-3%	-12%	-17%
Imported Red Rice 1kg	19,912	15,679	16,114	15,607	7,483	-3%	0%	-22%
Petrol 1 litre	32,203	30,679	26,971	26,357	12,706	-2%	-14%	-18%
Sugar	23,745	16,857	16,714	16,143	7,743	-3%	-4%	-32%
Vegetable Oil 1 litre	43,331	32,750	30,929	31,714	15,309	3%	-3%	-27%
Wheat Flour 1kg	17,848	15,929	16,229	15,321	7,344	-6%	-4%	-14%
Wheat Grain 1kg	17,000	-	-	-	-	-	-	-
Cereal Prices								
Red Sorghum 1kg	8,770	10,000	9,000	7,250	3,423	-19%	-28%	-17%
White Maize 1kg	9,385	6,971	8,800	9,221	4,380	5%	32%	-2%
Livestock & Livestock Product Prices								
Camel Local Quality (Head)	8,842,174	9,150,000	9,093,200	9,042,083	4,393,197	-1%	-1%	2%
Cattle Local Quality (Head)	3,618,636	4,264,000	4,199,043	3,925,542	1,907,212	-7%	-8%	8%
Fresh Camel Milk 1 litre	19,665	17,929	17,629	15,464	7,414	-12%	-14%	-21%
Goat Export Quality (Head)	1,264,238	1,382,286	1,192,043	1,157,536	562,315	-3%	-16%	-8%
Goat Local Quality (Head)	821,250	977,214	830,243	792,357	384,884	-5%	-19%	-4%
Other Essential Items								
Charcoal 50kg	85,827	80,714	88,143	81,429	39,464	-8%	1%	-5%
Cowpeas 1 kg	23,652	21,500	23,714	25,000	12,047	5%	16%	6%
Unskilled Labor Wage Rate	85,561	76,071	91,914	84,893	41,147	-8%	12%	-1%
Firewood Bundle	8,341	11,607	7,714	7,714	3,648	0%	-34%	-8%
Local Sesame Oil 1 litre	77,195	80,500	78,143	76,286	36,965	-2%	-5%	-1%
Exchange Rate (Somali Shilling per USD)	25,510	19,829	21,586	22,088	10,632	2%	11%	-13%
Terms of Trade								
Labour Wage (Daily)/ Cereal (Maize(Kg))	9	11	10	9	-	-10%	-18%	0%
Local Goat (Head)/ Cereal (Maize(Kg))	96	141	93	85	-	-9%	-40%	-11%
Price Indices								
Consumer Price Index	-	209	220	206	-	-6%	-1%	-

Figure 6: Trends in Cereal Prices

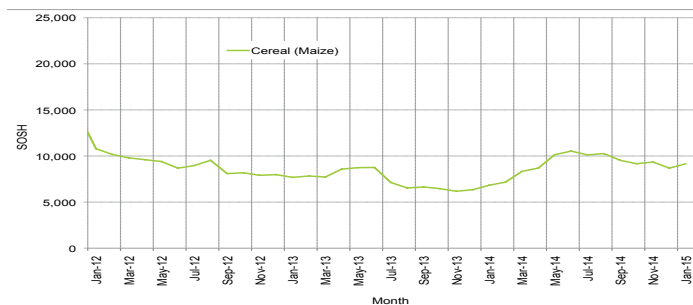


Figure 8: Imported Commodity Prices Compared to Exchange Rate

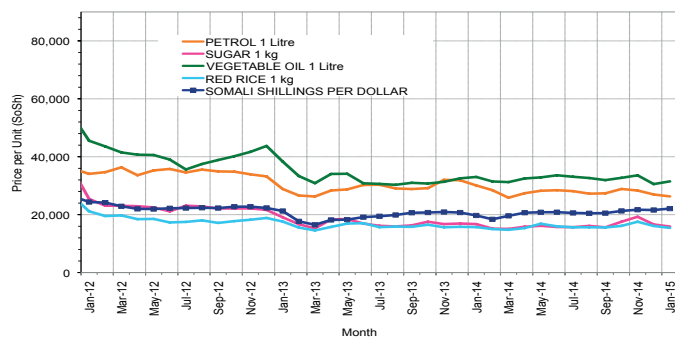


Figure 10: Exchange Rate

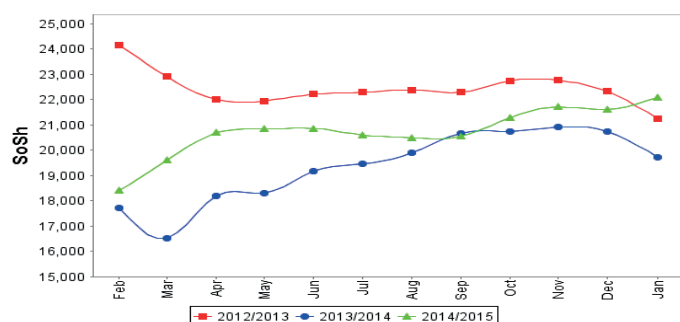


Figure 7: Trends in Wage Rates and Relative Purchasing Power

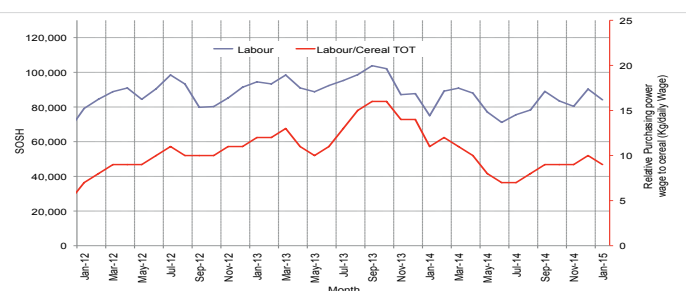


Figure 9: Goat Local Quality

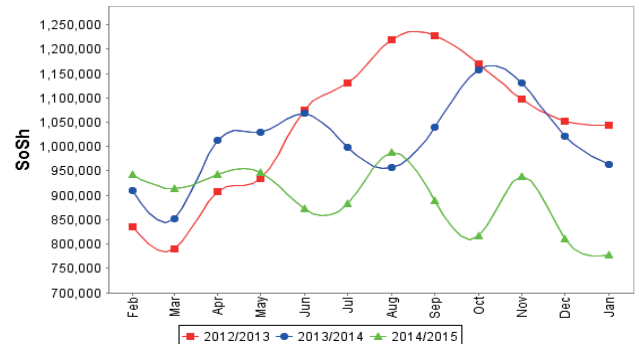
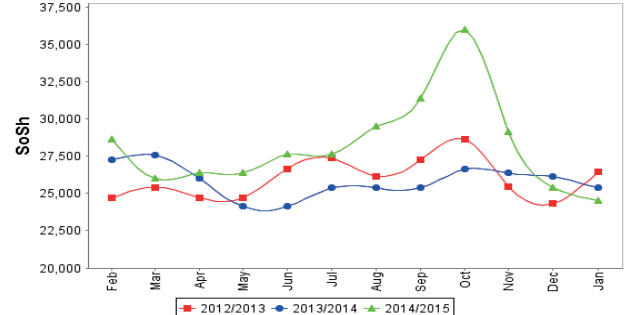


Figure 11: Water Drum (200 litres)



Regional analysis: Sorghum Belt Regions (Bay, Bakool, Gedo and Hiran)

Indicator	5-Year Average (2010-2014)	Jan-14	Dec-14	Jan-15 Nominal Price	Jan-14 Real (Deflated) Price	% Change Previous Month	% Change Same Month Previous Year	% Change 5-year avrg (2010-2014)
Imported Commodities Prices								
Diesel 1 litre	31,909	28,955	31,255	29,534	14,250	-6%	2%	-7%
Imported Red Rice 1kg	21,758	17,386	18,636	17,614	8,458	-5%	1%	-19%
Petrol 1 litre	31,407	28,682	30,818	29,432	14,200	-4%	3%	-6%
Sugar	25,618	18,886	19,687	18,527	8,902	-6%	-2%	-28%
Vegetable Oil 1 litre	43,945	35,477	39,545	38,886	18,794	-2%	10%	-12%
Wheat Flour 1kg	19,184	16,068	18,691	17,636	8,469	-6%	10%	-8%
Wheat Grain 1kg	12,449	12,725	18,733	19,000	9,132	1%	49%	53%
Cereal Prices								
Red Sorghum 1kg	8,364	7,448	8,416	7,523	3,555	-11%	1%	-10%
White Maize 1kg	9,411	8,710	10,231	9,647	4,587	-6%	11%	3%
Livestock & Livestock Product Prices								
Camel Local Quality (Head)	10,590,805	13,300,000	12,992,000	12,064,500	5,861,705	-7%	-9%	14%
Cattle Local Quality (Head)	3,062,439	3,845,313	3,966,250	3,766,667	1,830,019	-5%	-2%	23%
Fresh Camel Milk 1 litre	20,604	17,614	19,230	17,725	8,512	-8%	1%	-14%
Goat Export Quality (Head)	1,418,027	1,625,227	1,469,273	1,356,364	658,920	-8%	-17%	-4%
Goat Local Quality (Head)	879,241	978,182	916,182	840,682	408,364	-8%	-14%	-4%
Other Essential Items								
Charcoal 50kg	135,077	144,091	165,120	158,700	77,008	-4%	10%	17%
Cowpeas 1 kg	22,209	18,840	28,173	26,591	12,820	-6%	41%	20%
Unskilled Labor Wage Rate	98,591	110,455	114,873	115,341	55,941	0%	4%	17%
Firewood Bundle	5,754	6,727	6,727	6,432	3,025	-4%	-4%	12%
Local Sesame Oil 1 litre	76,687	81,000	86,229	84,464	40,939	-2%	4%	10%
Exchange Rate (Somali Shilling per USD)	25,829	20,408	21,267	21,625	10,407	2%	6%	-16%
Terms of Trade								
Labour Wage (Daily)/ Cereal (Sorghum(Kg))	12	15	14	15	-	7%	0%	25%
Local Goat (Head)/ Cereal (Sorghum(Kg))	115	131	109	112	-	3%	-15%	-3%
Price Indices								
Consumer Price Index	-	209	220	206	-	-6%	-1%	-

Figure 12: Trends in Cereal Prices

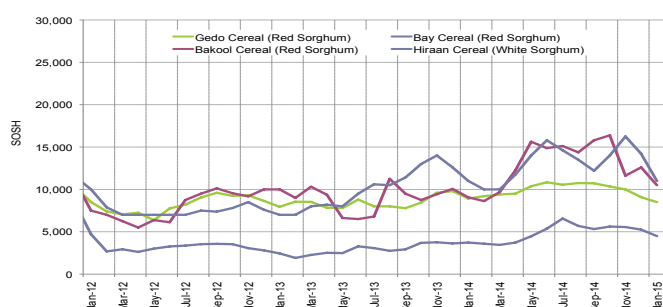


Figure 13: Trends in Wage Rates and Relative Purchasing Power

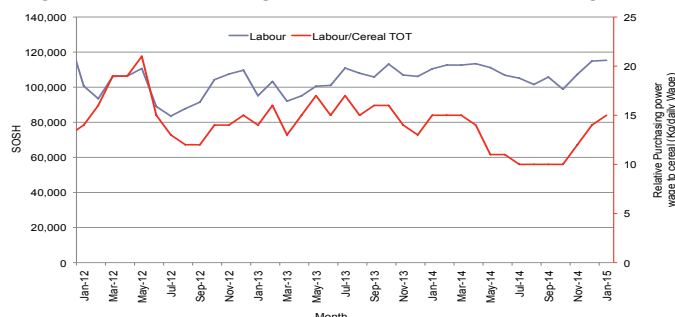


Figure 14: Imported Commodity Prices Compared to Exchange Rate

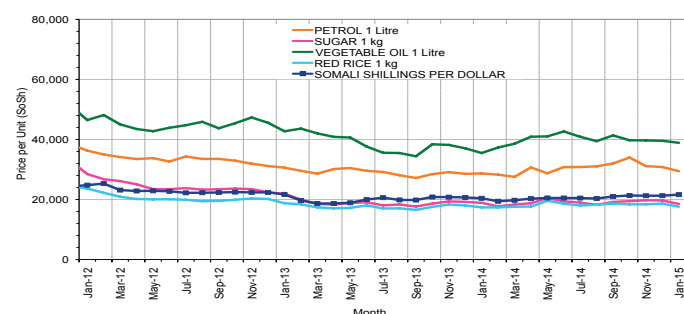


Figure 15: Goat Local Quality

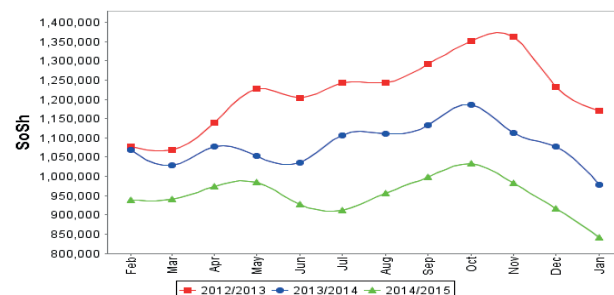


Figure 16: Exchange Rate

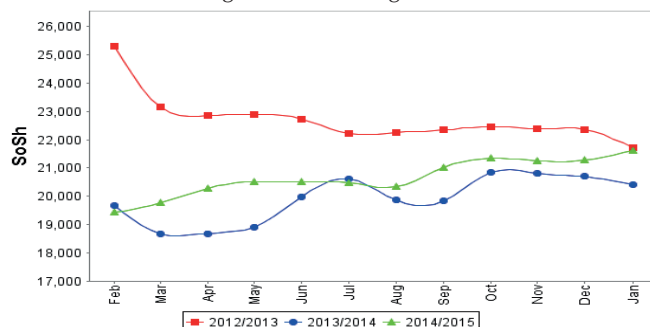
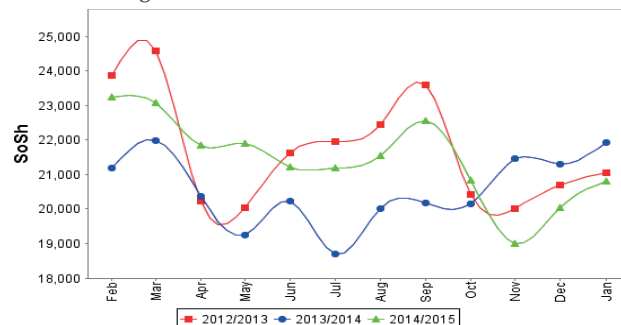


Figure 17: Water Drum (200 litres)



Regional analysis: Shabelle Regions

Indicator	5-Year Average (2010-2014)	Jan-14	Dec-14	Jan-15 Nominal Price	Jan-14 Real (Deflated) Price	% Change Previous Month	% Change Same Month Previous Year	% Change 5-year avrg (2010-2014)
Imported Commodities Prices								
Diesel 1 litre	29,375	27,542	25,633	24,583	11,844	-4%	-11%	-16%
Imported Red Rice 1kg	18,525	15,583	15,500	15,833	7,593	2%	2%	-15%
Petrol 1 litre	30,566	28,375	28,900	27,500	13,261	-5%	-3%	-10%
Sugar	23,424	16,583	16,667	16,333	7,836	-2%	-2%	-30%
Vegetable Oil 1 litre	37,041	27,167	27,767	28,292	13,646	2%	4%	-24%
Wheat Flour 1kg	17,066	16,042	16,500	16,208	7,775	-2%	1%	-5%
Wheat Grain 1kg	12,555	20,000	27,000	27,000	13,019	0%	35%	115%
Cereal Prices								
Red Sorghum 1kg	10,443	9,746	9,628	10,350	4,929	7%	6%	-1%
White Maize 1kg	7,565	6,992	8,149	8,137	3,854	0%	16%	8%
Livestock & Livestock Product Prices								
Camel Local Quality (Head)	14,609,600	19,178,000	18,336,000	16,450,000	7,992,497	-10%	-14%	13%
Cattle Local Quality (Head)	4,566,800	6,414,000	6,124,000	5,150,000	2,502,142	-16%	-20%	13%
Fresh Camel Milk 1 litre	17,133	19,000	20,717	18,917	9,091	-9%	0%	10%
Goat Export Quality (Head)	1,617,875	1,836,250	1,690,000	1,864,375	905,748	10%	2%	15%
Goat Local Quality (Head)	1,145,416	1,306,250	1,375,000	1,322,917	642,669	-4%	1%	15%
Other Essential Items								
Charcoal 50kg	118,872	126,569	121,089	121,361	58,866	0%	-4%	2%
Cowpeas 1 kg	20,349	16,260	21,588	22,669	10,914	5%	39%	11%
Unskilled Labor Wage Rate	65,433	76,875	72,167	70,833	34,316	-2%	-8%	8%
Firewood Bundle	5,441	7,500	7,333	6,375	2,997	-13%	-15%	17%
Local Sesame Oil 1 litre	64,283	75,875	72,920	67,950	32,915	-7%	-10%	6%
Exchange Rate (Somali Shilling per USD)	25,979	20,542	21,850	22,177	10,675	1%	8%	-15%
Terms of Trade								
Labour Wage (Daily)/ Cereal (Maize(Kg))	6	8	7	7	-	0%	-13%	17%
Local Goat (Head)/ Cereal (Maize(Kg))	113	134	143	128	-	-10%	-4%	13%
Price Indices								
Consumer Price Index	-	209	220	206	-	-6%	-1%	-

Figure 18: Trends in Cereal Prices

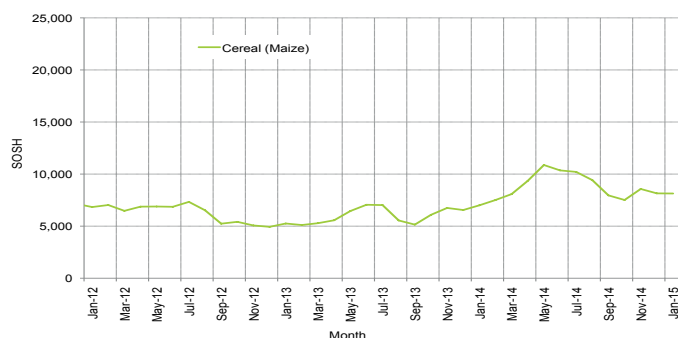


Figure 19: Trends in Wage Rates and Relative Purchasing Power

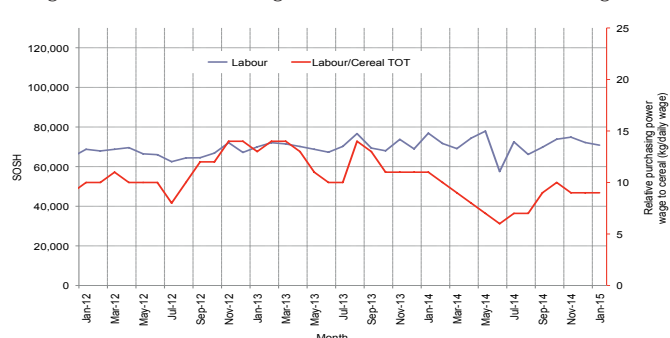


Figure 20: Imported Commodity Prices Compared to Exchange Rate

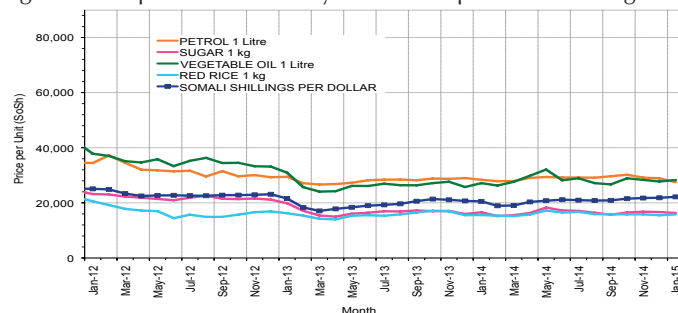


Figure 21: Goat Local Quality

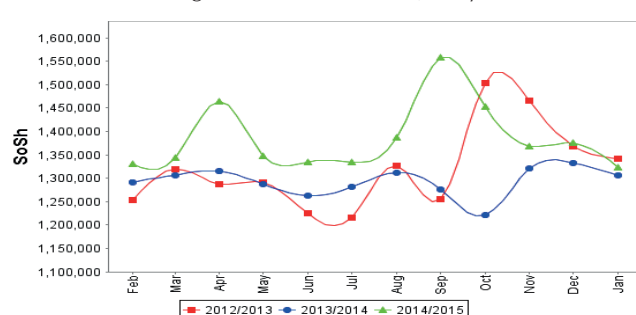


Figure 22: Exchange Rate

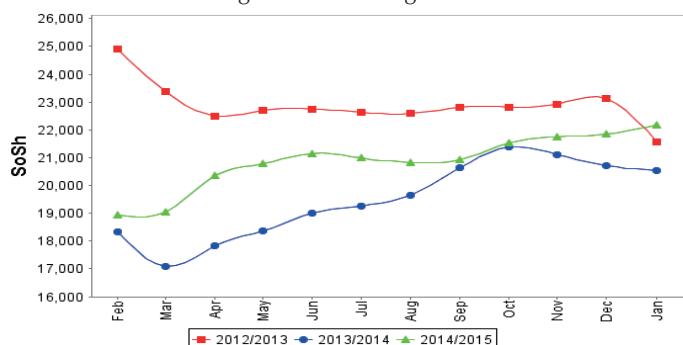
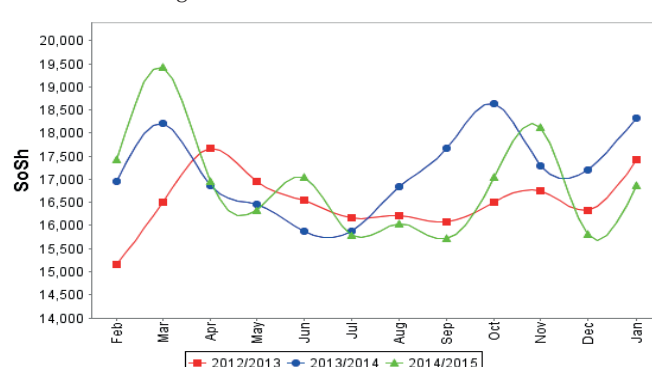


Figure 23: Water Drum (200 litres)



Regional analysis: Banadir Region

Indicator	5-Year Average (2010-2014)	Jan-14	Dec-14	Jan-15 Nominal Price	Jan-14 Real (Deflated) Price	% Change Previous Month	% Change Same Month Previous Year	% Change 5-year avrg (2010-2014)
Imported Commodities Prices								
Diesel 1 litre	24,591	20,500	21,267	20,479	9,850	-4%	0%	-17%
Imported Red Rice 1kg	17,932	12,771	13,167	12,542	5,994	-5%	-2%	-30%
Petrol 1 litre	25,379	21,208	21,192	21,250	10,225	0%	0%	-16%
Sugar	21,823	14,104	14,167	14,167	6,783	0%	0%	-35%
Vegetable Oil 1 litre	36,064	23,438	23,725	23,813	11,470	0%	2%	-34%
Wheat Flour 1kg	14,540	12,367	14,192	12,833	6,135	-10%	4%	-12%
Wheat Grain 1kg	10,513	7,542	10,267	10,917	5,204	6%	45%	4%
Cereal Prices								
Red Sorghum 1kg	7,738	6,933	8,653	8,542	4,050	-1%	23%	10%
White Maize 1kg	8,195	7,688	9,893	10,121	4,818	2%	32%	24%
Livestock & Livestock Product Prices								
Camel Local Quality (Head)	14,633,333	-	-	-	-	-	-	-
Cattle Local Quality (Head)	3,176,666	-	-	-	-	-	-	-
Fresh Camel Milk 1 litre	18,895	20,792	23,108	22,375	10,771	-3%	8%	18%
Goat Export Quality (Head)	1,967,000	3,000,000	-	-	-	-	-	-
Goat Local Quality (Head)	1,670,000	2,468,750	2,332,000	2,050,000	995,938	-12%	-17%	23%
Other Essential Items								
Charcoal 50kg	161,116	186,917	188,900	186,917	90,718	-1%	0%	16%
Cowpeas 1 kg	19,552	13,867	23,233	22,388	10,778	-4%	61%	15%
Unskilled Labor Wage Rate	88,108	111,042	107,667	102,500	49,702	-5%	-8%	16%
Firewood Bundle	6,466	8,100	8,000	8,000	3,787	0%	-1%	24%
Local Sesame Oil 1 litre	66,873	72,417	71,575	70,917	34,357	-1%	-2%	6%
Exchange Rate (Somali Shilling per USD)	25,676	19,979	21,293	21,854	10,518	3%	9%	-15%
Terms of Trade								
Labour Wage (Daily)/ Cereal (Maize(Kg))	11	14	11	10	-	-9%	-29%	-9%
Local Goat (Head)/ Cereal (Maize(Kg))	218	321	236	203	-	-14%	-37%	-7%
Price Indices								
Consumer Price Index	-	209	220	206	-	-6%	-1%	-

Figure 24: Trends in Cereal Prices

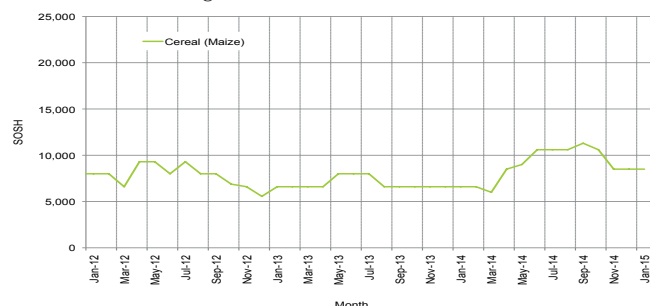


Figure 25: Bakara: Trends in Wage Rates and Relative Purchasing Power

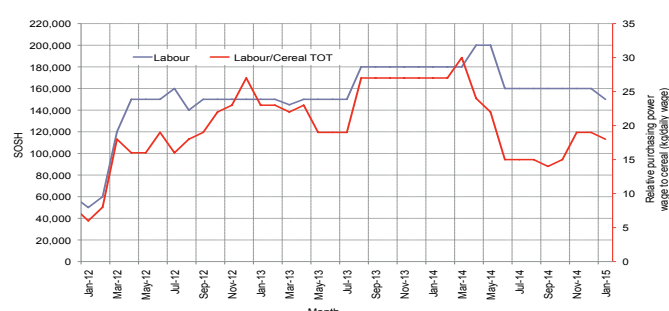


Figure 26: Imported Commodity Prices Compared to Exchange Rate

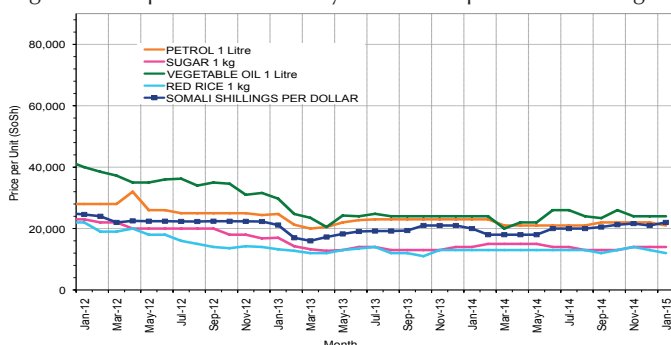


Figure 27: Goat Local Quality

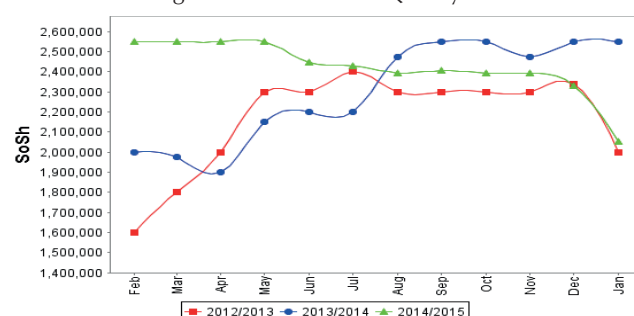


Figure 28: Exchange Rate

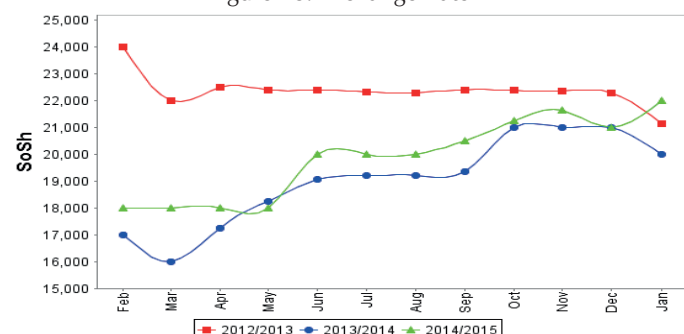
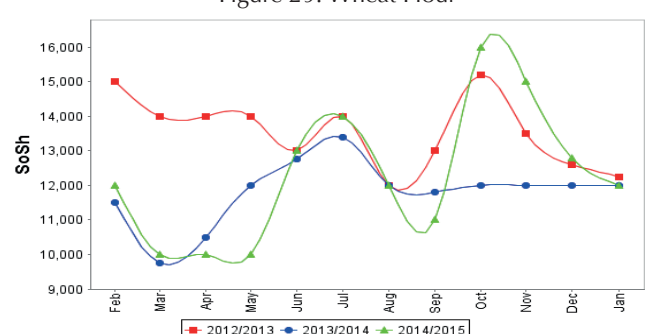


Figure 29: Wheat Flour



Regional analysis: Central Regions

Indicator	5-Year Average (2010-2014)	Jan-14	Dec-14	Jan-15 Nominal Price	Jan-14 Real (Deflated) Price	% Change Previous Month	% Change Same Month Previous Year	% Change 5-year avrg (2010-2014)
Imported Commodities Prices								
Diesel 1 litre	30,522	27,350	27,040	26,550	13,729	-2%	-3%	-13%
Imported Red Rice 1kg	24,068	18,600	18,000	17,900	9,224	-1%	-4%	-26%
Petrol 1 litre	27,664	23,600	23,272	25,500	13,182	10%	8%	-8%
Sugar	27,670	19,400	19,840	19,050	9,823	-4%	-2%	-31%
Vegetable Oil 1 litre	49,060	39,750	41,000	40,000	20,735	-2%	1%	-18%
Wheat Flour 1kg	19,150	16,550	16,760	16,000	8,234	-5%	-3%	-16%
Wheat Grain 1kg	15,155	13,813	15,867	16,500	8,494	4%	19%	9%
Cereal Prices								
Red Sorghum 1kg	12,987	12,733	11,250	11,750	6,020	4%	-8%	-10%
White Maize 1kg	14,165	12,750	15,000	13,600	6,984	-9%	7%	-4%
Livestock & Livestock Product Prices								
Camel Local Quality (Head)	8,925,000	10,537,500	11,600,000	11,825,000	6,159,266	2%	12%	32%
Cattle Local Quality (Head)	2,387,500	-	-	-	-	-	-	-
Fresh Camel Milk 1 litre	36,036	28,100	29,880	29,800	15,422	0%	6%	-17%
Goat Export Quality (Head)	1,384,500	1,331,250	1,230,000	1,320,000	687,457	7%	-1%	-5%
Goat Local Quality (Head)	1,011,906	1,040,000	876,000	850,000	442,645	-3%	-18%	-16%
Other Essential Items								
Charcoal 50kg	189,593	177,000	180,800	161,000	83,761	-11%	-9%	-15%
Cowpeas 1 kg	26,288	16,350	19,760	20,000	10,318	1%	22%	-24%
Unskilled Labor Wage Rate	83,950	84,000	84,000	85,000	44,175	1%	1%	1%
Firewood Bundle	31,755	32,800	33,160	33,100	17,141	0%	1%	4%
Local Sesame Oil 1 litre	92,130	87,100	83,600	87,950	45,711	5%	1%	-5%
Exchange Rate (Somali Shilling per USD)	26,238	20,935	21,517	21,405	11,049	-1%	2%	-18%
Terms of Trade								
Labour Wage (Daily)/ Cereal (Rice(Kg))	3	5	5	5	-	0%	0%	67%
Local Goat (Head)/ Cereal (Rice(Kg))	43	56	49	47	-	-4%	-16%	9%
Camel (Head)/Cereal (Kg)	390	567	644	661	-	3%	17%	69%
Price Indices								
Consumer Price Index	-	207	202	192	-	-5%	-7%	-

Figure 30: Trends in Cereal Prices

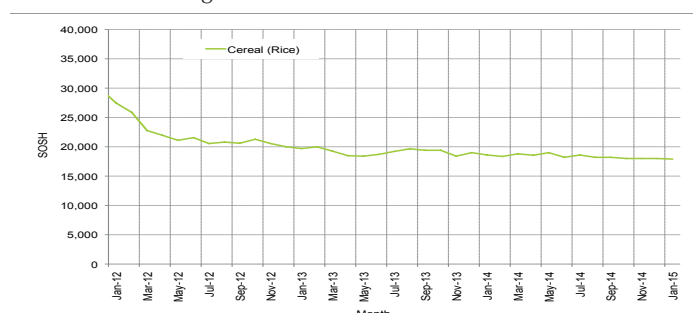


Figure 31: Trends in wage rates and relative purchasing power

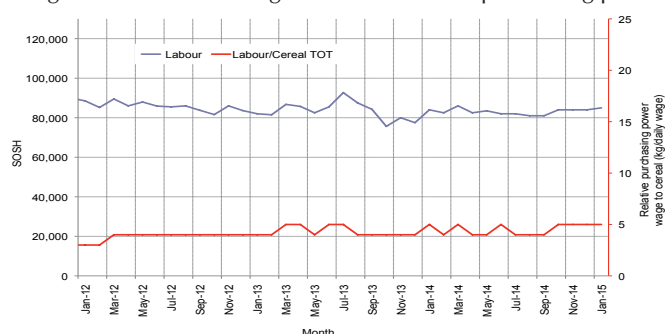


Figure 32: Imported Commodity Prices Compared to Exchange Rate

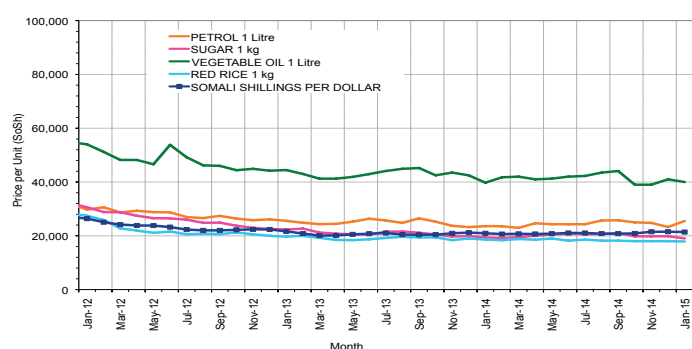


Figure 33: Goat Local Quality

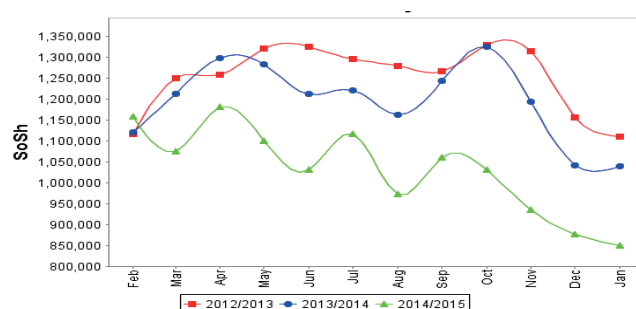


Figure 34: Exchange Rate

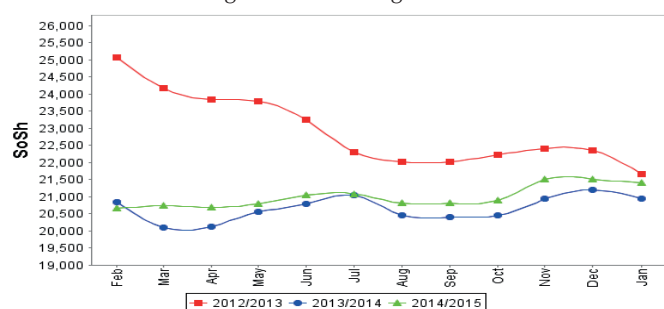
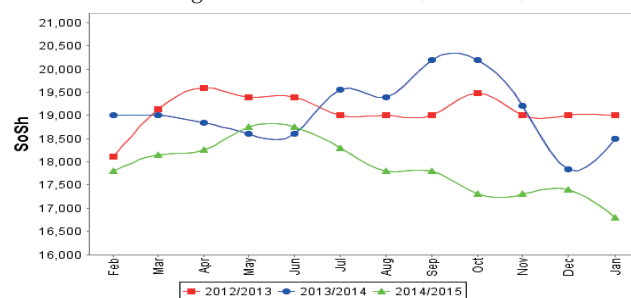


Figure 35: Water Drum (200 litres)



Regional analysis: Northeast Regions

Indicator	5-Year Average (2010-2014)	Jan-14	Dec-14	Jan-15 Nominal Price	Jan-14 Real (Deflated) Price	% Change Previous Month	% Change Same Month Previous Year	% Change 5-year avg (2010-2014)
Imported Commodities Prices								
Diesel 1 litre	27,175	23,063	21,875	19,250	8,342	-12%	-17%	-29%
Imported Red Rice 1kg	19,172	15,500	14,675	14,850	6,412	1%	-4%	-23%
Petrol 1 litre	24,245	20,375	20,100	18,913	8,194	-6%	-7%	-22%
Sugar	24,780	17,500	16,350	16,675	7,213	2%	-5%	-33%
Vegetable Oil 1 litre	42,187	33,375	31,050	31,250	13,605	1%	-6%	-26%
Wheat Flour 1kg	17,402	15,000	14,300	14,300	6,171	0%	-5%	-18%
Wheat Grain 1kg	26,275	24,750	21,800	21,300	9,241	-2%	-14%	-19%
Cereal Prices								
Red Sorghum 1kg	19,137	20,250	23,000	21,800	9,460	-5%	8%	14%
White Maize 1kg	18,191	18,500	21,400	20,400	8,846	-5%	10%	12%
Livestock & Livestock Product Prices								
Camel Local Quality (Head)	13,629,374	14,831,250	15,602,500	14,677,500	6,436,736	-6%	-1%	8%
Cattle Local Quality (Head)	6,795,000	7,750,000	9,000,000	8,500,000	3,727,586	-6%	10%	25%
Fresh Camel Milk 1 litre	39,287	32,000	29,813	31,838	13,863	7%	-1%	-19%
Goat Export Quality (Head)	1,344,916	1,450,000	1,511,250	1,431,250	627,576	-5%	-1%	6%
Goat Local Quality (Head)	1,278,250	1,350,625	1,243,750	1,227,000	538,002	-1%	-9%	-4%
Other Essential Items								
Charcoal 50kg	370,750	398,750	399,375	395,625	173,402	-1%	-1%	7%
Cowpeas 1 kg	36,283	28,333	30,800	30,667	13,349	0%	8%	-15%
Unskilled Labor Wage Rate	116,287	130,000	130,000	130,000	56,912	0%	0%	12%
Firewood Bundle	40,062	48,750	52,000	50,750	22,156	-2%	4%	27%
Local Sesame Oil 1 litre	91,441	93,125	96,250	95,750	41,891	-1%	3%	5%
Exchange Rate (Somali Shilling per USD)	26,439	20,569	20,863	20,976	9,099	1%	2%	-21%
Terms of Trade								
Labour Wage (Daily)/ Cereal (Rice(Kg))	6	8	9	9	-	0%	13%	50%
Local Goat (Head)/ Cereal (Rice(Kg))	68	87	85	83	-	-2%	-5%	22%
Price Indices								
Consumer Price Index	-	216	231	228	-	-1%	6%	-

Figure 36: Trends in Cereal Prices

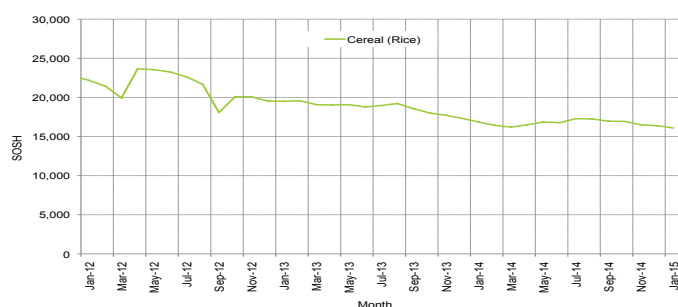


Figure 38: Imported Commodity Prices Compared to Exchange Rate

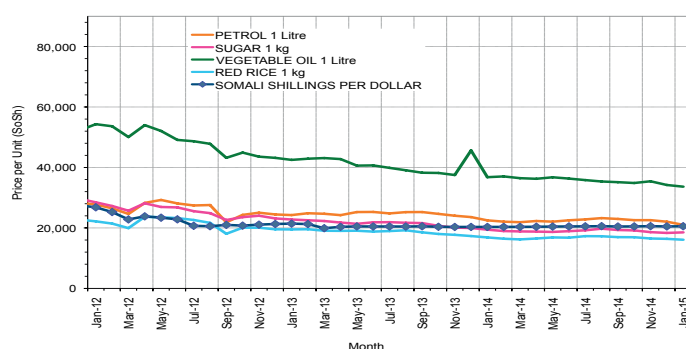


Figure 40: Exchange Rate

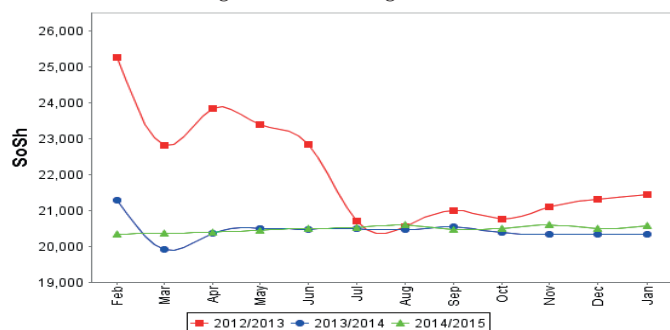


Figure 37: Trends in Wage Rates and Relative Purchasing Power

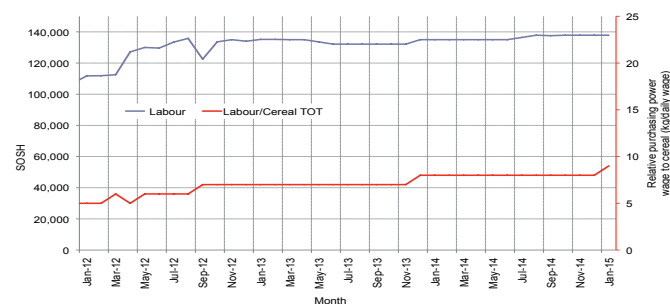


Figure 39: Goat Local Quality

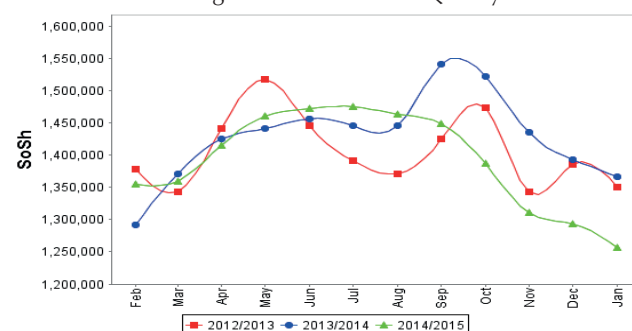
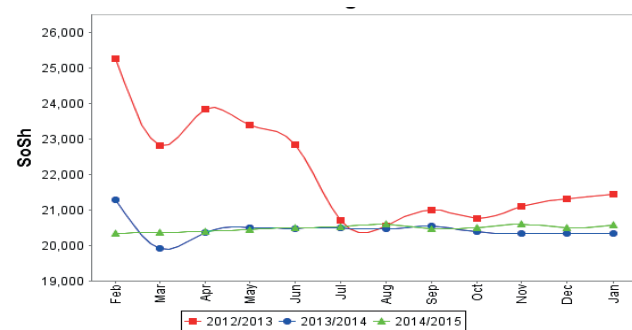


Figure 41: Water Drum (200 litres)



Regional analysis: Northwest Regions

Indicator	5-Year Average (2010-2014)	Jan-14	Dec-14	Jan-15 Nominal Price	Jan-14 Real (Deflated) Price	% Change Previous Month	% Change Same Month Previous Year	% Change 5-year avrg (2010-2014)
Imported Commodities Prices								
Diesel 1 litre	6,132	7,200	6,818	6,686	5,433	-2%	-7%	9%
Imported Red Rice 1kg	5,119	5,140	5,120	5,180	4,187	1%	1%	1%
Petrol 1 litre	6,427	7,460	7,604	7,685	6,259	1%	3%	20%
Sugar	6,074	5,880	5,812	5,800	4,700	0%	-1%	-5%
Vegetable Oil 1 litre	11,131	12,350	12,711	12,911	10,584	2%	5%	16%
Wheat Flour 1kg	4,415	4,600	4,540	4,600	3,707	1%	0%	4%
Wheat Grain 1kg	2,875	3,175	3,525	3,500	2,796	-1%	10%	22%
Cereal Prices								
White Sorghum 1kg	3,389	3,555	4,268	4,060	3,260	-5%	14%	20%
Yellow Maize 1kg	3,437	3,875	4,000	3,700	2,962	-8%	-5%	8%
Livestock & Livestock Product Prices								
Camel Local Quality (Head)	2,594,716	3,490,500	3,766,667	3,688,333	3,052,063	-2%	6%	42%
Cattle Local Quality (Head)	1,551,129	2,117,500	2,083,333	1,979,167	1,637,697	-5%	-7%	28%
Fresh Camel Milk 1 litre	5,402	5,085	6,700	5,900	4,782	-12%	16%	9%
Goat Export Quality (Head)	363,211	452,450	467,320	432,000	357,388	-8%	-5%	19%
Goat Local Quality (Head)	269,837	304,250	327,440	312,850	258,789	-4%	3%	16%
Other Essential Items								
Charcoal 50kg	41,605	55,950	60,400	61,550	50,834	2%	10%	48%
Cowpeas 1 kg	9,425	10,000	11,750	11,500	9,416	-2%	15%	22%
Unskilled Labor Wage Rate	36,428	46,440	45,061	45,336	37,416	1%	-2%	24%
Firewood Bundle	2,880	3,667	4,000	4,167	3,348	4%	14%	45%
Local Sesame Oil 1 litre	26,351	32,625	34,650	33,125	27,312	-4%	2%	26%
Exchange Rate (Somaliland Shilling per USD)	6,272	6,740	6,966	6,985	5,680	0%	4%	11%
Terms of Trade								
Labour Wage (Daily)/ Cereal (Rice(Kg))	7	9	9	9	-	0%	0%	29%
Local Goat (Head)/ Cereal (Rice(Kg))	52	59	64	60	-	-6%	2%	15%
Price Indices								
Consumer Price Index	-	130	121	121	-	0%	-7%	-

Figure 42: Trends in Cereal Prices

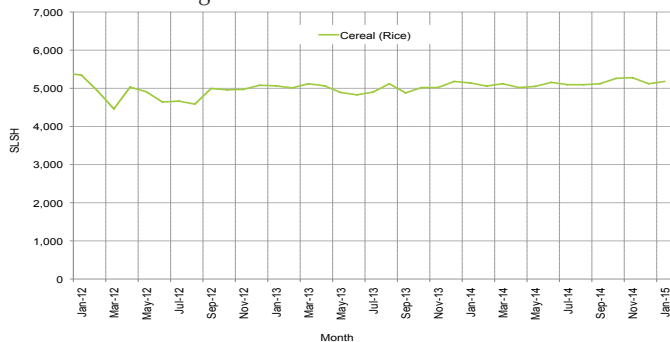


Figure 43: Trends in Wage Rates and Relative Purchasing Power

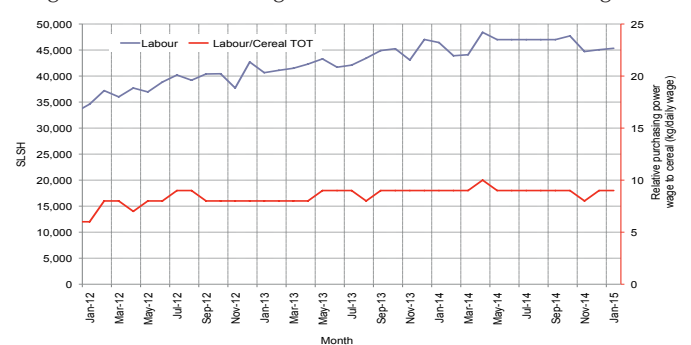


Figure 44: Imported Commodity Prices Compared to Exchange Rate

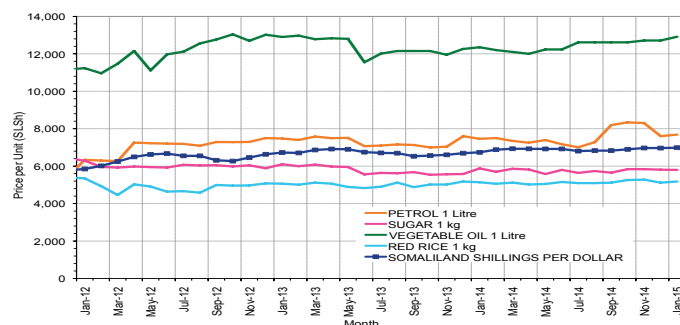


Figure 46: Exchange Rate

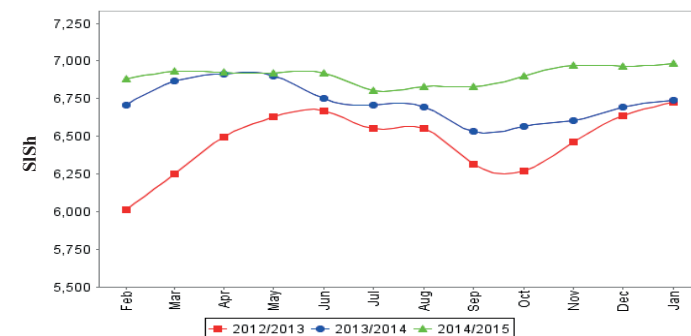


Figure 45: Goat Local Quality

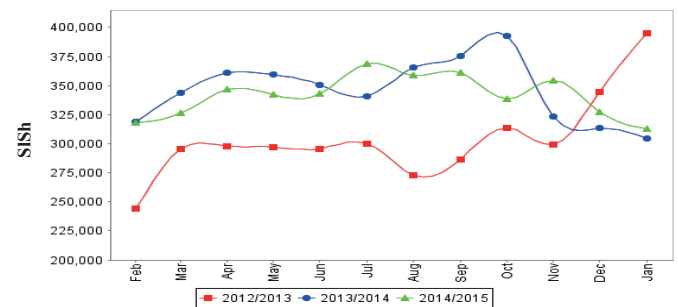
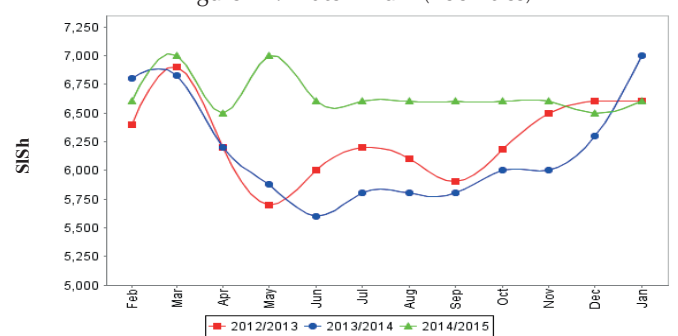


Figure 47: Water Drum (200 litres)



Trends in Livestock Exports

Table 1: Berbera Livestock Exports (Number of Heads)

	1998	1999	2000	2001	2002	2003	2004	2005	2006	2007	2008	2009	2010	2011	2012	2014 (Jan-Dec)
Shoats	957,224	2,048,136	1,601,083	51,546	341,711	563,107	859,404	1,023,795	1,017,242	1,350,054	1,219,519	1,556,003	2,584,810	3,104,684	3,219,584	3,089,592
Cattle	92,213	89,967	63,263	20,973	37,547	84,312	131,852	148,151	85,631	88,143	80,051	88,005	133,021	150,934	190,354	252,597
Camel	11,663	37,430	16,984	3,473	18,864	21,874	5,147	5,069	22,810	14,245	26,515	20,206	92,651	107,281	102,664	64,578

Figure 48: Berbera Livestock Exports (Number of Heads)

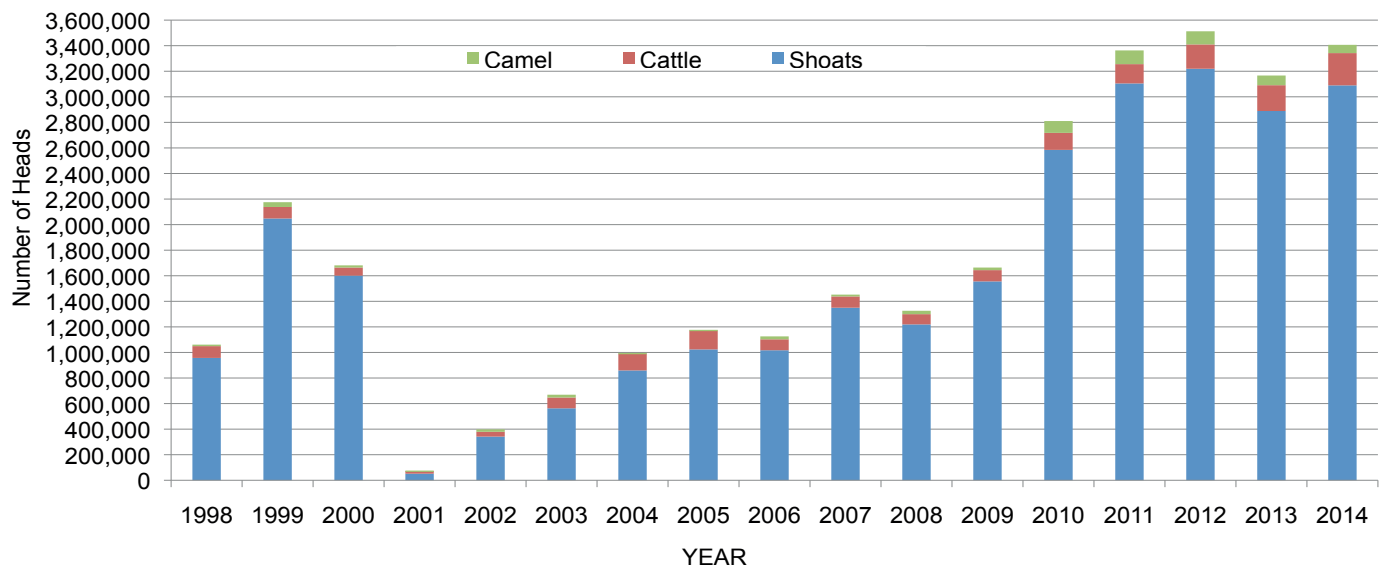
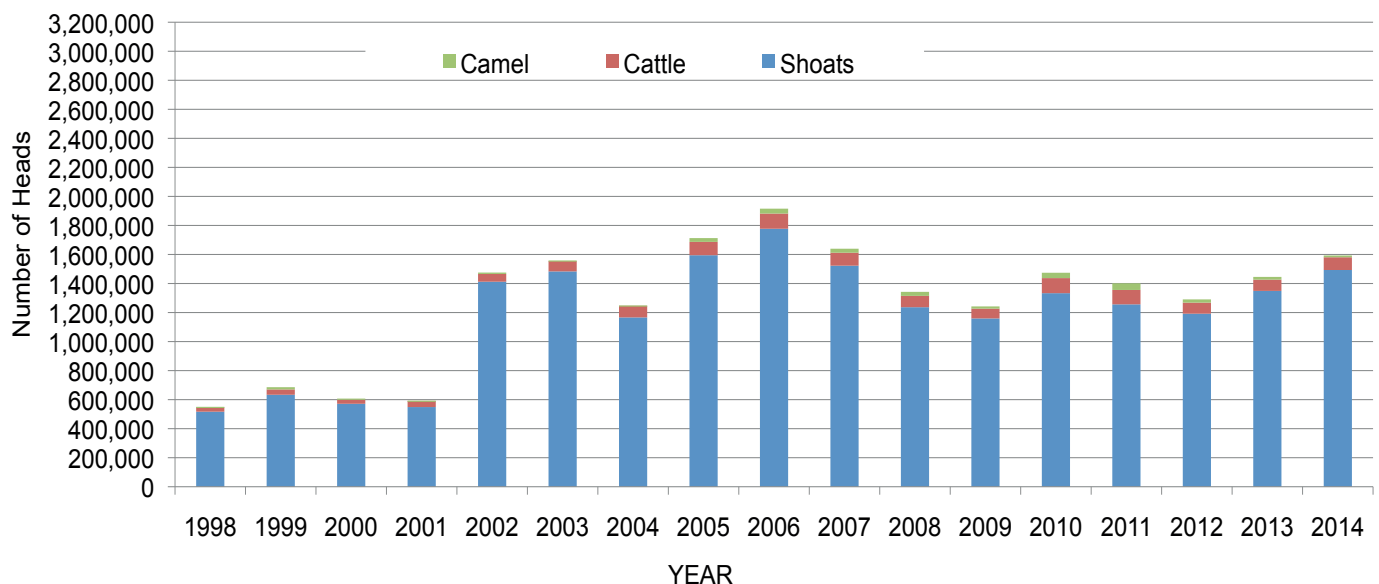


Table 2: Bossaso Livestock Exports (Number of Heads)

	1998	1999	2000	2001	2002	2003	2004	2005	2006	2007	2008	2009	2010	2011	2012	2013	2014 (Jan-Dec)
Shoats	517,020	633,669	571,455	548,853	1,412,450	1,483,409	1,166,480	1,594,859	1,777,283	1,522,855	1,236,775	1,159,454	1,333,478	1,256,535	1,192,197	1,349,123	1,493,111
Cattle	29,492	36,586	27,604	42,248	53,313	71,328	79,994	91,910	104,595	89,190	78,046	67,385	103,808	99,058	76,043	77,353	87,759
Camel	3,938	15,544	8,177	1,950	9,720	4,259	2,488	26,109	33,724	27,580	27,639	15,331	36,865	45,878	22,288	19,032	12,251

Figure 49: Bossaso Livestock Exports (Number of Heads)

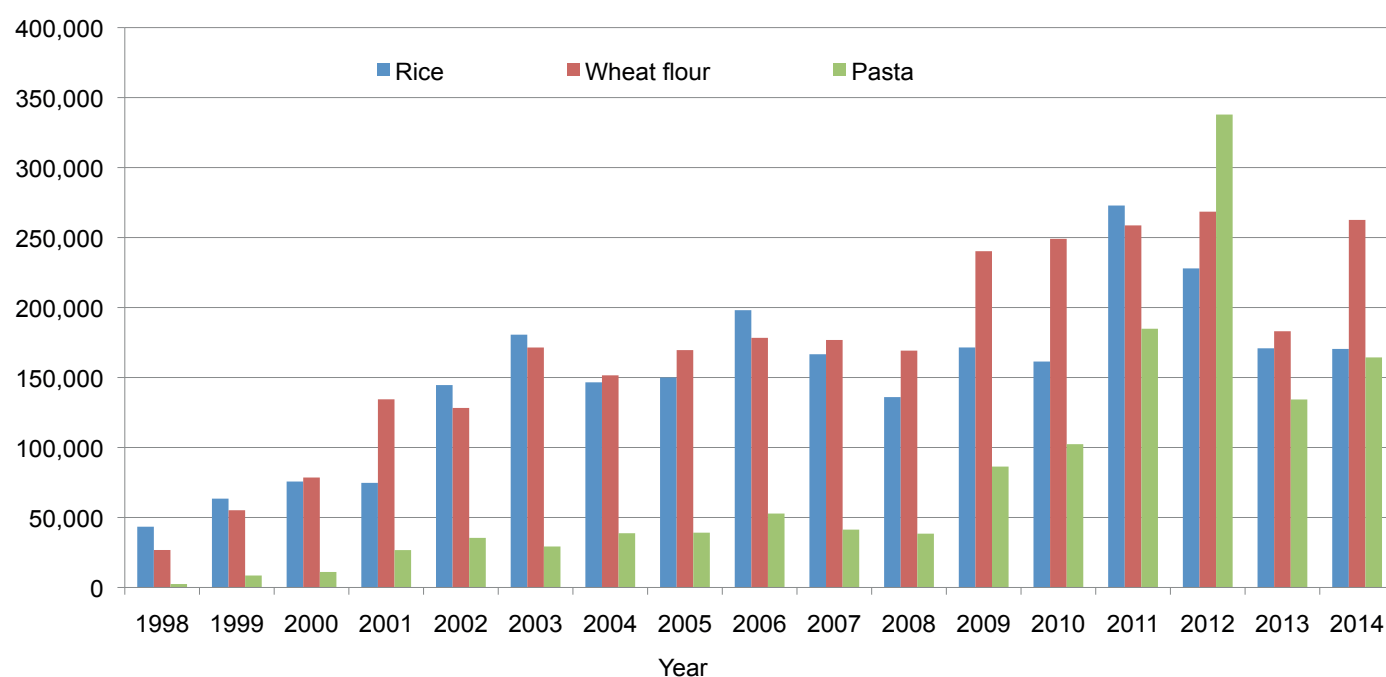


Trends in Cereal Imports

Table 3: Total Cereal Imports through Berbera, Bossaso and Mogadishu Ports (Tonnes) *

	1998	1999	2000	2001	2002	2003	2004	2005	2006	2007	2008	2009	2010	2011	2012	2013	2014 (Jan-Dec)
Rice	43,410	63,464	75,687	74,729	144,600	180,614	146,567	150,017	198,101	166,626	136,007	171,472	161,415	272,877	227,955	170,868	170,424
Wheat flour	26,774	55,176	78,555	134,425	128,263	171,442	151,555	169,583	178,345	176,821	169,208	240,247	249,080	258,679	268,491	183,058	262,595
Pasta	2,455	8,544	11,071	26,702	35,425	29,273	38,749	39,153	52,815	41,331	38,441	86,372	102,373	184,849	337,878	134,311	164,359

Figure 50: Total Cereal Imports (Berbera, Bossaso and Mogadishu)



* 2014 import data is up to December for Berbera and Bossaso and up to August for Mogadishu (Elmaan Port). 2013 Mogadishu data (Elmaan Port) includes only January -March 2014 imports.