

Market DataUpdate

January 2013



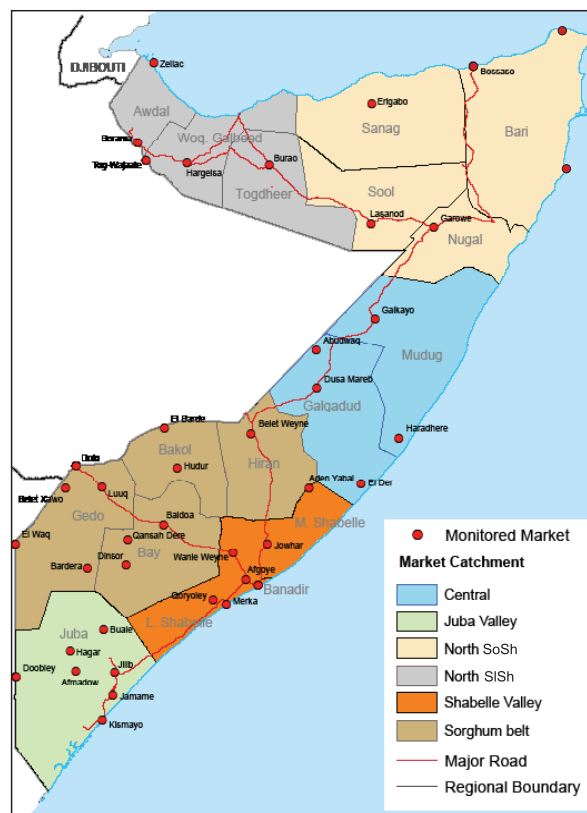
Food Security and Nutrition
Analysis Unit - Somalia



Issued February 22nd, 2013

Highlights

- **Inflation:** The January Consumer Price Index (CPI) declined slightly in South-Central while remaining relatively stable in all other regions of the North. Annual inflation reduced in Somali shilling (SoSh) areas but increased somewhat in the regions using Somaliland shilling (SiSh). The minimum cost of living is significantly higher in SoSh zones whereas it is moderately elevated in SiSh area when compared to the base period (March 2007).
- **Exchange rate** between SoSh and the US Dollar (USD) gained marginal value over the first month of the year while the SiSh lost negligible ground to the greenback. Over the past year, SiSh has remarkably depreciated against the USD, while the SoSh has gained value. The annual appreciation of the SoSh is attributed to economic renaissance in the capital (Mogadishu), relative stability in most parts of the country, limited supply of the local currency notes and dollar inflows through humanitarian interventions and on-going foreign and local investments predominantly in the capital. The weakened SiSh is due to increased supply and circulation of new higher denomination currency notes.
- **Local grain** prices were mixed- decreased significantly in the key sorghum producing regions of Bay; slightly reduced in Juba, Central, Gedo and Hiran regions but remained relatively steady in all other regions. The decline in locally produced cereals mainly reflect good outturn of the 2012/13 Deyr seasonal harvests. Other factors affecting current cereal price trends included: increased cereal flows from surplus markets to deficit markets, low prices of imported food and humanitarian food supply. Overall, cereal prices remained well below the levels a year earlier.
- **Prices of most imported commodities** continued to decline in January in nearly all SoSh markets while remaining relatively stable in SiSh areas. Compared to the same period last year, imported commodity prices are significantly lower in SoSh markets but stable in SiSh regions. The decline in prices of imported food is a result of the appreciation of the local currency, enhanced port functioning and humanitarian assistance
- **Livestock prices** remained stable to declining in most markets when compared to a month ago, in line with a seasonal pattern following the end of *Haji* exports. Livestock prices are significantly higher than a year ago in all monitored markets as a result of improved body conditions and restocking.
- **Labour wages** sustained their levels or reduced slightly in many markets in line with seasonal reduction in agricultural labour opportunities after harvests in crop producing areas. Labour wages are significantly higher compared to their levels a year ago in most markets.
- **Terms of Trade (ToT)** between labour wage and cereals were mixed- mostly stable or decreased with the exceptions of increases in Bay and Juba. The purchasing power of the poor mostly relying on casual labour has improved over the past year as a result of lower cereal prices, improved local quality goat prices and higher labour wages.



This Market Data Update is a monthly report that presents a compilation of tabulated graphical market information produced regularly as part of the monthly monitoring process.

The weekly price data is collected from 47 main markets throughout Somalia since 1995.

Market analysis is an integral part of all of FSNAU's Annual Food Security Projections and seasonal technical reports (Technical Reports on FSNAU Post *Cu* and *Deyr* Analysis).

This data is available online on www.fsnau.org/ids.

Funding Agencies



Regional Market Highlights

- **Juba Valley:** Prices of imported food, cereals and livestock declined slightly in January. The ToT (12Kg/daily wage rate) was one unit up from the previous month's level. Compared to a year ago, prices are significantly lower for imported food and local cereals, whereas they are considerably higher for livestock. Annual comparisons of ToT between labor and cereals also indicate a significant improvement in purchasing power for casual labourers.
- **Sorghum Belt:** Monthly price changes indicate reduction for imported food, sorghum and livestock. The ToT between labour and cereals decreased by one unit from end year levels as labour rates slumped. Generally, annual price changes indicate a significant decrease for imports and local cereals and a remarkable increase for livestock. More specifically, the ToT doubled (24kg/daily wage) in Bay region over the past year, increased significantly in the Hiraan but remained stable in Gedo while it declined in Bakool.
- **Shabelle Valley:** Monthly prices of imported food and livestock declined while maize quotations appreciated. Slight increment in labour wages could not keep pace with inflated cereal costs, consequently reducing the January ToT by one unit (13kg for a day's worth of labour). Prices of most imported commodities and cereals are significantly lower while prices of livestock are significantly higher compared to the levels in January 2012.
- **Central:** Imported food, livestock and local cereal prices decreased slightly in the opening month. Annual comparisons indicate significant decreases in the prices of all items except livestock, which is significantly higher. ToT (rice/ local goat) declined but is significantly higher when compared to the same month in 2012, currently standing at 56kg/local goat.
- **Northeast:** imported food prices declined marginally while those of livestock and sorghum were up with a small margin. Annual price comparisons show significant decline for imported commodities and red sorghum while those of livestock are slightly higher. ToT (rice/ local goat) were down one unit from December 2012 level (78kg/local goat) but is significantly higher when compared to the same month in 2012.
- **Northwest:** Prices of imported food and livestock remained stable while the cost of local cereals were mixed. Compared to January 2012, the prices have reduced for locally produced cereals; imports show mixed trends, while livestock prices are significantly higher. The monthly ToT between local white sorghum and wages remained steady but is significantly higher than in the same month last year, currently equivalent to about 12kg/daily wage rate.
- **Banadir:** Monthly changes in prices of imported food and goats show a moderate decrease; locally produced cereals remained stable. With the exception of highly valued goats, prices of imported and locally produced food are significantly below their levels a year ago. ToT cereal (maize/ labour wage) was one unit down from the preceding month to close at 17 kgs/ daily labour rate.

Table 1: Monthly and Annual Changes in Terms of Trade-Cereals (kg) per Daily Labour Wage Rate

ToT: MT of Cereals (kg) per Daily Labour Wage Rate Region	Cereal used	Jan. 2012	Dec. 2012	Jan. 2013	Monthly change	Annual change
		(kg/daily wage)	(kg/daily wage)	(kg/daily wage)	(%)	(%)
Banadir	White Maize	11	18	17	-6%	55%
Bay	Red Sorghum	12	22	24	9%	100%
Bakool	Red Sorghum	9	6	6	0%	-33%
Gedo	Red Sorghum	16	18	16	-11%	0%
Hiraan	White Maize	13	22	21	-5%	62%
Juba	White Maize	7	11	12	9%	71%
Shabelle	White Maize	10	14	13	-7%	30%
Northeast	Red Sorghum	5	7	7	0%	40%
Northwest	White Sorghum	10	12	12	0%	20%
Central	Red Sorghum	6	8	8	0%	33%

International Market Highlights

Diesel: Crude oil prices in Abu Dhabi (Dubai)¹ closed the first month of the year trading at \$107.54/barrel, just two percentage points above the December 2012 quotations but slightly lower than the levels a year ago. According to the Monthly Oil Market Report (Feb 2013)², the price appreciation was buoyed by signals of economic improvement in China and the United States, robust financial market activity, earlier than expected cutbacks in Saudi Arabian oil production and colder temperatures in the Northern Hemisphere.

In Somalia Port Cities (Bossaso and Mogadishu), January 2013 diesel prices remained relatively stable compared to their levels the previous month. The current prices are significantly lower (12-29%) than the same month last year, supported by appreciated SoSh as well steady supplies through sea ports. The price differential between domestic diesel and global crude oil prices over the last 12 months (since Jan. '12) reduced significantly, particularly in Bossaso (from 16 to 1 percent), signifying the influence of local macro-economic and socio-political factors in driving domestic fuel prices (Figure 1).

Rice: The benchmark Thai rice (Thai A1 Super 1/ B) export price rose by 2% to \$558 per tonne in January 2013³, which is 8 percentage points above the same month a year ago, reflecting large government purchases under the pledging programme⁴.

New year prices of imported rice in Bossaso and Mogadishu markets declined marginally (2-5%) but were significantly lower (27-40%) than their levels the same month in 2012. The annual price decline could be attributed to appreciated Somali shilling against the USD and higher supplies following enhanced port functioning. The gap between international and domestic rice markets has narrowed down from 74 percent in January last year to 12 percent currently in Mogadishu, and from 61 percent to 30 percent in Bossaso (Figure 2).

Wheat: Export prices of wheat declined for the second consecutive month in January⁵. The benchmark US wheat price (No.2 Hard Red Winter, f.o.b.) averaged USD 348 per tonne, down three percent from its level in December but still 17 percent higher than in January 2012 (Figure 3). The main drivers of the current wheat prices include low levels of wheat exports from the United States (major wheat exporter), large supplies of feed wheat, continued drought conditions in the United States, which affected wheat conditions in the southern great plains, where most of the wheat production is concentrated and weakening dollar⁶.

January 2013 wheat flour prices were stable in both cities but were significantly lower (16-21%) than the same month in 2012.

Figure 1: Diesel Prices: Dubai, Mogadishu and Bossaso

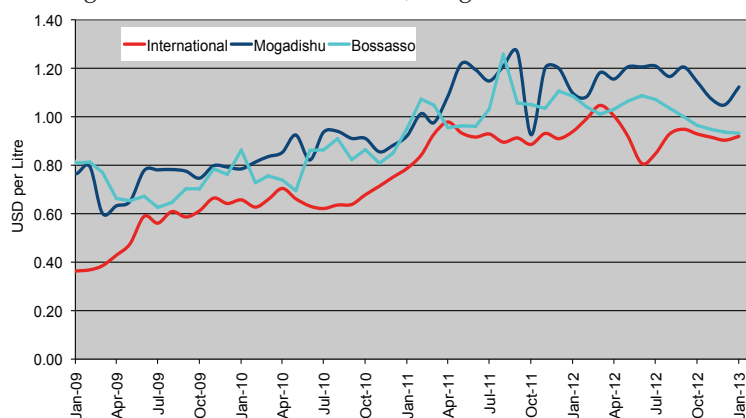


Figure 2: Rice Prices: Bangkok FOB, Mogadishu and Bossaso Markets

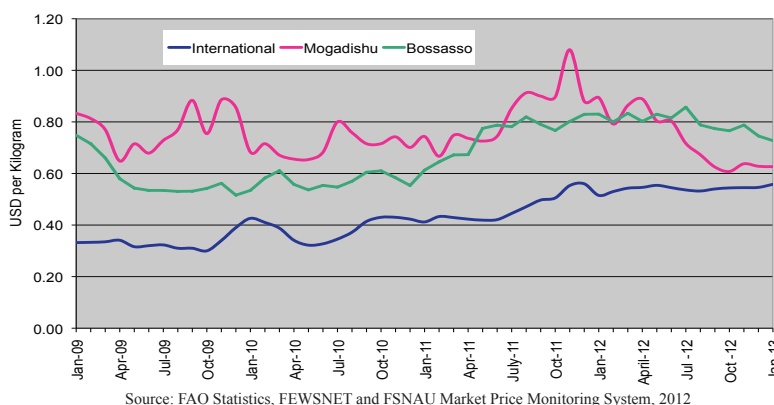
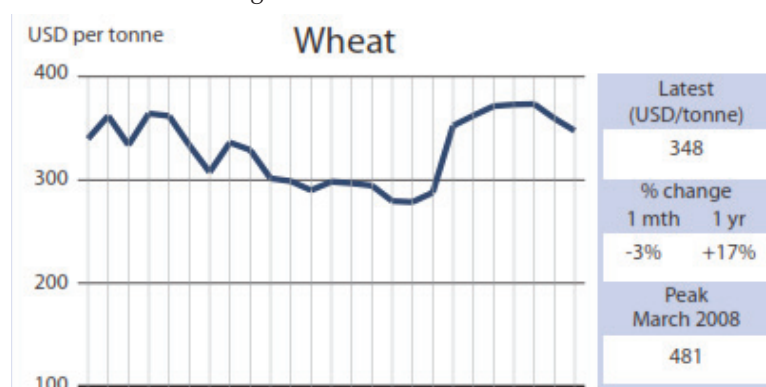


Figure 3: International Wheat Prices



Source: FAO Global Food Price Monitor, Feb 2013

¹ The main source of Somalia's oil imports

² Published by International Energy Agency (IEA) in collaboration with Organization of Petroleum Exporting Countries (OPEC)

³ The World Food Situation: The FAO Food Price Index February 2013; FAO Global food price monitor, 11 Feb 2013

⁴ Ibid; farmers hand over their rice to the government at premium rates well above world market prices

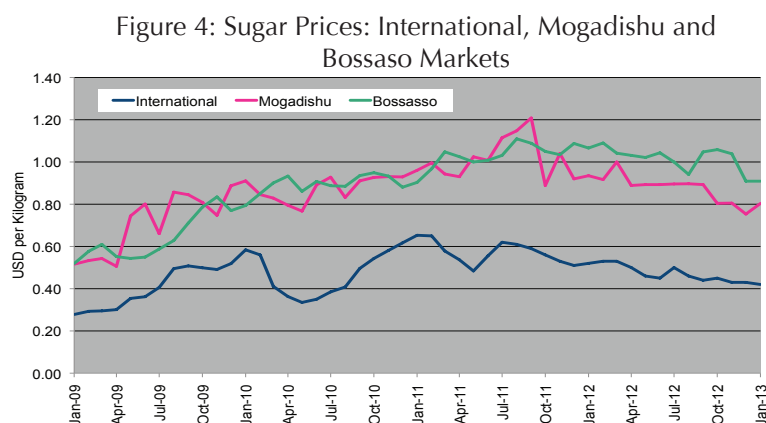
⁵ FAO Global Food Price Monitor, 11 Feb 2013

⁶ FAO Global Food Price Monitor, 11 Feb 2013

International Market Highlights

Sugar: The FAO Sugar Price Index⁷ averaged 268 in January, down 6 points (2.2 percent) from December 2012. Prices have declined for the third consecutive month, driven by the expectation of a large global production surplus and hefty export availabilities in the 2012/13 marketing season, notably in Brazil and Thailand. Sugar production is also expected to be large in the traditional importing countries⁸, which so far has limited their need to source from international markets.

January sugar prices in Bossaso and Mogadishu remained generally stable when compared to December 2012 levels but significantly lower (26-29%) than the same month last year, supported by increased supplies through commercial imports and appreciated domestic currency (Figure 4).



Source: International Sugar Organization, FEWSNET and FSNAU Market Price Monitoring System, 2012

Cooking Oil: the FAO Oils/Fats Price Index⁹ averaged 205 in January, up 9 points (4.4 percent) from December, reversing the declines observed in the last four months. The rebound was mainly driven by palm oil on account of fresh import demand and concerns that abundant rains could disrupt harvesting operations in Indonesia and Malaysia, two largest¹⁰ exporters of Palm Oil.

On the domestic markets, vegetable oil prices dropped slightly (3-6%) over the previous month in both cities but significantly (25-26%) when compared to the same month in 2012, the latter attributable to stronger SoSh, continued humanitarian interventions and improved port activities.

⁷ The World Food Situation: The FAO Food Price Index Feb 2013

⁸ Confederation of Independent States, European Union, USA, China and India

⁹ The World Food Situation: The FAO Food Price Index Feb 2013; Consists of an average of 12 different oils (palm oil, rapeseed oil, soybean oil, sunflower oil, animal and fish oils etc)

¹⁰ United States Department of Agriculture [Online] <http://www.indexmundi.com/agriculture/?commodity=palm-oil&graph=exports>

National Trends: CPI, Exchange Rates, Cereal Prices and Relative Purchasing Power

Figure 5: Terms of Trade between wage rates and selected cereals

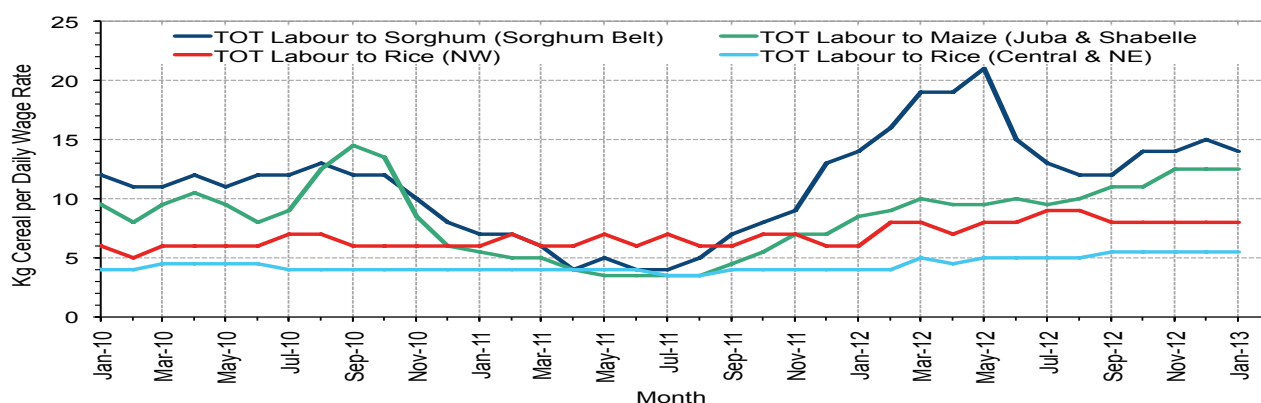


Figure 6: Monthly Exchange Rate for Selected Regions (SoSh and SiSh to USD)

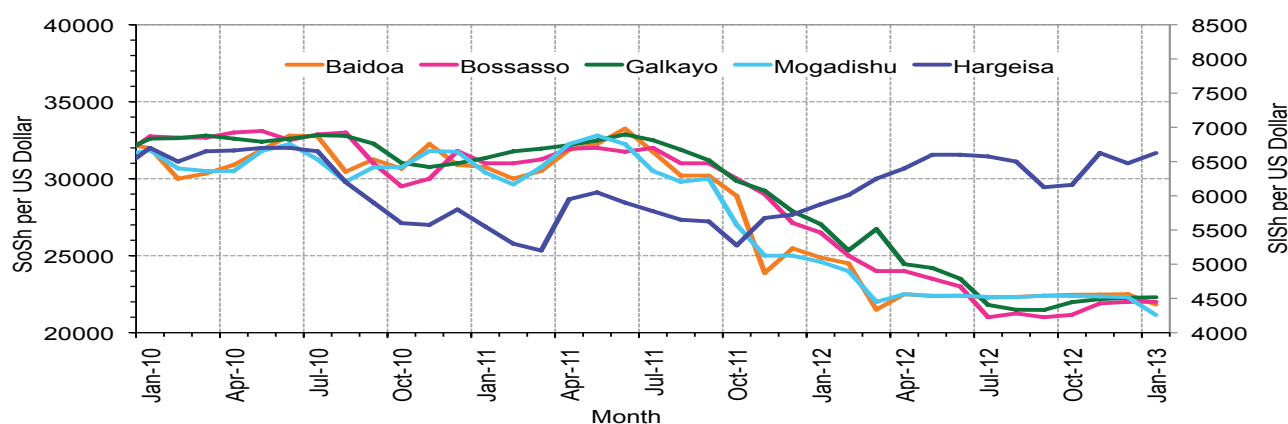


Figure 7: Monthly Trends in Consumer Price Index (CPI, March 2007=100)

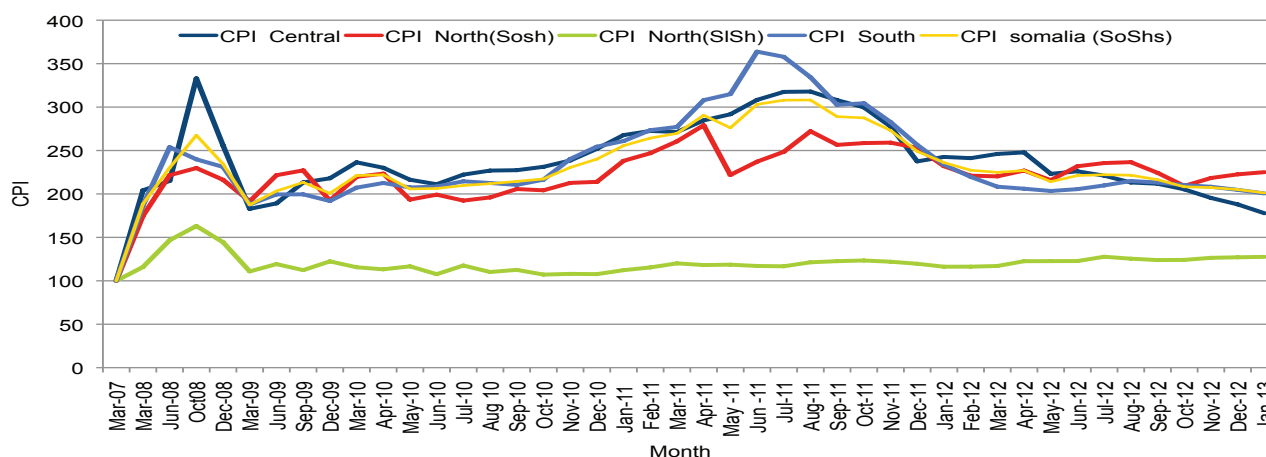
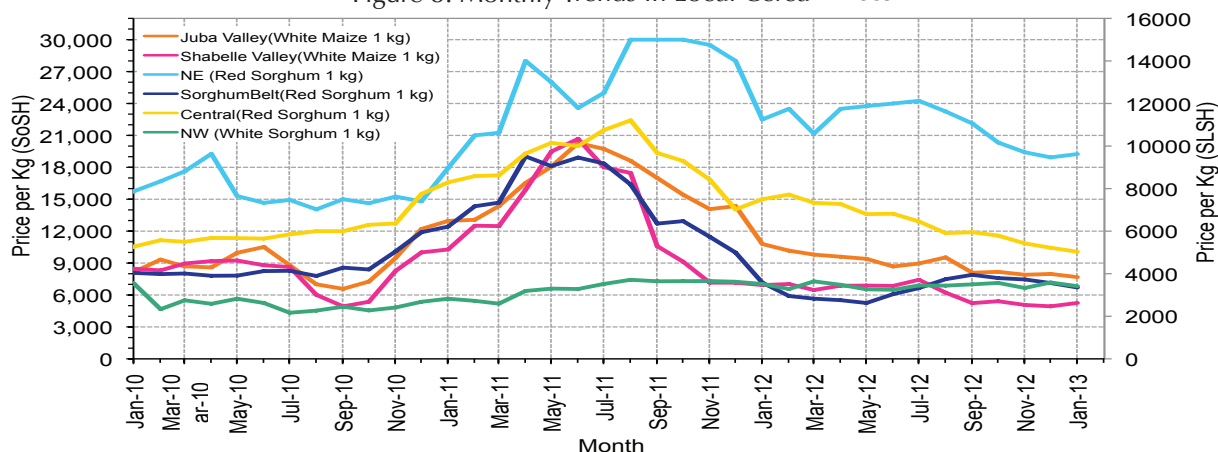


Figure 8: Monthly Trends in Local Cereal Prices



Regional analysis: Juba Regions

Indicator	5-Year Average (2008-2012)	Jan-12	Dec-12	Jan-13 Nominal Price	Jan-13 Real (Deflated) Price	% Change Same Month Previous Year	% Change Previous Month	% Change 5-year avrg (2008-2012)
Imported Commodities Prices								
Diesel 1 litre	31,242	30,821	31,371	28,250	13,983	-8%	-10%	-10%
Imported Red Rice 1kg	22,689	21,171	18,564	17,571	8,659	-17%	-5%	-23%
Petrol 1 litre	32,495	34,086	33,100	28,429	14,072	-17%	-14%	-13%
Sugar	22,695	25,436	21,457	19,250	9,496	-24%	-10%	-15%
Vegetable Oil 1 litre	45,031	45,525	43,617	37,536	18,612	-18%	-14%	-17%
Wheat Flour 1kg	19,365	18,100	17,229	16,643	8,197	-8%	-3%	-14%
Wheat Grain 1kg	16,666	18,000	-	-	-	-	-	-
Red Sorghum 1kg	7,924	7,000	6,400	7,500	3,639	-	17%	-5%
White Maize 1kg	9,327	10,794	8,346	8,036	3,906	-26%	-4%	-14%
Livestock & Livestock Product Prices								
Camel Local Quality (Head)	8,525,758	9,580,833	9,559,000	9,651,250	4,811,141	1%	1%	13%
Cattle Local Quality (Head)	3,168,142	3,592,343	4,678,567	4,307,556	2,147,258	20%	-8%	36%
Fresh Camel Milk 1 litre	16,686	17,807	20,200	20,167	9,953	13%	0%	21%
Goat Export Quality (Head)	1,036,067	1,343,229	1,822,314	1,717,679	856,180	28%	-6%	66%
Goat Local Quality (Head)	682,671	856,286	1,081,329	1,043,893	520,291	22%	-3%	53%
Other Essential Items								
Charcoal 50kg	73,934	75,600	98,164	113,500	56,481	50%	16%	54%
Cowpeas 1 kg	21,726	32,941	20,114	19,714	9,728	-40%	-2%	-9%
Unskilled Labor Wage Rate	80,032	79,164	92,479	95,143	47,330	20%	3%	19%
Firewood Bundle	5,862	7,957	9,100	9,714	4,743	22%	7%	66%
Local Sesame Oil 1 litre	70,560	78,600	75,693	68,393	33,995	-13%	-10%	-3%
Exchange Rate (Somali Shilling per USD)	27,935	24,370	22,289	21,373	10,555	-12%	-4%	-23%
Construction Materials*								
Cement 50kg	308,865	274,160	265,960	241,800	120,440	-12%	-9%	-22%
Cooking Pot Aluminium 7 Litre	327,223	324,571	319,417	503,542	250,921	55%	58%	54%
Galvanised Iron Sheet Ga 26	154,567	147,992	120,029	114,357	56,908	-23%	-5%	-26%
Hollow Concrete Block 10cm x 20cm x 40cm	19,250	-	15,300	15,000	7,378	-	-2%	-22%
Non Collapsible Jerrycan 10 Litre	34,400	38,800	36,042	34,167	16,933	-12%	-5%	-1%
Plastic Tarpaulin 14m x 5 m	495,300	390,600	339,571	305,893	152,931	-22%	-10%	-38%
Roofing Nails 15Kg	734,085	678,800	788,500	815,714	406,541	20%	3%	11%
Timber 2in x 4in x 20ft	292,123	261,580	243,800	239,500	119,293	-8%	-2%	-18%
Woven Dry Raised Blanket 150cm x 200cm	40,500	40,500	58,250	65,938	32,771	63%	13%	63%
Terms of Trade								
Labour Wage (Daily)/ Cereal (Maize(Kg))	9	7	11	12	-	61%	7%	38%
Local Goat (Head)/ Cereal (Maize(Kg))	73	79	130	130	-	64%	0%	77%
Price Indices								
Consumer Price Index	-	234	205	201	-	-14%	-2%	-
Purchasing Power Index	-	0.43	0.49	0.50	-	17%	2%	-

* Data has been collected since May 2010

Figure 9: Trends in cereal prices

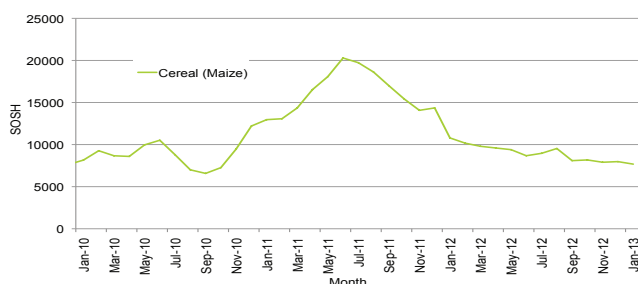


Figure 10: Trends in wage rates and relative purchasing power

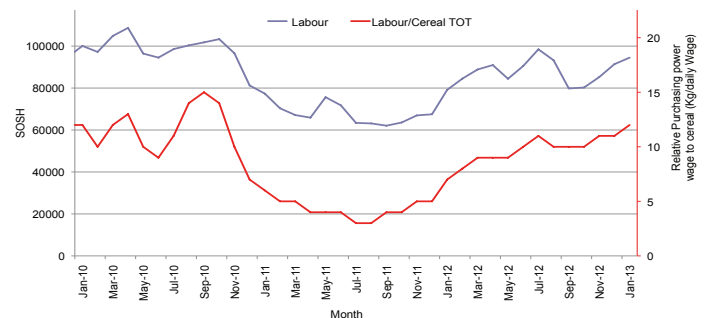


Figure 11: Imported Commodity Prices compared to Exchange Rate

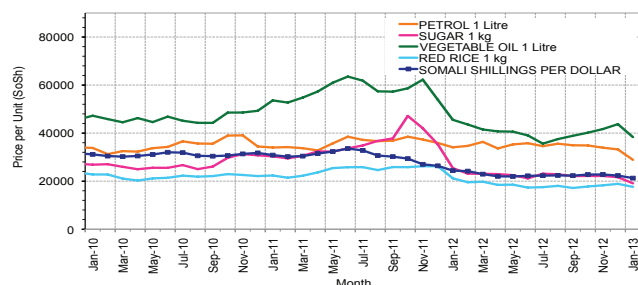


Figure 12: Goat Local Quality

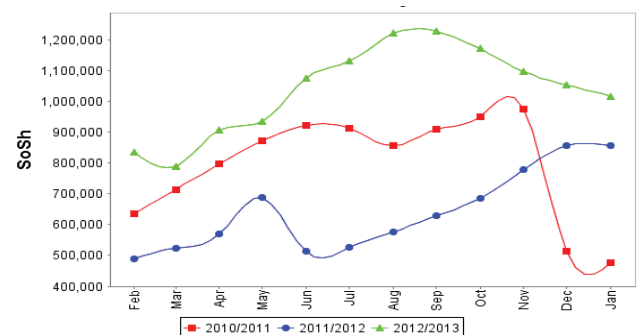


Figure 13: Exchange Rate

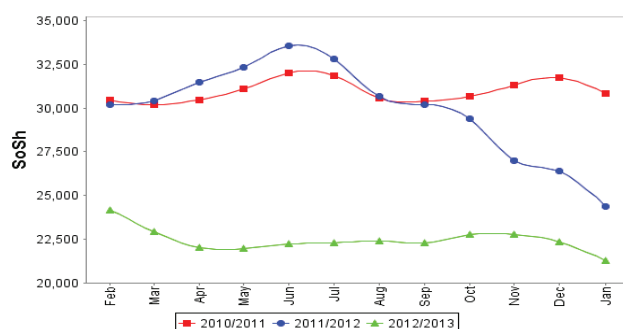
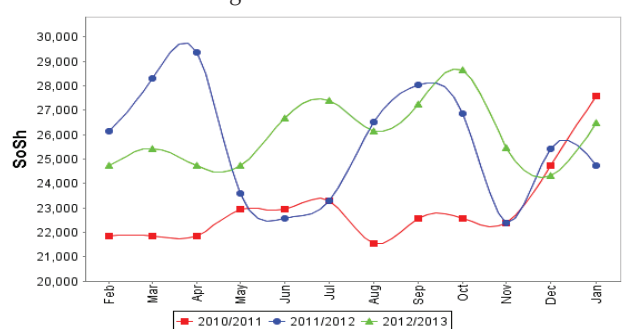


Figure 14: Water Drum



Regional analysis: Sorghum Belt Regions (Bay, Bakool, Gedo and Hiran)

Indicator	5-Year Average (2008-2012)	Jan-12	Dec-12	Jan-13 Nominal Price	Jan-13 Real (Deflated) Price	% Change Same Month Previous Year	% Change Previous Month	% Change 5-year avrg (2008-2012)
Imported Commodities Prices								
Diesel 1 litre	31,267	37,318	31,327	31,000	15,354	-17%	-1%	-1%
Imported Red Rice 1kg	24,641	23,655	20,182	18,773	9,259	-21%	-7%	-24%
Petrol 1 litre	31,421	36,250	31,145	30,614	15,161	-16%	-2%	-3%
Sugar	24,415	28,477	22,400	21,886	10,810	-23%	-2%	-10%
Vegetable Oil 1 litre	44,555	46,455	45,564	42,727	21,200	-8%	-6%	-4%
Wheat Flour 1kg	20,808	19,864	18,345	17,386	8,567	-12%	-5%	-16%
Wheat Grain 1kg	14,117	8,063	9,160	8,000	3,888	-1%	-13%	-43%
Cereal Prices								
Red Sorghum 1kg	8,099	7,163	7,125	6,708	3,244	-6%	-6%	-17%
White Maize 1kg	9,304	8,041	7,822	7,549	3,663	-6%	-3%	-19%
Livestock & Livestock Product Prices								
Camel Local Quality (Head)	7,464,166	10,978,889	14,015,000	13,920,000	6,939,155	27%	-1%	86%
Cattle Local Quality (Head)	2,600,538	3,167,857	4,408,750	4,011,250	1,999,547	27%	-9%	54%
Fresh Camel Milk 1 litre	18,574	20,386	23,545	21,932	10,833	8%	-7%	18%
Goat Export Quality (Head)	1,133,092	1,537,909	1,822,727	1,653,091	823,982	7%	-9%	46%
Goat Local Quality (Head)	657,707	1,020,705	1,232,382	1,170,591	583,451	15%	-5%	78%
Other Essential Items								
Charcoal 50kg	114,345	138,818	154,545	152,591	75,968	10%	-1%	33%
Cowpeas 1 kg	22,019	25,375	20,400	18,550	9,147	-27%	-9%	-16%
Unskilled Labor Wage Rate	82,622	100,682	109,673	95,136	47,326	-6%	-13%	15%
Firewood Bundle	4,789	5,114	6,600	6,659	3,220	30%	1%	39%
Local Sesame Oil 1 litre	73,104	80,292	68,286	66,607	33,104	-17%	-2%	-9%
Exchange Rate (Somali Shilling per USD)	28,053	24,786	22,366	21,707	10,721	-12%	-3%	-23%
Construction Materials*								
Cement 50kg	351,600	363,500	327,130	317,750	158,301	-13%	-3%	-10%
Cooking Pot Aluminium 7 Litre	308,312	296,000	303,055	291,864	145,397	-1%	-4%	-5%
Galvanised Iron Sheet Ga 26	197,204	196,136	170,100	166,425	82,864	-15%	-2%	-16%
Hollow Concrete Block 10cm x 20cm x 40cr	11,050	12,100	16,040	11,500	5,633	-5%	-28%	4%
Non Collapsible Jerrycan 10 Litre	53,352	55,000	55,556	58,833	29,229	7%	6%	10%
Plastic Tarpaulin 14m x 5 m	300,800	285,750	323,333	303,194	151,045	6%	-6%	1%
Roofing Nails 15kg	829,461	789,545	733,200	762,778	380,152	-3%	4%	-8%
Timber 2in x 4in x 20ft	275,881	282,656	283,440	304,864	151,878	8%	8%	11%
Woven Dry Raised Blanket 150cm x 200cm	103,988	97,143	90,714	86,500	43,021	-11%	-5%	-17%
Terms of Trade								
Labour Wage (Daily)/ Cereal (Sorghum(Kg))	10	14	15	14	-	1%	-8%	39%
Local Goat (Head)/ Cereal (Sorghum(Kg))	81	142	173	175	-	22%	1%	115%
Price Indices								
Consumer Price Index	-	234	205	201	-	-14%	-2%	-
Purchasing Power Index	-	0.43	0.49	0.50	-	17%	2%	-

* Data has been collected since May 2010

Figure 15: Trends in cereal prices

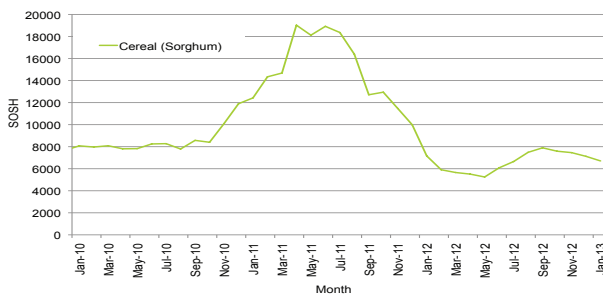


Figure 16: Trends in wage rates and relative purchasing power

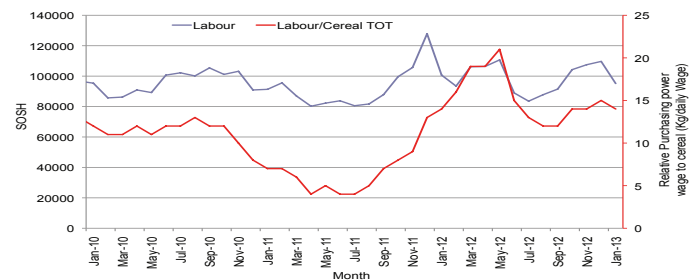


Figure 17: Imported Commodity Prices compared to Exchange Rate

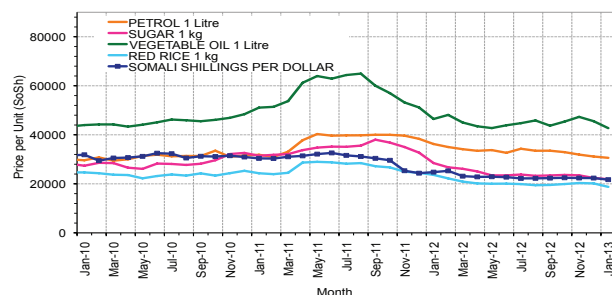


Figure 18: Goat Local Quality

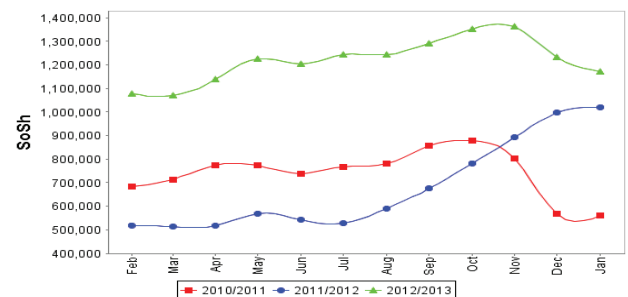


Figure 19: Exchange Rate

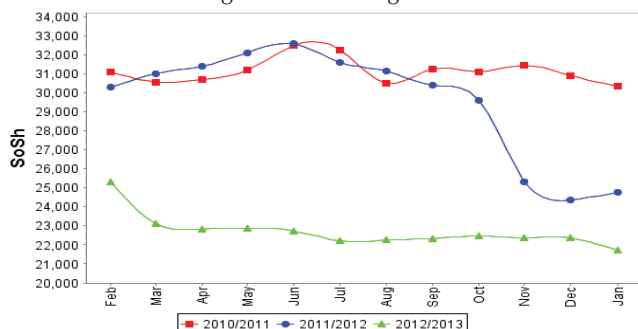
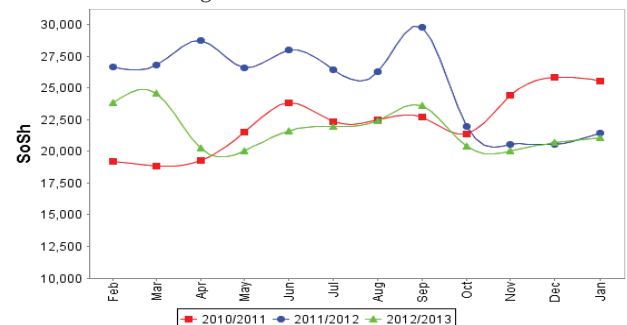


Figure 20: Water Drum



Regional analysis: Shabelle Regions

Indicator	5-Year Average (2008-2012)	Jan-12	Dec-12	Jan-13 Nominal Price	Jan-13 Real (Deflated) Price	% Change Same Month Previous Year	% Change Previous Month	% Change 5-year avg (2008-2012)
Imported Commodities Prices								
Diesel 1 litre	29,241	31,625	28,667	28,542	14,128	-10%	0%	-2%
Imported Red Rice 1kg	21,470	20,583	16,900	16,250	8,001	-21%	-4%	-24%
Petrol 1 litre	30,958	34,458	29,300	29,458	14,585	-15%	1%	-5%
Sugar	21,966	23,208	21,167	19,875	9,808	-14%	-6%	-10%
Vegetable Oil 1 litre	39,183	37,833	33,167	30,958	15,333	-18%	-7%	-21%
Wheat Flour 1kg	17,766	16,417	17,667	18,208	8,977	11%	3%	2%
Wheat Grain 1kg	12,000	12,000	6,933	5,667	2,725	-53%	-18%	-53%
Cereal Prices								
Red Sorghum 1kg	9,172	12,735	9,692	9,733	4,752	-24%	0%	6%
White Maize 1kg	7,297	6,835	4,936	5,255	2,520	-23%	6%	-28%
Livestock & Livestock Product Prices								
Camel Local Quality (Head)	10,598,000	14,510,000	16,608,000	17,630,000	8,788,625	22%	6%	66%
Cattle Local Quality (Head)	3,204,400	4,285,000	6,384,000	5,895,000	2,938,614	38%	-8%	84%
Fresh Camel Milk 1 litre	14,450	18,917	17,067	17,042	8,396	-10%	0%	18%
Goat Export Quality (Head)	1,273,375	1,833,750	1,894,500	1,911,250	952,677	4%	1%	50%
Goat Local Quality (Head)	888,983	1,208,750	1,368,667	1,341,250	668,526	11%	-2%	51%
Other Essential Items								
Charcoal 50kg	97,449	111,500	134,556	135,972	67,683	22%	1%	40%
Cowpeas 1 kg	19,052	24,872	17,262	17,368	8,558	-30%	1%	-9%
Unskilled Labor Wage Rate	47,525	68,750	67,167	69,958	34,775	2%	4%	47%
Firewood Bundle	3,854	5,625	6,167	6,417	3,099	14%	4%	67%
Local Sesame Oil 1 litre	60,950	60,042	57,967	55,000	27,318	-8%	-5%	-10%
Exchange Rate (Somali Shilling per USD)	28,298	25,088	23,133	21,583	10,659	-14%	-7%	-24%
Construction Materials*								
Cement 50kg	252,000	231,250	206,000	202,650	100,923	-12%	-2%	-20%
Cooking Pot Aluminium 7 Litre	710,000	700,000	785,000	763,750	380,637	9%	-3%	8%
Galvanised Iron Sheet Ga 26	108,150	97,350	73,200	75,500	37,537	-22%	3%	-30%
Hollow Concrete Block 10cm x 20cm x 40cm	13,250	12,750	12,250	12,313	6,038	-3%	1%	-7%
Non Collapsible Jerrycan 10 Litre	49,687	49,375	52,150	50,438	25,044	2%	-3%	2%
Plastic Tarpaulin 14m x 5 m	270,333	261,667	179,000	219,583	109,364	-16%	23%	-19%
Roofing Nails 15Kg	620,187	596,000	564,000	567,750	282,929	-5%	1%	-8%
Timber 2in x 4in x 20ft	54,650	51,050	46,760	45,200	22,433	-11%	-3%	-17%
Woven Dry Raised Blanket 150cm x 200cm	71,041	62,083	70,067	65,583	32,594	6%	-6%	-8%
Terms of Trade								
Labour Wage (Daily)/ Cereal (Maize(Kg))	7	10	14	13	-	32%	-2%	104%
Local Goat (Head)/ Cereal (Maize(Kg))	122	177	277	255	-	44%	-8%	110%
Price Indices								
Consumer Price Index	-	234	205	201	-	-14%	-2%	-
Purchasing Power Index	-	0.43	0.49	0.50	-	17%	2%	-

* Data has been collected since May 2010

Figure 21: Trends in cereal prices

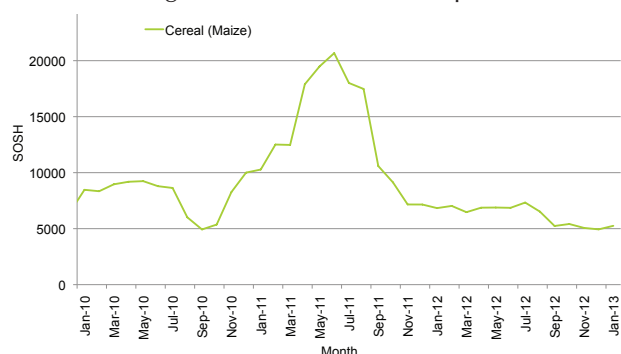


Figure 23: Imported Commodity Prices compared to Exchange Rate

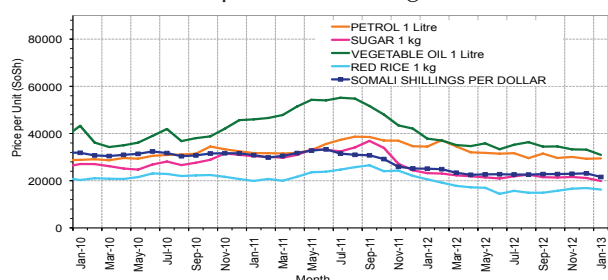


Figure 25: Exchange Rate

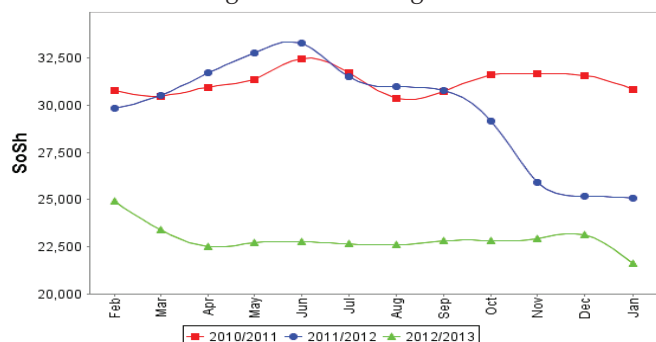


Figure 22: Trends in wage rates and relative purchasing power

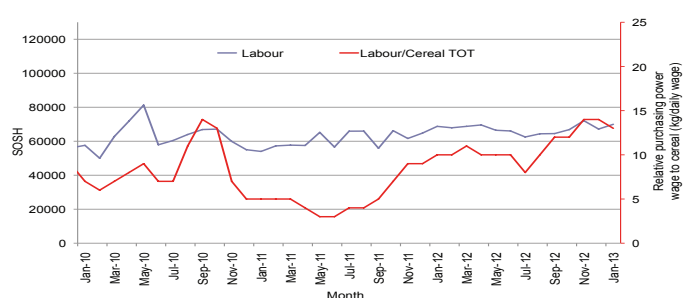


Figure 24: Goat Local Quality

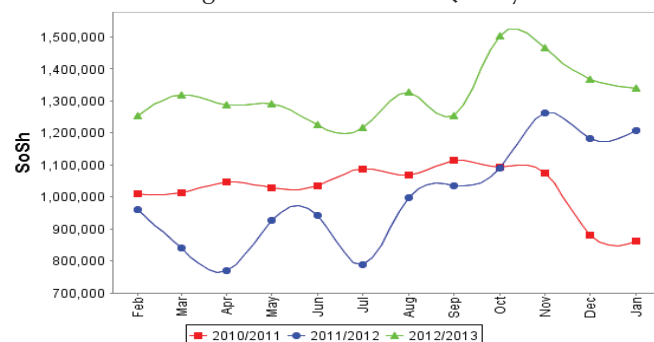
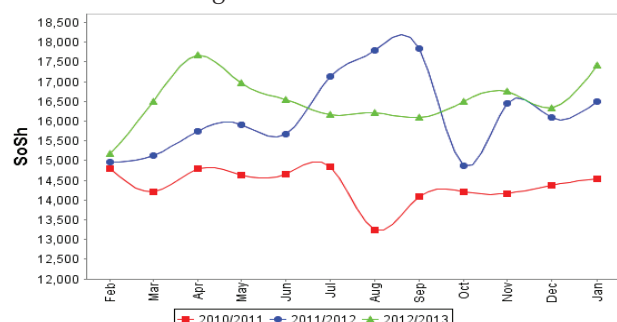


Figure 26: Water Drum



Regional analysis: Banadir Region

Indicator	5-Year Average (2008-2012)	Jan-12	Dec-12	Jan-13 Nominal Price	Jan-13 Real (Deflated) Price	% Change Same Month Previous Year	% Change Previous Month	% Change 5-year avrg (2008-2012)
Imported Commodities Prices								
Diesel 1 litre	26,816	26,417	23,833	22,875	11,303	-13%	-4%	-15%
Imported Red Rice 1kg	24,553	20,208	13,917	13,625	6,692	-33%	-2%	-45%
Petrol 1 litre	29,533	29,750	24,067	23,021	11,376	-23%	-4%	-22%
Sugar	22,540	20,500	17,393	16,313	8,032	-20%	-6%	-28%
Vegetable Oil 1 litre	38,076	38,042	32,867	31,500	15,603	-17%	-4%	-17%
Wheat Flour 1kg	16,062	13,375	13,583	13,104	6,432	-2%	-4%	-18%
Wheat Grain 1kg	12,398	11,444	8,260	7,830	3,803	-32%	-5%	-37%
Cereal Prices								
Red Sorghum 1kg	8,371	8,027	4,980	5,400	2,592	-33%	8%	-35%
White Maize 1kg	8,447	8,597	6,405	6,385	3,083	-26%	0%	-24%
Livestock & Livestock Product Prices								
Camel Local Quality (Head)	15,270,000	11,000,000	-	-	-	-	-	-
Cattle Local Quality (Head)	3,391,000	3,000,000	-	-	-	-	-	-
Fresh Camel Milk 1 litre	16,712	20,354	20,067	20,625	10,182	1%	3%	23%
Goat Export Quality (Head)	1,467,500	1,600,000	2,640,000	2,350,000	1,171,398	47%	-11%	-
Goat Local Quality (Head)	1,182,250	1,481,250	2,297,000	2,200,000	1,096,621	49%	-4%	86%
Other Essential Items								
Charcoal 50kg	164,333	152,500	194,533	188,667	93,952	24%	-3%	15%
Cowpeas 1 kg	20,567	25,896	18,597	16,392	8,072	-37%	-12%	-20%
Unskilled Labor Wage Rate	60,400	90,958	112,333	110,000	54,736	21%	-2%	82%
Firewood Bundle	5,444	8,083	7,896	7,900	3,838	-2%	0%	45%
Local Sesame Oil 1 litre	70,348	58,958	61,400	58,708	29,167	0%	-4%	-17%
Exchange Rate (Somali Shilling per USD)	28,560	25,029	22,437	21,275	10,506	-15%	-5%	-26%
Construction Materials*								
Cement 50kg	210,304	187,750	166,263	164,508	81,909	-12%	-1%	-22%
Cooking Pot Aluminium 7 Litre	251,562	313,125	266,600	269,917	134,456	-14%	1%	7%
Galvanised Iron Sheet Ga 26	100,468	90,854	83,567	80,604	40,082	-11%	-4%	-20%
Hollow Concrete Block 10cm x 20cm x 40cm	9,154	8,708	10,867	10,625	5,197	22%	-2%	16%
Non Collapsible Jerrycan 10 Litre	32,958	35,250	41,867	42,333	21,003	20%	1%	28%
Plastic Tarpaulin 14m x 5 m	256,250	226,667	225,000	245,000	122,035	8%	9%	-4%
Roofing Nails 15kg	517,127	517,921	475,783	462,563	230,492	-11%	-3%	-11%
Timber 2in x 4in x 20ft	179,812	139,375	116,567	112,583	56,024	-19%	-3%	-37%
Woven Dry Raised Blanket 150cm x 200cm	108,750	82,917	108,333	120,417	59,929	45%	11%	11%
Terms of Trade								
Labour Wage (Daily)/ Cereal (Maize(Kg))	7	11	18	17	-	63%	-2%	141%
Local Goat (Head)/ Cereal (Maize(Kg))	140	172	359	345	-	100%	-4%	146%
Price Indices								
Consumer Price Index	-	234	205	201	-	-14%	-2%	-
Purchasing Power Index	-	0.43	0.49	0.50	-	17%	2%	-

* Data has been collected since May 2010

Figure 27: Trends in cereal prices

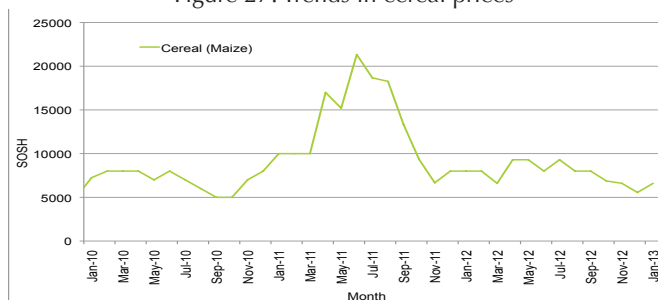


Figure 28: Bakara: Trends in Wage Rates and Relative Purchasing Power

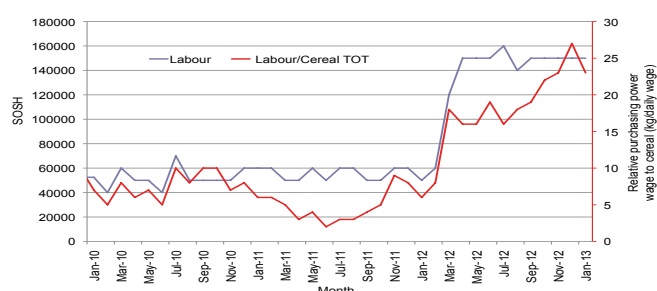


Figure 29: Imported Commodity Prices compared to Exchange Rate

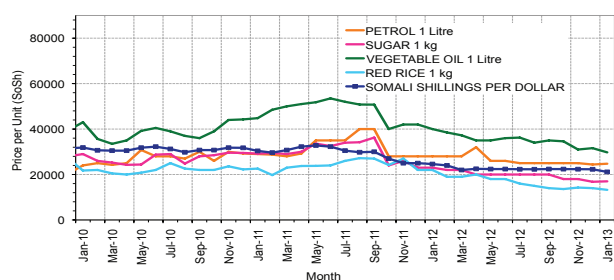


Figure 30: Goat Local Quality

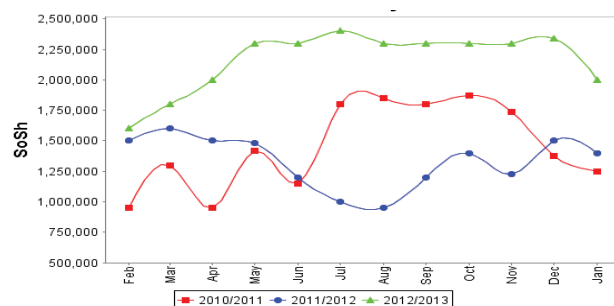


Figure 31: Exchange Rate

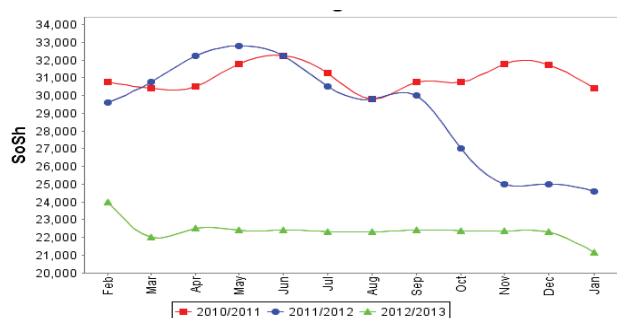
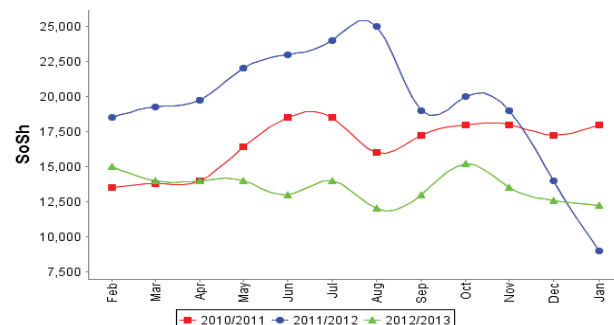


Figure 32: Wheat Flour



Regional analysis: Central Regions

Indicator	5-Year Average (2008-2012)	Jan-12	Dec-12	Jan-13 Nominal Price	Jan-13 Real (Deflated) Price	% Change Same Month Previous Year	% Change Previous Month	% Change 5-year avrg (2008-2012)
Imported Commodities Prices								
Diesel 1 litre	31,054	34,050	28,900	27,250	15,228	-20%	-6%	-12%
Imported Red Rice 1kg	27,068	27,450	20,000	19,700	10,981	-28%	-2%	-27%
Petrol 1 litre	27,887	29,750	26,120	25,550	14,272	-14%	-2%	-8%
Sugar	25,837	30,600	22,560	22,300	12,444	-27%	-1%	-14%
Vegetable Oil 1 litre	51,373	54,000	44,200	44,450	24,903	-18%	1%	-13%
Wheat Flour 1kg	21,770	20,900	16,680	16,250	9,041	-22%	-3%	-25%
Wheat Grain 1kg	17,401	17,500	13,600	13,333	7,400	-24%	-2%	-23%
Cereal Prices								
Red Sorghum 1kg	12,652	15,000	10,440	10,067	5,563	-33%	-4%	-20%
White Maize 1kg	14,494	16,300	9,750	9,250	5,103	-43%	-5%	-36%
Livestock & Livestock Product Prices								
Camel Local Quality (Head)	6,968,750	7,812,500	10,500,000	9,718,750	5,466,633	24%	-7%	39%
Cattle Local Quality (Head)	2,031,250	2,400,000	-	-	-	-	-	-
Fresh Camel Milk 1 litre	39,355	31,600	28,760	28,033	15,668	-11%	-3%	-29%
Goat Export Quality (Head)	1,167,333	1,479,167	1,468,000	1,539,583	865,905	4%	5%	32%
Goat Local Quality (Head)	815,965	1,043,000	1,156,400	1,110,833	624,736	7%	-4%	36%
Other Essential Items								
Charcoal 50kg	173,822	185,500	189,400	184,667	103,774	0%	-2%	6%
Cowpeas 1 kg	27,652	39,200	20,760	18,033	10,043	-54%	-13%	-35%
Unskilled Labor Wage Rate	74,325	88,500	83,600	82,000	46,024	-7%	-2%	10%
Firewood Bundle	23,349	35,000	38,400	36,500	20,431	4%	-5%	56%
Local Sesame Oil 1 litre	90,355	93,000	88,200	86,500	48,556	-7%	-2%	-4%
Exchange Rate (Somali Shilling per USD)	28,753	26,385	22,356	21,665	12,086	-18%	-3%	-25%
Construction Materials*								
Cement 50kg	320,750	312,000	281,368	275,280	154,743	-12%	-2%	-14%
Cooking Pot Aluminium 7 Litre	437,750	383,500	385,600	342,500	192,554	-11%	-11%	-22%
Galvanised Iron Sheet Ga 26	148,020	147,250	107,680	109,500	61,493	-26%	2%	-26%
Hollow Concrete Block 10cm x 20cm x 40cm	16,469	16,188	14,350	14,500	8,056	-10%	1%	-12%
Non Collapsible Jerrycan 10 Litre	46,750	51,000	50,400	50,000	28,025	-2%	-1%	7%
Plastic Tarpaulin 14m x 5 m	301,950	297,900	292,400	268,500	150,929	-10%	-8%	-11%
Roofing Nails 15Kg	796,419	782,150	665,100	654,000	367,771	-16%	-2%	-18%
Timber 2in x 4in x 20ft	146,550	141,500	106,500	106,250	59,665	-25%	0%	-27%
Woven Dry Raised Blanket 150cm x 200cm	152,000	129,600	131,200	127,750	71,759	-1%	-3%	-16%
Terms of Trade								
Labour Wage (Daily)/ Cereal (Rice(Kg))	3	3	4	4	-	29%	0%	52%
Local Goat (Head)/ Cereal (Rice(Kg))	30	38	58	56	-	48%	-2%	87%
Camel (Head)/Cereal (Kg)	257	285	525	493	-	73%	-6%	92%
Price Indices								
Consumer Price Index	-	243	188	178	-	-27%	-5%	-
Purchasing Power Index	-	0.41	0.53	0.56	-	36%	6%	-

* Data has been collected since May 2010

Figure 33: Trends in cereal prices

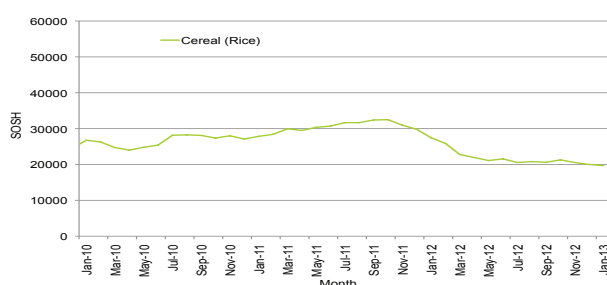


Figure 34: Trends in wage rates and relative purchasing power

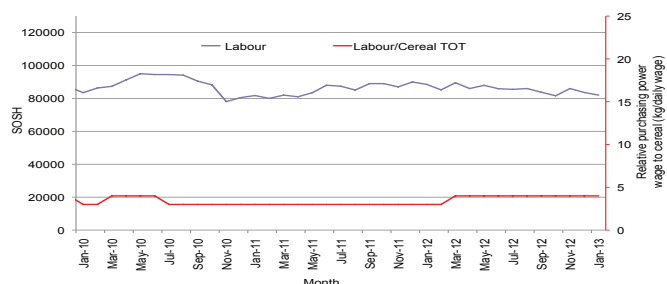


Figure 35: Imported Commodity Prices compared to Exchange Rate

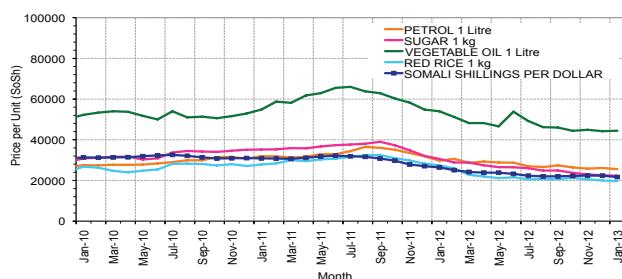


Figure 36: Goat Local Quality

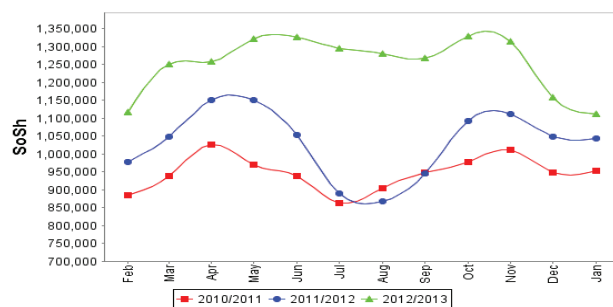


Figure 37: Exchange Rate

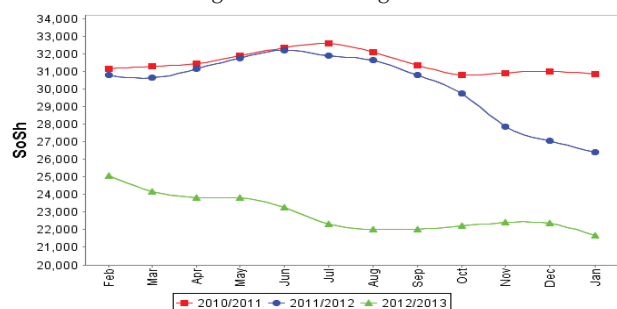
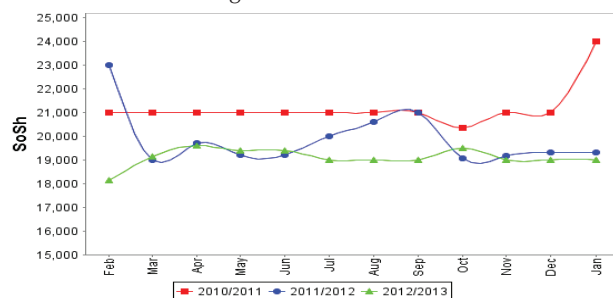


Figure 38: Water Drum



Regional analysis: Northeast Regions

Indicator	5-Year Average (2008-2012)	Jan-12	Dec-12	Jan-13 Nominal Price	Jan-13 Real (Deflated) Price	% Change Same Month Previous Year	% Change Previous Month	% Change 5-year avrg (2008-2012)
Imported Commodities Prices								
Diesel 1 litre	28,054	30,438	23,950	23,125	10,174	-24%	-3%	-18%
Imported Red Rice 1kg	21,819	22,175	16,950	16,875	7,397	-24%	0%	-23%
Petrol 1 litre	24,620	27,725	21,700	21,438	9,424	-23%	-1%	-13%
Sugar	23,723	28,463	20,500	20,125	8,841	-29%	-2%	-15%
Vegetable Oil 1 litre	45,012	54,313	36,450	36,250	16,005	-33%	0%	-19%
Wheat Flour 1kg	19,138	19,263	15,700	15,750	6,897	-18%	-1%	-18%
Wheat Grain 1kg	25,308	25,625	25,400	25,500	11,229	0%	0%	1%
Cereal Prices								
Red Sorghum 1kg	16,918	22,500	18,933	19,250	8,452	-14%	2%	14%
White Maize 1kg	16,875	17,875	16,800	18,500	8,119	3%	10%	10%
Livestock & Livestock Product Prices								
Camel Local Quality (Head)	10,747,708	14,140,625	14,957,500	15,800,000	7,019,342	12%	6%	47%
Cattle Local Quality (Head)	5,475,000	7,600,000	7,900,000	7,250,000	3,220,847	-5%	-	32%
Fresh Camel Milk 1 litre	34,375	35,250	38,200	39,688	17,532	13%	4%	15%
Goat Export Quality (Head)	1,112,333	1,270,000	1,395,000	1,393,750	619,099	10%	0%	25%
Goat Local Quality (Head)	1,049,125	1,435,000	1,336,500	1,321,875	587,167	-8%	-1%	26%
Other Essential Items								
Charcoal 50kg	316,271	405,625	378,450	385,313	171,082	-5%	2%	22%
Cowpeas 1 kg	35,900	57,250	33,800	32,167	14,191	-44%	-5%	-10%
Unskilled Labor Wage Rate	97,725	111,750	123,250	125,313	55,573	12%	2%	28%
Firewood Bundle	27,375	38,125	48,000	48,750	21,558	28%	2%	78%
Local Sesame Oil 1 litre	90,143	98,438	86,500	87,313	38,690	-11%	1%	-3%
Exchange Rate (Somali Shilling per USD)	28,997	26,813	21,675	21,813	9,591	-19%	1%	-25%
Construction Materials*								
Cement 50kg	230,906	232,563	186,700	190,563	84,561	-18%	2%	-17%
Cooking Pot Aluminium 7 Litre	396,406	455,313	397,250	406,563	180,523	-11%	2%	3%
Galvanised Iron Sheet Ga 26	226,969	218,750	180,450	183,750	81,534	-16%	2%	-19%
Hollow Concrete Block 10cm x 20cm x 40cm	12,469	12,500	11,900	11,813	5,148	-5%	-1%	-5%
Non Collapsible Jerrycan 10 Litre	37,187	36,875	38,750	39,375	17,393	7%	2%	6%
Plastic Tarpaulin 14m x 5 m	190,781	174,063	174,750	166,875	74,037	-4%	-5%	-13%
Roofing Nails 15Kg	437,547	434,219	606,000	610,313	271,043	41%	1%	39%
Timber 2in x 4in x 20ft	214,313	214,063	176,250	175,313	77,786	-18%	-1%	-18%
Woven Dry Raised Blanket 150cm x 200cm	271,250	271,563	247,000	241,250	107,080	-11%	-2%	-11%
Terms of Trade								
Labour Wage (Daily)/ Cereal (Rice(Kg))	4	5	7	7	-	47%	2%	66%
Local Goat (Head)/ Cereal (Rice(Kg))	48	65	79	78	-	21%	-1%	63%
Price Indices								
Consumer Price Index	-	232	223	225	-	-3%	1%	-
Purchasing Power Index	-	0.43	0.45	0.44	-	3%	-1%	-

* Data has been collected since May 2010

Figure 39: Trends in cereal prices



Figure 40: Trends in wage rates and relative purchasing power

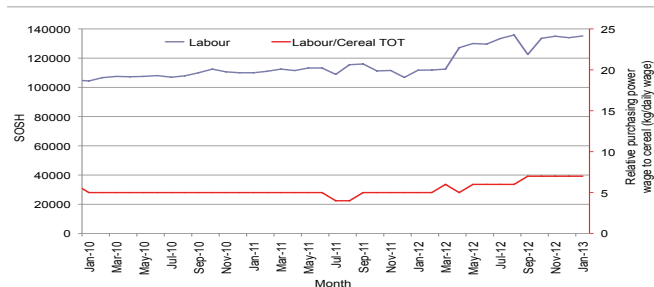


Figure 41: Imported Commodity Prices compared to Exchange Rate

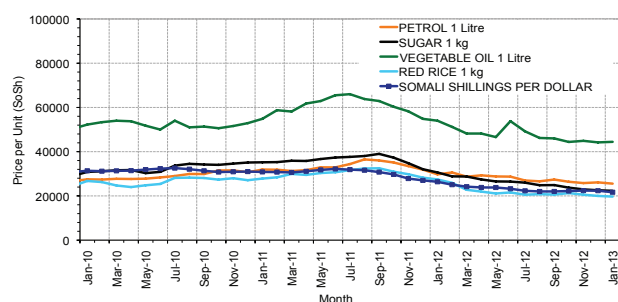


Figure 42: Goat Local Quality

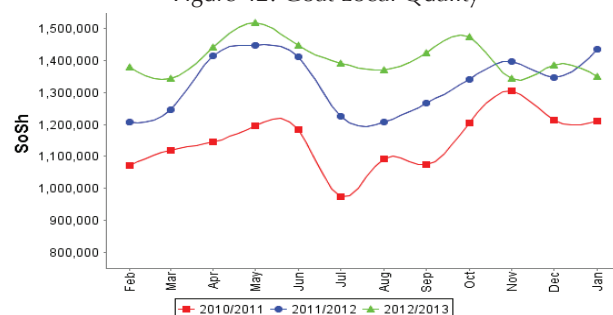


Figure 43: Exchange Rate

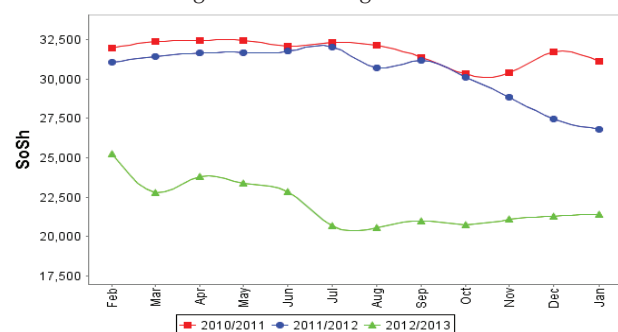
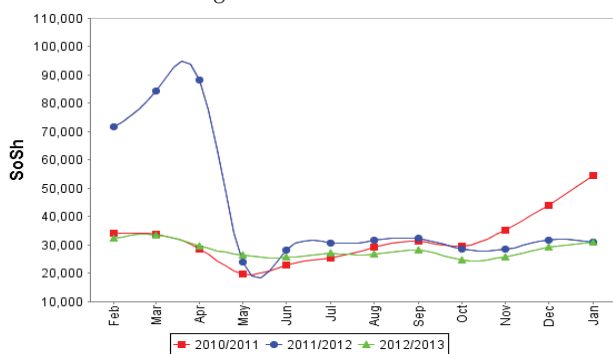


Figure 44: Water Drum



Regional analysis: Northwest Regions

Indicator	5-Year Average (2008-2012)	Jan-12	Dec-12	Jan-13 Nominal Price	Jan-13 Real (Deflated) Price	% Change Same Month Previous Year	% Change Previous Month	% Change 5-year avrg (2008-2012)
Imported Commodities Prices								
Diesel 1 litre	5,573	6,165	6,930	6,860	5,277	11%	-1%	23%
Imported Red Rice 1kg	5,114	5,345	5,080	5,065	3,870	-5%	0%	-1%
Petrol 1 litre	5,611	6,340	7,500	7,475	5,759	18%	0%	33%
Sugar	5,198	6,290	5,890	6,100	4,682	-3%	4%	17%
Vegetable Oil 1 litre	9,996	11,232	13,020	12,900	10,012	15%	-1%	29%
Wheat Flour 1kg	4,441	4,255	4,400	4,440	3,380	4%	1%	0%
Wheat Grain 1kg	3,205	3,050	3,113	3,075	2,310	1%	-1%	-4%
Cereal Prices								
White Sorghum 1kg	3,448	3,518	3,589	3,415	2,577	-3%	-5%	-1%
Yellow Maize 1kg	3,632	3,705	3,356	3,481	2,629	-6%	4%	-4%
Livestock & Livestock Product Prices								
Camel Local Quality (Head)	1,976,000	2,993,750	2,602,267	2,624,333	2,057,036	-12%	1%	33%
Cattle Local Quality (Head)	1,122,062	1,284,167	1,825,867	2,066,583	1,619,833	61%	13%	84%
Fresh Camel Milk 1 litre	5,307	5,270	5,600	5,600	4,290	6%	0%	6%
Goat Export Quality (Head)	262,858	315,430	479,380	455,750	357,149	44%	-5%	73%
Goat Local Quality (Head)	199,912	229,750	344,270	395,250	309,725	72%	15%	98%
Other Essential Items								
Charcoal 50kg	33,577	39,100	50,980	47,500	37,134	21%	-7%	41%
Cowpeas 1 kg	8,560	10,083	9,594	9,606	7,430	-5%	0%	12%
Unskilled Labor Wage Rate	29,310	34,600	42,700	40,650	31,764	17%	-5%	39%
Firewood Bundle	3,559	2,467	3,317	3,667	2,774	49%	11%	3%
Local Sesame Oil 1 litre	22,919	24,375	26,500	26,619	20,766	9%	0%	16%
Exchange Rate (Somaliland Shilling per USD)	6,045	5,850	6,635	6,725	5,172	15%	1%	11%
Construction Materials*								
Cement 50kg	44,309	45,994	53,480	54,748	42,815	19%	2%	24%
Cooking Pot Aluminium 7 Litre	104,523	109,872	87,940	97,250	76,131	-11%	11%	-7%
Galvanised Iron Sheet Ga 26	46,469	43,500	52,125	52,688	41,201	21%	1%	13%
Hollow Concrete Block 10cm x 20cm x 40cm	2,962	2,775	3,385	3,381	2,550	22%	0%	14%
Non Collapsible Jerrycan 10 Litre	6,380	5,725	7,200	7,620	5,873	33%	6%	19%
Plastic Tarpaulin 14m x 5 m	65,135	74,370	98,350	103,850	81,305	40%	6%	59%
Roofing Nails 15Kg	160,525	171,300	200,118	202,995	159,022	19%	1%	26%
Timber 2in x 4in x 20ft	113,170	101,258	129,313	128,442	100,582	27%	-1%	13%
Woven Dry Raised Blanket 150cm x 200cm	73,075	68,851	81,215	83,700	65,510	22%	3%	15%
Terms of Trade								
Labour Wage (Daily)/ Cereal (Rice(Kg))	6	6	8	8	-	24%	-5%	40%
Local Goat (Head)/ Cereal (Rice(Kg))	39	43	68	78	-	82%	15%	100%
Price Indices								
Consumer Price Index	-	116	127	128	-	10%	0%	-
Purchasing Power Index	-	0.86	0.79	0.78	-	-9%	0%	-

* Data has been collected since May 2010

Figure 45: Trends in cereal prices

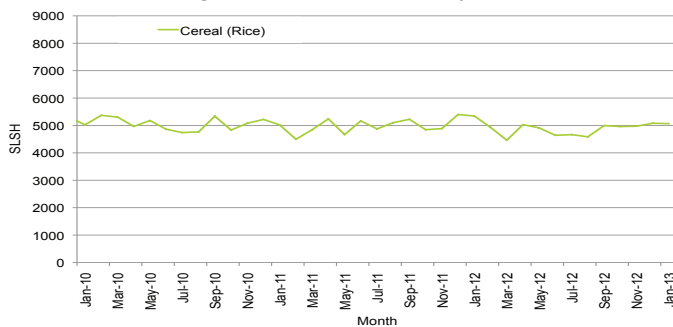


Figure 46: Trends in wage rates and relative purchasing power

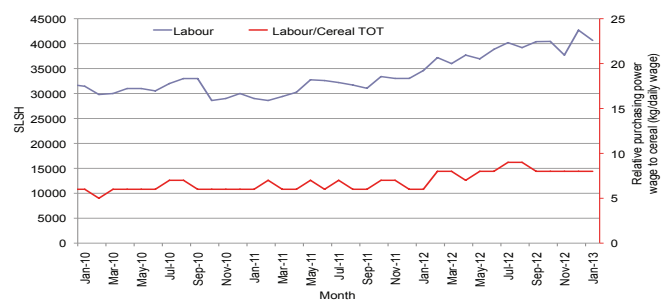


Figure 47: Imported Commodity Prices compared to Exchange Rate

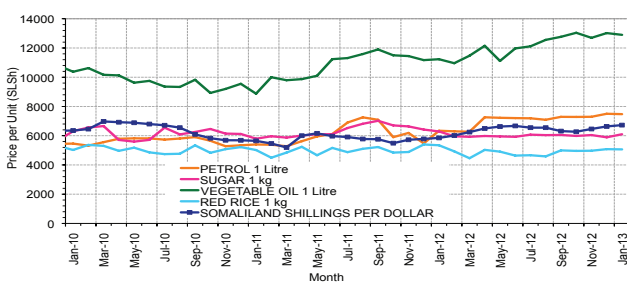


Figure 49: Exchange Rate

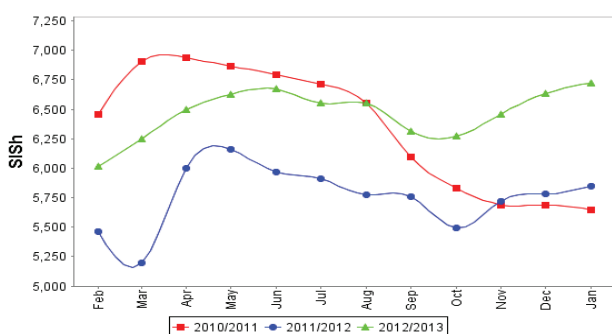


Figure 48: Goat Local Quality

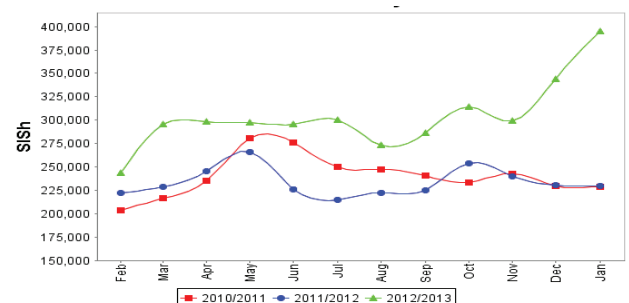
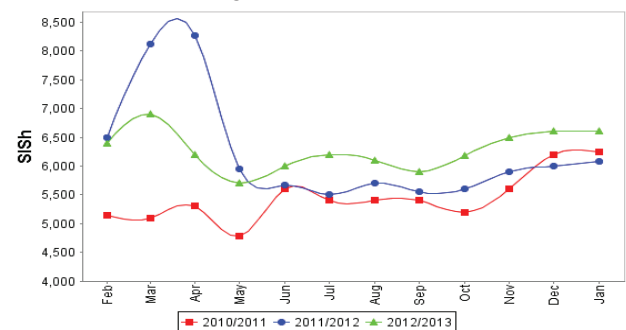


Figure 50: Water Drum



Trends in Livestock Exports

Table 2: Berbera Livestock Exports (Number of Heads)

	1994	1995	1996	1997	1998	1999	2000	2001	2002	2003	2004	2005	2006	2007	2008	2009	2010	2011	2012
Shoats	1,572,656	2,683,597	2,376,646	2,814,495	957,224	2,048,136	1,601,083	51,546	341,711	563,107	859,404	1,023,795	1,017,242	1,350,054	1,219,519	1,556,003	2,584,810	3,104,684	3,219,584
Cattle	173,400	167,128	65,127	66,939	92,213	89,967	63,263	20,973	37,547	84,312	131,852	148,151	85,631	88,143	80,051	88,005	133,021	150,934	190,354
Camel	38,553	21,993	42,801	50,587	11,663	37,430	16,984	3,473	18,864	21,874	5,147	5,069	22,810	14,245	26,515	20,206	92,651	107,281	102,664

Figure 51: Berbera Livestock Exports (Number of Heads)

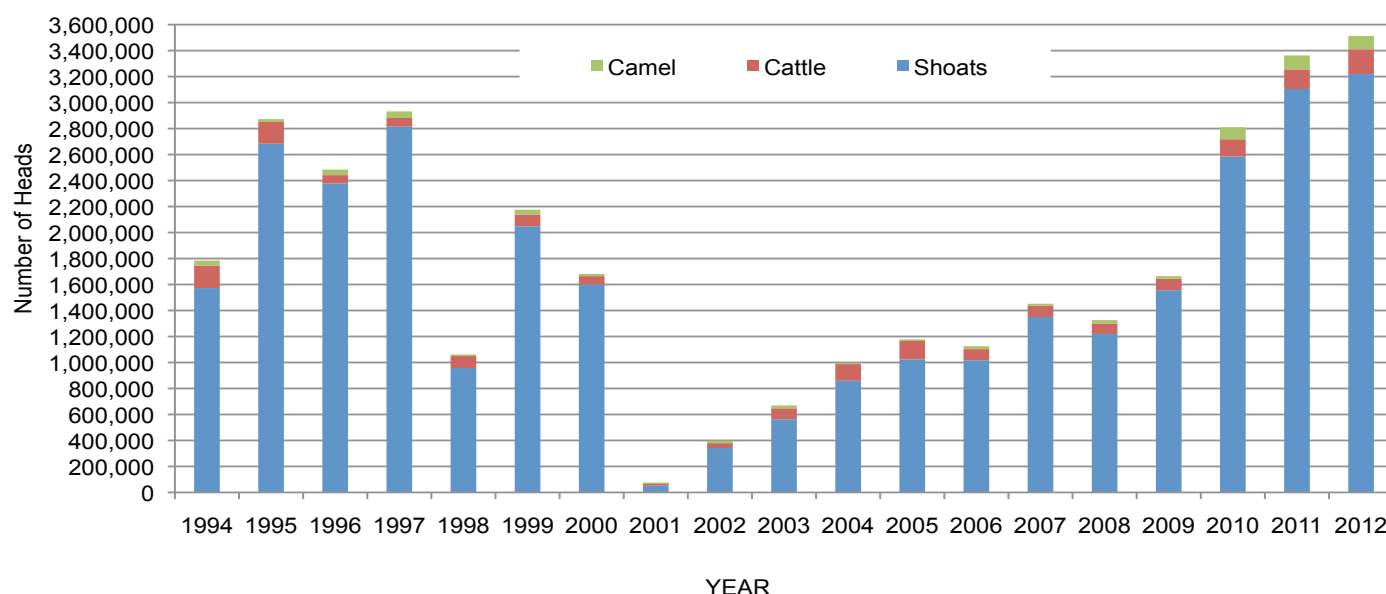
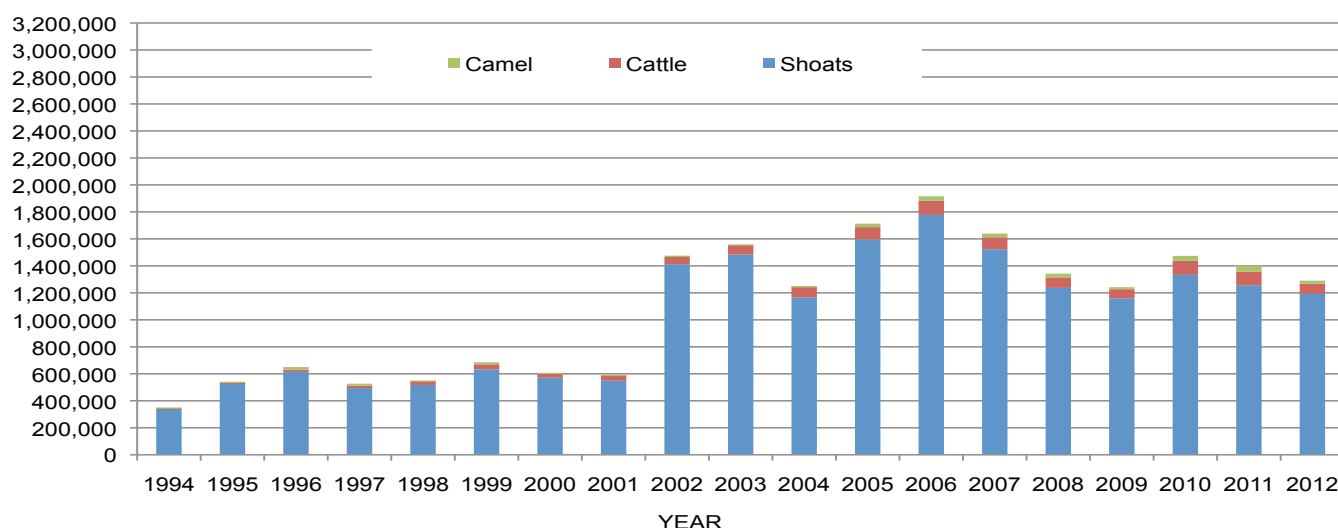


Table 3: Bossaso Livestock Exports (Number of Heads)

	1994	1995	1996	1997	1998	1999	2000	2001	2002	2003	2004	2005	2006	2007	2008	2009	2010	2011	2012
Shoats	344,000	524,346	614,407	494,320	517,020	633,669	571,455	548,853	1,412,450	1,483,409	1,166,480	1,594,859	1,777,283	1,522,855	1,236,775	1,159,454	1,333,478	1,256,535	1,192,197
Cattle	1,450	8,795	15,335	17,831	29,492	36,586	27,604	42,248	53,313	71,328	79,994	91,910	104,595	89,190	78,046	67,385	103,808	99,058	76,043
Camel	5,397	8,392	20,462	14,599	3,938	15,544	8,177	1,950	9,720	4,259	2,488	26,109	33,724	27,580	27,639	15,331	36,865	45,878	22,288

Figure 52: Bossaso Livestock Exports (Number of Heads)

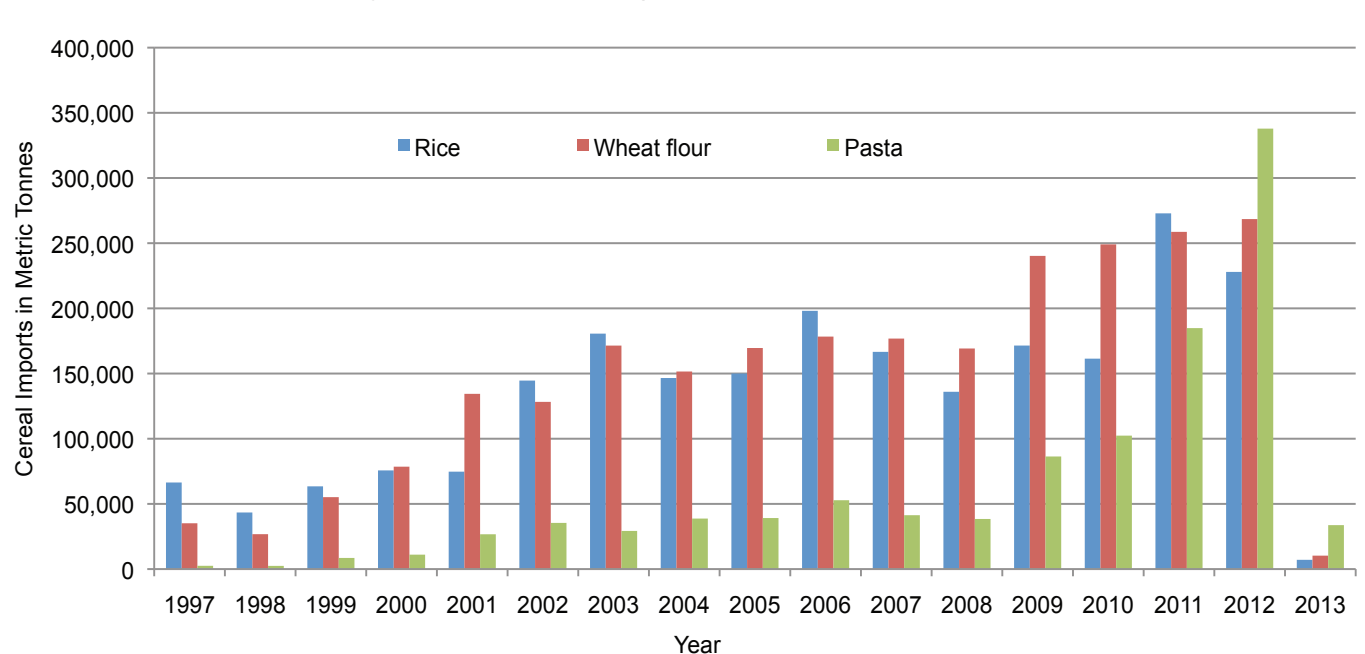


Trends in Cereal Imports

Table 4: Total Cereal Imports (Berbera, Bossaso, Elmaan)

	1997	1998	1999	2000	2001	2002	2003	2004	2005	2006	2007	2008	2009	2010	2011	2012	2013*
Rice	66,419	43,410	63,464	75,687	74,729	144,600	180,614	146,567	150,017	198,101	166,626	136,007	171,472	161,415	272,877	227,955	7,104
Wheat flour	35,143	26,774	55,176	78,555	134,425	128,263	171,442	151,555	169,583	178,345	176,821	169,208	240,247	249,080	258,679	268,491	10,304
Pasta	2,510	2,455	8,544	11,071	26,702	35,425	29,273	38,749	39,153	52,815	41,331	38,441	86,372	102,373	184,849	337,878	33,713

Figure 53: Total Cereal Imports (Berbera, Bossaso and Elmaan)



*Elman Data up to Jan 2013

*Berbera and Bossaso Data up to Dec 2012