

Market DataUpdate



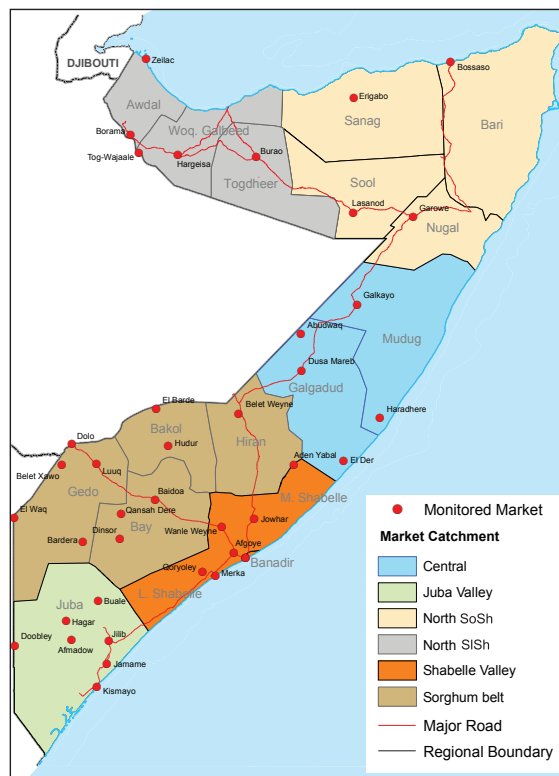
Food Security and Nutrition Analysis Unit - Somalia



Issued January, 2012

Highlights

- Inflation:** The monthly Consumer Price Index (CPI) decreased for the second consecutive time this month in most zones of the country, except in Central where it sustained the December 2011 levels. The annual inflation rate increased marginally in the Northwest but decreased in the range of 3 to 11 percent in other regions. When compared to the base period (March 2007), the cost of living is, however, significantly inflated (132-143%) in Somali Shilling (SoSh) areas, while having risen moderately (16%) in Somaliland Shilling (SiSh) areas.
- Exchange Rates:** Local currencies remained at par with the USD in most markets over the last one month but are significantly stronger when compared to a year ago; the latter attributed to increased dollar inflows following the humanitarian response to the famine last year as well as the earnings from record high livestock exports in 2011.
- Local grain prices:** Maize and red sorghum prices declined in most markets in southern and northern parts of the country, while increasing slightly in the central zone over the last one month. The decrease in the prices of local cereals is attributable to the increased supply of Deyr 2011/12 crop harvests in the southern markets. Notably, compared to a year ago, cereals prices are slightly lower in South-Central but considerably higher in the North due to the delay in arrival of cereal flows from southern regions as well as the new use of mechanized threshing.
- Prices of most imported commodities:** declined in the last one month and over the previous year in most markets. However, in the Northwest the prices remained stable since December 2011, although show significant increases from a year ago, in line with international price movements.
- Livestock prices:** remained stable to declining in most markets when compared to a month ago, in line with normal seasonal price depression following the end of the Hajj season. Current prices are significantly higher than a year ago in most markets of the country. Livestock export volumes from Berbera port exhibited a considerable (40%) monthly decline in January 2012. However, the exports from this port were significantly higher (50%) than the same month last year.
- Labour wages:** remained stable in the first month of the year in most markets apart from Banadir and Juba regions. In Banadir, the wages have decreased, which is attributable to increased labour competition from IDPs who continue arriving into the region. At the same time, labour wages increased in Juba regions as a result of ongoing cattle trade as well as farming (off-season, harvest) activities. Labour wages are slightly elevated from their levels a year ago in most markets.
- Terms of Trade (ToT):** between labour wages and cereals improved in most markets from their levels a month ago and over the past year, indicating strengthened purchasing power of poor households.



This Market Data Update is a monthly report that presents a compilation of tabulated graphical market information produced regularly as part of the monthly monitoring process.

The weekly price data is collected from 44 main markets throughout Somalia since 1995.

The 5-year period of 2003-07 was characterised by fairly stable prices and relatively low inflation. In this bulletin, these years are used as a reference period for seasonal trends comparison.

Market analysis is an integral part of all of FSNAU's Annual Food Security Projections and seasonal technical reports (Technical Reports on FSNAU Post Gu and Deyr Analysis).

This data is available online on www.fsnau.org/ids.

Technical and Managerial Support



Funding Agencies



Regional Market Highlights

- **Juba Valley:** Maize and imported food prices (rice, vegetable oil and wheat flour) declined in most markets, while livestock prices remained stable in the first month of the year. When compared to a year ago, prices are slightly lower of import commodities (rice, sugar, vegetable oil and wheat flour) and maize, in contrast to livestock prices, which remained above their levels twelve months earlier. Monthly and annual comparisons of ToT between labour and cereals indicate gradual improvement in purchasing power. Currently, 7kgs of maize can be purchased for a daily labour wage.
- **Sorghum Belt:** Local cereal (sorghum) prices declined significantly (23-44%) in Bay, Bakool and Gedo, while maize prices remained stable in Hiran. Prices of imported commodities declined marginally while those of livestock improved. Annual comparisons show significantly higher prices for livestock, and lower prices for imports and sorghum. A marginal decline in labour wages was effectively outperformed by the significant reduction in cereal prices, enhancing the terms of trade between labour and cereals. Further, the ToT has more than doubled when compared to the same period last year and currently stand at about 14 kg of cereals for a daily wage.
- **Shabelle Valley:** Similar to most other regions in the South, prices of maize and imported food declined, while livestock prices increased slightly. The ToT improved by an additional 1kg from December 2011 and currently is equivalent to 10kg/daily wage rate. Prices of most imported commodities and livestock are higher than their levels of the same month last year.
- **Central:** Prices of imported commodities and livestock declined marginally, while increasing slightly for sorghum in most main markets in January 2012. Imported commodities and sorghum cost slightly less than they did a year ago in most markets, while goat prices have somewhat improved. ToT (local goat/rice) improved over the month of January 2012, up to 38kg/local goat, which is also higher (12%) than a year ago.
- **Northeast:** Prices of cereals indicate a significant monthly decline but imported commodities and livestock decreased only marginally in January 2012. Annual price comparisons indicates reduced prices for all commodities apart from livestock, which shows mixed trends. ToT (local goat/rice) improved over the month of January 2012 and is higher (20%) than a year ago, currently standing at 65kg/local goat.
- **Northwest:** Prices of most monitored commodities were stable in January 2012, but are significantly above their levels of the same month last year. Though the ToT (white sorghums/wages) improved by 1 kg from a month ago to settle at 10kgs/daily wage rate, it is slightly lower compared to the levels in January 2011. ToT (local goat/rice) reduced slightly (6%) in the previous month, down to 43kg/local goat, and is also lower (10%) than a year ago.
- **Banadir:** Prices decreased significantly for local cereals, imported commodities and livestock both in the last one month and in the past year. The ToT labour wage/cereals remained almost unchanged in the first month of the year but is almost double of the levels the same month last year, due to lower prices and higher wages.

Table 1: Monthly and Annual Changes in Terms of Trade

Terms of Trade: Amount of Cereals (kg) per Daily Labour Wage RateRegion	January 2011 (kg/daily wage)	December 2011 (kg/daily wage)	January 2012 (kg/daily wage)	Monthly change (%)	Annual change (%)
Bay	4	8	12	50%	200%
Bakool	4	6	8	33%	100%
Gedo	11	17	17	0%	55%
Hiraan	8	15	13	-13%	63%
Juba	6	5	7	40%	17%
Shabelle	5	9	10	11%	100%
NE	6	4	5	25%	-17%
NW	11	9	10	11%	-9%
Central	5	6	6	0%	20%
Banadir	7	12	11	-8%	57%

International Market Highlights

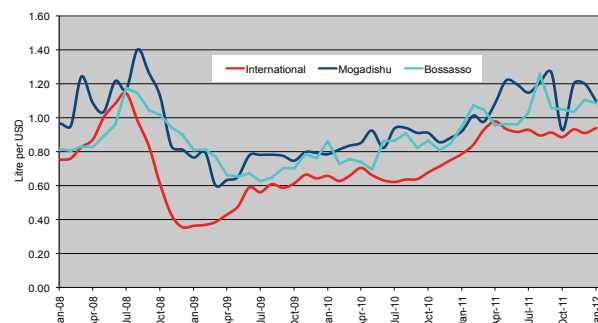
Diesel: Crude oil prices in Abu Dhabi/Dubai,¹ the main source of Somalia's oil imports, increased slightly (3%) from December 2011 to settle at USD 110/barrel in January 2012. The current quotation is 19 percent higher than the same month last year. The price volatility in 2011 is likely to extend² into 2012 as the European debt crisis remains unresolved, Arab Spring continues, unemployment remains high in the US and geo-political risks remain on the up-scale. Locally (Bossaso and Mogadishu), diesel prices declined marginally when compared to last month and the same month last year (visit <http://www.fsnau.org/ids> for local prices).

Rice: Export prices of rice³ in January fell steadily to close at USD 515 per ton, 8 percent lower than in December 2011. The price quotations are however 25 percent higher than in January last year. The monthly price decline is mainly due to stiff competition⁴ for market shares among exporters and ample⁵ seasonal supplies, especially from China and India. In line with international price trends, retail prices of imported rice show an annual increase of 14 percent in the Somali port town of Bossaso. However, in Mogadishu, the current prices are equivalent to those of the same month last year, mainly stabilized by humanitarian food distributions.

Sugar: The FAO Sugar Price Index⁶ rose to 334 points in January 2012, up 7.4 points from December last year, but still 86 points (20%) lower than a year ago. Last month's increase was largely driven by less than favourable weather conditions in Brazil, the world's largest producer and exporter of sugar, on fears that it might delay harvest and cut total production. On the other hand, large production harvests in India, the EU, Thailand and the Russian Federation contained the recent price increase. The effect of the international price developments of the last month are yet to be transmitted on the local port markets of Somalia where sugar prices remain stable. Sugar prices in Mogadishu however exhibited significant annual (21%) decline, which is likely due to sustained humanitarian assistance.

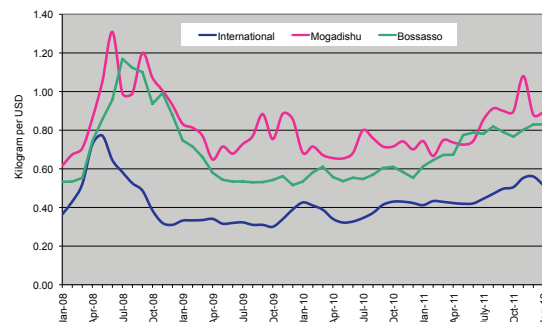
Cooking Oil: The FAO Oils/Fats Price Index⁷ rose to 234 points in January, 6 points up from December 2011. The index remains high in historical terms, although below the corresponding value recorded one year ago. Firming import demands for palm and soy oil, combined with a seasonal decline in palm oil production and the prospect of below average export availabilities of soy oil were the main driving forces behind the recovery in the index. International price transmission in cooking oil is evident in port cities of Somalia where vegetable oil price remained relatively stable while declining by 11 percent from a year ago in Mogadishu, partly as a result of on-going humanitarian interventions.

Figure 1: Diesel Prices: Dubai, Mogadishu and Bossaso



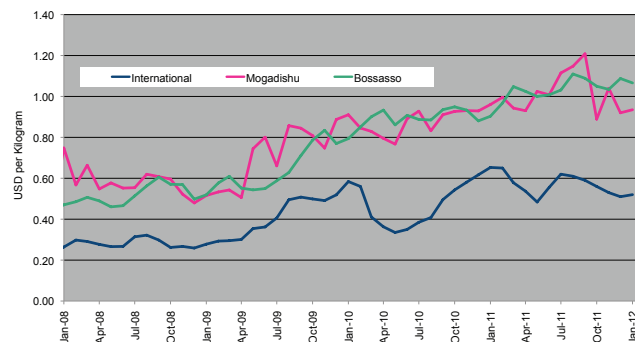
Source: FAO Statistics, FEWSNET and FSNAU Market Price Monitoring System, 2012

Figure 2: Rice Prices: Bangkok FOB, Mogadishu and Bossaso Markets



Source: FAO Statistics, FEWSNET and FSNAU Market Price Monitoring System, 2012

Figure 3: Sugar Prices: ISO, Mogadishu and Bossaso Markets



Source: FAO Statistics, FEWSNET, ISO and FSNAU Market Price Monitoring System, 2012

1 Weekly Abu Dhabi Murban Spot Price FOB (Dollars per Barrel), US Energy Information Administration, http://www.eia.doe.gov/dnav/pet/pet_pri_wco_k_w.htm

2 Oil Market Outlook 2012, Global Research; <http://www.globalinv.net/research/Oil-Market-Outlook-2012.pdf>

3 Bangkok, Rice (Thai A1 Super 1/ B), Export, US Dollar, Tonne, FAO Food Price Index, February 2012

4 FAO Food Price Index, February 2012

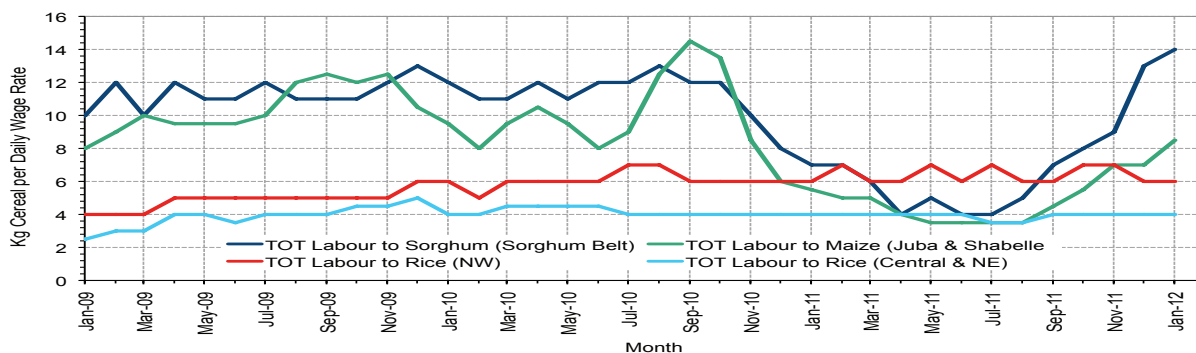
5 International Grain Council Grain Market Report, 19 Jan 2012; <http://www.igc.int/en/downloads/gmrsummary/gmrsumme.pdf>

6 FAO Food Price Index, February 2012

7 FAO Food Price Index, February 2012

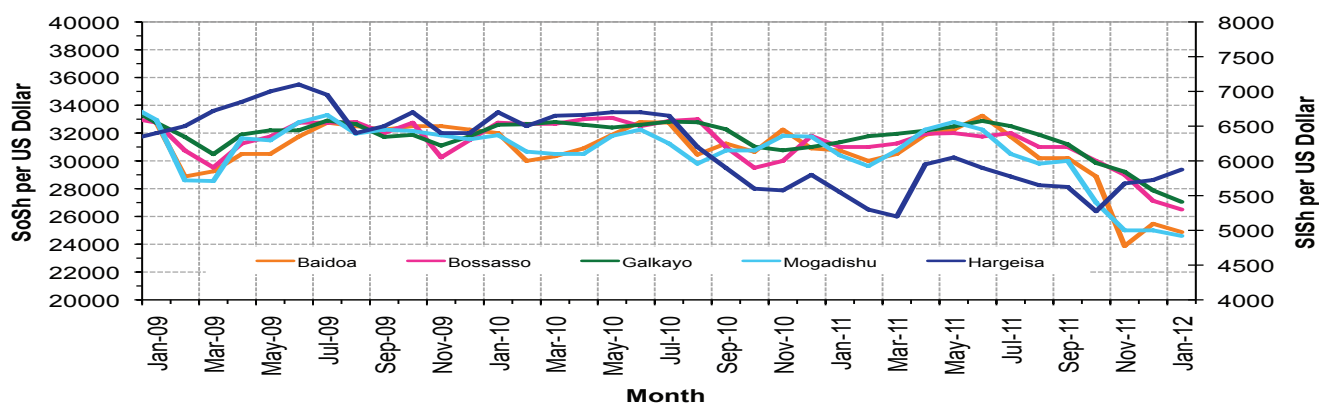
National Trends: CPI, Exchange Rates, Cereal Prices and Relative Purchasing Power

Figure 4: Terms of Trade between wage rates and selected cereals



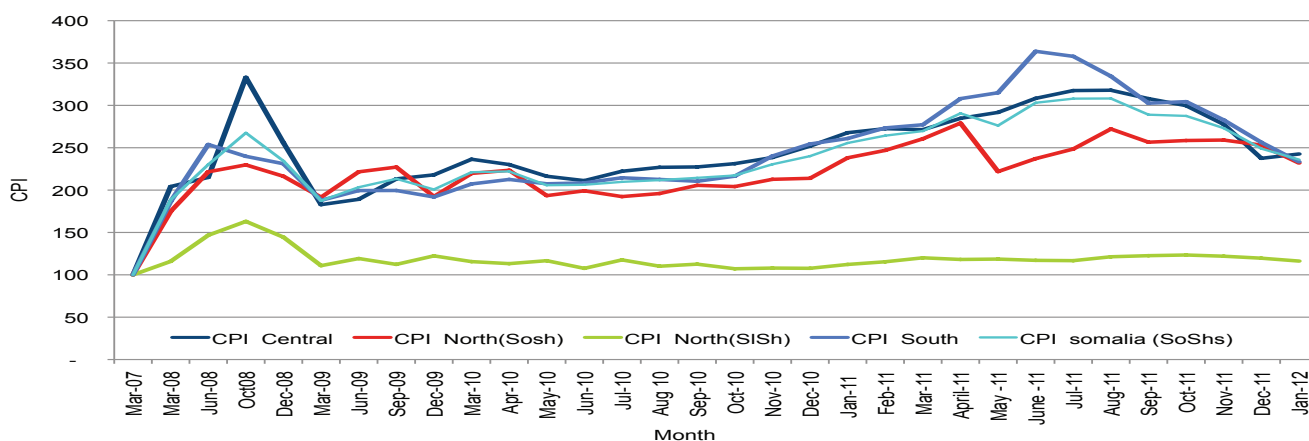
* Purchasing power low but improving

Figure 5: Monthly Exchange Rate for Selected Regions (SoSh and SISH to USD)



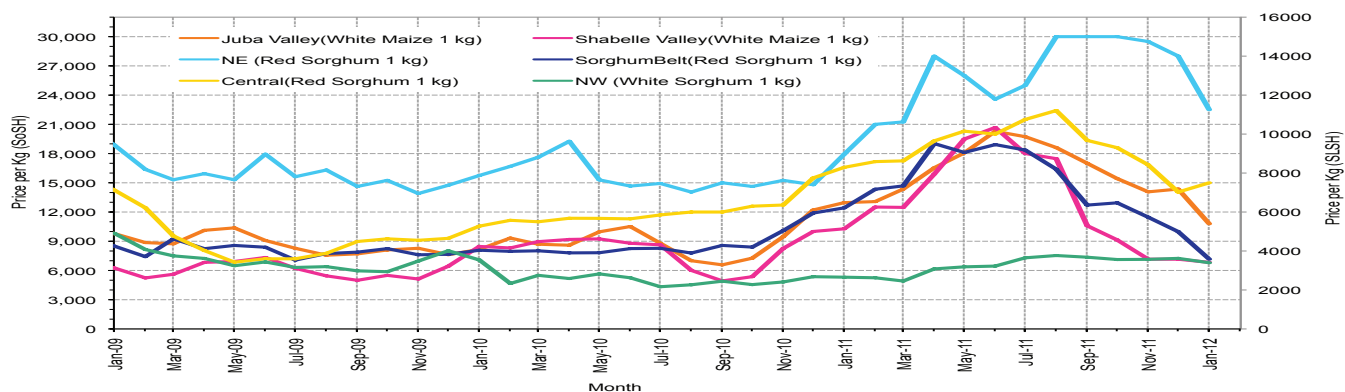
*Local currencies slowly strengthening against the USD

Figure 6: Monthly Trends in Consumer Price Index (CPI, March 2007=100)



*Inflation is slowly easing in SoShs regions but stable in Somaliland

Figure 7: Monthly Trends in Local Cereal Prices



*Local cereal prices are high but on a downward trend

Regional analysis: Juba Regions

Indicator	Jan-11	Dec-11	Jan-12 Nominal Price	Jan-12 Real (Deflated) Price	% Change Same Month Previous Year	% Change Previous Month	% Change 5-year avrg (2003-07)
Imported Commodities Prices							
Diesel 1 litre	31,429	39,964	30,821	13,071	-2%	-23%	169%
Imported Red Rice 1kg	22,357	26,214	21,171	8,947	-5%	-19%	199%
Petrol 1 litre	34,000	35,893	33,314	14,137	-2%	-7%	152%
Sugar	30,329	35,321	25,436	10,770	-16%	-28%	227%
Vegetable Oil 1 litre	53,614	53,893	45,525	19,355	-15%	-16%	162%
Wheat Flour 1kg	19,357	22,429	18,100	7,635	-6%	-19%	148%
Wheat Grain 1kg	16,000	28,000	18,000	7,592	13%	-36%	200%
Cereal Prices							
Red Sorghum 1kg	13,000	-	7,000	-	-46%	-	-
White Maize 1kg	12,964	14,357	10,794	4,513	-17%	-25%	400%
Livestock & Livestock Product Prices							
Camel Local Quality (Head)	7,255,834	8,211,667	9,580,834	4,094,274	32%	17%	224%
Cattle Local Quality (Head)	1,793,000	3,745,833	3,592,343	1,535,089	100%	-4%	177%
Fresh Camel Milk 1 litre	22,243	20,333	17,807	7,510	-20%	-12%	180%
Goat Export Quality (Head)	829,750	1,363,929	1,343,229	573,929	62%	-2%	246%
Goat Local Quality (Head)	476,143	856,191	856,286	365,834	80%	0%	227%
Other Essential Items							
Charcoal 50kg	72,000	74,821	75,600	32,208	5%	1%	185%
Cowpeas 1 kg	24,807	38,750	32,941	13,977	33%	-15%	500%
Unskilled Labor Wage Rate	77,357	67,500	79,164	33,731	2%	17%	156%
Firewood Bundle	6,143	6,857	7,957	3,300	30%	16%	213%
Local Sesame Oil 1 litre	77,057	89,786	78,600	33,490	2%	-12%	291%
Exchange Rate (Somali Shilling per USD)	30,834	26,375	24,370	10,315	-21%	-8%	56%
Construction Materials*							
Cement 50kg	343,571	335,000	274,160	117,062	-20%	-18%	-
Cooking Pot Aluminium 7 Litre	329,875	328,500	324,571	138,606	-2%	-1%	-
Galvanised Iron Sheet Ga 26	161,143	177,500	147,992	63,144	-8%	-17%	-
Hollow Concrete Block 10cm x 20cm x 40cm	19,250	20,000	-	-	-	-	-
Non Collapsible Jerrycan 10 Litre	30,000	38,333	38,800	16,481	29%	1%	-
Plastic Tarpaulin 14m x 5 m	600,000	483,125	390,600	166,823	-35%	-19%	-
Roofing Nails 15Kg	789,371	692,857	552,800	236,139	-30%	-20%	-
Timber 2in x 4in x 20ft	322,667	336,000	261,580	111,686	-19%	-22%	-
Woven Dry Raised Blanket 150cm x 200cm	-	-	40,500	-	-	-	-
Terms of Trade							
Labour Wage (Daily)/ Cereal (Maize(Kg))	6	5	7	-	23%	56%	-49%
Local Goat (Head)/ Cereal (Maize(Kg))	37	60	79	-	116%	33%	-35%
Price Indices							
Consumer Price Index	261	256	234	-	-10%	-9%	-
Purchasing Power Index	0.38	0.39	0.43	-	11%	10%	-

* Data has been collected since May 2010

Figure 8: Imported commodity prices compared to exchange rates

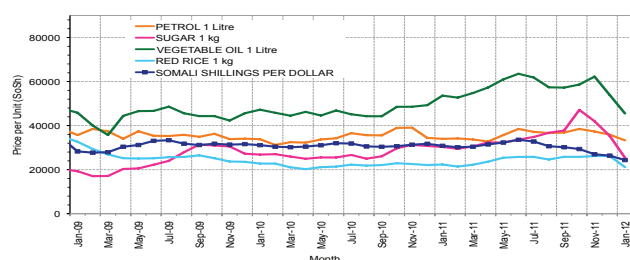


Figure 10: Goat Local Quality

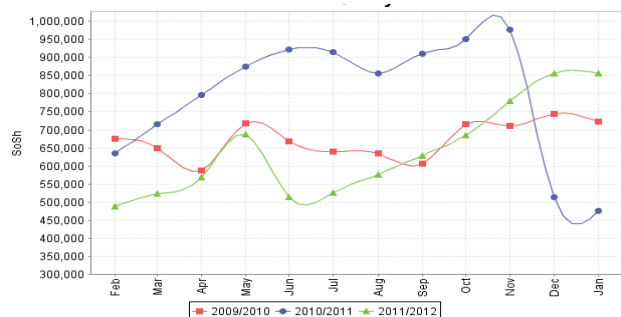


Figure 12: Water Drum

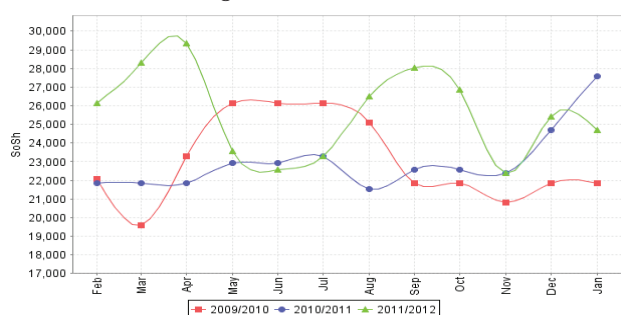


Figure 9: Trends in wage rates, staple cereal prices and relative purchasing power

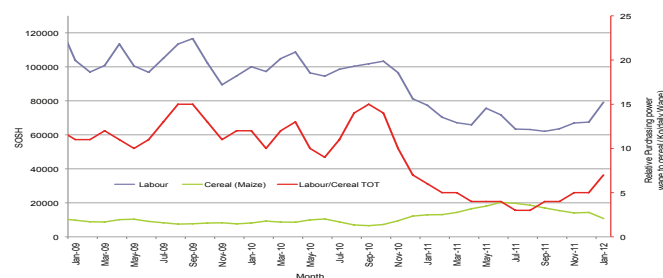


Figure 11: Sugar

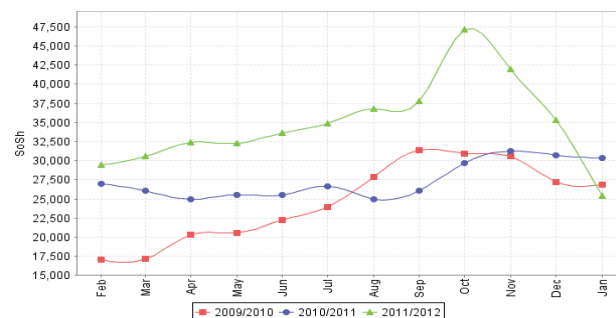
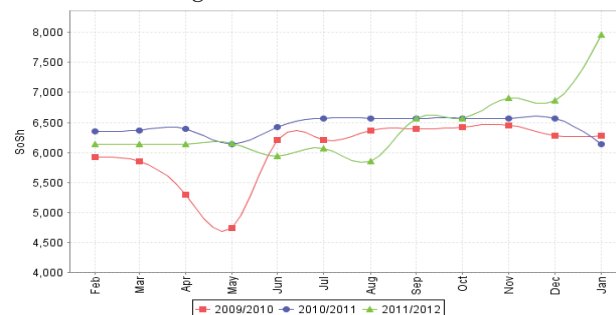


Figure 13: Firewood Bundle



Regional analysis: Sorghum Belt Regions (Bay, Bakool, Gedo and Hiran)

Indicator	Jan-11	Dec-11	Jan-12 Nominal Price	Jan-12 Real (Deflated) Price	% Change Same Month Previous Year	% Change Previous Month	% Change 5-year avrg (2003-07)
Imported Commodities Prices							
Diesel 1 litre	32,409	38,477	37,318	15,848	15%	-3%	229%
Imported Red Rice 1kg	24,318	24,518	23,655	10,009	-3%	-4%	196%
Petrol 1 litre	31,864	38,364	36,250	15,391	14%	-6%	167%
Sugar	31,455	32,727	28,477	12,070	-9%	-13%	220%
Vegetable Oil 1 litre	51,091	51,159	46,455	19,753	-9%	-9%	158%
Wheat Flour 1kg	21,500	21,182	19,864	8,389	-8%	-6%	156%
Wheat Grain 1kg	16,563	9,708	8,063	3,346	-51%	-17%	85%
Cereal Prices							
Red Sorghum 1kg	12,428	9,984	7,163	2,961	-42%	-28%	286%
White Maize 1kg	11,841	9,939	8,041	3,336	-32%	-19%	278%
Livestock & Livestock Product Prices							
Camel Local Quality (Head)	6,688,637	10,355,556	10,978,890	4,691,733	64%	6%	235%
Cattle Local Quality (Head)	1,601,945	2,994,643	3,167,857	1,353,685	98%	6%	146%
Fresh Camel Milk 1 litre	25,977	19,364	20,386	8,612	-22%	5%	250%
Goat Export Quality (Head)	1,090,909	1,525,000	1,537,909	657,126	41%	1%	313%
Goat Local Quality (Head)	559,545	997,614	1,020,705	436,099	82%	2%	338%
Other Essential Items							
Charcoal 50kg	121,659	143,977	138,818	59,224	14%	-4%	318%
Cowpeas 1 kg	26,225	34,109	25,375	10,744	-3%	-26%	438%
Unskilled Labor Wage Rate	91,318	127,841	100,682	42,926	10%	-21%	447%
Firewood Bundle	5,182	5,159	5,114	2,085	-1%	-1%	183%
Local Sesame Oil 1 litre	78,286	80,083	80,292	34,213	3%	0%	251%
Exchange Rate (Somali Shilling per USD)	30,391	24,361	24,786	10,492	-18%	2%	57%
Construction Materials							
Cement 50kg	339,700	362,000	363,500	155,242	7%	0%	-
Cooking Pot Aluminium 7 Litre	320,625	272,250	296,000	126,396	-8%	9%	-
Galvanised Iron Sheet Ga 26	198,273	202,273	196,136	83,719	-1%	-3%	-
Hollow Concrete Block 10cm x 20cm x 40cm	10,000	12,875	12,100	5,071	21%	-6%	-
Non Collapsible Jerrycan 10 Litre	51,705	51,545	55,000	23,404	6%	7%	-
Plastic Tarpaulin 14m x 5 m	315,850	264,250	285,750	122,015	-10%	8%	-
Roofing Nails 15kg	869,378	797,955	789,545	337,312	-9%	-1%	-
Timber 2in x 4in x 20ft	269,107	283,438	282,656	120,693	5%	0%	-
Woven Dry Raised Blanket 150cm x 200cm	110,833	97,500	97,143	41,414	-12%	0%	-
Terms of Trade							
Labour Wage (Daily)/ Cereal (Sorghum(Kg))	7	13	14	-	91%	10%	42%
Local Goat (Head)/ Cereal (Sorghum(Kg))	45	100	142	-	216%	43%	14%
Price Indices							
Consumer Price Index	261	256	234	-	-10%	-9%	-
Purchasing Power Index	0.38	0.39	0.43	-	11%	10%	-

* Data has been collected since May 2010

Figure 14: Imported commodity prices compared to exchange rates

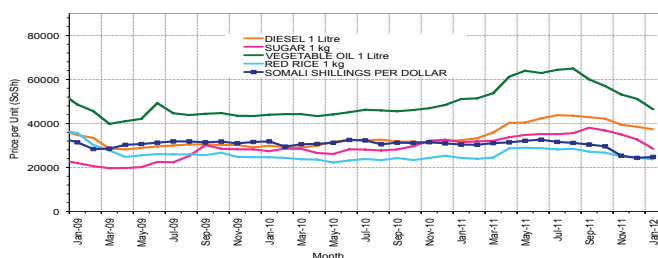


Figure 15: Trends in wage rates, staple cereal prices and relative purchasing power

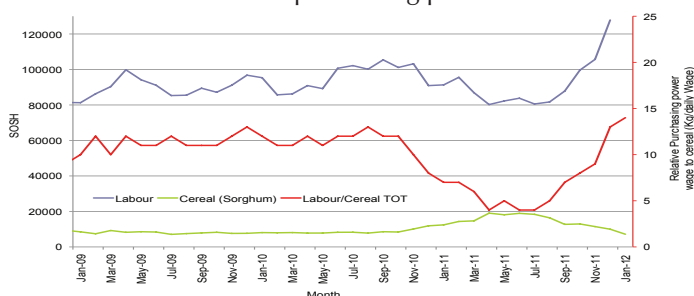


Figure 16: Goat Local Quality

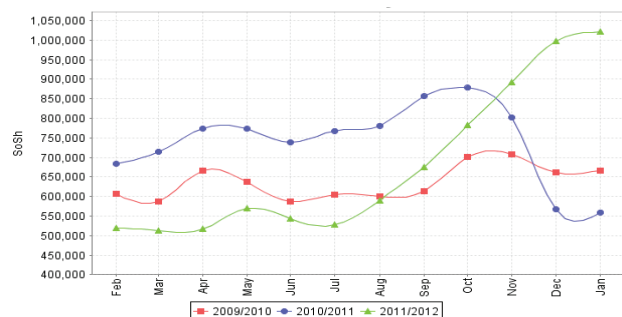


Figure 17: Sugar

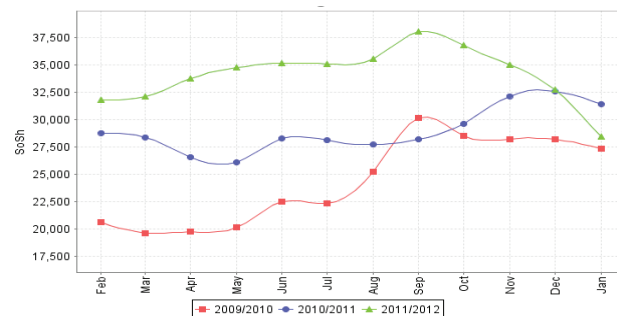


Figure 18: Water Drum

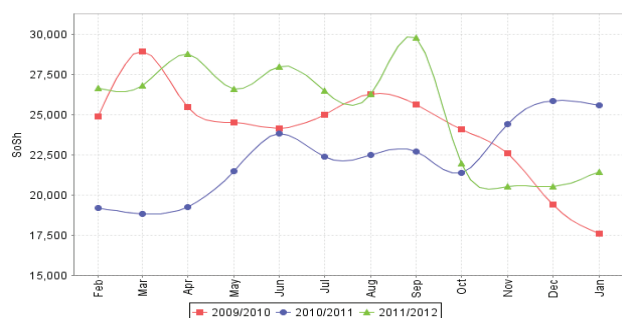
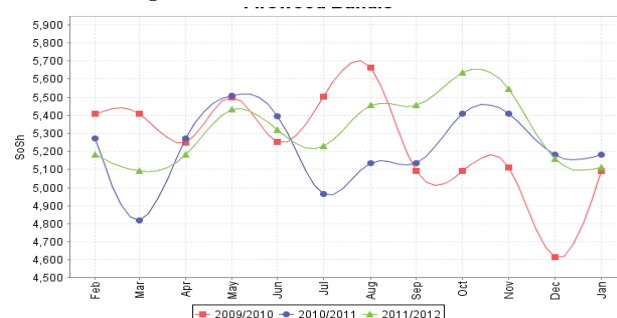


Figure 19: Firewood Bundle



Regional analysis: Shabelle Regions

Indicator	Jan-11	Dec-11	Jan-12 Nominal Price	Jan-12 Real (Deflated) Price	% Change Same Month Previous Year	% Change Previous Month	% Change 5-year avrg (2003-07)
Imported Commodities Prices							
Diesel 1 litre	31,042	32,417	31,625	13,415	2%	-2%	282%
Imported Red Rice 1kg	19,917	22,083	20,583	8,696	3%	-7%	241%
Petrol 1 litre	31,708	34,625	34,458	14,626	9%	0%	237%
Sugar	30,375	24,417	23,208	9,818	-24%	-5%	230%
Vegetable Oil 1 litre	46,000	42,083	37,833	16,068	-18%	-10%	188%
Wheat Flour 1kg	19,000	16,550	16,417	6,916	-14%	-1%	173%
Wheat Grain 1kg		12,000	12,000	-	-	0%	-
Cereal Prices							
Red Sorghum 1kg	12,000	14,055	12,735	5,342	6%	-9%	481%
White Maize 1kg	10,278	7,155	6,835	2,821	-33%	-4%	212%
Livestock & Livestock Product Prices							
Camel Local Quality (Head)	11,175,000	14,577,500	14,510,000	6,200,755	30%	0%	225%
Cattle Local Quality (Head)	2,645,000	4,232,500	4,285,000	1,831,097	62%	1%	249%
Fresh Camel Milk 1 litre	19,667	17,958	18,917	7,984	-4%	5%	306%
Goat Export Quality (Head)	1,221,042	1,736,250	1,833,750	783,554	50%	6%	260%
Goat Local Quality (Head)	862,500	1,182,500	1,208,750	516,460	40%	2%	247%
Other Essential Items							
Charcoal 50kg	109,083	130,694	111,500	47,550	2%	-15%	181%
Cowpeas 1 kg	24,011	26,086	24,872	10,529	4%	-5%	492%
Unskilled Labor Wage Rate	54,000	64,792	68,750	29,280	27%	6%	287%
Firewood Bundle	3,833	5,625	5,625	2,304	47%	0%	191%
Local Sesame Oil 1 litre	61,042	60,667	60,042	25,559	-2%	-1%	209%
Exchange Rate (Somali Shilling per USD)	30,854	25,192	25,088	10,621	-19%	0%	54%
Construction Materials*							
Cement 50kg	272,750	236,000	231,250	98,725	-15%	-2%	-
Cooking Pot Aluminium 7 Litre	720,000	700,000	700,000	299,045	-3%	0%	-
Galvanised Iron Sheet Ga 26	118,950	103,100	97,350	41,503	-18%	-6%	-
Hollow Concrete Block 10cm x 20cm x 40cm	13,750	12,000	12,750	5,349	-7%	6%	-
Non Collapsible Jerrycan 10 Litre	50,000	44,563	49,375	21,000	-1%	11%	-
Plastic Tarpaulin 14m x 5 m	279,000	289,583	261,667	111,724	-6%	-10%	-
Roofing Nails 15Kg	644,375	597,000	596,000	254,601	-8%	0%	-
Timber 2in x 4in x 20ft	58,250	49,250	51,050	21,716	-12%	4%	-
Woven Dry Raised Blanket 150cm x 200cm	80,000	55,500	62,083	26,431	-22%	12%	-
Terms of Trade							
Labour Wage (Daily)/ Cereal (Maize(Kg))	5	9	10	-	91%	11%	24%
Local Goat (Head)/ Cereal (Maize(Kg))	84	165	177	-	111%	7%	11%
Price Indices							
Consumer Price Index	261	256	234	-	-10%	-9%	-
Purchasing Power Index	0.38	0.39	0.43	-	11%	10%	-

* Data has been collected since May 2010

Figure 20: Imported commodity prices compared to exchange rates

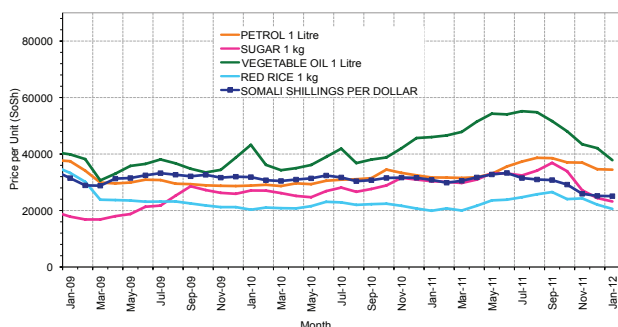


Figure 22: Goat Local Quality

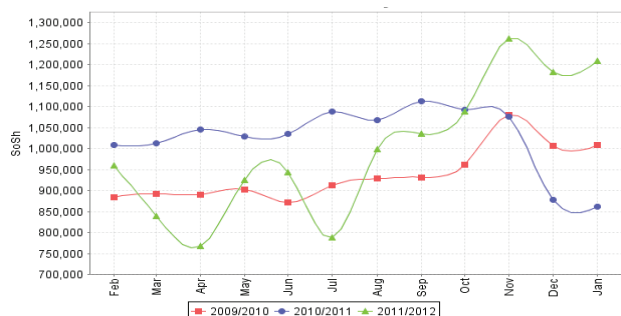


Figure 24: Water Drum

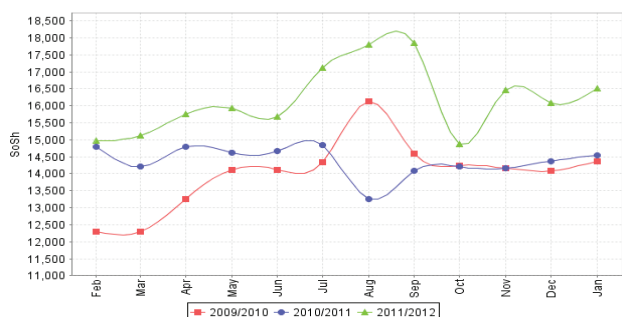


Figure 21: Trends in wage rates, staple cereal prices and relative purchasing power

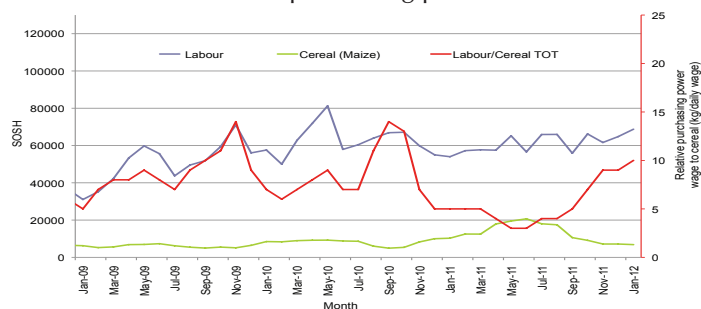


Figure 23: Sugar

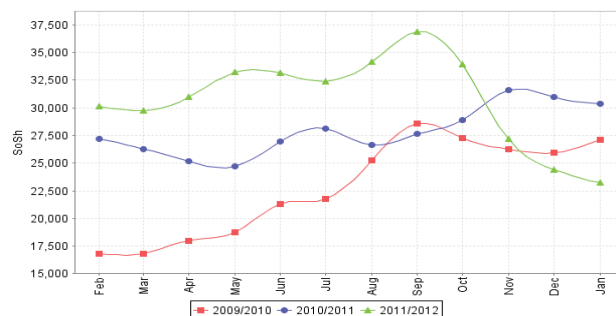
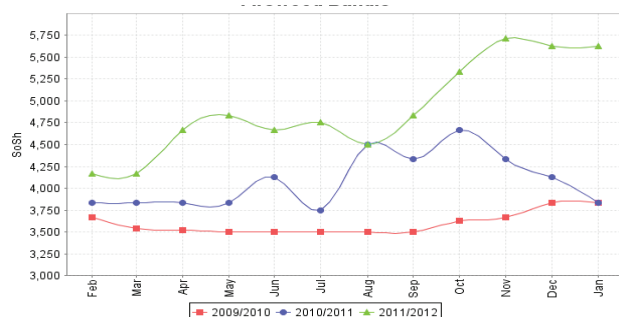


Figure 25: Firewood Bundle



Regional analysis:Banadir Region

Indicator	Jan-11	Dec-11	Jan-12 Nominal Price	Jan-12 Real (Deflated) Price	% Change Same Month Previous Year	% Change Previous Month	% Change 5-year avrg (2003-07)
Imported Commodities Prices							
Diesel 1 litre	28,167	29,458	26,417	11,189	-6%	-10%	230%
Imported Red Rice 1kg	21,310	19,729	20,208	8,536	-5%	2%	245%
Petrol 1 litre	28,917	30,667	29,750	12,614	3%	-3%	210%
Sugar	29,200	21,475	20,500	8,661	-30%	-5%	205%
Vegetable Oil 1 litre	44,342	41,000	38,042	16,157	-14%	-7%	179%
Wheat Flour 1kg	17,438	14,229	13,375	5,616	-23%	-6%	134%
Wheat Grain 1kg	16,000	11,375	11,444	4,791	-28%	1%	186%
Cereal Prices							
Red Sorghum 1kg	12,332	9,775	8,027	3,330	-35%	-18%	293%
White Maize 1kg	11,055	8,652	8,597	3,574	-22%	-1%	266%
Livestock & Livestock Product Prices							
Camel Local Quality (Head)	16,400,000	13,000,000	11,000,000	4,700,755	-33%	-15%	74%
Cattle Local Quality (Head)	3,080,000	3,000,000	3,000,000	1,281,951	-3%	0%	-15%
Fresh Camel Milk 1 litre	18,708	20,396	20,354	8,598	9%	0%	342%
Goat Export Quality (Head)	1,560,000	1,800,000	1,600,000	683,661	3%	-11%	-
Goat Local Quality (Head)	1,075,000	1,518,750	1,481,250	632,913	38%	-2%	153%
Other Essential Items							
Charcoal 50kg	147,500	191,458	152,500	65,071	3%	-20%	53%
Cowpeas 1 kg	27,609	28,507	25,896	10,967	-9%	-9%	469%
Unskilled Labor Wage Rate	76,042	104,250	90,958	38,771	20%	-13%	57%
Firewood Bundle	5,250	7,667	8,083	3,354	54%	5%	-80%
Local Sesame Oil 1 litre	64,283	62,542	58,958	25,096	-8%	-6%	192%
Exchange Rate (Somali Shilling per USD)	30,250	25,185	25,029	10,596	-17%	-1%	50%
Construction Materials*							
Cement 50kg	232,858	190,873	187,750	80,135	-19%	-2%	-
Cooking Pot Aluminium 7 Litre	190,000	322,063	313,125	133,714	65%	-3%	-
Galvanised Iron Sheet Ga 26	110,083	98,647	90,854	38,726	-17%	-8%	-
Hollow Concrete Block 10cm x 20cm x 40cm	9,600	10,250	8,708	3,621	-9%	-15%	-
Non Collapsible Jerrycan 10 Litre	30,667	39,833	35,250	14,964	15%	-12%	-
Plastic Tarpaulin 14m x 5 m	285,833	237,500	226,667	96,766	-21%	-5%	-
Roofing Nails 15Kg	516,333	524,755	517,921	221,234	0%	-1%	-
Timber 2in x 4in x 20ft	220,250	135,775	139,375	59,462	-37%	3%	-
Woven Dry Raised Blanket 150cm x 200cm	134,583	82,500	82,917	-	-38%	1%	-
Terms of Trade							
Labour Wage (Daily)/ Cereal (Maize(Kg))	7	12	11	-	54%	-12%	-57%
Local Goat (Head)/ Cereal (Maize(Kg))	97	176	172	-	77%	-2%	-31%
Price Indices							
Consumer Price Index	261	256	234	-	-10%	-9%	-
Purchasing Power Index	0.38	0.39	0.43	-	-	-	-

* Data has been collected since May 2010

Figure 26: Bakara: Imported Commodity Prices compared to Exchange Rate

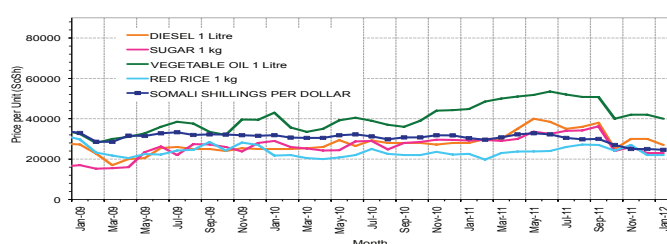


Figure 28: Goat Local Quality

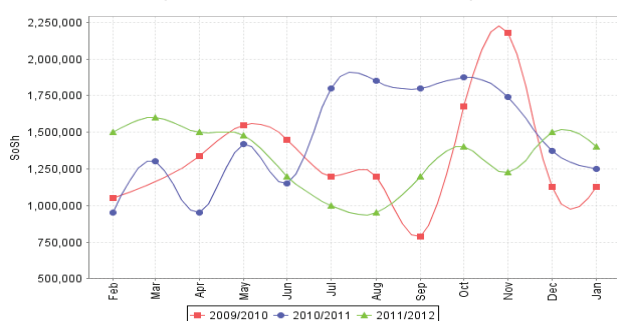


Figure 30: Wheat Flour

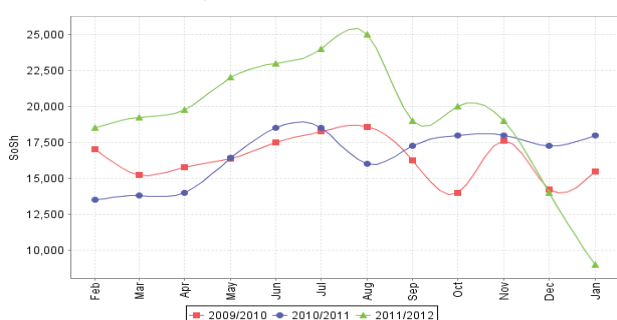


Figure 27: Bakara: Trends in Wage Rates, Staple Cereal Prices and Relative Purchasing Power

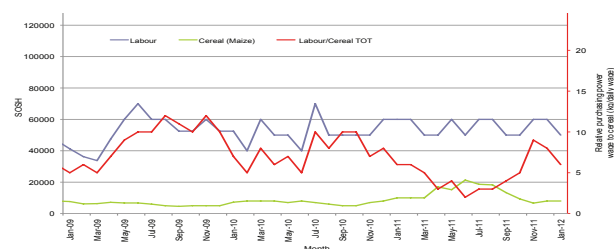


Figure 29: Sugar

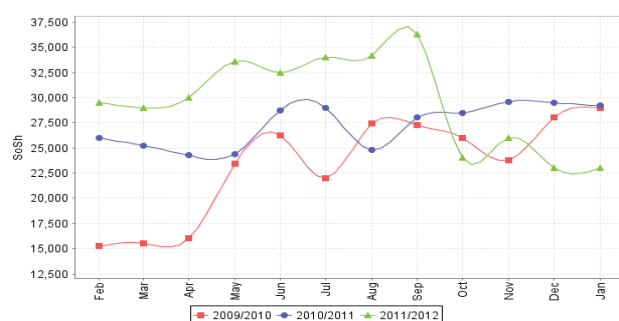
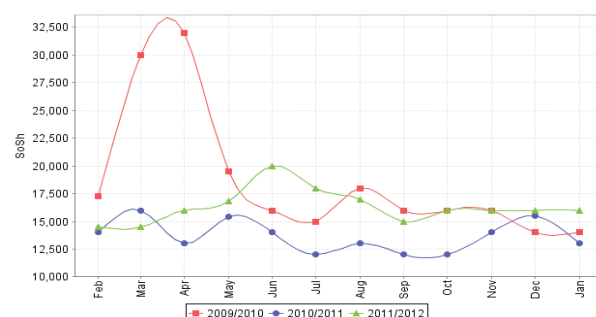


Figure 31: Fresh Camel Milk



Regional analysis: Central Regions

Indicator	Jan-11	Dec-11	Jan-12 Nominal Price	Jan-12 Real (Deflated) Price	% Change Same Month Previous Year	% Change Previous Month	% Change 5-year avg (2003-07)
Imported Commodities Prices							
Diesel 1 litre	35,060	36,280	34,050	13,934	-3%	-6%	242%
Imported Red Rice 1kg	27,840	28,260	27,450	11,214	-1%	-3%	277%
Petrol 1 litre	31,920	31,890	29,750	12,162	-7%	-7%	162%
Sugar	35,200	32,070	30,600	12,512	-13%	-5%	253%
Vegetable Oil 1 litre	54,850	54,840	54,000	22,157	-2%	-2%	231%
Wheat Flour 1kg	21,800	21,680	20,900	8,514	-4%	-4%	184%
Wheat Grain 1kg	17,133	19,125	17,500	7,113	2%	-8%	192%
Cereal Prices							
Red Sorghum 1kg	16,588	14,050	15,000	6,082	-10%	7%	257%
White Maize 1kg	18,275	16,260	16,300	6,618	-11%	0%	269%
Livestock & Livestock Product Prices							
Camel Local Quality (Head)	7,787,500	8,075,000	7,812,500	3,219,913	0%	-3%	257%
Cattle Local Quality (Head)	-	2,400,000	2,400,000	-	-	-	-
Fresh Camel Milk 1 litre	42,150	32,180	31,600	12,924	-25%	-2%	273%
Goat Export Quality (Head)	1,310,000	1,433,333	1,479,167	609,556	13%	3%	303%
Goat Local Quality (Head)	952,200	1,048,300	1,043,000	429,785	10%	-1%	278%
Other Essential Items							
Charcoal 50kg	199,300	186,600	185,500	76,356	-7%	-1%	263%
Cowpeas 1 kg	34,410	49,620	39,200	16,057	14%	-21%	524%
Unskilled Labor Wage Rate	81,750	90,000	88,500	36,376	8%	-2%	176%
Firewood Bundle	32,000	36,000	35,000	14,326	9%	-3%	867%
Local Sesame Oil 1 litre	95,300	91,750	93,000	38,231	-2%	1%	218%
Exchange Rate (Somali Shilling per USD)	30,848	27,030	26,385	10,775	-14%	-2%	56%
Construction Materials*							
Cement 50kg	329,500	335,340	312,000	128,494	-5%	-7%	-
Cooking Pot Aluminium 7 Litre	492,000	401,200	383,500	157,964	-22%	-4%	-
Galvanised Iron Sheet Ga 26	148,790	154,910	147,250	60,591	-1%	-5%	-
Hollow Concrete Block 10cm x 20cm x 40cm	16,750	16,750	16,188	6,572	-3%	-3%	-
Non Collapsible Jerrycan 10 Litre	42,500	52,200	51,000	20,920	20%	-2%	-
Plastic Tarpaulin 14m x 5 m	306,000	324,400	297,900	122,683	-3%	-8%	-
Roofing Nails 15Kg	810,688	814,000	782,150	322,272	-4%	-4%	-
Timber 2in x 4in x 20ft	151,600	146,400	141,500	58,221	-7%	-3%	-
Woven Dry Raised Blanket 150cm x 200cm	174,400	134,000	129,600	53,316	-26%	-3%	-
Terms of Trade							
Labour Wage (Daily)/ Cereal (Rice(Kg))	3	3	3	-	10%	1%	-27%
Local Goat (Head)/ Cereal (Rice(Kg))	34	37	38	-	11%	2%	0%
Camel (Head)/Cereal (Kg)	280	286	285	-	2%	0%	-5%
Price Indices							
Consumer Price Index	268	237	243	-	-9%	2%	-
Purchasing Power Index	0.37	0.42	0.41	-	10%	-2%	-

* Data has been collected since May 2010

Figure 32: Imported commodity prices compared to exchange rates

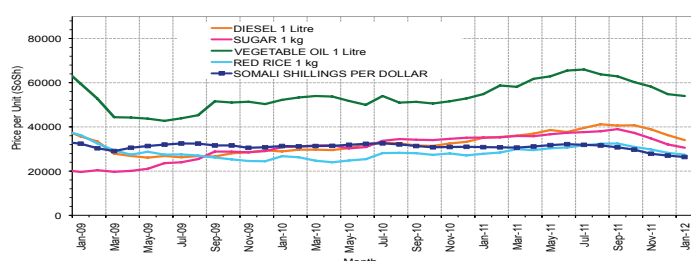


Figure 33: Trends in wage rates, staple cereal prices and relative purchasing power

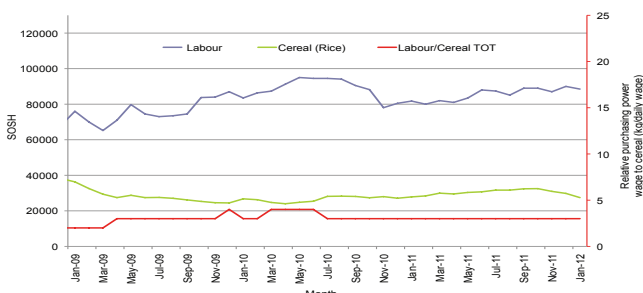


Figure 34: Goat Local Quality

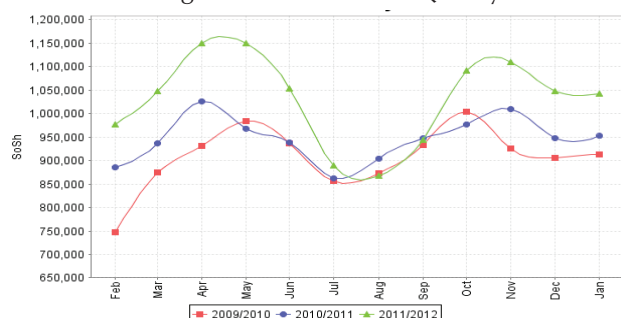


Figure 35: Sugar

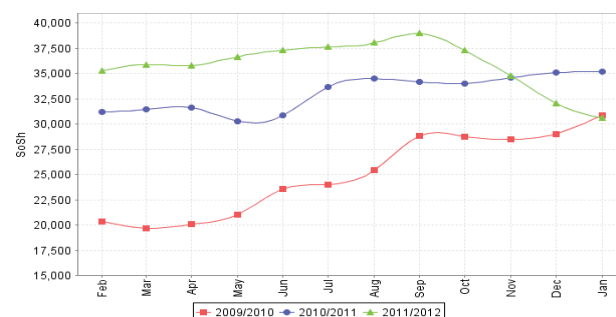


Figure 36: Water Drum

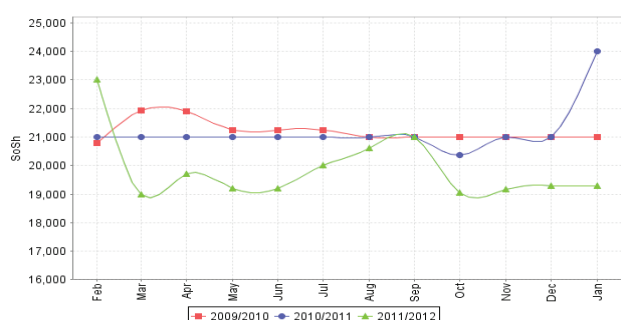
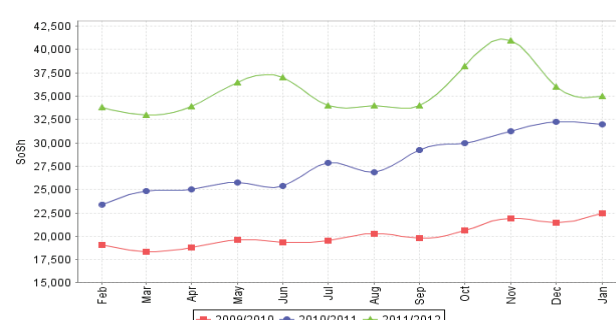


Figure 37: Firewood Bundle



Regional analysis: Northeast Regions

Indicator	Jan-11	Dec-11	Jan-12 Nominal Price	Jan-12 Real (Deflated) Price	% Change Same Month Previous Year	% Change Previous Month	% Change 5-year avrg (2003-07)
Imported Commodities Prices							
Diesel 1 litre	33,188	31,625	30,438	13,022	-8%	-4%	270%
Imported Red Rice 1kg	22,313	22,750	22,175	9,460	-1%	-3%	265%
Petrol 1 litre	27,875	28,313	27,725	11,853	-1%	-2%	197%
Sugar	31,250	29,625	28,463	12,171	-9%	-4%	259%
Vegetable Oil 1 litre	45,750	52,250	54,313	23,315	19%	4%	225%
Wheat Flour 1kg	19,750	20,438	19,263	8,205	-2%	-6%	197%
Wheat Grain 1kg	28,500	26,875	25,625	10,947	-10%	-5%	250%
Cereal Prices							
Red Sorghum 1kg	17,938	28,000	22,500	9,600	25%	-20%	224%
White Maize 1kg	20,000	17,500	17,875	7,606	-11%	2%	210%
Livestock & Livestock Product Prices							
Camel Local Quality (Head)	12,362,500	14,546,876	14,140,626	6,096,090	14%	-3%	350%
Cattle Local Quality (Head)	6,500,000	8,000,000	7,600,000	3,276,349	17%	-5%	336%
Fresh Camel Milk 1 litre	46,750	35,875	35,250	15,097	-25%	-2%	192%
Goat Export Quality (Head)	1,342,500	1,393,750	1,270,000	547,412	-5%	-9%	214%
Goat Local Quality (Head)	1,211,875	1,346,875	1,435,000	618,545	18%	7%	285%
Other Essential Items							
Charcoal 50kg	380,938	414,375	405,625	174,770	6%	-2%	491%
Cowpeas 1 kg	33,000	64,500	57,250	24,581	73%	-11%	473%
Unskilled Labor Wage Rate	110,000	106,813	111,750	48,077	2%	5%	156%
Firewood Bundle	33,125	41,250	38,125	16,336	15%	-8%	465%
Local Sesame Oil 1 litre	83,333	96,563	98,438	42,338	18%	2%	247%
Exchange Rate (Somali Shilling per USD)	31,125	27,469	26,813	11,459	-14%	-2%	63%
Construction Materials*							
Cement 50kg	229,250	231,125	232,563	100,161	1%	1%	-
Cooking Pot Aluminium 7 Litre	337,500	459,375	455,313	196,191	35%	-1%	-
Galvanised Iron Sheet Ga 26	235,188	221,313	218,750	94,206	-7%	-1%	-
Hollow Concrete Block 10cm x 20cm x 40cm	12,438	12,375	12,500	5,289	0%	1%	-
Non Collapsible Jerrycan 10 Litre	37,500	40,000	36,875	15,797	-2%	-8%	-
Plastic Tarpaulin 14m x 5 m	207,500	179,375	174,063	74,941	-16%	-3%	-
Roofing Nails 15Kg	440,875	551,333	666,250	287,128	51%	21%	-
Timber 2in x 4in x 20ft	214,563	215,750	214,063	92,185	0%	-1%	-
Woven Dry Raised Blanket 150cm x 200cm	270,938	264,688	271,563	116,974	0%	3%	-
Terms of Trade							
Labour Wage (Daily)/ Cereal (Rice(Kg))	5	5	5	-	2%	7%	-30%
Local Goat (Head)/ Cereal (Rice(Kg))	54	59	65	-	19%	9%	6%
Price Indices							
Consumer Price Index	238	253	232	-	-3%	-8%	-
Purchasing Power Index	0.42	0.40	0.43	-	3%	9%	-

* Data has been collected since May 2010

Figure 38: Imported commodity prices compared to exchange rates

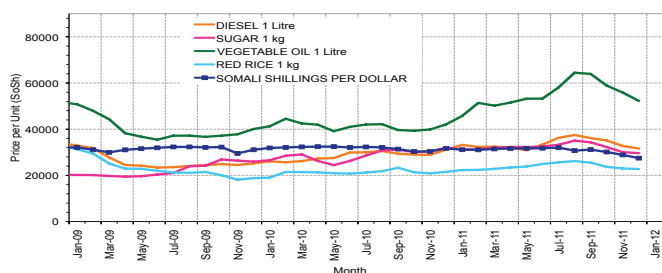


Figure 39: Trends in wage rates, staple cereal prices and relative purchasing power

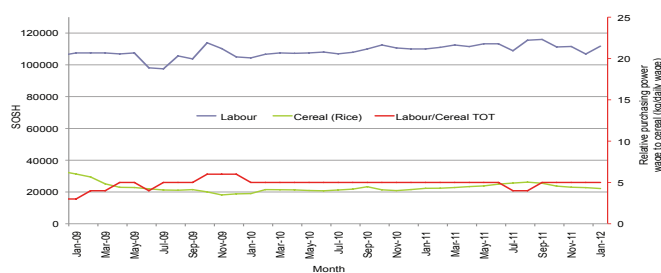


Figure 40: Goat Local Quality

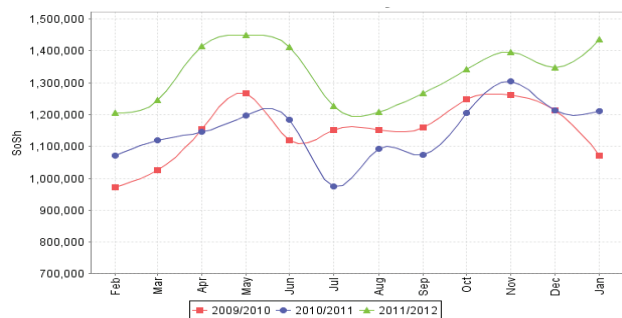


Figure 41: Sugar

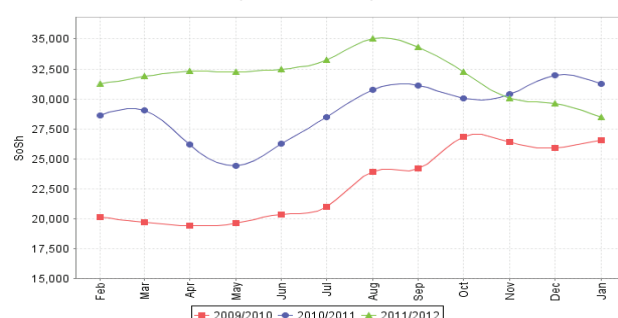


Figure 42: Water Drum

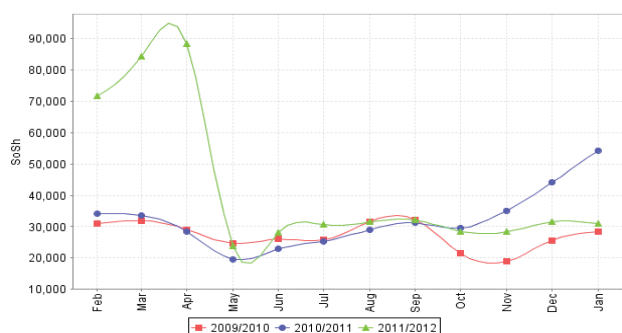
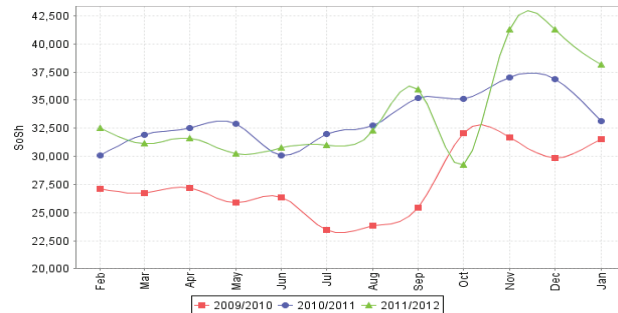


Figure 43: Firewood Bundle



Regional analysis: Northwest Regions

Indicator	Jan-11	Dec-11	Jan-12 Nominal Price	Jan-12 Real (Deflated) Price	% Change Same Month Previous Year	% Change Previous Month	% Change 5-year avrg (2003-07)
Imported Commodities Prices							
Diesel 1 litre	5,206	5,919	6,394	5,401	23%	8%	89%
Imported Red Rice 1kg	5,244	5,625	5,494	4,627	5%	-2%	95%
Petrol 1 litre	5,375	6,096	6,675	5,643	24%	9%	66%
Sugar	5,713	6,525	6,363	5,375	11%	-2%	97%
Vegetable Oil 1 litre	8,500	10,964	11,040	9,399	30%	1%	61%
Wheat Flour 1kg	3,975	4,413	4,319	3,616	9%	-2%	60%
Wheat Grain 1kg	2,267	3,000	3,067	2,539	35%	2%	64%
Cereal Prices							
White Sorghum 1kg	2,656	3,622	3,397	2,823	28%	-6%	80%
Yellow Maize 1kg	2,500	3,705	3,705	3,088	48%	0%	114%
Livestock & Livestock Product Prices							
Camel Local Quality (Head)	1,670,833	2,195,000	1,925,000	1,656,124	15%	-12%	54%
Cattle Local Quality (Head)	1,064,063	1,503,333	1,284,167	1,104,766	21%	-15%	55%
Fresh Camel Milk 1 litre	4,788	4,938	5,088	4,278	6%	3%	18%
Goat Export Quality (Head)	280,500	299,094	302,413	260,089	8%	1%	72%
Goat Local Quality (Head)	223,125	221,453	222,813	191,603	0%	1%	59%
Other Essential Items							
Charcoal 50kg	34,875	35,844	40,125	34,423	15%	12%	125%
Cowpeas 1 kg	7,375	8,500	9,000	7,643	22%	6%	103%
Unskilled Labor Wage Rate	28,750	33,782	34,500	29,583	20%	2%	21%
Firewood Bundle	1,600	2,833	2,467	2,023	54%	-13%	-36%
Local Sesame Oil 1 litre	20,563	25,333	24,500	20,979	19%	-3%	47%
Exchange Rate (Somaliland Shilling per USD)	5,612	5,782	5,862	4,944	4%	1%	-11%
Construction Materials*							
Cement 50kg	43,313	45,626	120,313	103,414	178%	164%	-
Cooking Pot Aluminium 7 Litre	91,000	84,955	87,340	75,045	-4%	3%	-
Galvanised Iron Sheet Ga 26	55,000	-	-	-	-	-	-
Hollow Concrete Block 10cm x 20cm x 40cm	3,375	2,933	3,033	2,510	-10%	3%	-
Non Collapsible Jerrycan 10 Litre	6,825	5,625	5,250	4,417	-23%	-7%	-
Plastic Tarpaulin 14m x 5 m	57,375	83,390	84,463	72,570	47%	1%	-
Roofing Nails 15kg	151,500	168,676	184,125	158,317	22%	9%	-
Timber 2in x 4in x 20ft	130,750	101,595	103,263	88,745	-21%	2%	-
Woven Dry Raised Blanket 150cm x 200cm	69,375	64,729	61,063	52,437	-12%	-6%	-
Terms of Trade							
Labour Wage (Daily)/ Cereal (Rice(Kg))	5	6	6	-	15%	5%	-38%
Local Goat (Head)/ Cereal (Rice(Kg))	43	39	41	-	-5%	3%	-19%
Price Indices							
Consumer Price Index	112	120	116	-	4%	-3%	-
Purchasing Power Index	0.89	0.84	0.86	-	-3%	3%	-

* Data has been collected since May 2010

Figure 44: Imported commodity prices compared to exchange rates

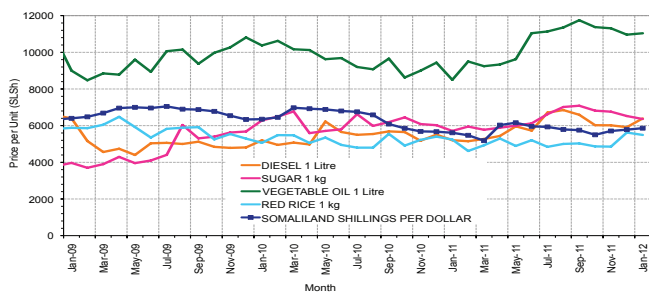


Figure 46: Goat Local Quality

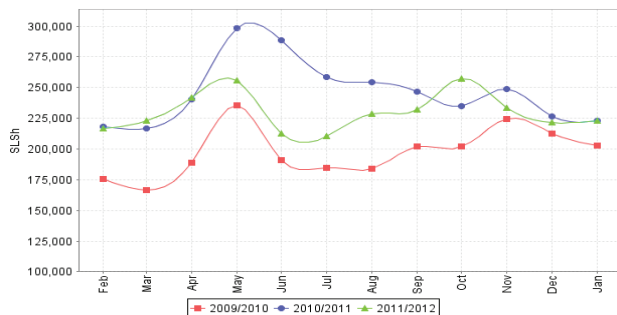


Figure 48: Water Drum

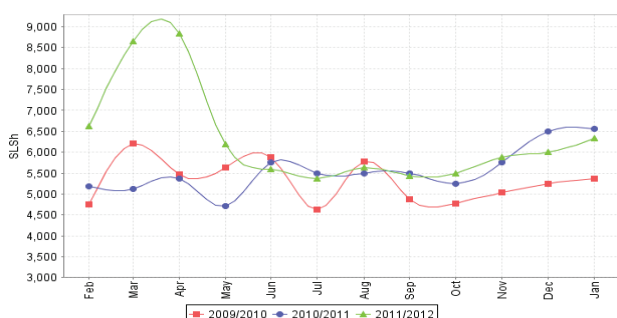


Figure 45: Trends in wage rates, staple cereal prices and relative purchasing power

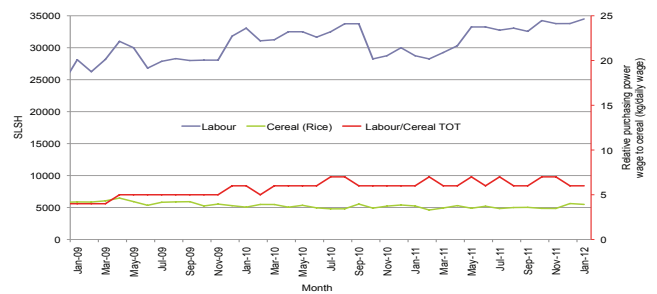


Figure 47: Sugar

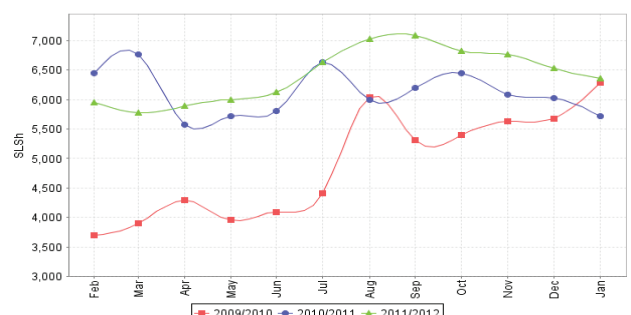
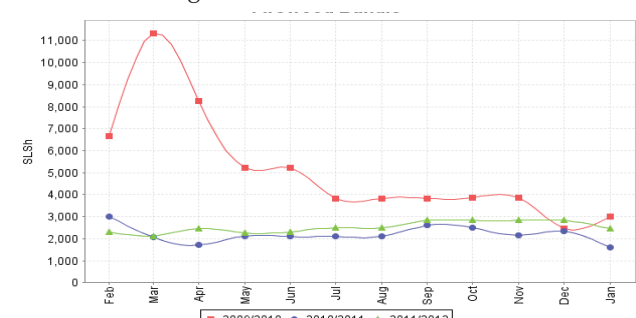


Figure 49: Firewood Bundle

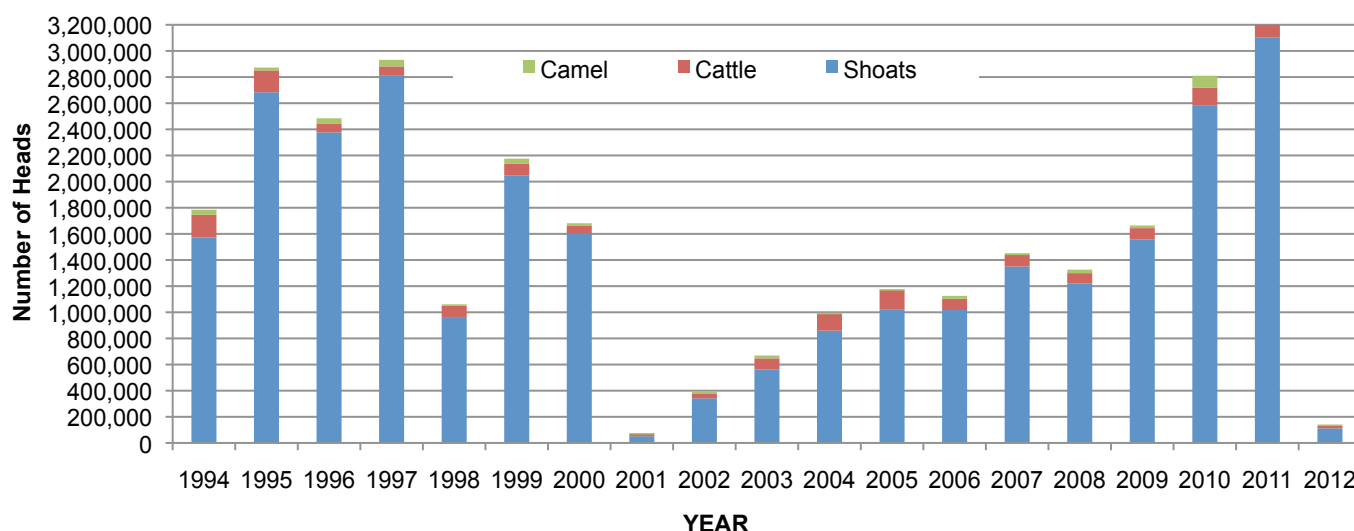


Trends in Livestock Exports

Table 2: Berbera Livestock Exports (Number of Heads)

	1994	1995	1996	1997	1998	1999	2000	2001	2002	2003	2004	2005	2006	2007	2008	2009	2010	2011	2012 (Jan)
Shoats	1,572,656	2,683,597	2,376,646	2,814,495	957,224	2,048,136	1,601,083	51,546	341,711	563,107	859,404	1,023,795	1,017,242	1,350,054	1,219,519	1,556,003	2,584,810	3,104,684	111,646
Cattle	173,400	167,128	65,127	66,939	92,213	89,967	63,263	20,973	37,547	84,312	131,852	148,151	85,631	88,143	80,051	88,005	133,021	150,934	18,917
Camel	38,553	21,993	42,801	50,587	11,663	37,430	16,984	3,473	18,864	21,874	5,147	5,069	22,810	14,245	26,515	20,206	92,651	107,281	10,740

Figure 50: Berbera Livestock Exports (Number of Heads)

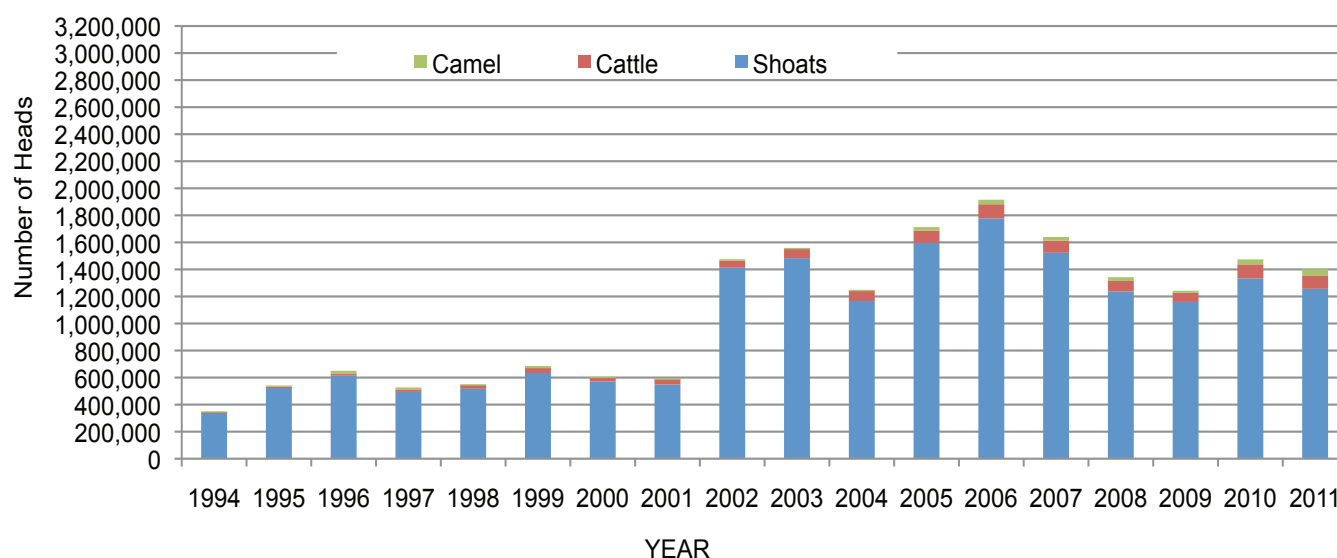


*Data includes January, 2012

Table 3: Bossaso Livestock Exports (Number of Heads)

	1994	1995	1996	1997	1998	1999	2000	2001	2002	2003	2004	2005	2006	2007	2008	2009	2010	2011
Shoats	344,000	524,346	614,407	494,320	517,020	633,669	571,455	548,853	1,412,450	1,483,409	1,166,480	1,594,859	1,777,283	1,522,855	1,236,775	1,159,454	1,333,478	1,256,535
Cattle	1,450	8,795	15,335	17,831	29,492	36,586	27,604	42,248	53,313	71,328	79,994	91,910	104,595	89,190	78,046	67,385	103,808	99,058
Camel	5,397	8,392	20,462	14,599	3,938	15,544	8,177	1,950	9,720	4,259	2,488	26,109	33,724	27,580	27,639	15,331	36,865	45,878

Figure 51: Bossaso Livestock Exports (Number of Heads)



*Data excludes January, 2012

Table 4: Total Cereal Imports (Berbera,Bossaso,Elmaan)

	1997	1998	1999	2000	2001	2002	2003	2004	2005	2006	2007	2008	2009	2010	2011
Rice	66,419	43,410	63,464	75,687	74,729	144,600	180,614	146,567	150,017	198,101	166,626	136,007	171,472	161,415	272,877
Wheat Flour	35,143	26,774	55,176	78,555	134,425	128,263	171,442	151,555	169,583	178,345	176,821	169,208	240,247	249,080	258,679
Pasta	2,510	2,455	8,544	11,071	26,702	35,425	29,273	38,749	39,153	52,815	41,331	38,441	86,372	102,373	184,849

Figure 52: Total Cereal Imports (Berbera,Bossaso and Elmaan)

