

Market DataUpdate

Highlights

Inflation:

SoSh (Somali shilling)-using areas: Consumer Price Index (CPI) changed (1-3%) in February 2016 month-on-month. Compared to a year ago (February 2015), CPI increased by five percent in Northeast regions, while in South-Central regions CPI declined (6-11%).

SISh (Somaliland shilling)-using areas: The CPI remained relatively stable month-on-month in February 2016, but increased (5%) compared to a year ago (February 2015).

Exchange rate:

SoSh-using areas: The exchange rates between SoSh and the United States Dollar (USD) indicated stability or marginal monthly changes (1-2%) in February 2016. In February the SoSh 2016 depreciated compared to a year ago across all areas.

SISh-using areas: The SISh depreciated against the USD in February 2016 both month-on-month (4%) as well as year-on-year (2%).

Local grain prices changed (increases/decreases) at mild rates (by less than 10 percent) in February 2016 in most regions of the country apart from Middle Juba, Hiran and Bay where local grain prices declined (11-27%) due to high cereal supply following the recent good harvest. Annual local grain prices were lower compared to a year ago in most regions of the country; with the exception of Gedo region where yearly cereal prices (red sorghum) increased by 12 percent due to reduced overall food aid distribution as a result of deteriorating security situation.

Prices of imported food (rice, sugar, vegetable oil, wheat flour) mostly exhibited relative stability or mild (less than 10%) monthly changes (increases/decreases) in local currency terms in February 2016; the exception is Middle Shabelle region where prices increased moderately (16-19%) due to deteriorated security conditions, specifically in Adan-Yabal. The annual comparison indicates that the prices of most imported commodities in the country have generally changed at mild to moderate rates.

Livestock prices (for all species) either remained relatively stable or changed at mild rates (less than 10%) month-on-month in February 2016 in most regions of the country. Notably, livestock (camel and goat) prices in Northwest declined moderately (15-16%) due to increased supply of livestock into the market from pastoral areas (to pay off debts and cover increased costs for water during dry season). Milk prices (camel and cattle) changed at mild rates (less than 10%) month-on-month in most regions of the country in February 2016. Annual comparison recorded higher livestock prices compared to one year ago in most of the regions in February. However, livestock prices exhibited annual moderate declines in Bay (goat-13%), Middle Juba (cattle-19%) and Lower Shabelle (camel-12% & cattle-14%). Compared to a year ago, milk prices (camel and cattle) were higher in most parts of the country with the highest increase being recorded in Northwest (camel milk-67%).

Labor (unskilled) wages either remained relatively stable or changed by less than 10 percent month-on-month in most regions of the country. Annual labor wages were higher compared to one year ago (February 2015) in most regions of the country.

Terms of Trade (ToT) between daily labor wage and local cereals either remained stable or changed by 1-2kg/daily labor wage month-on-month in February 2016 in most parts of the country; the exception is Bay region where the ToT increased by 7Kg/daily labour wage due to increase in labor wage and decline in red sorghum prices in the region. The ToT between local quality goat and cereals declined in central and northern parts of the country, while it increased in most of the southern regions; the highest increase was recorded in Bay (64kg/local quality goat) due to decline (27%) in cereal prices in the region. Annual comparison indicated increases in ToT between daily labor wage and local cereals as well as ToT between local quality goat and cereals in most regions of the country.

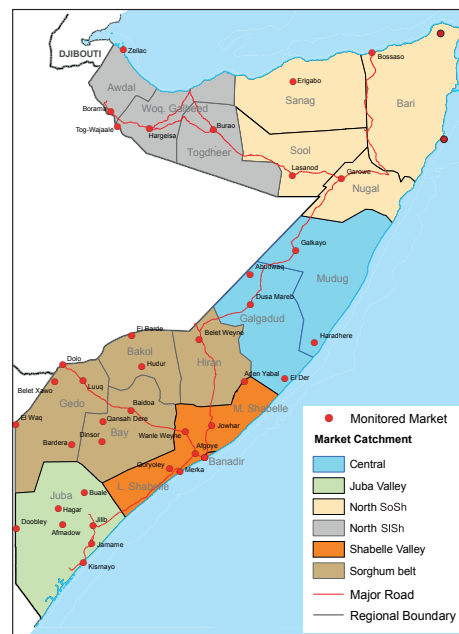
Towns Affected by Trade Disruption (Bulo Burto, Wajid, Hudur and Diinsor)

Labor (unskilled) wages declined in Bulo-Burto and Hudur (10-12%) while it increased in Wajid (19%) but remained stable in Dinsor in February 2016 month-on-month. Annual comparison indicated increase in labor wages in both Dinsor (13%) and Hudur (68%) due to improved farm labour opportunities in the area.

Terms of Trade (ToTs) between daily labor wage and local cereals changed (increase/decrease) mildly (1-2kg/daily labor) month-on-month in most towns in February 2016; the exception is Dinsor where the ToT increased by 6kg/daily labor wage as a result of escalated labor wages. ToT between local quality goat and local cereals rose in Hudur (4kg/goat), Bulo-Burto (5kg/goat) and Dinsor (89kg/goat) due to increase in goat prices and/or decline in cereal prices. Conversely, the ToT declined (9kg/goat) in Wajid in February 2016. ToTs are higher compared to a year ago in both Hudur and Dinsor due to decrease in cereal prices and increase in labor wages and goat prices.

Local grains (red and Sorghum) prices declined in all the four markets with the highest decline being recorded in Dinsor (27%) in February 2016 month-on-month due to increased cereal distribution as a result of relative improvement in security conditions. Annual price comparison indicated declines for red sorghum in Dinsor (23%) and increase in Hudur (12%).

Prices of imported food items (rice, sugar, vegetable oil, wheat flour) either remained stable or declined in Bulo-Burto and Hudur, while they mostly increased in Wajid and Dinsor month-on-month. Annual comparison indicated lower prices in Hudur and higher prices in Dinsor.



This Market Data Update is a monthly report that presents analysis of market information and is produced regularly as part of the monthly monitoring process.

The weekly price data is collected from 48 main markets and 51 rural markets throughout Somalia since 1995.

Market analysis is an integral part of all of FSNAU's annual food security projections and seasonal technical reports (Technical Reports on FSNAU Post Gu and Post Deyr Analysis).

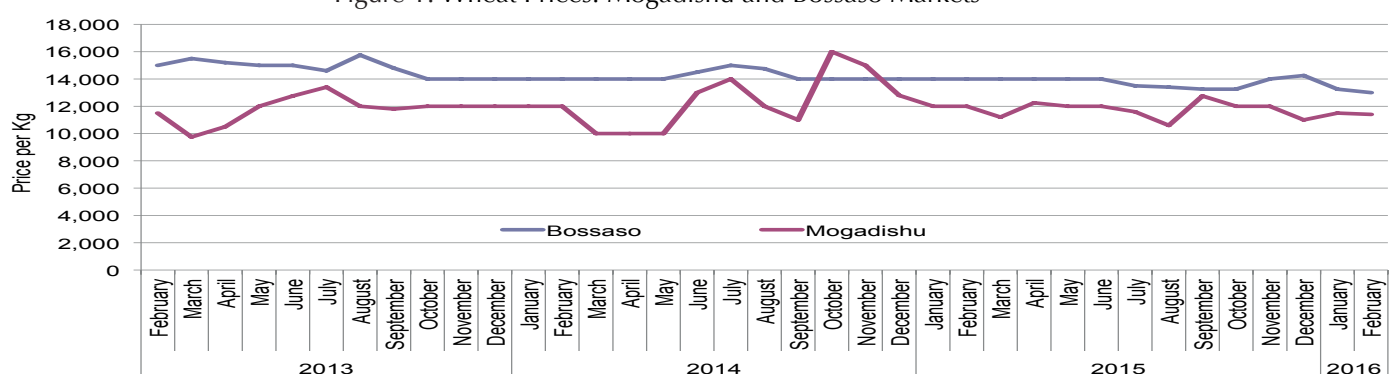
Detailed market data are available online on www.fsnaul.org/ids.

National Trends: CPI, Exchange Rates, Cereal Prices and Relative Purchasing Power

Table 1: ToT between Cereals (kg) and Daily Labour Wage Rate, by Region (February 2016)

Regions	February 2016 (kg)	Kg change from		
		January 2016 (Current)	February 2015 (Last Month)	February 5 yr Average (2011 - 2015)
Banadir/Mogadishu	26	0	10	10
Bay	24	7	5	6
Bakool	6	-1	3	1
Gedo	15	-1	-1	0
Juba	12	1	2	3
Shabelle	12	0	4	3
Northwest	11	0	2	3
Northeast	9	0	0	3
Central	5	0	0	2

Figure 1: Wheat Prices: Mogadishu and Bossaso Markets



Source: FSNAU Manifest Price Monitoring System

Figure 2: Terms of Trade Between Wage Rates and Selected Cereals

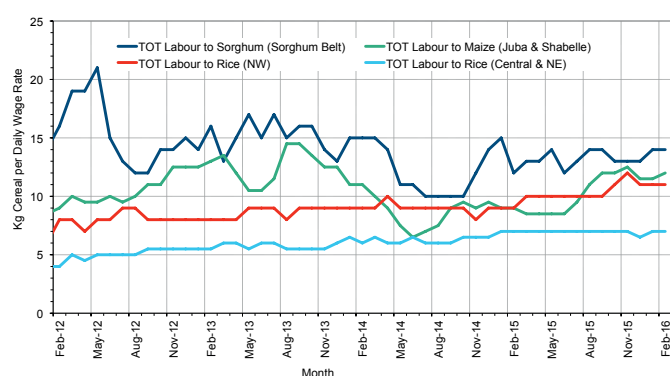


Figure 3: Monthly Exchange Rate for Selected Regions (SoSh and SISH to USD)

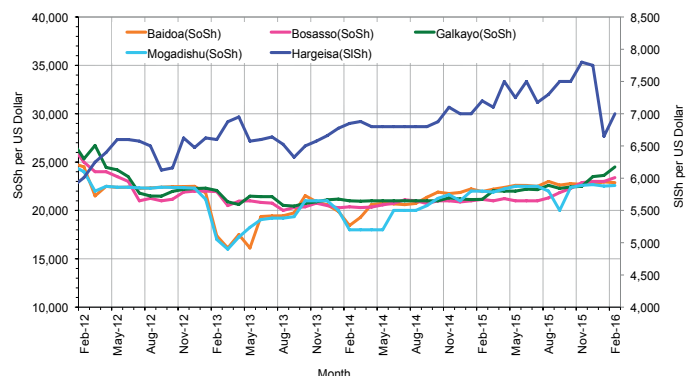


Figure 4: Monthly Trends in Consumer Price Index (CPI, March 2007=100)

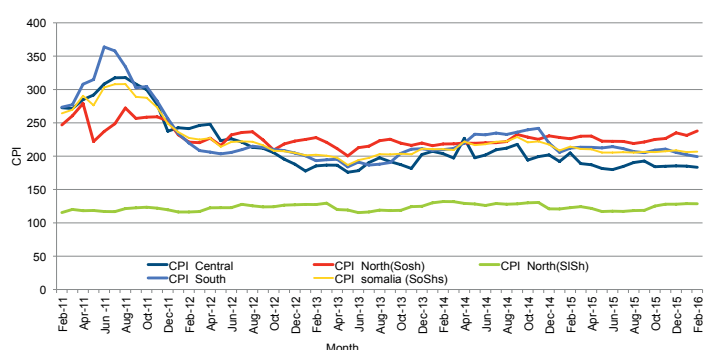
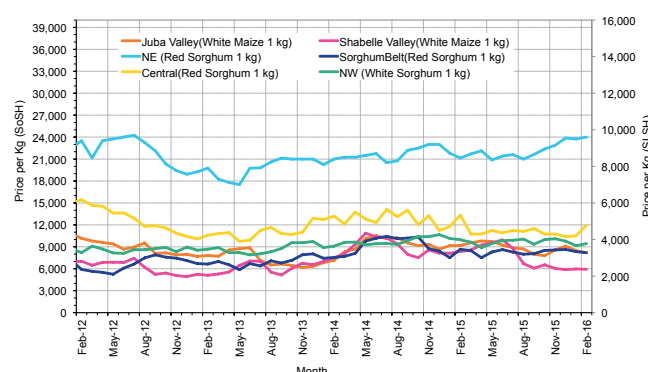


Figure 5: Monthly Trends in Local Cereal Prices



Regional analysis: Juba Regions

Indicator	5-Year Average (2011-2015)	Feb-15	Jan-16	Feb-16 Nominal Price	Feb-16 Real (Deflated) Price	% Change Previous Month	% Change Same Month Previous Year	% Change 5-year avg (2011-2015)
Imported Commodities Prices								
Diesel 1 litre	28,028	24,071	22,393	22,500	11,192	0%	-7%	-20%
Imported Red Rice 1kg	17,300	15,143	15,286	15,071	7,464	-1%	0%	-13%
Petrol 1 litre	29,768	24,875	27,357	26,500	13,200	-3%	7%	-11%
Sugar	20,178	16,000	15,714	15,000	7,428	-5%	-6%	-26%
Vegetable Oil 1 litre	38,121	31,571	29,207	29,457	14,684	1%	-7%	-23%
Wheat Flour 1kg	16,221	14,714	14,857	14,857	7,356	0%	1%	-8%
Wheat Grain 1kg	16,000	-	-	-	-	-	-	-
Cereal Prices								
Red Sorghum 1kg	8,000	9,000	8,000	7,500	3,664	-6%	-17%	-6%
White Maize 1kg	9,584	9,257	8,729	8,500	4,166	-3%	-8%	-11%
Livestock & Livestock Product Prices								
Camel Local Quality (Head)	8,733,800	8,150,714	11,925,833	11,332,143	5,687,257	-5%	39%	30%
Cattle Local Quality (Head)	3,340,391	3,529,286	3,474,167	3,747,083	1,880,480	8%	6%	12%
Fresh Camel Milk 1 litre	18,710	15,036	18,750	18,679	9,275	0%	24%	0%
Goat Export Quality (Head)	1,209,722	1,119,464	1,279,286	1,259,786	632,159	-2%	13%	4%
Goat Local Quality (Head)	787,978	771,429	819,107	836,786	419,865	2%	8%	6%
Other Essential Items								
Charcoal 50kg	82,286	77,857	94,643	97,143	48,654	3%	25%	18%
Cowpeas 1 kg	24,607	27,500	22,214	23,286	11,587	5%	-15%	-5%
Unskilled Labor Wage Rate	86,421	91,750	100,964	104,464	52,328	3%	14%	21%
Firewood Bundle	8,521	7,714	7,893	7,964	3,897	1%	3%	-7%
Local Sesame Oil 1 litre	74,811	73,179	68,000	66,071	33,060	-3%	-10%	-12%
Exchange Rate (Somali Shilling per USD)	22,562	22,232	22,814	22,629	11,257	-1%	2%	0%
Terms of Trade								
Labour Wage (Daily)/ Cereal (Maize(Kg))	9	10	12	11	-	-8%	10%	22%
Local Goat (Head)/ Cereal (Maize(Kg))	88	83	94	98	-	4%	18%	11%
Price Indices								
Consumer Price Index	-	212	202	199	-	-1%	-6%	-

Figure 6: Trends in Cereal Prices

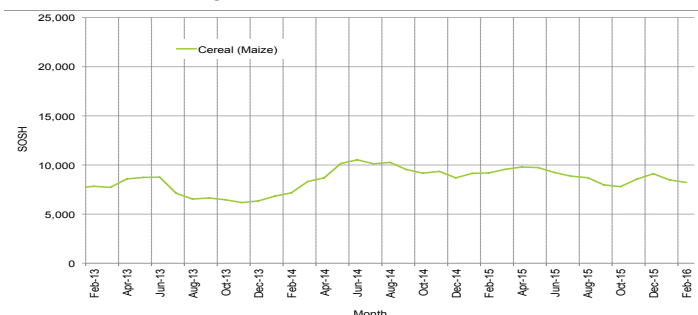


Figure 7: Trends in Wage Rates and Relative Purchasing Power

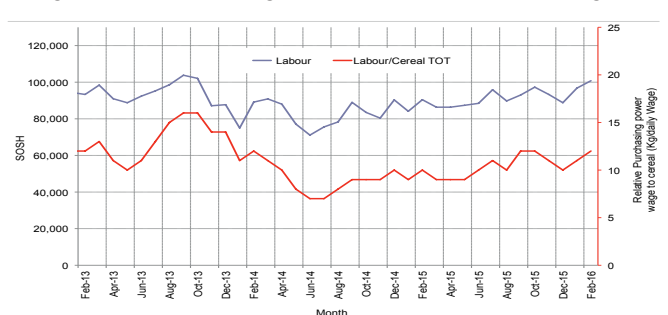


Figure 8: Imported Commodity Prices Compared to Exchange Rate

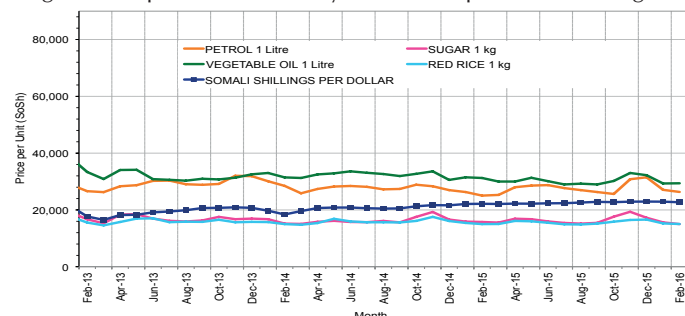


Figure 9: Goat Local Quality

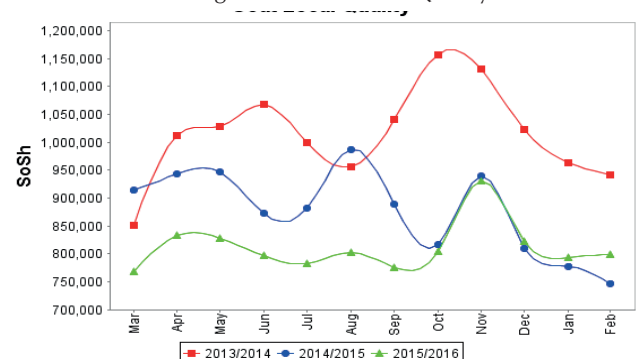


Figure 10: Exchange Rate

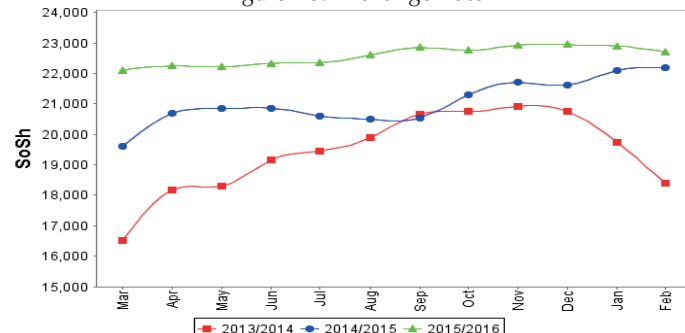
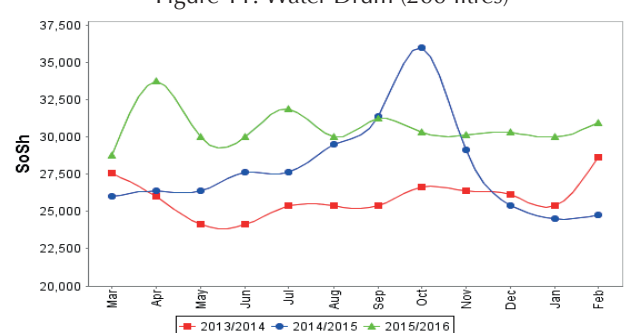


Figure 11: Water Drum (200 litres)



Regional analysis: Sorghum Belt Regions (Bay, Bakool, Gedo and Hiran)

Indicator	5-Year Average (2011-2015)	Feb-15	Jan-16	Feb-16 Nominal Price	Feb-16 Real (Deflated) Price	% Change Previous Month	% Change Same Month Previous Year	% Change 5-year avg (2011-2015)
Imported Commodities Prices								
Diesel 1 litre	30,954	29,511	26,386	24,018	11,954	-9%	-19%	-22%
Imported Red Rice 1kg	19,927	17,705	18,364	18,309	9,089	0%	3%	-8%
Petrol 1 litre	30,626	29,318	28,159	26,036	12,967	-8%	-11%	-15%
Sugar	22,941	18,414	18,545	18,564	9,217	0%	1%	-19%
Vegetable Oil 1 litre	43,623	37,659	35,409	32,800	16,362	-7%	-13%	-25%
Wheat Flour 1kg	18,095	17,318	17,841	18,018	8,943	1%	4%	0%
Wheat Grain 1kg	13,121	20,667	25,000	23,000	11,443	-8%	11%	75%
Cereal Prices								
Red Sorghum 1kg	8,621	8,664	8,340	8,188	4,009	-2%	-5%	-5%
White Maize 1kg	9,469	9,264	9,675	9,282	4,558	-4%	0%	-2%
Livestock & Livestock Product Prices								
Camel Local Quality (Head)	11,039,255	11,042,500	12,357,500	12,052,000	6,048,538	-2%	9%	9%
Cattle Local Quality (Head)	3,029,993	3,468,125	3,393,750	3,605,000	1,809,171	6%	4%	19%
Fresh Camel Milk 1 litre	21,029	18,350	19,364	18,927	9,399	-2%	3%	-10%
Goat Export Quality (Head)	1,426,613	1,350,227	1,434,091	1,453,818	729,540	1%	8%	2%
Goat Local Quality (Head)	876,009	775,682	799,091	770,364	386,529	-4%	-1%	-12%
Other Essential Items								
Charcoal 50kg	147,031	162,250	156,125	157,200	78,795	1%	-3%	7%
Cowpeas 1 kg	24,354	26,909	20,489	21,800	10,841	6%	-19%	-10%
Unskilled Labor Wage Rate	102,277	106,477	118,409	116,273	58,255	-2%	9%	14%
Firewood Bundle	6,059	6,432	6,341	6,309	3,066	-1%	-2%	4%
Local Sesame Oil 1 litre	74,985	79,643	71,071	66,429	33,239	-7%	-17%	-11%
Exchange Rate (Somali Shilling per USD)	23,302	21,809	22,684	22,709	11,297	0%	4%	-3%
Terms of Trade								
Labour Wage (Daily)/ Cereal (Sorghum(Kg))	13	12	14	14	-	0%	17%	8%
Local Goat (Head)/ Cereal (Sorghum(Kg))	118	90	96	94	-	-2%	4%	-20%
Price Indices								
Consumer Price Index	-	212	202	199	-	-1%	-6%	-

Figure 12: Trends in Cereal Prices

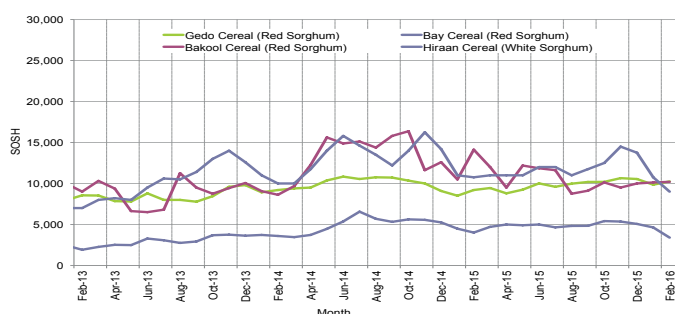


Figure 13: Trends in Wage Rates and Relative Purchasing Power

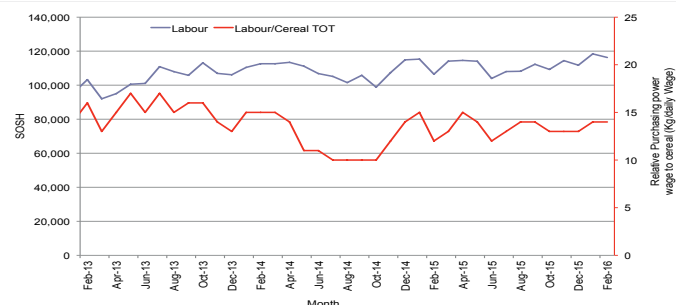


Figure 14: Imported Commodity Prices Compared to Exchange Rate

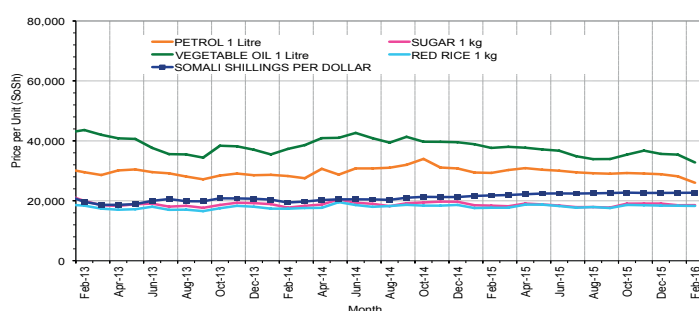


Figure 15: Goat Local Quality

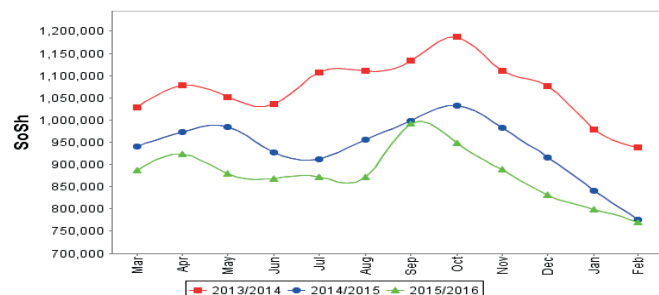


Figure 16: Exchange Rate

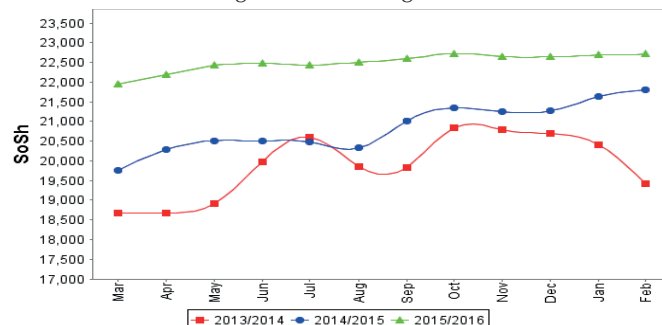
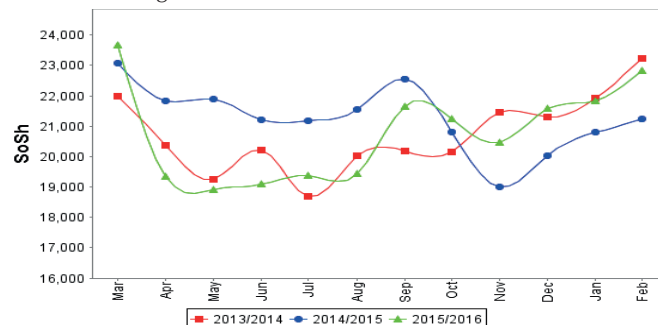


Figure 17: Water Drum (200 litres)



Regional analysis: Shabelle Regions

Indicator	5-Year Average (2011-2015)	Feb-15	Jan-16	Feb-16 Nominal Price	Feb-16 Real (Deflated) Price	% Change Previous Month	% Change Same Month Previous Year	% Change 5-year avg (2011-2015)
Imported Commodities Prices								
Diesel 1 litre	27,533	23,250	21,292	19,250	9,561	-10%	-17%	-30%
Imported Red Rice 1kg	17,216	15,417	15,167	17,000	8,432	12%	10%	-1%
Petrol 1 litre	30,208	27,167	27,000	25,458	12,677	-6%	-6%	-16%
Sugar	20,333	16,167	15,667	17,000	8,432	9%	5%	-16%
Vegetable Oil 1 litre	32,658	27,667	25,500	26,917	13,409	6%	-3%	-18%
Wheat Flour 1kg	15,958	15,167	15,000	15,833	7,846	6%	4%	-1%
Wheat Grain 1kg	15,333	22,000	17,500	17,000	8,432	-3%	-23%	11%
Cereal Prices								
Red Sorghum 1kg	10,595	9,881	9,136	8,500	4,166	-7%	-14%	-20%
White Maize 1kg	8,102	8,353	5,977	5,927	2,875	-1%	-29%	-27%
Livestock & Livestock Product Prices								
Camel Local Quality (Head)	15,499,000	17,565,000	19,290,000	18,192,500	9,130,322	-6%	4%	17%
Cattle Local Quality (Head)	4,921,000	5,350,000	4,917,500	4,972,500	2,495,490	1%	-7%	1%
Fresh Camel Milk 1 litre	18,258	19,000	19,333	19,167	9,520	-1%	1%	5%
Goat Export Quality (Head)	1,697,312	1,810,000	1,778,125	1,805,625	906,104	2%	0%	6%
Goat Local Quality (Head)	1,243,833	1,386,250	1,267,083	1,265,833	635,194	0%	-9%	2%
Other Essential Items								
Charcoal 50kg	128,580	134,403	155,597	135,056	67,682	-13%	0%	5%
Cowpeas 1 kg	20,492	20,365	19,932	16,258	8,060	-18%	-20%	-21%
Unskilled Labor Wage Rate	66,991	66,042	73,958	68,750	34,404	-7%	4%	3%
Firewood Bundle	6,091	6,375	6,083	5,875	2,849	-3%	-8%	-4%
Local Sesame Oil 1 litre	60,975	63,250	40,625	40,500	20,226	0%	-36%	-34%
Exchange Rate (Somali Shilling per USD)	22,722	21,590	22,604	22,850	11,368	1%	6%	1%
Terms of Trade								
Labour Wage (Daily)/ Cereal (Maize(Kg))	9	8	12	12	-	0%	50%	33%
Local Goat (Head)/ Cereal (Maize(Kg))	170	166	212	214	-	1%	29%	26%
Price Indices								
Consumer Price Index	-	212	202	199	-	-1%	-6%	-

Figure 18: Trends in Cereal Prices

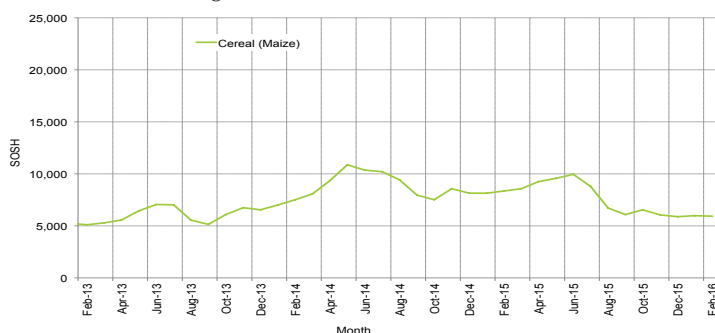


Figure 19: Trends in Wage Rates and Relative Purchasing Power

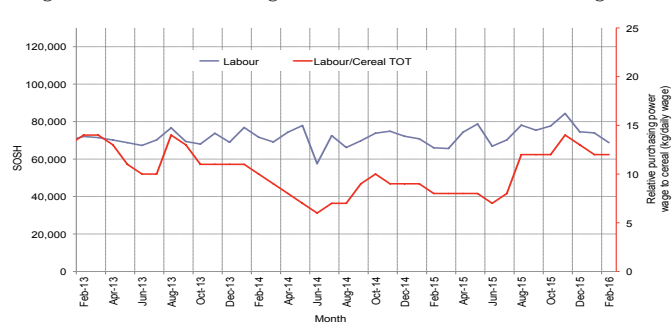


Figure 20: Imported Commodity Prices Compared to Exchange Rate

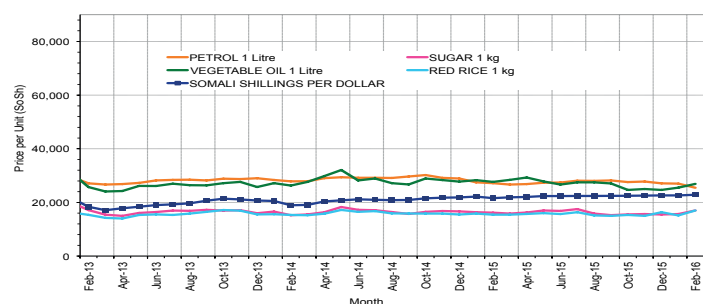


Figure 21: Goat Local Quality

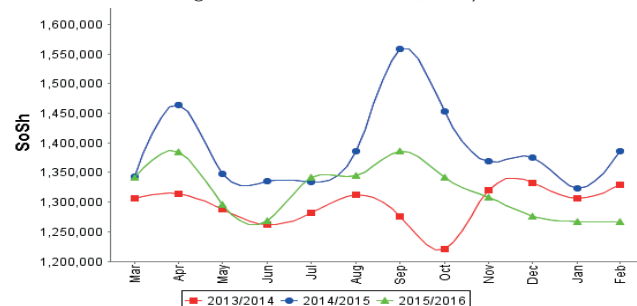


Figure 22: Exchange Rate

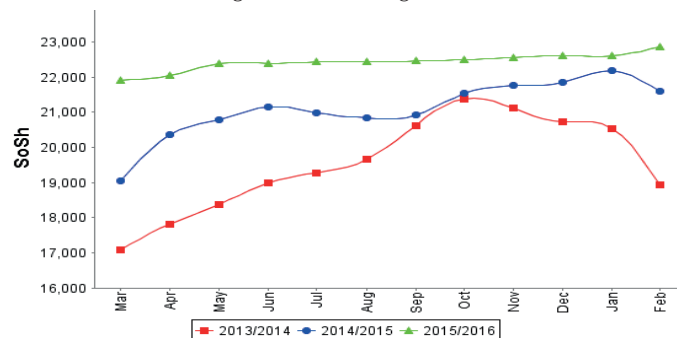
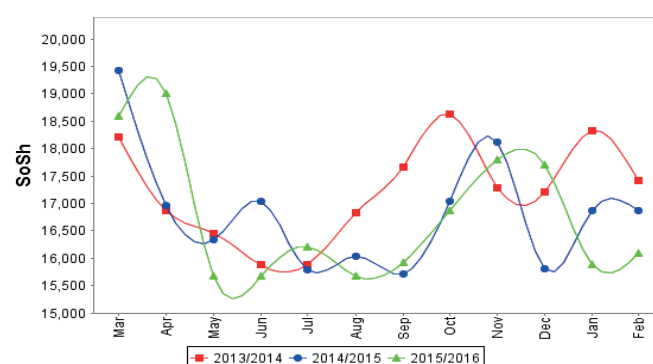


Figure 23: Water Drum (200 litres)



Regional analysis: Banadir Region

Indicator	5-Year Average (2011-2015)	Feb-15	Jan-16	Feb-16 Nominal Price	Feb-16 Real (Deflated) Price	% Change Previous Month	% Change Same Month Previous Year	% Change 5-year avrg (2011-2015)
Imported Commodities Prices								
Diesel 1 litre	22,728	19,563	16,500	16,733	8,298	1%	-14%	-26%
Imported Red Rice 1kg	15,637	12,500	12,563	12,471	6,159	-1%	0%	-20%
Petrol 1 litre	23,945	20,667	19,292	19,500	9,687	1%	-6%	-19%
Sugar	18,583	13,917	13,417	13,425	6,638	0%	-4%	-28%
Vegetable Oil 1 litre	31,725	23,646	22,500	22,550	11,217	0%	-5%	-29%
Wheat Flour 1kg	13,723	12,417	12,708	12,558	6,203	-1%	1%	-8%
Wheat Grain 1kg	11,252	10,750	11,917	11,267	5,555	-5%	5%	0%
Cereal Prices								
Red Sorghum 1kg	8,363	8,833	7,333	7,488	3,658	2%	-15%	-10%
White Maize 1kg	9,239	10,054	6,875	6,775	3,300	-1%	-33%	-27%
Livestock & Livestock Product Prices								
Camel Local Quality (Head)	14,000,000	-	-	-	-	-	-	-
Cattle Local Quality (Head)	3,962,500	-	-	-	-	-	-	-
Fresh Camel Milk 1 litre	21,912	22,542	23,000	23,000	11,443	0%	2%	5%
Goat Export Quality (Head)	2,150,000	1,900,000	2,000,000	1,980,000	993,619	-1%	-	-8%
Goat Local Quality (Head)	1,900,500	1,775,000	1,687,500	1,687,500	846,820	0%	-5%	-11%
Other Essential Items								
Charcoal 50kg	171,908	187,542	198,167	195,917	98,226	-1%	4%	14%
Cowpeas 1 kg	20,373	22,638	17,313	18,004	8,936	4%	-20%	-12%
Unskilled Labor Wage Rate	95,708	105,833	110,417	109,833	55,023	-1%	4%	15%
Firewood Bundle	7,403	7,400	8,800	8,680	4,256	-1%	17%	17%
Local Sesame Oil 1 litre	64,050	69,792	57,500	54,667	27,336	-5%	-22%	-15%
Exchange Rate (Somali Shilling per USD)	22,614	22,292	22,552	22,531	11,208	0%	1%	0%
Terms of Trade								
Labour Wage (Daily)/ Cereal (Maize Kg)	11	11	16	16	-	0%	45%	45%
Local Goat (Head)/ Cereal (Maize Kg)	222	177	245	249	-	2%	41%	12%
Price Indices								
Consumer Price Index	-	212	202	199	-	-1%	-6%	-

Figure 24: Trends in Cereal Prices

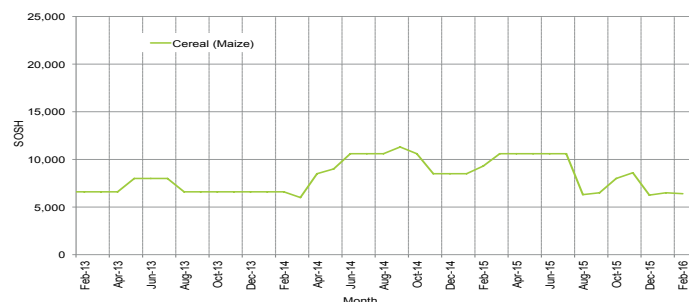


Figure 25: Bakara: Trends in Wage Rates and Relative Purchasing Power

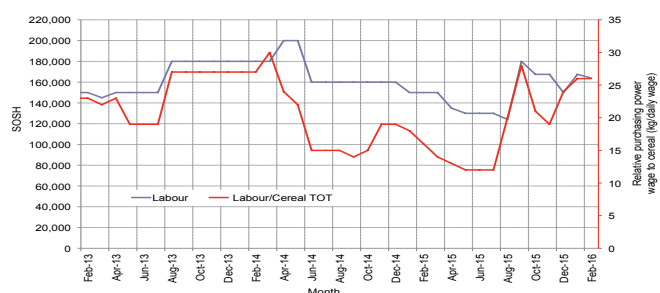


Figure 26: Imported Commodity Prices Compared to Exchange Rate

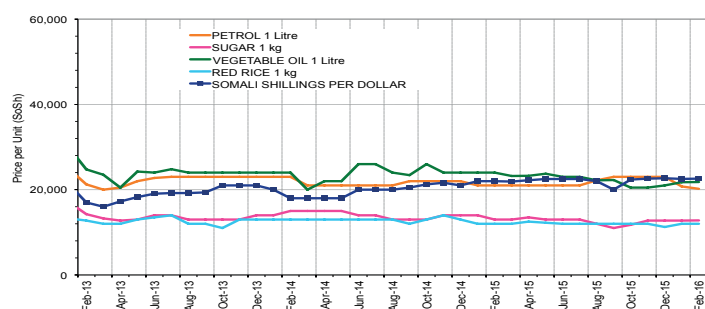


Figure 27: Goat Local Quality

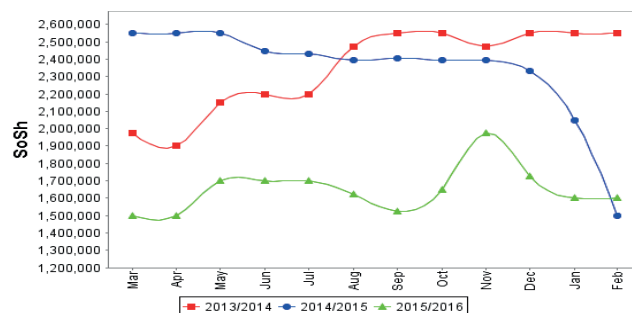


Figure 28: Exchange Rate

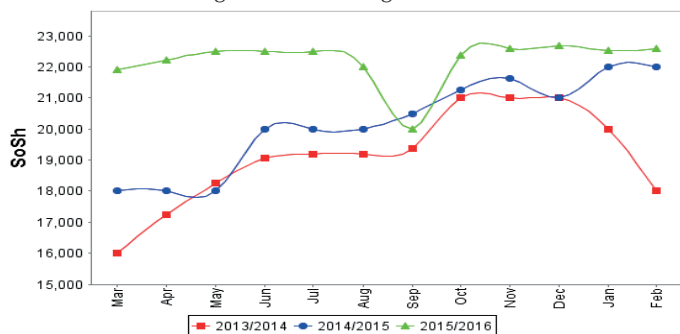
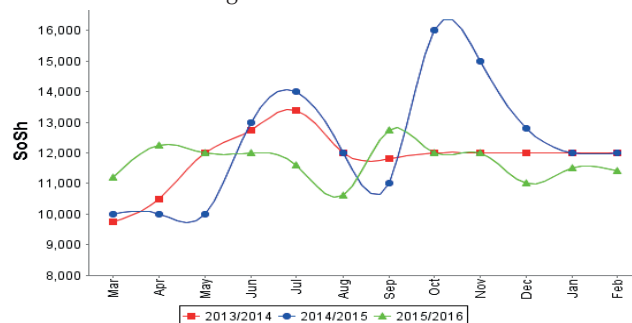


Figure 29: Wheat Flour



Regional analysis: Central Regions

Indicator	5-Year Average (2011-2015)	Feb-15	Jan-16	Feb-16 Nominal Price	Feb-16 Real (Deflated) Price	% Change Previous Month	% Change Same Month Previous Year	% Change 5-year avrg (2011-2015)
Imported Commodities Prices								
Diesel 1 litre	30,088	26,400	21,750	20,000	10,814	-8%	-24%	-34%
Imported Red Rice 1kg	21,966	17,200	17,250	17,280	9,329	0%	0%	-21%
Petrol 1 litre	27,330	25,800	23,950	21,800	11,796	-9%	-16%	-20%
Sugar	25,204	20,000	18,450	18,600	10,050	1%	-7%	-26%
Vegetable Oil 1 litre	46,620	38,400	35,250	34,280	18,606	-3%	-11%	-26%
Wheat Flour 1kg	18,262	15,800	15,700	15,840	8,544	1%	0%	-13%
Wheat Grain 1kg	16,085	17,333	16,875	16,200	8,740	-4%	-7%	1%
Cereal Prices								
Red Sorghum 1kg	13,947	13,333	10,500	11,975	6,435	14%	-10%	-14%
White Maize 1kg	13,904	13,400	12,700	13,250	7,130	4%	-1%	-5%
Livestock & Livestock Product Prices								
Camel Local Quality (Head)	9,772,500	11,775,000	13,625,000	13,575,000	7,407,598	0%	15%	39%
Cattle Local Quality (Head)	2,450,000	-	-	-	-	-	-	-
Fresh Camel Milk 1 litre	32,414	29,000	30,500	31,600	17,144	4%	9%	-3%
Goat Export Quality (Head)	1,431,941	1,280,000	1,270,000	1,147,500	626,076	-10%	-10%	-20%
Goat Local Quality (Head)	1,039,260	825,000	912,000	874,000	476,830	-4%	6%	-16%
Other Essential Items								
Charcoal 50kg	185,820	168,000	162,000	160,000	87,210	-1%	-5%	-14%
Cowpeas 1 kg	24,806	21,200	21,200	20,600	11,141	-3%	-3%	-17%
Unskilled Labor Wage Rate	82,840	85,000	92,000	92,000	50,103	0%	8%	11%
Firewood Bundle	33,900	33,100	33,000	30,400	16,489	-8%	-8%	-10%
Local Sesame Oil 1 litre	89,760	87,700	87,000	85,200	46,393	-2%	-3%	-5%
Exchange Rate (Somali Shilling per USD)	23,770	21,510	23,225	23,520	12,735	1%	9%	-1%
Terms of Trade								
Labour Wage (Daily)/ Cereal (Rice Kg)	3	5	5	5	-	0%	0%	67%
Local Goat (Head)/ Cereal (Rice Kg)	48	48	53	51	-	-4%	6%	6%
Camel (Head)/Cereal (Kg)	474	685	790	786	-	-1%	15%	66%
Price Indices								
Consumer Price Index	-	205	185	183	-	-1%	-11%	-

Figure 30: Trends in Cereal Prices

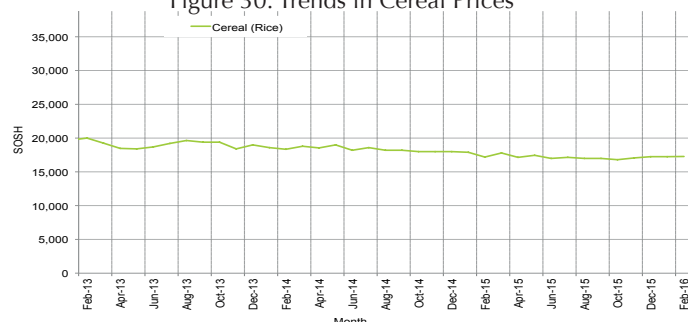


Figure 31: Trends in wage rates and relative purchasing power

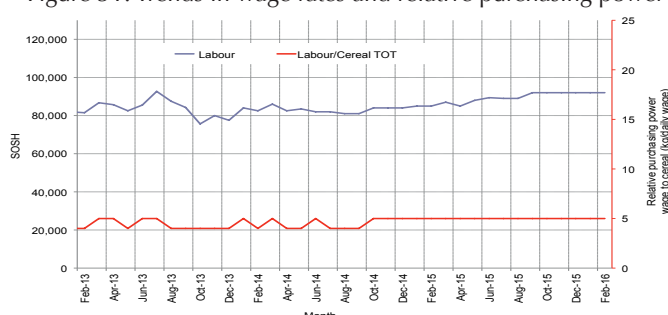


Figure 32: Imported Commodity Prices Compared to Exchange Rate

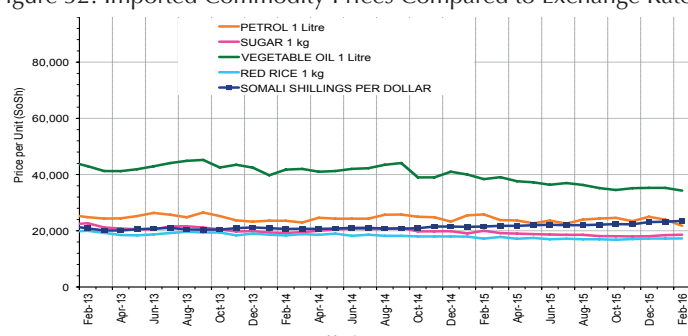


Figure 33: Goat Local Quality

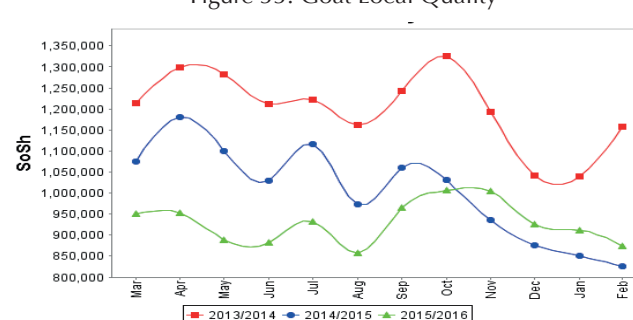


Figure 34: Exchange Rate

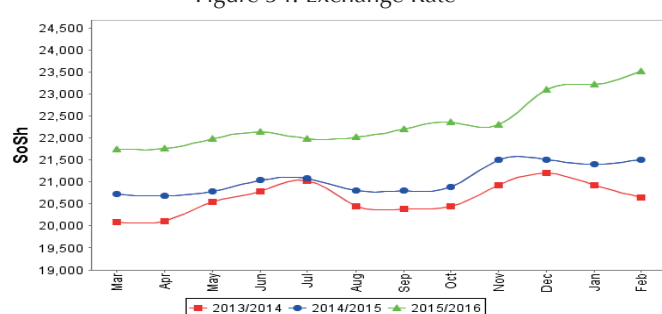
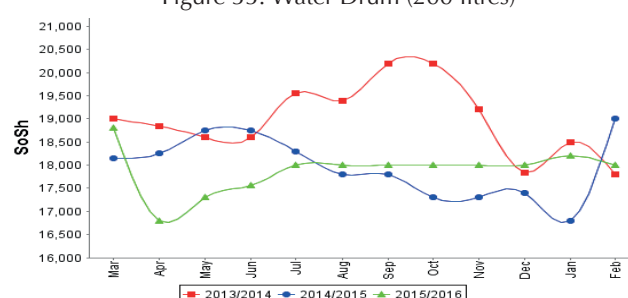


Figure 35: Water Drum (200 litres)



Regional analysis: Northeast Regions

Indicator	5-Year Average (2011-2015)	Feb-15	Jan-16	Feb-16 Nominal Price	Feb-16 Real (Deflated) Price	% Change Previous Month	% Change Same Month Previous Year	% Change 5-year avrg (2011-2015)
Imported Commodities Prices								
Diesel 1 litre	24,975	18,000	14,875	13,650	5,641	-8%	-24%	-45%
Imported Red Rice 1kg	18,150	15,063	14,600	14,450	5,977	-1%	-4%	-20%
Petrol 1 litre	22,950	18,188	19,125	18,250	7,575	-5%	0%	-20%
Sugar	22,325	16,500	15,813	15,888	6,582	0%	-4%	-29%
Vegetable Oil 1 litre	41,712	31,938	29,313	29,388	12,259	0%	-8%	-30%
Wheat Flour 1kg	16,737	14,375	13,938	13,850	5,725	-1%	-4%	-17%
Wheat Grain 1kg	25,200	21,625	22,000	22,200	9,236	1%	3%	-12%
Cereal Prices								
Red Sorghum 1kg	21,275	21,125	23,750	24,000	9,993	1%	14%	13%
White Maize 1kg	19,366	20,000	22,000	21,600	8,984	-2%	8%	12%
Livestock & Livestock Product Prices								
Camel Local Quality (Head)	14,639,374	14,450,000	14,300,000	13,765,000	5,788,940	-4%	-5%	-6%
Cattle Local Quality (Head)	7,700,000	8,250,000	9,125,000	9,125,000	3,837,531	0%	11%	19%
Fresh Camel Milk 1 litre	39,158	33,375	38,375	40,896	17,099	7%	23%	4%
Goat Export Quality (Head)	1,389,000	1,407,500	1,250,000	1,265,000	531,911	1%	-10%	-9%
Goat Local Quality (Head)	1,298,125	1,266,250	1,190,625	1,161,375	488,331	-2%	-8%	-11%
Other Essential Items								
Charcoal 50kg	385,625	387,500	375,625	378,000	158,873	1%	-2%	-2%
Cowpeas 1 kg	34,849	29,833	32,917	32,667	13,639	-1%	9%	-6%
Unskilled Labor Wage Rate	121,637	130,000	125,938	131,750	55,309	5%	1%	8%
Firewood Bundle	43,225	50,938	47,500	47,500	19,877	0%	-7%	10%
Local Sesame Oil 1 litre	91,104	93,125	95,625	97,750	41,010	2%	5%	7%
Exchange Rate (Somali Shilling per USD)	23,889	21,053	22,200	22,175	9,226	0%	5%	-7%
Terms of Trade								
Labour Wage (Daily)/ Cereal (Rice Kg)	7	9	9	9	-	0%	0%	29%
Local Goat (Head)/ Cereal (Rice Kg)	73	84	82	80	-	-2%	-5%	10%
Price Indices								
Consumer Price Index	-	226	231	238	-	3%	5%	-

Figure 36: Trends in Cereal Prices

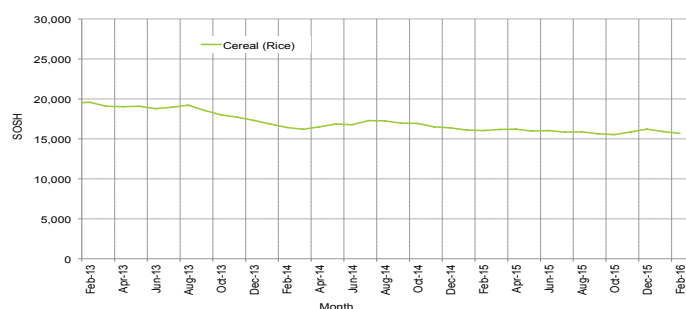


Figure 37: Trends in Wage Rates and Relative Purchasing Power

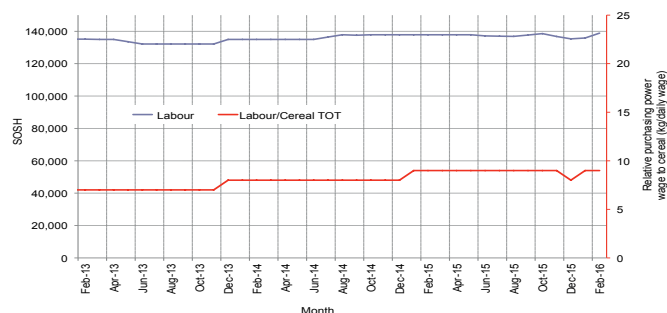


Figure 38: Imported Commodity Prices Compared to Exchange Rate

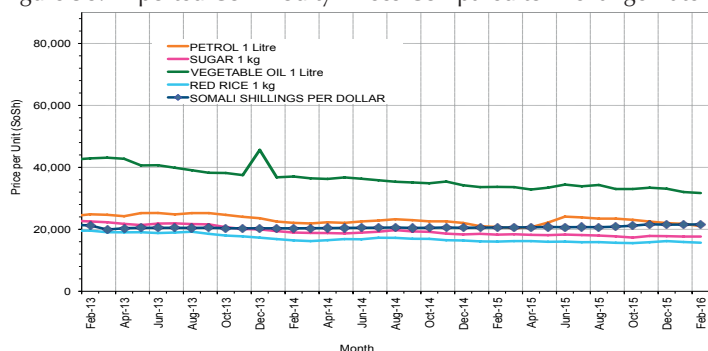


Figure 39: Goat Local Quality

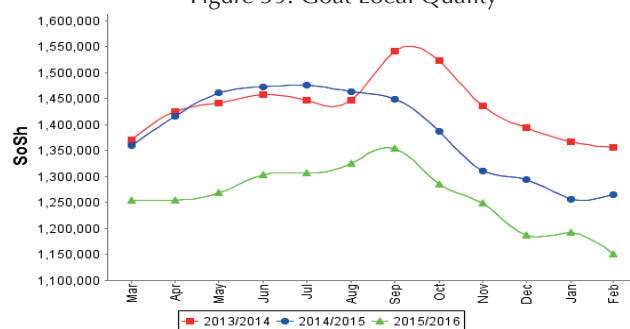


Figure 40: Exchange Rate

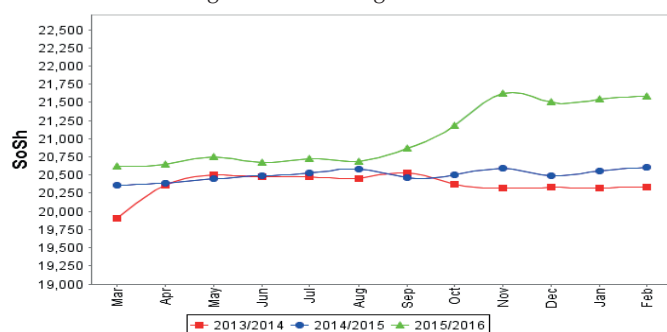
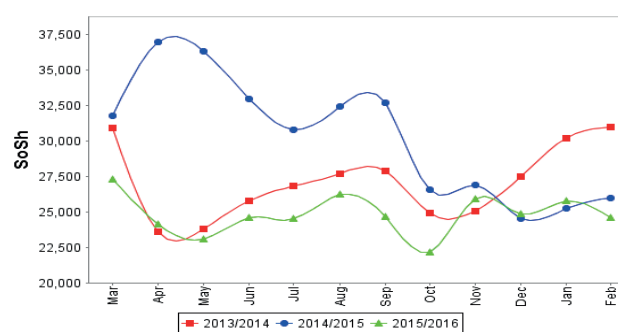


Figure 41: Water Drum (200 litres)



Regional analysis: Northwest Regions

Indicator	5-Year Average (2011-2015)	Feb-15	Jan-16	Feb-16 Nominal Price	Feb-16 Real (Deflated) Price	% Change Previous Month	% Change Same Month Previous Year	% Change 5-year avrg (2011-2015)
Imported Commodities Prices								
Diesel 1 litre	6,418	6,636	4,855	4,610	3,485	-5%	-31%	-28%
Imported Red Rice 1kg	4,927	5,140	5,140	5,100	3,866	-1%	-1%	4%
Petrol 1 litre	6,843	7,635	6,525	6,060	4,612	-7%	-21%	-11%
Sugar	5,892	5,840	5,550	5,400	4,099	-3%	-8%	-8%
Vegetable Oil 1 litre	11,820	12,971	11,500	12,200	9,387	6%	-6%	3%
Wheat Flour 1kg	4,217	4,535	4,540	4,600	3,477	1%	1%	9%
Wheat Grain 1kg	3,145	3,575	4,325	4,325	3,263	0%	21%	38%
Cereal Prices								
White Sorghum 1kg	3,421	3,985	3,660	3,780	2,839	3%	-5%	10%
Yellow Maize 1kg	3,350	3,625	4,520	4,560	3,446	1%	26%	36%
Livestock & Livestock Product Prices								
Camel Local Quality (Head)	2,732,925	3,645,458	4,586,250	3,917,500	3,046,283	-15%	7%	43%
Cattle Local Quality (Head)	1,739,860	1,945,967	2,256,667	2,191,667	1,704,216	-3%	13%	26%
Fresh Camel Milk 1 litre	5,479	5,200	8,600	8,660	6,634	1%	67%	58%
Goat Export Quality (Head)	406,479	440,630	420,600	362,325	281,656	-14%	-18%	-11%
Goat Local Quality (Head)	282,562	309,660	378,000	318,600	247,654	-16%	3%	13%
Other Essential Items								
Charcoal 50kg	44,805	58,900	58,900	58,350	45,275	-1%	-1%	30%
Cowpeas 1 kg	10,093	11,625	12,250	12,975	9,990	6%	12%	29%
Unskilled Labor Wage Rate	39,427	46,336	58,300	54,560	42,328	-6%	18%	38%
Firewood Bundle	3,276	4,000	4,833	4,500	3,399	-7%	13%	37%
Local Sesame Oil 1 litre	28,050	34,125	33,000	32,000	24,784	-3%	-6%	14%
Exchange Rate (Somaliland Shilling per US	6,413	7,000	6,820	7,120	5,437	4%	2%	11%
Terms of Trade								
Labour Wage (Daily)/ Cereal (Rice(Kg)	8	9	11	11	-	0%	22%	38%
Local Goat (Head)/ Cereal (Rice(Kg)	57	60	74	62	-	-16%	3%	9%
Price Indices								
Consumer Price Index	-	123	129	129	-	0%	5%	-

Figure 42: Trends in Cereal Prices

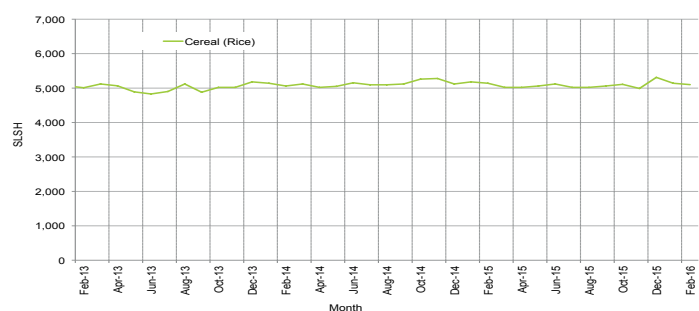


Figure 43: Trends in Wage Rates and Relative Purchasing Power

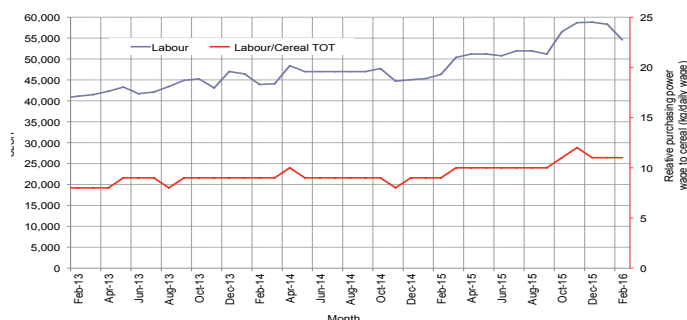


Figure 44: Imported Commodity Prices Compared to Exchange Rate

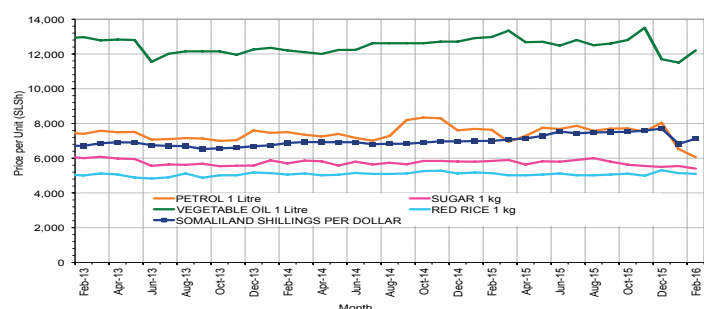


Figure 45: Goat Local Quality

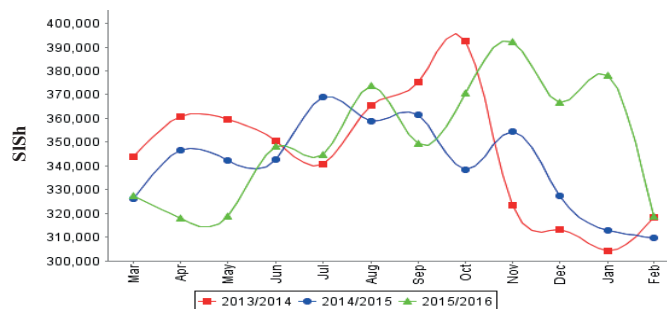


Figure 46: Exchange Rate

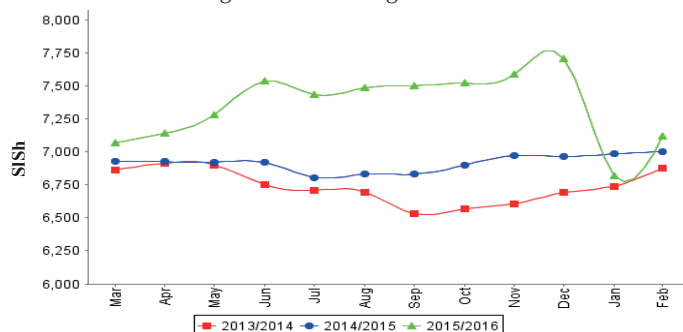
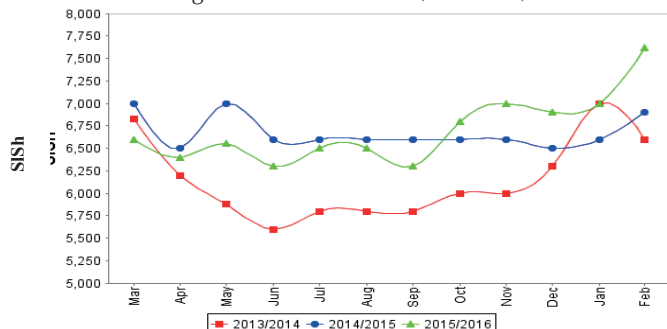


Figure 47: Water Drum (200 litres)



Trends in Livestock Exports

Table 1: Berbera Livestock Exports (Number of Heads)

	1999	2000	2001	2002	2003	2004	2005	2006	2007	2008	2009	2010	2011	2012	2013	2014	Jan-Dec 2015
Shoats	2,048,136	1,601,083	51,546	341,711	563,107	859,404	1,023,795	1,017,242	1,350,054	1,219,519	1,556,003	2,584,810	3,104,684	3,219,584	2,888,955	3,089,592	3,270,386
Cattle	89,967	63,263	20,973	37,547	84,312	131,852	148,151	85,631	88,143	80,051	88,005	133,021	150,934	190,354	20,875	252,597	160,395
Camel	37,430	16,984	3,473	18,864	21,874	5,147	5,069	22,810	14,245	26,515	20,206	92,651	107,281	102,664	75,728	64,578	61,475

Figure 48: Berbera Livestock Exports (Number of Heads)

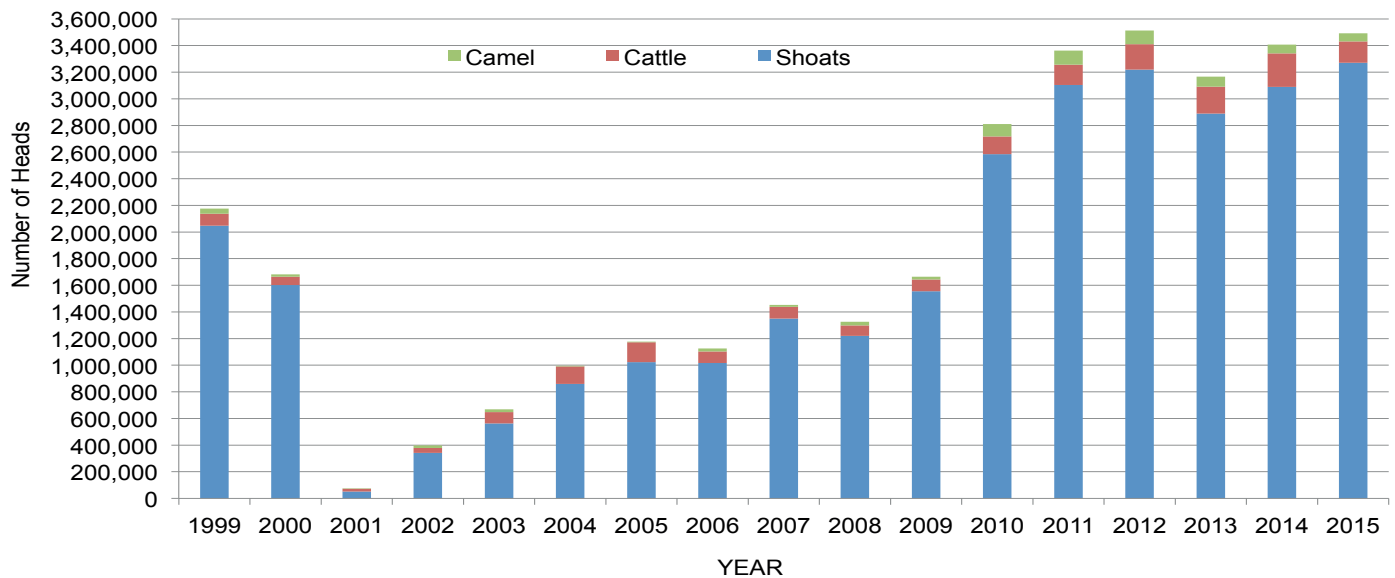
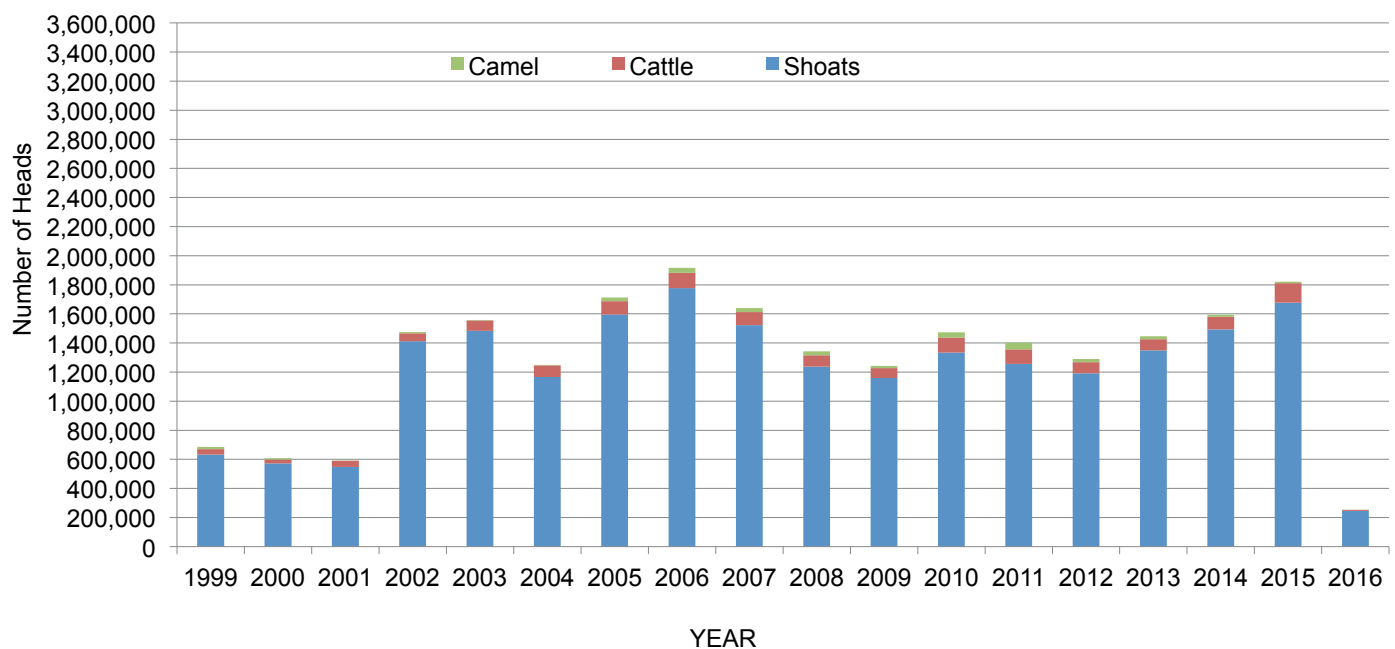


Table 2: Bossaso Livestock Exports (Number of Heads)

	1999	2000	2001	2002	2003	2004	2005	2006	2007	2008	2009	2010	2011	2012	2013	2014	2015	Jan-Feb 2016
Shoats	633 669	571 455	548 853	1 412 450	1 483 409	1 166 480	1 594 859	1 777 283	1 522 855	1 236 775	1 159 454	1 333 478	1 256 535	1 192 197	1 349 123	1 493 111	1 676 216	245 842
Cattle	36 586	27 604	42 248	53 313	71 328	79 994	91 910	104 595	89 190	78 046	67 385	103 808	99 058	76 043	77 353	87 759	134 597	6 554
Camel	15 544	8 177	1 950	9 720	4 259	2 488	26 109	33 724	27 580	27 639	15 331	36 865	45 878	22 288	19 032	12 251	10 945	2 749

Figure 49: Bossaso Livestock Exports (Number of Heads)

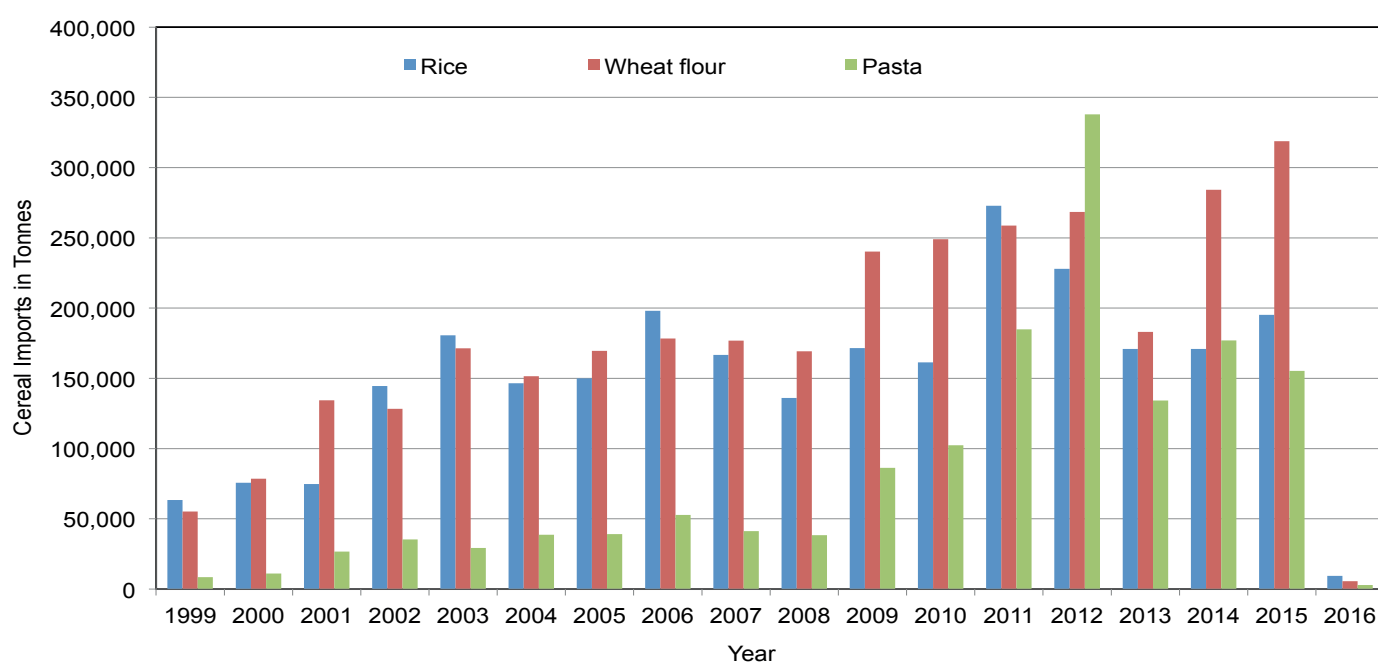


Trends in Cereal Imports

Table 3: Total Cereal Imports through Berbera, Bossaso and Mogadishu Ports (Tonnes) *

	1999	2000	2001	2002	2003	2004	2005	2006	2007	2008	2009	2010	2011	2012	2013	2014	2015	Jan-Feb 2016
Rice	63 464	75 687	74 729	144 600	180 614	146 567	150 017	198 101	166 626	136 007	171 472	161 415	272 877	227 955	170 868	170,888	195,240	9 424
Wheat flour	55 176	78 555	134 425	128 263	171 442	151 555	169 583	178 345	176 821	169 208	240 247	249 080	258 679	268,491	183 058	284 230	318,868	5 646
Pasta	8 544	11 071	26 702	35 425	29 273	38,749	39 153	52 815	41 331	38 441	86 372	102 373	184,849	337 878	134 311	176,951	155 360	2 918

Figure 50: Total Cereal Imports (Berbera, Bossaso and Mogadishu)



* Bossaso data is up to Feb 2016 and Berbera data is up to Dec 2015. Elman (Mogadishu) is up to Nov 2015. Mogadishu data (Elmaan Port) for 2013 includes only January -March imports.