

Highlights

Inflation:

SoSh (Somali shilling)-using areas: The Consumer Price Index (CPI) exhibited mild monthly changes (1-3%) in the South and North, while in Central it increased by seven percent due to increase in cereal (sorghum) prices in February. The CPI changed by 1-4 percent annually.

SISh (Somaliland shilling)-using areas: The CPI declined mildly (2%) month-on-month and dropped by seven percent year-on-year due to declines in cereal prices.

Exchange rate:

SoSh-using areas: The exchange rates between SoSh and the United States Dollar (USD) indicated relative stability or marginal monthly changes (1-5%) in February. The SoSh depreciated year-on-year across all areas, most significantly (23%) in Middle Juba.

SISh-using areas: The exchange rates between SISh and the USD remained stable month-on-month in February, while they have increased marginally (2%) year-on-year.

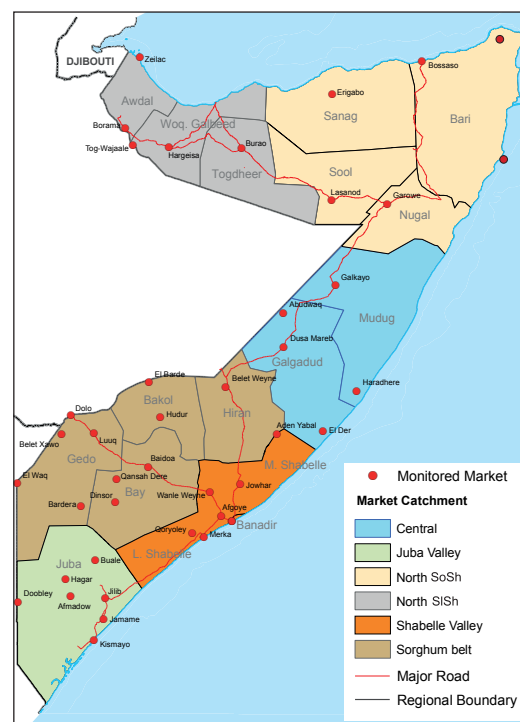
Local grain prices remained relatively stable or changed (increased/decreased) at mild rates (1-5%) in February in most regions of the country except for red sorghum prices which increased more significantly in Juba (24%) sorghum Belt (15%) and Central (13%) month-on-month. Annual comparison showed mild (less than 10%) cereal price changes in the northern part of the country; other regions indicated moderate to significant (11-29%) cereal price increases except Juba region which recorded 10 percent decrease in red sorghum prices. Notably, the annual moderate increase in red sorghum prices in sorghum belt region was due to annual price increases in Bay and Bakool regions.

Prices of imported food (rice, sugar, vegetable oil, wheat flour) in local currency terms either remained stable or changed at mild rates in February for most commodities across the country. Annual price comparison also indicates relative stability or mild (less than 10%) price changes (increase/ decrease) for most food imports across the country.

Livestock prices (for all species) showed mild monthly changes (increases/decreases) in most regions of the country in the month of February; in Lower Juba and Bay prices of big ruminants dropped by 12-14 percent due to low demand/increased supply. Prices of milk (cattle and camel) remained relatively stable or changed at mild rates (less than 10%) in most regions of the country in the same period. Annual comparison indicates lower prices for most livestock species in most markets in February. Milk prices have exhibited mild (less than 10%) yearly changes in most parts of the country; notably, they have declined moderately (13-27%) in Juba valley due to increased milk supply.

Labor (unskilled) wages remained relatively stable or changed mildly month-on-month in most regions of the country. Annual comparison indicates mild changes in labor wage rates in most regions of the country. However, significant annual declines were recorded in Bakool region due to reduced economic/trade activities in the context of worsened security conditions. Conversely, the rates have increased moderately (19%) in Bay due to improved labour opportunities as a result of somewhat improved security situation compared to last year.

Terms of Trade (ToT) between daily labor wage and local cereals as well as between local quality goat and cereals changed at mild to moderate rates month-on-month in most regions of the country. Compared to a year ago, the ToTs have lowered in most regions as a result of increased cereal prices and/or decreased labor wages and goat prices. Notably, the ToT between daily labor wage and local cereals was above the five year average in most regions of the country except in Shabelle and Bakool region where the ToT declined by (1-3Kg/daily labor wage).



This Market Data Update is a monthly report that presents analysis of market information and is produced regularly as part of the monthly monitoring process.

The weekly price data is collected from 48 main markets and 51 rural markets throughout Somalia since 1995.

Market analysis is an integral part of all of FSNAU's annual food security projections and seasonal technical reports (Technical Reports on FSNAU Post *Gu* and Post *Deyr* Analysis).

Detailed market data are available online on www.fsnau.org/ids.

National Trends: CPI, Exchange Rates, Cereal Prices and Relative Purchasing Power

Table 1: ToT between Cereals (kg) and Daily Labour Wage Rate, by Region

Regions	Feb 2015	Jan 2015	Feb 2014	February Average (2010-2014)
Banadir/Mogadishu	16	-11%	-41%	23%
Bay	19	6%	6%	12%
Bakool	3	-25%	-57%	-50%
Gedo	16	-20%	-11%	14%
Juba	10	11%	-17%	11%
Shabelle	8	-11%	-20%	-11%
Northwest	9	0%	0%	29%
Northeast	9	0%	13%	50%
Central	5	0%	25%	67%

Figure 1: Wheat Prices: Mogadishu and Bossaso Markets

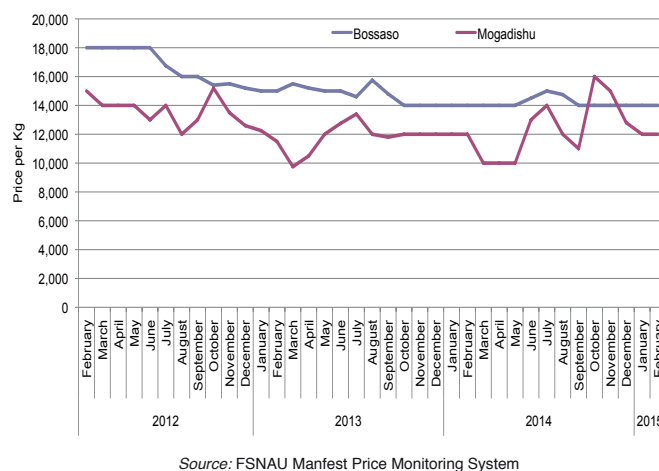


Figure 2: Terms of Trade Between Wage Rates and Selected Cereals

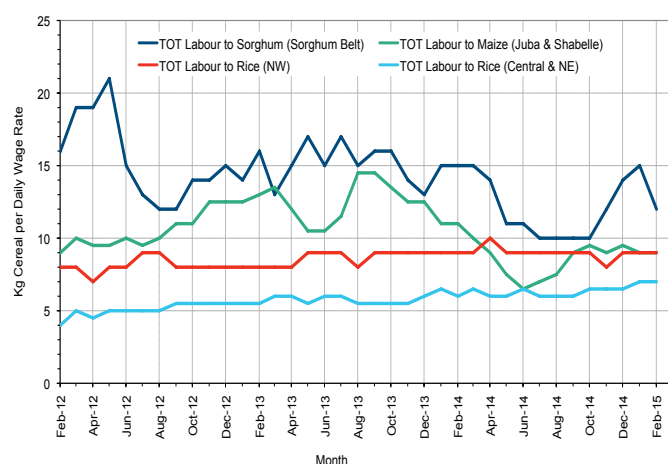


Figure 3: Monthly Exchange Rate for Selected Regions (SoSh and SiSh to USD)

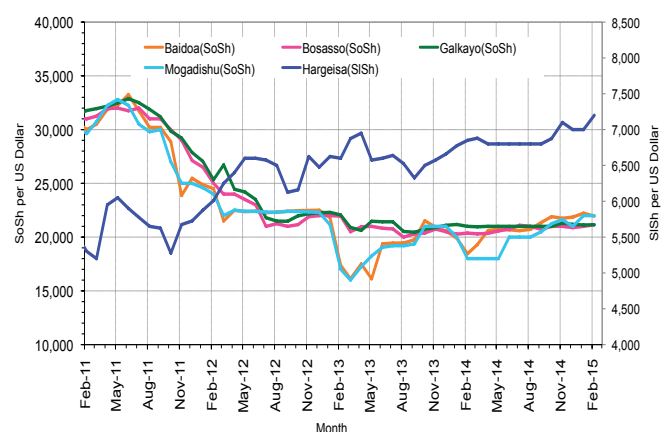


Figure 4: Monthly Trends in Consumer Price Index (CPI, March 2007=100)

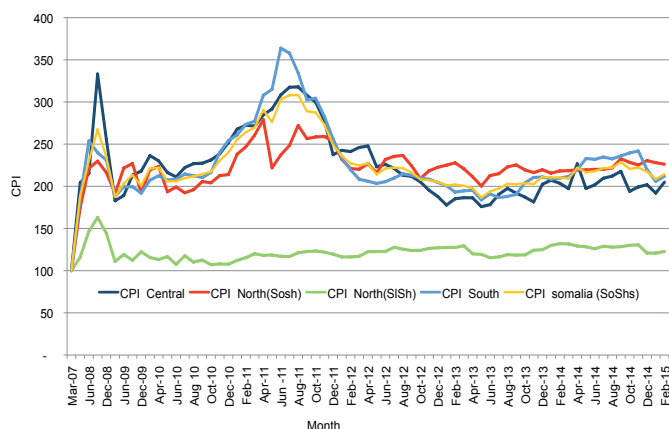
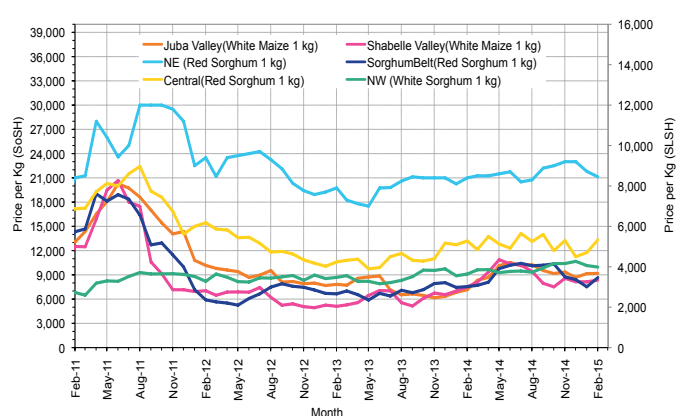


Figure 5: Monthly Trends in Local Cereal Prices



Regional analysis: Juba Regions

Indicator	5-Year Average (2010-2014)	Feb-14	Jan-15	Feb-15 Nominal Price	Feb-15 Real (Deflated) Price	% Change Previous Month	% Change Same Month Previous Year	% Change 5-year avrg (2010-2014)
Imported Commodities Prices								
Diesel 1 litre	29,114	27,821	24,679	24,071	11,258	-2%	-13%	-17%
Imported Red Rice 1kg	18,814	15,036	15,607	15,143	7,045	-3%	1%	-20%
Petrol 1 litre	31,057	28,679	26,357	24,875	11,637	-6%	-13%	-20%
Sugar	22,378	15,357	16,143	16,000	7,449	-1%	4%	-29%
Vegetable Oil 1 litre	40,942	30,607	31,714	31,571	14,796	0%	3%	-23%
Wheat Flour 1kg	16,821	15,143	15,321	14,714	6,843	-4%	-3%	-13%
Wheat Grain 1kg	14,000	-	-	-	-	-	-	-
Cereal Prices								
Red Sorghum 1kg	7,458	10,000	7,250	9,000	4,147	24%	-10%	21%
White Maize 1kg	9,599	7,336	9,221	9,257	4,268	0%	26%	-4%
Livestock & Livestock Product Prices								
Camel Local Quality (Head)	8,733,907	9,364,222	9,042,083	8,150,714	3,845,736	-10%	-13%	-7%
Cattle Local Quality (Head)	3,378,867	4,400,400	3,925,542	3,529,286	1,665,160	-10%	-20%	4%
Fresh Camel Milk 1 litre	19,732	18,054	15,464	15,036	6,995	-3%	-17%	-24%
Goat Export Quality (Head)	1,192,694	1,326,893	1,157,536	1,119,464	528,108	-3%	-16%	-6%
Goat Local Quality (Head)	760,614	949,250	792,357	771,429	363,891	-3%	-19%	1%
Other Essential Items								
Charcoal 50kg	84,486	86,429	81,429	77,857	36,636	-4%	-10%	-8%
Cowpeas 1 kg	23,108	20,304	25,000	27,500	12,876	10%	35%	19%
Unskilled Labor Wage Rate	87,057	91,357	84,893	91,750	43,191	8%	0%	5%
Firewood Bundle	8,250	11,143	7,714	7,714	3,540	0%	-31%	-6%
Local Sesame Oil 1 litre	75,489	82,536	76,286	73,179	34,429	-4%	-11%	-3%
Exchange Rate (Somali Shilling per USD)	24,203	18,464	22,088	22,232	10,390	1%	20%	-8%
Terms of Trade								
Labour Wage (Daily)/ Cereal (Maize(Kg))	9	12	9	10	-	11%	-17%	11%
Local Goat (Head)/ Cereal (Maize(Kg))	95	129	86	83	-	-3%	-36%	-13%
Price Indices								
Consumer Price Index	-	210	206	212	-	3%	1%	-

Figure 6: Trends in Cereal Prices

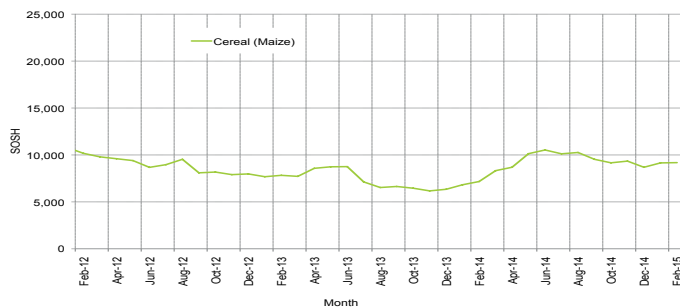


Figure 7: Trends in Wage Rates and Relative Purchasing Power

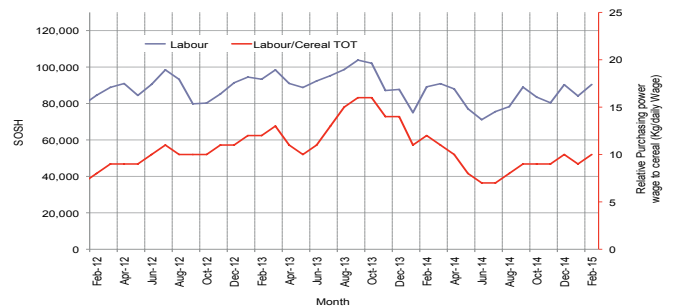


Figure 8: Imported Commodity Prices Compared to Exchange Rate

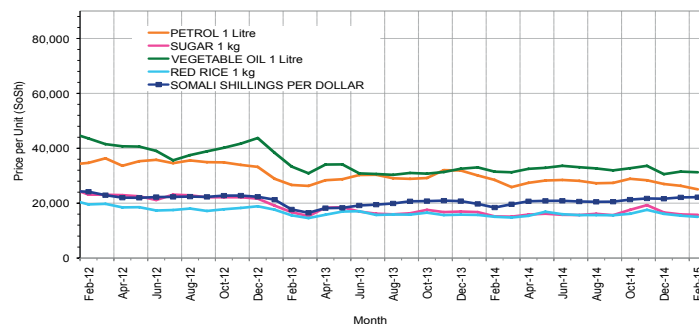


Figure 9: Goat Local Quality

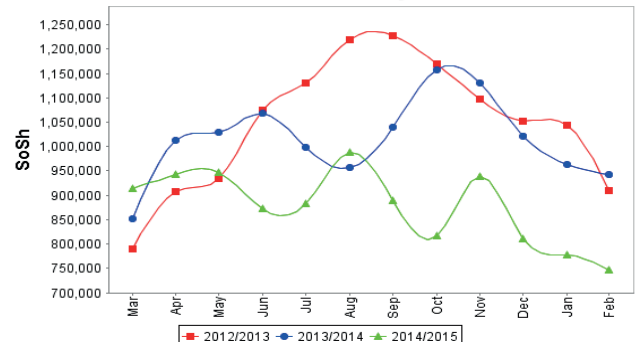


Figure 10: Exchange Rate

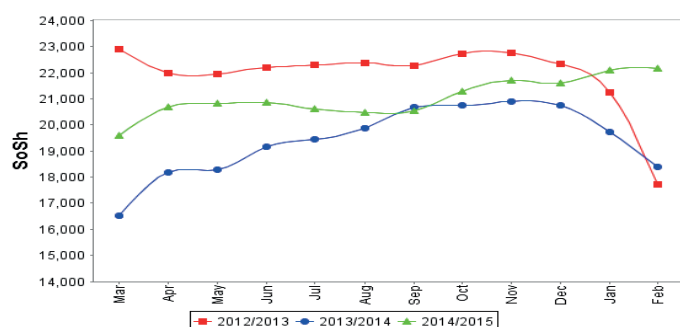
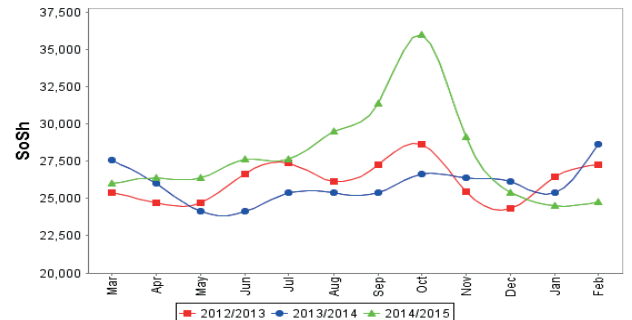


Figure 11: Water Drum (200 litres)



Regional analysis: Sorghum Belt Regions (Bay, Bakool, Gedo and Hiran)

Indicator	5-Year Average (2010-2014)	Feb-14	Jan-15	Feb-15 Nominal Price	Feb-15 Real (Deflated) Price	% Change Previous Month	% Change Same Month Previous Year	% Change 5-year avrg (2010-2014)
Imported Commodities Prices								
Diesel 1 litre	30,897	28,000	29,534	29,511	13,824	0%	5%	-4%
Imported Red Rice 1kg	21,259	17,364	17,614	17,705	8,254	1%	2%	-17%
Petrol 1 litre	30,931	28,273	29,432	29,318	13,733	0%	4%	-5%
Sugar	25,018	17,727	18,527	18,414	8,588	-1%	4%	-26%
Vegetable Oil 1 litre	44,964	37,318	38,886	37,659	17,669	-3%	1%	-16%
Wheat Flour 1kg	18,690	16,159	17,636	17,318	8,071	-2%	7%	-7%
Wheat Grain 1kg	11,688	13,150	19,000	20,667	9,652	9%	57%	77%
Cereal Prices								
Red Sorghum 1kg	8,481	7,548	7,523	8,664	3,988	15%	15%	2%
White Maize 1kg	9,764	8,985	9,647	9,264	4,271	-4%	3%	-5%
Livestock & Livestock Product Prices								
Camel Local Quality (Head)	10,557,255	12,627,500	12,064,500	11,042,500	5,210,197	-8%	-13%	5%
Cattle Local Quality (Head)	2,885,118	4,090,278	3,766,667	3,468,125	1,636,301	-8%	-15%	20%
Fresh Camel Milk 1 litre	20,972	18,682	17,725	18,350	8,558	4%	-2%	-13%
Goat Export Quality (Head)	1,391,704	1,607,500	1,356,364	1,350,227	636,992	0%	-16%	-3%
Goat Local Quality (Head)	857,645	939,227	840,682	775,682	365,898	-8%	-17%	-10%
Other Essential Items								
Charcoal 50kg	138,168	147,273	158,700	162,250	76,456	2%	10%	17%
Cowpeas 1 kg	23,916	21,925	26,591	26,909	12,597	1%	23%	13%
Unskilled Labor Wage Rate	98,259	112,636	115,341	106,477	50,140	-8%	-5%	8%
Firewood Bundle	5,827	6,545	6,432	6,432	2,935	0%	-2%	10%
Local Sesame Oil 1 litre	75,276	79,857	84,464	79,643	37,479	-6%	0%	6%
Exchange Rate (Somali Shilling per USD)	25,162	19,425	21,625	21,809	10,190	1%	12%	-13%
Terms of Trade								
Labour Wage (Daily)/ Cereal (Sorghum(Kg))	13	15	15	12	-	-20%	-20%	-8%
Local Goat (Head)/ Cereal (Sorghum(Kg))	117	124	112	90	-	-20%	-27%	-23%
Price Indices								
Consumer Price Index	-	210	206	212	-	3%	1%	-

Figure 12: Trends in Cereal Prices

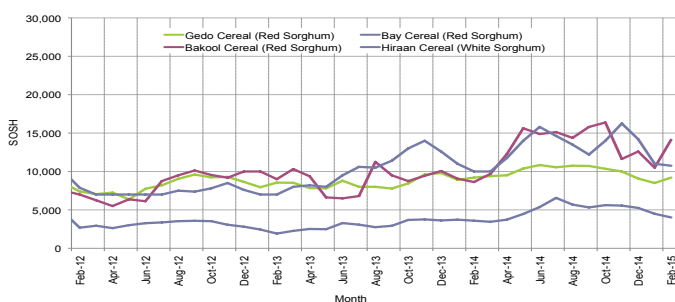


Figure 13: Trends in Wage Rates and Relative Purchasing Power

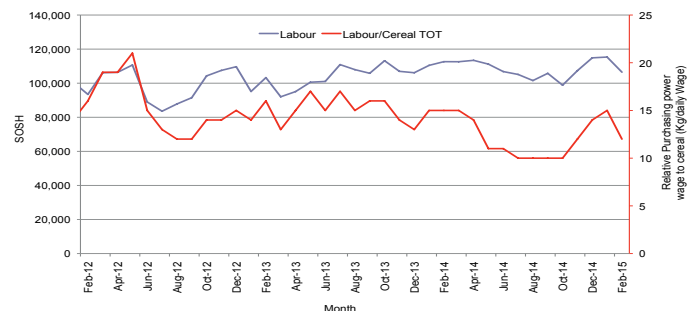


Figure 14: Imported Commodity Prices Compared to Exchange Rate

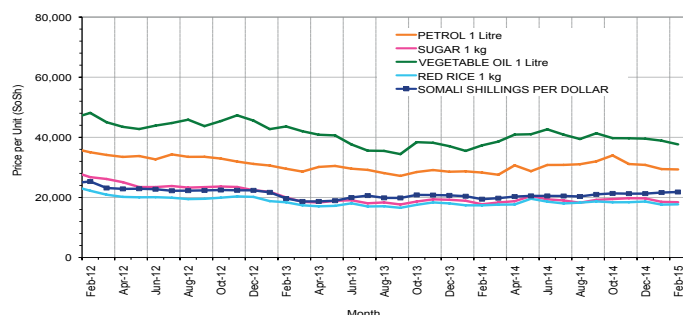


Figure 16: Exchange Rate

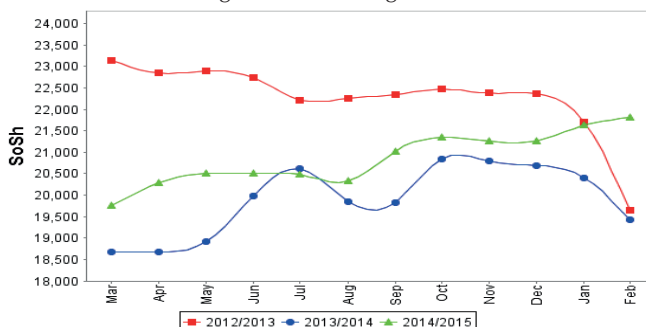


Figure 15: Goat Local Quality

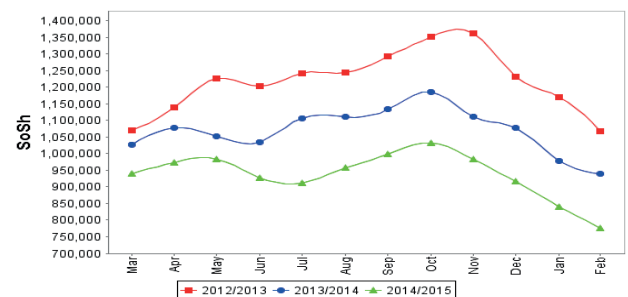
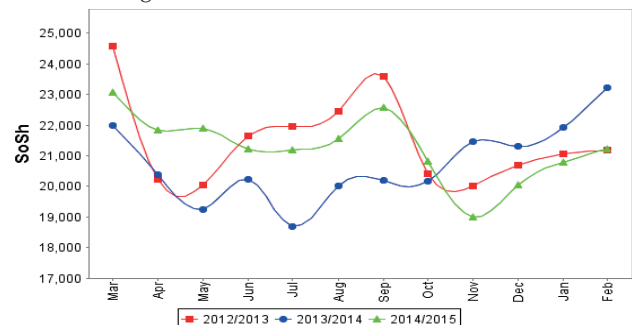


Figure 17: Water Drum (200 litres)



Regional analysis: Shabelle Regions

Indicator	5-Year Average (2010-2014)	Feb-14	Jan-15	Feb-15 Nominal Price	Feb-15 Real (Deflated) Price	% Change Previous Month	% Change Same Month Previous Year	% Change 5-year avg (2010-2014)
Imported Commodities Prices								
Diesel 1 litre	28,466	26,958	24,583	23,250	10,870	-5%	-14%	-18%
Imported Red Rice 1kg	18,374	15,333	15,833	15,417	7,174	-3%	1%	-16%
Petrol 1 litre	30,600	27,875	27,500	27,167	12,718	-1%	-3%	-11%
Sugar	22,541	15,208	16,333	16,167	7,528	-1%	6%	-28%
Vegetable Oil 1 litre	34,533	26,292	28,292	27,667	12,954	-2%	5%	-20%
Wheat Flour 1kg	16,041	15,333	16,208	15,167	7,056	-6%	-1%	-5%
Wheat Grain 1kg	13,111	20,000	27,000	22,000	10,280	-19%	10%	68%
Cereal Prices								
Red Sorghum 1kg	10,259	9,229	10,350	9,881	4,562	-5%	7%	-4%
White Maize 1kg	8,094	7,510	8,137	8,353	3,841	3%	11%	3%
Livestock & Livestock Product Prices								
Camel Local Quality (Head)	14,109,501	17,555,000	16,450,000	17,565,000	8,287,776	7%	0%	24%
Cattle Local Quality (Head)	4,617,000	6,470,000	5,150,000	5,350,000	2,524,246	4%	-17%	16%
Fresh Camel Milk 1 litre	17,241	18,917	18,917	19,000	8,865	0%	0%	10%
Goat Export Quality (Head)	1,594,437	1,887,500	1,864,375	1,810,000	853,931	-3%	-4%	14%
Goat Local Quality (Head)	1,168,291	1,329,583	1,322,917	1,386,250	653,989	5%	4%	19%
Other Essential Items								
Charcoal 50kg	122,836	120,069	121,361	134,403	63,317	11%	12%	9%
Cowpeas 1 kg	20,052	15,831	22,669	20,365	9,509	-10%	29%	2%
Unskilled Labor Wage Rate	64,158	71,667	70,833	66,042	31,061	-7%	-8%	3%
Firewood Bundle	5,583	8,417	6,375	6,375	2,908	0%	-24%	14%
Local Sesame Oil 1 litre	60,791	74,375	67,950	63,250	29,744	-7%	-15%	4%
Exchange Rate (Somali Shilling per USD)	24,561	18,942	22,177	21,590	10,087	-3%	14%	-12%
Terms of Trade								
Labour Wage (Daily)/ Cereal (Maize(Kg))	9	10	9	8	-	-11%	-20%	-11%
Local Goat (Head)/ Cereal (Maize(Kg))	161	177	163	166	-	2%	-6%	3%
Price Indices								
Consumer Price Index	-	210	206	212	-	3%	1%	-

Figure 18: Trends in Cereal Prices

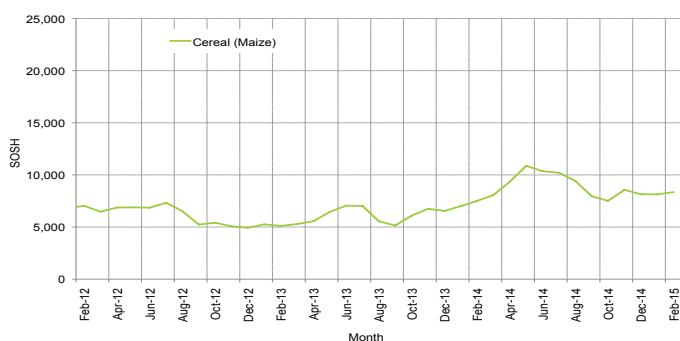


Figure 19: Trends in Wage Rates and Relative Purchasing Power

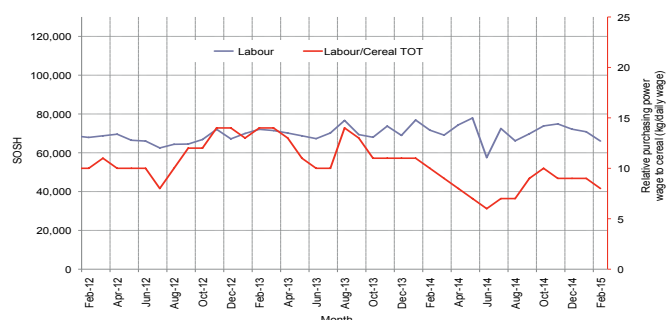


Figure 20: Imported Commodity Prices Compared to Exchange Rate

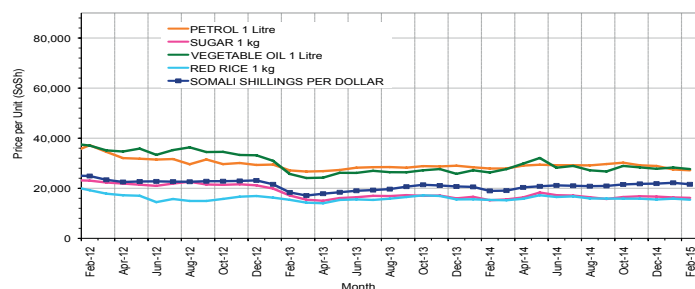


Figure 21: Goat Local Quality

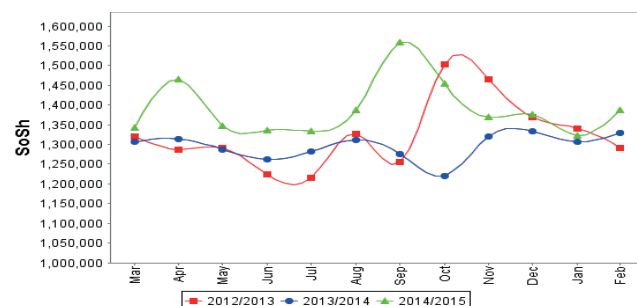


Figure 22: Exchange Rate

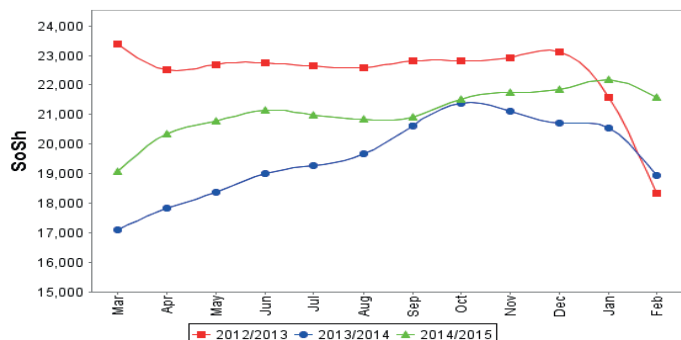
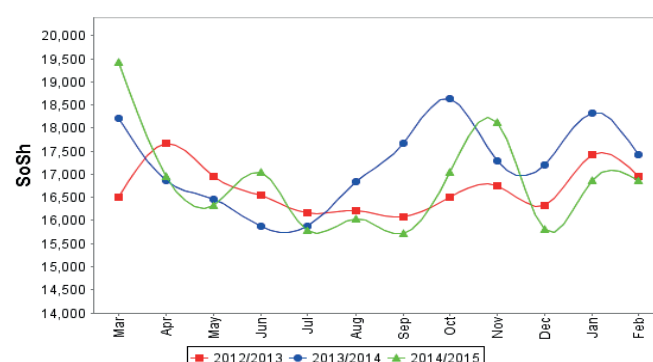


Figure 23: Water Drum (200 litres)



Regional analysis: Banadir Region

Indicator	5-Year Average (2010-2014)	Feb-14	Jan-15	Feb-15 Nominal Price	Feb-15 Real (Deflated) Price	% Change Previous Month	% Change Same Month Previous Year	% Change 5-year avrg (2010-2014)
Imported Commodities Prices								
Diesel 1 litre	23,816	20,292	20,479	19,563	9,131	-4%	-4%	-18%
Imported Red Rice 1kg	17,537	12,875	12,542	12,500	5,798	0%	-3%	-29%
Petrol 1 litre	24,811	20,792	21,250	20,667	9,652	-3%	-1%	-17%
Sugar	21,000	14,271	14,167	13,917	6,467	-2%	-2%	-34%
Vegetable Oil 1 litre	34,096	23,438	23,813	23,646	11,057	-1%	1%	-31%
Wheat Flour 1kg	13,940	12,450	12,833	12,417	5,759	-3%	0%	-11%
Wheat Grain 1kg	11,302	7,542	10,917	10,750	4,972	-2%	43%	-5%
Cereal Prices								
Red Sorghum 1kg	7,596	6,821	8,542	8,833	4,068	3%	29%	16%
White Maize 1kg	8,828	8,075	10,121	10,054	4,644	-1%	25%	14%
Livestock & Livestock Product Prices								
Camel Local Quality (Head)	13,958,333	-	-	-	-	-	-	-
Cattle Local Quality (Head)	3,641,666	-	-	-	-	-	-	-
Fresh Camel Milk 1 litre	20,204	20,792	22,375	22,542	10,536	1%	8%	12%
Goat Export Quality (Head)	2,045,000	3,000,000	-	1,900,000	-	-	-	-
Goat Local Quality (Head)	1,735,500	2,468,750	2,050,000	1,775,000	837,417	-13%	-28%	2%
Other Essential Items								
Charcoal 50kg	159,400	186,917	186,917	187,542	88,390	0%	0%	18%
Cowpeas 1 kg	18,995	13,929	22,388	22,638	10,582	1%	63%	19%
Unskilled Labor Wage Rate	82,541	109,792	102,500	105,833	49,836	3%	-4%	28%
Firewood Bundle	6,523	8,100	8,000	7,400	3,392	-8%	-9%	13%
Local Sesame Oil 1 litre	62,591	73,125	70,917	69,792	32,831	-2%	-5%	12%
Exchange Rate (Somali Shilling per USD)	24,305	18,692	21,854	22,292	10,418	2%	19%	-8%
Terms of Trade								
Labour Wage (Daily)/ Cereal (Maize(Kg))	10	14	10	11	-	10%	-21%	10%
Local Goat (Head)/ Cereal (Maize(Kg))	211	306	203	177	-	-13%	-42%	-16%
Price Indices								
Consumer Price Index	-	210	206	212	-	3%	1%	-

Figure 24: Trends in Cereal Prices

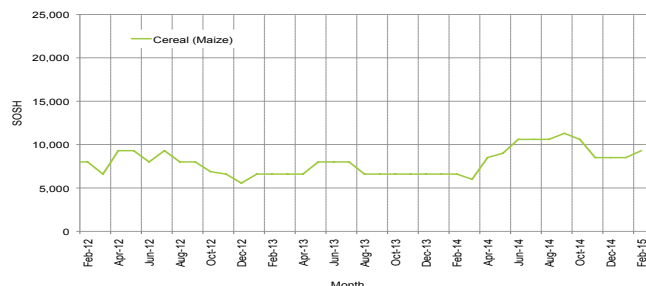


Figure 25: Bakara: Trends in Wage Rates and Relative Purchasing Power

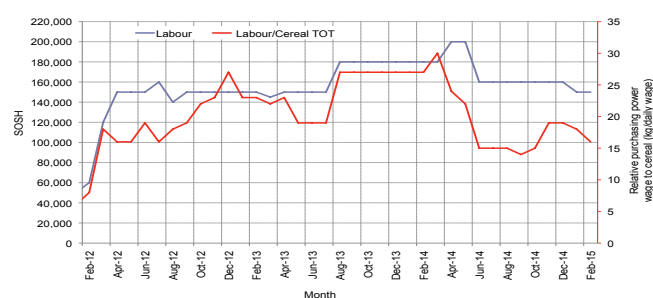


Figure 26: Imported Commodity Prices Compared to Exchange Rate

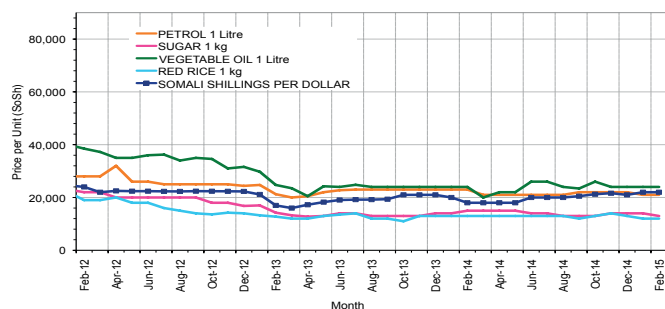


Figure 27: Goat Local Quality

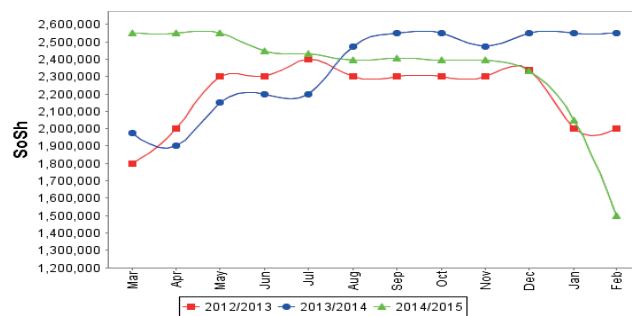


Figure 28: Exchange Rate

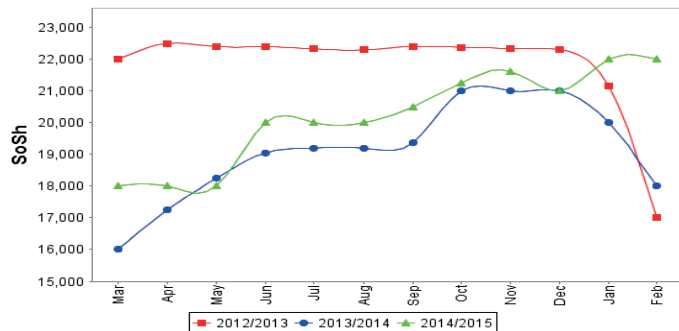
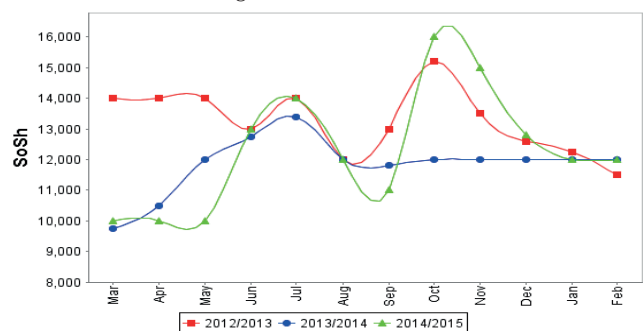


Figure 29: Wheat Flour



Regional analysis: Central Regions

Indicator	5-Year Average (2010-2014)	Feb-14	Jan-15	Feb-15 Nominal Price	Feb-15 Real (Deflated) Price	% Change Previous Month	% Change Same Month Previous Year	% Change 5-year avrg (2010-2014)
Imported Commodities Prices								
Diesel 1 litre	30,748	27,250	26,550	26,400	12,781	-1%	-3%	-14%
Imported Red Rice 1kg	23,806	18,350	17,900	17,200	8,292	-4%	-6%	-28%
Petrol 1 litre	27,650	23,550	25,500	25,800	12,489	1%	10%	-7%
Sugar	27,444	19,200	19,050	20,000	9,659	5%	4%	-27%
Vegetable Oil 1 litre	49,540	41,750	40,000	38,400	18,637	-4%	-8%	-22%
Wheat Flour 1kg	19,112	15,950	16,000	15,800	7,609	-1%	-1%	-17%
Wheat Grain 1kg	15,485	13,563	16,500	17,333	8,357	5%	28%	12%
Cereal Prices								
Red Sorghum 1kg	13,510	13,188	11,750	13,333	6,406	13%	1%	-1%
White Maize 1kg	14,144	11,583	13,600	13,400	6,438	-1%	16%	-5%
Livestock & Livestock Product Prices								
Camel Local Quality (Head)	9,162,500	10,500,000	11,825,000	11,775,000	5,745,283	0%	12%	29%
Cattle Local Quality (Head)	2,416,666	-	-	-	-	-	-	-
Fresh Camel Milk 1 litre	36,894	28,900	29,800	29,000	14,050	-3%	0%	-21%
Goat Export Quality (Head)	1,421,941	1,446,875	1,320,000	1,280,000	624,451	-3%	-12%	-10%
Goat Local Quality (Head)	1,051,260	1,157,500	850,000	825,000	402,443	-3%	-29%	-22%
Other Essential Items								
Charcoal 50kg	194,920	176,000	161,000	168,000	81,872	4%	-5%	-14%
Cowpeas 1 kg	25,406	15,800	20,000	21,200	10,244	6%	34%	-17%
Unskilled Labor Wage Rate	82,990	82,500	85,000	85,000	41,374	0%	3%	2%
Firewood Bundle	31,962	32,000	33,100	33,100	16,051	0%	3%	4%
Local Sesame Oil 1 litre	92,520	88,200	87,950	87,700	42,692	0%	-1%	-5%
Exchange Rate (Somali Shilling per USD)	25,699	20,650	21,405	21,510	10,395	0%	4%	-16%
Terms of Trade								
Labour Wage (Daily)/ Cereal (Rice(Kg))	3	4	5	5	-	0%	25%	67%
Local Goat (Head)/ Cereal (Rice(Kg))	46	63	47	48	-	2%	-24%	4%
Camel (Head)/Cereal (Kg)	403	572	661	685	-	4%	20%	70%
Price Indices								
Consumer Price Index	-	204	192	205	-	7%	1%	-

Figure 30: Trends in Cereal Prices

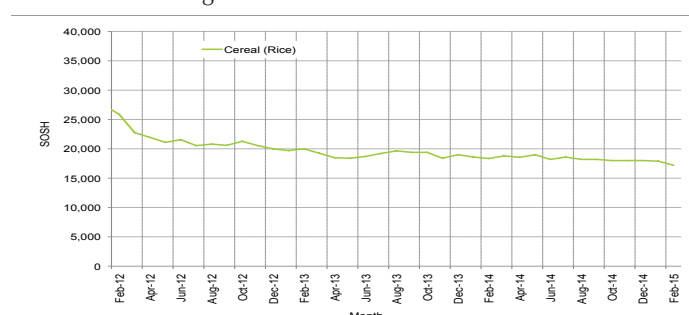


Figure 31: Trends in wage rates and relative purchasing power

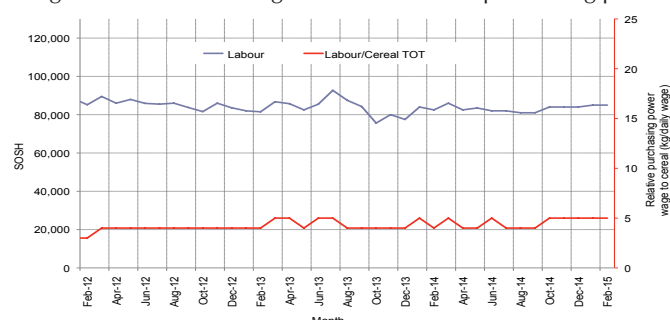


Figure 32: Imported Commodity Prices Compared to Exchange Rate

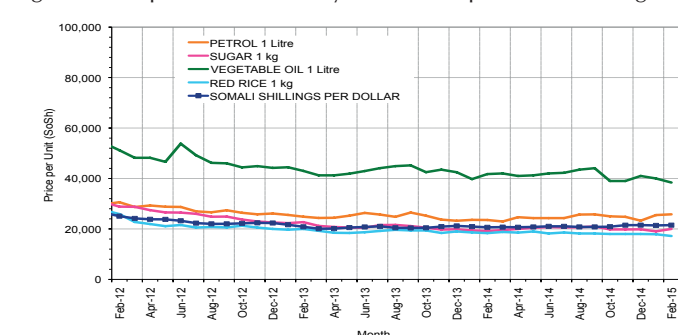


Figure 33: Goat Local Quality

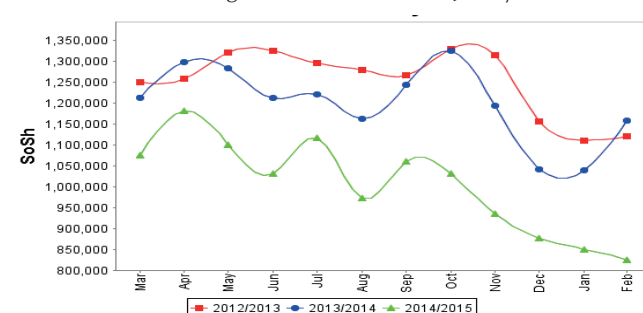


Figure 34: Exchange Rate

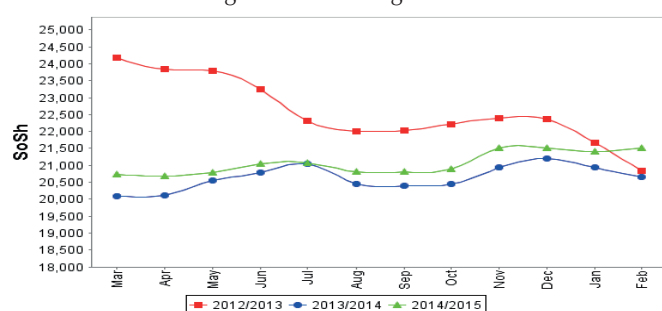
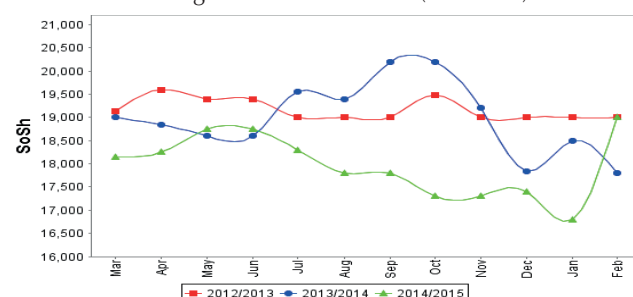


Figure 35: Water Drum (200 litres)



Regional analysis: Northeast Regions

Indicator	5-Year Average (2010-2014)	Feb-14	Jan-15	Feb-15 Nominal Price	Feb-15 Real (Deflated) Price	% Change Previous Month	% Change Same Month Previous Year	% Change 5-year avg (2010-2014)
Imported Commodities Prices								
Diesel 1 litre	26,512	23,000	19,250	18,000	7,858	-6%	-22%	-32%
Imported Red Rice 1kg	19,350	15,000	14,850	15,063	6,559	1%	0%	-22%
Petrol 1 litre	24,250	20,375	18,913	18,188	7,941	-4%	-11%	-25%
Sugar	24,750	16,938	16,675	16,500	7,194	-1%	-3%	-33%
Vegetable Oil 1 litre	44,137	34,063	31,250	31,938	14,019	2%	-6%	-28%
Wheat Flour 1kg	17,250	15,000	14,300	14,375	6,255	1%	-4%	-17%
Wheat Grain 1kg	26,525	24,750	21,300	21,625	9,460	2%	-13%	-18%
Cereal Prices								
Red Sorghum 1kg	20,387	21,000	21,800	21,125	9,239	-3%	1%	4%
White Maize 1kg	18,750	19,000	20,400	20,000	8,742	-2%	5%	7%
Livestock & Livestock Product Prices								
Camel Local Quality (Head)	13,875,626	14,893,750	14,677,500	14,450,000	6,388,104	-2%	-3%	4%
Cattle Local Quality (Head)	7,050,000	7,500,000	8,500,000	8,250,000	3,647,145	-3%	10%	17%
Fresh Camel Milk 1 litre	41,304	34,750	31,838	33,375	14,655	5%	-4%	-19%
Goat Export Quality (Head)	1,366,000	1,481,250	1,431,250	1,407,500	622,142	-2%	-5%	3%
Goat Local Quality (Head)	1,259,250	1,340,625	1,227,000	1,266,250	559,697	3%	-6%	1%
Other Essential Items								
Charcoal 50kg	361,500	390,000	395,625	387,500	171,210	-2%	-1%	7%
Cowpeas 1 kg	35,083	27,667	30,667	29,833	13,089	-3%	8%	-15%
Unskilled Labor Wage Rate	116,887	130,000	130,000	130,000	57,372	0%	0%	11%
Firewood Bundle	39,050	47,500	50,750	50,938	22,419	0%	7%	30%
Local Sesame Oil 1 litre	92,145	93,750	95,750	93,125	41,070	-3%	-1%	1%
Exchange Rate (Somali Shilling per USD)	26,072	20,594	20,976	21,053	9,207	0%	2%	-19%
Terms of Trade								
Labour Wage (Daily)/ Cereal (Rice(Kg))	6	9	9	9	-	0%	0%	50%
Local Goat (Head)/ Cereal (Rice(Kg))	67	89	83	84	-	1%	-6%	25%
Price Indices								
Consumer Price Index	-	218	228	226	-	-1%	4%	-

Figure 36: Trends in Cereal Prices

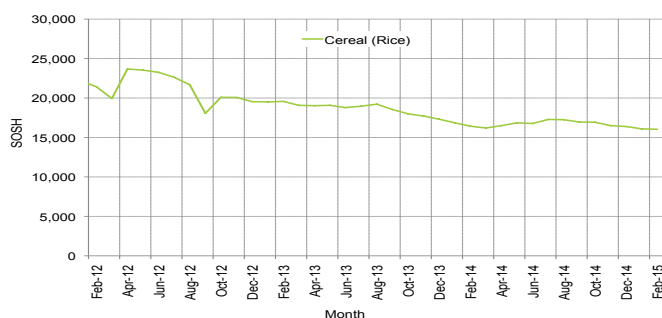


Figure 37: Trends in Wage Rates and Relative Purchasing Power

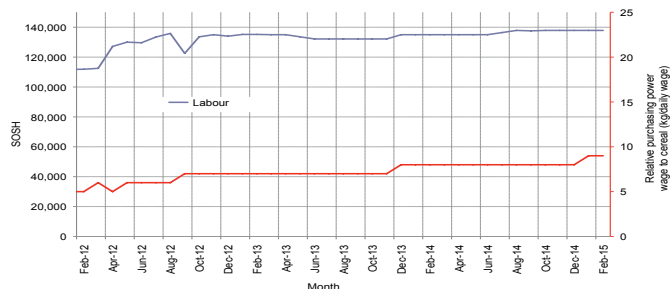


Figure 38: Imported Commodity Prices Compared to Exchange Rate

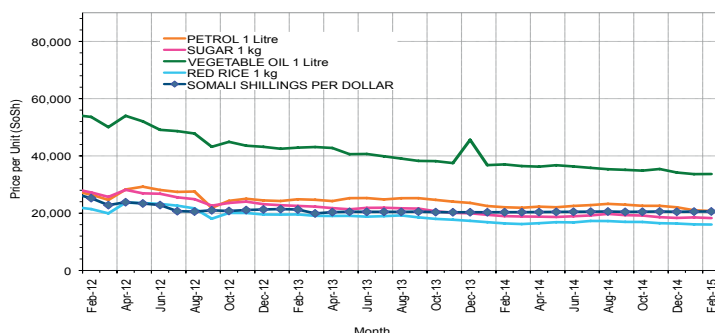


Figure 39: Goat Local Quality

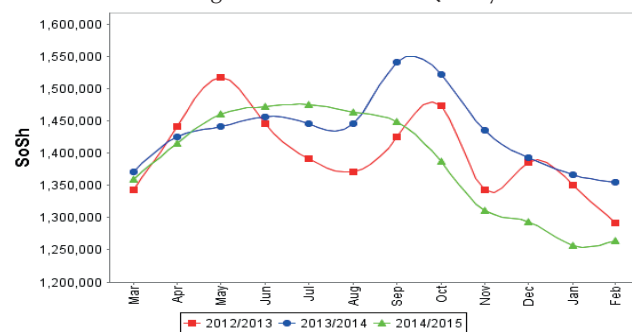


Figure 40: Exchange Rate

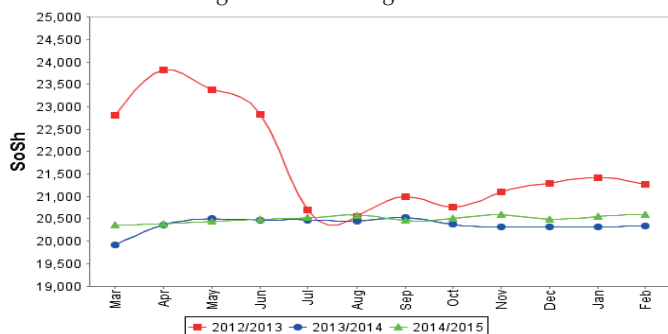
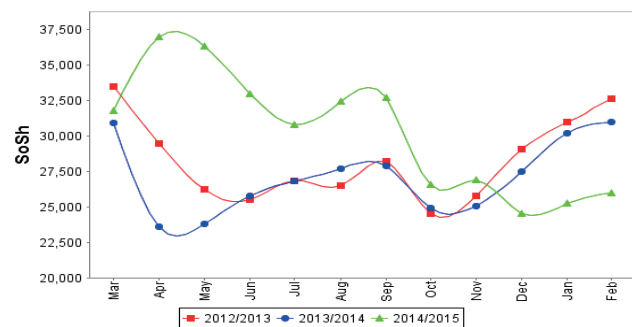


Figure 41: Water Drum (200 litres)



Regional analysis: Northwest Regions

Indicator	5-Year Average (2010-2014)	Feb-14	Jan-15	Feb-15 Nominal Price	Feb-15 Real (Deflated) Price	% Change Previous Month	% Change Same Month Previous Year	% Change 5-year avrg (2010-2014)
Imported Commodities Prices								
Diesel 1 litre	6,083	7,280	6,686	6,636	5,307	-1%	-9%	9%
Imported Red Rice 1kg	4,973	5,060	5,180	5,140	4,088	-1%	2%	3%
Petrol 1 litre	6,380	7,500	7,685	7,635	6,121	-1%	2%	20%
Sugar	6,036	5,700	5,800	5,840	4,658	1%	2%	-3%
Vegetable Oil 1 litre	11,326	12,200	12,911	12,971	10,468	0%	6%	15%
Wheat Flour 1kg	4,166	4,480	4,600	4,535	3,595	-1%	1%	9%
Wheat Grain 1kg	2,955	3,475	3,500	3,575	2,813	2%	3%	21%
Cereal Prices								
White Sorghum 1kg	3,174	3,640	4,060	3,985	3,147	-2%	9%	26%
Yellow Maize 1kg	3,255	3,540	3,700	3,625	2,853	-2%	2%	11%
Livestock & Livestock Product Prices								
Camel Local Quality (Head)	2,433,458	3,566,667	3,688,333	3,645,458	2,970,027	-1%	2%	50%
Cattle Local Quality (Head)	1,660,666	2,125,833	1,979,167	1,945,967	1,585,371	-2%	-8%	17%
Fresh Camel Milk 1 litre	5,579	5,185	5,900	5,200	4,137	-12%	0%	-7%
Goat Export Quality (Head)	374,183	477,300	432,000	440,630	358,902	2%	-8%	18%
Goat Local Quality (Head)	261,255	318,100	312,850	309,660	252,195	-1%	-3%	19%
Other Essential Items								
Charcoal 50kg	38,865	51,400	61,550	58,900	47,889	-4%	15%	52%
Cowpeas 1 kg	9,728	10,000	11,500	11,625	9,371	1%	16%	20%
Unskilled Labor Wage Rate	36,120	43,900	45,336	46,336	37,652	2%	6%	28%
Firewood Bundle	3,076	3,667	4,167	4,000	3,159	-4%	9%	30%
Local Sesame Oil 1 litre	26,688	32,813	33,125	34,125	27,703	3%	4%	28%
Exchange Rate (Somaliland Shilling per USD)	6,304	6,880	6,985	7,000	5,603	0%	2%	11%
Terms of Trade								
Labour Wage (Daily)/ Cereal (Rice(Kg))	7	9	9	9	-	0%	0%	29%
Local Goat (Head)/ Cereal (Rice(Kg))	52	63	60	60	-	0%	-5%	15%
Price Indices								
Consumer Price Index	-	132	121	123	-	2%	-7%	-

Figure 42: Trends in Cereal Prices

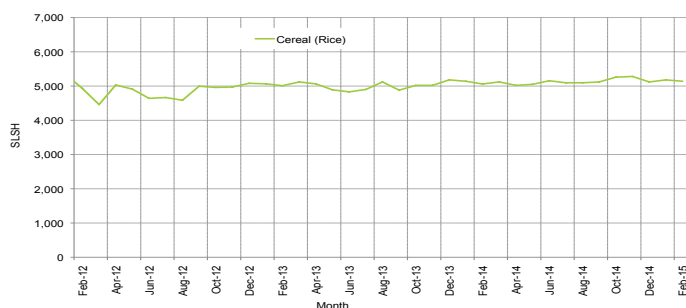


Figure 43: Trends in Wage Rates and Relative Purchasing Power

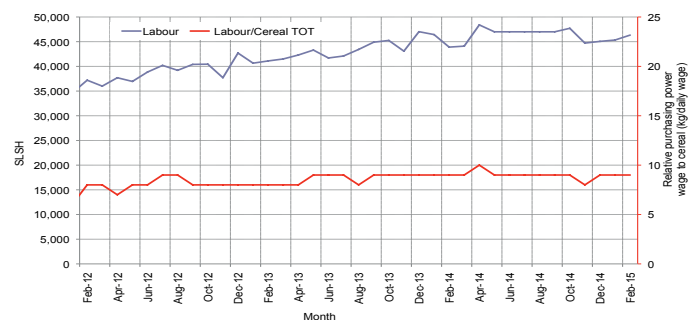


Figure 44: Imported Commodity Prices Compared to Exchange Rate

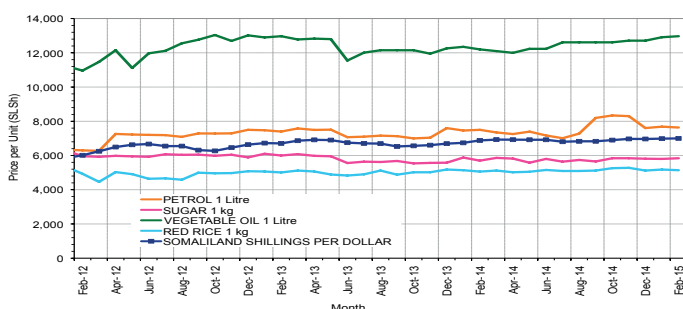


Figure 45: Goat Local Quality

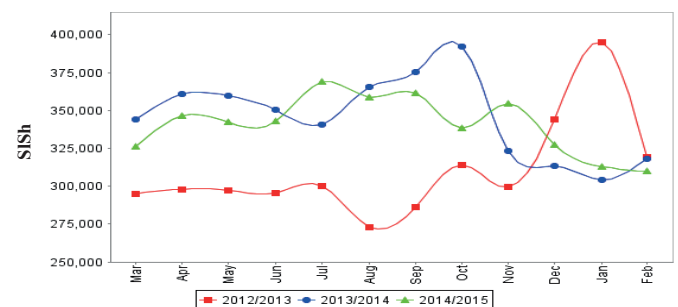


Figure 46: Exchange Rate

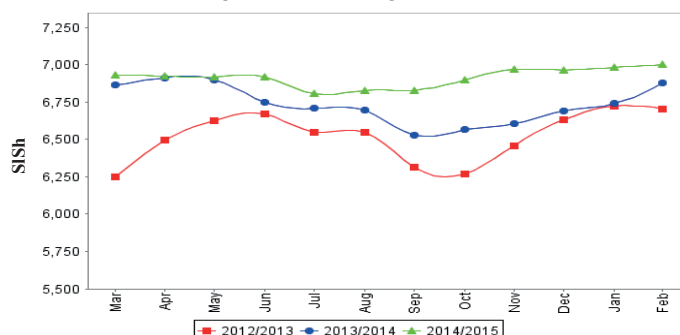
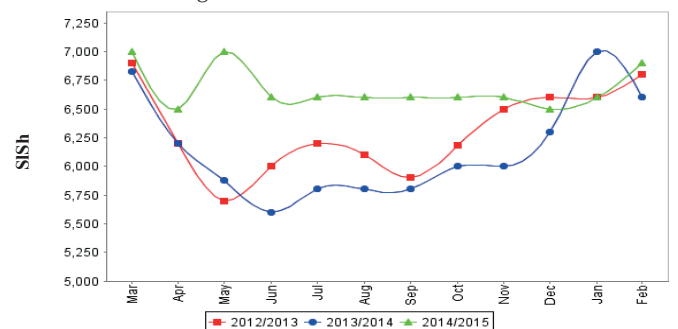


Figure 47: Water Drum (200 litres)



Trends in Livestock Exports

Table 1: Berbera Livestock Exports (Number of Heads)

	1999	2000	2001	2002	2003	2004	2005	2006	2007	2008	2009	2010	2011	2012	2013	2014
Shoats	2,048,136	1,601,083	51,546	341,711	563,107	859,404	1,023,795	1,017,242	1,350,054	1,219,519	1,556,003	2,584,810	3,104,684	3,219,584	2,888,955	3,089,592
Cattle	89,967	63,263	20,973	37,547	84,312	131,852	148,151	85,631	88,143	80,051	88,005	133,021	150,934	190,354	20,875	252,597
Camel	37,430	16,984	3,473	18,864	21,874	5,147	5,069	22,810	14,245	26,515	20,206	92,651	107,281	102,664	75,728	64,578

Figure 48: Berbera Livestock Exports (Number of Heads)

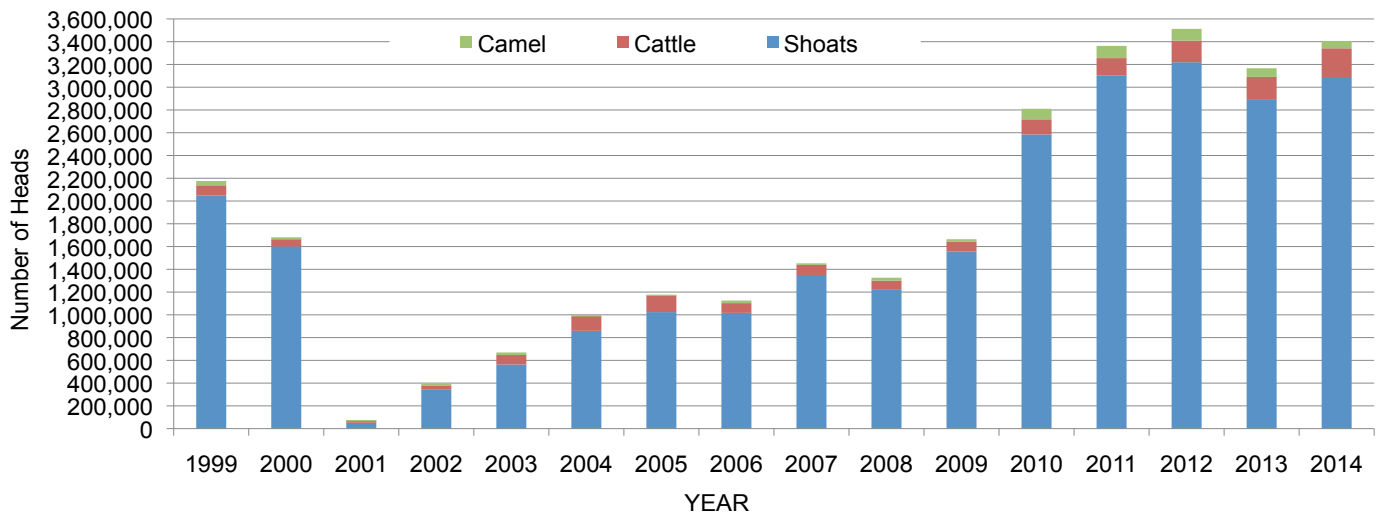
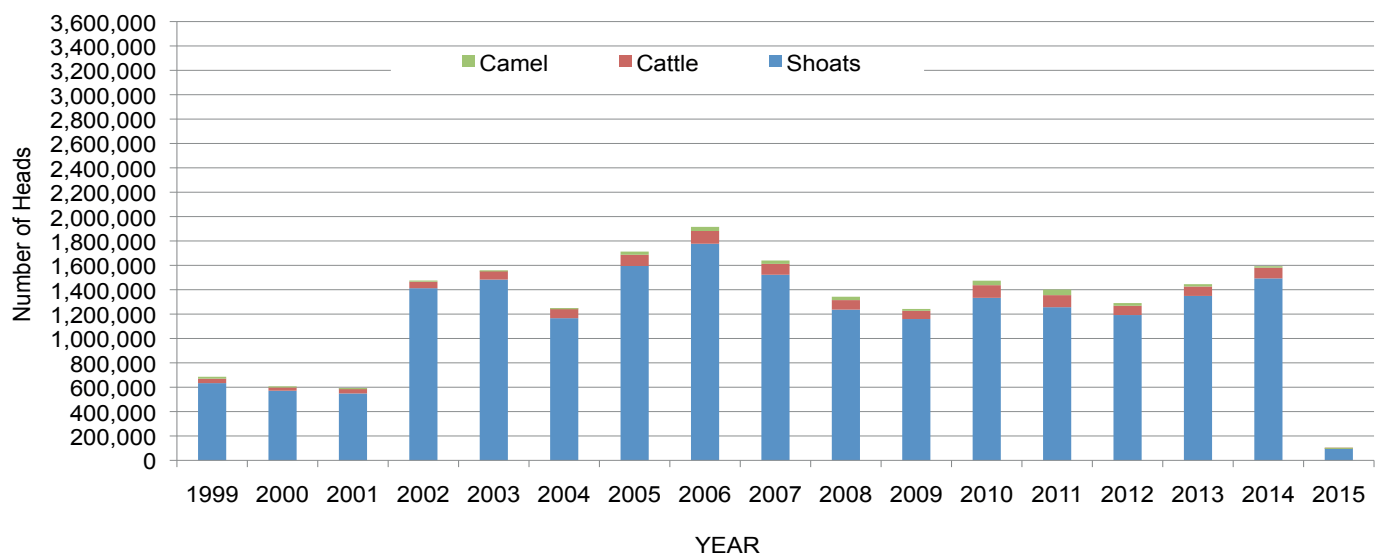


Table 2: Bossaso Livestock Exports (Number of Heads)

	1999	2000	2001	2002	2003	2004	2005	2006	2007	2008	2009	2010	2011	2012	2013	2014	Jan-2015
Shoats	633,669	571,455	548,853	1,412,450	1,483,409	1,166,480	1,594,859	1,777,283	1,522,855	1,236,775	1,159,454	1,333,478	1,256,535	1,192,197	1,349,123	1,493,111	93,979
Cattle	36,586	27,604	42,248	53,313	71,328	79,994	91,910	104,595	89,190	78,046	67,385	103,808	99,058	76,043	77,353	87,759	9,643
Camel	15,544	8,177	1,950	9,720	4,259	2,488	26,109	33,724	27,580	27,639	15,331	36,865	45,878	22,288	19,032	12,251	106

Figure 49: Bossaso Livestock Exports (Number of Heads)

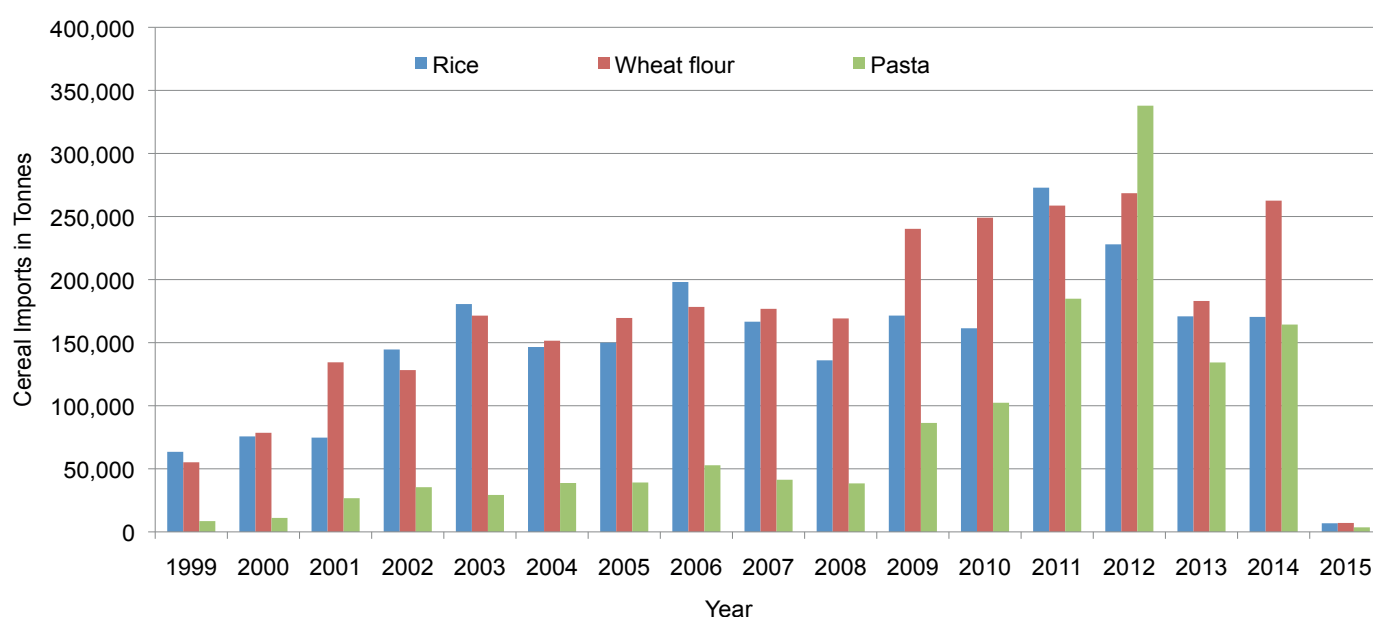


Trends in Cereal Imports

Table 3: Total Cereal Imports through Berbera, Bossaso and Mogadishu Ports (Tonnes) *

	1999	2000	2001	2002	2003	2004	2005	2006	2007	2008	2009	2010	2011	2012	2013	2014	Jan-2015
Rice	63,464	75,687	74,729	144,600	180,614	146,567	150,017	198,101	166,626	136,007	171,472	161,415	272,877	227,955	170,868	170,424	6,829
Wheat flour	55,176	78,555	134,425	128,263	171,442	151,555	169,583	178,345	176,821	169,208	240,247	249,080	258,679	268,491	183,058	262,595	7,080
Pasta	8,544	11,071	26,702	35,425	29,273	38,749	39,153	52,815	41,331	38,441	86,372	102,373	184,849	337,878	134,311	164,359	3,594

Figure 50: Total Cereal Imports (Berbera, Bossaso and Mogadishu)



* Bosasso import data is up to Jan 2015, Berbera data is up to Dec 2014 and Elman (Mogadishu) is up to Aug 2014. Mogadishu data (Elmaan Port) for 2013 includes only January -March imports.